

HOME VISITOR  
76 FROM PLAY 69  
TIME OUT  
12 PERIOD 34  
See Page 9.

# State Press

ARIZONA STATE UNIVERSITY TEMPE, ARIZONA

Vol. 46

Wednesday, February 17, 1965

No. 31

The situation in Southeast Asia looks worse every day. An ASU student from Viet Nam writes his views on page 4.

## Pre-registration Well Accepted, Castle Says

Pre-registration was well accepted by students, faculty and staff according to Dr. Gordon Castle, vice president and chairman of the University's Committee of Registration on Curriculum and Student Advisement. In general it was an improvement over the old system of registration, he said.

A slowed down registration pace and shorter lines were objectives of pre-registration, said Alfred Thomas Jr., registrar.

Keith Breon, assistant to the registrar, said that the drop-add period is always a problem during registration, but pre-registration, class changes have become heavier because students reconsidered their schedules.

OTHER administration officials agreed that pre-registration was worthwhile in helping solve student and administration difficulties that normally arise.

Students generally liked the change:

Carolyn Bates, sophomore said, "It was much easier for me"; Ann Coffield, sophomore: "At least I didn't have to wait in any long lines"; Tony Alesci, senior: "This was the best registration I've seen in the five years that I've been here."

PROFESSORS and secretaries found that handing out class cards, trying to teach, and making out final exams conflicted with this new procedure; they feel, however, that it was much easier on the students. "And after all, if it weren't for them we wouldn't be here," said Richard Neuheisel, instructor in general business administration.

Meetings by the committee are planned to discuss improving methods of registration.

## Students To Stage Opera

Opening night for Kurt Weill's folk opera, "Down in the Valley," to be presented by Lyric Opera Theatre, will be 7 p.m. tomorrow in Cosner Auditorium. The one-act work will be performed at 8:30 Friday and Saturday nights.

As the play opens, Brack Weaver is in jail awaiting hanging for the death of Thomas Bouché. He escapes to see Jennie Parsons once more. The use of flashbacks show the crime at Shadow Creek Cafe, the church and Jennie's home. Finally, assured of Jennie's love for him, Brack gives himself up to the posse.

Brack Weaver is being played by Paul Secrest. Jane Nelson will portray Jennie Parsons and Bob Short will play Thomas Bouché. Mary Parkey is directing the one-act opera.

Will Read will be the leader of the chorus, composed of 30 members of University Singers, under the direction of Dr. Kenneth Seipp, associate professor of music.

## Opera Ballet Kicks-off Arts, Celebrity Series

The Chicago Opera Ballet company leads the schedule of the 2nd semester Fine Arts Series with a performance at 8:15 tonight. The group will perform balletic interpretations of Bizet's "Carmen" followed by a short "Divertissement" and Lehar's "The Merry Widow."

The director and choreographer, Ruth Page, has been acclaimed here and abroad for her originality.

OTHER programs on the Fine Arts Series are Mozart's "Don Giovanni" by the Goldovsky Opera Theater on March 2. The company performed "The Barber of Seville" here last year.

Poet Stephen Spender is the attraction for March 22.

The last program of the series will feature pianist Glenn Gould on May 3.

CELEBRITY Series ticket-holders will be admitted to the

Royal Welsh Male Chorus concert on March 17.

Well-known jazz guitarist Laurindo Almeida, will perform March 27 for the Celebrity Series.

The last of the series' attractions is Arthur Schlesinger Jr. scheduled for April 23.

Students with series tickets must exchange them for reserved seats in advance of each performance.

## SEW Gets Increase In Student Interest



DISCUSS SEW PROGRESS — Sharon Habib, Spiritual Exploration Week chairman, and Rev. Charles Crouch, adviser to the Student Religious Council, stop in front of Danforth Chapel to discuss the progress of SEW activities.

## 3,000 Expected Next Month At First Annual ASU Day

Approximately 3,000 students from 127 Arizona high schools are expected to attend the first annual ASU Day March 20. Nadia Komarnyckyj, chairman of ASU Day, said, "Activities will provide specific informa-

tion for future college students planning to attend the University."

Events and activities of the day will include a morning registration period for lunches and admission tickets; visits to the college of an individual's choice, at which the colleges will conduct programs showing effective college curriculums; an assembly at Gammage Auditorium presenting the University Singers, a comedy entitled "Sandbox" and presentations by the University Concert Choir and Orchestra.

Students will then tour campus facilities and attend open houses of sororities, fraternities and dormitories.

Later in the evening a street dance is scheduled, after which participants will see a triangular track meet with the UofA and USC.

Hopefully, according to Miss Komarnyckyj, ASU Day will become an annual event.

Attendance and interest in the lectures, vespers and buzz sessions of Spiritual Exploration Week have been greatly improved over last year.

Ron Hockenberg, a subcommittee chairman, reported that the requests for resource leaders to speak at residence halls, fraternity, sorority and religious groups have been well over what was originally expected. Request for personal conferences is above that of previous years.

Discussions for the last three remaining days of SEW are:

Today — 9:40 a.m., MU 211, "Ecumenism — The New Reformation."

Tomorrow — 3:30 p.m., MU 213, "ASU Graduate—An Educated Fool?"; and at 7:30 p.m. in the same room, "Campus Idols and Campus Ideals."

The final buzz session will be at 9:40 a.m. Friday in MU 211, entitled "Three to Get Married."

## Finals Week Shuffled to Avoid Holiday

The final exam schedule for this semester has been changed because Memorial Day, May 30, will be officially observed the following day. Exams scheduled for Monday, May 31, the first day of the finals, were rescheduled for Friday May 28, according to Dr. Gordon B. Castle, vice president.

At the time the final exam schedule was made out, May 31 was not listed as a University holiday. The listing of this holiday necessitated the revision of the exam schedule.

A copy of the corrected exam schedule appears on page 3, so students and faculty may clip and save it.

## AS Petitions Available Soon

Students interested in running for office in the AS primary election March 31, must pick up petitions in the AS secretary's office, MU 202, after March 10.

The petitions are due on March 24. The general election will be held April 7.

# Wochner Guest at LBJTalk

AS President, Karl Wochner was in Washington, D.C., for President Johnson's Prayer Breakfast during the semester break.

Seminar sessions conducted by Senate and House members at the breakfast emphasized faith in God, and understanding of the other fellow's faith.

AMONG questions discussed with Wochner and other student body presidents were, "What is the religious atmosphere on the campus?" and the "responsibility on every campus to provide an atmosphere where religious understanding and tolerance can take root."

"I think that these breakfasts are a very good idea, and was encouraged and surprised to find that House and Senate members have these interdenominational breakfasts regularly during the year," Wochner said.

Some 1,400 people were invited to take part in the program and came from many different representative groups. Business, labor, various industrial leaders, as well as university presidents and House and Senate members took part in the conference.

"THIS IS the first time student body presidents have been invited," said Wochner. "They were selected from the top 100 universities in the country."

Wochner used part of his time hoping to find a national speaker for this year's AS President's Prayer Breakfast on campus, to be held during April. He also paid complimentary visits to the offices of Sens. Carl Hayden and Paul Fannin.

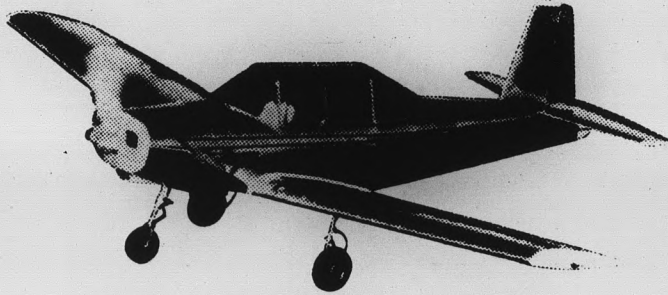
Sen. Frank Carlson of Kansas, breakfast chairman, extended the invitation to Wochner for the trip.



(Photo by John Polich)

OFF TO UTAH — Dick Garmon, head cheerleader, receives a check from Bob McConnel, president of the Inter-Hall Council. Inter-Hall Council raised the money with its Holi-Daze dance and the cheerleaders could travel to Utah when the Sun Devils play the University of Utah and Brigham Young.

## "Years Ahead" Flight Training In The New Shinn - 2150



MODERNIZED GROUND SCHOOL FOR PILOTS & NON-PILOTS

### Amos Flight Operations

A Private License is a Must in Modern Business

Don Amos — Class of '56

Phone BR 5-7291

SKY HARBOR



Wondering how you'll ever get ahead of financial woes?

Life Insurance savings give you a head start on the future. Consider the advantages of our Protected Savings Plan, the ideal estate builder for the young man. It combines low cost with flexibility to meet the economic changes that are bound to occur during a lifetime.

It will profit you to do some life insurance planning now—while you can gain by lower premiums!

JOHN HERRICK

Phone 264-4334

PROVIDENT MUTUAL  
Life Insurance Company  
of Philadelphia

## Orange Blossom

DIAMOND RINGS



MONACO •• A SINGLE DIAMOND EMBRACED BY TWO DELICATE PETALS WHICH MIRROR ITS BRILLIANCE •• FROM \$100

Paul Johnson  
JEWELERS

1604 E. CAMELBACK



MEMBER AMERICAN GEM SOCIETY

"Where Originality Is A Tradition"

Open 9 A.M.-5:30 P.M. — Thursdays Til 9 P.M.

# Royal Academy to Present Two Shakespearean Plays

The Royal Academy of Dramatic Arts will present Shakespeare's "Romeo and Juliet" in Gammage Auditorium Feb. 24, at 2:30 and 8:30 p.m.

"The Tempest" will follow on March 4 at the same times.

The academy, celebrating its Diamond Jubilee, has had among its students many of the great stars of theater: Sir Law-

rence Olivier, Sir Alec Guinness, Sir John Gielgud, Dame Edith Evans, Peter O'Toole, Albert Finney, Trevor Howard and Vivian Leigh.

Tickets, at reduced rates for students, are available at the Gammage Auditorium Box Office. Tickets for evening performances cost from \$2 to \$4.75; for matinees, \$2.50-3.75.

## J.D.'s BARBER SHOP

(formerly Campus Barber Shop)

Regular Haircuts  
plus

Men's Hair Styling

The Razor-Kut  
by the

Roffler Sculptur-Kut

by Dave Orman

Who Styled For "WESTSIDE STORY"

833 S. Rural Rd. — Tempe

Appointments Available — 967-5454

# FROM Hollywood

FOR THE FIRST TIME



A studio outline step by step. Secrets and short cuts to stardom finally made public in the book "Career" authored by the veteran actor of over 20 years RON HANSEN, who has worked with such actors as CLARK GABLE, JERRY LEWIS, LLOYD NOLAN and EDMOND O'BRIEN.



Price 1.00

Wintron Enterprises

3211 Primera Avenue  
Hollywood, California 90028

MAIL COUPON TODAY

FROM

Name \_\_\_\_\_

Address \_\_\_\_\_

City \_\_\_\_\_

State \_\_\_\_\_ Zip Code \_\_\_\_\_

# Exam Schedule

This is the revised examination schedule. Exams previously scheduled for Monday, May 31, have been changed to the Friday before.

All Classes Regularly Scheduled on

MWF or DAILY at:

7:40- 8:30	Tues., June 1 at 3:40- 5:30
8:40- 9:30	Thurs., June 3 at 10:00-11:50
9:40-10:30	Wed., June 2 at 1:00- 2:50
10:40-11:30	Fri., May 28 at 10:00-11:50
11:40-12:30	Tues., June 1 at 10:00-11:50
12:40- 1:30	Wed., June 2 at 10:00-11:50
1:40- 2:30	Fri., May 28 at 3:40- 5:30
2:40- 3:30	Wed., June 2 at 3:40- 5:30
3:40- 4:30	Thurs., June 3 at 7:40- 9:30
4:40- 5:30	Fri., June 4 at 3:40- 5:30

TTH or TTHS at:

7:40- 8:30	Tues. June 1 at 1:00- 2:50
7:40- 8:55	Tues. June 1 at 1:00- 2:50
8:40- 9:30	Thurs., June 3 at 3:40- 5:30
9:15-10:30	Tues., June 1 at 7:40- 9:30
9:40-10:30	Tues., June 1 at 7:40- 9:30
10:40-11:30	Thurs., June 3 at 1:00- 2:50
10:40-11:55	Thurs., June 3 at 1:00- 2:50
11:40-12:30	Wed., June 2 at 7:40- 9:30
12:15- 1:30	Fri., May 28 at 1:00- 2:50
12:40- 1:30	Fri., May 28 at 1:00- 2:50
1:40- 2:30	Fri., May 28 at 7:40- 9:30
1:40- 2:50	Fri., May 28 at 7:40- 9:30
2:40- 2:30	Fri., June 4 at 1:00- 2:50
3:15- 4:30	Fri., June 4 at 7:40- 9:30
3:40- 4:30	Fri., June 4 at 7:40- 9:30
4:40- 5:30	Fri., June 4 at 10:00-11:50
4:40- 5:55	Fri., June 4 at 10:00-11:50

## Paper Company Consultant Guest Speaker at Seminar

Kenneth D. Lozier, consultant to the St. Regis Paper Co. of New York City, will be guest speaker at 3:30 p.m. today in BA 101. The talk is sponsored jointly by the College of Business Administration and Pi Sigma Epsilon, student marketing club.

## INSURANCE PROBLEMS?

Students Under 25  
S-R 22's

- Auto • Motorcycle • Trailer • Fire • Theft
- We Write All —

**RALPH PACKER**

26 E. 8th St. Tempe  
967-3189 967-1182

Welcome To Lesters Friendly Barber Shop

# FLAT TOP

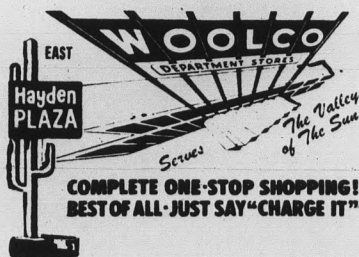


# BARBER SHOP

We can create any style to fit the individual's personality

Chart With 20 Modern Hair Styles

NOW — 2 Regular Barbers — 3 On Saturday  
Danelle Plaza — Across From Valley Fair  
3300 S. MILL AVE. and SOUTHERN



Shop Woolco  
10 a.m. to 9:30 p.m.  
Monday thru Sat.

COMPLETE ONE-STOP SHOPPING!  
BEST OF ALL—JUST SAY "CHARGE IT"

Make Woolco Your Headquarters for the Finest in Art Supplies. We have a complete line of Grumbacher and Weber artist oils, brushes, rolled canvas, canvas panels, papers, etc.

### VALUABLE COUPON

COUPON GOOD UNTIL Feb. 23

## 52" ROLLED CANVAS

REG. WOOLCO LOW PRICE 2.09 YD.

White cotton canvas. A full 52" wide. Make your own panels and save.

WITH COUPON  
**1.59** YD.

LIMIT 2 YDS. TO A CUSTOMER

Scottsdale Rd. at Curry Rd.

## Extension Office To Give Details On Group Fares

Information on group fares for summer travel in Europe is now available to faculty, staff, students and alumni through the Extension Office, AD 213.

A discussion of group travel possibilities will be held at 8 p.m. tomorrow in MU 7. Elmer Felton, director of audio-visual facilities at Central High School, will show slides of Europe and the Middle East.

The travel plans include a flight to London June 23 and a return trip either July 28 or Aug. 18. While in Europe, touring can be done individually or with a group.

Interested persons not able to attend the meeting may make arrangements at the Extension Office.

## KASN Selects Staff, Resumes Broadcasts

KASN has selected its new staff for the spring semester.

Rick Hawker was selected as station manager. The remaining positions are: Jim Kehoe, personnel director; Polly Horlacher, news director, and Ed Matthews, music director.

Two committees have also been selected. The Continuity-Production-Traffic Committee is composed of Chairman Paul Piscano, Doyne Utgard, Richard Cantor and Ben Ried.

Special Events Committee members are Chairman Larry Liffick, Sandy Pfaff, Al Michiels and Bill Schammel.

Next Wednesday marks the semester's first day of broad-

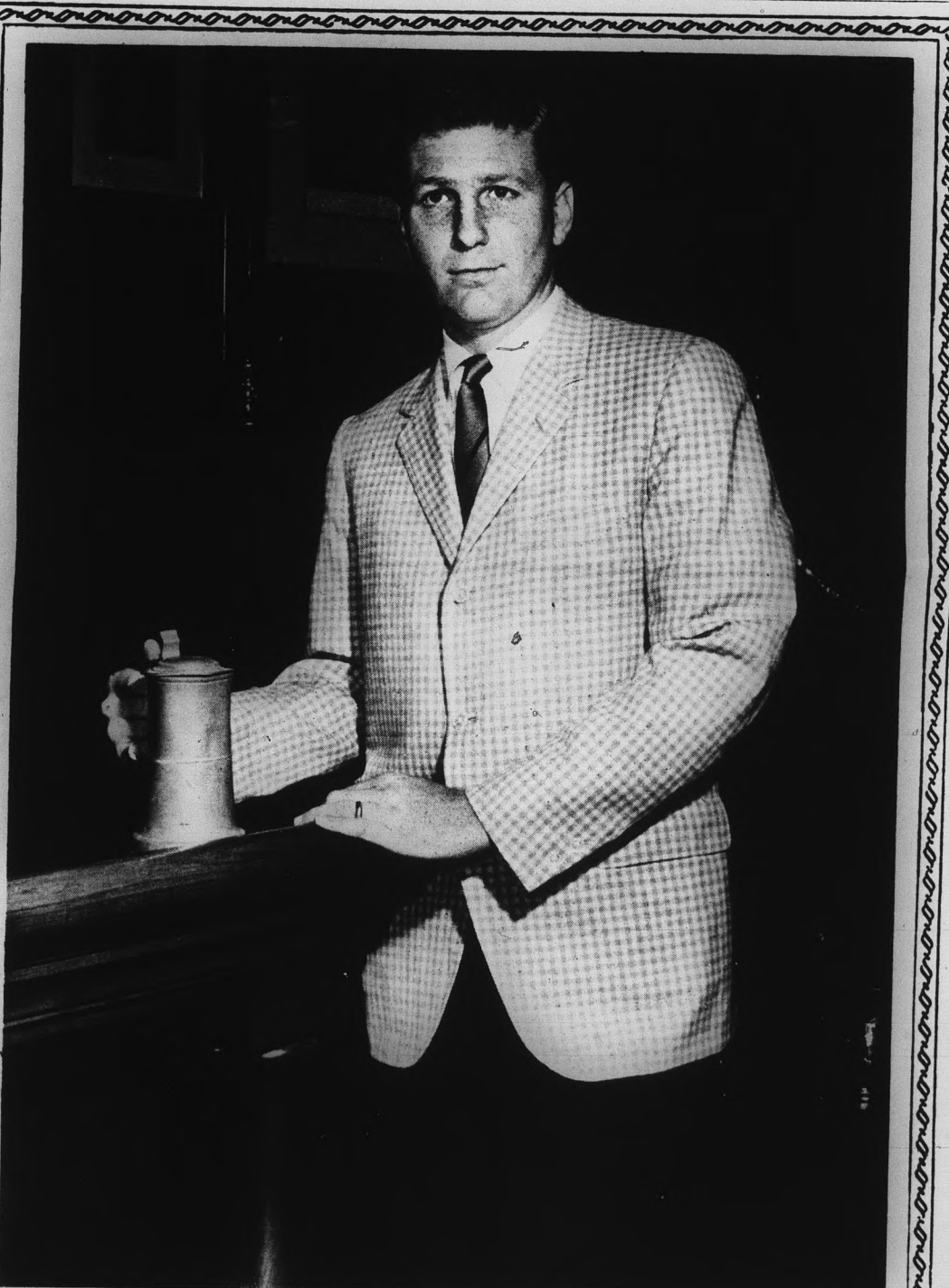
casting. KASN will broadcast from 2-10 p.m. Monday — Friday on 670 kc.

## Deprived Child Topic of Confab

A conference on the Deprived Child sponsored by the College of Education will be held on Feb. 26.

The conference will begin at 9 a.m. in the MU ballroom with a welcome address by President Durham.

The keynote address will be made by Dr. Frank Riessman, associate professor of Psychiatry at New York University's Albert Einstein College of Medicine.



## CHECK IN THE RACQUET CLUB

Just arrived in our tropical aisles. The HS&M Racquet Club sportcoat in a new batiste worsted check. Tailored in trim, slim, natural shoulder lines. Flap pockets. Welt edges. Take your pick of Wheat or Pewter. You get a colorfully casual appearance plus the benefits of pure, lightweight wool. And the meticulous tailoring of Hart Schaffner & Marx. **75.00**

**Hanny's Scottsdale**  
**Racquet Shop**

Scottsdale Road & First Ave.

from a foreign student:

# Southeast Asia: a Viet view

The following editorial was written by a Vietnamese student at ASU. He prefers to remain anonymous because he believes public exposure would interfere with his studies.

**SITUATED ON THE** eastern flank of the Indo-Chinese peninsula, Viet Nam is bordered to the north by China, to the west by Laos and Cambodia, and to the east and south by the part of the Pacific Ocean called the China Sea.

Despite 2,000 years of continuous cultural and political history, Viet Nam has been divided at the 17th parallel. Since 1954, by the Geneva ceasefire agreement, the Republic of Viet Nam lies south of the 17th parallel. The Communists occupy the north. The cochairman of the conference are the governments of Great Britain and the Soviet Union.

Viet Nam is a keystone in one of the most important sea routes of the world. It connects Europe with China and Japan to the northeast and with Indonesia, Australia and New Zealand to the southeast.

## strategically located

**THE STRATEGIC** importance of Viet Nam was fully demonstrated during World War II. Allied supplies were funneled through the Vietnamese harbor of Haiphong to the Chungking government of Nationalist China in the resistance against Japan. Also from bases in Viet Nam, Japanese armed forces launched the conquest of Malaya and Burma, initiating their military successes throughout Southeast Asia and the Pacific.

Often described as "the gateway to Southeast Asia," Viet Nam's strategic position in the struggle between communism and democracy is even more critical today. Saigon, the capital of South Viet Nam, is only a few hours flying time to such important free world bases as Manila and Singapore. Long regarded as the bulwark against further Communist expansion, South Viet Nam constitutes the main geographic and military obstacle to Communist designs in Southeast Asia. As such, South Viet Nam has been the target of extensive Communist campaigns of subversion and sabotage.

In the first phase of action (up to 1955), the Communists tried to create a state of disorder in the South while concealing their Communist origin. But their effort in this respect was curtailed by our government's action.

## ICC report cited

**FAILING IN THEIR** subversive plan, the Communist leaders increased pressure on South Viet Nam by more intensified invasions. A great number of soldiers, cadres, specialists, weapons and equipment have continued to infiltrate into South Viet Nam from the North. For evidence, let me quote from a special report issued in June 1962 by the International Control Commission. The commission was set up by the Geneva Conference on Indochina and consists of representatives from Canada, India and Poland. "... there is evidence to show armed and unarmed personnel, arms, munitions and other supplies have been sent from the zone in the North to the zone in

the South with the object of supporting, organizing and carrying out hostile activities, including armed attacks, directed against the armed forces and administration of the zone in the South... the committee has come to the further conclusion that there is evidence to show that the People's Army of Viet Nam (Communist forces in the North) has allowed the zone in the North to be used for inciting, encouraging and supporting hostile activities in the zone in the South..."

To conceal their activities, to justify their theme of propaganda, to impress the Vietnamese people, to deceive the world and to lead astray the opinion, the North Vietnamese Communists have ordered their men in the South to name themselves "National Liberation Front of South Viet Nam." It is nothing more than a puppet of the Communist North.

## Communist threat omnipresent

**WAGED BY THE COMMUNIST** bloc, South Viet Nam's war is certainly not a civil war. If anyone has the wrong belief that the war in South Viet Nam is a civil war it is only due to the ignorance of the Communist policy and ambition. As always, the Communists have a desire to inflict military and political defeat on the free world, especially the United States, thus undermining U.S. power and prestige throughout Asia. We should not forget that the Communist leaders have not concealed their aim of burying the United States.

The main objective of the Communists is the control of the whole world. The Republic of Viet Nam is a road block set up in their way of expansion toward the South, so they have been helping the Communist North Vietnamese to level that strategic barrier. We must realize that the aggression against South Viet Nam is not solely a Vietnamese problem, rather it is a challenge of the Communist bloc against the free world. It is a struggle between communism and freedom. A Communist takeover in South Viet Nam would not mean a failure of the Vietnamese nationalists, but it would be a defeat of all non-Communist peoples.

## assistance needed

**WE HAVE BEEN** fighting for our survival for more than 20 years. We have been in the front line of the free world in the struggle for peace and freedom. We need the support and assistance of the free world, especially of the American people who have been known for a long time as the advocates for and defenders of the principles of freedom and self-determination. The urgency of the present struggle demands that we be resolute in our action because any hesitation in this important period is a betrayal to our country.

We are determined to fight for the survival of our beloved Viet Nam which we have inherited from many thousands of years of heroic struggles. We are determined to liberate our country, not only from the Point of Ca Mau to the River of Ben Hai, but from the point of Ca Mau to the gate of Nam Quan. We are confident that the support and the assistance of the free world will help us toward final victory.

the relationship



## readers write

### reader raps Reilly

**EDITOR:** The article by Bob Reilly in Friday's State Press sadly misrepresented the basketball seating controversy. Let me set Mr. Reilly straight on the following points: 1. Student committees are not the instant solution to all evils, especially when these committees have no authority to act. 2. The first-come-first-serve vs. four tickets isn't petty or irrelevant to the students involved. However, that is not the sole reason for protest. ICA acted without consulting the student Senate which is responsible for representing the students of ASU. 3. "Limp

bodies" are not customers. If Reilly thinks sitdowns don't alter supply and demand, he needs a trip to Alabama and a course in economics. 4. The "easy way out" is to allow the Senate to be dissolved into ineffective committees. Also, the Senate did sit down with University officials. 5. The difficult thing is to represent the students without the authority to deal with the departments of this University. Therein lies the protest and criticism.

Jeff Boucher  
AMS Senator

See Reilly's answer, page 10.

—Ed.

### movies at Gammage?

**EDITOR:** One is always reading about, and hearing of, the lack of adequate seating at basketball games. There is such a simple solution: Just put up a screen in our excellent, new Gammage Auditorium and project the game by means of closed-circuit television. Or is the new auditorium looked upon as a sort of cathedral which would be desecrated by even the electronically-controlled image of a sport? Well, if basketball is considered degrading, it ought to be discontinued. But after the sordid murders, rape, etc., in "West Side Story," one

would think even "wicked" basketball would seem wholesome.

But basically, the auditorium if functional; here is a chance for it to function.

—A. Edgerton Williams

"We don't have the equipment. The facilities for movies in the auditorium are not ideal at all. It just isn't practicable with a distance of 90 feet," says David Scoular, Gammage Auditorium manager. The idea has been discussed by Intercollegiate Athletics, the Athletic Department and the auditorium staff and it doesn't seem feasible.—Ed.

### 'brothely' love

**EDITOR:** Ever since I came to college, my professors have been urging me to think clearly, use exact language, select the right word, and so on. When I read the editorial in Friday's State Press, "loose women and vinos," I noticed the words "bars and brothels." Now I know where several bars are, but brothels...? I just don't think there are any, any longer.

I asked several friends and some of them — even upper-

classmen — did not know what the word (not bar) meant. I had to simplify it down a little. Understand, I am not looking for one; I am just curious to know if, somewhere in the Valley, such an old-fashioned institution exists. If not, why use the term in an editorial?

I think this what my professors call a "culture lag" on the part of the editorialist.

Elmer Abbott

Yes, we know of one at... —Ed.

## State Press

is the official campus newspaper of Arizona State University. It is published each Wednesday and Friday throughout the school year, excepting holidays, and is entered as second class matter at the Tempe, Arizona, Post Office under the acts of March 3, 1879, and August 24, 1912. State Press is a member of the Arizona Newspapers Association, Associated Collegiate Press and National Advertising Service, Inc. Subscription price is \$3 per school year.

Editor-in-chief: JOHN KENDALL  
Managing editor: Frank Ducceschi  
News editor: Martha Thayer  
Copy editors: Richard Cantor, Robert Melbo

Campus editor: Tony Ault  
Sports editor: Bob Reilly  
Society editor: Diana Rosen  
Photo editor: John Polich  
Proofreader: Maret Viksjo

## Book Changes Result Of Section Shuffling

Students in at least three sections of Introduction to Literature could have avoided getting stuck with the wrong books for that course if they had waited until classes began, Dr. Jerome W. Archer, chairman of the Department of English, said yesterday.

Dr. Archer said normal attrition of professors and instructors and fluctuations in course registration almost always necessitates a reshuffling of class sections.

"In cases where the individual instructor selects supplementary texts," he said, "it is the student's responsibility to wait until the classes meet before buying these books."

The University Book Store policy requires presentation of a cash register receipt when a full refund is requested. Even if a new book has not been written in, the store can only give a partial allowance.

Dr. Archer said book-buyers

should make sure of their instructors first, then buy books and save the sales slip for added protection.

## Clancy's Closed; Being Remodeled

Clancy's, in the MU basement, has been closed since Feb. 1 for remodeling. Alterations will include the closing off of the back portion of the room for storage of civil defense supplies.

According to Mrs. Cecilia Scouler, MU director, the federal government ordered the storage of food and water.

She said Clancy's will be completely refinished in a lodge decor and will become a card and TV room. New furniture has already been purchased, but the opening date was not announced.



COLLEGE BOWL TROPHY — Maggie O'Conner, captain of the Quad team, holds the trophy which her team won for winning the championship match against Haigler Hall. Other team captains, who received certificates for their teams' partici-

pation, are, from left to right, John Morales, Lambda Chi Alpha; Maggie O'Conner, the Quad; Jon Wenge, Westminster Foundation; Sandy Schneider "Mac" B, and Richard Brown, Haigler Hall.

(Photo by John Polich)

## Birthday Dinner Will Honor Retiring Prof

Deadline is today for reservations for a birthday dinner honoring Dr. Irma Wilson, professor of Spanish.

Dr. Wilson will retire from teaching at the end of the present academic year, after serving the University since 1922. She now outranks all other members of the faculty in seniority.

Dr. Judith Radke, assistant professor of French, said that reservations and checks in the amount of \$4.50 per plate must reach her before the deadline, by all those planning to attend. The dinner will be at 7 p.m. on Feb. 25 at the Safari Hotel in Scottsdale.

## Campus Classified

Regulations: For students and faculty only of Arizona State University. To place classifieds, submit to Room 106 Administration Building. Deadline is Wednesday noon for Friday's issue. Rates: 3 cents per word, 50 cents minimum charge.

### ● FOR SALE

1963 Triumph TR-4. Excellent condition. 19,500 miles, blue with white top, tonneau, white walls, wire wheels. Must sell — \$1995. 967-4818 after five.

1962 AUSTIN-HEALEY 3000 MK11. Excellent condition. Blue-grey color. \$2,000. Phone 264-8218.

### ● RIDERS

Ride need from ASU to South Phoenix, around 5 p.m., vicinity of 7th St. & Southern. Will pay. Call BR 6-4510.

### ● FOR RENT

Large three room cottage, fully furnished, fireplace, pool, patio, walk to golf course, utilities included. 945-4493.

4 Bedroom house, \$175. 321 E. Broadway, Tempe. WO 7-3170.

### ● APARTMENTS

1 & 2 bedroom furnished or unfurnished. Completely remodeled. Very reasonable rates. Lone Palm Apartments. 2108 Rural Road. Phone 967-1308.

Room and three meals per day for two students who want to share a large, comfortable room. Twin beds, two chests of drawers, desk, table — excellent study atmosphere. Walking distance from campus. Laundry privileges. \$90 per month. 967-2445.

**You owe it to yourself to find out what the Bell System can offer you!**

We're a vigorous business in a booming field—communications.

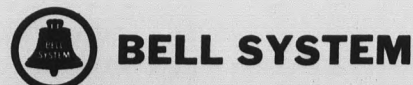
Our choice of jobs is vast and varied. Each has particular requirements for excellence.

We need good people for management because of our policy of promoting from within. You move up at your own speed as demonstrated by your individual performance.

Promotions naturally go to those who can successfully run their jobs with minimum assistance, deal effectively with people, handle tough and unfamiliar assignments—people who can produce.

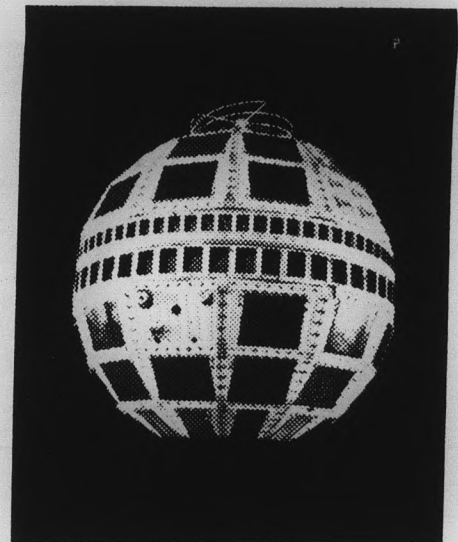
We want to meet those who have done well and who expect to keep on doing well. You owe it to yourself to find out what kind of a rewarding business or engineering career the Bell System can offer you. Our recruiting team will be on your campus soon, so make an interview appointment now at your Placement Office.

The Bell System companies—where people find solutions to exciting problems—are equal opportunity employers.



**BELL SYSTEM**

American Telephone and Telegraph Co. and Associated Companies



We work in space . . . to provide the world's finest communications

### Newman Club And Fraternities Elect Officers

Phi Delta Theta recently elected Frank Olson president, George Pahlman vice president and Larry Lewis warden.

Second semester officers for Newman Club are Tom Breen, president; Tom Walker, internal affairs vice president, and Peggy Huber, external affairs vice president.

Also, Del Etter, extension vice president; Becky Swiger, corresponding secretary; Mary-Ann McGovern, recording secretary, and Janet Feenek, treasurer.

Delta Sigma Phi elected Bill Nichols, president; Paul Machmer, administrative vice president; Victor Schwanbeck, activities vice president; Jim Kirst, secretary and Dave Linley, sergeant at arms.

### WAA Sponsors Dance Contest

WAA Dance Night will be held at 7 p.m. next Wednesday in the PV East cafeteria.

Sororities, dorms and all other women's organizations are invited to attend. Three divisions of dancing — folk, modern and Watusi — will be the areas of contest. Both men and women can participate in the third category.

This is the first dance night WAA has sponsored in two years. Contestants will be judged on appearance and appropriateness of costumes, ability and over-all performance. Winners will receive trophies.

### Club Calendar

**TODAY**

Tau Beta Sigma—6:45 p.m., MU 213, regular meeting

**THURSDAY**

Alpha Pi Epsilon—7:30 p.m., BA executive seminar room, guest speaker and general business meeting.



*Rosamond's*  
beauty salon

WO 7-3722

Tempe Center

Evenings By Appointment

# SONY DOES IT AGAIN!



### A UNIQUE NEW TELEVISION... FEATHERWEIGHT and SENSITIVE

SONY has truly done it again with the amazing TV-4-203UW. This remarkable set operates on flashlight batteries, rechargeable battery pack, auto/boat battery or AC. The 4-203UW brings in all 82 channels—both VHF and UHF, weighs only 6 pounds and has all the SONY sharpness and clarity you're used to. But this is only the beginning. This completely versatile television is so revolutionary that we'd like to show you the rest in person. Whether it's a personal television for yourself or a very special person be sure to see the newest from the best—4" TV from SONY. Come in for a demonstration today.

## Budd's Jewelry

708 So. Forest

Tempe

# Who's Whose

**PINNINGS**

Pat Erickson, Gamma Phi Beta, to George Pohlmann, Phi Delta Theta.

Alice Loezer, Gamma Phi Beta, to Brian Tyler, Phi Delta Theta.

Ginny Shamborg to Tim Kittleson, Sigma Alpha Epsilon.

Barbie Young, Phrateres, to John Butler, Delta Chi

Kay Crawford to Ron Merkley, Pi Kappa Alpha

Gerry Ann Miller, Alpha Phi, to Jack Kaufman, Sigma Nu

Linda Heizer, Alpha Delta Pi, to George Longstreth, Phi Delta Theta

Barb Haupt, Alpha Delta Pi, to Al Lindstrom, Phi Delta Theta

Ann Clark to Larry Nelson, Alpha Tau Omega

Karen Schmidt to Phil May, Pi Kappa Alpha

**ENGAGEMENTS**

Carol Gafney to Jack Moyer  
Joeline Jarrett to Carl Wieburg, Delta Chi

Lana Kaye Smylie to Roy O. Farley, Kappa Kappa

Sarah Frost, Kappa Kappa Gamma, to Larry Rupp, Phi Delta Theta

Donna Hillhouse, Alpha Phi, to Boyd Clodfelter

Robin Wood, Alpha Phi, to Steve Janisch, Phi Delta Theta

**MARRIAGES**

Rae Deanne Knight, Gamma Phi Beta, to Skip Hancock, Sigma Chi

Bev Raichert, Gamma Phi Beta, to Dave Grosser

Molly Mee, Gamma Phi Meta, to Tom Haney

Betty Miller to Rusty Muller, Alpha Tau Omega

Susan Combs to Jack Hennessy, Theta Chi

### Deadline Today For Ski Tickets

Enjoy a weekend of fun at ASU's Ski Weekend to be held at the Snow Bowl in Flagstaff Friday through Sunday. All students are invited.

The weekend includes transportation, two night's lodging, six meals at the Ski Lodge, dancing Saturday night, toboggans and a snow contest. Cost for the entire weekend is \$21 per student.

Deadline for tickets is today. For additional information contact Linda Oakley at the activities center, MU 212.

The affair is sponsored by the Social Activities Board.

**FREE HEAT**  
Free Air Conditioning  
Furnished One Bedroom  
\$115.88  
**UNIVERSITY APTS.**  
1700 S. College Ave. 967-7212

**MODELS  
WANTED**  
for  
Part Time TV, Newspaper &  
Misc. Advertising . . .  
Long Hours — Hard Work  
Low Pay  
STEEPLECRAFT ADV. CO.  
711 E. Main, Mesa  
969-5392

**Guitars Galore...**  
AT  
*Music Spot*  
53 E. Broadway 967-7161

Speerling's  
Country Sets.  
A  
S  
L  
E  
Hi!  
I'm Candy Coed.  
And I'm inviting you  
to Country Sets' 1st  
SALE.  
It's a bust. All winter  
merchandise goes.  
FAMOUS NAME BRANDS.  
Save up to 50%  
Wed, Thurs, Fri, and Sat.  
Only.  
Open Thurs until 9  
710 South Forest  
(ON CAMPUS)

# Gourmet Foods Entice World Travelers; European Restaurants Highlight of Tour

By SANDY FINERMAN

Have you ever wanted to eat your way across Europe?

Well, now you can do it on ASU's second European Gourmet Tour this summer.

"THE TOUR is opened to students, teachers or just anyone who is interested in going," said Mrs. Mary Lawton Wright, associate professor of home economics, who originated the tour.

"We plan to take in the best eating places and do the usual sightseeing," she said.

A home economics student can use the tour for credit. Students in other fields can use it as an elective if they have the opening. Non-students, she said, can go just for the fun of it.

"LAST YEAR people from all over the country participated," said Mrs. Wright. "As far as I know, until this year we were the only school that had this type of tour."

Besides delighting in all the good food, the tour will try to emphasize the geographical, historical and economic aspects of food.

"We will be going to Europe by boat," she said. "Each day we will have lectures and classes until we reach Europe."

THE TOUR will start on July 9 in New York. From there they will leave and eight days later land in Holland. Denmark, Germany, Switzerland, Italy, France and England will also be visited; the group will arrive back in New York Aug. 18.

Some highlights of the trip are the Folies Bergeres in Paris, cable car rides in Switzerland, the open-air opera in Rome and a visit to the Rhine wineries.

Mrs. Wright has been teaching courses in gourmet foods for four years. "You just can't make food your career without going into gourmet foods," she said.



MARY LAWTON WRIGHT

## Greek To Me

By JO-EM YUKNIS

Looks like the Pikes are on the lookout for knockouts. That is, they're looking for Calendar Girls to embellish their annual project. Two representatives from each sorority will attend a 2 p.m. tea Feb. 28 and the final 12 will be chosen from the group.

The Alpha Phi's annual Heart Fund Ball is coming up Feb. 26th and a lot of work by the individual participants for royalty and their sponsors remains to be done. Since this project is one of the largest of the year, interest should be great and the results — participation and money — even better.

GREEK WEEK is coming too. It's set for March 21-27. A meeting yesterday afternoon produced definite decisions and plans. Thus far, the schedule is as follows: Campaigns on the 21st; elections and convocation

on the 22nd; progressive parties on the 23rd; on the 24th will be the seminar; the Greek Sing on the 25th; Greek Ball on the 26th; and the Olympics on Saturday, the 27th.

The beautifully finished new hand-carved door at the Phi Psi house is one of the most attractive pledge projects on campus. Sororities cannot hope to match this feat, however, because where on earth could the actives put such gifts of beauty?

WHAT IS needed is a brilliant Greek to find a loophole somewhere in the circular argument that keeps the sororities confined to the limited, impersonal floors of Palo Verde Hall.

Speaking of pledge projects, the Chi Os will be at the girls' dorms tomorrow at 9 p.m. with candied apples. They are selling tickets to a car wash Saturday, at the Richfield station on 8th Street from 9 - 5.

967-4910

Eye Examinations  
Contact Lenses

Now Conveniently Near The Campus

**Dr. William V. McMullen**  
OPTOMETRIST

Hours:  
9-5 — Sat. 9-1

43 East Broadway  
Broadway Plaza

Earn a Master's Degree  
and  
Pursue Your Career too ?

**YES, at MOTOROLA!**

Motorola offers the student at the BS level an opportunity to advance his career and education concurrently. Work and achieve a Master's Degree in an environment of constant challenge.

**THE ENGINEERING TRAINING PROGRAM**

Open to BS graduates in Electrical Engineering, Chemical Engineering or Physics with a B average or better. While pursuing an MS degree at Arizona State University each trainee is placed in a rotational program covering four engineering activities at Motorola.

**THE MARKETING TRAINING PROGRAM**

Open to BS graduates in Electrical Engineering or Physics with a B-average or better. Marketing trainees may work toward an MBA or an MS degree. Rotational assignments are in the marketing area.

On Tuesday, February 23, Mr. John J. Robertson, Section Head, Linear 1/C Applications and Mr. Tom Davidson, Professional Recruitment Representative, will be on campus to discuss career opportunities with interested candidates. Contact your Placement Office for an appointment to talk with Mr. Robertson and Mr. Davidson.

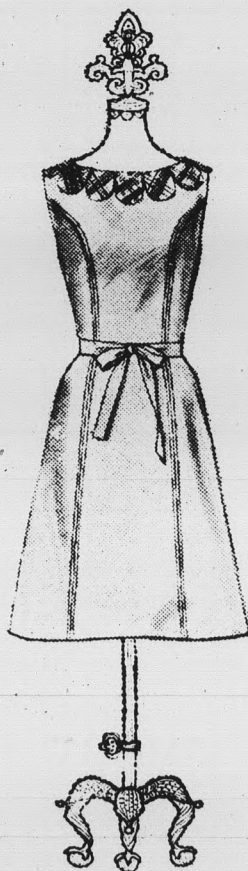
Direct Placement at all Degree Levels for . . .

- Electrical Engineers
  - Organic & Physical Chemists
  - Physicists
  - Chemical Engineers
  - Metallurgists
- in Research and Development, Quality Control, Marketing, and Production.

If you are unavailable for an interview at this time write directly to: Manager, Professional Recruitment and Training, Motorola Inc., Semiconductor Products Division, 5005 East McDowell, Phoenix, Arizona 85008.



**MOTOROLA INC.**  
Semiconductor Products Division  
AN EQUAL OPPORTUNITY EMPLOYER



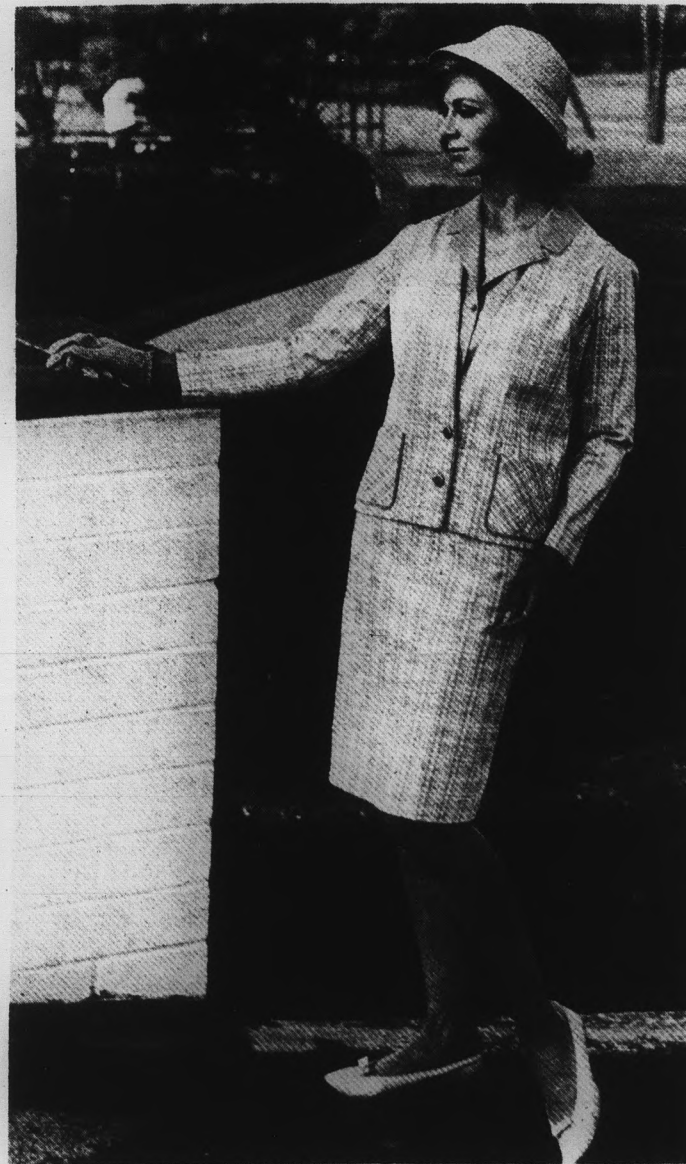
Comedienne

The deft and spinning touch of high comedy . . . as cool as Coward, as happy as Hart. Blue cotton chambray denim, circled with irreverent petals of cotton India madras that move engagingly, like a spaniel's ears. VILLAGER® collectors will treasure it for moments utterly devoid of social significance or levels of meaning. Self sash. Sizes. 6 to 16.



The Village Shop

10 to 6 -  
Thurs. 10 to 9  
Phone: 967-1981  
616 Myrtle Ave. Tempe, Arizona



- **PLAID BLAZER**  
Collarless blazer jacket with front patch bias pockets. Brass shield button closure. Attractive New Beige piping. **\$12.00**
- **PLAID SKIRT**  
Side zip slim line skirt with belt loops. Bias self covered belt with leather tab closure. **\$10.00**
- **PLAID CAPRIS** **\$10.00**

**CELIA'S** fashions

TEMPE CENTER

## Career Night Will Guide Young Students

The fifth annual Career Night for engineering and science oriented high school students will be held at Gammage Auditorium from 7-9 p.m. Monday.

The keynote speakers will be James Elmore, dean of the College of Architecture; John Yellott, lecturer in architecture, and Dr. Gordon Castle, vice president and professor of zoology.

The purpose of the event is to offer guidance for career preparation to the eighth-grader prior to graduation, and to offer guidance for career preparation to the high school junior and senior, who will be getting ready to make a college choice during the following year.



**CHICAGO BALLET** — This is a scene from "The Merry Widow," one of three plays to be presented in Gammage Auditorium at 8:15 tonight. Included in the production by Ruth Page's Chicago Opera Ballet will be Bizet's "Carmen" and "Divertissement," a

short ballet to be given between the two major works. Touring with the ballet company are two of Europe's top ranking stars, Irina Borowska of the London Festival Ballet and Karl Musil of the Vienna State Opera.

## Placement Interviews

**COMMERCIAL DIVISION**  
**TUESDAY** — U.S. Naval Engineering Lab, San Diego, Motorola Semiconductor Division, General Electric, Radio Corporation of America, U.S. Atomic Energy Commission.  
**WEDNESDAY** — Bell System, DuPont.  
**THURSDAY** — Bell System.  
**FRIDAY** — U.S. Naval Ordnance Training Station, Univac, First Western Bank, Powers Regulator Company, Trane Company, Texas Eastman, Arthur Young and Company.  
**EDUCATIONAL DIVISION**  
**TUESDAY** — West Covina, Calif., Unified School District, Glendora, Calif., Unified School District, Buena Park, Calif., School District.  
**WEDNESDAY** — West Covina, Calif., Unified School District, Orange Glen School District, Escondido, Calif., Los Angeles City School Districts, Placentia, Calif., Unified School District, Miami-Dade Junior College, Miami, Fla.  
**THURSDAY** — Los Angeles City School Districts, Placentia, Calif., Unified School District, Claremont, Calif., Unified School District, Centralia School District, Buena Park, Calif., Corona, Calif., Unified School District.  
**FRIDAY** — Los Angeles City School Districts, San Gabriel, Calif., School District, Hemet Valley Calif., Public Schools, South Whittier, Calif., School District.

**You owe it to yourself to find out what the Bell System can offer you!**

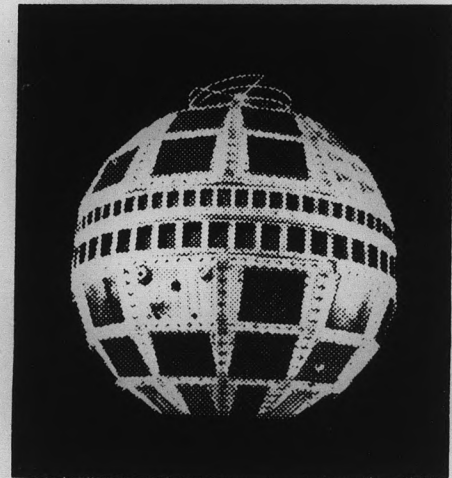
We're a vigorous business in a booming field—communications.

Our choice of jobs is vast and varied. Each has particular requirements for excellence.

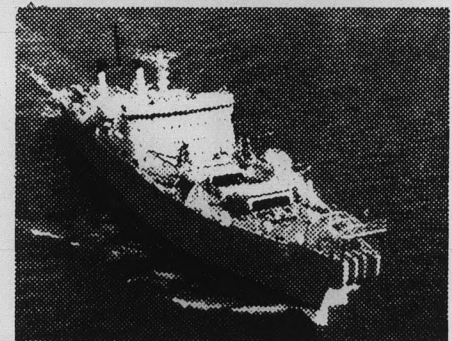
We need good people for management because of our policy of promoting from within. You move up at your own speed as demonstrated by your individual performance.

We want to meet those who have done well—top half of their class—and who expect to keep on doing well. You owe it to yourself to find out what kind of a rewarding business or engineering career the Bell System can offer you. Our recruiting team will be on your campus soon, so make an interview appointment now at your Placement Office.

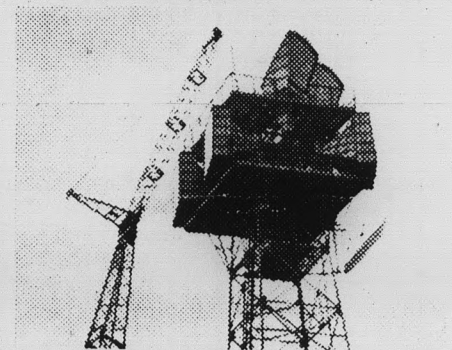
The Bell System companies—where people find solutions to exciting problems—are equal opportunity employers.



We work in space . . .



and under the sea . . .



and over the land . . . to provide the world's finest communications

**PROFESSIONAL TYPING**  
 TRANSCRIBING  
 THESES - TERM PAPERS  
 SPECIAL SERVICES  
 2727 N. Central 265-3630

*Pink Post Dress Shop*  
 Scottsdale's Only  
*Sample Dress Shop*  
 Designers Originals  
 Dresses from Hollywood  
 TV & Movie Wardrobes  
 529 N. Brown - 946-9174  
 Back of Kachina Theatre

"Where pizza is always in good taste"  
  
**VILLAGE INN PIZZA PARLOR**  
 801 E. Apache Blvd.  
 967-3355

The following Bell System Companies will be on the campus of  
**ARIZONA STATE UNIVERSITY**  
**FEBRUARY 24**  
 MOUNTAIN STATES TELEPHONE  
 BELL TELEPHONE LABORATORIES  
 AMERICAN TELEPHONE AND TELEGRAPH COMPANY  
 SANDIA CORPORATION  
**SIGN UP FOR AN INTERVIEW TODAY!**



**MOUNTAIN STATES TELEPHONE**  
 Serving you



**HAPPY COACHES** — Coach Ned Wulk and assistant Billy Mann, at Ned's right, whooped it up Saturday night when it was apparent the Sun Devils had sewn up their 76-69 victory over rival UofA.

# NCAA Kings Invade ASU For Gym Bout

It's nothing new for a coach to consider his team an underdog, but ASU's Norris Steverson flatly predicts "We have no chance at all."

And for good reason. Steverson's gymnasts host the University of Southern Illinois at 7:30 p.m. Thursday and though the "big" name isn't there, the talent is.

Southern Illinois is the defending NCAA champion and Steverson expects to lose. But he also hopes to accomplish two things from the meet:

First, he'd like to build interest in gymnastics in the Valley, and what better way than by hosting the best team in the nation.

SECONDLY, he figures that Southern Illinois will present a formidable challenge to his Sun Devils.

"I don't want them to become complacent," he said, "by winning a few easy meets."

The feature attraction of the meet will be still rings, where two young upstarts will clash with their former idol.

STEVerson pointed out that his two ringmen, Skip Johnson and Les Christianson idolized Southern Illinois' Bill Wolf when they were younger.

"Now they may beat him," Steverson said.

Wolf is second ranked in the midwestern division, while Christianson and Johnson rank one-two respectively in the midwest.

AS AN added feature, former ASU gymnastics great Chris Evans, who was the 1964 NCAA

champ, will put on an exhibition.

The Sun Devils have a 4-3 record, having lost a 78½-41½ verdict to the UofA last weekend in Tucson.

Steverson said his team should take second place in the WAC, but at best can hope to give Southern Illinois trouble in only two events — still rings and parallel bars.

JOHNSON will be ASU's entry in the parallel bars.

Other ASU entries, with midwestern rankings, in parenthesis, include, by event:

All-around — Johnson (7th); floor exercise — Jim Nelson (7th); side horse — North Witham (6th); and long horse — Norman Cox (10th).

Steverson pointed out that gymnastics at Southern Illinois is comparable to football at other schools.

"THEY WORK out seven days a week," he said, "and the school does a lot of recruiting." "Our team consists only of local boys," Steverson said, adding that "ASU doesn't offer extensive scholarships to gymnasts."

He pointed out that the sport is relatively new in Arizona, but "it's growing fast."

Thursday's meet should help speed it along.

## Ned Proved Them Wrong

The noise in the gymnasium was louder than it had been all season.

TV cameras placed in the press box overhead captured the unfolding events down on the floor for the state-wide audience.

SPORTS writers from across Arizona blushed when Ned Wulk proved them wrong with a startling 76-69 victory — his 15th in a row over the Wildcats.

There was the obvious hero, Jim Whitehead, who sank nine-for-nine while scoring 19 points in 28 minutes. There was a rebounding hero, John Myers, who grabbed 14 off the boards and added 10 points.

But the most incredible feat was performed by Freddie Lewis,

by basketball standards a "small size" outsideman at 6-0.

**FLYIN' FREDDIE:** Lewis moves with swiftness, precision and inch for inch probably jumps higher than any basketball player in the country.

Arizona's All-America candidate Warren Rustand said, "I thought that Lewis played very well. I don't think I've seen anyone his size who jumps as well as he does."

Lewis' incredible leaps blocked shots, knocked down passes and helped him grab 17 rebounds — high for the night among the giants.

Yet his greatest role was that of a team player. Lewis set the pace, started the play, calmed the nerves and played both inside and outside.

**THE WILDCAT** players assessed his worth when they credited Lewis with breaking their back.

"Lewis did a great job," said Arizona's Al Johnson. "He's the one who led them on the boards."

Arizona attributed more to its downfall than the outstanding shooting and rebounding by the Devils.

**CRUCIAL TURNOVER:** "I think the difference came," Rustand said, "when we were down by three points late in the second half and came down four consecutive times and lost the ball."

Wulk's strategy undoubtedly was influential with the second half zone defense being a factor.

"We decided to go with the zone because of foul difficulties and it put us in good rebounding position," he said.

**TONIGHT IS MOTHER-IN-LAW NITE AT SHAKEY'S. BRING ALL YOU HAVE!**

**Shakeys**  
PIZZA PARLOR & Ye Public House  
Phone 967-8803 For Takeout Orders  
1420 E. Apache Blvd. — Tempe

**SPORTING GOODS?**

Where? — TEMPE CENTER  
Name? — UNIVERSITY SPORTING GOODS

featuring:

**NAME BRAND MERCHANDISE**

such as \_\_\_\_\_

Black or White Oxford Style—All Star

**\$7.95**

**UNIVERSITY SPORTING GOODS**

**COMPLETE ATHLETIC SHOES & EQUIPMENT**

**CONVERSE**  
Chuck Taylor  
**ATHLETIC FOOTWEAR**

**BLACK ALL STAR OXFORD**

**TEMPE CENTER**

By BOB REILLY

## Senator's Critique Warrants Examination

It is not common practice to carry on debates with students who write letters to the editor (see page 4). Sen. Jeff Boucher's comments on the editorial page warrants exception to this rule.

For simplification, we will examine the "pertinent" points made by Boucher.

**FIRST: NO ONE** is saying student committees are the "instant solution to all evils." Their responsibility is to examine both sides of current and controversial issues and present the findings to the student body. This was not done during the basketball seating issue.

Second: Intercollegiate Athletics (ICA) maybe overstepped its authority when it did not first consult with the Senate about distribution of tickets. However, the Senate did not meet its responsibility in representing the students because ticket blocks were going to the Greeks week after week. Fraternity men stood in line and picked up tickets for their brothers at the expense of students who lacked such organization and affiliation. No one took the initiative to examine this problem.

Third: Linking the civil rights situation in Alabama to the seating controversy here defies intelligence.

**NEGRO DEMONSTRATIONS CAST** light on governmental systems and public businesses that ebb human dignity and block equal rights and opportunity. These demonstrations eventually forced passage of the civil rights bill that loosened chains of bondage.

In the end though, dignity, opportunity and attainment rests with the individual Negro like it rests with members of other races.

Actually, student demonstrations were against a situation only they can solve. Since the legislature cannot appropriate money for intercollegiate athletics, a new field house will come when students are willing, or obliged, to pay the extra fees.

Four: If meetings between University officials and student representatives have failed then maybe a more mature and empathic outlook would help the situation. Probably this would be more productive than a protest march. Power should be delegated only to the deserving.

## Love Led Hudlow to ASU

By ANDY SILVERMAN

An engagement ring converted a Wildcat football star into a Sun Devil student.

Floyd Hudlow, All-WAC halfback from the UofA, is now calling ASU home after transferring here to be with his fiancée, Shan Worsley.

ASU will never benefit from Hudlow's football talents because he signed a contract with the AFL's Buffalo Bills.

Hudlow is taking six semester hours in anticipation of a busy spring, filled by preparatory workouts for the Bill's tryout camp in July.

"In the beginning I will just run, but by June I'll commence a heavy daily workout," said Hudlow.

"Work in the spring means rewards in the fall."

Hudlow's reward is a large one — a \$15,000 contract. When he signed with the Bills in December, Hudlow received a bonus to make sure he attends the training camp. The remainder of the contract will be paid to him if he survives the three cuts.

"I hope to play five years in the AFL so I'll become eligible for a pension, but just being drafted by a pro team is the biggest thrill of my life," the 185-pound halfback commented.

Returning punts and kickoffs was Hudlow's specialty while playing for the UofA and Phoenix College. His returns resulted in five touchdowns and many long-yard gainers.

"I believe the main reason I was selected an all-WAC half-


back the first year (1963) was for my performance on punt and kickoff returns," he said.

Like many halfbacks, he credits his record to the "excellent blocking of my teammates."

"It gives you a great feeling to see your blockers out in front clearing your way to the goal line," he added.

The Bills signed Hudlow as a defensive halfback, a position he played in the recent Shrine and Senior Bowl games.

"It will be nice for a change to hit them and not them hitting you."



### SUN DEVILS BARBER SHOP

130 E. 8th — In The University Arches  
Open Monday thru Friday  
8:30 A.M. to 5:30 P.M.



**The Shrunken Head  
CAFE ESPRESSO**

Entertainers Wanted  
Call 274-6672 or 266-5143  
Watch For Opening Date

## COLLEGE DAY

EVERY THURSDAY IS  
"COLLEGE DAY" AT  
**Russ' Super Car Wash**

---

**CAR WASH ONLY**

**\$1.00**  
NO PURCHASE  
NECESSARY

TO ALL ASU STUDENTS  
UPON I.D. PRESENTATION

## Russ' Super Car Wash

7569 E. McDOWELL RD.  
SCOTTSDALE, ARIZONA

## ASU Bowling Club

### at TEMPE BOWL

2 Fellows and One Girl On Each Team

Club Bowls Wednesdays at 6:30 p.m.


Bowling	1.05
Trophies	.17
Tax	.03
<b>Total</b>	<b>1.25</b>
	Per Week

Interested Parties Please Contact  
ASU Student Harry Abbot — 727 Apache Blvd.  
Phone 967-1313 or  
Eddy Lalli, Mgr. Tempe Bowl — Phone 967-1656

## Auto Repairing—USED CARS

CHEVROLET SPECIALIST OLDSMOBILE  
Expert Lubrication • Reasonable Prices • Experienced Mechanics

### BRIT SMITH CAR CO.



TEMPE 8th & MILL OPEN TIL 9 P.M. & SUNDAYS

**SPECIAL**

**ASK ABOUT ASU DISCOUNT**

This Week



IT'S GREAT TO BE 'IN'

## A-1 Sprints T.M.

DYNAMIC STYLE  
CONTINENTAL SLACKS



JERRY LEWIS appearing in "THE DISORDERLY ORDERLY" a York-Jerry Lewis Production

A-1 Kotzin Co., Los Angeles, Calif.



**GYMNAST LES CHRISTIANSON**  
Will Perform Against Southern Ill. Tomorrow

## Golf Tournament In Final Stage Of Medal Play

ASU's women's golf team will host Odessa College, Odessa, Tex., in the final 18 holes of a 36-hole medal play tournament today at Scottsdale Country Club.

Odessa College is one of the top women's collegiate golf teams in the country, according to ASU's women's golf coach Sally J. Hardwick.

Only four girls entered the tourney: Carla Glasgow, Nicki Nordstrom, Kathy Farrer and Karen Keesling.

Following the Odessa match, the defending national collegiate champs will leave for Tucson and the Tucson Intercollegiate Golf Tournament to be held at the UofA.

## Wrestlers Tumble CSC; Hayes, Tribble Sparkle

Buzz Hayes and Charles Tribble grabbed important victories in ASU's 17-10 win over Colorado State College last Friday in Sun Devil Gym.

Hayes, who upped his season record to 13-2, came from a 5-0 deficit to upset Jim Crider 10-7. The 147-pound Crider was a place winner in the 1964 NCAA championships.

Tribble, who joined the mat squad this semester, found lit-

tle difficulty pinning CSC's Darrell Dilworth in 59 seconds. The 177-pounder, who now has a 5-0-2 record, was a member of the 1964 Olympic wrestling team.

Heavyweight Curly Culp gathered the only other Sun Devil pin, disposing Larry Lane in 5:39.

The remaining winner was Pete Russo (12-0-1) in the 130 class, while Art Martori (12-5-3) drew in the 157 class.

## Dairman Up For Academic Team

Inside man Dennis Dairman, a senior in the College of Business, has been nominated for the WAC academic basketball team.

The five players selected automatically are nominated for the All-America academic squad.

Dairman is currently leading the Sun Devils in scoring with a 19.6 average.

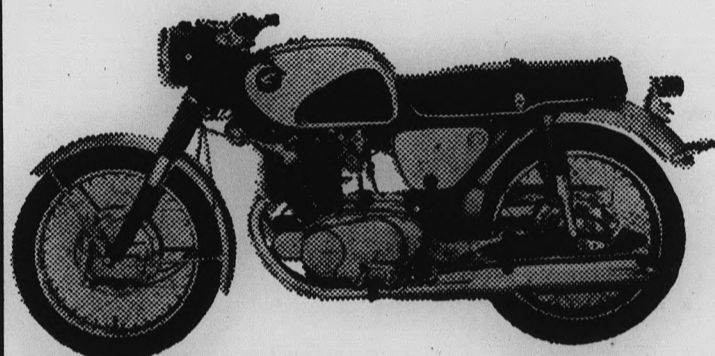
### A.S.U. BREAKFAST SPECIAL

**\$1.00**

3 EGGS AND HAM

Hash Brown Potatoes  
Toast, Jelly and Coffee  
Served Daily 6:30-11:30  
Dining Room  
Mesa-Tempe Hi-Way  
TEMPE

**HARMAN'S**



SUNNYSLOPE HONDA — where HONDA is a business and not a sideline. Where there is no delay on parts and service. Where all new model HONDAS are in stock for immediate delivery.

## Sunnyslope Honda

7th Street & Dunlap  
Open Friday Eve. & Sunday P.M.

**Coming: March 3, 1965**

*HUGHES announces campus interviews for Electronics Engineers receiving*

*B.S., M.S., or Ph.D. degrees.*

*Contact your Placement Office immediately to arrange an interview appointment.*

*Or write: Mr. J. E. Tenney  
Hughes-Fullerton R & D  
P.O. Box 3310  
Fullerton, California 92634*

*Creating a new world with electronics*

**HUGHES**

HUGHES AIRCRAFT COMPANY

U. S. CITIZENSHIP REQUIRED  
An equal opportunity employer.

new  
measure  
of  
the  
well  
dressed  
man  
!



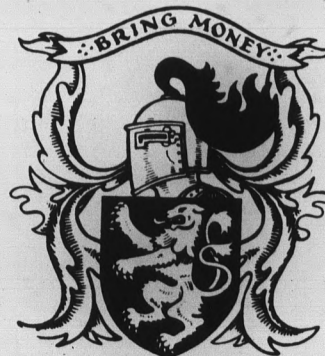
## THE 16" BURLINGTON TOP-BRASS

Just the right measure: 16".

The ever-elastic Lycra top stays put . . . comfortably over the calf, well under the knee. That untidy spacegap between trouser and sock is closed. Who but Burlington, first name in hosiery, would revolutionize your sock life like this? And who but Burlington would knit so much good sense styling into fine wool and nylon? A hint of ribbing . . . rich burnished solid tones. For perfect fit, there are two stretch sizes, regular and king. All this for a modest measure . . .

**\$2.00**

**John Horan**



FINE NATURAL SHOULDER CLOTHING  
130 East 8th Street — Tempe

AT TODAY'S SESSION —

# Senators to Debate Impeachment Article

The Student Senate will discuss the necessity for the MU Board and revisions of the impeachment articles at its meeting at 3:45 this afternoon in the Senate Chambers.

According to Judy Hamer, speaker of the Senate the following bills also will receive second reading:

—SB 237—to revise the Administrative Coordination Council.

—SB 239—to reorganize the Student Education Board.

—SB 240—to reorganize the Organizations Board.

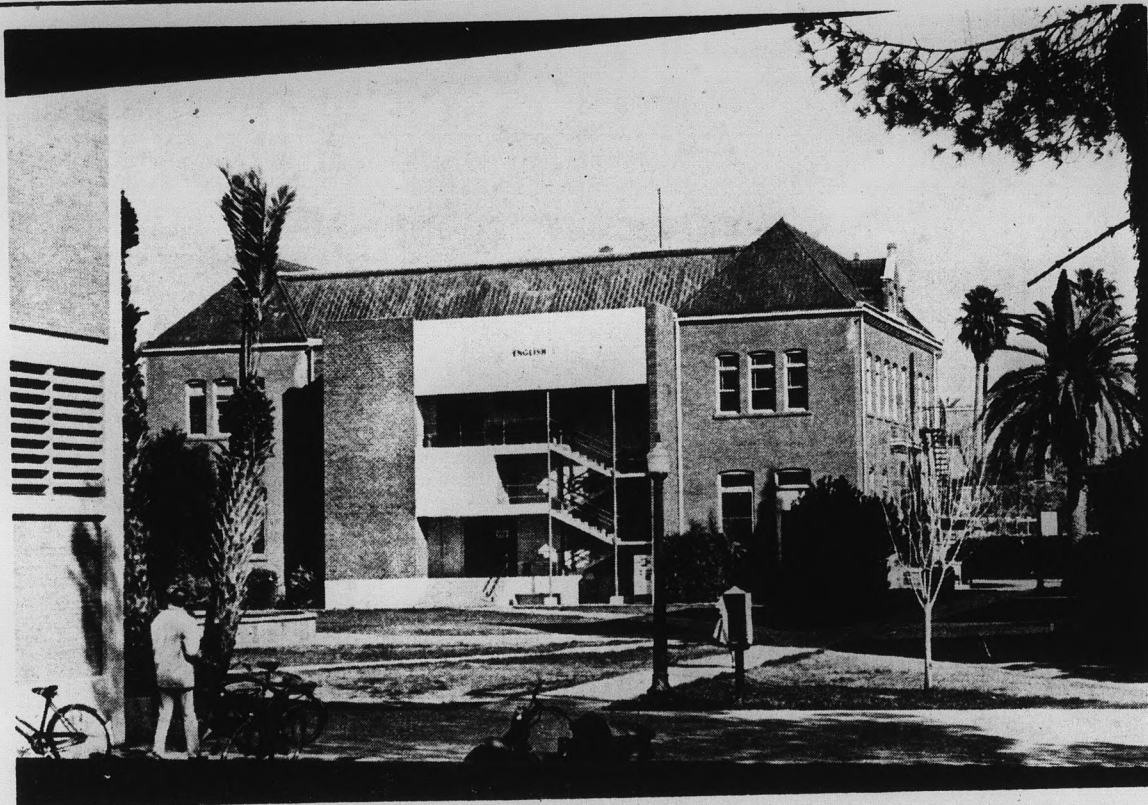
—SB 241—to reorganize the Leadership Board.

In other action, the AS budget for next year, SB 243, will be referred to committee for further investigation. This bill will specify the proportion of activity fees income to be appropriated to the different areas of the Associated Students program.

## Business Confab Here Saturday

About 200 junior college and high school teachers are expected to participate in the seventh annual Business Education Conference here Saturday.

Dr. Donald J. Tate, chairman of the sponsoring Office Administration and Business Education Department, College of Business Administration, said the theme was "Teaching Marketable Job Skills."



DESERTED — The English Building, younger Language and Literature Building. Viewed only through patio of the newer building which now takes its place, the landmark awaits its fate.

VIGOR-TRIGGER

50c

EICHENAUER'S BAR  
"Take The Tram" To  
Papago Plaza

SHAFTED  
BY SHAW?

MY WORD—  
IT'S  
EASIER  
WITH  
CLIFF'S  
NOTES!



Don't stumble through the literary classics. CLIFF'S NOTES will help you make better grades! These study aids give you a clear, concise summary and explanation, chapter by chapter. CLIFF'S NOTES are now being used by high school and college students throughout the United States. There are 100 different CLIFF'S NOTES covering the literary classics.

\$1

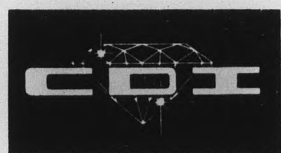
at your  
favorite  
bookstore  
or write:

Cliff's Notes

BETHANY STATION  
LINCOLN, NEBRASKA 68505



THESE ASU STUDENTS are learning about diamonds before they look around for engagement rings. CDI offers this informative course to anyone — free of charge.



130 E. EIGHTH

the jewelry salon for students

## Important Notice!

Refund Period Will Be Over

Saturday, February 20th

No Refunds or Exchanges can be made after this date. We will, however, be buying used books on a limited basis only.

# UNIVERSITY BOOKSTORE

# Sunrise



DAWN OF A NEW FASHION COLOR  
IN DRESS SHIRTS

styled by **Enro**

The majesty and beauty of the rising sun are captured in this season's newest color. The masculine demeanor of Sunrise allows easiest wardrobe coordination. Tailored in all Fine Combed Cotton Batiste Oxford with all the traditional features.

\$5.00

THE  
*Americana*  
SHOP

Quality Men's Apparel  
TEMPE SHOPPING CENTER  
OPEN 9:00 A.M. TO 6:00 P.M.  
THURSDAY 'TIL 9 P.M.