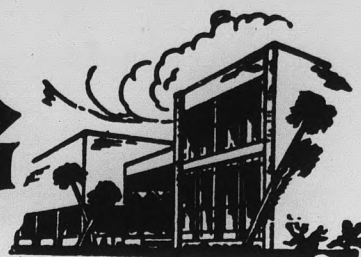




State Press

ARIZONA STATE UNIVERSITY

TEMPE, ARIZONA



Vol. 46

Friday, January 15, 1965

No. 28



(Photo by John Polich)

Parking Lot?

Two coeds contemplate a mud-filled crater located at College and Eighth Street in the former location of the Varsity Inn as the slime

engulfs a wayward tire. Construction zones in other campus location have caused areas of similar appeal.

Pre-Registration May Total Record 16,000 By January 21

By 5 p.m. Thursday it is possible that 16,000 students will have pre-registered at the University. Current enrollment is 16,921 but the registrar's office reports that close to 1,000 students are lost between semesters through graduation, transfer, dropout or suspension.

Mr. Keith Breon, assistant registrar, said, "Pre-registration, in the areas concerning my department, is going real well."

SHORTER lines, less confusion and more smiles seemed to reflect the four days of pre-registration. In general, most upperclassmen were satisfied with the new procedures and predicted its success.

Seniors and juniors have finished registering, sophomores are still in the process and freshmen begin Monday. Most people think any real problems will show themselves when the freshmen register because classes are usually well filled by the time the last of them registers. Problems occur when they have to go from building to building to get class cards.

Several students commented about the new procedure:

RON LOWRIE, junior, liberal arts: "I had no problems besides standing in line in front

of the sociology office. I got all the courses I wanted but I think there should be more people working to speed up registration."

Chuck Mason, junior, business: "Won't work. I stood in line two hours and only got one of the four courses I wanted. I like the idea but I think it would be better if it were centrally located."

Diane Grossmiller, senior, ad-

He-e-ey, Boo-Boo!

The State Press erred in Wednesday's front page story about the changes made by Campus Security regulating parking violations and fines.

The violation of falsifying information on the application for a parking decal or using a fictitious, falsely made or altered decal appeared in print as \$5. The actual fine is \$25.

Not Only That, But . . .

Wednesday's State Press made a mistake concerning the service branches of the ROTC. The page 5 story stated Air Force ROTC students are taking flight training; actually the Army ROTC students are taking part in this program.

vertising: "It was easier than before. I think it will succeed but it needs some improvement."

JOE HEATH, senior, journalism: "Good, because I got every class I wanted without waiting in line. If I were a freshman, I'd rather go back to the pushing-and-shoving routine."

Most of the other students questioned approved of the program but gave some suggestions for improvement: Some sections should be saved for the later registrants; classes should be dismissed during this period.

'Bombing' Denied

Young Americans for Freedom yesterday denied that the group had anything to do with the "bomb" story that appeared in the Evening American a week ago.

According to Mike Nobel, vice president of the conservative organization, "No member of the YAF was involved either officially or unofficially in giving the story to the Evening American."

Regent Says ASU Needs Funds Badly

By KEN WATERMAN

Is there a projected limit to the number of students that ASU and the UofA each can handle? Someone seems to think so.

"No one has set a peak for schools," said O. D. Miller, Board of Regents president, in an interview with Harold R. Cousland in yesterday's Arizona Republic, "but I think that 25,000 would be a realistic limit."

However, according to Miller, if the Regents' request for \$15,525,000 in capital outlay funds for 1965-66 isn't met, a serious problem will arise, which could be a determining factor in the projected enrollment figures.

"EITHER WE get these capital funds, (from the Legisla-

ture), or we must soon face raising entrance requirements or restricting the number of students in some drastic manner," warned the Regents' president.

ASU's predicted enrollment for next year is 18,500, the UofA will be around 20,000 and Arizona State College is forecasted at 4,500.

Last year, the Legislature split the funds for land and new buildings to meet Arizona's higher education demands. Therefore, only half of last year's appropriation, or about \$7.8 million, will not be available until July.

In 1963, the Legislature shaved off \$6 million from a request of nearly \$14 million.

MILLER ADDED that because the bill is separately introduced to each house, they "have fallen to friction between the two houses."

No Activities Next Week

Non-activity week begins Monday. Student organizations will not be allowed to sponsor social activities on weekdays. Non-activity week is a student policy enforced by a bill of long standing.

There are no specifications in the bill concerning activities during finals week.

According to Dr. Catherine Nichols, associate dean of students, the administration attempts to help students enforce its policy by not scheduling any social events.

Additional study rooms will be available in the MU during non-activity and finals weeks. Rooms 208, 209 and 210 will be available from 8 a.m. to 5 p.m.

Hot cider and coffee will be served to students Jan. 25 and 26, 8:45-9:45 a.m. "It will perhaps produce a moment's relaxation as the students go from studying to exams," said Mrs. Cecelia Scoular, MU director.

This year's request for operating budget totals \$29,273,000, up \$3 million from last year. About three-fourths of this is for faculty salaries. However, Miller said, "We are still considerably below the salary level of other, comparable state universities."

"Each school has kept its academic standards high and fared pretty well in the great scramble for top professors."

"THIS IS because the college presidents take the matter very seriously," Miller said. They're not trying to pad figures, but to keep moving ahead, the academic programs must have the facilities." He added that tuition costs will probably have to be raised if the requests aren't granted.

He concluded, saying that the Regents will not have any big matters this year of the medical school approval for the UofA two years ago, or the approval of new colleges of architecture, nursing, law and fine arts at ASU this year.

1200 Due At Confab

Twelve hundred teachers and students are expected to attend the fourth annual Invitational Reading Conference on campus today and tomorrow.

About 800 Arizona elementary and secondary school teachers are expected to be among those attending the conference. The College of Education will excuse certain education students from

class to attend the conference.

The conference will start at 9 a.m. today with registration in Gammage Auditorium and will adjourn at noon tomorrow.

Dr. William I. Martin Jr., an authority on children's literature and storyteller, will be guest speaker at the dinner meeting held at 7 tonight in the MU Ballroom. "A Charm of Words" will be his topic.

Exam Schedule

All Classes Regularly Scheduled on

MWF or DAILY at:

7:40- 8:30	Thurs.,	Jan. 28	at 3:40- 5:30
8:40- 9:30	Mon.,	Jan. 25	at 10:00-11:50
9:40-10:30	Tues.,	Jan. 26	at 10:00-11:50
10:40-11:30	Wed.,	Jan. 27	at 10:00-11:50
11:40-12:30	Thurs.,	Jan. 28	at 10:00-11:50
12:40- 1:30	Fri.,	Jan. 29	at 10:00-11:50
1:40- 2:30	Wed.,	Jan. 27	at 3:40- 5:30
2:40- 3:30	Tues.,	Jan. 26	at 7:40- 9:30
3:40- 4:30	Fri.,	Jan. 29	at 1:00- 2:50
4:40- 5:30	Fri.,	Jan. 29	at 3:40- 5:30

T TH or T TH S at:

7:40- 8:30	Thurs.,	Jan. 28	at 1:00- 2:50
7:40- 8:55	Thurs.,	Jan. 28	at 1:00- 2:50
8:40- 9:30	Mon.,	Jan. 25	at 3:40- 5:30
9:15-10:30	Thurs.,	Jan. 28	at 7:40- 9:30
9:40-10:30	Thurs.,	Jan. 28	at 7:40- 9:30
10:40-11:30	Mon.,	Jan. 25	at 1:00- 2:50
10:40-11:55	Mon.,	Jan. 25	at 1:00- 2:50
11:40-12:30	Tues.,	Jan. 26	at 1:00- 2:50
12:15- 1:30	Wed.,	Jan. 27	at 1:00- 2:50
12:40- 1:30	Wed.,	Jan. 27	at 1:00- 2:50
1:40- 2:30	Wed.,	Jan. 27	at 7:40- 9:30
1:40- 2:50	Wed.,	Jan. 27	at 7:40- 9:30
2:40- 3:30	Mon.,	Jan. 25	at 7:40- 9:30
3:15- 4:30	Sat.,	Jan. 30	at 7:40- 9:30
3:40- 4:30	Sat.,	Jan. 30	at 7:40- 9:30
4:40- 5:30	Fri.,	Jan. 29	at 7:40- 9:30
4:40- 5:55	Fri.,	Jan. 29	at 7:40- 9:30

Five-Year Program For Teachers Of Mentally Retarded Announced

A five-year program to prepare teachers of mentally retarded children will begin next fall.

"This is our planning year," said Dr. H. G. Hensley, former professor of Oklahoma Central State College, who has been appointed visiting associate professor of education to direct the new program.

"We plan to offer a full complement of courses next year," he said, "and we have had a real positive reaction without a great recruitment effort — already there are 25 declared majors."

The program will emphasize

the "interaction of theory and its practical application, leading to actual work with children," said Dr. Hensley.

"From the sophomore year on, students will spend quite a lot of time observing and working with children in classrooms."

The program will be developed under a new \$15,000 "stimulation grant" from the U.S. Office of Education.

He said: "We hope to develop a really outstanding training program for those who are qualified and very interested in this area. We are much more interested in quality than quantity."

"ASU hopes to train some of the best."

Special Hour Classes Set For Spring

Late afternoon, evening and Saturday courses will be offered spring semester for those unable to attend regularly scheduled classes during the day.

The classes will begin as early as 3:15 p.m. and continue to 10:30 p.m. Courses from one-half to four semester hours will be offered.

Students may enroll during regular spring registration, Feb. 4-6 during the day; Feb. 4-5 at night; or from 6-8 p.m. Feb. 8-11.

Students registering for more than six hours must pay a fee of \$115; for six hours or less, the fee is \$12 per hour.

Number of courses offered and the fields in which they are being offered are: one each, botany and zoology; two each, agriculture, mass communications, nursing and physics; four each, architecture, geography, geology and political science; five each, psychology, speech and drama, and anthropology; and six each, home economics and sociology.

Also, 49, art; 65, business administration; 99, education; 41, engineering; 20, English; 14, foreign languages; 16, health, physical education and recreation; 10, history; 11 industrial design and technology; 31, mathematics; and 12, music.

Cultural Affairs

Print rentals, sponsored by the Cultural Affairs Board, are due in the Board Office, MU 213, from now until the end of the semester. If the prints are not in by this time, Cultural Affairs may hold semester grades of persons withholding prints.

THE BEEF HOUSE

Charco Broiled Steaks

★ Filet Mignon \$1.28 ★ ½ Chicken 98c

★ Sirloin \$1.18 ★ Shishkebab \$1.50

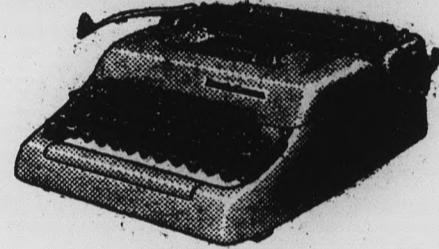
★ Pork Chops \$1.15 ★ King Size Hamburger 55c

Dinners Include Baked Potato, Tossed Green Salad, Choice of Dressing and Garlic Bread

Open Daily 11 a.m. to 9 p.m.
Also Above Orders To Go — 967-6248

Broadway Plaza—Corner Mill & Broadway, Tempe

TYPEWRITER "Cleaning Month"



Have Your Typewriter Put In Top-Notch Condition With This Special Offer

- CLEAN
- OIL
- ADJUST
- PLATEN TURNED
- NEW RIBBON
- GOOD WORK

Regular Price \$12.00 — During Jan. \$7.50

UNIVERSITY BOOKSTORE

BAKED SWISS STEAK

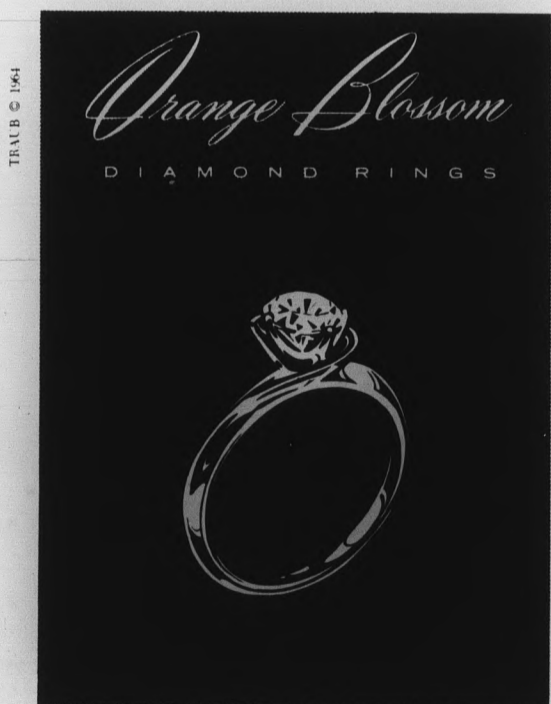
Frequently included on our menu are juicy cuts of tender steak meat, browned then slowly baked in rich cream-style gravy to a mouth-watering goodness.

Only 66c

PICCADILLY Cafeterias

★ THOMAS MALL ★ ALSO LOCATED IN CHRIS TOWN

SERVING 11 A.M. TO 8:30 P.M. DAILY INCLUDING SUNDAYS



PARISIENNE • PRICES FROM \$100 TO \$1200

Paul Johnson JEWELERS



MEMBER AMERICAN GEM SOCIETY

"Where Originality Is A Tradition"

Open 9 A.M. - 5:30 P.M. — Thursdays Til 9 P.M.

1604 E. CAMELBACK

Stairs Problem To Some

"Many students have to plan their curricula around twa classrooms are accessible to them. Last year I found only one building on campus where a student in a wheelchair could get anywhere he wanted to."

This was the opinion of Mrs. Elaine McFarland, director of the Student Health Service and a member of last year's Governors Committee for the Removal of Architectural Barriers to the Handicapped which studied the problem on a statewide basis.

Some of the problems handicapped persons face are doors that are too narrow for wheelchairs, telephones too high and cafeteria lines too narrow.

THESE PROBLEMS were brought to the attention of the administration and student body by a study conducted last December by the Activities Policy Committee under its Chairman Ronald Hockenber.

Mrs. Cecilia Scoular, MU director, has been working with the problem since the committee's report.

In order to find out more about the problem, she talked to Dee Schaefer, one of the students confined to a wheelchair.

From Mrs. Scoular's talk with Miss Schaefer came a number of suggestions to make the MU more accessible to handicapped students. Plans in-

clude widening the doorways of several bathrooms, making telephones more accessible to people in wheelchairs and having a busboy help with trays in the dining rooms.

IN ACCORDANCE with a resolution passed by the last session of the state Legislature, all new campus buildings are equipped with ramps, elevators or other aids to handicapped students.

According to John R. Ellingson, director of the physical plant, a bill is now before the Legislature to appropriate funds and remodel older buildings on campus. Aids to the handicapped will be provided.

*our Vesture
Footman suggests...*

The all weather casual jacket
by **BARACUTA**. Styled with
knit collar & cuffs, complete
with tattersall lining.

8 1/-3d
(22.50)

The Oxford Shop
Outfitters For Gentlemen
Corner on Forest & Seventh



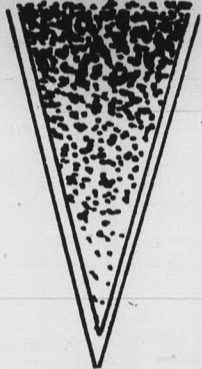
T.G.I.F. EVERY FRIDAY

3:00 to 7:30 P.M.

FREE POPCORN

Serving Your Favorite Beverages At Special T.G.I.F. Prices

KORRICKS
CHRIS-TOWN AND DOWNTOWN



Authentic Brogues

the classic look from Allan Temple

NOW an even greater value!

compare with \$20 value

14.97

Classic favorite . . . these authentic brogues from Allan Temple score with both suits and casual clothes.

Black or brown calf.

AND WE HAVE YOUR SIZE!

B widths — 9 to 13
C widths — 7½ to 13
D widths — 7 to 13
E widths — 8 to 11



MEN'S SHOES: Chris-Town — Downtown, Street Floor

The Editor Speaks - Staff Says 'Bye'

As this semester's staff prepares to meet their last deadline, it is easy to reflect that "if we knew then what we know now, we'd probably do it all over again."

The new staff will take over Feb. 10. Here's hoping they have as much fun, learn as much, but have fewer problems.

THE STATE PRESS DOES not suddenly appear in the little yellow boxes around campus each Wednesday and Friday, it takes hours and hours of work by the staff. Stories must be discovered, facts gathered, stories written, copyread, set in type, proofread, proofread again. Only then they are ready. The various editors put the type in the pages themselves, aided by the shop men of the Tempe Daily News. This means the staff members spend their afternoons and two nights a week working on the paper.

Managing Editor Ed Heath and I want to thank the staff, the adviser Prof. Robert Lance and the entire mass communications department, who have given moral support and often some much needed advice.

OVER THE SEMESTER, we tried to print all the news on campus following the ABCs of journalism: accurately, briefly and clearly. Editorially, we hoped to point out unfair situations, or the complaints students had about the administration, faculty and each other.

Malice was not our intent, just to help correct situations which exist on our campus, that can be changed.

It is our sincerest hope, that in some small way, we have been instrumental in solving a few small problems. We also hope that, in spite of heavy criticism, the staffs to come will keep this policy.

YES, WE HAVE made mistakes, but we are learning, too. Also working against the law of averages, it is impossible to spell every name right or not misspell a few words.

The time will come when the State Press will be a daily newspaper, growing to meet the school population. When that time comes, we wish that its standards will be upheld and that its concern be great.

This staff has enjoyed serving you.

Dodging Obstacles Is Campus Game

Walking across the campus is like participating in an obstacle race and losing.

Starting at the Social Sciences Building, the first obstacle one meets is the mud when trying to reach a small but significant blacktopped area, to get on College Avenue. Ankle-deep in this gloopy mess, one then tries to make it across this "tar patch."

The tar patch looks safe enough, but one must be clever and quick. The first step makes one sink about one and a half inches and every step thereafter takes you down another half inch.

SPEED IS THE key asset. With it one can make it across the patch in about three steps.

Be always alert, though, for the taller one stands on the patch, the more chance one has of being suddenly knocked into the street by a low branch on the tree that happens to be located right over the patch.

College Avenue is the first sign of hope to the somewhat doubtful student. As soon as the dust clears and one sees the avenue, that old "drive" returns in no time.

AFTER WAITING FIVE or 10 minutes for the monstrous trucks, leaking clouds of dirt along the road, one can then, with canteen in hand, trudge across the street.

Across the street one must repeat the procedure used for the tar patch because there is a twin on this side of the street.

Almost past the worst part, but look out; for where one least expects them . . . cracks in the sidewalk appear. Often and painfully one acquires a very sore toe and is disqualified from the race.

ORANGE STREET IS next for those who have endured the run so far. The idea here is to dart into the street, zig-zagging so as not to hit anyone, and try for the other side. Some people find it to their advantage to close their eyes.

Then it's in and out of little clusters of people, and several spins through and past the Business Administration Building, down the hole-covered path to the Agricultural Building and one is home, without passing "Go" or collecting \$200.

The race is over and the experience gained is invaluable, for one must go right back because class was dismissed. The professor was one of the losers who didn't make it past the tar patch.

BONNIE BROWN

LITTLE MAN ON CAMPUS



"I DREAD FINAL WEEK - THE PROFESSOR COMES HOME JUST WORN OUT EVERY DAY HE HAS TO GIVE A TEST."

Letters To The Editor

To The Editor:

In any organization that has a constitution, by-laws and such, and has the power to carry out actions as voted upon by the members, it must also have the belief in these convictions to act upon them after the final vote, without hesitation.

At a recent sorority meeting two girls were de-pledged. I do not question the sorority's reasons since I did not attend the meeting, however, since I live on the floor, I saw the action that followed. The girls involved found out about the action when numerous girls came into their room to tell them they were so sorry. One girl put two and two together, told the other girl and together they returned their pins. It was much later that evening before the girls were visited by the sorority president and even then they were not told why the action was taken.

In my opinion these girls should have been told of the action immediately, especially before other members of their pledge class were notified. This letter is not meant to harm or jeopardize the Greek system, only to make them aware of such situations. More than any-

thing, this letter is a reaffirmation that democratic process goes beyond the legalities of voting into the sphere of action.

DEBBIE HALL

To The Editor:

Like what's happening folks? At long last the MU is receiving a much needed paint job. But have you noticed the painters in the basement hallways? Yes, fellow students, the "Old Town" murals are going to be covered by the painters too.

Now, this is uncalled for. The present murals lend an atmosphere to these halls that was badly needed. When they were just green, one had the feeling he was walking through a subterranean missile plant.

When the murals went up, students felt like they were really somewhere. The Games Room is on this floor of the MU and the murals are quite appropriate. Every time you walked down that hall you had an experience.

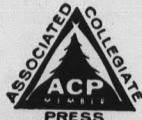
What is in store for us now? We are being given a freshly-painted hallway that is the same old, dull, uninteresting, drab, subterranean passage.

RALPH PLEASANT



THE STATE PRESS is the official campus newspaper of Arizona State University. It is published each Wednesday and Friday throughout the school year, excepting holidays, and is entered as second class matter at the Tempe, Arizona, Post Office under the acts of March 3, 1879, and August 24, 1912.

THE STATE PRESS is a member of the Arizona Newspapers Association, Associated Collegiate Press and National Advertising Service, Inc. Subscription price, \$3 per school year.



EDITOR-IN-CHIEF.....	PAM VAN BUSKIRK
MANAGING EDITOR.....	ED HEATH
NEWS EDITOR.....	GORDON BLACK
ASSISTANTS.....	TOM HAERTEL, KEN WATERMAN
CAMPUS EDITORS.....	GORDON ROBBINS, SHIRLEY DE MARKE
COPY EDITORS.....	JOHN KENDALL, RICHARD CANTOR
PHOTO EDITOR.....	JIM HUTCHINS
ASSISTANT.....	JOHN POLICH
SOCIETY EDITORS.....	PAT HUNTER, LINDA HELSER
SPORTS EDITORS.....	AL MICHAELS, JOE HEATH
ASSIGNMENTS EDITOR.....	BOB RANDOLPH
ASSISTANT.....	TONY AULT
CHIEF PROOF READER.....	DIANA ROSEN
REWRITE EDITOR.....	JOAN SKIPPER

I Cover College Avenue

By ED HEATH
Managing Editor

As one sits back for a few minutes and tries to analyze and grade the past semester, numerous plus and minus points come to mind.

It certainly can't be said the semester was a loss and it might be wishful thinking or rationalizing to say things couldn't have gone better. I guess it's up to each individual to make the final score.

Many encouraging events have occurred.

THE LAW and Fine Arts colleges were created. Two Rhodes scholars were selected from ASU. The College Bowl team made an unequalled contribution to the University. Gammage Auditorium has drawn a lot of publicity. Vonda Kay Van Dyke, as 1965 Miss America, will also mean additional promotion for ASU.

Closer to the students, Homecoming was the best ever. Student government is in the process of initiating programs which will provide much more for the student body. Pre-registration has proved to be of more than usual benefit — in fact, this should be recognized as one of the most beneficial services to the students.

On the other hand, there were some distressing events that soil the semester's record.

Certainly the Board of Athletic Control, with a little more planning, could have submitted a more considerate seating policy. The architect of the Language and Literature Building disclosed it would not have involved any extra expense to have larger windows.

It is still beyond me why the VI and East Hall were torn down so early before actual construction of their intended replacements. And I guess it's just natural that construction activities be messy.

FURTHERMORE, by the overtone of things this semester, I doubt we will ever see the completed College Avenue Mall or more liberal women's dorm hours or improved student seating in Gammage Auditorium or our \$2 parking fee being used or uncensored football cheers or any realistic expansion of on-campus study facilities or an exciting Rodeo Week.

Nevertheless, I give the semester a liberal passing mark and in this, my last column, I want to express my confidence that ASU will continue to grow; that sometime in the future it will be established as one of the leading universities in the country, one we can all be proud to have attended.

Staff Editorial -**Let's Look At ASU's Senate**

If you feel you've been snowed under by a never ending amount of work, stop for a minute and consider what your Student Senate has done.

If we are honest, we must admit some of our representatives have gone along for the glory ride.

Nevertheless, there is a definite core of senators who wish to serve the students. There always seem to be a few who desire to keep democracy moving forward. To these true representatives, a definite thanks is due.

THE TWELVTH Senate session showed a desire to give students more voice in student government in passing an amendment which called for initiative, referendum and recall. The bill is now in the Student Faculty Committee.

When the Board of Athletic Control changed the basketball seating policy, they went to bat for their constituents. They kept the ball rolling until the student body was given another representative on the Board of Athletic Control.

The Senate had the insight to realize that desir-

able changes were needed in its own structure.

They started housecleaning by introducing a bill to eliminate the MU Board. Before the bill was removed from the agenda, the Senators considered the board's attributes and realized it was a definite service to the students.

THE SENATE proceeded to repeal other ineffective

legislation, as: the termination of the Coronation Ball which went out with the Stone Age, and the establishment of a more effective method for selecting members for "Who's Who." The new selection method, the brain child of Dr. W. P. Shofstall, dean of students, made it possible for the selection to be fairer.

BOB HARTMAN

Poor Light Problem

In December a coed was abducted from a Palo Verde parking lot as she started to park her car. It happened at night, which brings us to wonder whether the abduction would have been attempted in daylight or in a brightly-lighted parking lot.

The parking lots surrounding the Palo Verde dormitories are poorly lighted, a fact which we feel could have direct bearing on this abduction attempt. Some of the lots are partially illuminated by street lights. Others have no lights whatsoever.

John R. Ellingson, director of the physical plant, said light poles have been ordered for the north and west parking lots but that no poles were ordered for

the east parking lots since "these lots are adequately lighted by the street lights."

But a nocturnal survey of the east lots will reveal that more lighting is necessary to assure coed safety at night. The street lights near the east lots do not thoroughly light these lots, leaving shadowed areas where girls park their cars.

Many coeds have an apprehension and justifiably so, about parking their cars in these poorly lighted lots. We believe no measure should be overlooked which would prevent a recurrence of the abduction incident, and that every Palo Verde parking lot should be brightly lighted to provide the maximum protection for coeds.

RON CHALLIS

*diamond
engagement
settings*

YOU ARE INVITED TO
VISIT OUR DIAMOND SALON
FOR STUDENTS, FEATURING
ARIZONA'S LARGEST SELECTION
OF ENGAGEMENT SETTINGS

OPEN 10-5 AND BY APPOINTMENT

COLLEGE DIAMOND IMPORTERS

130 E. EIGHTH
ACROSS FROM THE
UNIVERSITY INN

PHONE
967-8917
FOR APPOINTMENT

**NOW
OPEN!**

In The New Student
Shopping Center - Corner Forest & 8th St.

ONCE AGAIN . . .

Cultural Elevation,
Coffee, Relaxation, Conversation,
Coffee, Declamation, All At
One Location . . .

SAME FRIENDLY ATMOSPHERE

SAME EFFICIENT SERVICE

Complete & Varied Menu - Sandwiches and Fountain Service

Open Mon. thru Thurs. 7 a.m. - 10 p.m., Fri. 7 a.m. - 4 p.m., Sunday 9 a.m. - 10 p.m. - Closed Saturday

Teacher Since 1922 -

Spanish Teacher To Retire

By IRV JACOBSON

The father of Dr. Irma Wilson, professor of Spanish and the oldest in-service member of the faculty, wanted her to become a lawyer. "But you know," she said, "you eventually take what you want." She will retire in June after teaching here since 1922.

Dr. Wilson did yield to one of her father's wishes. After receiving her bachelor of arts degree in classical studies from Montana State University in 1916, and five years of teaching Latin in Montana schools, she began teaching Spanish because "father thought I should take a language that people will be using."

How has the teaching of Spanish changed through the years?

DR. WILSON believes a shift from the emphasis on learning to read Spanish to a stress on hearing and speaking the language has occurred. This new "aural-oral" method was caused by the increased mobility of the people of the world. Language teachers now strive to prepare students to live and work, for the Peace Corps, perhaps, in Spanish-speaking countries.

Dr. Wilson had her own hand in the changes at ASU. She was former chairman of the foreign language department; sponsored Alpha Mu Gamma, honorary foreign language society; founded the chapter of Delta Kappa Gamma, honorary society for women educators, and is a life member of the American Association of University Women.

SHE RECEIVED her Master of Arts and Doctor of Philosophy degrees at Columbia University, and wrote a book entitled, "Mexico: A Century of Progress," written while studying for her doctorate under Frederico de Onis at Columbia.

Dr. Wilson cited as a main reason for the University's phenomenal growth the influx of G.I.s who returned to Arizona after being stationed here

during World War II. During the war she directed workshops subsidized by the government for the Latin America "Good Neighbor Policy."

AND SHE happily said, "After wandering around a couple of locations on campus, the foreign language department finally has its regular place in

the new Language and Literature Building.

Friends, colleagues and students will honor Dr. Wilson at a banquet Feb. 25 at the Safari Hotel, Scottsdale. Part of the proceeds will be contributed to the Irma Wilson Student Loan Fund — indicative of her dedication to students.

VALENTINE

- Greeting Cards
- Quality Candies
- Paper Goods

HAPPY HOUSE Tempe Center

'Head for the HILLS'

After You Register . . .

We Have The
PAPERBACK
Books You Need

(Teacher's Lists Available)

HILLS BOOKS & RECORDS

TEMPE CENTER

MILL AVE 8th STREET to 10th STREET

TEMPE
Center

TEMPE'S FINEST SHOPPING CENTER
... 31 FINE STORES TO SERVE YOU!

EXAM TIME!

Please PASS... And Come See Us Again

- | | | |
|----------------------------|-------------------------------|--------------------------|
| Americana Shop | W. T. Grant | Ryan-Evans Drug Store |
| Ray's ASU Barber Shop | Happy House Shop | Sewing Basket |
| Bonnie Sue Fashions | Hill's Books & Records | Sherwin-Williams Co. |
| Brickie's Furniture | The Hogan | S&H Green Stamp Center |
| Buddy's Coffee Shop | Inland-Western Loan & Finance | Standard Service Station |
| Celia's Fashions | Jam's Restaurant | State Farm Insurance |
| El Rancho Market | King's Fashions | TeePee of Toys |
| Erickson's Handcrafts | Lee Optical | 31 Flavors Ice Cream |
| 1st Federal Savings & Loan | Scott Jewelers | Tops Liquor Store |
| 1st National Bank | Pioneer Camera Shop | Zzzona Laundry |
| GallenKamp's | Rosamond's Beauty Shop | |

Campus Classified

Regulations: For students and faculty only of Arizona State University. To place classifieds, submit to Room 106 Administration Building. Deadline is Wednesday noon for Friday's issue. Rates: 3 cents per word, 50 cents minimum charge.

● APARTMENTS

Want girl to share nice, one bedroom apt. with pool & sauna bath 1 1/2 miles from campus. Inquire after 5 at 607 W. 19th St., No. 5, Tempe, or anytime weekends.

1 & 2 bedroom furnished or unfurnished. Completely remodeled. Very reasonable rates. Lone Palm Apartments. 2108 Rural Road. Phone 967-1308.

1/2 Block from ASU. Newly re-decorated furnished one bedroom. \$85 on year-around basis. All utilities paid. 705 Krueger. Apts 1 & 6 vacant. Call 967-5430.

● RENT - Unfurnished

4 Bedroom house, \$175. 321 E. Broadway, Tempe. WO 7-3170.

● FOR SALE

1963 Chevy II, 100 Series, radio, heater, standard transmission, factory refrigeration, 6 cylinder. \$1,450. Call 946-7746 after 6 p.m. weekdays.

1964 Graduation ring. Save \$10.00. Brand new, never used. Call Fred after 5 p.m. at AM 6-4967.

ASU Faculty Members Active



Dr. C. Gilbert Wrenn, professor of educational psychology, will be in Washington, D.C., today and tomorrow to attend the first meeting of the executive committee of the Invitational Conference on the Relation Between Government and Universities in the Professional Preparation and Employment of Counselors.

Dr. Wrenn is chairman of the Manpower Advisory Committee.

Dr. Wrenn also will attend a meeting of the Committee on Ethics and Professional Conduct of the American Psychological Association.

The program is sponsored by the Panel on Counseling and Selection of the National Man-

Schabacker To Speak

Dr. Joseph E. Schabacker, chairman of the department

of management, will speak at the Phoenix chapter of the Administrative Management Society at 7 p.m. Thursday at Los Olivos Restaurant, 202 E. McDowell.

Dr. Schabacker will discuss "Management Education for the Future." Members are invited to bring guests to the social hour preceding the dinner.

Approximately 80 Phoenix

firms are members of the national group.

Dr. Mason Writes Book

Dr. Bruce B. Mason, professor of political science and director of the Bureau of Government Research, has written a booklet titled "Local Government in Taiwan: Some Observations."

End Of The Line

Several students reach the end of the line as they take the last step in pre-registering. The new system ends Thursday. Regular registration will be conducted Feb. 4-6.

Fred Elquest & Son

Everything for the Art Student

- Art Supplies
- Picture Framing

703 N. 2nd St.

Phoenix

PHONE AL 8-2628

Whip Those EXAMS

Into Shape

Then Stop By

CHICO'S

RESTAURANT*

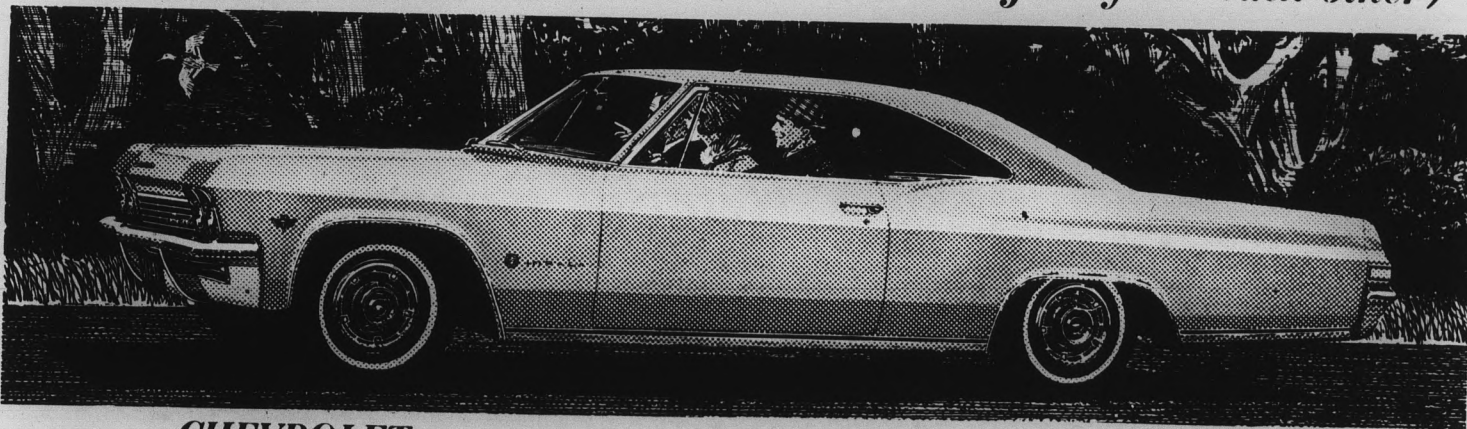
FINE MEXICAN FOOD

1120 East Apache Blvd. — Tempe

*Air Conditioned of course

Discover the difference in the '65 Chevrolets

(As different from other cars as they are from each other)



CHEVROLET—As roomy a car as Chevrolet's ever built. *Chevrolet Impala Sport Coupe*

When you take in everything, there's more room inside this car than in any Chevrolet as far back as they go. It's wider this year and the attractively curved windows help to give you more shoulder room. The engine's been moved forward to give you more foot room. So, besides the way a '65 Chevrolet looks and rides, we now have one more reason to ask you: What do you get by paying more for a car—except bigger monthly payments?



CORVAIR—The only rear engine American car made. *Corvair Corsa Sport Coupe*

You should read what the automotive magazines say about the '65 Corvair. They're wild about its ride. They think there's nothing else this side of the Atlantic that can touch its styling. They say if you haven't driven a new Corvair Corsa with a 180-hp Six Turbo-Chaaarged! you just don't know what you're missing.

Drive something really new—discover the difference at your Chevrolet dealer's

Chevrolet • Chevelle • Chevy II • Corvair • Corvette



Exclusive New Styles

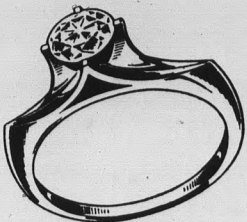


VAIL \$300 TO \$1800



Keepsake DIAMOND RINGS

LAVIER \$300 TO \$5000



CAPRI \$250 TO \$1800

Rings enlarged to show detail. Trade-Mark Reg.

Budd's

Jewelers

708 E. Forest

TEMPE



Teams Vie In 'Brain' Battle

Intramural College Bowl teams wound up the semester with a final game yesterday in the MU Upper Lounge. Inspired by "GE College

Bowl" and ASU's team, the games will be continued next semester.

(Photo by Larry Ward)

Major Lang Retires

A retirement ceremony honoring Maj. Josh M. Lang, assistant professor of air science, will be conducted at 8 p.m. Thursday on the MPE Field.

Maj. Lang, on the faculty since July, 1959, has taught junior and senior courses and been commandant of cadets and special project officer. He is now education director of the department.

Maj. Lang was commissioned a second lieutenant in 1941. He served with the 15th Air Force, and flew combat missions over Germany in B-24 Liberators.

During his 20 years of active duty he served in England, North Africa, Okinawa and Spain.

Maj. Lang will retire Jan. 31 as a lieutenant colonel in the Air Force Reserve.

NOW RICKY'S Hamburgers ONLY 15c

REMEMBER . . . On Mondays, Hamburgers ONLY 10c

ALSO now serving
 Chicken 'N Fries \$1.09
 Shrimp 'N Fries 55c
 Dubl-Burger 28c
 Cheeseburger 20c



Finest Quality . . . Fastest Service
 Phone 947-1571 for Pick-up Orders

Ricky's Drive-In

1847 S. Scottsdale Road Scottsdale
 1/4 Mile South of Papago Plaza Shopping Center

CASH for BOOKS

We Are Now Buying Used Books

Compare Prices Before You Sell

Check the Book Price List Now at University Bookstore 'Buy-Back' Desk

***We Pay More For Your Books!
 Make Us Prove It!***

THE NEBRASKA BOOK BUYER WILL BE
 HERE ON JANUARY 25, 26, 27, 28, 29, 30

UNIVERSITY BOOKSTORE

Your Student's Store



(Photos by Jim Hutchins)

Semesters Top Stories

The ASU College Bowl team was voted the top campus news story of the semester yesterday by the State Press.

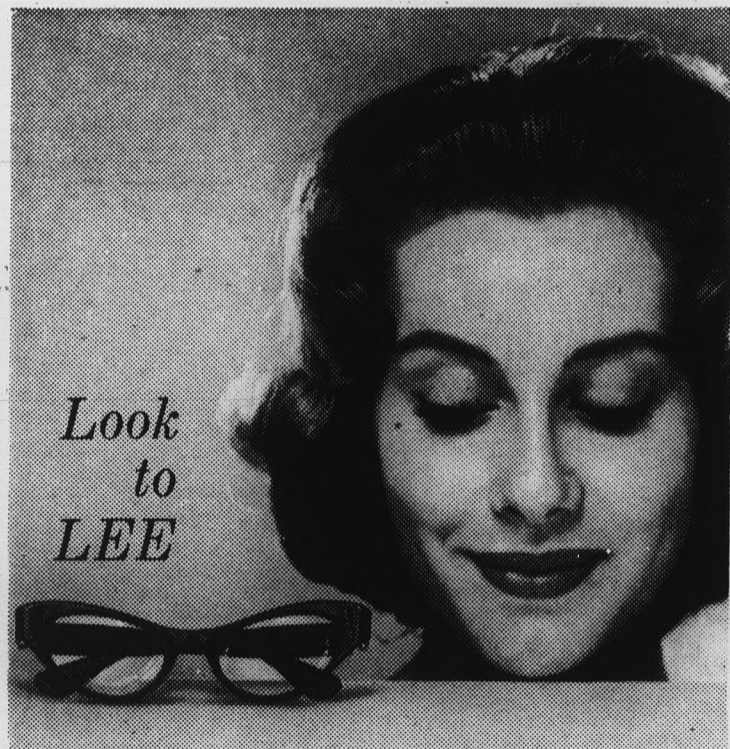
The top five State Press news stories were voted one out of 10 selected stories of significance appearing this semester. The State Press editors and mass communications professors judged the top five newsmakers

by the criterion of impact, prominence, readability and significance to the University.

The number two story was the Gammage Auditorium opening. Voted the number three big newsmaker was the basketball seatink boycott with its sit-down demonstrations.

The fourth top newsmaker was the crowning of Miss Vonda Kay Van Dyke as Miss Am-

erica, and her Homecoming visit to the campus. The strengthening of the school's alcohol policy and violation of it was voted the fifth top story of the semester.



Look to LEE

- CREDIT . . . Your credit is good at Lee Optical.
- STYLE . . . At Lee Optical . . . 500 frame styles and colors.
- QUALITY . . . All Lee Optical glasses are precision ground from finest American-made lenses. Satisfaction guaranteed or your money back.
- SERVICE . . . Lee's prompt service means no waiting.
- Get one-day service on most prescriptions.
- PRICE? . . . a pleasant surprise!

\$1.85

Single vision glasses . . . as low as

8 convenient offices | open Thursday nights and all day Saturday

TEMPE 805 Mill Avenue Tempe Center	THOMAS MALL 4527 E. Thomas Rd.	PHOENIX 16 W. Adams St.	YUMA 2816 4th Ave.
CHRIS-TOWN 19th Ave. and Bethany Home Rd.	SCOTTSDALE 719 N. Old Scottsdale Rd.	MESA 129 West Main	TUCSON El Con Shopping Center



Where it's always safe to save money on glasses . . . and contact lenses, too!

TYPING

Neat, accurate, reasonable. VeElla Gardens, 1700 E. Don Carlos, Apt. 2E, Tempe. Phone 966-0885.

TAILORING

Alterations & Repairs
Dry Cleaning
Shirt Laundry
Pinney's Tailor Shop
23 West 4th St 966-1751

Big Reduction

on all

DARLENE

- Sweaters
- Skirts
- Capris

Sizes 5 to 18

CELIA'S fashions

TEMPE CENTER

Campus
Drug

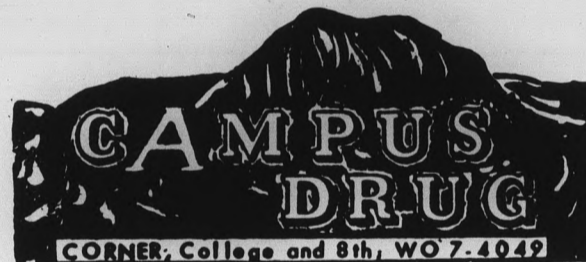
Specials

REVLON'S

"Intimate"

Moisture Lotion

Reg. 2.40 Now \$1.65



Good Luck
On Your
Finals!

Scott
Jewelers

966-6101 - Tempe Center

Introducing "BO-JO" NEW in Tempe

The Biggest Submarine
Sandwich in the West!!

ALREADY THE
TALK OF THE CAMPUS

Open Daily 11-1 a.m. — Sunday 2 p.m.-1 a.m.

CALL 967-7023
FOR
TAKEOUT ORDERS

829 S. Rural Road
"Across From New Fraternity Row"

Introductory
Offer

This Coupon
Good For
FREE
SOFT DRINK

Anytime
Next Monday
Or Tuesday

Devil-Advocated Activities

Reservations for the Social Board's Ski Weekend are available at the MU desk starting Monday. A \$5 fee is required and the balance must be paid by Feb. 12.

A \$21 cost will cover two nights' lodging in either Flagstaff Ramada Inn or the Flamingo, six meals at the Ski Lodge, all transportation, a complete-coverage insurance policy, a Saturday night dance, a snow sculpture contest and tobogganning.

Ski rental and the chair lift are extra. Students are asked to make reservations early as accommodations are limited. There will be no refunds.

Retreat Scheduled

The Newman Student Association will elect new officers at 7:30 Sunday evening in the Newman Center. Positions to be filled include president, first vice president, second vice president, third vice president, secretary and treasurer.

General requirements are: the candidate must be a third semester student, Catholic, and have the time and interest to devote to his position.

The annual Franciscan retreat for students at the Casa de Paz y Bien, 5802 E. Lincoln Drive, Scottsdale, will begin at 6:30 p.m. Feb. 1.

Meals and room accommodations will cost \$10 per student.

A list in the Newman Center should be signed for reservations.

Club Elects

Circle K Club, men's service organization, has elected Everett Taylor, a junior majoring in sociology, its president. Also elected was a new board of directors.

Dr. John W. Ryan, academic vice president, is the new faculty adviser.

The club participates in Parents' Day, picking up cards from the card section at football games, the United Fund drive and other community and campus services.

Various Objects Auctioned For Scholarship Fund

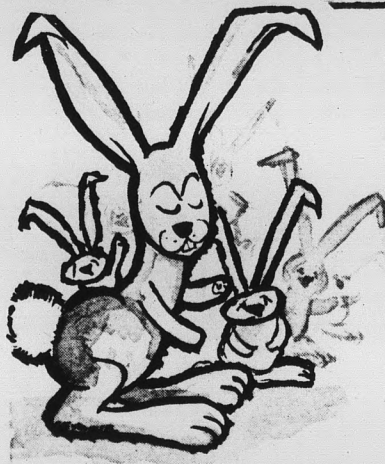
"Going once, going twice, sold!" echoed through Gam-mage Hall Wednesday night during the dorm's interhall auction to earn money for the AWS Scholarship Fund.

Coeds donated over 50 articles which were auctioned to the highest bidders. Items included bath powder, light bulbs, toys, jewelry, pinto beans and clothing.

Approximately \$20 was collected. Five cents was the lowest price paid and \$1.16 the highest. Chris Marin served as auctioneer.

GREEN MAGIC
40c
EICHENAUER'S BAR
"Take The Tram" To
Papago Plaza

NEED TYPING?
Thesis — Term Papers
Research Notes
What Have You?
SPECIAL SERVICES
2727 N. Central 265-3630



**OUR CUSTOMERS
MULTIPLY LIKE
RABBITS
'CAUSE
WE'VE GOT THE
FINEST
DRY CLEANING
and LAUNDRY!**

FREE OPENING SPECIAL
1 SKIRT & SWEATER OR **1** PANTS & JACKET
FREE CLEANED & PRESSED **FREE**
With Cleaning Order of \$1.00 & This Coupon
Offer Expires Jan. 20, 1965

Beautifully LAUNDERED
SHIRTS
"LIKE YOU
LIKE 'EM"
FOLDED OR ON HANGERS

**PANTS
SKIRTS***
3 for \$1.59
CLEANED & PRESSED

130 EAST EIGHTH ST., TEMPE
VALUE VALET

**COME IN AND REGISTER
FOR \$100 SPRING WARDROBE
Drawing To Be Held January 30**



**Campus
&
Career**

130 E. EIGHTH ST.
966-1162

Fashions Ltd.
TEMPE, ARIZONA

Open Monday-Friday 9-9
Saturday 9-6

\$ C - A - S - H \$

for

USED BOOKS

Sell Your Books Now For Top Prices

Keep The Used Books At ASU

Sell Them At

Varsity Book Exchange

(Next Door To Campus Drug)



UNFAMILIAR ART — Judy Wong, 18-year-old sociology major, portrays, with the use of Oriental costumes and enchanting makeup devices, the symbolic, Oriental stories of her heritage through opera dancing. Miss Wong's talents also include parts in theatrical productions, utilizing her minor in drama.

Old Art Shown By ASU Student

By STEVE RINGLER

The World of Judy Wong is partly as an ASU freshman, and on the whole, as a cute actress of Chinese opera. The 18-year-old Miss Wong has been posing in the many different costumes worn in the Chinese opera and pantomimes the artful gestures portrayed in the ancient plays.

Her most recent appearance was before the Scottsdale Players workshop to promote Chinese opera in the Valley and trying to get particular groups of players to this country from Hong Kong.

MISS WONG models and explains the colorful and fanciful costumes. She said the different costumes worn represent different characters in the play. The more elaborate the costume, the higher the position of the character. She also demonstrates the styling of makeup and its application.

The makeup used in Chinese opera is symbolic, being used to explain the type of person the actor portrays. White makeup is always used as a background and a villain will employ mostly black makeup over this while a hero will use mostly red.

MISS WONG said the opera's origin goes back to ancient

China but is new to the United States. She said it's been in San Francisco for some time but is just now becoming known nationwide.

It is common, she said, for people not to appreciate and reject things they don't understand.

She commented that if more people were introduced to Chinese opera, she would have no doubts they would be delighted and become impressed followers of the art.

SHE FURTHER stated, "Even if you didn't like the Chinese opera you would enjoy the costumes, makeup and gracefulness of the dancers."

The sociology major comes from a theatrical family and makes drama her minor. Her uncle is the late Sammee Tong who starred in the TV series "Bachelor Father" and "Mickey."



We're kind of sore at the State Press about Wednesday's ad, although we probably did overshoot our word quota a little. Anyhow we really had no intention of giving away a bunch of valuable shirts just for correctly identifying a bunch of child's play advertising slogans slimly disguised at best. What happened was the paper failed to print the last three and as a result almost our entire readership was able to win a shirt. They both chose the new tablecloth check in short sleeves by SERO!

Any of you who thought you were pretty clever in getting the easy twelve last week might just consider the missing three before trinking about putting any free shirts in the wardrobe. Number 13, for instance, was taken from an old ad Dr. Schweitzer sent to us having to do with a rather obscure brand of Tanganyikan soap chips used by the natives to make the river banks slippery during severe alligator attacks in the monsoon season. Not many would have gotten that, we're pretty sure!

Number 14 was stolen from a Chinese sewing machine repair shop in San Francisco whose owner quite by accident stumbled on the simplest repair method in history and made many millions of yen by advertising in the Chronicle that "WISHING WILL MAKE IT SEW." Possibly some foreign home economics students would have survived here.

The last omission wasn't actually so tough, but we thought it had a certain something about it. It was a cooperative ad by P. Lorillard Tobacco Company and The American Cancer Society advertising P. K. chewing gum and saying: NOT A COUGH IN A CARLOAD. The problem with number 15 as we see it was that it appeared only once — in the final 1932 issue of the Literary Digest.

Female Track Trumpeter Claims Undisputed Fame

By PRESTON LONG

It's time for the race and here comes the trumpet player to play the call to post. She's stepping up to her position now. She's raising the trumpet . . . She?!

Sure enough. It is a girl playing the call — Mary Ash, a senior music education major.

Miss Ash appeared on "What's My Line" last Sunday and

stumped the panel with her unusual occupation. She is the only woman to play the call to post (and the call to colors) at a race track in the United States.

Miss Ash began at the Arizona Downs Thursday, and she finds the work quite interesting.

Miss Ash has played the trumpet for 12 years.



Rosamond's
beauty salon

WO 7-3722

Tempe Center

Evenings By Appointment



Keep skirts wrinkle-free with

skirt
saver[®]
by Beverly Vogue

No more rumpling in front . . . no more sagging behind with this famous little pettispip. Design is twin fabric miracle with nylon tricot front, and rigid, non-stretching nylon taffeta back that keeps skirts from wrinkling, sagging, bagging. Perfect with knits, sheaths. Luxurious lace trim with front and back crisscrossed kick pleat.

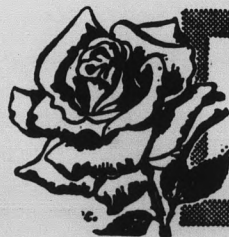
Black, white, beige.

Short, average,

Waist: 22, 24, 26, 28, 30 \$6.00

Bonnie
Sue
fashions

TEMPE CENTER
Phone 967-4094



Bobbies
Flowers

20 E. 5th St.
WO 7-2972 — WO 7-4274
Home Phone WO 7-6319

For Parties . . .
Large Artificial
Plants For Rent

TONIGHT IS
"HIGH SOCIETY
NITE" AT
SHAKEY'S



Shakeys

PIZZA PARLOR & Ye Public House

Phone 967-8803 For Takeout Orders

1420 E. Apache Blvd. — Tempe

John Horan

Mercero



Por Caballeros

at 8th St. & Forest



(Photo by Jim Hutchins)

HEART TO HEART — Candidates for the Alpha Phi Heart Fund Ball queen contest were entertained at a tea Wednesday. Pictured, from left, are Sue Ellen Hutchens, Kappa Kappa Gamma; Peggy Gygi, Alpha Tau Omega, and Jackie Johnson, Delta Gamma.

Five finalists were selected by a representative from each men's dorm and fraternity. The girl who raises the most money for the Heart Fund will be crowned queen at the Heart Fund Ball, Feb. 27. The Heart Fund Ball and queen contest is a yearly project of Alpha Phi sorority.

Finalists Are Selected For Heart Fund Ball

Five Heart Fund Ball queen finalists were selected yesterday afternoon at the Alpha Phi sorority's annual Heart Fund Tea.

The queen will reign at the Heart Fund Ball Feb. 27.

The finalists are Jackie John-

son, Delta Gamma; Peggy Gygi, Kappa Kappa Gamma; Diane Houseman, Alpha Epsilon Phi; Anita Ulibarri, Kappa Delta, and Cheryl Sampson, PV East.

The girl whose organization raises the most money for Heart Fund will be crowned queen

during the February dance at the Feed Bag Restaurant in Mesa.

The dance, featuring the Sonics, will be held from 8-12 p.m. Tickets going on sale in two weeks will cost \$2 a couple. Ticket receipts will go to the Heart Fund.

Women's Archery Contest Open To Undergraduates

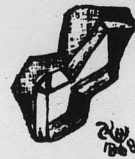
Undergraduates are invited to attend the Wednesday meeting of the Sun Devil Archers at 1:40 p.m. at the archery range on the MPE Field. The club recently took first

place in Class A women's and mixed team events and second place in Class B women's and mixed team event in the Winter Intercollegiate Archery Tournament.

discover for yourself

the Beauty of handmade

JEWELLRY



14K Wedding \$35.00



#002-1/2 ct. F.Q. \$400.00



#093-1/4 ct. F.Q. \$125.00

Original designs

by

alexander

Studio 14

75 W. FIFTH AVE. — SCOTTSDALE — 945-2563
DESIGNERS & MANUFACTURING JEWELLERS SINCE 1868

Melina Mercouri / Anthony Perkins

AND Raf Vallone

IN Jules Dassin's
PRODUCTION OF

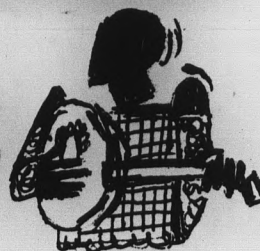


phaedra
A VIOLENT DRAMA OF PROFANE LOVE

Winner of
GRAND PRIZE
CANNES FILM
FESTIVAL
— 1959 —

"ONE OF THE YEAR'S 10 BEST!"
Daily News — Herald Tribune — N.Y. Times

BLACK ORPHEUS



VALLEY ART

509 Mill Ave. - WO 7-6664

FILM CLASSIC SERIES

*The second in a series of film classics will begin Tuesday in addition to our regular features.

Jan. 19 — "Ballad of a Soldier"

Jan. 26 — "Room at the Top"

Feb. 2 — "La Strada"

Feb. 9 — "On Approval"

Feb. 16 — "The Case of Dr. Laurent"

Feb. 23 — "Lovers and Lollipops"

Mar. 2 — "Wild, Wild Women"

Mar. 9 — "The Savage Eye"

A printed schedule and other information may be obtained at the theatre.

NOTE:—

These films have been brought back by request. If you have a film request submit them, in writing to the cashier or doorman. We will see what we can do! Mgr.

Glass Blowing Art Interests AS Junior

By **BETSY JEAN FRITH**

If one looks hard enough, one can find almost anything on this campus — even a glass blower. Eric Brubaker, a junior majoring in architecture with an interest in art education, is such a person.

ACCORDING to Brubaker there is a vast difference between glass blowers and glass pullers, who are seen at carnivals.

A puller is one who does not melt the glass but using rods and a torch, pulls the heated glass into desired shapes.

A blower melts the glass until it has no form or shape and then, using special tools, reshapes the glass into the desired forms.

About a year ago Brubaker convinced Henry Schrieber, assistant professor of art, to assist him in learning how to blow glass. Few books have been written on the subject, so they had a wide open field from which to start.

"IT WAS like starting a new frontier," Brubaker explained. "We would experiment, fail and try again. One of the first things that we learned was that glass changes its chemical composition when it is overheated. We had to throw out the ruined glass and start over."

Before they could do any blowing, Brubaker had to build all the machinery at his own expense. After spending several weekends rummaging through junk yards, he found

enough bricks, steel and scraps to build two furnaces.

PRESENTLY Brubaker is building an annealing furnace to cool the glass. All the glass he makes now breaks when cooled.

Brubaker starts with the molten glass in the 1400-degree furnace. Using a blow pipe, he gets a gather, or a glob of molten glass the consistency of molasses, from the furnace. With jacks that resemble glass cutters, he gives the gather some kind of form. The jacks determine the final thickness of the created object, as he uses them to stretch the glob and squeezes the portions he wants to narrow.

USING THE blow pipe with the molten glass at the end, Brubaker blows a bubble. He expands the bubble by manipulating his mouth and hands. He makes a cylinder by moving the blow pipe in an arc with the centrifugal force pushing the glass out and down. To make a sphere he spins the pipe.

Once Brubaker gets the basic form he wants, he dips a panto rod into molten glass in the furnace. Then he sticks the glass on the panto rod onto the bottom of the bubble thereby holding the bubble on two rods. Scoring the top to the bubble and tapping it gently, he removes the blow rod.

BRUBAKER finishes the object by heating the edge of the top to the melting point and shaping the head into a cone, sphere or whatever shape he wants. He repeats the same process to form the base.

Who's Whose

PINNINGS

Mary Jo Mayer to Bill Henny, Sigma Nu
 Cheryl Lennsenmeyer, Kappa Kappa Gamma, to Glenn Smith, Sigma Alpha Epsilon
 Gay Parker, Kappa Kappa Gamma, to Bob Wilfert, Sigma Chi
 Beth Walters, Kappa Kappa Gamma, to Joe Miller, Sigma Chi
 Bev Grimm, Kappa Kappa Gamma, to Jack Shiker, Sigma Chi
 Vicki Browne, Alpha Delta Pi, to Bill Gookin, Kappa Sigma

ENGAGEMENTS

Corrine Kuta to Greg Miller
 Sharon Farmer, Alpha Delta Pi, to John Van Houten, Theta Delta Chi
 Kathy Rauchfuss to Larry Kuhlman
 Toby Wienberg, Alpha Epsilon Phi, to Paul D. Beck, Alpha Epsilon Pi
 Karen Ely to Thomas Kite
 Peggy Jarvis to Mike Kinsey, Sigma Alpha Epsilon
 Donna Raption to George Silva, UofA
 Pam Harkins to Larry Vicario
 Chris Kendrick to Chuck Boothroyd
 Jane Stonehouse, Kappa Kappa Gamma, to Rick Kersten, U.S. Navy
 Sandy Berry, Chi Omega, to Jim Martin, Sigma Alpha Epsilon
 Jan Thomas, Alpha Delta Pi, to Bob Kec
 Tricia Taylor, Alpha Delta Pi, to Gordon Rames, Sigma Chi

MARRIAGES

Jacklyn Lucas to Mike Currier

IF Pledge Council Revived After Abolishment In 1962

"This semester the Interfraternity Pledge Council laid a cornerstone for its future and the future of the Greek system on the ASU campus," said Dean Mousser, IFC president.

The Interfraternity Pledge Council was discontinued in 1962 and this was the first time the organization attempted to do anything since the fall of 1962, and it started from scratch.

IFPC had to set up its own files (none were kept from 1962), plan projects and future goals, and frame a new constitution. This was done in one semester.

The Samuel Gompers project, one of the largest service projects done at ASU, was undertaken by IFPC along with 1,500 Greeks. It consisted of a fund drive and a breakfast attended by 700 Greeks Dec. 2.

Last Friday evening IFPC sponsored an all Greek dance for 200 Greeks at the Feed Bag Restaurant in Mesa.

Some of the group's ideas include the sponsoring of a scholarship program and workshop

which would be attended by all fraternity pledges. Service and need would be the criteria for the scholarship which would aid a pledge.

IFC will decide Feb. 18 whether to continue IFPC for the spring semester. The fraternities activate most of their pledges now and the number of pledges the fraternities install next semester will be a determining factor in its decision.

Present officers of IFPC are: Jim Rogers, president; Mike Vivion, IFPC chairman, and Bill Dawson, executive adviser from IFC.

Contest Winner

The Ugly Man contest was won by Howard Pink of Phi Mu Alpha Sinfonia.

The contest was sponsored by Pi Delta Epsilon, national journalism honorary, to get money for underprivileged children at Christmas.

Phi Delta Epsilon collected a total of \$42.16 for its Christmas charity drive through the project.

IMPORTANT NOTICE

We Would Like To Remind The Students To "Watch Your Books." We Do Have Thefts On This Campus

UNIVERSITY BOOKSTORE

HARMAN'S

Dining Room

Mesa-Tempe Hi-Way

Tempe

Regular \$1.75

Chicken Dinner

ONLY \$1.00

MONDAY ONLY

"It's Finger Lickin' Good"

\$2.50 Worth of Food

for only 50c

antonio's

731 E. Apache Blvd.

NOW OPEN SUNDAYS — FULL MENU

Our Campus Reps Will Contact You For Your Card

(Also Available at Antonio's, Of Course)

SELL for more . . .
 BUY for less . . .

AT THE PHRATERES

BOOK EXCHANGE

Bring your books to Room 7 of the MU (Basement) starting Wednesday, January 27 through January 30.

You Set The Price — We'll Sell It For You!

JAZZ CONCERT

Sunday, Jan. 17

featuring

PAUL HORN

With The Charlie Lewis Trio

Alternating With The

Nadine Jansen Quartet

For Continuous Entertainment

2 PERFORMANCES

4:00-7:00 P.M. and 9:00 P.M. to 1 A.M.

Admission \$1.50

BAND BOX

19th Ave. at Campbell — Phoenix



Chips Down As WAC Play Continues

A-State Cagers Face Big Contest

By JOE HEATH

Who ever heard of playing a 26-game schedule in two nights? Sounds impossible. But for the Sun Devil

cagers, success or failure of this season's team hangs on the outcome of tonight's Utah game and tomorrow's Brigham Young University test.

With the WAC gates rapidly closing, the Devils lone chance for escape could be shut off by the two high-flying WAC teams who both have been ranked nationally during the warm-up games for the league openers.

The Utes, paced by 6-6 George Fisher and backcourtman Granny Lash, rolled off 10 straight wins at the start of the season, receiving their first setback at the hands of UCLA in the championship game of the Los Angeles Classic.

THE REDSKINS, who have yet to win a WAC game in Tempe, lost to the Devils at home last season, 103-78.

Utah will move to Tucson following tonight's game to switch places with BYU who plays at the UofA tonight.

Brigham Young, pre-season co-favorite for the conference

(Continued on Page 16)



HOME SWEET HOME — In an all out effort, Dennis Dairman aids ASU to one of their six wins, five of them coming in the comfortable confinements of Sun Devil Gym.

New Men May Start

With A-State's failure to pull down the rebounds in last week's defeats to New Mexico and Wyoming, Coach Ned Wulk has mentioned the possibility of a few new faces in the starting lineup.

Scheduled to see more action in tonight's and tomorrow night's games are 6-10 Jim Proctor and 6-4 sophomore Randy Lindner.

Proctor has seen limited action in all 14 games thus far and has a total of 41 rebounds.

Lindner was a standout on last year's freshman team, scoring over 20 points a game and averaging better than 11 rebounds.

COME SEE **LOWEST COST FUN ON WHEELS**

M 50 \$225*

*f.o.b. Milwaukee

NEW FROM

HARLEY-DAVIDSON

Harley-Davidson — a famous American name — now introduces America's newest fun wheels, the nifty, thrifty M-50. A stylish blend of American and Continental workmanship guaranteed to please the eye and the pocketbook. An all steel, welded frame forms a sturdy backbone for the M-50's dependable 50 c.c. engine. There's 180 miles of fun packed into every gallon of gasoline along with miles of adventure. One ride and you'll agree — the M-50 by Harley-Davidson is the greatest new go on wheels. Take a look and a ride on this fabulous featherweight at:

RENTAL CYCLES

ARIZONA HARLEY-DAVIDSON

2507 E. McDowell Rd. 275-7677

Open 8-6 Daily, 8-9 Thurs.

Curtis JEWELERS

Jewelry

and

Watch Repairing

BULOVA — WYLER
CARAVELLE WATCHES
DIAMOND RINGS

WO 7-3221

609 Mill — Tempe

Records $\frac{1}{3}$ Records

The Original Price

ALL ARTISTS — ALL LABELS

Bring This Ad And
Get A FREE Gift

Open Daily 9 till 9 — Sat. 9 till 6
Sunday: Noon till 6 p.m.

DISCVILLE, U.S.A.

4119 E. Van Buren, Phoenix

SWINGIN' MUNTZ STEREO



FOR

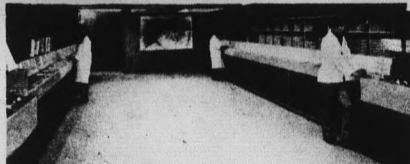
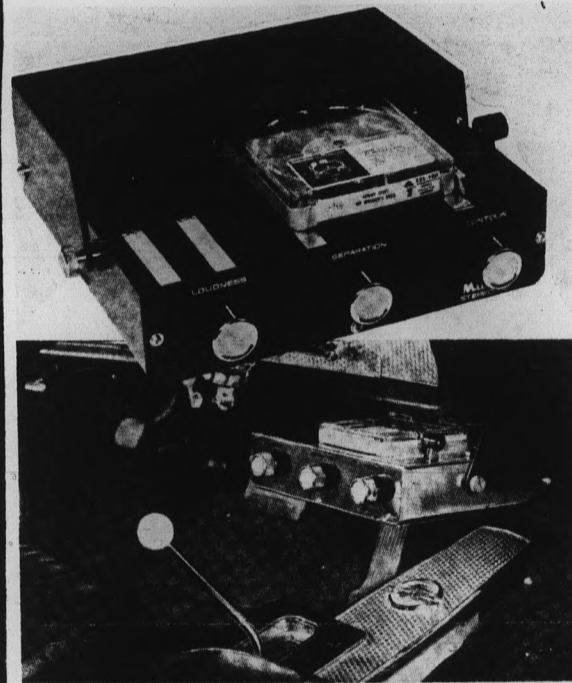
AUTOS

(One Hr. Installation)

\$99⁵⁰

COMPLETELY INSTALLED WITH FOUR SPEAKERS

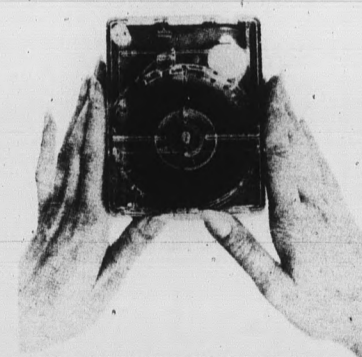
Fully Transistorized
One Yr. Unconditional
Guarantee



Duplicating section at the Muntz factory in Van Nuys; largest 4-track stereo facility in existence.



World's largest library of major label popular, jazz and classical music. Over 9000 selections, in $\frac{1}{2}$, 1 hr. and 2 hr. cartridges.



THE MUNTZ STEREO
Cartridge Contains 2 Full Hours
Of Your Favorite Music

- Jazz • Folk
 - Classical • Pops
- And Many More
Requires No Care
Plays Continuously, Endlessly
Tapes Start At 398

MUNTZ STEREO-PAK
THE ORIGINAL EARL "MADMAN" MUNTZ

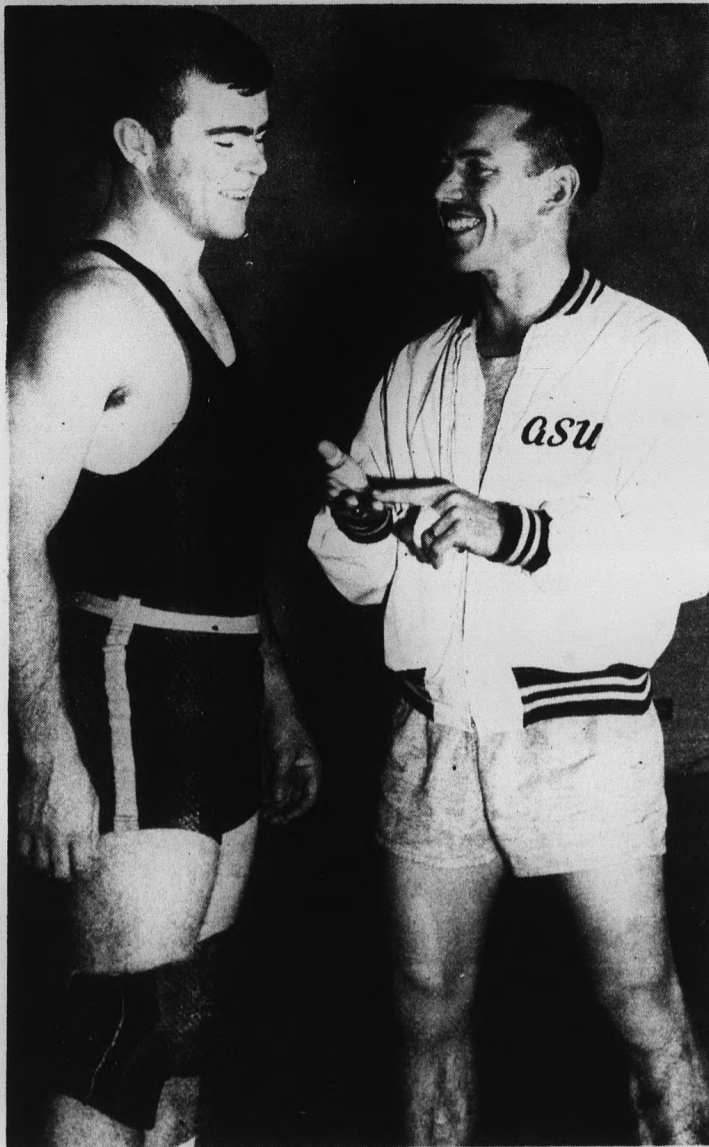
FOR APPOINTMENT, CALL: CR 9-4451

3100 E. Thomas
Only



YOUR EXCLUSIVE
MUNTZ STEREO - PAK DEALER





TWO-TIME CHAMP — Buzz Hays, two-time winner of the 157-pound class in the WAC, talks things over with Coach Ted Bredehoff in preparation for this afternoon's match with the UofA in Tucson.

Devil Wrestlers Face Wildcats

By MIKE HELFNER

The wrestling squad, in a tune-up match for this afternoon's session with the UofA, scored an easy victory over the hapless Aggies of New Mexico State last night.

THE TEAM left for Tucson early this morning for the 2:30 p.m. match and will return tonight. Tomorrow night, after the ASU-BYU basketball game, the Devils will meet Western States College of Colorado.

Coach Ted Bredehoff and the Devil squad are pointing toward today's meet in Tucson. If the Devils do manage to upset the slightly-favored Wildcats, it will be the first time any A-State wrestling team has won in Bear Down Gym. The Devils and 'Cats have met in dual competition eight times in four years, with each team holding four wins, all at home.

TWO MATCHES expected to be main attractions pit Hays against Alex Kerstitch and McMinn with Bob Tanita. Hays has never lost to Kerstitch but each win has been hard-fought.

The 123-pounders, McMinn and Tanita, met once this year in the Sun Devil Invitational Tournament, and McMinn took a narrow 3-1 victory.

Culp will meet an untried Wildcat and is expected to up his record to 6-0. He has caused an unusual problem for Bredehoff and there is no easy solution.

Culp is 6-2 and weighs approximately 240 pounds. A two-time state high school champ, he has forced three non-starting heavyweight wrestlers to quit because he is too difficult to wrestle.

Bredehoff said: "I hope the boys can put an end to this home gym advantage that has been so prevalent. I think that with the personnel we have, we can take today's match in Tucson. The boys will be trying hard to snap this skein and I think with some luck they can do it."

Soccer Club Plays KIFN

The soccer club, currently in second place in the Phoenix Soccer League, takes on the KIFN All-Stars Sunday afternoon in a home contest.

Home games for the ASU team are played on the field behind Alpha Drive.

Two weeks ago, ASU was knocked out of the league lead by a strong Williams AFB team, 4-3.

Currently in the lead is a team sponsored by Fletcher Jones.

Tennis

Men interested in participating on the tennis team are urged to contact Coach Ted Bredehoff.

Players must report before January 21 to be eligible for competition.

"For Confidence In Good Grooming"



OXFORD SQUARE BARBER SHOP

On The Campus at Seventh St. & Forest

Open Tuesday Thru Saturday



INSURANCE PROBLEMS?

— We Write All —
Students Under 25
S-R 22's

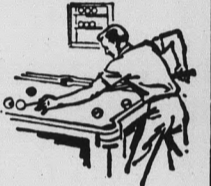
- Auto • Motorcycle • Trailer • Fire • Theft

RALPH PACKER

26 E. 8th St. Tempe
967-3189 967-1182

Lucky Cue Family Billiards

1612 EAST McDOWELL ROAD • PHOENIX
Next To — "Brookshire Restaurant"



POOL — BILLIARDS — SNOOKER
ALL AT ECONOMICAL PRICES

HOURLY RATES

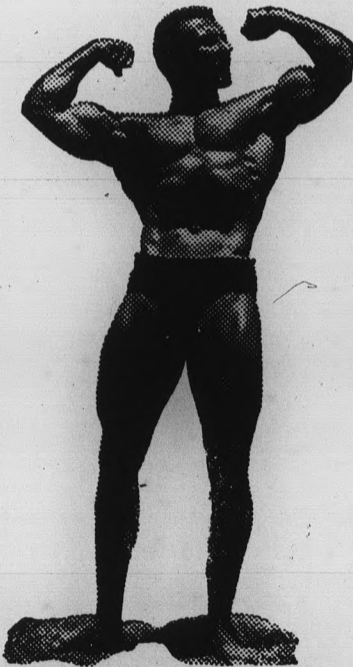
1 Player	\$.70
2 Players	1.25
3 Players	1.50
4 Players	1.50
5 Players	1.50

SPECIAL DEAL

Monday, Tues., & Wed.
Male Escort \$.70
Girl Friend NO CHG.
\$.70 Hr. For Both

Get In Shape Now!

WE OFFER INDIVIDUAL COURSES & PERSONAL INSTRUCTION FOR:



- Body Building
- Reducing
- Conditioning
- Sauna
- Massage
- Steam Bath

Hours: 10 to 10 Daily

Charter Memberships

\$6.00 Per Month

University Health Clubs

IN TEMPE
1018 N. Scottsdale Rd.
Ph. 967-7461

IN PHOENIX
3147 W. Ind. Sch. Rd.
Ph. 266-6798

VIP'S

(Very Insidious Plan to Push Pizza)



"They said we'd have to go far to beat a Village Inn pizza — but this is ridiculous!"

The fun place — where pizza is always in good taste! (Bring your age card.) Open till 1 a.m. week-nights and till 2 a.m. weekends.

801 E. Apache Blvd. 967-3355



Gym Squad Opens Season

Lacking depth, but loaded with talent, the Sun Devil gymnastic squad will travel to the University of Denver and the Air Force Academy tomorrow.

Coach Norris Steverson, who watched his team lose the 1964 WAC title to the UofA 198 to 160½, despite firsts in five of the nine categories, envisions the same situation repeating itself in 1965.

Steverson's apprehension is not unfounded. Chris Evans, NCAA still rings champion, and Jerry Stansbury, high point man during the conference championship last year are gone.

Closing the gap left by Evans and Stansbury are Skip Johnson, still rings and parallel bars, and Jim Nelson, floor exercise. However, their point production is not expected to fill the void created by the lack of team depth.

Rounding out the traveling team are Les Christianson, rings; Norman Cox, high bar; Norm Witham, side horse; Barney Rouse, trampoline, and Carl Fosdick, floor exercise.



NOT HERE — Jerry Stansbury, last year's high point man in WAC competition, won't be on the scene this year as the gymnastics team opens against the University of Denver.

Intramurals

The all-school intramural football championship will be decided this afternoon when two independent teams, the Wailers and the Rejects tangle at 3:45.

The Rejects are last year's defending champions.



ARTIST & DRAFTING SUPPLIES

Crafts - Picture Frames
Decorating Material
Open Mon. & Thurs. Nites
Tempe Center • WO 7-4482

STUDY*MASTER®
PREPOSTEROUS PERSONALS

\$25 FOR EACH PREPOSTEROUS PERSONAL used in our advertising. Must be based on any of 93 Study*Master titles. Open to students and faculty. Sorry, can't return unused entries. Send your entries to Study*Master Publications, 148 Lafayette St., N. Y. C. 10013.

NEEDED: Sharp edged scissors, by Englishman too tied up by many knotty problems to get one himself. Send as swiftly as possible to Box 202 GT, Lilliputia.

Richard Frankel, Hofstra College

WANTED: Experienced surgeon for difficult cardiovascular operation. Contact Mr. Shylock, Box 275 TMOV, Venice, Italy.

Michael R. Zaccaro, Univ. of Penn.

KNITTING LESSONS: Learn from an expert. You'll lose your head over our revolutionary new techniques. Write Mme. Defarge, Box 225 JOTC, Paris.

Susan A. Hoover, San Francisco State

STUDENTS find Study*Master Critical Commentaries, Chapter Notes, Poetry Reviews and Drama Analyses valuable study aids for comprehension, speed, reference, and improved grades.

\$1 Complete selection at your College Book Store.

Wheel Aligning - Balancing
Auto Glass Installation

Pete Null's

TEMPE BODY SHOP

SPECIALIZED COLLISION SERVICE

11 East Fourth Street

Phone WO 7-1601

TEMPE

FREE PRIZES

**Micropoint
Guessing
Contest**

Runs Until 5 P.M. Next Tues.

See University
Bookstore Window
For Details

Ask Bookstore Cashier
For Free Entry Blanks

— NO PURCHASE NECESSARY —

**WIN
RCA CLOCK RADIO
RCA TRANSISTOR RADIO
WRIST WATCH**

"Beat The Slide-Rule Boys"

More About -

Sun Devil Cagers

(Continued from Page 14)
crown, is also one of those nasty ol' clubs with a winning record, 9-3.

THE COUGARS have last year's entire starting lineup back and they too will be looking for their first WAC win in the Sun Devil Gym.

After losing in Tempe 110-85 last season, the Cougars managed a win over the WAC co-champs as they rolled up a 106-90 home court victory.

For a change, the Devils should be able to get back to

the run-shoot type game with which they seem to have their best luck, as all three teams pattern their game around the fast break.

HOWEVER, the difference in the games may well be decided on the boards, a word that spelled death for the Devils last weekend.

New Mexico topped A-State in the rebounding department 49-26, while Wyoming came out on top with a deciding 51-34 advantage.

Tentative Starting Lineup

BYU

G—Dick Nemelka (6-0, 175)
G—Mike Gardner (6-1, 180)
F—Steve Kramer (6-4, 200)
F—Neil Roberts (6-5, 200)
C—John Fairchild (6-8, 200)
BY—95.9 pts and 54.1 rebs game
Record — 9-3

UTAH

G—Skip Kroeger (5-11, 160)
G—George Rausch (6-0, 170)
F—Jerry Chambers (6-4, 170)
F—Granville Lash (5-11, 215)
C—George Fisher (6-6, 205)
U—91.4 pts and 51.5 rebs game
Record — 10-3



unquestionably

Madras

from the Hand Looms of India



Tapered Body

So fine as to be treasured . . . hand woven Imported India Bleeding Madras . . . finding individuality in deep unduplicated colorings . . . expressed in traditional style. Select now, with pleasure.

7.95

Patch Madras . . . 8.95

THE
Americana
SHOP

Quality Men's Apparel

TEMPE SHOPPING CENTER

OPEN 9:00 A.M. TO 6:00 P.M.
THURSDAY 'TIL 9 P.M.