

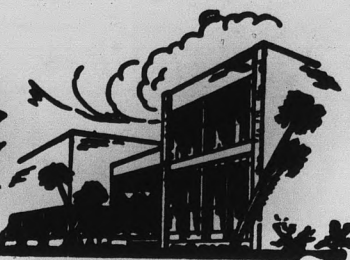


# State Press

ARIZONA STATE UNIVERSITY



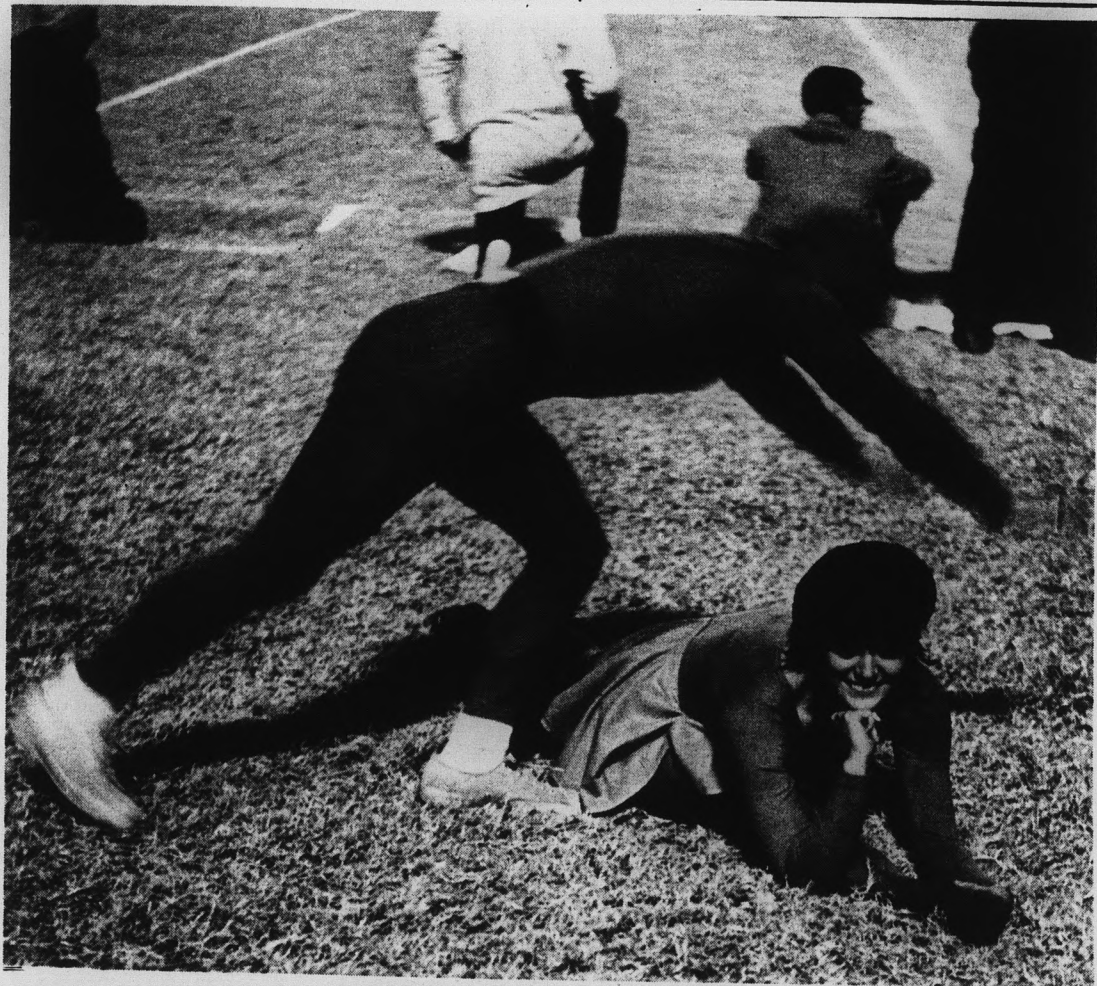
TEMPE, ARIZONA



Vol. 46

Wednesday, November 25, 1964

No. 18



## ASU's New Devilette

(Photo by Jim Hutchins)

The ASU Devil takes the turn over his new sidekick Devilette Nancy Hodges. Both performed in front of the student section at last week's football game to an enthusiastic crowd.

The duo will also be on hand to spark the fans this Saturday night at the season-ending game with the UofA in Tucson.

## College 'Who's Who' Lists Include 36 ASU Students

Thirty-six students have been chosen by Associated Students for inclusion in the national listing of "Who's Who in American Colleges and Universities" on the basis of scholarship, activities and contributions to the school.

They are:

**ROBERT HUGH ARCHER** — Sigma Tau Delta president, first alternate to of Panhellenic, Sigma Alpha Iota, Kappa Delta Pi, Kappa Delta Gamma, Alpha Delta Pi sorority corresponding secretary, SNEA, Talent Committee, Chi Omega sorority president, Homecoming chairman.  
**MARGARITA ESPARZA** — Mortar Board, Natani, treasurer of Spurs, Alpha Lambda Delta, Homecoming Queen, Beta Beta Beta, assistant head resident of McClintock B.  
**LYNN C. FINELL** — Mortar Board, Natani, Alpha Lambda Delta president, National Science Foundation Undergraduate Research Participation Program, student affiliate of American Chemical Society.  
**D. ANN GARDNER** — Mortar Board Natani president, Spurs, Alpha Lambda Delta, AS administrative vice president, chairman of Organizations and Student Leadership Board, McClintock B assistant head resident.  
**EMILY ALICE GETSINGER** — AS secretary, Phi Upsilon Omicron, Kappa Delta Pi, Phi Kappa Phi.  
**ROBERTA JOAN GLENN** — Phi Kappa Phi, Natani treasurer, Spurs, Mortar Board, Alpha Lambda Delta, Kappa Alpha Theta sorority secretary, Phi Alpha Theta.  
**JUDITH GAYLE HAMER** — AS first vice president, AWS senator, Spurs president, Mortar Board, Alpha Lambda Delta, sophomore class senator, Lambda Delta Sigma, president of East Hall.  
**VIRGINIA NELL JONES** — Senator G.E. College Bowl team.

**ELIZABETH ANN DYER** — Spurs, cheerleader, chairman of Big Name  
**MERRILEE ANN BEAN** — Mortar Board secretary, Kappa Alpha Theta president, Natani, Alpha Lambda Delta, assistant head resident of Palo Verde, A Club.  
**SANDRA LEA BERRY** — Pom Pon co-captain 2 years, Pi Omega Pi, Kappa Delta Pi.

**ELIZABETH ANN BOUCHER** — Mortar Board, Natani, Spurs, Kappa Delta Pi, AWS vice president.  
**RUSSELL ELLSWORTH BROWN** — Delta Sigma Pi president, vice president of Business Administration Council, Beta Gamma Sigma, Beta Alpha Psi, Sophos, Phi Eta Sigma.

(Continued on Page 8)

## Faculty Members Sign Safety Research Contract

A faculty committee of five engineering professors have signed a \$62,000 contract with the Flight Safety Foundation to study ways to save lives in aircraft accidents.

Dr. James W. Turnbow, professor of engineering science, is committee chairman. Other members are Dr. Nils O. Myklestad, professor of engineering science; Dr. James P. Avery, associate professor of engineering science; Dr. Jack A. Collins, associate professor of mechanical engineering, and Dr. William Schoeller, professor of civil engineering.

DR. TURNBOW said as long as an airplane does not break apart, the accident should not

be totally fatal. Most fatalities occur when seats break loose and become missiles.

The human body, he said, can withstand about 45 G's for a short period of time if properly restrained. This is more than enough to survive an accident.

According to Dr. Turnbow, the problem is to devise a method of holding the seat in place during an accident without adding too much weight to the aircraft.

HE MAINTAINS that the devices used to fasten the seats properly are too heavy to be practical.

The project will be completed by Sept. 15, 1965.

## Plan Offers Registration Simplification

A proposal to offer ASU students an opportunity to pre-register for the second semester during the period Jan. 5-22 has been developed by the University's Committee on Registration, Curriculum and Student Advisement.

In terms of the proposal, the various registration activities could take place during the following periods: advisement, Dec. 14-18; distribution of registration materials at the Moeur Administration Building, Jan. 5-22; distribution of class cards (probably at department offices of the various colleges), Jan. 5-22.

PRE-REGISTERING students then would be checked out and turn in their materials at the Administration Building lobby, with the option to pay at that time or during regular registration, Feb. 4-6.

Distribution of materials at the registrar's office beginning Jan. 5 will be by classes, with graduate students and seniors first. Juniors will pick up materials Jan. 8, 11 and 12; sophomores, Jan. 13-15, and freshmen, Jan. 18-21.

According to Vice President Gordon B. Castle, chairman of the committee on registration, "The proposal is not submitted with the idea that it is the solution to all the problems of registration. The committee will undoubtedly be able to arrive at

a better solution for fall registration, 1965-66."

THE PROPOSAL is under study of the President's Advisory Council, with further details to be reported to the faculty assembly on Dec. 1 and further review by the Technical Advisory Committee on University Operations.

In addition to Dr. Castle, members of the committee which developed the proposal are Vice President John W. Ryan, vice-chairman of the group, the deans of the colleges, the dean and associate dean of students, the registrar and the University librarian.

## Senior Photos

Today is the last day for seniors to have their pictures taken for the annual. Pictures will be taken at Matthews Hall behind the library. There is no sitting charge.

## Blue Key Taps Fifteen Members

Blue Key, national honorary for junior and senior men, tapped 15 upperclassmen this morning.

The men, selected for their activities, service to ASU and scholarship achievements, were guests at a breakfast at the Tempe Sands following the tapping ceremony. An initiation and banquet at Monti's is planned for Dec. 6.

Participation in at least two campus activities and a minimum cumulative index of 2.5 are basic qualifications for Blue Key membership. Members sell programs at football games, serve as ushers at University functions and the group continuously has a network of members who move handicapped students from class to class.

The honorary also sponsors the Blue Key Carnival held each spring in conjunction with the MU Birthday Party. This year the group hosted alumni members at a Homecoming

luncheon.

Throughout the year, Blue Key sponsors money-making projects to provide four \$200 scholarships, one for one man in each class.

New members of Blue Key and their activities are:

Olatunji Agoro, senior civil engineering major, is an associate member because he is a foreign student. He belongs to Tau Beta Pi, engineering honorary, Foreign Students Club, the soccer team and American Society of Civil Engineers. He also served on the People-to-People Committee. He has a cumulative grade index of 3.1.  
Leslie H. Anderson, junior accounting major, is brigade commander in Army ROTC. He has received Reserve Officers Association Medal and Distinguished Military Student award. He is chairman of Faculty-Student Relations Board and has served as

(Continued on Page 7)

## Stomp On The Nogo Tech Pussycats

Just Like The Pros

# Committees Suggest TV For Basketball Problems

By BOB HARTMAN

Closed-circuit TV broadcast of home basketball games was recommended as the answer to the seating problem by the Student Affairs Committee and the Board of Athletic Control in separate meetings this week.

The Student Affairs Committee yesterday sent a three-point recommendation to President Durham including the TV broadcast idea.

Other suggestions were that the Board of Athletic Control submit proposed seating policy changes to the committee, and the AS Senate seek student opinion on the current problem.

PRESIDENT Durham referred the basketball seating problem to the two official bodies after the Student Senate unanimously passed a resolution a week ago condemning Intercollegiate Athletics (ICA) for its change of policy.

Until this year student basketball ticket distribution was on a first-come, first-served basis. ICA, this year, divided the student body into three groups, allowing each group to attend four home games.

The Board of Athletic Control suggested Monday the use of KAET-TV to do the closed-circuit broadcast of important home games. Board members

stressed that two problems still remain to be solved.

—How to finance the telecast and

—Where to set up seating for viewers.

THE BOARD said most of the current problem is the result of misunderstanding.

Dr. Joel J. Dauten, chairman of the board, said the new policy was not a breach of the contract between Associated Students and ICA as had been accused because the same number of tickets as last year are being reserved for students and faculty.

The board said it changed the seating policy because many students and faculty complained they stood in a long line only to have tickets run out. Some students skipped classes to stand in line and others had morning classes or jobs and could not obtain tickets, according to the board.

THE ATHLETIC department studied the solutions used by other Universities with a similar problem and came up with the new plan the board said.

Dr. Dauten said, "It is not that we feel this is an ideal situation. We are open to any suggestion that may improve the situation."

He said under the new policy none of the tickets are sold to

the general public. If any student fails to pick up the seats reserved for him they will be sold to students on a first-come, first-sold basis.

### Placement Interviews

The Placement Center has scheduled the following interviews for seniors and graduate students:

MONDAY:  
Coast Guard recruiting

TUESDAY:  
Westinghouse

WEDNESDAY:  
Army Materiel Command,  
Pacific Mutual Life Insurance

THURSDAY:  
Dow Chemical, American  
Hospital Supply, Boeing

# Trainees To Leave For Brazil

Forty-eight Peace Corps trainees were graduated at 8 p.m. yesterday in ceremonies at 601 Alpha Drive.

According to Dr. Mayland Parker, University Peace Corps director, the oath of office was administered to the 23 women and 25 men by Larry Smith, Peace Corps trainer from Washington, D.C.

President Durham was principal speaker for the evening.

The ceremonies marked the completion of 12 and one-half weeks of training. The new volunteers left for home today on 10 days vacation after which they will embark for Brazil.

The trainees' main work in Brazil will be to employ preventative measures to improve health standards.



A funny thing happened on the way to the campus . . . a lot of funny things, come to think about it.

We had this great idea, see: open a real first class men's traditional shop for the guys at ASU and give them an opportunity to get back at us for all the noise we make each year at the football and basketball games. Having been in the same racket (though somewhat removed from campuses) for enough years to know better we undertook to find a location in Tempe on or near campus. Presto! In mid-summer the perfect spot showed. EIGHTH AND FOREST . . . convenient to all the action. So-o . . . location available . . . don't ask questions, sign lease.

Sign lease; funny things start to happen: 1) Another shop starts piling bricks to the rear (competition!); 2) The construction company (a one-truck — no-phone outfit whose work is very good but VERY SLOW) decided to give priority to a 1400 unit motel in Guadalupe; 3) The plumbing outfit (sewage specialists) smoked more pipes than they laid and dug more Surfers than ditches;



4) The concrete experts got stuck in another job; 5) The glassers couldn't see their way clear to furnish windows; 6) The electricians were too shocked to do anything at all and 7) The city of Tempe has decreed that nothing further can take place until there is a paved parking lot at the rear of the building (there will be.) Well, here we sit in the meantime with all these GANT shirts and CORBIN slacks and CANTERBURY belts and SOUTHWICK suits and coats which we don't really own until we pay for them . . . and LONDON FOG rainwear, GOLD CUP hose, GRIEF, HILTON, SIGEL, DEANS GATE, IZOD (velours and orlon sweaters and LaCoste) and on ad infinitum.

Anyway, we have what you want, and we've written a sort of form letter to our illustrious manufacturers telling them why we can't pay them until we sell some of their wares. So come on over to John Horan's at 8th and Forest, outfit yourselves at the right prices, charge (if you'll pay later — otherwise bring money), register for a whole bunch of free gifts and meet Des Milligan, Ted Bratrud, Tom Schine and John Horan. We might even be open.

## John Horan

Mercero



### Por Caballeros

at 8th St. & Forest

**HAPPY  
THANKSGIVING**  
from the  
**MUSIC SPOT**  
53 E. Broadway  
Broadway Plaza — 967-7161

**Sweatshirt  
Jamboree!**

**LAST TIME—  
2 FOR 5  
TILL '65**

Regular \$2.95 Sweatshirts  
Now - - - - \$2.75  
**2 For \$5.00**

Sale Now On At Your  
**UNIVERSITY  
BOOKSTORE**

## Carrie's Flowers

613 Mill Ave. — Tempe  
967-8691

The Best of Flowers . . . in Distinctive Arrangements

*Orange Blossom*  
DIAMOND RINGS

EMPRESS • PRICES FROM \$125 TO \$1500

**Paul Johnson**  
JEWELERS

1604 E. CAMELBACK

MEMBER AMERICAN  
GEM SOCIETY

*"Where Originality Is A Tradition"*  
Open 9 A.M. - 5:30 P.M. — Thursdays Til 9 P.M.

Search Continues -

# Abduction Plan Foiled By Coed

Campus Security officers and Maricopa County Sheriff's deputies were continuing a search Tuesday for a man who attempted to abduct a senior coed in the Palo Verde parking lot.

An unshaven man in his twenties pushed a sharp object into the side of Sondra Archer about 10 p.m. Thursday as she parked her car in the parking lot north of the dormitory.

The man approached her from the driver's side of the car and told her to move over. He drove the auto out of the parking lot and south on Stadium Drive to the Eighth Street intersection where Miss Archer jumped from the car when he slowed down to change lanes.

A passing motorist took the

unharmd coed to the Tempe police station where she told officers she had also been robbed of the \$4 in her purse.

The car was found at Roosevelt and Second streets in Phoenix Saturday morning.

Fingerprints and footmarks found on and near the car are being put through a check by police.

## Buchanan Wins Post

Carl Buchanan has been declared senator from the College of Architecture by the AS Supreme Court in a decision released over the weekend.

In a one-page report Chief Justice Tom Thomason said the Election Board did not follow the provisions of the AS election code and was at fault.

Buchanan polled the most votes in the race for the College of Architecture Senate seat.

## English Proficiency Examination Asked Of Liberal Arts Sophomores

The Junior English Proficiency Examination will be given next Wednesday at 2:30 p.m. in LSC 191. It is required of all second-semester sophomores enrolled in the College of Liberal Arts who did not receive an A or B in EN 102.

Students should allow two hours for writing the exam and may bring dictionaries. ID

cards must be presented for admission.

Transfer students who received A's or B's in comparable courses must inform the office of the dean of the College of Liberal Arts to be excused.

Students who fail the exam or neglect to take it will not be permitted to take junior-level courses next semester.

Watch For

# RECORD SALE

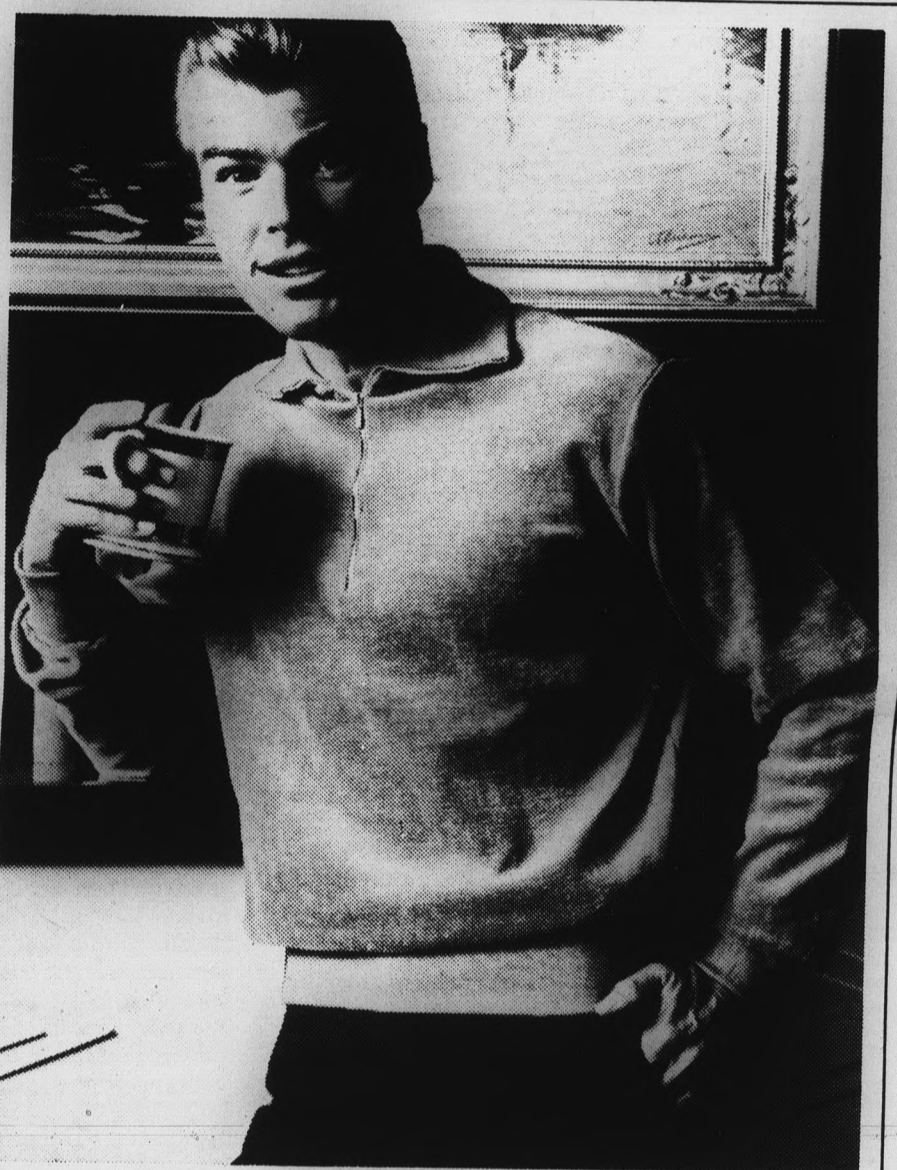
Coming in December

at the

# UNIVERSITY BOOKSTORE



**Shakey's**  
 PIZZA PARLOR & Ye Public House  
 Phone 967-8803 For Takeout Orders  
 1420 E. Apache Blvd. — Tempe



**Gifted Velour Pullover**  
*soft-touch for your*  
*Christmas male*  
**\$10**

The cotton velour pullover with a 2-way collar that converts from a soft roll to a turtleneck with the flick of a zipper. A wonderful addition to any man's leisure wardrobe. French blue, burgundy, olive, pewter or black. Sizes S-M-L-XL.

Call Miss Hall, Personal Shopper, AL 4-9292, from Noon 'til 9

## Hanny's Racquet & Shops

DOWNTOWN • CHRISTOWN • SCOTTSDALE • THOMAS MALL

Campus Representatives: Ted Lorber • Bruce Rys • Greg Halstead • Jim Grant

Staff Editorial -

# Traditional Race Is Now History

The Big Game Saturday is one of the few traditions at ASU. Now what was another tradition has become history. For 11 years there has been an annual bike race from Tempe to Tucson or vice versa, depending on where the game was played. The event was alternately sponsored by the Alpha Tau Omega fraternity at both schools. This year it was to have been sponsored by the ATOs here, which means the 116-mile race would start here and end in Tucson. Trophies would have been awarded during half-time.

**SAID THE STATE PRESS** in an article Nov. 23, 1960: "The Schwinn Bicycle Company has called this the most exhausting bicycle race in the country."

The tradition ended last year, when, two days before the Big Game, the state highway department told the Tucson chapter to cancel the event. The department reasoned that, since the route between Phoenix and Tucson had become an interstate highway, the race would hinder traffic and become a hazard to its participants. In the past, the fraternity chapter insured the race with Lloyd's of London.

**DEAN MOUSSER, PRESIDENT** of IFC, noted its passing with restraint: "It was one of the few traditions we had, and I thought it was a good one. We have always wanted to comply with state and University regulations."

Gerry Green, president of Alpha Tau Omega said, "We enjoyed sponsoring it."

JOHN KENDALL

# Pills Are Harmful

By consuming NoDoz and comparable drugs for last-minute, all-night-study sessions, college students are getting more than they bargained for.

The desired results of temporary alertness and possibly nervousness are achieved. The day after, the consumer feels tired and thinks his health and rest will be restored to normal in a day or so.

But people who artificially stay awake suffer damage far beyond temporary tiredness for several days. It is a fact that while asleep everyone dreams from 12-to-15 per cent and has dreams in cycles of 90 minutes apart. These are referred to as a fundamental biological rhythm.

**WHEN THIS RHYTHM IS** broken by deprivation of sleep, the person tends to become confused, which is one of the first symptoms of insanity.

If a person loses an extra amount of sleep, when he finally does get to sleep, he cannot catch up, he may become confused.

The Chinese deprived American pilots of sleep or interrupted it until the pilots were confused and had lost track of time. They told their captives that they were guilty of dropping germ bombs. The pilots actually thought either they or someone in their squadron had engaged germ warfare.

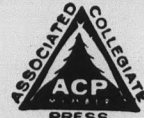
**ARE YOU GUILTY OF** taking stay-awake pills? What good will your education be if you become confused or insane? Perhaps you will only experience confusion in a mild sense, but experiencing slight confusion in an excess is apt to harm your present state of mind.

Deprivation of sleep is one of the oldest tortures known. The biggest damage is not immediate but an accumulation of such experiences does the most damage in time.

AUDREY LANE



THE STATE PRESS is the official campus newspaper of Arizona State University. It is published each Wednesday and Friday throughout the school year, excepting holidays, and is entered as second class matter at the Tempe, Arizona, Post Office under the acts of March 3, 1879, and August 24, 1912.



THE STATE PRESS is a member of the Arizona Newspapers Association, Associated Collegiate Press and National Advertising Service, Inc. Subscription price, \$3 per school year.

- EDITOR-IN-CHIEF \_\_\_\_\_ PAM VAN BUSKIRK
- MANAGING EDITOR \_\_\_\_\_ ED HEATH
- NEWS EDITOR \_\_\_\_\_ GORDON BLACK
- ASSISTANTS \_\_\_\_\_ TOM HAERTEL, KEN WATERMAN
- CAMPUS EDITORS \_\_\_\_\_ GORDON ROBBINS, SHIRLEY DE MARKE
- COPY EDITORS \_\_\_\_\_ JOHN KENDALL, RICHARD CANTOR
- PHOTO EDITOR \_\_\_\_\_ JIM HUTCHINS
- ASSISTANT \_\_\_\_\_ JOHN POLICH
- SOCIETY EDITORS \_\_\_\_\_ PAT HUNTER, LINDA HELSER
- ASSISTANTS \_\_\_\_\_ SUE BREHM, BARBARA JONES
- SPORTS EDITORS \_\_\_\_\_ AL MICHAELS, JOE HEATH
- ASSIGNMENTS EDITOR \_\_\_\_\_ BOB RANDOLPH
- ASSISTANT \_\_\_\_\_ TONY AULT
- CHIEF PROOF READER \_\_\_\_\_ DIANA ROSEN
- REWRITE EDITOR \_\_\_\_\_ JOAN SKIPPER

# Letters To The Editor

To the Editor:

Did the State Press do a service to ASU by reporting the probation "fad?"

Perhaps the Nov. 13 editorial sought to accuse University authorities of hindering school spirit. Instead, the editorial did a disservice of its own by subordinating probation to the level of a status symbol — a fad. In so doing, the State Press encouraged the fad to be taken lightly and popularly imitated.

Furthermore, the editorial showed short-sighted vision as to how school spirit should develop. It showed shallowness in its snap judgment that authorities are "Puritanical" and "narrow-minded" because, among other things, pantie raiders were put on probation.

Whether or not students should participate in pantie raids is not the concern of this letter.

I would, however, like to point out that the State Press could have chosen a better defense for its argument that spirit "... is just not allowed to develop."

For one thing the editorial failed to realize the rules involved in games of pranks. Boys who snitch watermelons or pumpkins or oranges from patches or groves run the calculated risk of a farmer's wrath.

Similarly, students who participated in the pantie raid were also aware that they risked disciplinary measures. It's part of the game.

For the State Press to cry, in effect, "No fair! It was only for spirit," is unsporting and unrealistic.

The response of the University authorities was to be expected. Their action did not indicate they were against school spirit. It did not mean they condemned the men who participated as "thinking in a perverted, smutty way," as the editorial chose to accuse.

Rather, it showed that ASU authorities are far-sighted enough to realize that, whether pranks are fun or not, pantie raids can "develop into mass hysteria ... and result in injury to students and property damage."

How should students and authorities promote school spirit, anyway? Does ASU gain more by allowing free rein to such pranks than it loses when they get out of control and incur injury and damage?

It would seem this is a limited, negative way to promote spirit.

On the other hand, positive methods of developing spirit, such as supporting members of the College Bowl team, certainly did more for ASU than the attitude reflected in your editorial.

The State Press may have legitimate arguments against the degree of discipline and sternness of policies concerning women's residences and possession of liquor.

The way to secure change, however, is not to cry "Puritan" or pout that "students are treated like children."

The State Press may have valid arguments that school spirit can be improved. It may have valid arguments that dis-

cipline is unnecessarily strict.

If so, it will do ASU greater service with more accurate and mature analysis of the issues in the future.

KATHLEEN KILLORIN

**Editor's Note:** It is often necessary to draw attention to the fact that a sad situation exists before something can be done about it. Miss Killorin seems to have missed the entire point of the editorial.

To the Editor:

Attending college on a shoe-string is not at all uncommon. Attending a late November football game in such a condition is. I presume that by some action of the Rally and Traditions Board the three-year retired position of Devilette was reinstated, possibly to carry out the fertility rite that was staged last Saturday night. The antics of the pair were an unwelcomed contrast to the wholesomeness and talent of the cheerleaders and pom pon girls. If their purpose was to distract misplaced Epicureans, or if hers was to reenact the nymph scene from Fantasia, it was realistically attained. If it was to "promote spirit" it failed for it served as only a repulsive distraction.

The reinstated dual mascot tradition is not the blunt of my criticism. I submit to the Rally and Traditions Board two suggestions: (1) Obviously the Devilette was given little direction as to what she was to do. I am sure her prancing and freezing came quite naturally. Correlation of cheerleaders and mascots would be worthwhile; (2) A more suitable costume for the Devilette.

Action on this issue needs to be taken before the next football game. I can see in no way the contribution of the mascots last Saturday, nor reason why their antics need be repeated.

CHERYL SAMPSON

Student Assistant  
Palo Verde East

\* \* \*

**Editor's Note:** Continual complaints have come in regarding the Devil and now the Devilette. Part are purists saying the pair is immoral and the others are, we think, just jealous seeing someone else attracting the attention they are. It is time to decide the function of the mascots at sports events. Concerning the costume, however, possibly a name-change would answer these type criticisms. Instead of being the ASU Sun Devils, we would be known as the ASU Eskimos. Then our mascots could wear big bulky parkas.

# Implications

The Senate defeated Senate Memorial number 1, which was to openly commend David Scoular, manager of Gammage Auditorium, for his service to the student body in relation to the students' use of the auditorium.

Goody ... goody ... goody!

# I Cover College Avenue

By ED HEATH  
Managing Editor

ASU really isn't a very colorful school by popular standards. It has no character.

It lacks ivy-covered buildings, other than Old Main. And while it tries to appear modern this is a joke, as evidenced by the Language and Literature Building

Furthermore, its over-all attitude on nearly everything is stagnant, conservative, even in the midst of such growth as the University has been experiencing.

**SURE,** it is a good philosophy to keep student activities under a tight rein when the University is undergoing these growing pains, but it is not developing the traditions or the characteristics that make a scholastic institution a university.

The University has all the ingredients of being a stage where the professors teach to be teaching; the administration makes rules for the sake of having rules; the staff comes and puts in its eight hours and leaves; and the students walk through classes and meetings, attend athletic events, concerts and/or plays. But nothing really happens.

There is only token culture in Gammage Auditorium and only token discipline for the pantie raiders.

**ALL SORTS** of efforts are being made to make the University a "home away from home" but the students don't make themselves comfortable and enjoy themselves.

The University is supposed to create an atmosphere of friendship and togetherness. After all, we are all here to achieve the same thing — an education. Yet even this fails to unite the student body.

Efforts to get the student body excited about something (a pre-game rally, for example) all fall far short of the ideal.

**EFFORTS** toward sophistication, if only to name a dining room in the MU the Pagoda Room, again reeks of being token attempts to make something of nothing.

The VI, East Hall, former centers where students united are gone and College Avenue is now being dug up. But these are emotional unifying elements. There must be something else to unify the students ... to make them proud of being enrolled at ASU.

Raise standards, demand more, insist that students, faculty, courses and activities be better than they were last year. Then and only then will school spirit, derived from school pride, result.

Local Politics In Action -

# ASU Structure Fluctuates

BY TONY AULT

What is Associated Students? This question has been asked time and time again by students and student government officers, with always a different answer. Why? Because AS is constantly changing.

AS, as in any government, must constantly change. Without change and revision it would be worthless. Therefore, the students and their student officers must be aware of these changes.

This column will keep the students informed of all recent issues brought before student government and the implications of change involved.

STUDENT government, in the past, has been made up of a nebulous group of people, elected by an apathetic student body, which attempted to outline policies concerning the students and their activities on campus.

Sen. Abramson thinks students need to know who to see if they wish to suggest a change in school policy. He also thinks a more active State Press is necessary.

"THE STATE Press should seek out news concerning student government and not wait for news to come to it. The State Press should accurately inform the student of the immediate plans and future prospects of student government," he said.

There is no denying that the State Press should report the current issues before student government more accurately and rapidly. The paper tries to cover ASASU and report the consequential news to the student body as well as possible, but it is responsible not only to ASASU but also to the student body; therefore other campus

news must be given preference if it has more prominence.

More understanding and cooperation on this issue between the two factions would be beneficial.

The majority of students still have no clear idea of what student government is, let alone what it has done and what it is doing to benefit the students.

Sen. Abramson, inter-hall senator, thinks that students must be informed of campus government and its activities in order to combat an apparent lack of enthusiasm. In his opinion the way to change student apathy to enthusiasm is through student assemblies and a more active State Press.

SEN. ABRAMSON says, "Student assemblies led by the student leaders should be scheduled by the registrar. All students who wish to attend the

assemblies—and this should be required of freshmen—can hear current plans of student government, what the various boards are doing and how the student can best use these boards."

"The assemblage could be used as a clearing house for debatable items of interest and as a general means for officers to inform the students of their platforms," said Abramson.

The State Press, in this column, will welcome the opinions of the student government officers to inform the students of the various issues, both pro and con, and of the changes wrought by current legislation.

### Young Republicans

The Young Republicans will meet at 7:30 p.m., Tuesday in MU 211.

## NOW OPEN Scott Jewelers

Tempe Center - 966-6101

*We request the honor of your presence for a Special Showing of the most complete selection, in this area, of World Famous Artcarved Wedding Rings*

Congratulations on your engagement! We are sure you will want to see the largest selection of wedding rings before you choose the ring you will cherish for a lifetime!

BUDGET TERMS AVAILABLE

## Bob Cratchit would just love Pacific Mutual Life

And so will you if you're one of the outstanding graduates selected by Pacific Mutual Life for a sophisticated training program. We have six of them, and when you finish the one of your choice, you'll be an agent, actuary (math grads only), real estate specialist, group insurance representative or a member of home office management. Wait till you learn about these fabulous "eat-as-you-learn" programs which speed you toward a respected position. Make a date to see Bob Carrow at the Placement Office.

On campus interviews: December 2, 1964

### CHRISTMAS GIFT PORTRAITS OF DISTINCTION AND FINE QUALITY CAN NOT BE RUSHED

Now Is The Time To Acquire  
The Most Cherished Gift Of All  
A Fine Portrait Of Yourself

Call 967-4467



Make An Appointment Today

8th St. At Scottsdale Road  
TEMPE, ARIZONA

STUDIO OF PHOTOGRAPHY



a new fashion

Original by *Brentwood*

## LUXURIOUS ALPACA SWEATERS

Brentwood's all new sweater fashions — Pure Alpaca — boast an unusually handsome texture that takes colors and patterns like no others. To this renowned wool, Brentwood lends its famous sweater styling technique and its keen fashion awareness to bring you sweater fashions without equal.



QUALITY MEN'S APPAREL  
TEMPE SHOPPING CENTER

WO 7-5457

OPEN 9:00 A.M. TO 6:00 P.M.  
THURSDAY 'TIL 9 P.M.

## EASY TO PACK PAPERBACK BOOKS

"Harlow"

"Three Sirens"

"Lord Of The Flies"

"Atlas Shrugged"

"Caravans"

"The Group"

"The Concubine"

**HILLS** BOOKS & RECORDS  
Tempe Shopping Center

# Organizations Obtain Approval

Five organizations were approved by the Student Affairs Board at their meeting yesterday making them official University organizations.

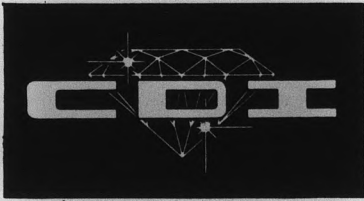
The National Collegiate Players, a drama honorary, was approved. Dr. James W. Yeater, assistant professor of speech and drama, is their adviser. Jim Seeman is president.

Also approved was the Uni-

versity Vagabonds Club. A travel club, their advisers are Dr. George Hamm, dean of men, and Dr. Elvin Taysom, assistant professor of animal sciences. Serving as president is Perry Gooch.

The Orthodox Fellowship of ASU, a religious organization associated with The Eastern Orthodox Church, was approved. Father Anthony Gabriel is the adviser and Paul Katsenes is president.

Alpha Kappa Delta, sociology honorary, has been approved. Dr. John H. Kunkel, assistant professor of sociology serves as adviser and Lura Henz serves as president.



"GETTING ENGAGED?"

## Byron's Town House

Cordially Invites You

For The Holiday Season

Fine Entertainment

Friday and Saturday Nights

### "The Paula Jean Trio"

Featuring Paula Jean On The Drums

Southern & Mill — 2 Minutes From Campus

# Cheerleaders' Request Denied By Board

The Board of Financial Control said Monday it did not have authority to give money to the cheerleaders for uniforms and travel expenses since the same request was struck from the budget last year by the Senate Finance Committee.

The board can grant funds only for matters not taken into consideration in the budget. The cheerleaders travel request was trimmed by more than \$1,500 last spring by the Senate Finance Committee. The committee cut the entire uniform allocation.

Head cheerleader Rick Burrus, however, was advised by the board to submit a written

request for reimbursement of monies already spent by the Rally and Traditions Board for cheerleader sweaters. The cheerleaders are supported by

the R&T Board.

The board indicated it would consider the sweaters a reward for services rendered by the cheerleaders.



## Rosamond's beauty salon

WO 7-3722

Tempe Center

Evenings By Appointment

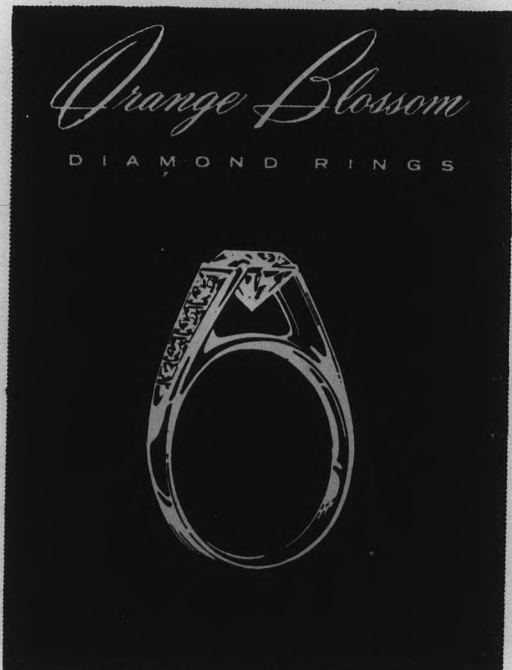
## LAY-AWAY NOW for CHRISTMAS

From Our Nationally Advertised Merchandise

- DARLENE — Sweaters - Skirts - Capri Pants
- CATALINA — Sweaters - Skirts - Capri Pants
- JONATHAN LOGAN — Dresses
- ROSEMARIE REID — "Pants International"
- KORET OF CALIFORNIA — Sportswear
- WHITE STAG — Sportswear
- VANITY FAIR — Lingerie
- HANES & BEAUTY MIST — Hosiery

# Celia's TEMPE CENTER Rosemarie's VALLEY FAIR

SEE DENNIS FOR DIAMONDS



MANTILLA • PRICES FROM \$200. TO \$1000

### Fine Dennis D. Naughton Jewelry

132 N. Central — Park Central Mall  
9 A.M.-5:30 Daily — Till 9 M., Thurs. & Fri.  
AL 2-3774

As Usual, The Creators Of The Unusual

Registered Jewelers American Gem Society

SEE DENNIS FOR DIAMONDS

# WIP'S

(Very Insidious Plan to Push Pizza)



"This is the part that's fun . . . when they put the Pizza in the oven."

The fun place — where pizza is always in good taste! (Bring your age card.) Open till 1 a.m. week-nights and till 2 a.m. weekends.

801 E. Apache Blvd. 967-3355



More About -

# New Members Of Blue Key

chairman of ASU College Bowl. He is presently 10th Regimental Commander of Pershing Rifles. A delegate to the Memorial Union Conference in Utah this fall, Anderson also was delegate to the national convention of Pershing Rifles. His cumulative index is 3.05.

Jeffrey Allan Boucher, senior management major, is ROTC battalion commander and recipient of the Distinguished Military Student award. He is a member of Cultural Affairs Board and business and house manager for University Players. He has served on the Senate Judiciary Committee and Senate Committee on ROTC Affairs. Now AMS senator, Boucher's cumulative grade index is 2.89.

Larry K. Geisel, senior mechanical engineering major, is a participant in the Honors Program of the College of Engineering Sciences. He is a member of Phi Kappa Phi, treasurer of Tau Beta Pi, national engineering honorary, and vice president of Pi Tau Sigma, national mechanical engineering honorary. Treasurer of Phi Gamma Delta fraternity, Geisel is a varsity tennis player and member of American Society of Mechanical Engineers. He has served on various committees of Pi Tau Sigma and Tau Beta Pi. His index is 3.88.

William L. Lawren, senior history major, was an alternate to the "G.E. College Bowl" team. He is a member of Phi Alpha Theta, national history honorary, and Archons. A member of Pi Kappa Alpha fraternity, he has served as IFC rush counselor and on the rush committee for two years. He has served also on the Senior Day Committee and IFC pledge council. Lawren's cumulative grade index is 3.23.

Wallace M. Meyer Jr., senior chemistry major, is president of Devil's Disciples. He attended Payson Leadership Workshop. A social member of Kappa Sigma fraternity, he was affiliated with Zeta Psi at Northwestern University. He served on Freshman Orientation Week Steering Committee and is a member of Rally and Traditions Board. Now sergeant-at-arms of the Senate, Meyer is a member of American Chemical Society Student Affiliates. His cumulative index is 2.98.

Robert Charles Montano, a junior English major, is a participant in the liberal arts Honors Program. He is corresponding secretary of Phi Gamma Delta fraternity and a member of IFC. Now serving as IFC senator, Montano was formerly Liberal Arts senator. He was a member of Sophos and Archons, and has served as chairman of the AMS Constitutional Revisions Committee and co-chairman of 1964 Greek Week. He was also a member of the Homecoming Steering Committee and Social Board. His cumulative grade index is 3.17.

Dean W. Mousser, junior electrical engineering major, is president of IFC, treasurer of Sigma Chi fraternity and a member of Archons. He is chairman of Membership and Elections Committee in the Senate. He has served on the Rally and Traditions and Faculty-Student Relations boards. A delegate to Western Regional conference of IFC, Mousser also served

as treasurer of IFC. He is a member of Institute of Electrical and Electronics Engineers with a cumulative grade index of 2.51.

Martin David Openshaw, senior agriculture major, is general chairman of Gammage Auditorium booklet sales. He is president of Lambda Delta Sigma, honorary fraternity of returned LDS missionaries. He also belongs to Kappa Kappa Psi, national band honorary, Alpha Zeta, national agriculture honorary, and Delta Phi Kappa, a national returned missionary honorary. His cumulative grade index is 2.9.

T. Terrance Phillips, junior chemical engineering major, is a participant in college of engineering Honors Program and a member of Student Society of Chemical Engineers. He belongs to Tau Beta Pi, engineering honorary, and is Alpha Tau Omega fraternity secretary and Standards Committee secretary. He has served on the Greek Week Steering Committee and Parents Day Steering Committee as subcommittee chairman. He has a cumulative grade index of 3.45.

Fred Reish, junior accounting major, is president of ASU Forum and member of AS Senate. A member of Theta Delta Chi, he is the recipient of the IFC Scholarship Award. He was state president of Sophos and is a participant in the Honors Program. Reish also belongs to Devil's Disciples, Beta Sigma and is a member of the Election Board. His cumulative grade index is 2.8.

Stephen Jack Sawyer, senior architecture major, has served as secretary

and treasurer of Alpha Rho Chi fraternity. He was awarded Central Arizona Chapter American Institute of Architects award. He was a member of Sophos and was on the Alpha Rho Chi College Bowl team. Sawyer has worked on Parents Day Committee and is chairman of Alpha Rho Chi Scholarship and Publicity Committee. His grade index is 2.96.

Robert R. Short, junior accounting major, is presently a Supreme Court Justice and member of AMS Constitution Committee. He belongs to Delta Sigma Pi, professional business fraternity, Accounting Club and Concert Choir. He is in the Honors Program and was a member of Sophos. His cumulative grade index is 3.58.

Gary Donald Smith, junior management major, is scholarship chairman of Theta Delta Chi fraternity and a member of Delta Sigma Pi business fraternity. He has served on the Social Board, Rally and Traditions Board and was a member of Young Republicans. A member of Sophos, Smith served on Freshman Orientation, MU Birthday Party and Senior Day committees. His index is 2.98.

Mike Vivion, junior English major, is resident assistant at Sahuaro Hall. He has served as social chairman, pledge trainer, IFC representative and delegate to national leadership workshop and convention of Phi Kappa Psi fraternity. He is a member of Archons and is now IFC pledge council adviser. He was a member of Sophos and IFC executive council. Now a member of the Education Board, Vivion has a 2.91 cumulative grade index.

Don't Forget  
**"WINTER SERVICE"**  
 YOUR CAR NOW . . .

AT  
 YOUR NEAREST AUTO DEALER

**Smiley-Berge Ford**

Corner 8th and Mill - Tempe

MILL AVE 8th STREET to 10th STREET

**TEMPE**  
 Center

**TEMPE'S FINEST SHOPPING CENTER**

**... 31 FINE STORES TO SERVE YOU!**

**Santa Arrives by Helicopter**  
**1:30 p.m. On Friday**

**Americana Shop**

**Ray's ASU Barber Shop**

**Bonnie Sue Fashions**

**Brickie's Furniture**

**Buddy's Coffee Shop**

**Celia's Fashions**

**El Rancho Market**

**Erickson's Handcrafts**

**1st Federal Savings & Loan**

**1st National Bank**

**GallenKamp's**

**W. T. Grant**

**Happy House Shop**

**Hill's Books & Records**

**The Hogan**

**Inland-Western Loan & Finance**

**Jam's Restaurant**

**King's Fashions**

**Lee Optical**

**Scott Jewelers**

**Pioneer Camera Shop**

**Rosamond's Beauty Shop**

**Ryan-Evans Drug Store**

**Sewing Basket**

**Sherwin-Williams Co.**

**S&H Green Stamp Center**

**Standard Service Station**

**State Farm Insurance**

**TeePee of Toys**

**31 Flavors Ice Cream**

**Tops Liquor Store**

**Zzzona Laundry**

## Campus Classified

Regulations: For students and faculty only of Arizona State University. To place classifieds, submit to Room 106 Administration Building. Deadline is Wednesday noon for Friday's issue. Rates: 3 cents per word, 50 cents minimum charge.

### ● LOST

Man's Ring, silver. Relief cut initials "A.L." Lost on Men's P.E. Field. REWARD. Call 945-3813 after 4 p.m.

Gold charm bracelet of great sentimental value. Please return. Reward. 947-6463 or BA 109.

### ● APARTMENTS

1/2 block East of Science Bldgs. One & two bdrm. Furn. Best deal for ASU people. Apt. is open for inspection at 805 Tyler & 705 Krueger. Call 967-5430.

### ● FOR SALE

'59 Austin Healy. Wire wheels, Michelin X tires, 6 speed, 6 cylinder engine, extremely low mileage, excellent condition. Best offer over \$1100. BR 5-3568.

Triumph TR-4, 1963. Perfect condition, fully equipped, wire wheels, white walls, radio and heater. 19,000 miles, must sell. WO 7-4818.

Early model IBM electric typewriter. English bike. Both good condition. Must Sell. 967-4822 eve. M-Th. Days Sat., Sun.

1956 Thunderbird - stick, heater, refrigeration, wire-wheels, continental kit. Excellent condition. Call AM 6-0352.

1955 Plymouth, 4-door sedan, radio, heater, air conditioning, white side-walls, new seat covers. Call 945-3618.

### ● ROOMS

Opportunity to teach piano lessons for female student taking room in private home used for piano studio. Phone Mrs. Thomson, 945-2087.

More About -

# Who's Who Around Arizona State Campus

(Continued from Page 1)  
**ALAN MCKINLEY BUNCH** - Election Board chairman, vice chairman of Faculty-Student Relations Board, chairman of Greek Week, Business manager of Sahuaro Hall, charter member of Alpha Zeta, Pi Sigma Epsilon.  
**SARAH ANN BURNS** - AWS President, assistant head resident of Palo Verde Hall, AWS culture chairman.  
**CASSAUNDR A LEE CLARK** - Mortar Board, Natani, president of Phrateres, Arizona Association of Student Nurses.  
**RALPH EVANS COTTEH** - ASASU activities vice president, president of Soccer Club, Archons, Sigma Delta Chi, Homecoming King.  
**SALLY JO DAVIS** - Mortar Board, Spurs, Panhellenic president, Kappa Delta Pi, Sigma Tau Delta, Kappa Alpha Theta sorority president.  
**MARY LYNN JORDAN** - President of Mortar Board, Natani, Alpha Lambda Delta, Kappa Kappa Gamma sorority treasurer, Phrateres.

**RALPH EDWARD KONKOL-SNEA**, John Carroll University sophomore class vice president, varsity football; Military Record - three Bronze Stars with "V" device for valor in actual combat against armed enemy, three Purple Hearts, Commendation Medal for meritorious service, UN medal.  
**WILLIAM L. LAWREN** - Archons, Phi Alpha Theta, Pi Kappa Alpha fraternity rush chairman, rush counselor, IFC.  
**KARLA RUTH PAYNE** - Phi Kappa Phi, Freshman Hostesses president, Chi Omega sorority personnel chairman, Alpha Lambda Delta, Mortar Board historian, Spurs vice president, Natani, Sigma Tau Delta.  
**GEORGIA GAY POMEROY** - Alpha Sigma Upsilon, Spurs, Natani historian, Kappa Delta Pi, Chi Omega rush chairman, SNEA.  
**BARRY JAMES RAPALAS** - Phi Eta Sigma, Alpha Mu Gamma president, Phi Alpha Theta, Phi Kappa Phi.  
**STEPHEN JACK SAWYER** - Alpha

Rho Chi treasurer and secretary, Sophos, Central Arizona Chapter American Institute of Architects Award.  
**FRANK ALSTON SMITH** - Phi Kappa Phi, Phi Delta Kappa, Blue Key.  
**JOE PAUL SPARKS** - Archons, Blue Key, Alpha Delta Sigma, Pi Kappa Alpha vice president, AMS president, assistant executive manager of ASASU.  
**HUME ANTHONY THOMASON** - Chief Justice of Supreme Court, Social Board chairman, assistant head resident of Sahuaro Hall, manager of MU Games Room, Sigma Alpha Epsilon chaplain.  
**DIANE KAY ULMER** - Spurs secretary, Natani, Alpha Lambda Delta corresponding secretary, Lambda Delta Sigma secretary.  
**GAY WALBERG** - Education senator, Kappa Delta Pi, Spurs president, Natani secretary, Mortar Board, Kappa Alpha Theta sorority corresponding secretary, SNEA.  
**BERNARD LEE WEBER** - AMS president, Rally and Traditions Board chairman, Devil's Disciples president, cheerleader, IFPC representative.  
**TONI LYNN WIGGS** - Texas Western College - Spurs, Alpha Lambda Delta, cheerleader, Miss Texas Western College; ASU - cheerleader.  
**JUDITH MARILYN WILSON** - Phi Kappa Phi, sophomore class senator, Kappa Delta sorority president, Alpha Lambda Delta, Spurs, Natani, Mortar Board vice president, Kappa Delta Pi.  
**CAROLE LYNN WINSLOW** - Off-campus women's senator, Natani, Mortar Board, Phi Upsilon Omicron, Alpha Delta Pi sorority rush chairman.  
**LYNN MARY WINSOR** - President of Palo Verde Hall, president of South Hall, assistant head resident of Palo Verde Hall, Memorial Union Board.  
**KARL EDWARD WOCHNER** - AS president, freshman senator, sophomore senator, AMS senator, speaker pro tem of Senate, Sophos state vice president, Blue Key, Memorial Union night manager.

## Western Festivities Mark Annual Event

The annual Western Week, complete with rodeo, dance, Western dress and kangaroo court for those who don't go Western, starts Dec. 7.

The event's queen, Janiece Johnson, and her attendants, Jacque Trotter and Terry Gibson, were crowned yesterday. All are members of the rodeo team. Queen contestants were judged on horsemanship, appearance and personality.

THE TWO-DAY rodeo will be held at the Scottsdale Jaycee Arena, Hinton and Scottsdale Roads, Dec. 12-13. Students will be admitted free with ID cards. Calf roping, team tying, ribbon roping, bull dogging and bull riding will be among rodeo events.

Schools from California, Nev-

ada and Arizona will compete.

A Western dance Friday night in the MU Cafeteria will start at 8 p.m.

THROUGHOUT the week a kangaroo court at the corner of College Avenue and Orange Street will deal with those who don't wear Western dress.

discover for yourself the Beauty of handmade JEWELLRY

14K Wedding \$35.00  
 #002-1/2 ct. F.Q. \$400.00  
 #093-1/4 ct. F.Q. \$125.00

Original designs by alexander

Studio 14  
 75 W. FIFTH AVE. - SCOTTSDALE - 945-2563  
 DESIGNERS & MANUFACTURING JEWELLERS SINCE 1868

**NOW RICKY'S Hamburgers ONLY 15c**

REMEMBER . . . On Mondays, Hamburgers ONLY 10c

ALSO now serving  
 Chicken 'N Fries \$1.09  
 Shrimp 'N Fries 55c  
 Dub-Burger 28c  
 Cheeseburger 20c

Finest Quality . . . Fastest Service  
 Phone 947-1571 for Pick-up Orders

**Ricky's Drive-In**  
 1847 S. Scottsdale Road Scottsdale  
 1/4 Mile South of Papago Plaza Shopping Center

**NEED TYPING?**  
 Thesis - Term Papers  
 Research Notes  
 What Have You?  
 SPECIAL SERVICES  
 2727 N. Central 265-3630



Here's an Extravagance You Can Afford (The Suzuki, that is)  
 Here's the fun way to get where you want to go or just for the fun of going!

**THE FABULOUS SUZUKI SPORTCYCLE**  
 6 Different Sizes  
 A Model for Every Purpose  
 (illustrated - the Trail 80 for on or off highway travel)

**SALES & RENTALS**  
 OPEN Mon. thru Fri. 10 A.M.-10 P.M.  
 Sat. & Sun. 10 A.M.-6 P.M.

**SUZUKI of PHOENIX**  
 PHONE 254-6601  
 2510 North Central Ave.

Look to LEE

- CREDIT . . . Your credit is good at Lee Optical.
- STYLE . . . At Lee Optical . . . 500 frame styles and colors.
- QUALITY . . . All Lee Optical glasses are precision ground from finest American-made lenses. Satisfaction guaranteed or your money back.
- SERVICE . . . Lee's prompt service means no waiting. Get one-day service on most prescriptions.
- PRICE? . . . a pleasant surprise!

Single vision glasses . . . as low as **\$1185**

8 convenient offices | open Thursday nights and all day Saturday

<b>TEMPE</b> 805 Mill Avenue Tempe Center	<b>THOMAS MALL</b> 4527 E. Thomas Rd.	<b>PHOENIX</b> 16 W. Adams St.	<b>YUMA</b> 2816 4th Ave.
<b>CHRIS-TOWN</b> 19th Ave. and Bethany Home Rd.	<b>SCOTTSDALE</b> 719 N. Old Scottsdale Rd.	<b>MESA</b> 129 West Main	<b>TUCSON</b> El Con Shopping Center

**LEE OF ARIZONA, INC.**  
 Dispensing Opticians

Where it's always safe to save money on glasses . . . and contact lenses, too!



Exhilarating... Masculine... Fresh as the ocean

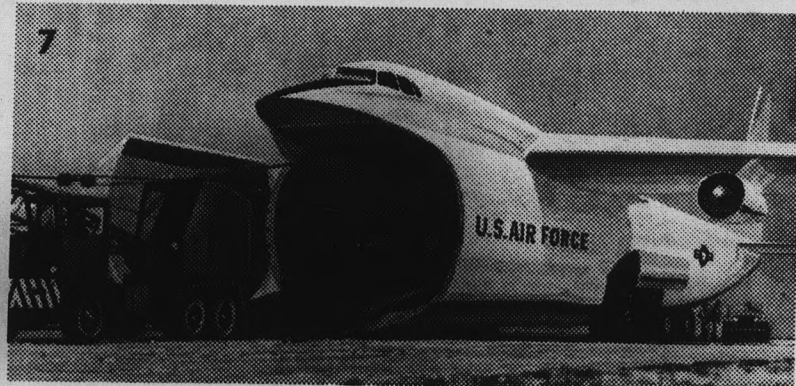
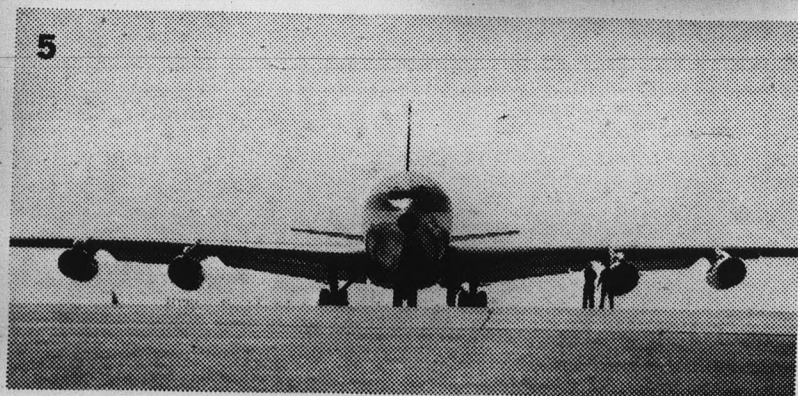
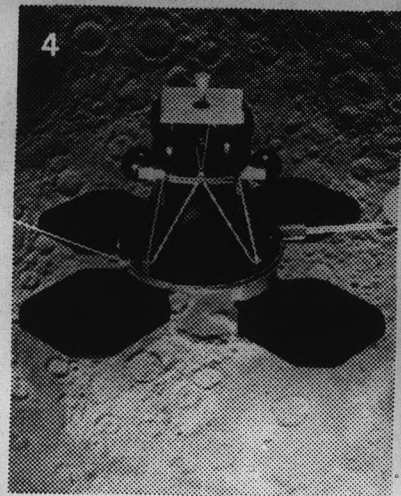
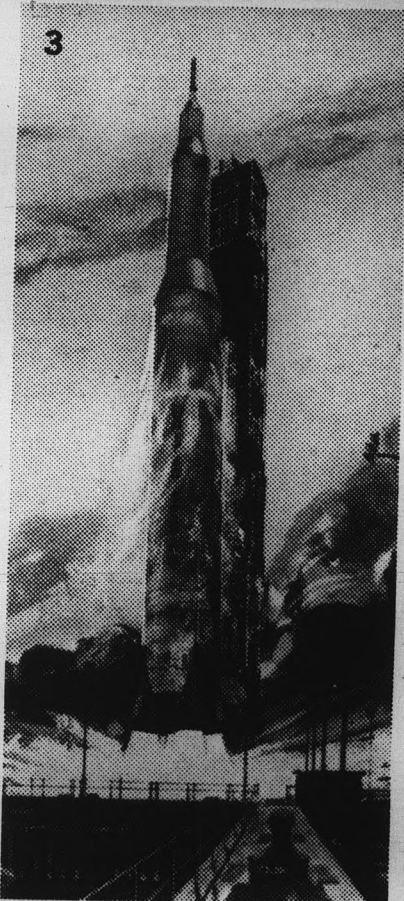
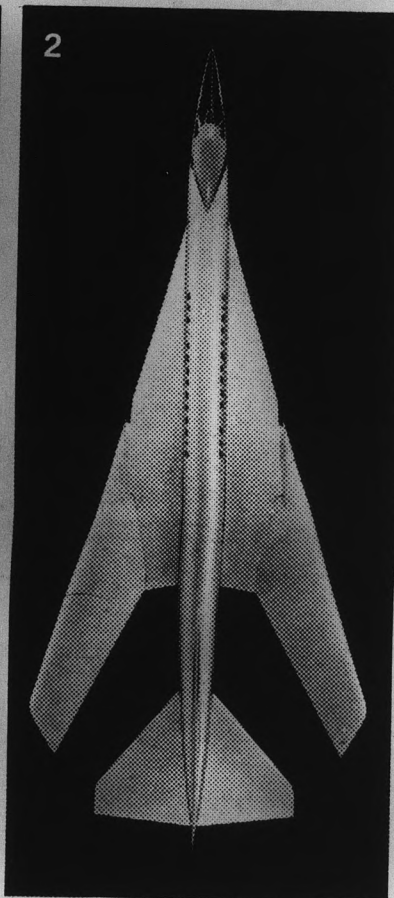
Old Spice AFTER SHAVE LOTION

... that's the way it is with Old Spice After Shave Lotion! 1.25 and 2.00

SHULTON

# Let's talk about long-range engineering and science careers in a dynamic, diversified company

## Campus Interviews Thursday and Friday, December 3 and 4



Young men of ability can get to the top fast at Boeing. Today, Boeing's business backlog is just under two billion dollars, of which some 60 per cent is in commercial jetliner and helicopter product areas. The remainder is in military programs and government space flight contracts. This gives the company one of the most stable and diversified business bases in the aerospace industry.

No matter where your career interests lie—in the commercial jet airliners of the future or in space-flight technology—you can find an opening of genuine opportunity at Boeing. The company's world leadership in the jet transport field is an indication of the calibre of people you'd work with at Boeing.

Boeing is now pioneering evolutionary advances in the research, design, development and manufacture of civilian and military aircraft of the future, as well as space programs of such historic importance as America's first moon landing. Gas turbine engines, transport helicopters, marine vehicles and basic research are other areas of Boeing activity.

Whether your career interests lie in basic or applied research, design, manufacturing or administration, there's a spot where your talents are needed at Boeing. Engineers and scientists at Boeing work in small groups, so initiative and ability get maximum exposure. Boeing encourages participation in the company-paid Graduate Study Program at leading colleges and universities near company installations.

We're looking forward to meeting engineering and science seniors and graduate students during our visit to your campus. Make an appointment now at your placement office.

1. Boeing 727, America's first short-range jet.
2. Variable-sweep wing design for the nation's first supersonic commercial jet transport.
3. NASA's Saturn V launch vehicle will power orbital and deep-space flights.
4. Model of lunar orbiter Boeing is building for NASA.
5. Boeing 707 jetliner was the U.S.'s first. Today Boeing jets dominate the air routes of the free world.
6. Boeing-Vertol 107 transport helicopters link major terminals with local airports and center-city heliports.
7. CX-HLS. Boeing is already at work on the next generation of giant cargo jets.

**BOEING**  
Equal Opportunity Employer

# Residents Planning Inter-Hall Formal

The Inter-Hall Council's "Holi-Daze Formal," open to all residence hall men and their dates, will be from 9 p.m. to 1 a.m. Dec. 12. The location has not been set.

The king and queen of the formal will be elected through a contest Dec. 1-4. Each men's hall will nominate a candidate for king and queen to run together.

Names of the candidates must be submitted to the Inter-Hall Council by Monday.

Nominees must be on-campus residents and the men must be from one of the men's halls. Votes will be in the form of coins deposited in jars labeled for the respective candidates. Voting will be at the corner of College Avenue and Orange Street.

The winners will be announced at the dance.

Money raised will help establish a fund for helping cheerleaders attend out-of-town games.

## Dorm Residents To Clash Monday In Gridiron Test

Sun Devil Stadium will be the scene of a powder puff flag football game at 3:30 p.m., Dec. 2, between the women of PV East and PV West.

The game features staffs of two halls, from head residents to desk assistants. The gridiron battle will be played by six-women teams with eight-minute quarters.

Admission to the game will be 25 cents. The money will go towards the AWS Scholarship Fund.

## Colonization Registration Sign-up Set

Registration for colonization rush is scheduled to begin Dec. 1 for two new sororities, Delta Delta Delta and Pi Beta Phi.

Full-time women students with a 2.12 cumulative grade index are eligible for rush. Registration will be open from 9 a.m. Tuesday until 4 p.m. Jan. 8.

Rush for the two sororities is scheduled Feb. 10-14.

Spring semester informal rush for the 10 national sororities already active will close around Christmas and will not be continued until after the new groups have completed colonization.

Founded in 1888, Delta Delta Delta has 107 active chapters. It has an intensive scholarship program for aiding women students.

Pi Beta Phi, founded in 1867, has 109 active chapters. The sorority's national philanthropy is a settlement school located in Gatlinburg, Tenn.

## Faculty Concert Slated Monday

A concert by the Faculty Chamber Music Society will be presented at 8:15 p.m. next Wednesday in the MU Ballroom.

The program will consist of "Quintet in E Flat Major" by J. C. Bach; "Trio VIII for Clarinet, Viola and Piano" by Mozart; "Serenade for Flute, Violin and Viola" by Reger; "Trio for Oboe, Bassoon and Piano" by Poulenc and Martinus' "Trio for Flute, Violoncello and Piano."

# GO DEVILS ... "ONE MORE TIME"

## then back to CHICO'S

### RESTAURANT\* FINE MEXICAN FOOD

1120 East Apache Blvd. — Tempe  
\*Air Conditioned of course

JOAN BAEZ — HOYT AXTON  
KINGSTON TRIO

### 1/3 THE ORIGINAL PRICE

\$5.98	.....	\$1.99
\$4.98	.....	\$1.66
\$3.98	.....	\$1.33

ALL ARTISTS — ALL LABELS

Open Daily 9 till 9 — Sat. 9 till 6  
Sunday: Noon till 6 p.m.

## DISCVILLE, U.S.A.

4119 E. Van Buren, Phoenix

## Soprano Presents Concert Dec. 6

Vicky Bond, who won second place in the Arizona State Fair Talent Contest with her presentation of "Un bel di" from Puccini's "Madame Butterfly," will present her senior recital at 3:30 p.m. in the MU Ballroom.

Accompanied by Margo Smith, Miss Bond will sing "Zigeunerlieder" by Brahms, "Poeme De L'Amour Et De La Mer" by Chausson, and from Verdi's "La Traviata," two arias, "Ah, fors' e lui" and "Sempre Libera."



Textured Stockings Are "In" And We Have Them

Beautiful Textured Stockings by MUNSINGWEAR In Jet Accent, A Must In Every Wardrobe

Only — \$1.65 pr.

## Bonnie Sue FASHIONS

913 Mill Ave. Tempe Center

Daily 9-6 — Thursday 9-9  
Phone 967-4094

### INSURANCE PROBLEMS?

— We Write All —

Students Under 25  
S-R 22's

- Auto • Motorcycle
- Trailer • Fire • Theft

**RALPH PACKER**

26 E. 8th St. Tempe  
967-1182

# GET THE 31 HABIT!

FLAVORS

During Dec., watch for Peppermint, Mint on the Rocks, Rum Raisin, Spumoni, Fresh Coconut, Creme De Menthe, Mint Sherbet, Pine-apple Ice.



ICE CREAM STORES

TEMPE CENTER

Phone 967-9776



## Be An American Airlines Stewardess

Would you like to put on an American Airlines stewardess uniform and wings? Come in for a brief, private interview. Learn more about the qualifications for this rewarding career.

Girls are now being interviewed for late spring and early summer openings. To serve our passengers' welfare and comfort, you must be:

- Single
- High School Graduate
- Age 20-27
- 5'2" to 5'9"
- Normal vision—contact lenses considered
- Weight 140 maximum—in proportion to height

Interviews now for assignment after the holidays.

CALL FOR AN APPOINTMENT  
Monday-Friday 9 AM - 4 PM

258-6761

AMERICAN AIRLINES



"An Equal Opportunity Employer"

# Campus Mailroom Is Service To All

By JOAN SKIPPER

Either way you spell it, mail or male is high on the list of subjects that occupy coeds' thoughts, and most of them wait hopefully every day for one or both types.

However, most who work or live on campus are more interested in the former. Thousands of pieces of mail flow daily to and from the University, much of it passing through the campus Mailroom, on its way to and from all parts of the world.

A service to students and faculty, the Mailroom acts as a convenient middleman between the Tempe Post Office and the University and is the center for campus mail flow.

HERE MOST of the services to be obtained at a regular post office are available. Common stamps are in stock, including foreign postage and air letters, and approximately \$400 worth per week are sold, according to LeRoy Davidson, supervisor of the Mailroom.

Other facilities include a letter scale and postal scale for weighing letters and packages, and a metering machine for exclusive use by the departments.

Registering, certifying and insuring of mail is done for faculty and staff members.

TWICE A day the Mailroom receives mail from the Tempe Post Office addressed to University departments and the faculty and staff.

It is sorted into one of the four routes into which the campus is divided and delivered to the respective area in the morning and afternoon. Three routes are covered by a mail truck and the other by a walking carrier.

Campus mail, most of which is sent in re-usable envelopes, is posted at the Mailroom and placed in its appropriate space. Representatives from dormitories pick up their own campus mail. Clubs, organizations and faculty members with private boxes also pick up their own mail.

THE TEMPE Post Office delivers mail to the dormitories and picks up outgoing mail there as well as at the seven courtesy boxes located at convenient spots around campus. The Mailroom sends outgoing mail posted there to the post office twice a day.

According to Davidson, approximately 5,500 pieces of mail flow through the Mailroom daily.

# New Art On Display

The original plaster casts of John Waddell's bronze sculptures "That Which Might Have Been" have been presented to Matthews Library by Walter Bimson, chairman of the board of the Valley National Bank.

The four figures, now being displayed on the second floor, symbolize Waddell's concept of what the four Negro girls killed in the Birmingham, Ala., bombing might have become.

The statues also represent the four compass points of human existence.

The statue facing the east

represents the mother type; and the figure facing west symbolizes the acceptance of death as a part of life.

Facing the north is a prayer figure which symbolizes becoming involved in life's challenges. Facing the south is a statue indicating both a turning and also a possibility of acceptance or rejection.

Waddell worked more than 16 months to create the larger-than-life-size statues. He plans to go to Greece later this month to do more work with bronze sculpture.

# Shoe Shine Kits Now Being Sold

Members of Angel Flight are selling shoeshine boxes in order to raise money for an April trip to the National Angel Flight Conclave in Washington, D.C.

The kits are 50 cents each and contain everything necessary for a shoe shine. They are on sale at the AFOTC detachment offices in Old Main and from members of Angel Flight.

## ATTENTION

- Fraternities
- Sororities

We Have

**LARGE HALL  
LOW RATES**

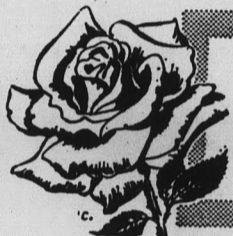
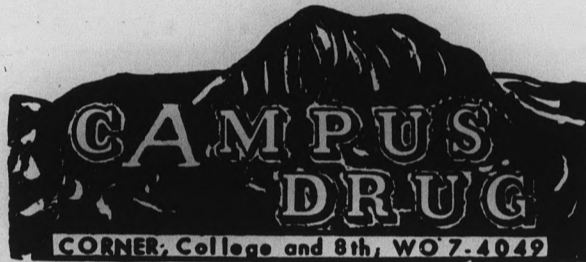
For Information Call  
**264-4808**

# Campus Drug Specials

GILT COMPLEX...?

TRY TIGRESS by Faberge

Gold Lip Glare — Tigree Lipstick  
Gilded Ceramic Glaze For Nails  
Antique Gold Eye Colour



## Bobbies Flowers

20 E. 5th St.  
WO 7-2972 — WO 7-4274  
Home Phone WO 7-6319

For Parties...  
Large Artificial  
Plants For Rent

## Kennecott's Corner

### Making Profits Is Everybody's Business

In American industry, it's often hard to tell a worker from an owner — and there's not much reason to try. Mr. Smith may be an owner, but you'll be surprised at how much he works. Mr. Jones may be a worker, but you'll be surprised at how much he owns. Wise investment, sound management, proud workmanship team up for success — and everybody's on the same team. Here at Kennecott, we figure business ought to make good profits, workers ought to make good wages, and the two are inseparable. When we all push together to make America prosperous, we all benefit together, too.

**Kennecott**  **Copper Corporation**  
Ray Mines Division

# LAS CRESENTA TERRACE LAS CRESENTA GARDENS

1130 East Orange

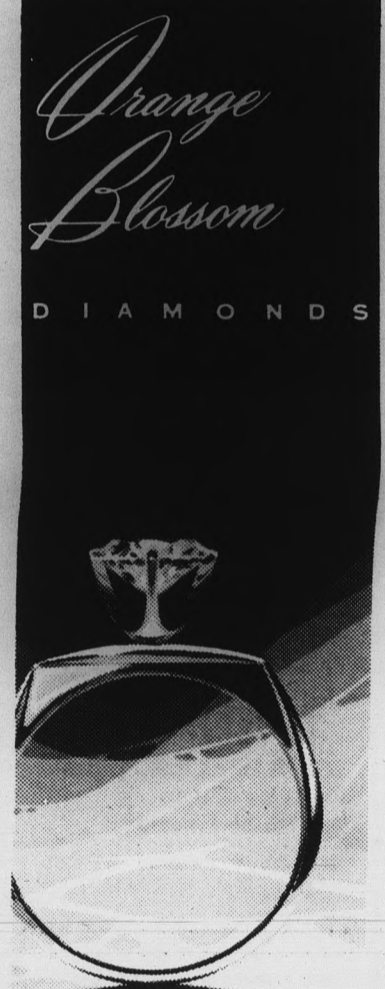
1025 East Orange

"Best in the West"

- Finest Material Insures Complete Soundproof Construction

- Luxurious furnishings
- Deluxe refrigeration piped in
- Large diving swimming pool
- Telephone outlets
- Large walk-in closets
- Wired for colored TV
- Your choice of studio or 1 or 2 bedroom with 2 baths
- Close to ASU campus
- Tropical sunken garden
- All electric kitchen
- All utilities furnished

For More Information Call 967-8350  
Or Stop In and See Us



SYMMETRY  
FROM \$125

AT THESE FINE STORES —

ARIZONA

Phoenix—  
Howes In Goldwater's  
Paul Johnson Jewelers  
Joseph Jirs. of Phoenix  
Dennis D. Naughton—  
2 Stores  
Rosenzweig's Jewelers—  
2 Stores

Prescott—  
Peterson's Jewelry

Scottsdale—  
Rosenzweig's Jewelers  
Wesley's Jewelers

Tucson—  
Frederick Fisher Jewelers  
Frank Lang Jeweler

CALIFORNIA

Blythe—  
Ralston

NEW MEXICO

Albuquerque—  
Butterfield Jewelers

NEVADA

Las Vegas—  
M. J. Christensen & Sons



(Photo by Jim Hutchins)

**Cheerleaders Little Helpers**

Two petite lovelies of Devil's Disciples, student spirit group, and their "managers," added a bit of color and an unfortunate accident to Saturday night's game against Idaho State.

One of the bouncing cheerleaders lost his skirt during his antics. He, however, tactfully camouflaged the mishap and discretely left the sidelines.

**Activities Centered At Hotel**

The Bamboo Room of the Pioneer Hotel has been established by ASU alumni, Sun Angels, Quarterback Club and boosters as the Tucson headquarters for the big game Saturday between the Sun Devils and the University of Arizona Wildcats.

A buffet dinner will be served from 4 to 7 p.m. and round-trip bus service to the UofA stadium will be available. And, a party and dance will be held at the hotel following the football game, announced Herb Voss, president of the Tucson chapter of the ASU Alumni Association.

Reservations and further information are available from the ASU Alumni House.

**TAILORING**

Alterations & Repairs  
Dry Cleaning  
Shirt Laundry  
Pinney's Tailor Shop  
23 West 4th St 966-1751

**Fred Elquest & Son**

Everything for the Art Student  
• Art Supplies  
• Picture Framing  
703 N. 2nd St.  
Phoenix  
PHONE AL 8-2628

**Motorcycle Escort Service**

AVAILABLE FOR PARADES  
SPECIAL OCCASIONS  
OR  
ANY EVENT  
REASONABLE PRICES

If We Can Be Of Service To You  
Call WO 7-5736  
R. L. Dennison

**COLLEGE DAY**

EVERY THURSDAY IS "COLLEGE DAY" AT

**Russ' Super Car Wash**

CAR WASH ONLY

**\$1.00**  
NO PURCHASE NECESSARY

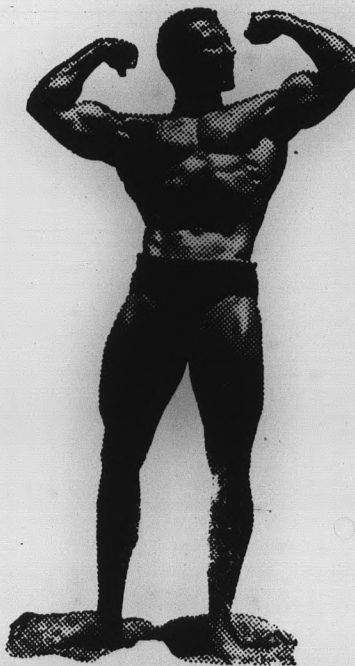
TO ALL ASU STUDENTS UPON I.D. PRESENTATION

**Russ' Super Car Wash**

7569 E. McDOWELL RD.  
SCOTTSDALE, ARIZONA

**Get In Shape Now!**

WE OFFER INDIVIDUAL COURSES & PERSONAL INSTRUCTION FOR:



- Body Building
- Reducing
- Conditioning
- Sauna
- Massage
- Steam Bath

Hours: 10 to 10 Daily

Charter Memberships

**\$1.50**  
PER WEEK IN SERIES

*University Health Clubs*

**IN TEMPE**  
1018 N. Scottsdale Rd.  
Ph. 967-7461

**IN PHOENIX**  
3147 W. Ind. Sch. Rd.  
Ph. 266-6798

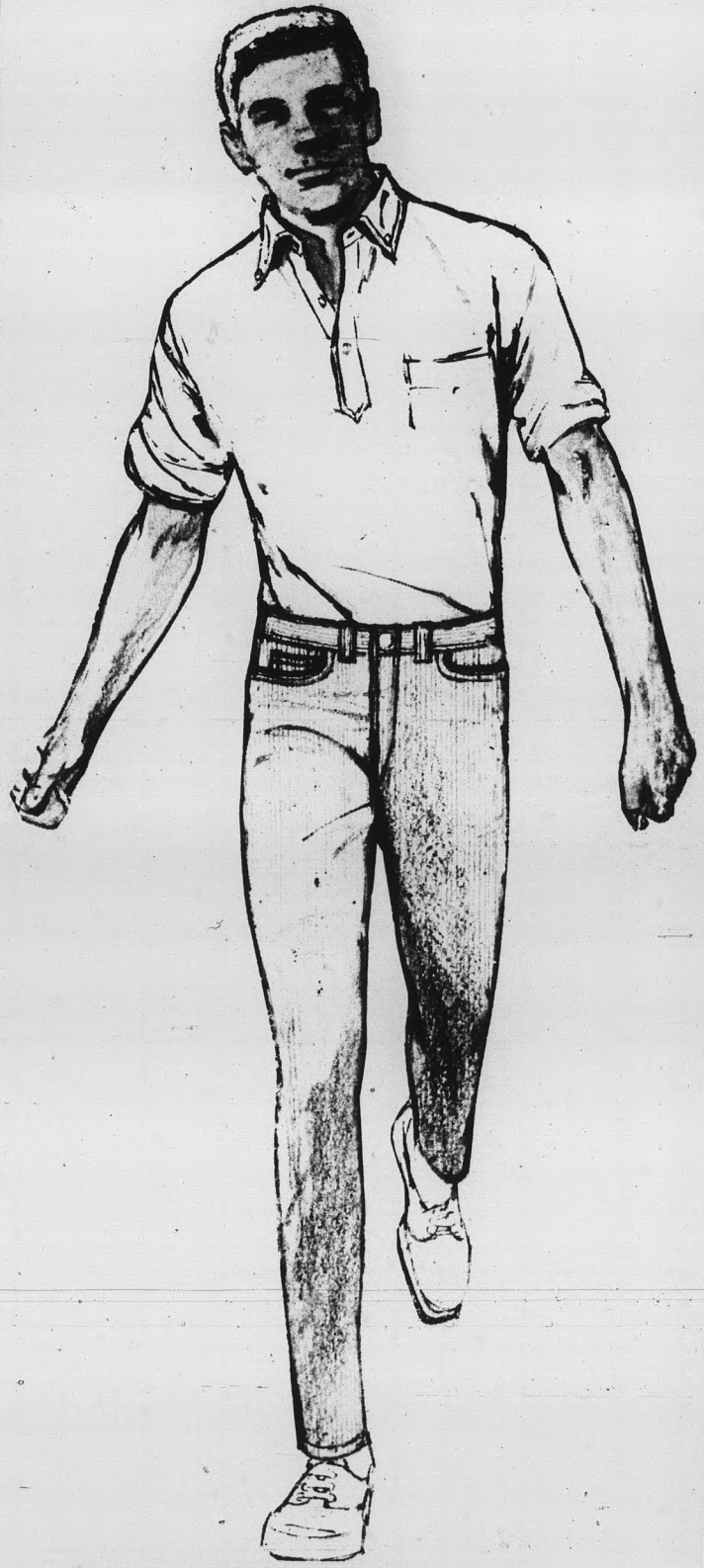
**UNIVERSAL TRAVEL**

Make Holiday Air Reservations NOW! — — — Call WO 7-1673

YOU PAY NO EXTRA FOR OUR SERVICES

WE REPRESENT ALL AIRLINES

18 EAST 5th STREET — TEMPE



**Dash To Class With Style In Levi Sta-Prest Slacks**

They're smooth, tapered and cut for campus life in specially processed cotton . . . your guarantee that Levi's Sta-prest slacks will drip dry and never need to be ironed. They're also precuffed and sport belt loops. Natural or pewter. Sizes 29-38.

6.98

**Rhodes**

E. Camelback at 18th St. — Dial 264-7811  
Open Mon., Thurs., Fri., 10-9:30  
Tues., Wed., Sat. — 10-6

# AS Wrestling Outlook Looms Bright

By MIKE HELFNER

The wrestling squad will open its season a week from tomorrow against the University of Oklahoma, last year's NCAA runner-up.

Besides ASU, the Sooners will compete with the UofA, San Diego State and UCLA.

The Devils will start only three returning lettermen in an attempt to stop the Sooners, who were 1962-63 NCAA champs. Back from last year's squad are two-time WAC champion Buzz Hays and last year's 137-pound WAC champ Tony Russo. The last returning letterman is 157-pound Jon Evans who was WAC runner-up.

TO OFFSET this, the Sooners have two NCAA champs in Frank Sager and Jerry Stanley plus Tom Lam, a third-place finisher, and Sven Holm, who captured fourth in the college ranks last year.

Wrestling Coach Ted Bredehoft has set a temporary starting line-up against the Sooners. Leading off for A-State is 123-pound Glenn McMinn, formerly of the Phoenix Wristlock Club. Next is Tom Van Hee, a 130-pound transfer from Lamar Junior College, Colo., Russo at 137, Evans at 147, Hays at 157 and Art Martori, an addition, at 167.

Then Bredehoft runs into problems. At 177 pounds, he would like to use football star Hal Lewis, but if the football team receives a bowl bid and

accepts, Lewis will not be allowed to take time off from football practice to wrestle. If Lewis cannot wrestle, then ASU will forfeit.

In the neavyweight class, Bredehoft has almost the same problem. He has Wayne McGinnis, Joe McDonald and Jerry Smith, McGinnis being the only one of the trio who is not on the football team.

BREDEHOFT would like to use some of his outstanding frosh talent but, under NCAA rules, freshmen are not eligible to compete until second semester.

Some of the on-the-bench standouts are Curly Culp, Arizona champion from Yuma; Frank Bogus, a Pennsylvania prep finalist; Ralph Hughes,

Oregon champion; Charlie Tribble, Olympic champion; Mike Leonard, Oklahoma third-place finisher, and Lloyd Eck, Montana champ. Also back after a year's absence is Pete Russo, younger brother to Tony, who will not be eligible until February.

The day after the Oklahoma match, the Devils play host to the third annual ASU Open Invitational Tournament for two days. Returning teams from last year's tournament are defending champion Colorado School of Mines, the UofA and Phoenix College. New entrants are Texas Western, Cal Poly of San Luis Obispo, New Mexico State and Cerritos Junior College.

For the first time, this tour-

nament will be split. In previous years, both colleges and high schools participated, but the prepsters will compete on Dec. 12 this year.

THE DEVILS will have 13 dual matches and will compete in five tournaments besides the WAC and NCAA champion-

ships.

In dual competition the Devils will wrestle seven times at home, all in Sun Devil Gym. They will meet San Diego State, Cal Poly, New Mexico State, Western States College, Colorado State College and the UofA besides Oklahoma.

## FREE Giant



Or any other 20c Cold Drink of your choice

WITH ANY ITEM  
ON OUR REGULAR MENU  
OF 69c OR MORE

SIMPLY PRESENT YOUR "ID" CARD  
WHEN ORDERING

(Offer Void After Dec. 31, 1964)

## THE SIZZLER

### STEAK HOUSE

Conveniently Located At

Hayden East - In The Mall

1 Mile North of Campus

"Years Ahead" Flight Training  
In The New Shinn - 2150



MODERNIZED GROUND SCHOOL  
FOR PILOTS & NON-PILOTS

Amos Flight Operations

A Private License is a Must in Modern Business

Don Amos - Class of '56

Phone BR 5-7291

SKY HARBOR

TIGER'S MILK

40c

EICHENAUER'S BAR  
"Take The Tram" To  
Papago Plaza

COME SEE LOWEST  
COST  
FUN ON  
WHEELS  
\$225\*



\*f.o.b. Milwaukee

NEW FROM

HARLEY-DAVIDSON

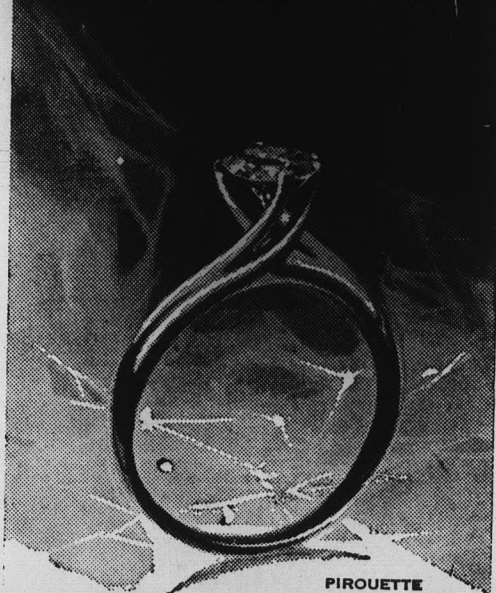
Harley-Davidson — a famous American name — now introduces America's newest fun wheels, the nifty, thrifty M-50. A stylish blend of American and Continental workmanship guaranteed to please the eye and the pocketbook. An all steel, welded frame forms a sturdy backbone for the M-50's dependable 50 c.c. engine. There's 180 miles of fun packed into every gallon of gasoline along with miles of adventure. One ride and you'll agree — the M-50 by Harley-Davidson is the greatest new go on wheels. Take a look and a ride on this fabulous featherweight at:

ARIZONA  
HARLEY-DAVIDSON

2507 E. McDowell Rd.  
275-7677

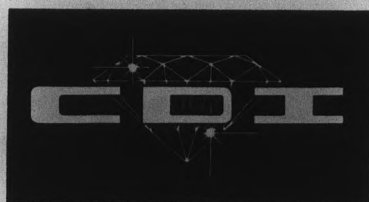
Open 8-6 Daily, 8-9 Thurs.

Orange Blossom  
ENGAGEMENT AND WEDDING RINGS



PIROUETTE

FOR STUDENTS WITH FINE TASTE . . .  
ONE OF ARIZONA'S LARGEST SELECTIONS  
OF ENGAGEMENT SETTINGS



COLLEGE DIAMOND IMPORTERS

NEW ADDRESS:  
130 E. 8TH ST.  
IN THE MALL

PHONE:  
967-8917  
OPEN DAILY

## NOGALES BULL RING

Sunday, November 29, 3 P.M.

ARIZONA STATE UNIVERSITY DAY

Your Friends and Hosts, MARIA and PACO DE LA FUENTE,  
invite you to see the

11th Bullfight of the Season

PRESENTING:

The Darling Matador of the Arizona Aficionados

## EMILIO RODRIGUEZ

AND

## John Fulton

The best American matador in the world with  
"Alternativa" in Spain

Defying Ferocious bulls from

## 4 VENADERO 4

Admission Prices U.S. Cy.

	Shady Side	Sunny Side
Reserved Seats 1st. Row	\$5.00	\$4.00
Reserved Seats, 2nd Row	5.00	4.00
Reserved Seats, 3rd Row	5.00	4.00
University Students		2.00
General Admission	4.00	3.00

Reservations: Fray Marcos de Niza Hotel, Tel. 651, NogalesSo.  
George Hall Travel Agency, Tel. MA-24806 Tucson  
Greyhound Travel Bureau, Tel. AL 8-8945, Phoenix, Ariz.

# Ogden Captures Crown

John Ogden, Brigham Young University fullback, ran for 143 yards against Wyoming Saturday to clinch season honors as the Western Athletic Conference's top ground gainer.

Ogden, with 770 yards, moved ahead of Allen Jacobs, Utah, who was leading the league until he gained only 44 yards Saturday against Utah State in the Utes last game of the regular season.

Arizona State quarterback, John Torok, with one game to go, already has outdistanced all competitors in total offense and passing offense. He has completed 114 passes for a total of 1962 yards.

Virgil Carter, BYU, is the season's runner-up in both categories.

Ken Oborn, BYU, apparently has won top honors as the best kickoff returner with 380 yards. His season's accumulation of 270 yards in punt returns could be surpassed Saturday if Arizona's Floyd Hudlow can pick up more

than 28 yards in this category against ASU.

The race for leadership in pass receiving, punting, and scoring is wide open. A-State's Ben Hawkins and Jerry Smith with 36 catches each, have eliminated other competition and will vie for the league's seasonal honors Saturday.

Jerry Marion, Wyoming, finished the season with a punting average of 40.0 yards; however, Gene Dahlquist, Arizona, and Chuck Kolb, A-State, have one more game in which to bid for the top honor.

Four players, each with 36 points, are within striking distance of the scoring lead, now held by Jacobs. The Utah fullback's season total of 48 points is threatened by Hudlow and Sun Devils Hawkins. Larry Todd and Hal Lewis.

### Sun Devil Fact

An ambitious 49-game schedule is on tap for Coach Bobby Winkles and his conference champion ASU baseball team in 1965.



## THE SAFE WAY to stay alert without harmful stimulants

NoDoz™ keeps you mentally alert with the same safe refresher found in coffee. Yet NoDoz is faster, handier, more reliable. Absolutely not habit-forming. Next time monotony

makes you feel drowsy while studying, working or driving, do as millions do . . . perk up with safe, effective NoDoz Keep Alert Tablets.

Another fine product of Grove Laboratories.

**FOR RENT**  
 Nice One Bedroom  
 Furnished Apartment  
**\$70.00**  
 ALL UTILITIES PAID  
 EXCEPT ELECTRIC  
 915 Kenwood Circle  
 966-0862 After 4 P.M.

Welcome To Our Friendly Barber Shop

**FLAT TOP**  **BARBER SHOP**


We can create any Style to fit the individual's personality

Chart With 20 Modern Hair Styles

NOW — 2 Regular Barbers — 3 On Saturday  
**DANELLE PLAZA**  
 3300 S. MILL AVE. and SOUTHERN

For The Time Of Your Life . . .

**RIDE A TOTE GOTE**  
 2 Hours For Only \$3.00



**CBC Distributors, Inc.**  
 803 N. SCOTTSDALE RD.  
 TEMPE

**STARTS TONIGHT!**

**THAT MAN FROM RIO**

You'll recognize him by bullet holes in his jacket . . . the alligator teeth-marks in his legs . . . and the girls in his arms

Shows At:  
 7:00  
 and  
 9:15

**'BUBBLES...EXALTATION OF THE ABSURD!'**  
 It's more reckless than James Bond's adventures. Belmondo is dandy as a fast, fearless modern day Harold Lloyd. THERE'S JUST FUN FOR FUN'S SAKE!  
*N.Y. Times*

**'KNOCKS YOUR EYES OUT!'** A stylish, amusing, hilarious take-off on adventure-intrigue films! 'That Man From Rio' leads us a merry chase."  
*N.Y. Herald Tribune*

**GLORIOUSLY FUNNY AND THRILLING TO WATCH!** *N.Y. World Telegram*

JEAN-PAUL BELMONDO  
 FRANCOISE DORLEAC

**THAT MAN FROM RIO**  
 EASTMANCOLOR



Spent Thanksgiving weekend in Paris . . . in Rio . . . in Brasilia . . . in the Amazon Wilds, with "The Man From Rio" Just when you think he's trapped — he escapes! Just when you think he escapes . . . he's trapped!

NOW SHOWING AT THE

**Kiva** 15 E. Main  
 THEATRE  
 — SCOTTSDALE —

WH 5-0982

# Sun Devils Blank Vandals; Test UofA

By JON MORRIS

Arizona State rolls toward a Saturday night showdown with Arizona in Tucson on the crest of an 8-1 record and a possible Sun Bowl bid.

The Devils, fresh from a 14-0 victory over Idaho, will try to keep the Wildcats from tying New Mexico and Utah for the WAC football crown.

THE SUN BOWL, which plays to a nationally-televised audience in El Paso, Tex., has cut its dwindling list to nine clubs under consideration. These are Auburn (6-3), Arizona (5-3-1), Georgia (5-3-1), Missouri (6-3-1) New Mexico (8-2), Oklahoma (5-3-1), Utah (8-2), Texas Tech (6-3-1) and the Devils.

Quarterback John Torok, who missed most of the second half against Idaho because of a bruised right shoulder, received a favorable report from Dr. L. C. Sutherland. He should be ready for Arizona.

Valley coaches, sports writers and sportscasters favor the Sun Devils, some by four touchdowns.

REGARDLESS of the outcome, the UofA has already as-

sured itself of a winning season. The 'Cats enter the game with a 5-3-1 record. The UofA has won over Brigham Young (39-6), Washington State (28-12), Wyoming (15-7), Idaho (14-7) and Texas Western (14-0), and have fallen before New Mexico (10-7), Oregon (21-0) and Air Force (7-0). Saturday they tied Iowa State (0-0).

ASU has taken the measure of Utah State (24-8), West Texas State (34-8), Wichita State (24-18), Texas Western (42-13), Colorado State (34-6), Kansas State (21-10), San Jose State (28-16) and Idaho (14-0). The Devils fell only to Utah (16-3).

Coach Frank Kush predicts a tough game. "Going into Tucson and winning is a monumental task. Arizona is always fired to the hilt for us and the extra spark will undoubtedly get their offense in gear."

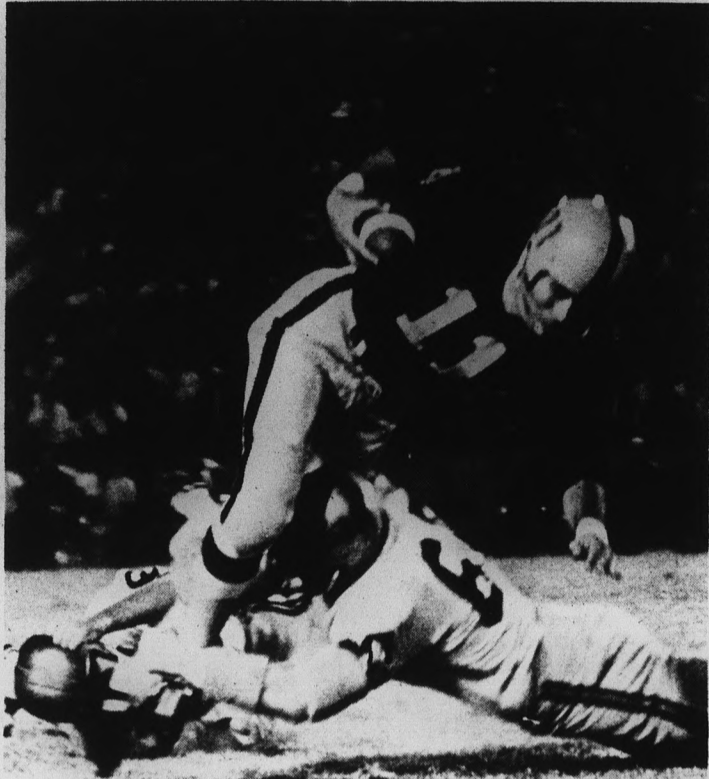
KUSH SAYS he has high regard for UofA halfbacks Rickie Harris, Floyd Hudlow and Jim Oliver, and fullback Preston Davis. "They are good running backs and capable of going the distance at any time."

A-State records continue to

tumble. Torok surpassed the TD toss record for the career of 26 by John Hangartner. Torok flipped his 27th in the Idaho game. The Devils became the passing-est squad in ASU history over the weekend. They have made 126 passing attempts for the season. The 1955 club had 119 in 11 games.

This could be the second-best season ever for Kush. A victory over the Wildcats would rank next to Kush's 1959 team which went 10-1. It will be a tie-breaker also in that Kush's teams have won three and lost three against the 'Cats in six seasons.

THE UofA holds a wide series (Continued on Page 16)



HALTED — Arizona State quarterback John Torok is brought down after a five-yard gain in the second period of Saturday night's contest with Idaho. Devils won, 14-0.

**PHIL'S Dog 'n Suds**  
 921 E. Transmission Road  
 ● CONEY DOGS  
 ● JUMBO BURGERS  
 ● MEXICAN FOOD  
 Take Out Orders—967-0983  
 Open Till Midnight Daily

Theta Chi Says:  
**BEAT NO-GO TECH**

**Curtis JEWELERS**  
 Jewelry and Watch Repairing  
 BULOVA — WYLER CARAVELLE WATCHES  
 DIAMOND RINGS  
 WO 7-3221  
 609 Mill — Tempe

**10% OFF**  
 ON ALL  
**Service & Repair Work**

- BRAKE WORK
- MOTOR TUNE-UP
- LUBE - OIL - FILTER

UPON PRESENTATION OF "ID" CARD ONLY AT  
**HAYDEN PLAZA EAST**

**BLAKELY**

"ACROSS FROM WOOLCO"

The **Capri's PICK OF THE WEEK**

ASU ..... 14  
 U of A ..... 13

Right or wrong . . . you can't miss with our PIZZAS!!

Open Daily 4 PM-2AM  
 16 E. Fourth St.

**Auto Repairing-USED CARS**  
 CHEVROLET SPECIALIST OLDSMOBILE  
 Expert Lubrication • Reasonable Prices • Experienced Mechanics

**BRIT SMITH CAR CO.**

TEMPE 8th & MILL OPEN TIL 9 P.M. & SUNDAYS WO 7-3381

**SPECIAL**

'59 Chevrolet	.....	\$695	This Week
'57 Plymouth	.....	\$195	
'56 Chevrolet	.....	\$395	

it's GREAT to be IN!!

**A-1 Tapers**  
 slacks

AUTHENTIC IVY STYLING



AT YOUR CAMPUS HEAD-QUARTERS STORE OR WRITE:  
**KOTZIN COMPANY**  
 LOS ANGELES 15, CALIFORNIA

Your A-1 Dealer In Tempe

**CAMPUS**  
 men's shop  
 603 Mill Ave.

# More About - Football

(Continued from Page 15)

edge, however, with 26 wins and 11 losses. Since World War Two the series is a standoff, with each team having nine wins.

Named Players of the Week were Gene Foster and Pat Appulese. Expected back in action for the first time in four games is linebacker Ed Mauck.

End Jerry Smith is expected to be all over the field along with halfbacks Ben Hawkins and Larry Todd, and fullback Foster. On offense Smith plays end; on defense he plays end, linebacker and halfback.

GRADUATING seniors are ends Jerry Smith and Don Switzenberg; tackles Frank Mitacek, Pat Appulese, Sam Fanelli and Joe McDonald; guards Ron Scarfo, Bob Kec and Chuck Karasek; centers Jim Murphy and John Klepacki; quarterback John Torok; halfbacks Gene Foster and John DiLorenzo, and fullback Ed Mauck.

Sophomore halfback Hal Lewis set up the victory over Idaho. Once-beaten ASU found its offense stymied four times inside Idaho's 30-yard line, but used two runs by Lewis to clinch the win.

Lewis sprang loose on a 41-yard first-period pass play and raced 24 yards in the third quarter for the decisive runs.



WILD SCRAMBLE — University of Idaho at Sun Devil Stadium. Identifiable Sun Devils fullback Ray McDonald (32) is stopped at the line of scrimmage in Saturday night's contest are Larry Hendershot (52), Ron Scarfo (65), Don Switzenberg (85) and Darrell Hoover (83).

### Sun Devil Fact

Coach Kush will be facing Arizona for the seventh time Saturday night. His squads have compiled a 3-3 record with their intrastate foes.

### TYPING

Neat, accurate, reasonable. VeElla Gardens, 1700 E. Don Carlos, Apt. 2E, Tempe. Phone 966-0885.

### Wheel Aligning - Balancing Auto Glass Installation

Pete Null's

## TEMPE BODY SHOP

SPECIALIZED COLLISION SERVICE  
11 East Fourth Street Phone WO 7-1601  
TEMPE

# Football Banquet Tuesday

The annual football banquet is scheduled for Tuesday at 6:30 p.m. in the MU Ballroom. Admission is \$3.50 per person. Reservations may be made with Frank Rispoli, assistant athletic director, at 966-3381.

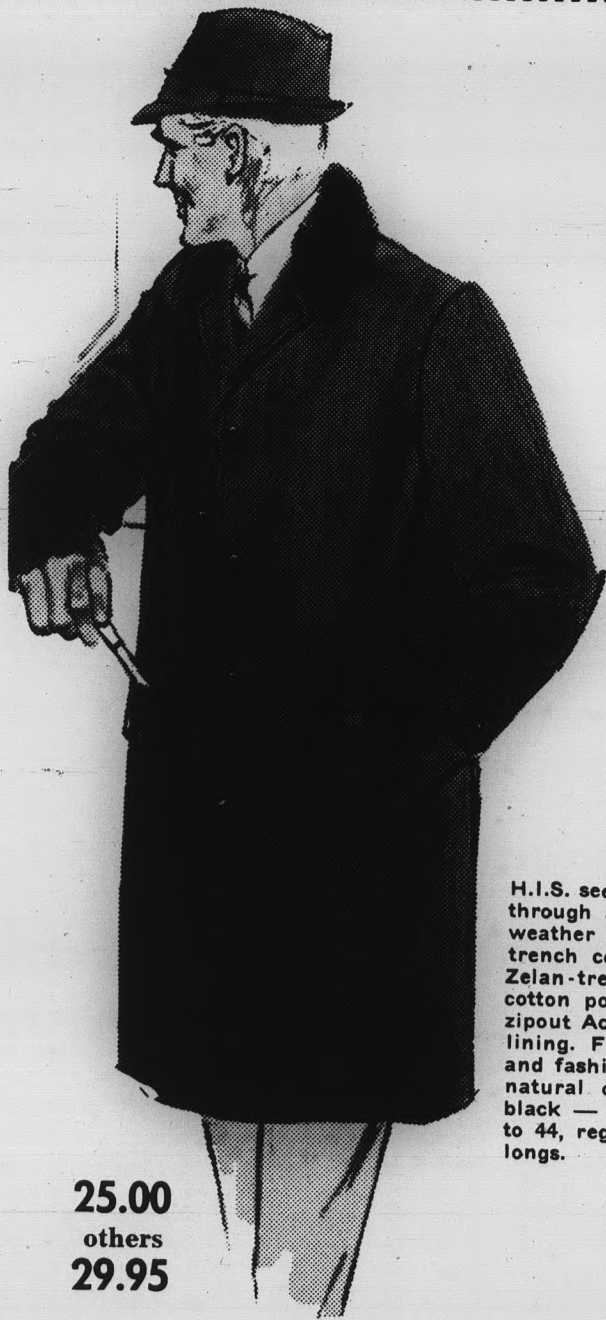
Fifteen seniors, who see final intercollegiate football action Saturday night in Tucson, will be guests of honor.

### A.S.U. BREAKFAST SPECIAL

# \$1.00

3 EGGS AND HAM  
Hash Brown Potatoes  
Toast, Jelly and Coffee  
Served Daily 6:30-11:30  
Dining Room  
Mesa-Tempe Hi-Way  
TEMPE

## HARMAN'S



25.00  
others  
29.95

H.I.S. sees you through all kinds of weather in this 40" trench coat . . . Zelan-treated, cotton poplin shell, zipout Acrilan pile lining. Functional and fashionable in natural olive or black — sizes 34 to 44, regular and longs.

The Americana Shop



FASHION  
WITH A  
NEW DIMENSION  
Conference Natural  
Herringbone Suits

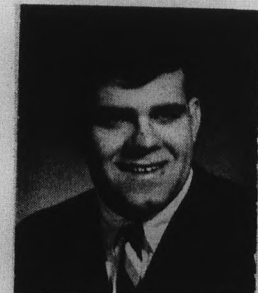
by CRICKETEER 59<sup>95</sup>

other sport coats  
from \$32.50

other suits  
from \$49.95

THE  
*Americana*  
SHOP

QUALITY MEN'S APPAREL  
TEMPE SHOPPING CENTER



Craig "Stubby" Ankeney  
Our Campus Representative

WO 7-5457

OPEN 9:00 A.M. TO 6:00 P.M.  
THURSDAY 'TIL 9 P.M.