

Follow These Steps To Start Your College Career At ASU

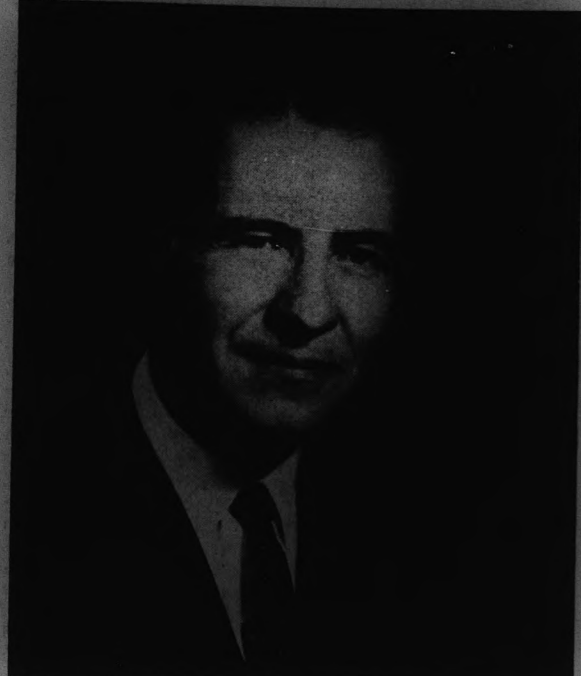
1. If you have not already done so, send your application for admission to the Office of Registrar and Director of Admissions, Arizona State University.
2. Have your family physician mail a complete health examination, including certificate of smallpox vaccination within the last four years. Mail the health examination to the Student Health Service in the addressed envelope provided.
3. Have forwarded result of Chest X-ray if done during the past six months. X-rays can be obtained at the Student Health Center at registration time, however, students are urged to have it completed ahead of time if possible.

4. The ACT (American College Test) is required of all students. If you did not take this test at your high school during the senior year, plan to take it at ASU this summer on July 1 or August 15 in the Life Sciences Building 191. There is a \$4 fee. The test will be given again on Sept. 16 at 1 p.m. in the Life Sciences Building 191.
5. Have your high school send a complete transcript of your high school record showing grades and credits earned, rank in graduating class, and the date of graduation direct to the Office of Registrar and Director of Admissions, Arizona State University, Tempe, Ariz.

6. Students who rank in the top 10 per cent of their high school graduating class will receive a certificate of Honors at Entrance.
7. The admissions policy of ASU provides that graduates from Arizona high schools who rank in the top three-fourth of their high school graduating class will be granted regular admission. The graduates who rank in the lowest one-fourth of their class may be granted a provisional admission only after testing and counseling.
8. During Freshman Orientation Week, beginning Monday, Sept. 14, at 8:15 a.m., you will meet your curriculum advisor

who will help you plan your first semester schedule. Your approved program of studies, signed by your adviser, along with your registration packet, chest X-ray clearance card and American College Test clearance card are your ticket to admission to Registration Hall in the Men's Physical Education Building on Thursday, Sept. 17. It is at this point that you obtain class cards for each of the courses of your semester academic program and pay fees.

Students who have not completed admission, health examinations or testing will be scheduled to finish registration on Saturday morning, Sept. 19 from 8-11 a.m.



Dr. G. Homer Durham

ASU Academic Role Prominent

By Dr. G. Homer Durham
President, Arizona State University

Arizona State University, established in 1885, today enrolls approximately 32,000 students during the year, and anticipates an on-campus enrollment of more than 17,000 this semester. Serving the growing needs of industry are the Colleges of Architecture, Business Administration, Education, Engineering Sciences, Liberal Arts, Nursing, the Graduate College, an Extension Division, the Summer Session, together with the Schools of Engineering and Social Service Administration, Divisions of Agriculture, and Industrial Design and Technology.

The fine arts as well as the liberal arts and sciences, find prominent places in the ASU curricula. Work leading to the Ph.D. is offered in physics, chemistry, engineering, psychology, mathematics, botany, zoology, English and education, in addition to baccalaureate and master's degrees in all the colleges.

The prominence which any institution of higher learning achieves is predicated largely on the interest of its students and the quality of its faculty.

Physical facilities are needed, but the ultimate test of a student's success comes from the interaction of his own effort and the inspiration, based on sound preparation and experience, his professors are able to impart.

High school students contemplating a choice of university can be assured that they will find at Arizona State University a highly trained, distinguished and cosmopolitan faculty secured through continuous and vigorous recruiting by deans and administrators.

One of the outstanding characteristics of ASU is the rapidity of its growth. Accordingly, traditional patterns of educational development to not apply, equally, in all of the University's departments.

The evolution of our programs in English and education, for example, has followed a steady pattern of development over a period of decades to a position of prominence.

Engineering, on the other hand, has achieved a similar position in only a few years. In this case, as in many others on the campus, the newness of the program is a strength, rather than a weakness. Engineering started at ASU with the nuclear and space age.

The College of Business Administration is also remarkably strong and is an example of growth with the infusion of new faculty, techniques and ideas to meet new needs.

Such a combination is evident throughout the University. ASU is distinctive for educational vigor. We welcome the fresh and vigorous ideas brought to us each year by so many new and returning students, and by our new faculty members.

President Durham To Greet Freshmen

Beginning his fifth full year as president of Arizona State University, Dr. G. Homer Durham plans this year to greet the largest freshman class in the history of ASU. "However," he explained, "this does not mean we are impersonal. On the contrary, we present all the advantages of the small college through our various curricula, chapters of academic societies, residence halls, and student organizations."

The 10th chief executive in the history of ASU, Dr. Durham accepted the post in 1960, after having served since 1953 as vice president of the University of Utah. Prior to that position, he was director of the Institute of Government and chairman and professor of political science at the University of Utah.

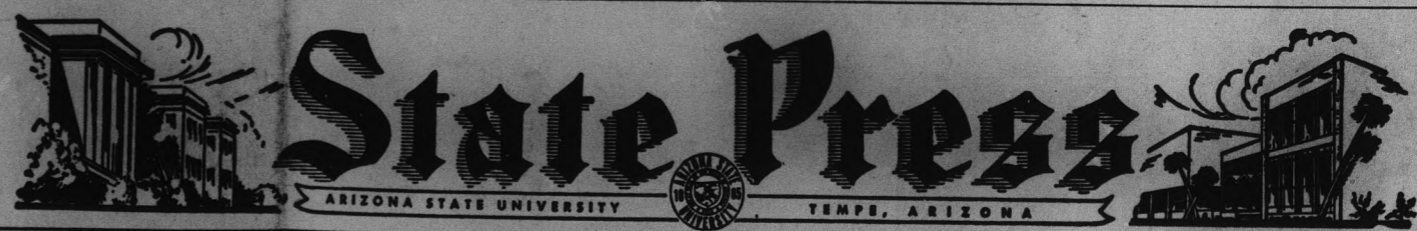
He started his teaching career as an instructor of political science at Utah State University and was promoted to assistant and then associate professor at that institution. He also served as an assistant professor of political science at Swarthmore College, consultant to the Institute of Local and State Government of the University of Pennsylvania, a visiting profes-

or at the University of California at Los Angeles, and in other capacities.

President Durham, who will greet incoming students at the first assembly of Freshman Week, currently is a member of the Air Force ROTC Advisory Panel to the Secretary of the Air Force and a member of the Board of Foreign Scholarships, to which he was recently appointed by President Lyndon B. Johnson.

President and Mrs. Durham will greet members of the incoming classes at an informal reception Monday evening, Sept. 14. Like her husband, Mrs. Durham also holds an undergraduate degree from the University of Utah in Salt Lake City. She also studied at the Sorbonne in Paris, France, and the London School of Economics and Political Science, University of London.

Complete
Frosh Week
Schedule
Page 5



July 15, 1964

Tempe, Arizona

SPECIAL ISSUE

Special Edition For High School Graduates -

UNIVERSITY WELCOMES FRESHMEN

Basic Fees Total \$115 For Residents

The basic fees at Arizona State University total only \$115 each semester. In addition, out-of-state residents must pay a \$325 tuition fee per semester. There is no tuition fee for Arizona residents.

Included in the \$115 are the following: registration; activities, admitting the students to all athletic events and entertainments and including a subscription to the State Press, student newspaper; use of the Memorial Union building; health services and facilities; use of the library; a ticket to the concert and lecture series; the alumni fee; and health and recreation fee.

Textbooks, most of which can be resold, run about \$50 per semester.

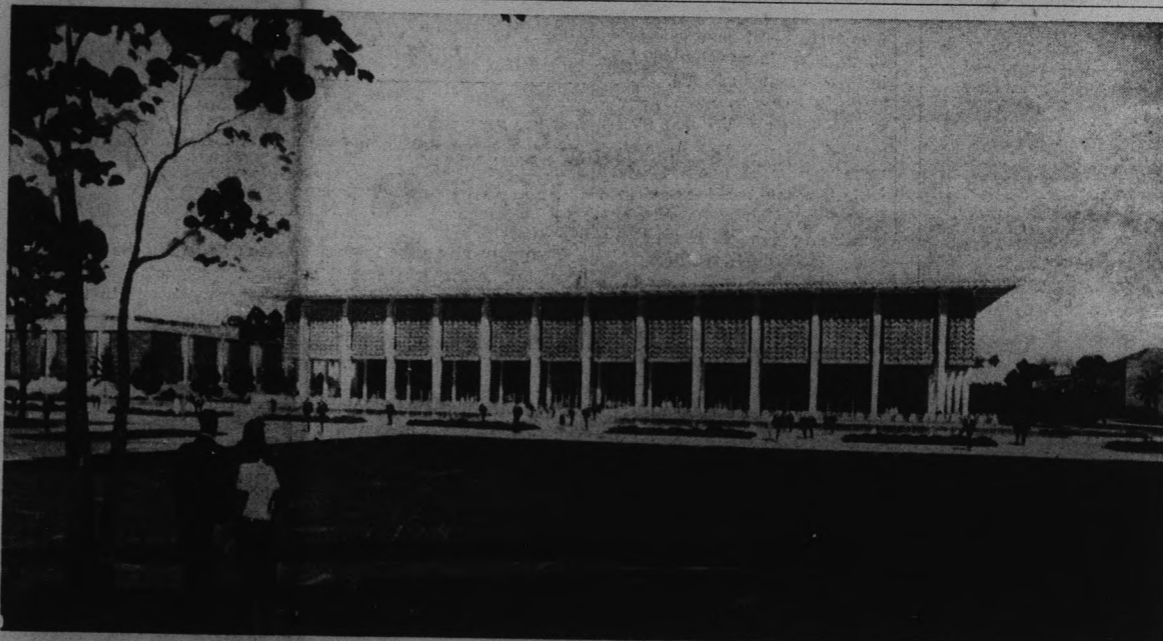
Considered apart from the basic fees, room and board for students living on campus vary, depending on the choice of residence hall. Room rates average about \$125 per semester and meal tickets cost approximately \$230 per semester, with a la carte service also available.

North, South, Gammage and West Halls rent rooms for \$120 per semester; McClintock A, \$140; McClintock B, \$157; and Wilson Hall, \$150. These are all women's residences.

Room rent in men's halls are Irish B, \$115; Irish A and C, \$125; Haigler, \$115; Hayden, \$140; and M.O. Best, \$150.

Palo Verde Hall for women has a \$380 rate, based on seven day weekly meal schedule.

Sahuaro Hall for men retains its \$312 fee because of a five-day meal schedule.



EDUCATIONAL CENTER of Arizona State University will be this five story, \$3,200,000 library to be located at northeast corner of College and Orange avenues. Library will measure 103 by 158 feet, will be 63 feet high, and contain about 200,000 square feet of enclosed

space. First floor will be nine feet below ground level surrounded by dry moat 30 feet wide. Entrance will be made at the second or ground level. Ground will be broken in October and completion is anticipated in summer, 1966.

Take Early Tests Aug. 10

Entering freshmen may take advantage of early testing at ASU on Aug. 15. Testing will start at 8:30 a.m. in room 191 of the Life Sciences Center.

Those planning to take the tests must apply in advance at the ASU admissions office, in person or by mail. There is a \$4 testing fee. This is the ACT test given in Arizona high schools last year and is only for those students who did not take it in high school.

The ACT tests are required by the university. Students not taking the test in high school or on Aug. 15 must take the exams during Orientation Week in the fall.

Chest X-Rays, also required, will be given on Aug. 22 from 8 a.m. to 3 p.m. at the ASU infirmary, as well as during Orientation Week. The X-Rays will be given only to students who have sent in their physical examinations.

ASU Takes Giant Strides From Modest Start In 1886

Arizona State University today bears little resemblance in size or scope to the one-room 31-student institution which opened its door in 1886.

Its progress from a normal school to teachers college, to liberal arts college and present status as a multi-purpose university has paralleled the burgeoning growth of the state and the increased diversification of its economic and social bases.

Because of the rapid growth of degree programs to meet the needs of the community, ASU can offer the qualified high school graduate competent training in virtually any field through its modern facilities and under the personal supervision of its outstanding faculty.

The responsibility for doing

so comes as a result of a relatively new educational fact of life. The U.S. Office of Education reports that about 80 per cent of the cost of an education goes into room, board and transportation; rising costs of these factors has caused proximity to emerge as the dominating factor in a choice of a suitable university.

That pattern follows at ASU, where 86 percent of the enrollment consists of Arizona residents, the largest fraction from Phoenix and the Valley.

A complete listing of available degree programs at ASU takes

400 pages of the catalog which is necessary to the prep scholar planning a collegiate career.

Briefly, ASU is comprised of its "core," and largest college, liberal arts, and five other undergraduate colleges: business administration; education; engineering sciences; nursing, and architecture. Engineering is a professional school at the undergraduate level. Its professional program is accredited.

Through these colleges, the students may earn one of seven different undergraduate degrees: bachelor of arts in more than 35 fields of specialization; bachelor of science in 40; bachelor of architecture, bachelor of science in engineering, bachelor of science in nursing, bachelor of arts in education, with two areas of specialization, bachelor of music and bachelor of fine arts.

As an outgrowth of the increasing numbers of students earning a degree, more than ever before are seeking advanced work. As ASU, this comes under the province of the Graduate College which grants 12 graduate degrees and in addition there is a new graduate school of social service administration.

Master's degrees are offered in several fields: master of arts and master of science, in more than 25 areas; master of arts in education; master of science in engineering, with further divisions; master of public administration; master of natural sciences; master of music; master of business administration, master of social work, and master of fine arts.

Arizona State University also offers a post-master's terminal degree, education specialist, the doctor of education degree and the doctor of philosophy degree, in nine fields.

ASU maintains a full-time counseling and guidance program for students and insists that lower classmen meet individually with faculty advisers for aid in planning their programs of study.

Insurance Plan Is Available To Students

Students enrolling at Arizona State University in the fall may take advantage of Associated Students' hospital insurance plan which offers complete health and accident coverage at about one third the cost of an individual plan.

According to Dick Finley, Associated Students' executive manager, the plan was initiated because of the relationship between high medical cost and dropouts due to illness and accidents. Another contributing factor is that most students have reached an age where they are automatically dropped from their parents plans as they enter a college or university.

"We are able through a group plan to give all regularly enrolled students carrying seven hours or more excellent coverage at reasonable rates," Finley said.

All freshmen and new students will receive complete information on the ASU plan through the mail. Students may enroll by filling out the application blank and returning it with the fee. Enrollment also will be open during the fall and spring registrations.

Orientation Week Begins September 14

While high school graduates all over the state are spending busy summers working, relaxing, studying, preparing for or starting on careers, Arizona State officials have been hard at work preparing for one date, Sept. 14, the opening of Freshman Orientation Week and the biggest year in Arizona State's 79-year history.

A record number of students are expected to enroll during that week at the state's fastest growing institution of higher learning, with about 17,500 expected, according to Alfred Thomas, Jr., registrar and director of admissions.

The school bell will sound promptly at 8:15 a.m. Sept. 14 for an estimated 5,000 incoming freshmen, who are expected to report at the Grady Gammage Memorial Auditorium to hear welcomes and instruction for registration from administration and student officials.

Thus will begin one of the busiest weeks in the lives of the freshmen, but a week that has its compensations in the fact that it is also a time for getting acquainted with their university environments, and with other people, many of whom will remain life-long friends.

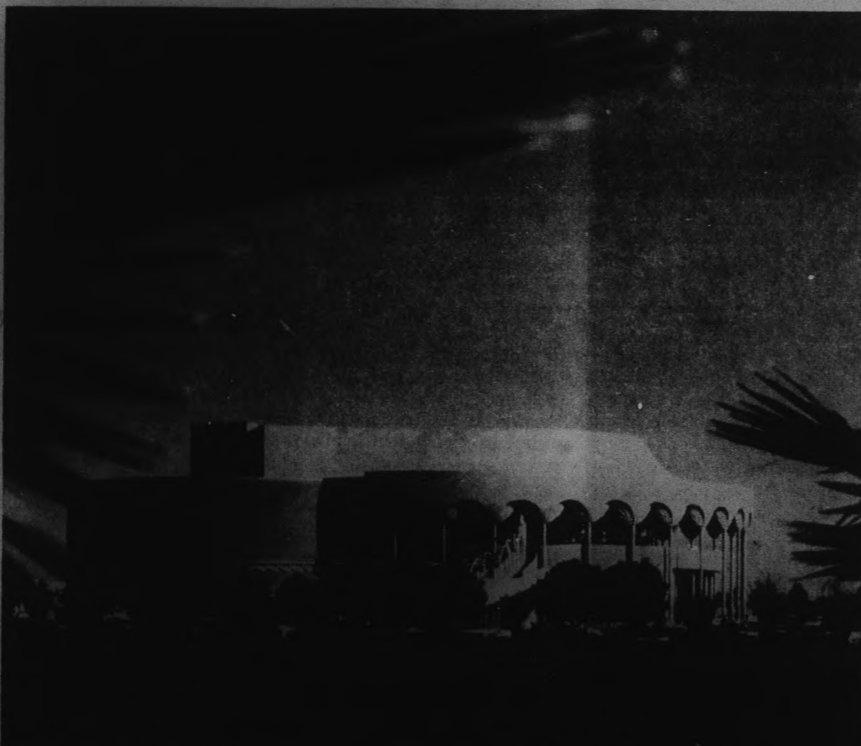
During Orientation Week, freshmen will hear from Dr. G. Homer Durham, ASU president, and obtain information helpful for registration.

Highlights of the week for freshmen include a Phrateres reception to which all off-campus freshmen women are invited; assemblies for Associated Women and Associated Men students; the reception for all new students, and the traditional painting of the "A" on Tempe Butte.

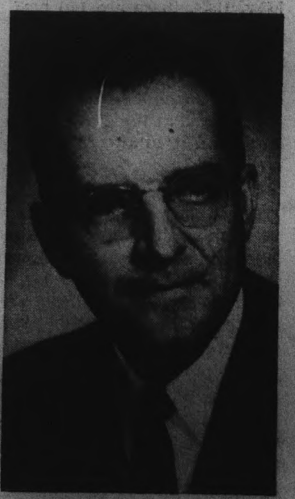
Also a pep rally; fraternity open houses; sorority rush parties, and a football game in Sun Devil Stadium.

All of the activities are carried on during the late afternoon and evening, with the daytime devoted to the serious business of embarking properly on a plan of studies to prepare the student for a rich career. Upperclassmen will be on campus from the first minute of Freshman Week on, just to answer questions and help new students get adjusted.

All freshmen will meet with faculty advisers for aid in planning a program of studies; they will take aptitude tests; pick up class cards, and register.



CULTURAL NUCLEUS of the ASU campus is the \$2.8 million Grady Gammage Memorial Auditorium designed by the late Frank Lloyd Wright. Unique auditorium, to be formally opened to the public in September, will be setting for Freshman Week Orientation assembly Sept. 14 Building is one of the nation's finest centers for performing arts.

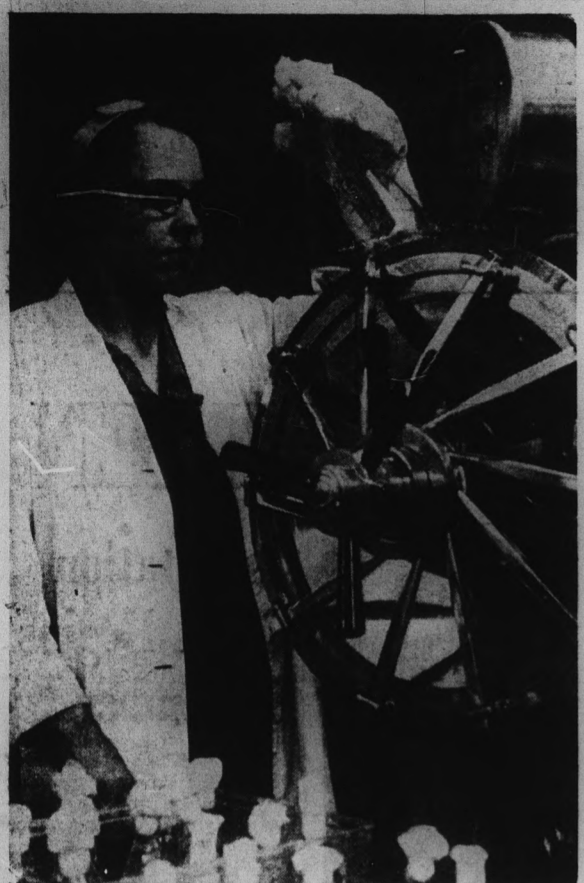


Alfred Thomas, Jr.
Registrar, Director of Admissions



THE STATE PRESS is the official campus newspaper of Arizona State University. It is published each Wednesday and Friday throughout the school year, excepting holidays, and is entered as second class matter at the Tempe, Arizona, Post Office under the Acts of March 3, 1879, and August 24, 1912. Subscription price, \$3 per school year.

THE STATE PRESS is a member of the Arizona Newspapers Association, Associated Collegiate Press and National Advertising Service, Inc.



ASU HONORS program allows selected undergraduates to pursue wide-open academic course limited only by their ability. Here, Lynn Finell, Phoenix junior, works on chemistry project for growing bacteria. Honors students must maintain 3.25 grade average in program.

ASU Reflects Rapid Growth Of Arizona

\$3 Million Library Vital To Education

Arizona State University's educational center will receive a vital updating when ground is broken in October for a five-story library building at the northeast corner of College and Orange Streets.

The building, costing an estimated \$3,200,000, will provide facilities and seating space presently unavailable in Matthews Library which was erected in 1930 when ASU's enrollment numbered in the hundreds.

With some 17,500 students expected this semester, additional library space and facilities are vital to the continued academic growth of the university.

The new library will measure 303x158 feet and will contain 205,000 square feet — about five acres — of enclosed space. Completion is anticipated during the summer of 1966.

The first floor level of the library will be nine feet below ground and will be surrounded by a dry moat about 30 feet wide. The moat will extend into the present College Avenue, necessitating the closing of the street to through traffic.

Matthews Library will be retained in a subliminary role. By 1966 when the new library is expected to open, Matthews will have collections numbering more than 600,000 volumes. Library seating space will be increasing to more than four times Matthews' present capacity of 600.

At present, Matthews offers reading rooms for education, humanities, science and technology, the social sciences and business administration, plus a well-stocked reference reading room and current periodical area.

A well-equipped music listening room permits students to enjoy the finest in classical recordings and FM radio programs. Available in the stacks are 140 individual carrels for study.

24 Religious Groups Active For All Faiths

An active and well-organized religious life, involving all major denominations and faiths and characterized by considerable inter-faith activity centered in Danforth Chapel at the heart of the campus, is among the oldest and strongest traditions at Arizona State University.

Such annual observances as Spiritual Exploration Week, in which virtually the entire campus participates, the Freshman Week picnic; the many special events arranged for Christmas and Easter by the student religious organizations, with all students as their guests; plus a steady round of religious events, including 15 courses in Bible and Religion, attest to the naturalness, healthfulness and vigor of the campus spiritual life.

The religious coordinator, Rev. Charles Crouch, is available in the Chapel for counseling or for information relative to the religious needs of the students, and coordinates the activities of all the denominations and faiths serving campus students.

Twenty-four such organizations are active and officially recognized by ASU at present. They are: The American Baptist Student Fellowship; Bahai Fellowship; Baptist Student Union; Baptist Young People's Union; Campus Crusade for Christ; Canterbury Association; Chi Alpha (Assembly of God); Christian Fellowship; Christian Science Organization; Church of Christ Student Fellowship; Church of God of Abrahamic Faith; Congregational Fellowship; Disciples Student Fellowship; Hillel Foundation; Lambda Delta Sigma (Phi Alpha for men and Phi Omega for women, plus Delta Phi for returned missionaries); Liberal Religious Students; Lutheran Student Association; Martin Luther Society; Missouri Lutheran Fellowship; Orthodox Christian Fellowship; Wesley Foundation; Westminster Fellowship; Newman Club; and the William Penn Fellowship.



IMPOSING PALO VERDE women's dormitory complex contains twin seven-story structures for 400 coeds apiece. Each dorm has its own dining facility. Palo Verde West, left, will be completed in September. Its twin, Palo Verde East, was occupied last year.

Ryan, Castle New Vice Presidents

Two new vice presidents have been added to the administrative staff at Arizona State University.

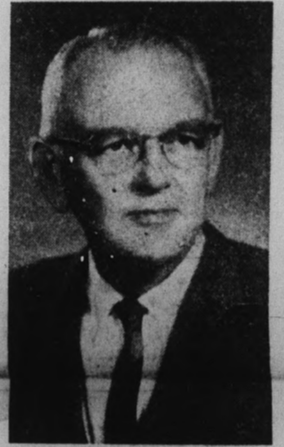
They are Dr. John W. Ryan, former assistant to the president and secretary to the board of trustees of the University of Massachusetts, and Dr. Gordon B. Castle, chairman of ASU's zoology department.

Dr. Ryan last September filled the vice presidential vacancy created by the return of Dr. Harold D. Richardson to full-time professional duties after 25 years of administrative service.

The appointment of Dr. Castle, effective in July, will enable Dr. William J. Burke, professor of chemistry, to devote full attention to his responsibilities as vice president for research and dean of the Graduate College. Dr. Castle will retain his academic rank and continue service as professor of zoology.

A former special assistant to the vice president of the University of Wisconsin, Dr. Ryan also served as associate professor of political science and director of the Bureau of Government at that institution before his appointment at Massachusetts.

Dr. Ryan was a member of the political science faculty and assistant director of the Institute of Public Service at Indiana University where he received master of arts and doctor of philosophy degrees. Former dean of the Graduate School at Montana State University, Dr. Castle came to ASU in 1962. At MSU, he was chairman of the zoology department from 1938 to 1948, dean of the College of Arts and Sciences from 1949 to 1952, dean of the Graduate School from 1952 to 1957, and acting president in 1958-59. He received his master's and doctor's degrees from the University of California, Berkeley.



Dr. Gordon B. Castle



Dr. John W. Ryan

Organizations Active Outlet

Regardless of race, creed, or color, interest, hobbies, studies, or career plan, there are organized activities for every student at Arizona State. Over 100 different organizations enrich campus life and provide an active outlet for literally every student.

The films are shown afternoons and evenings in Cosner Auditorium on campus.

Foreign Cinema Artistry Shown

Combining culture with entertainment, ASU each year presents a series of foreign films. All are international award winners and represent the finest in cinema artistry in the countries where they were created.

The films are shown afternoons and evenings in Cosner Auditorium on campus.

Halls Foster Strong Study, Social Climate

Housing is ultra-important in the booming Valley of the Sun. Arizona State University is constantly working to provide adequate and suitable housing for its students.

The ASU residence halls are not just a place to sleep and eat. The halls are integrated with the academic aims of the institution, and living in them has been a factor contributing to the success of many a student.

The halls have succeeded in developing a climate conducive to good study habits. All have regular "quiet hours" to encourage study and the head residents are always ready to further encourage high academic standards.

Each year, both men's and women's residences compete for the highest academic average and trophies are given to the winning men's and women's halls.

In addition to offering many services, the residence halls encourage the development of traditions and cultural programs. The individual residences sponsor their own dances, receptions; some have published their own mimeographed newspapers. Sahuaro and Palo Verde have their own dining rooms right in the residence buildings.

Each residence hall has its own governing body, made up largely of student officials elected by their fellow students in the hall.

Women's residence halls include: Palo Verde, Palo Verde East and West units, Gammage, McClintock B (honor hall for upperclass women), the Quad units, and McClintock A.

Men's residence halls include: Hayden, Irish, Best A and B units, Haigler, Wilson, Sahuaro and Adelphi.

All students wanting residence hall quarters for the coming academic year may apply to the Housing Office, Memorial Union building, room 3. Prospective students should apply early.

Multi-Million Dollar Expansion Proceeds

Half of the people in Arizona live within 50 miles of the University campus in this area, a great city, Phoenix, is one of the nation's most rapidly developing metropolitan centers.

Yet the ASU campus itself has all the grace of a rural location. It is a place of wide lawns and fine shade trees with over 300 acres of grounds.

The growth of Arizona State University from a tiny territorial normal school is a real tribute to the confidence which Arizona and her people have in meeting their problems in an increasingly demanding civilization.

No wonder there's a feeling of growth on the campus! More and more students are appealing to ASU for a complex variety of studies in many career fields.

Thirty-one students met in a single room when the Territorial Normal School held its first class on Feb. 8, 1886. About 15,500 students used the facilities of 80 major buildings at Arizona State University last year.

The most visible evidence of the dynamic growth of ASU is in the expansion of its physical plant in an attempt to anticipate and keep up with the tremendous influx of students. Multi-million-dollar projects are a yearly feature of this expansion.

And this will be another year of transformation with new projects being commenced or completed on all sides of the campus.

Heading the list is the long-awaited Grady Gammage Memorial Auditorium which will be opened in September. Designed by the late Frank Lloyd Wright, the \$2.8 million auditorium will seat 3,000 and will be one of the leading theater-auditorium-concert hall facilities in the nation. The building also will include classrooms, rehearsal space and offices for the drama and music departments.

Finished at the start of the 1963 fall semester were a seven-story Palo Verde East dormitory for 410 women and a 24,000 square foot addition to the Life Sciences Center.

New construction on campus includes: the seven-story Palo Verde West women's dormitory, a twin to Palo Verde East; a hydrology laboratory for the U.S. Forestry Service; a six-story, 68,000 square foot language and literature building; a 37,500 square foot industrial design and technology building; an addition to the College of Architecture located in the engineering center; a 64,000 square foot addition to the Physical Sciences building, and a 73,000 square foot addition to the engineering center.

The Board of Regents has approved preliminary plans for a five-story, \$3 million library to relieve the academic strain on old Matthews Library which was built in 1930. The striking new library will have space for one million volumes.

Other plans call for a shop building to be erected north of the new Industrial Design and Technology building, and a women's physical education building at McAllister and Tyler Streets.

The language and literature building will be the sixth major academic structure added since 1955.

The Life Sciences Center, opened in 1959, contains research and general laboratories,

classrooms, lecture halls and offices for botany, zoology, biology, microbiology and otomology. It also houses the Poisonous Animals Research Laboratory and an ecological laboratory where desert life is maintained in a natural environment.

The Physical Sciences Center, also completed in 1959, is a four story structure which is receiving its third addition en route to covering an entire city block. It houses chemistry, physics and mathematics facilities.

Both buildings match the nearby Engineering Center which was opened in 1955. A four-story Social Sciences building was completed in 1960, followed in 1961 by a four-story College of Education structure.

Evidence of the need for housing students near their classes are two main residence halls, Palo Verde for women, and Sahuaro for men, both opened in 1958. Palo Verde has received two separate seven-story additions.

Student Life Centers Around MU Activities

"On every campus, there must be a place set aside for timeless devotion to the timely art of living," says Mrs. Cecilia Scouler, director of the Memorial Union building at ASU.

This building, opened in March, 1956, was made possible by gifts of alumni, friends of the university, students and faculty members. It is dedicated to the memory of those from ASU who gave their lives in defense of the American way of life.

It is the dynamic center of campus life outside the classroom. Located there are the facilities for sharing of the arts, of friendships, ideas and experiences in work and play.

The Union program is planned to develop in students responsibility for the initiation and completion of a vital, worthwhile programs of social and cultural activities. It seeks to give each one a sense of belonging to a group and to a school of which he is an important part; and to further his understanding of the basic principles of democracy by participation in a democratic form of student government.

It fosters growth in social amenities and gracious living, and it provides a center for the entire college family.

Says Mrs. Scouler: "Its dedication is based on the belief that activities carried on within the Union bring to students those esthetic, religious and social values essential to our culture and our time."

Pretty Campus Is ASU Pride

The university's green campus, dotted with orange, olive and palm trees and luxuriant with a wide variety of vegetation, occupies more than 300 acres, exclusive of the 320-acre agricultural agriculture division farm.

Catalogue Governs University Programs

The official document governing the education of about 20,000 Arizona State University students is now available to all high school graduates.

The university's biennial catalog for 1963-65 is designed this year as a guide to educational planning for high school graduate who are undecided about attending college as well as for those who have already selected ASU.

The catalog tells the prospective student and his parents what the university has to offer. Copies may be obtained by phoning or writing the Director of Admissions at ASU or by picking them up at the Moer Administration building.

Of particular interest to high school graduates is the section on costs, availability of scholar-

ships, behavioral and social sciences, work opportunities both off and on the campus and arrangements for student loans.

For the first time in ASU history, a single registration fee (set at \$115 per semester for Arizona residents) makes its appearance in the catalog, replacing the separate and extra class, laboratory and activities fees of previous years.

Provision for additional career opportunities is indicated by the following list of bachelor's degrees achieved through courses offered by four undergraduate colleges (two more colleges were added this year in nursing and architecture), two divisions and 43 departments:

Bachelor of arts, science, ar-

chitecture, science in engineering, science in nursing, arts in education, music and fine arts, in addition to a variety of master's and doctor's degrees offered by the Graduate College.

The 1963-65 catalog carries descriptions of approximately 2,200 courses, of which 279 are new—to meet the diversity of educational needs required by thousands of students seeking a continuous four-year program preparatory to professional life.

The faculty roster has been expanded to include 600 full-time instructors and assistant, associate and full professors, more than half of which have doctor's degrees.

The offering of courses in the sciences and mathematics has been enlarged, adding flexibil-

ity to a 40-semester-hour general education program required of all students.

Additional growth and development are reflected by the following changes in the organization of the university:

The College of Applied Arts and Sciences has been changed to the College of Engineering Sciences; the School of Nursing, formerly a part of the College of Liberal Arts is now a college, as is architecture; the department of sociology and anthropology has been divided into separate units; and the Graduate School of Social Service Administration makes its first appearance in the catalog.

Another major organizational change is the conversion of the

division of industrial education into the division of industrial design and technology, which now includes the following fields of specialization:

Aeronautical, electronic, graphic arts, tool and manufacturing and welding technology and technical design.

Also included in the catalog are the higher standards for upper division students in the Education and Business Administration colleges.

Many of the catalog revisions involve the majority of students, but the university has also made additional provisions for the outstanding scholars by extending the Honors Program, initiated in the College of Liberal Arts, to the other undergraduate colleges.

Honors Study Is Quest For Quality

Those who question the seriousness of today's college student's or accuse them of seeking "snap" courses for an easy degree would be encouraged by the progress of the tough Honors Program at Arizona State University.

In September of 1959, three ASU students enrolled in the College of Liberal Arts for the new Honors Program. So successful was the program that by September, 1962, more than 120 students were participating.

Last fall, the program was adopted by the colleges of education, business administration, and engineering sciences.

In order to qualify, students from the sophomore year on must produce evidence of high academic achievement and embark on an intellectual adventure which could provide them an unequalled opportunity.

How does the Honors Program differ from a regular college program?

Its chief architect, Dr. Arnold Tilden, formerly Dean of the College of Liberal Arts, and the faculty envisioned it as a challenge to students of exceptional ability, interested in high scholarly attainment.

"Now, more than ever," he said, "it is imperative that this country develop its unusually competent students an awareness of the relationship of all knowledge and experience and to make him more concerned with basic values: intellectual, esthetic, social and ethical.

Dean Karl H. Dannenfeldt, Dr. Ernest I. Stewart, Assistant Dean of the College of Liberal Arts, Dr. Gene B. Montague, chairman of the Honors Council, and the Honors Council as a body administer the program, maintaining a vigilance for improvement. All concerned are pleased thus far with the results and opportunities arising for the honors graduate, but hope for continued improvement.

The Honors Program, according to Dr. Stewart, has a greater degree of richness and depth than the regular curriculum.

It gives the superior student the opportunity to work at his own speed in order to "close the gap between potential and performance."

The student is given more direct and personal instruction, allowing him to bypass many beginning courses. He is confined to neither the usual curriculum nor to the campus; he may conduct approved independent study. In short, his course is virtually tailored to his abilities and needs.

Once in the program, it is not easy for him to stay there, although at his election he may drop without having lost any progress toward a degree. Few choose to do so, although since the start of the Honors Program, some students have left and others have failed to qualify for continued participation. As of May, 1964, there are 170 participating in 16 major areas of instruction.

For graduation with honors, the student must pass a comprehensive examination in his major area. He must present to the Honors Council an acceptable thesis or a comparable creative project and at the discretion of his department, he may be asked to defend it in an oral examination before a committee of the council.

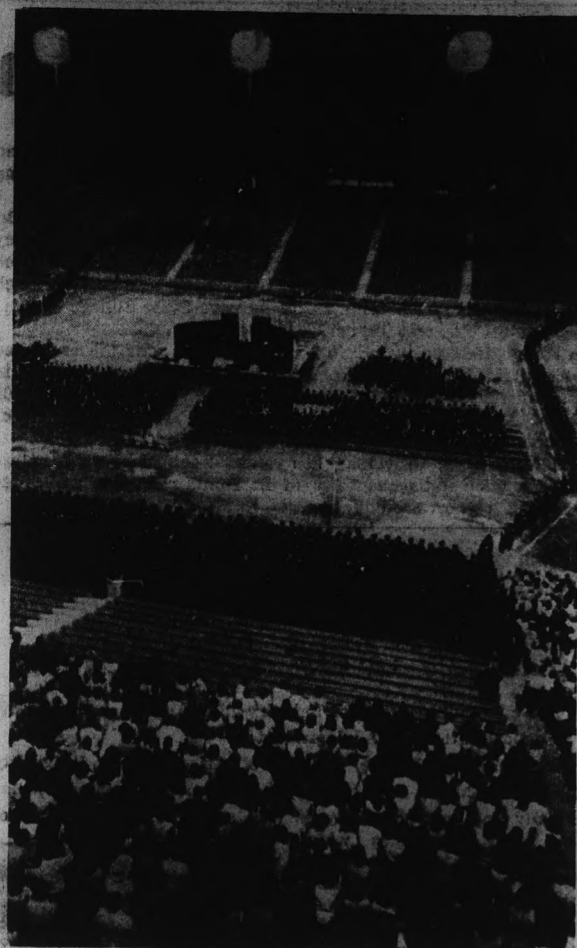
Dean Dannenfeldt emphasizes, however, that the Honors Program is not a speed-up process; it will take a student four years to complete his degree requirements.

For those students who do complete the Honors Program and obtain their baccalaureate degree, ASU will confer "summa cum laude" degrees to those who maintain an academic average over 3.5 (4.0 is straight "A"), and cum laude" degrees to those whose grade indexes are between 3.25 (the minimum for continued participation in the program) and 3.49.

But most important, the Dean and Honors Council members feel, is that these students will have devoted much more time to their studies than those following the normal course sequence and therefore will have come closer to "closing the gap between potential and performance."

And they will be in great demand for constructive contributions throughout the world.

Architecture, Nursing Get College Status



GOAL of all students is graduation. Last May, a total of 2,238 students were awarded graduate and undergraduate degrees, the largest class in the University's history.

Liberal Arts Is Mainstay Of University

Comprised of 23 departments, the ASU College of Liberal Arts maintains the largest faculty and offers the greatest number of courses of the university's seven colleges.

Liberal Arts offers programs of study leading to four undergraduate degrees, the bachelor of arts, bachelor of science, bachelor of fine arts, and bachelor of music.

Thirty-three areas of specialization are available to candidates for the bachelor of arts degree. The majors are:

Anthropology; biology; chemistry; clothing, textiles and related arts; dramatics; economics; English; family life and child development; fine arts; foods and nutrition; French; general home economics; geography; geology; German; health education; history; humanities journalism; mathematics; music; philosophy; physical education; physics; political science; psychology; radio-television; recreation; Russian; social welfare; sociology; Spanish; and speech.

Twenty-eight areas of specialization are available to the candidates for the bachelor of science degree from the College of Liberal Arts. The majors are:

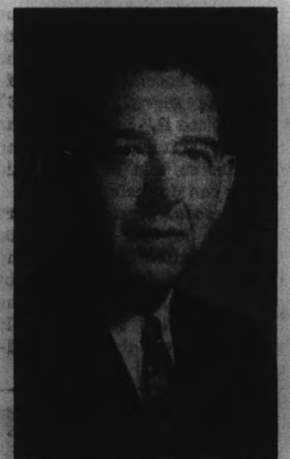
Anthropology applied arts; biology; botany; boys' club administration; chemistry; clothing, textiles and related arts; economics; entomology; family life and child development; foods and nutrition; general home economics; geography; geology; health education; mathematics; microbiology; physical education; physical sciences; physiology; zoology; political science; psychology; recreation; social welfare; sociology; wildlife biology; and zoology.

In addition to these areas of specialization leading to undergraduate degrees, the College of Liberal Arts offers special programs of study in the following areas:

Foreign Service Training program; Latin-American Area Studies; Medical Technology; pre-dental, pre-medical, and pre-osteopathy; pre-law; pre-ministerial; pre-occupational, pre-physical therapy; pre-optometry; pre-pharmacy; public service training program and X-ray technology.

Among the research facilities used by the College of Liberal Arts are a complete atomic mineral and metal analysis laboratory, a meteorite laboratory, physiological clinic and laboratory, the Bureau of Government Research, and the Poisonous Animals Research Laboratory.

Dr. Karl H. Dannenfeldt, professor of history, who joined the ASU faculty in 1956, is Dean of the College of Liberal Arts.



Dean Karl H. Dannenfeldt

Schedule Fills Big Demand For Classes

To make the fullest possible use of its classroom facilities, Arizona State University will offer this year a record selection of late afternoon and evening courses.

In response to the national demand for colleges and universities to make the greatest use of existing facilities to meet the pressure of fast-increasing enrollments, ASU classes now run from 7:40 a.m. to 10:30 at night.

The evening program is also designed as a service to both undergraduate and graduate students who are unable to attend classes in the daytime, or who find it necessary to take part of their classwork in the evening.



ENGINEERING CENTER addition, opened for classes at the end of last semester, adds 73,000 square feet of classrooms and research laboratories. The \$780,000 building is most recent of a series of integrated wings occupying a whole block.

Graduate Classes Offer Complete Advanced Study

With the increasing demands of our technical age, more and more students either remain in college after receiving bachelor's degrees to continue studies or return later for advanced degrees.

Thus it is of interest to young students starting their academic career to know that Arizona State University offers well rounded and extensive graduate programs through its Graduate College, of which Dr. William J. Burke, executive vice president and professor of chemistry, is Dean.

The graduate program at ASU is growing rapidly and currently enrolls approximately 7,000 students who are working toward advanced degrees. This represents an increase of about 20 per cent over last year.

Master's degrees are offered in: anthropology, art, biological sciences, botany, chemistry, English, French, geography, geology, German, history, home economics, humanities, mathematics, music, philosophy, physical education, physics, political science.

Also fine arts, music, natural sciences, psychology, sociology, Spanish, speech, zoology, accounting, economics, engineering, business administration, public administration, and social work.

The Graduate College also offers the Education Specialist, Doctor of Education, and the Doctor of Philosophy degrees. The Ph.D. fields include botany, chemistry, education, English, engineering, mathematics, physics, psychology, and zoology.

ASU Boasts Own Radio, TV Stations

Students at Arizona State University have an opportunity to participate in activities of KASN, campus radio, and KAET, educational television station.

KASN, a carrier current station, is maintained by ASU's Bureau of Broadcasting for the training of students in radio operation. Students may work on such jobs as writing, programming, continuity, and traffic. KASN operates about 12 hours per day, is commercial, and an affiliate of the National Broadcasting Company.

It also provides students enrolled in Mass Communications with a working laboratory completely equipped with the finest professional radio facilities.

Operation of KAET, a non-commercial, educational television station on Channel 8, is carried on by the Bureau of Broadcasting's staff of professional educational broadcasters. The station broadcasts over 50 hours per week of local and National Educational Television programs to help meet the educational needs of the community.

Students majoring in radio-television, and others interested in participating on an extracurricular basis, assist in the operation of KAET. Courses in radio and television are closely related to the operation of KAET and KASN. Student participation includes working

Qualified Teachers Is Education's Main Goal

ASU's College of Education, the oldest college in the state's oldest institution of higher learning, offers courses in major areas, leading to the bachelor of arts in education degree.

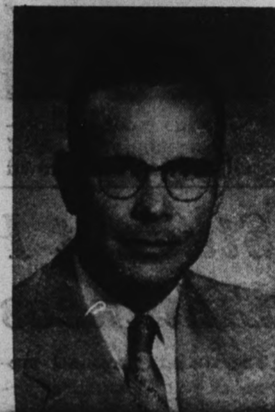
Master of arts in education, and doctor of education degrees are also conferred, as are the education specialist and doctor of philosophy degrees.

Specialization of course work is organized into 12 different groupings: elementary, secondary, special education, higher education, adult education, guidance and counseling, school administration and supervision, audio-visual education, social foundations, educational psychology, educational foundations.

The college also provides preparation for all state teaching certificates. In addition to the elementary program, students are prepared to meet certification requirements for teaching any one of the 24 major teaching fields and 13 additional minor fields for high school instruction.

The College of Education operates the Campus Laboratory School, an elementary school which serves as a laboratory for education majors. A Guidance Center, a Reading Center, and the Bureau of Educational Research and Services. The Bureau conducts a variety of surveys and studies for educational groups and institutions around the state.

During the year the college



Dean G. D. McGrath

Engineering Sciences Work To Meet Modern Demands

The School of Engineering, the two divisions of Agriculture and Industrial Design and Technology and the Research Center comprise the ASU College of Engineering Sciences.

The College offers programs of undergraduate study leading to the bachelor of science and bachelor of science in engineering degrees. Also offered are the master of science in engineering and the doctor of philosophy degrees. Courses in the Division of Agriculture are offered in agricultural science, agricultural production and management, and agricultural business. The Division also conducts four special programs: agricultural education, foreign agricultural service, pre-veterinary, and pre-forestry.

Candidates for the bachelor of science degree in the Division of Industrial Design and Technology may select one of six fields of specialization: aeronautical technology, electronic technology, graphic arts technology, technical design, tool and manufacturing technology, and welding technology.

Six fields of specialization are offered in the School of Engineering: chemical, civil, electrical, industrial, mechanical and engineering science. Five of

these are accredited by the Engineers' Council for Professional Development.

Engineering courses and laboratories are taught in the modern, spacious Engineering Center. The Computer Center also is housed in this complex.

Dr. Lee P. Thompson, who joined the ASU faculty in 1955, is Dean of the College of Engineering Sciences.

In the various areas associated with the production of University originated television and radio programs.

Studios of KAET and KASN are located in the Engineering Center.

Social Work School's Aim

Now in its second year of operation, the Graduate School of Social Service Administration is helping meet the critical need for trained, competent personnel in the social work profession.

The school was inaugurated in 1961 and course work began in 1963. The two-year program in professional social work education is designed to assure beginning competence in social work practice and leads to the degree of Master of Social Work.

To educate competent social workers, the school combines classroom study with professional participation. Dean of the Graduate School of Social Service Administration is Dr. Horace W. Lundberg.

Business Has Specialization In Ten Areas

Arizona State University's College of Business Administration offers a program of study leading to a bachelor of science degree in 10 fields of specialization.

Candidates for the bachelor of science degree in business administration may major in accounting, advertising, economics, finance, general business administration, insurance, management, marketing and selling, office administration, or real estate. Students majoring in general business administration may also take special courses in preparation for careers in transportation, traffic management, data processing and computer programming, business statistics, and business communications.

In addition to four-year degree programs, special three- and two-year programs of study in pre-law and secretarial sciences are offered. Graduate degrees of master of business administration, master of science in accounting and master of science in economics are also offered.

The College of Business Administration, located in Arizona's business center, also conducts special seminars and conferences for local businessmen. These executive development programs provide management training in most of the functional fields of business and acquaints the faculty with current business problems and practices.

A Dean's Advisory Council of 15 business leaders serves as a liaison group between the college and the business community.

The Bureau of Business Research and Services gathers and publishes business and economic data pertaining to the surrounding community. The Bureau also serves as a laboratory for students who wish to secure practical experience in business research and analysis.

The American Association of Collegiate Schools of Business, the official accrediting agency of professional schools of business, has accredited both the undergraduate and graduate programs of the College of Business Administration.

An Honors Program for outstanding students has been recently initiated. The goal of the program is to give students an enriched academic experience. Sophomores may be admitted to the Honors Program on the basis of their high school record.

Dr. Glenn D. Overman, who joined the ASU faculty in 1956 is dean of the College of Business Administration.

Health Service Benefits All

ASU's Student Health Service facilities are available to all full-time students, whether they live on campus or at home.

The health service has 26 beds, and examination and treatment rooms, along with modern X-ray and laboratory equipment and facilities.

A competent staff of physicians, medical technologists and registered nurses, along with a part-time psychiatrist, are on duty.

Clinic hours are from 8 a.m. to 4 p.m. Mondays through Fridays, and 9 a.m. to noon on Saturdays. Emergency patients are cared for at any time of the day or night, but after 10 p.m. must be accompanied by a patrolman from Campus Security.

Should a student become ill, bedside care is given in the infirmary for one week without charge. A nominal charge is made after that time should further care be needed.

Mrs. Elaine McFarland, R.N., heads the student health service staff.

Boosts Colleges To Six

Effective July 1, Arizona State University will add its fifth and sixth undergraduate colleges in nursing and architecture.

Mrs. Loretta Hanner is dean of the College of Nursing which is fully accredited by the National League for Nursing, and James W. Elmore is dean of the College of Architecture which was accredited in 1961 by the National Architectural Accrediting Board.

The College of Nursing offers to qualified high school graduates a basic four year collegiate program leading to a bachelor of science degree in nursing. The student nurse is given a base or general education to provide a rich academic background.

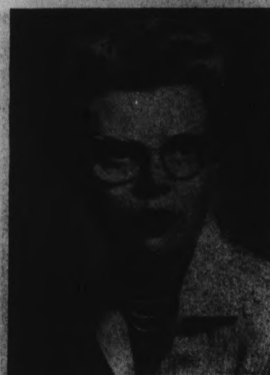
To provide the best clinical experience in all fields of nursing, the college utilizes the Maricopa County Health Department, Visiting Nurse Service, Inc., Samuel Gompers Rehabilitation Center, Georgian Court Convalescent Home, and the following hospitals: Good Samaritan, Crippled Children's, Maricopa County, Veterans Administration, Memorial, White Angel, St. Luke's, Doctor's, Arizona State and St. Joseph's.

The College of Architecture offers a five-year program leading to the bachelor of architecture degree. The college also offers a four year curriculum leading to a bachelor of science degree in construction.

The college program is based on the belief that the architecture profession has the obligation of providing creative leadership in the shaping of man's physical environment. The program acquaints the student with all the techniques and philosophies of design and construction, and through its varied resources, stimulates and aids the student in his quest for a personal technique and philosophy that will sustain him in seeking the rewards of a career devoted to shaping a better environment.



Dean James W. Elmore



Dean Loretta Hanner

Health Service Benefits All

ASU's Student Health Service facilities are available to all full-time students, whether they live on campus or at home.

The health service has 26 beds, and examination and treatment rooms, along with modern X-ray and laboratory equipment and facilities.

A competent staff of physicians, medical technologists and registered nurses, along with a part-time psychiatrist, are on duty.

Clinic hours are from 8 a.m. to 4 p.m. Mondays through Fridays, and 9 a.m. to noon on Saturdays. Emergency patients are cared for at any time of the day or night, but after 10 p.m. must be accompanied by a patrolman from Campus Security.

Should a student become ill, bedside care is given in the infirmary for one week without charge. A nominal charge is made after that time should further care be needed.

Mrs. Elaine McFarland, R.N., heads the student health service staff.

Consider Purpose Of University

By Dr. John W. Ryan
Vice President

You are about to begin one of the most important phases of your life—your college preparation. This will be an experience which will help to shape the nature and direction of the rest of your life. Perhaps you will be with us at Arizona State University. Wherever you choose to embark upon the college phase of your preparation for life, you must consider three important questions: What is the purpose of my going to college? What will happen to me as a result? How do I make the most of my college opportunity? The answers to these questions are yours to find, and they have meaning for you only as they are relevant to your aspirations and responsibilities. Allow me, however, to suggest some guidelines which may prove useful to you in applying these questions to yourself and the way you see the world.

Education for what? No question will perplex you more than this one through out your life. The overwhelming purpose of college for you is, of course, to prepare you for a useful life as an individual. Education at Arizona State University, for example, aims to prepare you for leadership and responsible citizenship, to increase your professional competence, to broaden your cultural horizon, to reinforce your commitment to moral and ethical standards, and to enhance your ability to recognize the fundamental questions of the broadest human concern. That, in general, is what we say is the purpose of your being in college. Now, what do you say? You are probably most concerned with two things: acquiring technical skill qualifying you for a high income, high status job, and enjoying a social experience which will provide you with rich memories in future years. We expect you to have these objectives, but we hope you will soon perceive that the purposes of education, like the purposes of life itself, are not exclusively vocational or social.

What will happen to you as a result of your college career; how will you be different? You should expect to be alert to the major problems and issues of life, and to place them in perspective as a result of your maturing sensitivity to the political, economic and social history of the United States and the world. You should have a deeper understanding and appreciation of the culture within which you have been nurtured and will develop, as well as an awareness of the other contemporaneous cultures which help to shape the circumstances of twentieth century life. You will have been taught how to analyze problems and seek their solution, and probably you will be trained to a high degree of expertness in a functional specialty. You will be all of these things, if you want to be, because your college experience is designed to enable you to acquire these attributes.

You want to make the most of your college opportunity. A few suggestions may help you to do so. First, avail yourself of every opportunity to read, to write, to understand and to act. You will find chances every day to perfect your use of the basic roads to knowledge, wisdom and effectiveness. The desired objectives of your college education are that you learn to read, to write, to understand and to act. It is also true that these things are learned by doing. As you set yourself to projects of reading, writing, understanding and acting, you increase your possession of these qualities. The faculty and your fellow students are there to help you, to criticize you and to judge you.

As a practical matter, the most important faculty member to you as you enter college is your curriculum advisor.

Your faculty curriculum advisor can be most helpful in getting you started right the first semester of the freshman year, and will be a source of information, counsel, and advice throughout each of the following semesters until you graduate. Your curriculum advisor cannot only be helpful in planning with you an educational program, but in many other ways. If you need help in thinking through a personal problem, if you need information about scholarships, work opportunities, or loans, if you want to discuss your career objective, job opportunities and requirements, or plans for graduate study, if you need counsel on improving your study habits, in getting acquainted with the library and its use, in understanding university requirements and regulations, if you need information and advice about social activities, organizations, sororities or fraternities—if you need help of any kind, seek out your faculty adviser. If he cannot help you himself, he will likely know someone who can, and he will be glad to "open the door," or get you to a source of help that will serve your need.

It may be truly said that every student needs some help sometime. Unless you are a rare exception, you will need some help sometime. The important thing is to know when you need it, and where to get it, and get it, before it is too late. Your first source is your faculty adviser. Don't put it off or avoid him.

Learning is a life-long process. Your college days prepare you, in a sense, for your continuous desire and search for truth, beauty and understanding. You owe it to your self to consider these questions very carefully because your answers will set the tone of your college experience. The tone of your college experience in turn, will set the pattern of the rest of your life.

Pioneer Spirit Lays Firm Foundation For ASU Growth

The tradition and spirit of Arizona State University go back to one of the most colorful and unusual adventures in higher education on record in the United States.

Founded in the frontier days of Arizona Territory before the Wild West era had fully disappeared, this was the first institution of advanced learning in a vast Southwestern desert area, stretching 1,200 miles from central Texas to Los Angeles and 600 miles northward from the Mexican border. Public education was as necessary a part of the conquest of the Great Southwestern Desert as Indian fighting, the struggle against outlawry, and the bringing in of abundant water.

Arizona State University, which opened its doors for instructional purposes on February 8, 1886, having been legally authorized by a pioneer legislature on March 12, 1885, was at the heart of the educational conquest of the desert on the day it opened and has been so ever since.

It was founded for a single extremely necessary purpose, that of training teachers for the frontier system of grade-schools that had sprung up in the early-day mining camps, cattle towns, army posts and farming settlements of the desert territory. Its second purpose was to provide training in agriculture and mechanics, though this didn't develop for some years. As far back as 1871 when the Apache terror was at its height, a valiant educational enthusiast, Territorial Governor Anson Safford, had launched a system of one-teacher public schools. They spread rapidly but ran so acutely short of teachers that they had to have a Normal School, in order to survive.

The Territorial Normal School, located at Tempe in the central-desert area of the Territory, was founded by the pioneer Charles Trumbull Hayden, father of United States Senator Carl T. Hayden. It solved the teacher shortage, and did valuable work from the start. By the time the Territorial University, legally founded on the same day, opened its doors in 1891, the Normal

School at Tempe had graduated four classes and had the teacher shortage well in hand.

The Normal School to begin with, was extremely small. It had only 33 students in its first year, a one-person faculty and a four-room building at the base of Tempe Butte. Hiram Bradford Farmer was its first president, principal, and only teacher. In its first fifteen years it had six successive presidents and, by 1900, had grown to 131 students. In that year a truly great man, Dr. Arthur John Matthews, became its president, and remained so for thirty years.

Destiny in the shape of abundant water came to the central desert of Arizona in 1911 through the completion of the Theodore Roosevelt Dam. Under this stimulus the Normal School began to grow. Statehood arrived and the Greater Phoenix area became the largest population center in the state. The pioneer Normal School became Tempe State Teachers College in 1925

and Arizona State Teachers College in 1929. It still had less than a thousand students, but was highly-rated educationally, among teacher-training institutions of the United States.

The depression of 1930-33 brought a setback. In 1933 Dr. Grady Gammage became president and his 27 1/2-year presidency was to be among the most remarkable on record in the United States. Under his leadership, the Teachers College burst through its limitations and became an all-purpose State College — Arizona State College at Tempe — in 1945.

The greatest postwar influx of population, plus the expanded curriculum, brought an expansion with few, if any parallels in modern times — from 533 students in 1945 to 4,094 in 1949, 9,708 in 1958, and 17,500 expected in September. The new name was accorded by a two to one vote of the people on Nov. 4, 1958.

Arizona State University has retained the pioneering, enterprising, democratic character of its frontier origins, while developing to the highest accreditation.

Burke Dean, Professor, Administrator

Dr. William J. Burke, who joined the Arizona State University staff in 1952 as a vice president, combines the dual roles of administrator, professor and dean. In addition to his duties as vice president, he is dean of the Graduate College and holds the rank of professor of chemistry.

Head of the University of Utah chemistry department from 1949 until he accepted the ASU position, Dr. Burke also has been a research chemist with E. I. du Pont de Nemours and Co., from 1937 to 1946.

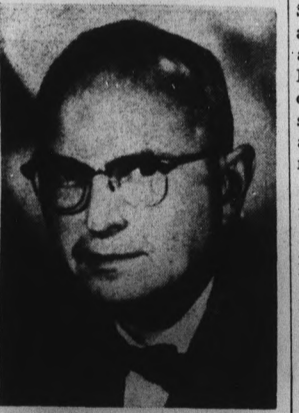
Dr. Burke served on the Fund for the Advancement of Education, Ford Foundation, committee on faculty fellowships from 1952-56, and recently spent two months in Ethiopia studying its system of higher education as a member of a State Department International Cooperation Administration survey team.

The ASU vice president received a bachelor of arts degree from Ohio University, Athens, and a doctor of philosophy degree in chemistry at Ohio State University, Columbus.

Dr. Burke, a native of Lowellville, Ohio, was associate professor of chemistry at Ohio University before assuming a similar post at the University of Utah in 1947.

A visiting associate for the Committee on Professional Training of the American Chemical Society, he has also served as secretary and counselor for the Salt Lake section of the ACS. He is a consultant on chemical problems for the Monsanto Chemical Co.

The author of more than 65 scientific articles and patents, Dr. Burke is a member of Phi Beta Kappa, Sigma Xi, Phi Lambda Upsilon, Gamma Alpha, Phi Kappa Phi, the American Chemical Society, and the American Association for the Advancement of Science.



Dr. William J. Burke

Campus Near Arizona Center

Arizona State University is located at Tempe, 1963 population, 36,000, the city limits of which meet the Phoenix southeastern boundaries. The campus is seven miles from downtown Phoenix, capital of Arizona and heart of the state's political, cultural and economic life.

Within easy driving distance of the campus are close to one million people, more than half of the state's population. Nearly 80 per cent of the enrollment lives off campus.

Stars Studied

There's a skyfull of stars shining in Arizona State University's Physical Sciences building.

Installed there is a Spitz Planetarium, with which ASU physical science teachers can put the images of 1,000 stars through their peepers. A dome 20 feet in diameter tops the installation.



SUN DEVIL MARCHING BAND adds color and precision to pre-game and halftime ceremonies at ASU football games. Here, band spells its name for crowd at Sun Devil Stadium. Sun Devils, both band and football team, start early this year against Utah State Sept. 19.

Marching Band Sets Auditions For Sept. 13

Arizona State University's Sun Devil Marching Band must get an early start this year if it is to perform at ASU's first football game on Sept. 19.

The marching and concert bands will hold auditions for all interested musicians Sunday, Sept. 13, at 1 p.m. in the band room of the Grady Gammage Memorial Auditorium, the band's new home. At 5:30 p.m. that day, a dinner-mixer for old and new band members will be held at the Tempe Sands, according to Director Harold Hines.

Since ASU's first football game is scheduled during Freshman Orientation Week, Sept. 14-18, band rehearsals and practices will be scheduled around the events of that week. Hines stresses the importance of attending early rehearsals, since all marching fundamentals are practiced during Freshman Orientation Week.

A second concert band will be formed this year for campus musicians who do not have time for participation in regular band. Designed for musicians who just want to keep in practice, the band will appear in concert and will offer one unit credit.

After football season, the Sun Devil Band will host the national convention of college band directors in December and will be one of seven university bands to appear in concert. The band will also make a concert tour in the spring.

Highlight of the music season will be the band's relocation in the acoustically-perfect Gammage Auditorium, designed by the late Frank Lloyd Wright.

ASU Bookstore Stock Complete

Located in the Memorial Union building at College Ave. and Orange St., is the campus bookstore, owned and operated by the university to serve the needs of students and faculty.

The Bookstore stocks a complete line of books: textbooks, reference books and books for general reading. School supplies, art supplies and stationery are also in stock.

The Bookstore is open from 8 a.m. to 7 p.m. Monday through Thursday; from 8 a.m. to 4:30 p.m. on Friday; and from 9 a.m. to 1 p.m. on Saturday.

Student Personnel Program Enhances College Activities

The student personnel program at ASU provides opportunities and services to enhance college living, studying and recreational activities. The program encompasses several major areas of college life outside the classroom.

Individual counseling ranges from personal problems to assisting students to gain information regarding loans, study

habits and scholarship. Counseling also provides a channel to the university administration of information about student needs and interests.

The student government program supplements the academic life by furthering belief in our nation's democratic procedures through active participation. It provides students an opportunity to become participating individuals.

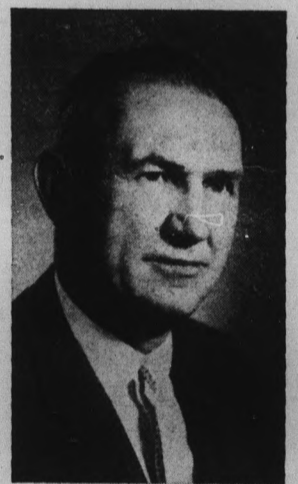
A well balanced intramural program keeps the student physically fit as well as mentally active. Fraternities, halls and other groups participate fully in this phase of the personnel program.

The office of the Dean of Students, Dr. Weldon P. Shofstall, is located in Room 103 of the Administration building. The office of the Associate Dean of Students, Dr. Catherine G. Nichols, is in the Memorial Union.

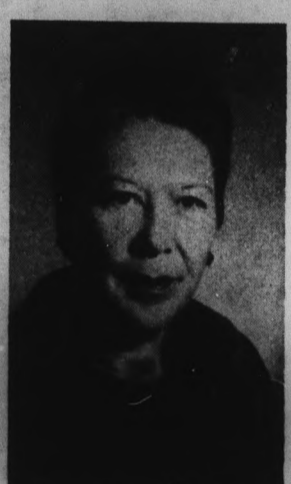
In addition to coordinating the work of the student personnel staff, the Dean of Students is also Director of Student Activities; member of the President's Advisory Council, Coordinating Council, Faculty Senate, and Academic Affairs Committee, the Scholarship

Committee and the Student Affairs Committee.

The Associate Dean is responsible in the following areas: orientation, counseling, coordination of the religious program, the Health Service, and the activities calendar. The staff is responsible for women's government, organizations, residence halls, personnel records and needs.



Dr. Weldon P. Shofstall



Dr. Catherine G. Nichols

First Drama Try-Outs To Be Aug. 17-18

Celebrity, Fine Arts Series Entertain

The University Players, ASU's campus little theater group, will present six major productions during the 1964-65 year.

Auditions for the first play, Oscar Wilde's "The Importance of Being Earnest," will be held Aug. 17-18 at 7:30 p.m. in the Lyceum, according to Dr. James Yeater, director and assistant professor of speech and drama.

All students interested in any phase of theater arts are invited to participate in the drama activities supervised by Yeater and Don Doyle. Students are needed as actors, or as technical assistants in costuming, makeup, scenery, construction, lighting, publicity or stage management.

Completing the University Players' play bill will be Shaw's "Heartbreak House," "Westside Story," Frisch's "The Fire Bug," Mozart's "Marriage of Figaro," Shakespeare's "Much Ado About Nothing" plus two children's plays and a dance drama.

World renowned musical and

dramatic artists will appear at Arizona State University during the Celebrity Series and Fine Arts Series of the 1964-65 year. The series will be part of the inaugural year ceremonies of the new Grady Gammage Memorial Auditorium.

At registration each student will register for his choice of series, giving him a reserved seat at no extra charge. A student wanting to attend productions of the other series may buy seats for each performance at a reduced rate.

The Celebrity Series will feature Andre Previn and his group; Mantovani and his orchestra; "Beyond the Fringe," a Broadway play; and the Royal Welsh Male Chorus and Dancers. The Fine Arts Series includes "King Lear"; the Chicago Opera Ballet; "Don Giovanni"; and Canadian pianist Glenn Gould.

ASU students are informed of campus events and activities by the State Press, a university-owned, student-operated news-

paper published twice weekly throughout the year. Subscription is included in the activity fee. Staff work serves as professional training for students enrolled in journalism courses and lends weight to student applications for jobs in the mass media industry.

The university yearbook, Sahuaro, is student-edited and published under the auspices of a faculty appointed supervisor. Art and photography students, future teachers planning to supervise high school publications and others interested in a major student activity find Sahuaro work rewarding.

In general charge of publications is the Board of Student Publications, equally representing the faculty, the administration and the Associated Students with a journalism faculty member as chairman. The Board selects student editors, who in turn select their own staffs and exercise editorial responsibility within the standards established by the Board.

Vice President Job Opportunities Cady Graduate Many For Students Of University

When the late Grady Gammage came to Arizona State University in the summer of 1933 to assume a presidency which would continue for more than a quarter of a century, the man to whom he reported for the keys to the campus was Gilbert L. Cady, now the Vice President for Business Affairs.

Cady, who began his career at ASU as a student, graduating 30 years ago with the class of 1934, still holds the keys to the solution of all problems involving the fiscal and physical management of a 300-acre campus with an appraised value exceeding \$50 million.

Starting at ASU as a freshman among 836 students, Cady worked his way through college as a part-time employee in the business office which led to successive posts as business secretary, college comptroller, administrative assistant to the president and, in 1957, the vice presidency.

One of the significant links between the University's color-



Gilbert Cady

ful past and its promising future, Cady's career at ASU has extended through four presidential terms. His dynamic leadership during the last three decades has been an important factor in the institution's development from an enrollment of 836 to one of more than 17,000 students.

The only interruption in this long term of dedicated service to the University during the period of its greatest growth came in 1941 when he left the campus to become an Army officer. He served overseas 37 months.

"As I see it," he says, "mine is a service function—providing facilities so that our academic people can do their jobs. "Increased enrollments are bringing us ever-rising costs. This institution has for so long been obliged to exist on tight marginal budgets, we have the habit of trying to get double value for every dollar expended."

The continuing influx of industry into Arizona is increasing the opportunities for ASU graduates.

Dr. Robert F. Menke, director of Arizona State University Placement Center, says "Job opportunities are opening up nationally and internationally as well as in Arizona, because of the many companies which have branches here and because ASU is attaining more prominence."

This past spring, representatives of 350 business firms and government agencies visited the ASU campus to recruit employees for their concerns. This was more than the number that recruited employees at ASU in the year before.

The strongest demand was for engineers, technicians and physical scientists.

Accountants and other business administration graduates are in strong demand. Many ASU graduates in the teaching field go to work in Arizona.

"The greatest demand in educational placement is for elementary school teachers and for those with elementary certificates who can teach in special fields, such as music, library work or girl's physical education. Teacher shortages in Arizona are also continuing at the high school level," notes Dr. Menke.

PART-TIME WORK

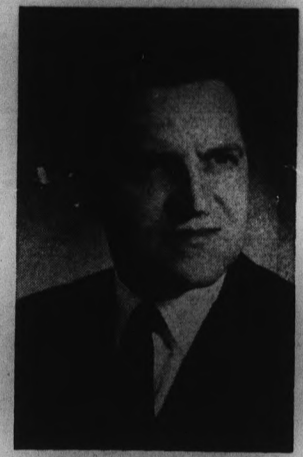
For the student who must work to supplement his income, Arizona State University, thanks to its location, is an ideal place to enroll. Located in the industrial and population center of the state, ASU offers many employment opportunities in Phoenix, Tempe, Mesa and Scottsdale businesses. Many on-campus part-time jobs are also available. To help the student, ASU has the Placement Center, on the ground floor of the Administration building. All student interested in jobs will find it helpful to register there.

Higher Education Center Formed

A Center for Higher Education, directed by Dr. Harry K. Newburn, professor of education, has been established at Arizona State University.

The Center, which will be housed in the College of Education, will coordinate studies for higher education, and will promote training programs including the preparation of administrators for colleges and universities, of college student personnel officers and of college and university instructors.

The new agency will also encourage research and may conduct field services for colleges and universities throughout the Southwest, particularly for the emerging junior colleges in Arizona.



Dr. Robert F. Menke

Sororities, Fraternities Schedule Rush

Eleven sororities and 21 fraternities are active on the Arizona State University campus and all conduct formal rush period during the fall.

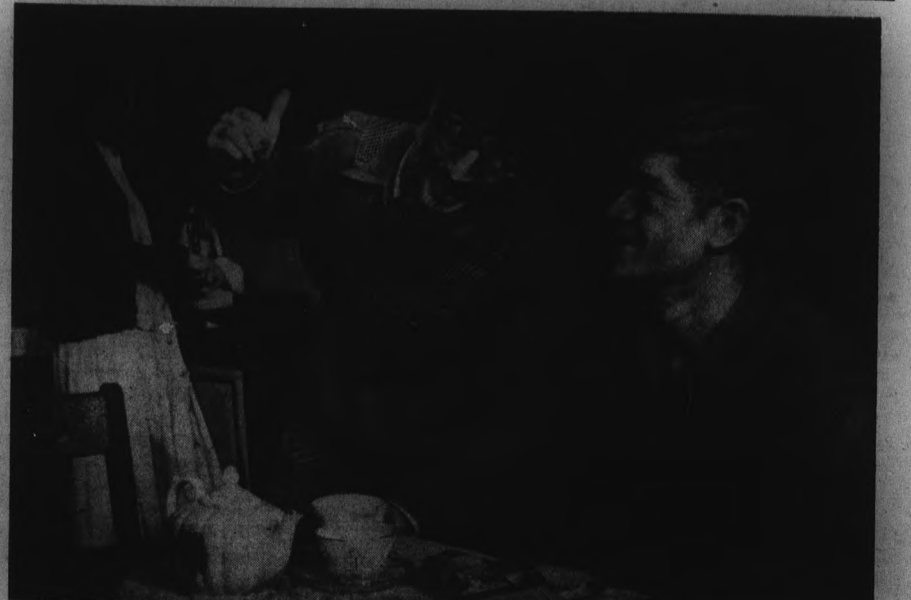
Coeds who want to join a sorority at ASU this fall should plan to be on campus ahead of Freshman Week for an orientation assembly Friday, Sept. 11 at Palo Verde Hall.

Sorority rush begins Friday, Sept. 11, with the orientation assembly in Palo Verde Hall at 12:30 and parties from 1:30-8:20. Parties also will be held Saturday, Sept. 12 from 1:30-6:00, and Sunday, Sept. 13 from 2:00-5:10.

Theme parties will be held Friday, Sept. 18 from 7:00-9:50, and preference parties on Saturday, Sept. 19, from 4:30-6:20. Bids will be issued after 2:00 on Sunday, Sept. 20.

Fraternity rush begins Friday, Sept. 18, with an orientation assembly at 6:30 p.m. Open houses will be held Saturday, Sept. 19, from 1:00-5:00, and Sunday, Sept. 20, from 1:00-10:00. Smokers will be held Monday, Sept. 21, from 1:00-10:00 and Tuesday, Sept. 22, from 6:30-10:00. Preference parties will be Wednesday, Sept. 23, from 1:00-9:00, and Thursday, Sept. 24 from 7:00-9:00.

Fraternity bids will be issued Friday, Sept. 25, from 1:00-5:00 with pledging ceremonies after 5:00. In order to join a fraternity before Oct. 13, men must go through formal rush. No one may pledge during the summer or before 5:00 Friday, Sept. 25.



UNIVERSITY PLAYERS is ASU's campus little theater group which will present six major productions this year. Tryouts are set for 7:30 p.m. Aug. 17-18 in the Lyceum building for group's first offering Sept. 24, "The Importance of Being Earnest," by Oscar Wilde. Three plays will be in new Grady Gammage Memorial Auditorium.

SUN DEVIL ATHLETES GAIN NATIONAL HONORS

Three Sports Are Among Leaders



Intercollegiate athletics at Arizona State University is prospering as never before on the national sports scene. Three sports are ranked by team nationally and ASU was among the top 20 in each. Baseball was rated first by Collegiate Baseball newspaper, football 13th and basketball 15th by United Press International.

But that was last year. Not quite the same outlook is forecast for 1964-65—especially in football and basketball. Coach Frank Kush will field a young inexperienced gridiron team that jumps into the deep end of the schedule the first time out against independent powerhouse Utah State University.

Also on the schedule are University of Wichita, the only team to beat ASU last year, University of Utah, Kansas State University (homecoming), San Jose State and University of Arizona.

Kush feels the entire season could hinge on the early season play of key veterans quarterback John Torok, halfbacks Larry Todd, Ben Hawkins and Gene Foster, end Jerry Smith, tackle Frank Mitacek and guard Bobby Johnson. The latter two are the only returning starters off the 1963 8-1 squad.

Among the youngsters that must produce quickly most of the praise has gone to backs Jess Fleming, Jim Bramlet, Hal Lewis, Ron Barber and Floyd Harris and quarterback John Goodman.

Basketball, under Coach Ned Wulk and frosh mentor Bill Mann, finds itself without three regulars—Joe Caldwell, Art Becker and Gary Senitz. The Devils also face perhaps the toughest schedule ever with national NCAA champ UCLA, NIT champ Bradley and perennial powerhouses Utah State, Oregon State, Texas Western plus the rugged Western Athletic Conference (which ASU has won or shared the past two titles).

One fulltime regular returns in Dennis Dairman. The 6-5 Phoenix senior will play either forward or guard. Two part-time returning regulars are 4-7 Dennis Hamilton and 6-2 Rich Coppola, both juniors plus monogram winners 6-10 Jim Proctor, 6-4 Gerald Jones and 6-5 John Myers.

Coach Bobby Winkles' baseball team had its best season ever (39-5 in regular season play) during 1964, advancing to the College World Series in Omaha, Neb. And next spring should find the Devils in fairly good shape.

Returning veterans (pending professional signings) are strike-out king Skip Hancock, Ron Lea, Jim Merrick and John Torok on the mound and hitters Jan Kleinman, Sal Bando, Luis Lagunas and Ray Stadler.

This crop along with a strong group of sluggers could provide another hitters year as was '64 for the Devils. Track Coach Senon "Baldy"

Castillo conceivably could have two performers in this fall's Tokyo Olympics—dashman Henry Carr and quarter miler Ullis Williams.

This duo will return next spring to form the nucleus of the '65 track squad along with veteran dash man Tom Hester, hurdler Ben Hawkins, weight men Jon Cole and Larry Hendershot and javelin thrower Glenn Winningham.

Gymnastics produced the first national champion ever at ASU in still ring performer Chris Evans during 1964. Evans copped the NCAA ring title his senior year after finishing fourth in 1963.

Former national wrestling champion Oklahoma and current small college NCAA titlist Western State College appear on the 1964-64 ASU mat schedule.

Wrestling Coach Ted Bredehoft will battle this potent opposition with returning lettermen Buzz Hays (157), Tony Russo (137), Ed Foy (167) and Fred Wilcox (Hwt.)

Bredehoft also doubles as tennis mentor. His 1964 team posted the first winning season ever in ASU history with a 22-6 dual meet record. Lost from that squad is senior Jay Rubinow.

Golf prospers under the Arizona climate and so does Coach Bill Mann's Sun Devil duffers. ASU finished 13-6-2 in dual meets and finished third in the first Sun Devil Invitational.

Swimming and diving the newest addition to the ranks of intercollegiate athletics at ASU, enjoyed a good year in 1964. Coaches Walt Schlueter and Dick Smith, former and current U.S. Olympic Women's Diving Team coaches, could field ASU's first male diving hopeful in the 1964 Olympics with sophomore Bernie Wrightson.

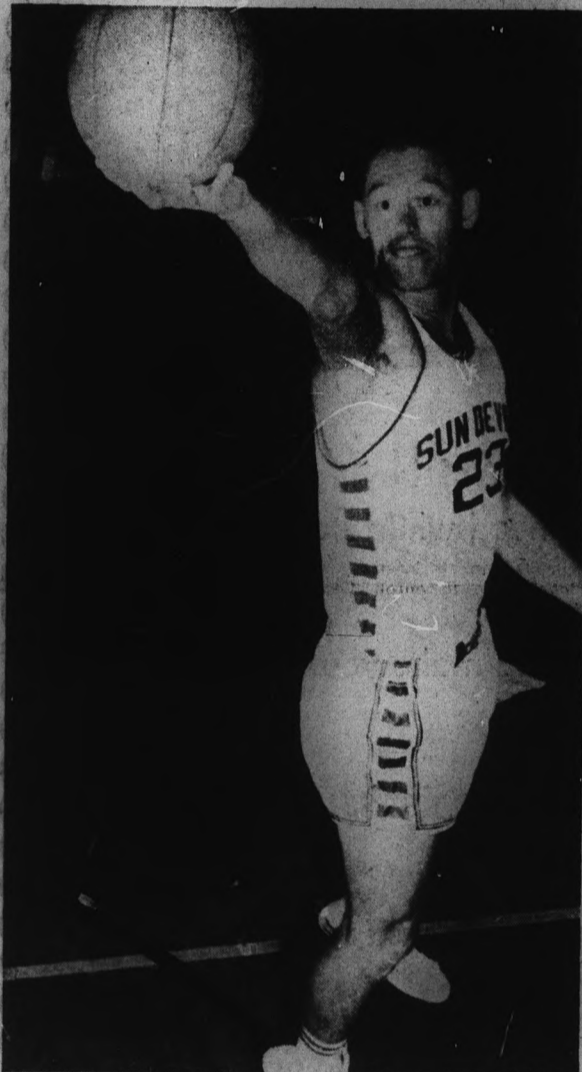


Clyde B. Smith
Director,
Intercollegiate Athletics

SOPHOMORE Ben Hawkins, rated one of the best of the upcoming backs in the Western Athletic Conference, skirts end on ASU's famed power sweep play in Sun Devil's 30-22 win over Utah. Leading inter-

ference are Sam Fanelli (77), Steve Turkovich (21) and Joe Kush (69). Taking out the one Utah tackler visible is end Alonzo Hill.

ference are Sam Fanelli (77), Steve Turkovich (21) and Joe Kush (69). Taking out the one Utah tackler visible is end Alonzo Hill.



Center Art Becker was twice named to first unit of Academic All-America basketball team. A history major, Art compiled a better than "B" average.



SECOND BASEMAN Luis Lagunas hit .340 as Devils posted best record in school's history—44-7. Luis won second team All-America honors.



OLYMPIC hopeful Henry Carr as a sophomore set world record at 220 at 20:3 seconds. This past season as a junior he bettered it with a 20:2 clocking.

Here Is Freshman Week Program -- Bring It With You September 14

<p>ORIENTATION WEEK 1964-65</p> <p>General Schedule For All New Freshmen Students</p> <p>This program applies to all new students, Monday, Tuesday and Wednesday are scheduled according to colleges, the individual schedules of which are included here. Each student on these days should follow the schedules outlined for the college he wishes to enter. Students who have not yet selected a college or "major," should follow the schedule of the College of Liberal Arts.</p> <p>GENERAL SCHEDULE FOR ALL STUDENTS</p> <p>Monday, September 14</p> <p>8:15 a.m. University Orientation Assembly—Grady Gammage Memorial Auditorium.</p> <p>After Assembly FOLLOW THE INDIVIDUAL COLLEGE SCHEDULE OF THE COLLEGE YOU ARE ENTERING.</p> <p>7 - 7:30 p.m. General Orientation Program, Channel 8, T.V.—May be viewed in residence halls and in Memorial Union.</p> <p>8 p.m. President's Reception.</p> <p>Tuesday, September 15</p> <p>8 a.m. - 5 p.m. FOLLOW THE INDIVIDUAL COLLEGE SCHEDULE OF THE COLLEGE YOU ARE ENTERING.</p> <p>7 p.m. Phrateres Reception for all new off-campus women, Memorial Union; AMS AWS Assembly in Memorial Union; AMS Assembly in Business Administration 203.</p> <p>Wednesday, September 16</p> <p>8 - 8:30 a.m. and 9 - 9:30 a.m. General Orientation Program, Channel 8, T.V.—May be viewed in residence halls and Memorial Union.</p> <p>10 a.m. - Noon FOLLOW THE INDIVIDUAL COLLEGE SCHEDULE OF THE COLLEGE YOU ARE ENTERING.</p> <p>10 a.m. - Noon X-Rays by appointment.</p> <p>1 - 5 p.m. American College Test (ACT), Life Science Center 191, REQUIRED of all new students who have not taken this test, \$4 testing fee.</p> <p>1 - 4 p.m. English 101 Exemption Test, Social Sciences 101. For those who have taken ACT, No Charge.</p> <p>6:30 p.m. Picnic on campus, south of Memorial Union.</p> <p>7 - 7:30 p.m. General Orientation Program, Channel 8, T.V.—May be viewed in residence halls or Memorial Union.</p> <p>Thursday, September 17</p> <p>Registration for freshmen. Follow instructions in registration materials.</p>	<p>6 p.m. Painting of the "A".</p> <p>7 p.m. Pep Rally.</p> <p>Friday, September 18</p> <p>8 a.m. - Noon ACT, Life Science Center 191.</p> <p>8 a.m. - 5 p.m. X-Rays, Student Health Service, Mortar Board Tea.</p> <p>4 - 5 p.m. Mixers, Quadrangle, Palo Verde East, Palo Verde West.</p> <p>Saturday, September 19</p> <p>8 a.m. - Noon X-Rays, Student Health Service.</p> <p>4 - 5 p.m. Reception for international students.</p> <p>8 p.m. Football Game, Sun Devil Stadium.</p> <p>COLLEGE OF LIBERAL ARTS</p> <p>Monday, September 14</p> <p>8:15 a.m. FOLLOW THE GENERAL SCHEDULE. College of Liberal Arts Orientation, Men's Gym.</p> <p>8:45 - 9:45 a.m. Pick Up Registration Materials, Physical Education Annex.</p> <p>10:30 a.m. - Noon Mathematics Testing, Required for courses in math, physics, or chemistry, BA 203.</p> <p>1 - 2:30 p.m. Foreign Language Testing, Required for courses in foreign languages, Social Sciences 105.</p> <p>3:30 - 5 p.m. X-Rays by appointment.</p> <p>Tuesday, September 15</p> <p>9 - 9 a.m. Departmental Orientation.</p> <p>9:30 a.m. - 5 p.m. Individual Advising and X-Rays by appointment.</p> <p>Wednesday, September 16</p> <p>9 - 9:30 a.m. FOLLOW THE GENERAL SCHEDULE. Individual advising.</p> <p>10 a.m. - Noon X-Rays by appointment.</p> <p>1 - 5 p.m. ACT, Life Science Center 191.</p> <p>1 - 4 p.m. English 101 Exemption Test, Social Sciences 101.</p> <p>COLLEGE OF ARCHITECTURE</p> <p>Monday, September 14</p> <p>8:15 a.m. FOLLOW THE GENERAL SCHEDULE. Pick Up Registration Materials, P. E. Annex.</p> <p>8:45 - 10:30 a.m. College of Architecture Orientation, Physical Science 100.</p> <p>10:30 a.m. - Noon Aptitude Testing, Physical Sciences 100.</p> <p>1 - 5 p.m. Tuesday, September 15</p> <p>8 a.m. - Noon Aptitude Testing, Physical Sciences 100.</p> <p>1 - 5 p.m. Individual Advising.</p> <p>2 - 3 p.m. X-Rays by Appointment.</p> <p>Wednesday, September 16</p> <p>8 - 9:30 a.m. FOLLOW THE GENERAL SCHEDULE. Individual advising.</p> <p>10 a.m. - Noon</p>	<p>1 - 5 p.m. Individual Advising.</p> <p>1 - 5 p.m. ACT, Life Sciences 191.</p> <p>1 - 4 p.m. English 101 Exemption Test, Social Sciences 101.</p> <p>COLLEGE OF BUSINESS ADMINISTRATION</p> <p>Monday, September 14</p> <p>8:15 a.m. FOLLOW THE GENERAL SCHEDULE. Pick Up Registration Materials, P. E. Annex.</p> <p>10 - 10:30 a.m. College of Business Administration Orientation, BA 203.</p> <p>10:30 a.m. - Noon Departmental Orientation and Group Advising, BA Building.</p> <p>1 - 3 p.m. Mathematics Testing, Required of all BA students, BA 203.</p> <p>3:15 - 5 p.m. Tuesday, September 15</p> <p>8:30 - 5 p.m. Individual Advising, BA faculty offices.</p> <p>8:30 - 5 p.m. X-Rays by Appointment.</p> <p>3:30 - 5 p.m. Foreign Language Testing, BA 203.</p> <p>Wednesday, September 16</p> <p>8 - 9:30 a.m. FOLLOW THE GENERAL SCHEDULE. Individual advising.</p> <p>10 a.m. - Noon ACT, Life Sciences 191.</p> <p>1 - 5 p.m. English 101 Exemption Test, Social Sciences 101.</p> <p>COLLEGE OF EDUCATION</p> <p>Monday, September 14</p> <p>8:15 a.m. FOLLOW THE GENERAL SCHEDULE. College of Education and Departmental Orientation, Memorial Union Ballroom.</p> <p>9:30 - 11:30 a.m. Pick Up Registration Materials, P. E. Annex.</p> <p>1 - 1:30 p.m. A-L College of Education Achievement Tests, Life Sciences 191.</p> <p>1:30 - 5 p.m. Mathematics Testing, for math majors, BA 203.</p> <p>3:15 - 5 p.m. Tuesday, September 15</p> <p>8 - 11:30 a.m. M-Z College of Education Achievement Tests, Life Sciences 191.</p> <p>8 a.m. - Noon A-L Individual Advising by appointment.</p> <p>8 a.m. - Noon X-Rays by appointment.</p> <p>1 - 5 p.m. M-Z Individual Advising by Appointment.</p> <p>3:30 - 5 p.m. X-Rays by Appointment.</p> <p>Foreign Language Testing, BA 203.</p> <p>Wednesday, September 16</p> <p>8:30 - 5 p.m. FOLLOW THE GENERAL SCHEDULE. Individual Advising by Appointment.</p> <p>10 a.m. - Noon X-Rays by Appointment t.</p> <p>1 - 5 p.m. ACT, Life Sciences 191.</p>	<p>1 - 4 p.m. English 101 Exemption Test, Social Sciences 101.</p> <p>Individual Advising by Appointment for those who have taken the ACT. X-Rays by Appointment.</p> <p>COLLEGE OF ENGINEERING SCIENCES</p> <p>Monday, September 14</p> <p>8:15 a.m. FOLLOW THE GENERAL SCHEDULE. Pick Up Registration Materials, P. E. Annex.</p> <p>9:30 - 10 a.m. College of Engineering Sciences Orientation and Group Advising, Life Sciences 191.</p> <p>10 a.m. - Noon Individual advising, Engineering Center.</p> <p>Tuesday, September 15</p> <p>8 a.m. - 5 p.m. Individual advising, Engineering Center.</p> <p>10 a.m. - 5 p.m. X-Rays by appointment.</p> <p>3:30 - 5 p.m. Foreign Language Testing, BA 203.</p> <p>Wednesday, September 16</p> <p>8 - 9:30 a.m. FOLLOW THE GENERAL SCHEDULE. Individual advising.</p> <p>10 a.m. - Noon X-Rays by appointment.</p> <p>1 - 5 p.m. ACT, Life Sciences 191.</p> <p>1 - 4 p.m. English 101 Exemption Test, Social Sciences 101.</p> <p>COLLEGE OF NURSING</p> <p>Monday, September 14</p> <p>8:15 a.m. FOLLOW THE GENERAL SCHEDULE. College of Nursing Orientation, Social Sciences 108.</p> <p>9 - 10:30 a.m. Pick Up Registration Materials, P. E. Annex.</p> <p>10:30 - 11 a.m. X-Rays by appointment.</p> <p>11 a.m. - Noon Mathematics Testing, required, BA 203.</p> <p>1 - 2:30 p.m. Foreign Language Testing, Social Sciences 105.</p> <p>3:30 - 5 p.m. Tuesday, September 15</p> <p>8:30 a.m. - 4:30 p.m. Individual advising, College of Nursing, by appointment.</p> <p>Wednesday, September 16</p> <p>8 a.m. FOLLOW THE GENERAL SCHEDULE. Individual advising by appointment.</p> <p>8:30 a.m. - 4:30 p.m. ACT, Life Sciences 191.</p> <p>1 - 5 p.m. English 101 Exemption Test, Social Sciences 101.</p>
--	--	--	---

SPECIAL INFORMATION FOR TRANSFER STUDENTS
All new transfer students who have not obtained a clearance card for the American College Test (ACT) must report to Room 191, Life Science Building, on Sept. 16 at 1 p.m. or on Sept. 18 at 8 a.m. Testing fee is \$4. Test Clearance Card is required for final registration.

Welcome Freshmen

The University Bookstore Is At Your Service

Come In And 'Shop Around' Before The Big 'Rush'

Shop On Campus

The University Bookstore

" . . . Your Campus Store . . . "

. . . Owned and operated by Arizona State University; to serve the needs of the students and faculty of this institution.

. . . Stocking a complete line of books — textbooks, reference, and general reading. A vast assortment of the best paperbacks.

. . . School supplies — Paper, Pencils, Pens, Notebooks, and all supplies necessary for the proper completion of your school work.

. . . Engineering Equipment—the widest assortment of the finest engineering supplies in the country—approved by the School of Engineering. The very best at the lowest prices to be found anywhere.

. . . Art Supplies and Equipment — a complete selection of the very best. All types of paints, brushes, paper, canvas, etc.

. . . A complete college line—monogrammed shirts, jackets and sweatshirts Decals and college souvenirs... Pennants, ceramics and college jewelry.

. . . Stationery — both social and engraved papers. Numerous types of both boxed and open stock.

Save More Money

Regular Hours

8 - 7 Monday thru Thursday

8 - 4:30 Friday

9 - 1 Saturday

- . . . Early purchases assure you of buying the books and supplies you need while stock is plentiful.
- . . . Shop before the "rush" and make your adjustments later.
- . . . Full 15 day refund period beginning with registration day.
- . . . No refunds are made without a cash register receipt.
- . . . Merchandise to be refunded must be in new and resalable condition.
- . . . Do not remove price tags or book covers.
- . . . The cash register receipt must accompany merchandise to be returned.

We Buy Used Books The Year Around

Visit Your

UNIVERSITY BOOKSTORE

LOCATED IN MEMORIAL UNION BUILDING

Serving The Students And The Faculty