

(SP Photo by Ed Ryan)

OFF TO ATHENS? — Kappa Kappa Gammas Gay Parker and Kathy Suarez, holding sign, chase Bart Bean through the College Avenue and Orange Street intersection Thursday

morning while getting out the news about Derby Day. The annual derby chase began early this morning with 11 other novel contests planned tomorrow in Goodwin Stadium.

Derby Day Celebrations Begin Today

Cries of "Grab That Derby!" are echoing this morning as Sigma Chi's third annual Derby Day gets underway with the traditional derby chase.

Fourteen teams representing sororities and women's dorms are competing in 12 novelty events today and tomorrow to earn points for trophy competition in this year's Derby Day.

For the chase, each Sigma Chi today wears a derby as long as he can and is fair game for all coeds who compete to collect the most derbies. Each derby counts one point for the group.

TOMORROW'S activities begin at 9 a.m. at the Sigma Chi house with the blue jean painting contest. Attired in as many pairs of blue jeans as possible, team members will peel them off as Sigma Chi members paint the Sigma Chi Greek letters on each pair.

Five points are possible for the team that has the most jeans worn and five points will be awarded to the individual wearing the most.

THE REMAINING 10 events will be at 1 p.m. in Goodwin Stadium. Coeds from each team will try for points in the doughnut dash, flour frolic, bamboo ramble, greased pig capture,

derby darlin', obstacle course, musical chairs, dizzie lizzie and a mystery event.

The third team effort will be the "dress a Sig" contest for which each group has three minutes to dress a Sigma Chi in the costume of a famous person.

In the events, five points will be awarded first place winners, three to second place winners and one point to third place winners.

A FREE DANCE for all students from 8 p.m. to midnight in the MU Ballroom will conclude Derby Day's activities. Music will be by the Silvertones. Trophies will be awarded at the dance.

A perpetual trophy and cup go to the first place overall group winner. The second and third place over-all winners get cups and the individual winners get fraternity paddles for their groups.

Committee Gets Letters

By PAT HUNTER
Staff Editor

"I am delighted to hear of your proposal to have a Shakespearean theme for your festival this year" — Mayor Cyril J. Kemp of Stratford-on-Avon, England.

Since the MU Birthday Party Committee announced its plans for the "Golden Age of Elizabeth," letters from Shakespearean festivals across the United States and England have reached its office.

The deputy chairman and director of the English festival, Levi Fox, sent the committee the program for the commemorative celebration in England this year. The owner of a London bookstore, Alec Clums, sent a 15-page list of reference material for the committee's use.

The committee has also corresponded with the British Travel Association, which lists

Prince Philip as a patron. The Stratford, Ontario, Canada, Shakespearean Festival Committee also has written to the committee.

The American Astronomical Society also sent the committee "best wishes for success," and correspondence has been re-

ceived from Colorado Shakespearean Theater, the Globe Theater in San Diego, the Oregon Shakespearean Festival, the New York City "Shakespeare in the Park" Festival and the American National Shakespearean Theater and Academy, Stratford, Conn.

Board Suggests Removal Of 21 Bookstore Magazines

By GORDON ROBBINS
Co-News Editor

A recommendation has been submitted to the University Bookstore from the MU Board that 21 magazines be removed from the bookstore magazine racks.

The magazines the board objects to are: Male, Saga, Men, Stag, For Men Only, Playboy, Secrets, Modern Romance and True Confessions.

Also: True Experience, True Love, True Story, True Detec-

tive, True Police Cases, Startling Detective, Screen Land, Screen World, Motion Picture, Screen Parade, Movie Life and Movie Land.

The recommendation was made after each board member contacted their respective contingencies for a sampling of opinion, according to Kaye Anderson, MU Board chairman.

Miss Anderson said the action was taken following a request by the student delegate to the board from the Student Religious Council that the board look into the quality of the magazines.

SRC did investigate the matter but did not announce its decision or take any action on the matter.

'Enjoy Being A Coed' Day Slated April 16

A day to dress up and enjoy coed status will come to ASU women April 16, Women's Day.

Sponsored jointly by Associated Women Students and the Faculty Women's club, the day will feature a morning assembly and reception and an evening banquet.

Speaker for the assembly will be Mrs. Carl Brandenfels, a practicing lawyer and advertising agency owner. The assembly will be at 10:30 a.m. in the MU Ballroom.

Following the assembly, the Faculty Women's club will sponsor a reception for Mrs. Brandenfels open to faculty and coeds.

Tickets for the banquet can be purchased from AWS representatives or Phrateres members. Cost is \$1.50, or 60 cents with a meal ticket.



(SP Photo by Ed Ryan)

Military Ball Tonight

Coeds Jan Schwanke, left, and Janice Ayers and two AFROTC cadets appear ready for the Military Ball to be conducted tonight at the Ramada Inn, Phoenix. The ball is sponsored by the Air Force ROTC from 9 p.m. to 1 a.m. Crowning of the 1964 Military Ball Queen and awarding of door prizes will be main events of the evening. Music will be provided by the John Costello Band.

New Constitutions -

Revisions Cause Senate Conflict

The Senate debated the AMS and AWS constitutions Wednesday and scheduled further discussion for the next session, April 1.

The Senate sent two recommendations on the AWS Constitution to the AWS General Council.

The Senate recommended the AWS senators be required to have a 2.2 cumulative index instead of a 2.5 as was presented. The Senate felt a 2.5 was too high and it would conflict with the AS Constitution's 2.2 requirement.

It also recommended Article XII, regarding the publication of "Coed Cues," be struck and incorporated in the by-laws.

If publication regulations are written into the constitution, then the Finance Committee must appropriate funds for its support; however, if it is part of the by-laws the committee does not have to appropriate the money.

After addressing the Senate on the details of the new portions of the AMS Constitution, Bob Montano, AMS Constitu-

tion and Revision Committee chairman, moved the constitution be passed.

Sen. Sam Linder made a substitute motion that the constitution be tabled until the next Senate meeting. Linder said he did not feel that they had had ample time to discuss the constitution. His motion was passed.

Montano was asked if AMS had the authority to control intramurals. He replied it does not have such authority and it would take a statute to give AMS the authority.

Sen. Nick Hagen asked if the constitution should include that the AMS Council representatives from the Honors Council represent only male honoraries. Montano agreed.

Shofstall Projects Theory On Students' Alcoholism

By DAVID HOYT

Theoretically, 128 ASU seniors are alcoholics.

This is a projection for a class of 2,400 based on information compiled by Dr. Weldon P. Shofstall, dean of students.

Because of his concern with student alcoholism, Dean Shofstall has been asked by the College Fraternity Editors Association to contribute an article on this subject for publication in the magazines of national social fraternities.

The article, entitled "Alcohol," is one of a series dealing with problems fraternities encounter.

IN HIS article, Dean Shofstall points out that the potential alcoholic has no advance warning of addiction until he starts drinking and then it may be too late.

He believes if students could

be made aware of the basic facts about alcoholism they could deal with it more effectively.

Dr. Shofstall emphasized: One person in 15 is a potential alcoholic; no one can know in advance whether or not he is a potential alcoholic; an alcoholic can not drink even a small amount without suffering serious

consequences; an alcoholic pattern is evident soon after the potential addict begins to drink; and, there is no generally accepted cause or known cure for alcoholism.

SHOFSTALL'S program for students suggests expert counseling at the first sign of an alcoholic problem.



Laird Pharmacy

PRESCRIPTION SPECIALISTS

TOBACCO — FOUNTAIN
We Give S & H Green Stamps

501 Mill

Tempe

NEED PHOTOGRAPHS?

RESUME & PUBLICITY PHOTOS

Sororities & Fraternities!

Spring Formals, Composites & Albums

A REMINDER —

May 10th Is Mother's Day

YOUR PORTRAIT, THE MOST TREASURED GIFT

Give HER the BEST

Call 967-4467



8th St. At Scottsdale Road
TEMPE, ARIZONA

Make An Appointment Today

Traffic Appeals Decisions Given

The Traffic Appeals Board issued the following results:

DENIED MARCH 11

John McBride, John Doherty, Jr., Louis Cavaleri, Edna Crossman (2), Janet Velasco, Ellen Reeves, Jerry Johnson, John Paris, John Wilbur (1).

APPROVED MARCH 11

Bill Cooper, Vincent Giles (2), David Adams, Gerald Holladay, Frank Cooper, Jr., Gary Schmidt, John Wilbur (1).

APPROVED MARCH 18

Thomas Rogers, Herald Schade, Sandra Hatfield, Harvey Wolfe (2), John Dick (2), Michael Yameli, Raymond Everett, Marcus Clapp, Iris Schiers (1).

DENIED MARCH 18

Richard Karon, Mitch Siskowski, John van Houten, William Shammie Jr. (2), Richard Weinberg, Geoff Fowler (2), Robert Eppler, Clifford Wilson, Barbara McNair, Reuel Matkin, Chris Stetzer, James Huey, Iris Schiers (1).

There will be no appeals meeting Wednesday.

FREE! 5x7 ENLARGEMENT
With Each Roll of B&W Film Processed At
Pioneer Camera Shop
Tempe Center

ABBOTT PSYCHOLOGICAL SERVICES
204 Apache Plaza
1000 Apache Blvd.
Tel. 966-0891 Tempe

HARMAN'S Dining Room
Mesa-Tempe Hi-Way
TEMPE

REGULAR \$1.75
Chicken Dinner
ONLY **\$1.00**
MONDAY ONLY

"It's Finger Lickin' Good"

ADVENTURE IN BEAUTY

FABULOUS "TROPIC STAR"

Paul Johnson
JEWELERS

1604 E. CAMELBACK



MEMBER AMERICAN GEM SOCIETY

"Where Originality Is a Tradition"

Open 9 A.M.-5:30 P.M. — Thursdays Till 9 P.M.

Larry and Phyllis Doud
New Owners Of "Peggy's"
In Tempe...
Invite You To Come In
And See The "New Look"

We Would Be Pleased To Open A Charge Account With You (With Approved Credit)

SENIORS...

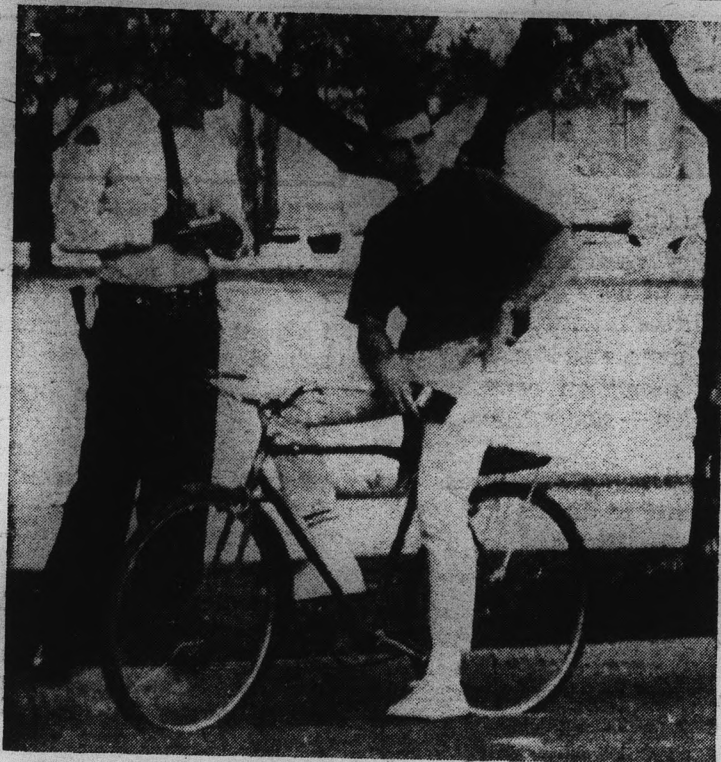
ORDER YOUR CAP & GOWN and RING... NOW...



At The

UNIVERSITY BOOKSTORE

Open Mon. — Thurs. 8-7 Fri. 8-4:30 Sat. 9-1



(SP Photo by Richard Cantor)
SEE THE POLICEMAN. He is writing out a ticket. Write, write, write. See the student. He was riding his bike. Ride, ride, ride. The policeman didn't like his riding. Cite, cite, cite. The student is holding his wallet. Empty, empty, empty.

Senators Review Six Bills

Two Senate bills were given committee of the whole approval, three were sent back to committee and one was postponed until next session by the Senate Wednesday.

SB 204, an act to reorganize the Faculty-Student Relations Committee, and SB 209, an act to revise the duties and organization of the Board of Financial Control, were okayed by the committee of the whole. They will be up for a vote at the next session.

SBs 207, 208 and 212 were referred back to committee. SB 211 was postponed.

'Queen Liz' To Be Chosen To Reign Over MU Party

"Queen Elizabeth" of the MU Birthday Party will be chosen from among 21 coeds competing for the title, it was announced this week. Judging will be done April 5 and the winners announced at a masque April 9.

The queen and her four ladies-in-waiting will hold court during the event in accordance with the 1964 theme, the "Golden Age of Elizabeth."

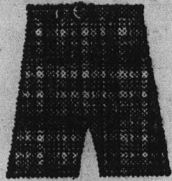
Contestants and their sponsors are Judy Thomas, Palo Verde; Mary Parkey, PV East; Kay Wester, Gammage; Peggy Dahl, Wilson; Connie Kellan, the Quad; Anne Valenzuela,

University Players; Genee Richardson, Spurs; Sue Ellen Hutchens, Alpha Tau Omega; Judith Ormsby, Sigma Phi Epsilon; Ginny Shamberg, Theta Delta Chi; Sandy Forney, Sigma Alpha Epsilon, and Nancy Hayden, Phi Sigma Kappa.

Also, Joan Patricia McGann, Delta Chi; Patricia Echon, Kappa Kappa Gamma; Susan Phillips, Gamma Phi Beta; Elissa Montgomery, Kappa Alpha Theta; Jeanette Minitello, Alpha Phi; Jayme Love, Alpha Delta Pi; Carole Johnson, Kappa Delta; Daryl Edson, Alpha Epsilon Phi, and Karin Loughrige, Chi Omega.

FOR BEST DRESSED BETTER WEEKENDS

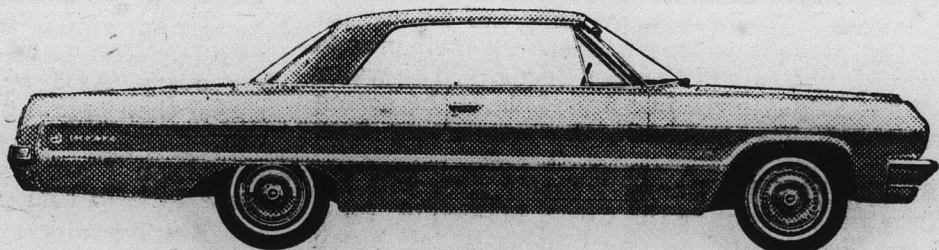
MADRAS



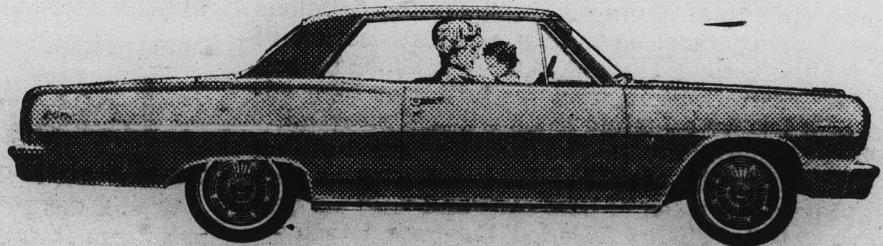
Authentic hand-woven madras from India in the season's smartest, most individual sportcoats, 37.50. Short sleeve madras sport shirts and walk shorts intraditional styling, 8.95 each.

Hanny's Racquet & Shops

Downtown • Christown • Scottsdale
 Thomas Mall



'64 Jet-smooth Chevrolet Impala Sport Coupe (119-in. wheelbase)



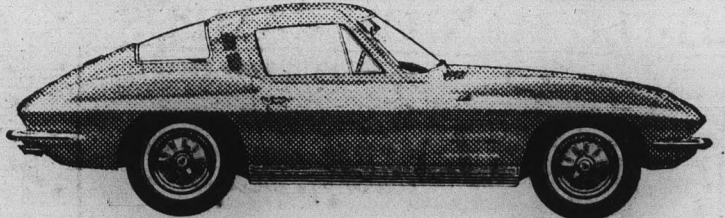
New Chevelle Malibu Sport Coupe (115-in. wheelbase)



'64 Chevy II Nova Sport Coupe (110-in. wheelbase)



'64 Corvair Monza Club Coupe (108-in. wheelbase)



'64 Corvette Sting Ray Sport Coupe (98-in. wheelbase)

Chevrolet will go to any length to make you happy

Things have changed a lot since a Chevy was only a Chevy. Especially your ideas of what you want a Chevy to be.

So now you have the Jet-smooth Chevrolet—17½ feet of pure luxury, bumper to bumper. The size makes it a luxury car. But not the price.

Or you can choose the thrifty Chevy II, a 15¼-foot family car with all kinds of passenger and luggage space.

This year, your choice might be the new 16-foot-plus Chevelle, sized to fit nicely between Chev-

rolet and Chevy II (and between parking meters, with five whole feet left over).

Then, too, there's the sporty 15-foot Corvair, so right for so many people (you girls, in particular) that we've never touched an inch of it. And finally, Corvette—still 14½ feet and still too much for any true sports-car lover to say no to.

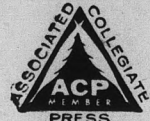
The long and short of it is, you don't have to go to any length to find exactly the kind of car you want. Just see the five different lines of cars at your Chevrolet dealer's.



THE GREAT HIGHWAY PERFORMERS Chevrolet • Chevelle • Chevy II • Corvair • Corvette
 See them at your Chevrolet Showroom.

State Press

THE STATE PRESS, distributed by the campus chapter of Sigma Delta Chi under the direction of Circulation Manager John Nadel, is the official campus newspaper of Arizona State University. It is published each Wednesday and Friday throughout the school year, excepting holidays, and is entered as second class matter at the Tempe, Arizona, Post Office under the acts of March 3, 1879, and August 24, 1912.



THE STATE PRESS is member of the Arizona Newspapers Association, Associated Collegiate Press and national Advertising Service, Inc.

Subscription price, \$3 per school year.
EDITOR-IN-CHIEF: EDWARD GASSER
MANAGING EDITOR: ED HEATH
NEWS EDITORS: GORDON BLACK, GORDON ROBBINS
ASSISTANTS: LARRY WARD, CAROL McPHERSON
CAMPUIS EDITOR: PAM VAN BUSKIRK
ASSISTANTS: SHIRLEY DeMARKE, BETSY JEAN FRITH
SPORTS EDITOR: AL MICHAELS
COPY EDITOR: JOHN KENDALL
ASSIGNMENTS EDITOR: FRANK DUCCESCHI
ASSISTANTS: PAT HUNTER, JOAN SKIPPER
PHOTO EDITOR: ED RYAN
FEATURE EDITOR: LINDA HELSER
CHIEF PROOFREADER: RICHARD CANTOR
ASSISTANTS: JANIE WILLIAMS, MARTY EDGAR

Springtime Frolic

Few students were not affected by the warm spring wind which blew into the Valley Sunday. The wind whipped with it infectious germs of spring fever.

An epidemic of picnics, sunbathing and idle frolicking erupted. Wednesday evening the fellows at Sahuaro Hall were unwilling to break up their orange fight even for two cars of Campus Security. The water fights of last Friday were just a prelude of the spring fun that could develop before the smothering heat hits us.

WEDNESDAY THE annual Easter rites will begin with a mass exodus to the Coast, Mexico or, for a few of the "better off," to the famous spring beach "conventions" in Florida.

After weeks of tension and books, there is nothing more satisfying than having a week off for frivolous activities. Spring vacation is that precious period of rebirth for the college student. At the beaches he can release his frustrations in wild festivities or take advantage of a leisure schedule to ease a reeling mind.

But the migrations to the beaches are nothing new, especially to the people of the coastal towns who must put up with a week of beer cans and wild parties. Last year 65,000 students invaded Daytona Beach — Fort Lauderdale is no longer "in." It seems the townspeople finally got fed up.

OVER SEMESTER break this year, a group of UofA students, again, caused trouble in Guaymas. After considerable drinking they started abusing the hotel employes and patrons. The Board of Regents suspended their 10-day Easter vacation. We're thankful the Regents didn't punish us too like they did when they canceled Easter vacations for two years following a similar incident in 1961.

We received a letter from the chief of police of Laguna Beach, Calif. He wrote, "All regulations and rules . . . liquor laws will be rigorously enforced, and we wish to emphasize that drinking on our beaches is not permitted. Subjects found sleeping or dressing in vehicles will be arrested and physically booked or cited." More towns each year are taking this attitude.

Enjoy yourselves but use moderation. We don't want the reputation the UofA has for vacation disturbances. Our future Easter vacations will depend on our behavior.

LITTLE MAN ON CAMPUS



"THAT'S ALL MALARKY! I SLEPT THRU THREE SEMESTERS OF FRENCH AND I STILL FLUNKED OUT."

A Student's View -

A Special 'Little' Man

By EDIE C. ALLERS

The "Little Man on Campus" cartoon, which State Press frequently runs, is a part of us.

It's a little bit student, a little bit faculty.

It's meant to be cute and clever, and it usually is.

I've seen another "little man" on campus. I'm sure he has a sense of humor also — off campus.

This "little man" is real.

He's in his late sixties or early seventies. His pride is obvious. He's determined to do his job well.

From his carriage and his intelligence, kind face, I assume his former job required cleanliness, intelligence and perseverance.

My "little man on campus" still retains these qualities. He must.

He conscientiously spears our gum wrappers, our empty cigarette packages, our devil-may-care tossed crumpled note papers, our paper cups and candy wrappers.

While he does his chores, my "little man" neither smiles nor frowns. He merely fulfills an obligation to a weekly paycheck.

Every time I see my "little man on campus," I want to offer my help. I want to offer my apologies for every ASU student who tosses paper garbage rather than palming it until reaching the nearest trash can.

When I see "my man" working on campus, I want to help him pick up our throw-aways.

But, I wouldn't dare offer my help to such a proud, yet humble person.

I wish students would pocket their paper garbage until a non-human receptacle appears.

I Cover College Avenue

By ED HEATH
Managing Editor

We are now three-fourths of the way through the current school year.

Those who have been here even for just this short length of time probably have noticed a few of the attitudes and practices of their fellow students.

Not just the ordinary guy you walk with to classes or the typical coed that bounces back and forth over the Eighth Street bridge but those "big people on campus" are all open to self-analysis.

If they aren't, it's time they shook their better-than-thou attitudes.

It's time students face up to certain shortcomings in themselves and in their University lives. And do something about it.

We hope this poem by an unknown author that has been a favorite around the office for several years, will help point out some specifics.

* * *

Letters To The Editor

TO THE EDITOR:

What is this morality campaign you mention in the State Press? No card playing in the MU! Conducive to cheating, perhaps? How about solitaire?

As for no pin ups in the dorms, what's the good? All the student has to do is look out his window and see a walking pin up in skin-tight shorts. If the campaign is serious it had better pass out mu-mus (mother hubbards).

Elmer Abbott

TO THE EDITOR:

The bookburning of Playboy and other magazines from the shelves of the school bookstore makes one wonder just what the hell is going on around here.

Few modern magazines have the well-rounded format of Playboy, which offers features on fashion, travel, sports, humor and masses of intellectual material even a college newspaper would be reluctant to print (for example, "An Interview with Ayn Rand").

The pushing of this publication underground makes about as much sense as abolishing AWS because a coed gets in trouble.

Charles Stough

TO THE EDITOR:

The MU Board made the policy of no card-playing in the lower lounge for the following reasons:

1. The type of language reportedly being used by the spectators and participants alike.

2. The lounge became a room dominated by one group of individuals, who began playing cards at 8 a.m. to 5 p.m.

3. Suspected gambling during the games.

ing the games.

At the MU Board meeting Wednesday, representatives of the card players did come to state their reasons for wanting to continue playing cards in the lower lounge. They assured the board that they knew of no gambling taking place. They further stated language and noise could be curtailed and Clancy's was impossible to use due to its darkness and inaccessibility.

After consideration of the objections presented, the board voted that students be allowed to play cards in the lower lounge until Clancy's is remodeled.

MU Board

TO THE EDITOR:

With many others from the faculty and student body, my family and I had the pleasure Tuesday night of attending the Concert and Lecture Series opera, "The Barber of Seville," by the Goldovsky Opera Company.

The Cultural Affairs Committee and Mr. David Scouler are herewith heartily commended for providing the University with such a spirited and entertaining evening.

J. W. Morrison, Jr.
Instructor in Engineering

TO THE EDITOR:

The Devils' Den is now inadequate in its attempt to meet the prodigious demands of those who enjoy expressing their ideas over a cup of coffee.

Therefore, to tear down the Varsity Inn in the name of beautification and progress would seem to me to be a hollow gift to the ASU students.

Dennis Blakemore

I'm tired

Tired of puppets instead of people,
Of crew cuts and tweed coats,
Of pipes and Picasso buttons,
Of people who drop soliloquies carefully labeled intelligence.

I'm tired of people who play the dating game like touts at the race track,
Tired of seeing people used because it's only a game,
Of people who turn making-out into a social grace,
Of watching sincerity fester into smoothness.

I'm tired of cynics who call themselves realists,
Tired of minds rotting in indifference,
Of people bored because they're afraid to care,
Of intellectual games of ring-around-the-rosey.

I'm tired of people who have to be entertained,
Tired of people looking for kicks with a bottle in each hand,
Of girls proud of knowing the score and snickering about it,
Of girls intent on learning the score.

I'm tired of sophisticated slobs,
Of people who tinker with sex until it's smut,
Of people whose understanding goes as deep as "neat."

I'm tired of people who scream they hate it, but won't leave it because they're lazy;
Tired of people with nothing better to do than glue their days together with alcohol.

I'm tired of people embarrassed at honesty, at love, at knowledge.

I'm tired, yes . . . very tired.

Noted Karate-ka -

Karate Expert Of Japan Offers Exhibition Sunday

One of Japan's outstanding karate experts will give an exhibition of the martial art at 8 p.m. Sunday in the MU Ballroom.

Master Nishiyama is chief instructor of the Japan Karate Association and a cultural attache with the Japanese Em-

bassy. He is recognized as the outstanding karate expert of Sho To Kan, the form or school of karate officially recognized by the Japanese government, according to Tom Green, ASU Karate Club adviser.

Nishiyama holds the fifth

degree black belt — the highest rank possible in the Japan Karate Association.

KPHO-TV, Ch. 5, will tape the exhibition. Several state dignitaries will attend, including Secretary of State Wesley Bolin.

All students are invited to attend. The event is sponsored by the Karate Club.

Infirmiry Statement Warns Of Hepatitis

Students with symptoms of a cold or flu should report to the infirmiry immediately, said Mrs. Elaine McFarland, director of the Student Health Center.

A case of contagious viral hepatitis, which has symptoms similar to cold and flu, has been discovered.

"THE DISEASE is only moderately contagious," she said, "and there have been no further cases except this one."

Viral hepatitis is a virus which attacks the liver through the blood stream. It can be contracted only through direct contact with a contaminated person or his personal articles.

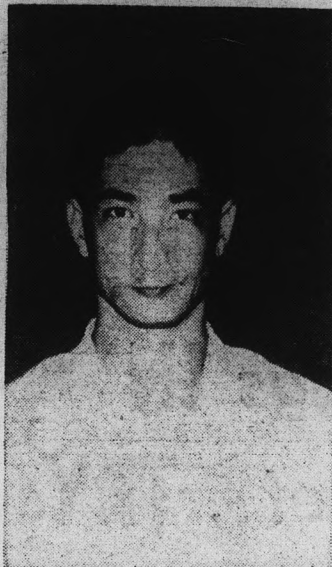
Symptoms include nausea, loss of appetite, fever and sto-

mach cramps. Jaundice, or yellowing of the skin, will appear approximately two weeks later.

SINCE THE virus has never been isolated, the incubation period is unknown. It may be from several days to several weeks.

Frequent washing of the hands, and keeping them away from the mouth are the only known preventatives, Mrs. McFarland said.

The only treatment is extensive rest.



MASTER NISHIYAMA

Jazz Series

Louis Armstrong gets together with jazz musician Benny Benack and Prof. Frederick Dorian, classical musicologist from the Carnegie Institute of Technology, at 8:30 Tuesday evening in the last of the "Louis Armstrong" series on KAET.

"Musicology and Dixieland" will be their topic.

BRIDGE LESSONS
CLASSES START MARCH 25 and 26
 Beginners, intermediate and advanced.
 Also beginners practice games Duplicate Games Daily
SCOTSDALE BRIDGE CLUB
 129 E. Stetson Drive
 947-9222 or 947-4666
 Phone for Details
 Amer. Bridge Teachers Asso. Members

Your Special Dream To ... SEE WITHOUT GLASSES Trial Wearing Plan



Dr. Albert D. Weiss, O.D.
OFFERS YOU

- Extensive Contact Lens Experience (Former Contact Lens Manufacturer and Lecturer)
- One Single Fee for Complete Optical Service At Competitive Prices
- No Need To Go Elsewhere For Your Eye Examination

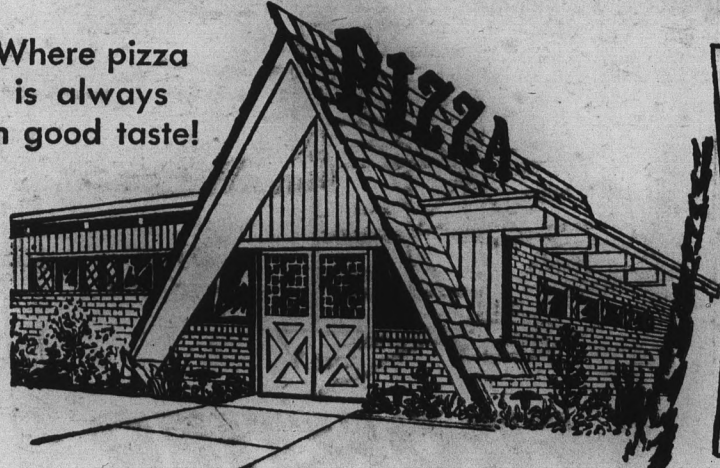
Convenient Day & Evening Hours — Phone 967-8451

WOOLCO DEPT. STORE BLDG.

1300 N. Scottsdale Rd. — Tempe
1 Mile North of ASU Campus

VILLAGE INN PIZZA PARLOR

Where pizza is always in good taste!



Thurs.-Fri.-Sat.
 9 P.M. to 1 A.M.
DIXIELAND TRIO
 Dave Wierbach
 Dale Everest
 Mel Scheib

Sunday 8-12 P.M.
 Dixieland Band

801 East Apache Blvd. — WO 7-3355

Other Locations: PHOENIX, 61 W. Thomas Rd. — MESA, 1156 W. Main

Newman Catholic Student Center

8th St. & College Ave.
P.O. Box 454, Tempe

Masses:

Sundays: 8, 9, 10 a.m., 6 p.m.

Weekdays: 6:45 a.m.

Saturdays: 8 a.m.

Confessions: Daily before Mass

Saturday: 3:30-5 p.m.

Rev. Thomas A. Walsh, Director

WO 7-3483

Catholic Student Association — Sunday 7 p.m.

Student Phone: WO 7-9708



On Campus with Max Shulman

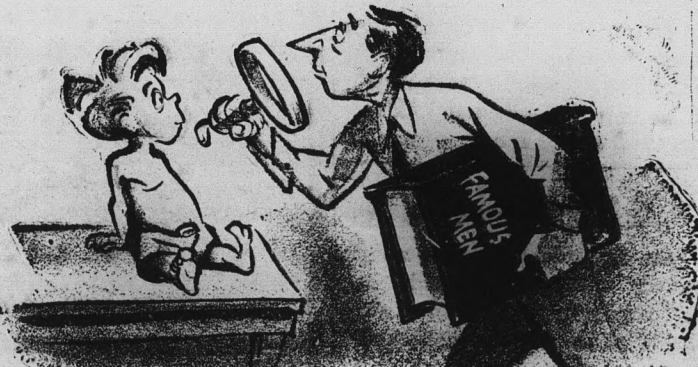
(Author of Rally Round the Flag, Boys!
and "Barefoot Boy With Cheek.")

WELL-KNOWN FAMOUS PEOPLE: No. 1

This is the first in a series of 48 million columns examining the careers of men who have significantly altered the world we live in. We begin today with Max Planck.

Max Planck (or The Pearl of the Pacific, as he is often called) gave to modern physics the law known as Planck's Constant. Many people when they first hear of this law, throw up their hands and exclaim, "Golly whiskers, this is too deep for little old me!"

(Incidentally, speaking of whiskers, I cannot help but mention Personna Stainless Steel Razor Blades. Personna is the blade for people who can't shave after every meal. It shaves you closely, cleanly, and more frequently than any other stainless steel blade on the market. The makers of Personna have publicly declared—and do here repeat—that if Personna Blades don't give you more luxury shaves than any other stainless steel blade, they will buy you whatever blade you think is better. Could anything be more fair? I, for one, think not.)



Max Showed no indication.....

But I digress. We were speaking of Planck's Constant, which is not, as many think, difficult to understand. It simply states that matter sometimes behaves like waves, and waves sometimes behave like matter. To give you a homely illustration, pick up your pencil and wave it. Your pencil, you will surely agree, is matter—yet look at the little rascal wave! Or take flags. Or Ann-Margret.

Planck's Constant, uncomplicated as it is, nevertheless provided science with the key that unlocked the atom, made space travel possible, and conquered denture slippage. Honors were heaped upon Mr. Planck (or The City of Brotherly Love, as he is familiarly known as). He was awarded the Nobel Prize, the Little Brown Jug, and Disneyland. But the honor that pleased Mr. Planck most was that plankton were named after him.

Plankton, as we know, are the floating colonies of one-celled animals on which fishes feed. Plankton, in their turn, feed upon one-half celled animals called krill (named, incidentally, after Dr. Morris Krill who invented the house cat). Krill, in their turn, feed upon peanut butter sandwiches mostly—or, when they are in season, cheeseburgers.

But I digress. Back to Max Planck who, it must be said, showed no indication of his scientific genius as a youngster. In fact, for the first six years of his life he did not speak at all except to pound his spoon on his bowl and shout "More gruel!" Imagine, then, the surprise of his parents when on his seventh birthday little Max suddenly cried, "Papa! Mama! Something is wrong with the Second Law of Thermodynamics!" So astonished were the elder Plancks that they rushed out and dug the Kiel Canal.

Meanwhile Max, constructing a crude Petrie dish out of two small pieces of petrie and his gruel bowl, began to experiment with thermodynamics. By dinner time he had discovered Planck's Constant. Hungry but happy, he rushed to Heidelberg University to announce his findings. He arrived, unfortunately, during the Erich von Stroheim Sesquicentennial, and everyone was so busy dancing and duelling that young Planck could find nobody to listen to him. The festival, however, ended after two years and Planck was finally able to report his discovery.

Well sir, the rest is history. Einstein gaily cried, "E equals mc squared!" Edison invented Marconi. Eli Whitney invented Georgia Tech, and Michelangelo invented the ceiling. This later became known as the Humboldt Current.

© 1964 Max Shulman

Mr. Shulman is, of course, joshing, but the makers of Personna Blades are not: if, after trying our blades, you think there's another stainless steel blade that gives you more luxury shaves, return the unused Personnas to Box 500, Staunton, Va., and we'll buy you a pack of any blade you think is better.

Too Many Boys -

Hickcox Explains Housing Decision

"It's difficult to be all things to all people." With this statement, Edward Hickcox, director of housing, summed up his feelings Wednesday night in a speech to the women of Wilson Hall concerning the proposed dormitory change.

Hickcox spoke at the request of Jean Van Slyke, Wilson Hall president. His appearance was designed to answer any questions on current housing problems.

WHEN ASKED why Wilson was chosen for conversion from a women's to a men's residence hall, Hickcox replied, "It was primarily Dean Catherine Nichols' decision as to which hall would be turned over to boys."

Hickcox cited a vacant women's dormitory, over crowded conditions in the men's halls and the fact many parents won't let their freshman sons live off campus as reasons for the decision.

Two additional housing units are in the planning stage for men for the fall of 1965, according to Hickcox. When these units are completed, Hickcox said Wilson will "probably" be returned to the women.

MANY COEDS who said they were resigned to the change asked if it would be possible to obtain five-day meal tickets as they are financially unable

Survey On

An attitude and preference survey of dormitory men, being made by the dean of students' office, is nearing completion.

FREE! 5x7 ENLARGEMENT
With Each Roll of B&W Film Processed At Pioneer Camera Shop Tempe Center

Campus Classified

Regulations: For students and faculty only of Arizona State University. To place classifieds, submit to Room 107 Administration Building. Deadline is Wednesday noon for Friday's issue. Rates: 3 cents per word, 50 cents minimum charge.

LOST & FOUND

LOST: In men's dressing room pool: One men's Timex wrist watch; one 1963 New Mexico Military Institute class ring. Reward. Call Lee Wooley, 945-3835, any day after 5 p.m.

Man's Timex watch in parking lot February 15th. Claim Room 102 Engineering Annex 5.

Toolbox: 1 March, P.V. Parking lot. 967-7090 Between 8 p.m. and 10 p.m.

WANTED

Ride for 7:40 class M & W. Please call 265-0777. Vicinity E. Bethany Home Road, 16th Street. Ask for Mary.

FOR SALE

1957 Olds for sale, new engine. 967-8291.

Voice of Music Tape Recorder. Hi Fi 1960. \$45.00. Heads need cleaning but otherwise in good condition. Mike included.

1954 Buick. Good for parts. \$50.00. Motor in good shape. Electric fuel pump. New battery. Body in poor condition. No windows. Call 967-6726 between 12:00 and 1:00 p.m. and 6:00 and 7:00 p.m.

1963 Pontiac w/421 Engine; Isky Cam. Aluminum wheels; 4-speed transmission. 10,000 miles. Vern Walton, 1836 Apache Blvd., Tempe, Ariz. Chuck Walton, Box 791, Casa Grande, Ariz. Phone 836-7443.

No Bells For Class 'Til 1965

Class bells will not be ringing on time until next January. This is due to a complete change in the bell system — from a waves system to a wire system, according to Bill Stanford, Education Board chairman.

The present bells are controlled by waves which originate from a master clock now too old to work properly.

The control clock will be changed by next August to the wire system.

to purchase the seven-day ticket.

Hickcox replied that over 120 students will be employed in the PV complex. He further stated that he thought it would be difficult for them to buy their meals for \$1.95 per day.

Hickcox assured the women that every consideration would be given to "hardship" cases.

Don't Put ALL Your Eggs IN One Basket.. TRY

CHICO'S

RESTAURANT

FINE MEXICAN FOOD

1120 East Apache Blvd. — Tempe —

Opening Feb. 15

LAS CRESENTA TERRACE

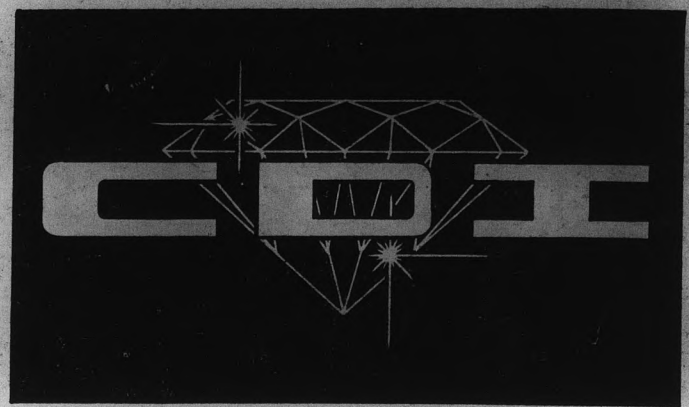
"Best In The West"

1130 EAST ORANGE

• Finest Material Insures Complete Soundproof Construction

- Luxurious furnishings
- Deluxe refrigeration piped in
- Large diving swimming pool
- Telephone outlets
- Large walk-in closets
- Wired for colored TV
- Your choice of 1 or 2 bedroom with 2 baths
- Close to ASU campus
- Tropical sunken garden
- All electric kitchen
- All utilities furnished

For More Information Call 967-8350 Or Stop In and See Us



Important Notice

Prongs may hide flaws in diamonds that are already mounted in rings.

Who else would have told you but CDI?

COLLEGE DIAMOND IMPORTERS

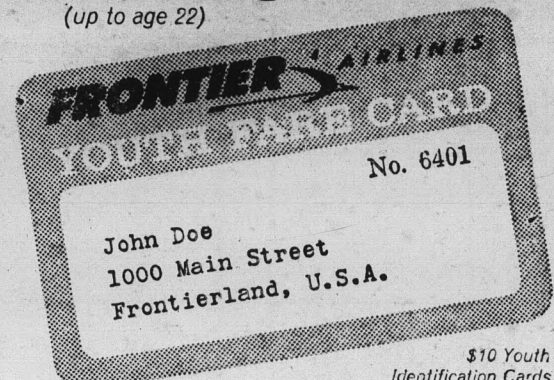
"DIAMONDS IMPORTED EXCLUSIVELY FOR STUDENTS"

ONE THOUSAND APACHE BOULEVARD TEMPE PHONE 967-8917

3 TO 5 DAILY OR BY APPOINTMENT STUDENT REPRESENTATIVES

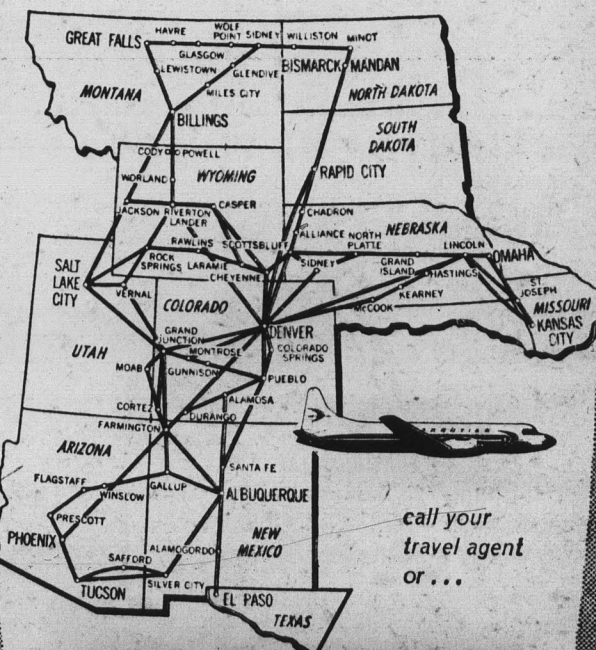
- | | |
|-----------------|----------------|
| JOYCE POOLE | BILL SCHUEMANN |
| FRED VON GESJEN | RICK SHAW |
| LEON BRANDLI | STEVE BELSER |
| ROBBIE MONTIERH | MIKE BRADSHAW |
| STEVE TETRIE | BOB KNOBLOCK |

50% DISCOUNT
for young travelers
(up to age 22)



\$10 Youth Identification Cards must be renewed on Jan. 1 of each year. Cards automatically expire on bearer's 22nd birthday. Good for unlimited use on Frontier's entire system. Call your travel agent or Frontier Airlines.

One way or round trip, young travelers age 12-22 receive 50% discount anywhere on the Frontier system. And, you can take a friend (also 12-22) at the same low fare. Travel any day of the week. Reservations confirmed in advance.



call your travel agent or ...

FRONTIER AIRLINES

Greeks To Compete In Songfest Contest

Sororities and fraternities are preparing for the annual Greek Week Sing, April 3.

Varied themes have been scheduled by Greeks this week according to Rodger Van Holtz, sing chairman.

ALPHA TAU OMEGA will sing "Give Me Your Tired, Your Poor," "When Johnny Comes Marching Home" and "I Believe." Phi Delta Theta will present a medley of naval songs and Pi Sigma Kappa, a medley from "How the West Was Won."

Sigma Chi and Kappa Kappa Gamma will combine for "Come By Here," "Get On Board Little Children" and "This Land Is Your Land." Sigma Alpha Epsilon will offer a medley from "West Side Story."

"Serenade To Spring" will be sung by Phi Kappa Psi and Kappa Delta.

PERFORMING individually will be Gamma Phi Beta singing, "Me And My Shadow"; Kappa Alpha Theta singing a

medley from "Carousel"; Chi Omega singing, "One Nation Under God" and Alpha Delta Pi singing, "Let There Be Peace On Earth" and "They Call Us America."

Judging will be divided into three categories: men's, women's and mixed. First, second and third place will be awarded in each division and a sweepstakes trophy will be presented to the best performers.

Members Initiated

Phi Upsilon Omicron, home economics honorary, formally initiated five members Sunday.

They are Lucile Smith, Wilma Romine, Susan John, Audrey Faber and Emily Getsinger.

Opera Called Entertaining

By RICHARD CANTOR
Staff Editor

If you wanted to see "The Barber of Seville," but missed it, go ahead and DO it — kick yourself.

You missed the most entertaining cultural event of the year.

Rossini's "Barber" is a comedy and Boris Goldovsky's Grand Opera Theater made the most of it.

COMEDY REIGNED supreme and ranged from a subtle roll of the eyes to a not-so-subtle sword tip aimed at the derriere of Dr. Bartolo.

And then there was the entrance of the music teacher,

Don Basilio. Picture a cross between Ichabod Crane and Mortimer Snerd on a seven-foot frame and an IQ of -4. Even the orchestra roared.

Then there was Fiorello. The orchestra was going full tilt and almost every member of the cast was on stage singing at the top of his lungs. Fiorello drags in a well-worn trunk at the height of the chaotic goings-on, and calmly climbs on top of it and goes blissfully to sleep.

An indelicate slam at Grand Opera if ever there was one.

WHETHER THE HUMOR was high or low it was professionally executed by an excellent

company, produced, directed and staged by Boris Goldovsky. He also conducted the first act.

The 17-member orchestra was small but highly polished, especially in the violins and winds so important in Rossini's music.

Actually, the only fault concerned the orchestra. It overpowered the vocalists many times, possibly because of improper projection on the singer's part, or the hall's lively acoustics.

IN ANY CASE, the whole production exuded the professionalism one would expect of a much larger and financially better endowed company.

Student Tour of 1964

EAST & WEST EUROPE

Personally Escorted by Mrs. Helen Montague

Depart New York June 21
64 DAYS

6 COLLEGE HOUR CREDITS AVAILABLE WITH THIS TOUR

for information and reservations contact Mrs. Montague, 967-7120, or

UNIVERSAL TRAVEL

18 E. 5th St. Tempe 967-1673
PICK UP FREE BROCHURE TO TAKE OR SEND HOME



HAPPY HOUSE SHOP

TEMPE CENTER

FOR YOUR EASTER SUPPLIES

Easter Basket Candy & Decorated Eggs

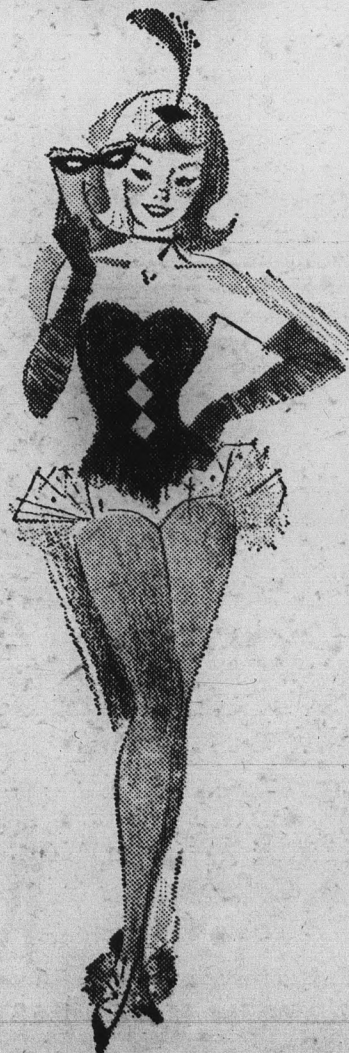
Wedding Announcements. Monogramming — Fast Service.



Hop To It . . .

Only A Block From the ASU Campus

TEMPE SHOPPING CENTER



Orchesis Prepares For Show

Orchesis, modern dance honorary, will present its 13th annual dance concert at 8:15 p.m. April 15 in Tempe Union High School Auditorium.

Rehearsals are now underway for the student-choreographed program. Margaret Gisolo, Orchesis director, planned the choreography for a 25-minute work based on Eugene O'Neill's "Morning Becomes Electra."

The number, entitled "A Dark Entwining" will be danced to music composed by Margaret Des Jardin, accompanist. Dialogue will be included with the dance.

Ten other short numbers will be presented.

A rehearsal performance, especially for high school students but also open to the public, is scheduled at 7:30 p.m. April 14 in the auditorium.

Coeds Meet At Regional AWS Confab

ASU's bid for the next AWS Regional Convention will be made next week by the University's delegation to the convention at the University of Washington at Seattle.

While at the convention the delegates will propose that the western province be divided into two areas. They believe two smaller provinces would improve communications within the respective areas.

Delegates are Paula Eisenman, AWS president; Sarah Burns, AWS president-elect; Ann Malene, Judy Hamer, Marti Stellhorn, Lynn Winsor and Sara Barker. Dean Jo Dorris will also attend.

CURTIS & TERRY
formerly
Bunch's Watch Shop
Watch Repair Specialists
609 MILL AVE. WO 7-3221
TEMPE

Greek To Me New Ideas Put In Greek Week

By BILL QUAYLE

It's time to look towards Greek Week. The week's theme will be "A Year of Decision." Several new ideas have been added to this week-long event and among these are a College Bowl contest, church services and a dedication of the week towards a definite purpose.

THE FIVE-DAY event will be April 1 to 5 and includes the parade of chariots, progressive parties, a toad hop and the annual Greek games.

BY THE GREEKVINE:

The annual "get-together" convention for all Theta Delta Chi members in the Western states is planned for today and tomorrow.

CONVENTION ACTIVITIES will include workshop discussions and a banquet at the Phoenix Country Club.

Phi Sigma Kappa celebrated its 91st Anniversary yesterday with a Founders' Day Dinner at their house. Among the special guests were President Durham and KTAR vice president Paul Hughes.

Pam Dyer was elected president of Chi Omega. Brenda Miller was chosen vice president; Saralou Combs, corresponding secretary; Martha Langmade, secretary; Karen Piekos, treasurer; Georgia Pomeroy, rush chairman, and Sue Burke, pledge trainer.

NEW OFFICERS of the Alpha Tau Omega pledge class are Jon Elam, president; Wayne Tanner, vice president, Von Hurley, secretary-treasurer, and Richard Mitten, social chairman.

Kappa Alpha Theta has elected new officers for the spring semester. They are Kitty Niggemann, president; Merrilee Bean, first vice president; Barbara Elliott, second-vice president; Roberta Glenn, recording secretary; Lynda Riggins, corresponding secretary; Joan Steele, treasurer; Pamela Dunn, editor; Karen Vollmer, house president, and Gay Walberg, trends chairman.

Deadline Set
Deadline for cheerleader applications is 4 p.m. April 8. Applications should be returned to the MU desk.
A cheering school will take place at 3:30 p.m. April 8 to 10 in MPE 103. Tryouts will be 3:30 p.m. April 14 in the men's gym. Each applicant must compose an original cheer.

MATERNITY INSURANCE
★ You Pay \$8.50 a mo.
★ Your receive \$200.00
★ Plus additional benefits
— Call —
Ron Frazier - 967-8603

Bobbies Flowers
20 E. 5th St.
Home Phone WO 7-6319
WO 7-2972 — WO 7-4274

Flowers & Gifts...
For Parties . . .
Large Artificial Plants For Rent

FREE DELIVERY
IN TEMPE — 5 P.M. to 11 P.M.
Largest, Tastiest Sandwiches In The Valley

★ BEEF BURGERS ★ ITALIAN SAUSAGE
★ CORNED BEEF ★ PASTRAMI

Raptis Tasty Hut
Delicatessen Drive-In
1205 Apache Blvd. 967-1202

CAMPUS DRUG *Specials*

WHAT GOES ON UNDER YOUR SPRINGTIME STRAW HAT
Faberge's Sizzling
"STRAW HAT CORAL"
... that's what!
\$1.85 plus tax

CAMPUS DRUG
CORNER, College and 8th, WO 7-4049
CREDIT ACCOUNTS INVITED

Lee service makes you roar with glee! Particular people get the glasses they like, on the double, and for the lowest price their eyes can afford!

SINGLE VISION GLASSES FROM **11.85**

BUDGET TERMS • SATISFACTION GUARANTEED

Quality Contact Lenses . . . **\$85.00**

TEMPE: Tempe Center — 805 Mill Ave.
PHOENIX: 16 West Adams
CHRIS-TOWN: 19th Ave. & Bethany Home Rd.
THOMAS MALL: 4527 East Thomas Rd.
SCOTTSDALE: 719 N. Old Scottsdale Rd.
MESA: 129 West Main
YUMA: 2816 4th Avenue
TUCSON: El Con Shopping Center

LEE OF ARIZONA, INC.
Dispensing Opticians
Where it's always safe to save money on glasses, contact lenses, too!

OPEN THURSDAY NIGHTS AND ALL DAY SATURDAY

Sportique
COLLEGE FASHIONS

Coming April 2, 1964
The Many Looks Of

● Women's Sportswear
● College Fashions

Bobbie Brooks
DAY-TIME • DATE-TIME • PLAY-TIME

HAYDEN PLAZA EAST Scottsdale & Curry Road



(SP Photo by Larry Ward)

Fraternity Selects 'Little Sisters'

Sigma Alpha Epsilon recently tapped seven women into its auxiliary, Little Sisters of Minerva. New members are (front) Jerry

Meikel, Delta Gamma, and Sylvia Feaster; (back row) Pam Kier, Jackie Johnson, Stacy Fairbairn, all Delta Gamma; Nancy Hoyer and Barb Ruth, both Chi Omega.

Cast Chosen For Satirical Play; Rehearsal Sessions In Progress

"Beggar on Horseback," the next production of the University Players, is now in rehearsal.

The play, a satirical comedy by George Kaufman and Marc Connelly, is being directed by Dr. James Yeater, head of the drama department.


The play is scheduled to run April 23 to 25 and April 30 to May 2.

The cast for the production

includes: Dave Levitas, who will portray Dr. Albert Rice; Susan Burke, Cynthia Mason; Dick Elmer, Nell McRae; Barry Fried, Mr. Cady; Judith Frane, Mrs. Cady, and Judy Meyer as Gladys Cady.

The stage manager is Robie Roberson.

**PROFESSIONAL
Sewing & Alterations
WO 7-3593
Bunny Lockbaum
601 W. 15th St. — Tempe**

Read 
"Calories, Vitamins and Common Sense" - 50c by Curtis Wood, M.D.
EICHENAUER'S BAR
Papago Plaza — Chris Town
264-6734

Rings 'N Things

PINNINGS

Ginny Shamberg to Daryl Winn, Theta Delta Chi
Sarah Frost, Kappa Kappa Gamma, to Larry Rupp, Phi Delta Theta
Karmen Rames, Kappa Kappa Gamma, to Dave Patton, Phi Delta Theta

ENGAGEMENTS

Cheryl Allison to Ron Stock
Joanne von Blume, Alpha Phi, to Tom Zoellner, Delta Sigma Pi
Bobbie McManus, Alpha Phi, to Jerry Chandler
Diane Miller, Alpha Phi, to Dick Haventine
George Ann Moshier, Alpha Phi, to Vince DeMarco
Judy Ragle, Alpha Phi, to Gary C. Rosely
Ann Scasselatti, Alpha Phi, Ben Riggs, Sigma Alpha Epsilon

MARRIAGES

Pam Cole, Gamma Phi Beta, to Dennis Dobson, Alpha Tau Omega
Susie Ryan, Gamma Phi Beta, to Jim Palmer, Sigma Chi
Ann Schafer, Gamma Phi Beta, to Tom Yaeger, UofA
Terry Ewing, Southwestern Preparatory School, to Hal Thompson, Kappa Sigma
Karen Kuehneman, East Hall, to Rick Ayars

FREE! 5x7 ENLARGEMENT
With Each Roll of B&W Film Processed At
Pioneer Camera Shop
Tempe Center

Fred Elquest & Son

Everything for the Art Student
● Art Supplies
● Picture Framing
703 N. 2nd St.
Phoenix
PHONE AL 8-2628

Administrators To Gather

ASU women administrators have been in Portland, Ore., since Wednesday attending a five-day convention of the National Association of Women Deans and Counselors.

Representing ASU are: Dr. Catherine G. Nichols, associate dean of students; Mrs. Jo F. Dorris, assistant dean of stu-

dents; Miss Mary Ruth Culbert, resident director of the Quad, and Mrs. P. Charlotte Lewis, assistant to Dean Nichols.

Dean Dorris reported that, in addition to participating in the usual personnel seminars, the ASU delegation will interview prospective resident directors for Palo Verde West.

VACATION READING?

TAKE A PAPERBACK BOOK

HILLS RECORDS & BOOKS
Tempe Center

"Live Happily Ever After"

But First Let Me Design

Your Rings

They'll Cost You Less,

Because I Make Them Myself



\$137.50
ENG. & WED. SET
14K — Emerald

\$285.00
ENG. RING
Diamond app. 1/2 ct.

\$200.00
ENG. & WED. SET
Diamond app. 1/2 ct.



\$85.00
14K WEDDING RING

\$17.50
14K WEDDING RING

\$32.50
14K WEDDING RING

alexander's studio 14

75 W. Fifth Ave. — Scottsdale
945-2563

Designers & Manufacturing Jewelers Since 1868
Watch and Jewelry Repairing

"ALWAYS SUNSHINE CLEAN"

Sunshine Village

LAUNDRY & PROFESSIONAL
PRESSING & DRY CLEANING

Water Repellant & Sizing Treatments

White Shirts — 25c

Free Drying On Tues. & Wed. Aft.

Hair Dryer In Refrigerated Waiting Room

Phone 967-9731

Broadway Plaza 29 E. Broadway, Tempe

FINAL 2 DAYS

On Sweaters...

Skirts...

and Capris...

2 FOR PRICE OF 1

SWIM SUITS

JUST ARRIVED!

- ★ ROSEMARIE REID
- ★ CATALINA
- ★ DARLENE

exclusively at

Celia's Tempe Center

and

Rosemarie's fashions

VALLEY FAIR SHOPPING CENTER

The Hot Spot

By AL MICHAELS
Sports Editor



After watching Colorado State University's baseball team this past week, you would have to come to the conclusion it was their chess team in disguise. The Sun Devils demolished the Rams by scores of 12-1, 15-4 and 17-1 in a three-game series that provided all the thrills and suspense of a gym class badminton tournament.

I wouldn't say Colorado State was desperate but their ace southpaw broke open the champagne when he held the Devils to three runs in one inning. A Ram rally consisted of two-out single and a wild pitch and their third baseman established a school record when he threw a guy out at first on less than four bounces. It's rough to admit that CSU was overmatched but I think they'd have trouble whipping the Wilson Hall B team.

I wouldn't say the Rams' hitting attack was anemic but the Devil outfielders traded their gloves for chaise lounges. A-State sophomore Skip Hancock struck out eight of 'em in a three-inning stint and would've fanned the other except he was laughing too hard. Skip had a rougher time with the Wallace and Ladmo All-Stars.

The spectators, meanwhile, set an NCAA record for most yawns in a three-game series. Some guy brought an alarm clock to Wednesday's contest and the vendors sold more No-Doz than popcorn. They had to call time in Tuesday's thriller to wake up the base umpire and Campus Security was called in Monday when the scoreboard operator put his pajamas on.

In all seriousness, though, the great majority of ASU's baseball contests provide a pleasant afternoon for spectators and the 1964 Sun Devils are extremely worthy of student support which has been noticeably lacking in the past.

Newcomers In FB Debut Tomorrow

Tomorrow night marks the annual spring football game for the Sun Devil football team and the emphasis will be on 10 of the 22 starters on the field who are freshmen.

Six freshmen will start for the "Maroons" and four for the "Golds."

Missing tomorrow night will be John Torok, apparent heir to the starting quarterback slot who was dismissed from spring football so he could participate in baseball.

The starting quarterbacks will both be frosh; John Goodman for the Maroons and Bob Lee for the Golds.

Veterans who have excelled in spring drills include ends Jerry Smith and Joe McDonald, guard Bob Johnson and halfbacks Gene Foster and Larry Todd.

SNIDE'S New PIZZA Lot

★ ★ 1964 Peperoni-12" Pizza Sedan

Italian Flour White Wall Tires, Fine Cheese Top, Snide's Oven-Tempered Heater

★ ★ 1932 Al Capone Bullet Proof Pizza

Limousine With Twin 12 Gauge Sausage Guns
This Model Eaten Extensively By Elliot Ness

SEE OUR OTHER TEN MODELS, INCLUDING SNIDE'S SPECIAL PIZZA WAGON WITH A COMPLETE LINE OF ACCESSORIES

SNIDE'S

The Greatest Thing That's Happened To Pizza

20 E. 7th St. Tempe Phone 967-8101

4 p.m.-12 p.m. Sun.-Thurs. — 4 p.m.-2 a.m. Fri-Sat

Lucky Cue "FAMILY" BILLIARDS
16th Street & East McDowell
Snooker - Pool - Billiards
14 New "Green-Top" Tables
At Low Rates



SMILEY-BERGE FORD

YOUR NEAREST AUTO DEALER

Complete Automotive Sales and Service

16 East 8th Street - Tempe
Phone - WO 7-2064

First time in the WEST!

REAL INDY CARS

USAC 100 MILE RACE
INDIANAPOLIS PREVIEW • GOVERNOR'S CUP

ROGER WARD
DON BRANSON
A. J. FOYT
LEN SUTTON

PARNELLI JONES
EDDIE SACHS
ROGER McCLUSKEY
LOYD RUBY

PLUS OTHER TOP DRIVERS

SAT	EXCITING PRACTICE 10-3 PM \$1.50 all seats CHILDREN UNDER 12 FREE
SUN	MAINSTANDS (pit straight) ALL SEATS \$5.50 SOUTHEAST STANDS (back straight) ALL SEATS \$4.50 HILLSIDE ADMISSION \$3.00

POSTPONEMENT DATE, MARCH 29

TIME TRIALS - 12 NOON
RACE AT 3:00 P.M.
FREE PARKING



20 MINUTES FROM DOWNTOWN PHOENIX

PIR
PHOENIX INTERNATIONAL RACEWAY
INDIANAPOLIS OF THE WEST

115th AVENUE & SOUTHERN

Marks In Jeopardy When Devils Test 'Cats, Troy

By JON MORRIS

NCAA champion Southern California, with "horses galore," provides real trouble for Arizona and Arizona State in a triangular track meet tomorrow night at Tucson.

The meet, which will start at 7:30 in the UofA's Varsity Stadium, has Devil Coach Baldy Castillo worried. "SC will take it easy. They have too many horses."

CASTILLO BELIEVES the 100 and 220 will be the featured races. The Devils' Henry Carr and Tom Hester go against Dave Morris and Dick Cortez of the Trojans and Steve Robins of UofA.

Morris and Cortez have 9.4 marks in the century, as opposed to Carr's 9.3.

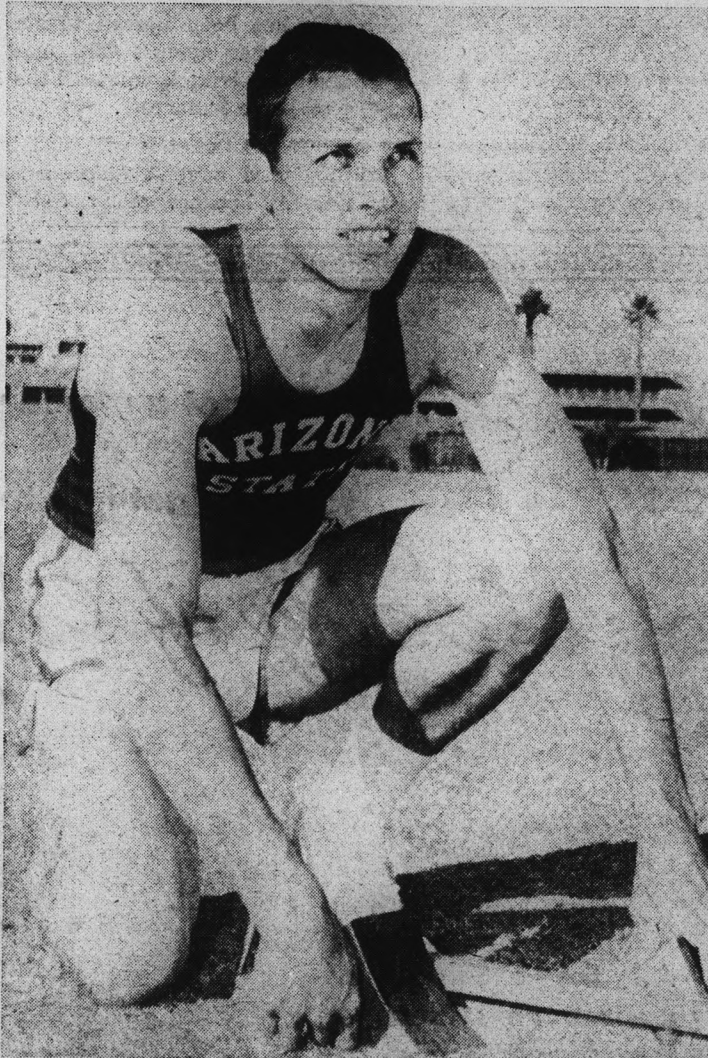
A battle should shape up in the javelin between A-State's Glenn Winningham (252-1 this year) and Larry Stuart of SC (252-2½).

SC's Bruce Bess, UofA's Dick Singleton and the Devils' surprising frosh Louis Scott will meet in the mile and two-mile. All three have run the mile in around 4:13 this season.

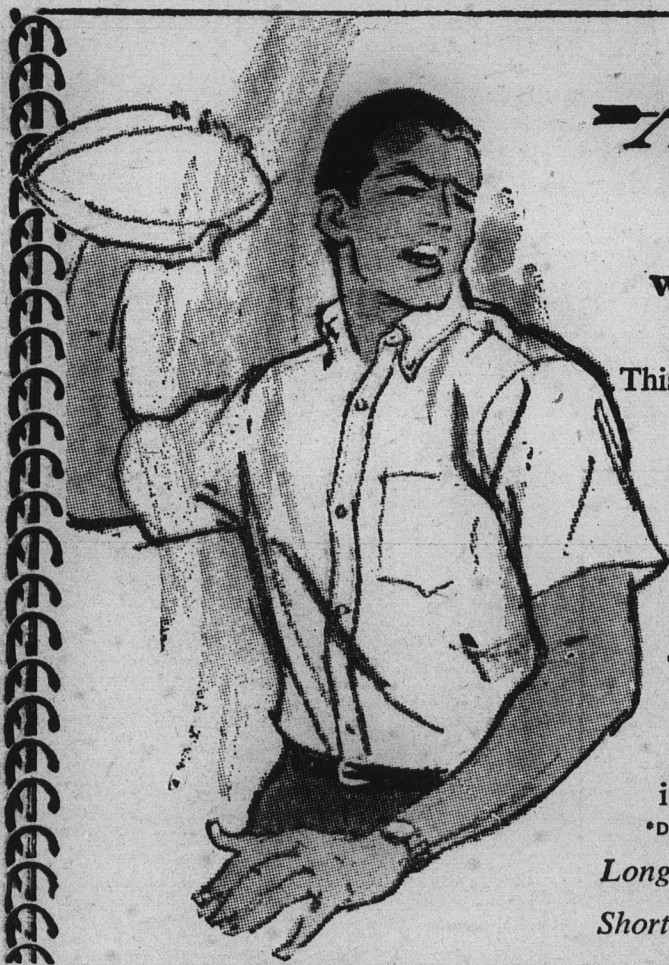
Bob Hildt of UofA, Theo Viltz of USC, and Darrell Jansen of ASU meet in the hurdles. Jansen and Hildt have done 14.3 in the highs.

SC IS WAY out in front in the weights, according to Castillo. Les Mills throws about 58 feet in the shot, and 180 in the discus. Larry Hendershot has cleared 54 in shot, and Jon Cole goes around 165 in discus.

The mile relay will be "a tossup if everyone's well," says Gary Comer and Wellesley Clayton went 41.4 in last week's USC-Long Beach State-San Diego State meet.



(SP Photo by Ed Ryan)
TIMBER TOPPER — A-State's Darrell Jansen warms up for tomorrow's triangular meet with Southern Cal and Arizona in Tucson. Jansen is the Devils' ace hurdler and will be facing the UofA's Bob Hildt tomorrow evening.



ARROW DECTON

won't give you the right time of day

This remarkable shirt retains its crisp, just-ironed look all day long because it's 65% Dacron* and 35% cotton...the ideal wash and wear blend that made "Look, Ma—no wrinkles" a famous campus expression. Tailored with the popular Sussex button-down collar in true Ivy fashion and tapered to trim you in every way except price.

*Du Pont R.T.M.

Long sleeves—only **\$6.95**

Short sleeves—only **\$5.95**

YOUR ARROW DEALER IN TEMPE...



Campus
men's shop

FOR MEN AND YOUNG MEN

S&H Green Stamps

603 Mill Ave.

Firestone

Where Customer Satisfaction is **GUARANTEED**

Open 7 A.M. to 9 P.M. (Sat. Till 6)

Drive In for Our Famous "3-for-the-money"



CAR SAFETY SERVICE

WE DO ALL THIS WORK:

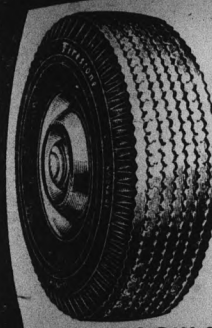
- 1 Align Front End
- 2 Balance Front Wheels
- 3 Adjust Brakes
- 4 Repack Front Wheel Bearings

We do All 3 for only

\$ 9 95

Replacement Parts if needed and torsion bar adjustment not included

★ JUST SAY "Charge It" ★



BRAND NEW Famous for Quality

Firestone

NYLON **\$10*** 6.70-15 Tube-type Blackwall TIRES

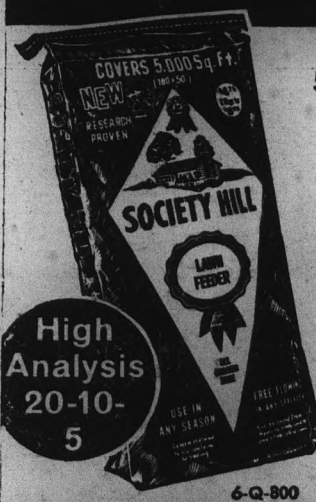
*Plus tax and trade-in tire off your car

WHITEWALLS \$2 MORE

6.70-15 Tubeless Blackwalls \$12* or 7.50-14

LOW PRICES ON ALL OTHER SIZES

Lawn and Plant Food



5,000 Square Feet of Coverage

Only

\$1.99

Limit Two Bags Per Customer

Non-burning • Feeds grass for months

Protects your grass by providing three vital elements—nitrogen, potassium and phosphorus—essential for rich green coloring and healthy plant growth.

TEMPE Firestone

Mill Avenue and Southern
967-8551

ASU Blasts Hapless Rams To Sweep Three

Colorado State University fell victim to an avalanche of 44 Sun Devil runs en route to losing a three-game baseball series to ASU this week.

A-State took the opener 12-1 Monday, whopped the Rams 15-4 Tuesday and completely routed the Rams 17-1 Wednesday afternoon.

The Devils used 43 hits, 17 of them for extra bases, to roll over CSU. Four were home runs. Luis Lagunas got his second of the season on Tuesday

and on Wednesday three men lofted shots over the fence. Rich Oliver plastered one over the left field fence. Sam Cook, ace relief pitcher, also polled a drive over the same barrier. Ray Stadler's towering fly over the left-centerfield fence was good for more than 400 feet.

COACH BOBBY Winkles attributed ASU's success to the fact that the Rams have had very little practice this year due to snow in Colorado. This was CSU's first trip into sun country this season.

"The games against CSU are not a true indication as to how strong the Devils are. The Rams are not too strong a club this early in the season," Winkles said.

ASU will be facing much tougher competition in the next two weeks. Colorado State College, which lost to UofA in last year's Region 7 NCAA tournament, will be here for games today and tomorrow.

MONDAY, A-STATE hosts

the Wyoming Cowboys for a three-game series and then the Devils go against Big Ten foes Michigan and Wisconsin.

Winkles has decided to drop the three-pitcher-per-game system in favor of a four-starting-pitcher rotation. Skip Hancock has been named to start the opener against CSC today and Jim Merrick will hurl the 1 p.m. game tomorrow.

"**THE LINE-UP** will still be juggled. I haven't found a set line-up because every one is

playing pretty even," Winkles declared. "If the Bears open Friday with a right-handed pitcher, Jan Kleinman will play first base in place of Doug Westley."

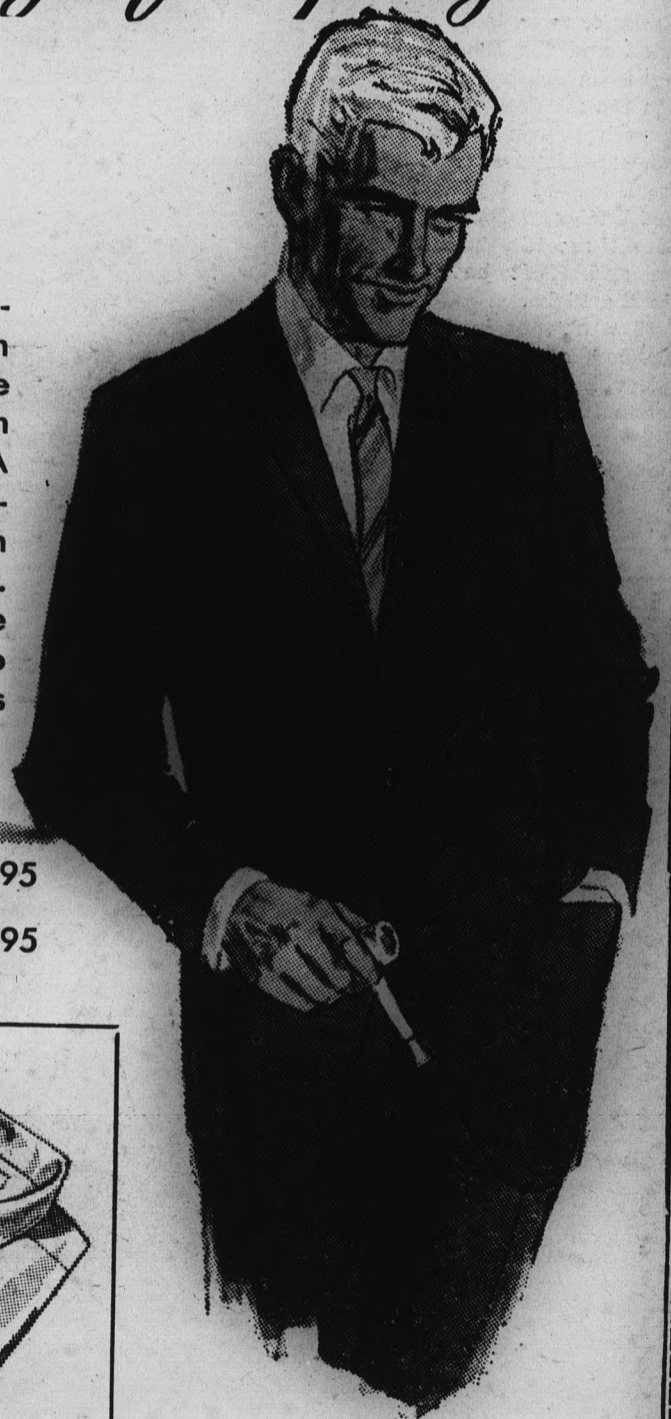
Leading batter through ASU's first nine games is Merrill Hyde. The slugging left fielder has gathered eight singles, four doubles and two triples in 25 trips to the plate for a .560 average. Stadler is batting .539, Westley is hitting .357, Kleinman .381 and Jack Handley is polling .333.

The Americana Shop



*S*aster...not a moment too soon
to really get into the
Swing of Spring

All the exciting, important new ideas on the spring scene are generously available in our new collections. A new suit or a few accessories can lighten your whole outlook... give you that "make the scene" feeling. So make your selections now!!



Suits from \$42⁹⁵

Sport Coats from \$29⁹⁵



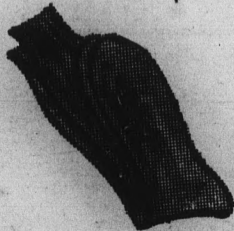
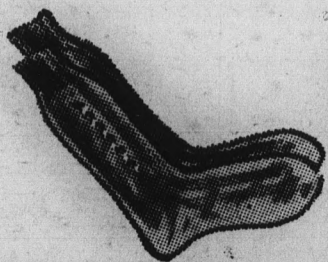
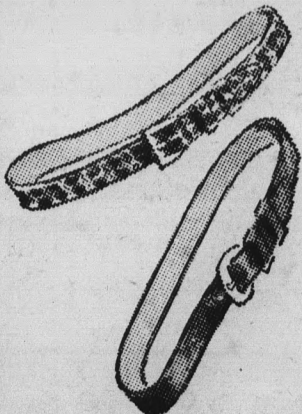
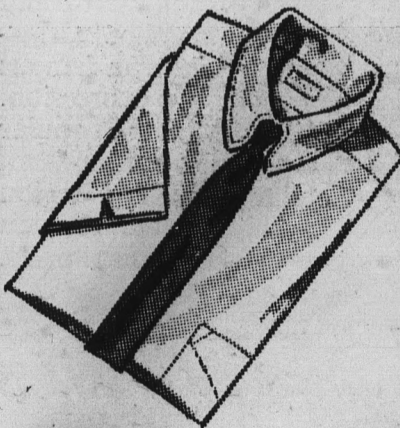
Slacks from \$8⁹⁵

Dress shirts from \$5⁰⁰

Socks from \$1⁰⁰

Neckwear from \$1⁵⁰

Belts from \$2⁰⁰



THE
Americana
SHOP

WO 7-5457
OPEN 9:00 A.M. TO 6:00 P.M.
THURSDAY 'TIL 9 P.M.

QUALITY MEN'S APPAREL
TEMPE SHOPPING CENTER