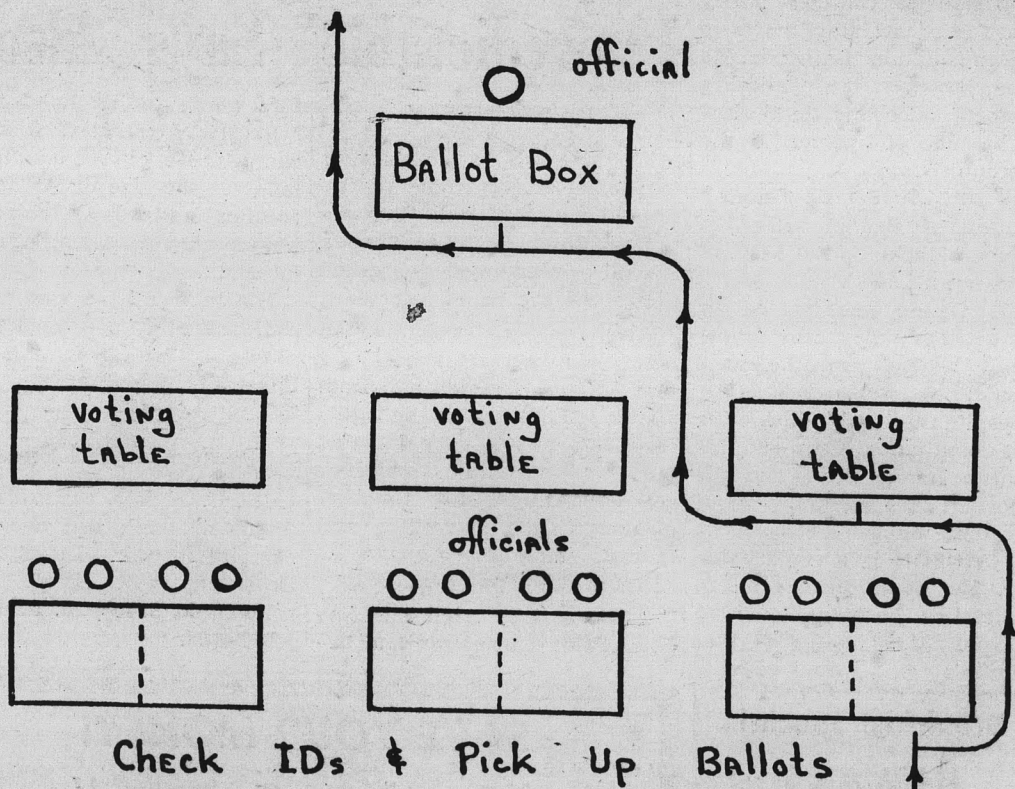


Three AS Offices To Be Filled Today



ELECTION PROCEDURE — There will be three tables divided alphabetically at each polling place. After the students have their names checked off on an enrollment list and IDs checked, they will pick up two ballots and proceed to the voting table. The two bal-

lots will be for three AS offices and the constitution. Election Board officials are taking no chance of discrepancies arising. Campus Security officers will be in the balloting area. They will circulate among the polling places to apprehend any student who attempts to vote more than once.

Sparks, Wochner In 'Closest Election'

By FRANK DUCCESCHI
Assignments Editor

Voters will decide today who will be Associated Student president — Joe Sparks or Karl Wochner — and end what has been termed "the closest election in the history of ASU."

Today's election also will determine if the student body will accept the revised AS Constitution, who will fill the activities vice presidency — Terry Cotter or Tom Thomason — and who will be AS secretary — Emily Getsinger or Sue Ellen Hutchens.

Sparks goes into today's general election as the favorite, with a one-vote edge on opponent Wochner. Sparks amassed 1,443 votes in the primary compared to Wochner's 1,442.

DESPITE special precautions taken during the preparation for today's election some problems have arisen.

Approximately 140 ballots were missing last night when Election Board members counted the numbered ballots prior to the election, according to

Alan Bunch, Election Board chairman.

Since leaving the printers, the ballots have been locked in Bunch's car or Dick Finley's office, where Bunch said there was little chance of anyone tampering with the ballots.

BUNCH phoned the Tempe Daily News, printers of the ballots, and asked if they had made a mistake in printing. The printer said a mistake is possible, however, there is also a possibility that some of the ballots could have been taken from the shop.

Bunch said since the ballots were numbered the board knows which of the IBM-card ballots are missing. If one of the missing ballots shows up during the counting, it will be voided, he said.

VOTES will be hand-counted even though IBM ballots are being used.

A fourth polling place, located in the Sahuaro complex, will be operating today. The Executive Council gave chairman Bunch the authority to set up the booth if no candidates objected.

\$10-30 Room Rent Increase Approved For All Dorms

By BOB MELBO

Increases in room and board fees ranging from \$10 to \$30 per semester at 18 dormitories were approved Saturday by the Board of Regents.

The new rent schedule will be effective Sept. 1.

Increases in dorm operating and maintenance costs plus installation of individual room phones and elimination of obsolete intercoms were cited for the rent hikes.

CURRENT rates and the amount of semester increases for each hall are:

Irish B — \$115, 25; Irish A and C — \$125, 15; North, South, West, Gammage — \$120, 20; Hayden — \$140, 20; Best and Wilson — \$150, 10; McClintock

A — \$140, 30; McClintock B — \$157, 13.

Sahuaro — \$312, (\$150 rent, 162 board), \$28 (\$14 rent, 14 board); Adelphi Housing — \$322 (\$160 rent, 162 board), \$28 (\$14 rent, 14 board); Palo Verde dorm complex — \$380 (\$157 rent, 223 board), \$20 (\$13 rent, 7 board).

RENTAL fees vary with services provided by each dorm.

For example, several halls provide refrigeration, while others have evaporative cooling. Board fees for Sahuaro Hall and Adelphi Housing cover five-day service; for Palo Verde dorm complex they cover seven-day service.

Room and board revenue covers the cost of food service, maintenance and operation, and

bond indebtedness on self-liquidating revenue bonds which were used to finance most of the dormitories at no cost to taxpayers.

Election Information

WHEN
7 a.m. to 5 p.m.

WHERE
Administration building lawn, front of Matthews Library, south of the PV bridge and in Sahuaro Hall complex.

Student Comments On Dorm Room Rate Increase Varied

By JOAN SKIPPER
Staff Editor

The Board of Regents' decision to raise dorm rates next year 10 per cent and cafeteria rates 5 per cent has prompted numerous comments from students.

Several dorm and sorority presidents gave their feelings and observations on the increase.

Jayne Love, Alpha Delta Pi: "I think the increase is unfair in a way because it will be a hardship for many people, especially those from out of state. It may discourage out of state students from coming to ASU and our sorority may lose some girls who don't live in Arizona.

"BUT ON THE other hand, I think the increase is a good thing so the University can grow. If we can see some proof of the need for the increase, I think we'll feel better about it."

Carl Ziesmer, Best B: "I believe the 10 per cent increase will be justified because of the improvements that will be made. As I understand it, Best B will be getting new lighting."

Marylou Ayala, East Hall: "I question the reason for the increase. The general feeling in East is that many students will be forced to live off-campus or drop out of school because of the high rates.

Judy Lay, Gammage: "I don't like the idea because I think the rates are high enough al-

ready. It's hard enough as it is to finance a college education, especially for students who are paying their own way, and this will make it even harder."

PHIL HEYL, Irish: "The over-all reaction in Irish is that getting room phones will make the increase worthwhile. Maybe the fellows will squawk about it next year when they have to pay it, but right now they don't care. We like the dorm and the increase won't make that much difference in the way we feel."

Kitty Niggemann, Kappa Alpha Theta: "I don't think the increase will have that much effect on sororities. If it is justified, the increase is all right, for 10 per cent won't be that much extra."

Mary Avery, "Mac" B: "I think some increase is natural since we will be getting room phones. But I think it's a shame to raise the cost of living on campus to such an extent that some people might not be able to live on campus and thus not go to college. I think housing should do a better job of informing students the reason for the increase so they can understand it."

Norby Smalley, "Mac" A: "The general feeling in 'Mac' A is that the increase won't be too bad, for the convenience of room phones will be worth it. However some girls feel the phones will be bad because no messages can be left if no one is there to answer the phone.

(Continued on Page 5)

Regents Receive Student Totals; Pass Three Actions

A second semester ASU total enrollment of 17,217, including residence enrollment of 14,615, was reported to the Board of Regents Saturday.

Of the total enrollment, 11,092 students are listed as undergraduates and 3,523 as graduates. Those taking extension courses number 1,788; 814 are taking correspondence courses.

In other action, the regents:

Approved addition of three economics courses (one graduate and two undergraduate), to the College of Business Administration curriculum;

Approved a preliminary budget of \$625,238 for ASU's summer sessions;

Approved the appointments of 38 new faculty members, 34 new staff employees and 22 graduate assistants.

Found In Trash -

False ID Cards Existence Proved

By DAVID HOYT

The existence of a number of false student ID cards has been substantiated.

Immediately following the Feb. 12 State Press article on ID falsification, the burned remains of several bogus cards were found in a trash can behind one of the men's dorms. This was confirmed Monday by Deans W. P. Shofstall and George F. Hamm.

A reliable administrative source indicated that there may still be as many as 100 false cards in circulation. There currently is no evidence suggesting the use of such cards in the primary election.

It was reported that one of the bogus cards in Dean Hamm's possession is very difficult to tell from a bona fide one, leading to speculation that the cards were not reproduced, but stolen.

DICK FINLEY, AS executive manager, whose office handles ID printing and issuing, pointed out that stealing cards would be difficult.

There are four copies of each student's card, he said. After the student is issued his copy, the cards leave Finley's office only twice; once to the colleges where freshmen cards are sorted out and once to Campus Security which keeps two copies.

FINLEY conceded that if a student was able to obtain a blank card it would be easy to duplicate the real thing.

Dean Hamm has begun an investigation of the new report of false cards. He said offenders immediately would be referred to the University disciplinary committee with recommendation for suspension.

Culture Discussion Will Be Offered

Highlight of a day-long symposium sponsored by the Committee for Cultural Reciprocity Friday in the MU Ballroom will be a discussion on cultural problems with representatives from the Orient, Middle East, South and North America and Africa.

A tentative description of "cultural reciprocity" offered by the committee is a process involving two or more cultural configurations between whom the interchange of information about cultural values may lead ultimately to some modification in the values of each.

Cultural reciprocity does not necessarily involve the exchange of anything tangible or of implied immediate worth, but may require the exhibition

for study of such cultural items as art forms, entertainment, technological devices and education.

Separate cultural area panel discussions will commence at 10:30 a.m. and at 2:30 p.m., selected faculty, other speakers and the general public are invited to the open discussions.

An intercultural banquet will end the meeting at 7:30 p.m.

Alsop Criticizes DeGaulle

Syndicated columnist Stewart Alsop told a near-capacity audience Friday night what many government figures in Washington have been mumbling for some time — French President Charles de Gaulle is shattering the Western alliance by his "pig-headed" attitude.

Obviously perturbed by the French general's recognition of Red China and the possibility of a neutral Southeast Asia, Alsop said de Gaulle's policy could force the United States to take an isolationist attitude. He added, however, the possibility is remote since this could shift the balance of power to the Communists.

HE DECLARED de Gaulle's isolation of Britain from the Common Market is the work of a foe, not a friend.

"De Gaulle has treated us like an enemy and has intentionally slapped us in the face," he said.

Despite the trouble inside the Western alliance, Alsop said this country remains strong and it is important that we know about President Johnson's character.

JOHNSON is a remarkable man. But it is impossible to predict how he would react to a crisis. My feeling is that Johnson's pride would prevent

him from going down in history as the man who cracked up before communism."

Turning to the Eastern front, Alsop said that Russia's Premier Khrushchev is a sane man. This, he pointed out, was demonstrated during the Cuban crisis. Aside from being 100 per cent Communist, Khrush-

chev showed the characteristics of humor and charm which is rare among dictators.

Alsop concluded by saying the cold war between the East and West will continue. The main question is whether or not America will maintain the courage to be the "keystone" of the free world."

'Republican Nomination Is Unpredictable' Says Alsop

By RAY ICELY

"Anyone who attempts now to predict the outcome of the Republican National Convention in June, ought to have a frontal lobotomy," observed Stewart Alsop in an interview.

Alsop recently accompanied Sen. Goldwater on a speaking tour through Arizona and said: "Although Barry is an able candidate and a very likeable person who reminds me of a college student, his toughest obstacle in the convention will be convincing delegates that he can win the popular vote."

Alsop arrived from Los Angeles Friday afternoon and before going to his hotel room, requested a quick view of the campus. He expressed amazement at the size of ASU's enrollment and was delighted and impressed with Gammage Auditorium.

His lecture here was one of the last of a two-week tour, before returning to the East Coast.

Professor Will Speak

Dr. C. H. Liu, assistant professor of analytical chemistry at Polytechnic Institute of Brooklyn, will speak about solvents at 3:40 p.m. Friday in PS C-108.

Breakfast Special

HARMAN'S

Original Flapjacks

ALL YOU CAN EAT only 45c

Other Breakfast Favorites at Popular Prices

Open Daily at 6:30 a.m.

HARMAN'S DINING ROOM

Mesa - Tempe - Highway Tempe

SAVE YOUR MONEY!

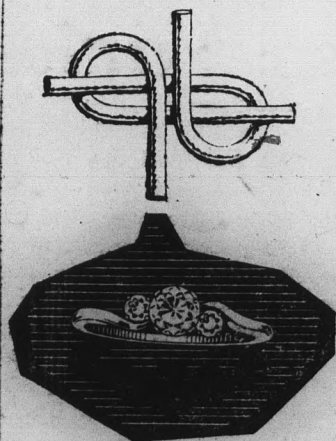
"Lucky Seven" SALE

COMING SOON

at the

UNIVERSITY BOOKSTORE

PUZZLED BY "BARGAIN" DIAMONDS?



If you are, then just remember: Any diamond worth buying is worth buying right. That's why you won't find "discount" diamonds or "bargain" gems in our outstanding collection.

We are members of the American Gem Society... an excellent reason why you can be sure of true gem quality and value when you purchase your diamond.



MEMBER AMERICAN GEM SOCIETY

Paul Johnson
JEWELERS

1604 E. CAMELBACK

"Where Originality Is a Tradition"

Open 9 A.M.-5:30 P.M. — Thursdays Till 9 P.M.

Apartments?

Can you top these advantages at CONTEMPO WEST

1. Exclusive Employment ag. for part time work
2. Tenant operated credit union
3. 3 blocks to campus
4. Greatest space and lowest cost per person
5. Each separate spacious court has its own pool
6. Private balconies, paneled walls, refrigerated, carpets, drapes, fully furnished and ALL UTILITIES PAID

CONTEMPO west

1010-1020-1028-1036 and soon 1044 East Orange Street

Phone 967-6515

Decision Made -

Regents Okay New Contract

The Board of Regents approved Saturday a \$160,038 contract for installation of a parking lot, drives, lighting and sprinkler systems southeast of Grady Gammage Memorial Auditorium.

The new parking facility, due to be completed in May, will be identical to the lot northwest of the auditorium, according to John R. Ellingson, director of physical plant.

Robert E. McKee, Phoenix and El Paso, Tex., contractor, was awarded the job.

The regents also approved assignment of architectural and engineering firms to projects contingent upon legislative appropriation of \$6,330,000 in building funds. The firms and proposed projects are:

T. Stuart Montgomery, Tempe architect, \$600,000 maintenance shops; Lowry & Sorensen Engineering Co., Phoenix, \$410,000 central plant refrigeration equipment, utility tunnel and piping extension to Best

Hall; Kemper Goodwin, Tempe architect, \$1,350,000 addition to the mathematics wing of the Physical Sciences Building; and George H. Schoneberger, Jr., Phoenix architect, \$300,000 School of Nursing Building.

A \$1,450,000 Women's Physical Education Building is also included in the funds request.

Crime To Be Topic

Dr. Daniel Glasser, visiting professor from the University of Illinois, will discuss "American Crime and American Freedom" today at 2:45 p.m. in the MU Ballroom.

Held in connection with the Center of American Studies, this lecture is the fourth in a series of five to be presented this spring.

Dr. Glasser is a noted consultant for the National Parole Institute and is a member of the sociology department at the University of Illinois.

Students Praise Legislature Tour

By PETER MAURICE

Students who attended the legislative workshop last week at the State Capitol unanimously praised the project and the benefits derived from it.

The workshop, conducted last week by the National Council of Education in Politics, was attended by students of Arizona universities and college.

The general purpose of the workshop was to allow students to learn from experience that part of lawmaking that is difficult to read from a textbook.

One group of students was assigned to individual legislators with whom they spent the entire legislative days. They sat with the legislator during the session while bills were being

voted on and attended committee meetings with him.

The second group watched the proceedings from the gallery in the mornings and attended hearings in the afternoons. They also attended question-and-answer sessions with Gov. Fannin, various legislators and lobbyists. They were permitted to sit at committee hearings and watch Supreme Court hearings.

Phones Installed While Hayden Awaits Centrex

While the new Centrex phone system isn't to be installed in men's dorms until next fall, Hayden Hall residents are already receiving some of its advantages.

At present, the wiring for the new system is being installed in the dorm. The wires were routed along the same path as the intercom. The intercom system had to be removed, leaving no way to send messages of phone calls to the rooms.

To offset this, two phones were placed on each of the three floors. Residents of the first floor will receive their calls on ext. 3213; those on the second floor, ext. 2185 and residents of the third floor will receive calls on ext. 2187.

Bryan Plans Speech On Mathematics

Dr. Charles Bryan, assistant professor of mathematics, will deliver a speech at 4 p.m. Mar. 12, in PS B-234. The speech, "An Existence Theorem for a Two-Point Boundary Value Problem," will be followed by free coffee on the Alumni House east lawn.

Campus Classified

Regulations: For students and faculty only of Arizona State University. To place classifieds, submit to Room 107 Administration Building. Deadline is Wednesday noon for Friday's issue. Rates: 3 cents per word, 50 cents minimum charge.

LOST & FOUND

Man's Short Overcoat Lost: Reward! Tel. 967-0992. Color, off-white with red lining. Return to psychology department.

LOST: One AGFA camera in case, vicinity MU to Tempe Center. Reward \$20. Contact Box 292, Sahuaro Hall, Room 224C

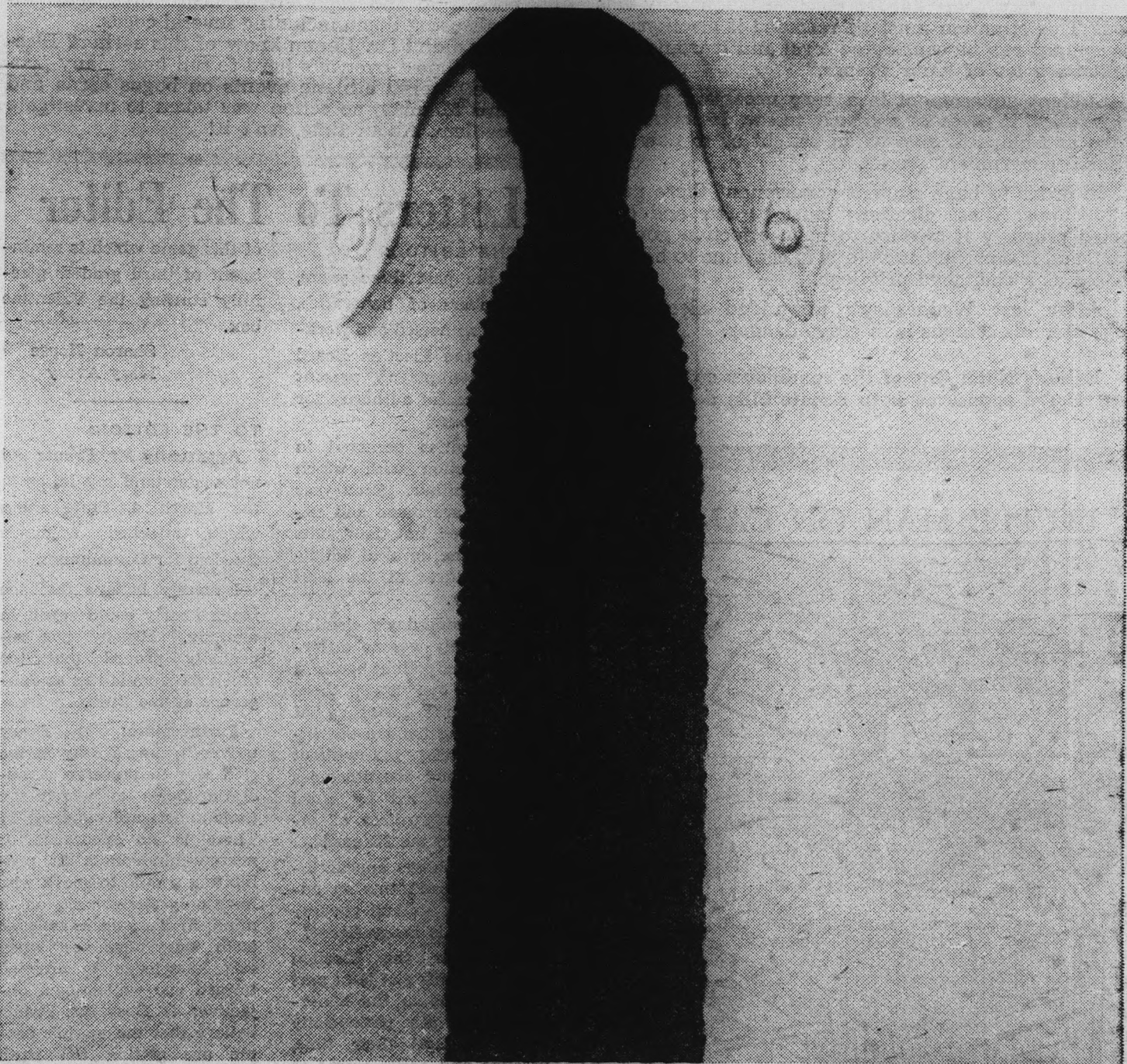
LOST: In men's dressing room pool: One men's Timex wrist watch; one 1963 New Mexico Military Institute class ring. Reward. Call Lee Wooley, 945-3835, any day after 5 p.m.

THE NEW HUE IN EAGLE BUTTON-DOWNS: FORESEEABLE FUCHSIA

LOOKS pink,*doesn't it? ★ We chose the name for this color from among the entries in our recent competition for new color-names because of its aptness: we predict great things. Remember you heard it here first. ★ What makes our solid pink new is that it isn't solid pink: the vertical yarn (or warp) is somewhere between a Robert Shaw Coral and a Lawsy Miss Scarlet; whereas the horizontal yarn (or woof) is a sort of 'Enry 'Iggins Just You White. ★ Thus creating an illusion, but of the finest oxford cloth all the same; with button cuffs and our dear, old bulgy collar, about \$7.00. If you don't know where to buy this and other Eagle Shirts in your town, please write Miss Afflerbach who does; at the address below.

*Use your imagination; this paper doesn't print in pink.

© 1964, EAGLE SHIRTMAKERS, QUAKERTOWN, PENNSYLVANIA



Eagle Shirts Are Available At **Hanny's Racquet Shops**
DOWNTOWN • CHRISTOWN • SCOTTSDALE



THE STATE PRESS, distributed by the campus chapter of Sigma Delta Chi under the direction of Circulation Manager John Nadel, is the official campus newspaper of Arizona State University. It is published each Wednesday and Friday throughout the school year, excepting holidays, and is entered as second class matter at the Tempe, Arizona, Post Office under the acts of March 3, 1879, and August 24, 1912.

THE STATE PRESS is member of the Arizona Newspapers Association, Associated Collegiate Press and national Advertising Service, Inc.

Subscription price, \$3 per school year.
EDITOR-IN-CHIEF EDWARD GASSER
MANAGING EDITOR ED HEATH
NEWS EDITORS GORDON BLACK, GORDON ROBBINS
ASSISTANTS LARRY WARD, CAROL McPHERSON
CAMPUS EDITOR PAM VAN BUSKIRK
ASSISTANTS SHIRLEY DeMARKE, BETSY JEAN FRITH
SPORTS EDITOR AL MICHAELS
COPY EDITOR JOHN KENDALL
ASSIGNMENTS EDITOR FRANK DUCCESCHI
ASSISTANTS PAT HUNTER, JOAN SKIPPER
PHOTO EDITOR ED RYAN
FEATURE EDITOR LINDA HELSER
CHIEF PROOFREADER RICHARD CANTOR
ASSISTANTS JANIE WILLIAMS, MARTY EDGAR

Your Money Backing It

Today the AS Constitution will be subject to student approval.

This much discussed and revised document has taken many hours of hard work resulting in its approval by all but one member of the Senate.

Why then, has the Board of Financial Control deemed it necessary to allocate student funds "to promote and explain" the new legislation?

Admittedly, an explanation of the new constitution will make for better informed students. Some of these funds, however, have been slated to pay for the construction and display of banners advocating a "yes" vote on the revised constitution, even though some students are undoubtedly against it.

Is it in the best interest of all students for student government to use our funds to campaign for the passage of this document? It will apply to all students if passed, not just those who wanted it.

Would this set a precedent whereby AS could use student funds to support a referendum or even an initiative?

Would this, in effect, give student government the right to take stands on campus issues and use student funds to support THEIR stand?

This is what is happening now! Incidentally, as of yesterday afternoon, we question the legality of the banners; student government forgot to put poster numbers on them.

GORDON ROBBINS, News Editor

I Cover College Avenue

By ED HEATH
Managing Editor

Here we go again. And a lot has happened since the last time this column has called the students to vote.

The primary election results have been counted and recounted to the extent that there can be no doubt that, if nothing else, the figures are correct.

But then a discussion of false IDs floating around campus arises. If they are present, this gives roots to the suggestion that they may have been and may again be used in the general today.

Many issues back, the State Press ran a series of stories on this very thing and Dick Finley, Deans Hamm and Shofstall all termed the idea merely rumor.

* * *

Speaking of rumors... This garbage has to stop. And from one degenerate to the other, it detracts from the entire atmosphere that should preside during a college election.

Dean Shofstall said anything any member of the Dean of Students office may say is to be reported to him. They are not allowed to comment on any candidate for an Associated Students office.

* * *

Congratulations student government for realizing it is not impossible to learn from the primary to improve the general.

The second election at Sahuaro Hall will allow greater participation in the election; huh, George?

* * *

Election Board and many other student government officers have gone to a great deal of work to make this second election the best possible — cooperate.

But most of all — vote.

* * *

Campaign flyers, handbills, cards, etc., have been surprisingly abundant.

These things add to the election season. However, without the assistance of Frank Connolly and his staff at the Tempe Daily News, these additions probably would not be present.

Frank did not charge the candidates any overtime costs because their materials had to be done on Sunday.

Instead he absorbed the loss because he "didn't want to disappoint anyone."

We reflect the candidates' feelings of appreciation by saying, "Thanks Frank."

A Student's View -

Election Code Broken

By VIVIAN FORDE

Can the election be considered fair and in accordance with the Election Code when two candidates for office were allowed to work at the polls punching IDs, passing out ballots, and what's more, counting votes!

True, these candidates were members of the Election Board, but Senate Bill 192, "An Act to Establish an Election Board," clearly states in Article III — Membership, Sec. G: "Candidates for office may not serve as Election Board members or clerks."

Senate Bill 189, Election Code, states in Article III — Conduction of Elections, Sec. A, Responsibility, No. 1: "The Election Board is directly responsible for the carrying out of this Election Code and maintaining the proper order and legality of elections."

How can the Election Board be considered a bona fide body to conduct elections when two of its members were not even qualified to serve?

How can we say that the election Wednesday was legal? This situation must be rectified if elections on this campus can be considered legal and it would also eliminate a lot of "sour grapes."

Student government is a very necessary part of campus life. It gives us a chance to see democracy in action and helps to give us an insight as to how our national government works.

In order to have student government there must be elections. These elections must be fair and conducted properly if we are to have effective government, and if our right to vote is to continue to be considered as a cherished privilege.

After last Wednesday's misguided election, it looks like this campus is in grave danger.

Editor's Note: One of the candidates on the Elections Board sponsored both Senate bills defining the code.

LITTLE MAN ON CAMPUS



"BOY, DID YOU GUYS EVER MAKE A LOTTA NOISE COMIN' IN LAST NITE!"

It's Just A Rumor?

It's about time that something is done about widespread speculation and reports of evidence that counterfeit ID cards are in circulation.

We've heard long enough that it's just a rumor. It's been proven now, it's true.

This Monday an assistant to Dean Hamm said: "Three good sources told me they had seen a substantial number of false ID cards. A box of 50 to 100 did exist last fall."

What proof did he have? He had a false ID card in his possession and reported he heard of several individuals using them, including several coeds.

Why didn't Dr. Hamm know of this earlier? Elections are almost over, it's hard to tell how many people have entered athletic events on bogus cards and yet until Monday, no action was taken to investigate the problem. About time, isn't it!

Letters To The Editor

TO THE EDITOR:

For the past three years, as members of honoraries, we have witnessed and worked with the Election Board in its attempts to present some degree of authority for AS elections.

Irregularities occurred in every election with which we are familiar. Each year criticisms are made and excuses offered, but the results are the same; farcical balloting procedures at the next opportunity.

Last Wednesday's election unfortunately was no different. At one polling booth in less than one hour, there were several instances of ballots being handed out indiscriminately, i.e. without ID cards, and constituencies being proclaimed by word of mouth regardless of information on the ID cards.

If these things appear insignificant, isn't this an admission that student government itself is insignificant?

This year the Election Board is shifting at least part of the blame to the honoraries who are periodically asked to lend their time, prestige and endorsement to the elections. In reality, we must sit, punching holes in ID cards, witnessing confusion and disregard for the election code by members of the Election Board.

We question the validity

of this game which is reminiscent of third graders gleefully stuffing the Valentine box.

Sharon House
Mary Avery

TO THE EDITOR:

Apparently Mr. Frantz did not understand my letter in the March 4, State Press which attacked academic freedom for Communists.

I merely believe that too much liberty could result in anarchy. History has repeatedly proved that too much freedom is just as dangerous as too little.

Furthermore: 1) Every university has a duty in the cold war to preserve democratic ideals to which the Communists are opposed; 2) There is no ignorance or narrow-mindedness in prohibiting people to speak who have only our submission in mind; 3) To gain knowledge is to "bury ourselves" when this knowledge is directed toward one well-known objective; 4) Does Mr. Frantz believe that the world's people are getting the truth from the Communists?

Finally, the events of November 22, 1963, are too high a price to pay for the right of Communists to air their views.

Philip Farmer

More About - Dorm Cost

(Continued from Page 1)

Lois Richardson, PV East: "I'm against the increase until I thoroughly understand the Board of Regents' reasons."

Pam Smith, the Quad: "I think the raise in prices will make it harder on many girls. So there should also be a raise in employment possibilities. Girls in the Quad feel they wouldn't be getting their money's worth because the Quad is such an old dorm."

Robbie Montierth, Sahuaro A: "I don't think the phone rates are fair because from what I understand the installation costs will be much less. As to the cafeteria increase, I think that's all right because the food is pretty good here compared to other universities."

Jean Van Slyke, Wilson: "I think they should show us the reason for the increase as rates are expensive enough now and this will only cause more friction. I don't think they'll get the girls they have now because of this increase. If I weren't graduating, I would live off-campus rather than pay the higher rates."

Role Explained

Dr. L. Mayland Parker, assistant professor of farm management, spoke on the effective role that American agrarianism might play in assisting the agriculture of emerging nations.

"American Agrarianism — A Guide for Emerging Nations" was the title of his lecture delivered at the American Studies Series last Wednesday afternoon.

Mac & Jack Sez . . .
"Take Color Slides At ASU's
Nite Games . . . Ask How At
**PIONEER CAMERA
SHOP**
TEMPE CENTER

Rare Books Display Set At MU Fete

The Alfred E. Knight collection of rare books from the "Golden Age of Elizabeth" will be on display during the MU Birthday Party in the upper lounge.

Extracts from the first edition of the First Folio of Shakespeare's works and the Second Folio, which includes "Romeo and Juliet," "Much Ado About Nothing," "Love's Labors Lost" and "Taming of the Shrew" will be exhibited.

Two editions of Holinshed's "Chronicle" (1586) and a page from Plutarch's "Vitae Illustrium," books that Shakespeare used for reference work, are part of the collection.

A Bible from 1614, a series of Ben Jonson's works, "Advancement of Learning" by Francis Bacon, "Faerie Queen" by Edmund Spenser, and works by Beaumont and Fletcher will be shown.

A biography of Queen Elizabeth which was published right after her death, Camden's "Elizabeth," will be exhibited.

The books are on loan from the Phoenix Public Library.

Honor Dorm Explained To Wilson Hall Coeds

Dean Jo Dorris, associate dean of students, spoke to Wilson Hall residents Monday evening concerning the decision to transfer Wilson into a men's honor dorm next year.

WHILE IT was doubtful the original decision could be changed, Dean Dorris said, possible concessions might be made if the women could prove that the move constituted "financial burden."

She cited overcrowded men's halls, the new Palo Verde West, and vacancies in the PV dorm complex as reasons for the administration's decision.

She agreed that such reasons as men being allowed to live off campus, men able to wait one more year for the construction of another men's dorm, the unavailability of women's dorms other than PV West and the compulsive seven-day meal ticket had merit, but felt they would have little effect in reversing the decision.

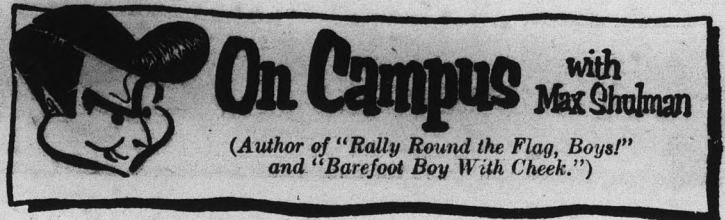
DR. GEORGE Hamm, dean of men, said Monday afternoon he "doubted" that Wilson would be used as a men's honor dorm.

Dean Dorris affirmed this statement Monday night when she told Wilson coeds that the

honor dorm had been proposed only after the dorm had been secured as a future men's dorm.

Jean Van Slyke, president of Wilson Hall, had requested, af-

ter consulting women residents, that Dean Dorris appear to answer any questions concerning the change and to clarify any rumors.



A ROBE BY ANY OTHER NAME

With the Commencement Day just a couple of short months away, the question on everyone's lips is: "How did the different disciplines come to be marked by academic robes with hoods of different colors?" Everybody is asking it; I mean everybody! I mean I haven't been able to walk ten feet on any campus without somebody grabs my elbow and says, "How did the different disciplines come to be marked by academic robes with hoods of different colors, hey?"

This, I must say, is not the usual question asked by collegians who grab my elbow. Ordinarily they say, "Hey, Shorty, got a Marlboro?" And this is fitting. After all, are they not collegians and therefore loaded with brains? And does not intelligence demand the tastiest in tobacco flavor? And does not Marlboro deliver a flavor that is uniquely delicious? And am I not short?

But I digress. Back to the colored hoods of academic robes. A doctor of philosophy wears blue, a doctor of medicine wears



Why, Why?

green, a master of arts wears white, a doctor of humanities wears crimson, a master of library science wears lemon yellow. Why? Why, for example, should a master of library science wear lemon yellow?

Well sir, to answer this vexing question, we must go back to March 14, 1844. On that date the first public library in the United States was established by Ulrich Sigafos. All of Mr. Sigafos's neighbors were of course wildly grateful—all, that is, except Wrex Todhunter.

Mr. Todhunter had hated Mr. Sigafos since 1822 when both men had wooed the beautiful Melanie Zitt and Melanie had chosen Mr. Sigafos because she was mad for dancing and Mr. Sigafos knew all the latest steps—like the Missouri Compromise Samba, the Shays' Rebellion Schottische, and the James K. Polk Polka—while Mr. Todhunter, alas, could not dance at all, owing to a wound he had received at the Battle of New Orleans. (He was struck by a falling praline.)

Consumed with jealousy at the success of Mr. Sigafos's library, Mr. Todhunter resolved to open a competing library. This he did, but he lured not one single patron away from Mr. Sigafos. "What has Mr. Sigafos got that I have not?" Mr. Todhunter kept asking himself, and finally the answer came to him: books.

So Mr. Todhunter stocked his library with lots of lovely books, and soon he was doing more business than his hated rival. But Mr. Sigafos struck back. To regain his clientele, he began serving tea at his library every afternoon. Thereupon Mr. Todhunter, not to be outdone, began serving tea with sugar. Thereupon Mr. Sigafos began serving tea with sugar and cream. Thereupon Mr. Todhunter began serving tea with sugar and cream and lemon.

This, of course, clinched the victory for Mr. Todhunter because he had the only lemon tree in town—in fact, in the entire state of Maine—and since that day lemon yellow has, of course, been the color on the robes of masters of library science.

(Incidentally, the defeated Mr. Sigafos packed up his library and moved to California where, alas, he failed once more. There were, to be sure, plenty of lemons to serve with his tea, but, alas, there was no cream because the cow was not introduced to California until 1937 by John Wayne.)

© 1964 Max Shulman


Today Californians, happy among their milch kine, are enjoying filtered Marlboro Cigarettes in soft pack or Flip-Top Box, as are their fellow Americans in all fifty states of this Marlboro Country!

SENIORS! Spring Placement Portrait Special

(February 26 through March 31)

Sitting (Minimum of 4 Proofs)
One FREE 5x7 Silvertone Portrait Print
12 Glossy Application Prints
ALL FOR \$8.75

For Sitting Appointment, Call 966-3637
ASU Photographic Service
Matthews Hall (Behind the Library)



This is no weak-sister deodorant!
...it's new

MAN-POWER

New Man-Power Deodorant has what it takes to do a MAN's job. Gives you the stepped-up penetration power, the staying power a man needs. Covers in seconds...controls perspiration...stops odor. And it's absolutely non-sticky. Try it...the new deodorant that does a MAN's job. New Man-Power. 1.00 plus tax.

EXTRA BONUS — the clean masculine aroma of OLD SPICE | SHULTON



(SP Photo by Ed Ryan)

Final Approval Now

The AWS Constitution Revision Committee meets for the last time before submitting the revised constitution to the Senate for final approval. Front, from left, Sue Knight,

Marty Stellhorn, Ann Malene, Paula Eisenman and Judy Hamer. Standing, Linda Blacklock and Norby Smalley. AS, AMS and AWS constitutions have all been revised this year.

Board Of Regents Promotes 31 Members Of Faculty

Promotion of 31 faculty members, 11 to the rank of full professor, and sabbatical leaves for 15 others were approved Saturday by the Board of Regents.

The promotions are effective July 1.

Advanced from associate professor to professor were: Dr. Harry M. Bracken, philosophy; Dr. Robert C. Lamm, music; Dr. Leo B. Levy and John E. Zimmerman, English; Dr. R. E. Bullington, secondary education; Dr. G. C. Helmstadter, educational psychology and guidance; Dr. Robert Roessel, educational services; Dr. Joseph J. Littrell, industrial design and technology; Dr. Charles E. Wallace, engineering science; Marcus Whiffen, architecture, and Loretta Hanner, nursing.

Twelve faculty members were promoted from assistant to associate professor. They are:

Dr. Charles Bowers, music; Dr. Douglas J. Henderson, physics; Dr. Harold Hickerson, anthropology; Dr. Richard G. Landini and Dr. Roger K. Meiners, both English; Dr. John Martinez, history; Dr. Dorothy

Wirtz, foreign languages.

Also Dr. Edmond Cross, secondary education; Dr. Fredric Mitchell, educational foundations; Dr. Lola Dawkins, office administration and business education; Dr. Virginia R. Huntington, accounting; and Sidney W. Wilcox, engineering science.

Promoted from instructor to assistant professor were: Arlene W. Hanssen, health, physical education and recreation; Donald Morris, anthropology; Ronald D. Smith, history; Marvin Jackson and Dennis O'Conner, both economics; Harry Lundgren, civil engineering; Bernita Steffl and Clarabelle Theobald, both nursing.

Granted sabbatical leaves for the 1964-65 academic year were: Dr. Keith Davis, professor of management; Dr. Grant Osborn, professor of general business; Dr. Nevin Savage, associate professor of mathematics; Dora L. Dawson, assistant professor of nursing; Marilyn Bagswell, instructor in nursing; and Paul E. Ruff, associate professor of engineering.

Leaves for the first semester were approved for: Dr. George M. Bateman, professor of chemistry; Dr. Paul Hubbard, professor of history; Inez W. Moffit, assistant professor of library science; Dr. Harold Coppock, associate professor of psychology; William W. Phillips, assistant professor of history; and Frank R. Byers, professor of drama.

The Regents also approved leave for the current semester and fall semester for Dr. Robert C. Headington, professor of economics.

On leave for the second semester will be Dr. Wallace E. Adams, associate professor of history; Dr. Gertrude A. Boyd, associate professor of education; Dr. Edwin P. Grobe, associate professor of French; Tom J. Harter, professor of art; Dr. Lloyd L. Lowenstein, professor of mathematics; Dr. Arnold Tilden, professor of history; Dr. Henry L. Manheim, associate professor of sociology; and Bertha H. Autenrieth, associate professor of music.

Korte Given Grant To Attend Columbia

Karl Korte, assistant professor of music, has been awarded a grant from the Alice Ditson Foundation at Columbia University to aid in the formation of a Southwest Composers League.

Korte believes there is a need for such a composers' organization as there is no organized significant outlet for new music in the Southwest.

"As a result," he said, "it is almost impossible for any but the most established composers to hear their efforts read, let alone performed."

It would give area composers an opportunity to gain a more national reputation by exchanging programs with other composers' groups throughout the country.

The league, according to Korte, would contribute to the general cultural life of the Southwest. And it would, he hopes, "help make the area and eventually the nation as a whole aware of the fact that there are many composers of stature, worthy of public performance, living and working in the Southwest."

\$780 Request Is Denied

The Board of Financial Control denied Monday the request of the Organizations and Student Leadership Board for \$780 to send a 30-member delegation to the Flagstaff Student Leadership Institute.

The request of the board was denied on grounds that the institute was scheduled at an impractical time — March 14 to 15, just before mid-term exams.

Bob Bradford, assistant dean of students, said the institute was designed for potential student leaders of ASU and would have catered to upperclassmen.

Because it would have catered primarily to upperclassmen, much criticism was directed against it by the board members who felt freshmen and sophomores should be given a larger foundation in student government.



Laird Pharmacy

PRESCRIPTION SPECIALISTS

TOBACCO — FOUNTAIN
We Give S & H Green Stamps

501 Mill Tempe

Opening Feb. 15

LAS CRESENTA TERRACE

"Best In The West"

1130 EAST ORANGE

• Finest Material Insures Complete Soundproof Construction

- Luxurious furnishings
- Deluxe refrigeration piped in
- Large diving swimming pool
- Telephone outlets
- Large walk-in closets
- Wired for colored TV
- Your choice of 1 or 2 bedroom with 2 baths
- Close to ASU campus
- Tropical sunken garden
- All electric kitchen
- All utilities furnished

For More Information Call 967-8350
Or Stop In and See Us

HAVING A PARTY?

Sororities - Fraternities

Superstition Inn Hotel


Complete Banquet Facilities

Apache Junction Phone 986-1631

A VARIETY OF CAREER OPPORTUNITIES

Our representatives will be on your campus Thursday and Friday March 12 and 13 to discuss career opportunities in **ADMINISTRATION** and **SALES**. Income equal to ability, effort. Whatever area you choose, Prudential provides training to help you excel.

See your Placement Officer to arrange an interview



THE PRUDENTIAL INSURANCE COMPANY OF AMERICA

Cheering Squad Offers Positions

Applications for next year's cheerleaders may be obtained at the MU Information Desk. Deadline is 4 p.m. April 8.

A cheerleader school will be conducted at 3:30 p.m. April 8 to 10 in Sun Devil Gym. Sponsored by the Rally and Traditions Board, the school is designed to teach the traditional ASU cheers, stated Miss Karen Kerry, chairman of the cheerleader advisory committee.

Tryouts are scheduled for 3:30 p.m. April 14 in the Men's Gym. Applicants should wear bermudas and tennis shoes, according to Miss Kerry. A 2.0 index for the previous semester or a 2.0 accumulative average is required.

Further information may be obtained at the MU Information Desk.



Sorority Girls Are 'Brides For A Day'

(SP Photo by Larry Ward)

Jan Robson (center), bride for a day, prepares for the Alpha Delta Pi annual "Guide For Brides" fashion show. Assisting her are (l to r) sorority sisters Penny Smith and Mary

Leigh Burns. Mary is modeling a tweed navy and white going away suit. The show is scheduled for Saturday at 2 p.m. in the Ramada Inn.

Club Members Slate Activities

Sierra Club will hold an organizational meeting at 8 p.m. Wednesday in MPE 103. Dewey Wildoner, mountaineer and lecturer, will present "Treasure in the Superstitions." Sponsors are Anne Pittman, associate professor of physical education, and John Spragins, assistant professor of electrical engineering.

The Sierra Club is one of the world's largest hiking and camping organizations dedicated to the enjoyment and preservation of the scenic resources of the United States, according to Miss Pittman.

The annual International Foreign Student Dinner and Floor Show, sponsored by the Foreign Students Club, will be at 7:30 p.m. Friday in the MU Ballroom.

The dinner is part of the day's cultural reciprocity program. The public is invited to the dinner. Cost will be \$1 for students and \$2.25 for non-students.

"Time, Space and Eternity" is the topic of a lecture by Ulric Jelinek at 3:30 p.m. Friday in

BA 203. Jelinek is president of Severna Manufacturing Company in New Jersey.

The lecture on science and the Bible is sponsored by the Campus Crusade for Christ.

Four guest callers from the Valley of the Sun Callers Association will participate in the Devils 'n' Dames square dance at 7 p.m. tomorrow in Clancey's. A square dance workshop will be 7 to 7:30 p.m. Interested students are invited.

Pi Lambda Theta alumnae, national honorary for women in education, are invited to a tea today at 4 p.m. in MU Upper Lounge.

Invitations have also been sent to students who may be eligible for membership. The group plans to organize a local chapter.

"Space Rendezvous" is the subject of a talk by Dr. William Wunch of the math department tomorrow at 1:15 p.m. in PS B-134 to the campus chapter of American Institute of Physics.

Clubhouse Is Faculty Aim For Future

The Faculty Club is now studying the possibility of constructing a clubhouse to provide recreation and dining facilities for faculty members, according to Lt. Col. Theodore Wyckoff, president of the Faculty Club.

At present, there are no adequate lounging and recreation facilities provided for faculty members. Wyckoff said that although there is an MU faculty dining room, it is overcrowded and much too small to serve as a gathering place for 737 members of the faculty.

Such accommodations have been provided by a great majority of the larger universities in the United States, including the UofA.

The clubhouse would be financed by the University and faculty subscription.

Plans for a major addition to the MU, possibly in 1966, are being studied by an informal committee headed by Mrs. Cecilia Scoular, MU director.

The inclusion of an adequate faculty lounge in this addition has been proposed.

Whether the lounge is included in the MU, or built separately as a clubhouse, will be determined by the amount of money the University and faculty members are willing to appropriate.

James Scalise was named first place winner in competition among third-year architecture students in the project of designing a Faculty Club building. Second and third place winners were Roger Plate and John Ohlfest, respectively. Prizes of \$15, 10 and 5 were awarded by the Faculty Club.



DON'T BOTHER TO CARRY AN EXTRA SUPPLY.

New Carefree* tampons promise so much more protection—you can leave the extras at home!

The principle of this superior protection is simple, natural. Most old-style tampons flatten, thin out, elongate when moisture strikes. This shape simply cannot cover the area of flow properly. Thus embarrassing accidents occur.

But a Carefree tampon (firmly compressed so it needs no rigid applicator) expands into a natural, round shape that conforms to your own body's structure, responds to your own body's needs. It gives you more comfort than any tampon or napkin ever developed.

Actual use tests proved that the new Carefree tampon absorbs, without leakage, 73% more than the leading tampon—starts to absorb more quickly than any other.

Better protection—longer protection. That's why you can leave that extra supply at home.

*Trademark

†Because Carefree is far more absorbent, there is no need for a Carefree super size. If you are using tampons for the first time, you may wish to try Carefree Slim (the smaller size).

Carefree

© PHARMEDICA LABORATORIES, MENLO PARK, N. J.

Music Starts Fast Tempo For Weekend

Musicians are setting a fast pace this week with three events, that begin tonight, scheduled by campus performers.

ASU's Chamber Music Society will present a concert tonight at 8:15 in the MU Ballroom.

Featured will be Edwin Putnik on the flute; Eugene Lombardi, violin; Harvey Wolfe, violoncello, and Ronald Isaak, piano.

Aloen Pilloud, a contralto, will be featured in a junior recital sponsored by the music department Sunday at 8:15 p.m. in the MU Ballroom.

Assisting in the program will be Barbara Kitamura, soprano and Doris Stevenson, pianist and accompanist.

"Komn, Susser Tod" by Bach, "Turn, Turn Thine Eyes," by Purcell, "La Girometta" by Sibella and an aria from "Mignon" by Thomas are among selections to be performed by Miss Pilloud.

Duets by Miss Pilloud and Miss Kitamura will include "I Would That My Love" by Mendelssohn and "The King of Love My Shepherd Is," by Shelly.

The Faculty Woodwind Quintet has been invited this weekend in Philadelphia at the national convention of Music Educators National Conference.

The convention is scheduled to meet Thursday through Monday.

Sponsored by the National Association of College Wind and Percussion Instructors, the quintet features Edwin Putnik on flute; Jack Ratterree, clarinet; Frank Stalzer, oboe; Eugene Chausow, French horn, and Herbert Fawcett, bassoon.

Also attending the convention will be Dr. William S. English, associate professor of music, who will participate in panel discussions.

BRIDGE LESSONS
CLASSES START MARCH 25 and 26
 Beginners, intermediate and advanced.
 Also beginners practice games Duplicate Games Daily
SCOTTSDALE BRIDGE CLUB
 129 E. Stetson Drive
 947-9222 or 947-4666
 Phone for Details
 Amer. Bridge Teachers Asso. Members

FACTORY CLOSE OUT
 On
"Cut 'n Jump" Water Skis
 1/2 Price
 Call WH 7-5911
 Or Stop By
6325 N. Invergordon
 Scottsdale

Bright Lights... And Dim

By LARRY WARD

While the campus population is often found eating and drinking everywhere from the Devil's Den to Monti's La Casa Vieja when the check from home comes in, the most popular spots these evenings seem to be the local pizza houses.

These restaurants specializing in pizza have grown nearly as fast as the campus in the past few years simply because they are fairly inexpensive and make an excellent rendezvous for friends or a place to go after a game or show.

Among the oldest and most popular spots is The Capri hidden in the darkness of East Fourth Street. While The Capri specializes in pizza, it also serves Italian dishes with all the trimmings. Entertainment is provided by a juke box filled with musical standards and folk songs.

OFF THE beaten track of most college traffic is Snides, the newest addition to the pizza pie and coffee spots. Its location on East Seventh Street has made it by-passed by a few pizza fans. Snides have served many a meal to State Press staffers on publication nights because of its closeness to the Tempe Daily News.

Burning fireplaces of the Village Inn on Apache Blvd. near Rural Road have attracted the largest population of University trade during these cold winter evenings.

The two rooms added to the familiar A-shaped roof and the patio, expected to be completed for warmer weather early next week, have expanded the Inn's seating capacity to about 300 people.

The Village Inn has inherited the nickname of the new "VI" from its doomed predecessor the Varsity Inn.

AND WHAT'S so unusual about banana and raisin pizza popular at the Pizza Pub Parlor on East McDowell, west of Scottsdale Road. The head pizza maker there says they have many calls for the appetizing concoction.

More called-for styles are also available, like the shrimp topping featured during Lent, green chile and the turkey pizza craze last November.

The honky tonk piano and banjo provide the entertainment Thursday through Sunday evenings.

Theme 'Year Of Discussion' Planned For Greek Week

By DIANA ROSEN

"Greek Week 1964 in A Year of Decision" will be the theme of the annual sorority-fraternity event scheduled for April 1 to 5.

Diana and Apollo, who will reign over Greek Week activities, will be voted on from 8 a.m. to 4 p.m. April 1

at 7:30 p.m. Each sorority selects a candidate for Diana and each fraternity selects a candidate for Apollo. Winners will be crowned at a convocation at 7 p.m. Wednesday in the MU Ballroom.

OREN ARNOLD, author and authority on the West, will speak at that time in relation to the Greek Week theme, according to Margaret Dahl, Greek Week co-chairman.

A College Bowl contest between two panels of four members each is planned for 3:30 p.m. April 2 in the MU. The eight participants will represent four sororities and four fraternities with the highest cumulative indexes for last semester. Competitors are undetermined as yet.

Fraternity and sorority problems will be discussed at seminars at 4:30 p.m. in the MU. The day's events will be culminated by a progressive party at the houses along Adelphi Drive.

A Lambda Chi Alpha Toad Hop at noon April 3 will start the day's activities. Inter-Greek competition in the Greek Sing will be on the West Hall porch

GREEK OLYMPICS will feature the athletic efforts of Greek men and women from 10 a.m. to 1 p.m. April 4 in Sun Devil Stadium.

Camelback Inn will host the Grecian Ball from 9 p.m. to 1 a.m. The Clarissa Hall Band will provide the music. Sweepstakes prize and place winners for the Greek Sing will be presented at the ball.

All activities with the exception of the progressive party are open to all students and faculty members, according to Bob Montano, Greek Week co-chairman.


Tickets Available

The Concert Choir is selling tickets for the March 13 and 20 performances of "Gypsy" starring Gisele MacKenzie at the Phoenix Star Theater.

Reservations may be made for \$3, 4, 4.75 and 5 by calling 966-3445 or by contacting a member of the choir.

Mac & Jack Sez . . .
 "If You Haven't Seen Us—
 We're Both Losers . . ."
PIONEER CAMERA SHOP
 TEMPE CENTER

Fight Fatigue With Vitamin C — 100 tablets — 100 mg — 49c



EICHENAUER'S BAR
 Papago Plaza — Chris Town
 264-6734

TONY'S CENTRAL CLEANERS
 505 Mill Avenue

Special Prices for College Students & Personnel

1 MENS SUIT — \$1.00	2 for \$1.00
1 DRESS (plain) — \$1.00	2 for \$1.00
1 SKIRT (plain) — 50c	2 for 50c
1 PANTS — 50c	2 for 50c
1 SPORT JACKET — 50c	2 for 50c
1 SHIRT — 50c	2 for 50c

(To Anyone Presenting This Ad)

Quality Cleaning — Prompt Service

SEE LATIN AMERICA UP CLOSE

How much do you know about Latin America? About the Alliance for Progress? Are Yanquis to blame for Latinos' shortcomings? What does the Moscow-Peking split mean to Lima, Caracas, Managua? Can free enterprise cope with the staggering problems of Latin America?

These are some of the questions that TIME's Special Correspondent John Scott set out last summer to answer firsthand. "How Much Progress?" is the result—a 140-page report to TIME's publisher. It is the twelfth in a series of annual studies Scott has been making for TIME, analyzing major political, economic and social developments throughout the world.

"How Much Progress?" also includes a comprehensive bibliography and comparative tables on Latin American population, GNP, exports, prices, monetary stability, U.S. investments, and food production.

A copy of Scott's report on Latin America is available to students and educators at 25¢ a copy to cover postage and handling. Write
TIME Special Report
 Box 853, Rockefeller Center
 New York, N.Y. 10020

A 140-PAGE REPORT PREPARED FOR TIME'S PUBLISHER IS AVAILABLE TO COLLEGE STUDENTS AND EDUCATORS

SENIORS...

ORDER YOUR

- ★ Cap & Gown
- ★ Name Cards
- ★ Rings
- ★ Now



At The

UNIVERSITY BOOKSTORE

Open Mon. — Thurs. 8-7 Fri. 8-4:30 Sat. 9-1

Pipe Presents Problems Only In Public Places

By SHIRLEY DeMARKE
Staff Editor

Pipe puff'n is popular — and with women too! Judy Brown, sophomore art major, is one of the first to bring the fad that's sweeping the East to this campus.

Encouraged by the surgeon general's report on smoking, Judy purchased her pipe two weeks ago and has been puffing even since.

"It's foolish to buy one and not use it," said Judy, but she admits that while the man in the smoke shop assured her a great number had been sold, she has yet to see a woman smoking one.

"Once you get over your own self consciousness you've come half way — then you have to expect the stares and giggles of the public."

A shopping tour at Thomas Mall was the first public appearance of Judy with her pipe. Judy laughingly admits that she forgets you can't inhale once in a while but says, "I'm getting better."

Practical reasons for pipe puffing? "It's cheaper," declares Judy. Judy was smoking approximately a pack of cigarettes a day while a pouch of pipe tobacco lasts her about a week and a half. In addition to being economical, it serves two purposes; pipe and hand warmer.

Her parents think it's better than cigarettes, but "terribly masculine," and her boy friend, although he suggested it, just tries not to think about it.

Honorary Sets Cosner Movie

"The Long Hot Summer" will be shown at 7:30 p.m. Thursday and Friday in Cosner Auditorium. The movie will be sponsored by Kappa Kappa Psi Honorary Band Fraternity. It stars Orson Wells, Paul Newman, Joanne Woodward, Anthony Franciosa and Lee Remick.

Donations are 25 cents. The proceeds will be used for music scholarships.

Greeks Elect New Officers, List Actives

Kappa Kappa Gamma recently initiated 10 new actives. They are: Kay Benzel, Sarah Burns, Phyllis Canero, Betty Davis and Betty Dodenhoff.

Others are Dianne Gaines, Barbara Lutz, Pat O'Neil, Karen Schriber and Merrilee Stadem.

Recently elected officers of Kappa Kappa Gamma are Judy Thomas, president; Ann Martin, first vice president; Trisha Eachen, second vice president; Sue Ellen Hutchens, recording secretary; Janie Stonehouse, corresponding secretary, and Mary Lyan Jordon, treasurer.

Other new officers are Gretchen Diercks, social chairman; Betty Dodenhoff, public relations; Julie Loper, activities; Kay Martens, pledge trainer; Betty Davis, house chairman; Diane Blethen, registrar, and Diane Battenfield, Panhellenic.

DELTA CHI

New actives of Delta Chi are Steve Aldrich, Art Lubin, Geoffrey Mack, Tom McPherson, Ted Person and Scott Proctor.

Others are Roger Renfro, Hank Rhodes, Randy Silver, Art Smith, Carl Wieberg and Bill Wood.

Recently elected officers are Larry Bauer, president; Ted Person, vice president; Bill Jeffrey, recording secretary; Geoffrey Mack, corresponding secretary, and Ross Echkel, treasurer.

Rings 'N Things

PINNINGS

Sue Roman, UofA, to Mark Schisler, Alpha Epsilon Pi Patricia Schaffers, Phrateres, to Douglas Michelson, University of New Mexico Laura Lee Beckman, Kappa Delta, to David F. Mower, Tau Kappa Epsilon Carolyn Marsh to Toby Johnson, Sigma Alpha Epsilon Gail Patterson, Alpha Phi, to Thom Andersen, Theta Delta Chi

ENGAGEMENTS

Theresa Gotchey to Airman 2/C Robert Boehm Beverly Bednorz to Frank Healy, Delta Chi Sandra Beydler to Carmen Corso, Delta Chi Karen Deckelmeier to James M. Chapman Beth Miller to Harry S. Fegley, Theta Chi Jan Wilson, UofA, to Bob Holbert, Kappa Sigma

Business Leaders To Meet For Scheduled Programs

"Community — Appraisal Part I" is the topic of ASU's Western Business Roundup radio panel program for Sunday.

Panelists will be Phoenix businessmen. Moderator will be Dr. Ralph C. Hook Jr., director of ASU Bureau of Business Services.

Under discussion will be downtown development, parking and traffic flow, policing a growing city and city planning.

The program will be broadcast Sunday on KOOL at 4:35 p.m., KPHO at 5:05 p.m., KALF at 9:30 a.m. and 5:30 p.m. and KYND at 10 a.m.

* * *

The third annual state Future Business Leaders of Arizona convention for junior and senior high school students will be on campus Saturday.

Alpho Pi Epsilon, national secretarial honor society, will host the registration and a campus tour.

Events of the all-day program will include competition

in business fundamentals, typing, shorthand, bookkeeping, parliamentary procedure, spelling and public speaking.

Dean Glen D. Overman of the College of Business Administration will speak at a 6 p.m. banquet in the MU.

Dr. Richard McCready, associated professor of office administration and business education, is state FBLA chairman and convention co-ordinator.

CURTIS & TERRY

formerly
Bunch's Watch Shop

Watch Repair Specialists

609 MILL AVE. WO 7-3221
TEMPE



LIKE TO FLY?

1 1/2 days Easter Vacation flight to Grand Canyon. Pilot has 2,000 hours.

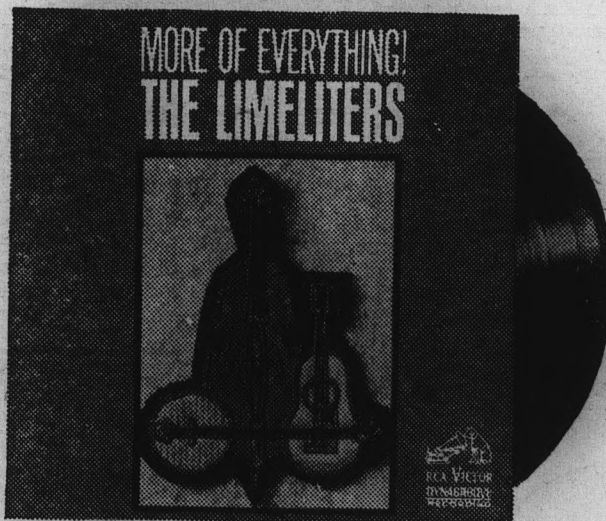
Leave Falcon Field Thursday, March 26. \$25, Maximum Flight. Contact Tom Weeks, 801 B. Lemon St., or leave note at MU desk.

STUDENTS (Female)

For pleasant telephone work. Full or part time. No exp. nec. \$1.25 per hour, plus bonus.

HAPPY HOSTESS
ADVERTISING
Suite 214
1000 Apache Blvd.
Tempe

BRAND NEW AND BRILLIANT

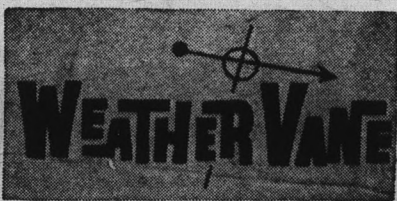


The Limeliter sing and play once more. Great folk standards like "No Man Is an Island," "The Best Is Yet to Come" and "Willow Tree." It's more of the best with the Limeliter.

RCA VICTOR
The most trusted name in sound

HILLS RECORDS & BOOKS
Tempe Center

FASHION SHOW



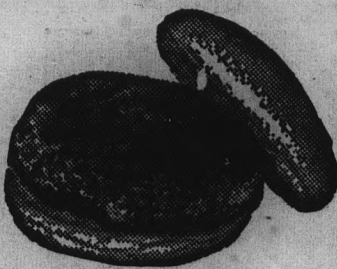
CAMPUS FASHIONS . . .
for young women . . .

Tonite — 7:30 P.M. — M.U. Bldg.
Admission \$1.00

SPONSORED BY PHRATERES

DELICIOUS! JUST 17c

French Fries 12c
Milk Shake 22c
AND INTRODUCING THE
Fish Sandwich . . . 25c
Dubl-Burger 30c



Finest Quality . . . Fastest Service
Phone 947-1571 for Pick-up Orders

Ricky's Drive-In

1847 S. Scottsdale Road Scottsdale
1/4 Mile South of Papago Plaza Shopping Center

FOR THE FUN OF IT... be sharp. Cactus Casuals in Classic Ivy or Continental styling are absolutely right anywhere—classes, tennis, dates—you name it. These Cactus Combers are Sanforized Plus, wash and wear, in Mission White and Tartan Green. Get some. You'll look great. About \$6.95. Also, men's walking shorts. Box 2266, South San Francisco, California.

CACTUS CASUALS

Sun Devils Split Four; Hancock Fires 2-Hitter

By MIKE HELFNER

The baseball team opened its season last Thursday on a winning note by downing Long Beach State 11-8. Los Angeles State moved in the next day and nosed out the Devils 6-5 to make the winning note a sour note.

Saturday LA State added insult to injury by blanking A-State 8-0 in the opener of a doubleheader. The Devils, behind the sparkling two-hit pitching of Skip Hancock, shut out the Diablos 5-0 in the second game.

Hancock's performance was an extremely bright spot for Coach Bobby Winkles; the other A-State starters failed to finish. Ace relief pitcher Sam Cook saw action in two games. He saved the first for John Torok, but was knocked out in the second game trying to win for Jim Merrick.

IN HIS two appearances, Cook threw eight innings, gave up eight hits, five runs, walked four, and struck out two. His performance, according to Winkles, is slightly below par. However, Winkles feels that with more work Cook can be better than he was last year. At that time Cook threw 74 innings, had a fantastic 9-1 record and a low 2.18 earned run average.

Hancock scattered just two singles in his win. He walked six men, and struck out 12.

THE EIGHT pitchers A-State used had a total of 23 walks and 24 strike outs. They also gave up 30 hits. On a whole, the pitching staff was a little weaker than expected, said Winkles. With more work they should improve.

Another trouble spot for Winkles was the infield. They committed seven errors. Shortstop John Ruedy accounted for two, third baseman Sal Bando three, and Jack Smitheran (subbing for Luis Lagunas at second) made two miscues. Catcher Tony Alesci made four fielding errors.

The hitting of the infielders was way below par. Ruedy batted a meager .167, Lagunas .071, Bando .125, Smitheran .000, and first baseman Jan Kleinman .250.

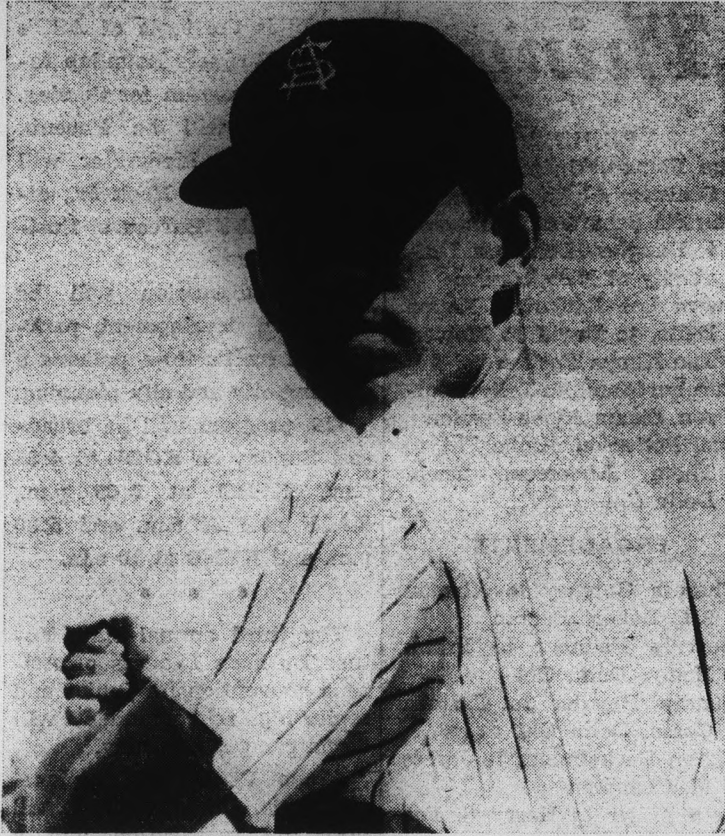
Doug Westley, a fine defensive man at first, played one game and went one for two for a .500 mark. Westley is scheduled to start both games this weekend.

MERRILL HYDE is the leading batter after the weekend games with a .539 mark. The right fielder collected seven hits in 13 at bats. Two of his hits were doubles, plus one triple.

Center fielder Jack Handley also hit a double. He collected two other hits in his nine trips to the plate for a .333 average. The other outfielder, Dick Heiden, smacked a triple and two singles in 13 at bats for a .252 average.

This weekend ASC will be here for a two game set on Friday and Saturday. No Sun Devil lineup has been set.

COACH WINKLES will be changing his line-up every game for the next ten games to give every player a chance



(SP Photo by Ed Ryan)
NEW STARTER — Senior Doug Westley, generally regarded as one of the finest fielding first basemen in the Southwest, will open at first base when the Sun Devils meet ASC here Friday. Westley went 1-for-2 in action against Los Angeles State Saturday.

to see action. Winkles also hopes to see each player in action and see how every man plays in a game.

"By the time we play Michigan in March our line-up will be pretty well set," said Winkles. He will be counting heavily on Cook and Hancock to lead the pitching staff. He is expecting much improvement in the hitting and the fielding departments.

STUDENTS (Male)

With cars. For light delivery work. Full or part time. No exp. nec. Must know Mesa-Tempe area, top pay.

HAPPY HOSTESS ADVERTISING

Suite 214
1000 Apache Blvd.
Tempe

YOUTH IN ACTION

By Joan

Now that we've entered the western week for western youth at ASU — and plans are going forward for the annual Rodeo in March, most Arizonians around here who think and act young, are donning their stetsons and boots and getting ready for western action. 'Is there a difference in western action?' — is the question most asked by Snowbirds from the East. Most certainly — as any Snowbird learns at his first Rodeo. For western action is fast action — requiring young minds and young hearts. And the key to western action is youth!

And speaking of youth in action of one thing you may be sure — the famous "Honda" motorcycle is irresistibly young — as witnessed by all Honda owners. You'll waste no time in letting the years roll by as you thrill to the surge of power in the Honda — the machine that spells fun, economy, high performance, dependable service — now on display in the showrooms of Honda of Arizona Motor Company of 800 N. Central, in Phoenix, featuring sales and service. Why not own a Honda — it's the smart way to go places!

"Years Ahead" Flight Training In The New Shinn - 2150



MODERNIZED GROUND SCHOOL FOR PILOTS & NON-PILOTS Amos Flight Operations

A Private License is a Must In Modern Business

Don Amos — Class of '56
Phone BR 5-7291 SKY HARBOR

Men the girls go for,

go for **FARAH**®
Slacks



go further in

Faréx
Slacks by

FARAH

Only \$5⁹⁸ - so, get several pairs!

FARAH MANUFACTURING CO., INC. EL PASO, TEXAS



(SP Photo by Ed Ryan)
EX-SERVICEMAN — Big Glenn Winningham hurled the javelin 247-9½ to earn a first place in Saturday's triangular meet with Occidental and Arizona. The track squad will face New Mexico in a dual meet at Goodwin Stadium Saturday night. Results of the Oxy-Arizona clash are on page 12.

ASU Compiles 7-3 Mark To Earn Conference Tie

By JOHN NADEL

The Sun Devils, finishing with a rush, completed their regular season with a 16-10 mark and with a 7-3 mark in the WAC, were co-champions.

With other co-champ New Mexico receiving a bid to play in the National Invitation Tournament, A-State is the conference representative in the NCAA tourney.

In their opening tournament game last night, the Devils traveled to Eugene, Ore., to meet Utah State.

Paired with A-State and Utah State was a game between Oregon State and Seattle. The winners of these two games move to Corvallis, Ore., this weekend for the Western Regionals.

The Sun Devil-Aggie winner will meet the University of San Francisco Friday night, while the Oregon State-Seattle

victor will be matched with the nation's number one team, the UCLA Bruins.

A-STATE'S JOE Caldwell was picked as the outstanding player in the WAC, and was the only unanimous choice for a first team berth.

Senior inside man Art Becker was chosen to the conference second team.

The Sun Devils needed a strong finish for an acceptable season, and they got it, as the team won 10 of their final 11 games.

A-State started the season on the right foot, pounding Western New Mexico easily, and a few days later, looked like a million dollars while defeating Wichita in Sun Devil Gym, 93-87. The Shockers are now sixth in the nation.

But following these two home contests, the Devils went on a four-game road trip that proved to be disastrous.

IN SIX DAYS, the Devils found themselves on the short end of the scoreboard four times, losing to Bradley 92-85,

Creighton 84-83, Denver also 84-83, and Colorado 93-70.

The Devils were ranked fourth in the nation at this trip's beginning, and, needless to say, this changed a bit after the trip.

Back in the friendly confines of Sun Devil Gym, A-State proceeded to win the first annual Sun Devil Classic, whipping Oklahoma 127-99, and California 72-65.

Other holiday action saw the Sun Devils squeezing by Stanford 61-60, and finally having their home court win streak ended at 52 by losing to Seattle 100-96.

A LOSS TO Texas Western and a victory over Colorado State then followed, preceding the beginning of the WAC race.

A-State traveled to Wyoming and New Mexico, and after grabbing early leads in both contests, the team fell to the Cowboys 87-82, and the Lobos 63-54.

Traveling to Illinois a week later, the Devils hit perhaps a season low in being bombed by the Illini 97-78.

Save At **KEN'S MOBIL SERVICE**

8th & Mill Ave., Tempe

5^c Coupon Given Free
 With Each Purchase Of
 5 Gallons Of Gas

Good For Service or Merchandise.
 NOT REDEEMABLE ON DATE ISSUED

This offer may be withdrawn any time without notice



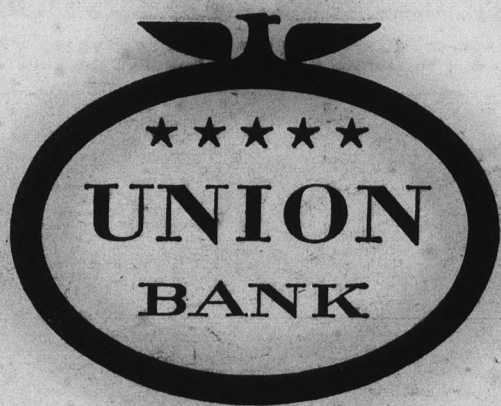
BOAC shows you the Europe the European students know—from \$1079* for 42 days.

Inquiring minds and the fun-minded will both enjoy the 11 BOAC itineraries specially designed for students. You visit little-known Alpine and Yugoslav villages as well as the Grand Tour classics. Here's what your tour price includes.

- Serious cultural, economic and governmental briefings.
- Oxford and Cambridge graduate-student tour leaders.
- Shakespeare at Stratford, Salzburg marionettes, Edinburgh Military Tattoo.
- Evenings with European students at Tivoli, Munich Hofbrau, and the Left Bank.
- Independent leisure in the great cities.
- Most meals.
- All hotels, prices based on double occupancy of rooms.
- You get there by BOAC Rolls-Royce 707 Fan-Jet.
- Travel in Europe by bus, train, steamer and air.

See your Travel Agent or nearest BOAC office—and send in the coupon.

*Including Economy Class round-trip jet air fare from New York, subject to change.



AN
UNUSUAL
MANAGEMENT TRAINING PROGRAM

INTERVIEWS:

MARCH 20

ARRANGE FOR AN INTERVIEW
 WITH THE PLACEMENT OFFICE

ALL OVER THE WORLD
B·O·A·C
 TAKES GOOD CARE OF YOU

1109
FREE TOUR BROCHURE
 British Overseas Airways Corporation
 Dept. BE-178 d
 530 Fifth Ave., New York 36
 Please send me your free brochure on
STUDENT TOURS

NAME _____
 ADDRESS _____
 My Travel Agent is _____



RED PIN BOWLING

A Strike
 Wins One Free
 Line When
 Head Pin Is
 Red.

Open Monday thru
 Thurs. 11-10 P.M.

Fri. and Sat. till
 Midnight

Sundays noon till 10 p.m.

35c per line
 3 lines for \$1.00

M. U.
Bowling Lanes

Devils Rip Oxy, UofA; Ulis Hurt

By JON MORRIS

Arizona State fought 12 mile per hour winds which froze a sparse gathering of spectators in sweeping to an impressive triangular track victory Saturday over Arizona and Occidental in Goodwin Stadium.

The Devils sped to seven first places in rolling up 75 points against UofA's 59 and Oxy's 47. Dual meet scoring found ASU stopping the Tigers 88-57, and the Wildcats beating Oxy, 78-66.

Henry Carr captured two victories with a 9.4 meet record time in the 100 and a 19.8 in a 220 that was run over 210 yards. Times for the race were declared void.

Carr's eventual successor, Tom Hester, gave the Detroit junior a real battle in both the 100 and 220, turning in a 9.5 for the century.

Top individual winner was the Wildcats' Gayle Hopkins who tied a meet record in the high jump at 6-4½, went 23-11¾ in the broad jump and 47-9¼ in the triple jump.

Other Devil winners were Glenn Winningham with a 247-9½ in the javelin, and the 440 relay (Hester, Darrell Jansen, Jim Childs and Carr) at 41.9. Both were new meet records.

Other meet records went to Arizona's Bob Hildt with a 14.3 in the 120 high hurdles, and Oxy's Vance Peterson in the 330 intermediate hurdles.

A-State's trackmen again lost the mile relay when Ulis Williams, attempting a comeback after being sidelined for three weeks, dropped out after barely starting the second lap. Williams further injured a thigh muscle which has put a damper on his and the Devils' plans this year.

Mac & Jack Sez . . .
"Take Movies At ASU's Nite Games . . . Ask How At PIONEER CAMERA SHOP TEMPE CENTER

Gymnasts Prep For WAC Meet

The gymnastics team used Saturday's 84-44 victory over Brigham Young University as a tune-up for the WAC championships this weekend.

ASU hosts the WAC meet at 7:30 p.m. Friday and Saturday in Sun Devil Gym. Student admission is 50 cents.

Coach Norris Steverson's athletes took seven firsts from BYU, losing only in trampoline to the Cougar's Lynn Leigh, en route to their eighth dual meet victory in 10 tries.

Jerry Stansbury nabbed three firsts on parallel bars, side horse and long horse. He is undefeated on long horse this year and is rated ninth in the nation.

Chris Evans turned out a 9.75 (10.0 is perfect) score on still rings to insure his national third place ranking and became the overwhelming favorite to win the WAC title.

Other ASU firsts came from Jim Nelson in floor exercise and Benny Bishop in tumbling.

Sun Devil Fact

Sun Devil Art Becker led the Western Athletic Conference in field goal percentage this past season with a .532 per cent. The 6-8 inside man from Phoenix also averaged 10.5 rebounds per game to finish fourth in that department.

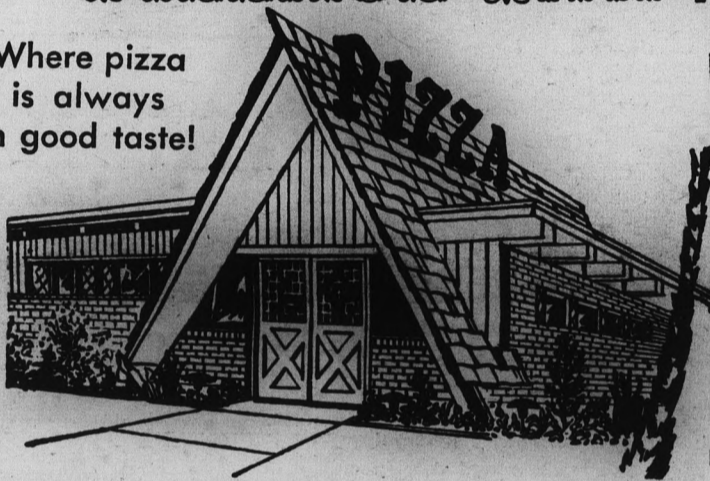


SOPH HOPEFUL — Sophomore Les Christianson is the only man to have defeated teammate Chris Evans on the still rings in the past two years. Christianson and the Sun

(SP Photo by Ed Ryan) Devil gymnastics squad are busily preparing for this weekend's WAC championships in the Sun Devil Gymnasium. Both matches are at 7:30 p.m. Friday and Saturday.

VILLAGE INN PIZZA PARLOR

Where pizza is always in good taste!



Thurs.-Fri.-Sat. 9 P.M. to 1 A.M.

DIXIELAND TRIO
Dave Wierbach
Dale Everest
Mel Scheib

Sunday 8-12 P.M.
Dixieland Band

801 East Apache Blvd. — WO 7-3355

Other Locations: PHOENIX, 61 W. Thomas Rd. — MESA, 1156 W. Main

PETER'S HOFBRAU
Authentic German Food Beverages Entertainment
German Atmosphere
Happy Get-Together
Hours: 4-6 o'clock
218 Western Park Dr.
(Just Off Indian School)
SCOTTSDALE
PHONE 947-4389

COLLEGE TALENT CALL!!



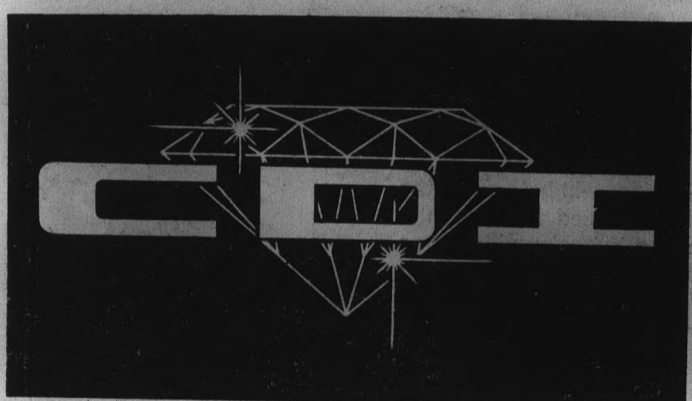
3rd ANNUAL CAMPUS REVUE

Here's the chance of a lifetime for college students to display their talents in a lively one-hour variety show under professional direction. The SIX FLAGS CAMPUS REVUE is one of the top attractions at America's Foremost Theme Amusement Park. All types of theatrical talent are needed.

SIX FLAGS OVER TEXAS

Accompanist will be provided at auditions or you may bring your own. A full summer employment at SIX FLAGS OVER TEXAS, Dallas-Fort Worth, will be offered those registered college students selected. Rehearsals begin Saturday, May 30.

AREA AUDITIONS:
Saturday, March 14—1:00 p.m.
BALLROOM, MEMORIAL UNION
Arizona State University — Tempe



Why Trust Anyone?

Ever see a motto like "Trust us . . ."?
Ever wonder why you had to trust them, why you couldn't decide for yourself?
In 2 hours, CDI can teach you enough about diamonds so you can decide for yourself.
That way, you don't have to trust anybody.
Not even us.

COLLEGE DIAMOND IMPORTERS
"DIAMONDS IMPORTED EXCLUSIVELY FOR STUDENTS"
ONE THOUSAND APACHE BOULEVARD
TEMPE PHONE 967-8917
BY APPOINTMENT ONLY