

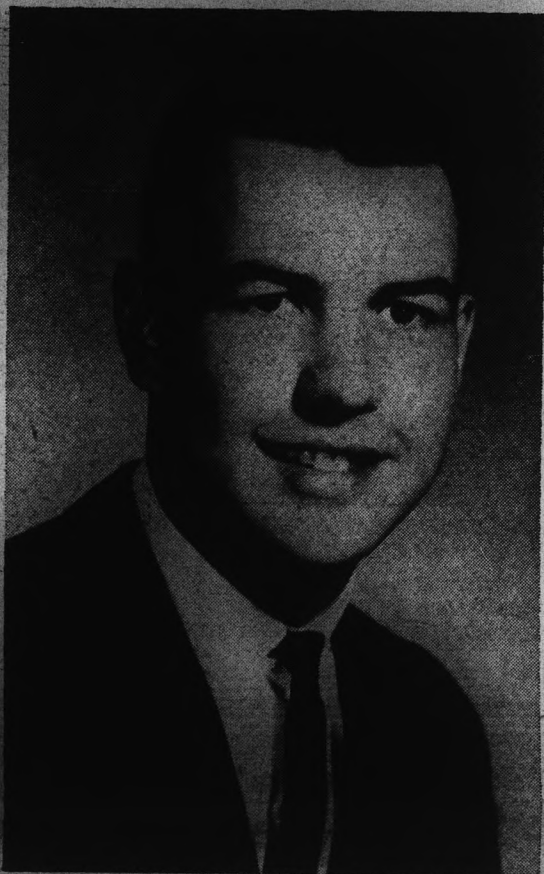
## 51 To Compete For 29 ASASU Offices

### 1964 ASASU Presidential Candidates

### Primary Elections Next Wednesday



JOE SPARKS



KARL WOCHNER

By BOB RANDOLPH and FRANK DUCCESCHI  
The student body will go to the polls Wednesday to elect a new ASASU president.

Approximately 4,000 students are expected to cast ballots, according to Alan Bunch, chairman of the Election Board. This is only a slight increase over the number of voters that participated in last year's presidential election.

Running for the office of Associated Students president will be juniors Joe Sparks and Karl Wochner. Both are Greeks.

Forty-nine students will be vying for 28 other ASASU AMS, AWS and Senate positions in Wednesday's primary election.

IN ORDER to help candidates reach the voters, campaign assemblies have been scheduled, Bunch said.

Assemblies have been slated for:

Palo Verde and Palo Verde East: 10:15 p.m. Monday, ASASU and AWS offices only.

The Quad: 10:15 p.m. Tuesday, ASASU and AWS offices only.

Sahuaro Hall: 10:40 p.m. Tuesday, ASASU and AMS offices only.

Polls will be open from 7 a.m. to 5 p.m. on the south side of PV bridge, in front of Matthews Library and on the southwest corner of College Avenue and Orange Street.

IBM ballots will again be used in an effort to speed up ballot counting, Bunch said.

Judy Hamer will run for first vice president without opposition, while Tom Thomason, Jim Stoffa and Ralph Cotter will seek the office of activities vice

president.

Annalee Ziman, Sue Ellen Hutchens and Emily Getsinger will vie for the office of ASASU secretary.

The AMS presidency will be a race between Bernie Weber and Robert Montano. Paul Cottrell and Michael Vivion will campaign for the office of AMS vice president.

THE OFFICE of AMS secretary will be sought by Ted Marsella and Bruce Briggs while the office of AMS treasurer will be pursued by Ronald Formento and Jon Elam.

Seeking the office of AWS president will be Sarah Burns and Beth Mitchell, while Jeri Anne Meikle and Susan Cope will run for secretary. The office of treasurer will be between Marilyn Fowsley and Paula Leahy. Other AWS offices will be filled in a later election.

Candidates for the two sophomore class Senate vacancies will be Alan Warne, Larry Wilson, Jeffrey Petzold and Andrea Hill; junior class — John Reiser and Fred Reish; senior class — Janice Ayers.

OTHER SENATE candidates will be Bill Sawyer, Mike Bowlin, Garth Tallman and Tom Bailey, representing Business Administration; Robert Taylor, Gay Waldberg and Sharon Goldberg, Education; Joe Kalish and Nadia Komarnycky, Liberal Arts.

Engineering Sciences Senator candidates will be Walter Dudley, Ronald Merkley, Bill Harris and Dean Mousser.

Off-campus men Senate candidates will be Sam Linder, Ira Friedman, Larry Gunning and Jim Stoleson.

Joan Yenerich, Roxanne Decker and Linda Heizer will seek the two off-campus women Senate seats.

## Senate Approves Fourth Constitution Rule Change

For the fourth time in two months the Senate approved the revised ASASU Constitution Wednesday.

The constitution will be sent to the student body for ratification at the primary election March 11, according to Alan Bunch, chairman of the Election Board.

In other Senate action, a resolution was passed declaring the rental and use of sports facilities at ASU was "not in the best interest of Associated Students."

Under present University policy, students and non-students can be charged for the use of Sun Devil Stadium, Goodwin Stadium, Sun Devil Gym, the gym annex, the pool, the tennis and basketball courts and all other sports facilities, including the practice field south of the gym.

SB 211, which asks for \$300 from the ASASU unappropriated balance for a three-day legislative workshop at the state capitol, was postponed until the

next Senate session March 11. The workshop, which is being sponsored by the political science department, is March 4 to 6.

According to Speaker George Stewart, it is student government policy that no money be appropriated for an event which has already occurred.

Four Bills were sent back to committee:

SB 204 — an act to revise the Faculty-Student Relations Committee.

SB 207 — an act to establish an Organizations Board.

SB 208 — an act to establish a Leadership Board.

SB 209 — an act to establish a Board of Financial Control.

If now passed, the above bills would, in time, have to be amended to conform with the new ASASU Constitution.

ALL CHANGES now will be made in committee, then revised bills will be put before the Senate for a vote.

Five new Senators are now in office. They are Pam Lawrence, AWS; Paula Chisholm, junior class; Roger von Holtz, liberal arts; Sue Hinkle, education, and Bruce Maxwell, academic council.

## Plastic Student ID Cards Studied For Fall Usage

A completely different type of student ID card is being considered for possible use next fall.

The new plastic cards would carry a minimum of information — matriculation number, picture and signature. The matriculation number may be embossed in the manner of commercial credit cards.

Dick Finley, ASASU financial manager, believes such cards would save work and cut costs. Currently, 14,000 cards are printed each year. Once the new system is in effect, only freshman and transfer students would need cards.

It is hoped that the new IDs would be more useful to the athletic department, Matthews Library and Campus Security, as well as students.

A committee, headed by Finley and including representatives from the comptroller's office, Matthews Library, the MU, Campus Security and the athletic department, is making a study of the type of card to be used.

## Registration Sets Repeat All-Time High

The University's enrollment has reached a record 14,609 students, according to Alfred Thomas, Jr., registrar and director of admissions.

This figure represents a 10 per cent increase over the 13,003 enrollment of the 1963 spring semester.

The undergraduate enrollment by colleges is as follows:

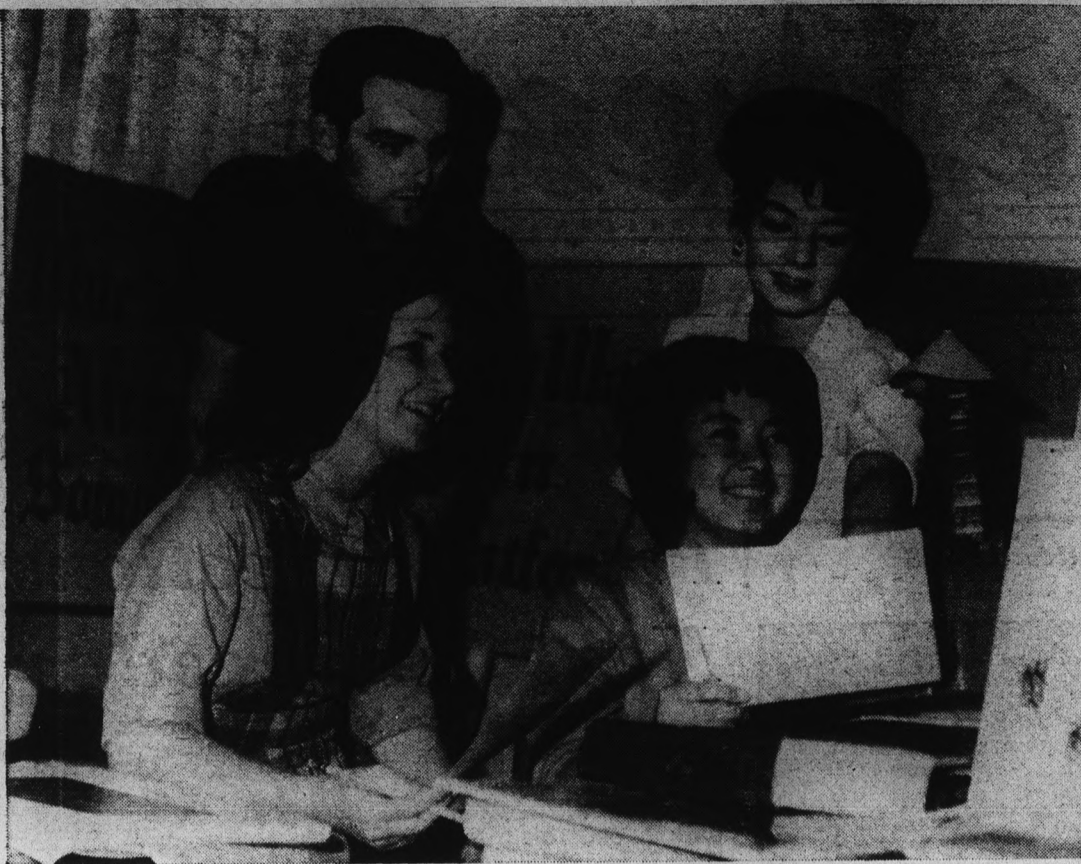
Liberal Arts, 3,235; Education, 3,145; Business Administration, 1,973; Engineering Sciences, 1,889 School of Nursing, 261; Unclassified, 589.

The total undergraduate enrollment is 11,092.

The Graduate College and the Graduate School of Social Service Administration have an enrollment of 3,517.

### Nero Concert Tickets Still Available

Tickets are still available at the MU Information Desk for the Peter Nero concert scheduled for 8 p.m. Sunday in Sun Devil Gym. The tickets, priced at \$1.50 and \$2, will be sold at the desk during regular MU hours during the weekend and at the gym box office from 6 to 8 p.m. Sunday.



(SP Photo by Richard Cantor)

STRATFORD-ON-ASU — Members of the MU Birthday Party Central committee check displays for the Golden Age of Elizabeth. Seated, from left, are Diane Powell, committee secretary; Mike Byron, adviser; Christine Kajikawa, chairman, and Dianne Lichty, adviser. Anyone interested in helping decor-

ate the MU should come to the activities center, MU 212, from 1:30 to 5:30 p.m. every Tuesday and Thursday. The birthday party will last four days instead of the one, as in the past. It will begin April 8 with a presentation by the Chamber Orchestra and end with an Elizabethan Ball April 11.

## State Congressmen To Attend Forum

The motor vehicle inspection law, Arizona's attitude toward federal aid to education and the public accommodations bill will be among key issues discussed in a legislative forum featuring four representatives from the Arizona House of Representatives at 7:30 p.m. Tuesday in the MU Ballroom.

Co-sponsored by the ASU Young Democrats and Young Republicans, the forum will discuss controversial issues now confronting the state legislature.

Representatives Jim Young and Clovis Campbell will represent the Democratic viewpoint and James Shelley and Marshall Humphrey the Republican view.

Dr. Leonard E. Goodall, head of the Bureau of Government Research, will moderate. Following the discussion period, a panel of two Young Democrats and two Young Republicans will question the legislators.

The audience may participate by writing questions on paper to be passed out at the door.

## MU Birthday Party Committee Named

Committee chairmen for the MU Birthday Party, have been announced by Chairman Christine Kajikawa and Co-chairman Linda Oakley.

Roger von Holtz will head the decorations committee. Karen Delamenter will direct decorating the upper lounge; Dave Nordrum, lower lounge; Glenna Wilson, ballroom, and Jimi Frady, the outside of the MU.

Brenda Holland will head the programs and invitations committee; Bob Abramson and Pam Johnson, exhibits; Pete Decker,

Blue Key Carnival; Joann Yeo and Bob Johnson, entertainment; Mary Parkey, banquet and masque; Fred Reish, progress and queen contest, and Prudy Voldeng, publicity.

### CORRECTION

A conference on "New Horizons in Mental Retardation," co-sponsored by the Maricopa County Council for Retarded Children and the College of Education, is scheduled today in the MU Ballroom.



The wise way to

*Save Money*

when buying a diamond.

Make your dollars buy more, consult a jeweler you can rely on completely. To back up your faith in our store, we have earned the coveted title, *Registered Jeweler, American Gem Society*. Buy where knowledge and reputation build trust, and you'll make a wiser diamond purchase.

*Paul Johnson*  
JEWELERS



1604 E. CAMELBACK

MEMBER AMERICAN GEM SOCIETY

*"Where Originality Is a Tradition"*

Open 9 A.M.-5:30 P.M. — Thursdays Til 9 P.M.

Mac & Jack Sez . . .  
"Take Movies At ASU's  
Nite Games . . . Ask How At  
**PIONEER CAMERA  
SHOP**  
TEMPE CENTER

### MATERNITY INSURANCE

- ★ You Pay \$8.50 a mo.
- ★ Your receive \$200.00
- ★ Plus additional benefits

— Call —

Ron Frazier - 967-8603



## You're Not Seeing Double . . .

We just want to make sure the SENIORS don't forget to order their **CLASS RINGS**

Diamond Top Now Available For The First Time

Delivery Takes From 6 to 8 Weeks

# UNIVERSITY BOOKSTORE

## COLLEGE TALENT CALL!!



### 3rd ANNUAL CAMPUS REVUE

Here's the chance of a lifetime for college students to display their talents in a lively one-hour variety show under professional direction. The SIX FLAGS CAMPUS REVUE is one of the top attractions at America's Foremost Theme Amusement Park. All types of theatrical talent are needed.

Accompanist will be provided at auditions or you may bring your own. A full summer employment at SIX FLAGS OVER TEXAS, Dallas-Fort Worth, will be offered those registered college students selected. Rehearsals begin Saturday, May 30.

## SIX FLAGS OVER TEXAS

AREA AUDITIONS:  
Saturday, March 14—1:00 p.m.  
BALLROOM, MEMORIAL UNION  
Arizona State University — Tempe

# WE WILL HAVE TO DO IT AGAIN!



Scottsdale Rd.  
at Curry Rd.  
1 Mile South  
of McDowell

Hundreds of requests have been made for Helicopter Rides... Our three day prize winning flights over HAYDEN PLAZA EAST and the zoo has certainly started something...

... SO WE WILL DO IT AGAIN!

This time we will feature rides for married couples only... there will be some special rides for anyone born on Leap Year Day.

Look for the "Whirly Birds" in front of the East Mall Next To Woolworth's

## SATURDAY, FEBRUARY 29th 2 P.M.

The Special Rides For Those Born On Leap Year Day Will Take You Over Phoenix To See HAYDEN PLAZA WEST... Now Under Construction For April Opening! There Will Be Another WOOLCO STORE Too!

# HELICOPTER RIDES

Get Your Tickets From "MR. ARIZONA" At The University Health Club Around The Corner From Dari-Delight

Read Your Local Newspapers and Listen Across The Dial On Your Radio... We Will Keep You Well Informed About The New Events At

## HAYDEN PLAZA EAST AND WEST

This could be your picture after a pleasing ride in one of the "Whirly Birds"...



HAVE FUN,  
SHOP WITH US  
"ALWAYS"

Look For The  
Cactus Sign



- HOME OF WOOLCO Department Stores
- KYND Radio
- FRY'S Food Store
- WOOLWORTHS
- SAVE-ON DRUGS
- SIZZLER STEAK HOUSE
- DARI-DELIGHT
- DESERT BREEZE Coin Operated Laundry and Dry Cleaners
- VALUE VALET
- MR. ROBERTS Beauty Salon
- RAY'S Barber Shop
- LUNDE'S Shoe Repair
- HAYDEN PLAZA Liquor Store
- POT POURRI (Arizona Humane Society)
- K-Way Construction
- K-WAY Associates
- EXCHANGE FINANCE CO.
- THE PILGRIM SHOPPE Furniture Store
- THE CROMWELL SHOP Men's Clothing
- SPORTIQUE College Fashions
- BLAKELY OIL CO.
- WORLD OF COLOR Paint Store
- VERA'S UNIFORMS
- THE RAVEN Book Store
- UNIVERSITY HEALTH CLUB

**REMEMBER:** Saturday, February 29th - 2 P.M.  
**K-WAY ASSOCIATES** Owner & Builder Of  
**HAYDEN PLAZA EAST-WEST** - fastest growing  
Shopping Centers in the Valley of the Sun...

### SCOTTSDALE ROAD at CURRY ROAD



THE STATE PRESS, distributed by the campus chapter of Sigma Delta Chi under the direction of Circulation Manager John Naddi, is the official campus newspaper of Arizona State University. It is published each Wednesday and Friday throughout the school year, excepting holidays, and is entered as second class matter at the Tempe, Arizona, Post Office under the acts of March 3, 1879, and August 24, 1912.

THE STATE PRESS is member of the Arizona Newspapers Association, Associated Collegiate Press and national Advertising Service, Inc.

Subscription price, \$3 per school year.

EDITOR-IN-CHIEF	EDWARD GASSER
MANAGING EDITOR	ED HEATH
NEWS EDITORS	GORDON BLACK, GORDON ROBBINS
ASSISTANTS	LARRY WARD, DIANA ROSEN
CAMPUS EDITOR	PAM VAN BUSKIRK
ASSISTANTS	SHIRLEY DeMARKE, BETSY JEAN FRITH
SPORTS EDITOR	AL MICHAELS
ASSISTANT	JOHN NADELL
COPY EDITOR	JOHN KENDALL
ASSIGNMENTS EDITOR	FRANK DUCCESCHI
ASSISTANTS	PAT HUNTER, JOAN SKIPPER
PHOTO EDITOR	ED RYAN
FEATURE EDITOR	LINDA HELSER
CHIEF PROOFREADER	RICHARD CANTOR
ASSISTANT	JANIE WILLIAMS

Staff Editorial -

# They Don't Want To Go

By PAM VAN BUSKIRK  
Campus Editor

One hundred and fifty coeds will be homeless. Their home-away-from-home, Wilson Hall, will house male students next year.

In exchange for Wilson, the administration has offered them Gammage, previously a freshman hall. This will provide rooms for 80 girls; Wilson held 150. What about the girls who are now in Gammage; where will they go?

There simply will be too many girls to get into the two McClintock and Gammage halls. This leaves the Palo Verde complex and its mandatory seven-day meal tickets.

**THIS MEAL TICKET** is the main gripe; it isn't practical. Nursing students, student teachers, girls who work in Phoenix, all will miss meals because they are not at the dorm during meal time. They can't afford to pay for meals at the dorm and not eat them and pay for another meal in a restaurant.

With the compulsory seven-day meal ticket stipulation removed, the girls could not complain. They can't afford to pay \$90 a month for room and board.

If the men students so desperately need rooms, why is Sahuaro Hall standing, at this time, with about 80 vacancies?

Why not put the 150 men who would move into Wilson into the empty rooms in Sahuaro and Gammage halls?

**MEN CAN LIVE** off campus. Girls can't until they are 23 and by then they usually are no longer going to college.

The girls who can't afford to live in the Palo Verde complex and don't have the requirements for "Mac" B, will struggle to get into "Mac" A and Gammage. Combined, these two halls will hold about 180 girls. There will be more girls than that without a place to stay. These coeds can't live off campus so they must live at home. Why move the girls home? More boys than girls can commute because they have cars. Besides, men CAN live off campus.

This change is only intended for one year. If the honor dorm, which will be Wilson, has waited this long, why can't it wait one more year?

Besides boys, the walls in Wilson are painted delicate pink, blue and green.

## I Cover College Avenue

By ED HEATH  
Managing Editor

Where are the GDIs who held a rally on Oct. 23?

Where is the group that used its numbers to display its power?

Then only taunts and insults were involved. Now is the time for those involved to exercise that power with a stronger weapon — votes.

The time is ripe to assure your suggestions and complaints a listening ear.

**IS IT TOO** late for a rebirth of the Independent Party of 1952 that successfully backed the election of its candidates through a unified effort? This group was founded on the following:

—Interest in seeing wider student representation in student government.

—Belief that the interests of all University students would be bettered by a more independent student governing body.

—Discontent with the monopolistic control of student affairs.

—Officers elected would conduct themselves as they think best for the students without obligation to any interest group.

**HOWEVER**, the ideas that grew from the formation of an Independent Party work in many other areas.

It eliminated the "more-the-merrier" attitude of student government elections and provided a carefully selected candidate from each party for each office.

This aided the voters who were relieved of the long list of candidates, half of whom were unknown.

**FURTHERMORE**, this demolished the politicking tactic of spreading votes over a number of political unknowns while a united group backed and got "their guy" elected.

The system proved that a two-party representation would stimulate more student interest in elections. Voting was increased 50 per cent over the preceding election.

At present ASU is without a formal Independent Party but it is not without Independents. And it is hard to believe that the Independent spirit that was exhibited in October is dead.

**THERE IS**, however, time to consider the advantages and disadvantages of voting along party affiliations.

There is time to plan how student government would benefit the majority of the student body.

And that is by voting for those candidates that would best establish a student government that is for and by the students.

## Chance To Speak Out

State Press will make space available for student opinion under the heading, "A Student's View." Wednesday the first article of this type was, "A Stifling of Freedom" by Steve Sargent.

We hope students will take advantage of the opportunity to present their views in perceptive, analytic articles. Almost any area of collegiate interest (except politics, please) is open for discussion, though it's best to stick to local subjects.

The same general rules should be followed as in writing letters to the editor. However, instead of mailing in "A Student's View," we'd like to encourage students to drop in the office, MU 3, and discuss the submissions with the editor-in-chief.

We appreciate letters to the editor. They keep us abreast of your reaction to State Press articles.

We edit the letters only when it is necessary to maintain good taste.

Sending us a letter does not insure publication. If your comments are timely and important, they normally will be printed.

There are a few points we would like you to keep in mind when writing to the editor. Please follow these suggestions to assure that your letter can be printed.

—Type your letters or write them legibly.

—Keep them short. The shorter they are the better your chances of having them printed.

—Make sure they are signed. You can have your name omitted on request and it will remain confidential.

—Add your role, e.g. student, faculty or staff. Also include your address and phone number, in case we need to clarify something.

The honor dorm for men is finally coming, maybe, next fall. Tentative plans are for the honor dorm to be Wilson; the girls have to go elsewhere.

So far the qualifications considered for the men will be a 3.0 accumulative. That's awfully high for 144 men to qualify and fill Wilson. We hope the criteria for residents won't be too rigid.

Many students with a less than B average are better students — they study harder and are more interested in a serious education — than many 3.0 playboys. Behavior and attitude, as well as grades, should be carefully considered.

## And After This One -



(Cartoon by Jack Price)

"When you've filled out this form and turned it in, we can give you the 206 form. After that there is form 83. Then, after we consider them for three weeks, we might tell you your grades."

## Letters To The Editor

### TO THE EDITOR:

To begin with I would like to thank the State Press for the article that appeared Feb. 19 concerning the handling of the Sahuaro for 1963.

At one point however, I was quoted as saying "I don't understand Dick Finley's view in this." This statement was in fact an error in reporting. Since this was a telephone interview, the chances for a mistake were certainly heightened.

As stated in that same article, my not being on campus this year leaves me with an incomplete picture of both sides of the controversy. This state of incomplete information seems to embrace quite a few critics who have recently raised the torch of crusade without a real understanding of the situation.

In the preparation of '61 Sahuaro, I worked with the editor on visual design, for '62 Sahuaro as co-editor, and editor-in-chief on '63 Sahuaro. Throughout the production of these three books the only real continued interest (other than the yearbook staff itself) in achieving the best presentation to the University came from Dick Finley.

The current differences of opinion have been apparently critiqued by "champions" whose interest is limited to

personal differences and not a workable solution for continued benefit to all students at ASU.

Let me ask one question: Have you ever thrown away one of your yearbooks?

Well then, let's not throw away the Sahuaro by petty bickering.

Gary Avey

### TO THE EDITOR:

To date this semester, your attempts to "Cover College Avenue" have resulted in little but a very sophomoric style of journalism.

The two most recent examples have been your misuses and magnifications of the "gap" between Independents and Greeks during elections. On a campus of this size and with as wide a variety of topics to choose from as you do have, it seems strange that you should have to create interest by portraying the coming elections as the Good Guys vs. the Bad Guys.

Having lived on both sides of the big Greek fence you describe, I have found that the only thing more harmful to a campus than a bitter independent, is a reporter with so little imagination that he must resort to childish friction to start his journalistic fire.

One of the Bad Guys . . .

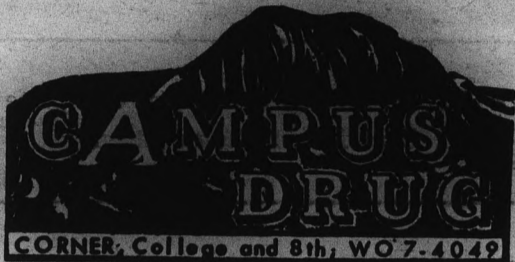
Norm Cable

CAMPUS DRUG

Specials

Max Factor SWEDISH FORMULA Hand Creme

Reg. \$1.00 - Now 2 for \$1.50



# Wilson Hall Coeds To Move To Make Room For Males

By DIANA ROSEN Staff Editor

Wilson Hall, a woman's dorm for the past eight years, will be a men's honor dorm next year only, according to Edward Hickcox, director of housing.

The hall of 140 men will probably be self governing. Dr. George Hamm, dean of men, emphasized that not all 3.0 students would serve the purposes of an honor dorm best and that the other above criteria may be definitely established in addition to an index requirement.

A shortage of men's living quarters was stated as the reason. The dorm will, however, be a girl's dorm again in 1965, Hickcox said. Plans are now on the drawing board for a new men's dorm complex to handle the increasing male enrollment.

"This is one step," added Hickcox, in an over-all plan to obtain better study conditions, more attractive rooms and a more social atmosphere in the dorms. "class dorm, and McClintock A and B. "Mac" B is a women's honor dorm. The Quad will again house freshmen women only.

PHONES WILL be installed in all rooms by next fall to insure a better form of student communication. This would help the student retain his individuality while living in a large communal type living quarter, Hickcox said.

The cost would amount to \$2 a month per student for the added number of phones per dorm. There will probably be an over-all increase in dorm rates this fall, he added.

Women's dorms available for next year will be the Palo Verde complex which has cafeterias for each of the dorms; Gamage Hall which will be an all-

EAST HALL will be razed this summer according to previous plans. Women can live in Wilson during summer session this year.

All men's dorms will be available for next year with the addition of the converted Wilson Hall. Haigler may be changed in a year from an 80 men dorm to a facility of either the athletic department or the physical plant. Nothing, however, is definite, Hickcox said.

Bad lighting, overcrowded rooms and poor studying conditions have prompted the conversion. It can not be torn down since it is a concrete structure.



BETWEEN OUTER SPACE



AND THE DEEP SEA

THERE'S A WIDE RANGE OF OPPORTUNITY IN THE BELL TELEPHONE COMPANIES

To outer space and into the deep sea, we take the sum total of our scientific and managerial knowledge. A case in point is Telstar, which represents the first step toward a worldwide communications system. Another example, the new deep-sea amplifier that simultaneously transmits two-way messages. Both communications triumphs stem from Bell System planning, research and development.

Such trailblazing projects command the best of managerial and scientific talent. That's why you'll find, throughout the Bell System, men with college training as diverse as the responsibilities they shoulder. Their backgrounds run the gamut from liberal arts and business courses to science or specialized engineering majors.

Admittedly, the work is demanding. It requires that unusual caliber of man who finds a greater satisfaction in challenge than in ready solution... who is eager to see his education yield dividends... who wants an immediate opportunity for leadership.

Men with this kind of impatience will discover the stimulation, welcome and rewards they seek in the telephone business.



BELL TELEPHONE COMPANIES

Mac & Jack Sez... "If You Haven't Seen Us We're Both Losers..." PIONEER CAMERA SHOP TEMPE CENTER



RED PIN BOWLING

A Strike Wins One Free Line When Head Pin Is Red.

Open Monday thru Thurs. 11-10 P.M. Fri. and Sat. till Midnight Sundays noon till 10 p.m.

35c per line 3 lines for \$1.00

M. U. Bowling Lanes

# Ferrell Talk Featured In Spring Series

By JANIE WILLIAMS  
Staff Editor

"The reaction to degenerated romanticism was one of the influences that brought about the realism of the 1880s."

So stated Dr. Wilfred Ferrell, director of freshmen English, when he spoke Wednesday during the current series of the Center for American Studies.

During the 1880s, America stood in a transitional phase for the development of the forthcoming 20th Century nation. There was a shift in the occupation of the country, with a change from an agrarian to an industrial economy.

"IN THESE years business became big business; and the business of America became business," Dr. Ferrell said, noting that there were more than 10,000 labor strikes during 1886.

The 1900s gave rise to the muckrakers. "These were the studies and exposes of social conditions in the crowded cities." He pointed out, however, that these writings offered no common solution to the problems they tackled; remedies were nearly as numerous as the publications.

"Amid the babble of these social and economic expressions rose the voices of the novelists, in most cases offering a feeble and frequently inept note." Charles Brockden Brown, the first professional novelist, was noted as having dealt with social issues in his writings.

DR. FERRELL stated that romanticism dominated the fiction period. "It capitalized on the melodramatic; the sensational, contrived plotting, stereotyped situations; all laved with a heavy dose of sentimentality and oppressively scented with a purple morality."

"The real significance of the social novels in the 1880s and '90s is not measured by their literary merits, or by the role they played in the reform movement, although as social documents they deserve a place of recognition among American letters."

He concluded, "in appraising the novels that rose from the treatment of social problems during this period, we find, with some few exceptions, little of aesthetic value to recommend them. But in the development of the American novel and in the tradition of the American ideal they served a significant purpose."

# Interviews Planned

The education division of the Placement Center has scheduled the following interviews for next week. All schools are in California unless otherwise noted.

**MONDAY:** Los Angeles, Hayward Unified Dist. and Redwood City.

**TUESDAY:** Los Angeles, Santa Ana, Hayward Unified Dist. and Cason Valley, El Cajon.

**WEDNESDAY:** Los Angeles,

Garden Grove Union High School Dist., Santa Ana and Cajon Valley, El Cajon.

**THURSDAY:** Garden Grove Union High School Dist., Fullerton Elementary, Redondo Beach and Glendale Unified School Dist.

**FRIDAY:** Fullerton Elementary, Glendale Unified School Dist., Lakeside Union School Dist., Escondido Union School Dist., Torrance Unified School Dist. and American Samoa.

## Strictly For You!

Our New

## Wilcox University Studio

Featuring

### Color & Black & White Portraiture

Special Attention To Flattering Results

- Portraiture
- Engagement Announcements
- Wedding Candid
- Publicity Glossies

Call 967-4467  
For Your

Appointment  
Today



8th St. At Scottsdale Road  
TEMPE, ARIZONA

**Foxy folks put Lee in the lead! More people go to Lee in Arizona because they know there is no finer eye-wear anywhere. They always get quality American-made lenses...always the finest service, for less.**

11.85

SINGLE VISION GLASSES FROM

BUDGET TERMS • SATISFACTION GUARANTEED

Quality Contact Lenses ... \$85<sup>00</sup>

**TEMPE**  
Tempe Center — 805 Mill Ave.

**PHOENIX**  
16 West Adams

**CHRIS-TOWN**  
19th Ave. & Bethany Home Rd.

**THOMAS MALL**  
4527 East Thomas Rd.

**SCOTTSDALE**  
719 N. Old Scottsdale Rd.

**MESA**  
129 West Main

**YUMA**  
2816 4th Avenue

**TUCSON**  
El Con Shopping Center

Dispensing Opticians  
*Where it's always safe to save money on glasses, contact lenses, too!*

**OPEN THURSDAY NIGHTS AND ALL DAY SATURDAY**

HARMAN'S

Dining Room

Mesa-Tempe Hi-Way

TEMPE

REGULAR \$1.75

Chicken Dinner

ONLY \$1.00

MONDAY ONLY

"It's Finger Lickin' Good"

Opening Feb. 15

# LAS CRESENTA TERRACE

"Best In The West"

1130 EAST ORANGE

• Finest Material Insures Complete Soundproof Construction

- Luxurious furnishings
- Deluxe refrigeration piped in
- Large diving swimming pool
- Telephone outlets
- Large walk-in closets
- Wired for colored TV
- Your choice of 1 or 2 bedroom with 2 baths
- Close to ASU campus
- Tropical sunken garden
- All electric kitchen
- All utilities furnished

For More Information Call 967-8350  
Or Stop In and See Us

## Career Opportunities at MOTOROLA

With a major expansion to over 1,000,000 square feet, Motorola has the largest semiconductor facility in the world.

ELECTRICAL ENGINEERS ■ ORGANIC & PHYSICAL CHEMISTS  
■ PHYSICISTS ■ CHEMICAL ENGINEERS ■ METALLURGISTS

BE SURE TO ASK ABOUT THE ENGINEERING AND MARKETING TRAINING PROGRAMS.

Motorola offers the student at the BS level an opportunity to advance his career and education concurrently. Work and achieve a Master's Degree in an environment of constant challenge.

On Tuesday, March 10th, Dr. Henry Cooper, Manager of Process Applications in Physical Sciences, R.&D., will be on campus to discuss career opportunities with interested candidates. Contact your Placement Office for an appointment to talk with Dr. Cooper.

THE ENGINEERING TRAINING PROGRAM

Open to BS graduates in Electrical Engineering, Chemical Engineering or Physics with a B average or better. While pursuing an MS degree at Arizona State University each trainee is placed in a rotational program covering four engineering activities at Motorola.

THE MARKETING TRAINING PROGRAM

Open to BS graduates in Electrical Engineering or Physics with a B-average or better. Marketing trainees may work toward an MBA or an MS degree. Rotational assignments are in the marketing area.

If you are unavailable for an interview at this time write directly to: Manager, Professional Recruitment and Training, Motorola Inc., Semiconductor Products Division, 5005 East McDowell, Phoenix, Arizona 85008.

**MOTOROLA INC. Semiconductor Products Division**  
5005 EAST McDOWELL ROAD • PHOENIX, ARIZONA 85008

AN EQUAL OPPORTUNITY EMPLOYER

# Debaters Awarded 1st Place

The Debate Squad placed first in a field of 34 at the seventh Desert Invitational Debate Tournament at the UofA last weekend.

ASU won the traveling trophy for the highest number of accumulated points for forensic excellence and individual events.

Team members are Betty Duffy, captain; Bedford Douglass, Wes Shellen and Mahlon Gaumer.

A plaque was also awarded the team. It will be on permanent display in the MU. A gavel was presented to Dr. William Stites, coach of the debate squad and associate professor of speech.

The debate team went to the Azalea Tournament at Springhill College, Mobile, Ala., during February.

The team will go to Colorado State University March 13 and 14 for a tournament and will sponsor a state tournament in April.



(SP Photo by Larry Ward)

WINNER — Dr. William H. Stites (right), admires the speech trophy Wes Shellen won at a recent Tucson forensic tournament.

**Bobbies Flowers** *Flowers Gifts...*

20 E. 5th St.  
Home Phone WO 7-6319  
WO 7-2972 — WO 7-4274

For Parties . . .  
Large Artificial  
Plants For Rent

*"Live Happily Ever After"*  
But First Let Me Design  
Your Rings  
They'll Cost You Less,  
Because I Make Them Myself

		
ENG. & WED. SET 14K — Emerald \$137.50	ENG. RING Diamond app. 1/2 ct. \$285.00	ENG. & WED. SET Diamond app. 1/2 ct. \$200.00
		
14K WEDDING RING \$85.00	14K WEDDING RING \$17.50	14K WEDDING RING \$32.50

**alexander's studio 14**

75 W. Fifth Ave. — Scottsdale  
945-2563

Designers & Manufacturing Jewelers Since 1868

Watch and Jewelry Repairing

# Appeals Results

The Department of Traffic Appeals issued the following results after Wednesday's meeting.

**GRANTED**

John Patschke, Steven Liston, Daniel Mullen, David Brunswig, Charles Smith, Michael Russell (2), LouBelle Ross, Steven Price, Doug MacDonald, Robert Storrs, Dorothy Duett, Fred Hermosillo, Margaret Statter (2), John Qualtrough, Arthur Paschke, Jr., Norma Ramsey, Dale Kinney, Jeanne Castle (1), Jack McElroy (1).

**DENIED**

Michael Murray, Philip Leech, Richard Walliser, Rebecca de la Torre, Susan Booth, Ethel Guymon, Joseph van Zile, Paul Moffat, Jerome Comen, Richard Sanders, Gene Carruth, Robin Parr, Jon Revelts, Bob Bigelow (2), Beverly Boothroyd, Michael Quinn, Jean Surabian (2), Linda Sullivan, Elaine Merritt, Tom Basham, Alan Wagenknecht, Algene Hudkins, Ronald Louis, Garry Terry, Joette Corriere (2), Jack Carrel, Mary Nielson, Athur Lopez, Willis Teale, Mark Seargeant, Richard Giorgio, Arthur Armstrong, Leon Neisius, Lee Searcy, Brian Amada, Gordon Johnson, Jeanne Castle (1), Jack McElroy (1).

## Campus Classified

Regulations: For students and faculty only of Arizona State University. To place classifieds, submit to Room 107 Administration Building. Deadline is Wednesday noon for Friday's issue. Rates: 3 cents per word, 50 cents minimum charge.

**FOR SALE**

FOR SALE: All State Motorcycle, 5 months old. 740 actual miles. Paid \$375.00 in October, sell for \$260.00. Call 967-6863.

FOR SALE: Motorcycle, BMW, R-26. Very clean. \$325.. 967-5023.

SURF'S UP—9'8" Jacobs and Vealzy surfboard for sale. Like new condition. Call Woody Dow WH 5-0973 after 10:15 p.m. weeknights.

1961 Austin Healy Sprite. Excellent cond. Must sell Any reasonable offer. Carol Bowers... Palo Verde East. Call 966-2134 after 5:30 p.m.

**APARTMENT**

1/2 Block from ASU, one bedroom furnished. \$75 month on yearly basis. Available March 1st. Call WO 7-5430.

**LOST & FOUND**

LOST: One AGFA camera in case, vicinity MU to Tempe Center. Reward \$20. Contact Box 292, Sahuaro Hall, Room 224C

LOST: In men's dressing room pool: One men's Timex wrist watch; one 1963 New Mexico Military Institute class ring. Reward. Call Lee Wooley, 945-3835, any day after 5 p.m.



## DON'T BOTHER TO CARRY AN EXTRA SUPPLY.

New Carefree\* tampons promise so much more protection—you can leave the extras at home!

The principle of this superior protection† is simple, natural. Most old-style tampons flatten, thin out, elongate when moisture strikes. This shape simply cannot cover the area of flow properly. Thus embarrassing accidents occur.

But a Carefree tampon (firmly compressed so it needs no rigid applicator) expands into a natural, round shape that conforms to your own body's structure, responds to your own body's needs. It gives you more comfort than any tampon or napkin ever developed.

Actual use tests proved that the new Carefree tampon absorbs, without leakage, 73% more than the leading tampon—starts to absorb more quickly than any other.

Better protection—longer protection. That's why you can leave that extra supply at home.

\*Trademark

†Because Carefree is far more absorbent, there is no need for a Carefree super size. If you are using tampons for the first time, you may wish to try Carefree Slim (the smaller size).

*Carefree*

© PHARMEDICA LABORATORIES, MENLO PARK, N. J.

## Greek To Me Tactics Labeled As 'Dirty Rush'

By BILL QUAYLE

The old saying, "One must take the good with the bad," seems to reflect Interfraternity Council's feelings on this semester's formal rush.

With the end of spring rush, reports started circulating around campus concerning fraternities employing "dirty rush" tactics to bring new pledges into the Greek system.

According to Graham Dorland, IFC vice president, "dirty rush consists of pressuring a man without showing him the full facts about the Greek system." He went on to say that it tries to emotionally obligate a person to a particular house.

WHEN IFC President Sandy Chamberlain speaks about formal rush he uses the proverb, "Competition breeds excellence." "Unfortunately," says Sandy, "a few become too enthusiastic with rush and this tends to border on dirty rush."

Dorland says there are seven charges of dirty rush to be brought before IFC. These charges range from blemishing another fraternity's name to putting pledge pins on potential rushees before the required time.

Evidence is mounting against one house where one of its rushees was wearing a pledge pin when he went to pick up his bid cards.

Another fraternity will soon have to explain why it put nine men, who never pledged, on the roll in the IFC office.

HOWEVER, all is certainly not lost for the Greeks. The fraternities that have engaged in this type of rush are in a small minority. IFC has set up a conduct committee to investigate performances of different houses during rush and throughout the rest of the semester.

The committee consists of three members of the IFC Executive Council, four rotating fraternity presidents and adviser Dr. George Hamm, Dean of Men. They meet whenever something needs to be discussed and if they find a fraternity guilty of a charge, they issue fines and sometimes probation.

It's too bad that some houses have to abuse the principles and ideals that IFC has set up for them. It's been said that one rotten apple can spoil a barrel. At the present, only mildew is forming on that apple. It has only been the tireless efforts of those who care that have kept the Greek system functioning.

## High School Debate Meet Is Saturday

Six hundred high school students from five states will invade the campus Saturday as guests of the Pi Kappa Delta, national forensic honorary, for the seventh annual High School Forensic Tournament.

There will be two classifications of oratory, team and individual. Dr. William H. Stites, adviser to the honorary, stated that the topic for team debate will be, "Resolved: That the Federal Government Should Provide Complete Medical Care, for All Citizens at Public Expense."

The topics for the impromptu and extemporaneous oratory will be current events.

There will be three divisions of competition: freshman and sophomore, upper division men and upper division women. Trophies will be awarded the first and second place winners in all divisions and a trophy will be presented to the overall first place winner.

Wes Shellen, chapter president, other members of the organization, faculty and speech majors will act as judges and timers. At the awards assembly in BA 203 at 5:30 p.m., trophies will be awarded to the winners.

Team debating is scheduled in the Social Sciences Building from 9 a.m. to 3 p.m. Individual oratory is scheduled in the Education Building. The public is invited to all sessions.

## Concert Planned By Band

The Sun Devil Band will present a formal concert under the direction of Harold Hines at 8 p.m. today and tomorrow in the Tempe Union High School Auditorium.

Saxophonist Fred Hemke will be featured soloist. Hemke, who will play "Concerto for Saxophone" by Ingolf Dahl, is a teaching associate at Northwestern University. He also teaches at Gunnison Band Camp in Colorado and at Interlochen National Music Camp in Michigan.

Band selections include "Bandology" by Eric Osterling, "Les Preludes" by Franz Liszt, "En Bateau" from "Petite Suite" by Claude Debussy, and "Incantation and Dance" by John Chance.

Also, "Lincolnshire Posy" by Percy Grainger, "Fairest of the Fair" by John Philip Sousa, "Schottische" from "Suite of Old American Dances" by Robert Russell Bennett, "Dixie" arranged by Morton Gould and selections from Rogers and Hammerstein's "South Pacific" arranged by Jerry Gates.

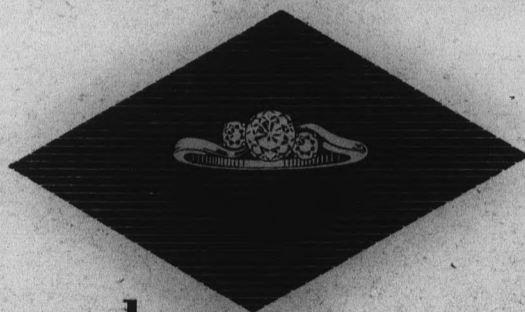
The concert is open to the public. Admittance will be by ticket until 7:55 p.m. Free tickets may be obtained at the MU Information Desk, the band office or from band members.

### Weather the Weather

Shop at the



for  
**Campus Fashions**  
Corner of 7th St. & Myrtle Tempe



elegance . . .  
a symphony of brilliance  
in diamonds and design

**College  
Diamond Imports**

1000 Apache Blvd. Suites 204-205  
Tempe — Call 967-8917 For Appointment

- Student Representatives:
- Ross Eckel
  - Robert Knoblock
  - Steve Petrie
  - Mike DeMuro
  - Tom LaBorde
  - Aynul Haque
  - Steve Belser
  - Shields Fair
  - Steve Briggs
  - Ken Waterman
  - John Thurman
  - Larry Cocheil
  - Frank Peters

LIVE A LITTLE . . .

EAT A LOT

at

**CHICO'S**

RESTAURANT\*

FINE MEXICAN FOOD

1120 East Apache Blvd. — Tempe

\*Air conditioned of course

## Grand Opening



IN OUR

NEW LOCATION

AT

**HAYDEN  
Plaza East**

VISIT OUR NEW

- ★ Finnish Sauna Bath
- ★ Massage Dept.

Charter Memberships

**\$5.00**  
per month

GET TRIM FOR  
THE SWIM

Summer's Coming,  
Get Ready Now.  
In Only 60 Days You  
Will Look Trim . . . In  
Any Clothes.

- Spot Reducing
- Slenderizing
- Weight Gaining

CALL  
967-7461  
TODAY  
FOR A FREE  
TRIAL VISIT

This Famous  
Guarantee

**3 Months Free**

If We Fail To Obtain  
The Following Results

**OVERWEIGHT:**

Lose 15 Pounds —

3 Inches Off Hips and Waist

**UNDERWEIGHT**

Add 2 Inches To Bust —

Improve Posture —

Reproportion Body

Measurements

**LADIES**  
Tues. & Thurs.  
10-10  
Sat. 9-1

**MEN**  
Mon., Wed., Fri.  
10-10  
Sat. 2-6

**UNIVERSITY HEALTH CLUB**

1018 Scottsdale Rd.

Tempe

# Varied Events Appear On Busy Club Agendas

"The Last Hour," theme of the weekly Wesley Foundation lectures, will feature Carl Craig, state minority group consultant for the Arizona State Employment Service at a noon luncheon Tuesday. The luncheon, at the foundation center, is open to the public and costs 50 cents each.

The Phi Psi and Phi Omega chapters of Lambda Delta Sigma will meet Monday at 7 p.m. at the LDS Institute for a grubby night basketball game. Delta Phi Kappa will provide the referees and the cheerleaders.

Co-Uni-Bus will sponsor the film "Billy Graham at Century 21" Sunday night at 9:15 at 405 E. Bishop Drive, Tempe. Students and faculty are invited.

A hike to Weaver's Needle via the Peralta Canyon trail is planned for tomorrow by Gam-

ma Theta Upsilon, national professional geography fraternity. Members will meet in the Agriculture Building parking lot at 9 a.m.

"The Storyville Study" will be the topic of a Sociology Club lecture by Dr. Martin U. Martel, associate professor of sociology, at 7:30 Monday night in MU 7. Dr. Martel will discuss the family, work and leisure roles in American magazine fiction. The public is invited.

Kappa Delta Pi, educational honorary, will host a panel discussion on "Techniques for Getting A's" at 7:30 Tuesday night in Ed 101. The panel will consist of faculty and students.

Recently elected officers of Omicron Delta Epsilon, honor

society in economics, are Peter Rose, president; Lawrence Moore, vice president, and Anthony Raspolc, secretary-treasurer. The local organization's constitution was approved. A topical revue of economics is planned for publication in the future.

Don Perry, president of Pi Sigma Epsilon, national professional fraternity in marketing, selling and sales management, will be honored at the Phoenix Sales and Marketing Executive Club's annual banquet 8 p.m. Monday in the Hotel Westward Ho banquet room in Phoenix.

Gov. Paul Fannin and ASU's Miss Arizona, Vonda Kay Van Dyke, will present to Perry the distinguished collegiate salesman award.

**FREE DELIVERY**  
**IN TEMPE — 5 P.M. to 11 P.M.**  
**Largest, Tastiest Sandwiches**  
**In The Valley**

★ **BEEF BURGERS** ★ **ITALIAN SAUSAGE**  
 ★ **CORNED BEEF** ★ **PASTRAMI**

**Raptis Tasty Hut**  
**Delicatessen Drive-In**

1205 Apache Blvd. 967-1202


**FINAL SALE**  
**Today & Tomorrow**

Nationally Advertised  
**Skirts & Sweaters**

**1/2 Price**

**CELIA'S — Tempe Center**  
**ROSEMARIE'S — Valley Fair**

Dennis Levine Says:  
 "Our fruit and vegetable salads are delicious."



**EICHENAUER'S BAR**  
 Papago Plaza — Chris Town  
 WH 6-2581

**HAPPY HOUSE SHOP** **TEMPE CENTER**

You Need A Gift ..... We Have It  
 You Need Party Supplies ..... We Have It  
 You Need Yummy Candy ..... We Have It

**ALSO**  
 Wedding Announcements — Shower Gifts  
 Paper Goods — Monogramming — Fast Service



**Eyes, Prices, Everything's**  
**R I G H T !**

at the

**TEMPE SHOPPING CENTER**

Only A Block From the ASU Campus



(SP Photo by Larry Ward)

### Singing 'Beatles' Go Greek

"It's the Beatles!" Entertaining at the exchange party of Alpha Delta Pi sorority and Alpha Tau Omega fraternity is the Greek's

answer to the Beatles. The singing ADPis are, from left, Paral James, Val Petty, Carolyn Meador and Nancy Monsees.

## Council To Name Best Pledge

The outstanding sorority pledge of the past semester will be named at a Panhellenic assembly 7:30 p.m. Monday in the MU Ballroom. New officers will also be installed at this time.

Girls competing for the title are Sharon Farmer, Alpha Delta Pi; Stevie Haines, Alpha Ep-

silon Phi; Cheryl Lamberts, Alpha Sigma Alpha; Wanda Killebrew, Chi Omega; Jeri Ann Meikle, Delta Gamma; Pat Erickson, Gamma Phi Beta; Paula Leahy, Kappa Alpha Theta; Gloria Eklund, Kappa Delta; Sarah Burns, Kappa Kappa Gamma, and Peggy Killborn, Sigma Sigma Sigma.

"ALWAYS SUNSHINE CLEAN"

## Sunshine Village

LAUNDRY & PROFESSIONAL PRESSING & DRY CLEANING

Water Repellant & Sizing Treatments

White Shirts — 25c

Free Drying On Tues. & Wed. Aft.

Hair Dryer In Refrigerated Waiting Room

Phone 967-9731

Broadway Plaza 29 E. Broadway, Tempe

# GRAND OPENING

DOOR PRIZES

FREE GIFTS

FUN FOR ALL

TEMPE'S  
NEWEST AND  
MOST MODERN  
FAMILY  
RECREATION  
CENTER

THE



21 NEW TABLES

- POCKET BILLIARDS
- SNOOKER
- CAROM BILLIARDS
- BRUNSWICK GOLD CROWN TABLES

Brand New — Beautiful  
SNACK BAR

COMPLETELY CARPETED  
ALL NEW EQUIPMENT  
OFF STREET PARKING  
FRONT & BACK ENTRANCE

Register Anytime TOMORROW  
For Free Door Prizes — Drawings  
Start at 8 p.m. Tomorrow Night!  
You Need Not Be Present To Win

#### FREE GIFTS & PRIZES GIVEN BY:

- Geo. Selleh Cleaners
- Tempe Radio & TV Clinic
- Joe Sellehs
- Costa Shoe Repair
- Bunch's Watches
- Ruth's Beauty Salon
- Herman's Bakery
- Tempe Sales Co.
- Tempe Dry Cleaning and Laundry
- Copes Barber Shop
- Tempe Music Center
- Fashion Bootery
- Ken Clark Agency



## JOIN IN THE FUN!

Conveniently Located At  
618 MILL AVENUE

# Devils Test BYU, 'Skins In Utah

BY JOHN NADEL

Two weeks ago, Utah came to this state to face the Sun Devils and the UofA. Prior to this trip, they were leading the WAC with a 3-0 mark. Two days later, they were 3-2 and had lost their chance to bust the conference wide open.

Now, as the Sun Devils travel to Utah, playing Brigham Young

tonight and the Redskins tomorrow, they find themselves in a similar situation.

Two victories would clinch a tie for the title, and with their last game at home against Arizona next Wednesday, A-State would be in a most favorable position.

But two victories, as Coach Ned Wulk well knows, will be no easy accomplishment. In WAC games thus far, the home team has won an astounding 18 out of 20 games.

ALTHOUGH IT IS desirable that the Sun Devils win, they are definitely in better shape than the other WAC teams. Losses by either Utah, New Mexico or Arizona would pretty well kill their hopes, as they all stand 4-3 in WAC play compared to A-State's 5-2.

Although the Devils walked over BYU, tonight's opponent,

110-85 at Sun Devil Gym, the Cougars will be no easy mark in Provo.

The Cougars have always done well at home, and this season has been no exception. Last week, BYU was victorious over Utah, 75-72 in the friendly confines of their home gymnasium.

The Cougars are 2-4 in conference play and 10-11 for the season.

UTAH, 3-3 in the WAC and 18-6 for the season, also has been tough at home, winning all three games at Salt Lake City while losing their three road games.

Their top flight guard Doug Moon was held well in check by Gary Senitza in the Sun Devil victory two weeks ago. The 71-65 Devil decision was a battle all the way, and tomorrow night's contest, televised

over Channel 12 at 8 p.m. should be much of the same.

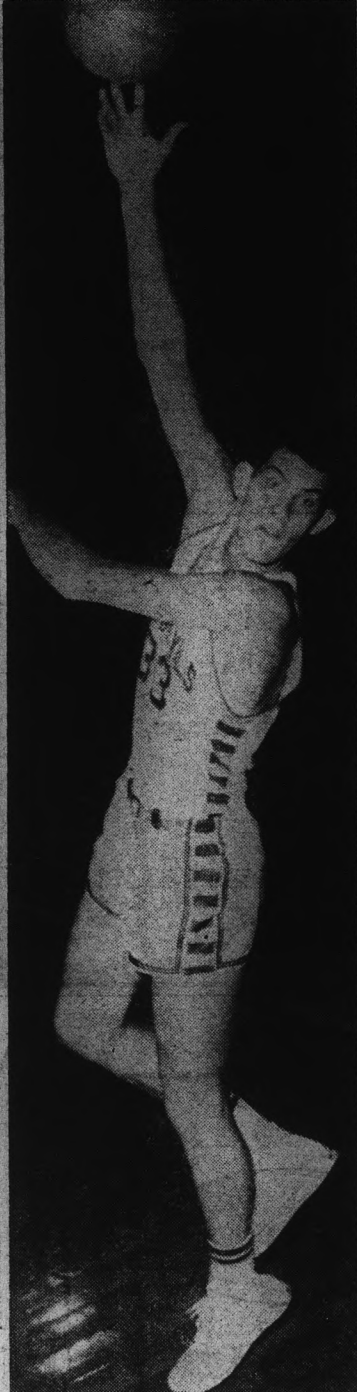
Latest statistics show Wyoming's Flynn Robinson not only leading the WAC in league scoring, with a 26-0 average, but also taking overall scoring, with a 25.2 merger over 22 games.

A-Stater Joe Caldwell is second in both departments, averaging 21.0 in the league and 20.8 overall.

ART BECKER continues to

lead field goal percentage statistics, sinking .586 of his shots from the floor. Sun Devil Dennis Dairman is fourth in this department, with a .524 average.

In other departments, Robinson is hitting at an .881 clip to lead free throwers, while Arizona's Albert Johnson leads the rebounders with 13.2 grabs per game. Caldwell is third in this department with 11.7 rebounds per contest.



(SP Photo by Ed Ryan) SOPH STARTER — Denny Hamilton will open at an inside post tonight when Arizona State meets Brigham Young at Provo, Utah. The 6-7 sophomore, from Huntington Beach, Calif., is averaging 5.9 points per game this season.

**Firestone**  
 "ONE-STOP" Drive-in Service  
**ANY SIZE** WHITEWALLS or BLACKWALLS

**Firestone**  
 DELUXE CHAMPION NEW TREADS  
 RETREADS ON SOUND TIRE BODIES OR ON YOUR OWN TIRES

**\$12<sup>00</sup>**  
 Plus tax and trade-in tire of same size off your car

★ Fast, expert car service ★ World's finest tires  
 ★ Top quality auto supplies

**ALL 3 SERVICES**

- 1. FRONT END ALIGNMENT**  
 Our expert mechanics align front wheels to manufacturer's original specifications.
- 2. FRONT WHEEL BALANCE**  
 Precision balancing extends tire life by preventing uneven wear. Weights included. **\$9<sup>95</sup>**
- 3. BRAKE ADJUSTMENT**  
 We adjust brakes, add fluid and clean and repack front wheel bearings. **Any American Car**

Parts extra, if needed

VALLEY FAIR SHOPPING CENTER  
 MILL AVE. & SOUTHERN

**Newman Catholic Student Center**  
 8th St. & College Ave.  
 P.O. Box 454, Tempe

Masses:  
 Sundays: 8, 9, 10 a.m., 6 p.m.  
 Weekdays: 6:45 a.m.  
 Saturdays: 8 a.m.  
 Confessions: Daily before Mass  
 Saturday: 3:30-5 p.m.  
 Rev. Thomas A. Walsh, Director  
 WO 7-3483  
 Newman Club Meets Tues. 7:30 p.m.  
 Student Phone: WO 7-9708

**Hayden PLAZA**

**Grand Opening**

VISIT OUR NEW LOCATION  
 In Hayden Plaza East

**NEW!** ★ Finnish Sauna Bath  
 ★ Massage Department

**Get In Shape Now!**

Men: Get in shape quickly under the personal supervision of Walt Hunt — "Mr. Arizona 1961"

**SPECIAL**  
 CHARTER MEMBERSHIPS  
**5<sup>00</sup>**  
 PER MONTH

Men: Mon., Wed., Fri., 10-10 Sat. 2-6  
 Women: Tues. & Thurs. 10-10 Sat. 9-1

**CALL 967-7461**  
 For a FREE Trial Visit

**MEN IN 60 DAYS WE GUARANTEE THESE RESULTS**

— UNDERWEIGHT —  
 Gain: 1½ Inches on each Arm  
 3½ Inches On Chest And Shoulders

— OVERWEIGHT —  
 Lose: 3 Inches Off Waist and Hips  
 15 Pounds Body Weight

**UNIVERSITY HEALTH CLUB**  
 1018 Scottsdale Rd. Tempe

**VILLAGE INN PIZZA PARLOR**

Where pizza is always in good taste!

**PIZZA**

Thurs.-Fri.-Sat.  
 9 P.M. to 1 A.M.  
**DIXIELAND TRIO**  
 Dave Wierbach  
 Dale Everest  
 Mel Scheib

Sunday 8-12 P.M.  
 Dixieland Band

801 East Apache Blvd. — WO 7-3355  
 Other Locations: PHOENIX, 61 W. Thomas Rd. — MESA, 1156 W. Main

# Wrestlers Seek Wildcat Revenge

By MIKE HELFNER

Julius Caesar's rule ended with his assassination on the Ides of March in 44 B.C. Wrestling Coach Ted Bredehoft has designated today the Ides of March because he hopes it will be the day ASU assassinates the UofA. (The real Ides, of course, fall on March 15.)

Earlier this year the Wildcats took a narrow 16-14 win over A-State and Bredehoft wants the Devils to put an end to the 1964 Wildcat rule.

**TO SEEK** this win, Bredehoft has worked his team extra hard this past week. Preparation is complete and everything is ready for the big day.

History will be made. This will be the first collegiate wrestling match ever held outdoors. Originally scheduled for 3:30 p.m. in Sun Devil Gym, it is now scheduled for the tennis courts across the street and the match will begin at 2:30 p.m.

A-State will be giving away five points with a forfeit in the 177-pound class.

**ALTHOUGH IT** will be the first match, the 123-pound contest will be the determining match. Manuel Aragon will start off for ASU and will go against Bob Tanita.

Aragon is undefeated in dual

competition but has dropped three tournament decisions to his opponent. Bredehoft feels, "This is a dual match and Aragon could pull off an upset."

**ANOTHER** terminal match will pit the Devil's Ed Foy against Jack McCall at 167 pounds.

The best match will feature two undefeated grapplers. Buzz Hays (12-0) for ASU against Alex Kerstitch (8-0).

Students looking for a sun tan this afternoon should come down to the tennis courts on Orange Avenue and watch the Devils take on the Wildcats.

# Devil Stars Head For Long Beach

Arizona State's Henry Carr, Dallas Long of the Pasadena AA and Adolph Plummer of the Los Angeles Striders will lead the field for tomorrow's 23rd Long Beach (Calif.) Relays.

Carr paces the Devil trackmen into the 54-event show of 1,500 college and high school participants which will begin at 9:30 a.m.

Four world record holders, Carr in 220 (curve) at 20.3, Long's 65-10½ in shot put, Plummer at 44.9 in 440 and the Devils' mile relay team (3:04.5) head the field.

Tom Hester, Jim Childs, Darrell Jansen, Jim McBurney, Joe Smart, Louis Scott, Bob Stiffler and Eric Owers will enter five relay events for the Devils.

# Gymnasts Host LBS

The gymnastics team will host Long Beach State College today at 7:30 p.m. in the Sun Devil Gym Annex.

Coach Norris Steverson's athletes are now 6-2 with the latest win a 65-63 decision of the Air Force Academy.

That meet saw ASU still ring performer Chris Evans taste defeat for the first time this

season. He lost by a half point to teammate Les Christianson. Evans was rated the nation's second best, according to latest statistics, and Christianson eighth on rings.

Tentative Devil entries are Jerry Stansbury, Jim Nelson, Carl Fosdick, Benny Bishop, Glenn Short, Norman Witham, Skip Johnson, Norm Cox, Christianson and Evans.

After February 17, 1964

## LOCK AND CROCKETT INSURANCE

822-B Mill Avenue

will be

## BERT CROCKETT INSURANCE

Sands of Tempe — 601 E. Apache Blvd.

Administrators of the . . . A.S.A.S.U. Life Insurance Program

A.S.A.S.U. Accident and Sickness Plan

Mailing Address — P.O. Box 188, Tempe, Arizona  
Telephone 967-3358

**ENROLLMENT IN THE STUDENT ACCIDENT AND SICKNESS INSURANCE**

**CLOSES FEBRUARY 29**

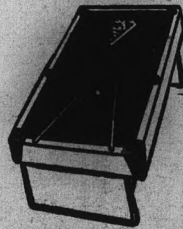
### Lucky Cue

"FAMILY" BILLIARDS

16th Street & East McDowell

Snooker - Pool - Billiards  
14 New "Green-Top" Tables

At Low Rates



Mac & Jack Sez . . .  
"Take Color Slides At ASU's Nite Games . . . Ask How At PIONEER CAMERA SHOP TEMPE CENTER



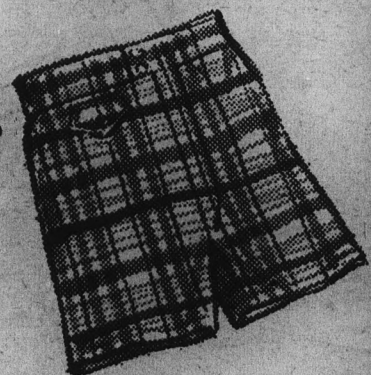
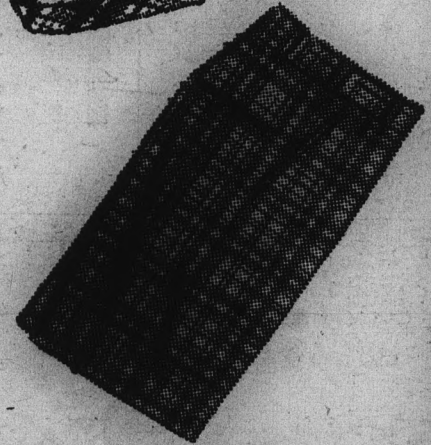
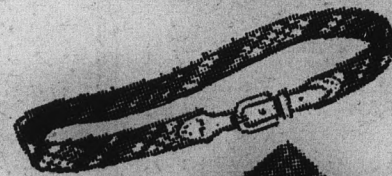
## unquestionably Madras

from the Hand Looms of India

We've gathered a complete collection of fashions in this superb hand woven cotton. Come choose a complete wardrobe for your casual life . . . everything from sport shirts and jackets to belts, ties and swim trunks and shorts.

- |              |      |         |
|--------------|------|---------|
| Sport Coats  | from | \$29.95 |
| Sport Shirts |      | 8.95    |
| Swim Shorts  |      | 6.95    |
| Walk Shorts  |      | 6.98    |
| Belts        |      | 2.50    |
| Ties         |      | 2.50    |

The Americana Shop



THE Americana SHOP

QUALITY MEN'S APPAREL  
TEMPE SHOPPING CENTER

WO 7-5457

OPEN 9:00 A.M. TO 6:00 P.M.  
- THURSDAY 'TIL 9 P.M.