

## Graduate Named Rhodes Scholar

Michael L. Skolnik, 1963 graduate, has been named ASU's first Rhodes Scholar this week.

Skolnik, who graduated with highest distinction last year, will enter Oxford University next October along with 31 other American Rhodes Scholars.

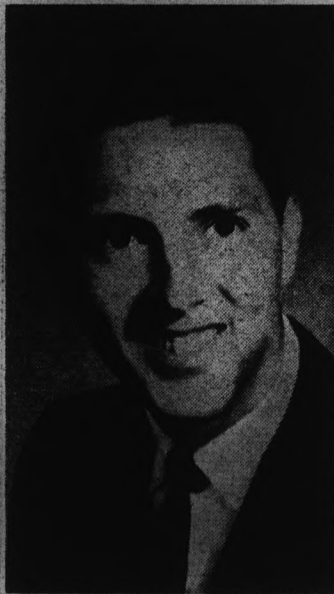
Holding his bachelor's degree in economics, he has been working on his master's degree at the University of California at Berkeley this year.

Rhodes Scholars are se-

lected annually by a national committee who considers literary and scholastic ability, quality of manhood, exhibition of moral character and physical vigor.

While an ASU student, Skolnik was active in Phi Kappa Phi, Phi Eta Sigma and Alpha Mu Sigma honoraries.

The scholar's other campus activities included the German Club, the Foreign Language Council and the Collegiate Council for the UN.



MIKE SKOLNIK, Rhodes Scholar

## Meet To View Latin America

Latin America will be in the spotlight Friday and Saturday at a conference sponsored by the Army ROTC.

The second annual student-faculty conference on "Defense of Latin America: The Changing Concept" will feature speakers, panels and conferences "in the round" all day Friday in the MU upper lounge and a special taping session at KAET Saturday morning.

Sterling Cottrell, deputy assistant secretary of state for inter-American affairs, will speak at 2 p.m. Friday on "Search for a Solution."

Cottrell replaces Edwin M. Martin, former assistant secretary of state for Latin American affairs. Dr. Jose Figueras, visiting professor of government at Harvard University, will speak at 8:30 p.m. on "The Outlook for Free Political Institutions in Latin America."

Lt. Col. Theodore Wyckoff, Commander of the Army ROTC detachment, will act as chairman for the conference after the 8:30 a.m. registration Friday morning.

Wyckoff will speak on "The Insufficiency of Conventional Measures: The Need for Re-thinking." He will be followed by Dr. Rosendo A. Gomez of the UofA and cadet Lt. Col. David I. Matthews.

Panel discussions will follow and then a break for luncheon.

In the afternoon session, deputy assistant secretary Sterling Cottrell will speak at the conference in the round and possibly introduce policy changes of our new President.

Dr. Edwin Lieuwen, University of New Mexico, will speak on "Arms, Politics, and The Alliance for Progress" followed by a panel discussion.

Dean Dannenfeldt of the College of Liberal Arts will act as panel chairman for the videotaping at the Engineering Center. Panelists include: assistant secretary Cottrell, Dr. Figueras and Lt. Col. Wyckoff.

The program will be aired over Channel 8 complete with audience participation Monday at 9 p.m.

There is no charge for the sessions open to the public.

## National Fraternity Honors Kappa Sigma Local Chapter

National officers, local and out-of-town alumni and campus colonizers formally installed Rho chapter of Kappa Sigma fraternity at ASU last Saturday.

Following breakfast in the MU, nine ASU students and Governor Fannin's son, Tom Fannin, were initiated as members of Kappa Sigma.

The fraternity moved to the sight of their new house for afternoon ground-breaking ceremonies. The 50-man, apartment-style house will be built on Terrace next to the University Terrace apartment units.

Keynote speaker at the evening banquet at Mountain Shadows was General Frederick R. Stoff of the Arizona National Guard.

Master of ceremonies of the program was Huber Ulrich, senior vice president of Curtis Publishing.

Banquet speakers included Charles Pickerill, Phoenix alumni president; Governor Fannin, 1962 Kappa Sigma Man of the Year; Chester McLaughlin, district Grand Master, Mickey

Ollson, Rho chapter president; Dick Miller, national vice president and Jim Miller, past president of the Phoenix alumni chapter.

The Christmas formal that followed climaxed the day honoring new initiates.

Those inducted in ceremonies on campus were Ollson, John Bacon, first vice president; Hal Thompson, second vice president; Nick Hagen, secretary; Dave Biddulph, treasurer; Jack Travis, Bill Willey, Bob Holbert and Larry Farrell.

## Blue Key Taps 14 Men Today For Top Campus Achievements



SMITH



GREENER



KONKOL



HOSKIN



KLEIN



GARRETSON

Blue Key, national men's honorary, tapped 14 campus leaders this morning and honored them with a breakfast at the Tempe Sands. Selections were based on campus leadership, academic achievement and character.

Over 700 applications were mailed to junior and senior students with at least a 2.5 index. Over 250 of these applications were returned.

This is the first year Blue Key selected its membership by mailing applications. It proved to be an effective method of obtaining a cross-section of campus leadership, according to Blue Key President Dan Baker.

Each year, Blue Key sponsors various campus projects and hosts its carnival and musicale. Four \$200 scholarships are made available annually from the proceeds of its projects.

ART BECKER — senior, history major, 3.11 grade index, Sigma Chi fraternity, basketball team, all-WAC first team, All-American honorable mention, all-WAC and All-American academic first team.

FERALD CAPPS — junior, music major, 2.85 grade index, Sun Devil Band, Symphony Orchestra, Phi Mu Alpha, Kappa Kappa Psi, Sophos, outstanding member of Sun Devil Band 1961-62, "select student" recipient of band activity scholarship, symphony orchestra activity scholarship.

JOHN GARRETSON — senior, accounting major, 3.77 grade index, Delta Sigma Phi fraternity, Beta Alpha Psi, Financial Club, Accounting Club, ROTC battalion commander, Phi Kappa Phi, Beta Gamma Sigma, Phi Eta Sigma, American Legion Award 1961-62, ROTC superior cadet 1962-63, Distinguished Military Student Award.

STEVEN GESHELL — junior, chemistry major, 3.15 grade index, Phi Sigma Kappa fraternity — scholarship chairman, Kappa Kappa Psi, Sun Devil Band, Sophos — secretary, Sun Devil Band scholarship, Phi Eta Sigma, Alpha Epsilon Delta.

JAMES GREENER — junior, business management major, 2.92 grade index, Delta Sigma Phi fraternity — scholarship chairman, Sophos, Social Board, business administration senator 1963-64, member of publications and public relations committee, business administration council 1963-64, IFC Three Point Club.

ROBERT HOSKIN — junior, history major, 3.34 grade index, Sophos, Lutheran Student Association, Phi Alpha Theta, Guild of Lay Theologians, ASU honors program, Der Deutsche Verein — treasurer and secretary.

JOHN KLEIN — senior, accounting major, 3.18 grade index, Lambda Delta Sigma, Sophos, Delta Phi Kappa — treas-

urer, Accounting Club — president, Pre-Law Club — president, Delta Phi Alpha, Beta Alpha Psi.

RALPH KONKOL — senior, French major, 2.80 grade index, Newman Club, Student NEA, Lt. Col. in the Army with over 20 years service. Military honors include: Three Bronze Stars, Commendation Medal for Meritorious Service, Three Purple Hearts for wounds received while in action, U.N. Medal for service with the U.N. Truce Supervision Organization in Palestine.

RICHARD PANZICA — senior, management major, 2.78 grade index, Sigma Nu fraternity — past president, vice president, secretary and chaplain, IFC representative, IFC rush committee, Reserve Officer's Association Award for the outstanding junior cadet in advanced ROTC, dean's list, Distinguished Military Student Award, Arnold Air Society commander.

ARCHER SHELTON — junior, chemical engineering major, 2.53 grade index, Kappa Sigma fraternity — president, Devil's Disciples, Greek Week publicity chairman, gymnastics team, Society of Chemical Engineers, American Chemical Society, Student Senate, IFC senator, Archons.

ELDON SMITH — junior, political science major, 2.75



BECKER



WOCHNER



C. STEWART



G. STEWART



PANZICA



GESHELL

(Continued on Page 6)

## Candles, Carols Will Spur Spirit Of Season's Joy

A candle-light carol sing, featuring traditional season music, will be piped over Danforth chapel's public address system today and tomorrow from 6-8:30 p.m.

The programs are under the direction of Jerry Dillon and the Baptist Student Union Freshman Council.

BSU representatives extended an invitation for all students to join in this effort to promote more Christmas spirit on campus.

# Exam Schedule

| All Classes Regularly Scheduled on MWF or Daily* at: |       | Examination is Scheduled on: |                        |
|--|-------|------------------------------|------------------------|
| 7:40- 8:30   | ..... | Fri.,                        | Jan. 24 at 1:00- 2:50  |
| 8:40- 9:30   | ..... | Mon.,                        | Jan. 20 at 10:00-11:50 |
| 9:40-10:30   | ..... | Tues.,                       | Jan. 21 at 10:00-11:50 |
| 10:40-11:30  | ..... | Wed.,                        | Jan. 22 at 10:00-11:50 |
| 11:40-12:30  | ..... | Thurs.,                      | Jan. 23 at 10:00-11:50 |
| 12:40- 1:30  | ..... | Fri.,                        | Jan. 24 at 10:00-11:50 |
| 1:40- 2:30   | ..... | Wed.,                        | Jan. 22 at 3:40- 5:30  |
| 2:40- 3:30   | ..... | Tues.,                       | Jan. 21 at 7:40- 9:30  |
| 3:40- 4:30   | ..... | Thurs.,                      | Jan. 23 at 3:40- 5:30  |
| 4:40- 5:30   | ..... | Thurs.,                      | Jan. 23 at 7:40- 9:30  |

| All Classes Regularly Scheduled on TTh or TThs at: |       | Examination is Scheduled on: |                       |
|--|-------|------------------------------|-----------------------|
| 7:40- 8:30   | ..... | Thurs.,                      | Jan. 23 at 1:00- 2:50 |
| 7:40- 8:55   | ..... | Thurs.,                      | Jan. 23 at 1:00- 2:50 |
| 8:40- 9:30   | ..... | Mon.,                        | Jan. 20 at 3:40- 5:30 |
| 9:15-10:30   | ..... | Fri.,                        | Jan. 24 at 3:40- 5:30 |
| 9:40-10:30   | ..... | Fri.,                        | Jan. 24 at 3:40- 5:30 |
| 10:40-11:30  | ..... | Mon.,                        | Jan. 20 at 1:00- 2:50 |
| 10:40-11:55  | ..... | Mon.,                        | Jan. 20 at 1:00- 2:50 |
| 11:40-12:30  | ..... | Tues.,                       | Jan. 21 at 1:00- 2:50 |
| 12:15- 1:30  | ..... | Wed.,                        | Jan. 22 at 1:00- 2:50 |
| 12:40- 1:30  | ..... | Wed.,                        | Jan. 22 at 1:00- 2:50 |
| 1:40- 2:30   | ..... | Wed.,                        | Jan. 22 at 7:40- 9:30 |
| 1:40- 2:55   | ..... | Wed.,                        | Jan. 22 at 7:40- 9:30 |
| 2:40- 3:30   | ..... | Mon.,                        | Jan. 20 at 7:40- 9:30 |
| 3:15- 4:30   | ..... | Sat.,                        | Jan. 25 at 7:40- 9:30 |
| 3:40- 4:30   | ..... | Sat.,                        | Jan. 25 at 7:40- 9:30 |
| 4:40- 5:30   | ..... | Fri.,                        | Jan. 24 at 7:40- 9:30 |
| 4:40- 5:55   | ..... | Fri.,                        | Jan. 24 at 7:40- 9:30 |

\*And classes that meet on M, MW, MF, MTWF, MWThF, MTWF or F.

Examinations for classes that are scheduled with "Time Arranged" and for classes that meet at, or after 5:30 p.m., will be conducted at the time scheduled for the last regular meeting of the class during the examination period of January 20 through January 25 unless otherwise scheduled by the instructor at a time during this final week of the semester.

## Prospector Ceases Print

The *Prospector*, campus literary magazine sponsored by the English Department, is ceasing publication.

A new magazine which will be based on the creative humanities such as sketches, paintings and poetry, will be sponsored by Sigma Tau Delta, national English Club. The club met yesterday afternoon to approve Francis Deblois as editor of the new magazine.

Deblois is now accepting contributions for the February issue in the English building. The magazine will be published twice a year.

The Swarthout awards will be given for the first time by a committee that is chosen by the English club.

### Coed To Tell Group Of Week in Africa

Miss Jackie Smith, a member of Operation Crossroads 1962, will speak on her experiences in Africa at 9 p.m. tonight in McClintock Dorm lobby.

Miss Smith spent two months in western and northern Africa under a program similar to the Peace Corps.

## Building Bid To Be Sent To Regents

Approval consideration of a bid for construction of an industrial design and technology building will be the agenda of the Board of Regents meeting Dec. 28.

The apparent low bid was \$485,300 submitted by Arnold Construction Co., Phoenix. The bid was one of 13 submitted in an open bid session conducted by Gilbert L. Cady, vice president for business affairs.

Architects Horibeck and Kickman of Mesa designed the 37,000 square foot complex to be located at McAllister and Tyler streets.

The construction cost will be financed by funds appropriated during the 1962 state legislature meeting. Original cost estimation was set at \$485,000.

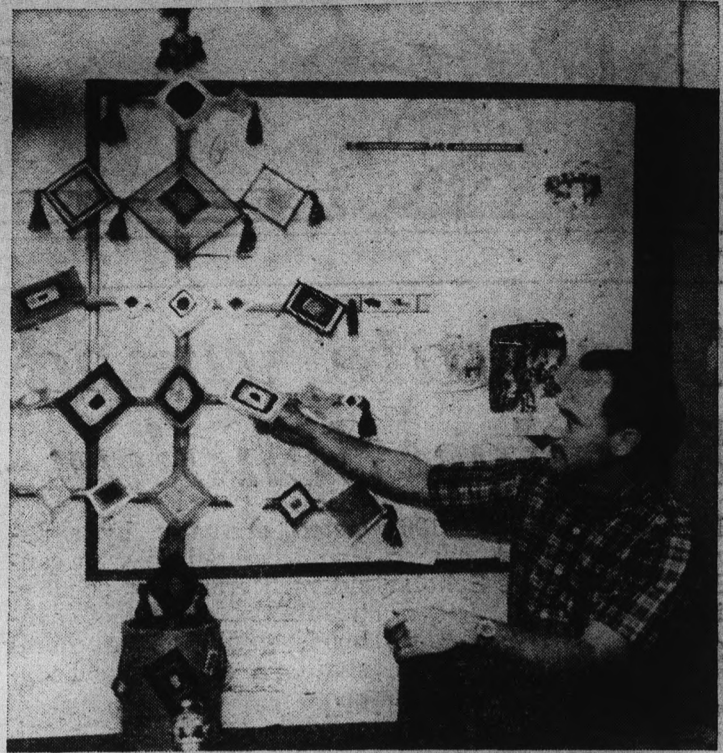
## Campus Hosts Philosophy Meet

Members of the Far Western Philosophy of Education Society will convene in the annual meeting Dec. 20-22 on campus.

Former ASU professor Wilbur Murra, now with the University of British Columbia, society president, will preside at the business meeting.

Approximately 100 teachers of educational philosophy from Utah, Nevada, California, Hawaii and Arizona are expected to attend.

President G. Homer Durham will welcome members of the society at the annual banquet. Other guests for the convention include clergymen, doctors and scientists. Panel discussions, papers and addresses are included in the agenda.



THE EYES OF GOD — "Ojos de Dios" ward off evil in the Anthropology Department. These decorations, first made by the Huichol tribe, have the legendary power to ward off evil spirits. Girl Scout Troop 880, lead by Mrs. J. A. Jones, of the Anthropology faculty, donated the decorations. (State Press Photo by Larry Ward)

## Going EAST - WEST - NORTH - SOUTH

Remember The . . .



## A DIFFERENT TYPE OF FOLK

From out of the isolated Brazilian jungle comes Los Indios Tabajaras and their "Maria Elena." Now it's the title tune for a fascinating new album. A treasury of tribal folk songs like "Maran Cariua," "Los Indios Danzan" and "Baion Bon." Get this album and hear the most intriguing new sounds in music today—at your record shop.

**RCA VICTOR**  
The most trusted name in sound

**HILLS RECORDS & BOOKS**  
Tempe Center

Mac & Jack Sez . . .  
"How're You Fixed For Film?"  
**PIONEER CAMERA SHOP**  
TEMPE CENTER

### INSURANCE

— We Write All —  
Inc. Under 25 & S-R 22's  
• Auto • Motorcycle •  
• Trailer • Fire • Theft •

**RALPH PACKER**

967-3189 or 967-9141  
26 E. 8th St. Tempe

Give The  
**GIFT**  
That Keeps  
On Giving . . .  
**Paperback Books**

for all ages

Open Eves Till Xmas

**HILLS RECORDS & BOOKS**  
Tempe Shopping Center



THE PAGODA

Open 9 A.M.-5:30 P.M. — Thursdays Till 9 P.M.

**Paul Johnson**  
JEWELERS



1604 E. CAMELBACK

MEMBER AMERICAN GEM SOCIETY

"Where Originality Is a Tradition"

**Dropouts Dilemma Discussed -**

# Mead Attacks Defective U.S. Educational System

By LINDA HELSER

"We don't do anything about anything until it's awful" was the charge made against Americans by anthropologist and author Dr. Margaret Mead during the general session of the ASU dropout conference Saturday.

Dr. Mead was referring to what she termed defects in the U.S. education system and the lack of interest in average and below average students.

In her discussion of the social implications of the dropout situation, she named the ability to read as the key to education and life in America.

Children as young as two years old may tend to "count themselves out" during some artistic stages, she said.

Upon entering school, children may again count themselves out by refusing to learn to read as no one pays any attention to them and they find themselves being dragged along, discovering life less meaningful each day.

Dr. Mead proposed the establishment of an enrollment age of children and spotting their difficulties early as a method of

alleviating some of these psychological problems.

She also pointed out that, since 1880, the age of puberty has dropped four months each decade.

**THIS UPSETTING** factor is making college age students want to go out and work and bypass school, she said.

Male dropouts usually go back to school after the armed services or work, but females generally don't go back for 25 years.

Dr. Mead cites "intermittent education" as the answer to this problem. This would consist of perhaps working one semester, taking a light school load the next and then working, again followed by a heavy scholastic load.

**SHE OBSERVED** that Americans have the false notion that the only time to educate is during the time of compulsory schooling.

**SPECIAL SPEAKER** State Senator William Huso, demanded that the attention of all citizens be directed to the dropout problem.

According to Huso, "The problem of dropouts is not confined to educational concerns,

for it eventually leads to a devastating imprint on the warp and woof of our economic fabric."

Huso stated that more than one-third of the nation's young people drop out of school before completing the senior high school year. About seven and one-half million youths will drop out of school during the next decade, he said.

"**AND STILL** we may assume the attitude of the inevitable; that these things just happened," continued Huso.

People also have labored under the false impression that youths in the dropout category, as a whole, fare badly in testings to determine IQ's, Huso said.

There is a prevailing feeling that extra-curricular loads, particularly those in athletics, are contributing to the heavy toll of dropouts.

Huso feels the truth is that there is one prevailing characteristic attached to a probable dropout; the lack of interest in extra-curricular activities.

He suggested the work of high school counselors as the most tangible deterrent to an increased dropout rate. Improvement in this phase will decrease the dropout rate, he feels.

## MU Christmas Schedule

Holiday hours have been announced for the MU, the Games Room and the Devil's Den. The Cafeteria will be closed Dec. 21-Jan. 5. The regular meal hour schedule will resume Jan. 6. Also, the Corral will be closed from Dec. 16 through Jan. 5.

| DATE    | MEMORIAL UNION  | GAMES ROOM     | DEVILS DEN    |
|---------|-----------------|----------------|---------------|
| Dec. 21 | 8 a.m.-Midnight | 10 a.m.-5 p.m. | 8 a.m.-5 p.m. |
| Dec. 22 | CLOSED          | CLOSED         | CLOSED        |
| Dec. 23 | CLOSED          | CLOSED         | CLOSED        |
| Dec. 24 | CLOSED          | CLOSED         | CLOSED        |
| Dec. 25 | CLOSED          | CLOSED         | CLOSED        |
| Dec. 29 | 8 a.m.-5 p.m.   | CLOSED         | 8 a.m.-5 p.m. |
| Dec. 26 | 8 a.m.-5 p.m.   | CLOSED         | 8 a.m.-5 p.m. |
| Dec. 27 | 8 a.m.-Midnight | CLOSED         | 8 a.m.-5 p.m. |
| Dec. 28 | CLOSED          | CLOSED         | 8 a.m.-5 p.m. |
| Dec. 30 | 8 a.m.-5 p.m.   | CLOSED         | CLOSED        |
| Dec. 31 | 8 a.m.-5 p.m.   | CLOSED         | CLOSED        |
| Jan. 1  | CLOSED          | CLOSED         | CLOSED        |
| Jan. 2  | 8 a.m.-5 p.m.   | CLOSED         | 8 a.m.-5 p.m. |
| Jan. 3  | 8 a.m.-5 p.m.   | CLOSED         | 8 a.m.-5 p.m. |
| Jan. 4  | 8 a.m.-Noon     | CLOSED         | 8 a.m.-5 p.m. |
| Jan. 5  | Noon-10 p.m.    | Noon-10 p.m.   | 8 a.m.-5 p.m. |

## Island Debris Spurs Search For Students

By ED GASSER

Wreckage spotted on a coral island 500 miles northeast of Tahiti drew new search parties this week in an extensive effort to find the schooner Astrea with former ASU students Jon Allen and Ruth Byra aboard.

Dr. John Griffith noticed large pieces of lumber, presumably ship wreckage, on the island of Ieou Nov. 18. Because of dangerous coral reefs, he was unable to land but reported his discovery on returning to Tahiti.

It was only last week that Mrs. Jenkins, mother of Allen, received word of the wreckage. Mrs. Jenkins last Thursday called the Coast Guard in Honolulu asking them to search the island Ieou in hopes of finding her son and the Astrea's four other crew members.

"Neither the planes nor ship have come back yet. The island is supposed to have wild sheep and fruit they could eat if they were shipwrecked

there," said Mrs. Jenkins yesterday.

Dr. Griffith immediately made plans to return to the island with natives to conduct a land search.

### Attends Seminar

Tom Pedigo, third year architecture student, recently returned from the annual student forum for architectural education in Washington D. C.

The forum, sponsored by the American Institute of Architects was attended by 150 students representing various schools of architecture. Guest speakers included the architect Paolo Salari.

**DON'T  
VACATION**

*(without calling us)*

We store, crate, or ship anything anywhere. Arrange for inexpensive end of term pick-up and delivery service now by calling us today.

**Bekins World Wide Moving and Storage**

Phone 266-8434

**Need Cash?**

**MONEY LOANED  
QUICKLY ON**

\* Diamonds \* Guns  
\* TV's \* Typewriters

**We Pawn - Buy - Sell**

**SAVE UP TO 50%  
ON UNREDEEMED  
ARTICLES!!**

**MESA LOAN  
& JEWELRY**

132 W. Main St., Mesa  
969-3762

**Exceptional  
GIFTS**

**Eichenauer's Bar**

Papago Plaza Chris-Town

**Save Your Money!**

FOR THE ANNUAL

**"Merry  
Christmas  
SALE"**

**This Friday, December 20**

at the

**UNIVERSITY  
BOOKSTORE**

**SHHHH!**

for ASU students and friends only: get two pizzas for the price of one. This is a sneak preview grand opening special for the all-new Village Inn Pizza Parlor in Tempe.

2 for 1 — good Thursday nite and all-day Friday.

**VILLAGE  
INN  
PIZZA PARLOR**

801 Apache Blvd. TEMPE 967-3355



THE STATE PRESS, distributed by the campus chapter of Sigma Delta Chi under the direction of Circulation Manager John Nadel, is the official campus newspaper of Arizona State University. It is published each Wednesday and Friday throughout the school year, excepting holidays, and is entered as second class matter at the Tempe, Arizona, Post Office under the Acts of March 3, 1879, and August 24, 1912. The STATE PRESS is a member of the Arizona Newspapers Association, Associated Collegiate Press and National Advertising Service, Inc. Subscription price, \$3 per school year.



EDITOR-IN-CHIEF \_\_\_\_\_ JERRY REILLY  
 MANAGING EDITOR \_\_\_\_\_ ROSS FISH  
 NEWS EDITORS \_\_\_\_\_ JOHN KENDALL, BETTY DUFFY  
 ASSISTANTS \_\_\_\_\_ GORDON ROBBINS, BILL QUAYLE  
 CAMPUS EDITOR \_\_\_\_\_ PAM VAN BUSKIRK  
 ASSISTANTS \_\_\_\_\_ MIKE LONGSTRETH, SUE JEFFRIES  
 SPORTS EDITOR \_\_\_\_\_ JOE HEATH  
 ASSISTANT \_\_\_\_\_ ALAN MICHAELS  
 COPY EDITOR \_\_\_\_\_ GORDON BLACK  
 ASSIGNMENTS EDITOR \_\_\_\_\_ BETSY JEAN FRITH  
 ASSISTANTS \_\_\_\_\_ SHIRLEY DeMARKE, FRANK DUCCESCHI  
 FEATURE EDITOR \_\_\_\_\_ SUE MARIONEUX  
 PHOTO EDITOR \_\_\_\_\_ LARRY WARD  
 ASSISTANT \_\_\_\_\_ ED RYAN  
 PROOFREADERS \_\_\_\_\_ ROBERT VAN WECHEL, RICHARD CANTOR

## Fair Weather Ahead

Christmas comes but once a year and when you're in college there may be a tendency to start the vacation as soon as possible.

Home for Christmas may mean driving across Tempe Bridge or across the nation. For those of you who haven't started your pilgrimage yet, let us offer a few words of advice on expected weather conditions.

Highways in Arizona and most of the Western states are expected to be in good condition. There is no snow now and very little expected. This prediction stands good for the rest of this week.

On the national scene, the Sky Harbor Weather Bureau hesitates to make a prediction but advises us that there is light snow over the North Central states, Illinois and Indiana, and it is expected to spread into the Great Plains area today.

Weathermen did state specifically that there were no major snowstorms in progress as of today. But weather conditions change so rapidly that there is always a chance for bad weather.

Above all, check with the highway patrol on road conditions in front of you. They are willing to help and advise in any way they can.

We urge you to plan your route and take the proper precautions — snow chains, maps, textbooks, etc. — before you start your trip.

We would like to see you back after vacation.

## They Need Your Support

This is no time for a letdown.

Our basketball team has taken a beating on their current road trip and put us all in a state of shock — after all, four straight losses by a team that was ranked number four before the road trip.

They need our support for the Sun Devil Classic that starts at home Friday night.

Let's show that we are still behind them. We have a 49 game winning streak at home to protect. They are capable of doing it.

They didn't give up for a minute during those four games away. Let's don't give up on them just because of the four losses.

## Looking For That Special Gift?

By RONNIE GANTMAN

What to get the people on your Christmas list has perplexed many shoppers in the past. Besides usually being extremely costly, most gifts are destined to bring only disappointment.

Are you sick of giving gifts which do not motivate the receiver? Have you had it when you see your gift back in the department store window? Are you helplessly caught in the rut of buying the same old thing year after year? Do you strive for originality?

If you can answer "yes" to any of the above questions, we have the gift suggestion of the year.

PRESENT THE people on your gift list with a beautiful, once in a lifetime, never to be forgotten gift — an elephant.

Now you think an elephant is a ridiculous idea, but when

you weigh the advantages of such an unforgettable gift to those of a necktie or pen that writes under water, you'll find this novel gift will please even the most discriminating person.

An elephant will provide undying love and affection. It will eliminate the deep-rooted frustration of running off to join the circus. With your own elephant, you can start your own circus, thus providing the extra money to continue your college education.

CLOSE YOUR eyes and try to imagine the excitement which will flow through the air on Christmas morning as the young ones run to the tree and find a lovable, tender, affectionate — bull elephant. Turns you on, doesn't it?

It is also the ideal way to beat the campus parking problem. No longer is it necessary to be late to classes



"Don't Ho-Ho Me, That Sign Goes For You Too."

## Letters To The Editor

TO THE EDITOR:

This letter is in regard to certain of the statements made in "Mickey Mouse and The Military."

Canada requires no draft because they don't have the world-wide commitments that the United States does. Alongside our 250,000 soldiers in side our 250,000 soldiers in Europe, two divisions in Korea, etc., their military posture does indeed seem pitifully small. Now we have maintained armed forces at nearly three million men since the end of the Korean War (the army itself has been between 850,000 and one million during this time). Canada has done nothing comparable. Those statements above would seem to be the main

reasons that the United States requires the draft, not a minute difference in a private's pay.

In the United States' armed forces, after a two-year tour, nearly everyone is an E-4 or higher. In view of this, those PFC's who would be drawing \$165 per month (due to longevity primarily) would seem to be mainly the so-called "career privates."

To state that only draftees are lacking in love for the military is ridiculous. A very large percentage of the several hundred thousand men that volunteer annually for the various services, do so only because they wish to choose the time, place, and/or military speciality for their tour of duty.

Essentially the choice is this: Enlist or wait and be drafted. Were the draft to disappear, so would a large number of enlistments. Military conscription has always provided the primary source of manpower for the maintenance of a large military establishment (in peacetime as well as war).

Thomas H. Sutherland

TO THE EDITOR:

In an article by Linda Helder in last Wednesday's State Press, she stated that I would give a new course, AC 305, Arid Region Architecture, for the spring semester.

The director of the school now informs me that he has decided not to have this course at this time.

I thought you might want to know of this change and make any notice of it you think necessary. May I take the opportunity of commending the article by Linda Helder and the highly professional manner in which she pursued her objective. It is my opinion that she did an excellent job.

Milton D. Lowenstein

## Collegiate Comment

By BOB REILLY

Max Frankel wrote in the New York Times that the first foreign policy "commotion" in the Johnson administration would be to revise the Alliance For Progress program. Evidently, his source of information was reliable because the first change in personnel dealt directly with Latin America.

Last Saturday, President Johnson replaced Edwin M. Martin as assistant secretary of state for inter-American affairs with fellow Texan Thomas Mann.

Martin was scheduled to give a major foreign policy address this Friday in the MU ballroom as part of the two-day Latin American Conference. As program speaker, he has since been replaced by Deputy Assistant Sterling Cottrell.

It is unlikely that Cottrell will cover the area that Martin planned to cover but, nevertheless, what he has to say may be of importance since he is retaining his post under Mann.

Although the transition from one Latin American department chief to another brings about new outlooks and approaches, Cottrell, in this case, should have some preconceived ideas on what we can expect from the new assistant secretary since Mann was assistant secretary for inter-American affairs from August 1960 to May 1961.

It is our hope that Cottrell will not avoid discussing the reason for the change in assistant secretaries and will include the failures as well as the successes in Latin America.

## It's Only A Toy

Buy her a doll that cries when it's slapped.  
 Buy him a gun — just a little one  
 That topples the birds from the trees with ease  
 Or corners a squirrel as neat as you please.

Buy them a bear that moans  
 When it's shot with a gadget,  
 And gives up the ghost right there.

It's fair and square — and it's only a bear:  
 Buy them the new rocket gun  
 That shoots with a deadly aim  
 High in the sky and down again with devastating roar.  
 People scatter everywhere,  
 and the "enemy" is no more.

Such fun it was — such fun to play  
 With Santa's toys at Christmas,  
 'Til in ran the little neighbor boy,  
 Flashing his new Christmas toy.

"Pop! Pop! Pop!" he cried in joy.  
 "Lookit! Lookit me!"  
 "Pop! Pop! Pop!" went the brand new toy  
 And the little boy cried,  
 "Wheel!"

And the bright white angel shattered down  
 From atop the Christmas tree.  
 Lillian Stough

## 'Messiah' Draws Overflow Crowd To Men's Gym

By T. GERALD OWEN

Last Sunday, the campus survived an attack of culture. There was no room for more than half of 1,500 people who came to hear Handel's "Messiah," as performed by the University Chorus and Symphony Orchestra.

The unanticipated surplus was seated in the balcony of the Men's Gym, from which the harpsichord and soloists were all but inaudible, while the orchestra and chorus were heard several times more often than necessary due to bad acoustics.

The half of the audience that came to hear the oratorio, but heard mish-mash instead, should be in staunch support of the Grady Gammage Auditorium.

On the whole, the fine vigorous performance was a credit to the members of the chorus and to its director, David Scoular. In part, credit for the orchestra's performance is due him, too. While Mr. Lombardi, director of the orchestra, was in control, especially during the Pastoral Symphony section, the rhythmic coordination of the orchestra was not at its best.

## Married Students Claim Housing Prime Problem

By DAWN FELICE  
(First of Two Parts)

With approximately 2,000 full-time married students presently enrolled at ASU, the problem of housing has been a recurring one.

Jack Kekar, research specialist in the Bureau of Business Services and Dr. Kendall A. Adams, assistant professor of marketing, have compiled a preliminary report from questionnaires distributed to 1,793 full-time married students enrolled during the 1962-63 fall semester.

ONE OF the questions in the survey was, "Would you be interested in renting an apartment adjacent to ASU that would be supervised or managed by the University?"

Of those questioned, 50 per cent indicated that they would. Since 43 per cent of the students reporting own their homes, it is supposed that they comprise the majority of the 50 per cent that said "no."

This seems to indicate that the interest in a university-

sponsored housing project is high.

About one-third of those questioned will be enrolled here for two or more years, so the problem is a long-term one.

THE STATISTICS show that over two-thirds of the couples had one or more children, 44 per cent of whom were under five and 34 per cent of whom were under 15.

The combined annual gross income of 50 per cent of these full-time students is under \$5,000 and only 25 per cent earn over \$7,500.

At present, 37 per cent of the couples are living in apartments, trailers or single rooms and 60 per cent live in single family homes. Others live with their parents.

Over one-half rent or lease

their living accommodations. Of these, 70 per cent are paying between \$71 and \$130 per month.

WHEN ASKED, "If you rent or lease the place in which you live, how much would you be willing to pay monthly, if you had the type of place you wanted?" 47 per cent quoted prices between \$70 and \$90. Only 11 per cent would be willing to pay more than \$110.

According to Kekar, most builders in this area are unable to provide a profitable apartment project for less than \$100 per month rent.

Besides the financial problem, proximity to campus is the second factor in the desire for University-sponsored housing for married students.

Only 16 per cent live within a mile of campus and 26 per cent live 10 miles or more from campus. This also adds to the parking problem here.

When asked, "Would you prefer to live closer to campus?", 55 per cent said they would.

### English Scientist-Lecturer To Speak On Meteorites

Prof. John F. Kerridge, chemist of Birkbeck College, University of London, will speak on chemical makeup of meteorites at 3:40 Friday in PSB-134.

Kerridge has employed electron microscope techniques in his research studies of structural chemistry.

His talk will be open to the public without charge.

### Travelers Unite To Form Club

The University Vagabonds Club will meet tomorrow night to discuss the plans for a summer in Europe.

The monthly meeting will be at 8 p.m. Thursday in MU 211.

It is a non-profit organization composed of university students, faculty, alumni, and friends who wish to travel, according to Bob Bradford, assistant dean of students.

The club is planning to spend over six weeks in Europe in independent travel, he said. Sponsors of the club say they hope to be able to make group travel arrangements at substantial savings over regular commercial fare.

## Renaissance, Baroque Art Exhibit Open

Dr. G. Homer Durham has announced the schedule for viewing the Lewis and Lenore Ruskin Collection of Renaissance and Baroque paintings, on display in the Board of Regents' conference room, AD 202.

The exhibit is open to the public and may be seen from 10 a.m. to noon and from 1 to 3 p.m. Mondays through Fridays.

THE RUSKIN Collection includes the following paintings: "The Adoration of the Child" by Jacob Jordaens (1593-1678), "King Herod and the Three Wise Men" by Franz Francken, The Younger, (1581-1642).

Also "Madonna and Child with St. John" by Domenico Puligo (1492-1527), and "St. Helena" by Marchesi da Cotignola (1481-1550).

"NIGHT SCENE" by Aert Van der Neer (1603-1677), "Lucretia Simonetta de Medici" by Alessandro Allori (1535-1607), "The Nativity" by Ambrosius Benson (1495-1550), "Portrait of the Artist" by Giovanni Francesco Barbieri, also known as Guercino.

Others are, "The Earl of Pembroke" by Cornelius Janssens van Ceulen (1593-1664), "Portrait of a Gentleman" by Bartholomeus van der Helst (1612-1670) and "Portrait of a Man" by Anthony Van Dyck (1599-1641).

Dr. Durham also said the collection of American art may be viewed daily in Matthews Library. Special exhibits are also available from time to time in the MU and Arts building.

**MILLER'S**  
The Valley's OLDEST Indian Store  
JEWELRY — MOCCASINS  
INDIAN ARTS  
UNUSUAL GIFTS — SOUVENIRS



VISIT

**MILLER'S**  
**INDIAN STORE**  
516 Mill Ave.

Books make gifts of a very special kind.

They don't break,  
They don't wilt,  
They don't age.

They are like the cake in the fairy tale, which can be eaten but still doesn't diminish.

UNIVERSITY  
BOOK STORE

### STUDENTS & FACULTY

The A-V Photographic Service in Matthews Hall (behind the Library) is here to provide a complete PORTRAIT STUDIO and to serve your photographic needs in:

- PUBLICITY
- ACTIVITY
- GROUPS
- PLACEMENT
- PORTRAIT
- REPRO & PHOTOSTAT

### PHOTOGRAPHY



The **SIZZLER**

New York  
**Steak Dinner 1.39**

Open Daily  
11 A.M. to 9 P.M.

Baked or French Fried Potato  
Roll & Butter

**TOP SIRLOIN \$1.19**

BAKED or FRENCH FRIED POTATO, ROLL & BUTTER

★ **Steak Sandwich 69c** WITH FRIES

**MONDAY NIGHT SPECIAL**

MONDAY NITE SPECIAL  
**TOP SIRLOIN 99c**

Baked or French  
Fried Potatoes  
Roll & Butter

Conveniently Located At

**Hayden East - In The Mall**

1 Mile North of Campus

### CORVETTE

1961 with 2 tops, 4 speed,  
4:11 positraction and new  
white walls. 25,000 actual.  
Must sell. New car on order.  
944-1565 or 942-4754.

### Campus Classified

Regulations: For students and faculty only of Arizona State University. To place classifieds, submit to Room 107 Administration Building. Deadline is Wednesday noon for Friday's issue. Rates: 3 cents per word, 50 cents minimum charge.

### APARTMENT

I am a lonely new 29 unit apartment building longing to make new friends. I can offer 1 or 2 bedrooms, carpet, drapes, beautiful furnishings, and a heated pool. I can be found at 1001 East Lemon, Tempe. Couples and all college students welcome. If you would just like to talk to me phone 967-0232.

1 1/2 blocks east of Science Bldgs. New furnished 1 Bedroom. Ideal for ASU couples. Low rates. For permanent tenants. \$75-\$85 Call WO 7-5430. Open at 802 Tyler St.

### FOR SALE

1959 Chev. 348 Bel Air 2-door, 3-2's, cam, floor shift, radio, heater. Consider trade. WO7-3948.

TRANSPORTATION SPECIAL, 1951 Pontiac straight 8, runs good. New brakes. \$60. Call 967-3983 after 6 PM.

### WANTED

Rider or ride to N.E. Iowa or general area, for Christmas holidays. Bob Vosseller, 1114 Maple Ave., Apt. 3, Tempe. No phone.

# Faculty 'Free Time' Filled With New Positions, Travel

## Thomas Named Secretary

Dr. Edwin N. Thomas, associate professor of geography, has been appointed secretary of the Western Section of the Regional Science Association.

Dr. Thomas, previously at the State University of Iowa, joined the faculty in 1962.

His major interest is urban geography and central place theory.

## Glenn Wilt, Jr., Earns Ph.D.

Glenn A. Wilt, Jr., assistant professor of general business administration, has been awarded a Ph.D. in business administration from the University of Michigan, Ann Arbor.

Wilt, who teaches business mathematics on KAET, Channel 8, received the 92nd Ph.D. from Michigan's School of Business Administration.

His thesis was a review of "Non Convertible Preferred Stock as a Financing Instrument" from 1950 to 1961.

## More About -

### Blue Key Taps 14 Men Today

(Continued from Page 1) grade index, Wesley Foundation — president, Concert Choir, varsity swimming team, International Student Relations Committee, Guild of Lay Theologians, Sophos, swimming letter award.

**CHARLES STEWART**—senior, political science major, 2.85 grade index, Pi Kappa Delta, Gamma Theta Upsilon, Pi Sigma Alpha, Irish Hall president, treasurer, Inter-hall council, debate team captain 1962-63, executive assistant to ASASU president, National Merit Scholarship finalist, Western Speech Association, impromptu speaking champion 1962-63.

**GEORGE STEWART**—senior, political science major, 2.69 grade index, Theta Delta Chi fraternity, Student Religious Council Senator, ASU Forum President, ASU Young Republicans, Delta Phi Kappa — vice president, Organizations and Student Leadership Board, La Liga Panamerica, ASASU first vice president, Speaker ASASU Student Senate, Pacific Students Presidents Association.

**KARL WOCHNER**—junior, chemistry major, 2.59 grade index, Theta Delta Chi fraternity, ASASU Student Senate, senate rules chairman, constitution revision chairman, Speaker pro-tem, Sophos — vice president, Wesley Foundation — treasurer, concert choir, Senior Day Committee, Homecoming Committee, Rally and Traditions Committee, Phi Mu Alpha voice scholarship, Homecoming King attendant.

## Fred Elquest & Son

Everything for the Art Student  
• Art Supplies  
• Picture Framing  
703 N. 2nd St.  
Phoenix  
PHONE AL 8-2628

## Psychotherapy Is Topic

Dr. Joel Greenspoon, professor of psychology and director of the clinical training program here, will address the University of Oregon Medical School Dec. 18-20.

Dr. Greenspoon will speak on "Behavioral Approach to Psychotherapy." The application of behavioral techniques in the treatment of mental patients also will be discussed.

## Faculty To Attend Confab

Dr. Karl H. Dannenfeldt, dean of the college of liberal arts, Dr. John H. Krenkel and Dr. Gerald R. Kleinfeld, all of the department of history, will attend the annual convention of the American Historical Association in Philadelphia, Dec. 28 to 30.

The purpose of the convention is to read, discuss and criticize various papers to be presented by the attending professors and historians.

The association, with a membership of 11,000 historians, publishes the American Historical Review.

## NEA AV Post Filled

Dr. Vernon S. Gerlach, assistant professor of education, has been elected to a three year term on the board of directors of the National Education Association's department of audiovisual instruction.

Dr. Gerlach will assume office just preceding the 1964 DAVI annual convention in Rochester, N.Y., next April.

# KAET To Feature Poe Tale; Students Adapt, Direct Drama

KAET, Channel 8, will televise "The Cask of Amontillado," 6:30 p.m. on Dec. 26.

Michael Byron adapted the story by Edgar Allen Poe for television and is directing it. He is a member of the University Players.

Fred Norman, playing the role of Montresor, is presently head of the drama department at Tempe Union High School. He has been in productions at Pasadena Playhouse and the Theater of the Rockies.

Jon Gusick, who portrays Fortunato, is a fencing master and has spent several years in Hollywood teaching actors the art of fencing.

Bob Johnson is technical designer and the properties mistress is JoAnne Yeo.



ACTORS TAKE FIVE — Mike Byron discusses a scene from "The Cask of Amontillado" with Jon Gusick and Fred Norman. The play will be telecast over KAET at 6:30 p.m. on Dec. 26.

(State Press photo by Bill Dooley)

## Henderson Elected Fellow

Dr. Douglas J. Henderson, assistant professor of physics, has been elected a Fellow of the Physical Society of London.

Dr. Henderson's specialty is "The Theory of the Liquid State."

The 29-year-old scientist came here in 1962 from the University of Idaho, where he had a similar professorship.

A native of Calgary, Alberta, Canada, he holds a BA with first class honors in mathematics from the University of British Columbia.

He went from there to the University of Utah in 1956, where he was a teaching assistant in physics and then mathematics. Two of his three years there were spent as a Corning Glass Foundation Fellow.

Marge Smith  
**FLOWERS**  
"Tempe's Most Popular Florist"  
722 Mill Avenue  
Evenings WO 7-5020    Open Sundays 9 - A.M. - 2 P.M.    Daily WO 7-0271

"Years Ahead" Flight Training  
In The New Shinn - 2150  
  
MODERNIZED GROUND SCHOOL  
FOR PILOTS & NON-PILOTS  
Amos Flight Operations  
A Private License is a Must In Modern Business  
Don Amos — Class of '56  
Phone BR 5-7291    SKY HARBOR

\$1.50 PER CAR    **NU-VIEW** DRIVE-IN 3150 W. THEATRE BUCKEYE 278-2970    1ST SHOW 7:00 P.M.

The "Tosca"  
You Hoped For...  
  
PUCCINI    RCA VICTOR  
**TOSCA**  
PRICE • DI STEFANO • TADDEI  
VON KARAJAN, Conductor  
"Flawless" says Time Magazine of this spine-chilling new recording starring Leontyne Price. "Achieves every possibility of Puccini's intense score." With beautiful 64-page art book.  
RCA VICTOR RED SEAL  
**HILLS RECORDS & BOOKS**  
Tempe Shopping Center

The Greatest Peel Since The Banana!  
In Gorgeous COLOR    SAUCY, SPICY and SENSUOUS!  
  
**MR. PETERS' PETS**  
featuring the world's most BEAUTIFUL models...  
EXTRA BONUS SPECIAL!  
Late Show Fri. - Sat. Sun.  
CO-HIT "DARK PASSAGE"  
Sophia Loren In "THAT KIND OF WOMAN"



**SOLOMON AND BALKIS** — Betty Burton as Balkis, Ed Humphrey as Solomon and Carol Richards as Butterfly's wife are shown in a pensive moment of "Solomon and Balkis." The opera was presented last night in two performances at Cosner Auditorium by the Opera Workshop.

## Clubs Announce Coming Activities

Eta Kappa Nu, electrical engineering honorary, conducted a formal initiation banquet Saturday evening in the MU banquet room.

Initiated were Arnold Celestini, Jack Cooper, Alfred Daniels, William Ellis, James Fitzsimons, William Hanks, George Hennigan, John Moore, Joseph Murphy, Duane Powers and Rudolph Villicana.

Keynote speaker was Dr.

Weldon P. Shofstall, dean of students, who spoke on "Ideas Have Consequences." Master of ceremonies was Dr. Joseph A. Barkson, professor of engineering.

Alpha Lambda Delta will have a Christmas party at 4:30 p.m. on Thursday in the MU upper lounge.

The freshman scholastic women's honorary is sponsored by

Mrs. Charlotte Lewis. Its group representative is Janet Bergman.

The Sun Devil Rodeo Association will meet tomorrow at 7:30 p.m. in Ag 250.

Films of the recent NIRA rodeos will be shown and plans for the annual horse show will be discussed. All interested students are invited.

## Religious Affiliated Organizations Schedule Meetings, Convention

Student Religious Liberals of the Unitarian Church will meet Sunday at 7:30 p.m. Jan. 5, in MU 7.

A discussion of modern art by a Valley art teacher and several art displays will be a featured part of the program.

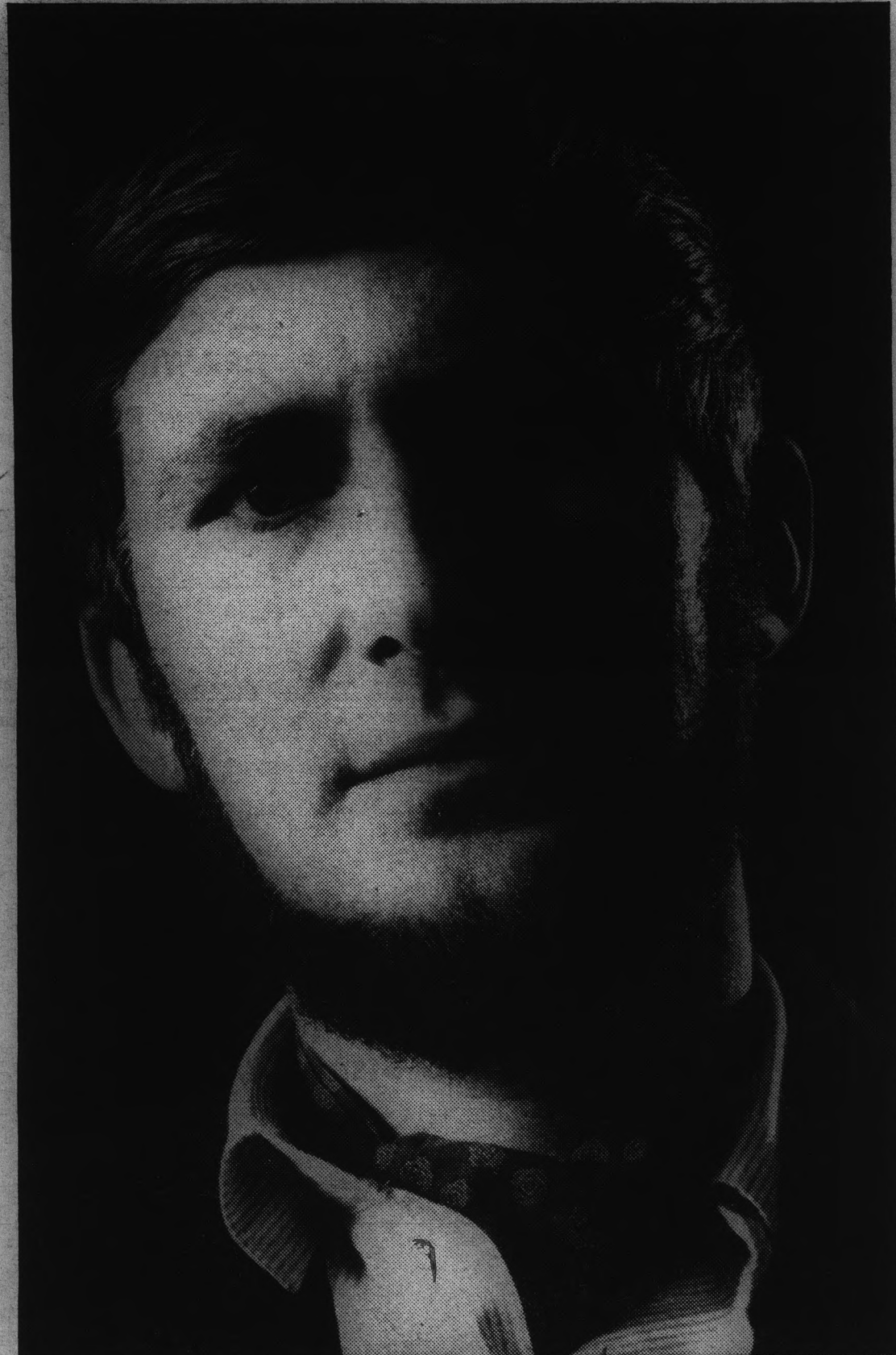
For further information, contact Candy Van Duzer, 119-2366.

Religious Council will travel to Ohio University, Athens, Dec. 27 to study the critical points of international affairs.

The gathering will include more than 3,000 campus delegates from the U. S. and other countries. Over one half of those attending will be students from foreign lands.

The ASU group will include five foreign students.

Members of the Student Re-



# THE BEARD FAD ON CAMPUS WILL END DEC. 26

Sweethearts and parents will be giving REMINGTON® LEKTRONIC II shavers for Christmas. Shaving will become easier, cleaner and more comfortable than having a beard.

Here's why:

There's the cordless feature. Sealed-in, rechargeable energy cells let you shave without a plug. And what shaves they are! 348 cutting edges of high-carbon steel (sharper and tougher than stainless steel) whisk whiskers off. These edges are honed on an angle. So whiskers get sliced off instead of "ploughed up." 756

whisker-gathering slots in the big shaving head feed whiskers to the cutters faster. And on top of the shaving head: REMINGTON Roller Combs. Adjust to any skin or beard—protect skin; set up whiskers.

Forget to recharge? There's a cord. Plug it in and shave anywhere—so get a REMINGTON LEKTRONIC II for Christmas. After all, you wouldn't want to be the only non-conformist on campus who isn't clean shaven.



**REMINGTON LEKTRONIC II**  
REMINGTON ELECTRIC SHAVERS, BRIDGEPORT 2, CONN.  
LEKTRONIC: Trademark, Sperry Rand Corp.

**Laird Pharmacy**



**PRESCRIPTION SPECIALISTS**

TOBACCO — FOUNTAIN  
We Give S & H Green Stamps

501 Mill      Tempe

## continental THEATRE

142 E. Washington — Ph. 253-6447

FINALLY IN AMERICA —  
THE YEAR'S MOST DARING FILM

# PRELUDE TO ECSTASY

Starring Swedish Beauty Lian Kaarina

Student Price: \$1.00

CONTINUOUS FROM 12:15

**DON'T MISS IT!! ONE WEEK ONLY**

He's Got The Answers -

Former 'Quiz Kid' Now On College Bowl

A Phi Delta Theta team of Bob Wilson, Pat and Lance Morris and Paul Cullom won the College Bowl for the second straight week Thursday afternoon by beating Alpha Epsilon Pi, 194 to 98.

As the game progressed, it became noticeable that a large majority of the questions were being answered by ex-radio "Quiz Kid" Bob Wilson.

Wilson even answered questions before narrator James Creasman had a chance to complete them. At one point, Creasman admitted a question was somewhat vague but Wilson explained the question and the answer in such a manner that Creasman agreed.

At the age of 8, Wilson was one of the quiz kids on the ra-

dio program of the same name. He is now awaiting word from Washington on a pending Fulbright Scholarship.

Wilson, a senior in philosophy with a 3.5 accumulative index, wants to attend law school after graduation.

When Wilson was asked what

he and his teammates do to prepare for the game he replied, "We have a pep session at the Library. It's the best way to relax before the big game."

The next session of College Bowl will be after Christmas vacation. It will be announced in the State Press.

**Lola's Cafe**  
 11 East 5th Street

- BREAKFAST
- LUNCH
- DINNER

STUDENT MEAL TICKETS  
 \$5.50 For \$5.00

"The Place Where Old Friends Meet"

**FREE!**  
**LADIES PETITE WRIST WATCH**



from  
**Campus Drug**

**ANOTHER DRAWING**  
 Tomorrow, Dec. 19

Submit Coupon To Cosmetics Counter  
 At Campus Drug - 8th & College

Name \_\_\_\_\_  
 Address \_\_\_\_\_

**PRE-CHRISTMAS SALE**  
**SALE**  
 - store-wide -  
**DRESSES**  
**DARK SKIRTS**  
**CAPRIS**

|                              |                |
|------------------------------|----------------|
| Junior Sizes 5-15            | <b>20% off</b> |
| Junior Petite - 3-11         | <b>20% off</b> |
| Misses - Sizes 8-20          | <b>20% off</b> |
| Also Half Sizes - 12½ to 22½ |                |

---

|                  |                |
|------------------|----------------|
| CAR COATS - 6-16 | <b>25% off</b> |
|------------------|----------------|

---

|        |                |
|--------|----------------|
| PURSES | <b>20% off</b> |
|--------|----------------|

---

**SWEATERS**

|                        |                |
|------------------------|----------------|
| SLIP-ONS - SIZES 34-40 | <b>20% off</b> |
|------------------------|----------------|

---

|                       |                |
|-----------------------|----------------|
| ALL OTHER MERCHANDISE | <b>10% off</b> |
|-----------------------|----------------|

---

**Bonnie Sue FASHIONS**  
 Tempe Center - WO 7-4094  
 Open 9 A.M. - 9 P.M. Till Xmas

*Enjoy your full measure of beauty...*

instantly, naturally in **BRA** *fantastic*

**ADDS 2 INCHES TO YOUR BUST WITHOUT PADDING!**

Bra Fantastic fulfills your promise of breath-taking feminine beauty... dramatically, naturally makes the most of you without any artificial means. You'll discover approximately 2 extra inches added to your bustline instantly. Pendulous and full bosoms regain youthful lines. You'll experience a new height of comfort too, in the 100% cool cotton fabric with dainty dacron polyester lace that out-wears 3 ordinary bras. A try-on will tell you... the secret, you alone will know is in Bra Fantastic's unique design.



**Bonnie Sue fashions**  
 Tempe Center

# Christmas Parties Aid Needy Families

By SUE JEFFRIES

Taking time off from books and social functions, Greeks have sponsored holiday fun for underprivileged children and adults.

Alpha Delta Pi, Chi Omega, Tri Sigs and Alpha Gamma Rho are all helping needy families in the area by giving clothes, food and toys to make their Christmas merrier.

Alpha Tau Omega and Gamma Phi Beta had their traditional Christmas party for 50 underprivileged children last Wednesday afternoon at the ATO House.

Kappa Kappa Gamma hosted the second graders from the Indian School at the Salt River Reservation last Saturday afternoon in their chapter room at PV for a pre-Christmas party.

THE ORPHANS from Sunshine Acres were feted Sunday afternoon by the Pi Kappa Alphas at the fraternity house.

Sigma Alpha Epsilon pledges are entertaining children at orphanages in the Valley this week.

Old fashioned Christmas carolling will entertain residents of the Tempe Community Hospital and other institutions in the area this week as Alpha Sigma Alpha, Kappa Delta, Sigma Phi Epsilon and Theta Chi each spread the holiday spirit.

Delta Gamma pledges and actives are presenting gifts to blind children at their annual Christmas party.

THE FIJIs are donating Christmas trees to families in Tempe and are collecting clothes and food for underprivileged children.

Phi Delta Theta pledges are visiting the Perry Institute and the Gompers Clinic this week to deliver toys and candy to the children.

Members of Tau Kappa Epsilon are raising money to help "Dress a Living Doll" charity drive.



MAN OF THE YEAR — Mickey Ollsen. Kappa Sigma president, is presented the annual Tri-Sigma "Man of the Year" award by sor-

ority President Melanie Wright, left, and Donna Panarello. The award was presented at the sorority's Christmas formal last Friday.

## Group Hikes Up Mountain

Members of Gamma Theta Upsilon, national professional geography fraternity, traveled Dec. 14 to Weaver's Needle in the Superstition Mountains on a field trip.

Object of the trip was to familiarize the members with the geography of the Superstition Mountains.

## Movie Is Set

"Period of Adjustment" will be shown tomorrow at 7:30 p.m. in the MU ballroom.

The ASU Forum sponsors the movie which stars Tony Franciosa, Jane Fonda and Jim Hutton.

The story concerns a newly-wedded couple going through its "period of adjustment."

Admission will be 25 cents.

**Bobbies Flowers** *Flowers & Gifts...*

20 E. 5th St.

Home Phone WO 7-6319  
WO 7-2972 — WO 7-4274

For Parties . . .  
Large Artificial  
Plants For Rent

Mac & Jack Sez . . .  
"We Develop Film  
And FRIENDSHIP At  
PIONEER CAMERA  
SHOP  
TEMPE CENTER



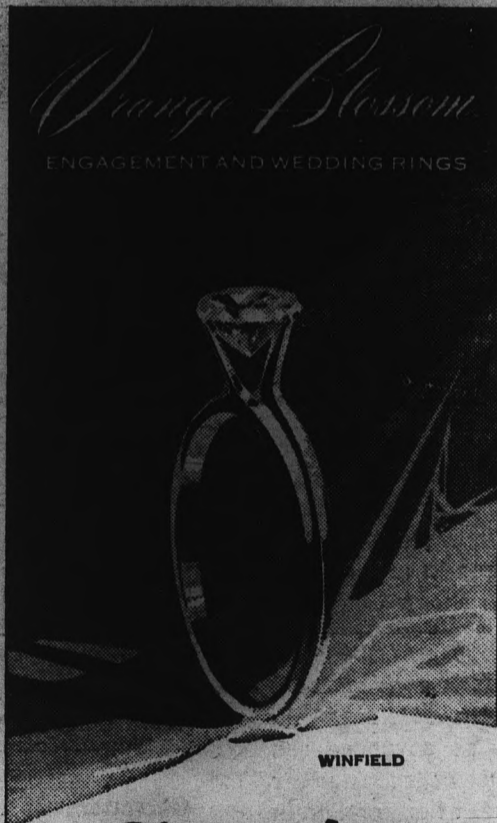
**ARTIST SUPPLIES**  
**CRAFTS - HOBBIES**  
Decorating Material  
Picture Frames  
Open Mon. & Thurs. Nites  
Tempe Center • WO 7-4482

**ONLY AT  
KINGS**

- CHARGE IT
- NO MONEY DOWN
- 3 MONTHS TO PAY
- NO INTEREST
- NO SERVICE CHARGE

**KINGS**  
Tempe Center

SEE DENNIS FOR DIAMONDS



*Fine Dennis D. Naughton Jewelry*

132 N. Central AL 2-3774 Switzer's, Park Central Mall AM 4-4361  
9 A.M.-5:30 Daily — Till 9 Mon., Thurs. & Fri.

As Usual, The Creators Of The Unusual  
Registered Jewelers American Gem Society

SEE DENNIS FOR DIAMONDS

DIAMONDS ARE OUR BUSINESS

DIAMONDS ARE OUR BUSINESS



**New Era**

...a shirt is a look is a girl!



Blouses — \$398 & up

Sweaters by DARLENE  
and CATALINA

Lovely Lingerie by KAYSER  
and HENSON - KICKERNICK

**Celia's**

3 Convenient Locations

- ★ Tempe Center
- ★ E. Mesa Shopping Center
- ★ ROSEMARIE'S, Valley Fair Shopping Center

OPEN EVENINGS TILL XMAS

# Placement Center Is Trying New System

By DIANA ROSEN

"Personalization through computerization" is accomplished in the Placement Center by a system based on the philosophy that the professional placement officer should personally know each and every candidate, his qualifications and preferences. Time and number of personnel cannot do this as well as a machine.

Arizona State is the first university to use the computer placement system for parttime jobs.

THE ENTIRE concept and utilization of the computer was analyzed in an article, "Personalization through Computerization," by Dr. Robert F. Menke, director of placement and Lawrence Yehle, placement assistant, in the October issue of the Journal of College Placement.

The computer, located in the Engineering Building, uses total recall as the tool to provide a more personal touch in securing part time jobs for the students.

When a job opening is reported, a form is put into the computer which is used to match those forms the student fills out. This form indicates the students' preferences of working hours, wages and type of work desired.

THE COMPUTER selects from these technical applications those students who meet the qualifications of the potential employer.

The student then is contacted by the center and given a personal recommendation sheet plus all the job information and is then scheduled for his job interview. In this way, the student is treated more accurately and personally.

There are many times, however, when the students' preferences cannot be matched with employers' requests.

Each day forms of newly registered students are placed on top of those previously entered along with new job offers.

THE FORMS are selected in progressive advancement and are kept in the computer for several weeks. If the student has not been matched with a job, he may re-register.

The purpose of the Placement Center is to find jobs for the students. But the supply and demand of certain types of jobs

is not always balanced and students should, at times, be willing to take a job other than that which he specifically desires, according to Dr. Menke.



SANTA HIMSELF — Jim Swanson, Alpha Tau Omega, played Santa Claus at a party for 50 underprivileged children. The traditional party was held at the ATO house and was sponsored jointly by ATO and Gamma Phi Beta.

## Special Recital Will Be Heard

A special Christmas Recital will be presented by the Music Department Dec. 18 at 2:40 p.m. in Cosner auditorium.

Program selections will feature Sopranos Mary Ann Christensen, Evelyn Taylor and Carol Richard and Pat Tarpey, contralto. Instrumental selections will be played by Bev Boothroyd, flute, and Lynda Jones, violin. The University Singers and the Marimba Ensemble will also perform.

Refreshments will be served.



THERE  
WILL BE  
AN EAGLE  
ON THE  
MOON

Our world-recognized trademark—"the P&WA eagle"—has been identified with progress in flight propulsion for almost four decades, spanning the evolution of power from yesterday's reciprocating engines to today's rockets. Tomorrow will find that same Pratt & Whitney Aircraft eagle carrying men and equipment to the moon and to even more distant reaches of outer space.

Engineering achievement of this magnitude is directly traceable to our conviction that basic and applied research is essential to healthy progress. Today's engineers at Pratt & Whitney Aircraft accept no limiting criteria. They are moving ahead in many directions to advance our programs in energy conversion for every environment.

Our progress on current programs is exciting, for it anticipates the challenges of tomorrow. We are working, for example, in such areas as advanced gas turbines... rocket engines... fuel cells... nuclear power—all opening up new avenues of exploration in every field of aerospace, marine and industrial power application.

The breadth of Pratt & Whitney Aircraft programs requires virtually every technical talent... requires ambitious young engineers and scientists who can contribute to our advances of the state of the art. Your degree? It can be a B.S., M.S. or Ph.D. in:

MECHANICAL • AERONAUTICAL • ELECTRICAL • CHEMICAL and NUCLEAR ENGINEERING • PHYSICS • CHEMISTRY • METALLURGY • CERAMICS • MATHEMATICS • ENGINEERING SCIENCE or APPLIED MECHANICS.

Career boundaries with us can be further extended through a corporation-financed Graduate Education Program. For further information regarding opportunities at Pratt & Whitney Aircraft, consult your college placement officer—or—write to Mr. William L. Stoner, Engineering Department, Pratt & Whitney Aircraft, East Hartford 8, Connecticut.

SPECIALISTS IN POWER... POWER FOR PROPULSION—POWER FOR AUXILIARY SYSTEMS. CURRENT UTILIZATIONS INCLUDE AIRCRAFT, MISSILES, SPACE VEHICLES, MARINE AND INDUSTRIAL APPLICATIONS.

### TYPING

Theses - Dissertations  
Term Papers - Themes  
TEMPE SECRETARIAL &  
ANSWERING SERVICE  
967-1321

Bunch's  
Watch  
Shoppe

featuring

- ACCUTRON, Electronic Watch by Bulova
- SPEIDEL Bands

Phone WO 7-3221  
609 MILL — TEMPE



**Pratt & Whitney Aircraft** (DIVISION OF UNITED AIRCRAFT CORP.)  
CONNECTICUT OPERATIONS EAST HARTFORD, CONNECTICUT  
FLORIDA OPERATIONS WEST PALM BEACH, FLORIDA



An Equal Opportunity Employer

Four Times ??? -

# Ouch! Ouch! Ouch! Ouch!

By AL MICHAELS

Arizona State's deflated Sun Devils returned home yesterday after a disastrous four-game road swing that shattered its once-mighty national image into tiny fragments.

The Devils, in succession, bowed to Bradley, 92-85, Creighton, 84-83, Denver, 84-83, and Colorado, 93-70, to obliterate its fourth ranked status and cause serious concern as to the possibility of retaining its Western Conference championship.

A-STATE does not begin its WAC competition until the middle of January but if its recent performances are indicative of the future, the path to the conference crown will be strewn with roadblocks.

The Sun Devils' 23-point loss to Colorado was ASU's worst defeat since the 1959-60 season when Dayton swept to an 89-59 triumph.

The four-game losing skein is the longest of Coach Ned Wulk's regime at A-State and it's times like this that cause the personable Devil mentor to wonder why he didn't accept the Cincinnati Royals' lucrative contract offer last spring.

ASU OPENED the tour against Bradley at Peoria, Ill., last Wednesday and saw a 9-point halftime lead disappear when the Braves resorted to

run-and-shoot tactics in the last period. The defeat was the first of the season for the Devils who had previously whipped Western New Mexico, 121-79, and Wichita, 93-87.

The tables were reversed in the Creighton encounter at Omaha as A-State found itself fighting from behind in the second half. The Devils did manage a 71-67 advantage at one juncture but it was a short-lived margin as the Bluejays scrapped back to pass defeat No. 2 on Tempe.

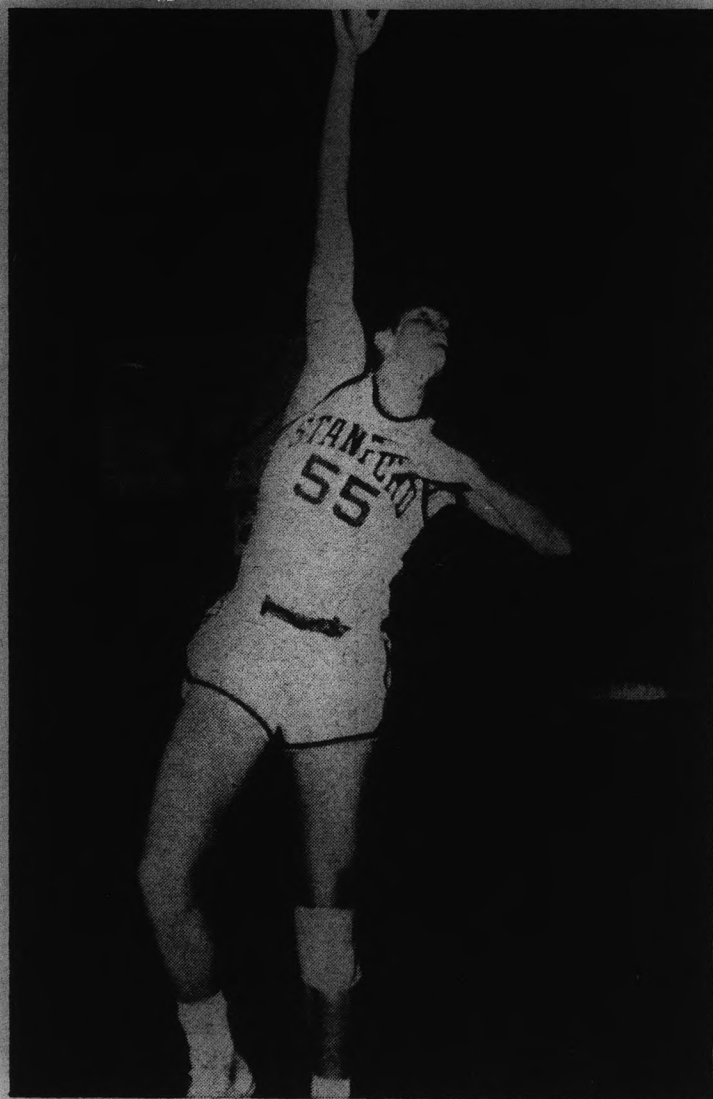
THE DENVER battle, supposedly the easiest tilt on the road trip, looked like just that as the Sun Devils managed a 10-point lead in the waning moments of the first period.

Wulk inserted a rash of substitutions at that point, saw his lead diminish to a scant field goal and finally evaporate when the second half began. This loss was the bitterest pill of all to swallow since the Pioneers were about as highly regarded as the KRUX "Good Guys."

Colorado's victory in the excursion's finale was the Buffaloes' 28th consecutive home-court triumph and perhaps its most impressive. The outcome was seriously in doubt only once in the last half when the Devils closed a wide deficit to 4 points midway through the period. But Colorado, sparked by big Jim Davis and Bob Joyce, turned it on at the end to apply the coup de grace to ASU's fatal venture.

A-STATE is now preparing for this weekend's first annual Sun Devil Classic featuring ASU, Oklahoma, California and Michigan State.

Cal is matched with Michigan State in Friday's first game with the Devils hosting the Sooners in the nightcap.



TOM DOSE, Stanford's 6-8 All-Coast center, will shoot hooks in Tempe over the holidays.

## No Break For ASU

While many students will travel to different parts of the country to spend their Christmas vacations, the Sun Devil basketball team will remain in Tempe with four contests scheduled over the holidays in Sun Devil Gymnasium.

Leading off the holiday schedule will be the first annual Sun Devil Classic Friday and Saturday nights. Participating teams in the tournament are the University of California, Michigan State, Oklahoma and the Devils.

Following the Classic, A-State hosts the Stanford Indians Dec. 30. Stanford is led by its All-American candidate, Tom Dose, a 6-8 senior who averaged 20.8 points per game last year.

Dose's 520 points broke a Stanford record for scoring in a single season.

The Indians are a member of the Big Six and are rated strong contenders in this year's race.

Following Stanford will be  
(Continued on Page 12)

## Miners Win Meet

Colorado School of Mines and Central High of Phoenix were the two divisional winners in the Second Annual ASU High School and College Open Invitational Wrestling Tournament at Sun Devil Gym this past weekend.

CSM, with six finalists, amassed a total of 75 points to far outclass its nearest competitor, Cal Poly, with a total of 48 points. The UofA was a close third with 45 points.

In the high school division, Central High barely nosed out Arcadia of Scottsdale 71-68.

The Sun Devils did not enter a team; however, several ASU students entered the tournament unattached. Sun Devils

Buzz Hays, Mike Harmer, Tony Russo, and Glenn McMinn were all defeated in the finals.

Harmer lost his match 3-1 when his opponent managed to take him down with less than 10 seconds remaining.

Mac & Jack Sez . . .  
"You Wouldn't Go To A  
Drugstore To Buy Groceries"  
**PIONEER CAMERA  
SHOP**  
TEMPE CENTER

## PETER'S HOFBRAU

Authentic  
German Food  
Beverages  
Entertainment  
German Atmosphere  
Happy Get-Together  
Hours: 4-6 o'clock  
218 Western Park Dr.  
(Just Off Indian School)  
SCOTTSDALE  
PHONE 947-4389

### SPORTOONS BY NORM CHESTNUT



**MUGS UP**  
ROOT BEER  
Where the Nickel is Mighty  
303 E. EIGHTH Phone WO 7-0800  
TEMPE, ARIZONA

Your A-1  
Dealer in  
Tempe  
603 Mill Ave. — Tempe

Wheel Aligning - Balancing  
Auto Glass Installation  
Pete Null's  
**TEMPE BODY SHOP**  
SPECIALIZED COLLISION SERVICE  
11 East Fourth Street Phone WO 7-1601  
TEMPE

DELICIOUS!  
JUST 17c  
French Fries 12c  
Milk Shake 22c  
AND INTRODUCING THE  
Fish Sandwich . . . 25c  
Dubl-Burger . . . . 30c  
Finest Quality . . . Fastest Service  
Phone 947-1571 for Pick-up Orders  
**Ricky's Drive-In**  
1847 S. Scottsdale Road Scottsdale  
1/4 Mile South of Papago Plaza Shopping Center

Concourse pacesetters—trim smartness  
with new lowered front pockets (only one  
on hip) and tab front waist band.  
**Racers** T.M.  
TK  
REVERSE TWIST—  
55% Acrilan,  
38% Rayon, 7% Acetate.  
Wrinkle resistant. Automatic  
wash and wear. \$5.98  
AT YOUR FAVORITE  
SOFT GOODS EMPORIUM

# Records Fall For Hopkins

After two weeks of shooting in the Winter Intercollegiate Archery Tournament, two tournament records were broken.

Carol Hopkins, ASU's all-American, shot a 596 Columbia Round to smash the 584 record set in 1959. She also became the third ASU archer to have shot six gold from a distance of 40 yards.

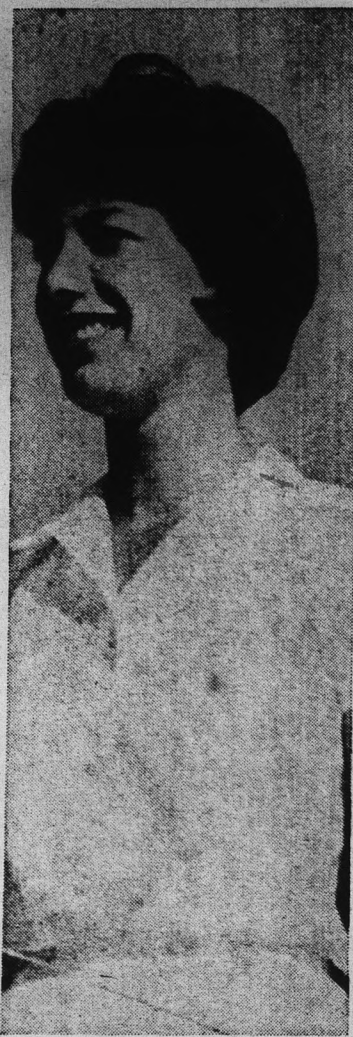
**THE SCORES** for the Women's Columbia Round team were Hopkins, 596; Mary Ann Wahl, 552; Sandra Cox, 534, and Judy Severance, 506. Total score was 2188; 6 points short of the tournament record. The mixed Columbia Round team of Don Olson, 530; Fred Houchell, 507; Sheila Brubaker, 470, and Barry Bowman, 437, had a total of 1944.

In the 30-yard Team Round

division the women's team was composed of Sandra Nix, 448; Judy Randall, 429; Ronda Heller, 420, and Betty Walla, 428 for a team total of 1725. The mixed team came up with the same score they had last week, 1550. Team members were Yvonne Prevratil, 414; Socorro Mendoza, 384; Bill Poe, 392, and Bob Owne, 360.

**CAROLYN MAXWELL** shot a 526 to break the all-time school record of 508 which was set in 1951. Other members of the 20-yard Team Round division were Rosetta Tracy, 406; Janie Williams, 392, and Sue Scarbrough, 383 for a team total score of 1687.

Results of the third and final round of the tournament will be reported as soon as possible.



CAROL HOPKINS

# Off The Cuff

By JOE HEATH

How does that ol' saying go about speaking too soon? Well, whatever the specific words are, I think that they are very applicable in my situation.



I refer to my column of two issues back when I so rashly said, "This could be the year for ASU to be rated number one." At the time, the Devils had won two straight, were fourth ranked in the nation and were looking for someone else to fall victim to the "Tempe Bombers."

**THE FIRST FEATHER** for the hat was Bradley; and "boom!" ASU took a nine point halftime lead. While KTAR's announcers joked at the midway break, the Braves' coach passed out the hatchets and the "Cardiac Kids" quickly developed a murmur.

The ol' heart gave way at Omaha and the case was pronounced critical following the Denver game.

The 20 mile trip from Denver to Boulder went okay as the team left the driving to Greyhound. But, then came the crash and burning in the Colorado gymnasium.

Fret not! Guess who's 15th in the latest UPI Poll—A-State.

Meanwhile, Creighton holds down the 18th spot and Bradley is resting at 19th. Wichita, after defeating Bradley on the Brove's home court, dropped from 12th to 14th in this week's ratings.

A statistician might say that the road ahead looks clear because none of the other teams on the Devil slate of upcoming games are rated in the top 20. **NOTE:** Denver and Colorado aren't rated either.

In the last 62 games that the Devils have played, they have lost only 11 — 10 of these on the road. In the 1958-59 season ASU posted a 17-9 season record, winning 14 of 14 at home.

A-State has won 49 straight home games, defeating some pretty good ball clubs in doing it. This season ASU opens the Western Athletic Conference campaign on the road against Wyoming — and two days later they visit New Mexico. Four non-conference games are played following the Lobo match and then the next league tilt is played at Tucson.

**THE RECORD MIGHT** look bad, but here's a credit to the team.

There are only a couple hundred tickets left for the championship night of the Sun Devil Classic — so, let's look to the future and forget the past.

The Devils will be running into some more top notch teams and individual stars over the remainder of the season, so all is not lost yet.

The team that has probably the greatest potential of any past A-Staters can still show how tough they can be.

## Intramurals

The intramural football tournament started Monday with 13 teams competing for top honors.

The Rejects and Sigma Chi, first and second place finalists last year, both drew byes.

The championship and consolation games will be played at 3:45 Thursday on the men's PE field.

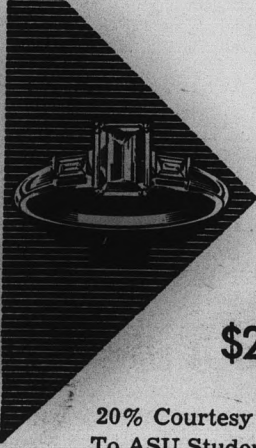
Jan. 10 is the entry deadline for intramural bowling.

## Xmas Games

(Continued from Page 11)  
Seattle University. The Chieftains will visit Sun Devil Gym Jan. 4. With the graduation of All-American Eddie Miles, Seattle has found the going a little rough this season.

The Devils then travel to Texas Western Jan. 6 and return home Jan. 11 to host Colorado State University.

**This superb emerald-cut Diamond just**



**\$250**

20% Courtesy To ASU Students

*College Diamond Imports*

1000 Apache Blvd. Suites 204-205  
Tempe — Call 967-8917 For Appointment

**Student Representatives:**

- Jim Peterson
- Robert Knoblock
- Steve Petrie
- Mike DeMuro
- Tom LaBorde
- Shields Fair
- Steve Briggs
- Ken Waterman
- John Thurman
- Larry Cochell

Is Your Car Ready For The Holidays?

# WINTERIZE SPECIAL

- Adjust Carburetor
- Clean Spark Plugs
- Set Engine Timing
- Adjust Dist. Points
- Complete Lubrication
- Change Motor Oil
- Check Hoses, Cooling and Heating

**\$9.95**  
Labor  
(A \$15.00 Value)

Permanent Anti - Freeze **\$179** Gal.  
**SALE**  
(WITH WINTERIZE SPECIAL)

**BRIT SMITH CAR CO.**

8th and Mill ● TEMPE ● WO 7-3381

**GLORY**  
to God  
in the Highest,  
and on earth  
**Peace,**  
**Good Will**  
toward men. Luke 2:14

The *Americana* Shop  
TEMPE CENTER