

Parents Day Guide -



OVER THE BRIDGE — Dave Putman (left) points out path of Parent's Day tours to Hal Roper.
(State Press Photo by Gary Gray)

Chairmen Announce Plans For Revamped Parents Day

By SHIRLEY DeMARKE
Parents Day, scheduled Nov. 2, is a completely re-organized program according to co-chairmen Tony Cerkenik and Dave Putman.

Parents Day is an annual event conducted to give parents the opportunity to tour the campus, buildings and residence halls, talk to administrators and view sample programs effective in the various colleges at the University.

INVITATIONS have been mailed to the parents of students who addressed envelopes during semester registration.

The day's events will begin with registration at 8 a.m. in front of the Devil's Den. Assisting in the program will be Kaydettes, Angel Flight and the Freshman Hostesses.

Bus and walking tours of the campus, under the direction of Natani, Kaydettes and Angel Flight, will leave the MU every 30 minutes from 9 a.m. to 2 p.m.

PRESIDENT Durham and Daryl Winn, ASASU president, will welcome Moms and Dads at 3 p.m. in the MU at a special assembly featuring campus talent.

Following the assembly President and Mrs. Durham, the vice presidents, deans and their wives, will conduct a reception on the MU terrace.

Luncheon for the visitors will be available in Palo Verde, Palo Verde East and the MU.

Spurs, sophomore women's honorary, will be selling "mums for moms" the week before Parent's Day.

Booths for the sale, a

traditional Spurs project, will be located in the residence halls, fraternity houses and in front of the MU and Agricultural buildings.

Cost of the mums will be \$1.50. They will be distributed by Spurs the morning of Parent's Day.

Special half-time ceremonies during the ASU-Utah football game, featuring the band and card section, are under the di-

rection of co-chairman Tony Cerkenik.

Blankets will be presented during half-time to parents having the most children enrolled in the University and to parents having traveled the greatest distance to attend. In case of a tie, scholarship average will determine the awards.

Completing the day's events will be a dance for students and parents, 10 to 12 p.m. in the MU ballroom.

Tom Hails '63 Homecoming

By ROSS FISH

"Bring 'em back big," Tom said Homecomingly.

Tom waves his ASU pennant as he blurts out the goal of the 1963 Homecoming steering committee on the cover of the directory released this week to all organizations and dormitories.

The directory, organized by Carla Esch and committee secretary Jodee Baird, explains the function of sub-committees, describes events preceding and during Homecoming week and announces qualification and deadlines for all competition.

Themed "Great Discoveries," Homecoming week will sport a series of alumni and student events Nov. 11-16.

"Let the alumni make a 'Great Re-Discovery' of the dynamism that is Arizona State University," said Cindi Buchanan, steering committee chairman.

The classes of 1923 and 1943 will be given special recognition throughout Homecoming activities since they will be celebrating their twentieth and fortieth reunions. The two classes will have reunion luncheons Nov. 16, the day of the Homecoming game with Wyoming.

All alumni will attend an alumni dinner and dance at the Phoenix Country Club Nov. 15 and a pre-game buffet at Palo Verde Hall before the game. An alumni lettermen's breakfast at the Sands Motel will be Nov. 17.

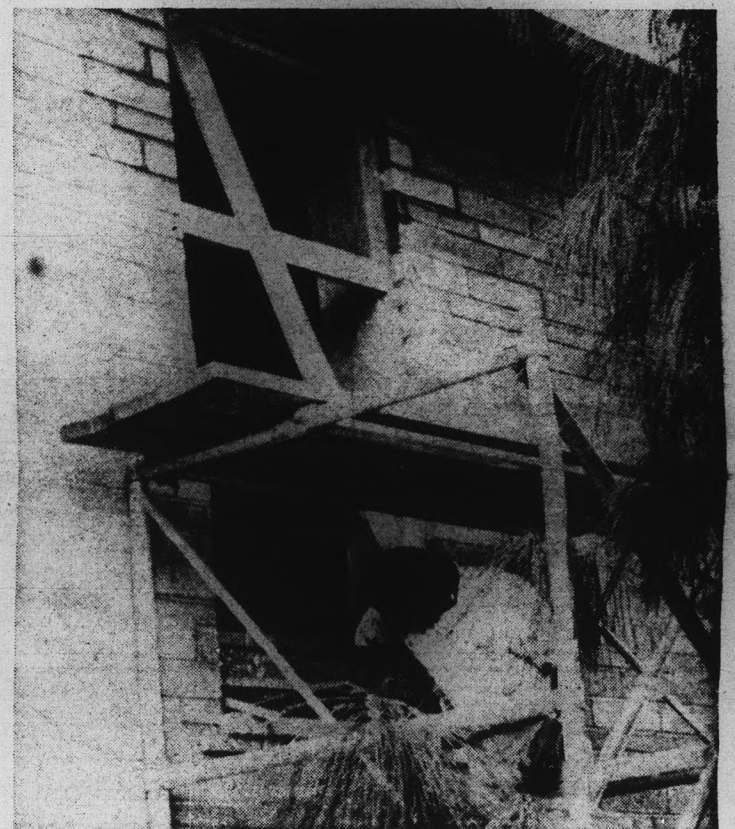
A schedule of campus

events is attached to the directory.

The first deadline on the schedule is for Homecoming king and queen.

Homecoming king and queen candidates must be entered for competition by 2 p.m. Oct. 29 in MU 202.

Decoration entry blanks are due by 4 p.m. Nov. 1 in MU 202. Lot assignments will be made available during the following week.



NEW THRESHOLD — A University employee chops out the Danforth Chapel wall where remodeling has begun.
(State Press Photo by Gary Gray)



JOURNAL — Cheerleaders Mike Schwartz and Greg Eagleburg n-gubbies for their trip to El Paso for the Texas Western game.
(State Press Photo by Larry Ward)

ASU Board Will Distribute Monthly Activity Calendar

A monthly activities calendar will be distributed early next month according to the Activities Coordination Board.

The first ASASU calendar with all of the month's events will be available to all students Nov. 1.

ALL EVENTS which are on the University calendar will be placed on this calendar and distributed to students without cost.

Perry Gooch, Activities Vice President, in explaining the calendar said, "One of the main problems with student government is student activities. ASASU sponsors something every night, and when a maximum of only five per cent attend or even know the event is happening, it is quite evident publicity is not always getting out."

Gooch also said, "The calendar is to make students aware of the events scheduled for their benefit."

All organizations planning activities are urged to schedule

their events on the university calendar in the Assistant Dean of Students' office at least fifteen days before the event.

THE CALENDAR, to be distributed at the dorms, will be available at the MU information desk.

Only 3,000 copies are going to be published this first month.

U.S. Launches Two Top-Secret Space Satellites

The United States used an Atlas-Agena Rocket Thursday to send two top-secret satellites into a 60,000 mile high orbit to patrol for nuclear space tests.

The two 485-pound satellites were the most accurately launched by the Atlas-Agena.

The satellites are the forerunners of a complex system of nuclear patrol satellites.

Aye Aye Aye Aye -

Senate Reviews, Approves Court And Board Positions

Twelve executive appointments received the consent of the Student Senate at Wednesday's session.

Dan Baker was approved for the office of Chief Justice of the ASASU Supreme Court. The Senate consented to the appointment of Mary Avery, Paul Collum, Jack Johnson and Marilyn Fullerton as Associate Justices.

CONFIRMED were Alan Bunch, Elections Board Chairman; Kay Anderson, MU Board chairman; Ann Gardner, Organization and Student Leadership Board chairman; Bernie Webber, Rally and Traditions Committee chairman; Karen Loughridge, Faculty-Student Relations Committee chairman; Tom Thomason, Social Activities Committee chairman and Glenda Brockbank, International Student Relations Committee chairman.

Chairman for the Education Board and the Cultural Affairs Committee have not been appointed.

SPEAKER of the Senate George Stewart appointed Ira Friedman parliamentarian and Sharon Farmer Senate librarian.

Four bills were introduced in Wednesday's meeting.

SB 197—An act to explain and unify the student discipline system.

SB 198—An act to recommend the proportion of the activity fees income to be appropriated to the different areas of the Associated Students' program for the academic year 1964-65.

SB 199—An act to provide for the representation of councils in the Student Senate.

SB 200—An act to provide a primary election for the Homecoming Queen and King election.

IN OTHER ACTION the Senate established a special committee to study the campus parking problem. Senator Rex Young was appointed to head the committee.

Patriots Plan Pageant For United States Day

George Stewart, ASASU first vice president, will serve as master of ceremonies for the Valley's United States Day program Wednesday.

The third annual observance is scheduled for 8 p.m. in the Phoenix Union High School auditorium, 7th St. and E. Van Buren. It is free to the public.

GUEST SPEAKER for the event will be Dean Jones, Broadway and Hollywood actor.

Arizona Attorney General Robert Pickrell will introduce the speaker.

Also slated to participate in the program is coed Susan Jean Bergstrom, Miss Arizona of 1963.

As an added feature, radio station KRUX will announce names of the winners of its elementary and high school essay contests, "United States — So Proudly We Hail."

LOCAL OBSERVANCE of United States Day was organized in 1961 by Mrs. H. K. Terheun of Scottsdale in conjunction with numerous civic and patriotic organizations.

United States Day is designed locally to provide a school year celebration similar to the Fourth of July observances.

Mrs. Terheun stressed that she and her associates plan the program to avoid any semblance of partisan impact.

SIMILAR observances will take place throughout Arizona and in more than 25 states.

A reception and dinner in the Cloud Club, atop the Guaranty Bank Building in Phoenix, will precede the program at 5:30 p.m.

State Chairman For Democrats To Be Speaker

Robert Allen, new State Chairman of the Democratic Party, will be the speaker at the Oct. 22 meeting of the Young Democrats. The meeting will be at 7:30 in MU 211.

Interested students are invited. Refreshments will be served.

Daren Vurich, president, and Marie Burke, secretary, were elected to positions in the State Young Democrats. Vurich is the first vice president and Burke is the treasurer of the State group.

John Birch Member Will Discuss Plans



JOHN ROUSSELOT

John Rousselot, governor of the Western district of the John Birch Society, will speak on "The Goals and Programs of the John Birch Society" Oct. 25 at 3:40 p.m. in Cosner Auditorium.

The program is sponsored by the ASU Young Americans for Freedom, a non-partisan political group. Rousselot is a firm believer in limited government and individual freedom.

Rousselot, former Representative from California has been quoted as saying, "Goldwater can take California, most of the Midwest, including Illinois and Ohio, and a nearly solid South."

ASU Students, Faculty & Staff

CHRISTIAN SCIENCE SOCIETY

28 East 5th Street, Tempe

INVITES YOU TO ATTEND

- Sunday Church Services — 11 A.M.
- Sunday School — 11 A.M.
- Wednesday Evening Meetings — 8 P.M.

EVERYONE WELCOME

"Years Ahead" Flight Training In The New Shinn - 2150



MODERNIZED GROUND SCHOOL FOR PILOTS & NON-PILOTS Amos Flight Operations

A Private License is a Must In Modern Business

Don Amos — Class of '56

Phone BR 5-7291

SKY HARBOR

STUDENTS & FACULTY

The A-V Photographic Service in Matthews Hall (behind the Library) is here to provide a complete **PORTRAIT STUDIO** and to serve your photographic needs in:

- PUBLICITY
- ACTIVITY
- GROUPS
- PLACEMENT
- PORTRAIT
- REPRO & PHOTOSTAT

PHOTOGRAPHY

The True Economy Champ

Only \$1895

1963 Falcon 4-dr.

★ Radio & Heater

★ Factory Refrigerated

★ Standard Transmission

SMILEY-BERGE FORD

YOUR NEAREST AUTO DEALER

★ Just 2 Blocks From Campus ★

16 E. 8th St.

TEMPE

WO 7-2064

NEW! PRO-ELECTRIC ROLL-ON
FIRST! BEFORE-SHAVE LOTION THAT ROLLS-ON

No dripping, no spilling! Covers completely!
 Old Spice Pro-Electric protects sensitive skin areas from razor pull, burn. Sets up your beard for the cleanest, closest, most comfortable shave ever! 1.00

SHULTON



Professor Introduces New Text

Dr. Richard R. McCreedy, associate professor of office administration and business, was named treasurer of the Phoenix chapter of the National Office Management Association this week.

Until recently he was active as chairman of the chapter's education committee.

This fall Dr. McCreedy's

book, "Solving Business Problems with Calculators," was published by the Wadsworth Publishing Co. of Belmont, Calif.

The book, to be used next semester as a text, outlines the integration of the use of business machines and mathematics.

Angel Flight Elects Officers

New officers have been chosen by members of Angel Flight, women's Air Force ROTC auxiliary.

Elected were Toni Vicente commander; Kathy Erickson, deputy commander; Pat Grove, secretary; Judy Drage, treasurer and Rifa Gear, public relations officer.

College Bowl Program To Match ADPI's, Thetas In First Contest

Kappa Alpha Theta and Alpha Delta Pi sororities will match wits Oct. 24 in the first '63-64 College Bowl. The Bowl, sponsored by the faculty-students relations committee, will meet each Thursday at 4 p.m. in MU 211.

The questions, covering a variety of subjects, were submitted and verified by World Book Encyclopedia and the Encyclopedia Americana and Britannica.

Anyone interested in helping produce College Bowl may contact Kay Martens at Palo Verde or Karin Loughrige, WO 7-5444.

College Bowl is based on the televised G.E. College Bowl.



THE VESTED SUIT

Aside from displaying a Phi Beta Kappa key, there are other good reasons for a vest. One is warmth: extra comfort on the chilly days ahead. Another is the trim way a vest flatters the figure. If you've forgotten how fine you look in a vested suit (or never owned one), come in and see our new collection of herringbones, reverse twists and hopsacks... for young men of all ages.

69.95 to 100.00

Hanny's

Racquet & Shops

DOWNTOWN • CHRISTOWN • SCOTTSDALE

SWITZER'S



Corduroy Co Coat with Fashion Flare

\$19.98

Just the ticket for the gal on the go... with a casualness you'll love... its comfortable 7/8ths length... the roomy patch pockets... the smart tailored look. The superb shaping of your coat will never be lost because of a foam backing laminated to the fine cotton corduroy. Water repellent, too. Choose yours in olive green, camel or beige in sizes 8 to 16.

JUST \$19.98

Black wooden handled tote \$8.98 Plus Tax

ALL FIVE STORES

SWITZER'S DOWNTOWN PHOENIX Shop 9:30 to 5:30 daily except Thursday 9:30 to 9
PARK CENTRAL 9:30-6 daily except Mon., Thurs., Fri. 9:30-9
CHRIS-TOWN 10 to 9 daily except Saturday 10 to 6
SCOTTSDALE Fashion Square, Camelback and Scottsdale Rds. 9:30 to 5:30 daily except Thurs. 9:30 to 9
THE COTTON SHOP 15 E. 1st Ave., Scottsdale. 9:30 to 5:30 daily except Thurs. 9:30 to 9

FOR 47 YEARS, FOREMOST IN FASHIONS AND FURS

State Press

THE STATE PRESS, distributed by the campus chapter of Sigma Delta Chi under the direction of Circulation Manager John Nadel, is the official campus newspaper of Arizona State University. It is published each Wednesday and Friday throughout the school year, excepting holidays, and is entered as second class matter at the Tempe, Arizona, Post Office under the Acts of March 3, 1879, and August 24, 1912.



The STATE PRESS is a member of the Arizona Newspapers Association, Associated Collegiate Press and National Advertising Service, Inc.

Subscription price, \$3 per school year.

| | |
|--------------------|----------------------------------|
| EDITOR-IN-CHIEF | JERRY REILLY |
| MANAGING EDITOR | ROSS FISH |
| NEWS EDITORS | JOHN KENDALL, BETTY DUFFY |
| ASSISTANTS | GORDON ROBBINS, BILL QUAYLE |
| CAMPUS EDITOR | PAM VAN BUSKIRK |
| ASSISTANTS | MIKE LONGSTRETH, SUE JEFFRIES |
| SPORTS EDITOR | JOE HEATH |
| ASSISTANT | ALAN MICHAELS |
| ASSIGNMENTS EDITOR | BETSY JEAN FRITH |
| ASSISTANTS | SHIRLEY DeMARKE, FRANK DUCCESCHI |
| COPY EDITOR | GORDON BLACK |
| FEATURE EDITOR | SUE MARIONEUX |
| PHOTO EDITOR | LARRY WARD |
| CHIEF PROOFREADER | TROY IRVINE |
| ASSISTANT | ROBERT VAN WECHEL |

'Showmanship' In Boxing

Some 'pro' boxing matches are no longer matches based on the skill and training of two conditioned athletes, but matches based on the skills of public relations experts.

"Showmanship" has crept into the pro boxing world. Mismatches are becoming the rule instead of the exception. The public has to be satisfied even if it means pre-fight name-calling, arguments and scandal to get the proper setting for the match.

As for the matches, they have to be good and bloody, lots of knockdowns and maybe the fighter's life. Benny "Kid" Paret, Davey Moore and Ernie Knox are recent victims.

College boxing utilizes shorter rounds, protective headgear and meticulous matching. Careful physical examinations are required before bouts.

In spite of this there are still a few college deaths. Pro boxing could take a good, long look at the college conditions and then revive their own decadent form of sport.

Job Openings Critical

The problem of unemployment is approaching a critical point among America's youth, supposedly the leaders of tomorrow. But for too many, tomorrow never comes.

RECENT STATISTICS

from the Social Security Department show that three out of every ten youths entering the labor force during the years ahead will not have a high school diploma. One third of this group, about 250,000 a year, will not even have completed elementary school.

Graduation from high school definitely improves the chances of becoming employed, but is still not the solution to the problem. More vocational schools are needed, many more than are now existing.

Modern industry is automating to such an extent that U.S. News and World Report estimates of job losses range as high as 40,000 per week. Of course automation also creates new jobs, but relatively few people are trained or have knowledge of these new opportunities.

THE STANDARD high school education does not show or teach a youngster how to operate a drill press. Not all of our youth are interested in attending college or in becoming a white collar man. Some would like to work in factories, but do

not have the training to meet the advanced technological needs of modern industry.

We are in a sense producing the leaders of our country's future, but not supplying the builders.

TOM MIKULSKI

LITTLE MAN ON CAMPUS



"I BELIEVE IF YOU'LL CHECK WEDNESDAY'S CHEM II LECTURE NOTES - YOU'LL FIND I SAID THEY WERE COMBUSTIBLE WHEN MIXED."

Few Worth Their Salt

On this campus there are so very many organizations, some not so good and just a few really worth their salt. But heading the list of the top ones is the Cultural Affairs committee.

This student committee is vested with the responsibility of encouraging interest in the arts among students. They also make it possible for "culturally-minded" students to obtain tickets at the MU information desk to symphonies, concerts and other performances throughout the valley at reduced prices.

This semester the committee has many new programs to enhance the cultural atmosphere of the campus. Included in this present program are a reader's theatre, receptions for the visiting lecturers, an art show featuring drawings from the children of Tokyo, and among other events, a noon Pops concert.

Other activities of the group include those concerned with the MU. For example, they engage in the activities of Open House in the fall, the traditional Christmas Party and the annual Birthday Party.

Flowers to this committee which keeps a constant look out for those things which they feel will interest not only "culturally-conscious" students but especially those new in the pursuit.

CARRIE ROSS

Experts Question A-Ban Pact

By BOB REILLY

When President Kennedy signed the limited A-Ban Pact he said, "Even if it fails, we shall not regret." Many noted experts, among those Gen. Thomas S. Power, the commander of the Strategic Air Command, and nuclear physicist Edward Teller, were not so optimistic as the President. Briefly, here is a testimony from the Senate Preparedness Subcommittee of which Gen. Power and Dr. Teller took part.

"NUCLEAR EXPLOSIONS send out an electromagnetic pulse. This pulse or wave is believed to be capable of fusing wires, burning out circuits and causing other damage which would put a missile or any other apparatus out of commission. Through this process, a high-yield nuclear weapon may effectively disarm missiles resting in their silos miles away from the point of explosion.

These high-yield weapons, which throw out a correspondingly large amount of electromagnetic energy, have been extensively tested by Russia. The U.S., on the other hand, has refrained from such high-yield testing."

No one is saying that the

great powers of the world should not seek control over the arms race but, was it wise to pass such a treaty when so much doubt and conflict remains among statesmen, scientists and military men? Evidently, the answer must have been yes, since the Senate and Joint Chiefs stamped their approval. Our dealings with Russia must be based on guesses and assumptions, rather than certainty and fact.

AIR FORCE CHIEF of Staff, Curtis LeMay, still worries that the Russians, as a result of their 1961-62 atmospheric tests, are in front of the U.S. in nuclear weapons development. Gen. LeMay said, "One of the things that I don't like is that, if this is true and they do know more than we do, they may know something that is vital. They may be able to pick up a weakness in our defense system that they can exploit." Why did LeMay give in? "I think that the risks can be held to manageable proportions," said LeMay.

Influential Republican Minority Leader Everett Dirksen of Illinois had his doubts removed when Senate Majority Leader Mike Mansfield (D.-

Mont.) said, "Do not look for miracles from this treaty. There are none."

"THIS NATION, the Soviet Union and the world are destined to live for a long time with feet dangling over the grave that beckons to the human civilization which is our common heritage. Against that immense void of darkness, this treaty is a feeble candle."

Thirty years ago the free nations of the world worked for a "feeble candle" when an "Austrian tramp" was crying Peace across Europe. We developed the might to throw back the force when his true intentions developed into war but, out of the ruin came a more dangerous enemy.

MAYBE THE Senators who voted for the treaty and the President, who signed it, believe that "today fear is a little less — hope a little greater," but some find it hard to relax when professional magazines like "Missiles and Rockets" comments, "The U.S. has invested billions of dollars in a Maginot Line of Atlas, Titan and Minutemen missiles which could be rendered harmless by new Soviet developments." How do you feel?

I Cover College Avenue

By ROSS FISH

Homecoming 1963 will, of course, honor every returning alumni.

However, two classes will be given a special welcome home. As a tradition, the classes celebrating their twentieth and fortieth reunions will get gold carpet treatment.

GLANCING back through the pages of old State Press volumes, homecoming celebrations vary in theme and activities.

But not 1943, one of this year's special-recognition classes.

The top front-page story of the Nov. 19 issue is headlined, "No Homecoming . . ."

FRESHMEN excited about participating in their first college homecoming read it.

Sophomores and juniors who had had a taste of the annual celebration read it.

And, the graduating seniors who were anticipating the "biggest, best" homecoming ever, read it.

TO THE 1963 students who are involved in the preparation of the "biggest, best" homecoming ever, the lone article describing Homecoming 1943 should make us want to lengthen that gold carpet and throw open every door to the class who never saw "their" homecoming.

The '43 students had to be satisfied with "No Homecoming . . ."

The State Press carried the following:

"Along with football games, nylons, and pleasure drives, homecoming week is 'out for the duration' at Arizona State. The council has made this decision for very obvious reasons to all of us.

"When the government pleads with us almost daily through radio and newspaper facilities to curb civilian travel, who are we to encourage it?

"IN PREVIOUS years, homecoming was the big fall event. Everyone donned Western attire for the week, and the halls were decked out with various decorations.

"Old students had a chance to come back and reminisce a little, and play Jane and Joe College again.

"And, of course, there was always the big homecoming football game! It was all very nice, and we're sorry that the freshmen have to miss it."

HOMEcoming 1963 will be a challenge — a challenge to every University student to prove to the alumni that this is their homecoming.

We are the producers — they are the audience.



HALL LIBRARY — Sorting donated books for the new Hayden Hall library are (l to r) assistant head resident Hans Krock, Tim Evans and Mike McGetrick.

Hayden's New Look -

Open House And Library Slated For Hayden Hall

An open house is being presented this afternoon between 1:00 and 5:00 by the men of Hayden Hall. The open house for all faculty, their families and guests, is to initiate the building of a residence hall library.

The Hall Council will be on hand to conduct tours of the hall, answer questions and provide the faculty with some of the hall background and history. Refreshments will be served and plans of future hall

improvements will be discussed.

TO PROVIDE the hall with an environment for learning, the Hall Council is attempting to build a library in the new reading and study room.

The library is to be built in the former TV room which has been remodeled by the housing office. The TV has been removed during the week and is placed in the main lobby only on the weekends. This measure has brought about an atmosphere more conducive to good study habits.

NEW CARPET, tables, chairs, sofas and lamps totaling \$1745 were added to the room by the housing office. The walls were repainted and drapes hung.

Matthews Library gave the hall their first boost toward building an effective reference library by donating a new set of Colliers Encyclopedias complete with a roll-away stand.

The men of Hayden requested that each of the faculty members attending the open house bring an autographed book to help fill the empty shelf space.

ANYONE WISHING to contribute a book that will be unable to attend the open house may send it to Mr. Richard R. Scott, Head-resident, Hayden Hall through campus mail.

Hall Council President Jim Gilman stated, "The attitude of the men toward building this library is very surprising. Several men have offered to donate books and magazines. I feel that this program will be the basis of a higher academic standard in our resident hall."

AIA High School Events Planned For School Year

Thirteen high school events will be held on this campus from November through April.

Most of the Arizona Interscholastic Association-approved events will occur on Saturdays.

The first high school day will be Nov. 23. It will include Senior Day and the Annual High School Symposium for Girls.

Two-day events are the Annual High School Badminton, Archery and Golf Tournament for Girls, March 13-14, and the Central Arizona Regional Science Fair, beginning at 4 p.m.

The High School Gymnastic Meet for Girls will begin at 7 p.m., April 24.

Other events: Music Scholarship Auditions, Dec. 7; Arizona Angus Association field day, Dec. 14; Arizona Teenage Traffic Safety Association, Central District Conference, Jan. 25; Forensic Tournament, Feb. 29; Future Farmers of America, Field Day, and Future Business Leaders of America, March 14; Central District High School Music Festival Organizational Events, band, orchestra, chorus, April 25.

FREE DELIVERY
IN TEMPE — 5 P.M. to 11 P.M.
 Largest, Tastiest Sandwiches
 In The Valley

★ BEEF BURGERS ★ ITALIAN SAUSAGE
 ★ CORNED BEEF ★ PASTRAMI

Raptis Tasty Hut
 Delicatessen Drive-In

1205 Apache Blvd. 967-1202

Now You Can Buy
"Life"
 At Our New
 Magazine Rack

UNIVERSITY BOOK STORE
 "In The Basement"

Mac & Jack Sez . . .
 "Use Our 24-Hour
 Film-Drop Box"

PIONEER CAMERA SHOP
 TEMPE CENTER

THE BELL TELEPHONE COMPANIES
 SALUTE: DICK KUSSMAN

Dick Kussman (B.A., 1953; M.A., 1959), in the short span of three years, has advanced through Pacific Telephone's management achievement program to what the company terms "district level."

In his new job as divisional commercial supervisor, he assists in the administration of over 276,000 subscriber accounts in the Los Angeles area.

During his short telephone career, Dick has had responsible assignments in the marketing, traffic and plant departments. Prior to his latest promotion, he spent nearly a

year as commercial staff supervisor in charge of management and non-management training.

Dick has shown his capacity for increased responsibilities, and has opened up a bright future for himself with the Telephone Company. The proof is in his rapid advancement to a managerial position at the district level.

Dick Kussman, like other young men, is impatient to make things happen for his company and himself. There are few places where such restlessness is more welcomed or rewarded than in the fast-growing telephone business.



BELL TELEPHONE COMPANIES



TELEPHONE MAN-OF-THE-MONTH



MALULEE PINSUVANA

Dancer Will Depict Thailand Folk Epic

By LINDA HELSER

An excerpt from a classical Thailand folk epic will be portrayed in dance, embellished by lavish costume, accompanied by authentic native music and performed by Malulee Pinsuvana at ASU Sunday, at 1 p.m.

The program, sponsored by the University Players, will take place in the Lyceum and is open to students and faculty.

Mrs. Pinsuvana and her husband Adul, graduate student at ASU and first lieutenant in the Royal Thai Air Force, have lived in Tempe almost two weeks.

They previously resided in Bangkok, Thailand where they have left their nine-month-old daughter Lalida, in the care of grandparents.

TEMPE will be their home for two years while Mr. Pinsuvana receives his masters degree.

Malulee began her dancing career at nine years of age in the School of Dramatic Art of the Fine Arts in Bangkok, where she learned Thai classical dance along with singing and literature.

The two hours she spent dancing each day served as a physical fitness technique for the school program, which is the only school of its kind.

At 11 years of age she first danced publicly for the birthday celebration of the ex-president of Thailand.

IN AN EPISODE from the Thai epic Ramayana, she was the leading lady at 16-years-old, during a three-month season at the National Theater of Fine Arts in Thailand.

Since, she has danced before the Thailand King and Queen and many other dignitaries and royalty in their court.

Malulee, though she struggles with the speaking of the English language, is extremely fond of American popular music and singers.

Pat Boone and Nat King Cole head her list of favorites with notorious rock and roll artists hitting the bottom.

THE SMALL, delicate 21-year-old lady is enjoying her stay here and plans to teach Thailand dancing with the authority of her certificate from Bangkok.

'Campus Impact' -

Magazine Positions Offered

Campus Impact, an Arizona inter-campus feature magazine, announced through its directors yesterday that the organization will start accepting applications for staff positions Monday.

The newly organized publication is designed to serve students of Arizona colleges and universities with sports, fashion and general feature coverage.

THE MAGAZINE will be completely staffed with student help. Positions are open in the following areas: commercial art, advertising, creative writing, general feature writing and editing and photography.

Prominent Valley journalists and publication leaders will serve on a board of advisors and will act as critics for the magazine, evaluating and commenting on articles, photography and general appearance.

Following each issue's publication, a standardized critique form from the advisory board will be mailed to each staff member.

PROFITS FROM the magazine will be placed in a trust fund to be used for future scholarships next spring.

The 54-page gloss magazine, scheduled for publication in late January, will include a full col-

or cover and special color pages on the inside.

Applications for staff positions will be available at the MU information desk next Monday through Friday.

Hall Paper Planned

The women of Palo Verde are sponsoring a contest to name their new inter-hall newspaper.

Newman Catholic Student Center

8th St. & College Ave.
P.O. Box 454, Tempe

Mass: 9, 10 a.m., 6 p.m.
Sun: 8:45 a.m.
Wee: 8:45 a.m.
Sat: 8 a.m.
Conf: Daily before Mass
Saturday: 3:30-5 p.m.
v. Thomas A. Walsh, Director
WO 7-3483
Ban Club Meets Tues. 7:30 p.m.
Student Phone: WO 7-9708

You have room for growth in data processing—at IBM

IBM offers graduates with bachelor's or advanced degrees in Engineering, the Sciences, Business Administration, Economics, or Liberal Arts challenging assignments in the marketing of information systems and equipment. ■

Rewarding opportunities exist in more than 190 IBM Sales and Service Offices located in major cities throughout the United States. ■

These opportunities increase with each new system that is designed to meet the growing needs of business, industry, government, research, education, or space. ■

wide range of positions

Marketing: ■ The IBM Data Processing Representative is a consultant to his customers. ■ He demonstrates how customers can achieve better business management and controls through data processing. ■

Systems Engineering: ■ IBM Data Processing Systems Engineers are men and women who study customer requirements in depth, devise an approach, define a preferred machine and operational solution, and assist in implementing this solution. ■

Customer Engineering: ■ The IBM Customer Engineer is a specialist in precision data processing machines and systems. ■ He is responsible for the installation and maintenance of IBM's vast line of electronic and electromechanical equipment. ■

opportunities for advancement

IBM, an Equal Opportunity Employer, offers you extensive training in the area of your special interest. ■ This training continues as you advance along a planned career path leading to professional or managerial positions. ■

We also have comprehensive company-paid benefits plans...training programs to keep you abreast of developments in your field...and a tuition-refund plan to give you financial assistance for graduate study. ■

on-campus interviews

See your college placement director to determine when IBM will interview on campus, and make an appointment to see our representative.

If the interview date is inconvenient for you, please write or call: ■ T. E. Gilroy, Branch Manager, ■ IBM Corporation, 3424 N. Central Ave., Phoenix 12, Arizona, CR 7-2661. ■

IBM will interview October 21, 22. ■

MOVE AHEAD WITH **IBM** DATA PROCESSING

antonio's

731 APACHE BLVD.

NOW OPEN

11:30 A.M. TO 10 P.M.

NOW SERVING

- ★ ITALIAN
 - ★ AMERICAN
 - ★ MEXICAN
- ### FOODS

Featuring Roast Beef, Corned Beef, Pastrami, Baked Ham & Salami Sandwiches

New Full Line Of
DELICATESSEN

and Beverages

967-2160 FOR TAKE OUT

Antonio's Fine Food Also At

VILLAGE SPANISH KITCHEN

In Village Food Bazaar

20th St. & Camelback

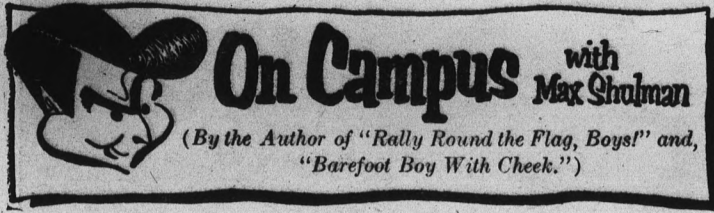
Church Groups Schedule Events

Canterbury Association is sponsoring a reception Sunday from 5:30-7:30 p.m. for Reverend Clarence W. Odell Jr., the new Curate at St. Augustine's Church.

The reception will be at the home of Mr. and Mrs. Kemper Goodwin, 111 E. 5th St., Tempe.

Jack Williams, former mayor of Phoenix and columnist for the Gazette, will be the featured speaker at the Wesley Foundation's "Last Hour Lecture Luncheon" Oct. 22 at 12:15 in Ross Hall.

"Contemporary World Religions" is the topic of the Sunday morning discussions group.



BOOM!

Today, foregoing levity, let us turn our keen young minds to the principal problem facing American colleges today: the population explosion. Only last week four people exploded in Cleveland, Ohio—one of them while carrying a plate of soup. In case you're thinking such a thing couldn't happen anywhere but in Cleveland, let me tell you about two other cases last week—a 45-year-old man in Provo, Utah, and a 19-year-old girl in Northfield, Minnesota. And, in addition, there was a near miss in High Point, North Carolina—an eight-year-old boy who was saved only by the quick thinking of his cat, Fred, who pushed the phone off the hook with his muzzle and dialed the department of weights and measures. (It would, perhaps, have been more logical for Fred to dial the fire department, but one can hardly expect a cat to summon a fire engine which is followed by a Dalmatian, can one?)

But I digress. The population explosion, I say, is upon us. It is, of course, cause for concern but not for alarm, because I feel sure that science will ultimately find an answer. After all,



has not science in recent years brought us such marvels as the maser, the bevatron, and the Marlboro filter? Oh, what a saga of science was the discovery of the Marlboro filter! Oh, what a heart-rending epic of trial and error, of dedication and perseverance! And, in the end, what a triumph it was when the Marlboro research team, after years of testing and discarding one filter material after another—iron, nickel, tin, antimony, obsidian, poundcake—finally emerged, tired but happy, from their laboratory, carrying in their hands the perfect filter cigarette! Indeed, what rejoicing there still is whenever we light up a Marlboro which comes to us in soft pack and Flip-Top Box in all fifty states and Cleveland!

Yes, science will ultimately solve the problems arising from the population explosion, but meanwhile America's colleges are in dire straits. Where can we find classrooms and teachers for today's gigantic influx of students?

Well sir, some say the solution is to adopt the trimester system. This system, already in use at many colleges, eliminates summer vacations, has three semesters per annum instead of two, and compresses a four-year-course into three years.

This is, of course, good, but is it good enough? Even under the trimester system the student has occasional days off. Moreover, his nights are utterly wasted in sleeping. Is this the kind of all-out attack that is indicated?

I say no. I say desperate situations call for desperate remedies. I say that partial measures will not solve this crisis. I say we must do no less than go to school every single day of the year. But that is not all. I say we must go to school 24 hours of every day!

The benefits of such a program are, as you can see, obvious. First of all, the classroom shortage will disappear because all the dormitories can be converted into classrooms. Second, the teacher shortage will disappear because all the night watchmen can be put to work teaching solid state physics and Restoration drama. And finally, overcrowding will disappear because everybody will quit school.

Any further questions?

© 1963 Max Shulman

* * *

Yes, one further question: the makers of Marlboro, who sponsor this column, would like to know whether you have tried a Marlboro lately. It's the filter cigarette with a man's world of flavor. Settle back and enjoy one soon.

Construction Will Soon Relieve Classroom Acoustics Problem

Relief may be in sight for students and faculty members who have been annoyed by poor acoustics in Social Science and Engineering building classrooms.

A major source of the problem, according to John R. Ellingson, director of physical plant, is the waffle-type ceiling construction, known as pan framing.

THOUGH THEY have been sprayed with acoustical plaster to absorb as much sound as possible, the ceilings are still incomplete.

Ellingson explained that because of problems involved in financing the building, final

touches were temporarily put aside. It was necessary to fit the program to the funds available and get the most square footage for the money.

He added that wall surfaces will be modified and that the problem can be completely overcome when money is appropriated.

A PERMANENT ceiling beneath the waffle pattern is called a drop ceiling. The newer Education building has such a ceiling because a different architect and different plans were involved in its construction.

According to Ellingson, "Expansion has been forced so fast

that it's been hard to go back and finish improvements in buildings and to modify them as we'd like to."

POSSIBLE TARGET date for final sound treatment in the Social Science building is February, 1965. That is when many of the building's occupants are expected to move into the new Language and Literature building.

Ellingson indicated that the normal time for modifications is when a building's use changes.

ASU Symphony

Eugene Lombardi will conduct the ASU Symphony Orchestra in its first concert of the new season this evening at 8:15 in the MU ballroom. There is no admission charge.

SHEET MUSIC — SUPPLIES — REPAIRS

Tempe Music Center
HOOTENANNY HEADQUARTERS

Guitars — Banjos — Ukles — Folk Books
Strings — Capos — Etc.

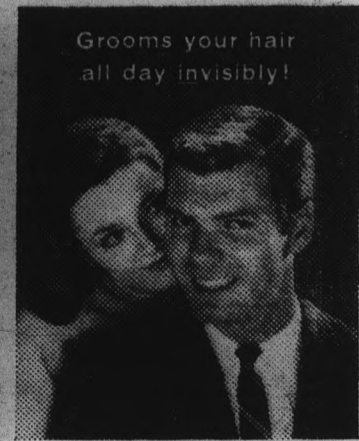
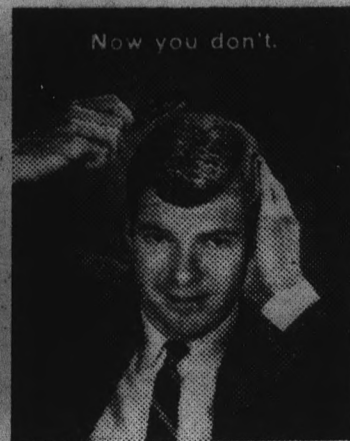
15 E. 6th TEMPE WO 7-4132

Read
"Eat & Grow Younger"
by Kordel 60c

EICHENAUER'S
Papago Plaza Chris-Town

only your hair knows it's there!

It's invisible, man! You can't see it. She can't feel it. Only your hair knows it's there! It's CODE 10 for men, the new invisible hairdressing from Colgate-Palmolive. Non-greasy CODE 10 disappears in your hair, gives it the clean, manly look that inflames women, infuriates inferior men! Be in. Let new CODE 10 groom your hair all day, invisibly.



AVAILABLE AT

CAMPUS DRUGS

Corner College & 8th Street

Calories Don't Count? -

DiETING Dangers Disclosed

By **SUSAN MARIONNEAUX**
(First in a series)

So many things are new when students enter college.

By now most of the people have been orientated to college life. But one difficult factor of living on campus is adjusting to new eating habits.

At home we ate the food that our mothers selected.

The majority of meals were well balanced and nutritious and we didn't have to worry about whether we were getting enough of the correct food. At college, though, one has to make these choices. If one was never acquainted with courses in nutrition or healthful living, these choices may become very difficult.

BECAUSE SO many of us living on campus eat in cafeterias, we tend to overeat. There is always the urge to taste everything and sometimes return for seconds. Eating between meals and while studying in the evening hours adds unwanted pounds. After a time this excess storage of food begins to show.

When this happens, then we turn to our favorite crash diet for the remedy.

Overweight people, the majority of which are women, are easy prey to all sorts of health fads. Thus, they become victims of strange diets and "beauty culture" businesses which thrive on massage, calisthenics, danc-

ing, exercise and nonsense.

These women make a great many people rich, not only people who invent odd diets or formulate techniques of beauty culture, but responsible businessmen as well. In an average year, American women spend 640 million dollars for girdles and 2.5 million for bathroom scales. That represents a lot of girdling and a lot of weighing.

AFTER a careful study, Dr. Harold Aaron wrote in Consumer Reports. He said, "Marked and repeated fluctuations in weight are more damaging to health than a constant state of slight or moderate overweight. . . . No dietary aid, no passive exercise device can substitute for a supervised program of diet, moderate exercise and psychological support." The food fad, the "special reducing formula," is not only a snare for your money. It can also undermine your health.

Two Will Attend Gym Confab

Two members of the health, physical education and recreation faculty will attend the Western College Men's Physical Education Society meeting in Reno, Nev., Oct. 24-26.

Also attending will be Professor Fred O. Bryant, area chairman for men's physical education.

DR. FREDERICK J. Strare, who is director of the department of nutrition at Harvard, summarizes the perils of crash dieting extremely well:

"There is no more cure for overweight than insulin for diabetes. (Insulin, of course, is a treatment, not a cure.) At best, diets enable you to control your illness. At worst, as in fad dieting, they trap you in a vicious circle of losing and gaining, which is not only futile but, quite possibly, dangerous. Among illnesses that may possibly be precipitated by off-again, on-again crash dieting are rheumatic fever and asthma, high blood pressure, arteriosclerosis, gout, thyroid disease and others."

One New York faddist was even hospitalized for scurvy—the only such case the doctors had seen in fifty years.



ORGANIZED CONFUSION — Fourth year architecture student Fred Von Gesjen works on a project in a study cubical.

Mac & Jack Sez . . .
"24-Hour Service On Color & Black & White"
PIONEER CAMERA SHOP
TEMPE CENTER

HARMAN'S
Dining Room
Mesa-Tempe Hi-Way
TEMPE

REGULAR \$1.75
Chicken Dinner

ONLY **\$1.00**

MONDAY ONLY

"It's Finger Lickin' Good"

Laird Pharmacy

PRESCRIPTION SPECIALISTS

TOBACCO — FOUNTAIN
We Give S & H Green Stamps

501 Mill Tempe



MUSEUM PIECE

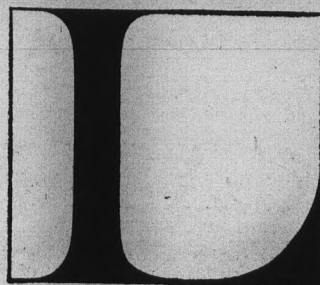
This cyclotron was built and operating by the fall of 1930 and reported at the Washington April Meeting (Phys. Rev. 37, 1707, 1931). The diameter of the chamber was about 5 inches. Placed between the 4-inch diameter poles of a magnet with a field of 12,700 gauss and 2,000 volts on its single dee, it produced 80,000 volt hydrogen molecule ions trapped and measured in a Faraday cage to which a measured and adequate decelerating voltage could be applied.

The do-it-yourself-with-sealing-wax days are gone from cyclotron technology forever. The tiny instrument invented by Dr. Ernest O. Lawrence at Berkeley in 1930 has been superseded many times by increasingly larger and more powerful instruments of nuclear research.

Today the business of discovery is carried on by 3200 people at the Berkeley site of Lawrence Radiation Laboratory, overlooking the University of California campus and San Francisco Bay. And the challenge of innovation remains for engineers—in advanced accelerator design and in a dynamic unclassified research program.

ME's: Our Mechanical Engineering work concentrates on design of accelerators and the instrumentation associated with them, on magnet development, high vacuum systems, shielding problems and mechanical engineering applied to biomedical research.

Engineering graduates at all levels who want to learn more about LRL should contact the Placement Office for appointments. Campus interviews will be held on October 29, 1963.



LAWRENCE
RADIATION LABORATORY
BERKELEY
OPERATED BY THE
UNIVERSITY OF CALIFORNIA
BERKELEY & LIVERMORE

An equal opportunity employer

ASU Day -

State Fair Will Feature Student Talent

A colorful array of student talent will be featured during ASU Day, Nov. 2, at the Arizona State Fair.

The Parade of Bands will be led by the 120-piece Sun Devil marching band, directed by Harold Hines. The band will also present a 4 p.m. program at the grandstand stage.

ON THE PLAZA stage, variety acts will be performed throughout the day by students.

The ASU percussion ensemble, directed by Mervin Britton, of the music department, will be featured from 10:30 to 11 a.m.; and a dance program by pom pon girls will be presented from 11 to 11:30 a.m.

Three students from Nigeria, in authentic costume, will present a half-hour dance program from 11:30 a.m. to noon, to the accompaniment of native music. They are Olatunji Agoro, Oladele Oderinlo and Edward Bucknor-Smartt.

MRS. MALULEE Pinsuvana, classical Thai dancer from Bangkok, will be featured from noon to 12:30 p.m. in a unique dance program. Garbed in colorful silks and embroideries, she will perform centuries-old dances to the accompaniment of classical Thai music. She is the wife of Adul Pinsuvana, ASU graduate student who is a lieutenant in the Thai Royal Air Force.

A program of classical and popular piano solos will be presented from 12:30 to 1 p.m. by Robert Vujkev, sophomore majoring in music. Folk songs and music will be featured from 1:30 to 2 p.m. They will be sung by the Aires, a student vocal group, which includes Patricia Tarpey, Ed Humphrey, Karl Wochner and Betty Burton, Scottsdale.

THE ROBERT Wujkov Trio will present a program of jazz and dance music from 3:30 to 4 p.m. The trio features Wujkov at the piano; Ross Schavolla, bass; and Larry Mabbitt, drums.

Operatic arias by Vicky Bond, accompanied by Doug Palmer are scheduled from 4 to 4:30 p.m. Both students have soloed with the ASU Symphony Orchestra and both are recipients of summer scholarships to Chautauqua.

Language Professor Slated For Confab

Semanticist S. I. Hayakawa will speak on "Communications: Interracial and International" at 7:30 p.m., Oct. 31, at the General Semantics Conference here.

Hayakawa, professor of language arts at San Francisco State College, will speak in MU ballroom.

NEARLY 2,000 ministers, executives, teachers, principals, students, and other persons are expected to attend the one-day conference, which is open to the public. The College of Education is sponsoring the meeting.

Conference theme is "Improvement of Communication Through Science." The purpose is to demonstrate the importance and utilization of general semantics in every possible vocation, said Dr. Thomas M. Weiss of the school of education, conference director.

SYMPOSIUMS will be conducted on general semantics in religion, at 10 a.m.; in business and industry, 1 p.m. and

in education, 3:20 p.m. They will be at Cosner Auditorium.

Hayakawa is a native of Vancouver, B.C., Canada. He has a bachelor of arts degree from University of Manitoba, master of arts from McGill University, doctor of philosophy from University of Wisconsin, and doctor of fine arts, with honors, from California College of Arts and Crafts.

He has lectured or taught at Wisconsin, University of Chicago, Illinois Institute of Technology, and elsewhere. He was visiting professor at Menninger School of Psychiatry in 1961.

IN 1959 HE received the Claude Bernard medal in experimental medicine and surgery from the University of Montreal.

He is founder and editor of "ETC.," a quarterly devoted to the role of language and symbols in human behavior. It is the official publication of the International Society for General Semantics, of which Hayakawa is secretary-treasurer and former president.

His latest book is "Style, Status and Personality," which Harcourt, Brace and World is publishing this month.

Yearbook Editor

Karen Hess, editor of the '64 Sahuaro, is in New York City representing the yearbook at the annual national convention of the Associated Collegiate Press.

The convention got under way last night with a reception and banquet, and today's program is devoted chiefly to seminars on all phases of collegiate publications.

The outstanding yearbooks, newspapers and magazines will be recognized.

Miss Hess, who will hear several nationally-known authorities on publications production, will make a full report to the Sahuaro staff after she returns.

Archery Club

The Sun Devil Archery Club elected the following officers last Wednesday: Mary Ann Wahl, president; Fred Honchell, vice president; Bette Walla, secretary-treasurer and Debbie Nollen, publicity chairman.

Campus Classified

Regulations: For students and faculty only of Arizona State University. To place classifieds, submit to Room 107 Administration Building. Deadline is Wednesday noon for Friday's issue. Rates: 3 cents per word, 50 cents minimum charge.

FOR SALE

1959 Corvette and 1959 Impala. Low mileage. Loaded. Excellent. Evenings AM 5-7725.

New Mexican twelve string guitar for \$55. If interested please call 967-0390 after 6:30 P.M. Monday through Friday.

Trailer—cabana, 10 minutes from campus. Ideal for 1 or 2. \$1500. 1050 N. 46th St. See Manager.

FOR RENT

One bedroom terrace apartment and two bedroom town house for lease. New, unfurnished, carpeted, pool. Reasonable, 5 minutes drive. See Cook EC 305. Phone 946-7013.

1/2 blocks east of Science Bldgs. Ideal for ASU couples. Low rates. For permanent tenants. \$75 - \$85. Call WO 7-5430.

See The Valley from The Air

If you are at all interested in flying, let me show you how enjoyable and profitable it can be for you.

Call Larry Kusche, 275-7668, 7 days a week, 966-0869 after 6 p.m.

Now five kinds of Chevrolets for all kinds of people!



JET-SMOOTH LUXURY CHEVROLET—For luxury-loving people. Rich new styling, finer appointments in all four series and 15 models. Engines up to 425 hp*, manual or Powerglide* transmissions.

NEW CHEVELLE—For pacesetter people. A totally new kind of car with small-car handling, big-car comfort! Styling that makes expensive cars jealous. Three series and 11 models, and a full choice of engine and transmission teams!

CHEVY II—For practical people. Chevy II with new V8 power* for fun-on-a-shoestring. Stretches the shoestring further with 4- and

6-cylinder engines. Chevy II's six models in two series all act like they're bigger, more expensive cars!

CORVAIR—For fun-loving people. More fun than ever from Corvair's new bigger engine! Same Corvair handling and riding ease in 9 models—including the 150-hp Turbocharged Spydery!

CORVETTE—For sports-minded people. Corvette now rides softer, smoother—but loses none of its gusto because its big V8 offers versions from 250 to 375 hp*!

Want to get together with other car-loving people? Go see your Chevrolet dealer... he likes all kinds!

*optional at extra cost



See five entirely different lines of cars at your Chevrolet Showroom — CHEVROLET, CHEVELLE, CHEVY II, CORVAIR & CORVETTE

Bobbies Flowers



20 E. 5th St.

Home Phone WO 7-6319
WO 7-2972 — WO 7-4274

For Parties... Large Artificial Plants For Rent

Need Insurance UNDER 25?

We Write All...
• Auto • Motorcycle
• Trailer • Fire • Theft
Terms Available

RALPH PACKER

Valley Bank Bldg.
967-3189 Tempe 967-9141



SCIENCE REPORTER — John Fitch is host on a special weekly science show aired at 8 p.m. every Thursday on KAET.

KAET Program Highlights

Following is a list of programs to be seen today, Monday and Tuesday on KAET, Channel 8.

TODAY

A.M.
 8:40 Business Math Telecourse
 9:40 Child Development Telecourse
 10:40 Physical Universe Telecourse
 11:40 Living World Telecourse

P.M.
 12:40 Business Math Telecourse
 5:30 The New Biology
 6:00 Child Development Telecourse

6:45 Business Math Telecourse
 7:30 What's New?
 8:00 At Issue
 8:30 Living World Telecourse
 9:15 Physical Universe Telecourse
 10:00 La Scala Opera

MONDAY

A.M.
 8:40 Business Math Telecourse
 9:40 Child Development Telecourse
 10:40 Physical Universe Telecourse
 11:40 Living World Telecourse

P.M.
 12:40 Business Math Telecourse
 5:30 The New Biology
 6:00 Child Development Telecourse
 6:45 Business Math Telecourse
 7:30 What's New?
 8:00 On Hearing Music
 8:30 Living World Telecourse
 9:15 Physical Universe Telecourse
 10:00 International Magazine

TUESDAY

A.M.
 9:00 ASU Physical Education
 9:40 ASU Physical Education
 10:40 Physical Universe Telecourse
 11:40 Living World Telecourse

P.M.
 12:40 ASU Physical Education
 5:00 ASU Physical Education
 5:30 The American Economy
 6:00 Ticker Tape
 6:30 Origami
 7:00 The Ageless Auto
 7:30 What's New?
 8:00 Destruction of the Indian
 8:30 Living World Telecourse
 9:15 Physical Universe Telecourse
 10:00 La Scala Opera

Radio Stations Plan Roundups

The "Role of Purchasing in Management" is the title of this weeks Western Business Roundup to be heard on various radio stations throughout the state.

Dr. Ralph C. Hook Jr., professor of marketing and director of the ASU Bureau of Business Services is moderator.

The panel includes Prominent Valley business leaders.

Moderator of the panel is Dr. gram Monday at 8:30 p.m. in the Valley and over the Arizona Network. Network stations are located in Bisbee, Casa Grande, Douglas, Flagstaff, Nogales, Prescott, Show Low, Sierra Vista, Tucson, Wilcox and Yuma.

Saturday KOOL will broadcast the program at 9:35 a.m. and Sunday KPHO at 4:05 p.m., KALF at 9:30 a.m. and 5:30 p.m., and KYND at 10 a.m.

Topics of the program will include status of the purchasing agent, relationship to other functional areas, effect on a company's competitive position, and data processing.

Education Club Sets Speaker

The association for Childhood Education will have a meeting Monday at 3:30 p.m. in ED 301.

Featured speaker at the meeting will be Dr. Lester Perrill of the sociology department. Dr. Perrill will speak on "The Influences of Socio-economic Classes on the Child and the Teacher."

Activities To Be Presented

The sixth annual leadership laboratory for human understanding in business is scheduled for Oct. 29 from 8 a.m. to 5 p.m. at the Ramada Inn in Tucson.

Dr. Keith Davis, professor of management, will be the main speaker.

Registration fees for a firm sending one representative to the laboratory is \$15, while additional representation fees for the same firm will be \$10 each.

The Student Marketing Club will conduct a luncheon meeting Wednesday from 12-1:30 p.m. in MU 218A.

Dr. William Nielander, chairman of the marketing department has just returned from a two year stay in Japan and will speak on marketing concepts there.

All those interested are asked to sign up in BA 102.

Mr. B. W. Goodenough, consulting engineer from Sacramento, Calif., will be guest speaker at a meeting of the Construction Society, Oct. 21 at 7 p.m. in room 137 of the Engineering center.

While working for private contractors, Mr. Goodenough achieved considerable fame for his efforts as assistant project engineer on Hoover Dam and as project engineer for the Shasta Dam in northern California.

Foreign Student Club will have their first excursion of the year, a trip to the Grand Canyon, Saturday.

Sign up sheets for the trip are in Danforth Chapel. The group will leave at 4:30 a.m. and return at 6:30 p.m.

Today the club will have its weekly International Open House from 4:00 to 5:30 p.m. All interested persons are invited.

ASU Co-Eds

Open Your Own Charge Account at

KINGS

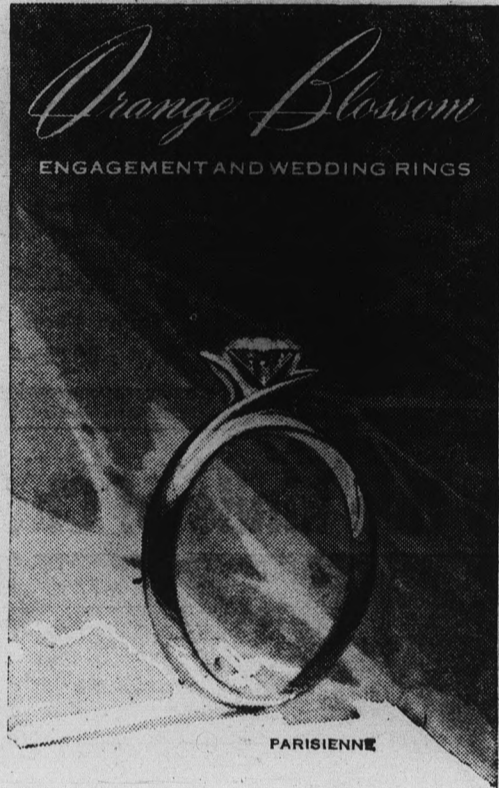
Fashion Apparel

3 Months To Pay — No Interest — No Service Charge

only at

King's

921 Mill Ave. Tempe Center



Paul Johnson
JEWELERS



Open 9 A.M. - 5:30 P.M.
Thursdays Till 9 P.M.

1604 E. Camelback

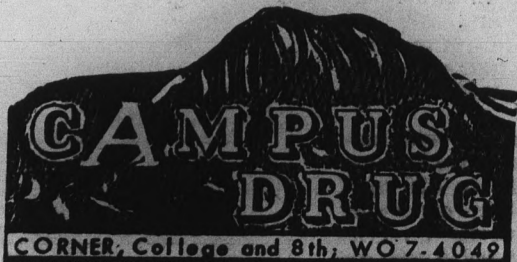
"Where Originality Is a Tradition"

CAMPUS DRUG

Specials

Ask About The **BONNE BELLE TREATMENT**

for **Teen-Age Skin Problems**



CREDIT ACCOUNTS INVITED



Lee Optical's "on campus"

Lee Optical glasses are seen wherever ASU students gather! Visit your Lee Optical Office and Contact Lens Center at 805 Mill Ave., Tempe Center.

Single vision glasses as low as **\$11.85** Quality contact lenses **\$85.00**

Open Thursday nights and all day Saturday / Pay-as-you-wear

8 CONVENIENT OFFICES TO SERVE YOU:

| | | |
|---|---|--|
| TEMPE TEMPE CENTER 805 Mill Ave. | PHOENIX 16 West Adams | SCOTTSDALE 719 N. Old Scottsdale Rd. |
| THOMAS MALL 4527 East Thomas Rd. | MESA 129 West Main | YUMA 2816 4th Avenue |
| CHRIS-TOWN 19th Ave. & Bethany Home Rd. | TUCSON El Con Shopping Center | |

Where it's always SAFE to save money on glasses...and contact lenses too!!!



Honorary Convenes Learning Problem Faced As Roosters Rise

Are you kidding me, an organization that meets at 6:30 in the morning?!!

It's strange but true. Forty three brothers of the Gamma Omega chapter of Delta Sigma Pi show their bright shining faces each Wednesday morning in the faculty dining room for breakfast and an hour of professional activity.

Delta Sigma Pi is the international professional fraternity of business administration and commerce.

THIS YEAR marks Gamma Omega's 13th year on campus. In the past 12 years of its existence, it has been on the honor roll in the Chapter Efficiency Contest 10 times and has placed first for nine years, the last eight in a row.

The chapter locally follows its purpose of business-like study, scholarship, social activity, research and affiliation with the business world by aiding the College of Business Administration in its various conferences and workshops.

For interested business majors, there is a final rush event slated for this Sunday at 8 p.m. in the MU upper lounge.

By **BETSY JEAN FRITH**.
Stimulating the desire to learn is the new approach adopted by the ASU psychology department.

Studies in the problems of learning for the aged, creativity in children and teaching reading to retarded readers are being conducted.

Also under discussion are experimental techniques in rehabilitation, stimulus control of study behavior and teaching Russian with machines as well as studying verbal behavior in groups.

According to Prof. Arthur J. Bachrach, chairman of the psychology department, bringing this experimental approach to the psychologists basic skill in learning has direct application to the solution of certain human problems.

A little girl's desire to read, an amputee's desire to walk with an artificial leg or an obese woman's desire to lose weight can be stimulated by creating an environment conducive to learning, Bachrach said.

Bachrach's approach is based on consequences of learning. His department, the so-called behaviorial school of thought, is interested in applying research techniques to educational, social and clinical problems.

While animals may be used in research of human problems, most research subjects at ASU are people.

Grants from such federal agencies as the Office of Naval Research, National Aviation and Space Administration and National Institute for Mental Health help in the research.

Reseachers in Bachrach's department study conditions under which certain kinds of behavior occur.

One of Bachrach's problems concerned a child who was hostile at school but congenial at play, at home and at Sunday school. The behaviorist is interested in what conditions stimulated the child's hostility at school and how the school environment can be altered to decrease the hostility.

Women's Intramural Competition Increased By Coed Participation

Women's intramurals are receiving the support of many dorms, sororities and church organizations who are entering teams in volleyball competition.

Bowling starts Oct. 21 and swimming on Oct. 30.

The program is currently un-

dergoing changes in organization and procedure. These include the creation of a student director of Women's Intramurals, revision in scoring and awards given.

A WAA Intramural Handbook was also printed.

This year's schedule of activities includes badminton doubles on Tuesday and Thursday nights and track and field meets.

Handbooks or further information may be obtained from 3 to 4 p.m. in room 126 of the Men's P.E. building.

Many Residence Halls Sponsor Coed Activities

Palo Verde is sponsoring a series of talks to be heard every two weeks.

Madaline Snoberger, a junior, and a professional florist, will speak Nov. 5, on "Flower Arranging."

The women of East Hall took third place honors in the banner contest last Saturday. Their banner was entitled, "Bottle the Buffaloes."

East Hall also appointed 12 new committee chairmen. Ann Klemann was elected to the MU Board; Chris Marin, Cultural Affairs; Cheryl Mason, Homecoming; Anita Schwartz, chaplain; Lu Ann Slater, WAA, and Barbara Stickler, scholastic.

Also receiving new offices are Karen Fair, refrigerator; Lynn Hale, publicity; Judy Hamer, parliamentarian; Ruth Hempel, study room; Barbara Hitt, historian, and Mary Jenkins, pep.

An exchange between McClintock A and B and Sahuaro A and B will be Oct. 22, on the

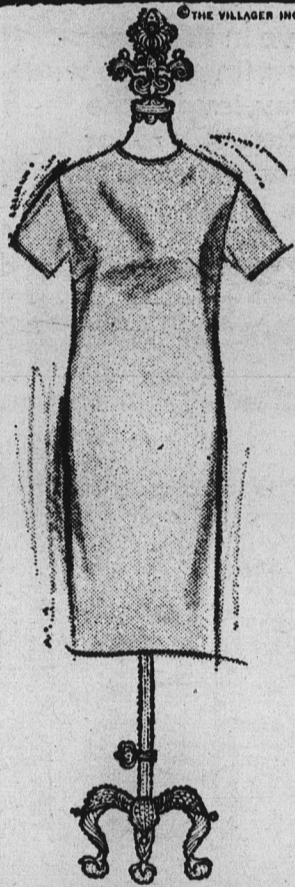
patio of McClintock Hall from 7:30 to 10 p.m.

AWS sponsored a Talent Show in the Palo Verde cafeteria Oct. 16.

Sophos, sophomore men's honorary, will have an exchange with Gammage Hall residents on the patio of the MU ballroom Oct. 22, from 7:30 to 10 p.m.

An after-hours Halloween Party will take place Oct. 31 for the women of Palo Verde East.

The Banner Contest for the West Texas-ASU game Oct. 12, was won by Palo Verde East.



Flexible Knit

One of those wherever-you-go things so pleasant to have, so versatile, packable, and variable. Change its whole character with a necklace, a scarf, a pin, or its own spaghetti sash. Double-knit wool, good as gold... shift shaped, slightly sleeved, back zippered. Flexible colors Camel & Villa Blue Sizes 8 to 12



Hours — 10 To 6
Thursday — 10 To 9

The Village Shop

Phone 967-1981
616 Myrtle Ave.
Tempe, Arizona

National Bible Week

OCTOBER 13-19

Discount Prices This Week:

Amplified New Testament — \$3.00
(retails, \$3.95)

Amplified Old Testament — \$4.00
(retails, \$4.95)

J. B. Phillips New Testament — \$2.00
(retails, \$3.00)

Visit the booths on campus by the Devil's Den and in front of the Library



the artistry of
Darlene

turtle turns soft...in the raglan sleeve cardigan with ribbed mock turtleneck. Fully fashioned in luxury soft French angora and wool. Sizes 34 to 40, 17.98
Matelng Skirts — 9.98 and 13.98

Celia's

TEMPE CENTER

1149 E. Main — Mesa
— Open Tuesday Till 9 P.M. —

Informal Modeling at the Sands Hotel
Every Friday, 12:30 to 1:30

'Daughters of Dance' -

Statue Unveiling Set

Bronze, life-sized figures titled "Daughters of Dance" will be unveiled today at 10 a.m. in the Phoenix Art Museum. The figures sculpted by Professor John Waddell of the art department were made and cast in Mexico during his two years leave of absence.

The dance figures were commissioned by Walter Bimson, chairman of the board of Valley National Bank, for the fountain at the museum.

WADDELL used the ancient lost wax process that was used by Cellini during the 1500's.

Work by Waddell has been exhibited widely and his sculpture and paintings are on display in many private collections. His heroic-size "Dance Mother," from which the castings were made, was presented to the Phoenix Art Museum in 1962 by Bimson.

BEFORE coming to

ASU in 1957, Waddell taught at the Institute of Design, Chicago, Ill., The National College of Education, Evanston, Ill., and Michigan State University.

Waddell's drawings, water colors and prints are on

display in numerous private collections. He has filled many portrait commissions in oils and his 100-foot mural, done in 1961 for the Arizona Ranchhouse Inn in Phoenix, was destroyed last year by fire.



FROM WAX TO RICHES — Professor John W... examines one of the life-size bronze figures which he created while on leave of absence in Mexico.

Danish Quartet Plans Concert

A youthful Danish quartet on its second U.S. tour will perform in the Phoenix Chamber Music Society's first concert of the year tonight at 8:30 at Longview School auditorium, 12th St., and E. Indian School Rd.

Included in the program will be Mozart's "Hunt" Quartet, a work by the Danish composer Bentzon and Beethoven's Quartet, Opus 59, No. 3.

Members of the quartet are Arne Svendsen, first violin; Palle Heichelmann, second violin; Knud Frederiksen, viola and Pierre Rene' Hommens, cello. They were trained at the Royal Danish Conservatory and appear regularly with premier orchestras as well as touring in quartet concerts.

Tickets may be reserved by calling 253-8853 or may be purchased at the door.

Journal Editor Schedules Talk To Hillel Group

Theodore Emerine, Managing Editor of the Arizona Journal, will speak to members of Hillel, Jewish student youth group, at 12:30 p.m. Sunday in MU 218.

Emerine will speak in connection with National Newspaper Week, Oct 13-19. A luncheon will be served.

Members will be admitted free, guests will be charged 75 cents.

New officers for Hillel are Diana Rosen, president; Randy Silver, vice president; Jack Mulis, secretary, and Mel Miller, treasurer.

Honorary Will Sponsor Picnic

Beta Phi chapter of Kappa Delta Pi, national education honorary, will sponsor a get acquainted picnic for members Oct. 22 at 6 p.m. at Tempe Beach, according to program chairman, Sandra Miller.

Students who plan to attend are asked to contact Dr. Ken-

neth Hoover, associate professor of education in ED 414A.

Officers for Kappa Delta Pi are Dr. Kenneth Hoover, president; Sandra Miller, vice president; Judy Kippola, secretary; Alba Giuntoli, treasurer; Claudia Chapman, reporter-historian and Dr. M. S. Lewis, counselor.

GO SUN DEVILS . . .

MAKE
MINCE MEAT of the
MIGHTY
MINER MINIONS . . .

CHICO'S

RESTAURANT*

FINE MEXICAN FOOD

1120 East Apache Blvd. — Tempe

*Air conditioned of course

Love in the sunlight, love in the moonlight, love in the quiet dark, love in the wild woods, love in the doorway, love in the automobile, love on the beach, love for breakfast, lunch, dinner and in between, love in all innocence, love in full desire!



JOSEPH E. LEVINE presents

LOVE AT TWENTY

and ...WHEN LIFE COMES TO CLIMAX!

FRENCH SEQUENCE adapted, directed and dialogue written by FRANCOIS TRUFFAUT • POLISH SEQUENCE directed by ANDRZEJ WAJDA • ITALIAN SEQUENCE written and directed by RENZO ROSSELLINI • GERMAN SEQUENCE written and directed by MARCEL OPHULS • JAPANESE SEQUENCE directed by SHINTARO ISHIHARA • A PIERRE ROUSTANG production An EMBASSY PICTURES release

JOSEPH E. LEVINE presents

JEAN PAUL BELMONDO CLAUDIA CARDINALE

Star Tonight
For One Week Only
AS Student
Admission \$1.00



The Love Makers

with PIETRO GERMI ROMOLO VALLI GABRIELLA PALLOTTA
GINA SAMMARCO MARCELLA VALERI FRANCO BALDUCCI PAOLA PITAGORA GIANNA GIACHETTI
ROSITA DI VERA CRUZ OLIMPIA CAVALLI and PAUL FRANKEUR
Directed by MAURO BOLOGNINI ALFREDO BINI AN ITALO-FRENCH CO-PRODUCTION
TITANUS-GALATEA-ARCO FILM, ROME SOC GENERALE CINEMATOGRAFIE, PARIS AN EMBASSY PICTURES RELEASE

PHOENIX FIRST RUN SHOWING
VALLEY ART

11th Avenue

TEMPE

WO 7-6664

Halloween

Party Favors — Center Pieces
Cutouts — Napkins — Nut Cups
Invitations — Cards

HAPPY HOUSE SHOP TEMPE CENTER

THE WORKING MAN AND GAL'S . . .

Nite Club

DINING & DANCING NITELY
EXCEPT SUNDAY

Large Wooden Dance Floor
Extra Low, Low, Low Prices

You Must Be 21

"21 Nite Club"

2200 N. Scottsdale Road — In Papago Plaza

Sports Enthusiast -

Tennis Star Returns

By BILL SCHAMMEL
Using the courts of the world as her playground, Carole Ann Prosen, ASU sophomore, covered the tennis circuit almost entirely last year.

The 20-year-old, hard hitting girl from Orlando, Fla., enjoyed something that many tennis players can just dream about at her age — competing with and meeting the top ten-

nis stars of the world.

MISS PROSEN dropped out of school last year so she could participate in the 1962 world circuit. She started out in the Caribbean tour in January and played until April. Some of the places she visited were Colombia, Venezuela, Puerto Rico, Jamaica and her native state of Florida.

After returning home for a

week, she was off to Europe to participate in 12 tournaments, one of which was Wimbledon, in London at the end of June.

Her first tournament was in Naples and from there she moved to Rome, Paris, Austria, Germany, Switzerland and England.

SHE WON the tournament in Switzerland and placed well up in most of the others.

The most exciting experience of the whole trip was when she was chosen to play at Wimbledon in the world tennis championships, she said.

"Europe impressed me tremendously with the beautiful country and the friendly people," she added.

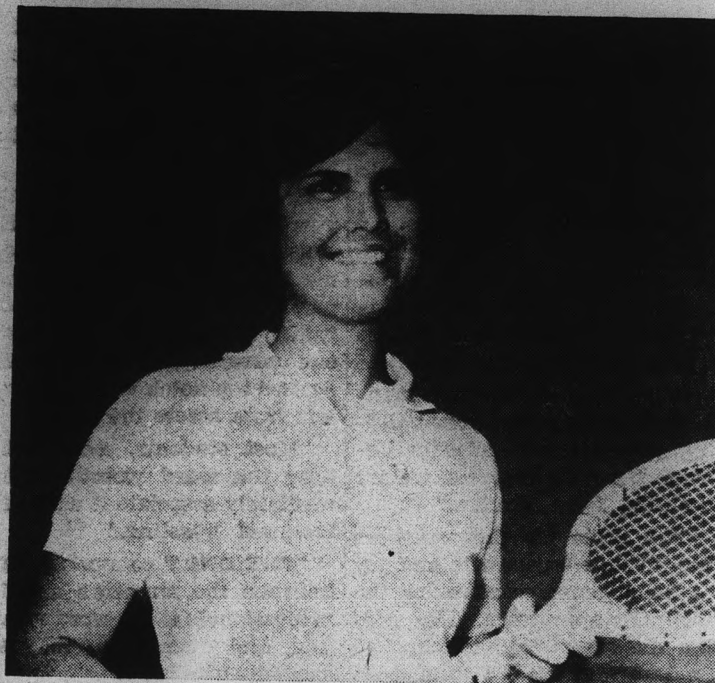
"**AT WIMBLEDON** we could hardly turn around without people shaking our hands or asking for autographs," she said. "The food, music and the graciousness of the people were very impressing to us wherever we traveled."

Carole played against such stars as Leslie Turner, Margaret Smith and Darlene Hard, all of whom hold national championships.

Her parents encouraged her interest in tennis and from then on she dreamed of playing in the European tournaments. She didn't realize that her dream would be fulfilled so early in her career.

HER FUTURE plans don't include any national or international tournaments as yet. Her schoolwork is keeping her pretty busy.

She will play on the ASU women's tennis team and in the interscholastic tournaments.



CAROLE PROSEN

YOU READ ABOUT HER IN PLAYBOY MAGAZINE ... NOW SEE ALL OF JAYNE MANSFIELD

SEE THE UN-CUT... UN-CENSORED EUROPEAN VERSION OF—

"PROMISES! PROMISES!"

Starring JAYNE MANSFIELD • MARIE McDONALD • TOMMY NOONAN

ADULTS ONLY!

3rd Smash Week!

PORTOFINO

46 E. Main — WH 6-0111 — Scottsdale

Marge Smith

FLOWERS

"Tempe's Most Popular Florist"

722 Mill Avenue

Evenings WO 7-5020 Open Sundays 9- A.M. - 2 P.M. Daily WO 7-0271

Joseph E. Levine presents **FEDERICO FELLINI'S**

The man who shocked you with "La Dolce Vita" now electrifies the world with "8 1/2"!

This is the story of Guido and his wife and his mistress and the innocent beckoning young girl and all the women in his life, past and present

with MARCELLO MASTROIANNI • CLAUDIA CARDINALE • ANDIK AIMEE • SANDRA MILO • ROSSELLA FALK • BARBARA STEELE

Produced by ANGELO RIZZOLI

Phoenix Premiere Engagement Starts Tonight!

ASU Students \$1.25 **KIVA - Scottsdale** 15 E. Main - WH 5-0982

THE

MEWS

presents

Ron Ryan

Recording Artist "In Concert" at ASU, "500 Miles", "Hardtimes"

Mike Hance

RON'S PARTNER
Picture a petite, cute girl playing bass & harmonizing.

Ian Macpherson

Current favorite on KOOL's Folk Sing

Gary Seger

KUPD Disc Jockey
For a closer look at politics, folk music, and girls!

Wed. Thru Sun. 9 to 2

HOOTENANNY

Every Wed. & Thurs.
Hooters Admitted FREE

Ask Someone How To Get There . . . The Address Doesn't Help You Much!

Wrestlers Ready For Season Start

By MIKE HELFNER

If you were behind the P.E. building Tuesday afternoon, you heard the sounds and saw the action as the wrestling team had its first practice session in preparation for another season of competition.

What kind of wrestling team will ASU have this year? With the season just beginning, the State Press went directly to Sun Devil Wrestling Coach Ted Bredehoft. His answer was, "At this point, I am somewhat discouraged at the lack of members we have. On the other hand, I am very pleased at the 'esprit de corps' of the few boys we have. It is indicative that spirit can overcome the lack of personnel."

THE FIRST day of practice was only a training period, with emphasis on calisthenics and the basic wrestling skills. The discouraging factor was that only 12 men, with little experience, showed up.

A bright spot for Coach Bredehoft was the sight of Terrell "Buzz" Hays, a WAC champion last year, back for another season.

Bredehoft was discouraged because five lettermen from last year's squad didn't come back to school. Even more discourag-

ing is that Dave Greer, last year's outstanding wrestler, is in school, but not out for the team.

BREDEHOFT became discouraged when he learned that there are approximately 10 men on campus who have experience and background in wrestling, but have not come out for the team.

He hopes the desire for competition will reach them and that they will come out for the team.

The Devils are lacking in depth and have found trouble in some of the higher weight classes, but Coach Bredehoft feels that once the football season ends, some football players will be of immense help.

COACH BREDEHOFT mentioned that his three year building program was slightly behind. "In some respects, we are building from scratch."

The goals for the wrestlers are to look forward to and try to be a representative on the U.S. Olympic team. The goal for the squad was to improve on last year's 9-4-1 dual meet mark.

"AS OF NOW, the Sun Devils are a better tournament team than last year's, but due to the lack of personnel, the Devils may be weaker in dual competition."

When asked who his best wrestler was, Coach Bredehoft replied that "Buzz" Hays, because of background and experience, is the best.

"AS OF NOW, many boys

are untried, but any one of them could be outstanding. Each is equally capable of winning a championship."

COACH BREDEHOFT, the secretary-treasurer of the NCAA Wrestling Coaches and Officials Association, said, "Although small in number, I personally feel that by the time the WAC championships roll around in March, we will make a representative showing which will speak well of the wrestling program at ASU."

Bredehoft commented on this year's schedule by saying, "Because of the large home schedule this year, the student body will have an excellent opportunity to watch the members of our wrestling team in action against top notch visiting wrestlers from across the nation."

"Most students, when they hear the word wrestling, immediately associate it with professional 'rassling.."

"THE ONLY common ground between the amateurs and the professionals is the word wrestling, and even then, they are spelled differently."

Coach Bredehoft says, "I am confident that once a student has taken it upon himself to watch an intercollegiate wrestling match, that he or she will become an ardent spectator fan."

"We hope that in the near future, we can come close to the 8,000 people that annually pack the fieldhouses of Oklahoma, Lehigh, Oklahoma State, Penn State and Pittsburgh."



DEFENDING CHAMP — Defending WAC cross country champion Eric Owers will be looking to continue his winning ways this weekend in the meet at Papago Park. (See story on page 16.)

(Photo by Ed Ryan)

LIKE MAKE HOLIDAY AIR RESERVATIONS NOW... You Pay No Extra Scratch For Our Service

- Airline Tickets
- Youth Fares
- Excursion Fares

AT UNIVERSAL TRAVEL
18 E. 5th St.
WO 7-1673

BE THE CENTER OF ATTRACTION AT EVERY PARTY

PLAY A KAY GUITAR it's easy!

on campus... at parties you're the center of attraction if you can entertain the crowd with music.

It's fun, too... completely relaxing after hours of studying. Easy to own on our special payment plan. Ask about our FREE lesson!

KAY ELECTRIC \$47.50 GUITAR

Mesa Loan & Jewelry
132 W. Main Mesa
969-2762

Today's most interesting students read The New York Times Western Edition

Why don't you? You'll find it a rewarding daily addition to your college days and studies. It keeps you on top of today's exciting events... helps you in a variety of courses... gives you vital background for discussions in and out of the classroom.

Why not arrange a subscription today? The Western Edition of The New York Times is available to you on campus the same day it rolls off the presses in Los Angeles—and for only 10¢ a copy. Your New York Times representative on campus will be glad to serve you every day, Monday through Saturday, during the coming year.

For A 15% Student Discount, Contact:

Dwain "Mickey" Bouton
1020 E. Orange—Apt. 12, Tempe
Phone 967-6325

3 Months \$6.37—6 Months \$11.68
9 Months \$17.17



Devils Look For Fourth

By AL MICHAELS

Arizona State will seek its fourth consecutive win tomorrow night when the Sun Devils tangle with the up-and-coming Texas Western Miners at El Paso.

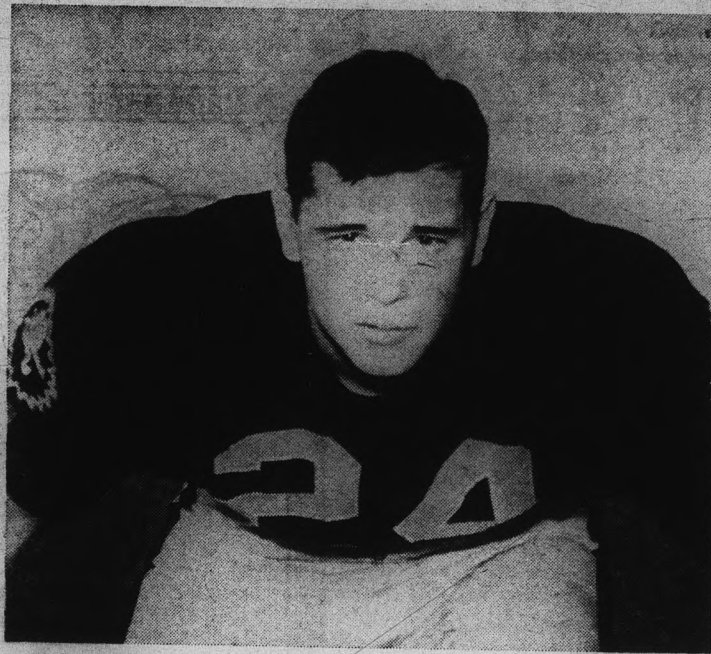
The Devils, who are finally beginning to jell after a disastrous opening game, will rely on the arm of senior quarterback John Jacobs and the blockbusting power running of fullback Tony Lorick in an attempt to duplicate last season's decisive 35-7 thumping of TWC.

Jacobs wrested the starting position away from John Torok with an impressive performance in last Saturday's 24-16 win over West Texas State and appears to have regained the form which earned him All-Western Athletic Conference honors in 1962.

LORICK, known affectionately to his teammates as "The Bull," has rambled for 337 yards in 36 carries for a 9.4 yard average.

The Miners, revengeful after a 13-7 loss to the UofA last weekend, own a pair of wins over North Texas State (34-7) and New Mexico State (14-13) and were defeated by New

The Cat Rides -



DEFENSIVE ANDOUT — Larry Facchine, 5-10, 175-pound defensive safety for the Sun Devils is one of the leading tacklers so far this season. The speedy senior hails from Vandergrift, Pa. (Photo by Ed Ryan)

Mexico University (23-7).

TEXAS WESTERN is reported to be in top physical shape for tomorrow's contest.

The Devils, meanwhile, will be minus the services of Henry Carr (bruised thigh), Gene Foster (broken arm), Ed Mauck (dislocated shoulder) and Mitch Siskowski (back injury).

ASU doctors have advised Carr to give up football entirely and concentrate on track and field.

The game will mark the 30th meeting between the two schools. Arizona State holds a slim 14-12-3 edge in the series that originated in 1925.

EDDIE MULLENS, sports information director at the Texas school, promised that the current Miner squad is "considerably improved over the team that faced ASU last season."

A-State coach Frank Kush agrees. "The Miners are the coming football power in this area and they'll be plenty tough in their new stadium before the home folks."

TWC will open with a backfield consisting of Jerry Tucker (180) at quarterback, Julius Glosson (180) and Bob Mortimer (205) at the halves, and Charley Arciniega (185) at fullback.

The
**Capri's
PICK
OF
THE
WEEK**

ASU 17
Miners 7

Right or wrong . . .
you can't miss with
our PIZZAS!!

WAC Standings

| Team | Confer. | Total |
|-------------|---------|-------|
| Utah | 2-0 | 2-2 |
| Arizona | 1-0 | 2-2 |
| N. Mexico | 0-1 | 1-2 |
| Brig. Young | 0-2 | 1-3 |
| Wyoming | 0-0 | 3-1 |
| *A-State | 0-0 | 3-1 |

*Ineligible for Conference championship until 1966 season.

Now You Can Buy
"Sports Afield"
At Our New
Magazine Rack
**UNIVERSITY
BOOK STORE**
"In The Basement"

Intramurals

A rules committee was chosen Wednesday at the regular meeting of the intramural managers.

The committee consists of Rick Clelland, Hooters Inc., Bob Ellis, Haigler Hall, Bill Woodruff, Phi Delta Theta and David Brown, Sigma Phi Epsilon.

The committee will be the interpreter of the rules in the intramural handbook and is to settle any disputes concerning them.

The intramural Office reported that this committee was designed to turn the interpretation of the rules over to the men themselves. Thus placing a ruling authority closer at hand.

Tentative Starting Lineups

| Arizona State | | | Texas Western | | |
|-----------------|-------|----|-------------------|-------|--|
| Player | Wt. | | Player | Wt. | |
| Alonzo Hill | (190) | LE | John Evans | (190) | |
| Frank Mitacek | (237) | LT | Mr. Adams | (210) | |
| Bob Johnson | (210) | LG | Tim Morton | (202) | |
| Chris Stetzar | (215) | C | Dever Fate | (190) | |
| Joe Kush | (179) | RG | Ed Belt | (215) | |
| John Seedborg | (222) | RT | B. Glover | (210) | |
| Herman Harrison | (208) | RE | Ulysses Kendall | (200) | |
| John Jacobs | (195) | QB | Jer. Tucker | (180) | |
| Ray Young | (174) | LH | Julius Glosson | (180) | |
| Charley Taylor | (208) | RH | Bob Mortimer | (205) | |
| Tony Lorick | (203) | FB | Charley Arciniega | (185) | |

Visit A New, Modern Billiard Parlor
Which Features A MOST ECONOMICAL
Form Of ENTERTAINMENT

\$1.25 per hour for 2 Players
\$1.50 per hour for 3-4 players
Free Instructions From 1 to 6 P.M.

Featuring 14 New "National Billiard Co."
Snooker - Billard - Pool "Green-T" Tables
"Lucky Cue" FAMILY BILLIARDS

1612 E. McDowell Rd. — Phoenix

THE BEST IN
FOLK MUSIC

with
Phil Lucas
Arizona's Top Folk Singer

and **Allen Benjamin**

Traditional Folk Music On The 12 String Guitar

Four Shows Nightly

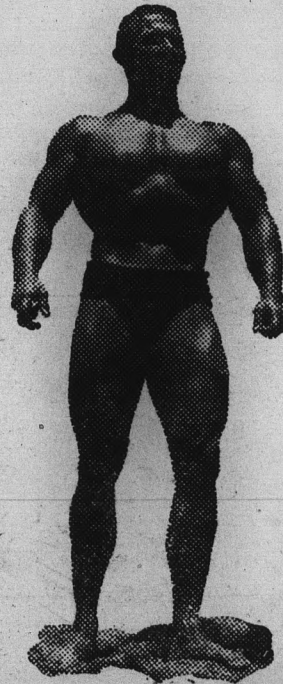
8:30 P.M. to 2:00 A.M.

BABOQUIVARI Coffee House

131 E. 1st Street — Scottsdale
946-0572

Get In Shape Now!

Men: Get in shape quickly under the
personal supervision of
Walt Hunt — "Mr. Arizona 1961"



SPECIAL

CHARTER MEMBERSHIPS

500
PER MONTH

Men: Mon., Wed.,
Fri., 10-10
Sat. 2-6

Women: Tues. & Thurs.
10-10
Sat. 9-1

CALL 967-7461

For a FREE Trial Visit

MEN

WE GUARANTEE THESE RESULTS
IN 60 DAYS

— UNDERWEIGHT —

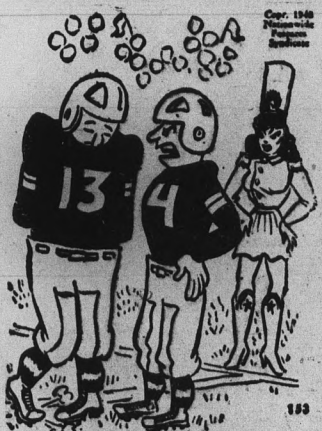
Gain: 1 1/2 Inches on each Arm
3 1/2 Inches On Chest And Shoulders

— OVERWEIGHT —

Lose: 3 Inches Off Waist and Hips
15 Pounds Body Weight

UNIVERSITY HEALTH CLUB
63 E. Broadway • Tempe

SPORTOONS
BY NORM CHESTNUT



"Let's restrict our passes to the playing field."

MUGS UP
ROOT BEER
Where the Nickle is Mighty
503 E. EIGHTH Phone WO 7-0800
TEMPE, ARIZONA

Off The Cuff

By JOE HEATH

Tomorrow night the Sun Devil football team will be in El Paso for its second road game of the season with Texas Western playing the host role.

The series between the two schools dates all the way back to 1925 when heads were first bumped and the Texans came out on top, 27-12.

Since then ASU has won 14 times, dropped 12 (including the 1925 game) and a deadlock has occurred on three occasions.

I RECEIVED A sports release from El Paso earlier this week.

The writer (no name was given) wrote the lead on the story as a take-off on the old song "Something's Gotta Give."

It went something like this: "When an irresistible object like Arizona State (offense) meets an immovable force such as Texas Western (defense), something's gotta give..."

I CAN'T REALLY see just what they're talking about. Texas Western opponents have averaged 14 points a game. Meanwhile, they are averaging only 15.5 per game themselves.

I feel that they will have to score over 20 points to defeat the Devils. Prediction . . . ASU by 13.

ASU Harriers Run At Home

A rematch of last week's meet is in store for the A-State cross country runners when the Devils tangle with UofA and Phoenix College tomorrow at 11 a.m. in Papago Park.

Detroit freshman Louis Scott, surprise individual winner last week with a time of 16:01, leads A-State in another attempt to upend defending WAC champ UofA.

OTHER TOP RUNNERS, according to Coach Baldy Castillo, will be Joe Smart, Eric Owers, John Silverthorne and Art Reade.

Jim McBurney, Larry Berryhill, Steve Breedlove, Phil Lunn and Bob Stiffler also will run at Papago Park.

CASTILLO SAID that Papago's hilly 3.5 mile course appeals more to his runners. "Our boys like to run the hills better than a flat course."

The Devils' 37-26 loss to the Wildcats last week was the closest the Devils have come to defeating UofA in history.

WAC Games -

Brigham Young University visits Laramie to play Wyoming in the only WAC contest this weekend.

The Cougars will be looking for their first conference victory after having lost to Arizona, 33-7, and Utah last weekend, 15-6.

THIS WILL also be a meeting of two of the WAC's outstanding players thus far, BYU's Phil Brady and Wyoming's Tom Wilkinson.

Brady, a junior from Scottsdale, is the second leading conference rusher behind ASU's Tony Lorick. He is also second in the conference in total offense.

WILKINSON, THE Cowboys' sophomore quarterback, is currently leading the WAC in both passing and total offense.

In other action tomorrow, remaining conference teams play non-league contests. The U of A hosts 15th ranked Oregon in a regionally televised battle, New Mexico State, Utah WAC leader at 2-0 hosts Colorado State, and the Sun Devils are at Texas Western.

Intramural Officials Needed Soon

Anyone interested in refereeing men's intramural volleyball beginning Monday is asked to contact the Intramural Of-

fice as soon as possible.

Those refereeing will be paid \$1.25 per game and will judge

two contests each afternoon. All games begin at 4 p.m. and will end about 5:30 p.m.



We're specialists in sweaters



College men will recognize the fashion-plus in our newest sweaters. Whether at a game or in a classroom, add to your pleasure by wearing a sweater.

Choose your favorite from many colors and models . . . with patches if you wish!

- Cru-neck from \$ 8.95
- Button Cardigan from \$ 9.95
- V-neck from \$11.95
- Zip Cardigan from \$14.95

Cue & Cushion

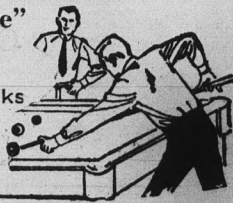
"Arizona's Finest Billiard Lounge"


NEW LOW RATES

- Ladies FREE Mondays • Soft Drinks
- Pool - Snooker - Billiards
- Refr. & Carpeted

PAPAGO PLAZA

2 Miles North of Campus on Scottsdale Road





VILLAGE INN

PIZZA PARLOR

"Where pizza is always in good taste"

- TEMPE - 801 Apache Blvd. . . . 967-3355
- MESA - 1156 West Main . . . 964-4515
- PHOENIX - 61 West Thomas Road . . . 264-5511

Trench coats, too!

No matter what the weather . . . this coat will see you through. Cotton shell, zip-out pile lining. Functional colors in black, olive, grey or natural.

\$24⁹⁵

THE Americana SHOP

QUALITY MEN'S APPAREL
TEMPE SHOPPING CENTER



OPEN 9:00 A.M. TO 6:00 P.M.
THURSDAY 'TIL 9 P.M.

WO 7-5457