

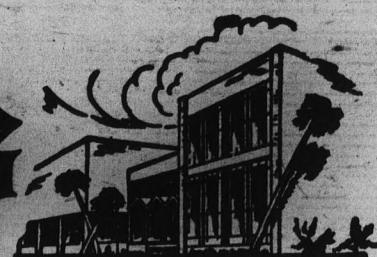


# State Press

ARIZONA STATE UNIVERSITY



TEMPE, ARIZONA



Vol. 42

Wednesday, September 25, 1963

No. 2

## ASASU Announces Committee Positions

Appointments for the committee chairmen and assistants, who will help conduct student government this year, have been announced by the ASASU officers.

George Stewart, ASASU vice president and Speaker of the Senate, has appointed the following members of the Student Senate to committee positions:

**CHAIRMAN OF the finance committee** will be Linda Carnowski, rules committee chairman, Karl Wochner, John Reiser will head the judiciary committee, and Nick Hagen will handle the membership and elections committee.

Also, Nancy Tenney will be chairman of the education committee, the activities control committee will be headed by Janice Ayers, while the student government operations committee will have Fred Reish as chairman and the publications and public relations committee chairman will be Rex Young.

**SPEAKER PRO-TEM** of the Senate this year is Karl Wochner. This is Wochner's third year in the Senate, advancing him to Senior Senator.

Sam Linder will act as Senate Sergeant-at-Arms.

Marilyn Vihel, ASASU secretary and secretary of the Senate, has announced her appointments for 1963-64. Cheryl

Hadaway will be assistant secretary, Susan John will be the office assistant and Sharon Farmer will be the Senate librarian.

**DARYL WYNN**, ASASU president, has tentatively filled 22 positions for executive board and committee chairmen, but they are not yet official,

for they are still awaiting Senate confirmation.

All ASASU officers wish to stress that appointments for this year were not made in a haphazard manner. All appointments must have the consent of the Student Executive Council and be confirmed by the Senate.

## Devil Card Pack Outplays Dealer

By LINDA HELSER

With a pack of cards like ASU's card-stunt section, leader Jim Holland always looks for a joker.

Jim found his jokers, but the majority of conscientious students who performed at halftime during the ASU-Wichita game, outplayed them.

**STUDENTS** in the special section of the stadium, supplied with colored cards held at eye level, respond to Holland's instructions and the corresponding instruction sheets attached to each seat.

A simulated-teletype stunt, the American flag and other standard stunts such as the ASU in script letters were features at Saturday night's halftime.

**FUTURE STUNTS** will feature ASU's outstanding alumni

whose lives and deeds have contributed to ASU.

Having the distinction of being the first to use this system, ASU's card section was featured in a nationwide publicity campaign.

Originally including 1,200 students, the section now consists of 2,500. Preparation of the stunt cards before the days of the computer took nearly 100 hours per week. The computer does the work in eight minutes.

## Helen Keller -



**PATIENCE** — University Player, Anita Bryon, in her role as the miracle worker, Annie Sullivan, teaches sign language to 10-year-old Helen Winters, who plays Helen Keller in ASU's first dramatic performance of the season. Curtain rises on "The Miracle Worker" tomorrow at 8:30 p.m. in the Lyceum Building Auditorium.

## Players To Stage 'Miracle Worker'

The first performance of the University Players entitled "The Miracle Worker," depicting the early life of Helen Keller, will open at 8:30 p.m. tomorrow in the University Playhouse in the Lyceum Building.

The play will run tomorrow through Saturday night and Thursday, Oct. 3 through Saturday, Oct. 5. Tickets are available from the Playhouse box office.

Dr. James Yeater, assistant professor of speech and drama is directing the play, written by William Gibson.

Professor George Thomas, of the speech and drama department, is technical director.

The title role of the miracle worker, Annie Sullivan, Miss Keller's teacher, will be played by Anita Bryon, ASU junior.

Helen Winters, 10-year-old Phoenician, will portray the young Helen Keller.

Other ASU students in the cast include: Francis De Grado as a doctor, Claire Chene as Kate, Gary Stephens as Miss Keller's father, Anne Valenzuela as Aunt Ev, George Nelson as James and Robert Archer as Anagnos.

The main scene for the play will be the childhood home of Miss Keller in Tuscumbia, Ala.

The set is a permanent set on several levels showing a cross-section of the Keller home, including Annie Sullivan's bedroom, the dining area and front porch. Also shown will be the yard around the house and a garden house in the yard will be displayed during the play.

On side stages are a railroad station and a scene inside the Perkins Institute for the Blind in Boston.

More than four weeks of preparation went into the physical set, according to Professor Thomas. The cast has been rehearsing for several weeks.

## Pom Pon Girls To Select Five New Members

Eight new girls will be chosen to join the five returning members of the pom pon squad. The new members will be chosen on the basis of dance ability, personality and personal appearance, according to Sandy Berry, captain of this year's squad.

Tryouts will be open to any freshman, sophomore or junior with a 2.0 grade index or better.

All girls trying out should wear white shorts, white blouses and white tennis shoes, Miss Berry said.

First tryout will be held October 1. From this tryout girls will be invited back for a second tryout on October 2. Both tryouts will be in the MU ballroom from 3 to 5:30 p.m.

The five returning members of the squad are Miss Berry, captain; Nola Hill, co-captain; Patty Garnes, Charlene Saylor and Marilyn Webb.

In addition to performing at ASU football games, the pom pon girls will perform at various events throughout the Valley this year.



**OUTFITS ARE NEW** — The Pom Pon outfits are new this year and so are some of the girls. Sandy Berry, Pom Pon captain, Marilyn Webb and Nola Hill model the short skirts and vests. The sleeves are longer this year and the vests have buttons down the back.

## AWS To Inaugurate New Culture Series

Paula Eiseman, president of Associated Women Students, has announced the inauguration of a cultural program under the direction of AWS which will be effective October 10.

In addition to the regular meetings of the general council held every other Thursday, AWS will feature guest speakers.

Speakers will include students participating in the foreign exchange program, professors from ASU's five col-

leges, professional women and women who are in state and federal government.

The program is under the direction of Sarah Burns, cultural program chairman.

Miss Eiseman included plans for the AWS executive members to visit the women's residence halls and acquaint students with the officers and programs of AWS.

Other officers are Beth Mitchell, vice president; Ann Malene, secretary and Marty Stelhorn, treasurer.



KAYETTES CHOSEN are bottom row l-r Pam Lefton, Susie Ryan, Judy Hargrove, Paula Burns and Kay Wester. Middle row l-r Pat Brown, Joy Moss, Judy Henderson, Nancy

Monsees and Louise Dierks. Top row l-r Sylvia Feaster, Nancy Hoyer, Ann Martin, Pam Shelly and Janet Thomas.

### Car Crash Claims Student's Life

ASU student Mike William Harden died early Thursday morning in a one-car crash near El Centro, Calif. Escaping serious injury was

the owner of the car, James Conway Brugh. Both men were freshmen. Harden was a junior tennis star attending ASU on an athletic scholarship.

# Refund Period E N D S MONDAY, SEPT. 30

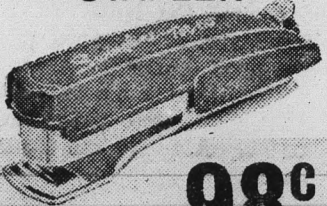
After This Date We Are Buying  
Used Books On A Limited Basis

# UNIVERSITY BOOKSTORE



Cleopatra, with feminine guile,  
Said to Tony, "Let's barge down the Nile!"  
When she reached for an asp,  
Her belt lost its clasp.  
So she stapled it up Swingline style.

## SWINGLINE STAPLER



**98¢**  
(including 1000 staples)  
Larger size CUB Desk  
Stapler only \$1.49

- No bigger than a pack of gum
- Unconditionally guaranteed!
- Refills available anywhere!
- Get it at any stationery, variety, or book store!
- Send in your own Swingline Fable. Prizes for those used.

Swingline INC. LONG ISLAND CITY 1, N. Y.

### Twins Enter Guilty Plea

Mansour and Nasser Haghghi, former ASU students from Iran, this week pleaded guilty to burglarizing a Scottsdale residence.

The 26-year-old twins were arrested April 6, on charges of kidnapping three-year-old Mike Auther of Phoenix.

As a result of their pleading guilty, the kidnapping and other burglary charges will be dropped.

### 'Surfer Exchange'

Alpha Tau Omega will teach Gamma Phi Betas how to surf on an ironing board tonight at their "Surfer Exchange" at the Alpha Tau Omega fraternity house.

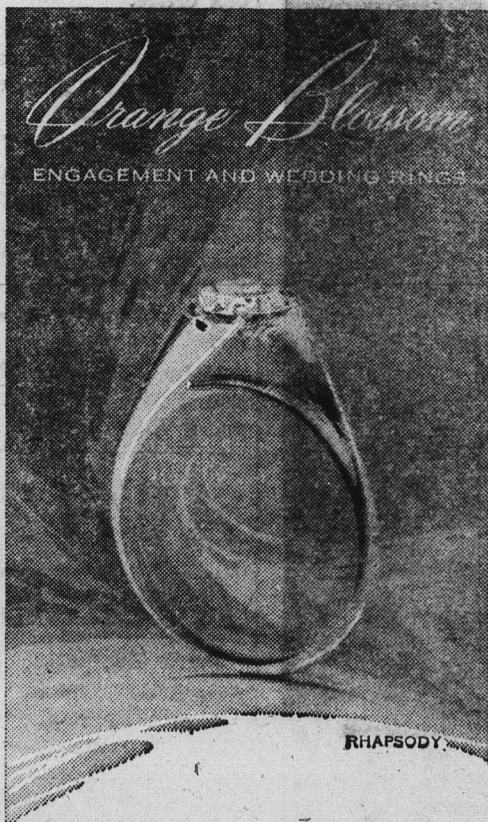
### Eating Hours Schedule Set

The MU dining facilities will be open the following hours during the semester:

**MU Cafeteria** — Monday-Friday, Breakfast, 6:45-8 a.m. Coffee and doughnuts, 8:25-8:45 a.m. Lunch, 11 a.m.-1 p.m. Dinner, 5-6:30 p.m. Saturday, Breakfast, 7:30-8 a.m. Lunch, 11:45 a.m.-12:30 p.m. Dinner, 5-5:30 p.m. Sunday, Breakfast, 8-8:30 a.m. Lunch, 12-12:30 p.m. Dinner, 5-5:30 p.m.

**Devil's Den** — Monday-Friday, 6:30 a.m.-10 p.m. Saturday, 7:30 a.m.-10 p.m. Sunday, 7:30 a.m.-10 p.m. On game nights, 7:30 a.m. 8 p.m.

**Corral** — Monday-Friday, 8 a.m.-4 p.m. Saturday, game nights; 10-12:30 p.m. Closed Sunday.

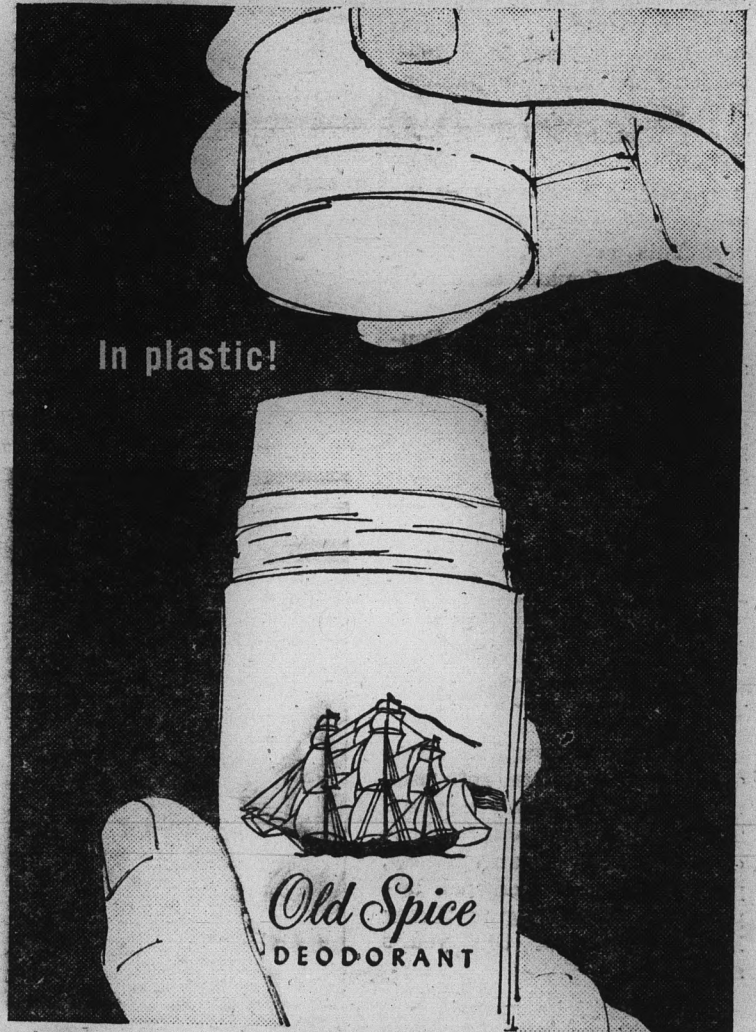


**Paul Johnson**  
JEWELERS

1604 E. Camelback Open 9 A.M. - 5:30 P.M.  
Thursdays Til 9 P.M.

"Where Originality Is a Tradition"

# MEN!



In plastic!

## Here's deodorant protection YOU CAN TRUST

Old Spice Stick Deodorant... fastest, neatest way to all-day, every day protection! It's the active deodorant for active men... absolutely dependable. Glides on smoothly, speedily... dries in record time. Old Spice Stick Deodorant — most convenient, most economical deodorant money can buy. 1.00 plus tax.

**Old Spice** STICK  
DEODORANT  
SHULTON

Find Your  
**Swingline**  
Staplers  
at  
**Campus  
Drug**  
Corner College & 8th

# Debaters Prime For Action *Two New Meteorites Added To Collection*

ASU debate squad members have begun research of the current national forensic topic in preparation for a year of inter-collegiate speech tournaments and exhibition debates.

The 1963 topic is "Resolved, that the federal government should guarantee an opportunity for higher education to qualified high school graduates." Two-person teams ar-

gue the affirmative and negative side of this proposition.

In addition to the tournament schedule, Dr. William Stites, debate advisor, has announced a new extended program of campus and community exhibition debates.

**THOSE INTERESTED** in having an issue debated before their organization should deliver their requests to Dr. Stites at Matthews Hall 31.

Returning squad members

are Betty Duffy, Mahlow Gaumer, Wes Shellen, Calvin La Salvia, Bedford Douglass, Jim Stoffa and Mike Yarnell.

New members are Emily Chase, Pat Price, Judy Polloch, Lois Drossman, Kimbeth Wehrli, Debbie Rice, Sherry Hall and Toni Butterbach.

Also, Chuck Burton, George Evans, Spencer Gries, Dean Helland, Steve Briggs, William Sawyer, Charles Spencer, Ronnie Andrew and Ray Icely.

ASU's Nininger meteorite collection gained two meteorites from Finland this month with the return of Dr. Carleton B. Moore, collection director, from a European trip.

Dr. Moore, assistant professor of chemistry and geology, viewed meteorite collections in Oslo, Stockholm, Uppsala, Helsinki, Copenhagen and London during a two and one-half month summer National Science Foundation trip for U.S. geology professors.

ASU WAS shipped a ton of

rock for geochemical investigation and Dr. Moore brought sections of the two Finnish meteorites in exchange for sections from the Nininger collection.

The meteorites were found near the towns of Hvittis and Bjurbole, Finland.

The Hvittis meteorite which had fallen on land is an unusual type of which only 11 exist among the 1,700 recorded meteorites, said Dr. Moore.

ASU now possesses a quarter-pound section of the seven-pound object.

## Political Science Members Publish Varied Articles

Three ASU political science department faculty member recently had articles published by the Bureau of Government Research.

T. J. Leonard, assistant professor of political science, has published a study of government in India, according to Leonard E. Goodall, acting director of the ASU Bureau of Government Research.

Entitled "The Federal System of India," the 15-page pamphlet is the sixth of a series of studies on public affairs published by the bureau.

It describes how the Indian government operates today and compares it with the federal system of the United States.

Leo D. Vichules, assistant professor of political science, published an article dealing with Phoenix area party leaders in the current issue of Public Affairs Bulletin, printed quarterly by the Bureau of Government Research.

The article, entitled "Maricopa County Party Leaders," was written from data collected by undergraduate and graduate students in Professor Vichules' 1963 fall semester political science course.

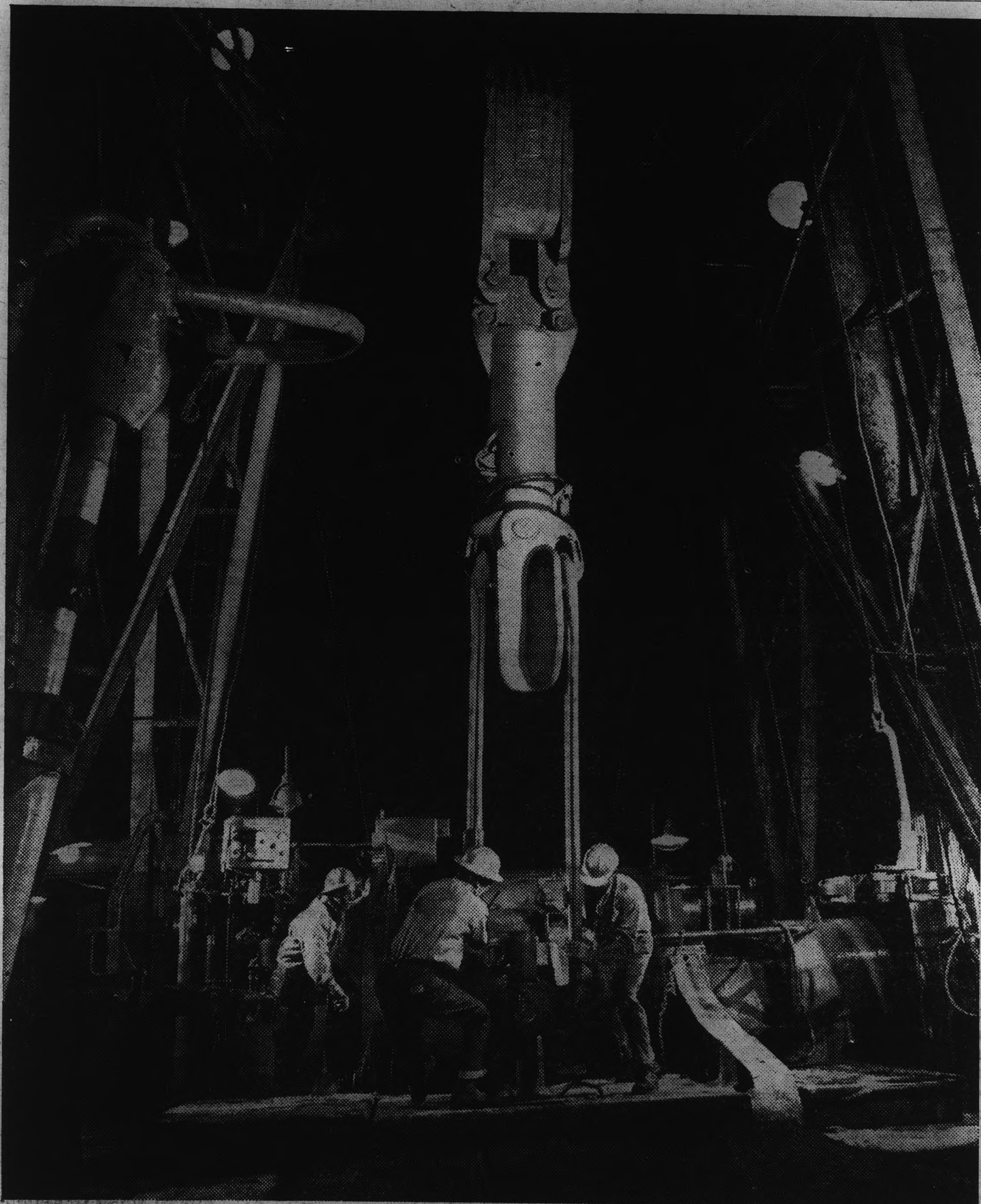
Dr. Bruce B. Mason, former chairman of the political science department, now on a year's leave, also published a short article in the bulletin. It is entitled "The Precinct Committeeman in Arizona."

The Indian pamphlet is sold for 50 cents; the bulletin is distributed free. Both are available at the political science office, SS 220.

## KAET To View United Nations

KAET, Channel 8, will present a 15-minute series featuring highlights of the current session of the United Nations General Assembly beginning tonight at 11:25.

The series will run for 14 consecutive weeks during which viewers will see world statesmen debating international issues such as disarmament, decolonization, human rights and other subjects that concern the 111 member nations.



## Some of our stockholders work at night

Communist workers must find it very hard to understand that an American can be an *employee* and also an *owner* of the business.

For instance: All Standard Oilers who are 35 or older, and have 5 years of service, may invest a portion of their pay in Standard shares if they wish, through monthly deposits in our Employee Stock Plan.

The Company adds a contribution, which has averaged

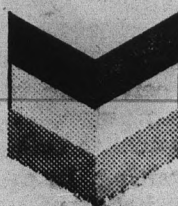
more than \$1.50 for every \$1.00 deposited by employees. When a Standard Oiler retires, dividends from his accumulated stock add to his other retirement benefits.

The Employee Stock Plan is now the largest single holder of Standard Oil stock.

Yes, the husky fellows on that night drilling crew are Standard Oil stockholders. They own a piece of the Company, and share in its profits.

Planning ahead to serve you better

**STANDARD OIL COMPANY OF CALIFORNIA**



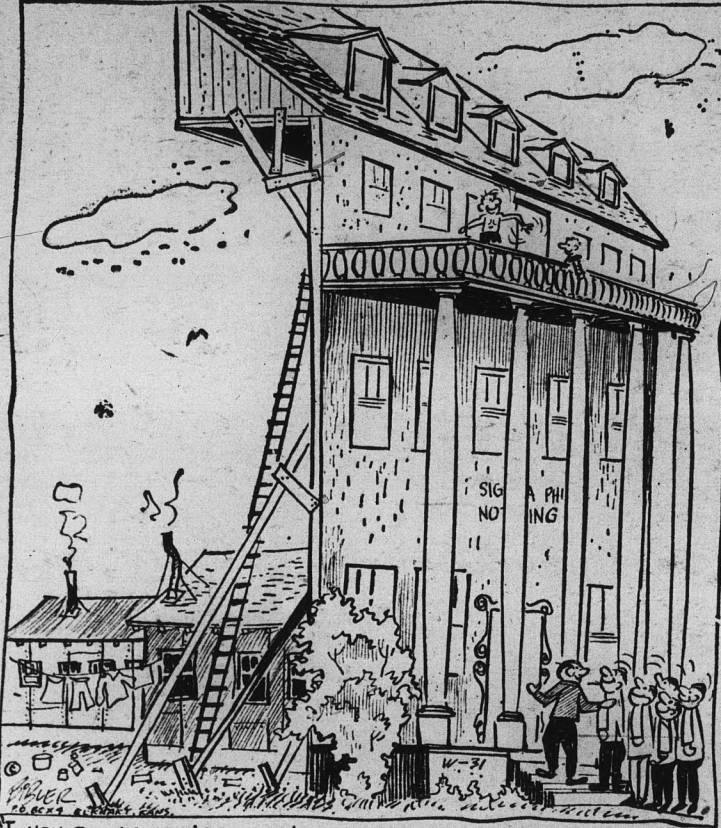
# State Press

THE STATE PRESS, distributed by the campus chapter of Sigma Delta Chi under the direction of Circulation Manager John Nadel, is the official campus newspaper of Arizona State University. It is published each Wednesday and Friday throughout the school year, excepting holidays, and is entered as second class matter at the Tempe, Arizona, Post Office under the Acts of March 3, 1879, and August 24, 1912. The STATE PRESS is a member of the Arizona Newspapers Association, Associated Collegiate Press and National Advertising Service, Inc.

Subscription price, \$3 per school year.

EDITOR-IN-CHIEF	JERRY REILLY
MANAGING EDITOR	ROSS FISH
NEWS EDITORS	ED HEATH, BETTY DUFFY
ASSISTANT	EDIE C. ALLERS
CAMPUS EDITOR	PAM VAN BUSKIRK
ASSISTANTS	MIKE LONGSTRETH, SUE JEFFRIES
SPORTS EDITOR	JOE HEATH
ASSISTANT	ALAN MICHAELS
ASSIGNMENTS EDITOR	BETSY JEAN FRITH
ASSISTANTS	SHIRLEY DeMARKE, FRANK DUCESCHI
COPY EDITOR	JOHN KENDALL
ASSISTANT	GORDON BLACK
FEATURE EDITOR	SUE MARIONEUX
PHOTO EDITOR	LARRY WARD
ASSISTANT	BILL DOOLEY
CHIEF PROOFREADER	TROY IRVINE

## LITTLE MAN ON CAMPUS



"I WOULD LIKE YOU 'RUSHEES' TO SEE TH' GRACIOUS LIVING WE HAVE INSIDE, BUT THIS DELIGHTFUL SURPRISE COMES AFTER YOU PLEDGE."

## I Cover College Avenue

By ROSS FISH

This is your life.

After two weeks of college classes, freshmen should be able to see what their courses are going to require of them; while sophomores, juniors and seniors should be back in the groove.

**THE UNIVERSITY** is a place where youth develops new friendships, new habits, new hopes — a place where he must find himself, set his goals and not waste a minute to attain them.

This is your life.

You have come to Arizona State for an education. Education is a process of both learning and living. You alone, as the adult university student, must determine how to group the hours of each day into the right perspective.

**THE "LIVING"** portion of the educational concept is equally important as the academic for a person can rarely live in harmony with others without taking unto himself part of their desires, their thoughts and their values.

The old saw, "If you want a job well done, give it to a busy man," is just as true today as it ever was.

But be careful.

**THIS** is your life.

Only you know your capabilities. You must choose whether you can afford the Den Hour or should hustle to the library, whether you have time to cruise campus or should start your English assignment, whether you should fill up your schedule with a maze of interesting committee meetings or plan to use your afternoons for study sessions.

It's so easy to look back and see how you should have had the sense to see where to draw the line between living and learning. But it's difficult to budget your time when it's most needed.

**THIS** is your life.

But no matter who you are or where you come from, we have similar problems when it comes to organizing time. We envy the person who produces top grades while continuing to be active in both his personal and campus life.

All it takes is a minute to stop and evaluate yourself. What are your limitations?

**AT THE END** of the second week of school, we find extra-curricular activities pulling into full swing. Campus elections will need campaigning, committees will need members and workers, parties will need dancers and men will need women.

But remember, if you want to join the procession down the halls of ivy one spring night, perhaps you'd better consider those books a little more important.

Yes, this is your life.

**YOU MUST** make your own decisions.

## Sportsmanship Big Word

"It isn't whether you win or lose, it's how you play the game."

When the final gun ended Saturday night's football game, 22 men stood on the field and thought how they had played the game.

**THE WICHITA** 11 were jubilant, elated, proud almost to the point of being arrogant. They had just beaten a team by the same number of points that they were expected to lose by.

Unfortunately, the ASU 11 came out on the short end of the score. They were shocked, ashamed and thoroughly beaten. A finer tuned football team hadn't paid any attention to ASU's pre-season ratings and let them know about it the hard way.

The story does not and cannot end there. ASU's football team is deserving and capable of handling the praise heaped upon it — as soon as it starts functioning as a team.

**WHEN** 11 men stay on the field, 20 points behind and still play to win, there is greatness there — a sportsmanship that becomes a way of life to a dedicated athlete.

But when there is dissent among the team members as to what constitutes sportsmanship, that is, what a trained athlete does or how he acts on or off the playing field, this can cause problems for any team.

Two ASU and one Wichita player were ejected from Saturday night's football game. They suffered from a lapse of sportsmanship in front of over 30,000 fans.

**TEMPERS FLARE** when the going gets rough and Saturday night's game was rough and fast. This combination of events resulted in a fist-fight between a Shocker and a Sun Devil, who were immediately ejected. A second Sun Devil entered a rather vehement protest against the ejection and emphasized the point by throwing his helmet on the ground.

This is not representative of sportsmanship at ASU. The childish display of one or two members of a team cannot and must not be regarded as typical of ASU's football team.

**THE RESULTS** of the game can hardly be blamed on the two Sun Devils who were ejected, although a rather demoralizing effect is produced when two top players are bounced so early in a game. Substitutes cannot replace two highly trained, highly regarded football players rich in defensive experience.

If the two men would have stayed in the game . . . it would have meant a team. A team based on the common denominator of sportsmanship accorded and expected from other teams.

## Welcome Frosh-Try And Stay

Welcome Freshmen.

You've survived the rigors of entering a university — Now all you have to do is stay.

**ARMED WITH** your academic readiness, you'll have to fight family pressures, social distractions, immaturity or lack of responsibility and self-discipline.

On your own, you may drift into neglect of systematic out-of-class reading. The next step is a sidewalk procrastinator. This spells failure for many a college student.

**YOU MAY BE** tempted to over-indulge in winning attention in what seems to be leadership experience, fraternities or sororities, residence halls or campus politics. These will be the things you write home about.

Parents will assume, sometimes wrongly, that everything is going along just fine.

**THEY ARE THE** first to receive the tragic letter stating that because of low academic standing, their son or daughter will not be able to return to college.

The pitfalls are there and waiting. In order to finish college begin now to cultivate habits of self-reliance and responsibility that will help you avoid them.

## Speech Review

# Regular Negro On The March

By JON MORRIS

"The black bourgeois in the United States is a slob, but the regular Negro is on the march and he'll not be stopped," said Dean Joseph W. Mathews Sunday.

Mathews, dean of the Ecumenical Institute of Chicago, spoke on "The Image of the Negro in Our World" in the first of four Sunday Evening Faculty Forum lectures in the MU ballroom.

The dean delivered a vibrant, often romantic piece in which he drew parallels between the African Negro's problems and the country's race difficulties.

He said, "The African is gaining a new sense of pride to be the black of the world that the American Negro does not know."

He said that during his recent two-month tour of Africa it was a "wonderful thing to look into the eyes of a Congo man. Here was a man who was free, and glad to be free."

**THE AFRICAN** black man is a first-rate human being in Africa now, a far different story from the American Negro's positions, Mathews said.

In Africa Mathews saw "irrational vitality — spontaneity that is bursting through mankind." He added that while there is prejudice in America, the African is busy building a nation.

Mathews said whites are "waiting for the black man in Africa to fall back on his face." He said that U.S. whites are waiting for the push of the Negroes that burst in the last three months to be defeated.

He said that many American Negroes go to Africa and are well received.

**MATHEWS** outlined three basic needs of the Congo man, unity, education and well-being of the people. "A great federation in the Congo is wanted," he said.

The dean said the "African is not primitive and never was primitive. He has a gift we may

never understand."

Speaking of educational needs in Africa, the dean said, "There are so damn many researchers today and too few teachers."

"He who gives his life to this cause will find out what it really means to live," Mathews said.

"**AFRICA NEEDS** institutions of learning badly." Education is the "guts of their life," he said.

The African word "muntu" means humanness, Mathews said. "Feeling a Nigerian's handshake is quite different from that of a college football hero. Humanness is in the handshake, vitality, look and feeling of the African," he said.

"We've lost the sense to be human today. The American Negro is on the war path. The African troubles broke him loose," Mathews said.

"It is all part of the resurrection of the black man across the world. The American Negro is a tragic figure in relation to the African," Mathews explained. "There has been a shift in cause. He isn't merely after the rights of the African, it's a matter of human dignity."

"**HOWEVER VIOLENT**, however nasty the Negro is, he's doing a job for us. He's giving us an awareness of dignity — what it means to be human. Until he did that, there wasn't a chance for him in the United States," Mathews said.

In summing up the American Negro situation Mathews said, "It is bringing us to a timeless decision as to whether we're going to live our lives to the hilt."

## Axe Me!

Four ASC students were apprehended at 2:25 a.m. Monday for hanging paper axes on ASU trees, reports Campus Security.

Motive: None.

The only question the State Press has is — What did the ASC students hang on before creeping around the campus at that hour?

## Classified Information...

Students interested in taking out classified ads in the State Press should contact Norman Garnatz in AD 106.

The rates are three cents per word with a minimum of fifty

cents per issue payable in advance.

The deadlines for submission of ads are noon Monday for Wednesday's issue and the same time Wednesday for Friday's issue.

## Children's Workshop Scheduled

The annual Creative Art Workshop for children will begin October 12 under the direction of Jack Taylor, associate professor of art.

The 10-week course is open to students between the ages of six and 18. Classes are scheduled each Saturday in the Arts Building from 9 a.m. to noon.

Parents may enroll their children in advance by contacting the director, or enrollment may be made during official registration on the first Saturday of the workshop. Tuition, including cost of materials, will be \$20.

The prime goal, according to Director Taylor, is to discover the creative art potential in each student through experiences and research in the art field.

## KAET Recruits Seasoned Worker

Fred Damer, senior majoring in electronics, has joined the staff of KAET, Channel 8, as a

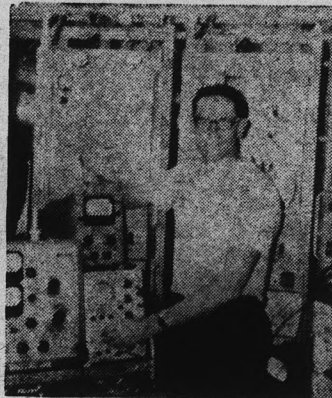
student engineer.

Damer is a transfer student from South Dakota State University. In addition to his electronics background, he has worked as a field engineer for Radio Corporation of America.

He was attached to the Ballistic Early Missile Warning System radar stations in Alaska, which use a great deal of RCA equipment.

Damer brings the station's total of engineers to four. Lynn Dryer, chief of engineering services and John Novak, television staff, are both ASU alumni.

KAET's senior staff engineer is Jack Daniels, a graduate of Franklin University and formerly a video tape recording technician at Ohio State.



KAET ENGINEER — Fred Damer, shows electronic equipment he used when working at missile warning stations in Alaska.

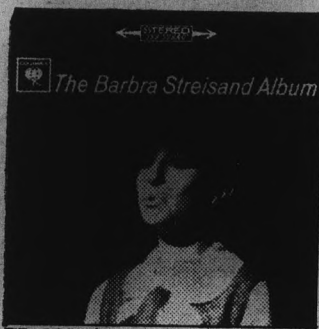
## By Popular Request The 1964 SAHUARO Sale Will Be Extended Throughout The First Semester

In Room 2 - M.U. Basement



### "ONE-OF-A-KIND..."

she is fresh and sophisticated, subtle and straightforward, complex and direct. Above all, a consummate performer, mixing improvisational flair with an effortless control of her songs and her audience." That's how Variety described "the electric climate of excitement" that Barbra creates. She ignites the spark whenever she performs—Basin Street East in New York, the Riviera in Las Vegas, or on records. That unique quality made The Barbra Streisand Album an immediate smash hit. The voltage is even higher on The Second Barbra Streisand Album.



OL 2007/CS 8807\*



OL 2054/CS 8854\*

\*Stereo © COLUMBIA (MARGAS REG. PRINTED IN U.S.A.)

BARBRA STREISAND ON COLUMBIA RECORDS



## Small Business Seminar Offered

ASU's Bureau of Business Services of the College of Business Administration will offer a Small Business Management Seminar for the benefit of owners and managers of small businesses beginning October 1. Meetings are scheduled on Tuesdays from 7 to 9:30 p.m. in the executive seminar room of the BA Building.

A \$45 enrollment fee will cover the cost of instruction, materials and two dinners. Further information may be obtained through the extension division or the ASU Bureau of Business Services at Ext. 3441.

## ASU Instructor Earns Degree

A doctor of philosophy degree in business administration will be conferred on William Huizingh, ASU associate professor of accounting, in December, by the University of Michigan.

Huizingh, on leave of absence last academic year to complete his doctorate at Michigan, is now back on campus. His dissertation concerned the evolution of reporting practices for working capital position.

Arthur Andersen and Co., Chicago-based certified public accountants, last year awarded a \$5,400 doctoral dissertation fellowship to Huizingh.

A CPA in Arizona and Colorado, Huizingh has bachelor of science and master of business administration degrees from the University of Denver.

## Professor Returns From UCLA Campus

Dr. Ross Rice returned to ASU this fall as professor of political science after a year as visiting professor of political science at the University of California, Santa Barbara.

Dr. Rice was chairman of the ASU political science department until June, 1962, when he left for California.

He is a former Tempe mayor and past member of the city council.

## UNIVERSAL TRAVEL

"ASU Student Travel Headquarters"

WO 7-1673

18 E. 5th St. - Tempe

## ideas:

"The future depends on people with ideas."

This statement helps explain the work at IBM today: seeking and finding new ways to handle information, planning and building new machinery for the task, exploring wholly new methods.... ■ The demand for ideas has never been greater. ■

Check with your college placement officer and make an appointment with the IBM representative who will be on campus interviewing. ■ Ask for our brochures. ■ IBM is an Equal Opportunity Employer. ■

If you cannot attend the interview, write: ■ Manager of College Relations, ■ IBM Corp., 590 Madison Ave., New York 22, N. Y. ■

MOVE AHEAD: SEE **IBM** OCT. 21 & 22

# HILLS BOOKS and RECORDS

Your Campus Record Headquarters

In The TEMPE SHOPPING CENTER

# 'Old Town' Represented Pictorially In MU Valley

Arizona is well-known for its ghost towns, but one of the liveliest "ghost towns" is located at ASU—in the basement of the MU.

The basement area was transformed into "Old Town," a collection of University amusement areas and student activity offices, decorated in Old Western motif.

**STREET SIGNS** designating the direction of State Street, the hall that leads to the State Press, and Sahuaro Road, pointing the way to the Sahuaro, yearbook office, are planned.

Town square will be the area of the bowling alley and Clancy's while the State Press will be termed the "Town Paper" and the Sahuaro office will be the "Town Printers."

Also redecorated this summer was the Devil's Den, which now truly does resemble the modern concept of the devil's flaming home.

**RESPONSIBLE** for the murals in the basement and the Devil's Den are Don Newton, Michael Obrenovich and Jack Haehl, under the direction of the Social Board and Mrs. Cecilia Scoular, MU director.

The three artists also decorated Clancy's in 1958.

Newton and Obrenovich are currently employed in the ASU audio-visual department.

While painting the street scenes, Don Newton says he does not paint just one figure at a time, but that he adds de-

tails to the various scenes, depending upon the color of paint he is using at the moment.

**ALL SCENES** were painted with no previous diagramming, other than mental planning by the painters.

The painters remark that the things bothering them the most about their work are the questions that the students continually ask, for example, "What are you doing?"

## New Schedule Reveals Movies

Bob Hope in "Bachelor in Paradise" will open the 1963 Cosner movie schedule Thursday at 7:30 p.m.

Students will be able to attend all but two of the movies this year without cost.

This new program includes continuing the regular Thursday and Friday night series as well as a new series.

Periodically, Tuesday nights will be set aside for an art series. "Lili," "Macbeth" and "An American in Paris" are scheduled for this semester.

Thursday and Friday night movies include, "Carousel" and "Shane."

Movie chairman, Jerry Beemiller, said that 25 cents will be charged for "Psycho" and "The World of Suzi Wong."

## New Officers, Activity Told

Stevie Haines has been elected president of the Alpha Epsilon Phi sorority pledge class. Other officers are Bernie Orloff, secretary-treasurer; Janice Cohen, junior Panhellenic representative; Liz Meer, social chairman; Susan Jacobs, scholarship and Sonia Tarish, creativity.

The Sun Devil Rodeo Association is having a western dance for old and new members, Friday, from 8 to 12 p.m. in Clancy's.

## Center Aids Job Finding

All seniors and graduate students completing degree requirements this school year are urged to register now at the placement center for employment after graduation.

Campus interviews by national firms will begin in October.

The placement service, in AD 101, also helps students find part-time employment both on and off campus.

## Phrateres Pledge Off-Campus Women In Morning Ceremony

Phrateres, off campus women's organization, pledged 74 women in early morning ceremonies Monday.

New pledges from Phoenix are Patty Gorman, Pat Fabeny, Aleda Richter, Linda Knight, Sandy Schneider, Susan Peacock, Darla Mace, Dorene Gallard, Charlotte Poorman and Darlis Geist.

Also Diane Cooper, Karen P. Turner, Barbara Furthmiller, Mary Jane Rogers, Margi Culeen, Karen Sparkes, Pat Dick, Nikki Mandigo, Sharon Maurin, Margaret Fogie, Heidi Schulz and Mary Katariski.

FROM SCOTTSDALE are Diane Hamilton, Leonora Couvdos, Pat Moore, Barbi Young, Linda Carter,

Louise Pries, Janice Rose, Pat Grady and Carolyn Wischler.

Also Barbara Patterson, Mary Staddon, Judy Parker, Susan Sampson, Barbara Jenkins, Ann Jordan, Kathy Myers and Edra Luellen.

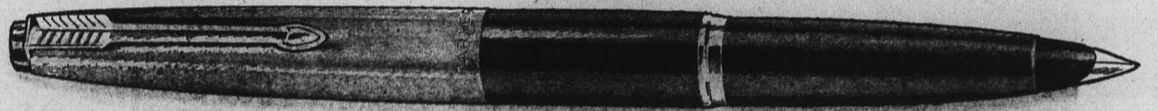
Pledges from Mesa are Carol Davidson, Brandow, Lois Snyder, Barbara Kramer and JoAnne Shorter.

FROM TEMPE are Sue Benedict, Liz Hocking, Nancy Hawkins, Justine Lewis, Patty Robinson Debbie Flanders, Jean Harris, Alberta Amos, Vicki Dilworth, Phyllis Crabtree, Tina Fredrickson, Ruthann Kroese, Darlene Gammill and Johni Willingham.

Also from Tempe are Robin Reed, Marsha Porterfield, Carol Byers, Darlene Starner, Kim Keener, Janice Whiting, Nancy Barnum, Ruthanna Terrell, Sandra Fix, Elaine Gilbert, Kay Bensenbruegge, Elaine Pickett, Roxanne Decker, Sandy Ramos, Gladys L. Lytle and Debbie Clark.

**Q.**  
Why buy a pen this good when you might just lose it?

**A.**  
Parker won't let you lose it. If you do, it will be replaced\*



### \*SPECIAL REPLACEMENT OFFER

If you buy a Parker 45 for \$5 between now and October 31, 1963, it will be protected against loss for one full year at no extra cost. Just register its purchase by mailing one-half of the Parker 45 Registration Certificate to the insurance company listed on the certificate. Then if the pen is lost, the insurance company will replace it at no charge. All you have to do is mail the other half of the certificate, properly notarized, and describe how the pen was lost.

Here's why this is such a good pen for a college student:

It's "convertible". You can load it with a cartridge or you can replace the cartridge with this ingenious little "converter" and fill it from an ink bottle. Hard to run out of ink during an exam.

Solid 14K gold point. You get a choice of seven widths from extra fine to extra broad. And if you damage a point, your dealer can replace it instantly.

For only \$5 you get: The pen, a "converter," a cartridge, and free exchange of any undamaged point within 30 days of purchase. PLUS Parker's special replacement offer. This guarantee against loss will be offered until October 31st only, so better see your Parker dealer right away.

† PARKER—At 75 years—Maker of the world's most wanted pens

The new Parker 45 Convertible \$5

1. load it with a cartridge  
2. or fill it from an ink bottle

AVAILABLE AT THE  
**UNIVERSITY BOOKSTORE**

**Welcome!**  
**STUDENTS & FACULTY**

**Jam's**  
**RESTAURANT**  
Tempe Center

**DAILY BREAKFAST SPECIAL**  
2 COUNTRY FRESH EGGS ANY STYLE,  
HASH BROWNS, TOAST, JELLY,  
COFFEE OR TEA

**50c**  
With Ham, Bacon or Sausage

**65c**  
Served Till 11 A.M.

**OPEN 8 A.M. TO 7 P.M. DAILY**  
**CLOSED SUNDAYS**

A Shocker Mistake?—



LOOSE BALL—An incomplete pass gets by Wichita's Sullivan Mills (25) and Charlie Taylor (37) in the first quarter of Saturday night's game in Sun Devil Stadium. Watching is Alonzo Hill (80). Wichita won contest 33-13.

# Shockers Supreme, Devils Demolished

By AL MICHAELS

Wichita, a team with heart, crushed Arizona State's supposedly invincible Sun Devils, 33-13, before 31,592 Sun Devil Stadium fans Saturday night.

Coach Chelo Huerta's Shockers clawed their way back from a 13-0 first quarter deficit to hand ASU its first opening game defeat since 1942.

Coach Frank Kush felt his squad wasn't at its best against the Shockers.

### WHO'S TO BLAME?

"I'll take the credit for the Wichita loss," said downhearted Kush after the game. "It's the coach's job to have his athletes mentally prepared for a game, and we weren't. Wichita wanted to win the game a lot more than we did."

Immediately following the loss, Kush took his troops to the Devils' practice field at Goodwin Stadium and ran them through a 45-minute scrimmage session.

### WIN ONE, LOSE ONE

One ASU halfback commented, "Yeah, we played two games Saturday night but won the second one."

## Roger Locke Honored For Canada Play

Roger Locke, an all-American end candidate and former outstanding member of the Sun Devil football squad, was awarded the outstanding player award following a game between the Winnipeg Blue Bombers and Regina in the Eastern division of the Canadian pro football league.

Locke, playing for Winnipeg, starred at both offensive end and defensive linebacker in the game August 19.

He joined Winnipeg after graduating in 1962 and has earned the nickname of "Big" Roger Locke.

WANTED: Men & Women to sell nationally advertised product. Generous Commission. Eichenauer — WH 6-5281.

Wichita combined the passing of Henry Schichtle and the running of fleet scatbacks Ray Patterson and Sullivan Mills in defeating the Sun Devils for only the second time in seven meetings.

Schichtle completed 11 of 22 throws for 167 yards, including a 72-yard touchdown toss to Patterson.

ASU tallied on its first drive of the night when Gene Foster bucked in from the three-yard line after a 71-yard march.

### STOPPED FOR A WHILE

The Shockers were unable to move following the kickoff and the Devils found themselves right back in scoring position after a Wichita punt. ASU's drive bogged down on the Shocker 23 and John Seeborg's attempted field goal was wide.

Three plays later, Wichita was forced to punt from its own 22. Charley Taylor fielded Jim Sickler's boot on the ASU 46 and scampered 54 yards to close out the Devils' scoring.

Wichita tallied on the ensuing drive when Schichtle capped a 77-yard thrust by rolling out from the three for the score.

At halftime, the Devils nursed a 13-6 margin.

## Swim Coach Will Speak

ASU swimming coach Walt Schlueter will be the featured speaker at the 1964 Canadian Forum for Advanced Aquatics in London, Ontario, Canada, August 20-22.

The clinic is sponsored by the Canadian Fitness and Sports Council and the Canadian Amateur Swimming Association.

Schlueter was Pan-American swimming and diving coach for the U.S. team in 1950 and U.S. Olympic diving coach in 1952.

### INSURANCE

— We Write All —

Inc. Under 25 & S-R 22's

- Auto • Motorcycle •
- Trailer • Fire • Theft •

### RALPH PACKER

967-3189 or 967-9141  
26 E. 8th St. Tempe

**VILLAGE INN**  
PIZZA PARLOR  
"Where pizza is always in good taste"

- TEMPE — 801 Apache Blvd. . . . 967-3355
- MESA — 1156 West Main . . . 964-4515
- PHOENIX — 61 West Thomas Road . . . 264-5511

### THREE PLAYS TIE

It took Wichita just three plays to get even in the third quarter with Patterson scoring on a 72-yard pass play.

The Shockers moved ahead for keeps on a 47-yard drive halfway through the period, Mills taking it in from the five.

Wichita added two insurance TDs in the fourth stanza as the Devils extended their losing streak to two, ASU bowed to Arizona, 20-17, in last season's finale.

Leading rusher for ASU was fullback Tony Lorick who picked up 79 yards in five carries. Lorick, teammate Larry Fachine and Shocker halfback Miller Farr were ejected in the second quarter following a sideline scuffle.

**Racers**  
slacks

Course winners!  
Extra slim with the new dropped front pockets.

**AI**

FINE TWILL—  
of 100% cotton:  
Sanforized Plus for  
easy care, \$4.98  
AT YOUR FAVORITE  
SOFT GOODS EMPORIUM

**Your A-1 Dealer in Tempe**

**CAMPUS DRUG**  
102 MEN AND YOUNG MEN

**MAN SIZE!**

**MENNEN SPEED STICK**  
deodorant FOR MEN

**MENNEN SPEED STICK**  
One wide, dry stroke stops perspiration odor all day!

Speed Stick, the deodorant for men! Really helps stop odor. One neat dry stroke lasts all day, goes on so wide it protects almost 3 times the area of a narrow roll-on stick. No drip, never tacky! Fast! Neat! Man-size! Mennen Speed Stick! **M**  
All it takes is one clean stroke daily!

FULL LINE OF MENNEN PRODUCTS AT

**CAMPUS DRUG**

CORNER COLLEGE & 8th ST.

# Off The Cuff

By JOE HEATH

Well, what can I say? If I could come out with something like "If Young would have caught that third quarter pass," or "If it hadn't been for those fumbles and interceptions," then I don't think that things would be so bad.

However, sad as it is, the only "if" that could have kept ASU from being ransacked would be "If Wichita had only stayed home."

It wasn't even a "You choked Tempe, you choked" type of game.

**THE WAY** it appears, the Devils were the victims of a "Fast Eddie" hustle. Before the game, Wichita Coach Chelo Huerta made known the fact that he was merely hoping for a good showing by his crew of Shockers.

But when the dust was all cleared (and there wasn't too much in the air after the first quarter), "Paul Newman" Huerta told reporters that "we gave them 13 points in the first quarter and then beat them in the final three quarters. Next year we'll beat the hell out of them again."

Once again, what can I say? They slap people's wrists for taking their money back after they have supposedly covered their bets. I would have said "no bet" if I had been offered 13 points and Wichita before the game.

Pre-game guessers (including myself) weren't entirely wrong — there were more than 30,000 fans in Sun Devil Stadium — until the start of the fourth quarter anyhow.

**LOYAL DEVIL** fans who will be attending the New Mexico State game Saturday night might be interested in noting some of the "tentative" starting lineup changes that already have been announced by Coach Frank Kush.

End Jerry Smith will be replacing Alonzo Hill; sophomore guard Bobby Johnson will take over for Bob Kec, and Ray Young will move ahead of halfback Charlie Taylor.

Meanwhile, word comes from Las Cruces, N.M., that no one feels worse about ASU's defeat than NMSU Coach Warren Woodson.

"When we get over to Tempe Saturday night," said the Aggie coach, "they'll be ready to prove how good a team they really are. That score was no indication of their strength. We're just unlucky enough to be the team that goes in there Saturday night."

It all remains to be seen.



**THIS  
WEEK  
ONLY!**

**SEPT 24, TO 29**

BETTER SEE  
THEM NOW —  
AT THE VALLEY'S  
NEWEST, BIGGEST  
CONCERT-COFFEE  
HOUSE — ALWAYS  
THE FINEST IN  
NATIONALLY —  
KNOWN FOLK  
MUSIC

## FOGGY MOUNTAIN

FIFTY-FIVE WEST SIXTH AVENUE

SCOTTSDALE

947-5161

### Devil Coeds Will Form Fitness Club

A physical fitness club for women is being formed by the department of health, physical education and recreation.

The department extends an invitation to all women faculty and staff members to help form the club.

An orientation meeting will be Monday at 7:30 p.m. in MPE Annex 102 to discuss organization of the club. Miss Nina Murphy will be coordinator of the program.

Anyone interested but unable to attend the meeting is requested to call 966-3648 for additional information.

### WAC Scores —

Wichita 33, Arizona State 13  
Utah State 42, Arizona 0  
Wyoming 35, Montana 0  
Oregon State 29, Utah 14  
Kansas State 24, BYU 7  
New Mexico (idle)

### Sun Devil Facts

The Western Athletic Conference is represented by five cities ranked among the top 65 in the U. S. in population. They are (with 1960 census figures in parenthesis): Denver (Conference office—494,000), Phoenix (439,000), Tucson (213,000), Albuquerque (201,000) and Salt Lake City (189,000).

## Today's most interesting students read The New York Times Western Edition

Why don't you? You'll find it a rewarding daily addition to your college days and studies. It keeps you on top of today's exciting events... helps you in a variety of courses... gives you vital background for discussions in and out of the classroom.

Why not arrange a subscription today? The Western Edition of The New York Times is available to you on campus the same day it rolls off the presses in Los Angeles—and for only 10¢ a copy. Your New York Times representative on campus will be glad to serve you every day, Monday through Saturday, during the coming year.

Dwain "Mickey" Bouton

1020 E. Orange — No. 12

Tempe, Arizona

