

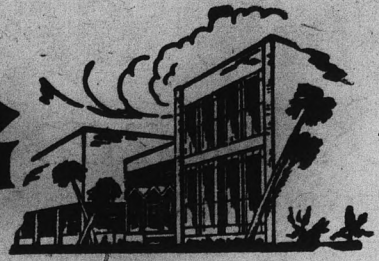


State Press

ARIZONA STATE UNIVERSITY



TEMPE, ARIZONA



Vol. 42

Friday, September 20, 1963

No. 1

ASU Enrolls Over 15,000 For Classes

ASU fall enrollment as of 8 p.m. last night was 15,048 and was on schedule for reaching the anticipated total of 15,500 students by the close of registration, according to Alfred Thomas, Jr., registrar and director of admissions.

The freshman class is expected to total more than 4,000 and graduate enrollment should approach 3,500, the registrar said.

Final enrollment figures will not be available until the close of late registration, Monday at 4 p.m., according to Thomas.

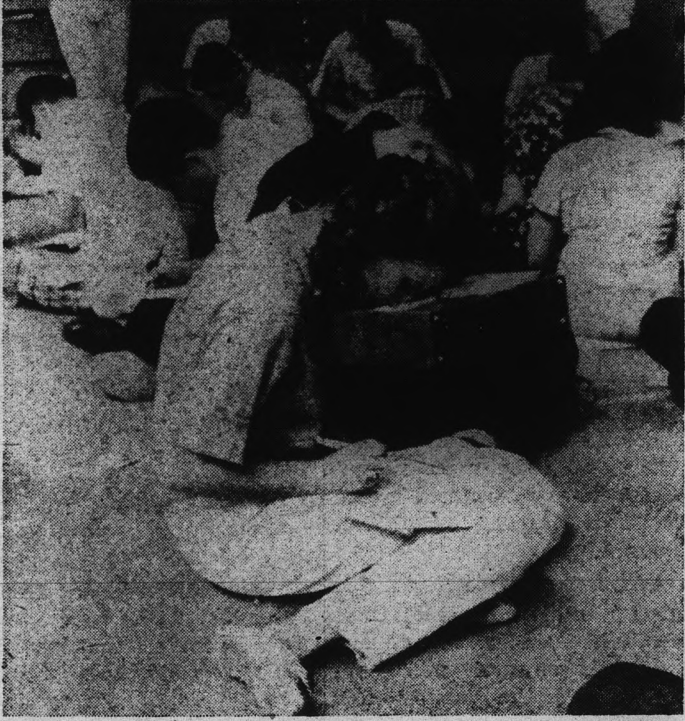
ASU's student body has increased by more than 10,000 since the 1953 enrollment of 4,578.

State Press Office Moves

The State Press begins its 1963-64 publication year with a brand new look — improved and expanded editorial offices in MU 3, formerly occupied by the University Housing office.

The offices were moved from MU 211 during the summer in response to a need for larger quarters to house the steadily expanding publication.

Along with the new quarters came new telephone numbers and an expansion of the phone service into three lines. State Press extension numbers are 3656, 3657 and 3249.



REGISTRATION — Students searched out open spots to organize materials and fill in blanks at registration last week.

Greek's' Pledging Ends Rush Events

Greeks and rushees gave a sigh of relief this week as fraternity and sorority formal rush ended.

Sorority women involved themselves during Freshman Week with a series of open houses, theme parties and preference parties.

Sorority bids were accepted by 187 women Saturday.

Climax to their rush were ribboning and pinning ceremonies at the sororities' Palo Verde chapter rooms. Rush activities ended for the men

ceeding the formal activities by comments such as that of Dean of Students Weldon P. Shofstall.

"Fraternity men tend to stay in college and to eventually reach the goal of most university men, which is a university degree, much more than other students," said Dean Shofstall.

"In fact, it seems that when a man joins a fraternity he almost doubles his chances of graduation. I can't think of more specific, practical and important value to fraternity membership than this one point."

Wednesday when rushees picked up their bids in the MU.

ASU's 21 fraternities began rush last Friday with open houses. Events continued with open houses Saturday, smokers Sunday and preference parties Monday and Tuesday evenings. Greek rush was spurred pre-

See Pages 12 and 13 For Pledge Lists

Arizona Beauty Returns Home To Join Daily Campus Parade

By J. DAVID McFARLAND

Susan Jean Bergstrom, Miss Arizona of 1963, left the boardwalks of Atlantic City, New Jersey, to return to campus life last week.

"I would like for the contest to have gone on another week," Suzie said, "But I'm glad to get back to college."

AS FOURTH runner-up to Miss America, the 21 year old Miss Arizona received a \$1500 scholarship which she will use to major in physical education here.

"I was really shocked when they announced my name as a finalist," she said.

"They tell you not to run to win, but to run to have a good time, and that's what I did. I

was very honored to be fourth runner-up to Miss America, but I would have liked to win the crown."

THE HIGHLIGHT of Suzie's TV appearance came when master of ceremonies Bert Parks asked her to face a question board.

"You're standing on my dress," she said quietly. Parks failed to hear her the first time, and the second time Parks and a television audience of 75 million heard her. Parks quickly stepped off the dress and Suzie turned to the question board.

"After it was all over I saw these two footprints on my dress, and I thought I'd never have it cleaned," she said.

SUZIE DISCOVERED that Miss America contestants don't have time to get tired.

The pageant started on the boardwalk. "There were high school and college bands from all over the East coast. And the girls' floats were the most magnificent things I've ever seen," Suzie said.

"A YEAR is a long time," Suzie says of her reign as Miss Arizona, "but in many ways I'll be sorry to see the title go."

As the retiring Miss Maricopa County, Suzie crowned another ASU beauty, Vonda Kay Van Dyke, Miss Maricopa of 1964. Vonda, a junior speech major, is a professional singer and ventriloquist at Legend City.

Memorial Union Opens Facilities

The annual Memorial Union Open House will feature a "view of the new" providing a variety of entertainment to welcome newcomers to the University, tonight from 8 p.m. to midnight.

Clancy's, in the MU basement, has been transformed into a replica of "Mickey Finn's," the notorious San Diego night spot.

OLD-TIME flicks will be shown and dancing waitresses will entertain.

Folk singer Ted Newman will preside at a hootenanny in the lower lounge. The new Memorial Union Quartet, comprised of Betty Burton, Ed Humphrey, Pat Tarpey and Karl Wochner, will also appear.

A piano sing-along is planned in the lower lounge hosted by the Social Activities Committee.

THE UPPER lounge will house the ASASU permanent art collection. A pottery wheel will be in operation for a ceramics demonstration, sponsored by the Cultural Affairs Committee.

The ballroom will feature dancing and Susan Stahlberg, Phoenix recording artist. Glen Martin will introduce the Sun Devil football team at 9 p.m. and dancing will resume until midnight.

THE BOB VUJKOV Trio will feature music in the style of Andre Previn, with Ross Chavolla on bass, Larry Mabbitt on drums and Bob Vujkov on piano in Room 218.

All ASASU offices will be

open to interested students.

Applications for student government committee membership will be available at both lounges.

BOWLING, billiards and table tennis will be free during the evening in the games room.

Hosting the evening's activities is the Memorial Union staff.

Union hours have been set. The building will be open Monday through Thursday, 7 a.m. to 10:30 p.m., Friday and Saturday 8 a.m. to midnight. The information desk will open at 8 a.m. It will be open Sunday noon to 10 p.m.

THE GAMES room will offer pool and table tennis, Monday through Thursday, from 10 a.m. to 10 p.m. and until midnight on Fridays.

Bowling is scheduled from noon to 10 p.m. Monday through Thursday and noon to midnight on Friday.

The Devil's Den is open Monday through Friday 6:30 a.m. to 10:30 p.m., Saturdays 7:30 a.m. to 10:30 p.m. and Sundays 1 p.m. to 10:30 p.m.

The Corral, adjacent to the MU ballroom, is open Monday through Friday, 8 a.m. to 4 p.m. and is closed Saturday and Sunday.

In Suzie's Footsteps



ASU BEAUTIES — Susie Bergstrom, Miss Arizona, crowns Vonda Kay Van Dyke as Miss Maricopa County in the contest that started Suzie's climb to the Miss America Pageant where she was awarded fourth place. Both are ASU coeds.

State Of University Talk Outlines Growth Plans

Enrollment at ASU will be 30,000 by 1975 according to President G. Homer Durham in his annual "State of the University" address at the faculty planning conference September 6. Dr. Durham made several challenging predictions in his address.

The president said no one should be surprised if the operating budget reached \$30 million in 1973-74 and approached the \$90 million mark by 1980.

Durham explained the reasoning behind these predictions was the tremendous growth of the state of Arizona.

"I am obligated to submit a preliminary and tentative report to the Board of Regents with respect to long-range planning between now and September, 1980," Durham said.

"The statements are purely tentative and preliminary.

Like all plans, they will soon be replaced as knowledge and experience unfold."

Durham discussed land-acquisition plans and outlined the proposed building budget through 1966, which, with the new University Library, will total nearly \$14 million dollars.

Included among the major building projects, in addition to the library, is a mathematics wing of the Physical Sciences Center, a language and literature addition, women's physical education, nursing, business administration, fine arts, architecture, Physical Sciences wing F, remodeling of the Arts building, a Student Health addition, psychology, and refrigerating Old Main.

A school of fine arts may become an administrative necessity by 1965, according to Durham. Because of the predicted growth of the

state and the significance of legal training for business and public affairs as well as the practice of law itself, Durham said a College of Law may be necessary by 1971.

"Fortunately, the expense involved in a College of Law is small," he added. He also pointed out that minor investment yields probably the highest returns per dollar invested, both to the institution and to the community served.

Durham said the question of other professional schools and programs must remain open. "Their development will come largely in the future as required by only the most urgent needs and as determined by the Board of Regents," said Dr. Durham.

Addressing more than 600 faculty members and their wives, he said, "We have acquired unusual additional strength to the faculty this year. The acceptance of the first class in the new Graduate School of Social Service Administration this September marks the beginning of formal instruction in our newest graduate professional school."

Durham emphasized that (Continued on Page 6)



ASU WELCOME — Dr. G. Homer Durham, ASU president, welcomes John W. Ryan to the administrative staff of Arizona State University.

Eastern Educator Is New Vice President

Dr. John W. Ryan, former assistant to the president and secretary to the board of trustees of the University of Massachusetts (Amherst) has been appointed ASU academic vice president.

The new vice president was formerly special assistant to the vice president of the University of Wisconsin, political science faculty member and assistant director of the Institute of Public Service at Indiana University where he received a Master of Arts and Doctor of Philosophy degrees.

IN ADDITION to serving as a research analyst for the Kentucky Department of Revenue

at Frankfort in 1954-55, Dr. Ryan was also visiting research professor for Indiana University in Bangkok, Thailand, from 1955-57.

In announcing his appointment, ASU President G. Homer (Continued on Page 6)

Uhl Fills Temporary Post As Political Science Head

Dr. Raymond Uhl has been named acting director of the Political Science department in the absence of Dr. Bruce Mason who will be overseas for a year.

Dr. Mason left in June for Nationalist China as a professor-advisor to a University of Michigan aid team. Dr. Mason is serving as a public administration advisor in Taipei, the capital of Taiwan.

Dr. Leonard Goodall has been named acting director of the Bureau of Government Research in the absence of Dr. Mason.

Dr. Uhl, senior professor in the political science department, was graduated from the University of Virginia. He received his doctorate from Johns Hopkins University in Baltimore, Md.

Dr. Uhl has taught at the University of Virginia, the University of Hawaii, the University of South Carolina and the University of Minnesota. He served for three years as director of local government research for the Maryland State Planning Commission.

At the University of Minnesota Dr. Uhl was a visiting professor of political science with assignment to the Korean program.

He came to ASU four years ago.

Acting Government Research Bureau Director Goodall has been here for two years. He came here from the University of Illinois.

Bunch's Watch Shoppe

featuring

• ACCUTRON, Electronic Watch by Bulova

• SPEIDEL Bands

Phone WO 7-3221
609 MILL — TEMPE

RECORD SALE

Jazz and Classics

A Special Group Of Both Hi Fi And Stereo Albums Originally Priced At \$3.98 & \$4.98 Are Now Selling For

\$1.98 HI-FI

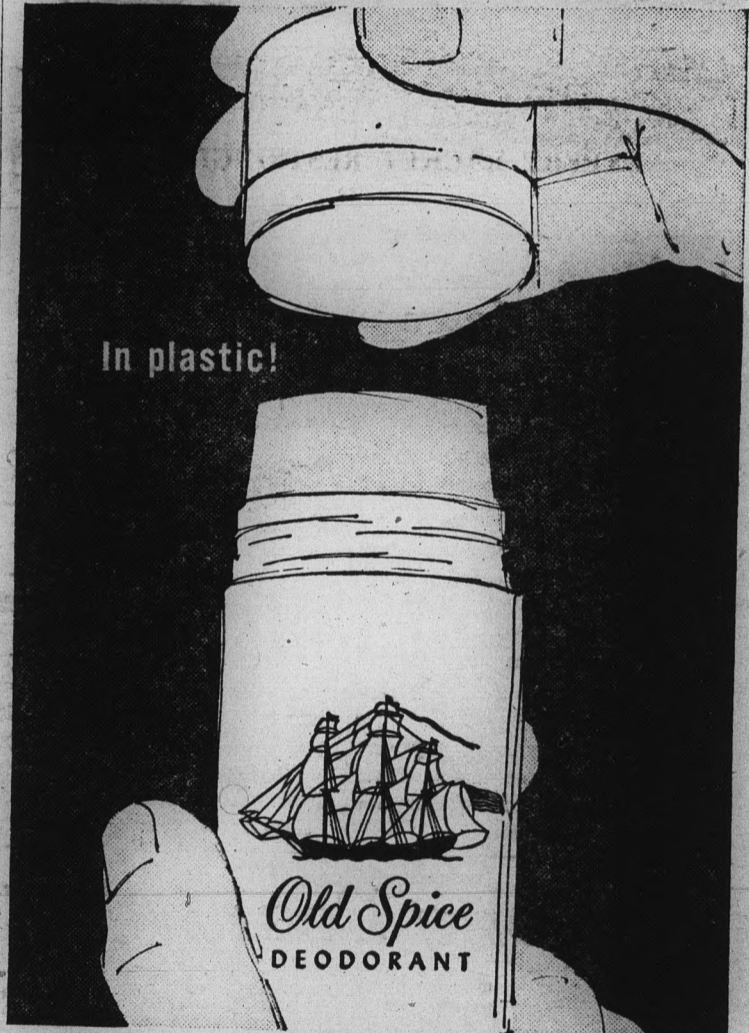
\$2.98 STEREO

Come In And Browse At Campus Record Headquarters

HILLS Records

TEMPE SHOPPING CENTER

MEN!



Here's deodorant protection YOU CAN TRUST

Old Spice Stick Deodorant...fastest, neatest way to all-day, every day protection! It's the active deodorant for active men...absolutely dependable. Glides on smoothly, speedily...dries in record time. Old Spice Stick Deodorant —most convenient, most economical deodorant money can buy. 1.00 plus tax.

Old Spice STICK DEODORANT
SHULTON

System Altered

CENTREX Regulates Phones

An out-moded and seriously over-loaded telephone system on campus, that crippled communications and frequently sent tempers flaring, has been replaced by a more efficient system, according to Vice President of Business Affairs Gilbert L. Cady.

Put into operation August 24 the new system, CENTREX, enables incoming calls to be dialed directly to individual extensions by means of automatic switches, by-passing campus operators.

WITH the change-over came a new telephone number for ASU, 966-3011.

The public no longer will be greeted by constant busy signals when dialing the University, a frequent annoyance in the past, Vice President Cady said. The same problem was often shared by students and campus personnel attempting out-going calls.

Under the new system the number of feeder lines leading to ASU has been increased from 32 to 135 said Ed Nantz, spokesman for the Mountain States Telephone Co. The number of campus phones has increased from approximately 750 to 1,100.

NANTZ said much of the telephone increase can be attributed to installation of individual room phones in Palo Verde East, Quad and Gammage halls.

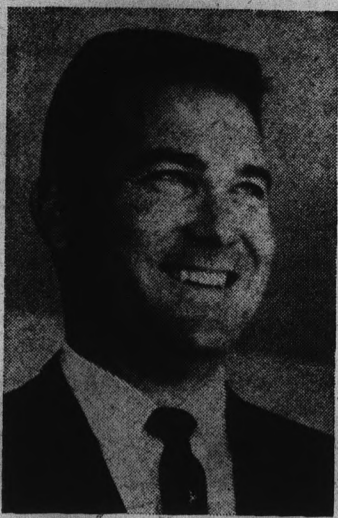
"If our old system had been expanded to meet the needs," Mr. Cady said, "the cost would have been far greater than conversion to this new system."

"Complex as the equipment room is filled with its maze of wires and switches, it is actually designed to simplify and speed up the entire communication process."

An analysis of enrollment figures and volume of telephone calls during the past ten years dramatically points up the need for the new system.

IN THE fall of 1953 there were 4,077 on-campus students registered for first semester. During the month of October,

(See •Phones on page 6)



DON DEDERA

Dedera Named New Chairman Of Alumni Fund

Don Dedera, columnist for The Arizona Republic, has been named chairman of the 1963 ASU Alumni Development Fund according to Harry Mehrtens, president of the association.

Dedera, a 1951 graduate of ASU, was given the national Ernie Pyle Memorial Award in 1958 for his morning column.

More than \$10,000 was available in the Alumni Fund last year and \$100,000 in student loan funds was realized in a program similar to the United Student Aid Fund.

Information will be mailed to all Alumni in the next few weeks, Mehrtens said.

Relocation Of Ten Offices Aids ASU Expansion Effort

Relocation of ten ASU administrative and student activity offices was completed during the summer in an effort to expand university facilities.

The biggest move was the transfer of the admissions offices, registration and records from the Administration Building to the remodeled Moeur Administration Building.

A GENERAL exodus was initiated from the MU this summer. The offices of the Dean of Students, Dean of Men, Financial Aids office, ASASU and Intercollegiate Athletics Business office have been moved to the Administration Building.

The Dean of Students' office is now located in AD 103 and AD 104 is headquarters for the Dean of Men and the Financial Aids office.

The ASASU and Intercollegiate Athletics Business office is now in AD 106.

THE OFFICE of the executive manager of ASASU will move from MU 226-227 to MU 206-207 on Monday.

The Housing office was moved into the Moeur Administration Building from the basement of the MU.

The University Bookstore has opened a second location exclusively for the sale of text books in the southwest corner of the MU basement. The upstairs store is selling supplies and is enlarging its paperback book selection.

THE STATE PRESS office was moved from MU 211 to MU 3, the former Housing office location.

Other rooms vacated in the MU are being remodelled into conference rooms, additional dining areas and expanded student government offices.

Campus Security has been relocated on the northeast corner of Orange Street and Van Ness Avenue. The Physical Plant offices have expanded into the old Campus Security quarters.

Record Lectures
Speeches, Meetings, Etc.
On CITROEN Miniature
Tape Recorder
For Free Demonstration
On Campus
Call Don Morris
WH 5-0347

P.E. CLOTHES FOR MEN AND WOMEN

Brand Names MEN'S WEAR

Brand Names WOMEN'S WEAR

EXPERT RACKET RESTRINGING

Trophies and Engraving

"FOR BRANDS YOU KNOW"

Joe Selleh

624 Mill Ave.

WO 7-4163

Buy Your

U.S. Keds

at

Fashion Bootery

605 Mill

Tempe

Management Course Set

A graduate seminar in the Management of Industrial Research and Development taught by Dr. Vincent G. Reuther, ASU associate professor of management, is offered for the first time this fall by the College of Business Administration.

The seminar is scheduled Thursday evenings from 6:40-9:30 and carries three semester hours graduate credit. No technical education experience is required.

Also offered are two sections of Industrial Management taught by Dr. Reuther. The three hour course may be taken on Monday, Wednesday and Friday from 9:40-10:30 a.m. or Tuesday and Thursday from 9:15-10:30 a.m.

Registration can be made at the Department of Management, BA 107-109.

Fall Term SPECIAL

One 5x7 Print Plus

12 Wallet Size . . .

Regularly \$18.00

now only **\$11.95**

Includes Sitting Fee

Studio M Portraits

"Portraits of Excellence"

PIONEER CAMERA SHOP — Tempe Center

Thank You
We Appreciate Your Understanding During The Rush Days

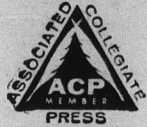
BOOKS AND SUPPLIES WILL BE REPLENISHED IMMEDIATELY TO FILL YOUR NEEDS

Bookstore Hours:
Monday - Thursday — 8 a.m. to 7 p.m.
Friday Only — 8 a.m. to 4:30 p.m.
Saturday Only — 8 a.m. to Noon

UNIVERSITY BOOKSTORE



THE STATE PRESS, distributed by the campus chapter of Sigma Delta Chi under the direction of Circulation Manager John Nadel, is the official campus newspaper of Arizona State University. It is published each Wednesday and Friday throughout the school year, excepting holidays, and is entered as second class matter at the Tempe, Arizona, Post Office under the Acts of March 3, 1879, and August 24, 1912. Arizona Newspapers Association, Associated Collegiate Press and National Advertising Service, Inc.



The STATE PRESS is a member of the Subscription price, \$3 per school year.

JERRY REILLY MANAGING EDITOR ROSS FISH NEWS EDITORS ED HEATH, BETTY DUFFY ASSISTANT EDIE C. ALLERS CAMPUS EDITOR PAM VAN BUSKIRK ASSISTANTS MIKE LONGSTRETH, SUE JEFFRIES SPORTS EDITOR JOE HEATH ASSISTANT ALAN MICHAELS ASSIGNMENTS EDITOR BETSY JEAN FRITH ASSISTANTS SHIRLEY DeMARKE, FRANK DUCCESCHI COPY EDITOR JOHN KENDALL ASSISTANT GORDON BLACK FEATURE EDITOR SUE MARIONEUX PHOTO EDITOR LARRY WARD ASSISTANT BILL DOOLEY CHIEF PROOFREADER TROY IRVINE

Athlete Speaks Up For Track Team

By BOB REILLY

This past summer the United States track team suffered a severe jolt during their two-day track meet with the Russians in Moscow.

THE HEAVILY FAVORED U.S. men won by five points (119-114) but the women took a solid (28-75) licking. It was common knowledge that the women would lose. But most people expected a better showing since U.S. coach Payton Jordon had predicted a clean sweep in both divisions. What went wrong?

A dispatch sent to the New York Times said, "The United States track coaches sharply criticized the conduct and attitude of some members of the American female squad. The coaches said the attitude may have affected the performance of the male stars in the meet with the Soviet Union." Life titled their full page story, "Our Lackadaisical Girls Take a Soviet Shellacking."

WAS THIS THE CASE? There seems to be a difference of opinion between the coaches and reporters on the one side, and the athletes on the other.

Henry Carr, who is a champion of the first rate, disagrees with his coaches. When the ASU speedster returned to school last week after spending the summer in Europe with the U.S. team, he had this to say.

"I don't believe the girls affected the men's showing. It seems to me the coaches were prejudiced against the girls. They placed the blame on them when things went wrong. The newspapermen didn't consult us when the charges were made."

HENRY WENT ON to discuss the circumstances under which athletes must work. He said, for instance, the team members are given just two dollars a day. While they are away competing their friends are working at summer jobs and spending time with their wives and families. Some men "didn't believe it was worth being away from home for only two dollars a day."

The athletes, who are in the best position to know, do not believe they can pin-point why they won one day and lost the next. "It's a dog eat dog business. The men you compete with are your friends but they are always working to beat you. It's hard to give any one reason why you win one day and lose the next. If I don't win certain races this year I could be an unknown two years from now," said Carr.

IT SEEMS NO MATTER how the girls conducted themselves they were destined for a disastrous defeat in Moscow. The girls were reprimanded for playing records in the night and "kidding with the boys." Jordan wanted them to "get to practice on time and keep their mouths shut."

According to Henry, the errors were made long before the girls arrived in Moscow.

"Most of the girls that went to Russia were in their teens. Most had never competed in international competition before and were certainly no match for the older, more mature Russian girls. However, I believe they have more potential than the Russian girls. But our system for training them is poor. Only two universities, Hawaii and Tennessee State, field women track teams."

THE MEMBERS OF the U.S. men's track team should have been consulted before the stories about the girls reached the world's papers. Undoubtedly the story placed the whole team in a bad light and if the charges made were not true, in whole or part, an unforgivable error has resulted.

The Angel And The Devil



I Cover College Avenue

By ROSS FISH

College Avenue is booming with optimistic spirit.

Holding the front-line banner this year is a new group — ASU's Devils' Disciples who are devoting their time and talents to the task of promoting school spirit and tradition.

CONGRATULATIONS to the campus organizers who carefully selected forty enthusiastic ASU men for membership.

Twenty juniors and twenty seniors, representative of nearly every campus group, have already begun action.

Freshmen saw the boosters supervising the annual whitewashing of the "A", performing at the pep rally and counting beanies at the freshmen mixer.

ONE YOUNG lady, who had the audacity to wear a sweatshirt with the letters of a southern Arizona play-school, had her curls dampened by the Disciples at the pep rally.

Similar to the Brigham Brawlers of BYU, the Devils' Disciples have set tradition as their main objective. Throughout the sports seasons they will keep up the old traditions and work to produce new ones.

They will meet visiting teams with the spirit they represent as well as welcoming home our own teams.

PERHAPS the organization of the Devils' Disciples will solve a few of the annual problems of the Rally and Traditions Board.

Of course, the Disciples' real success will depend upon each and every ASU rooster.

Let's give them our wholehearted support tomorrow evening by proving our university level of enthusiasm.

LET'S MAKE the roar of ASU's cheering section a sound no one will forget.

From the band's entrance to the last blazing rocket, let's set a record for the loudest, most enthusiastic and exciting football game in ASU's history.

Our success will set a pattern into which every campus activity will fall this year.

TO ASU's new Devils' Disciples — "good luck!"

We have confidence that you will find the cooperation needed to boost your men to the necessary high spirits of a mature university pep club.

We want people to say, "Here is Arizona State University. Color it with spirit!"

We Get Letters

Letters to the editor will be printed in future issues if they follow State Press standards and policies.

Letters must be less than 500 words, in good taste and must be signed by the writer.

Names will be withheld upon request.

Ignorance Is No Excuse

This piece seeks to inform the student of his responsibility to himself and the university in matters of conduct.

The relationship between an enrolled student and a university is contractual. This concept has been repeatedly pronounced by the courts of law.

A CONTRACT RESULTS when a student applies for admission to a university or college and is accepted. The student binds himself to comply with the rules and regulations (in law called covenants) printed in the official catalog of the institution.

In a leading case, *Koblitz v. Western Reserve Univ.* (21 Ohio C.C.R. 144, 1901) the court observed that the student "upon making the contract agrees to submit himself to the reasonable discipline of the school . . . (and) the university agrees with him that it will impart to him instruction; that it will aid him in the ordinary ways in his studies; that it will treat him fairly; that it will not impose upon him penalties which he no wise merits, and that it will deal with him impartially."

ANY BREACH OF any covenant of this contract by the student authorizes the duly appointed Discipline Committee, appointed by the President with the advice of his council, to impose upon him a penalty if the evidence presented by the Committee and the accused shows a violation.

The penalty of such an adjudged breach may be suspension or expulsion from the University, and only occasionally does, the Committee impose probation.

The Discipline Committee is not a court of law, but the law courts rarely interfere with its decisions. In the case of *Woods v. Simson*, 146 Maryland 547:

"THE MAINTENANCE OF discipline, the upkeep of the necessary tone and standard of behavior in a body of students in a college is a task . . . (to) be left untrampled in handling (by the Discipline Committee) the problems which arise as their judgment and discretion may dictate, looking to the ends to be accomplished. Only in extraordinary situations can a court of law ever be called upon to step in between students and the officers (the Discipline Committee) in charge of them."

The Committee is not concerned with any criminal adjudications. This is the constituted authority of the federal, state, and city administrations.

SINCE A CONTRACT by and between the University and an enrolled student exists, what are the covenants, the breach of which can, upon proof, bring expulsion or suspension of the student by the Committee? On Page 82 of the official catalog, which is proposed by the President and approved by the Board of Regents of the University, the (covenants) Standards of Conduct are:

Introductory: "... each student is expected to conduct himself in such a manner as to uphold, not detract from, the good name of the University and fellow students by conforming to the law and accepting the moral and social practices of the community, state and nation."

Specifically: "Among the circumstances which indicate possible dismissal from the University, if the student is found guilty, are whenever a student:

1. Endangers or seriously threatens the life or physical safety of others or self.
2. Leads or participates actively in destructive group action.
3. Has serious or repeated difficulties with law enforcement authorities.
4. Commits sexual immorality.
5. Does not respect public and private property.
6. Does not meet his just financial obligations in relations with others and the University.
7. Refuses to cooperate with efforts made to help him adjust to University responsibilities.
8. Persists in conduct which, though perhaps less serious than violations listed above, eventually would serve to discredit the University and/or its students."

E. J. DEMSON Member of the Discipline Committee

Trio Heads Roster

Three Department Chairmen Appointed

Three new department heads have been added to the faculty.

Among these new professors are Dr. Jerome W. Archer who will assume the position as chairman of the department of English, Dr. Richard G. Stoner, who has been named chairman of the department of physics, and Dr. Joseph C.

Schabacker, who has been appointed chairman of the management department.

Dr. Archer, who was head of the English department at Marquette University since 1948, received his Bachelor and Master's degrees there.

After receiving his doctorate at Northwestern, Archer went on to become co-author of "A Reader for Writers," by McGraw-Hill Book Co.

As co-founder and member of the Pennstate Research As-

sociates, Dr. Richard Stoner has been a consultant for Monarch Electric Company and Henry Holt and Co.

After receiving his doctorate of physics at Princeton, Dr. Stoner last year received the Christian T. and Mary F. Linback Foundation Award for Distinguished Teaching at Pennsylvania State University.

As instructor of accounting and management at Temple University from 1946 to 1949 and then lecturer of business administration at the University of California from 1951 to 1959, Dr. Schabacker received his Master's and Doctor's degree in organization and management theory from UCLA.

Dr. Schabacker has been head of business extension at UCLA and has been president of the National Council for Small Business Management Development.



DEVILS' DISCIPLES — Chuckling over plans for new traditions are school spirit boosters Jim Tyson and Jim Frady. Both are members of the new men's pep club.

Fred Elquest & Son
 Everything for the Art Student
 • Art Supplies
 • Picture Framing
 703 N. 2nd St.
 Phoenix
 PHONE AL 8-2628

INSURANCE
 — We Write All —
 Inc. Under 25 & S-R 22's
 • Auto • Motorcycle •
 • Trailer • Fire • Theft •
RALPH PACKER
 967-3189 or 967-9141
 26 E. 8th St. Tempe

Law Outlined

Vehicle Violators Face High Fines

If past trends continue, campus parking violations should cost ASU students about \$1200 per month during 1963-64.

This is the estimate made by John O'Leary, assistant director of the Department of Security. With an estimated 10,000 parking decals already issued, O'Leary warns that campus officers will begin issuing citations "probably next week." Only warning notices have been issued since September 9.

"OUR BIGGEST trouble," said O'Leary, "occurs with the faculty-staff lots in the heart of the campus, where only a certain limited amount of space is available."

A new feature of the penalty provisions this year is that miscellaneous violations will be regulated by a schedule of fines separate from that which applies to simple parking violations. Instances of failure to register a vehicle, improper display of decal, failure to report new license number and others, now carry a set fine.

FINES FOR parking violations are adjusted to a graduated scale according to the number of violations a student acquires during the academic year.

O'Leary noted that three violations within a single semester will make a student subject to disciplinary action by the dean of students, adding, "We have no real discipline over students in the area of parking. We have no authority to compel the student in any way. It all has to be enforced through the dean's office."

ALL MONEY collected from fines is channeled into a special fund which is then used for such purposes as surfacing of campus roadways, maintenance, signs, repainting curbs, hiring extra personnel for traffic direction and special events, purchase of chains and padlocks

for parking areas and a variety of other usages all connected with the general area of traffic and parking.

A final insight into the overall parking situation was provided by Lt. Tom Godbehere of the campus police, who observed, "We've got room for thousands of cars, but it's way out on the edges of campus and most people like you and I... they don't like to walk."

Petitions Ready For Freshmen Senate Race

Petitions for the offices of Freshman Senator will be available in MU 202, September 23-27, according to Allan Bunch, chairman of the election board.

An orientation assembly for candidates has been set for 5 p.m., October 1 in MU 208 and 209, announced Bunch.

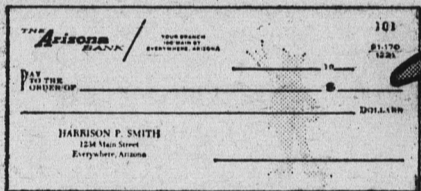
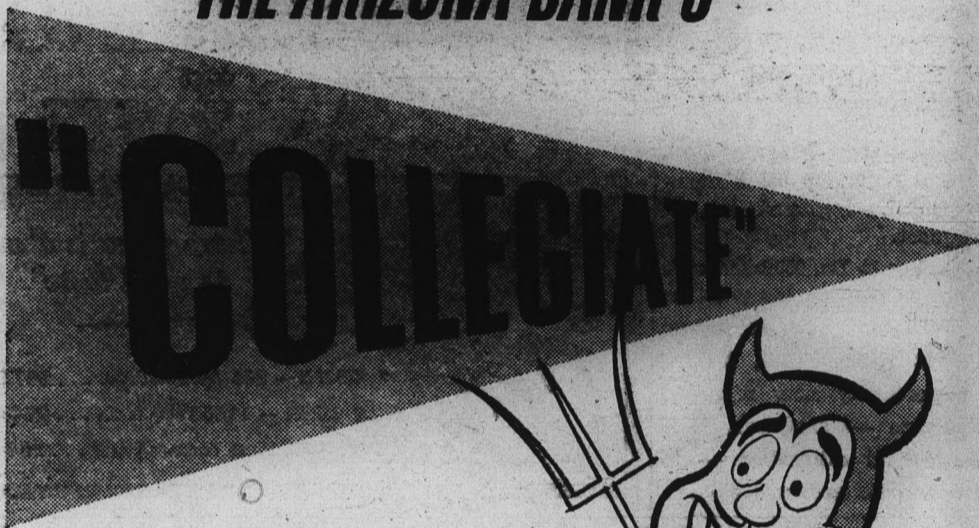
Qualifications for the office are registration for 12 semester hours and freshman class standing.

Two Senators will be chosen to represent the Freshman class in the October 15 general election. The primary will be conducted October 8.

Graduate Senators will be appointed this year, according to first vice president George Stewart.

Neither of the Graduate offices were filled in last Spring's election.

"SMART" SUN DEVILS CARRY THE ARIZONA BANK'S



Personalized Checks with a picture of your school mascot printed on each one!

- 150 checks — 10 fillers of 15 checks each. Just \$1.50!
- Your name imprinted on modern compact-size cover, hardly larger than a pack of cigarettes. Cover carries school crest in color.
- Each check personalized with your name and address.

THE Arizona BANK

MEMBER FEDERAL DEPOSIT INSURANCE CORPORATION

STUDENTS & FACULTY

The A-V Photographic Service in Matthews Hall (behind the Library) is here to provide a complete **PORTRAIT STUDIO** and to serve your photographic needs in:

- PUBLICITY
- ACTIVITY
- GROUPS
- PLACEMENT
- PORTRAIT
- REPRO & PHOTOSTAT

PHOTOGRAPHY

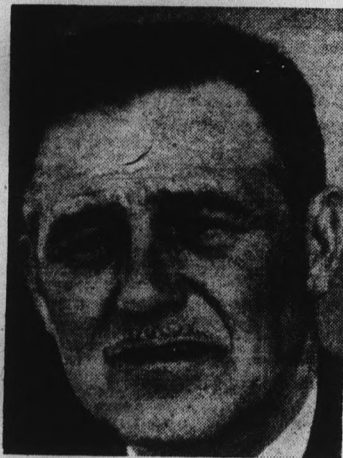
'Image Of The Negro' Is Faculty Forum Subject

Joseph W. Mathews, a Methodist clergyman, and dean of the Ecumenical Institute, Chicago, will speak about "The Image of the Negro in Our World," at 8 p.m. in the MU Ballroom September 22.

This will be the first of a series of four Sunday Evening Faculty Forum lectures.

Last spring he spent two months touring Africa to observe and evaluate the educational progress of emerging African nations. The tour was sponsored by the Agricultural and Technical Assistance Foundation.

Through conversations with political, cultural and religious leaders, he collected data and



JOSEPH W. MATHEWS

formed opinions about one of the most rapidly changing areas on earth.

The forum is not an official ASU program, but a series of lectures and discussions organized by a group of faculty

Student Displays Sculpture Work

Sculpture by Mrs. Nancy Luomala, a candidate for the master of fine arts degree, is currently on display in the foyer of the Arts Building.

Her display, entitled "The Expression of Social Consciousness in Figurative Sculpture," represents the human figure in a variety of media.

The exhibition is open to the public until September 22.

members in an effort to promote wider understanding of present-day problems.

An informal question and answer period in the MU upper lounge will follow the talk.

Phones

(Continued from Page 3) 1953, 16,800 incoming calls were received.

By September, 1959, on-campus enrollment had increased to 10,275 students and incoming calls for that month totaled 28,400.

Estimates for the 1963 fall enrollment are 15,500 on-campus students and 106,100 incoming calls are anticipated in October.

In addition to the numerical size of the University community, i.e. students, faculty and staff, other factors have expanded the volume of calls. These include the cooperative relationship between ASU's School of Engineering and valley industries and between ASU's College of Business Administration and local businesses.

NUMEROUS telephone inquiries relating to the cultural program on campus are expected to increase the volume of incoming calls when the new Grady Gammage Memorial Auditorium is completed.

Ila Hagan, of the ASU accounts payable office, explained the billing process for the new telephone system calls for individual bills to be sent to each extension throughout the campus.

"The bills will be identical to a home telephone bill," Miss Hagan said, "and they will come in a bundle monthly to my office."

KAET-TV Will Feature Piano Recital

Each Tuesday and Friday beginning September 20 at 10 p.m. on KAET, Channel 8, will present a program entitled "The World of Music." The program lasting for 14 weeks will feature concerts, operas, dances, and ballets performed by some of the world's greatest artists.

The program is part of the National Educational Television's weekly "Festival of the Arts." Featured during this series will be such programs as: "The Evil Queen," "The Masked Ball" and "Othello."

More About New Vice-President

(Continued from Page 2) Durham said, "Dr. Ryan brings to ASU a wealth of faculty and administrative experience at three of the nation's large state universities — Indiana, Wisconsin and Massachusetts — plus a modern background of scholarly service and experience overseas."

DR. RYAN is filling the academic vice presidential vacancy created by the return of Dr. Harold D. Richardson to full time professorial duties after nearly 25 years of administrative services.

Dr. Richardson, academic vice president at ASU from 1953-1959, and acting president of the University in 1959-60, resumed full-time teaching service in the College of Education, effective September 1, at his request.

Referring to Dr. Richardson's decision to resume his position as professor of education, President Durham said, "I envy the opportunity now afforded to students — graduate, professional and otherwise — to sit in Dr. Richardson's classes."

More About Durham Speech

(Continued from Page 2) the destiny of ASU is in the hands of each faculty member. "No aspect of our work is more important than the stewardship exercised in the classroom," he stated.

He went on to say, "I believe the biggest task this institution presently faces is to consolidate, mold, shape, refine and develop the broad programs now authorized here for a complete undergraduate, professional, and graduate university."

Some of the figures might frighten some communities, he said. "But the vigor, growth

and character of Arizona is such, in my opinion, that big figures only encourage and provide challenge. Here it is realized that education, the enlargement of individual capacity to produce, serve, and become usefully independent, is a free people's best investment."

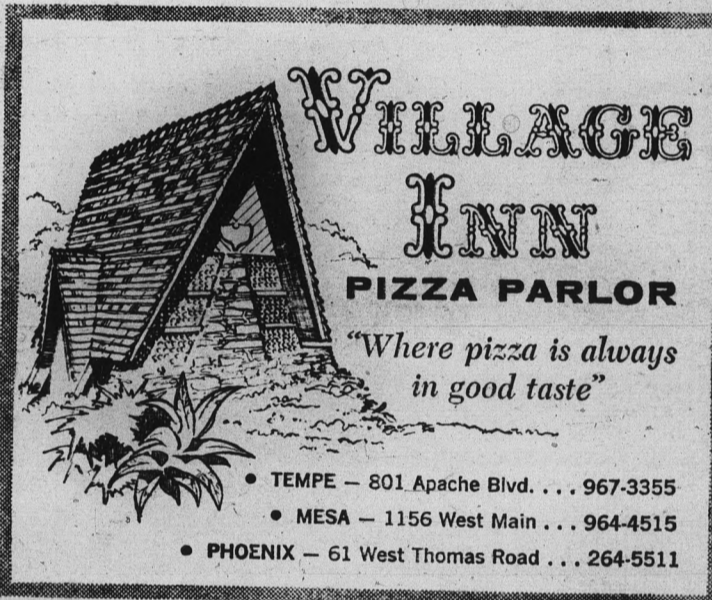
Sun Devil Facts
ASU was Arizona's first institution of higher learning.

INTERESTED IN FLYING?

Stop by and talk to Larry Kusche, ASU Student, at

Phoenix Aviation
Westend of Airline Drive At Sky Harbor

Or Call
275-7668
For Information



VILLAGE INN
PIZZA PARLOR
"Where pizza is always in good taste"

- TEMPE — 801 Apache Blvd. . . 967-3355
- MESA — 1156 West Main . . . 964-4515
- PHOENIX — 61 West Thomas Road . . . 264-5511

FREE DELIVERY
IN TEMPE — 5 P.M. to 11 P.M.
Largest, Tastiest Sandwiches
In The Valley

★ CORNED BEEF ★ PASTRAMI
★ BEEF BURGERS ★ ITALIAN SAUSAGE

Raptis Tasty Hut
Delicatessen Drive-In
1205 Apache Blvd. 967-1202

"ALWAYS SUNSHINE CLEAN"

Sunshine Village
LAUNDRY & PROFESSIONAL
PRESSING & DRY CLEANING

White Shirts — 25c
Free Drying On Tues. & Wed. Aft.
Hair Dryer In Refrigerated Waiting Room
Phone 967-9731

Broadway Plaza 29 E. Broadway, Tempe

We'd Like The Opportunity To
Service Your Present Car
Or To Help You Find A
New or Good Used Car

SMILEY-BERGE
FORD
Your Nearest Auto Dealer

JUST 2 BLOCKS FROM CAMPUS ★
16 East 8th Street — TEMPE — Phone WO 7-2064

AWS Active

Council To Plan Cultural Events

AWS will start off its year Friday with an informal party for the General Council at the home of Dean Dorris in Scottsdale.

Discussing and rediscussing plans for the year will take place at the informal affair. Nearly 40 girls, the executive council, hall presidents, representatives and appointees will attend.

Schedule for this year is a new cultural program which was designed by the council last spring.

This will involve lectures from well known ASU professors on "My Last Lecture" on Thursday afternoons, twice a month.

The date for the first lecture will be announced by President Paula Eissemann. Tentative programs include a talent show and the Star Formal.

One tentative program which will be discussed Friday night is that of freshmen women as receptionists in the AWS office.

Beth Mitchell, AWS vice president, encourages those freshmen who are interested in keeping the AWS office open

most of the day to contact the executive committee.

The first AWS meeting will be held next Thursday.

Seminar Begun

A three hour graduate seminar in teaching blind and partially sighted children began here yesterday.

The seminar, directed by Mrs. Betty Nannah, principal of the Arizona State School for Deaf and Blind at Tucson, lasts from 7 to 9:40 p.m. Thursdays at the Arizona Foundation for Blind Children, Inc.

Persons may register at the first class.

Meeting Set For '64 Sahuaro

Students who wish to work on the 1964 Sahuaro are asked to attend an introductory meeting at 7 p.m. Thursday in the yearbook office, MU 2, according to Karen Hess, editor.

Those who did not register during registration for staff work should go to MU 2 for information prior to the Thursday meeting.

Space sales to campus organizations will start within the next week.

Ann Schneider and Ted Valas are assistant editors. They were appointed last spring by Miss Hess after her selection as editor by the Board of Publications.

Faculty Facts

Professors Attend Coast Event

Five members of the history and political science departments have attended the 56th annual meeting of the Pacific coast branch of the American Historical Association held at San Francisco State College last month.

History Department Chairman Dr. Paul G. Hubbard attended both the general and executive council meetings during the three-day event that ended Aug. 29. Dr. Hubbard is a member of the executive council.

Others attending from ASU

were Dr. Wallace E. Adams and Dr. Guilford A. Dudley, both associate professors of history; Dr. John R. Martinez, assistant professor of history and Dr. T. James Leonard, assistant professor of political science. Dr. Leonard presented a paper entitled "The Indian Civil Service, 1919-1959."

Dr. Wallace E. Adams of the history department, has returned from a year's leave during which he was a visiting assistant professor at the University of California at Santa Barbara.

Baja Analyzed By Professor

Prof. Marvin Alisky, chairman of the mass communications department, analyzes Arizona's southern neighbor, Baja, California, in the latest issue of Arizona State University's "Public Affairs Bulletin."

Copies of the free bulletin are available from ASU's Bureau of Government Research.

Professor Of Management To Head New York Meeting

Dr. Keith Davis, professor of management in the College of Business Administration, will be co-chairman at a meeting of the International Management Congress in New York City this week.

The professor, representing the Academy of Management, will appear on a panel discussing "Stimulating Management Growth in Developing Countries," with other speakers from Venezuela, The Netherlands, India and Brazil.

Social Board

Applications for membership on the ASU Social Board are now available at the MU desk, according to Tom Thomason, chairman.

AMS Plans Organization Of Off-Campus Branch

The organization of an off campus men's group will be one of the major programs adopted by AMS this semester.

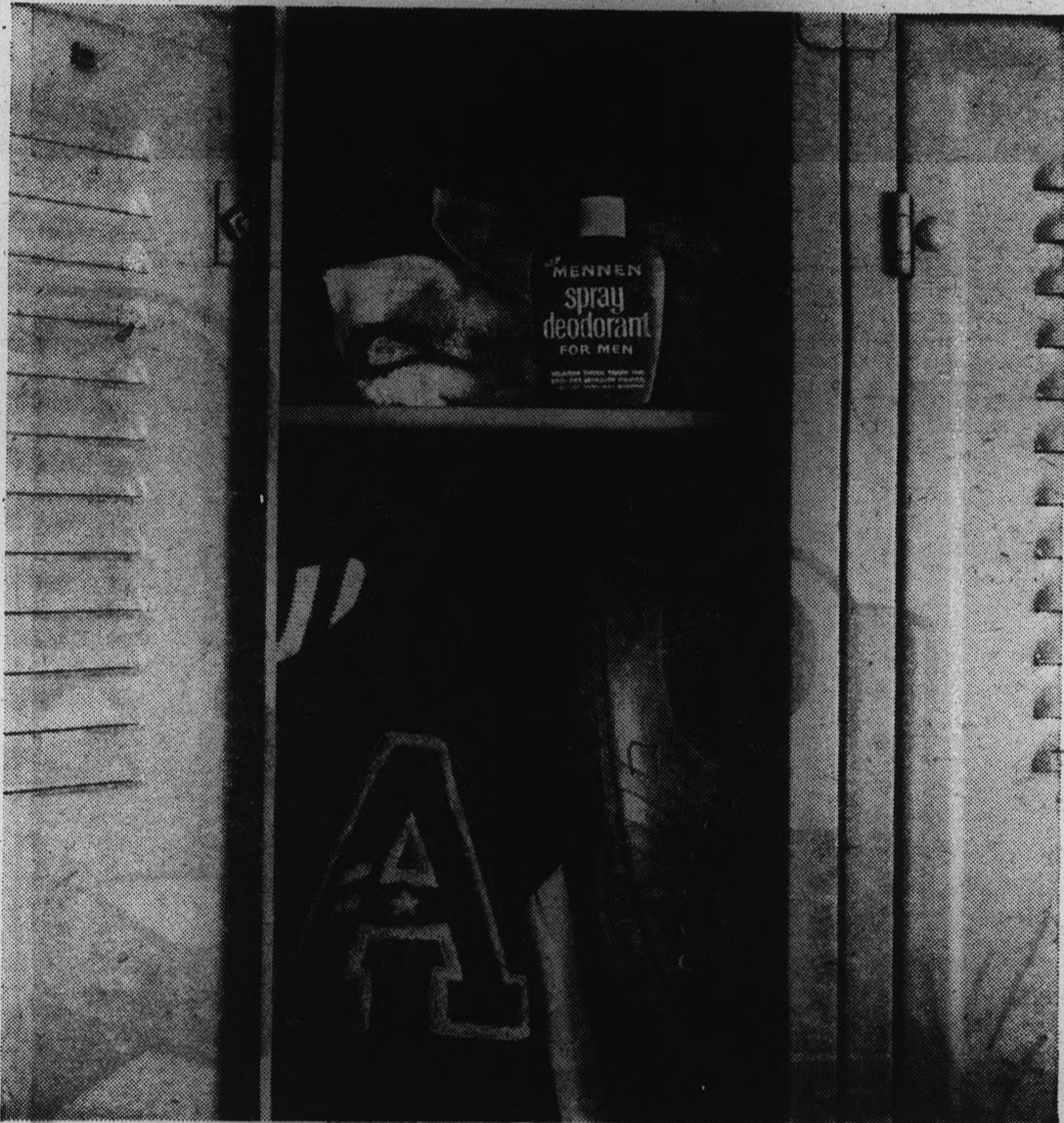
According to President Joe Sparks, internal structure and design is now being looked into and planned, ready for organization around October 1st.

Sparks also noted that the

National Collegiate Intramural Rulebook was now going to be used by the men's sports on campus. Previously no book has been used. It is hoped that more effective participation can be accomplished through this action. Those wishing to be referees should contact Gary Bellrichard immediately at ext. 3641.


The lighting of the A, traditionally an AMS project, will be continued this year. At tomorrow night's game the fraternities will light the east A while one of the men's dorms will be in charge of the south one. A schedule for the season will be posted by the AMS office next week.

More immediate plans of the Associated Men Students include Parents Day and the Judiciary Board. Those interested in committee work should contact the AMS office.



MENNEN SPRAY DEODORANT. Best deodorant a man can use. For two good man's reasons.

1. Mennen Spray gets through to the skin where a man perspires.
2. Mennen Spray is concentrated. Delivers three times the anti-perspirant power of any other leading men's deodorant.

Mennen Spray Deodorant . . . in the handy squeeze bottle. Try it. 

STOP BY AND CHECK OUR COMPLETE LINE OF

OF



CAMPUS DRUG
CORNER, College and 8th, W.O. 7-4049

MENNEN
Products

New Tempe University Studio

TO OPEN SOON

Scottsdale Road at 8th Street, Tempe


FOR THE FINEST IN PHOTOGRAPHY

BLACK & WHITE OR COLOR

MAY WE SERVE YOUR PHOTOGRAPHIC NEEDS?

Sorority
Fraternity
Organization
Publicity
Activity
Group
Queens
Election
Engagement

Fine
Portraits
by



BOB WILCOX

STUDIO OF PHOTOGRAPHY AM 4-2531

518 East Thomas Road

Campus Sprouts New Building

Five New Projects Under Construction At ASU

By TROY IRVINE

Men and machinery at ASU's 315-acre Tempe campus are going full throttle this week with five major projects under construction. Rising 80 feet over 15 acres of building and parking space is the Grady Gammage Memorial Auditorium, designed by the late Frank Lloyd Wright. The controversial architecture of the circular-shaped steel, concrete and brick building will make the auditorium not only unique in design but also will provide for excellent interior acoustics, according to John Ellingson, director of the physical plant.

Once tagged a "merry-go-round" because of its design, the \$2,800,000 auditorium is nearly 80 per cent complete with finishing touches expected in March, 1964. Workmen this week are scaffolding the 3,000-seats on the three viewing levels.

ANOTHER feature which adds to its eye-catching form is two sunken parking lots which will accommodate 750 cars. Leading from the lots are lighted arch-ways which will carry pedestrians to the balcony.

Behind the stage is a connected building which will ac-

commodate music and drama facilities along with stage workshops.

Plans for the building were revealed in 1959 by the late Dr. Grady Gammage, who hoped that the much-needed auditorium would become a reality in a couple of years.

A fine-arts assembly center, the Gammage Auditorium will provide facilities for lecture and concert series and the main lobby may be used to exhibit art shows coming to campus.

THE foundation will soon be laid for a seven story women's dormitory, Palo Verde West, which will be an identical twin of recently completed Palo Verde East.

Palo Verde West will accommodate 410 coeds.

The "X" shaped structure is scheduled for completion in August, 1964 at a cost of \$1,750,000.

Palo Verde West will be financed through the sale of self-liquidating bonds at no cost to the taxpayer.

A 65,000 square foot addition to the Engineering Center is 20 per cent complete this week with cement being poured on the second and third floors. Lo-

cated near the intersection of Van Ness and Orange Streets, the "L" designed three-story building will house research labs and administrative offices along with 20 classrooms.

Soon to be ready for pedestrian use is a 240-foot arched bridge over Eighth Street to the Palo Verde dorms. The 12-foot wide concrete span will be used as a utility overpass.

The 17-foot clearance on the bridge will allow for the flow of traffic when Eighth Street

is eventually widened to 80 feet for a federal highway secondary route.

THREE major building projects are awaiting approval of the Board of Regents which will meet on campus Sept. 28.

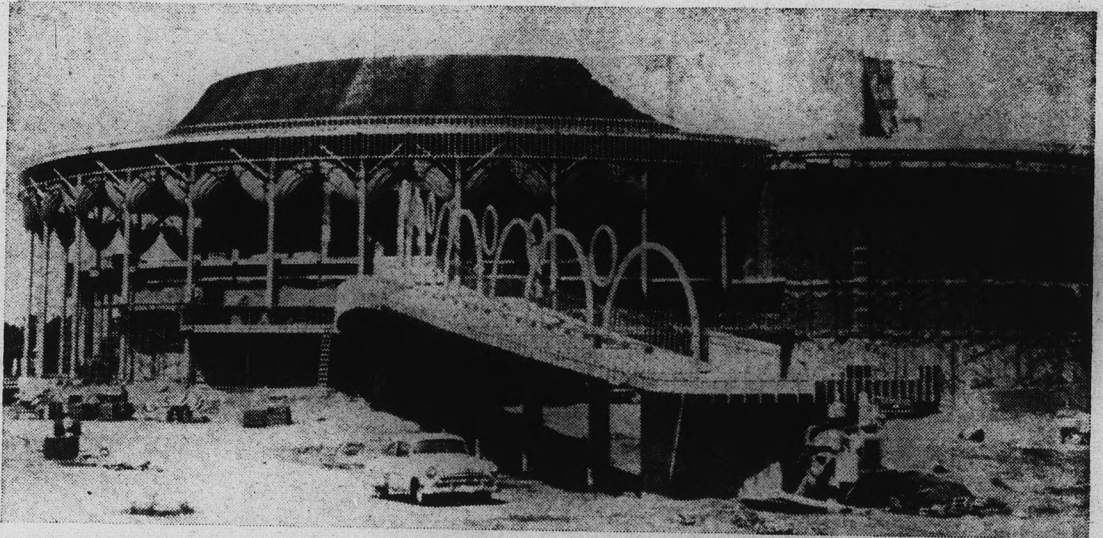
Projects to be okayed by the Regents are:

A Language and Literature building to be situated near the corner of Eighth Street and College Avenue. The "T" formed structure will be built at a cost of about \$1,080,000,

and will house the English, speech, foreign language and mass communications departments.

One wing of the building will rise six floors high, the other two and eventually four. The total area of 79,157 square feet will take care of 91 offices, 49 classrooms and 13 laboratories.

A 65,000 square foot physical science building calls for \$1,098,000 in funds. The three-floor reinforced concrete wing also will accommodate two additional floors.



GRADY GAMMAGE Memorial Auditorium towers 80 feet above 15 acres of parking space and other buildings. It is about 80 percent complete.

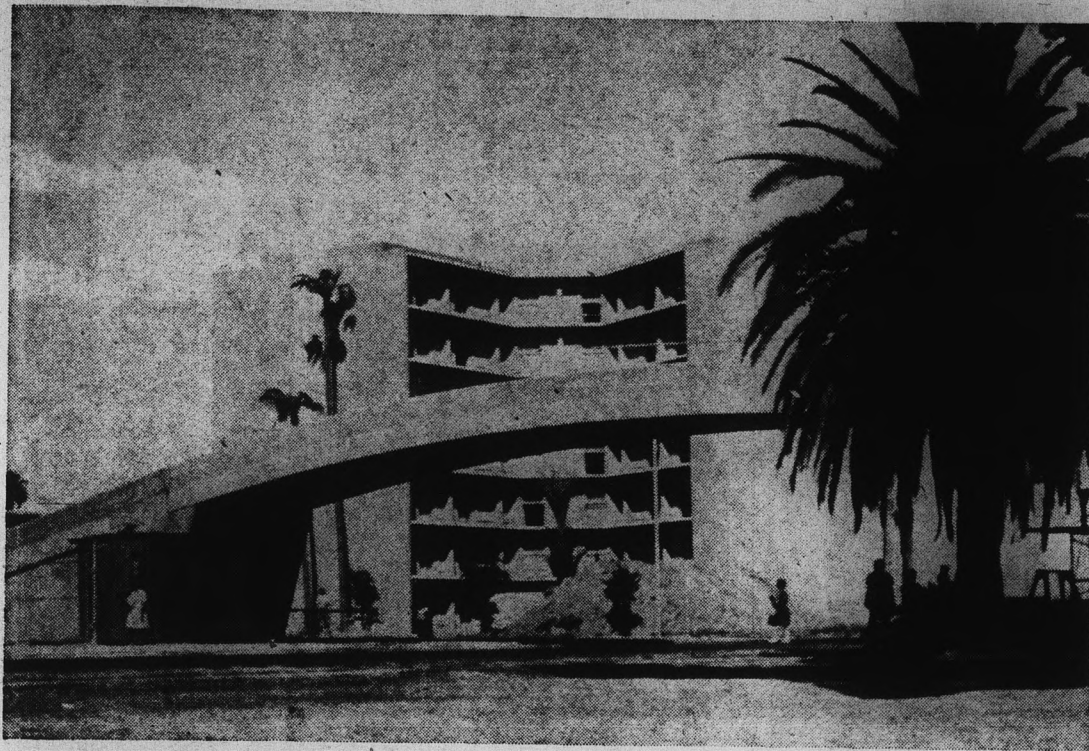
(State Press Photo by Larry Ward)

A Winner Every Time!

THE TEMPE SHOPPING CENTER

Just A Block From The ASU Campus

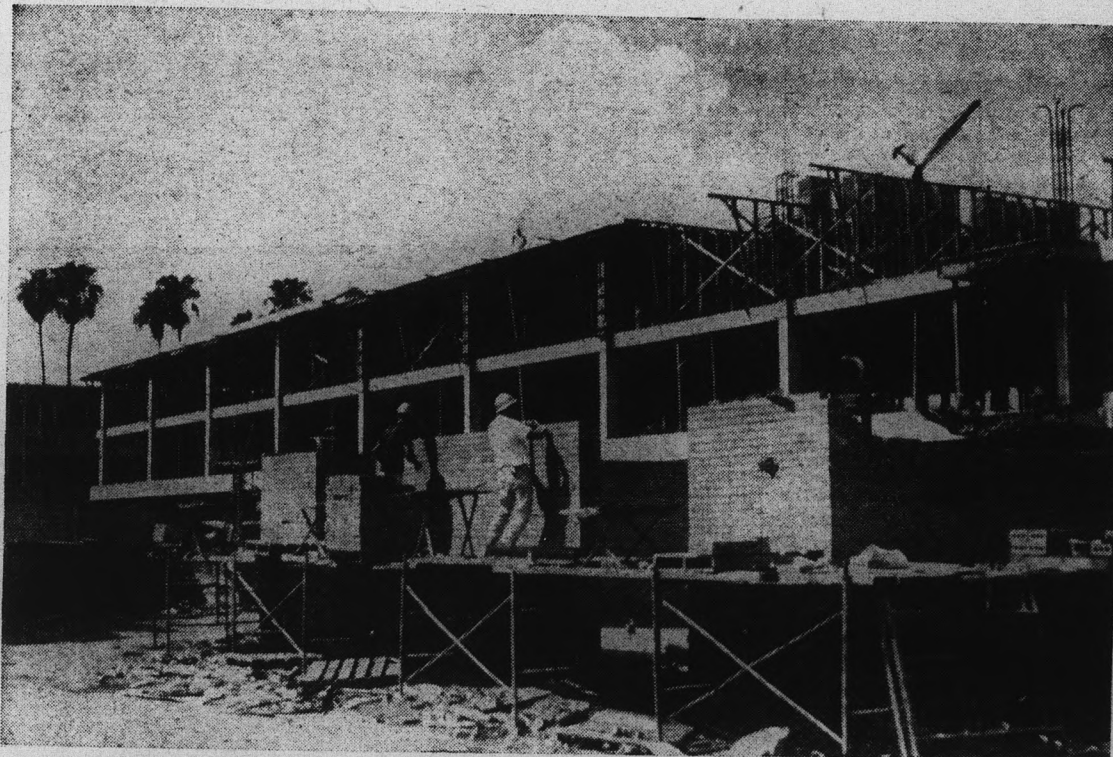




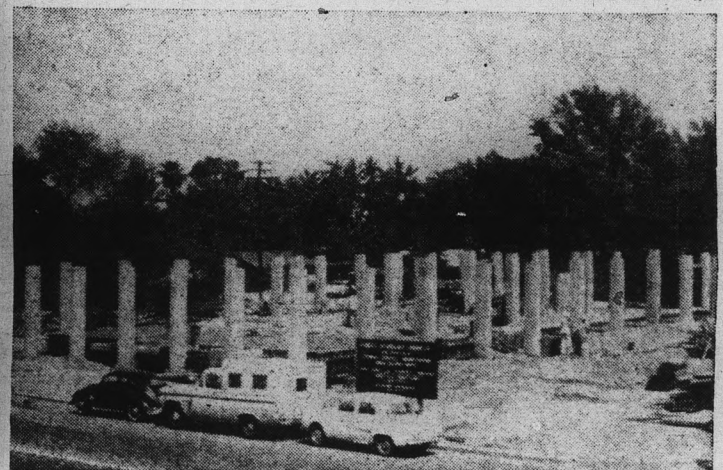
BRIDGING EIGHTH STREET is the new arched causeway connecting the campus proper with the new women's dormitories. In background, the new Palo Verde East women's dormitory. (State Press Photo by Larry Ward)



ENTRYWAY to Palo Verde East, new seven-story women's dormitory, with the cafeteria at left. (State Press Photo by Larry Ward)



GIANT ADDITION to ASU Engineering Center spreads over 65,000 square feet and is about 20 percent complete. (State Press Photo by Larry Ward)



FOUNDATION PILLARS RISE on the new Forest Hydrology Laboratory going up directly east of the new Engineering Center addition on the east edge of the campus. (State Press Photo by Larry Ward)



THREE Locations For Your Convenience



1

RAY'S ASU BARBER SHOP
TEMPE CENTER
5 Barbers To Serve You — 8:30 A.M. - 5:30 P.M.

2

SANDS BARBER SHOP
SANDS HOTEL
Monday thru Friday — 8:30 A.M. - 5:30 P.M.

3

M. U. BARBER SHOP
Memorial Union Building
2 Barbers To Serve You — 8:30 A.M. - 5:30 P.M.

4

HAYDEN PLAZA "EAST"
Opening SOON!

Committee's Solution

Television Media Utilized For Freshmen Orientation

For years freshmen have been called together in the Sun Devil Gym or any other place large enough to hold an assembly for a freshman orientation course.

This year the Freshmen Orientation Committee tried a new approach to the problem of assembling 4,000 frosh students and televised the program over KAET.

According to the orientation committee the purpose of the program shown late last week,

was to tell freshmen a little about the out-of-class student life.

The program, narrated by Dean Kathryn Nichols, dean of women, featured student government officials such as Daryl Winn, ASASU president; Mary Ellen Moore, AWS president; and Joe Sparks, AMS president.

The committee believes that this was the first time such a program has been tried at ASU and possibly in the west.



KASN APPOINTEES — Seated (l to r) Jon Bosworth, special events director; Greg Hoover, traffic director; Ron Meitz, news director; Bob Van Wechel, continuity director; Gary Wallach, promotion director. Standing

(l to r) Bruce Radloff, music director; Don Yeager, personnel director; Lee Proper, special events director, and Lon Lee, program director.

(State Press Photo by Larry Ward)

Campus Radio Personnel Announced

ASU's radio station, KASN, (670) will be operated by a new staff this semester.

Beginning October 1, the staff will include:

Lon Lee, Program Director;

Gary Wallach, Promotion Director; Greg Hoover, Traffic Director; Bob Van Wechel, Continuity Director; Lee Proper and Jon Bosworth, Special Events Director; Ron Meitz, News Director; Bruce Radloff, Music Director; Don Yeager, Personnel Director, and Al Michaels, Sports Director.

Students interested in announcing or any phase of broadcasting or desire their own radio show should contact Lon Lee at the Bureau of Broadcasting in the Engineering center.

A meeting for radio and TV students and those interested will be held Thursday, September 26 in room 123 of the engineering center.

This Week On KAET Courses And Cultural Programs Premier

MONDAY
 A.M.
 8:40 Business Math Telecourse
 9:40 Child Development Telecourse
 10:40 Physical Universe Telecourse
 11:40 Living World Telecourse
 12:40 Business Math Telecourse
 P.M.
 6:00 Child Development Telecourse
 6:45 Business Math Telecourse
 7:30 What's New?
 8:00 On Hearing Music
 8:30 Living World Telecourse
 9:15 Physical Universe Telecourse
 10:00 The Village Council
TUESDAY
 A.M.
 9:40 ASU Freshman Library Orientation
 10:40 Physical Universe Telecourse
 11:40 Living World Telecourse
 12:40 ASU Freshman Library Orientation
 P.M.
 5:30 ASU Freshman Library Orientation
 6:00 Court of Reason

10:00 Conversations With Eric Hofter
 10:30 Court of Reason
THURSDAY
 9:40 ASU Freshman Library Orientation
 10:40 ASU Freshman Library Orientation
 11:40 ASU Freshman Library Orientation
 6:55 Press Photography Awards
 7:00 The Ageless Auto
 7:30 What's New
 8:00 Israel: Land of Miracles
 8:30 Living World Telecourse
 9:15 Physical Universe Telecourse
 10:00 The Evil Queen
 10:30 Canterbury Choir Boy
 11:00 Non-Violence in Mississippi
WEDNESDAY
 A.M.
 8:40 Business Math Telecourse
 9:40 Child Development Telecourse
 10:40 Physical Universe Telecourse
 11:40 Living World Telecourse
 12:40 Business Math Telecourse
 P.M.
 6:00 Child Development Telecourse
 6:45 Business Math Telecourse
 7:30 What's New?
 8:00 Escape From the Cage
 8:30 Living World Telecourse
 9:15 Physical Universe Telecourse

P.M.
 6:00 The Big Picture
 6:30 Japanese Brush Paintings
 7:00 Arizona Firearms Safety
 7:30 What's New?
 8:00 Virus
 8:30 What in the World?
 9:00 Village Council
 10:00 ASU Freshman Library Orientation

Business Radio To Air Views On Marketing

The Bureau of Business Services of the College of Business Administration, will feature "Research and the Marketing Science Institute" in its "Best of the Western Business Round-up" radio program Saturday and Sunday on five local networks.

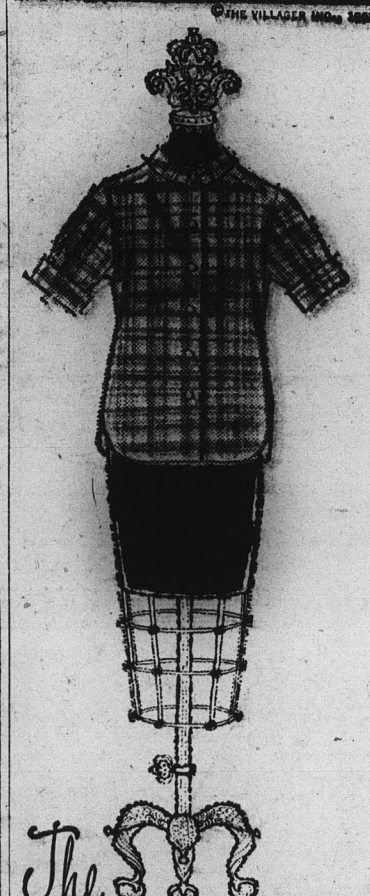
Western Business Roundup, produced weekly by the bureau, will be on Saturday at 9:35 a.m. on KOOL; Sunday at 8:30 a.m. on KYND; 9:30 a.m. and 6:05 p.m. on KALF; 5:05 p.m. on KPHO, and 7:30 p.m. on KOY.

Panelists will include Dr. Kendall A. Adams and Donald A. Lingren.

Channel 8 Specials

Highlights of programs to be seen Monday through Wednesday on KAET channel 8, include:

MONDAY, SEPT 23
 P.M.
 8:00 On Hearing Music — "Hinschaw Plays Ives." Mr. Hinschaw performs the second movement "Hawthorne" and the third movement, "The Alcotts," from Ives' "Second Piano Sonata."
 10:00 The Village Council — "Fate of the Indian Nation." Seventy per cent of the Indian population live in villages. The Village Council, descended from Westminster via Ghandi and Nehru, ultimately determine the fate of the nation. Commentary by Seville Davis of the Christian Science Monitor.
TUESDAY, SEPT. 24
 P.M.
 7:00 The Ageless Auto — "Earliest use of Steam." Diane and Lester Thomas show some of the earliest steam autos.
 8:00 Israel: Land of Miracles — "The Integration." This program deals with the fusing of different ethnic strains and the development of Hebrew as a national language.
 10:00 The Evil Queen — "Snow White Ballet." A prize winning telecast from Sweden recreating the story of Snow White in ballet. Produced especially for television by the Swedish Broadcasting Company.



The Villager Madras Shirt

The timeless traditional processes by which India madras is created . . . the natural dyes that bleed and soften, the patient slow hand-weaving . . . leave their mark in the fabric itself. This madras, woven in India especially for VILLAGER, has much in common with the VILLAGER shirt.



Hours — 10 To 6
 Thursday — 10 To 9
The Villager Shop
 Phone 967-1981
 616 Myrtle Ave.
 Tempe, Arizona

GREETINGS
 From Your
LEVI
 Headquarters

Western Wear and Sports Wear for Men & Women

CASUAL CLOTHES & SHOES

All At Your Pioneer Family Store
 We Give S&H Green Stamps

Tempe Boston Store
 410 Mill Ave.

MAKE A STRIKE!

UNIVERSAL TRAVEL
 18 E. 5th STREET

- ALL MAJOR AIRLINES
- TOURS

Bobbies Flowers
Flowers Gifts...

20 E. 5th St.
 Home Phone WO 7-6319
 WO 7-2972 — WO 7-4274

For Parties . . . Large Artificial Plants For Rent

WELCOME STUDENTS

YOU REALLY "STRIKE-IT RICH" WHENEVER YOU LET

UNIVERSAL TRAVEL

ARRANGE YOUR TRAVEL PLANS

CALL WO 7-1673 FOR INFORMATION

UNIVERSAL TRAVEL 18 E. 5th STREET



NEW VIEW—Nicki Nordstrom, Karen Blair, Connie Barr (l to r) relax in one of Palo Verde East's lounges.

'Modern' Defines New Dorm

By SUE JEFFRIES
 ASU's answer to the Hilton Hotel chain is Palo Verde East. Located in front of Palo Verde Hall, PV East is the most lavish dormitory on campus. Two hundred and five rooms house 410 coeds in the seven-story dorm.

Nicknamed the "Hotel" by its residents, PV East boasts having a private telephone in each room. Each floor has a lounge decorated in contemporary furniture with kitchen facilities and a study area. Two rooms, whose colors range from green to purple, are joined as suites

with baths between. The two elevators for PV East blend in with the modern decor. The elevator doors are purple with white stripes. Atop the seven-story building is a walled-in sun deck with a view of the campus. The dome-shaped roof of the cafeteria contrasts with the new look of height on campus.

According to Mrs. Margaret Libby, acting head resident, PV East is a "friendship" dorm. "The reason for having suites instead of single rooms is to encourage friendship among the girls," said Mrs. Libby.

Palo Verde East, designed by Cartmell and Rossman of Phoenix, is one of two dormitories to be built in front of Palo Verde Hall. The other, PV West, will soon be under construction.

Newman Catholic Student Center

8th St. & College Ave.
 P.O. Box 454, Tempe

Masses:

Sundays: 8, 9, 10 a.m., 6 p.m.

Weekdays: 6:45 a.m.

Saturdays: 8 a.m.

Confessions: Daily before Mass

Saturday: 3:30-5 p.m.

Rev. Thomas A. Walsh, Director
 WO 7-3483

Newman Club Meets Tues. 7:30 p.m.

Student Phone: WO 7-9708

SUN DEVILS ATTENTION!

Join The Gang At

PARKSIDE APARTMENTS

It's Real COOL

At Our Clubhouse, Game Room,
 And In Our Olympic Sized Pool

SPECIAL STUDENT & FACULTY RATES

Unfurnished \$97.50 Up & A Completely
 Furnished Apt. Which Can Accommodate
 Up To Three Students For \$115.88 up.

★ Extra Storage ★ Built-In Kitchens ★ Covered Carports ★

Phone 967-2673

1701-1901 CUTLER DRIVE, TEMPE

(Broadway Road — West of Mill Avenue)

Violin Performance Set In Concert, Lecture Series

Violin virtuoso Ruggiero Ricci will be the first of several world-renowned artists to appear in the 1963-64 Concert and Lecture Series at ASU.

Ricci will inaugurate the series on October 10 in the MU ballroom in a program designed primarily for ASU students.

The talent of this California-born and American trained performer was recognized at the age of nine when he made his debut with the Manhattan Symphony Orchestra.

Ricci has appeared as soloist with many of the world's great symphony orchestras. He has appeared with 2,000 concerts as well as a three-year tour of duty with the U.S. Army, at which time he entertained in army camps and hospitals.

THE MERCE Cunningham Dancers, with American composer John Cage as musical director, will appear in a program of contemporary dance on November 4 in the Tempe Union High School auditorium.

Returning to the campus after several years' interlude will be the Amadeus Quartet which will present a program on November 18 in the MU ballroom. This will be the first of several chamber music concerts.

Making appearances in 1964, all in the MU ballroom, are pianist Augustin Anievas on January 9, the American Jazz Ensemble on February 1, the Wiener Solisten, a 13-man string ensemble from Vienna,

on February 3, and the Vlach Quartet, a Czech chamber music group, on February 9.

BURGESS MEREDITH will present a solo performance on February 13 and Saturday Evening Post's contributing editor Stewart Alsop is slated for a lecture on March 6.

A full production of "The Barber of Seville" with orchestra under the direction of Boris Goldovsky, is scheduled March 17 at Tempe Union High School auditorium. It will be the concluding program of the series.

All programs will begin at 8:15 p.m., according to David B. Scouler, professor of music and director of the series. Students with ID cards will be admitted free.

University faculty and staff members may purchase \$2 seasonal tickets at the MU beginning October 1.

Chapter Sends Representative

ASU was represented recently in New York City at the Golden Anniversary Convention of Alpha Epsilon Pi, national social fraternity.

Paul Beck, ASU sophomore and AEP chapter sentinel, was among 90 delegates from U.S. and Canadian colleges and universities attending the convention.

Workshop sessions entailed discussions of civic responsibilities, scholarship, cultural activities programming and chapter house management.

An interfraternity awards luncheon highlighted the four-day event.

Faculty Club

ASU Faculty Wives Club will be hosted at the annual fall tea on Sept. 28 from 2 to 4 p.m. at the home of Mrs. G. Homer Durham, Tempe.

Mrs. Edward Burgoyne of Tempe is tea chairman.

Foreign Students Plan Meetings

The first international open house is slated for 4 p.m. today at the ASU Alumni House.

The meeting provides an opportunity for the ASU foreign students to become acquainted and exchange background information.

The purpose of this weekly meeting is to help students of all nationalities appreciate each other's background.

HEY KIDS!
 YOUR SCHOOL COLORS
 YOUR SCHOOL NAME
 TOUGH MOLDED STYRENE PLASTIC
 GET YOUR
YELL-A-PHONE
 FROM US!
 Only 98c
CAMPUS DRUG
 CORNER, College and 8th, WO 7-4049

Men Sport Pledge Pins

Wednesday night in formal pledging ceremonies, ASU's 19 fraternities inducted their new pledges.

ALPHA EPSILON PI

AE Pi pledges are Herbert Cohen, Henry Golden, Michael Helfner, Ed Heuman, Rusty Lasky, Eddie Litwack, Paul Markow, Ken Miller, Jon S. Morris, Terry Moss, Gary Phillips, Howard Samuels, Richard Weinberg, Millard Zisser and Howard Zitman.

ALPHA RHO CHI

John P. Chase, Jimmy Gantt, David Knox and Ron Wyona.

ALPHA TAU OMEGA

The 27 new pledges of ATO are Will Adrian, John Cozad, Fred Dammer, Chris Evans, Carl Fosdick, Bob Harper, Jim Heller, John Hicks, Gene James, Ken Kerner, Bob Ladd, Steve Larson, George Mattson, Paul McKinney, Richard Mitten, Bob Moss, Dave Nordrum, Bill Pletch, Bill Reynolds, Tim Rhodes, Bob Shumway, Joe Simpkins, Preston Smith, Wayne Tanner, Gary Tibshranney, Bill Turner and Steve Wrath.

DELTA CHI

The pledges of Delta Chi are Steven Aldrich, Willard Beeskow and Roger Renfro.

DELTA SIGMA PHI

Delta Sig pledges are Kent Bassett, Mike Bostwick, Garland Cotney, Steve Denton, B. Jim Guenther, Roy Heibush, Jim Kirst, Dan Rahmatulla and Victor Schwaback.

KAPPA SIGMA

Randy Ellexson, Harold Hurlbut, Leslie T. Miller and Nick Ploussard are the new Kappa Sig pledges.

LAMBDA CHI ALPHA

The eight pledges of Lambda Chi are James A. Barry, Ace Baty, Roy J. Blake, Mark Clark, Alan R. Eddy, Eldrin Henney, Gerald N. Teason and Roger Woodward.

PHI DELTA THETA

Wearing Phi Delt. pledge pins are Allen Alexander, Don Beal, Bruce Briggs, Todd Carter, Jim Douglas, Jim Feitelson, Ron W. Gercke, Bill Goodrich, Gary Grimm, Donald Harris, Gene Janssen, Jerry Klein, Dave Kolvum, Mike McAllister, David Morrow, Corky Northrup, Frank Olsen, Gene Reid, Bill Schammel, Robert Shaw, Joe Tierney, Stephen Woodward, Jeff Wright and Meyer Ziman.

PHI KAPPA PSI

The nine new Phi Psi pledges are Robert Bourne, Jerry Bunkles, Michael Covey, Arthur Hargreaves, George Kapp, Bruce Larson, Mike McAlpine, Ron Merkle and Martin Reker.

PHI GAMMA DELTA

New Phi Gamma pledges are Jim Allen, Dave Bell, Jim Bounds, Den Driscoll, John Faulkner, Mike

Logan, Ron Monteleone, William Nelson, Douglas Nurnberg, Jim Pearson, Chester Smith III, Jim Thompson, Bob Urie and Randy Willer.

PHI SIGMA KAPPA

The 33 new Phi Sig pledges are Stephen Axelson, Gary Baker, Stephen Belser, Kenneth Bond, Ken Brosius, Kenneth Buxton, Harry Carlson, Roger Evans, Robert Gardner, Bob Ginter, Max Goodrich, William Hedlund, George Huntington, Steve Johnson, Tim Kash, Jon Klein, Bill Krzton, Steve Lende, John Lawson, Bill Lee, Bill Leonard, James May, Lowell McGuire, Jim Peterson, Dallas Phillips, Jim Quinlan, Ron Ravenscroft, Edgar Reeve, Jim Rowles, Richard Seminars, Tom Solomon, Douglas Taylor and James Thane.

PI KAPPA ALPHA

New Pike pledges are Bill Farmer, Geoff Fowler, Mike Green, Bill Hamm, Bill Lawren, Fred Loetscher, Phil May, Dale O'Harrow, Bob Randolph, Gary Rose, William Scherrer, Mickey Sharp, David Stauffer and William Watson.

SIGMA ALPHA EPSILON

Wearing new SAE pins are Phil Benner, Rick Burrus, Jack Coates, Terry Cummings, Bryan Evans, Dave Freedman, Steve Fry, Joe Kalish, Jim Lavery, Dan Lesley, Bill MacMorran, Robert Perry, Jeff Petzold, David Ream, Bill Sherer, Glenn Smith, Scott Stegall, Jr., Thomas Weitzel, Fred Wilcox, Jack Williams and John Williamson.

SIGMA CHI

New pledges of Sigma Chi are Brent Benson, Dusty Blether, Tim Buer, Vincent Carter, Eddie Corral, Mariano Escobedo, Chuck Flint, Stewart Ford, Bill Hart, Dave Hayward, William Hazen, Paul Katsener, Steve Jacobson, John P. Ladas, Bill Laurie, Jerry Lung, Ronald Mark, Henry J. Martinson, Joe Miller, Nick J. B. Mumford, Jim Palmer, Joe Porter, Malcolm Read, Leonard Rosenberg, Tom Thompson, Jim Walker, Dan Walrath and Edward Varney.

SIGMA NU

Wearing Sigma Nu pledge pins are Stephen Axelson, Malcolm Coon, Robert Davis, Jr., Bob Day, Jon Elam, Edgar Foy, Fred Giffre, Jim Hayes, Robert Howell, Jr., Jack Journey, Lonnie Lenington, Christopher Manley, Mike Orcutt, Jerry Poplar, Greg Sorrenson and Walt Tegtmeyer.

SIGMA PHI EPSILON

The 29 Sig Ep pledges are Joe Angelo, Steve Bodley, John Butterfield, Joe Clark, John Causey, Rick Crog, Charles Davey, Charles DePew, Troy Elliott, Gary Fergemann, Greg Gordon, Dave Hamlin, Larry Huffman, Tim Kelley, Bruce Kosman, Steve Liston, Ted Marsella, Robert Nelson, Andy Nickles, Dave Oursler, Wally Rees, Hal Roper, Mark Seidner, Colin Smith, Scott Spear, Dave Watte, Curtiss Waters, Larry Wilson and Dave Yansen.

TAU KAPPA EPSILON

Tau Kappa Epsilon pledged Frank Davis, Leonard Dick, Robert W. Haley and Donald A. Roberts.

THETA DELTA CHI

The 28 new pledges of Theta Delta Chi are Paul Adams, David Adams, John Beyer, Anthony Bustos, Bill Byran, Gary Coughran, Charles H. Cowley, Cliff Damron, Dick Davis, Art Duncan, Tom Ellison, John Enk, Steve Evans, Bob Fortner, Spencer Fry, Bob Furlow, Stuart Gibbons, Thomas Horen, Robert Keating, Morris Kestler, Terry Magowan, Dirk Ploog, George Ranney, Fred Schwarz, Gary Donald Smith, Larry Taylor and Jon VanArsdall.

THETA CHI

New Theta Chi pledges include Russell Flaherty, Joe Gatti, Larry Gunning, Thomas Levinski, William Lien, W. T. Miles, Harry L. Schaeff, James Alan Stoleson, Gilbert Velasco and Don Williams.

Project Starts To Raise Money

The pledges of Delta Gamma sorority will sell raffle tickets, September 23 from 7-10 p.m. at the fraternity houses. The money will be used to buy Braille books for blind students.

Tickets will be sold for one dollar apiece.

The winner will be named at the drawing on 10 p.m. Monday. The prize will be \$25.

Various Activities, Projects Slated By Silver Wing Cadets

Flights to several of the nation's Air Force bases will highlight this year's Silver Wing calendar.

During the football season Silver Wing, the honorary fraternity for basic AFROTC cadets, will help concessions at the home games. The service project for this year will be decided in the near future.

The Silver Wing executive board members for this year are Donald Bisbee, commander; Al Slucher, executive officer; Michael Hughes, operations officer; Jerry Dvorak, comptroller; William Daley, public information and material officer; Eric Bergeson, administrative officer, and Michael McDaniels, provost marshal.

Paper Presented

Dr. Robert Rein'l, chairman of the philosophy department, presented a paper at the 13th International Congress of Philosophy in Mexico City last week.

The Silver Wing advisor is Capt. John L. McElroy, professor of air science.

BRITAIN'S ACADEMY AWARD WINNER. BEST ACTRESS. **LESLIE CARON**

THE SHAPED ROOM

Why do women cry?

with **TOM BELL** THIS IS AN ADULT PICTURE

BERNARD LEE • BROCK PETERS • CICELY COURTNEIDGE
PATRICIA PHOENIX and EMLYN WILLIAMS
Produced by JAMES WOLF & RICHARD ATTENBOROUGH
written for the screen and directed by **BRITAN FORBES**
ROMULUS PRODUCTION - A COLUMBIA PICTURES RELEASE

Starts Tonight!
KIVA THEATRE
15 E. Main St. - WH 5-0982
Scottsdale

University Players Set Tryouts For Season's Second Production

Tryouts for the second production of the University Players, "The Visit," written by Swiss playwright Friedrich Duerrenmatt, are scheduled for 7:30 p.m. Sept. 23-24.

Required for the presentation are 24 men and 12 women.

Among the men needed are three "muscle men," one mandolin player, one guitar player and a team of three gymnasts.

In the play which will be presented Oct. 31 to Nov. 2 and Nov. 7 to 9, are characters from early teens to late 60's.

Wheel Aligning - Balancing
Auto Glass Installation

Pete Null's

TEMPE BODY SHOP
SPECIALIZED COLLISION SERVICE

11 East Fourth Street Phone WO 7-1601
TEMPE

Two Top Film Hits — All Phoenix Is Talking About TOGETHER FOR THE 1st TIME: ONE WEEK ONLY



Shelley Winters **the balcony** Peter Falk

Guaranteed to be the most controversial film ever!

Plus This Major Co-Hit

Both features now playing exclusively at the **VALLEY ART THEATRE**

509 Mill - Tempe Phone WO 7-6664
Student Rates — \$1.00

"BEST AMERICAN FILM OF 1962!" — Time Magazine

DAVID & LISA
AN UNUSUAL LOVE STORY!
KEIR DULLEA
JANET MARGOLIN
HOWARD DA SILVA
Produced by PAUL HELLER
Directed by FRANK PERRY
A Continental Distributing Corp. Release
Affiliate of the Walter Reade Theatrical Corp.

Hostesses Invite Freshmen Girls To First Meeting

A Freshmen Hostess "Get Acquainted" meeting will be September 26 at 3:30 p.m. in the MU upper lounge.

All freshmen women are invited.

Freshmen hostesses work at the MU information desk and are the official hostesses for all programs in the Union building.

The hostesses meet weekly and have planned programs of speakers and special guests.

Officers will be elected October 1.

"FOLKWAYS USA"

Folk Music For One Solid Hour

Now On KTAR Radio
Sunday Nite 8:00

With
Bryan Hickox

THE UNBELIEVABLE HORROR OF A MAN-MADE HELL....
THE UNENDURABLE PAIN OF VIOLENT HUMAN EMOTIONS...

"A CHILLY EXPOSE... SUSPENSE... EXCITEMENT"
— N. Y. Times

no exit

VIVECA LINDEFORS AS INEZ, WHO PREFERRED WOMEN...
RITA GAM AS ESTELLE, WHO PREFERRED MEN...
MORGAN STERNE AS GARCHI, WHO WOULD SPOON...
BEN PINZA AS THE CHUCK OBSERVER...
JEAN-PAUL SARTRE'S

THE PRIZE WINNING FILM BERLIN FILM FESTIVAL

Phoenix Premier Engagement Starts Tonight!

PORTOFINO
Theatre — Scottsdale
46 E. Main WH 6-0111

New Dean Reveals Four Point Program

As advisor to the ASU fraternity system, Dean of Men G. Hamm has a four point fraternity improvement plan which he intends to put into effect this year.

First, he plans the utilization of grade averages and tests with which he hopes to create a formula to predict the success of prospective fraternity men.

STRESSING IMPROVEMENT of managing finances and organization of programs, the

second phase, will include a series of two-hour orientation sessions of all fraternity presidents, treasurers.

As part of the third area, Dr. Hamm's office will help in concluding fraternity business activities at the end of the school year.

An exchange of scholarship programs to provide models to improve fraternities that now have weak programs is planned as his final project.

Marge Smith
FLOWERS
"Tempe's Most Popular Florist"

722 Mill Avenue

Evenings WO 7-5020 Open Sundays 9- A.M. - 2 P.M. Daily WO 7-0271

Koret
of
California

designs these
gay POPCORN
MATCH-
MATES in
textured
Permathal
Everglaze
100% cotton
knit by
ALAMAC for
easy, breezy
wear, never a
care. Stripes
and solids mix
and match at a
whim . . . makes
casual living
just plain fun!

Elastikord Slim Skirt 7.98
Striped Insert Cardigan 7.98



Informal Modeling at the Sands Hotel
Every Friday, 12:30 to 1:30

Celia's

TEMPE CENTER
&
1149 E. Main — Mesa

Sororities Pledge 187

Ribboning ceremonies Sunday afternoon for 187 girls ended six days of formal rush for the 11 ASU national sororities.

Sororities and their new pledges are:

ALPHA DELTA PI
Toni Atmore, Carolyn Bates, Marilyn Carlson, Gale Chatham, Bonnie Crumb, Viki DeMeyer, Donna Fiekle, Linda Helzer, Linda Helm, Karen Hendrickson, Kenni Henderson, Susan Hollander and Carol James.

Also, June Kettering, Melanie Martin, Debbie McDougal, Carol Beth Miller, Nancy Monsees, Margie Patterson, Valerie Petty, Janet Schwanke, Shirley Smith, Lauren Thompson and Sharron Waggoner.

ALPHA EPSILON PHI
New wearers of the AEPi colors are: Janice Ann Cohen, Susan Jacobs, Stephanie Haines, Elizabeth Meer, Bernita Orloff and Sonia Tarrish.

ALPHA PHI
Now wearing the silver and bordeaux: Jacque Lyn Bennett, Patricia Brown, Lynne Lee Casata, Valerie Collins, Janice Edwards, Christine Epling, Cathy Hettel, Carol Hubert, Michele Kapon, Cheryl Lambert, Barbara McManus and Kay McCurmin.

Also, Gerry Ann Miller, Jeanette Minitello, Susan Riddell, Lolly Silver, Barbara Styles, Elaine Tinder, Christine Turchi, Babs Wallace and Robin Wood.

ALPHA SIGMA ALPHA
Displaying their ribbons are: Jeanne Ellis, Gwen Gilsdorf, Sharon Goldberg and Dawn Powell.

CHI OMEGA
New pledges are: Deanna Bangle, Bonnie Brennan, Emily Getzinger, Gaye Lyn Gravely, Andrea Hill, Judith Lynn Henderson, Nancy Hoyer, Wanda Killebrew, Rayma Kirkpatrick and Brooke Lennartz.

Also, Mary Maxine McFadden, Martha Maning, Joy Moss, Carolyn Orling, Priscilla Overman, Barbara Ruth, Margene Smith, Carol Tessitore and Joan Yenerich.

DELTA GAMMA
Pledges hoping to earn the anchor pin of DG are: Jocelyn Baum, Barbara Borrowdale, Jeanne Brown, Beverly Buehler, Susan Callis, Sally Cartney, Stacy Fairbairn and Kelley Felts.

Also, Martha Higdon, Jill Higgins, Susan Honig, Jackie Johnson,

Anne Lundy, Jerry Anne Meikle, Terry Nelson, Sue Nichols, Bette Rogers, Betty Sigvaldson and Suzi Turner.

GAMMA PHI BETA
New pledges of Gamma Phi are: Pat Erickson, Ann Empie, Suzanne Girton, Terry Gonzales, Barbara Grim, Elizabeth Hall, Anne Haufier, Patricia Hills, Catherine Ann Hoeksema and Sherry Livingston.

Also, Molly Mee, Lynda Miller, Martha Mitchell, Susan Phillips, Susan Ryan, Sandra Walmsley, Donna Warman and Marti Joanne Wright.

KAPPA ALPHA THETA
Proudly displaying their Theta pledge pins are: Sandra Kay Aakne, Beverly Ball, Jane Berrier, Karen Blair, Judy Brashear, Georgeanne Danneker, Kathleen Dooley and Diana Van Duern.

Also, Gail Fisher, Judith Ellen Hage, Barbara Jordan, Paula

Leahy, Jan Leslie, Marilyn Joan Miller, Marilyn T. Miller, Carol Nielson, Sue Norman, Tammy Powers, Sharon Reardon, Donna Simser, Kay Tweed, Prudence Voideng and Connie Weller.

KAPPA DELTA
New KD's are: Sandy Adams, Michelle Bertino, Carol Borschardt, Diane Dickson, Marsha Edgar, Gloria Eklund, Karen Glenn, Sharon Hammons, Ann Hawkins, Nancy Heath and Linda Hoffman.

Also, Neta Kay Johnson, Lee Kerr, Jacqueline McCoy, Libbie Robbins, Sammy Lee Simpson, Pamela Sisk, Jacqueline Smith, Susan Swenson, Joyce Towsley and Carol Jean Wallace.

KAPPA KAPPA GAMMA
New Kappa pledges are: Linda Lee Adams, Kay Benzel, Sarah Burns, Phyllis Canero, Judy Cusack, Betty Davis, Dianne Gain, Bonnie Hansen, Christine Kendrick, Patricia Lenihan and Cheryl Ann Linsenmeyer.

Also, Barbara Lutz, Pat O'Neill, Gay Parker, Pam Scheffey, Karen Schreiber, Merrily Stadem, Cathy Suarez and Sandy Walker.

SIGMA SIGMA SIGMA
Wearing the purple and white of Tri-Sig are: Katherine Dale Bates, Sharyn Cantwell, Dana Dean, Louise Dillman, Lee Domb, Carol Hartline, Rhoda Heller, Beverly Jones, Peggy Kilbourne, Mary Frances Melby, Charlotte Poole and Jacqueline Simmons.

Women Students Schedule Party

General council members of the Associated Women Students are invited to a get-acquainted party at 6:30 this evening at the home of Mrs. Jo Freida Dorris, assistant dean to the Associate Dean of Students. She resides at 8614 East El Charro in Scottsdale.

The meeting is to provide an opportunity for the members to become acquainted and to discuss future activities.

Council members who have not yet made reservations are asked to do so by calling the dean's office.

AWS officers for the year are Paula Eisenman, president; Beth Mitchell, vice president; Ann Malene, secretary, and Marti Stellhorn, treasurer.

The first general council meeting will be at 3:30 p.m., Sept. 26 in MU 210.

Graduates Instruct

Joanne Lorraine Griggs and George A. Thomas, recent graduates from the University of Washington graduate school, and Gordon Cluff from ASU will be teaching in the speech and drama department.

Miss Griggs received the bachelor's degree from Drake University in Des Moines, Iowa, and her master's from the University of Washington.

A member of American Educational Theatre Association and Children's Theatre Conference, she will serve as special lecturer teaching speech and oral interpretation. She will also costume all University Players' productions.

Thomas will be assistant professor of speech and drama, teaching classes in stagecraft and make-up. He will direct art and will be technical director for the University Players.

Before studying at the University of Washington, he was graduated from Beloit College with the bachelor of arts degree and is a member of American Education Theatre Association, Children's Theatre Conference, American Community Theatre Association and National Collegiate Players.

Teaching speech correction and hearing will be Cluff, assistant professor of speech. He earned his bachelor's degree from ASU and his master's from Southern Illinois University in Carbondale and is working on his doctor of philosophy degree.

Donald Doyle Attends Confab

Donald P. Doyle, assistant professor of speech and drama, will plan the program for the 1964 National Children's Theatre conference by the American Educational Theatre Association.

He is acting conference chairman.

Doyle recently attended the 1963 conference at the University of Minnesota at Minneapolis.

BEAUTY IS MY BUSINESS

For 20 years I have been making women more beautiful with Merle Norman Cosmetics Know-How. Cosmetics make you feel Beautiful. You too can gain the self assurance, poise and satisfaction of personal improvement. Phone 947-4552 now for your appointment. With no obligation you receive your personalized Beauty Treat.

MERLE NORMAN
COSMETIC STUDIO OF SCOTTSDALE
947-4552
Casa De Los Arcos Bldg. Edna Davison owner
12 North Marshall Way 9-5:30 Thursday to 9 p.m.

antonio's

731 APACHE BLVD.

NOW OPEN

11:30 A.M. TO 10 P.M.

NOW SERVING

★ ITALIAN
★ AMERICAN
★ MEXICAN
FOODS

Featuring Roast Beef, Corned Beef, Pastrami,
Baked Ham & Salami Sandwiches

New Full Line Of
DELICATESSEN
and Beverages
967-2160 FOR TAKE OUT

Antonio's Fine Food Also At
VILLAGE SPANISH KITCHEN
In Village Food Bazaar 20th St. & Camelback

Choral Group Slates Tryouts For Vocalists

The "University Singers," a new choral group, has been organized by the ASU department of music. The group was formed "to provide experience in both choral and vocal entertainment for its members," according to Dr. Kenneth F. Seipp, associate professor of music.

Tryouts for all interested students are in annex XI, opposite the Lyceum building daily at 2:40 p.m. One hour of class credit will be given for the course which will meet Mondays, Tuesdays and Thursdays at 2:40 p.m.

Auditions Set For Folk Music

Folk music enthusiasts are invited to a meeting Tuesday at 3 p.m. in MU 211.

Dr. Roger Meiners of the English Department will assist in conducting the meeting.

Beauty Returns -



COMING HOME — Miss Susan Bergstrom arrives in Phoenix after placing as fourth runner-up in the Miss America contest held in Atlantic City. Holding her trophy, Miss Arizona is met by her sorority sisters, members of Kappa Kappa Gamma. Susan is a student at ASU and majors in physical education. Before entering the contest, she worked as a receptionist for a local public utility company.

New Deans To Aid And Guide Students

ASU students and faculty will be working with three new deans this year including a new dean of men, Dr. George F. Hamm, assistant dean of students, Mrs. N. R. Dorris, returning after a year's absence, and a new assistant dean of students, Robert C. Bradford.

Dean Hamm, former assistant dean of students, who says he hopes to make ASU's fraternity system the best in the country, received his bachelor's degree from South Dakota State College, where there are no social fraternities. He earned a Master's and a Ph.D. degree from the University of Wyoming.

DEAN DORRIS earned a Bachelor's degree in music from the Oklahoma College for Women. She also studied business education and psychology.

She received her Master's degree from Oklahoma State University, majoring in psychol-

gy and emphasizing counseling, tests and measurements. She also served as head counselor on the dean of women's staff there.

Her duties for the year will include counseling and assisting students in connection with employment organizations, loans and personal problems. She will also advise the Panhellenic Council and Associated Women Students.

SHE WORKED with the college preparatory program sponsored by the YWCA during her year's absence from ASU.

Dean Bradford holds a Master's degree from Stanford University and has studied at the University of Utah and Harvard Graduate School of Business.

He is head resident of Sahuaro "A" and his major duties will be to counsel men students, advise the leadership board and counsel the student leadership workshop at Payson, October 25-27.

Helen Keller's Life To Be Seen In 'The Miracle Worker' Drama

Helen Keller's early life will be depicted in the first production of the University Players entitled "The Miracle Worker," which will run Sept. 26-28 and Oct. 3-5.

Dr. James Yeater, assistant professor of speech and drama is directing the play, written by William Gibson.

The title role of the miracle worker, Annie Sullivan, Miss Keller's teacher, will be played by Anita Bryon, ASU junior.

Ten-year-old Phoenician Helen Winters will portray the young Helen Keller.

Other ASU students performing are Francis De Grado as a doctor, Claire Chene as Kate, Gary Stephens as father Keller, Anne Valenzuela as Aunt Ev, George Nelson as James and Robert Archer as Anagnos.

Curtain time is 8:30 p.m. each night in the University Playhouse in the Lyceum building.

Other University productions planned this season range from classic Greek drama to the latest musical.

"The Visit," a tale of vicious revenge written by Swiss playwright Friedrich Duerrenmatt,

will be presented Oct. 31 to Nov. 2, and Nov. 7 to 9.

Aristophanes' classic drama, "Lysistrata," an account of women in revolt, is scheduled November 21 to 23 and December 5 to 7.

"Greensleeves Magic," to be presented December 20 to 22 and January 3 to 5, is a story for children by Charlotte Chorpennig.

"Enemy of the People," a study of power and corruption by Henrik Ibsen, is slated for February 13 to 15 and February 20 to 22.

The list of plays also includes "The Fantasticks," a musical, by composer Harvey Schmidt and lyricist Tom Jones. It will run March 12-14, March 19-21 and April 2-4.

Final presentation scheduled for April 23-25 and April 30 to May 2 will be "Begger On Horseback." This is a satire of modern manners written by George S. Kaufman and Barc Connelly.

Season tickets are now available for \$7.50 for general admission and \$5.00 for ASU students and faculty. Individual admission will be one dollar and \$1.50 for students and faculty and general admission respectively.



When Godiva, that famed lady fair,
Told her husband, "I've nothing to wear,"
With his Swingline in hand,
He stapled a band
And said, "Wear this, my dear, in your hair!"

SWINGLINE STAPLER



98¢
(including 1000 staples)
Larger size CUB Desk
Stapler only \$1.49

- No bigger than a pack of gum
- Unconditionally guaranteed!
- Refills available anywhere!
- Get it at any stationery, variety, or book store!
- Send in your own Swingline Fable. Prizes for those used.

Swingline INC. LONG ISLAND CITY 1, N. Y.

Find Your
**Swingline
Staplers**
at
**Campus
Drug**
Corner College & 8th

**"Years Ahead" Flight Training
In The New Shinn - 2150**

**MODERNIZED GROUND SCHOOL
FOR PILOTS & NON-PILOTS**

Amos Flight Operations
A Private License is a Must in Modern Business

Don Amos — Class of '56
Phone BR 5-7291 **SKY HARBOR**

WELCOME ASU Students & Faculty

GET ACQUAINTED SPECIAL
FREE LUBE JOB
WITH ANY \$10.00 PURCHASE

CREDIT ACCOUNTS INVITED

★ We Service All Makes Of Cars ★

**Save Hundreds Now
On Any Of Our 37
1963 Models In Stock**

Be Our Guest

SHOWING **1964** FULL LINE

Dodges & Chryslers

COME IN AND DRIVE ONE
8 A.M. TO 10 P.M. DAILY EXCEPT SUNDAY

Dana Bros. MOTOR CO.

Dodge — Chrysler — Imperial
Authorized Factory Dealer

211 Mill Ave. Phone WO 7-3345

"Your Hometown Dealer & Garage
Away From Home"

Closed Saturday Nite For Games

GO-GO-GO-SUN DEVILS

Greek To Me Column Debuts

By SUE JEFFRIES
and
MIKE LONGSTRETH

For the independent and Greek students alike the close of formal rush provides the first breather since school's start. The breather, short as it is, gives us a chance to introduce our plans for the type of news which will appear in this column.

This semester we will attempt to overhaul the personality of the traditional Greek To Me column. It is our intention that future columns will place greater emphasis on telling the Greek story to the independent student. Greek To Me, therefore, will not be just devoted to fraternity and sorority "shop talk."

The writers of Greek To Me intend to seek out and answer the questions independents have about Greeks, and those that Greeks have about independents. To fulfill these ambitions the column will feature "Greek Profiles."

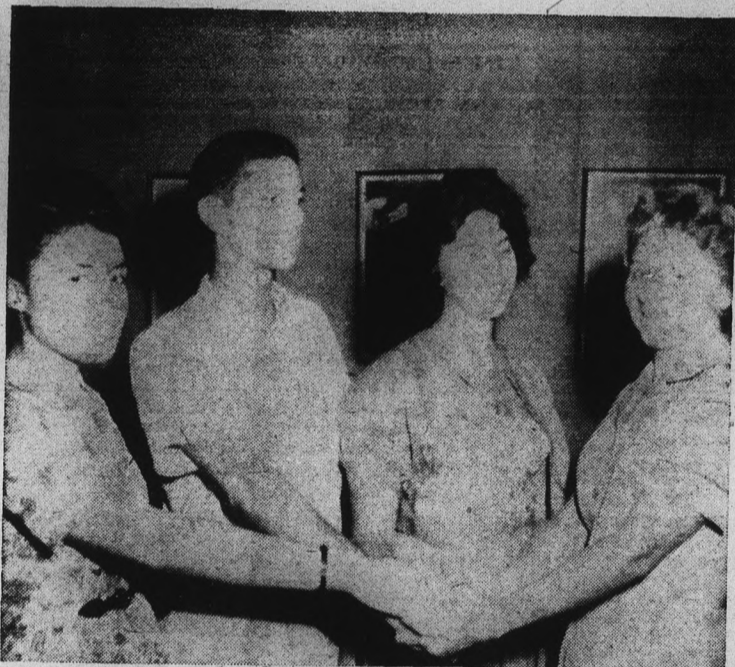
Deans and other faculty members will be interviewed and given an opportunity to express their thoughts as related to the organizations and their members.

Through the coverage of special events, Greek To Me will show how certain social activities add to the important balance of Greek life.

In future columns we intend to reveal to the independent student the inside story of the real Greek life.

Greek To Me will allow the interested independent student an honest opportunity to evaluate ASU's Greek system and determine whether or not he should affiliate.

Army Bound -



STUDENT NURSES — Three ASU student nurses who entered the Army Student Nurse Program September 13 are, standing (l. to r.) Mary Lou Ayala, Rex Nelson and Judith Korttila. Welcoming them is Captain Kathryn Teele, Army nurse counselor for Arizona.

ASU Nurses Enlist In Army As Privates

Three full-time students from the ASU School of Nursing entered the Army Student Nurse Program September 13, each as Private First Class in the Nurse Corps.

Nurses include Mary Lou Ayala, Judith Korttila and Rex Nelson.

They are enlisted in the reserves and are required to attend no meetings if a C average is maintained and no classes are missed.

Monthly pay of \$206 and other military benefits are given to the nurses.

Six months prior to graduation they are commissioned as 2nd Lieutenants in the Army

Nurse Corps and are subject to active duty after acceptance by the Arizona State Board of Nursing.

Nelson is the first male nurse in the state and the first to go into the program from the western states since the program opened three years ago.

He is one of 25 males in the United States selected for the program.

Nelson claims Bismarck, N.D., as his home.

He will be commissioned in December and will graduate in May. He plans to specialize in anesthesiology, the administering of anesthetics.

Mary Lou is from Chandler and Judith from Tucson.

Welcome Students

The Campus Men's Shop cordially invites you to inspect the largest selection of Ivy and Traditional styled clothing and furnishings in the area.



CAMPUS CLASSICS

A most welcome and necessary addition to any young man's about-campus wardrobe. Natural shoulder jackets in most popular patterns

SUITS TROPICAL WEIGHT WOOL

\$49⁵⁰

SPORT COATS

\$29⁵⁰ to \$39⁵⁰



SLACKS

Largest selection of famous brand name cotton "Ivy" and Continental trousers . . .

Many colors & patterns to select from . . .

\$4⁹⁸

to

\$6⁹⁸



\$11⁹⁸

to

\$15⁹⁸

JARMAN SHOES

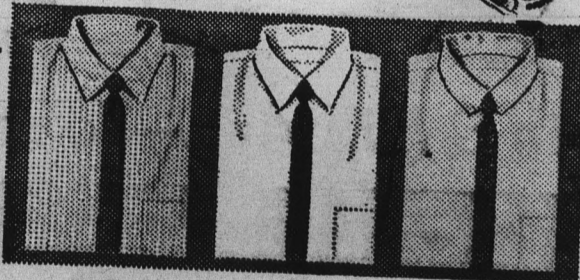
Dependable, durable for your campus wear



FULLY ZIPPER LINED

TRENCH COATS

\$19⁹⁸



NEW DRESS SHIRTS
by Arrow and Van Heusen

Classic white and colors, in solids and stripes; in favorite collar styles.

\$4⁰⁰ & \$5⁰⁰

Campus men's shop

FOR MEN AND YOUNG MEN . . .


603 MILL AVENUE

TEMPE

If You Drive a General Motors Car —
 the **BEST PLACE** for **SERVICE** is **BRIT SMITH'S**
 "We do the job RIGHT—THE FIRST TIME"

- Factory Trained Mechanics
- Reasonable Prices
- Pick up & Delivery Service

- Genuine Replacement Parts
- Work Guaranteed
- Permanent Records Maintained
On Your Car

All  Warranties Honored

ASU SPECIAL

FRONT END ALIGNMENT \$ **6.95**
 (Famous Bear Equipment)
 Most Cars

Reg. \$12.50 — Good Thru Oct.



Ken Langness
 Service Manager
 (12 Yrs. As Chevrolet Service Manager)

ASU SPECIAL

GET ACQUAINTED OFFER

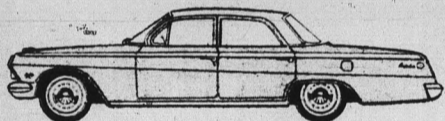
TEXACO
LUBE JOB 99¢
 (Reg. \$1.75)

Good Thru Oct. — Bring Ad

CHEVROLET

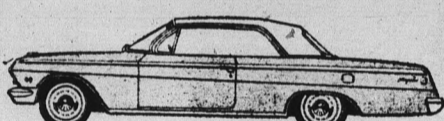
and OLDSMOBILE SPECIALISTS ♦ SERVICE ♦ SALES

BEL-AIRE SPECIAL



'63 CHEVROLET
 SAVE \$500
 ONLY ONE LEFT

IMPALA SPECIAL



'63 CHEVROLET
 SAVE \$700
 ONLY ONE LEFT

'55 CHEVROLET \$295 / '58 PLYMOUTH \$495

SAVE \$\$ on USED CARS

- ★ No City Sales Tax
- ★ Largest Stock In Tempe
- ★ Reconditioned Before You Buy
- ★ Complete Service Facilities
- ★ Bank Financing (Lowest Interest Rates)
- ★ Warranty In Writing (And Free)
- ★ Lowest Prices No Manager To Pay

8th & Mill Ave.—Tempe—Service Entrance on 8th St. WO7-3381

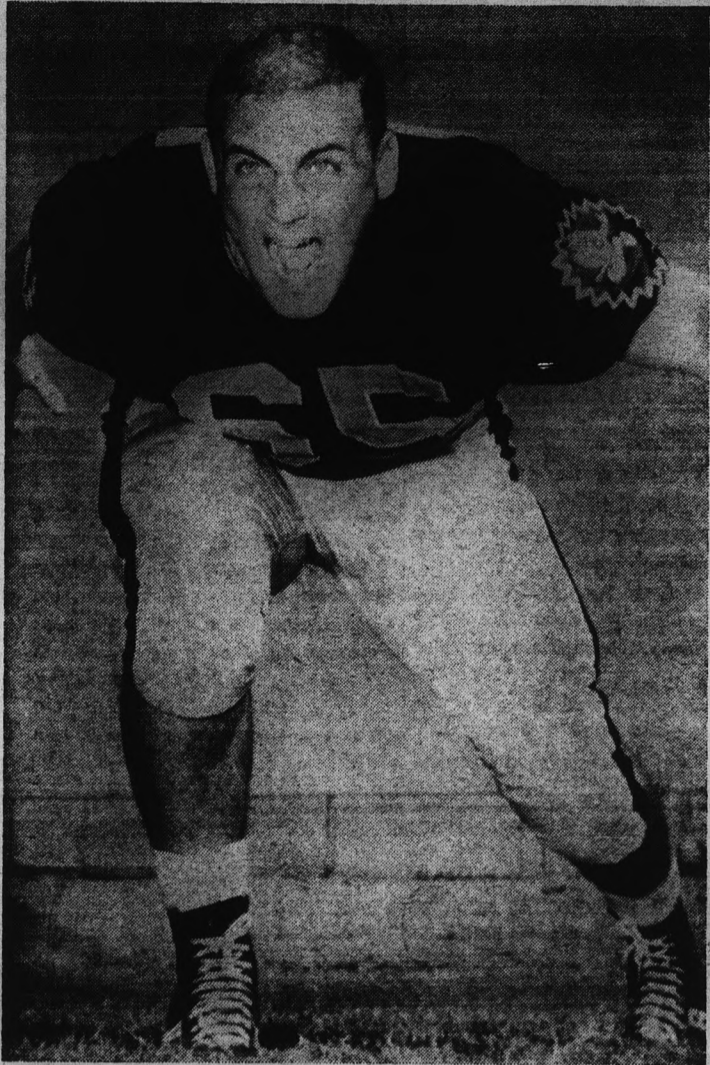
BRIT SMITH CAR CO.



"MOST People Like Our Service" — OUR FIFTH YEAR IN TEMPE

ASU To Face Wichita Tomorrow

Crowd Of 30,000 Expected To Cram Devils' Stadium



HERE COMES THE "DAWG" — Ron (Dawg) Scarfo, a 5-7, 195 pound junior from Girard, Ohio, will start at left guard in tomorrow's opener with Wichita. ASU's version of Mighty Mouse, one of best liked players on the Sun Devil squad, is a dog catcher during the off-season.

(Photo by Ed Ryan)

By ALAN MICHAELS

Arizona State Coach Frank Kush, fielding perhaps the finest team in the school's history, leads the Sun Devils into the opening game of the 1963 football season against Wichita tomorrow night.

An anticipated crowd of 30,000 at Sun Devil Stadium will see ASU's jetstream backfield and question mark line face a Shocker outfit that returns 16 lettermen from last year's 3-7 season.

The Devils will open with Alonzo Hill and Herman Harrison at ends, Frank Mitacek and Hase McKey at tackles, Joe Kush and Ron (Dawg) Scarfo at guards, Chris Stetzar at center and a backfield featuring John Jacobs at quarterback, Charley Taylor and Gene Foster at the halves, and Tony Lorick at fullback.

JACOBS, A 195-pound senior from Braddock, Pa., and Harrison are being boomed for All-American honors.

"Jake" completed 77 of 136 passes for 1,263 yards in gaining All-Western Athletic Conference recognition last season.

Harrison, a 6-3, 190-pound senior from Duquesne, Pa.,

caught 13 passes for 207 yards and one touchdown in 1962.

The Sun Devils finished with a 7-2-1 mark last year, including a 21-10 victory over Wichita in the season opener.

ASU LED the nation in total offense with a 384.4 yards per game average, finished second in scoring to Wisconsin with a 30.4 average, eleventh in passing offense, thirteenth in rushing offense and sixteenth in points after touchdown.

Individually, Jacobs was nationally ranked 26th in passing, Lorick 15th and Taylor 37th in rushing, and John Seedborg third in scoring by kicking alone and 35th in punting.

The Devils held an offensive game-type scrimmage last Saturday night which saw the first

and second units account for 12 touchdowns.

"I THOUGHT our hustle was good," said Kush, "but our execution left something to be desired. Sure, we scored 12 touchdowns, but remember, this was solely an offensive scrimmage, and there were 12 offensive penalties called — one of which cost us a touchdown."

The surprise of the scrimmage was the performance of second team quarterback John Torok, who returned to action after suffering miscellaneous injuries in a car accident prior to the opening of fall practice.

TOROK completed 20 of 32 throws for 248 yards, including touchdown passes of 46 yards to halfback Ray Young, five and four yards to end Jerry

(Continued on Page 21)

HAPPY HOUSE SHOP TEMPE CENTER

- Greeting Cards — Stationery
- Paper Goods — Party Favors
- Wedding Announcements — Invitations
- Monogramming
- Chess — Cribbage — Bridge
- Gifts — Candies — Service

The Americana Shop



The Students Report

Americana Shop apparel is modest in price . . . traditional in styling

Selections of clothing, furnishings and sportswear . . . guaranteed to fit.

U should stop!! for your **FREE ASU** key charm



WO 7-5457

WO 7-5457

OPEN 9:00 A.M. TO 6:00 P.M.
THURSDAY 'TIL 9 P.M.

THE
Americana
SHOP
QUALITY MEN'S APPAREL
TEMPE SHOPPING CENTER

Most WAC Teams Open Tomorrow

By JOHN NADEL

The Western Athletic Conference, after a very successful opening season, swings into its second year of intercollegiate competition this Saturday as five of the six members open the 1963 football season.

The only defending champion New Mexico is idle this weekend, waiting until September 28 when they open against Texas Western.

IN ADDITION to the ASU meeting with Wichita, other openers include Brigham Young at Kansas State, Utah State at Arizona, Oregon State at Utah and Wyoming at Montana.

With the Sun Devils ineligible for the conference championship due, to the fact that they play only three conference games, the race should be very close, with all other members of the conference having a shot at the title.

The most likely choice to win would be the University of Arizona. Coach Jim LaRue has 26 returning lettermen, paced by tackle Jerry Zeman and halfback Tom Phillips. Zeman is a tough 215-pounder who will anchor a well-experienced line, with lettermen at least two deep in every position.

PHILLIPS, A junior from San Diego, is a 9.6 sprinter who Coach LaRue calls "one of the outstanding backs in the WAC."

The Wildcats return four lettermen quarterbacks and three lettermen fullbacks.

Although New Mexico was stripped by graduation of many key performers, they should be tough again this season. The defending Conference champions will field a solid interior line led by Eddie Stokes, All-WAC center a year ago.

BACKFIELD returnees include all-conference fullback Bucky Stallings and wingback Howard Hancock. Much of the Lobos' success depends upon the 205-pound Stallings, a senior. But the Lobos will miss

their 1962 offense.

Utah will be no easy match for anyone this season. The Redskins will probably pass a lot in '63, with able quarterback Gary Hertzfeldt doing the throwing. With an excellent receiver like Roy Jefferson, the Utes will have one of the better passing attacks in the conference.

Leading the running game will be fullback Doug Wasko. Although the Utes will score a lot of points in 1963, their defense is weak, and the Redskins meet some strong offenses this season.

THE WYOMING Cowboys, with 25 returning lettermen, should be improved over last season's team, which compiled a 5-5 mark.

A strong line will help the Pokes, but Coach Lloyd Eaton was so desperate for running halfbacks that he moved Rick Desmarais, last season's leading rusher, over from fullback.

The Cowboys will have a lot of depth, but won't be a very fast team. Success this season probably depends on their strong line, which should hold up pretty well.

Brigham Young could be the real spoiler. The Cougars have 31 lettermen returning, but lost a lot when All-American Eldon Fortie graduated.

Much success this season depends on the new tailback, Phil Brady, a junior from Scottsdale.

The line returns almost intact, so BYU will probably be improved over last year's 4-6 mark.

Intramurals Start Monday

The first intramurals competition of the new school year will be badminton, beginning Monday.

Contestants may sign up today by 3 p.m. at the Intramural Office in the MU games room.

Players may enter badminton competition independently.

An intramurals manual will be available Monday, with details of the 1963-64 intramurals program.

Sigma Delta Psi, national honorary athletic fraternity, will be on an individual basis this year. There will be 15 events and contestants must pass all events throughout the year to qualify.

Sun Devil Facts

Frank Kush is the winningest football coach in Arizona State University history. His five year record reads 38 wins, 12 losses and one tie.

Imps Prepare For Opener

By JON MORRIS

ASU's Sun Imps recently found 54 men trying for freshmen football positions as Coach Bill Kajikawa readies his freshman for an Oct. 5 opener against Eastern Arizona Junior College in Thatcher.

California leaders in representation on the squad with 18 candidates. Arizona has 10, Pennsylvania, nine; Michigan, seven, and Ohio, four.

Quarterback candidates include three California men — 195-pounder John Goodman, Bob Lee, 184 pounds, and Alex Sotomayor, 173 — plus Larry Huffman, 195, from Detroit, and John Vincent, 180, from Tempe High School.

COACH KAJIKAWA was born in Oxnard, Calif. He came to Phoenix in 1929 where he won nine varsity letters at Phoenix Union High in football, basketball and baseball.

He received an education de-

gree from ASU while twice winning All-Border Conference honors as a tailback on the football squad. He played infield on the baseball team.

KAJIKAWA has served as head baseball and basketball coach and freshman football and basketball mentor during his 26-year stay at ASU.

Other games on the freshman football schedule include an Oct. 12 away game with San Diego State, a home contest Oct. 26 against the University of New Mexico and a finale with the UofA Nov. 16 at Tucson.

GO-GO GALLENKAMP'S GYM SHOES



GallenKamp's
shoes for the entire family
more miles to a Gallenkamp

Women's & Men's circular vamp, pin-point toe, machine washable oxford. Canvas uppers, cushion insole and molded rubber sole. In white, black or chino; women's sizes 4 to 10; men's sizes 6½ to 13.
narrow and medium widths

2.99 Women's **3.99** Men's

Welcome ASU STUDENTS & FACULTY

FOR —

ARTIST & DRAFTING SUPPLIES — DECORATING MATERIALS — CRAFTS — HOBBIES — PICTURE FRAMING —

LET



FRICKSON ART and CRAFT SUPPLIES
HANDCRAFTS

SUPPLY YOUR NEEDS

Tempe Center — WO 7-4482

Open Mon. & Thurs. Eve.

Gallenkamp's

Tempe Center

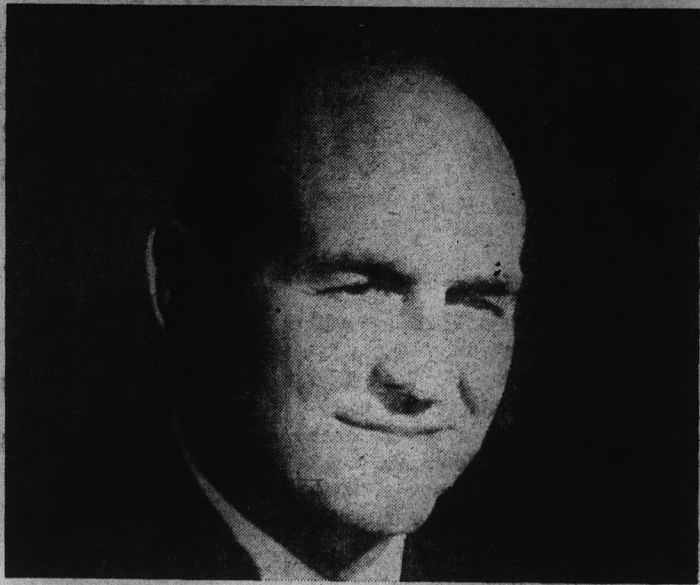
Also Stores In
Mesa, Tower Plaza,
Park Central &
Chris-Town



Gallenkamp's

Tempe Center

Also Stores In
Mesa, Tower Plaza,
Park Central &
Chris-Town



NORRIS STEVERSON

Coach Accepts National Post

Norris Steverson, ASU gymnastics coach, was recently appointed to the national committee on rules, records and eligibility by the United States Gymnastics Federation.

Steverson was one of six members appointed to the committee headed by chairman Dick Holzaepfel of the University of Iowa. Steverson is presently serving as president of the Western Intercollegiate Gymnastics Association.

Off The Cuff

By JOE HEATH

An estimated 4,000 rookies got their first taste of college life recently when they stood in unending lines to register, pay fees, go through rush or what have you, but little do these frosh know about what's in store for them tomorrow night.

There are approximately 15,500 students at ASU this semester. There will be well over 30,000 fans at tomorrow night's football opener against Wichita.

Well, frosh, if you haven't already been informed about the first-come-first-serve seating arrangements at Sun Devil Stadium, let me be the one to clue you in on what's in store come time for the game.

Kickoff is set for 8 p.m. with about 15 minutes of pre-game ceremonies. A small portion of the stadium has been designated as the student rooting section (cheers, cards and an occasional mixer man being part of the fringe benefits) and it is my opinion that people arriving later than 7 p.m. just won't be able to sit with the fans of their choice.

HOWEVER, NO matter where you form a lap, you'll be watching the team that 54 leading sportswriters and sportscasters in the Rocky Mountain-Southwest area have picked as the strongest team in the Western Athletic Conference.

With what could prove to be the fastest backfield in the nation (seven men do the 100 in 10 flat or less, including Henry Carr, the world's record holder in the 220) the Sun Devils were the first spot choice of 37 of the "experts" taking part in the poll.

Since ASU will not be eligible for the WAC crown until the 1966 season, second place point getter Arizona was tabbed as the conference favorite and netted 22 of the sportsmen's votes.

IN THE RECENT issue of Sports Illustrated (Sept. 18) a king sized plug was given to the ASU eleven.

Here, also, the Sun Devils are picked as the area's top team with the UofA receiving the nod for the league crown.

Tentative Starting Line-up

ARIZONA STATE		WICHITA	
Alonzo Hill* (190)	LE	Larry Beckish (195)	
John Seedborg (222)	LT	Bill Parcels (210)	
Ron Scarfo (195)	LG	Butch Bartlett (195)	
Chris Stetzar (215)	C	Jim Waskiewicz (225)	
Joe Kush (179)	RG	Larry Hobson (225)	
Hase McKey (233)	RT	Fred Buss (235)	
Herman Harrison (208)	RE	Herb Krumsick (195)	
John Jacobs (195)	QB	Henry Schichtle (185)	
Charley Taylor (208)	LH	Miller Farr (186)	
Gene Foster (201)	RH	Harold Myers (195)	
Tony Lorick (203)	FB	Pete DiDonato (195)	

Q. Why buy a pen this good when you might just lose it?

A. Parker won't let you lose it. If you do, it will be replaced*



*SPECIAL REPLACEMENT OFFER

If you buy a Parker 45 for \$5 between now and October 31, 1963, it will be protected against loss for one full year at no extra cost. Just register its purchase by mailing one-half of the Parker 45 Registration Certificate to the insurance company listed on the certificate. Then if the pen is lost, the insurance company will replace it at no charge. All you have to do is mail the other half of the certificate, properly notarized, and describe how the pen was lost.

Here's why this is such a good pen for a college student:

It's "convertible". You can load it with a cartridge or you can replace the cartridge with this ingenious little "converter" and fill it from an ink bottle. Hard to run out of ink during an exam.

Solid 14K gold point. You get a choice of seven widths from extra fine to extra broad. And if you damage a point, your dealer can replace it instantly.

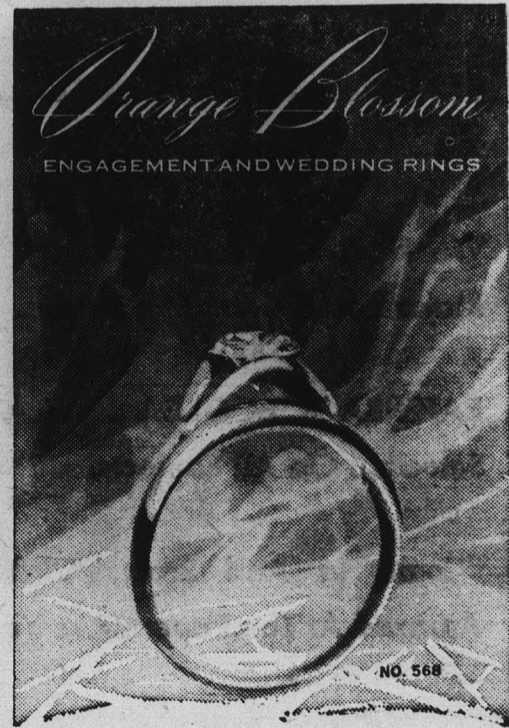
For only \$5 you get: The pen, a "converter," a cartridge, and free exchange of any undamaged point within 30 days of purchase. PLUS Parker's special replacement offer. This guarantee against loss will be offered until October 31st only, so better see your Parker dealer right away.

⚡ PARKER—At 75 years—Maker of the world's most wanted pens

The new Parker 45 Convertible \$5

1. load it with a cartridge
2. or fill it from an ink bottle

AVAILABLE AT THE UNIVERSITY BOOKSTORE



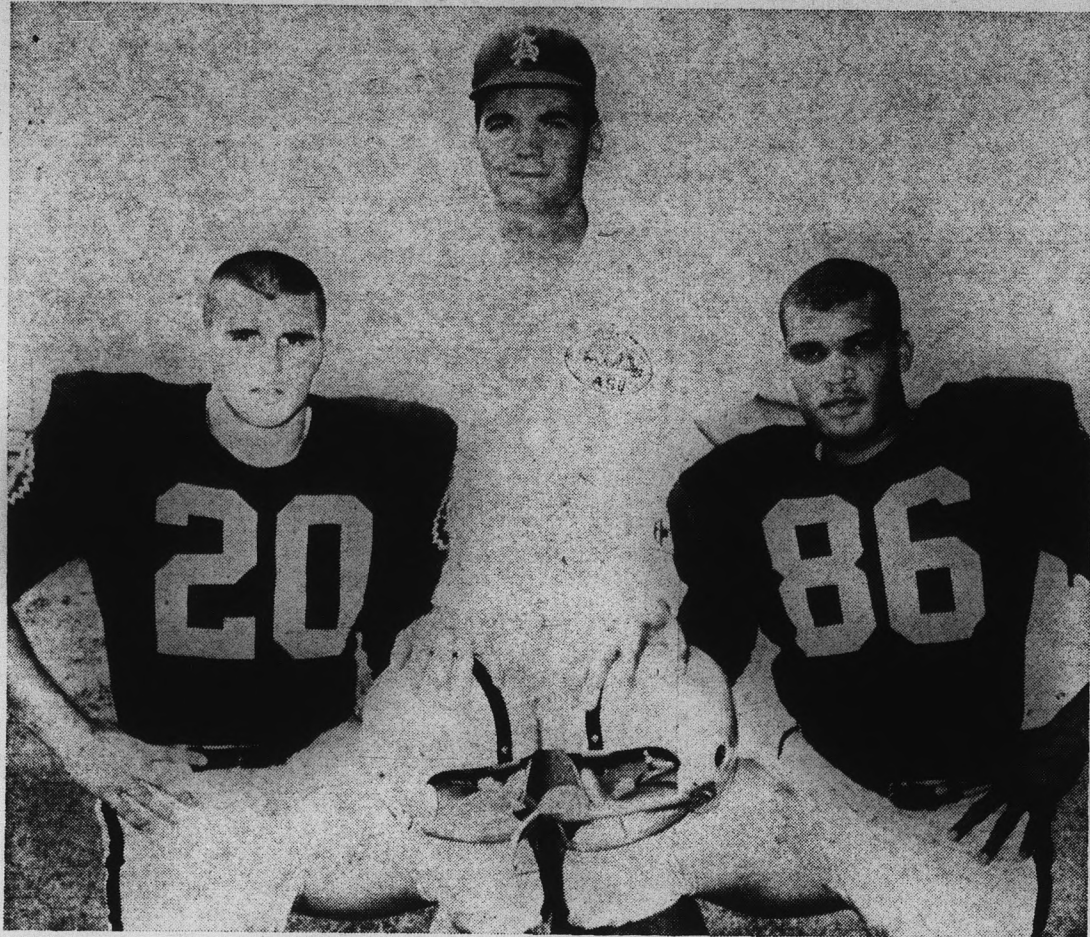
Paul Johnson JEWELERS

Open 9 A.M. - 5:30 P.M. Thursdays Til 9 P.M.

1604 E. Camelback

"Where Originality Is a Tradition"

All-American Candidates -



ROOMMATE TO ROOMMATE — Sun Devil quarterback Johnny Jacobs (left) and end Herman Harrison, ASU's All-American candidates, pose with coach Frank Kush as they get ready for tomorrow night's season opener with Wichita. Jacobs gained All-Western Athletic Conference recognition in 1962 while Harrison was runnerup to Dale Keller in pass receptions. "Jake" and Herman have been roommates since both were freshmen.

The largest crowd ever to witness a sporting event in Arizona occurred in 1961 when 40,164 football fans watched Arizona edge Arizona State University, 22-13, in Sun Devil Stadium at Tempe. This mark will be in jeopardy Nov. 30 when the two teams meet again in Tempe.

TV Credit Courses Set

Four college credit courses are offered this fall over KAET, Channel 8, ASU's educational television station.

Mathematics of Business will be offered Monday, Wednesday and Friday at 8:40-9:25 a.m., 12:40-1:25 p.m. or 6:45-7:30 p.m. and carries three hours credit. Glenn A. Wilt Jr., assistant professor of business, will conduct the course.

Child Development will be taught by Dr. Dura-Louise Cockrell, professor of home economics, at 9:40-10:25 a.m. and 6-6:45 p.m., MWF. It offers three semester hours credit.

Physical Universe will be offered at 10:40-11:25 a.m. or at 9:15-10 p.m., MTWF, taught by Dr. Francis Yale, associate professor of science education. Four hours credit is offered.

The fourth course is "The Living World," taught by Dr. Herbert L. Stahnke, professor of zoology. Offering four hours credit, it is scheduled at 11:40-12:25 or 8:30 to 9:15 p.m., MTWF.

Regular students may register by mail or in person at the Extension Division Office before September 21. Textbooks are available at the University Bookstore and the programs may be viewed at home or in the TV viewing rooms at ASU.

Guiding Arizona State University's 1963 football hopes will be returning All-WAC quarterback John Jacobs.

The Capri's PICK OF THE WEEK

ASU	33
Wichita	7

There's something new in the works . . . watch this ad for details.

ARE YOU READY for the 21st CENTURY?

- A College Degree Is A Great Asset . . . But It Does Not Make A Complete Person.
- We Have All The Necessary Tools To Make You A Complete Person.
- PAPERBACK BOOKS . . . A Complete Selection On All Subjects.
- "Come In And Browse". You'll Be Amazed At The Paperbacks You'll Find.

HILLS BOOKS & RECORDS

TEMPE SHOPPING CENTER

Campus Paperback Book Headquarters

"Auld" Coach

Arizona State University Athletic Director Clyde B. Smith was head football coach at La-Crosse (Wis.) State College from 1938-42. His teams produced two undefeated seasons and four conference crowns during that period with his '42 team boasting the best defensive mark in the nation.

THE MEWS

presents

Ron Ryan

Recording Artist "In Concert" at ASU, "500 Miles", "Hardtimes"

Mike Hanse

RON'S PARTNER

Picture a petite, cute girl playing bass & harmonica

Ian MacPherson

Current favorite on KOOL's Folk Sing

Gary Seger

KUPD Dick Jockey For a closer look at politics, folk music, and girls!

Wed. Thru Sun. 9 to 2

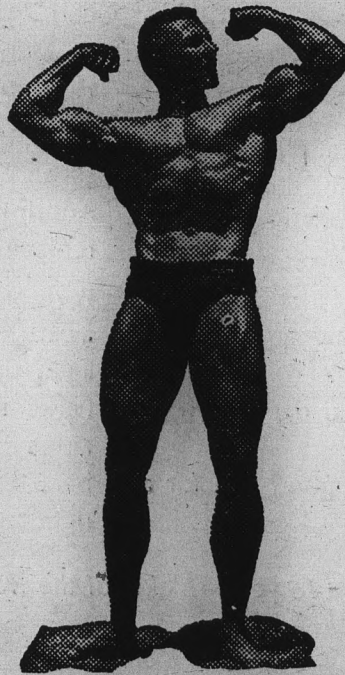
HOOTENANNY

Every Wed. & Thurs. Hooters Admitted FREE

Ask Someone How To Get There . . . The Address Doesn't Help You Much!

Get In Shape Now!

Men: Get in shape quickly under the personal supervision of Walt Hunt — "Mr. Arizona 1961"



SPECIAL

CHARTER MEMBERSHIPS

500 PER MONTH

Men: Mon., Wed., Fri., 10-10 Sat. 2-6 Tues. & Thurs. 10-10 Sat. 9-1

Women:

CALL 967-7461

For a FREE Trial Visit

MEN

WE GUARANTEE THESE RESULTS IN 60 DAYS

— UNDERWEIGHT

Gain: 1 1/2 Inches on each Arm 3 1/2 Inches On Chest And Shoulders

— OVERWEIGHT —

Lose: 3 Inches Off Waist and Hips 15 Pounds Body Weight

UNIVERSITY HEALTH CLUB 63 E. Broadway • Tempe



PENNSYLVANIA IMPORTS — Thirteen players and three coaches represent the state of Pennsylvania on the 1963 Sun Devil football team. Bottom row (l. to r.) fullback Jim Milliron, back Larry Facchine, halfback Steve Turkovich, guard Joe Kush, end Herman Harrison, guard Ken Craft.

Top row: Line coach Dick Tamburo, tackle Sam Fanelli, tackle Bob Gaskell, quarterback John Jacobs, linebacker Chris Stetzar, head coach Frank Kush, quarterback Chuck Kolb, guard Chuck Karasek, fullback Ed Mauck and assistant coach John Avianantos.

Big Names Enter State Drag Races

Big name dragsters will be entered in competition Saturday evening at Arizona Raceway for the Arizona Fall Drag Championship.

Entries include Glen Ward's A Fuel dragster from California which reaches 186.53 m.p.h., the Campbell-Rose D Fuel dragster with an elapsed time of 8.92 from San Bernadino, Calif., and Earl Canavan's A Fuel dragster from Inglewood, Calif., which turns speeds of 184 m.p.h., and the Levitt-Blair-Baltes A Fuel dragster with speeds of 190.26 from Imperial Beach, Calif.

The fuel eliminator prize money of a \$1,000 bond awarded along with the gas eliminator prize money of a \$500 bond is drawing entries from Las Vegas such as the Grantz-Mall A Fuel dragster and from Florida the Hanna B Fuel dragster.

Stock cars will be receiving a \$100 bond for street eliminator and number one stock eliminator will receive a \$50 bond.

Number two and three stock eliminators receive \$25 bonds while all classes except fuel and gas dragsters will be awarded trophies.

Sept. 28 action will continue for dragsters in competition at the Arizona Stock Car Drag Championship on the strip 22 miles northwest of Phoenix on Grand Avenue.

Time trials at the raceway will begin at 4:30 with eliminations at 8:30 p.m.

More About—

Seasonal Opener Against Wichita

(Continued From Page 17)
Smith and seven yards to Don Switzenberg.

Jacobs turned in his usual brilliant performance, clicking on seven of 11 throws for 88 yards, including a 16-yard heave to Hill for a score.

Coach Chelo Huerta had Wichita practice under the lights last week and was pleased with the Shockers' overall showing.

"After practicing in the hot afternoon sun for several days, the night practice went over well with our players and they responded very good," Huerta commented.

ALL-MISSOURI Valley Conference halfback Miller Farr is the big gun in the Wichita attack.

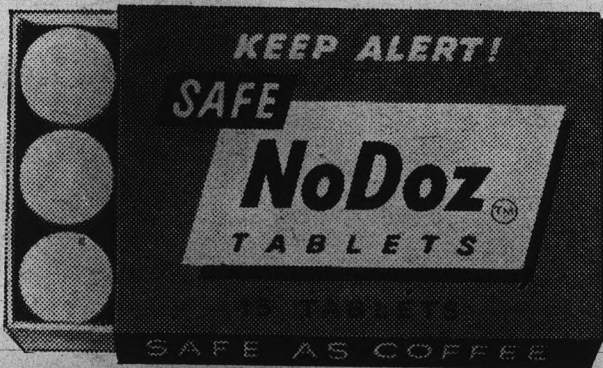
Farr accounted for 180 yards

in 50 carries last season and led the Shockers in pass receiving with 17 grabs.

Henry Schichtle (pronounced Sheetle) will open at quarterback. The 6-0, 185-pound senior connected on 26 of 51 passes last year for 261 yards and two touchdowns.

The Sun Devils will average 207 pounds per man in the line and 202 in the backfield for a team average of 205. Comparable weights for Wichita for 211-190-204.

Game time is 8 p.m.



THE SAFE WAY to stay alert without harmful stimulants

NoDoz keeps you mentally alert with the same safe refresher found in coffee and tea. Yet NoDoz is faster, handier, more reliable. Absolutely not habit-forming.

Next time monotony makes you feel drowsy while driving, working or studying, do as millions do... perk up with safe, effective NoDoz tablets.

Another fine product of Grove Laboratories.

Beverli Invites You Back . .

Same Old Place - Same Old Prices

THE CAPRI

16 East FOURTH St., Tempe

Large — 17" Diameter
Small — 15" Diameter

PIZZA

From 1.15 to 2.50

Complete
ITALIAN
Meals

From 1.00 to 1.50
Including Salad
Bread & Butter
And Coffee

Swingin' Hi-Fi
The Best Selection Of
Jazz Music In The Valley

OPEN DAILY 4 P.M. - 2 A.M.

CLOSED TUESDAYS

Call WO 7-9096 For Take Home Orders

AGAIN THIS YEAR

CAMPUS DRUG

HAS

STADIUM SEATS

Only \$2.98

(We Mean To Sit In — Not To Get In!)

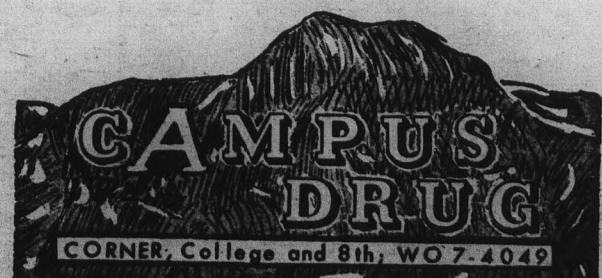
Also New Polyfoam

STADIUM CUSHIONS

See All SUN DEVIL Events

In Comfort

Only \$1.69 HANDY HANDLE



Sun Devil Eleven Faces Old Foes

By JOE HEATH

Tomorrow night's contest with the University of Wichita will mark the seventh gridiron meeting between the Shockers and the Sun Devils.

The series began in 1946, with ASU compiling four wins against one loss and a tie. The Devils won last year, 21-10.

In their second conflict of the year, ASU will do battle with New Mexico State University. Here, the Tempe footballers hold a 19-6-1 advantage with the series beginning in 1930.

COLORADO STATE University, the third game on the slate, has yet to beat an ASU team in eight attempts. In fact, the Rams have played over 25 contests without recording a win.

The fourth and fifth games of the year are played with Texas teams. The first, West Texas State University, upset the Devils last season, 15-14. ASU holds a 10-5 series advantage.

Texas Western College has been a Sun Devil opponent 29 times. ASU has won 14, lost 12 and tied three.

Game number 6 will pit ASU against the University of Utah. This series originated in 1961 and is standing even at one win apiece.

SAN JOSE STATE College has defeated the Sun Devils 10 times in 14 tries. However, last year ASU pinned an impressive 44-8 defeat on the Spartans. This series originated in 1936.

In game number 8, ASU will be playing the only team on its schedule that they have never defeated — the University of Wyoming. The teams have only met once before, in 1951, with the Cowboys winning 20-7.

WHEN THE University of Idaho comes to Tempe, they will be trying to break a three-game losing streak at the hands of the Devils. The two teams met last in 1957, with the Devils winning that one, 19-7.

The grand finale of the season comes on the night of November 30, with the "Big Game" against the UofA. The series originated in 1899 with the Wildcats holding a commanding 26-10 series advantage. Arizona has won the last three years in a row, with a 20-17 upset win last season.

The only two changes in the 1964 Sun Devil schedule will be the addition of Utah State and Kansas State in place of Wyoming and New Mexico State.

Sun Devil Facts

Arizona State University and University of Wyoming renew their brief football rivalry Nov. 16 at Tempe. Wyoming won the only other contest between these two WAC foes in 1951, 20-7.

Guaranteed Smog Free -

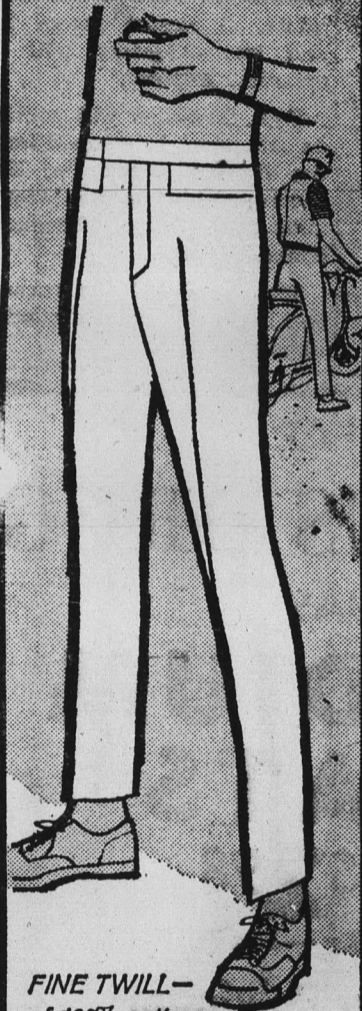


LOS ANGELES PRODUCTS — Three backs and two ends from the Southern California area are ready for tomorrow night's opener against Wichita at Sun Devil Stadium. Bottom (left to right): end Darrell Hoover, and halfback Tony Lorick. Top row: end Brian Tyler, quarterback Rick Davis and quarterback John Torok.

(Photo by Ed Ryan)

Racers slacks

Concourse winners! Extra slim with the new dropped front pockets.



FINE TWILL— of 100% cotton: Sanforized Plus for easy care, \$4.98
AT YOUR FAVORITE SOFT GOODS EMPORIUM

GO You Devils . . . !

"SHOCK" Some WHEAT — Then

Stop By

CHICO'S RESTAURANT*

FINE MEXICAN FOOD

1120 East Apache Blvd. — Tempe

*Air conditioned of course



When Godiva, that famed lady fair,
Told her husband, "I've nothing to wear,"
With his Swingline in hand,
He stapled a band
And said, "Wear this, my dear, in your hair!"

SWINGLINE STAPLER



98¢

(Including 1000 staples)
Larger size CUB Desk Stapler only \$1.49



No bigger than a pack of gum
• Unconditionally guaranteed!
• Refills available anywhere!
• Get it at any stationery, variety, or book store!
• Send in your own Swingline Fable. Prizes for those used.

Swingline INC. LONG ISLAND CITY, I. N. Y.



Lee Optical's "on campus"

Lee Optical glasses are seen wherever ASU students gather! Visit your Lee Optical Office and Contact Lens Center at 805 Mill Ave., Tempe Center.

Single vision glasses as low as **\$11.85** Quality contact lenses **\$8.50**

Open Thursday nights and all day Saturday / Pay-as-you-wear

8 CONVENIENT OFFICES TO SERVE YOU:

- TEMPE** TEMPE CENTER 805 Mill Ave.
- PHOENIX** 16 West Adams
- SCOTTSDALE** 719 N. Old Scottsdale Rd.
- THOMAS MALL** 4527 East Thomas Rd.
- MESA** 129 West Main
- YUMA** 2816 4th Avenue
- CHRIS-TOWN** 19th Ave. & Bethany Home Rd.
- TUCSON** El Con Shopping Center



Where it's always SAFE to save money on glasses...and contact lenses too!!!

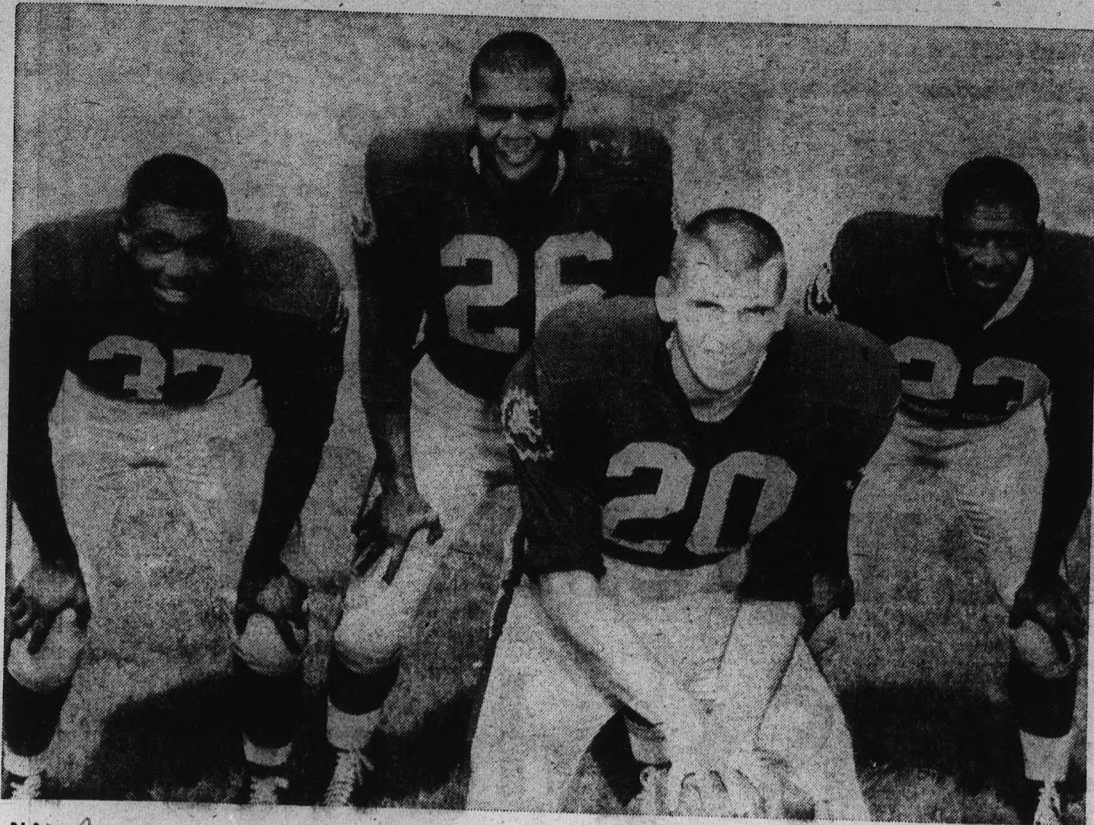
Your A-1 Dealer in Tempe



Find Your Swingline Staplers

at Campus Drug

Corner College & 8th



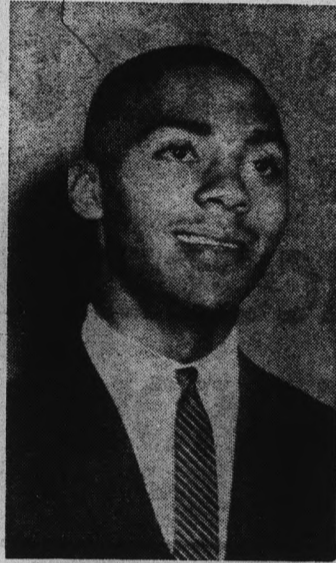
— These four ASU backfield men led last year's Sun Devils lead the nation in total offense. All four have notched starting berths for tomorrow night's opener with Wichita. The returning lettermen are John Jacobs (20), quarterback; Charlie Taylor (37), right half, Tony Lorick (26), fullback, and Gene Foster (23), left half.

Henry Carr Sidelined For Opener

ASU's speed-filled backfield will be without the services of speedster Henry Carr for tomorrow night's opener with Wichita.

The Devil halfback, holder of the world's record in the 220-yard dash, will be sidelined with a severe bruise on his left thigh.

Carr was injured in a recent offensive scrimmage and trainer Art Dickinson estimated that Carr will be out of action for about one week.



HENRY CARR

Sun Devil Facts

Arizona State University will field what may well be the speediest backfield in college football this fall. Leading the fleet Sun Devils is world record setting dashman Henry Carr, who last spring bettered the existing world record in the 220-yard dash around a curve with a clocking of 20.3 seconds. In all, ASU boasts seven backs who run the 100 in under 10 seconds.

in just one year the trend is clear...

DECI-LON

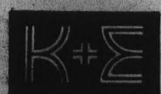
the engineering - science line rule.

The trend to Deci-Lon is easy to see... easy to understand. This newest concept in slide rule design and operation has won enthusiastic approval among slide rule users.

Good reasons why: greater computing capacity, greater logic, greater consistency, greater everything important to efficient slide rule operation.

NEW! Now there's a Deci-Lon, 5" for your pocket — a convenient auxiliary to the Deci-Lon 10" for your desk.

AT YOUR COLLEGE STORE



KEUFFEL & ESSER CO. Hoboken, N.J.

Attention—A.S.U. Students, Faculty and Friends:

SUN DEVIL CHECKS

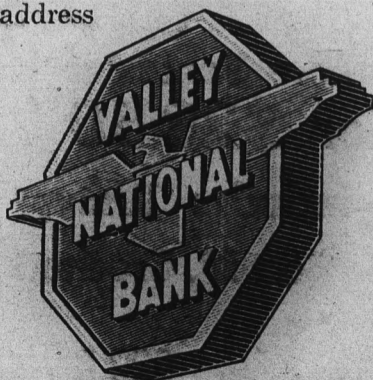


(SORRY IT'S BLACK & WHITE: SEE THE COLORFUL CHECKS AT YOUR VALLEY BANK!)

Now... for either regular or special checking accounts, you can order these special Sun Devil personalized checks — at any Valley Bank office.

The "V" and lower-center panel are white; the background a soft pastel; the figure and college seals in colors. See an actual check at your Valley Bank.

Register-style, numbered, personalized with your name and address, you can get 200 checks for only \$1.60. They will be mailed to the address you specify in one week from date you place your order.



ADVERTISE A.S.U.!

(Your checks go everywhere)

*Order at ANY Valley Bank office!

MEMBER FEDERAL DEPOSIT INSURANCE CORPORATION



Now On Sale At

UNIVERSITY BOOKSTORE

Important Notice

To All Members Of Associated Students

**YOUR ACCIDENT & SICKNESS INSURANCE
PLAN IS NOW OPEN FOR ENROLLMENT**

**ABOUT \$2.35 PER MONTH
BUYS THIS VALUABLE PROTECTION**

Also Family Plans Available For Married Male Students Under Age 35

**DON'T TAKE ANY
FURTHER CHANCES
ENROLL NOW!**

IF YOU ENROLLED LAST SCHOOL
YEAR YOUR INSURANCE
TERMINATED ON
SEPTEMBER 11, 1963



FOR INFORMATION

Contact - Dick Finley
Room 207 - Memorial Union Building

OR

Bert M. Crockett
822-B Mill Ave.
Phone 967-3358

Certificates Of Coverage, For Students That Have Enrolled By Mail, May Be Picked Up At Dick Finley's Office,
Room 207, Memorial Union Bldg.

LIFE INSURANCE PLAN

FOR MEMBERS OF ASSOCIATED STUDENTS

(Students Taking 7 or More Semester Hours)

Under Age 23 - \$10,000 For \$28.50 Annual Premium

Ages 23 to 39 Slightly Higher - (Includes Waiver of Premium)

For More Information Phone Bert M. Crockett - 967-3358

Lock and Crockett Insurance 822 B Mill Ave., Tempe