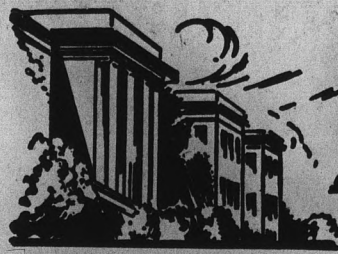


6,904 Enroll For First Session

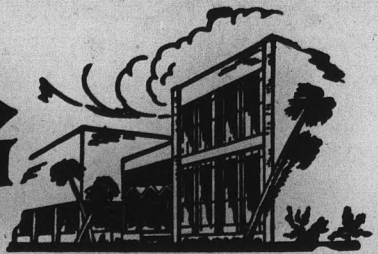


State Press

ARIZONA STATE UNIVERSITY



TEMPE, ARIZONA



SUMMER SESSION

June 21, 1963

No. 1

Enrollment At Highest Level

A record 6,904 students enrolled for the first semester of summer school, it was announced yesterday by ASU Registrar Alfred Thomas.

The number was short of the anticipated 7,000, but Thomas pointed out that additional students are yet to sign-up for two special classes this session.

Relocation of the fee collection center in the gym and the addition of four cashiers helped speed registration, Thomas said. More than 5,000 students had registered by noon Monday.

Further streamlining of procedures are planned for the second session, Thomas also announced.

Helping Hand



ANOTHER LINE — A campus police officer assures four summer students that they're heading for the right line to pay fees. Enrollment was accelerated by a reorganization of registration.

President Releases Proposal For Operation Of Auditorium

President G. Homer Durham has released a plan for utilization of the Grady Gammage Memorial Auditorium with the music and drama departments and special lectures receiving most frequent mention.

According to Dr. Durham's plan, University events would always receive priority.

The Frank Lloyd Wright designed structure being constructed on the Southwest corner of the campus is more than half built, with completion scheduled for March, 1964.

The modernistic multi-purpose auditorium will be 305 feet long, 235 feet wide and 80 feet high, with a seating capacity of 3,000.

Dr. Durham's proposed plan lists the following needs and purposes that the auditorium is designed to serve the University:

1. As an official meeting place for University convocations, the

freshmen assembly, faculty conferences, the "State of the University" address, and faculty-student assemblies.

2. As a general classroom facility, "especially for the Department of Music, but also speech and drama and possibly others." The large lecture halls and other classrooms will be regularly scheduled for any department needing them.

3. For presentations of the music department for the University community and general public including band concerts, symphonies, concert choir and instrumental group performances.

4. For presentations of the speech and drama department, including Orchestras.

5. For joint undertakings of the music and drama departments in the field of opera, light opera, musical comedy and ballet theater.

6. To facilitate the University Concert and Lecture series. The

President's bulletin also recommended the series be expanded to attract supplementary box office support and eventually aid in cost of the maintenance of the building.

7. For Homecoming, other student and alumni events.

8. For general mass testing programs on special occasions each year, if the need develops.

9. For annual faculty research lectures, the proposed Carl Hayden lecture in American institutions, the Grady Gammage lecture in problems of American education and others.

10. To anticipate providing a home for a Phoenix Symphony orchestra series in the auditorium, under arrangements made with the Symphony board of directors.

In addition, the auditorium may possibly be available on a rental basis as a general facility for cultural enrichment of the area, after meeting ASU needs, the report indicated.

Charitable organizations using the auditorium will have to pay for parking facilities, electricity, normal depreciation wear, ushering services, custodial care and cleaning under a schedule of fees to be determined by the business manager.

All-American

ASU senior Carol Hopkins has been named to the All American Women's Intercollegiate Archery team by the National Collegiate Archery Coaches' Association.

Miss Hopkins qualified with scores of 552, 570 and 575 on Columbia Rounds.

Summer Activity Scheduled By MU

By JANET BERGMAN

A variety of activities including a planetarium visit, musical programs, lectures and horseback riding are planned for students by the Memorial Union staff for the rest of the month.

Two lecture-demonstrations in the campus planetarium will be given by Dr. Francis Yale, associate professor of science education, Monday at 1:30 and 7:30 p.m.

Limited to 40 people, passes for each showing may be obtained from the information desk. Those attending are asked to meet at the desk 15 minutes before each lecture so they may go together to the planetarium.

A YOUNG American soprano, Katherine Williams, will be featured in the first Concert-Lecture program Tuesday at 8 p.m. in the ballroom.

Miss Williams' program, "It Started With a Song," will trace American musical history. Highlights will include "Greensleeves," "Summertime" and "The Lass With the Delicate Air."

A reception in the upper lounge will follow the program.

An opportunity to meet students and faculty members informally will come Wednesday at a morning coffee, 9 to 10:30 a.m. in the upper lounge.

ASU Music Camp faculty will present a special recital that evening, open to the public.

EDUCATION FOR gifted and handicapped pupils will be discussed by Dr. William F. Hall, of Phoenix Elementary School District, at a lecture-luncheon Thursday from 12:30 to 2 p.m. in the banquet room.

Dr. Hall will tell of present and proposed special educational programs in Arizona schools.

Advance reservations for the luncheon must be made at the information desk by noon Wednesday. Cost is \$1.

A solo recital featuring Music Camp students, will be Friday at 8:30 p.m. in the ball-

room. The public is invited.

A TWO-HOUR early morning horseback ride and ranch style breakfast at Papago Park are scheduled at 6 a.m. a week from Saturday.

Cost of the outing is \$3. Reservations must be made by 4 p.m. Wednesday at the information desk.

Outstanding Music Camp students will present a scholarship recital June 30 at 3:30 in the ballroom. The public is invited.

New Security Director Named

John B. Duffy, special agent with the Phoenix office of the Federal Bureau of Investigation since 1950, has been named director of campus security.

THE APPOINTMENT of Duffy, who will retire July 1 from the FBI after more than 21 years of service with the agency, is effective July 2, according to Gilbert L. Cady, ASU vice president for business affairs.

John B. O'Leary, who has been serving as director of campus security for the past year, will become assistant director, Cady said.

DUFFY LEFT Arizona in 1942 to join the FBI, and returned to the state in 1945, serving with the Flagstaff office until 1950 when he came to Phoenix.

During the past five years, he has worked closely with the Arizona Law Enforcement Committee on Training in the establishment of law enforcement schools at ASU, serving as a coordinator and a classroom instructor.

ASU Education College Reaccredited Until 1971

Arizona State University's College of Education has been reaccredited for ten years, from 1961 to 1971, by the National Council for Accreditation of Teacher Education, Washington, D.C.

Dr. G. Homer Durham, ASU president, said "The Council granted full reaccreditation for the program for elementary teachers, secondary teachers and school service personnel with the Doctor's degree as the highest degree approved."

W. Earl Armstrong, in a let-

ter to the ASU president, stated:

"As in all other programs, however, there is certain to be room for improvement.

"The Council has confidence that the present leadership will continue to make such improvements as existing research and hard thinking indicate are desirable.

"It is especially recommended that attention continue to be given to the quality of students who are admitted to teacher education at all levels.

Small Business Meet Slated

Leaders from business, education and the government will present keynote addresses at the 1963 annual conference of the National Council for Small Business Management development on campus next week.

The four-day conference at ASU will center on the theme "Management Development — A Look Ahead."

Dr. Ralph C. Hook Jr., director of ASU's Bureau of Business Services, is current president of the national council

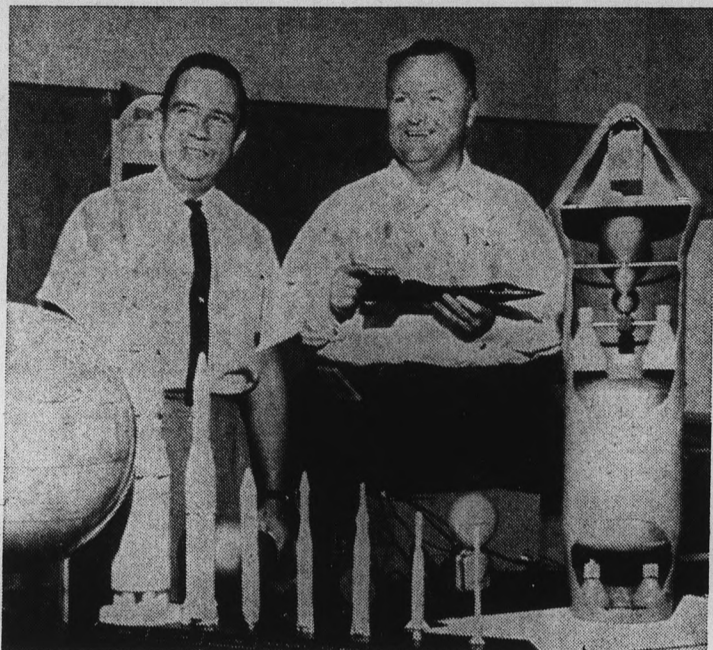
for Small Business Management Development.

Keynote speakers are Dr. J. Leroy Thompson, director of the educational service bureau of Dow Jones & Company, New York; Dr. Charles T. Clark, chairman of the department of general business, University of Texas, Austin; and Dr. Wilford L. White, director of office management and research assistance, Small Business Administration, Washington, D.C.



EDITOR-IN-CHIEF JERRY REILLY
 MANAGING EDITOR ROSS FISH
 ASSIGNMENTS EDITOR JANET BERGMAN
 ASSISTANTS SHIRLEY DeMARKE, FRANK DUCCESCHI
 ASSISTANT BILL DOOLEY

Space Study



AERO-SPACE Education Workshop was one of several short courses offered during ASU's summer pre-session. The study series was designed to provide enrollees with a background and understanding of general aviation and the space age. Dr. Brett R. Stuart, education lecturer, was director of the workshop.

National Science Foundation

Instructors And Students Participate In Institutes

More than 250 high school and college instructors and advanced secondary students from 43 states, India and Pakistan are participating this summer in six National Science Foundation institutes on campus.

Supported by NSF grants totaling nearly \$500,000, the institutes are designed to increase the knowledge and teaching competency of the participating student-instructors.

ONE INSTITUTE, a summer extension of an academic-year program for secondary teachers of science and mathematics, began June 12 and ended yesterday. The remainder will begin June 24 and last from six to eight weeks.

The academic-year institute which resumed June 12, supported by a grant of \$278,800, was conducted by Dr. Alan T. Wager, professor of physics. Dr. Ernest E. Snyder, jr., associate professor of science education, is associate director of the program involving 38 participants.

Dr. Wager is also director of the institute for senior and junior high school teachers of chemistry and physics. Forty-eight participants have enrolled

for this institute supported by a grant of \$65,089.

UNDER THE direction of Dr. Robert L. Burgess, assistant professor of botany, 41 participants have enrolled in the institute in desert biology for college teachers of biological sciences to study plants and animals of the southwestern deserts. Associate director of the program, for which a \$39,300 grant has been awarded, is Dr. A. E. Dammann, associate professor of zoology.

Dr. Lehi T. Smith, assistant professor of mathematics, is director of an institute for senior and junior high school teachers of mathematics. Thirty-nine teachers will participate in the

session supported by a \$44,610 grant.

FORTY-TWO junior and senior high school teachers will have an opportunity to obtain a basic understanding of chemistry as it applies to biological systems, under the direction of Dr. George M. Bateman, professor of chemistry.

Dr. Chester R. Leathers, associate professor of botany, is associate director of the institute which was granted \$52,600.

A grant of \$17,440 will enable 49 advanced high school students to participate in an institute on chemistry, plant physiology, psychology and sociology, under the direction of Dr. Howard G. Applegate, assistant professor of botany.

State High School Music Festival Will Start Sunday

The 18th annual Arizona All-State High School Music Camp will open June 23 at ASU with registration from 1 to 4 p.m. Sunday.

Nearly 400 students from Arizona and 15 other states have been accepted for the camp which will be in session until July 13.

The three-week camp, directed by Mr. and Mrs. Miles A. Dresskell, of the ASU music faculty, will offer intensive study in voice, instrument or dance, as well as music theory and appreciation, crafts, art appreciation, ceramics, painting and drawing, and baton twirling.

Campers will be given the opportunity to appear in solo recitals, ensemble programs, dance programs, and concerts by band, orchestra and chorus. Their art work will be placed on exhibition.

Students may sign up for six free private lessons on an instrument or invoice or dance.

Those who have already paid their fees may report directly to Sahuaro Hall, where campers will be housed. Others should go to the Music Camp office in the Fine Arts building.

Starting each morning with 7:30 a.m. classes, the students' schedules are planned to provide a full program, including study, recreational activities, social events, and musical programs.

Total fee for the three weeks, including room, board, classes and six private lessons, is \$80. Further information may be obtained by contacting the Music Camp office.

Architect Conducts Silt No.3 For Out Of State Students

Arizona's sun and sand have brought 33 out-of-state students to ASU this summer.

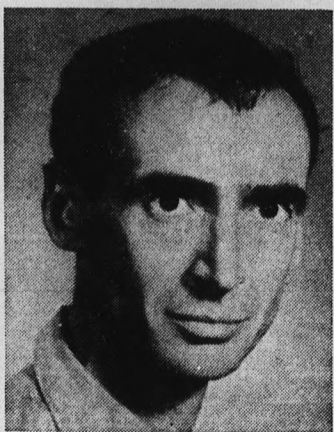
The undergraduate and graduate students from colleges and universities in the U.S. and Canada were accepted to a five week summer workshop entitled Silt No. 3.

Classes are being held in the open-air studio of director Paolo Soleri, ASU faculty associate in architecture.

Students are employing a wash-away silt technique in which a mixture of fine sand and clay from the Salt River

bed is packed into hard homogeneous forms that can be carved like soft sandstone.

The silt is applied in wet, runny form, making it simple to build up and patch. Once the object is defined, it can be sprayed and invested in plaster.



SOLERI

The next step involves washing away the silt, leaving the thin shell of plaster, which may be further refined inside and

out. The plaster shell may be the final products, or a "positive" casting may be done within it, after which the shell is flaked off.

Students have, in the silt, a unique material for research and expression, Soleri said.

The first week will be spent familiarizing workshop participants with materials and procedures. The following weeks will be devoted to various projects.

Some students will alternate between design and three-dimensional interpretations. Others will make specific objects such as vases, seats, bowls or planters. Some will experiment in the sculpture field.

The silt lends itself to such a workshop for many reasons. It is reusable and inexpensive, has sufficient strength and cohesion to allow for sharp and delicate detail, has structural strength and can be washed away after investment in plaster.

Management Conference Expected To Draw 750

Approximately 750 Phoenix-area businessmen will participate on campus today in an invitational conference on advanced management.

"An Invitation to Problem Solving" themes the conference sponsored by the International Business Machines Corporation in cooperation with the ASU College of Business Administration.

The one-day meeting will include seven seminars covering major application areas which

have developed in recent years in the field of data processing.

The sessions are designed to provide an answer to the common problem faced by contemporary business of how to cope with the great quantities of information on new methods.

Subjects to be covered are simulation, tele-processing, information retrieval, management operating systems, critical path scheduling, design automation and control systems.

Summer Series Starts Sunday

The first of a weekly series of Christian fellowship programs, "An Introduction to Dietrich Bonhoeffer," will be presented Sunday at 6:30 p.m. at the Lutheran Student Center, 1414 S. McAllister Avenue.

All students attending summer school are invited to attend the programs which will be jointly sponsored by the American Baptists, the Lutheran Student Association, the Wesley Foundation and the Westminster Foundation. The Baptist Student group will sponsor Sunday's program.

The following programs are scheduled for the summer:

June 30—Dietrich Bonhoeffer, Wesley Foundation.

July 7—Relaxation Lutheran Style, 7:00 p.m. at the Lutheran Student Center.

July 14—Modern Art and the Christian Faith, Baptist Student Movement.

July 21—Sahuaro Lake Party MU lobby, 1:30 p.m. Westminster Foundation.

July 28—Film, Wesley Foundation.

August 4—Karl Barth, an Introduction, Lutheran Student Association.

August 11—Karl Barth, Baptist Student Movement.

Student, School Receive Awards

Graduate student Ronald Crews and ASU were each recently awarded \$500 by the National Office Management Association as first prize in the annual contest for the best research paper written by a student in a college or university school of business administration.

Crews graduated from ASU with a bachelor of science degree in accounting June 4.

Crews' paper, "The Impact of Office Automation on Employment," was judged on conciseness, thoroughness, clearness, appearance and its contribution.

The money awarded to ASU is earmarked for educational equipment.

Constitution Exams

The examinations on the U.S. Constitution and the Arizona Constitutions, required of 11 public school teachers in Arizona, will be given June 29 at Arizona State University in room 108 of the social science building at 9 a.m.

Bowlers Form Summer Leagues

University bowling leagues for the summer months are now being organized according to Bill Gorman, games room manager.

Faculty and staff, mixed doubles, student-faculty couples and other five-man teams will bowl on Tuesday, Wednesday and Thursday evenings through both summer sessions. Arrangements will be made for bowlers attending only one summer session to participate. The leagues will follow American Bowling Congress rules.

Anyone interested in joining one of the summer bowling leagues may sign up now at the games room desk or call extension 440.

The games room will also be open during the following hours for pen bowling:

Monday-Friday—10:00 a.m. to 10:00 p.m.

Saturdays—9:00 a.m. to 1:00 p.m.

Sundays—Closed.