

Panels, Banquet Highlight Confab

"The Political-Military Defense of Latin America" was the theme of the first annual Student-Faculty Conference on Political-Military Affairs Dec. 7 and 8 in the MU.

The conference, sponsored by the ASU departments of military science, political science and mass communications, was highlighted by panel discussions, speeches and a banquet.

Dr. Rosendo A. Gomez of the UofA spoke on "The Marxist Approach to Latin America: Marx, Lenin, Stalin and Mao." He described the aims and methods of Marx-Leninism in that area of the world.

Other speakers included Dr. Russell H. Fitzgibbon of UCLA, who discussed "Answering the Marxist Approach: Problems and Prospects." He noted certain changes must be made before Latin America can live better socially and economically.

"COMMUNIST Military Capabilities in Latin America: The Spectrum of Violence," was the topic of a talk by Lt. Col. Theodore Wyckoff of the ASU military science department.

He noted that guerrilla warfare and subversion are possible in Latin America today and these cannot be fought entirely by military means.

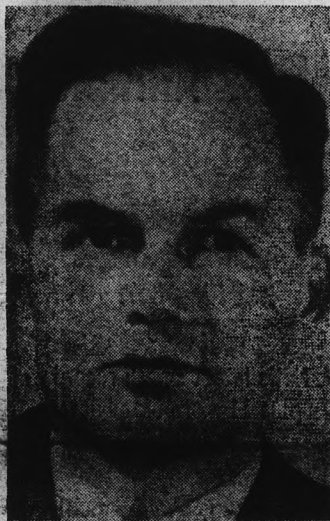
Dr. John Martinez of the ASU history department, spoke at the luncheon attended by 80 students and faculty members. His topic was "The Changing Role of the Military in Latin America."

"POLITICAL DEFENSE of Latin America" was the theme of a talk by Dr. James L. Busey of the University of Colorado. He emphasized the non-official means for strengthening our Latin American position. Among them, he went on, were exchange student program and personal and business contacts.

The 7:30-10:00 p.m. dinner was attended by 50 people. Guest speaker was Professor Ronald

Hilton, Director of the Institute of Hispanic-American and Brazilian Studies at Stanford University.

HE DISCARDED his prepared speech on "The State of the Hemisphere" and spoke on "Religion, Sex and Politics in Latin



DR. BUSEY

America." He noted the absence of Christian orientation among the intellectuals in Latin America and the rise of spiritualism.

Presiding over the Saturday session was Dr. Arnold Tilden, dean of the College of Liberal Arts. The theme of the symposium was "Political-Military Defense of Latin America: A Composite View."

A 30-minute panel discussion, followed by a question and answer session ended the conference.

A replay of the final discussion may be seen tomorrow at 10 p.m. on KAET-TV, Channel 8.

WORLD NEWS

Soviets Concede To Black Boxes

GENEVA — Three robot detectors may be placed on Russian soil to police a nuclear test ban, according to the Soviet's Monday report to the 17-nation disarmament conference.

Described by Soviet Delegate Semyon K. Tsarapkin as an important concession by Moscow, the Russian offer to accept international supervision of the "black boxes" aroused the interest of the United States and British delegates.

The Russian delegate proposed that three detectors be placed in each country possessing atomic weapons. Although the Americans and British saw this as a possible way to break the test ban deadlock, there was no Western acceptance of the specific proposals.

Foreign Aid Review Ordered

WASHINGTON — President Kennedy has ordered an immediate review of this country's foreign aid program to determine whether it contributes "materially" to the security of the United States.

Pressured by increasing criticisms from members of Congress, the President has appointed a nine man committee to take a "hard new look" at the aid program.

Bimson To Address Presidential Forum

With ASU Chorus --

Orchestra To Perform Handel Oratorio Sunday

The ASU chorus and symphony orchestra will unite in a performance of Handel's obscure oratorio, "Samson," in the men's gymnasium Sunday afternoon.

David Scouler will conduct the chorus and Eugene Lombardi will lead the orchestra in the 3 p.m. performance.

Tenor Marion Smith of the music faculty will sing the role of Samson, while Lewis Litchfield will sing bass. Students Carol Richard and Barbara Morris will divide the role of Delila and Pat Thayer will sing the alto part.

HARPSICHORDIST will be faculty member Nadine Dresskell.

The oratorio, said to be Handel's favorite, is set after Samson's defeat by the Philistines. In chains, the blind hero sings the famous aria "Total Eclipse."

When challenged by the Philistines to show his strength at their festival, Samson reluctantly departs for the temple.

AS THE Israelites and Philistines each celebrate their respective gods' powers, word comes that Samson has destroyed the temple and buried himself in its ruins.

The oratorio ends with the chorus singing, "Let Their Celestial Concerts All Unite."

Library Group To Meet Friday

ASU's Library Committee will meet this Friday to near John R. Ellingson, director of the physical plant, and Dr. Alan D. Covey, head librarian, report on their country-wide tour of college libraries.

The purpose of the survey was to gather information for building of ASU's new library to be located where East Hall now stands.

The library will probably have open stacks instead of closed stacks as in Matthews Library. This means that the stacks will be intermittently arranged throughout the building, Ellingson said.

'Good Luck!'

A "good luck team" telegram will be sent to the basketball team prior to its three away games with Kansas, Kansas State and Wichita, sponsored by the Rally and Traditions Board.

Students can add their signatures to the telegram for 5 cents at a table in front of the MU starting Thursday.

Forum Hears Pedalis Talk

What is life like behind the Iron Curtain? This was the topic of an address to the ASU Forum Monday night by Dr. Pranas Pedalis, of the economics department.

He spoke about his university and political experiences behind the Iron Curtain and told of the way the Communists moved in and took over Lithuania.

AS A PROFESSOR at the University of Vytautas in Lithuania, he witnessed the Communists dominate the educational system and change its entire outlook.

Dr. Pedalis also worked as a member of the "underground" in Lithuania. His association with the "underground" eventually led to his escape and freedom.

He started teaching at ASU in 1959.

The ASU Forum is a group of students on campus interested in having different speakers talk on numerous topics. Dr. Keith Davis is the group's adviser.

DR. PADALIS was the first of five speakers the Forum has scheduled to relate personal experiences behind the Iron Curtain.

Arrangements are also being made to have Sen. Thomas Dodd, (Dem.-Conn.), speak before the Forum. His subject will be U.S. foreign policy.

Jackson, Cochran Will Talk

Carl Bimson, a Phoenix banker and civic leader, will be the guest speaker discussing "Important Economic Developments of the World Today" at the President's Forum tomorrow in the MU upper lounge at 10:30 a.m.

A panel, composed of Bimson and two ASU professors, will discuss the current status of the world's two leading economic forces, the European Common Market and the economy of the USSR, on a major U.S. problem, the "gold situation."

ASU PROFESSORS Dr. John Cochran, economics department chairman, and Marvin Jackson, economics department, will give talks following Bimson.

Bimson is vice chairman of the Valley National Bank board of directors and chairman of the executive committee of the board.

DR. COCHRAN is a Harvard graduate in economics, former secretary-treasurer of the Midwest Economics Association and a former staff member of military intelligence.

Cochran will speak on the European Common Market.

Marvin Jackson, final speaker, is an economist from the University of Colorado, a doctoral candidate of the University of California at Berkeley, and a former Air Force intelligence officer.

The forum is open to the public and refreshments will be served.

Fund Drive Begins

More than \$15,000 has been realized from the first stage of ASU's annual Alumni Fund request. But the second fund drive, which began this week, is aiming even higher.

In the first letter of the new campaign, sent out recently by fund chairman Marvin Palmer ('38), alumni were informed that ASU is a "tax assisted," not "tax supported" institution.

PALMER'S LETTER explained that only 46.9 per cent of ASU's total expenditures last year came from tax monies.

The remainder, the letter outlined, came from endowments, grants, student fees and gifts such as the Alumni Fund.

"More funds for loans and research are needed and the availability of scholarships, particularly for freshmen, is often the determining factor in where top students decide to attend college," the chairman said in his letter.

Spurs & Sophos Collect Food For Guadalupe Area

Getting into the Christmas spirit early, Spurs and Sophos combined their talents in a drive to collect food for the needy last Wednesday.

Approximately 650 cans of food were collected by the two groups to be given to three needy families in the Guadalupe area, Richard Potter, president of sophos disclosed.

POTTER ALSO announced that Sophos had tapped eight new members at a special breakfast last Friday. They are: Clark Grabe, Tom Taylor, Louis Castro, Victory Lee, Trent Densmore, Mike Bowlin, John Farone and Dave Yandell.

The busy Sophos hosted a state convention on campus Saturday, attended by the local club and the Sophos organization from ASC.

AT THE CONVENTION, it was decided that two conventions will be conducted each year. Grand Canyon College and the University of Arizona will be invited to future meets.

The state Sophos constitution was revised at the convention and state officers were elected.

New officers are Ken Coor, president, ASC; Karl Wochner, vice president, ASU; Bob Hoskins, reporting secretary, ASU, and Jack Johnson, treasurer, also of ASU.

Robert C. Hill of the ASU accounting department, guest speaker at the convention, spoke on the importance of campus service organizations.

Board Sponsors Mexican Lunch

A Mexican luncheon for ASU faculty and staff will be sponsored by the Faculty-Student Relations Board tomorrow at noon in the faculty dining room.

Students from Payne Training School will entertain guests with Mexican Christmas carols. Student members of the Faculty-Student Relations Board have been encouraged to wear Mexican attire.

The purpose of the luncheon is to acquaint the faculty with the board's student members and the board's programs and purposes.

10 ASU Debaters Shine At LA State

Ten members of the ASU debate team garnered two trophies and 10 certificates of merit last weekend at Los Angeles State College.

ASU debaters were among 400 contestants from 35 colleges and universities who competed at the Western States Alternate Forensic Tournament.

The team of Mahlon Gaumer and Jim Stoffa received the tournament's second place debate trophy and accompanying award certificates.

Gaumer also received a second place trophy and an honor certificate for impromptu speaking.

Both Gaumer and Wes Shellen merited ratings of excellent in the division of extemporaneous speaking. The event involved limited preparation on a topic

in the current American political scene.

Bedford Douglas was presented a certificate of superior rating for his oration on modern art.

The two teams of Douglas and Wes Shellen and Mike Yarnell and Calvin LaSalvia were recognized as excellent in debate by the judges.

Also attending the tournament were Maggie Bartholomeaux, Myra Killingsworth, Allen Haggard and John Lockley.

Thefts Increase As Holidays Near

Theft is on the increase with the approaching holiday season, according to campus security incident reports.

There were 16 reported thefts last week.

A fur stole, two bicycles, a watch, cash and a coat were reported stolen from dormitories.

A set of hub caps and a camera were reported taken from cars parked in area 45 at the southeast corner of Tyler and Van Ness Avenue.

A typewriter was reported stolen from a car parked in area 41 at the north side of 8th Street across from Old Main.

Incident reports show that most of the thefts happen because of carelessness.

IT'S NOT TOO LATE!

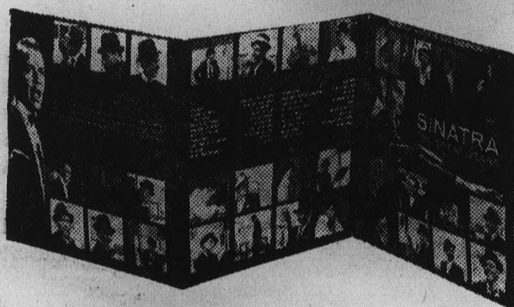
Christmas Cards
can still be
IMPRINTED
with YOUR name
at the
UNIVERSITY BOOKSTORE

TWO FINE CHRISTMAS GIFT IDEAS

from



For These Great
New Albums on



SINATRA—THE GREAT YEARS

Here's the fabulous Frank—all of him—in one magnificent package! This superb three-record set contains the 36 finest recorded performances of his career...a treasured gift for any Frank Sinatra fan! (S)WCO-1762

DEAR LONELY HEARTS
Nat King Cole
(S)T-1838

Nat's latest smash record plus 11 more brand-new ones just like it!



NEW FRONTIER
The Kingston Trio
(S)T-1809

More fine folk tunes sung and played by America's favorite balladeers.

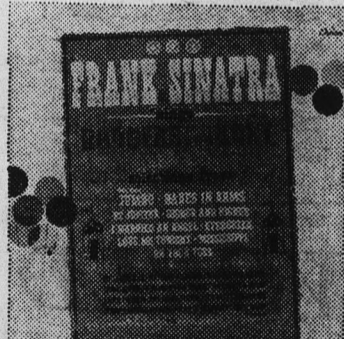


THE RODGERS AND HAMMERSTEIN DELUXE SET

Beautifully packaged and bargain priced, this boxed three-record set is the perfect gift choice for those who love show music. Includes the original sound track recordings for three of the greatest hit musicals of all time...OKLAHOMA!, THE KING AND I, and CAROUSEL. (S)TCL-1790

FRANK SINATRA SINGS RODGERS AND HART
W-1825

Frank sings all-time hits from top musicals, including "Jumbo."



TENNESSEE ERNIE FORD'S BOOK OF FAVORITE HYMNS
(S)T-1794

A dozen of Ernie's favorite sacred songs selected from his best-selling albums.

These and many more gift albums available now.

FREE GIFT WRAPPING

Tape Recorders — Tape — Needles

Phonographs — Radios (AM-FM) — Transistor & Clock

HILLS RECORDS

TEMPE CENTER — OPEN EVERY NITE TILL NINE

Lola's Cafe

11 East 5th Street

- BREAKFAST
- LUNCH
- DINNER

STUDENT MEAL TICKETS \$5.50 For \$5.00

"The Place Where Old Friends Meet"

CARS WANTED
CASH ON THE SPOT

BRIT SMITH Car Co.
802 Mill — Tempe

Star In The East, Star In Tempe Too

"... and lo, the star which they had seen in the East went before them till it came to rest over the place where the child was. Where is he who has been born King of the Jews?" Matt. chap. 2, verse 2.

Tempe and ASU have a star in the East too.

AN ELECTRICALLY illuminated star was installed on the beacon atop the Tempe Butte in December of 1932. The star, 18 feet high, was used originally as a background for ASU chorus members who sang carols on the Butte.

Not only could the star be observed from a great distance, but the carols sang on the Butte could be heard throughout the city. Caroling from the Butte has been abandoned, but the star still shines.

In 1932, three beaverboard wise men were constructed by Tempe High School, but were later replaced with wise men constructed of more sturdy material.

SINCE the construction of the three wise men, except when blackout rules during the war forbade it, the wise men and the star have been seen from

the first Monday after Thanksgiving until New Years.

"For we have seen his star in the East, and have come to worship him." Matt. chap. 2, verses 8-9.

DON'T WAIT!
HAVE YOUR CAR SERVICED FOR CHRISTMAS
 TEXACO CREDIT CARDS ACCEPTED
BRIT SMITH Car Co.
 802 MILL TEMPE WO 7-3381

Congregationals Win Bowl Lead

Congregational Fellowship regained its College Bowl position by winning a rematch over Blue Key honorary, 200 to 113.

Tomorrow a faculty-composed team will challenge the Fellowship team in the MU ballroom at 4 p.m. The contest will be followed by a party for the contestants and the audience.

The Congregational Fellowship team consists of Ann Okada, Nick Hagen, Sheila Sample and Mary Avery.

The faculty team consists of Dr. J. Lamberts, English; Dr. Lester Perril, sociology; Robert Hill, business, and Dr. William Northey, microbiology.


College Bowl and the party are sponsored by the Student-Faculty Relations Board whose chairman is Bonnie Olson.

Channel 8

KAET will present a special TV program, "The Death Penalty," tomorrow at 9 p.m.

Programming schedule for KAET, Channel 8, today and tomorrow both a.m. and p.m.:

TODAY	
A.M.	
8:40	Business Law Telecourse
9:40	Physical Universe Telecourse
10:40	Living World Telecourse
11:40	Physical Universe Telecourse
12:40	Social Studies Telecourse
P.M.	
6:00	What's New? "Western Without Guns" "Relative Motion" "Bulldogs"
6:30	Social Studies Telecourse
7:15	Business Law Telecourse
8:00	Virus "The Stuff of Life"
8:30	Living World Telecourse
9:15	Physical Universe Telecourse
10:00	Turn of the Century "The Warm, Cheery Saloon"
10:30	UN Review
10:45	Horizons of Science "The Mathematician and the River"
TOMORROW	
P.M.	
6:00	What's New? "Early Gunslingers"
6:30	The Finder "Lucky Lindy"
7:00	Meet the Organ "Organ Jazz—Jackie Davis"
7:30	The Big Picture "Mobility"
8:30	"The House We Live In" "Alan Watts—Zen Buddhism"
9:00	TV Perspectives "The Death Penalty"
10:00	Special: ASU TV Symposium "The Political-Military Defense of Latin America"



MEET PLAYBOY'S MISS DECEMBER AT HANNY'S
 (you may win a date with her — compliments of Hanny's)

Miss June Cochran, Playboy Magazine's Miss December, will be at Hanny's Downtown Varsity Shop Thursday, Scottsdale Friday and Christown Saturday. Drop in, meet her, register for the free date on Saturday evening. We provide everything (including a charming chaperon) for your dinner date at the Executive House.

Hanny's Varsity Shops
 DOWNTOWN • SCOTTSDALE • CHRISTOWN

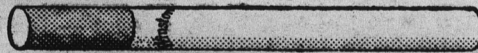
SHOP DOWNTOWN, CHRISTOWN & SCOTTSDALE EVERY NIGHT UNTIL 9:00

ALL IT TAKES



Nothing else needed but you to complete this picture of filter smoking at its flavorful best. Enjoy yourself...light up a Winston.

PURE WHITE,
MODERN FILTER

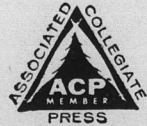


PLUS FILTER - BLEND UP FRONT

Winston tastes good like a cigarette should!



THE STATE PRESS, distributed by the campus chapter of Sigma Delta Chi under the direction of Circulation Manager Mike Barriok, is the official campus newspaper of Arizona State University. It is published each Wednesday and Friday throughout the school year, excepting holidays, and is entered as second class matter at the Tempe, Arizona, Post Office under the Acts of March 3, 1879, and August 24, 1912. Subscription price, \$3 per school year.



THE STATE PRESS is a member of the Arizona Newspapers Association, Associated Collegiate Press and National Advertising Service, Inc.

EDITOR-IN-CHIEF _____ LINDA WARREN SIMS
 NEWS DEPARTMENT
 MANAGING EDITOR _____ BILL OVEREND
 CAMPUS EDITOR _____ ED HEATH
 ASSISTANT CAMPUS EDITORS _____ BETTY DUFFY, MARTI CZEPOWSKI
 ASSIGNMENTS EDITOR _____ GWEN ZUPANCIC
 ASSISTANT ASSIGNMENTS EDITORS _____ TOM WIRK
 PAM VAN BUSKIRK
 NEWS EDITORS _____ BOB ZACHE, BOB CLAMPETT
 ASSISTANT NEWS EDITORS _____ ROSS FISH, JERRY REILLY
 COPY EDITOR _____ GARY OLMSTEAD
 CHIEF PROOFREADER _____ LYNDA HARRIS
 SPORTS DEPARTMENT
 SPORTS EDITOR _____ BOB JACOBSEN
 ASSISTANT SPORTS EDITOR _____ DENNIS ANDERSON

Implications

If you're hurtin' to hear some vile language and see some poor sportsmanship, turn out for the intramural football finals and watch and listen to a certain top independent team. Here's a hint — some members of this team "rejected" football players! Wonder why they lost out on those varsity positions?

Incidentally, IFC, many freshmen are convinced that Linda Rankin and Ron Evans are this year's homecoming royalty because their pictures are still being displayed in your display case on the second floor of the MU. Isn't it about time for a change of scene?

We have heard that the destruction suffered by the games room and Clancy's is partly the fault of local high school kids who frequent these joints. So us college kids aren't completely to blame.

Looks like the East Hall women are really keeping up the tradition that the East Hall men set. Remember when males resided in the dorm they were always playing football on the lawn outside? Well, now when you walk down College Avenue, you will see women kicking and passing the pigskin around.

Who knows? The next step might be a line of women in front whistling at all the passing young men.

EXAMINATION SCHEDULE

All Classes Reg. Scheduled on MWF or Daily* at:	Examination is Scheduled on:
7:40- 8:30	Mon., Jan. 21 at 7:40- 9:30
8:40- 9:30	Wed., Jan. 23 at 7:40- 9:30
9:40-10:30	Fri., Jan. 25 at 7:40- 9:30
10:40-11:30	Tues., Jan. 22 at 9:40-11:30
11:40-12:30	Thurs., Jan. 24 at 9:40-11:30
12:40- 1:30	Fri., Jan. 25 at 12:40- 2:30
1:40- 2:30	Mon., Jan. 21 at 12:40- 2:30
2:40- 3:30	Wed., Jan. 23 at 12:40- 2:30
3:40- 4:30	Tues., Jan. 22 at 2:40- 4:30

All Classes Reg. Scheduled on TTh or TThS at:	Examination is Scheduled on:
7:40- 8:30	Thurs., Jan. 24 at 7:40- 9:30
8:40- 9:30	Tues., Jan. 22 at 7:40- 9:30
9:40-10:30	Mon., Jan. 21 at 9:40-11:30
10:40-11:30	Wed., Jan. 23 at 9:40-11:30
11:40-12:30	Fri., Jan. 25 at 9:40-11:30
12:40- 1:30	Thurs., Jan. 24 at 12:40- 2:30
1:40- 2:30	Tues., Jan. 22 at 12:40- 2:30
2:40- 3:30	Mon., Jan. 21 at 2:40- 4:30
3:40- 4:30	Fri., Jan. 25 at 2:40- 4:30

*And classes that meet on M, MW, MTWF, MWThF, MTWTh, or F Examinations for classes that are scheduled with "time arranged" and for classes that meet at or after 4:30 p.m., in the evening, will be held at the time scheduled for the last regular meeting of the class during the examination period of Jan. 21 thru Jan. 25 unless otherwise scheduled by the instructor at a time during this final week of the semester.

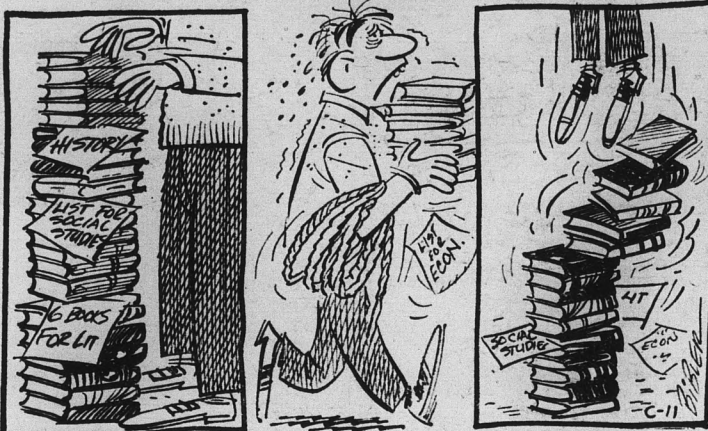
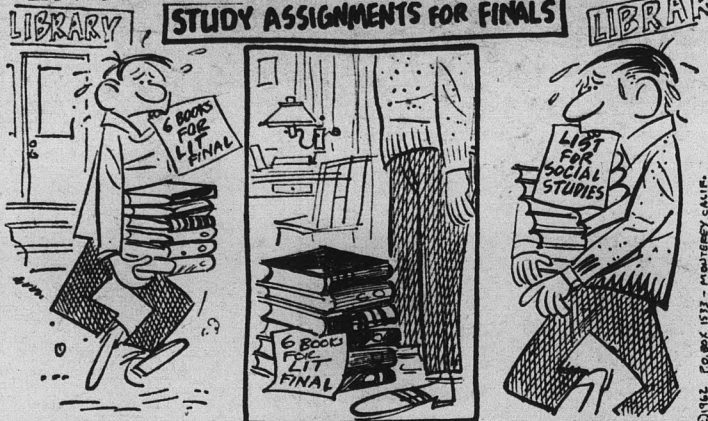
MATHEMATICS: All classes in mathematics 116, 117, 119, 120, and 220 will be scheduled for the final exam on Wednesday, Jan. 23 at 2:40 p.m. All classes in Mathematics 118, 121, 212, and 385 will be scheduled for the final exam on Thursday, Jan. 24, at 2:40 p.m. Specific room assignments for these exams will be made by instructors at, or before, the last meeting of the class.

Examinations should be scheduled for three semester hour courses that meet twice a week for 1½ class periods to correspond to the full class hour period for which the course is scheduled.

If conflicts occur, or if under this schedule, a student has more than three exams in one day, he should consult instructor(s) regarding possible schedule adjustment, or, if necessary, the dean of the college concerned.

No changes should be made in this schedule, except those required in individual cases, without the approval of the dean of the college concerned.

LITTLE MAN ON CAMPUS



Sounding Off....

By LINDA WARREN SIMS

In last Friday's issue of the State Press, I called the Student Telephone Directory, published by the Delta Phi honorary fraternity, "the most useless piece of literature on campus."

That afternoon, some members of Delta Phi came in to see me and pointed out that I was sadly mistaken. The book is not completely useless. Therefore, just to be fair, I wish to point out some of the good points of the directory. For example, on page six, all the telephone numbers of all women's dorms, men's dorms, sororities, fraternities, churches and important campus numbers are listed. This reference, I must admit, would be useful. Therefore, the book is not "completely useless."

ATTENTION Mike Schwartz! Here we have supported you through many a trial and woe, and lo and behold, you were absent from your head cheerleading post at last Saturday's basketball game. Why? Everyone else was there. Remember Mike, first things first.

REMEMBER, if you need a ride home over the Christmas vacation, consult the file at the MU Information Desk for people going your way. It is a free service provided by the MU Staff.

POSSIBLY THE most juvenile, idiotic, ridiculous and sadistic group on campus are "The Biters." Their pledge ceremony is certainly original, however. When they find someone they would like to pledge, they call upon him, sprinkle him with salt, pepper and cinnamon; and proceed to bite him "all over." The bites are not playful nips, as any of their members can vouch for. If this group continues its barbaric membership drive, we will expose its members to State Press readers.

CONGRATULATIONS to all the people who helped to decorate the MU. It looks real nice and Christmasy and makes everyone want to go home to their hearths and home-cooked food.

Letters To The Editor

TO THE EDITOR:

I should like to take this opportunity to express my surprise at a situation which exists on the Arizona State University campus — the lack of married student housing.

I am well aware of the argument put forth by those opposing married student housing on this campus. They argue that, due to the fact that the Phoenix area is a seasonal tourist region, the surrounding cities and towns abound in rentals, most of which are available to ASU married students. Therefore, they say, the expense of constructing on-campus apartments is an unnecessary one.

It is my feeling that this is not a valid argument. The rental units available in the area sur-

rounding the ASU campus are in one of two categories. The first group includes those "designed" for winter visitors. These are, for the most part, priced well out of the range of the average college student.

The second category consists of apartments "designed" primarily for college students. This group, besides being totally inadequate in number, is priced to compete with tourist accommodations making them too expensive, or if not too expensive, they are vaguely reminiscent of stables, unfit for human habitation.

I would be interested in hearing any comments, pro or con, on this situation.

Harry M. Kaufman

I Cover College Avenue

By BILL OVEREND

D. M. Watt is one ASU spirit booster who backs up what he says.

President of the Circle K club, Watt has started the ball rolling in the State Press campaign to re-uniform the Sun Devil Mascot.

"I LIKE school spirit," Watt wrote in response to past articles in this column. "I'm yelling hooray."

Better yet, Watt kicked in \$2 toward a new mascot uniform!

We hope that Watt's contribution will persuade other school supporters to follow suit. And, just to keep things rolling, the State Press is pitching in \$10.

That gives us \$12. After we are given \$78 more, we will turn the funds over to the Rally and Traditions board so they can get into the act.

WE COULD turn this into a school project if a few volunteers from the art department would donate time to design a head for the uniform. Later, perhaps, girls from home economics would sew together a Devil suit or something.

But . . . before any further action begins, we need the help of students who really want to boost school spirit. That's another way of saying we need money.

IF YOU have anything to contribute towards the State Press mascot fund, please drop by the office, MU 211, or deposit it in account No. 021 at the Associated Student's Business Office, MU 207.

It shouldn't take long to raise the money if the student body genuinely desires positive action. Every cent will help.

Incidentally, money contributed to this fund is being deposited in a regular bank account to insure its safety.

SO CHIP IN, gang. ASU deserves the best shiny mascot suit we can give it.

For you who haven't heard, the Sun Devil mascot this year, Mike Zussman, is slowly recovering from serious injuries caused by a recent auto accident.

Mike did all he could to promote spirit here this year despite the handicap of his ugly uniform. He, too, deserves the best shiny mascot suit we can give him.

THE MOST depressing sights along College Avenue these days are the lonely piles of fallen leaves along the street.

Midwesterners and others used to the fun of walking through drifts of autumn leaves must be saddened by these sights.

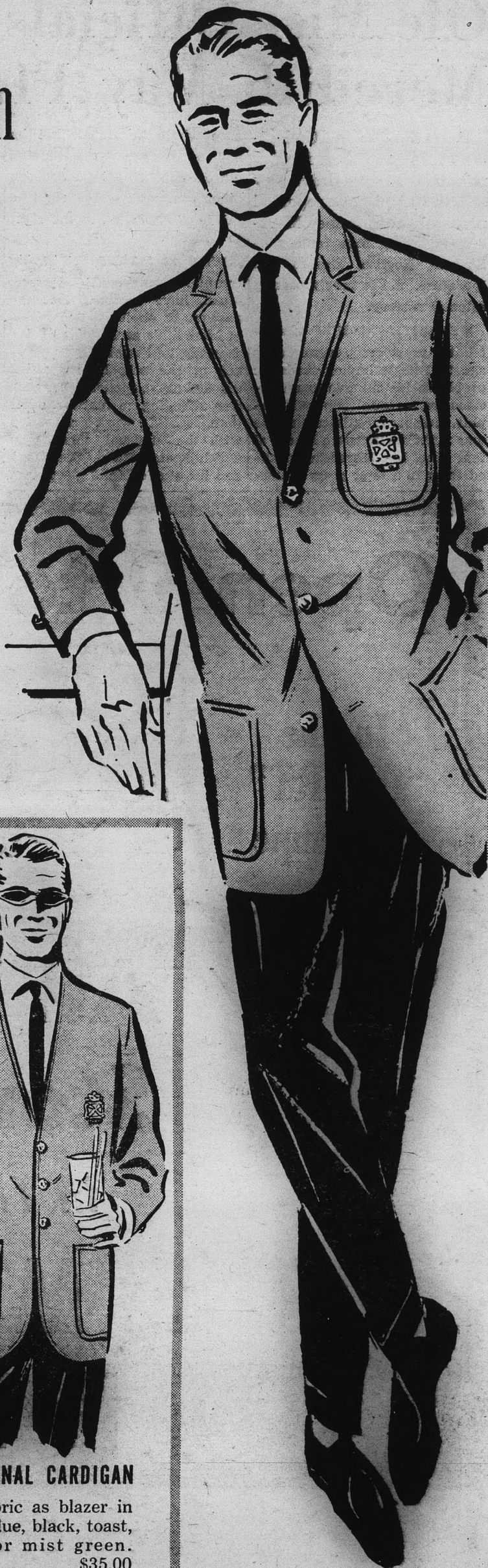
Oh, brother.

Remember him handsomely on
CHRISTMAS
 with fashionable gifts
 like these

The Traditional Blazer

A favorite with men 17 to 70 for generations, it makes a perfect gift. A lush, all-wool basket weave that's full-lined and has metal buttons for distinctiveness. Comes with or without Bullion crest. Striking masculine colors are: Gold, white, red, loden, and navy. Short, regular or long sizes. We'll gift box it for you without extra charge.

\$35



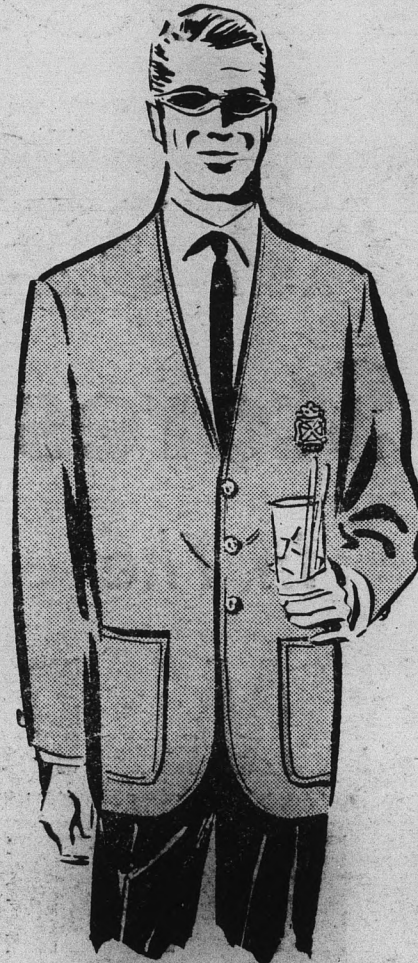
DAY'S CORD SLACKS

Popular everywhere for campus or casual wear, they're tailored in a lush cotton midwale cord and completely washable. Choose olive or natural.
 \$6.95



CARDIGAN SWEATERS

Links 'n links knit with light cable treatment in royal blue, charcoal, white, red, pewter, or blue. 100% virgin wool . \$18.95
 Pure alpaca \$29.95



TRADITIONAL CARDIGAN

Same fabric as blazer in powder blue, black, toast, yellow or mist green.
 \$35.00

SHOP 'TIL
 9 PM AT ALL
 4 STORES

McDougal
 c a s s o u , l t d .



DOWNTOWN
 130 N. Central 252-6511

CHRISTOWN
 1615 W. Bethany Home Rd. 264-5505

TOWN & COUNTRY VILLAGE
 2047 E. Camelback 264-5507

SCOTTSDALE
 4611 N. Scottsdale Rd. SAFARI HOTEL

Ole Miss Officials Worry, Meredith May Flunk Out

According to the Collegiate Press Service, faculty members at the University of Mississippi have reported privately that James Meredith is failing four courses — Spanish, English, algebra and literature, and is barely passing colonial history.

MEREDITH HIMSELF admitted to reporters several days ago that he is having academic problems. He cut two examinations for a recent trip to Memphis. Rumors circulated that he was withdrawing from school at that time, but Meredith quashed them in a later press confer-

ence where he stated that he had no intention of dropping out of school. But he added one other comment: "The right to fail is as important as the right to succeed."

WHY IS MEREDITH having trouble? Observers in Oxford, Mass., have reported that the answer is obvious. Regardless of Meredith's academic abilities, they say, he has almost no privacy at the school, is guarded day and night, spends hours each day attending to matters other than school work connected with the unusual manner in which he enrolled at "Ole Miss," and his studies (and sleep) are

constantly interrupted by the sound of firecrackers and other disturbances.

Additionally, Meredith is followed day and night by a huge press gallery. Many papers and news agencies continue to keep at least one man in Oxford at all times, and since their job is to cover Meredith's activities, they are with him constantly.

The 29-year-old Negro has no friends at Ole Miss, it appears, for very few students dare even speak to him, assuming they wish to. The student government at the school has called "unwise" those students who have spoken to Meredith.

Physics Colloquium Planned

"Radioactive Disintegrations of Se 81" will be the lecture topic by Dr. William W. Pratt, of Pennsylvania State University, at a physics colloquium in PS 134 at 3:40 p.m., tomorrow. Students, faculty and public are invited.

THE HOGAN

New ... In The Tempe Center

GIFT HEADQUARTERS

- WESTERN WEAR
- HANDMADE JEWELRY
- LEATHER GOODS

OPEN NITES TILL 9 P.M.

Open 9 to 9 Till Christmas

In the
"HEART"
of Tempe

All 32
Stores

In The

TEMPE
CENTER

WILL REMAIN OPEN EVERY
NITE UNTIL 9 P.M.
Except Saturday & Sunday

JUST 2 BLOCKS
FROM
ASU CAMPUS

- AMERICANA SHOP
- BASKIN-ROBBINS ICE CREAM SHOP
- BOB BRICKIE FURNITURE
- BONNIE SUE FASHIONS
- CELIA'S FASHIONS
- CENTER HARDWARE
- EL RANCHO MARKET
- ERICKSON'S HANDICRAFTS
- FIRST FEDERAL SAVINGS AND LOAN ASSOCIATION
- FIRST NATIONAL BANK
- GALLENKAMPS
- HAPPY HOUSE SHOP
- HILL'S RECORD SHOP
- HOUSE OF PANCAKES
- INLAND WESTERN LOAN AND FINANCE CORPORATION
- JAM'S RESTAURANT
- KING'S FASHIONS
- LEE OPTICAL
- LITTLE TRAVELERS
- PIONEER CAMERA SHOP
- RAY'S ASU BARBER SHOP
- ROSAMOND'S BEAUTY SALON
- RYAN-EVANS DRUGS
- S & H REDEMPTION CENTER
- SEWING BASKET
- SHERWIN-WILLIAMS
- STATE FARM INSURANCE
- TEE PEE OF TOYS
- THE HOGAN
- TOP'S LIQUORS
- W. T. GRANT CO.
- ZZONA LAUNDRY & CLEANERS

"The Rivals" --



CLYDE PARKER (Acres) becomes a bit upset while Susan Flannery (Mrs. Malaprop) looks on in "The Rivals," a play presented by the University Players. Performances are scheduled at 8:30 p.m. Thursday through Saturday at the Lyceum.

Vicky Bond To Star In Recital

A special recital, featuring soprano Vicky Bond and pianist Jerry Cobb will be presented tomorrow in the MU ballroom.

The program, sponsored by the music department, will begin at 8:15 p.m.

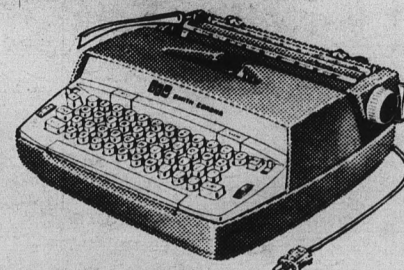
Accompanist will be Wallace Hornbrook.

Miss Bond will sing "Ich Grolle Nicht" and "Im Wunder-shonen Monat Mai" by Schumann, "Der Tod, das ist die Kuble Nacht" and "Meine Liebe ist grun" by Brahms, and "Arie, Ruhe sanft," from "Zaidi" by Mozart.

Cobb will present "Sonata in D Major" by Mozart and "Transcendental Etude No. 11, Harmonica du Soir," by Liszt.

The public is invited to attend free of charge.

A LASTING GIFT for XMAS



NEW SMITH-CORONA Coronet ELECTRIC PORTABLE

NEW

ELECTRIC POWERITE
BIG TARGET TABULATOR
TOUCH SELECTOR
REPEAT ACTION KEYS

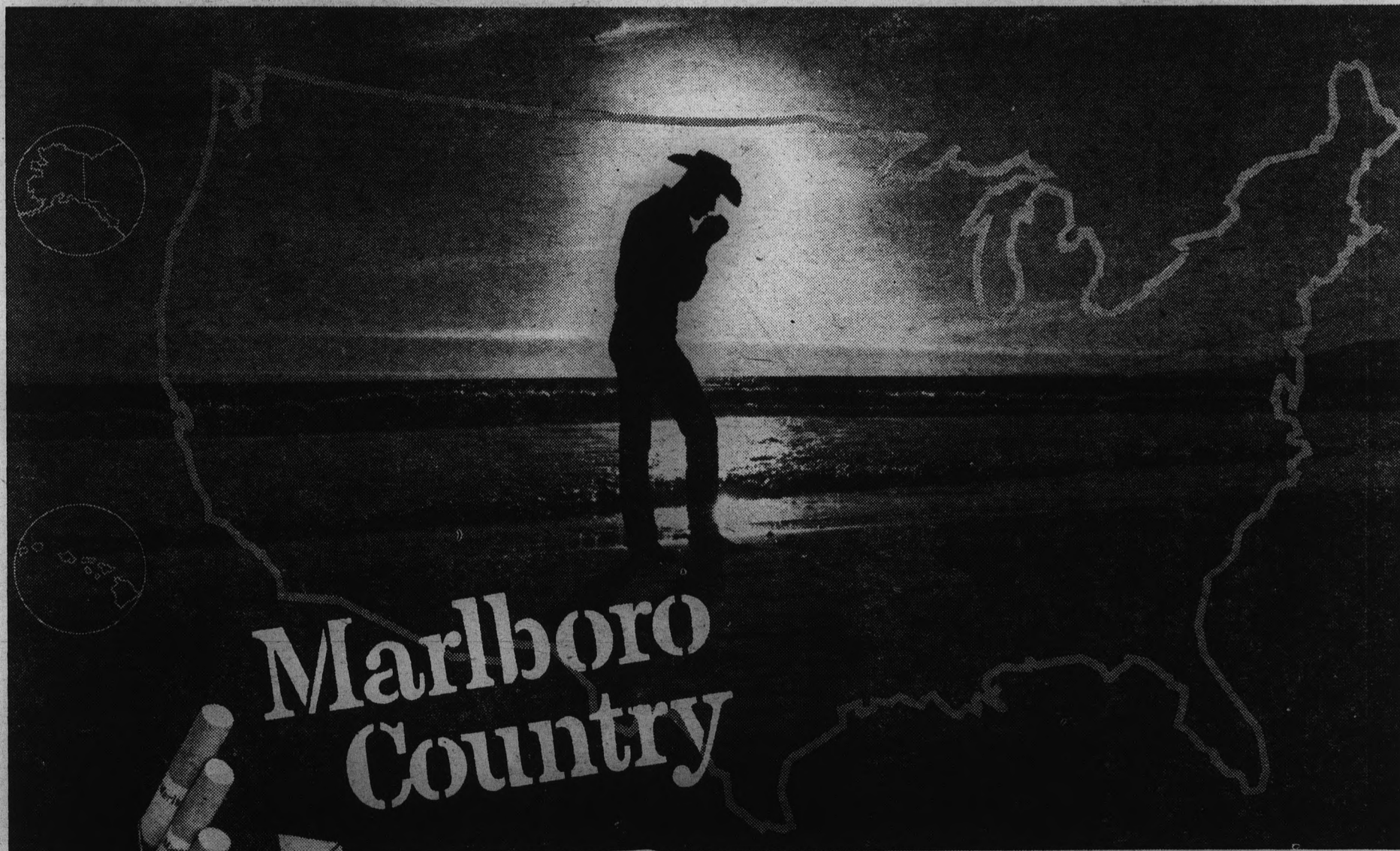
Priced at Only **\$159.50**
Plus Tax
Low Weekly Terms

5 YEAR GUARANTEE

UNIVERSITY BOOKSTORE

TALL FASHIONS
OF ARIZONA
Serving tall or long-waisted women Since 1953
SIZES 8 - 20
"AFTER FIVE" Dresses
For The Holidays
509 E. CAMELBACK
Phoenix CR 4-3886
Open Monday & Thursday
9:30 a.m. - 9 p.m.

UNDER NEW MANAGEMENT
Ruth Vaught's
Milady's Salon
of
Beauty
601 E. APACHE BLVD.
In Sands Hotel
OPEN MON.-SAT. 8:30 TO 6
Evenings By Appointment
PHONE
WO 7-2221

Sold and enjoyed in all 50 states and in more than 100 countries around the world

In all 50 states, the big switch is to Marlboro

Remember 1955, when Marlboro came to town? Suddenly, the U.S. had a flavor cigarette with a filter on the end. Sales grew in every town, in every state. Today the whole place is Marlboro country—land of the filter cigarette with the unfiltered taste. Behind this popularity is the famous Richmond recipe of ripe tobaccos (the finest grown), and the pure white Selectrate Filter. Pack or box, you get a lot to like.

Activities Board Chooses Theme Of Birthday Fete

"Great Periods Of Time" will be the theme of the next Memorial Union Birthday Party, scheduled for March 9, 1963.

The general theme for the seventh annual party was chosen at last Wednesday's meeting of the Activities Control Board, according to John Brooking, chairman.

Brooking will be accepting applications from students interested in working on the party through Wednesday, Dec. 19, at MU 202.

Faculty Interests Determine Hours

Faculty interest will be the main factor deciding the hours of the MU games room during the Christmas vacation.

Bob Alberti, MU program director, has announced that the games room will remain open during the Christmas vacation if there is sufficient interest from the faculty and their families.

Faculty members are asked to contact Bob Alberti, at ext. 563 before Dec. 15.

"Night On Broadway"

A "Night on Broadway" will be presented by the Cultural Affairs Committee tomorrow evening at 7:30 in the MU upper lounge.

The program will feature music and drama from the Broadway plays of Lerner and Lowe. The four vocalists who will perform are Pat Tarpey, Carol Richard, Keith Friend and Dennis Phillips. Jim Mancuso is the featured dramatist.

On The Go

By MARY GORMAN

The 63rd chapter of Phi Kappa Psi Fraternity, Arizona Beta, will receive its charter this weekend after only a year's colonization period at ASU.

They were first colonized on the Sun Devil campus in September of '61 by two University of Washington juniors, Bob Chamberlain and Bob Clampett. Today they have 33 members.

LAST YEAR, the Phi Psi's placed first in the Greek games.

A few weeks ago, you'll remember, the homecoming king was a Phi Psi.

The past year has seen two Phi Psi pledges as president of Interfraternity Pledge Council. Also, two Interfraternity Council Officers have been Phi Psi's in the last year.

Last year the ASU Phi Psi chapter won the IFC trophy for the most improved scholarship and the trophy for the highest scholarship.

Also in the short period of a year, four Phi Psi's have been named to Blue Key.

PHI KAPPA PSI fraternity began originally at Jefferson College in Cannonsburg, Penn., in 1852. It was a part of the Jefferson Duo which was founded at the college. The other half of the Duo was Phi Gamma Delta fraternity.

It is incidental that as Phi Psi fraternity goes national this year, Phi Gamma Delta will be colonizing at ASU in January.

* * *

IF YOU WANT to see something different in the line of College Bowl competition, catch the ASU College Bowl tomorrow afternoon at 4 in the MU Ballroom.

It's a faculty vs. student contest and it should prove to be interesting.

CARS WANTED
CASH ON THE SPOT
BRIT SMITH Car Co.
802 Mill — Tempe

ACCOUNT
P.O. Box 32033,
Los Angeles, California

EUROPE 1963

via BOAC Rolls-Royce 707 jets

"Surpassed my expectations"—G. P., Penn State '62
"Loved every minute of it"—D. B., Oregon '63
"Very good value"—M. M., USC '62
"Very satisfied"—G. W., Ohio Wesleyan '63
"Greater than I dreamed it could be"—B. T., So. Methodist '63

YOU CAN SELECT FROM 8 ITINERARIES:

GOLDEN BEAR GRAND CIRCLE—70 days—5 departure dates—15 countries. Land portion, only \$1140. Total including trans-Atlantic air fare \$1595.*

HIGHLIGHT SERIES—45 days—June 16 and June 29 departures—10 countries. Land portion: \$798. Total including air fare \$1312.*

GRAND ORBIT TOUR—71 days—June 15 departure—15 countries, including North Africa. \$1695 including air fare.*

All these tours are fully conducted by European graduate students. They include most meals, theatrical performances, excellent European-style hotels, private motorcoach, rail, steamer and air transportation on the Continent.

For information: see your Travel Agent or send in convenient coupon below or call your local BOAC office.

*New York round-trip

FREE TOUR BROCHURE
ALL OVER THE WORLD
BRITISH OVERSEAS AIRWAYS CORPORATION
Dept. BE-178, 530 5th Ave., New York 36
MU 7-1600
Please send me your free brochure on tours.
NAME _____
ADDRESS _____
PHONE _____
TAKES GOOD CARE OF YOU My Travel Agent is _____

Happy House
Tempe Center
CHRISTMAS CARDS
WESTERN — RELIGIOUS
GENERAL
ASSORTED AND SOLID PACK
LARGE SELECTION

Orange Blossom
A MODERN CLASSIC
SCULPTURED IN
18 KARAT GOLD.
BUDGET TERMS TOO.
AGS
Open 9:00 A.M. to 9:00 P.M.
Till Christmas
Paul Johnson
JEWELERS
1604 E. Camelback
"Where Originality
Is a Tradition"

Arizona's Own
Christmas Card!
ARIZONA HIGHWAYS
Magazine
DECEMBER ISSUE
Send your out-of-state EXTRA copies
early for Christmas delivery.
"Merry Christmas" mailing envelope in every newsstand copy.
AVAILABLE NOW
WHEREVER MAGAZINES ARE SOLD

NOW ON SALE AT THE
UNIVERSITY BOOKSTORE

Swimming Team Begins Meets In Mid-January

Sun Devil swimmers, to participate in their first intercollegiate competition, will open the season sometime in mid-January, according to coach Dick Smith.

Although the schedule is tentative, the Devils probably will compete with all of the WAC schools.

AN OUTSTANDING member of the Devil team is Bernie Wrightson, a freshman from Denver, Colorado, who is one of the top ranking AAU divers off the one and three-meter boards.

He also participates in the swim sprints.

Wrightson recently won the Mexican National Championship.

Bill Keswick, whose specialties are the stroke events, is another swim standout.

COACH SMITH currently is national president of the American Swimming Coaches Association.

Smith was named president at the association's annual meeting this year at Detroit.

The organization is composed of coaches from the AAU ranks, colleges, high schools, clubs and commercial organizations.

AT THE same time, Smith

was reappointed chairman of the 1963 National AAU Age-Group Diving committee, and vice chairman of the 1963 Senior Men's National AAU Diving committee.

Earlier the ASU coach was appointed Olympic women's diving coach.

He will be in charge of women divers representing the U.S. at the 1964 Olympics in Tokyo.

The Phoenix JAYCEES Are Looking For A 1963

"Rodeo of Rodeos" QUEEN

APPLICATIONS MAY BE OBTAINED AT STATE PRESS OFFICE OR MU DESK

For Further Information Call Jaycees Office at AM 4-4808

New antiseptic

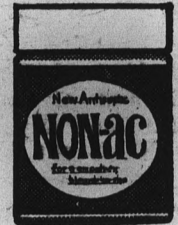
NON-AC

for a smoother, blemish-free skin

Complexion care is what counts! Now RX-2, an amazing new rare herb discovered in the sun-drenched desert of Arizona, has been found effective in fighting skin bacteria associated especially with skin blemishes and acne. NON-AC is an antiseptic preparation containing a new anti-bacterial agent that destroys harmful skin bacteria and fights blemishes before they appear.

Soothing NON-AC contains no irritating substances.

Use NON-AC regularly for a smoother, envied complexion.



Write today for your jar. Only \$3.00. Postage and tax prepaid. No C. O. D.'s. Send money order to: Mutual Processing Corp., Dept. 10A P. O. Box 293, Scottsdale, Arizona

© COPYRIGHT 1962 BY MUTUAL PROCESSING CORP.

ANNOUNCING THE 1963-1964 AFFLERBACH FELLOWSHIPS*

BACKGROUND OF THE COMPETITION: No matter how much time our People in Naming spend thinking up just the right color names for our shirts (Maize, Stone Green, Peat Blue, etc.), the Eagle Secret Shoppers inevitably report that you choose your Eagle shirts with such statements as "Gimme six of them greenish ones" or "Could I bother you for two or three dozen of those stri-ped ones." Our problem is in selecting names which will capture the imagination of the shirt-buying public. ❖ **NATURE OF THE COMPETITION:** The 10 Afflerbachs for 1963-64 will go to those persons suggesting the best names for our colors. Imagination-capturing names, like Well Red, Long Green, Charlie Brown, or Navel Orange. You may wish to inspect our shirts—for inspiration, if not purchase. Eagle shirts don't always have an Eagle label—some fine stores sew in their own—but if you write us, we'll suggest your nearest Eagle Shirt Color Inspection Station. ❖ **STIPEND:** The grand prize winner will have his (or her) choice of a Traveling Afflerbach (a grand all-expense-paid weekend at the Bush House in Quakertown—an exciting chance to become acquainted with the natives—many of whom are us, including Miss Revera Afflerbach, herself) or a Stationary Afflerbach (a dozen Eagle Button-down shirts). The 9 other Afflerbachs will consist of a grant of four Eagle Button-down shirts. Each, that is. ❖ **RULES:** The competition is open to all students and faculty members at schools, as well as to those who have filled in the coupon below.

*This, actually, is Eagle's second competition in as many years. Those of you who partook of the first, that is, what to do with the pocket on a Shirtkerchief, will doubtless be excited to learn that the book containing many of your letters to Miss Afflerbach has now been published by the Macmillan Co. and is now available at your bookseller. We have called it *Dear Miss Afflerbach, or The Postman Hardly Ever Rings 11,342 Times*, and the price is \$4.95.

AFFLERBACH FELLOWSHIP APPLICATION FORM

1. Name _____
 2. Address _____
 3. City _____
 4. State _____
- (If you live in Altoona, Fresno, or other places we've never heard of, would you help our Ladies in Addressing by telling us what city or town you live near: _____.)
5. Suggested color name (s) (e.g. In Violet, Hugo Black, Whizzer White) _____

Mail the completed application to The Afflerbach Foundation, Eagle Shirtmakers, Quakertown, Pennsylvania. Applications are due by January 1st, 1963.

© 1963 EAGLE SHIRTMAKERS, QUAKERTOWN, PENNSYLVANIA

WAA News

Archery intramurals are now under way.

Results from the recent W.A.A. competition:

TENNIS DOUBLES

BeginningMargaret Downs, Mae Hashimoto, Gammage Hall
 IntermediateCarolyn Moore, Shan Worsley, Gamma Phi Beta
 AdvancedLynn Haines Mac "A", Emma Flores, Off-Campus

DANCE NIGHT

Tap DanceP.E.E.M. Club
 Folk DanceLambda Delta Sigma
 Modern Dance.....Gamma Phi Beta

CARS WANTED

CASH ON THE SPOT

BRIT SMITH Car Co.
 802 Mill — Tempe

Need Insurance UNDER 25?

We Write All . . .
 • Auto • Motorcycle
 • Trailer • Fire • Theft
 Terms Available

RALPH PACKER

Valley Bank Bldg.
 967-3189 Tempe 967-9141

PICK'S COIN-OP

Self Service Laundry
 Dry Cleaning
 Locker Service

Coin Operated Hair Driers
 — ALWAYS ATTENDED —
 Mon. through Sat.—8 A.M.—10 P.M.
 Sundays—9 A.M.—9 P.M.

827 Rural Road Tempe



Off The Cuff

By BOB JACOBSEN
Sports Editor

This weekend marks the "make or break" of the season for the ASU Sun Devils.

Within eight days, the Devils meet five top-notch basketball teams, four of which were ranked in the pre-season top 20.

Friday the Devils will meet the University of Kansas, always a tough roundball team at home.

Dec. 15 ASU TANGLES with the Kansas State Wildcats, possessors of a 22-3 season last campaign.

Wichita's annually strong Wheatshockers will provide the opposition Dec. 17.

Dec. 21, the Devils will host the Big Eight champion of last year, the Colorado Buffaloes.

The following night, Minnesota will come to town. It was the Gophers who gave the Demons one of their four defeats last year.

ALL BUT KANSAS ARE regarded highly by pre-season polls, so the Devils will have their work planned for them.

Another thought: Fans at Manhattan and Lawrence are so rabid in their cheering for their respective teams, they MIGHT not be rooting for each other's team as ASU plays KU at Manhattan and K-State at Lawrence.

Those who might have seen head football coach Frank Kush hitching a ride last week were right.

Not once, but three different times.

It started in Douglas as Kush spoke at the Douglas High football banquet. After it was over he took a cab to Bisbee to catch a plane to Tucson.

THE CAB BROKE down. He then hitched a ride to Bisbee but was too late for the plane.

So, he took a bus to Tucson. The bus broke down. He hitched a ride to Benson, then hitched another ride to Tucson.

He then caught a plane to Phoenix and arrived home after 48 hours on the go.

And where is Kush this week?

Out making speeches at various high school banquets around the state.

SIX PHOENIX SWIMMERS AND divers were named to the AAU Women's All-America swim team yesterday on the basis of championships won, records broken and all-around performance over the past season.

They were Barbara McAlister, Patsy Willard, Jeanne Collier, Nancy Poulson, Marilyn Ramenofsky, and Pam Sheets.

Ticket Stubs To Be Gotten Next Monday

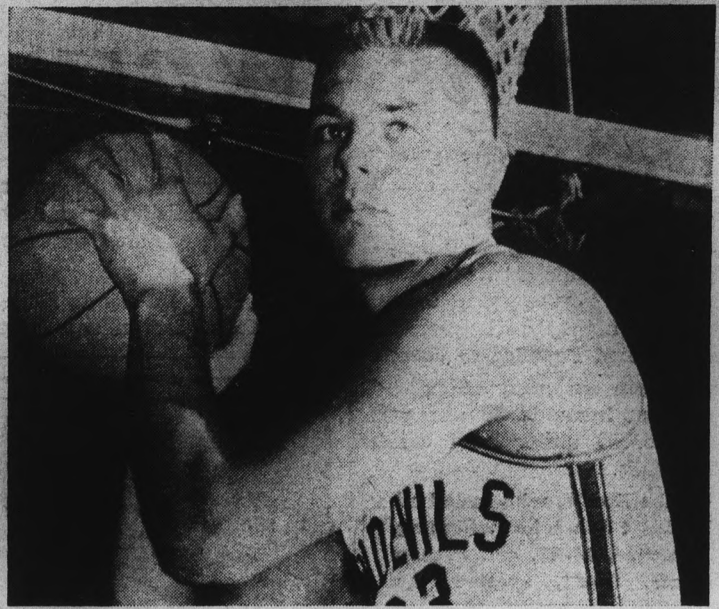
Students may pick up ticket stubs for December home basketball games beginning Dec. 17, ASU ticket manager Sharon Sullivan announced this week.

The ticket office in the men's gym will be open from 8:30 a.m.-5 p.m. Monday through Wednesday for pickup convenience.

Students will be permitted to pick up only one stub other than their own, Miss Sullivan announced.

Tickets will be available for the Dec. 21 game with the University of Colorado, the University of Minnesota game Dec. 22, and the University of Denver game Dec. 31.

Students who intend to be out of this area during this period are asked not to pick up tickets.



"THE HORSE" — Tony Cerkenik, 6-4 senior forward for the Sun Devils, is shooting a fantastic 67.9% from the field. Cerkenik has hit on 19 of 28 attempts. He will be in action this weekend as the Devils visit Kansas.

Titans Go ASU

Three key members of Arcadia High School's football team, Class AA champs, have signed letters of intent to ASU.

Football coach Frank Kush said the three were half-backs Everett Rollins and Pat McGinty and tackle Bob Bertelson.

All three were accorded all-state recognition on various honor teams.

McGinty, 5-10, 175, and Rollins, 6-0, 205, were first and second, respectively, in Class AA scoring.

COPYRIGHT © 1961, THE COCA-COLA COMPANY. COCA-COLA AND COKE ARE REGISTERED TRADEMARKS



BETWEEN CLASSES...
get that refreshing new feeling with Coke!

Bottled under authority of The Coca-Cola Company by PHOENIX COCA-COLA BOTTLING CO.

FOR YOUR MUSICAL CHRISTMAS

GUITARS, UKES, RECORDERS, HARMONICAS
SHEET MUSIC & ALBUMS

BY POPULAR REQUEST WE NOW STOCK
WONDERTONE STRINGS and LA VOZ REEDS

Tempe Music Center

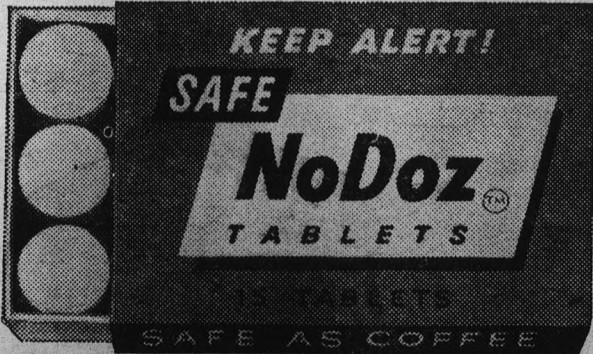
15 E. 6th St. WO 7-4132
(Across from new Western Savings on 6th)

Elegance FOR EVENING

Rent Formal Wear Complete Outfit \$875

Joe Sellek

7th & Mill — Tempe



THE SAFE WAY to stay alert without harmful stimulants

Never take chances with dangerous "pep pills." Instead, take proven safe NoDoz. Keeps you mentally alert with the same safe refresher found in coffee. Yet NoDoz is faster, handier, more reliable. Absolutely

not habit-forming. Next time monotony makes you feel drowsy while driving, working or studying, do as millions do... perk up with safe, effective NoDoz. Another fine product of Grove Laboratories.

Announcing New Low Prices for College Students at . . .

TEMPE BOWL — PAPAGO BOWL
1100 Apache Blvd. 1340 S. Scottsdale Rd.

THUNDERBIRD LANES 2430 W. Indian School

WAGON WHEEL LANES 4222 E. Thomas Rd.

40c per line plus tax

Student Prices Upon Presentation of College I.D. Card

Devils Whip Pepperdine, 83-71

By BOB JACOBSEN

Paced by the inside scoring of Tony Cerkvnik, Joe Caldwell and Art Becker, ASU's Sun Devils scored their third consecutive victory of the young season Saturday night, 83-71, over the highly-rated Pepperdine Waves.

The win extended ASU's win streak at home to 36 and was win No. 95 under head coach Ned Wulk.

The Devils, who have had little trouble whipping Whittier, 94-63, and Fresno State, 89-61, spotted the Waves an early 10-point lead but rallied to pull out the victory.

ASU was down 24-14 early in the game but settled down and brought out a 41-35 lead at half-time.

Speed did the trick in the second half as, with 16 minutes to go and Pepperdine down only 50-45, the Devils started to pull away.

Cerkvnik, Caldwell and Becker all hit field goals as ASU shot into a 60-48 lead which it maintained throughout the contest.

Cerkvnik, who hit an amazing 11-for-13 from the field, led all scorers with 25 points and hauled down 18 rebounds.

Caldwell connected for 24 points and led both clubs with 19 rebounds.

Becker, who also hit well from the field with 9-for-13, hit for 23 points, his personal high.

Lee Tinsley, a 5-10 guard, kept the Devils in hot water most of the first half accounting for 14 points in the initial stanza and eight in the second half to pace the Waves with 22 markers.

He connected on 10-of-22 attempts.

Noel Smith, 6-3, hit for 16 points, while Bob Warlick, reputed to be Pepperdine's best,

accounted for 15 points.

Raul Disarufino with seven points and Dennis Dairman with four markers rounded out Sun Devil scoring.

Friday ASU travels to Manhattan, Kans., for an encounter

with the Jayhawkers of Kansas University.

Dec. 15—the Sun Devils move over to Lawrence for a battle with the Kansas State Wildcats.

ASU receives a day's rest be-

fore moving on to Wichita Dec. 17 for a contest with the Wichita Wheatshockers.

The games with Kansas and Kansas State are part of double-headers with Cincinnati, the No. 1 team in the nation, which will

meet K-State Friday and KU Dec. 15.

The Devils then return home for Dec. 21 and Dec. 22 battles with Big Eight champ Colorado and a Big Ten title contender, Minnesota.



Brighten

his

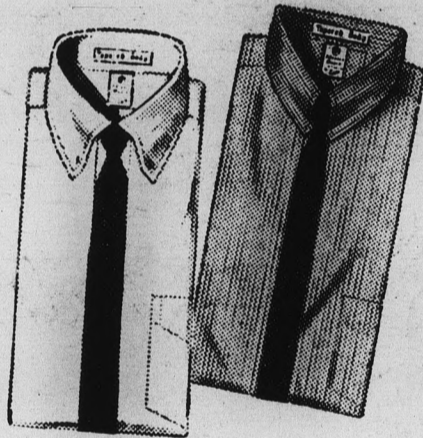
Christmas

with Gifts

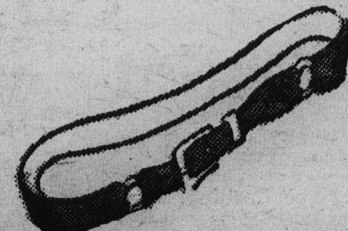
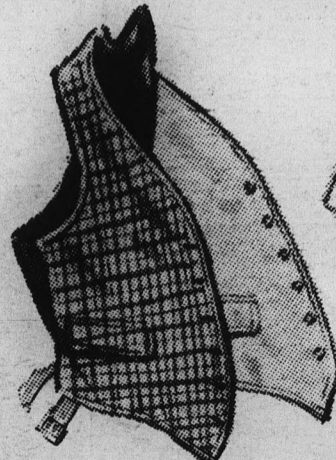
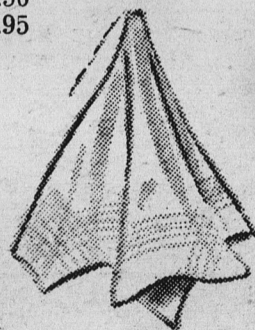
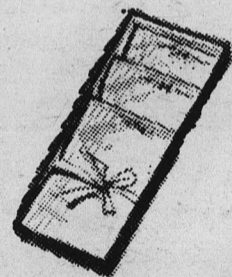
like these

from

The Americana Shop



- Sport Shirts from \$ 5.00
- Dress Shirts from 5.00
- Knit Shirts from 5.00
- Neckwear from 1.50
- Reversible Vests from 6.95
- Belts from 1.50
- Sweaters from 8.95
- Hankies from 3/1.00
- Leather Goods from 2.95
- Pajamas from 5.00
- Slacks from 5.00
- Sport Coats from 32.50
- Suits from 39.95



Sun Imps Triumph

Four men scored in double figures Saturday to pace ASU's Sun Imps to a 76-67 victory over Kerr Sporting Goods of Phoenix.

The Imps' record is 3-0 for the season.

Pacing the yearlings' balanced scoring attack were Paul Meany and Jim Whitehead, who hit for 19 and 18 points, respectively.

Dennis Hamilton and John Myers added 10 each.

Former ASU ace Jerry Hahn led Kerr with 19 points. Bob Dienes added 16 for the losers.

The game was the last of the calendar year for the Imps, who will see action next Jan. 7 against EAJC, at Thatcher.

DON'T WAIT!
HAVE YOUR CAR SERVICED FOR CHRISTMAS
 TEXACO CREDIT CARDS ACCEPTED
BRIT SMITH Car Co.
 802 Mill TEMPE WO 7-3381

THE *Americana* SHOP
 QUALITY MEN'S APPAREL
 TEMPE SHOPPING CENTER
 OPEN 9:00 A.M. TO 9:00 P.M.
 MONDAY THRU SATURDAY
 CLOSED SUNDAY
 WO 7-5457

Campus Representative Mike Schwartz will gladly help you with your gift selections