

Pearl Harbor Attack Remembered

By ROSS FISH

Twenty-one years ago today, students were studying for classes, attending church services, recovering from a Hardin-Simmons football defeat and preparing for the holiday vacation.

At the same time, Japanese airmen were bearing down on the U.S. Pacific fleet at Pearl Harbor.

When the news of the almost total elimination of U.S. naval power reached American homes, there were mixed emotions.

Several ASU employees interviewed yesterday recalled their reaction to the

bombing and announcement of war.

SEVERAL persons interviewed asked that some of their remarks be left out of print because their feelings are still too personal.

Most of the women interviewed said their first thoughts were with the important men in their lives.

"With three brothers, one already in the service, I was terribly frightened," said Mrs. Dorothy Alexander, secretary-stenographer in the Dean of Students office.

"My first thought was that my boyfriend would go in the service," said

Mrs. Ardys Bradbury, secretary-bookkeeper in the business office. "He did. And, as a result I spent three lonely years."

ATTENDING Cornell University at the time, Mrs. Trudy Thomas, assistant MU Director, said the picture was still vivid, but difficult to describe. "At first it seemed impossible to comprehend. As the numbness wore off, the effect on campus was definitely visible.

"There was a change in our lives as well as the campus atmosphere," Mrs. Thomas continued. "We realized that those on cam-

pus would be deeply affected."

"I can't explain it," said Rex Hillyer of MU maintenance. "I was working in a bakery when we heard the announcement and everything just stopped. I thought of a high school friend who was in Pearl Harbor."

"We knew that 'the war to end all wars' as World War I was said to be, hadn't come," said Edward F. Dorrance, head cashier in the Business Office. "I knew my happy days were over."

"IT SOUNDED like the whole world was shatter-

ing," said Mrs. Donna Rodgers, secretary to the ASU Executive Manager. "When you're young, you naturally panic. You look at everything you've planned and wonder where you're future's really going."

Mrs. Grace Forge, cashier in the Business Office, said "It didn't really mean too much to me since I was too young, but I can remember the quiet, sick atmosphere."

"My memories are quite personal," said Mrs. Irene Cross in the MU business office. "The thoughts of war clouded everything else out."



Vol. 41

Friday, December 7, 1962

No. 22

School Given Grants

ASU has received \$202,000 in grants from the National Science Foundation for support of four summer educational institutes, according to President G. Homer Durham.

The institute of secondary school instructors in chemistry and physics will receive \$65,100. Dr. Alan T. Wager, ASU professor of physics and chairman of the department of physics, will be director of the June 24-Aug. 10 institute.

\$52,600 will go to the June 6-Aug. 16 institute for secondary school teachers in biochemistry and cellular biology. Dr. George M. Bateman, ASU professor of chemistry and head of the Division of Physical Sciences, will be the director.

The June 24-Aug. 10 institute for secondary school teachers in mathematics will receive \$44,600. Dr. Lehi T. Smith, ASU assistant professor of mathematics, will be the director.

Dr. Robert L. Burgess, ASU assistant professor of botany, will conduct the June 24-Aug. 3 institute for college teachers in desert biology, which will receive \$39,900.

Seven Caught For Stickers

Seven students have been referred to the office of the dean of students for unauthorized use of faculty parking stickers this semester. Lt. Thomas W. Godbehere, Campus Security, said recently.

Students found using unauthorized parking stickers are referred directly to the dean's office, according to Lt. Godbehere.

Christmas Spirit-



CHRISTMAS SPIRIT returned for its annual visit to the ASU campus last night as students gathered to decorate the MU.

WORLD NEWS

Guard Cutback Begins

WASHINGTON — The Pentagon began Tuesday its long-planned and still controversial reorganization and cutback of the Army National Guard and Reserve forces.

Shortly after Secretary of Defense Robert S. McNamara announced some of the details, Gov. Albert D. Rosselini of Washington, chairman of the National Governors Conference, made known his opposition to the plan as it affected his state.

Rosselini, a Democrat, urged all governors to withhold any approval of the changes until a special committee of the conference has had a chance to meet and discuss them.

JFK May Seize Housing

WASHINGTON — The federal government may seize and operate low-rent housing projects which violate contract clauses requiring them to observe President Kennedy's order prohibiting discrimination in federally-assisted housing.

This possibility was acknowledged publicly at a press conference Tuesday as the government released regulations applying the anti-discrimination order to federal urban renewal, public housing and community facilities programs.

'Who's Who' Selects 36

Thirty-six ASU students received selection to Who's Who in American Colleges and Universities. Who's Who is a directory for outstanding college and university students.

These students were selected by a committee consisting of ASASU officers, AMS president, AWS president, and ASU chief justice. Selection was based on activities, honors, and scholastic ability from those students with a minimum of 84 semester hours. These students are:

Donna Arnote: Natani, Pleiades, Cultural affairs committee, Gamma Phi Beta sorority.
Frederick Ayer: Blue Key,

See Pictures Page 5

Arnold Air Society, education board, Phi Sigma Kappa fraternity (president).

Margaret Baker: Spurs, Natani, Pleiades, AWS Senator.

Betty Barclay: Spurs, Natani, Pleiades, Gammage Hall Girl of the Month.

Roger Baymiller: Blue Key, Pi Sigma Alpha (political science honorary), International Affairs Club, History club (president).

Linda Brodersen: Alpha Lambda Delta, memorial union board, German club, Kappa Alpha Theata Sorority.

John Brooking: Activities Vice President ASASU, Cheerleader, Rally and Traditions board chairman, Sigma Chi fraternity.

Sharon Brousseau: Alpha Lambda Delta, Natani, Pleiades, Freshman Week.

Linda Brown: Alpha Lambda

Delta, Spurs, Natani, Pleiades.

Robert Arlen Clampett: Blue Key, homecoming king, ASASU Supreme Court Justice, Phi Kappa Psi fraternity (president).

Michael Craig: Blue Key (president), freshman week chairman, President's cabinet, Sigma Chi fraternity.

La Donna Curry: AWS council, Cultural affairs board, Palo Verde hall president, Kappa Alpha Theta sorority.

Janet Elliott: Spurs, Natani, Pleiades, Big sister.

Bonnie Evans: Associated Women students president, AWS vice president, Pleiades, Gamma Phi Beta sorority.

Leslie Farnsworth: Co-chairman homecoming, senator, Angel Flight, Alpha Delta Pi sorority (president).

Diane Fitzgerald: Alpha Lambda Delta, Spurs, big sister, Gamma Phi Beta sorority.

William Anthony Flick: Blue Key, Editor-in-Chief State Press, IFC, Alpha Tau Omega (president).

Eileen Frederick: Spurs, Natani, Pleiades, Chi Omega sorority (president).

Barbara Marlowe Harber: North Hall president, Managing Editor State Press, Pi Delta Epsilon, journalism honorary,

(Continued on Page 3)

Conference Opens

ASU students and faculty were scheduled to meet at 9 a.m. today in the MU for the opening of the first annual Faculty-Student Conference on Political-Military Affairs.

They will discuss "The Political-Military Defense of Latin America."

The two-day conference which runs through tomorrow noon will feature Ronald Hilton, professor of romance languages at Stanford University at 7:30 in the MU banquet room.

Today's speakers will include Dr. Rosendo A. Gomez, of the UofA; Dr. Russell H. Fitzgibbon, of UCLA; Enguerrando Tapia of Sonora, Mexico; Lt. Col. Theodore Wyckoff and Dr. John Martinez, both of ASU.

Tomorrow the conference will meet in the KAET studio to tape comments from a panel consisting of Dr. James L. Busey, of the University of Colorado; Dr. Fitzgibbon and Dr. Hilton.

A replay of the discussion can be seen Thursday at 10 p.m. on KAET-TV, Channel 8.

'Silent Spring' Viewed As Highly Emotional

By ED GASSER

Just how much support is Rachel Carson's "Silent Spring" receiving from our doctors of science?

Apparently very little. "She presents only the aesthetic side of the picture and with great 'emotion'. If man is to practice intensive agriculture he must control the plant pests. She is making a mountain out of a molehill with the data she has," said Dr. A. M. Dycus, professor of botany.

Miss Carson's claims that the extensive use of insecticides is extremely dangerous and that the consequences of their continued use may be disastrous, have caused considerable controversy among both scientists and laymen.

Dr. Dycus has had many years of experience testing insecticides and fungicides on various plants and does not disregard the possibility that they may be harmful.

He explained that most organic insecticides are harmless after having been deployed six weeks on the plants or in the soil because they undergo chemical breakdown. Heavy metal insecticides using lead, zinc and copper are more dangerous because they do not deteriorate.

Dr. Dycus recognizes pesticides as important in agriculture and says, "The specific purpose of insecticides is to lower the cost of produce. The yield per unit area is increased many fold with the use of them, and the produce is more nearly perfect.

"Even more indiscriminate, is the use of antibiotics by physicians. Antibiotics such as penicillin and streptomycin are as dangerous as insecticides when not properly used," said Dr. Dycus.

He contends, "The Department of Agriculture's control (of insecticides) is adequate. 'Silent Spring' could hurt the produce industry."

Dr. Charles M. Woolf, associate professor of zoology, is a geneticist with some doubt that insecticides are doing an extensive genetic damage to man.

He does believe however that the chemicals may cause an increase in mutation, but this increase is relatively small. He agrees some insecticides could cause hepatitis, cancer and leukemia but he thinks others are not harmful to man.

"The number of lives lost because of mutation caused by insecticides is small compared to the number of lives saved by insecticides. In the 1860s, about half of all deaths in the world were due to malaria. But malaria is no longer a serious problem in many parts of the world, partly because of insecticides," he said.

When asked if the increased use of insecticides could be directly responsible for the increase in cancers, he replied,

Engineers To Confer

Lowell Rose, chief industrial engineer of Sperry in Phoenix, will be the guest speaker at the American Institute of Industrial Engineers meeting in MU 218A Dec. 13 at 11:40 a.m.

Coffee and doughnuts will be served.

"Insecticides are not the total cause. Neither insecticides nor radioactive fall-out can be blamed for the increase. Cancer was present long before man developed insecticides."

Dr. Woolf added, "Each life is meaningful and we should use caution, but insecticides should not be thrown out for fear of a few deaths resulting from their use."

CONCLUSION — We have presented the views of faculty members from three ASU departments. There was not complete agreement on all points concerning the dangers of using pesticides. We can, however, conclude that the dangers, whether immediate or future, do exist and will require careful analysis if we are to accept and understand them.

The Phoenix JAYCEES Are
Looking For A 1963
"Rodeo of Rodeos"
QUEEN

APPLICATIONS MAY BE OBTAINED
AT STATE PRESS OFFICE OR MU DESK

For Further Information Call
Jaycees Office at AM 4-4808

Wallace, Ladmo & - - Schwartz?

Mike Schwartz, ASU's head cheerleader, appeared on KPHO-TV's "It's Wallace?" show Tuesday.

Schwartz gave the "Quizel Frizel" cheer on the air with the studio crew echoing the responses.

It's not too late!
your selection
Christmas Cards
CUSTOM
HAND-IMPRINTED
with your name
QUICK SERVICE

At The
UNIVERSITY
BOOKSTORE



Tastes Great because the tobaccos are!

21 GREAT TOBACCOS MAKE 20 WONDERFUL SMOKES!

Vintage tobaccos grown, aged, and blended mild... made to taste even milder through the longer length of Chesterfield King.

CHESTERFIELD KING

TOBACCOS TOO MILD TO FILTER, PLEASURE TOO GOOD TO MISS



FOR A GENTLER, SMOOTHER TASTE

ORDINARY CIGARETTES

CHESTERFIELD KING

ENJOY THE LONGER LENGTH OF CHESTERFIELD KING

The smoke of a Chesterfield King mellows and softens as it flows through longer length... becomes smooth and gentle to your taste.

More About -

Who's Who Selections

(Continued from Page 1)
 Kappa Delta sorority.
 Samuel Hill: Alpha Mu Gamma, foreign language honorary, Phi Kappa Phi honorary, Memorial Union board, Russian Circle (president).
 Robert Hobbs: Blue Key, IFC, Memorial Union birthday party, Sigma Chi fraternity (president).
 Patricia Inbody: Natani, Pleiades, Pi Omega Pi, business education honorary, College Bowl.
 Henry Klopping: first Vice President ASASU, Sophos, Blue Key, Theta Delta Chi (president).
 Stephen Montgomery: Blue Key, Chief Justice Supreme Court, social board chairman, Sigma Nu fraternity.
 Nancy Moore: AWS council, big sister, Pleiades, Kappa Alpha Theta sorority (president).
 Gary Nichols: Sophos, Blue Key, senator, Western Week chairman.
 Anne Okada: Alpha Lambda Delta, Spurs, Phi Kappa Phi, College Bowl.
 Arlene Przanowski: Natani, Pleiades, Kappa Delta Pi, Freshman counselor.
 Richard Ray: Lambda Delta Sigma (president), Delta Sigma Pi, Blue Key, accounting club.
 Marilyn Annis Rossini: Angel Flight, women's day chairman, Memorial Union board, Chi Omega sorority.

Somporn Sangchai: Pi Sigma Alpha, College of Liberal Arts honors program, Sophos, international affairs club.
 Stephen Sargent: Blue Key, senator, President's cabinet, Supreme Court Justice.
 E. Lynn Shahan: Natani, Pleiades, big sister, Kappa Delta sorority.
 Marilyn Spitler: Alpha Lambda Delta, Spurs, Natani, Pleiades.

Jerome Sullivan: IFC, president, senator, President's cabinet, Sigma Nu fraternity (president).
 Roberta Turner: Kappa Delta Pi, history club, English society, Education board.
 Of the 36 selectees 42 per cent are men, 58 per cent are women, 70 percent live on campus, 53 percent are Greek affiliates, 75 per cent have a "B" or better grade average.

Frosh In Fitness Test

Freshman men are participating in the college and university American Association for Health, Physical Education and Recreation fitness program.
 The testing program consists of pullups, situps, standing broad jump, 120-foot shuttle run, 50-yard dash, softball throw and 600-yard run.
 The men have been participating in the Royal Canadian Air Force 5BX conditioning plan as a warmup for the AAHPER tests.
 The upper 80 per cent of the frosh participants may select various activity courses for their second semester PE requirement.
 The top 10 freshman students will be invited to participate in a fitness tournament at 3 p.m. Jan. 16.
 A Sadie Hawkins Day episode back in 1947 found ASU students en masse throwing one another into the drink, resulting in mob rule and stern frowns from the faculty.



Laird Pharmacy

PRESCRIPTION SPECIALISTS

TOBACCO — FOUNTAIN
We Give S & H Green Stamps

501 Mill Tempe

Bobbies Flowers

20 E. 5th St.
Home Phone WO 7-6319
WO 7-2972 — WO 7-4274



Flower Gifts...

**For Parties . . .
Large Artificial
Plants For Rent**

THE BELL TELEPHONE COMPANIES SALUTE: ROY MOORE

Roy Moore (B.B.A., 1958) is responsible for 51,000 telephone customers served from Southwestern Bell's San Antonio office. To efficiently keep tabs on the nearly \$700,000 monthly billing, Roy has a staff of 24 people including four supervisors.
 A lot of responsibility, but Roy showed he could handle it right from his first assignment as a Staff Assistant in

the Houston Sales Department. From there, he progressed to Commercial Assistant, and then to Group Manager for ten exchanges around Cuero, Texas.
 Roy Moore and other young men like him in Bell Telephone Companies throughout the country help bring the finest communications service in the world to the homes and businesses of a growing America.



BELL TELEPHONE COMPANIES

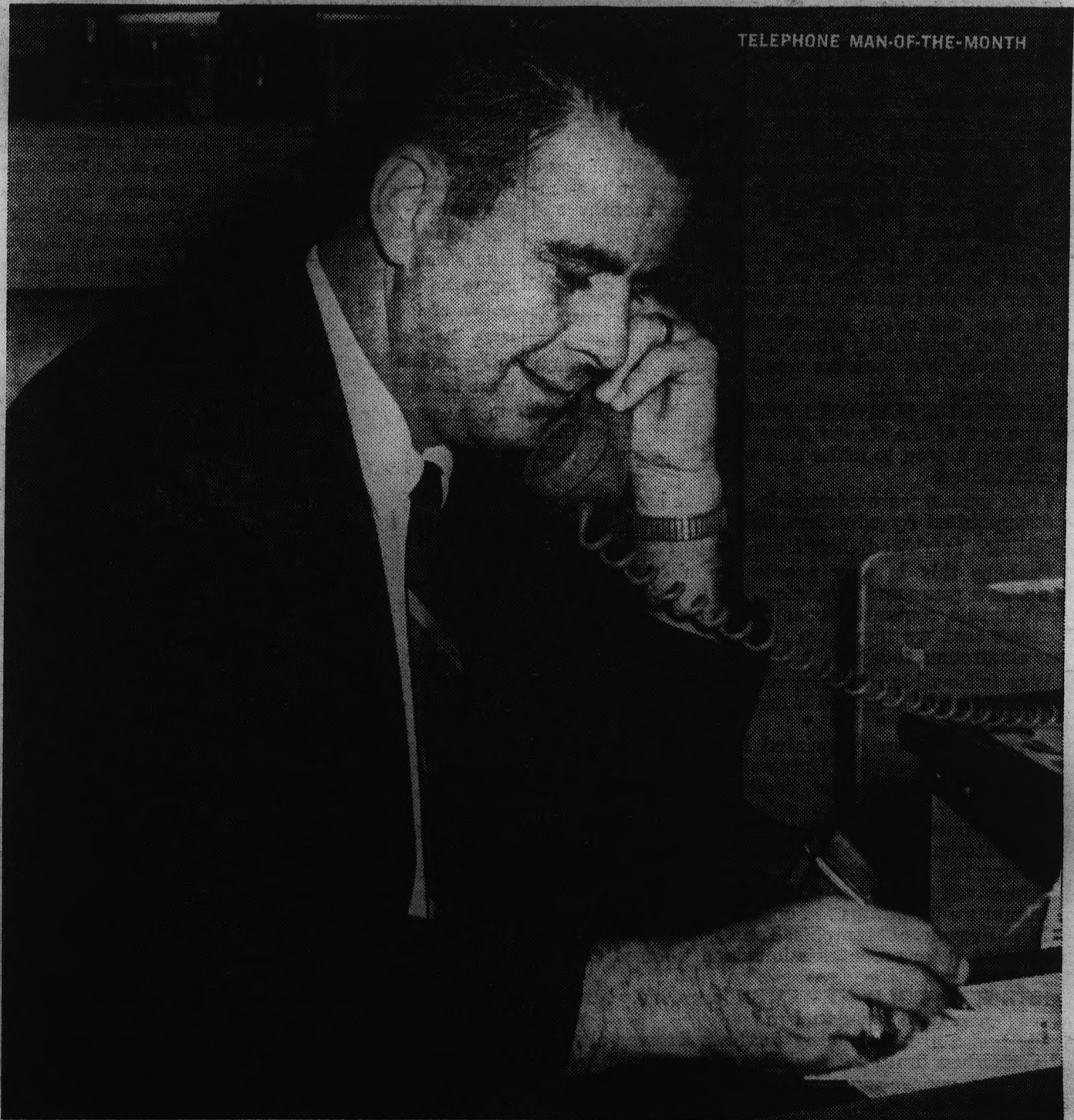
Symphony Band

This week's Campus Concert will feature the Symphonic Band. The program consists of "When Jesus Wept" as the introduction to the overture "Chester," both pieces are by William Schuman.
 The concert will be aired on KYND radio, 1580 kc, Sunday, at 8:30 a.m.
 It will also be broadcast on:
 KPHO radio, 910 kc, Sunday, at 5:30 p.m.
 KOOL radio, 960 kc, Sunday at 8:45 p.m.
 KTAR radio, 620 kc, Sunday, at 1105 p.m.

Campus Classified

Regulations: For students and faculty only of Arizona State University. To place classifieds, submit to Room 207, Memorial Union Building, by noon two days before date of publication: noon Monday for Wednesday's issue, noon Wednesday for Friday's issue. Rates: 3 cents per word, 50 cents minimum charge.

- **APARTMENT**
Two blocks from ASU. Brand new furnished apartment designed for ASU married couples only. \$85 month year-around rate. All utilities paid. Inquire Apt. 9, 705 Krueger St., or call WO 7-5430.
- **FOR SALE**
H. F. Speaker—high quality Triaxial Speaker in unfinished Electrovoice "Empire" Cabinet. WO 7-7489.
96 pieces, Ncrtake China, rose design. Removed from original packing only for inspection. Wonderful Christmas present for wife or mother. Sgt. Weeks, AFROTC, Main 214, Ext. 372.
Tuxedo, Midnight blue. Almost new. Size 36. Cheap. Call 967-0438.
- **RIDERS WANTED**
Looking for riders to Houston, Texas, for Xmas holidays to share driving and gas expenses. Will return at the end of holidays. Leonard Goldberg. 717 Alpha Dr., Tempe. WO 7-9909.
- **SEWING**
Sewing, altering, and dressmaking Mrs. Kotten, 1311 W. 10th Place, Tempe, Arizona. WO 7-9173.





THE STATE PRESS, distributed by the campus chapter of Sigma Delta Chi under the direction of Circulation Manager Mike Barriok, is the official campus newspaper of Arizona State University. It is published each Wednesday and Friday throughout the school year, excepting holidays, and is entered as second class matter at the Tempe, Arizona, Post Office under the Acts of March 3, 1879, and August 24, 1912. Subscription price, \$3 per school year.



THE STATE PRESS is a member of the Arizona Newspapers Association, Associated Collegiate Press and National Advertising Service, Inc.

EDITOR-IN-CHIEF LINDA WARREN SIMS
NEWS DEPARTMENT
MANAGING EDITOR BILL OVEREND
CAMPUS EDITOR ED HEATH
ASSISTANT CAMPUS EDITORS BETTY DUFFY, MARTI CZEPOWSKI
ASSIGNMENTS EDITOR GWEN ZUPANCIC
ASSISTANT ASSIGNMENTS EDITORS TOM WING, PAM VAN BUSKIRK
NEWS EDITORS BOB ZACHE, BOB CLAMPETT
ASSISTANT NEWS EDITORS ROSS FISH, JERRY REILLY
COPY EDITOR GARY OLMSTEAD
CHIEF PROOFREADER LYNDA HARRIS
SPORTS DEPARTMENT
SPORTS EDITOR BOB JACOBSEN
ASSISTANT SPORTS EDITOR DENNIS ANDERSON

Sounding Off....

By LINDA WARREN SIMS

Probably the most useless piece of literature on campus is the new Student Telephone Directory.

Carefully tabulated on 101 pages are the names of thousands of ASU students, their home addresses and their home phone numbers.

THUS, IF YOU WISH TO call Joe Schmoe or Jane Doe who you think might be living in a dormitory on campus, don't dial the number listed in the directory or you're liable to be speaking to their mothers in New York City or Kansas City, Kansas.

Always before, the directory was careful to list the campus phone numbers and addresses of our students.

We hope that this doesn't cut down dating for next semester too drastically.

After all, if you don't know where someone is, how can you ever find them again?

We suggest that the Delta Phi honorary fraternity, publishers of the directory, cease to pass their booklet out. Unless, of course, their plan is to make it available for people sending Christmas cards to their friends so far away over the vacation.

This would be its only value.

TODAY IS THE DAY THE Japanese bombed Pearl Harbor.

If you wonder why people are always bringing this up, why not sit down with your father and mother and ask them about their feelings on that day.

You might also refer to the front page poll of some of the opinions of older people on campus who remember the terror of that day and the days, months and years that followed.

Today, Dec. 7, 1962, Japan is one of our strongest allies and has worked long and hard to rehabilitate itself after the destruction of Hiroshima and Nagasaki.

Perhaps, we might optimistically say that WW II accomplished something when we think of the new prosperous Japan, but then we recall a Korea, a Lebanon, and just lately a Cuba.

WHEN OUR NATION'S PEOPLE finally sat back after the end of the second great war, they licked their wounds and vowed to make this world a peaceful place in which to live.

Their wishes were admirable, and we hope they are not disappointed by what has followed.

Millions sacrificed their lives for this cause.

Perhaps this is why people are always bringing this up; as a gruesome reminder that war is not pretty, valiant, heroic, romantic, sensational or any of the other adjectives that we may give it as we sit complacently in our classrooms today.

War is horrible, deathly, rotten and cruel.

THAT IS WHY PEOPLE are always bringing it up.

According to an Associated Press report, the student government of the University of Mississippi has reprimanded Sidna Brower, coed editor of the campus newspaper, for "failure to uphold student rights" in the recent controversy at Ole Miss over the enrollment of Negro student James H. Meredith.

During the demonstrations, Miss Brower called students involved in the riots "barbarians, rabble rousers and immature weaklings . . . engaged in civil savagery."

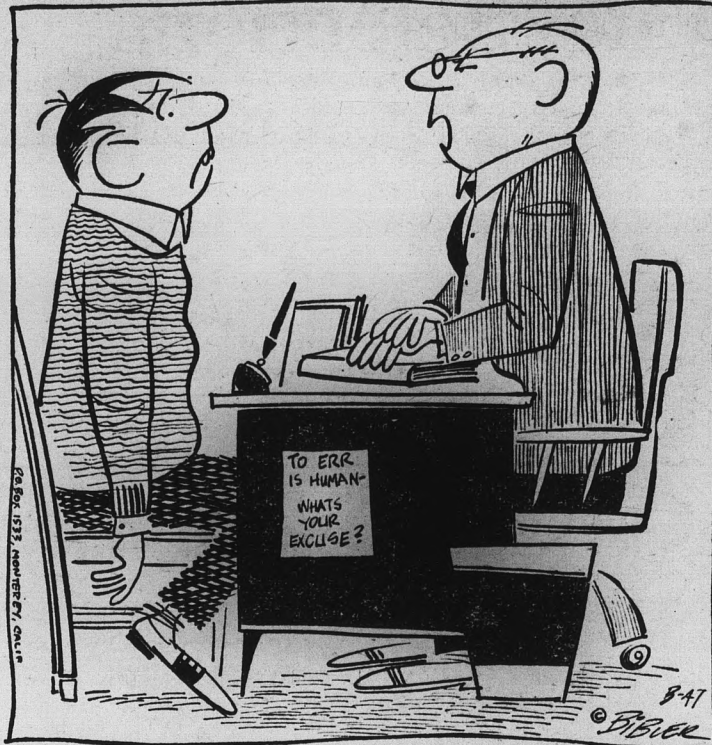
Miss Brower, of Memphis, Tenn., sat quietly through the student government sessions and refused to comment.

SHE HAD TOLD NEWSMEN previously that she was an "open field for criticism."

We feel a great empathy for Miss Brower although we have only a limited knowledge of her situation.

We also congratulate her on being one of the few people at the University of Mississippi who was brave enough to be objective.

LITTLE MAN ON CAMPUS



"HERE IT IS ALMOST THE END OF THE TERM AND YOU HAVEN'T BEEN TARDY OR ABSENT - YOU HAVE DONE THE ASSIGNED HOMEWORK AND YOUR PAPERS HAVE BEEN HANDED IN ON TIME! - TELL ME, HAS THE DRAFT BOARD BEEN BUGGIN' YOU ABOUT GRADES AGAIN?"

Letters To The Editor

TO THE EDITOR:

I would like to thank Walt Schmidt for bringing a mild, though complicated, problem to a place where it can be publicly discussed rationally. We see enough vindictiveness elsewhere on the editorial page as it is. I trust we can at least keep "letters to the editor" as moderate in tone as Mr. Schmidt's letter was.

The problem that upset Mr. Schmidt is first of all a matter of communications. In contrast to the exuberant view of the reporter who characterized the MU board as about to set up barricades around the Devil's Den and machine gun the staff (Devil's Den under fire . . . etc. See State Press Nov. 13). The true picture of the board's efforts is simple. We are attempting to influence the administration of the university to enlarge the Devil's Den. In order to accomplish this three things must be done:

- 1. Establish need for enlargement;
2. Develop as complete a proposal for expansion as possible;
a. Construction costs, sketches, etc.;
b. Overall view of university expansion;
c. Prove desirability of redecorating at time of expansion;
3. Present proposals to Mr. Cady, arguing need for immediate expansion versus inconvenience of forestalling until den site could be shifted to larger quarters.

The first part of the study is complete. Plans are laid and work begun on the second part. We have a board meeting every other week, subcommittee meetings at least once a week and are devoting all the time possible to develop our presentation for Nov. 30 which is the target date for approaching Mr. Cady. Our hope is that if a favorable decision is reached the contracts can be let for completion over Christmas vacation. The largest problem we have

encountered is unwillingness on the part of student groups in construction and architecture to cooperate in developing complete proposals. I should like to use this opportunity to appeal to these students and, in fact, all students who can aid in the development of student plans for our den to cooperate with the board. The administration will laugh in our face if we can't agree, especially in public.

I wish to re-assure the student body that student government is doing everything possible to insure enlargement of the den. The board members concerned with the study: Paula Eisemann, Al Abrahms, Lynn Edgerton, Ron Cummings and Kay Merrill have given and will give freely of their time to accomplish this end. All they need is cooperation.

Roger Brindle
Chairman,
Memorial Union Board

TO THE EDITOR:

Many students on campus do not realize the tremendous job accomplished by our ASASU secretary, Cindi Buchanan, and her assistant, Susie Poe.

They work long hours all the time to prepare all the minutes, agenda, etc., for the senate and most of the councils, boards and committees on campus.

But most important is the friendliness generated throughout their office.

They are warm and cordial to all students who approach them for either help or information.

I believe that these two girls deserve a big vote of appreciation from all the students at Arizona State University.

Name Withheld

TO THE EDITOR:

Mary Gorman should stay out of pool halls. That's no place for a lady.

Charles Stough

TO THE EDITOR:

Charles Stough should stay out of "Letters to the Editor." That's no place for a gentleman.

Ed Matthews

I Cover College Avenue

By BILL OVEREND

The traffic situation about 9:55 p.m. in front of Palo Verde Hall has become a little bit too dangerous for ASU officials to tolerate any longer.

Now that the construction of a new dorm in the large lot on the east side of PV has stopped students from using that area to park when returning from dates, the entire load has been shifted to a much smaller area on the west side.

THE PROBLEM is: everybody's coming and going at the same time. It's congestion at its best.

So far there have been no major accidents in the lot. But that streak of luck could fade any night.

One solution to the mess would be to install a traffic light in the middle of the lot. But that's not that sharp a solution.

Probably the best idea would be for Palo Verde officials to open the doors at the rear of the building — on the north side leading into the cafeteria — to enable students to utilize the large parking lot behind Palo Verde.

THAT WOULD facilitate the movement of cars coming and going and would create few additional problems.

The matter may seem relatively unimportant now. But we urge Miss McCandless to attempt some solution immediately.

Action now could prevent a tragedy.

We're glad to see the campaign to get a new uniform for our school mascot has inspired so much enthusiasm.

IT'S THE same old story. Too many people spend too much time running around yelling "School spirit, yip-pee!" to ever get down to work doing something concrete to improve it.

Oh, well.

That werewolf incident with Campus Security the other day won this reporter's nomination for funniest of the year.

If you know of any happenings with anything approaching the same degree of humor, let us know. They make good stories.

APPEARING in today's State Press are a group of 36 students just named for one of the highest honors the collegiate world can bestow on an undergraduate. We mean "Who's Who."

It's a neat deal. First of all, the new members get their pictures in this paper. Then their honor is recorded on their college transcript. Then they get their names printed in a national volume.

It is considered an honor to belong.

ASU Forum Starts Monday

Dr. Pranas Padalis, professor of economics at ASU will speak on "University and Political Experience Behind the Iron Curtain," Monday, December 10, at 3:30 p.m. in the MU upper lounge in the first session of the ASU Forum.

First of five speakers, Dr. Padalis will relate personal experiences during his stay behind the Iron Curtain.

Senator Thomas Dodd, Democrat from Connecticut, will

speaking on U. S. Foreign Policy behind the curtain later in the series. There will be three other faculty members and a student speaking, which will run the series through February.

Dr. Kieth Davis, advisor to the ASU Forum, will introduce the speakers.

The next speaker will be January 7, first Monday after Christmas vacation. No admission will be charged for these programs.

BE SURE TO SEE

"THE STORY OF... A TRACK CHAMPION"

featuring Jim Beatty, miler

Sunday, Dec. 9th
9:30 P.M. KOOL-TV Ch. 10

presented by
ARIZONA PUBLIC SERVICE COMPANY

the fourth dimension: TIME

...still a mysterious concept to science. Time is only an idea, an abstraction... an area of shadow, speculation—and surprise.

SEPT. 5, 1752, NEVER HAPPENED!... Nor did any date from Sept. 3 to 13, at least in England and the American Colonies. Why? The King decreed that these days would be skipped to correct a discrepancy between the Old English calendar and the newly adopted Gregorian calendar. This left puzzled Englishmen and colonists with one 19-day month and a 355-day year.



THE HAMSTER'S BUILT-IN "CONTINUOUS CLOCK"... enables him to maintain his daily activities of eating and sleeping without the usual stimuli of light and darkness. He lives on exactly the same schedule even in total darkness.



IT TAKES TIME TO MAKE TIME. Hamilton's extremely precise version of a timepiece takes from 6 to 9 months to produce. Half of the more than 2000 production steps are quality inspections which assure Hamilton accuracy.

Are you a person who likes to stand out? A Hamilton is both attractive and distinctive, a touch of excellent taste that you can wear every hour of a lifetime. They start as low as \$35. Ask your favorite gift-giver. Hamilton Watch Co., Lancaster, Pa.

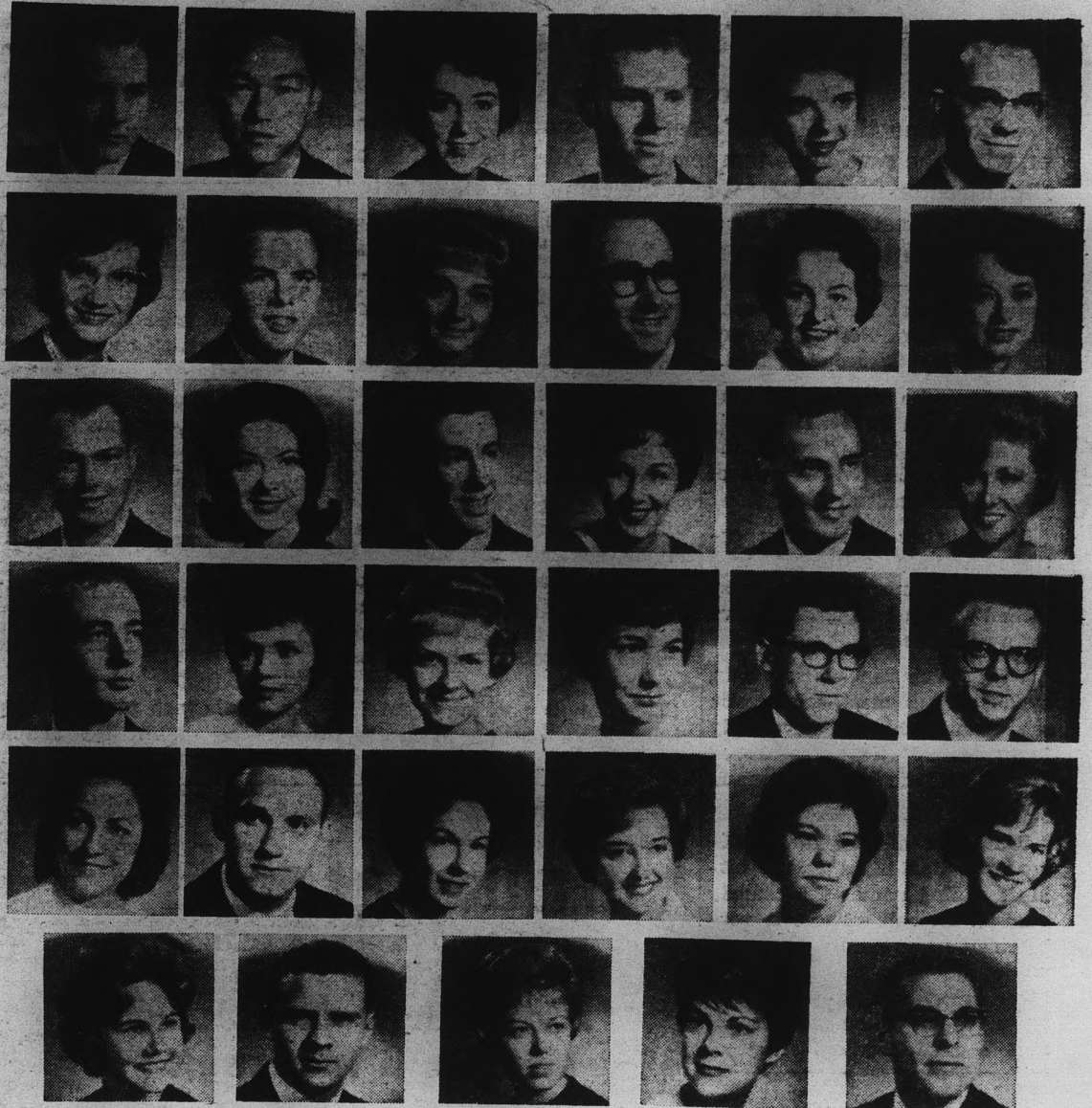
HAMILTON
Creator of the World's First Electric Watch



Accumatic VIII-B \$59.95
Clover \$45

All prices plus tax

ASU's 'Who's Whos'



WHO'S WHO — Top left to right, William Anthony Flick, Somporn Sangchai, Bonnie Louise Evahs, Samuel Edward Hill, Nancy Jo Moore, Michael Andre Craig, Patricia Ann Inbody, Robert Clark Hobbs, Donna Jewell Arnote, Roger Browning Baymiller, Sharon Ann Brosseau, Janet E. Elliot, Gary Nichols, Eileen Elizabeth Frederick, Stephen K. Montgomery, Betty Lu Barclay, Henry, W. E. Klopping, La Donna Curry,

Jerry Sullivan, Linda J. Brown, Arlene Therese Przanowski, Linda Joan Brodersen, Stephen Lee Sargent, Frederick Latham Ayer, Diane Lynette Fitzgerald, John Joseph Brooking, Marilyn Joan Spittler, Roberta Frances Turner, Anne Yoshie Okada, Margaret Truman Baker, Barbara Marlowe Harber, Robert Arlen Clampett, El Lynn Shahan, Leslie Farnsworth. Not pictured: Richard Stanley Ray, Marilyn Annis Rossini.

Job Interviews Begin Monday

Final industrial recruiting of seniors and graduate students prior to Christmas will begin next week.

Monday, the National Aeronautics and Space Administration from Langley Field, Virginia, will interview engineers and scientists.

Tuesday, the Ferry Morse Seed Company will interview agriculture majors interested in sales positions and a representative of the Graduate School of Business Administration at the University of Southern California will explain their program.

A General Dynamics representative will interview electrical and mechanical engineers on Wednesday.

Thursday, the Silicone Division of Union Carbide will interview chemists and chemical engineers.

Interested students should contact the Placement Center for appointments.

Permission Slips

Late night permission slips for any campus event must be obtained by dormitories and organizations no later than one week prior to the event, according to an announcement made yesterday by the Associated Women Students.

The slips may be obtained in the AWS office in MU 205.



It's greasy, by George! But Vitalis with V-7 keeps your hair neat all day without grease. Naturally, V-7 is the greaseless grooming discovery. Vitalis with V-7 fights embarrassing dandruff, prevents dryness, keeps your hair neat all day without grease. Try it today!



NOW ON SALE AT

CAMPUS DRUG

CORNER COLLEGE & 8th ST.

Satirical Farce Laughs At Aristocratic Italians

By SPERO THEODORE

Combine the Sicilian's sense of morality and honor with their volatile temperament. Add the talents of film director Pietro Germi and the comic talents of actor Marcello Mastroianni. Mix this potpourri of ingredients and pour into the rigid mold of Italy's marital laws. The results — a wonderfully funny satirical farce that won a Cannes Film Festival Award for the "Best Comedy" of 1962.

To Marcello Mastroianni, who has been seen in "La Dolce Vita" and "La Notte," went the Cannes Film Festival Award of "Best Comedian" in 1962.

Marcello here masterfully portrays a vain aristocrat who owns a title, no wealth, a mustached wife and an arduous love for a young cousin.

With Valentino-slick hair, eyelids at half-mast, aristocratic expression and a marvelously funny facial tic, Mastroianni brings off the part in grand style.

The title of the film, "Divorce, Italian Style," with biting meaning names the comedy vehicle. Though divorce is verboten in Italy, killing your wife while she is in the arms of a lover brings a light penal sentence, social commendation, if not semi-deification, and a

Course Trains Driver Teachers

Arizona high school students should be good drivers if they get an ASU teacher for Driver Education.

And ASU students minoring in Driver and Safety Education will be above average drivers themselves if they pass the final exam. It will be given not by instructors but by Arizona Highway patrolmen and members of the traffic safety division.

Minors in Driver and Safety Education have been studying and using ten different pieces of "training device" equipment since early this semester.

The Driver Education Equipment was donated to the department of education by the American Automobile Association late last summer.

Dr. Craig Rover of the educational department reports that some college students and high school pupils who do not have a drivers license also use the equipment.

While high schools may not have all the equipment found in ASU's annex four the education minors will have the training to use such devices when they are available.

But first they have to pass that final.

Second Savant Due Thursday

The December issue of Savant magazine will appear on campus Thursday, it was announced this week.

The first issue was distributed Nov. 20. Plans for Thursday's issue include articles on Jerry Lewis' visit and other subjects, and a number of cartoons.

Savant is promoting the election of the "Queen of Beasts," to be held in January.

clear field to other female pastures.

The film centers around the aristocrat's efforts in arranging these circumstances.

Though the film is very high comedy, it is not of the "broad comedy" school. It is not replete with punch lines and trite visual humor and comedy situations. Therefore it is not the sort of comedy to evoke many loud guffaws. But this fact does not belittle its quality, which is on a high plane.

The film is packing them in at the KiVa Theater in Scottsdale.

Programming schedule for KAET, Channel 8, today, Monday and Tuesday both a.m. and p.m.

TODAY
A.M. 8:40 Business Law Telecourse

Lost & Found

Three boxes full of clothes, books and miscellaneous lost and found articles in the Campus Security office will be disposed of Saturday, Lt. Thomas G. Godbehere, campus security, said today.

Miscellaneous items and clothing will be given to the Salvation Army. Books will be sold to the University Bookstore. Proceeds, from the sale of the books, will be donated to the President's student aid fund.

Lt. Godbehere urges rightful owners to claim lost articles before Saturday.

KAET GLIMPSES

9:40 Physical Universe Telecourse
10:40 Living World Telecourse
11:40 Physical Universe Telecourse
P.M.
12:40 Social Studies Telecourse
6:00 What's New?
"Huck Returns to Hannibal"
6:30 Social Studies Telecourse
7:15 Business Law Telecourse
8:00 Psychology One
"Differences in People"
8:30 Living World Telecourse
9:15 Physical Universe Telecourse
10:00 An Age of Kings
"The Morning's War"
Henry VI, Part III, Acts 1,2,3

MONDAY
A.M.
8:40 Business Law Telecourse
9:40 Physical Universe Telecourse
10:40 Living World Telecourse
11:40 Physical Universe Telecourse
P.M.
12:40 Social Studies Telecourse
6:00 What's New?
"Civil War Cowboy,"
"Bulldog Puppies"
6:30 Social Studies Telecourse
7:15 Business Law Telecourse
8:00 Beginnings


"Dr. Will Menninger, Psychiatrist"
8:30 Living World Telecourse
9:15 Physical Universe Telecourse
10:00 Special: TV Perspectives
"The Death Penalty"

TUESDAY
A.M.
9:40 Physical Universe Telecourse
10:40 Living World Telecourse
11:40 Physical Universe Telecourse
P.M.
6:00 What's New?
"Cowboys' Tools"
"The Oscilloscope"
"Hunting Dogs"
6:30 The Art of Singing
"Interpretation from Manuscript to Concert Stage"
Meet the Organ
"Organ Jazz—Jackie Davis"
Heritage: Bruce Catton
"Ideals of the Civil War"
8:00 Time for Living
"Safeguarding our Health"
8:30 Living World Telecourse
9:15 Physical Universe Telecourse
10:00 An Age of Kings
"The Sun in Splendour"
Henry VI, Part III, Acts 4, 5

Unusual GIFTS

VISIT THE VALLEY'S OLDEST AND MOST INTERESTING INDIAN STORE

**Authentic Indian Jewelry
Gifts & Moccasins**

516 Mill Ave.  **WO 7-2203**

Treat Your Favorite MUCHACHA

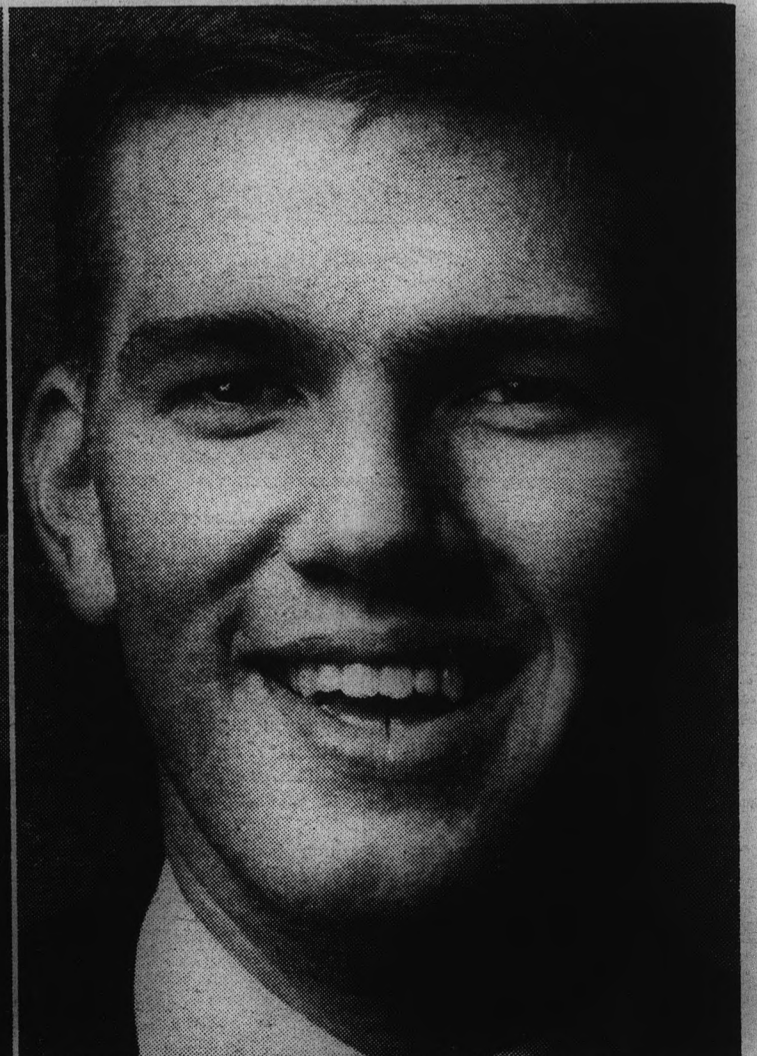
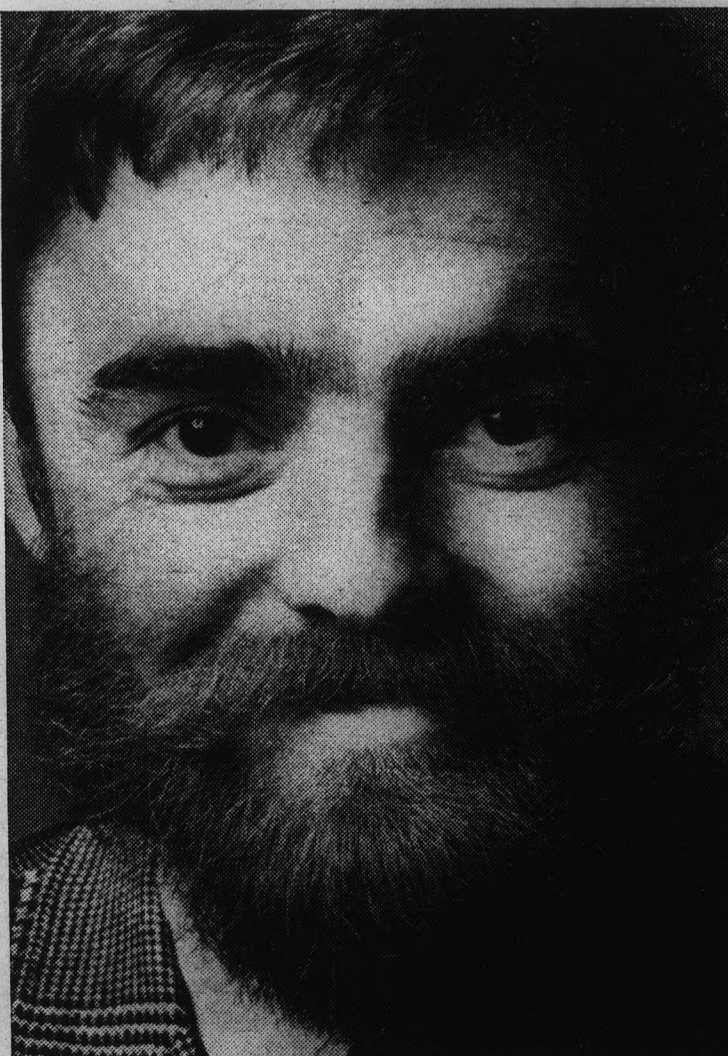
To A Fine Dinner At

CHICO'S

RESTAURANT *

FINE MEXICAN FOOD

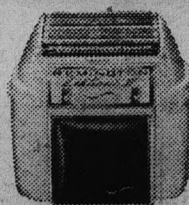
1120 East Apache Blvd. — Tempe
*Air conditioned of course



Neither has "shaved" in a month!

No kidding. As far as the guy on the right is concerned, he stopped shaving a month ago, started rolling his whiskers off with the new REMINGTON® LEKTRONIC® II Shaver.

What's the secret? Remington's exclusive roller combs. They roll skin down for comfort. Roll whiskers up for closeness. So comfort-



able, it's just like rolling your whiskers off. P.S. The Lektronic II is the only rechargeable electric that runs with or without a cord. Use it cordless anywhere you want (or with the cord from any 110-volt AC outlet). See the new Remington Lektronic II Shaver at your college bookstore.

*LEKTRONIC is a trademark of Sperry Rand Corporation.

Chapel Corner

By ED HEATH

An excellent project for the religious groups on campus would be to aid the St. Vincent De Paul Society's Charity dining room, which serves free meals to the poor regardless of creed or nationality.

The society is concerned whether enough food will be available for the traditional Christmas dinner for the expected hundreds of hungry men, women and children.

The dining room needs all kinds of meats, vegetables, beans, condiments, fruits and desserts.

Donations with which to purchase food are welcome.

Anthony Holden, manager of the dining room, also hopes toys and other gifts may be obtained for the children.

Pickups of food can be made by calling either AL 2-2692 or 258-5619.

However, due to the shortage of vehicles, Holden asks that donors bring food to the dining room, 119 S. 9th Ave., if possible.

* * *

The Baptist Student Union will sponsor an International Student Banquet today at 7:30 p.m. in the First Southern Baptist Church, 711 W. 8th St.

Director Windy Burke said that all foreign students and BSU members are invited.

Leroy Albright, missionary to Nyasaland will be the featured speaker.

* * *

The Newman Club will participate in a nine-day novena to Our Lady of Perpetual Help beginning Monday.

Father Robert Costello, Redemptionist priest from San Leandro, California, will conduct the services each night at 7 p.m.

After the nine days, the novena will be continued each Tuesday at 7 p.m. before the Newman Club meetings.

* * *

The Wesley Foundation will hold an inquiry class at 10:30 a.m. Sunday in the Methodist Student Center, 215 E. 8th St.

There will be a discussion on the "Role of the Christian Student in the University."

Next week's Last Hour Luncheon series will feature Dr. Catherine Nichols, dean of women, 12:15 p.m. in the student center.

Cost of the luncheon is 50 cents.

* * *

The Phi Psi and Phi Alpha chapters of Lambda Delta Sigma will have a Spanish Fiesta at 7 p.m. today at the LDS Interstake center in Mesa.

A Spanish dinner, floor show and dancing will be included in the program.

Members will meet at the LDS Institute at 6:30 p.m. for rides to Mesa.

Groups Capture Christmas Spirit

Women dormitories on the ASU campus will sponsor a number of exchanges and dances on Tuesday, December 11 in their mutual pre-Christmas activities.

Gammage and Sahuaro Halls are slated to hold an exchange on that date in a cooperative decoration of Sahuaro B. A dance will follow the festivities.

The Quad—North, South, and West Halls—are sponsoring a dinner together which is to be held in the Sahuaro A cafeteria. A dance in the lobby will wind up the night's festivities.

Faculty Club

The Faculty Club will have its first meeting of the semester at 8:10 p.m. Tuesday in the faculty dining room.

Election of officers and a talk on organization by President G. Homer Durham are scheduled.



ORANGE JULIUS

"A DEVILISH GOOD DRINK"

ORANGE OR LEMON
MADE WITH FRESH JUICE
— RICH IN VITAMIN C —

Truly A Health Drink

★ GRILLED DEVIL DOGS ★

- MONGREL (Mustard-Relish-Onion)
- PICKLE POOCH (Mustard-Dill P.)
- BAR-B-Q PUP (B-B-Q Sauce-Onion)
- KRAUT HOUND (Mustard-S. Kraut)

25c

- ★ MUTT CALIENTE 30c
- ★ BLUE RIBBON PUP 35c

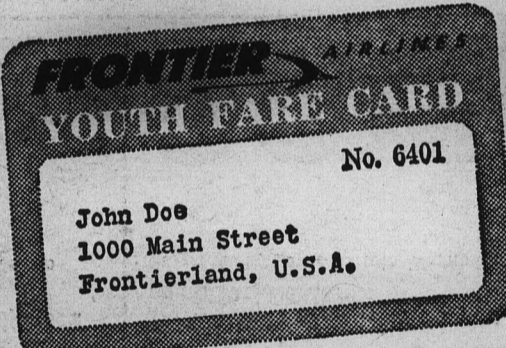
Broiled (Ground Chuck) Burgers

1 Patty 30c — 2 Patties 45c
Served With Potato and Carrot Chips

ENJOY INSIDE OR PATIO SEATING
3517 East Van Buren — Phoenix
Open 9 A.M. - 12 P.M. Daily — Till 2 A.M. Fri. & Sat

50% Discount for Young Travelers up to age 22

First class round trip air travel for youths 12 to 22 at half the regular fare. And, you can take a friend (also 12-22) with you at the same low fare. Reservations confirmed in advance.



\$5 Youth Identification Card is valid for 1 year (or until 22nd birthday). Good for unlimited use on Frontier's entire system. Call your travel agent or Frontier Airlines.



Serving 1/3 of the United States ... 62 cities in 10 states!

FLY **FRONTIER** AIRLINES



Happy House

Tempe Center

CHRISTMAS CARDS

WESTERN — RELIGIOUS
GENERAL
ASSORTED AND SOLID PACK
LARGE SELECTION



BUY YOUR AIRLINE TICKETS IN TEMPE

AT NO EXTRA COST

CALL WO 7-1673 FOR

"STUDENT TRAVEL HEADQUARTERS"

UNIVERSAL TRAVEL

18 East Fifth Street - Tempe

Rings 'N Things

PINNINGS

Nancy Bernic to Pete Bernal, Alpha Tau Omega.
 Charla Jo Allen, Gamma Phi Beta, to Harold Lee, Lambda Chi Alpha at the University of New Mexico.
 Judy Drage, Kappa Delta, to Ed Logan.
 Jean Lunenschloss, Kappa Kappa Gamma, to Hal Hylton, Delta Chi.
 Bev Raichert, Gamma Phi Beta, to Jerry Huvelle, Alpha Tau Omega.
 Karen Kellogg to Raul Disarufino, Alpha Tau Omega.
 Jan Howard, Chi Omega, to Bill Mahan, Sigma Alpha Epsilon.
 Margee Holstine, Alpha Sigma Alpha, to Mike Hays, Lambda Chi Alpha.

ENGAGEMENTS

Lynda Harris to Gerald Pier-son.
 Susan Walmsley, Gamma Phi Beta, to Bill Mac-Donald.
 Annie Sanchez to John Sandoval.
 David Watt to Kay Marie Mills.
 Marie Hall to Fred Roybal, Tau Kappa Epsilon.
 Renee Bethancourt, Kappa Delta, to Lt. Ed McKee, Williams Air Force Base.
 Liz Kerr, Alpha Sigma Al-pha, to Gary Brown.
 Barbara Campbell, Alpha Sigma Alpha, to Walter McMorris.

Educators Met By Hostesses

Neat and attractive in their blue sheaths and patent leather heels, ASU's Freshman Hostesses welcome guests to the Memorial Union and many campus functions.

Recently, they served as hos-tes-ses for the more than 7,000 participants in the Arizona Education Association convention. In preparation for such duties they attend regular meetings, where coeds learn essentials of poise, manners, serving, groom-ing and conversation.

Officers of the Freshman Hostess committee include: Suzi Springer, president; Joan Yene-rich, vice president; Ann Ma-lone, secretary; Christine Kaji-kawa, treasurer; Mary Stell-horn, representative; Linda Oakley, publicity chairman; and Sue Hinkle, historian.

Mrs. Trudy Thomas is ad-viser for the 57 members in the group.

PICK'S COIN-OP
 Self Service Laundry
 Dry Cleaning
 Locker Service
 Coin Operated Hair Driers
 — ALWAYS ATTENDED —
 Mon. through Sat.—8 A.M.-10 P.M.
 Sundays—9 A.M. - 9 P.M.
 827 Rural Road Tempe

Musicians To Give Yule 'Pops' Concert

A pre-holiday "Pops" concert will be presented by the ASU Symphony Orchestra next Wednesday at 11:40 a.m. in the MU ballroom.

There will be tables for those wishing to eat their lunches during the concert.

Eugene P. Lombardi will conduct the orchestra, with Mer-evin Britton directing the ASU percussion ensemble.

The symphony portion of the program will include the Over-ture to Wagner's "Der Meister-singer," Leroy Anderson's "Sleigh Ride," and a score of other selections.

The program is sponsored by the ASU music department and the Cultural Affairs Committee. Students, faculty and public are invited.

**Wheel Aligning - Balancing
 Auto Glass Installation**
 Pete Null's
TEMPE BODY SHOP
 SPECIALIZED COLLISION SERVICE
 11 East Fourth Street Phone WO 7-1601
 TEMPE

Annual Holiday Semi-Formal Ball Listed On Social Board Calendar

The Social Board's annual Christmas semiformal will be in the MU ballroom Dec. 15 at 8 p.m.

ask-boy event is free to stu-dents and their guests accord-ing to Jan Nichols, Social Board chairman.

Garth Tallman's band will play dance music.

DELICIOUS!
 And Easy On Mom!!!
JUST 17c
 French Fries 12c
 Milk Shake 22c



Finest Quality . . . Fastest Service
 Phone 947-1571 for Pick-up Orders
 "Load the Family in your bus and leave the cookin' to Us!"
Ricky's Drive-In
 1847 S. Scottsdale Road Scottsdale
 1/4 Mile South of Papago Plaza Shopping Center

Get Lucky Play "Crazy Questions"


(Based on the hilarious book "The Question Man.")

50 CASH AWARDS A MONTH. ENTER NOW. HERE'S HOW:
 First, think of an answer. Any answer. Then come up with a nutty, surprising question for it, and you've done a "Crazy Question." It's the easy new way for students to make loot. Study the examples below, then do your own. Send them, with your name, address, college and class, to GET LUCKY, Box 64F, Mt. Vernon 10, N. Y. Winning entries will be awarded \$25.00. Winning entries submitted on the inside of a Lucky Strike wrapper will get a \$25.00 bonus. Enter as often as you like. Start right now!

RULES: The Reuben H. Donnelley Corp. will judge entries on the basis of humor (up to 1/2), clarity and freshness (up to 1/2) and appropriateness (up to 1/2), and their decisions will be final. Duplicate prizes will be awarded in the event of ties. Entries must be the original works of the entrants and must be submitted in the entrant's own name. There will be 50 awards every month, October through April. Entries received during each month will be considered for that month's awards. Any entry received after April 30, 1963, will not be eligible, and all become the property of The American Tobacco Company. Any college student may enter the contest, except employees of The American Tobacco Company, its advertising agencies and Reuben H. Donnelley, and relatives of the said employees. Winners will be notified by mail. Contest subject to all federal, state, and local regulations.

<p>THE ANSWER: BMOC</p> <p>Submitted by Lewis Bartula, Wayne State U.</p> <p>THE QUESTION: How do you spell comb backwards?</p>	<p>THE ANSWER: Not By Bread Alone</p> <p>Submitted by Marilyn Singer, U. of Toledo</p> <p>THE QUESTION: How is a really good sandwich made?</p>	<p>THE ANSWER: The Red Pony</p> <p>Submitted by John Grabda, Syracuse U.</p> <p>THE QUESTION: What is the backbone of Communist China's cavalry?</p>
<p>THE ANSWER: THOR</p> <p>Submitted by Charles Pugliese, Brown U.</p> <p>THE QUESTION: What do you get from thitting on a thadde all day?</p>	<p>THE ANSWER: Study Hall</p> <p>Submitted by George Hansen, U. of California</p> <p>THE QUESTION: Which building was dedicated to Dr. Alfred R. Study?</p>	<p>THE ANSWER: Baby Booties</p> <p>Submitted by Gail Smith, U. of Texas</p> <p>THE QUESTION: What plunder do baby pirates get?</p>

Get Lucky
 the taste to start with... the taste to stay with



THE QUESTION IS: WHAT'S A PLEASANT, MEMORABLE WAY TO URGE SMOKERS TO BUY LUCKY STRIKE CIGARETTES? When you Get Lucky, you get the famous, fine-tobacco taste that's easy to stick with. You get the great taste that explains why Lucky smokers stay Lucky smokers. Got it? Then go, go, go. Go out and Get Lucky.

Product of The American Tobacco Company - "Tobacco is our middle name."

Groups Boast Full Agendas

Election of officers, pledge initiations, a car wash and a luncheon speaker are on the agendas of four ASU organizations.

Phrateres

Wet girls and clean cars will be the result tomorrow when the pledges of Phrateres International, Eta chapter, have a car wash at Petty's 76 gas station on the corner of Van Ness and Apache Blvd.

The wash, from 8 a.m. to 5 p.m., will increase funds in their treasury.

Alpha Rho Chi

Alpha Rho Chi, architectural fraternity, recently elected new officers. They are Herman Orcutt, president; Charles Mosher, vice president; Stephen Titus, secretary; Stephen Sawyer, clerk; Henry Metzger, treasurer; R. Brooks Leonard, worthy superintendent.

Gamma Alpha Chi

Gamma Alpha Chi, a national professional advertising fraternity for women, initiated eight pledges at a MU ceremony Sunday.

The eight are Roxie Bruno, Pam Van Buskirk, Marti Czepowski, Betty Duffy, Donna Farney, Kay Lynskey, Sharlyn Nelson and Doyné Utgard.

Marketing Club

E. R. Parker, general manager of Associated Grocers of Arizona, will speak at the Marketing Club luncheon Tuesday in MU 218.

The Marketing Club luncheon are open to all students and faculty. The price of the lunch is \$1 or a meal ticket. Those who cannot be there at 12:30 are welcome to come to hear the speaker at 1 p.m.



**ARTIST SUPPLIES
CRAFTS - HOBBIES**
Decorating Material
Open Mon., & Thurs. Nites
Tempe Center • WO 7-4482

Panhellenion Panorama - Program To Depict Greek Antiquity In Folk Festival Of Song And Dance

Panhellenion, a Greek folk festival, will present in concert a panorama of Greek life and legend through dance, song and music tonight in Tempe High School auditorium.

Presented as the next program of ASU's Concert and Lecture Series, the Panhellenion concert is open to the public.

Admission is by activity card or by \$2 general admission.

Sixteen dancers out of a group of more than 50 were selected by Eleni Tsaouli, founder, director and choreographer of Panhellenion, to perform ancient and modern folk dances.

THE GROUP is completing a sold-out tour of the United States and Canada, having already successfully toured Greece and many countries in Western Europe.

One of the most ancient dances offered by the group will be the Tsakonikos, in which the young men and girls execute complex turns depicting escape from the Cretan maze.

THE KERKIRAIKOS, another dance presentation, will en-

act the discovery of Odysseus by a princess on the shores of Corfu.

Another set of dances will depict scenes from life in a Macedonian village: the reaping of wheat, children at play, a marriage ceremony, a war dance, reconciliation and return to peaceful life.

One of the most famous dances to be performed by the group is the Tsamikos or Kleftikos.

It was created by mountain guerrillas and is characterized by several high leaps and lunges of the men to demonstrate their physical prowess and virility.

Other dances to be performed include several from the islands of the Aegean, and from Crete and the Tsamiko and Kalamatiano ancient round dances.

In addition to the dancers, Panhellenion's touring unit will feature four virtuoso instrumentalists who play a variety of antique native instruments.

Most important for traditional Greek music is the clarino, descended from the ancient shepherd's pipe.

Dorms To Host At Open House

Wilson Hall and the Quad are conducting their annual Open House this Sunday from 2 to 4 p.m.

The lobby and corridors will be decorated in both dorms and residents are encouraged to decorate their room doors. Prizes will be awarded for those judged to be most attractive.

ASU students are invited to enjoy the festive atmosphere and refreshments.

Marge Smith
FLOWERS
"Tempe's Most Popular Florist"

722 Mill Avenue

Evenings WO 7-5020	Open Sundays 9- A.M. - 2 P.M.	Daily WO 7-0271
-----------------------	----------------------------------	--------------------

New antiseptic

NON-AC

for a smoother, blemish-free skin

Ever had unsightly blemishes "pop up" when they were least wanted or expected—and spoil your plans? Acne need not be a worry when you use NON-AC. You'll feel secure knowing your skin is at its healthy-best when you regularly apply new antiseptic NON-AC. NON-AC contains RX-2, an anti-bacterial ingredient derived from a rare herb found only in the sun-drenched desert of Arizona. NON-AC fights infection before it erupts. Use NON-AC regularly and treat your skin to a smoother, envied complexion.

Write today for your jar. Only \$3.00. Postage and tax prepaid. No C. O. D.'s. Send money order to:
Mutual Processing Corp., Dept. 17B
P. O. Box 293, Scottsdale, Arizona
© COPYRIGHT 1962 BY MUTUAL PROCESSING CORP.

STUDENTS . . .

Buy Your -

Electronic Kits — Test Equipment Kits — Hi-Fi Kits
All at Lowest Prices

HARMAN KARDON AMPLIFIERS & TUNERS

- TRANSISTOR RADIOS
- TRANSISTOR RADIO BATTERIES
- TUBES FOR YOUR PORTABLES
- FLASHLIGHT BATTERIES
- RESISTORS — CONDENSERS
- CHOKES — TRANSFORMERS

At Wholesale Prices!

Complete Display of Latest Hi-Fi Gear "Demonstrated"

Phone 264-6145

**ELECTRONIC
CENTER, INC.**

3400 E. Thomas Rd.



CONTACT LENSES:

AT THE LOWEST
PRICE YOUR EYES
CAN AFFORD

85⁰⁰

Open Thursday Nights
and All Day Saturday



CONTACT LENS CENTER
805 Mill Avenue
Tempe Shopping Center

Members of Associated Students

Are Eligible to Apply for

\$10,000 or \$5,000 of LIFE INSURANCE

At These Low Rates

Age (nearest birthday)	\$10,000	\$5,000
Under 23	\$28.50	\$15.00
23 to 29 inclusive	30.50	16.00
30 to 34 inclusive	34.50	18.00
35 to 39 inclusive	49.50	25.50

Premium rates increase automatically when an insured student enters a higher age group.

Lock & Crockett Insurance

822-B Mill, Tempe — Phone 967-3358

Administrators of the ASASU LIFE INSURANCE
and ASASU HEALTH & ACCIDENT PLANS

Frosh Host Kerr

With two victories under their belts, ASU's Sun Imps face their toughest challenge of the young basketball season tomorrow night when they host Kerr Sporting Goods of Phoenix.

THE KERR team boasts of many former Valley high school and college stars, such as Bob Deines, Bob Kerr, Gary Mattson, Wade Wolf, Fred Knight, Dick Kerr, Bob Buzzard and Tim Myers.

A balanced scoring attack aided the Imps in their first two games.

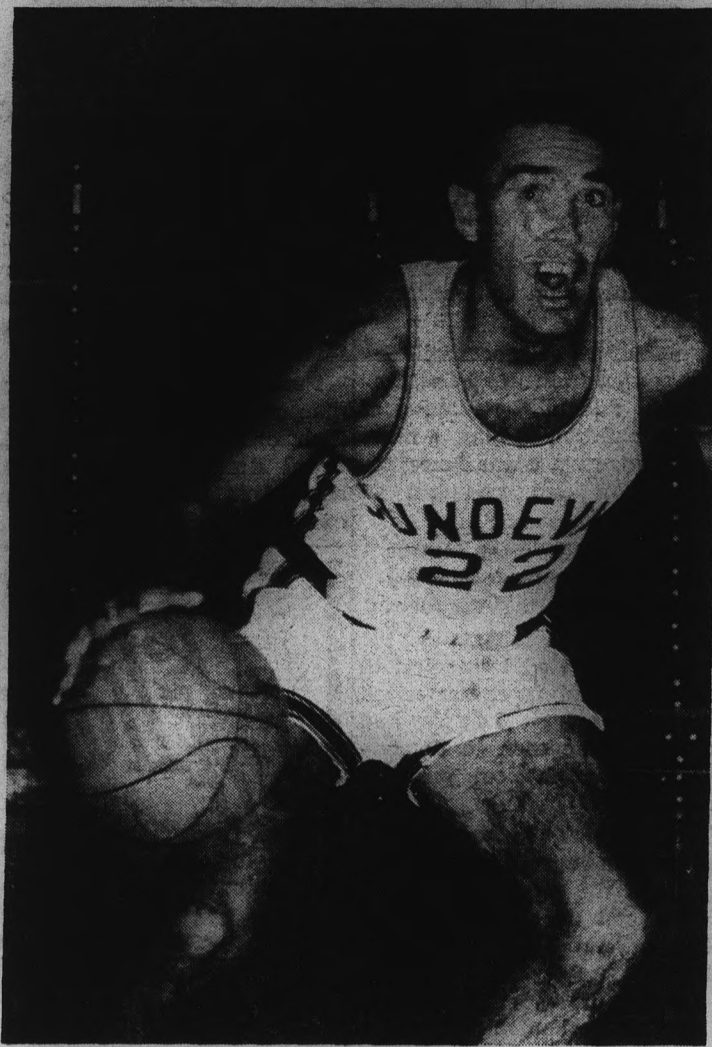
Monday night against Glenarm, John Myers, Jim Whitehead and Paul Meany hit in double figures.

AGAINST Mesa, four frosh hit for 11 or more points, led by Whitehead's 19.

Whitehead, an outside man, and Myers, an inside man, are the leading scorers for the yearlings with two-game averages of 14.5 and 11.5 points.

Tentative ASU starters for tomorrow's game are, at inside posts, Dennis Hamilton (6-7), Charles Robinson (6-6), and Myers (6-5).

Tomorrow's 6:30 p.m. game will be the last action for the frosh until Jan. 7, when they travel to Thatcher to meet EAJC.



STEADY SENIOR — Averaging 9.5 points per game after two contests, Raul Disarufino is scoring better than five points per game over last year's average. Raul was a spark-plug in Monday's victory and will be counted on tomorrow night when ASU hosts Pepperdine.

Devils Feature Team

Roger Locke, John Jacobs and Tony Lorick, season-long stalwarts for ASU, made the 1962 UPI all-conference football team, announced Tuesday.

Devil halfback Charley Taylor and tackle John Seedborg were second team choices.

Rounding out the first team were New Mexico's Larry Jasper and Bobby Santiago, Brigham Young's Eldon Fortie and

Mike Brady, Utah's Dave Costa and Ron Manno, Wyoming's Joe Vitale and Arizona's Vern Alexander.

NOW THREE LOCATIONS

- 1. Tempe Center
 - 2. 1302 Rural
 - 3. Bayless Center
- Open 24 Hours A Day!



Keep America Strong & Healthy

Get In Shape Now!

Men: Get in shape quickly under the personal supervision of Walt Hunt — "Mr. Arizona 1961"

GRAND OPENING

SPECIAL

CHARTER MEMBERSHIPS

500

PER MONTH

MEN: Mon., Wed. Fri., Sat.

HOURS 10 to 10

CALL 967-7461

For a FREE Trial Visit MR. ARIZONA 1961



MEN

WE GUARANTEE THESE RESULTS IN 60 DAYS

— UNDERWEIGHT —

Gain: 1 1/2 Inches on each Arm
3 1/2 Inches On Chest And Shoulders

— OVERWEIGHT —

Lose: 3 Inches Off Waist and Hips
15 Pounds Body Weight

UNIVERSITY HEALTH CLUB

63 E. Broadway

• Tempe

"Years Ahead" Flight Training In The New Shinn - 2150



MODERNIZED GROUND SCHOOL FOR PILOTS & NON-PILOTS
Amos Flight Operations

A Private License is a Must In Modern Business

Don Amos — Class of '56
Phone BR 5-7291 SKY HARBOR

Tennis

There will be a meeting of all varsity and freshmen tennis players Tuesday, Dec. 11, at 8 p.m. in the lobby of the MPE building. Anyone unable to attend contact Coach Ted Bredehoff immediately.

LARRY'S TV

727 Apache Blvd.
WO 7-0920
Hi-Fi — Stereo Phonographs

BOOK DISCOUNT SERVICE

P.O. Box 32033,
Los Angeles, California

Need Insurance UNDER 25?

We Write All . . .
• Auto • Motorcycle
• Trailer • Fire • Theft
Terms Available

RALPH PACKER
Valley Bank Bldg.
967-3189 Tempe 967-9141

BARBER SHOP

University BARBER SHOP

1336 APACHE BOULEVARD
BAYLESS SHOPPING CENTER
Open 9-6 p.m. . . . Closed Mon.

Finest in Barber Service

Children & Flat Tops
Our Specialty

4 Barbers to Serve You



A man needs Jockey support

Jockey is for men. Made from 13 separate pieces to give the support and protection every man needs

A man needs a special kind of support for true male comfort. And only Jockey builds a brief from 13 separate, tailored pieces to give that support—plus comfort. No other brief has such a firm, long-lasting waistband to hold the brief up for constant support, and no other brief has the Jockey assurance of no-gap security.



Get the real thing . . . It isn't Jockey if it doesn't have the Jockey Boy.

COOPER'S, INCORPORATED, KENOSHA, WIS.

Fortie WAC Pacer

Final 1962 WAC statistics show that BYU's Eldon Fortie was the dominator in individual statistics, while ASU and New Mexico dominated team statistics.

Fortie racked up 1,963 total offense yards, the highest figure ever among the six WAC universities.

JOHN JACOBS, Sun Devil quarterback, led the passers by a wide margin, with 77 completions in 136 attempts for 1,263 yards and 14 touchdowns.

With 1,231 yards total offense, he finished second.

ASU's Dale Keller led the conference in pass receptions with 20 catches for 358 yards and five touchdowns.

His nearest competitor was Utah's Jerry Overton with 18 catches for 190 yards.

IN RUSHING, Fortie was the leader with 1,149 yards gained in 199 carries.

Second was Bobby Santiago of New Mexico with 805 yards gained in 155 carries.

Sun Devil Tony Lorick was third with 704 yards gained in 105 carries, a 6.7 average.

Charley Taylor was fifth with 567 yards gained in 106 carries, a 5.3 average.

In team statistics, the Devils led the conference, as well as the nation, with a 384.4 yard total offense average.

THEY ALSO led in passing offense with 150.2 yards per game.

ASU led in scoring with 30.4 points per game.

The total defense leader was New Mexico, giving up only 207.3 yards per game.

Devils 16th!

Arizona State's Sun Devils are ranked 16th according to the latest UPI poll.

Cincinnati is ranked first in the top ten, followed by Duke, Loyola (Ill.), West Virginia, Oregon State, Mississippi State, Illinois, Wisconsin, Kansas State and Bowling Green.

The second ten is composed of Stanford, Creighton, UCLA, Kentucky, N.Y.U., ARIZONA STATE, Ohio State, Indiana, Dayton and Southern California.

The
Capri's
"PICK OF
THE
WEEK"

Devils 68
Pepperdine .. 60

Right or Wrong
You Can't Miss
With Our
PIZZA'S

16 E. 4th — Tempe



Off The Cuff

By BOB JACOBSEN
Sports Editor

With Arizona upsetting ASU on Nov. 24, both the Sun Devils' and Wildcats' league record ended at the .500 mark, although ASU was ineligible for the championship.

Thus, four of the league's six teams had a .500 record in conference play and get this — only a missed field goal by Utah's Roy Jefferson on the last play of the Utah-New Mexico game Oct. 20 kept the league from ending in a six-way tie.

IN FACT, HAD JEFFERSON'S field goal attempt been good, Utah would have earned a 10-7 victory over the Lobos, instead of the 7-7 tie, and six teams would have finished with an even-up league record.

Even with ASU out of the title picture eligibility-wise, a five-way tie would have existed.

And the WAC, in its first football campaign, was just ONE PLAY away from such a thing.

FOR THOSE WHO LIKE A balanced race from top to bottom, the 1962 Western Athletic Conference football race must have been just what they ordered.

Tomorrow night's game with Pepperdine should be a good one.

The Waves return seven lettermen from last year's 21-7 mark, including 6-5 Bob Warlick, a pre season All-America selection.

**EVERY MAN'S
CHEERLEADER**

Sportsman or spectator, you'll cheer for the "Gordon Dover Club" Shirt. Softly rolled button-down medium-point collar is teamed with a center plait in back and button on back of collar. Perfect fit results from years of Arrow tailoring know-how. Comfortable "Sanforized" cotton Oxford cloth. comes in this fall's leading solid shirt colors. \$5.00.

ARROW
FOUNDED 1851

Traditionally the Finest for Discriminating Men



DEVIL SURPRISE — Gary Senitza, a 6-2 junior guard from Lawrenceburg, Ind., has been a pleasant surprise for Coach Ned Wulk this year. Gary is averaging 10.5 points a game and will be in action tomorrow against Pepperdine.

Natural- Shouldered Classics

For The Holiday Season ...



\$59.50

others from

\$29.95

You can stride purposefully across any stage of your life in elegantly-tailored Don Richards suit. Styled in the smooth good taste of University preference, your continual fine appearance is assured.

LAYAWAY
NOW FOR XMAS

Campus
men's shop

FOR MEN AND YOUNG MEN . . .

603 Mill

Tempe

Sun Devils Host Pepperdine Waves In Battle Of Unbeatens

By JOE HEATH

A battle of the undefeated is on tap for the Sun Devil Gymnasium tomorrow night as the maroon and gold hosts the Pepperdine College Waves.

Each squad owns two victories thus far in the young season. ASU has one-sided wins over Whittier and Fresno State, and the Waves' wins are over Redlands, 94-72, and San Fernando Valley, 79-69.

COACH NED Wulk, however, after the lopsided wins, is far from satisfied with his followers.

ASU opponents have been hitting only 31 per cent of their floor shots but still have managed to average 62 points a game.

"Our defense is lousy. If we

don't improve in a hurry, we're going to get killed," said Wulk.

"The Fresno State team was road weary," said Wulk. "They missed on numerous opportunities close to the basket.

"AND IT was our weak defense that was allowing these shots."

Wulk had previously said the first two contests would give the Sun Devil fans an idea of what is in store for the year.

Pepperdine will bring almost the same team to Tempe that downed Utah State, 75-71, in the NCAA Western Regional

playoffs last year.

Previously, that Utah State squad had dumped the Sun Devils, 78-73, for the right to go to the playoffs.

THE WAVES, coached by Robert (Duck) Dowell, are defending West Coast Athletic Conference champions.

Three preseason All-America candidates will be on the floor tomorrow.

Joe Caldwell is the home town representative while the Waves have Bob Warlick and Harry Dinnel.

Both were lettermen on last

year's squad, which was ranked 16th in the nation defensively.

Warlick, 6-5, 225, was on the first team WCAC; first team, all tourney at the NCAA regionals, and Pepperdine's leading point maker.

HEIGHT SEEMS to be the Wave weak spot, no man being more than 6'-5".

The Sun Devils enter the contest after receiving 14th national ranking by Sports Illustrated.

Wulk is happy with the work of his outside men, Raul Disarufino and Gary Senitza.

"If we can count on our out-

side men for 20-plus points a game, we should be all right."

The Devil mentor says Caldwell "is off to a good start," and Tony Cerkvenik "is taking some of the rebounding off Joe, and is scoring better."

ASU is shooting at a 44 per cent clip and is averaging 91.5 points a game.

Caldwell is averaging 22 in the point department and 16.5 in rebounds.

Cerkvenik is close behind, dumping in 21 points in his only game and pulling in 16 rebounds.

Gymnasts Stage Meet

ASU's varsity gymnastics team will stage an intrasquad meet Monday at 3:30 p.m. at the annex in Sun Devil Gymnasium.

All interested students, faculty and staff members are invited. No admission will be charged.

The team also will perform at halftime tomorrow night when the Sun Devils meet Pepperdine.

Standout gymnasts have been Jim Nelson, in tumbling and floor exercise, Jerry Stansbury, side horse, horizontal and parallel bars, John Nowak, trampoline, Chris Evans, still rings, and Dave Lambert, long horse.

Gymnastics coach is Norris Stevenson.

Intramurals

There will be an intramural manager's meeting today at 2:45 p.m. in Room 103 of the MPE building.

Fred Elquest & Son

Everything for the Art Student

- Art Supplies
- Picture Framing

703 N. 2nd St.
Phoenix
PHONE AL 8-2628

Bunch's Watch Shoppe

Where Discounts Are Real

featuring

- BULOVA WATCHES
- SPEIDEL BANDS

Phone WO 7-3221
609 MILL — TEMPE

TWO FINE CHRISTMAS GIFT IDEAS

from

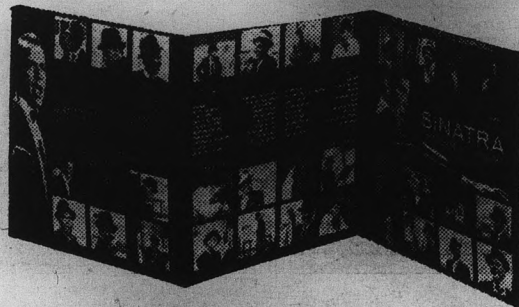


FOUR STARS!

For These Great



New Albums on




SINATRA—THE GREAT YEARS

Here's the fabulous Frank—all of him—in one magnificent package! This superb three-record set contains the 36 finest recorded performances of his career...a treasured gift for any Frank Sinatra fan! (S)WCO-1762



THE RODGERS AND HAMMERSTEIN DELUXE SET

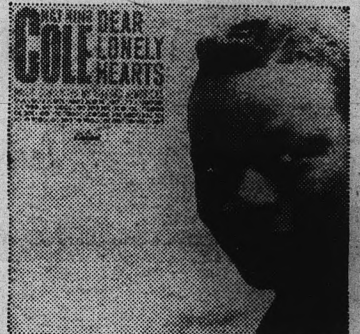
Beautifully packaged and bargain priced, this boxed three-record set is the perfect gift choice for those who love show music. Includes the original sound track recordings for three of the greatest hit musicals of all time...OKLAHOMA!, THE KING AND I, and CAROUSEL. (S)TCL-1790

These and many more  gift albums available now.

DEAR LONELY HEARTS

Nat King Cole
(S)T-1838

Nat's latest smash record plus 11 more brand-new ones just like it!



NEW FRONTIER

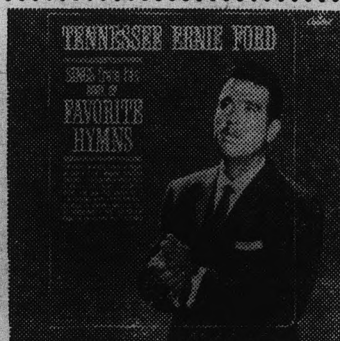
The Kingston Trio
(S)T-1809

More fine folk tunes sung and played by America's favorite balladeers.

FRANK SINATRA SINGS RODGERS AND HART

W-1825

Frank sings all-time hits from top musicals, including "Jumbo."



TENNESSEE ERNIE FORD'S BOOK OF FAVORITE HYMNS

(S)T-1794

A dozen of Ernie's favorite sacred songs selected from his best-selling albums.

FREE GIFT WRAPPING

Tape Recorders — Tape — Needles
Phonographs — Radios (AM-FM — Transistor & Clock

HILLS RECORDS

TEMPE CENTER — OPEN EVERY NITE TILL NINE