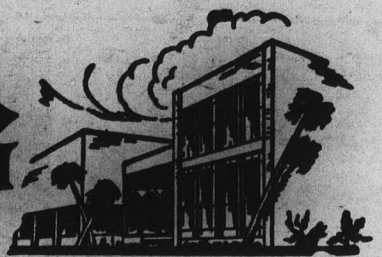


State Press

ARIZONA STATE UNIVERSITY



TEMPE, ARIZONA



Vol. 41

Friday, November 2, 1962

No. 13

Homecoming King, Queen Picked

Sixty Mexican Officials To Receive ASU Tribute At Game Saturday Night

A press buffet in the MU and ceremonies at the Utah State University football game tomorrow evening will honor a delegation of about 60 Mexican dignitaries visiting Arizona.

The delegation will come to Phoenix this evening as honored guests in celebration of Mexico Day tomorrow at the Arizona State Fair.

The Honorable Luis Encinas, Governor of Sonora, Dr. Moises Canale, president of the University of Sonora, Robert Salazar, student body president of the University of Sonora and the delegation are guests of Governor Paul Fannin, the Arizona State Fair commission and the Arizona-Sonora committee.

President G. Homer Durham will host the delegation at the press buffet at 6 p.m. in the MU ballroom and at the football game.

Playing of the national anthem of the Republic of Mexico followed by the Star Spangled Banner will honor the dignitaries as they enter Sun Devil Stadium.

The ASU marching band will present a cooperative Mexico Day feature in observance of the occasion during halftime.

The guests will be seated in President Durham's and ASASU

President Bob Carter's box seats and other reserved sections during the game.

Carter is expected to discuss with President Salazar the exchange program of student government officers between ASU and the Mexican universities now under consideration.

President Salazar will be the guest of Sigma Phi Epsilon Saturday night.

Official welcoming of the delegation will be this evening at 5:30 at an invitational buffet at Chris-Town shopping center in Phoenix.

A "Greetings From Neighbors" program will follow the buffet at 6:45. The group will shop from 7 to 9 p.m.

Mexico Day at the State Fair will be celebrated with ceremonies at the main gate at 10:30 a.m. A tour of fair exhibits and the new Mexico village will follow. The group will also be honored with a noon luncheon at the fair.

Sue Rawson To Reign With King Bob Clampett

By ROSS FISH

Pressing their hands into a wet cement block, Sue Rawson and Bob Clampett began their reign as queen and king of ASU's 1962 Homecoming at the premiere dance in the MU ballroom Wednesday evening.

Flashing lights, beacons, roving radio reporters and an anxious crowd welcomed the 28 Homecoming celebrities to the premiere of "Famous Flicks," theme of this year's Homecoming week.

ANNOUNCEMENT of the royalty finalists was made by Dean Maxine Neely and Dean Gary Anderson.

Of the 14 candidates competing for Homecoming royalty, the winning pair had the highest accumulative grade averages. Queen Rawson has a 3.54 and King Clampett a 3.35.

The election drew a record-breaking number of voters to the polls. A total of 2,909 voted for king and 2,906 voted for queen.

THE FIRST independent to be elected Homecoming queen in ASU's history, Miss Rawson won with 815 votes.

Queen attendants were Diane Smith, 392 votes; Pinky Shoemaker, 296 votes; Lynn Chewning, 223 votes, and Marilyn Wood, 196 votes.

Other contestants were Delma Van Hooser, 191 votes; Virginia Maddox, 188 votes; Betty Bunn, 136 votes; Bev Johnson, 122 votes; Sharlyn Nelson, 84 votes; Rosemary McDowell, 58 votes; Loretta Padilla, 56 votes; Jan Nichols, 52 votes, and Carol Richman, 35 votes.

CLAMPETT WON the king's crown with 504 votes. Runners-up were Tony Raineri, 421 votes; Kelly Munson, 374 votes; Dale Keller, 249 votes, and Tony Cerkvenik, 194 votes.

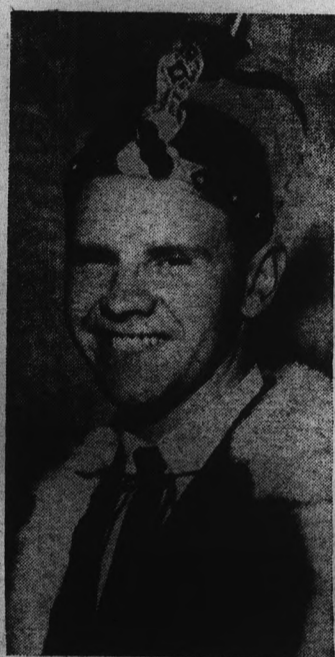
Other candidates were Rex Young, 183 votes; John Brookings, 172 votes; Steve Montgomery, 163 votes; Duane Clay, 154 votes; Roger Locke, 152 votes, and Tony DePrima, 106 votes.

Also, Jerry Eppler, 96 votes, Bob Jacobsen, 52 votes, and Mike Krofchick, 28 votes.

(Continued on Page 9)



QUEEN



KING

SCHEDULE

Following is the schedule of Homecoming activities for today, tomorrow and Sunday. Your attendance will help to insure their success.

Today

ALL ALUMNI DINNER DANCE — Phoenix Country Club, 7th Street and Thomas Road. Dinner served any time between 7 and 10 p.m. Dance, 9 p.m. to 1 a.m. Music by Tom Warnken's Orchestra. Dinner music by Los Reyes Mariachi quartet.

DECORATIONS JUDGING — Decorations must be completed by 6 p.m. Judging will begin at 8 p.m.

Saturday

DECORATIONS JUDGING — Daytime judging begins at 9 a.m.

REUNIONS — Classes of 1922 and 1942.

COLLEGES OPEN HOUSES — Informal . . . buildings will be open, with faculty members on hand to greet. College of Business Administration, B.A. Building; Education, new Farmer Education Building; Liberal Arts, Social Science Building.

PLEIDES LUNCHEON — Noon, MU.

BLUE KEY LUNCHEON — Noon, MU.

FORMER ASASU OFFICERS — Dean and Mrs. W. P. Shofstall "at home" to all former officers, 138 Encanto Drive, Tempe.

ORGANIZATIONS OPEN HOUSES — Saturday afternoon. Complete schedule of fraternity, sorority, and other groups' events at the registration tables.

INFORMAL PRE-GAME BUFFET — Served from 6 to 7 p.m. in Palo Verde Hall's cafeteria.

FOOTBALL, ASU vs UTAH STATE — 8 p.m., Sun Devil Stadium. At halftime winners of the decorations contest will be announced and the Homecoming king and queen will arrive by helicopter.

Sunday

SECOND ANNUAL LETTERMEN'S BREAKFAST — Served at 9 a.m., Sands Hotel, Tempe. Program includes Head Coach Kush, his staff, all other coaches and special awards. Breakfast, \$1.50.

MEMBERS OF THE ARIZONA EDUCATION ASSOCIATION — AEA members will be on campus Homecoming weekend for their statewide meeting. All AEA alumni are urged to include both the convention and Homecoming events in their schedule.

Classes Of '22, '42 Chosen For Honors

Homecoming 1962 will honor the classes of 1922 and 1942.

Those returning to campus for their reunions will find the "ole stomping grounds" have taken on a much different color.

The black and orange rooters of 1922 had as their class motto, "Life is what you make it."

Student Body President Lorene Botkin was leader of the class that cheered at games with

caps, canes and jazz-horns. They were the first class to publish a yearbook after World War I.

Campus organizations included Clonium Literary Society, the Cactus Walking Club, the Wallflower Club and the Four Square Club whose purpose was "to face life squarely, and to find and give the best."

Homecoming 1942 had quite a different atmosphere than this year's. It was the first wartime homecoming since 1918.

The college woman could certainly not have had the idea that college was the place to go "to get your man." Most men were in uniform.

The rationing of gas made the traditional Homecoming parade impossible. But spirits were not dampened. A "stationary parade" was set up in the women's quadrangle, resembling this year's decorations contest.

UofA Tickets On Sale Nov. 6

Fifteen hundred student tickets for the Nov. 24 ASU-UofA game in Tucson will go on sale at the ticket office in the Men's Gym Tuesday at 8:30 a.m. at \$2.50 each.

Students may purchase one ticket each by showing their activity cards. Married students may purchase an additional ticket by presenting their spouse cards, activity cards for husbands or wives not attending ASU.

General admission tickets for the game are sold out.

'Pranksters' Now Crooks

"Fraternity pranks" will no longer be considered pranks at ASU, according to a recent unanimous vote of the Interfraternity Council.

Theft will be considered a criminal offense, and offenders will be referred to ASU's police department and Tempe police.

Prosecution of violators will be sanctioned by the IFC.

Campus Change Apparent To Old 'Normal' Student

Alumni returning to ASU this weekend will find many changes and additions on campus.

Among these are the new Grady Gammage Memorial Auditorium, new Alpha Drive fraternity row, a seven-story addition to Palo Verde and a three-story addition to the Life Sciences building.

Almost \$8 million worth of new buildings, additions and remodeling are on the ASU construction agenda for this year.

The seven-story addition to Palo Verde, which began last month, will be ready for occupancy next September.

It will cost \$1,397,840 and will house 410 coeds.

Grady Gammage Auditorium and parking lots, now under construction, are to be ready in the spring of 1964 at a cost of about \$2,860,000.

Installation of air conditioning in the Home Economics building will cost \$33,962.

A \$19,605 contract will provide for additions and alterations to the gymnasium annex.

Before 1963 a language building will be erected west of Old Main at an estimated \$1,250,000.

Construction of tennis and basketball courts next to Haigler Hall will cost \$17,153.

Work on the \$99,889 remodeling job on the gymnasium, to consolidate space for both men and women, has already begun.

A three-story addition to the Engineering Center, adjoining it on the north side, will be built for about \$970,000.

Refrigeration and modification of the Moeur Activity building will cost about \$106,000.

About \$13,747.40 will be spent on landscaping and site improvements for the 10 fraternities on Alpha Drive.

A \$10,987 contract will provide for the renovation of lavatory facilities in East Hall.

The Life Sciences building will get an addition this term costing approximately \$365,000.

An added building for industrial education will cost about \$450,000.

Initial work on these buildings will begin before the first of the year.

Construction of three farmhouses at the ASU farm will cost \$36,334.

Also, approximately \$500,000 will be spent on construction, to start immediately, of dairy, poultry and horticulture facilities at the farm.

About \$1 million will be spent on additions and improvements in the central physical plant and tunnel distribution system.



A SIX-HOUR twist session at the corner of College and Orange by The Pledges recording group, of Sigma Nu, campaigning for Steve Montgomery last week.

Welcome Back, Alums!

UNDER 25?

Need Insurance?

We Write All . . .

- Auto • Motorcycle
- Trailer • Fire • Theft

RALPH PACKER

Valley Bank Bldg.
967-3189 Tempe 967-9141

Fred Elquest & Son

Everything for the Art Student

- Art Supplies
- Picture Framing

703 N. 2nd St.

Phoenix

PHONE AL 8-2628

WELCOME
ASU
"Homecomers"



Now At

DOG 'N' SUDS

THE FAMILY - PAK

5 CHAR-CO-BURGERS

Plus

1 GALLON OF CREAMY

DOG 'N SUDS ROOT BEER

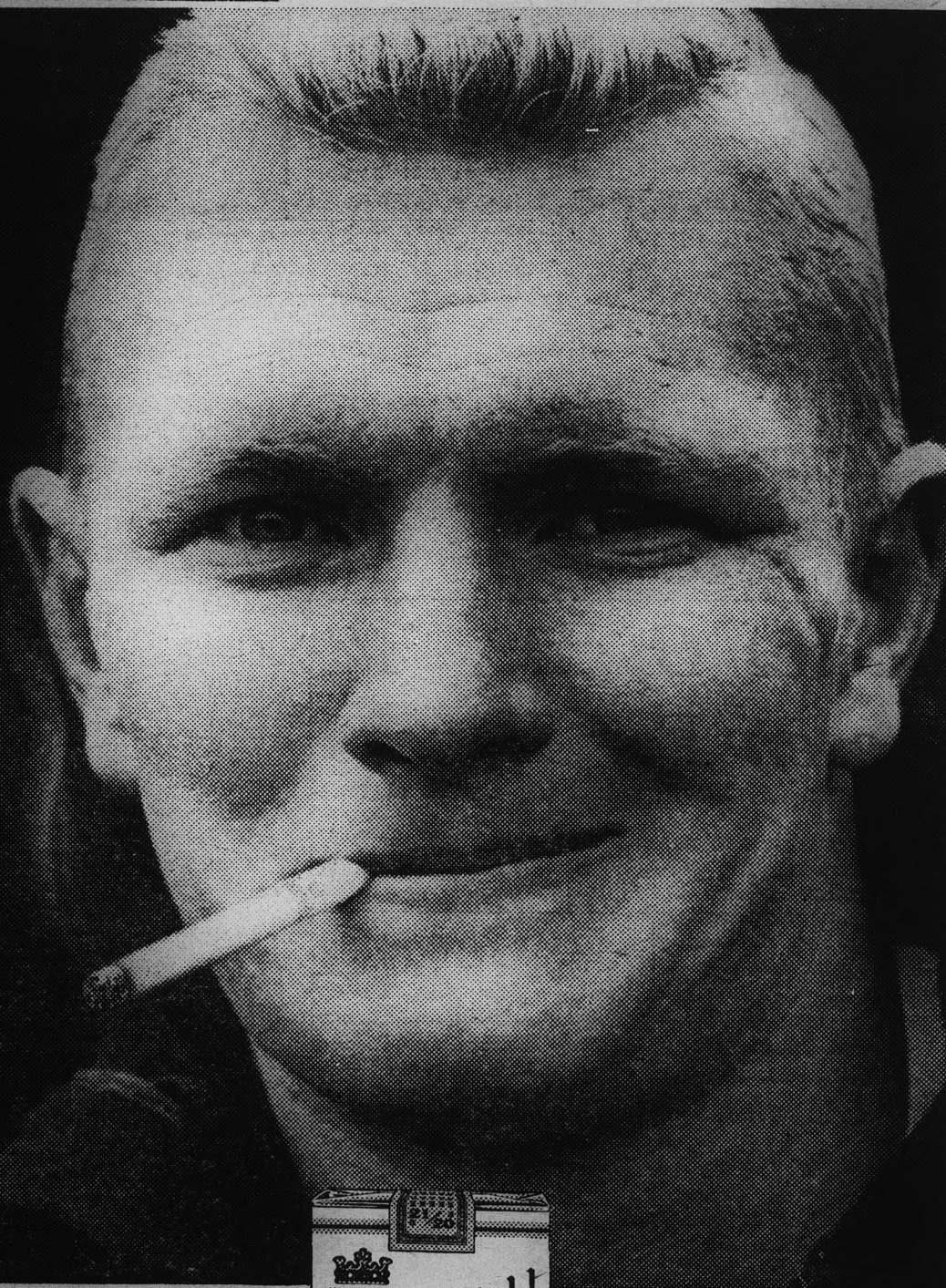
All for **\$1.50** Regular \$2.15 Value

For Carryouts 967-0983

Extra Thick Malts and Shakes
Made With Whole Milk

AT CORNER OF
TRANSMISSION and SCOTTSDALE RD.

Tastes Great because the tobaccos are!

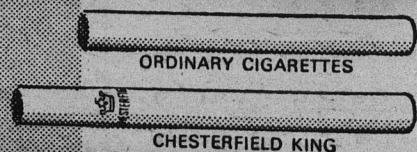


21 Great Tobaccos make 20 Wonderful Smokes!

CHESTERFIELD KING tastes great, smokes mild. You get 21 vintage tobaccos grown mild, aged mild and blended mild, and made to taste even milder through its longer length.

CHESTERFIELD KING

Tobaccos too mild to filter, pleasure too good to miss!



Longer length means milder taste

The smoke of a Chesterfield King mellows and softens as it flows through longer length . . . becomes smooth and gentle to your taste.

TALL

Or Long Waisted

Tremendous Selections
FREE HEM ALTERATIONS
Charge Accounts Invited

No Interest or
Carrying Charges

Tall & Chic - Mesa

13 S. Macdonald WO 4-1009

LARRY'S TV
727 Apache Blvd.
WO 7-0920
HI-FI — Stereo Phonographs

BOOK & PRINT
P.O. Box 32033
Los Angeles, California

Old Main Important Event In Early A-State History

By Marilyn Fish

What is now ASU's "old campus" from West Eighth to Orange Street, and from College to Normal Avenue, was once a 20-acre pasture.

The land, in 1884, was the property of George W. Wilson and his wife, Martha. Wilson sold five acres of his pasture to a group of Tempe citizens who turned it over to the territory for a school. Wilson later gave the other 15 acres also. The Wilsons' generous act was the first and most valuable endowment Arizona State University ever received.

Since ASU's founding in 1885, it has grown tremendously.

The Tempe Normal School, as it was known then, opened its doors for the first time Feb. 8, 1886. Hiram Bradford Farmer was the first president.

The construction of Old Main

in 1894 was an important event in ASU's early history. With the completion of Old Main, the Normal seemed to be on its way up.

In 1900, Dr. A. J. Matthews became president of the school. The first dormitory, Alpha Hall, was built southwest of Old Main in 1901.

TEMPE NORMAL became Tempe State Teacher's College in 1925. In 1930, 222 courses were offered and 28 bachelor of arts in education degrees were earned.

Dr. Matthews, after 30 years as president, retired at the end of the 1930 scholastic year. Dr. Ralph W. Swatman preceded Dr. Grady Gammage, who became president in 1933.

AFTER YEARS of struggle, the school name was changed to Arizona State College at Tempe in 1945. ASC then became a university on Nov. 20, 1958.

Dr. Gammage's 27 years as president of ASU ended on Dec. 27, 1959, when he died in his campus home.

IN 1960, ASU celebrated its Diamond Jubilee in appreciation of its rich history. This was also the year that Dr. G. Homer Durham became ASU's tenth president.

This past 1961-62 year has also been a memorable one in the school's history, marked by these events:

ASU became part of a new athletic conference; the Board of Regents approved a new graduate School of Social Service Administration; ASU was selected to train Peace Corps volunteers; a gift of \$50,000 was given by Mr. and Mrs. Hugh W. Long to be used in the fine arts program of the new Grady Gammage Auditorium; the first alumni fund drive was conducted, resulting in a total of \$15,749.

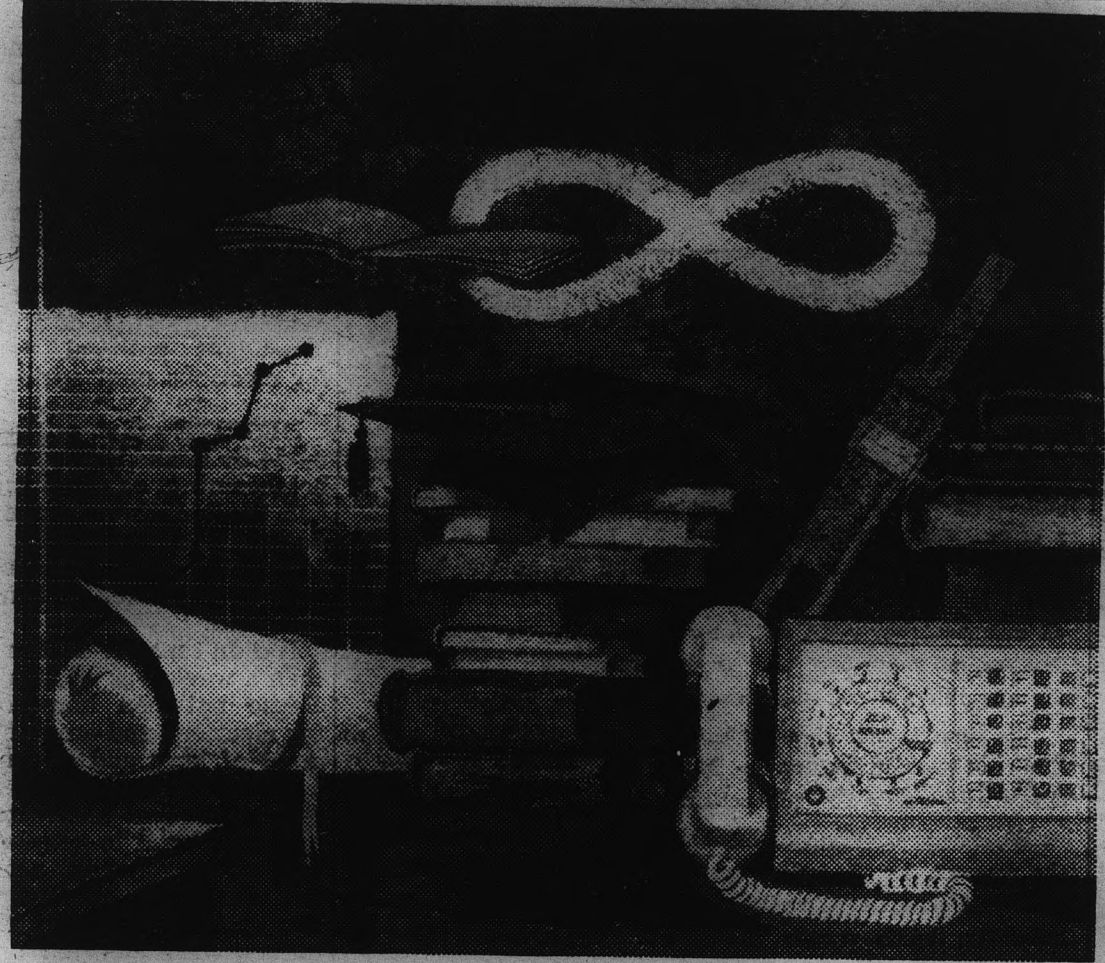
APPROXIMATELY 120 new faculty members were added to ASU's roll in 1962, including a new executive vice president, Dr. William J. Burke; a new dean, Horace W. Lundberg, and a new librarian, Dr. Alan Covey.

A new residence for ASU's president was completed. Ten social fraternities finished new chapter houses and plans for a new seven-story residence hall for women were made.

Official accreditation of the schools of engineering, architecture and nursing has brought new acknowledgment of academic excellence to ASU.

ASU's GROWTH is a story of numbers — from 553 students in 1945 to approximately 16,000 today. It's also a story of physical growth — new residence halls, new classroom buildings, and new schools within the university.

In Person
BRUCE BROWN
Narrating His 1961
SURF FILM
"Barefoot Adventure"
Musical Score by Bud Shank
PHOENIX COLLEGE AUDITORIUM
Saturday, November 3 — 8:00 p.m.
ALL SEATS \$1.25



Learning never stops for engineers at Western Electric

There's no place at Western Electric for engineers who feel that college diplomas signify the end of their education. However, if a man can meet our quality standards and feels that he is really just beginning to learn . . . and if he is ready to launch his career where learning is an important part of the job and where graduate-level training on and off the job is encouraged — we want and need him.

At Western Electric, in addition to the normal learning-while-doing, engineers are encouraged to move ahead in their fields by several types of educational programs. Western maintains its own full-time graduate engineering training program, seven formal management courses, and a tuition refund plan for out-of-hours college study.

This learning atmosphere is just one reason why a career at Western Electric is so stimulating. Of equal importance, however, is the nature of the work we do. Our new engineers are taking part in projects that implement the whole art of modern telephony, from high-speed sound transmission and solar cells to electronic telephone offices and computer-controlled production techniques.

Should you join us now, you will be coming

to Western Electric at one of the best times in the company's history. In the management area alone, several thousand supervisory jobs are expected to open up to W.E. people within the next 10 years. And our work of building communications equipment and systems becomes increasingly challenging and important as the communications needs of our nation and the world continue to increase.

Challenging opportunities exist now at Western Electric for electrical, mechanical, industrial, and chemical engineers, as well as physical science, liberal arts, and business majors. All qualified applicants will receive careful consideration for employment without regard to race, creed, color or national origin. For more information about Western Electric, write College Relations, Western Electric Company, Room 6206, 222 Broadway, New York 38, New York. And be sure to arrange for a Western Electric interview when our college representatives visit your campus.



Principal manufacturing locations at Chicago, Ill.; Kearny, N. J.; Baltimore, Md.; Indianapolis, Ind.; Allentown and Laureldale, Pa.; Winston-Salem, N. C.; Buffalo, N. Y.; North Andover, Mass.; Omaha, Neb.; Kansas City, Mo.; Columbus, Ohio; Oklahoma City, Okla.; Engineering Research Center, Princeton, N. J.; Teletype Corporation, Skokie, Ill., and Little Rock, Ark. Also Western Electric distribution centers in 33 cities and installation headquarters in 16 cities. General headquarters: 195 Broadway, New York 7, N. Y.

Welcome ALUMNI and TEACHERS

OUR ANNUAL FALL
"BOOK & PRINT"
SALE
IS IN PROGRESS
Stop By!

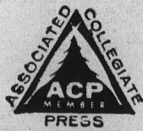
Bookstore Hours:

Monday - Thursday — 8 a.m. to 7 p.m.
Friday Only — 8 a.m. to 4:30 p.m.
Saturday Only — 8 a.m. to Noon

UNIVERSITY BOOKSTORE

State Press

THE STATE PRESS, distributed by the campus chapter of Sigma Delta Chi under the direction of Circulation Manager Mike Barrick, is the official campus newspaper of Arizona State University. It is published each Wednesday and Friday throughout the school year, excepting holidays, and is entered as second class matter at the Tempe, Arizona, Post Office under the Acts of March 3, 1879, and August 24, 1912. Subscription price, \$3 per school year.



THE STATE PRESS is a member of the Arizona Newspapers Association, Associated Collegiate Press and National Advertising Service, Inc.

EDITOR-IN-CHIEF _____ LINDA WARREN SIMS

NEWS DEPARTMENT

MANAGING EDITOR _____ BILL OVEREND

CAMPUS EDITOR _____ ED HEATH

ASSISTANT CAMPUS EDITORS _____ BETTY DUFFY, MARTI CZEPOWSKI

ASSIGNMENTS EDITOR _____ GWEN ZUPANCIC

ASSISTANT ASSIGNMENTS EDITORS _____ TOM WING

NEWS EDITORS _____ PAM VAN BUSKIRK

ASSISTANT NEWS EDITORS _____ BOB ZACHE, BOB CLAMPETT

COPY EDITOR _____ ROSS FISH, JERRY REILLY

CHIEF PROOFREADER _____ GARY OLMSTEAD, LYNDA HARRIS

SPORTS DEPARTMENT

SPORTS EDITOR _____ BOB JACOBSEN

ASSISTANT SPORTS EDITOR _____ DENNIS ANDERSON

Editorially Speaking

As you alumni survey the physical advancements and changes of your old alma mater, your emotions will probably be amazement and pride. Yes, Arizona State is coming of age in many ways. Three years ago it became a university. Last year it began to add the many graduate programs that are currently drawing candidates from all parts of the nation.

But a university must continue to grow, to improve, to advance. A university must develop and lead intellectually. This is the constant challenge for ASU.

For a look into the intellectual future of ASU, let us begin Aug. 7, 1962. At this time President Durham reported to the Board of Regents on the critical inadequacy of faculty salaries.

In order to provide and continue the excellence of education here at ASU and in the state, we must recruit and continue recruiting the finest educators available. According to the figures for 1961-62, an ASU professor earns an average annual salary of \$7,740, compared to \$11,130 received by professors at all campuses of the University of California.

An October 21 article in the San Diego Union newspaper reports that the California Board of Regents has approved another ten per cent increase for faculty salaries in that state. As for the Arizona situation, it is now under study by Dr. J. Byron McCormick, advisor to the Arizona Board of Regents.

A study and planning committee, under the chairmanship of Dr. Douglas Arner, was appointed Nov. 10, 1961 to study plans for a new library. During July, 1962, the administration and Dr. Arner consulted with Mr. Paul Miles, assistant librarian at UCLA, who recently was responsible for designing and planning a program for the large "North Campus Library" at that institution.

Dr. Alan D. Covey, new ASU librarian, has been prominent in the design and construction of the new library at Sacramento State College. Vice presidents Richardson and Burke are also members of this committee. With the new graduate programs, resources and facilities must be provided for the advanced degree seekers.

The "American Heritage" lecture series of last year is being continued this year by "Expressions of the American Spirit" lectures. Under the direction of Dr. Katharine Turner, two lectures have already been presented this fall. Those who take advantage of these presentations will appreciably augment their intellectual activities.

The first Grady Gammage Memorial Lecture was presented last year under the auspices of the College of Education. These lectures are designed as an annual affair to bring distinguished American leaders in the field of education to ASU. Dr. James J. Jelinek is the chairman of the planning committee of this campus feature for this year.

Early admissions of accelerated high school students are under study. This program is conducted on a highly selective, individual basis and considers the pressing demands for graduate professional education and the many years involved that may be interrupted by military obligation if the student is not well along in his studies.

The establishment of a General Education Council is in the planning stage. This council will replace the present General Education Committee and would be charged with general responsibility for reviewing the content and quality of the courses approved for group requirements. It would then recommend standards to be set by the departments concerned.

Revision of the catalog also is being considered. As it stands now, it is difficult for a person examining our catalog to ascertain the specific requirements for a bachelor's, master's or Ph.D. in many fields. It might also help to eliminate the disappointed graduation applicants who find themselves deficient after four years of study.



"NOW I know why we come home every year!"

President's Address

Life is filled with "crises." We will always be confronted with them. The present one will be adequately met. Others will follow.

There is too much loose thinking, born of mankind's natural fears, in all such situations. We should not be distracted, unduly, by discussions concerning fall-out, the propensities of thermonuclear, push-button or biological warfare. We need to have due respect for all the hazards of life, including accident, disease, bad manners, poor taste, and the results of ignorance in general. However, as Americans and as university students, we should face any international situation with considerable confidence.

We should meet crises as educated men and women and as citizens of a great, free nation. How? By doing our own jobs as well as we possibly can. "Sufficient to the day is the evil thereof."

We should continue to meet assignments, plan, and undertake research for the better answers to questions, old and new. We should report continually to our posts throughout the entire University, the community, the state and the nation. The intelligent never succumb to panic.

If every person meets his or her obligations, the nation, with God's help, will surmount any crisis. Everybody has to do his job. If everybody does his job well, we shall come through any situation. So, on campus we must do our jobs well, every day, any day. We are an important part of the defense system.

There will always be "difficult times" ahead. In 1946 the atomic bomb was called "the absolute weapon." There were said to be no defenses against such weapons. Today, this statement is no longer fully correct. Some defenses have been found — of many sorts. Around the corner, if we do our jobs well, there may be even more effective instruments of defense. It is the history of weaponry (and I invite you as scholars to examine this history) that for every new offensive weapon, the ingenious mind of man sooner or later develops an effective defense.

Above all, it is our task to maintain our faith — faith in our fellow citizens who man the political, economic, psychological, military and other defenses of our country. We help them best if we do our own jobs well, not voicing our fears. By our actions and deeds, we must show our capacity to do our jobs, demonstrate our faith in the Future. Others inclined to doubt and mistrust may then be inspired, in turn, to do their jobs well.

There will be other crises. The threat of war and conflict always carries peculiar poignancy for men and women of university age. It carries peculiar poignancy for everyone. No one escapes. The lesson of history remains, however. The best defense is faith, not fear. The best evidence of faith is our ability and determination, each of us, to do our daily job well. Let us do so at Arizona State University at all times.

President G. Homer Durham

I Cover College Avenue

By BILL OVEREND

For the first time in the history of this university, an independent reigns as Homecoming Queen.

For the first time in the history of this university a member of a "small" fraternity reigns as Homecoming King.

For the first time in the history of this university ASU's student body has broken the myth of Greek superiority.

It's sort of nice.

NOT SINCE the days when ASU was known as ASC have students shown so much enthusiasm for a campus election. Almost 3,000 voted for this year's king and queen.

Fraternity and sorority members have been worrying for a long time that the independents would some day invade the polls. Now that that invasion has been launched, we can predict heated battles between Greeks and independents in future elections.

If independents continue to flaunt their new-found muscles they could force the Greeks into joining forces in support of one or two candidates.

Plans are already being made for creation of an independent political party for elections next spring.

DESPITE the mistakes made by Leslie Farnsworth, homecoming co-chairman, and the half-dozen sorority sisters she appointed to committee posts, homecoming spirit reached its zenith this year.

It didn't matter that more than a week was allowed to elapse between homecoming elections and announcement of king and queen.

Nor did it bother the committee that a directory prepared by it to "explain" homecoming week activities contained obvious errors and discrepancies, that judges were selected on a last-minute basis, etc.

Perhaps Miss Farnsworth summed up her committee's performance best in a question she posed in a recent letter to the editor.

"WOULDN'T you say when the Dean's office, the Alumni office, the elections board, the publicity office, the MU, thirty organizations on campus, the maintenance department, the ASU administration, and the State Press," she asked, "had to ALL synchroize their plans, in three short weeks, that we've (the committee) done a darn good job?"

I think not. On the contrary, the fact that those organizations were forced to "synchronize" in three short weeks seems to me to be an argument against the committee's effectiveness.

But it does support my basic premise that the ASU student body deserves a pat on the back for its efforts in making this year's homecoming one of the best. All students joined in despite the lack of any central organization.

How Times Have Changed

By SUE BURNS

Students really "sizzled the ribbon" in 1942 (whatever that meant)!

They watched such movies as "I Married an Angel," and "The Heart of the Rio Grande."

They listened to such top hits as "Barrel House Bes-sie" and "Mr. Five-by-Five."

The campus was called Arizona State College. The nickname was the Bulldogs.

Arizona State placed 15 people in the "Who's Who in American Colleges and Universities."

Charlie's Barber Shop was the popular gathering place.

The '42 Homecoming was the

first since 1918. King and queen were Bill Ward and Nancy Frew.

Drives to give the big iron fence for scrap iron and to get typewriters for the war were carried on through STATE PRESS editorials.

And, in 1942, touch football was a sport for women, too!

Mighty Fine Food . . .

Before & After The Game

Hamburgers - - 17c

French Fries - - 12c

Milk Shakes - - 22c

Finest Quality . . . Fastest Service
Phone 947-1571 for Pick-up Orders

Ricky's Drive-In

1847 S. Scottsdale Road Scottsdale
1/4 Mile South of Papago Plaza Shopping Center



Lost And Found Clears Out Articles

Most items turned into lost and found Campus Security will be disposed of within two weeks if not claimed according to Lt. Thomas G. Godbehere.

Students who turn in lost items are reminded that they relinquish all claims to the articles.

Proceeds from the sale of books will go to the President's Student Aid Fund.

Clothing will be donated to the Salvation Army. Articles such as watches and rings will be kept for one year.

Tempe Normal football team opened a tough season against Tempe High School, October, 1914. Normal won 12-6.

State Fair Judges Pick Blue Ribbons For ASU

Prizes have been awarded to students, faculty and alumni of ASU for entries in the art exhibit at the Arizona State Fair.

A first prize and the Valley National Bank \$500 purchase prize went to Daniel Hall, ASU alumnus, for his watercolor "Snip." The Murphy purchase prize of \$95 went to Nancy Crowley, ASU student, for her watercolor "Valley Native."

Other first prize winners include:

Thomas J. Harter, acting chairman, ASU art department, for his oil entitled "New Growth"; Ben Goo, associate professor, sculpture, "The Bridesmaid"; Arthur Jacobson, associate professor, print, "The

Table"; Dianne Ross, graduate student, mosaic; and Lavonne Schrieber, faculty wife, crafts.

Mrs. Schrieber also won a second prize in handwoven fabrics. Peter D'Agastino, ASU student took third prize in sculpture.

Honorable mentions include: Henry Schrieber, assistant professor, jewelry; Ray C. Davis, alumnus, mosaics; Max Rennels, instructor, oil painting; Jacobson, watercolor; Harter, watercolor; John Waddell, professor, sculpture; Joanne M. Rapp, alumnus, watercolor; and James Rapp, instructor in architecture, crafts.

Sun Devil Facts

In March, 1943, Arizona State hosted more than 60 parents during its ninth annual Parents' Day.

CO/AD CLASSIFIED

Serving 700,000 readers of college newspapers

For rates, write CO/AD
396 Park Ave.
San Jose, Calif.

TRAVEL

EUROPE - Discover this bargain. Write Europe, 255-C Sequoia, Pasadena, Calif.

TRAVEL FILMS, 16 mm. Free list. Lobett Co. 2002 Taraval, San Francisco.

HUMOR

30,000 COMEDY Lines. Free catalog. Orben, 3536a Daniel Crescent, Baldwin, N.Y.

OPPORTUNITIES

SAVE 15%, Reporter Magazine, \$5.10 yr., USA. "Readers Service Center," c/o CO/AD Box C.

BICYCLE MOTORIZING Plans—Send \$17 converts bicycle to Motorbike. Go-Byk Industries, Fergus Falls, Minn.

HEALTH—Reducing, Gaining Muscles, Longevity. Mail 25c for all 4 courses. Buy Now. Health Course, \$1. Agents Kit, \$2. Big Deal, \$3. Guaranteed! Side System, 8421-C Evergreen, Southgate, Calif.

EDUCATIONAL

SUPER LEARNING power overnight! Success guaranteed! Write "Guide," Box 362C, Yorktown Heights, N.Y.

EXPERIMENT WITH sleep-learning! Fascinating, educational. Details free. Research Association, Box 24-CP, Olympia, Wash.

L'EXPRESS—Controversial French Weekly. Howard Publications, 1475 Broadway, New York.

Campus Classified

Regulations: For students and faculty only of Arizona State Unit to Room 207, Memorial Union Building, by noon two days before date of publication: noon Monday or Wednesday's issue, noon Wednesday for Friday's issue. Rates: 3 cents per word, 50 cents minimum charge.

FOR SALE

Corvette 1959, low mileage, like new. Excellent condition. 8 a.m. to 5 p.m. call AL 2-2143. After 5:30 p.m. to 3:30 p.m. AM 5-7725.

Used CURTA, the miracle hand calculator that adds, subtracts, multiplies, square root. Ideal for science and engineering students, \$40.00. Contact Kim Rothans, WO 7-9917.

SEWING

Sewing, altering, and dressmaking. Mrs. Kotten, 1311 W. 10th Place, Tempe, Arizona. WO 7-9173.

WANTED

Urgently need ride A.S.U.—Scottsdale after Mon., Wed., Class 6:30-7:55. Willing wait. 947-4912 leave message.

FOR RENT

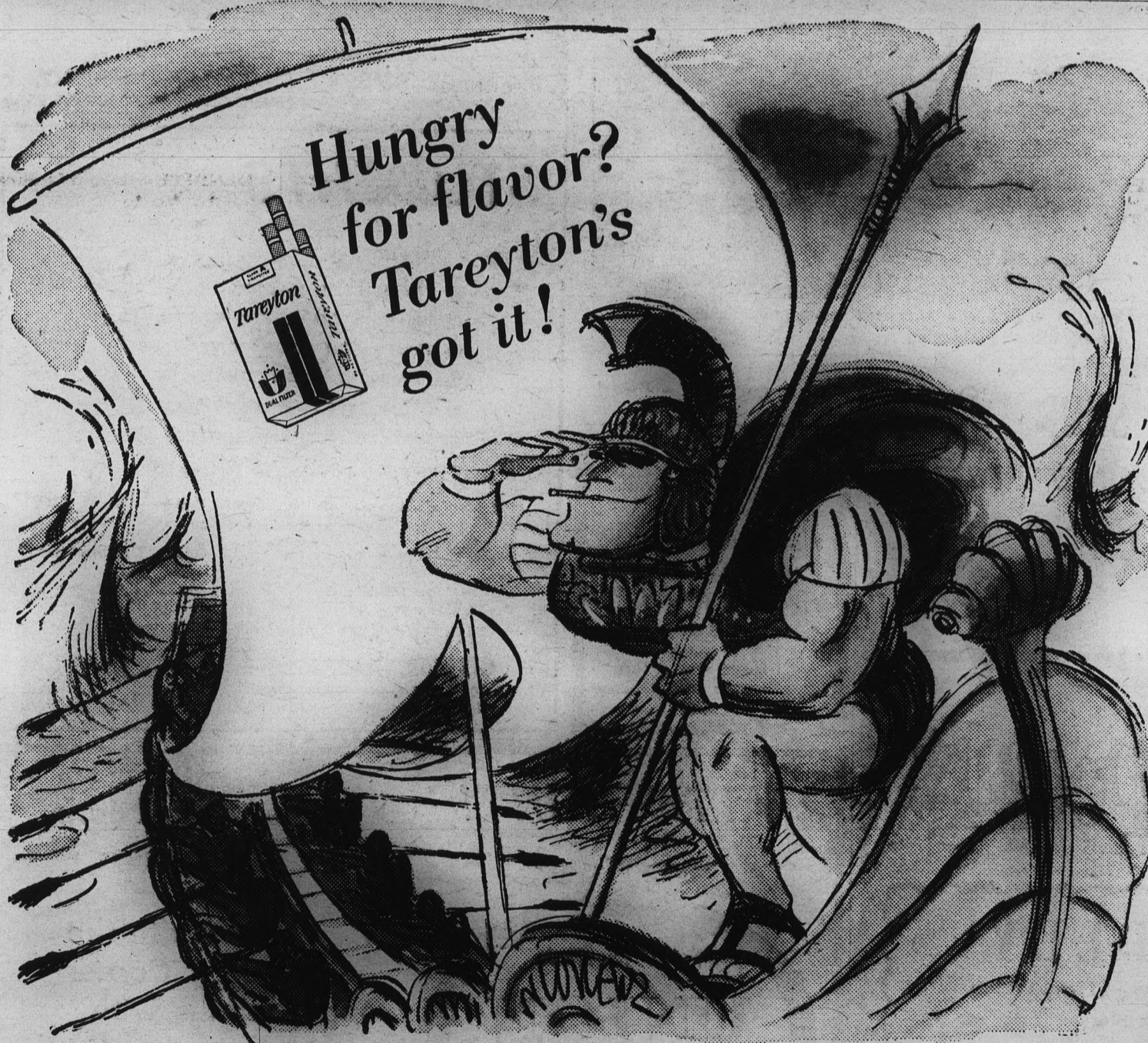
Room: \$35.00 month. Male or female. Kitchen privileges. Five minute drive from campus. Call 967-7037.

MISCELLANEOUS

Will author from B. A. Building of the essay, "DEAR KAY" contact Tom after 10:30 P.M. at WO 7-0640 for interesting offer.

LOST

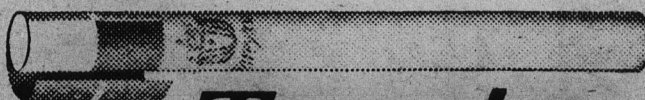
Clipboard with two notebooks and Intro. to Business book. Lost Oct. 26 at Corner of Orange and College. Reward. Please Phone WO 7-2694. Leave message.



"Tareyton's Dual Filter in duas partes divisa est!"

says Sulla (Skipper) Augustus, famed leader of the Roman fleet. "When you're out on the aqua," says Skipper, "there's nothing like a Tareyton! The flavor is the maximus. In fact, inter nos, here's de gustibus you never thought you'd get from any filter cigarette!"

Dual Filter makes the difference



DUAL FILTER Tareyton

Product of The American Tobacco Company—Tobacco is our middle name © 1962

ASU Grads Have Made Their Mark

ASU past graduates have made their mark in the fields of entertainment, education, military, communications and politics.

A role call of some of the outstanding alums and their achievements begins with ASU's oldest grad, Admiral William R. White, U.S. Navy retired, class of 1890. Admiral White served with Admiral Dewey at Manila Bay.

Senator Carl Hayden, founder of ASU, is the dean of the U.S. Senate. He has served in Congress since 1912. In 1959 Senator Hayden was awarded an honorary doctorate degree by ASU.

Raughie C. Stanford, class of 1898, is a former Governor of Arizona and a former Justice of the Arizona Supreme Court.

Dr. Karl Luebrick, class of '06, is the president of Manmaolu College, Hawaii. He was formerly the president of Kent State University of Ohio.

Dr. Paul Sharkey, class of '49, is the chairman of the department of neurosurgery at Baylor University, Houston, Tex.

Robert Stroud, class of '28, is the secretary of Mutual of New York Insurance Co., New York City.

Don Deder, class of '51, is a well-known columnist for the Arizona Republic. In 1958, he received the Ernie Pyle Award given by Scripps Howard.

Charles Stauffer, class of '01, is a former publisher of the Arizona Republic and Phoenix Gazette.

Steve Allen, well-known author, composer and TV personality attended ASU in 1945. He is currently the emcee of his own night-time TV show.



AIR HORNS and cowbells rattled windows around campus during election campaigning. Parading everything from "johns" to Model-As, students got an early start on the weekend last Friday.



WHICH ONE's the queen? Campaigning coeds take five during the electioneering last week.

Campus Security Looks For Bell

Ouch! There's a bell missing again! This time its the 1500-pound ASU Victory bell. The bell was stolen sometime between Oct. 20 and 26. The bell was located near the campus security office. Campus security is checking into the matter.

Bobbies Flowers Gifts...

20 E. 5th St.
Home Phone WO 7-6319
WO 7-2972 — WO 7-4274

For Parties... Large Artificial Plants For Rent

"Years Ahead" Flight Training In The New Shinn - 2150



MODERNIZED GROUND SCHOOL FOR PILOTS & NON-PILOTS

Amos Flight Operations

A Private License is a Must in Modern Business

Don Amos — Class of '56

Phone BR 5-7291

SKY HARBOR

STUDENTS . . .

Buy Your —

- TRANSISTOR RADIOS
- TRANSISTOR RADIO BATTERIES
- TUBES FOR YOUR PORTABLES
- FLASHLIGHT BATTERIES
- RESISTORS — CONDENSERS
- CHOKES — TRANSFORMERS

At Wholesale Prices!

Electronic Kits — Test Equipment Kits — Hi-Fi Kits
All at Lowest Prices

Complete Display of Latest Hi-Fi Gear "Demonstrated"

Make Your Dollars Go A Long Way at

ELECTRONIC CENTER, INC.

3400 E. Thomas Rd.
Phone 264-6145



HAPPY HOUSE SHOP CENTER TEMPE

OUR HOMECOMING SPECIAL

SUN DEVILS 24
UTAGS 14

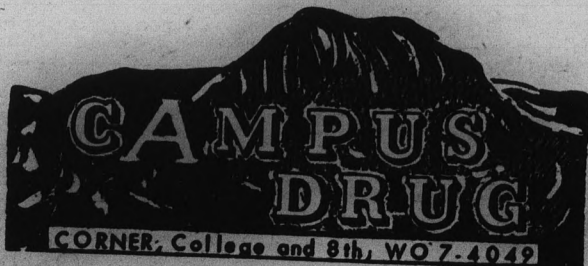
CAMPUS DRUG

Specials

YARDLEY

Lavender Soap — Hand Cream
English Lavender — Talc

\$1.65 & \$2.00

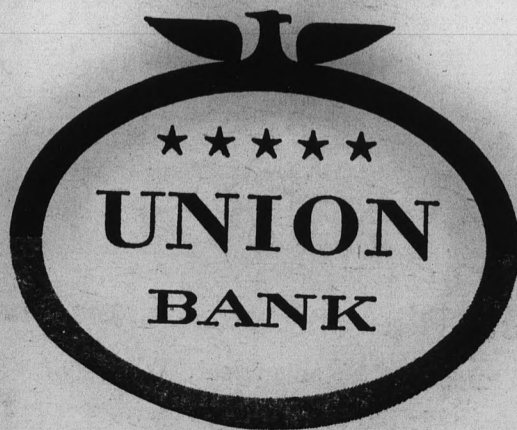


Welcome Back, Alums!

Have You Auto Insurance Problems?

- Need SR-22 Filed
 - Under 25
 - Premium Financing
 - Rates Too High
- CALL
Clifford Peterson
4227 N. 12th St. Phoenix
CR 7-9291

ATTENTION !



Training Section
Eighth and Hill
Los Angeles, California

January and June Graduates

✓ Investigate the outstanding Career opportunities with the Nation's Leading Growth Bank.

✓ Interviews on November 8.

✓ Contact your Placement Office



RACCOON COATS and ukeles, tight skirts and garters. Homecoming royalty candidates and their helpers used all the old campaigning gimmicks to sway voters in last week's election.

More Go For Advanced Degrees; ASU Has 1,987

By JEAN POWELL

Today's bachelor's degree is approximately equal to the high school certificate of 30 or 40 years ago, says James McNaugh-Hester, president of New York University.

As a result, an advanced degree is required for business and professional people.

Testimony to this fact is found in the increased enrollment of students in colleges and universities.

ASU is a good example.

Particularly significant is the development and growth of the graduate college.

Since 1952, 10 graduate degree programs have been added, making the present total 13.

The programs are: doctor of philosophy, doctor of education, education specialist, master of arts, master of arts in education, master of business administration, master of fine arts, master of music, master of natural sciences, master of public administration, master of science, master of science in engineering and master of social work.

Of the 3,004 students en-

rolled in the graduate college, 1,987 are working for an advanced degree.

There are 1,017 unclassified students who are not candidates for degrees.

In order to receive credit for work on the graduate level, a student must enroll in graduate college.

A graduate student is considered full-time if he carries 12 hours or more. There are 675 full-time students enrolled this semester.

The college of liberal arts claims 43 per cent of them. Psychology and the natural sciences are the most popular fields in this college.

Education is a heavy second choice for graduate work, claiming 37 per cent of the full-time graduate students.

Most are in secondary education, with guidance and elementary about equally divided. Several are working on doctorates in education administration.

A unique group of graduate students is the Guidance Institute.

This group contains 30 people

from 22 states who are studying under a National Defense Education Act scholarship.

All are teachers with some experience in secondary education. They study prescribed courses, and the guidance departments of Valley high schools are their laboratories.

One stipulation of the scholarship is that these teachers do guidance counseling in public schools after completing their work at the institute.

Approximately 11 per cent of the full-time graduate students are working on various types of engineering degrees.

Electrical engineering is a popular field with heavy emphasis on electronics.

The college of business administration claims seven per cent of the full-time students.

Management is a favorite major, but most will receive the bachelor of business administration degree.

The small remaining percentage is divided between home economics, agriculture and industrial arts.

Most of the unclassified graduate students are found in education. They are teachers acquiring needed hours and keeping abreast of developments in their subject fields.

Others among the unclassified are students who are taking courses they missed as undergraduates or who are enjoying special interest courses.

Another facet of the graduate college is the graduate assistantship. A full-time graduate assistant works 20 hours a week and may carry 10 semester hours.

There are approximately 160 graduate assistants on campus.

Forty-six are in the chemistry department, 27 in physics, 25 in English, 24 in engineering, 19 in math and 18 in business administration.

They do research, teach or instruct labs.

It is interesting to note that 57 of the assistants hold a bachelor's or master's degree from ASU.

Dean Irving W. Stout heads the graduate school.

He is the affable general supervisor and counselor for all graduate students.

Problems concerning courses of study and programs are referred to the departments.

Dean Stout's assistant, Mrs. Carrie B. Sawyer, and four secretaries complete the staff who handle the paper details and furnish information to the students.

The Graduate Council, made up of faculty representatives from each college, is responsible for the formulation of policies and approval of procedures used in organizing and administering graduate programs.

WELCOME ALUMNI!

Make Homecoming A Complete Success . . .

Stop In At

CHICO'S

RESTAURANT*

FINE MEXICAN FOOD

1120 East Apache Blvd. — Tempe —

*Air conditioned of course

EVERY FRIDAY NIGHT

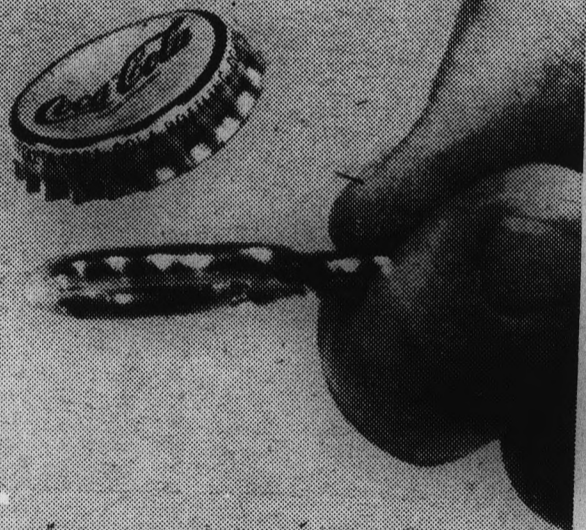
DANCE

9-12 P.M. AT MEZONA IN MESA

COMBO . . . 50c

SPONSORED BY L.D.S. CHURCH

COPYRIGHT © 1961, THE COCA-COLA COMPANY. COCA-COLA AND COKE ARE REGISTERED TRADEMARKS



60,000,000 times a day people get that refreshing new feeling with Coke!



Bottled under authority of The Coca-Cola Company by PHOENIX COCA-COLA BOTTLING CO.



ANGEL OPERAS

(All Complete)

1/3 OFF TODAY & TOMORROW

- Carmen
- Faust
- Pagliacci
- Tosca
- La Boheme
- Tristan
- La Traviata
- Manon Lescart
- Madam Butterfly
- Gianni Schicchi
- Cosi Fan Tute
- Barber of Seville
- La Forza Del Destino
- Cavalleria Rusticana

and many others

HILL'S RECORDS

Open Thurs. & Fri. till 9 — Tempe Center

PICK'S COIN-OP

Self Service Laundry
Dry Cleaning
Locker Service

Coin Operated Hair Driers
— ALWAYS ATTENDED —
Mon. through Sat.—8 A.M.-10 P.M.
Sundays—9 A.M. - 9 P.M.

827 Rural Road — Tempe

Homecoming Royalty Of 1958 Now Rule Domestic Throne



ANDERSON ALUMS — Mr. and Mrs. Ben Anderson passed the crowns which they wore as 1958 Homecoming king and queen on to the 1962 rulers Bob Clampett and Sue Rawson. Married in 1959, the Andersons make their home in Scottsdale, Mrs. Anderson is the former Diane Eldridge.

In 1958 they were Ben Anderson and Diane Eldridge, Homecoming king and queen.

Today they are Mr. and Mrs. Ben Anderson of Scottsdale, parents of two small boys.

Mr. and Mrs. Anderson, who crowned the 1962 Homecoming royalty Wednesday night, were married in July 1959, one month

after graduation.

Ben, an education major, is now teaching physical education at Scottsdale Arcadia High School.

Diane worked for 1½ years in advertising, her major field.

She is now at home taking care of Benny, 21 months, and Timmy, 8 months.

Sponsored by Delta Sigma Phi in the 1958 contest, Ben was an end on the varsity football team.

Diane, nominated by Gamma Phi Beta, was treasurer of that group, president of Gamma Alpha Chi, BA senator, a member of WAA, Newman Club, pom-pom and R. and T. Board.

Welcome Alumni!

503 E. 8th • WO 7-0800
CARRY OUT SERVICE

Campus Jewelry

Dick Marshall — Student Owner

Getting Engaged?

See Our Fine Selection Of Original Settings

Corner Fifth and Mill
Price Courtesy with Activity Card

NATIONAL AERONAUTICS AND SPACE ADMINISTRATION
FLIGHT RESEARCH CENTER
EDWARDS, CALIFORNIA

Invites Applications from Students majoring, or with advanced degrees in:

- * PHYSICS
- * AERONAUTICAL ENGINEERING
- * ELECTRICAL ENGINEERING
- * MECHANICAL ENGINEERING
- * MATHEMATICS

TO PARTICIPATE IN AERODYNAMICS AND SPACE-ORIENTED FLIGHT RESEARCH, AND INSTRUMENTATION DEVELOPMENT PROGRAMS SUCH AS X-15, LUNAR LANDING, SUPERSONIC TRANSPORTS and X-20 (DYNA SOAR) FRC Representative will be ON CAMPUS for interviews November 13.

Positions above are in the Career Civil Service.
Positions are filled in accordance with Aero Space Technology Announcement 252 B.
All qualified applicants will receive consideration regardless of race, color, creed or national origin.

business
admin-
istration
majors

Hughes, one of Southern California's leading electronics firms, is currently selecting candidates for its Finance Development Program.

- We would like to discuss the Program with you if:
- you will receive your Bachelor's or Master's degree during the next year,
 - your interest is financial management,
 - your academic training is in one or more of the following areas:

Accounting Finance Economics
Business Statistics General Business

The Program is completely oriented and operational. It has been developed to fill the ever increasing financial management requirements of our company. The two-year Program provides valuable experience in many financial areas.

CAMPUS INTERVIEWS
November 14, 1962
by
Mr. W. I. Green
Group Controller

For further information and to arrange a campus interview, contact your Placement Director or write: Mr. Carey W. Baker, Hughes Aircraft Co., Culver City, California.

CREATING A NEW WORLD WITH ELECTRONICS

HUGHES

HUGHES AIRCRAFT COMPANY
An equal opportunity employer.



Be An American Airlines Stewardess

Would you like to put on an American Airlines stewardess uniform and wings? Come in for a brief, private interview. Learn more about the qualifications necessary to begin this rewarding career. If accepted, you'll train at our million dollar Stewardess College, at American's expense. Develop new poise, learn secrets of personal grooming.

Starting salary \$335, with expense allowance and periodic increases. To serve our passengers' welfare and comfort, you must be:

- Single Age 20-27 High School Graduate
- 5'2" to 5'9" Normal vision without glasses—contact lenses may be considered.

CALL FOR AN APPOINTMENT
Monday-Friday 9 AM - 4 PM

AL 8-6761

AMERICAN AIRLINES **AMERICA'S LEADING AIRLINE**

"An Equal Opportunity Employer"



HUNTING FOR VOTES — Armed with promotion posters and leaflets, noise makers, cheers and abundant enthusiasm, 18 students board their decorated old car and embark on a boisterous trip down College Avenue to track down additional votes for their Homecoming candidate. (Photo By ASU Photo Service)

Student Poll Shows Political Knowledge

Seventy-two per cent of ASU's students can name both candidates for Governor of Arizona, 20 per cent only one candidate, and 8 per cent neither candidate, according to a public opinion survey by senior journalism majors.

Sixty per cent can name both candidates for U. S. Senator from Arizona, 22 per cent can name one candidate, and 18 per cent cannot name either candidate.

The class doing the polling, JO 421, during Oct. 22-26, interviewed 509 students. The survey sample was constructed from the official enrollment profile from the registrar's office. That is, 27 per cent freshmen, 16 per cent sophomores, 16 per cent juniors, 16 per cent seniors, 15 per cent graduate students, 5 per cent unclassified undergraduates, and 5 per cent unclassified graduate students.

tor Barry Goldwater was running for re-election though his term is not up until 1964. A few thought John Rhodes was running for Governor, though he is a candidate for re-election as Congressman. One student insisted that L. Alton Riggs, actually a candidate for county supervisor, was running for Governor. But a comfortable majority of ASU's students do definitely know who is running for senator and governor.

Such factors as residence in a dormitory, fraternity house, with parents, or an apartment, and which college in which respondents enrolled, were tabulated. A few students thought Sena-

When it came to volunteering major issues, the percentages were lower. The most frequently mentioned issue in the governor's race was taxes. In the senate race, it was foreign policy.

UPTON'S Coin Operated Dry Cleaning & Laundry

Study, Read, Relax In Our Lounge With FREE Coffee While Your Laundry & Dry Cleaning Is Automatically Done

Open 8 A.M. - 10 P.M. — 7 Days A Week

Phone 967-0071

Attendant Always On Duty

UPTON'S BEAUTY SALON
967-0764 — Eve's By Appointment

2010 RURAL RD. — AT BROADWAY

Disc Artists To Entertain After Game

Wilson Hall will sponsor an after-game dance tomorrow evening in the MU ballroom from 10:30-12:30.

Couples may dance to the music of Garth Tallman's orchestra.

Special entertainment will be recording artists Kelly and Jan.

Recording for Bronko records, the duo sings "The Hour Is Near" and "Once Upon A Time."

A special invitation is extended to alumni to attend.

More About-

Royalty Elections

(Continued from Page 1)
"Elect a queen who is a queen" was the campaign slogan of the quadrangle unit, Miss Rawson's election sponsor.

A JUNIOR, she has been the student assistant of the quadrangle unit this fall, is president of Natani, junior women's honorary. She also is a member of Angel Flight AFOTC auxiliary in which she served as commander last year.

She is vice president of the First Congregational Church youth group and a Golden Heart of Sigma Phi Epsilon fraternity.

Her past activities include Freshman Hostess president and junior adviser, a representative to the Student Union Convention in Albuquerque, a member of the activities coordination board and treasurer of Spurs, sophomore women's honorary.

SHE HAS also been chairman of the student-faculty relations board, a representative to the

student religious council and a sub-committee chairman for the MU Birthday Party.

A transfer from the University of Washington, king Clampett came to ASU as a colonizer for Phi Kappa Psi fraternity of which he is now president.

Now a senior, Clampett is a member of Blue Key, men's honorary, a Supreme Court justice and has served on the IFC rush committee and the conduct committee.

SERVING AS news editor of the State Press this fall, he is vice president of Sigma Delta Chi, men's journalism honorary, and a member of Pi Delta Epsilon, journalism honorary.

Gifts for the royal pair include a \$200 wardrobe for the king from Hanny's and for the queen a Lanz dress from Goldwater's and a matching four piece sports outfit from Ser-rano's.

LIKE MAKE HOLIDAY AIR RESERVATIONS NOW...

You Pay No Extra Scratch For Our Service

Don't Sweat Going To Phoenix We Represent All Airlines

"SWING BY TODAY" **UNIVERSAL TRAVEL**

WO 7-1673

18 E. 5th St.

WO 7-0751

COPE'S BARBER SHOP

703 Mill Ave. — Tempe

FLATTOP - IVY LEAGUE SPECIALS

3 BARBERS TO SERVE YOU

Open 9-6 Tuesday.—Sat.



Lee Optical's "on campus"

Lee Optical glasses are seen wherever ASU students gather! Visit your Lee Optical Office and Contact Lens Center at 805 Mill Ave., Tempe Center.

Single vision glasses as low as **\$11.85** Quality contact lenses **\$85.00**

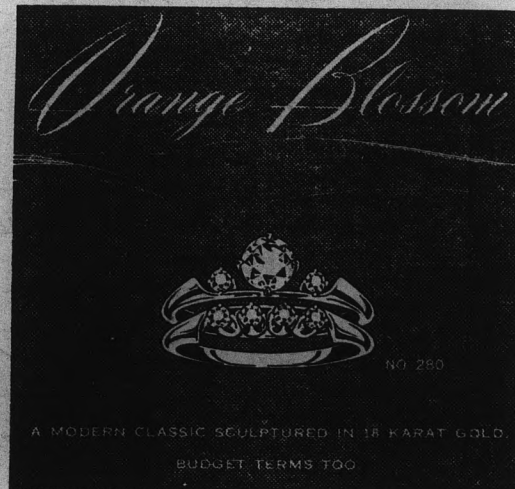
Open Thursday nights and all day Saturday / Pay-as-you-wear

6 CONVENIENT OFFICES TO SERVE YOU:

TEMPE 805 Mill Ave.	PHOENIX 16 West Adams	CHRIS-TOWN 19th Ave. & Bethany Home Road
SCOTTSDALE 655 N. Scottsdale Rd.	MESA 129 West Main	YUMA 2816 4th Avenue



Where it's always SAFE to save money on glasses...and contact lenses too!!!



Open Thursdays

9:00 A.M. to 9:00 P.M.

Paul Johnson
JEWELERS

1604 E. Camelback

"Where Originality Is a Tradition"

On Other Campi

By Nancy Tenney

WEST TEXAS STATE COLLEGE, TEXAS . . . Western Week adds a special flavor to Homecoming week festivities at West Texas. A barbecue, parade of floats, and Western Day Dance will be included in the activities, which will be broadcast over a local TV station.

Tommy Dorsey's band will play for the homecoming dance.

PHOENIX COLLEGE, ARIZONA . . . "Gay Ninety's" will be the theme of PC's Homecoming, Nov. 9. In keeping with the theme, old-model cars will transport the king and queen candidates onto the field at half-time of the game with Compton College.

A skit contest is being held for organizations sponsoring royalty hopefuls.

XAVIER UNIVERSITY, OHIO . . . Candidates for Homecoming Queen at Xavier participated actively in the campaign. They stood at doorways and handed out cigarettes, pencils, sample packs of mouth wash, and other assorted "treats" to passers-by.

The float parade, "Broadway Musical," was led by several 1963 Oldsmobile convertibles, and music for the traditional dance was played by a well known vocal group, The Four Saints.

EASTERN NEW MEXICO UNIVERSITY . . . The schedule of Homecoming events at ENMU will begin with a pep rally followed by a bonfire, fireworks, and traditional tug-o-war. A University production of "Teahouse of the August Moon" and dedication of a new Liberal Arts Terrace followed by a barbecue will be included.

Festivities will be climaxed by the homecoming ball. Buddy Morrow and his Night Train Boys will play for this final event.

MONTANA STATE COLLEGE . . . Les and Larry Elgart, rated as a top college orchestra for the past several years, will highlight the Homecoming Ball at MSC.

A Bobcat Booster no-host breakfast at a local hotel will be for football fans the morning before the game.

UNIVERSITY OF TEXAS, AUSTIN . . . Allen Luden, television personality, will MC the Distinguished Alumni Awards Banquet at U of T.

Foreign Student Voice Heard On Homecoming

By JANET BERGMAN

Homecoming is a completely novel idea to most of the foreign students on campus, according to a poll taken at the Foreign Student Club meeting Sunday.

S. M. SPOOR, a junior from The Netherlands, said: "In Holland, we did not have a homecoming event.

"If this is a major campus activity, I am disappointed. If it is a minor activity, I think it is a lot of fun."

ERIC OWERS, a sophomore from Australia, said: "I think that Homecoming is a ridiculous idea, especially since it falls right next to mid-term examinations.

"Besides being a complete waste of time and money, it achieves very little (maybe a little school spirit) and in general is poorly organized.

PREMCHAND LENGADE, a senior from India, said: "We have these 'king and queen' elections back home. But the king is elected on his body-fi-

gure and physique, besides his sports ability.

"And of course the queen is elected on her beauty. Hence, no voting in case of a king!"

ULRICH MUHR, a junior from Germany, said: "Homecoming is a time when class attendance is low and school spirit is high."

SHAH MAROUFKHANK, a sophomore from Iran, said: "Homecoming is great. It is a good break for the students after studying two months."

MANSOUR HAGHIGHI, a senior from Iran, said: "I think Homecoming is a great idea. I was here last year and really enjoyed it."

"Homecoming SPECIAL"

ANY 1962 DODGE DART or LANCER

(This week only)

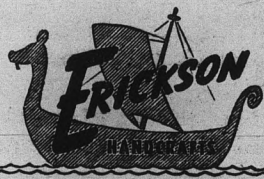
\$ 50. Below Our Actual Cost

Save A Year's Depreciation

DANA BROS. MOTOR CO.

211 MILL AVE.

TEMPE



ARTIST SUPPLIES
CRAFTS - HOBBIES
Decorating Material
Open Mon., & Thurs. Nites
Tempe Center • WO 7-4482

THE PLANTATION HOUSE

IN MESA

ROGUE ROOM

featuring

Tahitian and Hawaiian Revue

FRIDAY & SATURDAY 9:00 P.M.

Phone 969-1334 For Reservations
NO COVER — NO MINIMUM

SMILEY-BERGE FORD

16 E. 8th St. — Tempe

Announces . . .

We have just installed the latest in SCIENTIFIC ENGINE and ELECTRICAL TEST EQUIPMENT.

WITH THIS AD

We will give you a 15% Labor Discount on any engine or electrical system Test and Repair.

It's Your Future!

VOTE:

FANNIN — Governor

MECHAM — Senator

LIDDON — Corporation Comm.

VAN PETTEN — Supervisor, Dist. 1

Sponsored by

A S U YOUNG REPUBLICANS CLUB

Aggies Inva de Devilland

By JOE HEATH

Two powerful football teams that have tasted defeat only once this season will meet in Sun Devil Stadium tomorrow night for the ASU Homecoming.

Utah State, who has only lost three season games in the last three years, will be gunning for its first win in four years over the Devils.

ASU assistant coach Dick Mansperger viewed the game: "Utah State will be the best team that we've faced this year."

The never-tiring Aggies run a three-unit system that changes by the clock. Every five minutes a fresh team is sent into the game.

"There is no discrimination,"

said Mansperger. "Units are changed by the clock and not the field position."

The Aggies are big, fast and sound. They can play a wide open game.

The ASU coach said they run a pro-type offense that keeps you guessing.

"They will pass indiscriminately—on first down or fourth down—when you least expect it."

They lost two big men from last year's team, tackles Merlin Olsen and Clark Miller, but they still have tremendous size.

Mansperger pointed out tackle Bill Williamson, who weighs 270 and already has been drafted by the pros.

He named Williamson, tackle Lionel Aldridge (230) and halfback Roger Leonard (180) as men to watch.

End-to-end the Aggie line will average 221-pounds per man, a 15-pound per man advantage over the Sun Devils.

Coach John Ralston's squad suffered its only loss of the season at the hands of New Mexico, 14-13.

Meanwhile the Aggies have piled up wins over San Jose (29-18), Montana (43-20), Montana State (41-13), Colorado State (21-0) and Brigham Young (27-21).

The Aggies have a strong offense that grinds out yardage when it needs it. Still they have yet to run a play from scrimmage that has gained more than 30 yards.

They are averaging 31 points a game, most being a result of ground offense.

The Sun Devils will match this machine with a total offense that is among the nation's best.

Averaging 28.8 points a game, the Devils will rely on the swiftness of their two fullbacks and six halfbacks plus the accurate throwing arm of John Jacobs.

The Utah State offense will feature power behind pulling linemen.

ASU works with end sweeps and a potent passing attack.

In the backfield, the Sun Devils will hold a 19-pound per man advantage. The Aggie backs tip the scales at 179, the Devils hit a 198 average.

Fencing

The Fencing Club will meet tomorrow at the Moeur Activity building from 2-4 p.m.

The meeting is open to all. The adviser is Karen Kenyon.

Baseball Practice Ends

Fall baseball practice concluded at ASU this week with the varsity winning seven of nine intersquad games from the frosh.

The freshmen's lone win came opening day of the games with pitcher John Pavlik going the route for the win.

BOTH TEAMS battled to a tie in a later contest.

Coach Bobby Winkles picked sophomore hitters Alan Schmelz, a Cerritos JC transfer, shortstop Luis Lagunas, and first baseman Tom Ellithorpe as most promising.

Standouts among the mound corps were junior Lad Nemecek, who threw 12½ innings, giving up no runs; junior Sam Cook, who tossed 14 innings allowing one earned run, and sophomore Ronnie Lea, who gave up one unearned run in 10 innings.

WINKLES also termed the performance of sophomore Jim Merrick as "excellent." The curve-balling lefty allowed two runs in nine innings of relief work.

For the freshmen, in addition to Pavlik, coach Jim Railey named as promising hurlers Skip Hancock, a former Phoenix Camelback High ace, and Phil Henderson.

Leading frosh hitters were Fred Rico, Jim Rhoden, another former Camelback standout, and Sal Bando.

ONE noticeable change was the appearance of pitcher Sterling Slaughter, a senior, who played centerfield.

Coach Winkles said Slaughter might be used next season as a late-inning defensive measure and a pinch hitter or runner.

Now 3 Locations For Your Convenience

1

RAY'S ASU BARBER SHOP
TEMPE CENTER
5 Barbers To Serve You
9 A. M. to 6 P. M.

2

SANDS BARBER SHOP
SANDS HOTEL
2 Barbers To Serve You
9 A. M. to 6 P. M.

3

M.U. BARBER SHOP
MEMORIAL UNION BLDG.
By Appointment — If Desired
Monday thru Friday

Complete Tune-ups — Repairs — Steam Cleaning

SPECIAL 99c LUBE
With
Oil Change
Monday thru Thursday

606 APACHE BLVD.

A & W EL PASO SERVICE

"Across From The Sands Hotel"

TEMPE

For
GAME TIME . . .
and for
RAIN TIME . . .

Tremendously popular because of the fine quality fabric, wide choice of very smart styles.

ORLON ZIPPER LINED
\$19⁹⁵



RAYON LINED
\$15⁹⁵

FOR MEN AND YOUNG MEN
603 Mill Avenue • Open Thurs. Till 9 P.M.



Nothing rasher for your hair than grease. Let Vitalis with V-7 keep your hair neat all day without grease. Naturally, V-7 is the greaseless grooming discovery. Vitalis® with V-7® fights embarrassing dandruff, prevents dryness, keeps your hair neat all day without grease. Try Vitalis today. You'll like it!



NOW ON SALE AT

CAMPUS DRUG

CORNER COLLEGE & 8th ST.

the
Capri's Pick Of The Week

ASU . . . 21
Utah St. 16

Right or Wrong
You Can't
Miss
With Our
PIZZA'S

BYU Ace Top Gun In WAC

Eldon Fortie of Brigham Young, the national total offense leader, still is top gun in WAC circles, leading in total offense (1506 yards), rushing offense (837 yards) and scoring (68 points).

John Jacobs, ASU quarterback, after another remarkable passing week, now has a comfortable lead and now leads other WAC passers with 48 completions in 86 attempts for 748 yards, a .558 percentage and 10 touchdown passes.

JACOBS, who has thrown nine touchdown passes in the last four games, is second in the conference in total offense with 711 yards.

Jacobs' prime receiver, Dale Keller, tops league pass catchers with 18 receptions for 329 yards.

For the fourth straight week, ASU and New Mexico each lead in three team statistical departments.

The Sun Devils lead in total offense with 405 yards gained per game.

Phx. C.&C.C. Assn. presents
FRI. & SAT. Nov. 16-17-8:30 PM.
PHX. UNION H.S. AUDITORIUM

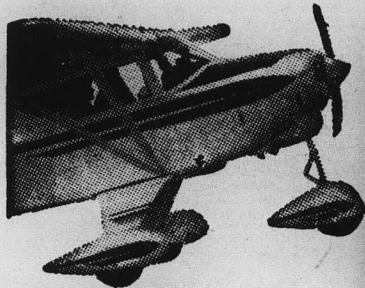
"Death of a Salesman"

STARRING
Hershel Bernardi

Pulitzer Prize
Critics Circle
Award Antoinette Perry
Award Theatre
Club Award
"Front Page"
Award

one of the most powerful dramas in the whole range of American Theatre.

Tkts. \$4.25-3.50-2.50-1.50 on sale
Linde Box Office, Hanny's, 1st St.
at Adams. Ph. AL 4-2979.



Wish You Could Fly?
Start Learning TODAY
the easy, economical
Piper COLT Way!

Complete Private Pilot course at a new low cost. We have 100% bank financing.

BRAND NEW MODERN AIRCRAFT • EXPERT GOVERNMENT-RATED INSTRUCTORS • NEW PIPER AUDIO-VISUAL GROUND SCHOOL COURSE.

Call
ANDERSON AVIATION
Phone 275-5741
Sky Harbor Airport

Off The Cuff

By Dennis Anderson

One of the more memorable highlights of ASU Homecoming is the honoring by the Alumni Association of Sun Devil gridiron teams of the past.

Tomorrow night during half-time of the ASU-Utah State Homecoming game, members of the 1922 team will be honored on their 40th reunion.

AT THAT TIME, ASU was known as the Tempe Normal School, and the team nickname was "Bulldogs." Head coach for the season was Earnest C. Wiils.

The Bulldogs of 1922 were the first football team at Tempe Normal in 3 years, the sport having been dropped after a dismal no-win 2-loss record in 1919.

Things didn't improve much in 1922, however, as the Bulldogs compiled a 0-3-1 record. Losses came at the hands of Mesa High, 13-6, and Phoenix College, 12-0 and 36-12.

The Bulldogs saved face by tying with Phoenix High, 13-13.

ACCORDING TO DON DOTTS of the Alumni group, a newspaper article of that season summed up the 1922 Bulldogs. It read as follows:

"The strength of the team was one of the big surprises of the season and except for inexperience and anxiety at critical moments the Bulldogs would have had a more victorious season."

The Alumni office has records of 11 members of the squad. Only 5 live in the Valley.

These five are expected tomorrow night.

Two of the more prominent members are John Goodwin, presently a faculty member of the ASU industrial arts department, and Cedric Austin, director of Phoenix parks and playgrounds.

THE FIFTH QUARTER: When Utah State's Aggies invade Sun Devil Stadium tomorrow night they will bring in two of the largest gridgers ever to appear here.

The more familiar name to ASU fans is Darnel Haney, 6-8, 240 pounds, an end more renowned for his basketball roughhouse tactics.

Then there's Big Bill Williamson, a ferocious 6-5 275-pound tackle who's already been drafted by the pro L.A. Rams.

NOW THREE LOCATIONS
1. Tempe Center 2. 1302 Rural 3. Bayless Center
Open 24 Hours A Day!

ZZZONA

DRIVE-IN LAUNDRY & CLEANERS
FIRST in Laundry and Cleaning • LAST in the Phone Book

AUTO REPAIRING

SPECIAL

FRONT-END ALIGNMENT \$6.95

'59 CHEVROLET \$895

TRANSPORTATION USED CARS As Low As \$95

We Do The Job RIGHT - The First Time!
Reasonable Prices • Work Guaranteed

BRIT SMITH Car Co.

CHEVROLET • OLDSMOBILE
802 Mill • WO 7381 • Tempe
MOST CARS - HURRY, LIMITED TIME OFFER

ASU Hosts WAC Cross-Country

Arizona State will host the first Western Athletic Conference Championship Nov. 10 when the Sun Devil harriers meet five member schools for cross country honors.

The run will be staged at the 3.3-mile Papago Park course.

Seven athletes from each school will compete, with the five best times counting toward the team title.

On the basis of team depth

and season record, the UofA contingent rates as the favorite for the title.

Other conference members participating will be Utah, Wyoming and New Mexico.

Flat Tops a Specialty • All Styles

Paul's BARBER SHOP

2008 Rural Road (Rural at Broadway) Three Chairs
Plenty of Free Parking

Keep America Strong & Healthy

Get In Shape Now!

Men: Get in shape quickly using the most advanced scientific methods.

Ladies: Improve your figure under the supervision of experienced lady instructors.

GRAND OPENING SPECIAL

CHARTER MEMBERSHIPS
5.00 PER MONTH

MEN: Mon., Wed., Fri., Sat.
LADIES: Tues., Thurs.

HOURS 10 to 10
CALL 967-7461

For A FREE trial Visit **MR. ARIZONA 1961**

WE GUARANTEE THESE RESULTS IN 60 DAYS

MEN	LADIES
— UNDERWEIGHT — Gain: 1½ Inches on each arm 3½ Inches on chest and shoulders.	— UNDERWEIGHT — Gain: 2 Inches on bust 10 pounds body weight
— OVERWEIGHT — Lose: 3 Inches Off waist and hips. 15 pounds body weight	— OVERWEIGHT — Lose: 3 Inches off hips and waist. 15 pounds body weight

UNIVERSITY HEALTH CLUB
63 E. Broadway, Tempe
PHONE: 967-7461