

# 'Hollywood Look' To Hit Campus

By ROSS FISH

The Hollywood look will be in vogue on campus during the next two weeks as organizations and dormitories construct movie sets reminiscing "Famous Flicks," the theme of ASU's Homecoming week Oct. 29-Nov. 4.

Finishing touches must be completed by 6 p.m. Nov. 2, when official judging begins, or the sets will be disqualified.

A panel of prominent Valley personalities will judge the pseudo-motion pictures during the evening of Nov. 2 for light-

ing, color, neatness and total effect.

THE FOLLOWING day, the judges will complete the score sheets on which a total of 10 points may be accumulated in each of six categories, including originality, animation, theme, design, effort and color.

Individual themes based on past or present movies were due last Wednesday in the ASASU secretary's office.

Themes and sponsors include "Where the Boys Are," East Hall; "Sayonara," Gammage Hall; "Dr. Jekyll and Mr. Hyde," Haigler

Hall; "Devil and Daniel Webster," Hunt Hall; and "From Here to Eternity," McClintock Hall.

OTHERS INCLUDE "Look Homeward Angel," Palo Verde Hall; "Duel in the Sun," Sahuaro "A"; and "The Greatest Show on Earth," Wilson Hall.

Sorority decoration themes include "Carousel," Gamma Phi Beta; "The Guns of Navarone," Alpha Delta Pi; "Moby Dick," Kappa Alpha Theta; "For Whom the Bell Tolls," Kappa Kappa Gamma; and "Devil at 4 O'clock," Alpha Sigma Alpha.

Other sorority entries are

"Three Faces of Eve," Alpha Phi; "Hunchback of Notre Dame," Sigma Sigma Sigma; "Some Like It Hot," Kappa Delta; and "Lunch at the La Mar Factory," Chi Omega.

Several fraternities on Alpha Drive will not participate in the decorations contest, since their projects must be displayed in the alley.

FRATERNITIES and their themes include "Snow White and the Seven Dwarfs," Alpha Epsilon Pi; "King Kong," Delta Chi; "The Good Earth," Alpha Gamma Rho; "Street Car Named De-

sire," Sigma Nu; and "Creature from the Black Lagoon," Sigma Phi Epsilon.

Other fraternity entries are "The Ten Commandments," Tau Kappa Epsilon; "Showboat," Pi Kappa Alpha; "Twelve Angry Men," Phi Kappa Psi; and "To Hell and Back," Lambda Chi Alpha.

Special interest groups with entries include "Pocket Full of Miracles," Newman Club; and "Man With the Golden Arm," Wesley Foundation.

Many groups had duplicated choices. Their themes will be announced later.



Vol. 41

Friday, October 19, 1962

No. 9

## Nov. 2 Classes To Be Dismissed

ASU classes will be dismissed all day Nov. 2 as 6,500 Arizona Education Association teachers, administrators and other school personnel meet on the ASU campus for the 71st annual convention.

Principal speaker at the two-day convention will be

Dr. Harold Taylor, who became the nation's youngest college president at the age of 30 when he was appointed president of Sarah Lawrence College, Bronxville, N.Y.

DR. TAYLOR is a distinguished educator, author, lecturer and was last winter's moderator of the ABC television series "Meet the Professor."

Dr. Taylor will speak at the Nov. 2 general session in the morning, and will repeat his address that afternoon.

The program of the general session, to be in the gym, will include greetings from Gov. Paul Fannin, W. W. Dick, state superintendent of public instruction, and ASU President Dr. G. Homer Durham.

Also, Walter Haffley, Tucson, president of the Arizona Congress of Parents and Teachers, and Dr. John Stille, Flagstaff, president of the Arizona School Board Association.

## Greeks To Give Work Tomorrow

Over one hundred ASU Greeks have volunteered to devote tomorrow working for the proposed Tempe-Scottsdale Valley Community Hospital.

Representatives from Panhellenic Council and Alpha Tau Omega and Sigma Chi fraternities will meet for briefing at 9 a.m. in Palo Verde Hall.

The group will work in Tempe and Scottsdale to fill petitions for an election on the establishment of the Valley Community Hospital district.

President of the Valley Community Hospital board of directors, John Pritzlaff, said the board will offer a trophy to the Greek organization with the most signatures per worker.

## Odd Odors Back Again

These are the times that try men's noses.

It's fertilizer time on campus, and a good number of lawns have been liberally doused with the stuff.

Things are looking up though.

Bob Svob, foreman for physical plant groundsmen, says that deodorized fertilizer has been put in strategic locations, such as around the MU and the Administration building.

For the rest of the campus — well, does anybody have an extra clothes pin?

## WORLD NEWS

### Khrushchev To Visit U.S.

WASHINGTON — Soviet Premier Nikita Khrushchev is said to have confirmed reports that he hopes to attend part of the UN General Assembly session in New York soon. He is expected to come to the U.S. sometime between Thanksgiving and Christmas.

American sources had no comment on the visit, saying it was up to Moscow to disclose its plans. President Kennedy already has decided to agree to one or more meetings.

### Minuteman Blown Up

CAPE CANAVERAL — Wednesday night a U.S. Minuteman "instant ICBM" veered off course and was blown up, raining wreckage over the launching area.

The 54-foot missile blasted from the bottom of a silo on a proposed 3,000 mile flight over the Atlantic, then cut back sharply toward the Florida mainland and had to be destroyed.

### Cuban Threat Causes Build-Up

WASHINGTON — The Communist threat in Cuba was named as the motive for a major build-up of air defenses in the southeastern United States announced yesterday by military sources.

Air Force officials said that radar equipment in the southeast has been considerably strengthened in recent weeks.

### Ben Bella Sides With Fidel

HAVANA — Algerian Premier Ahmed Ben Bella, after a state visit in Washington this week, has joined with Premier Fidel Castro in demanding that the United States give up its big naval base at Guantanamo, Cuba, the Cuban government announced Wednesday.

## Senate Kills Thomas Plea

BY TOM WING

ASASU Senate Wednesday defeated a motion to study further the possibility of an additional \$1,700 appropriation for ASU Senior Day program.

Additional funds had been requested by ASU Registrar Alfred E. Thomas, head of the program, in a speech to the senate Wednesday.

The motion to have the senate finance committee study the problem and bring forth a bill at the next session, Oct. 31, was defeated 13 to 15.

STUDY OF the additional appropriation, for the purpose of including a free lunch, came to the senate in the form of an invitation from the student affairs committee, which had been requested by President G. Homer Durham, to make the study. Dr. Durham's request resulted from a letter from Registrar Thomas.

Thomas, in a half-hour speech to the senate, asked for \$1,700 additional funds to conduct a program of a caliber equal to those of Arizona State College and the University of Arizona.

The registrar felt the free lunch was necessary as a "social amenity" and in consideration of the long distances traveled by the participating students.

Lengthy discussion by most of the senate followed Mr. Thomas' speech. Senator Susan Chemnick, present finance committee chairman and member of the committee last year, pointed out the length of time and consideration given by the finance committee to making the orig-

inal appropriation last year.

CHEMNICK also pointed out President Durham's consideration of the appropriation and willingness, upon signing the finance bill last year, to "try" the program without the free meal.

ASU previously provided the high school seniors participating in the program with a free noon lunch.

However, ASASU has tried to eliminate the free lunch during the last three years. ASASU did not pay for the lunch last year, but lunch funds were taken from another university source.

ASC and UofA both provide one free meal during their Senior Day programs.

IN OTHER ACTION Wednesday, newly elected freshman senators Fred Reish and John Reiser and four other senators who were absent from the first session were sworn into the senate by Chief Justice Steve Montgomery.

Senate Bill 179 received first reading to become the first legislation to enter the senate this year.

The bill, if passed, would eliminate the requirement that the chairman of the Rally and Traditions committee have one previous year of membership on the committee.

## Homecoming King, Queen To Be Elected Thursday

Royalty to reign over Homecoming Week will be chosen by the student body in Thursday's general elections.

Information sheets and photographs of each candidate are due today at 4 p.m. in the ASASU Secretary's office.

CAMPAIGNING will begin Tuesday morning and end when the polls close at 5 p.m. Thursday. Voters may vote for both king and queen this year, according to the elections board.

Crowning of the king and queen will be a highlight of the Halloween dance in the MU ballroom the following Wednesday. The pair will reign over the remaining activities of Homecoming week.

Candidates whose petitions have been turned in for Homecoming queen include Betty Bunn, Kappa Kappa Gamma; Lynn Chewning, Alpha Phi; Bev

Johnson, Kappa Alpha Theta; and Virginia Maddox, Gamma Phi Beta.

OTHER QUEEN candidates are Rosemary McDowell, Sigma Sigma Sigma; Sherlyn Nelson, Kappa Delta; Jan Nichols, Wilson Hall; Loretta Padilla, Alpha Sigma Alpha; and Sue Rawson, Quadrangle dorms.

Other candidates are Pinky Shoemaker, McClintock Halls; Diane Smith, Chi Omega; Delma Van Hooser, Alpha Delta Pi; and Marilyn Wood, Delta Gamma.

All king and queen candidate's photographs will appear in Wednesday's State Press.

# Blue Key Taps Eighteen Students

The ASU Chapter of Blue Key, national scholastic and service honorary, tapped 18 new members at a sunrise breakfast at the Tempe Sands Hotel at 6:30 this morning.

Tapped were Wayne Holsworth, Bob Chamberlain, David George, Dave Matthews, Bob Bonitati, Doug Zimmerman, Daryl Winn, Bob Hanson, Bob Eger and David Mills.

Also tapped were John Lee, Wayne McCarey, Chris Kilgard, Ron Tankersly, Dan Baker, Rick Muir, Nick Hagen and Richard Ray.

Requirements for selection for the Blue Key are junior academic standings, 2.5 grade index, and consideration of participation in major activities.

Blue Key sells programs at football games and sponsors the annual Blue Key carnival

and musicale fro funds which go for student scholarships.

The chapter will sponsor a homecoming luncheon for alumni before the Nov. 3 football game, and an election of a Blue Key Darling during the year.

Present Blue Key officers are Mike Craig, president; Andy Coles, vice president; Steve Sergeant, secretary and Gary Nichols, treasurer.

### NEW FURNITURE

According to the Jan. 11, 1946, State Press, new furniture has been ordered to "rejuvenate" East Hall. The residents of the hall can also expect a ping-pong set, shuffle board and a new pool table.

### Swimming Pool Times Released For Semester

This semester's swimming schedule has been announced by Clyde Smith, athletic director, and Marvin Grier, pool supervisor.

Recreational swimming for students, faculty and staff will be 11:30 a.m. to 12:30 p.m. on Monday, Wednesday and Friday and 4-5 p.m. Monday, Tuesday, Thursday and Friday.

On Saturday afternoons the families of students, faculty and staff can swim from 1-4.

The men's swimming team will swim daily from 2:30-4 p.m.

The Women's Swim Club will meet from 4-5 p.m. Wednesday and the synchronized swimming classes will be 6:30-8:30.

### Magazine Approved By Board Of Publications

The board of publications unofficially approved the distribution of a new college satire magazine yesterday after viewing the copy and layout of the proposed publication.

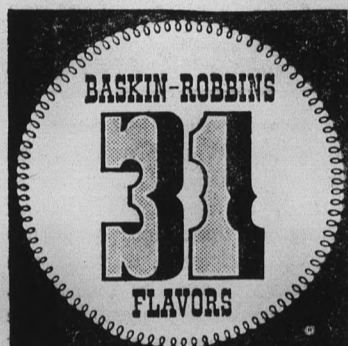
Charles Stough, a new ASU student, brought the material before the board in a petition for university sanction. According to the rules of the university, all material of this type must have permission for distribution before it can be brought on campus.

The first issue of the publication, to be called "Savant," will appear without charge to students, "about Nov. 15," said Stough.

"Something is sadly missing from a university of this size when it has no humor-satire

magazine," Stough said. "We'll be counting on student submissions for our material, which includes humorous articles, cartoons and photographs. The first issue is almost complete, but full information is forthcoming on submissions for those that follow."

The board lacked a quorum and could not officially rule on the matter, but granted tentative permission after a telephone poll of absent members. The official vote will come Nov. 1.



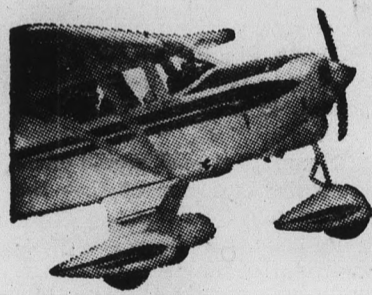
ICE CREAM STORE

TRY A NEW FLAVOR

- Vanilla Nut Mix
- Banana-Marshmallow
- Espresso
- Pumpkin
- Candi-Date
- Red Apple-Jack Ice
- Apricot-Orange Ice

TEMPE CENTER  
Phone 967-9776

Daily & Sunday 10 A.M. - 11 P.M.



Wish You Could Fly?

Start Learning TODAY

the easy, economical

Piper COLT Way!

Complete Private Pilot course at a new low cost. We have 100% bank financing.

BRAND NEW MODERN AIRCRAFT • EXPERT GOVERNMENT-RATED INSTRUCTORS • NEW PIPER AUDIO-VISUAL GROUND SCHOOL COURSE.

Call

ANDERSON AVIATION

Phone 275-5741

Sky Harbor Airport

### Mac & Jack Special HALLMARK

Halloween Decoration  
Large Selection  
Contemporary &  
Greeting Cards

Pioneer Camera  
Tempe Center

### UNDER 25?

Need Insurance?

We Write All . . .

- Auto • Motorcycle
- Trailer • Fire • Theft

RALPH PACKER

Valley Bank Bldg.  
967-3189 Tempe 967-9141

### Complete Tune-ups — Repairs — Steam Cleaning

SPECIAL 99c LUBE

With Oil Change

Monday thru Thursday

606 APACHE BLVD.

A & W EL PASO SERVICE

"Across From The Sands Hotel"

TEMPE



Tastes Great because the tobaccos are!

21 GREAT TOBACCOS MAKE 20 WONDERFUL SMOKES!

Vintage tobaccos grown, aged, and blended mild . . . made to taste even milder through the longer length of Chesterfield King.

CHESTERFIELD KING

TOBACCOS TOO MILD TO FILTER, PLEASURE TOO GOOD TO MISS



FOR A GENTLER SMOOTHER TASTE

ORDINARY CIGARETTES

ENJOY THE LONGER LENGTH OF CHESTERFIELD KING

CHESTERFIELD KING

The smoke of a Chesterfield King mellows and softens as it flows through longer length . . . becomes smooth and gentle to your taste.

# KAET GLIMPSES

Programming schedule for KAET, Channel 8:

**TODAY**

A.M.  
8:40 Business Law Telecourse  
9:40 Physical Universe Telecourse  
10:40 Living World Telecourse  
11:40 Physical Universe Telecourse  
P.M.  
12:40 Social Studies Telecourse  
6:00 What's New?  
"Judgment in Sports"  
6:30 Social Studies Telecourse  
7:15 Business Law Telecourse  
8:00 Psychology One  
"Perception of Objects"  
8:30 Living World Telecourse  
9:15 Physical Universe Telecourse  
10:00 Age of Kings  
"Uneasy Lies the Head"  
(Henry IV Part 2, Acts 3, 4, 5.)

**MONDAY**

A.M.  
8:40 Business Law Telecourse  
9:40 Physical Universe Telecourse  
10:40 Living World Telecourse  
11:40 Physical Universe Telecourse  
P.M.  
12:40 Social Studies Telecourse  
6:00 What's New?  
"Animals of the Tropics"  
6:30 Social Studies Telecourse  
7:15 Business Law Telecourse  
8:00 Art in Living  
"The Artist Today"  
8:30 Living World Telecourse  
9:15 Physical Universe Telecourse  
10:00 Special: State Department  
Briefing "Five Goals of U.S. Foreign Policy"

**TUESDAY**

A.M.  
9:40 Physical Universe Telecourse  
10:40 Living World Telecourse  
11:40 Physical Universe Telecourse  
P.M.  
6:00 What's New?  
"Sculpturing in Metal"  
6:30 About Ceramics

7:00 "Forms: Need They be Found?"  
7:30 "Animals of the Seashore"  
"Classifying Marine Animals"  
8:00 Heritage: Robert Frost  
"Frost and Dr. Jonas Salk"  
8:30 This New House  
"A Blueprint for Unity"  
9:15 Living World Telecourse  
9:15 Physical Universe Telecourse  
10:00 An Age of Kings  
"Uneasy Lies the Head"  
(Henry IV Part 2, Acts 3, 4, 5)

## Music Teachers Meet

The Arizona State Music Teachers Association will meet here tomorrow through Monday, its 34th annual state convention.

Student affiliates of ASMTA will perform along with ASU faculty members and students. Artists from Mexico and speakers from Arizona and California will be featured.

The programs are open to the public.

Clyde B. Smith, athletic director at Arizona State University, coached the Sun Devil football team from 1952-54.

## Peace Corps Envoy Will Speak Oct. 25

Harry Van Cleve, Peace Corps representative from Washington, D.C., will be the guest speaker for an orientation program sponsored by the International Affairs Club in the MU ballroom from 7:30-9:30 a.m. Oct. 25.

After the talk, Van Cleve will present a movie dealing with Peace Corps activities. Students and faculty members are invited.

All students interested in Peace Corps information may make appointments with Van Cleve by contacting Dean Gary Anderson in MU 213.

Thursday morning has been reserved for interviews.

# Royalty Contest Rules Presented

The Elections Board has announced the rules which will govern the campaigns and election for homecoming king and queen.

1. Posters and banners must have a registered number in the lower right hand corner. These numbers may be procured in Dick Finley's office, MU 226.

2. No banners can be placed across main thoroughfare and no election materials shall be placed on school property or shall deface school property. Also no posters or banners shall be placed on the MU lawn or Danforth Chapel lawn.

3. No campaign materials shall

be placed within 50 feet of the polls and no talking shall be allowed in the polls.

4. There shall be no limit to the size and number of the posters. There shall be no restrictions placed on handbills or name tags.

5. No ASASU loudspeaker can be used for campaigning for or by a candidate.

6. Rallies, demonstrations and parades can be held between 7:30 a.m. and 10:30 p.m. except during class hours. These must be conducted in an orderly fashion.

7. No campaign materials can be displayed before 6 a.m. Tuesday Oct. 23. All material must be removed by 10 p.m. Oct. 25. Campaigning by voice will be allowed at any time.

There will be two poll sites: one on the corner of College and Orange and one on the Social Science building lawn next to East Hall. The polls will open at 8:30 a.m. and close 5 p.m. Oct. 25.

Ballots must be marked only with an "X" or they will be disallowed. Each voter will vote twice, once for the king and once for the queen. Absentee ballots will be available Monday Oct. 21 from the ASASU secretary's office, MU 202.

Any candidate who does not follow the above prescribed rules will be immediately disqualified.

## Noted Dutch Novelist Due

Noted Dutch novelist, essayist, editor and critic Adriaan van der Veen will discuss "The Effect of European Unity on Contemporary European Literature" in the MU ballroom at 8 p.m. Monday.

The program, first of the monthly English Evenings, is sponsored by the English department and is open to the public.

Van der Veen is literary editor of a leading Dutch daily newspaper and is fiction editor of the Dutch magazine Delta, a quarterly published in English and distributed outside of Europe.

His articles on Dutch and

European literature have appeared in the Atlantic Monthly, the London Times literary supplement and the Encyclopedia Britannica.

He has lectured for the Brit-



VAN DER VEEN

ish Broadcasting Company and German radio.

He is a member of the Dutch Academy of Letters.

# STUDENTS . . .

## Buy Your -

- TRANSISTOR RADIOS
- TRANSISTOR RADIO BATTERIES
- TUBES FOR YOUR PORTABLES
- FLASHLIGHT BATTERIES
- RESISTORS - CONDENSERS
- CHOKES - TRANSFORMERS

At Wholesale Prices!

Electronic Kits - Test Equipment Kits - Hi-Fi Kits  
All at Lowest Prices

Complete Display of Latest Hi-Fi Gear "Demonstrated"

Make Your Dollars Go  
A Long Way at

**ELECTRONIC CENTER, INC.**

3400 E. Thomas Rd.  
Phone 264-6145



# BAP

BRITISH AUTO PARTS

PARTS AND ACCESSORIES FOR ALL FOREIGN CARS

BRITISH - FRENCH  
GERMAN - ITALIAN

915 E. Indian School  
264-6737

## ON STAGE!

TUE. OCT. 23 thru SUN. OCT. 28

**JANET BLAIR**

(IN PERSON)

IN A NEW

MUSICAL REVUE

Tues., Wed., Thur. 8:30 P.M.

Sun. 7:30 P.M.

2 Shows Sat. 7:30 & 9:45

\$3.75 & \$4.75

MAIL & PHONE ORDERS NOW!

Phone AM 6-4487, Phoenix

RICHARD CHARLTON'S

**SOMBRERO PLAYHOUSE**

4747 N. 7th St. - Phoenix



# PICK'S COIN-OP

Self-Service Laundry

Dry Cleaning

Locker Service

Coin Operated Hair Driers

— ALWAYS ATTENDED —

Mon. through Sat.—8 A.M.—10 P.M.

Sundays—9 A.M. - 9 P.M.

827 Rural Road Tempe

# ORANGE JULIUS



"A DEVILISH GOOD DRINK"

ORANGE OR LEMON  
MADE WITH FRESH JUICE  
— RICH IN VITAMIN C —

Truly A Health Drink

## ★ GRILLED DEVIL DOGS ★

- MONGREL (Mustard-Relish-Onion)
- PICKLE POOCH (Mustard-Dill P.)
- BAR-B-Q PUP (B-B-Q Sauce-Onion)
- KRAUT HOUND (Mustard-S. Kraut)

**25c**

- ★ MUTT CALIENTE ..... 30c
- ★ BLUE RIBBON PUP ..... 35c

## Broiled (Ground Chuck) Burgers

1 Patty 30c — 2 Patties 45c

Served With Potato and Carrot Chips

ENJOY INSIDE OR PATIO SEATING  
3517 East Van Buren — Phoenix

Open 9 A.M. - 12 P.M. Daily — Till 2 A.M. Fri. & Sat



The one lotion that's cool, exciting  
— brisk as an ocean breeze!

The one-and-only Old Spice exhilarates... gives you that great-to-be-alive feeling... refreshes after every shave... adds to your assurance... and wins feminine approval every time. Old Spice After Shave Lotion, 1.25 and 2.00 plus tax.

**Old Spice** — the shave lotion men recommend to other men!

SHULTON



THE STATE PRESS, distributed by the campus chapter of Sigma Delta Chi under the direction of Circulation Manager Mike Barrick, is the official campus newspaper of Arizona State University. It is published each Wednesday and Friday throughout the school year, excepting holidays, and is entered as second class matter at the Tempe, Arizona, Post Office under the Acts of March 3, 1879, and August 24, 1912. Subscription price, \$3 per school year.



THE STATE PRESS is a member of the Arizona Newspapers Association, Associated Collegiate Press and National Advertising Service, Inc.

EDITOR-IN-CHIEF ..... LINDA WARREN SIMS  
 NEWS DEPARTMENT  
 MANAGING EDITOR ..... BILL OVEREND  
 CAMPUS EDITOR ..... TWILA DRUMM  
 ASSISTANT CAMPUS EDITOR ..... BECKY ACUFF  
 ASSIGNMENTS EDITOR ..... GWEN ZUPANCIC  
 ASSISTANT ASSIGNMENTS EDITORS ..... TOM WING  
 NANCY TENNEY, PAM VAN BUSKIRK  
 NEWS EDITORS ..... BOB ZACHE, BOB CLAMPETT  
 ASSISTANT NEWS EDITOR ..... ROSS FISH  
 COPY EDITOR ..... GARY OLMSTEAD  
 CHIEF PROOFREADER ..... LYNDA HARRIS  
 SPORTS DEPARTMENT  
 SPORTS EDITOR ..... BOB JACOBSEN  
 ASSISTANT SPORTS EDITOR ..... DENNIS ANDERSON

# Sounding Off....

By LINDA WARREN SIMS

For the game tomorrow night, Mike Schwartz, head cheerleader, requests that everyone bring a noisemaker of some sort — cowbells, raspberries, horns, whistles.

Since it is so close to Halloween, you should have no trouble finding one in the dime stores around town.

This could be fun, and noise-makers could take up the slack in the noise that the "neck-tied, high-heeled, tight-collared, well-girdled" students cannot make, being physically impaired by the Sunday-best duds that they wear.

**MOST OF THE** high-heeled young things are so exhausted by the perilous ascent up the bleachers that they cannot yell for the entire first half. Then they are so worried about the forthcoming descent that they can't yell during the second half.

Thus, the R&T Board has suggested a "grub night" for this weekend. Sweatshirts, cut-offs, burmies, slacks, Levi's, etc., are recommended attire, and Lord knows they are certainly more comfortable, although far from stylish.

Remember, the night Mike had the roll call yell, when he named off the various classes, fraternities, sororities, dorms and the faculty and called for yells from each group?

Well, this was a successful yell but a couple of groups were left out and afterward complained.

**MIKE WANTS TO REPEAT** this yell during the remaining games, so if you want your group to be called upon to yell out, pick up a registration blank at the Sigma Nu house, fill it out, and you, too, will have your say.

Mike had nothing but compliments for the spirit displayed at the Washington State contest and regrets having had to miss last week's game.

He will welcome any suggestions for new cheers. Mike's philosophy about cheering goes something like this:

"I don't intend to get smutty. Cute, yes, but not smutty."

You all may be wondering why I give Mike so much publicity in this column.

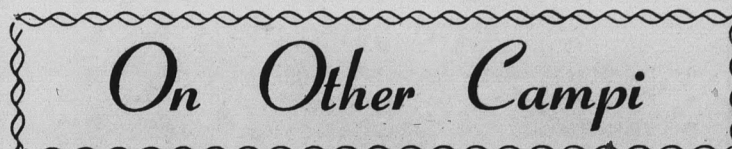
**WELL, FIRST,** I am one of his many fans. Second, he is doing a fine job as head cheerleader, perhaps the finest job anyone has done since I have been attending ASU.

Third, Mike gets no pay — nothing — for his time and energy, so a few good words in this column might boost his morale and keep his view optimistic.

These explanations should cover most of the inquiries.

\* \* \*

**DUE TO** the recent disgrace brought to the Phi Kappa Psi national fraternity by the UofA Alpha chapter, we have allowed our own outstanding ASU Beta chapter to have the opportunity to clarify its position. A letter to the editor appears today from the ASU chapter in order to avoid any more dissension that might arise locally because of the Tucson incident.



## On Other Campi

**UNIVERSITY OF ARIZONA** . . . Alpha Chapter of Phi Kappa Psi, national social fraternity, has been permanently expelled from the UofA campus following a drinking party in the fraternity's house on October 6.

The fraternity has been on probation since last year on charges of a general lack of leadership and poor scholarship. The drinking party resulted in the permanent action, according to A. L. Slonaker, dean of men.

## Letters To The Editor

TO THE EDITOR:

I have been following the many charges and counter-charges about the events in Mississippi, the controversy over General Edwin Walker, and the charges against the "right wing extremists" who seem to support Governor Barnett. But up to now I have not once seen an intelligent analysis of the situation in any newspaper that I have read.

The issue in most people's minds is that of racial inequality. This is a very real issue, a very serious issue and a very emotional one. Consequently many people tend to try to make it appear that it is the only issue, making out that all who support Governor Barnett are rabid racists and ought to be rounded up and put in jail.

But the racial issue is not the only issue. That is why Governor Barnett has picked up support from people who are definitely not segregationists or anti-Negro. Please do not stop reading now and I will show you what most people do not want to know.

When the thirteen sovereign colonies got together to form a nation, they wanted to be sure that they did not lose the right to govern themselves as they saw fit. Remember that they were fearful about joining in the first place—especially the southern states which supported slavery. After much debate, the Constitution of the United States emerged, clearly defining the duties of the federal government. A balance between centralized and decentralized government was attained, allowing the federal government to rule, but protecting the states from federal coercion with the ninth and tenth amendments. The Constitution also made provisions for amendments in the future by the passing of the proposed amendment through Congress with a two-thirds vote and then being ratified by three-fourths of the states.

The Declaration of Independence said that all men were created free and equal, but then there was slavery. Then, at least, the "rail men" did not include the Negro. Slavery was finally abolished by the Civil War, but just abolishing slavery did not make the Negro "free and equal."

The question of self rule had been left to the individual states. Some had integration, some had both segregation and integration and some had just segregation. This was done by the states. In the south, segregation was law, made law by the duly cision it technically repealed the states' rights on the issue of segregated lawmakers. Until 1954, segregation in the south was legal in all respects. In 1954 the U. S. Supreme

Court made the decision that segregation would be illegal. By this decision. And now we hear a new controversy: Does the Supreme Court have the power to make this decision? The average person will at once answer, "Yes, it's the Supreme Court, isn't it?" But again the lack of analysis and lack of respect for the views of the other side are flagrant.

The first step toward conciliation is to make the basic assumption that men must obey the law. When men do not obey the law, chaos results. The leaders, if they violate the law, must rely on their popularity with the people for their power, which is very dangerous. Once the law is violated by the leaders, anything can happen because all of the curbs to power are nullified. Therefore law must be obeyed if order is to be kept.

Benjamin Franklin was once asked if we have a republic or a democracy and is said to have replied, "A republic, if you can keep it."

To keep our present form of government, we must obey its constitution. And here is the area that people can honestly question the authority of the Supreme Court on the 1954 decision.

The decision of the Supreme Court violated the tenth amendment. That amendment states, "... the powers not delegated to the United States by the Constitution, nor prohibited by it to the states, are reserved to the states respectively, or to the people."

Now, however, because of this Supreme Court decision, the federal government can intervene in states' affairs anytime the Supreme Court, acting as its conscience, disagrees with the people in that state.

Thus the question arises — Can the Supreme Court amend the Constitution? The U. S. Supreme Court, by ruling certain laws unconstitutional, early became respected as the guardian of the Constitution, and this was indeed a function of the Court to protect our privileges which were enumerated in the Constitution. But . . . Can the Court CHANGE the Constitution?

A method to change the Constitution was specifically indicated in the Constitution. The Constitution enumerated the powers and duties of each branch of the government. And the Protector of the Constitution was not given the power to be the Wrecker of the Constitution.

No one denies that the racial situation in Mississippi is bad. No one denies that refusing a Negro child the right to attend a public school is unjust. This is agreed upon by liberals and conservatives alike. But in the south—up to 1954—segregation was the law, made by legally installed lawmakers. What is the right way to correct the situation? Amend the Constitution in a normal way or repeal the Constitution in an unheard of and illegal way?

I myself have no doubt that an amendment to the Constitution could be passed. Why don't we try the legal way?

Dean Holland

With the revealing of the events concerning our brother chapter at the University of Arizona, we of Phi Kappa Psi fraternity feel that a word to Arizona State University Students, faculty and alumni is in order.

We are sorry that Arizona Alpha has acted in a manner unbecoming a fraternity. Their violation of the high standards of Phi Kappa Psi could only result in the action taken by the administration of the UofA or by action of the national Phi Kappa Psi fraternity.

We have worked hard to fit into ASU's Greek system. We are proud of the "leadership ability and scholastic responsibility" which we have shown.

To elaborate, we placed first scholastically among ASU's 20 fraternities last spring, capturing the most improved scholarship trophy and the highest overall fraternity trophy. We now have five men in Blue Key, national scholastic and service honorary.

Once again, we are grieved over our brother chapter's situation, but we do not intend to let guilt by association hamper our continued growth and progress.

Phi Kappa Psi Fraternity  
 Bob Clampett, President

TO THE EDITOR:

Under what policies does the university administration approve off-campus housing for students? Do these policies include segregation?

On Sept. 17, 1962, we moved into the Sun Devil Apartments, 121 E. Broadway, Tempe.

AFTER we had resided there

for approximately three weeks, it was brought to our attention by the management that anyone who had strong feelings for integration should voice his opinion.

Since we felt strongly in favor of integration, we let it be known to the management.

The management then expressed its policies and proclaimed that the apartments were segregated.

We replied that this policy was unreal, whereupon the management said, "If you don't like it, you can leave." This we did.

Arizona State University is a land-grant college, and in accordance to this grant, no form of segregation is allowed at this institution.

Therefore we propose an investigation of the Sun Devil Apartments and its policies about student segregation.

These apartments are using the nickname of this school and therefore the school's policies might be misinterpreted as the existing policies now enforced at the Sun Devil Apartments.

**IN ORDER** to keep situations such as these from reoccurring, the university should either not allow students to live in segregated housing or should prevent owners of off-campus housing whose policies are in alignment with segregation from using the school symbol or name to entice students to live there.

If nothing is done about this existing off-campus situation, one might then speculate a functional relationship between the policy of the Sun Devil Apartments and its condonement by this school.

John Peter Abt  
 David L. Greenberg

## I Cover College Avenue

By BILL OVEREND

Allow me to explode a myth for you.

It concerns the popular belief that independents have as much say on the ASU campus as Greeks. It is based on the assumption that numbers alone guarantee equality in prestige, freedom of action and equal representation.

It is false.

If you haven't noticed, this student body is run by a Greek minority. Your student body officers all are Greeks. Your Supreme Court is packed with Greeks. Almost all student committees are staffed by disproportionately large amounts of fraternity and sorority men and women.

**A MINORITY** rules ASU student government. And it's the fault of the majority of independents.

It is unfortunate that ASU independents have consistently allowed the Greek majority to run roughshod over them during every recent campus election.

It is unfortunate that qualified independents who may seek victories in future campus elections will be hampered by their lack of organized backing.

But they have only themselves to blame.

**ASU'S GREEKS** are a wonderful aggregate of worthy persons. It's not their fault that they have assumed so much power around here.

It's time, however, for our independents to assume some power of their own. It's time they started voting in elections. It's time they started insisting that they be given an equal voice in campus affairs.

If they don't, ASU's independent mass will deserve to remain in its position of the downtrodden underdog. That position, I might add, will not bother too many Greeks.

\* \* \*

**HOMEcoming** preparations are still in the most disorganized state of affairs in recent years.

Only last week, the Homecoming committee issued a brochure of scheduled events and activities for Homecoming Week.

With few exceptions, every major fact listed in the brochure was incorrect, including the date for election of king and queen.

Let's hope the committee and the minds running it manage to squeeze past the rapidly approaching event without too much embarrassment to themselves or their school.

# Sigma Phi Epsilon Treats Boys Ranch

Sigma Phi Epsilon Chandler by university buses. fraternity and ASASU President Bob Carter treated 65 boys from the Arizona Boys Ranch with a pre-game dinner and box seats for the ASU-West Texas football game last Saturday. The boys, all between the ages of 12 and 17, were brought to the Sig Ep fraternity house on Alpha Drive from the Ranch in

President Carter's student government box awaited the boys for the game after a 6 p.m. dinner at the fraternity house. The boys were returned to the ranch after the game. The boys, who are all self supporting are, according to President Carter, examples of their motto "Where boys with problems become men of promise."

## New Library Cards Issued

Library cards are now being issued at Matthews library.

Assistant librarian Frank Schneider requests that students secure the cards within the next two weeks.

Schneider said students losing cards should contact the library immediately since they will be liable for all books issued with the cards.

## 56 ON FIRST TEAM

A total of 56 Arizona State University football players were named to the All-Border Conference first team during the 30-year history of the league.

Mac & Jack Special  
5 Transistor Radio  
Desk Size  
Reg. \$37.95 — Now \$31.95  
Pocket Size  
Reg. \$29.95 — Now \$23.95

Pioneer Camera  
Tempe Center

## Faculty Facts—

# PE Classes Set For Faculty Men

Exclusive for faculty men: fitness and recreation program with classes beginning next week.

Ken Penman, assistant professor of physical education, will supervise two sections scheduled for Monday and Tuesday from 12-1 p.m. Classes also are available on Monday-Wednesday and on Tuesday-Thursday.

"Sessions will be informally conducted and customized to meet the needs and capacities of the individual," reported Clyde B. Smith, head of the division of health, physical education and recreation.

## Building Research

Milton D. Lowenstein, assistant professor of architecture at ASU, was appointed to the Building Research Institute's planning committee Wednesday.

Purpose of the committee will be to consider the city's land resources for further building expansion.

## Paper Presented

Dr. Gerard Hasserjian, new associate professor of engineering, recently presented a paper entitled "Fields of a Curved Plasma Layer Excited by a Slot" at a meeting of the International Union of Radio Societies in Ottawa, Canada.

## Hill To Speak

Robert C. Hill, ASU assistant professor of accounting, addressed the national meeting of the Institute of Broadcast Financial Management in Milwaukee, Wis. this week.

His subject was "Dollars and Decisions—the Contributions of Quantification to Broadcast Management."

Hill based his speech on his doctoral research in the area of decision formulation and cost-revenue analysis in television broadcast operations.

## Science Seminar

Dr. John W. Conant, research physical chemist of Aerojet-General Corporation, will present a seminar in Physical Sci-

ences C108 this afternoon at 3:40.

"High Temperature Reactors for Kinetic Studies" and "The Structure of Hydrazine Perchlorate Hemihydrate" will be the subjects discussed.

## Nurses At Meeting

Rosemary Johnson, associate professor of nursing at ASU, and LaRue Weed, instructor in the school of nursing at ASU, recently attended meetings of the American Public Health Association in Miami, Florida.

## RUSSIAN FILM SHOWN

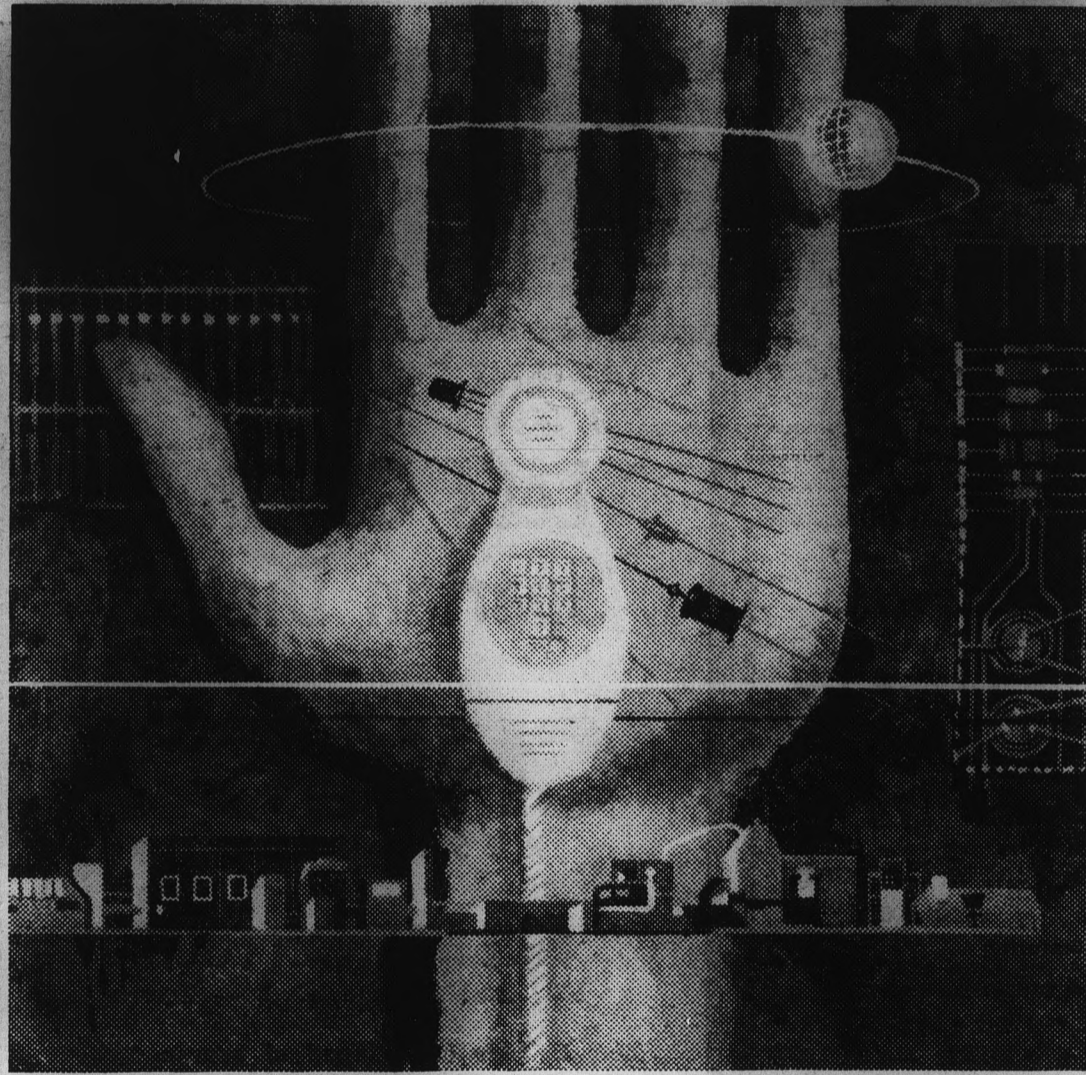
"A Look at Central Asia," a slide show presented by Professor Sanford Couch, was featured in the first Russian Circle meeting of the year Monday.

Professor and Mrs. Couch toured Russia in 1960 under the United States foreign exchange program.

## SUN DEVIL FACTS

The 1,300 members of the 1948 spring semester freshman class had to assemble on the lawn in front of the Arizona State auditorium because there was not enough room to seat them in the building.

**CASA LOMA**  
**DINING ROOM**  
(Now Under Management of Leon Parkhurst)  
**COMPLETE MENU**  
BREAKFAST — LUNCH — DINNER  
Open Daily 7:30 A.M. to 9:30 P.M.  
Open Late On Game Nites  
Available For Private Parties — Ph. WO 7-9970  
390 Mill Ave. Tempe



## Our future is in the hands of men not yet hired

At Western Electric we play a vital role in helping meet the complex needs of America's vast communications networks. And a career at Western Electric, the manufacturing arm of the nation-wide Bell Telephone System, offers young men the exciting opportunity to help us meet these important needs.

Today, Western Electric equipment reduces thousands of miles to fractions of seconds. Even so, we know that our present communications systems will be inadequate tomorrow; and we are seeking ways to keep up with—and anticipate—the future. For instance, right now Western Electric engineers are working on various phases of solar cell manufacture, miniaturization, data transmission, futuristic telephones, electronic central offices, and computer-controlled production lines—to name just a few.

To perfect the work now in progress and launch many new communications products, projects, procedures, and processes not yet in the mind of man—we need quality-minded

engineers. If you feel that you can meet our standards, consider the opportunities offered by working with our company. In a few short years, you will be Western Electric.

Challenging opportunities exist now at Western Electric for electrical, mechanical, industrial, and chemical engineers, as well as physical science, liberal arts, and business majors. All qualified applicants will receive careful consideration for employment without regard to race, creed, color or national origin. For more information about Western Electric, write College Relations, Western Electric Company, Room 6206, 222 Broadway, New York 38, New York. And be sure to arrange for a Western Electric interview when our college representatives visit your campus.



Principal manufacturing locations at Chicago, Ill.; Kearny, N. J.; Baltimore, Md.; Indianapolis, Ind.; Allentown and Laureldale, Pa.; Winston-Salem, N. C.; Buffalo, N. Y.; North Andover, Mass.; Omaha, Neb.; Kansas City, Mo.; Columbus, Ohio; Oklahoma City, Okla. Engineering Research Center, Princeton, N. J. Teletype Corporation, Skokie, Ill., and Little Rock, Ark. Also Western Electric distribution centers in 33 cities and installation headquarters in 16 cities. General headquarters: 195 Broadway, New York 7, N. Y.

**BOOK DISCOUNT SERVICE**

P.O. Box 32033, Los Angeles, California

**CAMPUS Launderette**

- Hand Ironing
- Shirts - Trousers
- Cleaning
- ROTC Uniforms

SPECIAL RATES ON FLUFF DRY

"Next Door To The V.I."  
WO 7- 3982

LIKE MAKE HOLIDAY AIR RESERVATIONS NOW...

You Pay No Extra Scratch For Our Service

Don't Sweat Going To Phoenix We Represent All Airlines

"SWING BY TODAY" UNIVERSAL TRAVEL  
WO 7-1673  
18 E. 5th St.

# Social Work School To Be State's First

Arizona's first graduate school in social service administration will open a two year program at Arizona State University next September. It will be one of 67 such schools in the U.S. and Canada.

Entrance to the graduate school of social service administration is available to students with a Bachelor of Arts degree. A Master of Social Work degree is given upon completion. Dr. Horace Lundberg, the school's new dean, expects an enrollment of 20 to 25 students.

**DEAN LUNDBERG** was associated for seven years with the Graduate School of Social Work at the University of Utah. Later he worked as a specialist in developing school social work under the U.S. Office of Education in Washington, D.C.

Dean Lundberg's staff, comprised of four or five permanent faculty members, is in the process of outlining the proposed courses.

**WORK WITH** family services, juvenile delinquency, the Child Welfare Bureau and any kind of social work is the aim of the school.

It also hopes to aid such Valley groups as the Veteran's Administration, the Indian Agency and recreation and youth centers.

## Bathe Early Or---Brrrrrr!

Cold showers only will be the result of a shutdown of steam and hot water on campus from the central physical plant from 10 p.m. tonight to 5 a.m. tomorrow.

During this time connections will be made between the existing plant and new construction.

## OLD SCIENCE BUILDING

The Science building, completed in October, 1948, costing \$600,000 was at that time the first major building addition to the Arizona State campus in 30 years.

## Dietitian To Speak Here

Captain Ernestine Neuhart, Air Force dietitian will speak to Home Economics students at 8:00 a.m. on October 24th in the Home Economics Building. All interested students are invited to attend this lecture.

Captain Neuhart is a graduate of Montana State College where she received a B.S. in Home Economics. She completed the required 12 months internship at the University of California Medical Center.

Captain Neuhart has served on the staff at the USAF Hospital, Aerospace Center at Lackland Air Force Base, Texas, and at other commands in California.



Captain Ernestine Neuhart



**PILOTS** — Advanced Air Force ROTC cadets look over one of the many navigation charts they'll study in the Flight Instruction Program. Hoping to qualify for Pilot Training are, kneeling from left, to right, Buford

D. V. Ness, John W. McCarey, Brad L. Shelton and George W. Rhodes. Standing, Alfred H. Tichenor, Sol W. Ward, Gail D. Walston, Jack N. Dole, Roy R. Shannon and Harold W. Lowe.

## Paramount To Contribute To Fund

Paramount Picture Studios will contribute a sizable amount to the ASU student loan fund, according to Dean Smith, project coordinator for Jerry Lewis'

movie, "The Nutty Professor." The first crews from Paramount are due to arrive about Nov. 12, to set up equipment.

Filming is scheduled to begin Nov. 15, and continue through Nov. 16 and 17.

## Youngest ASU Student?

Paul Merton may well have been the youngest person ever to register as a freshman student at Arizona State. Paul, who entered the school in September, 1948, did not celebrate his 17th birthday until Oct. 25.

**Mac & Jack Special**  
**REMINGTON**  
 Portable Typewriters  
 Reg. \$58.45 — Now \$44.95  
 Reg. \$95.25 — Now \$69.95  
**Pioneer Camera**  
 Tempe Center

Flat Tops a Specialty All Styles

## Paul's

### BARBER SHOP

2008 Rural Road Three Chairs  
 (Rural at Broadway) Plenty of Free Parking

## Bunch's Watch Shoppe

Where Discounts Are Real

featuring  
 • BULOVA WATCHES  
 • SPEIDEL BANDS

Phone WO 7-3221  
 609 MILL — TEMPE

## ATTENTION SUN DEVILS

# Let's Go On A Spartan Diet...

# CHICO'S

## RESTAURANT\*

### FINE MEXICAN FOOD

1120 East Apache Blvd. — Tempe

\*Air conditioned of course

## FOR YOUR HOMECOMING NEEDS

SEE 

ARTIST SUPPLIES  
 CRAFTS — HOBBIES  
 DECORATING MATERIALS

OPEN MON., THURS. & FRI. NIGHTS  
 TEMPE CENTER WO 7-4482

## Lee Optical's "on campus"

Lee Optical glasses are seen wherever ASU students gather! Visit your Lee Optical Office and Contact Lens Center at 805 Mill Ave., Tempe Center.

Single vision glasses as low as **\$11.85** Quality contact lenses **\$85.00**

Open Thursday nights and all day Saturday / Pay-as-you-wear

**6 CONVENIENT OFFICES TO SERVE YOU:**

<b>TEMPE</b> 805 Mill Ave.	<b>PHOENIX</b> 16 West Adams	<b>CHRIS-TOWN</b> 19th Ave. & Bethany Home Road
<b>SCOTTSDALE</b> 655 N. Scottsdale Rd.	<b>MESA</b> 129 West Main	<b>YUMA</b> 2816 4th Avenue



Where it's always SAFE to save money on glasses...and contact lenses too!!!

## CCUN Affiliate Eyed

Efforts will be made to organize an ASU affiliation with the Collegiate Council for the United Nations at 3:45 p.m. Monday in MU 7.

A national student organization devoted to informing students of the United Nations' policy and functions, the CCUN has more than 350 college affiliates. The development of a group

to organize the CCUN was encouraged in ASASU President Bob Carter's "State of the University" address Oct. 3.

Steve Sargeant, student organizer, said that the CCUN's program and purposes, its support on other campuses, and hopes for the ASU affiliation will be brought out at the first meeting.

## College Bowl Competition Set

Application blanks are available for 1962-63 College Bowl competition.

Interested organizations may obtain entry blanks and rules from the Student-Faculty Relations Board at the MU information desk.

Applications must be returned by 4 p.m. Nov. 1.

## Greeks Name Officers

Three sororities and one fraternity have announced their fall semester pledge class officers.

New officers of the ALPHA EPSILON PHI pledge class are Barbara Shurberg, president; Marsha Smith, vice president; Barbara Jo Berkson, secretary, and Judee Sorkin, treasurer.

ALSO, Arlene Hochfeld and Miss Shurberg, regular Panhellenic delegates, and Miss Berkson, alternate delegate.

KAPPA KAPPA GAMMA pledge officers are Edith Orstadt president; Sue Effron, vice president; Janie Stonehouse, secretary; Diane Battenfield, treasurer; Judy Thomas, house.

Others, Mary Ann Everly and Kathy Baker, junior Panhellenic delegates; Sharon Miller, public relations; Donna Shaw, social chairman and Tanya Pomeroy, scholarship.

SIGMA SIGMA SIGMA pledge officers are Magdalene Caganich, president; Jane Whitaker, vice president; Linda Hunsicker, secretary; Susan Meagher and Maggie Bartholomeaux, Panhellenic delegates, and Sandy Comstock, WAA.

PI KAPPA ALPHA pledge class officers are Cullen Hollister, president; Dave Palko, vice president; John Sentz, secretary, and Paul Donah, treasurer.

Attention, all witty, urbane college students:

# Get Lucky!

## MAKE \$25 (or would you like to try for \$50?)

### ENTER LUCKY STRIKES' ZANY NEW "Crazy Questions" Contest

(Based on the hilarious book "The Question Man.")

50 CASH AWARDS A MONTH. ENTER NOW. HERE'S HOW:

First, think of an answer. Any answer. Then come up with a nutty, surprising question for it, and you've done a "Crazy Question." It's the easy new way for students to make loot. Study the examples below, then do your own. Send them, with your name, address, college and class, to GET LUCKY, Box 64F, Mt. Vernon 10, N. Y. Winning entries will be awarded \$25.00. Winning entries submitted on the inside of a Lucky Strike wrapper will get a \$25.00 bonus. Enter as often as you like. Start right now!

**RULES:** The Reuben H. Donnelley Corp. will judge entries on the basis of humor (up to 1/2), clarity and freshness (up to 1/2) and appropriateness (up to 1/2), and their decisions will be final. Duplicate prizes will be awarded in the event of ties. Entries must be the original works of the entrants and must be submitted in the entrant's own name. There will be 50 awards every month, October through April. Entries received during each month will be considered for that month's awards. Any entry received after April 30, 1963, will not be eligible, and all become the property of The American Tobacco Company. Any college student may enter the contest, except employees of The American Tobacco Company, its advertising agencies and Reuben H. Donnelley, and relatives of the said employees. Winners will be notified by mail. Contest subject to all federal, state, and local regulations.

<p>THE ANSWER:</p> <p><b>ANCIENT EGYPTIAN MUMMIES</b></p> <p>THE QUESTION: Who raised ancient Egyptian children?</p>	<p>THE ANSWER:</p> <p><b>WHALE OIL</b></p> <p>THE QUESTION: What's good for lubri-cating creamy whales?</p>	<p>THE ANSWER:</p> <p><b>Art Appreciation</b></p> <p>THE QUESTION: What does Arthur Appreciation like to be called?</p>
<p>THE ANSWER:</p> <p><b>TWAIN</b></p> <p>THE QUESTION: What wuns on a twack?</p>	<p>THE ANSWER:</p> <p><b>James Joyce</b></p> <p>THE QUESTION: Can you give a boy's name and a girl's name both starting with J and having five letters?</p>	<p>THE ANSWER:</p> <p><b>Across the river and into the trees</b></p> <p>THE QUESTION: How do you get to Grandma's house?</p>

The answer is:

# Get Lucky

the taste to start with... the taste to stay with

The question is: WHAT IS THE SLOGAN OF THE FAVORITE REGULAR CIGARETTE OF TODAY'S COLLEGE STUDENTS? If you missed that one, go to the rear of the class. Everyone should know that fine-tobacco taste is the best reason to start with Luckies, and that taste is the big reason Lucky smokers stay Lucky smokers. Prove it to yourself. Get Lucky today.



Product of The American Tobacco Company - "Tobacco is our middle name"

*Joe Sellek*  
FOR YOUR

- ★ TROPHIES  
A Good Selection In Stock
- ★ ENGRAVING  
Rapid One-Day Service
- ★ RESTRINGING  
Done Scientifically

*Joe Sellek Co.*  
624 MILL AVENUE

Fri., Oct. 6 — 8:30 p.m.  
Phx. Union High School

**BUD TRAVIS**  
and  
The Brilliant  
Wonderfully  
Entertaining  
Up & Coming Folk  
**TWOSOME**

Tkts. \$2.50 - 2.00 - 1.50  
Linde Box Office  
Hanny's 1st St. & Adams  
Ph. AL 4-2979

### Campus Classified

Regulations: For students and faculty only of Arizona State University to Room 207, Memorial Union Building, by noon two days before date of publication: noon Monday or Wednesday's issue, noon Wednesday for Friday's issue. Rates: 3 cents per word, 50 cents minimum charge.

#### ● FOR SALE

\$125.00—1952 Stick Shift. Radio and heater. Excellent Motor. Buick Hardtop. Good transportation. Call WO 7-7253. HURRY!!

#### ● SEWING

Sewing, altering, and dressmaking. Mrs. Kotten, 1311 W. 16th Place, Tempe, Arizona. WO 7-9173.

#### ● FOR RENT

Nearly new one bedroom furnished apartment. Special rate to University couples, \$75. Water paid. 1409 Rural Road. WO 7-5348.

#### ● WANTED

Amateur Radio operators interested in forming ASU Club contact Carl Haywood K7EAB Room 209, Best A.

# Residents Honored By AWS

The AWS all women's tea honoring head residents is scheduled for Wednesday in the MU upper lounge from 3 to 5 p.m.

The tea will honor women head residents, house mothers of fraternity houses, and Dean Catherine Nichols and Dean Maxine Neely.

Women students are invited to come and meet the head residents of other dormitories and the deans. Apparel will be dresses and flats.

The theme is "Autumn" and entertainment will be provided by pianist Robert Vujkov, ASU freshman.

General chairman of the tea is Judy Hamer; decorations, Bernice Fong; refreshments, Geri Swanberg; entertainment, Susie Hing; invitations, Kathy Krauss; and publicity, Carolyn Swartz.

## BUSINESS NEWS

"New Techniques in Management Control" will be discussed this week on the Western Business Roundup radio program.

It may be heard on KOOL at 9:35 a.m. Friday, KPHO at 5:05 p.m. and KRIZ at 11:30 p.m. Saturday.

## Fred Elquest & Son

Everything for the Art Student  
• Art Supplies  
• Picture Framing  
703 N. 2nd St.  
Phoenix  
PHONE AL 8-2628

# SAM Tours Phone Co.

Members of the Society for the Advancement of Management toured the offices of the Mountain States Telephone and Telegraph Company yesterday.

Students interested in any phase of management or related fields are invited to join SAM.

The group meets twice a month, with an outside speaker at one meeting. Bill Smith of Air-Research spoke at the last meeting.

SAM president is Frank Kirdar. Dr. R. L. Blomstrom is the adviser.

# Turnbow Speaks On Flight Safety

Dr. James W. Turnbow, department of engineering science, will speak to Sigma Xi, scientific honorary, about "Full-Scale Crash Testing of Aircraft with Emphasis on Safety," at 8 p.m. Tuesday in the Physical Science Auditorium.

Dr. Turnbow will discuss research on flight safety, which is being conducted by the Aviation Crash-Injury Research, a branch of Flight Safety Foundation. The ACI Research places emphasis on the cause of injuries in order to reduce the number and severity of accidents.

The talk will be illustrated with slides and a movie.

## LARRY'S TV

727 Apache Blvd.  
WO 7-0920  
Hi-Fi — Stereo Phonographs

# Chapel Corner

By ED HEATH

The Chapel Corner column appears in the State Press today and every Friday for the purpose of printing information about ASU religious organizations.

Contact Ed Heath at the State Press office, MU 211, or call 264-2955.

Deadline is Wednesday noon. Information sheets are available in the State Press office.

Dr. Eaton J. W. Read, visiting lecturer on marketing at ASU and Perpetual Deacon in the Protestant Episcopal Church of America, will speak on "Christianity in Business" at the evening meeting of the Canterbury Association Sunday.

The lecture and discussion will be at St. Augustine Church, 1735 College Ave.

THE NEWMAN Club will have car washes tomorrow from 9:30 a.m. to 4:30 p.m. at the Harris Shell station, Sixth St. and Mill Ave., Tempe, and the Shell station at Miller and McDowell Rds., Scottsdale.

The Wesley Foundation will continue its weekly Last Hour luncheon series featuring Chilton McPheeters, district superintendent of Methodist churches, at 12:15 p.m. Tuesday in Ross Hall, Eighth St. and Forest Ave.

This series features speakers talking as if it were their last opportunity to address mankind, according to Gary Fadeley, series director.

Luncheon will be from 12:15-12:45. It is open to the public. Cost is 50 cents.

Student-Faculty Board has openings for students wanting to serve on it for this academic year.

Applications are available at the MU information desk.

Mac & Jack Special

Refrigerator  
30" Freezer  
24" Freezer  
30" Freezer

Pioneer Camera  
Tempe Center

# Weekday Exchange Okayed

Panhellenic Council and the Interfraternity Council have decided that the "weekend exchange" rule will be dropped in favor of a weekday preference agreement.

Strong disapproval from the administration of Sunday activities was a factor.

A joint committee was selected from the two groups to discuss the different types of exchanges possible.

Composing this committee are Bob Clampett and Daryl Winn from IFC and Suzy Fuller and Edy West representing Panhellenic.

At the last Interfraternity Council meeting the recognition of Arizona Beta colony of Phi Kappa Psi as a national fraternity here was granted by a unanimous vote.

# UPTON'S Coin Operated Dry Cleaning & Laundry

Study, Read, Relax In Our Lounge With FREE Coffee While Your Laundry & Dry Cleaning Is Automatically Done

Open 8 A.M. - 10 P.M. — 7 Days A Week

Phone 967-0071  
Attendant Always On Duty

2010 RURAL RD. — AT BROADWAY

# EVERY FRIDAY NIGHT DANCE

9-12 P.M. AT MEZONA IN MESA  
COMBO ... 50c

SPONSORED BY L.D.S. CHURCH

CAMPUS DRUG

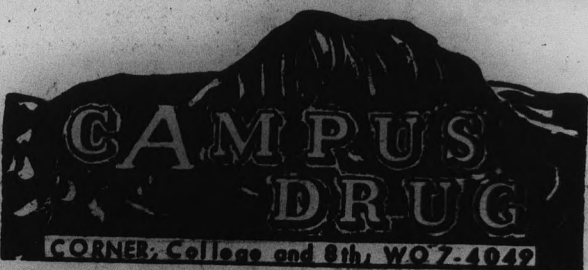
# Specials

Revlon

## CONTEMPORA

MATTE FINISH MAKE-UP  
SPECIAL TRAVEL SIZE ONLY

\$2.00



# SPACE, MISSILE & JET PROJECTS AT DOUGLAS

have created outstanding career opportunities for

## SCIENTISTS and ENGINEERS

B.S. degrees or better

Assignments include the following areas:

**Servo-Mechanisms**—relating to all types of control problems

**Electronic Systems**—relating to all types of guidance, detection, control and communications

**Propulsion**—relating to fluid-mechanics, thermodynamics, dynamics, internal aerodynamics

**Environmental**—relating to air conditioning, pressurization and oxygen systems

**Human Factors**—analysis of environment affecting pilot and space crews, design of cockpit consoles, instrument panels and pilot equipment

**Heat Transfer**—relating to missile and space vehicle structures

**Structures**—relating to cyclic loads, temperature effects, and the investigation of new materials, methods, products, etc.

**Aerodynamics**—relating to wind tunnel, research, stability and control

**Solid State Physics**—relating to metal surfaces and fatigue

**Space vehicle and weapon system studies**—of all types, involving a vast range of scientific and engineering skills

Get full information at  
**INDIVIDUAL ON CAMPUS INTERVIEWS**

with a Douglas representative  
Thursday, October 25

We urge you to make an appointment with Dr. Robert F. Menke, Director of Placement. If you cannot please write to

S. A. Amestoy, Staff Assistant to VP Engineering

**DOUGLAS AIRCRAFT COMPANY, INC.**  
3000 Ocean Park Blvd., Santa Monica, California

An equal opportunity employer

# DRUMM BEATS



Although it sounds like it came from Ripley's "Believe It or Not," the ASU Sun Devil Band is buying new uniforms. Almost \$12,000 worth.

**THE BOARD** of Financial Control awarded the musicians \$5,000 out of the ASASU budget earlier this semester.

Last year, the bandsmen received \$5,000 from the Board of Athletic Control and \$2,000 from the music department given over a two-year period.

Harold Hines, Sun Devil Band director, reports that 135 new uniforms will be ordered later in the semester.

Right now Hines, and his assistant Ronald Holloway, are looking at styles, color combinations and hashing over ideas for a dual-purpose uniform to be used at both football games and concerts.

**THE INFORMAL** and grubby craze is taking effect before tomorrow night's football game. The Kappa Kappa Psi dance, scheduled for tonight in the MU Ballroom has been changed from semi-formal to informal dress. Folk singer Henry Thome will provide entertainment.

Jerry Lewis is staging a big all-university program for ASU students the night of November 16 in Goodwin Stadium with free entertainment, eats and band.



**FRATERNITY DEDICATION** — Noel Amherd (right), administrative vice-president of Delta Sigma Phi, presents plaque to E. Scott Robinson in dedicating the chapter library, named E. Scott Library, at the recent formal house dedication. Robinson is a former chapter supervisor. Dean Gary Anderson (left) looks on.

## Delta Sig Dedicates Library

Delta Sigma Phi held formal dedication ceremonies last Sunday at its new house, 714 Alpha Drive.

Grand National President, Chandler Harris, and Francis Wacker, executive secretary of the National Board of Governors, were present for the dedication and guest speakers at the banquet which followed.

Harris, also present when the Delta Sigs received their national charter in 1948, commented on the progress in the last 14 years.

"**YOU HAVE** dedicated a house" Harris said, "and now you must dedicate yourself to making your house and fraternity something of which each member can be proud."

After the banquet, chapter president Andy Coles presented a plaque to T. S. Montgomery, designer of the house.

On behalf of the fraternity, Scott Robinson, former chapter supervisor, was given a plaque in recognition of his outstanding efforts during his three years in office.

**THE HOUSE** library will be named E. Scott Robinson Library.

## BA Sponsors Coffee Hour

The Business Administration Council will sponsor a free coffee hour Tuesday from 9-11 a.m. in the seminar room of the BA building.

The event will acquaint students with the organization and business administration faculty members.

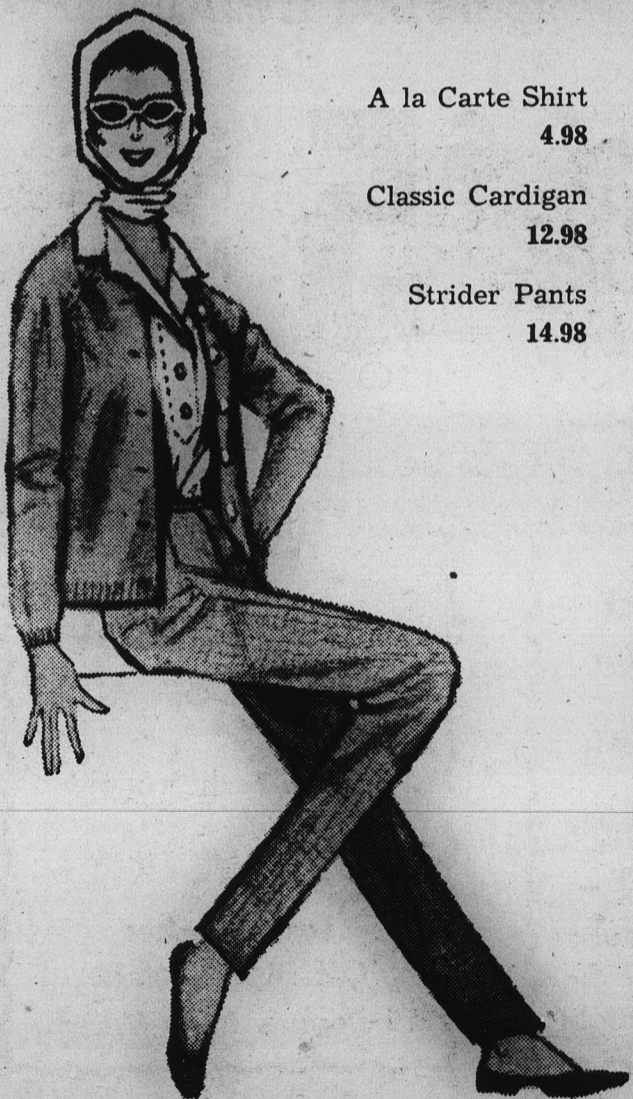
Charles Plake is chairman. Interested students may contact Dean Overman in the BA building.

## Bobbies Flowers



20 E. 5th St.  
Home Phone WO 7-6319  
WO 7-2972 — WO 7-4274

For Parties . . .  
Large Artificial  
Plants For Rent



A la Carte Shirt 4.98

Classic Cardigan 12.98

Strider Pants 14.98

## Celia's FASHIONS

TEMPE CENTER

1149 East Main

Mesa

### NOW THREE LOCATIONS

1. Tempe Center
2. 1302 Rural
3. Bayless Center

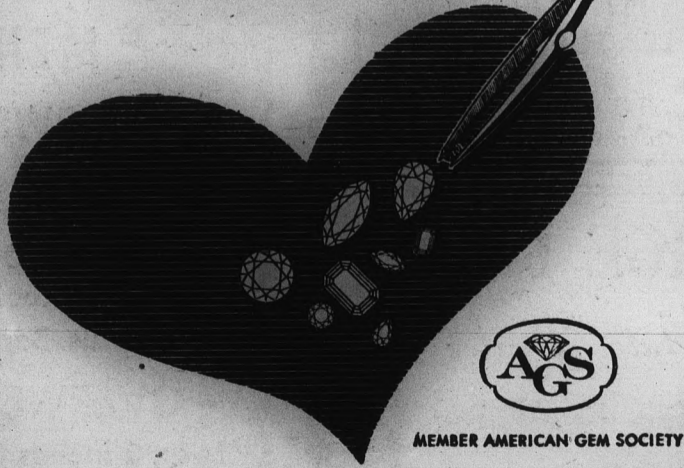
Open 24 Hours A Day!



# ZZZONA

**DRIVE-IN LAUNDRY & CLEANERS**  
FIRST in Laundry and Cleaning • LAST in the Phone Book

the modern way  
to select your  
**DIAMOND**



MEMBER AMERICAN GEM SOCIETY

Make your diamond purchase the way the professionals do — unmounted. Select your diamond in the quality and price range you wish and then choose a mounting from our selection of Artcarved, Orange Blossom and other quality brands. If you desire, our designer will create an "original" for you alone.

Open Thursdays

9:00 A.M. to 9:00 P.M.

**Paul Johnson**  
JEWELERS

1604 E. Camelback

# TALL

Or Long Waisted

Tremendous Selections  
FREE HEM ALTERATIONS  
Charge Accounts Invited  
No Interest or  
Carrying Charges

Tall & Chic - Mesa

13 S. Macdonald WO 4-1009



Those who have  
a choice, choose

## VESPA

CHOOSE YOURS  
AT THESE SPECIAL  
SALE PRICES

125 Vespa	\$335.00
150 Vespa	\$385.00
G.S. Vespa	\$450.00

Complete Parts & Service  
Available



**CUSHMAN**  
Motor Products

4817 N. 16th St. — Phoenix  
265-1272

465 E. Main — Mesa  
WO 7-2117

# Off The Cuff

By Dennis Anderson

Don't let San Jose's win-loss record lull you into thoughts of an ASU win tomorrow night.

Past history has proven that the Spartans shouldn't be taken lightly when going up against the Sun Devils.

**FOR SOME REASON** or other, San Jose regards ASU as its private whipping boy.

Of the 13 games the teams have played in the past, SJS holds 10 wins against 3 losses.

It's been five years since ASU won, 44-6 back in 1957. Since then it's been nothing but frustration for ASU's Frank Kush.

As the winningest coach ever at ASU, Kush's record has been dented by four defeats to San Jose.

In 1958, Kush's initial year at the helm, San Jose edged the Devils by 21-20. The following year a 24-15 loss was the only one in an otherwise perfect 10-win season.

Came 1960 and San Jose's speedy Johnny Johnson raced 44 yards through the Demon line to give the visitors a 12-7 edge.

Last year, ASU came closest to victory.

With six minutes to go, the Devils led 26-20. Then San Jose exploded for two scores, the final tally being set up by an interception.

The Spartans won 32-26 with but nine seconds left!

Now the Spartans invade Sun Devil Stadium seeking their first win of the season.

**LAST WEEK THEY TIED** with Idaho, 12-12. Two weeks ago they gave a strong Oregon team a scare before bowing 14-0. California beat them 25-7, and Utah State was victorious 29-18.

Washington State spanked them 49-8. But once again, don't let this fool you!

"They're the type of team that can hurt you anytime with their explosive speed and power," said Kush.

And what will ASU need for victory?

"We're going to need the same mental attitude that we had for the Washington State game," concluded Kush.

## Award To Top Scholar-Athlete

A Western Athletic Conference scholarship award will be presented to the outstanding scholar-athlete at ASU during the 1962-63 academic year.

The announcement was made by Dr. G. Homer Durham, president of ASU. Dr. Durham added that a similar award will be presented to a worthy scholar-athlete at each member institution of the Western Athletic Conference.

Each institution will have sole responsibility for picking its scholar-athlete award recipient.

### Sun Devil Facts

Clyde B. Smith, Arizona State University's athletic director, coached football teams for 24 years at La Crosse State College, University of Indiana, and Arizona State University.

**Sun Devil Facts**  
Arizona State University will meet its first Big 10 opponent, University of Wisconsin, Sept. 30, 1967, at Madison.

WO 7-0751



**BARBER SHOP**

703 Mill Ave. — Tempe  
**FLATTOP - IVY LEAGUE SPECIALS**  
 3 BARBERS TO SERVE YOU  
 Open 9-6 Tuesday.—Sat.

## SMILEY-BERGE FORD

Your Nearest Auto Dealer

- ★ Complete Service Facilities
- ★ 7 Mechanics On Duty
- ★ Servicing All Makes & Models
- ★ Newest Test Equipment

JUST TWO BLOCKS FROM ASU CAMPUS

16 East 8th Street — Tempe  
Phone WO 7-2064

# Beat The Spartans

## GRAND OPENING

### UNIVERSITY HEALTH CLUB

63 EAST BROADWAY, TEMPE

FOR MEN AND WOMEN

WOMEN...

TUESDAY AND THURSDAY

MEN... MONDAY, WEDNESDAY, FRIDAY and SATURDAY

# Special

TO THE NEXT 25 MEMBERS

CHARTER MEMBERSHIPS FOR ONLY \$5 PER MONTH

WE GUARANTEE These Results In 60 Days

### MEN

— UNDERWEIGHT —

Gain: 1½ Inches On Each Arm

3½ Inches On Chest And Shoulders

10 Pounds Body Weight

— OVERWEIGHT —

Lose: 3 Inches Off Waist And Hips

15 Pounds Body Weight

### WOMEN

— UNDERWEIGHT —

Gain: 2 Inches On Bust

10 Pounds Body Weight

— OVERWEIGHT —

Lose 3 Inches Off Hips & Waist

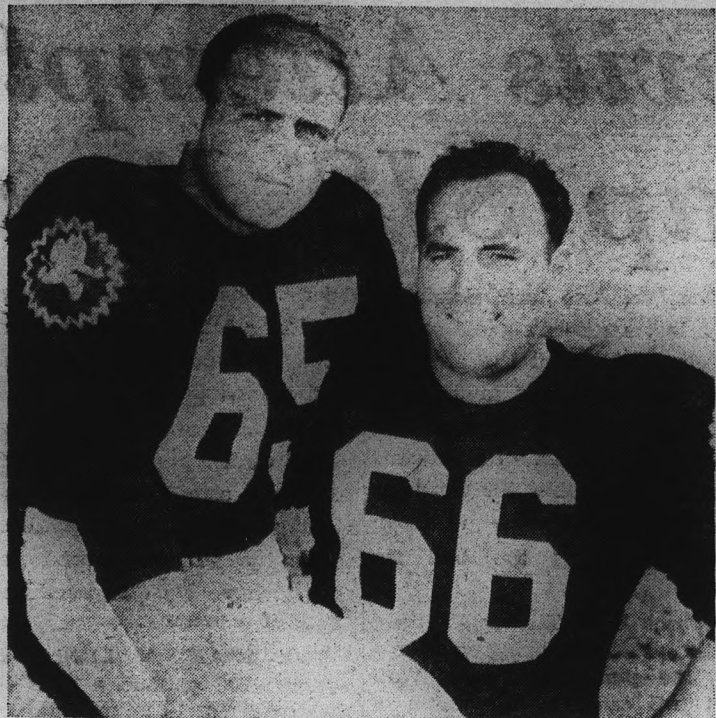
15 Pounds Body Weight

## UNIVERSITY HEALTH CLUB

63 EAST BROADWAY, TEMPE

PHONE 967-7461

HOURS: 10 A.M. TO 10 P.M.



**FATHER AND SON?** — No. The two ASU football players above are nine years of age apart. Both play guard and are sophomores, but Ron Scarfo, left, is 19, while Joe Pico is 28. Scarfo graduated from high school in Girard, Ohio, in 1961, while Pico graduated from Fremont High School in Los Angeles in 1952. Pico is married and has three children. (Photo by Ed Ryan)

# Sun Imps Meet NMU Wolfpups

BY NORDY JENSEN

With one game under their belts, the Arizona State University Sun Imps are pointing for an improved showing tomorrow when they meet the University of New Mexico Wolfpups in Albuquerque.

Coach Bill Kajikawa's frosh football team dropped a 25-7 decision last Saturday to Eastern Arizona JC in a game played at Thatcher.

**THE IMPs**, suffering from first game jitters, were down 19-0 before they chalked up their only score of the game. It came on an 11-yard aerial from Fullback Dave Smith to right half Ben Hawkins. Hawkins went high in the air to snare the pass.

With their running game stifled by a tough EAJC defense, the Imps took to the air, gaining 107 yards. Overall, the Imps finished with 127 yards total offense.

**COACH KAJIKAWA** named a tentative starting lineup for the coming UNM Wolfpup contest. Named possible starters were RE—Brian Tyler, Charter Oak, Calif.; RT—Pat Peters, Steubenville, Ohio; RG—Ken LaJudice, Arlington, Tex.; G—Tom Ptak, Willoughby, Ohio; LG—John Folmer, El Paso, Tex.; LT—Dave Vereb, Allen Park, Mich.; LE—Jim Houston, Or-

chard Lake, Mich.; QB—Chuck Kolb, Williamsport, Pa.; LH—Joe Parham, Muskegon Hgts., Mich.; RH—Ben Hawkins, Nutley, N.J., and FB—Dave Smith, Lombard, Ill.

## Sport Shorts

**BOWLING**—Tryouts for the ASU bowling team will be at 10 a.m. Saturday, Oct. 20, in the MU basement. Each man will bowl three lines.

**SWIMMING**—The first swimming workout will be at 2:30 p.m. Tuesday, Oct. 23, at the ASU swimming pool.

**CROSS-COUNTRY** — Art Reade and Eric Owers placed fifth and sixth, respectively, in a triangular meet Saturday with Arizona and Phoenix College.

**VOLLEYBALL** — Off-Campus took first place in the WAA intramurals completed last week.

# Jacobs New WAC Leader

John Jacobs, Arizona State's junior quarterback, has displaced Utah's Gary Hertzfeldt as the Western Athletic Conference individual forward passing leader, according to the latest figures released by Commissioner Paul W. Brechler's office in Denver.

Jacobs completed 18 of 32 passes in ASU's 15-14 losing effort to West Texas State last Saturday night and now has 32 completions for the season, one more than Hertzfeldt, the season-long leader. It marks the first time this season that a major individual statistical leadership has changed hands.

**MOST OF** the rest of the statistical noise is still being made by Eldon Fortie of Brigham Young, who leads in total offense (1097 yards), rushing offense (607 yards), and scoring (48 points). Fortie is also third in passing offense and seventh in kickoff returns.

Only one other individual leadership was affected last week and that was in pass receiving where Arizona State's Dale Keller jumped into a tie with Bruce Smith of BYU. Both have 11 receptions, but Keller's catches have been good for 186 yards to 179 yards for Smith.

**ARIZONA STATE** and New Mexico now hold all six team department leaderships. The Sun Devils lead in total offense (358.8 yards), passing offense (152.8 yards), and rushing defense (82.8 yards).

Mighty Fine Food . . .  
Before & After The Game

**Hamburgers - - 17c**  
**French Fries - - 12c**  
**Milk Shakes - - 22c**

Finest Quality . . . Fastest Service  
Phone 947-1571 for Pick-up Orders

## Ricky's Drive-In

1847 S. Scottsdale Road Scottsdale  
1/4 Mile South of Papago Plaza Shopping Center

Wheel Aligning - Balancing  
Auto Glass Installation

Pete Null's  
**TEMPE BODY SHOP**  
SPECIALIZED COLLISION SERVICE

11 East Fourth Street Phone WO 7-1601  
TEMPE

Mac & Jack Special  
BMM Turret  
Lens Camera  
Reg. \$124.50  
No. \$85.88

Pioneer Camera  
Tempe Center

## POWER-KNIT T.M.

Only **Jockey** T-shirts are Power-Knit to keep their fit

The Jockey Power-Knit T-shirt is man-tailored . . . from the exclusive nylon reinforced Seamfree® collar that stays snug and smooth . . . to the extra-long tail that stays tucked in. It's Power-Knit with extra top-grade combed cotton yarn to take the roughest kind of wear a man can give it . . . and still not bag, sag or stretch out of shape. It's a Jockey . . . the man's T-shirt . . . Power-Knit to keep its fit. \$1.50

**Jockey** POWER-KNIT T-SHIRTS  
COOPER'S, INCORPORATED, KENOSHA, WISC.

Erik the Red had no choice—but Vitalis with V-7 will keep your hair neat all day without grease. Naturally, V-7 is the greaseless grooming discovery. Vitalis® with V-7® fights embarrassing dandruff, prevents dryness, keeps your hair neat all day without grease. Try Vitalis today!

the  
**Capri's Pick Of The Week**

ASU - - - 9  
San Jose - - 8

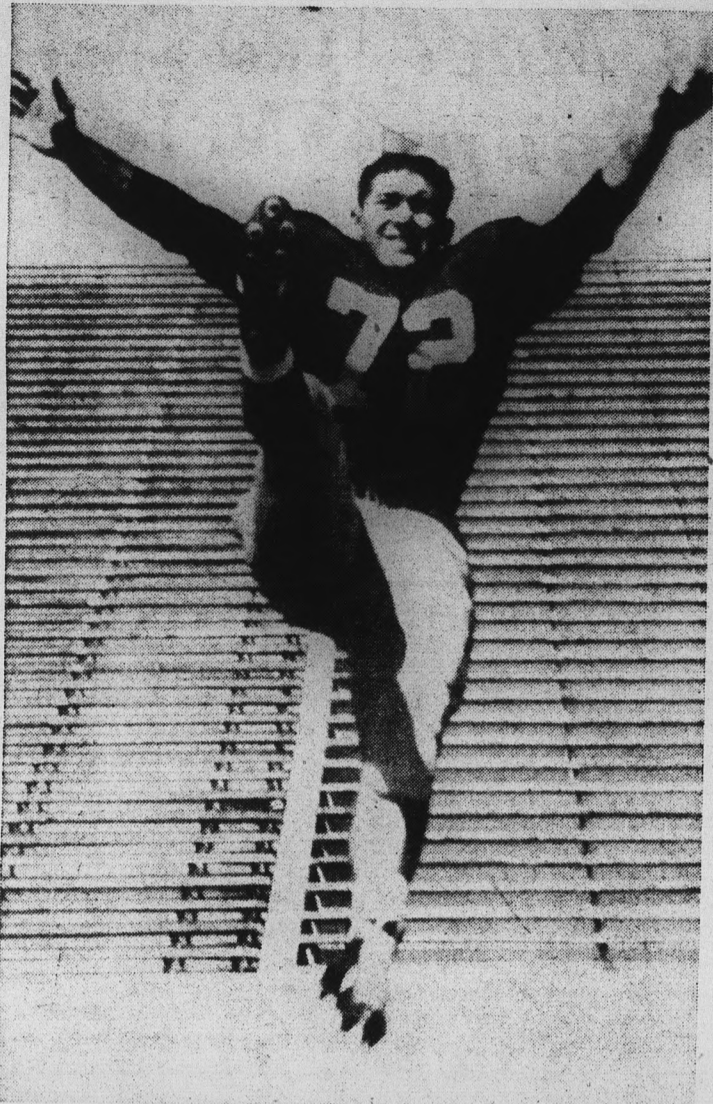
Right or Wrong  
You Can't Miss  
With Our  
**PIZZA'S**

Your **JOCKEY** Dealer  
In Tempe . . .

# Joe Sel

624 Mill WO 7-4163

NOW ON SALE AT  
**CAMPUS DRUG**  
CORNER COLLEGE & 8th ST.



SUN DEVIL'S FOOT — John Seeborg of Long Beach, Calif., has done quite a job kicking for the Arizona State Sun Devils this season. After four games the 6-foot, 215-pound junior tackle is averaging 39 yards per punt. He also has kicked 11 of 12 extra points and a 36-yard field goal. John will be in the lineup when ASU squares off against the San Jose Spartans Saturday night at Sun Devil Stadium. (Photo by Ed Ryan)

# Sun Devils Attempt To Snap SJS Jinx

BY JOE HEATH

San Jose State will be the foe this weekend as ASU hits the half way point of its eight game home stand.

The Spartan's 0-4-1 record will be thrown out the window at game time tomorrow night. The highly favored Sun Devils will be trying to break a four-game losing streak at the hands of the West Coast team.

"THE SPARTANS seem to play their best against ASU," points out Art Johnson, sports information director at San Jose. "Four years ago we were 0-3 on the season and won," said Johnson. "Our boys felt they could win then and the feeling is the same this time."

After starting the season off with losses to Washington State (49-8), Utah State (29-18), Oregon (14-0) and California (25-8), the young San Jose team is finally coming into its own.

THIS IS the opinion of Gene Felker, assistant ASU coach who scouted the Spartans last weekend in their 12-12 tie with Idaho. "The Spartans are similar to us in the fact that they are green and inexperienced. But they have better than average material that is just now starting to click," said Felker.

The San Jose team dominated last weekend's game on the ground and filled the air with 16 complete passes in 21 tries.

Fullback Johnny Johnson led the ground attack with 92 yards in 22 carries, but the Spartans beat themselves with seven fumbles, losing the ball six times.

Coach Bob Titchenal's team will once again bring speed into the game. Halfback Walt Roberts can run the length of the field in 9.7 seconds. He's one of the reasons the Spartans picked up 17 first downs last week as compared to three for Idaho.

QUARTERBACKING the invaders will be Rand Carter who

did an unbelievable job against the Idaho team considering the steady downpour of rain and the mud-soaked field.

With 68 seconds left in the game, Carter moved his team 62 yards, completing eight for eight passes and what appeared to be the winning touchdown, only to have it called back because of a penalty.

THE SPARTAN LINE will average 214 pounds a man in the backfield, 10 pounds a man over the Sun Devils.

The two schools first met in 1936 and will be playing the fourteenth game of the series. San Jose has won 10, the last ASU victory, 44-6, coming in 1957.



## Happy House

Tempe Center

USE OUR LAYAWAY PLAN NOW  
FOR XMAS GIFTS FOR  
MOM and DAD

Open Thursday & Friday Till 9 P.M.

**his**  
SPORTSWEAR

Shirts by **Enro**

Sweaters By

**Brentwood**

SOX

by

**JERKS**

ONLY TWO MORE WEEKS TO REGISTER AT

THE *Americana Shop* for the

# \$600 ASU Wardrobe Contest

**GO, DEVILS  
BEAT  
THE SPARTANS!**

OPEN 9:00 A.M. TO 6:00 P.M.  
THURSDAY AND FRIDAY NITE  
'TIL 9 P.M.

Under this contest, you need only to fill in the blank below (also available at our store) and deposit it in our special ASU ticket box located in our store at 907 Mill Ave., Tempe Shopping Center. Some of the apparel included in the drawing is shown in our display windows and a more specific breakdown of the items in each prize is listed in The Americana Shop. And no purchase is necessary to be eligible for prizes.

Winners names will be drawn and posted in our store Homecoming Day, November 3, at 3:00 P.M. Prizes must be claimed by November 9.

- 1st Prize—\$250.00 worth of merchandise
- 2nd Prize—\$150.00 worth of merchandise
- 3rd Prize—\$100.00 worth of merchandise
- 4th thru 15th—\$10.00 worth of merchandise

Beau Brummell Ties

SHIELDS Jewelry

Shirts by *Jayson*

Suits by **SAGNER** Sport Coats



Quality Men's Apparel  
TEMPE SHOPPING CENTER

Name .....

Address .....

Phone .....