

# Meeting, Lecture Rules Explained

By BILL OVEREND

A clarification of rules governing sponsorship of public lectures and conduct of political meetings by student groups at ASU has been circulated to university faculty members after extensive study by Dr. G. Homer Durham's advisory council.

Issued as a general policy statement, the council's findings discourage student

sponsorship of lectures open to the general public and place responsibility for all lectures and meetings directly with faculty advisers.

**THE STATEMENT** provides that student organizations seeking to sponsor public lectures must "secure advance approval of the student affairs committee" two weeks in advance of the proposed date.

Such requests must carry

the recommendation or approval of the faculty adviser of the organization.

The statement allows approved organizations freedom in selecting lecturers, but proclaims:

"It must be recognized that Arizona State University cannot be wholly disassociated in the public mind from views expressed on its campus. Student organizations must exercise

care and prudence in their choice of speakers and accept the consequences of their choice, including disciplinary action."

**THE CLARIFICATION** includes policies adopted by the Board of Regents on May 21, 1956 governing political meetings. Those policies close all political meetings on campus to the general public, prohibit the recognition of subversive

organizations attempting "to operate under the guise of political parties," and prohibit the opening of campaigns by political candidates on campus.

Elsewhere, the policy statement allows approved student organizations which have obtained consent of their faculty adviser to use classrooms and other university facilities upon clearance of proper authorities.



Vol. 41

Friday, October 12, 1962

No. 7

## Romero and Sons—



OPENER — Plucking their guitars are Celendonio Romero and Sons, who will open the Concert and Lecture Series with a performance in the MU ballroom Wednesday at 8:15 p.m.

## Guitar Stars To Perform

By MARY GORMAN

Celendonio Romero and Sons, famed classic and flamenco guitarists, will open the 1962-63 ASU Concert and Lecture Series next Wednesday at 8:15 p.m. in the MU ballroom.

The group, which has been featured in Time magazine, will play Bach as well as Spanish and flamenco music.

They will perform both solo and ensemble arrangements.

Romero and Sons have performed for the New York Philharmonic Symphony Society, and have played two Town Hall concerts.

**THE GROUP** has made three albums for Mercury Records, and finished last season performing at the Seattle World's Fair.

The guitarist group is one of the top names on the schedule this year.

Also included on the calendar for this season is Vance Packard, noted author of "The Status Seekers," and "The Hidden Persuaders."

**JUDITH ANDERSON**, fam-

ous Broadway actress, will appear on Feb. 1. She will present scenes from Macbeth and Medea.

A Greek folk festival production, Panhellenion, will be shown on Dec. 7. It will be portrayed through a study in depth of the folk arts of the country.

Speakers appearing on this year's series include W. H. Auden, noted English poet, playwright and critic, who will lecture on "A Poet and His Poems," on March 20.

**ALSO** Dr. Juscelino Kubitschek, former president of Brazil, will speak on "United States-Argentina: Partners for Peace and Progress."

## WORLD NEWS

### Meredith Charges Army Segregation

**OXFORD, Miss.** — Negro James H. Meredith charged Tuesday that Army units in the Oxford area had "purged Negro soldiers from their positions in the ranks and relegated them to menial duties such as garbage collection."

In Washington, Cyrus R. Vance, secretary of the Army, denied the accusations, explaining that Negro troops were not used on patrols during the recent crisis at the University of Mississippi "to avoid unnecessary incidents."

### Yanks Picture Torture Camps

**WASHINGTON** — Three American ex-prisoners of war publicly unfolded their tales of horror for the first time Tuesday since their release from Communist torture camps in Laos.

"We were treated like pigs," said Sgt. Orville R. Ballenger of Columbus, Ohio. "For the first five months I was locked in an old toilet."

### U.S. Offers Cuba \$13 Million

**WASHINGTON** — The U.S. government has agreed to underwrite the shipment of \$13 million worth of medicine and food to Cuba if invasion captives are released, informed sources said Wednesday.

This amount presumably would be augmented by private subscriptions raised by the families of 1,113 men captured in the unsuccessful Bay of Pigs invasion attempt of April 1961.

### Winnie Escapes Again

**PHOENIX** — So-called "Tiger Woman" Winnie Ruth Judd, 57, walked off from the Arizona State Hospital Monday and reportedly left Phoenix by air for St. Paul, Minn., Tuesday.

The escape touched off a routine search by local law officials, some of whom expressed disinterest in her seventh escape attempt.

## Reish, Reiser Elected To ASU Frosh Senate Posts

Fred Reish and John Reiser were elected ASASU freshmen senators in a closely contended, low percentage voting general election Wednesday.

Slightly more than 12 per cent of the record size class, 665 freshmen, voted in the general election.

Reish drew 212 votes to capture the first senate seat and a wide margin over Senator-elect John Reiser, who had 162 votes.

**JOE MURPHY** and Claudia (Corki) Norde made it a close race, however, with 149 and 142 votes respectively.

Both senators-elect are pre-law students and graduates of Tempe Union High School.

Reish is majoring in political science in the College of Liberal Arts. A Theta Delta Chi pledge, he received honors at entrance and a National Merit Scholarship.

He is in the Pre-Law Club and Young Republicans and has been appointed to a committee to study the ASU student handbook.

**REISER** is majoring in general business in the College of

Business Administration. He has received the Danforth Award for Leadership and is in the Pre-Law Club.

The senators-elect must receive a majority vote of acceptance by the ASASU Senate before being sworn in as members by Chief Justice Steve Montgomery.

### Film Extras Signed Up

About 100 student extras will be selected to work with Jerry Lewis when he begins filming "The Nutty Professor" on the ASU campus next month.

The students, according to Dr. James W. Yeater, head of the University Players, will be chosen from a list of more than 500 who signed up for the parts.

Drama and radio-television majors will receive priority in the selection, but others will be used. All extras will be paid daily for their work.

Dr. Yeater will notify students selected for the parts after Lewis tells him how many are needed.

## 1,000 Hit By Colds

Nearly 1,000 ASU students have been to the infirmary due to "acute upper respiratory infections," commonly called colds, in the last two weeks.

According to Mrs. Elaine McFarland, director of student health service, each case is being treated according to individual symptoms.

There have been no cases of influenza at this time, although immunization shots have been given to many students, she said.

Flu vaccine shots may be obtained by students with a school load of seven hours or more for only 50 cents.

### Channel 8-



MAX MORATH plays a small-time theatrical agent in "Party Lines, Inc." This National Educational Television series, "Turn of the Century," can be seen Wednesdays at 10 p.m. on Channel 8, KAET-TV. See Page 5 for a complete program listing.

### Handbook Committee Appointed

Bob Carter, ASASU president, has appointed Jim Holland to head a special committee to study the 1962-63 ASU Student Handbook.

The committee will suggest revisions for improvement of

the 64-page booklet and present a discussion on the book at the 9:40 a.m. session of the Payson Workshop tomorrow.

Other committee members are Kay Holgrem, Fred Reish and Carol Ruff.

### Blue Key Applications Are Sought

Applications for membership in Blue Key, national upperclassmen's scholastic and service honorary, are now being accepted in the IFC office of the MU.

All campus organizations, fraternities, hall councils and student committees may submit names.

Candidates will be selected with regard to campus activities and grade averages.

A minimum index of 2.5 is required.

During the year, Blue Key sponsors a carnival, a musicale and program sales at all ASU home football games.

Proceeds are donated to a scholarship fund and to charity.

### EAST HALL OPEN HOUSE

East Hall, ASU's oldest dorm, is having an open house tonight.

Tours of the dorm will be conducted from 7-12 p.m.

There will be a talent show from 9-10 p.m. and a dance from 10 p.m. to midnight in the patio.

### 86 Go To Payson Workshop

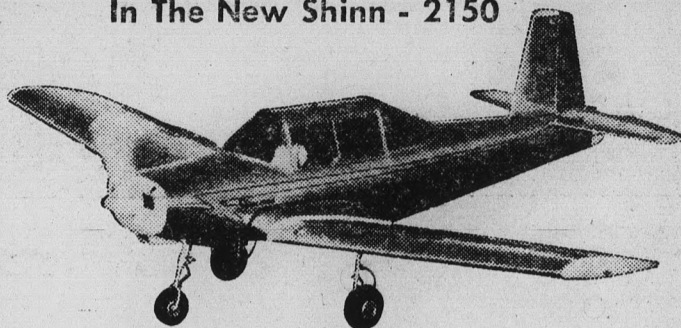
Eighty-six ASU students leave campus at 3 this afternoon for the annual weekend Fall Leadership Workshop in Payson.

Dr. George F. Hamm, men's

counselor, said 35 applicants had to be turned down due to limited facilities at Camp Tontozona, workshop site.

These 35 applicants are listed as alternates.

### "Years Ahead" Flight Training In The New Shinn - 2150



### MODERNIZED GROUND SCHOOL FOR PILOTS & NON-PILOTS Amos Flight Operations

A Private License is a Must In Modern Business

Don Amos - Class of '56

Phone BR 5-7291

SKY HARBOR

WO 7-0751

**COPE'S BARBER SHOP**

703 Mill Ave. - Tempe  
**FLATTOP - IVY LEAGUE SPECIALS**  
 3 BARBERS  
 TO SERVE YOU  
 Open 9-6 Tuesday-Sat.

Mighty Fine Food . . .  
 Before & After The Game

**Hamburgers - - 17c**  
**French Fries - - 12c**  
**Milk Shakes - - 22c**

Finest Quality . . . Fastest Service  
 Phone 947-1571 for Pick-up Orders

**Ricky's Drive-In**

1847 S. Scottsdale Road Scottsdale  
 1/4 Mile South of Papago Plaza Shopping Center

## MASTERWORK THE ULTIMATE IN AM-FM SHORT WAVE TRANSISTOR RADIO PORTABLES



MODEL 2100

- Full AM and FM Broadcast Band and 25-49 Meter Band for International Short Wave
- 5" Speaker
- 5 Push Button Controls
- Telescopic Antenna plus Convenient Detachable Carrying Handle
- 9 Transistors and 3 Diodes
- Operates on 6 Standard Flashlight Batteries Available Anywhere



Power-packed Performance for \$64<sup>95</sup>

## HILLS RECORDS

Tempe Center

OPEN THURSDAYS TILL 9 P.M.  
 RADIOS - PHONOS - TAPE RECORDERS

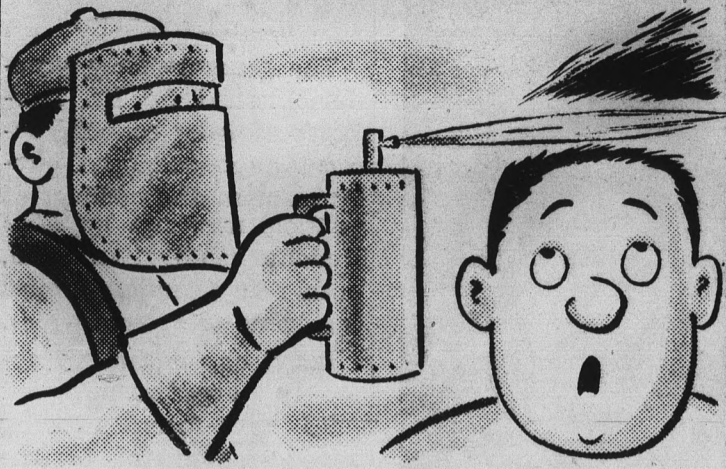
**NEW! PRO-ELECTRIC ROLL-ON**  
**FIRST! BEFORE-SHAVE LOTION THAT ROLLS-ON**

No dripping, no spilling! Covers completely!  
 Old Spice Pro-Electric protects sensitive skin areas from razor pull, burn. Sets up your beard for the cleanest, closest, most comfortable shave ever! 1.00

SHULTON



**DOING IT THE HARD WAY** by hoff  
(GETTING RID OF DANDRUFF, THAT IS!)



**easier 3-minute way for men: FITCH**

Men, get rid of embarrassing dandruff easy as 1-2-3 with FITCH! In just 3 minutes (one rubbing, one lathering, one rinsing), every trace of dandruff, grime, gummy old hair tonic goes right down the drain! Your hair looks handsomer, healthier. Your scalp tingles, feels so refreshed. Use FITCH Dandruff Remover SHAMPOO every week for positive dandruff control. Keep your hair and scalp really clean, dandruff-free!



**FITCH**  
LEADING MAN'S  
SHAMPOO

NOW ON SALE AT  
**CAMPUS  
DRUG**  
CORNER COLLEGE & 8th ST.

# Nursing Professor Tells Of Berlin Experiences

By **BOB HUDNALL**  
Last year about this time, Dorothy McLeod, assistant professor of nursing at ASU, was in the hectic first month of teaching of the academic year.

The Berlin crisis was a far-away diplomatic battle of words. BUT ON Oct. 9 National Guard Reserve Captain Dorothy McLeod was informed she would be going on active duty with the 161st Fighter Interceptor Group as chief nurse of the group's dispensary.

She joined the group on Nov. 1 and left for overseas Nov. 22. During her eight months abroad, she was stationed at Etain Air Base in France.

"It was a wonderful and sobering experience," said Miss McLeod. "I traveled 11,000 miles by car in five months through France, Spain, Italy, Austria,

Switzerland, England and Germany.

"MY TRIPS on the Autobahn to West Berlin made me realize the importance of why I had been called to active duty during this critical time," she continued.

"It appears to me that the Communists are just not getting their message over to the young people. Many times through careful furtive signs East German teen-agers would convey their hope for freedom and friendship.

"One suddenly and emphatically stares at realism when one comes face to face with the Berlin Wall.

"It's ugly and crudely constructed, but the armed soldiers staring at each other from either side brings to one the chilling meaning of East-West differences.

"I, LIKE many other visitors,

brought home a chunk of the wall. At least, symbolically, I helped weaken it a little."

After eight months of active duty she returned to ASU on Aug. 15.

Although she has resumed teaching, she is still a member of the Arizona Air National Guard.

As acting commander, she is recruiting registered nurses for an aeromedical squadron being formed Nov. 1.

## Diving From Sky Unique Pastime Of ASU Student

"Jumping from a ladder is much more dangerous than jumping from a plane," claims Phyllis Reese, ASU junior, an avid skydiving enthusiast.

Phyllis is the only female member of the Sky-Hi Pioneer Skydiving Club of Scottsdale.

She was the first teen-age member of the club to make a night jump, a particularly difficult feat because of the limited visibility for pin-pointing the target.

A nursing major, Miss Reese hopes to use her parachuting experience in emergency work in disaster areas.

She learned how to jump from a plane by practicing from a high ladder in her backyard. This exercise taught her how to land on the ground and roll without injuring herself.

A virtually unknown sport before 1956, skydiving now attracts thousands.

Arizona State's first campus patrol began operations in December 1948. The force was formed to augment the regular staff of night watchmen, and consisted of eight men.

**Bobbies  
Flowers**



20 E. 5th St.

Home Phone WO 7-6319  
WO 7-2972 — WO 7-4274

For Parties . . .  
Large Artificial  
Plants For Rent

Cast off the doldrums  
with our salty

**WEATHERLY  
SHIRT**



5.00

The smooth-sailing Weatherly shirt has just arrived at Hanny's . . . the perfect cotton knit for yachting, loafing, barbecues and other scholastic pursuits. Note the salty collar, the unrestrained lines and comfortable good looks. The skipper now has 3 colors on deck: navy, kelp green and cheddar. Sizes S-M-L-XL.

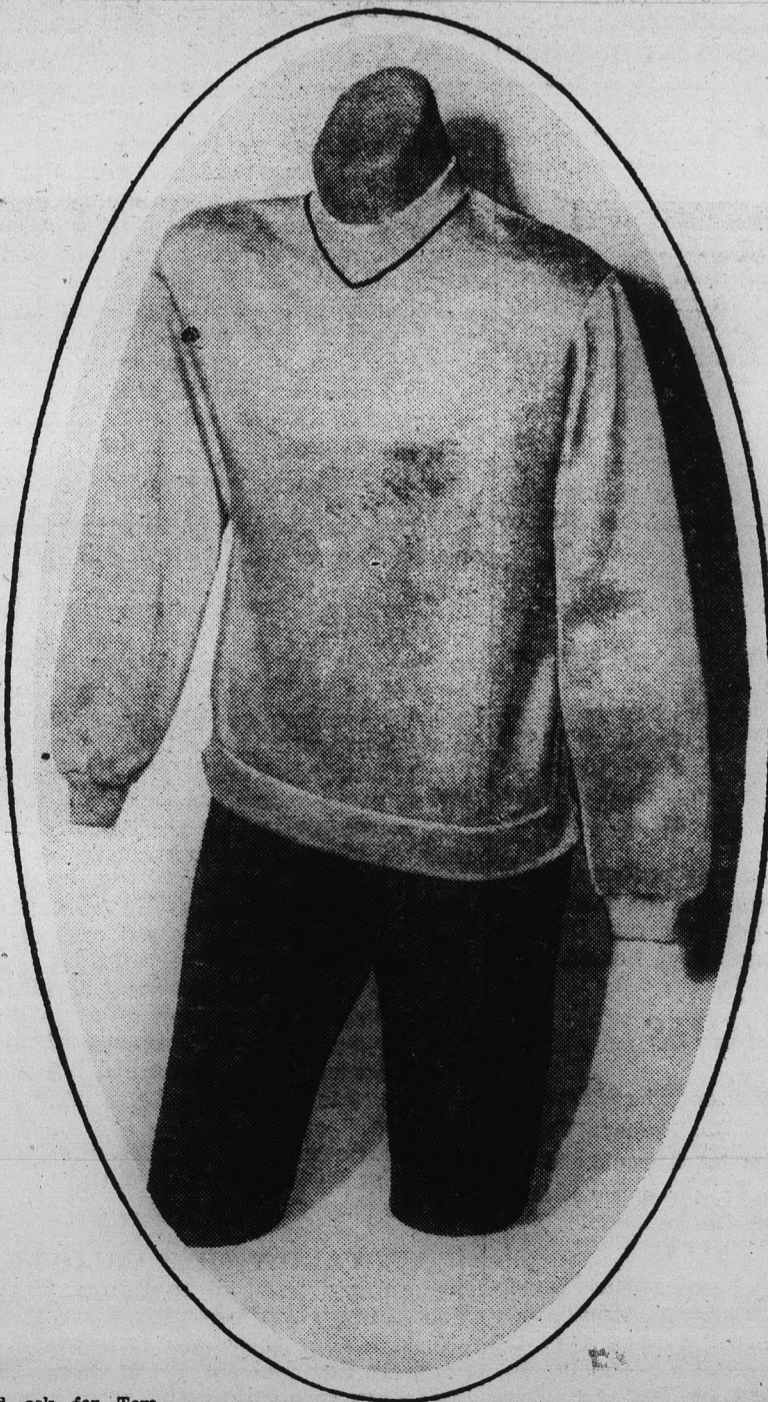
**Hanny's  
Varsity Shops**

DOWNTOWN • CHRISTOWN • SCOTTSDALE  
30 NORTH FIRST STREET

CAMPUS REPRESENTATIVES

Rick LeSuer, Downtown  
Ted Lorber, Chris-town  
Bruce Rys & Bob Miles, Scottsdale

Phone and mail orders filled. Dial AL 4-9292 and ask for Tom Siegfried. Write Hanny's, 30 North First Street. Add 17c tax.



the  
**Capri's  
Pick  
Of  
The  
Week**

ASU . . . 28  
W. Texas 14

Right or Wrong  
You Can't  
Miss  
With Our  
**PIZZA'S**



THE STATE PRESS, distributed by the campus chapter of Sigma Delta Chi under the direction of Circulation Manager Mike Barrick, is the official campus newspaper of Arizona State University. It is published each Wednesday and Friday throughout the school year, excepting holidays, and is entered as second class matter at the Tempe, Arizona, Post Office under the Acts of March 3, 1879, and August 24, 1912. Subscription price, \$3 per school year.



THE STATE PRESS is a member of the Arizona Newspapers Association, Associated Collegiate Press and National Advertising Service, Inc.

EDITOR-IN-CHIEF LINDA WARREN SIMS
NEWS DEPARTMENT
MANAGING EDITOR BILL OVEREND
CAMPUS EDITOR TWILA DRUMM
ASSISTANT CAMPUS EDITOR BECKY ACUFF
ASSIGNMENTS EDITOR GWEN ZUPANCIC
ASSISTANT ASSIGNMENTS EDITORS TOM WING
NANCY TENNEY, Pam Van Buskirk
NEWS EDITORS BOB ZACHE, BOB CLAMPETT
ASSISTANT NEWS EDITOR ROSS FISH
COPY EDITOR GARY OLMSTEAD
CHIEF PROOFREADER LYNDA HARRIS
SPORTS DEPARTMENT
SPORTS EDITOR BOB JACOBSEN
ASSISTANT SPORTS EDITOR DENNIS ANDERSON

Guest Editorial- Editorially Speaking

By Sidney Harris (Reprint from Arizona Republic)

A man I know lost his job a few months ago and went to a friend of his, who happens to be an executive in an advertising agency.

"I could hire you," the executive confided, "but I advise you against it. You won't be happy here."

"I'm not asking for happiness," the man retorted. "I'm asking for a job."

IT SEEMED TO ME a sensible reply. Happiness is not to be found by looking for it and is more of an accident than a matter of planning or design.

If young people were told fewer fables about happiness, and more truth about the realities of life, it would save them a great deal of disappointment and disillusion as they get older.

To the poor man, happiness is money; to the sick man, health; to the obscure man, fame; to the weak man, power; to the homely man, charm.

Yet we have abundant evidence that the rich, the healthy, the famous, the powerful and the charming are often just as miserable as their envious brothers.

ARCHEOLOGISTS MANY years ago dug up an inscription written by Abd-Ar-Rahman III of Spain, which went as follows:

"I have now reigned about 50 years in victory or peace, beloved by my subjects, dreaded by my enemies, and respected by my allies. Riches and honor, power and pleasure, have waited my call, nor does any earthly blessing appear to have been wanting to my felicity. In this situation, I have carefully counted the days of genuine happiness which have fallen to my lot — they amount to 14."

On the other hand, Marcus Aurelius, the Roman ruler, lived in a dreadful period of history; his public life was torn by war, famine and insurrection; his private life was bitter and unsatisfying; yet he wrote the famous "Meditations," which show he was able to achieve a calm acceptance of the conditions of his life, and to surmount these conditions — because he did not "expect" happiness.

Colton pointed out, in a book some years ago, that Mark Anthony sought for happiness in love, Brutus in glory and Caesar in dominion.

Yet "the first found disgrace, the second disgust, the last ingratitude, and each destruction."

LEARNING TO RECOGNIZE one's own abilities and limitations, to live within the framework of one's own personality, to play cards that are dealt to us as best we can — this may not win us happiness, but we can at least each have a kind of serenity that is the next best thing to it.

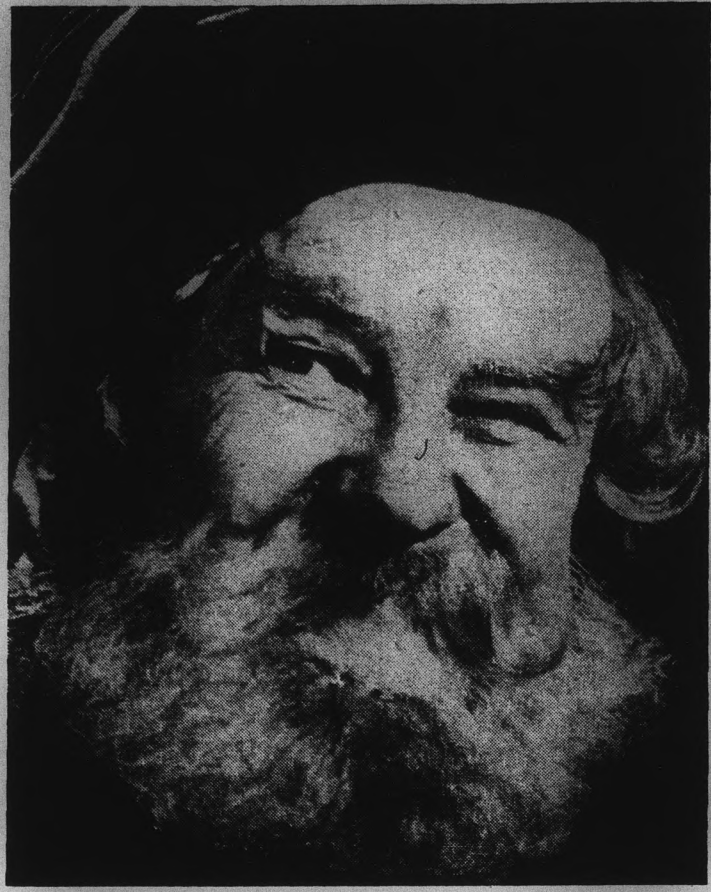
If we should learn anything as we mature, it is that happiness is a by-product, not an end product; and that the surest way to have it slip through our fingers is to grasp for it with greedy and impatient hands.

Implications

Kind of like the idea of pitting the independents against the Greeks for the United Fund drive. Almost makes one want to give more just to be on the winning side. Of course, the independents aren't organized but there are many more of them and this means more loose change.

"More 'mature' music in the den," says the student government board investigating the Den. Really now, have you ever heard Bach or "The Nutcracker Suite" on 45. Perhaps Caviar and finger-bowls would add that extra touch of elegance so lacking in our campus haunt!

"Who's Leading Whom" seems to be a strange question to have on a banner hanging over the main street of a college campus. We assume the faculty guidance that we pay for each semester is our guiding star in our quest for knowledge.



FRANK PETTINGELL — Gives a hearty, humorous portrayal of Sir John Falstaff in the BBC's Peabody Award-winning series, "An Age of Kings." The superb production of Shakespeare's chronicle plays is being shown across the country by National Educational Television. It can be seen Tuesdays and Fridays at 10 p.m. KAET, Channel 8.

Sounding Off....

By LINDA WARREN SIMS

Every so often we run across something that is worth printing. Not often, mind you, but every so often. The following is part of a foreword in a new book by Taylor Caldwell. The name of this new work is "The Listener."

"FOR WHO LISTENS to us in all the world, whether he be friend or teacher, brother or father or mother, sister or neighbor, son or ruler or servant? Does he listen, our advocate, or our husbands or wives, those who are dearest to us?"

"Do the stars listen, when we turn despairingly away from man, or the great winds, or the seas or the mountains? To whom can any man say — Here I am!"

"Behold me in my nakedness, my wounds, my secret grief, my despair, my betrayal, my pain, my tongue which cannot express my sorrow, my terror, my abandonment."

"Listen to me for a day — an hour! — a moment! — lest I expire in my terrible wilderness, my lonely silence! O' God, is there no one to listen?"

IS THERE NO ONE to listen? you ask. Ah yes, there is one who listens, who will always listen. Hasten to him, my friend! He waits on the hill for you. For you, alone."

SENECA

(Seneca lived in Nero's time and was Nero's teacher and adviser as well as a poet.)

Taylor Caldwell's comment follows.

"The most desperate need of men today is not a vaccine for any disease, or a new religion, or a new 'way of life.' Man does not need to go to the moon or other solar systems. He does not require bigger and better bombs and missiles."

"HE WILL NOT DIE if he does not get 'better housing' or more vitamins. He will not expire of frustration if he is unable to buy the brightest and newest gadgets, or if all his children cannot go to college."

"His basic needs are few, and it takes little to acquire them, in spite of the advertisers. He can survive on a small amount of bread and in the meanest shelter. He always did."

"His real need, his most terrible need, is for someone to listen to him, not as a 'patient,' but as a human soul. He needs to tell someone of what he thinks, of the bewilderment he encounters when he tries to discover why he was born, how he must live and where his destiny lies."

"The questions he asks of psychiatrists are not the questions in his heart, and the answers he receives are not the answers he needs...."

CERTAINLY MISS CALDWELL summarized the hungry need of mankind. Perhaps she is the hungriest, most lonely, of these people are the compulsive talkers. Although they are extremely anxious, one cannot help but feel sorry for them. They seem to be trying to say something that cannot be expressed in words. Instead, the sound of their own voice apparently has a therapeutic effect on their inner craving for acceptance.

I Cover College Avenue

By BILL OVEREND

The general policy statement issued by Dr. Durham's advisory council, concerning sponsorship of public lectures and conduct of political meetings by ASU students could, if enforced, push many campus groups into some pretty hot water.

It's doubtful that all approved organizations at ASU have been securing advance approval of the student affairs committee for lectures open to the general public.

It's an open lie to claim that clubs sponsoring political speakers have closed their meetings to the "general public."

Those organizations that have violated university policy in these areas could become targets for disciplinary action.

MORE IMPORTANT, organizations sponsoring speakers who slander or libel institutions or individuals will be held responsible for their speaker's actions.

If the rules are enforced, they could prevent the sort of irresponsible name-calling that occurred in the MU only last Thursday, when a former lecturer reportedly insinuated that President Kennedy conspired with national news services to abet a lobotomy on a certain conservative southern general.

PREPARATIONS for Homecoming this year are well underway, although most students are unaware of them.

The theme this year is "Famous Flicks." Incidentally, the deadline for individual house decorations is next Wednesday.

Bob Carter's study of a student check cashing system and a centrally located U.S. Post Office branch on campus could bring some needed improvements for the ASU campus.

He'll need student support, however, to gain necessary attention. If you think these proposals would be worth their expense, write the State Press a letter expressing your views.

IT'S TIME the student body started to realize that student government works only when those who are governed are concerned about the laws being passed to govern them.

If nobody cares what Bob Carter, Henry Klopping or Dean Nichols are doing in student government, then it's time they were informed of their figure-head status.

If you do care, get in there and fight, gang.

# STUDENTS . . .

## Buy Your -

- TRANSISTOR RADIOS
- TRANSISTOR RADIO BATTERIES
- TUBES FOR YOUR PORTABLES
- FLASHLIGHT BATTERIES
- RESISTORS — CONDENSERS
- CHOKES — TRANSFORMERS

At Wholesale Prices!

Electronic Kits — Test Equipment Kits — Hi-Fi Kits  
All at Lowest Prices

Complete Display of Latest Hi-Fi Gear "Demonstrated"

Make Your Dollars Go  
A Long Way at

**ELECTRONIC  
CENTER, INC.**

3400 E. Thomas Rd.  
Phone 264-6145



## Deadline For Homecoming

All organizations are reminded that the deadline for Homecoming applications is Oct. 17 at 4 p.m. Representatives from each organization participating should attend the Homecoming committee meetings that are held each Thursday at 4 p.m. in the MU.

Additional information concerning requirements, dates, space allotments and expenses may be found in the ASASU secretary's office.

## KAET GLIMPSES

Programming schedule for KAET, Channel 8, for today, Monday and Tuesday both a.m. and p.m.

| TODAY |                              |
|-------|------------------------------|
| A.M.  |                              |
| 8:40  | Business Law Telecourse      |
| 9:40  | Physical Universe Telecourse |
| 10:40 | Living World Telecourse      |
| 11:40 | Physical Universe Telecourse |
| P.M.  |                              |
| 12:40 | Social Studies Telecourse    |
| 6:00  | What's New?                  |
|       | "Drawing the Horse"          |
| 6:30  | Social Studies Telecourse    |
| 7:15  | Business Law Telecourse      |
| 8:00  | Psychology One               |
|       | "Attention"                  |
| 8:30  | Living World Telecourse      |
| 9:15  | Physical Universe Telecourse |
| 10:00 | An Age of Kings              |
|       | "The New Conspiracy"         |

"Henry IV, Part 2, Acts 1 & 2  
MONDAY

|       |                                  |
|-------|----------------------------------|
| A.M.  |                                  |
| 8:40  | Business Law Telecourse          |
| 9:40  | Physical Universe Telecourse     |
| 10:40 | Living World Telecourse          |
| 11:40 | Physical Universe Telecourse     |
| P.M.  |                                  |
| 12:40 | Social Studies Telecourse        |
| 6:00  | What's New?                      |
|       | "Japanese Brush Painting"        |
| 6:30  | Social Studies Telecourse        |
| 7:15  | Business Law Telecourse          |
| 8:00  | Art In Living                    |
|       | "The Artist in Society"          |
| 8:30  | Living World Telecourse          |
| 9:15  | Physical Universe Telecourse     |
| 10:00 | Special: Television Perspectives |
|       | "The British Public School"      |

TUESDAY

|       |                                      |
|-------|--------------------------------------|
| A.M.  |                                      |
| 9:40  | Physical Universe Telecourse         |
| 10:40 | Living World Telecourse              |
| 11:40 | Physical Universe Telecourse         |
| P.M.  |                                      |
| 6:00  | What's New?                          |
|       | "Swimming and Diving?"               |
| 6:30  | About Ceramics                       |
|       | "Forms: Product of Man and Material" |
| 7:00  | Animals of the Seashore              |
|       | "Embryology"                         |
| 7:30  | Heritage: Robert Frost               |
|       | "20th Century Heritage"              |
| 8:00  | This New House                       |
|       | "Of Minds and Mills"                 |
| 8:30  | Living World Telecourse              |
| 9:15  | Physical Universe Telecourse         |
| 10:00 | An Age of Kings                      |
|       | "The New Conspiracy"                 |
|       | Henry IV, Part 1, Act 1 & 2          |

## Dr. Fearon To Speak

Dr. Harold E. Fearon, assistant professor of management, is speaking to the District One Purchasing Agents Conference in San Francisco this week.

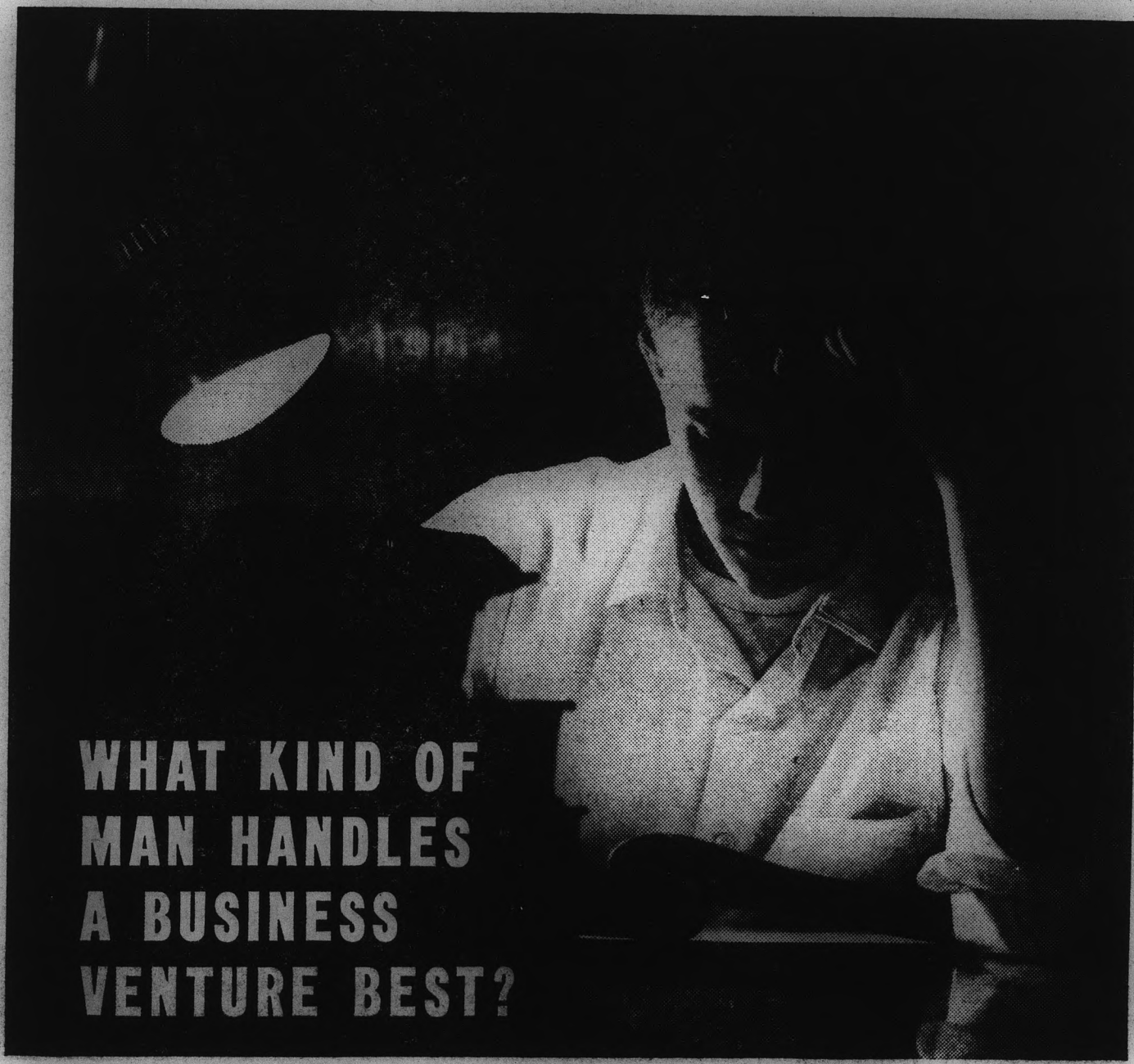
Dr. Fearon is presenting results of studies on the use of staff purchase researchers within purchasing departments of major industrial firms.

His talk is entitled "Purchasing Research."

He is a member of the board of directors of the Arizona Association of Purchasing Agents.

The conference is for purchasing executives from Washington, Oregon, California, Arizona, Utah and Hawaii.

Nobel Prize-winning atomic scientist Dr. Carl David Anderson was the speaker for ceremonies dedicating the new Science building in November, 1948.



**WHAT KIND OF  
MAN HANDLES  
A BUSINESS  
VENTURE BEST?**

*A midwestern college audience recently heard this answer in a talk by A.T. & T. Board Chairman, Frederick R. Kappel*

"To us this is an important question because we hire nearly 3000 college graduates yearly. To get an answer we went to our own files and examined the records of nearly 17,000 people. We checked each man's comparative success against what he achieved in college.

"As a group, the scholars won handily. Of the men who stood among the top third in salary for their level of experience, more than half were also in the top third of their college class. Only a quarter were in the bottom third.

"And contrary to age-old beliefs, extracurricular activities proved a lesser indicator unless the individual had an outstanding achievement. Mere 'joining' was not enough.

"The study indicates, at least as far as the Bell System goes, that there's little opportunity for college students

who practice 'diplomaship'—the belief that a diploma automatically leads to job success. Such thinking will not make telephone service what we know it can be.

"The men we want are men with intelligence *plus* those other attributes that give you the feel, the sense that they will make things move and move well—men who want to excel and are determined to work at it.

"Nothing short of excellence will do."

FREDERICK R. KAPPEL, *Chairman of the Board*  
American Telephone and Telegraph Company



**BELL TELEPHONE COMPANIES**



Those who have  
a choice, choose

**VESPA**

CHOOSE YOURS  
AT THESE SPECIAL  
SALE PRICES

|            |          |
|------------|----------|
| 125 Vespa  | \$335.00 |
| 150 Vespa  | \$385.00 |
| G.S. Vespa | \$450.00 |

Complete Parts & Service  
Available



**CUSHMAN**  
Motor Products

4817 N. 16th St. — Phoenix  
265-1272  
465 E. Main — Mesa  
WO 7-2117

Faculty Facts-

Woolf To Talk In Honolulu

Dr. Charles M. Woolf, associate professor of zoology, was asked by the American Society of Plastic and Reconstructive Surgery to present his study concerning genetic factors of the cleft lip and palate in Honolulu.

Dr. Woolf left yesterday for Hawaii.

He recently made a two-year genetic study in Utah of 553 families and their 25,000 relatives in searching for the cause of the deformities.

Dr. Donald J. Tate, professor of office administration and business education, presented his paper, "Of Mice and Mouse-traps" in Burley, Idaho, yesterday and today.

The talk, which was given at two business education section meetings of the Idaho Education Association Conference, placed emphasis on the importance of teaching economics to high school students.

The annual fall tea of the Faculty Wives Club will be tomorrow from 2 to 4 p.m. at the home of Mrs. G. Homer Durham.

The wives of new faculty members will be honored.

Mrs. Karl H. Dannenfelt is chairman of the tea. Mrs. Durham and Mrs. Edward Burgoyne, president of the club, will

Gourmet Diets Are Discussed

Mary Lawton Wright, associate professor of home economics, will speak on "Gourmet Cooking as Related to Modified Diets" at the Arizona Dietetic Association convention, October 18 at the Ramada Inn.

Mrs. Wright earned the bachelor's degree at Iowa State University and the master's degree at the University of Iowa.

Prior to coming to ASU she taught at Purdue, worked with the Chicago American paper and a Chicago advertising agency, in addition to owning a home economics consulting service.

Mrs. Wright is listed in "Who's Who in the Midwest" and "American Women."

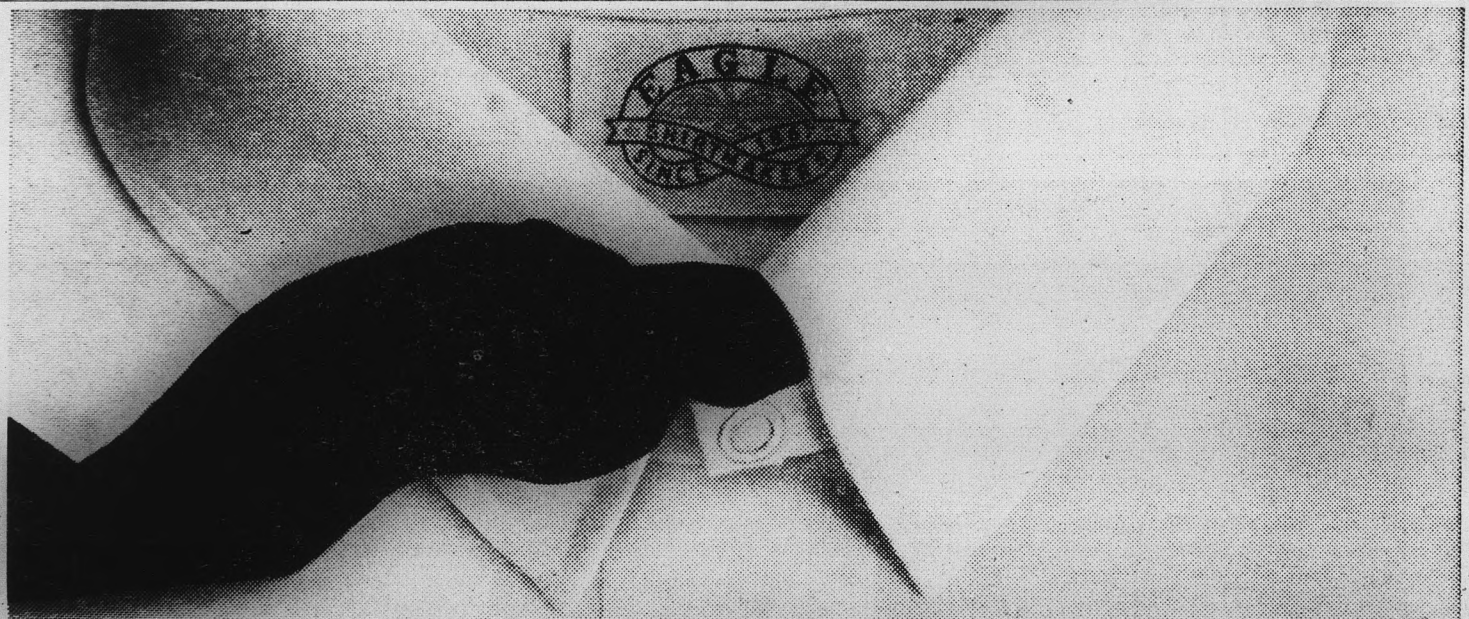
receive guests at the door.

Dr. Harold Fearon, assistant professor of management at ASU, spoke at the Executive Seminar in Purchasing and Materials Management recently at Michigan State University, East Lansing.

Dr. Fearon spoke on "Purchasing Research" and "Data Sources in Purchasing."

The seminar entailed two weeks of discussion on the managerial aspects of the purchasing function.

LIKE MAKE HOLIDAY AIR RESERVATIONS NOW... You Pay No Extra Scratch For Our Service Don't Sweat Going To Phoenix We Represent All Airlines "SWING BY TODAY" UNIVERSAL TRAVEL WO 7-1673 18 E. 5th St.



ENDOW THE AFFLERBACH COLLECTION! OR Nobody ever lost an Eagle Tabsnap under the dresser

MANY men who would like to wear tab collar shirts do not do so because they object to the tyranny of collar buttons. It is not just that collar buttons are hard to find when you need them. (Contrary to popular belief collar buttons do not always roll under furniture. The only sure way of finding a collar button is to walk around barefoot in the dark until you step on it. Now there is an experience.) No, there is something else: some men are simply not built for collar buttons. Their Adam's apples are in the wrong place. Or their hands are not the right shape for wrestling with all those empty collar button holes. So they end up wilted and out of sorts before they ever hit the street. It is the haberdashery equivalent of cutting yourself shaving. But that is a thing of the past. An Eagle Tabsnap Shirt is secured by one simple, inaudible click. As you can see from the illustration, it lies inconspicuously flat and neat. The snap enclosure is covered by the same material as the shirting itself. Eagle Tabsnaps are available in a wide range of colors and patterns, with short sleeves or regular. Yes, it appears that the collar button will join the button fly in the museum of clothing antiquities. Say, that is a good idea. If you can find your collar button please send it to us and we will start one (The Afflerbach Collection) right here in Quakertown. In return we will tell you where in your town you can find Eagle Shirts. Otherwise how would you know?

[COLLAR BUTTON COUPON]

Miss Afflerbach, Eagle Shirtmakers, Quakertown, Pennsylvania Dear Miss Afflerbach:

Here is my collar button. I couldn't find it but please write anyway.

Yours very truly,

Name

Address

City State

© 1962 EAGLE SHIRTMAKERS, QUAKERTOWN, PENNSYLVANIA

BARBER SHOP University BARBER SHOP 1336 APACHE BOULEVARD BAYLESS SHOPPING CENTER Open 9-6 p.m. . . . Closed Mon. Finest in Barber Service Children & Flat Tops Our Specialty 3 Barbers to Serve You Shoe Shine

Campus Classified

Regulations: For students and faculty only of Arizona State University to Room 207, Memorial Union Building, by noon two days before date of publication: noon Monday or Wednesday's issue, noon Wednesday for Friday's issue. Rates: 3 cents per word, 50 cents minimum charge.

FOR SALE

1959 FIAT 500—Sun roof—excellent condition. 50 miles per gal. \$356 cash. Call WO 7-1673 days.

SEWING

Sewing, altering, and dressmaking Mrs. Kotten, 1311 W. 19th Place, Tempe, Arizona. WO 7-9173.

FOR RENT

Sunset Apts., furnished, 1 bedroom, refrigerated, heated pool, near ASU \$85. 1342 Sunset Dr. CR 4-9348 - 967-0981.

Nearly new one bedroom furnished apartment. Special rate to University couples, \$75. Water paid. 1409 Rural Road. WO 7-5348.

LOST

Black and gold class ring. Washington-Lee High School. Vicinity: Infirmary. Please call Mary Uiman, East Hall.

MISCELLANEOUS

NOTICE! SCUBA Class at YWCA 226 East Earl, Phoenix. Starts Monday night, 7:30 p.m. for eight weeks. Interested? See you there! Oh. Fee \$15.00.

WELL, there is one other way. Not that Miss Afflerbach wouldn't love to hear from you, and all, but if you just can't wait and/or if you want to save yourself a four-cent stamp we'll let you in on a little secret. You'll find them at Hanny's.

Hanny's Harsity Shops DOWNTOWN • CHRISTOWN • SCOTTSDALE

# Reefers Grow On Campus, But It's All For Science

By BOB HUDNALL

Marijuana, a plant highly prized for its narcotic properties, is being raised in ASU's botany laboratories.

The plant is being grown for extensive research on the chemical mechanism causing sex change and the occurrence of bisexuality.

Investigation of sex inheritance and the role of sex hormones testosterone (M) and estrogen (F) in plant and animal life is the purpose of the research.

HEADING this program is Dr. H. G. Applegate, assistant professor of botany, who transferred here this fall from Southern Illinois University. He was awarded the \$32,000 NSF grant there.

By treating the marijuana buds with the opposite sex hormone, a male plant will produce a female flower or vice versa.

The sex change is not the only effect, however.

The Marijuana plant, usually living only one season, is rejuvenated after the hormone application and will live for another year.

These youth-producing powers have been anxiously pursued since before Ponce de Leon sought the "fountain of youth."

IN PLANTS, sexual change for youth seems fair trade, but for man it is not feasible.

The bodily and psychological sex changes accompanying rejuvenation in humans presently outweighs the desired effects.

## VA Announces Medical Care

Los Angeles Veterans Administration outpatient clinic, has announced that, under a new law, veterans must secure approval from the nearest VA regional office or clinic before they go to private physicians and dentists at VA expense.

Those eligible under this law are peacetime veterans with a service-connected but non-compensable disability (less than 10 per cent).

Those with service-connected dental conditions must apply for treatment within one year from discharge.

High priority for VA hospital care will be given those needing hospitalization for service-connected conditions.

For more information or application for VA medical, dental or hospital care, contact the nearest VA office.

Though 15,000 marijuana plants will be used in the total three-year program, Dr. Applegate now has only a few hundred, due to a lack of laboratory facilities.

The new Life Sciences building addition to be completed this year will provide the laboratory space needed to house the plants and their accurately air conditioned growing chambers.

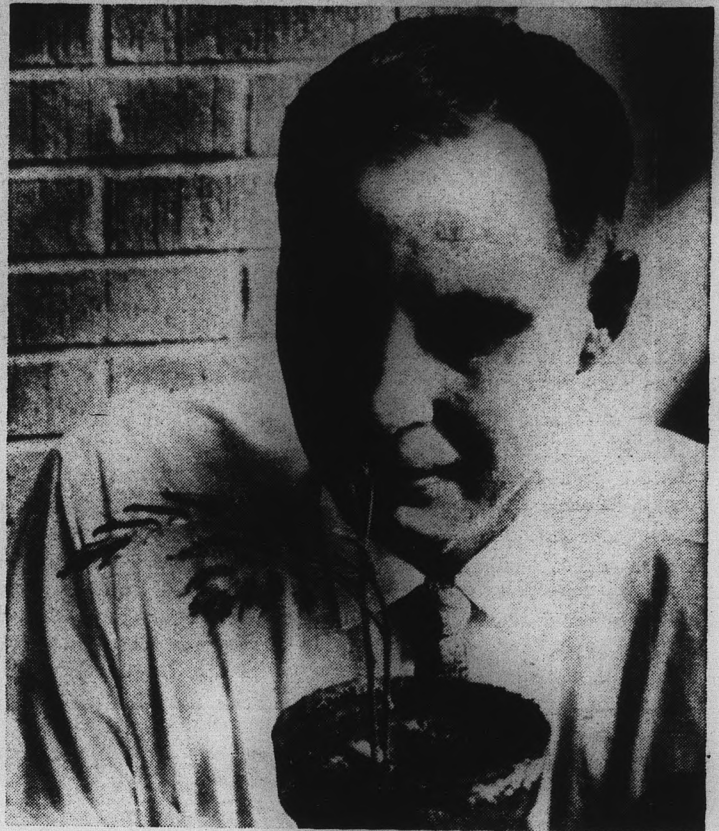
A NARCOTICS permit was required from the Treasury Department to legally raise the plants.

When asked why the marijuana plant was used, Dr. Applegate replied:

"It is significant that the same hormones control sex development in plants and animals. Therefore, we can use plants which are cheaper and require less care than animals and still get the same results.

"Work we're doing on marijuana will tie in with extensive research which has already been done on that plant."

## Marijuana Research—



DR. H. G. APPLIGATE inspects a young marijuana plant to be used in research on the chemical mechanism causing sex changes and the occurrence of bisexuality. Fifteen thousand of the plants will be used in the three year program.

## Experts View Common Market

The controversial subject of the Common Market will be explored in the National Educational Television series, "This New House," starting Tuesday at 8 p.m. on KAET, channel 8.

"This New House" provides analysis and commentary by international figures including Orville L. Freeman, U.S. secretary of agriculture; Hugh Gaitskell, leader of Britain's Labor Party, and Ludwig Erhard, vice chancellor of the German Federal Republic.

The first of the six programs will deal with the rise of Europe

as an economic power, from the end of World War II to its present state of prosperity.

### Shofstall To Speak

Dr. W. P. Shofstall, ASU dean of students, will give an address, "Let's Keep America Free", at a luncheon of the Sertoma Club at Tucson's Ramada Inn tomorrow.

The offering of influenza vaccine at cost to Arizona State students was initiated by the Student Health Service in 1946.

**BAP**

BRITISH  
AUTO  
PARTS

### PARTS FOR ALL FOREIGN CARS

- CLUTCHES
- GASKETS
- RINGS
- WATER PUMPS
- FUEL PUMPS

Lodge Spark Plugs  
AMCO Accessories  
British - French  
German - Italian

As Advertised In  
ROAD & TRACK

915 E. Indian School

264-6737

Fri., Oct. 6 — 8:30 p.m.

Phx. Union High School

## BUD TRAVIS

and

The Brilliant  
Wonderfully  
Entertaining

Up & Coming Folk

TWOSOME

Tkts. \$2.50 - 2.00 - 1.50

Linde Box Office  
Hanny's 1st St. & Adams  
Ph. AL 4-2979

Capitol Records Scores  
Again With More

## "CAMPUS CROWD PLEASERS"

- ★ KINGSTON TRIO —  
"Something Special"
- ★ BARBARA DANE —  
"On My Way"
- ★ BOBBY DARIN —  
"Oh — Look At Me Now"
- ★ GEORGE CHAKIRIS
- ★ THE LETTERMEN

Ask For Your FREE Book Cover

**HILLS RECORDS**

Tempe Center

Open Thursday Till 9 P.M.  
Radios — Phonos — Tape Recorders

Flat Tops a Specialty

All Styles

## Paul's BARBER SHOP

2008 Rural Road  
(Rural at Broadway)

Three Chairs  
Plenty of Free Parking

CAMPUS  
DRUG

# Specials

Revlon

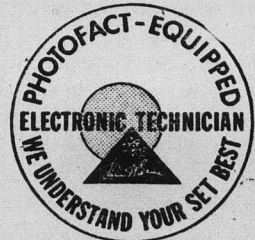
CONTEMPORA

MATTE FINISH MAKE-UP  
SPECIAL TRAVEL  
SIZE ONLY

\$2.00

**CAMPUS  
DRUG**  
CORNER, College and 8th, WO 7-4049

for **RELIABLE**  
TV or RADIO REPAIR  
CALL US... WE ARE YOUR



We're fully equipped with a SAMS PHOTOFACT Library—the world's finest TV-Radio service data. We have the complete manual covering the very set you own—that's why we UNDERSTAND YOUR SET BEST. Call us for:

- Quick, Expert Repair
- Guaranteed Replacement Parts
- Honest Workmanship
- Reasonable Cost

Ask to see the PHOTOFACT Manual covering your set. See the complete and accurate information on circuitry, adjustments, replacement parts—everything to insure fast, efficient, and economical workmanship.

We understand your set best

**LARRY'S TV**

727 Apache Blvd.  
WO 7-0920



**EYES TOWARD THE SKY** — These new members of Angel Flight are watching for the wings they'll be wearing next week. They are from left to right: First row; Sharon Fasoli, Bonnie Lu Johnson, Rose McCann and Linda Arnote. Second row; Kathy Erickson, Judy Drage and Pat Grove. Third row; Barbara Diehl, Marian Brown and Carolyn Curry. (Photo by Larry Ward)

## Angel Flight Welcomes 11 Into Ranks

Eleven regulars and ten alternates were chosen for Angel Flight membership this morning at 5:30.

The new regulars for the AFROTC women's honorary are Linda Arnote, Marian Brown, Charleen Chatterton, Carolyn Curry, Barbara Diehl and Kathy Erickson.

Also, Sharon Fasoli, Pat Grove, Bonnie Johnson, Rose McCann and Judy Drage.

New Angel Flight alternates are Anita Beaumarchais, Kathy Bressler, Gretchen Diercks, Rita Gear, Linda Hutchins, Lyle Jo James, Beverly Johnson, Judy Ragland, Lee Rossi and Wanda Le Clere.

The candidates were selected by Deputy Commander Margie Jaeger, Cadet Col. Buford Ness, Cadet Lt. Col. Charles F. Weitz, Information Officer George Rhodes and Mrs. Helen Montague, Angel Flight sponsor.

The new members and alternates were chosen from 39 finalists and were required to learn elementary drill plus Angel Flight rules and policies.

There was a breakfast honoring the new members this morning at 6:30.

The Dixie Dees Gammage Award for outstanding women speech students was established in 1948 by AWS.

## Pi Delt Seeks Ugly Face For Halloween Competition

Pi Delta Epsilon, national journalism honorary, will sponsor the second annual Ugly Person contest, Oct. 29 and 30, on the Devil's Den Patio.

The event is a club service project, the proceeds of which go to The Arizona Republic "Dress a Living Doll" charity and other Pi Delta Epsilon projects.

ORGANIZATIONS entered should have their candidates made up and photographed in the photography laboratory in Matthews Hall, by Oct. 19.

The entry fee is the cost of the picture.

The pictures will be displayed Oct. 29 and 30 on the Den patio. Votes will be a penny each.

THE WINNER WILL receive a gift certificate from Hanny's and the sponsoring organization will receive a trophy. The winner will be announced in the Halloween edition of the State Press, Oct. 31.

All interested organizations should contact Twila Drumm or Mary Gorman in the State Press office, MU 211.

## Homecoming Ideas Due Wednesday

Homecoming house decoration themes are due in the office of the ASASU Secretary not later than 4 p.m. on Wednesday, Oct. 17.

The over-all theme for this year's homecoming is "Famous Flicks."

Three organizations have already turned in their theme ideas. These are: Alpha Sigma Alpha, "The Devil At Four O'Clock"; Alpha Phi, "Three Faces of Eve"; and Wilson Hall, "The Greatest Show on Earth."

Organizations may receive no professional help with their decorations. If such help is discovered, the organization will be

requested to drop out of the decorations division.

Decorations will be judged on originality, animation, theme, design, effort and color. Four or five prominent individuals from the Valley will be selected as judges of the decorations.

Construction may begin any time after Oct. 17 and must be completed by Nov. 2. Follow-up articles will be printed in next Wednesday's State Press.

## ASU Calendar

- MONDAY**
- P.M.
  - 3:00—Board of Financial Control, MU 208
  - 3:30—Education Board, MU 210
  - 3:30—Spurs executive meeting, MU senate chamber
  - 4:00—Spurs, MU senate chamber
  - 8:00—Off-campus men, MU-209
- TUESDAY**
- A.M.
  - 6:30—Toastmasters breakfast, MU faculty dining room
  - P.M.
  - 12:00 noon—Marketing Club luncheon, MU 218C
  - 3:30—Rally and Traditions, MU 266 and 209
  - 3:30—Cultural Affairs, MU 210
  - 3:30—Faculty - Student committee, MU 7
  - 3:40—Panhellenic, MU senate chamber
  - 6:00—Sophos, MU 209
- WEDNESDAY**
- A.M.
  - Delta Sigma Pi breakfast, MU faculty dining room
  - P.M.
  - 1:40—Sigma Delta Chi, MU 210
  - 3:30—Senate, MU senate chamber
  - 4:00—Natali, MU 209
  - 5:30—Pleiades, MU 209
  - 6:00—Lutheran seminar, MU 208
  - 6:00—Spiritual Exploration Week, MU 210
  - 6:15—Blue Key, MU 218A

**MUGS UP**  
ROOT BEER

Take  
A  
Break

503 E. 8th • WO 7-0800  
CARRY OUT SERVICE

INTRODUCING THE NEW

# FISH HUT

Authentic Decor From the East Coast and Deep Seas

DINNERS  
**99c**

Featuring All Types of Beverages

1411 N. Scottsdale Road Tempe

**Pooped... but must carry on? Snap right back and keep going! Take Verv® continuous action alertness capsules. Effective, safe, not habit-forming.**

**Stay bright. Fight drowsiness and be at your brilliant best with Verv® continuous action alertness capsules. Effective, safe, not habit-forming.**

# The Book Stall

18½ B EAST SEVENTH ST., TEMPE  
(On The Alley Behind Arizona Bank)

## used books

Tues. — Wed. — Thurs. — Fri. — Sat  
Hours: 11:30 A.M. to 3:30 P.M.  
5:00 P.M. To 9:00 P.M.

**CLOSED SUNDAY AND MONDAY**

**\$17.95**

A Must For  
All Types Of  
Weather

Career Girl and  
Travel Wear  
Rain 'n Shine  
Trench Coat

Water & Stain  
Repellent

100% Cotton

## BONNIE SUE Fashions

Tempe Center

We all make mistakes...

**ERASE WITHOUT A TRACE  
ON EATON'S CORRASABLE BOND**

Typing errors never show on Corrāsable. The special surface of this paper makes it possible to erase without a trace—with just an ordinary pencil eraser. Results: clean-looking, perfectly typed papers. Next time you sit down at the keyboard, make no mistake—type on Corrāsable!

Your choice of Corrāsable in light, medium, heavy weights and Onion Skin. In handy 100-sheet packets and 500-sheet boxes. Only Eaton makes Corrāsable.

A Berkshire Typewriter Paper

EATON PAPER CORPORATION PITTSFIELD, MASS.

NOW AVAILABLE AT

## KORRICK'S

Downtown AL 8-5911  
Chris-Town AM 4-3911

## Independents Challenge Greeks

Independents will be matched against Greeks next Wednesday as Spurs and Sophos join to raise funds for the United Fund Campaign.

This is the first year that the two groups have combined on a competitive basis.

Booths will be set up at var-

ious points on campus, and the UF contribution boxes marked for Greeks and Independents.

All proceeds will go to the local drive, to be distributed among various charity organizations supported by United Fund.

The winning group will be announced in the Oct. 19 paper.



## Happy House

Tempe Center

**OPEN**

Thursday and Friday Till 9 P.M.  
For Those People Who Wish To Pick  
Their Xmas Cards Early  
Solids Packs and Assortments  
Large Selection — We Monogram

## UPTON'S Coin Operated Dry Cleaning & Laundry

Study, Read, Relax In Our  
Lounge With FREE Coffee While  
Your Laundry & Dry Cleaning Is  
Automatically Done

Open 8 A.M. - 10 P.M. — 7 Days A Week

Phone 967-0071

Attendant Always On Duty

2010 RURAL RD. — AT BROADWAY

*Jonathan Logan*

\$15<sup>98</sup>



Cozy good looks . . . in 100% Orlon Acrylic knit. This svelte sheath . . . cowl collared and buttoned for dash. Knitted string belt ties like a shoe lace over elasticized for-fit waist. Washable only — by hand or machine.

**Celia's**  
FASHIONS

TEMPE CENTER

1149 East Main

Mesa

## On The Go

By MARY GORMAN

If you're hurting for things to do around school these days, besides study, there's plenty of things waiting for you.

The ASU Concert and Lecture Series opens a full fall schedule Oct. 17 at 8:15 p.m. with the classic and flamenco guitarists, Celendonio Romero and Sons, appearing in the MU ballroom.

**YOU CAN** even rationalize yourself out of studying if you take humanities, as credit can be obtained for humanities classes by attending the concert.

\* \* \*

Bud and Travis, well-known folk-singing duo, will be appearing in Phoenix Oct. 26.

**ALWAYS** popular with the college crowd, Bud and Travis are returning to the Phoenix area, after other successful appearances here.

\* \* \*

If you like musicals, two ASU students are appearing in "Bye Bye Birdie," Oct. 11-14, at Arcadia High School auditorium.

**WENDY WEISS** and Roger Bigelow, both ASU freshmen, play typical teen-age fans in the hilarious spoof of the current music craze — rock and roll.

Both are members of the dance troupe and are featured in major scenes.

Check into this, they're offering special rates for students.

\* \* \*

While you're checking out the price of tickets, don't forget the road tour of the hit London and New York play, "The Caretaker," which is playing Oct. 16 and 17, with a special half-price ticket rate for students, at Sombrero Playhouse in Phoenix.

\* \* \*

Here on campus, the University Players are having tryouts for "The Rivals," next Monday and Tuesday nights at 7 in the University Playhouse.

The comedy calls for four women and eight men.

Dr. Yeater, chairman of the Drama department, announced that the tryouts are open for all university students.

INSTRUMENTS • SUPPLIES • LESSONS • REPAIRS

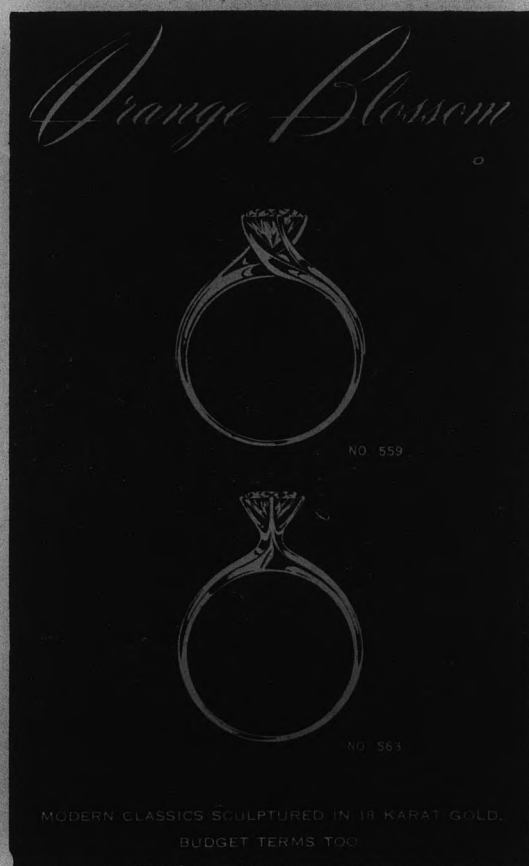


## Tempe Music Center

Sheet Music — Method Books  
4 Day Special Order Service

15 E. 6th St., Tempe

WO 7-4132



MODERN CLASSICS SCULPTURED IN 18 KARAT GOLD.  
BUDGET TERMS TOO.

Open Thursdays 9 A.M. to 9 P.M.  
Member



American Gem Society

*Paul Johnson*  
JEWELERS

1604 E. Camelback

## Honoraries Sell Mums

Members of Spurs and Sophos, sophomore honorary groups, are taking orders for "mums for mom," to be worn by mothers on campus during Parents Day, Oct. 27.

The large, gold mums will sell for \$1.50.

All Spurs and Sophos members will be taking orders, and mums may be picked up on Parents Day in specified rooms in each dorm, in the Phrateres room, and at a table in front of the MU.

Receipts must be presented before any mum can be picked up.

Mums can also be wired home directly through the florist.

## LDS Coeds Head North

Seventy women from Phi Psi and Phi Omega chapters of Lambda Delta Sigma will attend an overnight campout at Camp Lo Mia near Pine, Arizona, today and tomorrow.

Purpose of the annual event is to allow pledges to become better acquainted with actives.

The two groups will depart from the Latter-Day Saints Institute, 330 8th St., at 4:30 and 5:30 p.m. and will return tomorrow afternoon.

## Press Contest To Offer \$100

The Arizona Press Women are presenting \$100 and an inscribed trophy for outstanding nonfiction writing in newspaper, magazine, radio and television fields.

The third annual Junior Mass Communications Award was announced by Betty F. Kraus, chairman of the award committee.

Undergraduate women enrolled in journalism classes or active in student publications or broadcasting are eligible.

They must submit three entries which have been published or broadcasted.

Entry blanks may be obtained in SS 207.

## Club To Hear Armstrong

The American Society of Mechanical Engineers, ASU chapter, will have a business meeting Oct. 17 at 7:30 p.m. in the Engineering Center, room 143.

Rod Armstrong, in charge of Commercial Placement at the ASU Placement Center, will speak at 8 p.m. in EC 442 on "Road to Employment."

## CAMPUS Lauderette

- Hand Ironing
- Shirts - Trousers
- Cleaning
- ROTC Uniforms

SPECIAL  
RATES ON  
FLUFF DRY

"Next Door To The V.I."  
WO 7- 3982

# Basketballers Open Drills

With six returning lettermen and an impressive list of sophomores and junior college transfers, the ASU Sun Devil basketballers begin practice Monday under the tutorage of Coach Ned Wulk and his assistant, Billy Mann.

This year the Devils will be competing in the new Western Athletic Conference and will be striving to equal or better last year's season mark of 23-4 and their Border Conference slate of 8-0.

**BACK THIS** year will be frontliners 6-8 Art Becker, 6-5 Joe Caldwell, and 6-4 Tony Cerkvenik plus backcourt men Raul Disarufino, Bobby Howard, and Gary Senitza.

Heading the sophomore crew will be Dennis Dairman, who averaged 23.2 points a game while a freshman, but sat out last year with a broken collar bone. Dave Reid, and Tom Owens are other sophs to watch, while 6-7 center Harry Orr and 6-3 forward Alan Schmelz are the JC transfers.

**LETTERMEN MISSING** from last year's squad include the team's leading scorer, 5-9 Larry Armstrong, who hit 17.2 points per game, 6-6 Jerry Hahn, 6-4 Ollie Payne, 6-6 Mike McConnell, and 5-10 Rex Dernovich.

ASU opens its season against Whittier Dec. 1 at home. The rest of the schedule includes contests with Pepperdine, Kansas, Kansas State, Wichita, Colorado, Minnesota, Canisius, Texas Western, Rhode Island, Creighton, and the WAC members—Utah, Brigham Young, Wyoming, New Mexico, and Arizona.

# Off The Cuff

By Dennis Anderson

The collegiate football season rolls into high gear this weekend with some interesting contests on tap across the nation.

Alabama, rated number one, should have an easy time with Houston. A long time rivalry pits second-rated Texas against up-and-coming Oklahoma.

**THIRD-RANKED** Penn State is at Army.

USC, now in fourth spot, has the day off, ditto fifth placed Mississippi. LSU's sixth-ranked Bengals go up against a highly rated Miami (Fla.) eleven.

A hot battle should ensue up at Corvallis, Ore., where two Northwest powerhouses, seventh-rated Washington and Oregon State tangle.

In a key Southwest Conference Game, eighth-rated Arkansas is at Baylor. Ninth-ranked Purdue, now the favorite for Big Ten honors, takes a breather with Miami of Ohio.

**PREVIOUSLY NUMBER ONE** in the land, Ohio State, meets Illinois.

An interesting slate is also on tap for Western Athletic Conference members. Down at Tucson, the UofA tries to get back into winning ways by hosting the Air Force Academy Falcons.

Brigham Young, with the nation's leader in total offense, Eldon Fortie, meets Utah and the WAC's leading passer, Gary Hertzfeldt.

Powerful Utah State goes to Albuquerque intent on knocking off New Mexico's Lobos.

At El Paso, Wyoming runs into Texas Western's Miners, on the comeback trail after last week's upset over WAC leader, New Mexico.

**NOW THREE LOCATIONS**  
 1. Tempe Center    2. 1302 Rural    3. Bayless Center  
**Open 24 Hours A Day!**



**ZZZONA**  
**DRIVE-IN LAUNDRY & CLEANERS**  
 FIRST in Laundry and Cleaning • LAST in the Phone Book

**ATTENTION SUN DEVILS**

**HELP STAMP OUT BUFFALOES!**

**CHICO'S**  
 RESTAURANT\*

**FINE MEXICAN FOOD**  
 1120 East Apache Blvd. — Tempe —

\*Air conditioned of course

**SPACE, MISSILE & JET PROJECTS AT DOUGLAS**  
*have created outstanding career opportunities for*  
**SCIENTISTS and ENGINEERS**  
*B.S. degrees or better*

Assignments include the following areas:

|  |   |
|--|---|
| <b>Servo-Mechanisms</b> —relating to all types of control problems   | <b>Heat Transfer</b> —relating to missile and space vehicle structures  |
| <b>Electronic Systems</b> —relating to all types of guidance, detection, control and communications  | <b>Structures</b> —relating to cyclic loads, temperature effects, and the investigation of new materials, methods, products, etc. |
| <b>Propulsion</b> —relating to fluid-mechanics, thermodynamics, dynamics, internal aerodynamics  | <b>Aerodynamics</b> —relating to wind tunnel, research, stability and control   |
| <b>Environmental</b> —relating to air conditioning, pressurization and oxygen systems  | <b>Solid State Physics</b> —relating to metal surfaces and fatigue  |
| <b>Human Factors</b> —analysis of environment affecting pilot and space crews, design of cockpit consoles, instrument panels and pilot equipment | <b>Space vehicle and weapon system studies</b> —of all types, involving a vast range of scientific and engineering skills         |

**Get full information at**  
**INDIVIDUAL ON CAMPUS INTERVIEWS**  
 with a Douglas representative  
 Thursday, October 25

We urge you to make an appointment with Dr. Robert F. Menke, Director of Placement. If you cannot please write to  
**S. A. Amestoy, Staff Assistant to VP Engineering**

**DOUGLAS AIRCRAFT COMPANY, INC.**  
 3000 Ocean Park Blvd., Santa Monica, California  
 An equal opportunity employer



**DU PONT**  
 BETTER THINGS FOR BETTER LIVING... THROUGH CHEMISTRY

**The sculptured knit:  
 very in, very "Orlon Sayelle"**  
ACRYLIC FIBER

HUNTINGDON'S smashing ski-county sweater: a rich, soft, big-stitch knit of 100% "Orlon Sayelle"\*. Du Pont's newest luxury sweater fiber. Which makes it rugged, but lightweight, full of bounce. And unusually good-looking. Easy to machine-wash, machine-dry. Or wash it by hand and lay on a flat surface to dry. "Mont Blanc" in steel green, curry, nickel, blue, white. Sizes S.M.L. and XL. About \$16.00.

\*Du Pont's registered trademark for its bi-component acrylic fiber. Du Pont makes fibers, not fabrics or clothes. Enjoy the "Du Pont Show of the Week" Sunday nights, NBC-TV.

**GOLDWATER'S MEN'S WORLD**

Phoenix — Scottsdale

# Unbeaten Devils Host West Texas Buffaloes

By JOE HEATH

"They're razor sharp. Their play execution is excellent, and they play a wide open game which points to high scoring."

This is the report that came from ASU assistant coach Dick Mansperger after he watched West Texas State roll over Arlington State 49-0 last weekend.

"The Buffaloes are riding high and gunning for the Sun Devils," said Mansperger.

Coach Joe Kerbel's club started the season off big, 61-0 over Trinity, and has yet to let up. Averaging 47 points a game, the Buffaloes have added as vic-

tims Texas Tech (30-27) and Texas Western (49-0) on their way to a perfect season.

LOOKING at the statistics will give the Sun Devil fans an idea of what they are in for.

In four contests, they have outscored their opponents 189-27.

"Pistol" Pete Pedro, All-American candidate at halfback, leads the nation in rushing: 621 yards in 75 carries for an 8.3 average.

The other halfback, Jerry Logan, is the national leader in the scoring department. He has scored eight touchdowns and has booted 24 of 26 PAT's, the last 16 in a row, for 72 points.

Logan also is averaging better than 45 yards per punt.

While the offense has been rolling up the points, the defense has been setting its own laurels.

The Buffaloes intercepted six passes in the Arlington game.

When Pedro takes a rest, while his team doesn't have the ball,

his replacement is Jerry Richardson.

RICHARDSON has eight interceptions for the season.

Head Sun Devil coach Frank Kush has had his squad working long and hard this week in preparation for the coming horde of point-getters.

Although the Devils held Washington State to 51 yards on the ground, the Cougars riddled the defense with passes for 258 yards and two touchdowns.

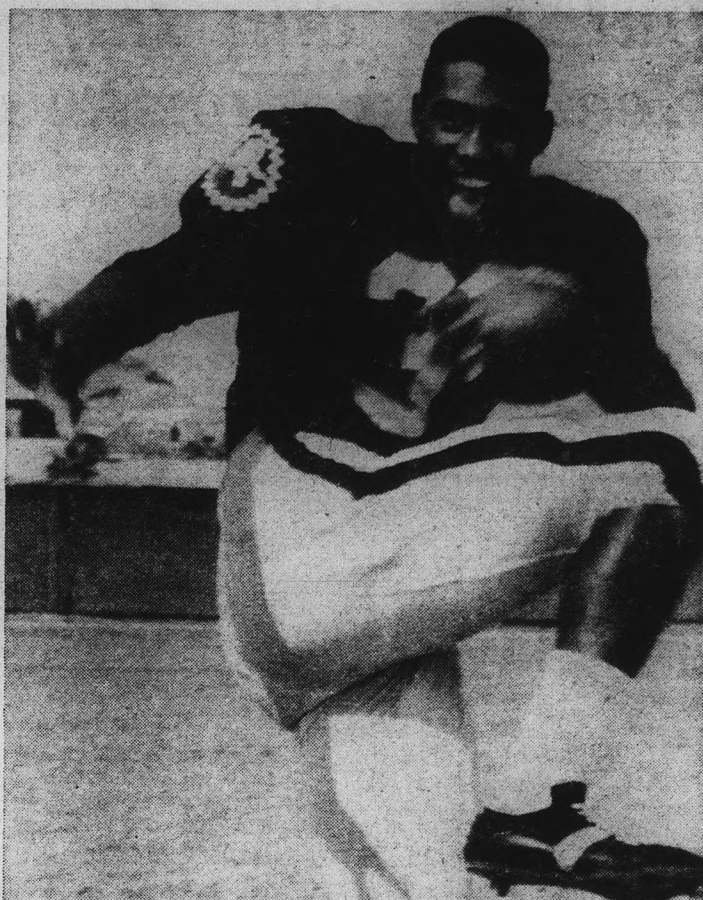
"We will be facing an outstanding team," said Kush.

"We've worked hard and it will be a rough row to hoe."

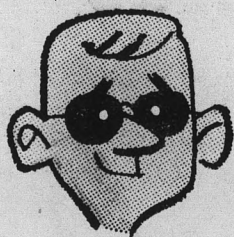
Mansperger rates Texas fullback Russell Mundy "one of the finest anywhere."

"He can kill you up the middle if you stack the defense to stop the end runs of Pedro and Logan," said Mansperger.

The Texas line is headed by guard Stu Johnson, who Mansperger rates as "one of the finest in the country."

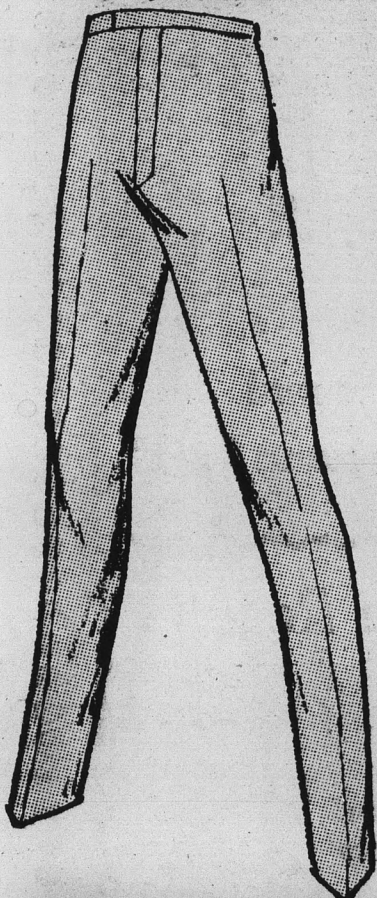


BACK OF THE WEEK — Charley Taylor, halfback for Arizona State University's undefeated Sun Devils, was elected "Back of the Week" in the Western Athletic Conference for his fine showing in the Devils' 24-24 tie with Washington State University last Saturday. (Photo by Ed Ryan)



### "My Analyst"

"says I may have to stop wearing Rapier slacks. Seems all the attention I'm getting is giving me a complex. Please girls, I know these Rapier slacks are sharp, but think of my health."



**TK Rapier**  
slacks  
\$6.98 to \$7.98

At your favorite campus shop

for the  
**YOUNG MAN**  
of distinction



Corduroy Three-Piece Suit  
Tailored With Natural Shoulder  
**\$29.50**

**A SHIRT WITH AN OXFORD ACCENT**

British inspired, all-American admired . . . Arrow's "Gordon Dover Club." Medium-point, button-down collar is softly rolled for unstilted shaping and fit. Tailored with traditional placket front, plaited back in cool cotton Oxford. All-American trimly tailored to look clean-cut, to feel really comfortable. "Sanforized" labeled keeps it that way. \$5.00.

**ARROW**  
FOUNDED 1851  
*Traditionally the Finest for Discriminating Men*

603 Mill

Tempe

**Campus**  
men's shop  
FOR MEN AND YOUNG MEN . . .

603 Mill

Tempe

# Untested Sun Imps Meet Gila Monsters

Arizona State University's untested Sun Imps open their season tomorrow against Eastern Arizona Junior College with the Gila Monsters having had four contests under their belt to date.

The Monsters will be definite favorites after wins over Dixie JC (13-6) and the ASC Axebabes (27-0) and losses to pow-

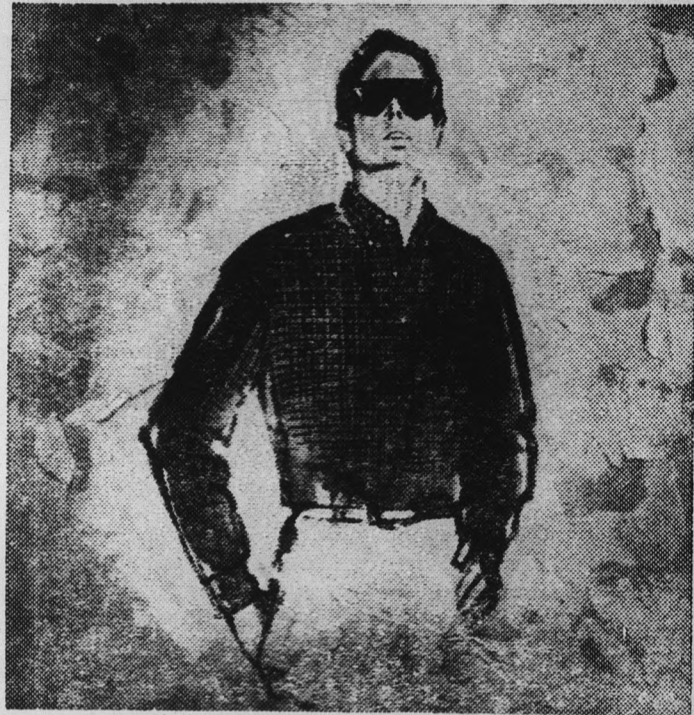
erhouses New Mexico Western (21-0) and Phoenix College (16-7).

The tentative starting lineup for the Sun Imps reads—LE Ken Potts, LT Dave Vereb, LG Ed Sims, C Tom Ptak, RG Ken La-Judice, RT Pat Peters, RE Brian Tyler, QB Chuck Kolb, LH Joe Parham, RH Ben Hawkins, and FB Dave Smith.



FRESHMAN COACHING STAFF — Members of the freshmen football coaching staff at ASU this season are from left, Fred Rhoades, head coach Bill Kajikawa and No-

lan Jones. Not pictured are John McFalls and Don Bigler. The Sun Imps open their season this Saturday against Eastern Arizona Junior College at Thatcher.



Like Nothing Else in Shirts

**BENTLEY AUTHENTICS**

by *Gayson*

Pick a Bentley Authentic and you choose a shirt that's comfortable, well-mannered and tailored in the finest tradition. Top-quality all combed cotton madras or broadcloth sets off classic and contemporary versions of plaids, checks and stripes that speak in quiet tones.

from \$5<sup>00</sup>

THE *Americana* SHOP

QUALITY MEN'S APPAREL  
TEMPE SHOPPING CENTER

OPEN 9:00 A.M. TO 6:00 P.M.  
THURSDAY AND FRIDAY NITE  
'TIL 9 P.M.

# GRAND OPENING

## UNIVERSITY HEALTH CLUB

63 EAST BROADWAY, TEMPE

# Special

TO THE FIRST 50 MEMBERS

ENROLL NOW FOR ONLY \$ **5** PER MONTH

Get In Shape Under The Personal Supervision of Walt Hunt "Mr. Arizona 1961"

**WE GUARANTEE These Results**

**In 60 Days:**

**- UNDERWEIGHT -**

Gain: 1½ Inches On Each Arm  
3½ Inches On Chest & Shoulders  
10 Pounds Body Weight

**- OVERWEIGHT -**

Lose: 3 Inches Off Waist & Hips  
15 Pounds Body Weight

## UNIVERSITY HEALTH CLUB

63 EAST BROADWAY, TEMPE

PHONE 967-7461

HOURS: 10 A.M. TO 10 P.M.