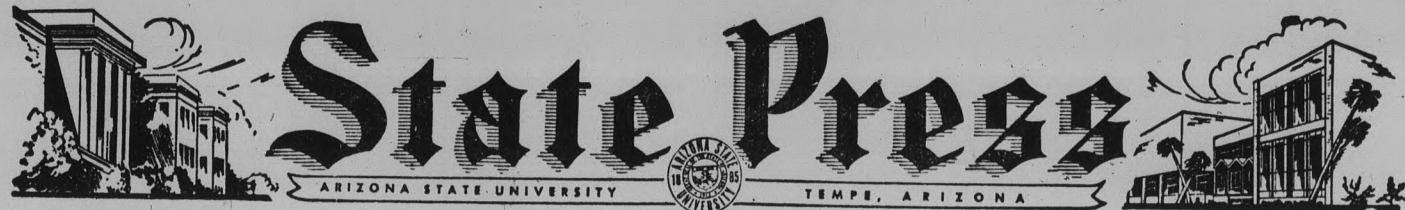


Special Edition For 1962 High School Graduates

PROGRAMS
OF FIVE COLLEGES
AT ASU
PAGES 3-4



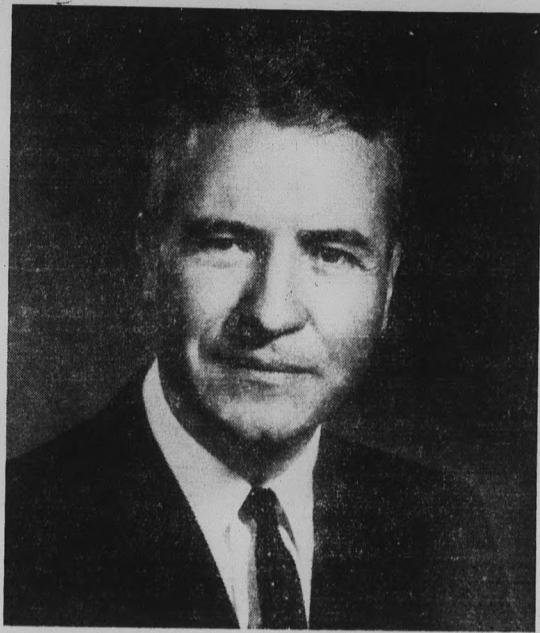
COMPLETE
FROSH WEEK
SCHEDULE
PAGE 5

July 23, 1962

STATE PRESS

No. 8

ASU READY TO WELCOME STUDENTS



Dr. G. Homer Durham

ASU Academic Role Distinctive

By DR. G. HOMER DURHAM
President, Arizona State University

The prominence which any institution of higher learning achieves is predicated largely on the caliber of scholars it recruits and retains on its faculty.

To be sure, physical facilities adequate to the task of training students in the multi-faceted professions needed in a complex society cannot be under-rated in importance. The ultimate test of a student's success, however, comes from the interaction of his own attitude and the inspiration, based on sound preparation and experience, his professors are able to impart.

High school students contemplating a choice of a university can be assured that they will find at Arizona State University a highly-trained, distinguished and cosmopolitan faculty secured through continuous and vigorous recruiting by deans and administrators.

As a fast-growing university, evolved from a state college, ASU cannot point to a specific number of degree programs more outstanding than others. The traditional patterns of educational growth do not apply to all departments at ASU.

The evolution of our programs in English and education, for example, follow the conventional pattern of development over a period of decades to a position of prominence.

Engineering, on the other hand, has achieved a similar position in only five years. In this case, as in many others on the campus, the very newness of the program is a strength, rather than a weakness. Engineering started at ASU with the nuclear and space age; thus the school has no huge investments in obsolete equipment and its faculty is free from similarly archaic ideas and teaching methods.

The fully accredited College of Business Administration is unquestionably strong and is an example of growth in which the traditional patterns are combined with the infusion of new faculty, techniques and ideas to meet equally new needs.

Such a combination is evident in most ASU programs — the physical sciences, the arts and the humanities, to cite but three — and the procedure of orderly, long-time growth, plus the addition of modern facilities and concepts, has resulted in an educational vigor distinctive to ASU.

Thus, every university has its own degree of uniqueness, shaped in character by both internal and external forces not duplicated precisely elsewhere.

We would urge high school seniors considering enrolling at ASU next fall to avail themselves of the always-open invitation to visit the campus and the academic departments in which their interest lies. They can discuss their goals and aptitudes with faculty members and investigate their opportunities.

Then, we would urge them to prepare themselves for the dedication and sacrifices necessary at any modern university for high scholastic attainment.

High Achievements Mark Career Of Dr. Durham

Beginning his second full year as president of Arizona State University, Dr. G. Homer Durham has sterling qualifications to serve his generation and the younger ones of the state of Arizona.

The 10th chief executive in the history of ASU, Dr. Durham accepted the post in October, 1960, after having served since 1953 as vice president of the University of Utah. Prior to that position, he was director of the Institute of Government and chairman and professor of political science at the University of Utah.

He started his teaching career as an instructor of political science at Utah State University in 1939 and was promoted to assistant and then associate professor between that time and 1944, except for a year, 1942-43, in which he was

assistant professor of political science at Swarthmore College and consultant to the Institute of Local and State Government of the University of Pennsylvania.

Dr. Durham has been a member of the Western Interstate Commission for Higher Education, serving as commissioner and a member of the Executive Council from 1955 until his appointment to the ASU post. He has also served as president of the American Society for Public Administration and of the Western Political Science Association.

President Durham, who will greet incoming students at the first assembly of Freshman Week, currently is a member of the National Language Advisory Board, U. S. Office of Education, Department of Health, Education and Welfare,

Follow Steps To Start Your College Career

1. If you have not already done so — send an application for admission to Office of Registrar and Director of Admissions, Arizona State University, Tempe, Arizona.

2. Have your family physician mail a complete health examination, including certification of small pox vaccination within the last four years. Mail only health examination to Student Health Service in the addressed envelope provided.

3. Have forwarded result of Chest X-Ray if done during past six months. (Note: Chest X-Ray can be obtained at Arizona State University Student Health Center at registration time, however, students are urged to have it completed ahead of time if possible.)

4. Have your high school send complete transcript following graduation. Transcript must include grades and units earned, date of graduation, and rank in class. The scores on tests and an appraisal of students' capabilities by the principal or counselor will be welcomed. It is important that prospective students have their complete high school transcript sent, as soon after graduation as possible, direct to:

Office of Registrar and Director of Admissions
Arizona State University
Tempe, Arizona.

5. Students who rank in the upper ten per cent of their graduating class will receive a certificate of HONORS AT ENTRANCE.

6. All students entering Arizona State University are required to take a battery of aptitude tests. In order to provide for a better testing atmosphere, students are urged to take these tests during the summer rather than wait until the registration period in September.

7. The new admission policy requires that graduates from Arizona's approved high schools who rank in the upper three-fourths of their class will be granted regular admission. The graduates who rank in the lowest one-fourth of their class may be granted provisional admission only after pre-admission testing and counseling.

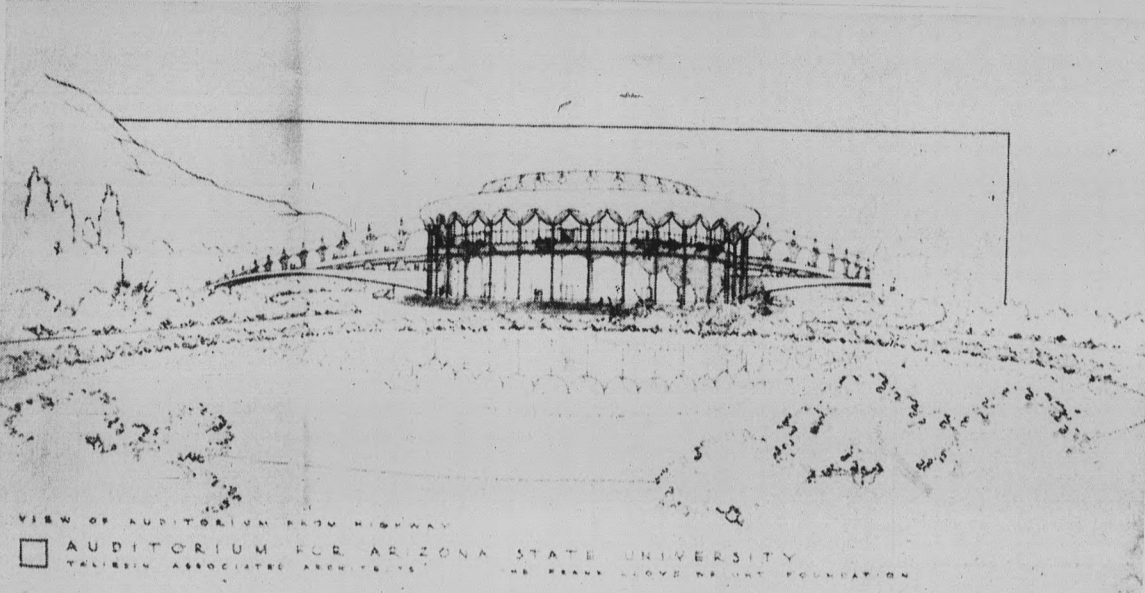
8. Although we would like to have as many prospective students as possible come to the campus for testing early, we would like especially to urge all students who might rank in the lowest fourth of their class to be sure to come at this time. This will then provide us with an opportunity to have their tests scored and the results available so that we may schedule individual time with counselors to determine whether or not these students may be admitted. It is our purpose to make as careful an evaluation as possible to see that worthy students have an opportunity to study at Arizona State University or to dissuade those who in all probability will not be able to carry a college program successfully.

1962-63 Arizona State University catalogues will be mailed to students at the time of admission. Keep this catalogue and bring it with you. It will be the only copy you will receive.

Pretty Campus Is ASU Pride

The university's green campus, dotted with orange, olive and palm trees and luxuriant with a wide variety of vegetation, occupies more than 300 acres, exclusive of the 320-acre agriculture division farm.

Valuation of the campus and its physical plant currently is set at more than \$30 million, with additions and improvements going on at the rate of about \$3 million per year since about 1957.



ARTIST'S SKETCH shows the long-awaited Grady Gammage Memorial Auditorium, now under construction at ASU. Designed by the late Frank Lloyd Wright.

the steel, concrete and brick auditorium will be 304 feet long, 235 feet wide and will rise more than 80 feet above ground level.

Burke Executive Vice President Of University

Dr. William J. Burke, head of the University of Utah chemistry department since 1949, is the new executive vice-president of ASU. A research chemist with E. I. du Pont de Nemours and Co. from 1937 to 1946, Dr. Burke also holds the rank of professor of chemistry.

Dr. Burke, who will join the ASU staff on or before Sept. 1, served on the Fund for the Advancement of Education, Ford Foundation, committee on faculty relationships from 1952 to 1956.

He recently spent two months in Ethiopia studying its system of higher education as a member of a State Department International Cooperation Administration survey team.

The new ASU vice-president received a bachelor of arts degree from Ohio University, Athens, and a doctor of philosophy degree in organic chemistry at Ohio State University, Columbus.

Dr. Burke, a native of Lowellville, Ohio, was associate professor of chemistry at Ohio University before assuming a similar post at the University of Utah in 1947.

A visiting associate for the Committee on Professional Training of the American Chemical Society, he has also served as secretary and counselor for the Salt Lake section of the ACS. He is a consultant on chemical problems for the U. S. Army and the Monsanto Chemical Co.

The author of more than 65 scientific articles and patents, Dr. Burke is a member of Phi Beta Kappa, Sigma Xi, Phi Lambda Upsilon, Gamma Alpha, Phi Kappa Phi and the American Association for the Advancement of Science.

ASU Takes Giant Strides From Modest Start In '86

Arizona State University today bears little resemblance in size or scope to the one-room, 31-student institution which opened its doors in 1836.

Its progress from a normal school to teachers college, to liberal arts college and present status as a multi-purpose university has paralleled the burgeoning growth of the state and the increased diversification of its economic and social bases.

Because of the rapid growth of curricula to meet the needs of the community, ASU can offer the qualified high school graduate competent training in virtually any field through its full degree programs or variety of pre-professional courses.

The responsibility for doing so comes as a result of a relatively new educational fact of life. The U. S. Office of Education reports that about 30 per cent of the cost of an education goes into room, board and transportation; rising costs of these factors has caused proximity to emerge as the dominating factor in a choice of a suitable university.

That pattern follows at ASU; where more than 87 per cent of the enrollment consists of Arizona residents, the largest fraction from Phoenix and the Valley.

A complete listing of available degree programs at ASU takes 400 pages of the catalog, which is necessary to the scholar planning a collegiate career.

Briefly, ASU is comprised of its "core," and largest college, liberal arts, and three other undergraduate colleges; business administration; education; and applied arts and sciences. Its

professional schools at the undergraduate level, whose programs all are accredited, include architecture, engineering and nursing.

Through these colleges, the student may earn one of seven different undergraduate degrees; bachelor of arts in more than 35 fields of specialization; bachelor of science in 40; bachelor of architecture; Bachelor of science in engineering; bachelor of science in nursing; bachelor of arts in education, with three areas of specialization and 15 further divisions; and bachelor of music, in two specialized fields.

As an outgrowth of the increasing numbers of students earning a degree, more than ever before are seeking advanced work. At ASU, this comes under the province of the Graduate College, which grants 12 graduate degrees and

will administer a new professional school of social service administration.

Master's degrees are offered in several fields; master of arts and master of science, in more than 25 areas; master of arts in education; master of science in engineering, with further divisions; master of fine arts; master of public administration; master of natural sciences; master of music; master of business administration and master of social work.

Arizona State University also offers a post-master's terminal degree, education specialist, the doctor of education degree and the doctor of philosophy degree, also in several fields.

ASU maintains a full-time counseling and guidance program for students and insists that lower classmen meet individually with faculty advisers for aid in planning their programs of study.

2 Programs Honor Scholastic Leaders

Arizona State University has two programs to honor students of exceptional ability.

"One program is designed to recognize individuals with high promise as university students," says Alfred Thomas, Jr., ASU registrar and director of admissions.

Through this program, entering freshmen who were in the top 10 per cent of their high school graduating classes receive certificates of "Honors at Entrance."

Under the other program, upperclass students maintain-

ing B-plus academic averages have the opportunity to participate in individual research and study, supervised by faculty members.

Under the honors program, designed specifically for students of exceptional ability who are interested in scholarly attainment, the individual studies replace many specified regular classes. During its first two years of operation, the program was open to students majoring in English, psychology, philosophy, history, political science or sociology, all under the College of Liberal Arts.

Most Students From Arizona

Approximately 87 per cent of the enrollment at Arizona State University is comprised of Arizona residents, according to Alfred Thomas, Jr., registrar and director of admissions.

Out-of-state residents constitute 12 per cent of the on-campus enrollment, and the remainder of the students come from foreign countries or U.S. possessions.

Maricopa County contributes 90 per cent of the state enrollment, followed by Pinal, Yavapai, Gila and Yuma counties.

During the second 1961-62 semester, a total of 4,647 students were from Phoenix; 1,622, Tempe; 1,283, Scottsdale; 921, Mesa; 176, Glendale; and 161, Chandler.

Frosh Week Scheduled For September 10

While high school graduates, all over the state are spending busy summers working, relaxing, studying, preparing for or starting on careers, Arizona State officials have been hard at work preparing for one date, September 10, the opening of Freshman Orientation Week and the biggest year in Arizona State's 77-year history.

A record number of students are expected to enroll during that week at the state's fastest growing institution of higher learning, with about 13,500 expected.

The school bell will sound promptly at 8:15 a.m., September 10 for an estimated 4,000 incoming freshmen, who are expected to report at the men's gymnasium to hear welcomes and instructions for registration from administration and student officials.

Thus will begin one of the busiest weeks in the lives of the freshmen, but a week that has its compensations in the fact that it is also a time for getting acquainted with their university environment, and with other people, many of whom will remain life-long friends.

During Orientation Week freshmen will hear from Dr. G. Homer Durham, ASU president; Dr. H. D. Richardson, Academic Vice President; Alfred Thomas, Jr., Registrar and Director of Admissions; Weldon P. Shofstall, Dean of Students and Catherine G. Nichols, Associate Dean of Students.

Freshmen will also meet Bob Carter, Associated Students president; Henry Klopping, first vice president; John Brooking, activities vice president; Cindi Buchanan, secretary; Bonnie Evans, Associated Women Students president; and Doug Zimmerman, Associated Men Students president.

Highlights of the week for freshmen include a Phratres Tea to which all off campus freshmen women are invited; the reception for all new students, and the traditional painting of the "A" on Tempe Butte. Also a pep rally; fraternity open houses; sorority rush parties; vespers at Danforth Chapel; and a freshman mixer at the Memorial Union.

All of the activities are carried on during the late afternoon and evening, with the daytime devoted to the serious business of embarking properly on a plan of studies to prepare the student for a rich career. Upperclassmen will be on campus from the first minute of Freshman Week on, just to answer questions and help new students get adjusted.

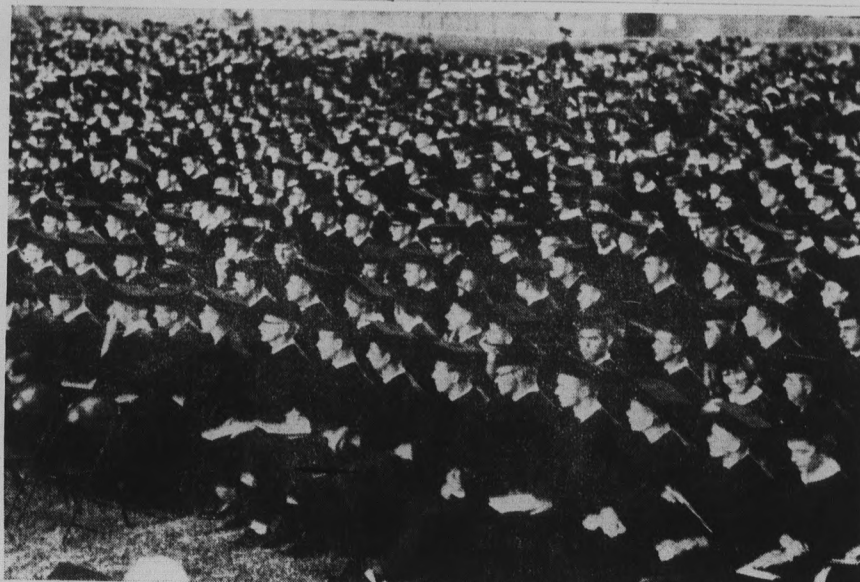
All freshmen will meet with faculty advisers for aid in planning a program of studies; they will take aptitude tests; pick up class cards; and register.

Complete details of Freshman Week and a comprehensive schedule of events are contained in this special edition of the STATE PRESS. Read it carefully and bring it with you to the campus.

All upperclassmen are expected to report to the campus Tuesday, September 13.



Alfred Thomas, Jr., Registrar and Director of Admissions



GRADUATION is the goal of all entering students, but only application through collegiate careers brings the diploma. Here, part of this year's record breaking graduating class, 1,713, listens to commencement ceremonies in Sun Devil Stadium.



July 23, 1962

THE STATE PRESS is the official campus newspaper of Arizona State University. It is published each Wednesday and Friday throughout the school year, excepting holidays, and is entered as second class matter at the Tempe, Arizona, Post Office under the Acts of March 3, 1879, and August 24, 1912. Subscription price, \$1 per school year.

The STATE PRESS is a member of the Arizona Newspapers Association, Associated College Press and National Advertising Service, Inc.

Tough Honors Program Is Challenge To ASU Students

Those who question the seriousness of today's college students or accuse them of seeking "snaf" courses for an easy degree would be encouraged by the progress of the tough Honors Program at Arizona State University.

In September of 1959, three ASU students enrolled in the College of Liberal Arts for the new Honors Program. So successful was the program that by September, 1961, more than 50 students were participating.

In order to qualify, students must pass batteries of tests, produce evidence of previous high academic achievement and embark on an intellectual adventure which could provide them an unequalled opportunity.

How does the Honors Program differ from a regular college program?

Its chief architect, Dr. Arnold Tilden, Dean of the College of Liberal Arts, and his faculty envisioned it as a challenge to students of exceptional ability, interested in high scholarly attainment.

"Now, more than ever," he said, "it is imperative that this country develop its unusually competent students. This is a quest for quality."

The program has sought to develop in the student an awareness of the relationship of all knowledge and experience and to make him more concerned with basic values, intellectual, esthetic, social and ethical.

Dean Tilden, Dr. Ernest I. Stewart, Assistant Dean of the College of Liberal Arts, Dr. Douglas Arner, chairman of the Honors Council, and the Honors Council as a body administer the program, maintaining a vigilance for improvement. All concerned are satisfied thus far with the results and opportunities arising for the honors graduate.

The Honors Program, according to Dr. Stewart, has a greater degree of richness and depth than the regular curriculum. It gives the superior student the opportunity to work at his own speed in order to "close the gap between potential and performance."

The student is given more direct and personal instruction, allowing him to bypass many beginning courses. He is confined to neither the usual curriculum nor to the campus; he may conduct approved independent study. He can attend any course taught by the College, without credit or cost. In short, his course is virtually tailored to his abilities and needs.

Once in the program, it is not easy for him to stay there, although at his election he may drop without having lost any progress toward a degree. Few choose to do so, although since the start of the Honors Program, some students have left and others have failed to qualify for continued participation. As of June, 1962, there are 68 participating, 60 of them Arizonans, plus one student each from Hawaii, Germany and Thailand. They study in eight major areas of instruction.

For graduation with honors, the student must pass a comprehensive examination in his major area. He must present to the Honors Council an acceptable thesis or a comparable creative project and at the discretion of his department, he may be asked to defend it in an oral examination before a committee of the council.

Dean Tilden emphasizes, however, that the Honors Program is not a speed-up process; it will take a student four years to complete his degree requirements.

For those students who do complete the Honors Program and obtain their baccalaureate degree, ASU will confer "summa cum laude" degrees to those who maintain an academic average over 3.5 (4.0 is straight "A"), and "magna cum laude" degrees to those whose grade indexes are between 3.2 (the minimum for continued participation in the program) and 3.49.

But most important, the Dean and Honors Council members feel, is that these students will have devoted much more time to their studies than those following the normal course sequence and therefore will have come closer to closing the gap between potential and performance.

And they will be in great demand for constructive contributions throughout the world.

Entering Freshmen May Take Early Tests Aug. 4

Entering freshmen may take all students entering the university the advantage of early testing at ASU on July 14 and Aug. 4. Early testing will be required to Testing will start at 9 a.m. and take the exams during Orientation Week in room 191, Life Sciences Center.

Chest X-Rays, also required, will be given on July 14 and Aug. 4, from 11 a.m. to 4 p.m. at the ASU infirmary, as well as during Orientation Week.

The X-Rays will be given only to students who have sent in 14 and Aug. 4, are required of

Student Personnel Program Vital

The student personnel program at ASU provides opportunities and services to enhance college living, studying and recreational activities. The program, encompasses several major areas of college life outside the classroom.

Individual counseling ranges from personal problems to assisting students to gain information regarding loans, study habits and scholarships. This counseling also provides a channel to the university administration of information about student needs and interests.

The student government program supplements the academic life by furthering belief in our nation's democratic procedures through active participation. It provides students an opportunity to become participating civic-minded individuals.



Dr. Catherine G. Nichols Associate Dean of Students



Dr. Weldon P. Shofstall Dean of Students

The office of the Dean of Students is located in Room 213 of the Memorial Union Building.

The office of the Associate Dean of Students, Dr. Catherine G. Nichols, is parallel in responsibility to that of the

Dean of Students, but differs in functions assigned to it.

Some general areas of student life are centered in or coordinated by the Associate Dean's office, for example: general and personal counseling; coordination of the counseling

services committee; orientation and Orientation Week; the university calendar and much of the social program; the religious program; and the Student Health Service.

Other areas of the Associate Dean's Division apply particularly to women students, for example: women's student government (Associated Women Students); Phrateres, the organization of off-campus women; Panhellenic Council; honor societies; and all women's residence halls, organizations and activities.

Personnel records on all women students are on file in the Associate Dean's office. From these records and from interviews, the staff recommends all women wishing loans, scholarships, employment in the residence halls or elsewhere, if the student requests it.

The office of the Associate Dean of Students is on the Mezzanine of the Memorial Union Building.

20 Religious Groups Active For All Faiths

An active and well-organized religious life, involving all major denominations and faiths and characterized by considerable inter-faith activity, is among the oldest and strongest traditions at Arizona State University.

Such annual observances as Spiritual Exploration Week, in which virtually the entire campus participated; the many special events arranged for Christmas and Easter by the student religious organizations, with all students as their guests; plus a steady round of religious events, including 15 courses in Bible and Religion, attest to the naturalness, healthfulness, and vigor of the campus spiritual life.

The townspeople of Tempe, itself a community of over 26,000 people with a score of congregations, help provide the services of the religious coordinator, Rev. Charles Crouch. He is available on campus for counseling or for information relative to the religious needs of the students, and coordinates the activities of all the denominations and faiths serving campus students.

Twenty such organizations are active and officially recognized by ASU at present. They are: The American Baptist Student Fellowship; Bahai Fellowship; Baptist Student Union; Baptist Young People's Union; Campus Crusade for Christ; Canterbury Association; Chi Alpha (Assembly of God); Christian Fellowship; Christian Science Organization; Church of God of Abrahamic Faith; Congregational Fellowship; Hillel Foundation; Lambda Delta Sigma (Phi Alpha for men and Phi Omega for women); plus Delta Phi for returned missionaries; Liberal Religious Students; Lutheran Student Association; Martin Luther Society; Wesley Foundation; Westminster Fellowship Newman Club; and the William Penn Fellowship.

All these groups have their individual activities, social life and programs. Some of them have their own buildings. Banded together in the Student Religious Council, they play an active role in campus affairs and are represented in the student government.

One of the most beautiful buildings on campus is Danforth Chapel, available to all religious denominations.

The religious life of the ASU student, while purely voluntary, blends naturally with his other activities. It is not a thing apart.



DANFORTH CHAPEL is interdenominational and is located in the center of the ASU campus for use by students and faculty of all faiths.

Basic Fees Total \$103.50 Per Term

The basic fees at Arizona State University total only \$103.50 each semester. In addition out-of-state residents must pay a \$300 tuition fee per semester. There is no tuition fee for Arizona residents.

Included in the \$103.50 are the following registration activities, admitting the students to all athletic events and entertainments and including a subscription to the State Press, student newspaper; use of the Memorial Union building; health services and facilities; use of the library; a ticket to the concert and lecture series; the alumni fee; and health and recreation fee.

ASU Bookstore Stock Complete

Located in the Memorial Union building, at College Ave. and Orange St., is the campus bookstore, owned and operated by the university to serve the needs of students and faculty.

The bookstore stocks a complete line of books; textbooks; reference books and books for general reading. School supplies, art supplies and stationery are also in stock.

The bookstore is open from 8 a.m. to 7 p.m. Monday through Thursday; from 8 a.m. to 4:30 p.m. on Friday; and from 9 a.m. to 1 p.m. on Saturday.

Memorial Union Is Center Of Campus

"On every campus, there must be a place set aside for timeless devotion to the timely art of living," says Mrs. Cecilia Scouler, director of the Memorial Union building at ASU.

This building, opened in March, 1956, was made possible by gifts of alumni, friends of the university, students and faculty members. It is dedicated to the memory of those from ASU who gave their lives in defense of the American way of life.

It is the dynamic center of campus life outside the classroom. Located there are the facilities for sharing of the

arts, or friendship, ideas and experiences in work and play. The Union program is planned to develop in students responsibility for the initiation and completion of a vital, worthwhile program of social and cultural activities. It seeks to give each one a sense of belonging to a group and to a school of which he is an important part; and to further his understanding of the basic principles of democracy by participation in a democratic form of student government.

It fosters growth in social agencies and gracious living and it provides a center for the entire college family.

Says Mrs. Scouler: "It's dedication is based on the belief that activities carried on within the Union bring to students those esthetic, religious and social values essential to our culture and our time."

College Camp At Tontozona

Up in the cool wooded country under the Mosallon Rim, Arizona State University has its Camp Tontozona.

Located on Tonto Creek, about 20 miles beyond Payson, the camp is situated on eight acres of patented land and the university has a special use permit from the U. S. Forest Service on an additional eight acres.

Mint Springs, at the center of the camp grounds, provides a water supply for about 200 people. A dining hall and kitchen; two dormitory buildings; an architectural classroom unit and a lodge for members of the ASU administration and faculty are all located at Camp Tontozona. Throughout the school year, many groups take advantage of the camp's facilities. Student body officers hold two leadership workshops there each year.

Half Of State Census Near ASU Campus

Half of the people in Arizona live within 50 miles of the Arizona State University campus. In this area, a great city, Phoenix, is one of the nation's most rapidly developing metropolitan centers.

Yet the ASU campus itself has all the grace of a rural location. It is a place of wide lawns and fine shade trees with over 300 acres of grounds.

The growth of Arizona State University from a tiny territorial normal school is a real tribute to the confidence which Arizona and her people have in meeting their problems in an increasingly demanding civilization.

No wonder there's a feeling of growth on the campus! More and more students are appealing to ASU for a complex variety of studies in many career fields.

Thirty-one students met in a single room when the Territorial Normal School held its first class on Feb. 8, 1886. About 12,000 students used the facilities of over 50 spacious and appropriate buildings at Arizona State University last year.

The most visible evidence of the dynamic growth of ASU is in the expansion of its physical plant in an attempt to anticipate and keep up with the tremendous influx of students. During the past six years over \$15 million worth of new structures have been added to the campus.

This will be another year of transformation with over \$6 million in new construction scheduled. Heading the list is the long awaited Grady Gammage Memorial Auditorium, already under construction on a 15-acre site at the curve of the Tempe-Mesa Highway.

Designed by the late Frank Lloyd Wright, the striking auditorium will have a total seating capacity of 8,955, and also will include facilities for sections of the drama, music and art departments.

Other major additions to be started in the Fall will be a language and literature building on College Avenue north of the Social Science Building; an industrial technology building on College Avenue at Sixth Street; and a seven-story addition to Palo Verde women's dormitory on the north end of the campus.

Recently completed were new science facilities, desperately needed to provide classroom, instructional, laboratory and research space. The Life Science Center, opened in 1959, has 128 rooms of varying size and houses special and general laboratories, classrooms, lecture halls, rooms for graduate research and an animal resource center.

The Physical Sciences building, a four-story structure built three years ago, has already had two additions. The building will eventually cover a full city block and it houses chemistry and physics classrooms, laboratories and research facilities.

The exteriors of both buildings match the nearby Engineering Center; opened five years ago.

A four-story Social Sciences building opened two years ago and a five-story College of Education facility was completed last year.

Evidence of the need for housing students near their classes are two almost new residence halls, Palo Verde for women and Sahuaro for men.

It is interesting to note that of 546 faculty members, only one full professor and only one associate professor hold their highest degrees from Arizona State University. However, 25 assistant professors currently hold their highest degrees from ASU, undoubtedly one of the smallest percentages in the nation. There are, in addition, 11 instructors, three lecturers and nine faculty associates who were graduated from ASU.

What does this mean to the citizens of Arizona, the present and future students of ASU and the communities which will absorb them as graduates?

The wide diversity of faculty training and experience means that in the Phoenix metropolitan area, remarkable new synthesis in higher education is taking place. The cross-fertilization of ideas coming from such a configuration presents a unique opportunity for new educational vigor.

A truly American institution is evolving on the campus. Out of the exchange of ideas available may be expected fresh and stimulating developments distinctive to Arizona State University.



LIFE SCIENCE CENTER is used by most students during the course of their collegiate careers, whether majoring in science or fulfilling general education requirements. This capacious facility, opened only three years ago, is devoted primarily to biological sciences, with a matching structure across the street for physical sciences. Both science centers have modern classrooms, auditoria and research laboratories.

Faculty Receives Degrees From Outstanding Schools

When a new university evolves rapidly from a state college, the institution can emerge into one of several patterns. There is frequently a question as to what kind of a university it will become.

In the case of Arizona State University, whose faculty roster carried 546 names at the beginning of last fall, a partial answer can be gleaned from the source of the faculty, measured by the origin of the highest degree held by each faculty member.

From this information, it can be seen that the university has a broad base, its faculty coming from the major institutions of the nation, with wide geographical diversity. The strength of older universities in producing faculty members for the nation also may be seen in part in analyzing the ASU roster, to which 118 institutions in 38 states, the District of Columbia and seven foreign countries have contributed members.

As of September, 1961, 22 major graduate schools around the country had contributed seven or more faculty members to the present ASU teaching staff for a total of 307 of the 546, more than 56 per cent.

Columbia University has conferred more doctor of philosophy degrees than any other university in the United States; thus one would expect doctorates from Columbia to be well represented at ASU. More ASU faculty members, 28, hold their highest degree from Columbia, than from any other university.

Indiana, somewhat surprisingly, comes second. This is explained by the size and strength of the College of Business Administration at both Indiana University and ASU. Indiana, since World War II, has taken its place as a major, if not the major, producer of university business faculties. Hence many members of the ASU business faculty hold their highest degree from that institution. In all, 25 ASU scholars in all fields have their highest degree from Indiana.

Illinois, noted particularly for producing doctorates in chemistry, is next with 17, and the State University of Iowa is represented by 17, for fourth place. Three institutions, Northwestern, Ohio State and the University of Southern California, each have placed 16 faculty members on the ASU staff.

Cornell, Stanford and Wisconsin have contributed 15 each; Chicago and Minnesota, 14 each; the universities of Colorado and Texas, 13 each. The University of California at Los Angeles and the University of Michigan have provided 11 each and the University of California at Berkeley, 10.

Eight ASU faculty members hold their highest degree from Harvard University, a figure which also marks the contribution of Iowa State University, Michigan State and New York University. Seven are from the University of Washington.

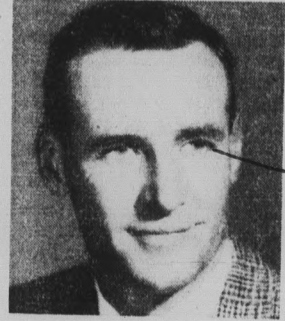
Seven institutions are responsible for five ASU faculty members each: Purdue, Missouri, Nebraska, Oklahoma State, Denver, Oklahoma and Alabama; four have contributed four each: Arizona, Colorado State, New Mexico and West Point. A total of 17 institutions, including Yale, Johns Hopkins, Massachusetts Institute of Technology and Princeton, are represented by three ASU faculty members.

It is interesting to note that of 546 faculty members, only one full professor and only one associate professor hold their highest degrees from Arizona State University. However, 25 assistant professors currently hold their highest degrees from ASU, undoubtedly one of the smallest percentages in the nation. There are, in addition, 11 instructors, three lecturers and nine faculty associates who were graduated from ASU.

What does this mean to the citizens of Arizona, the present and future students of ASU and the communities which will absorb them as graduates?

The wide diversity of faculty training and experience means that in the Phoenix metropolitan area, remarkable new synthesis in higher education is taking place. The cross-fertilization of ideas coming from such a configuration presents a unique opportunity for new educational vigor.

A truly American institution is evolving on the campus. Out of the exchange of ideas available may be expected fresh and stimulating developments distinctive to Arizona State University.



Edward Hickey Director of Housing

Suitable Housing ASU Goal

Housing is ultra-important in the booming Valley of the Sun. Arizona State University is constantly working to provide adequate and suitable housing for its students.

The ASU residence halls are not just a place to sleep and eat. The halls are integrated with the academic aims of the institution, and living in them has been a factor contributing to the success of many a student.

The halls have succeeded in developing a climate conducive to good study habits. All have regular "quiet hours" to en-

courage study and the head residents are always ready to further encourage high academic standards.

Each year, both men's and women's residences compete for the highest academic average and trophies are given to the winning men's and women's halls.

In addition to offering many services, the residence halls encourage the development of traditions and cultural programs. The individual residences sponsor their own dances, receptions; some have published their own mimeo-

graphed newspapers. Sahuaro and Palo Verde have their own dining rooms right in the residence buildings.

Each residence hall has its own governing body, made up largely of student officials elected by their fellow students in the hall.

Women's residences include: Palo Verde, Gammage, McClintock A, McClintock B, (honor hall for upperclass women), North, West, South, Wilson and East halls. Men's residences are: Hayden, Irish, Best A, Best B, Haigler, and Sahuaro halls.

University Colleges Offer Wide Selection Of Courses

Know Your Adviser

By DR. H. D. RICHARDSON
Academic Vice President

If you are reading this, you already have made one important decision, or are in the process of making it. You have decided, or are about to decide, to continue your education at a college or university. If you have already selected Arizona State University, my congratulations to you! You have made a good decision.

But there is a second, and perhaps a more important long-range decision that you will need to make, and if you are like most university students, you will need some help. You will need to decide, and the earlier the better, why you are going to college or university. You should have a better and a clearer reason than "to continue my education." Education for what? What do you want four years of university education to do for you? What type or kinds of preparation and training will meet your particular interests and needs? Will you be able to get it at ASU?

Answers to these questions will come quite easily if you have made at least a tentative decision as to your purpose, objective, or goal, and if you continue to gain some understanding of how university education may be used to advance you toward the realization of your goal.

This is where a faculty adviser can be of real help. To be most helpful, however, you must have done some thinking and planning on your own.

You need to have some notion of a purpose and goal. What it is, and what it becomes, must result from your thinking and planning, at least to begin with. Upon entering college or university, the problem becomes one of selecting a four-year program of studies that will best provide the preparation and training needed to serve your needs and interests, and meet the requirements imposed by your purpose or objective. To help you evaluate your purpose, and to guide you in the selection of a curriculum—that is, a well-designed and planned program of studies that will meet your needs and also the requirements for a bachelor's degree—is the function of the faculty curriculum adviser. Your faculty curriculum adviser can be most helpful in getting you started right the first semester of the freshman year, and will be a source of information, counsel, and advice throughout each of the following semesters until you graduate. Your curriculum adviser cannot only be helpful in planning with you an educational program, but in many other ways. If you need help in thinking through a personal problem, if you need information about scholarships, work opportunities, or loans, if you want to discuss your career objective, job opportunities and requirements, or plans for graduate study, if you need counsel on improving your study habits, in getting acquainted with the library and its use, in understanding university requirements and regulations, if you need information and advice about social activities, extra-curricular activities, organizations, sororities or fraternities—if you need help of any kind, seek out your faculty adviser. If he cannot help you himself, he will likely know someone who can, and he will be glad to "open the door" or get you to a source of help that will serve your need.

It may be truly said that every student needs some help sometime. Unless you are a rare exception, you will need some help sometime. The important thing is to know when you need it, and where to get it, and get it, before it is too late. Your first source is your faculty adviser. Don't put it off or avoid him. Your faculty curriculum adviser is most willing to help you. You will meet him early during freshman week. Become acquainted with him. Seek his counsel when you need it. Have confidence in him. Give him the opportunity to be helpful. Regard him as your trusted counselor and friend!



Dr. H. D. Richardson

Campus Radio Big Operation

All students at Arizona State University have the opportunity to participate in activities of KASN, radio station operated on campus in conjunction with the academic program. The station operates some 12 hours a day, is commercial, and an affiliate of the National Broadcasting Co.

Those interested in joining the KASN staff should watch the State Press, student newspaper, for an announcement of the first staff meeting, to be held early in the school year.

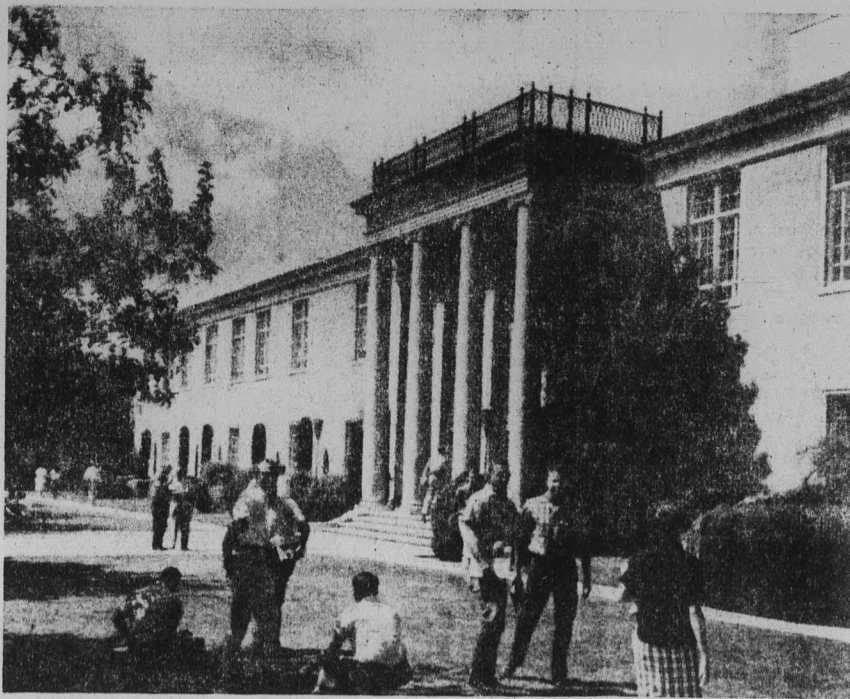
KASN's studies are located in the Radio-TV Bureau, the center of university broadcasting activities.

Apply Early For Residence

All students wanting residence hall quarters for the coming academic year may apply to the Housing Office, Memorial Union building, room 3. Prospective students should apply early.

In addition to operating the student-staffed campus radio station, the bureau supervises the curriculum of those majoring in radio-television studies, and operates one of the most active program production centers in the west.

During the past year, the bureau's programs were carried more than 4,500 times on the commercial radio stations in the state.



MATHEWS LIBRARY is the heart of the campus academic life, containing not only more than 400,000 volumes but also the ASU Collection of American Art, one of the most significant in the southwest. The library also has browsing rooms and facilities for listening to music, along with numerous study and research rooms.

Liberal Arts, Largest ASU College, Is Core Of University Academic Life

Comprised of 25 departments and a School of Nursing, the ASU College of Liberal Arts maintains the largest faculty and offers the greatest number of courses of the university's five colleges.

Liberal Arts offers programs of study leading to five undergraduate degrees, the bachelor of arts, bachelor of science, bachelor of science in nursing, bachelor of fine arts, and bachelor of music.

Thirty-two areas of specialization are available to candidates for the bachelor of arts degree. The majors are:

Anthropology; biology; chemistry; clothing, textiles and related arts; dramatics; economics; English; family life and child development; fine arts; foods and nutrition; French; general home economics; geography; geology; German; health education; history; humanities; journalism; mathematics; music; philosophy; physical education; physics; political science; psychology; radio-television; recreation; social welfare; sociology; Spanish; and speech.

Twenty-eight areas of specialization are available to the candidates for the bachelor of science degree from the College of Liberal Arts. The majors are:

Anthropology; applied arts; biology; botany; boys' club administration; chemistry; clothing, textiles and related arts; economics; entomology; family life and child development; foods and nutrition; general home economics; geography; geology; health education; mathematics; microbiology; physical education; physical sciences; physics; physiological zoology; political science; psychology; recreation; social welfare; sociology; wildlife biology; and zoology.

In addition to these areas of specialization leading to undergraduate degrees, the College of Liberal Arts offers special programs of study in the following areas:

Foreign Service Training Program; Latin-American Area Studies; Medical Technology; pre-dental, pre-medical, and pre-osteopathy; pre-law; pre-ministerial; pre-occupational, pre-physical therapy; pre-occupational; pre-pharmacy; public service training program.

Among the research facilities used by the College of Liberal Arts are a complete atomic mineral and metal analysis laboratory, a meteorite laboratory, psychological clinic and laboratory, the Bureau of Government Research, and the Poisonous Animals Research Laboratory.

Dr. Arnold Tilden, who joined the ASU faculty in 1937, is Dean of the College of Liberal Arts.



Dr. Arnold Tilden
Dean, College of Liberal Arts

Business Administration College Has 10 Areas Of Concentration

Arizona State University's College of Business Administration offers a program of study leading to a bachelor of science degree in 10 fields of specialization.

Candidates for the bachelor of science degree in business administration may major in accounting, advertising, economics, finance, general business administration, insurance, management, marketing and selling, office administration, or real estate. Students majoring in general business administration may also take special courses in preparation for careers in transportation and

Health Service Available To All

ASU's student health service facilities are available to all full-time students, whether they live on campus or at home.

The health service has 26 beds and examination and treatment rooms, along with modern X-Ray and laboratory equipment and facilities.

A competent staff of physicians, medical technologists and registered nurses, along with a part-time psychiatrist, are on duty.

Infirmary hours are from 8 a.m. to 4 p.m. Mondays through Fridays, and 9 a.m. to noon on Saturdays. One of the physicians is in the infirmary during its open hours Monday through Fridays. Emergency patients are cared for at any time of the day or night.

Should a student become ill, bedside care is given in the infirmary for one week without charge. A nominal charge is made after that time should further care be needed.

Mrs. Elaine McFarland, R.N., heads the student health service staff.

ASU's Pioneer Spirit Meets Modern Needs

The tradition and spirit of Arizona State University go back to one of the most colorful and unusual adventures in higher education on record in the United States.

Founded in the frontier days of Arizona Territory before the Wild West era had fully disappeared, this was the first institution of advanced learning in a vast Southwestern desert area, stretching 1,200 miles from central Texas to Los Angeles and 600 miles northward from the Mexican border. Public education was as necessary a part of the conquest of the Great Southwestern Desert as Indian fighting, the struggle against the outlawry, and the bringing in of abundant water.

Arizona State University, which opened its doors for instructional purposes on February 8, 1886, having been legally authorized by a pioneer legislature on March 12, 1885, was at the heart of the educational conquest of the desert on the day it opened and has been so ever since.

It was founded for a single extremely necessary purpose, that of training teachers for the frontier system of grade-schools that had sprung up in the early-day mining camps, cattle towns, army posts and farming settlements of the desert territory. Its second purpose was to provide training in agriculture and mechanics, though this didn't develop for some years. As far back as 1871 when the Apache terror was at its height, a valiant educational enthusiast, Territorial Governor Anson Safford, had launched a system of one-teacher public schools. They spread rapidly but ran so acutely short of teachers that they had to have a Normal School in order to survive.

The Territorial Normal School, located at Tempe in the central-desert area of the Territory, was founded by the pioneer Charles Trumbull Hayden, father of United States Senator Carl T. Hayden. It solved the teacher shortage, and did valuable work from the start. By the time the Territorial University, legally founded on the same day, opened its doors in 1891, the Normal School at Tempe had graduated four classes and had the teacher shortage well in hand.

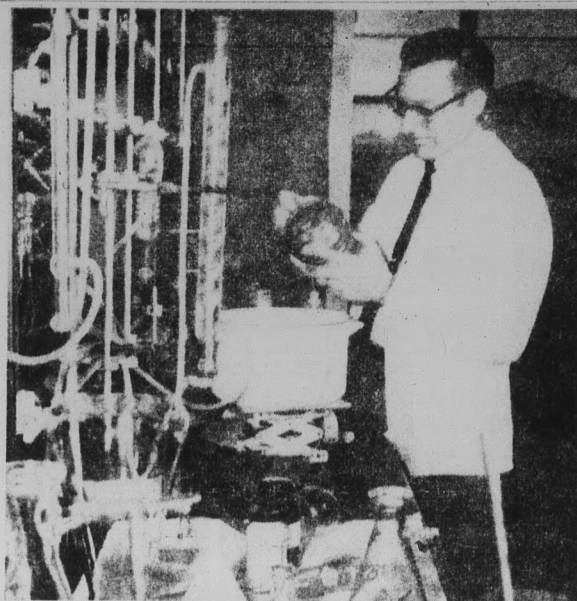
The Normal School, to begin with, was extremely small. It had only 33 students in its first year, a one-person faculty and a four-room building at the base of Tempe Butte. Hiram Bradford Farmer was its first president, principal, and only teacher. In its first fifteen years it had six successive presidents and, by 1900, had grown to 131 students. In that year a truly great man, Dr. Arthur John Matthews, became its president, and remained so for thirty years.

Destiny in the shape of abundant water came to the central-desert of Arizona in 1911 through the completion of the Theodore Roosevelt Dam. Under this stimulus the Normal School began to grow. Statehood arrived and the Greater Phoenix area became the largest population center in the state. The pioneer Normal School became Tempe State Teachers College in 1925 and Arizona State Teachers College in 1929. It still had less than a thousand students, but was highly rated educationally, with Class-A accreditation among teacher-training institutions of the United States.

The depression of 1930-33 brought a setback. In 1933 Dr. Grady Gammage became president and his 27½-year presidency was to be among the most remarkable on record in the United States. Under his leadership, the Teachers College burst through its limitations and became an all-purpose State College — Arizona State College at Tempe — in 1945.

The greatest postwar influx of population, plus the expanded curriculum, brought an expansion with few, if any parallels in modern times — from 553 students in 1945 to 4,094 in 1949, 9,708 in 1958, and between 11,000 and 12,000 at the present time. The new name was accorded by a two to one vote of the people on Nov. 4, 1958.

Arizona State University has retained the pioneering, enterprising, democratic character of its frontier origins, while developing topmost accreditation



ASU FACULTY conducts research for private and government agencies with over \$1 million in grants. Setting up equipment for use in cancer research is Dr. Roland K. Robins, professor of chemistry. A wide variety of research projects in numerous fields also provides learning and income opportunity for serious students.

Vice President Is ASU Alumnus

Gilbert L. Cady, ASU Vice President for Business Affairs, started his career at ASU as a student, graduating 28 years ago with the class of 1934.

Working his way through school, he held a job in the business office, a start which led to successive posts as college comptroller, administrative assistant to the president and, in 1957, the vice presidency.

Mr. Cady is responsible for the fiscal and physical management of the ASU \$30 million campus, farm and buildings; and all of the business functions of the university.

"As I see it," he says, "mine is a service function — providing facilities so that our academic people can do their jobs. Increased enrollments are bringing us ever-increasing costs. This institution has for so long been obliged to exist on tight marginal budgets, we have the habit of trying to get double value for every dollar expended. We intend to keep this habit in order to prevent higher education of the best from exploding enrollments from being excessively burdensome."



Gilbert L. Cady
Vice President for Business Affairs

"We have more 'stockholders' than any other business in the state, because every citizen of Arizona is a stockholder in ASU. Our responsibility to them is to obtain the most higher education of the best quality, for the least cost."

Education College Performs Vital Function In Preparing Teachers

ASU's College of Education, the oldest college in the state's history, offers courses in major areas, leading to the bachelor of arts in education degree.

Master of arts in education

School, an elementary school which serves as a laboratory for education majors; a Guidance Center, a Reading Center, and the Bureau of Educational Research and Services. The Bureau conducts a variety of surveys and studies for educational groups and institutions around the state.

During the year the college sponsors a series of workshops on an extensive range of topics, including gifted children; cerebral palsied children; Indian education; human relations; migrant children; guidance and counseling; reading curriculum development; library science.

Dr. G. D. McGrath, who joined the university faculty in 1950, is Dean of the College of Education.

Schedule Meets Class Demands

To make the fullest possible use of its classroom facilities, Arizona State University will offer this year a record selection of late afternoon and evening courses.

Dr. H. D. Richardson, academic vice president, points out that there is no sharp distinction now between the daytime and the evening programs.

"In response to the national demand for colleges and universities to make the greatest use of existing facilities to meet the pressure of fast-increasing enrollments, ASU classes now run from 7:40 a.m. to 10:30 at night," says Dr. Richardson.

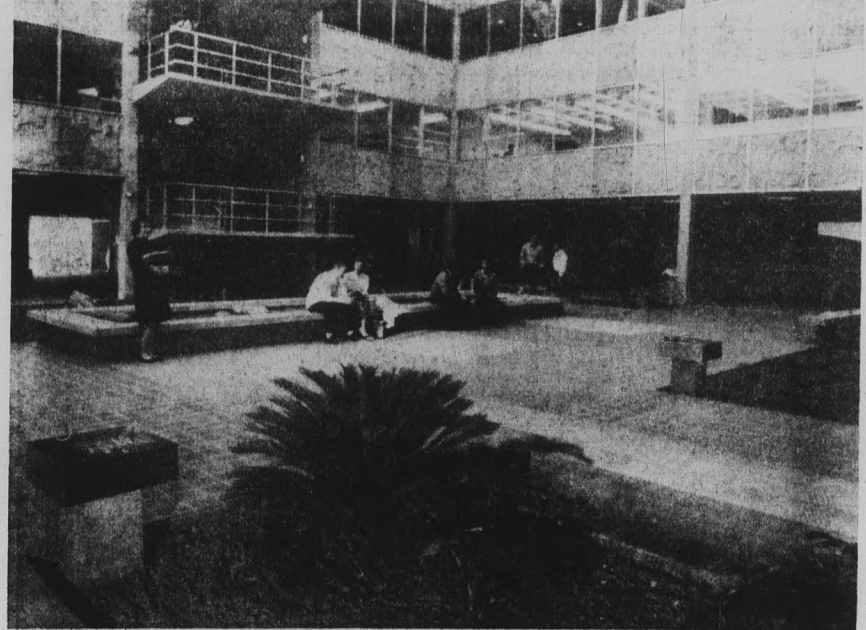
The evening program is also designed as a service to both undergraduate and graduate students who are unable to attend classes in the daytime, or who find it necessary to take part of their classwork in the evening.

It also serves business and professional people who wish to brush up on the latest developments in their lines of work, or to take advanced training in

and doctor of education degrees are also conferred, as are the education specialist and doctor of philosophy degrees.

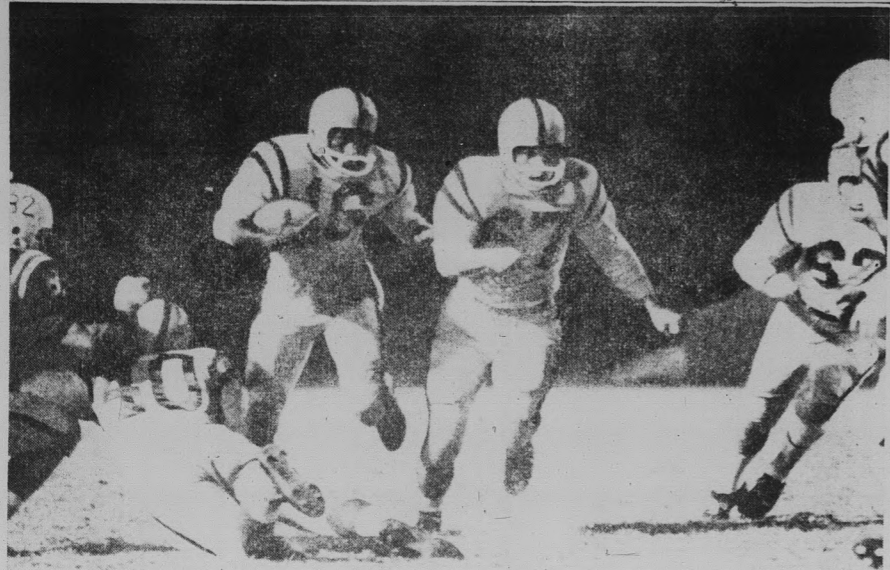
The College of Education operates the Campus Laboratory them.

Dr. G. D. McGrath
Dean, College of Education



MODERN LINES of the Social Science Building at ASU attract students and faculty to the four-story structure. Operated from 7:40 a.m. to 10:30 p.m., the building features a serene inner courtyard, offices and laboratories for study and research. A similar facility for the College of Education recently was completed.

Sparkling Sports Year Ahead



Devil Powers Make 1st Start In New Loop

The 1962-63 year, which marks the beginning of collegiate careers for another freshman class, could be the start of a new and exciting era in Arizona State's intercollegiate athletics.

This sports season marks the debut of the new Western Athletic Conference of which ASU is a member. Five other schools combine with ASU to make the WAC one of the strongest conferences in the West. The other charter members are Brigham Young University, the University of Arizona, the University of New Mexico, the University of Wyoming and the University of Utah.

Conference champions will be named in all sports and ASU will be in contention for all titles with the exception of football which requires each school to play four conference games. ASU has only two, Arizona and Utah, on its 1962 schedule.

Football promises to be exciting as Coach Frank Kush has accumulated one of the fastest backfields in the nation. This year's squad will be primarily a sophomore-junior team and could suffer from inexperience.

Again the Sun Devils play a rough 10-game schedule which opens on Sept. 22 at Wichita and then begins a stretch of eight straight home games before closing at Tucson against Arizona. The Devils will meet Colorado State, Washington State, West Texas State, San Jose State, Texas Western, Utah State, Utah and New Mexico State during the eight week stretch at home.

For basketball the WAC shapes up as one of the nation's toughest conferences. Coach Ned Wulk's charges will meet all the members in home-and-home series.

Arizona State's fast breaking offense, which compiled a 23-4 record last year, will be manned by a crop of experienced juniors and seniors. All had a hand in forming ASU's fine record last year.

As ASU's prestige rises nationally, the basketball schedule becomes increasingly tougher. In addition to conference foes the Devils meet both Kansas, Kansas State and Wichita on the road and will play in the Queen City Invitational Tournament to be held in Buffalo, New York. Other teams invited are Canisius, Rhode Island State and South Carolina.

Home competition will be furnished by Colorado, Minnesota and West Coast power, Pepperdine, which reached the NCAA regionals last year.

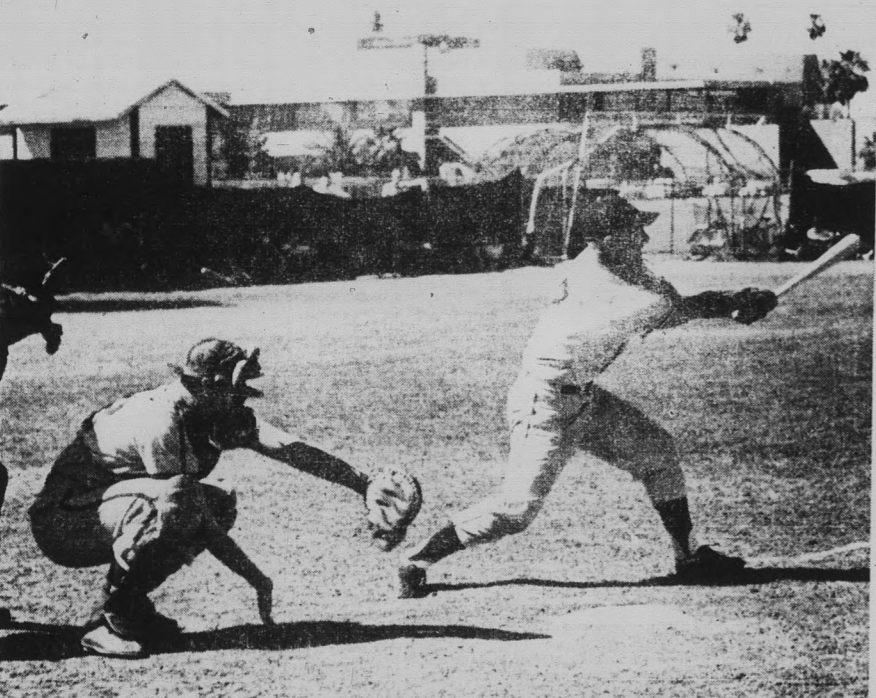
Baseball Coach Bobby Winkles fielded a young team last season and although the record lacked the luster of seasons past the players gained valuable playing experience which will benefit them this year when they enter a conference for the first time in baseball history.

Pitching continues to be the hallmark of Sun Devil teams and this season should be no different. Experienced juniors and seniors return and, for depth, a fine crop of sophomore hurlers enter their first varsity competition after compiling a fine 14-3 record as frosh. Powerful swinging sophomores will give the Devils more offensive punch at the plate.

Last year saw ASU's track and field aces attain national prominence never before reached by a Senon (Baldy) Castillo coached team. Baldy's mile relay team, which returns intact for another season, set a new national record and several other performers had the best times recorded in the nation in their events.

Coach Bill Mann's golfers finished last year with a 25-5 record and placed high in many tournaments. The entire team returns and with added experience should be one of the toughest in the West. The gymnasts increased their scope and calibre of opposition, winning western states acclaim but Coach Norris Stevenson was hard hit by graduation and could have a depth problem for this season. With the establishment of the WAC, swimming, tennis and wrestling are gaining emphasis and will field strong teams.

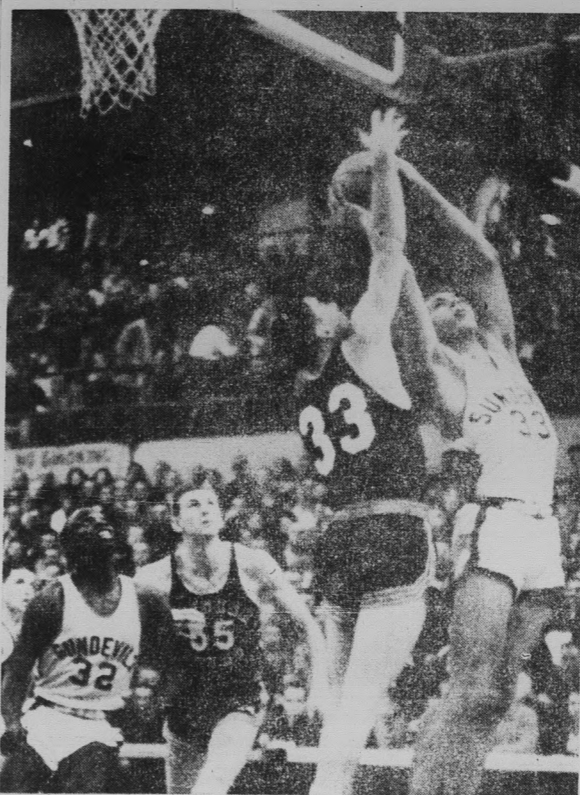
PIGSKIN PACKER Nolan Jones gets plenty of help from his interference in typical scene of ASU's grid prowess. Sun Devils will play tough football schedule, including eight straight home games, before capacity crowds in ASU's 30,000 seat stadium. Activity fee paid at registration entitles full-time students to admission to all athletic events.



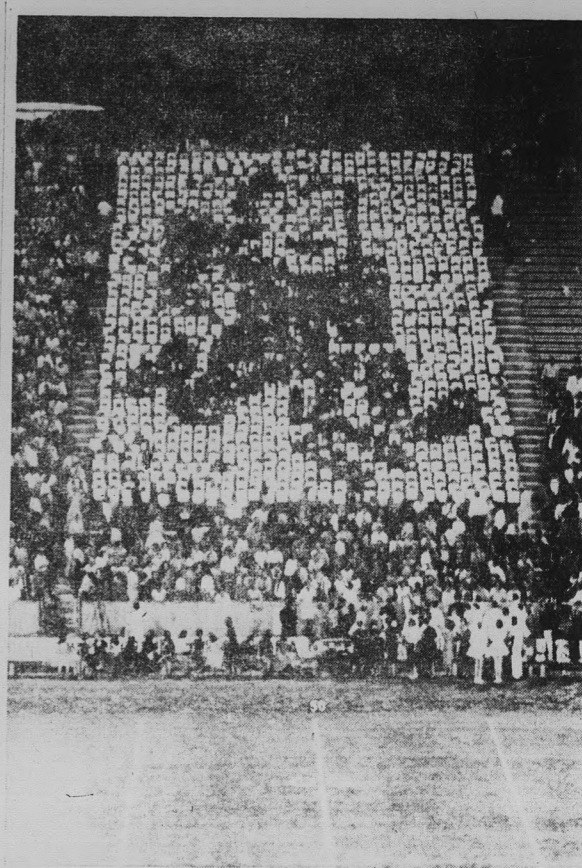
POWER PACKED SWING by Sun Devil outfielder puts one out of the park, an increasingly familiar sight as baseball enjoys terrific resurgence at ASU under energetic young coach Bobby Winkles. Devil diamonds play a gruelling schedule of close to 50 games, most of them at home.



SPRINT SPECIALISTS Ron Freeman, left, and Uis Williams are important part of crack Sun Devil mile relay team which established new national relay record. The team returns intact for another season as ASU continues to compete with the nation's finest thinclads.



BIG REBOUNDER, Tony Cerkevnik uses his 6-4, 210-pound frame to good advantage as he snags rebound from a BYU opponent. Cerkevnik is a key to Coach Ned Wulk's fast break as the Devil cagers debut in the Western Athletic Conference one of the nation's toughest hoop leagues. Another team leader is powerful Joe Caldwell (32) who helped boost ASU into the national rankings.



SUN DEVIL, the nickname and emblem of Arizona State, is formed by the student card section during halftime at football games, along with other card stunts. Emblem was created for ASU by Walt Disney.

Arts, Sciences, Graduate Roles Big

Two divisions and two professional schools make up the ASU College of Applied Arts and Sciences. They are: the divisions of agriculture and industrial education, and the schools of architecture and engineering.

The college offers programs of study leading to three undergraduate degrees, bachelor of science, bachelor of science in engineering and bachelor of architecture, plus the Master of Science in Engineering degree, and the Ph.D.

Courses in the Division of Agriculture are offered in: agricultural economics and management; plant industry; and animal industry. The division also conducts special programs in: agriculture education; pre-veterinary; and pre-forestry.

Candidates for the bachelor of science degree in the Industrial Education Division may select one of six fields of specialization: industrial arts education, aeronautics, construction, technical design electronics, and mechanics.

The School of Architecture offers a five-year fully accredited, program of study in architecture and a four-year curriculum in construction.

The heavy enrollment in the ASU School of Engineering is making the College of Applied Arts and Sciences the most rapidly growing college on campus. Six fields of specialization are open in the school: chemical engineering, civil engineering, industrial engineering, electrical engineering, engineering science, and mechanical engineering. Of these five are accredited by the Engineers' Council for Professional Development.

The courses are taught in the Engineering Center, one of the largest educational structures in the state. In the center is the Arizona State Computer Center, operated by the Gen-



Dr. Lee P. Thompson
Dean, College of Applied Arts and Sciences

eral Electric Computer Department, and containing one of the most elaborate systems of electronic data processing equipment ever installed on any college or university campus.

Dr. Lee P. Thompson, who joined the faculty in 1955, is Dean of the College of Applied Arts and Sciences.



Dr. Irving W. Stout
Dean, Graduate College

With the increasing demands of our technical age, more and more students either remain in college after receiving bachelor's degrees to continue studies or return later for advanced degrees.

Thus it is of interest to young students starting their academic careers that Arizona State University offers a well-rounded and extensive program through its Graduate College, of which Dr. Irving W. Stout is Dean.

Approximately 3,500 students are now working toward advanced degrees and the number earned increases each year. Enrollment in the Graduate College at ASU is the largest in the Rocky Mountain States.

Master's degrees are offered in English, history, music, mathematics, education, political science, psychology, sociology, Spanish, humanities, accounting, business administration, chemistry, physics and engineering.

Also natural sciences, art, French, German, economics, home economics, physical education, public administration, psy-

chology, geology, botany, zoology, and biology.

The Graduate College also offers a post-master's terminal degree, Education Specialist; the Doctor of Education degree; and the Doctor of Philosophy degree. The Ph.D. fields include physics, chemistry, engineering, English, psychology, education, mathematics, botany and zoology.

Honorary Organizations Commend High Scholarship And Campus Leadership

Organized activities open to every student are a special feature of campus life at Arizona State University. Over 50 different organizations enrich academic and social life and provide an activity outlet for everyone who wants to participate.

Each separate group has its own purpose. An especially notable section of these organizations is devoted to honorary groups which commend high scholarship and campus leadership.

The honoraries, some national, some local, include:

Advanced Air ROTC cadets; Blue Key, service; Delta Sigma Pi, business administration; Kappa Kappa Psi, band; Pershing Rifles, Army ROTC cadets; Phi Delta Kappa, education; Phi Epsilon Kappa, physical education; Phi Mu Alpha Sinfonia, music; Phi Eta Sigma, freshman men's scholastic; Pi Sigma Epsilon, sales.

For women — Alpha Lambda Delta, freshman women's scholastic society; Alpha Pi Epsilon, Psi secretarial; Phi Upsilon Omicron and Beta Chi Epsilon, home economics; Gamma Alpha Chi, advertising; Natani Pleiades, senior women's serv-

ice group; Sigma Alpha Iota, music; Spurs, sophomore women's service group; Tau Beta Sigma, band; Women's A Club, sports; Narads, swimming.

For both men and women — Alpha Beta Alpha, library science; Alpha Mu Gamma, foreign language; Beta Beta Beta, biology; Gamma Theta Upsilon, geography; Kappa Delta Pi, education; Mu Rho Alpha, music; Pi Delta Epsilon, journalism; Pi Kappa Delta, forensics; Pi Omega Pi, commerce; Psi Chi, psychology; Alpha Kappa Chi, sociology; Theta Chi Epsilon, art; Orchestras, modern dance; and Phi Kappa Phi, national scholarship society equivalent of Phi Beta Kappa.

Series Brings Famous Artists

World renowned musical and dramatic artists and lecturers will appear at Arizona State University during the ASU concert and lecture series of the 1962-63 school year.

The student activities fee, which is paid during registration, covers the cost of the series and there is no additional charge to students. Most events are held in the Memorial Union ballroom, with an occasional presentation at the larger Tempe Union High School auditorium.

The concert series will open this year with the London Intimate Opera, one of Britain's musical institutions.

Also among the events this year will be appearances by the Loewenguth String Quartet, Panhellenion-Greek Folk Festival Company, the Komitas String Quartet, Judith Anderson and Company, the Wallfisch Duo, Tenor Feruccio Tagliavini, Poet W. H. Audin, Pianist Mieczyslaw Horowitzski, and lecturers Vance Packard and Dr. Juscelino Kubitschek.

ASU Fraternities, Sororities Active

Eleven sororities and 21 fraternities are active on the Arizona State University campus and all conduct formal rush period during the early fall.

Coeds who want to join a sorority at ASU this fall should plan to be on campus ahead of Freshman Week for an orientation assembly, Friday, Sept. 7, the day residence halls will be open for women.

In order to avoid conflicts with registration activities and classes, rush activities are scheduled only on weekends, and will extend for three weeks.

The Panhellenic Council at ASU represents the 11 national social sororities and publishes a handbook which is included with other freshman orientation material mailed to all incoming women during the summer. Detailed information concerning rush is contained in the handbook.

Fraternity rush begins Sunday, Sept. 16, with an assembly at 2:00 p.m. and open houses that afternoon and early evening.

Open houses and get-togethers at the various fraternity headquarters are conducted the late afternoon and evening come from the bureau.

Publications Bureau Busy

At Arizona State University, you'll often run into the work turned out by ASU's Bureau of Publications.

Except for the student publications, the State Press newspaper and Saburo year book, headquarters are conducted in the bulk of campus publications the late afternoon and evening come from the bureau.

Campus Near Arizona Center

Arizona State University is located at Tempe, 1960 population, 25,000, the city limits of which meet the Phoenix southeastern boundaries. The campus is seven miles from downtown Phoenix, capital of Arizona and heart of the state's political, cultural and economic life.

Within easy driving distance of the campus are over 720,000 people, more than half of the state's population. Nearly 80 per cent of the enrollment lives off campus.

Tempe, and thus Arizona State University, is served by the Southern Pacific Railroad and is crossed by U.S. highways 60-70-80-90. Sky Harbor Airport in Phoenix, one of the six busiest air terminals in the nation, is 20 minutes drive from Tempe.



BRAND NEW facilities for student and faculty research are included in many of ASU's new buildings. Here, students work on a project in psychology research in the Social Science Building, using animals for experiments.

Library Is ASU Culture, Study Center

Like few buildings on the ASU campus, Matthews Library serves the entire campus community. The modern air-conditioned building provides excellent facilities and a growing collection of materials, including over 450,000 volumes.

The ever courteous and helpful staff efficiently serves the students and faculty members who seek out the library as they go about the business of a university; the pursuit of knowledge.

What brings the students to the library? Most often, it's a daily class assignment or a book on reserve that cannot be taken out. It's next to impossible to write a term paper or a thesis without visiting the library. Aside from class assignments which require reference books, many students bring their own textbooks to the library, seeking a quiet atmosphere conducive to study.

Arranged in ASU's Matthews Library are reading rooms for education, humanities, science and technology, the social sciences and Business Administration. In addition, there are a well-stocked reference reading room and a periodical room with over 4,000 current subscriptions.

A well-equipped music room permits students to enjoy the finest in classical recordings and FM radio programs. Available in the stacks are 140 individual carrels, for convenient study.

Situated in the library is the ASU Collection of American Art, including over 150 original paintings, numerous works of sculpture and an extensive print collection.

A collection of the works of George Elbert Burr is housed in the library. An internationally known etcher, who lived in Phoenix for the last 17 years of his life, Burr died in 1939. Burr pictured in his etchings, the haunting, indestructible spirit and the beauty of desert country. The collection of his works in Matthews Library is the second largest in the world, the largest being in the New York Public Library.



VOLPONE, produced last semester by ASU's Drama Workshop is typical of the plays done each year by the thespians on campus. Open to any student for on-stage and backstage work, the Drama Workshop is under the direction of Professors James Yeater and Frank Byers of the speech and drama department and it carries a full schedule throughout the year.

Insurance Plan Is Available To Students

Students enrolling at Arizona State University in the fall may take advantage of the Associated Students' hospital insurance plan, which offers complete health and accident coverage at about one third the normal cost of an individual plan.

According to Dick Finley, Associated Students' executive manager, this plan was made necessary by the fact that so many students reach an age where they must be dropped from their parents' hospital plans right about the same time they enter the university.

"We are able, through offering a group plan, to give all regularly enrolled students carrying seven hours or more excellent coverage at reasonable rates," Finley said.

All freshmen and new students will receive complete information about the plan through the mail. Students may enroll in the plan by filling out the application blank and returning it with the fee. Enrollment will also be open at the regular registration line during fall registration.

Campus Journalists Staff State Press

If any one mirror reflects all the campus activity at Arizona State University, it's the State Press.

Twice a week, the tabloid student newspaper makes its appearance at special half-colored boxes at strategic campus sites.

You'll pick up a copy and read it through for a number of reasons.

It will contain the latest happenings on campus and what's about to happen. Student opinion is voiced in the Letters to the Editor section.

Student editors run the State Press and use student reporters to cover the multitude of campus events.

Much like ASU, the State Press has changed its name through the years to meet the times. Its first issue was published in 1903, when it was the Tempe Normal Student.

In 1925, the name was changed to Tempe Collegian, since ASU that year became Tempe State Teachers College.

In 1929 another name for the school, Arizona State Teachers College, brought a name change to the paper; The Collegian.

It's been the State Press since the mid-30's.

Though most of the editors and reporters on the State Press are journalism majors, the staff isn't restricted to students in this field. Anyone, experienced in journalism or not, can work for the paper.

And if you can't work for the State Press, you can still enjoy its reflection of campus life—when it comes out every Wednesday and Friday.

Theater Group Sets Audition

The Drama Workshop, ASU campus little theater group, will present at least six major productions during the 1962-63 school year.

Auditions for the first play of the year will be held Aug. 21-22 at the Lyceum theater, according to Dr. James Yeater, workshop director and assistant professor of speech and drama.

All students interested in any of the many phases of theater arts are invited to participate in the workshop activities supervised by Yeater and Frank R. Byers, drama professor.

Students are needed in the workshop as actors, or as technical assistants in costuming, makeup, scenery, construction, lighting, publicity, or stage management.

Movie Series Features Fine Foreign Films

Combining culture with entertainment, ASU each year presents a series of foreign films. All are international award winners and represent the finest in cinema artistry in the countries where they were created.

The films are shown afternoons and evenings in Cosner Auditorium on campus.

penings on campus and what's about to happen. Student opinion is voiced in the Letters to the Editor section.

Student editors run the State Press and use student reporters to cover the multitude of campus events.

Much like ASU, the State Press has changed its name through the years to meet the times. Its first issue was published in 1903, when it was the Tempe Normal Student.

In 1925, the name was changed to Tempe Collegian, since ASU that year became Tempe State Teachers College.

In 1929 another name for the school, Arizona State Teachers College, brought a name change to the paper; The Collegian.

It's been the State Press since the mid-30's.

Though most of the editors and reporters on the State Press are journalism majors, the staff isn't restricted to students in this field. Anyone, experienced in journalism or not, can work for the paper.

And if you can't work for the State Press, you can still enjoy its reflection of campus life—when it comes out every Wednesday and Friday.

Carter Directs Class Officers

Bob Carter, El Centro, Calif., pre-medical major, is the 1962-63 president of the Associated Students of Arizona State University.

Henry Klopping, Flagstaff, is first vice-president; John Brooking, Tucson, is activities vice-president, and Cindi Buchanan, Phoenix, is secretary.

Linda Warren, Bisbee, will edit the State Press, student newspaper, for the first semester, 1962-63, and Gary Avery, Phoenix, will edit the 1963 Sahuaro, student yearbook.

Professional Schools Aid Specialization

Arizona State University's three professional schools — nursing, engineering, architecture — are the results of years of careful academic development to meet specialized needs of state students.

SCHOOL OF NURSING

ASU offers to qualified high school graduates a basic four-year collegiate program leading to the degree of bachelor of science in nursing. In the program, the student nurse is given a base of general education, so that he or she will have a rich academic background.

To provide the best clinical experience in all fields of nursing, the School of Nursing utilizes Good Samaritan Hospital, Arizona State Hospital, Maricopa County Health Department, Visiting Nurse Service, Inc., and other hospitals and health centers in the Phoenix area.

Mrs. Loretta Hamner is director of the School of Nursing, which is fully accredited.

SCHOOL OF ENGINEERING

The engineering program is designed to make effective a philosophy of education for careers in science, engineering and industry, for leadership in the second half of the 20th century.

Well prepared students can usually complete the studies leading to the degree of bachelor of science in engineering in four years. A student who so desires may devote five years to his undergraduate work and include additional instruction in the humanities, the social sciences, the physical sciences, or mathematics.

The school offers six fields of specialization, of which five are accredited.

Dr. Lee P. Thompson, dean of the College of Applied Arts and Sciences, is director of the School of Engineering.

SCHOOL OF ARCHITECTURE

This school offers programs leading to the degree of bachelor of architecture, and is based on the belief that the profession of architecture has the obligation of providing leadership in the shaping of man's physical environment.

The School of Architecture was accredited in April, 1961, and currently heads the list of 51 such schools in the United States.

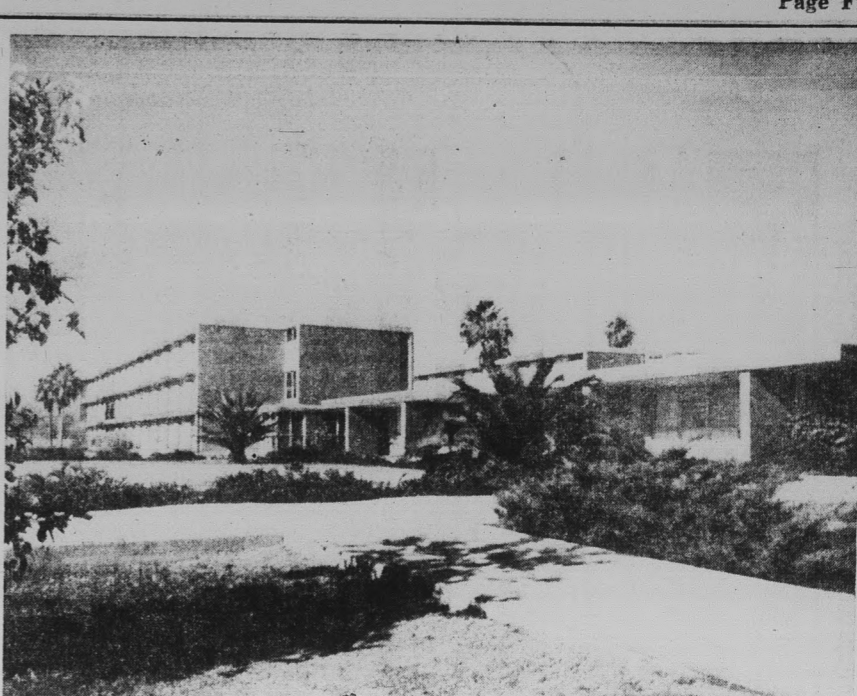
This school attempts to give the student-architect a working mastery of all aspects of our complex technology, and to develop his native talent so he can apply this working knowledge to the creation of architecture which will enrich man's lives.

Director of this school is James W. Ehlmore.

A major addition to the Life Sciences Center, cost of which is estimated at \$450,000, now is under construction.

Designed by Kemper Goodwin and Associates, Tempe, the addition will provide 24,000 additional square-feet of research space, laboratories, classrooms and offices.

The Life Sciences Center was first occupied in 1959.



PALO VERDE HALL, a women's dormitory on the north end of the campus, has its own dining facilities and rooms for 600 students. Also in the dormitory are chapter rooms for ASU's sororities. Palo Verde is one of several dormitories on campus and was built with revenue from self-liquidating bonds, at no cost to the taxpayer. Similar facility, Sahuaro Hall, serves men students and is located south of Apache Boulevard.

Job Opportunities Many For ASU Students, Grads

The continuing influx of industry into Arizona is increasing the opportunities for ASU graduates.

Dr. Robert F. Menke, director of Arizona State University's Placement Center, says "Job opportunities are opening up nationally and internationally, as well as in Arizona, because of the many companies which have branches here and because ASU is attaining more prominence."

This past spring, representatives of 325 business firms and government agencies visited the ASU campus to recruit employees for their concerns.

The strongest demand was for engineers, technicians and physical scientists.

Accountants and other business administration graduates are in strong demand. Most

ASU graduates in the teaching field go to work in Arizona.

"The greatest demand in educational placement is for elementary school teachers and for those with elementary certificates who can teach in special fields, such as music, library work or girl's physical education. Teacher shortages in Arizona are also continuing at the high school level," notes Dr. Menke.

Physical Sciences' Planetarium Is Excellent Teaching Tool

There's a skylull of stars shining in Arizona State University's Physical Sciences building.

Installed there two years ago is a Spitz Planetarium, with which ASU physical science teachers can put the images of 1,000 stars through their paces. A dome 20 feet in diameter tops the installation. Onto its surface the star images are projected, and can be made to change position, mimicking 24 hours' movement in four minutes.

Through the turning of a 12-sided projector the stars cross

A T-33 jet trainer, obtained from the U.S. Air Force through the Surplus Property Agency, has been added to the equipment utilized in the aeronautical technical program of the Division of Industrial Education.

An H-5 helicopter had been obtained previously for the aeronautical program. The aircraft will be used in teaching courses in electrical, hydraulics, fuel, oil, engine, pressurization and ejection systems.

the simulated sky as they do in the sky outdoors. The viewer can see them as they look in any latitude from the North Pole to 60 degrees south latitude, two-thirds of the way between the equator and the South Pole.

The planetarium at ASU is the result of years of development by Dr. Armand Spitz, former education director at Franklin Institute, Philadelphia, Pa. In his work at the institute, the doctor caught the vision of making models of the few multi-million dollar planetariums available to all.

Working at his dining room table, he developed what started out as a toy, the Spitz Junior Planetarium. So excellent was the model that within the past 10 years it has been adopted as a teaching tool by many schools and colleges. From the toy, he evolved the standard model, which now sells for about \$6,000.

Purchased for the use of Arizona State University's division of physical sciences, the installation is used primarily in the training of between 150 and 180 future elementary school science teachers each semester.

PART-TIME WORK

For the student who must work to supplement his income, Arizona State University, thanks to its location, is an ideal place to enroll. Located in the industrial and population center of the state, ASU offers many employment opportunities in Phoenix, Tempe, Mesa and Scottsdale businesses. Many on-campus part-time jobs are also available.

To help the student, ASU has the Placement Center, on the ground floor of the Administration building. All students interested in jobs will find it helpful to register there.



Dr. Robert F. Menke
Director Placement Center

Here Is Freshman Week Program - Bring It With You September 10!

ORIENTATION WEEK 1962-63		Thursday, September 13		COLLEGE OF BUSINESS ADMINISTRATION		Monday	
General Schedule For All New Freshman Students		Registration for Freshman students — according to schedule included in registration materials. Painting of the "A" Pep Rally		8:15 - 9:30 a.m. University Orientation — Men's Gym. Pick up registration materials — Moerur Activity Building. College of Business Administration Orientation — BA 202.		8:00 - 10:00 a.m. Assemblies — Student Orientation. Individual Advising — X-Rays by appointment.	
This program applies to all new students, freshmen and transfers. Monday, Tuesday and Wednesday are scheduled according to colleges, the individual schedules of which are included here. Each student should, on these days, follow the schedule outlined for the college he wishes to enter. Students who have not yet selected a college, or "major," should follow the schedule of the College of Liberal Arts.		Friday, September 14		10:30 - 12:00 a.m. Departmental Orientation and group advisement — BA Building 202. Mathematics Testing (required of all BA students) — BA 203.		1:00 - 2:30 p.m. M-Z—Testing required of all College of Education students. B.A. 203, 103.	
GENERAL SCHEDULE FOR ALL STUDENTS		Saturday, September 15		1:00 - 3:00 p.m. Departmental Orientation and group advisement — BA Building 202. Mathematics Testing (required of all BA students) — BA 203.		8:00 - 10:00 a.m. Assemblies — Student Orientation. Individual Advising — X-Rays by appointment.	
Monday, September 10		X-Rays Movie Freshman Mixer		8:00 - 9:30 a.m. ASU aptitude test (required of all students who did not take tests in summer) — BA 203. Individual Advising — BA 203 — X-Rays by appointment.		Wednesday	
9:30 - 5:00 p.m. Pick up registration materials. Individual College Meetings, advisement, and testing. X-Rays by appointment. FOLLOW THE INDIVIDUAL COLLEGE SCHEDULE of the college you are entering.		Monday		8:15 - 9:30 a.m. University Orientation — Men's Gym. College of Education Orientation — M.U. Ballroom. Pick up registration materials — Moerur Activity Building. Departmental Orientation and Group Advisement. Mathematics Testing for Math Majors — B.A. 203. X-Rays by appointment.		8:00 - 10:00 a.m. Assemblies — Student Orientation. Individual Advising and X-Rays by appointment.	
8:00 p.m. President's Reception.		Tuesday		9:30 - 5:00 p.m. ASU aptitude tests (required of all students who did not take tests in the summer). Life Science 191. College of Applied Arts and Sciences Orientation. Memorial Union.		1:00 - 2:30 p.m. M-Z—Testing required of all College of Education students. B.A. 203, 103.	
8:00 a.m. - 5:00 p.m. Individual College advisement and testing. X-Rays by appointment at Student Health Service. FOLLOW THE INDIVIDUAL COLLEGE SCHEDULE of the college you are entering.		Wednesday		8:00 - 10:00 a.m. Group Advisement, Engineering Center. Individual Advising. Engineering Center. X-Rays by appointment.		8:00 - 10:00 a.m. Assemblies — Student Orientation. Individual Advising and X-Rays by appointment.	
7:00 p.m. Phrateres and Off-Campus Men Receptions. AWS and AMS Assemblies.		Thursday		8:00 - 10:00 a.m. Individual Advising, Engineering Center. X-Rays by appointment.		1:00 - 2:30 p.m. M-Z—Testing required of all College of Education students. B.A. 203, 103.	
8:00 p.m. AWS and AMS Assemblies.		Friday		8:00 - 10:00 a.m. Individual Advising, Engineering Center. X-Rays by appointment.		8:00 - 10:00 a.m. Assemblies — Student Orientation. Individual Advising and X-Rays by appointment.	
8:00 - 10:00 a.m. Individual College advisement. X-Rays by appointment. FOLLOW THE INDIVIDUAL COLLEGE SCHEDULE of the college you are entering.		Saturday		8:00 - 10:00 a.m. Individual Advising, Engineering Center. X-Rays by appointment.		8:00 - 10:00 a.m. Assemblies — Student Orientation. Individual Advising and X-Rays by appointment.	
10:00 - 5:00 p.m. Promie jointly sponsored by Religious Council and Freshmen-Orientation Committee.		Sunday		8:00 - 10:00 a.m. Individual Advising, Engineering Center. X-Rays by appointment.		8:00 - 10:00 a.m. Assemblies — Student Orientation. Individual Advising and X-Rays by appointment.	
5:30 p.m. Promie jointly sponsored by Religious Council and Freshmen-Orientation Committee.		Monday		8:00 - 10:00 a.m. Individual Advising, Engineering Center. X-Rays by appointment.		8:00 - 10:00 a.m. Assemblies — Student Orientation. Individual Advising and X-Rays by appointment.	

Welcome Freshmen

The University Bookstore Is At Your Service

Come In And 'Shop Around' Before The Big 'Rush'

Shop On Campus

The University Bookstore

" . . . Your Campus Store . . . "

... Owned and operated by Arizona State University; to serve the needs of the students and faculty of this institution.

... Stocking a complete line of books - textbooks, reference, and general reading. A vast assortment of the best paperbounds.

... School supplies - Paper, Pencils, Pens, Notebooks, and all supplies necessary for the proper completion of your school work.

... Engineering Equipment-the widest assortment of the finest engineering supplies in the country-approved by the School of Engineering. The very best at the lowest prices to be found anywhere.

... Art Supplies and Equipment-a complete selection of the very best. All types of paints, brushes, paper, canvas, etc.

... A complete college line-monogrammed shirts, jackets and sweatshirts. Decals and college souvenirs . . . Pennants, ceramics and college jewelry.

... Stationery-both social and engraved papers. Numerous types of both boxed and open stock.

Save More Money

Regular Hours

8-7 Monday thru Thursday

8-4:30 Friday

9-1 Saturday

- ... Early purchases assure you of buying the books and supplies you need while stock is plentiful.
- ... Shop before the "rush" and make your adjustments later.
- ... Full 15 day refund period beginning with registration day.
- ... No refunds are made without a cash register receipt.
- ... Merchandise to be refunded must be in new and resalable condition.
- ... Do not remove price tags or book covers.
- ... The cash register receipt must accompany the merchandise to be returned.

We Buy Used Books The Year Around

Visit Your

UNIVERSITY BOOKSTORE

LOCATED IN THE MEMORIAL UNION BUILDING

Serving The Students And The Faculty