



State Press

ARIZONA STATE UNIVERSITY



TEMPE, ARIZONA



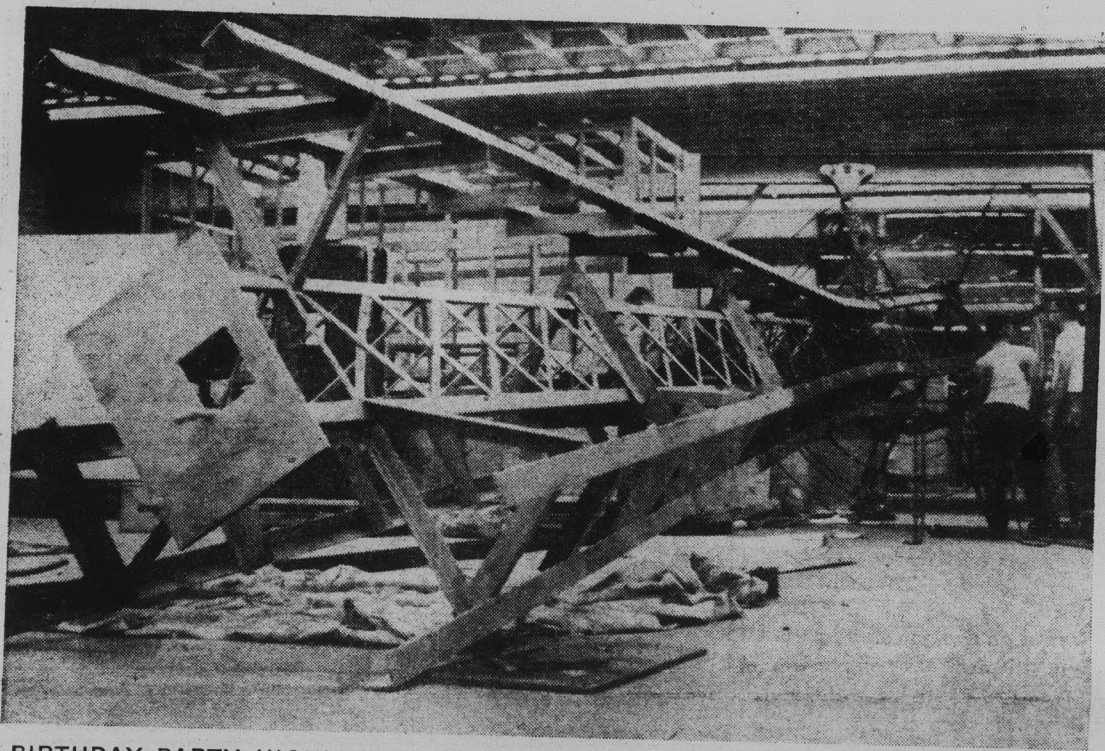
Vol. 40

Friday, April 13, 1962

No. 48

BIRTHDAY PARTY TOMORROW; 'WORLD'S FAIR' TO BE THEME

Completing The Needle



BIRTHDAY PARTY HIGHLIGHT — Construction was nearing completion yesterday on the 43' high scale replica of the space needle, the center piece of the World's Fair now open in Seattle. ASU's needle is being constructed by the Engineers Joint Council, the ASU chapter of American Society of Mechanical Engineers and other volunteers from various campus organizations. The needle will be located near the northeast corner of the MU and will go on display at tomorrow night's annual Memorial Union Birthday Party. See editorial comment on the space needle in "Off the Editor's Desk," Page 4.

Annual Event Open To All

By BECKY WATSON

The Memorial Union Birthday Party, ASU's biggest social event, will be open to the public from 5 p.m. to midnight tomorrow.

"Seattle World's Fair-Arizona Day," the theme of the MU party, will feature the worlds of business, science, entertainment and art.

Also featured will be the foreign students' International Dinner, the annual Blue Key Carnival and the Arizona Room.

The world of art will present the seven arts of painting, architecture, sculpture, dance, drama, music and poetry, throughout the evening.

The Phoenix Art Museum has donated 25 original paintings by American and French contemporary artists.

Six architectural models loaned by the ASU Architecture department will also be on display. The six models, done by second-year students, are the winners of the Southwest Pine

Association's competition for design of a newstand kiosk.

Sculpture exhibits have been loaned for the party by the ASU Art department.

"Don Juan in Hell," a dramatic reading by George B. Shaw, will be presented by Susan Flannery, Mike Salomon and Lynn Blair.

A vocal trio composed of Eldon Smith, Pat Tarpey and Karl Wochner will present show tunes from Broadway musicals in the ballroom.

Ron Ryan, folk singer, and Edsel Reid and his jazz combo will also be performing.

(Continued on Page 3)

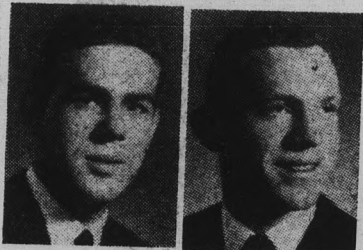
ASU Anthropology Professor Carter And Tallman To Be In Finals; To Compare Indians, Asians Klopping, Brooking, Buchanan Win

American Indians in the United States will be compared with remnant peoples in countries throughout Asia for the last lecture in the series of six, "America and the Challenge of Asia."

Dr. Kenneth M. Stewart, ASU professor of Anthropology, will discuss "Primitive Remnant Peoples of Asia" next Monday at 2:40 p.m. in the MU Ballroom.

According to Dr. Stewart, almost every country in Asia has people who are usually primitive and present problems to the governments involved.

He cited the Ainus of Japan as an example and pointed out that India has about 20 million primitive tribesmen. He said that Siberia also has many of these primitive peoples.



CARTER TALLMAN

Presidential candidates Bob Carter and Garth Tallman edged out Steve Montgomery in the primary elections Wednesday with a vote of 604, 435 and 360, respectively.

Henry Klopping was declared first vice president by receiving a majority of votes cast in the primary election with 656.

(Under statute rule, any primary candidate receiving a majority of votes cast wins the election). He defeated Mike Craig, 383, and Don Noller, 257.

Other ASASU officers elected included John Brooking, who defeated Jan Nichols, 796 to 495 for ASASU activities vice president. Cindi Buchanan was unopposed for ASASU secretary.

Others who face election in the finals will be: AMS president, Doug Zimmerman and Jerry Eppler, who defeated Dick Estes; AWS vice president, Kay Lnynskey and Diane Voorhis, who defeated Candy Garland.

Senate, (sophomore) — Karl

Wochner, Judy Wilson and Bev Bulla, who defeated Rita Gear; (senior) — Mark Cockrill, Tom McDougall and George Rhodes, who defeated Pete McClennen.

Also, (liberal arts) — Hugo Zettler, June Koenig and Jeff Louis, who defeated William Verhulst; (business administration) — Fahir Kirdar, Mike Stanton and Ron Autenrieth, who defeated Eddie Royle; (education) — Janice Ayers, Bill West and Danny Baker, who defeated Dave Reger.

Others are (off-campus women) — Carole Walker, Nancy Tenney and Karen Loughrige, (Continued on page 2)

Business Day Slated Wednesday At ASU

Business Day at ASU will be sponsored Wednesday by the Business Administration Council from 9:40 a.m. to 1:40 p.m.

The convocation will begin at 9:40 a.m. in the MU Ballroom.

Keynote speaker will be Joseph S. Glickauf, partner-in-charge of administrative services, Arthur Anderson and Co., Chicago, an international public accounting firm. Glickauf will speak on "New Dimensions in Management Decision-Making."

Area of business interest seminars will be conducted at 10:40 and 11:40 a.m. in the BA

building. Local business leaders will speak on subjects concerning accounting, business education, law, finance, management, marketing and office administration.

At 12:40 p.m., an honors luncheon will be in the MU banquet room.

Tickets for the luncheon may be purchased from members of the Business Administration Student Council or in the Marketing department office for \$1.25 or 50 cents, with a meal ticket.

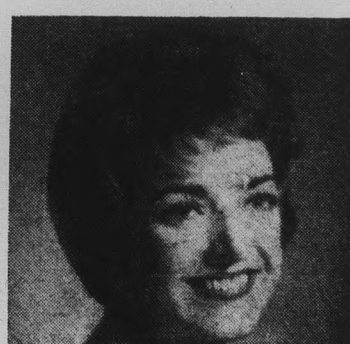
Tickets must be purchased in advance.



KLOPPING
First Vice President



BROOKING
Activities Vice President



BUCHANAN
Secretary

Educator To Speak To ASU Foundation

Dr. Frank Baxter, noted California educator, will be the main speaker at the 1962 ASU Foundation dinner Tuesday night at 7 in the Hotel Westward Ho, Phoenix.

Dr. Baxter, professor emeritus of the University of Southern California, Shakespearean scholar and pioneer in TV education, will speak on "Comments on a Noble Experiment: Mass Education in America."

Also scheduled to speak are Dr. G. Homer Durham, ASU president, who will review campus highlights of the year, and Sidney B. Moeur, secretary of

the foundation, who will cover the development and achievements of the foundation.

Dr. Baxter has received the Sylvania Award, seven "Emmys" from the Academy of Television Arts and Sciences, the Ohio State University Award and the first George Foster Peabody Award for television education, which was presented in 1956.

Idea, Interest Lead To Lab

Start with an idea, interest others in its usefulness and the idea will usually be realized, say the members of ASU's chapter of Pi Sigma Epsilon.

With the help of interested parties, this chapter of Pi Sigma Epsilon, professional fraternity for marketing, sales management and selling, has fulfilled its dream.

Last summer, Pi Sigma Epsilon saw a need for a sales research laboratory for students, according to Pi Sigma's advisor, William H. Harris, professor of Marketing at ASU.

With funds accumulated from a portion of the \$350 top chapter award which Pi Sigma Epsilon received last March, part of the proceeds from the sale of a sales record entitled "Closing the Sale," by J. Douglas Edwards of Phoenix and \$200 donated by Independent Contractors Inc. of Tempe, the fraternity has begun installation of a sales research lab in BA 104.

The lab contains two tape recorders, a sales training program and a collection of books and pamphlets pertaining to sales advertising and selling, according to Professor Harris.

Senate Acts Affirmatively On Directive

By TOM WING

A recommendation of "do pass" for the Senate directive to the MU Board, passage of the University Western Week bill and a resolution requiring more voting facilities for the ASU general election provided the Student Senate with a spirited session Wednesday.

The senate debated at length directive number two before recommending it pass. The directive was amended as follows:

"Whereas the goal of appropriate dress is desirable and good, the Memorial Union Board is urged to take any positive steps available to improve the dress of students in the Memorial Union."

Senate resolution three was introduced by Senator Don Noller and passed by a vote of fifteen for, nine against and one absent.

The directive "requests the Election Board to provide two additional polling places on April 18 making use of paper ballots, these places to be located at points along College Avenue between Old Main and the Agriculture building."

In opposition to the resolution, Senator Henry Klopping read a letter from Dick Langmade, Election Board chairman, stating the board had already taken the necessary action.

Speaker Jim Chilton commented that he favored passage of the resolution to better relationships between senators and constituencies.

ASASU Secretary Sel Erder said that the Election Board was unable to provide more polling places at the primary due to the lack of time.

Application Blanks Are Available To Cheerleader Hopefuls At Desk

Application blanks are now available for cheerleader candidates at the MU information desk.

Tryouts will be May 1 at 3 p.m. in the Sun Devil gym.

Students who have a semester's residence at ASU, a 2.00 grade index for the semester previous to applying and a minimum of 12 semester hours can apply.

More About

Elections

(Continued from Page 1)

who defeated Algene Schwanz: (off-campus men) — Dan Haveron, Bob Bramlet and Bob Coar, who defeated Richard Ormrod.

Candidates who won office in Wednesday's primary were: AMS vice president — Bob Hansson, defeating Dennis Baird; AMS secretary — Bill Mahan, unopposed; AMS treasurer — Dudley Greer, unopposed.

AWS president — Bonnie Evans, defeating Marilyn Rossini; AWS secretary — Charla Jo Allen, defeating Gay Walberg; AWS treasurer — Diane Bowman, defeating Lynn Winsor.

Senate (junior class) — Susan Chemnick and Mike Kinsev, defeating Charlie Roberts; (graduate) — Bob Bonitati, unopposed; (applied arts and sciences) — Charles Bingaman and Ron Wasem, unopposed.

A total of 1,435 students voted, or about 17.5 percent of the approximately 8,000 activity card holders.

SIC FLICS



"He has your ears, Bernie."



21 GREAT TOBACCOS MAKE 20 WONDERFUL SMOKES!
AGED MILD, BLENDED MILD - NOT FILTERED MILD - THEY SATISFY



GET READY FOR SUMMER

Wide Selection of SWIM WEAR

by Rose Marie Reid & CATALINA

Celia's FASHIONS

Tempe Center Tempe

1149 E. Main Mesa

Economics Major with Fine Arts Styling



This one goes to the head of the class—with the lowest wagon price in the U. S., the highest honors for top gas mileage, and the longest years of high resale value among all compacts. That's the Rambler American Deluxe 2-Door Wagon for you. And when you consider its clean, crisp styling that lives so smartly with the years (we don't make drastic changes merely for the sake of change), you really have a good and handy thing going for you. Try it on all counts—at your Rambler dealer's.

RAMBLER

American Motors Means More for Americans

Student Opinion Of Press Is Sought By Committee

The Publications-Public Relations committee of ASASU sent out 250 questionnaires Tuesday to ASU students in an attempt to evaluate student opinion of the State Press.

The survey's purpose is to determine and acquaint the State Press staff with the stu-

dents' attitude towards the paper and its policies.

The report will be used when the senate begins debate on yearly State Press appropriation and will be made available to university administrators.

WANTED
GOOD USED CARS
TOP PRICES PAID
CASH ON THE SPOT
BRIT SMITH Car Co.
 802 Mill TEMPE, ARIZ. WO 7-3381

Bowl Results

McClintock B defeated Pi Kappa Alpha 250 to 147 yesterday in the third contest of the ASU College Bowl series.

Next Thursday, Sophos, sophomore men's honorary, is scheduled to meet Mac B in the fourth round of the series at 4 p.m. in the MU upper lounge.

More About Tomorrow Evening's Party

(Continued from Page 1) forming artists in the world of art.

Orchesis, ASU's modern dance honorary, will present a selection of dances from their spring concert, and sketching artists Diane Douglas, Gary Spetrino and Nancy Smith will do sketches during the evening—completing the tour through the world of art.

Bob Day, coordinator of the world of art, said, "The Cultural Affairs Board's contribution to the MU Birthday Party is expected to exceed those of the past years. We hope that the students will take advantage of the exhibitions and entertainment we have provided for them through the world of art."

The International Theatre in the upper lounge will feature world-wide entertainment by ASU foreign students and foreigners in the Valley of the Sun.

Entertainment in the International Theatre will include Columbia folk dancing, the Ikeda Japanese folk dancers, a Burmese sword dance by Tim

Maung and a Scotch bagpipe selection by John Ford.

Also, a Japanese judo exhibition by Yoshi Wada, Ship Moses and Roy Moriuchi, the Martha Bale Troupe Flamenco dancers, the Stevan Hristich Choir of the St. Sava Serbian Church, and the Mikuika Family with the Belgium band will be included.

In the Arizona Room, located in the lower lounge, Dawa Chindi American Indian Club will attempt to recreate four Indian villages. The villages will be Apache, Navajo, Hopi and Pima-Papago.

Also in the Arizona Room will be the Pan American Club, who will recreate a courtyard surrounded by a hacienda and mission front. They will have a Spanish dancer performing.

The State Press erred in its April 11 issue by giving credit to the members of the Student Construction Society of America for the arches to be constructed for the MU Birthday Party at the science pavilion.

The credit for the free standing arches should have been given to the American Society of Civil Engineers student chapter.

Marge Smith
FLOWERS
 "Tempe's Most Popular Florist"

Evenings 722 MILL AVENUE Daily
 WO 7-5020 WO 7-0271

PARIS

CINEMA
 511 Mill Ave Tempe

NEXT DOOR TO THE VALLEY ART

BE FOREWARNED ABOUT THE FRANKNESS OF THE SUBJECT MATTER OF "THE CONNECTION"

NOW! THE MOST CONTROVERSIAL MOTION PICTURE EVER FILMED IN AMERICA IS PLAYING IN TEMPE TO CONTINUE ITS EXCLUSIVE UNITED STATES SHOWING.

"A PROBING UNMERCIFUL SHOCKER... IT MAKES 'THE MAN WITH THE GOLDEN ARM' LOOK LIKE A WALT DISNEY PRODUCTION"

—Tim Kelly, Arizona Republic

— PLUS —
 "It's all of a piece, crazy, mixed-up, wild, violent, sexy, outspoken and honest.....Electricity, magnetism, animal vitality, in abundance!"

—ARCHER WINSTEN New York Post

BREATHLESS

starring Jean Seberg and Jean-paul Belmondo

VALLEY Lock Shop

416 Mill Ave.
 967-6541

Locks changed & repaired
 ... Foreign Car keys ...
 Lawnmowers sharpened ...
 ... Knives and scissors sharpened!

WANTED

GOOD USED CARS
 TOP PRICES PAID
 CASH ON THE SPOT

BRIT SMITH Car Co.
 802 Mill TEMPE, ARIZ. WO 7-3381

KAET Glimpses

A new series distributed by the National Educational Television network will make its debut appearance tonight on Channel 8, ASU's educational station.

At 7:30 p.m., KAET will present the "Special: NET Drama Festival." The initial program of the series is on "Columbe: Jean Anouilh."

On Monday at 8 p.m., Channel 8 will highlight the "Special: Ed and Frank" program.

Called "Suburbia Today," Monday's show will feature a comparison of city life with life in the suburbs.

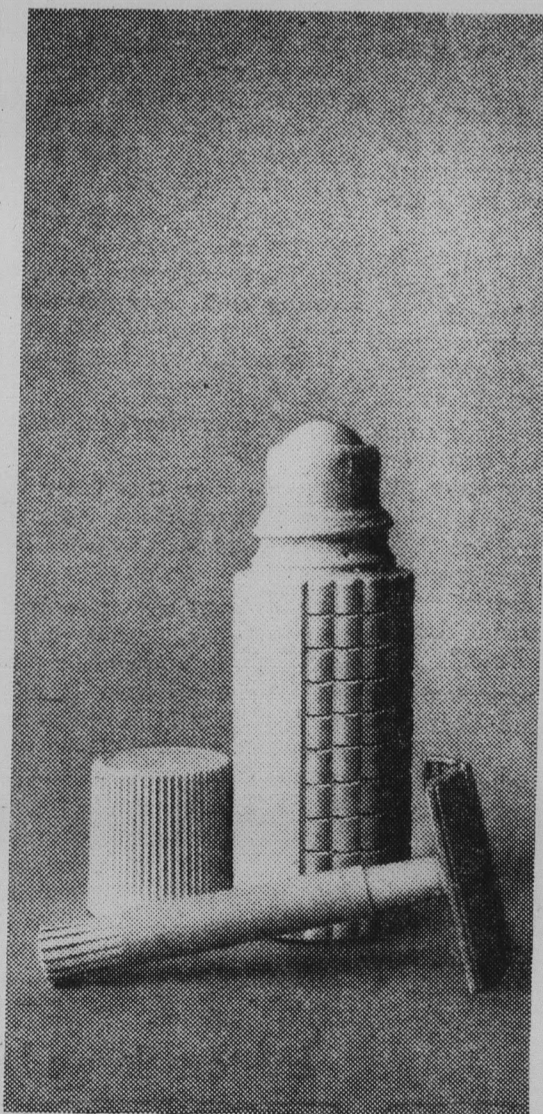
"Psychology One" is the title of a new series debuting Tuesday at 8:30 p.m. on the educational channel.

ENJOY A VISIT TO THE OLDEST INDIAN STORE IN THE VALLEY

Authentic Indian Arts
 Moccasins
 Unusual Gifts
 Pre-Historic Artifacts on Display

MILLER'S INDIAN STORE

516 Mill Ave. Tempe, Ariz.



Two approaches to the "man's deodorant" problem

If a man doesn't mind shaving under his arms, he will probably find a woman's roll-on satisfactory. Most men, however, find it simpler and surer to use Mennen Spray Deodorant. Mennen Spray was made to get through to the skin, where perspiration starts. And made to work all day. More men use Mennen Spray than any other deodorant. How about you?

64¢ and \$1.00 plus tax



THE STATE PRESS, distributed by the campus chapter of Sigma Delta Chi under the direction of Circulation Manager Mike Barrick, is the official campus newspaper of Arizona State University. It is published each Wednesday and Friday throughout the school year, excepting holidays, and is entered as second class matter at the Tempe, Arizona, Post Office under the Acts of March 3, 1879, and August 24, 1912. Subscription price, \$3 per school year.



THE STATE PRESS is a member of the Arizona Newspapers Association, Associated Collegiate Press and National Advertising Service, Inc.

EDITOR-IN-CHIEF ————— **BILL FLICK**

NEWS DEPARTMENT

MANAGING EDITOR ————— **BARBARA MARLOWE**
CAMPUS EDITOR ————— **BILL OVEREND**
ASSISTANT CAMPUS EDITOR ————— **TWILA DRUMM**
NEWS EDITOR ————— **ROSALYN WHITNEY**
ASSIGNMENTS EDITOR ————— **MARY GORMAN**
FEATURE EDITOR ————— **JANET WOLHETER**
COPY EDITOR ————— **GARY OLMSTEAD**
CHIEF PROOFREADER ————— **BOB ZACHE**
ADVERTISING MANAGER ————— **HAL HUBELE**

SPORTS DEPARTMENT

SPORTS EDITOR ————— **BOB EGER**
ASSISTANT SPORTS EDITOR ————— **BOB JACOBSEN**

OFF THE EDITOR'S DESK



thanks, engineers
for the needle

Tomorrow night is "fair" night at Arizona State. It will likely be a very memorable night in the history of this institution. It will undoubtedly be the night of one of the great MU birthday parties ever.

IT WILL BE the climactic ending of an unbelievable amount of work and effort . . . put forth by a great variety of persons — students, faculty and staff alike.

It would be impossible for us to name all the persons who have contributed their time to this year's party—THE party, if you please.

We could name the steering committee and the various committee chairmen involved but that would be a great injustice to the hundreds of people who have done (and will do, before tomorrow night) a great share of the work.

HOWEVER, we do not feel it would be harmful to name one group which has really "gone all out" for the party this year—to the tune of about 500 man hours. The group is the engineers, and thus far we have unintentionally overlooked their efforts.

They are responsible for what is anticipated to be the biggest attraction of the party . . . the 43' high space needle (picture, Page 1). Approximately 20 men, representing the departments of Civil, Mechanical and Electrical Engineering, have been working for the past six weeks on the construction of the 2,500 pound needle.

THEY HAVE been working around the clock since last Tuesday. Many of the men have taken leave from their jobs in order to finish the needle. They have put forth an amazing effort.

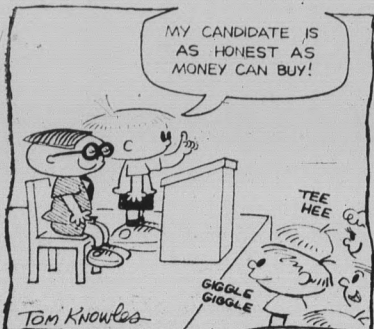
For those people in charge of the party and for those thousands of people who will be there tomorrow night, we say thanks to the engineers for their part in a tremendous communal effort—the 1962 Memorial Union Birthday Party, "Arizona—Seattle World's Fair."

CLEARING THE DESK: We note that applications for next year's cheerleaders are now out and that try-outs will be May 1.

If you remember, there was much criticism of our cheerleading situation this year. For those of you who shouted the loudest, here's your chance to improve things. Start looking around for some good candidates and encourage them to apply.

With eight consecutive home football games next year, we can't afford to have continued discontent with our cheerleaders.

CLAUDE HOPPER



by tom knowles



COVERING COLLEGE AVENUE

women — don't give up your freedom for a few

By BABS MARLOWE

The women of McClintock B have taken a firm stand that should be followed by the other women's dorms.

That is, if they are thinking clearly and are thinking ahead a few feet in front of their noses.

There is currently a move in AWS to limit the freshmen women to three overnights per month.

It is thought that this plan would further enrich the dormitory program and the program of Associated Students in the line of activities on the weekend.

It is entirely conceivable and perhaps even planned that this plan would later progress to include upper-classmen. Or maybe they, who support the plan would care to put it on an academic standing:

If Susie Jones has a 2.5 or better, she can have 4 overnights but Sally Smith only has a 2.49, so she can't go home this weekend.

Supporters of the plan contend it would create a more



campus-like atmosphere at ASU.

Comparison and contrast are fine, if the comparison is in the realm of logic.

However, when it comes to proposals such as these, ASU must consider, its own, rather unique problems — nuts to those sister institutions; wherever they may be.

The best way to promote social activities on this campus is to have good ones, and these take money. As we said before, the Frank Lloyd Wright Auditorium will greatly aid the program of the ASASU activities vice president.

Not only will his committee have a large enough place for them, but the performers need not be inconvenienced by poor personal arrangements.

We digress. This is not a plug for the activities program. It has improved, and we are confident that John Brooking will continue in this line.

In the McClintock B proposal, the women state that they are in favor of a positive approach to the stimulation of spirit and activity on the campus but:

"They are unalterably op-

posed to the current proposal of restricted weekend signouts for women as a negative approach and as an infringement on the freedom we presently enjoy and respect."

If this plan is accepted, the burden of school enthusiasm will be placed on the 2,500 ASU students who live on campus.

This plan would limit those women students who, of necessity, must go home on weekends due to lack of funds to eat on campus or in the nearby area during the weekend.

If this plan is accepted, the amount of responsibility and paper work for the head residents will be increased to maximal proportion, for we doubt that a head resident would deny the request of a parent for his daughter to come home on the weekend.

It encourages an atmosphere of distrust between the students and the head residents, they say. But this is only heresay.

We greatly encourage the AWS General Council to resoundingly defeat this proposal and continue the atmosphere of trust, integrity and maturity that has been evidenced by that body in the past.

LETTERS TO THE EDITOR

complacency to apathy to dependency to bondage

To the Editor:

Comment on W. M. Wingfield's letter of April 11.

Mr. Wingfield does not wish to continue using the paper as a forum? He started this. He replied to Ken Berger. If he had not replied, there would have been no forum.

It takes two to make a forum. Wingfield says this is his last word, says the issue is wearing thin. Any intelligent person can see through that, whatever his political conviction.

That's an attempt to get the last word.

By the way, that letter ran way, way over the 300-word limit. A special privilege? Obviously.

Why should any of us sweat it when we are taken care of under W. M. W.'s equality? We get the money even if we're too lazy. Why go to college and pursue excellence? To be educated? Good enough, but we wouldn't.

We would let the Kennedy brothers and their advisors take care of us, I'll bet. Remember how the great civilizations fell? From complacency to apathy, from apathy to de-

pendency, and from dependency back again into bondage.

May we not be so unwise.

John Fry III

Editor's Note: Your letter at least proves that some of our readers are keeping up with the Berger-Wingfield discussions. Therefore, we will print your letter contrary to our little

announcement Wednesday saying that we were burnt out on the subject. Also, we were hurting for letters.

Oh yes . . . you're right. We were OBVIOUSLY giving special privileges to Mr. Wingfield—especially in view of the fact that we reside in the hard-core Republican conservative camp.

EDITORIALY SPEAKING

we're looking at qualifications

A few comments on the elections, both last Wednesday's and the general election coming up next Wednesday.

Obviously, the procedures in the primaries were somewhat inefficient. This was unfortunate and probably helps account for the very low voting percentage.

However, the chairman of the Election Board was the first to admit the board's mistake. We do not feel it is necessary to criticize them further. Nor do we feel the Student Senate's brilliant public relations move in the form of a resolution passed Wednesday criticizing the board was necessary, (see news story about senate on Page 2).

Let us hasten to point out that not ALL student senators favored this resolution, and several voiced heated protest against the measure.

The election board has made its error, and it will not happen again.

Two more voting places will be set up for the general election, both to be located at "population centers" on campus (probably the BA and the corner of College and Orange).

Therefore, it should be much easier to cast your ballot next Wednesday. For that reason, we again encourage you to vote.

We think it is a critical election. And because we think interest in the elections may slack off due to the slow procedures Wednesday, we feel each vote will be of great importance.

The State Press would like to ask that you closely examine the qualifications of the remaining ASASU candidates. The most important qualifications in the year's general election, in our minds, is experience.

We are looking at the qualifications. We ask that you do, too.

Square Dance Festival Scheduled

Devils 'n Dames, ASU square dancing club, will appear in the 15th annual two-day Square Dance Festival of the Great Southwest Friday.

Fifty ASU square dancers will participate in the festival, sponsored by the Valley of the Sun Square Dance Organization,

which is expected to draw dancers from throughout the United States.

Devils 'n Dames will provide transportation for all interested in attending Friday night's program. Those needing rides are asked to meet in front of the MU of 8 p.m. Friday.

WE Apologize

For Not Making You
More Aware Of The Fact
That There Is A Real
Nice Camera Shop In
The Tempe Center . . .

**PIONEER
CAMERA SHOP**

HALLMARK CARDS — MAC & JACK

After Hours

Easter Vacation: Big Trips Ahead

By **BILL OVEREND**
Campus Editor



Well, gang, looks like Easter vacation has sneaked up on the ASU campus.

Last year carloads of collegiates zoomed over to California, up to Las Vegas and down into the heart of Mexico. It was a great break for all concerned.

This year, however, the situation is a little bit different. We have only a four-day vacation, including Saturday and Sunday. The amazing briefness of this break poses several questions, foremost of which is "Where in the heck can we go?"

Some students, we have heard, are planning safaris into the nearby metropolis of Tempe. They'll stay there throughout the vacation, visiting such hotspots as the Dairy Queen and the House of Pancakes.

Although our chances for a fun-filled Easter vacation this year were crushed almost a year ago, the effects are yet to be felt by most of the students of this university.

But our upcoming four-day holiday permits only one prediction: We're all going to have a crummy time!

NOW THREE LOCATIONS . . .

1. Tempe Center 2. 1302 Rural 3. Bayless Center

Open 24 Hours A Day!

ZZZONA

DRIVE-IN LAUNDRY & CLEANERS

FIRST in Laundry and Cleaning - LAST in the Phone Book

NOW FUN AND SUN DAYS

AT YOUR CHEVROLET DEALER'S

(where you'll find the nicest ways to get away!)

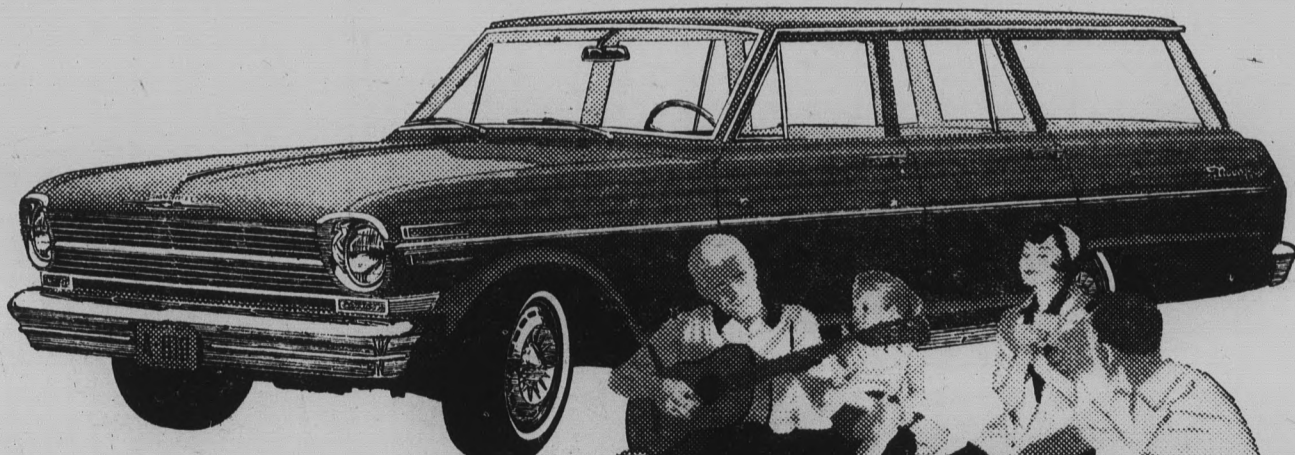
You won't find a vacation-brightening variety like this anywhere else. And now that spring has sprung, the buys are just as tempting as the weather. Your choice of 11 new-size Chevy II models. Fourteen spacious, spirited Jet-smooth Chevrolets. And a nifty, nimble crew of rear-engine Corvairs. Three complete lines of cars—and we mean complete—to cover just about any kind of going you could have in mind. And all under one roof, too! You just won't find better pickings in size, sizzle and savings anywhere under the sun. And you couldn't pick a better time than now—during your Chevrolet dealer's Fun and Sun Days.



NEW BEL AIR 4-DOOR STATION WAGON
Jet-smoothie that rides just right, loaded or light—with 97.5-cu.-ft. cargo cave and Full Coil suspension.



CORVAIRE MONZA 4-DOOR SEDAN
From snappy interiors to sure-footed seat, this one's got the gift of making sport of most any trip.



NEW CHEVY II NOVA STATION WAGON
Here's a wagon that sells at a compact price, yet totes in a big way with a longer load floor than any compact—over 9 ft. with second seat and tailgate down.

See the new Chevrolet, Chevy II and Corvaire at your Chevrolet dealer's One-Stop Shopping Center

Greeks Select Spring Pledges

ASU fraternities and sororities recently announced new pledges, initiates and officers of second semester.

NEW PLEDGES

Pi Kappa Alpha: Mike Sessions.

Theta Chi: Gary Merrill, John Pezold, Alan Grieme and David Lee.

Phi Kappa Psi: David George, Brent Williams, Kerry Thomas, Don Story, Lon Lee and Bill Weidemaier.

Campus Classified

Regulations: For students and faculty only of Arizona State University. Cash in advance. Submit to Room 207, Memorial Union Building, by noon two days before date of publication: noon Monday for Wednesday's issue, noon Wednesday for Friday's issue. Rates: 3 cents per word, 50 cents minimum charge.

APARTMENT

Two blocks from ASU. Brand new furnished apartment designed for ASU married couples only. \$85 month year-around-rate. All utilities paid. Apt. #9, 705 Krueger St. WO 7-5430.

FOR SALE

1957 Chevrolet Convert., full power, radio, heater, w/w, V-8. Powerglide, good tires. Phone 275-0576. Must sell.

Bcy's 26", 10-speed Schwinn racer. Excellent condition. \$65. WH 6-8400.

1958 MG. Good condition. All accessories. Private party. \$1,195. CR 4-5304.

TYPING

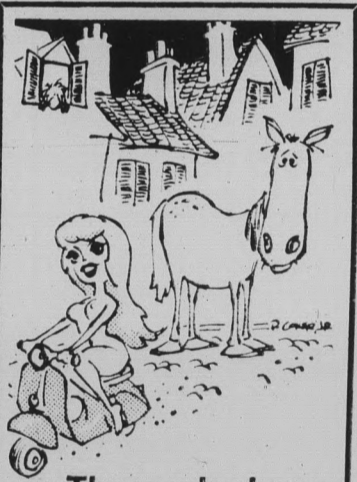
Expert typing. Scottsdale WH 6-5948.

SEWING

Sewing, altering, and dressmaking. Mrs. Kotten, 1311 W. 10th Place, Tempe, Arizona. W. 7-9173.

WANTED

Faculty Couple as resident manager new 18-unit apartment. Air conditioning. Pool. Five blocks from Campus. May occupancy. Call Robert Carter, Sands of Tempe. WO 7-2611.



Those who have
a choice, choose
VESPA

- SALES
- SERVICE
- PARTS

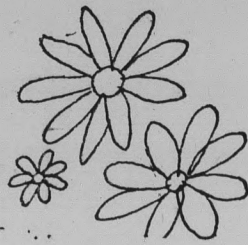


CUSHMAN
Motor Products

4817 N. 16th St. — Phoenix
AM 5-1272
633 E. 4th Ave. — Mesa
WO 4-2117



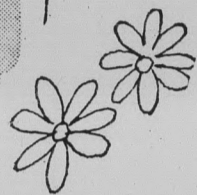
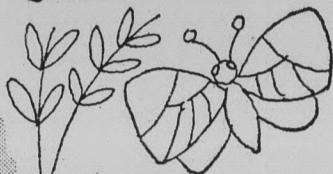
step
into



SPRING

in One

Easy Stop!



Widest Choice Of

Gifts FOR Easter!



28 FINE STORES TO SERVE YOU

Americana Shop • Bob Brickie Furniture • Bonnie Sue Fashions • Celia's Fashions • Center Hardware • El Rancho Market • Erickson's Handcrafts • First Federal Savings & Loan Association • First National Bank • GallenKamps • Happy House Shop • Hill's Record Shop • House of Pancakes • Jam's Restaurant • King's Fashions • Little Travelers • Pioneer Camera Shop • Porters • Ray's ASU Barber Shop • Rosamond's • Ryan-Evans Drugs • S&H Redemption Center • Sewing Basket • Sherwin-Williams • Tee Pee of Toys • Top's • W. T. Grant Co. • ZZZona Laundry & Cl's
... easy to shop... easy to park (free)... everyday low prices

MOST
EVERY GIFT
FOR
MOST
EVERYBODY

Tempe

Shopping Center

OPEN EVERY
THURSDAY
EVENING
UNTIL 9

on mill avenue - 8th to 10th streets

Runge's Homer Gives ASU Victory Over Wolverines

Paul Runge, who has suddenly given Coach Bobby Winkles' spray hitting Sun Devils a long ball punch, did it again Wednesday, as he smashed a three run homer in the bottom of the ninth inning to erase a 6-4 deficit and give ASU a 7-6 baseball win over Michigan.

The day before, Runge smashed a homer and a double in a losing cause against the same Michigan crew.

Although the Devils were only able to manage four hits,

compared to 10 for Michigan, the locals made them count, as they took a 2-1 series edge and boosted their season mark to 17-8.

Arizona State's errors gave the Wolverines a 5-3 lead after six innings of play. The Devils closed the gap to 5-4 as Gary Linthicum drove in a run in the eighth, but Michigan opened the margin to 6-4 with another single tally in the top of the ninth.

In the bottom of the ninth Larry Walker and Danny Ikeda

walked, and the stage was set for Runge's blast. Doug Westley contributed two hits to ASU's four hit attack as Linthicum and Runge produced the others.

Gary Graham started on the mound for the Sun Devils and worked through the eighth inning. He was replaced in the ninth by Larry Smith, who became the pitcher of record when the Devils cinched the game in the bottom of the ninth. Smith's record is now 2-0.

BOB VIEWS SPORTS NEWS

Devil Foes Tough Lot

By BOB EGER
Sports Editor



Arizona State is currently in the midst of a batch of college baseball competition which ranks among the toughest the nation has to offer.

The Devils met mighty Arizona, second ranked nationally, for three games a couple of weeks ago. Then they took on the gigantic task of looking respectable against a powerful Los Angeles Dodgers "B" team.

No sooner had the shell-shocked Devils recovered from the blows of the Dodgers, when a spunky bunch of Texans from Sul Ross came to town with an impressive 8-1 record and left two days later with an even more impressive 10-1 mark.

Now the foe is Michigan, always one of the leaders in the Big Ten Conference, and usually well thought of on the national level. The Devils and Wolverines are in the midst of a big seven game series, which began on Monday and will terminate tomorrow with a double header.

Monday, the Devils enter a tournament which boasts several of the top teams in the nation. The Demons will be a part of the annual Los Angeles State Easter tourney, which includes USC, UCLA, San Jose State, Cal Poly, ASU and LA State. It's a week-long affair where each team plays six games.

Here's an idea of the strength of the teams in that tourney. Southern Cal is the nation's top ranked team. Los Angeles State is fourth ranked, and UCLA is rated 12th in the country.

A constant barrage of this type of competition can get a team down. It's not like pro ball, where a bunch of second-division patsies come around every so often to brighten things up.

Consider the plight of poor Bobby Winkles as he sees group after group of towering monsters come to town to face his own tiny terrors. ASU definitely doesn't have a murderer's row this year. Instead, it's speed and hustle that the Devil mentor must depend on. There's a sound principle for building a club on this basis. Speed and hustle are qualities you can depend on day after day. The ability to smash the ball out of the park, you can't always depend on.

If you've watched the Devils in action and wondered if half the home team was standing in holes out there, they aren't. Here are the heights of a few of the regulars: Larry Brion 5-6, Dennis Starkins 5-7, Larry Walker 5-7, Danny Ikeda 5-8, Bill Gorman 5-8 and Phil Groover 5-9.

Not a one of them is a "slenderella" reject. Instead they're all tough little ball players who are doing a man-sized job against sometimes rather staggering odds.

It's definitely a club patterned after Chicago's Go-Go White Sox, a group noted for lots of speed and defense but not much in the way of big sticks. Winkles, as you will recall, was a standout infielder in the Sox organization. Maybe some of it rubbed off on the Sun Devil boss.

The Americana Shop



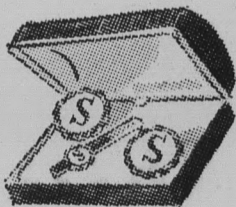
Why limit your choice?

Choose Easter Accessories from the largest, most elegant collection in town!

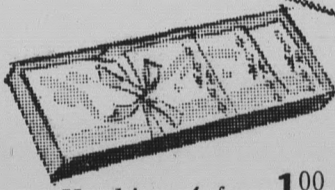
Get exactly what you want in Easter accessories with so large a collection of correct furnishings... it's our pleasure to serve you.



Belts from 1⁵⁰



Jewelry sets from 2⁹⁵



Hankies, 4 for 1⁰⁰



Shirts from 4²⁵



THE Americana SHOP
Quality Men's Apparel
TEMPE SHOPPING CENTER

Open 'til 6:00 p.m.
Thursday night
'til 9:00 p.m.
WO 7-5457

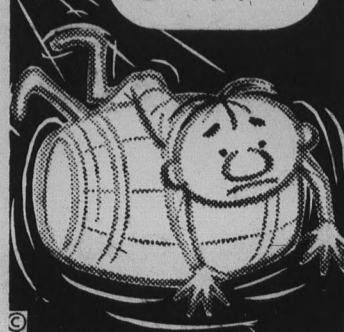
EASTER



EGGS — BUNNIES — CARDS
GRASS — PAPER GOODS
PARTY DECORATIONS

ALL AT THE
HAPPY HOUSE SHOP WO 7-5353
Tempe Center

OVER A BARREL?



There's Still Time For...
EASTER Reservations

The Short Vacation Means You Should Fly... As Low As

30⁰⁹* Round Trip To Los Angeles
* Youth Fare

Why Drive To Phoenix STOP IN YOUR STUDENT TRAVEL HEADQUARTERS

18 E. 5th WO 7-1673 UNIVERSAL TRAVEL

Lynn Haines Top Seeded In Arizona Open Net Play

Lynn Haines of Arizona State is favored in two divisions in the annual Arizona Open tennis tournament in Tucson this weekend.

Miss Haines, second ranked at ASU and the top junior player in Texas, will compete in both the women's singles and the junior girls' singles. She is top seeded in both divisions.

ASU's top-ranked girl netter, Carole Ann Prosen, has been ill and will not compete in the tourney.

Two other ASU coeds are a-

mong the top seeded entrants in the tournament in the women's division. Pinky Shoemaker is second seeded, and Emma Flores is fourth seeded. Laurie Callaway of Phoenix is seeded third. Over 300 entries are listed for the tourney, which boasts 19 events. There are 30 entries in the women's division. Play started yesterday and will continue through Sunday on the University of Arizona courts.

Then Watch Them Go

Carr Preps For Spot On Mile Relay Crew

Sun Devil track fans are eagerly awaiting Henry Carr's debut as a quarter miler next Wednesday night with hopes that the Detroit speedster can churn a time which might enable the Sun Devils to regain their post on the top of the nation's mile relay listings.

Carr, the fantastic sprinter

who last week sped to a 9.5 hundred and a 20.5 furlong, will run the second leg on the mile relay against New Mexico. Coach Baldy Castillo hopes Carr can reach a clocking in the low 47's and if he can, the Devils will be ready to take on the best competition the nation has to offer in the upcoming West Coast meets.

Last weekend the idle Devils saw themselves slip from the top spot in the nation, as Texas Southern breezed to a 3:09.0 clocking and Abilene Christian recorded 3:10.0. The Devil's best this year is 3:10.2 against USC.

Castillo knows that the ASU foursome will have to improve that time by April 28 when the Mount SAC relays come around, and the Devils will be face to face with the nation's best teams.

Against USC Mike Barrick led off with a 48.6 leg, followed by

Gaston Green 49.1, Ron Freeman 46.3 and Ullis Williams 46.2. Carr is being groomed to run in Green's spot so that the latter can devote full time to his hurdles events. Green is former nation JC high hurdles champ.

Since the USC meet, Barrick has lowered his time out of the blocks to 47.8, and Freeman has consistently been turning the fastest leg on the relay — usually well under 47 flat. Williams, meanwhile, has clocked a 46.0 quarter from the blocks, which is equivalent to about a 45.5 with a running relay start.

If Carr can successfully make the transition from the sprints to the quarter, the Devils could go well under the 3:07.9 which they recorded last year, and which stands as the second-fastest time ever run by a college quartet.

Michigan Tops ASU

Michigan's Wolverines pushed across six big runs in the top of the eighth inning to break a 6-6 tie and then added six more in the ninth to crush Arizona State 18-6 on the Sun Devil diamond yesterday afternoon.

The win was the second of the current seven-game series for the Wolverines and tied the series standing at two games all-

Larry Smith was Arizona State's losing pitcher as he was on hand when Michigan started doing its damage in the eighth inning. His record is now 2-1.

Doug Westley paced the Sun Devils at the plate with four hits in five trips. Merrill Hyde contributed a three-run triple to the ASU attack.

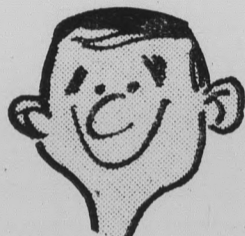
UofA Golfers Top Sun Devils, 16-11

The UofA's golfers defeated Arizona State 16-11 Monday in a match played at Tucson Country Club. The loss was only the fourth of the season for the ASU linksters, who have won 18 matches.

Ray Stawicki fired a 72 for ASU to win his match against Mike Rombold of the UofA 2-1. Les Wimp of ASU shot a 75 but lost 2-1 to Tom Fink of the

Wildcats, who carded a 73. Mike Farrel shot an 80 to win 2-1 against the UofA's Phil Marskey.

The Devils travel to Santa Cruz, Calif., for their next competition. They will meet Oregon State Wednesday and will then enter the Northern California Intercollegiate tourney at Santa Cruz April 19-21.



"WHAT A WAY TO GO"

"Women find me irresistible in my Tapers. Don't get me wrong—I like it. But how much can one man take. Please wear your A-1 Tapers as much as possible and let me get some rest."



A-1 TAPERS®
4.95 to 6.95

At your favorite campus shop

BULLFIGHT

Nogales, Sonora Bullring, April 15, 3:30 P.M.

FERMIN RIVERA — LUIS PROCUNA
And taking the Alternativa (Doctorate) in Bullfighting — **TOMAS ABAROA**
6 BULLS FROM GARFIAS

Shady Side, General — \$5.00 — Sunny, General — \$3.50



Arrow

Ban-Lon. "PAR"

hits the mark for complete comfort

No matter what you do you'll look your best and feel your best wearing an Arrow Ban-LON "Par." It gives you the action of a knit combined with a bright array of colors and a soft absorbent hand. Completely washable. Short sleeves

\$5.95

ARROW®

From the "Cum Laude Collection"

Your A-1 Dealer In Tempe...



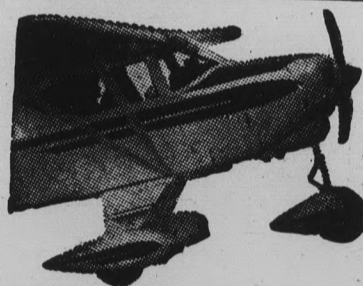
Your ARROW Dealer in Tempe...

603 Mill Ave.



FOR MEN AND YOUNG MEN

WANTED
GOOD USED CARS
TOP PRICES PAID
CASH ON THE SPOT
BRIT SMITH Car Co.
802 MILL TEMPE, ARIZ. WO 7-3381



Wish You Could Fly?

Start Learning TODAY

the easy, economical

Piper COLT Way!

Complete Private Pilot course at a new low cost. We have 100% bank financing.

BRAND NEW MODERN AIRCRAFT • EXPERT GOVERNMENT-RATED INSTRUCTORS • NEW PIPER AUDIO-VISUAL GROUND SCHOOL COURSE.

Call

ANDERSON AVIATION

Sky Harbor Airport
Phone 275-5741