

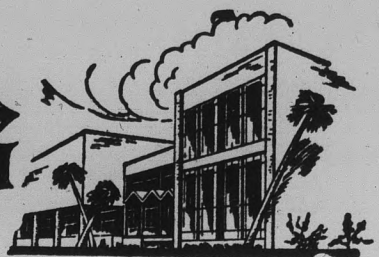


# State Press

ARIZONA STATE UNIVERSITY



TEMPE, ARIZONA



Vol. 40

Friday, March 23, 1962

No. 42

## Election Materials ...Not Yet

"No campaign materials may be displayed prior to April 9," Dick Langmade, ASASU Elections Board chairman, announced yesterday.

Candidate petitions are already out and must be turned in to the ASASU secretary by 4 p.m. April 2.

Only bonafide members of each constituency may sign petitions. For example, only off campus men may sign the petitions being circulated for off campus men's senator.

Candidates will present their platforms to interested students at 7:30 p.m. April 10 in the MU.

Voting machines will be used in the election. "This is a very complicated balloting system, more so than the national election," Langmade said. Students will have to go through two voting machines in order to complete voting.



**PLANNING THE BIG WEEK** — Members of the Greek Week steering committee going over specific plans for this year's event are, from left, Margie Holstine, Ron Tankersley, Sharyl Nelson and Gary Avey. Activities begin next Wednesday, with primary elections for Diana and Apollo, and continue through April 7, when the Greek Ball will conclude the festivities. Other activities include the IFC Sing, Work Day, progressive parties, a parade, the chariot race and Greek games.

## PV Girls Winners In 'Bowl'

There were no television cameras or commercials, but the familiar phrase, "A toss-up worth 10 points," officially began yesterday's first match of the ASU College Bowl.

The match ended with the Palo Verde team acquiring 192 points and the opponents, Gamma Phi Beta, earning 22.

The winning team, representing Palo Verde Hall, was composed of Sel Erder, Pat Inbody, Jean Jordan and Ruth Wick.

Carol Sivesind, Karen Lindstrom, Chris Coie and June Koenig represented the Gamma Phi team.

One of the toss-up questions which went unanswered was: "Who was the famous Dutch artist known for the use of light and darkness in his works?" The answer: Rembrandt.

The questions represented such fields as history, science, languages and music.

Another question which stumped the teams was: "Name the mountain system which stretches a quarter of the way across the globe."

Jim Creasman, ASU alumni secretary, was the moderator, and Dr. Ernest L. Parker, professor of Animal Husbandry, was the referee.

The winning team will meet the Pi Kappa Alpha team April 5 in the second match of the bowl.

Approximately 50 faculty members and students watched the initial bowl match.

## Foreign Trade Grants Available

Application forms for the American Institute for Foreign Trade scholarship are now available in MU 213, according to Mrs. Marge McKemy, secretary of the Scholarship committee.

The submission deadline for these forms is April 25.

## 'Palestine Refugee Problem' Is Subject Of Next Lecture

By BOB ZACHE

Palestine is our home.  
To return home is our goal.  
To struggle is our way.  
Sacrifice is our duty.  
Faith is our sword.  
Death does not frighten us.  
Palestine! Ours, ours, ours.

In the current issue of Saturday Evening Post these words are reported painted on the walls of an Arab refugee schoolhouse in Lebanon.

"The Arab Middle East—Palestine Refugee Problem" is the subject of the fourth program in the series of six, "America and the Challenge of Asia." Dr. Kent Pillsbury, ASU associate professor of Education, will conduct this lecture Monday at 2:40 p.m. in the MU Ballroom.

An estimated birthrate of 35,000 a year is adding to a

population of 1.2 million people who call the land now occupied by Israel their home, even though many of them have never seen it.

The partitioning of the former British mandate of Palestine between its Jewish and Arab inhabitants by the United Nations General Assembly in 1947, the outbreak of hostilities between Arabs and Jews in the course of this partition, the withdrawal of British forces from Palestine, the establishment of the independent state of Israel in 1948 and the flight of many Arabs from Palestine in the course of these events are the causes of the refugee problem as reported in "The UNRWA School System and the Palestine Arab Refugee Problem," which was pub-

lished by the ASU Bureau of Government Research.

It also says, "If Soviet agitation makes the Middle East one of the hot spots in the East-West controversy, a principal issue underlying political tensions in that area may be found in the Arab-Israeli conflict."

Dr. Pillsbury, who co-authored the above mentioned publication with Dr. Heinz R. Hink, ASU associate professor of Political Science, traveled throughout the Middle East in 1960-61 studying the Arab-Israeli education problems.

With three lectures of the series over and three to go, Dr. Karl H. Dannenfeldt, ASU head of the division of Behavioral and Social Sciences, said that the main purposes of the series are being accomplished: to acquaint students with faculty members who have a background in Asian affairs and to introduce subject areas not usually studied by students.

## Faculty Senate Approves New Admissions Proposal

The ASU Faculty Senate has approved an early admissions proposal to be included in the 1962-63 catalogue supplement.

According to the faculty bulletin, the proposal, which was recommended to the senate by the University Admissions and Standards committee, states that only "a small select number of highly qualified applicants who must have completed the junior year of high school, have the approval of their parents and the recommendation of their high school principal and have demonstrated educational

promise and maturity and who rank in the top 10 per cent of students admitted to the freshman class as measured by high school grades and entrance tests" will be considered for admission to the freshman class.

The bulletin also stated that President G. Homer Durham recommended that the proposal be referred back to the Admissions and Standards committee for editing before being included in the supplement, because of the close vote of 10 to 8 which approved the proposal.

## Den Paddles Are Back!

The paddles are back!

If you've been to the Devils Den lately, you've probably already noticed the wooden paddles hanging on the wall behind the serving counter.

Paddles, representing various fraternities and sororities on campus, previously covered the entire north wall of the Den but were stolen last year, according to Gene Bollen, Den manager.

## Mono Report Is Available At MU Desk

Dr. L. C. Sutherland's report on infectious mononucleosis, which is being distributed by Lambda Delta Sigma fraternity, is still available in bountiful supplies.

According to Chuck Warrell, distribution chairman, of the 5,000 original copies of the report, approximately 1,500 have not been delivered to the distribution points. The report is available to anyone interested at the MU information desk, the Student Health Service, dorms and from sorority and fraternity groups. See editorial comments on the mono report in "Off the Editor's Desk," Page 4.

## Forensic Tourney At ASU Tomorrow

ASU will host about 800 high school students this Saturday in the fourth annual foreign language forensic tournament. Thirty high schools are expected to compete in the tournament, which will be in the Social Science building.

Students will compete in five language divisions: French, German, Latin, Spanish, and native-Spanish. The latter is for contestants who come from Spanish-speaking homes and have acquired a native fluency and facility of pronunciation.

Among the events scheduled are humorous and serious recitation, and sight reading and original composition. ASU fac-

ulty members and Foreign Language majors, as well as guest linguists from the Valley will judge the competition.

There will be three levels of individual competition in all of the language divisions except native-Spanish. They will be beginning, intermediate and advanced. Students in the native-Spanish division will meet in open competition.

Ribbons will be awarded to first, second and third place winners in all events in each division. A plaque will be presented to the schools whose students jointly amass the most points in each of the four languages.

# Total Budget Is Estimated At \$184,000

An estimated total budget of \$184,000 for next year was announced yesterday by the Student Senate Finance committee.

Eight thousand student activity fees of \$23 per year make up the fund, added Henry Klop-ping, chairman of the committee.

The detailed budget should be finished in the near future and will be submitted to the Student Senate and the Board of Financial Control for approval.

An open public hearing will be announced for the discussion of the budget, said Klop-ping.

Senate secretaries Adeline Brist, Beverly Bulla and Sandra Wetzel have assisted in the paper work of cutting the budgets of the various sub-committees of the senate which have submitted proposed budgets.

# Morgan Photos Displayed Here

A photography exhibit by Barbara Morgan, one of the world's most famous photographers and painters, is presently on display in the art gallery of the ASU Social Sciences building.

The display, which includes 77 of Miss Morgan's major accomplishments of her career, will be on campus through April 15. The exhibit will then go to Thailand.

Miss Morgan, a UCLA graduate, began her photography career in 1935. Since then she has had an almost continuous period of one-artist exhibitions in such places as the Museum of Modern Art and the George Eastman House, Rochester.

## VALLEY Lock Shop

416 Mill Ave.  
967-6541

Locks changed & repaired  
... Foreign Car keys ...  
Lawnmowers sharpened ...  
... Knives and scissors sharpened!

## EUROPE

74 DAYS  
50 CITIES  
20 COUNTRIES

ALL TRANSPORTATION INCLUDED: SHIP OVER, JET BACK — INDIVIDUAL VOLKSWAGEN'S.

ALL THE ADVANTAGES OF ECONOMIC TOUR TRAVEL WITHOUT THE DISADVANTAGES OF STRICT ITINERARY OR REGULATIONS — DESIGNED BY COLLEGE STUDENTS — 4 YEARS EXPERIENCE — BROCHURES & FILMS AVAILABLE —

CALL — 948-0237 or 945-7564

**\$745<sup>00</sup>**

# PRETTY COED OF THE WEEK



Ralph Forney, A.R.P.S.

miss patricia pansini

# Students Do Not Favor Lowering Of Voting Age

ASASU Student Body President Gary Walker stated Wednesday he had found that approximately 85 per cent of the students do not feel the 18-21 age group is prepared to vote objectively.

He found the students as a whole were definitely not in favor of lowering the legal voting age to 18 in Arizona.

Over a period of about two months, Walker has taken spot

straw votes from campus groups and organizations to get an idea of interest and support.

Walker said he had explored the idea of supporting such a move "if and only if the students were in favor of it."

University of Arizona Student Body President Bob Reade revealed in a letter to Walker that there was no hint of supporting such a move at Tucson due to lack of opinion.

10 - 6 Mon. thru Sat.  
10 - 9 Thursday

## The Village Shop

a shop designed with the college girl in mind

967-1981

616 MYRTLE TEMPE



## TAKE A BREAK

### DATE HOUR

8:00 P.M. - 10:00 P.M.

2 Big Root Beers For Price Of One!

## Mugs Up Root Beer

503 EAST 8TH ST.  
"WHERE THE NICKEL IS MIGHTY"

# Air Force Test Set Next Week

The Air Force officers qualifying test will be given in Room 191 of the Life Sciences building, March 31 at 7:30 a.m., said Captain Monaghan of the Air Force ROTC department yesterday.

"The AFOQT is a written examination which all persons interested in entering the advanced Air Force ROTC program must pass," Monaghan added.

The test is mainly concerned with pilot, navigation, general officer, verbal and quantitative or mathematical aptitudes.

Other areas of the test are flying, technical administration and quantitative interests of the applicant.

Applicants must have completed two years of basic Army or Air Force ROTC or be a veteran and be a citizen of the U.S.

Applicants who pass the test will be sent to Williams Air Force Base to take a physical test and then sent back to ASU to be reviewed by a board of officers, added Monaghan.

Interested people should contact the Air Force ROTC department before March 31 to be eligible to take the test.

### Uniform Change Made

As of March 12, all students in air science may wear either the brown 505's or the winter blues.

# National Society Accepts ASU's Civil Engineers

A student chapter of the American Society of Civil Engineers at ASU joined the league of 143 national chapters earlier this semester.

Charles W. Newlin, ASU associate professor of Engineering and faculty advisor to the group, outlined highlights of this semester's program, which will include guest speakers and social activities.

The organization, which functions as a professional club for civil engineers, has membership open to all civil engineering students from freshmen to seniors and offers the privileges open to professional members.

# SCANDALOUS!

EVERYONE'S TALKING ABOUT

US — BUT WE DON'T CARE —

WE'RE SELLING

# CAPITOL ALBUMS

AT 20% OFF

These Top Artists

- ★ NAT KING COLE
- ★ KINGSTON TRIO
- ★ 4 FRESHMEN
- ★ DEAN MARTIN
- ★ STAN FREBERG
- ★ LOUIS - KEELEY
- ★ JUDY GARLAND
- ★ GEORGE SHEARING
- ★ JONAH JONES
- ★ FRANK SINATRA
- ★ STAN KENTON
- ★ FRED WARING

## Show Tunes

- OKLAHOMA
- CAN CAN
- KING & I
- MUSIC MAN
- CAROUSEL
- PAL JOEY

ALL CLASSICS

# HILLS RECORDS

Tempe Center

**REDWOOD** **GOOD FOOD**

**JUST OPEN**  
**NEW COCKTAIL LOUNGE**  
 Open Until 1 A.M. — Closed Wednesday

**SPECIAL DINNERS**  
 Served In Dining Room  
 Breakfast — Lunch — Dinner  
 6:30 A.M. TO MIDNITE

2207 W. Main — Mesa-Tempe Highway  
 NEXT TO PIONEER DRIVE-IN THEATRE  
 GEORGE AND GRACE CAMERON **CLOSED WEDNESDAY**



**COLLEGE BOWL** — Before an over-crowded north half of the MU upper lounge, Gamma Phi Beta and Palo Verde Hall competed for high point team in the first match of the ASU College Bowl. Sue Rawson, chairman of the Faculty-Student Relations Board which sponsors the College Bowl, said they hoped to use the entire room for the next match to accommodate the crowd. See story, page 1.

**WINNER OF 11 ACADEMY AWARD NOMINATIONS!**

**WEST SIDE STORY**  
 Released thru UNITED ARTISTS

**ARIZONA PREMIERE**  
 Starts Wed. March 28th

**THE KACHINA THEATRE**  
 501 N. SCOTTSDALE RD. — SCOTTSDALE, ARIZ.

**MAIL ORDERS — NOW!**

Name \_\_\_\_\_  
 Address \_\_\_\_\_  
 No. Of Seats \_\_\_\_\_ Price \_\_\_\_\_ Date \_\_\_\_\_

**Price Scale**

EVENINGS (Sunday to Thursday)	Loge \$2.00	Orchestra \$1.50
EVENINGS (Fri. Sat. & Holidays)	Loge \$2.50	Orchestra \$2.00
MATINEES (Sunday and Holidays)	Loge \$2.00	Orchestra \$1.50
MATINEES (Wednesday & Saturday)	Loge \$1.75	Orchestra \$1.25

**Wernstedt To Visit Malaya**

Dr. Frederick L. Wernstedt, ASU associate professor of Geography, will participate in a regional conference of Southeast Asian geographers April 1-8 at the University of Malaya.

Dr. Wernstedt will present a paper, "Growth and Internal Migrations of the Philippine Population," during the conference. Approximately 12 nations will participate in the conference.

The ASU professor is currently completing a book, "The Physical, Cultural and Regional Geography of the Philippines," with Dr. Joseph E. Spencer, of the University of California.

**Pool Opens For Season**

The campus swimming pool is open Monday through Friday from 2:30 to 3:30 p.m. and Saturdays from 1 to 4 p.m. The pool is closed on Sundays.

**WALLY'S CAFE**

**Good Things to Eat and Drink**

1133 Normal Avenue  
 "Across the Street  
 From East Stadium  
**Open 7 Days Week**  
 6:30 A.M. TO MIDNITE



**YOUR STUDENT TRAVEL HEADQUARTERS**

**STILL TIME TO PLAN FOR**

- SUMMER SCHOOL IN HAWAII
- TOURS IN EUROPE
- WHAT?

**UNIVERSAL TRAVEL** 18 E. 5th  
 WO 7-1673

**Campus Classified**

Regulations: For students and faculty only of Arizona State University. Cash in advance. Submit to Room 207, Memorial Union Building, by noon two days before date of publication: noon Monday for Wednesday's issue, noon Wednesday for Friday's issue. Rates: 3 cents per word, 50 cents minimum charge.

**FOR SALE**

1958 Impala \$1250.00, 824 Elmer Rae St., Tempe, WO 7-0644, Between 6 and 8 p.m. or weekends.

1957 Ford Convertible, V-8, Automatic transmission, radio and heater. Original owner. Low mileage. Call Chuck Mason, Extension 241.

'58 Vespa Motor Scooter in good condition. For information call Paul Beck, A.E.P.; House WO 7-9909.

1958 Cushman (Husky) Scooter. Good condition. \$100. WO 7-7744.

Winchester 300 magnum, Model 70, brand new condition. \$100. Am 6-6395.

**TRAVEL**

EUROPE for \$495 round trip, Phoenix — Copenhagen. Depart June 11 on major airline DC 7C FIRST CLASS. This opportunity available to students, faculty (wife and children). Charter requires 80 people. Deadline March 20. For more information contact The Arizona Student Faculty Charter, Box 191, Phoenix, or call 938-0000.

"GRAND TOUR"—80 days in Europe. Select group of students to travel in private auto with architect guide, June 11 to August 30 from Copenhagen, complete cost—food, lodging, entertainment; 4 students \$1185 each or 5 students \$1095 each, plus air fare Arizona Student Faculty Charter. Contact JEFFREY COOK, School of Architecture, EC 317, phone 504.

**RIDE WANTED**

Employed A.S.U. 8:30 to 4:30 (Wed. through Friday.) From in or near Park Scottsdale, Granite Reef and Jack Rabbit Rd. Ext. 596.

**LOST**

14 Kt. Pearl Ring in the Ladies' Lounge of the Social Science Building. Reward! Call Judge Sorkin, AL 3-5383.



*for higher grades...  
 the better students use*

**BARNES & NOBLE COLLEGE OUTLINES and EVERYDAY HANDBOOKS**  
 famous educational paperbacks... average price \$1.50

OVER 140 TITLES ON THE FOLLOWING SUBJECTS:

- |              |             |                   |             |
|--------------|-------------|-------------------|-------------|
| ANTHROPOLOGY | ENGINEERING | LANGUAGES         | RECREATIONS |
| ART          | ENGLISH     | MATHEMATICS       | SCIENCE     |
| BUSINESS     | ETIQUETTE   | MUSIC             | SOCIOLOGY   |
| DRAMA        | GOVERNMENT  | PHILOSOPHY        | SPEECH      |
| ECONOMICS    | HANDICRAFTS | POLITICAL SCIENCE | STUDY AIDS  |
| EDUCATION    | HISTORY     | PSYCHOLOGY        |             |

**START RIGHT...buy your Outlines and Handbooks when you get your textbooks!**

ON SALE AT

**UNIVERSITY BOOKSTORE**



THE STATE PRESS, distributed by the campus chapter of Sigma Delta Chi under the direction of Circulation Manager Mike Barrick, is the official campus newspaper of Arizona State University. It is published each Wednesday and Friday throughout the school year, excepting holidays, and is entered as second class matter at the Tempe, Arizona, Post Office under the Acts of March 3, 1879, and August 24, 1912. Subscription price, \$3 per school year.



THE STATE PRESS is a member of the Arizona Newspapers Association, Associated Collegiate Press and National Advertising Service, Inc.

EDITOR-IN-CHIEF BILL FLICK
NEWS DEPARTMENT
MANAGING EDITOR BARBARA MARLOWE
CAMPUS EDITOR BILL OVEREND
ASSISTANT CAMPUS EDITOR TWILA DRUMM
NEWS EDITOR ROSALYN WHITNEY
ASSIGNMENTS EDITOR MARY GORMAN
FEATURE EDITOR JANET WOLHETER
COPY EDITOR GARY OLMSTEAD
CHIEF PROOFREADER BOB ZACHE
ADVERTISING MANAGER HAL HUBELE
SPORTS DEPARTMENT
SPORTS EDITOR BOB EGER
ASSISTANT SPORTS EDITOR BOB JACOBSEN

COVERING COLLEGE AVENUE

diamond jubilee questions remain unanswered

By BABS MARLOWE
'A Tradition of Growth - A Commitment to Quality.'
The Diamond Jubilee lamp post signs have been removed, the parking stickers no longer carry the slogan and the State Press removed the insignia from its flag.
Overtones of the jubilee remain, and questions about the activities remain unanswered. The objectives were broad and committed to the slogan.



One of these goals was to provide the people of the state with a more accurate image of ASU, its status, its methods and objectives. One means of obtaining this objective was a 20-minute color film about ASU.
Appropriated out of the \$50,000 Diamond Jubilee budget was \$3,000 for the film. As stated in the outline of the Diamond Jubilee, the film was de-

signed as a recruitment film. Many students have asked what happened to this film, so we asked Dr. Joel Benedict, director of Audio-Visual on campus.
Dr. Benedict said that the film footage was probably all completed and is in a working film form. He added that the film has never been compiled into final form due to many delays throughout the filming. Nancy Witt, the photographer, is no longer with the Audio-Visual Center, and Richard Bell, chairman of the Diamond Jubilee committee, is no longer on the staff.

Also, an appropriation of \$100 was allotted for the installment of a plaque at the site of the first building on campus. The corners of the building were to be located, and a graveyard of cornerstones was to be established there.

One of the finer goals of the jubilee was the hope that long range steps of ASU development could be incorporated into the jubilee festivities. One of these was the establishment of a Fine Arts Center which, as we know, culminates in the Frank Lloyd Wright Auditorium.

The Diamond Jubilee also arranged for the Cleveland Symphony to present a concert here, and to a packed house.

We still must wonder what happened to the other activities that were planned: were they not feasible or poorly planned? Perhaps someone can help us answer these questions.

As for the film, we hope that Dr. Durham will have the film compiled and brought up to date. The promotional values of such a film are innumerable.

OFF THE EDITOR'S DESK



a cooperative effort—the mono report

Thanks to the consistent and capable research reporting on the part of ASU journalist Bob Clampett, we are able to comment on the infectious mononucleosis report now being distributed to various campus groups.

The five-page report, written by Dr. L. C. Sutherland, university physician, discusses the nature of the ever-increasing disease and includes sections on transmission, treatment and diagnosis, among others.

CLAMPETT tells us that the report is basically the brain child of one ASU student. Early last October, Jim Chilton, ASASU first vice president, saw the need for a means of informing ASU students of the realities of "mono."

Chilton went to Dr. W. P. Shofstall, dean of students, to discuss the possibility of a report to minimize the rumors about this mysterious disease. Dr. Shofstall agreed that the report would be advantageous, and the two submitted Chilton's plan to the Student Health Service and to the Student Senate. The proposal was accepted. Dr. Sutherland went to work, and today the report is being read by thousands of ASU students.

We should not overlook another important segment of the overall program. This is the highly-organized effort of the members of Lambda Delta Sigma, which facilitated the distribution of the report.

YOU MAY BE asking yourself, "Is it really that big a deal?" We say yes. Why?

Yesterday's Arizona Journal reported that mononucleosis "has reached epidemic proportions among Arizona State University students for the past two years." The Journal quoted an estimation by Dr. Sutherland that "about one out of six students suffered the disease last year."

Therefore, we feel the report is of great importance and value to the students of ASU. We commend the many people whose efforts produced the report.

CLEARING THE DESK: We understand some guy has come up with a revolutionary way to improve the taste of salt... sprinkle a little beer on it.

EDITORIALLY SPEAKING

the hole got dug... thanks

The MU Birthday Party is rapidly approaching and such persons as ASASU Activities Vice President Jim Howard are beginning to confront problems every day.

Yesterday, one problem in particular faced Jim. He needed a hole dug in front of the Union... something to do with putting up the monorail and space needle.

According to Jim, it isn't too easy to find a group of men around this place to dig a nine-foot deep hole for you, especially with no dinero involved.

However, he did manage to find a few guys to help. And, for him, we say thanks to the pledges of Delta Sigma Phi and Alpha Tau Omega.

LETTERS TO THE EDITOR

greatly shocked by dr. dauten's column

To the Editor:

I was greatly shocked when I read the column in the March 14 State Press by the chairman of the General Business department, Dr. Dauten. The doctor said, "College students, therefore, do not have the motivation to investigate our new economic orders such as Socialism or Communism..."

I hope the good doctor is cor-

rect; but when the basic economics textbook at ASU is written by an admitted follower of the economist John Maynard Keynes, I don't see how this is possible. The reason being that Keynes was a Fabian Socialist; therefore, his student, Paul A. Samuelson, is preaching the truth of the Socialist philosophy of Keynes and Samuelson is shown in the book "Keynes at Harvard," written by a group of Harvard

graduates who started the "Veritas Foundation" to uncover the Socialists at Harvard. I am sure most students would reject this Socialist trash, if they were only allowed to read the case for Free-Enterprise Capitalism. But since they are given only the Socialist side, how can they be expected to believe in—the words of Dr. Dauten—"... our capitalist system."

Ken Berger

COMING UP...

government to be viewed

The State Press will conclude its current series on the Memorial Union in next Wednesday's issue when Feature Editor Janet Wolhuter reports on the student government angle of the Union.

Student government at ASU is now coming into particular prominence as the student body elections grow nearer. Therefore, we feel an analysis of the student government system on our campus is now called for.

Miss Wolhuter will develop this situation further, explaining the ASU setup and the student body officers who head it.

erase the stain of liberalism

To the Editor:

A few years ago, one great name change was made on our campus. We propose another.

Liberal is a gross misrepresentation of our fine college of Liberal Arts. It should be renamed. Since liberalism leads to socialism and socialism to communism, we suggest the name Conservative or at least

Moderate Arts College in order to erase the stain of liberalism from the University.

Name Changers and Callers

Editor's Note: Good idea, boys. And while we're at it, let's examine a few more names around here... like STATE Press, Memorial UNION, SOCIAL Science, EAST Hall, etc.

letters to editor policy

State Press letters to the editor must be typewritten, signed, less than 300 words and in good taste.

Although it is essential that all letters must be signed, it is not necessary that the author's name appear in print.

Letters intended for the Wednesday issue should be turned in Monday; for the Friday issue, Wednesday.

In view of the new editorial outlook of the State Press, students are encouraged to SPEAK UP!

CLAUDE HOPPER

by tom knowles





**PI SIG WINS AGAIN** — Admiring the plaque awarded them for being the outstanding Pi Sigma Epsilon chapter in the nation for the second consecutive year are, seated from left to right, Dr. William Harris, faculty advisor, John Trowbridge, Edward Nadolski and Bob King; standing, Charles Phipps, Bill Sloan, Tom Jenkins, Howard Headges and Jerry Cheraux.

## Top Chapter Award Goes To ASU Club

For the second consecutive year ASU's chapter of Pi Sigma Epsilon, professional fraternity for marketing, sales management and selling, has won the national award for the "top chapter of the year."

It was presented to the fraternity at the national convention in Detroit on March 5.

Made to the most outstanding of the 25 chapters in universities throughout the continental U. S., Hawaii and Puerto Rico, the award is in recognition of the constructive projects and school activities that the winning chapter accomplishes during the year.

The award consists of a

large traveling trophy, which is kept by the chapter for one year, and a trophy which is a permanent possession of the chapter, plus \$350 for use in the chapter's service activities.

The local chapter's projects included support of the student-sponsored Parents Day and High School Senior Day at the College of Business Administration, sponsorship of sales rallies in February, 1961 and March, 1962, and selling tickets to the recent Public Relations Institute.

Faculty advisor for the group is Dr. William Harris, chairman of the department of Marketing.

**Bobbies Flowers**

*Flower Gifts...*

20 E. 5th St.  
WO 7-2972 — WO 7-4274

For Parties . . .  
Large Artificial Plants For Rent

NOW THREE LOCATIONS . . .

1. Tempe Center 2. 1302 Rural 3. Bayless Center

Open 24 Hours A Day!

**ZZZONA**

**DRIVE-IN LAUNDRY & CLEANERS**

FIRST in Laundry and Cleaning • LAST in the Phone Book

## Harpichord Concert Set

Harry P. Rickel, associate professor of Music at Arizona State University, will introduce the Jones-Clayton two-manual concert harpichord to the public March 25 at 8:15 p.m. in the MU.

The harpichord Rickel will play makes use of two keyboards, with an accompanying increase in volume and resonance. It was made especially for him by Richard Jones, California builder of hand-crafted keyboard instruments.

Professor Rickel has long supported the movement that music should be played on the instruments for which it was originally written. Rickel's dedication has resulted in a course in harpichord being offered at ASU this semester for the first time. Presently, five students are enrolled.

Sunday's concert will include works of Peter Sweelinck, J. S. Bach, Francois Couperin and C. P. E. Bach. Accompanying will be the University Collegium Musicum, directed by Dr. Phillip Nelson, assistant professor-of Music.

Tareyton delivers the flavor

DUAL FILTER DOES IT!

"Tareyton's Dual Filter in duas partes divisa est!" says Julius (Cookie) Quintus, ace javelin man and B.M.A.C. (Big Man Around Coliseum). "A Tareyton would even make Mars mellow," says Cookie. "Tareyton's a rara avis among cigarettes. It's one filter cigarette that really delivers de gustibus. Pick up a pack today and you'll find there's Pliny of pleasure in Tareyton."



DUAL FILTER  
**Tareyton**

Product of The American Tobacco Company — "Tobacco is our middle name" © A. T. Co.

**FRICKSON**  
HANDCRAFTS

ARTIST SUPPLIES

Crafts • Hobbies  
Decorating Materials  
Picture Framing

Tempe Center • WO 7-4482

**DAIRY QUEEN**

Tastes Better!

Stop In . . .  
Find Out  
For  
Yourself !!

**TEMPE DAIRY QUEEN**

950 MILL AVE. — TEMPE

*After Hours*

**Lull In Activity Only Momentary!**

By **BILL OVEREND**  
Campus Editor



The lull before the storm! That's the situation around the ASU campus these days as the Greeks prepare for what could easily become their busiest spring in years.

Their upcoming schedule is crowded, to say the least. First, there's the IFC Sing next Friday. As soon as that is brought to a decent vocal pause, Greek Week will proceed to challenge the entrepreneurial skills of our fraternity and sorority citizens. For you who, for some reason or another (i.e., social probation), have never participated in one of these spectaculars, Greek Week is a composite of chariot races, work projects, egg throws, tugs-of-war, elections for Diana and Apollo and a joint party for everybody in the world. Fraternities and sororities pair off and compete as teams. In short, it's sort of a student "Ben Hur."

While the Greeks are frantically attempting to survive their onslaught of activities, the rest of the campus is making a few preparations of its own. Biggest of these is, of course, for this year's **MU Birthday Party**, centered around the Seattle World's Fair. Should be a pretty busy season!

**GREEKS AT A GLANCE**

The biggest party on the Greek scene for many a month is scheduled for this Saturday when **Sigma Nu**, **Phi Delta Theta** and **Tau Kappa Epsilon** join forces and finances to throw the world's biggest barn dance. It's also the world's best way to cement good fraternity relations at ASU. We predict this party will start a trend of joint social efforts.

**Alpha Tau Omega** could easily have the most original party of the year going tonight. It's a high school party, featuring letter sweaters, class rings, etc. **Sigma Sigma Sigmas** will head out to the Arizona Stables in Scottsdale tonight for a hayride. **Sigma Nus** staged a "Race Day" at Cave Greek Sunday.

**AROUND THE TOWN**

Just ask for Roy when you make your reservations at **Baron's** for one of its elegant and delicious dinners this weekend. Just completed, this combination restaurant and cocktail lounge, located next to Goldwater's in Scottsdale, is easily as smart and plush a night spot as any in this area. It was designed to cater to the Very Elite, and, unfortunately, the prices show it. But, if you can spare \$15 for dinner for two, both the food and service will make that dent in your wallet almost painless!

**30 Greeks To Vie For King, Queen**

Primary elections, March 28, will decide which four campus Greeks will compete in the general election for Queen Diana and King Apollo, rulers of Greek Week.

The general election, March 30, will decide the two winners who will be crowned during the IFC Sing, which kicks off the weekly events.

Competing for Queen Diana's crown are:

Susan Poe, Alpha Delta Pi; Audrey Rozefsky, Alpha Epsilon Phi; Suzi Smith, Alpha Phi; Sandra Holmes, Alpha Sigma Alpha; Diane Huber, Chi Omega, and Monnie Tiffany, Delta Gamma.

Also, Donna Bacon, Gamma Phi Beta; Dee Stouffer, Kappa Alpha Theta; Sharlyn Nelson, Kappa Delta; Shireen Alford, Kappa Kappa Gamma, and Diana Voorhis, Sigma Sigma Sigma.

King Apollo candidates are:

Allen Wieckowicz, Alpha Epsilon Pi; Walter Edge, Alpha Gamma Rho; Gerald Lundeen, Alpha Rho Chi; Ron Schmiertenknop, Alpha Tau Omega; Dean Bass, Delta Chi, and Dan Curtis, Delta Sigma Phi.

Others are Mickey McHugh, Lambda Chi Alpha; Gary Glassford, Phi Delta Theta; Jim Pilafas, Phi Kappa Psi, and Doug Zimmerman, Phi Sigma Kappa.

Also, Dave McKee, Sigma Phi Epsilon; Bob Jacobsen, Pi Kappa Alpha; Dan Roth, Sigma Alpha Epsilon; John Brooking, Sigma Chi; Ray Eberhard, Sigma Nu; Earnest Beck, Sigma Pi; Norman Orfall, Theta Chi; Charles Ralls, Theta Delta Chi, and Bert Keller, Tau Kappa Epsilon.

**Pledges, Initiates Bolster Fraternity, Sorority Ranks**

Several sororities and fraternities have announced their second semester slate of initiates and pledges.

Gordon Campbell and Carl Hultman.

**PLEDGES**

Alpha Phi: Barbara Brock and Elizabeth Price.

Chi Omega: Carla Payne, Karen Lothridge, Candy Garland, Beth Mitchell and Carole Glackin.

Sigma Chi: Roger Son, Charles Laatz, Pat Paulson, John Robinson, Bob Kennedy, Tom Kelly, John Carroll, Dave Coyle, Forest Klumph, Jim Borst, Virgil Shute, Ed O'Clair, Stan Wood, Allan Carroll, Bill Tyers, Bob Cleary, Tom Allen, Tony Johnson, Mark Ongaro, Bob Hoover, Norman England, Bob Dearborn, Steve Turek and Renz Jennings.

Sigma Phi Epsilon: Ralph Wilcox, Gary Ledbetter, Don Burton, Rick Bouck, Leonard Wise, Bill Wolfe, Dan Shelton, Paul Putman, Kermit Thompson, Dave Brown, Larry Ward, Jack Blankenship, Jack Beavers and Rich Pagoria.

**NEW INITIATES**

Kappa Delta: Mickey Aiden, Linda Essex, Kay Johnson, Barbara Marlowe, Margaret Murphy, Carolyn Wooldridge and Phyllis Reese.

Chi Omega: Karen Arneson, Sandy Berry, Bev Bulla, Roxie Bruno, Glenda Brockbank, Beth Helm, Natalie Freedman, Pam Dyer, Jerry Shields, Linda Sullivan, Diane McHugh, and Donna Welman.

Sigma Phi Epsilon: Jerry Atwood, Steve Bingaman, Tom Campbell, Rod Gastineau, Roger Hill and Dave Putman.

Sigma Chi: Bernie Weber, Tim Bray, A. G. Carter, Steve Munro, Dan Bohlman, Wally Reeder,

**For The Best  
In Mexican Food  
try  
CHICO'S  
RESTAURANT\*  
FINE MEXICAN FOOD  
1120 East Apache Blvd. — Tempe  
\*Air conditioned of course**

**LATER, BABY, LATER...  
LET ME FINISH MY CI FIRST."**



This boy has the right idea. Don't let anything stand in the way of your reading **CAMPUS ILLUSTRATED** — the new national magazine for all college students. What's in the April CI for you?

**SUMMER JOBS** — how to get yours! **CAMPUS INTEGRATION** — how far, how fast? **UNCLE SAM WANTS YOU** — latest on deferments! **WHO APPEALS TO COLLEGIANS?** — 20 top choices. **CAROL BURNETT** — fame, fortune and frustration. and: **RIBICOFF, KILGALLEN, SULLIVAN, SAROYAN BRUBECK.** PLUS: NEWS, BOOKS, RECORDS, CAREERS, FASHIONS.

**"SO NOW, BABY, NOW... GET APRIL CI AT NEWSSTANDS & BOOKSTORES"**

**TEMPE RADIO & TV CLINIC**

- Record Player — TV
- Auto Radio
- House Radio

Service — Repair  
Wm. Hertenstein  
4 West 7th St. — WO 7-4732

Be Our Guest For  
**"Round the Clock Fashions"**  
By  
**RAE'S MADEMOISELLE**  
At the Sands of Tempe  
Tuesday, March 27th, 1962 at 8:00  
MODELING ALL SIZES TEENS TO MISSES  
Door Prizes — No Charge

Foreign & Domestic  
**Speedometer Service**  
Also  
**AUTO CLOCKS DISCOUNT TO STUDENTS**  
**Western Instrument Co.**  
4632 N. 7th Ave., Phoenix  
265-8486

**NOW SWINGING THE MUSIC HALL**  
Special Dance Today From  
3:30 P.M. - 6:30 and 8:30 - 12:30 Tonite  
**VARIETY OF ENTERTAINMENT**  
Also  
SATURDAYS — 8:30 TO 12:30  
SUNDAY AFTERNOONS — 3 P.M. to 7 P.M.  
**1825 Apache Blvd. Tempe**

# Winklemen Win Double Header

Coach Bobby Winkles' Arizona State baseballers, getting good hitting and playing errorless ball, swept a double header from Southern Illinois University 9-4 and 10-0 Wednesday afternoon on the ASU diamond.

In the opener, a home run shot by Merrill Hyde broke a 4-4 tie in the fourth inning and gave relief hurler Larry Smith all the margin he needed to breeze in with the win. Smith worked in relief of starter Harley Anderson and relinquished only 3 hits in 5 1/3 innings.

Hyde's homer came with two teammates on base and gave ASU a 7-4 lead. The Devils added two tallies in the sixth inning of the seven inning affair.

In the second contest, Pete

Lovrich turned in his second straight impressive mound performance, as he scattered five hits en route to a shutout victory. Lovrich is now 2-0 for the season.

Hot hitting Dick Heiden tripled and singled twice to lead Sun Devil hitters. Lovrich and Danny Ikeda each rapped out a pair of hits.

## ASU Nine Wins

Arizona State pounded out a 10-9 baseball victory over Southern Illinois yesterday afternoon to take a 3-1 series lead and put the Sun Devil's season mark at 7-3.

The Devils host Southern Illinois this afternoon at 3:30 and again tomorrow in a one o'clock double header.

## Golfers Beaten On Road Trip

Some hot-shooting West Coast golf teams evened Arizona State's golf record to 4-4 during the Devil road trip last week.

San Diego State cupped 20 points to ASU's 7, while the Naval Training Station handed the Demons a 17-10 defeat. The Marine Corps of San Diego got by the local golfers 22 to 5.

### BOB VIEWS SPORTS NEWS

## Troy Dynasty Could Fall

By **BOB EGER**  
Sports Editor



A sports dynasty, which ranks as perhaps the greatest in the history of intercollegiate athletics, is currently in trouble.

The University of Southern California has been so far ahead of the rest of the collegiate track and field world since 1930 that vanquished foes often seriously wonder if the men of Troy are really mortals.

In the 32 years since 1930, the Trojans have won 20 national championships and have placed second six times. Year after year the coast school turns out several of the world's best performers. Four members of the present edition are currently holders of world rankings.

And the Trojan might has reeled off winning streaks of 99 straight team meets, dating back to 1948, and 99 straight dual meets, beginning in 1945.

This might be the year that those monstrous winning streaks are ground to a halt. There are two big hurdles in Troy's way. The lesser of the two threats is Arizona State's own budding track power, and the foremost threat is rugged Oregon. The Devils get the first shot at USC tomorrow night, and Oregon gets a try on April 24.

On paper, a Sun Devil win is entirely possible. But other teams in the past have been picked through facts and figures to beat the Trojans and have withered before the strong and speedy men of Troy.

Oregon was loaded last year, and West Coast scribes speculated about a possible upset. The Trojans stormed past the Ducks 73-58 to keep their win streak intact.

This year's Sun Devils are on the brink of destroying USC's crushing grip on the rest of college track and field. Strictly on the basis of times, heights and distances this year — the Sun Devils should win the dual competition against Troy 69-67. However, let us not forget that ASU has had four outdoor appearances in which to establish its 1962 bests, while the Trojans have had only two outdoor meets.

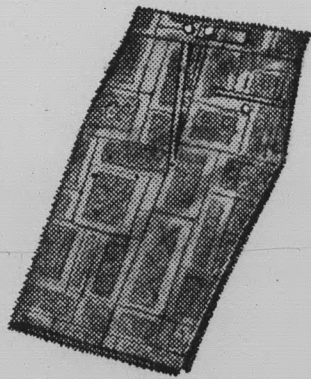
Southern Cal is still the mighty track power which rests on a plateau far above everyone else. The Trojans are the unbeaten marvels and must be rated as a solid favorite in both the triangular and dual scoring tomorrow night.

But we've never seen a more determined bunch of athletes than Baldy Castillo's tracksters, and they proved last week that they're ready for anyone.

If I were you, I wouldn't miss that meet Saturday. No matter what the outcome, you'll see history made.

# Carefree

## LEISURE WEAR



Low Price  
Comfortable Bermuda-length shorts, perfect for golf, hiking, or leisure.

3<sup>95</sup> to 6<sup>95</sup>

SHIRTS BY ARROW  
3.95 and 4.95

**Campus**  
men's shop

FOR MEN AND YOUNG MEN

603 Mill Avenue

Tempe



Your HEALTH is our BUSINESS

Phone  
WO 7-2922



# LAIRD PHARMACY

CORNER FIFTH & MILL, TEMPE



## The PIZZA HUT

"Eat In or Carry Out"

Open Every Day For Lunch & Dinner

11:30 A.M. to 1 A.M.

Friday & Saturday Till 2 A.M.

FREE

Catering Service To Parties

Order By Phone For Faster Service

WO 7-3355

801 E. Apache

Tempe

### INTRAMURAL Scene

Monday and Tuesday of this week marked the opening of the intramural basketball season at ASU.

Monday's games were characterized by scores showing wide margins, the widest of the day being a 63 pointer, as Sigma Alpha Epsilon defeated Delta Sigma Phi to the tune of 84 to 21.

Other scores in Monday's action showed the Newman Club defeating Sahuaro 52 to 20; the Flintstones over Irish Hall 65 to 34; Best B over the Soul Brothers by forfeit and Phi Sigma Kappa 64 to 38 over Pi Kappa Alpha.

Tuesday's scores were much more evenly matched, with the closest game being played between the Rogues and the PV Dishwashers. The Rogues took that game by a score of 52 to 49.

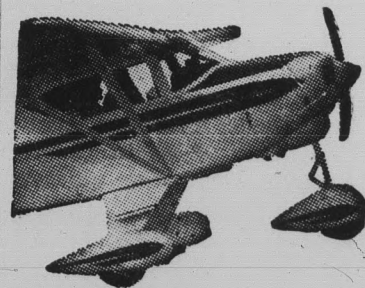
Other scores Tuesday showed the House of Davis 49, Haigler Hall 33; Best A 56, Hayden Hall 52; Sigma Nu No. 1 42, Sigma Chi 36; Phi Alpha Theta 59, Delta Sigma Phi No. 2, 39; Alpha Tau Omega 52, Tau Kappa Epsilon 35, and Delta Sigma Phi No. 1 41, Sigma Alpha Epsilon 31.

## Sweet Larry Most Valuable

Sweet Larry Armstrong, who's received almost every honor imaginable in his three years of varsity competition at ASU, was named Most Valuable Player at the annual basketball awards banquet Wednesday night in the MU Ballroom.

A new award, the E for Effort desk set, went to junior Tony Cerkvienik, the Devils' rebounding ace.

Ollie Payne was also chosen honorary team captain for the season just concluded.



Wish You  
Could Fly?

Start Learning  
TODAY

the easy, economical

### Piper COLT Way!

Complete Private Pilot course at a new low cost. We have 100% bank financing.

BRAND NEW MODERN AIRCRAFT • EXPERT GOVERNMENT-RATED INSTRUCTORS • NEW PIPER AUDIO-VISUAL GROUND SCHOOL COURSE.

Call

## ANDERSON AVIATION

Sky Harbor Airport  
Phone 275-5741

Oklahoma, Too

# Devils Battle Trojan Might

By DENNIS ANDERSON

Track and field at its best comes to Goodwin Stadium tomorrow night when USC's national leader and Oklahoma's Big Eight champs hook up with ASU in a triangular meet.

Field events start at 7:30, and the 440 relay will commence track events at 8 p.m. USC will be shooting for its 100th consecutive victory, but after showings of Sun Devil cindermen during the last week, the Trojans will find them a severe threat to this record.

Another strong team effort by ASU, coupled with a good showing by Oklahoma, and USC could find itself on the short end of a stunning upset.

The Sooners bring a well-balanced squad into the meet, headed by broad jumper Anthony Watson, 1960 U.S. Olympic team member and one of the few in the elite "26-Foot Club," with a leap of 26-1 1/4 last year.

ASU's Hubie Watson, fresh off record shattering performances, tops the sprint field, which includes Demon flash Henry Carr and USC's Bruce Munn.

USC's Rex Cawley will enter either the 440, 220 or mile relay. If he enters the quarter, he will find rough going from Sun Devils Ullis Williams and Ron Freeman.

Shot putter Dallas Long of USC returns to defend

## Tracksters Smash Utah

Hubie Watson broke one school record and equalled another, as Coach Baldy Castillo's Sun Devil tracksters coasted past Utah 92-39 in Goodwin Stadium Wednesday afternoon.

Watson, running smoothly, breezed to a 9.5 clocking, equalling the school record, in the 100 yard dash, and then he ripped off a fantastic 20:5 2/10, for a new ASU and stadium mark.

Watson's speedy marks were only two of six dual meet records that fell, even though the powerful Devils experimented throughout most of the meet. Half miler Dan Roth stepped up to the mile and turned in an outstanding 4:24.7 time for a meet record. Three dual meet field event marks went by the boards, as John Rose pole vaulted 15 feet, Frank Covelli tossed the javelin 226-11 and Joe Caldwell high jumped 6-6 1/4.

Other ASU winners were Ron Freeman in the 440 at 48.4, Pete Anselmo in the shot with 51-4 and the discus with 152-6, Eric Owers in the half mile with 2:00.2, Darrell Jansen with 23.7 in the low hurdles and the Sun Devil mile relay team with an effortless 3:17.6.

his stadium and meet record of 63-6, set two years ago. Another Trojan, spear thrower Jan Sikorsky, meets ASU ace Frank Covelli for the third time this season. They traded wins in previous encounters.

The high and low hurdles will provide plenty of excitement, matching ASU's trio of Green, Jansen and Tucker versus Troy's Bob Pierce and Brian Polkinghorne.

The half mile shapes up as another battle, with ASU's Dan Roth and Eric Owers matching strides with USC's Wayne Farrow and Tom Lile.

Pole vaulter John Rose will once again attempt to crack the stadium and meet record of 15-3 3/4, set by OU's J. D. Martin in 1960.

In a race that has become a tradition as well as a bitter rivalry, the Sun Devil and Trojan quartets will square off in the mile relay.

Last year, USC's four-some sped to a stadium and then collegiate record of 3:07.9, with ASU close behind in 3:08.1. But this year's "new" Sun Devil team of Mike Barrick, Gaston Green, Freeman and Williams has a 3:11.1 time and will be favored.

# Bad Weather Ahead For Troy



Goodwin Stadium  
March 24

LINDA

WHO'S RAINBOW — The University of Southern California, flying high on the crest of 99 straight team meets and 99 straight dual meets without a loss, must get past Arizona State and Oklahoma here tomorrow night to reach the magic 100 mark.

## HAPPY HOUSE SHOP

Tempe Center  
WO 7-5353

## THE TEMPE TEA TRADER

Constant Comment — Tea Bags or Loose  
Twinings of London — Quality Since 1706  
John Wagner & Sons — 15 Varieties

A TEA GIFT IS TEA-RIFIC

.....ON STAGE!.....  
Now thru Sunday

**JOHN RAITT**  
in  
**"THE PAJAMA GAME"**  
co-starring  
**JULIA MEADE**  
Smash Hit Musical Comedy!  
Coming — March 27 thru 31  
**CHARLES LAUGHTON**  
in  
"A Session With Charles Laughton"  
Phone AM 6-4487, Phoenix

RICHARD CHARLTON'S  
**SOMBRERO PLAYHOUSE**  
4747 N. 7th St. — Phoenix

The Americana Shop



great tradition on campus

## THE NATURAL SHOULDER SUIT

Our traditional suits are a natural on campus. If you wear any size from 35 to 46, you'll find it in our complete stock of natural shoulder fashions — tailored by Sagner. Choose from four colors blended with Dacron and cotton . . . automatic wash 'n wear!

### \$39.95

Northweave, Northpark or Pesa Pluma Suits by Sagner from \$49.95 to \$65.00

Dacron and Cotton Poplin Suits by H.I.S. \$29.95

THE  
*Americana*  
SHOP

OPEN 9:00 A.M. TO 6:00 P.M.  
THURSDAY NITE 'TIL 9 P.M.

WO 7-5457

TEMPE SHOPPING CENTER