



## MILITARY BALL SET TONIGHT

### Queen, Prize To Highlight Annual Event

By MARY GORMAN

The selection of a queen and the awarding of two tickets to the World's Fair at Seattle as the main door prize will highlight the Military Ball tonight.

The 1962 Military Ball, whose theme is "Stairway to the Stars," will begin at 9 in the men's gym.

The queen of the military Ball was selected on March 7 but will not be announced until tonight.

The eight finalists picked by ROTC cadets are Karen Arneson, Beverly Bulla, Joan Charlson, Shirley Otten, Pat Pansini, Marilyn Rossini, Georgia Wagner and Cheryl Wargon.

The queen was selected on poise, appearance and personality. Judges were Paul Coze, French consul; Mrs. Frank Lloyd Wright, president of the Frank Lloyd Wright Foundation; Ted Fio Rito, noted band director; Mrs. Wesley Johnson, director of the Phoenix Little

Theatre, and Jim Spero, KUPD disc jockey.

The round trip tickets for two to the World's Fair will be the main door prize for the ball. Four transistor radios and four pen and pencil desk sets also will be given away as prizes.

The ball is alternately sponsored by the Army and Air Force ROTC departments. This year, the 14th annual ball is sponsored by the Air Force ROTC.

Dr. H. D. Richardson, academic vice president will crown the 1962 Milba Queen.



PREPARING FOR BALL — Again this year, panic time arrived, as ROTC members frantically began decorating for the annual Military Ball yesterday afternoon. This year the big job was in the hands of the Air Force ROTC, and members found themselves working all night. Shown here are, from left, Bill Smith, Bob Coar, John Seedborg, Sol Ward and Wayne McCarey.

## Leaves Of Absence Granted To ASU Faculty Members

The Board of Regents at its monthly meeting last Saturday, approved leaves of absence for ten ASU faculty members.

Those granted leaves were Dr. Harry Wood, chairman of the Art department, who will leave first semester 1962-63 to complete projects in writing, research, film-making, painting and sculpturing, and Dr. Guilford Dudley, associate professor of History, who will leave second semester 1962-63, to further research in Oriental civilizations.

Also, Eugene Chausow, assistant professor of Music, will be gone both semesters of

1962-63 to appear with the National Symphony Orchestra in Washington, D.C., and Margaret Naczki, instructor in Nursing, who will be gone the 1962-63 year, to study maternal child nursing and pediatrics.

Also granted leaves for the 1962-63 year were Robert Gryder, assistant professor of Office Administration and Business Education, to complete requirements for his doctorate; and El-lamae Branstetter, assistant director of the School of Nursing, to study for the Ph.D. in human development.

Arthur Matula, assistant professor of Journalism; Mrs. Ruth H. Keenan, assistant professor

of English and Joan Richardson, instructor in Mathematics, have been given leaves for 1962-63, to study for or complete the Ph.D. degrees.

Dr. John D. Ratliff, associate professor of English, will conclude business obligations during the 1962-63 year, on his leave.

## Management Meet Today

A seminar on systems for management control will be on campus today in the executive seminar room of the Business Administration building from 8:30 a.m. until 9 p.m.

The seminar, consisting of two lecture-demonstrations and five workshop sessions, is sponsored jointly by ASU and the Phoenix chapter of the Systems and Procedures Association.

Enrollment is restricted to those presently engaged or associated with systems and procedures analysis work or the implementation of completed systems work.

The seminar will present current thinking about some fundamentals and techniques of modern systems management, according to Dr. Vincent G. Reuter, ASU associate professor of Management.

## Population Is Topic Of Next MU Series

Robert Ripley once said in "Believe It Or Not" that if the people of China were to march 12 abreast past a given point on earth, they would never finish.

He explained that their population growth is such that the column of people would grow faster than the people were marching.

"The Population Dilemma of Southeast Asia" is the third lecture in a series of six on "America and the Challenge of Asia." Dr. Frederick L. Wernstedt, ASU associate professor of Geography, will present the program at 2:40 p.m. Monday in the MU Ballroom.

Dr. Wernstedt was in the Philippines in 1951-52 on a

Fulbright grant and again in 1955-56 while working on an Office of Naval Research project on inter-island shipping. He taught at Pennsylvania State University nine years before joining ASU last fall.

## Education Committee Reorganizing

The ASASU Senate Education committee, currently under a revitalization process, has announced that it is seeking supplementary membership.

"This committee is coming alive again," said Chairman Dave Matthews, "and we have established several important objectives, including the development of a worthwhile lecture series, a policy of academic integrity, improved advisor relationship and better general scholarship."

Interested freshmen, sophomore and junior students may inquire at the MU information desk for further information concerning appointment to the committee.

## Lambda Delta Sigma To Distribute Report

An authoritative discussion of infectious mononucleosis compiled by Dr. L. C. Sutherland, university physician, will be distributed Monday.

The report, which will be distributed to the various dorms, may be obtained from the MU information desk, the Student Health Service and fraternity and sorority groups. It will be available to all students.

Dr. Sutherland's report describes the disease as one prevalent among young people and

children, occurring in solitary isolated cases and in epidemic form. It is characterized by fever, sore throat and severe fatigue.

The report also gives an important account of the disease, its definition, cause, transmission, treatment, diagnosis and evaluation.

The report is being distributed by Lambda Delta Sigma in conjunction with the senate Student Services committee. Chuck Beals is chairman of the project.

## 'No Shorts' Says Board

The MU Board announced Tuesday a policy of no Bermuda shorts in the cafeterias. It will be enforced starting Monday.

The policy applies to both men and women.

Cafeteria checkers have been asked to stop individuals from entering the cafeterias without correct attire.

# Wear Your Green For St. Pat's Day

By JERRY REILLY

"Faith 'n' begorra, tomorrow is the wearing of the green." It's the feast of St. Patrick and a great day for the Irish.

Ireland's greatest national holiday as well as Holy Day is celebrated in the U.S. by the adopted sons of the "old soil." Dinners, toasts, addresses and general merrymaking are carried on by the Friendly Sons of St. Patrick, Ancient Order of Hibernians and anyone else with good "Irish intentions."

The patron of Ireland, archbishop and primate of the see of Armagh, has countless legends and traditions associated with him. Some are authentic, others stem from sentimental folklore.

St. Patrick was born in 385 A.D. in Kilpatrick, Dumbarton, Scotland, but the year of his death varies. It is reportedly between the years 461-493, making his age anywhere from 76 to 108.

His father, Calphurnius, was a Roman of high rank who held the office of decurion of Britain. When Patrick was 16, he was captured by Irish marauders and kept as a slave. He was in servitude for six years and learned the Celtic language before he escaped to Britain.

He decided to devote himself to religious work and went to the monastery of St. Martin at Tours, France.

After 18 years of preparation, Pope Celestine commissioned St. Patrick to work in Ireland. Here he preached and taught for 29 years. He built churches, organized parishes and performed "miracles."

The Druids, an ancient group of Celtic sorcerer priests, resent-

## Fred Elquest & Son

Everything for the Art Student

- Art Supplies
- Picture Framing

703 N. 2nd St.

Phoenix

PHONE AL 8-2628

## Campus Classified

Regulations: For students and faculty only of Arizona State University. Cash in advance. Submit to Room 207, Memorial Union Building, by noon two days before date of publication: noon Monday for Wednesday's issue, noon Wednesday for Friday's issue. Rates: 3 cents per word, 50 cents minimum charge.

### FOR SALE

1953 Impala \$1250.00. 824 Elaine Rae St. Tempe. WO 7-0664. Between 6 and 8 p.m. or weekends.

Winchester 300 Magnum Model 70. Brand new condition \$100. AM 6-6235.

### COACHING

Freshman desires coaching once a week in Calculus (MA 120) Call 946-2836 after 3:30.

### TRAVEL

EUROPE for \$495 round trip, Phoenix - Copenhagen. Depart June 11 on major airline DC 7C FIRST CLASS. This opportunity available to students, faculty (wife and children). Charter requires 80 people. Deadline March 20. For more information contact The Arizona Student Faculty, Charter B13, Box 191, Phoenix, or call 938-0000.

# Employers To Interview Applicants

The Placement Center is still busy, as student interviews continue today and next week.

Today the Honeywell company will recruit engineers, mathematicians, chemists and sales graduates, and the Bank of America and Social Security Administration representatives will talk to business administration and liberal arts graduates.

Also, Round Valley High School, Springerville-Eager, Ariz., will interview for positions in elementary and high schools; Marana Public Schools, Marana, Ariz., will interview for vacancies in sixth grade, junior high and high school.

Tuesday, Hughes Aircraft Company will interview Accounting, Finance, General Business and Management majors; Pacific Mutual will talk to Mathematics majors for actuarial training, and the Naval Recruiting Station will interview women for careers in the U.S. Navy.

# ASU Junior Is Selected As Phoenix's 'Miss Emmy'

Lynda Salisbury, ASU junior, was selected as the 1962 "Miss Emmy" Saturday night by the Phoenix chapter of the National Academy of Television Arts and Sciences.



LYNDA SALISBURY

Miss Salisbury will represent the academy at public functions this spring, present the Emmy awards in the Phoenix area, May 12 and travel to Los Angeles May 22, as a guest of the academy, for the national Emmy awards.

Representing the ASU Drama Workshop, Miss Salisbury won her title over 10 contestants from talent and modeling agencies in the Phoenix area.

A member of Gamma Phi Beta sorority, Miss Salisbury is a Junior Class senator and was first attendant to the 1961 Homecoming queen. Majoring in Speech and Drama, she is a member of the cast of "Volpone," to be presented March 22-24 and 29-31 by the Drama Workshop.

## Foreign Club To Plan Meal

The Foreign Students Club will meet in MU 218A Sunday at 3 p.m. to discuss plans for its International Dinner, which will be held in April.

A film of Arizona will be freshments will be served.

## Glenn Flight To Be Shown

KAET will present an hour long special Wednesday evening at 9, "Mystery of Space." It will trace the development, countdown, launching, ascent and tracking of the Friendship 7.

## Career Cues:

**"The broader your knowledge, the greater your chance of success!"** Edwin J. Ducayet, President Bell Helicopter Company

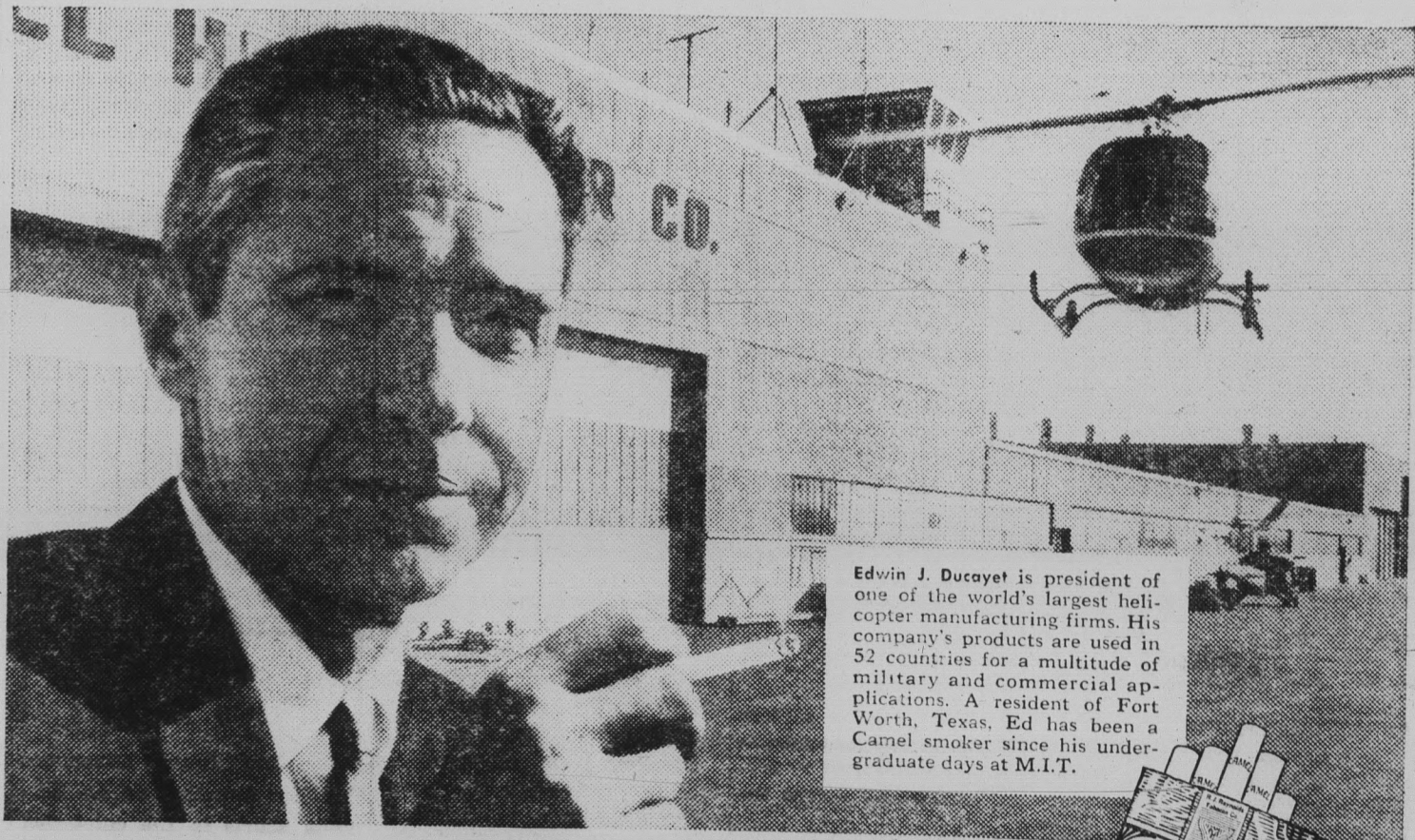
"As I look back, graduating from college in the depth of the depression was a blessing in disguise. It was difficult to get a job, and even more difficult to hold it. It proved to me early in life that to succeed in business requires constant struggle.

"I found that the truly successful individual never stops learning, that a formal college education is the foundation on which we continue to build the knowledge and experience required to get ahead.

"Even in today's age of specialization, a man eventually reaches a point where breadth of knowledge is necessary. The engineer must understand accounting and marketing. The marketing man must know his product. The financial man must be sympathetic to engineering development and sales programs. Management must have a working knowledge of all phases of the complex and highly competitive business world.

"Therefore, even though specializing, a student should make his college curriculum as broad as possible, and diversify his outside activities. Authoritative surveys have shown that only a small percentage of individuals end up in the field in which they specialized in college.

"Widen your world. Broaden your interests right now. Since graduation from college I've discovered that those who are really succeeding today are the ones who do more and keep on learning from what they do. The broader your college interests are now - the steadier your ladder of success tomorrow!"



Edwin J. Ducayet is president of one of the world's largest helicopter manufacturing firms. His company's products are used in 52 countries for a multitude of military and commercial applications. A resident of Fort Worth, Texas, Ed has been a Camel smoker since his undergraduate days at M.I.T.

Smoking more now but enjoying it less?...change to Camel!

# Have a real cigarette-Camel

THE BEST TOBACCO MAKES THE BEST SMOKE



R. J. Reynolds Tobacco Company Winston-Salem North Carolina



**HIGH GRADES HONORED** — Greeting two of the ASU women who made a 3.5 or better last semester are Pleiades Sel Erder and Suzanne Barnes. Pleiades, senior womens' honorary, sponsored a tea to honor those coeds who passed the 3.5 mark. Pictured, from left, are Sel Erder, Phyllis Boswell, Janet Elliott and Suzanne Barnes.

## Coeds Honored For Averages

ASU coeds, who earned a 3.5 or higher average first semester, were honored by Pleiades, senior women's honorary, at a reception in the MU upper lounge last night.

Coeds honored were Carma Anderson, Betty Barclay, Eleanor Barnette, Gail Barton, Judy Bishop, Margie Boerner, Ruth Bowman, Marion Bratt, Linda Broderson, Sharon Brosseau, Ethel Burton, Ellen Chamberlain, Marcia Cook and Frances Dains.

Also, Barbara Deines, Jacquelyn Dolphin, Becky Donaldson, Muriel Downing, Linda Ecker, Joan Edson, Andrea Ehrlich, Donna Erbland, Sel Erder, Mary Farmer, Irene Fields, Nelda Fleck, Suzi Gerber, Susan Griffiths and Tobi Guberman.

Others honored were Betty Guyer, Doris Hall, Lillian Hanson, Mary Harries, Mary Heller, Viva Henley, Ruth Hine, Marion Hoffman, Phyllis Hoffman, Suzanne Horne, Vera Humble, Mary Isbell, Patricia Jones, Mary King, Carol Kioeff, Nancy Kofoed and Charline Kvapil.

Also, Corinne Melton, Muriel Miller, Linda Morrison, Patsy Nelson, Marion Parrish, Leslie Pearson, Dee R. Reed, Diane Schenk, Georgieann Skinner,

Flo Smith, Kathleen Spieles, Norma Strauss, Agnese Findinotti, Selma Wagner, Winifred Walters, Margaret Weimer, Rosalind Wetzel, Margaret Williams, Lyola Yee and Doris Zesinger.

Other honorees were Sue Barnes, Marilyn Baldwin, Doris Cornett, Beverly Dawson, Virginia Deever, Eleanor Dominiques, Karen George, Nina Harman, Wanda Herd, Edythe Hoffman, Sue Holden, Jeanne Lobb, Peggy Meyer, Ella Owens, Marilyn Pollard, Virginia Rodrigues, Evon Rogers, Vivian Smith, Edna Snyder, Nerle Telleen and Donna Williams.

Others were Lois Anderson, Suzanne Armistead, Ellen Suzanne Armistead, Lucy Fuller, Sharon Ishikawa, Brenda Tibshraeny, Lurlyne Young, Nan Baechlin, Charlene Erb, Joanne Hall, Barbara Kilpatrick, Carmen Ruthling, Lynde Swan, Phyllis Terry and Mary Williams.

Also honored were Ann Overall, Joyce Watson, Cleo Reppert, Elsa White, Peggy Stanton, Willa Thomas, Marilyn Spitzer, Roberta Turner, Kathryn Bevington, Linda Brown, Shirley Delbridge and Janet Elliot.



Keep up to dates with a traditional  
**WHITE FORMAL JACKET**

Hanny's lightweight dinner jackets follow the natural shoulder party line. You'll enjoy the ease and comfort of this gleaming white favorite, knowing you're correctly dressed for the season's most important formal occasions.

33.00

Black tuxedo pants, plain front style, 15.00

Hanny's has a complete assortment of formal accessories

**Hanny's Varsity Shops**  
DOWNTOWN CHRISTOWN

See  
Campus Representatives: Ted Lorber,  
Renz Jennings, Rick LeSueur

## Ceramics And Paintings Featured In MU Display

The Cultural Affairs Board and the ASU Art department have combined to present a display of ceramics and water color painting in the MU lower lounge.

The display opened March 12 and will close April 10.

The ceramics are presented by Angelo C. Garzio, assistant professor of Art, Kansas State University. The water color paintings are selections from the California Water Color Society's

fourtieth national exhibition.

Professor Garzio exhibited his ceramics in the American pavilion of the Brussels World's Fair, and the Second International Exhibition of Ceramics, Ostend, Belgium.

Professor Garzio earned the Bachelor's degree from Syracuse University in 1949. He obtained the Master's degrees in art, history and ceramics at Iowa State University.

**SWINGING?**  
**We're HANGING!**

**LP's** While They Last

**99c—\$1.49—\$1.98**

Most of these albums were \$3.98 & \$4.98. There are Popular, Jazz, even Classics. If you like a BARGAIN . . . Come and Get It!

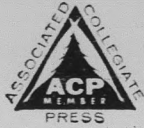
**HILLS RECORDS**

Tempe Shopping Center



COVERING COLLEGE AVENUE

THE STATE PRESS, distributed by the campus chapter of Sigma Delta Chi under the direction of Circulation Manager Mike Barrick, is the official campus newspaper of Arizona State University.



THE STATE PRESS is a member of the Arizona Newspapers Association, Associated Collegiate Press and National Advertising Service, Inc.

EDITOR-IN-CHIEF BILL FLICK
NEWS DEPARTMENT
MANAGING EDITOR BARBARA MARLOWE
CAMPUS EDITOR BILL OVEREND
ASSISTANT CAMPUS EDITOR TWILA DRUMM
NEWS EDITOR ROSALYN WHITNEY
ASSIGNMENTS EDITOR MARY GORMAN
FEATURE EDITOR JANET WOLHETER
COPY EDITOR GARY OLMSTEAD
CHIEF PROOFREADER BOB ZACHE
ADVERTISING MANAGER HAL HUBELE
SPORTS DEPARTMENT
SPORTS EDITOR BOB EGER
ASSISTANT SPORTS EDITOR BOB JACOBSEN

comments on new women's dorm discussed

By ROSALYN WHITNEY

Since the announcement of the new seven-story women's dormitory that is planned for the fall of 1963, everyone has been voicing his opinion of the proposed plant.



Some of the comments you might have heard include. "Seven stories and it only houses 410 girls?" "There will only be 14 girls on each floor." "Why are they building it in front of Palo Verde?" and "It would be better across the street."

We don't have all the answers, but after a short talk with Housing, we have a better understanding of the situation, which we will try to pass on to any of our wondering readers.

First, you must remember that this dormitory is going up, not out, and second, there

will be only seven floors, not 28. Once you have accepted these two small facts, you are ready to continue to a more detailed explanation.

Concerning the four wings of the dorm, you must not think of them in terms of Palo Verde. Instead of being separate wings divided into floors, the new dormitory will be seven floors, each divided into four wings. Each floor will house approximately 60 women, while each wing of the floor will provide space for approximately 15.

The four wings of each level will be joined by a lounge, similar to those which are placed at the end of each floor in Palo Verde, which will serve the 60 women living on the floor.

The proposed placement of the new addition is in the east Palo Verde parking lot. Looking ahead, the school hopes to some day build a third dorm, which would be placed in the west

parking lot, creating a new quad. This system would have one director, as well as three head residents.

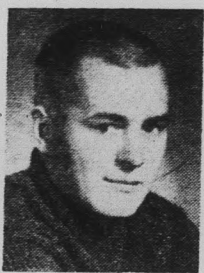
Questions or comments anyone?

The ASASU executive officers have been very busy lately. A stream of letters have been written to Senator Barry Goldwater, Senator Gale McGee of Wyoming and Harry S. Truman requesting their presence on the Arizona State campus.

Senators Goldwater and McGee have been invited to meet for a debate on or about April 25, while Mr. Truman has an open invitation for any time before May 21.

It has been suggested that any student who would appreciate an opportunity to hear these three gentlemen might take the time to address a personal letter to any one of, or all of them extending his own personal invitation.

OFF THE EDITOR'S DESK



letters are overflowing; but keep 'em coming

We get many things up here at the State Press... complaints, demands, a compliment about every two moons and lots and lots of letters.

MOST OF THEM are well-written, in good taste and, therefore, meet the previously indicated requirements set forth in our "State Press Letters to the Editor Policy."

Recently, the number of letters has been steadily increasing... a fact which pleases us. We are attempting with our greatest effort to publish as many as we can.

THE STATE PRESS staff definitely feels that the "letters to the editor" portion of this newspaper is one of the most valuable and necessary attributes of the paper.

We feel we are giving you, the students, ample opportunity to express yourselves. We hope you will nourish this opportunity.

Keep 'em coming.

CLEARING THE DESK: The State Press has lost a true and long-time friend, Mr. Clarence Southern, who passed away yesterday.

LETTERS TO THE EDITOR

poem expresses disappointment

To the Editor:

Since I am unable to express in my own words my extreme disappointment in Derby Day—an event that should have been a credit rather than a discredit to the Greek System and the sponsoring group, I am relying on the attached poem to express my attitude for me.

This poem applies to the disgusting conduct of the crowd as well as the distorted sense of humor of the individuals who planned some of the events.

A Greek

I'm tired. Tired of puppets instead of people. Of crew cuts and tweed coats, of pipes and Picasso buttons. Of people who drop soliloquies carefully labeled intelligence.

I'm tired of people who play the dating game like fouts at the race track. Tired of seeing people used be-

cause it's only a game. Of people who turn making out into a social grace. Of watching sincerity fester into smoothness.

I'm tired of cynics who call themselves realists. Tired of minds rotting in indifference. Of people bored because they're afraid to care. Of intellectual games of ring-around-the-rosy.

I'm tired of people who have to be entertained. Tired of people looking for kicks with a bottle in each hand. Of girls proud of knowing the score and snickering about it. Of girls intent on learning the score. I'm tired of sophisticated slobs. Of people who tinker with sex until it's smut. Of people whose understanding goes as deep as "neat." I'm tired of people who scream they hate it, but won't leave it because they're lazy. Tired of people with nothing better to do than glue their days together with alcohol.

I'm tired of people embarrassed at honesty, at love, at knowledge.

I'm tired, yes... very tired.

LETTERS TO THE EDITOR

the overflow lot — this is ridiculous!

To the Editor:

There is a situation on this campus that all students are painfully aware of. We refer to student parking. We'll grant that several steps have been taken to help solve the problem, however, things could be improved.

To be specific: There is a new parking lot due east of the engineering annex (formerly the Presbyterian Church) that is unfortunately labeled "Faculty Parking."

This lot, as was explained in the State Press, is overflow parking for the faculty. This is ri-

diculous! Between the hours of 7:40 and 11:30 a.m., the most congested parking time, there has been an average of three cars at any one time parked in this lot, which is large enough for more than ten times that number! At the same time, students have been forced to park at least another two blocks farther away along the streets. Why? So that the faculty, if the numerous and near faculty lots are full, won't have to brave the parking storm the students are faced with every day.

We think that now is the time

for some serious thinking on improvement of the economical use of parking lot facilities. We believe that returning this lot for the use of the students, whom it can really serve is called for.

Signed by 48 Students

Editor's Note: In order to conserve obviously needed space in the State Press, we are not printing the names of those students who signed this letter. Their names are available at the State Press office.

new dorm needed, but who needs it most?

To the Editor:

A few days ago, I read that bids will soon be let on what is to be Arizona State University's tallest building — a girls' dormitory to be built near the massive structure comprising Palo Verde Hall.

I do not deny the need for the building, but I am dismayed at the fact that concentration appears to be on improving facilities for female students, while boys' accommodations seem to be regressing. Dormitories like Haigler, Irish and East Hall illustrate this fact. The academic environment, a very necessary factor in our college training, greatly needs consid-

eration in the boys' dormitories. It perplexes me, therefore, that an honor dormitory for boys has not been instituted on this campus. McClintock "B" is an admirable setup for girls, but no such facility exists for the boys.

I feel that a boys' dormitory guaranteeing privacy and a good study atmosphere would be a tremendous benefit to those male students desiring to maintain high scholastic standards.

Garth Tallman

Editor's Note: We agree.

LETTERS TO THE EDITOR

athletic department doing its job

To the Editor:

In reference to your March 2 issue, "Name Withheld" will be happy to learn the weight room is now open from 2:40 until 4:30 on Monday, Wednesday and Friday afternoons. Also, if he wants to play basketball, the gym an-

nex is very frequently open for that purpose, besides being open for gymnastic activities every day. I believe the athletic department has done a good job providing facilities for students who wish to take advantage of them.

Name Withheld

CLAUDE HOPPER

by tom knowles



# Corporation Head To Address Law Club

E. T. Williams Jr., Arizona corporation commissioner, will address members of the ASU Pre-Law Club at 2:30 p.m. Tuesday in MU 7.

The club, recently organized and chartered, is open to anyone interested in any field of

law. No particular grade average is required.

Speakers from all areas of the legal profession will speak at various times to acquaint students with the different fields open to those with a law back-

ground, according to Thomas Navratil, club president. He said the club will act as an information center, providing data which will include reference materials from law schools and about career fields.

# Certificate Ruling To Affect Students

By BARBARA MARLOWE

As a rough estimate, half of the 2,575 students registered in the College of Education will not graduate until 1963.

These 1,238.5 students will be directly affected by the new ruling of the State Board of Education regarding teacher certification requirements.

According to the ruling, elementary school teachers must have completed 30 hours work beyond the bachelor's degree within five years in order to qualify for renewal of a five-year temporary certificate.

Secondary school teachers must also meet the 30-hours ruling within the five-year period.

The board removed the requirement that beginning teachers in the secondary schools must complete six graduate hours before obtaining a temporary teaching certificate.

In the February 19 issue of the Maricopa County Classroom Teacher's Association News, Dr. R. Craig Rover of the College of Education had predicted: "I don't believe the state board will proceed with such reductions in teacher qualifications, if we let them know our feelings in the matter. In suggesting these proposals they are, I believe, asking the advice and consent of the teaching profession."

In a telephone interview Wednesday, Dr. Rover said that he was not in favor of the removal of the six hours graduate work requirement for temporary certification. He said that, conceivably, these hours could be entirely undergraduate hours.

He further stated that students would be more likely to continue graduate study and complete the master's degree, if some work had already been completed.

Dr. Rover was asked if he felt the new rulings would likely draw more out of state teachers. He said that it probably would and added that currently 60 per cent of our teachers are trained outside Arizona.

Regarding this percentage of out of state teachers, Dr. Rover,

in the MCCTA article quoted above wrote: "If a large number of these people are allowed to enter teaching in Arizona with courses of doubtful value in the classroom, they will not be able to demand the current pay status of our more qualified teachers."

"This does one thing in education. It puts the well-qualified, well-prepared professional teacher on a higher salary plane, and she is therefore employed only when the supply of 'cheap' teachers is exhausted."

A former high school teacher commented that the financial strain could be tremendous in completing 30 hours within five years, if no college is close by. He said that teachers often depend on summer jobs to meet living expenses at that time.

It is possible that the 30 hours could be completed within five full summer semesters. If this were undertaken, the former high school teacher said that it almost completely eliminated the possibilities of a job, placing a double financial responsibility on the teacher.

The federal administration's top-education officials testified before a house education subcommittee that:

1. There are 90,000 full-time teachers who are not qualified by the standards of their own states;
2. One-fourth of the elementary school teachers are not college graduates.
3. Half the English teachers in junior and senior high school lack the minimum college requirements for an English major.

Secretary of Health, Education and Welfare Abraham A. Ribicoff, was quoted as saying that the present state of U.S. education leaves millions of children without a real chance to develop their ability to lead useful, happy lives.

## Father, Son Present Concert-Lecture

H. Th. Wijdeveld, architect, and his son, Wolfgang, a musician, presented a concert-lecture last night in the MU Ballroom.

Slides, music and lectures

showing the combination of inspiration in music and architecture were presented. Wijdeveld compared the majesty of cathedral columns to the majesty of Bach's music in his lecture.

## Bobbies Flowers

Flowers Gifts...

20 E. 5th St.  
WO 7-2972 — WO 7-4274

For Parties . . .  
Large Artificial  
Plants For Rent

## VALLEY Lock Shop

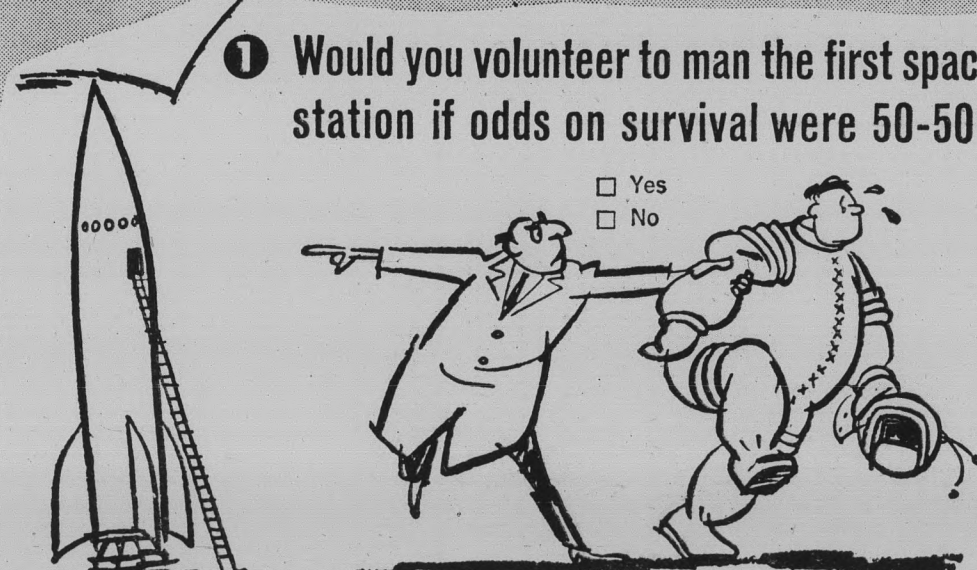
★  
416 Mill Ave.  
967-6541

Locks changed & repaired  
... Foreign Car keys ...  
Lawnmowers sharpened ...  
... Knives and scissors sharpened!

### Check your opinions against L'M's Campus Opinion Poll #18

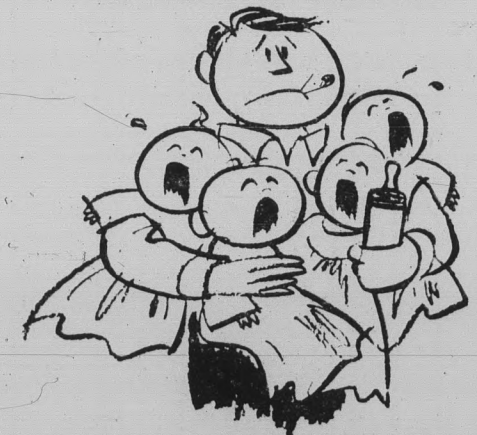
**1** Would you volunteer to man the first space station if odds on survival were 50-50?

Yes  
 No




**2** How many children would you like to have when you're married?

None  One  Two  Three  Four or more



**3** Do men expect their dates to furnish their own cigarettes?

Yes  
 No



Get lots more from L&M

L&M gives you MORE BODY in the blend, MORE FLAVOR in the smoke, MORE TASTE through the filter. It's the rich-flavor leaf that does it!




HERE'S HOW 1029 STUDENTS AT 100 COLLEGES VOTED!

Yes	36%
No	64%
None	3%
One	9%
Two	31%
Three	31%
Four or more	26%
Yes	73%
No	27%

L&M's the filter cigarette for people who really like to smoke.

## TAKE A BREAK



DATE HOUR

8:00 P.M. - 10:00 P.M.

2 Big Root Beers  
For Price Of One!

## Mugs Up Root Beer

503 EAST 8TH ST.  
"WHERE THE NICKEL IS MIGHTY"

## String Ensemble To Appear Here

The Hungarian Quartet, a noted string ensemble, will appear at ASU Sunday and Monday at 8:15 p.m. in the MU ballroom.

The quartet, part of the Concert and Lecture Series, made its debut in Budapest in 1935. By 1933, the quartet had been heard in every major city of Western Europe.

The outbreak of the war in 1939 stopped the quartet's international travel, and for five years, they lived in Holland, without performing.

After the war, the quartet performed 16 quartets of Beethoven throughout the world, from Milan and Amsterdam to Buenos Aires and Rio de Janeiro. In 1948

the quartet appeared in the United States.

This past year, the quartet spent the entire season in Europe. In the summer months they participated in 10 major European music festivals.

Members of the quartet appearing at ASU are Zoltan Szekely, first violin, Michael Kuttner, second violin, Denes Koromzay, viola and Gabriel Magyar, cello.

Sunday's concert will include the Beethoven Opus 74 and the Schubert Opus 161. On Monday night, the program will include the Mozart G-Major string quartet and Dvorak's Opus 96.

## Group Therapy Study Workshop Opens Saturday

A workshop in group psychotherapy is scheduled tomorrow from 9 a.m. to 9:30 p.m. in the executive seminar room at the Business Administration building.

Dr. E. James Anthony, professor of Child Psychiatry at Washington University Medical School, St. Louis, Mo., will be workshop leader.

Dr. Donald Pollie, ASU assistant professor of Psychology and workshop director, said the purpose of the meeting is to discuss critical problems in the practice of group psychotherapy.

## Music Day To Open At ASU Tomorrow

A state music day observance is slated at ASU tomorrow.

It will be sponsored by the ASU and UofA student and alumni chapters of Sigma Alpha Iota, women's national music fraternity.

At 10 a.m. in the MU, the Alpha Beta chapter from Tucson will conduct a workshop for officers. At the same time, a panel discussion for alumnae will take place. Mrs. Grant Fletcher, of the Phoenix alumnae chapter, will be in charge.

Two workshops are planned for 11 a.m. A choral group will meet in the MU upper lounge. An instrumental group will be in MU 208 and 209.

A luncheon meeting is scheduled for 1 p.m. in the MU Ballroom.

The ASU chapter will present an American musicale, open to the public, at 4 p.m. in the Ballroom.

Rita Chatwin and Muriel Miller will present a waltz from "Rodeo" by Copeland. "Violin Concerto," written by Dr. Grant Fletcher, ASU professor of Music, will be played by Jan Sessions.

Martha Bacon will sing "Tres Poemes" by Stravinsky. Selection from "Hermit Songs" by Samuel Barber will be sung by Suzanne Williams.

## Government Film Series To Open On TV Tonight

KAET, the educational television station of ASU, will present the first of a series of six special documentary films prepared for the U.S. government tonight at 7:30 on Channel 8.

The documentaries were prepared by Pare Lorentz during the New Deal era. Lorentz was referred to by President Franklin D. Roosevelt as "my shooter" and has been hailed by many critics as the master of the informational film form.

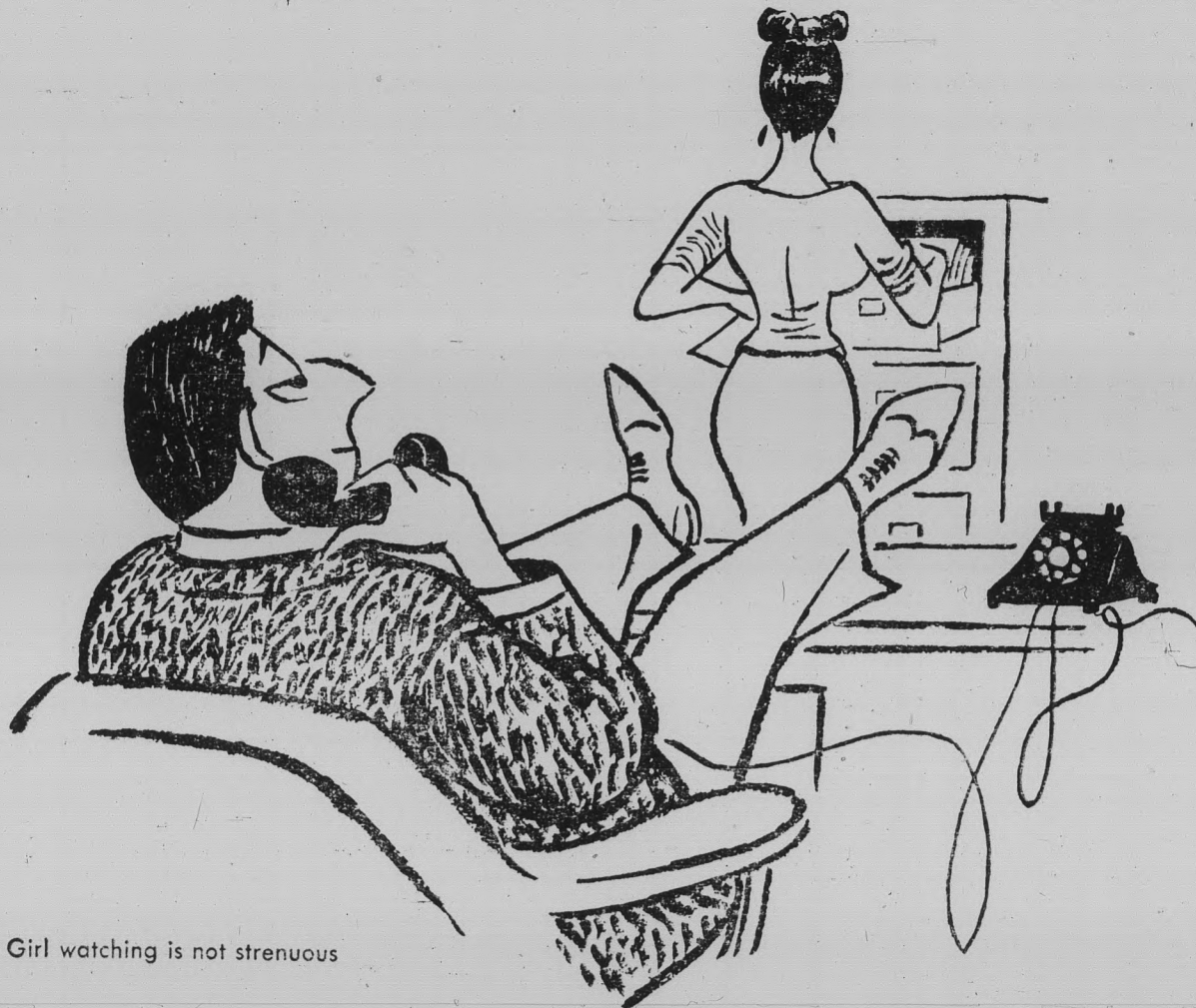
Tonight's feature, "The River and the Plough," deals with flood control along the Mississippi and marks the first time these films have been shown on national television.

On Monday, KAET presents two outstanding programs. Making its debut at 7:30 p.m. will be "The Painting," featuring "The Theme of the Painting." It will be the first time an artist has produced a painting before glaring studio lights. At 8 p.m., the educational channel presents "Intertel Special: Stone Age to Atom Age," and the program "New Guinea Portrait." The past and present confront each other in the remote jungles of New Guinea.

On Tuesday, two programs highlight Channel 8's telecasting. At 8:30 p.m., KAET presents on the program "Main Street — Waters Divided." "The Great Northwest." It is the story of the Columbia River. At 9 p.m., the program "Great Decisions — 1962," will present "Iran — Middle East Pivot?" The feature will outline U.S. policy in the Middle East.

# Girl Watcher's Guide

Presented by Pall Mall Famous Cigarettes



Girl watching is not strenuous

## LESSON 9 - Advantages over bird watching

Although girl watching will inevitably be compared with bird watching, it enjoys many obvious advantages. For one thing, it is less strenuous.

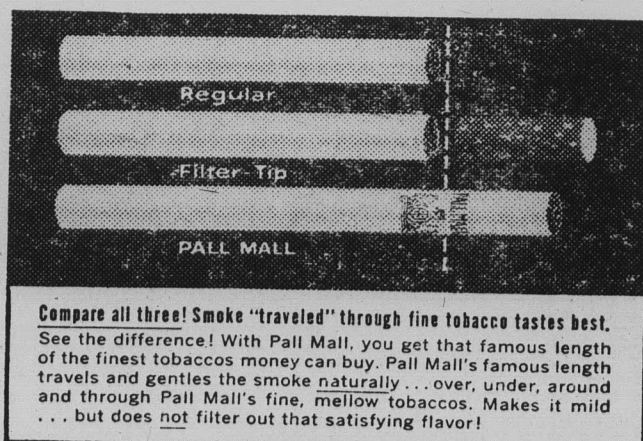
The bird watcher usually has to hike out into the woods where there is often a great deal of climbing over rocks and fallen trees and, occasionally, some swimming

across rushing streams. Girl watching sites, however, are generally accessible to the watcher's home, school or place of business and can usually be reached without great effort. Perhaps no other hobby is so easy to enjoy. (Pall Mall is easy to enjoy, too. That's because Pall Mall's natural mildness is so good to your taste!)

## WALLY'S CAFE

Good Things to Eat and Drink

1133 Normal Avenue  
"Across the Street  
From East Stadium  
Open 7 Days Week  
6:30 A.M. TO MIDNITE



Compare all three! Smoke "traveled" through fine tobacco tastes best. See the difference! With Pall Mall, you get that famous length of the finest tobaccos money can buy. Pall Mall's famous length travels and gentles the smoke naturally... over, under, around and through Pall Mall's fine, mellow tobaccos. Makes it mild... but does not filter out that satisfying flavor!

Pall Mall's natural mildness is so good to your taste!

So smooth, so satisfying, so downright smokeable!

© A. T. Co. Product of The American Tobacco Company  
"Tobacco is our middle name"

This ad based on the book, "The Girl Watcher's Guide." Text: Copyright by Donald J. Sauer. Drawings: Copyright by Eldon Dedini. Reprinted by permission of Harper & Brothers.



## P.R. Institute Set

The fourth annual Public Relations Institute will be in the MU March 22.

The institute, sponsored by the Public Relations Society of Phoenix, will start at 9 a.m. and adjourn at 5 p.m.

Students and faculty members will be able to attend the institute for a \$1 registration fee, according to an announcement.

Wednesday by General Chairman Elliot Emerson. The fee will cover all regular sessions except the luncheon. Luncheon tickets will cost \$5.

Tickets for the institute may be purchased from members of Pi Sigma Epsilon, professional fraternity for marketing, sales management and selling, or at the marketing office, BA 102C.

## Fraternities And Sororities Add Spring Pledge Lists

Spring fraternity and sorority rush has brought in the first crop of second semester pledges for ASU's Greek organizations.

New pledges are:

Kappa Delta: Carol Johnson, Linda Weatherup, Peggy Ek-lund, Judy Wilson and Marilyn Garbe.

Gamma Phi Beta: Cindy Armer, Karla Emery, Betty Guild,

Chan Warsely, Carolyn Moore and Pat Tompkins.

Sigma Nu: Bob Kee, Dave Calvert, Larry Baragar, Richard Harris, Ron Scarfo, John DiLorenzo, Bill Glickauf, Bryan Wallace, Val Frye, Larry Hufstadler, Jack McWilliams, Dick Coviello, Bruce Haas, Kent Piester, John Marcecola, Charles Middleton, Mike Schwartz, Tom

Kopp, Bill Fischer and Dan Baxley.

Pi Kappa Epsilon: Ron Axson, Bruce Allan, Bill Goodman, Ron Goodman, Ed Moses and Ed Croonenberg.

Delta Chi: Conrad Peterson, Dennis Klemonski, James Didlo, Lamar Pollock, Brent Harelson, Don Holley, Tom Pavlin, Dean Bass and Mike Teeter.

Phi Kappa Tau: Steve Sabe, Jerry Reed and Allen Wana-maker.

**REDWOOD** GOOD FOOD

JUST OPEN  
**NEW COCKTAIL LOUNGE**  
Open Until 1 A.M. — Closed Wednesday

SPECIAL DINNERS  
Served in Dining Room  
Breakfast — Lunch — Dinner  
6:30 A.M. TO MIDNITE

2207 W. Main — Mesa-Tempe Highway  
NEXT TO PIONEER DRIVE-IN THEATRE

GEORGE AND GRACE CAMERON CLOSED WEDNESDAY

10 - 6 Mon. thru Sat.  
10 - 9 Thursday

*The Village Shop*

a shop designed with the college girl in mind

967-1981 616 MYRTLE TEMPE

## Geology Lectures Offered

Dr. Raymond C. Moore professor of Geology at the University of Kansas, will deliver two public lectures in Room 150 of the Agriculture building March 22.

The topic of the first lecture, at 3:30 p.m., is "Evidence for Evolution Based on Invertebrate Fossil Records." The second address, at 7:30 p.m. will be centered around Dr. Moore's studies of the geology of the Grand Canyon.

Dr. Moore's appearance is sponsored by the American Geological Institute under a grant from the National Science Foundation.

Dr. Moore is a honorary member of the geological societies of Edinburgh, London, Belgium and France and has served as president of several professional groups, including the American Association for the Advancement of Science, the American Geological Institute and the Geological Society of America in addition to the Kansas chapters of Phi Beta Kappa and Sigma Xi.

## Oklahoma State Training School Beckons Aggies

Seven members of the Alpha Zeta chapter of Alpha Gamma Rho, agriculture fraternity, are attending the Southwest Regional Officer Training School this weekend at Oklahoma State University.

The following active members and pledges are attending: Ron Rayner, noble ruler; Ken King, secretary; Duane Strebe, treasurer; Jim Goldman, reporter; Richard Cuming, pledge president; Walt Edge and John Rasmussen.



To the girl who wants to serve her country... and herself

Now, when our democratic ideals are being challenged in so many areas of the world, more and more young women are asking what they can do to help. If you, too, are asking this question, we invite you to look into the opportunities available in the Women's Army Corps.

As a WAC officer, you serve your country as an executive, working in a variety of interesting fields, such as communications, personnel, finance and public relations. You have the unique opportunity to travel, make new friends, and be a part of the team of young men and women who are actively meeting the challenges of today.

Mail the coupon below, and we'll send you complete information about the rewarding career available to you as an Army officer in the Women's Army Corps. *Special for college juniors:* If qualified you can serve 4 summer weeks, all expenses paid, at the WAC Center at Fort McClellan, Alabama. You'll get an exciting sample of WAC life. Send coupon for details!

THE ADJUTANT GENERAL DEPARTMENT OF THE ARMY WASHINGTON 25, D.C. CN-10-61

ATTN: AGST

Please send me the booklet "Selected for Success," describing career opportunities in the Women's Army Corps.

(Check here if you also want information on the 4-week "sampler" plan for college juniors.)

NAME \_\_\_\_\_

ADDRESS \_\_\_\_\_

CITY \_\_\_\_\_ STATE \_\_\_\_\_

COLLEGE OR UNIVERSITY \_\_\_\_\_

GRADUATION DATE \_\_\_\_\_

**ERICKSON** HANDCRAFTS

ARTIST SUPPLIES  
Crafts • Hobbies  
Decorating Materials  
Picture Framing  
Tempe Center • WO. 7-4482

# Week Of Activity Confronts Greeks

By TWILA DRUMM

Music will echo through the West Hall quad March 30 at 7:30 p.m. when the annual IFC Sing kicks-off ASU's Greek Week.

Queen Diana and King Apollo will be crowned at the sing to reign during the week full of fun and festivities, March 30 through April 7.

On the Greek Week agenda is a "Work Day," March 31; a convocation, April 2; progressive parties, April 4; a parade, a race of chariots and Greek games, April 6, and the Grecian Ball, April 7.

Primary elections for Diana and Apollo will be March 28, with each sorority and fraternity entering a delegate.

March 30 is the date set for the general elections. Greeks will narrow their selection to four finalists, two sorority and two fraternity candidates. Site of the elections and candidate names are not available at this time.

The Greeks have scheduled a "Work Day" March 31 to benefit the children at Sunshine Acres and the Scottsdale-Tempe YMCA. Sorority and fraternity members will cover the Scottsdale-Tempe area from 10 a.m. until 2 p.m. performing odd jobs to raise money for the 1962 philanthropic project.

Dr. Arthur M. Lee, executive secretary to Governor Paul Fannin, will address the Greeks at a convocation April 1 in the MU Ballroom at 8 p.m. Dean Gary Anderson, Jerry Sullivan, IFC president, and Margie Holstine, Paphellenic president, will also address the convocation.

Theme of the progressive parties, on April 4 from 7-12 p.m., is "Broadway Shows." Greeks will progress to five fraternity houses: Delta Sigma Phi, Sigma

Nu, Lambda Chi Alpha, Phi Sigma Kappa and Alpha Tau Omega and to the Sahuaro Hall lobby where Sigma Alpha Epsilon will host.

The parade, race of chariots and Greek games are planned for April 6, with the four fastest runners from each fraternity pulling each group's chariot entry in the race.

Ending the 1962 Greek Week will be the Grecian Ball at Superstition Ho. Trophies of the IFC Sing sweepstakes and winners of the Greek games will be announced at the informal affair, which is from 9 to 12 p.m. Clara Hall's band will provide music. Tickets are \$1.50.

Greek Week chairman is Dennis Rosenthal. Secretary is Diane Smith, Chi Omega; treasurer, Paul Beck, Alpha Epsilon Pi.

# Rings 'N Things

It's that time again for the traditional dunkin's in the Old Main pond. Wonder if romance is worth it all?

### PINNINGS

Beverly Adkins, Kappa Delta, to Bob Machulies, Phi Kappa Tau.

Donna Welman, Chi Omega, to Karl Guelich, Delta Sigma Phi.

Suzy Fuller, Alpha Phi, to Mark Cockrill, Sigma Alpha Epsilon.

Margie Jaeger to Bob Robinson, Sigma Alpha Epsilon.

Mary Ann Mitchell, Chi Omega, to Tony Ashton, Delta Sigma Phi.

### ENGAGEMENTS

Carol Hendrickson to Tom Paulin, Delta Chi.

# Orchesis To Give Show Tomorrow For The Deaf

Orchesis, ASU modern dance honorary, will entertain at a banquet to benefit the Phoenix Association for the Deaf at 9:30 p.m. tomorrow at the Smoke House Inn.

According to Margaret Gisol, associate professor of Physical Education, dances to be performed and their participants will be:

"The Dream," Rita Gear, Mary Livermore, Suzi Smith, Jerry Spector and Henry Suprenski; "Lullaby," Linda DeWitt; "Chewing Gum," Joyce Lipson, and "A Prayer," Beverly Brown, Sidna Bradley and Hope Heimann.

Orchesis will present a Dance Concert April 12 at 8:15 p.m. in the Moeur Activity building.

# O'Neil's 'Poet' Tryouts Slated

Tryouts for Eugene O'Neil's "Touch of a Poet," Drama Workshop's last production for this season, will be from 3 to 5 p.m. next Monday and Tuesday in Payne Auditorium.

Drama Workshop will present Stephen Zweig's adaptation of Ben Johnson's "Volpone" March 22-25 and 29-31 at 8 p.m. in the Lyceum building.



**Your HEALTH is our BUSINESS**

Phone  
**WO 7-2922**



## LAIRD PHARMACY

CORNER FIFTH & MILL, TEMPE

### TEMPE RADIO & TV CLINIC

- Record Player — TV
- Auto Radio
- House Radio

Service — Repair

Wm. Hertenstein

4 West 7th St. — WO 7-4732

## EUROPE

74 DAYS  
50 CITIES  
20 COUNTRIES

ALL TRANSPORTATION INCLUDED: SHIP OVER, JET BACK — INDIVIDUAL VOLKSWAGEN'S.

ALL THE ADVANTAGES OF ECONOMIC TOUR TRAVEL WITHOUT THE DISADVANTAGES OF STRICT ITINERARY OR REGULATIONS — DESIGNED BY COLLEGE STUDENTS — 4 YEARS EXPERIENCE — BROCHURES & FILMS AVAILABLE —

CALL — 948-0237 or 945-7564

# \$745<sup>00</sup>

## Koret of California



A summer long vacation from wardrobe care with these elegant sportswear ensembles. Lifting colors, no-wilting fabric with exclusive KORASET finish. a product of Koret of California's patented process. Unconditionally guaranteed wash and wear

Blouse	5 <sup>98</sup>
Shirt	10 <sup>98</sup>

## Celias FASHION'S

Tempe Center

Also at 1149 E. Main — Mesa

# MEN!



In plastic!

Old Spice DEODORANT

## Here's deodorant protection YOU CAN TRUST

Old Spice Stick Deodorant...fastest, neatest way to all-day, every day protection! It's the active deodorant for active men...absolutely dependable. Glides on smoothly, speedily...dries in record time. Old Spice Stick Deodorant — most convenient, most economical deodorant money can buy. 1.00 plus tax.

Old Spice STICK DEODORANT

SHULTON

## 'Date Nite' Set For MU

You'll need a date to get into the MU Games room during "Date Nite" tomorrow.

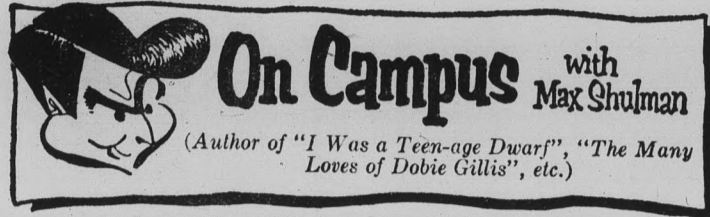
The entire area will be reserved for couples only from 7:30 p.m. until midnight, according to Steve Montgomery, Social committee chairman.

The evening is intended to promote the use of MU recre-

ational facilities during student leisure time.

Bowling, billiards, table tennis, chess, checkers, cards, free refreshments and dancing in Clancy's will be available.

Free bowling, billiards and table tennis play will be distributed among the couples on an objective numerical basis.



### THE GRASS IS ALWAYS GOLDFER

The academic world, as we all know, is loaded with dignity and ethics, with lofty means and exalted ends, with truth and beauty. In such a world a heinous thing like faculty raiding—colleges enticing teachers away from other colleges—is not even thinkable.

However, if the dean of one college happens—purely by chance, mind you—to run into a professor from another college, and the professor happens to remark—just in passing, mind you—that he is discontented with his present position, why, what's wrong with the dean making the professor an offer? Like the other afternoon, for instance, Dean Sigafos of Gransmire Polytech, finding himself in need of a refreshing cup of oolong, dropped in quite by chance at the Discontented Professors Exchange where he discovered Professor Stuneros from the English Department of Kroveny A and M sitting over a pot of lapsang soochong and shrieking "I Hate Kroveny A and M!" Surely there was nothing improper in the dean saying to the professor, "Leander, perhaps you'd like to come over to us. I think you'll find our shop A-OK."

(It should be noted here that all English professors are named Leander, just as all psychology professors are named Fred. All sociology professors are, of course, named Myron, all veterinary medicine professors are named Rover, and all German professors are named Hansel and Gretel. All deans, are, of course, named Attila.)

But I digress. Leander, the professor, has just been offered a job by Attila, the dean, and he replies, "Thank you, but I don't think so."

"And I don't blame you," says Attila, stoutly. "I understand Kroveny has a fine little library."

"Well, it's not too bad," says Leander. "We have 28 volumes in all, including a mint copy of *Nancy Drew, Girl Detective*."

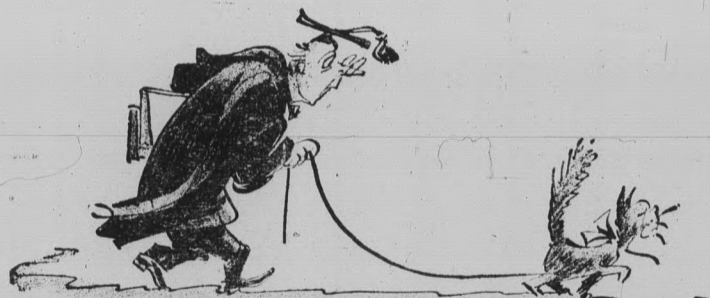
"Very impressive," says Attila. "Us now, we have 36 million volumes, including all of Shakespeare's first folios and the Dead Sea Scrolls."

"Golly whiskers," says Leander.

"But of course," says Attila, "you don't want to leave Kroveny where, I am told, working conditions are tickety-boo."

"Oh, they're not too bad," says Leander. "I teach 18 hours of English, 11 hours of optometry, 6 hours of forestry, coach the fencing team, and walk Prexy's cat twice a day."

"A full, rich life," says Attila. "At our school you'd be somewhat less active. You'd teach one class a week, limited to four A students. As to salary, you'd start at \$50,000 a year, with retirement at full pay upon reaching age 29."



"I walk Prexy's cat twice a day."

"Sir," says Leander, "your offer is most fair but you must understand that I owe a certain loyalty to Kroveny."

"I not only understand, I applaud," says Attila. "But before you make a final decision, let me tell you one thing more. We supply Marlboro cigarettes to our faculty—all you want at all times."

"Gloryosky!" cries Leander, bounding to his feet. "You mean Marlboro, the filter cigarette with the unfiltered taste—Marlboro, the cigarette with better makin's—Marlboro that comes to you in pack or box—Marlboro that gives you such a lot to like?"

"Yep," says Attila, "that's the Marlboro I mean."

"I am yours," cries Leander, wringing the Dean's hand. "Where do I sign?"

"At the quarry," replies Attila. "Frankly, we don't trust paper contracts any more. We chisel them in marble."

Stonecutters cut it in stone, woodcutters cut it in wood, seamstresses embroider it in doilies: you get a lot to like in a Marlboro—filter, flavor, pack or box.

## IFC Sing To Attract 19 Groups

IFC will present its annual singing March 30 at 7:30 p.m. in the West Hall quad.

First, second and third place trophies will be awarded to each winning fraternity, sorority and mixed group. A traveling sweepstakes trophy will be awarded at the Grecian Ball to the winner accumulating the most points.

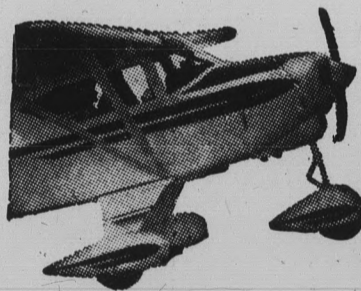
The order of performance for the 1962 IFC Sing is: Delta Sigma Phi, "A Whale of a Tale"; Kappa Delta, "Flower Drum Song Medley"; Phi Sigma Kappa, "Meadowlands"; Alpha Phi, "Droben Aue Der Grunen Und," and Theta Delta Chi, "Barn Yard Medley."

Also, Chi Omega, "Green Leaves of Summer"; Sigma Nu, "Medley of TV Commercials"; Kappa Kappa Gamma, "Hans Christian Andersen Medley," and Alpha Epsilon Pi and Alpha Epsilon Phi combined, "Exodus Song."

Others are Sigma Chi, "Sweetheart of Sigma Chi"; Gamma Phi Beta, "Loch Lomond"; Alpha Tau Omega, "Cotton Fields"; Kappa Alpha Theta, "Does Your Chewing Gum Lose Its Flavor?"; Sigma Alpha Epsilon, "Dixie"—"Battle Hymn of the Republic"—"This Is My Country" Medley, and Alpha Delta Pi, "Man on the Flying Trapeze."

Also, Delta Gamma and Phi Delta Theta, "Round and Round," and Sigma Phi Epsilon, "Hey Betty Martin' — Happy Days' Medley."

First place winners last year were: sorority division, Chi Omega; fraternity, Alpha Tau Omega, and mixed division, Delta Gamma and Phi Delta Theta.



Wish You Could Fly?

Start Learning TODAY

the easy, economical Piper COLT Way!

Complete Private Pilot course at a new low cost. We have 100% bank financing.

BRAND NEW MODERN AIRCRAFT • EXPERT GOVERNMENT-RATED INSTRUCTORS • NEW PIPER AUDIO-VISUAL GROUND SCHOOL COURSE.

Call

ANDERSON AVIATION

Sky Harbor Airport Phone 275-5741

### After Hours

## Publicity Hounds: Take My Advice!

By BILL OVEREND  
Campus Editor



"Those jerks up in the State Press office won't give us any publicity!"

Sound familiar? Well, it should. We hear this well-worn gripe at least twenty times a week. So, since I'm the jerk who has to handle your earth-shaking announcements, allow me to list a few simple steps to insure coverage of your group on these pages.

First, make sure you've done something in which somebody other than you will have an interest. If you only want to see your name in the paper, we can't help you. The only way you can satisfy that particular lust for publicity is to purchase a classified ad. Second, don't waste your time and ours with meeting announcements. Nobody outside your group really cares too much when you meet, and we do not consider it our job to remind your members when to assemble. Third, when you do something, let us know the details. Give us color, something to keep us from falling asleep.

### GREEKS AT A GLANCE

Unless fraternities and sororities start turning in their social functions and other activities, this issue's "Greeks at a Glance" will be our last. The Greeks, in our estimation, have an obligation to sell themselves to the rest of the campus. Nobody else will do it. And there are dozens of other groups eager for the space we give you. So please shape up! We definitely do not want to cut you off.

Outside of the usual new pledges, officers and activities, this week's single flash from the Greek world comes from the men of **Delti Chi**. Seems they spent Saturday at the Sunshine Acres Children's Home, landscaping and painting a cafeteria building. Sounds like a pretty worthwhile project, from where we sit. Too bad a few other groups don't try the same thing.

### AROUND THE TOWN

Cinema fare in the Phoenix area is still riding a crest of superiority. Greatest loss this week was the disappearance of "The Children's Hour" from the **Kachina** and **Cinema Park Drive-In Theaters**. "Spartacus," which isn't that bad a flick itself, is back to fill the gap. Laurence Harvey's face fills the screen at most of the other movie houses around town. He's at all the **Southwest Drive-Ins** and the **Strand** in "Summer and Smoke," an adult-only film, and at the **Indian Drive-In** and the **Paramount** in "Walk On The Wild Side," an ADULT-ONLY film.

We understand that somebody has finally invented an interesting travelogue. The honor goes to Gwen Buchanan, who sponsors the "World Adventure Series" now running at **Scottsdale High School**. Tonight the series will concern "Switzerland — Land of Peace." The film, beautifully filmed and colorfully narrated, will start at 8:30 p.m. If you've got 90 cents you want to trade for an exciting new experience, go see it. You can't go wrong!

## BULLFIGHT

Nogales Sonora, Sunday, March 18, 3:30 P.M.

PEDRO JIMENEZ — "Pedrin"

Competing With

JOEL TELLES — "El Silverio"

STUDENT TICKETS AVAILABLE IN NOGALES

## NOW SWINGING THE MUSIC HALL

Special Dance Today From 3:30 P.M. - 6:30 and 8:30 - 12:30 Tonite

VARIETY OF ENTERTAINMENT

Also

SATURDAYS — 8:30 TO 12:30

SUNDAY AFTERNOONS — 3 P.M. to 7 P.M.

1825 Apache Blvd.

Tempe

**INTRAMURAL Scene**

Sigma Nu and Sigma Chi dominated the intramural wrestling competition last Monday with two wins each.

Winners and their divisions include:

- 127 lbs.—Mike Schwartz—Sigma Nu
- 137 lbs.—Dan Haveron—Phi Sigma Kappa
- 147 lbs.—Ed O'Clair—Sigma Chi
- 157 lbs.—Evans Woodhouse—Sigma Chi
- 167 lbs.—Lance Morris—Phi Delta Theta
- 177 lbs.—Bruce Crile—Delta Sigma Phi
- 187 lbs.—Dave Sampson—Sigma Nu
- Unlimited—Bill Warrell—Alpha Tau Omega

Intramural basketball will begin Monday, and the schedule will be posted in the gym.

Sigma Nu and Alpha Tau Omega are waging a close battle for the number one position in organization scoring for the year. Sigma Nu is now in the lead, by a slim margin of two points with a total of 121, while Alpha Tau Omega is second with 119.

# Devil Nine Hosts L.A. State

Coach Bobby Winkles' base-batters tackle their toughest early season assignment today and tomorrow when they meet Los Angeles State in a three game series.

The Devils and Diablos clash this afternoon at 3:30 and meet for a pair starting at 1 tomorrow afternoon.

LA State is one of the better teams in the West — an area which contains the majority of the nation's collegiate baseball might. The Diablos won their

first six encounters this season, all of them on the road.

Last season the Sun Devils met the LA State club six times, with each team managing three wins in the hard-fought series.

The Diablos combine a steady hitting attack with sound pitching led by Casey Cox, winner of three of the team's six games.

Winkles will counter with a batch of pesky hitters of his own and a relatively untried pitching staff. Righthander Gary Graham (1-0) will probably get

the call today, and righties Larry Smith (0-0), Pete Lovrich (0-0) or lefty Harley Anderson (1-0) will handle the starting chores tomorrow.

A busy week is on tap starting Monday, as Southern Illinois comes to town for single games every week day and for a twin bill on Saturday.

## Net Team Has Busy Slate

Arizona State meets Utah State in another battle of the nets next week, but the sport this time will be tennis, not basketball.

The Devil netmen, after a 9-0 triumph over Phoenix College last week, will be decided underdogs in the two-day matches which begin Monday.

ASU, with only one returning letterman, has a better-balanced

team than last year, but its overall attack is weaker.

A full week of competition is scheduled, with the Devils hosting Colorado State March 21 and 22 and traveling to Tucson March 24 for a match against the UofA.

Players include Richard Reakes, Dick Draper, Craig Carlson and Don Elliot.

## ASU Wins Again

A pair of Sun Devil hurlers disproved the theory that pitchers can't hit as Arizona State romped to a 12-1 baseball victory over Grand Canyon College yesterday afternoon on the local diamond.

Starting pitcher Sterling Slaughter picked up a pair of hits and relief hurler John Miller slammed ASU's first home run of the season over the left

field wall with a teammate on base in the eighth.

Slaughter worked five innings on the mound and picked up his first win of the young season. He allowed four hits and walked only one while whiffing seven Antelope batters. Larry Smith pitched two scoreless frames and Miller struck out four batters while yielding only one hit in two innings.

Larry Brion, Syd Smith and Gary Linthicum all pounded out two hits for the Devils.

GCC	010	000	000	—	1	6	5
ASU	111	313	02x	—	12	14	3

### Track Meet Tuesday

ASU's busy tracksters will meet the University of Utah in a dual meet in Goodwin Stadium Tuesday night. As usual, field events will begin at 7:30 and running events at 8.



### YOUR STUDENT TRAVEL HEADQUARTERS

STILL TIME TO PLAN FOR

- SUMMER SCHOOL IN HAWAII
- TOURS IN EUROPE
- WHAT?

**UNIVERSAL TRAVEL** 18 E. 5th WO 7-1673

If you are expecting Mr. Stork — or are just hoping he'll call



**Why Was This Plan Created?** Cradle Protection was conceived to provide medical benefits for babies who either are born prematurely or with imperfections or birth injuries. It provides insurance against what can be staggering medical bills which are not ordinarily covered by other forms of hospital-surgical coverage.

**PAYS UP TO \$5,000** for correction of birth imperfections or child's premature birth costs.

**PROVIDES LIFE INSURANCE** benefits for the wife and each newborn child.

The plan is available to all married women age 49 or under and insurance may be applied for even during pregnancy.

For an almost unbelievably low premium Cradle Protection will eliminate a big financial worry. Let us tell you about all the wonderful benefits of this revolutionary insurance concept.

For Information Call  
WO 7-3358

**LOCK & CROCKETT INSURANCE**

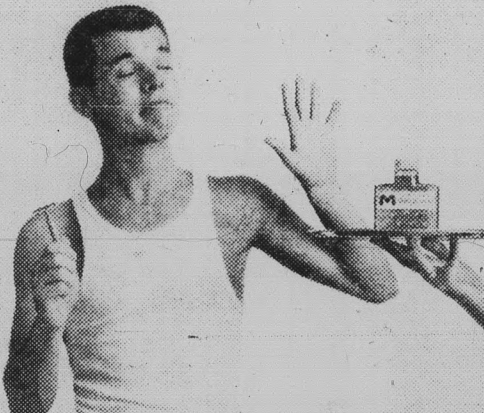
822 B Mill Ave.

Tempe

## "YOUR AFTER-SHAVE LOTION, SIR"

"Jason, you dolt! You know I use only Mennen Skin Bracer after-shave lotion."

"Of course, sir. And this..."



"Indeed so, sir. And..."

"Tonight I need Skin Bracer. I'm going to the Prom. So take that stuff away and get me some Skin Bracer!"



"I've told you that Skin Bracer cools rather than burns. Because it's made with Menthol-Ice."

"Quite, sir. And this..."

"Besides, that crisp, long-lasting Bracer aroma has a fantastic effect on girls."



"But sir, this is Skin Bracer. They've just changed the bottle. Shall I open it now, sir?"

\*



\*ACTUALLY, YOU DON'T NEED A VALET TO APPRECIATE MENNEN SKIN BRACER. ALL YOU NEED IS A FACE!

Tomorrow Night

# Home Track Slate Starts

By DENNIS ANDERSON

ASU opens its 1962 home track schedule tomorrow night against the University of Arizona and Oregon State University.

The star-studded meet kicks off at 7:30 with five field events — the pole vault, high jump, broad jump, shot put and javelin. An added 440 yard relay will be the first track event, at 8 p.m.

Sun Devil fans will be given their first home view of the "new look" edition of Coach Baldy Castillo's cinder squad. Gone are such familiar names as Spence,

Henderson, Schreiner, Jeisy and Lindroos.

In their place an outstanding group of newcomers makes its debut. Leading the parade will be quarter-miler Ullis Williams, javelin flinger Frank Covelli, hurdler Jim Tucker, sprinters Henry Carr and Larry Todd and Australian half-miler, Eric Owers.

Billed as the top attraction of the night will be the 100 and 220 yard dashes, lining up one of the finest casts ever assembled on Goodwin Stadium cinders.

Sun Devils Hubie Watson, Carr and Todd will vie against the UofA's Larry Dunn and Steve Robbins and OSU's Canadian sprint star, Lynn Eves.

No less attractive than the shorter sprints will be the 440 yard dash, pitting ASU's threesome of Williams, Freeman and Barrick against OSU's trio of Monroe, Comer and Johnson.

Consistent John Rose will provide plenty of thrills, as he once again vaults for heights of 15 feet and upwards.

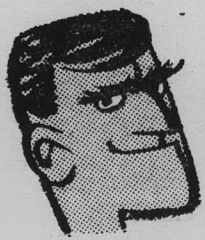
The nightcapper should be a dandy, as Sun Devil and Beaver mile relay quarters could provide a duel reminiscent of last year's ASU-USC titanic.

To date, ASU has posted the top outdoor time for '62, a nifty 3:12.5. But this will probably fall by the wayside, as the Beavers are bent for revenge after last month's upset by ASU in the Los Angeles Times indoor meet.

When ASU's Ullis Williams overcame an 8 yard deficit to pin the defeat on OSU anchor man Norm Monroe, Monroe remarked to Williams, "We'll get you the next time."



FABULOUS FOURSOME — These Sun Devils, following in the tradition of recent years, have established the fastest mile relay time in the nation this season. The four, (left to right) Ullis Williams, Mike Barrick, Gaston Green and Ron Freeman, will have stiff competition from Oregon State tomorrow night in Goodwin Stadium.



"LOVE IS A SNAP"

"Girls used to just smile. Now they pucker. It happened so suddenly, the day I put on these Rapier slacks. Sorry girls, my heart belongs to A-1."



**A-1 Rapier**  
4.95 to 6.95

At your favorite campus shop

Your A-1 Dealer In Tempe...



## Cage Season Best Ever

Basketball season came to an abrupt halt at Arizona State Tuesday night.

It's all over for the Sun Devils, who made a gallant bid in the late stages of the game but couldn't quite catch up to tough Utah State.

The heartbreaking 78-73 loss dropped the Devils from the NCAA tourney in the first round and snapped the nation's longest major college win streak at 18 games.

It was the final appearance for five seniors who have thrilled local fans for the past several seasons. Larry Armstrong, Jerry Hahn, Ollie Payne, Mike McConnell and Rex Dernovich all

wound up colorful careers as the buzzer sounded to end the frantic contest.

They were all vital parts of the best season ever recorded by a Sun Devil basketball team. Ned Wulk's exciting cagers rolled to a 23-4 record and averaged 90.1 points per contest while doing it.

ASU fans, although rightfully grievous over the loss of these fine performers, should take a look into the future, for the prospects are somewhat cheerful. Such varsity talent as Joe

Caldwell, Tony Cerkvnik, Art Becker, Raul Disarufino, Bob Howard, Gary Senitza and Darrell Risner will return. They'll be joined by sensational Dennis Dairman, who sat out this year with an injury, and by Gerald Jones, a top-flight performer.

Foreign & Domestic  
**Speedometer Service**

Also  
**AUTO CLOCKS**

**DISCOUNT TO STUDENTS**

**Western**

**Instrument Co.**

4632 N. 7th Ave., Phoenix  
265-8486

NOW THREE LOCATIONS . . .

1. Tempe Center 2. 1302 Rural 3. Bayless Center

Open 24 Hours A Day!

**ZZZONA**  
DRIVE-IN LAUNDRY & CLEANERS  
FIRST in Laundry and Cleaning • LAST in the Phone Book



The  
**PIZZA HUT**  
"Eat In or Carry Out"

Open Every Day For Lunch & Dinner

11:30 A.M. to 1 A.M.

Friday & Saturday Till 2 A.M.

FREE Catering Service To Parties

Order By Phone For Faster Service

WO 7-3355

801 E. Apache

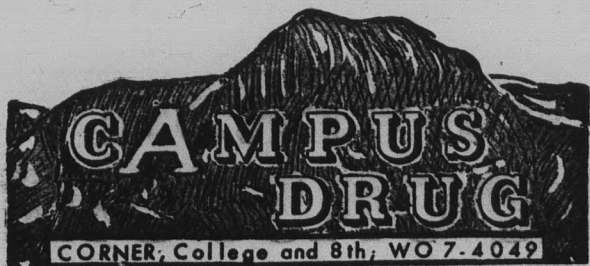
Tempe

**SPECIAL PURCHASE**

★ BEAUTY DROPS ★

"BEAUTY IN THE BATH"  
A NEW COSMETIC OIL THAT EFFECTIVELY COMBATS DRY SKIN.

\$1.50 and \$2.50



CORNER, College and 8th, WO 7-4049

BOB VIEWS SPORTS NEWS

# Boys Had Off Night

By **BOB EGER**  
Sports Editor



What happened to the boys in Corvallis? That's the question everyone's been asking us the past couple of days.

And that's the question we've been asking ourselves. And the Devils have been quizzing themselves on the same matter.

They didn't choke — that we're sure of. They were the veterans of big-time NCAA play, and Utah State was just another one of many good teams they've met the past two years. They were playing in the familiar Pacific Northwest before a crowd that was anything but hostile.

It doesn't appear to have been a case of overconfidence. Team members have been genuinely concerned and puzzled with their relatively poor performances in recent games and knew that even though they were winning, they weren't up to par.

Our diagnosis is that it was simply an off night. The Wulkmen apparently were getting their shots — the darned things just weren't dropping in. The Devils even outrebounded the bigger Aggies. It was simply a case of a bad night from both the floor and the foul line.

Utah State Coach LaDell Anderson admitted after the game that "five out of six nights we probably couldn't beat this team."

He hit the nail right on the ol' noggin. That's just about how seldom the Devils did get beat this year — once for every five or six wins.

And if one looks back a ways, past the recent batch of patsies, they find such names as Oregon, Kansas, Utah (twice), Indiana, Minnesota and the Air Force Academy among the Devils' past foes this season.

We're disappointed but not disgusted with ASU's tourney showing. The dramatic comeback bid was evidence of the Sun Devils' desire and hustle. And whenever those two qualities are fulfilled, we feel the Devils haven't let us down.

### SPRING SPORTS IN SPOTLIGHT

With Arizona State's part in the NCAA cage tourney over, the attention on this campus naturally switches to the spring sports.

An *we've* got a couple of dillies.

Baseball on the college level doesn't come any better than it does right here, and it can't be found in any more abundance than at Arizona's two universities.

The Demon nine plays every day but Sunday for the next two weeks, with twin bills on both Saturdays. After a week or so off to rest in early April, the Devils tackle another solid month of competition.

And track and field at this place of learning is on a high plateau which has been scaled by only a few schools in the nation.

With the likes of Ullis Williams, John Rose, Hubie Watson and Henry Carr on hand, you can't afford to not be in attendance at a home track meet, or you might miss out on a national or even a world record.

Tomorrow night's meet is a good one not to miss, because, in addition to the ASU talent, the competition will be packed with nationally renowned names from Oregon State and Arizona.

# ASU Gymnasts Enter Meet

Arizona State sends its gymnastics team after top honors at the Western Intercollegiate

Championships in Sacramento, Calif., this weekend. Competition is slated for today and tomorrow.

Competing for ASU are Harvey Plant, Bill Cornelius, Chris Evans and Jerry Stansbury.

Plant, a steady point winner for the Devils in several events, is a strong candidate for the trampoline honors. He's one of the nation's best and hasn't been defeated in competition this year. Other events in which Plant usually shines are

free exercise and tumbling.

Cornelius, another all-around performer, will be counted on to produce key points for the Devils. Cornelius has been hampered recently by a bad wrist, which may hinder his performance somewhat.

Evans is a talented still rings performer and Stansbury an all-around gymnast, and Coach Norris Steverson is counting on both to provide the depth needed for ASU to place high in the western meet.

## Busy Sports Weekend

Sports fans shouldn't complain from lack of things to do at ASU this weekend.

There's a baseball game here against LA State at 3:30 this afternoon.

The same team meets the Devils in a double header tomorrow afternoon starting at 1 on the ASU diamond.

And two of the top track teams in the nation, Oregon State and Arizona, come to Goodwin Stadium for a triangular meet against the Devils tomorrow night.

.....ON STAGE!.....  
Now thru Sunday  
**WALTER PIDGEON**  
**MARTHA SCOTT**  
**RICHARD CARLSON** (in person) in  
"The Complaisant Lover"  
Coming — March 20 thru 25  
**JOHN RAITT**  
in "The Pajama Game"  
Phone AM 6-4487, Phoenix  
RICHARD CHARLTON'S  
**SOMBRERO PLAYHOUSE**  
4747 N. 7th St. — Phoenix

"Years Ahead" Flight Training  
In The New Shinn - 2150

MODERNIZED GROUND SCHOOL  
FOR PILOTS & NON-PILOTS  
**Amos Flight Operations**  
A Private License is a Must In Modern Business  
**Don Amos — Class of '56**  
Phone BR 5-7291 **SKY HARBOR**

## An Ideal Financial Plan For College Men

Lincoln National's College Plan starts you on the road to financial security at the beginning of your career, while rates are lowest and you are still insurable.

I'll be glad to explain how its special advantages can benefit you.

**Marvin D. Loos**  
3500 N. Central Representing CR 7-3395

**THE LINCOLN NATIONAL LIFE**  
Insurance Company  
It's Name Indicates It's Character

# SENIORS...

Order Your

- ★ Cap & Gown
- ★ Name Cards
- ★ Rings

at the

# UNIVERSITY BOOKSTORE

Open Mon. — Thurs. 8-7 Fri. 8-4:30 Sat. 9-1

## accounting majors M.B.A.'s

Hughes, one of Southern California's leading Electronics firms, is currently selecting candidates for its Finance Development Program.

This program is completely oriented and operational. It has been developed to fill the ever increasing financial management requirements of our company. Valuable training is provided in each of four financial areas: General Accounting, Cost Accounting, Systems and Procedures, Planning and Budgets. The program's length is two years. Periodic salary reviews assure maximum benefits.

Although grade-point average is not the prime requisite, you should be in the upper one-half of your class.

If you are a graduate or will receive your M.B.A. at the close of the present semester, we'd like to discuss the program with you.

### CAMPUS INTERVIEWS

March 20, 1962

For further information and to arrange a campus interview, contact your Placement Director. Or write Mr. Carey W. Baker, Hughes Aircraft Company, 11940 Jefferson Blvd., Culver City, Calif.

CREATING A NEW WORLD WITH ELECTRONICS

# HUGHES

HUGHES AIRCRAFT COMPANY