



# ENGINEERING PROGRAM SET



**SPECIAL VALENTINE** — KUPD disc jockey Jim Spero was greeted by 12 Wilson Hall coeds Wednesday morning at 6 a.m. and was presented a special valentine. Girls, from left, are Liz Barnes, Judy Smith, Nancy Brncic, Fafi Owens, Sue Davis, Judy Meezan, Sylvia Burrell, Barbara Rood, Patti Abbott, Linda Sackman, Jan Nichols and Linda Marty. Photo by Ralph Forney

## Activities Tuesday To Be In Center

By BILL FLICK  
Editor-in-Chief

ASU's School of Engineering will go on display to Valley high school and junior college students and the general public Tuesday.

Students and faculty of the six engineering departments within the school will present themselves, their work and their laboratory facilities in a program which will begin at 2:30 p.m. and end at 9 p.m.

school graduate interested in a career in engineering.

Site for the six and a half hour program will be ASU's Engineering Center, located at Van Ness and Orange Avenues on the east end of campus. Program presentations are scheduled for Room 207 of the center.

All laboratory facilities will be open for inspection, with many exhibits and demonstrations scheduled to last throughout the evening.

Technical representatives of General Electric will be on hand to explain the million dollar GE computer installation.

Purpose of the open house is to acquaint prospective ASU engineering students with the facilities on this campus and to give the general public an opportunity to inspect an outstanding portion of Arizona State.

Instructors from the various engineering departments will

### Musicale Deadline Announced

Deadline for registering acts in this year's Blue Key Musicale is Tuesday, it was announced this morning by Jack Ong, chairman of the show.

The musicale is scheduled March 2 and 3 in Cosner Auditorium.

The annual variety show is a charity project to provide scholarships.

Acts can be from Greek letter organizations, special interest groups, honoraries and dormitories.

There is a \$5 registration fee, to offset production expenses, according to Ong. The fee should accompany each group's announcement of participation.

## Women's Athletic Association Initiates 97 In MU Ceremonies

The Women's Athletic Association initiated 97 women last night in the MU upper lounge.

Pat Miller, president of WAA, awarded the pins and Carol Lyen presented awards to those who earned 800 and 1,000 points in WAA activities.

Top students who earned 1,000 points and membership in the "A" Club are Norma Butler, Ada Dedrick, Sandy Kaminski, Karen Maglich, Sandy Smith, Bonnie Stricker, Carol Hopkins and Emma Flores.

Earning 800 points and associate "A" Club membership are Nancy Stimson, Donna Poston,

Sue Hyllested, Pearl Tang and Sherry Wheeler.

Coeds earning 500 points and a ring include Juanita Brown, Michelle Filkins, Linda Rankin, Margaret White, Mary Isbell, Carol Gardner, Ina Leffler, Shirley Masterson, Ruby Parra and Bertha Hunez.

Membership in WAA was granted to coeds earning 100 points. The coeds include Linda Beck, Margaret Bramley, Dottie Cooley, Sandi Denen, Rae Ann Eden, Becky Farrier, Jeanette Jenson, Kay Lecky, Hazel Linsenmeyer, Barbara Maldonado, Kathy Mangano, Roxie Martin, Mariamne Moore, Sandra Nix and Diane Smith.

Also, Sheryl Payne, Marianne Prevratil, Judy Robinette, Nancy Rogers, Sally Rudolph, Marsha Smith, Carol Uhlik, Mary Ann Wahl, Lynn Winsor, Marian Winsryg, Shan Worsley, Sheila Foster, Judy Howell and Marjorie Avery.

Others are Judy Anderson, Diane Rickel, Carol Sivesind, Donna Weiman, Sue Rogers, Linda Cook, Carol Leafdale, Phyllis Bounds, Rosemary Frick, Joyce Hing, Paula Ivanovich, Darnell Jensen, Linda Jones and Carolyn Knebel.

Also granted membership were Sandra Krill, Susan Marionneaux, Loretta Padilla, Jan MacKenzie, Sue Peterson, Norby Smalley, Lois Truman and Lupe Urias.

Others were Lynn Chewing, Carolyn Curry, Vicki Jordan, Pam Loeb, Mary Ann Mitchell, Linda Shumway, Nancy Jo Smith, Marilyn Luckey and Jacque Blake.

Also Betty Barr, Barbara Butler, Joan Mills, Dee Stouffer, Julie Van Dellen, Becky Watson, Martha Craig, Dandy Duckels, Carol Sorenson, Deanna Leiterman, Martha Lenz, Ann Nordstrom and Mitzi Barboni.

Serving on the committee to arrange the ceremonies were Norma Butler, general chairman; Carol Hopkins and Sharon Ishikawa, both publicity; Pearl Tang, program and points; Karen Maglich, invitations, and Lynda Saliba, refreshments.

### Open House Schedule

- 6:30 p.m. Civil Engineering
- 7:00 p.m. Industrial Engineering
- 7:30 p.m. Mechanical Engineering
- 8:00 p.m. Chemical Engineering
- 8:30 p.m. Electrical Engineering
- 9:00 p.m. Engineering Science

speakers on their respective fields of study. Special emphasis will be given to the prospective high

## Industrial Designer To Talk Here

Sam Maloof, prominent industrial designer and hand-manufacturer of furniture from Los Angeles, will speak to ASU Architecture students at 4 p.m. Monday, in Room 332 of the Engineering Center.

Maloof has designed and constructed furniture for several prominent firms. He prefers to do his work by hand to maintain a higher quality of craftsmanship. Also, he refuses to design furniture that will be constructed on power equipment.

Maloof has achieved international fame yet still works in his own workshop, which is his only retail outlet.



**PLACE IN TUCSON** — ASU's Kayettes, auxiliary of the Army ROTC, placed fifth in fancy drill competition at Davis-Monthan Air Force Base in Tucson last weekend. From left, front row, are Kayettes Dee Stouffer, Karen Arneson, Shirley Otten, Judy Anderson, Linda Rankin and Pat Pansini. Back row, from left, are Barbara DeGraaf, Jeannette Jenson, Lynn Anderson, Gail Gustafson, Kathy Young, Audrey Rozefsky and Bev Bulla.

# Pilot Meeting Set For English Club

An open meeting to form an English Majors club will be at 3:30 p.m. Monday in MU 218A.

Dr. Gene Montague, ASU assistant professor of English, will speak on "Classroom Criticism."

The purpose of the meeting is to accept and discuss suggestions for a club designed to bring together persons interested in literary and oralinguistic matters.

"There's evidence of university spirit and learning when students carry over their classroom to outside discussion," said Dr. Collice Portnoff, chairman of the English department, of

the plans for forming the club.

"The reason for planning the club was the need for outside association as there is no common uniting bond among the students in the English department as found in other ASU departments," said Mrs. Marjorie Henshaw, associate professor of English and sponsor.

Mrs. Henshaw feels there is a definite need for a discussion-type of group not only led by faculty members, but also outstanding students. The discussions will enable students to express their opinions and to discuss others presented.

# Desk Moved At Matthews

Several physical changes have been made in Matthews Library this semester, according to Frank A. Schneider, assistant librarian.

The new information and reference service desk is now located to the north of the main lobby. The area which previously housed the reference service desk has been designated as the special services desk and includes the following services: government documents, inter-library loan, graduate resources, college catalogs, micro-films, reading machines and a copying machine.

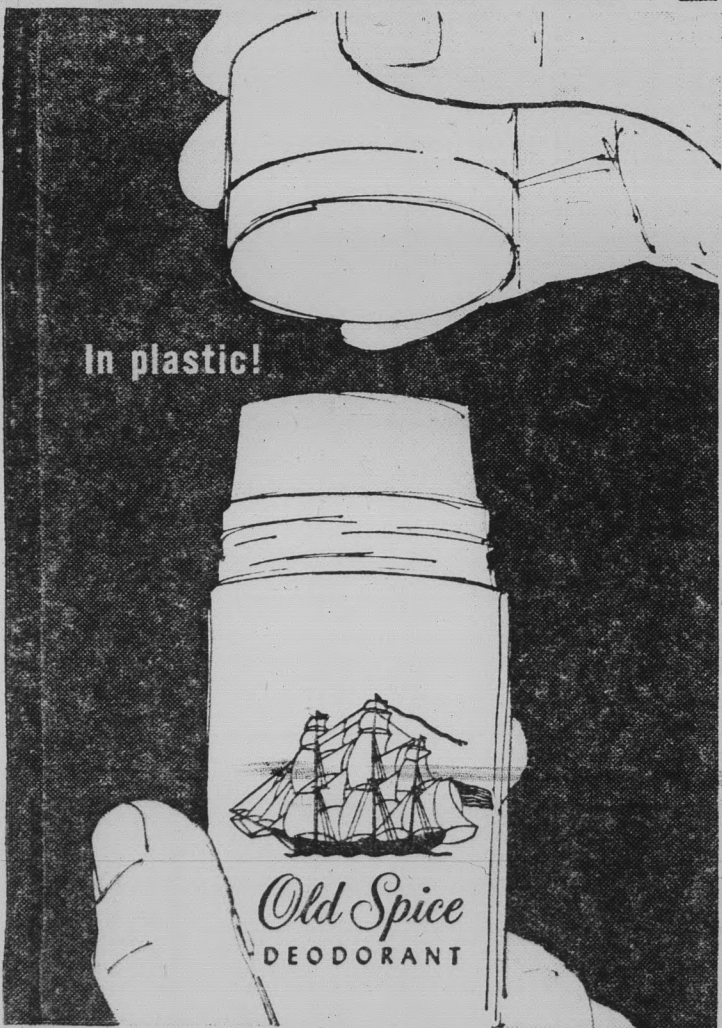
A new reading area has been provided, where the reference book materials are located. The stacks located near the public card catalog now include bibliographic materials and are called Bibliographic Center.

**Your HEALTH is our BUSINESS** Phone **WO 7-2922**



**LAIRD PHARMACY**  
CORNER FIFTH & MILL, TEMPE

# MEN!



## Here's deodorant protection YOU CAN TRUST

Old Spice Stick Deodorant...fastest, neatest way to all-day, every day protection! It's the active deodorant for active men...absolutely dependable. Glides on smoothly, speedily...dries in record time. Old Spice Stick Deodorant - most convenient, most economical deodorant money can buy. 1.00 plus tax.

**Old Spice STICK DEODORANT**  
SHULTON

..... ON STAGE! .....

Now thru Sunday  
**GYPSY**  
**ROSE LEE**  
(in person)  
in  
**"AUNTIE MAME"**



Phone AM 6-4487, Phoenix  
Tickets also at Leonard's - Park Central & Desert Squire - Scottsdale  
Coming - Feb. 20 thru 25  
WALTER SLEZAK  
in **"My 3 Angels"**  
RICHARD CHARLTON'S  
**SOMBRERO PLAYHOUSE**  
4747 N. 7th St. - Phoenix

**IT'S TIME TO WRITE YOUR NAME Permanently IN TEXT BOOKS**

**The Refund Period Has Now Ended**

**WE ARE BUYING USED BOOKS ON A LIMITED BASIS**

"TRY YOUR CAMPUS BOOK STORE FIRST"

# UNIVERSITY BOOKSTORE

Bookstore Hours:  
8 A.M.—7 P.P., Monday Through Thursday  
8 A.M.—4:30 P.M., Friday Only  
9 A.M.—1 P.M. On Saturday

## SIC FLICS



**"Another Chesterfield? But I just gave you one last week!"**



**21 GREAT TOBACCOS MAKE 20 WONDERFUL SMOKES!**  
AGED MILD, BLENDED MILD - NOT FILTERED MILD - THEY SATISFY

# Conference Guests To Be NEA Heads

The state-wide Audio-Visual Education Conference which opened in the Social Science building patio yesterday will feature addresses by the president and executive secretary of the department of Audio-Visual Instruction of the National Education Association.

This morning at 10:30, Dr. Anna L. Hyer, executive secretary will speak on "The Focus of Learning" in the MU ballroom.

Dr. Ernest Tiemann, president of the department, will be the speaker at the annual dinner meeting at 6:30 tonight in the MU ballroom.

The theme of this year's conference is "Look-Listen-Learn." The conference includes displays

by 40 exhibitors from California and Arizona. They will display the newest AV equipment and materials in teaching.

## Judaic Talks Scheduled

Hillel and B'nai B'rith will sponsor a series of four lectures on "Introduction to Judaism" this semester.

The first lecture of the series, "Talmud and Modern Man," will be discussed by Rabbi Tuttenhower at 7:30 p.m. Wednesday, in the MU upper lounge.

The public is invited to attend these lectures. There is no admission charge, and refreshments will be served.

## Student Orators To Come Here For Tournament

Approximately 300 high school speakers are expected to compete in the sixth annual high school forensic tournament tomorrow at ASU.

The speakers will represent schools in Arizona, Nevada and California.

Events scheduled include debate, extemporaneous speaking, original oratory, dramatic reading, oral interpretation, impromptu speaking and listening comprehension.

Freshmen and sophomores will be eligible for the novice division, juniors and seniors for the senior classification.

## Course Drops To End March 19

Drop-add terminated Monday Feb. 12, at 4 p.m. Courses may be dropped until 4 p.m. March 19, the end of the first six weeks of the semester. Add period ended on Feb. 12.

**Chevrolet**  
SPECIALIST  
Auto Repairs  
**BRIT SMITH Car Co.**  
802 MILL

## NOW! Coin-Operated Dry Cleaning Center

10 LBS.

Only 2.00

## HOLIDAY LAUNDRY

Open 8-8 Daily — 10-6 Sunday  
1015 West 8th St., Tempe

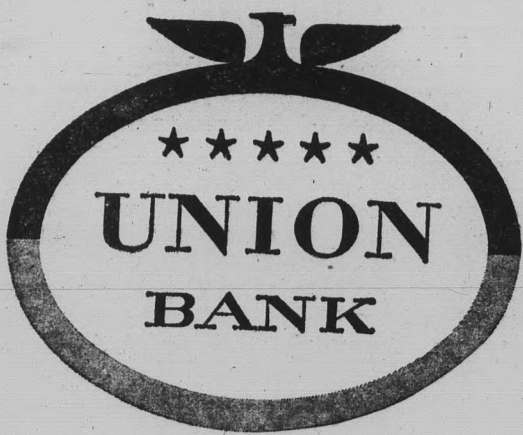
- Save Time . . .
- Save Money . . .
- Professional Job . . .

**Malcott's**  
Stein and Sirloin

4817 E. Indian School

Now Playing —  
**"Rose Murphy Trio"**  
"Ramsey Lewis Trio" Opens Feb. 20

ALL YOU CAN EAT!  
CHUCK WAGON \$1.95  
Char Broiled Steak Dinner \$1.95



### THE NATION'S LEADING GROWTH BANK

- Challenging Assignments
- Accelerated Training
- Excellent Salaries

Interviews, February 27, 1962



## Keep Your Eye On The Cardigan



All good sports like the easy-swinging comfort and bold good looks of the 100% alpaca cardigan. A new shipment has just arrived including pewter, black, gold, olive, tiger or bone. S-M-L-XL. \$27.50

### Martin's "Snorkel" Airlite Jacket

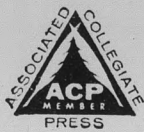
Designed for golfers and motorists. The "snorkel strip" lets the jacket "breathe." Water repellent, washable cotton poplin. Amazingly light in weight and wonderfully comfortable. Sizes 36-44. \$12.95

## Hanny's Harsity Shops

See DOWNTOWN CHRISTOWN  
Campus Representatives: Ted Lorber,  
Renz Jennings, Rick LeSueur



THE STATE PRESS, distributed by the campus chapter of Sigma Delta Chi under the direction of Circulation Manager Mike Barrick, is the official campus newspaper of Arizona State University. It is published each Wednesday and Friday throughout the school year, excepting holidays, and is entered as second class matter at the Tempe, Arizona, Post Office under the Acts of March 3, 1879, and August 24, 1912. Subscription price, \$3 per school year.



THE STATE PRESS is a member of the Arizona Newspapers Association, Associated Collegiate Press and National Advertising Service, Inc.

EDITOR-IN-CHIEF ..... BILL FLICK

NEWS DEPARTMENT

MANAGING EDITOR ..... BARBARA MARLOWE

CAMPUS EDITOR ..... BILL OVEREND

ASSISTANT CAMPUS EDITOR ..... TWILA DRUMM

NEWS EDITOR ..... ROSALYN WHITNEY

ASSIGNMENTS EDITOR ..... MARY GORMAN

FEATURE EDITOR ..... JANET WOLHETER

COPY EDITOR ..... GARY OLMSTEAD

CHIEF PROOFREADER ..... BOB ZACHE

ADVERTISING MANAGER ..... HAL HUBELE

SPORTS DEPARTMENT

SPORTS EDITOR ..... BOB EGER

ASSISTANT SPORTS EDITOR ..... BOB JACOBSEN

### OFF THE EDITOR'S DESK



## calendar is packed; it must be spring

Now that we've got our feet on the ground and the regular grind of classes, den breaks and cuts have regained existence, we would like to provide a special service for those of you who desire to plan what you will be doing a week or month from today.

So to the organized persons on this campus (if there are any), and to all other interested individuals — here's a brief look into the future . . . a look at what's up for ASU during this most enjoyable time of year—SPRING.

Get out your attractive, pale yellow student "Jot It Down" calendars and make note:

**IN THE NOT TOO** distant future such annual events are scheduled as the Blue Key Musicale, Friday and Saturday, March 2 and 3 . . . the ROTC Military Ball, Friday, March 16 . . . and Greek Week, beginning Friday, March 30 and continuing through Thursday, April 5.

April will be a busy month with ASASU elections scheduled for the 11th and 18th, both Wednesdays . . . the MU Birthday Party is set for Saturday night, April 14, and there's a good chance the annual Blue Key carnival will take place the same night in conjunction with the party.

We'll have a brief (and that's an exaggerated term—the wrong way we're sorry to say) Easter vacation, beginning Friday, April 20, and abruptly ending the following Monday.

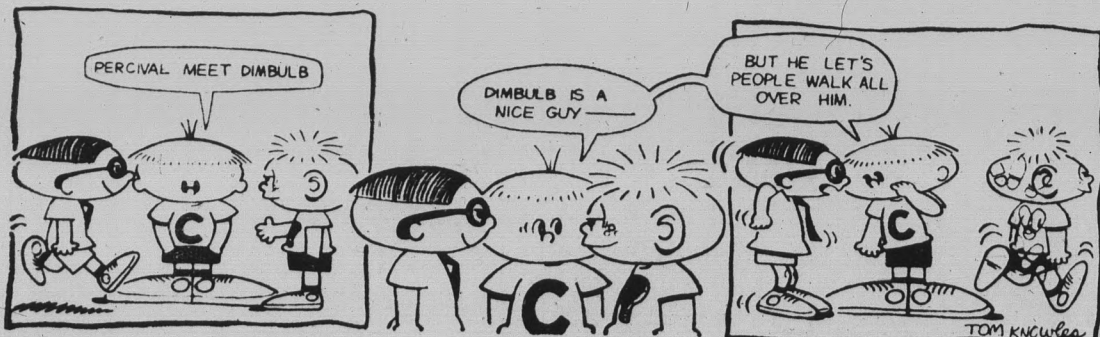
**MAY WILL WITNESS** such events as the Payson Workshop, Friday; Saturday and Sunday, the 4th, 5th and 6th . . . and the Naiads water show on the same Friday and Saturday. The month of reckoning and rejoicing will probably see two other annual events, both popular and well-attended . . . the Interfraternity Council Sing and Water Sports Day. We say probably, because neither has been calendared yet . . . but that's rather typical for these two events.

There it is. Things are going to be just a bit busy at State.

Get organized now or you'll never make it.

**CLEARING THE DESK:** Ever fill out a drop-add form at ASU? There's a nice little motto at the top . . . it say's BEAR DOWN. Hello, UofA!

### CLAUDE HOPPER



## COVERING COLLEGE AVENUE

# foresight: mankind's great innate desire

By BABS MARLOWE

One of man's greatest wishes is to have the vast amount of foresight as he does hindsight.

Politicians and statesmen perhaps wish for this more than any other desire. So often we can see what is wrong with something, begin legislation and wonder just what the outcome will be. So many decisions must be made on hindsight, perhaps best called experience.



One of the great Americans, Patrick Henry, once said, "I have but one lamp by which my feet are guided, and that is the lamp of experience."

Looking forward, this is election year and for the first time, many of us will be able to vote. Each of us is qualified to vote in ASU elections, and, already, prospective candidates are gathering ideas, and manpower, to build platforms and stage campaigns.

Gary Walker stressed his desire to represent the students, realizing his own limitations and the limitations of the office. Since his successful campaign last spring, he has spoken at various civic groups throughout the Valley.

### COMING UP . . .

## cage playoffs to be discussed

The Sun Devils are now Border Conference basketball champions. As a result, they are guaranteed an opportunity to begin a trek which could lead to the collegiate basketball championship of the U.S.

Therefore — because we do not feel that this championship is an impossible accomplishment — the State Press will use news and editorial space to explain the various playoff games and tournaments which the Devils may see action in.

Also, we will attempt to aid in building as much student support as it will take to get ASU students to attend any or all of these games.

Sports Editor Bob Eger will explain the details on Wednesday's front page, and he and the editor-in-chief will co-author an editorial in the same issue in an effort to create spirit and interest.

He feels there should be a student board to continue and expand just the thing he personally has been doing.

Volunteers are currently calling students to hear their complaints and suggestions about student government. Most students complained about the parking situation, dorm hours and lack of a longer spring vacation.

Two means of feeling out student opinion were also established this year: the Plebiscite and the President's Cabinet. Gary said, speaking for the student body, "You have to . . ."

The student body officers are more than willing to discuss the responsibilities, both implied and written, of their offices to anyone interested.

Students have stated, to the point of complaint, that the shock absorbers on their cars are not what they used to be since the last "deluge." They cite the parking lot to the west of Palo Verde and behind the Campus Drug store as the prime example.

Sahuaro Hall residents seem to have some trouble crossing the highway and feel that a stop light would be appreciated. They say it's either a stop light or practicing with the track team! Maybe Coach Castillo could help them out at that.

By the way, Sahuaro B won the Cactus Bowl played just before Christmas vacation.

And that's 29!

### LETTERS TO THE EDITOR

## commencement becoming political?

To the Editor:

It has been announced that George Romney, now campaigning for nomination to the office of governor of Michigan, is to be our commencement speaker in June.

Last year a brilliant graduate (Ina Abrahams) decried the fact that we, the students and graduates of ASU, are given no voice in who will speak at the commencement exercises.

Last spring it was campaigning Senator Goldwater, now it is candidate Romney . . . what has graduation become?

Apparently, just another platform in the foundation of politician's egoistic desires.

All right, let those political aspirants have their say . . . but leave commencement speeches to those who will undertake sincerely to speak to and for their listeners. And the listeners are YOU — the readers of this paper, the 1962 graduates and all future graduates.

If you have an opinion on this matter, let Dr. Durham know about it. Write to him. Maybe he'll show us that he is the president not just "of" ASU, but "for" ASU as well.

S. L. Fineberg

### EDITORIALLY SPEAKING

## campaign for dorm hours begins

"We want longer women's dorm hours!"

Those six words are heard rather frequently around this place . . . and a lot of different people shout them.

But just talking about this thing will not get the job done. No one shouted Arizona State College into Arizona State University back in 1958. It took a lot of work on the part of many serious-minded, mature individuals to get the job done.

And thus is the case with the dorm hours situation at Arizona State.

Therefore, if enough students at ASU really want women's dorms hours eased and if enough students are willing to put in a large amount of time in tactfully seeking to accomplish this goal, then we feel it is time to begin a campaign aimed at this goal. In short, we pledge our support.

Why?

Because we do feel this is a sensible, deserving request to present to the administration. And because we feel it is our duty — IF THE MAJORITY OF STUDENTS SO DESIRE — to represent student opinion in this matter, and thereby aid in attempting to accomplish this goal.

THUS: We consider this editorial the first step in the campaign . . . a campaign which has been used in the past at ASU as a plank in the platforms of student body office-seekers.

We also consider this editorial a plea to you . . . a plea asking you — first of all — are you in favor of this campaign? . . . and — secondly — will you work for it?

Factually, we suggest: (1) that sophomore, junior and senior coeds who maintain a satisfactory grade index be granted 11:30 p.m. late nights during the school week; (2) that the required grade index be a 2.25, and (3) that coeds who fall below this index maintain freshman hours, which would be 10:30 p.m. during the week.

There it is. Accept it, reject it, alter it.

But — regardless of what you come up with — SUPPORT IT!

by tom knowles

## Low Prices Are Plan Feature

Associated Students health and accident insurance plan provides the student with the greatest coverage at the lowest prices, according to Dick Finley, executive manager of Associated Students.

Medical care accompanying serious illness and accident is

very expensive, he explained. He advised ASU students to check with their parents and if they do not have personal coverage, to protect themselves from financial catastrophe by participating in the Associated Student health and accident plan.

## Career Day Set At ASU

ASU will host about 300 high school juniors from Phoenix Saturday under the auspices of Careers for Youth.

The students will be guests at a 9 a.m. breakfast in the MU, after which they will be taken on a tour of the campus by the women of Spurs and the men from Theta Delta Chi.

### Bobbies Flowers

### Flower Gifts...

20 E. 5th St.  
WO 7-2972 — WO 7-4274

For Parties . . .  
Large Artificial  
Plants For Rent

**Chevrolet**  
SPECIALIST

Auto Repairs

**BRIT SMITH Car Co.**  
802 MILL

## New low-cost luxury in two just-out Chevy II Nova sedans

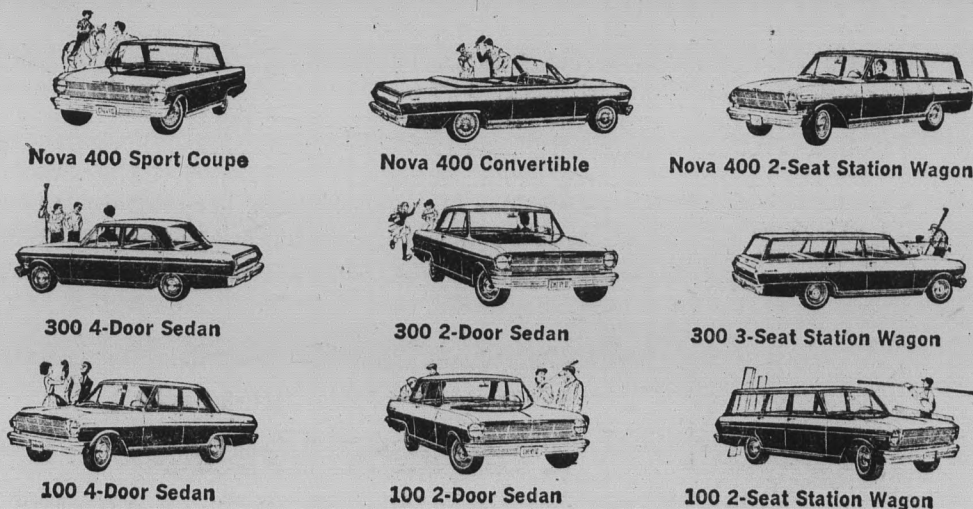


• Luxury and low cost have never been more beautifully blended than in these two newest additions to the Chevy II line! Like their running mates—the Nova 400 Sport Coupe, Convertible and Station Wagon—they have the same more-for-your-money features that have made Chevy II the winner of *Car Life* magazine's Engineering Excellence Award for 1962. Soft-riding new Mono-Plate rear springs, proved in the equivalent of 2,000,000-plus test miles. Thrifty 6-cylinder engine

that gets more "git" out of a gallon of regular. Body by Fisher roominess that fits big families and small parking places. An easy loading vacation-sized trunk. New ideas that save on upkeep. Plus trim, tasteful styling, inside and out. See the smart, sassy, saving Chevy II Novas—and the other sensibly sized, sensibly priced Chevy II models—at your Chevrolet dealer's.

### Chevy II Nova

**CHEVROLET** New Chevy II Nova 2- and 4-Doors—plus a wonderful choice of other Chevy II models



See the new Chevy II at your local authorized Chevrolet dealer's

## PRETTY COED OF THE WEEK



Photo by Ralph Forney

### miss pinky shoemaker . . .

attractive asu tennis star, sophomore resident of mac 'a', selected as this week's pretty coed

### ATTENTION

- FRATERNITIES
- SORORITIES
- CLUBS

New Low Air  
Fare To Europe

For Approved  
Groups Of 25 Plus  
New York To London

\$300

Each Jet  
Round Trip  
(Sub. to C.A.P. App.)

"The Student Travel Center"

### UNIVERSAL TRAVEL

18 E. 5th  
WO 7-1673



We all *make mistakes...*



### ERASE WITHOUT A TRACE ON EATON'S CORRASABLE BOND

Typing errors never show on Corrāsable. The special surface of this paper makes it possible to erase without a trace—with just an ordinary pencil eraser. Results: clean-looking, perfectly typed papers. Next time you sit down at the keyboard, make no mistake—type on Corrāsable!

Your choice of Corrāsable in light, medium, heavy weights and Onion Skin. In handy 100-sheet packets and 500-sheet boxes. Only Eaton makes Corrāsable.

A Berkshire Typewriter Paper



EATON PAPER CORPORATION  PITTSFIELD, MASS.

**Fads And Fashions**

**Java Natives And French 'Hip-Huggers' Influence New Looks In College Fashion**

BY TWILA DRUMM

College-wise, the trend in fashion (whether it's for males or females) seems to be heading for color—everywhere!

In dresses, coats, skirts and shirts, we are experiencing "The Period of Color," covering nearly every shade in the spectrum.

From the natives in Java comes an all-cotton cloth called batik. This brightly-colored material is fashioned in men's sport clothes. The unique aspect of this hand-screening process is that no two pieces of cloth are identical.

Not as expensive as it sounds, sport coats are in the \$38 range; walking shorts, \$8.95, and belts around \$2.50.

Speaking of sport coats in the batik, there are lighter shadings, with a popular combo of blue and olive. There is a renewed interest in light-blue denim blazers.

"The most basic article of wearing apparel in the college man's wardrobe is the single-breasted navy blazer," the retailers explained.

Since ASU is located in the Valley of the Sun, what could be more appropriate for coeds than the stretch denim "hip-rider" pants.

A boy's levi for girls, these "hip-huggers" originated with shortie tops in St. Tropez, a summer resort in the south of France. The "timid" tomboy can wear them with a long shirt.

Cotton-knitted coordinates are ideal for this time of year. In between seasons, they have the advantage of being light-weight plus extra warm.

Two fashion influences sweeping college campuses is

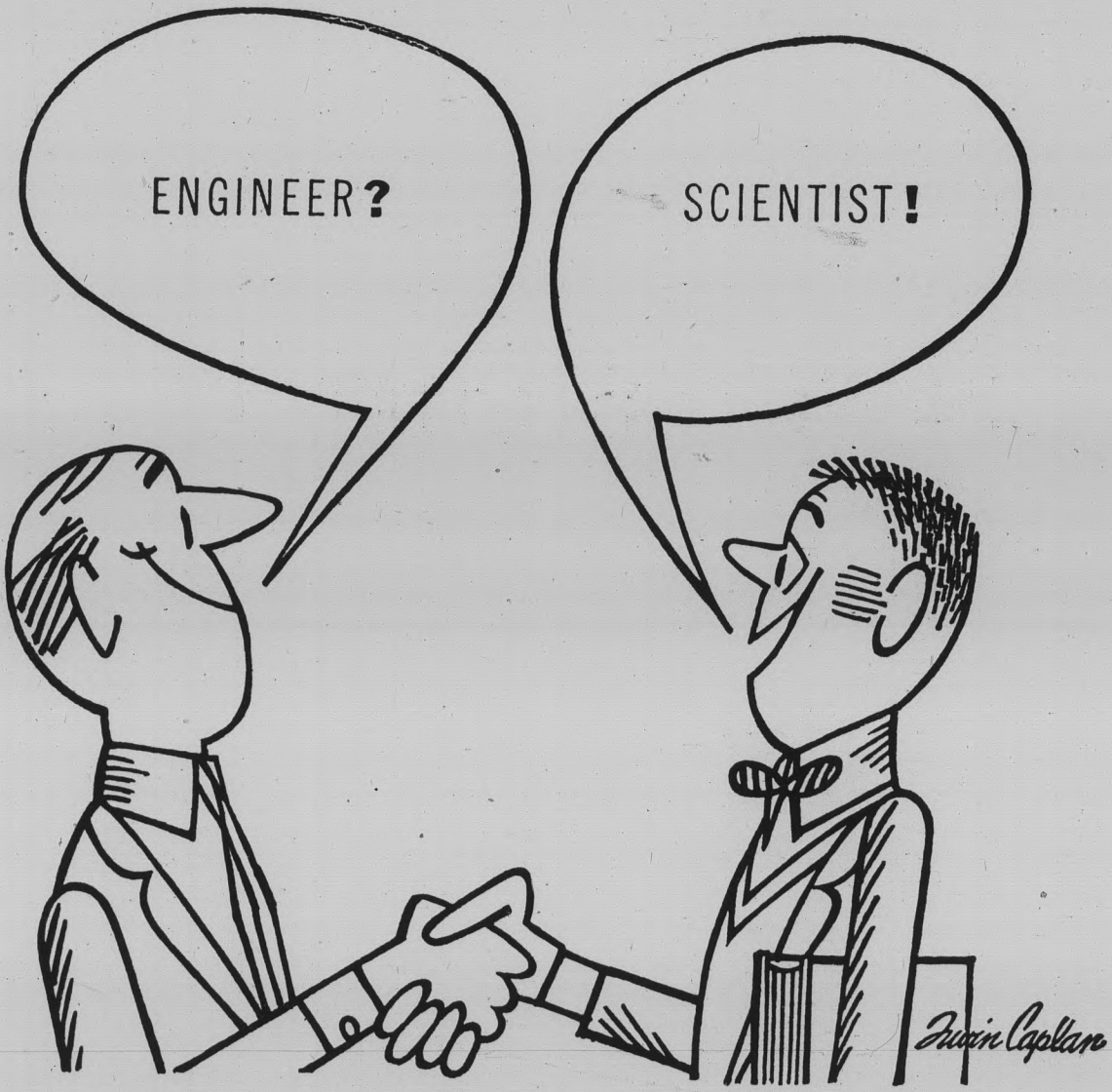
the "feminine" and the "twist" look.

The "fad and look" type clothes are fun-clothes, said local merchants, but modern styles are still in good taste, lending themselves to college students' fashions.

*Marge Smith*  
**FLOWERS**  
"Tempe's Most Popular Florist"

Evenings **722 MILL AVENUE** Daily  
WO 7-5020 WO 7-0271

For Some  
**"DOWN RIGHT"**  
Good  
Mexican Food Try  
**CHICO'S**  
RESTAURANT\*  
FINE MEXICAN FOOD  
1120 East Apache Blvd. — Tempe  
\*Air conditioned of course



**We're looking forward to meeting you**

We'll be on the campus on the dates listed below, ready to give engineering and science seniors information on space-age careers in a dynamic industry. If you are looking for a company offering assignments on programs of unique interest and career potential, you'll be interested in the advantages Boeing can offer you.

Boeing, for instance, is a major contractor on such advanced programs as the Saturn S-1B advanced first stage booster, the Dyna-Soar manned space glider, the solid-fuel Minuteman ICBM, and the Bomarc defense missile system. Boeing is also the world's foremost designer and builder of multijet aircraft, including the eight-jet B-52H missile bomber, the KC-135 tanker-transport, the C-135 cargo-jet, and the famous Boeing 707, 720 and 727 jetliners. In addition, Boeing's Vertol Division is one of America's leading builders of helicopters.

Research projects at Boeing are under way in such advanced fields as celestial mechanics, solid state physics, nuclear and plasma physics, flight sciences, space flight and propulsion.

Expanding Boeing programs offer exceptional opportunities to holders of B.S., M.S. and Ph.D. degrees in aeronautical, mechanical, civil, electrical-electronic and industrial engineering, and in engineering mechanics, engineering physics as well as in mathematics and physics. At Boeing you'll work in a small group where individual ability and initiative get plenty of visibility. You'll enjoy many other advantages, including an opportunity to take graduate studies at company expense to help you get ahead faster.

Drop in to your Placement Office and arrange for an interview. We're looking forward to meeting you!

Thursday and Friday — March 1 and 2

**BOEING**

Divisions: Aero-Space • Military Aircraft Systems • Transport • Vertol  
Industrial Products • Boeing Scientific Research Laboratories  
An equal opportunity employer

Ever Take A

**MUGS UP**  
*Bath?*



Our Large Root Beer Is So Big That Midgets Have Been Known To Bathe In It . . .

**MUGS UP**  
Root Beer

503 E. 8th Street

"Where The Nickle Is Mighty"

## Churches Plan Full Slate

ASU religious organizations have scheduled a busy week-end slate of parties, dinners and discussions.

Tonight, the Wesley Foundation will host a "Near Valentine's Dance" from 9 to 12 at the First Methodist church social hall.

Sunday, local church groups will combine efforts to sponsor a panel discussion at 6:30 p.m. in the MU upper lounge.

The Canterbury Association will provide a free parish supper at St. Augustine's Church at 6 p.m. Sunday.

## It's Twistin' At Wilson!

Wilson Hall will sponsor a twisting party on Wednesday in the dorm lobby from 7:30 to 10 p.m.

The instruction will be given by the Wilson Hall girls, and a special prize will be presented to the "top twister."

Price of admission is 50 cents with the proceeds being donated to the Pleiades scholarship fund.

### Chevrolet SPECIALIST

### Auto Repairs

BRIT SMITH Car Co.  
802 MILL

## Campus Premiers

# Cosner Viewers Can See Actual Olympics In Action

By TWILA DRUMM

Students and faculty have the opportunity to view one of Germany's great cinema classics this evening in Cosner Auditorium at 7:30.

The film, "Olympia," is not well-known, as it played on a theatrical basis for only a few weeks in 1940, having been withdrawn as a result of the international situation.

The Berlin Olympic games provide the subject matter.

A film of tremendous appeal both to motion picture and athletic fans, "Olympia" consists of

two separate parts, complete within themselves.

Part I will be shown tonight at Cosner. It consists of an abstract introduction, the carrying of the torch to Berlin, plus track and field events, including the famous Jesse Owens races.

The entire project was conceived and directed by Leni Riefenstahl, an artistic genius and competent master of the film craft. More than two hundred and forty hours of footage were exposed, with the aid of over 100 cameramen. From this mass of film, Miss Riefenstahl, alone, edited the work into its final shape, a project which covered 18 months.

A donation of 25 cents per person is being asked for all films in this semester's series by the Cultural Affairs Board.

10 - 6 Mon. thru Sat.  
10 - 9 Thursday

## The Village Shop

a shop designed with the college girl in mind

967-1981

616 MYRTLE TEMPE

# Girl Watcher's Guide

Presented by Pall Mall Famous Cigarettes



First field trip

## LESSON 7- Keep moving

One of the most important rules of girl watching is this: keep moving. In fact, it is always a good idea not only to move, but to appear to be going somewhere. (This is especially important on group field trips.) Beautiful girls, although they enjoy being watched, are instinctively suspicious of strollers and downright fearful of loiterers.

The man who is walking briskly, who looks like he's "going places," makes a better girl watcher. For one thing, he sees more total girls and in the end he enjoys his hobby more. (If you are planning an extended field trip—to Paris and Rome, for example—be sure to pack a couple of cartons of Pall Mall.)

### WHY BE AN AMATEUR? JOIN THE AMERICAN SOCIETY OF GIRL WATCHERS NOW!

**FREE MEMBERSHIP CARD.** Visit the editorial office of this publication for a free membership card in the world's only society devoted to discreet, but relentless, girl watching. Constitution of the society on reverse side of card.

This ad based on the book, "The Girl Watcher's Guide." Text: Copyright by Donald J. Sauer. Drawings: Copyright by Eldon Dedini. Reprinted by permission of Harper & Brothers.



Pall Mall's natural mildness is so good to your taste!

So smooth, so satisfying, so downright smokeable!

## WALLY'S CAFE

Good Things to Eat and Drink

1133 Normal Avenue  
"Across the Street  
From East Stadium  
Open 7 Days Week  
6:30 A.M. TO MIDNITE

## Campus Classified

Regulations: For students and faculty only of Arizona State University. Cash in advance. Submit to Room 207, Memorial Union Building, by noon two days before date of publication: noon Monday for Wednesday's issue, noon Wednesday for Friday's issue. Rates: 3 cents per word, 50 cents minimum charge.

### APARTMENT

New furnished apartment, designed for ASU married couples. \$85 year around rate includes all utilities. Inquire Apt. 9 at 705 Krueger or call WO 7-5430.

### RIDERS

Share ride to and from ASU to Maryvale. Call BR 2-1056 after 6 P.M.

### FOR SALE

24-inch K & E mahogany slide rule, leather case and instruction book. \$14. WH 5-4458.

Motorcycle. 1959 Triumph T-20-S 200 CC. Rebuilt Engine, transmission. \$325. YO 3-3753.

1960 Renault Dauphine. Radio, Heater. 62 License. Original Owner. Low Mileage - Clean. Call WH 6-2228.

### FOR RENT

Available March 1. Attractive unfurnished two-bedroom apartment, East Phoenix. 10 minutes from ASU. Refrigeration, carpet, drapes; built-in stove; hot water. \$95 month. Phone 275-3339 evenings.

### TRAVEL

EUROPE for \$495 round trip Phoenix to Copenhagen. Depart June 11 on Major Airline DC7c FIRST CLASS. This opportunity available to students, faculty (wife and children). Charter requires 80 people. Deadline March 20. For more information contact The Arizona Student Faculty Charter B13 Box 191, Phoenix, or call 938-0000.



TO YOUR **HEART'S** CONTENT!

*in the heart of Tempe*

Americana Shop  
Bob Brickie  
Furniture

Bonnie Sue Fashions  
Celia's Fashions

Center Hardware

El Rancho Market

Erickson's  
Handcrafts

First Federal  
Savings and Loan  
Association

First National  
Bank

GallenKamps

Happy House Shop

Hill's Record Shop

House of Pancakes

Jam's Restaurant

King's Fashions

Little Travelers

Pioneer Camera  
Shop

Porters

Ray's ASU Barber  
Shop

Rosamond's

Ryan-Evans Drugs

S&H

Redemption Center

Sewing Basket

Sherwin-Williams

Tee Pee of Toys

Top's Liquors

W. T. Grant Co.

ZZZona Laundry  
& C/ers

28...  
**T**

**Fine Stores to Serve You**

*...easy to shop...easy to park (free)  
...everyday low prices*

**Tempe**  
*Shopping* **Center**

*on mill avenue - 8th to 10th-streets*

OPEN EVERY THURSDAY  
EVENING UNTIL NINE

# SLACK SPECIAL PLAIDS — CHECKS

Values To \$14<sup>95</sup> Now \$7<sup>00</sup>

Values To \$17<sup>95</sup> Now \$9<sup>00</sup>

WO 7-5457



THE  
*Americana*  
SHOP

WO 7-5457

TEMPE SHOPPING CENTER



Graduating Ph.D's, MS's, BSEE's

Exceptional  
opportunities  
with

**SYLVANIA**  
near  
**SAN FRANCISCO**

Sylvania Mountain View, 40 minutes south of San Francisco, offers you challenging scientific work on defense systems, plus ideal living conditions.

The work involves systems studies, design and development in frequency ranges from DC to daylight; it offers growth into scientific or management positions of responsibility.

Immediate openings exist in the following fields:

- Operations Research
- Systems Analysis, Design
- Design and Development of:
  - Antennas, Receivers, Transmitters,
  - Transceivers, Servos
- Analog Computers
- Mechanical Design
- Field Engineering

Sophisticated San Francisco's theatres, restaurants and major league sports are minutes away. The Pacific Ocean is near; hunting, fishing and skiing 3 hours' drive.

Furthering your education? Sylvania encourages, sponsors graduate study at Stanford and other nearby institutions.

See your Placement Officer now to talk with Sylvania's representative

**ON CAMPUS, MARCH 1**

or write J. C. Richards, Sylvania MVO, Box 188, Mountain View, California

Sylvania also offers opportunities at Eastern, Midwestern facilities. Immediate openings for February graduates. U.S. citizenship required. An equal opportunity employer.



## After Hours

### Greek Rush: The Big Push

By BILL OVEREND  
Campus Editor



Sunday heralds the annual attempt by ASU fraternity men to organize an effective spring rush. And, although past second semester rush programs have traditionally blossomed into fantastic flops, it looks like 1962 might be quite a year for pledge classes. Never before has the pressure been so great on individual houses. Last semester's minute clusters of initiates, coupled with the new Fraternity Row, should combine to force fraternities into an all-out rush war. Already, scores of bewildered independents are being invited to parties by strangers in white shirts and ties. The girls get into the act Monday with the start of open rush for sororities. Independent females who've suddenly found the urge to go Greek should check with Dean Dorris' office, fill out the necessary information sheets, and strike out for Palo Verde.

Greeks aren't the only ones scouting around for new blood these days. **Off Campus Men** is crying for members, and has planned a very attractive program for attracting them. There's an exchange with **Phrateres** Monday at 7:30 p.m. in Clancy's, a couple of parties, and still more exchanges in the near future. With student interest, this organization could easily regain its status as one of ASU's top boosters, so if you live off campus, make the exchange Monday night and see what's cooking. Incidentally, **Off Campus Men** has recently changed its meeting time and place to 3:30 p.m. on Mondays on the Varsity Inn patio. This could be a group to watch, especially if their rebuilding program succeeds!

#### Greeks at a Glance

Party life is perking up for ASU fraternities these days. One of the year's more original capers was the **Delta Sigma Phi** "Canal Street Stomp" Saturday. Dress for the affair was Mexican with music by the "Swingin' Blazers." **Theta Chis** are getting ready for their annual "Gangster Party" tonight at their house. A theme party, the event will feature costumes and skits.

Turf Paradise's feature race tomorrow is the **Sigma Phi Epsilon** Purse, in honor of the ASU chapter's tenth anniversary as a national fraternity. Sig Eps will celebrate with an annual Founders' Day banquet at the Skyriders Hotel, after the **Golden Hearts**, their auxiliary, presents a trophy at the track. Alumni of **Phi Kappa Psi** will hold their twelfth annual Founders Day banquet tonight at the Westward Ho. The fraternity, 110 years old, has just established a colony at ASU, whose members will join the UofA chapter at the banquet. On the convention scene, **Sigma Nus** traveled to California over the weekend for a divisional conference at Stanford University.



### Monogramming Service

STATIONERY — NAPKINS — XMAS CARDS

FOR FAST SERVICE

**HAPPY HOUSE SHOP** Tempe Center  
WO 7-5353

### "Years Ahead" Flight Training In The New Shinn - 2150



MODERNIZED GROUND SCHOOL  
FOR PILOTS & NON-PILOTS  
**Amos Flight Operations**

A Private License is a Must In Modern Business

Don Amos — Class of '56

Phone BR 5-7291

SKY HARBOR

# Rose, Davies Enter Meets

John Rose and George Davies of Arizona State travel East this weekend for competition on the indoor circuit.

Rose will compete tonight in the New York Athletic Club meet in Madison Square Gar-

den. He's listed as the favorite in the pole vault, with 16-foot vaulter John Uelses unable to compete because of illness.

Davies, competing unattached, will appear in Louisville, Ky., tomorrow night. If travel arrangements can be made between New York and Louisville, Rose will also enter the Kentucky meet.

Rose has been over 15 feet four times already this season and holds victories in the Los

Angeles Invitational and the Winnipeg Meet of Champions in Canada. He finished behind Uelses in an earlier meet in New York.

Davies finished second with 15-3½ in the Los Angeles Times indoor games last week. He set a world mark of 15-10¼ last spring, but the International Amateur Athletic Federation has not recognized it—apparently because it was made with a glass pole.

## ASU, League Can't Agree

Arizona State and the rest of the newly-formed Western Athletic Conference are having difficulty agreeing on how to divide football gate receipts.

ASU is backing a plan whereby each school keeps all its home football income while the rest of the conference wants to divide the take for home games.

The latter method would obviously be an aid to the other teams, because ASU has the largest stadium in the loop and usually fills it. Conference opponents could increase their revenue by taking a share of the ASU gate and then offering a share of their own lesser gate when they have home games.

ASU naturally would benefit by keeping its home gate receipts. Both sides are firm on the matter. Athletic directors of the six conference schools decided in a Denver meeting to leave the final decision up to the presidents of the schools involved.



**ARTIST SUPPLIES**  
Crafts • Hobbies  
Decorating Materials  
Picture Framing  
Tempe Center • WO 7-4482



*Wish You  
Could Fly?*

**Start Learning  
TODAY**

*the easy, economical*

**Piper COLT Way!**

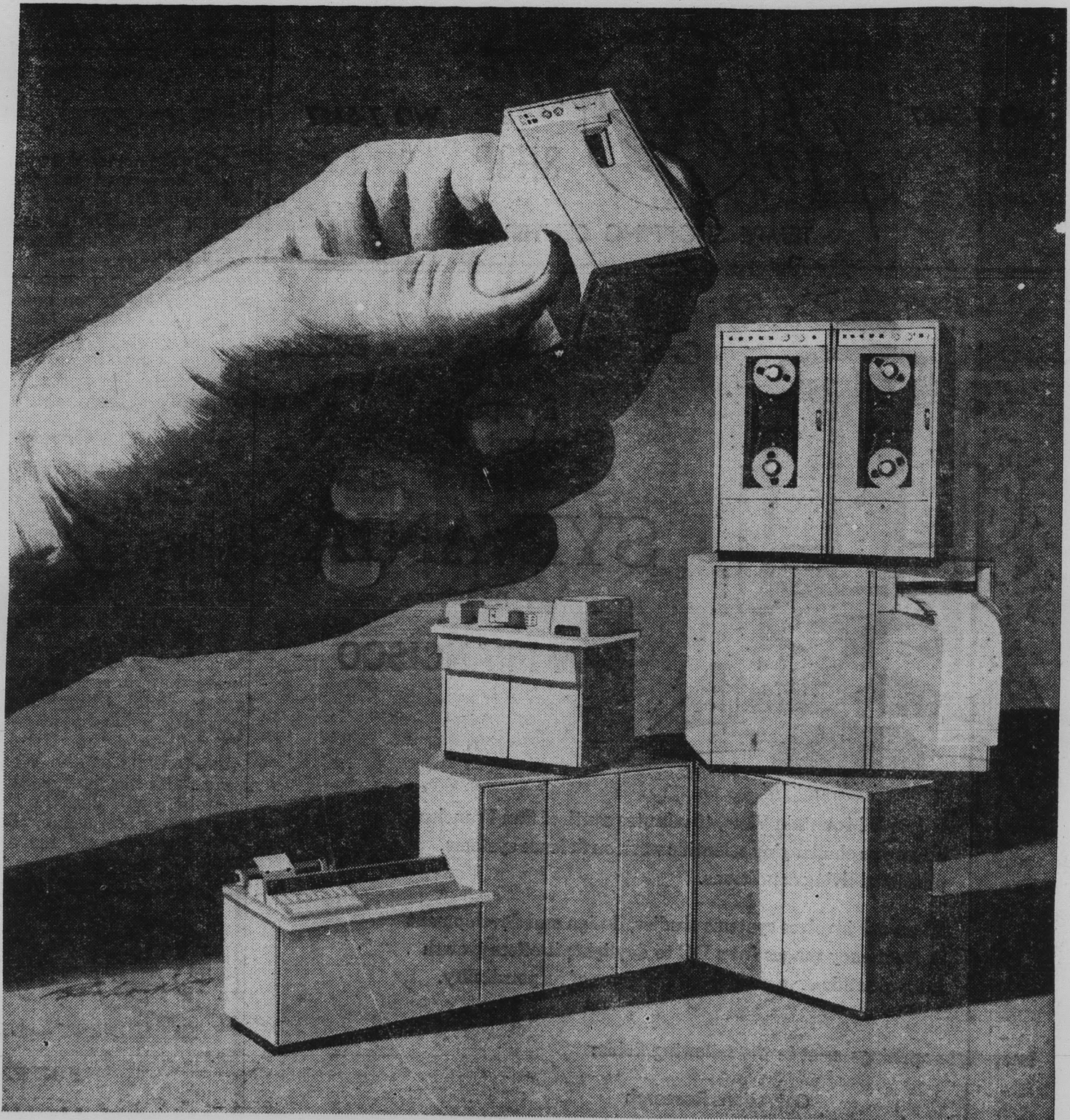
Complete Private Pilot course at a new low cost. We have 100% bank financing.

**BRAND NEW MODERN AIRCRAFT • EXPERT GOVERNMENT-RATED INSTRUCTORS • NEW PIPER AUDIO-VISUAL GROUND SCHOOL COURSE.**

Call

**ANDERSON AVIATION**

Sky Harbor Airport  
Phone 275-5741



## BUILD YOUR FUTURE AT NATIONAL'S ELECTRONICS DIVISION IN LOS ANGELES

Make that first step a big one—into an exciting future with NCR's Electronics Division. If you qualify for one of the careers now open at NCR in digital computer systems, you'll work on advanced projects with many of the key people in your field—men who created the National 315 Electronic Data Processing System and the brilliant CRAM magnetic-card concept in random-access memories.

At NCR, you will be part of a fast-moving organization. In less than two years the Electronics Division's facilities have tripled in size, and further expansion is in progress as a result of the heavy demand for the National 315 System.

The benefits for which you are eligible are broad. They include a full-tuition-refund plan for advanced studies and payment of membership in professional societies. You will enjoy not only a substantial salary but the opportunity to go as far as your own creativity can take you.

Because its major activity is development of systems for established commercial markets in 120 countries, the Electronics

Division is advancing on exceptionally solid ground. If you would like to make your professional start with a major contributor to one of the fastest growing fields of modern technology, be sure to reserve the date below.

**INTERVIEWS ON CAMPUS  
TODAY**

**FOR ELECTRICAL ENGINEERS, INDUSTRIAL ENGINEERS, ENGINEERING PHYSICISTS**

Schedule yours today at the Arizona State University Placement Bureau (and pick up our company brochure).

**NCR**

The National Cash Register Company  
1401 E. El Segundo Blvd., Hawthorne (Los Angeles), California  
Telephone PL 7-1811

P.E. CLOTHES FOR MEN AND WOMEN  
Brand Names MEN'S WEAR  
Brand Names WOMEN'S WEAR  
EXPERT RACKET RESTRINGING  
Trophies and Engraving  
"FOR BRANDS YOU KNOW"

*Joe Selleh*

624 MILL AVE.

WO 7-4163

# Cagers Host Pasadena Tomorrow

Arizona State's Sun Devil Cagers will keep one eye on their opponents and one eye on the title race in the Skyline Conference as they enter the home stretch of regular season play.

With a perfect (8-0) Border Conference record behind them and a 13 game winning streak on the line the Devils will try their prolific scoring attack on Pasadena College tomorrow night in Sun Devil Gym. Monday, Arizona State College comes to town.

The Devils are keeping an interested eye on the Skyline Conference, because that's the source of their competition for a playoff game prior to the ac-

tual NCAA Western Regionals.

Utah, currently under NCAA penalty, isn't allowed in post-season NCAA play, so the right to represent the Skyline loop in the playoff game against ASU is up for grabs among the rest of the Skyline pack. Utah State and Colorado State are the two contenders. Neither has played the Devils this year.

Meanwhile, the Devils have a lot of work ahead of them to reach the keen edge of perfection hoped for by Coach Ned Wulk by the time the tournament rolls around.

Unfortunately, the things that need the most work don't correspond with the things that the fans would like to see the Wulkmen do.

With an 89.5 season scoring mark going for them and five games against relatively easy foes, four of them at home, the ASU quint appears to have an excellent shot at the national scoring title.

But ball control is one of the

main items on Wulk's agenda of things which need improving. And he wants to give his talented bench a little more seasoning.

The latter might not cut down the scoring at all. With the likes of Art Becker, Mike McConnell, Gary Senitza and Bobby Howard along with sometimes starter Ollie Payne to call on, Wulk can be assured the scoring output won't take a decided drop once the starters leave the game.

Game time tomorrow night against Pasadena College is 8:30. A frosh preliminary game will start at 6:30.

## Larry Needs 9

Sweet Larry Armstrong should overtake Al Nealey's three year ASU basketball scoring record tomorrow barring mishap.

Armstrong needs only 9 points to become the highest scorer in the history of Arizona State.

## BOB VIEWS SPORTS NEWS

### Fiberglass Is Progress

By BOB EGER  
Sports Editor



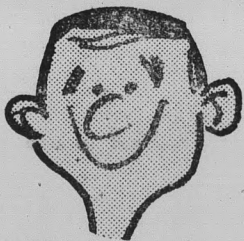
The world pole vault mark which ASU's George Davies set last May has been referred to the International Amateur Athletic Federation Council rather than be approved as some 30 other world records were at an IAAF meeting in London, Friday.

Apparently, the reason is that Davies used a fiberglass pole to vault 15-10 1/4 and top all existing standards.

Suddenly this type of pole, which has been in use for years, has been termed illegal, even though existing track and field rules don't brand it so.

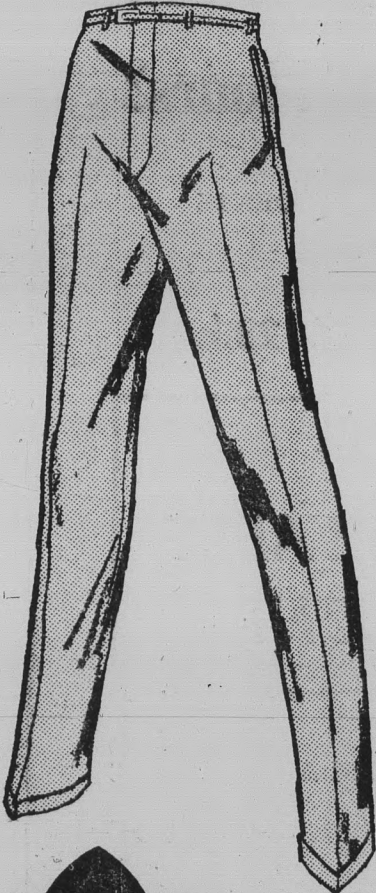
"It had to be the pole," says Davies. "Everything else about the vault was perfect. They spent almost two hours measuring it."

No complaints were lodged against Davies' vault (Continued on page 12)



"WHAT A WAY TO GO"

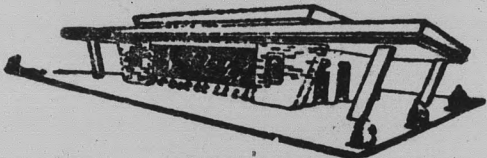
"Women find me irresistible in my Tapers. Don't get me wrong—I like it. But how much can one man take. Please wear your A-1 Tapers as much as possible and let me get some rest."



**A-1 TAPERS®**  
4.95 to 6.95

At your favorite campus shop

## REDWOOD



RESTAURANT  
GOOD FOOD

BREAKFAST — LUNCH — DINNER  
CLOSED WEDNESDAYS

GEORGE AND GRACE CAMERON  
2207 W. Main — On Mesa-Tempe Highway — WO 4-9860

## ASU, UofA Battle To Cage Tie

Arch-rivals Arizona State and the UofA met in a basketball thriller Wednesday night in Tucson.

Only it wasn't the usual type of cage game.

Senior football players from both schools put on an exhibition of how the game is properly played, before the Harlem Globetrotters took over for their game with the Washington Generals in Bear Down Gym.

The outcome of ASU-UofA contest wasn't too decisive. The score was 19-19.

**Chevrolet**  
SPECIALIST

Auto Repairs

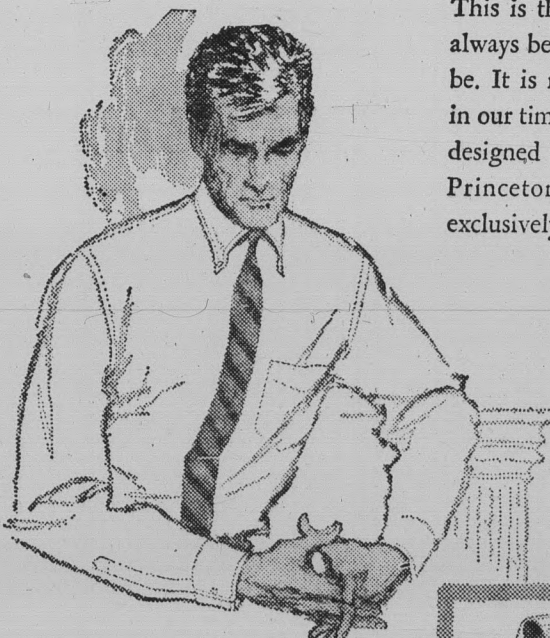
BRIT SMITH Car Co.  
802 MILL



Stop In ...  
Find Out  
For  
Yourself !!  
**TEMPE**  
**DAIRY**  
**QUEEN**  
950 MILL AVE. — TEMPE

## Wren Shirts, Ltd

A Distinguished New Name in Shirts



This is the classic look as it has always been and as it always will be. It is masterfully perpetuated in our timeless collection of shirts designed by Douglas MacDaid, Princeton and New Haven, exclusively for Wren Shirts, Ltd.



Select your Wren shirts today in your favorite traditional collar styles in a wide assortment of fabrics, patterns and colors. From \$5.00

## JENTS DEN

NATURAL SHOULDER SHOP  
39 West Main, Scottsdale  
WH 5-1913

The  
**Capri's**  
"PICK OF THE WEEK"

ASU ..... 102  
Pasadena ..... 67

Right or Wrong  
You Can't Miss  
With Our  
**PIZZA'S**  
16 E. 4th — Tempe



Your A-1  
Dealer In  
Tempe...

### Bob Views Sports News

(Continued from page 11)

until recently when Marine John Uelses cleared 16 feet twice with a glass pole and aroused the fighting instinct of one Don "Tarzan" Bragg — former world record holder. Bragg's outdoor world record of 15-9 1/4 was eclipsed by Davies, and his world indoor mark of 15-9 1/2 was erased by Uelses' spectacular glass pole efforts.

Bragg's nickname of Tarzan stems from his physical appearance which closely resembles that of the muscular men who have portrayed Tarzan on the screen. Perhaps even more fittingly, his cries of "foul" ring out across the track and field world just as Tarzan's screams rang out across the jungle.

No great fuss was ever made about the type of pole construction until Bragg became disturbed at seeing his records go by the boards. So little emphasis has been placed on the pole that an IAAF official in London recently admitted that he didn't even know Davies' record vault was made with a fiberglass pole.

"They've been using glass poles for years and nobody complained," said Davies.

John Rose, another Arizona State vaulter who uses a glass pole and is ranked among the world's best with a 15-5 3/4 effort, is equally perturbed over the recent rash of complaints.

"Jim Brewer (the only 15 foot high school vaulter in history) used a glass pole years ago when he was in high school, and when he did 15 feet, everyone praised him," said Rose. "Now Uelses does 16 feet with the same type of pole and suddenly he's using illegal methods."

As we see it, fiberglass is simply an improvement over the poles before it. Mechanical advancements are made in track and field just as they are everywhere else. Dutch Warmerda set a long standing record with a bamboo pole and Bragg posted his marks with an aluminum pole. That's progress, just as the transition from aluminum to fiberglass is progress. Bragg didn't see to mind the earlier improvement.

The IAAF still hasn't rejected Davies' world record vault. It may still be approved, or it may not be allowed. It hardly seems right now — months after the vault — to legislate against it when there was no prior legislation regarding the use of fiberglass poles.

Uelses explained the whole thing very well at a recent press conference. "I can't see where there could be any problem," he said. "The definition of a pole vault is to get over a height with a pole. It doesn't say what kind of pole."

## Diamond Practice Underway

Coach Bobby Winkles is taking a good look at his varsity baseball candidates before cutting the squad to 24 beginning next week.

The Devils are preparing daily for their season opener on March 13 against Grand Canyon College on the Devil diamond. Their first appearance will actually be on March 10 against an alumni team.

A rugged 43 game schedule awaits the Devils. Heading the list of opponents is national powerhouse Arizona, who the Devils will meet six times—half of them at home. Another tough opponent is Michigan, which travels to the Valley of the Sun for seven games with ASU.

Included in the season is a round-robin Easter tournament at Los Angeles State with teams from the host school, UCLA, Cal Poly (Pomona), San Jose State and ASU entered.

If the Devils can win the district crown, they'll represent this area in the College World Series in June.

Following that tourney, the Devils will fly to Honolulu, Hawaii, for the Armed Forces Council tournament, which is expected to run about five days.

Defending national champion USC is expected to attend the tournament along with several of the better West Coast teams.

Last year the Devils compiled a 36-13 record, including wins in their first 21 games. Their schedule this year includes 33 home games.

**NOW THREE LOCATIONS . . .**

- 1. Tempe Center
- 2. 1302 Rural
- 3. Bayless Center

**Open 24 Hours A Day!**



**DRIVE-IN LAUNDRY & CLEANERS**  
FIRST in Laundry and Cleaning • LAST in the Phone Book

### H-O-T

## Weather Ahead...

Refrigerate Your Car Now

at

# DANA BROS.

211 Mill — Tempe

REASONABLE PRICES ON ALL POPULAR BRANDS

**Malcott's**  
Stein and Sirloin

4801 North Central

NOW PLAYING  
**"CAL TJADER QUINTET"**  
Carmen McRae Opens Feb. 19

ALL YOU CAN EAT!  
CHUCK WAGON \$1.95  
Char Broiled Steak Dinner \$1.95



**The PIZZA HUT**  
"Eat In or Carry Out"

Open Every Day For Lunch & Dinner  
11:30 A.M. to 1 A.M.  
Friday & Saturday Till 2 A.M.

FREE Catering Service To Parties

Order By Phone For Faster Service  
WO 7-3355

801 E. Apache Tempe

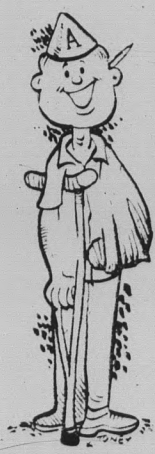
## Carrying MORE Than Six Hours?

YOU'RE ELIGIBLE FOR THE ASSOCIATED STUDENTS HOSPITAL PLAN.

ENROLLMENT ENDS FEBRUARY 28th

DON'T MISS THIS LOW COST PLAN

**BUDGET PLANS AVAILABLE FOR MARRIED STUDENTS**



- ★ DEPENDENTS BENEFIT THE SAME AS STUDENTS
- ★ CONSIDERABLY LOWER PREMIUMS — DUE TO LOW AVERAGE AGE.
- ★ PAYS FOR ACCIDENT TREATMENT — IN OR OUT OF HOSPITAL.
- ★ 24 HOURS A DAY COVERAGE — WORLD WIDE — ON OR OFF CAMPUS.
- ★ COVERAGE CONTINUES THROUGH THE SUMMER UNTIL SEPT. 12.
- ★ COVERAGE STARTS IMMEDIATELY.
- ★ CHOOSE YOUR OWN DOCTOR AND HOSPITAL

INFORMATION

DICK FINLEY ROOM 226 Memorial Union

CHARLES LOCK 822B MILL AVE. Tempe Phone 967-3358