



Cultural Events Set This Weekend

Loans Get Approval From Nold

Two hundred and two National Defense Education Act loans were approved for ASU students from Sept. 5 to Dec. 1, 1961, according to Woodrow V. Nold, ASU's financial aid officer.

Only 50 applications were denied during this period.

"At the present time there are approximately \$75,000 in the non-government loan funds available for distribution," said Dr. Nold.

"However, not all of this money is available at one time, because 50 per cent or more is being used for loans," he added.

During this semester, 187 short and long term non-government loans were administered from Sept. 5 to Dec. 1. The short term loan must be repaid one year after graduation or withdrawal from school.

"For the last three academic school years, 1958-1961, a total of 2,041 loans were approved for ASU students comprising \$420,000. Interest and service charges received from the loans amounted to \$3,114. This money was returned to its respective loan fund to increase its total value, thus giving the students the satisfaction and gratification of knowing they have contributed to the loan fund," Dr. Nold said.

"The money will then be used by some other needy student or maybe themselves at some future date," he added.

ASU Receives Health Grant

A \$11,500 research grant has been awarded to ASU by the National Institutes of Health, Bethesda, Md., in support of an investigation involving animal venoms.

Dr. Robert A. Patterson, assistant professor of Zoology, and Dr. Herbert L. Stahnke, director of the poisonous animals research laboratory will continue as principal investigator and co-investigator, respectively, of the project.

Devils Beat Miners, 62-55

Arizona State's Sun Devils defeated the Texas Western Miners in El Paso last night, 62-55.

The Devils ended a Texas Western eight-game winning streak.

Leading scorer was Jerry Hahn with 20, followed by Larry Armstrong with 13.



DR. MILTON MAYER

Students Must Register Earlier--Placement Center

"For maximum assistance in commercial placement, students should register with our office a full year before completing graduation requirements," Dr. Robert F. Menke, director of placement, recently recommended.

"Graduates in education available for teaching positions next September should register for placement before Feb. 1, thus allowing them full advantage of the placement services," Dr. Menke continued.

Record numbers of companies, government agencies and schools are already scheduled to recruit on campus next semester. This semester's concluding interviews will be as follows:

Today — Hewlett-Packard Company: mechanical and electronics engineers, chemists.

Tuesday — U.S. Department of Agriculture: Agriculture or Business Administration students (summer employment).

Wednesday — Army Medical Specialist Corp: dieticians, Physical Education, recreation, pre-physical therapy and pre-occupational therapy students.

'Politics To Opera' Climax Semester

This is the last big weekend for ASU students to attend campus activities and cultural affairs before non-activity week begins next Monday.

Scheduled are a lecture on communism, a top Dixie-land jazz band and an evening of music with eminent Metropolitan Opera stars, planned to give Sun Devils a final fling before they crack the books.

Second Term TV Courses Begin Feb. 5

KAET-TV, Channel 8, will offer three TV credit courses for the second semester, it was announced by Sheldon P. Siegel, TV Program Manager. All courses will begin Feb. 5.

Physical Universe, PL 110-TV will be seen from 4:45 - 5:15 p.m. Monday, Wednesday and Fri. Dr. Francis Yale, associate professor of Physical Science, will teach the three hour course.

Edward J. Demson, Director of the ASU Foundation, will instruct a three hour course, Business Law, GB 306-TV. It will be seen at 7:30 p.m., Monday, Tuesday and Thursday and is open to anyone with two years' of college.

American Government, PS 102-TV, will be taught by Dr. Raymond Uhl, professor of Political Science, Monday, Wednesday and Thursday from 6:30 - 7 p.m. Credit is three semester hours.

Extension students may register by Feb. 16 at the ASU extension office. Full information may be obtained by contacting KAET-TV, ASU.

Milton Mayer, professor and writer, will speak on "Christians Under Communism" today at 3:30 p.m. in the MU upper lounge. The Young Democrats and Wesley Foundation will co-sponsor his appearance.

Mayer has had two books published, "They Thought They Were Free - the Germans, 1933-1945" and "The Revolution in Education."

He has traveled throughout Eastern and Western Europe. Since July, 1961, he has been living in Prague, Czechoslovakia.

His articles have appeared in Life, The Progressive, Harper's and Reader's Digest. Mayer was director of the "Voices of Europe" radio program of the National Association of Educational Broadcasters.

Upon completion of his lecture tour in the United States, he will return to the post of visiting professor on the faculty of the Protestant seminary in Prague.

Jazz Concert

The Turk Murphy band, which features vocalist Pat Yankee, will present a jazz concert Saturday at 8 p.m. in the MU Ballroom.

Tickets for the concert are available at the MU information desk, with prices set at 75 cents per person, \$1 per couple.

Stars Perform

Jennie Tourel and Martial Singher, two Metropolitan Opera and concert stars, will perform at 8:15 in the MU ballroom Sunday night as part of the 1962 Concert and Lecture Series.

Tickets, which will be available at the door, are \$3 for adults and \$1 for high school students and children. ASU students and faculty will be admitted by activity cards or season tickets.

Campus Police Open New Lot

A new student parking lot on the southeast corner of Van Ness and Tyler streets will be officially opened this morning, according to Sergeant Tom Godbhere of Campus Security.

Primarily for off-campus students, Lot S may be entered through the alley on Tyler between Van Ness and McAllister.



OUCH! — Singing in the shower appears to have been replaced by singing in the barber chair as Best A's entry in the 10th annual Sigma Pi Fraternity Barbershop Quartet Contest performs. From left to right are Joe Smart, Bob Machulies, Herb Robertson and Chuck Johnson.

Wisconsin Professor To Speak

Dr. R. H. Bing of the department of mathematics at the University of Wisconsin will present four lectures on mathematics at ASU next week.

Dr. Bing, one of the nation's foremost topologists, will discuss "Topological Equivalence" at 4 p.m. and "Near Misses in Topology" at 8 p.m. Tuesday.

"The Inventive Side of Mathematics" will be discussed by Dr. Bing at 4 p.m. and "Recent Developments in Euclidean Topology" at 8 p.m. Wednesday.

All lectures will be in Room 100 of the ASU Physical Sciences building except the third lecture, which will be in Life Sciences Center 191.

Two Seniors Nominated For Grants

Mike Peplow and Earl Walpole, ASU seniors, have recently been nominated for Woodrow Wilson National Fellowships. The students will be interviewed by the regional selection committee for final selection on Sunday.

Peplow, an English major, is active in Alpha Mu Sigma and Blue Key. He also was selected for Who's Who. Presently he is completing graduate studies and is in the ASU honors program.

Walpole, a French major, is president of the French Club and Alpha Mu Gamma, foreign language honorary. He also is a member of Phi Delta Kappa, education honorary group.

WHIP
Those Exams Into Shape
and then stop by for
Some Excellent Mexican Food

at
CHICO'S
RESTAURANT*

FINE MEXICAN FOOD

1120 East Apache Blvd. — Tempe

*Air conditioned of course

MUGS UP
ROOT BEER

TAKE A BREAK!

Date Hour
8:30 - 9:30 P.M.

2 OF ANYTHING FOR THE PRICE OF 1

EVERY NITE THRU FINAL EXAMS

Mugs Up Root Beer
503 E. 8th

"WHERE THE NICKEL IS MIGHTY"

SPECIAL PURCHASE

COTY
Once-A-Year SPECIAL
Moisture Rich Beauty Preparations

Up To **50%** off

CAMPUS DRUG
CORNER, College and 8th, WO 7-4049

We Are Now Buying Used Books

NEBRASKA BOOK BUYER HERE
January 22-27

UNIVERSITY BOOKSTORE

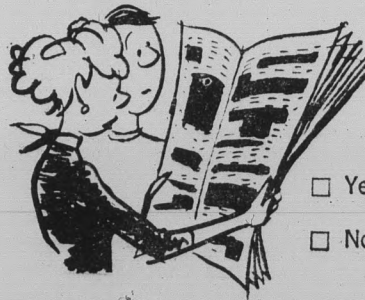
Check your opinions against L'M's Campus Opinion Poll #16

① How would you spend a \$5000 inheritance?



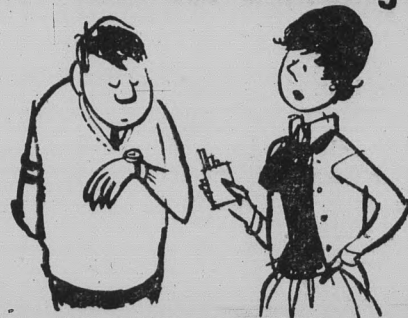
more education European tour stocks sports car

② Should the faculty have the power to censor campus newspapers?



Yes
 No

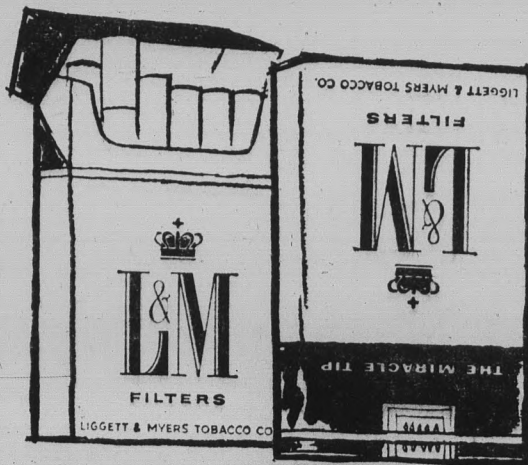
③ What's your favorite time for smoking?



during bull sessions
 while studying
 during a date
 anytime there's stress & strain

Expect more, get more, from L&M

There's actually more rich-flavor leaf in L&M than even in some un-filtered cigarettes. You get more body in the blend, more flavor in the smoke, more taste through the filter. So get Lots More from filter smoking with L&M... the cigarette that smokes heartier as it draws freely through the pure-white, modern filter.



HERE'S HOW 1029 STUDENTS AT 100 COLLEGES VOTED!

more education	.36%
European tour	.31%
stocks	.24%
sports car	.9%
Yes	.12%
No	.88%
bull sessions	.28%
studying	.27%
date	.10%
stress & strain	.35%

L&M's the filter cigarette for people who really like to smoke

Art Professor States Student Sculptures Reflect Creative Nature, Free Expression

"Students have reflected a creative nature through their sculptures which are presently on display in the lobby of the Arts building," stated Ben Goo, associate professor of Art.

Goo also mentioned that a student broadens his range of freedom of expression by choosing the material and the theme he wishes to work with.

Materials of the sculpture on display include lead, granite, cast bronze, welded metal and steel rods, alabaster and terracotta (fired clay).

Silver jewelry is also being displayed in glass cases in the lobby. A few of the nineteen beginning students participating in the show have included stones, which they have polished, in their jewelry.

Mrs. Jean Hopkins, assistant professor of Art, is jewelry instructor.

Donald Schaumberg, associate professor of Art, stated that about 20 beginning and advanced

students are participating in the ceramics and crafts display. Items may be seen in the jewelry case in the Arts building.

The photography display, entitled "Memento Mori," is in the foyer of the Social Sciences building.



4817 E. Indian School

Opening Tonight "ANITA O'DAY"

2.00 Cover Fri. & Sat.—1.50 Sun. thru Thur.

- ★ ALL YOU CAN EAT! \$1.95
- ★ CHUCK WAGON \$1.95
- ★ Char Broiled Steak Dinner

Your HEALTH is our BUSINESS

Phone WO 7-2922

LAIRD PHARMACY

CORNER FIFTH & MILL, TEMPE

S-A-L-E

On Sweaters & Skirts & Large Group of Dresses

Celia's FASHIONS

TEMPE CENTER



when Jimmy grows as big as his shadow

... the free world he lives in will be using almost a million gallons of petroleum every minute.

That's about 60% more than it uses today — by 1971.

Where will it all come from?

From hundreds of places on earth you might never expect oil to exist. Right now, for example, Standard's exploration teams are probing the ocean floor many miles out to sea ... trekking across Arabian deserts, marked "inaccessible" on maps.

Others are climbing over glaciers in Alaska, pushing through the snow into the frozen interior of Canada, slogging through the jungles of Latin America.

In the last ten years, geologists from Standard and its affiliates explored in 47 countries on six continents.

Is the search paying off?

Yes. In the United States alone, we found two new barrels of oil for every barrel we took out of the ground.

The search will continue to help make certain that Jimmy and his generation will have the oil they need for an ever-expanding number of homes, cars, mechanized farms and industries ... and provide chemicals from petroleum that will help make possible more exciting new products.

planning ahead to serve you better

STANDARD OIL COMPANY OF CALIFORNIA





The STATE PRESS, distributed by the campus chapter of Sigma Delta Chi under the direction of Circulation Manager Charles Hilgeman, is the official campus newspaper of Arizona State University. It is published each Wednesday and Friday throughout the school year, excepting holidays, and is entered as second class matter at the Tempe, Arizona, Post Office under the Acts of March 3, 1879, and August 24, 1912. Subscription price, \$3 per school year.

The STATE PRESS is a member of the Arizona Newspapers Association, Associated Collegiate Press and National Advertising Service, Inc.

EDITOR-IN-CHIEF JACK ONG

NEWS DEPARTMENT

MANAGING EDITOR BILL FLICK

NEWS EDITORS BILL OVEREND, JANET WOLHETER

COPY EDITOR GARY OLMSTEAD

CHIEF PROOFREADER EDIE ALLERS

ASSIGNMENTS EDITOR BARBARA MARLOWE

ASSISTANTS MARY GORMAN, BOB ZACHE

SOCIETY DEPARTMENT

EDITOR ROSALYN WHITNEY

ASSISTANT BETTY ADAMS

SPORTS DEPARTMENT

EDITOR BOB EGER

ASSISTANT BOB JACOBSEN

News Overflows

Due to less news space necessitated by advertising commitments, we have decided to reduce the editorial comment in this issue to devote a portion of the space usually dedicated to such comment for news.

Responsible journalism requires the consideration of news dissemination before that of opinion. "I Cover College Avenue" and "Editor's Scratchpad" will be resumed at a later date.

Eat Some Protection

Be a philanthropist: take a cube of sugar this Sunday or Sunday, Jan. 21, in the Moeur Activity building.

In the cube of sweetener will be a polio vaccine that is being made available to Maricopa County residents and ASU students by the Maricopa Medical Society, county and national health services, the Phoenix Pharmaceutical Association and the county chapter, National Polio Foundation.

The vaccines will help protect the body from contracting polio and will also aid in preventing carriage of the virus, thus preventing contagion.

Get your oral vaccine between 11 a.m. and 5 p.m. Sunday or Jan. 21.

Permission Needed For Oral Vaccine

Students under 21 and unmarried must obtain parental permission slips before the Sabin Oral Vaccine may be administered on Sunday and Jan. 21.

Dr. L. C. Sutherland, physician at the Student Health Center, said that forms may be obtained in dormitories, at the Health Center, in the Memorial Union, and will be distributed to fraternities and sororities.

Students living in the Phoenix area are urged to obtain permission by this Sunday so that non-Valley residents, who must mail home for permission can be administered the serum on the 21st with as little waiting as possible.

The vaccine given this month is for type 1 polio. Later in the year, vaccine for types 2 and 3 will be given. The entire series is roughly comparable to 3 to 4 Salk vaccine inoculations, according to Dr. Sutherland.

He added that students do not have to be Maricopa county residents to receive the vaccine.

Health Meeting Here At 10 a.m.

Health Education workshop will convene Friday, from 10 a. m. to 2:30 p. m. in the MU. Approximately 40 elementary and secondary school administrators and health educators are expected to attend. The workshop will consist chiefly of discussions on school health programs and the establishment and development of solutions to health problems.

Students must bring the parental permission form with them to the Moeur Activity Building when they come for the vaccine.

'Wooden Bucket' Attendance Fete To Start Feb. 9

The first annual "Ole Wooden Bucket" award contest is beginning this year, according to Ted Bredehoff, ASU wrestling coach.

The award will be presented to a team consisting of one women's and one men's organization who have the largest combined attendance at the ASU-UofA wrestling meet on February 9, at 7:30 in the Sun Devil Gym.

The purpose of the "Ole Wooden Bucket" award is to further student interest in wrestling.

The winning team will receive an engraved wooden bucket prior to the final match. The award will be based on percentage of total membership and will be presented annually at the yearly ASU-UofA wrestling meet.

Letters To The Editor

Why Objective Tests?

To the Editor:

Objective questions are hard for some students to answer. This difficulty is not due to the mentality of the student as a whole but, rather, the difference in habits of thinking.

A lecturer may be talking and a student may be mulling over in his mind something that has just been said and miss the next point of the lecture. Or the student may be reading an article and skip over part of it because he was thinking over the part, or parts, that impressed him.

The above mentioned scholar, and others, though they know their faults and are trying to break them, cannot handle multiple choice questions.

Multiple choice questions clutter the mind with non-essentials.

There are also the true and false questions and the ambiguous way they are asked. Take the question asked this semester in one class: "Intelligence tests are available that can measure accurately your mental capacities in relation to other college students." The statement is supposed to be answered true, but the word accurately is detracting.

Name Withheld

Foreign Students Elect Officers

Newly elected officers of the ASU Foreign Students Club are Hormaz Hormozi, Iran, president; Joe Smart, Trinidad, vice president; Steven Sivai, Kenya, treasurer, and Brigitte Postler, Germany, secretary.

Reader Offers 'Dollar Cause'

To the Editor:

I was most distressed to read yesterday about your financial difficulties. As a new student, not active in campus affairs, I have depended upon our paper to keep me posted.

Let me be the first to offer my DOLLAR CAUSE — 'cause I think the paper

performs a practical and entertaining function.

With 12,000 students on campus, if we would all put in our DOLLAR CAUSE — 'cause we want the paper to grow, 'cause we want more news, 'cause we want to be informed, our wants would be satisfied.

J. B. Merchant

Editor's Note: This letter was brought to us yesterday afternoon. Accompanying it was a crisp new dollar bill. We are pleased that the financial position of the State Press — YOUR newspaper — has reached the mind of at least one ASU student. We are confident that Mrs. Marchant is not alone in her feelings.

We returned her dollar and at the same time expressed our deepest appreciation. Her "dollar cause" idea is genuine and appealing, but somewhat impractical, since you students already aid in the financial support of this paper through your activity fee.

Thank you for your concern; that is what we need.

Faculty Facts

Drs. Richard E. Schutz and Robert L. Baker, associate professors of Educational Psychology, are conducting an intensive study of youngsters working with self-instruction materials. The study is effective for a two-year period beginning this year and is being supported by a \$59,642 grant.

Dr. Gerard V. Haigh, associate professor of Psychology, has been named a member of the American Academy of Psychotherapists. The organization is composed of outstanding psychotherapists in psychiatry and clinical psychology.

A statistical theory of testing multi-engine planes, computer systems and paired human organs, such as eyes and kidneys, has been developed by Dr. John E. Freund, professor of Mathematics. The theory is explained in an article in the current issue of the Journal of the American Statistical Association entitled "Bivariate Extension of the Exponential Distribution."

Dr. Lester S. Perril, professor of Sociology, has been named a fellow in the psychological and social sciences section of the Gerontological Society.

Jack Stuler, graduate assistant in Photography, will exhibit his work in Yuma this month. Both black and white and color photography will be featured in the display at the Yuma Art Center.

Dr. William S. Peters, ASU professor of General Business, has been elected president of the Arizona chapter of the American Statistical Association.

The ASA was established in 1837 and is one of the oldest professional organizations in the nation.



CAMPUS HOSTESSES — The Freshman Hostess Committee offers its services for any group having social functions in the MU. Over eighty girls serve as usherettes and hostesses at coffee's and receptions throughout the year. Mrs. Trudy Thomas, left, serves Lynn Harkreader as other members of the committee look on.

FENWICK SWINGS AGAIN

SPECIAL SELLING LP's

CLASSICS

WHILE THEY LAST

1 **49**
ea.

NO RETURNS OR EXCHANGES

HILLS RECORDS

TEMPE CENTER

OPEN THURS. TO 9:00 P.M.

10 - 6 Mon. thru Sat.
10 - 9 Thursday

The Village Shop

a shop designed with the college girl in mind

967-1981

616 MYRTLE TEMPE

IMPORTANT NOTICE

The University Bookstore would like to remind the students to "watch your books." We do have thefts on this campus.

University Bookstore

YOUR STUDENTS STORE

Chemnick Picked To Head Finance, As Senators Quit

Announcement of three resignations and three appointments highlighted the seventh session of the ASASU Student Senate last Wednesday.

Senate Speaker Jim Chilton announced the resignations of Senators Steve Sargent, Mal Spence and Bob Lowery. Newly appointed senators are Dan Moulton, Steve Futhuff and M. Lane Lee.

Sargent stated failing health as the reason for his resignation in a letter to ASASU First Vice President Jim Chilton.

Senator Sue Chemnick was appointed temporary chairman of the Senate Finance Committee, the position vacated by Sargent's resignation.

Senate Bill 171 was given first reading and assigned to the Rules committee for study.

Also Senate Bill 170 was indefinitely postponed pending action of the Senate Finance Committee.

ON STAGE!

Jan. 16 thru 21



ARLENE FRANCIS

(in person) in

"Old Acquaintance"

Pre-Matinee FASHION LUNCHEON Thurs. & Sat. 12 to 2 P.M. \$1.50

Phone: AM 6-4487

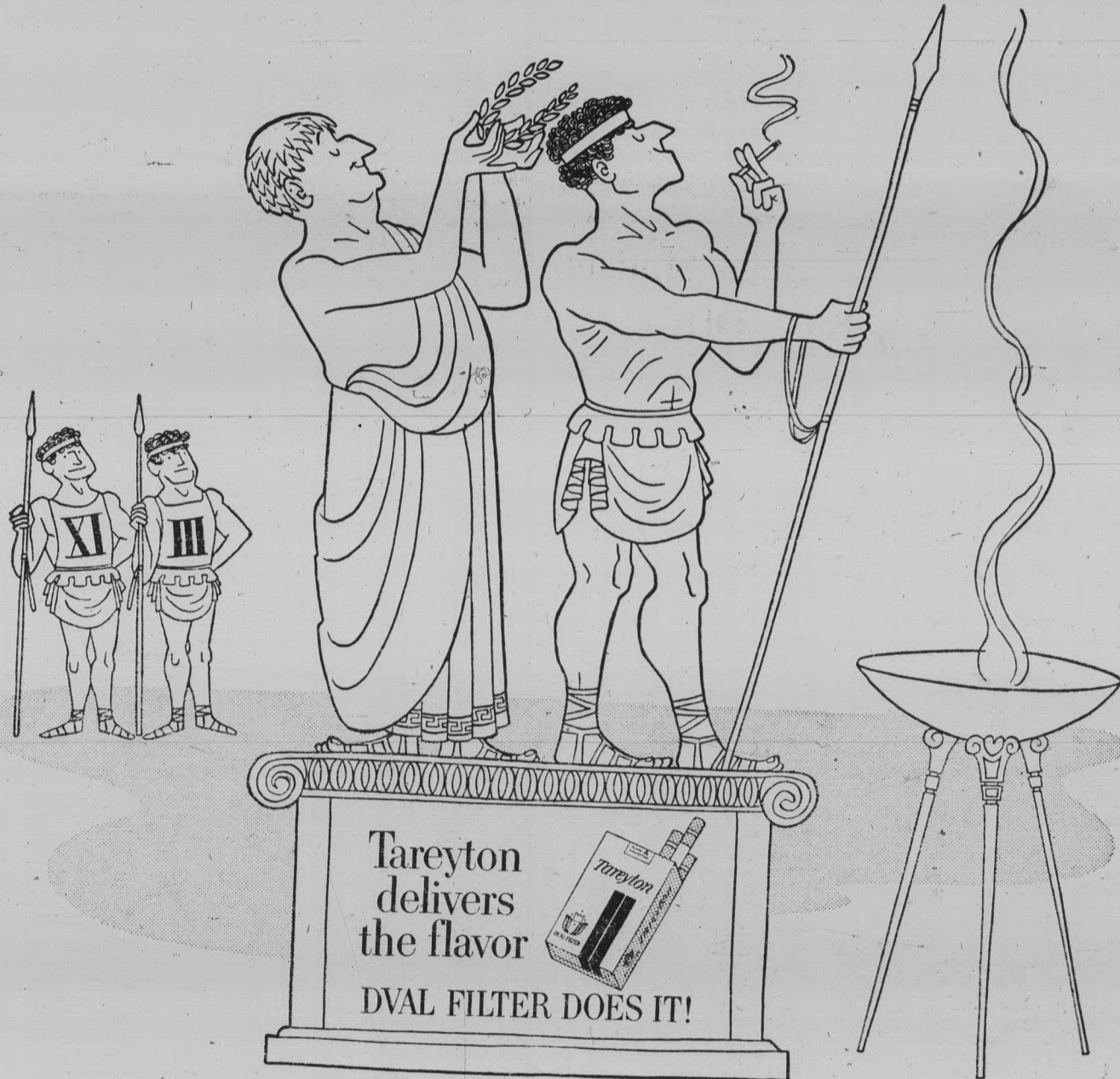
Jan. 23 thru 28

Margaret O'Brien

in

"Under The Yum Yum Tree"

Richard Charlton's Sombbrero Playhouse 4747 N. 7th St. — Phoenix



"Tareyton's Dual Filter in duas partes divisa est!"

says Julius (Cookie) Quintus, ace javelin man and B.M.A.C. (Big Man Around Coliseum). "A Tareyton would even make Mars mellow," says Cookie. "Tareyton's a rara avis among cigarettes. It's one filter cigarette that really delivers de gustibus. Pick up a pack today and you'll find there's Pliny of pleasure in Tareyton."



DUAL FILTER
Tareyton

Product of The American Tobacco Company - "Tobacco is our middle name" © A. T. Co.



Go To The SEATTLE

World's Fair

DR. W. PODLICH, ASU WILL CONDUCT A SPECIAL TOUR

● For 3 College Credits ●
Call Dr. Podlich or stop in

UNIVERSAL TRAVEL 18 E. 5th St.

Matmen Meet PC Bears

Arizona State's Sun Devil Wrestling Club meets powerful Phoenix College tonight at 7:30 on the Bear's mat.

Coach Ted Bredehoff's Sun Devil crew last weekend posted a pair of impressive victories over Arizona State College and the Phoenix YMCA wristlock club.

The Devil matmen are hoping

to boost their won-lost mark to the winning side of the ledger for the first time this season. They currently have a 2-2 record.

Phoenix College was defeated by the University of Arizona, a team that handed ASU one of its two losses.

INTRAMURAL Scene

Sigma Nu holds a seven point lead over runner-up Sigma Chi in the intramural points race at the end of the first semester of competition.

Victories in tennis singles and doubles, a second place in swimming and a third place finish in the fraternity division of football were the keys to the 92 points compiled by Sigma Nu.

Sigma Chi with 85 points holds a one-point lead over Alpha Tau Omega. Delta Sigma Phi is close behind in fourth place with 82. Sigma Alpha Epsilon rounds out the top five with 71 points.

- | | |
|------------------------|------|
| 1. Sigma Nu | 92 |
| 2. Sigma Chi | 85 |
| 3. Alpha Tau Omega | 84 |
| 4. Delta Sigma Phi | 82 |
| 5. Sigma Alpha Epsilon | 71 |
| 6. Phi Sigma Kappa | 56.5 |
| 7. Hooters Inc. | 55.5 |
| 8. Pi Kappa Alpha | 53 |
| 9. Sahuaro B | 53 |
| 10. Phi Delta Theta | 51 |

Campus Classified

Regulations: For students and faculty only of Arizona State University. Cash in advance. Submit to Room 207, Memorial Union Building, by noon two days before date of publication: noon Monday for Wednesday's issue, noon Wednesday for Friday's issue. Rates: 3 cents per word, 50 cents minimum charge.

APARTMENT

2 blocks from ASU—New, furnished, designed for ASU couples. Only \$85 per month, utilities paid. 705 Krueger St., WO 7-5430.

TYPING

Public Stenography — fast and accurate in both typing and shorthand. Call WO 7-3077 or contact at home 815 W. 9th St., Tempe. Mrs. Snyder.

RIDERS

Rider wanted to New York area. Share driving and expenses. Leave about Feb. 1. Gene Pinter, Chemistry Department, or PS-C39.

LOST

Advertising Notebook, please return to RM 204 Memorial Union. Reward!

FOR SALE

Boys 26 inch Schwinn 10 speed racer. Excellent condition. \$70. 1403 E. Turney Ave., Scottsdale. WH 6-8400.

Flying back to Mass. Must sell much below normal price. 1955 Dodge Custom Royal. Power brakes and steering. Radio, Heater, tinted glass. Good condition. \$390. Henry Batt, 744 Orange St.

I got a nice little English Ford I need \$450 more than. F. Glenn Jacobs, WH 5-8008.

"Ye Shall Know The Truth"

<p>10th and Ash - Church of Christ - 971 Ash Avenue WO 7-4872, Tempe CLEO WIMBISH Evangelist SUNDAY University Bible Class 9:45 a.m. Worship 10:45 a.m. Evening 7:00 p.m. WEDNESDAY Evening Study 7:30 p.m.</p>	<p>River Drive - Church of Christ - 1016 River Drive WO 7-5112, Tempe PRESTON WINCHELL Evangelist SUNDAY University Bible Class 9:45 a.m. Worship 10:45 a.m. Evening 6:30 p.m. WEDNESDAY Evening Study 7:30 p.m.</p>
---	--

**DEVOTIONALS IN DANFORTH CHAPEL
MONDAY & FRIDAY MORNINGS 6:30 to 7:00 A.M.**



ORANGE JULIUS

"A DEVILISH GOOD DRINK"

ORANGE OR LEMON
MADE WITH FRESH JUICE
— RICH IN VITAMIN C —
Truly A Health Drink

★ GRILLED DEVIL DOGS ★

- MONGREL (Mustard-Relish-Onion)
- PICKLE POOCH (Mustard-Dill P.)
- BAR-B-Q PUP (B-B-Q Sauce-Onion)
- KRAUT HOUND (Mustard-S. Kraut)

25c

★ MUTT CALIENTE 30c
★ BLUE RIBBON PUP 35c

Broiled (Ground Chuck) Burgers
1 Patty 30c — 2 Patties 45c
Served With Potato and Carrot Chips

ENJOY INSIDE OR PATIO SEATING
3517 East Van Buren — Phoenix
Open 9 A.M. - 12 P.M. Daily — Till 2 A.M. Fri. & Sat



WHAT'S GOING ON, ON CAMPUS?
PANTI-LEGS
THAT'S WHAT!

What's going on girls in every college in the country? PANTI-LEGS by GLEN RAVEN... the fabulous new fashion that's making girdles, garters and garter belts old fashion! A canny combination of sheerest stretch stockings and non-transparent stretch panty brief, PANTI-LEGS are ecstatically comfortable with campus togs, date frocks, all your 'round-the-clock clothes — especially the new culottes and under slacks. No sag, wrinkle or bulge. L-o-n-g wearing. Of sleek Enka Nylon. Available in three shades of beige plus black tint. Seamless or with seams. Petite, Medium, Medium Tall, Tall.
Seamless, \$3.00. 2 for \$5.90.
With seams (non-run), \$2.50.
2 for \$4.90.




FOR STORE NEAREST YOU, PLEASE WRITE TO
GLEN RAVEN, INC., 1430 Broadway, N.Y., N.Y.



- Greeting Cards
- Stationery
- Candy
- Paper Goods
- Gifts

HAPPY HOUSE SHOP Tempe Center
WO 7-5353



On Campus

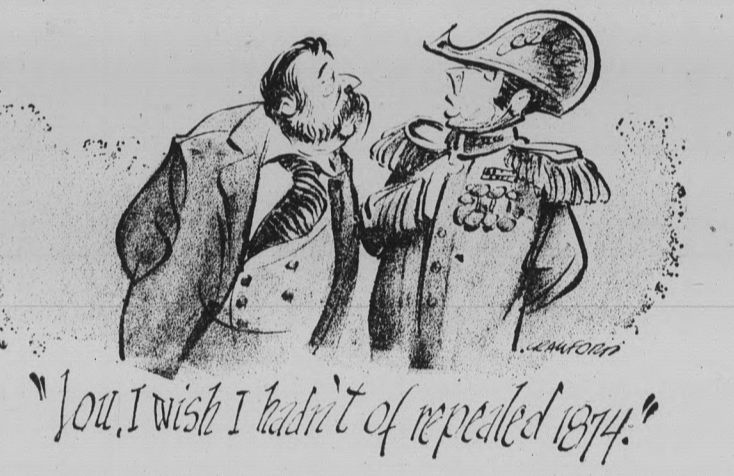
with Max Shulman

(Author of "Rally Round The Flag, Boys", "The Many Loves of Dobie Gillis", etc.)

RING IN THE NEW

Are you still writing "1961" on your papers and letters? I'll bet you are, you scamps! But I am not one to be harsh with those who forget we are in a new year, for I myself have long been guilty of the same lapse. In fact, in my senior year at college, I wrote 1873 on my papers until nearly November of 1874! (It turned out, incidentally, not to be such a serious error because, as we all know, 1874 was later repealed by President Chester A. Arthur in a fit of pique over the Black Tom Explosion. And, as we all know, Mr. Arthur later came to regret his hasty action. Who does not recall that famous meeting between Mr. Arthur and Louis Napoleon when Mr. Arthur said, "Lou, I wish I hadn't of repealed 1874." Whereupon the French emperor made his immortal rejoinder, "*Tipi que nous et tyler tu.*" Well sir, they had many a good laugh about that, as you can imagine.)

But I digress. How can we remember to write 1962 on our papers and letters? Well sir, the best way is to find something memorable about 1962, something unique to fix it firmly in your mind. Happily, this is very simple because, as we all know, 1962 is the first year in history that is divisible by 2, by 4, and by 7. Take a pencil and try it: 1962 divided by 2 is 981; 1962 divided by 4 is 490-1/2; 1962 divided by 7 is 280-2/7. This mathematical curiosity will not occur again until the year 2079, but we will all be so busy then celebrating the Chester A. Arthur



bi-centenary that we will scarcely have time to be writing papers and letters and like that.

Another clever little trick to fix the year 1962 in your mind is to remember that 1962 spelled backwards is 2691. "Year" spelled backwards is "raey." "Marlboro" spelled backwards is "oroblrarn." Marlboro smoked backwards is no fun at all. Kindly do not light the filter. What you do is put the filter end in your lips, then light the tobacco end, then draw, and then find out what pleasure, what joy, what rapture serene it is to smoke the filter cigarette with the unfiltered taste. In 1962, as in once and future years, you'll get a lot to like in a Marlboro—available in soft pack and flip-top box in all 50 states and Duluth.

But I digress. We were speaking of the memorable aspects of 1962 and high among them, of course, is the fact that in 1962 the entire House of Representatives stands for election. There will, no doubt, be many lively and interesting contests, but none, I'll wager, quite so lively and interesting as the one in my own district where the leading candidate is none other than Chester A. Arthur!

Mr. Arthur, incidentally, is not the first ex-president to come out of retirement and run for the House of Representatives. John Quincy Adams was the first. Mr. Adams also holds another distinction: he was the first son of a president ever to serve as president. It is true that Martin Van Buren's son, Walter "Blinky" Van Buren, was at one time offered the nomination for the presidency, but he, alas, had already accepted a bid to become Mad Ludwig of Bavaria. James K. Polk's son, on the other hand, became Salmon P. Chase. Millard Fillmore's son went into air conditioning. This later was known as the Missouri Compromise.

© 1962 Max Shulman

* * *

In Missouri, or anywhere else, there is no compromise with quality in Marlboro or the new unfiltered king-size Philip Morris Commander. The Commander does something new in cigarette making—gently vacuum cleans the tobacco for flavor and mildness. Get aboard! You'll be welcome.

**WALLY'S
CAFE**

**Good Things to
Eat and Drink**

1133 Normal Avenue
"Across the Street
From East Stadium
Open 7 Days Week
6:30 A.M. TO MIDNITE

Devils At NMS Tomorrow

New Mexico State's powerful Aggies present a stiff challenge to Coach Ned Wulk and his Sun Devil cagers in a crucial Border Conference basketball battle in Las Cruces tomorrow night.

Last night the Devils met Texas Western in El Paso in another important BC game. Results were not available at press time.

The Aggies, who tied ASU for the Border crown last season, have enjoyed only moderate success so far this season, but they have played a rugged road schedule against top-caliber competition.

New Mexico State needs a win to stay in the Border race and its odds are fairly good. A Wulk

team has yet to beat an Aggie team in Las Cruces in five tries.

Big George Knighton, the Border loop's top scorer and second-best rebounder, is the man ASU's defense is geared to stop. Knighton has plagued the Devils on several occasions in recent years.

Prior to last night's contest against Texas Western, Larry Armstrong was still way out in front in the Sun Devil scoring race with 210 points in 12 games for a 17.5 average. This is in spite of the fact that he has played a limited amount of time, due to Wulk's liberal substitution policy.

The Sun Devils boast the

three most accurate shots in the conference according to the latest BC statistics. Jerry Hahn is hitting .552 Art Becker .544 and Tony Cerkvenik .543.

Cerkvenik is leading the Border Conference in rebounding with 145 grabs for a 12.0 average. He's averaging nearly two rebounds per game more than Knighton.

Three Sun Devils are scoring in the double figures and three are threatening. Behind Armstrong are Hahn with a 13.3 average, Ollie Payne 12.5, Cerkvenik 9.6, Becker 9.0 and Joe Caldwell 8.6.

Now Exclusive Engagemnet

PHONE 946-9481
Scottsdale Rd. & 5th Ave.



On Today At
4:50 - 7:25 - 10:00

**FRANK CAPRA'S WILD AND
WONDERFUL MIRACLE!**



**GLENN FORD BETTE DAVIS
HOPE LANGE ARTHUR O'CONNELL**

**FRANK CAPRA'S
Pocketful
of Miracles**

Hear the Wonderful
New Sammy Cahn-
Jimmy Van Heusen
Song Hit
"POCKETFUL OF
MIRACLES"

co-starring
PETER FALK THOMAS MITCHELL
EDWARD EVERETT HORTON MICKEY SHAUGHNESSY
and guest stars
DAVID BRIAN SHELDON LEONARD HAL KANTER HARRY TUGEND ROBERT RISKIN DAMON RUNYON
Produced and Directed by
FRANK CAPRA PANAVISION® COLOR UNITED ARTISTS

Extra -
Football
Highlights 1961

STUDENTS PRICES ANYTIME -

Gymnasts Host BYU Tonight

ASU opens its 1962 gymnastics season tonight when it hosts Brigham Young University. Starting time is 7:30 in the old gym.

Tonight's meet is the first of a nine meet schedule which includes competition against several of the West's top teams and participation in a number of top invitational meets.

Heading Coach Norris Steverson's squad are seniors Bill

Cornelius and Harvey Plant. Cornelius, one of the top all-around performers in the West, was a steady point-winner last season.

Plant, a trampoline artist with a national ranking, "should win every trampoline event he enters this year," said Steverson.

Steverson is counting on the development of sophomores to bolster the team's depth as the season progresses.



**The
PIZZA HUT**

"Eat In or Carry Out"

Open Every Day For Lunch & Dinner

11:30 A.M. to 1 A.M.

Friday & Saturday Till 2 A.M.

FREE
Catering Service To Parties

Order By Phone For Faster Service

WO 7-3355

801 E. Apache

Tempe

DIXIELAND HITS ASU!

With

TURK MURPHY

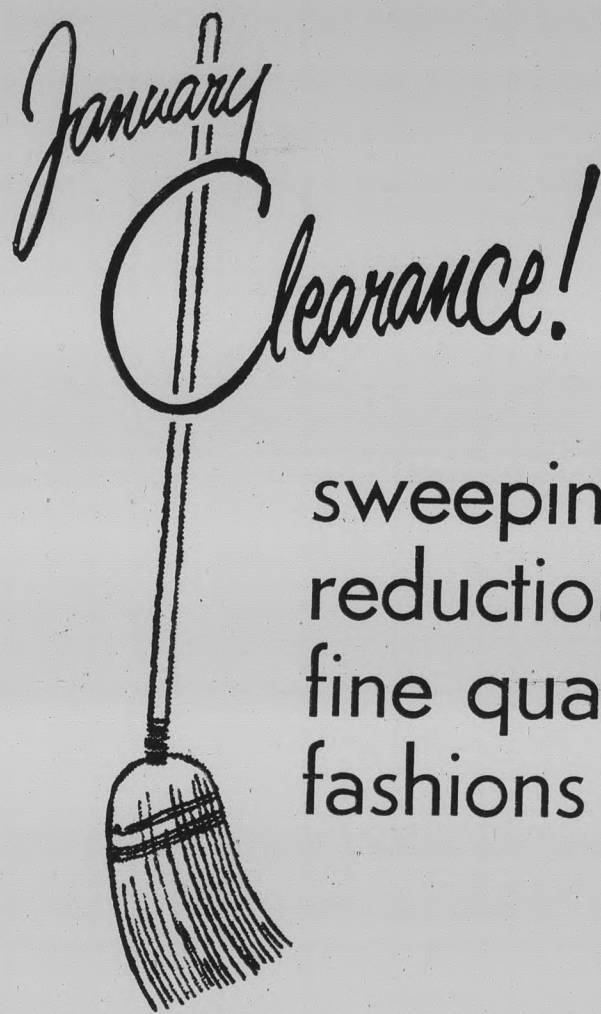
And All That Jazz...

SATURDAY (Tomorrow) JAN. 13

8:00 P.M. - M. U. BALLROOM

Tickets On Sale At M.U. Ballroom - 75c Single - \$1.00 Couple

SPONSORED BY SOCIAL COMMITTEE



sweeping
reductions on
fine quality
fashions

THE
Americana
SHOP

QUALITY MEN'S APPAREL
TEMPE SHOPPING CENTER

SAVE UP TO
40%

SPORT COATS

Values to \$32.50 **NOW \$21.00**

Values to \$37.50 **NOW \$24.00**

SLACKS Pleated Model

Values to \$10.50 **NOW \$6.49**

Values to \$14.95 **NOW \$8.89**

SPORT SHIRTS

Values to \$5.00 **NOW \$3.49**

Values to \$5.95 **NOW \$3.89**

Values to \$7.95 **NOW \$4.89**

SWEATERS

PULLOVER... CARDIGAN... ZIPPER

40% OFF

OUTERWEAR

Values to \$14.95 **NOW \$9.00**

Values to \$18.95 **NOW \$12.00**

SPECIAL

Traditional Or Continental Model

CORDUROY

SLACKS

\$6.95 Value **NOW \$4.89**

SUITS

\$29.95 Value **NOW \$21.00**

ODD - LOT TABLE

TAKE YOUR PICK

97c

Open 'til 6:00 p.m.

Thursday Night

'til 9:00 p.m.

WO 7-5457

THE
Americana
SHOP

TEMPE SHOPPING CENTER

Nominal charge

for alterations

All Sales Final

WO 7-5457