



State Press

ARIZONA STATE UNIVERSITY



TEMPE, ARIZONA



Vol. 40

FRIDAY, JANUARY 5, 1962

No. 26

Board Of Regents Hears Reports On ASU Grants; Okays Auditorium Plans

ASU received more than a half million dollars in research contracts, gifts and grants during the last month of 1961.

The \$532,688.58 total includes \$201,500 from the National Science Foundation in support of institutes for the advanced training of high school and college instructors and \$187,888 for research contracts and grants.

The remaining amount is in gifts from private donors, including six paintings, valued at \$43,200, and 1,500 shares of the

\$2,861,700 Set For Building

Final plans for construction of the Grady Gammage Memorial Auditorium were approved December 28, by the Board of Regents.

The auditorium is named in honor of the University's ninth president who served in that capacity from July 1, 1933 until his death Dec. 22, 1959. Dr. Gammage was instrumental in initiating the auditorium's construction.

The state legislature has appropriated \$2,861,700 for construction of the auditorium.

The 3,000-seat building, designed by the late Frank Lloyd Wright, will be located at the southwest end of the campus in the area bounded by the Tempe-Mesa highway. It was one of the last projects of the noted architect.

Maytag Company, valued at approximately \$96,000. The latter was contributed by Robert E. Maytag of Phoenix.

Summer Grants Total \$201,500

Four grants totaling \$201,500, to support summer institutes in science, mathematics and desert biology for high school and college teachers, have been awarded ASU by the National Science Foundation, announced George A. Boyd, ASU co-ordinator of research.

The largest NSF grant, \$70,600, will be under the direction of Dr. Valentine Galasyn, assistant professor of Chemistry, to support a summer institute in science for secondary school teachers.

Dr. Lehi T. Smith, assistant professor of Mathematics for secondary school teachers will be supported by an NSF grant of \$49,900.

Two grants of \$40,500 each will support an institute in desert biology for college instructors, conducted by Dr. Gordon L. Bender, professor of Zoology, and an institute in science and mathematics for secondary school teachers, directed by Dr. John Aronson, assistant professor of Chemistry.

Within the last four years, the NSF has awarded ASU 19 grants which total approximately \$1,750,000.

Campus Is Discussed For Corps Training

ASU and U.S. Peace Corps officials met Wednesday to discuss the possibility of establishing a training program on the ASU campus.

The proposed program, which would be financially supported by a Peace Corps contract, would involve the training of approximately 70 volunteers for service in Columbia, South America.

The proposed Peace Corps program would resemble the Army officer candidate school and Navy V-12 programs of World War II.

The discussion Wednesday was exploratory; the findings of the meeting will be taken to Washington, D.C., for discussion. If the results are favorable, the proposed terms will be sent back to ASU in the form of a contract, which will be submitted to the Board of Regents.

The main participants in the discussions were Leon A. Schertler, Washington, D.C., consultant on Peace Corps training, and Dr. L. Marland Parker, associate professor of Farm Management and co-ordinator for all Peace Corps activities on the ASU campus.

Dr. Parker has participated in previous preliminary discussions with Dr. Robert Iversen, senior training officer of the Peace Corps in Washington, D.C.

Other ASU participants in the Wednesday discussions were Dr. Dan Robinson, head of the division of Agriculture; Dr. Arnold Tilden, dean of the College of Liberal Arts; George A. Boyd, co-ordinator of research; Dr. Robert A. Roessel, assistant professor of Education, and Dr. Russel K. Bowman, chairman of the department of Foreign Languages.

Also present at the discussion were Dr. Walter E. Burdette, professor of Industrial Education, and Dr. Ronald G. Thomson, professor of Health, Physical Education and Recreation.

If the program is established at ASU, according to Dr. Parker, trainees will include volunteers from all over the U.S. Most of the instruction will be conducted by ASU faculty members.

Technical training will be given in agriculture and industrial education. Other instruction will be in world affairs and American history and traditions. Intensive training will be given in

Spanish and area studies of Latin America, with special comment on Colombia. Studies in community development will also be stressed.

Field work in the training program will be carried out in cooperation with Arizona Indian groups where cultural differences will be demonstrated.

In regard to Wednesday's discussion, Dr. Parker said, "Mr. Schertler seemed to be impressed with the personnel available and with the unique position Arizona has for becoming acquainted with various cultures as exist among the many ethnic groups in the state."

'United States And World Affairs' Topic Of Dr. Durham's Talk To ROTC Groups

By HOWARD BERNSTEIN

Explaining the need to better understand today's nation-state system, President G. Homer Durham spoke yesterday to ASU's Army and Air Force ROTC contingents.

In his speech "The United States and World Affairs," Dr. Durham traced the American political system back 100 years to critics who predicted the United States could not endure.

"To really understand the United States' position in world affairs today," Dr. Durham said, "we must grasp three important concepts."

These he explained, are the nature of the nation-state system, the Russian approach to political affairs and the failure of the United States and its allies to develop a counter-approach to Russia's international tactics.

"The basic ingredient of the nation-state system," he said, "is sovereign equality. An additional factor, however, is the alliances formed among several countries to balance power."

"The United States has entered several military alliances since 1942," he added. Among them are the UN, NATO and SEATO.

"As a military alliance, the UN no longer works to serve U.S. purposes," he declared. "The young Afro-Asian nations have a larger voice in it than we do."

Examining the Russian approach to political affairs, Dr. Durham warned it has been very effective.

"The Soviet approach is fundamentally different from any other," he said. "They have formed an in-

ternational political party which attempts to bring the various governments of the world under the control of Russia."

Because of Russia's success with this program, Dr. Durham concluded, the United States' failure to develop a counter-approach to it must be analyzed.

"Perhaps our best chance of eventually developing such an approach," he said, "rests with the construction of a new balance of power in the form of a united Europe."

Outlining other political problems, he included Red China, Laos and Vietnam.

"We all need to study comprehensively the nation-state system of our modern world," Dr. Durham finished. "Only then can we hope to understand and control it."



JAZZ MAKERS — Vocalist Pat Yankee and Turk Murphy will appear with Murphy's Dixieland Jazz Band in a concert here Jan. 13. Ensemble is noted as one of the top five most popular dixieland jazz bands in U.S.

Murphy Dixieland Band To Appear Here Jan. 13

Dixieland comes to campus a week from tomorrow, with the Turk Murphy Band scheduled to present a jazz concert in the Memorial Union ballroom at 8 p.m.

The Murphy jazz ensemble, which features Pat Yankee, vocalist, will highlight the last all-campus social event of the first semester.

Tickets for the concert will be available at the MU information desk starting Monday,

with prices set at 75 cents per person, \$1 per couple.

The Turk Murphy Band is currently appearing on an extended San Francisco engagement.

According to a musical survey magazine, the group ranks in the top five most popular jazz bands in the nation.

Turk Murphy was with the original Lu Waters Jazz Band, along with Bob Scobey and Bob Helm.

Meteorite Collection Curators To Speak At ASU Next Week

Curators of the three largest meteorite collections in the nation will be on the ASU campus next week.

On Jan. 11, Dr. G. Arthur Cooper, world renown paleontologist and head curator of the Geology department at the Smithsonian Institute, Washington, D.C., will deliver an address at 7:30 p.m. in the Memorial Union.

Dr. Cooper will discuss his recent work on the geology and fossils of the Glass Mountains of the Big Bend region of Texas. He is a member of the national advisory board of the Ninninger Meteorite Collection at ASU.

Dr. Cooper will participate in a meeting of the advisory board of the meteorite collection at 9 a.m. Jan. 12 in the regents' room in the Administration building.

Other participants in the meeting will be Dr. Harrison Brown, professor of Geochemistry, California Institute of Technology; Dr. A. O. C. Nier, professor of Physics, University of Minnesota; Dr. Brian Mason, professor of Geology at Columbia University and curator of the American Museum of Natural History, New York; Walter R. Bimson, chairman of the board, Valley National Bank, and Dr. Ben R. Gossick, ASU professor of Physics.

Also attending the meeting will be Dr. G. Homer Durham, ASU president; Dr.

Carleton B. Moore, director of the meteorite collection at ASU, and Edward Henderson, curator of meteorites at the Smithsonian Institute.

Special attention will be fo-

cused on an annual grant of \$1,000 given by Dr. H. H. Ninninger, of Sedona, and gifts totaling \$8,900 from Herbert C. Fales, of New York, to assist students participating in the meteorite program.

Remodeled Corral Will Provide Better Service, Greater Variety

Something new has been added to the MU Corral.

Hamburgers, cheeseburgers, grilled cheese and French fries—all cooked to order.

"The Corral kitchen has been remodeled and a grill and French fries added to improve the food service," said Richard Munkachy, director of food service at ASU.

"This new system was devised to take better care of Corral diners and to alleviate over-taxed food facilities at Sahuaro,

Palo Verde and the Den," Munkachy said.

"Further, to attempt to utilize our facilities to the fullest, Clancy's now serves cold sandwiches and drinks from 11:30 a.m.-1 p.m.," he added.

The new hot food service in the Corral was created by the MU staff, headed by Mrs. Cecilia Scouler, and the Saga Food Service staff, food suppliers for Sahuaro, Palo Verde, the Den, Clancy's and the Corral.

Whatever you do, do it better
with Maximum vision and comfort.

Dr. Irving Kanarek

Optometrist

Papago Shopping Plaza
(Near Little Lulu)

Appointment Suggested
WH 6-7431

10 - 6 Mon. thru Sat.
10 - 9 Thursday

The Village Shop

a shop
designed
with the college
girl in mind

967-1981

616 MYRTLE
TEMPE

Photographer To Talk Here

Julius Shulman, a noted national architectural photographer, will give a lecture at 8 p.m. Monday in the MU Ballroom.

His lecture is sponsored by the ASU chapter of the American Institute of Architects, which is requesting a 50-cent donation for the lecture.

Shulman is the winner of the color division in the 1961 architectural photography competition organized by the AIA and the Architectural Photographers Association.

WALLY'S CAFE

Good Things to Eat and Drink

1133 Normal Avenue

"Across the Street From East Stadium

Open 7 Days Week
6:30 A.M. TO MIDNITE

LET US SERVICE Your Car

Expert Mechanics
Reasonable Prices

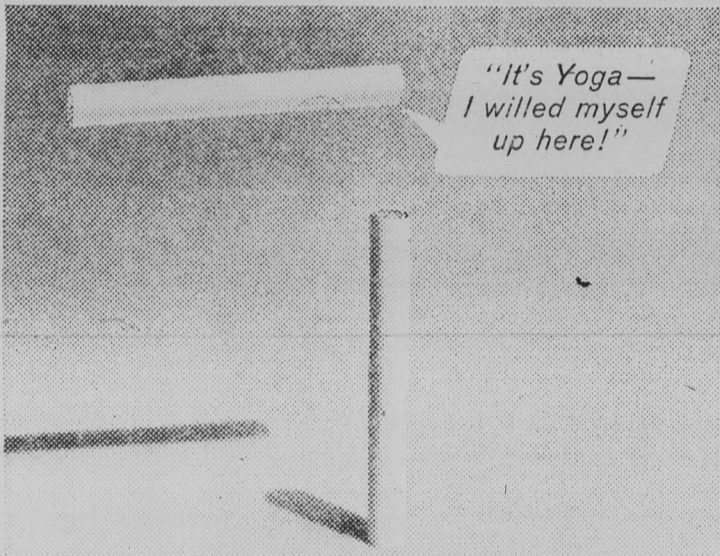
CHEVROLET Specialist

Texaco Card Accepted
We Do the Job RIGHT
The FIRST Time

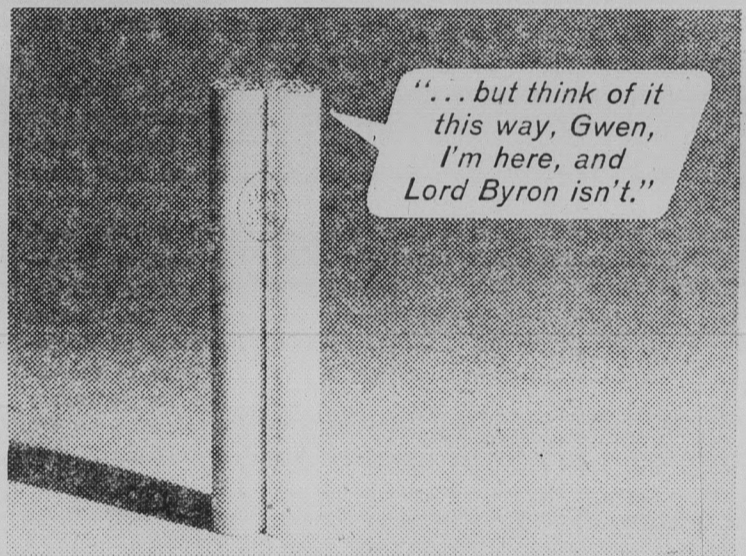
BRIT SMITH Car Co.
802 MILL AVE — TEMPE

LUCKY STRIKE presents: LUCKY TUFFERS

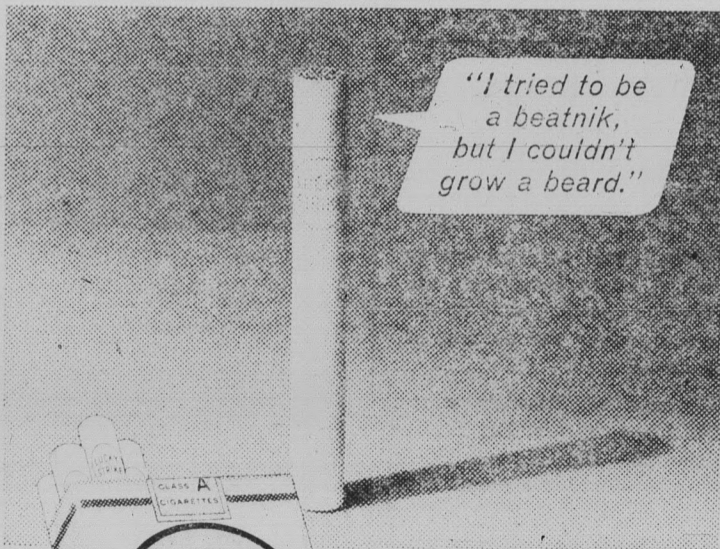
"THE INTELLECTUALS"



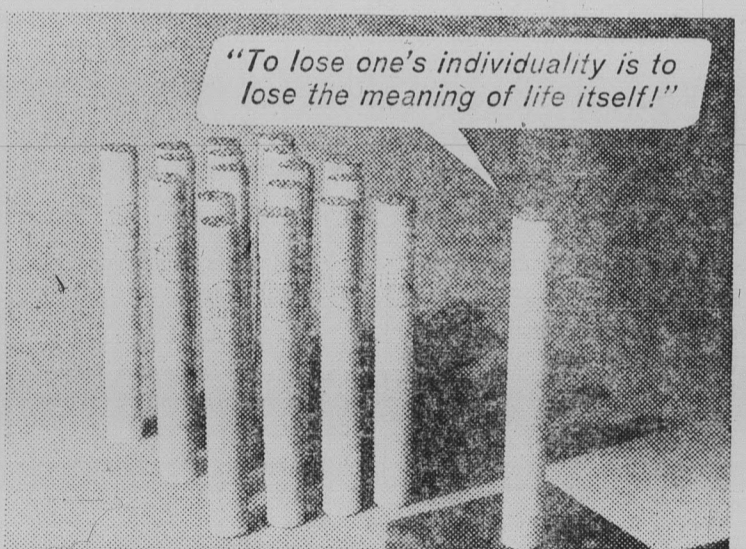
"It's Yoga— I willed myself up here!"



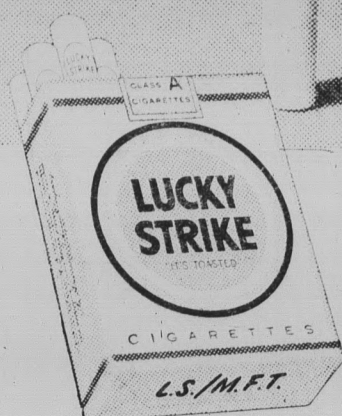
"...but think of it this way, Gwen, I'm here, and Lord Byron isn't."



"I tried to be a beatnik, but I couldn't grow a beard."



"To lose one's individuality is to lose the meaning of life itself!"



IF YOU'RE AN INTELLECTUAL, be thankful you're living at the right time. The climate of our contemporary culture is sympathetic to new voices, new ideas. The new age of enlightenment explains, among other things, the popularity of Luckies on college campuses. Deduce this yourself: Enlighten up a Lucky. As its heady aroma swirls about you, reflect on this profundity: College students smoke more Luckies than any other regular.

CHANGE TO LUCKIES and get some taste for a change!

© A. T. Co.

Product of The American Tobacco Company — "Tobacco is our middle name"

Air Force Gives Grant To School

Dr. Clement J. Kevane, associate professor of Physics, will direct a two-year continuation of a solid state physics research project for the U.S. Air Force Office of Scientific Research.

The Air Force, in announcing the \$41,984 grant to ASU for the project, said it includes provision for two graduate assistants in solid state physics.

Objective of the high temperature research project is to learn the mechanism of conduction of electricity in rare earth oxides and the electronic structure of these solids.

Findings of the basic research study will contribute to the general understanding of charge transport in solids, especially insulators.

Arnold Toynbee To Give Speech About Religions

Arnold Toynbee, noted English historian, will appear on a special hour-long television program devoted to "Four Religions" at 9 p.m. Monday over KAET, channel 8.

Hinduism, Buddhism, Islam and Christianity will be examined visually by showing worshippers in the performance of their faith to explain the differences and similarities in the four religions.

Orchestra Opens Gates

The ASU Symphony Orchestra will present a "Concerto" Concert on March 23 featuring five student soloists, who need not be music majors, according to Eugene Lombardi, symphony conductor.

Auditions will be on Feb. 10 at 1 p.m. in Cosner Auditorium. Application blanks, available in the Music office in the Fine Arts building, must be returned no later than Feb. 1.

Information on rehearsals, judging and selection of soloists, literature and other regulations is available in the Music office.

ASU Awarded Survey Grant By U.S. Agency

ASU has been awarded a grant by the U.S. Office of Education under a research program to participate in a survey of the present status of infant and pre-school tests.

Dr. Rachel Ball, ASU professor of Psychology, is one of the co-investigators on the project.

The project is a study of the literature and present practices involved in the use of mental tests for infants and pre-school children.

Dr. Christy To Lecture On Physics

Dr. Robert F. Christy, professor of Physics at California Institute of Technology, will be visiting lecturer at ASU Thursday and Friday.

He will speak under the auspices of the American Association of Physics Teachers and the American Institute of Physics as part of a nationwide program to stimulate interest in physics. The program is now in its fifth year and is supported by the National Science Foundation.

Dr. Christy will hold lectures and informal discussions and will assist faculty members with curriculum and research problems in physics.

Dr. Christy will be the guest of Professor Alan T. Wager, chairman of the Physics department. His current work involves theoretical nuclear physics, high energy physics and elementary particles.

KAET GLIMPSSES

Today
 5:15—Uncle Wonder's Workshop, "Friction II"
 5:30—Day in Review News
 5:45—Investor News: Stocks
 5:50—Sports Summary
 6:00—What's New?, "The Charleyhorse"
 6:30—World of Medicine, "Ophthalmology"
 7:00—Spanish Telecourse
 7:30—SPECIAL: AN AGE OF KINGS, "Uneasy Lies the Head" (Henry IV — Part 2, Acts 3, 4, 5)

Monday, Jan. 8
 4:45—Sociology Telecourse
 5:15—Uncle Wonder's Workshop, "The Inclined Plane"
 5:30—Day in Review News
 5:45—Investor News: Stocks
 5:50—Sports Summary
 6:00—What's New?, "The Living World"
 6:30—American Government Telecourse
 7:00—Spanish Telecourse

7:30—Japanese Brush Painting, "Drawing the Sparrow"
 8:00—Adventures in Living
 8:15—Psychology Telecourse
 9:00—SPECIAL — FOUR RELIGIONS

Tuesday, Jan. 9
 5:15—Uncle Wonder's Workshop
 5:30—Day in Review News
 5:45—Investor News: Stocks
 5:50—Sports Summary
 6:00—What's New?, "The Quiet Man"
 6:30—The Open Line — WO 7-1411, "Sam Vickers, City Manager"

7:00—Spanish Telecourse
 7:30—American Art Today, "Science & American Art"
 8:00—Metroplex, "The Promise of the City"
 8:30—Searchlights on Delinquency, "Delinquency Areas"
 9:00—Flaherty and Film, "Nanook of the North"
 9:30—ASU Directed Teaching

Wednesday, Jan. 10
 4:45—Sociology Telecourse
 5:15—Uncle Wonder's Workshop
 5:30—Day in Review News
 5:45—Investor News: Stocks
 5:50—Sports Summary
 6:00—What's New?, "National Parks"
 6:30—American Government Telecourse
 7:00—Spanish Telecourse
 7:30—American Memoirs, "How Historical is History?"


8:00—Social Security in Action, "Billy Gilbert"
 8:15—Psychology Telecourse
 9:00—Playwright at Work, "Gazzo's A Hatful of Rain"
 9:30—UN Review

Thursday, Jan. 11
 4:45—Sociology Telecourse
 5:15—Uncle Wonder's Workshop, "Wedges"
 5:30—Day in Review News
 5:45—Investor News: Stocks
 5:50—Sports Summary
 6:00—What's New?, "Insects"
 6:30—American Government Telecourse

7:00—Spanish Telecourse
 7:30—Our Neighbor the Moon, "Living on the Moon"
 8:00—Camera 15, "From This Land"
 8:15—Psychology Telecourse
 9:00—Eastern Wisdom & Modern Life, "The Rise of Zen"
 9:30—College News Conference

10:00—The Next Step, "Sabin Oral Polio Vaccine"
Friday, Jan. 12
 5:15—Uncle Wonder's Workshop, "Lightning & Electricity"
 5:30—Day in Review News
 5:45—Investor News: Stocks
 5:50—Sports Summary
 6:00—What's New?, "The Grand Canyon"
 6:30—World of Medicine, "The Effect of Sunlight"
 7:00—Spanish Telecourse
 7:30—SPECIAL: AN AGE OF KINGS, "SIGNS OF WAR" ("Henry V Acts 1, 2, & 3")

LET US
SERVICE
 Your Car
 Expert Mechanics
 Reasonable Prices
CHEVROLET
 Specialist
 Texaco Card Accepted
 We Do the Job RIGHT
 The FIRST Time
BRIT SMITH Car Co.
 802 MILL AVE — TEMPE



FLIGHT INSTRUCTION
 Special Rates For
 College People
 MODERNIZED GROUND SCHOOL
 FOR PILOTS & NON-PILOTS
Amos Flight Operations
 A Private License is a Must In Modern Business
 Don Amos — Class of '56
 Phone BR 5-7291 SKY HARBOR



ORANGE JULIUS
 "A DEVILISH
 GOOD DRINK"
 ORANGE OR LEMON
 MADE WITH FRESH JUICE
 — RICH IN VITAMIN C —
 Truly A Health Drink

★ GRILLED DEVIL DOGS ★

- MONGREL (Mustard-Relish-Onion)
- PICKLE POOCH (Mustard-Dill P.)
- BAR-B-Q PUP (B-B-Q Sauce-Onion)
- KRAUT HOUND (Mustard-S. Kraut)

25c

★ MUTT CALIENTE 30c
 ★ BLUE RIBBON PUP 35c

Broiled (Ground Chuck) Burgers
 1 Patty 30c — 2 Patties 45c
 Served With Potato and Carrot Chips

ENJOY INSIDE OR PATIO SEATING
 3517 East Van Buren — Phoenix
 Open 9 A.M. - 12 P.M. Daily — Till 2 A.M. Fri. & Sat

KEPI ON THE AIR
 FM 96.9 mc

ON STAGE!
 Jan. 16 thru 21



ARLENE FRANCIS
 (in person)
 in
 "Old Acquaintance"

Pre-Matinee
 FASHION LUNCHEON
 Thurs. & Sat. 12 to 2 P.M.
 \$1.50

Phone: AM 6-4487

Jan. 23 thru 28
 Margaret O'Brien
 in
 "Under The Yum Yum Tree"

Richard Charlton's
 Sombrero Playhouse
 4747 N. 7th St. — Phoenix



KAET Schedules New Art Series

The second in a series of 13 half-hour television programs devoted to "American Art Today" will be presented at 7:30 p.m. Tuesday over KAET.

The initial program explored major contemporary influences on American art and traced the origin of external influences.

Seven major modes of American art were discussed and illustrated with paintings and prints and with demonstrations at the easel.

ARTIST SUPPLIES
 Crafts • Hobbies
 Decorating Materials
 Picture Framing
 Tempe Center • WO 7-4482

Fenwick Says They're JUNK

We Think They're **BARGAINS**

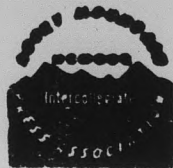
SALESMENS SAMPLE LP's
 While They Last
99c & \$1.49

HILLS RECORDS
 Tempe Center
 Open Thursday Till 9:00 P.M.



The STATE PRESS, distributed by the campus chapter of Sigma Delta Chi under the direction of Circulation Manager Charles Hilgeman, is the official campus newspaper of Arizona State University. It is published each Wednesday and Friday throughout the school year, excepting holidays, and is entered as second class matter at the Tempe, Arizona, Post Office under the Acts of March 3, 1879, and August 24, 1912. Subscription price, \$3 per school year.

The STATE PRESS is a member of the Arizona Newspapers Association, Associated Collegiate Press and National Advertising Service, Inc.



EDITOR-IN-CHIEF _____ JACK ONG

NEWS DEPARTMENT

MANAGING EDITOR _____ BILL FLICK

NEWS EDITORS _____ BILL OVEREND
_____ JANET WOLHETER

COPY EDITOR _____ GARY OLMSTEAD

CHIEF PROOFREADER _____ EDIE ALLERS

ASSIGNMENTS EDITOR _____ BARBARA MARLOWE

ASSISTANTS _____ MARY GORMAN
_____ BOB ZACHE

SOCIETY DEPARTMENT

EDITOR _____ ROSALYN WHITNEY

ASSISTANT _____ BETTY ADAMS

SPORTS DEPARTMENT

EDITOR _____ BOB EGER

ASSISTANT _____ BOB JACOBSEN

Exam Schedule

All Classes Regularly Scheduled on MWF or Daily* at:	Examination is Scheduled on:
7:40- 8:30	Mon., Jan. 22 at 7:40-9:30
8:40- 9:30	Thurs., Jan. 25 at 12:40-2:30
9:40-10:30	Fri., Jan. 26 at 9:40-11:30
10:40-11:30	Tues., Jan. 23 at 9:40-11:30
11:40-12:30	Wed., Jan. 24 at 12:40-2:30
12:40- 1:30	Mon., Jan. 22 at 12:40-2:30
1:40- 2:30	Fri., Jan. 26 at 7:40-9:30
2:40- 3:30	Wed., Jan. 24 at 2:40-4:30
3:40- 4:30	Mon., Jan. 22 at 9:40-11:30

All Classes Regularly Scheduled on TTh or TThS at:	Examination is Scheduled on:
7:40-8:30	Tues., Jan. 23 at 7:40-9:30
8:40-9:30	Thurs., Jan. 25 at 7:40-9:30
9:40-10:30	Tues., Jan. 23 at 2:40-4:30
10:40-11:30	Wed., Jan. 24 at 7:40-9:30
11:40-12:30	Mon., Jan. 22 at 2:40-4:30
12:40-1:30	Thurs., Jan. 25 at 9:40-11:30
1:40-2:30	Wed., Jan. 24 at 9:40-11:30
2:40-3:30	Fri., Jan. 26 at 12:40-2:30
3:40-4:30	Tues., Jan. 23 at 12:40-2:30

*And classes that meet on M, MW, MF, MTWF, MWThF MTWTh or-F.

Examinations for classes that are scheduled with "Time Arranged" and for classes that meet at, or after 4:30 p.m., in the evening, will be held at the time scheduled for the last regular meeting of the class during the examination period of Jan. 22 thru Jan. 27 unless otherwise scheduled by the instructor at a time during the final week of the semester.

LITTLE MAN ON CAMPUS



"YOU'RE LATE AGAIN!!"



Our early classes Wednesday recorded perfect attendance . . . that is to say: everyone enrolled was present. THAT is to say there was a minimum of holiday casualties (our prayers for a fog-bound Los Angeles International Airport were not answered, so we had a Farewell to Holidays convention in the rear . . . which includes anything preventing the coming to school on the first day following vacation.)



"Farewell to Holiday," you say. "What does the slob mean?" And we answer: just that! Not another long spell from the drag of classes until school's out . . . period. Christmas vacation is ASU's sole "holiday" as of this year.

Take a look . . . semester break? Ha! Finals end Jan. 27, registration starts Feb. 1; Easter "vacation" is April 20-23, inclusive that's Friday through Monday. Yet school's not out till June 2, the last day of finals; with three long breaks last year, we were "released" June 2.

Granted, we enjoyed a longer summer, but what good will that do in the way of a rest next semester?

And nothing will be done till 1963, by action of the Regents. Tsk! Tsk!

* * *

In L.A. (and probably everywhere else) it's the Twist . . . bar all . . . nada! They're doing it at the Grove, Palladium, Moulin Rouge. All sorts of steps and shakes . . . done by all ages and shapes. There are a couple of new "Twists" finding their way onto the beaches, but we can neither pronounce nor spell the words . . . and if we could, probably couldn't print them. So everyone twisted in the new year! Up Sunset Strip down Hollywood Blvd. Quite the spectacle!

As long as we're on the subject of such things, let us clue you in on a couple of masterpieces we happened to see in the big city.

The best thing (and every student except one who spent Christmas on the coast saw this one . . . that is to say, everyone we talked to was "West Side Story," first motion picture I've seen where the audience applauded after almost every musical selection (added bravos for "Tonight," "Maria," "The Dance at the Gym") and gave a standing ovation when composer Leonard Bernstein's name was flashed on the giant screen at the end . . . the guy probably wasn't even there. Several others who saw "WSS" on other evenings reported similar praises.

It is, of course, the best picture of the year, bar all once more.

The cast of 99% teenagers and young adults makes every step taken during the two and a half hours important. Everything is choreographed and the result is electrifying . . . that's what the synopsis said, and what's good enough for them is likewise for us.

With her performance as Maria coupled with another good job in "Splendor in the Grass," Natalie Wood might well win an Oscar nomination.

Other "West Side" sure bets for prizes include direction, film editing, screenplay, color cinematography, musical score. And that's to name a few.

Doris Day and Rock Hudson (they keep on insisting that his name should appear first!) do another "Pillow Talk" in "Lover Come Back," only in a new setting. It's all intact: girl, boy conflict—girl meets boy, boy pretends he's someone else, they fall in love, all goes well, girl uncovers male and . . . er . . . his true identity.

But it ends well, and Doris is as neat as ever. Hard to believe she's 39.

* * *

AFTER THOUGHT — The world "turns the wrong way" for those who expect it to always turn for them . . .



By BILL FLICK

What's in store for '62 — from an ASU standpoint?

Several things. Some of the following items are scheduled events; others are our predictions.



Among the scheduled events . . .

A tremendous four-day Easter vacation (that includes a weekend). A real good chance for all you Devils from Globe and the surrounding area to go home for Spring vacation. But let's not complain . . . this is only the second most important holiday in the Christian world. We can't help it if outfits like Harvard, Princeton, Northwestern, Stanford, UCLA and the UofA have a week's vacation (or even more) . . . this is no reason for Arizona State to do likewise. Besides, we are probably the "trend-settingest" university in America. Hope Slippery Rock and EAJC follow the ASU trend.

On the more pleasing side . . .

A sincerely tremendous three million dollar auditorium is scheduled for the new year . . . at least it has been approved. And we are hoping that 1962 will see the start of construction on Frank Lloyd Wright's last work.

1962 will also see the completion of another huge building program at ASU — ten new fraternity houses — on which construction has now begun.

The new fraternity row should be a spectacular addition to our ever-growing campus. Congratulations to those houses participating in the program. . . It took a lot of scraping, string-pulling and weight-throwing to get it done, but all ten made it. And the deepest thanks to men like Gary Anderson, Gilbert Cady and Chuck Mason (AMONG MANY OTHERS) for their never-ending efforts.

Football for '62 promises to be great with eight consecutive home games scheduled . . . beginning with Colorado State on Sept. 29 and ending with New Mexico State on Nov. 17. Two months of Saturday night high heels, girls . . . without a break!

Among our predictions . . .

A championship basketball team — and we mean NATIONAL championship. They dropped three on the road, but we say no more. This will mean victories over Utah (6 points) and probably USC (1 point) at the Western Regionals in Provo in March. If they make it through that one, we'll all be praying. And who knows? . . . maybe they'll be answered. 10-4.

Also predicted . . . three more Pizza Huts, the Second Annual Ugly Person contest, an OK from the MU Board permitting studying in the lower lounge, a campaign for longer women's dorm hours, legalized gambling in East Hall and a return visit to the Blue Grotto.

As for 1961? Sayonara to a good year and our last 365 days of being a minor.

Speakers To Attend Reading Conference

Members of the ASU faculty will host Arizona and out-of-state speakers at the first annual invitational Reading Conference.

Registration begins at 8:30 a. m., Jan. 12 and 13 in ASU's new College of Education building, room 101.

Dr. G. Homer Durham, ASU president, and Dr. G. D. McGrath, Dean of the College of Education and general chairman of the conference, will greet the guests.

The conference, designed to assist educationalists in creating an improved reading program for youth, will include a discussion on automated reading laboratories by Dr. Joel Benedict, professor of Education and director of ASU's Audio-Visual Center at 9:20 a. m. and an address on "Criteria for Selecting Materials and Methods for Reading Instructions" by guest speaker Dr. Stanford E. Taylor of Huntington, L. I., who is president of Educational Developmental Laboratories, at 10:00 a. m.

Following the discussions, Dr. Taylor and John P. Ver-

Parachute Club Hits The Silk

The Sun Devil Parachute Club is being organized on the ASU campus.

It is a special interest group open to all students and faculty members who are interested in the sport of parachuting.

Charter members of the organization are Ernest Wolfchiel, president; Tod Walker, Joe Statts, Douglas Cooper, Bill Shaw and Karen Rickard.

Non-jumpers will start training, under the supervision of trained instructors, Jan. 23.

complete selection of fresh, delicious



TEMPE DRUGS

6th & Mill — Open 9-7



Stop In... Find Out For Yourself!!

TEMPE DAIRY QUEEN

950 MILL AVE. — TEMPE

Student Attends Biennial Council

James D. McGowan, president of the ASU chapter of Phi Delta Kappa, professional educational fraternity, attended the fraternity's 28th Biennial Council held on the Indiana University campus.

The event brought together more than 325 representatives of 218 chapters in the U. S. and Canada.

While attending the convention, McGowan served on the organization's budget committee.

gis ASU professor of Education and ASU faculty associates Ray Christine and Mrs. Evelyn Evaard will direct section meetings. Dr. Taylor will speak on "Sensation and Perception" at 1 p. m.

Friday's discussions will end after a 6 p. m. banquet in MU 218.

The conference will adjourn at noon Saturday.

\$1,000 Scholarship Is Awarded

Brent Welling, a sophomore engineering student at ASU, has been named first beneficiary of a new \$1,000 annual scholarship program instituted by Union Rock and Materials Corp., Phoenix.

K. G. Bentson, president of the sponsoring firm and W. P. Shofstall, chairman of the Scholar-

ship committee, announced the program.

Bentson said the program was started by his firm in lieu of individual Christmas gifts to customers in order to benefit the entire construction industry by helping to interest more young men in preparing for construction careers.

Bobbies Flowers

Flower Gifts...

20 E. 5th St.
WO 7-2972 — WO 7-4274

For Parties... Large Artificial Plants For Rent

TEMPE CHURCHES of CHRIST

Invite You To Their SERVICES and BIBLE CLASSES

10th and Ash Avenue WO 7-4872 CLEW WIMBISH Evangelist	1016 River Drive WO 7-5112 PRESTON WINCHELL Evangelist
--	---

SUNDAY		SUNDAY	
University Bible Class	9:45 a.m.	Bible Classes	9:45 a.m.
Morn. Worship	10:45 a.m.	Morn. Worship	10:45 a.m.
Evening	7:00 p.m.	Evening	6:30 p.m.
WEDNESDAY		WEDNESDAY	
Evening Study	7:30 p.m.	Evening Study	7:30 p.m.

DEVOTIONALS IN DANFORTH CHAPEL
MONDAY AND FRIDAY MORNINGS 6:30 to 7:00 A.M.

Mathematicians for Space Technology Leadership

"But our purpose is... to apply what we discover in some simple cases as principles, by which, in a mathematical way, we may estimate the effects thereof in more involved cases, for it would be endless and impossible to bring every particular to direct and immediate observation." Isaac Newton—"Mathematical Principles of Natural Philosophy—Book III: The System of The World," 1686.

REPRINTS OF THE DRAWINGS CREATED FOR THIS SERIES, SUITABLE FOR FRAMING, ARE AVAILABLE ON REQUEST.

In disciplines that follow the tradition of Newton, Mathematicians at Space Technology Laboratories, Inc. seek "principles" for the analysis and evaluation of complex data as a means of accelerating man's conquest of space. At STL, those responsible for Space Technology Leadership look to the Computation and Data Reduction Center to identify and evaluate applied mathematical principles from diverse observations. In so doing, STL Mathematicians may employ advanced digital processing techniques in solving problems and analyzing data acquired from ballistic missile and space vehicle programs. Mathematicians who seek greater stimulus and responsibility are invited to communicate with Dr. R. C. Potter, Manager of Professional Placement and Development, at STL, an equal opportunity employer.

SPACE TECHNOLOGY LABORATORIES, INC. P. O. BOX 95005, LOS ANGELES 45, CALIFORNIA
a subsidiary of Thompson Ramo Wooldridge Inc.

Programmers and Mathematicians—STL interviews on campus Jan. 11 & 12
Please make arrangements now with your placement office for interview appointment.



Devils Return; Get Two Wins

By DENNIS ANDERSON

Returning home from the disastrous pre-holiday road trip, ASU's cagers found the friendly confines of Sun Devil Gym to their liking, and responded with victories over Denver and Brigham Young.

On December 29, the Demons ran over the Pioneers from Denver University, 106-62. The following night, BYU's Cougars fell, 94-54.

"We got back on the track in rousing fashion," stated ASU coach Ned Wulk. "However I feel that both Denver and BYU have stronger ball clubs than they showed against us."

"The play of Larry Armstrong was improved, though he played sparingly," Wulk continued, "and Tony Cerkvenik was his old self again on the boards."

Wulk cleared the bench in both games. Fourteen team members saw action in each contest.

In the Denver romp, the Sun Devils ran up a 57-30 halftime

score, and added 49 in the second period. Gerry Hahn led all scorers with 20 points.

Five others hit in double-figures. Mike McConnell hit for 15, his top effort of the year. Art Becker canned 13 and Cerkvenik 12. Ollie Payne and Armstrong hit for 10 apiece.

Cerkvenik hauled in 13 rebounds, followed by "Jumping" Joe Caldwell with 10.

One of the season's largest home crowds, 4,564 persons, was on hand to watch the Devils take a resounding 47-16' halftime lead over BYU in route to the 94-54 win.

Five Devils paced the rout with double-figure scoring. Once more they were led by Hahn with 15. Cerkvenik followed with 14 and Armstrong came through with 12.

Raul Disarufino, playing one of his top offensive games of the year, had 10 points, as did McConnell.

Cerkvenik grabbed 14 rebounds, edging Caldwell by one.

BOB VIEWS SPORTS NEWS

Violent World Of Basketball

By BOB EGER
Sports Editor



Question: How disastrous was ASU's recent basketball roadtrip?

Answer: Although success in the win column certainly eluded the Devils on their cross-country jaunt, they probably arrived home a little better off than most people realize.

After the successful home stand by the Devils to start the season, fans became fired up and expected the ASU cagers to sweep through the heart of this nation's basketball territory, leaving behind them a horrible trail of destruction.

The Sun Devils didn't sweep through the Midwest destroying their foes. They didn't stumble through either. Even in defeat they stepped high. Post-game reports from opponents revealed that they made a 100% favorable impression wherever they went.

Sure they lost three times on the road. In modern college basketball circles that's not uncommon. With the season only about a third of the way gone there are just three major teams in the entire United States that are undefeated. Those three — Ohio State, Villanova and Mississippi State — are ranked first, fifth and ninth nationally by Associated Press.

The bottom has dropped out from under a lot of good ball clubs already this season but that doesn't mean they are out even though they may be down.

Providence is the defending National Invitational Tournament champion and was ranked fourth in the United Press pre-season poll. That was one month ago — now Providence can't be found in the top 25 teams.

Wake Forest was ranked fifth in pre-season polls. Now it's nowhere in sight. Wichita was un-ranked and unheard of before the season. Then the Shockers upset defending NCAA champ Cincinnati and immediately vaulted well within the top ten. Then the Shockers were knocked off a couple of times and now Wichita is un-ranked and forgotten — all within a period of about three weeks.

In the rapid-moving world of college basketball there are lots of ups and downs. There will probably be plenty more see-sawing among the nation's top teams before the season is over.

And a few of the "downs", ASU included, will be right back up there knocking on the door when post season tourney time comes around.

Lynn Haines Wins Cotton Bowl Crown

Lynn Haines, an ASU freshman and second-ranked on the talent-laden Arizona State female tennis ladder, won first place honors in the annual Cotton Bowl tennis tournament in Dallas, Texas, during the Christmas vacation.

Miss Haines swept through four matches without losing a game to reach the finals where she defeated Jill Philbrick of Lubbock 3-6, 6-3, 6-2 for the junior girl's crown.

Lynn is the top ranked junior girl's competitor in Texas and Miss Philbrick is ranked among the top three in that state.

En route to her singles victory, Miss Haines topped Mary Hill of Dallas 6-0, 6-0; Barbara Morgan of Wichita Falls 6-0, 6-0; Janice Jackson of Houston 6-0, 6-0 and Kay Monk of Dallas 6-0, 6-0.

Devils Lose Road Games

Minnesota and Utah polished off Arizona State in the final games of the Sun Devils' pre-holiday road trip by scores of 70-68 and 102-89 respectively to give the Sun Devils a dismal 1-3 road record.

Against the Golden Gophers, ASU couldn't find the range from the floor, hitting only 29.3 percent of its shots — far below par.

Ollie Payne and Larry Armstrong shared high point honors against Minnesota with 16 points each. Joe Caldwell with 10 was the only other Devil to break into the double figures.

Caldwell turned in a spectacular rebounding performance, grabbing 19 off the boards in the best rebounding effort of the season for a Sun Devil.

Against Utah, the Devils couldn't cope with a blistering performance from the Redskins as the Utah club poured 50 per cent of its shots through the hoop.

Bill McGill led Utah in scoring with 47 markers to bolster his national scoring lead. Payne and Armstrong had 24 and 22 points respectively and Jerry Hahn added 20 for ASU.

NOW THREE LOCATIONS . . .

1. Tempe Center 2. 1302 Rural 3. Bayless Center

Open 24 Hours A Day!



ZZZONA
DRIVE-IN LAUNDRY & CLEANERS
FIRST in Laundry and Cleaning • LAST in the Phone Book

P.E. CLOTHES FOR MEN AND WOMEN

Brand Names MEN'S WEAR

Brand Names WOMEN'S WEAR

EXPERT RACKET RESTRINGING

Trophies and Engraving

"FOR BRANDS YOU KNOW"

Joe Selleh

624 MILL AVE.

WO 7-4163



• Greeting Cards

• Stationery

• Candy

• Paper Goods

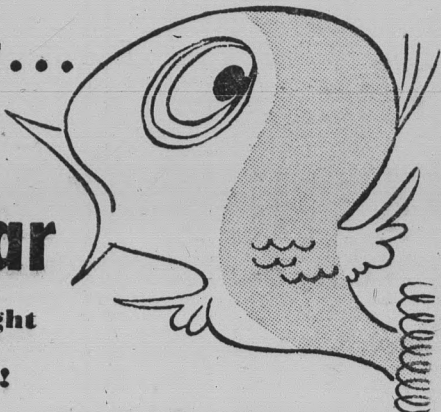
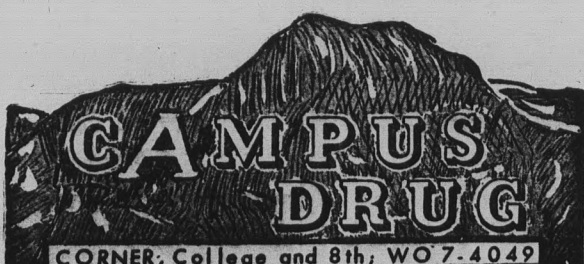
• Gifts

HAPPY HOUSE SHOP Tempe Center
WO 7-5353

Singing out . . .

happy
New Year

may it be a bright
and cheery one!

CAMPUS DRUG
CORNER, College and 8th, WO 7-4049

SMILEY-BERGE FORD

Your Nearest Auto Dealer

★ Complete Service Facilities

★ 7 Mechanics On Duty

★ Servicing All Makes & Models

JUST TWO BLOCKS FROM
ASU CAMPUS

16 East 8th Street — Tempe
Phone WO 7-2064

The
Capri's
"PICK OF
THE
WEEK"

ASU 85

H-SU 66

Right or Wrong
You Can't Miss
With Our
PIZZA'S

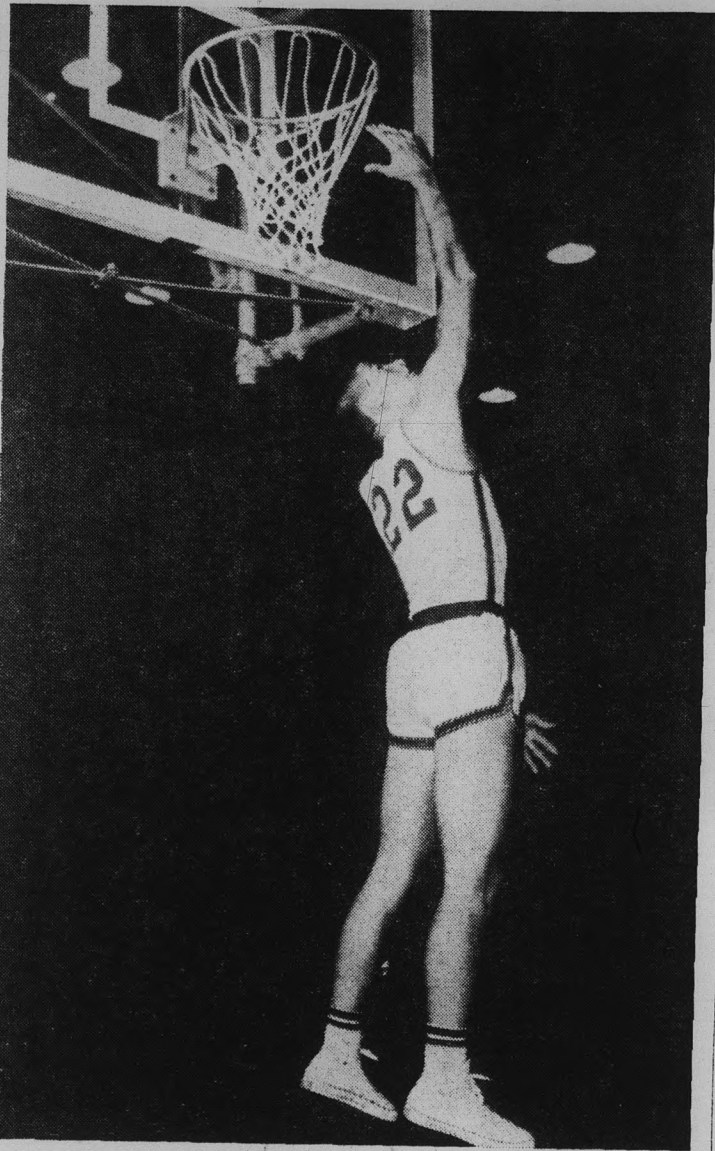
16 E. 4th — Tempe

Two Sun Devils Sign With Pros

Jesse Bradford and Larry Reaves have signed professional football contracts with the Toronto Argonauts.

Reaves, playing inside tackle on the Devils' unbalanced line, had his best season this last year. The stocky 220-pounder from Braddock, Pa., has repeatedly won acclaim from Coach Frank Kush for solid blocking and defensive play.

Bradford from Shafter, Calif., held down the left guard spot on the Sun Devil line. He is known for his great speed, being one of the fastest linemen in football. Bradford, a solid 190-pounder, has run the 100 yard dash in 9.5 — considerably faster than most backs.



BIG ART — 6-8½ sophomore inside man Art Becker should log plenty of playing time against Hardin-Simmons tomorrow night in Sun Devil Gym. Becker has been instrumental in several of the Devils' wins this season.

Tomorrow Night-

Cagers Host Cowboy Five

Hardin-Simmons' Cowboys playing the University of Arizona at Tucson last night, are to do battle with Arizona State in a Border Conference basketball game.

The Cowboys, 4-6 before

led by Paul Hinds and Don Seamster, a pair of hot-shooting hoopsters with 15.8 and 14.0 scoring averages respectively.

Other starters will probably be 6-7 senior Richard Nelson, 6-3 senior Dallas Christian and 5-9 junior Barry Oxford.

Last season the Devils topped the Cowboys in both of their meetings, 85-73 and 97-78. The Devils took a 7-3 mark into last night's game with West Texas State and a home win streak which stood at 23 games.

Hardin-Simmons Coach Bill Scott will be making his final Arizona swing after 11 seasons at the helm of the Cowboys. The last time the Pokes defeated the Devils was in the 1956-57 season when they topped ASU 71-65.

Mansperger On Grid Job

Dick Mansperger, former standout Sun Devil football player and a student coach at ASU, returned this week as an assistant to Head Coach Frank Kush.

Mansperger replaced backfield coach Chuck Fairbanks, who left ASU for a similar post at Houston.

Mansperger, a member of ASU's "best ever" football team in 1957, was assistant to Joe Kerbel at West Texas State during the grid season just concluded. Prior to that he coached at Palo Verde Junior College after leaving his student assistant position at ASU in 1958.

Results Not Available

Arizona State met West Texas State in a Border Conference basketball game last night in Sun Devil Gym. Results of the 8:30 p.m. contest were not available by press time.

Axers Visit ASU Matmen

Arizona State's Sun Devil wrestling club shoots for its first dual meet win of the season tonight as it hosts Arizona State College. The first match is scheduled to get underway at 7:30 in Sun Devil Gym.

The Devil matmen were beaten by the UofA and New Mexico in their only other two dual meets this season.

Coach Ted Bredehoff hopes fans will continue to support the Devil grapplers in the manner they did during the first home meet against New Mexico. A sizable crowd was on hand to

see the Devils' first home contest in the current revival of wrestling at ASU.

Bredehoff plans to go with the same lineup tonight that he used against New Mexico, with one exception. There will be no competition in the 191 pound division, so Rex McConaghy will move up from that spot to the heavyweight division.

Zuger To Play In Senior Bowl

Joe Zuger, senior ASU quarterback is expected to see plenty of defensive action in the Senior Bowl game tomorrow in Mobile, Alabama.

Zuger is one of three top quarterbacks on the North team for the annual clash. His quarterback competition comes from Eddie Wilson of Arizona and Mel Melin of Washington State.



"LOVE IS A SNAP"

"Girls used to just smile. Now they pucker. It happened so suddenly, the day I put on these Rapier slacks. Sorry girls, my heart belongs to A-1."



A-1 Rapier
4.95 to 6.95

At your favorite campus shop

Your A-1 Dealer In Tempe...



DON'T BE A ... ON THE DANCE FLOOR



IT'S EASY TO BECOME AN EXPERT DANCER WHEN YOU LEARN TO

Dance at Dale's

ASU SPECIAL
12 Lessons — \$12.50
Open Daily 10-10; Saturday 10-6
WH 6-4241 — Scottsdale



Your HEALTH is our BUSINESS

Phone WO 7-2922



LAIRD PHARMACY

CORNER FIFTH & MILL, TEMPE



The PIZZA HUT

"Eat In or Carry Out"

Open Every Day For Lunch & Dinner

11:30 A.M. to 1 A.M.

Friday & Saturday Till 2 A.M.

FREE Catering Service To Parties

Order By Phone For Faster Service

WO 7-3355

801 E. Apache

Tempe



When it comes to career planning, do you find yourself in a predicament?

Perhaps you should look into the possibilities offered by a career in the life insurance business. Provident Mutual offers college men excellent opportunities in sales and sales management.

Take the time now to talk with us about our training program. We'll be glad to fill you in on the details.

LOUIS T. CHANEY

2727 N. Central
AM 4-4334

Provident Mutual
Life Insurance Company
of Philadelphia, Pa.