

TAKES ON NEW LOOK — The Memorial Union was redone in an apropos decor last Thursday at the annual Christmas party. There were refreshments, dancing, popcorn on the fireplace, plenty of paint and several Christmas trees. More pictures, Pages 2 and 3.

Tempe Night At University Expected To Be Outstanding

ASU's first "Town and Gown Night" at 8:10 p.m. Dec. 19, in the MU Ballroom, is shaping up as an outstanding event both in music and in community relations.

Tempe's mayor, Dr. Ross R. Rice, who is chairman of the ASU Political Science department, followed up the city council's Nov. 30 resolution by proclaiming it Tempe Night at ASU and added, "I'm sure the council and the people of Tempe can look forward to an out-

standing musical Christmas program."

E. J. Demson, president of the Faculty Club, which is sponsoring the event, said 125 invitations have been sent to Tempe civic leaders and businessmen, and to ASU faculty and staff members.

Dr. Philip Nelson, assistant professor of Music and director of the Collegium Musicum, has prepared an outstanding program for the group's appearance.

Elizabethan music for strings will provide incidental background during arrival and seating of guests. Featured will be several "fancys" by Thomas Morley, with soloists Chris Bond and James Maki.

Opening the formal program will be two processions from the "Daniel Play," a French manuscript from around 1150. Featured countertenor will be Ted Bradshaw. Next will be four carols from medieval England for voices and recorders. The carols will feature Edith Long, Martha Bacon, Molly Spingler and Bradshaw as soloists.

"A Virgin and Mother" by John Merbecke in 1540, and a group of traditional Yule carols from France will round out the program for nine voices and nine instrumentalists.

Faculty Club officers in charge of arrangements for the first Town and Gown Night are E. J. Demson, president; Professor Mary V. Lyle, vice president; Professor James E. Cohn, secretary, and Professor Harold Fry, treasurer.

They have been assisted by the following people: Mrs. David Scouler, Mrs. Trudy Thomas, Mrs. Albert Kimball, Miss Judy Feaster and Jack Ong.

Exec Council Okays Five Constitutions; Physicals Suggested

By BOB CLAMPETT

Constitutions of five student organizations were approved Friday by the ASASU Executive Council.

Approved were the constitutions of Pi Sigma Alpha, Political Science honorary, Rho Beta Sigma, a local fraternity; Chi Alpha and the Church of God Collegiate Fellowship, both religious groups, and the Student Construction Society of America.

The Executive Council discussed a plan requiring every athletic intramural participant to undergo a physical examination before being allowed to participate. The plan was recommended to the ASASU Intramural committee.

ASASU President Gary Walker appointed a committee to investigate recent complaints concerning campus vending machine service.

Committee members include Walker, Jim Chilton, Barbara Anderson, Bob Carter and Ed Manley.

Ed Hickcox, ASU director of housing, discussed a plan concerning off-campus housing with the council.

Hickcox recommended that the council investigate the current plan allowing students to be housed in private homes around the Tempe area.

He said student complaints have been directed to his office concerning the procedure of attaining such housing. The council decided to investigate these problems further.

Also under investigation by the Executive Council is MU policy concerning student conduct in the building.

Debate Frosh Win Matches At SC Meet

Four ASU freshmen, composing two teams, won five out of six debates at the Western Speech Association alternate tournament at the University of Southern California last weekend, according to Dr. William H. Stites, ASU associate professor of Speech.

They were Jon Bailey and Allan Haggart, and Maryann Gilliland and Marilyn Rogers. They received certificates of excellence.

Two teams from ASU also won four out of six debates. They included Ken Salmon, a junior, and Mary Schwartzman, a freshman; and Kathy Kolbery, a sophomore, and Phyllis Hoffman, a junior.

The question in all debates was, resolved: That labor organizations should be under the jurisdiction of anti-trust legislation. Each team argued both the affirmative and the negative.

Dr. Stites accompanied the students to the tournament, in which thirty-seven colleges and universities participated.

Motorola Stipends Available

New scholarships, sponsored by Motorola, will be available to ASU Electrical Engineering students Feb. 1, 1962.

The scholarships will involve a cooperative education program which will provide opportunities for Electrical Engineering students to work and attend school in alternate six-month periods.

The program is designed to allow the student to study the operation of the various departments of the center while training in industry. At the same time, it will provide a source of income with salary rates depending upon individual students.

Experience and aptitude will be considered. Students who have had no experience in industry will be classified as co-op students and will receive \$2 per hour.

To enter the program an Electrical Engineering student must have these qualifications:

1. Must have a grade point average of 2.0 or better,
2. Must be recommended by the ASU Engineering department.

3. Must be an Electrical Engineering major with a desire to enter the field of electronics.

4. Must understand that he will be ineligible to be considered for full-time employment with Motorola before graduation.

5. Must have a strong desire to enter the program and be able to present an acceptable financial plan for completing the program.

6. Must have completed one year of work at the engineering college.

Qualified students will operate in pairs, one student attending school from Feb. 1 to July 23 while the other student works during that time. Then they will alternate during the next period, July 23 to Feb. 1.

The program will take five years at the most to complete, depending upon the individual.

Interested students may contact the Electrical Engineering office, 209A Engineering Center.

Registrar Says, Grade-Wise, Coeds Have Edge Over Males

Alfred Thomas, Jr., ASU registrar and director of admissions, has shown that ASU women are smarter than ASU men, by comparing last year's male-female grade averages in each of the four undergraduate college classes.

"Women were smarter than men," he said, "among undergraduate students second sem-

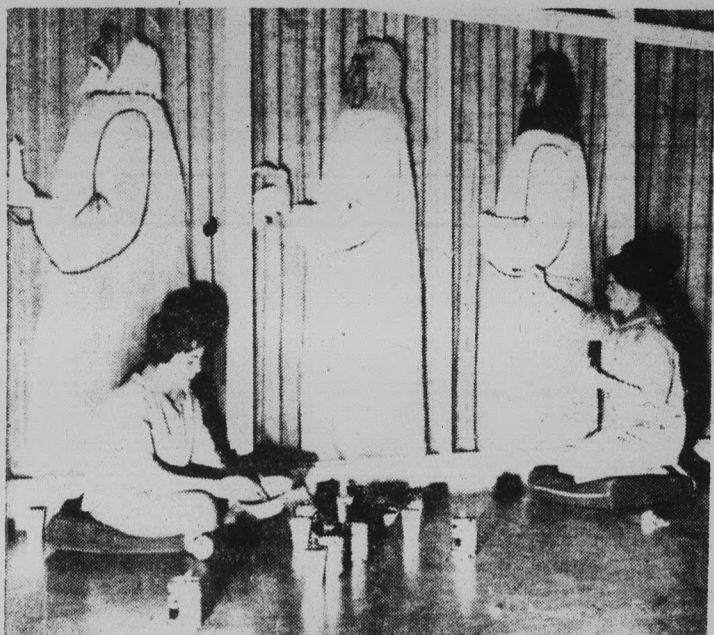
ester last year at ASU. The total average grade for men was a 2.22, just slightly over a C, but the women carried off a solid C plus, coming in at 2.51."

The break-down for the total male and female averages is as follows: freshmen women, 2.25; freshmen men, 1.98; sophomore women, 2.55; sophomore men, 2.20; junior women, 2.75; junior men, 2.28; senior women,

2.85, and senior men, 2.25.

The men's average was better than the women's in only the College of Applied Arts and Sciences. The junior men averaged 2.13, while the junior women averaged 2.02. The women's highest average was a 2.87 in the College of Liberal Arts, by the senior class, and the men's record high was 2.72 of the seniors in the College of Education.

Yule Decorations Brighten Memorial Union...



FOR DINING MOOD — Persons taking their lunches in the Faculty Dining Room enjoy this handpainted window mural of the Three Wise Men.



PLENTY TO PAINT — Cultural Affairs committee members helped with painting choir boys, Santa and his team. All decorating was done during annual MU Christmas Party last Thursday night.

ASU Professor Seeks New Process To Speed Search For Cancer Cure

Cancer research is a tedious process.

But Dr. Myron L. Casper, a new assistant professor of Chemistry at ASU, is trying to speed up the process and at a lower cost.

Currently, cancer researchers

have had to reduce tons of coal to tar or use machines which smoke caploads of cigarettes and capture the minute quantities of tar from each, to obtain valid samples for analysis and experimentation. These processes are obviously long and expensive.

Dr. Casper will try to make synthetic compounds, exactly like those in coal and cigarette tars, in large quantities with a minimum of labor and expense.

He is working under a new \$4,000 grant to ASU from the Research Corporation of New York City. Dr. Casper discovered his method during research at the University of Colorado, where he received

his doctor of philosophy degree.

He joined the ASU faculty this year and hopes to give qualified graduate students similar opportunities in the research lab.

If his work is successful, his next step will be to verify chemical structures and formulae and correct any error which may show up. After that, researchers then can conduct a frontal attack on the compounds themselves and, ultimately, it is hoped, achieve a cancer cure.

Yule Dance Set Saturday Night

A Christmas dance, sponsored by the Social Board, will be in the MU Ballroom Dec. 16 from 9 p.m. to midnight.

The dance will be semi-formal. Bob Roth and orchestra will furnish the music, free of charge.

Unusual GIFTS

VISIT THE VALLEY'S OLDEST AND MOST INTERESTING INDIAN STORE

Authentic Indian Jewelry
Gifts & Moccasins

516
Mill
Ave.



WO 7-2203

Malcoff's
Stein and Sirloin

4801 North Central

NOW PLAYING

The Fantastic Composer, Arranger, Entertainer

MATT DENNIS

& His Trio

COMING SOON

Buddy Collette Quintet

ALL YOU CAN EAT!

CHUCK WAGON

\$1.95

Char Broiled Steak Dinner

\$1.95



4817 E. Indian School

NOW PLAYING

**"WINGY MANONE
PLUS FIVE"**

ALL YOU CAN EAT!

CHUCK WAGON

\$1.95

Char Broiled Steak Dinner

\$1.95

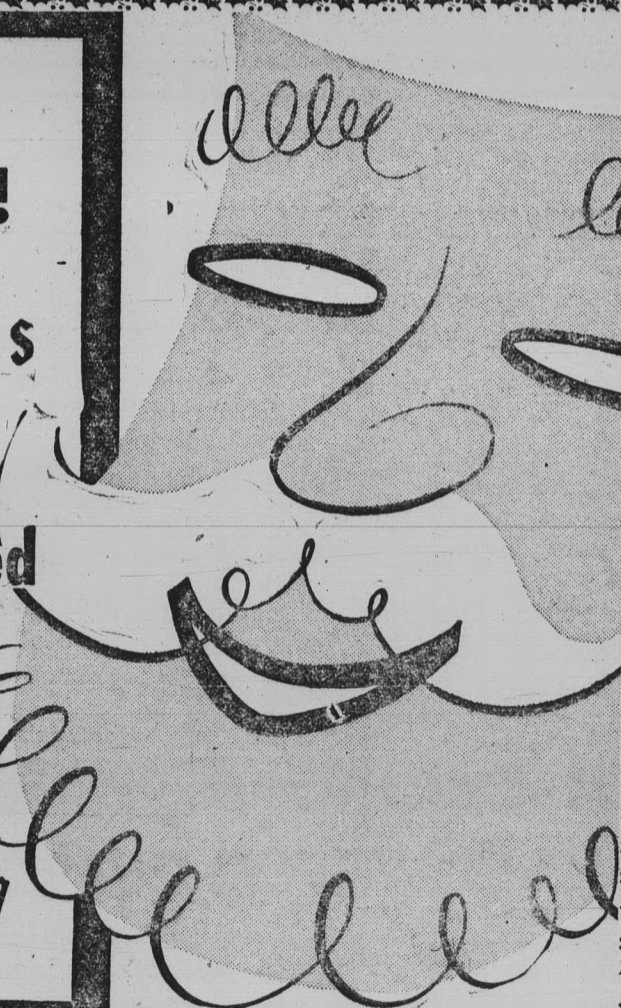
It's not
too late!

your selection

**CHRISTMAS
CARDS**

custom
hand-imprinted
with your name

Quick
service
Imprinting



AT YOUR

**UNIVERSITY
BOOKSTORE**

...ASU Students Participate In Annual Event



STRUMMIN' and STRINGIN' — Jolly songs backed by two guitars made stringing cranberries more enjoyable. Strings of the berries adorn the Christmas trees.



SANTA JOINS IN — Didn't know Santa enjoyed the jitterbug, did you? This sorority miss found him quite sociable.



- STYLING
- TINTING
- BLEACHING
- PERMANENTS
- MANICURING

Milady's Beauty Salon

Personalized Beauty Care
 9 A.M. - 6 P.M. EVENINGS BY APPOINTMENT
 Sands of Tempe 601 E. Apache
 WO 7-1611 Ext. 37 WO 7-2221

Bobbies Flowers



20 E. 5th St.
 WO 7-2972 — WO 7-4274

For Parties . . .
 Large Artificial
 Plants For Rent

Constitution Test Slated Saturday

Examinations on United States and Arizona Constitutions for teacher certification requirements will be at 10 a.m. Saturday in the Social Sciences building, according to Dr. Ross R. Rice, chairman of the ASU Political Science department.

The examinations are not open to students and carry no university credit. Sponsored by the Political Science department, the exam requires a \$10 fee.

ASU Air Society To Attend Meet

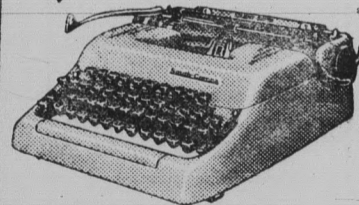
Delegates of the ASU chapter of Arnold Air Society and Angel Flight will attend an area conclave in Tucson Dec. 20, 21, 22.

ASU representatives are Hal Lowe and Val Tirman, Jr., from Arnold Air Society, and Jan Werner and Linda Peterson from Angel Flight.

The representatives will stay on campus at the UofA.

The conclave, which will decide area policies for the Arnold Air Society, will be attended by delegates from 15 other universities.

Christmas Hint!



A famous Smith-Corona

WORLD'S FASTEST PORTABLE

No finer gift to give or to get. An all-family favorite and a big help to the boy or girl in school or college. Full-size keyboard and many big-machine features.

Pick yours out now!

at the
**UNIVERSITY
 BOOK STORE**



It's what's up front that counts

FILTER-BLEND is yours in Winston and only Winston. Up front you get rich golden tobaccos specially selected and specially processed for filter smoking. Smoke Winston.

WINSTON TASTES GOOD like a cigarette should!

R. J. Reveal Tobacco Co., Winston-Salem, N. C.



The STATE PRESS, distributed by the campus chapter of Sigma Delta Chi under the direction of Circulation Manager Charles Hilgeman, is the official campus newspaper of Arizona State University. It is published each Wednesday and Friday throughout the school year, excepting holidays, and is entered as second class matter at the Tempe, Arizona, Post Office under the Acts of March 3, 1879, and August 24, 1912. Subscription price, \$3 per school year.

The STATE PRESS is a member of the Arizona Newspapers Association, Associated Collegiate Press and National Advertising Service, Inc.



EDITOR-IN-CHIEF _____ JACK ONG

NEWS DEPARTMENT

MANAGING EDITOR _____ BILL FLICK

NEWS EDITORS _____ BILL OVEREND, JANET WOLHETER

COPY EDITOR _____ GARY OLMSTEAD

CHIEF PROOFREADER _____ EDIE ALLERS

ASSIGNMENTS EDITOR _____ BARBARA MARLOWE

ASSISTANTS _____ MARY GORMAN, BOB ZACHE

SOCIETY DEPARTMENT

EDITOR _____ ROSALYN WHITNEY

ASSISTANT _____ BETTY ADAMS

SPORTS DEPARTMENT

EDITOR _____ BOB EGER

ASSISTANT _____ BOB JACOBSEN

EDITOR'S Scratch pad



By BILL FLICK

The KU game Monday night really irked us. It wasn't the brand of ball that was played, or the final score, and not even the wrestling display at half-time. No, it was none of those.

It was, to be simply blunt, the poor sportsmanship of a certain mass of people who call themselves Sun Devil "fans."

Why all the booing, complaining and jeering?

Arizona State now has an amazing and downright good basketball team. Why do these so-called fans have to degrade the very team itself by displaying poor sportsmanship?



Here's what we mean. Granted basketball referees are not infallible. Of course they make mistakes; and a certain amount of verbal protest from the spectators may serve as a corrective lesson.

But why do the fans of the number eight team in the nation have to act like they are watching incapably officiated junior high school basketball?

So we are complaining about the treatment of the officials.

BUT THIS AIN'T THE BIGGEST GRIPE!!

What about the treatment of the players???? And, specifically, the players of the opposing team.

Those guys from KU played their hearts out. More than one of them played 40 minutes of basketball—every second of the game. And they played good, hard basketball. Rough basketball; and, for the most part, clean basketball. So did the Sun Devils.

BUT DID THE FANS?

More specifically . . . Arizona State was guilty of a technical foul near the end of the game. Maybe it was a just call, maybe not.

But the gentleman who stepped up to the KU foul line to take that free shot had done nothing wrong. No, sir, little Jerry Gardner (one of the best backcourt men in the country) had done nothing wrong. He had played a great and very sportsmanlike ball game.

Yet he was booed and jeered as he shot that free throw. The roar was loud and filthy. Thank God he made that shot . . . and thanks to you true sportsmen who applauded as it swished through the net.

So to those of you who come out to ASU on game nights—let us say thank you for supporting us and our fine team.

Would it be too much to ask you to respect our opponents?



Ralph likes to tell the story of the time a psychiatrist had him on his Beverly Hills couch waiting for Ralph to tell his first remembered experience:

"I was two years old and my mother had me dressed up as Little Jack Horner to attend a Christmas costume party for tots. I was to go along with the nice lady next door and her daughter of three who was garbed as an angel, wings and all.

"The party was six blocks away and there were about two dozen kids there, all costumed. The nice lady plopped me into a corner (to go with the rhyme) and that's where I sat with a Christmas plum pie in my lap for many many minutes while the others played games, spilled gooey ice cream and things over themselves and all they touched and had a ball in general.

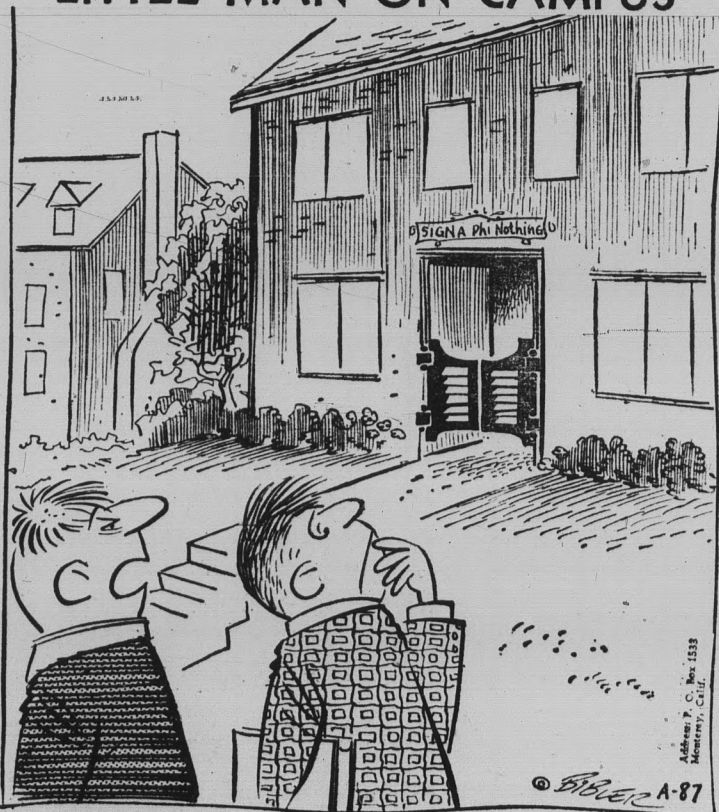
"I fumed until finally this nice old lady remembered me with much gusto and loud mouth to attract everyone's attention. She motioned that I should say my rhyme by sticking in my thumb, pulling out that plum, et cetera.

"To her horror and I guess consternation, I refused, whereupon the nice lady grabbed my baby hand and jammed the whole thing into the pie as I burst into a crying tirade that broke up the party.

"After the psychiatrist heard the story he suggested I do two things, smile a lot with the corners of the mouth turned up and keep away from Christmas plum pies. I can smile and say I haven't seen a plum pie in 50 years."

Thanks for the tale, Ralph, and congratulations for making the ranks. Who's more of a character!

AFTER-THOUGHT — Motto of one women's dorm: "Go ahead and smile. Maybe it isn't true" . . .



"—TH' SIGMA PHI NOTHING HOUSE — SEEMS LIKE THAT FRATERNITY IS ON PROBATION MOST OF THE TIME."

Toward Understanding

One problem many college communities recognize is the lack of understanding between the campus vicinity and the surrounding "outside" communities.

Arizona State is no exception, but there is a current project which we feel will certainly improve the ASU-Valley of the Sun relationships and it is being sponsored by the Faculty Club — the "Town and Gown" series.

In this series, ASU will be host to various Valley cities; the first, Tempe Night at the University, is scheduled next Tuesday.

We feel confident the Town and Gown nights will do much to put our campus in a favorable light on the Valley "stage" . . . and we're very proud of the Faculty Club for accepting the responsibility of such a big project.

Letters To The Editor

ASU: Mass Disorganization

To the Editor:

At the United States Military Academy, cadets are taught duty, honor and country, in that order.

Here at ASU, many students are getting the impression that we are learning disorganization, confusion and how it takes 24,000 hours for 12,000 students to register.

From the chaos and mass confusion of registration, to the imaginary lice in Sahauro and the non-imaginary mice in West, our school is almost as organized as General Custer's battle plans.

There are so many points of wilderness and perplexity that if anyone ever tried to reorganize this school, it would be as hopeless as the US Space Commission attempting to put an astronaut in orbit.

The area of confusion varies so greatly, we will cover only a few major problems.

Registration is coming up all too soon and if everyone is dreading it as much as we are, then it is time something was done about it. We are still going through four hours of buckling knees and writer's cramp and just when you believe you're through, you discover a fifteen minute period in which you have four classes at the same time so you start over again.

Well, the Engineering department has come up with a life saver. The students can go see their counselors and set up the classes as usual. Then the day of registration you just walk over to the gym and pick up your class cards already finished and in the usual quintuplets. All you have to do is sign

your J.H. All the work is done by IBM machines. If there happens to be a class that you don't like, then change it through the regular procedure. If this sounds yummy, then let the brass know. Maybe if enough of Orwell's sheep start bleating five minutes good, four hours bad, then we'll get some response from the R. Van Winkle clan upstairs.

A few other points of scrip-torial rebellion are the equally endurance requiring drop-add procedures, and the parking situation around campus.

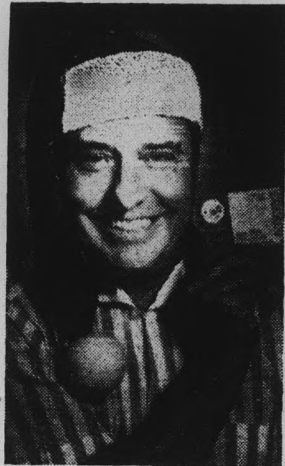
A person with an 8:40 class usually has to arrive at school at 8, cruise around like a parking-spot-hawk and lunge for the kill when he finds one. Now if someone doesn't beat him to it, more than likely he'll run into someone repairing the streets; another point of irritation.

All of the aforementioned points plus our newly organized campus Security Council, alias Student Affairs Committee add up to the number one member of the "I can mess things up better than you can" club.

Now it is realized that the school will be only 75 years old this February and any college grad knows that this isn't enough time to be steeped with tradition, much less be organized.

Let it be known that we are presenting only the facts of the situation around these parts with the hope of getting some action. So our advice to the administration is, LET'S GET ORGANIZED tomorrow.

Mike Crowson



Student Art Display Set Tomorrow In MU

Prints, paintings, ceramics, pottery, jewelry and sculpture will be exhibited for purchase at the annual student art sale in the MU lower lounge at 3 p.m. tomorrow.

All students entering the art sale will meet in Arts 329 at 4:30 p.m. today, according to Jack Taylor of the Art department. Forms listing the name of the artist, price of the item

and medium will be completed at this time.

The art sale will begin Friday and Saturday at 6 a.m. and last until 10:30 p.m. Sunday the sale opens at 9 a.m. and closes at 4 p.m.

The exhibit, jointly sponsored by the Cultural Affairs committee and the Art department, will offer an opportunity to purchase outstanding student work at reasonable prices.

Dr. Menke Explains Purpose Of ASU Placement Center

Placement Center's role in graduate student job placement was further explained last week in an interview with Dr. Robert F. Menke, director of placement.

For example, the Center's purpose is to assist students in obtaining employment suited to their training, ability and experience. The Center also helps serve the state, region and na-

tion by providing trained personnel for business, industry and government.

To obtain maximum benefits from these facilities, Dr. Menke urged registering by all candidates as soon as possible. One full year's registration prior to receiving a bachelor's degree is recommended.

Coincidental with the Center's efforts to help, by Dec. 5, 1961, 105 commercial, industrial and governmental agencies had interviewed students on campus for job placements, said Dr. Menke.

While 20 more agencies will interview before Christmas, the main recruiting bulk is expected in the springtime with an estimated 250 more firms to confer during the second semester. Total number of firms to be represented for the year will be about 375. The Center looks forward to a wonderful year.

As a result of this, the Educational Placement and the Commercial and Governmental Placement sections expect about a 2,500 student registration in the academic year of 1961-62. Students will have approximately 4,000 individual interviews with the various employers.

To gain an interview, registration with Placement Center is the first step. The students establish permanent placement files and may be actively registered as long and as often as is necessary.

One of the objectives of interviewing is to determine the student's acceptability as an individual to employers of college graduates.

In addition, off campus interviews are granted. Candidates will be notified of opportunities to talk with prospective employers who are interviewing elsewhere.

Whereas this year's total can-

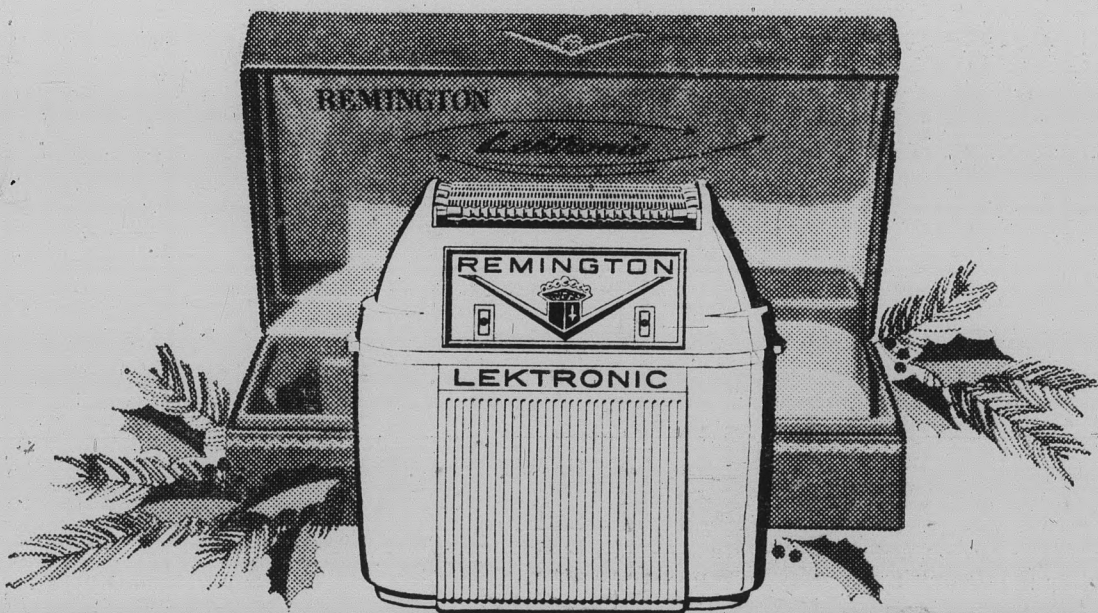
not now be estimated, last year's graduate placement was over 1,380 candidates, Dr. Menke said.

The only requisite for receiving Placement Center bulletins for student knowledge of interviewing company, date, interviewer and area of employment is to be registered with the Center. Bulletins are mailed weekly to those listed, with Commercial and Educational Placement.

Meanwhile Dr. Menke has advised a daily check of the Educational Placement bulletin boards, to be found on the left side and Commercial Placement boards on the right side of the door to the Placement Center.

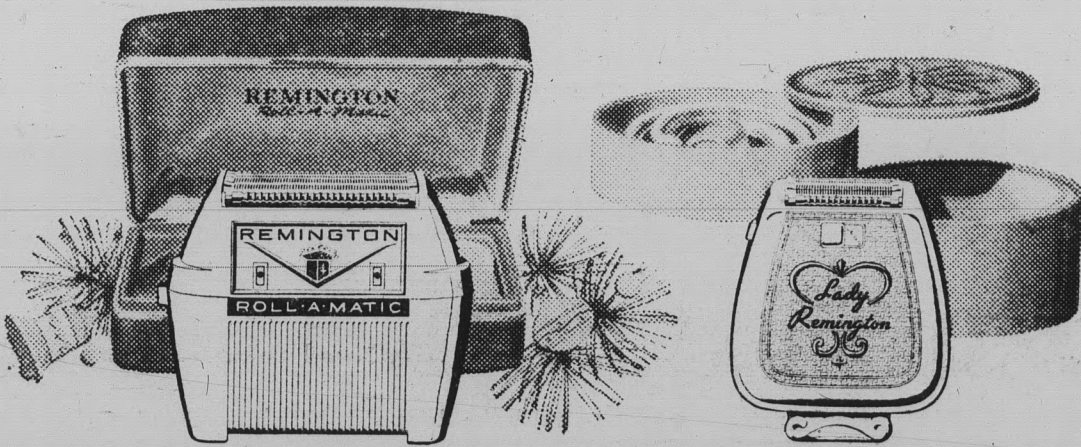
Brochures are also available at the Center which will provide the student with information concerning the various companies and agencies on campus.

In view of the findings of "The Dermatologists' Report"*



NEW SELF-POWERED SHAVER! REMINGTON® CORDLESS LEKTRONIC™. Has adjustable roller combs. Shaves without a cord. No batteries to replace. Recharges in its own charging stand for up to 2 weeks of cord-free shaves. Energy cells are designed to last life of shaver. Handsome leatherette gift case. At your college or university store.

wouldn't a Remington be the perfect gift...



FAMOUS REMINGTON ROLL-A-MATIC® Has adjustable roller combs, man-sized shaving head with 6 rows of diamond-honed, self-sharpening cutters. Always operates at top shaving speed. Attractively gift-cased. At your college or university store.

LADY REMINGTON SHAVER™ With exclusive roller combs. Only lady's shaver that adjusts separately for underarms and legs. So gentle, you can use a deodorant immediately. On-off switch. Matching boudoir case. At your college or university store.

to get from (or for) dad and mom? Drop a subtle hint soon!

*This report is based on a clinical study completed in 1959 and published in a leading medical journal, March 1961. The study and many of its findings have subsequently been reported in newspapers across the country. It revealed Remington with adjustable roller combs gives the safest close shave of any shaving instrument, blade or electric.

© 1961 BY SPERRY RAND CORPORATION

AAUP Program Set Today

The concluding program of a series sponsored by the ASU chapter of the American Association of University Professors will present the topic "The University Professor Examines His Public Image" at a panel discussion today at 3:45 p.m. in the MU upper lounge.

Members of the panel will include Dr. Douglas Arner, associate professor of Philosophy; Dr. LeRoy Eyring, chairman of the department of Chemistry, and Dr. Heinz Hink, associate professor of Political Science.

CHRISTMAS Enlargement SPECIAL

Regular 8x10 enlargement from your favorite negative printed on double weight Matte Portrait Paper

REGULAR PRICE 70c EACH

WITH THIS COUPON

2 for 71c

FROM THE SAME NEGATIVE

Offer Expires December 17, 1961

Tempe Drugs

6th & Mill

Open 9-7

Student-Faculty Meet Next Week

A coffee sponsored by the Student-Faculty relations committee, is scheduled for Monday, 1:30-3 p.m. in the seminar room of the BA building.

This is the second coffee planned by the committee this semester and it is designed to give students and faculty members an opportunity to meet each other.

Limited to professors in the business department, the coffee is open to all students, but particularly those with business classes.

YR's To Hear Arizona Senator

Senator Barry Goldwater will speak to the ASU Young Republicans Friday at 3:30 p.m. in the MU Ballroom.

The topic of his speech will be the Kennedy administration. A question and answer period will follow.

Students and faculty are invited.

Society Elects Five Officers

The Society for Advancement of Management elected five new officers at its monthly meeting last Thursday to replace those graduating in January.

Newly elected officers are Donald Monkres, treasurer; Fahir Kirder, alumni vice president; Frank Fafara, Robert Sanders and Cecelia Morgan, membership vice presidents.

Phrateres Holds Founder's Day Banquet

The annual Founder's Day banquet of ASU's Phrateres International, off-campus women, was held yesterday in the MU ballroom.

Mrs. L. D. Hylton, past president of the organization, was guest speaker.

Printed in:

BOSTON, LOS ANGELES LONDON



Interesting Accurate Complete

International News Coverage

The Christian Science Monitor One Norway St., Boston 15, Mass.

Send your newspaper for the time checked. Enclosed find my check or money order. 1 year \$22. 6 months \$11 3 months \$5.50

Name _____ Address _____ City _____ Zone _____ State _____

Topic Set By AAUW

"Teacher Education: Present and Future" will be the subject under discussion at the Tempe branch meeting of the American Association of University Women tomorrow, 7:30 p.m., at the Alumni House.

The program will include a talk by Dr. William F. Podlich, Jr., director of student teaching at ASU, entitled "New Horizons for Teacher Education;" and a talk by Dr. Joel Benedict, director of ASU's audio-visual center, entitled "The Influence of Technology on Teaching."

Today's great labor saving device tomorrow.

UofA Professor To Address Club

Dr. J. Gregory Oswald, assistant professor of History at the University of Arizona, will address the History Club tonight at 7:30 in the MU upper lounge.

"The People of European Russia" is the title of Dr. Oswald's address.

Len Skrobel, president of the History Club, will act as chairman of this public meeting.

Society To Meet

Alpha Epsilon Delta, pre-medical honors society, will meet tonight at 7:30 in SS 108. Dr. Robert Loreuzen will speak on eye surgery at the open meeting.

NEA Officer Will Speak

The Student NEA group will host Robert Frazier, national third vice president of the NEA, as guest speaker at its regular meeting Thursday at 7:30 p.m.

"Frazier will speak on 'The Student NEA Leadership Conference,'" said Judy Sell, program chairman.

The meeting is open to the public and refreshments will be served.

Moore To Speak

Sigma Gamma Epsilon will meet Dec. 14 at 8 p.m. in the Geology lecture room. Dr. Carlton Moore will speak on meteorites.

Solos, Carols To Highlight ASU Recital

Caroling, with audience participation, will follow a program of Christmas music tomorrow, presented by the University Choir at 2:30 p.m. in Cosner Auditorium.

Solos by ASU music students will be featured. Vocalists will be Suzanne Williams and Ted Bradshaw. Carol Franklin will present a clarinet solo.

Faculty Women Schedule Tea

The ASU Faculty Women's luncheon will be Saturday at 1 p.m. at Jokake Inn.

Entertainment in the form of Christmas music and readings will be featured.

Girl Watcher's Guide

Presented by Pall Mall Famous Cigarettes



The sign of the amateur

LESSON 5 - The importance of head control

We are told that bird watchers, who always take notes while they watch, are able to keep one eye on the bird and one eye on the notebook. Eye dexterity of this type is also a great asset to the girl watcher. It enables him to watch two girls at the same time, even when the girls are sitting on opposite sides of a classroom. The beginner,

who must watch the girls one at a time in a situation of this type, must learn to restrict his movements to the eyeballs. *The girl watcher never moves his head.* Undue head-turning, particularly if it is accompanied by shouts or whistles, is the sign of the amateur. (If you want something to shout about, try a Pall Mall!)

WHY BE AN AMATEUR? JOIN THE AMERICAN SOCIETY OF GIRL WATCHERS NOW!

FREE MEMBERSHIP CARD. Visit the editorial office of this publication for a free membership card in the world's only society devoted to discreet, but relentless, girl watching. Constitution of the society on reverse side of card.

This ad based on the book, "The Girl Watcher's Guide." Text: Copyright by Donald J. Sauers. Drawings: Copyright by Eldon Dedini. Reprinted by permission of Harper & Brothers.



Pall Mall's natural mildness is so good to your taste!

So smooth, so satisfying, so downright smokeable!

thrill a child with a letter from Santa . . .



Our Santa Post Office has wonderful letters all about Santa's workshop, brownies, and reindeer and they're yours *free of charge!* The special child in your life will be delighted and thrilled with this proof that there is a Santa Claus!



HERE'S ALL YOU DO:

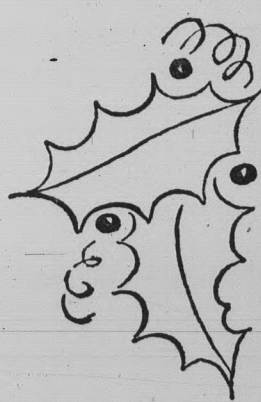
1. Visit our Santa Post Office located in the parking area at Tempe Shopping Center and take your pick from our colorful letters and envelopes.
2. Address, stamp and deposit the Santa Claus letters in our special mail box. We will have them sent from the famous Santa Post Office in Santa Claus, Indiana, so they will arrive before Christmas. Make this Christmas really merry for children of all ages.

SANTA POST OFFICE HOURS

3 p.m. to 6 p.m. Nov. 27 thru Nov. 29
 4 p.m. to 9 p.m. Monday thru Friday
 12 Noon to 6 p.m. Saturday
 Dec. 1 thru Dec. 15

28 FINE STORES TO SERVE YOU

Americana Shop • Bob Brickie Furniture • Bonnie Sue Fashions • Celia's Fashions • Center Hardware • El Rancho Market • Erickson's Handcrafts • First Federal Savings & Loan Association • First National Bank • Gallenkamps • Happy House Shop • Hill's Record Shop • House of Pancakes • Jam's Restaurant • King's Fashions • Little Travelers • Pioneer Camera Shop • Porters • Ray's ASU Barber Shop • Rosamond's • Ryan-Evans Drugs • S&H Redemption Center • Sewing Basket • Sherwin-Williams • Tee Pee of Toys • Top's • W. T. Grant Co. • ZZZona Laundry & Cl's
... easy to shop... easy to park (free)... everyday low prices



**MOST
 EVERY GIFT
 TO SUIT
 MOST
 EVERYBODY**

Tempe

Shopping Center

**OPEN EVERY
 EVENING
 BEGINNING
 DEC. 1**

on mill avenue - 8th to 10th streets

Miss McCandless Acts As Mother To PV Girls

"Being a head resident is a 24-hour job, but I love every minute of it," said Miss Margaret McCandless summing up her job as head resident of Palo Verde Hall.

"My job includes everything from supplying band-aids and escorting girls to the infirmary in the middle of the night to helping girls with family problems," she stated.

Miss McCandless feels that the main duty of any head resident is "working with the girls for individual adjustment to college life and dorm living."

She credits Dean Catherine Nichols for aiding greatly in helping the ASU

women to adjust to college life.

Prior to becoming director of residents at Palo Verde, Miss McCandless was dean of girls at a private school in St. Louis. She received her master's degree in personnel and guidance

at Columbia University. After college graduation, Miss McCandless taught social sciences in a high school before entering her work as a counselor. This is her third year as head resident of Palo Verde.

Miss McCandless feels that the size of her hall creates a problem in carrying on activities as a unit, but that an "esprit de corps" is slowly being incorporated. The housing of sororities in the hall, she feels, promotes individuality as a group and stimulates the cohesive element in larger activities.

Asked if she had encountered any unusual requests, Miss McCandless related two experiences that were particularly surprising to her.

The first concerned a girl whose mother asked that she be allowed to return home so that another member of her family could expose her to the measles. More recently, a girl signed-out to carry out an assignment as "dog-sitter" for a family who was going on vacation.

Miss McCandless feels that the position of head resident is both a pleasure and a challenge. She has no recollection of any problem or request which has come up that couldn't be solved.

Perhaps this is due to her theory that "anything that is right and good to do is possible. The problem may take more time, but it can be done."

Angel Flight Group Visits Williams Air Force Base

Members of ASU's Angel Flight visited Williams Air Force Base last Thursday as part of their yearly activities as an honorary auxiliary of the AFROTC.

Lt. Jay Norton, an ASU alumnus presently stationed at Williams, guided the members through the base.

The coeds inspected the flight line, "flew" link trainers and had lunch at the Officer's Club.

Other Angel Flight activities include participation in the

Armistice Day Parade and Military Honors Night.

The women of Angel Flight are chosen by former Angel Flight members and the advanced students of the AFROTC on the basis of personal appearance, poise, personality and scholarship.

The women are honorary cadet officers and serve as official hostesses at military functions on campus.

Placement Interviews

Nine college recruiters will be on campus to interview before the Christmas holidays, reports Dr. Robert F. Menke, director of placement.

Today — Phillips Petroleum Company: engineers — Autonetics, Division of North American: engineers, chemists, mathematicians, physicists — Rocketdyne, Division of North American: engineers, chemists, mathematicians, physicists — Los Angeles Division of North American Avi-

ation, Inc.: engineers, mathematicians, physicists — Alamos Elementary School District: teachers, kindergarten through sixth grade.

Tomorrow — Litton Systems, Inc.: engineers, chemists, mathematicians.

Friday—Allyn and Bacon, Inc. publishing company: Business Administration, Liberal Arts, Education students.

Monday, Dec. 18 — Chicago Bridge and Iron: engineers.

Shofstall Elaborates Seven Points In Speech On Alcohol Education

Dr. W. P. Shofstall, dean of students, addressed a seminar on Alcohol Education in Phoenix last Friday.

Seven points were stressed by Dr. Shofstall at the seminar:

1. Approximately one person in 15 is a potential alcoholic.

2. No person can know in advance if he is or is not a potential alcoholic.

3. An alcoholic can never drink alcohol in any amount, however small, without suffering serious consequences.

4. An alcoholic repeatedly gets into trouble after drinking but continues to drink in spite of this.

5. There are no generally accepted causes of or cures for alcoholism.

6. The symptoms of alcoholism can be observed in people of any age, sex or race soon after the person is free to drink as much or as often as he desires.

7. In order to live at all, the alcoholic is forced to accept a way of life the non-alcoholic should accept voluntarily.

Alcohol education not only educates alcoholics about their condition, but also educates non-alcoholics to better understand the consequences of alcoholism.

Bunch's Watch Shoppe

Where Discounts Are Real

- featuring
- BULOVA WATCHES
- SPEIDEL BANDS

Phone WO 7-3221
609 MILL — TEMPE

Campus Young Republicans

PRESENT

Senator Barry Goldwater

Speaking On

"Which Way With JFK?"

3:30 P.M. — Friday, Dec. 15

Memorial Union Ballroom

Students & Faculty Invited

SIC FLICS



"What'll it be, Miss Porter...
the Dekes or us?"



21 GREAT TOBACCOS MAKE 20 WONDERFUL SMOKES!
AGED MILD, BLENDED MILD — NOT FILTERED MILD — THEY SATISFY

Cultural Affairs Trips Scheduled

The Cultural Affairs Board is sponsoring a tour of the Phoenix Art Museum Thursday. Tickets may be purchased at the MU desk for 30 cents. The tour will leave the front of the MU at 2 p.m. There will be no charge if you travel by private automobile. A tour to Frank Lloyd Wright's home, Taliesin West, now used as an architecture school, is planned for Saturday. The tour will depart from the front of the MU at 1 p.m.



MU Calendar

Wednesday, Dec. 13	Thursday, Dec. 14	Monday, Dec. 18
Sigma Delta Pi: Faculty Dining Room — 7 a.m.	IFC Executive Council: 208 — 9:30-10:30 a.m.	Pi Delta Epsilon: 208 — 2:30-3:30 p.m.
Traffic Appeals: 208 — 7:30 a.m.	BSM: 208 — 10:30-11:30 a.m.	Social Board Sub-committee: 209 — 2:30-3:30 p.m.
Tempe Business Men: 218C — 12:30-1:30 p.m.	Presbyterian Study Group: 208 — 11:30 a.m.	Board of Financial Control: 210 — 3-4:30 p.m.
Finance Club: 218A — 12:30-1:30 p.m.	Bureau of Government Research: Ballroom and 218 — all day	Spurs: 209 — 3:30-5 p.m.
French Group: 208 — 1:30 p.m.	Religious Conference: 209 — 2-5 p.m.	Membership and Election Education: Senate Chamber — 3:30-5 p.m.
Membership and Elections: 210 — 2:30-3:30 p.m.	Greek Week: 210 — 3:30 p.m.	Tau Beta Sigma: 209—6:30-7:30 p.m.
Art Control: Senate Chamber — 2:30-3:30 p.m.	AWS: Upper Lounge — 3:30 p.m.	Alpha Epsilon Pi: 210 — 6:30-9 p.m.
Rehearsal: Ballroom — 2:30-3:30 p.m.	Finance Committee: 208 — 4 p.m.	Pi Kappa Alpha: 208 — 7-9 p.m.
Social Board: 208 — 3-4:30 p.m.	IFC: Senate Chamber — 4 p.m.	Phi Kappa Tau: 209 — 7:30-9 p.m.
Student Faculty: 210 — 3:30-5 p.m.	IFPC: 218C — 4-5:30 p.m.	
Senate: Senate Chamber — 3:30-4:30 p.m.	Pleiades: 209 — 5:30 p.m.	Tuesday, Dec. 19
AAUP: Upper Lounge — 3:30-5 p.m.	Westminster Foundation: 208 — 6-7:30 p.m.	Toastmasters: Faculty Dining Room — 7 a.m.
Pi Sigma Alpha: Lower Lounge — 3:30-5 p.m.	Lutheran: 210 — 6-7 p.m.	University Pops Concert: Ballroom — 11 a.m.
Religious Council: 209 — 6-7:30 p.m.	Judiciary: Senate Chamber — 6-7 p.m.	Student Services: 210 — 1-2:30 p.m.
Rules: Senate Chamber — 7:30-8:30 p.m.	Business College: Ballroom — 6 p.m.	MU Board: 208 — 2-3:30 p.m.
History Club: Upper Lounge — 7:30 p.m.	Kappa Kappa Psi: 210 — 7 p.m.	Senate Committee: 210 — 2:30-3:30 p.m.
Sigma Delta Chi: 208 — 8-8:30 p.m.	Baha'i: 208 — 7:30 p.m.	Off Campus Men: 208 — 3:30-5 p.m.
Dawa Chindi: 209 — 8 p.m.	SNEA: Upper Lounge — 7:30 p.m.	C.A.: 209 — 3:30-5 p.m.
Recital: Ballroom — 8:30 p.m.	Devils and Dames: Clancy's — 7:30 p.m.	Hostess: Upper Lounge — 3:30-5 p.m.
		Rules and Traditions: Clancy's — 3:30-5 p.m.
	Friday, Dec. 15	Blue Key: 209 — 6 p.m.
	Bureau of Government Research: Ballroom and 218A — all day	Supreme Court: 210 — 7 p.m.
	Executive Council: 208 — 2-4 p.m.	Kappa Kappa Psi: 218A — 7-8 p.m.
	Young Republicans: Ballroom — 2:30-4:30 p.m.	Cultural Affairs: Lower Lounge — 7-8 p.m.
	Pi Sigma Alpha: Upper Lounge — 2:30-3:30 p.m.	Faculty Club: Ballroom — 8-9 p.m.
	Phi Kappa Phi: 218 A, B and C — 6 p.m.	
	Bridge: Lower Lounge — 6:30 p.m.	
	Cultural Affairs: Upper Lounge — 7-9 p.m.	
	Recital: Ballroom — 7:30 p.m.	
	Saturday, Dec. 16	
	College of Business Administration: 209 and 210 — luncheon in 218 — 9:30 a.m.	
	Electrical Engineers: 218 A and B — 6-8 p.m.	
	Dawa Chindi: Clancy's — 7-9 p.m.	
	Social Board: Ballroom — 8-9 p.m.	
	Sunday, Dec. 17	
	Chi Omega: Upper Lounge — 12:30-1:30 p.m.	
	Social Board: Clancy's — 4 p.m.	
	Alpha Epsilon Pi: 210 — 6-9 p.m.	
	Tau Kappa Epsilon: 209 — 7-8:30 p.m.	
	Liberal Religious Students: 208 — 8 p.m.	

An Ideal Financial Plan For College Men

Lincoln National's College Plan starts you on the road to financial security at the beginning of your career, while rates are lowest and you are still insurable.

I'll be glad to explain how its special advantages can benefit you.



Marvin D. Loos
3500 N. Central CR 7-3395
Representing
THE LINCOLN NATIONAL LIFE
Insurance Company
It's Name Indicates It's Character

CAMPUS Launderette

ONE DAY SERVICE

- Shirts - Trousers
- Cleaning
- ROTC Uniforms

M-W-F Special Rates On **FLUFF DRY**

"Next Door To The V.I."

men recommend it

to other men



Cool, clean Old Spice After Shave Lotion always gets you off to a fast, smooth start. Feels just as good between shaves as it does after shaving. Rates A-OK with dates. 1.00 and 1.75 plus tax.

Old Spice AFTER SHAVE LOTION

SHULTON

Exclusive Dealer In Tempe For

HALLMARK CARDS

The Most Complete Stock Of
Cameras — Photo Equipment
In Town

PIONEER Camera Shop

Tempe Center

"We Develop Film and Friendship" — Mac & Jack
OPEN EVENINGS TILL XMAS



SPURS WASH WINDOWS FOR SAFETY — To promote safe driving over the Christmas holidays, ASU Spurs will be washing car windows on-campus and along Mill Avenue this Saturday from 9-11:30 a.m. Getting in some early practice are, from left, Pauline Leung, Anna Sue Crush and Sue Wilbur.

Twelve Will Be Initiated Into Service Honorary

Twelve men will be initiated into Blue Key, national upper-classmen's service honor society, at 5:30 this afternoon in Danforth Chapel.

Blue Key president Eric Maxwell will conduct the service.

Following the induction, new members will join with old members at the annual banquet at La Casa Vieja.

John Christianson, director of development for the Valley Na-

tional Bank, will speak on "The Common Man."

Initiates include Bill Flick, Henry Klopping, Steve Montgomery, Steve Sargent, Bob Schure and Steve Slemmons, juniors; and Duane Alleman, Grant Allen, Gerald Hahn, Andy Mitchell, Jack Ong and Keith Renelt, seniors.

The men were tapped in pre-dawn ceremonies Oct. 6.

Wheel Aligning - Balancing
Auto Glass Installaton
TEMPE BODY SHOP
 SPECIALIZED COLLISION SERVICE
 I. W. "Pete" Null — Phone WO 7-1601
 11 East Fourth Street
 TEMPE

Five Students Enter Contest

Five ASU students are participating in the Central States Speech Association's eleventh annual National Public Speaking Contest.

Students' voices are being recorded on a tape and will be sent to Washington State University for the sectional competition. The three best tapes will then be sent to Chicago, where the finals will be held in April.

Students participating are Clarence Sullivan, Kenneth Flake, Garth Tallman, Joanne Munsil and Harris Caplan.

FORMAL SCHEDULED

Phi Kappa Tau will hold its annual Christmas Cameo Ball at the Skyriders Hotel at Sky Harbor Airport Dec. 16 at 9 p.m.

Campus Classified

Regulations: For students and faculty only of Arizona State University. Cash in advance. Submit to Room 207, Memorial Union Building, by noon two days before date of publication: noon Monday for Wednesday's issue, noon Wednesday for Friday's issue. Rates: 3 cents per word, 50 cents minimum charge.

● FOR SALE

Call WO 7-9057 and save. Need money to be home for Christmas. ASU student selling brand new 1962 Zenith Transistor Zenith Portable Radio with carrying case. 60 days still left on warranty. Will sell at cost—over 25% discount.

Complete set of 160 lb. Weights almost brand new. 30% discount from list price.

A 6-year-old King Alto Saxophone in wonderful Condition. Make me an offer. Save money. Call WO 7-9057.

● RIDES WANTED

Round trip to OKLAHOMA CITY. Not more than \$25.00 or share expenses whichever cheaper. Call Dan Lawler, WO 7-2607.

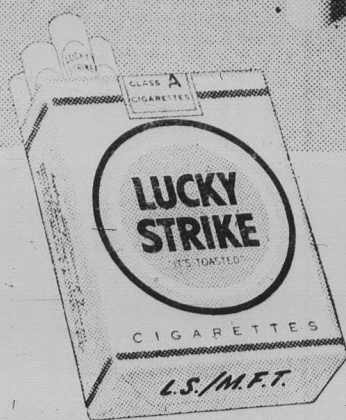
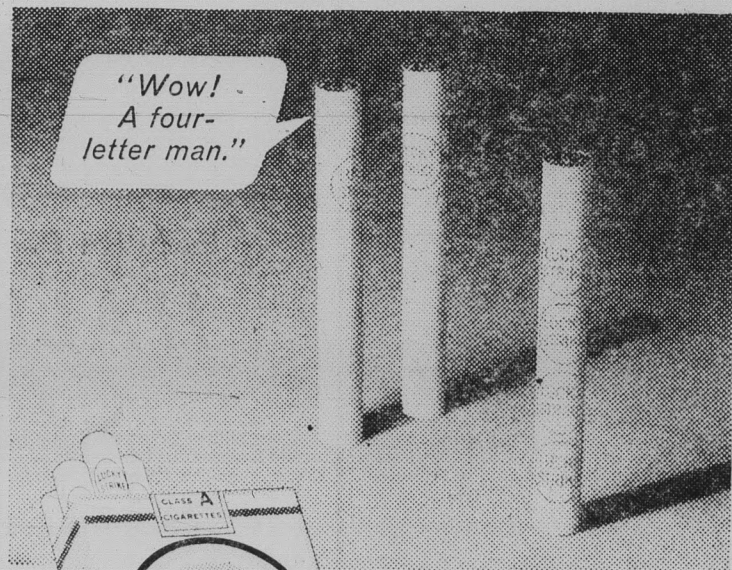
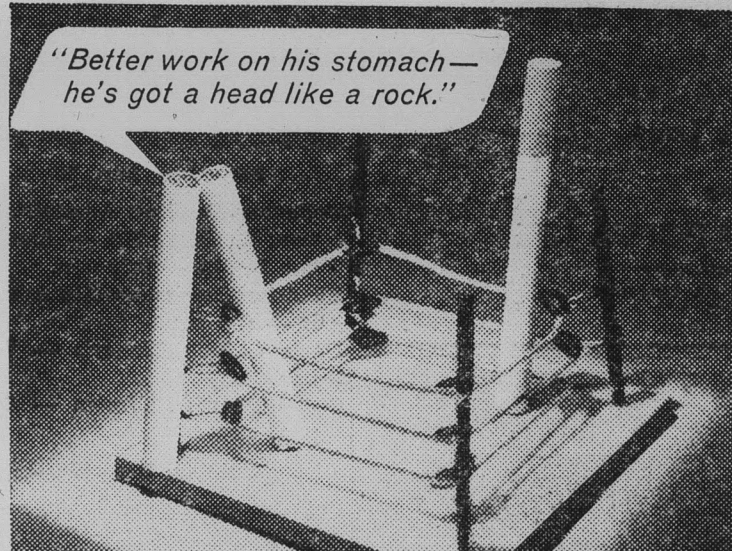
Student wishes riders to Utah for Christmas. Call AM 5-9714.

Need a ride to Beverly Hills on December 20. Will help with expenses. Call 967-2488.

● LOST & FOUND

If camera in brown case has been found, please contact Emil Wanner, AM 5-7787.

LUCKY STRIKE presents:
LUCKY TUFFERS "WINTER SPORTS"



WHEN DOES A LUCKY TASTE BETTER THAN A LUCKY? There's a dangerous question because, as you well know, college students are crazy about Luckies and smoke more of them than any other regular. Still, there is one kind of Lucky that tastes a little bit better than any other kind. These extra-special Luckies are the ones you get for Christmas. The only thing better than a Lucky is a free Lucky. Ask for a carton this Christmas.

CHANGE TO LUCKIES and get some taste for a change!

© A. T. Co.

Product of The American Tobacco Company — "Tobacco is our middle name"

Matmen Lose To Wildcats

Arizona State's Wrestling Club turned in a respectable showing in falling to the powerful UofA varsity grapplers 15-11 in Tucson Saturday.

The Sun Devil grapplers, in their first dual meet of the season, dropped the first four matches but came on strong to win three of the last four and give the Wildcats a battle right to the last match.

Buzz Hays, 157 lb. ASU freshman, scored the only fall of the meet when he pinned the UofA's Jim Neveln in 5:20. Other ASU winners were Tom Kelly with a 5-2 decision over UofA's Gary Sackett in the 177 pound division and Rex

McConaghy with a 9-6 win over the Wildcat's Karl Runk in the heavyweight division.

ASU's George Diggs turned in an outstanding performance in defeat against UofA's Don Wood. Wood, a former Pacific Coast Intercollegiate champ, had a battle before decisioning Diggs 5-2.

Coach Ted Bredehoff said after the meet, "I felt we should have won the meet. Perhaps I was expecting too much from our non-experienced boys. It was the first taste of college competition for many of them. We know now that our work will be cut out for us this Saturday against New Mexico. They were one of the few teams to beat the UofA last year."

Starting time for Saturday's meet against New Mexico is 7:30 p.m. in Sun Devil Gym.

Here are the results of the UofA meet:

- 123 lbs.—Don Wood (UA) over George Diggs (ASU) 5-2.
- 130 lbs.—Bob Tanita (UA) over Pat Drumm (ASU) 10-5.
- 137 lbs.—Frank Lucas (UA) over Don Brian (ASU) 4-0.
- 147 lbs.—Steve Pinnell (UA) over Jim Parker (ASU) 5-3.
- 157 lbs.—Buzz Hays (ASU) pinned Jim Neveln (UA) 5:20.
- 167 lbs.—Matt Hanhila (UA) over Bruce Crile (ASU) 4-2.
- 177 lbs.—Tom Kelly (ASU) over Gary Sackett (UA) 5-2.

HWT. — Rex McConaghy (ASU) over Karl Runk (UA) 9-6.

Lettermen Elect Jones President

Nolan Jones, star Sun Devil halfback, was elected president of the newly formed ASU Letterman Club at a meeting last Thursday in the Men's Gym.

Jones was elected from a list of ten candidates selected earlier by a nominating committee. Four other lettermen took their place beside Jones as "A" club officers.

Mike Barrick became the club's vice-president; Bill Gorman, secretary; Bill Cornelius, treasurer and Tony Cerkvenik, sergeant-at-arms.

There hasn't been a Letterman Club on campus for eight years when ASU was still a college. The old club was one of the most active organizations on campus.

Reorganization of the "A" club is the result of work by interested ASU lettermen, the Alumni Letterman Club and members of ASU's faculty.

Intramurals

Dick Reakes of Sigma Nu and Dave Rietow of Hooters Inc. are tied with 17 points each, to lead intramural participants in badminton. Stan Sims also of Hooters Inc. is close behind with 16 points. Ron Schmietsknop of Alpha Tau Omega is in fourth place with 14 points and Joe Watters of Sigma Chi is fifth with 12 points.

BOB VIEWS SPORTS NEWS

Road Trip Will Affect Ranking

By BOB EGER
Sports Editor



Ned Wulk's dashing Devils hit the road this weekend for a series of games that could make or break them as far as supreme national recognition is concerned.

The Devils will be leaving the friendly confines of Sun Devil Gym where they have racked up four straight wins this year against St. Michael's, Utah, Oregon and Kansas.

In their last two games the Demons bombed Oregon and Kansas, winning by a total of 50 points against two clubs which are about as good as any on the tough ASU schedule.

Against Oregon their fast break wasn't working like it should and in the Kansas encounter the Devils couldn't hit like past performances show they can. We shudder to think what would have happened if ASU had been really "on" both nights.

After four games there seems to be one big difference between this club and the one that enjoyed unprecedented success for an ASU cage team last year.

That difference — defense.

Last season the Devils scored at an 83.1 clip which put them in the seventh spot nationally in scoring. This year they are scoring at a rate of 84.0 points per game — just about the same pace as last year.

But.

Last year ASU yielded an average of 72.6 points per game and this year they've given up only 61.2 per game and three of the teams they've played have pretty potent offenses.

The Devils are only a point a game better than last year offensively. But on defense they're about 11 points a game better. That's a big difference.

RANKED EIGHTH

United Press International's weekly poll of coaches, released yesterday, rated the Devils eighth nationally. It marked the second straight week that the ASU quint has improved on its 10th place pre-season rating.

The week-long road trip now looming before the Devils could cause them to rise or fall sharply in the national standings.

They meet New Mexico Saturday, Indiana Monday, Minnesota Wednesday and Utah Friday of next week. That little excursion will give coaches in the mid-west a chance to see the Devils in action and a good showing by the Demons could cause the number of coaches' votes from that area to rise sharply in the next couple of UPI polls.

This is the do-or-die time for the Devils. Their final national standing could be pretty well determined by this trip. The games they play later in the season won't carry the prestige value of the games which loom on the immediate horizon.

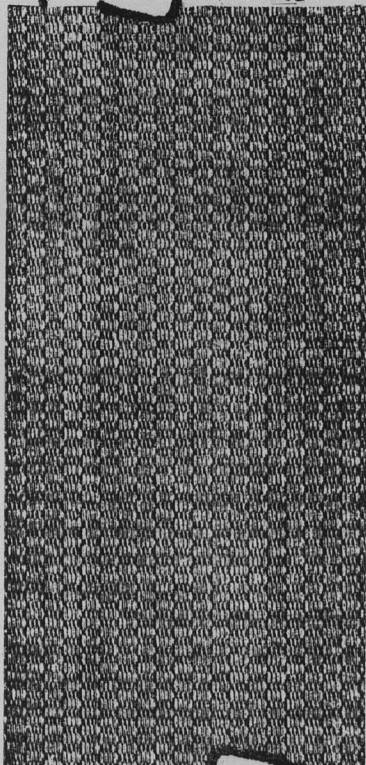
Monday's victory over Kansas wasn't figured in the UPI ratings released yesterday. That win, plus Wichita's upset of sixth ranked Purdue Monday, could scoot ASU up another notch or two in next week's poll.

Southern Cal is within striking range of the Devils. The seventh ranked Trojans only beat Kansas by eight points while the Devils trimmed the Jayhawks by 14. If UPI's board of coaches takes that—and ASU's 15 point defeat of Southern Cal last year—into consideration, the Devils could conceivably be as high as sixth next week because Purdue is sure to drop from its sixth place perch after Monday's defeat.

they've flipped over a-1's new cuadro cord rapier®



AI slacks only \$4.95



AI slacks only \$4.95



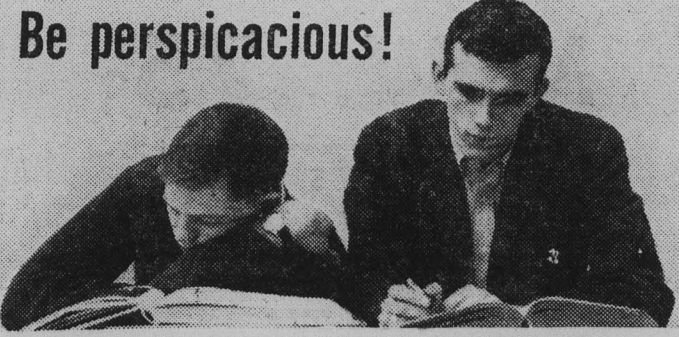
they've flipped over a-1's new cuadro cord rapier®

Your A-1 Dealer In Tempe...



OWN A 1962 DODGE LANCER FOR AS LITTLE AS \$47 PER MONTH after normal down payment

DANA BROS. 211 MILL AVE. TEMPE



Be perspicacious!

Not this: a student who drowns over books no matter how much sleep he gets.

This: perspicacious... sharp! NoDoz keeps you awake and alert—safely!

If you sometimes find studying soporific (and who doesn't?), the word to remember is NoDoz.® NoDoz perks you up in minutes, with the same safe awakener found in coffee or tea. Yet NoDoz is faster, handier, more reliable. Absolutely non-habit-forming, NoDoz is sold everywhere without prescription. So, to keep perspicacious during study and exams—and while driving, too—always keep NoDoz in proximity.

The safe stay awake tablet—available everywhere. Another fine product of Grove Laboratories.

Merry Christmas and Happy New Year

From — J.D. Harry Andy Bob at

J.D.'s CAMPUS BARBER SHOP

816 College Ave. NEXT DOOR TO THE "VI" Open Monday thru Friday 8 A.M. to 6 P.M.

Sun Devils Trounce Kansas Cagers

By BOB EGER
Sports Editor

Arizona State's Sun Devil cagers, at times looking like they were in a major slump, at times looking like they were in a minor slump and at times looking like they ruled the world, smashed highly-regarded Kansas 72-58 before 4,612 fans in Sun Devil Gym Monday night.

Sweet Larry Armstrong and company gave the Kansans a sound drubbing and gave the college basketball world further notice that the Devils are a team to be reckoned with.

From the time that Jerry Hahn tipped in two points with a little more than six minutes

gone in the game to give ASU an 8-6 lead, the Devils were never headed as they romped to their fourth straight win of the season. The victory stretched their home winning streak to 21 games against collegiate competition and 22 games overall.

Only an unusual number of mistakes and the inability of the Devils to hit from the floor and the foul line at the pace they've been hitting this season kept them from winning by a bigger margin. At one point in the third quarter they led by 23 points.

Armstrong pumped 20 points through the net to take high point honors and boost his career total to 1,003. He's fast ap-

proaching Al Nealey's three-year school scoring record of 1,304.

Tony Cerkvénik and Ollie Payne hit 13 points each and dominated the boards, grabbing 18 and 12 rebounds respectively. Jerry Hahn hit for 10 markers and Raul Disarufino, in his usual steady floor game, netted nine.

Kansas' much-publicized backcourt duo of Jerry Gardner and Nolen Ellison gave the Devils trouble all night, hitting 16 points each.

The Jayhawks suffered from a rather cool shooting eye both from the floor and the charity

line — the same thing that plagued the Devils.

Kansas hit .32 per cent from the floor and .59 per cent on charity tries while the Devils scored on .41 per cent of their field goal tries and hit only .53 per cent from the foul line.

The game was the end of a disastrous weekend for the Kansas five. The Jayhawks lost a pair of tough battles on the West coast Friday and Saturday nights as USC and UCLA proved too much for them.

Kansas, widely known in recent years as one of the basketball powers of the country, lost the services of a pair of All-

American potentials in Bill Bridges and Wayne Hightower this year.

The Jayhawks, known for their big men in the past, couldn't match the Devils up front although the Kansans' guards were more than adequate. There was no great center like Clyde Lovellette, B. H. Born, Wilt Chamberlain or Bridges on the inside — something that has become a trademark with Kansas teams.

ASU Destroys Oregon's Defense

By DENNIS ANDERSON

"A complete team effort," were the words of Coach Ned Wulk after Arizona State's smashing 91-55 conquest of the

University of Oregon last Saturday night before 4,368 fans in Sun Devil Gym.

"The team improved greatly from the Utah game," he con-

tinued. "Our depth showed real well and there was good passing." The only weakness was on the defensive boards.

Defensively touted Oregon took an early lead, gaining a short-lived domination in rebounding and shooting. Then with 10:35 left in the half, two baskets apiece by Cerkvénik and Payne put the Demons ahead to stay.

By halftime ASU had increased its lead to twenty points, 42-22. Five players hit in double figures to pace the Sun Devil scoring. As usual, Larry Armstrong led the parade with 15. He hit on 5 out of 7 field goals and 5 for 5 at the free throw line.

Jumping Joe Caldwell followed closely with 14. "The

Fish," displaying the poise and coolness of a veteran, hit for a sensational .857 field goal percentage.

Rounding out the Devil double-figure scorers were Jerry Hahn with 12 points and Payne and Cerkvénik with 11 each. Cerkvénik led all rebounders with 12, something he does with consistency.

As a team the Sun Devils accomplished impressive figures. They made good on 37 of 66 field goals for a .560 percentage. At the charity line they hit a whopping .895 on 17 of 19 tries.

Forward Bill Simmons led the otherwise immobile Ducks. He made good on 12 of 24 field goals and 5 for 7 free throws to top all scorers with 29 points.

Imp Cagers Defeat Luke; Lose Against Kerr's Five

ASU's Sun Imp cagers split their two games in preliminaries to the varsity action against Oregon and Kansas.

Saturday night the Imps rolled to a 96-57 win over Luke Air Force Base. Then, on Monday evening, Kerr's Sporting Goods jumped to a 52-34 half-time lead and never relinquished it as they went on to hand the frosh their second loss of the year, 94-83.

In the Luke contest four of the Imps scored in double figures. Tom Owens pacing the way with 18. Luis Lagunas and Howard Lee had 16 each and Bill Mullen 15. Owens also grabbed 14 rebounds to lead in that department.

Owens again paced the Imps

in the loss to Kerr's, this time hitting for 20 points. He was followed by Lee and Mullen with 16 and 13, respectively. Rebound leader was Mullen with 13.

Kerr's was led by Royce Youree, former ASU star, who netted 21 points.

Good Record

Ned Wulk has an 8-0 record against rival UofA basketball teams in his four years at ASU.

TYPING Literary Criticism

Reasonable Rates
B. Coursin Black
Box 917, Mesa
40 S. Morris (upstairs) WO 4-9152

GIRLS!

Boyfriend, Dad or Brother is sure to be pleased on Christmas with gifts from the AMERICANA SHOP. And we will mail your packages home if luggage is a problem. All purchases from us beautifully wrapped FREE, too!!

And use our lay-a-away plan at no extra charge on your Christmas gift purchases!

THE
Americana
SHOP
QUALITY MEN'S APPAREL
TEMPE SHOPPING CENTER

Open 9 to 9 WO 7-5457 Monday thru Saturday

\$ \$ \$ \$ \$ \$

Over-Stocked SALE

"Goals For Americans"

WAS ... \$1.00

NOW ... 75c

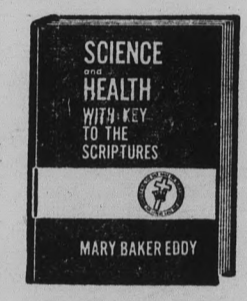
SALE ENDS SAT.,
DECEMBER 16th

At Your

University Bookstore

\$ \$ \$ \$ \$ \$

EVERY COLLEGE STUDENT needs this book



to increase his ability to learn

An understanding of the truth contained in Science and Health with Key to the Scriptures by Mary Baker Eddy can remove the pressure which concerns today's college student upon whom increasing demands are being made for academic excellence.

Christian Science calms fear and gives to the student the full assurance he needs in order to learn easily and to evaluate what he has learned. It teaches that God is man's Mind—his only Mind—from which emanates all the intelligence he needs, when and as he needs it.

Science and Health, the textbook of Christian Science, may be read or examined, together with the Bible, in an atmosphere of quiet and peace, at any Christian Science Reading Room. Information about Science and Health may also be obtained on campus through the

Christian Science Organization at

Danforth Chapel
ASU Campus
Meeting time
7:15 to 8 P.M.
Thursdays
Meeting place
Danforth Chapel
Everyone Welcome