

It'll Be First Come-First Served For Game Seats



State Press

ARIZONA STATE UNIVERSITY



TEMPE, ARIZONA



Vol. 40

Friday, December 1, 1961

No. 20

Religious Project Starts Monday

Tickets Go At 8:30 Monday; Five Games To Be Televised

By JACK ONG
Editor-In-Chief

Starting next week, reserved seats stubs for home basketball games will be issued on a first come-first served basis at the ticket office in the men's gymnasium.

The action, announced by Al Stephan, staging and ticket sales manager for the Athletic department, was taken by the department and the student Executive Council.

"It seemed wise to eliminate any inference of class distinction between the four classifications of students," Stephan said.

Ticket stubs, part of the Athletic department's crowd control system, were distributed Monday through yesterday for this evening's and tomorrow night's games to seniors first, juniors second, sophomores third and freshmen last.

Department officials met with considerable student disagreement.

The ticket office opens Monday at 8:30 a.m. and stubs will be issued to holders of identification tickets. It will be possible for one student to obtain stubs for other students to sit in the same row of reserved seats; their I.D. cards will warrant extra tickets.

To make it possible for more fans to see the games, five "big" matches will be close cir-

cuit televised by ASU's station KAET, channel 8.

Seats will be set up in the Memorial Union ballroom to accommodate approximately 600 more students after the 2,300 gym seats are taken.

Stubs will also be necessary for entrance to the ballroom; students without stubs will be charged 25 cents and the general public will be charged \$1.

Money collected will be used to offset the cost of televising the games, which Stephan estimated as \$250 per game.

Tomorrow night's bout with Utah is the first to be televised. Others on the closed circuit TV schedule are Oregon, Dec. 9; Kansas, Dec. 11; Brigham Young University, Dec. 30, and the University of Arizona, Feb. 27.

There is a possibility of more games being televised if attendance rises over capacity like it is expected to do.

The men's gym holds 4,609 people.

Talks And Discussions Highlight Annual Event

"Decisions Determine Destiny" is the theme of Spiritual Exploration Week, Dec. 3-8, sponsored by the Student religious Council.

The annual event will bring to campus six speakers representing Christian Science, Latter-day Saints, Jewish, conservative Protestant, liberal Protestant and Roman Catholic faiths.

Tempe churches are arranging Sunday programs devoted to the week's theme.

Monday's schedule starts at 7:40 a.m., with classroom visitations by student resource leaders. At 9:40 a.m. there will be an opening assembly in the MU ballroom.

A panel discussion, "Contrast to the West: The Witness and Thought of the Ancient-Modern Church of the East," will be at 11:40 a.m. in the MU upper lounge.

Speakers will be Father Thomas Green of St. George Orthodox Church, Phoenix; Andreas K. Poulakidas, English department assistant, formerly with the University of Athens, and W. G. Baroody of the English and Humanities departments.

Buzz sessions are slated each day at 3:40 p.m. in the MU lower lounge. At 4:40 p.m. Monday will be vespers in Danforth Chapel, followed at 7:40 p.m. by group discussions at dormitories and Greek letter organization's homes.

At 8 p.m., Dr. Paul Dunn, LDS Institute director of the University of Southern California, will speak at the LDS Institute.

Tuesday's events start at 7:40 a.m. with classroom visitations. At 11:40 a.m., Rabbi Milton L. Shulman of Temple Shalom, Phoenix, and Mr. Charles S. Milligan, professor of Christian Ethics at Iliff School of Theology, Denver, will speak on "Decisions, Plus and Minus God" in the MU ballroom.

A faculty luncheon with resource leaders will be at 12:40 p.m. at Tempe Sands, with 3:40 p.m. buzz sessions, 4:30 p.m. vespers, a 6:40 p.m. buzz session in the MU lower lounge, a Christian Science movie in SS 108 at 7 p.m., and a panel discussion, "Religion and the Arts," at 8 p.m. in the MP upper lounge.

Wednesday's assembly will be at 10:40 a.m. in the upper lounge. Drs. Dunn and Harold Fickett of the First Baptist Church, Van Nuys, Calif., will speak.

Their topic will be "In God We Trust — A Choice and a Heritage."

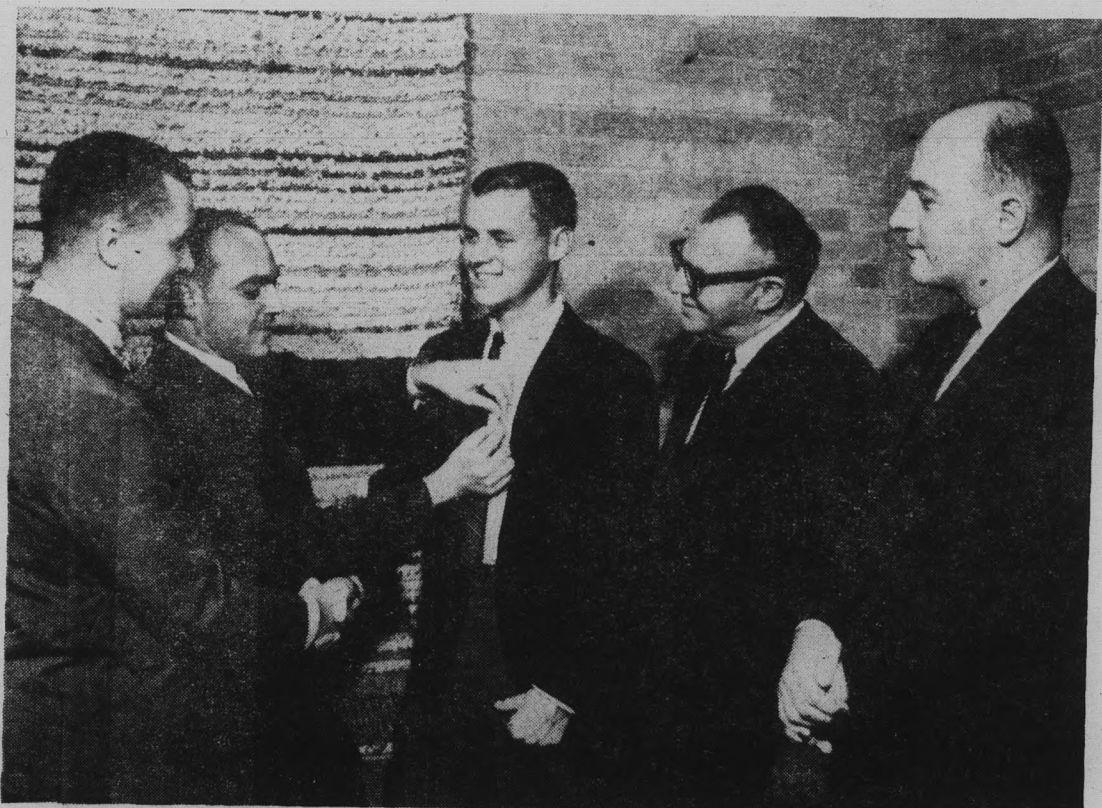
Thursday's assembly, the final one, will be at 1:40 p.m. in the upper lounge, featuring Rev. Wilfred A. Illies, Newman Club chaplain at St. Cloud State College, St. Cloud, Minn., and Richard F. Shroth, Christian Science minister in the Armed Forces.

Their topic will be "Fifteen Minutes from Destiny."

Friday's activities will include classroom visitations, a buzz session at 3:40 p.m. in the lower lounge and 4:40 p.m. vespers in Danforth Chapel.

Byron Cleeland, sophomore, is general chairman of Spiritual Exploration Week. Working with him are Mary Avery, Bessie Ingram, Sharon Hendrickson, Sandra Mervis and Judy Sell.

Also Albert Brandstater, Ann Overall, Louise Walker, Karen Hess, Marilyn Burch, Remy Autz, Sharon Hedgpath and Janice Hall.



COLONY JOINS NATIONAL — ASU's Delta Delta colony of Theta Delta Chi joins the national fraternity in formal ceremonies Saturday. Showing the national badge to Delta Delta Roger Baker are, from left, John M. H. Poupart, Montreal; Bob Creamer, one of the colonizers from the University of Virginia; John H. Eversole, president of the Phoenix Graduate Association, and Raymond L. Howe, executive secretary of the Grand Lodge from New York City.

ASU Theta Delta Chi Colony Receives Charter Tomorrow

One year and 52 days after Theta Delta Chi established ASU's Delta Delta colony, it will receive the colony into the National Theta Delta Chi fraternity.

Colonizers Robert S. Creamer, Jr. and Robert J. Rousseau arrived from the University of Virginia and UCLA respectively to establish the first colony of Theta Delta Chi's 114 year old history, which was accepted into IFC on Oct. 10, 1960.

The formal installation banquet will be at the Hotel Valley Ho at 6:30 tomorrow evening, preceded by initiation ceremonies at the Desert Botanical Gardens auditorium in the afternoon.

Toastmaster at the banquet will be John M. H. Poupart of Montreal, Quebec. Principal speaker will be General Robert Scott, Jr., author of "God Is My Co-Pilot," who will speak on "Fraternity Brotherhood in the Modern World."

Special guests include Governor Paul Fannin; Mr. Hal Kennedy, legal counsel for Los Angeles County; Mr. Ralph Olsen, president of the Theta Delta Chi Grand Lodge; Mr. Raymond Howe, executive secretary of the Grand Lodge and John Evans, secretary of the Grand Lodge.

Also, Carl Lindberg, treasurer of the Grand Lodge; John H. Eversole, president of the Phoenix Graduate Association; Sir Peter King, of London who is on the executive council, and ASU Dean Gary R. Anderson, IFC advisor.

Initiated will be Gary Avey, Roger Baker, Birchell Eversole, Wallace Forman, Thornton Gibson, Ted Hemphill, Henry Kloppe, Eric Maxwell, James McKee, Carl Ross, Thomas Ross, James Sarti, Robert Stewart, Robert Wharton and Daryl Winn.

Rodeo Terminates Western Activities

ASU's eleventh annual Inter-collegiate Rodeo concludes Western Week this weekend.

Formerly a feature of Homecoming, the event is now sponsored by the ASU Rodeo Club.

Teams composed of eight men and three women will compete for \$1000 in prizes. Silver belt buckles are the prizes for single event winners, and hand-tooled saddles will be given to the all-around cowboy and cowgirl.

Events will include saddle and bare-back bronc riding, bull riding, calf roping, team roping, bull riding and bulldogging. Women will compete in barrel racing and calf roping.

The ASU team is comprised of members of the Rodeo Club, which was organized in 1951 by students interested in horsemanship. Club members compete with each other for a position on the team.

In addition to rodeo skills, the team members must maintain a high scholastic average. The National Intercollegiate Rodeo Association requires all participants in the NIRA sponsored rodeo to have a C average.

Busses in front of the MU

Student Price Set For Film

Special discount coupons for the movie "Question 7," an award-winning drama depicting the clash between Christianity and Communism in East Germany, are now available at the MU information desk.

They will admit students for 50 cents and faculty and staff for \$1 during the week of Dec. 7-13, at the Fox Theater, according to Byron Swanson, campus Lutheran pastor.

Based on documents and reports from the east zone of Germany, the movie was filmed five miles from the Iron Curtain and employs a cast of European actors.

Fred Elquest & Son

Everything for the Art Student
• Art Supplies
• Picture Framing
703 N. 2nd St.
Phoenix
PHONE AL 8-2628

Bunch's Watch Shoppe

Where Discounts Are Real

featuring
• BULOVA WATCHES
• SPEIDEL BANDS
Phone WO 7-3221
609 MILL — TEMPE

UofA 'Heroes' Capture Flag

News from "Nogo Tech's" The "Pussycat," is loaded with stories of victories over ASU.

Two braggarts claim they captured the official ASU flag as it was being lowered after "that" game. Seems the flag is safe and the UofA plans to fly it at the center of campus as a reminder of winning some game or other.

will provide transportation to the rodeo. They depart at 11:30 a.m. Saturday and Sunday.

Until recently team members had to transport their horses at their own expense. Now a horse van transports their stock on the Associated Students budget.

Many of the cowboys who will be competing this weekend got in some practice during the week. The Kangaroo Court, sponsored by Alpha Tau Omega, Sigma Pi and Kappa Alpha fraternities and East Hall, got plenty of business with the help of these men, their ropes and one patient burro.



ARTIST SUPPLIES

Crafts • Hobbies
Decorating Materials
Picture Framing

Tempe Center • WO 7-4482

Moscow Peace Walker To Speak At Wesley Foundation Meeting

Ed Lazar, member of the San Francisco to Moscow Peace Walk team, will speak at the ASU Wesley Foundation, at 8 p.m. Monday.

Lazar, an American pacifist, will discuss and answer questions concerning his experiences during the walk.

While studying non-violence, the peace walker lived in India

for six months. He also studied at Pendle Hill, Quaker graduate study center at Wallingford, Pa. In June, Lazar joined the Peace Walk in London, England.

Stubs for the televised Arizona State-Utah game Saturday night may be picked up tomorrow at the ticket office.

STOP!

LOOK!

WARNING...

As Of December 15, 1961

All Airlines Except Bonanza Are

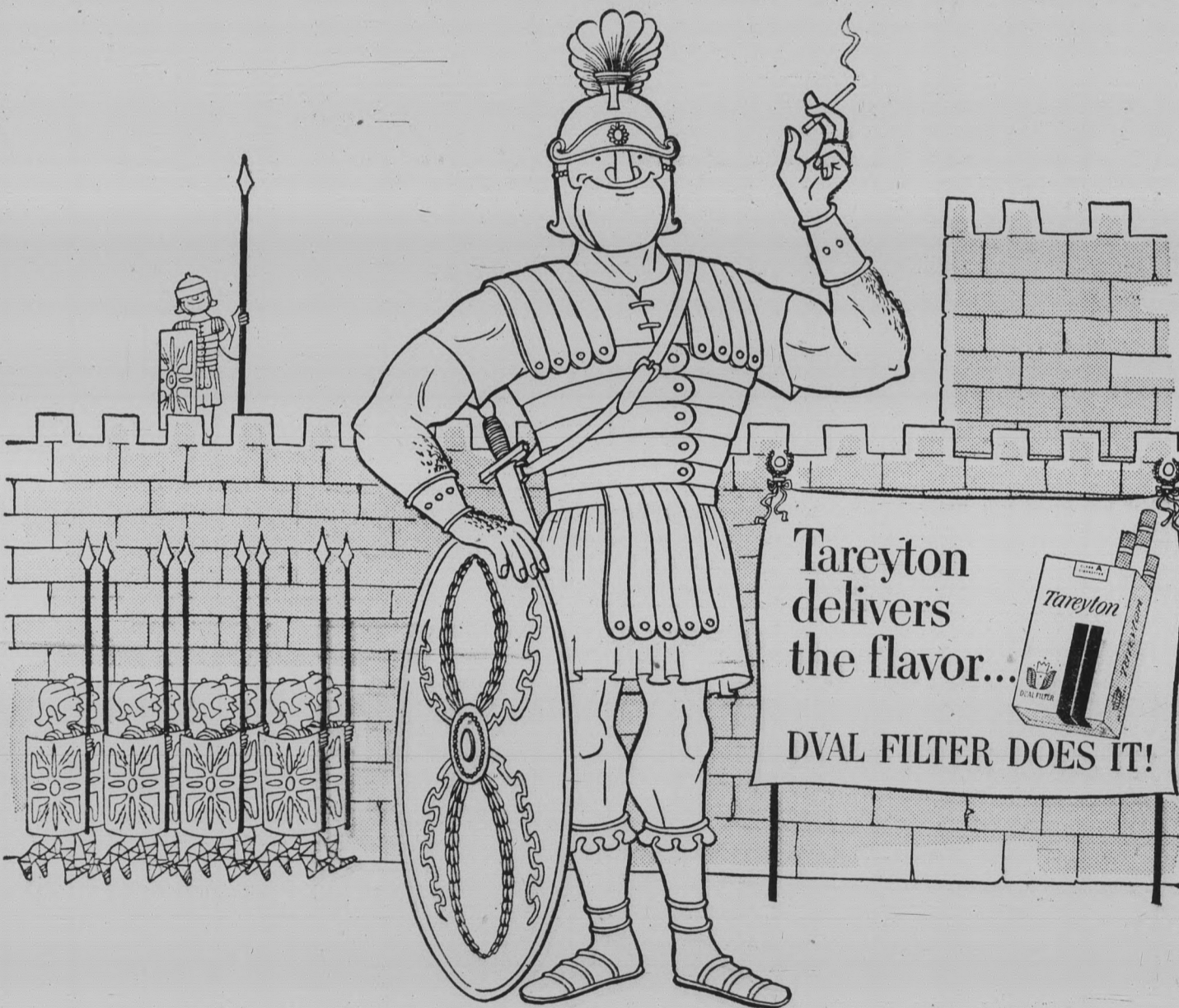
CANCELING YOUTH FARES...

STOP IN FOR THE INSIDE DOPE...

UNIVERSAL TRAVEL

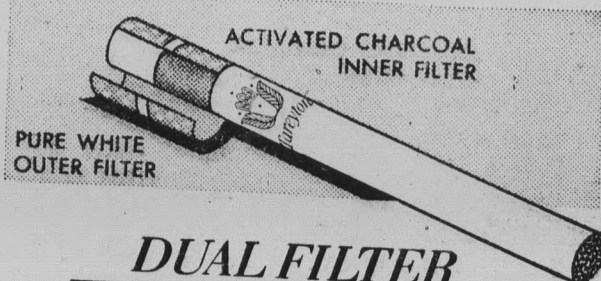
18 E. 5th St. ... WO 7-1673

LAST CALL FOR HOLIDAY RESERVATIONS... COME IN



"Tareyton's Dual Filter in duas partes divisa est!"

says Virgilius (Vinegar Virgil) Cassius, noble Praetorian guardsman, as he prepares for another glorious parade. "Don't run around in Circus looking for a good smoke," says Vinegar Virgil. "Tareyton's one filter cigarette that really delivers de gustibus. Be one of the cohorts and carpe diem with Tareyton."



DUAL FILTER Tareyton

Product of The American Tobacco Company - "Tobacco is our middle name" © A. T. Co.

10 - 6 Mon. thru Sat.
10 - 9 Thursday

The Village Shop

a shop designed with the college girl in mind

967-1981

616 MYRTLE TEMPE

BOOKS

MAKE AN IDEAL

CHRISTMAS GIFT.

VISIT OUR TRADE

BOOK DEPT. TODAY

At The

UNIVERSITY BOOKSTORE

Open Mon.-Thur. 8-7 Fri. 8-4:30 Sat. 9-1

Vote Sends Suggestions To President

Dean W. P. Shofstall, chairman of the Student Affairs committee, voted "yes" Monday to break a tie vote that recommendations made by the Student Affairs committee be directed to the president.

The question voted on was, should the Student Affairs committee make recommendations directly to the president of the Associated Students, in matters which concern the Associated Students' statutes?

The question arose out of the proposed revisions of Senate Bill 11 concerning the approval of student organizations.

Officials Placate Irish Hall Group

Complaints of alleged inadequate facilities by residents of Irish Hall have resulted in the furnishing of much new equipment and the ordering of new furnishings, it was announced by ASU Housing Tuesday.

Edward M. Hickcox, ASU Housing official, told the men of Irish Tuesday night that the University has ordered 60 new mailboxes, which will be delivered and installed within 60 days. Mailboxes are one article that Irish requested immediately.

Commenting about new desks, Hickcox said, "There is a desk manufacture representative coming to the

campus Monday to, study our problem."

"As for study lamps," continued Hickcox, "we will probably attach them to the new desks, after we determine which type of lamp is to be used." Some of the lamps that have been in Irish are dangerous because of ill-repair, but they are being removed.

Charles Stewart, Irish Hall president, said, "We are real impressed with the effect shown by Housing to correct this."

In addition to the new mailboxes and new desks which are to be installed, Irish has been given new wastebaskets and brooms.

Regarding the general condition of the older dorms on campus, Hickcox said, "The school is on a semi-crash program to bring halls up to desired standards. We had to let the halls go, because we don't get legislative monetary support for dorms. All we can do is bond, and when these bonds are due we must pay them off. This is the position we have been in. However the school is now to the point where it can start upkeep again."

Hickcox also mentioned that, at the present time, a 400 station women's dorm, to be built near Palo Verde, is being designed.

'Fraternity Row' Building Details Near Completion

ASU physical plant personnel announced yesterday that they should know within a month when construction will start on eleven new fraternity houses.

These fraternities are presently negotiating for the lowest bids from several construction companies.

Estimated construction costs of, each house are \$200,000-\$250,000.

Houses will be furnished by the fraternities. The furnishings are not included in the construction costs.

The fraternities include Alpha Epsilon Pi, Phi Delta Theta, Sigma Phi Epsilon, Phi Sigma Kappa, Sigma Nu, Sigma Chi, Theta Delta Chi, Alpha Tau Omega, Sigma Alpha Epsilon, Delta Sigma Phi and Sigma Pi.

Malcoff's Stein & Sirloin

4801 North Central

NOW PLAYING

"MEADE

LUX LEWIS"

Plus

"THE JOURNEYMEN"

ALL YOU CAN EAT!

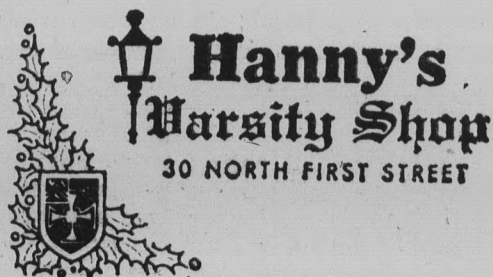
CHUCK WAGON \$1.95



The Baggly Shag Gift Sweater

18.95

Hanny's has a soft touch when it comes to men's sweaters . . . The Baggly Shag. It's a rich, fleecy blend of 65% fine wool and 35% baby kid mohair. Your choice of Carolina blue, charcoal, white, red, black or Arctic green. Sizes small to extra large.



AT HANNY'S VARSITY SHOP DOWNTOWN OR CHRISTOWN • TO ORDER BY PHONE DIAL AL 4-9292



Stop In . . .
Find Out
For
Yourself !!
TEMPE DAIRY QUEEN

950 MILL AVE. — TEMPE



The STATE PRESS, distributed by the campus chapter of Sigma Delta Chi under the direction of Circulation Manager Charles Hilgeman, is the official campus newspaper of Arizona State University. It is published each Wednesday and Friday throughout the school year, excepting holidays, and is entered as second class matter at the Tempe, Arizona, Post Office under the Acts of March 3, 1879, and August 24, 1912. Subscription price, \$3 per school year.

The STATE PRESS is a member of the Arizona Newspapers Association, Associated Collegiate Press and National Advertising Service, Inc.

EDITOR-IN-CHIEF _____ JACK ONG

NEWS DEPARTMENT

MANAGING EDITOR _____ BILL FLICK

NEWS EDITOR _____ BILL OVEREND

COPY EDITOR _____ GARY OLMSTEAD

CHIEF PROOFREADER _____ EDIE ALLERS

ASSIGNMENTS EDITOR _____ BARBARA MARLOWE

ASSISTANTS _____ MARY GORMAN, JANET WOLHETER, BOB ZACHE

SOCIETY DEPARTMENT

EDITOR _____ ROSALYN WHITNEY

ASSISTANT _____ BETTY ADAMS

SPORTS DEPARTMENT

EDITOR _____ BOB EGER

ASSISTANT _____ BOB JACOBSEN



You nasty little children studying in the lower lounge of the Memorial Union just take your nasty little books and skip upstairs to the upper lounge!

Jeeeee!

Is this what our (quote) MU Board (unquote) is coming to? What's comin' off?



First there'll be no bermuda shorts in the building except downstairs in the games area. Then there's fish in the cafeteria (a la carte) every day. Now there's no studying in the lower lounge. Sounds bad, crew, sounds too bad.

MU Board chairman Mike Kinsey has been quoted as saying, "The upper lounge will be open for study, so please do your studying there."

First off, I find it difficult to study with "My True Story" crying from the television set in the afternoon and "Cheyenne" blasting away at Indians or horse thieves in the evening.

Second, I don't figure any MU Board member should be able to tell me where not to study, except maybe in her room or something like that. A lounge is a lounge, upper or lower, and students shouldn't be told what to do or not to do in them (within reason) . . . study, especially!

The MU Board might re-evaluate its responsibility to the Union and to the student body . . . are you with us or agin' us?

ONG-AO (You've heard of Todd-AO) — If you're looking for a bit of high adventure, we'd like to suggest "The Devil at Four O'Clock" . . . from the same studio that presented "The Guns of Navarone," Columbia.

Spencer Tracy gives one of his finest portrayals to date, as a rejected priest on a tropical island who is concerned with a hospital for leprous children. The hospital, forced to be built on the edge of a volcanic mountain by the villagers because of their fear of the sick children (what they don't know is that leprosy in the children's stage is not contagious), is Tracy's personal philanthropic project.

Excitement rumbles when the volcano erupts. Tracy, along with Frank Sinatra and his two fellow ex-cons, is given until 4 p.m. the next afternoon to attempt to rescue the children from up the mountain. We won't reveal the ending. Not anything like "Psycho," but a little more moving.

"Devil" scenes are great, but photography is a little unconvincing, with use of dubbing that might have been improved.

Sinatra is good, but Tracy steals the show.

One last word about the NO STUDYING ruling (can't help but laugh at the silly thing each time I think about it) . . . if the board can't think of anything better to do, we'd suggest the investigation of escalators up and down the three MU floors . . . or replacing the TV set with a color set . . . or getting a larger lab for the State Press.

AFTER-THOUGHT — "If you can't beat 'em and they won't let you join 'em, then what?" . . .

I Cover College Avenue

By BILL FLICK

Today's the day! It's deadline time for the Pi Delta Epsilon Ugly Person Contest. Today at 4 p.m. the ASU Photographic Services lab will close its door. And we're hoping that you and your organization will have your "ugly person" photographed before that door closes.

Once again, here's all the dope you need to know about the contest:

First of all, the purpose of this unusual affair is to assist in the Arizona Republic's "Dress a Living Doll" Christmas charity program.

Specific instructions: Select an individual to make up as ugly as possible, using theatrical makeup. Have him (or her) photographed at the Photography Service, Matthews Hall. Cost of the 8x10 photo is your entry fee.

Bring the photograph into the State Press office by Monday at 4 p.m., or leave it at the photo lab. We'll take it from there.

Tables will be set up on the Devils Den patio beginning Tuesday of next week, and running through Thursday. On these tables will be jars with the photographs attached thereto. Judging for the ugliest person will be a penny per vote.

The ugliest person will receive a gift certificate from a prominent Valley clothing shop. Winning organization will receive a trophy.

As we have said, proceeds from the contest will help support "Dress a Living Doll." This is an annual Christmas charity which provides clothing for thousands of needy children in this area.

We hope you will respond to this unique and spirited charity by entering the ugliest guy or gal you can create. It's not that difficult a thing to do. AND AFTER ALL, we have too darn many queen and-king contests at this place.



So why not switch things around a little, and see who's ASU's UGLIEST person, O.K.?

ANYHOW, YOU'VE GOT TILL 4 THIS AFTERNOON TO MAKE A MESS OUT OF SOMEBODY . . . and get him photographed.

We ask you to participate . . . (cause we're in charge and we sure don't want it to flop!!!!)

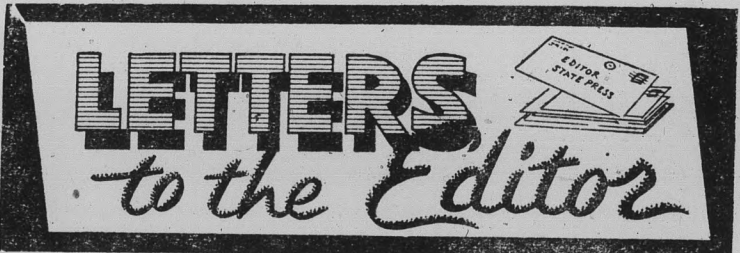
It seems the difficulties which arose over the fact that our basketball team has a tremendous crowd-drawing characteristic are being ironed out.

Ticket stubs for home games will be picked up on a first come, first served basis in the future—beginning next week! Also, for

Saturday night's game, 600 more students will get to see the game via closed circuit TV in the ballroom. Students are asked to pick up stubs at the ticket office for admission to the ballroom, or pay a 25 cent cover charge Saturday night.

And speaking of basketball, EVEN THOUGH WE'RE A SUN DEVIL FAN ALL THE WAY, let's not discount St. Michael's as much as some sports writers are doing. They were Frontier champs last year . . . and we also remember when "little" schools like ASC used to beat the pants off guys like us.

And, finally, a sweet hello to Linda.



Suggestion No. 1

To the Editor: basketball and be happy and well-adjusted.

With all the emotional ruckus about the new basketball seating arrangement, I would like to suggest a practical, workable idea to the Athletic department.

When the ASU gym was designed, only the balcony along the east wall was constructed. This section now holds 1,224 people. However, the original design also allowed for the west wall to be knocked out eventually, and another balcony section constructed along the west wall.

This plan is now feasible and much less expensive than a new gymnasium. Also, 1,224 more people could have seats, watch

Of course, this plan should have been initiated this summer when the overflow crowds at last year's games made it clearly evident that more seats would be needed. Thriftiness is an admirable quality, but certainly not at the expense of several hundred ASU students. Turn loose of the change, fellas. It's there and we know it.

Students may only suggest to the powers that be. Their strength is not great, never has been and never will be. Therefore, I suggest the Athletic department consider this practical idea from a student.

Linda Warren

Suggestion No. 2

To the Editor: asked for solutions. I will give them one.

I have read all of the articles published in the State Press diligently, and the idea of inter-collegiate athletics as an aspect of education and entertainment for the primary use by the student has been conspicuous by its absence. I believe the majority of students hold this idea and feel the Athletic department is not interested in their desires but only in making as much money as they possibly can. I must confess that this is also my opinion.

This basketball team is our team, composed of our fellow students who perform in facilities built by the taxpayers of this state for use by the students in furthering their education.

The Athletic department has kindly condescended to give us half the seats, 2,300, for 12,000. It is my belief that the students should be given option on all the seats they desire up to and including the total number. I, of course, realize that the Athletic department must make some money to operate. They have

The major bone of contention, as I see it, is the right of the activity card. The students have paid for them and feel that they should be given the use that has traditionally been theirs. The Athletic department, on the other hand, wants to sell as many seats to the public as possible.

I suggest that the activity card be no longer used to gain admission to the games and that the admission fee be charged for all seats and that it be reduced to an amount equal to the total revenue gained from the sale of the seats formerly sold to the public.

Tickets could go on sale to all students without discrimination for a period up to four days before the game at which time sales could be opened to the general public. Perhaps a plan such as this could not be augmented this year, but it might be food for thought for future seasons.

Fau Jaramscak

Letters To The Editor Would Be Insulting

To the Editor: This is in regard to Bill Overend's column in the Nov. 29 edition concerning the guarding of the Victory Bell by members of the Army and Air Force ROTC units. In this article it would seem that Overend has forgotten about school tradition.

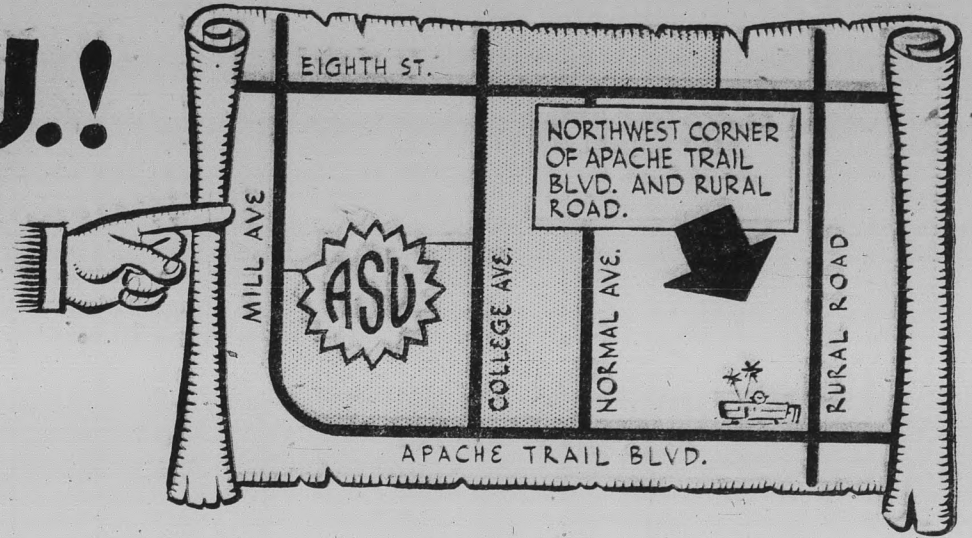
Everyone complains about the lack of school spirit and tradition. This is one of the instances where some people are trying to kill what spirit we have. It is a tradition to stop the UofA from stealing our Victory Bell, so how can Overend say, "Next year why not just give 'em the bell?"

This would add insult to injury and strength to the non-traditionalists.

Terry Repp

YOU...of A.S.U.!

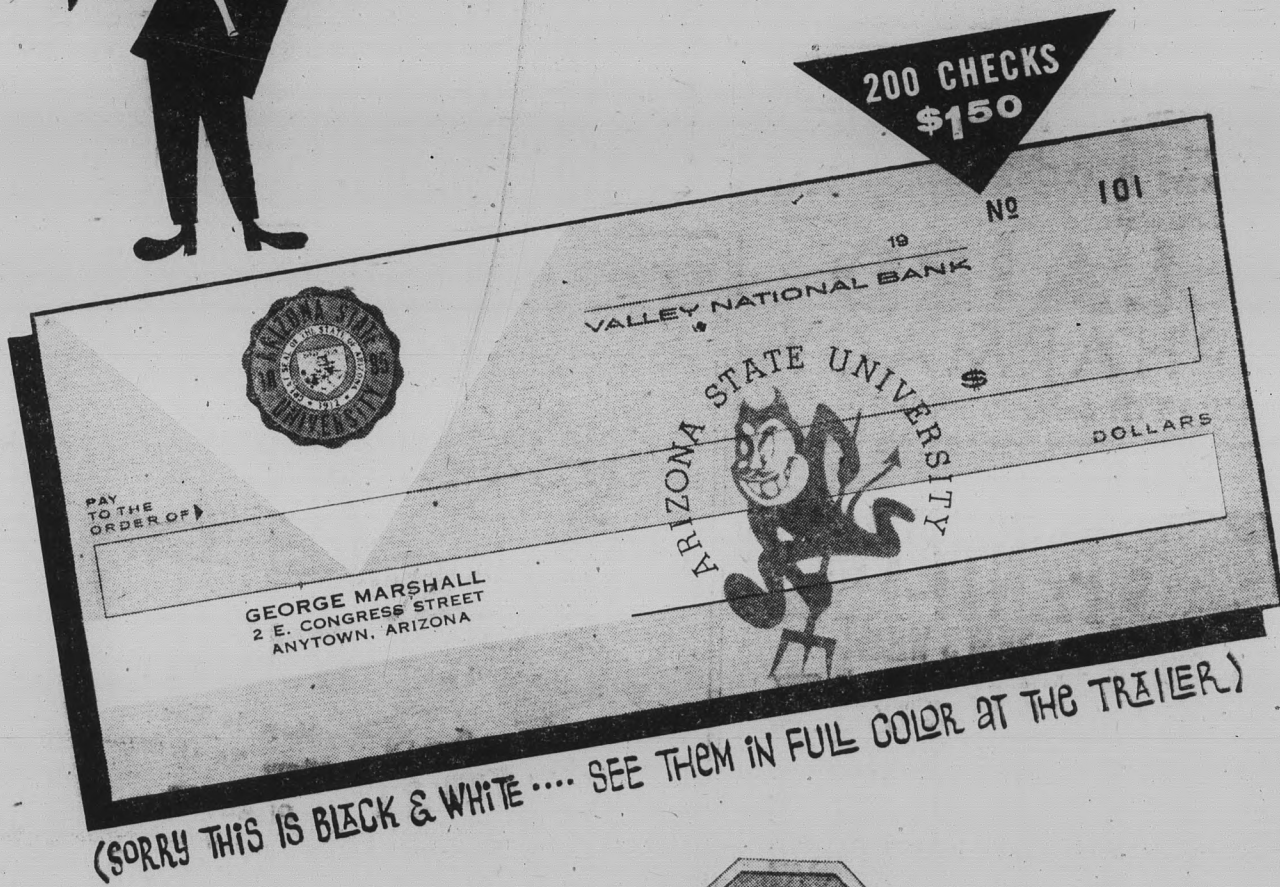
NOW THERE'S A VALLEY BANK RIGHT ACROSS THE STREET! (OUR 72nd OFFICE IN ARIZONA)



We're late in getting into Tempe, but we're coming in with the most convenient and attractive and interesting and serviceable bank that the University could desire! Our new building will be worth the daily inspection of architecturally-minded students and profs: a splendid modern bank with a "gold-anodized geodesic dome" (you'll have to see it to believe it!)

Anyway, it will be exactly what students, faculty and everyone else would want! In the meanwhile, to get rolling, we've rolled in our super-duper banking trailer, a de luxe affair offering **EVERY** banking service save safe-deposit. And since this

will be the official home of the Sun Devils checks, come on in... **MOVE YOUR ACCOUNT**... and enjoy advertising **YOUR** school while enjoying the extra-special, friendly personalized Valley Bank service! We open Monday morning, December 4th for **YOUR** business!



HOME OF THE COLORFUL SUN DEVIL CHECKS:

YES, IT'S A COLORFUL PERSONALIZED CHECK THAT ADVERTISES YOUR SCHOOL WHEREVER YOUR CHECKS GO! THE A.S.U. OFFICIAL SEAL IN 2 COLORS; THE SUN DEVIL (WITH FORK) IN ACTION; YOUR NAME AND ADDRESS: 200 FOR \$1.50 (FREE CHECKS, OF COURSE, TO REGULAR ACCOUNT, AND SPECIAL CHECKING @ 10¢ A CHECK PLUS ONLY 25¢ A MONTH SERVICE CHARGE)



OUR TEMPE OFFICE IS OUR A.S.U. OFFICE... FOR YOU!
MEMBER FEDERAL DEPOSIT INSURANCE CORPORATION



UNDER THE BAR — The Limbo usually fascinates young as well as old. It will be demonstrated in a floor show at Clancy's tomorrow night. "Night Club International," sponsored by the Foreign Student Club, will be from 9 to midnight, with music, dancing and talent show.

'Antigone' To Climax Workshop

A modern version of "Antigone," Sophocles' centuries-old Greek tragedy, will start a split six-night run as the final production of the semester by the ASU Drama Workshop at the Payne Auditorium at 8 p.m. next Thursday.

The play will run through Saturday, Dec. 9, and will be repeated Thursday through Saturday, Dec. 14-16. Tickets will be available to the public for \$1 at the door.

The production, directed by Dr. James W. Yeater, assistant professor of Drama and Speech, will feature Susan Flannery of Sun City in the title role.

Jean Anouilh, noted French playwright, adapted the play during the World War II Nazi occupation of France, which is the setting for the modern version.

The characters and situations of the ancient drama have been retained by Anouilh in the plot, which basically concerns Antigone's dilemma in choosing between the dictates of her own conscience and those of the government, which has refused burial to her brother. Antigone is used as a subtle vehicle of protest against the Nazis.

Finley Announces Adoption Of Group Insurance Plan

Dick Finley, ASASU executive manager, has announced the adoption of a new insurance plan for ASASU student groups and their advisors.

This plan, underwritten by the American Casualty Company, covers student groups while traveling to or participating in a sponsored activity away from the University.

The new policy, now in effect, will provide payment for medical expenses due to an accident incurred within the school year for a maximum of \$1,000 medical and \$1,000 accidental death and dismemberment. The old insurance plan originally covered student groups up to \$500 medical and \$500 accidental death and dismemberment.

This insurance, now primarily used by fraternities, sororities and groups going on field trips, must be taken out prior to each trip. The premium is 20 cents for the first day and ten cents for every day thereafter.



Your HEALTH is our BUSINESS

Phone **WO 7-2922**

RX

LAIRD PHARMACY

CORNER FIFTH & MILL, TEMPE

Sophomores To Take Exam December 12

The Junior English Proficiency Examination, required of all Liberal Arts second semester sophomores who received a grade of C or lower in EN 102, will be given Dec. 12, at 2:30 p.m. in Eng. 207, according to Dean Arnold Tilden, College of Liberal Arts.

Only students listed by the registrar as second semester sophomores are affected. First semester sophomores this semester will take this test next April, if an A or B grade is not received in EN 102.

Students failing the test or neglecting to take it will not be permitted to take junior level courses next semester.

See our complete selection of fresh, delicious



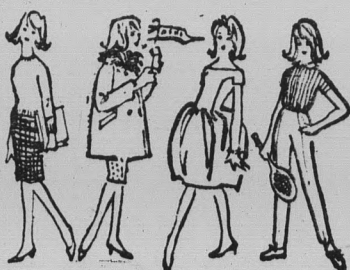
TEMPE DRUGS

6th & Mill — Open 9-7



WHAT'S GOING ON, ON CAMPUS? PANTI-LEGS THAT'S WHAT!

What's going on in every college in the country? PANTI-LEGS by GLEN RAVEN... the fabulous new fashion that's making girdles, garters and garter belts old fashion! A canny combination of sheerest stretch stockings and non-transparent stretch panty brief, PANTI-LEGS are ecstatically comfortable with campus togs, date frocks, all your 'round-the-clock clothes — especially the new culottes and under slacks. No sag, wrinkle or bulge. Long wearing. Of sleek Enka Nylon. Available in three shades of beige plus black tint. Seamless or with seams. Petite, Medium, Medium Tall, Tall. Seamless, \$3.00. 2 for \$5.90. With seams (non-run), \$2.50. 2 for \$4.90.



FOR STORE NEAREST YOU, PLEASE WRITE TO GLEN RAVEN, INC., 1430 Broadway, N.Y., N.Y.

Bobbies Flower Gifts...

20 E. 5th St.
WO 7-2972 — WO 7-4274

For Parties...
Large Artificial
Plants For Rent



IN THE COLLEGE BRAND ROUND-UP

PRIZES: 1—The Alleghany VI self-contained Full Stereo Phonograph. Plus four 33 1/2 long-play albums.
2—The Sheidrake High Fidelity 4-speed Full Stereo portable Phonograph. Plus two 33 1/2 long-play albums.
3—A \$50.00 Gift Certificate from Hills Record Shop.

RULES: All packages turned in for the contest must be of current Marlboro, Philip Morris, Parliament or Alpine Cigarettes, and wrapped in bundles of ten. Packages collected for the contest must be turned in to Tom Thrift, campus representative, 1230 Spence Avenue, Apt. B., on January 6, 1962, no later than 6:00 P.M. Entries turned in after the above time and date will not be acknowledged. No exception.

WHO WINS: The group turning in the most packages per capita will receive 1st, 2nd or 3rd prize according to the results of the contest. Winners will be notified individually, and in the State Press.

Get on the BRANDWAGON ... it's lots of fun!





HURRY!

Now Is The Time To Order
PRINTED
Personal
CHRISTMAS CARDS
Good Selections
Priced Right

For Businesses,
Lovely Cards In
100s of a kind

Tempe Daily News

Stationery — Office Supplies
607 Mill Avenue

thrill a child with a letter from Santa . . .



Our Santa Post Office has wonderful letters all about Santa's workshop, brownies, and reindeer and they're yours *free of charge!* The special child in your life will be delighted and thrilled with this proof that there is a Santa Claus!



HERE'S ALL YOU DO:

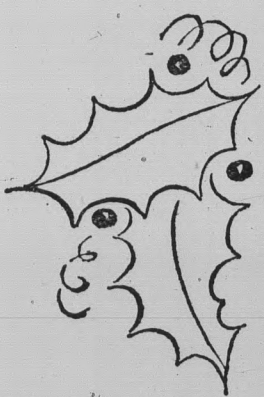
1. Visit our Santa Post Office located in the parking area at Tempe Shopping Center and take your pick from our colorful letters and envelopes.
2. Address, stamp and deposit the Santa Claus letters in our special mail box. We will have them sent from the famous Santa Post Office in Santa Claus, Indiana, so they will arrive before Christmas. Make this Christmas really merry for children of all ages.

SANTA POST OFFICE HOURS

3 p.m. to 6 p.m. Nov. 27 thru Nov. 29
 4 p.m. to 9 p.m. Monday thru Friday
 12 Noon to 6 p.m. Saturday
 Dec. 1 thru Dec. 15

28 FINE STORES TO SERVE YOU

Americana Shop • Bob Brickie Furniture • Bonnie Sue Fashions • Celia's Fashions • Center Hardware • El Rancho Market • Erickson's Handcrafts • First Federal Savings & Loan Association • First National Bank • Gallenkamps • Happy House Shop • Hill's Record Shop • House of Pancakes • Jam's Restaurant • King's Fashions • Little Travelers • Pioneer Camera Shop • Porters • Ray's ASU Barber Shop • Rosamond's • Ryan-Evans Drugs • S&H Redemption Center • Sewing Basket • Sherwin-Williams • Tee Pee of Toys • Top's • W. T. Grant Co. • ZZZona Laundry & Cl's
... easy to shop ... easy to park (free) ... everyday low prices



**MOST
 EVERY GIFT
 TO SUIT
 MOST
 EVERYBODY**

Tempe

Shopping Center

**OPEN EVERY
 EVENING
 BEGINNING
 DEC. 1**

on mill avenue - 8th to 10th streets

2202

E. APACHE

WO 7-3741

VIC'S

Open 8-6 Mon.-Sat.

QUALITY MEATS

CORNER DRUG

PRICES EFFECTIVE TODAY & TOMORROW
BUDGET PRICED — BUTCHER SERVED

CENTER

SIDE OF BEEF

U.S.D.A. Choice or Good Grade

Cut & Wrapped

47^c

lb.

FRESH GROUND

BEEF

3 lbs. for **89^c**

FRESH GROUND

CHUCK

2 lbs. for \$**1⁰⁰**

CENTER CUT

ROUND STEAK 69^c

lb.

RIB STEAK

59^c lb.

PORTER HOUSE

STEAK

THE CHOICE CUT OF BEEF
85^c lb.

CENTER CUT

EASTERN GRAIN FED

PORK CHOPS

59^c lb.

EASTERN GRAIN FED

LOIN END

Pork Roast

45^c lb.

SUGAR 5^L 39^c

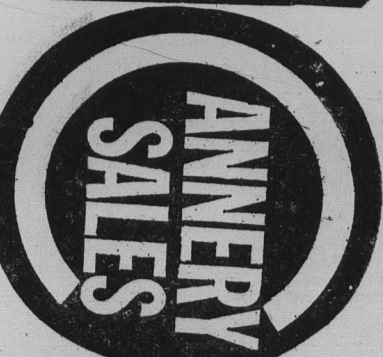
5^S

With \$5.00 Order

Gerbers Strained

BABY FOOD

12^c 98^c



Pork & Beans

No. 2 1/2 Can

5^F 0^R \$1

Located
2202 E. Apache

Corner Drug

Shopping Center

Prices For

Today and Tomorrow
Closed Sunday

SOUPS 7^c \$1⁰⁰

7^A 1^N 5

CAMPBELLS — All Kinds

FROZEN — Large 8 in.

PIES 3^F 0^R \$1⁰⁰

Cinch
CAKE MIX

Reg.
Size
Box

19^c

SPICED PEACHES 15^c

No. 2 1/2 Can

Peas No. 303 8 For

Milk Tall Cans 8 For

Dog Food 12 cans For

Catsup 14 oz. bottle 6 for

\$1

MARKER CANNED

Apple Sauce

No. 303
10 1/2^c

PURE STRAWBERRY

PRESERVES

3^{18 oz. Jar} \$1⁰⁰

Full Strength

BLEACH

Gal.

49^c

Marge Smith
FLOWERS
"Tempe's Most Popular Florist"

Evenings **722 MILL AVENUE** Daily
WO 7-5020 **WO 7-0271**

On Campus with **Max Shulman**
(Author of "Rally Round The Flag, Boys", "The Many Loves of Dobie Gillis", etc.)

"HAPPINESS CAN'T BUY MONEY"

I have asked the makers of Marlboro—an enterprising and aggressive group of men; yet at the same time warm and lovable; though not without acumen, perspicacity, and drive; which does not, however, mask their essential great-heartedness; a quality evident to all who have ever enjoyed the beneficence of their wares; I refer, of course, to Marlboro Cigarettes, a smoke fashioned with such loving care and tipped with such an easy-drawing filter that these old eyes grow misty when I think upon it—I have asked, I say, the makers of Marlboro—that aggregate of shrewd but kindly tobaccoists, that cluster of hearty souls bound together by the profit motive and an unflagging determination to provide a cigarette forever flavorful and eternally pleasing—I have asked, I say, the makers of Marlboro whether I might use today's column to take up the controversial question: Should a coed share expenses on a date?

"Yes," said the makers simply. We all shook hands then and squeezed each other's shoulders and exchanged brave smiles, and if our eyes were a trifle moist, who can blame us?

To the topic then: Should a coed share expenses on a date? I think I can best answer the question by citing the following typical case:

Poseidon Nebenzal, a student at Oklahoma A and M, majoring in hides and tallow, fell wildly in love with Mary Ellen Flange, a flax weevil major at the same school. His love, he had



"Oh, foolish reaper! Why have you not told me before?"

reason to believe from Mary Ellen's sidelong glances and maidenly blushes, was not entirely unrequited, and by and by he mustered up enough courage to ask her the all-important question: "Will you wear my 4-H pin?"

"Yes," she said simply. They shook hands then and squeezed each other's shoulders and exchanged brave smiles, and if their eyes were a trifle moist, who can blame them?

For a time things went swimmingly. Then a cloud appeared. Mary Ellen, it seems, was a rich girl and accustomed to costly pleasures. Poseidon was bone-poor and he quickly ran out of money. Unable to take Mary Ellen to the posh places she fancied and too proud to tell her the reason, he turned surly and full of melancholy. Soon their romance, so promising at the beginning, was headed for a breakup. But at the last moment, Poseidon managed to blurt out the truth.

"Oh, beloved agrarian!" cried Mary Ellen, grappling him close. "Oh, proud husbandman! Oh, foolish reaper! Why have you not told me before? I have plenty of money, and I will contribute according to my ability."

Poseidon, of course, protested, but she finally persuaded him of the wisdom of her course. From then on they split all expenses according to their incomes. Rather than embarrass Poseidon by handing him money in public, a joint bank account was set up to allow him to write checks. Into this account each week they faithfully deposited their respective allowances—35 cents from Poseidon; \$2300 from Mary Ellen.

And it worked fine! They were happy—truly happy! And what's more, when they graduated they had a nice little nest egg—eight million dollars—with which to furnish a lovely apartment in Lubbock, Texas, where today they operate the local laundromat.

So you see? You too can salvage your failing romance if you will only adopt a healthy, sensible attitude toward money.

© 1961 Max Shulman

Lucre is no obstacle when it comes to popular-priced Marlboro, or to Marlboro's popularly priced partner in pleasure—the unfiltered, king-size Philip Morris Commander. Get aboard. You'll find long enjoyment for short money.

Students Shape Empty Room Into Anthropology Museum

By JACK LOVETT

Now you can stop wondering.

That handsome glassed-in northwest corner of the ground floor in the Social Sciences Building, which has been variously a large empty space, a storeroom for miscellaneous bulky cartons, and an art gallery, is about to assume its rightful role.

It states on the building directory that this room is the Anthropology Museum. And, under the guidance of Dr. Reynold J. Ruppe, head of the Department of Sociology and Anthropology, a class of 15 students in Museum Techniques is rapidly whipping it into shape.

While some members of the class pursue research in the library, others are preparing the actual exhibits which will go in the cases.

Target date for completion of the museum displays is Christmas, said Dr. Ruppe. Eight small cases and three large ones will contain exhibits, and a large panoramic exhibit will be prepared in the "show window" facing the north side of the building court.

The entire display at present will be devoted to the Indians of Arizona. Students are prepar-

ing two dioramas and another partial diorama to tell the story of these civilizations.

The large show window will be devoted entirely to the Indians of Arizona today. Other exhibits will trace the various tribes and civilizations back to the days of the HoHoKam.

The rest of the story will be told in exhibits of basketry, pottery and other handicrafts of the tribes. These will come from the ASU collection, with some items on loan from the Uni-

versity of Arizona, the Museum of Northern Arizona at Flagstaff and from the Heard Museum in Phoenix.

For the time being, only the area along the north wall of the quad will be devoted to the anthropology exhibits. The west room will continue as an art gallery, as at present, since there are no cases available to occupy that space.

"However," Dr. Ruppe said, "the Anthropology Museum eventually will expand to occupy the entire space."

Drama Critic To Talk Monday In Ballroom

Dr. Joseph Wood Krutch, Ph.D., and award-winning author and drama critic, will lecture on "Biology and Humanism" at 8:15 p.m. Monday in the MU ballroom.

Dr. Krutch is author of 23 books, including "The Measure of Man," which won the National Book Award for non-fiction in 1954, and has contributed several articles to such magazines as Atlantic, Harper's, Saturday Review, Theater Arts and Saturday Evening Post.

A Fellow of the American

Academy of Arts and Sciences, Dr. Krutch is also a member of the American Academy of Arts and Letters, the National Institute of Arts and Letters, former president of the New York Critics Circle and presently a member of the Board of Editors, American Men of Letter Series.

Both Columbia and Northwestern University have conferred honorary degrees upon him.

Malcoff's
Stein & Sirloin

4817 E. Indian School

OPENING TONITE!
The Great
"JERI SOUTHERN"
For A Limited Engagement

ALL YOU CAN EAT!
CHUCK WAGON \$1.95

ORANGE JULIUS
"A DEVILISH GOOD DRINK"

ORANGE OR LEMON
MADE WITH FRESH JUICE
— RICH IN VITAMIN C —
Truly A Health Drink

★ GRILLED DEVIL DOGS ★

- MONGREL (Mustard-Relish-Onion)
- PICKLE POOCH (Mustard-Dill P.)
- BAR-B-Q PUP (B-B-Q Sauce-Onion)
- KRAUT HOUND (Mustard-S. Kraut)

25c

★ MUTT CALIENTE 30c
★ BLUE RIBBON PUP 35c

Broiled (Ground Chuck) Burgers
1 Patty 30c — 2 Patties 45c
Served With Potato and Carrot Chips

ENJOY INSIDE OR PATIO SEATING
3517 East Van Buren — Phoenix
Open 9 A.M. - 12 P.M. Daily — Till 2 A.M. Fri. & Sat

CLUBS & ORGANIZATIONS

Raise Money by having a Theatre Party at the famous
SOMBRERO PLAYHOUSE
which opens Jan. 16th with
ARLENE FRANCIS
(In Person)

Write or phone for details to
Sombbrero Playhouse
4747 N. 7th St. — Phoenix
Phone CR 4-2521

Campus Classified

Regulations: For students and faculty only of Arizona State University. Cash in advance. Submit to Room 233, Social Science Bldg., 8 a.m. to 9 a.m. daily, 1:30 to 2:30 Monday and Wednesday. Call Ext. 471 for other hours. Rates: 10 cents a line per issue, 35 cents minimum charge.

● **HOUSE FOR RENT**

Right party wanted to rent 2-bedroom furnished house—large fenced back yard for children. 3 blocks from campus. Phone WO 7-5430.

● **FLYERS WANTED**

Fly to Mexico. Have plane, will travel to Acapulco during Xmas vacation for gas and oil only. Can take two. Bernie Matchett. WO 7-0643.

FRANK HATED GOOD DANCERS 'CAUSE THEY STOLE ALL HIS GALS.

NOW HE'S A GOOD DANCER AND HATED BY HIS GAL-LIN' PALS!

LEARN TO
Dance at Dale's
ASU SPECIAL
12 Lessons — \$12.50
2 Locations
SCOTTSDALE — MESA
WH 6-4241 — WO 9-3601

WAA Dance Night Slated For Dec. 6

ASU coeds representing sororities and campus organizations will compete for trophies Wednesday during the WAA Dance Night.

Christian Science Movie Scheduled

A half-hour color movie entitled, "The Story of Christian Science," will be presented as a part of Spiritual Exploration Week by the ASU Christian Science Organization, Tuesday at 7 p.m. in SS 108.

Following the movie, there will be an informal question and answer period. Everyone is welcome.

This movie presents, in an objective manner, the major tenets and teachings of this religion, tells of the life of Mary Baker Eddy, its founder, and explains its government and various activities.

**KEPI
ON THE AIR**
FM 96.9 mc

The event will begin at 7:30 p.m. in the Moeur Activity building.

Dance categories include folk, tap and modern. First, second and third place trophies will be awarded to the winners in each division.

Night rehearsal for lighting will be held Monday from 4-6:30 p.m. in the Moeur Activity Building.

Sororities participating are Kappa Delta, Chi Omega, Gamma Phi Beta, Kappa Alpha Theta and Alpha Phi.

Other participating campus organizations are West Hall, Off-Campus Women, McClintock Hall A and B and Palo Verde Hall.

Merle Packer and Mary Elizabeth Graham, assistant professors of Physical Education, will be the faculty sponsors for the annual event.

The event is open to the public.

'Roman Holiday' Tonight

The Cultural Affairs Board will present "Roman Holiday" tonight at 7:30 in Cosner Auditorium.

Starring Gregory Peck, Eddie Arnold and Audrey Hepburn, the movie is one of the series offered by the board this semester.

MU Calendar

Today

Housing Conference: 210 — 9 a.m.-4 p.m.
Executive Council Meeting: 208 — 3-4:30 p.m.
Bridge Lessons: Lower Lounge — 6:30-7:30 p.m.
TV Drama: Upper Lounge — 7-9:30 p.m.

Tomorrow

AWS: Lower Lounge—11 a.m.-2 p.m.
Foreign Student Club: Clancy's — 8-12 p.m.

Sunday, December 3

Alpha Epsilon Pi: 210 — 6:30-9:30 p.m.
CA Reception: Lower Lounge — 7-9:30 p.m.
Tau Kappa Epsilon: 209 — 7-8:30 p.m.
Hillel: 218 A — 8-10 p.m.
Liberal Religious Students: 208 — 8-9:30 p.m.
Music Department Concert: Ballroom — 8:15-10 p.m.

Monday, December 4

SEW Assembly: Ballroom—9:40-10 a.m.
SEW Panel: Upper Lounge — 11:40 a.m.-12:30 p.m.
SEW Buzz Sessions: Lower Lounge — 3:40-5 p.m.
Social Board Sub-Committee: Lower Lounge — 3:40-5 p.m.
Board of Financial Control: 210 — 3-4:30 p.m.
Membership and Elections: Senate Chamber — 3:30-4 p.m.
Spurs Executive Council: 209 — 3:30-4 p.m.
SEW Buzz Sessions: Lower Lounge — 3:40-5 p.m.
Spurs: 209 — 4-5 p.m.
Education Committee: Senate Chamber — 4-5 p.m.
Phi Beta Kappa Dinner: 218 A and B — 6 p.m.
Tau Beta Sigma: 209 — 6:30-7:30 p.m.
Alpha Epsilon Pi: 210 — 6:30-10 p.m.
Pi Kappa Alpha: 208 — 7-9 p.m.
C & L Series: Ballroom — 8:15-10 p.m.
CA Reception: Upper Lounge — 9:30-10:30 p.m.



\$12.95

JUST SLIP IT ON

and Go...

IT'S A JARMAN "Snug-A-Matic"

And from the very word "go" you will enjoy the sure-footed comfort of this trim Jarman slip-on. Its elasticized topline hugs your foot — holds but doesn't bind. It features popular moccasin styling and Jarman's flexible Silhouwelt construction. Fashioned of Cashmere Grain leather. Pay us a visit and try the "Snug-A-Matic."

**Campus
men's shop**

FOR MEN AND YOUNG MEN
603 MILL AVE WO 7-2960
OPEN THURSDAY EVENING UNTIL 9 P.M.

TEMPE CHURCHES of CHRIST

Invite You To Their
SERVICES and BIBLE CLASSES

10th and Ash Avenue
WO 7-4872
CLEW WIMBISH
Evangelist

1016 River Drive
WO 7-5112
PRESTON WINCHELL
Evangelist

SUNDAY		SUNDAY	
University Bible Class	9:45 a.m.	Bible Classes	9:45 a.m.
Morn. Worship	10:45 a.m.	Morn. Worship	10:45 a.m.
Evening	7:00 p.m.	Evening	6:30 p.m.
WEDNESDAY		WEDNESDAY	
Evening Study	7:30 p.m.	Evening Study	7:30 p.m.

DEVOTIONALS IN DANFORTH CHAPEL
MONDAY AND FRIDAY MORNINGS 6:30 to 7:00 A.M.

An Age of Kings

Don't miss this outstanding series of historical plays by William Shakespeare. It's a National Educational Television highlight—brought to you by HUMBLE OIL & REFINING COMPANY America's Leading Energy Company.



FRIDAYS AT 7:30 P.M.—CHANNEL 8

SIC FLICS



"Look! Fiedler's back from vacation!"



21 GREAT TOBACCOS MAKE 20 WONDERFUL SMOKES!
AGED MILD, BLENDED MILD - NOT FILTERED MILD - THEY SATISFY

Devil Cagers Start Season Tonight

By BOB EGER
Sports Editor

Arizona State's 1961-62 cage edition takes the floor for the first time tonight at 8:30 against St. Michael's and faces the problem of taking the Knights too lightly with powerful Utah coming to town tomorrow.

Although it's the nationally-ranked Redskins everyone has been talking about, the Knights may surprise a few people even though they haven't built much of a reputation in this area. St. Michaels is defending Frontier Conference champion and is expected to have a bet-

ter team than the one which copped the Frontier crown over schools like Arizona State College and New Mexico Highlands last year.

All-Frontier Conference guard Robert Rodriguez, 6-2, leads the Knights along with a couple of standout returnees in 6-5 James Caffigan and 6-5 Al Armendaraz.

Coach Al Romero claims his club's two top assets are its "spirit and aggressiveness" although the Knights are also fairly well off in the size and speed categories.

Arizona State Coach Ned Wulk will open with the same lineup that shot the

Devils into the national spotlight last season. Tony Cerkvenik 6-4, Ollie Payne 6-4, Jerry Hahn 6-7, Larry Armstrong 5-9 and Raul Disarufino 6-2 will get the nod as starters.

Tomorrow the Devils get a chance at Utah, the team that dumped them from the NCAA Western Regionals last spring. The Redskins, ranked 7th nationally and featuring one man gang, Bill "The Hill" McGill, could be taking their life in their hands tomorrow when they invade Sun Devil territory.

The Utes are somewhat weaker than last year with the loss of three standouts from last year's team and only four veterans returning.

Gone are Jim Rhead, Rich Ruffell and Joe Morton from the club that bounced the Devils 88-80 last spring. They were the second, third and fourth highest scorers on the club last year behind McGill.

"The Hill" averaged 27.8 points per game last year but the rest of the returning Utah club shows a definite lack of scoring punch.

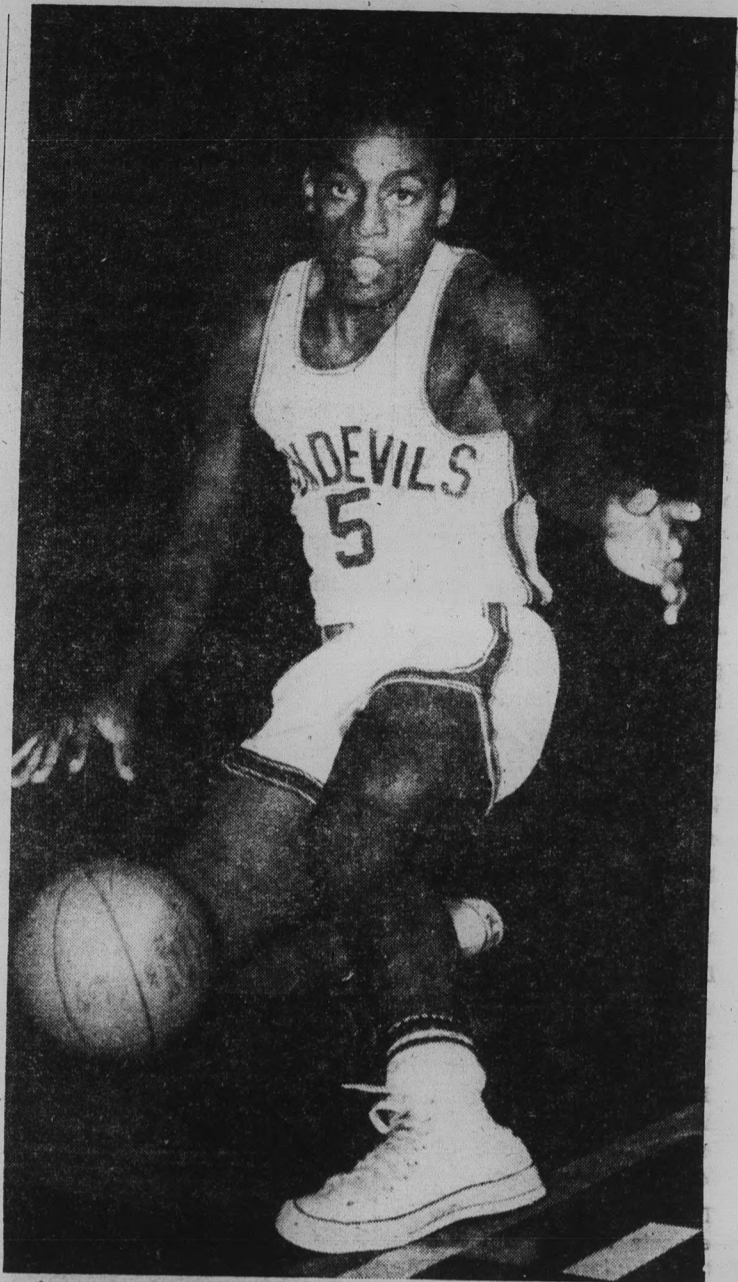
Returning with McGill are Ed Rowe, Bo Crain and Joe Aufderhide. McGill and Rowe are the only regulars left from last year's ball club and Rowe only averaged 4.5 points per game. Crain and Aufderhide both averaged 4.4 points per contest in limited action.

A-State's Jerry Hahn gets the unenviable job of guarding McGill. At 6-7, he's a couple of inches shorter than the Utes' All-American but he's done a good job on opponent's big men in the past.

If "The Hill" proves to be too much, Joe Caldwell and Art Becker will be waiting to try their hand. Caldwell is 6-5 and can high jump 6-6 and Becker can almost match McGill in height at 6-8.

Hahn, Caldwell and Becker were all scheduled to view movies of McGill in action this week so they should be well briefed on what to expect.

If the Devils can knock off the seventh-ranked Utes, they could improve their already impressive 10th national ranking. The game will be one of the first in the country among ranked major teams and could bring about quite a shuffle in the standings.



SWEET LARRY — Armstrong, Arizona State's leading scorer with a 19.9 average last year will be in the starting lineup tonight when the Sun Devils open against St. Michael's and tomorrow when the Demons host powerful Utah. Armstrong and his Devil teammates will be out to improve on their 23-6 season of last year.

NOW THREE LOCATIONS . . .
1. Tempe Center 2. 1302 Rural 3. Bayless Center
Open 24 Hours A Day!

ZZZONA
DRIVE-IN LAUNDRY & CLEANERS
FIRST in Laundry and Cleaning • LAST in the Phone Book

SPECIAL PURCHASE

Crystal Mist
de
COTY
BOXED FOR \$250
GIFT GIVING

CAMPUS DRUG
CORNER, College and 8th, WO 7-4049

VALLEY ART THEATRE 509 Mill Ave.

Out Of The Pages Of Playboy Magazine
"NOMINATED: MOST REVEALING FILM OF 1961"
—Playboy Magazine
ANATOMY AWARD WINNER OF 1961"
—N. Y. Herald Tribune

TITILLATING!

Not Tonite, HENRY!

STARRING **HANK HENRY** Plus
THE "CARRY-ON" GANG OF COMEDIANS IN
"PLEASE TURN OVER"
By the Producers of "CARRY-ON NURSE"

Help Control Respiratory Diseases

Respiratory diseases of all kinds, including TB, bring death, disability and untold suffering to many families. Help your TB association control respiratory disease with your Christmas Seal dollars.

FIGHT TB AND OTHER RESPIRATORY DISEASES

EXPERT RACKET RESTRINGING
Trophies and Engraving
P.E. CLOTHES FOR MEN AND WOMEN
Brand Names MEN'S WEAR
Brand Names WOMEN'S WEAR
"FOR BRANDS YOU KNOW"

Joe Selleh

624 MILL AVE. WO 7-4163

The PIZZA HUT
"Eat In or Carry Out"

Open Every Day For Lunch & Dinner
11:30 A.M. to 1 A.M.

FREE
Catering Service To Parties

Order By Phone For Faster Service
WO 7-3355
801 E. Apache Tempe

Devils Get Seven Spots On All-Conference Team

Arizona State University, Border Conference champ in its last year in the BC, placed seven

men on the All-Conference first team and two on the second team as picked by the five head coaches in the conference.

The announcement was made by Border Conference Commissioner Emil L. Larson, who polled the coaches and tabulated the votes.

The Devils were: Nolan Jones, halfback; Clay Freney, fullback; George Flint, tackle; Larry Reeves, tackle; Roger Locke, end; Dick Locke, guard and Fred Rhoades, center.

The rest of the 14-man unit includes: Ralph Kennedy, end;

John Young, guard, and John Furman, quarterback, all from Texas Western; Royce Cassell, end, and Preacher Pilot, halfback, both from New Mexico State, and Stu Johnson, guard, and Pete Pedro, halfback, West Texas State.

Quarterback Joe Zuger and end Dale Keller of ASU made the second team.

For Jones it marked the third successive season to be honored to the first team while Flint, Dick Locke, Rhoades and Freney were all named for the second time.

Imp Cagers Start Slate

ASU's Frösh cagers open their season this weekend with two games on tap. Tonight they meet Mesa LDS 15th Ward, and tomorrow Fort Huachuca provides the opposition. Starting time both nights is 6:30.

"These fellows are not thinking of last year's illustrious team, but are working hard to make this a successful season," stated coach Bobby Winkles.

Winkles, Sun Devil baseball mentor, has taken over the Sun Imp coaching job left vacated by the mid-semester resignation of Fanny Markham.

Three Arizonans will be in tonight's starting lineup. The outside spots will be manned by Luis Lagunas, 5-8 of Hayden and 5-11 Howard Lee of St. Johns. Ben Anderson, 6-3 of Mesa, holds down one of the three inside posts.

The other starters at the inside spots will be Bill Mullen, 6-6 of Watertown, Wisconsin, and Tom Owens, 6-4 of Newport, Kentucky.

Your Date...

Will Never Be Late

If She Knows You're

Headed For

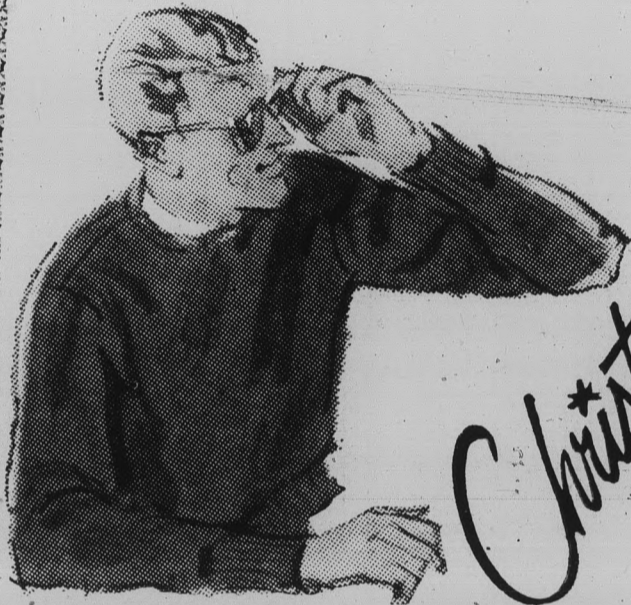
CHICO'S

RESTAURANT*

FINE MEXICAN FOOD

1120 East Apache Blvd. — Tempe

*Air conditioned of course



Christmas Gifts

for Dad, Boyfriend and Brother . . .

You'll be sure of their Christmas pleasure if you choose our gifts selected especially for the men in your life.

FREE

Gift Wrapping for all Christmas gifts purchased from us.

- Beautiful Neckwear \$1.50
- Oxford-cloth Shirts \$5.00
- Boxed handkerchiefs, 3 for \$1.00
- Reversible check vests \$6.95
- Patterned sport shirts \$5.00
- Stretch or sized sox \$1.00
- Dress Slacks by Haggar \$10.95
- Leather or elastic belts \$1.50

Open every night beginning Tonight!

THE *Americana* SHOP

QUALITY MEN'S APPAREL
TEMPE SHOPPING CENTER
WO 7-5457



GOT THE BIG BOMB BLUES?



DON'T BURY YOURSELF IN THE BACKYARD.

RELAX BEFORE YOU RELAPSE.

HAVE FUN - LEARN TO

Dance at Dale's

ASU SPECIAL

12 Lessons — \$12.50

2 Locations
SCOTTSDALE — MESA
WH 6-4241 — WO 9-3601

The Capri's
"PICK OF THE WEEK"

ASU 89
Utah 80

Right or Wrong
You Can't Miss
With Our
PIZZA'S

16 E. 4th — Tempe