

'61 Homecoming Royalty To Be Elected Tuesday

Homecoming royalty for 1961 will be chosen by the student body in Tuesday's general elections.

All students will vote for Homecoming King and Queen, with the two runners-up for each title being named court attendants.

(During this same general election, freshmen will cast their final ballots for freshman senators.)

Voting polls will be on the northeast corner of College Ave. and Orange St. and in front of Old Main. ID cards must be presented prior to voting.

Although there are no restrictions for Homecoming campaigns, the Homecoming Committee has announced that common sense must prevail. The campaigns will begin at 6 a.m. Monday.

Queen candidates and their activities are:

Norma Butler — junior, Physical Education major, Alpha Sigma Alpha, WAA vice president, AWS representative, PEMM, WAA "A" Club, Lambda Chi Alpha Crescents.

Linda Edgar — senior, History major, Kappa Kappa Gamma, WAA, Kaydettes, Crescents, Rally and Tradition Board, Greek Week Steering Committee.

Paula Ivanovich — jun-

ior, Math major, Alpha Phi, sophomore senator, Newman Club, Rally and Traditions Board.

Kathy Rainey—junior, Kindergarten-Primary Education major, Kappa Alpha Theta, WAA, Racquet Club, Sweetheart of Sigma Chi.

Linda Rankin — senior, Elementary Education major, Alpha Delta Pi president, Little Sisters of Minerva, Kaydettes president, Homecoming Committee co-chairman, Queen of Hearts, Outstanding Freshman Woman, Pi Kappa Alpha Cal.

★ ★ ★

Dance Merits Late Night

"Tuesday night will be a late night for women, so that all may attend the Homecoming dance," announced Linda Rankin, co-chairman of the Steering Committee.

Eddie Cooke and his band will provide the music for the dance in the MU ballroom from 8 to 12 p.m.

Student Body President Gary Walker will be master of ceremonies for the evening and will crown the Homecoming Queen from among the three finalists.

Linda Lowry is in charge of the coronation and will crown the King. Gifts from local merchants will be presented to the royal couple.

(Continued on Page 6)

endar Girl.

Carol Roosevelt — senior, Liberal Arts major, Delta Gamma, Philadelphia, AWS Council, Freshman Orientation co-chairman.

Lynda Salisbury — junior, Speech major, Gamma Phi Beta, Philadelphia, Kaydettes, Junior Class senator.

Elinor Simmons — senior, Elementary Education major, Kappa Delta, SNEA, ACI, Angel Flight, AWS representative, Palo Verde vice president.

Brenda Tibshraeny — senior, Elementary Education major, Chi Omega, MU Board, Newman Club, WAA, NEA.

Diane Voorhis—junior, Elementary Education major, Sigma Sigma Sigma, Newman Club, Greek Week Committee, AWS representative, Homecoming Committee, Palo Verde Hall Council.

Those men vying for King include:

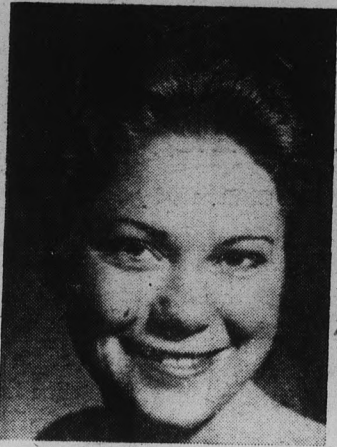
Tony Ashton — junior, Business Administration major, Delta Sigma Phi, Young Republicans.

Howie Bernstein — sophomore, Radio-TV major, Sigma Nu, Granada Club.

Keith Cole — senior, Business Administration major, Phi Sigma Kappa.

Wayne Cole—junior, English major, Theta Delta Chi, Alpha Mu Sigma, Social Board, Rally and Traditions Board, Blue Key, Junior Class senator, cheerleader.

(Continued on Page 6)



BUTLER



SALISBURY



EDGAR



SIMMONS



IVANOVICH



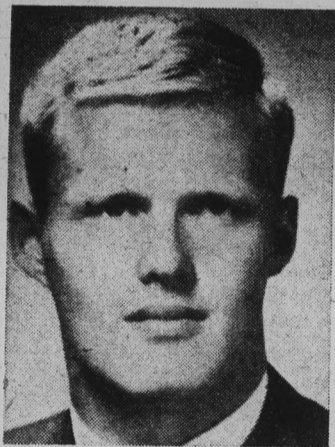
TIBSHRAENY



RAINEY



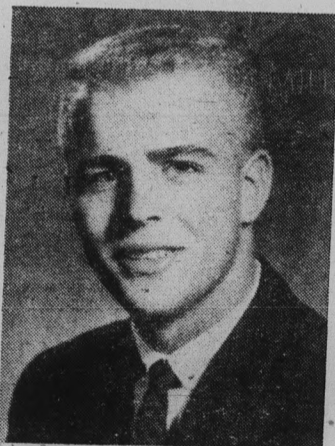
VOORHIS



K. COLE



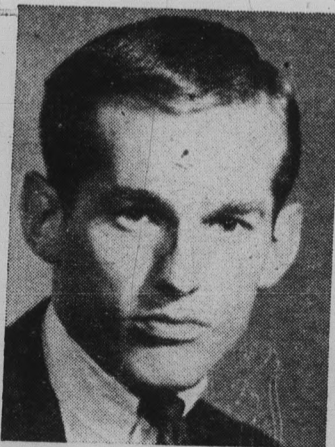
RANKIN



ASHTON



W. COLE



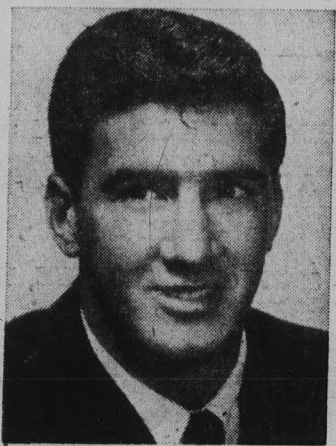
IMMEL



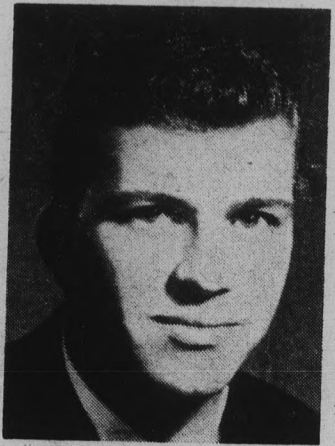
KELLER



ROOSEVELT



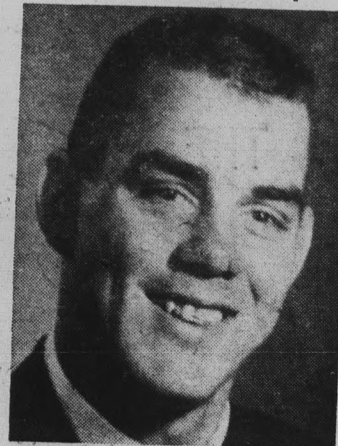
BERNSTEIN



EVANS



ISHERWOOD



SOUTHERN

ASU Young Democrats Announce Dick O'Hara As New President

The Young Democrats elected officers at a meeting Wednesday at the Alumni House. New officers are Dick O'Hara, president; Edsel Reid, first vice president; Nancy Rogers, second vice president; Ronnie Shiff, secretary, and Jean Newman, treasurer. Two committee chairmen were appointed: Steve Rummel publicity chairman and Linda O'Hara, social chairman. The club will sponsor a showing of "Compulsion," Oct. 20 in Cosner Auditorium.

Engineering Council Accredits Degree Program For ASU

Dr. G. Homer Durham, ASU president, announced Saturday that full accreditation of five engineering degree programs at ASU was given by the National Engineers' Council for Professional Development.

The areas of accreditation are in civil, mechanical, electrical and industrial engineering and engineering science.

"Impressive new buildings have been designed and constructed to provide ample space for offices, classrooms and laboratories," he added.

Referring to Dr. Everitt's remarks, Dr. Durham said, "We are highly gratified at the action of the ECDP. I cannot emphasize too strongly the value to the state, and, particularly to central Arizona's growing and diverse industries, of a high level engineering college in the Valley."

Dean Lee P. Thompson, dean

of the College of Applied Arts and Sciences and head of the Engineering school, said, "Industries throughout the state have been generous with aid, both in starting the program and developing it. Aid has included donations of equipment, scholarship funds and personnel to conduct highly specialized classes."

SMILEY-BERGE FORD

Your Nearest Auto Dealer

- ★ Complete Service Facilities
- ★ 7 Mechanics On Duty
- ★ Servicing All Makes & Models

JUST TWO BLOCKS FROM ASU CAMPUS

16 East 8th Street - Tempe
Phone WO 7-2064

Interfraternity Problems Discussed During Greek Retreat This Week

The first Interfraternity Council Greek retreat began Wednesday and ends today. The purpose of this retreat is the discussion of important problems faced by ASU fraternities.

Dr. A. H. Harris, chairman of the Marketing department lec-

tured on the art of brainstorming, the first day. Other topics discussed were scholarship, quiet hours, financial problems, rush and alumni support.

At the end of the retreat all agreed solutions will be printed in a pamphlet and distributed.

Defense Loans Available In '62

Dr. Woodrow V. Nold, ASU's financial aid officer, announced yesterday that National Defense Student loans won't be available until, "as far as we know," the fall semester, 1962-63.

Hundreds of applicants have applied for these loans, "but," he said, "now they will have to make other arrangements. We are sending individual letters to applicants who haven't been approved."

"We still have money in very limited amounts for short and long-term loans to be repaid one year after graduation or drop-out," he said. "This money is available only to the most needy and worthy students," Dr. Nold concluded.

Whatever you do, do it better
with Maximum vision and comfort.

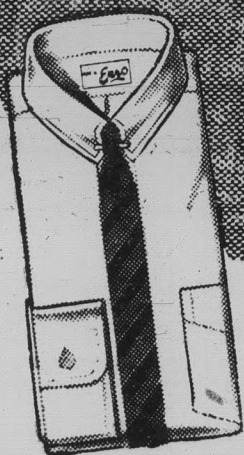
Dr. Irving Kanarek

Optometrist

Papago Shopping Plaza
(Near Little Lulu)

Appointment Suggested
WH 6-7431

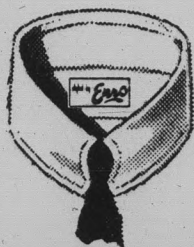
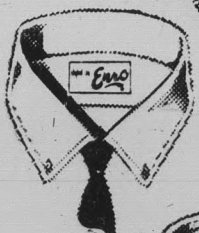
The Rich
Texture
of
Oxford
Luxury



for Any Occasion
Oxford Shire
SHIRTS

styled by **Enro**

Add to finest styling and tailoring the rich feel of Oxford Cloth. The dressed up look men demand . . . in a comfortably casual vein. Make your selections from our complete range of styles.



from

\$500

THE
Americana
SHOP

QUALITY MEN'S APPAREL
TEMPE SHOPPING CENTER

IF YOUR DOCTOR SAYS 'HOSPITAL'
WHO WILL PAY YOUR 'BILLS'



HERE ARE SOME CLAIMS PAID LAST YEAR BY

ASSOCIATED STUDENTS INSURANCE PLAN

	Billed	Insurance Paid
APPENDECTOMY	345.90	316.40
SPINAL CONDITION	1,375.70	951.50
TONSILS	178.60	178.60
INSECT BITE	113.45	113.45
AUTO ACCIDENT	586.80	586.80

THIS YEAR COULD BE YOUR TURN

DON'T RISK FINANCIAL LOSS — ENROLL NOW
APPLICATIONS AT ROOM 213 MEMORIAL UNION

OR COME TO

CHARLES LOCK — 822B MILL AVENUE, TEMPE, WO 7-3358

TOMORROW!

IS THE
CLOSING
DATE

Testing Service Director Finds New Teaching Style

Dr. Richard E. Schutz, director of ASU's testing service and associate professor of Education, recently presented a paper on a new teaching method to the American Psychological Society.

The system, first used on kindergarten and eighth grade children, operates by pupils receiving tokens, which can be exchanged for gifts, for progress in reading.

Dr. Schutz said that this system could be modified for a university, and then he described one experiment used by a university.

Immediately following a lecture, the students took a test on the material presented. The scoring sheet was synthesized to colors to indicate if a student's answer was correct.

If it was incorrect, the professor repeated the lecture material to the students who missed the question until a correct answer was given.

This process was repeated until the entire lecture was covered by examination and all the student responses were correct.

He stressed the fact that this method must be done repetitiously.



HOW NOT TO -- Photographers find poses like these pleasing to the eyes, but it has been suggested that, for a picture's sake, there is a way for a lady to place her lower limbs. This is not the way. Next time, agree photogs, just before the camera snaps, pull down the skirts, thank you. (Ralph Forney Photo)

Writing Contest Promotes Free Press

A writing contest for journalism students is in progress to encourage the world to appreciate the effort of maintaining a free press.

"The Need For A Free Press For A Free World," is the subject for the writing or essay. The wording is limited to 300 words. The deadline is Nov. 12.

Ten writings from each respective college or university are

to be selected by each institution's journalism faculty. The writings are then submitted to an impartial panel of judges that will consist of outstanding writers and editors.

The Hotel Flamingo, Las Vegas, is sponsoring this contest in connection with their Christmas season party. The first annual international press gathering is held at this time.

NOW THREE LOCATIONS . . .
 1. Tempe Center 2. 1302 Rural 3. Bayless Center
Open 24 Hours A Day!

ZZZONA
DRIVE-IN LAUNDRY & CLEANERS
 FIRST in Laundry and Cleaning • LAST in the Phone Book

Mac & Jack Sez . . .
 "Try Our Different Party Decorations"
PIONEER CAMERA SHOP
 TEMPE CENTER

10 - 6 Mon. to Fri.
 10 - 9 Thursday

The Village Shop

a shop designed with the college girl in mind

967-1981 616 MYRTLE TEMPE

MEN!

In plastic!

Old Spice DEODORANT

Here's deodorant protection YOU CAN TRUST

Old Spice Stick Deodorant... fastest, neatest way to all-day, every day protection! It's the active deodorant for active men... absolutely dependable. Glides on smoothly, speedily... dries in record time. Old Spice Stick Deodorant - most convenient, most economical deodorant money can buy. 1.00 plus tax.

Old Spice STICK DEODORANT
 SHULTON

The Chief Executive Look

This is the authentic hacking model suit so much in the news today. We feature it in lustrous black. The fabric is a luxurious blend of resilient mohair and wool. The jacket has natural shoulders and side vents. We predict it will win in a landslide.

73.00

Hanny's
Varsity Shop
 30 NORTH FIRST STREET
 DOWNTOWN • CHRISTOWN

See Campus Representatives: Ted Lorber, Jim Kirkpatrick, Jim Oakley, Renz Jennings



The STATE PRESS, distributed by the campus chapter of Sigma Delta Chi under the direction of Circulation Manager Charles Hilgeman, is the official campus newspaper of Arizona State University. It is published each Wednesday and Friday throughout the school year, excepting holidays, and is entered as second class matter at the Tempe, Arizona, Post Office under the Acts of March 3, 1879, and August 24, 1912. Subscription price, \$3 per school year.

The STATE PRESS is a member of the Arizona Newspapers Association, Associated Collegiate Press and National Advertising Service, Inc.



EDITOR-IN-CHIEF JACK ONG

NEWS DEPARTMENT

MANAGING EDITOR BILL FLICK

NEWS EDITORS LINDA WARREN, BILL OVEREND

COPY EDITOR CAROL OSMAN

CHIEF PROOFREADER EDIE ALLERS

ASSIGNMENTS EDITOR BARBARA MARLOWE

ASSISTANTS MARY GORMAN, JANET WOLHETER, BOB ZACHE

SOCIETY DEPARTMENT

EDITOR ROSALYN WHITNEY

ASSISTANT BETTY ADAMS

SPORTS DEPARTMENT

EDITOR BOB EGER

ASSISTANT BOB JACOBSEN

Letters To The Editor

Adds To 'Shawian' Thought

To the Editor:

Dick Shaw has spoken! I suggest that all students cut his pearls of wisdom out of last issue of the State Press and fram (sic) them just to remind them what direction of thought will be allowed on the ASU campus by our leader.

like to insist upon three more reforms. (1) A mass application of ASU students to the City of Tempe to be annexed into the City of Phoenix or better yet establish a new City of Shaw in appreciation of his contributions to ASU.

(2) Petition the state legislature for a grant to allow Dick Shaw to remain at ASU indefinitely for the purpose of guarding ASU student legislation against any nasty parliamentarism (sic) mistakes.

(3) Send all correspondence directly to him to make sure it agrees with his "mind."

Humble Janizary of Shaw, Mitchell Holder P. S.: Maybe we had better liquidate Dahlstrom for high treason.

Editorial Policy Slammed

To the Editor:

I feel that something is lacking in an editorial policy which permits a columnist to arouse fears and excite rumors in such an irresponsible manner as Bill Flick has in his statements about lice in Best Hall, and his insinuations in Wednesday's issue that Sahuaro Hall also needed an inspection.

In the second place, Sahuaro Hall has been inspected. Two weeks ago I asked a sanitarian from the county health department to assist me in inspecting that hall. While we had some recommendations to make, none of them was related to sanitation. Individual housekeeping in the rooms varies, of course, but we found nothing that was a threat to the public safety or welfare.

In the first place, finding lice on an individual is no reflection on the sanitation or the housekeeping of a residence hall, and the suggestion that it is such, is grossly unfair to the residents. One resident who was accused of having lice reported to the Student Health Service; the physician who examined him thoroughly could find none. The individual who did have lice reported for treatment and was given treatment. If a person has lice he knows it and wants to get rid of them. Infestation with lice is a personal matter and can be treated only on a personal basis.

If Mr. Flick has specific information, I feel that he should bring it to the attention of either the head resident in the hall concerned or to the Student Health Service. Then, if nothing is done, he can take his editorial stand in the responsible manner of the true journalist. As Mr. Flick says, this isn't high school, and we expect maturity of judgment and regard for the feelings of the many residents in both halls concerned.

Elaine McFarland, R. N. Director, Student Health Service

Editor's Note. If satire hurts, there must be a reason provoking pain. Satire to us is still writing that employs ridicule and sarcasm . . . sometimes in fun, others with a more definite purpose in mind.

P. S. Mr. Flick was not the author of that particular column you mentioned.

No Circus, Please

"There shall be no restriction to the campaign for Homecoming King and Queen," states the Associated Students Bill 152, Article VII, Section H (May 17, 1961.)

It is true we need school spirit at Arizona State, and Homecoming is certainly the time to manifest that spirit in the most enthusiastic manner possible.

However, this IS a university and the dictates of good taste should govern all actions, including those to enhance school spirit.

We ask all candidates for Homecoming King and Queen to conduct their campaigns simply and sensibly; let's have a rally, not a circus sideshow.

In addition, we would like to suggest that our student government review and re-consider Article VII, Section H of our Senate Bill 152, with a realization that extensive, extravagant campaigns are not monetarily possible for all groups that wish to sponsor candidates.

I Cover College Avenue

By BILL FLICK

Certain ASASU officers (and a few—or maybe a lot—more people) want a bigger and better State Press. Well, so do we. But let us give you just a few of very many facts:

There are 14 persons who appear on our masthead. The average monthly salary of these 14 is a little over \$17. The average hourly wage, about 20 cents;

There are 750 square feet of working space in our office for 104 persons, 97 of whom are not paid. Allowing space for desks, etc., we have about two square feet per person. (The men's restroom in the MU is roughly 350 square feet!);

There are 16 typewriters in our office for these same 104 persons.

And there are many other things which we will be willing to discuss with you ANYTIME,

but which we, for one reason or another, cannot print.

No, we are not the Cornell Daily Sun. Or the Michigan Daily. Neither do we subscribe to the Associated Press wire service, nor do we pay most of our employees. And we can't. We don't have enough facilities, personnel, instructors or that peculiar stuff that some people call dinero to do all these things. Therefore, to those of you who want a bigger and better State Press, we plea for your support. Join us in our fight for more money, the best administrative relations and more emphasis on journalism at this University.

Until we can win our fight, please do not shout too loudly. We're all in the same boat.

But, temporarily . . .

For those of you who want national and international news: A U.S. attache in the Congo was forced to sweep the steps of the Patrice Lumumba Monument

For those of you who want more editorial comment: We think Goldwater has the right idea all the way.

And to that special group of you who are satisfied with the "I Cover" column as it is, let us say—thanks. And Amen.

Noticed in the Arizona Republic last week that our Peace Walking friends (remember) ran into a little trouble upon completion of their 10-month journey to Moscow. They were even banned there! We remember them saying that it took several weeks and maybe months before their particular philosophies sank in and captured your brain. Well, we're still waitin'.

As is indicated by our consistent predicting of ASU football games, we are overly interested in football. And as is indicated by the complete ridiculousness of how we predict em, we are quite radical. For tomorrow night, therefore, we will calm down a little and say Arizona State 28, West Texas State 6.

Just noticed today is Friday the 13th. Well, here's hopin', huh Schmietz?

TO EVERYBODY IN THE WHOLE WORLD: May we please remind you that we are covering College Avenue and nothing else. It's getting to where you have to look both ways before you say anything.

Next Wednesday—B.O. Bill. Watch Out.

What's Good Enough For One . . .

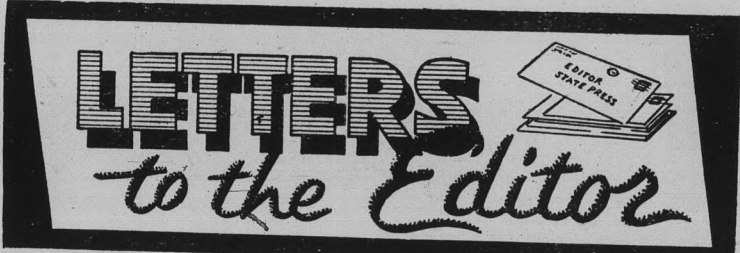
To the Editor: slacks constitute a privileged person?

Are all men treated with equal liberties? Do we all have the right to enjoy the liberties that we so freely expound on? Does one person or group of persons have more rights and liberties than others?

Do the fraternities have the right to ask for a reserved section at the football games? Why do they ask for this privilege? Does a thin tie, a short-sleeve shirt, and continental

If one group asks for special privileges does another group have that same right? Do their actions take into consideration the feelings of others? The trouble with the world today is that people cannot get along peacefully. We should be working toward an end that will promote peacefulness and harmony rather than hinder it.

William Verhulst



LITTLE MAN ON CAMPUS



AN' REMEMBER, WHEN HE PINS ON HIS FRATERNITY PIN—DON'T FORGET TO GIVE A LITTLE OUCH!!

Letters To The Editor

Thanks Expressed

To the Editor:

It is always remarkable what the printed word can do. A few days ago I was fearful that I would be forced to drop school because I had no transportation. But your editorial of Oct. 4 solved my problem. I received a rash of phone calls about four hours after the paper came out. Hence, I got a ride the very next day. The State Press has

indeed an effective readership.

Lenny Yoldi

Editor's Note: The feeling of having been of service to its readers is the most rewarding thing in the newspaper business. We'd like to thank the considerate persons who were thoughtful enough to offer assistance to someone in need. And good luck to you, Lenny.

Bunch's Watch Shoppe

Where Discounts Are Real

- featuring
 - BULOVA WATCHES
 - SPEIDEL BANDS
- Phone WO 7-3221
609 MILL — TEMPE

Airguard Activated New Equipment, Services Available At ASU Library

Seven hundred Phoenix men, many of them ASU students and alumni, received orders from the Pentagon at 11 a.m. Monday, that changed them into fulltime members of the USAF.

The 161st Fighter Group of the Arizona Air National Guard received the news of its activation with mixed emotions.

Before, these men had been weekend warriors, running the gamut of civilian life from construction company owner to construction worker; college student to radio commentator.

The exact number of ASU men in the 161st is not known, but most students who have been here a couple of years knew one or two.

New equipment and services at Matthews Library are keeping pace with the increased use

of library resources by a larger student body.

One of the new facilities is a Thermo-Fax copying machine, located in the Current Periodicals Reading Room. This machine turns out copies of any material, typed or written, at 10 cents a page.

Another, the microfilm copy machine, installed at the reference desk, makes copies of microfilm at 20 cents per frame.

Available at the reference desk is a newly organized collection of college and university catalogs.

Young Republicans Plan Meeting

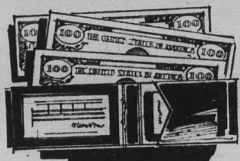
Young Republicans of ASU will meet Tuesday at 3:40 p.m. in SS 105 to set up their workshop for the year.

Cliff Lahnes, a Maricopa County Republican precinct committeeman, will be present

to help the ASU club plan a series of meetings to include workshops on grass-roots politics, according to Larry Nims, ASU Young Republicans Club chairman.

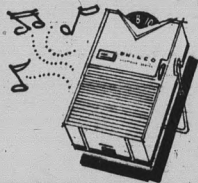
Win \$100.00 a month for the entire school year with Sheaffer's "Pen Money" contest

2 FIRST PRIZES OF \$100 A MONTH



Winners (one man and one woman student) will receive a check for \$400 on Dec. 15th and \$100 a month beginning in January and ending in May.

25 SECOND PRIZES of a new Philco transistor radio



IT'S EASY TO ENTER—EASY TO WIN! HERE'S ALL YOU DO

Just tell us in 25 words or less, what you like *most* about Sheaffer's all-new \$2.95 Cartridge Fountain Pen. Write your entry in ink on any sheet of paper, enclose it with the top from a package of Skrip cartridges, and mail it to: Sheaffer "Pen Money" Contest, P.O. Box 4399, Chicago 77, Illinois. Entries accompanied with your name, address, school name and class must be received by November 7, 1961.

Entries will be judged on the basis of their believability and freshness of thought. Judges' decisions are final and all entries become the property of the W. A. Sheaffer Pen Company. None will be returned. In case of ties, duplicate prizes will be awarded.

Every college student in the United States may enter, except employees of W. A. Sheaffer Pen Company, its subsidiaries, its advertising agencies... the independent company judging entries... and members of their immediate families. Contest subject to federal, state and local regulations.

Winners will be notified by mail approximately four weeks after contest closes. List of winners available after close of contest if request is accompanied by stamped, self-addressed envelope.



Here are some of the things to keep in mind when you're writing about Sheaffer's all-new cartridge fountain pen

- For smooth, easy writing, there's no substitute for a Sheaffer fountain pen.
- Loads like a rifle with leakproof cartridges of world famous Skrip writing fluid.
- Fills quick, clean, easy... just drop a Skrip cartridge into barrel.
- Fits easily into a shirt pocket... comes in a choice of five smart colors.



SPECIAL!

LIMITED TIME ONLY

Pen and 98c worth of Cartridges FREE \$3.98 Total Value for

\$2.95

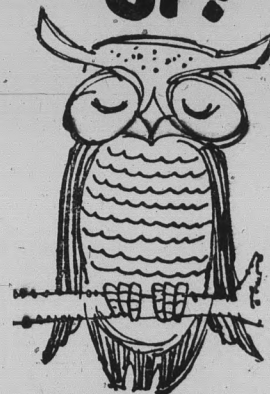
SHEAFFER'S

©1961, W. A. SHEAFFER PEN COMPANY, FORT MADISON, IOWA
SHEAFFER PENS • PHILCO HEARING AIDS



Stop In...
Find Out
For
Yourself!!
TEMPE DAIRY QUEEN
950 MILL AVE. — TEMPE

WAKE UP!



DON'T GET CAUGHT...

WITHOUT THOSE HOLIDAY AIR RESERVATIONS—

COME IN NOW --

MANY FLIGHTS ARE FILLING UP FAST... DON'T BE DISAPPOINTED

Stop By Today

UNIVERSAL TRAVEL

WO 7-1673
18 E. 5th St.

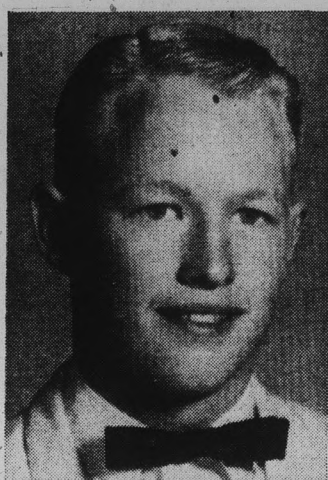
NOW ON SALE AT YOUR UNIVERSITY BOOKSTORE

BOOKSTORE HOURS

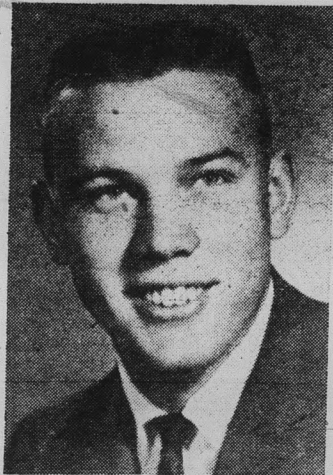
8 A.M. to 7 P.M. Monday through Thursday—8 A.M. to 4:30 Friday
SATURDAY ONLY — 9 A.M. to 1 P.M.



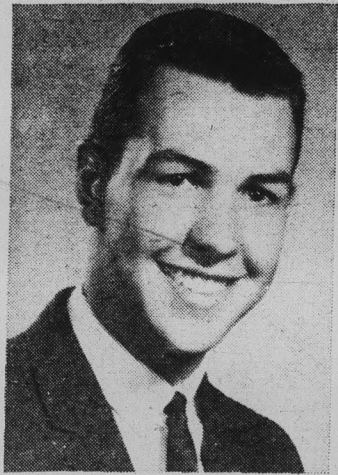
COAR



DANA



THOMPSON



WOCHNER

WALLY'S CAFE

Good Things to Eat and Drink

1133 Normal Avenue
"Across the Street From East Stadium"
Open 7 Days Week
6:30 A.M. TO MIDNITE

Final Voting Set Tuesday

Bob Coar, Steve Dana, Kermit Thompson and Karl Wochner were elected from a field of 19 candidates for the two freshman senate chairs in Wednesday's primary.
Two will be elected in the general election next Tuesday. Polls will be at the northwest corner of College Ave. and Orange St. and on the Old Main northwest lawn.

More About -

Homecoming Royalty

(Continued From Page 1)
Ronnie Evans — senior, Business Administration major, Sigma Alpha Epsilon.
Steve Immel — freshman, Drama major, Education Board, Phoenix Little Theatre.
Bob Isherwood — junior, Industrial Arts Education

major, Sigma Chi.
Dale Keller IV — junior, General Business major, ASU football team, Public Relations Board.

John Southern — senior, Interdivisional Studies major, Alpha Tau Omega, Homecoming Steering Committee.

More About -

Homecoming

(Continued from Page 1)
A general preview of Homecoming and the coronation will be aired on television Channel 3, KTVK, Tuesday at 4:30 p.m. The program is entitled "Phoenix Marquee," with Gene Burrus as host.
"This is not necessarily a date affair," added Miss Rankin, "we just want everyone to come and see the coronation."

TEMPE

CHURCHES of CHRIST

Invite You To Their SERVICES and BIBLE CLASSES

10th and Ash Avenue WO 7-4872 CLEO WIMBISH Evangelist	1016 River Drive WO 7-5112 PRESTON WINCHELL Evangelist
----------------------------------------------------------------	-----------------------------------------------------------------

SUNDAY University Bible Class 9:45 a.m. Morn. Worship 10:45 a.m. Evening 7:00 p.m.	SUNDAY Bible Classes 9:45 a.m. Morn. Worship 10:45 a.m. Evening 6:30 p.m.
WEDNESDAY Evening Study 7:30 p.m.	WEDNESDAY Evening Study 7:30 p.m.

DEVOTIONALS IN DANFORTH CHAPEL
MONDAY AND FRIDAY MORNINGS 6:30 to 7:00 A.M.

FOR YOUR HOMECOMING DECORATIONS

- FLORAL SHEETING
- FRINGE
- FESTOONING
- TINSELS
- PAINTS

- CORRUGATED PAPERS
- 107" WIDE NO SEAM PAPER
- CUT OUT LETTERS
- CREPE PAPERS
- MAT BOARD

Everything to make your Decoration a complete success.
Also a complete line of Christmas Decorations

THE LLOYD R. CADY DISPLAYS

2818 N. 16th Street

Phone AM 5-1701

Phoenix

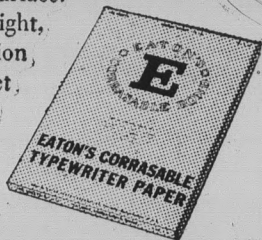


ERASE WITHOUT A TRACE ON EATON'S CORRASABLE BOND

Touch-type, hunt-and-peck, type with one hand tied behind your back—it's easy to turn out perfect papers on Corrāsable. Because you can erase without a trace. Typing errors disappear like magic with just the flick of an ordinary pencil eraser. There's never a telltale erasure mark on Corrāsable's special surface.

Corrāsable is available in light, medium, heavy weights and Onion, Skin. In convenient 100-sheet packets and 500-sheet ream boxes. Only Eaton makes Corrāsable.

A Berkshire Typewriter Paper



EATON PAPER CORPORATION PITTSFIELD, MASS.

SIC FLICS



"Not only is this a dull party, but I've run out of CHESTERFIELDS!"

21 GREAT TOBACCOS MAKE 20 WONDERFUL SMOKES!
AGED MILD, BLENDED MILD—NOT FILTERED MILD—THEY SATISFY

NOW AVAILABLE AT KORRICKS

Downtown
AL 8-5911

Chris-Town
AM 4-3911

Radio Exams Are Offered

Examinations for commercial and amateur radio operator licenses will be given at Phoenix Union High School Oct. 20 and 21, announced the Los Angeles office of the Federal Communi-

cations Commission. The amateur license test will be given Oct. 20 from 6 to 9 p.m., and the commercial license test will be Oct. 21 from 9 a.m. to 5 p.m.

Unlucky Friday Scares Superstitious Students

By ROXANNA BERRY

Did you ever wonder why Friday the 13th is an unlucky day?

I mean, why Friday the 13th . . . why not Monday the 16th? Let's face it, Monday, any Monday, for the most of us, just isn't the day we'd choose as "The Day We'd Most Like to Live Over Again."

But to the point, why unlucky Friday the 13th?

Curiously, from several books on the subject, there are those who consider any Friday unlucky.

Friday is a bad day to start anything new, especially something that can't be finished. No moving should be done on this day, either. Of course, this refers to changing one's abode.

However, savage and primitive tribes set aside Friday as "no work" day, to ask the gods for health, wealth, etc. Anyone who worked on this day instead of worshipping could not expect good luck. Could this be a fore-runner of T.G.I.F.?

The fact that the Crucifixion is connected with this day further explains its ill luck.

At the risk of being unpatriotic, may I point out to all you double whammy avoiders, if you are "lucky" enough to be in possession of one of Uncle Sam's "calling cards," you are the bearer of much bad luck.

The American dollar bill is a masterly adaptation of 13's. The Great Seal of the United States displayed on the back side has an incomplete pyramid of 13 steps, 13 leaves and berries on the olive branch in the eagle's left talon, 13 arrows in his right talon, and 13 stars above his head. Of course, this can be traced to the original 13 colonies.

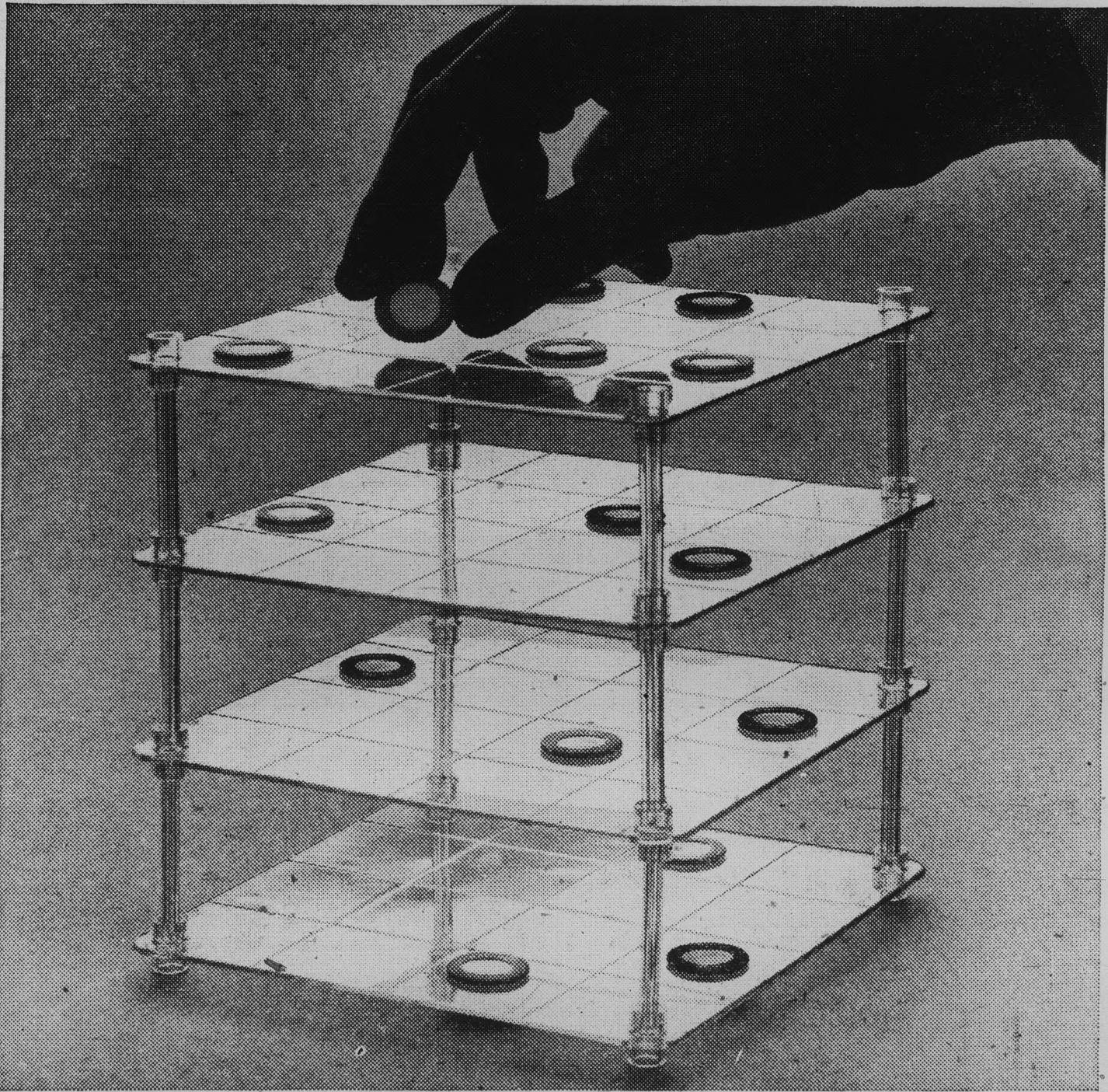
Say, we got off to an unlucky start, didn't we?

Tempe's Friendly Church
107 E. Broadway

SERVICES

Sunday School	9:45
Morning Worship	10:50
Young People's Hour	6:30
Evening Evangelistic Service	7:30
Prayer Meeting & Choir Rehearsal Wed.	7:15

TEMPE CHURCH OF THE NAZARENE
LEO KIRLEY, Pastor
Phone WO 7-5609 Tempe



ENJOY GAMES LIKE 3-D TIC-TAC-TOE?

Then you'd like computer programming, the new career that makes full use of your logical talents. If you have a keen analytical and logical mind—and want to use it fully after college—then computer programming at IBM may be just the career you've always looked forward to.

A computer programmer examines a business, industrial, or scientific problem and translates it into a special mathematical-logical language for the computer. Working at amazing speeds, the computer can produce answers in minutes, even seconds. Some of these answers might actually take days to produce by other methods.

The problems are interesting and varied. IBM programmers have used computers to predict hurricanes, tell days ahead where satellites will be in space, locate the best factory sites for businessmen, and aid highway engineers in laying out roads.

No previous knowledge of computers is necessary; an intensive training course will equip you for your work. But you should have an analytical and logical turn of mind, and at least two years of college mathematics.

In computer programming you will find that the salaries are excellent, and that the future can be virtually as unlimited as the future of the computer itself. There are ample opportunities for continued education.

The IBM representative will interview on your campus. He will be glad to give you details about this fascinating new profession. Your placement office will make an appointment. All qualified applicants will be considered for employment without regard to race, creed, color or national origin. Or you may write, outlining briefly your background, to: **Manager of Technical Recruitment, IBM Corp., Dept. 902, 590 Madison Avenue, New York 22, N. Y.**

You naturally have a better chance to grow with a growth company.



IBM will interview Nov. 15, Nov. 16.

Campus Security

All students are advised to obtain parking stickers. Last year's stickers are void, according to Sergeant Godbehere of campus security.

The scooter area at the north end of lot U is now open. Bicycles should be locked when left unattended. Campus security is swamped with reports of stolen bikes and books.

Mac & Jack Sez . . .
"You Won't Get
"Tripod-up" at the
PIONEER CAMERA SHOP
TEMPE CENTER



A CHERISHED CAMPUS TRADITION SPARKLES ANEW

PIN YOUR GIRL

. . . pin this precious remembrance to her heart for always . . . in rich college tradition.

. . . chain her to you with this sentimental symbol of your college days.

. . . in solid gold or sterling silver.

VARSITY BOOK EXCHANGE

304 E. 8th St. — Tempe

Greek To Me —

Homecoming Puts Pressure On Greeks

By ROSALYN WHITNEY

As if ASU didn't have enough to do, now Homecoming is putting on the pressure. Nails, boards and papier-mache are in abundance while sweatshirts and cutoffs are the current attire. Replacing freshman candidates' posters will be those of the aspiring Homecoming King and Queen, and the campaigning will go into full swing.

A special congratulation goes out to the Theta Delta Chis who will become the first ASU fraternity colony to go national, after only one year when they are duly installed on Dec. 2. They are also the first colony of Theta Delta Chi in 113 years to take the short route.

More shiny new pins on campus. The Sigma Chis initiated eight, including Bill Fulton, Bob Austin, Tom Hopkins, Sandy Pfaff, Bob Casias, Dick Krause, Bruce Alverson and Evans Woodhouse. Newly initiated Sigma Nus are Bob Payton, Rich LeSuer, Chip Colbertson, Phil Randolph, Don Casturo, John Thoren, Pete Fuggella, Ray Eberhart, Dave Sampson and Jack Kaufman.

Luncheon at Neptune's Table feted Kappa Delta's new actives Beyerly Atkins, Sue Chemnick, Ann Reid, Ann Shahan, Marjorie Watts, Carol Cowley and Corky Ulteig.

Pledging continues with Kappa Alpha Theta pledging Kay Stouffer, Pi Kappa Alpha taking five including Ray Belcher, Jim Vaughn, Dan Eaton, Nelson Chaffin and Andy Tomlinson.

Theta Chi pledged Leighton Dimler, Gar Engelking, Ray Hull, Jim Jones, Bob Kennedy, Mick Quenzer, Ernest Sakiewtewa, Dick Scott and Tex Walton.

Newly elected Sigma Chi officers are Bill Lindner, president; Bob White, vice president;

Jim Perucca, treasurer; Jack Stroh, pledge trainer; Graham Dorland, recording secretary; Bill Price, corresponding secretary; and Bill Luke, rush chairman.

Kappa Alpha Theta elected Linda Beck, president; Nancy Moore, pledge trainer; Gretchen Walsh, secretary; Linda Hardin, corresponding secretary; Nancy Stimson, treasurer; and Kathie Namgano, rush chairman.

Theta Chis are braving Friday the Thirteenth with a costume party. We wish them luck!

Alpha Thetas for their exchange, and the Alpha Delta Pis and Phi Alphas carried stuffed animals for their pajama party.

Founders Day will be celebrated by the Delta Chis with a barbecue tomorrow at the Delta Chi fraternity house. We extend to them a wish for a "Happy Birthday."

Exchanges are running in a very casual vein lately. Chi Omegas and Phi Delta Thetas enjoyed an outdoor barbecue, while Sigma Nus and Alpha Phis chose to go just plain "grubby." Tennies and sweatshirts were brought out by the Phi Sigma Kappas and Kappa

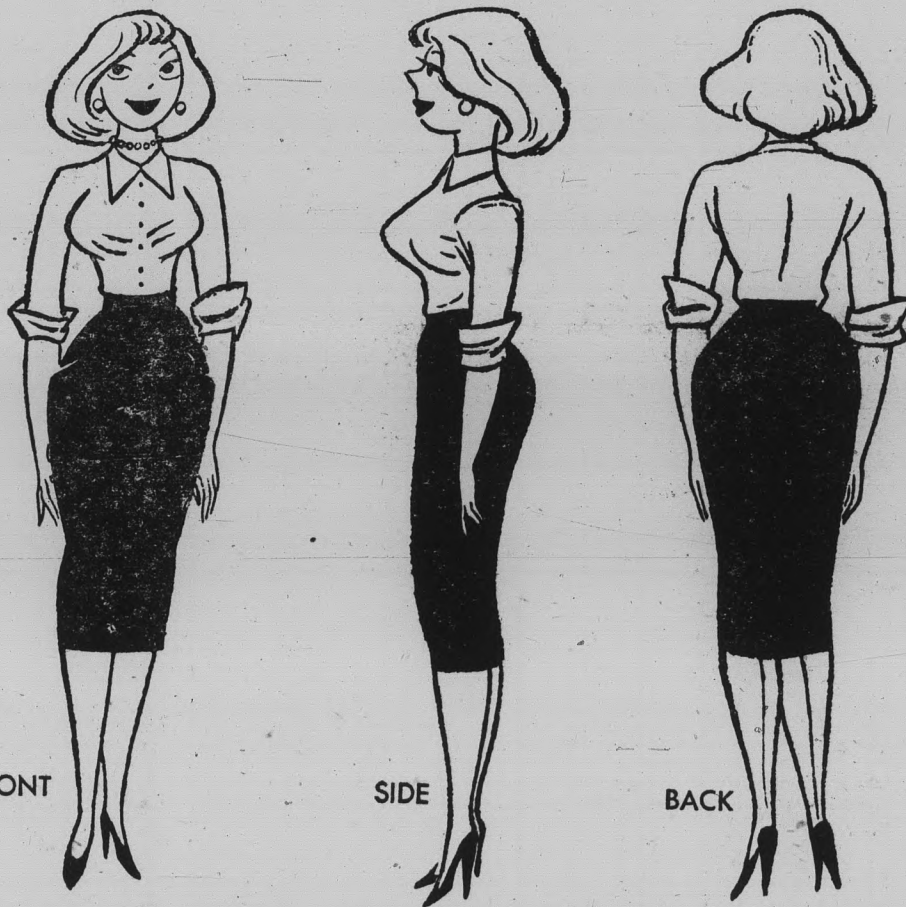
The candle is still being passed around the Greek circle and among those honoring the tradition are Rita Utz, Kappa Kappa Gamma, who announced her pinning to Dennis Baird, Phi Delta Theta; Kathy Bunch and Linda Light, Delta Gammas, who are pinned to Dick Finn, Phi Alpha, and Bill Beinlich, West Point Military Academy,

respectively; Chi Omega, Mary Ann Mitchell, who is engaged to Sigma Nu, Gary McKittrick; Delta Gammas Anne Robinson and Diane Munson, announcing their engagements to Ramon Mount, ASU graduate, and Guy Dorr, Phi Delta Theta, respectively.

Mac & Jack Sez . . .
 "We Ain't Hard To
 Get Along With . . . Try Us!"
**PIONEER CAMERA
 SHOP**
 TEMPE CENTER

Girl Watcher's Guide

Presented by Pall Mall Famous Cigarettes



Three views of an average, healthy girl

See our complete selection of fresh, delicious



TEMPE DRUGS

6th & Mill — Open 9-7

MUGS UP
ROOT BEER

- Complete carry our service
- Efficient Car Hostesses
- Cherry Atmosphere

503 E. 8th St. — WO 7-0800
"Where the Nickel is Mighty"

LESSON 1 - How to recognize a girl

It is not surprising, in these days of constantly changing fashion standards, that girls are often mistaken for men.

Certain popular items of apparel, such as slacks, baggy sweaters and boxy suits, contribute to this unfortunate situation. Therefore, we suggest that new students of girl watching start with the fundamentals (see above diagram). As you can see, girls are easiest

to identify from the side. However, even the beginner will soon achieve proficiency from front and rear as well.

Advanced students can usually tell a girl from a man at five hundred paces, even when both are wearing asbestos firefighting suits. (You might try offering the subject a Pall Mall, but you won't prove anything. It's an extremely popular brand with both sexes.)

WHY BE AN AMATEUR? JOIN THE AMERICAN SOCIETY OF GIRL WATCHERS NOW!

FREE MEMBERSHIP CARD. Visit the editorial office of this publication for a free membership card in the world's only society devoted to discreet, but relentless, girl watching. Constitution of the society on reverse side of card.

This ad based on the book, "The Girl Watcher's Guide." Text: Copyright by Donald J. Sauer. Drawings: Copyright by Eldon Dedini. Reprinted by permission of Harper & Brothers.



Pall Mall's natural mildness is so good to your taste!

So smooth, so satisfying, so downright smokeable!

© 1961 Product of The American Tobacco Company "Tobacco is our middle name"

'Each Woman's Voice' Theme For Workshop

"Each Woman's Voice" will be the theme of the AWS workshop, Oct. 28, in the MU ballroom from 9 a.m. to 3 p.m. The workshop is for residence hall councils and the AWS Council. Jodee Baird and Margaret Murphy are co-chairmen of the project. Each hall council will present a sub-topic for discussion. Over 100 women will discuss opportunities available to the individual participating in AWS. Featured speakers and panels will be on the program followed by a luncheon.

FOR THE BRIGHTEST AND THE SMARTEST



Bonnie Sue Fashions

Tempe Shopping Center — WO 7-4094

Fred Elquest & Son

Everything for the Art Student

- Art Supplies
- Picture Framing

703 N. 2nd St.

Phoenix

PHONE AL 8-2628

VALLEY ART THEATRE

509 MILL AVE

TEMPE

NOW PLAYING — TWO PROVOCATIVE MOTION PICTURES

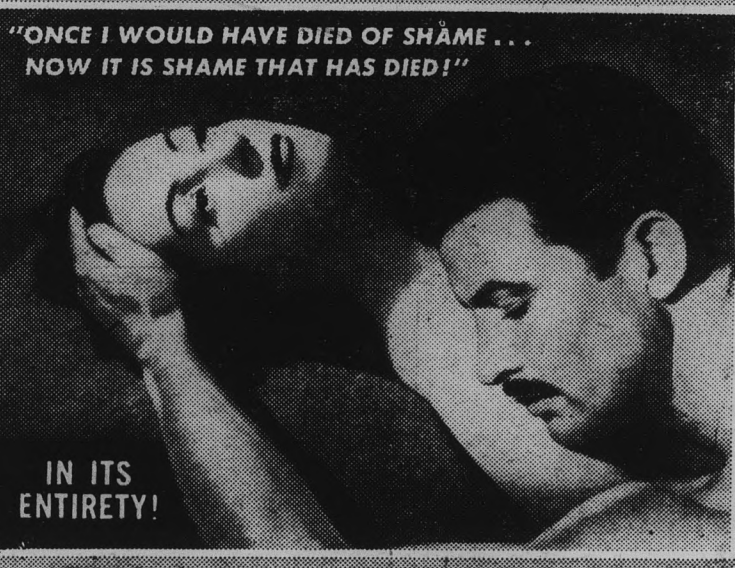
Mon. thru Fri.: "Lady" at 7:00, 10:20 — "Bardot" at 8:35

Sat. and Sun.: "Lady" at 3:45, 7:05, 10:25 — "Bardot" at 2:00, 5:20, 8:40

THE MOST CONTROVERSIAL MOTION PICTURE OF THE YEAR

FROM THE MOST TALKED ABOUT BOOK OF THE YEAR!

Recommended For Adults Only!



D. H. LAWRENCE'S MASTERPIECE

LADY CHATTERLEY'S LOVER

with DANIELLE DARRIEUX • LEO GENN and introducing ERNO CRISA

"Easily the peep-showiest of all the Bardot pictures — and probably the best!"

—TIME Magazine

PLUS: ON THE SAME PROGRAM

"A TREATMENT BOTH BOLD AND HONEST."

—N. Y. Post

"KEEPS THE FACTS OF LIFE UPPERMOST IN MIND!"

—N. Y. World Tel. and Sun

Original Uncut French Version

BRIGITTE BARDOT

"Love Is My Profession"

A STORY BY SIMENON



CO-STARRING JEAN GABIN • EDWIGE FEUILLERE

MU CALENDAR

Friday, Oct. 13
 Executive Control: 208—3 p.m.
 IFC: Uppr Lounge—3 p.m.
 Board of Financial Control: 208—4:30 p.m.
 Bridge-Lessons: 209 and 210—6:30 p.m.
 Bridge Play: 209 and 210—7:30-10:30 p.m.
 AIEE: 218A, B and C—6:30 p.m.
 CLU: Ballroom—7 p.m.
 Kappa Delta Pi: Upper Lounge 8 p.m.

Saturday, Oct. 14
 ASCB: 218A—8:30 a.m. - 10:30 a.m.
 Concert and Lecture: Ballroom—7-8 p.m.
 Reception: Upper Lounge — 8 p.m.

Sunday, Oct. 15
 Foreign Student Club: 209 — 3-4:30 p.m.
 Tau Kappa Epsilon: 209—7-8:30 p.m.
 Delta Sigma Pi: 218A—8 p.m.
 Hillel: Upper Lounge—8 p.m.

Monday, Oct. 16
 Housing: 208—3-4:30 p.m.
 Spurs: 209—3 p.m.

Intramurals: 210—4-5 p.m.
 Junior Panhellenic: 218A—3:30-4:30 p.m.
 Tau Beta Sigma: 209—6:30-7:30 p.m.
 Alpha Epsilon Pi: 210—6:30 p.m.
 Pi Kappa Alpha: 208—7-9 p.m.

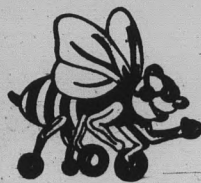
Tuesday, Oct. 17
 Toastmasters: Faculty Dining Room—7 a.m.
 Student Marketing Club: 218C noon
 Memorial Union Board: 208—2-3:30 p.m.
 CA: 209—3:30-5 p.m.
 Off Campus Men: 210—3:30-5 p.m.
 Education Board: 218A — 3:30 p.m.
 Hostesses: Upper Lounge—3:30 p.m.
 Card Section Comm.: Clancy's —3 p.m.
 Homecoming Comm.: 208 — 4 p.m.
 Alpha Mu Sigma: 210—5-7 p.m.
 Blue Key: 209—6-7:30 p.m.
 Sigma Pi: Faculty Dining Room —7 p.m.
 Alpha Rho Chi: 209—7:30 p.m.
 Homecoming Dance: Ballroom 8 p.m.

West Hall Set For Colonial Ball

West Hall will stage its 23rd annual Colonial Ball Saturday at 8:30 p.m. in the West Hall lobby.

Specially invited guests include President and Mrs. G. Homer Durham, ASU administrators and faculty members and former West Hall residents.

Following a grand march, guests will be received by Miss Margaret Walsh, head resident; and Dolores Cano and Carol Christensen, assistant head residents. Committee chairmen include Sherry Flanagan, Claudia Bayer, Georgia Keel, Leta Kreutzer, Lynne McLaughlin and Pat Childers.



FLIGHT INSTRUCTION

Special Rates For College People

MODERNIZED GROUND SCHOOL FOR PILOTS & NON-PILOTS

Amos Flight Operations

A Private License is a Must In Modern Business

Don Amos — Class of '56

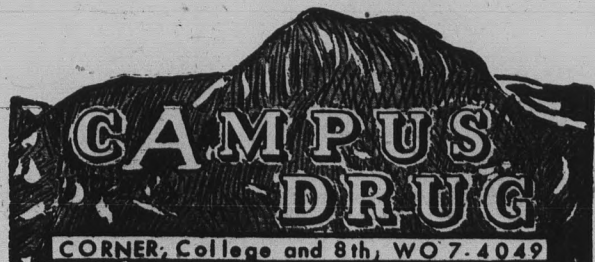
Phone BR 5-7291

SKY HARBOR

SPECIAL PURCHASE

CUTEX LIPSTICK

7 High Fashion Shades All for 150



CORNER, College and 8th, WO 7-4049



NEW MINERVAS—Phi Alpha of SAE tapped ten coeds for Little Sisters of Minerva Tuesday night. The new Minervas are, from left to right, Joanna Baird, Lesley Luhman, Wilma Baca, Linda Beck, Barrie Kiesel, Donna Hartshorne, Pam Frazier, Vivianne Taylor, LaDonna Bacon and Kathy Bunch.

SAEs Select Ten Minervas

Little Sisters of Minerva, women's auxiliary to Phi Alpha of SAE, initiated ten coeds Tuesday evening.

They are La Donna Bacon, Gamma Phi Beta; Joanna Baird and Wilma Baca, Chi Omega; Lesley Luhman, Kappa Kappa Gamma; Barrie Kiesel, Alpha Delta Pi; Donna Hartshorne and Vivianne Taylor, Alpha Phi; Kathy Bunch and Pam Frazier, Delta Gamma; and Linda Beck, Kappa Alpha Theta.

This is the fourth year that the SAEs have tapped coeds for their auxiliary.

Following initiation at the MU, the SAEs honored the newly initiated Little Sisters and the thirteen remaining members.

The president of the Little Sisters is Bonnie France. Vice-president is Leslie Farnsworth, secretary is Dianne Huber and treasurer is Linda Lowry.

These twenty-three coeds will be the official hostesses at the formal installation of the SAE charter, Dec. 9.

IFPC Pajama Race, Dance Cancelled

The Interfraternity Pledge Council has announced that the Pajama Race and Dance scheduled for tonight have been canceled.

Mac & Jack Sez . . .
"We Develop Film AND Friendship"
PIONEER CAMERA SHOP
TEMPE CENTER

BARBER SHOP
University
BARBER SHOP

1336 APACHE BOULEVARD
BAYLESS SHOPPING CENTER
Open 9-6 p.m. . . . Closed Mon.

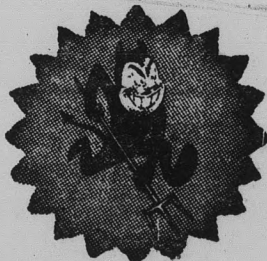
Finest in Barber Service

Children & Flat Tops
Our Specialty

3 Barbers to Serve You

Shoe Shine

FOOTBALL SPECIAL



Steak Size Hamburger
With Cheese Lacing,
Potato Salad--Pickle Chips

75¢

Ryan-Evans
DRUG STORES
TEMPE CENTER

A. S. U. HOMECOMING DECORATIONS



SUPPLY YOUR NEEDS

POWDER PAINTS • CREPE PAPER
CORRUGATED PAPER • GLITTER MAS-
KING TAPE • SPRAY PAINTS • CEL-
LOPHANE • GLUE • STYRAFOAM
BRUSHES • ACETATE • ANGEL HAIR
POSTER BOARDS • COLORED PAPERS
TEMPERAS • OIL & WATER COLORS
FELT PENS • RUBBER CEMENT
CLAY

TEMPE CENTER
WO 7-4482

Tickets Available For Area Shows

The box office of cultural affairs at the information desk of the MU has tickets for the following attractions:

"High Button Shoes"—Phoenix Musical Theatre—Nov. 26, 6:00 p.m.

"Doraine and Ellis"—Phoenix Union High School auditorium—Oct. 20, 8:30 p.m.

"Marriage Go Round"—Phoenix Little Theatre—Oct. 19-21 and Oct. 26-28.

Season tickets to Phoenix

Symphony Orchestra are \$12.50.

All tickets must be purchased on campus 36 hours before night of performance.

Reduced prices will be offered whenever possible.

Mac & Jack Sez . . .
"Everything Is Not
'Black & White' At The
PIONEER CAMERA SHOP
TEMPE CENTER

ORDER OUR TAKE-OUT DINNERS & REALLY ENJOY TOMORROW NITE'S GAME ON RADIO

Call WO 7-3049
for

CHICO'S

RESTAURANT*

FINE MEXICAN FOOD

1120 East Apache Blvd. — Tempe

*Air conditioned of course

COPYRIGHT © 1961, THE COCA-COLA COMPANY. COCA-COLA AND COKE ARE REGISTERED TRADEMARKS



BETWEEN BITES . . .
get that refreshing *new feeling*
with Coke!

Bottled under authority of
The Coca-Cola Company by PHOENIX COCA-COLA BOTTLING CO.

Devil Cagers Open Drills Monday

By BOB EGER
Sports Editor

Basketball Coach Ned Wulk will greet 16 varsity candidates for the opening of practice Monday with hopes of molding them into one of the powerhouse clubs in the nation.

Wulk, who guided the 1960-61 Sun Devil cage edition to a 23-6 season, will have his first six varsity squad members returning plus a group of freshmen who averaged over 106 points per game last year. "We'll have a much better

team than we had last year," said Wulk, "but how much of the improvement will be reflected in the won-lost record remains to be seen because of a much stronger schedule."

On the Devils' slate this season are Utah, Oregon,

Kansas, Indiana, Minnesota and the Air Force Academy, among others. It is by far the most ambitious schedule tackled by an ASU quintet.

Last season, the Devils beat Oregon State, Seattle and Southern Cal, among others, and reached the NCAA Western Regional finals before Utah eliminated them. ASU also finished third in the Far West Classic cage tournament.

This year the Devils open at home against St. Michael's College on Dec. 1 and then host Utah, Oregon and Kansas on Dec. 2, 8 and 11, respectively.

Leading Wulk's crop of returnees is sensational guard

"Sweet Larry" Armstrong. Armstrong, who stands only 5-9, averaged just under 20 points a game last year and made several All American clubs.

Joining Armstrong are starters Tony Cerkvenik, Jerry Hahn, Ollie Payne and Raul Disarufino. The number six man on last year's team, Mike McConnell, is also back.

Heading the list of talented sophomores are 6-9 Art Becker, 6-5 Dennis Dairman and 6-5 Joe Caldwell. Those three alone accounted for over 60 points per game as frosh last season.

Three capable outside men from last year's frosh squad plus a standout junior college transfer will give Armstrong and Disarufino plenty of backing.

Gary Senitza, Darrell Risner and Mike Kinsey all had spectacular frosh seasons and are joined by Bob Howard, a transfer who also had a standout season at Phoenix College. Howard is the younger brother of Paul Howard, a former Sun Devil ace.

Sun Imps Start Slate Tomorrow

ASU's Sun Imp gridders open a belated season at Silver City, N. M., tomorrow, when they meet the Mustangs of New Mexico Western, a four-year institution.

Possibly the toughest foe on the Imps' schedule, the Mustangs have five games under their belts. Included in those games are a 20-0 defeat of Eastern Arizona JC, another season opponent of the frosh. New Mexico Western is a member of the Frontier Conference, which includes ASC at Flagstaff.

SMASH SLASH!

MEN'S SWEATERS

We're Over-Stocked With All Of The New Styles and Colors



YOU SAVE NOW

Not When The Season Is Over . . .



100% ALL WOOL

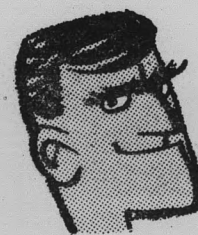
Reg. 9 ⁹⁵	Now	6⁸⁸
Reg. 10 ⁹⁵	Now	7⁸⁸
Reg. 12 ⁹⁵	Now	9⁸⁸
Reg. 13 ⁹⁵	Now	9⁸⁸
Reg. 16 ⁹⁵	Now	12⁸⁸

Your Choice Of Pull-Over or Cardigan

Campus
men's shop

FOR MEN AND YOUNG MEN . . .

603 Mill Ave. . . . Open Thurs. Till 9 P.M.



"LOVE IS A SNAP"

"Girls used to just smile. Now they pucker. It happened so suddenly, the day I put on these Rapier slacks. Sorry girls, my heart belongs to A1."



A1 Rapier
4.95 to 6.95

the
Capri's Pick Of The Week

ASU . . . 35
W. Texas -- 7

Right or Wrong You Can't Miss With Our PIZZA'S

Your A-1 Dealer In Tempe . . .



Buffs Offer Devils Stiff Grid Test

ASU Must Stop 'Beep Beep' Pedro

By BOB JACOBSEN

Arizona State's Sun Devils, a new ball club after holding three-touchdown-favorite Utah to a two-point victory last weekend, face perhaps their roughest defensive assignment of the campaign tomorrow as they encounter the West Texas State Buffaloes at Canyon, Texas.

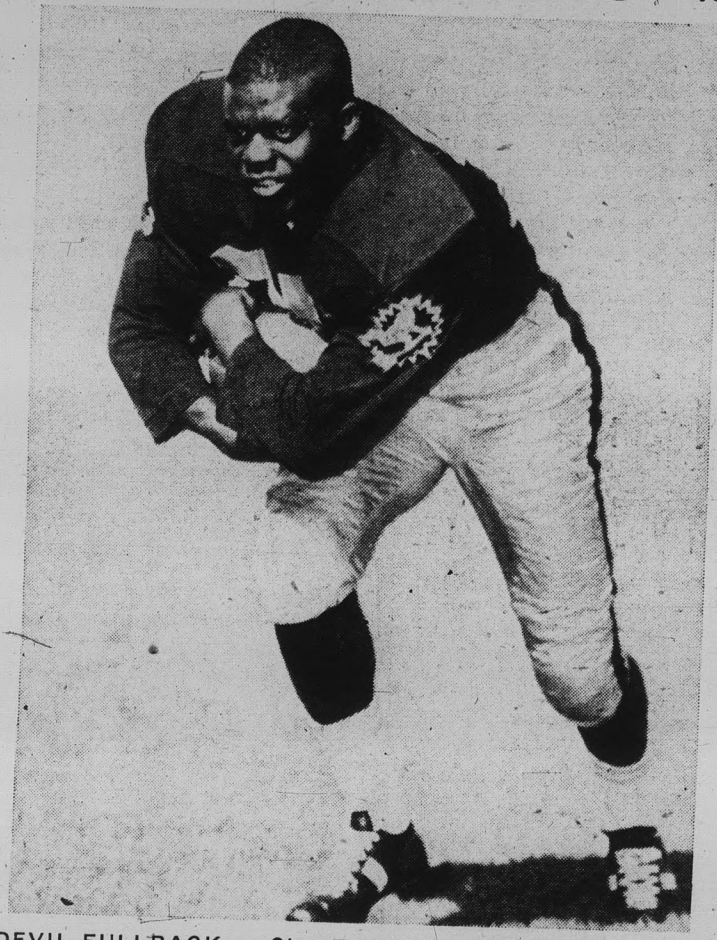
WTSC (2-1), the nation's top scoring team with 145 points in three contests, also is fifth in the nation in total offense and rushing offense, averaging 420 yards a game in the former and 316 in the latter.

The Buffs' sensational attack is paced by sophomore halfback Pete "Beep Beep" Pedro, who currently is the nation's No. 1 scorer with 72 points on 12 touchdowns, six of which were in one game. He also leads the country in rushing with 494 yards.

Other stalwarts in the Buff attack are right halfback Jerry Logan, who ranks high in the country in kickoff returns with 142 yards in eight returns, and Quarterback Jim Dawson who has completed 18 of 35 passes for 221 yards and four touchdowns. Dawson has had two passes intercepted.

ASU will be out to extend a win streak over the Buffs which has lasted since 1950. The Devils have whipped West Texas seven times since then, giving them a 9-4 edge in the overall series. Saturday night is the Buffs' Homecoming which gives them more incentive to end the Devil streak and start one of their own.

ASU will again be under the leadership of Quarterback Joe Zuggi, who played brilliantly in a losing role to Utah. Sophomore halfback Charlie Taylor took over the team leadership in scoring by countering twice against Utah to run his total to 18 points.



DEVIL FULLBACK — Clay Freney has been waging a battle with Dornel Nelson all season for the starting fullback job. Freney, who excels as a linebacker on defense, was an All Border Conference pick last season. (Photo by ASU Photo Service.)

Wrestling Practice Starts Monday

Anyone interested in participating on the Sun Devil wrestling team should be present for a meeting in the men's gym 103 at 3:30 p.m. Monday.

Immediately following the meeting, the first practice session will take place. Anyone intending to participate in the workouts should bring his own equipment.

A wrestling manager is also needed for the upcoming season.

Applicants should contact coach Ted Bredehoft as soon as possible.

Cage Tryouts

Students interested in playing freshman basketball should report to the men's gym Monday at 6 p.m. for the first day of practice. One week of practice is scheduled for players not on scholarship. Players should bring their own equipment.

Western Loop Now Official

Representatives from the six member schools of the newly formed Western Athletic Conference met in Denver Wednesday and officially inaugurated the conference. Formal organization will be completed by next July.

The schools—Utah, Wyoming, New Mexico, Brigham Young, Arizona State and Arizona will follow a full schedule of conference sports, with the exception of football, during the 1962-63 school year. League football won't begin until 1964 because of prior scheduling commitments in that sport.

Dr. G. Homer Durham, president of Arizona State, attended the meeting at which Tom O. Popejoy, president of New Mexico University, was elected chairman of the league presidents.

Paul Brechler, commissioner of the Skyline Conference, from which four of the teams are leaving, will move to the new Western Conference as administrative head.

Brechler said at Wednesday's meeting there might eventually be as many as 10 or 11 members in the new conference. "Nobody feels a conference of six members will be adequate," said Brechler.

MOM & DADS

Welcome

Happy House Shop
Tempe Center



The
PIZZA HUT

"Eat In or Carry Out"

Open Every Day For Lunch & Dinner

11:30 A.M. to 1 A.M.

FREE
Catering Service To Parties

Order By Phone For Faster Service

WO 7-3355

801 E. Apache

Tempe

EXPERT RACKET RESTRINGING

Trophies and Engraving

P.E. CLOTHES FOR MEN AND WOMEN

Brand Names MEN'S WEAR

Brand Names WOMEN'S WEAR

"FOR BRANDS YOU KNOW"

Joe Sellek

624 MILL AVE.

WO 7-4163

Mac & Jack Sez . . .
"Stop In And
Get Acquainted"
PIONEER CAMERA
SHOP
TEMPE CENTER

Campus
Classified

Regulations: For students and faculty only of Arizona State University. Cash in advance. Submit to Room 233, Social Science Bldg., 8 a.m. to 9 a.m. daily, 1:30 to 2:30 Monday and Wednesday. Call Ext. 471 for other hours. Rates: 10 cents a line per issue, 35 cents minimum charge.

FOR SALE

Blue Schwinn Continental, 10 speed-gear with tandem. Like new. Call WH 6-8567.

at Indian School

NOW APPEARING

MILT BUCKNER TRIO

Argo Recording Artist
Back by Popular Demand

COMPLETE STEAK DINNERS

- 16 oz. New York
- 10 oz. Tenderloin
- 12 oz. Top Sirloin

\$1.95

Free bus service to all Arizona State home football games for our dinner guests. (E. Indian School Only.)

Malcoff's Steinhaus Sirloin

2 BIG LOCATIONS

4801 N. CENTRAL
AM 4-2568

4817 E. INDIAN SCH.
WH 6-2711

COCKTAILS

at North Central

NOW APPEARING

Last 2 Days

EARL "Fatha" HINES

and His Recording Quintet

ALL YOU CAN EAT!

Chuck Wagon

- Prime Ribs of Beef
- 6 Hot Entrees
- 15 Chilled Salads
- Dessert - Coffee

\$1.95