



Bulla



Coar



Cole



Duhe



Harelson



Jane



Papandrew



Price



Wallach



Welberg

Freshmen Get First ASU Vote Today

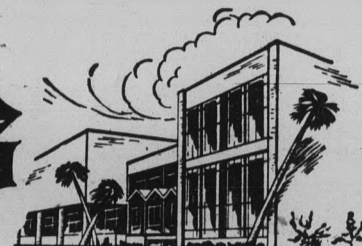


State Press

ARIZONA STATE UNIVERSITY



TEMPE, ARIZONA



Vol. 40

Wednesday, October 11, 1961

No. 6

Senate Draws 19 Hopefuls In Primary Election Today

Primary elections for freshman senator will be held today. Polls are located at the northwest corner of College Avenue and Orange Street, and in front of Old Main. Freshmen will be allowed to vote for two candidates.

The four candidates receiving the most votes will run in the general election on Oct. 17. In event of a tie in the primary, all the names of those candidates will be put on the ballot for the general election.

During the general election, two candidates will be chosen for freshman senator. In case of a tie in the general election, a special election will be held.

Candidates and the majors and activities at ASU are:

Richard Bradfield — Engineering.

Bev Bulla — Political Science; Chi Omega, Kaydettes.

Kristin Ann Cole — Dramatics; Gamma Phi Beta, Christian Science Fellowship.

Robert G. Coar — Economics. Stephen Dana — Business Management; Lambda Delta Sigma.

John P. Duhe — General Business.

Mike Jane — Political Science; Delta Gamma.

Curt Johnson — Political Science; Phi Sigma Kappa.

James S. Jones — Chemistry; Theta Chi, Young Republicans.

Brent Harelson — Agriculture; Delta Chi, Future Farmers of America.

Bob Hulme — Advertising.

Carol J. McCutchen — Psychology; Alpha Delta Pi, Rally and Traditions Board.

Tom Papandrew — Chemistry; Newman Club.

Tom Price — Economics; Alpha Tau Omega.

Tim Schnatzmeyer — Business Management; Theta Delta Chi.

Kermit Thompson — Engineering; Sigma Phi Epsilon.

Gay Walberg — Art; Kappa Alpha Theta, Rally and Traditions Board.

Gary Wallach — Radio-TV.

Karl Wochner — Pre-Dental; Rally and Traditions Board.

Decors Open Homecoming On Monday

Construction of Homecoming decorations may begin on Monday, Oct. 16, according to John Southern, chairman of the Homecoming Committee.

"There will be no work on decorations from 6-12 p.m., Tuesday, so that everyone can attend the dance that night," said Southern.

Susan Chemnick, publicity chairman for Homecoming week, announced that although the deadline for decorations to be completed is 4 p.m. Oct. 20, pictures for publicity purposes will be taken earlier Friday.

Specifications for all decorations except dormitories are: 30 ft. long, 10 ft. wide, 20 ft. high. Dormitory space is limited to 50 ft. long, 20 ft. wide, 20 ft. high.

"Petitions for a waiver of size regulations may be filed with the Secretary of the Associated Students," said Ron Schmiertenknop, chairman of decorations.

Memorial Union Board Announces New Policies Affecting Students

Michael Kinsey, chairman of the MU Board, announced that the north half of MU upper lounge will be open for studying while the south half will be open for TV viewing.

Also a recommendation will be made by the board that the games room open at 8 a.m. instead of 10 a.m.



CAMPAIGN FEVER... Karen Clarkson, Ron Paquin and Sharma Lenhart study a freshman senate aspirant's poster, one of many out this week campaigning for today's primary and next week's final elections.

Agnes Moorehead Opens Concert Series

Agnes Moorehead will be the featured performer at the opening of ASU's 1961-62 concert and lecture series on October 14 at 8:15 in the MU Ballroom.

Miss Moorehead will give a solo appearance in "That Fabulous Redhead." Activity cards provide admission for students. Preceding "That Fabulous Redhead," which is produced by Paul Gregory, will be a comedy

entitled "A Phoenix Too Frequent," written by Christopher Fry. Richard Gray, Mayo Loizeaux and Louise Vincent star in the comedy.

Miss Moorehead has appeared in four other of his productions. She has also starred on Broadway in Orson Welles' productions. She has earned four academy award nominations for her roles in Hollywood films.

Richard Gray, Shakespearean actor, plays a corporal in "A Phoenix Too Frequent." The comedy is set in a tomb, where a widow, portrayed by Mayo Loizeaux, and her maidservant, played by Louise Vincent, are determined to grieve by joining the widow's dead husband.

Vet Notice

All veterans and war orphans must re-sign their September monthly certifications in the Veterans Office this week.

Associated Student Leaders Return From Union Confab

Six student leaders from ASU attended the Region Ten Student Union Convention last Friday and Saturday in Laramie, Wyoming. They were Jim Howard, activities vice president; Mike Kinsey, MU Board chairman; Jim Chilton, first vice president; Charles Roberts, Cultural Affairs board chairman; Steve Montgomery, So-

cial Board chairman; and Oliver White, MU program director.

They left Tempe last Thursday morning and flew to Laramie with a stop in Denver, where they were guests at an open banquet.

Friday's meeting was a general one, discussing the purpose of the Union. Following discussions dealt with specific problems of student unions.

The activities were topped off by the Wyoming State-Utah football game, where the conferees were guests.

Steve Montgomery, Social Board chairman, said "The most important thing at the meeting was the exchange of ideas of the Unions of the district."

"Without such a conference we might be making the same mistakes that others have made before. Now we can profit by other people's experiences," he said.

Homecoming Pictures

Candidates for Homecoming queen will be photographed today at 11:30 a.m. in Moeur Activity Building. Candidates should wear heels and a cotton dress.

Candidates for Homecoming king will meet today at the MU information desk at 11:50 a.m. for pictures. Men should wear a suit and tie.



TAPPED LAST WEEKEND -- Blue Key, national men's service honorary, tapped first semester members before breakfast last Friday. New members include, from left, Steve Slemmens, Grant Allen, Ike Alleman, Andy Mitchell, Bill Flick, Jack Ong and Wayne Cole. Not pictured are Henry Klopping, Steve Montgomery, Bob Schure, Steve Sargent, Gerald Hahn and Keith Renelt.

Questionnaire To Circulate Seeking Students' Opinion

A questionnaire will be circulated today which will seek to establish a list of the areas that students feel deserve consideration by the ASU student government.

The list will provide a basis for the Plebiscite, a form allowing students to select the areas on which their government will act.

Dick Langmade, Plebiscite chairman, said that students receiving the questionnaire should give serious consideration to the problems facing ASASU and decide which of these appear most urgent. The questionnaire will be distributed to various campus groups.

Dr. W. P. Shofstall, Dean of Students, is credited for the establishment of the Plebiscite.

Langmade explained that the entire student body will be allowed to vote from the list compiled by this questionnaire

at the Homecoming and freshman elections on Oct. 17. Those areas receiving the greatest amount of votes will be selected for immediate action by the student officers.

Throughout the year, the Plebiscite will be distributed among the student body, thus enabling new issues to be presented to the ASASU officers.

Engineers Plan Meeting Friday

ASU American Institute of Electrical Engineers will meet Friday in the MU following a dinner at 6 p.m.

Donald R. White, project director of Atlas Operational Weapons System, Los Angeles, is guest speaker for the event.

White will discuss "Project Mercury — Peculiarity of Manned Space Flight," emphasizing increased reliability requirements in escape procedures necessary for manned space flight.

White has been chairman of the National Aeronautical Space Administration's working subcommittee on the "abort" and escape systems for pilot safety.

Baha'i Club To Meet

The Baha'i Club will have its regular meeting tomorrow at 7:30 p.m. in MU 208.

Students May Apply For Scholarships

Applications for Fulbright Scholarships and Rhodes Scholarships are available now at the Scholarship Office, MU 212, according to Marge McKemy, secretary of the scholarship committee.

Rhodes Scholarships are for study at Oxford, England. They are limited to unmarried male citizens of the United States between the ages of 18 and 24, who have attained at least junior standing at time of application.

Fellowships Go To Graduate Counseling Unit

Four new graduate fellowships in guidance and counseling have been awarded in the ASU doctoral program, according to Dr. H. D. Richardson, academic vice president.

The recipients of the fellowships will receive \$2,000 a year plus \$400 per dependent.

Delbert Jerome, counselor at South Mountain High in Phoenix, is among recipients.

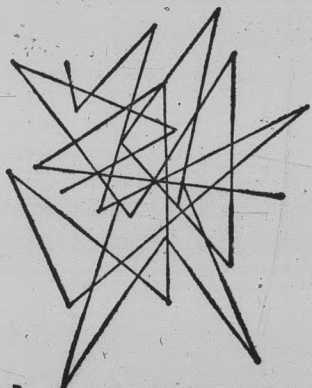
This program, in its second year, is designed to train students to be teachers of guidance and counseling at the college and university level and is supported by the U. S. Office of Education.

To be eligible, applicants must be holders of at least the bachelor's degree by the end of the current academic year, and must rank as superior scholastically.

Exams Scheduled

Examinations on the United States and Arizona constitutions for out-of-state teaching certificates will be given at 10 a.m., Sat., Oct. 14, in SS 108.

The registration fee may be paid at the time of examination. For details contact the Department of Political Science, Ext. 205.



CONFUSION

... about your financial security is a serious problem—one that demands sound advice based on long experience.

Provident Mutual has been helping people to solve life insurance problems ever since 1865.

Be sure your financial future is secure. Call on experience—call on:

LOUIS T. CHANEY

30 E. 5th St. Tempe
WO 7-1634

PROVIDENT MUTUAL
LIFE INSURANCE COMPANY OF PHILA.
PHILADELPHIA 1, PENNSYLVANIA

experience reflected by more than \$2,000,000,000 worth of insurance protection now in force with Provident Mutual.

IF YOUR DOCTOR SAYS

'HOSPITAL'

WHO WILL PAY YOUR

'BILLS'

HERE ARE SOME CLAIMS PAID LAST YEAR BY



ASSOCIATED STUDENTS INSURANCE PLAN

	Billed	Insurance Paid
APPENDECTOMY	345.90	316.40
SPINAL CONDITION	1,375.70	951.50
TONSILS	178.60	178.60
INSECT BITE	113.45	113.45
AUTO ACCIDENT	586.80	586.80

THIS YEAR COULD BE YOUR TURN

DON'T RISK FINANCIAL LOSS — ENROLL NOW

APPLICATIONS AT ROOM 213 MEMORIAL UNION

OR COME TO

CHARLES LOCK — 822B MILL AVENUE, TEMPE, WO 7-3358

ONLY 3 DAYS LEFT

To Closing Date

Jam's

Restaurant
TEMPE CENTER

GOOD FOOD is Our SPECIALTY

Serving
Breakfast — Lunch — Dinner
OPEN DAILY EXCEPT SUNDAY
8 A.M. to 7 P.M.

Grad Council Change Made

A revision of the membership of ASU's graduate council was announced recently by Dr. G. Homer Durham, ASU president.

"The revision has been made in accordance with the rapid expansion of the University's graduate program," Dr. Durham said.

Last February the board of regents authorized ASU to grant the doctor of philosophy degree in six major areas of study, to offer two additional master's degrees, and to add two fields of specialization to the master of arts degree program.

Dr. Irving W. Stout, dean of the Graduate College, is chairman of the council.

Comedy Set At Cosner

"Mister Roberts," the popular comedy, will appear on the Cosner Auditorium screen tomorrow and Friday nights at 7:30, free to the public.

Henry Fonda stars as Mister Roberts, backed by James Cagney and Jack Lemmon, the latter winner of the best supporting actor Academy Award for his performance.

"Mister Roberts" is in color and wide screen. The showings are sponsored by the Cultural Affairs committee.



IN SHOW CAST -- Carole Chene and Sara Winter, freshmen, are participating with 35 others in the cast of "Paint Your Wagon," the Lerner and Loewe musical being produced by the Scottsdale Chamber Opera Theatre Nov. 3 and 4. Lerner and Loewe are best known for "Gigi" and "My Fair Lady."

"YOUR AFTER-SHAVE LOTION, SIR"

"Jason, you dolt! You know I use only Mennen Skin Bracer after-shave lotion."
"Of course, sir. And this..."



"I've told you that Skin Bracer cools rather than burns. Because it's made with Menthol-Ice."
"Quite, sir. And this..."
"Besides, that crisp, long-lasting Bracer aroma has a fantastic effect on girls."



"Indeed so, sir. And..."
"Tonight I need Skin Bracer. I'm going to the Prom. So take that stuff away and get me some Skin Bracer!"



"But sir, this is Skin Bracer. They've just changed the bottle. Shall I open it now, sir?"



* ACTUALLY, YOU DON'T NEED A VALET TO APPRECIATE MENNEN SKIN BRACER. ALL YOU NEED IS A FACE!

NOW!

AT THE

Stein & Sirloin RESTAURANTS

EARL "FATHA" HINES

& His Recording Quintet
Nightly Except Sunday—No Cover
4801 N. Central

2 BIG LOCATIONS

The Little Dynamite Of The Organ

MILT BUCKNER

& His Argo Recording Trio

— DANCING —

Nightly Except Monday

— NO COVER —

Foodwise Featuring The "CHUCKWAGON"

All You Can Eat For

\$1.95

And Complete Charbroiled
Steak Dinners \$1.95

4817 E. Indian School Rr.

What Are YOU Running For?

WE CAN GIVE
24-HOUR SERVICE
ON CAMPAIGN PICTURES

Call Us — Or Hurry On Down To

PIONEER CAMERA SHOP

Tempe Shopping Center
WO 7-4662



The STATE PRESS, distributed by the campus chapter of Sigma Delta Chi under the direction of Circulation Manager Charles Hilgeman, is the official campus newspaper of Arizona State University. It is published each Wednesday and Friday throughout the school year, excepting holidays, and is entered as second class matter at the Tempe, Arizona, Post Office under the Acts of March 3, 1879, and August 24, 1912. Subscription price, \$3 per school year.

The STATE PRESS is a member of the Arizona Newspapers Association, Associated Collegiate Press and National Advertising Service, Inc.



EDITOR'S Scratchpad

I Cover College Avenue

By BILL FLICK

Ever been down to Housing? Swinging little group they've got down there. There's Mary and Diane and Eva. And they're really nice. REALLY.

We were down there yesterday vigorously involved in attempting to pay this month's bill for one of the Co-Op units, and actually we had quite a good time with them after finally getting the bill paid.



Unavoidably, the subject of lice and garbage came up and we had quite a time defending the column our news editor wrote last week.

"You sure made a lot of enemies by saying that," one of the overly-anxious-to-wait-on-you girls said.

Well maybe we did and maybe we didn't. But one thing we hope we can do in the future, if we have failed thus far, is to present humorous (WE HOPE) satire to the students and faculty of this university and cause them to recognize and enjoy it... cause this ain't high school and we feel understanding satire is a part of an education. At the same time, we don't enjoy stepping on anyone's feet any more than you do. Guess we're tryin' to do the impossible — please all of the people all of the time. So mox nix.

One further comment — we are not yielding our previous editorial stand. Maybe Best "A" COULD use an inspection of some sort... and Sahuaro too.

Have been in several discussions lately about the hustling situation on campus. We came up with the profound and not-so-shocking statement that the Social Sciences building is the best place on campus. The choice was quickly narrowed down to either the SS or the BA building, and after much debating and survey-taking, a majority of those concerned agreed that the BA was strictly "hello" and not much more. Lots of Greek talk, but not much downright hustling.

WHEREAS, further down College Avenue directly across from good old Matthews, there lies paradise (and we don't care how many of you Rho Phis disagree!!) There is more party talk, more date talk and more fixing-up done on the front steps of this structure than ANYWHERE ELSE ON CAMPUS. (Didn't mean to slam the VI, but that's what we think. C'est la vie). So we'll stick with SS all the way... (and permit it to be known that this columnist could quite easily mean that in a very different and sincere way). AH, BOGWASH!

A last minute reminder from a sign on the bookstore door — Refund period ends September 30th!

We will not comment on one particular thing which has appeared previously, but let us just say... swingin'!!

EDITOR-IN-CHIEF JACK ONG

NEWS DEPARTMENT
 MANAGING EDITOR BILL FLICK
 NEWS EDITORS LINDA WARREN, BILL OVEREND
 COPY EDITOR CAROL OSMAN
 CHIEF PROOFREADER EDIE ALLERS
 ASSIGNMENTS EDITOR BARBARA MARLOWE
 ASSISTANTS MARY GORMAN, JANET WOLHETER, BOB ZACHE

SOCIETY DEPARTMENT
 EDITOR ROSALYN WHITNEY
 ASSISTANT BETTY ADAMS

SPORTS DEPARTMENT
 EDITOR BOB EGER
 ASSISTANT BOB JACOBSEN

'Card Men' Short-Handed

When our card section was organized three years ago, it was the result of many weeks' planning, scheduling and investigating.

Our card section has been generally successful and has been a popular half-time feature for the public. It still requires plenty of work to plan, and this year the Rally and Traditions board is a bit short-handed: forty hands, twenty people.

Jan Phillips, who is chairman of the card section project, encourages interested students to attend a meeting in Clancy's at 3 p.m. tomorrow.

"There's a lot of work to do all season," Jan said. She wants good workers to assist in passing and gathering the cards and helping the reader.

We feel the card section adds to the spirit and color of football games. Let's keep ours going.

A Word To Freshmen

Freshmen take another step forward at Arizona State today.

We urge you to vote with care and to take this privilege that is typical of American democracy with seriousness.

Voting for your senators is just the start. You'll be voting for school royalty as well as for leaders of the university; in the near future you'll be responsible for the selection of community and national leaders.

Vote with pride. It is a privilege too many other nations don't have; it is an honor too many Americans have seemed to take for granted.

LITTLE MAN ON CAMPUS



OUR JOINT REPORT ON 'STRANGE COURTSHIP CUSTOMS' IN A MOMENT — BUT FIRST, MISS SMITH HAS AN ANNOUNCEMENT...

Seems as though our little scratching last week (re: Miss B. B. Bombshell) proved just a bit disturbing to a few fine folks. Mainly, some wise guys had that love song by Ray Charles, "Hit the Road Jack," piped directly outside our office up here in ye olde MU all weekend. Guess the record wore out at last.



If our sharp-shooting campus marchers, the Kaydettes and Angel Flights, were offended, we meekly shower apologies.

But why were they offended? you ask. After all, they weren't even mentioned. Ah, we answer, such are the hardships of life. You can't please them all, kids!

And poor Miss Bombshell. We approached her last Friday after we saw her crying all over the Phi Delt bench while reading the article.

Her first tearful reaction was, "How could you-all do this to sweet unsuspecting me?"

That "hee hee" wasn't in her voice. Good ole B. B. was serious, bless her heart, we thought.

"Well, how? Why? Don't I walk good enough? I figger what's good enough for Sea Maids is good enough for you-all."

"Please..."

"I was chosen from hundreds of other girls by the hard-hitting men of the Marching-Aboard-Ship-Training Corps. Isn't that proof enough?" she sobbed.

"We..."

"They know what they want. Can't you trust their choice? Don't you-all like those nice boys?"

B. B. was getting hysterical. She was deeply embarrassed. "Oh, if my pledge class takes this seriously, I'll lose face and it's all your fault."

She fluttered her lashes and we're positive she nearly "hee hee'd," but re-checked her current role and "boo hoo'd" instead.

Ashamed, depressed and certainly feeling small, we left B. B. on the Phi Delt bench. We didn't even have the nerve to turn back when she rose to go to class and, in her tearful state, fell flat on her face into the Orange Street gutter.

Poor B. B. But she's still shooting sharp and in this, her first week as a Sea Maids pledge, is doing fine, according to progress reports from the men.

Our judgment must've been wrong: those men DO know what they want...

AFTER-THOUGHT — Estranged boy to gal in Den: "It's all right that you returned my pin, but don't keep telling everyone you fired me!"...

Letters To The Editor

Major Tips On Minor Gripes

To the Editor:

Just to let you know, there are several minor complaints about various items around the ASU campus.

For example, how come:

- Students have to pay 25c for a 10c coke at football games? Do university officials approve of this swindle?
- Cigarettes are 30c in ASU vending machines while 25c elsewhere?
- The administration has taken over the Memorial Union?
- The dorm air conditioning is turned on at night and off during the day?

Then there is the matter of the Frats (sic) getting a reserved section for football games. Nope, if they can't get seats between 6:30 and 7 like any other student, there is always a radio nearby. Come to think of it, why aren't there seats for all students that come to a game?

School spirit would be helped if the head cheerleader would watch the game so he wouldn't call for the cheer "Block That Kick" when ASU has the ball, or other similar yells.

Oh yes! Down with ROTC. (This one should net at least 2,000 supporters.)

Doug Auka

Editor's Note: We are inclined to join in the questioning, series 1-4.

... Cheerleaders are only as successful as the cheering section.

... Oh yes! About ROTC, someone (plus at least 2,000 supporters) have beat you to the punch. He (and they) failed.

"I Cover" Column Commended

To the Editor: Klahr.

Three cheers! The "I Cover College Avenue" column finally got through one issue without mentioning Gary Peter

What do you say we try for a record, say 2,000 years or more?!

Sick of G.P.K.

Implications

Here is a "pet-peeve" . . . girls' dorm hours. The story comes in that one freshman girl was called before the dorm council for being "fifteen seconds" late! We know that being on time is a responsibility that the girls have, but when someone gets called up for being fifteen seconds late, that's kinda funny.



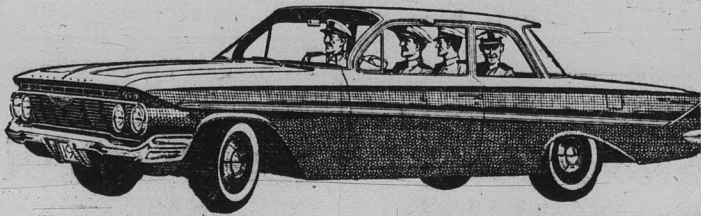
There has been mention of a couple of "gripes" about Saturday football games, not to mention the final score.

For one, the yard markers were not "limed-off", causing considerable difficulty in spotting the ball when it was at the end of the field. This complaint even was voiced by people in the press box, and they have the best view of the action.

Another suggestion for the stadium might be to have better lighting on the ramps going to the top. We've noticed several people stumble and almost fall at several "dark" spots, and one thing we don't want is blood on our new stadium!

By the way, did you know that K.A.S.N., the campus radio station is in the air? This year (for now anyway) it broadcasts at 580 on the dial.

NEW & USED CHEVROLETS



SALES . . . SERVICE SPECIAL

'61 Impala Demo. Loaded, 4,000 Mi. New Car Warranty

Discount \$700

BRIT SMITH Car Co.

802 MILL — WO 7-3381 — 802 MILL Across From House of Pancakes

ASU Student Takes National SNEA Post

Bob Frazier, ASU senior in education, has been elected third vice president of the Student National Education Association, the first member of an Arizona chapter to be elected to a national office in the association.

Frazier was elected at the annual SNEA convention at Pennsylvania State University this summer. He also is vice president of the Arizona SNEA.

The SNEA, which has had a chapter at ASU since 1944, is a branch of the National Education Association, a professional teachers group. A chapter operates at each of the six colleges and universities in the state.

Goals of the SNEA enable the student to prepare for a future as a teacher in his community. The SNEA is open to all students interested in entering the teaching profession.

New Drafting Machines Added To Industrial Education Department

The Division of Industrial Education is still making progress in its development at ASU.

Miss Lucile Kaufman, assistant professor of Engineering, who is solely responsible for the Technical Design program in the Division of Industrial Education said that 24 new drafting tables complete with machines have been added to the new headquarters of Technical Design.

The headquarters are located in the old Visual Aids Building at College Avenue and 6th Street and have been in use since January.

The drafting machines eliminate the necessity of students bringing triangles, protractors and "T" squares to class.

Miss Kaufman, a mechanical engineer registered in Illinois and Arizona, has been with ASU since 1950. She is the developer of the four-year Technical Design curriculum in Industrial Education.



It's what's up front that counts

FILTER-BLEND is yours in Winston and only Winston. Up front you get rich golden tobaccos specially selected and specially processed for filter smoking. Smoke Winston.



R. J. Reynolds Tobacco Co., Winston-Salem, N. C.

WINSTON TASTES GOOD like a cigarette should!

Bowling Meet Tomorrow

There will be an organizational meeting in Clancy's tomorrow at 3:30 p.m. for all students who have signed up for or expressed an interest in bowling leagues.

Steve Montgomery, Social Board chairman and Oliver White, MU program director, have called the meeting. Interested students who miss the meeting should check in at the games desk, Montgomery said.

"They'll have to come to us, we can't go to them," he said.



YOU'RE NEXT AT

JD's

Campus Barber Shop

816 College Ave.

NEXT DOOR TO THE "VI"

Open Monday thru Friday

8 A.M. to 6 P.M.

SHOE SHINE STAND



NABS MUSICAL LEAD — Roger Bigelow, ASU freshman dramatics major, plays Will Parker in the Phoenix Musical Theater production of "Oklahoma!" Dancer-Actor Gene Nelson portrayed Parker in the movie version of one of the most popular American musicals in history. "Oklahoma" opens at West Phoenix High auditorium tomorrow at 8:30 p.m. Here Roger tells pals "Everything's Up to Date in Kansas City."

University Of Hawaii States Increase In Scholarships For American Students

All-expense-paid scholarships for American students have been increased to 100 for the 1962-63 academic year it was announced by the East-West Center at the University of Hawaii.

The two-year scholarship which includes an academic tour of Asia, gives the student an opportunity for special studies in other universities and a chance to become acquainted with institutions, traditions, and the people and character of the country.

Though primarily aimed at graduate students, the program includes eight scholarships for undergraduates in Asian studies. Graduate fields covered include: Anthropology, Art, Asian Studies, Drama and Theater, Asian Geography, Government, International Relations, Asian and Pacific History, Pacific Island Studies, Japanese, Overseas Operations, Asian Philosophy, Sociology and Music.

Application blanks may be obtained by writing to Director of Student Programs, East-West Center, University of Hawaii, Honolulu 14, Hawaii. Deadline for completed applications is Feb. 1, 1962.

FOR YOUR HOMECOMING DECORATIONS

FLORAL SHEETING
FRINGE
FESTOONING
TINSELS
PAINTS

CORRUGATED PAPERS
107" WIDE NO SEAM PAPER
CUT OUT LETTERS
CREPE PAPERS
MAT BOARD

Everything to make your Decoration a complete success.
Also a complete line of Christmas Decorations

THE LLOYD R. CADY DISPLAYS

2818 N. 16th Street

Phone AM 5-1701

Phoenix

Dr. Gibbs Proves Nematodes To Blame

Dr. Byron J. Gibbs, associate professor of biology has persisted and succeeded in dissecting round worms (nematodes) to prove that the parasite protozoan is perpetuated by round worms.

It has long been known that turkey raisers could not let turkeys come in contact with chickens. Chickens have immunity to this parasite, but

their droppings can infect the soil or infect round worms if they are not already infected.

The real culprit is the round worm, the male carrying the parasite in sperm and the female in the reproductive organs.

Dr. Gibbs has succeeded in mounting the dissections on slides, staining them so that under microscopic studies it is easy to study the parasite in the round worm.

Gilbert Directs 'Street Scene' For Workshop

Alan Gilbert, new assistant director of Opera Workshop and a leading man in such musicals as "South Pacific," "Say Darling" and "A Tree Grows In Brooklyn," will produce "Street Scene," an American opera composed by Kurt Weill, for the workshop.

Gilbert held leading roles in "Finian's Rainbow," and "Three Penny Opera," where he played Mack the Knife. In addition, the new assistant director has appeared in numerous TV productions.

While in Arizona, Gilbert has appeared in four big musicals and directed two operas for the Arizona Opera Association.

Gilbert conducted the opera workshop at ASU from June 1-June 14.

State Personnel Attend Session

The initial session of the first year in ASU's long-range program of management development began Monday with an enrollment of some 15 Arizona management personnel.

Dr. Ralph C. Hook, Jr., Director of the Bureau of Business Services, said, "ASU has developed the long-range Industrial Management Institute program to answer industrial needs for personnel with breadth of experience necessary to qualify them for increasing management responsibilities."

The program, conducted for three terms each year, each ten weeks in length for four years, is co-sponsored by the Valley of the Sun Industries and ASU's College of Business Administration.



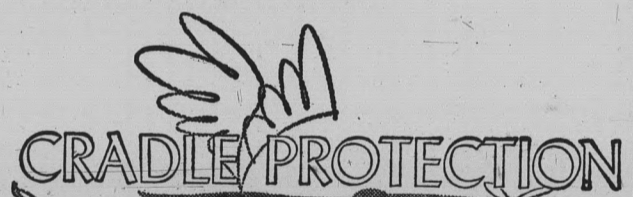
- STYLING
- TINTING
- BLEACHING
- PERMANENTS
- MANICURING

Milady's Beauty Salon

Personalized Beauty Care

9 A.M. - 6 P.M. EVENINGS BY APPOINTMENT
Sands of Tempe 601 E. Apache
WO 7-1611 Ext. 37 WO 7-2221

If you are expecting Mr. Stork
— or are just hoping he'll call



Is a must for you

Why Was This Plan Created? Cradle Protection was conceived to provide medical benefits for babies who either are born prematurely or with imperfections or birth injuries. It provides insurance against what can be staggering medical bills which are not ordinarily covered by other forms of hospital-surgical coverage.

PAYS UP TO \$5,000 for correction of birth imperfections or child's premature birth costs.

PROVIDES LIFE INSURANCE benefits for the wife and each newborn child.

The plan is available to all married women age 49 or under and insurance may be applied for *even during pregnancy*.

For an almost unbelievably low premium Cradle Protection will eliminate a big financial worry. Let us tell you about all the wonderful benefits of this revolutionary insurance concept.

For Information Call

WO 7-3358

LOCK & CROCKETT
INSURANCE

822 B Mill Ave.

Tempe

Mrs. Thomas Added To MU Staff

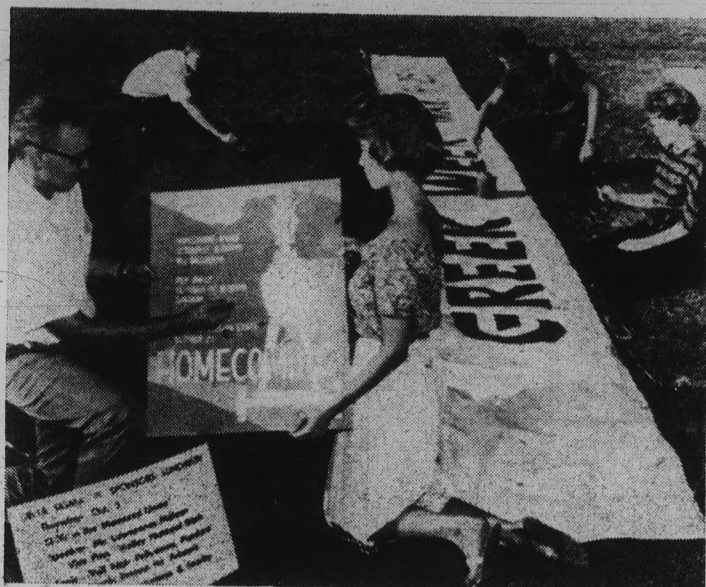
Poster Makers At Your Service

Mrs. Trudy Thomas, assistant director of the MU, is the busy woman in charge of reservations and arrangements for all student activities, committees and conferences held in the MU.

"The wonderful thing about this job is the contact I have with the individuals who represent the students, faculty, staff, and community," said Mrs. Thomas.

Mrs. Thomas, a graduate of Cornell University, was secretary to the vice president of Cornell University after her graduation and served with the American Red Cross in Australia during World War II.

Besides being in charge of reservations and maintenance in the MU, Mrs. Thomas is also the advisor to the Freshman Hostess Committee.



PUBLICITY SERVICE -- Members of the Arizona State student publicity service work on posters in front of the organization's headquarters, Annex VIII, located next to the Home Economics building. Headed by senior Andy Mitchell, the group includes Bruce Hayden, Karen Sorgatz, Norman Cable, Mary Jo Willis and faculty advisor Bruce Benson.

ASU Publicity Men Serve Student Body

"The purpose of the ASU Publicity Service is to provide poster service to students at a minimum cost," says Andy Mitchell, student manager of the service.

The service was organized under Associated Students three years ago. All services are performed at cost.

This year the organization made posters for the MU Open House, Homecoming and the after-game dances.

Prices for the different types of posters are: Silk Screens, \$2 for the screens, 70c for each poster when ordering at least nine, and 60c a poster when or-

dering more than nine. In printed signs, the price is 60c a poster for nine or less, and 50c a poster when ordering more than nine. Banner prices are fixed according to the amount of material used and the hours spent.

Student members of the service are Mitchell, Bruce Hayden, Karen Sorgatz, Norman Cable and Mary Jo Willis. Faculty advisor is Bruce Benson.

"We'll do the posters and contact the State Press and the Phoenix papers for any student organization that is planning an event on campus," says Mitchell.

Wilson Grant Nominations Are Now Being Accepted

Any member of the ASU faculty may nominate candidates for Woodrow Wilson National Fellowships.

Candidates should be planning a career in college teaching, should have earned no graduate credits by the fall of 1962 and should be planning to do their graduate work and subsequent teaching in the humanities or social sciences.

The nominating faculty members should write to: Professor John Hough, Dept. of Classics, University of Colorado, Boulder, Colorado. Nominations should include name of candidate, current address, undergraduate college and proposed field of graduate study.

Fellowships carry a basic stipend of \$1,500 per year plus dependency allowances for wife and children. Applicants must be citizens of the U.S. or Canada, or aliens in the process of becoming citizens. Nominations should be made by Oct. 15.

Constitution Booklet Now Is Available

"Revision of the Arizona Constitution: a Commentary," an analysis of the Arizona Constitution, is available at the ASU bureau of government research.

Written by Dr. Bruce B. Mason, director of the bureau, and Dr. Heinz R. Hink, associate professor of Political Science, the booklet sells for \$1 per copy.

The state constitution is examined by the authors with two questions in mind: Have the adjustments of the constitution been to the proper degree, and have new facts about government been taken into account?

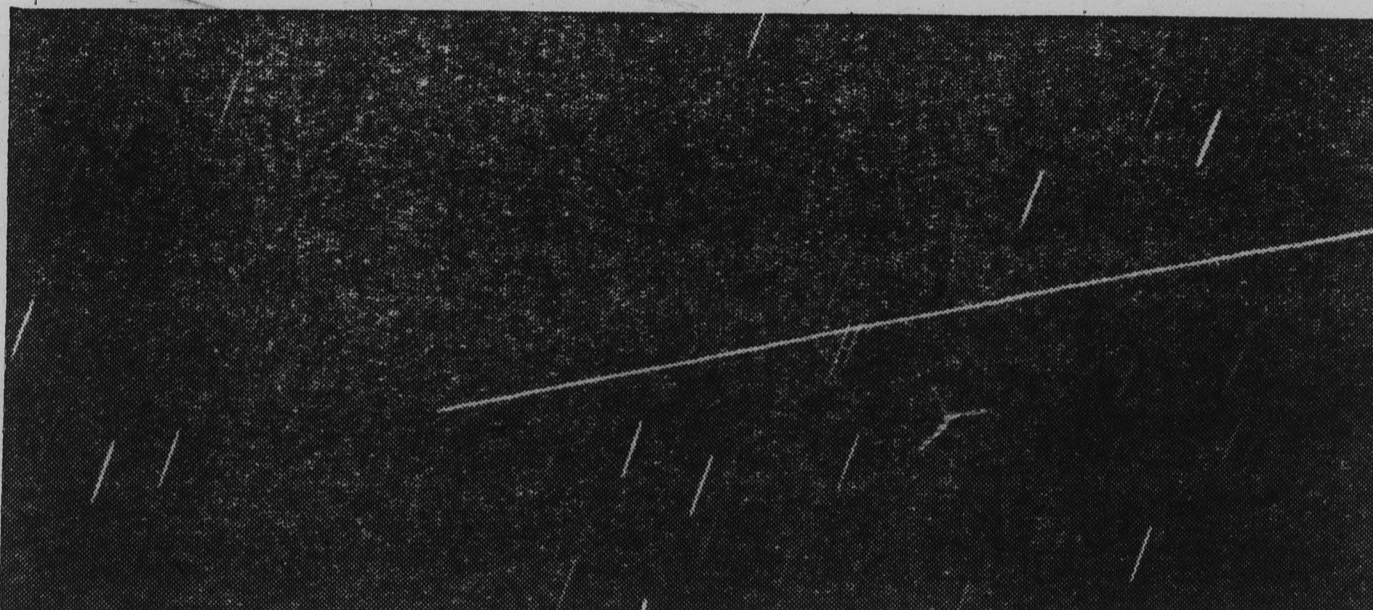
Mason and Hink state, in the preface to the study: "If the answer, after analysis, is that the adjustments have been proper, the new facts taken account of, then no need exists for change.

"On the other hand, if the answer has been negative in either case, then some change is in order. Arizona cannot be hurt by a re-examination of its fundamental premises."

Astronomy Club To Meet

Tomorrow night at 7:30 is the first meeting of the Astronomy Club in Physical Sciences B 344.

PROJECTS OF THE BELL SYSTEM



range from the reaches of space

Unretouched time exposure shows Echo I communications satellite (long line) crossing the heavens right to left. Shorter lines are stars "in motion."



to the depths of the sea

Actual undersea photo of telephone cable off coast of Florida.

Our job is providing communications of all kinds, wherever needed—whether in the northern snows to flash word of possible enemy missile attack, or in your home or college, or in serving the nation's business.

When we can't fill a need off the shelf, then we start fresh and create the answer to the problem. We've done that hundreds of times.

We began transatlantic radiotelephone service in 1927. Then we developed the

world's first undersea telephone cables to speed calls between continents.

We handled the world's first telephone conversation via satellite. And we have started development of an important world-wide communications system employing satellites.

When industry and government needed a way of gathering huge amounts of coded information from distant points, we were ready with our vast telephone network and Data-Phone, which can

transmit mountains of data at extremely high speeds.

And so it goes—Long Distance service, Direct Distance Dialing, the Transistor, the Solar Battery—a succession of firsts which goes back to the invention of the telephone itself.

Universal communications—the finest, most dependable anywhere—are what we deliver. Inside: for home, office, or plant. Outside: on land, under the sea, through the air.



BELL TELEPHONE SYSTEM

Nine New 'Angels' Are Selected



NINE NEW ANGELS — Arnold Air Society, Air Force ROTC honorary, chose nine girls to join Angel Flight, their women's auxiliary. The girls will work with Arnold Air Society and participate in all ROTC functions. From left to right, bottom row, Mike Jane, Donna Rapton; middle row, Cheryl Wargon, Sue Rawson, Joycelyn Ong; back row, Brigitte Postler, Judy Tomich, Jan Reed and Georgia Wagner.

Many Meetings Set At ASU This Week

ASU Rodeo Club set Dec. 2 and 3 for the annual Intercollegiate Rodeo to be held at the Scottsdale J.C. rodeo arena.

All students interested in ASU's Rodeo Club are invited to attend the Oct. 12 meeting in the Agricultural Building, room 202 at 7:30 p.m.

ASU's Faculty Club held its annual meeting for election of club officers last Wednesday.

Officers for 1962-63 are Edward J. Demson, director of special services, lecturer Business Law, president; Mary G. Lyle, assistant professor of English, vice-president; James E. Chon, assistant professor of

Mathematics, secretary, and Harold Fry, assistant professor of Engineering, treasurer.

ASU's Flying Devils Club will meet today at 6 p.m. in Clancy's.

ASU students are invited to attend today's regular meeting of the Faculty-Student Relations Committee at 3:40 p.m. in MU 210.

ASU's Fencing Club will meet Wednesdays at 6:40 p.m. in the Moeur Activity Building.

All interested advanced fencers may attend.

ASU Wednesday Special
At Both

**UNIVERSITY
LAUNDROMATS**

10c Wash — 6 P.M. to 11 P.M. — 10c Wash

● 2 LOCATIONS ●

601 W. 8th St. — 727 Apache

MU Calendar

Wednesday, Oct. 11

Tempe Business Men: 218C — 12 noon-1:30 p.m.

French Group: 208 — 1:30-2:30 p.m.

French Speaking Groups: 210 — 1:30-2:30 p.m.

Social Board: 208 — 4:30 p.m.

IFC: Ballroom — 3 p.m.

Rally and Traditions: 210 — 3:30 p.m.

Student-Faculty Committee: 210 — 3:30 p.m.

Natani: Upper Lounge — 4-5 p.m.

Election Board: 208 — 5 p.m.

Haigler and West Exchange: Clancy's — 6 p.m.

Religious Council: 209 — 6 p.m.

Dawa Chindi: 209 — 7 p.m.

Kappa Kappa Gamma: 218A, 218B, 218C — 6:45 p.m.

Student Nurses: Upper Lounge — 7 p.m.

Faculty Recital: Ballroom — 8 p.m.

Thursday, Oct. 12

IFC Executive Council: 208 — 9:30-10:30 a.m.

Delta Sigma Pi: 218B and 218C — 12:30-1:30 p.m.

IFC: Ballroom — 3-5 p.m.

AWS Hall Council: 210 — 3:30-5 p.m.

Homecoming Committee: 208 — 4 p.m.

IFC: Senate Chamber — 4-6 p.m.

Pleiades: 209 — 5:30 p.m.

Westminster Foundation: 208 — 6 p.m.

Lutheran: 210 — 6 p.m.

Flying Devils: Clancy's — 6-7 p.m.

Campus Crusade: 218A and 218B — 6:30-7:30 p.m.

Kappa Kappa Psi: 210 — 7 p.m.

Baha'i: 208 — 7:30 p.m.

Pi Sigma Epsilon: 209 — 7:30 p.m.

Devils and Dames: Clancy's — 7:30 p.m.

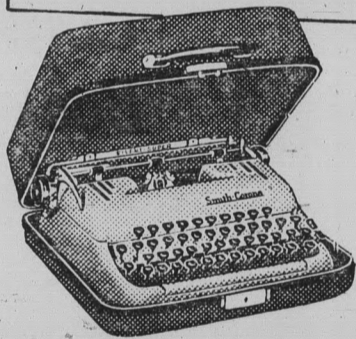
ASU Facts

Thirty-one pupils were in attendance for the first day of classes at Tempe Normal school February 8, 1886.

REPORT CARD				
Subject	Grade			
English	C+	B	B	A
History	C	C	B	B+
French	C	C	B	B
Algebra	B	B	B+	A
Science	B	B	B+	B+
Physical Ed.	A	B	A	A

Remarks:

Steady improvement since typing notes and assignments



Send your son or daughter back to school with a new Smith-Corona available on special "Back to School" terms. Five models to choose from.

Smith-Corona
WORLD'S FIRST AND FASTEST PORTABLE

**NOW A
5-YEAR GUARANTEE**

AT THE
**UNIVERSITY
BOOKSTORE**

Ph. 946-9481
KACHINA Scottsdale Rd.
at 5th Ave.

COMING
FRIDAY, OCT. 13

Enjoy your favorite cigarette in our scientifically ventilated Rocking Chair Lounge Section.

*The searing Story of
a borrowed Love!*



*I'll never
give him
a divorce...
I worked
too hard
to get him!*

ROSS HUNTER-CARROLLTON PRODUCTION
**SUSAN HAYWARD
JOHN GAVIN**

FANNIE HURST'S

"Back Street"

IN EASTMAN COLOR!

ALSO STARRING **VERA MILES** as "LIZ SAXON"

CHARLES DRAKE · VIRGINIA GREY · REGINALD GARDINER

WAA Volleyball Ends; Swimming Next Event

WAA volleyball intramurals ended Thursday with Kappa Alpha Theta winner for the dormitory and sorority division and the sophomore No. 2 team as winner for the physical education majors.

Swimming intramurals begin today at 4 p.m.

ASU Facts
ASU Sun Devils beat the U of A Wildcats 61-14 on November 13, 1951.



THE TRUE AND HARROWING FACTS ABOUT RUSHING

It is well enough to sit in one's Morris chair and theorize about sorority rushing, but if one really wishes to know the facts, one must leave one's Morris chair and go out into the field. (My Morris chair, incidentally, was given to me by the Philip Morris Company, makers of Marlboro Cigarettes. They are great-hearted folk, the makers of Marlboro Cigarettes, as millions of you know who have enjoyed their excellent cigarettes. Only from bountiful souls could come such mildness, such flavor, such filters, such pleasure, as you will find in Marlboros! For those who prefer crushproof boxes, Marlboro is available in crushproof boxes. For those who prefer soft packs, Marlboro is available in soft packs. For those who prefer to buy their cigarettes in bulk, please contact Emmett R. Sigafos, friendly manager of our factory in Richmond, Virginia.)

But I digress. I was saying that in order to know the true facts about sorority rushing, one must go into the field and investigate. Consequently, I went last week to the Indiana College of Spot Welding and Belles Lettres and interviewed several million coeds, among them a lovely lass named Gerund McKeever. (It is, incidentally, quite an interesting little story about how she came to be named Gerund. It seems that her father, Ralph T. McKeever, loved grammar better than anything in the world, and so he named all his children after parts of speech. In addition to Gerund, there were three girls named Preposition, Adverb, and Pronoun, and one boy named Dative Case. The girls seemed not to be unduly depressed by their names, but Dative Case, alas, grew steadily more morose and was finally found one night dangling from a participle. After this tragic event, the father abandoned his practice of grammatical nomenclature, and whatever children were subsequently born to him—eight in all—were named Everett.)



They Pledged more girls than they had room for...

But I digress. I was interviewing a lovely coed named Gerund McKeever. "Gerund," I said, "were you rushed by a sorority?"

"Yes, mister," she said, "I was rushed by a sorority."

"Did they give you a high-pressure pitch?" I asked. "Did they use the hard sell?"

"No, mister," she replied. "It was all done with quiet dignity. They simply talked to me about the chapter and the girls for about three minutes and then I pledged."

"My goodness!" I said. "Three minutes is not very long for a sales talk!"

"It is when they are holding you under water, mister," said Gerund.

"Well, Gerund," I said, "how do you like the house?"

"I like the house fine, mister," she replied. "But I don't live there. Unfortunately, they pledged more girls than they have room for, so they are sleeping some of us in the bell tower."

"Isn't that rather noisy?" I said.

"Only on the quarter-hour," said Gerund.

"Well, Gerund," I said, "it has certainly been a pleasure talking to you," I said.

"Likewise, mister," she said, and with many a laugh and cheer we went our separate ways—she to the campanile, I to the Morris chair.

© 1961 Max Shulman

The Philip Morris Company makes, in addition to Marlboro, the new unfiltered, king-size Philip Morris Commander—choice tobacco, gently vacuum cleaned by a new process to assure you the finest in smoking pleasure.



BRAINSTORMING — Discussing the techniques of brainstorming to be used in the Interfraternity Council's Greek Retreat this week are, from left, standing, Bill Flick, IFC secretary, and Jon Flach, IFC President; seated, Dr. W. H. Harris, Professor of Marketing; Andy Mitchell, IFC vice-president; and Don Head, newly appointed IFC Public Relations Director.

First IFC Greek Retreat Opens With Brainstorming

Over 100 ASU fraternity men are expected to attend Council Greek Retreat here Oct. 11-13.

Dr. William H. Harris, ASU professor of Marketing and member of the Sales Executive Club of Phoenix, is general chairman. He will discuss such subjects as leadership, scholarship, social standards, rush program, finances,

housing and alumni interest.

The Wednesday session will be devoted to defining the specific problems; Thursday, ideas will be thrown out for possible solutions to the problems; and Friday, the ideas will be weighed in an attempt to find workable solutions.

At the end of the retreat, a composite of the information will be printed in pamphlet form and sent out to the Na-

tional Interfraternity Council for distribution nationally.

Local fraternities also will receive the pamphlet, the object of which is to help solve problems existing within the Greek system on this campus as well as others.

Interested Coeds Invited to Vie For Area Titles

There has been a lack of response from ASU co-eds concerning the Miss Phoenix and Miss Maricopa County contests, according to Joe Jordan, chairman.

Entry deadlines are Oct. 11 and 14 respectively, with both finals Oct. 17. Jordan stated that ASU girls seem to be uninterested or unaware of the dual programs.

While the Miss Phoenix affair restricts its applicants to residence within the city limits, the Miss Maricopa contest is open to all girls living in the county.

The two separate contests place their finalists in the Miss Arizona contest later this year.

Jordan also remarked that Phoenix College has entered several contestants bent on bringing the titles back to their campus.

Luncheon Set By Delta Sigma Pi

Delta Sigma Pi, professional business fraternity, will have a luncheon at 12:30 p.m. tomorrow in MU 218B.

Lawrence Mehren, vice president of the Valley National Bank, will be the guest speaker.

The admission is 75c or a meal ticket, and all business students and faculty may attend.

ASU Facts

ASU's football team of 1931 was the first team to wear the Border Conference crown.

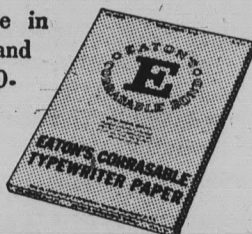


ERASE WITHOUT A TRACE ON EATON'S CORRASABLE BOND

Don't meet your Waterloo at the typewriter—perfectly typed papers begin with Corrasable! You can rub out typing errors with just an ordinary pencil eraser. It's that simple to erase without a trace on Corrasable. Saves time, temper, and money!

Your choice of Corrasable in light, medium, heavy weights and Onion Skin in handy 100-sheet packets and 500-sheet boxes. Only Eaton makes Corrasable.

A Berkshire Typewriter Paper



EATON PAPER CORPORATION PITTSFIELD, MASS.

NOW AVAILABLE AT KORRICKS

Downtown
AL 8-5911

Chris-Town
AM 4-3911

Frosh Gridders Open Saturday

Arizona State's freshman footballers open their season Saturday against New Mexico Western on the road.

The frosh have been scrimmaging against the Sun Devil varsity for several weeks and appear to be in good physical condition for their opener.

Sun Imp Coach Bill Kapikawa will take 36 players on the trip. His assistants are Dave (Bukets) Fonner and Jim Lambeth, both former Sun Devil varsity gridgers.

Gridders Regain Old Spark

Loss To Utah Considered Moral Victory For ASU

By BOB JACOBSEN

Displaying a superb first half offense and a solid second half defense, ASU's Sun Devils were just outmanned Saturday night as the Utah Redskins edged them 28-26 in the Devils' third contest of the current campaign.

Although the Devils did lose the game, they won a moral victory as they entered the game at least two touchdown underdogs and more on many major forecasts.

Utah Head Coach Ray Nagel commented, "We like to think of ourselves as a defensive team, but their offense just rolled over us. They surprised us a few times offensively and their second half defensive stunting bothered us."

The Devils, losing their first game after victories over Wichita and Colorado State, looked much improved over their two wins as evidenced by the 274 total yards gained against a supposedly tough Utah defense.

Quarterback Joe Zuger, who played the full 60 minutes in a superb performance, completed 8 of 16 passes for 128 yards. His chief receiver was sophomore end Roger Locke who, along with displaying sterling defensive play in the second half, snared three passes.

This Saturday the Devils travel to Canyon, Texas, to encounter the Cinderella ball club of the Border Conference, the West Texas State Buffaloes.

WTSC, led by sophomore halfback "Pistol Pete" Pedro who tops the BC in about every department, has averaged an amazing total of 48.3 points a game in whipping Brigham Young 55-8, Texas Western 56-27, and losing to Wichita 41-34. The Buffs had won only five games in the last three years until this campaign.

Cage Tryouts

Male students interested in playing freshman basketball should be at the men's gym at 6 p.m. Monday for the start of practice.

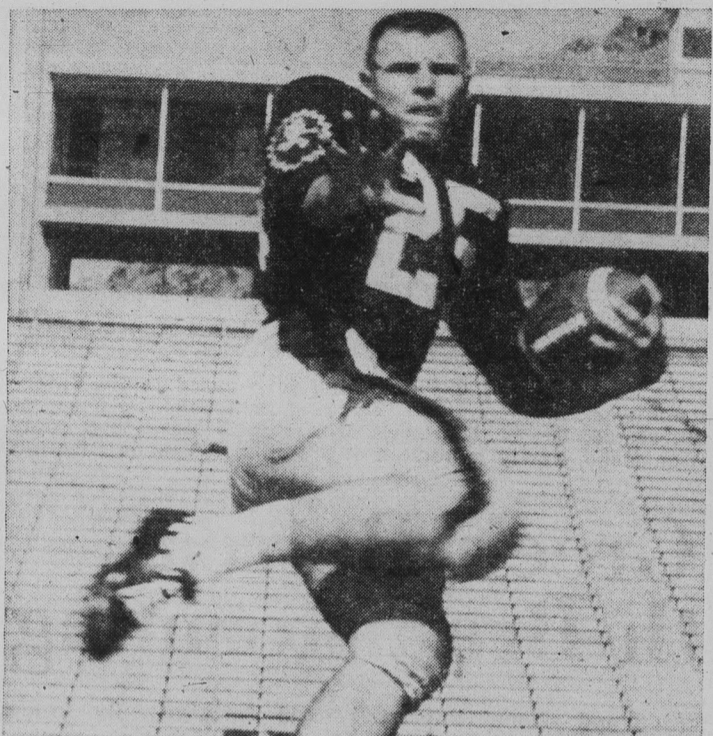
Practice for players not on basketball scholarships will last one week, during which players will be chosen to round out the frosh squad. All players must furnish their own equipment.

Campus Classified

Regulations: For students and faculty only of Arizona State University. Cash in advance. Submit to Room 233, Social Science Bldg., 8 a.m. to 9 a.m. daily, 1:30 to 2:30 Monday and Wednesday. Call Ext. 471 for other hours. Rates: 10 cents a line per issue, 35 cents minimum charge.

FOR RENT

Room for two students, twin beds, separate desks, drawers, closet space, bath facilities, radio, ironing board, telephone, linen and storage space. Only \$8 apiece per week or \$11 for single student. WO 4-1528.



TOP RUSHER -- Halfback John McFalls leads the Sun Devil footballers in average yards per carry with a mark of over eight yards per try. McFalls led the Devils in that department during the 1959 season before being slowed down by diabetes last year. (Photo by ASU Photo Service.)



SCOOTER — ASU halfback Ossie McCarty scoots for the goal line after taking a pass from quarterback Joe Zuger against Utah Saturday night. McCarty was stopped short of the goal but moments later Charlie Taylor plunged over for one of the Devils' four touchdowns of the game. Utah came from behind in the last quarter to defeat the Devils, 28-26. (Photo by Paul Emmerick.)

NOW ON SALE AT THE

CAMPUS DRUG

CORNER, College and 8th, WO 7-4049

SPECIAL COMPLIMENTARY OFFER FOR COLLEGE MEN

Learn the Pleasures of Fine Tobacco...

Enjoy the Original Extra-Mild Cavendish in the Handy "Poly" Pocket Pouch

AMPHORA

Blended in Holland by Douwe Egberts Royal Factories

AMPHORA, is cool, even-burning, long-lasting. Its pleasurable smoking qualities have won loyal friends—it outsells all other tobaccos in its class! If you haven't tried AMPHORA, be our guest. Simply fill in the coupon below and mail it. You will receive a complimentary full 2-ounce pouch.

ROMICK'S INTERNATIONAL TOBACCO CO.
11918 Vose Street, North Hollywood, California
Gentlemen: Please send me a complimentary full 2-ounce pouch of AMPHORA. I enclose 10¢ coin to cover cost of handling and mailing.
(PLEASE TYPE OR PRINT)

NAME _____
STREET _____
CITY, ZONE, STATE _____
UNIVERSITY _____

This Offer Expires December 31, 1961

New in our...
Traditional Shop

Coordinated Sport Suits

Harmony in a duet of all wool plaid sport coats and tropical weight plain - front trousers for the utmost in casual good looks. Grey, olive or blue ideas.

Jackets \$50.00
Trousers \$21.50

Student charge accounts available in the Traditional Shop

McDougall
cassou, ltd.

Lower level 130 North Central ALpine 3-5886

Netters In Tournament

Play Tomorrow In New Mexico

Anne Pittman's ASU girl netters will compete in the New Mexico Intercollegiate Invitational tennis tournament beginning tomorrow in Albuquerque and continuing through Saturday.

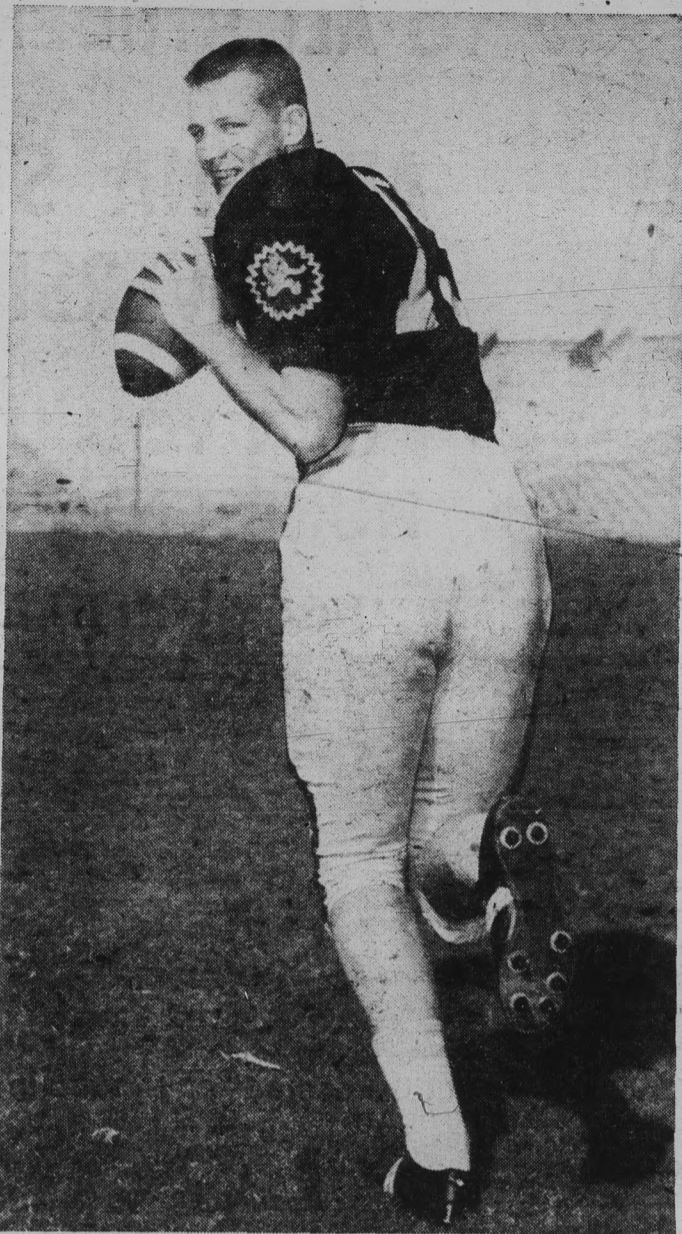
The tournament, which will attract top tennis individuals and teams from all over the Southwest, is held in conjunction with the William Tucker Invitational golf tournament, in which ASU also will be represented.

Lyn Haines, Pinky Shoemaker, Emma Flores and Dianne Rickel will compete for ASU. Carol Prosen, top ranked on the ASU tennis ladder, will not make the trip due to a cold and a heavy class schedule.

Miss Haines recently placed second to Miss Prosen in women's and girls' singles in the Southwestern Championships and Misses Shoemaker and Flores won the women's doubles crown in that tourney. They will all be among the top-seeded players in the tournament.

Arizona State will also send a women's golf team to Albuquerque for the Tucker Invitational. Carol Sorenson, Barbara Beuckman, Sue Meerdink and Rosalie Sheedy will compete.

A men's contingent composed of Ray Stawicki, Wayne Breck, Cal Cooke, Mike Hill, Byron Wood and Dave Cink will also participate in the Tucker golf tourney.



60 MINUTE MAN — Sun Devil quarterback Joe Zuger, who has fought out stiff competition from Ron Cosner and John Jacobs to hold onto the starting signal calling job, played the entire game against Utah Saturday and was instrumental in the fine showing by ASU against the Utes. (Photo by ASU Photo Service.)

BOB VIEWS SPORTS NEWS

Devils Did Good Job

By BOB EGER
Sports Editor



Although they didn't beat Utah Saturday, Coach Frank Kush's Sun Devils endeared themselves to thousands of their fans who were beginning to wonder whether this season would produce any of the exciting football displayed by Devil gridiron groups of the past.

For Arizona State it was a victory in every sense of the word except on that big scoreboard on the south end of the Sun Devil battlefield. Except for a couple of breaks, it could easily have been a victory there, too.

A surprised and admittedly fortunate bunch of Utah gridders readily agreed on one point after the game—that the Sun Devils were the best team they had faced this season even though Wisconsin had edged them and Oregon had given them a good battle.

With their impressive performance against the Utes, the Devils answered the questions that had been plaguing their followers through the first two games.

Yes, they are capable of playing the kind of ball predicted of them before the season got under way.

Yes, they were holding a few things back in their first two games against Wichita and Colorado State. One of them was a tricky halfback-in-motion pass play which Joe Zuger and Ossie McCarty used to catch the Utes flat footed.

Yes, they are definitely a team which completely disregards the odds in favor of their opponents and plays the game as if they forgot they were supposed to lose. They've done it before, they did it Saturday and they'll probably do it again.

Yes, Nolan Jones is human and is subject to missing a PAT now and then, even if it is only once or twice a season. His successive conversion record should stand for some time.

Saturday's display of team effort plus several outstanding individual performances was very likely only the start of lots more of the same to come. The fuse was lit against Utah. Now let's keep an eye on Canyon, Texas, this Saturday and see if the bomb goes off.

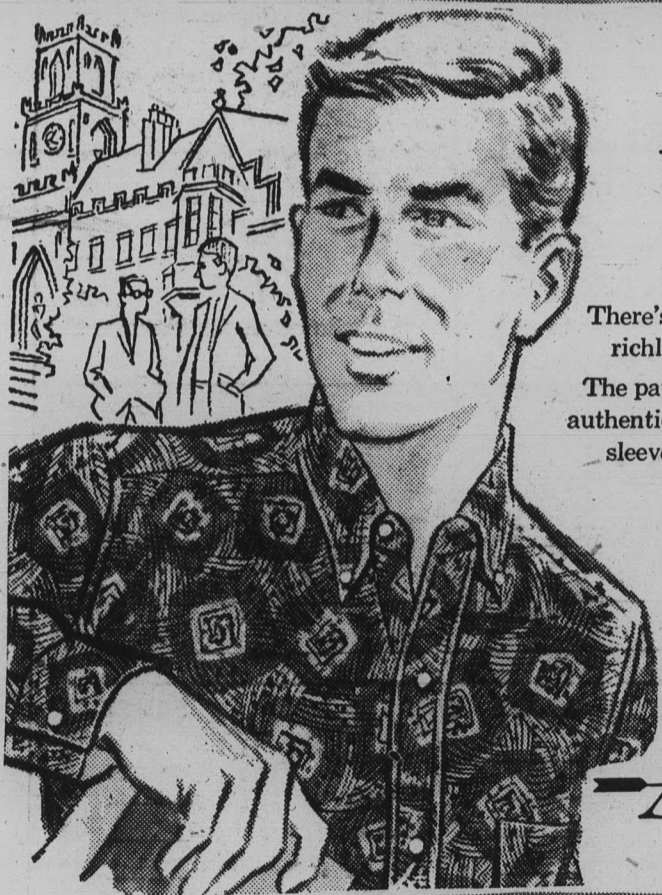
The Buffs, a team that has developed a prolific scoring attack around speedster Pete Pedro, represent a stiff test for the Devils even though Kush's troops will probably go into the game as about a touchdown favorite.

Last season the Devils faced a team much like the Buffs in New Mexico State. The Aggies, who handed the Devils a come-from-behind defeat, had perhaps better balance than the Buffs do this year but even Pervis Atkins and Bob Gaiters weren't scoring at the rate Pedro is for the Buffs this season.

SMALL THINGS — The University of Arizona continues to roll along, smashing everything that comes within its range. Only Nebraska, with a 14-14 tie, has managed to mar the Cats' perfect slate so far.

When the Devils and the Cats mix it up here on the 25th of November an all-time Arizona attendance record will probably be written into the books.

Oregon State comes to town Oct. 21 and that, too, should draw well over 30,000 fans. About 31,300 watched the Devils and Utah Saturday.



In a class by itself

There's never been a casual sport shirt so richly endowed as Arrow Batik Prints.

The patterns are subtle, imaginative, and authentic. The sleeves come in your exact sleeve length — plus the famous Arrow contour tailoring for a slim, trim tapered waistline fit. Sanforized labeled.

Short sleeves \$4.00
Long sleeves \$5.00

ARROW

From the "Cum Laude Collection"

Your ARROW Dealer in Tempe ...

603
Mill Ave.

Campus
men's shop
FOR MEN AND YOUNG MEN ...

SMILEY-BERGE FORD

Your Nearest Auto Dealer

- ★ Complete Service Facilities
- ★ 7 Mechanics On Duty
- ★ Servicing All Makes & Models

JUST TWO BLOCKS FROM
ASU CAMPUS

16 East 8th Street — Tempe
Phone WO 7-2064



FLASH!

TO ALL STUDENTS OF

ARIZONA STATE UNIVERSITY

CAN YOU USE A HUNDRED BUCKS?

THAT'S WHAT YOU CAN WIN IN EVERY ONE OF

VICEROY'S Big College Football Contests

IT'S EASY! Just pick the ten winning teams, predict the scores—and you're in the money!

FLASH! ONLY STUDENTS ON THIS CAMPUS ARE ELIGIBLE!

SECOND CONTEST OCTOBER 21ST

All you have to do is clip the coupon, pick the winners and predict the scores—then figure out how you're going to spend that hundred bucks! It's easy . . . just clip the coupon below or get an entry blank where you buy cigarettes and fill in your predictions of the ten game scores. Then mail it with an empty Viceroy package or a reasonable rendition of the Viceroy name as it appears on the package front to Viceroy at the Box Number on the entry blank or drop it in the ballot box conveniently located on the campus.

Open only to students and faculty members. Enter as many times as you want. Simply send an empty Viceroy package or reasonable rendition of the Viceroy name with each entry.

Entries must be postmarked or dropped in the ballot box no later than the Wednesday midnight before the games and received by noon Friday of the same week. Next contest will be on games of November 4—when you'll have another chance to win.

LOOK!
HERE ARE ALL THE PRIZES YOU CAN WIN!

1st PRIZE \$100

2nd PRIZE \$50

3rd PRIZE \$25

PLUS

10 OTHER PRIZES OF \$1000 EACH



And a free carton of Viceroy to every contestant who names all ten winning teams—REGARDLESS OF THE SCORES!

DON'T SMOKE ANOTHER CIGARETTE UNTIL YOU LEARN WHAT

VICEROY'S Deep Weave Filter

CAN DO FOR YOUR TASTE!



It can do plenty. Here's why: the Viceroy filter starts with pure, safe vegetable material, made into the same straight filter strands as most good filters.

But here's the twist: Viceroy weaves those tiny strands into the special Deep-Weave Filter . . . and that's the filter you can trust to give you the good taste of Viceroy's rich tobacco blend. The fact is . . .

Only Viceroy's Got It . . . At Both Ends! Got The Filter . . . Got The Blend!

*Reg. U.S. Patent Office.

HERE ARE THE CONTEST RULES—READ 'EM AND WIN!

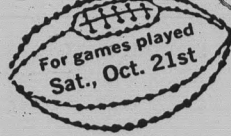
1. Any student or faculty member on this campus may enter except employees of Brown & Williamson, its advertising agencies, or members of their immediate families. All entries become the property of Brown & Williamson—none will be returned. Winners will be notified within three weeks after each contest. Winners' names may be published in this newspaper. You may enter as often as you wish, provided each entry is sent individually. Contest subject to all governmental regulations. Entries must be postmarked or dropped in ballot box on campus no later than the Wednesday midnight before the games are played and received by noon Friday of the same week. The right to discontinue future contests is reserved.

2. Entries must be in contestant's own name. On the coupon in this ad or on an Official Entry Blank or piece of paper of the same size and format, write your predictions of the scores of the games and check the winners. Enclose an empty Viceroy package or a reasonable rendition of the Viceroy name as it appears on the package front. Mail entry to Viceroy at the Box Number on the entry blank or drop in Viceroy Football Contest Ballot Box on campus.

3. Entries will be judged by The Reuben H. Donnelley Corp. on the basis of number of winners correctly predicted. Ties will be broken on the basis of scores predicted. Duplicate prizes awarded in case of final ties.

4. Winners are eligible for any prize in subsequent contests.

(Attach Viceroy package or facsimile here)



Viceroy College Football CONTEST NO. 2

Here are my predictions for next Saturday's games. Send my prize money to:

NAME _____ CLASS _____

ADDRESS _____ (PLEASE PRINT FULLY)

WIN	SCORE	WIN	SCORE
<input type="checkbox"/> Arizona St.	_____	<input type="checkbox"/> Oregon St.	_____
<input type="checkbox"/> California	_____	<input type="checkbox"/> So. Calif.	_____
<input type="checkbox"/> Iowa	_____	<input type="checkbox"/> Wisconsin	_____
<input type="checkbox"/> Michigan St.	_____	<input type="checkbox"/> Notre Dame	_____
<input type="checkbox"/> L. S. U.	_____	<input type="checkbox"/> Kentucky	_____
<input type="checkbox"/> Penn. St.	_____	<input type="checkbox"/> Syracuse	_____
<input type="checkbox"/> Oklahoma	_____	<input type="checkbox"/> Kansas	_____
<input type="checkbox"/> Michigan	_____	<input type="checkbox"/> Purdue	_____
<input type="checkbox"/> Air Force	_____	<input type="checkbox"/> Maryland	_____
<input type="checkbox"/> Arkansas	_____	<input type="checkbox"/> Texas	_____

Contest open ONLY TO STUDENTS AND FACULTY ON THIS CAMPUS. Mail before midnight, Oct. 18, to Viceroy, Box 16F Mt. Vernon 10, New York