



State Press

ARIZONA STATE UNIVERSITY



TEMPE, ARIZONA



Vol. 40

Friday, October 6, 1961

No. 5

Activities For Parents Day Set Tomorrow Afternoon

Tours of the campus, an address by Dr. G. Homer Durham, football game half-time festivities and an after-game dance are on the agenda for Arizona State's Parents Day tomorrow.

The big event will be the ASU-Utah football game. The main feature of half-time activities will be the presentation of the traditional "A" blanket to the parents with the largest number of children now enrolled at ASU, and to the parents who have traveled farthest.

Among many events planned for the day, Bob Carter, AMS president, reported that President G. Homer Durham will speak on "Overall Academic Progress of the University" in his address to the parents at 1:30 p.m. in the MU ballroom.

According to Carter, parents will have an opportunity to meet ASASU officers, the dean of the five colleges and the Dean and Associate Dean of

Students at the president's reception at 2:30 p.m. in the MU upper lounge.

Campus tours, beginning at 2:30 p.m., will include such established features as the Computer Center and newer facilities, including the new Education Building. According to Carter, special emphasis will be on the research progress of the University.

Parents are especially invited to the after-game dance in the MU ballroom. A nine-piece band from Kappa Kappa Psi,

national men's band honorary, will play, sponsored by the Social Board.

Many parents who will be attending activities are ASU alumni.

According to Jim Creasman, alumni secretary, approximately 700 students are children of ASU graduates. He says further that eight students have grandparents who are alumni.

Creasman noted that Miss Sue Ann Owens, a junior from Tempe, reported to the Alumni Association that her parents and both grandmothers are alumni.

According to Creasman, Miss Sandra Archer, a student from San Rafael, Calif., is the daughter of Parker A. Archer, 1939 Student Body President.

Creasman, whose daughter Martha is an ASU sophomore, is hopeful of a big turnout of parents.

Mrs. Sharon Coleman, ASU ticket manager, reminds students that guest tickets for their parents must be purchased prior to 4 p.m. Saturday. According to Mrs. Coleman, guest tickets for seating in the student section are \$4 each. A student cannot sit outside the student section without a ticket for that section.



CLEAN UP -- Scurrying to clean rooms for Parents Day open house (after all, Mother is coming), are Carolyn Curry, left, and Linda Allison. The same scene was repeated all over campus in preparation for the "big visit."

Thirteen Get Blue Key Nod In Early Morning Tapping

Thirteen men in Tempe and one in Laramie, Wyo., were tapped at 6:30 this morning for Blue Key honorary.

ASASU Activities President Jim Howard tapped Steve Montgomery attending the Memorial Union Convention in Wyoming with the greeting "Congratulations! You have been tapped for Blue Key."

The remaining new members were awakened with the same greeting before joining for

breakfast at the Tempe Sands. Juniors tapped include Bob Schure, Steve Sargent, Steve Montgomery, Bill Flick, Steve Slemmons, Wayne Cole and Henry Klopping.

Seniors include Grant Allen, Frank Hennig, Jack Ong, Andy Mitchell, Duane Alleman, Gerald Hahn and Keith Renelt.

Selection is based on scholarship, leadership and contribution to the University through extra-curricular activities.

Committee Announces Sites For Homecoming Decorations

Decoration sites for Homecoming Week, Oct. 16-21, were announced today by Ron Schmietenknop, steering committee in charge of decorations.

"Great Myths" decorations will be erected Monday, Oct. 16. Decorators will take a break Tuesday night for the coronation ball, then resume work Wednesday to meet the judging deadline Friday.

Winners will be announced at the Homecoming football game Saturday evening.

Sororities will build their decorations in the Sun Devil Stadium drive; Palo Verde hall independents will build in front of the dormitory; Adelphi Dr. fraternities, in front of respective houses; Sahuaro Hall fraternities, on west side of Adelphi Dr. along street; off-campus fraternities, in front of respective houses; and special interest groups and McClintock Halls, before main entrance of Memorial Union.

Election Notices

All candidates for freshman senator who have turned in petitions must have a picture taken at the ASU Photo Service on Monday morning. It must be specified for the State Press. No snapshots may be used.

There will be only one general election for the Homecoming King and Queen contest. Petitions for the contest are due Oct. 12. For further information contact Dick Langmade.

Board Gives 'OK' To Graduate School

The Board of Regents Wednesday approved the establishment of a graduate school of Social Service Administration at ASU.

The school, which was requested urgently by private and public welfare agencies in Arizona, will offer a two-year program leading to the degree of Master of Social Work.

In other action, the Regents approved the firm of John A. Carollo Consulting Engineers, Phoenix, for the design of the

water distribution system, sewer, electrical and irrigation systems for the small group-housing subdivision at Eighth Street and Scottsdale Road.

A contract for \$11,010.45 was approved for the Bentson Contracting Co., Phoenix, for surfacing the parking area at the north end of the ASU campus.

A \$25,880.22 contract was approved for Cyr and Evans Contracting Co., Tempe, for street improvement in the north campus area.



STAY CASUAL — ASU cheerleaders John Brooking, Delma Van Hooser, Bill Reed and Sue Peterson, stress casual dress at football games. The pair on the left show preferred dress, while the usual ASU dress (not preferred by Rally and Traditions Board) is displayed on the right.

(Photo by Ralph Forney)

New Magazine Set For Campus Writers

Are you a budding Ernest Hemingway? Or, perhaps a struggling Walt Ditzel?

If so, "Connote," a publication consisting entirely of ASU student writing, poetry and art work, needs your contributions for its initial issue.

Slated to be released within two weeks, the magazine is edited by Jim Davis, ASU senior, and will be published by the Triangle Printing Co. It will be unique in that there will be no editorial restrictions and controversial ideas are welcome, Davis reports.

Davis is accepting materials or they may be mailed to the publisher at 516 N. 46th St. in Phoenix. Contributions already have been entered by William Decker, Jeff Berner, Gil Locks, Larry Morgan and other ASU students.

"We felt that ASU and Phoenix needed and could support a high quality magazine, one that would not have the usual editorial restrictions," said Davis.

He added, "With 'Connote' the quality of content is the only determinant. We shall remain student-centered and-oriented and hope to print the best available in fiction, poetry, articles, criticism, etc."

The magazine will be available at bookstores on campus.

Dean Calls For 'Who's Who' List

The names of nominees for Who's Who In American Colleges and Universities must be in the dean of students office, MU 213 today.

This is the highest honor a student can receive at ASU. Last year 36 finalists were accepted for the national list.

Selection of the candidates is based upon scholarship, with a minimum cumulative index 2.00 and 8 1/2 hours, extra class activities and honors based on ability.

Nominations may be from faculty, staff, student organizations and residence halls.

Implications

Hi again! Here we are with your "complaint" column. IMPLICATIONS is a column where you can put in your complaints or even your compliments about ASU; that is, other than the letters to the editor which are reserved for big issues such as "Communism at ASU." If you note something around campus that you think could be corrected, just leave a note at the State Press stating your "gripe." Please write in because we get a bang out of reading how college students spel.

games, English, Drama, Humanities, Journalism, Radio and Television, Speech and Foreign Languages were all picked up at that one little room. It seems like something could be done to speed up drop-add in this area.

A big "Hoo Ha" to the men of East Hall! Their decorations to the effect of "Beat Wichita," although primitive at times, was a boon to school spirit. Old timers (third semester sophomores and over) will recall the days when all the dorms on campus were decorated on Friday before a football game, with a trophy given to the best hall at the game. Remember how Gene Savage and the old crew at Haigler used to have great decorations? We wonder if that spirit could be raised again.

If you went through drop-add and survived, you're lucky, especially if you went to the English building. It seems as though all the class cards for the following departments were in one room, which caused a traffic jam like those at the football

RCA VICTOR

Presents

Harry Belafonte

NEWEST RELEASE

★ JUMP UP CALYPSO ★

- Love Is A Gentle Thing
- Mark Twain
- An Evening With Belafonte
- Caribbean

"Carnegie Hall" & "Return To Carnegie Hall"
Reg. 9.95 each NOW 7.98 each

HILLS RECORDS

TEMPE CENTER — WO 7-5234

● GIFT CERTIFICATES ●

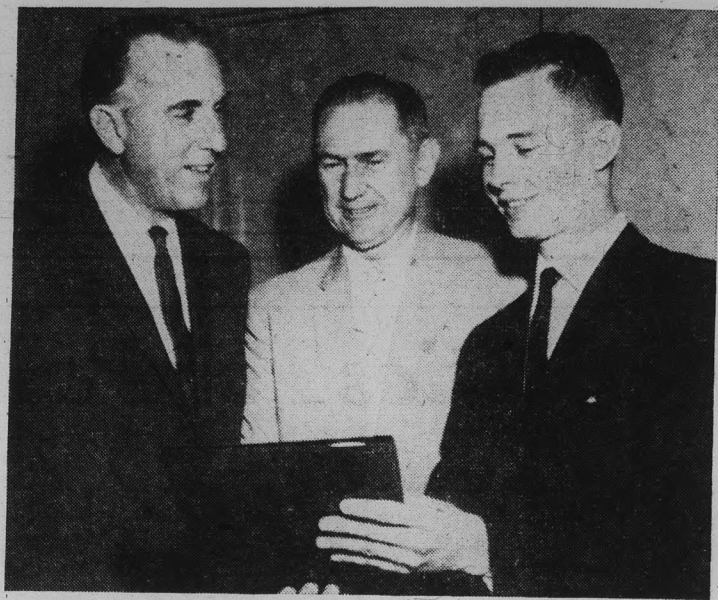
OPEN THURSDAYS TILL 9 P.M.

ASU Establishes Research Award

A \$1,000 fellowship award for personnel research at ASU has been established at the university, Dr. Robert F. Menke, campus Director of Placement, recently announced.

The Vera Christie Graduate Fellowship, sponsored annually by the Western College Placement Association, has been established to encourage research in the philosophy, standards, practices and objectives of recruitment and placement, it was stated.

Persons interested in applying for the fellowship may obtain full details from Dr. Menke, Room 101, Administration Building. The award carries no restrictions on the holding of other awards or employment.



THE GOVERNOR OBSERVES -- At the opening session of the ASASU Student Senate, Gov. Paul Fannin addressed the senators on their role in government. Also pictured are Dean W. P. Shofstall, advisor to the Senate, and Speaker Jim Chilton.

Check your opinions against L&M's Campus Opinion Poll # 7

Who'd make the best wife?



- WOMAN EXECUTIVE
- FASHION MODEL
- NURSE
- SECRETARY
- TEACHER

Is it better to marry in college-or wait till later?



- MARRY IN COLLEGE
- WAIT TILL LATER

How many cigarettes do you smoke a day?



- LESS THAN 8
- 8-12
- 13-17
- 18-22
- OVER 22

Here's how 1383 students at 138 colleges voted!

Start fresh Stay fresh with L&M

Any way you look at them-L&M's taste better. Moisturized tobaccos make the difference! Yes, your taste stays fresh with L&M-they always treat you right!



They always treat you right!

BREAK. STAY FRESH WITH L&M. OR A LOT, GIVE YOUR TASTE A LITTLE WHEN YOU SMOKE A LITTLE.

Over 22	15%
18-22	28%
13-17	19%
8-12	18%
Less than 8	20%
Marry in College	15.4%
Wait till later	84.6%
Executive	3.0%
Secretary	16.4%
Nurse	27.9%
Fashion Model	11.9%
Teacher	40.8%

Try fresh-tasting, best-tasting L&M today... in pack or box!

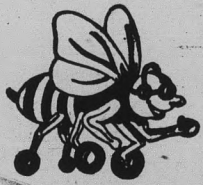
S. A. Group Meeting Set

The Student Affairs Committee will meet Monday at 3:30 p.m. in the Board of Regents room.

The committee is designed to serve the University as a general advisory body to the ASASU Executive Council, the Student Senate, and other organs of the Associated Student under their constitution as well as other student activity matters, according to the Statement of Guiding Principles of the Student Affairs Committee issued by President G. Homer Durham last summer.

The Committee on Student Affairs consists of the principal administrative officers appointed by the President with respect to student affairs.

Mac & Jack Sez . . .
 "Leaning Left Or Right?
 Our Centerpieces Still Score!"
PIONEER CAMERA SHOP
 TEMPE CENTER



FLIGHT INSTRUCTION

Special Rates For College People

MODERNIZED GROUND SCHOOL FOR PILOTS & NON-PILOTS

Amos Flight Operations

A Private License is a Must In Modern Business

Don Amos — Class of '56

Phone BR 5-7291

SKY HARBOR

Red Carpet To Unravel For Parents

Fraternalities, sororities and dorms are taking an active part in the Parents' Day weekend. Most have planned some special event to honor visiting parents.

A sampling from each group shows that East Hall will roll out the red carpet, literally, for parents, ushering them into the hall for open house. Best B plans a tea following the campus tours scheduled by the Parents' Day steering committee.

Pi Kappa Alpha will serve a 6 p.m. buffet and then parents and the Pikes will attend the game together. Phi Sigma Kappa scheduled a 5 p.m. buffet and a party after the game.

Alpha Tau Omega fraternity has scheduled a banquet beginning at 5:00 p.m. following all day open house.

All sororities in Palo Verde are holding open house on each floor. Independents throughout the dorm will also honor their parents with a tea.



CONVENTION BOUND -- Luggage-laden and overcoat-carrying campus leaders left yesterday for Laramie, Wyo., for the Regional Student Union Convention. From left are Oliver White, activities director of the MU, Steve Montgomery, Jim Howard, Jim Chilton, Mike Kinsey and Charlie Roberts.
 (Photo by Ralph Forney)

New Vocal Scholarship Established

ASU's department of music recently announced a new vocal scholarship fund in memory of the late Harry B. Harelson, former chairman of the department.

Mr. Harelson began his Arizona career as a teacher at Mesa High School in 1923. He came to ASU in 1935.

Since 1935 he was active as a professor of voice at ASU and aided in establishing an ASU chapter of Phi Mu Alpha Sinfonia, national music fraternity.

Dr. Wendell J. Rider, chairman of the department said contributions towards the scholarship have reached \$350.

Workshop Will Start For Students

The Saturday Morning Art Workshop at Arizona State University, which will start on Oct. 14, is designed to offer a variety of experiences to creative students throughout the valley.

Meetings are scheduled from 9 a.m.-noon through Dec. 16, according to Jack Taylor, ASU assistant professor of Art.

Application blanks, which have been sent out to the valley schools, should be returned to Professor Taylor at the ASU Art department before Oct. 14.

Enrollment will be limited to 100 students from nine to 18 years of age. Tuition fee, including the cost of all materials, is \$20.

Taylor said, "We are looking for students who are sensitive to problems, flexible in their approach, and fluent in their interpretation. Imagination and original thinking will be encouraged, along with intellectual and emotional curiosity."

Whatever you do, do it better
 with Maximum vision and comfort.

Dr. Irving Kanarek

Optometrist

Papago Shopping Plaza
 (Near Little Lulu)

Appointment Suggested
 WH 6-7431

GANT



The Hugger

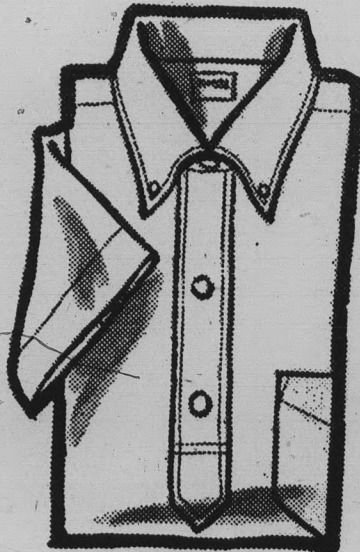
The Styles Shown

Above: The Hugger in white oxford with tapered body; B.D. collar, 5.95.

Center: The pullover in white, linen, blue or maize oxford. 5.95.

Right: The Tab collar oxford shirt in white or blue, 6.50. In stripes, 6.95.

3 TRADITIONAL IVY FAVORITES by GANT of New Haven



Pullover

We believe that Gant shirts have a certain well-bred look that distinguishes them from all others. Careful tailoring and adherence to a strict tradition are qualities indigenous to Gant. Here are 3 styles from our collection.

GANT



The Tab



Hanny's Harsity Shop
 30 NORTH FIRST STREET

Downtown • Christown

See Campus Representatives: Ted Lorber, Jim Kirkpatrick, Jim Oakley, Renz Jennings

All Events Should Be Calendared

Organizations wishing to calendar events must obtain forms from the associate dean of students office in the MU building, groups are reminded.

If the event is on campus, use of school property must be cleared by the supervisor of the building to be used.

Signatures required are those of the building supervisor, faculty member or organization sponsor, chaperones and signature of the person filing the reservation.

In event of change or cancellation, it is the duty of the person or group calendaring the event to notify the calendar secretary in Dean Nichols' office and the building supervisor.

New Stickers Necessary

Parking stickers are a must for anyone with a car on campus. Last year's stickers are void.



The STATE PRESS, distributed by the campus chapter of Sigma Delta Chi under the direction of Circulation Manager Charles Hilgeman, is the official campus newspaper of Arizona State University. It is published each Wednesday and Friday throughout the school year, excepting holidays, and is entered as second class matter at the Tempe, Arizona, Post Office under the Acts of March 3, 1879, and August 24, 1912. Subscription price, \$3 per school year.

The STATE PRESS is a member of the Arizona Newspapers Association, Associated Collegiate Press and National Advertising Service, Inc.



EDITOR-IN-CHIEF _____ JACK ONG

NEWS DEPARTMENT

MANAGING EDITOR _____ BILL FLICK

NEWS EDITORS _____ LINDA WARREN, BILL OVEREND

COPY EDITOR _____ CAROL OSMAN

CHIEF PROOFREADER _____ EDIE ALLERS

ASSIGNMENTS EDITOR _____ BARBARA MARLOWE

ASSISTANTS _____ MARY GORMAN, JANET WOLHETER, BOB ZACHE

SOCIETY DEPARTMENT

EDITOR _____ ROSALYN WHITNEY

ASSISTANT _____ BETTY ADAMS

SPORTS DEPARTMENT

EDITOR _____ BOB EGER

ASSISTANT _____ BOB JACOBSEN

EDITOR'S Scratchpad



By BILL FLICK

Greetings! Back again after an issue's worth of vacation from this column. Our reliable sidekick "B.O." Overend held his own Wednesday, and luckily enough we all still have jobs around this place. So let us say that we're darn glad to be with you.

Hundreds of girls were gathering en masse at the doors of the reception hall. From all these excited hearts, only two or three (four at the most) would realize the bliss of being selected.

Two or three (four at the most) out of so many hundreds! Yegads! they were all thinking: "Will it be me? Will my heart wear a valentine?"



The girls silenced their gibberish when the sharp-looking cadets marched precisely to the reception hall doors. The cadets, stern and straight in appearance, had done their honors. They quick-changed into sociable young gentlemen and set forth to greater duties.

"Enter, ladies," ushered the head man. The ladies gracefully entered and just as gracefully floated to the davenport along



Actually, we feel that our editorial columns have succeeded in bringing forth some dynamic ideas and also have lightened up the good ole SP. We speak not only of "I Cover" but also of Ong and Eger.

At least we have received some results.

In particular — the space problem, in reference to the Union: Had a good little talk with a very earnest and hard-working woman (Mrs. Cecelia Scouler). And it is unbelievable . . . a few statistics: During school year 1959-1960 a total of 140,417 persons belonging to 2,080 groups used the various facilities (i.e., space) of the union. During 1960-61 the number jumped to 211,791 persons in 3,231 groups, indicating an increase of nearly 70%. And, according to the MU staff, the number is increasing again this year. The staff is earnestly striving to maintain efficiency in the union currently, and at the same time working to compile a complete study of the space problem. So we'll have More on this later—surely.

Also, a representative from Sahuaro Hall came in Wednesday complaining (politely) that B.O. Bill had ruined all the work which he and others had done in maintaining the standards of Sahuaro. Maybe so, but you really should have seen that place the first week or so of school. Anyway, the point we're making is that we invited and encouraged this aforementioned individual to write a letter to our Editor defending himself and his establishment. As of four o'clock yesterday no such letter had hit the copy desk.

Moral of this story—don't just shout it, write it!

Have noticed that a certain group on campus is on the band wagon, to have everyone dress casually at the games. Seems they try it every year. Should they succeed, we'll see you after the game in your Bermies at Mountain Shadows (and bring your tennies — they have courts at Camelback Inn).

We are pleased to hear that the Greeks are gung-ho over the "build-a-banner program." But let's not forget that East Hall has been doin' it for the last 8 years!!! (maybe longer, who knows? Even Cereghino hasn't been here that long.)

Being as last week's prediction was so far off, we'll go even farther out on the limb of uncertainty and say: Arizona State 0, Utah 0.

Lastly, to end the mam affair once and for all, let us say in response to Mr. Overend's comment — OH YES WE WILL!!!

Letters To The Editor

Someone's Mixed Up

To the Editor: Our friend seems to be of the opinion that Tempe is doing ASU a favor by allowing it to occupy city property. Actually, the reverse would seem to be nearer the truth. To my mind, the city of Tempe is a blight on the Valley of the Sun, and the major reason for its continued existence has been ASU.

Mr. Dahlstrom closes his letter by saying he liked the multicolored "A". Perhaps this is because it matches his multicolored head.

Dick Shaw

Check This Waterloo

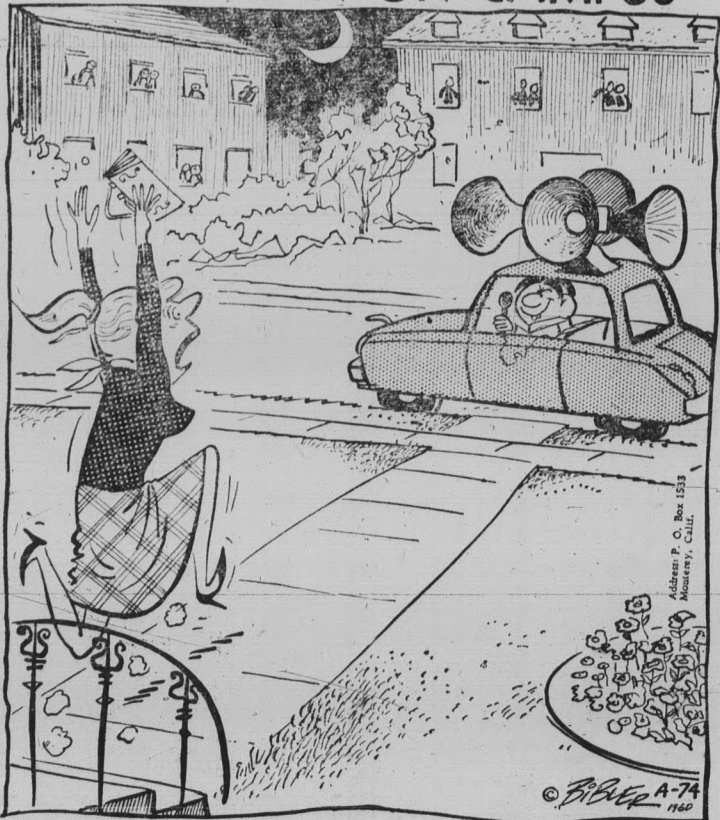
To the Editor: Help! I need money! The student handbook says that in order to cash a check, all a student has to do is go to the bookstore. What they don't say is that you should only take the time to do this if the check is for \$5 or less.

What about those students who receive a weekly allowance, usually totaling more than \$5? Is there any place on campus where we can get a bigger check cashed?

This is a real problem for out-of-state students, who have trouble identifying themselves.

Broke

LITTLE MAN ON CAMPUS



OK, OK, I'M COMING! — BUT WHY CAN'T YOU JUST BLOW YER HORN LIKE TH' OTHER FELLOWS?!!

the walls. They sat.

The head man cleared his throat.

"Welcome, one and all," he smiled. "As you know, our selection will be narrowed to a heartbreaking number of two or three, four at the most. You won't all make it. We're sorry. But right now we'd like to express our gratitude to you all for giving our fine organization this attention."

He cleared his throat again.

"Now we'll get on with the selection. Twenty of you will be chosen as finalists. We'll call you this evening, my buddies and I will, and you'll join us for coffee tomorrow morning. From you we will pick our winning twosome or threesome, foursome at the most."

He scratched his forehead with sophistication.

"Now we're going to drift around and socialize. Ask questions and we'll try to answer them.

"The purpose of this forthcoming socializing is for us to judge you on personality and learn a little about you too. Let's go, men!"

The hundreds of chicks quickly applied smiles to their lips. They were all very friendly looking.

Now we'd like to pick on one lovely, the fashionable Miss B. B. Bombshell, dressed in a fashionable white sheath that was accompanied by golden heels and jewelry.

The head man interviewed her. "You are?"

"B. B.," she giggled with a blush. "B. B. Bombshell, sir. Hee hee!"

"I . . . I . . . why are you with us this fine afternoon, Miss Bombshell?"

"Well, hee hee, it'd be awful nice to be part of your auxiliary, or however your pronounce it."

"You are taking Sea Maids, our Marching-Aboard-Ship-Training Corps auxiliary, seriously?"

"Oh-h-h, yes indeed-y!" she slobbered with emotion. "Ummmm, hmmm! Sho' am, cutie."

The head man straightened his stripes.

"Good. Have you had any marching experience?"

"No-o-o? But . . ." she started. Then she rose from her perch and demonstrated three struts right before his eyes. "I can walk pretty good, though," she breathed.

"There's lots of work," the head man said, flustered. "You're sure you'll be able to add something to our auxiliary if selected?"

"Sure I'm sure. Oh, yes indeed-y, I'm positive, sir."

"There are 7:40 a.m. drills once a week, parades to march in, a beautiful uniform that you'll have to keep clean. . ."

"That's for me, buddy!" B. B. gasped.

"Fine. If you make the finals, we'll give you a buzz tonight."

"Any time," she nodded with a huge smile and wink of the eye.

B. B. was one of hundreds who tried out last week. This week she's a proud new pledge of Sea Maids. Our congratulations.

AFTER-THOUGHT — "A smile is a curve that can straighten out lots of things . . ."

Lieutenant Colonel Wykoff Named New MS Professor

Lt. Colonel Theodore Wykoff succeeded Colonel Farrell as professor of Military Science early this week.

Professor Wykoff recently returned from active duty in Korea and told ROTC cadets, "The free world's position in Eastern Asia depends upon well trained American officers to support the Republic of Korea's

troops against Communist aggressors.

The Colonel is enthused with the ROTC program and believes that the free world needs specialists of all types to train, lead, and support our frontier barriers.

He holds a Master of Arts of Public Affairs and Political Science and is a graduate from the ROTC program of the University of Southern California in 1942. He has had three overseas tours of duty and has familiarized himself with the Communist aggression problem.

The Colonel is married and the father of three children.

See our complete selection of fresh, delicious



TEMPE DRUGS

6th & Mill — Open 9-7

Mac & Jack Sez . . .
"We Ain't Hard To Get Along With . . . Try Us!"
PIONEER CAMERA SHOP
TEMPE CENTER

Faculty Facts

Dr. Thomas Weiss, associate professor of Education, will be featured speaker Monday night for the Beta Phi chapter of Kappa Delta Pi, national education honorary.

The meeting will be at 8 p.m. in MU 218. Following Dr. Weiss' address, "Is Education Enough?", there will be a question-answer period.

Mrs. Erva Verner, campus laboratory school teacher, heads the program committee. Officers of the honorary are Robert F. Frazier, president; Mrs. Verner, vice president; Carol Coon, secretary; Alvin Shipley, treasurer and Larry McGrath, historian-reporter.

Dr. Roland K. Robins, professor of Chemistry and principal investigator on cancer research, is responsible for ratification of a combined ASU-Cancer Chemo-therapy testing

contract for a study of "Synthesis of Various Purine Derivatives for Anti-Tumor Testing."

Dr. Walter G. Becker, ASU associate professor of Business Administration in finance is the recipient of one of 22 banking seminar fellowships awarded by the Federal Reserve Bank of San Francisco. The award will be used for attendance at the sixth Central Banking Seminar, Nov. 1-3 in San Francisco.

The Board of Regents has approved leaves of absence for four ASU faculty members during the current academic year.

Prof. James W. Elmore, professor and director of the School of Architecture, was granted a six-month leave effective Feb. 1 to gather and revise material for a book.

Eugene Chausow, assistant professor of Music, was given a leave of absence for the academic year 1961-62 to be a horn soloist with the National

Symphony Orchestra of Washington, D.C.

Also granted leaves were Mrs. Helen E. Nebeker, instructor in English, for the 1961-62 year to continue studies leading to an advanced degree, and Lee Shaw, assistant professor of English, a one-semester extension of last year's leave.

Three recent articles on bacteriological studies appearing in professional journals are the work of Dr. Roy M. Johnson, associate professor of microbiology at ASU.

"Nutritional Requirements of Growth and Sporulation for Bacillus Cereus in Microculture" appears in Bacteriological Proceedings, published by the Society of American Microbiologists. Gayle Gilda, Tempe graduate student, is co-author.

Carl E. Cords, Phoenix, a former graduate student now working on his doctorate at the University of Washington, collaborated on the second article, "The Effect of Periodate on Sporulation in a Synthetic Medium for the Bacillus Cereus," appearing in the Journal of the Arizona Academy of Science.

"An Analysis of Staphylococci Types in the Phoenix Area," written by Dr. Johnson with the cooperation of two Phoenix hospitals, appeared in Arizona Medicine.

Dr. Collice H. Portnoff, head of ASU's English department, has been elected to membership in the American Translators Association, New York City. The association is devoted to advancing the profession of translating and interpreting works in foreign languages.

Dr. Portnoff is a member of Centro Studie Scambi Internazionali, Rome, Italy, a group which promotes international cultural exchanges.

How to get yourself a superb new **MONARCH*** portable typewriter by *Remington*

"We'll help you convince your parents you should have a Remington **MONARCH** portable typewriter to take the work out of your school work . . . and make homework fun! All you do is fill out and mail the coupon below. Then we write a letter to your folks outlining the reasons why a Remington **MONARCH** portable can help you get better grades. (Incidentally, the **MONARCH** portable comes complete with carrying case plus a terrific self-teaching touch-typing course that's a pushover to master!) Ask to see the rugged, modern, compact **MONARCH** portable at your college store or your Remington dealer!"



CHECK THESE SUPERB "EXTRA FEATURES": 1. Single key instantly sets or clears columns and indents! 2. Touch regulator adjusts to your individual "feel"! 3. Variable line spacer lets you type "right on the lines" of ruled paper! 4. Adjustable paper edge guide lets you insert paper precisely every time! 5. Calibrated scale on paper bail lets you center your headings faster! 6. Numerals and calibrations on paper table simplify margin settings—positively! 7. Erasure table on cylinder simplifies making corrections! 8. Card and writing line scale lets you type more precisely! 9. Removable top cover makes ribbon changing and cleaning easier! 10. Carriage centering device locks machine tight for safer carrying! 11. Two-color ribbon and stencil control! 12. Lighter weight without a hint of flimsiness or "creep" while you type!

Mr. William Most, Advertising Manager
Remington Portable Typewriter Division
Sperry Rand Corp.
315 Park Avenue South, N. Y. 10, N. Y.
Yes, my parents could use a little convincing . . . and I can happily use the Monarch portable to take the work out of homework!

YOUR NAME _____
ADDRESS _____
CITY _____ STATE _____
PARENT'S NAME _____
ADDRESS _____
CITY _____ STATE _____

Campus Security

"Watch your books!" This advice from Chief Norman Peck of Campus Security characterizes the sad shape of affairs concerning students, books and supplies.

Books are being stolen on a wholesale basis in the cafeterias and lunch-spots. Students leave their books on shelves and return to find them gone; no clues, no trace, no nothing, Peck reports.

The ASU bookstore and "Devil's Den" have become notorious for the thefts since the beginning of school. Wherever you are, sit close to your books and keep an eye on them, security officers advise.

Good news for motorscooter and motorbike riders; special parking areas have been announced. Sgt. Thomas Godbere here has designated the following areas to ease the confusion between the two groups:

The northwest corner of staff lot H, recognized by surrounding block fence, lot U, opening next week, and proposed lot 1, NE corner. If these areas are full, student lots are the answer.



ON CHANNEL 8 --- Garry Moore, who has been starring on television and radio since he was a senior in high school, reads a poem and a story by Washington Irving on "Reading Out Loud," a new series designed to encourage parents and children to read together. The series, which is being distributed by National Educational Television, is broadcast Mondays at 7:30 p.m. on ASU's Channel 8, KAET.

Mrs. Turley Returns To Campus As Assistant Dean

From student to administrator. That's Mrs. Joycelynn Turley, ASU graduate, who is back on campus as Assistant to the Associate Dean of Students.

Mrs. Turley graduated from Arizona State in 1959. While on campus Mrs. Turley was Associated Women's Students vice president, and Spurs president. She was active in Kappa Delta Pi, Beta Chi Epsilon, and Pleiades.

She was elected outstanding

senior woman by AWS, American Association of University Women, and the Home Economics Department.

Mrs. Turley won the "Make It Yourself With Wool" contest, and the Delta Kappa Gamma scholarship. She was also a member of Who's Who.

In her new position Mrs. Turley will be an advisor to Alpha Lambda Delta, loan chairman, and will work with new-student interviews.

Landscapes Highlight Exhibition

Landscape designs of prominent Vermont landscape architect Dan Kiley are now being exhibited in the School of Architecture at ASU.

The exhibition includes 24 panels borrowed from the American Federation of Arts and will be on display through Oct. 22.

Kiley's credo, "to develop the warmth inherent in nature and in the site," is explored in photographs of his work at the U.S. Air Force Academy, Rockefeller Institute, Union Carbide and Carbon, General Motors and in several private homes designed by leading architects.

Ceramics Work Now On Display

Two faculty members, six students and three former students of ASU have craft work on display in the third annual Members Exhibition of the Arizona Designer-Craftsmen currently showing at the Heard Museum in Phoenix.

Ceramic pieces by Don Schaumberg, associate professor of Art at ASU, were accepted for the exhibition by a three-man jury.

Roland Searight, a member of the Training School faculty, is represented by several pieces of silver jewelry, and Jim Bacon, a graduate assistant in Art, has ceramics on display.

Students whose work was accepted include Janet Kaufman, ceramics; and Alexandra Bakevych, Barbara Bardrick, William Jennys and Nancy West, jewelry.

Mac & Jack Sez . . .
"How're You Fixed For Film?"
PIONEER CAMERA SHOP
TEMPE CENTER

MOM & DADS
Welcome

Happy House Shop
Tempe Center



The Americana Shop



SHORT SLEEVE DRESS SHIRTS

... still in demand on campus

We've another shipment of short sleeved shirts 'cause the weather is still hot!! Choose either the button down or snap-tab collar in oxford cloth . . . both collar models available in white or blue.

from \$4.50

Walk Shorts by



Natural or Olive Poplin
In The Traditional Model

\$5.95

SIZES
28-36

Open 9:00 a.m. to 6:00 p.m.

Thursday Night

'til 9:00 p.m.

WO 7-5457

THE
Americana
SHOP

QUALITY MEN'S APPAREL
TEMPE SHOPPING CENTER

FOR THE BRIGHTEST
AND THE SMARTEST

Fashions

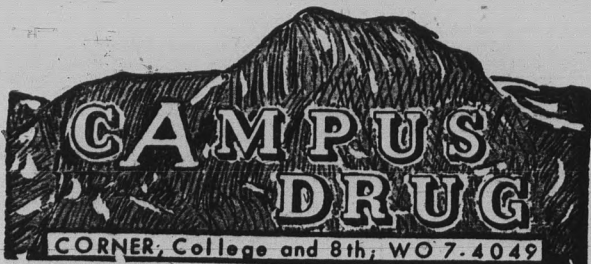
Bonnie Sue Fashions

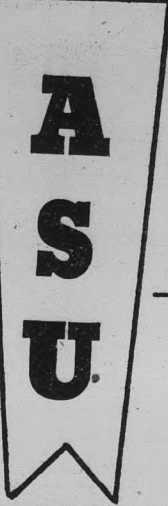
Tempe Shopping Center — WO 7-4094

SPECIAL PURCHASE

CUTEX LIPSTICK

7 High Fashion Shades
All for 1.50





welcome

28

Go You SUN DEVILS!

FINE STORES TO SERVE YOU

...just a block away!

DOWN With UTAH

- Americana Shop
- Bob Brickie Furniture
- Bonnie Sue Fashions
- Celia's Fashions
- Center Hardware
- El Rancho Market
- Erickson's Handcrafts
- First Federal Savings and Loan Association
- First National Bank
- GallenKamps
- Happy House Shop
- Hill's Record Shop
- House of Pancakes
- Jam's Restaurant
- King's Fashions
- Little Travelers
- Pioneer Camera Shop
- Porters
- Ray's ASU Barber Shop
- Rosamond's
- Ryan-Evans Drugs
- S&H
- Redemption Center
- Sewing Basket
- Sherwin-Williams
- Tee Pee of Toys
- Top's
- W. T. Grant Co.
- ZZZona Laundry & C/rs



Tempe Shopping Center

on mill avenue - 8th to 10th streets

OPEN EVERY THURSDAY EVENING UNTIL NINE

Alternate Pom-Pon Girls Show Vivacity In Action

Five alternates were chosen this week for the ASU Pom-Pon line. They are Paula Freestone, Doni Herre, Mary Lou McNatt and Sandy Berry, freshmen, and Marilyn Whitney, sophomore.

These girls will substitute for varsity members who, for some reason cannot perform at one of the school's events. They also will replace any varsity member who may drop out during the year.

For the first time, the squad has been limited this year to eight members instead of the usual ten. The reason for this change, according to Patsy Rich, co-captain, is that "We are working extensively with the band, and it has an 8-man front. The number eight also works out better with the counts of music whereas ten always presented a problem."

The new girls were selected by a panel of seven judges after a group of 15 was chosen by the returning varsity squad. There are no seniors on the squad this year.

The pom-pon line presently is awaiting the arrival of new uniforms. They are to be of the traditional white corduroy, with shorter sleeves than last year's outfits.

Reversible weskits (maroon on one side, gold on the other) have been ordered and should be here in time for Saturday's game.

To promote school spirit and to remind students to attend the games, the girls will wear "ASU Pom-Pon" sweatshirts, and white pleated skirts on the Friday before each game.

Each of the new girls chosen this week had high school experience as part of a precision dancing group. Sandy Berry, a Chi Omega pledge, was a three-year member of the Phoenix Union Pom-Pon line, and served as co-captain her senior year.

Doni Herre and Marilyn Whitney both were members of the Glendale Pom-Pon line for three years. Marilyn is an Alpha Delta Pi.

Paula Freestone, from Mesa High, was co-captain of the Mesa Bunnies for two years and Mary Lou McNatt was a Pom-Pon girl at Tempe High for three years before coming to ASU. Mary Lou is now a Gamma Phi Beta pledge.



DAIRY QUEEN

Tastes Better!

Stop In...
Find Out
For
Yourself!!

TEMPE DAIRY QUEEN

950 MILL AVE. — TEMPE

Intellectual Intramurals To Be Tried

"Intellectual Intramurals," patterned after the television program "College Bowl," is now in the planning stages at ASU.

The intramurals program will be a kind of contest, but will match wits instead of athletic talents. "We'll stress the intellect," said Gary Walker, ASU president who suggested such a program to the executive council.

The intramurals will pit student groups against each other. Questions will be submitted by ASU professors and will cover many different subjects.

Walker said that this program will be specifically for ASU student groups, but it is hoped to arrange an intellectual match between representatives of ASU and the University of Arizona.

Details are being worked out by the student-faculty relations board.

ASU, established in 1885, is the oldest institution of higher learning in Arizona.

Returning squad members this year are Joan Charlson, Martha Creasman and Marilyn Vihel, sophomores, and Ellen Adler, Patty Murray and Sue Hergenrather, juniors. Patsy Rich and Gloria Mudersbach, both juniors, are co-captains of this year's squad.

Moskowitz Talks Today

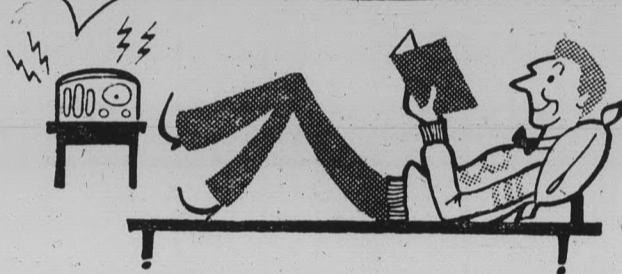
Saul Moskowitz, presently assigned to the Department of Labor, Washington, will speak to students in classes today.

Moskowitz, an economic advisor for the State Department, received his BA and MA degrees from Brooklyn College and Columbia, in that order, and his Doctor of Jurisprudence from the University of Munich.

Moskowitz will visit the classes of Dr. Rice, 8:40-9:30 a.m., SS 212; Dr. Wilson, 9:40-10:30 a.m., SS 325; Dr. Paulson and Dr. Martinez, 10:40-11:30 a.m., SS 303; and Dr. Leonard, 12:40 p.m.-1 p.m., SS 212.

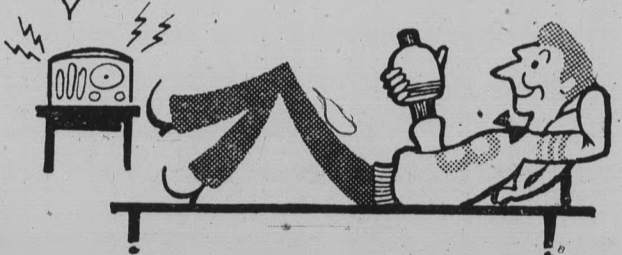
ARCHIE SAYS:

My cousin Archie—he thought the electric razor his gal gave him last Christmas was o.k. Then he tried Old Spice Pro-Electric, the before shave lotion. Now the guy won't stop talking, he thinks electric shaving is so great.

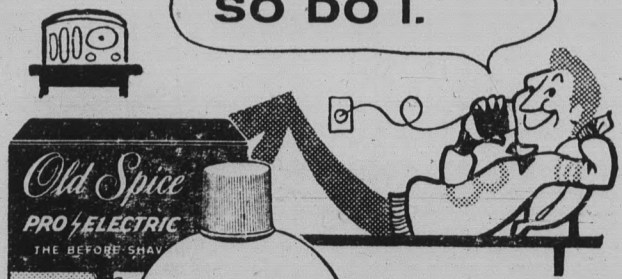


ARCHIE SAYS Pro-Electric improves electric shaving even more than lather improves blade shaving. **ARCHIE SAYS** Pro-Electric sets up your beard by drying perspiration and whisker oils so you shave blade-close without irritation. **ARCHIE SAYS** Pro-Electric gives you the closest, cleanest, fastest shave.

If Archie ever stops talking, I'll tell him I use Old Spice Pro-Electric myself.



SO DO I.



P. S.
There's a .60 size but Archie gets the 1.00 bottle. (He always was a sport).

SHULTON

USMC Interviews Available

Young men attending ASU who are interested in the Marine Corps Officer Training Program may make interview appointments with Capt. R. M. Foster by contacting the Student Placement office between 10 a.m.—3 p.m. from Oct. 11-13.

Foster says, "In our Platoon Leader Class Program, we feel that we have an excellent plan

for men who desire to fulfill their military obligation as a commissioned officer.

"Under this plan, a man attends the college of his choice and the program does not interfere with his studies. The only training requirement is to attend two summer training sessions, each of six weeks duration, at Quantico, Va.



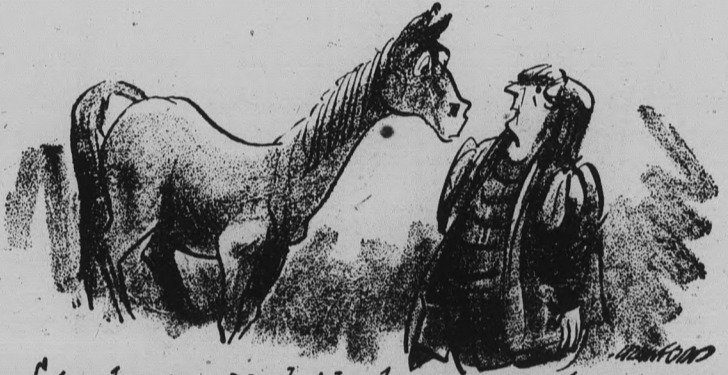
On Campus with Max Shulman

(Author of "I Was a Teen-age Dwarf", "The Many Loves of Dobie Gillis", etc.)

SAIL ON, SAIL ON!

I suppose October 12 is just another day to you. You get up in the ordinary way and do all the ordinary things you ordinarily do. You have your breakfast, you walk your ocelot, you go to classes, you write home for money, you burn the dean in effigy, you watch Howdy-Doody, and you go to bed. And do you give one little thought to the fact that October 12 is Columbus Day? No, you do not.

Nobody thinks about Columbus these days. Let us, therefore, pause for a moment and retell his ever-glorious, endlessly stirring saga.



Columbus never wanted to clap eyes on a horse again.

Christopher Columbus was born in Genoa on August 25, 1451. His father, Ralph T. Columbus, was in the three-minute auto wash game. His mother, Eleanor (Swifty) Columbus, was a sprinter. Christopher was an only child, except for his four brothers and eight sisters. With his father busy all day at the auto wash and his mother constantly away at track meets, young Columbus was left pretty much to his own devices. However, the lad did not sulk or brood. He was an avid reader and spent all his waking hours immersed in a book. Unfortunately, there was only one book in Genoa at the time—*Care of the Horse* by Aristotle—and after several years of reading *Care of the Horse*, Columbus grew restless. So when rumor reached him that there was another book in Barcelona, off he ran as fast as his fat little legs would carry him.

The rumor, alas, proved false. The only book in Barcelona was *Cuidar un Caballo* by Aristotle, which proved to be nothing more than a Spanish translation of *Care of the Horse*.

Bitterly disappointed, Columbus began to dream of going to India where, according to legend, there were thousands of books. But the only way to go to India was on horseback, and after so many years of reading *Care of the Horse*, Columbus never wanted to clap eyes on a horse again. Then a new thought struck him: perhaps it was possible to get to India by sea!

Fired with his revolutionary new idea, Columbus raced to the court of Ferdinand and Isabella on his little fat legs (Columbus, though six feet tall, was plagued with little fat legs all his life) and pleaded his case with such fervor that the rulers were persuaded.

On October 12, 1492, Columbus set foot on the New World. The following year he returned to Spain with a cargo of wonders never before seen in Europe—spices and metals and plants and flowers and—most wondrous of all—tobacco! Oh, what a sensation tobacco caused in Europe! The filter had long since been invented (by Aristotle, curiously enough) but nobody knew what to do with it. Now Columbus, the Great Discoverer, made still another great discovery: he took a filter, put tobacco in front of it, and invented the world's first filter cigarette!

Through the centuries filters have been steadily improved and so has tobacco, until today we have achieved the ultimate in the filter cigarette—Marlboro, of course! Oh, what a piece of work is Marlboro! Great tobacco, great filter, great smoke! And so, good friends, when next you enjoy a fine Marlboro Cigarette, give a thought to the plucky Genoese, Christopher Columbus, whose vision and perseverance made the whole lovely thing possible.

© 1961 Max Shulman

And thank Columbus too for the king-size Philip Morris Commander. If unfiltered cigarettes are your choice, you'll find Commander the choice of the unfiltered. Welcome aboard.



MODERN DANCERS -- A portion of ASU's new Orchestis members strike a pose here. New members were selected last week.

Handicapped ASU Student Persistent, Courageous

"Because no best is quite so good you don't conceive a better; and because no evil is so worse than worst you fall in hate with love," a phrase from an e. e. cummings poem, is well applied to a short, dark-haired man in a wheel chair.

The man is Lennie Yoldi a cerebral palsy victim. Lennie is an Arizona State University junior.

Technical terminology defines cerebral palsy as a birth injury which affects the motor con-

trol of the brain, impairing muscular movement and speech.

When Lenny was born, the medical profession knew little about cerebral palsy. Institutional care was the general recommendation for such a child. One doctor even suggested that Lennie be placed in a home for feeble-minded children.

"The boy has a brilliant mind," said Mrs. Norma Snyder, Lennie's counselor at Phoenix College. Lennie was graduated with honors from Phoe-

nix College. "He was an outstanding student," she added.

Motivation is the superior advantage that Lennie possesses in working with his handicap. The will to achieve has enabled him to learn to eat without help, maneuver his legs so that he can climb from his wheelchair to a car, and turn the pages in a book. Typing and attending school are two other accomplishments.

Activity is one form of expression for Lennie. Wayne Edlund, professor of English and history at Phoenix College, noted that Lennie waved his arms when trying to attract someone's attention.

"If the person isn't in his line of vision, Lennie makes noises to gain recognition," Edlund said.

"I always could tell if Lenny liked what I said," Edlund continued. "If he was pleased, he gurgled. Grunting was the communication for something he disliked."

Lennie's goal is to become a self-sufficient writer, possibly a newspaper columnist. His first articles were published in The Phoenix Gazette and The Arizona Republic during a cerebral palsy drive.

A medical journal is considering the purchase of a story by Lennie about cerebral palsy and vision.

His first contribution to the State Press appeared Sept. 27 on the editorial page. It concerned Dag Hammarskjold's death.

A review of Neville Shute's book, "On The Beach," is an example of Lennie's writing ability. He describes Shute's characters as "single dimensional moles."

Lennie's conclusion to the review reads, "Has Shute correctly analyzed man's true sense of values? If he has, then no thermonuclear holocaust can be as devastating as what already has happened to man. Why destroy humanity if a super-powered Ferrari and a bottle of brandy are what makes it tick? It is dead."

Lennie's classes involve history and writing. His courses are mass communications, the history of Europe since Waterloo and American cultural history. Much of Lennie's writing is based on political observation and political events.

Lennie's interests are primarily esthetic. Reading and listening to classical music are two pastimes. He particularly likes Rubenstein and Beethoven. His parents escort him to concerts at every opportunity. He is bilingual, with a knowledge of both English and Spanish.

A friendly person, Lennie enjoys people. A big problem is communicating with them, since his speech is impaired.

But Lennie can express himself. When he is amused, he throws his head back, his eyes narrow and the wrinkles around them curl. While listening to professors, his face bears a curious intensity.

Watch his face. It talks.

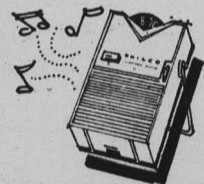
Win \$100.00 a month for the entire school year with Sheaffer's "Pen Money" contest

2 FIRST PRIZES OF \$100 A MONTH



Winners (one man and one woman student) will receive a check for \$400 on Dec. 15th and \$100 a month beginning in January and ending in May.

25 SECOND PRIZES of a new Philco transistor radio



IT'S EASY TO ENTER—EASY TO WIN! HERE'S ALL YOU DO

Just tell us in 25 words or less, what you like *most* about Sheaffer's all-new \$2.95 Cartridge Fountain Pen. Write your entry in ink on any sheet of paper, enclose it with the top from a package of *Skip* cartridges, and mail it to: Sheaffer "Pen Money" Contest, P.O. Box 4399, Chicago 77, Illinois. Entries accompanied with your name, address, school name and class must be received by November 7, 1961.

Entries will be judged on the basis of their believability and freshness of thought. Judges' decisions are final and all entries become the property of the W. A. Sheaffer Pen Company. None will be returned. In case of ties, duplicate prizes will be awarded.

Every college student in the United States may enter, except employees of W. A. Sheaffer Pen Company, its subsidiaries, its advertising agencies... the independent company judging entries... and members of their immediate families. Contest subject to federal, state and local regulations.

Winners will be notified by mail approximately four weeks after contest closes. List of winners available after close of contest if request is accompanied by stamped, self-addressed envelope.

Here are some of the things to keep in mind when you're writing about Sheaffer's all-new cartridge fountain pen

- For smooth, easy writing, there's no substitute for a Sheaffer fountain pen.
- Loads like a rifle with leakproof cartridges of world famous *Skip* writing fluid.
- Fills quick, clean, easy... just drop a *Skip* cartridge into barrel.
- Fits easily into a shirt pocket... comes in a choice of five smart colors.



SPECIAL! LIMITED TIME ONLY

Pen and 98c worth of Cartridges FREE \$3.93 Total Value for

\$2.95

SHEAFFER'S

©1961, W. A. SHEAFFER PEN COMPANY, FORT MADISON, IOWA SHEAFFER PENS • MAICO HEARING AIDS

NOW ON SALE AT YOUR
UNIVERSITY BOOKSTORE

BOOKSTORE HOURS

8 A.M. to 7 P.M. Monday through Thursday—8 A.M. to 4:30 Friday
SATURDAY ONLY — 9 A.M. to 1 P.M.

Padalis Continues Communist Battle

By LARRY JARRETT

Dr. Pranas Padalis, associate professor of economics, has done more than just teach. He fought actively for the freedom of Lithuania, his homeland.

Once a key member of the Lithuanian underground, he helped drive out the Communists. Although Lithuania is now behind the Iron Curtain, Padalis is still fighting Communism today as an educator of future U.S. economists.

"The Lithuanian's hatred for the Soviets was and still is very deep. When the people resisted occupation, the Kremlin planned to deport nearly one million to Siberia, and over 200,000 were deported," Padalis said.

This led to the formation of the underground known as the "Lithuanian Front." Padalis served as political advisor, evaluating the international situation and projecting the possibility of liberation.

Approximately 3,000 college students and young army officers, who had defected from the Soviet controlled army, joined the movement.

On June 23, 1941, the revolution began with simultaneous attacks on all fronts by small cells of 3 to 5 guerrilla forces. Instantaneously, 100,000 farmers joined the national uprising. After 3 days of intense fighting, 4,000 students, officers and farmers were killed, but the Soviets were chased from the country.

Immediately a provisional government, with Padalis as vice minister of commerce, was established. The government was short-lived, however, for the Nazi war machine rolled into Lithuania and on Aug. 5 occupied the country until the war's end.

"The Germans were too strong to overthrow, but resistance was still strong even after 60,000 people were deported to work in Nazi war factories," Padalis said.

"And no Lithuanian youths were drafted into the German army as they were in other countries," he added proudly.

After the war the Soviets regained control. Padalis escaped shortly before the Soviets tried 163 leaders of the anti-Communist movement.

"If I tried to go home now, I wouldn't be too popular. The Communists still have that list and they never forget," Padalis remarked.

Padalis continued his fight against Communism by working for Voice of America from 1954 to 1959. He served as program editor and chief of the Lithuanian Service in the Ra-

dio Center, Munich, Germany. Broadcasting daily, he commented on the internal economic and political developments, criticizing the Soviet regime in Lithuania.

He is now fighting Communism by using his knowledge of the Soviet regime and totalitarian economy to expose the evils of Communism.

"Marx and Lenin could not recognize today's capitalism. It is doubtful that Kremlin propagandists understand it, for they lash out at a 19th century type of capitalism as though it were existent today," Padalis stated.

"We have to know the Soviet economy to see that the new capitalism is far outshining and outperforming the Communist system. We must understand the Soviet economy to evaluate the challenge it poses to the West," Padalis concluded.

Mac & Jack Sez . . .
"Stop In And
Get Acquainted"
**PIONEER CAMERA
SHOP**
TEMPE CENTER

Guest Seats On Sale At Ticket Office

Student guest tickets for the ASU-Utah game will be on sale in the ticket office until 4 p.m. Saturday. No guest tickets may be purchased at the game.

Guest tickets for the Utah, Oregon State and UofA game are \$4. Guests will be admitted to the Hardin-Simmons and University of Detroit games for \$3.50. Tickets for guests will be on sale from the previous Wednesday until 4 p.m. on the day of the game for the rest of the semester.

No students will be admitted to the unreserved area of the stands on their activity tickets.

Fred Elquest & Son

Everything for the Art Student
● Art Supplies
● Picture Framing
703 N. 2nd St.
Phoenix
PHONE AL 8-2628

Senior Photo Deadline Set

Senior and graduate students must make yearbook appointments before November 1.

No portraits will be shot; no more senior and graduate pictures will be accepted for the Sahuaro, after this date.

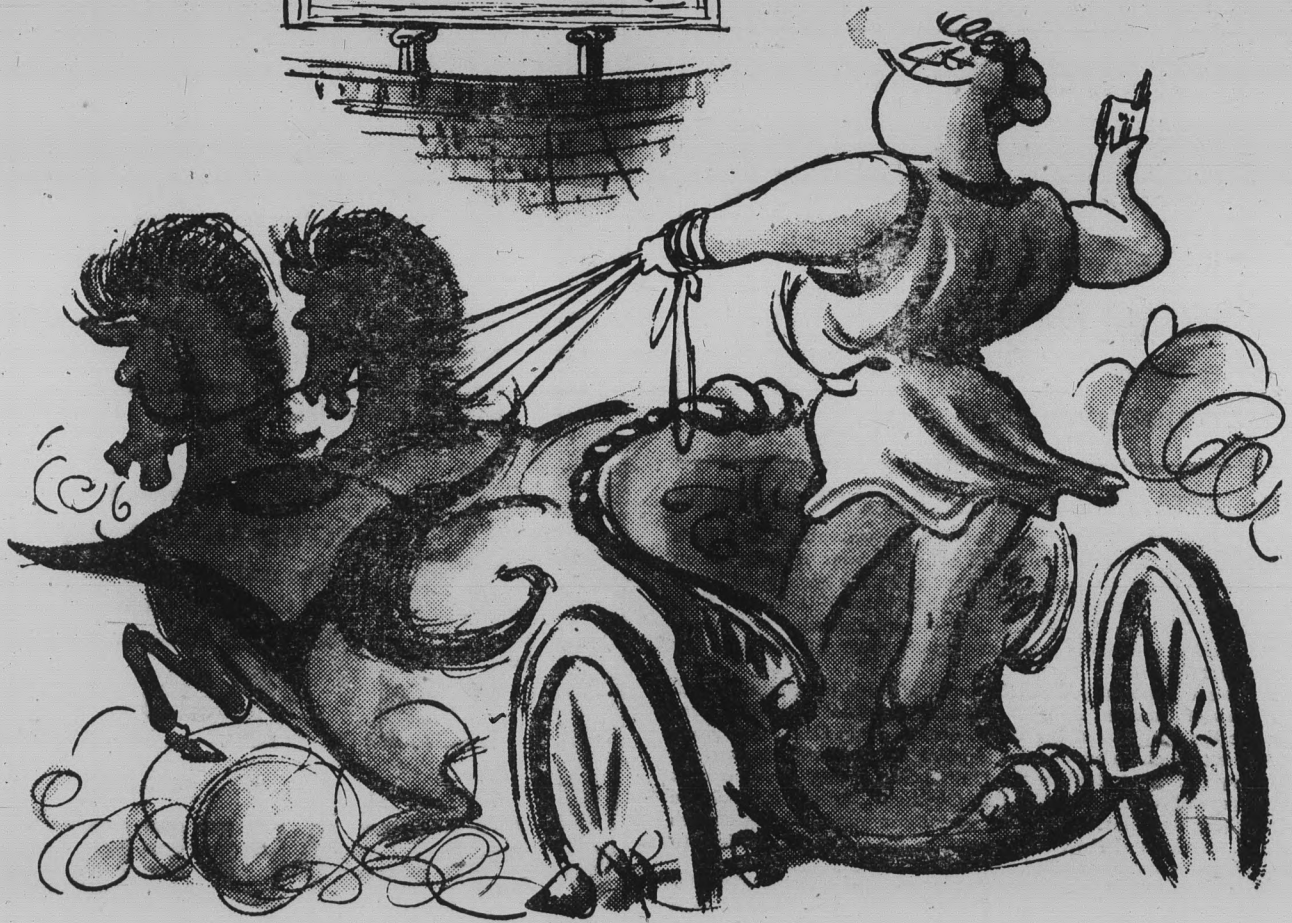
There is no charge for having

portraits taken, and only those taken by the ASU Photo Service will be used in the yearbook. No substitutions will be accepted.

Appointments may be made at Photo Service in Matthews Hall back of the library, or by calling Ext. 553.

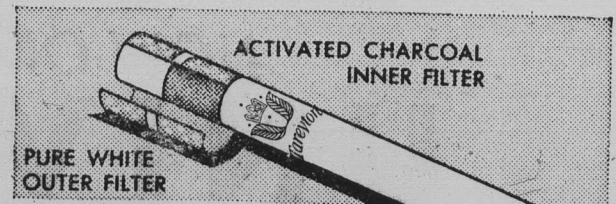
**SCALP
THOSE
REDSKINS**
Then Stop By For
Some Fine Food At
CHICO'S
RESTAURANT*
FINE MEXICAN FOOD

1120 East Apache Blvd. — Tempe
*Air conditioned of course



"Tareyton's Dual Filter in duas partes divisa est!"

says turf king Virgilius (*Big Wheel*) Plutarch. "Try the Appian Way to fine tobacco taste—Dual Filter Tareytons," says *Big Wheel*. "From the Alps to the Aqueduct, we smoke them summo cum gaudio. Try Tareyton, one filter cigarette that really delivers de gustibus!"



**DUAL FILTER
Tareyton**

Product of The American Tobacco Company—Tobacco is our middle name © A. T. Co.

WALLY'S CAFE

Good Things to
Eat and Drink

1133 Normal Avenue
"Across the Street
From East Stadium
Open 7 Days Week
6:30 A.M. TO MIDNITE

Annual AWS Star Formal Urges November 'Time Out'

Take "Time Out" this year and go to the AWS Star Formal, November 11.

Plans are underway for the event with the theme of "Time Out." The highlight of the annual tradition is the crowning of "Mr. Preferred." Candidates will be nominated by women's campus organizations.

Dianne Bowman, general chairman of the formal, has announced her committee chairmen. They are Brigitte Baron and Sally Davis, programs; Sue Young and Lynnda Cook, invitations; Marilyn Fish, Susan Poe and Sue Cantwell, "Mr. Preferred"; Pam Dyer and Elsa Spencer, decorations; Frances Fish and Linda Hardin, refreshments; Gayle Fuller and Stevie Collins, flowers; Kay Reid and Carmen Rames, entertainment and Sue Jeffries and Betty Adams, publicity.

They include Dr. LeRoy Eyring, professor and chairman of the Chemistry department from the State University of Iowa; and Thomas Thomson, associate professor of Chemistry from Adams State College.

Alpha Mu Sigma To Meet

Alpha Mu Sigma, sophomore men's honorary, will elect officers Tuesday at 5 p.m. in the MU.

Mac & Jack Sez . . .
"Try Our Different Party Decorations"
PIONEER CAMERA SHOP
TEMPE CENTER

NOW THREE LOCATIONS . . .

- 1. Tempe Center
- 2. 1302 Rural
- 3. Bayless Center

Open 24 Hours A Day!



ZZZONA
DRIVE-IN LAUNDRY & CLEANERS
FIRST in Laundry and Cleaning • LAST in the Phone Book

VALLEY ART THEATRE

509 MILL AVE. TEMPE
Now Playing "TUNES OF GLORY" at 7:00, 10:15
"SAPPHIRE" at 8:30



"ONE OF THE YEAR'S TEN BEST . . . BRILLIANT ACTING AND DIRECTION A FINE FILM, FIRST-RATE DRAMA MERITS ALL THE HONORS IT HAS ALREADY RECEIVED"
—N. Y. Times

"A THOROUGHLY SUPERIOR ENTERTAINMENT!"
—Time Mag.

"EXTRAORDINARY POWER . . . WILL WIN THE HIGHEST PRAISE."
—N. Y. Post

ALEC GUINNESS
JOHN MILLS

TUNES OF GLORY

TECHICOLOR

also starring DENNIS KAY JOHN PRICE WALSHP FRASER
and introducing SUSANNAH YORK

Plus: "HIT OF THE YEAR . . . AN ABSORBING MURDER MYSTERY . . . THE MOST UNIQUE OF ITS KIND SINCE 'LAURA!'" —Dick Williams

"ONE OF THE YEAR'S MOST INTRIGUING FILMS!" —NEWSWEEK

"Sapphire"

Please don't tell her secret!

Forty-Eight Professors Added To Faculty Roster

Forty-eight new members have been added to ASU's growing faculty.

They include Dr. LeRoy Eyring, professor and chairman of the Chemistry department from the State University of Iowa; and Thomas Thomson, associate professor of Chemistry from Adams State College.

New assistant professors of Chemistry are Dr. Carleton Moore, who also is director of ASU's Ninger Meteorite laboratory, from Wesleyan University; Dr. Myron L. Casper from the University of Colorado; and Dr. M. E. Munk from Wayne State University.

New Mathematics professors are Dr. Edward C. Bryant from the University of Wyoming; Dr. Walter T. Scott from Northwestern University; and Joan H. McCarter from Los Angeles City College.

Dr. Frederick L. Wernstedt, associate professor of Geography from Pennsylvania State University, is also a new member of the teaching staff here.

Charles G. Evenson, from the University of Arizona is an instructor in Geology.

Dr. Robert L. Reinl comes

from Louisiana State University and is a full professor of Philosophy; Dr. Theodore Waldman from Iowa is associate professor of Philosophy.

Psychology additions are Dr. W. D. Tyler, associate professor from Louisiana State University and Dr. Lloyd O. Brooks, instructor from the University of Houston.

Dr. John Alan Jones, assistant professor of Anthropology, is from Indiana University. Leo D. Vichules, assistant professor of Political Science is from San Francisco State College; and Dr. Isaac A. Stone, from University of Washington is a lecturer in History.

Broderick H. Johnson, assistant professor of Journalism, is from Indianapolis. Nicholas Salerno is a new instructor in English; and Richard Barrutia, from Arizona, is assistant professor of Spanish and director of the Language laboratory.

Associate professor of Genetics is Dr. Charles M. Woolf, from Utah. Instructor in Botany is William T. Barry from Montana.

Dr. Van Deren Coke, assoc-

iate professor of Art is from Indiana University. Henry H. Schriber Jr., from the College of Idaho, is assistant professor of Art.

Assistant professor of Physical Education is Martin M. Kentner from New York. Hildegard Streufert, assistant professor of Home Economics, formerly taught at Oregon State University.

Additions to the School of Nursing are Eula Gould, associate professor, from Vanderbilt; Mrs. Margaret Woodtli, assistant professor, from San Francisco State. Instructors include Mrs. May Bruner, from Colorado; Jacqueline Lewis, from St. Louis; and Bernita M. Steffl, from the University of Minnesota.

Additions to the College of Education are Dr. Richard Bullington, from Arizona, and Dr. Nelson L. Haggerson, both associate professors of Secondary Education. Dr. Frederic F. Mitchell, assistant professor of Educational Foundations, is from New York.

New associate professors include Dr. Norman F. Kallaus, Office Administration and Business Education, from the University of Indiana and Vol Gene Edmondson, General Business, from Oklahoma.

Assistant professors in the College of Business Administration are Charles H. Bell Jr., from Arkansas and Alfred W. W. Schoennauer from UCLA, both General Business, and Dr. Harold E. Fearon from Indiana and Sherwood G. Huneryager from Illinois, both in Management.

In Accounting are Robert C. Hill, from New York and Theodore R. Pickett Jr., from San Diego. Charles S. K. Jameson, Office Administration and Business Education is from California.

Gloria M. Natale, Office Administration is from New Jersey. Robert D. Sandmeyer, economics and research specialist for the ASU bureau of business services, is from Iowa. Barrie Richardson, Marketing, is from Indiana University.

Instructor in General Business is Richard L. Merkel from Wisconsin.

More In Naiads Stunts Than Meets Observing Eyes

"Gee, that stunt looks so smooth and easy."

This is the comment heard most often at the annual ASU Naiads Water Show. But there is more than meets the eye.

According to Mrs. Ramona Plummer, Naiads instructor, "a

lot of work and a lot of time" are involved in training for the show.

Naiads, in its fifth year, is a Greek word meaning "water nymphs." Requirements for acceptance in the group are "basic swimming strokes, porpoise (surface dive), standing front dive from the deck, ballet leg, simple stunts and a 'nice form'," states Mrs. Plummer.

The first Naiads show, at the ASU pool in 1958, seated 250 persons who sat through a rainstorm just to watch the performance. "At the last show there was no rainstorm, but there was a crowd of 2,500 for both nights.

The Naiads have performed at the Ramada Inn, Mountain Shadows, the San Marcos Hotel in Chandler, Superstition Ho in Apache Junction, and the Scottsdale Country Club.

Bridge Lessons Begin Tonight

The ASASU social board is sponsoring weekly bridge lessons, starting Oct. 6, at 6:30 p.m. in MU 208 and 209.

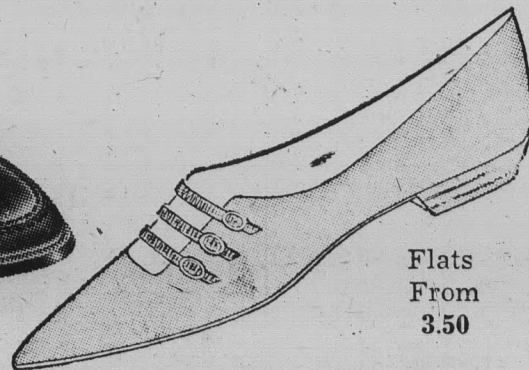
These hour-long instructions are given by a professional, free of charge, and are open to students as well as the faculty and staff of ASU.

Following the instructions, the instructor will supervise duplicate bridge play, for which a nominal fee will be charged.

Come On Over And See Arizona's LARGEST SELECTION OF FLATS FOR WOMEN - LOAFERS FOR MEN



Loafers From 7.98



Flats From 3.50

wigwam

47 W. Main Scottsdale Open Thurs. Till 9 P.M.



KAYDETTES TAKE SIX — Kaydettes, the Army ROTC women's auxiliary, chose six new members at the final tea last Tuesday. The women's honorary, sponsored by Pershing Rifles, acts as official hostess, usher and marches in all ROTC functions. From left to right, bottom to top, the new Kaydettes are Bev Bulla, Audrey Rozefsky, Jeanette Jensen, Barbara De Graaf, Shigley Otten and Dee Stouffer.

Greek To Me -

Never Any Dull Moments For Enthusiastic Greeks

By ROSALYN WHITNEY

ASU Greeks are busy people and their officers are behind them giving them that extra push. Recent elections have given a new set of individuals responsibility of being the backbone of their organizations.

Kappa Kappa Gamma elected Mary Ann Rex, president; Wilh Thomas, pledge trainer; Rosina Yanez, marshal; and Jan Phillips, rush chairman.

Lou Volpe was elected Tau Kappa Epsilon president; Dave Erb, secretary-treasurer; Bill Schmidt, social chairman; and Ed Sandige, rush chairman.

Sharon Teufel, president of Gamma Phi Beta, is assisted by Peggy Childs, pledge trainer; Lynda McKnight, social chairman; Linda Salisbury, secretary; Susan Walmsley, corresponding secretary; Pam Cole, treasurer; and Sue Hergenrath, activities; and Carol Sivesind, standards chairman.

Pledge classes need leaders and recent elections are producing them. Alpha Delta Pi pledges elected Lynne Peterson, president; Carole Walker vice president; Kathy Spalding, secretary; Bobbie Szczepankowski, treasurer; Darlene Bunn, social chairman; and Donna Raption, Jr. Panhellenic representative.

Diane McHugh is Chi Omega pledge president; Donna Wellman, vice president; Roxie Bruno, secretary; Sharron Falsoli, treasurer; Jerry Shields, social chairman; Bev Bulla and Karen Arneson, Jr. Panhellenic representatives.

Alpha Sigma Alpha pledge class is headed by Margaret Wallace, president; Barbara Mack, vice president; Shirley Clapp, secretary-treasurer; and Marion McDaniel and Beth Wickham, Jr. Panhellenic representatives.

presentatives.

Steve Sidles is president of the Phi Alpha of Sigma Alpha Epsilon pledge class assisted by vice president, Bill Finn; secretary, Eric Gossett; and treasurer, Bob Bacon.

President, Bonnie Judy, leads the Kappa Alpha Theta pledge class. KAT pledge class secretary is Carolyn Curry; social chairman, Marty Lenz; and Jr. Panhellenic representatives, Alice Thaw and Mary Haverland.

The little kiddies leaving Palo Verde last week were the Gamma Phi Betas and Phi Sigma Kappas heading for a Kid-die Party Exchange. Sigma Sigma and Theta Chi joined for an Oct. 3 exchange at the Theta Chi house.

Let's get away from it all seemed to be the theme for several ASU sororities this past week-end. Alpha Delta Pi es-

caped to Prescott for a Friday in the cool country, while Chi Omegas chose Saturday afternoon for a retreat to South Mountain.

Kappa Deltas took over the Campfire Girls Camp in Prescott for an entire week-end of food 'n fun. Kappa Kappa Gammas stayed home, but a pajama party highlighted their Friday night.

Seen many proud new actives on campus? Might have been newly initiated Phi Alphas Dan Roth, Gary Chapman, Paul Cotton, Dave McCormack, Denny Starck, Rich Rendo, Bill Mehan, or Bill Smith.

Phi Delta Thetas initiated twelve, including Dudley Greer, Keith Carlson, William Hendricks, Aksi Kiukut, William Woodroffe, Gerald Ruppe, John Powers, Richard Langmade, Thomas Stanton, William Boyd, Robert Lewis and Bruce Hovde.

Mac & Jack Sez...
"You Won't Get
'Tripod-up' at the
**PIONEER CAMERA
SHOP**
TEMPE CENTER

**Open Rush Set
By Panhellenic**

Panhellenic has announced that open rush will run through Dec. 20. All girls who are interested in open rush must register at the Dean of Women's office and pay a \$2.50-rush fee.

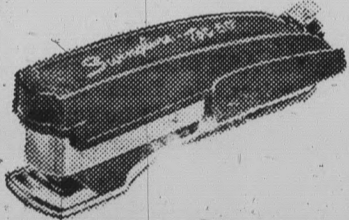
**Irish And West
Hold Exchange**

Approximately 90 girls from West Hall and 140 boys from Irish Hall had an exchange Wednesday evening in the patio of Irish B-Wing.

The theme, "Hollywood Spotlight Ball," was completed with decorations including a waterfall built by the Irish Hall boys.



Medusa was once heard to rave:
"A new hair-do is just what I crave,
With my Swingline I'll tack
All these snakes front to back,
And invent the first permanent wave!"



**SWINGLINE
STAPLER**

no bigger than
a pack of gum!

98¢
(including 1000 staples)

- Unconditionally Guaranteed
- Made in America!
 - Tot 50 refills always available!
 - Buy it at your stationery, variety or bookstore dealer!

Swingline INC.
Long Island City 1, New York
WORLD'S LARGEST MANUFACTURER
OF STAPLERS FOR HOME AND OFFICE

**Grand Opening
HOL'N ONE DONUT
&
COFFEE SHOP**

Rural Rd. Just South Of Apache Blvd.

Today

**FREE DONUTS & COFFEE
FROM 3 TO 12 P.M.**

STUDENTS ARE CORDIALLY INVITED
TO MAKE THIS YOUR HEADQUARTERS -
YOU WILL NOT BE RUSHED
OUT. DONUTS TO GO TOO.

**SPECIAL FOR ASU STUDENTS
Every Sat. & Sun. - Smorgasbord Buffet
Help Yourself - All For 90c**

"Ye Shall Know The Truth"

10th and Ash
- Church of Christ -

971 Ash Avenue
WO 7-4872, Tempe
CLED WIMBISH
Evangelist
SUNDAY
University
Bible Class 9:45 a.m.
Worship 10:45 a.m.
Evening 7:00 p.m.
WEDNESDAY
Evening Study 7:30 p.m.

River Drive
- Church of Christ -

1016 River Drive
WO 7-5112, Tempe
PRESTON WINCHELL
Evangelist
SUNDAY
Bible Class 9:45 a.m.
Worship 10:45 a.m.
Evening 6:30 p.m.
WEDNESDAY
Evening Study 7:30 p.m.

DEVOTIONALS IN DANFORTH CHAPEL
MONDAY & FRIDAY MORNINGS 6:30 to 7:00 A.M.

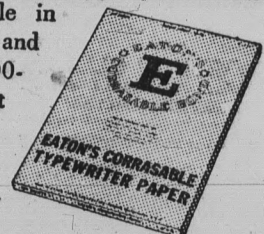


**ERASE WITHOUT A TRACE
ON EATON'S CORRASABLE BOND**

Typing errors never show on Corrasable. The special surface of this paper makes it possible to erase without a trace—with just an ordinary pencil eraser. Results: clean-looking, perfectly typed papers. Next time you sit down at the keyboard, make no mistake—type on Corrasable!

Your choice of Corrasable in light, medium, heavy weights and Onion Skin. In handy 100-sheet packets and 500-sheet boxes. Only Eaton makes Corrasable.

A Berkshire Typewriter Paper



EATON PAPER CORPORATION PITTSFIELD, MASS.

**NOW AVAILABLE AT
KORRICKS**

Downtown
AL 8-5911

Chris-Town
AM 4-3911

MU CALENDAR

<p>Friday Religious Conference: 210 — 2-3:30 p.m. Executive Council: 208 — 3 p.m. Phi Mu Alpha: 218A and 218B — 6 p.m. I.F.C.: Ballroom — 7 p.m.</p> <p>Saturday World Series: Lower Lounge Football Squad: Faculty Dining Room — 11:30 a.m.-1:30 p.m. Parents Day: Ballroom — 2:30 p.m. Social Board: Ballroom — 8 p.m.</p> <p>Sunday World Series: Ballroom Delta Sigma Chi: Upper Lounge — 8 p.m.</p> <p>Monday World Series: Ballroom</p>	<p>Spurs: 208 & 209 — 3 p.m. Phi Kappa Psi: 210 — 5-6:30 p.m. Phi Alpha: 209 — 6 p.m. Alpha Epsilon Pi: 210 — 6:30 p.m. Pi Kappa Alpha: 208 — 7 p.m. Kappa Delta Pi: 218B — 8 p.m.</p> <p>Tuesday World Series: Ballroom Memorial Union Board: 208 — 2-2:30 p.m. Panhellenic: 210 — 3:30-5 p.m. Homecoming Committee: 208 — 4 p.m. Cultural Affairs: 209 — 4 p.m. Card Section Committee: Clancy's — 3-5 p.m. Blue Key: 209 — 6-7:30 p.m. Alpha Rho Chi: 209 — 7:30 p.m. Pi Sigma Epsilon: 218A — 8 p.m.</p>
--	---



Phi Delta Theta Names Nineteen To Philadelphia

Nineteen coeds have been selected for Philadelphia, women's auxiliary to Phi Delta Theta social fraternity, it was announced recently.

They are Sel Erder and Susan Poe, Alpha Delta Pi; Judy Munford, Alpha Pi; Nancy Clifton and Carolyn Green, Chi Omega; Barbara Bentson, Kay Crandell, and Jan Tiffney, Delta Gamma.

Judy Anderson, Beth Beierlein and June Koenig, Gamma Phi Beta; Marilyn Lucky, Kathy

Mangano, and Melinda Sellers, Kappa Alpha Theta.

Sharon Nelson, Kappa Delta; and Sarah Frost, Rita Utz, Susan Weyrough, and Rosing Yanez, Kappa Kappa Gamma.

Formal pledging ceremonies will be this evening followed by a party.

Philadelphia officers are Marilyn Talley, president; Linda Allison, vice president; Linda Salisbury, secretary-treasurer; and Jan Phillips, rush chairman.

Activities

Alpha Epsilon Delta, pre-medical society, will meet Oct. 11 at 7:30 p.m. in SS 108.

ASU's Foreign Student Club will meet Sunday at 3 p.m. in MU 209.

Natani, junior women's honorary, will have a get-acquainted party for new members tonight at 5 p.m.

Palo Verde 600 Hold Successful Surprise Party

The women of Palo Verde proved that it is possible for 600 women to keep a secret.

With the assistance of Dean Catherine Nichols and Mrs. Charlotte Lewis they succeeded in carrying out a surprise birthday party for head resident, Miss Margaret McCandless.

10 - 6 Mon. to Fri.
10 - 9 Thursday

The Village Shop

a shop designed with the college girl in mind

967-1981

616 MYRTLE TEMPE

SPECIAL OFFER...

For 2-Headed Pipe Collectors

Genuine imported hand-carved cherrywood pipe... that really smokes!

This unique two-headed pipe is a real conversation piece... a must for your collection! Hand-carved in the Italian Alps and finished in gay colors. Stands alone on its own tiny legs. Ideal for your desk, mantel, or bookshelf... mighty good smoking, too! This is a wonderful value! Send for your two-headed pipe today!



Only \$1.00

and picture of Sir Walter Raleigh from new pouch pack

NOW Sir Walter Raleigh in the new pouch pack keeps tobacco 44% fresher!

Choice Kentucky Burley—Extra Aged! Smells grand! Packs right! Smokes sweet! Can't bite!

Shown Approximately 3/4 Actual Size

Clip Coupon...

Mail Today!

Sir Walter Raleigh
Box 303
Louisville 1, Kentucky

NAME _____
 ADDRESS _____
 CITY _____ ZONE _____ STATE _____
 COLLEGE _____

This offer good only in U.S.A. Not valid in states where prohibited, taxed or otherwise restricted. Offer expires June 30, 1962. Allow four weeks for delivery.

Please send me prepaid 2-headed pipe(s). Enclosed is \$1 (no stamps, please) and the picture of Sir Walter Raleigh from the box in which the pouch is packed for each pipe ordered.



The PIZZA HUT

"Eat In or Carry Out"

Open Every Day For Lunch & Dinner.

11:30 A.M. to 1 A.M.

FREE Catering Service To Parties

Order By Phone For Faster Service

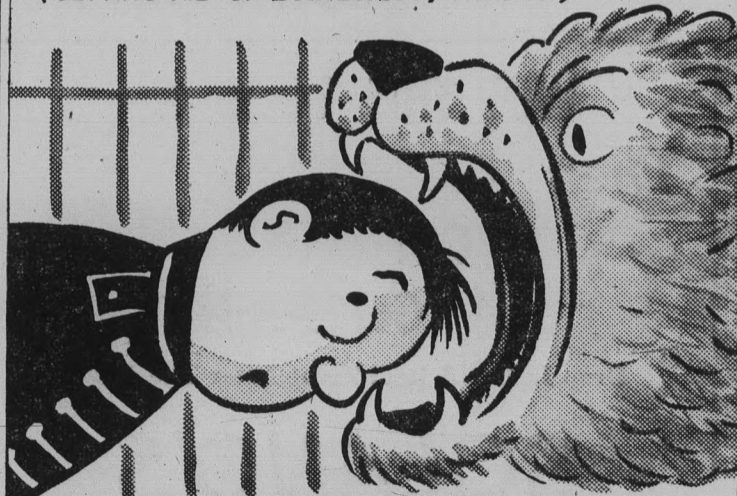
WO 7-3355

801 E. Apache

Tempe

DOING IT THE HARD WAY by hoff

(GETTING RID OF DANDRUFF, THAT IS!)



easier 3-minute way for men: FITCH

Men, get rid of embarrassing dandruff easy as 1-2-3 with FITCH! In just 3 minutes (one rubbing, one lathering, one rinsing), every trace of dandruff, grime, gummy old hair tonic goes right down the drain! Your hair looks hand-somer, healthier. Your scalp tingles, feels so refreshed. Use FITCH Dandruff Remover SHAMPOO every week for positive dandruff control. Keep your hair and scalp really clean, dandruff-free!



A start on your financial planning may be just the tonic you need right now; it's never too early to begin.

Life Insurance is the only investment which gives you a combination of protection and savings; it's the ideal way to start a complete financial program.

Your campus representative will be glad to discuss with you a variety of plans which may be tailored to your individual present and future needs. See him now, when you can profit by lower premiums!

CONTACT

LOUIS T. CHANEY

30 E. 5th St. Tempe

WO 7-1634

PROVIDENT MUTUAL Life Insurance Company of Philadelphia

S
P
O
R
T
S



BOB
EGER



BOB
JACOBSEN



GARY
OLMSTEAD



DENNIS
ANDERSON



MIKE
BARRICK

S
P
O
R
T
S



Jim Carroll, Delta Sig, defeated Richard Reakes of Sigma Nu, in the singles finals of the ASU intramural tennis program on the men's courts Monday.

Carroll won the title on straight sets, 6-2 and 6-4. It was the second year in succession that he won the tennis singles crown.

Doubles competition has been underway this week with the finals in that division played yesterday afternoon.

Over 100 players participated in intramural tennis.

Volleyball is the next sport with competition slated to get underway Monday. Pairings will be posted on the bulletin board in the Men's Gym.

Bulletin

Richard Reakes and Bill Overend, Sigma Nu, defeated Ron Schmiethknop and Mike Crowson, ATO, 6-1, 6-2 to win the intramural tennis doubles crown yesterday afternoon.

Judo Club

The ASU Judo Club will hold its first meeting Oct. 11 at 7:30 p.m. in the Men's Gym. Any interested persons are encouraged to attend.

Mac & Jack Sez . . .
"Everything Is Not
'Black & White' At The
**PIONEER CAMERA
SHOP**
TEMPE CENTER

Meet Your State Press Sports Staff

By JACK ONG
Editor-In-Chief

Exciting sports news coverage, accurate scores and bulletins on Sun Devil opponents . . . twice a week throughout the school year!

Takes plenty of time, insatiable curiosity, lasting patience, writing ability and that ever-necessary nose for news.

Five zealous young men with an abundance of these qualities, and the work they do on the job, convince us that our sports staff is one of the finer college level newspaper sports staffs.

Because of their desire to work and ability to do their work well, they have achieved what we feel is the best sports section we've ever read in college papers from across the land.

Today we'd like to introduce you to the State Press sports staff.

BOB EGER

Bob Eger, State Press sports editor, is the first winner of the \$2,000 Eugene Pulliam — Sigma Delta Chi scholarship. He has had four years of professional experience on the Yuma Daily Sun.

Eger is chapter vice president of Sigma Delta Chi national professional journalistic society, and is also a member of Pi Delta Epsilon, national journalism honorary. He received the SDX award for outstanding news reporting at ASU and the R.E. Osborn trophy for outstanding high school journalism.

He was a Scholastic Sports Association representative for the Los Angeles Examiner in high school, was sports editor of his high school paper and president of the Quill and Scroll Club.

Eger, a junior, is a journalism major and has worked the past two years on the State Press sports staff, including two previous semesters as sports editor.

BOB JACOBSEN

Assistant sports editor Bob Jacobsen is starting his third year with the State Press. He was Washington High's sports editor and was a member of Quill and Scroll.

Jacobsen, a junior journal-

ism major, is a member of Pi Delta Epsilon and is an SDX pledge.

GARY OLMSTEAD

Gary Olmstead, formerly editor and sports editor at Phoenix College, joined the State Press sports staff this

year. Olmstead received the Phoenix Press Box Scholarship for sports writing.

In high school he belonged to Quill and Scroll and the National Honor Society. Olmstead is a junior, majoring in journalism, and is a pledge to SDX.

DENNIS ANDERSON

Formerly the sports editor for Antelope Valley Junior College in California, Dennis Anderson now lends his talents to the State Press sports section.

Anderson was a member of the Scholastic Sports Association of the Los Angeles Examiner in high school and junior college. He is an SDX pledge and is minoring in journalism. His specialty is track and field writing.

MIKE BARRICK

Mike Barrick, who runs the 440 for ASU's track team and is a member of the widely known Sun Devil mile relay team, returns for his second semester on the State Press.

Barrick is a junior, majoring in radio and television. He is an SDX pledge.



TOP LINEMAN -- Sun Devil tackle Larry Reaves has been praised by Head Coach Frank Kush as the top lineman after two games. According to Kush, Reaves has made fewer mistakes than any other Devil lineman so far this season. He'll be in the starting lineup tomorrow against Utah. (Photo By ASU Photo Service)

Campus Classified

Regulations: For students and faculty only of Arizona State University. Cash in advance. Submit to Room 233, Social Science Bldg., 8 a.m. to 9 a.m. daily, 1:30 to 2:30 Monday and Wednesday. Call Ext. 471 for other hours. Rates: 10 cents a line per issue, 35 cents minimum charge.

FOR SALE

Cushman Eagle, \$125. Phone AL 3-3819.

1960 TR3 Triumph. \$1,800 price includes O/D, tonneau cover, convertible top and Germany's finest car radio, 18,700 actual miles. A truly distinctive automobile for a discerning person. 946 1/2 McAllister, 1/2 block east of ASU on Orange. 967-1773.

WANTED

Room and Board plus transportation to ASU in exchange for some house-keeping and child care. Preference to foreign student. CR 9-1985 evenings.

WIN THIS TOUGHIE—
Then Go!
GO!
Go! Devils . . .
Drop In For A Real Treat After The Game

SOLANO'S CAFE

Serving Delicious Mexican Food
— Food To Take Out —
Open Daily 10 A.M. to 9 P.M.
Closed Mondays
Corner 4th & Mill WO 7-9035 Tempe

NOW ON SALE AT THE

CAMPUS DRUG
CORNER, College and 8th, WO 7-4049

SPECIAL COMPLIMENTARY OFFER FOR COLLEGE MEN

Learn the Pleasures of Fine Tobacco . . .

Enjoy the Original Extra-Mild Cavendish in the Handy "Poly" Pocket Pouch

AMPHORA
Blended in Holland by Douwe Egberts Royal Factories

AMPHORA, is cool, even-burning, long-lasting. Its pleasurable smoking qualities have won loyal friends—it outsells all other tobaccos in its class! If you haven't tried AMPHORA, be our guest. Simply fill in the coupon below and mail it. You will receive a complimentary full 2-ounce pouch.

ROMICK'S INTERNATIONAL TOBACCO CO.
11918 Vose Street, North Hollywood, California
Gentlemen: Please send me a complimentary full 2-ounce pouch of AMPHORA. I enclose 10¢ coin to cover cost of handling and mailing.
(PLEASE TYPE OR PRINT)

NAME _____
STREET _____
CITY, ZONE, STATE _____
UNIVERSITY _____

This Offer Expires December 31, 1961

BC Standings

	OVERALL STANDINGS				Conference				
	W.	L.	T.	Pct	Pts.	Pts.	W.	L.	T.
1. West Texas S.	2	0	0	1.000	111	35	1	0	0
2. Arizona State	2	0	0	1.000	35	13	0	0	0
3. New Mexico S.	2	1	0	.667	98	54	0	0	0
4. Texas Western	0	2	0	.000	33	77	0	1	0
5. Hardin-Simmons	0	3	0	.000	6	92	0	1	0

Frosh Baseball Squad 'Best Ever'

Thirty-two freshmen baseballers survived the cut to make the fall roster of the Arizona State University frosh baseball squad.

Head Baseball Coach Bob Winkles believes the squad has the best potential of any frosh baseball team ever at ASU.

Although the team is overloaded with catchers, first basemen, and shortstops, Winkles hopes to convert some of his shortstops to second and third basemen.

The frosh, presently being coached by Jim Railey, are opposing the varsity sophomores and transfers daily in intrasquad games. The contests will last for two to three more weeks.

Eighteen Arizonians are represented on the squad with California and Illinois having fourteen each.

Now You Know

Bobby Winkles, in three years of coaching at Arizona State University, has compiled an impressive record of 95 baseball victories against 43 defeats.

Golfers Start Competition

First Tourney Is Wednesday In Albuquerque

By GARY OLMSTEAD

Fanny Markham's men's golf group, runnerup in the NCAA tourney last year, begins its 1961-62 season unofficially on the links next Wednesday in Albuquerque, New Mexico.

In Albuquerque, the ASU golfers will perform in the seventh annual William H. Tucker Invitational Tournament, hosted by the University of New Mexico.

Comprising Markham's traveling troop, which leaves Monday, will be a trio of veterans from last year's stellar squad, Ray Stawicki, Wayne Breck and Cal Cooke, sophomore Mike Hill and two frosh competitors, Byron Wood and David Cink.

Stawicki, captain of this season's university linksmen; Breck, sixth in the nation among collegians last year and Cooke and Hill, a Jackson JC transfer, all will compete in the college division, while the two freshmen will vie in the freshman and junior college division.

In preparation for their spring commencement, Markham's men will participate in such tournaments as the Arizona State Amateur, Arizona State Open and the Phoenix Open.

Last season, the Devils' links ledger read 30-3-2. Their laurels included the Border Conference championship and the runnerup slot behind Purdue in the tough NCAA meet.

In that same NCAA encounter, Purdue and ASU gained further distinction. They were the only two squads that qualified five men for the national event.

BOB VIEWS SPORTS NEWS

Sun Devils In Unusual Role



By BOB EGER

Sports Editor

Tomorrow, for the first time this season and one of the few times in Frank Kush's ASU coaching career, the Sun Devils will be gridiron underdogs.

And never before have they been such underdogs. Some sources rate Utah as much as a five touchdown favorite while the general opinion seems to be two or three TD's. One of the national football power polls gives Utah a 16 point advantage.

The Devils are noted for winning the big ones. They seldom drop a contest to a team of stature but seem to get knocked off when least expecting it. Last year Kush's troops stunned Washington State and North Carolina State for their biggest wins even though they were dumped by three other clubs that shouldn't have done it.

The question is: Can the Devils continue their trend of smashing the big boys? They don't come much bigger than Utah.

The Redskins come to Sun Devil Stadium fresh off a 14-6 win over a good Oregon group. Prior to that they lost a close contest to Wisconsin and smashed Colorado State 40-0. If you'll recall ASU's winning margin over Colorado State was only eight points, 14-6.

ASU scout Gene Felker called the Utes "the best balanced team to visit Sun Devil Stadium in several years," after watching the Redskins in action.

Utah sports the same type of game as the Devils — no exceptionally fast backs but a terrific line which makes the running attack dangerous. And the Utes, like the Devils, can get the job done through the air when they have to.

There's just one difference. Utah has two of those massive lines and both are rated about as tough as anything the West has to offer in the way of forward walls.

If the Devils held something in reserve in their first two outings, now is the time to bring it into the open. A few new tricks, and the right mental attitude, and the Devils could make it a better ball game than a lot of people think.

SMALL THINGS — There's one ray of sunshine among the dreary forecasts for the outcome of tomorrow night's ASU-Utah skirmish. Oscar Fraley, the famous "Fearless Fraley" of United Press International and one of the top football forecasters in the country, picks the Sun Devils to beat the Redskins.

... It's a good thing Nolan Jones surpassed the national collegiate record for consecutive extra points last week because his job will have added dangers tomorrow due to the caliber of Utah's linemen. Jones' teammates will have their hands full trying to keep the Utes from swarming the kicking tee before Jones gets his boots off.

EXPERT RACKET RESTRINGING

Trophies and Engraving

P.E. CLOTHES FOR MEN AND WOMEN

Brand Names MEN'S WEAR

Brand Names WOMEN'S WEAR

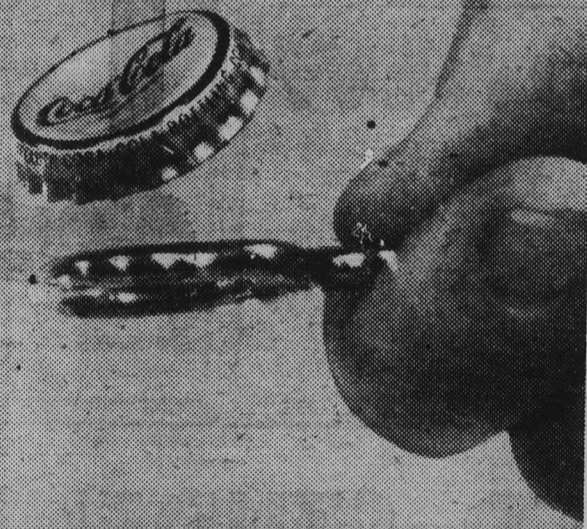
"FOR BRANDS YOU KNOW"

Joe Selleh

624 MILL AVE.

WO 7-4163

COPYRIGHT © 1961, THE COCA-COLA COMPANY. COCA-COLA AND COKE ARE REGISTERED TRADEMARKS



60,000,000 times a day people get that refreshing new feeling with Coke!



Bottled under authority of The Coca-Cola Company by PHOENIX COCA-COLA BOTTLING CO.

SMILEY-BERGE FORD

Your Nearest Auto Dealer

- ★ Complete Service Facilities
- ★ 7 Mechanics On Duty
- ★ Servicing All Makes & Models

JUST TWO BLOCKS FROM ASU CAMPUS

16 East 8th Street - Tempe
Phone WO 7-2064

the
**Capri's
Pick
Of
The
Week**

ASU ---- 17

Utah ---- 14

Right or Wrong
You Can't
Miss
With Our
PIZZA'S

Utah Heavy Favorite Over Devils

ASU Faces Toughest Test Of Current Grid Campaign

By BOB EGER
Sports Editor

When Utah's rugged Redskins step onto the turf in Sun Devil Stadium tomorrow night, they will confront Coach Frank Kush's Sun Devils with perhaps the biggest barrier of the current season.

The Redskins, favored from two to five touchdowns by most sources, have a club capable of beating the Devils at their favorite game — line play.

On the other hand, the Devils will enter the game with two rather poor offensive showings behind them and the hopes of all their rooters that they will finally burst loose and reach a point somewhat near their potential.

ASU, the top club in the Border Conference defensively, will not only have to maintain its one touchdown per game average yield, but it will have to generate some type of offense to match the massive Utes.

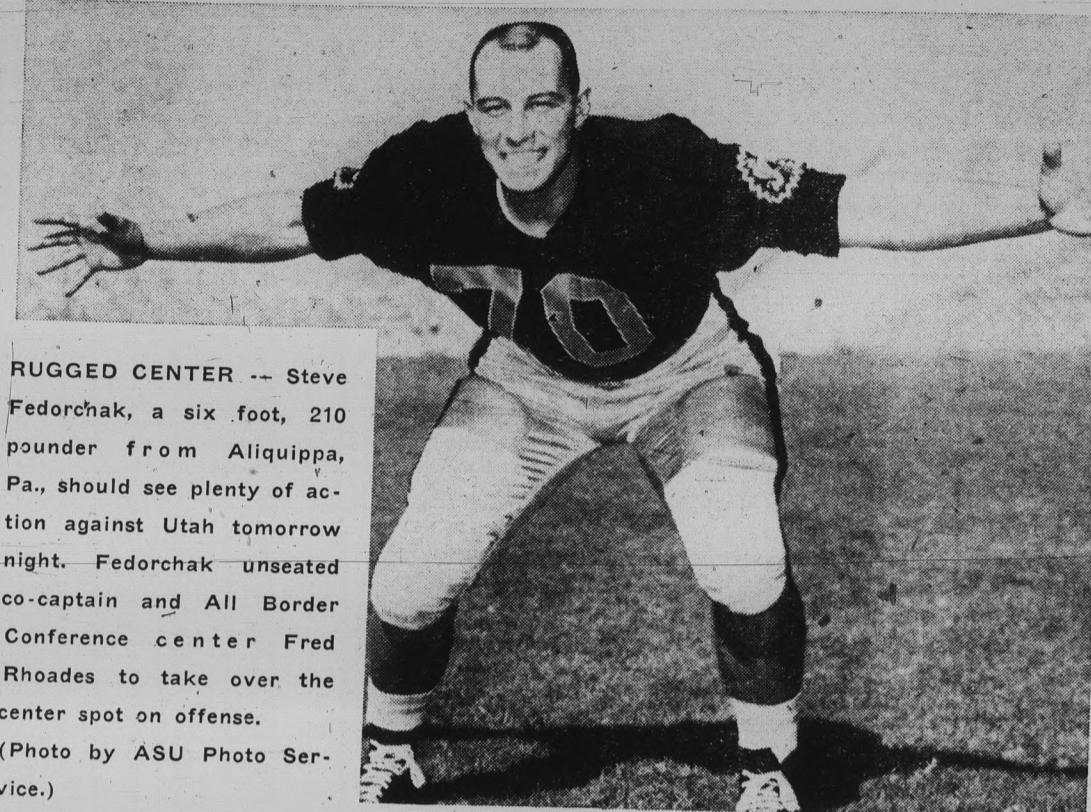
The potential is there. Joe Zuger, who more than earns his keep with his defensive safety work, has turned in a pair of steady offensive showings at quarterback and is capable of launching a deadly aerial attack if given any kind of protection.

Nolan Jones, Ossie McCarthy, John McFalls, Charlie Taylor, Dornel Nelson and Clay Freney give the Devils plenty of backfield depth.

Kush's big worries have been in the line. A combination of minor injuries and minor attacks of senioritis have caused several changes in the for-

ward wall. This is where tomorrow's battle will probably be won or lost and the Redskins have much more depth up front.

Tackle Larry Reaves was singled out by Kush as the Devil lineman who has done his job most effectively so far this season and he's one of the few who has held onto his starting job.



RUGGED CENTER -- Steve Fedorchak, a six foot, 210 pounder from Aliquippa, Pa., should see plenty of action against Utah tomorrow night. Fedorchak unseated co-captain and All Border Conference center Fred Rhoades to take over the center spot on offense. (Photo by ASU Photo Service.)

BC Statistics

Total Offense

	G.	Gain	Avg.
1. West Texas State	2	895	448
2. New Mexico State	3	1022	341
3. Arizona State	2	535	268
4. Texas Western	2	486	243
5. Hardin-Simmons	3	495	165

Rushing Offense

	G.	Gain	Avg.
1. West Texas State	2	718	359
2. New Mexico State	3	837	279
3. Arizona State	2	304	152
4. Texas Western	2	211	106
5. Hardin-Simmons	3	208	69

Total Defense

	G.	Gain	Avg.
1. Arizona State	2	407	204
2. New Mexico State	3	735	245
3. West Texas State	2	577	289
4. Hardin-Simmons	3	929	310
5. Texas Western	2	809	404

Rushing Defense

	G.	Gain	Avg.
1. Arizona State	2	238	119
2. West Texas State	2	284	142
3. New Mexico State	3	616	205
4. Hardin-Simmons	3	721	240
5. Texas Western	2	638	319

Who ASU's Opponents Play

WICHITA (2-1) at WEST TEXAS STATE (2-0)

COLORADO STATE (0-3) at SAN JOSE STATE (2-1)

UTAH (2-1) at ASU (2-0)

Idaho at OREGON STATE (0-2)

HARDIN-SIMMONS (0-3) at ARIZONA (1-0-1)

TEXAS WESTERN (0-2) at New Mexico U.

DETROIT (2-0) Open

Now You Know

Arizona State University's baseball team reeled off 21 straight victories at the beginning of the 1961 season for one of the longest winning streaks in collegiate baseball.

Mac & Jack Sez . . .

"We Develop Film AND Friendship

PIONEER CAMERA SHOP
TEMPE CENTER

Go Devils!

LET'S MAKE

UTAH

NUMBER 3 . . .



- Complete carry our service
- Efficient Car Hostesses
- Cherry Atmosphere

503 E. 8th St. — WO 7-0800
"Where the Nickel is Mighty"

FREE 180 NEW CARS

TO BE GIVEN AWAY TO CELEBRATE THE '62 CHRYSLERS

• SEE THEM NOW •

211 MILL **DANA BROS.** 211 MILL

MARRIED STUDENTS

Save Money On Your

Hospital Insurance Premiums

Enroll In The Associated Students Program

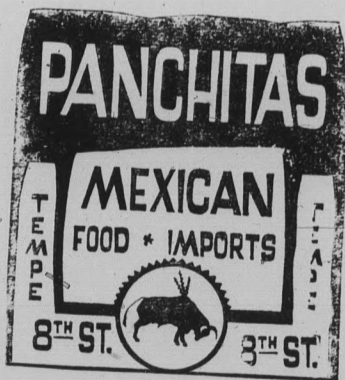
The Group Plan Closes October 14th

Budget Plans Available

Applications and Information At
Room 213 Memorial Union Building

OR

Charles Lock — 822B Mill Avenue, Tempe
WO 7-3358



- Authentic Mexican Imports
- Pinatas
 - Sarapes
 - Bags
 - Peon Pants

AT CORNER OF
2200 E. 8th St., Tempe

Hours: 11 A.M. to 8:30 P.M.

Closed Mondays

Call WO 7-1772 For

Carry Out Orders