

ASU Enrollment Surpasses 12,000

Parents Day Set For October 7

A group of very special people will be on campus Oct. 7 for a very special event. The people are our parents—the event is Parents Day.

Activities planned for the day include a special Parents Day luncheon in the MU Cafeteria, a tour of the campus, and opportunities to meet ASASU officers, the Deans of the five colleges and the Dean and Associate Dean of Students.

The feature event of the evening will be the football game

with the University of Utah. Parents are especially invited to the after-game dance in the MU Ballroom.

Awards will be presented to the parents with the largest number of children now enrolled at ASU and to the parents who have traveled the longest distance for the day's events.

Associated Men Students will be in charge of Parents Day activities. Co-chairmen of the event are Dave Putman and Allen Reed.

According to AMS President, Bob Carter, invitations have been sent to all parents.

Graduate School Increases Most; Greater By 20%

An enrollment increase of 13 per cent over last year has been reported by Dr. Alfred Thomas, Jr., director of admissions.

Total campus enrollment is 12,016, compared to 10,640 last year. These figures do not include 1500 students enrolled in residence centers throughout the state.

Largest increase was in the Graduate College. 2,438 Graduates are enrolled, a 20 per cent increase over last year. Next largest increase was the freshman class with a 15 per cent increase (3,360 over last year's 2,917). The lowest increase was in the sophomore class with 1,822 enrolled, an increase of 3 per cent. The junior and senior class had an increase of 9 per cent with 1,887 and 1,877 enrolled.

Undergraduates not classified, pending appraisal of records, were 499, giving a total of 9,576 undergraduates.

Themes Limited For Homecoming

No Paul Bunyans—please!

The theme for ASU's 1961 Homecoming was announced in Wednesday's State Press as "Great Myths." However, word comes from the Homecoming Steering Committee that only Old World myths will be accepted.

No modern or American themes will qualify. This stipulation was made to avoid imitating a nearby institution's efforts last year.

Greek, Norse and Egyptian myths were given as possible areas from which to select a theme.

Individual theme selections must be turned in to the office of the ASASU Secretary between Oct. 3 and Oct. 6. On the day of submission, selections will be reviewed and the groups notified if their theme is acceptable.

State Press

Vol. 40

Friday, September 29, 1961

No. 3



PLAN HOMECOMING—Five Homecoming committee members discuss decorations rules for this year's salute to ASU alumni. From left are Susan Chemnick, publicity; Ron Schmietsknop, decorations; Andy Mitchell, half time; Linda Rankin, one of two general chairmen; and Sharlyn Nelson, secretary to the committee. (Ralph Forney Photo)

Leadership Board Invites Student Body To Payson

The Organizations and Leadership Board of the Associated Students announced yesterday that the annual ASASU Fall Leadership Workshop will be held Nov. 3, 4 and 5 at the university's Camp Tontozona in Payson.

Purpose of the workshop will be to broaden interest and stim-

ulate active participation in ASU student government.

"We can accommodate only 80 students, and a number of those places will be taken by the ASASU officers, board chairmen and senators," board chairman J. C. Brown said. "But with the large number of freshmen and transfer students at Arizona State, we'd like, as always, to see some fresh blood injected into ASASU."

The primary qualifications for the 15 to 20 open places at the workshop are interest and ability. High school student government experience is not essential.

Anyone wishing to apply should make application and an appointment for an interview in the office of the Assistant Dean

of Students' room 213, in the MU. This must be done by Friday. The charge, including transportation, is \$4 for each student attending the workshop.

"We do expect that anyone who applies for a place will realize that the workshop is not a weekend vacation and, if selected, will be prepared to work hard and face some real issues about college student responsibilities in the 1960s," Brown added.

Classified Ad Policy Stated

The State Press classified advertising service begins this week, advertising manager Hal Hubele announced today.

Ads for the classified columns, which are only for students, faculty and staff members, may be placed by contacting the classified manager in SS 233 between 8-9 a.m. daily or by appointment (Ext. 471).

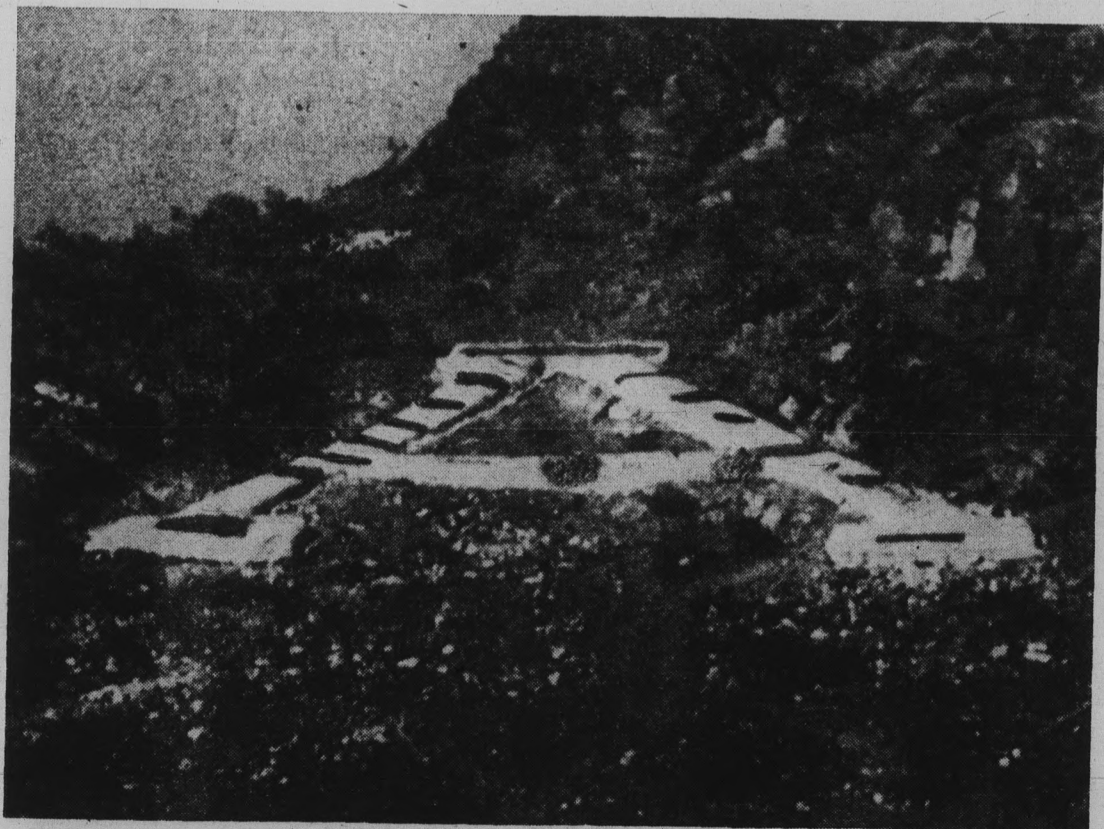
Classified ad rates are 10 cents a line, with a minimum ad charge of 35 cents per issue. Cash must be in advance.

Deadlines for classifieds are 9:30 a.m. Mondays and Wednesdays for Wednesday's and Friday's issues, respectively. Advertisements submitted after these times will run in the following issue.

Nolan Shoots For Record

If the Sun Devils score against Colorado State at Fort Collins tomorrow and Nolan Jones successfully kicks the extra point as he has in 30 successive tries, he will become the all-time national collegiate record holder for consecutive conversions.

Another Sun Devil, Bob Fuller, held the national mark which Jones tied against Wichita last Saturday. In addition to 30 straight in 1950, Fuller kicked out of 51 and he did it barefooted.



PAINT JOB—Alleged vandals splashed colored paint on the "A" overlooking the campus from Tempe Butte. Incoming freshmen whitewashed the huge concrete as a Freshman Week tradition only two weeks ago. Story, Page 6. (Ralph Forney Photo)

MU Open House Begins Tonight At 8

Fannin Will Address Initial Meeting Of ASASU Senate

Governor Fannin will address the first formal meeting of the Student Senate Tuesday in the Senate Chamber. Jim Chilton, ASASU vice-president, announced this in the Senate's orientation meeting held Wednesday.

The governor will be the

Democrats Meet Oct. 11

ASU Young Democrats will meet Oct. 11, at 3:30 p.m. in the Social Science Building and elect officers for the year.

The club met Wednesday in the upper lounge of the Memorial Union. Candidates for offices were nominated. Nominees and offices are: President, Dick O'Hara; Vice President, Nancy Rogers, Edsel Reid, Steve Rummell, Ron Homer; Secretary, Ronny Schiff, and Treasurer, Jean Newman. Nominations will be reopened before the elections.

Mac & Jack Sez . . .
"Everything Is Not
'Black & White' At The
PIONEER CAMERA
SHOP
TEMPE CENTER

10 - 6 Mon. to Fri.
10 - 9 Thursday

The Village Shop

a shop
designed
with the college
girl in mind

967-1981

616 MYRTLE
TEMPE

featured speaker along with ASASU president Gary Walker, who will give the state of the University address. All students are invited to attend. The senate convenes at 4 p.m. and a reception will follow in the Lower Lounge of the MU.

Wednesday's meeting was held to familiarize the student senators with the procedures of student government. Jim Chilton spoke briefly on the duties of a senator and stressed the importance of a senator's obligation to the students he or she represents.

"As senators," said Chilton, "you are responsible to that particular group which you have been selected to repre-

sent. You are the foundation of our representative form of government."

Two appointments were announced by Chilton. Bob Machulies is the new Sergeant-at-Arms and Ed Manley is the new Parliamentarian. Machulies is an assistant head resident at M. O. Best "A". Manley has served as a student senator for two years.

Addresses were given by the two senate advisors, Dean Nichols and Dean Shofstall. They stressed the value of the senators to student government.

"I feel," stated Dean Shofstall, "that there is no more important position in student government than the student senator."

ASU Graduate College Adds Six More PhD Programs

Six new Ph.D degree programs are being offered in the ASU graduate College for the first time this year. The six new programs are in the fields of education, chemistry, psychology, English, physics and engineering.

University President G. Homer Durham recently stated

that by 1970, 12 to 16 additional programs may be added. He also predicts that by the end of the decade, that graduate students may make up nearly half of the total student body of the University.

Expected enrollment in the Graduate College for the 1961-62 school year is 2400.

In addition to the Education Doctorate and Education Specialist degrees, the University now offers the Master of Arts in twelve fields of specialization, the Master of Fine Arts, the Master of Music, the Master of Natural Sciences, the Master of Public Administration, the Master of Science in Engineering, the Master of Arts in Education, the Master of Business Administration and the Master of Science in five different fields.

Meeting Set Monday

The ASASU Education Board will meet at 3 p.m. Monday in MU 210. The board is set up to further the general well-being of all students by promoting a better total education program. Special emphasis is placed upon that education

which develops the whole student.

New committee chairmen and members are needed. Anyone interested should attend the meeting. "It's a good place to start in student government," said Ed Manley, Chairman.

Like
Make Holiday
Air Reservations
NOW . . .

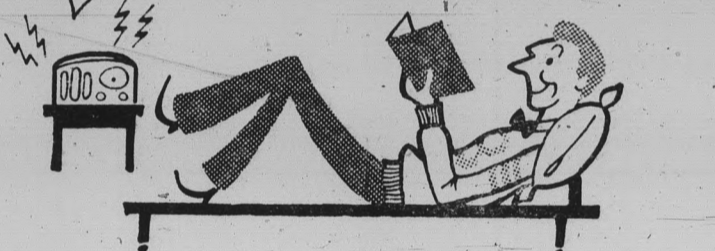
- ★ YOU PAY NO EXTRA SCRATCH FOR OUR SERVICE
- ★ DON'T SWEAT GOING TO PHOENIX

We Represent All
Airlines
"SWING BY TODAY"

UNIVERSAL TRAVEL
18 E. 5th St.
WO 7-1673

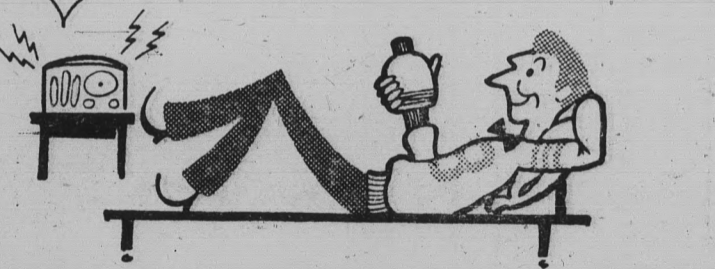
ARCHIE SAYS:

My cousin Archie—he thought the electric razor his gal gave him last Christmas was o.k. Then he tried Old Spice Pro-Electric, the before shave lotion. Now the guy won't stop talking, he thinks electric shaving is so great.



ARCHIE SAYS Pro-Electric improves electric shaving even more than lather improves blade shaving. ARCHIE SAYS Pro-Electric sets up your beard by drying perspiration and whisker oils so you shave blade-close without irritation. ARCHIE SAYS Pro-Electric gives you the closest, cleanest, fastest shave.

If Archie ever stops talking, I'll tell him I use Old Spice Pro-Electric myself.



SO DO I.

Old Spice
PRO-ELECTRIC
THE BEFORE SHAVE
PRO-ELECTRIC
BEFORE-SHAVE LOTION

P. S.
There's a .60 size but Archie gets the 1.00 bottle. (He always was a sport).

S H U L T O N

MOTOROLA

Stereo Portables

COMpletely AUTOMATIC — DUAL CHANNEL AMPLIFIER — WOOD CABINET — FABRIC COVERED — SEPARATE TONE & VOLUME CONTROL

- One 5 1/4" speaker in main unit
- One 5 1/4" speaker in detachable unit

Come In And Listen

Others Models From \$99.95

- 3 Speakers ● 5 Speakers
- Vibrasonic, 5 Speaker Set

\$79.95

HILLS RECORDS

Tempe Center • Open Thursday Till Nine

Head Resident Tea Set Tuesday By AWS

The annual Head Resident Tea has been set for Oct. 4 from 3-5 p.m. in the upper lounge of the Memorial Union.

The tea, sponsored by AWS is designed to acquaint students with the head residents. All fraternity house mothers and head residents from the dormitories will be present. Fraternity house mothers will be escorted by the presidents of the fraternities.

The receiving line consists of Dean Nichols, Dean Dorris, Mrs. Joyce Lynn Turley, Barbara Anderson, Bonnie Evans and LoDonna Curry.

Cookies and lemonade will be served by representatives from

each dormitory. Piano music will be featured to entertain an expected crowd of 300.

General chairman is LaDonna Curry. Other committee members are: Beth Bollinger, invitations and decorations; Jeanne Davenport, refreshments; Gwen Weston, poster publicity; and Virginia Hiskey, entertainment.

Off Campus Men Meet October 3

Off Campus Men, an organization with an eligible membership of 3000, will meet Tuesday at 7 p.m. in the upper lounge of the Memorial Union.

Criticisms Arise On Flag Raising

Certain criticisms have arisen from students concerning the pre-game flag-raising ceremony at football games.

The question in point concerns the speed at which the United States flag is raised by the respective ROTC color guards. Some students say it is too slow. The joint ROTC departments responded with the answer that the flag is raised according to U.S. military manuals coinciding with ASU policy.

Two hand-picked cadets from both the Army and Air Force raise the flag in a brisk, hand-over-hand movement. By the time the National Anthem is finished the flag is usually in position at the top of the pole. Sergeant Henderson of the Air Force department has been in charge for the past four years. The procedure was changed when he came.

Scoular Says Chorus 255 Strong This Year

The University Chorus has outgrown its rehearsal hall.

The University Chorus was started just last year by the Choral Union, and this year its membership has grown to 255 singers, of which over 200 are ASU students, according to the group's director, Professor David Scoular.

The chorus, sponsored by the ASASU and the Music Department, was formed to make a large chorus available for students who like to sing. It also serves members of the faculty and the townspeople of Tempe who enjoy large group singing. The University Chorus has been meeting in the Physical Science Building Auditorium, but because of the number of singers rehearsing, they will move to the larger auditorium in the Life Sciences Building.

The chorus is currently preparing its first work, Beetho-

ven's "Mass in C." Scoular said that for the first time the soloists will be chosen from among the student singers, instead of bringing in an outsider as in the past.

The chorus will be accompanied by the ASU Symphony Orchestra, under the direction of Professor Eugene Lombardi. Rita Chatwin is the piano accompanist.

"It is not the largest chorus in the Valley, but it has an exciting tone, and I think it's on its way to becoming the best in the Valley," Scoular said.

Dr. Farris Honored

Dr. Martin T. Farris, associate professor of Economics at Arizona State University, has received recognition as a certified member to the board of directors of the American Society of Traffic and Transportation.

TEMPE

CHURCHES of CHRIST

Invite You To Their SERVICES and BIBLE CLASSES

<p style="text-align: center;">10th and Ash Avenue WO 7-4872 CLEO WIMBISH Evangelist</p>	<p style="text-align: center;">1016 River Drive WO 7-5112 PRESTON WINCHELL Evangelist</p>
--	---

<p style="text-align: center;">SUNDAY</p> <p>University Bible Class 9:45 a.m. Morn. Worship 10:45 a.m. Evening 7:00 p.m.</p> <p style="text-align: center;">WEDNESDAY</p> <p>Evening Study 7:30 p.m.</p>	<p style="text-align: center;">SUNDAY</p> <p>Bible Classes 9:45 a.m. Morn. Worship 10:45 a.m. Evening 6:30 p.m.</p> <p style="text-align: center;">WEDNESDAY</p> <p>Evening Study 7:30 p.m.</p>
--	---

DEVOTIONALS IN DANFORTH CHAPEL
MONDAY AND FRIDAY MORNINGS 6:30 to 7:00 A.M.

WALLY'S CAFE

Good Things to Eat and Drink

1133 Normal Avenue

"Across the Street From East Stadium"

Open 7 Days Week
6:30 A.M. TO MIDNITE

VALLEY ART THEATRE

509 MILL AVE. TEMPE

Now Playing "MOUSE" 6:30, 9:20 — "NURSE," 7:50, 10:40

SHOWING NIGHTLY



If You Never See Another Comedy In Your Life, You Must See "Carry On Nurse"!

Spend An Hour And A Half In Absolute Hysterics.

Don't Miss Getting Your Daffodill

Carry On Nurse!

Plus:

THE HILARIOUS STORY OF HOW THE DUCHY OF GRAND-FENWICK WAGED WAR ON THE UNITED STATES AND WON!

PETER SELLERS Playing three hilarious roles in

YOU'VE NEVER ROARED MORE!

The MOUSE that ROARED!

Southwick Clothes

It's for you ...

SOUTHWICK'S IVY HOPSACK CLASSIC

Reach for Southwick's natural shoulder classic in comfortable, long-wearing hopsacking. Your choice of cambridge grey, charcoal and brown, flawlessly crafted in the Southwick tradition.

\$88.00

Hanny's Varsity Shop

30 NORTH FIRST STREET

DOWNTOWN CHRISTOWN

See Campus Representatives: Ted Lorber, Jim Kirkpatrick, Jim Oakley



The STATE PRESS, distributed by the campus chapter of Sigma Delta Chi under the direction of Circulation Manager Charles Hilgeman, is the official campus newspaper of Arizona State University. It is published each Wednesday and Friday throughout the school year, excepting holidays, and is entered as second class matter at the Tempe, Arizona, Post Office under the Acts of March 3, 1879, and August 24, 1912. Subscription price, \$3 per school year.

The STATE PRESS is a member of the Arizona Newspapers Association, Associated Collegiate Press and National Advertising Service, Inc.



EDITOR-IN-CHIEF JACK ONG

NEWS DEPARTMENT

MANAGING EDITOR BILL FLICK

NEWS EDITORS LINDA WARREN, BILL OVEREND

COPY EDITOR CAROL OSMAN

CHIEF PROOFREADER EDIE ALLERS

ASSIGNMENTS EDITOR BARBARA MARLOWE

ASSISTANTS MARY GORMAN, JANET WOLHETER, GEORGE BUSSING, BOB ZACHE

SOCIETY DEPARTMENT

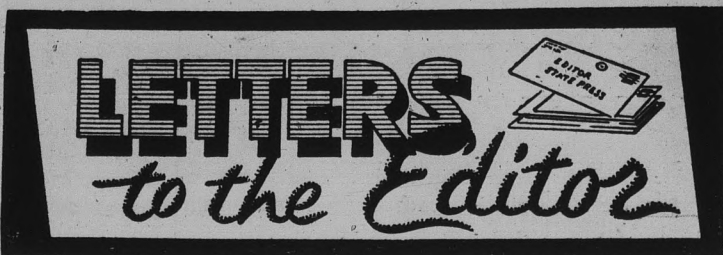
EDITOR ROSALYN WHITNEY

ASSISTANT BETTY ADAMS

SPORTS DEPARTMENT

EDITOR BOB EGER

ASSISTANT BOB JACOBSEN



Wooden Goals, Anyone?

"C'mon, let's tear down the goal posts!" This was one of the many cries heard after our ASU-Wichita victory Saturday night. From hither and yon, and every other nook and corner came a herd of screaming, shoving, wild students, in a moment's notice. These people's objective was to get to the posts, no matter how, and pull them down. A well with everyone involved. tradition, you say? True. But For the most important game of the season, the U of A-ASU don't come down that easily. game, why not erect wooden They happen to be steel and goal posts for the benefit of those who have to have goal posts to tear down? By all means, we must pacify these overly spirited students the best way we know how!

Compromise usually meets Ida Know

Wha' Hoppen To Our Books?!

To the Editor:

As one enters the bookstore, either to purchase supplies or simply browse around, there is a wall of shelves between the north and east entrances of the premises.

Here, the prospective customer is required to deposit his books while making his purchases. This prevents students from leaving the store without paying for their books.

The existing problem concerns the students. Namely, how to keep one's books from being removed from the shelves. Fortunately, a comparatively few books have been stolen this year.

It would be worthwhile for all concerned to keep a close watch on their books, but, that isn't always possible.

How about adopting a system similar to hat checking? That is, post a guard to distribute numbers to those wishing to check in books. Using this method, one may only pick up books corresponding to his number.

Another system that would eliminate the possibility of losing books may be to set up individual lockers around the campus. This may also eliminate books being stolen from cars.

I wonder if I'll be able to leave my books in the Den at lunch today?

Gwen Zupancic

The Joke's Stale

The new look on Tempe Butte is just what our campus needs. No sooner do the freshmen play their part in tradition — whitewashing the "A" on the Butte — than does the gigantic symbol get another paint job barely one week later.

The red spots, clearly visible from campus, were compliments of vandals, apparently.

If these alleged vandals are products of Arizona State, might we suggest that in the future their paint will be more appreciated on things that need it.

Now, won't a fine fraternity or sorority pick up where the children left off? Little ones often do not possess the mental capacity to clean their own messes.

Instead, they gripe and fuss, then sit back and let others take action; they complain about someone's cooking . . . while dishing up a second serving; they even "take it out" on someone else's property when dissatisfied with their own or with themselves.

Yes, we laughed at the "A" and its paint spots. But the joke's over, isn't it? Let's clean it off now. If our help is needed, let us know.

I Cover College Avenue

By BILL FLICK

One of ASU's proverbial problems: Who does the Memorial Union belong to? Or better yet, who should get what space?

We have heard several rumors lately about both the administration and the student groups and officers not being satisfied with the present situation in the MU. Complaints from both sectors revolve around one basic principle: there just ain't enough room! And we agree.

However, not wanting to base any argument on mere rumors, we have struck upon what we hope is a brilliant idea. We want you to decide . . . and then

comment on your decisions, putting them into print if necessary.

Here's how: Tonight is open house in our student union. This will be a four-hour period when you will have the opportunity to inspect the union, and perhaps help us solve this space problem by reaching your own conclusion.

We doubt quite seriously if anything can actually be done right now to alleviate this problem regardless of how many of you choose to complain about it. But if some sort of campaign is not begun soon — one way or the other — this problem may never cease

to be one of our biggest. So we suggest something should be done. And at the present time there is plenty of room in this paper for letters to our beloved editor.

Therefore, if you have formed any opinions on aforementioned problem or if after tonight you have formulated a stand on the subject, then drop us a line, preferably a well-written line. Perhaps something could be done, or at least the ball started rolling — after all, Gary Peter darn near got the RO program abolished (at least it requires a heck-of-a-lot less time now).

FOR THE APPEAL-TO THE-EVERYONE CLASS — Several things. We were discussing the very name of this collection of odds and ends with a certain individual the other day and we came up with this: We didn't agree completely on how well College Avenue is being covered in this column, but we did agree that the City of Tempe ought to have its try at it — cause it shore could use it.

Also, as we feel that most of you are true music lovers, we would like to announce the fact that the Den has just received via air mail special delivery a new record for its juke box. It's called "Hit the Road, Jack." We are definitely pleased to hear this but it was also announced that one record must be taken off — "Peanut Butter." (WE WISH!!!)

A long shot — Arizona State 42, Colorado State 0, and Nolan Jones to break the collegiate record of 30 consecutive conversions.

Finally, to m.a.m., we'll make it — somehow.



Flick

Little Man On Campus



"NAWWW, IT'S NOT SUCH A POPULAR COURSE. IT'S JUST WHEN THEY HAD SEATS EVERYONE FELL ASLEEP."



"BUT TH' COACH TOLD US TO START MAKIN' MORE USE OF TH' LIBERRY."

Financial Policy Book

The Board of Financial Control will meet today from 4:30 to 6 p.m. in MU 208. The student financing policy book will be submitted for approval.

Dick Finley, executive manager of ASASU, compiled the edition. Gary Walker, ASASU president, is chairman of the board.

Last year, Senate Bill 165 appropriated a \$198,855 budget to the different phases of this year's Associated Students activities. This means that \$23 of each \$103.50 activity fee is used in that area.

This will be the board's first full year of operation.

On Campus with Max Shulman
 (Author of "I Was a Teen-age Dwarf," "The Many Loves of Dobie Gillis," etc.)

THE GIRL I LEFT BEHIND ME

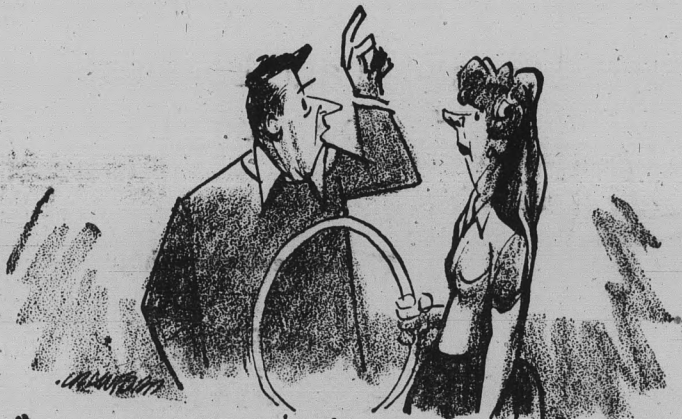
It happens every day. A young man goes off to college, leaving his home town sweetheart with vows of eternal love, and then he finds that he has outgrown her. What, in such cases, is the honorable thing to do?

Well sir, you can do what Rock Sigafoos did.

When Rock left Cut and Shoot, Pa., he said to his sweetheart, a simple country lass named Tess d' Urbevilles, "My dear, though I am far away in college, I will love you always. I will never look at another girl. If I do, may my eyeballs parch and wither, may my viscera writhe like adders, may the moths get my new tweed jacket!"

Then he clutched Tess to his bosom and planted a final kiss upon her fragrant young skull and went away, meaning with all his heart to be faithful.

But on the very first day of college he met a coed named Fata Morgana, a girl of such sophistication, such poise, such *savoir-faire* as Rock had never beheld. She spoke knowingly of Franz Kafka, she hummed Mozart, she smoked Marlboros,



"You can hit me in the stomach, if you like."

Now, Rock didn't know Franz Kafka from Pancho Villa, or Mozart from James K. Polk, but Marlboros he knew full well. He knew that anyone who smoked Marlboros was modern and advanced and as studded with brains as a ham with cloves. Good sense tells you that you can't beat Marlboro's exclusive selectrate filter, and you never could beat Marlboro's fine flavor. This Rock knew.

So all day he followed Fata around campus and listened to her talk about Franz Kafka, and then in the evening he went back to the dormitory and found this letter from his home town sweetheart Tess:

Dear Rock,

Us kids had a keen time yesterday. We went down to the pond and caught some frogs. I caught the most of anybody. Then we hitched rides on trucks and did lots of nutsy stuff like that. Well, I must close now because I got to whitewash the fence.

Your friend,
Tess

P.S.—I can do my Hula Hoop 3,000 times.

Well sir, Rock thought about Tess and then he thought about Fata and then a great sadness fell upon him. Suddenly he knew he had outgrown young, innocent Tess; his heart now belonged to smart, sophisticated Fata.

Rock, being above all things honorable, returned forthwith to his home town and walked up to Tess and looked her in the eye and said manly, "I do not love you any more. I love a girl named Fata Morgana. You can hit me in the stomach with all your might if you like."

"That's okay, hey," said Tess amiably. "I don't love you neither. I found a new boy."

"What is his name?" asked Rock.

"Franz Kafka," said Tess.

"A splendid fellow," said Rock and shook Tess's hand, and they have remained good friends to this day. In fact, Rock and Fata often double-date with Franz and Tess and have heaps of fun. Franz can do the Hula Hoop 6,000 times.

* * * © 1961 Max Shulman

Marlboro, in the king-size soft pack and famous flip-top box, is sold and enjoyed in all 50 States. And king-size unfiltered Philip Morris Commander, made of superb natural tobaccos, is also available wherever you travel.

ASU Marching Band Launches Season; Will Appear Before Half-Million People

By JERRY REILLY

The ASU marching band launched its 1961-62 season with a display of sight and sound last Saturday at the opening football game with Wichita University.

Pre-game and half-time activities were supplied by the

expanded 130 member group.

Under the direction of Dr. Harold Hines and assistant director Ronald Holloway, the Sun Devil musicians are organizing for another year of activities that includes over 35 appearances before approximately a half million people.

Besides playing for all home football games the band will also play at the San Jose-ASU game as they tour through California. The group will also play in the Los Angeles Coliseum during the L.A. Rams and Detroit Lions professional game

that is scheduled to be televised over CBS-TV.

October 28th is annual band day at ASU and over 1,300 high school students are expected to attend. The festivities include the high school and Sun Devil bands marching together during half-time activities.

Pleased with the band this year, Holloway said "We have a bunch of good kids and fine personnel."

Dr. Hines is returning after a year of absence with his newly acquired Ph.D. from the University of Southern California.

Mac & Jack Sez . . .
 "We're Really Interested In ASU People Here At PIONEER CAMERA SHOP TEMPE CENTER"

NOW THREE LOCATIONS . . .
 1. Tempe Center 2. 1302 Rural 3. Bayless Center
 Open 24 Hours A Day!

ZZZONA
 DRIVE-IN LAUNDRY & CLEANERS
 FIRST in Laundry and Cleaning • LAST in the Phone Book.

Fred Elquest & Son
 Everything for the Art Student
 • Art Supplies
 • Picture Framing
 703 N. 2nd St.
 Phoenix
 PHONE AL 8-2628

MIKE MENNEN
 and the UNLIKED-LIFEGUARD CAPER

WENT SOUTH FOR REST. BEACH SO CROWDED I COULDN'T GET ANY. HEARD SCREAM. THEN ANOTHER. AFTER THIRD SCREAM I GOT SUSPICIOUS. STARTED TO INVESTIGATE.

IT WAS LIFEGUARD. HE'D TRIED TO RESCUE DROWNING WOMAN. BUT SHE STUCK A HATPIN IN HIS INNER TUBE.

LIFEGUARD TOLD ME THIS WAS 10th ATTEMPT TO KILL HIM. FROM THIS EVIDENCE I CONCLUDED HE WASN'T VERY POPULAR. STARTED LOOKING FOR CLUES. FOUND A WOMAN'S ROLL-ON DEODORANT IN HIS BEACH BAG.

IT WAS HIS. NO WONDER HE WAS UNPOPULAR. GAVE HIM BOTTLE OF MENNEN SPRAY DEODORANT... HARDEST-WORKING, LONGEST-LASTING SPRAY A MAN CAN USE. GETS THROUGH TO THE SKIN. WORKS ALL DAY. AFTER THAT, I GOT PLENTY OF REST.

BACK IN OFFICE. PHONE RANG. IT WAS LIFEGUARD. SINCE USING MENNEN SPRAY HE'D HAD TO RESCUE 407 DROWNING WOMEN. WANTED TO COME NORTH FOR A REST.

STOP BY AND CHECK OUR COMPLETE LINE OF MENNEN Products

CAMPUS DRUG
 CORNER, College and 8th, WO 7-4049

'A' Gets Painted Twice This Year

Who ever heard of a polka dot "A"?

Last year the campus was honored (?) with a pastel green "A" atop Tempe Butte. That occasion was St. Patrick's Day.

This week Tempe Butte is sporting what appears to be a polka dot "A". No one seems to be sure of the occasion.

The big question is, who done it?

Students and faculty showed mixed reactions when it was shown to them.

SDX To Show 'Imitation of Life'

"Imitation of Life," the international film classic starring Lana Turner, John Gavin, Sandra Dee and Susan Kohner, is scheduled for two benefit showings Wednesday and Thursday at Cosner Auditorium.

The screenings are being sponsored by Sigma Delta Chi, Arizona's first undergraduate chapter of the national men's professional journalism society. Show time both evenings will be 7:30 p.m., according to Jack Ong, project chairman.

Admission will be 35 cents per person for the benefit; tickets are to be sold at the auditorium door.

Mac & Jack Sez . . .
"You'll Laugh Too, at Some of our Clever Contemporary Cards."
PIONEER CAMERA SHOP
TEMPE CENTER

Happy House Shop

Tempe Center

— TO THE LADIES —

- Featuring ROLFS Leather Goods
- BILLFOLDS — BOODLE BAGS
- FRENCH PURSES — KEY KADDIES
- HOLD ME CLUTCHES — TWIN CLUTCHES
- CIGARETTE CASES — LIGHTERS

COLUMBIA

Presents

The BEST In JAZZ

- ★ Brubeck
- ★ Basie
- ★ Ellington
- ★ Previn
- ★ Miles
- ★ Garner
- ★ Chico Hamilton

\$3.98
HI FI

\$4.98
STEREO

HILLS RECORDS

TEMPE CENTER — OPEN THURS. TILL 9

ASU Gives Course In Speed Reading

A course in speed reading will be offered to ASU students under the sponsorship of the Subjective Reading Center of Phoenix.

Classes and demonstrations will be in Irish hall from noon to 3 p.m. on Saturdays, starting Sept. 30. The course will enable students to increase their reading speed, comprehension and ability. Fee for the 14 week course will be \$100.



Stop In . . .
Find Out
For
Yourself !!
TEMPE DAIRY QUEEN
950 MILL AVE. — TEMPE

A typical response was that of Dick Finley, ASU executive manager. When he saw it, an expression of complete surprise crossed his face. "Good night!" he exclaimed, quickly adding, "I didn't do it!"

As late as Wednesday afternoon the Campus Security Department was unaware of the prank. When told for the first time, Jean Herring, Campus Security Department secretary, said, "How about that?" She added, "We haven't heard anything."

Upon closer examination (what a climb!) the "A" loses the polka dot look. Apparently the culprit(s) used spray paint cans for the four-color job.

The legs and top of the "A" are adorned with horizontal bars of red. On the right leg of the giant letter are the initials JHS (possibly a slip of the can kept this from being THS). Above the initials lie a green skull and crossbones.

In the center of the crossbar of the "A" is a red spiral similar to some of the petroglyphs found further up the butte. To the right of the spiral are the initials FTA and RF in black paint.

A gold slash crosses the right leg of the letter near the crossbar. Various dots and rectangles in black, green and gold decorate the expanse of the recently whitewashed "A".

Groups interested in restoring the "A" to its previous whiteness are asked to contact the Interfraternity Council.

AGAIN THIS YEAR CAMPUS DRUG

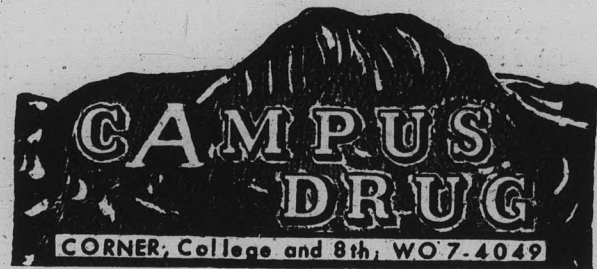
HAS

STADIUM SEATS

Only \$2.98

ENJOY ALL THE GAMES
THIS YEAR — IN COMFORT

HURRY . . . ONLY A LIMITED SUPPLY



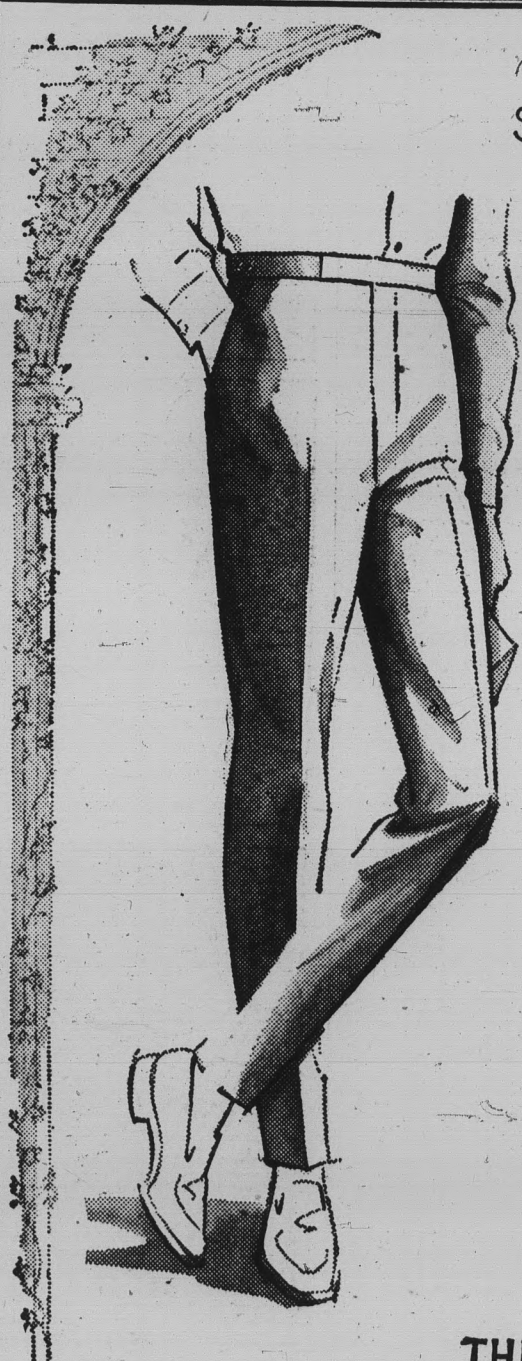
Slim-styled and beltless
for the young man

The Americana Shop



Here's the long slim look that's so popular with young men everywhere! H.I.S. tailors these slacks for perfect fit in its famous piper model . . . neat, beltless, plain front, adjustable button side tabs. The fabric is easy-to-care-for cotton . . . gabardine or twill. We have your size in your favorite color.

\$5.00 & \$5.95



Open 9:00 a.m. to 6:00 p.m.
Thursday Night
'til 9:00 p.m.

WO 7-5457

THE
Americana
SHOP

QUALITY MEN'S APPAREL
TEMPE SHOPPING CENTER

welcome

ASU

28

FINE STORES TO SERVE YOU

...just a block away!

Americana Shop

Bob Brickie

Furniture

Bonnie Sue Fashions

Celia's Fashions

Center Hardware

El Rancho Market

Erickson's
Handcrafts

First Federal
Savings and Loan
Association

First National
Bank

GallenKamps

Happy House Shop

Hill's Record Shop

House of Pancakes

Jam's Restaurant

King's Fashions

Little Travelers

Pioneer Camera
Shop

Porters

Ray's ASU Barber
Shop

Rosamond's

Ryan-Evans Drugs

S&H

Redemption Center

Sewing Basket

Sherwin-Williams

Tee Pee of Toys

Top's

W. T. Grant Co.

ZZZona Laundry
& C'rs



Tempe Shopping Center

on mill avenue - 8th to 10th streets

OPEN EVERY THURSDAY
EVENING UNTIL NINE

Honoraries Will Choose New Cadets

The Army and Air Force Women's Auxiliaries, Kaydettes and Angel Flight, will select new members through a series of teas beginning with the Kaydette Tea Monday.

The honorary auxiliaries work to promote the ROTC unit which they serve, acting as official hostesses and appearing at all ROTC functions.

Girls interested in Angel Flight should register at the MU information desk. The first tea will be Tuesday, at 3 p.m.

Coeds interested in Kaydettes are invited to attend the Monday tea at 4 p.m. in the MU upper lounge. School dresses and heels are appropriate.

Those interested in either organization should not have a 7:40 class on Tuesdays and Thursdays.

Board Sponsors Rally For Team

ASU's Sun Devil football team will be met by the ASU Sun Devil Band and ASU's Pom-pon girls Sunday, 10:30 a.m., at Sky Harbor airport.

The team will be returning from the Colorado State football game at Ft. Collins, Colo.

The Rally and Traditions board, organizers of this new welcoming event, says, "Let's all be there to welcome them home, win or lose."



KAYDETTES PLAN TEA — Kaydettes are busy preparing for their annual membership teas which will begin at 4 p.m., Monday. From left to right are Kathy Young, Judy Anderson, Lynn Anderson, and Marilyn Fish.



FLIGHT INSTRUCTION

Special Rates For College People

MODERNIZED GROUND SCHOOL FOR PILOTS & NON-PILOTS

Amos Flight Operations

A Private License is a Must In Modern Business

Don Amos — Class of '56

Phone BR 5-7291

SKY HARBOR

Spurs' Mums Sale Slated

The ASU Spurs, service honorary, is boosting the spirit of Parent's Day, Oct. 7, by selling "Mums for Mom" in women's dorms, this week end.

The mums, selling for \$1.50, will also be sold Saturday in the

Memorial Union from 11 a.m. to 3 p.m.

This project has been a tradition of Spurs for the last several years. Proceeds will be used in aiding the Spurs to attend the Regional Convention in El Paso, Texas, Nov. 3, 4, and 5.

ORDER OUR TAKE-OUT DINNERS & REALLY ENJOY TOMMOROW NITE'S GAME ON RADIO

Call WO 7-3049 for

CHICO'S RESTAURANT*
FINE MEXICAN FOOD

1120 East Apache Blvd. — Tempe

*Air conditioned of course

Mac & Jack Sez...
"Shutter-Bugged?"
See Us At The
PIONEER CAMERA SHOP
TEMPE CENTER

Campus Classified

Regulations: For students and faculty only of Arizona State University. Cash in advance. Submit to Room 233, Social Science Bldg., 8 a.m. to 9 a.m. daily, 1:30 to 2:30 Monday and Wednesday. Call Ext. 471 for other hours. Rates: 10 cents a line per issue, 35 cents minimum charge.

WANTED

Male to share apartment \$35 per month. Apply W. J. Mogg, Apt. 3, 1210 Apache Blvd. after 5 P.M.

APARTMENTS

5 New furnished apartments for ASU married couples now under construction 2 blocks east of ASU campus at 705 Krueger St. \$85 per month, utilities paid. Phone WO 7-5430 for details.

Bunch's Watch Shoppe

Where Discounts Are Real

- featuring
- BULOVA WATCHES
- SPEIDEL BANDS

Phone WO 7-3221
609 MILL — TEMPE



"Tareyton's Dual Filter in duas partes divisa est!"

says Publius (*Boom-Boom*) Aurelius, Coliseum crowd-pleaser.

Says *Boom-Boom*, "Tareyton is one filter cigarette that really delivers de gustibus. Legions of smokers are switching. Try a couple of packs of Tareytons. They're the packs Romana!"



DUAL FILTER Tareyton

Product of The American Tobacco Company — "Tobacco is our middle name" © A. T. Co.

Phi Kappa Psi Establishes Colony On ASU Campus

Phi Kappa Psi colony will petition for official recognition in the IFC this coming month. The Phi Psi colony has been in existence on this campus one week.

Bob Chamberlain and Bob Clappett, transfer students from the University of Washington, are forming the colony which now boasts ten men. The colony's existence is the result of combined efforts of national Phi Kappa Psi fraternity, the fraternity's Phoenix alumni association and Dean of Men Gary Anderson.

Phi Kappa Psi is known as one of the old-line fraternities, being founded in 1852. The fraternity has 62 accredited chapters throughout the United States.

Greek To Me - - -

Greeks Normal Again After Close Of Rush

By ROSALYN WHITNEY

After a three month rest, Greeks are back in the swing of things on the ASU campus. Rush is over and the new pledge classes are caught up in exchanges, chapter walk-outs, and candle passings.

Proud new actives may be seen wearing their well-earned fraternity pins and Greeks are welcoming a new colony to the ASU campus.

"Greek to Me" sends greetings to our newest member, Phi Kappa Psi and congratulations to the Phi Alphas who will join the ranks of national Sigma Alpha Epsilons come December.

Exchanges are serving to introduce fraternity and sorority pledge classes to campus social life. Alpha Delta Pis joined with the Alpha Tau Omegas for a "return to good ole high school days" get together at the ATO house. Kappa Deltas traveled to South Mountain Park for their

opening exchange with the Sigma Phi Epsilons, which featured a barbecue dinner and pledge entertainment.

Phi Delta Thetas honored the members of their women's auxiliary, Phidelphas, at a September 25 dinner at Monti's.

New officers' assuming their responsibilities after fall elections, include Vivianne Taylor, president of Alpha Phi sorority; Marsha Smith, vice president; Diane Miller, assistant pledge trainer; Donna Hartshorne, parliamentarian; and Karen Sor-gatz, scholarship chairman. Phi Delta Thetas chose Don Head, president; Dennis Jenkins and Dave Fisher, pledge trainers; Ron Sheridan, secretary; Keith Renault, treasurer; Pete McClennan, corresponding secretary; and Pat Morris, scholastic chairman.

Newly elected Alpha Tau Omega president is Larry Summerson. Bill Flick serves as Worthy Sentinel, with Pete Bernal, Worthy Usher; Will Thomas, social chairman; and Bill Mapes, pledge trainer. Fred Dworkis and Norman Orfall will represent Theta Chi as IFC representatives for the fall semester.

Sigma Sigma Sigmas Margaret Burton and Diane Voorhis were present at the Tri Sigma

Rocky Mountain regional meet to accept the second place national traveling trophy for Beta Kappa chapter for its contributions to the Robbie Page Memorial Fund.

Along with the return to campus life for Greeks, comes the candle passing. Alpha Phi Carol Fuller is pinned to Theta Delta Chi, James McKee. Alpha Delta Pi, Pam Redburn is engaged to Bill Osborn, ASU junior. Peggy Childs, Gamma Phi Beta, announced her pinning to Bill Cheery, Phi Sigma Kappa, and another Gamma Phi, Diane Bowman, is engaged to Sigma Phi Epsilon, Chuck Bingham. Chi Omegas, Suzi Johnson and Peggy Ruth have announced their engagements to Delta Sigma Phi Bill Hicks and Leon Hawk, respectively. Carol Osman, Sigma Sigma Sigma, is engaged to Bing Brown, Phi Psi.

Prints Available

Some prints of paintings are still available for student and staff rental at the MU information desk, according to Ron Horner, chairman on the sponsoring Cultural Affairs committee.

Prints are rented each semester.



The PIZZA HUT

"Eat In or Carry Out"

Open Every Day For Lunch & Dinner

11:30 A.M. to 1 A.M.

FREE Catering Service To Parties

Order By Phone For Faster Service

WO 7-3355

801 E. Apache

Tempe

Mac & Jack Sez . . .
"24 Hour Service on
Color & Black & White"
PIONEER CAMERA
SHOP
TEMPE CENTER



OVERWHELMING RESPONSE TO THE ASSOCIATED STUDENTS INSURANCE PLAN

has forced up to keep enrollment open TWO WEEKS LONGER

REMEMBR, Students insured last year should also re-apply for this year's coverage.

THERE ARE PLANS FOR SINGLE STUDENTS, MARRIED COUPLES, AND FAMILIES.

DON'T PUT IT OFF ANOTHER DAY

Applications at Room 213 Memorial Union

or

Charles Lock, 822B Mill Ave., Tempe - WO 7-3358

SIGN UP NOW

Before Saturday, October 14



LOOK YOUR Loveliest

- Hair Coloring
- Manicuring

Hair Styling To Suit Your Personality

Center Beauty Salon

EXPERT STYLISTS TO SERVE YOU

— PERMANENTS —

Includes Hair Cut, Shampoo And Set Styled To Compliment You

OPEN TUESDAY EVENINGS
2202 Apache - For App't. - WO 7-1903

RCA VICTOR

HITS OF THE MONTH

- ★ LIMELIGHTERS - "The Slightly Fabulous Limelighters"
- ★ AL HIRT - "He's The King"
- ★ PETER NERO - "New Piano In Town"
- ★ BELAFONTE - "Jump Up Calypso"

\$3.98

STEREO

\$4.98

HI FI

HILLS RECORDS

Tempe Center - Open Thurs. Till 9

Good Frosh Cage Potential

The 1961-62 roster of Sun Imp basketball was released by frosh mentor Fanny Markham this week. Four Arizonans are listed on the squad. Two players are from California, and one each from Indiana, Kentucky, and Wisconsin.

The coaching staff feels that this year's quintet will be of "sleeper" quality, in contrast to last season's fast starters. The center spot will be man-

ned by Dave Reid of Rancho High, Anaheim, Calif., and Bill Mullen, of Watertown, Wisc., both 6'6". Reid was an All-League selection his high school junior year, but sat out his last season due to a football injury. Mullen was also an All-League selection.

Joe Quintana, Lincoln High, Los Angeles, Calif., Tom Owens of Newport, Kentucky, and Jerry Brown of Winslow, Ariz., will battle for the forward spots. Quintana, 6'3", was an All-

City selection, and led his league in scoring both his junior and senior years. Owens is 6'4" and despite missing half the season due to illness, received All-State honorable mention. Brown, who stands 6'3", was an Arizona Class A choice the past season.

Four candidates will be vying for the guard slots. They are Howard Lee, 5'10", of St. Johns, Ariz., Louis Lagunas, 5'10", of Hayden, Ariz., Archie Hen-

derson, 5'8", Washington High, Phoenix, and 6'2" Norm Davis of Horace Mann High, Gary, Indiana.

Lee was named on the Arizona All-State Class B team and Lagunas received the same honor. Henderson was an All-Phoenix city selection, and was also on the Class AA All-Stars. Davis earned honorable mention on the Indiana All-State team.

Gym Meeting
A gymnastics meeting is scheduled for Tuesday at 4:30 p.m. in the men's gym, according to Coach Norris Steverson.

NOW YOU KNOW
ASU quarterback Joe Zuger has averaged 42.6 yards per punt for 81 boots going into this season and covering a three-year span.

Mac & Jack Sez . . .
"Everything Comes Up
Roses At The
**PIONEER CAMERA
SHOP**
TEMPE CENTER

QUITTING BUSINESS!

National Brand Watches at Tremendous Savings!

- HAMILTON Ladies & Gents 1/3 to 1/2 off
- ELGIN 17 Jewel, as low as \$22.48
- LONGINES up to 1/2 off
- BULOVA up to 1/2 off
- BENRUS - Swiss Timer 1/2 Price
- TIMEX Ladies, Men's, Children's \$4.98
- WYLER 17 Jewel, Shockproof 50% off

Diamonds

Engagement Sets

- \$675.00 square cut baguette in center, diamonds on side **\$375.00**
- \$450.00 nice center diamond, six diamonds on side, seven-diamond wedding ring **\$269.00**
- \$350.00 value set. Yellow gold, 14 diamonds **\$175.00**
- \$275.00 value, yellow or white gold, 10 diamonds **\$149.00**
- \$250.00 set. Art carved **\$125.00**
- \$200.00 set, diamond set fishtail mounting **\$112.50**
- \$150.00 diamond set Yellow or white gold **\$98.00**
- \$100.00 sets **\$50.00**

JEWELRY

WATCH BANDS
Gemex, Speidel & Kreisler
Yellow and White Gold

Costume Jewelry
Up to \$25.00 Values **\$3.95**
as low as
OTHERS LESS THAN HALF

DISHES

- Franciscan — Syracuse
- Castleton — Bavarian
- Haviland
- Johnson Bros.
- Red Wing Bone China
- Milk Glass
- Figurines — Hummels
- Brass — Giftware

Photo-Vue

Ident. Bracelet

Ladies' and Gents' — Speidel and Forster
Reg. \$10.95, Others at \$1.98

\$5.98

Shaeffer Sets On Sale
Pen & Pencil 1/2 off

Ronson Lighters
Now on Sale at 1/2 off

SAVE UP TO 75%

Sale Continues
Until All Merchandise
Is Sold

NATIONALLY ADVERTISED JEWELRY & GIFTS

Hurry For These Savings

Stock consists of fine Diamonds, Platinum Diamond Jewelry, Gold Jewelry, Bulova, Wyler, Elgin, Gruen Watches, Speidel, Gemex, Anson, Delta, Simmons Jewelry, Fine Wedding Rings, Kreisler Lighters, Gifts, etc. All merchandise must be sold.

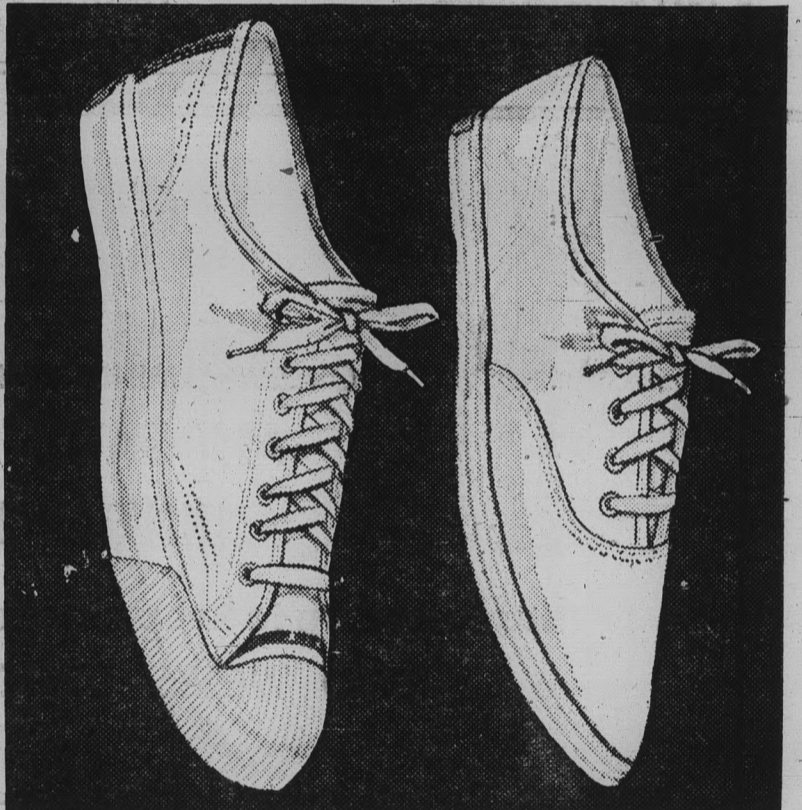
Costume Jewelry

- Trifari - Van Dell
- Indian - Turquoise
- Sterling - Copper

AT COST
BELOW COST

WATCH BANDS

Ladies' — Gents' **\$2.19**
Reg. \$4.95



Other shoes may look like Keds, but only U.S. Keds® can give you "that great feeling." Because Keds have a patented shockproofed arch cushion and cushioned inner sole. And because Keds are built over tested, scientific lasts to fit all feet perfectly, even narrow ones. Keds are right for class, gym, tennis court or dorm. Machine-washable (and they even look good clean). His: Keds "Court King." Hers: Keds "Champion." Get your new U.S. Keds at fine stores everywhere.

LOOK FOR THE BLUE LABEL



*both Keds and the blue label are registered trademarks of
United States Rubber
ROCKEFELLER CENTER, NEW YORK 20, NEW YORK

Wright & Sanborn
JEWELRY & Gifts

21 East
1st Street
Scottsdale

Your Exclusive KEDS Dealer In Tempe

Fashion Bootery

605 MILL AVE.

TEMPE

Devil Gridders Visit Colorado State

Hope To Improve Over Performance In Opener

By BOB EGER
Sports Editor

Arizona State hopes to get its offense rolling tomorrow against Colorado State University at Fort Collins and show supporters at home that it is really a better team than the one that ground out a dull, 21-7 victory over Wichita last Saturday.

Coach Frank Kush has made several changes in the line in hopes of improving

power plays up the middle, an area where Wichita stopped the Devils cold.

Steve Fedorchak has been given the nod at center over All Border Conference returnee Fred Rhoades. Bob Widmer will probably get the call at left guard over Jesse Bradford, partly because of a minor leg injury sustained by Bradford against Wichita and partly because of Widmer's spirited play in Saturday's game.

Roger Locke will probably replace Herman "Ham Handed" Harrison at right end but both will undoubtedly see plenty of action. Harrison was more than adequate offensively in the Wichita game but left something to be desired on defense.

Kush plans to start Joe Zuger at quarterback, although Ron Cosner and John Jacobs will probably see more action than they did in the opener.

John McFalls, after a sensational showing against Wichita, appears sure of retaining his right halfback job and Nolan Jones, despite minor injuries, will start at left half over slightly ailing Ossie McCarty and rapidly improving Tony Lorick.

Clay Freney and Dornel Nelson have been waging a battle all week for the starting fullback spot and either could get the call.

Mac & Jack Sez . . .
"See Us For Real Fine Custom Processing"
PIONEER CAMERA SHOP
TEMPE CENTER

Go Devils DOWN COLORADO STATE FOR NUMBER 2 . . .



- Complete carry our service
- Efficient Car Hostesses
- Cherry Atmosphere

503 E. 8th St. — WO 7-0800
"Where the Nickel is Mighty"

- ★ Complete Service Facilities
- ★ 7 Mechanics On Duty
- ★ Servicing All Makes & Models
- ★ Good Transportation Or Late Model Cars Available

Smiley-Berge Ford

Your Nearest Auto Dealer

★ JUST 2 BLOCKS FROM CAMPUS ★

16 East 8th St.—Tempe—Phone WO 7-2064

BOB VIEWS SPORTS NEWS

Devils Need Big Score

By BOB EGER
Sports Editor



Frank Kush's Sun Devils will be shooting for more than just a win when they meet Colorado State at Fort Collins tomorrow.

They want to run up a big score to prove that they can hold their own against a couple of later-season opponents who have already trounced the Rams. And they hope to show that they are at least as good as last year's edition of the Sun Devils.

Last Saturday Arizona beat Colorado State 28-6, and the week before, Utah trounced the Rams 40-0. That gives Kush and his troops a couple of targets to shoot at tomorrow.

And a third mark for which the Devils will be gunning is the 39-0 whitewashing they delt the Rams in the opener here last season.

Although comparative scores are often not accurate indicators, they at least provide food for thought and no matter what the outcome, tomorrow's battle should be thought-provoking.

Following tomorrow's game the Devils have three straight toughies as they tangle with Utah, West Texas State and Oregon State on successive weekends. The Utah and Oregon State games are home contests.

Last weekend Utah held its own although dropping a 7-0 verdict to powerful Wisconsin and Oregon State likewise played respectable ball while succumbing to once mighty and still tough Syracuse.

West Texas State, long one of the Border Conference doormats, has finally come into its own, as evidenced by the 55-0 mop-up job it did on Brigham Young last Saturday. The Buffaloes gave the Sun Devils a scare last year before falling 14-3.

SMALL THINGS — The Nov. 11 grid game between the Sun Devils and Texas Western in El Paso will be a tie breaker in the teams' all-time series. Each team has won 12 and there have been three ties in the 27 previous meetings.

ASU Netters In Southwest Tournament

Carol Prosen and Lynn Haines of Arizona State are seeded first and second respectively in women's singles in the 49th annual Southwestern Tennis Championships which started yesterday and will continue through Sunday in Tucson.

Miss Prosen and Miss Haines should receive their top competition from third seeded Nancy Pennies of Texas Western and Emma Flores of ASU, seeded fourth.

About 250 netters entered the tournament with close competition expected in all divisions of play.

Bill Lenoir of the University of Arizona is top seeded in men's singles over Hugh Stewart of Pasadena, Calif., who last week upset Australian Rod Laver in the Pacific Southwest Championships.

George Stoesser, the defending tourney champ, is third seeded for this year's competition.

Other ASU women's entrants are Pinky Shoemaker, Ina Leffler and Sandy Smith.

See our complete selection of fresh, delicious



TEMPE DRUGS
6th & Mill — Open 9-7

the **Capri's Pick Of The Week**

ASU ---- 21
Aggies ---- 7

Right or Wrong You Can't Miss With Our PIZZA'S

EXPERT RACKET RESTRINGING
Trophies and Engraving

P.E. CLOTHES FOR MEN AND WOMEN
Brand Names MEN'S WEAR
Brand Names WOMEN'S WEAR

"FOR BRANDS YOU KNOW"

Joe Selleh

624 MILL AVE.

WO 7-4163

Jam's

RESTAURANT
Tempe Center

DAILY BREAKFAST SPECIAL
2 EGGS, ANY STYLE
TOAST, JELLY & COFFEE

45c

WITH HAM, BACON OR SAUSAGE

65c

SERVED TILL 11 A.M.

OPEN 8 A.M. TO 7 P.M. DAILY
CLOSED SUNDAYS

WHY AREN'T YOU

IN A
BOWLING LEAGUE?
*Sign Up NOW at the
Memorial Union Games Desk*

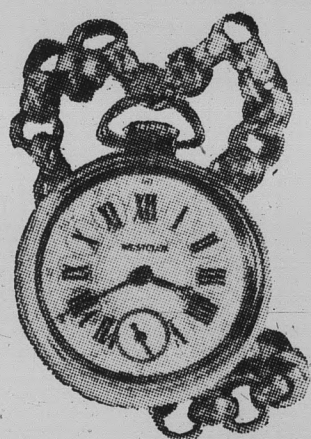
Who ASU's Opponents Play

Cincinnati at WICHITA (1-1)	0) at TEXAS WESTERN (0-1)
ASU (1-0) at CSU (0-2)	Stanford at OREGON STATE (0-1)
Oregon at UTAH (1-1)	HARDIN - SIMMONS (0-2) at Memphis State
WEST TEXAS STATE (1-	SAN JOSE STATE (2-0) at Idaho
	Xavier at DETROIT (1-0)
	ARIZONA (1-0) at Nebraska

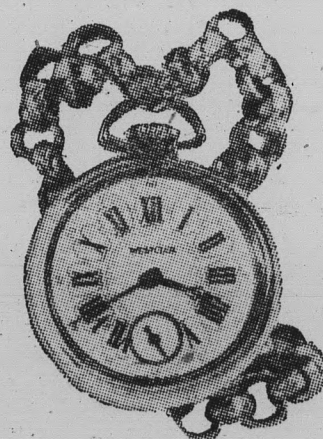
Buy Keds
at
**McDougall
Cassou
Traditional
Shop**

Lower Level
130 N. Central, Phx.

Mac & Jack Sez . . .
"Things Are Developing
Fast At The
**PIONEER CAMERA
SHOP**
TEMPE CENTER

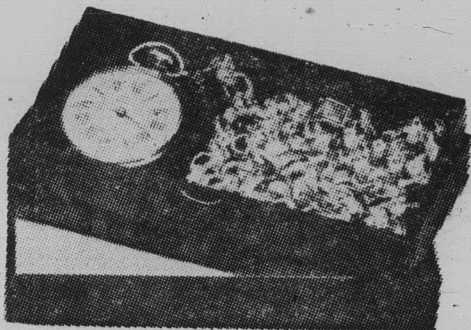


M
A
D
E
M
O
I
S
E
L
L
E



WESTCLOX CAMPUS WATCH → COLLEGE CLICK!

Making a hit with these girls from A.S.U. is the new Mademoiselle Campus Watch by Westclox. Top picture from left are: Jamie Hack, Caldwell Read, Margo Gamasche, Carol Trapp, Brigitte Postlier and Patricia Melone. Bottom picture shows Carol Trapp and Caldwell Read.



Mademoiselle CAMPUS WATCH

For campus wear! For anywhere! This new versatile Westclox Watch goes with you wherever you go. Wear it on the waist, wrist, or around the neck. Exclusive Westclox design makes this watch the hit of the campus!

\$6.95

Ryan-Evans
DRUG STORES

WE GIVE

GREEN STAMPS

W
E
S
T
C
L
O
X