



State Press

ARIZONA STATE UNIVERSITY



TEMPE, ARIZONA



Vol. 40

Wednesday, September 27, 1961

No. 2



OPENING NIGHT TIPS — Mike Byron, one of the stars of "The Browning Version," gets a bit of advice on how to make a quick costume change simpler from Drama Workshop director Dr. James Yeater. "Version," along with "The Dock Brief," two one-act plays, open tonight and will play through Sunday. This is the first time the Workshop has scheduled a Sunday performance. Curtain is at 8 p.m. nightly; tickets, \$1 or activity tickets, are available at the door and at the MU information desk. The plays will be at Payne Auditorium.

University Offers Four New TV Courses; Include Foreign Language, Social Science

Push-button education now is available to Phoenix residents and arm-chair students without their leaving home. A student may enroll in as many as 14 semester hours of televised college credit courses this fall.

ASU is the first state institution to offer televised college credit courses statewide. Four courses will originate on campus and may be seen over ASU's educational television station KAET, Channel 8. Enrollment will be conducted by the Office of Extension Division with programs beginning Oct. 2.

Registration closes Friday. Courses offered include: Spanish 102, Elementary Spanish, four credits, from 7 to 7:30 p.m. Monday through Friday with Dr. Quino Martinez, associate professor of Spanish.

Psychology 100, three credits, begins at 8:15 to 9 p.m. Mondays, Wednesdays and Thursdays, taught by Dr. Israel Goldiamond, professor of psychology.

Sociology 101, three credits, will be taught by Dr. Lester Perill, professor of sociology, from 4:30 to 5 p.m. on Mondays, Wednesdays and Thursdays.

Political Science 102, three credits, begins at 6:30 to 7 p.m. on Mondays, Wednesdays and Fridays, taught by Dr. Raymond

Uhl, professor of political science.

In addition to these televised courses, programs presenting everything from William Shakespeare to Edward Albee, from Purcell operas to Richards Rodgers, from the jungles of Vietnam to the White House will be shown over the National Educational Television "prime time."

These programs begin Friday at 7:30 p.m. with the Boston Symphony Orchestra in a complete two-hour concert over ASU's KAET, Channel 8.

Sheldon Siegel, KAET program manager, said these programs would be broadcast every Monday, Wednesday and Friday nights.

Monday night features an hour long symposium on "Prospects of Mankind" with moderator, Mrs. Eleanor Roosevelt, and different speakers each week including President John F. Kennedy, philosopher Bertrand Russell, scientists Sir Charles P. Snow and Jerome Wiesner, French statesman Maurice Schumann, former Prime Minister Mohammad Hatta of Indonesia, Julius Nyerere of Tanganyika and U.S. Ambassador to the U.N. Adlai Stevenson.

On Wednesday night,

"Significant Persons" will present programs featuring people such as Aaron Copland, Richard Rodgers, Marcel Marceau, Lorraine Hansberry, Walter Piston, Dr. Carl Jung, Dame Edith Sitwell and Edward Steichen. Excerpts from or demonstrations of work of each are to be interwoven with commentary.

Friday night's series, "Festival of the Arts," will present programs such as Shakespeare's "An Age of Kings," plus full-length operas and concerts, the best in complete drama from foreign producers and programs on history's great artists and their work.

1962 Graduates Offered Positions

Students graduating from ASU in 1962 may register now for commercial or governmental employment at the Placement Center, Dr. Robert Menke, Director of Placement, has announced.

The Placement Bureau will be able to give more personal attention to those students who take advantage of early registration.

All necessary papers and information are now available in the Placement Center.

'Myths' Selected Theme For ASU '61 Homecoming

Homecoming — 1961 style — will see the ASU campus come alive with "Great Myths."

New and different ideas are being planned to generate more interest and spirit in one of the year's biggest student activities.

The week's activities will begin Oct. 17th with general elections for Homecoming King and Queen. That evening the winning couple will be crowned at a dance in the MU ballroom. This year, two attendants for each will also be named, and royalty gifts presented, courtesy of local merchants. The royal court will reign all week, as opposed to last year's one night affair.

Next on the calendar of events is a pep rally in Sun Devil Stadium Oct. 19th at 8 p.m.

Again this year, dorms, fraternities, sororities, and special interest groups will vie for top honors in decorations. The 1961 contest budget limit for organizations is \$175.

Climaxing the Big Week, the ASU Sun Devils will meet the Oregon State College Beavers Oct. 21 in Sun Devil Stadium.

Preliminaries for Homecoming Week start today, when king and queen candidates may pick up petitions in MU 202. These must be turned in by Oct. 5.

Oct. 3 is the real kick-off date, with an orientation meeting required for all candidates scheduled at 4 p.m. in the MU. This is also the first date groups may submit their theme selections on a first-come first-served basis. Only myths will be accepted, no legends. Oct. 6 is the deadline for entries.

Co-chairmen for 1961 Homecoming are John Southern and Linda Rankin. Secretary for activities is Sharlyn Nelson. Committee chairmen include: Ron Schmiertenknop, decora-

tions; Andy Mitchell, half time; Linda Lowry, coronation; Sue Chemnick, publicity; Steve Montgomery, dance; Bob Frend, pep rally; Doris Parisek, alumni registration; Beverly Dexter, directory; Sam Freedman, judging; Marian Winsryg, gifts.

Decoration Committee sub-chairmen are: Jack Phillips, fraternities; Nancy Clayton, sororities; Ferne Bridge, dorms; and Zee Chapman, special interest.

MU Open House Scheduled For Friday At 8 p.m.

Entertainment, dancing, recreation and an art exhibit will be features of the annual Memorial Union Open House Friday from 8 p.m. to midnight.

Dr. Thomas Harter, professor of Art, will lecture and show an exhibit from the American Watercolor Society in the lower lounge at 8:15 p.m.

Dancing to the music of Bob Roth's Octet is scheduled for 9 p.m. Free refreshments will be served in Clancy's and four floor shows are slated for the evening.

"The Detective Story," a crime-mystery classic, will be shown in MU 218, while bowling, billiards and table tennis will be available in the Games Room.

ASASU officers will be in their offices to meet the guests.

Appeals Made By Campus PO

The Campus Post Office is trying to decrease the amount of dead letters in the office by reminding all students to please put full return addresses on all correspondence. This means name, hall, room number, and ASU.

Faculty, staff, and graduate-assistants are asked to include name, department, and ASU.

All campus mail addresses should bear the department, hall, fraternity, sorority, club, etc., in addition to the addressee's name.

Since the Campus Post Office does not deliver student mail, yellow parcel notices should be taken to the main Tempe Post Office at Fifth Street and Mill Avenue.

Petitions Available

Petitions are available today for freshman senators and Homecoming king and queen, according to Dick Langmade, new chairman of the Elections board.

The petitions, available at the ASASU secretary's office, MU 202, are due Oct. 5.

Primary elections for the senators will be Oct. 11; the general election for both senators and Homecoming royalty will be Oct. 8.

A 2.0 cumulative grade index is required of all students running in ASASU elections.

All candidates must attend a meeting next Tuesday, Langmade said.

Interstate Vending Service To Provide ASU Machines

By GEORGE BUSSING

A contract has been awarded by ASU to the Interstate Vending Machine Company of Arizona to provide vending service to the campus, according to a memo from the office of Gilbert Cady, vice-president of business affairs.

No other vending machine is allowed to operate on the campus with the exception of the washing and drying machines in the dormitories.

"We'll do everything in our power to keep the machines on campus trouble free and in sat-

isfactory condition," said Alex Fitzgibbons, Phoenix branch manager for Interstate. He also said, "We want to co-operate 100%, and to be doing this we ask you (meaning ASU students) to co-operate by not abusing a machine if it fails to operate correctly. If a coin is lost, we'll be happy to refund it." Refund stations will be set up and posted on each machine soon.

According to the memo mentioned above, Mr. Tony Bustamante, manager of the ASU Bookstore, is the ASU representative between the university and Interstate. He will have final authority for approving locations, types of machines and all co-ordination between the company and ASU. For the present he is the person to contact for reimbursement of coin loss. His ASU extension is 318, but you can also contact him at the bookstore.

The International Vending Company of Arizona is a branch

of the Interstate Vending Company which has machines throughout the nation and in Europe. Approximately 85 new machines of larger capacities have been added to the campus. Some of the 60 old machines that the university owned have been rebuilt and repainted and situated at different locations on campus.

Fitzgibbons has been with Interstate three years. He started as a service man, but when he was transferred from the West Coast to Phoenix, he was the service manager for the L.A. and Orange County areas.

The memo from the office of Gilbert Cady also said, "this contract with International Vending Company will be very advantageous to ASU, and it is requested that all co-operation possible be extended this company."

Business Administration Offering Prep Courses

The College of Business Administration will offer three courses in preparation for Chartered Life Underwriters and Chartered Property and Casualty Underwriters at Phoenix College this year. The courses are designed to prepare insurance people for the national chartering examinations.

The courses are the fundamentals of life and health in-

urance, group and health insurance, and insurance principles and practices. All classes are already in progress, except for Insurance Principles and Practices, which will start tomorrow at 4:30 p.m.

All classes meet once weekly for two hours and will continue until June. All classes will be in room 106 of the LA building at Phoenix College.

ASU Professor Relates Tales Of World War II

"Farming, teaching, and living in America is a privilege and a pleasure," maintains Dr. Ernest L. Parker, professor of animal husbandry at ASU.

Dr. Parker, his wife, and daughter were forced to flee their native home in Belgium during May of 1940. In a mass exodus along with 5,000 other refugees escaping from the danger of the Nazi war machine, Dr. Parker and his family began their nightmareish flight through France. The Parkers were captured by the Nazis in Rouen, France.

While the English were evacuating Dunkirk, they were able to free some of the refugees being held by the Nazis. The Parkers were among those refugees.

Later the Parkers were smuggled out of France and finally walked over the Pyrenees mountains into Spain. They later went to Cuba and applied for admission to the United States and eventually became citizens of this country.

Parker joined the ASU staff in 1950 to teach animal husbandry and this year will branch out and teach humanities.

Young Democrats Meeting Today

"The purpose of the Young Democrats is to inform students of people and philosophies of the Democratic party," said Nancy Rogers, president of the organization.

Plans are now incomplete, but in the future the assemblage expects speakers from state and national offices within the Democratic party. Such spokesmen as Bill Stephens, Maricopa County Democratic chairman and majority leader of the State House of Representatives, are scheduled. The first meeting is today at 3:40 p.m. in the upper lounge of MU.

Party aim is to attract and inform youthful members possessing a capacity for learning. "Such are assets to any group," Nancy said.

Also on the future agenda are forums of speakers and several social occasions.

FOUR BARBERS TO SERVE YOU BETTER



J. D. COLLINS
No. 1 Chair

Harry Heckathorn
No. 2 Chair

Andy Pardo
No. 3 Chair

Bod Nadeau
No. 4 Chair

NEW
SHOE SHINE
FACILITIES

Open Daily 8-6 MONDAYS thru Fridays

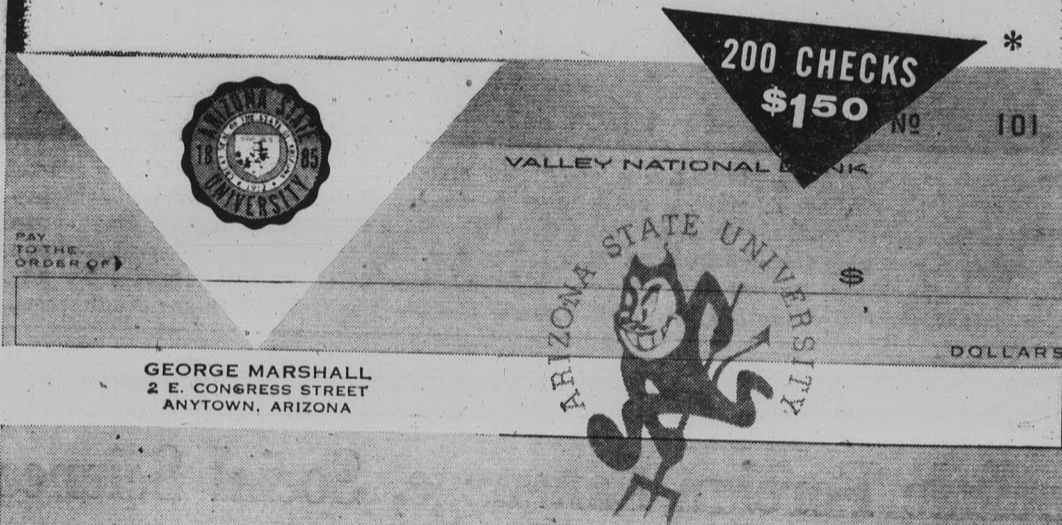
JD's

**CAMPUS
BARBER
SHOP**

816 COLLEGE AVE. — NEXT TO "VI"

Attention — ASU Students and Faculty:

SUN DEVIL CHECKS



(SORRY IT'S BLACK & WHITE; SEE THE COLORFUL CHECKS AT YOUR VALLEY BANK!)

Now . . . for either regular or special checking accounts, you can order these special Sun Devil personalized checks — at any Valley Bank office.

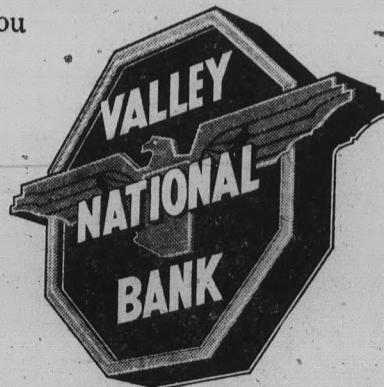
The "V" and lower-center panel are white; the background a soft pastel; the figure and college seals in colors. See an actual check at your Valley Bank.

Register-style, numbered, personalized with your name and address, you can get 200 checks for only \$1.50. They will be mailed to the address you specify in one week from date you place your order.

ADVERTISE YOUR SCHOOL!

(Your checks go everywhere)

*Order at ANY Valley Bank office!



MEMBER FEDERAL DEPOSIT INSURANCE CORPORATION



Sahuaro Dons New Look In Men's Campus Dorms

"Hello. Sahuaro Halls, may I help you?"

"May I speak to Ken Calbeck please?"

"Yes, Ma'am. If you'll hold the line, I'll call him for you."

If the conversation sounds unusual for a men's dorm, it is because Sahuaro Halls are unusual dorms. The old Sahuaro Hall has seen its last days and in its place are three dorms each headed by a head resident and a hall council in A and B units. Sahuaro A is distinct and unique from Sahuaro B or C units.

Director of Sahuaro Halls, Ken Calbeck, former head resident of M.O. Best "A", supervises the overall administration of the units. John Dittmer, head resident in A unit, Dick Scott of B unit, and Bob Stouffer in C unit agree with Calbeck that the present system encourages participation by all in council work, intramurals, and provides a closer contact with the men.

Sahuaro C differs from A and B as it houses the men of Sigma Chi, Theta Delta Chi, and Phi Alpha of Sigma Alpha Epsilon. Each occupies a floor and as-

sumes the responsibilities of maintenance through the individual fraternity. This housing arrangement is only temporary, according to Stouffer, as all three have planned housing in the new fraternity development near Palo Verde Hall.

Sahuaro B began its social season last night with an exchange with North Hall. Tonight Arden Mowry will show slides of a hunting trip to British Columbia. B unit also displayed a banner at last week's game. Sigma Phi Epsilon men are housed in B unit under the same arrangements as the three fraternities in C unit.

The A unit council met early this week to plan a social calendar. The council is headed by President Huntley Lewis, Jr., assisted by Paul Nicholson, Fred Jager, Chet Winham, Jerry Mays, Dan Shelton, Row Cummins, and Bob Bingham. Dittmer's assistant head residents are Dave McElfresh and Bob Carter.

Last Thursday the Sahuaro cafeteria was divid-

ed into three sections and family style meals are served with head men at each table to serve. The meal is preceded by a grace. No men are allowed to dinner in less than a shirt with a collar and slacks.

This dinner regulation hopes to encourage coeds to eat occasionally at Sahuaro Hall dinners. Women may purchase a la carte dinner tickets at the lobby desk where they will find a gentleman in a white shirt and tie to assist them. The organization of the desk is directed by Eric Maxwell, a business administration senior.

NEVER AGAIN -- Men of Sahuaro Halls will never again be in the lobby without a shirt, demonstrate the head residents. John Dittmer, left, and Dick Scott, right, instruct Bob Stouffer in shirt and tie regulations.



- STYLING
- TINTING
- BLEACHING
- PERMANENTS
- MANICURING

Milady's Beauty Salon

Personalized Beauty Care
9 A.M. - 6 P.M. EVENINGS BY APPOINTMENT
Sands of Tempe 601 E. Apache
WO 7-1611 Ext. 37 WO 7-2221

Career Cues

"Cure for job boredom: I made my favorite pastime my career!"

Richard Bertram, President
Bertram Yacht Co., Division of Nautec Corp.

"When you stop to think what percent of our total waking hours is spent bread-winning, you realize how tragic it is for any man to work at an occupation he doesn't enjoy. Besides frittering away life, it reduces chances of success to just about zero. I know... because it almost happened to me!

After college, I did what I thought was expected of me and joined a solid, Manhattan-based insurance firm. I soon found office routine wasn't for me. I lived only for

lunch hour when I could walk to the Battery and mentally sail with the ships that stood out in the Narrows... and for the summer weekends when I could go sailing. Fortunately, the company I worked for is one of the leading insurers of yachts and after two years I was transferred to their Yacht Underwriting Department. Enjoyment and interest in my work improved immediately 100%.

After World War II, I started my own yacht brokerage firm and yacht insurance agency in Miami, combining my marine insurance background with an even closer relationship with boats.

My only problem ever since has been a feeling of guilt that my work was too easy. I love boats and boating people. That affection has paid me rewards way beyond the financial security it has also provided.

The moral's obvious. You have an odds-on chance for success and happiness working at what you enjoy most — what comes naturally! And if it's not just frivolous, your life's work could well be what you now consider just a pastime. It's certainly worth thinking about, anyway!"



Richard Bertram, while still in his early thirties, became one of the country's leading yacht brokers. Today he heads up eight companies covering yacht manufacturing, insurance, repair, storage, finance and brokerage. A resident of Coconut Grove, Florida, Dick became a Camel fan while still in college.

And to make any time pass more enjoyably...

Have a real cigarette-Camel

THE BEST TOBACCO MAKES THE BEST SMOKE.



R. J. Reynolds Tobacco Co., Winston-Salem, N. C.

Former Editor Of State Press Teaching Here

A former ASU State Press editor is back on campus this year in the capacity of an English instructor.

He is Nicholas Salerno who graduated from ASU in 1957 with a BA in Education, majoring in English, and minoring in journalism. He won the Moeur Award for a 3.96 four-year index.

Salerno received his Master's Degree in English from ASU. Next month, he will take final oral exams at Stanford University to earn a Doctor of Philosophy degree.

In 1953, he entered ASU on the Phelps-Dodge Scholarship of \$1,000 annually for four years. "There were 4,000 students then, and now there are about that many freshmen," he observed. "The freshmen students seem a little more capable now."

Salerno's instructor was Ernest J. Hopkins, then Chairman of the Department of Mass Communications, now Professor Emeritus of Journalism. "He's great," said Salerno.

"The State Press was located at the top of the Union building (MU) where Dean Shofstall's present office is. The Union building opened when I came here," he continued. "It was bright and shiny."

By 1955 Salerno attained the position of Editor in Chief of the State Press and held it for two semesters.

Then, ASU was called Arizona State College. "As State Press Editor," he said, "I was always in trouble with the administration and student body officers about the name change dispute at that time. The State Press had no authorization to print the dispute. We started to call the college ASU and the Board of Regents told us to stop."

Campus Classified

Regulations: For students and faculty only of Arizona State University. Cash in advance. Submit to Room 233, Social Science Bldg., 8 a.m. to 9 a.m. daily, 1:30 to 2:30 Monday and Wednesday. Call Ext. 471 for other hours. Rates: 10 cents a line per issue, 35 cents minimum charge.

WANTED

Male to share apartment \$35 per month. Apply W. J. Mogg, Apt. 3, 1210 Apache Blvd. after 2 p.m. Wednesday, 5 p.m. other days.



Letters To The Editor

What Price Spirit?



The STATE PRESS, distributed by the campus chapter of Sigma Delta Chi under the direction of Circulation Manager Charles Hilgeman, is the official campus newspaper of Arizona State University. It is published each Wednesday and Friday throughout the school year, excepting holidays, and is entered as second class matter at the Tempe, Arizona, Post Office under the Acts of March 3, 1879, and August 24, 1912. Subscription price, \$3 per school year. The STATE PRESS is a member of the Arizona Newspapers Association, Associated Collegiate Press and National Advertising Service, Inc.

EDITOR-IN-CHIEF JACK ONG

NEWS DEPARTMENT

MANAGING EDITOR BILL FLICK

NEWS EDITORS LINDA WARREN, BILL OVEREND

COPY EDITOR CAROL OSMAN

CHIEF PROOFREADER EDIE ALLERS

ASSIGNMENTS EDITOR BARBARA MARLOWE

ASSISTANTS MARY GORMAN, JANET WOLHETER, GEORGE BUSSING, BOB ZACHE

SOCIETY DEPARTMENT

EDITOR ROSALYN WHITNEY

ASSISTANT BETTY ADAMS

SPORTS DEPARTMENT

EDITOR BOB EGER

ASSISTANT BOB JACOBSEN

There's A Time, Place For Toilet Tissue Too

There is a time and a place for everything, says the renowned adage.

And, obviously, this includes toilet tissue.

We do not feel that its place is a football stadium. Nor do those high flying rolls add much to the spectacle taking place on the gridiron.

There is a good chance of someone suffering quite a blow; how does this add to the spirit of the moment?

We're quite content with our fine football team, the beautiful new stadium, our excellent band, cheerleaders and pom pon girls.

Won't you juveniles leave the toilet tissue where it belongs? Confetti tends to be a bit more comfortable on the head.

U. N. Will Miss 'Tightrope Artist'

By LENNIE YOLDI

The greatest tightrope artist has fallen. Dag Hammarskjold is dead.

Since taking over as secretary general of the United Nations, Hammarskjold walked for nine years on a high tension line which, if it had snapped, could have plunged the world into war.

The struggle between communism and capitalism gave the Swedish statesman his biggest challenge. Intervention or threats of intervention by these two groups into the affairs of small countries kept him hopping between national capitals on his missions of peaceful mediation.

Besides counter-balancing the two big isms, Hammarskjold neutralized many quarrels among the small nations, especially in the Middle East, where ancient rivalries have been mixed with an immature sense of nationalism. The overt and covert hostilities between Egypt and Israel were a major headache for the former secretary general.

Now he is dead. He was going to Northern Rhodesia, presumably to persuade Katanga's Moise Tshombe to come to terms with the Congo's central government. This latest attempt to quiet the violent pains of independence, which the former Belgian colony has been experiencing, ended in a plane crash in the jungle.

Many news commentators are speculating whether the U.N. can survive Hammarskjold's death. This uncertainty reflects the inherent weakness of the international body. From its beginning, the U.N. has shown all the signs of futility which have been present in all organizations designed to create global harmony. Inability to reach quick decisions, lack of police powers to effect such decisions, unreliable financing: these failures have made the U.N. largely impotent.

Moreover, now that a new secretary general must be appointed, Soviet Russia no doubt will press for its Troika scheme. No matter whether the Communists succeed, such an attempt and the opposition it will engender could wreck the organization completely.

Dag Hammarskjold will be missed.

To the Editor:

As an incoming freshman, I came to ASU full of spirit, ready to transfer my loyalty from my small high school team to the renowned Sun Devils. Naturally, I attended the first home game, and sat in the section designated for students. What a disappointment! I cheered the first few yells with the other freshmen who accompanied me to the game. We followed the cheerleaders, and really yelled up a storm. Then we realized that the "upperclassmen" seated around us were staring. We sat the next one out, and only then did we realize that we were the only ones cheering! What few students were brave enough to yell, soon reverted to a few unintelligible squeaks. Even these received glares from all sides. What's with this school? One of the sorority girls told me

about what she called "inner spirit." That's fine — and how does the team know we're cheering them "inside"?

It's a wonder the players didn't get their directions mixed up, with all the noise that was coming from the end of the field. I refer to the Knot-hole Club. These grade school kids cheer loud and long, though most of them aren't even aware of what's happening on the field. In 10 years, I dread the fate of these kids. Will they, too, be numbered among the "Silent Watchers" of ASU's gridiron antics?

Perhaps if the sororities and fraternities concentrated more on cheering the team to victory and less on trying to outdo each other in dressing up — and how about letting some of the "inner spirit" out?

Name Withheld

By BILL FLICK

To those curious people who attended their first Sun Devil football game Saturday night... and also to those of you who have seen such football games before, let us say:

Number one, we hope you now have the ID card policy straightened out. If you have not, you may still be confused about such things as:

1. How many times do you have to show the stupid thing to get to your seat?
2. How difficult is it to slip by the eagle eye of the attendants when you are in possession of an ID other than your own.
3. If you're enjoying yourself at all, you'd better not put it back in your wallet 'cause you'll need it every time you go back for ice... or a coke.



The accumulation of weekend debris on the desk Monday morning upon observation included two neat stacks of mail (four letters in campus envelopes; one package from Miami Beach; one announcement of test dates from the Peace Corps; eight or nine boring news releases), two full ash trays, one 1951 telephone directory, three memos and one coffee urn.



That's kee-rect: one coffee urn. It was a 48-cupper and we were delighted at the consideration of some nice anonymous soul.

Looked to us as though we weren't alone in feeling that no newspaper office was complete without a pot of coffee steaming away all the time.

Unfortunately, there was coffee in the pot. More unfortunately, we tasted it. Yowitch! Some people have said that true newspapermen took their coffee only when it was thick enough to float a lead bar.

This did! But something's out of order; because not even our advisors favored the liquid.

All good things come to an end; our pot was no exception. Seems as though Drama Workshop supporter Jim Seeman saw someone lugging the urn across campus from Payne Auditorium to the editor's desk in MU 211.

Wasn't that nerve? Someone took a coffee pot! And from the Drama Workshop, as if this fine organization weren't deprived of enough... mainly of an adequate workshop.

Everything is fine now except our stomachs. Guess the gesture of friendship (leaving us the coffee pot) was an attempt to wipe us out (leaving us the coffee).

Yep! All is okay. "We were quite shook about the disappearance at first," Seeman said, but the return of the pot insures tonight's first curtain at Payne Auditorium.

"Browning Version" and "The Dock Brief" are season openers... they'll run through Sunday, at 8 p.m. Being free to students, we recommend our drama department's work for your investigation.

Meanwhile, at the auditorium, they're doing a bit of investigation themselves. Jim announced, however, "I'll tell you who took it!" Looks like he's a natural detective at heart... and not such a bad actor either.

Hope he and his fellows get to move into the Lyceum building at the first of the year like they're planning. Our culture-minded Drama department has long (too long) been neglected the necessary equipment it needs sorely.

Next time, boys, either make better coffee or hide your darned pot or stick to acting and leave cooking to our Home Ec department or take a collection and get us our own pot.

AFTER-THOUGHT — "Familiarity breeds contempt"...

Number two, to those of you who sit in the renown ASU card section: In the future, please line up in even rows and sit directly over the white assignment card. Also, to those of you who spent the hour from seven to eight indulging yourselves, please do not stand up in the middle of the card section and wave a red card. It just don't look right!... no matter how big a kick you're getting out of it.

Number three, the parking problem. To solve this problem begin by eating supper at four in the afternoon (or take advantage of the new university-supported buffet dinner which will be served at 6 p.m. at Palo Verde Hall prior to the home games), leave for the stadium by six if you have more than ten miles to go, and arrive at your pre-determined parking place by six-thirty... and you may find a place.

And finally, number four, the finding-a-seat problem. If you follow our designated policy for finding a parking place, you should arrive at Sun Devil Stadium in plenty of time to get a good seat. If you are incapable of walking up the ramp (this includes freshmen girls in high heels) the new Coke carts will carry you up... we thenk.

Also, to you brethren of the fraternity world, get EVERYONE over there at seven instead of just the pledges — we were over at Haigler Hall the other day and there are some pretty big independents wandering around.

We hope some of these tips will help you out come the night of October 7, but if McFalls keeps going like he did, no one will give a hoot anyway.

FOR THE APPEAL-TO-THE-EVERYONE CLASS—We think the people at the library (and we don't mean ASU's) could be a little more courteous, and we hereby withdraw last week's plug.

Also, Gilbert High School is currently undefeated.

Interviews Hit New High

Recruiting boomed this year as campus interviews hit an all time high, according to Warren Gotthard, Director of Placement.

Teacher interviews increased with 37 percent more school system representatives and 34 percent more individual interviews on campus.

Reported job vacancies were up slightly with a total of 9,257.

Some imbalance persisted between supply and demand. Shortage of candidates continued for low elementary, art, vocal music and girl's P.E. teachers. Secondary level shortages were noted in English, library science, math, physical science, foreign languages and girl's P.E.

The big jump in campus in-

terviews indicated two trends.

One, knowledge of ASU and its product has become more widespread. Two, more companies were forced to compete for college trained personnel months in advance of their availability. Salaries moved upward in keeping with the national trend.

Student part-time and summer employment thrived.

The selected student placement program succeeded in placing 46 incoming freshmen in campus jobs. They were carefully chosen on the basis of financial need and proven scholastic ability. Presumably they could not attend college without this assurance of aid.

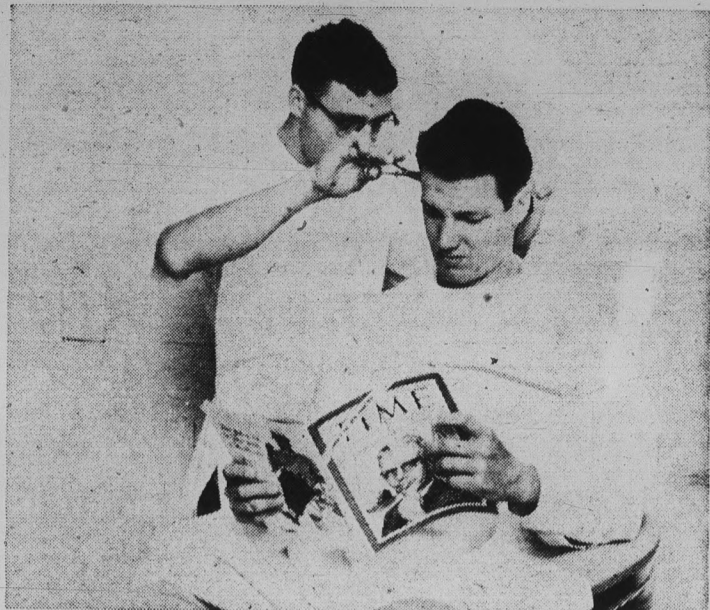
Meeting Planned By Republicans In MU Thursday

The Young Republicans Club of ASU will have its first meeting of the year tomorrow at 3 p.m. in MU 218.

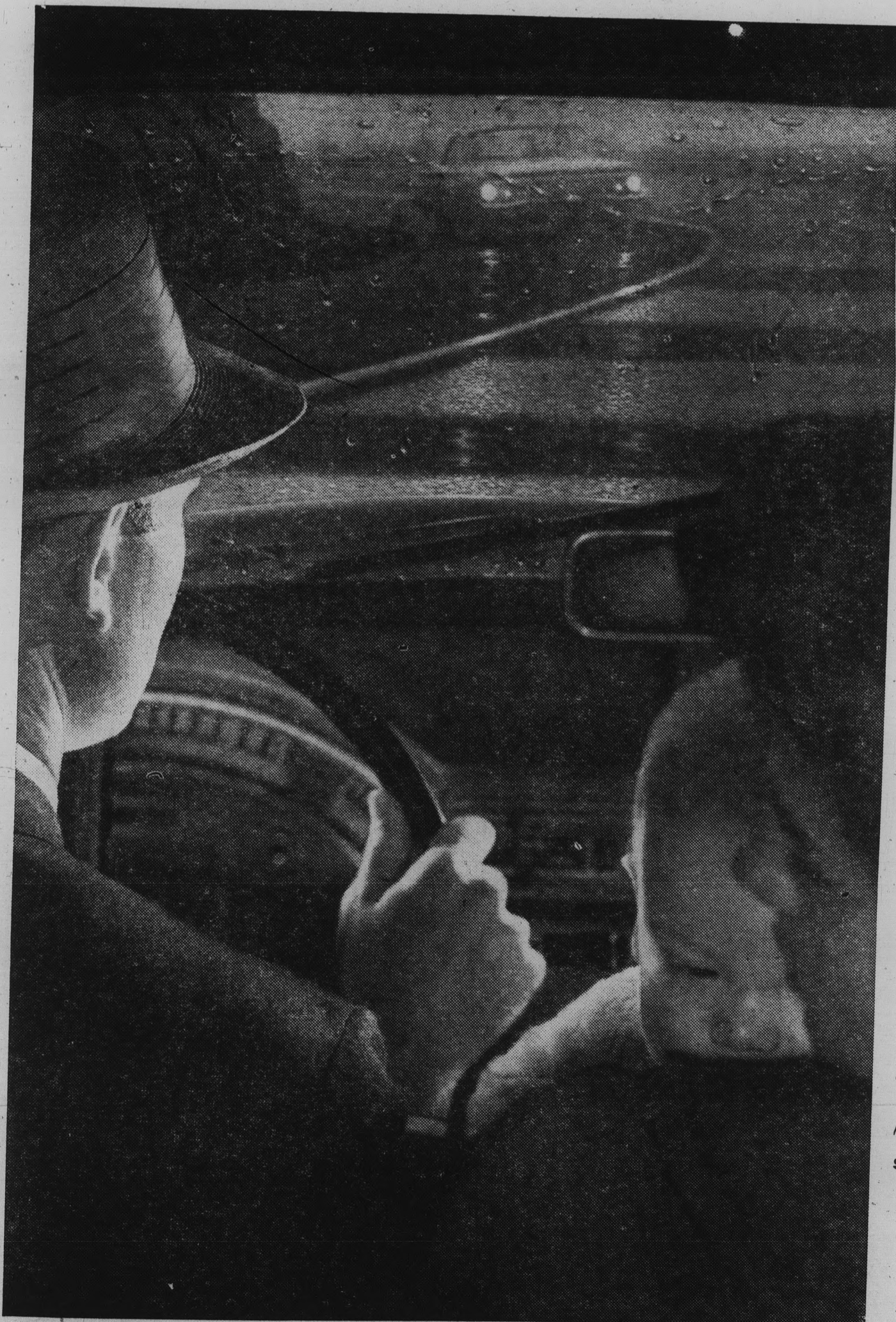
A program of events will be outlined and committees, committee chairmen and helpers will be selected.

Larry Nims, club chairman, will present the goals of the club and explain its purposes and platform.

The club wishes to express its regret for the cancellation of Senator Goldwater's speech last week, but has received word that he will be able to appear in December.



EASY ON THE EARS — Tom Fogelberg enjoys a current magazine while getting "clipped" in the new MU barber shop, feature of the games area downstairs. Barber is Sam Roper. (Photo by Bob Mayer)



"Talking road" that can save your life!

The visibility is almost zero and ahead is a sharp curve.

Suddenly, beneath your wheels, the road says: "Slow down!" It does this by sending sound and low vibrations through your automobile's frame. You get the message and cut your speed.

This road warning system—called a "rumble strip"—cut accidents in test areas by nearly two-thirds. It is made chiefly from a new kind of plastic developed by Standard's scientists... one so rugged that it will stand up to the pounding of the heaviest traffic.

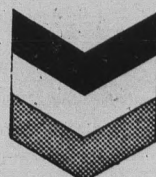
The rumble strip is part of Standard's continuing interest in traffic safety, which includes driver training, seat belts in Company cars, educational films for schools, and widespread distribution of safety tips.

The tough plastic which makes the rumble strip possible is only one of a wide variety that our scientists are creating to help manufacturers bring you new and better products.

They include super-strong plastics for car bodies; tough, versatile plastics for building materials; long-lasting plastic fibers to increase the durability of everything from clothing to tires.

planning ahead to serve you better

STANDARD OIL COMPANY OF CALIFORNIA



Sorority Rush Concludes With Pledging Ceremonies

The excitement of rush is over and sorority pledges are settling down to pledge meetings, study tables and, at last, classes.

Preference Parties Friday marked the end of the formal rush period, and Saturday the suspense ended as coeds picked up their bids.

ASU sororities and their present pledges include:

ALPHA DELTA PI — Misses Ellen Adler, Nancy Cook, Suzanne Cosenza, Julia Ann Langston, Carol Jean McCutchen, Shirley Otten, Lynne Peterson, Sue Anne Pflumm, Donna Jo Raption, Carole Walker, Sueann Jenkins, Elizabeth Anne Chenaault, Linda Nase, Sandra Archer, Suzanne Barry, Darlene Bunn, Tracy McManus, Kath-

leen Spalding, and Judy Tomich.

ALPHA PHI — Misses Barbara Capper, Donna Hillhouse, Joy Mahan, Judy Lee Robinette, Suzi Smith, Martha Walker, Gwen Weston, Sharon Faast, Suzy Kaiander, Audrey Kuck, Sandra Jo Flowers, Jane Hundertmark, Sandra Graham, Carla Baird, Stevie Sue Collins, Patti Mortenson, Kathryn Sefferovich, Linda Warren, Patricia Betton, Tina DeFalco, Kay Osbohn, and Barbara Straub.

ALPHA SIGMA ALPHA — Misses Shirley Ann Clapp, Jackie Flick, Barbara Mack, Maricon McDaniel, Margaret Wallace, Mary Wickham, Mary Schwarzmam, and Jeanette Hanna.

ALPHA EPSILON PHI — Misses Diane Mayman, Evelyn Arm, Gayle Berg, Teddi Kirske, Carlyn Yosowitz, and Dianne Schuster.

CHI OMEGA — Misses Karen Arneson, Sandra Berry, Roxie Bruno, Beverly Bulla, Susan Chambers, Pam Dyer, Natalie Freedman, Beth Helm, Bonnie Johnson, Sandy McAndrew, Martha Worklan, Diane McHugh, Jerry Shields, Linda Sullivan, Georgia Wagner, Donna Wellman, Ann Young, Glenda Brockbank, Linda Blue, and Sharon Fasoli.

DELTA GAMMA — Misses Donna Allen, Sandi Beeler, Dianne Clemons, Kay Crandall, Nancy Davidson, Marguerite Gear, Michaelle Jane, Jeanette Jensen, Diane Munson, Jan Reed, Ellen Roca, Ruth Wicks, Susan Wood, Sandra K. Young, Leslie Madison, Rose Meis, Marilyn Randall, Sandra Ruffin, Judi Anderson, Kathy Eklo, Julia Frey, Caryl Jordan, Susan Meerdink, Joan Nicholas, and Beth Noland.

GAMMA PHI BETA — Misses Betty Adams, Linda Allums, Janice Ayers, Darcy Brooks, Judy Groseclose, Karen Lindstrom, Judy Massey, Wanda Roeher, Sharon Wilkes, Suzanne Young, Susan Moore Young, Brenda Batchelor, Barbara Coker, Mary Lou McNatt, Jane Yvonne Rosio, Billie Stormont, Marie Trudi Cook, Carole Ann Edwards, Naomi Funk, Kirstin Cole, Carol Ingersoll, Margie Rechif, and Judy Russell.

KAPPA ALPHA THETA — Misses Linda Brodersen, Roberta Glenn, Mary Haverland, Joan Porter, Sharon Sabine, Gay Walberg, Lynn Winsor, Bonnie Judy, Sharron Bowen, Carolyn Curry, Pamela Dunn, Barbara Elliott, Vicke Jordan, Martha Lenz, Marcia McIntyre, Donna Moore, Carol Sorensen, and Alice Thaw.

KAPPA DELTA — Misses Elaine Beckman, Judith Drage, Linda Essex, Carolyn Woolridge, Kaye Bergman, Bettie Lynn Boggess, Norma Nelson, Allison Alden, Theresa Carter, and Sharon Kay Johnson.

KAPPA KAPPA GAMMA — Misses Shirleen Alford, Betty Cash, Pat Collins, Jean Lunenschloss, Kay Lynskey, Sheila Murphy, Carol Schwan, Noell Smith, Gretchen Diercks, Louise Diercks, Dorne Fildstead, Winnie Goodrum, Lois Jorgensen, Dianne Randall, Ann Bardwell, Paula Chisholm, Barbara DeGraaf, Trisha Eachon, Bonnie McDonald, Kay Merrill, Patricia Peterson, Susan Straub, and Leslie Thomas.

SIGMA SIGMA SIGMA — Misses Cecelia Anderson, Judy Goodson, Carol Mihelich, Pamela Seavey, Melanie Wright, Gretchen Klicker, Sandra Rhoads, Carol Ann Grjer, Judy Smith, Doris Gray, and Linda Haskell.

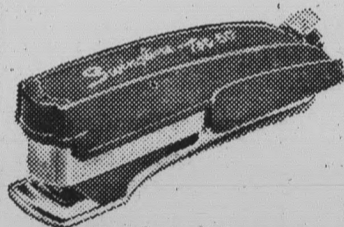
Groups Seek New Members

All girls interested in joining Naiads are welcome to the first tryout session tonight at 6:30 at the ASU Pool. The girls must bring their own bathing caps.

Orchestra tryouts are going into their second day and all students interested in the organization are invited to attend tryout at 7 tonight in the Moerur Activity Building.



Napoleon—as you will note—Kept his hand tucked inside of his coat When his friends asked, "Mon Cher, Qu'est-ce-que c'est have you there?" He replied "C'est mon Swingline je tote."



SWINGLINE STAPLER

no bigger than a pack of gum!



98¢

(including 1000 staples)

Unconditionally Guaranteed

- Made in America!
- Tot 50 refills always available!
- Buy it at your stationery, variety or bookstore dealer!

Swingline INC.

Long Island City 1, New York
WORLD'S LARGEST MANUFACTURER OF STAPLERS FOR HOME AND OFFICE

If you are expecting Mr. Stork — or are just hoping he'll call



Is a must for you

Why Was This Plan Created? Cradle Protection was conceived to provide medical benefits for babies who either are born prematurely or with imperfections or birth injuries. It provides insurance against what can be staggering medical bills which are not ordinarily covered by other forms of hospital-surgical coverage.

PAYS UP TO \$5,000 for correction of birth imperfections or child's premature birth costs.

PROVIDES LIFE INSURANCE benefits for the wife and each newborn child.

The plan is available to all married women age 49 or under and insurance may be applied for *even during pregnancy.*

For an almost unbelievably low premium Cradle Protection will eliminate a big financial worry. Let us tell you about all the wonderful benefits of this revolutionary insurance concept.

For Information Call

WO 7-3358

LOCK & CROCKETT INSURANCE

822 B Mill Ave.

Tempe

MU CALENDAR

Wednesday, Sept. 27

Natani: 208, 4 p.m.
Rally and Traditions: 209, 3:30 p.m.
Sigma Phi Epsilon: 201, 6 p.m.
Student-Faculty: 210, 3:30 p.m.
International Affairs Club: 218A, 12:30 p.m.
Social Committee: 218A, 3 p.m.
Pi Sigma Epsilon: 218A, 8 p.m.
Society for Advancement of Management: Upper Lounge, 12:30 p.m.
Young Democrats: Upper Lounge, 3 p.m.
SNEA: Upper Lounge, 7:15 p.m.

Delta Sigma Pi: Lower Lounge, 7 a.m.

Indian Education: Clancy's, 8 p.m.

Thursday, Sept. 28

Homecoming Committee: 208, 4 p.m.
Westminster Foundation: 208, 6 p.m.
AWS Star Formal Committee: 209, 3:30 p.m.
Kappa Kappa Psi: 209, 6:30 p.m.
Greek Week Committee: 210, 3:30 p.m.
IFC: Senate Chambers, 4 p.m.
Civic Engineers: 218A, 7:30 p.m.
Baptist Students: 218B, 6:30 p.m.
Young Republicans: 218C, 3 p.m.
Hostess Meeting: Upper Lounge, 3:30 p.m.
Devils and Dames: Clancy's, 6:30 p.m.

Friday, Sept. 29

Executive Council: 208, 5 p.m.
Baptist Student Union: 209, 8 a.m.
Religious Conferences: 210, 2 p.m.
Memorial Union Open House: 8 p.m.

Saturday, Sept. 30

Credit Union Seminar: 218B, 12:15 p.m.
Music Reading Conference: Ballroom, 9 a.m.
Kappa Kappa Psi: Ballroom, 7 p.m.
Activities Breakfast: Faculty Dining Room, 9 a.m.
Music Reading Conference: Faculty Dining Room, 11:30 a.m.

Sunday, Oct. 1

Christian Science Reception: Upper Lounge, 3 p.m.

Monday, Oct. 2

Spurs: 209, 3 p.m.
Phi Kappa Psi: 210, 4 p.m.
Alpha Epsilon Pi: 210, 6:30 p.m.
Kaydettes: Upper Lounge, 3:30 p.m.

Tuesday, Oct. 23

Homecoming Committee: 208, 4 p.m.
Blue Key: 209, 6 p.m.
Alpha Rho Chi: 209, 7:30 p.m.
Panhellenic: 210, 3:30 p.m.
Industrial Engineers: 218A, 11:30 a.m.
Kaydettes: 218A, 3 p.m.
Arnold Air Society: Upper Lounge, 3 p.m.
History Club: Upper Lounge, 8 p.m.
Card Section Committee: Clancy's, 3 p.m.

PROVIDENT MUTUAL LIFE INSURANCE COMPANY OF PHILADELPHIA

Is pleased to announce that former ASU Student



Paul R. (Bob) Linville

Is a career agent recently graduated from our Campus Training School, under the management of

Louis T. Chaney

Opportunity For Undergraduates

A career offering a business of your own and no limit on potential income. Opportunity to start training and earning while still at college as part of our company Unit Plan. Interviews and Aptitude Tests can be arranged through your College Placement Bureau or come in to 30 E. 5th St., Tempe, at 10 A.M. Saturday.

PROVIDENT MUTUAL

30 E. 5th St., Tempe

WO 7-1634

SAYS COACH KUSH-

Mistakes Hurt Devils In Win Over Wichita

By BOB JACOBSEN
"We made a lot of mistakes but most of them were mental and should be corrected before the Colorado State game," commented Head Football Coach Frank Kush, after his Sun Devils had spilled Wichita 21-7 Saturday night in the season opener for ASU.

"I was real pleased with our team effort on defense and a few individual showings on offense by John McFalls, Nolan Jones and Larry Reaves. Reaves probably played the best all-around game of his career," Kush continued.

McFalls, who was victimized with diabetes last Fall, rambled

for 130 yards against the Wheatshockers to score one touchdown and set up the other two. Forced to go outside against a strong Wichita interior defense, McFalls and Jones continually ate up yardage.

The Devils gained 189 yards on the ground and 116 in the air as compared to the Shockers' 86 on the ground and 134 in the air. Quarterback Alex Zyskowski, who was sidelined against Toledo with a sprained ankle, came into the contest in the second quarter and began firing strikes all over the field, especially to end Ron Turner. Turner caught seven of the 12 completed passes by Zyskowski.

Quarterback Joe Zuger, who intercepted three passes; linemen Bob Widmer and Ken Craft; and linebacker Clay Freney all turned in outstanding defensive games.

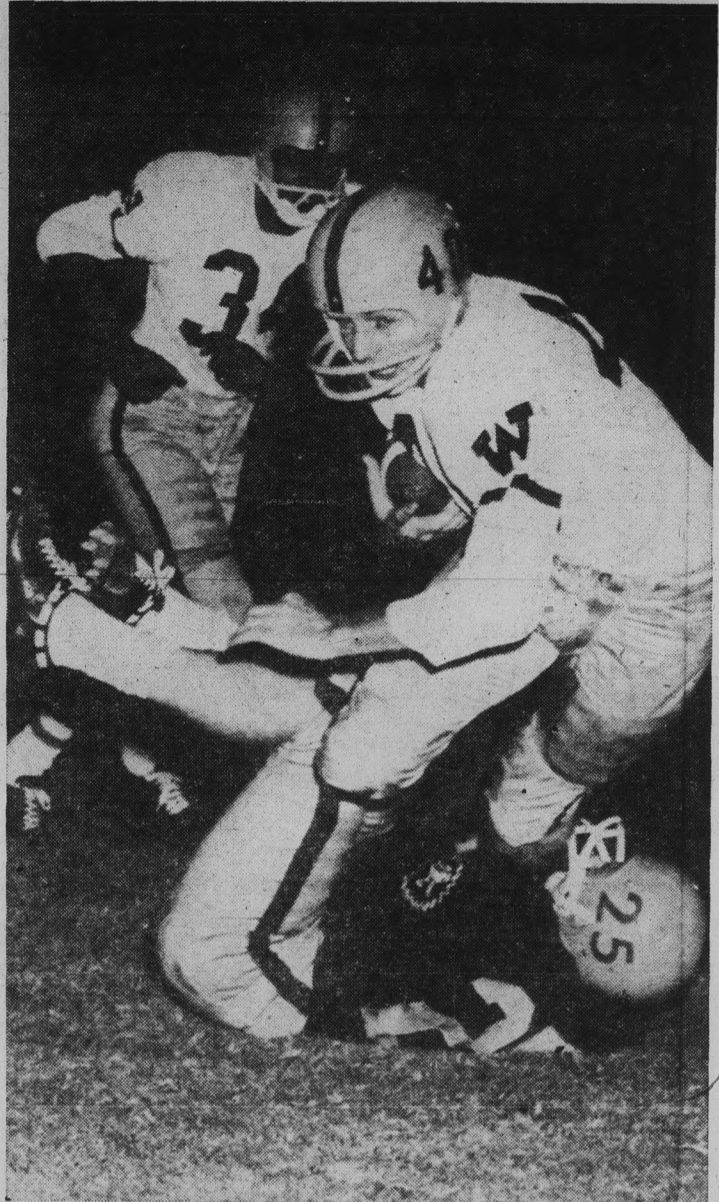
ASU encounters a young and spirited Colorado State squad next Saturday at Fort Collins, Colorado. Last Saturday, after spotting the University of Arizona a 28-0 lead, CSU's Buffaloes scored one touchdown and threatened two other times in losing to the Wildcats, 28-6.

First Imp Game Set Oct. 14th

The October 7 season opener matching ASU's Sun Imps against the San Diego Naval Training Center at San Diego has been cancelled, according to Coach Bill Kajikawa.

Kajikawa stated that due to the National Defense build-up, the Naval Center has decided to forego the grid sport this season. Cancelling of the game at this time has made it impossible to schedule another in its place.

Thus the opening date will be moved to Oct. 14, when the Imps travel to Silver City, N. M., and meet New Mexico Western's Varsity.



DEVIL TACKLER--Sun Devil halfback John McFalls (25) pulls down Wichita's Gary Bowers as Adolph Wilson of Wichita looks on in Saturday's game which the Devils won 21-7. McFalls topped all backs with 130 yards rushing and scored ASU's first touchdown. (Photo by Ralph Forney)

How ASU's Opponents Fared

Arizona State (1-0) 21, WICHITA (1-1) 7
ARIZONA (1-0) 28, COLORADO STATE (0-2) 6
Wisconsin 7, UTAH (1-1) 0
WEST TEXAS STATE (1-0) 55, Brigham Young 8
North Texas State 9, HARDIN-SIMMONS (0-2) 7
Syracuse 19, OREGON STATE (0-1) 8
SAN JOSE STATE (2-0) 16, University of the Pacific 0
DETROIT (1-0) 21, Western Michigan 14
TEXAS WESTERN (0-1) open



New in our...
Traditional Shop



A Hearty
Welcome Back!

For The Occasion
A WELCOME
SPECIAL
WALK SHORTS
Regularly 5.95
3.95

Walk Shorts Reg. 6.96, 7.95, 8.95
4.95

Choose plaids, solids, checks, prints
Student charge accounts available in the
Traditional Shop

McDougal
cassou, ltd.
Lower level 130 North Central ALpine 3-5886

Thank You..

*We Appreciate Your
Understanding During
The Rush Days*

**BOOKS AND SUPPLIES WILL BE
REPLENISHED IMMEDIATELY
TO FILL YOUR NEEDS**

Bookstore Hours

Monday - Thursday — 8 a.m. to 7 p.m.
Friday Only — 8 a.m. to 4:30 p.m.
Saturday Only — 8 a.m. to Noon

**COLLEGE
BOOKSTORE**

Frosh Manager Needed
A freshman basketball manager is needed for the 1961-62 season. Anyone interested in applying for the job should contact Coach Ned Wulk.

WO 7-3982

**CAMPUS
Launderette**

**Suds
N-Service**

- Fluff Dry
- Hand Ironing
- Cleaning
- Alterations

We, The New
Owners, Solicit
Your
Patronage

**WE ARE EAGER
TO PLEASE**

818 College Ave.
"Next Door to the VI"



FLASH! TO ALL STUDENTS OF
ARIZONA STATE UNIVERSITY

CAN YOU USE A HUNDRED BUCKS?

THAT'S WHAT YOU CAN WIN IN EVERY ONE OF

VICEROY'S Big College Football Contests

IT'S EASY! Just pick the ten winning teams, predict the scores—and you're in the money!

FLASH! ONLY STUDENTS ON THIS CAMPUS ARE ELIGIBLE!

FIRST CONTEST OCTOBER 7TH

All you have to do is clip the coupon, pick the winners and predict the scores—then figure out how you're going to spend that hundred bucks! It's easy . . . just clip the coupon below or get an entry blank where you buy cigarettes and fill in your predictions of the ten game scores. Then mail it with an empty Viceroy package or a reasonable rendition of the Viceroy name as it appears on the package front to Viceroy at the Box Number on the entry blank or drop it in the ballot box conveniently located on the campus.

Open only to students and faculty members. Enter as many times as you want. Simply send an empty Viceroy package or reasonable rendition of the Viceroy name with each entry.

Entries must be postmarked or dropped in the ballot box no later than the Wednesday midnight before the games and received by noon Friday of the same week. Next contest will be on games of October 21—when you'll have another chance to win.

DON'T SMOKE ANOTHER CIGARETTE UNTIL YOU LEARN WHAT VICEROY'S Deep Weave* Filter CAN DO FOR YOUR TASTE!

It can do plenty. Here's why: the Viceroy filter starts with pure, safe vegetable material, made into the same straight filter strands as most good filters.

But here's the twist: Viceroy weaves those tiny strands into the special Deep-Weave Filter . . . and that's the filter you can trust to give you the good taste of Viceroy's rich tobacco blend. The fact is . . .

Only Viceroy's Got It . . . At Both Ends! Got The Filter . . . Got The Blend!

*Reg. U.S. Patent Office

HERE ARE THE CONTEST RULES—READ 'EM AND WIN!

1. Any student or faculty member on this campus may enter except employees of Brown & Williamson, its advertising agencies, or members of their immediate families. All entries become the property of Brown & Williamson—none will be returned. Winners will be notified within three weeks after each contest. Winners' names may be published in this newspaper. You may enter as often as you wish, provided each entry is sent individually. Contest subject to all governmental regulations. Entries must be postmarked or dropped in ballot box on campus no later than the Wednesday midnight before the games and received by noon Friday of the same week. The right to discontinue future contests is reserved.

2. Entries must be in contestant's own name. On the coupon in this ad or on an Official Entry Blank or piece of paper of the same size and format, write your predictions of the scores of the games and check the winners. Enclose an empty Viceroy package or a reasonable rendition of the Viceroy name as it appears on the package front. Mail entry to Viceroy at the Box Number on the entry blank or drop in Viceroy Football Contest Ballot Box on campus.

3. Entries will be judged by The Reuben H. Donnelly Corp. on the basis of number of winners correctly predicted. Ties will be broken on the basis of scores predicted. Duplicate prizes awarded in case of final ties.

4. Winners are eligible for any prize in subsequent contests.

LOOK!

HERE ARE ALL THE PRIZES YOU CAN WIN!

1st PRIZE \$100

2nd PRIZE \$50

3rd PRIZE \$25

PLUS

10 OTHER PRIZES OF \$100 EACH



And a free carton of Viceroy's to every contestant who names all ten winning teams—REGARDLESS OF THE SCORES!

Viceroy College Football CONTEST NO. 1

For games played Sat., Oct. 7th

Here are my predictions for next Saturday's games. Send my prize money to:

NAME _____ CLASS _____

ADDRESS _____ (PLEASE PRINT PLAINLY)

WIN	SCORE	WIN	SCORE
<input type="checkbox"/> Arizona St. U.	_____	<input type="checkbox"/> Utah	_____
<input type="checkbox"/> Maryland	_____	<input type="checkbox"/> Syracuse	_____
<input type="checkbox"/> Michigan	_____	<input type="checkbox"/> Army	_____
<input type="checkbox"/> Ohio St.	_____	<input type="checkbox"/> U. C. L. A.	_____
<input type="checkbox"/> Purdue	_____	<input type="checkbox"/> Notre Dame	_____
<input type="checkbox"/> S. M. U.	_____	<input type="checkbox"/> Air Force	_____
<input type="checkbox"/> Vanderbilt	_____	<input type="checkbox"/> Alabama	_____
<input type="checkbox"/> Duke	_____	<input type="checkbox"/> Wake Forest	_____
<input type="checkbox"/> Washington	_____	<input type="checkbox"/> Pittsburgh	_____
<input type="checkbox"/> Columbia	_____	<input type="checkbox"/> Princeton	_____

Contest open **ONLY TO STUDENTS AND FACULTY ON THIS CAMPUS.** Mail before midnight, Oct. 4, to: Viceroy, Box 16F Mt. Vernon 10, New York