

Survivors Of Primary Vie Today



GRANT ALLEN

Leadership Conference Starts Friday

Busses will leave at 3 p.m. sharp Friday for Payson, taking 80 ASU students to the annual Leadership Workshop at Camp Tontozona.

Main speakers for the event will be John Schoolland, director of Guidance at West Phoenix High school; Jim Creasman, ASU Alumni secretary; and Dr. Roy Rice, director of Summer Sessions and professor of Education.

Schoolland will present "The Principles of Leadership," while Rice will give a demonstration on the "Uses of Parliamentary Procedure"; Creasman will speak on "Leadership After the Sheepskin."

Dean W. P. Shofstall will present closing remarks and a Workshop evaluation to conclude the session Sunday.

Upon arriving at Camp Tontozona, the group will eat dinner, then join in group singing and introductions at 7:30 p.m.

At 8 p.m., Schoolland will speak, followed at 9 with a campfire program.

At 10:45 recreation and dancing is planned at Kohl's Ranch to last the remainder of the evening.

Morning call at 7:30 Saturday morning starts the day, with breakfast at 8.

Les Miller, ASASU first vice president, will present the ASASU program, fashioned like a senate session; students will act as senators.

After lunch, Dr. Rice will speak; Creasman will speak after dinner Saturday night.

"Away All Boats!" starring Jeff Chandler, will be shown at 9 p.m.; refreshments will be served. More dancing at Kohl's Ranch will begin at 10.

At 10 a.m. Sunday, following breakfast at 8:30, morning worship is scheduled. At 11 a.m. Dean Shofstall will give his evaluation.

Busses will return to campus at 1 p.m. after lunch.



Vol. 39

Wednesday, April 26, 1961

No. 47

Presidential Contenders Make Press Statements

By GRANT ALLEN

It is a great responsibility to represent the students of ASU as the president of their student body, and to direct the boards and committees that provide the many student activities and programs.

As a candidate for this responsibility, I would like to pledge my efforts to prepare and direct a complete system of student activities including regular assemblies, dances, programs and cultural events.

It is my desire to organize and publicize these functions well, so that all students understand about them and have an opportunity to participate.

It is also my wish to build up ASU in every way possible. This will be carried out by careful selection of the most capable and dedicated individuals possible to lead the boards and committees that do so much to direct our student government.

An effort to speak for the students carefully and consistently will be made, as well as an effort to encourage all possible to participate in student government.

By GARY K. WALKER

If elected, I believe my three years of student government experience at Arizona State can be coupled with imagination to give the students and faculty of Arizona State sound, positive student government.

It is my feeling that in the past, student government has spent too much time being anti-this or anti-that.

If elected I will pledge myself to create sound, positive programming such as selling ASU to the people of Arizona, making our constitution a workable one, attempting to make ASU an interesting place on the weekends, accentuating more participation in student government, and last but not least making the age-old attempt at creating some solid school spirit.

I will try to make the students' desires and wishes my platform. If elected, I will try to surround myself with capable individuals, giving them a free hand in their various endeavors.

8 a.m.-4:30 p.m. have been designated as ASU general election voting hours today by the Election Board. Polling places will be at the corner of College Ave. and Orange St., the Business Administration building lawn and the Old Main lawn.

Official results of last Wednesday's primary, in which 2,144 students voted; and persons on today's runoff ballot appear on Page 4.

Ladies Fare Tomorrow . . .



All decked out for annual Women's Day activities here tomorrow are (left photo) Susan Poe, left, LaDonna Bacon, Sue Herbruck and Bonnie France. Women's Day speakers will include Dr. Carolyn G. Gerster (top right) and Virginia Hash.



GARY K. WALKER

Traditional Women's Day Is Tomorrow

Women students don high heels and "best dresses" for Women's Day activities tomorrow.

The day begins with pre-dawn tapping ceremonies by women's honorary groups.

An assembly at 10:40 a.m. in the MU ballroom will feature Dr. Carolyn G. Gerster, specialist in Internal Medicine and Radiology; and Miss Virginia Hash, Phoenix attorney. Classes will be dismissed for the assembly at the discretion of individual professors.

Scholarships and awards will be given to outstanding women at the Awards Banquet, 5:45 p.m. in the MU ballroom. Trophies will be presented to the organizations with the best decorated tables and highest attendance at the assembly and the banquet.

Miss Suzanne Williams, a Music major who won the state and district National Federation of Music Club's student auditions in March, will provide entertainment.

A limited number of tickets for the banquet are still available in the Associate Dean of Students' office in the MU. They are 75 cents for students with meal tickets and \$1.65 without them.

(Continued on Page 2)



Dr. Durham Plans Meet

Dr. G. Homer Durham, ASU president, will meet with all honorary and professional group presidents and chairmen of councils represented in the Student Senate, 2 p.m. May 10, in the MU upper lounge.

Dr. Durham will discuss academic and advising problems with these student leaders.

Expansion Is Seen

By GEORGE E. BUSSING

"The Division of Industrial Education is currently working with the College of Education Graduate Policies committee concerning the granting of an EdD (Doctor of Education degree) in Industrial Education."

The above statement was made by Dr. W. E. Burdette, head of the division of Industrial Education. "The Southwest is presently without a program such as this and we are fully qualified in faculty and other criteria to undertake one," Burdette said.

The Division has two major functions: "Teacher Education" for undergraduate and graduate work preparing teachers in Industrial Arts Education, Vocational Industrial Education and Technical Education. "Technical Education" prepares four-year students as engineering technicians in Technical Design, Electronics, Aeronautics and Metal Technology.

Previously under the former Division of Technology and Industries, Industrial Education is now a part of the College of Applied Arts and Sciences which was founded in 1956. Before this date, I.E. was located in West Stadium. It is now in the Engineering Center at Orange and Van Ness.

The division of I.E. has 14 full time faculty, several associated faculty and three staff members. This semester the division has 930 enrollees, 94 of whom will receive degrees in June. Twenty two students will receive MA degrees, 34 will receive BA degrees and 38 will receive BS degrees. While enrollment normally decreases slightly in the second semester across the University, I.E. increased by 100 enrollments.

Future plans for the division involve its moving to a site west of Palo Verde Hall on College Avenue. Electronics Technology has already been relocated there. The Agriculture welding building, presently located on the University Farm, will be moved there around May 15. It will house Mechanical Technology and will be occupied by Fall.

According to Dr. Burdette, "The Industrial Education labs are generally well equipped and the most urgent need of the division is the authority for new building construction in keeping with the demands of present programs and enrollments." The new I.E. center will eventually include four or five buildings.

Dr. Burdette received his EdD at the University of Missouri. He spent seven years teaching the department of Industrial Education at State College in St. Cloud, Minnesota before transferring to Ball State College in Muncie, Indiana. In Muncie, Dr. Burdette was head of the Woods and Drafting department. He then joined ASU as the head of the division of Industrial Education. In relation to the future of the I.E. division, Dr. Burdette said, "The expanding need for teachers of Industrial Education, like that for teachers in all fields, is a story familiar to all of us, and this need forms a continuing challenge for division efforts."

Women's Day

(Continued from Page 1)

The theme of the eighth annual Women's Day is "The Wisdom to Know; The Courage to Do." The event was started in 1953 by the Dean of Women, to coordinate women's activities.

General chairman of the event is Suzi Gerber. Advisor is Carol Coon.



Mrs. Eleanor Roosevelt and U.S. Ambassador to the U.N. Adlai Stevenson discuss the Congo during a special introduction to Mrs. Roosevelt's national educational television program, "Prospects of Mankind." The hour-long show will be shown on ASU television station KAET, Channel 8, tomorrow at 8 p.m.

Creative Writing Contest Deadline Set For Monday

Students are reminded that Monday is the deadline for submitting manuscripts to the second annual Glendon and Kathryn Swarhout creative writing contest.

Prizes will be awarded in the areas of poetry and prose fiction. First place winners in each area will receive \$50 each. Second place carries a \$25 prize.

Manuscripts may be left at room 114A, English building, or mailed to the Swarhout Contest in care of the English department.

MAGGIE SEZ . . .

"See Mac & Jack At The"

PIONEER CAMERA SHOP
TEMPE CENTER

Announcements

Still Available

16c each

Hurry, Hurry, Hurry

At Your

UNIVERSITY BOOKSTORE



New in our . . .
Traditional Shop

SUMMER SLACKS

ideal for
classroom
comfort

only
\$15⁹⁵

New light-weight dacron-wool slacks in popular shades of Black Olive, Light Oliver, Cambridge Grey, Heather Grey and Midnight Black.

6-month credit plans available to students

McDougal
cassou, ltd.

Lower level 130 North Central ALpine 3-5886

LAST TWO NIGHTS!

"WELL DONE, Old Chaps"
Sat. Review




THE LEAGUE OF GENTLEMEN

AT 7:30-9:30

STARTS FRI. NIGHT

A FROLIC!
-A PERTLY RAFFISH COMEDY!

She was hired to teach French but after one glance at her figure - every man young or old - wanted to learn anatomy!



"A French MISTRESS"

AGNES LAURENT
CECIL PARKER
JAMES ROBERTSON JUSTICE

VALLEY Art Theatre
TEMPE
WO 7-6664

Speaker Blasts Permissiveness

A former official of the communist party told some 250 ASU students Friday that conservatism is gaining popularity among today's college students.

Frank S. Meyer, book review editor for National Review magazine and communist party member for 14 years before World War II, said, "Large sections of the intellectual strata are being attracted to the conservative movement. Over 100 groups are now on American campuses."

Discussing his main topic, "Our Permissive Society and the Decay of Culture," the right-wing spokesman blasted liberals for following a policy of permissiveness.

Meyer's appearance on cam-

pus was sponsored by the Cultural Affairs board.

After his half-hour prepared speech, the conservative opened a question-answer session. He pounded the administration's urban renewal policy as unneeded saying, "In my opinion cities have always renewed themselves."

Meyer proclaimed he was in favor of the controversial John Birch society, although he was not a member. However, he disagreed with the Birch society because "they are much too kind to liberals."

Meyer was asked if he was familiar with the society's recent declaration that 700 Protestant ministers are communists. "There are probably 50,000 Protestant ministers that are liberals and are aiding communists," he retorted.

The hour and ten minute meeting ended during a violent verbal battle on communism at ASU between several members of the audience.

Advising Period Set This Week

This week, beginning Monday through noon Saturday, is the advisement period for the Fall Semester.

No student will be permitted to complete registration in September without a properly completed and signed Program of Studies Sheet. Students without this sheet will not be admitted to the card distribution area, and will have to wait until the end of the regular card distribution period. At that time, a special period will be provided for all carry-over individuals.

All students who do not clear advisement this week will be required to pick up Program of Studies Sheets stamped "Late Advisee." These sheets will automatically exclude the holder from the regular card distribution period.

Advisors will post special hours of availability for the advisement period. Students who have no advisor or need reassignment for any reason are to report to the Dean's Office of the college in which they are enrolled.

Bulletin Board

Wednesday

Noon - 218C - Tempe Business and Professional Luncheon.

2:30 p.m. - 208 - Students Faculty committee

2:30 - Senate Chambers - Membership and Elections Committee, Senate Activities Control

2:30 - Ballroom - Music department recital

3 - 210 - Rallies and Tradition Board

3 - 218A - Natani

3:30 - Senate Chambers - Senate meeting

3:30 - 209 - AWS Coed Cues

3:40 - Upper Lounge - division of Behavioral Sciences symposium

4 - 208 - Activities Coordination board

4 - 218B - American Association of University Professors

6:30 - 210 - Theta Delta Chi pledges

6:30 - 208 - Campus Crusade

7 - 21C - Quill & Scroll dinner

7:30 - 218A - Phrateres

8:15 - Ballroom - concert and lecture

9:30 - Upper Lounge - Concert and Lecture Reception

Thursday

10:30 a.m. - Ballroom - Women's Day Assembly

11:30 - Upper Lounge - Women's Day Reception

Noon - 218A - Faculty Women's Luncheon

12:30 p.m. - 209 - Baptist Student Union

1:30 - 208 - Sigma Delta Chi

1:30 - 210 - Board of Publications

3 - 208 - Education Board

3:30 - 209 - Associated Women Student's

3:30 - Senate Chamber - Senate Meeting

3:30 - 218B - Water Sports Day

3:40 - Upper Lounge - History, Philosophy and Political Science clubs present Dr. Martinez speaking on "Religion & Communism"

4 - Ballroom - Women's Day Decoration Judging

5:45 - Ballroom - Women's Day Banquet

6 - Senate Chambers - Senate Finance Committee

6:30 - 210 - Kappa Kappa Psi

7:30 - Satan's Cellar - Devils & Dames

8 - 208 - Dawa Chindi

8 - 209 - Baha'i

Friday

2:30 p.m. - 208 - Associated Men Students

3 - 210 - Senate Finance

6:30 - 209 - Bridge Lessons

7:30 - Lower Lounge - Bridge

8 - Satan's Cellar - Social Committee

MAGGIE SEZ . . .

"I Love To Shop With Mac & Jack" At The

PIONEER CAMERA SHOP
TEMPE CENTER

CONCERTS, INC. PRESENTS



THE NEW SIDES OF
SHELLEY BERMAN
with the CUMBERLAND THREE

Phoenix Union High School Aud.

TUESDAY, MAY 9 - 8:15 P.M.

Reserved Tickets 3.50 - 2.75 - 2.00

ON SALE AT LINDE BOX OFFICE, HANNYS

HAVE

CAP & GOWN PHOTOS

Made Now At The
Photo Center
(Matthews Hall)

Phone Ext. 553
For Appointments

We Have
Caps and Gowns

"I'M THROUGH"



YOU'RE NEXT AT

J.D.'s CAMPUS BARBER SHOP

- Now 4 Barbers -

816 College Ave.

Next Door To The "VI"
Open Monday thru Friday
8 A.M. to 6 P.M.

Have a real cigarette—have a CAMEL

Richard Bertram
OCEAN RACER AND YACHT BROKER

The best tobacco makes the best smoke!

R. J. Reynolds Tobacco Co., Winston-Salem, N. C.



A man with Alopecia Universalis* doesn't need this deodorant

He could use a woman's roll-on with impunity. Mennen Spray was made for the man who wants a deodorant he knows will get through to the skin . . . where perspiration starts.

Mennen Spray Deodorant does just that. It gets through to the skin. And it works. All day. More men use Mennen Spray than any other deodorant. Have you tried it yet? **64¢ and \$1.00 plus tax**

*Complete lack of body hair, including that of the scalp, legs, armpits, face, etc.



EDITOR-IN-CHIEF JACK ONG
MANAGING EDITOR TOM HILTON
NEWS EDITORS JUDY OLSON, BILL FLICK
COPY EDITOR AND BILL OVEREND
CHIEF PROOFREADER WARREN J. FIELD
DISPATCHER DICK DRAPER
CARTOONIST GEORGE DEPASSE
ASSIGNMENTS EDITOR MIKE ROKOFF
EDITOR Society Department LINDA RANKIN
EDITOR Sports Department BOB EGER



The STATE PRESS, distributed by the campus chapter of Sigma Delta Chi under the direction of Circulation Manager Charles Hilgeman, is the official campus newspaper of Arizona State University. It is published each Wednesday and Friday throughout the school year, excepting holidays, and is entered as second class matter at the Tempe, Arizona, Post Office under the Acts of March 3, 1879, and August 24, 1912. Subscription price, \$3 per school year.

The STATE PRESS is a member of the Arizona Newspapers Association, Associated Collegiate Press and National Advertising Service, Inc.

Election Results Listed

Official primary election returns have been reported by the Election board.

With a record number of 2,144 students casting ballots, some candidates won; others will appear on the general election ballot today.

Last Wednesday's results follow:

ASASU PRESIDENT		
Gary K. Walker	In Runoff	710
Grant Allen	In Runoff	437
Dick Shaw	Defeated	403
Jim Sult	Defeated	324
Frank Hennig	Defeated	270
ASASU FIRST VICE PRESIDENT		
Jim Chilton	Victor	1,304
Andy Mitchell	Defeated	743
ASASU ACTIVITIES VICE PRESIDENT		
Jim Howard	Victor	1,302
Michael A. Craig	Defeated	660
ASASU SECRETARY		
Sel Eder	In Runoff	762
Kathy Sefferovich	In Runoff	734
Dianne Parker	Defeated	577
AMS PRESIDENT		
Mark Cockrill VIII	In Runoff	330
Bob Carter	In Runoff	302
Joe Watters	Defeated	244
Don Wolfram	Defeated	189
Dan Pfumm	Defeated	88
AMS VICE PRESIDENT		
John Power	Victor	711
Walt Taft	Defeated	301
AMS SECRETARY		
John Towler	Victor	504
Richard Lattin	Defeated	484
AMS TREASURER		
Jim Warne	In Runoff	538
Dick Estes (Write-In)	In Runoff	61
Gordon Watson (Write-In)	Defeated	53
John Miller (Write-In)	Defeated	40
AWS PRESIDENT		
Barbara Anderson	Victor	861
AWS VICE PRESIDENT		
Bonnie Evans	Victor	458
Claudia McDonald	Defeated	421
AWS SECRETARY		
Carole Hendrickson	In Runoff	308
Marilyn Rossini	In Runoff	236
Donnie Coombs	Defeated	183
Connie Barr	Defeated	161
AWS TREASURER		
Mary Ellen Ross	Victor	453
Lois Richardson	Defeated	421
LIBERAL ARTS SENATOR		
Sue Jeffries	In Runoff	243
Henry Klopping	In Runoff	208
Ron Meyer	In Runoff	195
Howie Bernstein	In Runoff	171
Bob Schure	Defeated	155
Gerald Brown	Defeated	65
EDUCATION SENATOR		
Sherrie Ulmer	In Runoff	279
Helen Plummer	In Runoff	246
Don Noller	In Runoff	242
Beverly Dexter	In Runoff	189
Kathi Bunch	Defeated	187
Margie Holstine	Defeated	179
APPLIED ARTS AND SCIENCES SENATOR		
Steve Sargent	Victor	239
Gary Nichols	Victor	198
Daniel Moulton	Defeated	119
BUSINESS ADMINISTRATION SENATOR		
Scott Crosby	Victor	252
Susie Johnson	Victor	207
Richard Havertine	Defeated	143
A. D. Jacobson	Defeated	127
OFF-CAMPUS MEN SENATOR		
William Mahan	In Runoff	345
Daryl Despain	In Runoff	278
David Reger	In Runoff	269
OFF-CAMPUS WOMEN SENATOR		
Margaret Dahl	Victor	124
D. Bowman	Victor	112
Bobbie Taylor	Defeated	97
SENIOR CLASS SENATOR		
Ed Logan	Victor	479
Marlyn Talley	Victor	467
JUNIOR CLASS SENATOR		
Lynda Salisbury	In Runoff	258
Wayne Cole	In Runoff	223
Jan Nichols	In Runoff	214
Floyd Harris	In Runoff	150
Larry Luxton	Defeated	127
SOPHOMORE CLASS SENATOR		
Susan Chemnick	Victor	427
Bill Reed	Victor	298
Marilyn Wood	Defeated	143
Martha Dillner	Defeated	116
GRADUATE COLLEGE SENATOR		
Don Moore	Victor	102
Edward Manley	Victor	101

Letter Defends Letter

To the Editor:

To the Son of Liberty in regards to your letter in favor of Mr. Goldwater: Miss Abrahams' comments were not directed against Mr. Goldwater per se. They were positive statements that a commencement speaker should be a distinguished man of letters and not merely a political leader.

Miss Abrahams felt as we do that Mr. Goldwater is not recognized as an intellectual

leader in the sense of being a scholar or a creator of world-recognized new ideas. We doubt that Miss Abrahams will be the only person uninspired by Mr. Goldwater.

In closing, we might point out that the original "sons of liberty" (Boston Tea Party, etc.) would not have hesitated to sign such a trivial document as your "epistle".

The son of Joseph Volker, Sr.
The Son of Curtis K. Swartz

Think First

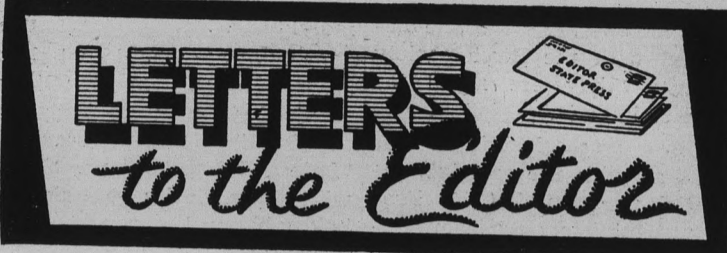
A disappointing but "record breaking" number of Arizona State students took a few minutes to help decide their student officials for next year.

This "record breaking" percentage, even including part time and correspondence students who are less likely to vote, was 17.4 percent of the student body. 2,144 students voted out of an enrollment of 12,291.

It was better than last year's primary election vote of 1,250, but was still not a representative portion of the student body.

We compete with the University of Arizona in football, cheering, enrollment . . . you name it, we probably compete. Here then, is how their students voted this year: in a total enrollment of 14,149, a reported 2,205 students voted in the primary and 3,741 in the general election.

If we vote today for competition's sake, we might do so wisely.



Why The Fuss?

To the Editor:

Dr. Douglas Arner, ASU associate professor of Philosophy, who has come out blasting Robert Birch and the John Birch Society as well as other anti-Communist groups for what he calls their anti-intellectual, unethical and fascist inclinations.

Let me answer Dr. Arner with the following news items taken from the April 6, 1961, issue of the Boston Herald:

"Cardinal Cushing said Wednesday night Robert Welch . . . should be supported as a dedicated foe of communism."

"Speaking at a Stonehill College dinner attended by 300 business and professional men in the area, Cardinal Cushing said he has known Welch for many years."

"Anyone who is fighting communism today on a top level and who knows the methods and teaching of communism — that man is going to suffer, the Cardinal said, in an obvious reference to recent demands in Congress for an investigation of Welch and the John Birch group."

"The Cardinal said the communist nations recently issued a manifesto directing Communists all over the world to attack anti-communist societies."

I would like to ask Dr. Arner why he is making all the fuss about the John Birch Society. The commies have been running free and easy for years and nobody screams about that.

Scott Crosby

Concern Good

To the Editor:

It is evident that individuals and groups and this campus are becoming concerned about the communist menace (or the lack of it). The arousal of such interest is a healthy thing and may well have beneficial results in the long run.

We are involved in a war of ideas. It will not be won unless we do everything possible to encourage each American to think deeply concerning the problems which confront his nation, to share the results of

his thinking with others, and to stand firm for the truth which he discovers in so doing.

This sort of endeavor does not flourish in an atmosphere of social censure and anonymous mud-slinging.

In short, let us critically discuss ideas, movies, movements, political parties, international issues, and contemporary problems.

Let us not however sink to the asininity of calling names.

Dave Matthews

Conrad The Campus Cop



You're right—they do look like Mickey Mouse ears!"



By DAVE McELFRESH

One more month and finals will be here again. Five days and nights of cramming and staying up late with NO-DOZ, or, if you're brave, Bennies.

I am under the impression that finals are supposed to test what you have learned during the past semester. If this is so, why should the exams be jammed together in five days? Why not stretch them out over a longer period of time.

Even the published exam schedule states that if you have more than three exams on any one day, you should see your instructors to change an exam time. It's hard enough to survive through two hours of exams, much less six hours or more. This is especially true the farther up the academic scale you go.

Furthermore, it is more than likely that your first exam will be in a class you had only yesterday where material was discussed that should be absorbed by the final the next day.

To say nothing of the usual daily assignments.

There simply is not time to organize your thoughts in that short period of time. If there were one day between the ending of classes and the beginning of finals, this would give you some time to coordinate your thoughts, necessary in writing a good exam. Then, if tests were scheduled on alternating days instead of every day, all-night cramming would be reduced.

Professors would have time to grade examinations and not be rushed to get grades in on time.

Of course the sale of cigarettes and coffee would sharply increase, I'm sure. But this would make the Den and the V.I. quite happy.

* * *

This year marked the end of a ten day spring vacation. In my opinion, spring vacation is very necessary. The second semester seems much longer than the first because of the length of time between breaks.

This is the time when students usually go to the beach, spend their time relaxing, or, in a few cases, catch up with studies. Nine times out of ten a term paper comes due soon after Easter and the time is well spent in the stacks.

It also gives the faculty a break from us.

These ten days give you time to look for a summer job. You return relaxed and ready to tackle the last two months of school. With a break of only four days there is hardly time to relax. If you do go somewhere, you are too tired from traveling to even think of going to class to soon.

There might be some justification in cutting down the spring vacation if school was out a little earlier in the summer, or if the time was used to lengthen the exam schedule. To date, this is not the case. If anything, the semester is longer. A time of rest and relaxation has become just another day of 7:40's and tests.

Yell and scream all you want; you are stuck with this decision for at least two years. Then there is hope, not much, but hope.

**HAVE
CAP & GOWN
PHOTOS**

**Made Now At The
Photo Center
(Mathews Hall)**

**Phone Ext. 553
For Appointments
We Have
Caps and Gowns**

36 Initiated To Honorary

Thirty-six juniors and seniors, an alumnus, and a faculty member were initiated into the ASU chapter of Phi Kappa Phi, national honorary scholastic society, last week.

To qualify for membership in Phi Kappa Phi, juniors must compile a cumulative grade index of 3.75 and seniors one of 3.5.

Rudolf H. Lavik, professor of Physical Education and Phi Kappa Phi president, conducted the initiation.

The juniors who were initiated are: F. Grant Allen, Gary Peter Klahr, Harvey Rosenstock, Alan Paul Schwartz, and Monny Lester Weatherly

Jr., of Phoenix; Sue Carol DuPree, Ralph M. Flores, Mrs. Marilyn A. Pollard, of Tempe; and Mrs. Lela B. Stoleson, of Scottsdale.

The seniors initiated are: Robert R. Bergstrom, Mrs. Emma Ruth Boyle, Geraldine Davis, Judith S. Gettig, Juanita P. Griego, Tanya Hartley, Gerald E. Hicks, Thomas J. Humphrey, Mary E. Jackson, Richard A. Leo, Myrna L. Rutz, Jefferson D. Simmons, Anne R. Stedwell, Gary L. Stryker, and David M. Trujillo, all of Phoenix.

Others are: Joyce E. Arbaugh, Paul T. Brehm, Arthur B. Clark, Donna G. Erbland, James F. Holley, of Tempe; Barbara L. Cavin, James F. Hurley, Gerald L. Johnston and Bruce G. Rogers, of Scottsdale; Mrs. Marion J. Atwell, of Mesa; Charlene J. Gualdoni, of Morenci; and Dorothy F. Purington, of Candia, N.H.

Also initiated were Elizabeth Frances Crump, of Phoenix, an alumnus, and Dr. William S. Peters, professor of General Business.

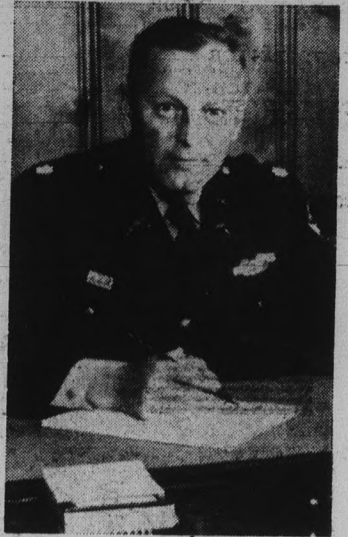
**Major Smith Retires;
Takes Final Review**

Army ROTC guidons dipped in honor yesterday to retiring Lt. Col. Paul R. Smith as he concluded an army career that spanned some 20 years.

Since 1957, Col. Smith served with the Arizona State University ROTC unit as instructor, operations officer and staff member.

An ROTC graduate of the University of North Dakota, Col. Smith served in the Pacific Theater during World War II, and later in Germany and Korea.

Among the dignitaries who shared the reviewing stand with Col. Smith during yesterday's parade were: Gilbert Cady, ASU vice president of business affairs; Col. William Toy, Ret.; and Major Rex Hopper, professor of Military Science for the Phoenix Union High school system.



Lt. Col. Paul R. Smith

MAGGIE SEZ . . .
"I take Mine
To The
**PIONEER CAMERA
SHOP**
TEMPE CENTER



They call it
"kiss mist"

**THE NEW SURE BREATH FRESHENER
FOR PEOPLE WHO LIKE TO BE LIKED!**



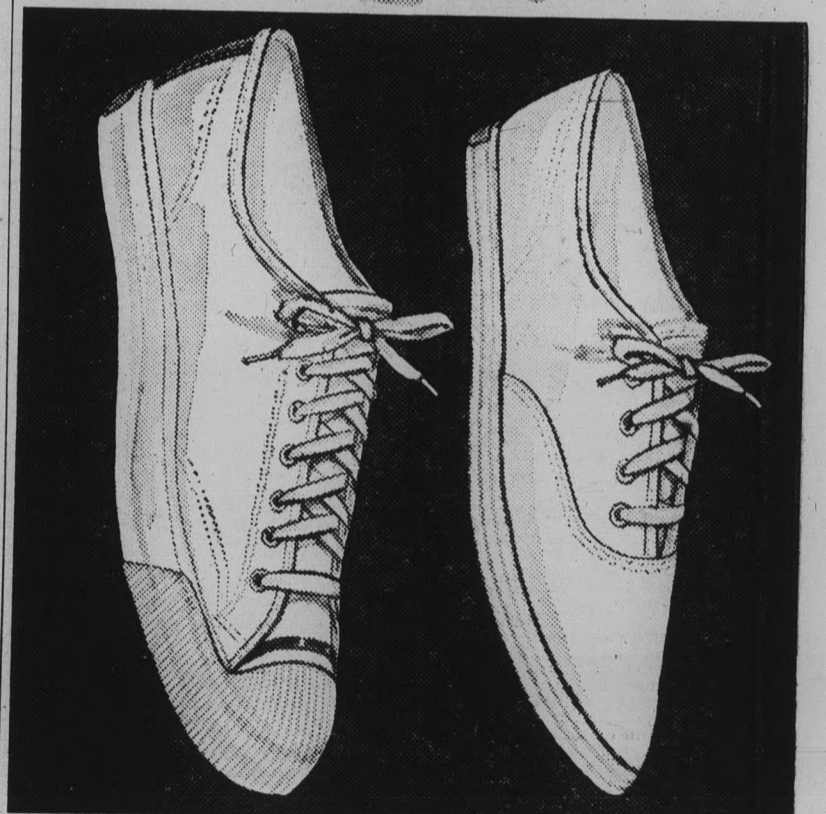
New Lavoris Oral Spray . . . they call it "Kiss Mist" on campuses across the nation! "Kiss Mist"! Exciting new way to freshen your breath instantly! Use it anytime, anywhere—after eating, drinking, smoking—whenver you want to be close . . . stay close!

One spray does what breath gums and mints can't do! New Lavoris Oral Spray freshens breath—kills odor-causing germs on contact! Comes in a carry-it-with-you bottle, handy for pocket or purse.

250 sprays • Less than a penny a spray **69¢**



**LAVORIS
ORAL SPRAY**



Other shoes may look like Keds, but only U.S. Keds® can give you "that great feeling." Because Keds have a patented shockproofed arch cushion and cushioned inner sole. And because Keds are built over tested, scientific lasts, to fit all feet perfectly, even narrow ones. Keds are right for class, gym, tennis court or dorm. Machine-washable (and they even look good clean). His: Keds "Court King." Hers: Keds "Champion." Get your U.S. Keds at good shoe or department stores.

LOOK FOR THE BLUE LABEL®



*both U. S. Keds and the blue label are registered trademarks of
United States Rubber
ROCKEFELLER CENTER, NEW YORK 20, NEW YORK



Dave Emerson, Eric Maxwell and Fred Koory, Blue Key members, brief Jackie Taylor and Loretta Sowell on plans for the Blue Key carnival, scheduled for 7:30 p.m. tonight at Goodwin Stadium.

Phi Mu Alpha Chapter Installed On ASU Campus

Kappa Nu chapter of Phi Mu Alpha, largest professional music fraternity in the country, was recently installed at ASU.

Seventeen members were initiated in the formal installation ceremonies, conducted by Waldo Winger. Winger, of UCLA, is the province governor of the fraternity.

ASU charter members are David Cope, Merrill Harlan, David Kilpatrick, Fred Maynard, Robert Miller, Thomas Watts, Gerald Whalin, Jan Haynes, Carl Franklin, Harold Franklin, Richard Franks, John Cobb and William Huff.

Faculty members initiated are Eugene Chausow, ASU assistant professor of Music; Ronald A. Holloway, acting director of the Sun Devil Band; Marion

Smith, ASU assistant professor of Voice; and James Hendricks, former ASU student.

**HAVE
CAP & GOWN
PHOTOS**

**Made Now At The
Photo Center
(Mathews Hall)**

**Phone Ext. 553
For Appointments**

**We Have
Caps and Gowns**

Carnival Set Tonight In Goodwin Stadium

The 13th Annual Blue Key Carnival, with twenty participating organizations, will take place tonight at 7:30 in Goodwin Stadium.

A trophy will be awarded to the group turning in the most money, and all proceeds will go toward the Blue Key Scholarship fund.

The participating groups are: Alpha Delta Pi, Alpha Epsilon Pi, Alpha Phi, Alpha Sigma Alpha, Canterbury Association, Chi Omega, Delta Sigma Phi, Gammage Hall, Gamma Phi Beta and Hayden Hall.

Also Kappa Kappa Gamma, North Hall, Phi Kappa Tau, Phi Sigma Kappa, Sahuaro Hall, Sigma Nu, Sun Devil Rodeo Association, Tau Beta Sigma (honorary band sorority), Theta Chi and West Hall.

The honorary organization pledges members on the basis of scholarship, (2.5 or above), character, school service and leadership. New members are tapped in the spring and fall.

Blue Key sponsors such projects as: selling programs at football games, ushering at Baccalaureate and Commencement exercises, tending election polls and granting two-year scholarships to high school graduates.

Women's Club Plans Luncheon

Members of the Faculty Women's Club will hold a luncheon at noon tomorrow in the MU ballroom following the traditional Women's Day Assembly.

Dorothy Wirtz, department of Foreign Languages, is in charge of luncheon reservations. The cost of the luncheon is \$1.50 and is payable at the door.



Wondering how you'll ever get ahead of financial woes?

Life Insurance savings give you a head start on the future. Consider the advantages of our Protected Savings Plan, the ideal estate builder for the young man. It combines low cost with flexibility to meet the economic changes that are bound to occur during a lifetime.

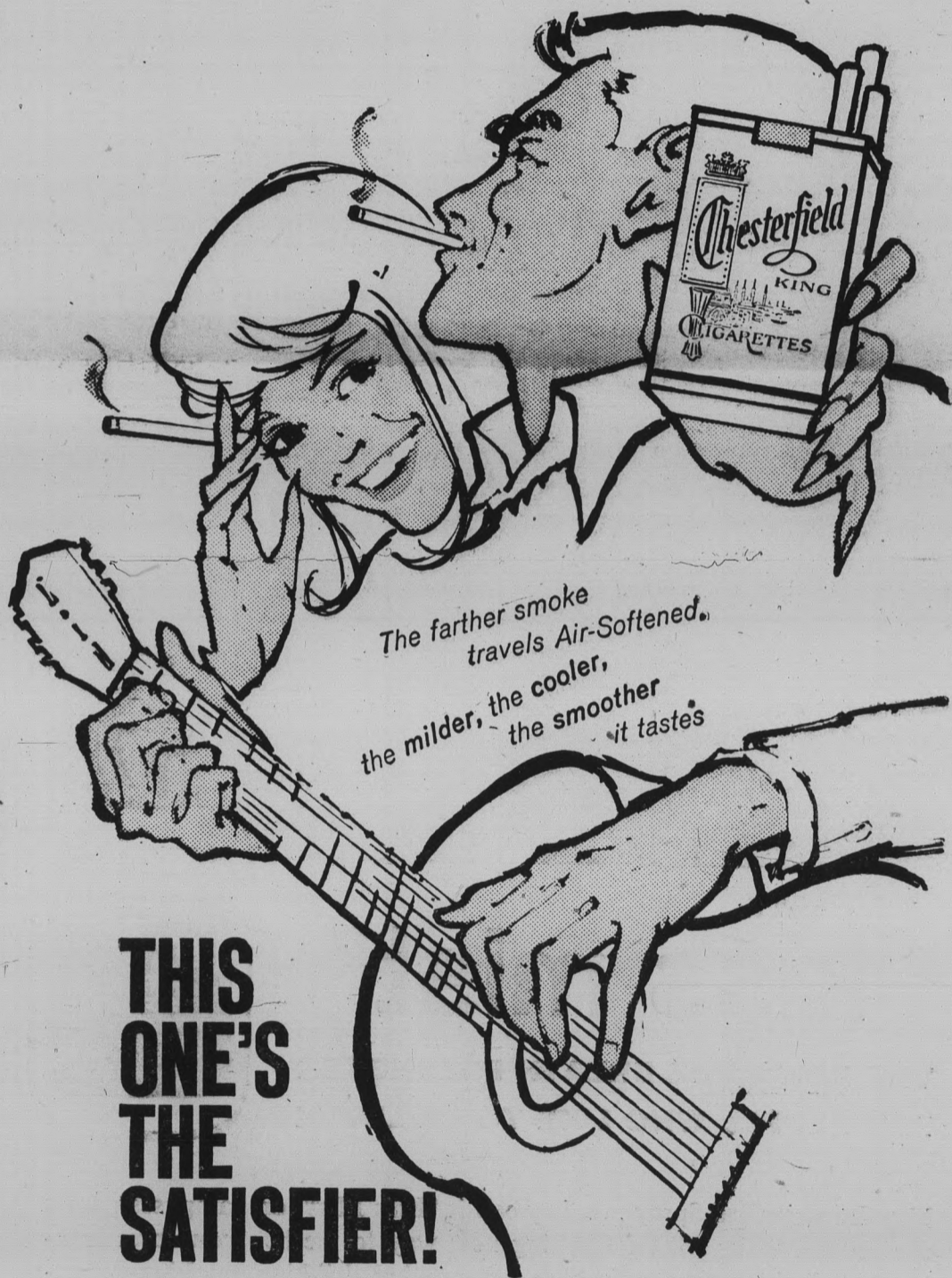
It will profit you to do some life insurance planning now—while you can gain by lower premiums!

CONTACT

LOUIS T. CHANEY

30 E. 5th St. Tempe
WO 7-1634

PROVIDENT MUTUAL
Life Insurance Company
of Philadelphia



The farther smoke travels Air-Softened, the milder, the cooler, the smoother it tastes

THIS ONE'S THE SATISFIER!

Perfectly in tune with your taste—that's Chesterfield King. Every satisfying puff is *Air-Softened* to enrich the flavor and make it mild. Special porous paper lets you draw fresh air into the full king length of top-tobacco, straight Grade-A all the way.

Join the swing to

CHESTERFIELD KING

© Liggett & Myers Tobacco Co.

MAGGIE SEZ . . .
"I Love To Browse At The"
PIONEER CAMERA SHOP
TEMPE CENTER

STUDENT TRAVEL

HEADQUARTERS
BY: Jet or Steamship
TO: HAWAII
EUROPE
MEXICO
ALASKA
ORIENT
FOR: Study or Pleasure
Let's Talk Over Your Plans — No Obligation
See Pauline
UNIVERSAL TRAVEL
18 E. 5th St. — WO 7-1673

Devil Nine Hosts Marines After Successful Road Trip

ASU's Sun Devil baseball team will host the San Diego Marines at 3:30 p.m. today in the second of a three-game series at Sun Devil Diamond.

Back from a successful 6-1 road trip to the West Coast which boosted them to sixth ranking in the country, the Devils will throw right-hander Mike Tatum at the Marines today. Tatum will be looking for his seventh victory without a loss.

ASU took come-from-behind

wins on Thursday and Friday against Cal Poly and the San Diego Marines before bombarding San Diego University and the Marines on Saturday.

It took a five-run ninth inning against Cal Poly to insure an 8-5 win. Ed Littleton's two-run homer sparked the Sun Devil rally in that frame.

Mike Tatum halted a Cal Poly rally in the ninth as he relieved Sam Cook and struck out a pinch hitter with two on and two out to end the game.

Friday, Runge was the hero as he singled in two runs to tie the game in the ninth inning, and doubled in two more in the 11th to give ASU a 5-4 win.

Roger Barnson got the win in a relief role for ASU. He replaced Sterling Slaughter who held the Marines to three hits in 7 2/3 innings. Slaughter entered the game in the first in-

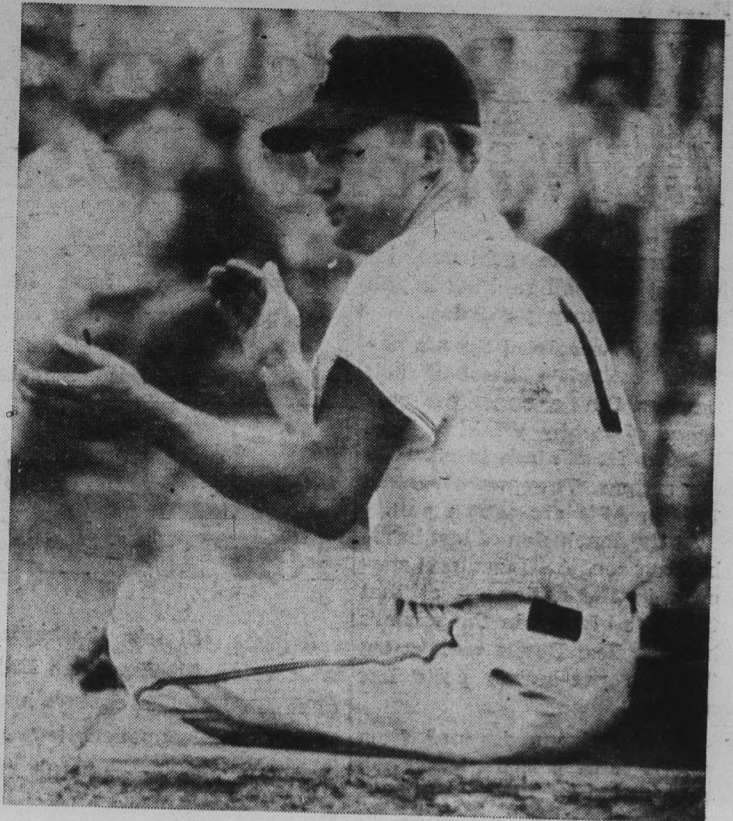
relief of starter Gary Graham.

Four Sun Devil home runs bounced San Diego University 16-5 Saturday morning and the Demons put together another torrid hitting attack to smash the Marines 12-2 in an afternoon contest.

Tomlinson hit two of ASU's circuit-blows in the first game and Danny Ikeda and Mike Matsik added the others. Tomlinson led Devil hitters with four hits in five trips and Larry Brion was three-for-six with four runs batted in.

In the second game Tatum tossed a three hitter past the Marines to record his sixth win against no losses this season. In addition he hit the first home run by a Sun Devil pitcher this season.

Littleton homered twice and Runge hit one out to lead the Devils' 14 hit barrage.



Sun Devil baseball coach Bobby Winkles will be matching wits with Frank Sancet of The UofA this weekend as Arizona's two universities renew their intense baseball rivalry in Tucson.

EUROPE

STUDENTS & TEACHERS TOUR 73 DAYS

PERSONALLY ESCORTED BY KARL DENNISON, ASU STUDENT BODY PREXY

Leave Los Angeles June 23 via air-conditioned luxury liner of the P.O.-Orient Line through the Panama Canal. Visit Trinidad, Barbados, Jamaica, Bermuda, Canary Islands, Portugal, England, Belgium, Holland, Germany, Switzerland, Austria, Italy, Monaco, France, Liechtenstein.

ALL EXPENSES \$1395

Price includes transportation, good hotels with bath, meals, tips, transfers, sightseeing, entertainment, night clubs, concerts. Extensions to Spain & Scotland available. Open to everyone.

Stop by Associated Students Office, Room 201 Union Bldg. for folders on this or any of 50 student tours to choose from.

Clare's Travel Service

4344 E. Indian Sch. Rd. AM 4-0531



FLIGHT INSTRUCTION

Special Rates For College People

MODERNIZED GROUND SCHOOL FOR PILOTS & NON-PILOTS

Amos Flight Operations

A Private License is a Must In Modern Business

Don Amos — Class of '56

Phone BR 5-7291

SKY HARBOR

Marines Topple Devils 11-5

San Diego's Marines repaid Arizona State for a pair of defeats on the Coast as they handed the locals an 11-5 baseball setback on Sun Devil diamond yesterday afternoon.

Marine pitcher Nate Booker went the distance, scattering eight ASU hits to gain a measure of personal revenge for a 6-5 loss handed him by the Devils here last year.

Sterling Slaughter, ASU's starter, was the losing pitcher. His record is now 6-2. Slaughter was replaced by Roger Barnson, and Sam Cook worked the final inning for the Sun Devils, allowing four runs.

Ed Littleton hit a home run,

his eighth of the year, and a double in four at bats. Mike Matsik and Gary Linthicum each had two hits for the Devils.

ASU had a pair of runs in the first inning and two more in the second but Booker proved stingy from that point, allowing only a single tally in the fifth as he shut ASU out in six of the last seven innings.

MAGGIE SEZ . . .

I Enjoy Shopping At The

PIONEER CAMERA SHOP

TEMPE CENTER



OXFORD for
comfort . . . quality . . . appearance

The rich texture of fine oxford skillfully tailored gives the assurance of being well-dressed. Case in point: the Arrow University Fashion B.D. with the authentic roll of the classic button-down. Your wardrobe is incomplete without a selection of these casual Arrow shirts in both long and short sleeves.

\$5.00

ARROW

From the "Cum Laude Collection"

Your ARROW Dealer in Tempe

Campus men's shop

603 Mill Ave.

Tempe

OPEN THURSDAY NIGHT TILL 9 P. M.

SUMMER'S AHEAD...

Play it **COOL**

REFRIGERATION Service Special

REFRIGERATION Installation Special

WE WILL

- ★ Check Freon
- ★ Check Clutch
- ★ Check All Lines
- ★ Check For Leaks
- ★ Check Compression
- ★ Check Belts and Adjust

\$6.75

All Makes and Models Parts and Materials Extra If Needed

1961 FRIGETTE

REFRIGERATION

INSTALLED

\$27500 and up

1 Yr. 12,000 Mile Warranty

3 Refrigeration Specialist On Duty

COMPLETE SERVICE FACILITIES

SMILEY-BERGE FORD

YOUR NEAREST AUTO DEALER

GROWING BIGGER BY SERVING BETTER

16 E. 8th St.

TEMPE

WO 7-2063

Sun Devils Ranked Sixth In National Baseball Poll

Arizona State achieved its highest baseball ranking in the school's history yesterday.

In the Associated Press's national collegiate baseball poll the Sun Devils, under the guidance of Bobby Winkles, have jumped from ninth to sixth in the ratings. They were ranked 14th in AP's pre-season poll.

At the conclusion of last baseball season ASU ranked seventh in the nation — at that time the highest in the school's history. The Devils were rated 22nd in pre-season polls last season.

Rival Arizona dropped from second to fifth in the latest poll even though the Wildcats (34-6) have a better record than top-ranked USC (26-6-2) and hold a 9-0 victory over the Trojans.

Top Ten Teams

- | | |
|-------------------------|-----|
| 1. USC, 26-6-2 | 458 |
| 2. Fresno, 26-6 | 410 |
| 3. Texas, 17-0 | 362 |
| 4. Oklahoma State, 12-0 | 233 |
| 5. Arizona, 34-6 | 220 |
| 6. Arizona State, 33-6 | 163 |
| 7. California, 21-5 | 109 |
| 8. Florida State, 19-5 | 102 |
| 9. Wake Forest, 17-3 | 95 |
| 10. Missouri, 9-2 | 92 |

Two of ASU's past opponents this season were ranked in the top 20 teams. Michigan was rated 12th and Los Angeles State

Campus Classified

Regulations: For students and faculty only of Arizona State University. Cash in advance. Submit to Room 207 MU on Mondays and Wednesdays only for publication on Wednesdays and Fridays during hours, 10 a.m. to 12 noon.

Rates: 10 cents a line per issue, 35 cents minimum charge.

FOR RENT

2 Blocks From ASU
New, 1-Bedroom, furnished, for ASU couples. Patio, storage space. WO 7-5430.

Brand new studio apartment close to ASU Campus, \$80, utilities paid. WO 7-5430.

FOR SALE

Varmint artillery, 270 Winchester, scope, case, \$110; Model 12 Winchester shotgun modified pump, \$65; 22 target pistol, \$20; Agfa 35 mm camera, \$20. Stefun, 922 Apache, Apartment 1. Evenings. Take offers.

JOB OPPORTUNITIES

EARN \$85 PER WEEK during summer aboard passenger ships as waiter, clerk, waitress, etc. Must be over 18. Complete details, send \$1.00, Lansing Information Service, Dept. B-5, Box 74, New York 61, N.Y.

7,000 SUMMER JOBS

To \$600/mo. Nationwide, all fields. Complete listings, \$1.00. Act now! The College Job Mart
Glendale Bldg.
221 Glendale Ave.
Lexington, Kentucky

RIDES

Rides to New York, New England. Leaving immediately after finals, driving direct. Prefer riders to share in driving. Call Arnold Siegel, WO 4-7229, or write 125 Fraser Drive West, Mesa.

TYPING

Manuscripts, thesis, reports, 25c per page. Telephone: WO 7-5419, Mrs. Smith.

held down the 17th spot.

The Sun Devils have four games yet to play against Arizona and have three remaining contests with Los Angeles

State. The Demons play the Wildcats here twice and all three of their games against LA State will be on the Sun Devil Diamond.

Devil Cagers Pick McGill Toughest 1960-61 Opponent

Arizona State's basketball team voted All-American Billy (The Hill) McGill captain honors on its all-opponent team.

McGill was named the top opponent on all but one of the Sun Devils' ballots. Joining him on the first opponent team were Dave Mills and Eddie Miles of Seattle, George Knighton of New Mexico State and John

Rudometkin of Southern Cal. Fresno State's Mike McPherson, Oregon's Charlie Warren, Texas Western's Al Tolen and Utah's Rich Ruffle and Jim Rhead were chosen for the second team.

The Sun Devils played against Knighton on three occasions during the season and post season games and met Mills and Miles two times.

ASU Baseball Statistics

(Players, other than pitchers, with 15 or more at bats)

	Batting Averages									
	GP	AB	R	H	2B	3B	HR	RBI	AVG	
Richardson, of	12	12	5	5	0	1	0	1	.416	
Brion, 3b	39	148	46	55	7	1	0	25	.372	
Tomlinson, ss	39	154	47	56	7	1	8	47	.364	
Runge, 1b	38	140	40	49	10	2	6	44	.350	
Ikeda, of	39	149	35	50	6	1	2	37	.336	
Littleton, of	36	141	36	46	3	0	7	28	.326	
Matsik, 2b	38	156	32	49	3	2	2	30	.315	
Gorman, c	20	47	14	14	5	0	2	16	.298	
Slanoc, c	9	17	9	5	2	1	0	7	.294	
Kennedy, of	29	49	14	14	4	0	0	8	.286	
Lefebvre, of	30	87	25	23	4	1	5	22	.264	
Panek, of	15	29	8	6	0	1	2	5	.207	
Ramirez, 2b	5	20	3	4	1	0	0	3	.200	
Linthicum, c	4	16	2	2	1	0	0	3	.125	

	Pitching										
	GP	IP	H	R	ER	ERA	SO	BB	W	L	
Anderson	8	40 $\frac{2}{3}$	37	22	17	3.99	59	26	5	1	
Barnson	15	54 $\frac{2}{3}$	55	22	10	1.69	33	13	7	2	
Cook	11	44 $\frac{2}{3}$	39	13	11	2.43	26	13	4	1	
Graham	6	10	18	12	7	3.31	15	15	1	0	
Kavagian	4	12 $\frac{2}{3}$	14	26	22	16.02	7	14	0	0	
Lujan	5	7 $\frac{2}{3}$	8	5	5	5.92	6	3	1	0	
Miller	6	12 $\frac{2}{3}$	15	4	2	1.44	10	7	1	0	
Slaughter	11	51 $\frac{1}{3}$	42	22	17	2.98	54	25	6	1	
Smith	5	28 $\frac{1}{3}$	27	21	13	4.14	18	12	2	1	
Tatum	11	60 $\frac{2}{3}$	35	19	10	1.44	58	19	6	0	

Netters Win

Arizona State's tennis team defeated Fort Huachuca 9-1 last Saturday for its fifth win of the season.

Winners for ASU were Ed Leonard, George Emmons, Brian Heming, Wally Kendig, Dick Draper, Sam Schulz, and Joe Johns.

"THANKS MAGGIE"
(Say, Who Is Maggie?)
PIONEER CAMERA SHOP
TEMPE CENTER



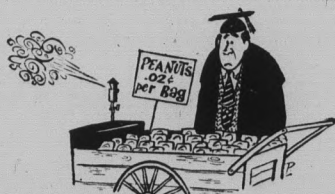
LUCKY STRIKE PRESENTS: DEAR DR. FROOD:

DR. FROOD'S THOUGHT FOR THE DAY: A little learning can be a dangerous thing—especially in a multiple-choice exam.



DEAR DR. FROOD: I have calculated that if the population explosion continues at its present rate, there will be a person for every square foot of earth by the year 2088. What do you think of that?
Statistics Major

DEAR STATISTICS: Well, one thing's sure, that will finish off the hula-hoopers—once and for all.



DEAR DR. FROOD: You can tell your readers for me that college is a waste of time. My friends who didn't go to college are making good money now. And me, with my new diploma? I'm making peanuts!
Angry Grad

DEAR ANGRY: Yes, but how many of your friends can do what you can do—instantly satisfy that overpowering craving for a peanut.

THE RECRUITERS ARE COMING! THE RECRUITERS ARE COMING! And here's Frood to tell you just how to handle them: These representatives of big business are, on the whole, alert fellows. They may be aware that college students smoke more Luckies than any other regular. Let them know that you know what's up—offer them a Lucky, then tap your cranium knowingly. Remember—today's Lucky smoker could be tomorrow's Chairman of the Board.

CHANGE TO LUCKIES and get some taste for a change!

Product of The American Tobacco Company—"Tobacco is our middle name"

DEAR DR. FROOD: I have been training our college mascot, a goat. He has learned how to open a pack of Luckies, take out a cigarette, light up and smoke. Do you think I can get him on a TV show?
Animal Husbandry Major

DEAR ANIMAL: I'm afraid not. To make TV nowadays, you've got to have an act that's really different. After all, there are millions of Lucky smokers.

DEAR DR. FROOD: I am a full professor—and yet I stay awake nights worrying about my ability to teach today's bright young college students. They ask questions I can't answer. They write essays I don't understand. They use complicated words that I've never heard before. How can I possibly hope to win the respect of students who are more learned than I am?
Professor

DEAR PROFESSOR: I always maintain that nothing impresses a troublesome student like the sharp slap of a ruler across his outstretched palm.



DEAR DR. FROOD: Could you give a word of advice to a poor girl who, after four years at college, has failed to get herself invited on a single date?
Miss Miserable

DEAR MISS: Mask?

