



# State Press

ARIZONA STATE UNIVERSITY



TEMPE, ARIZONA

1885

Diamond Jubilee

1960

Vol. 39

Wednesday, November 30, 1960

No. 19



SUN DEVIL . . . faces pop up regularly on the All Border Conference football team. Six ASU gridgers were named to the first team by conference coaches and ten altogether were selected to honorable mention positions or higher. Sun Devil first stringers are Jesse Bradford, George Flint, Dick Locke, Fred Rhoades, Nolan Jones and Clay Freney. (Story, page 8)

## Cage Season Set To Open

By BOB EGER  
Sports Editor

Arizona State will kick off its 1960-61 basketball season against California Western at 8:30 tomorrow night in Sun Devil Gym.

Head Coach Ned Wulk and his varsity quintet will open a vigorous 22 game schedule with hopes of surpassing last year's best ever 16-7 mark and bettering last season's 83.9 scoring average which ranked the Devils sixth nationally in the points-per-game department.

Wulk faces a rugged task with such schools as Oregon State, Oregon, Kent State, New Mexico State and the Air Force Academy dotting the schedule. Oregon State comes to Sun Devil Gym Saturday, giving the locals only one day's preparation after tomorrow night's game against Cal Western.

The Westerners are a small, defense-minded team and manage to hold their own against top small college and service competition in California. They finished among the nation's top ten small colleges in team defense last year.

"With a few exceptions, the boys have come along about as well as expected," said Wulk. "There are still some things to be desired but overall the play isn't bad. We'll be greatly strengthened when Raul Disarufino shakes his football legs and gets used to playing basketball again."

Wulk expects Disarufino, a sophomore, to earn a starting guard berth alongside junior Larry Armstrong before the season has progressed too far. Probable Devil starters for tomorrow night's clash are Ollie Payne, Tony Cerkvenik, Bill Pryor, Jerry Daugherty and Armstrong.

Payne and Armstrong were standouts as sophomores last year and are being counted on to carry a big load this year. Pryor, always considered po-

tentially great, has new-found aggressiveness and should add scoring and rebounding punch this year. Cerkvenik and Daugherty are newcomers who are being heavily counted on to help make up for the loss of several of last year's seniors who held key spots.

Preceding the varsity game is a freshman contest pitting the ASU Sun Imps against Lake Air Force Base. Game time for the freshman contest is 6:30 p.m.

## Nuclear Reactor For ASU

The ASU nuclear energy program received a financial boost of \$25,875 from the Atomic Energy Commission to purchase a sub-critical nuclear reactor. The reactor will be installed on campus some time next summer.

The grant will enable the university to enter nuclear engineering laboratory work and will afford the opportunity to expand laboratory instruction into the field of nuclear reactor design.

A sub-critical reactor has an external neutron source which is added as opposed to a critical reactor which emits its own neutrons.

"The reactor will be fueled by two and three quarter tons of natural uranium," Dr. Castle O. Reiser, professor of Engineering said.

The present nuclear technology laboratory, used in connection with nuclear science, physics and chemistry courses, was largely equipped as the result of an earlier grant of \$69,108 from the AEC in June of 1959.

By Executive Council -

## Campus Drinking Studied

By GARY PETER KLAHR

The Executive Council voted unanimously Monday to seek student opinion on campus drinking problems. The Council passed a resolution asking students and campus organizations to discuss the problem and submit their written opinions to the ASASU secretary by Dec. 12.

The Council emphasized that the inquiry is not related to or directed against any specific incidents or groups.

According to the resolution, campus groups should meet to discuss Page 25 of the Student

Handbook, regarding alcohol consumption, "for the purpose of informing the ASASU Executive Council regarding the attitude of students about the topic of alcoholic consumption."

Councilmen asserted that the results of the opinion "poll" will not be binding on the Council.

The six questions that the Council want organizations to discuss are: 1. Is alcohol a problem on this campus? 2. Should the consumption of alcohol at official group affairs be prohibited? If so, how enforced? If not, just how far

should prohibition go? 3. Should students convicted of drunken driving be disciplined by the university? If so, in what way? 4. Should students found guilty of illegal consumption be disciplined by the university? If so, in what way?

5. Should a student be disciplined for mere attendance at a drinking party (for example, a desert party) even though he or she may not drink? Would it make any difference in the way a participant should be handled if the party resulted in a serious accident or bad publicity? 6. Other problems and questions suggested by the policy on alcohol.

According to a member of the elections board, a high-ranking student government officer voted in the recent King-Queen election without presenting the required I.D. card. While this person was voting, other students who did not present I.D. cards were being turned away.



Why should students obey rules when those making the rules openly violate their own laws?

## Indian Clothing Donated To Anthropology Museum

ASU has fallen heir to 31 pieces of clothing, all over 100 years old. The collection of Plains Indian apparel was contributed to the anthropology museum last week by James C. Coe of Phoenix.

Located off the patio of the Liberal Arts building, the museum is scheduled to open this spring, according to Dr. Reynolds J. Ruppe, newly appointed director.

Among the displays antio-

pated in the museum showcases will be 38 pieces of Hohokam pottery dating back 600 years, which were presented to ASU in 1958.

Student discoveries as well as items borrowed from local museums will also be exhibited, with the displays changing periodically.

The museum will remain open to the public during school hours and for special events.

## Traditional Christmas Party Set Friday Night In Memorial Union

The annual MU Christmas party, sponsored by the Activities Coordination board, will be this Friday, 8 to 12 p.m.

The decorations, to be done by the students during the party, will include the trimming of several trees and painting the large MU windows.

A band will provide dance music in the ballroom and popcorn will be served. Caroling

by the lower lounge fireplace is planned to stimulate the usual Christmas spirit. Members of the ASU Concert Choir will serve as leaders for the singing.

John Summers, general chairman, said "We hope to create a real Christmas atmosphere through the decorating, and the program is planned to provide entertainment for all students."

# Students Discuss ROTC With State Education Chief

A group of ASU student officials discussed the compulsory ROTC issue with State Superintendent of Public Instruction W. W. Dick last Wednesday.

ASASU President Karl Denison led the four-man student delegation. Other members were John Sampson, chairman of the Committee For Voluntary ROTC, Jim Sult and Gary Peter Klahr, committee members. The conference was the first of several that the

CFVR is seeking with state and federal officials.

Dick said, "I perhaps have not studied this issue as much as I should have." He asked the students to write him a letter outlining their case and to furnish supporting documents. He said he will investigate the issue and may visit the campus for a first-hand look at the ROTC.

Sampson announced that the Committee For Voluntary ROTC will meet this Friday at 2:45 p.m. in MU 218 to discuss possible preparation of a voluntary ROTC bill for the state legislature. The meeting is open to all ASU students.

# Art Display Shows ASU Home Talent

The permanent art displays in the MU features talent by ASU faculty and staff members.

They include a western mural in the upper lounge and a portrait of Charles A. Stauffer in the upstairs hall, both of which were done by Dr. Harry Wood, chairman of the Art department. The mural was donated as his gift to the Memorial Union. In the lower lounge there is a painting of a Kachina Doll, by Miss Walsh, head resident of West Hall.



## 6 ways to hypnotize men

Ever wonder why some of the plainest gals walk off with the most eligible bachelors—often under the noses of a batch of beauties? The December Journal tells you "How to Be Popular." Your eyes, smile, manner can help you hypnotize men—if you know a few simple tricks. (P.S.) Information comes from an irrefutable source—men!



# Industrial Arts Conclave Features Panel Discussion

Dr. Walter E. Burdette, head of the ASU Division of Industrial Education, will be panel moderator at the first Industrial Education Conference on campus Saturday.

Epsilon Pi Tau, professional industrial educators society, of which Dr. Burdette is a trustee, will serve as host to conclave attendants.

A smoker-chat session will initiate the evening convention at 5 p.m. in the MU upper

lounge, followed by dinner at 6 and the main program at 7.

Theme of the program panel discussion will be "Promotion of Industrial Education in Arizona."

Various topics will be discussed by educators from Arizona and other states. Each speaker will serve as a small group discussion leader of his topic.

Over 200 persons are expected.

FeAsS CaTiO<sub>3</sub> U<sub>3</sub>O<sub>8</sub> SiO<sub>2</sub> S<sub>8</sub> N<sub>2</sub> K<sub>2</sub>CO<sub>3</sub> Na<sub>2</sub>SO<sub>4</sub> H<sub>2</sub>SO<sub>4</sub> H<sub>2</sub>O<sub>2</sub> Mn<sub>2</sub>O<sub>3</sub> Be<sub>2</sub>O<sub>3</sub> FeS Cu<sub>2</sub>O Pb<sub>2</sub>O<sub>3</sub> CO<sub>2</sub> Ca<sub>3</sub>(PO<sub>4</sub>)<sub>2</sub> S<sub>2</sub> Fe<sub>2</sub>O<sub>3</sub> PbV<sub>2</sub>O<sub>6</sub> CO<sub>2</sub>

- MINERAL SPECIMENS - MICROSCOPES
- ULTRA VIOLET EQUIPMENT
- COLLECTING SUPPLIES
- GEMS
- BOOKS
- GEOLOGY - MINERALOGY
- JUNIOR SCIENCE

**SCOTT WILLIAMS**  
Mineral Company, INC.  
440 N. SCOTTSDALE ROAD • SCOTTSDALE, ARIZONA • WH 5-0803

# XMAS SPECIAL

## IF IT'S NOT ELECTRIC IT'S OBSOLETE

And the Smith-Corona Electric Portable is the world's first and only electric portable. Just a touch of the keys and electric power takes over, turning out clear, uniform, print perfect results... even for beginners and "hunt and peck" typists. Don't settle for an old fashioned portable. Get the power touch, the power performance of a Smith-Corona electric portable!

**SPECIAL OFFER!** Free with every Smith-Corona Portable — a \$23.95 recorded home study course that teaches touch typing in just 10 days.

## Smith-Corona ELECTRIC PORTABLE



Regularly 164.50\*

# NOW \$135.00\*

\*Plus tax

AT YOUR CAMPUS STORE

# COLLEGE Bookstore

## The New

# Tee Pee OF Toys

TEMPE CENTER

## ★ NOW OPEN EVENINGS

FOR YOUR SHOPPING CONVENIENCE

OLE! —

# Dr. Martinez To Conduct Mexico Christmas Party

A Christmas party in a Mexican home with new friends from both sides of the border! a pinata; the traditional "La Posada" with its songs, candles, and procession; the Christmas salad; holiday cheer; presents for each and all! This is only the beginning of ten days of a new and wonderful experience.

Beginning Dec. 24 by first class flight from Tucson and ending Jan. 2, the Mexico Holiday trip will be personally conducted by Dr. Quino Martinez, associate professor of Spanish and Literature at ASU. He is known to thousands from his Spanish classes on TV.

A few of the highlights (besides the Christmas party) will be a New Year's Eve at the fabulous El Patio night club; two nights in Taxco; the Del Prado Hotel in Mexico City as "home"; the bullfight; sight-seeing and much more.

The total cost including ho-

tel, transportation, sightseeing; some meals; Mexican tourist card; and parties is only \$298. Call WO 7-1673 for further information.

# Arizona State Foundation Adds 42 New Members

The Arizona State University Foundation, a non-profit corporation founded to further the development of ASU, has gained forty-two valley residents as members.

New Phoenix members include: Lyle L. Young, Verland M. Haldiman, Henry C. Fuller, Mark Wilmer, Dr. R. Lee Foster, Sidney Myers, Kemper Marley, Rex R. Staley, Edward A. Tovrea, W. Roy Wayland, Jack Williams, Wilber F. Asbury, Robert R. Ross, George F. Miller, Joseph G. Rice, Read Mullan, C. H. Patten, Leonard Goldman, Lloyd Clark, Alfred

# Placement Center Plans Interviews

Students interested in a management trainee program in retailing may see representatives of the J. C. Penney Co. tomorrow. Representatives of the Allis Chalmers Manufacturing Co. will interview engineers on campus Thursday.

Next Monday and Tuesday a recruiter from the Atomic Energy Division of Phillips Petroleum will seek electrical and mechanical engineers in addition to Math, Chemistry, and Physics majors. The public accounting firm of Touche, Ross, Baily & Smart will visit the campus for the first time to interview accountants Monday.

A representative of the Army Medical Specialists Corps will also be here to discuss the Army's programs for occupational and physical therapists and dieticians Monday and Tuesday.

Next Wednesday Sperry-Phoenix, Celanese Corporation and Aeronutronics will seek engineers, chemists, physicists, and mathematicians. Also on Wednesday, United Airlines will interview women interested in becoming airline stewardesses.

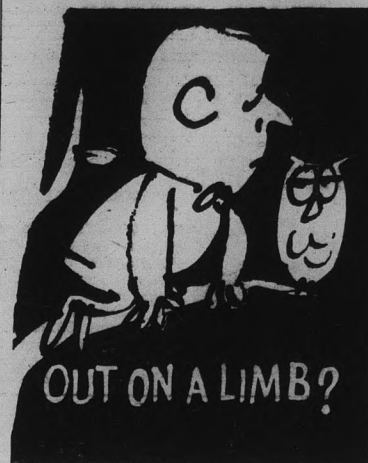
Razor, Frank B. Wallace and George N. Marshall.

Other Phoenixian members include: A. M. Crawford, J. R. Patrick, S. P. Applewhite, Dr. J. D. Hamer, Gordon R. Chambers, Lee R. Poe, Dr. Lee Ehrlich, M. H. Diels and James H. O'Connor.

From Scottsdale, new members are Henry Shipley, Raymond Rubicam, Robert Foehl, E. S. Lee, Russ Lyon, Carroll J. Pierce and Paul V. Feltman.

From Chandler is new member Edmond W. Ellsworth. Tempe's members are Francis N. Connolly, Dr. Richard O. Flynn, and ex-Governor Howard Pyle.

Color films of the ASU-UofA football game will be shown tonight at 7 p.m. in BA 203. All students are invited to attend.



It's easy to feel that way when you can't seem to get ahead of financial woes. But, things probably aren't as bad as they seem.

A good way to begin your financial planning is through life insurance. And a good time to begin is now, when you'll profit by lower premiums. Many new plans and features, especially attractive to college students, deserve your consideration.

Stop by our campus office, or telephone for more information.

CONTACT

## LOUIST. CHANEY

30 E. 5th St. Tempe  
WO 7-1634

PROVIDENT MUTUAL  
Life Insurance Company  
of Philadelphia

## WHEN YOU GRADUATE



## THE WORLD IS YOURS

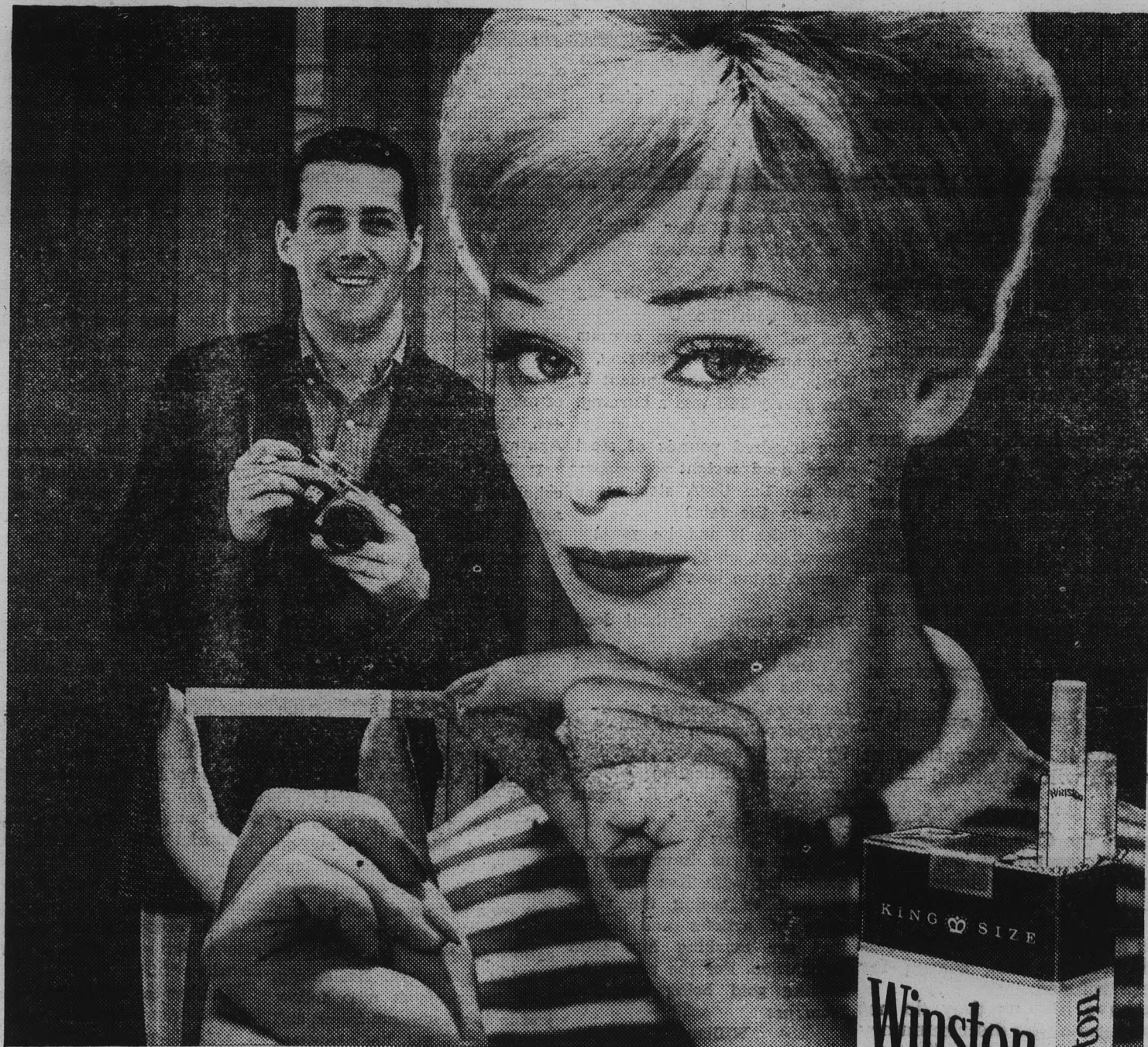
Provided you have the training to qualify yourself for a position in America's ever-expanding foreign trade

THE AMERICAN INSTITUTE FOR FOREIGN TRADE  
Phoenix, Arizona

Can provide you this training  
Sign up for an interview

Dec. 7  
9 A.M. - 5 P.M.

Placement Office



## It's what's up front that counts

Up front is **FILTER-BLEND** and only Winston has it! Rich, golden tobaccos specially selected and specially processed for full flavor in filter smoking.

R. J. Reynolds Tobacco Company, Winston-Salem, N. C.

**WINSTON TASTES GOOD like a cigarette should!**



**EDITOR-IN-CHIEF** GORDON PETERSON  
**MANAGING EDITORS** MICHAEL BARRETT and JACK ONG  
**SPORTS EDITOR** BOB EGER  
**SOCIETY EDITOR** DEANA DORMAN  
**COPY EDITOR** TOM HILTON  
**ASSIGNMENT EDITORS** CAROL OSMAN and LINDA WARREN  
**SPECIAL EDITORS** VELVA RICHEY, MIKE BENSON, WARREN FIELD, ALLEN McCARLEY and GARY KLAHR



The STATE PRESS, distributed by Dale Compton, is the official campus newspaper of Arizona State University. Published each Wednesday and Friday throughout the school year, excepting holidays and entered as second class matter in the Post Office at Tempe, Arizona, under the Acts of March 3, 1879, and August 24, 1912. Subscription price, \$3.00 per school year.  
 Member: Arizona Newspapers Association, Associated Collegiate Press, and National Advertising Service, Inc.

Editorially Speaking . . .

# No Comment

Does financial support of an institution indicate approval of its policies?

This question has become foremost in the minds of many students and faculty members alike, as the word spreads that a faculty reception for President G. Homer Durham is scheduled Friday at the Camelback Inn in Phoenix.

The Inn admittedly has a record of discrimination against Jews, Negroes, Mexicans, Indians and Orientals, and, one might conclude, any persons who might be considered part of a group other than "Caucasian Christians."

During a group event such as the faculty reception, of course, all persons would be admitted, regardless of race, religion, etc. But, if at the end of the reception, faculty individuals wished to remain at the Camelback, a good many of them might well be refused.

Under these circumstances, is it right for our faculty to support such an institution? In an attempt to determine feelings on this matter, the State Press phoned many faculty members to ask their opinions.

The prevalent answer was, "No comment!"

Among those faculty members who did make comments, several asked that their names not be printed.

This type of attitude makes us wonder what these persons are afraid of!

So, rather than unnecessarily subject any faculty members to whatever they wear, we will avoid using names in this editorial.

Anyway, here are some of the comments which teachers did venture to put forth:

"Yes, a mistake has been made in selecting Camelback, but the faculty should forget this and attend the function, in honor of Dr. and Mrs. Durham."

"The uproar was unfortunate — the discrimination angle is extremely over-emphasized. There is a time and place for everything, but this wasn't the time (for the uproar)."

"There is no dissention in the faculty. There are just 8 or 10 members of the faculty who are very sensitive about belonging to a minority group." (However, the minutes of a faculty senate meeting, Nov. 21, show that 22 members of ONE college petitioned to "move that the location of the forthcoming Faculty Party, honoring President Durham, be changed to a place whose acceptance of racial, religious, and ethnic group members is more consistent with the ideals of a university, which aspires to serve all people." The motion was tabled.)

"Our department will not go because of policies at the Camelback Inn." (This comment was made by a teacher — the chairman of the department refused to comment.)

"I am definitely against holding it (the reception) at this place (the Camelback Inn). I will not attend — it's a matter of principle."

"The decision is made."

When the State Press asked the Camelback Inn for comment, the reply was, "As far as groups go, we do not have any discrimination." Concerning individuals, "We like to have a congenial group — we like to be selective."

The "selective" idea was emphasized when individual Jews and Mexicans phoned the Inn, asking for room reservations. They were refused.

Many faculty members have told us they do not plan to attend the function because of the discriminatory policies. Others have told us that because of this abstention, the faculty may not have sufficient funds to meet a contract with Camelback Inn.

But, the big question remains "Should our faculty, as part of the university and, hence, part of the state, give financial support to an institution which discriminates among peoples?"

Isn't this contrary to the principles which this same faculty attempts to instill into us, the students, in the classroom?

A couple of faculty members have told us that Camelback Inn was accepted on the basis of price — that accommodations there were obtained at less cost than would be possible at other establishments.

What price does one place on principles?

## LITTLE MAN ON CAMPUS



"I'D FLUNK HIM BUT HE'S TH' ONLY 'MAJOR' I'VE GOT ENROLLED IN THIS COURSE."



By MICHAEL BARRETT

Food and shelter, always interesting topics of conversation, have been much on the minds of ASU students recently.

\* \* \*

One student gripe heard around campus concerns meal tickets.

Ticket holders are not allowed to transfer their cards, either for fun or profit, to others.

"Why not? We payed for the tickets so why can't we lend or rent them," the scholars complain.

Reason for discouragement of the above practices is that the meal-ticket cost (about \$2 a day) of feeding hungry students is based upon inevitable daily absences, according to Ed Stone, Saga Food Service southwestern division manager.

He says if meal-ticket costs were based on a non-absence policy, the costs to students would rise. Therefore, all ticket holders would have to pay more for their cards.

\* \* \*

Recently the brother of an ASU student was a guest in the latter's dormitory room for a few nights.

Upon discovery of this visit, the resident was tossed out of his hall, but fortunately found roost in another men's dorm.

Reason for the expulsion was that all non-students or "outsiders" who stay in another's dorm room must inform the head resident and remit \$1 per night rent.

Now some students consider this ruling somewhat less than fair to the resident in that he pays his rent and should be allowed to have any guests, excepting the opposite sex, just as if he were rooming on the "outside."

But the Housing Office states and rightly so, that it is necessary that the head resident know who's in the nest, "insider" or "outsider," for the smooth functioning of the residence and residents.

Housing emphasizes the \$1 rental fee is not charged in order to make money but merely as a method of checking when "outsiders" are staying in a resident's room. The latter is responsible for the former.

In the "good old days" a guest could sleep overnight in a friend's dorm quarters without paying. Only cooperation asked was that the guest be registered with the head resident.

Unfortunately, student hosts and guests did not cooperate and the present ruling was put into effect merely as a check on who's "in."

Whether the dollar charge used as a "reminder" to the rules is logical or effective is debatable. Total cost of having a guest in the hall (linen's the big item) probably runs not more than 25 cents a night, according to Housing. So why isn't that price instead of the buck charged?

In any case, it is unfortunate that student residents in the past abused their "host privileges." As a result, Sun Devils today or their guests now pay the penalty of a buck for a night's flop.

## LETTERS to the Editor

To the Editor:

The last school day before Thanksgiving vacation, The campus cops and their three-wheeled steeds Were working industriously as busy little bees Writing ticket after ticket without provocation.

'Twas the night before the big game with the U And all through the campus not an officer was stirring, While down by the student U The liberty bell was a burning.

Two hundred pounds of steel and dead weight But did the UofA stealers hasten the fate? Nay! Take it and be gone! For writing pink tickets it's entirely too late.

What a terrible, slothful deed has been done! Till the liberty bell is returned to its station, Let there be no more pink-faced policemen Writing three-dollar tickets without justification.

A. K. Rogers

To the Editor:

Many of us have enjoyed conversing with Ken Harrison as well as seeing the signposts of articles and letters that are marking him with recognition. For the record, he is like gold being extracted from ore.

William A. Patrikis

To the Editor:

An open letter to Dr. G. Homer Durham and the Disciplinary Committee:

Arizona State University faces an insult already condoned by the populace of the state of Arizona. This insult, not to the morals of men, but towards their usefulness as men to those with whom they live, is the large scale, "socially legalized" consumption

of alcoholic beverages by young people, so outstanding in Arizona. Somehow the drinkers in this state manage to consume an average annual amount of 15.1 gallons of alcoholic drinks per person!

You have before you not a problem easily settled by chosen words of wisdom oft repeated in the past, not a problem to be provisionally neglected, but a deep-rooted, cancerous "thing" that has as its ultimate goal the destruction of man's useful reasoning powers. This problem is society's Apathy!

It lies within your higher echelons of understanding and authority, above ours as students, where this problem will be met squarely; and its consequences will bear only what your courage and convictions fortify. There are people who say we cannot stop this "alcohol menace" from living on campus. Even Dean Shofstall says a changed attitude of the public is needed (which in my estimation, is giving in before the battle is even begun). Don't wait for the public!

Punishment to persons of university status whether on campus or not must become evident. You must not meet this as a simple expedient, but as a challenge to higher education to prove its worth in guiding a society. Be strong. And those of us who follow you in spirit will not falter; and society will not be permitted its apathetic desires.

Name Withheld

To the Editor:

Perhaps someone could explain why the UofA sold us "reserved" seats for the football game, and then didn't reserve them?

Is this considered proper treatment for a "sister institution"?

A New Student

**SHOP NOW FOR  
CHRISTMAS!**

See Our Lovely . . .

- ★ Claussner Hosiery
- ★ Catalina Sweaters
- ★ Koret of California Sportswear
- ★ Gotham Gold Stripe Lingerie
- ★ Costume Jewelry

A Small Deposit Will Hold Your Layaway

**Celia's Fashions**

Tempe Center

Open 9:30-5:30 • Thursday Till 9 P.M.

**Indifference To Integration Is Charged**

By BARBARA MARLOWE  
"The greatest enemy of integration is not hate literature but the indifference of the American people," said Richard Haley, field secretary

for the Congress for Racial Equality, who spoke here.


"Americans discuss integration problems in their living rooms but that is as far as the discussion will go," he added.

Haley was a member of a panel speaking to the joint meeting of the William Penn Fellowship and the Sociology Club last Monday evening. Also on the panel were W. A. Robinson, former principal of Carver High School, once an all Negro School in Phoenix, Joe Sanders of the Arizona Indian Association, Nasji Inoshita, president of the Glendale Buddhist Church, and Gustavus Shaw, principal of Dunbar School.

Moderator was the Rev. Walter H. Dugan, retired Episcopalian minister.

Haley, former professor at Florida A&M and voted teacher-of-the-year was then dismissed one week later for participation in the sit-in demonstrations, summarized his presentation with the statement: "If you would just set yourselves free, my freedom would just about take care of itself."

Directing his remarks to Inoshita, Gustavus Shaw, a Negro, said, "My people have been waiting 300 years for what you have accomplished in 60 years. He spoke of the Negroes' problems in finding suitable housing saying, "A prominent Phoenix banker once told me that he would rather die in Hades before he let Phoenix become a salt and pepper town."



Is your **READING ABILITY** merely adequate?  
You can increase your **COMPREHENSION** and  
**DOUBLE YOUR READING SPEED**  
**GREATER KNOWLEDGE — MORE LEISURE**  
through  
**Accelerated Reading**  
Day & Evening Courses — Information Call WH 5-4554  
Vision, Research-Development, Inc.  
Vision Science Bldg. — 28 Pima Plaza — Scottsdale



LUCKY STRIKE PRESENTS:  
**DEAR DR. FROOD:**

DR. FROOD'S THOUGHT FOR THE DAY: "Life ain't all beer and skittles," as the saying goes —but if enough students got together, maybe skittles could make a big comeback.



Dear Dr. Frood: I just don't understand the men in this college. Not one of them has ever asked me for a date. I am intelligent and easy to get along with. Enclosed is my snapshot. What do you think is wrong?

*Left Out*

DEAR LEFT: After considering this problem from every angle, I can only conclude that you have **enormous feet**.

Dear Dr. Frood: According to my figures over ninety-five per cent of the students here are below average. What is wrong?

*Math Major*

DEAR MATH: You are obviously going to a below-average college.

Dear Dr. Frood: I don't speak from personal experience, but I understand all the men in this college are wolves. What do you think a respectable girl like me—with a good old-fashioned upbringing—should do about this situation?

*Strait Laced*

DEAR STRAIT: Drop your handkerchief.



Dear Dr. Frood: When I entered college as a freshman this fall, my father gave me a very large sum of money to cover room, board, tuition, books and all other expenses for four full years of college. Because of an unfortunate series of poker games, however, the money is now completely gone. How would you suggest I handle this situation?

*Ten High*

DEAR TEN: I feel confident that your father will give you another chance if you go up to him like a man, tell him you are sorry, admit your mistake and promise him that your luck will change.



Dear Dr. Frood: Do you think it is safe for a girl to walk home alone from a college dance?

*Nervous*

DEAR NERVOUS: Safer.



**DON'T BREAK TRADITION, WARNS FROOD!** One of the proudest traditions on the American campus, reports Dr. Frood, is smoking Luckies. Today college students smoke more Luckies than any other regular. According to Dr. Frood, "Any student who breaks this tradition not only robs himself of the full pleasure of smoking—but also could, conceivably, bring 'the Curse of Frood' down upon the entire student body."

**Carl Ritter**  
**ORCHESTRAS**  
Professional Musicians  
For All Occasions  
—Trios To Big Bands—  
**SCOTTSDALE**  
WH 5-1671  
(Federal & State Licensed)


**Now 4 Barbers**



YOU'RE NEXT AT  
**JD's**  
Campus Barber Shop  
OPEN DAILY 8 - 6  
MONDAYS thru FRIDAYS  
816 COLLEGE AVE.  
NEXT TO "VI"

**CHANGE TO LUCKIES and get some taste for a change!**

Product of The American Tobacco Company — "Tobacco is our middle name"



**FLIGHT INSTRUCTION**

Special Rates For  
College People

**MODERNIZED GROUND SCHOOL  
FOR PILOTS & NON-PILOTS**

**Amos Flight Operations**

*A Private License is a Must In Modern Business*

**Don Amos — Class of '56**

Phone BR 5-7291 **SKY HARBOR**

# Matthews Assails Committee At Senate ROTC Hearing

Dave Matthews, an ASU junior and a member of last year's Student-Faculty ROTC Study Committee, charged last week that the committee's report represented "a poor showing on the part of the faculty members of the committee."

Matthews stated his charges at a public hearing conducted by two senate committees investigating the ROTC issue.

About 20 students attended the hearing last Wednesday. Education Committee Chairman Jim Chilton presided.

Matthews said that he had neither "seen nor signed" the final committee report written by Chairman Dr. L. M. Myers.

The committee, composed of six faculty and five students, recommended continuation of compulsory ROTC by a 7-4 vote.

In answer to a senator's question, Matthews said the committee did not consider whether students had a legitimate basis for complaint about the ROTC. He emphasized that he was not criticizing the faculty members personally; "but the report was not a detached evaluation of the ROTC situation."

Earlier in the hearing, Matthews suggested that compulsory ROTC be replaced with a mandatory military orientation program for both men and

women. Under his proposal, the present ROTC program would become voluntary, but all students would be required to take a course, taught jointly by civilian and military instructors, explaining the political-economic-military battle that the U.S. faces today.

Mike Purtill, Deputy Commander of the ASU-ROTC Battle Group, asked for continuation of compulsory ROTC. He said the Army cannot meet its need for 14,000 officers annually without a compulsory program.

Purtill asserted that the compulsory basic ROTC program is necessary to introduce students to the military. Otherwise, he said, there would not be enough student interest in advanced ROTC which leads to officer commissions.

John Sampson, chairman of the Committee for Voluntary ROTC, presented evidence in conflict with Purtill's views. Sampson showed committee members a letter from the Assistant Secretary of Defense, stating that the official Defense Department position is that there is no military need for compulsory ROTC.

Sampson also said that compulsory ROTC is needlessly expensive in that hundreds of students are trained annually who do not become officers. The ROTC committee chairman also asserted that ROTC discriminates against college students, since they are subject to both ROTC and the draft.

## ASU Faculty, Staff Fete President At Reception

President and Mrs. G. Homer Durham will be feted by the ASU faculty and staff members at a buffet dinner and dance, Friday evening at the Camelback Inn.

The affair is scheduled for 7 to 10 p.m. with dinner being served at 7:30 p.m.

Committee members who planned the reception are: Dr. Walter G. Becker, chairman of the faculty assembly; Dr. Collice Portnoff, chairman of the English department; Dr. Catherine G. Nichols, associate dean of students; Louis Taylor, president of the Faculty Club; Mrs.

Paul Hubbard, president of the Faculty Wives Club; Miss Mary Lyle, president of the Faculty Women's Club; and Edward J. Demson, director of special services.

The ASU Faculty Trio, composed of Miles Dresskell, violinist; Nadine Dresskell, pianist; and Roland Searight, cellist, will provide dinner music. Dr. F. O. Cooke, associate professor of English, and Dr. J. J. Lamberts, English professor, will offer piano selections.

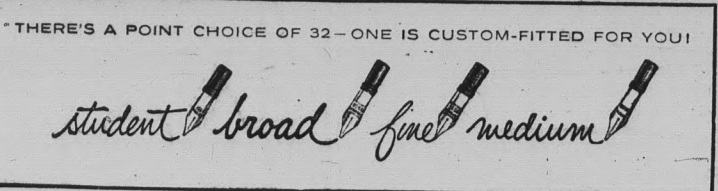
All faculty and staff members are invited and dress may be either formal or informal.



### All set to play Santa Claus?

What you need is a red suit, white beard, fat pillow, and a pack full of Esterbrook Classic Pen and Pencil Sets. You can be anyone's favorite Santa if you give the smoothest-looking, smoothest-writing Christmas gift this side of the North Pole. Your choice of 6 holiday colors and 32 changeable pen points, too.

**Esterbrook Pens** \$4.95 SET  
\*T.M. The Esterbrook Pen Co.



Available At Your

# COLLEGE BOOKSTORE

Tried Regular Filter Cigarettes? Tried Other Menthol Cigarettes?

## NOW! Come Up...All The Way Up to the MENTHOL MAGIC of KOOL!

When your taste tells you it's time for a change, remember: Only Kool—no regular filter cigarette, no other menthol cigarette—gives you real Menthol Magic!



# Sororities Plan Triad Formal

Alpha Delta Pi, Gamma Phi Beta and Kappa Kappa Gamma will combine for the first annual sorority Triad Formal Saturday night at Turf Paradise.

Highlight of the dance will be the triple crowning of the ADPi Diamond Man, Gamma

Phi Man and Kappa Man. These are "sweethearts" named each year by the sororities.

Entertaining will be Ray Andrade's band and the Balladeers, campus folk singing group.

## IRE's Choose Four Leaders

The Institute of Radio Engineers recently elected to office the following members: Ross Hendrix, chairman; Wayne Reeves, vice chairman; Jim Kohl, corresponding secretary; and Tony Herrada, treasurer.

## Fraternal Group Elects Officers

Mike Hayes is newly-elected president of Lambda Chi Alpha fraternity.

Serving with him will be Bob Siefker, vice president; Ed Rathie, secretary; Chuck Abbott, treasurer; Rex Nelson, rush chairman; Andy Mitchell, social chairman; and Bob Linticum, house manager.



WINNERS . . . Lee Henderson, first place finisher in the Bike Race, is held up and congratulated by his Phi Sigma Kappa fraternity brothers and other well-wishers. He is admiring the huge traveling trophy passed on to winners.

ASU Society

TEMPE DRUG

6th & MILL

★ ★ FOUNTAIN ★ ★

SIDE ENTRANCE & ANGLE PARKING ON SIXTH STREET

## Cha-Cha-Cha And Others To Be Taught

Dance lessons sponsored by the ASASU Social committee will begin tonight at 6:30 in Clancy's.

There will be two classes, each limited to 30 students. Intermediate dancers will be taught from 6:30 to 8 p.m. and advanced students from 8 to 9:30 p.m. The price is \$8 for 8 lessons.

## Fraternity, Hall, LDS Place In ATO Bike Race

Phi Sigma Kappa fraternity conquered a 116-mile course to Tucson Saturday in six hours, thirty-six minutes to win the Alpha Tau Omega-sponsored Bike Race.

The final Phi Sig lap rider finished just thirty seconds ahead of the second place winner representing M.O. Best A Hall. Third place went to Lambda Delta Sigma, who finished in

six hours, thirty-eight minutes.

Two men collapsed during the race, which was called by spectators one of the hardest and closest races ever run.

Riders of the winning team are: Jerry Clark, Bob Muffucci, Lee Henderson, Rex Young, Chris Evans, Harry Hallickson, Mike Peck, Roger Van Holtz, Al Anderson, Tom Dunn and Scott Lende.

Trophies were awarded before the UofA game to the first three victors by ATO.

## Three Coeds 'Attached'

Gamma Phi Beta Virginia Maddox is wearing the Alpha Tau Omega lavalier of Lou

Liedman.

Binky Buck, Kappa Kappa Gamma, passed the candle Monday announcing her pinning to Larry Wilson, Delta Sigma Phi.

Diane Weary, Gamma Phi, is lavaliered to Sigma Phi Epsilon Bob Brooks.

## Applications Out

The Phoenix Jr. Chamber of Commerce has announced that applications are being accepted for Queen of the 1961 Phoenix J. C. Rodeo to be held in March.

A girl must be over 18 and single to be eligible.

Application blanks are available at the information desk in the MU. All applications must be in by January 7.

New One & Two Bedroom

FURNISHED APARTMENTS

Heated Swimming Pool, Laundry Facilities

LONE PALM APARTMENTS

2108 Rural; Tempe Phone WO 7-0372



ITALY'S FAMED

# Bianchina

SPORTS CONVERTIBLE

Here's a car for you which literally pays for itself!

- Gets 50 miles per gallon!
- Insurance at compact-car discount!
- First year's depreciation is already taken!

This one-owner, sports convertible, has radio, heater, 2 fender-mounted mirrors, spare whitewall tire, first-class upholstery and is in excellent condition. See it at owners home today! Full price? Just \$795!

BY OWNER

518 EAST 3rd ST., SCOTTSDALE  
WH 5-4273

WH 6-5711

**COPE'S**  
**BARBER SHOP**  
703 Mill Ave.—Tempe  
**FLATTOP IVY LEAGUE SPECIALS**  
3 Barbers to Serve You  
Harold Cope  
Herb Banning  
Bob Wilford  
Open 9-6 Tues.-Sat.

Apparel for men at moderate prices in traditional stylings to suit your taste.

Selections of sportswear, furnishings and clothing, expertly fitted to your satisfaction.

University gals, authentic button-down shirts for you!

THE *Americana* SHOP

Open Thursday Nite 'til 9:00 p.m.

WO 7-5457

Quality Men's Apparel  
TEMPE SHOPPING CENTER

The Americana Shop



# Devils Place Ten Gridders

Arizona State placed ten men on the 1960 All-Border Conference football squad, including six on the first team, in the annual poll of conference coaches.

## ASU Girls Win ASC Sports Day

ASU co-eds walked off with most of the honors at the recent Women's Sports Day on the ASC campus at Flagstaff.

Although the results of competition between the more than 200 girls from nine different schools were not emphasized, the local girls took team and individual honors in most of the activities.

ASU's wins came in volleyball, badminton and table tennis. The ASU co-eds finished second to the UofA in swimming.

Four linemen and two backs were selected to the first unit. They are tackles Jesse Bradford and George Flint, guard Dick Locke, center Fred Rhoades, halfback Nolan Jones and fullback Clay Freney.

Second team spots went to end Bob Rembert and quarterback Joe Zuger. Tim Lee, Arizona State end, and guard Larry Reaves received honorable mention for their play during the 1960 season.

### BC FIRST TEAM

Ends: Kelley, Sims, NMS

Tackles: Bradford, Flint, ASU

Guards: Locke, ASU; Young, TWU

Center: Rhoades, ASU  
Quarterbacks: Furman, TWU; Johnson NMS

Halfbacks: Atkins, Gaiters, NMS; Jones, ASU; Thompson, Arizona

Fullback: Freney, ASU.  
(Picture on Page One)

### Against Wildcats

# 'Fighting For Our Lives With No Punch,' Says Kush

"We were fighting for our lives — with no punch," stated Head Coach Frank Kush after watching a fired-up University of Arizona football team crush his ASU Sun Devils 35-7 Saturday night at Tucson.

The Wildcats, who played exactly as their nickname im-

plies, roared through the Sun Devil line for huge gains consistently throughout the evening while countering four touchdowns on the ground, three in the second half.

The win extended the Cat win streak to six, a remarkable feat considering the past few years' disastrous seasons.

Only last week Head Coach Jim LaRue was awarded a new automobile for his fine work in lifting Arizona out of the football doldrums.

Starting time for Sun Devil basketball games is 8:30 p.m. this year instead of 8 p.m. as in previous years.

# 3 NEW Leagues NOW FORMING FOR ASU BOWLERS

### OVER 500 DOLLARS IN TROPHIES

# 1

**FRATERNITY & SORORITY MIXED FOURSEOME**  
Tuesdays 6 P.M. Each Week  
**STRICTLY FRATERNITY & SORORITY**  
2 and 2 to each team  
Maximum of 8 teams in league

All Leagues Are Handicap

# 2

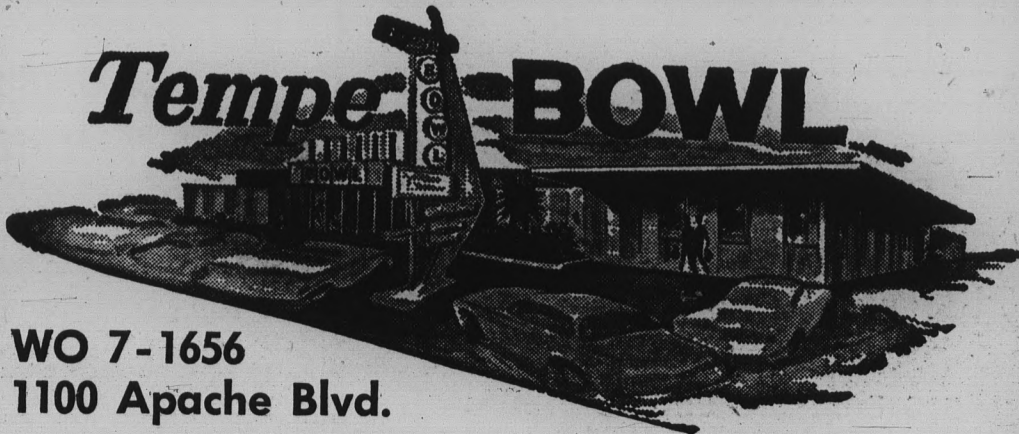
**ALL - STUDENT MIXED FOURSOME**  
Thursdays 6 P.M. Each Week  
Maximum of 10 teams in league

Free Shoes To ASU Students

# 3

**FACULTY, STAFF & MARRIED STUDENTS MIXED FOURSOME**  
Fridays 6:30 P.M. Each Week  
Maximum of 16 teams in league  
1.50 per week covers 3 lines of bowling

FULL DETAILS IN FRIDAY'S STATE PRESS



WO 7-1656  
1100 Apache Blvd.

## BONDED BRAKE SHOES

EXCHANGE

A GREAT SAVINGS OVER NEW PARTS  
MANY MORE PARTS AT A SAVINGS

### Bauer's Parts & Equipment

221 W. MAIN, MESA WO 4-5674

TEMPE

100 E. 5th St.  
WO 7-1651

CHANDLER

150. N. ARIZ. AVE.  
YO 3-6625



### UNITED AIR LINES NEEDS STEWARDESS APPLICANTS

Attractive appearance and good personality; age 20-26, Height 5'2"-5'8" with weight under 138 lbs. max., Single, High School graduate. Apply now for February or June classes.

#### Campus Interviews

Wednesday, December 7th only  
1:30 p.m. - 4:30 p.m.

Brochures and appointments available through Placement Office.

