



State Press

ARIZONA STATE UNIVERSITY



TEMPE, ARIZONA

1885

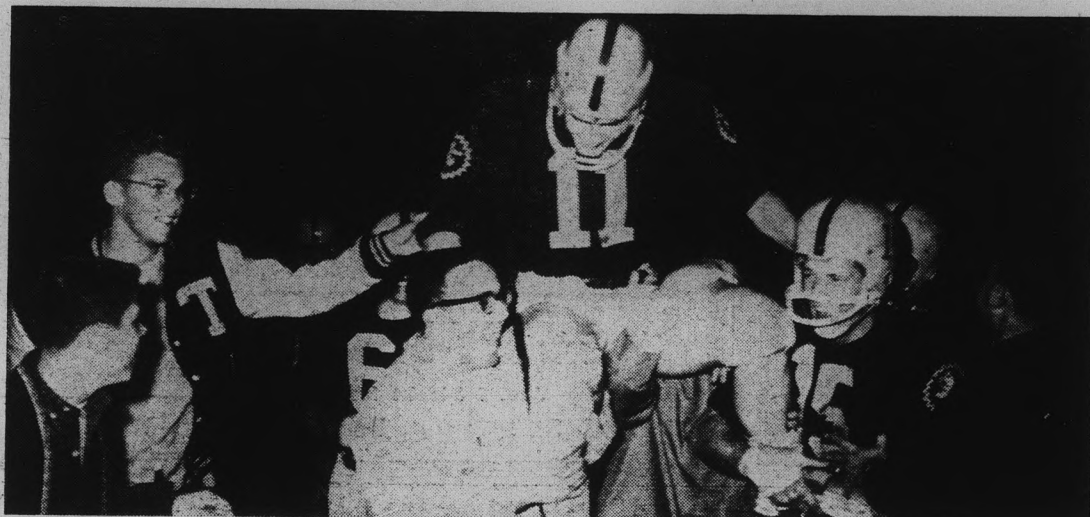
Diamond Jubilee

1960

Vol. 39

Wednesday, November 16, 1960

No. 16



HEROES . . . Quarterback Ron Cosner gets a free ride off the field as jubilant football fans showed their pleasure at the Devils' 25-22 victory over North Carolina State, Saturday night. It was ASU's last home game of the season; Nov. 26 the Devils face the UofA Wildcats at Tucson. (Charles Hilgeman photo)

Council Considers Changing College Avenue Into Mall

The Executive Council discussed closing College Avenue when it met Monday, but deferred final action until more information can be gathered.

The proposal to close the street and turn it into a park-type mall was made by the Inter-Hall Council. Final decision on the matter rests with the ASU administration and City of Tempe, but the council is considering a recommendation to President G. H. Durham.

Tom Brown, Elections board chairman, said the main purpose in the closure would be "beautification" of the campus.

He said the action would increase the "collegiateness" of the campus, and dispel the impression that ASU is just a commuter college.

John Sumners, activities vice president, said the closure would help to solve parking problems by reducing intra-campus travel. Other councilmen suggested that a bicycle and scooter lot should be established in the new area to encourage use of the smaller vehicles.

The council also discussed the problem of students breaking league bowling contracts. MU board Chairman Laird

Simpson said that such cases will be first reviewed by his board and then referred to the deans for disciplinary action, if necessary.

Simpson explained that league bowlers now sign contracts for about \$35 each, covering their bowling fees. He said that a few students have attempted to void their contracts and evade their financial responsibilities.

Simpson said his group has agreed upon three legitimate reasons for voiding contracts:

1. If the student quits school;
2. If the student has good medical reasons;
3. If the student is financially unable to meet the contract.

The decision of the board is final in each case.

Mexico Interior Excursion Planned For ASU Students

A trip through the interior of Mexico will be conducted by Dr. John Martinez, ASU history professor, from Dec. 22 through Jan. 2. The trip which is open to all students will cost \$125 which includes transportation, lodging and meals.

Stops during the trip will be made in Nogales and Hermosillo, with two days spent in tropical Can Blas. Guadalajara, the second largest city in Mexico will be visited and a four day stay in Mexico City is also planned.

Sight-seeing trips in Mexico City will take students to the University, the pyramid of the Toltecs, Cortez's Castle, and to Taxco, the colonial silver mining center. The paintings of Diego Rivera at the University of Mexico will be viewed by the group.

The return back to the United States will be made through Central Mexico.

Anyone interested in making the trip should make reserva-

tions with Dr. Martinez in his office, 224K, Liberal Arts building. Deadline for reservations is Dec. 10.



Thanks to somebody who opened the gate of the parking lot behind the men's gym. Cadets going to drill can get through much easier now.

Observed on the "Den" patio: Clouds of smoke pouring out of the WALL of the incinerator onto the patio. Not too conducive to enjoyable sitting.

Staff lot "C", behind the Art building is restricted 24 hours. Surely, staff and faculty do not need that lot at night. Why can't students park there provided they remove their cars before 7 a.m.!

AS Debaters Participate In L. A. Meet

Six ASU debate teams will participate in the Western Forensic tournament Dec. 9 and 10 at the University of Southern California, Los Angeles. The ASU teams will compete with at least 35 schools representing 13 western states.

The debate question for the years is: "Resolved, that the United States should adopt a program of compulsory health insurance for all citizens."

Recently, two ASU teams traveled to Fort Worth, Texas for the Texas Christian University forensic tournament, capturing first place in six out of twelve debates. This tournament is one of the largest tournaments in the nation, with 33 schools representing 7 states.

For Institute-

\$279,700 Granted AS

A \$279,000 grant has been awarded to ASU by the National Science Foundation, Washington, D. C., in support of an "academic year institute" for high school teachers of sciences and mathematics.

The institute, scheduled to begin Aug. 25, 1961, will continue for approximately 11 months. Dr. Ernest E. Snyder, chairman of the department of General Physical Sciences, has been designated director of the program.

Within the last three years, the NSF has awarded ASU nine grants, which total more than one million dollars, in support of institutes for high school and college teachers. According to Dr. Snyder, about 45 selected high school teachers will be able to participate in the program.

The high school teachers will take a full course load in the sciences or mathematics for a certificate of completion or for a master's degree in one of four regular science graduate programs.

Objectives of the institute are: To improve subject-matter competence of the participating teachers. To strengthen the capacity of these teachers to motivate students to consider

careers in science and mathematics. To bring the teachers into personal contact with the highly productive scientists who make up the staff of the institute. This will be done with the view of stimulating interest and increasing the student's prestige professionally.

A stipend will be awarded to each teacher-student that is accepted. This will enable him to study full-time.

The professional competence of the applicant and his capacity to develop as a teacher are the primary criteria for the selection of participants.

Dr. Snyder is accepting applications for enrollment in the program.



HER MAJESTY . . . Kathy Hammond, Tucson High School coed named ASU Senior Day Queen, Saturday, receives a bouquet of roses from Don Kunkel and Nancy Weigle, co-chairman of the event. (Charles Hilgeman photo)

ASU Symphony Orchestra Presents Concert Friday

The ASU Symphony Orchestra will make its second appearance of the 1960-61 school year at a public concert Friday, 8:15 p.m. in the MU ballroom.

Directed by Eugene P. Lombardi, ASU assistant professor of Music, the orchestra is comprised of 60 ASU music students. Guest soloist for the concert will be Charles Bowers, assistant professor of Music at ASU. Bowers will offer "Lyri-

cal Piece" for clarinet and strings by the contemporary American composer, Wayne Barlow.

Other selections in the concert will include "Prelude and Fugue in D Minor," by Handel, Schumann's overture to "Manfred" and Beethoven's "Fifth Symphony."

The ASU string orchestra will perform a short "Manheim Symphony in G Major."

Meeting Tonight

The ASU Astronomy club, under the direction of Dr. F. G. Yale, will meet tonight at 7 p.m. in room B-401 of the Physical Science building.

The activities of the meeting will include mounting and testing of Jerome Spector's 6-inch parabolic mirror, which was aluminized at the last meeting by Larry Stubby and Joe Morrison of ASU research laboratories.

"Picnic," starring William Holden and Kim Novak, will be shown as Cosner Auditorium, Thursday and Friday, at 7:30 p.m.

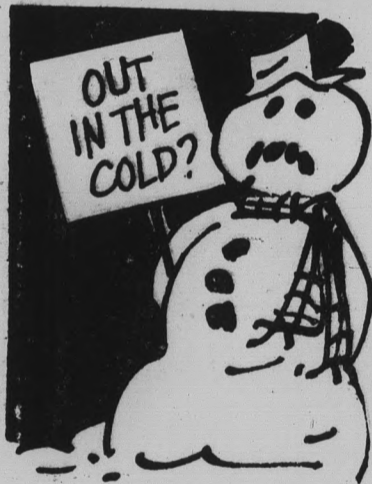
Four Stolen Automobiles Recovered

Four cars have been stolen on campus this year in comparison to three at the same time last year.

Even with the increase in thefts, most of which are caused by the owner leaving the car unlocked, all of the stolen cars have been returned.

With the assistance of Valley police forces, the campus police department has been able to return the cars within 24 hours after they were taken. In some cases, usually when the cars were "borrowed" for joy-riding, they have been returned to their owners within an hour or so.

A lady's gold wrist watch was found and turned in to the campus police two weeks ago. The owner may claim it, upon making proper identification, at the campus security office.



No need to be, really. If thoughts of life insurance planning bring a cold chill to your bones, you aren't thinking in the right direction.

Starting an adequate life insurance program now, while you're still at college, gives you a head-start on the future. Provident Mutual offers a variety of plans with guaranteed savings and protection features; only through life insurance can you buy such a combination in one package!

We'd like to tell you more about these flexible plans which are now available. Just phone or stop by our office.

CONTACT

LOUIST. CHANEY

30 E. 5th St. Tempe

WO 7-1634

PROVIDENT MUTUAL
Life Insurance Company
of Philadelphia

MINERAL SPECIMENS • MICROSCOPES
 ULTRA VIOLET EQUIPMENT
 COLLECTING SUPPLIES
 GEMS

BOOKS
 GEOLOGY-MINERALOGY
 JUNIOR SCIENCE

SCOTT WILLIAMS
 Mineral Company, Inc.
 440 N. SCOTTSDALE ROAD • SCOTTSDALE, ARIZONA • WH 5-0803

SMILEY-BERGE FORD
 Your Nearest Auto Dealer

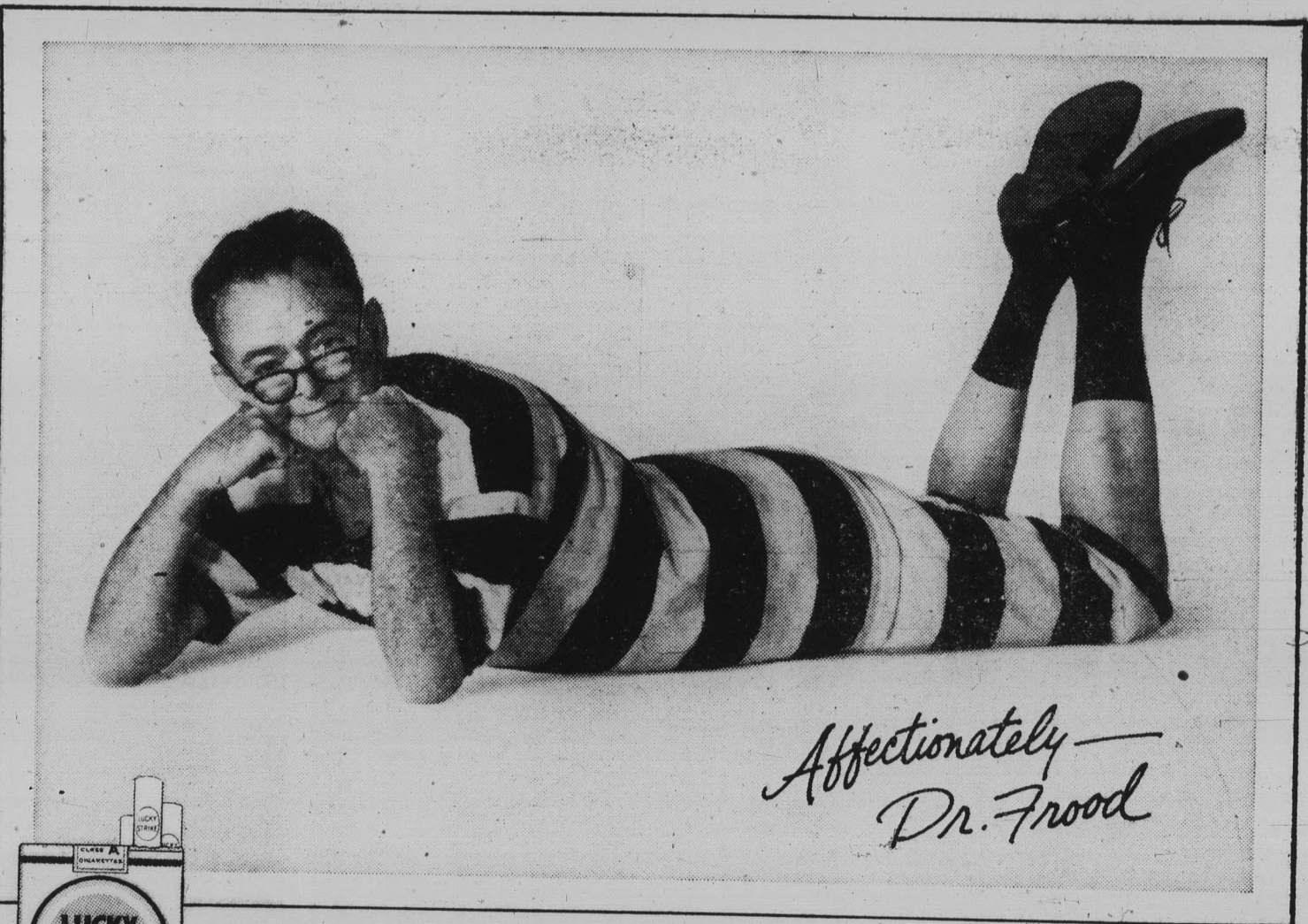
- ★ Complete Service Facilities
- ★ We Service All Makes
- ★ 7 Mechanics On Duty
- ★ Everything For Your Transportation Needs

60 Cars - Trucks
 From Transportation Cars to Thunderbirds

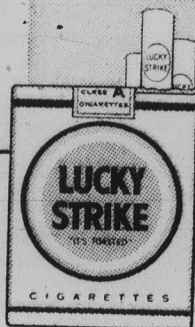
SMILEY-BERGE MOTORS
 Just 2 Blocks from ASU Campus
 16 E. 8th St. Tempe WO 7-2063

YOU MAY RECEIVE A LIFE-SIZED, AUTOGRAPHED PORTRAIT OF DR. FROOD—UNLESS YOU ACT NOW!

Hurry! Rush out now and buy a pack of Luckies! Smoke them quickly! Send the empty pack to Dr. Frood. If you do it now—Frood guarantees not to send you this photo.



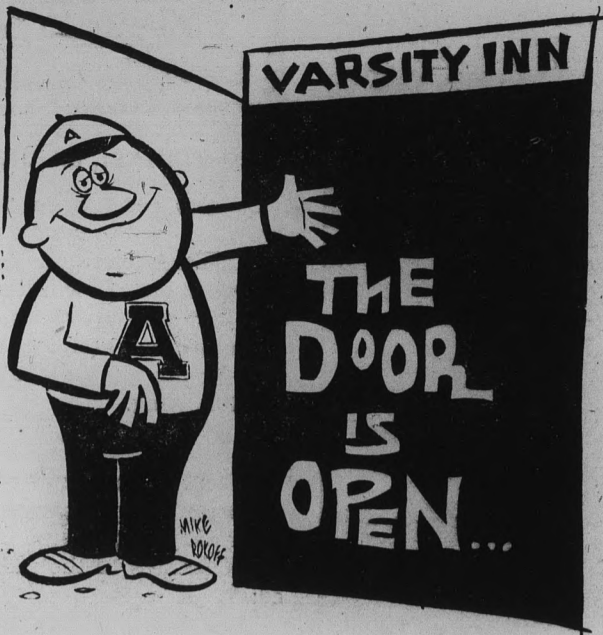
*Affectionately —
Dr. Frood*



THIS IS NO IDLE THREAT! Dr. Frood portraits will be mailed at random beginning November 15. Only students who send us empty Lucky packs will be safe! TAKE NO CHANCES! Mail those empty packs today. Send them, with your name and address, to Dr. Frood, Box 2990, Grand Central Station, New York 17, New York.

CHANGE TO LUCKIES and get some taste for a change!

Product of The American Tobacco Company — "Tobacco is our middle name."



TO THE ENTIRE UNIVERSITY
From Freshmen to PhD's
 Evening Study Break - 8:30 to 9:30
COFFEE 5c

**TRY OUR INTERESTING
 EVENING DINNER
 MENU**

Interviews Listed At ASU Job Center

Tomorrow, Shell Oil Company will interview Marketing majors for accounting and finance training. Both Price Waterhouse & Company and the Air Force Audit Agency will interview accountants.

Shell Oil Company will conclude its interviewing on Friday while Army Ordnance Missile Command will talk to Math, Physics, and Engineering majors.

On Monday, North Ameri-

can Aviation representatives from Aoutonetics and the Los Angeles Division will be recruiting electrical, mechanical and civil engineers as well as Math and Physics majors. Also, a recruiter for the YWCA will talk to women interested in job opportunities with that organization.

Tuesday, the Martin Company will interview electrical, civil and mechanical engineers, Math and Physics majors.

Booklets Will Be Given

The Committee For Voluntary ROTC has voted to distribute copies of an informational pamphlet about the ROTC issue. The pamphlet will be available free of charge to all students, faculty, and citizens in the AMS office, MU 204.

The pamphlet, entitled "The Facts About the Compulsory ROTC Issue in Arizona," tells the story of the ROTC controversy, the present status of the ROTC, five arguments for voluntary ROTC, and a list of what students can do to help bring a voluntary ROTC. The ROTC department was offered equal space in the publication, but it declined because of the printing costs involved.

The Voluntary ROTC committee will meet this Friday to discuss arrangements for conferences with state officials and evaluation of information on the issue.



For That
 'SHARP' Look...

J. D.'s
 CAMPUS BARBER
 SHOP

Now 4 Barbers
 To Serve You

Open Daily 8 a.m. - 6 p.m.
 MONDAY thru FRIDAY

816 College Avenue
 Next Door To "VI"



IBM WILL INTERVIEW NOVEMBER 29 - 30

Candidates for Bachelors or Masters Degrees are invited to discuss opportunities in:

**Marketing and Sales
 Engineering and Science**

This is a unique opportunity to find out about the many career opportunities at IBM. The IBM representative can discuss with you typical jobs, various training programs, chances for advanced education, financial rewards, and company benefits—all important factors that affect your future.

SOME FACTS ABOUT IBM

An Unusual Growth Story: IBM has had one of the exceptional growth rates in industry. It has been a planned growth, based on ideas and products having an almost infinite application in our modern economy.

Diverse and Important Products: IBM develops, manufactures and markets a wide range of products in the data processing field. IBM computers and allied products play a vital role in

the operations of business, industry, science, and government.

Across-the-Country Operations: Laboratory and manufacturing facilities are located in Endicott, Kingston, Owego, Poughkeepsie and Yorktown, New York; Burlington, Vermont; Lexington, Kentucky; San Jose, California; and Rochester, Minnesota. Headquarters is located in New York City with sales and service offices in 198 major cities throughout the United States.

The Accent is on the Individual: No matter what type of work a person does at IBM, he is given all the responsibility he is able to handle, and all the support he needs to do his job. Advancement is by merit.

The areas in which IBM is engaged have an unlimited future. This is your opportunity to find out what that future has to offer you.

Call or stop in at your placement office to arrange an appointment with the IBM representative for the date above. If you cannot attend an interview, write or call the manager of the nearest IBM office:

Mr. C. H. Woolf, Branch Manager
 IBM Corporation, Dept. 882
 3424 North Central Avenue
 Phoenix, Ariz.
 CRestwood 7-2661

IBM

INTERNATIONAL BUSINESS MACHINES CORPORATION



EDITOR-IN-CHIEF GORDON PETERSON
 MANAGING EDITORS MICHAEL BARRETT and JACK ONG
 SPORTS EDITOR BOB EGER
 ORGANIZATIONS EDITOR DEANA DORMAN
 COPY EDITOR TOM HILTON
 ASSIGNMENT EDITORS CAROL OSMAN and LINDA WARREN
 SPECIAL EDITORS VELVA RICHEY, MIKE BENSON, LINDA RANKIN, WARREN FIELD and GARY KLAHR



The STATE PRESS, distributed by Dale Compton, is the official campus newspaper of Arizona State University. Published each Wednesday and Friday throughout the school year, excepting holidays and entered as second class matter in the Post Office at Tempe, Arizona, under the Acts of March 3, 1879, and August 24, 1912. Subscription price, \$3.00 per school year.
 Member: Arizona Newspapers Association, Associated Collegiate Press, and National Advertising Service, Inc.

Guest Editorial —

Unfinished ...

Milton D. Lowenstein, ASU assistant professor of Architecture, is the author of today's editorial. Mr. Lowenstein is a registered architect in Arizona and teaches Philosophy of Architecture. His articles and essays have appeared in many national and local publications.

By MILTON D. LOWENSTEIN

Among his other attributes, an architect can, by creating a suitable context, bring order to some aspects of the campus which other people perceive as chaotic.

The variety in building forms, traffic hazards, absence of places for contemplation and repose, the prevalence of waste or uncongenial spaces, and the illogical functional relationships inside and outside of buildings, are some of the inevitable architectural concomitants of a young fast growing university here today in one of the country's choicest locations for living. When seen within the context of the confused purposes of our time, the prospect of ever ameliorating conditions on the campus microcosm seem remote.

On the other hand, when viewed in the context of energy expended upon many hastily erected structures; torn up streets; huge street signs and endlessly speeding traffic; or of the Indians' community life, and their love and respect for the desert; and of the friar-priests' zeal for the world's salvation; or of contemporary youth's hopes to create communities with plenty of space—physical and ideological — in which to grow; then the longing to act creatively becomes overpowering.

Every architectural project begins with a program consisting of a goal and general directions for achieving it. This is followed by the design, then the erection of the building, and finally the growing awareness of its high purposes which are endangered by continual use of what only then can be called architecture.

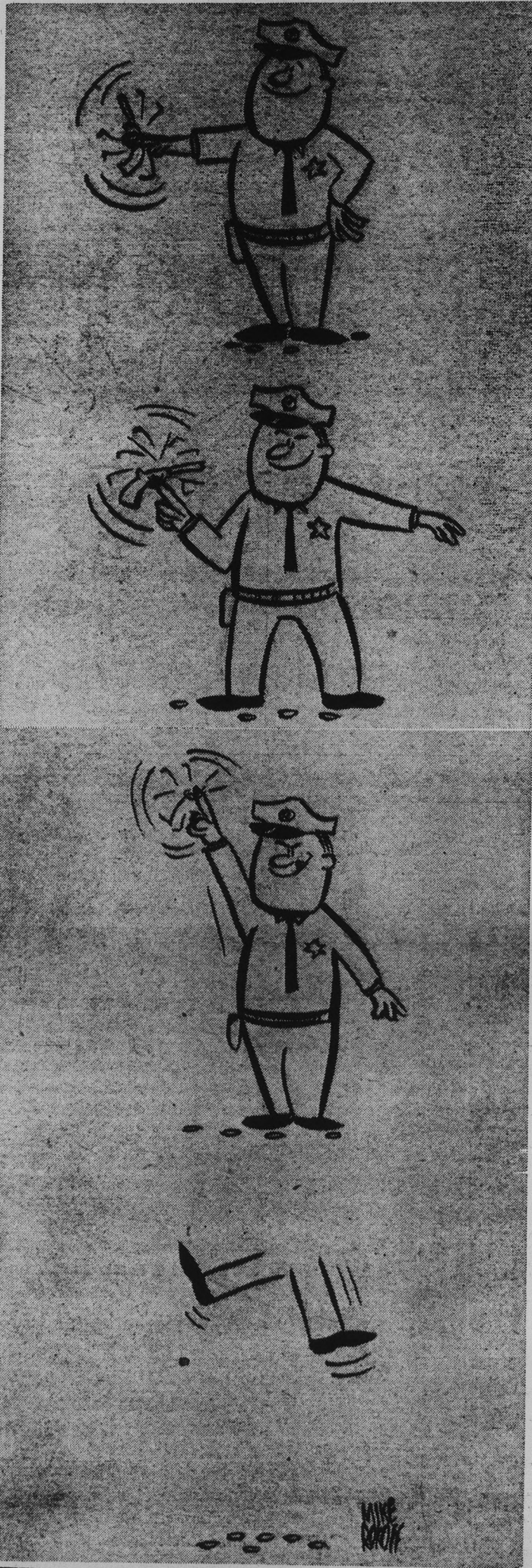
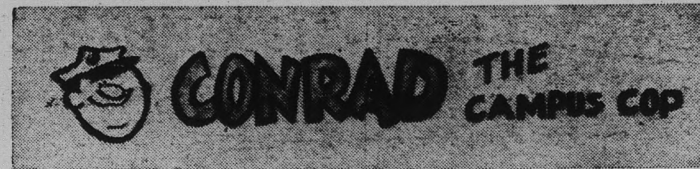
The program proposed here is to work toward making the University the cultural center first of Tempe, afterward of the Southwest, by engaging the enthusiastic assistance of the faculty and students to improve the appearance of the campus within the context of a more beautiful Tempe. The steps to follow would be:

1. A committee of faculty members qualified in the fields of design, crafts and horticulture meet with the officials of Tempe to formulate a basis of cooperation for the cultural growth of the Tempe territory and its place in the larger Phoenix-Scottsdale-Tempe-Mesa areas.

2. Representatives of ASU student government, and other student organizations, meet with the above faculty committee to propose campus projects which will enhance its appearance, not necessarily by destroying any existing structures, but by attention to their context, i.e., careful landscaping and other treatment of the spaces around the buildings, the streets and all vacant areas. The campus may be divided into sections, each the responsibility of a class year or of a single college or a combination of both. The interior of each building on the campus used by faculty and students should be subjected to a similar process. Representatives of the student groups who carry out the work should be given recognition comparable to that given to successful athletic teams.

The desire to turn the desert into a garden is instinctive with all people who live in arid regions. Since Adam was forced from the first oasis and into the desert of Mesopotamia, free men have striven to create an Eden from the resources of the earth that are left to him. The University is rich in many resources available for the effort of approaching a goal which has implications for democracy and education.

Tempe and the University can together aspire, within the context of the Southwest's more western towns, to the distinction of being its cultural center. Quoting our President, Dr. Durham, "The business of Arizona State University is the unfinished business of mankind."



To the Editor:
 In answer to your poem, Mr. Stein,
 I'd like to try some lines of mine:
 That homerun hit over the center field wall
 Never cleared the fence at all.
 For in the outfield a glove rose high,
 And grabbed that ball fore it flew by.
 The game is over, the Republicans done,
 Kennedy and the Democrats

won.
 Which actually just goes to say,
 A game isn't over until the last play.
 When two such teams are so evenly matched,
 Don't count your chickens before they're hatched.
 One Who Waited
 * * * * *
 To the Editor
 and Mr. Stein:
 Apropos to political baseball:
 tough, Casey, tough...
 W. M. Wingfield



By MICHAEL BARRETT

Campus reaction in the last two days to the results of the presidential election varied among students, workers, faculty and administrators.

An informal sampling of various points of view disclosed the following.

* * *

Robert Cauthorn, assistant professor of Economics, who was "delighted" at the outcome and closeness of the race, stated:

"I've been fed up with the maudlin sentimentality and aimless middle roadism of the Republican administration the last four years... unutterable dullness.

"Eisenhower's first administration had more direction... I think a party needs to be replaced now and then to clean out some of the dead wood," he added.

* * *

"The electoral college is outdated... the president should be elected directly by the popular vote," charged Elsa Spencer, Education sophomore.

"The sadness of the election is that good men like Nixon and Lodge will probably be lost to public office in the next four years," she added.

* * *

"I'm happy Arizona went Republican and voted for Nixon," mentioned Ronald Farrell, Art junior.

"Our state has always been a 'me too'er'... with the state's growth, it can go its own way," he concluded.

* * *

"I was for Kennedy because he's for the working man. Nixon isn't," said Paul Candelaria, Devil's Den employee.

* * *

"Although I read and listened about the candidates as much as I could, I just didn't look into the issues enough.

"Therefore I really don't feel qualified to say if the results were good or bad," commented a forthright Sophomore Education coed.

* * *

"A step in the right direction... a movement toward aims of democracy as outlined by Jefferson," stated Raymond Studer, instructor in Architecture.

* * *

"I'm happy to see the popular vote so close... it gives me mixed emotions about the validity of the electoral college," observed Herman Schmidt, assistant Dean of Students.

* * *

Two freshmen, who apparently had just dropped their beanies and paint brushes, were shuffling out of an erudite professor's class the other day with the glow of learning upon them.

Questioned one: "What's aesthetics?"

Gravely answered the other: "I think it's some kind of drug they give you before having an operation."

'Conformity Kills Creativity,' Says Balin

"Conformity among the younger generation is killing creativity," said Robert P. Balin, faculty associate of Industrial Education, in an article appearing in the November issue of "Industrial Arts and Vocational Education."

"There is a wide-spread misconception that creativity is

limited to a few. Virtually every person has more creative ability than he is putting to use. Why, then, don't students use this inherent ability? They are afraid to be considered 'oddballs'."

Mr. Balin states that open-mindedness is the key to creativity. A student must neither

be an extremist nor a conformist, but be able to view all sides of an issue and make any needed adjustments.

He believes that teachers can do something to encourage individual expression and creativity by providing inspiration and stimulation.

"The teacher must offer a purpose and a challenge rather than a "correspondence course on campus," he says.

Student Senate Approves Rules

The student senate defeated another move to limit the Speaker's power last Wednesday as the senate gave final approval to the new senate rules. The senate will meet again today at 3:45 p.m. in the Senate Chambers.

Last week's session was also

marked by the introduction of the first bill this year. SB 151, introduced by Senators Ed Manley and Tod Walker, would repeal five pieces of "ineffective legislation."

The measure would repeal SB 7, which set up a Discipline and Standards of Conduct board; SB 20, which provides for a plaque to inscribe the names of the Homecoming King and Queen each year; SB 73, which sets up a Campus Community Chest and regulates fund-raising drives; SB 92, which directs the Publicity Agency to make a banner-advertising each major athletic event; and Section VI-C of SB 120, which provides that the Department of Traffic Appeals should check to see that traffic fines are consistent with those charged in regular courts.

The fight over senate rules took up most of the session. The dispute centered around the continuing controversy over the Speaker's powers to vote and speak.

Senator Manley moved that the Speaker be denied the right to vote, and be given the right to speak from the floor only when the senate votes to grant him permission. Manley asserted that such a rule would just be consistent with the unwritten senate rules of the past.

Senator Jim Chilton opposed the proposed provision. He said that the senate had defeated an attempt earlier to restrict the Speaker's power. Chilton also noted that a decision of the Student Court had upheld the right of the Speaker to debate and vote.

In reply, Manley asserted that his proposal would actually liberalize past senate practice involving the Speaker. He said that, formerly, the Speaker needed unanimous consent to debate on the floor, and that his change would provide debating privileges by majority vote.

Martha's WEDDING SHOP
25%
 REDUCTION ON
 DISCONTINUED WEDDING GOWNS

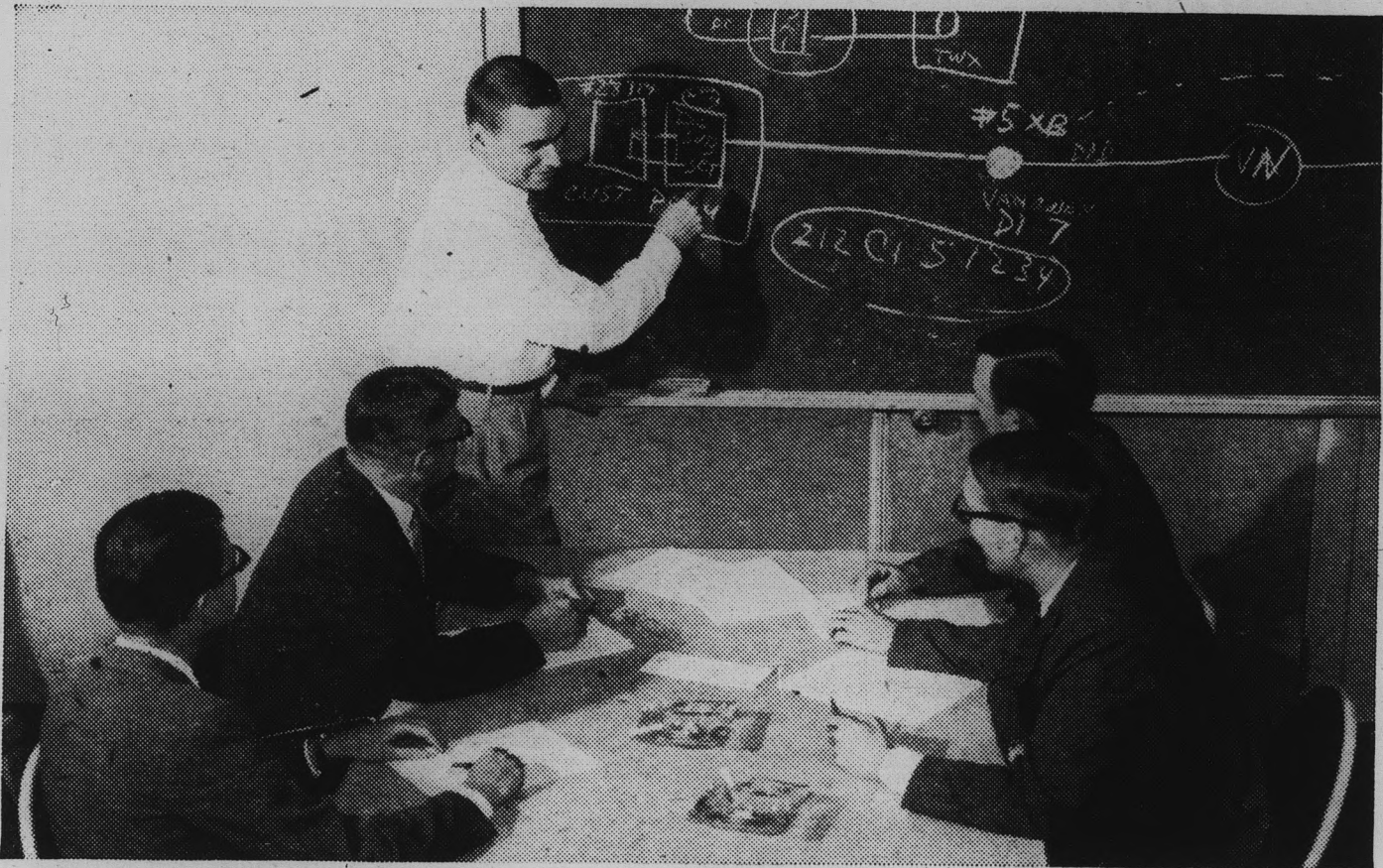
These beautiful wedding gowns are reduced because it is an important factor in our shop to carry styles available for re-ordering. This gives you a wonderful opportunity to buy at a pleasing reduction. ALL SALES FINAL SERVICES EXTRA

OUR LEMON TREE . . . is sprouting new branches of real bargains . . . you may pick from it . . . formals, both long and short cocktail and dinner dresses . . . and a "little of this and a little of that" at LEMON PRICES

OPEN MONDAY AND THURSDAY NIGHTS 'TILL 9
 307 East Camelback Road AM 6-8415

CARBURETORS
 EXCHANGE
 A GREAT SAVINGS OVER NEW PARTS
 MANY MORE PARTS AT A SAVINGS
Bauer's Parts & Equipment
 221 W. MAIN, MESA WO 4-5674

| | |
|--------------------------------------|---|
| TEMPE 100 E. 5th St. WO 7-1651 | CHANDLER 150. N. ARIZ. AVE. YO 3-6625 |
|--------------------------------------|---|



STU'S EXPLAINING HOW MACHINES WILL SOME DAY "OUTTALK" PEOPLE

"Stu" Smith graduated from Southern Cal with a powerful yen for excitement. His kind of excitement—Engineering.

He got what he bargained for (and a little more) when he joined Pacific Telephone. One of Stu's early assignments was to find out how existing Long Distance networks could be used to pipeline high speed "conversations" between computers in distant cities.

The fact that he did a fine job did not go unnoticed.

Today, four years after starting his telephone career, Senior Engineer Stuart Smith heads a staff of people responsible for telegraph and data transmission engineering in the huge

Los Angeles area. As a pioneer in this new data transmission field Stu predicts data processing machines will some day do more Long Distance "talking" than people.

Stu contacted 12 other companies before joining Pacific Telephone. "I don't think there's any limit to where a man can go in the telephone business today. Of course, this isn't the place for a guy looking for a soft touch. A man gets all the opportunity he can handle right from the start. He's limited only by how well and how fast he can cut it."

If Stu's talking about the kind of opportunity you're looking for, just visit your Placement Office for literature and additional information.



"Our number one aim is to have in all management jobs the most vital, intelligent, positive and imaginative men we can possibly find."

FREDERICK R. KAPPEL, President
 American Telephone & Telegraph Co.



BELL TELEPHONE COMPANIES

Carl Ritter
ORCHESTRAS
 Professional Musicians
 For All Occasions
 —Trios To Big Bands—
SCOTTSDALE
 WH 5-1671
 (Federal & State Licensed)

**New One & Two
 Bedroom**
**FURNISHED
 APARTMENTS**
 Heated Swimming Pool,
 Laundry Facilities
**LONE PALM
 APARTMENTS**
 2108 Rural, Tempe
 Phone WO 7-0372

TEMPE

SHOPPING

Center

In The Heart of Tempe On Mill Avenue . . . 8th Street to 10th Street

ONLY ONE BLOCK FROM CAMPUS

for your

**One - Stop Shopping Center
for All Your Shopping Needs**

**NO EXTRA CITY SALES TAX
PLENTY OF FREE PARKING
COURTEOUS AND EFFICIENT SERVICE
COMPLETE MERCHANDISE STOCKS**

**4TH
Anniversary
Celebration
SALE**

TOMORROW

Thru SATURDAY

November 17, 18, 19

SAVINGS AT EVERY STORE

Americana Shop
Men's Apparel

Bonnie Sue Fashions
Women's & Children's Apparel

Celia's Fashions
Women's Apparel

Center Hardware
Hardware Supplies

El Rancho Market
Groceries — Produce

Erickson's Handcrafts
Art & Craft Supplies

First Federal Savings
Savings & Loan Service

GallenKamps
Family Shoe Store

W. T. Grant Co.
Department Store

First National Bank
Drive - In Facilities

Happy House Shop
Gifts — Candy — Cards

Hill's Record Shop
Records - TV - Radios - Stereos

House of Pancakes
Breakfast — Lunch — Dinner

Jam's Restaurant
Table Service

King's Fashions
Women's Apparel

Little Travelers
Infants' and Children's Wear

Pioneer Camera Shop
Cameras — Photo Finishing

Porters
Women's and Men's Wear

Ray's ASU Barber Shop
Men's Barber Shop

Rosamond's
Beauty Shop

Ryan Evans Drug
Prescriptions — Cosmetics

Sherwin Williams Co.
Paints — Wallpaper

Sewing Basket
Fabrics

S&H Redemption Center
Green Stamp Store

Sun Devil Hop-In
Drive - In Service

Tee Pee of Toys
Toys — Juvenile Furniture

Top's
Beverages — Snacks

Union Furniture
Furniture and TV

Zzzona Laundry & Dry Cl.
Coin Operated — Open 24 Hours

Honoraries Initiate 9

The campus chapter of Alpha Pi Epsilon, national honorary secretarial society, will initiate three ASU students tonight at 6 p.m. in the BA building.

Initiates are Kathryn Sefferovich, Tarlei Beall, and Doris Rikken.

Six students will be initiated at 7:30 tomorrow night at a banquet meeting of Pi Omega Pi, business education fraternity.

Luis Moren, Mary Sue Daley, Harriet Frires, William Holt, Joan Skinner, and Jeannette Ross will be the new members.



MR. PREFERRED . . . Reaching for the trophy to be awarded to one of the five finalists for Mr. Preferred are Barry Goldwater, Jr., Karl Dennison, Bob Stouffer, Dick Locke and Fred Rhoades. The winner will be announced Saturday night at the AWS "Desert Starlight" formal. Final voting will be by women when they purchase tickets.

Greeks Gain New Members And Pledges

Kappa Alpha Theta sorority has initiated Mary Dangerfield, Carol Yost, and Nancy Stimson. Miss Stimson was named outstanding pledge.

Recently pledged to Alpha Sigma Alpha sorority are Karen Maglick, Sandy Holmes and Wanda Hall.

Seven men have been pledged to Theta Delta Chi fraternity. They are: Bob Kecker, Wally Foreman, Allen Wieckowicz, Ten Hemphill, Robert Baker, Gary Avey and Tony Deprina.

Maxwell To Speak

Olen Maxwell will speak on "The Impact of Religion on Social Change" at tomorrow night's meeting of the Bahai club.



The public meeting will begin at 7 p.m. in MU 210.

Maxwell, presently associated with a local realty firm, is a graduate of Pasadena City College, a member of the Junior Chamber of Commerce, N.A.A.C.P. and the Council of Racial Equality.

Officers Elected By Engineers

The Student Society of Mechanical Engineers elected officers Thursday. New president is Carroll Hopkins. Other officers are Dan Barnett, vice president; John Mattison, secretary; Bob Devinney, treasurer; and Bob Cohen, engineer council representative.

Next meeting of the group is Dec. 15.

"Man has made his bedlam; let him lie in it."

SPECIAL Group Of LP's

\$1.00

3 DAYS ONLY

Register For Door Prizes

HILLS RECORDS

Tempe Center

Open Thursdays Till 9

The Garden Hof Brau

Buffet style luncheon, from 11:30 A.M. til 4:30 P.M.

Complete luncheon 95c

We also serve steaks, lobster tail, chicken. From \$1.85 up:

For Reservation Call WH 5-7097

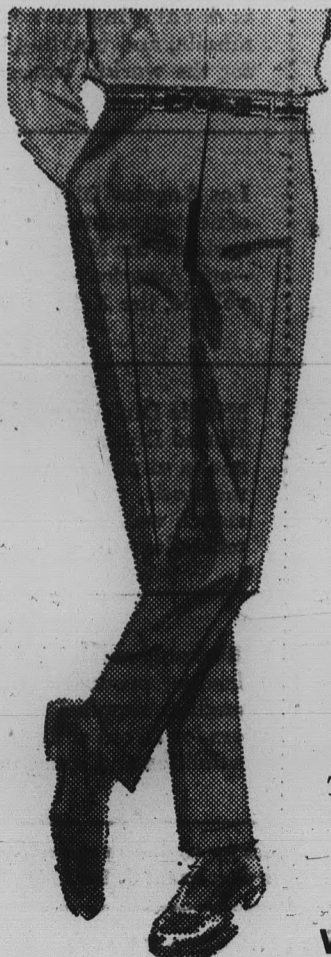
801 SCOTTSDALE ROAD in

FRONTIERTOWN SHOPPING CENTER

Our First Anniversary Celebration at the Americana Shop

Thursday, Friday, Saturday . . . November 17, 18, 19

Offering Good Sound Values



Automatic Wash 'n Wear SLACKS

We are offering a special group from our regular stock featuring the traditional pleatless model . . . at a substantial saving

\$10.95 NOW \$8.95

Open Thursday night 'til 9:00 P.M.

WO 7-5457

THE *Americana* SHOP
TEMPE SHOPPING CENTER

Short Sleeve Button-down SPORT SHIRTS \$5.00 NOW \$3.88



Line Play Key To Win Over NCS

Won Up Front - Kush

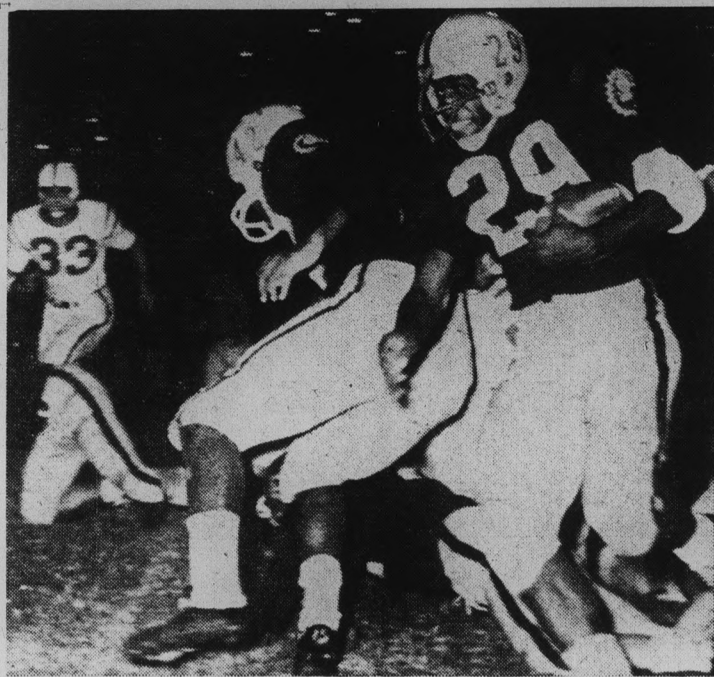
By BOB JACOBSEN

"The tremendous play of our line was the big difference," stated Head Coach Frank Kush after his ASU Sun Devils had come from behind to upend North Carolina State's Wolfpack 25-22 Saturday night at Sun Devil Stadium.

"They did a real good job of rushing Roman Gabriel," continued Kush. "They also stopped two key fourth-down plays in the last quarter and really laid some blocks out ahead of our end sweeps."

Possibly the key play of the game came late in the final quarter when, with third down and a foot to go for a first down on the Devil thirty-yard line, Wolfpack All-American candidate Gabriel was stopped cold on a quarterback sneak by the ASU line led by guard Dick Locke, the Sun Devils' own All-American candidate. On the next play N.C. State fumbled and the Devils held on for the victory. If Gabriel had been successful on his sneak, the outcome of the game might have been different.

Quarterback Ron Cosner, who ran for long yardage twice when he couldn't find a receiver open in the Sun Devils' first two scoring drives and halfback Ossie McCarty, whose beautiful 64 yard punt return in the final quarter set up Jones' winning field goal, were awarded a football used in the game by their teammates.



RAY YOUNG . . . moves for yardage against North Carolina State as Dornel Nelson (42) blocks out Wolfpack defender. ASU defeated the Pack 25-22 in the Sun Devil Stadium Saturday night. (Charles Hilgeman photo)

A basketball fan's night is set for Tuesday, Nov. 22 at 7:30 p.m. in Sun Devil Gym. ASU Head Coach Ned Wulke will explain some of the terminology used in the game and the players will demonstrate several phases of the game.

Following the demonstrations, the freshman and varsity teams will play a full-length regulation game. Admission to fan night is free to students, faculty members and the public.

ASU Coeds Win Doubles Tournament

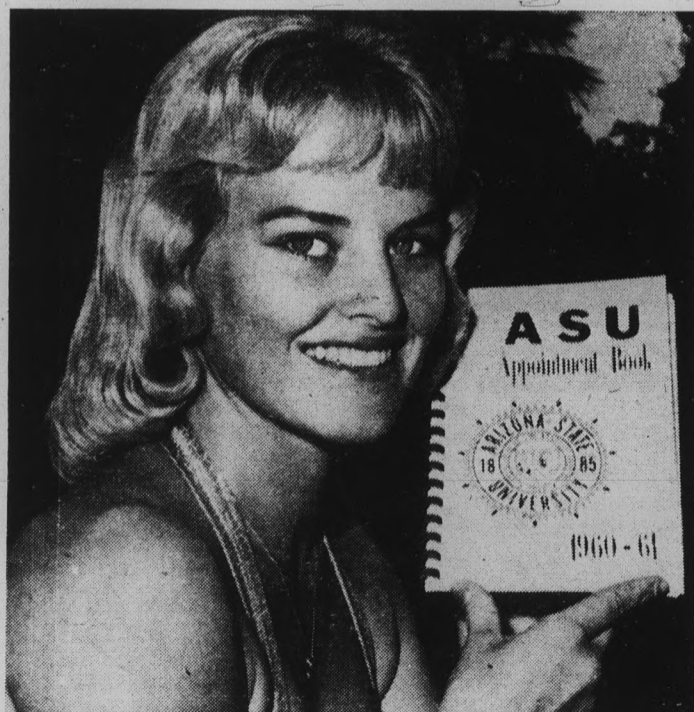
Arizona State's Pinky Shoemaker and Emma Flores won the women's open doubles tennis tournament on the ASU courts Friday and Saturday. They topped a field of 32 entries from the Phoenix area.

Misses Shoemaker and Flores, top seeded, defeated second seeded Ina Leffler and Sandy Smith in the finals, 8-6, 6-1. Miss Leffler and Miss Smith are members of the ASU girl's net team.

The Shoemaker-Flores team reached the semi-finals with a 6-3, 6-1 victory over Quola Hatch James and Georgene Brock of the Tempe High physical education department.

Miss Leffler and Miss Smith earned their finals berth with a come-from-behind 3-6, 11-9, 6-0 win over Mrs. Mike Blanchard and Susie Blanchard of the Paradise Valley Country Club.

FOR A DATE...



WRITE IT DOWN in your new ASU 1960-61 APPOINTMENT BOOK, with 43 full pages of pictorial highlights of campus life; maps of ASU, Phoenix and the Valley; class schedule; itemized school activities and events you won't want to miss — movies, athletic events, dances, exams, everything — plus weekly and monthly appointment calendar. It's just the right size (5½ by 8½ inches) and just the right price (one dollar).

Your ASU APPOINTMENT BOOK is now available at
CAMPUS BOOKSTORE
CAMPUS DRUGS

Sunday Nov. 20

3 P.M.

P.U.H.S. Auditorium

"THE PIANIST OF THE CENTURY"

Sviatoslar RICHTER

He has no equal in the world today. Every lover of piano can't afford to miss the opportunity of a lifetime.

Ticket 2.00-2.50-4.00-5.00
 On Sale Linde Box Office
 Hannys—Adams at 1st St.
 Phone AL 4-2979

How ASU's Opponents Fared

| | |
|---------------------------|--------------------------|
| New Mexico 24 | BYU 19 (3-6) |
| COLORADO ST. 6 (2-7) | Denver 6 |
| NEW MEXICO ST. 35 (8-0) | Fresno 27 |
| WEST TEXAS 15 (3-6) | SAN JOSE 12 (3-4) |
| WASHINGTON ST. 18 (4-4-1) | ARIZONA 28 (5-3) |
| Idaho 7 | TEXAS WESTERN 14 (4-3-1) |



FLIGHT INSTRUCTION

Special Rates For College People

MODERNIZED GROUND SCHOOL FOR PILOTS & NON-PILOTS

Amos Flight Operations

A Private License is a Must In Modern Business

Don Amos — Class of '56

Phone BR 5-7291

SKY HARBOR

ENGINEERS AND SCIENTISTS NAA's On-Campus Interviews

NOVEMBER 21

The NAA industrial family has a career for you



Nuclear power at the Atomics International Division (Canoga Park, Calif.)

Atomics International Division is a leader, both here and abroad, in the development of nuclear reactors for power, research, and mobile systems.



Electronics & electro-mechanics at the Autonetics Division (Downey, Calif.)

Autonetics Division produces computers, inertial guidance, armament control, and flight control systems. Developers of inertial guidance systems for first Polaris-carrying subs, Minuteman ICBM, GAM-77 missile.



Naval aircraft & missiles at the Columbus Division (Columbus, Ohio)

Columbus Division, a complete center of systems capability, produces Navy's Mach 2A3J Vigilante, is developing new Army target missile, and building the reflector for the world's largest radio/telescope.



Design & development of manned weapon systems at the Los Angeles Division (Los Angeles, Calif.)

Los Angeles Division is the home of next-generation manned weapon system—the Mach 3 B-70 Valkyrie—and America's first manned space vehicle, the X-15.



Missile weapon system management & space research at the Missile Division (Downey, Calif.)

Missile Division produces GAM-77 Hound Dog missile, is at work on space exploration vehicles and methods, and is conducting research well in advance of existing technology in the space sciences.



Propulsion systems and concepts at the Rocketdyne Division (Canoga Park, Calif.) (McGregor, Texas)

Rocketdyne Division, Free World's leading producer of large rocket engines, supplied main-stage boosters for 25 out of 28 successful U.S. satellites and space probes.

Advanced opportunities for engineers and scientists with graduate degrees. See Your Placement Office Today For Interview

NORTH AMERICAN AVIATION, INC.