

# State Press

ARIZONA STATE UNIVERSITY



TEMPE, ARIZONA

1885

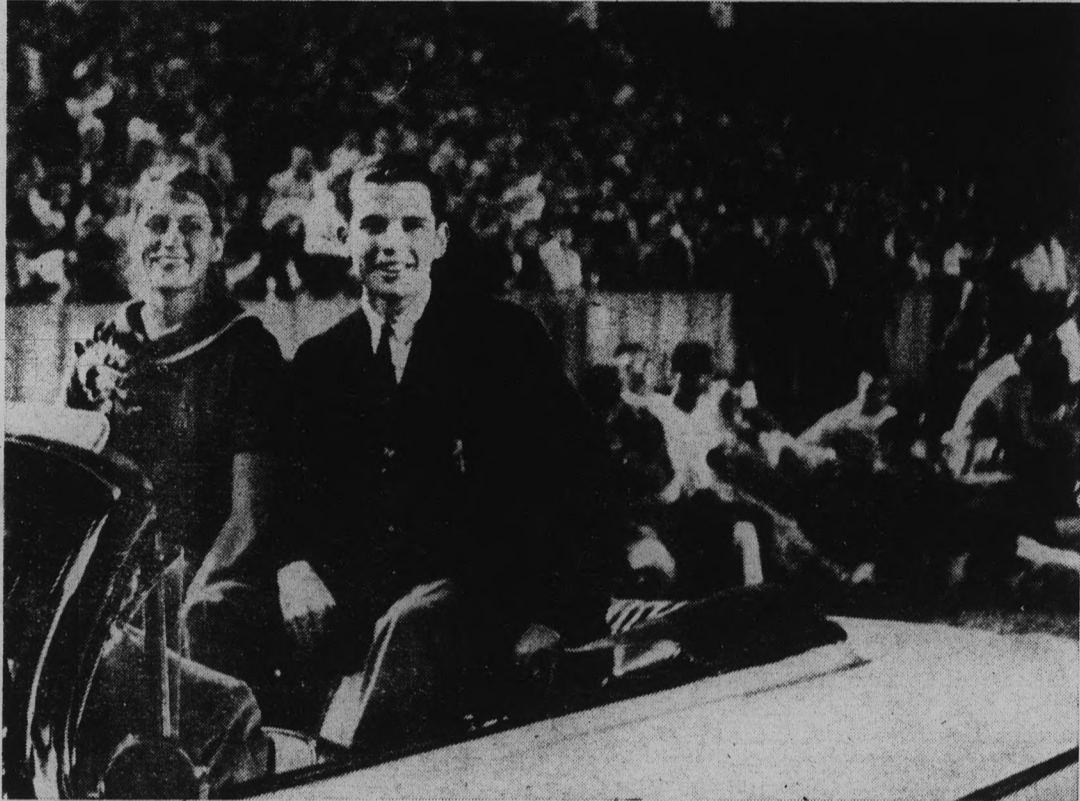
Diamond Jubilee

1960

Vol. 39

Wednesday, November 9, 1960

No. 15



**HAIL, ROYALTY . . .** Vel Richey and Joe Watters flash happy smiles for their subjects as they are driven to be crowned Homecoming Queen and King at last Saturday night's game at half-time. More Homecoming activities pictures are on page 8. (Charles Hilgeman Phot.)

## Sun Devil Rodeo Team Third In U.S. Intercollegiate Rodeo

By WARREN J. FIELD

The ASU Sun Devil rodeo team rode, roped and raced its way into third place in Sunday's National Intercollegiate rodeo.

Carol Truman, ASU senior and rodeo club member, won the title of all-around cowgirl, by accumulating the greatest number of points in the individual contests.

Of the six teams entered in the West Coast Region contest, only Cal Poly at San Louis Obispo, and the UofA outscored ASU. Cal Poly was first with 575 points, UofA was second with 267 and ASU earned 232.

In addition to the usual rodeo events, the club has initiated a sorority-fraternity event involving two fraternity men,

a horse, calf, rope, two sorority sisters and a pair of panties.

According to event rules, the calf comes out of the chute "pre-roped." As the calf crosses a line, the horse and rider draw up, stopping the calf and the two fraternity men bulldog the animal. At that stage of the game, the two ladies attempt slipping the panties on the calf's hindquarters as one man releases the rope holding the calf. All must then run across the finish line.

The Tri-Sigmias and Lambda Chi's took first place with Kappa Alpha Theta and Sigma Nu taking second.

First place winners of the day's events received engraved silver belt buckles while second place winners received riding equipment. Third place

winners received western apparel with fourth place victors earning magazine subscriptions. ASU team members taking prizes in team roping, bull riding, bronc riding, ribbon roping, barrel racing, calf roping and steer wrestling were:

William Kuefer, Carol Truman, Wesley Mickle, Jim Shupe, Dick Collins and Buddy Martin. Also Clarkson Collins, John Arnhold, Tom Harsh, Nelda Wright and Joyce True-lock.



Why are there no run-offs for Homecoming King and Queen as in other campus elections, especially with so many candidates?

Crowning the King and Queen during the 3-ring circus called half-time is almost a waste of time. The ceremony was so rushed (as was presentation of the trophies) that it was over before anyone realized what was happening.

Homecoming royalty should be announced at the beginning of Homecoming, not at the end.

An interesting sight after the football games: female fashion plates attempting to walk down the seats of the stadium without jamming their spikes in the cracks between the boards.

### Sigma Nu, DG's Take Firsts

## Chi O's Win Sweepstakes

Homecoming decoration trophies were awarded to organizations with the best displays during the halftime ceremonies at the ASU-Texas Western game. (Picture Page 8.)

The decorations were divided into four groups; fraternities, sororities, halls, and special interest groups.

The Sweepstakes winner was Chi Omega sorority with their display, "Steropticon View."

"Oasis of Learning" was the theme which carried Sigma Nu to first place in the fraternity division. Alpha Tau Omega captured second place with "Name Change." Third place was Delta Sigma Phi's display "Pillars in Progress."

In the sorority division, Delta Gamma was first with their entry, "Reflections of the Past." "First Annual" was the theme of second place winner Gamma Phi Beta. Kappa Kappa Gamma won third place with "Arizona State's Family Album" as their theme.

Phrateres led the special interest groups with their display entitled "On the Road to Learning." The Rodeo club was second place winner with "The First Cut In The Diamond." Lambda Delta Sigma won third place with "First Territorial Championship."

First place winner in the hall division was taken by Best A, men's resident hall, with "The Coming of the Man," as their theme. Gammage Hall won second place with "Ma and Pa Krause's Kitchen." North Hall won third place with their display of the "First Car On Campus."

Judging was based on originality, animation, theme, de-

sign, effort and color of decoration.

Thirty-two campus organizations entered the competition this year.

## King, Queen Named

Velva Richey, senior, and Joe Watters, junior were elected King and Queen of ASU's Diamond Jubilee Homecoming by the majority of 3,490 votes cast.

President Durham presented the royalty with their trophies during the halftime of the homecoming game.

Miss Velva Richey's activities are Alpha Delta Pi vice president, State Press special editor, AWS publicity chairman, Kaydette's president, and Pi Delta Epsilon Journalism honorary. Prior to this year she was named 'Outstanding Freshman Woman,' served as secretary of the Rally and Traditions committee, and was AWS senator for two years. She is a student in the College of Education.

Watters activities are Sigma Chi social chairman, and he is in the College of Business Administration. Previously he was Sigma Chi secretary, received the outstanding intramural award, and was a member of the Rally and Tradition committee.

## Woodwinds, Brass, Percussions Concert In MU Tonight

A concert of woodwinds, brass and percussion groups, open to the public, will be presented in the MU ballroom, at 8:15 p.m. tonight.

Woodwind groups directed by Frank Stalzer, assistant professor of Music, brass groups directed by Eugene Chausow, assistant professor of Music, and percussion groups led by Mervin Britton, Music instructor, will highlight the program.

Percussion groups are featuring Russell's "Percussion Suite" and McKenzie's "Pastorale for Flute and Percussion," while the woodwind en-

sembles will interpret Clerisse's "Serenade Melancolique for Saxophone Quartet" and Reisenstein's "Suite for Woodwind Quartet."

The closing performance will be Beadell's "Introduction and Allegro for Brass Choir and Timpani."

### No School, No Paper

There will be no school Friday, Veterans' Day. Consequently, the State Press will not publish Friday. Regular publication will resume next week.

## 2,000 High Schoolers Expected For Senior Day

More than 2,000 Arizona high school seniors from throughout the state are expected to convene on campus Saturday for ASU's 1960 Senior Day.

President G. Homer Durham will greet the prospective college students at a morning assembly following registration from 9 to 10 a.m. The seniors will be introduced to ASU and instructed on the day's activities which include a free luncheon, student talent show, meetings with Deans of the

various colleges, ASU-North Carolina State football game and the after-game dance in the MU.

Highlight of the afternoon program is the Senior Day queen contest. From contestants already chosen by the high school classes, a senior girl will be selected to reign as queen of the 1960 Senior day. She will be named and crowned at half-time.

Nancy Weigle and Don Kunkel are co-chairmen of the day.

# Student John Miller Is Modern Renaissance Man

By MAC McCARLEY

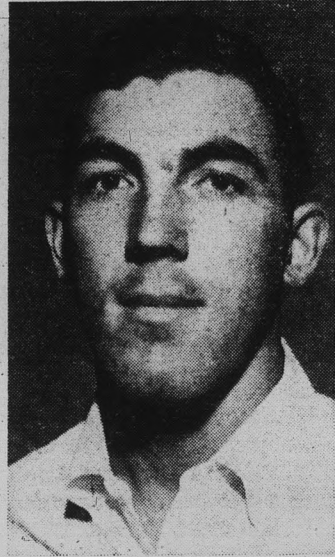
Varsity baseball pitcher; examine; student of Greek, Philosophy, and Shakespeare: These are some of the facts in the life of John Miller, the personality of the week. Athletes usually study "Peanuts", and philosophy students usually play chess; but John is one of the few people who is well-rounded both physically and mentally.

Miller, a Heigler Hall resident, was in the Marines for two years and had a 25-1 record for their baseball team. Last year on the Sun Devil pitching staff he wound up at 5-4. After college, John is going to give professional baseball a whirl. He says, "It would give me an unmitigated degree of pleasure to succeed in professional baseball." He also has aspirations of attending law school.

John is from Pasadena, California and graduated from high school in 1956. John says

that he enjoys reading and fishing very much.

With all these attributes, John Miller has one more — he is a "nice guy". And after all what's better than a "nice guy?"



JOHN MILLER

# AS Advisor Rules Out Senate Seat

The ASASU Legal Advisor has ruled that the College of Education Academic Council is not entitled to senate representation. However, the Advisor left the way open for re-organization of the Council to meet requirements.

Legal Advisor Bud Bartlett said the CEAC does not meet the requirement that organizations have "a mutual and exclusive purpose."

# Durham Will Study ROTC; Expects Results By Spring

ASU President G. Homer Durham has announced that he is undertaking a study of the compulsory ROTC issue at ASU.

In a letter to ASASU President Karl Dennison, Durham said, "I expect that by early spring, we will be able to reach some well-established position on this question."

Durham said his study will include: study of various materials, polls, and reports previously compiled; discussion of the issue with Dr. H. D. Rich-

ardson, ASU Academic Vice-President and Coordinator of Military Affairs, and other faculty members; and possible referral of the question to the Faculty Senate, "inasmuch as important questions of educational policy will naturally result from this study."

"Thought for the week: He who gets too big for his britches will be exposed in the end."

# Graduating Seniors Must Register For Applications By Next Week

Seniors planning to graduate at the end of the fall or spring semester must file graduation applications before next Wednesday.

"First semester candidates are urged to file their applications immediately so not to conflict with the anticipated large number of May graduates," said Alfred Thomas, Jr., Registrar and Director of Admissions.

A \$5 fee must be paid to the

cashier at the Business office and the receipt taken to Mrs. Margaret A. Krenkel, Administration 106, to secure a Senior checkout appointment.

## Fred Elquest & Son

Everything for the Art Student  
• Art Supplies  
• Picture Framing  
703 N. 2nd St.  
Phoenix  
PHONE AL 8-2628

## Bunch's Watch Shoppe

Where Discounts

Are Real

Phone WO 7-3221  
609 MILL — TEMPE

"Home of the Brave," from the play by Arthur Laurentz, is to be shown tomorrow and Friday in Cosner Auditorium at 7:30 p.m. It stars Lloyd Bridges, Frank Lovejoy, James Edwards, and Steve Brodie.

### The Americana Shop



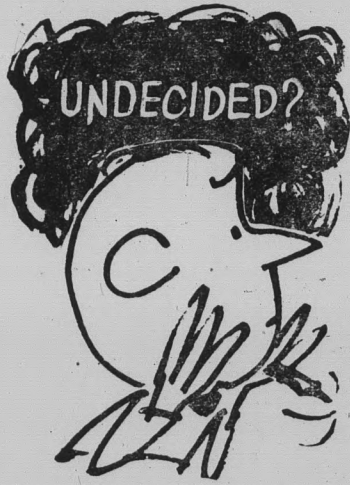
### MATCHING!

Button-Down SPORT SHIRTS have a new look of ELEGANCE

(And the girls shirts are also available with Peter Pan Collar. Both collar styles are sized 10 - 14 and extra small).

from \$5

THE Americana SHOP  
TEMPE SHOPPING CENTER



Daily decisions plague everyone. But when they have to do with a future career, they're really a problem.

If your indecisions fall in this area, you might try looking into the advantages of a career in life insurance sales, leading to sales management. We're looking for young men with initiative, young men who want job opportunities that will grow with them. And we're equipped to start you on your training program now, while you're still in school.

Just call our office, or write for the free booklet, "Career Opportunities"

CONTACT

### LOUIST. CHANEY

30 E. 5th St. Tempe  
WO 7-1634

PROVIDENT MUTUAL  
Life Insurance Company  
of Philadelphia

Marge Smith  
**FLOWERS**  
MAKE EVERY OCCASION MEMORABLE

Evenings 722 MILL AVENUE Daily  
WO 7-5020 WO 7-0271



# Gosh frosh!

how'd you catch on so quick? Catch on to the fact that Coca-Cola is the hep drink on campus, I mean. Always drink it, you say? Well—how about dropping over to the dorm and downing a sparkling Coke or two with the boys. The man who's for Coke is the man for us.



BE REALLY REFRESHED

Bottled under authority of The Coca-Cola Company by

Phoenix Coca-Cola Bottling Co.  
1301 South Central, Phoenix

# Corporation Representatives To Interview ASU Students

Students interested in careers in insurance sales may see a recruiter from the College Life Insurance Company tomorrow. The Burroughs Corporation will seek Business Administration students with an interest in business machine applications. Students in accounting will be interviewed by a representative of the public accounting firm of Arthur Young and Company.

Also tomorrow, the Guy F. Atkinson Company, a heavy construction and manufacturing firm, will talk to accounting, general business and civil engineering majors. Proctor and Gamble Manufacturing will recruit engineers for production management and design and development work, and chemists for chemical research and chemical process development.

# Viennese Artists Perform

Sounds of piano for four hands filled the MU ballroom Monday evening with the talents of Paul Badura-Skoda and Joerg Demus.

The internationally famous Viennese artists presented a concert of the music which flourished in the times of Mozart and Schubert.

The precision timing shown in "Fantasy in F minor, Opus 103" by Schubert brought rounds of applause from an audience of over 500.

Following intermission, Badura-Skoda and Demus played selections from Brahms and 12 children's songs from the Bizet compositions.



TAKING BOWS . . . are Paul Badura-Skoda (left) and Joerg Demus, dual pianists, after the opening selection of their Monday night concert in the MU ballroom.



## FLIGHT INSTRUCTION

Special Rates For College People

MODERNIZED GROUND SCHOOL FOR PILOTS & NON-PILOTS

Amos Flight Operations

A Private License is a Must In Modern Business

Don Amos — Class of '56

Phone BR 5-7291

SKY HARBOR

## Typewriter Repairs

Special Rates of Students Free Pickup & Delivery

TOWN & COUNTRY Typewriter Service

601 W. Main WO 4-3431

# Salem refreshes your taste — "air-softens" every puff



Created by R. J. Reynolds Tobacco Company

Take a puff...it's Springtime! For the cool, fresh softness in Salem's smoke is the very essence of springtime. This most refreshing cigarette of all is made even more so by Salem's special High Porosity paper that "air-softens" the smoke. You'll be delighted with Salem's springtime freshness — its rich, tobacco taste. Smoke refreshed . . . smoke Salem!

- menthol fresh
- rich tobacco taste
- modern filter, too

## Of Davis' Talk "Togetherness" Is Subject

Dr. Keith Davis, chairman of the ASU Management department, will participate in the "Executive Profile" lecture series offered this fall by UCLA, in the Southern California area.

Dr. Davis will discuss "Togetherness: The Informal Variety" in Los Angeles Nov. 17 and in San Diego Nov. 18.



SORRY, CLOSED TONIGHT THURS.—FRI.—SAT MATINEE 12:30 SAT.

JUDY HOLLIDAY IN "Bells Are Ringing"

—CO-FEATURE—

VAN JOHNSTON IN "Enemy General"

## Be Smart on Campus

With a Fine Imported Pipe Open Mon. & Thurs. Till 9 P.M.



And Our Own Blends of Tobaccos

PHOENIX PIPE SHOP 326 N. CENTRAL Arizona's Newest and Most Complete Pipe Shop



EDITOR-IN-CHIEF GORDON PETERSON  
 MANAGING EDITORS MICHAEL BARRETT and JACK ONG  
 SPORTS EDITOR BOB EGER  
 ORGANIZATIONS EDITOR DEANA DORMAN  
 COPY EDITOR TOM HILTON  
 ASSIGNMENT EDITORS CAROL OSMAN and LINDA WARREN  
 SPECIAL EDITORS VELVA RICHEY, MIKE BENSON, LINDA RANKIN, WARREN FIELD and GARY KLAHR



The STATE PRESS, distributed by Dale Compton, is the official campus newspaper of Arizona State University. Published each Wednesday and Friday throughout the school year, excepting holidays and entered as second class matter in the Post Office at Tempe, Arizona, under the Acts of March 3, 1879, and August 24, 1912. Subscription price, \$3.00 per school year.  
 Member: Arizona Newspapers Association, Associated Collegiate Press, and National Advertising Service, Inc.

Editorially Speaking . . .

## Where And When

"SHORT SUPPLY — 235,000 physicians or 132 per 100,000 population are licensed to practice. Medical graduates will have to increase from 6,861 to 10,400 students annually to maintain the present ratio."

The 50 per cent increase recommended by the National Foundation will come from two sources — if it comes at all. First, from higher enrollment and less drop-out in present medical schools. This problem, obviously, must be left mostly to those who administer the present schools.

But, the greatest hope for alleviation of the lack of physicians apparently lies in the second source — more medical schools.

Last year, the Arizona Board of Regents appointed a team or committee to determine the extent of Arizona's need for a medical school or schools, and possible locations for such schools.

So far, the committee has not released any report, recommendation, or anything else. Individual members have, however, indicated the committee is considering Phoenix, Tempe, Tucson and Flagstaff as possible sites. At least one member has considered the possibility of locating a medical school in a town completely disconnected from any university or college.

Our own recommendation (from self-appointed experts) would be two medical schools — one in Tucson, one in Tempe.

The reasons, we believe, are obvious and solid. First, the above figures show the need for more doctors in the United States. The situation in Arizona itself certainly isn't any better. Certainly, two schools would help immensely in improving the situation.

However, if budgets will allow only one school, Tempe seems the logical spot. We have a School of Nursing, all types of laboratories, instructional aids, instruments, etc., which could be used in correlation with the medical school, especially in a beginning tight-budget program.

The University of Arizona undoubtedly has all these things too. But, Tempe is only some 10 miles from Phoenix — the largest metropolitan area in the state. It is located in Maricopa county — more than half the population of the state. This brings benefits in many areas — but, being strictly pragmatic, it brings money.

Those are our recommendations — may the committee make theirs soon.

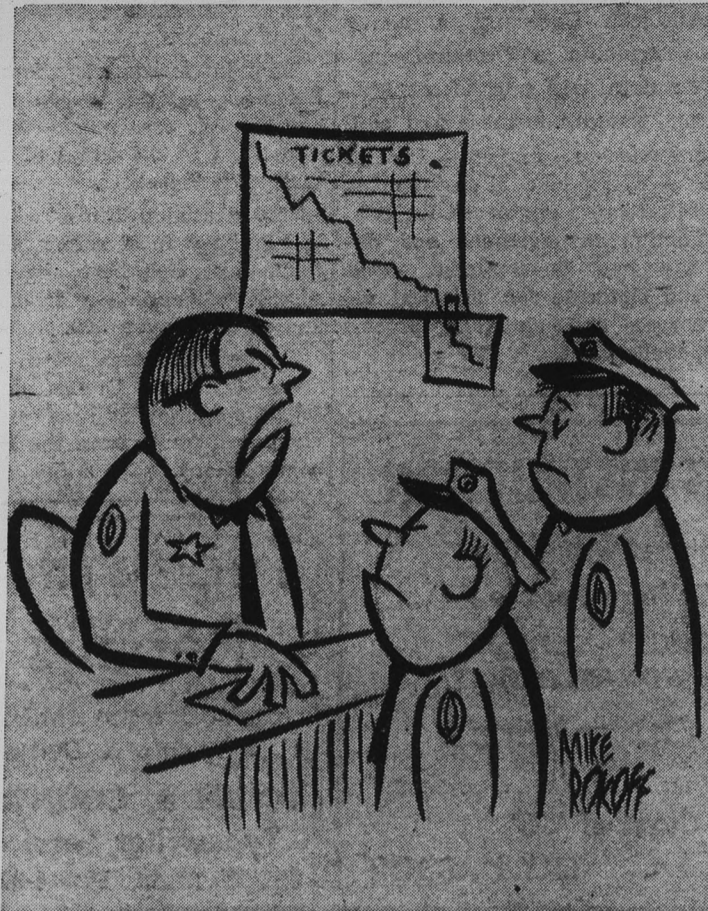
Regardless of the number or locations of medical schools, Arizona and the nation need them now.

## Fewlish

It seems a shame, what with this new found "spirit drive" at ASU, that a few "wise guys" still persist in messing things up with childish pranks. Just for kicks, we sat on the press box side of Sun Devil Stadium Saturday night. The cheering on some occasions was surprisingly good, loud and organized, but come half-time we waited expectantly for the card section show.

Not bad generally, but somewhere near the top of the section were a few individuals waving wrong-colored cards and ruining the well planned work of many who have a sincere desire to make ASU "big time" in all facets of football festivities. These few were purposefully waving their cards above their heads as if to say "look everybody we're different". There are times and places for non-conformity, but the midst of a card section show is not one of them.

Uniformity is the thing that makes a card section successful.



"Our prestige is dropping; we're becoming known as nice guys!"



To the Editor:

Commendations are in order for the 1960 Homecoming Committee headed by Mike Kreutz, general chairman.

Other chairmen deserving praise are Madge Munro and Barbara Defer, registration; Larry Miller, decorations; Dennis Rosenthal and Norma Walker, publicity; Tom Brown, king and queen contest; Jim Crease-man, alumni; Marilyn Fish and Mike Cohen, judging; and Mike Kreutz, halftime. Many other committee members also deserve credit.

I think all students who worked on homecoming decorations deserve a share of the recognition for the many hours of labor they contributed to make the weekend a success.

All in all I was very satisfied and I'm sure my feelings are shared by the student body.

A Satisfied Student  
 \* \* \*

To the Editor:

All the letters to date on the subject of school spirit have operated from the premise that school spirit, or the noisy display of it, at any rate, is desirable. No believers in the "still waters running deep" adage here, evidently.

On the assumption that minority groups (in this case it might even be an inarticulate majority) are allowed to be heard, how about a few letters from the other side? Let us have an opinion or two from those who feel that cow bells, auto horns and general noisiness are more suitable for high school games. Personally, I am neutral.

Elmer Abbott

To the Editor:

The day was bleak and dreary, The Republicans were at bat. The game was long and weary For the pitcher was a Democrat.

The game was in the last inning, The score was ought to ought. No one knew just who was winning, The game was so well fought.

The difference between the two teams Was in itself an entity. The Republicans had Nixon, The Democrats, Kennedy.

Kennedy was best at pitching, Nixon best at bat. Kennedy threw a curve ball, Nixon missed, and said "Drat that."

The game was in the final moment, The count was three and two; Kennedy chuckled heartily, "After this ball, Nixon will be through."

Kennedy threw a fast ball As Nixon interjected, "You're going to lose the game, Jack, You see I've just connected."

The ball soared high and long, Well over the center field wall. Kennedy silently stood there, Just about to bawl.

The game was over The Republicans had won. The Democrats stood dumb-founded, Cursing for what he'd done.

The difference between the parties, We need not debate, Republicans favor initiative, The Democrats, a welfare state.

I. N. STEIN



By MICHAEL BARRETT

Is the Concert and Lecture Series worthy of its name?

In one of the CLS programs the purpose of the series is stated:

"The Concert and Lecture Series at Arizona State University is an integral part of the cultural educational activities of the student and faculty of the institution. The Series includes some of the finest available artistic talent in the nation, carefully chosen to present a well-rounded program of the highest type."

"A well-rounded program?" A look at the schedule for the past five years shows otherwise states a critical student.

This year is a typical example with seven musical events arranged and only two non-musical programs: Author Andre Maurois who spoke Oct. 31 and Comedienne Anna Russell who will appear Jan. 13.

Last year's series featured Actor Vincent Price, a news panel, and Statesman Clement Attlee. The 1958-59 series had seven musical events with an actor and lecturer rounding out the schedule. A painter, a poet and a repertory theatre shared the 1957-58 series with seven musical programs. The imbalance was greatest in 1956-57 when a lone lecturer appeared during a year which included nine musical programs, the critic observes.

A review of the schedules shows that the Lyceum and Concert series is "Seventh Heaven" for one who loves music but a veritable desert for one searching for thought-provoking ideas, the critic says.

Where are the philosophers, authors, statesmen, educators, economists and others possessing a point of view, be it good or bad, right or wrong, he asks.

The challenge to a student's ideas is necessary for the latter's approach to meaningful learning, he maintains.

He suggests those responsible for next year's Concert and Lecture Series might bear in mind selecting a better balanced program for a more complete learning experience.

However, the critic has overlooked some problems which face the student-faculty committee in attempting to present a varied program throughout the year.

Difficulties include schedule conflicts of speakers and artists; a small budget (about \$7,000, as compared to approximately \$70,000 for intercollegiate athletics); and inadequate facilities.

The latter are the seating capacities of closet-sized Cosner Auditorium, and the MU ballroom, and the acoustical shortcomings of the men's gymnasium.

Capacity and audio problems stand out in programs featuring symphony orchestras or plays.

This year's CLS schedule was formed with keeping in mind the history of the series which has been primarily musical, the fact that the different colleges present speakers, that the Diamond Jubilee Symposium in February has tentatively scheduled outstanding speakers, and that student reception in the past has been greater for musical programs.

# ASASU Student Judges Stop Advisory Opinions

Chief Justice Fred Koory concluded the court executive meeting Wednesday with the decision that the ASU Student Court shall render no more advisory opinions.

Upon the advice of Sponsor Dr. H. R. Hink, assistant professor of Political Science, their first decision concerning the first vice president and secretary's right to vote in the

senate is an advisory opinion and not binding.

"To obtain a ruling from the court there must be a plaintiff and a defendant and the issue in question must be in fact," concluded Dr. Hink. (The question of the first vice president's right to vote in the senate was only a proposed rule by the senate rules committee.)

Upon this advice, the court would not accept the question concerning the proposed senate bill about the senate having closed executive sessions.

"The trouble with women's slacks is that most of them are not slack enough."

# Drama Workshop Needs Play Production Crews


Members of the Drama Workshop will meet in Payne Auditorium Sunday, 2:00 p.m. to organize crews for the remaining productions.

A discussion is planned to explore the possibilities of organizing an honorary drama fraternity.

Marjorie Jones was recently elected president. Other officers Laura Kirkpatrick, historian

and Mike Rost, treasurer. Rolene Susselman, Bill Decker and Jim Seaman were elected three members at large.

A new class in ballroom dancing will begin tonight at 7 p.m. at Clancy's in the MU basement. The price is \$1 per lesson for the series of 8 lessons. Interested students may sign up tonight at the first lesson.



**Quick,  
Complete  
Carry-out  
Service**

AT THE  
BRAND NEW

## MUGS-UP

ROOT BEER DRIVE-IN

Corner Van Ness and 8th Street  
"Where The Nickle Is Mighty"

### Carl Ritter

#### ORCHESTRAS

Professional Musicians  
For All Occasions  
—Trios To Big Bands—  
SCOTTSDALE  
WH 5-1671  
(Federal & State Licensed)

## The Garden Hof Brau

Buffet style luncheon,  
from 11:30 A.M. til 4:30 P.M.  
Complete luncheon 95c

We also serve steaks,  
lobster tail, chicken.  
From \$1.85 up:

For Reservation Call WH 5-7097  
801 SCOTTSDALE ROAD in  
FRONTIERTOWN SHOPPING CENTER



# IBM WILL INTERVIEW NOVEMBER 29 - 30

Candidates for Bachelors or Masters Degrees are invited to discuss opportunities in:

Marketing and Sales  
Engineering and Science

This is a unique opportunity to find out about the many career opportunities at IBM. The IBM representative can discuss with you typical jobs, various training programs, chances for advanced education, financial rewards, and company benefits—all important factors that affect your future.

**SOME FACTS ABOUT IBM**

**An Unusual Growth Story:** IBM has had one of the exceptional growth rates in industry. It has been a planned growth, based on ideas and products having an almost infinite application in our modern economy.

**Diverse and Important Products:** IBM develops, manufactures and markets a wide range of products in the data processing field. IBM computers and allied products play a vital role in

the operations of business, industry, science, and government.

**Across-the-Country Operations:** Laboratory and manufacturing facilities are located in Endicott, Kingston, Owego, Poughkeepsie and Yorktown, New York; Burlington, Vermont; Lexington, Kentucky; San Jose, California; and Rochester, Minnesota. Headquarters is located in New York City with sales and service offices in 198 major cities throughout the United States.

**The Accent is on the Individual:** No matter what type of work a person does at IBM, he is given all the responsibility he is able to handle, and all the support he needs to do his job. Advancement is by merit.

The areas in which IBM is engaged have an unlimited future. This is your opportunity to find out what that future has to offer you.

Call or stop in at your placement office to arrange an appointment with the IBM representative for the date above. If you cannot attend an interview, write or call the manager of the nearest IBM office:

Mr. C. H. Woolf, Branch Manager  
IBM Corporation, Dept. 882  
3424 North Central Avenue  
Phoenix, Ariz.  
CRestwood 7-2661



INTERNATIONAL BUSINESS MACHINES CORPORATION

ASASU And U —

# Unfair Treatment Charged

By GARY PETER KLAHR

The "conservative" group of student senators has another complaint this week—unfair treatment from the Student Court.

Senator Ed Manley protested court procedure in a recent case involving the constitutionality of a proposed rule restricting the right of the Speaker to vote and speak on the floor.

Senate Speaker Les Miller referred the question to the Student Court, though the senate voted to strike the proposed rule. Miller cited Robert's Rules of Order and the ASASU constitution to show that the Speaker has voting and speaking rights as an ex-officio senator.

The student Court ruled that the proposed rule was unconstitutional, citing the same grounds as Miller. But Manley

said that the hearing was unfair.

Manley said the Court excluded him from the hearing, though it allowed another non-judge to remain. Manley said that the court proceedings should be public.

Manley claims that the decision was only an advisory opinion, since the court did not hold formal hearings to hear both sides of the case. But Miller said that there is no provision for advisory opinions in the ASASU constitution, and that the decision can only be appealed if additional evidence is presented.

Manley, along with Senators Tod Walker and Bobbie Taylor, sent notice of appeal to Miller. They asked for a formal hearing with opportunity to present both sides of the case. But under Miller's interpretation, the Court can only consider new evidence.

Manley also complained that the Court decision rested too heavily on Robert's Rules of Order. He said the Senate Rules

take precedence over Robert's Rules and conflicts must be resolved in favor of the Senate's own rules.

Rules Chairman Manley asserted that the proposed rule was written in conformity with a request from Miller to spell out previously unwritten senate rules. Manley said that the restrictions on the Speaker are traditional and not a new curtailment of power.

\*\*\*

A number of special events are on tap for today's senate session. For one thing, ASU President G. H. Durham will address the Senate. He had been invited to speak earlier in the year, but conflicting engagements prevented him from doing so.

A report is expected from a special committee appointed two weeks ago to study "excessive" prices for student guest tickets at football games. Don Kunkel is chairman of the committee, with Mary Alice Rhodes, Jim Chilton, and Bob Hopkins as other members.



These are the silver wings of a U. S. Air Force Navigator. As a flying officer on the Aerospace team, he has chosen a career of leadership, a career that has meaning, rewards and executive opportunity.

The Aviation Cadet Program is the gateway to this career. To qualify for this rigorous and professional training, a high school diploma is required; however, two or more years of college are highly desirable. Upon completion of the program the Air Force encourages the new officer to earn his degree so he can better handle the responsibilities of his position. This includes full pay and allowances while taking off-duty courses under the Bootstrap education program. The Air Force will pay a substantial part of all tuition costs. After having attained enough credits so that he can complete course work and residence requirements for a college degree in 6 months or less, he is eligible to apply for temporary duty at the school of his choice.

If you think you have what it takes to earn the silver wings of an Air Force Navigator, see your local Air Force Recruiter. Ask him about Aviation Cadet Navigator training and the benefits which are available to a flying officer in the Air Force. Or fill-in and mail this coupon.

There's a place for tomorrow's leaders on the Aerospace Team. **U.S. Air Force**

MAIL THIS COUPON TODAY  
 AVIATION CADET  
 INFORMATION DEPT.  
 BOX 7822 WASHINGTON 4, D.C.

I am between 19 and 26½, a citizen of the U. S. and a high school graduate with \_\_\_\_\_ years of college. Please send me detailed information on the Air Force Aviation Cadet program.

NAME \_\_\_\_\_  
 STREET \_\_\_\_\_  
 CITY \_\_\_\_\_  
 COUNTY \_\_\_\_\_ STATE \_\_\_\_\_

## New Course Starts At Talieson West

An extension course in environmental design is scheduled to begin Thursday, 7:30 p.m. at Talieson West.

Sponsored by ASU, the course will be taught by Gene Masselink, creator of murals and interior designs.

Masselink was Frank Lloyd Wright's secretary for 25 years.

There are no special qualifications required for eligibility, but only those with some art background may take the course for credit.

Individual student conferences to determine the particular interests of each student will be during the first class meeting.

"SURE I VOTED . . ."

in my  
 Haircut  
 from  
**J. D.'s**  
 CAMPUS BARBER  
 SHOP

Now 4 Barbers  
 To Serve You

Open Daily 8 a.m.-6 p.m.  
 MONDAY thru FRIDAY

816 College Avenue  
 Next Door To "VI"

**Drop It In Our Lap!**

. . . . Your Publicity

**MIKE ROKOFF  
 STUDIOS**

POSTERS BANNERS PROGRAMS CARTOONS

CONTACT JEFF  
 WO 7-0596

THE POLLS  
 ALL AGREED  
 ON ONE THING . . .

# CHICO'S

RESTAURANT\*

FINE MEXICAN FOOD

1120 East Apache Blvd. — Tempe

\*Air conditioned of course

Old Spice  
 Smooth Shave

stays  
 moist  
 and  
 firm

to the end  
 of  
 your  
 shave . . .

Old Spice  
 SMOOTH SHAVE

Your razor rides easy all the way. Softens the most stubborn beard instantly for a faster, closer shave, soothes and lubricates your skin. Extra-rich, extra-thick, push-button quick. Regular or Mentholated, only 1.00

Old Spice SMOOTH SHAVE  
 SHULTON

# Ryan-Evans

DRUG STORES

Tempe Shoppin Center  
 WO 7 - 2076

# New Inter-Hall Constitution Given Conditional Approval

The ASASU Executive Council decided Monday to approve the revised Inter-Hall Council constitution under the condition that this one point be added: "An advisor to the Inter-Hall Council shall be selected on the recommendation of the Dean of Students." The council discussed the

possibility of installing street lights at the intersection of Apache Blvd. and McAllister Ave. The proposed idea of closing College St. and Orange Ave. was discussed and will be further studied.

Other Exec. Council highlights:

**MU board:** An enforceable policy governing the MU bowling alley is being written.

**Education board:** Dr. Decker will work with the board in attempting to settle problems in grading systems, drop-add session and advisors.

**AMS:** The committee to support voluntary ROTC is compiling information and will meet with state officials in the near future.

**AWS:** A committee has been formed to investigate the possibility of moving Band Day and Senior Day to second semester in future years. A new system for the annual blood drive will be used this year. It is still in the planning stages.

"No one is entirely useless. Even the worst of us can serve as a horrible example."

# Head Resident's Tea Scheduled Tuesday

Head residents from each campus dorm will be honored at the AWS Head Residents Tea, Tuesday.

Specific attendance times will be announced in the individual dorms.

Sponsored by the AWS council, the hat, heels, and gloves affair will feature variety entertainment throughout the afternoon.

General chairman for the tea is Barbara Marlowe. Other chairmen include: Dona Arnote, publicity; Ellen Travis, invitations; Phyllis Freeman and Pat Pinterell, entertainment; Joanne Azcuenga, decorations; Marilyn Spittler, re-

freshments; and Kathy Clark, physical arrangements.

Open to all ASU women students, the tea will be from 2:30-4:30 p.m. in the upper lounge of the MU.

This season's last after-football game dance will be Saturday following the ASU-North Carolina State game. Carl Ritter's orchestra will provide music in the ballroom from 10:30 to 12:30. The dance is sponsored by the Social committee.

"Marriage is designed to be a device for making a homing pigeon out of a night owl."

## \$1,795 Collected From ASU For Tempe Community Fund

Approximately \$1,795 has been collected from ASU for the Tempe Community Chest.

"It is hoped that we will exceed last year's total of \$1,898 by 5 per cent this year," explained Dr. R. C. Hooks Jr.,

ASU Bureau of Business Services and ASU chairman for the 1960 Community Chest. (The campaign is to conclude in two more weeks.)

The 1960 goal is set for \$13,572, some \$2000 above last year's total of \$11,310.

*Jimmy Robinson's*  
**U**niversity  
**D**rive  
**I**n

Phone **WO 7-3141**  
 for the **FASTEST CARRY OUT Service in Tempe**

Corner Apache & Rural • TEMPE  
 5 Minutes after your call your order will be ready at one of our curb stands

## SIR WALTER RALEIGH

Protective Pouch Keeps Tobacco

# 44% FRESHER!



This protective aluminum foil pouch keeps famous, mild Sir Walter Raleigh 44% fresher than old-fashioned tin cans. The sturdy pouch is triple laminated. Carries flat. Sir Walter Raleigh is choice Kentucky burley—extra aged! Try it.

**SMELLS GRAND — PACKS RIGHT! SMOKES SWEET — CAN'T BITE!**

Here's that wonderful buy again!

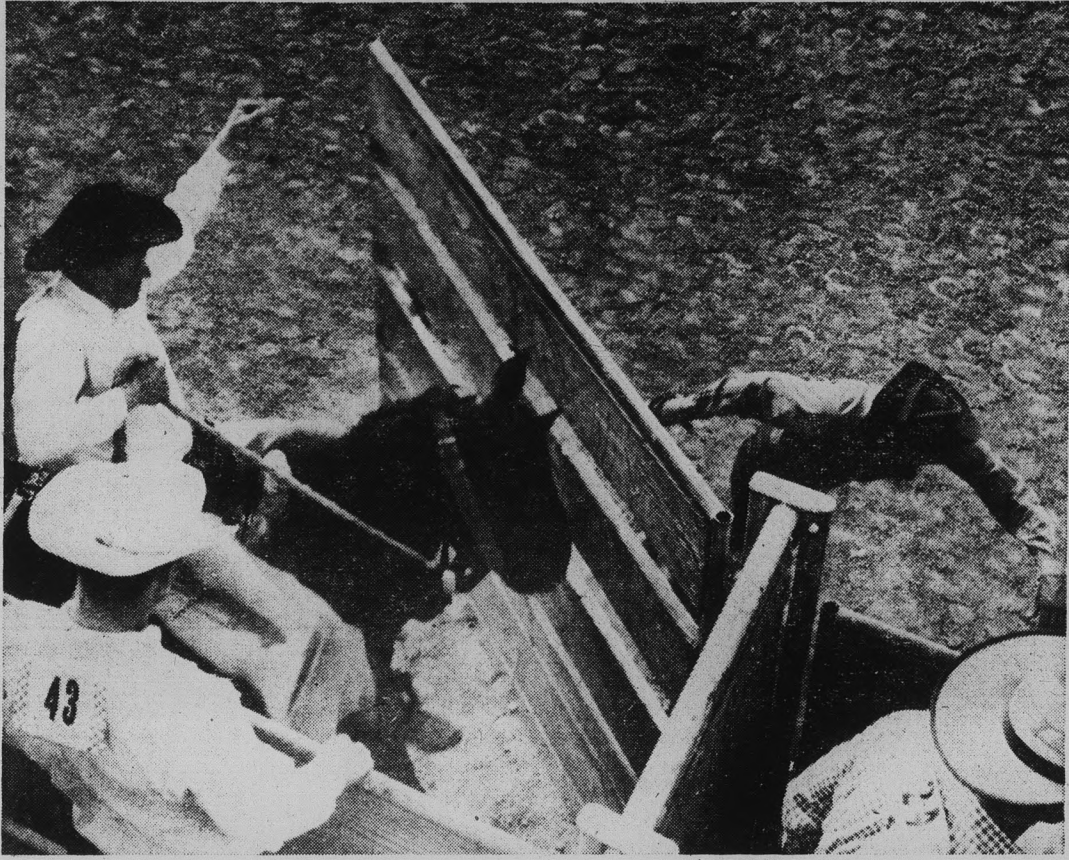
**Imported silk & wool authentic ivy sharkskin suits**

**\$73.00**

Lightweight, long wearing sharkskin suits with a slight sheen... perfect for important campus and business affairs. You'll like its wonderful shape-retaining, wrinkle-resisting properties. Light, medium or dark grey, brown or charcoal blue.

**Hanny's Varsity Shop**  
 30 NORTH FIRST STREET

Campus Representatives • Ted Lorber • Bruce Rys • Brian Padberg



**OPEN UP . . .** Anticipation of the chase is lived again as this cowboy rides his horse from the chute at the annual Intercollegiate Rodeo. The rodeo was part of ASU's Homecoming last weekend at the Scottsdale Jaycee arena. Nelda Wright, freshman coed, reigned as Rodeo Queen over the two-day event. (Dennis Rosenthal Photo).

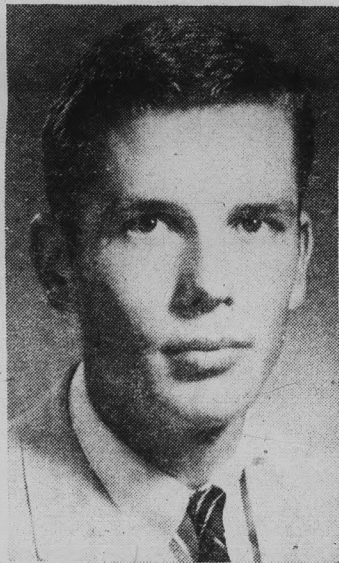


**WAY 'ROUND THE BARREL . . .** Carol Truman was selected All-Around Cowgirl at the rodeo, accumulating more points than other female competitors. Here Miss Truman shows her skill in barrel racing. (Dennis Rosenthal Photo)

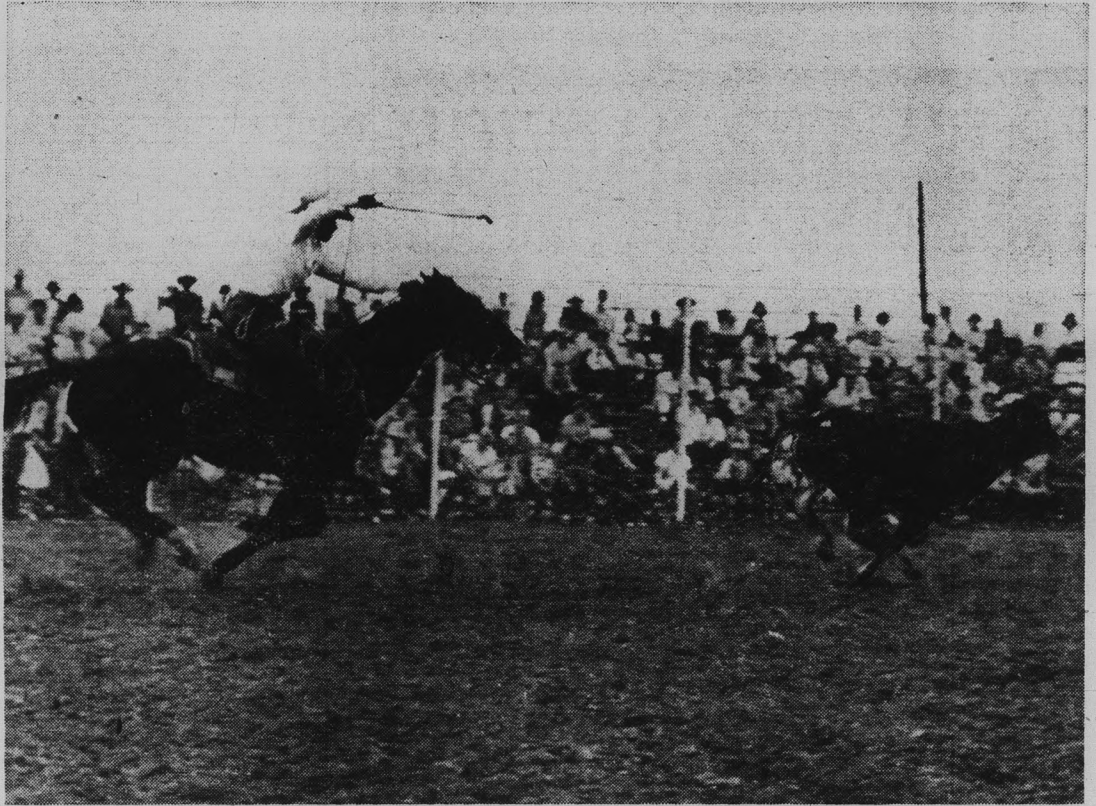
## Homecoming Activities, From Horses To Royalty, Caught In Photographs



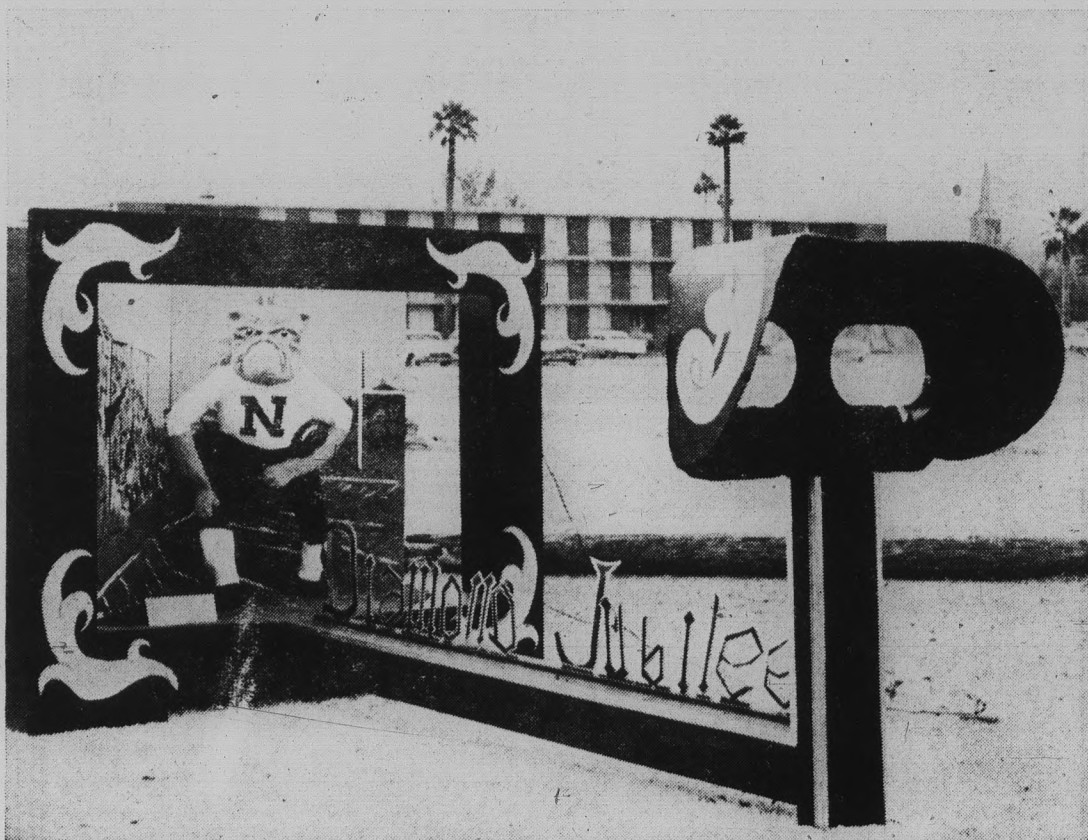
Queen Velva Richey



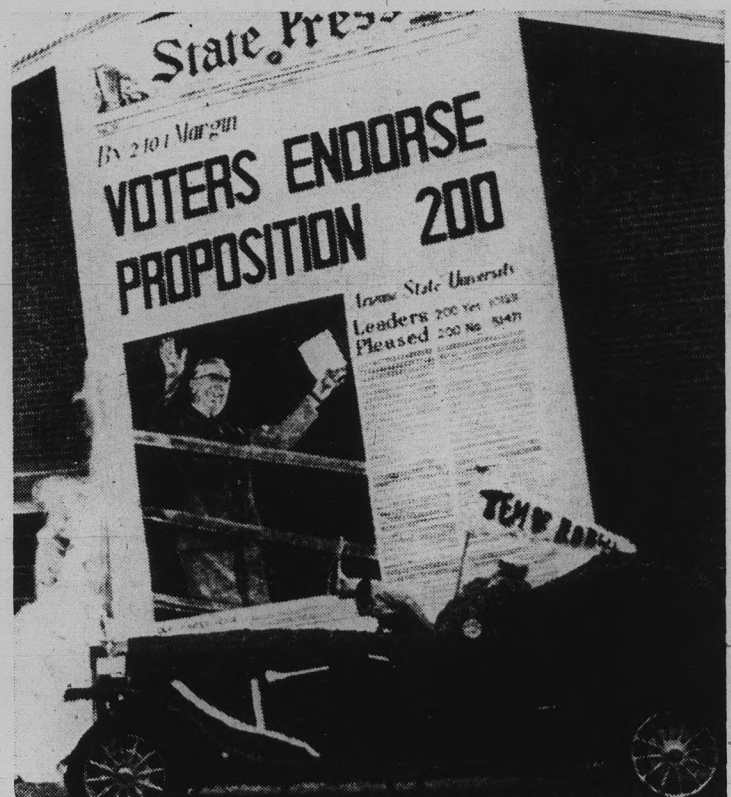
King Joe Watters



**RIDE 'IM, COWBOY! . . .** Calf dashes in fruitless flight as rider swings his lasso in the all roping style. (Dennis Rosenthal Photo)



**THE WINNAH . . .** This "Stereopticon View" constructed by Chi Omega sorority won the sweepstakes trophy in decorations competition. Viewers looked through the stereoscope at right to see a representative of the school's earliest football team. (Jim Rogers Photo)



**BIG EDITION . . .** Alpha Tau Omega fraternity used the Nov. 5, 1958 "name change" issue of the State Press for its Homecoming decorations; the display won second place in the fraternities and sororities division. Front page was drawn in paint and charcoal by Mark Sklenicka. (Jim Rogers Photo)

# Trips Abroad Slated For Summer Months

Low-cost educational travel programs to Europe, Latin America and the Far East will be offered next summer under the auspices of the U. S. National Student Association.

A non-profit service organization, NSA offers a significant contribution to better understanding among nations at a price within the financial reach of many students. Meetings with other students of similar age and background provide the student with a wider per-

ception of the international student community.

Programs are arranged allowing the participant to visit four, five, or six countries during the summer. One such 54-day program covering five countries costs \$820 including Trans-Atlantic transportation and all expenses in Europe.

For further information write: U. S. National Student Association, 2161 Shattuck Avenue, Berkeley 4, California, Dept. S-T.

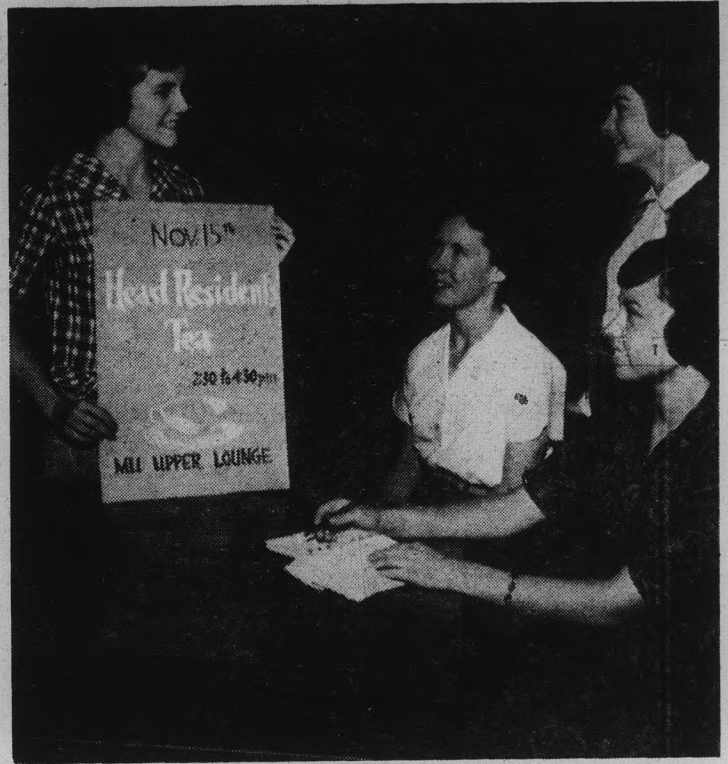
# Jazz Players Get Chance

The second annual Intercollegiate Jazz Festival will be at Georgetown University, May 6, 1961. Any jazz group may enter by submitting an application form accompanied by a tape recording. The tape need not be of professional technical quality, but should represent a sample of the groups playing ability.

The board of judges who will determine the winners will consist of Dave Brubeck, Paul Desmond, John Hammond, and George Hofer. The five finalists will be chosen from the tapes.

Prizes for the winners will include engagements at Birdland, and the Red Hill, a recording with a major company, and a scholarship for the best individual musician.

Last year the first prize went to the Charles Bell Contemporary Jazz Quartet from Carnegie Tech. They won an engagement at Birdland, a recording contract with Columbia Records, and an appearance at the Newport Jazz Festival.




MAKING PLANS . . . for the Head Residents' Tea here are (l to r) Barbara Marlowe, Marilyn Spittler, Donna Arnote and Pat Pintarell. The affair is scheduled for next Tuesday, sponsored by Associated Women Students. See story, page 7.

**A Mum For The Game . . .**

*Bobbies Flowers*

20 E. 5th St.

WO 7-2972 — WO 7-4274





## two heads are better than one

Especially when one happens to be a delectable girl-type head. Lovely heads are always attracted to male heads that use 'Vaseline' Hair Tonic — made *especially* for men who use water with their hair tonic. 'Vaseline' Hair Tonic's 100% pure grooming oil replaces oil that water removes. In the bottle and on your hair the difference is *clearly* there! Just a little does a lot!

IT'S CLEAR ♪ ♪  
IT'S CLEAN IT'S



# VASELINE HAIR TONIC

\*VASELINE\* IS A REGISTERED TRADEMARK OF CHESEBROUGH-POND'S INC.

## TEMPE DRUG

6th & Mill

★ ★ FOUNTAIN ★ ★

SIDE ENTRANCE & ANGLE PARKING ON SIXTH STREET

## SMILEY-BERGE FORD

Your Nearest Auto Dealer

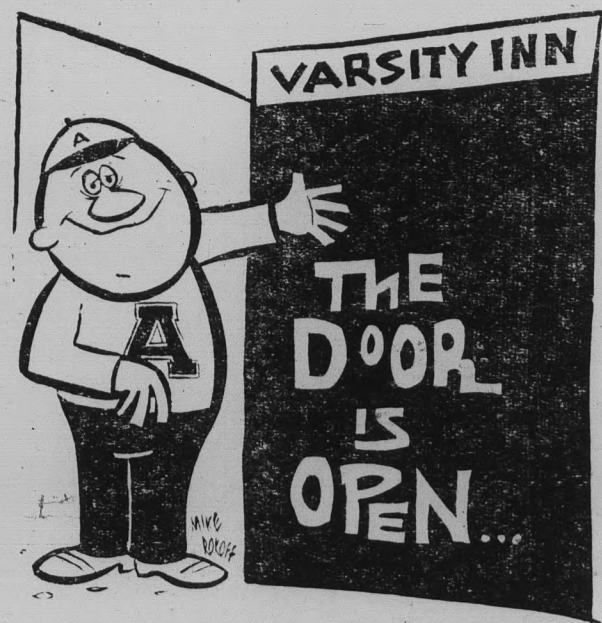
- ★ Complete Service Facilities
- ★ We Service All Makes
- ★ 7 Mechanics On Duty
- ★ Everything For Your Transportation Needs

**60 Cars - Trucks**  
From Transportation Cars  
to Thunderbirds

## SMILEY-BERGE MOTORS

Just 2 Blocks from ASU Campus

16 E. 8th St.      Tempe      WO 7-2063



TO THE ENTIRE UNIVERSITY

From Freshmen to PhD's

Evening Study Break - 8:30 to 9:30

COFFEE 5c

**TRY OUR INTERESTING  
EVENING DINNER  
MENU**

# Journey Offered

The Scandinavian Seminar, 127B East 73 Street, New York 21, N.Y., is accepting applications for the 1961-62 study program in Denmark, Finland, Norway or Sweden.

Those eligible for the nine-month program include teachers, college graduates, and college undergraduates interested in a junior-year-abroad program.

The Seminar is conducted in a completely Scandinavian environment and in the language of the country of residence. Before departure, members begin language study with records supplied by the Seminar. Language learning continues in two family stays of three to four weeks each, which are alternated during the first three months with short courses on Scandinavian history, literature, and art.

Residing at the school for six months, students take courses in the humanities and social sciences, live with a Scandinavian roommate, and participate in the life of the school.

The cost of tuition, room and board for nine months, language materials, and transportation from New York to Copenhagen is \$1480.

# AIE Hears Murray

This country may experience a dynamic, explosive, technological change within the next 10 or 15 years, predicted The Arizona Republic's new managing editor, J. Edward Murray yesterday at the day-long conference of Arizona Industrial Editors.

Fifty delegates, representing publications of Arizona's major businesses, attended the Industrial Journalism conference which was co-sponsored by the editors' group and ASU's bureau of Business Services and the department of Mass Communications.

# What The Faculty's Doing

Dr. Charles Wexler, professor of mathematics at ASU is the new director and regional representative of the 1960-61 visiting lecturer program to secondary schools in the new southwest region of Arizona, New Mexico and Utah.

The program is sponsored by the Mathematical Association of America, with the financial support of the National Science Foundation. Dr. Wexler,

former president of the southwestern section of the MAA, is the author of the textbook, "Vector Approach to Analytic Geometry," soon to be published.

An article by Dr. Richard E. Schultz, associate professor of education at ASU, appears in the current issue of Educational and Psychological Measurement, published in Richmond, Va. The article reveals

the results of a statistical study, "A Factor Analysis of Academic Achievement and Community Characteristics," which indicates that high educational achievement can be obtained in widely varying communities.

Peter K. Stein, associate professor of engineering at ASU, is executive chairman of the Western Regional Strain Gage committee and will preside at its day-long meeting today in Los Angeles.

Relax In The Atmospheric

## Jungle Room

"Home of the best pizza in the West"


- ★ Wed. Nites — SPAGHETTI SPECIAL — Spaghetti Dinner with Italian Salad, garlic bread and drink — \$1.00
- ★ Thursday Nites — PIZZA SPECIAL — Regular Pizza \$1.45, Thursday Only \$1.10 drink included — at the

**JUNGLE ROOM**  
28 East 5th Street      Tempe

**THIS WEEK'S**  
*Special Purchase*

Got The Sneezes?  
WE HAVE YOUR FAVORITE

## COLD REMEDY



**CAMPUS DRUG**  
CORNER, College and 8th, WO 7-4049

# Filters for flavor

*-finest flavor by far!*



**Tareyton**

CLASS A CIGARETTES

DUAL FILTER

THE TAREYTON RING MARKS THE REAL THING!

Tareyton has the taste—  
**Dual Filter**  
does it!

HERE'S HOW THE DUAL FILTER DOES IT:

1. It combines a unique inner filter of ACTIVATED CHARCOAL... definitely proved to make the taste of a cigarette mild and smooth...
2. with a pure white outer filter. Together they select and balance the flavor elements in the smoke. Tareyton's flavor-balance gives you the best taste of the best tobaccos.

NEW **DUAL FILTER** *Tareyton*

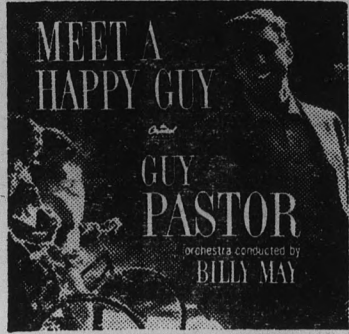
Product of The American Tobacco Company — "Tobacco is our middle name" © A. T. Co.

**KENNETH CLARK**  
**Insurance**  
COMPETITIVE PRICE  
Independent Agency  
Service  
611 Mill, Tempe, WO 7-3388

**STADIUM COFFEE SHOP & Delicatessen**

Good Things to Eat and Drink

1133 Normal Avenue  
"Across the Street From East Stadium"  
TV & RADIO  
Open 7 Days Week



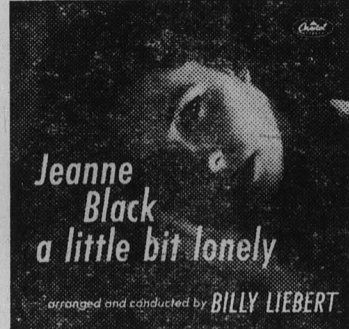
□ **GUY PASTOR.** His five-week Vegas show with father Tony went 6 months! Happy Guy in *Misty, Bewitched*, more. ST1465



□ **MAVIS RIVERS.** New Samoan singer-discovery all critics are raving over. At *Sundown, Home, Spring Is Here*, others. ST1408



□ **MARK MURPHY.** Acute beat and song senses mark swingin' Murphy in *Honeysuckle Rose*, scat *But Not for Me*, etc. ST1458



□ **JEANNE BLACK.** Songs just a bit sad by great new talent who's just a bit sensational here in her own first album. ST1513



□ **THE ELIGIBLES.** A winning combination of fresh-blended voices in *How High the Moon, Dearly Beloved*, 10 more. ST1411



□ **DWAYNE HICKMAN.** *I'm a Lover, Not a Fighter*, he admits. Many lovesongs of barefoot boy with tongue in cheek. ST1441

# LISTEN TO SOMEBODY



□ **THE SEVEN TEENS.** Brilliant young pros in 12 swing classics like *Sing Sing Sing, Cherokee* and *Little Brown Jug*. ST1424

# NEW!

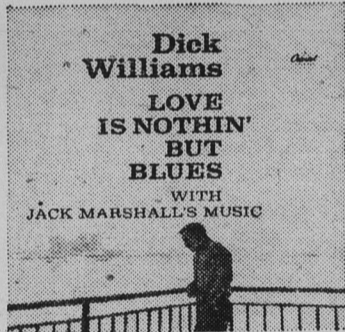
**BRIGHT NEW TALENT TOO GOOD TO MISS**



□ **JOHNNY UKULELE.** Hawaiian uke genius and rhythm. *Black and White Rag, Wedding Song, Third Man Theme*, etc. ST1425



□ **NANCY WILSON.** Something wonderful happens to you as this new star ("a real find,"—*High Fidelity*) sings. ST1440



□ **DICK WILLIAMS.** Dick puts his heart and voice into *Love Me or Leave Me, I Cried for You*, 12 bluesy songs. ST1330



□ **BILL HOLMAN.** "One of the happiest albums of the year," says jazz critic Leonard Feather; top W. Coast musicians. ST1464



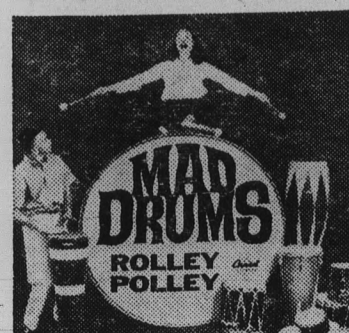
□ **TAK SHINDO.** Steaming sukiyaki of old Eastern, modern Western instruments. *String of Pearls*, swing favorites. ST1433



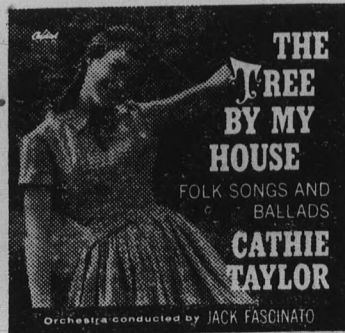
□ **SUSAN BARRETT.** Susan swings thru the U.S. in record time via *Georgia on My Mind, Manhattan*, stopovers. ST1412



□ **SUE RANEY.** Sue's smooth voice flows as rain on a window pane. *Wrap Your Troubles in Dreams, Impossible*, etc. ST1335



□ **ROLLEY POLLEY.** Antidote to tranquilizers. Bongos, congas, traps, much more. Wild mono, near-cataclysmic stereo. ST1454



□ **CATHIE TAYLOR.** Beguiling and crystal-clear voice of gifted mid-teener; calypso, sea songs, folk tunes, all kinds. ST1448

All albums in stereo and regular L.P.; omit prefix S for monophonic.



© Capitol Records, Inc.

# HILLS RECORDS

TEMPE CENTER

Open Thursdays  
Till 9 P.M.

## ART, etc.

By MIKE BENSON

In the past two weeks we have been notified by friends and friends of friends that our column has not given enough space to art, as such.

We checked; they were right.

Part of the reason was that we found nothing in particular to report; the rest of the reason is that our knowledge of music exceeds our knowledge of art. (Some would say our capacity as an art critic must be very small, indeed).

In response to this criticism, we are happy to report that the MU has two exhibitions for your "viewing pleasure."

The two trophy cases near the information desk contain ceramics, jewelry, and crafts designed and made by ASU students. Particularly worthy of note (and we admit the choice is purely subjective) are the works of the following: Lathrop Gay — rings, pin, pendant; Mary Soule — bracelet, pin; Judy Fernyhough — mosaic; Terry Livingston — wooden bowls; Barbara Bardrick — matching necklace and earrings.

The exhibits we have seen at ASU tend to prove to us that students are often far more creative and original than many of the people they learn from.

This is apparent when one walks from the trophy cases to the lower lounge. Much of the work there is from older schools, and interesting as such, but we would much prefer to see some of the more contemporary works on display once in a while.

"Saturday Night at the Met" by Reginald Marsh gave us one of the best belly-laughs we've had in many months. In the painting, Mr. Marsh makes much fun of the tuxedoed "upper crust" displaying their wealth and snobishness.

The other painting that particularly struck us was Gardner Symons' "Landscape." A snow covered winter scene, the painting glows with the warmth of sunset. The snowfall has been gentle; the trees still hold their leaves in bright autumn colors.

In the display cases are a series of small statues by the sculptor, Barye. The best of them show various animals in mortal conflict. The feeling of motion and animal savagery seems to flow from these works. (Perhaps this could be used to liken the relations between several of the nations of the world.)

### WEST TO HAWAII EAST TO EUROPE

1961 Steamship Space  
Being Booked NOW

- ★ Matson Ships
- ★ Student Sailings

All Schedules  
Available

### UNIVERSAL TRAVEL

Next to Bobbies Flowers  
18 E. 5th St. — Tempe

# Larson Speaks On Cult

"Jesus may have been a member of the Essene cult," Dr. Martin A. Larson told the Liberal Religious Students meeting Sunday evening in MU 218.

Dr. Larson, who was previewing his book, "Religion of the Occident," received his master's and doctor's degrees at the University of Michigan.

"The Essenes existed from 200 to 60 BC," Larson said. "The existence of them is confirmed by the Dead Sea Scrolls." (The Scrolls were found in 1947.)

"The Essenes predicted in 60 BC that the Messiah would appear in forty years," Larson added. "They also worked out the doctrine of exclusive salvation."

"It was from this group that the first Judas Macabee came to lead the successful revolt against the Greeks, and the Jews gained their independence for a century," Larson continued.



READY TO HEX . . . the University of Arizona football team are members of Alpha Sigma Alpha sorority, Sandy Halmer and Lynne Lawton, making voodoo dolls both for the sorority's philanthropic project and to promote football game spirit.

## Alpha Sigma Alpha To Sell Voodoo Dolls To 'Jinx' U-A

A sorority project to kill two birds with one stone will be undertaken next week.

Voodoo dolls made by Alpha Sigma Alpha members will be sold Nov. 18, 21, 22 and 23 to aid the sorority's philanthropy, Arizona retarded children; and to promote spirit for the ASU-UofA football game, which will be played Nov. 26.

Both the project and the

game between the two old rivals are annual events.

The dolls will be sold each day from 9:30 to 3:30 p.m. in front of the Quadrangle. Members have been making the objects since summer and will sell them for 25 cents.

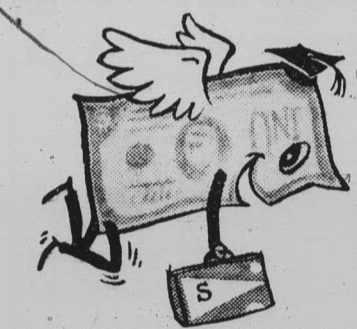
Linda Ban is general chairman of the charity drive; Loretta Padilla is publicity manager.



Stop In . . . Find Out For Yourself!!

TEMPE DAIRY QUEEN

950 MILL AVE. — TEMPE



Scholar dollars travel farther with SHERATON HOTELS

**STUDENT-FACULTY DISCOUNTS**

Save on the going prices of going places at Sheraton Hotels.

Your Sheraton card gets you special save-money rates on singles and greater savings per person when you share a room with one, two or three friends. Generous group rates arranged for athletic teams, clubs and college clans on-the-go.

Send for your Sheraton Student I.D. Card or Faculty Guest Card with credit privileges. Please tell us where you are a student or full-time faculty member when you write to:

MR. PAT GREEN  
College Relations Dept.  
Sheraton Corporation  
470 Atlantic Avenue  
Boston 10, Mass.

### GENERATORS & STARTERS

EXCHANGE

A GREAT SAVINGS OVER NEW PARTS  
MANY MORE PARTS AT A SAVINGS

**Bauer's Parts & Equipment**

221 W. MAIN, MESA WO 4-5674

TEMPE  
100 E. 5th St.  
WO 7-1651

CHANDLER  
150. N. ARIZ. AVE.  
YO 3-6625

## Security First National Bank

serving

Southern California

will have a representative on Campus

NOVEMBER 14

to discuss:

- Accelerated Management Training
- Immediate Responsibility
- Outstanding Promotional Possibilities
- Ideal Living Conditions in a Stimulating Environment.

He would like to interview Seniors and Graduate Students in Accounting, Business Administration, Economics, Finance or Agriculture.

Please make necessary arrangements at your Placement Office.

Rely on your PHARMACIST

We Give S&H Green Stamps  
**LAIRD PHARMACY**  
501 Mill  
WO 7-2922  
**Rexall DRUGS**



New in our...  
**Traditional Shop**



### Hi-V Collar Sweaters

If you're going to pull the wool over your eyes, make it one of our new Shetlands . . . Hi-V, crew or shawl. Solid tones or plaids in charcoal, Cambridge grey, pearl grey, olive or gold.

13.95 to 16.95

6-months credit plans available to students

Meet your campus representative

Bruce Hovde



**McDougal**  
cassou, ltd.

Lower level 130 North Central ALpine 3-5886



LEADERS . . . Previewing films to be shown at the newly-organized Recreation club meetings are Miss Pittman, center, and other leaders.

campus character:



BLACKSTONE TORT

Pride of the law school, Blackstone has never lost a moot trial. But there's nothing moot about his preferences in dress. He finds that when he's comfortable, he can trap a witness and sway a jury like Clarence Darrow.

So he always wears Jockey brand briefs while preparing his briefs. Exclusive Jockey tailoring gives him a bonus of comfort he gets in no other underwear. Fine Jockey combed cotton is more absorbent, smoother fitting, too.

To look your best, feel your best, take a tip from Tort. Always insist on Jockey brand briefs, \$1.25. Your campus store has them now!

COOPER'S INCORPORATED - KENOSHA, WIS.



Recreation Club Newly Organized

ASU Recreation majors have formed a professional recreation club, to provide opportunities for social and professional growth of its members.

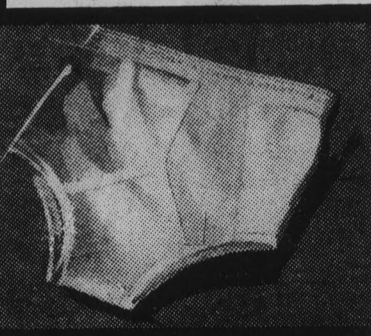
Newly-elected officers are Gary Shadle, president; Emile Jo Dawson, secretary-treasurer; and Miss Anne Pittman, sponsor.

Program plans include speakers from various areas of recreation and related fields, movies depicting special areas of concern related to leadership in the field, panel discussions, excursions and other opportunities for student leadership training.

They plan to attend the annual state meeting of the Arizona Recreation Association in Yuma, Dec. 8-10.

Club membership is open to students majoring in Recreation and related areas. Students desiring to affiliate should contact Gary Shadle or Miss Pittman.

Mothers will be guests of honor at the Phrateres Tea, 7:30 p.m. tonight in the MU upper lounge. Dr. Gene Montague of ASU's English dept., will be the guest speaker.



Orchesis Show Salutes Jubilee

The Orchesis Dance Workshop will present original student compositions in observance of the ASU Diamond Jubilee, 7:30 p.m. today.

The modern dance concert, free of charge, will begin with a series of studies without accompaniment, with and without props, and with the use of percussion instruments and pre-classic music.

A portion of the program will be devoted to a demonstration of Mary Wigman's vibratory dance technique. Miss Wigman, a pioneer of modern dance in Europe, currently maintains dance studios in West Berlin.

The Diamond Jubilee portion of the program is divided into three sections "The Changing Scene - Yesterday and Today," "Yesterday's Scene," and "The Consistent Scene."

Composers of the dances in the Diamond Jubilee section are Mary Livermore, Irene Kemp, Norma Baker, Linda DeWitt, Jean Campbell, Joyce Lipson, and Hope Heimann. Also Annie Sanchez, Toni Huff, and Patti Nestor.

Sigma Chis Spoil Walk

Sigma Chi pledges walked out with three members of the active chapter as captives, to Los Angeles over the three day Homecoming weekend.

They took Bill Bromiley, Jim Perucca, Gail Waggoner and Steve Tatum, pledge director, for a prearranged party with Sigma Chi chapters of UCLA and USC and Delta Delta Delta and Pi Beta Phi sororities.

The Sig actives, hearing of the plans, flew two members to the coast where they captured one of the pledges and ruined the walk-out attempt.

Fifteen Pledge Business Group

Fifteen new pledges were received into Delta Sigma Pi, Business honorary, Sunday.

The new pledges are Kenneth Freeman, Dan Roth, Ben Pomeroy, Joe Dvorak, Bruce Wodetzski, Donald Wolfram, Robin Weiker, Cliff Frey, Bruce Andrews, John Biava, Robert Ward, Stephen Sowers, Samuel Freedman, Phillip Kabie and Donald Poppe.

The initiation ritual and a banquet will be Nov. 19 at the Thunderbird Country Club.

New One & Two Bedroom

FURNISHED APARTMENTS

Heated Swimming Pool, Laundry Facilities

LONE PALM APARTMENTS

2108 Rural, Tempe Phone WO 7-0372

Formal Features 'Desert Starlight'

"Desert Starlight" is the theme of the annual AWS formal dance in the MU ballroom 9 p.m. to midnight Nov. 19.

Highlight of the dance will be the crowning of "Mr. Preferred."

Beta Chi Epsilon Accepts Members

Officers were elected and new members initiated by Beta Chi Epsilon, Home Economics honorary at ASU, Oct. 31.

The new officers are Patricia Murphy, state secretary; Barbara Bartlett, national first vice-president; Gail Gustafson, historian-reporter.

New members are Gail Gustafson, Janet Steward, Nancy Ehlers, Sylvia Hammond, Sue Tesner, Sandy Harsha, May Jorgensen, Lela J. Ross, Susanne Balash, Barbara B. Tejach, Roberta Agnew and Catherine G. Lauterbach.

Also Virginia Timmons, Jeanne Sarko, Jeanne Davenport, Elizabeth Ivanovich, Karen Naumann, Sue Harwell, Ralva Mitchell, Margie Zern, Carole Peiffer, Geraldine Goza, Helen Black, Donna Erbland, and Enid Yoder.

Also Gayle Sellens, Sandra Jo Stimson, Sandra Herman, Carol J. Hole, Judy Harris, Janice Kephart, Cynthia Coleman, Sharon V. Smith, Marilyn Ross, Cheryl Nevin Lorraine Dager, Mary Don Lackland, Barbara Droke, Jeanne Kilpatrick Marilyn P. Templeton, Nermin Kirdar, Mildred Caudle, Karin Moritz, Mary Lawton Wright, Jean Bell, Marjorie Watts, Jacquelin Chlebus, Mary Ann Jackson, and Doris Speer.

Preliminary voting to choose the five finalists will be today from 8 a.m. to 4 p.m. All ASU women are eligible to vote.

The list of nominees includes Mike Kreutz, Sonny Peterson, Dick Locke, Fred Rhodes, Bob Stouffer, Karl Dennison, Bob Rousseau, Dick Faust, Brian Padberg, Jim McGowan, Benny Armijo, John Gomes, Rick McDonald, Mike Tiffany, Barry Goldwater, Jr., Ron Schmietenknop, Martin Kenny and Bob Lowrey.

Dance music will be provided by the Bob Roth Octet. The Balladeers, new folk singing trio on campus, will also be featured.

"Visits always give pleasure - if not the coming, the going."

HOWARD 1961 SUMMER TOURS

Original Study Tour to the Pacific 13th Annual Year

HAWAII UNIVERSITY SUMMER SESSION 63 Days, \$549, plus \$9 tax • 6 Credits Steamship enroute, jet return to West Coast, campus dormitory residence, plus 16 major social, sightseeing, and beach functions. Waikiki residence available at adjusted rate.

JAPAN-HAWAII STUDY TOUR 82 Days, \$1892 • 9 Credits Hawaii program above combined with 21 days on field study course in Japan. Orient tour includes roundtrip jet and all first class and deluxe land arrangements.

ORIENT STUDY TOURS HAWAII - JAPAN - FORMOSA PHILIPPINES - HONG KONG 86 Days, \$1892 • 6 Credits Includes roundtrip steamship, and all first class services ashore - best hotels, all meals, sightseeing, inland sea cruise, tips, plus extensive schedule of parties, special dinners, entertainment and social events. Choice of courses; Humanities and Social Sciences; Oriental Art and Appreciation.

Apply: HOWARD TOURS, Inc. 578 Grand Ave. Oakland 10, Calif.

Your Student Directory

NOW ON SALE

ON THE ASU CAMPUS

Contains Names and Phone Numbers Of All ASU Students

Also Has Permanent Addresses - For Such Things as Xmas Cards, etc.

Your JOCKEY Dealer In Tempe



Joe Selleh

"The Place to go for Brands You Know"

7TH & MILL

Ph. WO 7-4163

BOB VIEWS SPORTS NEWS

# Wolfpack Is Hardest Yet

By **BOB EGER**  
Sports Editor



Coach Frank Kush wasn't kidding when he said that North Carolina State would be the best football team an ASU squad has ever faced.

The Wolfpack is a sounder unit than either of the two teams that have defeated the Sun Devils this year—San Jose and New Mexico State.

Coach Earle Edwards has a huge, mobile line to supplement a host of talented backs. And the Pack is two deep along that all-important forward wall.

ASU has probably outplayed every opponent in the line this year but things could change Saturday night. The Devils will be outweighed, as usual, but this time they could also be outgunned. One thing is certain, the line play will be vicious—worth looking at through binoculars instead of watching the backs all the time.

North Carolina State brings to Sun Devil Stadium one of the most talked about players in the college ranks today. He is a 6-4, 220 pound quarterback named Roman Gabriel who can throw and run with the best of 'em.

He holds six Atlantic Coast Conference passing and passing-rushing records and was the most accurate passer in the country last year according to NCAA statistics.

Here are a few quotes concerning Gabriel's ability:

"About the best looking college passer I've seen in recent years. He can do so many things that most boys aren't doing today."—Wallace Wade, Duke Coach.

"The greatest single-game performance (against Maryland last year) by any college passer I've ever seen,"—Bill McPeak, assistant coach, Washington Redskins.

"The best passer in college ball today," Earle Edwards, North Carolina State head coach.

Gabriel was named Atlantic Coast Conference Back of the Week for his performance against Wake Forest last week. It was the fourth time in seven polls this season that he has received the honor.

NCS end Jim Tapp was selected ACC Lineman of the Week for his play against Wake Forest.

Whatever the outcome, Saturday's game should be a bang-up affair with plenty of thrills.

**SMALL THINGS . . .** Just prior to game time last week more tickets had been sold for the North Carolina State game, a week away, than for the Texas Western contest which was about to start.

. . . The outcome of the Texas Western-UofA game this weekend should provide a good indication as to how good the Wildcats actually are. The Devils meet the Cats in two weeks.

# Sun Imps Crush Eastern Arizona J C With 37-7 Win

Arizona State's Sun Imps rolled to a 37-7 victory over Eastern Arizona Junior College at Thatcher Saturday.

It was the first win of the season for the ASU frosh. They had previously lost their only other contest to the University of Arizona freshmen.

After a scoreless first quarter, the Imps took command with Steve Turkovich scoring on a six yard burst after he had set up the score with a 30 yard run.

A 51 yard pass play from quarterback Chris Stetzar to end Charlie Taylor gave the Imps their second score, seconds before the half ended.

The Imps picked up one TD in the third quarter with Mitch

Siskowski scoring from two yards out to cap a 65 yard sustained drive.

ASU scored three times in the final period with John Villaverde tallying from 14 yards, Ken Barnhill and Paul Stanton combining for a 21 yard scoring pass play and Ernest DeLaine crossing the goal from

the two.

EAJC scored its only touchdown in the fourth quarter.

Arizona State has lost six of 16 fumbles this season while recovering 11 of 18 opponents fumbles.

**SCOTT WILLIAMS Mineral Company, INC.**  
440 N. SCOTTSDALE ROAD • SCOTTSDALE, ARIZONA • WH 5-0803

- MINERAL SPECIMENS • MICROSCOPES
- ULTRA VIOLET EQUIPMENT
- COLLECTING SUPPLIES
- GEMS
- BOOKS
- GEOLOGY • MINERALOGY
- JUNIOR SCIENCE

**PORTERS OF ARIZONA University Shop**

**LUXURIOUS FRENCH FLANNEL**

in three high-styled slacks

The look and tailoring of wool . . . but lighter, more comfortable and harder wearing . . . almost wrinkleless . . . 70% orlon and 30% wool . . .

**\$13.95**

Inter-continental. No-belt style for the sportscar set . . . side tabs . . . slim cut.

Pleated. Continuous waistband . . . fashion set pleats in the manner of classic styling.

Plain front. Ivy styled . . . trim tapered pants . . . new square flaps on hip pockets.

**PORTERS • TEMPE CENTER • 901 MILL AVENUE**

**Happy House** TEMPE CENTER WO 7-5353

Just Received A New Shipment of **PRINCE GARDNER** Men's and Ladies Wallets, Billfolds, French Purses, Cigarette Cases and Lighters

**WOW**

Come In . . . Try These . . .

**Good Monti Steaks**

FRIDAY NITE FISH DINNER  
ALL YOU CAN EAT . . . . . **\$1.50**

**MONTI'S "La Casa Vieja"**  
Where the steaks are incomparable, and reasonably priced.  
1st Street & Mill Ave. WO 7-2436

# Rifle Team Undefeated

ASU's men's postal rifle team remained undefeated by outshooting four schools in its last match.

The Sun Devils scored 1,429 points while Louisiana State University was runner-up with 1,374. Rice Institute, Westminster College and St. Bonaventure University followed with scores of 1,365, 1,353 and 1,353 respectively.

The Devils had previously defeated Purdue and Rose Poly by large margins.

Capt. John Luxemburger, team sponsor, has hopes that the ASU rifle team will finish among the top twenty teams in the nation.

Luxemburger stated "We have an exceptional girl's team which presently is shooting at a pace that could win top spot in the nation."

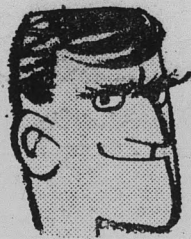
The top five shooters on the

men's team and their averages are: Joe Andrews, 286.2; James Ferris, 283.2; Roger Baker, 282.7; George Coxe, 282.0 and Robert Holtzman, 281.0.

## How ASU's Opponents Fared

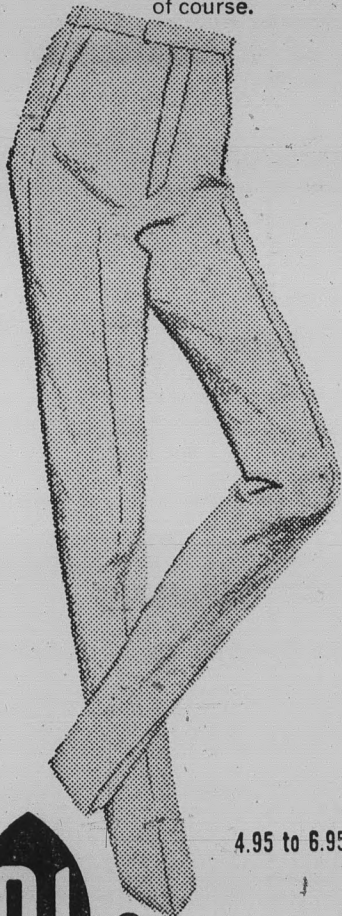
Utah 27  
 COLORADO ST. 6 (2-6)  
 WEST TEXAS 28 (3-5)  
 Trinity 0  
 Oregon State 20  
 WASHINGTON ST. 10 (3-4-1)

North Texas 26  
 HARDIN-SIMMONS 19 (0-8)  
 New Mexico 27  
 BYU 15 (2-6)  
 COP 26  
 SAN JOSE 20 (3-3)  
 NEW MEX. STATE (7-0)  
 No Game  
 ARIZONA STATE 24 (6-2)  
 TEXAS WESTERN 0  
 NORTH CAROLINA ST. 14 (6-2)  
 Wake Forest 12  
 ARIZONA 32 (4-3)  
 Idaho 3



### "BRAINS OVER BRAWN"

I broke my back to get ahead. Football, track, baseball, basketball. But nobody noticed me. Then one weary day I started wearing A-1 Rapierslacks. Instant success. Now I'm a confirmed 6-letter man. RAPIER, of course.



4.95 to 6.95



At your favorite campus shop



the traditional look in broadcloth sport shirts

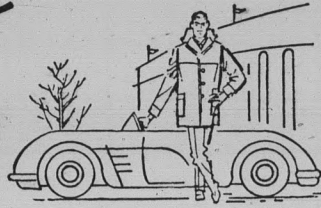
The fabric, the fashion, the feeling... all lend the look of classic authenticity to these favored sport shirts. Distinctively printed on broadcloth in handsome, muted colorings... styled with button-down collar and back pleat. Tailored in exact sleeve length. \$5.00

cum laude collection

by



## COUNTRY & CASUAL Outerwear



### NEW FALL OUTERWEAR

Warm and casual is the fall style forecast. See our jackets and car coats, many with warm fleece lining.

\$1295



### V-NECK PULLOVER

More texture, less weight! Handsome wool pullover sweater. In bold, new crowfoot cable. All colors, sizes.

By Arrow \$895

Your Arrow and A-1 Dealer



603 Mill Ave. — Tempe

We Give S&H Green Stamps

OPEN THURSDAY 9 to 9



SOPHOMORE... fullback Dornel Nelson who turned in an outstanding performance on offense against Texas Western should see even more action this week against North Carolina State.

### Sun Devil Statistics

RUSHING			
	TC	NYG	AVE.
Jones	85	539	6.2
Drake	72	403	5.6
McCarty	57	329	5.8
Freney	80	313	3.9
Nelson	47	193	4.2
Young	25	98	3.9

SCORING				
	TD	PAT	FG	PTS.
Jones	8	22	5	85
Freney	4	0	0	24
Nelson	3	0	0	18
McCarty	2	2	0	14
Drake	2	0	0	12
Rembert	2	0	0	12

PASSING			
	PA	PC	YDS.
Zuger	57	29	368
Cosner	35	13	225
Disarufino	7	2	23

RECEIVING			
	CT.	YDS.	AVE.
Lee	11	121	11.0
Rembert	9	110	12.2
Jones	5	55	11.0
R. Locke	4	90	22.5
Freney	4	46	10.6
McCarty	3	46	15.3

# Devils Eye Rugged NCS Wolfpack

## After Dumping Texas Western

By BOB JACOBSEN

"There were some good performances Saturday night, but I'm still not satisfied," stated Head Coach Frank Kush, looking back on the Sun Devils' 24-0 whitewash of Border Conference foe Texas Western.

"We have to improve both offensively and defensively and need an all-out effort this Saturday if we're going to stand a chance against a team like

North Carolina State. They have a real solid football team," he continued.

QUARTERBACK Joe Zuger, who injured his thumb against the Miners, didn't throw a forward pass the entire game because of the injury. Kush fears the worst, but Sun Devil trainer Art Dickinson figures it's nothing more than a sore thumb. Other minor ASU ailments which Dickinson believes will be healed before the clash with the Wolfpack are Ron Cosner's inflamed eye, Clay Freney's bruised leg, and Nolan Jones' charley horse.

Kush was pleased with the work of Jones, the game's leading rusher and scorer; the line work of guard Jesse Bradford and the blocking of All-American guard candidate Dick Locke on consistently successful end runs.

"They are the best team Arizona State has ever played," claimed Kush about NSC's twice-beaten Wolfpack.

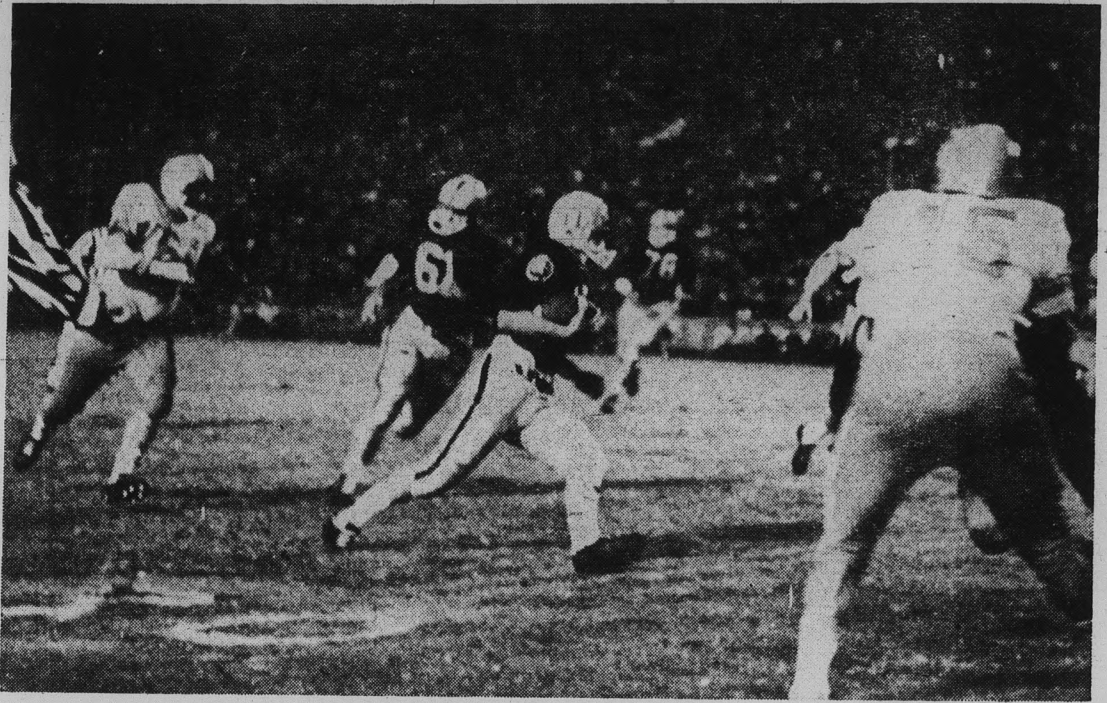
"They have a good, big quarterback in Roman Gabriel, a 270 pound all-man tackle in Dick Reynolds, and three terrific ends in Jim Tapp, John Morris, and Claude Vollmar.

GABRIEL, a 6-4, 220 pound junior, who N. C. State supporters believe is a sure-fire All-American, has passed for 854 yards on 72 completions in 128 attempts, has rushed for 105 yards, and is personally responsible for ten Wolfpack touchdowns this season.

Tapp is a terror on defense while Morris and Vollmar are the team's leading pass receivers. Morris has snared 16 while Vollmar has caught 11. Halfback Claude Gibson has nine pass receptions.

The Wolfpack employs a multiple offense from both unbalanced and balanced lines. They split their ends, use a wing formation, and throw a lot of rollout passes.

Arizona State has averaged 23.9 points per game this season while holding its opponents to 7.9 points.



GAINING . . . yardage against Texas Western is Sun Devil quarterback Ron Cosner (11). He helped engineer the Devils to a 24-0 win over Texas Western Saturday night. (Charles Hilgeman Photo).

the  
**Capri's  
Pick  
Of  
The  
Week**

ASU - 16  
NCSt. - 7

**Right or Wrong  
You Can't  
Miss  
With Our  
PIZZA'S**

16 E. 4th St. — Tempe

**JERRY SINGS  
FOLK SONGS  
6 p.m. - 9 p.m.  
Monday and Thursday**

**TURN THE TABLES ON  
THE WOLPACK . . .**

**"Blow The Horn On Gabriel"**

**SOLANO'S  
CAFE**

Why not enjoy our delicious Tacos during the game  
Special for Saturday only — 6 for \$1.19 to take out

**Serving Delicious Mexican Food  
— Food To Take Out —**

Closed Mondays  
Corner 4th & Mill      WO 7-9035      TEMPE

# Now Underway.. 2 BIG EVENTS

## TURKEY SHOOT

One Prize For Every 10 Entries  
(Turkey or CASH Awarded Nov. 23)

1.50 ENTRY FEE COVERS 2 LINES

Standings Posted Daily — Handicap

2/3 of 200 — Blue Book or Current Avg.

## 3 MAN SWEEPER

GUARANTEED

**\$500**

FOR BREAKING

1999

PLUS \$100.00 ANYTIME  
FOR 6 STRIKES IN A ROW  
IN ANY GAME

Handicap 2/3 of 200  
Entry \$2.75 Per Person



1100 Apache Blvd.

WO 7-1656