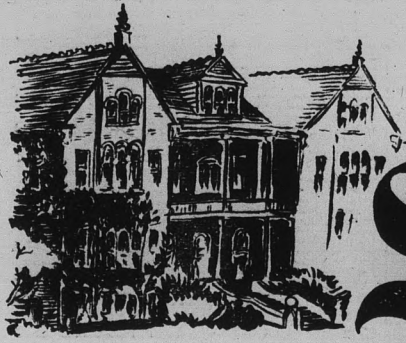


# WELCOME BACK, ALUMNI



1885

Diamond Jubilee

1960

## State Press

ARIZONA STATE UNIVERSITY



TEMPE, ARIZONA

Vol. 39

Friday, November 4, 1960

No. 14

### Alumni Events Top Homecoming Slate

# 15 Candidates Vie — Elections Today

Hundreds of ASU alumni are expected to participate this weekend in Homecoming festivities honoring graduates of the classes of 1920, '30, '40, and '50.

New activities have been planned for the Alumni, following this year's theme, "Diamond Jubilee '60."

An alumni dinner-dance at the Ramada Inn Friday night at 7 p.m. will begin the weekend of activities. Papa-Go Golf Course is the site selected for the alumni golf tournament Saturday morning. Graduates will then gather for the alumni reunion luncheon at noon in the MU banquet room, at which Senator Carl Hayden, '90, will be present.

A past student body officers' lawn party at the home of Dean Shofstall will be in the afternoon.

A special addition to this year's Homecoming program is a pre-game banquet at 5 p.m. Saturday in the MU ballroom.

Rear Admiral (Retired) William Russell White, class of 1890, will receive the Diamond of Alumni Distinction, a special award for this year, honoring ASU's oldest living graduates. Alumni Appreciation Award will be Mr. Arthur Burgher, founder of the Sun Angel Foundation. Dr. D. R. Van

Petten, '33, will receive the Alumni Service Award.

The Bulldogs, ASU's football team of 1939-1940 Border Conference champs coached by Dixie Howell, will be honored at the pre-game dinner.

An oil portrait of Lewis Neeb, ASC alumnus who passed away two years ago, will be presented to ASU by the Neeb family and twenty-five past alumni presidents will be given special recognition.

The honors banquet precedes the 8 p.m. ASU-Texas Western football game.

### Pep Rally Is Tonight

The Rally and Traditions committee is sponsoring a pep rally tonight at 8 o'clock.

The main feature of the rally, a bonfire, is to be in the lot east of Palo Verde.

The band, pom-pon girls, and cheerleaders will provide additional entertainment.

Refreshments will be served following the rally.

Diamond Jubilee Homecoming King and Queen elections are today with 10 candidates for Queen and 5 for King.

Polls on the Administration building lawn are open from 8 a.m. to 4 p.m. All students are eligible to vote for King and Queen, and identification cards will be required at the polls.

President Durham will crown the royalty at halftime of the Homecoming game and present them with their trophies.

The following candidates submitted petitions and hold at least a 2.00 cumulative index for the preceding semester.

Queen candidates are:

Linda Allison: junior, College of Education, Kappa Alpha Theta; activities (current) Angel Flight, Philadelphia secretary, Rally and Traditions committee, freshman counselor in Palo Verde hall, social chairman Kappa Alpha Theta; (previous) AWS Star Formal invitations chairman, AWS Big Sister, Greek Week steering committee, Kappa Alpha Theta scholarship.

Dee Davis: senior, Liberal Arts College, Delta Gamma;

activities (current) Delta Gamma president; (previous) past president, vice president, and secretary-treasurer Angel Flight, Fledge class president, vice president North hall, Delta Gamma treasurer, IAWS steering committee, AWS convention steering committee.

Linda Houle: senior, College of Business Administration, Kappa Delta; activities (current) ASASU secretary, Alpha Pi Epsilon secretarial honorary, Newman Club; (previous) organizations secretary, Kappa Delta assistant treasurer and education chairman, vice president McClintock A.

Linda Lecky: junior, College of Liberal Arts, Sigma Sigma Sigma; activities (current) Sigma Sigma Sigma treasurer, music chairman, homecoming chairman; (previous) Sigma Pi Sweetheart.

Patty Lowe: senior, College of Education, Chi Omega; activities (current) Philadelphia vice president; (previous) Kaydettes, Naiads.

Madge Munro: junior, College of Education, Alpha Phi; activities (current) Panhellenic rush chairman, Alpha Phi assistant pledge chairman, secretary of

homecoming steering committee; (previous) Alpha Phi standards chairman, vice president pledge class, assistant rush chairman, Coordination board, Calendar chairman, Panhellenic representative to AWS, freshman council.

Cynthia Patton: senior, College of Liberal Arts, Kappa Kappa Gamma; activities (current) pom pon girl, Kaydettes treasurer, Naiads; (previous) pledge class activities chairman.

Donna Poston: junior, Alpha Sigma; activities (current) Alpha Sigma Alpha president, Young Democrats, History club, WAA; (previous) Alpha Sigma Alpha membership director, Panhellenic council, Rally and Traditions committee, student senate.

Velva Richey: senior, College of Education, Alpha Delta Pi; activities (current) State Press special editor, AWS publicity chairman, Kaydettes president, Pi Delta Epsilon journalism honorary; (previous) AWS senator, Outstanding freshman woman, Alpha Delta Pi vice president.

Diane Rose: senior, College of Education, Gamma Phi Beta;

(Continued on Page 8)

### TV Sets In MU Election Night

Three television sets will be available in various sections of the Memorial Union on election night, Tuesday, for students interested in following the election returns.

The MU closing hour will be extended to midnight that night and the Devil's Den will be open for refreshments.

The extended hours were granted in order that students might follow the vote count on television, according to Mrs. Cecelia Scoular, MU director.

The Activities Coordination board will have a dance band on hand, and will request that AWS arrange a late night for dorm girls.

The board planned to turn the event into an "election party" for students in the Union.



CANDIDATES . . . for Homecoming Royalty are (l to r) Joe Watters, Clifford Petterson, Diane Rose, Cynthia Patton, Madge Munro, Donna Poston, Dee

Davis, Linda Allison, Linda Houle, Patty Lowe, Velva Richey, Linda Lecky, John Sumners, Dick Thomas and Darrell Franklin.

# Decorations Entering Final Stage

Thirty-two ASU organizations will be putting finishing touches on Homecoming decorations late tonight and all day tomorrow.

The organizations, including dormitories, sororities, fraternities, and special interest groups, have chosen themes ranging from "Territorial Football Champs" and "Oasis of Learning" to "A Tribute to Grady Gammage" and "Name Change."

General classification of theme is according to eras in ASU's development. Themes and eras are: 1885-1900, Special Interest groups; 1901-1920, Sor-

orities; 1921-1940, Dormitories; 1941-1960, Fraternities.

Judging of decorations will begin Friday evening following the 6 p.m. construction deadline and will continue Saturday morning. Several of the displays will be located in front of the MU, and along College Avenue and Orange Street. The remainder will be constructed at the fraternity houses and on the curve behind Palo Verde.

Those organizations participating are: Sun Devil Rodeo

club; Phrateres; MO Best A and B, West, South, North, East, McClintock A and B, Palo Verde, Hayden, Sahauro, Wilson, and Irish Halls; Lambda Delta Sigma; Sigma Sigma Sigma, Kappa Delta, Kappa Alpha Theta, Delta Gamma, Kappa Kappa Gamma, Alpha Sigma Alpha, Alpha Phi, Gamma Phi Beta, and Alpha Delta Pi sororities; Sigma Nu, Alpha Tau Omega, Phi Sigma Kappa, Lambda Chi Alpha, Alpha Epsilon Pi, Tau Kappa Epsilon, Phi Kappa Tau and Sigma Phi

Epsilon fraternities.

Judging on the basis of conformity to theme, and day and night time appearance, five judges will evaluate the homecoming decorations.

Dr. Raymond G. Studer, professor of Architecture; Dr. John Hale, professor of Art; Mrs. John Weisend, owner of the Phoenix Rene Modeling school; Dave McCutcheon, president of the Phoenix Advertising Club; and Sidney Green, free lance interior designer and set designer, will serve on the judging board.

## GE Firm Arranges Program.

A co-operative work-study program for electrical engineers, math and physics majors has been arranged with the General Electric plant in Deer Valley.

The purpose of this program is to permit selected students to work full-time during part of each year and to study for a degree during the rest of the year.

A recommendation must be submitted from a faculty member in each selected student's department. Application forms and information may be obtained from the Placement Center, which is acting coordinator of the program.

The public accounting firm of Haskins & Sells will seek accountants, Monday. Recruiters for Texas Instruments will interview students in engineering, chemistry and physics.

The Chicago Bridge & Iron Company will interview civil and mechanical engineers on Tuesday. The U.S. Naval Labs at China Lake, Corona, and Pasadena, California will offer all separate employment opportunities through campus recruiting. These federal facilities will interview physical science, engineering, aeronautics and electronics majors.

## Dance Set Saturday

"Into the Future" will be depicted in decorations at Saturday night's Homecoming dance in the MU ballroom, sponsored by the Social committee.

Music will be provided by the Bob Roth Octet; the Baladeers will entertain at intermission.

The dance will be from 10:30-12:30.

Homecoming royalty will be presented also; the King and Queen will be crowned at the football game preceding the dance.



HELPING HAND . . . Kappa Alpha Thetas, Kathy Rainey and Marilyn Luckey get a bit of digging help on their Homecoming decorations from Sigma Chi Dean Anderson. (Charlie Hilgeman Photo)

## Prize Movie Showing Twice Today

The Swedish film "The Seventh Seal," written and directed by Ingmar Bergman, will be shown today at Cosner Auditorium, 3 and 7:30 p.m.

The movie deals with a knight on his way home from the Crusades who sees traces of the black plague. The knight leaves for the Holy Land a young man full of faith, but returns in uncertainty.

A short film entitled "Muscle Beach" will also be shown.

# ANNUAL FALL BOOK SALE

## Starts Today!

AT THE

# College Bookstore

YOUR CAMPUS STORE

## Appeals Heard Tuesdays, Thursdays

Traffic appeals are being heard at 4 p.m. on Tuesdays and Thursdays in the Campus Police office.

"To be acceptable, all appeals must be filled out completely," Chuck Hahn, chairman, emphasized.

"If little things like the number of the citation being appealed are left out, there is no means of reference that the department can use in deciding a case." (The citations are filed in the Campus Police office according to number and not the name of the person cited.)

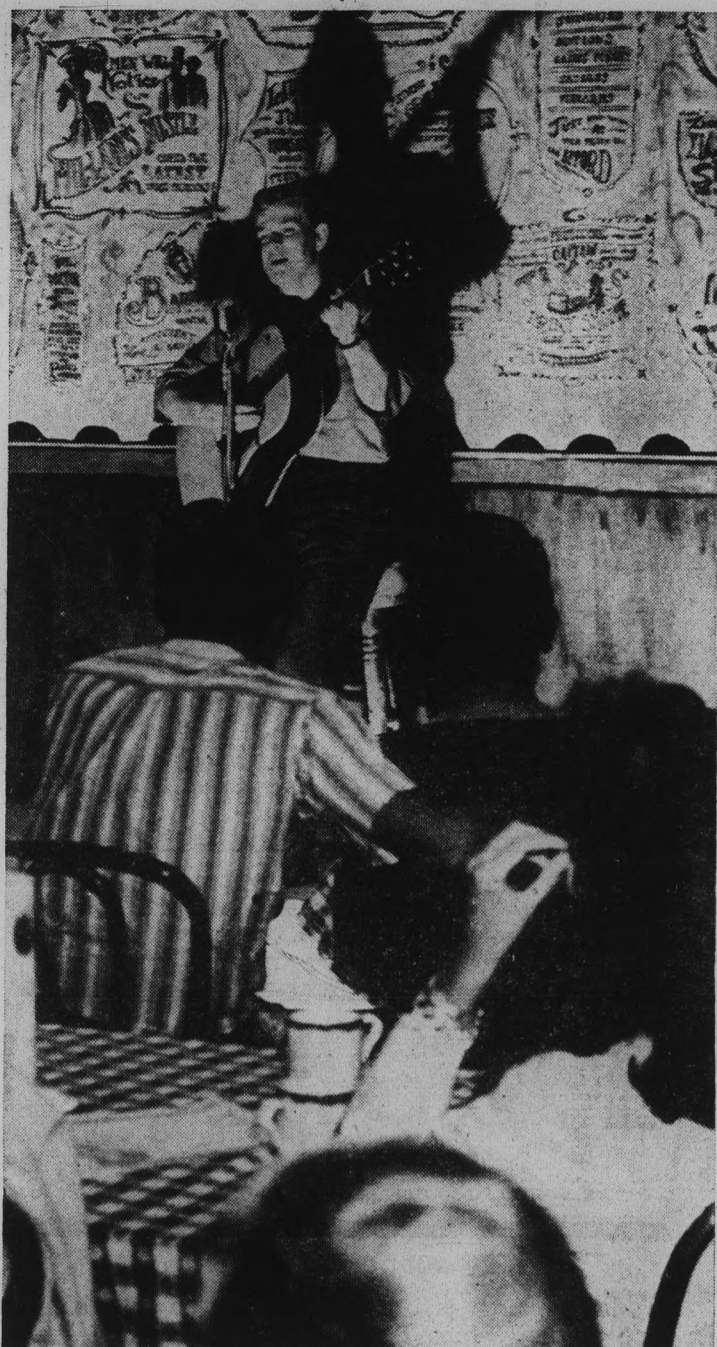
"When appellants don't appear before the board, it is to their disadvantage. In which case, the board must make a decision using only that information given on the appeal which is most often incomplete and/or not clearly stated," he concluded.

On all completely or partially disapproved appeals an explanation sheet is attached stating the reasons for the board's decision.

### Fred Elquest & Son

Everything for the Art Student

- Art Supplies
  - Picture Framing
- 703 N. 2nd St.  
Phoenix  
PHONE AL 8-2628



ESPRESSO, ETC . . . Folk Singer Dolan Ellis will make his second in a series of appearances here Sunday from 4-7 p.m. Espresso will be sold, and Ellis will entertain as well as lead group singing. The Sunday sessions are sponsored by the Social committee in Clancy's

## Saddle Up! Spirits High For Rodeo

By ALLAN McCARLEY

Yipeeeee! It's rodeo time at ASU. Yep pardner, this is western week on campus and highlighting the week's activities is the Intercollegiate Rodeo. It is sponsored by the ASU Rodeo club and will be this Saturday and Sunday at the Scottsdale Jaycee Rodeo arena.

Events will begin at 1 p.m. They are: steer wrestling, bull riding, calf roping, saddle bronc riding, ribbon roping, bareback riding and team roping. A special event of the rodeo will be one in which sorority and fraternity members will try to put pants on calves.

The rodeo will be the largest ever put on by the Sun Devils, with 10 schools competing. Schools vying for the championship will be: UofA, U of Calif., Cal Poly at Pomona, U of Nevada, Price J. C., Palo Verde J. C., Fresno State, Cal Poly at San Luis Obispo.

Queen for the rodeo is Nelda Wright, freshman from Yuma.

The Sun Devil rodeo team and the events they will participate in are: Conrad (Junior); Amabisca, club president, bull riding and all roping events; Bill Kuefer, bull riding and bull-dogging; Dean Hill, bull-dogging and all roping events; Wes Nickle, all roping events; Helkie Lasthore, saddle riding and bareback broncs and bulls; Bill Willis, alternate team member, bareback broncs and bulls; Carol Truman, calf tying and barrel racing. ASU students with their activity tickets

will be admitted free to the rodeo.

The rodeo club has just become a member of the ASASU and received an appropriation of \$4200. With this money, and with money raised by the members, the club has started providing transportation for the rodeo team to and from each Intercollegiate Rodeo.

In the spring, the club plans an Intercollegiate Horse Show, trail rides, and breakfast rides. They also have round robin roping contests at various arenas around the area.

Last year the rodeo team finished third in the Southwest region of the National Intercollegiate Rodeo Association.



NELDA WRIGHT

### Army ROTC Plans Shoot

The second annual ASU Turkey Shoot, sponsored by the Army ROTC, takes place tomorrow, Saturday and Sunday at the rifle range in the west side of Goodwin Stadium. The hours of the event are 1-10 p.m. tomorrow and 8 a.m. to midnight Saturday and Sunday.

One shooter out of every 20 will win his choice of a turkey or ham. The range will be 20 feet, and each person will get four shots.

Rifles and ammunition will be furnished, or any iron-sight 22 caliber rifle may be used.

The entrance fee is 50 cents and the proceeds will go to the ROTC rifle team fund.

Be Smart on Campus

With a Fine Imported Pipe Open Mon. & Thurs. Till 9 P.M.



And Our Own Blends of Tobaccos

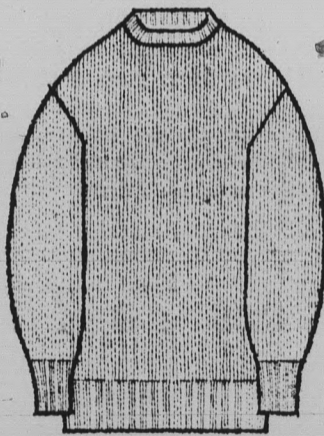
PHOENIX PIPE SHOP  
326 N. CENTRAL  
Arizona's Newest and Most Complete Pipe Shop



Just Arrived at Hanny's . . .

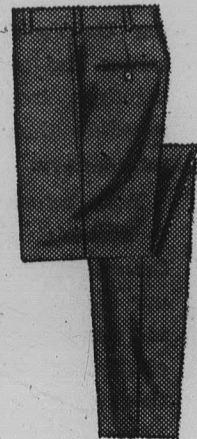
Pure Shetland Crew Neck Sweaters 13.95

This brawny wool crew neck, loomed in the Shetland isles, has rapidly become a top favorite for campus and casual wear. The proprietor has a complete stock of olive, brown heather, charcoal, oxford olive and deep brown shades.



NATURAL TAPERS . . . PLAIN WAISTED PANT 6.95

Well-informed Ivy enthusiasts will welcome this new arrival. The fabric: hopsacking. The front is pleatless; the cuffs have disappeared. The colors: black, brown, oxford olive or grey.



Hanny's  
Varsity Shop  
30 NORTH FIRST STREET

Campus Representatives • Ted Lorber • Bruce Rys • Brian Padberg

Rely on your PHARMACIST

We Give S&H Green Stamps  
LAIRD PHARMACY  
501 Mill  
Rexall DRUGS  
WO 7-2922



EDITOR-IN-CHIEF GORDON PETERSON  
 MANAGING EDITORS MICHAEL BARRETT and JACK ONG  
 SPORTS EDITOR BOB EGER  
 ORGANIZATIONS EDITOR DEANA DORMAN  
 COPY EDITOR TOM HILTON  
 ASSIGNMENT EDITORS CAROL OSMAN and LINDA WARREN  
 SPECIAL EDITORS VELVA RICHEY, MIKE BENSON, LINDA RANKIN, WARREN FIELD and GARY KLAHR



The STATE PRESS, distributed by Dale Compton, is the official campus newspaper of Arizona State University. Published each Wednesday and Friday throughout the school year, excepting holidays and entered as second class matter in the Post Office at Tempe, Arizona, under the Acts of March 3, 1879, and August 24, 1912. Subscription price, \$3.00 per school year.  
 Member: Arizona Newspapers Association, Associated Collegiate Press, and National Advertising Service, Inc.

Editorially Speaking . . .

Progress?

Diamond Jubilee—1885-1960. Classes honored—1920, '30, '40, '50. Name changes, acreage added, new buildings. There are many ways to section the growth of the Tempe Normal School of Arizona to the present (and future) Arizona State University.

But, whether you section the growth in terms of years, decades, name changes, acreage added, new buildings, or what-have-you, the division is false.

Granted, chronological and physical divisions are handy points of reference for discussion, they are valueless in terms of the over-all institution.

Every time a new student registers, or an old one graduates (or drops out), a new era for the school is begun or finished. Yet, regardless of all these changes, the school as a whole continues to progress along its destined path, with seemingly little concern about the gain or loss of a building, student or teacher.

The graduates of the honored class of 1920 will note a tremendous physical change when they visit the campus this Homecoming. Our growth is so rapid, even the class of '50 will note many additions.

But, will they see any change in the basic structure, function or operation of the old alma mater? We think not.

Tempe Normal or ASU, the school continues to have one primary function — education. This, fortunately does not change.

But, we occasionally wonder, does it progress? Do teaching methods keep up to date?

Of course, we realize, many teachers do try to keep up. With these we have no gripe. In fact, for these we have respect.

But, for the others. . .

How many teachers sound like a tape recording, still playing the same side they did in 1920, '30, '40, '50. . . How many still give the same tests. . .

But, don't lay it all on the faculty. The students haven't changed much either. No slam intended to the grads of long ago, but concepts do change. Yet, some students still seek only the "three R's," nothing more.

For its Diamond Jubilee celebration, ASU has chosen the slogan, "A Tradition of Growth — A Commitment to Quality." We think it's a fine slogan, but it presents a challenge that's hard to live up to.

Yes, grads, you'll see an amazing amount of physical change at this the fastest-growing university we know—but how much other change will you see?



We owe it to our children Clarence, to stand firm on Civil Rights and the protection of the society against the radical opinion of the masses. . .



By GORDON PETERSON

Today's paper is the biggest one so far this year. In case anybody hasn't realized, it's a special issue in honor of the alumni. The front section (this one) is a regular State Press. The back section is a "special," for Homecoming features only.

If the Friday dateline on this paper confuses you, here's the reason:

Under postal law, for the State Press to be mailed as second class matter (and save money), it must be published on predetermined days (i.e. Wednesday and Friday). We can legally skip one of these days, as for holidays, etc. But, we are not supposed to publish under other datelines. Thus, even though the State Press is usually printed Tuesday and Thursday night, it carries the Wednesday and Friday datelines.

Anyway, when a story in this issue says something like "elections today," it means Thursday, even though its under a Friday dateline. Confusing, ain't it?

Three TV sets in the MU, with the building and Den remaining open until midnight, are scheduled for the big elections Tuesday night. Real good deal — we only hope the thing is decided by midnight. Seriously, though, we think the MU powers were really on the ball to arrange for THREE sets. Congrats and Thanks, and we even take back some of the mean things we said when no TV set was available for the "Great Debate."



By JACK ONG

Homecoming: football, pretty girls, Christmas . . . wasn't there a time (in high school, most likely) when you didn't know exactly what homecoming was?

It was the hardest football game of the season, or when the prettiest gal and handsomest guy were selected, or Christmas holidays!

Everything but welcoming back past graduates of the school. Checking around, we found that until college, homecoming festivities meant all sorts of things. Actually, we suppose, a little of everything is included on the college level: the queen and king, a good football game ahead, even a holiday tomorrow!

But mainly, we're saying "Howdy again" to our alumni.

On the homecoming agenda at numerous high schools, some ASU'ers remember, are parades, rallies, special football games, and better meals at the cafeteria.

But not at ASU! (Oops, no offense intended . . .)

**SMARTIES** — Homecoming to us is taken literally: back again. We elect our royalty today, get special corsages for our dates Saturday, but it's the "old timers" (from the first graduates of Tempe Normal to last year's diploma-grabbers) who are really honored.

This year, we're spotlighting the classes of 1920, '30, '40 and '50. But, all of you, it's good to see you on campus. We realize the old place isn't "like it used to be," but know you'll be tolerant.

Good to be back? Well, we're with you!

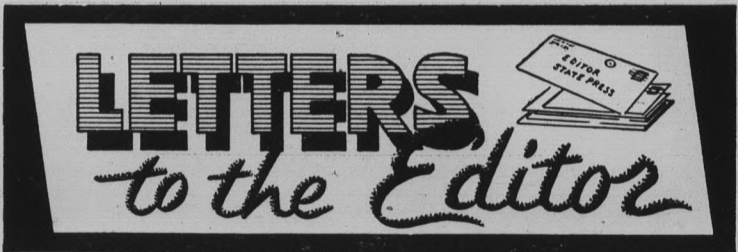
**MORE ESPRESSO** — Dolan Ellis will do a repeat show Sunday in Clancy's from 4 to 7 p.m. Espresso will be sold. It's a keen idea, if we must say so. Friendly atmosphere, hostesses, group singing: good way to spend a few hours relaxing.

The program is being spearheaded by the ASASU Social committee.

**PLAN AHEAD** — We wish the UofA's Senior Day committee and our own would get together from now on and schedule their events on different days.

Both schools were planning to host high school seniors last Saturday until we postponed our date to the 12th. To top it all, Band Day is usually held in conjunction with Senior Day; this conclave was not reset. The result was natural conflict. Too bad. . .

**AFTER-THOUGHT** — "One too many sips before the game usually means one too many feet at the dance afterwards" . . .



Letters To The Editor

To the Editor:

Even we, the off-campus, married, business students, that have to earn a living while trying to earn an education, enjoy reading the campus news and views, expressed in the State Press.

However, there are many students like myself, that have classes on publication days beginning at 7:40 and not ending until 11:30 a.m. This leaves only a few minutes with which to run to the car, grab a bite to eat, and travel to work by noon. The earlier to work the earlier home to do the other chores required in this type of life.

Therefore, it would be highly appreciated if you could see fit to place a State Press Distribution Box at the rear entrance of the B.A. building.

Winded Hope-To-Be-Reader, Robert E. Miller

To the Editor:

Honorable Mention To the Football Team

You may have lost the game against NMSU last Saturday, but you won your spurs. Your supremacy as a team showed up in everything but the scoreboard.

In answer to Ron Cosner's query, "What do we have to do to win?" I would answer . . . play, Ron, play, it's just a matter of time."

Congratulations men on a tremendous effort.

"Not in the clamor of the crowded street  
 Not in the shouts and plaudits of the throne,  
 But in ourselves, are triumph and defeat."  
 —Henry W. Longfellow

Ken H. Harrison

To the Editor:

In the past there has been much to say about our lack of school spirit. Some of it has been constructive criticism, but the majority has just been criticism. Well one of them has paid off, because I believe we have the best school spirit in years. I for one would like this to continue. One way, is to keep moving forward. Because — you either go forward or backwards — you never stand still. So to keep moving forward, we must think of new and better ways to bring out the spirit that is here and wasting, only to be used correctly. This could be done by suggestions from the student body

on what they think would help.

The suggestions would then be screened and the best used.

Some new yells have been used during the last home games that I think are good. The "Whistle-Boom," as one. But I have found it hard to whistle very loud or long. Did you have this trouble also? If so, I would like to suggest we all buy a small whistle and take it to the game this Saturday and see if we will get a better effect.

One way to see if this is any good, is to try it. You know we play the "OTHER" school in a few weeks and we need something new for that game.

Kendall Bennett

**Carl Ritter**  
**ORCHESTRAS**  
 Professional Musicians  
 For All Occasions  
 —Trios To Big Bands—  
**SCOTTSDALE**  
 WH 5-1671  
 (Federal & State Licensed)

**Typewriter**  
**Repairs**  
*Special Rates of Students*  
*Free Pickup & Delivery*  
**TOWN & COUNTRY**  
**Typewriter Service**  
 601 W. Main WO 4-3431



**On Campus** with **Max Shulman**  
*(Author of "I Was a Teen-age Dwarf," "The Many Loves of Dobie Gillis," etc.)*

**THE PARTY WEEKEND: ITS CAUSE AND CURE**

With the season of party weekends almost upon us, my mail of late has been flooded with queries from young inmates of women's colleges wishing to know how one conducts one's self when one has invited a young gentleman for a weekend, so let us today take up this burning issue.

Well, my dear girls, the first thing to remember is that your young gentleman is far from home and frightened. Put him at his ease. You might, for instance, surprise him by having his mother sitting in a rocker on the station platform when he gets off the train.

Next, what kind of corsage should you send your young gentleman? Well, my beloved maidens, orchids are always acceptable. So, indeed, are phlox and delphinium. In fact, most any flora will serve. Do try, however, to avoid carnivorous plants.

If you find, my esteemed fillies, that your local florist has run out of stock, do not be dismayed. Make a corsage out of paper. But pick good, stiff, durable paper—twenty dollar bills, for example.

Remember at all times, my fond wenches, to show your young gentleman courtesy and consideration. Open doors for him, walk on the traffic side of the path, assist him to the punch bowl, zip his parka, light his Marlboros. (What, you ask, if he doesn't smoke Marlboros? Ridiculous, my precious nymphs! Of course, he smokes Marlboros! Don't you? Don't I? Doesn't everybody who knows a hawk from a handsaw? What other cigarette gives you such a lot to like? Such easy-drawing filtration? Such unfiltered taste? Such soft pack or flip-top box? No other, my sweet minxes, no other. Marlboro stands alone, and any man worthy of you, my estimable damsels, is bound to be a Marlboro man.)



*Surprise him when he gets off the train...*

If you will follow the simple instructions stated above, my good lasses, you will find that you have turned your young gentleman into a fast and fervent admirer. There is nothing quite like a party weekend to promote romance. I am in mind of a party weekend some years ago at Miss Pomfritt's Seminary for well-born females in West Linotype, Ohio. Serafina Sigafos, a sophomore at this institution, majoring in napkin folding, sent an invitation to a young man named Fafnir Valve, a junior at the Joyce Kilmer School of Forestry, majoring in sap and boles. Serafina had been afe for Fafnir since high school, but Fafnir preferred a girl named Gelia Fleshwound, the high school drum majorette who once threw a baton so high she impaled a south-bound mallard.

Anyhow, Serafina sent an invitation to Fafnir, and he came, and she showered him with kindness and cuff links, and then he went away, and Serafina sat anxiously by the mailbox, wondering whether she would ever hear from him again. Sure enough, two weeks later she got a letter: "Dear Serafina, Can you let me have fifty bucks? Yours, Fafnir."

Whimpering with ecstasy, she ran to the bank and withdrew the money and mailed it to him. From then on, she got the same request every week, and as a result, she became very well acquainted with Ralph T. Involute, teller of the West Linotype Bank and Trust Co., and their friendship ripened into love, and today they are happily married and live in Stamen, Oregon, where Ralph is in the extruded molasses game and Serafina is a hydrant.

*Every weekend is a party weekend with Marlboros—or Marlboro's unfiltered companion cigarette—mild, flavorful Philip Morris. Try the newest Philip Morris—the sensational king-size Commander. Have a Commander—welcome aboard!*

**French Author, Andre Maurois, Gives Mundane Observations On "Art And Life"**

By DAWN LANDER

"Why is real life not full enough to satisfy man? What do we get from art that life does not give?" questioned Andre Maurois, world renowned author and historian, speaking here Monday night.

Maurois, most noted for his biographies, is now 75 and still writing. He gave his own observations on "Art and Life."

"Why do men attach such importance to the reproduction of objects and actions which can be observed in the real world? We can see real flowers and trees and yet we go to a museum to look at a painting," he said.

Art replaces action, he observed. What can you do when you cannot have something you want? Imagine it, advised the writer.

"Art satisfies our desires through imagination. Artists

create to imagine what life refuses," said Maurois.

Yet people well adjusted can enjoy art, therefore it must offer more. The writer asked "Why do we see in the imaginary world more than in the world we can see, when the world we can see is far more beautiful?"

Maurois said the feeling of beauty gives the feeling of being part of a well-ordered world. Men and women who observe the real world cannot keep it in mind with peace for it is always changing. In real life one is always worried and uneasy, unable to understand people, hate, love, self.

"Why do we not find in ourselves the unity, lacking in the universe? Often it all looks like an absurd nightmare. We yearn for an ordered, peaceful, predictable life. Such a world is a world of art," the Frenchman asserted.

There are storms in music, storms in sound, yet we are never frightened for we know music will obey in the end, it is ordered.

The author continued with his example, "Music has symmetry, reassuring to the human mind; it makes anticipation possible. It removes disturbing aspects of the universe and allows us to foresee what happens. It is easier to understand than nature, for nature very seldom offers such intentional pleasure."

Actual life has no clear meaning, Maurois observed. Art is nature seen and ordered by the artist's mind and therefore made clearly intelligible and intentional to another man's mind.

"One can imagine abstract type of beauty, which is not always intelligible. Yet it gives an idea of a human mind—an

abstract image," he said.

Art must also show something of the chaos, the writer asserted, saying, "There must be folly in beauty, for beauty is unity plus folly."

"The worst enemy of peace of mind is imagination," he said. "Man imagines fear in the future and regret for what might have been in the past."

"Why do we pay to see fear, hate, passion—things which in real life we would try to avoid and forget we go to see on a screen," Maurois said.

He explained that the way to appease the imagination is to give attention to objects which can no longer be thought of and on which no action can be taken.

"Even the most fearful drama can be restful to the mind for at last we are spectators, not actors in life. Art supplies the union between life and peace," stated the author.

"We have eyes but do not see, ears but do not hear, hearts but do not feel. Who can give us back the world we have lost?" Maurois questioned.

"We wait for artists to discover beauty for us," he said. The artist looks for the deep meaning of life, helps us to see, helps us to sense aspects which otherwise remain unseen. "The great painter recreates nature, points out the things we never see," the writer told the audience.

"Is it dangerous to escape from the real world into the world of art, to find refuge in orderliness and beauty?" Maurois asked. Going on — "Will it mean a detachment from our duties, a shrinking of responsibility or will we come back more courageous to face life?"

Maurois defended art, saying people return more ready for the world of action as, "Great works of art equal high places of the mind making us happier and stronger."

"Art plays a part in the life of man, both important and intriguing," he concluded.

**Fair Display Prepared**

ASU will have a display at the State Fair, tomorrow through Nov. 13, for the first time in history.

The display will contain a telestory, with colored slides of the campus, a display of books written by ASU faculty, pictures and drawings of the new buildings, a photo elasticity display from the engineering department, a display of ASU's planned TV programs and a display from the Bureau of the Business Services. Other displays of campus activities are being planned. Diamond Jubilee editions of the State Press will be distributed.

**Homecoming Decoration PROBLEMS?**

WE HAVE EVERYTHING TO MAKE YOUR DECORATIONS A BIG SUCCESS

- Corrugated Paper
- Glitter
- Glitter Glue
- Fluorescent Paint
- Crepe Paper
- Mat Board
- Fluorescent Boards
- Banner Paper
- Fluorescent Paper and Spray
- Cut-Out Letters

WO 7-4482



Art and Craft SUPPLIES

IN THE TEMPE CENTER

**KENNETH CLARK Insurance**

COMPETITIVE PRICE Independent Agency Service

611 Mill, Tempe, WO 7-3388

**Bunch's Watch Shoppe**

Where Discounts Are Real

Phone WO 7-3221 609 MILL — TEMPE

# Four Hands On One Piano Music Feature On Monday

A form of musical art which flourished in the times of Mozart and Schubert will be revived when two internationally-known Viennese pianists appear in a program of music-for-four-hands at one piano Monday night.

Paul Badura-Skoda and Joerg Demus, each an outstanding concert pianist, will combine their artistry in an ASU concert and lecture series program at 8:15 p.m. in the Memorial Union.

The concert will open with three Schubert compositions, "Marche Caracteristique in C

Major," "Grand Rondeau in A Major," and "Fantasy in F Minor."

Following intermission, the pianists will perform Mozart's "Andante con Variazioni in G Major," the Hindesmith "Sonata in E for Four Hands," and Bizet's "Jeux d'Enfants."

General admission tickets at \$2 may be obtained at the door on the evening of the concert in the MU ballroom. Activity cards or season tickets may be presented for admission.

The current revival of interest in the art of four-hand piano playing began four years ago following the release of a

series of recordings made by Badura-Skoda and Demus.

The recordings and some joint concert appearances were so well received that the pianists decided to forego individual performances for two seasons to present the treasury of four-hand compositions.

Demus and Badura-Skoda have been acclaimed in sold-out triumphs in Vienna and other European capitals, in New York, Washington, Chicago, Los Angeles and other American cities. The artists are available on more than one hundred Westminster records.

# ASU Women To Vote For 'Mr. Preferred' 8 a.m. - 4 p.m. Wednesday

All ASU women are eligible to vote for "Mr. Preferred," Wednesday, 8 a.m.-4 p.m. Activity cards will be required.

"Mr. Preferred" is chosen each year in conjunction with the annual AWS Star Formal, scheduled this year for Nov. 19 in the MU ballroom.

All campus organizations were given an opportunity to nominate a candidate for the title.

Nominees for the honor and the organizations they represent include: Mike Kreutz, Alpha Delta Pi; Sonny Peter-

son, Kappa Alpha Theta; Dick Locke, Kappa Kappa Gamma; Fred Rhodes, Delta Gamma; Bob Stouffer, Chi Omega; Karl Dennison, Kappa Delta; Bob Rousseau, East Hall; Dick Faust, Sigma Phi Epsilon; Brian Padberg, Phi Delta Theta; Jim McGowan, McClintock B; Benny Armijo, Wilson Hall; John Gomes, North Hall; Rick McDonald, Alpha Tau Omega; Mike Tiffany, Delta Sigma Phi; Barry Goldwater, Jr., Phrateres; Ron Schmenknoff, Alpha Phi; Martin Kenny, Lambda Chi Alpha; and Bob Lowrey, Gam-mage Hall.

Five finalists will be chosen from this group to be voted upon by women students when they purchase their tickets for the Star Formal. The winner will be crowned at the dance.

Linda Lowry is chairman of the contest.

## Closed Sessions Court Question

ASASU Senate Speaker Les Miller asked the Student Court to decide whether senate sessions can be closed to ASASU students.

In a letter to Chief Justice Fred Koory, Miller asked for a ruling on the constitutionality of a senate rule, proposed by the Rules committee, which would permit a majority vote of the senate to resolve itself into executive session and bar the public.

Miller referred the court to the section of the constitution which provides: "Senate meetings shall be opened to all members of Associated Students."

Miller said he would disregard the rule if the court ruled it unconstitutional. He said it was his opinion that the rule conflicted with the constitution.

## Free Movies, Art Displays, Discussions Are Cultural Affairs Committee Projects

By SEL ERDER

Free movies in Cosner Auditorium every week and the numerous art displays in the MU lower lounge are only two examples of how the ASU Cultural Affairs committee promotes and stimulates awareness and interest in the various arts. The committee arranges for discussions by people who are authorities on poetry, literature, music, art, foreign affairs and drama.

The committee consists of fifteen members, which include Mrs. Cecilia Scoular, staff advisor; Dr. Philip Nelson, faculty advisor; and thirteen students. The acting chairman is Mike Craig.

There are eight sub-committees with membership varying

from four to twenty. They are: Views & Previews, Reception, Art, Music, Theatre, Movies, Tours, and Box Office.

For the first time this year the Cultural Affairs committee is sponsoring a Pops Concert by ASU's own orchestra. The committee is trying to get someone from Hollywood to discuss the movie "Ben Hur." A project to establish a President's Box of 30 reserved seats for Concert and Lyceum series has been approved. The ASASU president, officers, members of the Cultural Affairs committee, and guests of Karl Dennison are to be seated in the President's Box.

The Cultural Affairs committee arranges for students to rent art reproductions of well-known artists for \$1 a semester. "We are about the only university in the Southwest with this 'print rental' system," said Mrs. Scoular. The committee sponsors guided tours of art shows at ASU and in the valley. Chinese paper gods, and contemporary ceramics, which presently are being displayed in the MU lower lounge, are arranged by the Cultural Affairs committee.

The committee is also in charge of receptions given in the MU upper lounge after every event sponsored by Concert and Lyceum series.

Annual Vesper services before Christmas vacation are planned by the music sub-committee. Also, this sub-committee is responsible for music from 11:30 to 1:30 every day in the MU lower lounge.

A trip to Nogales to see bull-fights, a visit to Grand Canyon

and maybe one to Disneyland are among the plans for this year.

The theatre sub-committee arranges for reduced prices on tickets at theatres and plays in the area. It also arranges transportation from the ASU campus.

## Bulletin Board Changes Hands

The bulletin board at the corner of College and Orange will be taken over by the Calendar committee.

The MU board passed the motion with the stipulation that the committee uses timely decorations.

## Objection Voiced To Seat Saving

The Executive Council voted Monday to ask students not to save seats at ASU football games.

Executive Manager Dick Finley told the council that Frank Rispoli, graduate manager, had received complaints from a state official about students saving seats at the games. The official wrote Rispoli and ASU President G. H. Durham, that he and his wife had been denied seats in the student section on Parent's Day.



Daily decisions plague everyone. But when they have to do with a future career, they're really a problem.

If your indecisions fall in this area, you might try looking into the advantages of a career in life insurance sales, leading to sales management. We're looking for young men with initiative, young men who want job opportunities that will grow with them. And we're equipped to start you on your training program now, while you're still in school.

Just call our office, or write for the free booklet, "Career Opportunities"

CONTACT

**LOUIST. CHANEY**

30 E. 5th St. Tempe  
WO 7-1634

**PROVIDENT MUTUAL**  
Life Insurance Company  
of Philadelphia

## Proposition 100 Gets Sanction Of ACA, AAUW

The Arizona College Association has endorsed Proposition 100, the referendum for constitutional amendment which would permit the employment of non-citizens as faculty at the universities and state college.

The proposition, which will be placed before Arizona voters in the November general election, was endorsed by members of the group's council and executive committee during a meeting Saturday at ASU.

The Arizona State Divisions of the American Association of University Women and University Professors have also endorsed the proposition.

**WELCOME BACK  
OLD GRADS!**

from your  
**COLLEGE  
BOOKSTORE**

**MINERAL SPECIMENS - MICROSCOPES**

- ULTRA VIOLET EQUIPMENT
- COLLECTING SUPPLIES
- GEMS
- BOOKS
- GEOLOGY-MINERALOGY
- JUNIOR SCIENCE

**SCOTT WILLIAMS**  
Mineral Company, INC.  
440 N. SCOTTSDALE ROAD • SCOTTSDALE, ARIZONA • WH 5-0803

Now Appearing In Person

# Dolan Ellis

One of America's Foremost Folk Singers

★ ★ ★ ★

• Dining • Dancing • Entertainment

Dance To The Music Of

## AL OVEREND

For Reservations Call Leonard — AM 4-1712  
No Cover Charge — \$1.00 min. per Person

Ralph E. Staggs

# Embers

THEATRE RESTAURANT  
East Camelback at 24th Street

# 30 Pershing Rifle Leaders To Convene On Campus

Thirty leaders of Pershing Rifles, national military honorary, will meet Saturday in the Memorial Union for a 10th Regimental assembly.

The delegates represent six colleges and 347 Pershing Riflemen.

Purpose of the assembly is

## Richard Bell Attends Meeting

Richard Bell, head of ASU's Radio-TV Bureau, attended the National Association of Educational Broadcasters, National Education TV Center and the west coast meeting of National Association of Broadcasters in San Francisco last week.

Prof. Bell said ASU will become a member of the NETV Center when the ASU educational TV station begins broadcasting in late November.

two fold. First, to organize the regiment, and, second, to acquaint the leaders with the policies and standards of the newly-installed 10th Regimental Headquarters at ASU.

Highlights of the assembly will include an informal luncheon, business meetings, and a presentation of an itinerary of the following year's program by the nine hosting members of the 10th Regimental Headquarters staff.

The six attending schools are: ASU, New Mexico State, Texas Western College, University of California at Santa Barbara, San Jose State College, and the University of San Francisco.

Chairman for the convention is Cadet Lt. Col. Gary Shoemaker, regimental commander. Heading the convention planning committee is Tom Wadham, operations officer for the 10th Regiment.

# AS Aggies Leave Today To Compete

ASU's livestock judging team will leave this morning to compete in the Golden Spike National Livestock Show's annual collegiate judging contest.

The contest will be at Ogden, Utah, tomorrow morning. Teams representing about 12 of the larger western colleges and universities are expected to enter the competition according to ASU team coach, R. D. Rasmussen, assistant professor of Animal Husbandry.

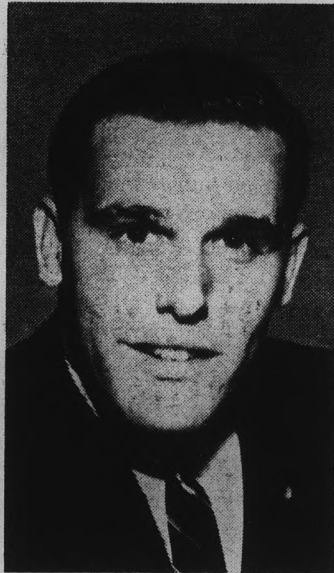
Students interested in the uncommon supernatural may find some of their questions answered at the Math club meeting Wednesday, 7:30 p.m. in the Physical Sciences auditorium. Charles Lustfield, graduate of the University of Illinois, will speak on "The Mysteries of Logic."

## Personality Of The Week —

# Donald Wolfram Is Active Student

By ALLAN (Mac) McCARLEY

Don Wolfram has been at ASU for two years and has more activities than most students have in four. Don is a sophomore majoring in Economics and one of his most important activities at the pre-



DON WOLFRAM

awards committee. On Parents' Day, he was the M.C. for the parents banquet.

Don was co-chairman of the AMS service awards banquet, took an active part in planning Orientation Week, was a Big Brother and attended the Payson Leadership Workshop. Don is also active in fraternity life, acting as the assistant social chairman of his fraternity, Phi Delta Theta.

And on top of this, Don is the co-campaign manager for Newton Frishberg, running for the state senate from District No. 26, and campaigns daily for Mr. Frishberg. All this and classwork too!

When he first came to ASU, Don said he was pleased to find many students interested in the national political scene. "I've had a chance to work with some of these students in several local campaigns and because of their interest I feel they will be community leaders in the future. I wish more students had an active interest in national politics," he said.

sent time is the vice chairmanship of the committee to support voluntary ROTC. But that is just the beginning of his activities!

Don is the chairman of the Rules committee and the parliamentarian for Off-Campus Men. He is a member of the election board, and chairman of the Quarterback club which shows color films of the away football games to the student body. We also find Don acting as the chairman of the AMS service

## College, Orange May Be Closed

A proposal to close College Avenue and Orange Street during school hours is being discussed by the Interhall Council.

"It is hoped this will alleviate ASU's traffic-pedestrian congestion," said Keith Renelt, Interhall Council vice president at Wednesday's council meeting.

A proposal to seek student support for the plan was reported at the meeting by Renelt.

## Arizona Editors Examine Policy

Arizona Industrial Editors will examine management policy and its interpretation during the fourth annual conference today.

All sessions, except the luncheon, will be in the Business Administration building.

The day-long meeting starts at 9 a.m. with keynote speaker James Douglas, first vice president of the International Council of Industrial Editors, speaking on, "How Management Interprets Policy."

## FLIGHT INSTRUCTION

At Special Rates For College People  
A Private License is a Must in Modern Business  
AMOS  
FLIGHT OPERATORS  
Don Amos - Class of '56  
Ph. BR 5-7291 - Sky Harbor

Make  
**HOMECOMING**  
Complete . . .  
Drop In For  
Some Excellent Mexican Food  
**CHICO'S**  
RESTAURANT\*  
FINE MEXICAN FOOD  
1120 East Apache Blvd. — Tempe  
\*Air conditioned of course

**DAIRY QUEEN**  
Tastes Better!  
Stop In . . .  
Find Out  
For Yourself!!  
**TEMPE DAIRY QUEEN**  
950 MILL AVE. — TEMPE

# Have a real cigarette—have a CAMEL

"For real taste, nothing like a Camel!"  
*Orin Murray*  
FIELD SURVEY ENGINEER,  
GLEN CANYON DAM, ARIZONA  
**The best tobacco makes the best smoke!**  
R. J. Reynolds Tobacco Company, Winston-Salem, N. C.

Come In . . . Try These . . .  
**Good Monti Steaks**  
FRIDAY NITE FISH DINNER  
ALL YOU CAN EAT . . . . . **\$1.50**  
**MONTI'S "La Casa Vieja"**  
Where the steaks are incomparable, and reasonably priced.  
1st Street & Mill Ave. **WO 7-2436**

# All Staff Members Resign From UC 'Daily Californian'

BERKELEY — Editors of all campus publications at the University of California resigned Sunday night in protest over new control measures.

Fifty-five staff members including business managers and editors of the daily paper, literary, humor, engineers' magazines and the yearbook walked off the campus and immediately began publication of an independent off-campus paper.

The campus argument arose Friday between the Associated Students Executive committee and nine senior editors of the "Daily Californian." The committee had tried to remove editor Dan Silver and his staff.

The student government committee then voted a change of by-laws putting campus editorial jobs under its supervision. Under the old rules, the senior editorial board nominated editors.

Silver, 19, of Berkeley, resigned along with the others when the by-laws act was passed.

Silver's editorial stand endorsing a candidate in a school election was one of the committee's complaints.

A "we resign" issue explaining the editor's viewpoints was published Monday.

The "Daily Californian" published the next day. So did the "Independent Californian," a new rival of the Associated Students of the University of California organ, edited by Silver, and distributed at the campus gates. The new paper is being financed by ads and donations.

In telephone conversations with Ex-DC Editor Dan Silver

and ASUC President George Link, the "State Press" was able to discover additional facts clarifying the situation.

"The staff resignation was unconditional. We are not going back! I'm sorry the whole mess happened, but I'm glad and proud that we took the position that we did," Silver said.

"This is absolutely inaccurate," Link claimed. "Both the story which appeared in the San Francisco Chronicle and several statements made by Silver are extremely slanted." (see above)

Link claimed that only five members of other ASUC publications tendered their resignations.

### EDITORIALIZING

"The Daily Cal's support for SLATE (a collegiate political organization) member Mike Tiger, was comparative to the straw that broke that camel's back," said Link. He added that the Executive Council had been receiving complaints "for a long time" concerning editorializing in DC pages.

Link said that the Executive Council never actually made any changes in the by-laws, nor did they introduce impeachment charges against Silver.

### NEW STAFF

After the resignations, the new DC began publication with an estimated 300 volunteers serving as staff. One member of the Hearst family was reported as writing news, and many football players are writing sports.

### EDITOR PROTESTS

"We're going to blast the student government at Cal," said Mort Saltzman, editor-in-

chief of the UCLA "Daily Bruin," to a "State Press" reporter in Los Angeles.

The "we" is most of the college papers in California, Saltzman indicated. A massive condemnation of the acts of the Cal student government begins this week in these papers," he indicated.

Saltzman, president of the Sigma Delta Chi (professional journalism society) chapter at UCLA, criticized the behavior of Silver: "I believe the walk-out was inadvisable and immature because it achieves nothing except a possible egocentric satisfaction."

"But nevertheless, they acted objectively and responsibly under the existing regulations, but the student government tried to usurp the authority of the student press," he added.

"They got sneaky and tried to kick the editor out after passing some new regulation that it was illegal to support any campus candidate — an 'ex post facto' sort of thing. Silver and his staff stood for principal and walked out," the editor added.

"Both men and women wear blue jeans, but the over-all effect isn't the same." — Austin Farley, "The Bulletin," Kansas State Teachers College.

## ASU Court Rules On Voting Issue

The ASASU Student Supreme Court unanimously ruled the ASASU first vice president and secretary may relinquish their chairs to vote and/or speak in the senate.

The decision reversed the ruling of the ASASU Senate Rules committee.

The three reasons given for the new decision include:

1) According to Article IV, Sec. 1A, of the ASASU constitution, the first vice president and secretary of ASASU are ex-officio members of the senate.

2) According to Article III of the ASASU constitution, the ASASU first vice president and secretary are elected by the student body as a whole and are, therefore, primarily responsible to the student body.

3) Robert's "Rules of Order Revised" states that if an ex-officio member of a society (in this case, the ASASU Senate) isn't under the authority of that society, he shall have all rights and privileges, including the right to vote, of that society but shall not be required to meet the obligations of the society. (Chief Justice Fred Koory feels that this interpretation of ex-officio has been consistent throughout the ASASU constitution.)

### More About—

## Royalty Elections

(Continued from Page 1)

activities (current) Gamma Phi Beta standards chairman and rush chairman, pom pon team, Kappa Delta Pi education honorary; (previous) Spur, Kaydettes president, Gamma Phi Beta vice president, student senator, Pleiades, Phidelphia, Orchesis, academic scholarship, rally and traditions committee.

King candidates are:

Darrell Franklin: senior, College of Education, Phi Delta Theta; activities (current) Phi Delta Theta president, IFC; (previous) Arnold Air Society, advanced AFROTC, student NEA president, junior class council representative.

Clifford "Sonny" Peterson: junior, College of Business Administration, Phi Sigma Kappa, transfer from Santa Monica Junior College.

John Summers: senior, College of Applied Arts and Sciences, Alpha Tau Omega; ac-

tivities (current) ASASU activities vice president, Blue Key, Parents' Day chairman, Concert Choir manager; (previous) social committee, dance committee chairman.

Dick Thomas: senior, College of Business Administration, Delta Sigma Phi; activities (current) Delta Sigma Phi president, Blue Key; (previous) AMS secretary, IFC representative, ASASU executive council, vice president and secretary of Delta Sigma Phi, Parents' Day committee, Greek Week committee.

Joe Watters: junior, College of Business Administration, Sigma Chi; activities (current) Sigma Chi social chairman; (previous) Sigma Chi secretary, outstanding intramural award, committee, Rally and Traditions committee.

"All suckers for highballs don't play on baseball teams."

## GENERATORS & STARTERS

EXCHANGE

A GREAT SAVINGS OVER NEW PARTS  
MANY MORE PARTS AT A SAVINGS

### Bauer's Parts & Equipment

221 W. MAIN, MESA WO 4-5674

TEMPE

100 E. 5th St.  
WO 7-1651

CHANDLER

150. N. ARIZ. AVE.  
YO 3-6625

## Drop It In Our Lap!

.... Your Publicity

MIKE ROKOFF  
STUDIOS

POSTERS  
BANNERS

PROGRAMS  
CARTOONS

CONTACT JEFF  
WO 7-0596

# Martha's

## For Homecoming

.... and the special social activities on the campus, we have just the right date or party dress.

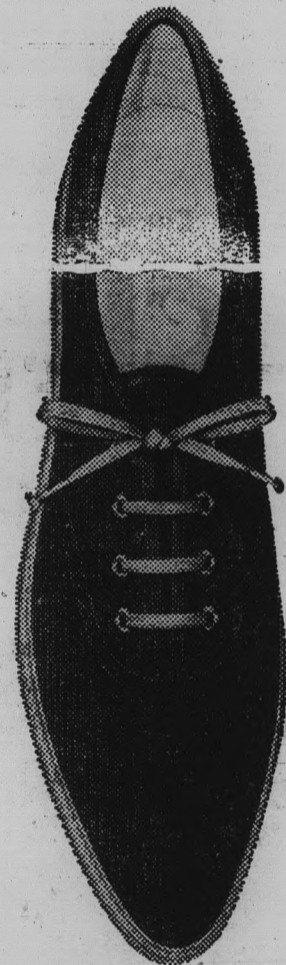
NEW STYLES

NEW COLORS

### Martha's Wedding Shop

OPEN MONDAY AND THURSDAY NIGHTS 'TIL 9  
307 East Camelback Road AM 6-8415

# ON TO GALLENKAMP'S FOR NEW WASHABLE CORDUROY SCATS



GallenKamp's Scats are the most! But for everything — gym, casual wear, sports or play. Long-wearing, washable uppers. Springy, molded white rubber crepe soles. Built-in arch cushion and air cushion insole.

FREE INITIALS.

# 299

Guaranteed by Good Housekeeping

## GallenKamp's

more miles to a GallenKamp

IN THE TEMPE CENTER

### New Publisher Talks To Press

Clinton D. McKinnon, publisher of the "Arizona Daily Journal," will give a progress report on the new statewide daily paper and discuss its editorial policies at today's meeting of the ASU Men's Press club.

McKinnon is president of the Arizona Broadcasting Company (KVOA-TV, Tucson) and is a former editor-publisher of the Los Angeles Daily News.

The meeting, in MU 209, 1:30 p.m., is open to all ASU journalism students.

A question and answer period will follow.

### GREEK TO ME—

## Delta Chis Sell Flowers; Homecoming Teas Planned

Members and pledges of Delta Chi are selling Homecoming mums for Saturday night's game.

Pledges of Sigma Sigma Sigma are planning the annual Homecoming Alumni Tea to be Saturday in Palo Verde Hall at 2 p.m.

Zee Chapman is chairman of Alpha Sigma Alpha's tea for mothers and alumni planned for Saturday in the sorority

chapter room at 1:30 p.m.

Alpha Tau Omegas will celebrate the end of Homecoming work at their hay ride tonight.

Susan Walmsley was named Gamma Phi Beta's Outstanding Pledge at a luncheon following initiation Saturday.

Judy Hartsough has pledged Alpha Phi.

Phi Alpha of Sigma Alpha Epsilon will be washing cars at Petty's Union Gas Station, Saturday. Price is \$1.

New Phi Sigma Kappa pledges are Jim Dewell, Jim Finlay, Randy Wright, Gerry Del Conte, Chris Evans, Bill Tate, Charlie Roberts and Criss Evans.

The Gamma Phi Beta pledge class will give a breakfast for their actives tomorrow morning.

Carole Angius, not Lesley

Luhman as we printed, is Kappa Kappa Gamma's new assistant pledge trainer. Sorry!

Kappa Alpha Theta's newest pledge is JoAnne Gunderson.

Sandra Luhrs was pledged to Kappa Kappa Gamma.

Carol Arney announced her engagement to Jack Leavitt, Phi Delta Theta, Monday night at an Alpha Delta Pi candle passing ceremony.

Kasol Johnson, Alpha Phi, is pinned to Ron Tankersly, Delta Sigma Phi.

Marilyn Dickman is pinned to Chuck Barrows, Phi Sigma Kappa, and Bev Searcy, Gamma Phi Beta, is pinned to Walt Gifford, also a Phi Sig.

Phi Alpha Jim Givans has given his pin to Karen Quam, Alpha Omicron Pi at the UofA. This was announced at a "formal" flashlight passing ceremony.

## Fraternity Celebrations Scheduled

ASU fraternities will welcome alums this weekend with a variety of luncheons, dinners, open houses, and after game dances. These events will conclude a week of building house decorations.

Alpha Epsilon Pi alums and members will enjoy a buffet supper before the game at the house and then return for a party afterwards.

Members of Alpha Tau Omega are planning an open house for alums and family beginning at 2 p.m. followed by dinner at the house.

Delta Chi will host their alumni at their house following the game.

Delta Sigma Phi will have an alumni luncheon at noon, then prepare for 300 expected dinner guests at the house. After the game, the Delta Sigs and their dates will have a dance at the Camelback Inn.

Lambda Chi Alpha members are hosting an alumni dinner Friday night at their house and are having a luncheon for parents and alumni on Saturday.

Pi Kappa Alpha is holding open house Saturday afternoon. Sigma Chi's are hoping to celebrate a victory with a party after the game.

A bus will take members and guests of Sigma Nu to the game and then to the San Marcus Inn for a party following dinner at their house.


Sigma Phi Epsilon will have a dance at the Feed Bag in Mesa following the game.

Tau Kappa Epsilon is having an alumni-active baseball game Saturday afternoon followed by a banquet at 5 p.m. at the Golden Drumstick.


Phi Sigma Kappa members and guests will have dinner at their house and a party at the Valley Ho following the game.

Phi Alpha of Sigma Alpha Epsilon is planning a party in Phoenix following the game.

**A Mum For The Game . . .**

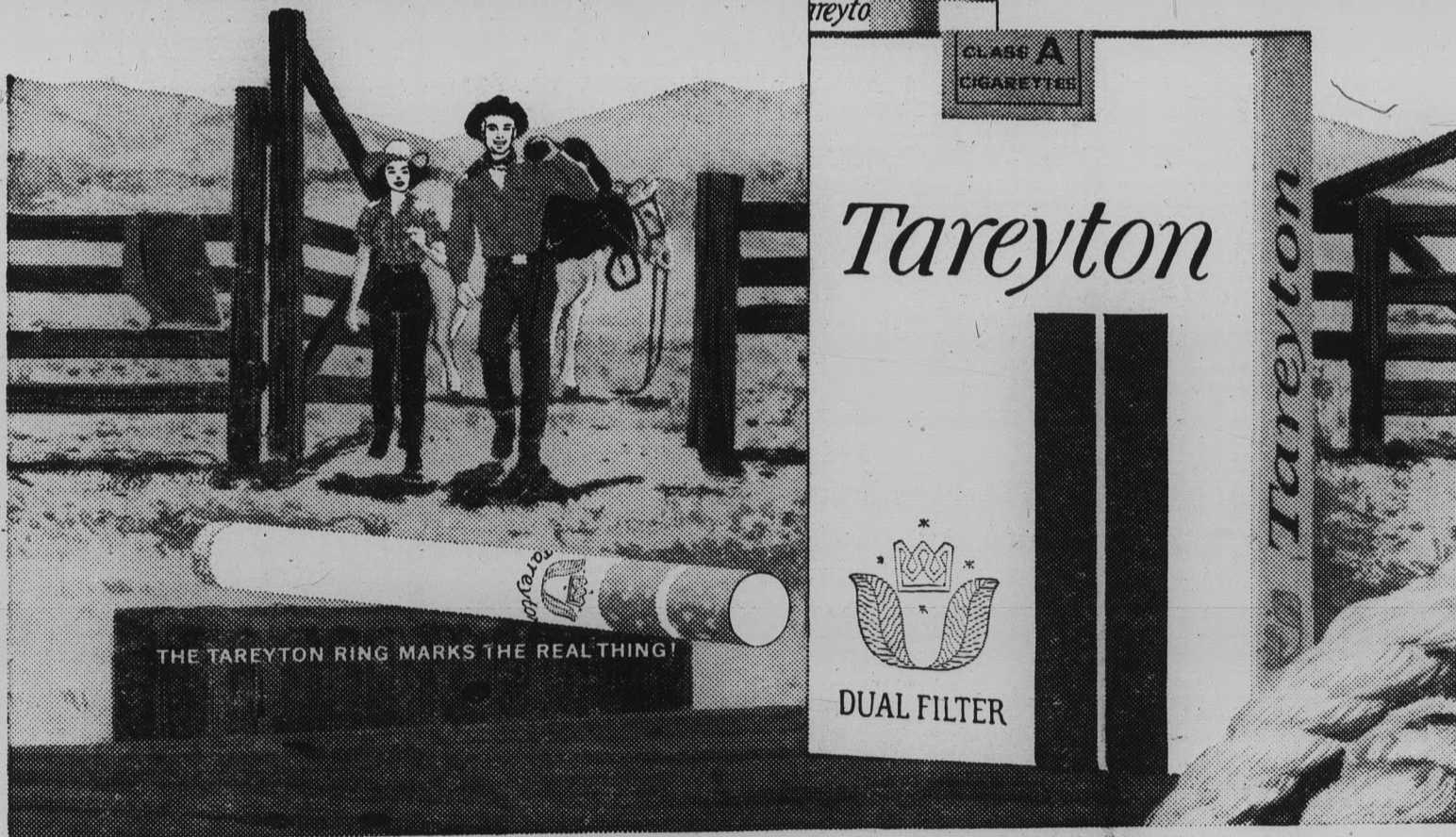


**Bobbies Flowers**  
20 E. 5th St.  
WO 7-2972 — WO 7-4274

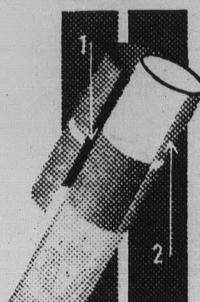


# Filters for flavor

*—finest flavor by far!*



Tareyton has the taste—  
**Dual Filter does it!**



Here's how the DUAL FILTER DOES IT:

1. It combines a unique inner filter of ACTIVATED CHARCOAL . . . definitely proved to make the taste of a cigarette mild and smooth . . .
2. with a pure white outer filter. Together they select and balance the flavor elements in the smoke. Tareyton's flavor-balance gives you the best taste of the best tobaccos.

NEW DUAL FILTER **Tareyton**

Product of The American Tobacco Company — "Tobacco is our middle name" © A T Co.

Inter-fraternity Council will meet today at 4 p.m. in the Senate Chambers.

Dolan Ellis will sing Sunday in the second of a series of expresso sessions at Clancy's, 4-7 p.m. Ellis is a Valley folk singer who won recognition at Portofino's in Scottsdale.

**THEATRE TEMPE**  
STARTS TONITE  
BOXOFFICE OPEN 6:30  
SHOW AT 7:00

**ROD TAYLOR**  
IN  
"THE TIME MACHINE"

— CO-FEATURE —  
**RYO IKEBE**  
IN  
"BATTLE IN OUTER SPACE"

# Past A - State Athletes Honored

By NORDY JENSEN

One highlight of Homecoming Week will be the honoring of the 1939 and 1940 Bulldog football teams at half-time of Saturday's game against Texas Western.

In this Diamond Jubilee year, the State Press is honoring, in addition to the '39 and '40 football teams, all athletic teams of the years 1950, 1940, 1930 and 1920.

### BC CHAMPS

The honored alumni of the 1939 and 1940 gridiron teams carved out two Border Conference championships plus playing in two Sun Bowl games. The 1939 team was undefeated in BC play and held its first five opponents scoreless until Texas Mines (now Texas Western) broke the spell in a 27-7 loss to Coach Millard "Dixie" Howell's Bulldogs.

A jarring offense led by fullback Wayne "Ripper" Pitts, now Director of Athletics at Phoenix Central High, tallied 109 points in the first five games before Texas Mines scored. At the season's end Arizona State had scored 212 points to 49 for the opponents. At the completion of the 8-2 season, the Bulldogs battled famed Catholic University of Washington, D.C., to a scoreless tie at the Sun Bowl in El Paso, Texas.

Four A-Stater's won all-conference first team honors. Halfback Joe Hernandez and guard Al Sanserino, who now live in California, co-captain Noble Riggs, and Pitts were named. Riggs, a guard in 1939, is now a colonel in the U.S. Army at the Pentagon in Washington, D.C.

A 17-0 loss to Hardin-Simmons University in 1940 marred an otherwise perfect record in regular season play. In the Bulldogs' second consecutive Sun Bowl game, Western Reserve University of Cleveland, Ohio, toppled Arizona State, 26-13.

Again Pitts led the Bulldog offense which rolled up 2,448 yards rushing to 990 for the op-

ponents. Hernandez and Sanserino stood out on the 1940 team. Other star performers were halfbacks Hascall Henshaw and Bill Davis, now athletic directors at Tempe Union and Phoenix Union high schools, respectively. Quarterbacking the powerful Bulldog offense was Walt Ruth, who resides in Yuma. Erd Sam Andrews, Hayden, and center Ray Green, Phoenix, were among the standouts.

### '49-'50 DEVILS

A trip to the Salad Bowl in Phoenix was awarded the 1949-50 Sun Devil football team. Coach Ed Doherty's charges compiled a 7-2 record during the season but lost to Xavier of Ohio, 33-21, in the bowl game. Doherty, named BC "coach of the year" in 1950, is presently head coach at Xavier.

Halfback Wilford "Whizzer" White, the leading ground gainer in the BC during the 1949 season, was selected to the all-conference first team. Team captain and quarterback Cecil Coleman and center Bill Gosselin made second team honors. Coleman is now head coach at Fresno State College.

The 1949-50 basketball team, led by all-conference center, Wade Oliver, finished third in the BC and was 12-13 overall. Oliver, now of Sunnyslope, led the conference in scoring with 303 points and a 18.9 average.

The 1950 baseball team broke even with a 10-10 record, while the track team won the Border Conference meet. Bill Miller, Merle Wackerbarth, Ben Jewell, Don Hildreth and White led the cindermen to victory in 1950.

While the 1939 football team was winning, the 1939-40 basketball team had a rough season, winning only 7 with 11 losses. A two point margin was the difference in four games. Floyd "Bud" Arnett, a second BC team selection, captained the squad. Arnett also pitched for Coach Bill Kajikawa's baseball team, which managed only

two victories, one over the University of Arizona.

Coach Rudy Lavik's 1940 sophomore-laden track team placed second in the conference. Team members were ASU's present tennis coach, Marlowe Keith, Arnett, and Gerald "Wimpy" Jones, now Phoenix Union basketball coach.

### GRIDDERS WINLESS

The 1929-30 Bulldog football

team was winless in six contests, scoring only 13 points all season. Dick Finley captained the squad and ASU gymnastics coach, Norris Steverson, was a team member.

In basketball, the Bulldogs posted a 3-10 record. Coach Aaron McCreary's cagers were led by Oliver "Turk" Anderson, Bob Smith, athlete of the year, and Norman "Cow" Clements.

His cindermen placed second in the conference meet, taking seven of 15 first places.

The 1919-20 football team lost two contests, to the UofA, 53-0, and Phoenix High School, 45-3, and football was discontinued until 1922. There are no records on track or baseball competition.

The basketball squad defeated Tempe Union High, 29-28, for Arizona State's only victory in five games during the 1919-20 season.



AGGIE . . . tailback Bob Gaiters takes a spill after picking up slight yardage against ASU. The Devils contained Gaiters, national rushing and scoring leader, but couldn't cope with teammate Pervis Atkins who ran a kickoff back 98 yards and rambled 70 yards on one play from scrimmage.

(Charles Hilgeman Photo)

## Frosh Gridders Play Saturday

Arizona State's freshman footballers travel to Thatcher for a game with Eastern Arizona Junior College Saturday afternoon at 2 p.m.

The Sun Imps will be trying for their first win of the season. They were defeated by the UofA Wildkittens, 26-13, in their only other game.

For Your  
**SHINING  
HOURS**  
Under The  
Sun . . .



KORET  
of  
CALIFORNIA

*Celia's*  
**FASHIONS**  
Tempe - Mesa

## Who ASU's Opponents Play

Utah at CSU (2-5)	SAN JOSE (3-2) at COP
Trinity at WEST TEXAS (2-5)	NEW MEXICO ST. (7-0) no game
Oregon St. at WASHINGTON ST. (3-3-1)	TEXAS WESTERN (4-1-1) at ASU (5-2)
HARDIN-SIMMONS (0-7) at North Texas	N. CAROLINA ST. (5-2) at Wake Forest
New Mexico at BYU (2-5)	

## TEMPE DRUG

6th & MILL

★ ★ FOUNTAIN ★ ★  
SIDE ENTRANCE & ANGLE PARKING  
ON SIXTH STREET

## Jimmy Robinson's

U niversity

D rive

Phone  
WO 7-3141

for the

**FASTEST CARRYOUT  
Service in Tempe**

Corner Apache & Rural • TEMPE  
5 Minutes after your call your order will be ready  
at one of our curb stands

Wheel Aligning - Balancing  
Auto Glass Installation

## TEMPE BODY SHOP

SPECIALIZED COLLISION SERVICE

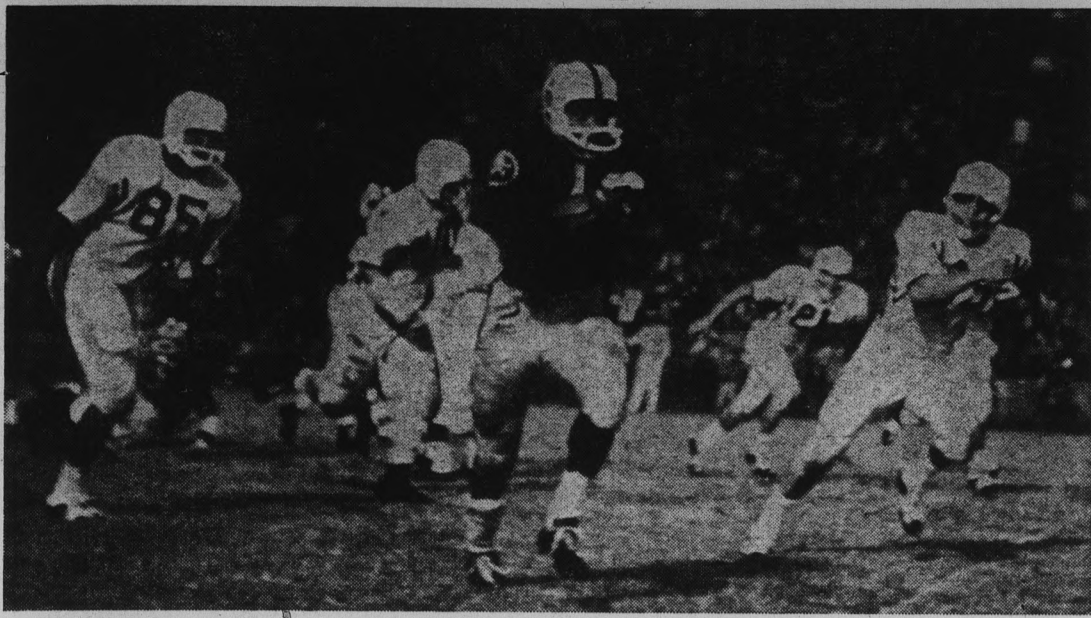
I. W. "Pete" Null - Phone WO 7-4013

11 East Fourth Street  
TEMPE

WELCOME BACK  
**OLD GRADS!**

from your

**COLLEGE  
BOOKSTORE**



ROLLIN' . . . Nolan Jones scoots for a 15-yard gain against New Mexico State Saturday night. Jones contributed three extra points and a field goal but the Devils succumbed to the Aggies, 27-24. (Charles Hilgeman Photo)

# Sun Devils Praised In Spite Of Defeat

By BOB JACOBSEN

"Our strategy worked well but a couple of bad breaks hurt us," exclaimed gloomy Head Coach Frank Kush after his Sun Devils suffered their second straight defeat Saturday night at the hands of the unbeaten New Mexico State Aggies, 27-24.

"We ran 80 plays to their 57

but we still got beat," Kush stated. ASU's ball control was exceptional as it took the opening kick-off and drove 92 yards for its initial counter, consuming half the period with the drive.

The Sun Devils contained Aggie stalwart Bob Gaiters, the nation's leading ball carrier and scorer. After he fumbled

early in the last stanza on the NMSU 15-yard line Head Coach Warren Woodson replaced him at tailback, moving Pervis Atkins over from wing-back. Atkins then proceeded to set up the Aggies' final score with a 70-yard scamper to the Sun Devils' twenty-five yard line. Moments before, Atkins had brought the Aggies within four points with a 98-yard kick-off return.

ASU's Nolan Jones, not exceptionally fast for a half-back, caught Atkins, a 9.6 sprinter, from behind to stop him from going the distance on his 70 yard run from scrimmage.

Kush praised the junior half-back for his hustle on defense and his ball carrying and stated that he would be back in the starting left halfback slot this week against Texas Western.

He also singled out several members of the Demon unit for outstanding games — especially fullback Dornel Nelson, center Steve Slanoc and tackle Mike Krofchik. Kush also cited the play of quarterbacks Joe Zuger and Ron Cosner.

Aggie Coach Warren Woodson said the Devils had "the best line we've faced all season."

ASU's Sun Devils have averaged 29,125 fans for four home games this season.

## BOB VIEWS SPORTS NEWS

### Good Strategy Against NMS

By BOB EGER  
Sports Editor



Coach Frank Kush dealt with the New Mexico State Aggies Saturday in the only way they could effectively be dealt with—and it almost worked.

He realized the hopelessness of trying to contain the Aggie offense and set about to polish the Devils' offensive attack in hopes of matching the Aggies with a potent offense of his own.

The Devils more than matched the Aggies offensively. Arizona State emerged superior in every offensive department but a pair of costly fumbles and a 98 yard touchdown run on a kickoff return by the Aggies' Pervis Atkins spelled the difference.

From the opening play from scrimmage, Kush's strategy was apparent — run as many plays as possible and run the Aggies into the ground. The Devil and Demon units were substituted freely for each other keeping constant pressure on the Aggies with their lack of depth.

These tactics allowed Arizona State to roll up 404 yards total offense while holding NMS, the nation's total offense leader, to 257. And it wasn't the Devil defense which held the Aggies to those 257 yards. It was the offense which controlled the ball as Kush predicted.

It was a brilliant bit of coaching strategy and it was carried out brilliantly by a spirited bunch of Sun Devil football players. They won everywhere but on the scoreboard but it's the scoreboard that counts.

. . . Texas Western this week represents another possible stumbling block for the Devils. The Miners have won four straight and have scored in the forties in their last two games. They are due for a sudden nose dive soon, however, for the easy part of the schedule is behind them. They must face ASU, Arizona, Bowling Green and New Mexico State on successive weeks from here on.

**SMALL THINGS . . .** Before the season is over the Devils will have faced four of the top five passers in the nation. They have already played against top-ranked Mel Melin of Washington State, second-ranked Harold Stephens of Hardin-Simmons and fourth-ranked Charlie Johnson of New Mexico State. They have yet to face North Carolina State's All-American candidate Roman Gabriel who holds down the fifth spot.

. . . Al Nealey was finally dropped from the Cincinnati Royal's roster after surviving all but the last cut. Staying as long as he did was quite an accomplishment considering the personnel the Royals have this year. He was competing with such names as Robertson, Twyman, Wilfong, Jordan, Boozer and Embry, among others, for a job.

. . . It's easy to tell freshman basketball coach Fanny Markham around campus. He's the guy with the big grin. And he has reason to grin — his team is loaded with talent. Included on the Sun Imp squad are three prep All-Americans and numerous All-State and All-Conference selections from all over the country.

. . . Our sympathies to Alonzo Hill, Sun Imp end, who lost his brother in the tragic Cal Poly plane crash.

### How ASU's Opponents Fared

Montana	26	WASHINGTON ST.	29 (3-3-1)
COLORADO ST.	14 (2-5)	SAN JOSE ST.	6 (3-2)
ARIZONA	21 (3-3)	TEXAS WESTERN	45 (4-1-1)
WEST TEXAS	14 (2-5)	HARDIN-SIMMONS	6 (0-7)
		Utah State	34
		BYU	0 (2-5)
		NEW MEXICO ST.	27 (7-0)
		ASU	24 (5-2)
		UCLA	7
		N. CAROLINA ST.	0 (5-2)

Marge Smith  
**FLOWERS**  
MAKE EVERY OCCASION MEMORABLE  
Evenings 722 MILL AVENUE Daily  
WO 7-5020 WO 7-0271

Varsity Inn  
THE DOOR IS OPEN...

TO THE ENTIRE UNIVERSITY  
from Freshmen to PhD's  
EVENING STUDY BREAK  
8:30 TO 9:30  
**COFFEE 5c**

LOOK YOUR BEST FOR HOMECOMING!  
with a Haircut from  
**J. D.'s**  
CAMPUS BARBER SHOP  
Now 4 Barbers To Serve You  
Open Daily 8 a.m.-6 p.m.  
MONDAY thru FRIDAY  
816 College Avenue  
Next Door To "VI"

Dancing Party Nightly with Bill Montague's NOMADS . . . the hottest combo in town  
**QUIET VILLAGE**  
5140 E. Van Buren  
BR 3-0600

# Miners Here In BC Clash

By BOB EGER  
Sports Editor

Texas Western College, winner of four straight games and in a good position to give New Mexico State a run for the money in Border Conference competition, provides a formidable foe for Arizona State this week-end.

The Devils will try to bounce back from two straight losses when they host the Miners Saturday night. Western has title aspirations and must secure a win against ASU to stay in the conference race.

Last Saturday the Miners trounced Hardin-Simmons 45-6, boosting their season mark to 4-1-1. After dropping their opener to still unbeaten Utah State, 20-7 and tying North Texas State 16-16 they rebounded to beat New Mexico 23-17, West Texas State 6-3 and Trinity, 41-14 in addition to Hardin-Simmons.

Miner coach Ben Collins has been carefully preparing for the Sun Devils all week. I'm not foolish enough to believe that we can beat Arizona State by playing just a good game," he said. "We've got to play an excellent game—we've got to be better than we have been at any time this year."

ASU Head Coach Frank Kush is wary of the Miners. "We played our best ball of the season against New Mexico State and we'll have to maintain that level if we hope to beat Texas Western," he said.

Scout Gene Felker also warns against Western. These boys are typical Texas football players," he stated. "They have a good football background, are rugged, and don't get rattled easily. They'll be tough to beat."

Spearheading the Miner offense is quarterback John Furman. He has completed 59 of 127 pass attempts for 632 yards this season. He was voted the most valuable player in the Border Conference last year.

Furman's favorite receiver is 145-pound halfback Del Williams who has grabbed 22 tosses for 226 yards and one touchdown. Williams has also averaged five yards a try as a ball carrier this season.

Charlie Bradshaw, a 165-pound fullback, is leading the team in rushing with 434 yards and a 4.8 average. Halfback Kent Babb is also a threat as a ball carrier. He has 283 yards and a 5.4 average.

If the Miners can get past ASU, and Arizona next week, they could win the Border title by topping New Mexico State in their final game of the season. Last year the Miners beat the Aggies 20-15.

VISIT THE  
ATMOSPHERIC  
**Jungle Room**

'Best Pizza In The West'  
28 E. 5th — Tempe

## Conference Statistics

### TOTAL OFFENSE

	G.	Ave.
New Mexico State	7	394.6
Arizona State	7	332.2
Texas Western	6	320.7
Arizona	6	255.0
West Texas State	7	244.4
Hardin-Simmons	7	199.9

### TOTAL DEFENSE

	G.	Ave.
Arizona State	7	217.3
New Mexico State	7	253.9
Texas Western	6	258.2
West Texas State	7	291.4
Hardin-Simmons	7	338.4
Arizona	6	369.7

### RUSHING OFFENSE

	G.	Ave.
New Mexico State	7	255.3
Arizona State	7	252.6
Texas Western	6	292.3
Arizona	6	142.7
West Texas State	7	139.1
Hardin-Simmons	7	73.3

### RUSHING DEFENSE

	G.	Ave.
Arizona State	7	109.4
New Mexico State	7	159.9
Texas Western	6	161.3
West Texas State	7	218.6
Arizona	6	228.5
Hardin-Simmons	7	268.6

### PASSING OFFENSE

	G.	Ave.
New Mexico State	7	139.3
Hardin-Simmons	7	121.0
Texas Western	6	118.3
Arizona	6	112.2
West Texas State	7	105.3
Arizona State	7	79.6

### PASSING DEFENSE

	G.	Ave.
Hardin-Simmons	7	69.4
West Texas State	7	72.9
New Mexico State	7	94.0
Texas Western	6	96.8
Arizona State	7	107.9
Arizona	6	110.5



WINNERS . . . of the third annual Odessa Invitational tennis tournament were ASU coeds (l to r) Pinky Shoemaker, Ina Leffler, Emma Flores and Sandy Smith. They display their individual planter trophies and the team trophy they won in the Texas tournament.

## Girl Net Team Wins Odessa

ASU's girl's tennis team, composed of Pinky Shoemaker, Emma Flores, Ina Leffler and Sandy Smith, won the third annual Southwest Women's Intercollegiate Invitational Tournament in Odessa, Texas, last week.

The win was the third consecutive tournament victory for an ASU team, enabling this school to retire the team trophy.

Miss Shoemaker was runner-up to San Angelo Jr. College's Nancy Richey in the singles division. Miss Richey

is ranked second nationally in girl's competition and is among the top eight in the women's division.

A team composed of Miss Shoemaker and Miss Flores won the doubles title. Misses Leffler and Smith combined for second in the doubles competition.

Eight southwestern schools competed in the tournament.

The second quarter has been ASU's most productive in football this season. The Sun Devils have scored 52 points in that period to 22 for their opponents.

Saturday, Nov. 12, 8:30 p.m., — P.U.H.S. Auditorium



N. Y. TIMES and LIFE agree with CLAUDIA CASSIDY "He's the Unchallenged Master"

The Great Spanish Gypsy Dancer

**ESCUADERO**

AND A GLAMOROUS ARRAY OF FLAMENCO SONG & DANCE STARS

Tickets 1.25 — 1.50 — 2.00 — 2.50  
SPECIAL STUDENT RATE  
On Sale Linde Box Office — Hanny's  
Phone AL 4-2979

Extra Added Attraction: Gogo Reyes & Co. Fantastic Dancer

Another Tough One Devils but

MINCE THE MIGHTY MINER MINIONS!

**SOLANO'S CAFE**

Why not enjoy our delicious Tacos during the game Special for Saturday only — 6' for \$1.19 to take out

Serving Delicious Mexican Food — Food To Take Out —

Closed Mondays  
Corner 4th & Mill — WO 7-9035 TEMPE

**Special!**

**HOMECOMING RATE**

FRIDAY — SATURDAY — SUNDAY

**3 lines for \$1.00**

**SPARE TOURNAMENT**

SATURDAY AFTERNOON, 1 p.m.

ONE TROPHY AWARDED FOR

EVERY 6 ENTRIES

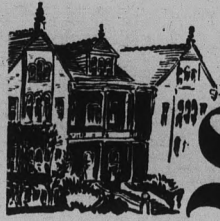
Entry Fee Only .50c

**Memorial Union Bowling Lanes**

Classes Honored:

1920

1930



# State Press

ARIZONA STATE UNIVERSITY TEMPE, ARIZONA

1885

Diamond Jubilee

1960

Classes Honored:

1940

1950

Vol. 39

Friday, November 4, 1960

No. 14

## School, Alumni Progress Together

### School Advances Through Decades

ASU is the oldest active institution of higher learning in Arizona. Since its founding in 1885, ASU has progressed rapidly.

In 1920, Tempe Normal School of Arizona, as ASU was then known, had a curriculum of 134 courses. Dr. A. J. Matthews, who became president in 1900, bestowed degrees on 74 graduates.

A law, passed in 1925, changed the school's name to Tempe State Teacher's College. In 1930, TSTC offered 222 courses, and 28 Bachelor of Arts in Education Degrees were earned.

Dr. Matthews retired in 1930, at the end of the scholastic year, after 30 years of service. Dr. Ralph W. Swetman served until Dr. Grady Gammage became president in 1933.

By 1940, the number of courses offered had more than doubled. The curriculum then had 546 courses. Dr. Gammage, in his seventh year, conferred degrees on 289 senior and graduate students. In 1945, the school's name was again changed, this time to Arizona State College at Tempe.

In 1950, the school's 65th year, the curriculum numbered 840 courses. A significant note in the class of 1950 was that 57 per

cent, or 428, of the 825 graduates were World War II veterans.

In 1958, greater prestige was added to the institution in the form of legal recognition as Arizona State University.

Dr. Gammage passed away in 1959, after 27½ years of service to ASU.

The present President, Dr. G. Homer Durham, took office last month.

The university now is organized into 5 colleges, an extension division, and 2 summer sessions. The original attendance of 31 has expanded to this year's record enrollment of 12,183.

Three men were largely responsible for guiding the destiny of the institution over its 75 year growth. They were: Charles Trumbull Hayden (1885-1900), Dr. A. J. Matthews (1900-1930), and Dr. Grady Gammage (1933-1959).



REAR ADMIRAL WILLIAM R. WHITE

### 1890 Grad To Receive Diamond Pin

The oldest known graduate of ASU, will be awarded an Alumni Diamond of Distinction during the University's annual Homecoming observance.

Rear Admiral William R. White, 84, only known living member of the Tempe Normal School class of 1890, will receive the award Saturday in the Memorial Union.

Admiral White served as a cadet under Admiral Dewey at Manila, and learned in 1952 that he had been promoted from captain to rear admiral on the strength of a commendation Dewey wrote 54 years earlier.

The reason for the promotion went back 53 years to the Battle of Manila Bay. In August, 1898, 22-year-old Naval Cadet White was given command of the captured Spanish launch "Barcelo" by Admiral Dewey. He was told to stick close to shore to test enemy firepower.

When White's ship fired, the Spaniards fled to the hills. White and his men landed and took Manila without a casualty.

Until 1947, when Admiral Dewey's account of the battle of Manila Bay was made public, the commendation had been forgotten. As a result of a law passed in 1936, all officers who received battle awards were automatically promoted one grade upon retirement.

During his naval career, which included service in World War I, he commanded the USS Arizona, sunk by the Japanese in Pearl Harbor.

Admiral White also served in World War II, as the naval engineering inspector of the Philadelphia Navy Yard.

In 1951 he published the results of 55 years' study of leadership in a two-volume, 2,500-page work entitled "Leadership," a history of all the men who have been the leaders and their countries back through history.

Following his retirement from the navy, Admiral White devoted most of his time toward the development of leadership training programs on a collegiate level. He was instrumental in the establishment of leadership courses at the US Military and Naval academies.

### Much Confronted In Last 20 Years

By ROSE LEISTER

Composition of a new school fight song by Fred Waring, plus cigarette machine stealing and jaguar hunting tales were some of the things confronted by ASC students in 1940 and 1950.

In March, 1940, Fred Waring sent a letter saying he would compose a fight song for Arizona State.

On May 24, 1940, 8 p.m., Fred Waring and his Pennsylvanians were the first to sing and play ASC's new fight song over NBC radio.

Then in May, "Arizona Judge," a thoroughbred bull dog, became ASC's new mascot (At that time, ASC was the home of "The Bulldogs.")

In March, 1950, World War II veteran Pete Ferguson, an ASC sophomore, was telling a tale about guiding people on hunting and fishing trips in Mexico in 1947. He remembered catching a 200-pound sea bass and killing 7-foot leopards or jaguars.

"Like any cat, El Tigre (as the Mexicans call them) dies hard. . . . after you 'kill' one of them, he'll sometimes get up and kill you," Ferguson recalled.

That year, Matthews Hall, housing resident students, received a letter of appreciation from an orphanage in Germany. The residents had sent 55 pounds of lard to Landesweissenhaus orphanage for Christmas (1949). At that time, lard was the most difficult commodity to obtain in Germany.

In April, 1950, students were asked their opinions on questions like, "Should these clubs (campus organizations formed for the purpose of "educational and interest development") have the right to be exclusive?"

Acceptance into these clubs was according to constitutional rules of the organization.

The majority replied "no." One of the typical reasons given was, "being that these are fraternal organization interested persons should have the right to join any club he so desires without any strings attached."

Then in May, 1950, Bruce Couston, Captain of Campus Police, walked into the State Press office. "You got a minute?" he asked. Reporter Bob McGregor did.

(Continued on Page 17)

### State, Nation Get Distinctive Alumni

In her 75 years of service, ASU has given Arizona and the nation many distinguished alumni.

Senator Carl Hayden graduated from ASU with the class of '96 and is now the senior senator in the United States Senate. Senator Hayden's father, Charles Trumbull Hayden, founded ASU in 1886.

Don Deder, the Arizona Republic's award-winning columnist, is a product of the class of '51. He was recently presented with the Ernie Pyle Award for feature writing, which is a national award given by the Scrips-Howard newspapers.

Nationally known TV personality Steve Allen, ex-'45, was very active during the fight for the ASU name change. He made several TV and radio tapes urging the public to vote YES for 200.

Class of '90 claims Rear Adm. William Russell White, who will be presented with the Diamond of Alumni Distinction at Homecoming this year. The class of '90 is the earliest class with a member still living.

Rawghlie C. Stanford, ex-'99, served as governor of Arizona in 1937-'88. He is a former Arizona Supreme Court Justice, serving 12 years on the Court and 2½ terms as Chief Justice.

Assistant United States Attorney General from 1921 to 1929, was Mable Walker Wilbrandt, class of '11. She is a California lawyer at present.

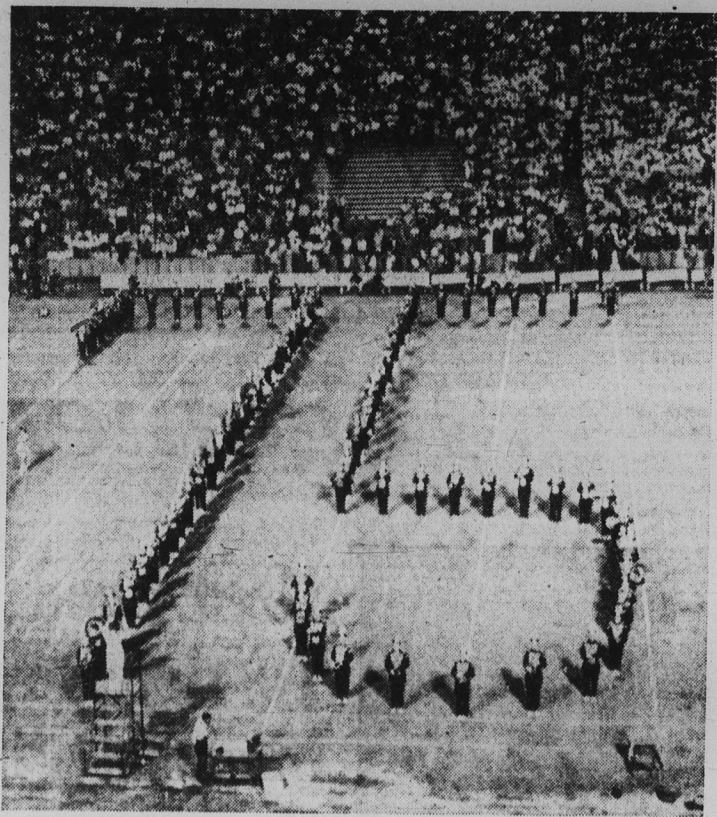
Lynn Laney, class of '03, served on the ASC at Tempe Board of Education from 1941-'45, then in 1947 he became a member of the Board of Regents. He is currently treasurer of the Board and has served as president. He was awarded the Alumni Service Award at Homecoming last year.

Charles Stauffer, former publisher of the Arizona Republic and Phoenix Gazette, was a graduate of the Class of '01. A civic leader in Phoenix, he was chairman of the alumni campaign to raise funds for the MU building.

President of Maunaloa College on the island of Maui, Hawaii, is Dr. Karl Leebrick, class of '06. Before his present position, Leebrick was President of Kent State University, Ohio.

Harold Glen Clark, Class of '23, is a vice-president at Brigham Young University, Utah, and director of adult education and extension.

Class of '48 claims Jean Spreen who is currently vice-president for development of Mills College of Education, New York City.



DIAMOND . . . Jubilee Year with the magic number 75 is spelled out by the ASU Sun Devil marching band at the half-time ceremonies of a recent football game.

### California Trip Scheduled For ASU Band Dec. 2-4

The ASU marching band and the Texas Western band will share honors for the Homecoming halftime show. The Texas Western band will do a humorous political show, and the Sun Devils a four-and-a-half minute precision drill. "Leisure Time USA" will be the theme of the ASU Band

tour to California, Dec. 2, 3, and 4. Among their stops will be Disneyland, Dec. 3. On Dec. 4, they will present a halftime show at the L.A. Rams-San Francisco game, to be played "before 90 to 100 thousand spectators" said Ron Hollaway, acting Band Director.

# Dorms' Distinctive Delights Unique, Universal, Unquiet

By DAWN LANDER  
"But mother, I don't care if there are four girls in a room. It's fabulous".

From West to Wilson, from Gammage to Palo Verde—ASU dorm life is something unique, experienced only by those initiated into a special order — college coed.

It's strange to note that obvious discomforts such as overcrowded conditions, cockroaches, stopped up sinks, hard beds, and outdated structures do little to quell enthusiasm.

Peaceful study time is suddenly shattered by a voice bellowing down the hallway "Quiet hours!" A rapping application of a mop handle upon the ceiling serves to quiet upstairs disturbers, especially distressing when they go barefoot and their footbones can be heard cracking through the thin floor.

Trades and exchanges in the dorm are no less vigorous than at the New York stock market. Hairdryers are in constant demand — and oh, doesn't anyone have a brown purse?

Shrieks of despair are emitted as one girl discovers the skirt she had planned to wear is already heading for the football game—worn by her roommate!

Adjustment to sleeping porches is a completely unforeseen experience. Rigid training and conditioning are required to waken only to the frequency

of your own clock, sleeping through the air-raid siren your neighbor calls an alarm.

Perplexed plumbers have extracted everything from nylon hose to bobby pins to mascara brushes from clogged sink drains. It is not unusual for a downstairs tenant to discover the back flow from an upstairs sink filling hers when the pipes

are filled with lost, but little missed, articles.

Amusing to head residents is the same boys' faces year after year dating different girls as each new crop comes through.

"Why hasn't he called?" beams a distraught coed. Don't look now, but he did call and someone has left him hanging on the downstairs phone.

Ah well, such is dorm life.

## Homecoming SPECIAL

Authentic ASU Belt

Has Official Seal on Belt Buckle  
ELASTIC STRETCH

Reg. \$2.50

\$2.00

For Homecoming Only



The Americana Shop

seen everywhere on campus

### THE TRADITIONAL LOOK

From that important new extra vest to sport jackets, slacks and shirts, you'll find the clothes you need for the life you'll be leading right here! See our complete collection now.

Sports Coats from \$30

TEMPE SHOPPING CENTER

Reversible Vests, from.... \$5.95  
Button-Down shirts, from \$5.00  
Pleatless Slacks, from..... \$9.95

Open 'til 6:00 P.M.  
Thursday night 'til 9:00 P.M.

WO 7-5457

# TEMPE

# Center

## SHOPPING

In The Heart of Tempe On Mill Avenue . . . 8th Street to 10th Street

### ONLY ONE BLOCK FROM CAMPUS

*for your*

### One - Stop Shopping Center for All Your Shopping Needs

**NO EXTRA CITY SALES TAX.  
PLENTY OF FREE PARKING  
COURTEOUS AND EFFICIENT SERVICE  
COMPLETE MERCHANDISE STOCKS**

### HOMECOMING 1960

A hearty greeting is extended to all the "OLD GRADS" attending this week's festivities.

May there may be many more in the years to come . . .

**Americana Shop**  
Men's Apparel

**Bonnie Sue Fashions**  
Women's & Children's Apparel

**Celia's Fashions**  
Women's Apparel

**Center Hardware**  
Hardware Supplies

**El Rancho Market**  
Groceries — Produce

**Erickson's Handcrafts**  
Art & Craft Supplies

**First Federal Savings**  
Savings & Loan Service

**GallenKamps**  
Family Shoe Store

**W. T. Grant Co.**  
Department Store

**First National Bank**  
Drive - In Facilities

**Happy House Shop**  
Gifts — Candy — Cards

**Hill's Record Shop**  
Records - TV - Radios - Stereos

**House of Pancakes**  
Breakfast — Lunch — Dinner

**Jam's Restaurant**  
Table Service

**King's Fashions**  
Women's Apparel

**Little Travelers**  
Infants' and Children's Wear

**Pioneer Camera Shop**  
Cameras — Photo Finishing

**Porters**  
Women's and Men's Wear

**Ray's ASU Barber Shop**  
Men's Barber Shop

**Rosamond's**  
Beauty Shop

**Ryan Evans Drug**  
Prescriptions — Cosmetics

**Sherwin Williams Co.**  
Paints — Wallpaper

**Sewing Basket**  
Fabrics

**S&H Redemption Center**  
Green Stamp Store

**Sun Devil Hop-In**  
Drive - In Service

**Top's**  
Beverages — Snacks

**Union Furniture**  
Furniture and TV



OLDEST SORORITY . . . Pictured are members of the Zetetic Society after it changed from a literary organization to Zeta Sigma sorority.

## Greek Histories Traced

By DEANA DORMAN  
Organizations Editor

Greek letter organizations on campus began with the founding of the Zetetic Society in 1895. Today there are 11 national sororities and 19 fraternities.

In 1911 Zetetic literary group changed to Zeta Sigma sorority and in 1949 became Gamma Phi Beta, the first national sorority here.

Alpha Tau Omega is the oldest fraternal organization starting in 1914 as the Lambdies, a debating society. In 1925 they changed their name to Lambda Phi Sigma and in April, 1951, they were initiated as Zeta Alpha chapter of ATO.

Chonian Society began in 1914, changed to Chi Sigma in 1929 and to Sigma Sigma Sigma sorority in 1950.

Alpha Sigma Alpha sorority, founded in 1901, became Beta Chi chapter of the national group in 1952.

Alpha Delta Pi sorority, which became nationally affiliated in 1950, was previously Philomathian Society, founded in 1921.

Delta Sigma Phi fraternity, nationally affiliated in 1948,

was previously Pi Delta Sigma, founded in 1931.

Tau Sigma Phi, founded in 1932, became nationally affiliated with Delta Chi fraternity in 1949.

Founded in 1935, Mu Sigma Chi was initiated as Beta Xi chapter of Tau Kappa Epsilon fraternity.

Phi Sigma Kappa national fraternity initiated Delta Sigma Chi local, founded in 1948, as Chi Triton chapter in 1949.

Kappa Alpha Psi began here in 1948.

Phi Beta Epsilon and Kappa Kappa Alpha societies combined to become Phi Kappa Delta in 1949, and in 1951 was initiated as Psi Epsilon chapter of Chi Omega sorority.

Kappa Delta sorority, with a similar history, became Gamma Theta in 1949 after a merge of Phi Alpha Gamma and Kappa Theta societies. National Kappa Delta initiated the Beta Psi chapter in 1951.

Lambda Chi Alpha was colonized in 1949 and installed as Zeta Psi chapter in May 1951.

Similarly, Sigma Pi, a colony in 1949, became national in 1951.

Alpha Epsilon Pi fraternity came on campus in 1950.

Delta Tau chapter of Pi Kappa Alpha fraternity was founded here in 1951 and re-chartered in 1959.

Arizona Alpha of Sigma Phi Epsilon was chartered here in 1952.

Chi Theta, founded in 1952, became Theta Chi in 1953.

Sigma Nu, nationally affiliated in 1956, was previously Nu Sigma, founded in 1952.

Alpha Gamma Sigma, founded in 1954, became affiliated with Alpha Gamma Rho, national agricultural social fraternity, in 1958.

Phi Delta Beta, started in 1955, became a chapter of Phi Delta Theta in 1958.

Phi Kappa Tau came on campus in 1955.

Alpha Epsilon Delta, founded in 1956, became Alpha Epsilon Phi sorority in 1958.

Sigma Chi Sigma, colonized in 1957, received its national Sigma Chi charter last February.

Phi Alpha colony, founded in 1958, will petition for national membership into Sigma Alpha Epsilon fraternity this summer.

Alpha Phi and Delta Gamma sororities came on campus in February as national colonies and charter members were initiated in May of 1958.

Similarly Kappa Kappa Gamma and Kappa Alpha Theta were colonized and initiated in 1959.

## Breakfast's Value Subject Of Study

A group of ASU professors and students are engaged in an extensive study of the early morning eating habits of a local elementary school's students.

Under the direction of Dr. Ernest L. Parker, ASU professor of Animal Husbandry, the study is trying to stimulate a desire for an adequate breakfast and to determine the effects of an adequate breakfast on the scholastic achievement, social behavior, and nutritional-health status of its youthful subjects.

According to Dr. Parker, approximately 80 students in the fourth grades at Kyrene School, south of Tempe, were divided into two groups at the start of the experiment four weeks ago. One group receives a school-prepared breakfast for the first 14 weeks of the study and the other group for the second 14 weeks. The group not receiving breakfasts serves as a control group.

"Breakfast is supplied by the school cafeteria to the 40 students about 20 minutes prior to the start of school each morning. The meal, nutritionally

balanced and varied, consists of eggs, milk, buttered bread or toast, and juice or fruit," Dr. Parker explained.

Commenting on the reason for the study, the first of its kind in Arizona, the project leader said, "Nutritionally, it has been established that a balanced breakfast is the most important meal, particularly for growing children. Unfortunately, breakfast is the meal which in our modern days is frequently neglected or even left out completely."

Dr. Parker says that Kyrene School was chosen as the site for the project because of "the willingness of its principal, school board, and FTA to cooperate in the work of the project." Written permission to participate in the study from each student's parents was obtained.

Various educational, sociological and nutritional tests were made on the youngsters at the beginning of the test period. They will be continued periodically throughout the 28-week experiment. Directing the medical testing are the phys-

(Continued on Page 18)



Tempe  
Center  
WO 7-5353

We Now Have the Two Outstanding  
PARTY PAPER LINES IN AMERICA —  
**PACKAY and MONOGRAM of CALIFORNIA**  
Napkins, Three Sizes — Paper Towels  
Coasters — Place Mats  
ALL MATCHING SETS

**STADIUM  
COFFEE SHOP  
& Delicatessen**

**Good Things to  
Eat and Drink**

1133 Normal Avenue  
"Across the Street  
From East Stadium  
TV & RADIO  
Open 7 Days Week

**FOR YOUR  
HOMECOMING DECORATIONS**

**FLORAL SHEETING  
FRINGE  
FESTOONING  
TINSELS  
PAINTS**

**CORRUGATED PAPERS  
107" WIDE NO SEAM PAPER  
CUT OUT LETTERS  
CREPE PAPERS  
MAT BOARD**

Everything to make your Decorations a complete success.  
Also a complete line of Christmas Decorations

**THE LLOYD R. CADY DISPLAYS**

2818 N. 16th Street
Phoenix

Phone AM 5-1701

**Captured BY ESCAPED CONVICTS!**

Campers Bob and Pete have just turned on their radio . . .

2 CONVICTS HAVE ESCAPED FROM STATE PRISON AND ARE HEADING FOR . . .

SHUT DAT F'ING OFF!

SURE, I'LL GET A COUPLE OF ROCKS FROM THE LAKE TO COOK ON

I'LL GO WITH YA-AN! NO FUNNY BUSINESS!

Pete puts a rock at each side of the fire . . .

CRACK! CRACK!

SHOTS!

Note: Bob and Pete knew that rocks in a stream often take up water; when these rocks are heated, the water turns to steam — and the rocks explode!

A short time later . . .

When the state troopers arrive . . .

EXPLODING ROCKS... YOU SURE THINK FOR YOURSELVES! I'LL BET THAT'S WHY YOU'RE VICEROY SMOKERS!

RIGHT! VICEROY'S GOT IT... AT BOTH ENDS! GOT THE FILTER, GOT THE BLEND!

THE RIGHT TASTE BECAUSE

**Viceroy's got it... at both ends**

GOT THE FILTER... GOT THE BLEND!

© 1960, BROWN & WILLIAMSON TOBACCO CORP.

# Dr. Plowman Will Speak At Seminar

"National Transportation — The Trend Toward Coordination," will be the theme of the keynote address by Dr. E. Grosvenor Plowman tomorrow at the fifth annual Southwestern Transportation Seminar at Camelback Inn.

More than 200 people connected with the transportation and traffic profession are expected to attend the event, sponsored jointly by ASU transportation groups — and Chambers of Commerce in Phoenix, Tucson and El Paso.

The Seminar will begin at 9 a.m. and climax at 7:30 p.m. with an awards banquet.

### More About—

## Past Events

(Continued From Page 13)  
Couston reported that wallets, wrist watches, ROTC uniforms, men's suits, radios, washing machine boxes, Coke machine money changers, one cigarette machine (later found in the desert), and telephone boxes had been stolen or robbed and looted during the year.

"Just tell them," Couston said, "to hang on to their valuables."

# What Is The Meaning Behind Homecoming?

(Editor's note: An Englishman tells his views on an American Homecoming.)

By KEN HARRISON

"We wander in our thousands over the face of the earth, the illustrious and the obscure, earning beyond the seas our fame, our money, or only a crust of bread; but it seems to me that for each of us coming (going) home must be like coming (going) to render an account. We return to face our superiors, our kindred, our friends — those whom we obey, and those whom we love."

This quotation by Conrad seems, to me, a fitting one in this homecoming issue of the State Press. Whereas the original message was concerned with other than academic nostalgia, it does contain an element of truth for us, here and now, at ASU.

We, of the present, cannot think in terms of the unknown future, that all too soon will be part of our past. It is, therefore, worth a pause to reflect on the worthwhile principles behind "Homecoming" in the contemporary college sense. Each individual arrives at his own concept of what is worthwhile and what is not, that is his prerogative. Each individual can learn to understand him-

self, that is his good fortune. But everyone must contribute something of the best in himself to his heritage, that is his duty. Not duty to his God necessarily, but duty to his kind. What his heritage is, represents in part the outcome of his forefathers contributions. If you think your inheritance is small, possibly your "kind" held back some measure of contribution. If you feel life is, not only, "worth living" but you would like to extend the lease on it, chances are your "kind" gave generously to your inheritance.

So, when "old grads" come back to recapture a feeling of having belonged to something worthwhile and honored, reward them in their fragile hopes of finding something indistructable in this world of constant change and nebulous security. Prove to them, and give rebirth to an old concept, that such abstractions as "fri-

endship, brotherhood, pride and dignity of men," yes, and even such a sentimental utterance as "memories of happy days," still do survive as symbols of the brotherhood of men and his best aspirations. The pride in belonging begins in identifying "good." Start right now by being proud of your particular heritage. Admit "it's great to be at State" or whatever. For even if as Lord Brougham said, we are engaged in the "pursuit of knowledge under difficulty," let's enjoy the chase and the exercise while we can. To those cynics of the coffee cup, and the heroes of the brave new world, let the following be my censure:

"Count me not with those that whine for what is over —

All that once was good is good for ever more."

Welcome Old Grads! . . . It's your turn to buy the coffee.

## New Facilities Aid Work Of ASU Health Service

The ASU Student Health Service has added new facilities for students. The major progress has been in the In-

firmary building, built in 1953.

A full-time and a part-time physician are available and a psychiatrist visits the campus at least once a week.

X-ray equipment, an examination table, an autoclave, and new lab equipment have improved the infirmary service.

Two full-time nurses have been added to the staff within the last two years.

According to Mrs. Elaine McFarland, Student Health Service director, in the 1950-51 school year there were 334 bed patients, while in the 1959-60 school year there were 496. Clinic visits totaled 6,856 in 1950 and in 1959 they amounted to 15,837.

The old infirmary had 10 beds while the present one has accommodations for 26 patients. The number of patients that need to be transferred to hospitals has decreased even though the number of students has increased. In 1953, 33 had to be transferred but in 1959 only 15 were transferred.

# Reading Always Timely

ASU's College Bookstore is not only a place to buy textbooks and school supplies, it is a source of America's best sellers.

"A best seller at the bookstore depends mostly on what a professor is recommending," said Jeff Wane, assistant manager of the bookstore.

Many of the required books are on the National Best Selling List. *Brave New World* by Aldous Huxley, *Of Human Bondage* by W. Somerset Maugham and *The Elements of Style* by William Strunk Jr. and E. B. White, are some of the best sellers.

Mr. Wane said a representative stock of other best sellers have been ordered.

*I Was A Teenage Dwarf* by Max Shulman and *The Caretakers* by David Tefer are two of the best selling paper backs from the September National Best Seller list.

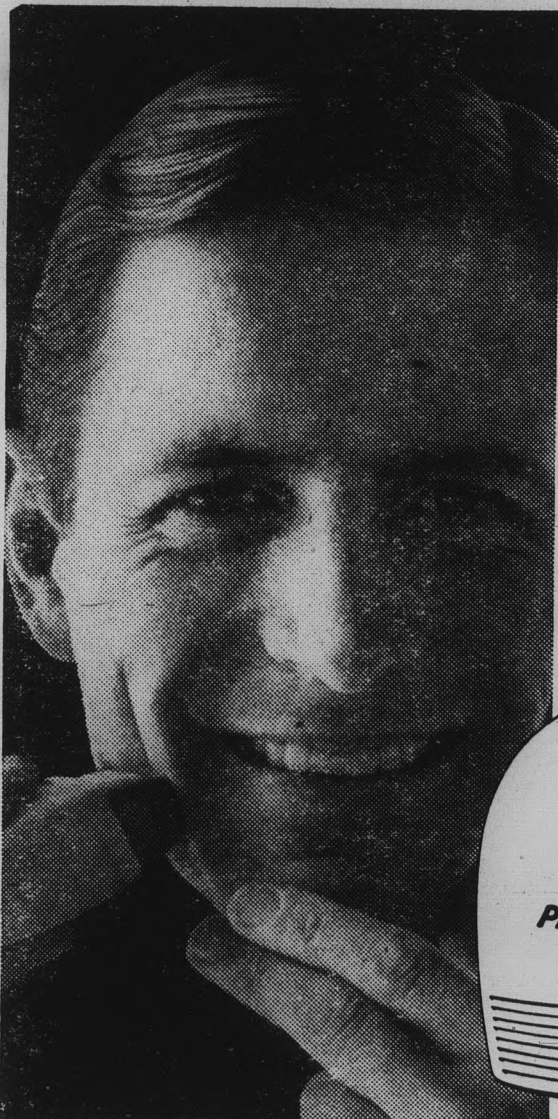
*For 2c Plain* by Harry Golden, *Elmer Gantry* by Sinclair Lewis, *Butterfield 8* by John O'Hara, *From the Terrace* by John O'Hard, and *Faces In the Mirror* by Yael Dayan also appeared on the list.

Two books, *The Remarkable Kennedys*, by Joseph McCarthy and *The Conscience of a Conservative* by Barry Goldwater are on order but have not arrived yet.

Offered at the bookstore are approximately 200 non-required texts in engineering, science, and mathematics. Examples are reference hand books, a very complete reference section on Arizona, and two or three hundred titles under reprint series. *College Outline Series*, *Lit-tlefield Outline Series*, *Made Simple Series*, and *Schaum's Series* are used in connection with different classes.

The bookstore will special order anything that is available.

"The number of nudists in this country has been reported to be a bare 50,000." — Austin Farley, "The Bulletin," Kansas State Teachers College.



### Mister... you're going to wear that shave all day!

**START WITH THIS NEW FORMULA BEFORE-SHAVE LOTION**, stop 4 o'clock stubble trouble! You can shave blade-close, all-day clean, without "tenderizing" your face, when you use Pro-Electric Before-Shave Lotion. It contains ISOPHYL® to give your shaver extra glide-power — refreshes you with that brisk, bracing Old Spice scent. 1.00 no federal tax.



SHULTON

**Ryan-Evans**  
**DRUG STORES**  
 Open to 10 P.M. Every Nite  
 TEMPE CENTER  
 We Give S & H Green Stamps  
 WO 7-2076

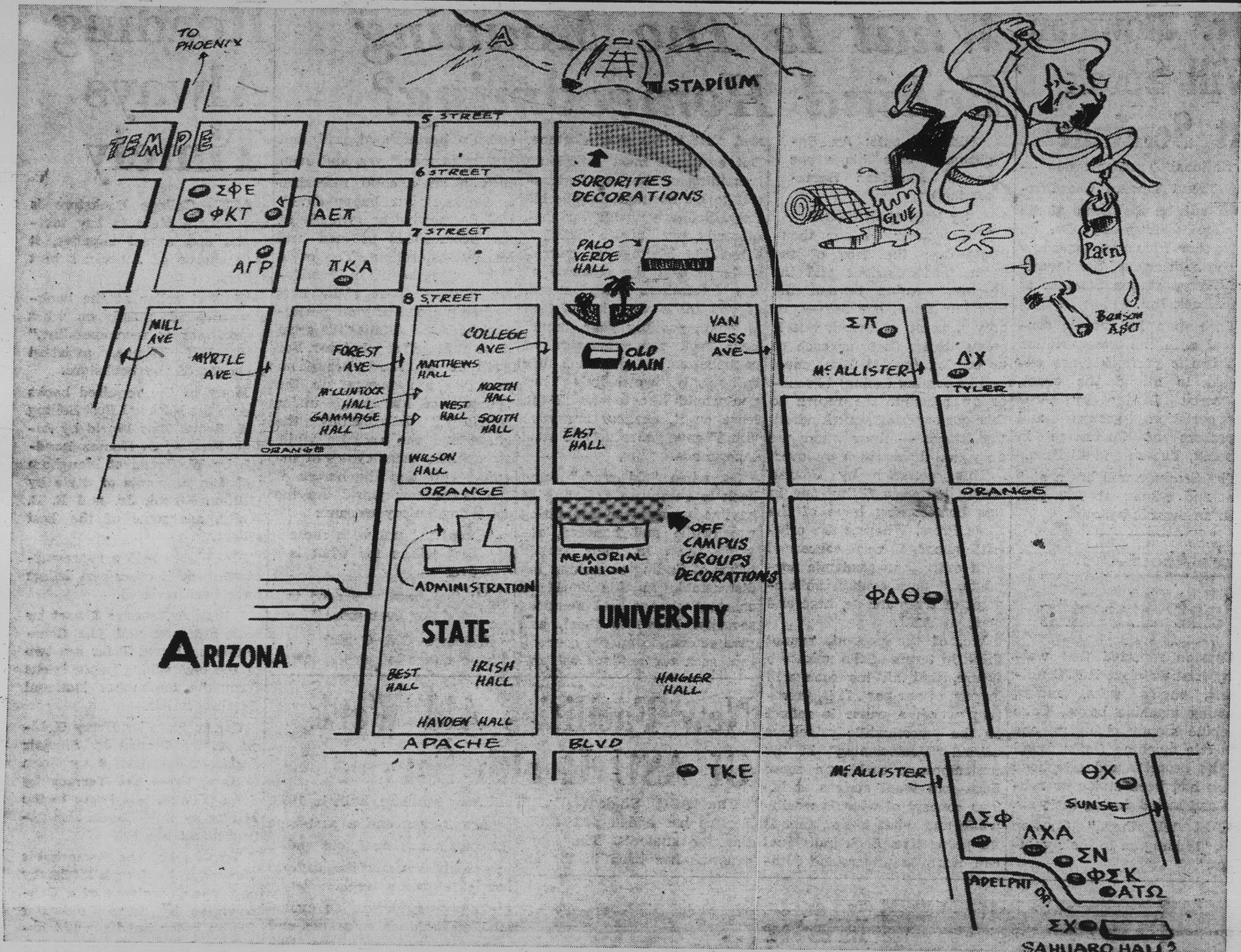
Quick, Complete Carry-out Service

AT THE BRAND NEW

# MUGS-UP

ROOT BEER DRIVE-IN

Corner Van Ness and 8th Street  
 "Where The Nickle Is Mighty"



WHERE DECORATIONS ARE . . . Map shows gray areas where homecoming decorations have been constructed.

More About —

# Breakfast Study

(Continued From Page 16)  
ians and nurses of the Tempe Medical Center.

At the end of the test, the ASU faculty members and students will compile a statistical analysis of the study for publication in a special research bulletin.

Aiding in the research project are Dr. Grant Moody, associate professor of Dairy Husbandry; Dr. Roy Johnson, associate professor of Microbio-

logy; Dr. W. T. Northey, assistant professor of Microbiology; Dr. S. K. Fitzgerald, associate professor of Sociology; Dr. Jessie M. Rannels, professor of Home Economics; and M. C. Woolridge, assistant professor of Home Economics.

Also involved in the project are two graduate students; Miss Irene Voelker and Miss Joan Landman, plus groups of ASU pre-medical and medical technological students.

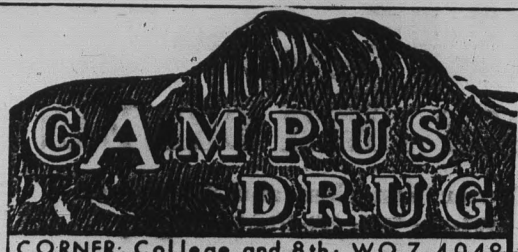
## THIS WEEKS

### Special Purchase

Got The Sneezes?

WE HAVE YOUR FAVORITE

## COLD REMEDY



CORNER, College and 8th, WO 7-4049



Tried Regular Filter Cigarettes?



Tried Other Menthol Cigarettes?



# NOW! Come Up...All The Way Up to the MENTHOL MAGIC of KOOL!

When your taste tells you it's time for a change, remember: Only Kool—no regular filter cigarette, no other menthol cigarette—gives you real Menthol Magic!

YOU FEEL A NEW SMOOTHNESS DEEP IN YOUR THROAT!



# ASASU Governing Body Changes Over 20 Years

By GARY PETER KLAHR

Our student government has undergone many changes since the simple days of 1940. Because 1940 ASU graduates are being honored at homecoming this week, we are reviewing the student government events of that year.

The main student government agency in those pre-senate days was the Associated Students Council. The council was composed of 25 students who represented classes, dormitories, and organizations.

The most important function of the council was to apportion \$10,000 of student funds. This compares with last year's ASASU budget of \$161,000.

According to the Aug. 2, 1940, issue of the State Press, "Regular weekly meetings are held with a majority constituting a quorum. All students are

invited to participate in the discussions." The Associated Students' president that year was Archie Meikle of Winslow.

Early in the year, the council approved the \$9,560 budget for the 1940-41 year. The newspaper reported that "All requests submitted were for increases over last year except that of the State Press." In the budget, the State Press received the largest appropriation—\$2100.

About the same time, Hascall Henshaw was elected president of the Men's Judiciary committee by "a unanimous vote of the student body." The five-man committee tried cases of students brought before it "because of misdemeanors and actions harmful to both the student and the school."

At the 1940 Homecoming, the State Press reported that "the

usual Western theme will prevail." The newspaper noted that the annual parade would feature patriotic ideas as well as cowboy floats. However, no specific theme for the parade was set that year. The ASTC football team, then called the Bulldogs, played Greeley State of Colorado in the Homecoming game.

Thus student government in 1940 was not much different from today — it handled the same problems, sponsored the same events, and still provided the opportunity for students to blow off steam about campus life and rules.

"Many a college girl who is proud of her figure does not know a darned thing about mathematics." — Austin Farley, "The Bulletin," Kansas State Teachers College.



MARCHE! . . . Sun Devil Majorette Harlie Judy leads the numerous high school bands that performed in mass at last Saturday's football game. Occasion was the annual ASU Band Day. (Charlie Hilgeman Photo)

**PORTERS**  
OF  
ARIZONA

## University Shop



**A TRIFLE RACY**  
You saw these slacks in  
Sports Illustrated  
and Playboy

**\$7.95**

**Glo-cord Midvale Corduroy.**  
Crisp, contrasting tones in  
100% cotton corduroy  
... rich, glowing effect  
... adjustable side  
tabs ... no-belt ...  
offset front pockets ...  
cuffless ... slim cut ...  
lowest rise ever ...  
pleatless, of course ...  
in teak olive and sand-  
piper tan.

**Inter-continental.** Far  
too sharp and smart-  
looking for the ordin-  
ary man ... definitely  
for the man with style  
taste a trifle above the  
crowd ... trim, hand-  
some and sporting ...

100% cotton ... side tabs ... extension  
waistband ... shades of tan, olive.

TEMPE CENTER • 901 MILL AVENUE

## 'Aspirins - To - Answers' At MU Information Desk

Say, could you tell me where I can pick up the annual? Could I get change here? Is the mail room around here anywhere? Where can I get tickets for the game?

Although there are signs in the Main Lobby, saying where to pick up the annual, and

calendars put up daily to tell where and when all meetings are scheduled, these questions are still the most frequently asked at the MU information desk.

Even though question answering is the main feature of the MU information desk, there are a variety of services available. Sewing kits, aspirin and band-aids are always on hand, newspapers are sold, a cot and an alarm clock can be checked out, pencils can be sharpened, and tours of the building can be scheduled.

The MU is the center of all campus activity. Many times it is the only contact visitors have with ASU.

"One nice thing about being a man is that you do not have to kiss something that has not shaved for two days." — Austin Farley "The Bulletin," Kansas State Teachers College.

the  
**Capri's  
Pick  
Of  
The  
Week**

**ASU - 21**  
**Miners - 7**

**Right or Wrong  
You Can't  
Miss  
With Our  
PIZZA'S**

16 E. 4th St. — Tempe

**JERRY SINGS  
FOLK SONGS**  
6 p.m. - 9 p.m.  
Monday and Thursday

### HOWARD 1961 SUMMER TOURS

Original Study Tour to the Pacific  
13th Annual Year

#### HAWAII UNIVERSITY SUMMER SESSION

63 Days, \$549, plus \$9 tax • 6 Credits  
Steamship enroute, jet return to West Coast, campus dormitory residence, plus 16 major social, sightseeing, and beach functions. Waikiki residence available at adjusted rate.

#### JAPAN-HAWAII STUDY TOUR

82 Days, \$1892 • 9 Credits  
Hawaii program above combined with 21 days on field study course in Japan. Orient tour includes roundtrip jet and all first class and deluxe land arrangements.

#### ORIENT STUDY TOURS

HAWAII - JAPAN - FORMOSA  
PHILIPPINES - HONG KONG  
66 Days, \$1892 • 6 Credits

Includes roundtrip steamship, and all first class services ashore — best hotels, all meals, sightseeing, inland sea cruise, tips, plus extensive schedule of parties, special dinners, entertainment and social events. Choice of courses: Humanities and Social Sciences; Oriental Art and Appreciation.

Apply:  
**HOWARD TOURS, Inc.**  
578 Grand Ave.  
Oakland 10, Calif.

# Tempe Bowl Salutes The SUN DEVILS

FOR THEIR FINE EFFORT AGAINST NEW MEXICO STATE

HERE IS OUR  
WEEKLY CALENDAR  
OF EVENTS

## TEMPE BOWL

*The  
recreation  
center  
for the  
whole  
family*

Every Day of the Week

**3 Man  
Sweeper  
Underway**

GUARANTEED

**\$500**

For Breaking

**1999**

PLUS \$100.00 ANYTIME  
FOR 6 STRIKES IN A ROW  
IN ANY GAME

Handicap 2/3 of 200  
Entry \$2.75 Per Person

## SUNDAY

**Family Day**

Children accompanied by either or both parents  
can bowl at 1/2 price

## MONDAY

**Father And Son Day**

Dad, bring your boys bowling on Mondays (any time during 24 hours). It is only 1/2 price for them — when they are accompanied by you. This is an inexpensive way to have fun and play together at something you both enjoy.

## TUESDAY

**Women's Free Bowling Day**

9 A.M. to 12 Noon

- Free Bowling
- Free Instruction
- Free Kid Care
- Free Bowling Shoe Usage
- Free Coffee & Donuts

## WEDNESDAY

**Mother And Daughter Day**

For you and the girls . . . fun together . . . playing together Develop an enjoyable interest and association between you female members of the family in a delightful atmosphere. Girls 1/2 price when Mother brings them.

## THURSDAY

**Women's Free Bowling Day**

- Free Bowling, 1 p.m. to 4 p.m.
- Free Instruction
- Free Kid Care
- Free Bowling Shoe Usage
- Free Coffee & Donuts

## FRIDAY

**Mixed Couples Day**

3 Lines for Price of 2

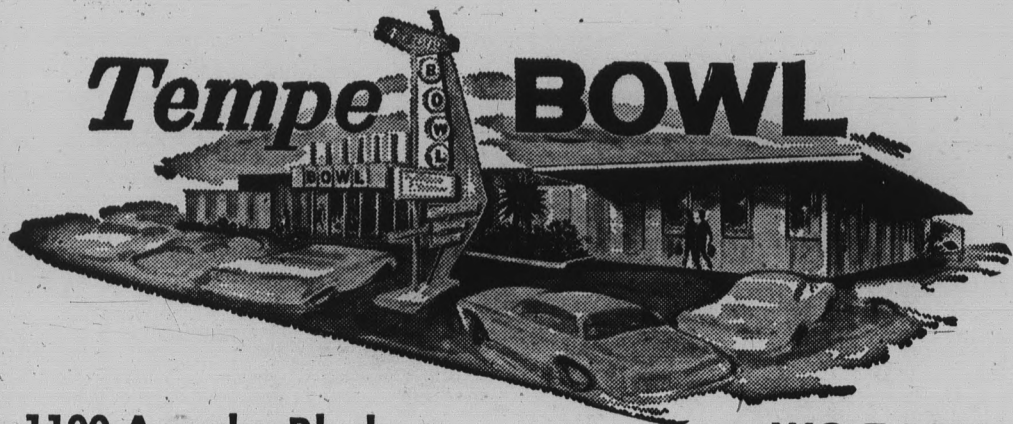
9 a.m. to 5 p.m.

Priority for lanes will be given to mixed couples during this time

## SATURDAY

**Boys And Girls Day**

9:30 a.m. to Noon: Ages 8 to 11  
Noon to 2:30 p.m.; Ages 12 to 14  
2:30 to 5 p.m.; Ages 15 to 17.



1100 Apache Blvd.

WO 7-1656

### Free Bowling to Lucky Guys & Gals

Get a Strike with a "Gold Crown" Pin  
in the head position and receive your  
line FREE

(Offer good Monday thru  
Friday 9 a.m. to 5 p.m.)

Listen to the bowling news show sponsored by Tempe Bowl on KYND, 1580 on our dial. 4:45 p.m. to 5:00 p.m. Monda thru Saturday