

DIG . . . Men and machines continue work on campus, installing air-conditioning pipes in tunnels.

Dennison Requests Student Support

Student President Karl Dennison asked for student support "in developing this institution to the stature it deserves among universities," in his State of the University address to the senate Wednesday.

Dennison noted ASU is embarking on a new experience "under the capable leadership of our new president, Dr. G. Homer Durham."

"We are charter members of this institution in university standing," Dennison noted, "as were our pioneer friends who first registered at Tempe Normal. We can demonstrate the intelligence and thought with which we administer our duties . . . and thus disillusion those who feel you must have a 'degree' before we have any legal rights."

Dennison asserted that student government can assist students best "in our work in the educational channels." Dennison defined this area as concerning recommendations to the administration on the academic program.

The student president said that the privilege of student participation in the education program demands "the keenest sense of responsibility and consideration."

"We are in a position to indicate those problems and ac-

tions which interfere with students in their desires and efforts to obtain the best education they are capable of achieving," Dennison explained.

Dennison set a key goal for the year — "to show, through every activity in our government, that student, faculty, and administration have the same goal — a great university." He suggested that more information be reported about student government, since "it is very hard to be fooled by rumors if a person is well informed."

Dennison proposed the following:

Senate members should speak to all faculty members "to obtain their opinions and feelings of our system and present the true aims of our government."

The student government should seek to develop "a spirit of unity and morale in the student body." To further this aim, Dennison suggested ASASU should "interpret the needs and concerns of the students to the faculty and also interpret the requirements of the faculty to the students."

The senate should attempt to make legislation vetoed last year by Dr. Richardson acceptable to the new president.

False Identification Cards Subject Owners To Fine

Students who gave false information for their activity cards will be subject to disciplinary action.

W. P. Shofstall, chairman, University Discipline committee, announced in an all-student letter that a number of cards have been found to contain false information. People who are found with incorrect identification cards will be brought before the disciplinary committee. Each case will be considered individually.

Incorrect cards must be exchanged for new ones before 4:30 p.m., Oct. 12, at the Audio-Visual Lab. There is a two dollar charge for the new card.

The new type cards have been issued to aid in student

Seating Plan Is Killed; State Press Blamed

The "Spirit Incorporated" seating plan has been cancelled.

The plan called for the sectioning-off of student groups at football games — off-campus students, members of sororities or fraternities, or residents of dormitories.

"I feel that the State Press' presentation of the 'Spirit Incorporated' plan aided in the killing of the plan," Karl Dennison, ASASU president declared.

Dennison was referring to the lead paragraph in last Wednesday's story in the State Press. It read: "Let's see your color pass, please, will be the key phrase in the stadium at Saturday night's game."

"There were some hints of disturbance and I felt that this would not be a proper manner in which to greet our new president. We want to have the best presentation possible for Dr. Durham," Dennison said.

Workshop Presents 'Rivalry'

The Drama Workshop will present Norman Corwin's play "The Rivalry," Oct. 4-8, at Payne auditorium. Curtain time is 8:30 p.m.

The play deals with the historic debates between Abraham Lincoln and Stephen A. Douglas as they battled for a senate seat in Illinois in 1865.

Playgoers may use their activity card or buy tickets for 50 cents at the information desk in the MU. Tickets will also be available at the door.

The cast includes: Mike Rost as Abraham Lincoln; Bill Decker as Stephen Douglas, and Clare Chene assumes the part of Adele Douglas. Bill Yurik plays a reporter covering the debates, while Ruth Beushausen takes the part of a Democratic committee woman. Fred Moore plays a Republican committee man.

Fannin Accents Education Value

Governor Paul Fannin called for a re-emphasis on education in the atomic age in a speech to the student senate Wednesday.

"The role of education in our world today is of vital importance to our state and our nation. As our state enlarges and its problems and challenges increase correspondingly, our greatest need will be in the area of human resources," the governor noted.

"Arizona educated young men and women will be best equipped to assume working roles within the framework of our emerging new importance in the social, political, and commercial complex. It is in that knowledge that education in Arizona — its financial support . . . and quality — is of primary concern and received

priority attention of leaders in and out of government. . . ."

"The military overtones of this cold war generally capture the headlines. But it is more probable that the conflict will be decided upon an ideological basis — that the war will evolve as a struggle for men's minds," the governor asserted.

The chief executive said the main issue is whether "Christian principles or 'Godlessness' will rule the world. He said education will play a big part in determining the answer.

Fannin continued, "It seems to me that education's challenge — in which you members of the student senate and your fellow students are important participants — is to give young Americans the ability to think; the intellectual tools to cope successfully with society's complexities; the belief in industry and self-sufficiency; in short, the overall capacity to challenge the responsibilities of freedom with the self reliance that only knowledge and understanding can supply."

Fannin commended the late ASU President Grady Gammage "for his selfless dedication.

The Governor concluded: "I believe deeply in the value of these student years and your participation in student government during those years. We shall expect this group to gain leadership in the years ahead when you leave this campus to apply your studies here in your own chosen way."

ASU Senate Sets Rules For Year

An unexpected argument over adoption of senate rules highlighted Wednesday's senate session otherwise devoted to ceremonial activities.

Rules Chairman Ed Manley urged the adoption of the new rules his committee made during the summer. Senate Speaker Les Miller had stated earlier that the senate would adopt last year's rules at this session, and debate the new rules next session.

After a brief debate, the senate voted 16-10 to adopt the old rules.

Miller welcomed senators and introduced Regent O. D. Miller. Chief Justice Fred Koory was escorted to the chamber where he swore in the 32 senators.

Don Kunkel, Membership and Elections committee chairman, said all ASASU committee chairmen were notified of their statutory and constitutional duties.

Kunkel recommended all appointments be confirmed; the senate voted unanimously to do so. Appointments were previously printed in the Sept. 16 issue of the State Press.

Polio, Flu Shots Offered Students At Health Service

Polio vaccine is available to ASU students for 75 cents a shot at the Student Health Service. Four immunizations are needed for complete protection.

"Flu" vaccine is also available for 50 cents a shot. Students are urged to have these vaccinations as soon as possible.

What is so unattractive about our campus that a large percentage of the girls evacuate it on weekends?

That "tombstone" containing a manhole cover in the Best "A" parking lot does a beautiful job of ripping out the under side of cars. Sports car owners are more fortunate. They merely smash fenders on this concrete "thing" in the middle of the lot entrance.

Implications needs more comments from readers. This column is not as sophisticated as those on the eddy page; will print anything valid, signed or not. Just mark any tips: IMPLICATIONS, c-o State Press.

New Parking Policy Applied

Parking space continues to shrink and parking regulations keep growing on campus.

Lack of space has prompted a new policy affecting residents of North, South, West, Wilson, McClintock A-B, Gammage, and East halls.

Instead of issuing dorm stickers to upperclassmen who request them, a limited number is being issued to the first upperclass dorm occupants who ask for them. The stickers will

apply to a designated lot. The McClintock A-B and North lot is behind the library; the South, West, Gammage, and Wilson lot is behind Wilson Hall.

Residents of East Hall are still restricted to their lot. Any women's dorm residents, with the exception of Palo Verde, may inter-exchange parking between the two lots behind Wilson Hall and the library.

The previous arrangement, where a dorm sticker was good in any of the three lots, is no

longer in effect. If the lot designated is full, these dorm stickers will be honored in any off-campus lot.

Frosh Get Ag Welcome

Freshmen and transfer students in the Agriculture department will meet for a Welcome Night, sponsored by The Agrarians, Tuesday.

Scheduled for 8 p.m. at the college farm, S. Mill Ave. just south of Broadway St., incoming ag students will meet the department faculty.

Representatives from Alpha Gamma Rho, national agriculture social fraternity, and the Rodeo club will explain the purposes of their groups.

Dr. Daniel Robinson, chairman of the department, will present a welcoming speech.

Students Here Are 'Serious,' Catherine Gammage Says

"Students on the ASU campus are very serious, intent, and anxious to have the opportunity to further their education," said Mrs. Catherine Gammage, assistant to the Registrar and Director of Admissions. They "realize the importance of education more than before, and are increasingly aware of the need for higher education in our society."

Mrs. Gammage said that, "Many people have just awakened" to realize that their college record will always stay with them.

"Today's students are under many more pressures, but fundamentally they are the same as the students I used to work with. Students are still students the world over," she concluded.

Mrs. Gammage formerly served as Dean of Women at Arizona State College, Flagstaff,

at Lake Forest College, Illinois, and at Kent State University, Ohio. While serving in that capacity, she dealt with students, needing aid in campus adjustment. In her present position she deals with those who desire admission to ASU.

State Press Moves To New Office

Letters and visitors to the State Press editorial offices will find the staff moved upstairs next week, because the MU Board okayed the Press taking over the old publicity office, MU 211.

Action was taken Tuesday.

FLIGHT INSTRUCTION

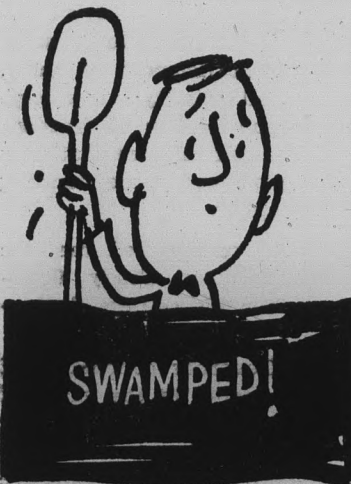
At Special Rates For College People

A Private License is a Must in Modern Business

AMOS FLIGHT OPERATORS

Don Amos - Class of '56
Ph. BR 5-7291 - Sky Harbor

'58 MGA Roadster, wire wheels, radio, heater, Good Show. Recent grad, leaving country. Must sacrifice this week. \$1300. About \$200 to \$300 under market. WH 5-5870 - 1140 East Ind. Sch. Rd., Scottsdale. Weekends, evenings.



Up to your ears with indecision? Better not let it muddy up your career planning. Now's the time to start thinking about the future.

A career in life insurance is worth your investigation. Provident Mutual offers college men excellent opportunities in sales and sales management and, if you're interested in actual sales training, you can get started now while you're still at school.

Ask for our free booklet, "Career Opportunities". We welcome inquiries.

CONTACT

LOUIS T. CHANEY

30 E. 5th St. Tempe
WO 7-1634

PROVIDENT MUTUAL
Life Insurance Company
of Philadelphia

To All
ASU Faculty
&
Personnel

This Is Your Personal
Invitation To See The
1961

- ★ Incomparable Imperial
- ★ Dodge & Dodge Dart

and the

- ALL NEW DODGE LANCER COMPACT
- ALL NEW DODGE PICK-UP

Dana Bros. CO. MOTOR

Factory Authorized Dealer

- DODGE
- CHRYSLER
- IMPERIAL

211 Mill Avenue

Tempe

Men's Organizations Take Over 'A' Lights

Lighting the 'A' on Tempe butte has served as a traditional symbol of school spirit in past years; this symbol will be ignited at every football game this year, home and away.

Lighting will be handled by campus men's groups, under a program sponsored by AMS.

Dates and chairmen of the weekly project for the rest of this season have been announced.

They include:

Oct. 1 — Phi Alpha colony

of Sigma Alpha Epsilon, Paul Cotton; Oct. 8 — Alpha Mu Sigma, sophomore men's honorary, Jack Ong; Oct. 15 — Sigma Chi fraternity, Bill Bromiley; and Oct. 22 — Delta Sigma Phi fraternity, Mike Tiffany.

Also: Oct. 29 — Lambda Chi Alpha fraternity, Andy Mitchell; Nov. 5 — Sigma Nu fraternity, Charlie Burtch; Nov. 12 — Alpha Tau Omega fraternity, Charlie Ditsch; and Nov. 26 — Sigma Pi fraternity, which has not appointed a chairman yet.

ARTISTS FOR TONIGHT

and

ARTISTS OF THE MONTH



THE FOUR FRESHMEN



T 1103

FRESHMEN FAVORITES, VOL. 2

VOICES IN LOVE T 1074

THE FOUR FRESHMEN IN PERSON T 1008

VOICES IN LATIN T 992

FOUR FRESHMEN AND FIVE SAXES T 884

FOUR FRESHMEN AND FIVE TRUMPETS T 763

FRESHMEN FAVORITES T 743

FOUR FRESHMEN AND FIVE TROMBONES T 683

VOICES IN MODERN T 522

AVAILABLE AT

Hills Records

TEMPE CENTER

This year's Civil Defense council, under AMS sponsorship, will have an organization meeting Thursday, 5 p.m., MU 210, according to Jim Crosby, CD chairman.

Inflation, Taxes First Debate Series Topic

The first in a series of lectures offering background on the current Kennedy-Nixon debates will be at the University Presbyterian Church, Sunday evening at 6:30.

Scheduled to speak on "Inflation, Taxes" and "A Balanced National Budget" are Dr. John Lowe, Dr. Martin Farris and Dr. Robert Cauthorn, all from the College of Business Administration.

The series, entitled "The Great Debates—Facts and Fig-

ures," will include two more lectures: "Tensions of the Cold War" and "Problems of Disarmament," with Dr. Pranas Padalis, associate professor of Economics, formerly with the Voice of America, Oct. 16; and Civil Rights with Dr. Heinz R. Hink, assistant professor of Political Science, Oct. 23.

Each of these lectures will be held at the University Presbyterian Church, 6:30 p.m.

The program is a part of the regular Fireside program

every Sunday evening. A supper is held at 5:30 p.m. and a Worship service at 7:30 p.m.

Rev. John Dodson, Presbyterian associate university pastor, invites everyone to attend the Great Debates series and also the dinner and worship services.

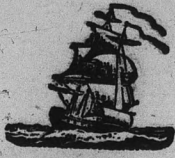
Cheer Squad Adds Judee

Another cheerleader was chosen Wednesday to join the present ASU squad. Judee Peterson, ASU junior, was selected from a field of nine contestants for the position.

Contestants were judged on their performance and ability in leading two yells.

Judging the applicants were members of the Rally & Traditions committee, present cheerleaders, and Dean Ruth Kilbourne.

RECENT ARRIVALS



THE 3-PIECE CLASSIC CORDUROY SUIT

\$45

The vest which has been missing from most suits in recent years has again been found desirable by gentlemen of fashion. Accordingly, the proprietor has received a shipment of natural shoulder corduroy suits with reversible vests (corduroy to match on one side; a fancy pattern on the other). In the much-admired olive & antelope shades.

Hanny's
Varsity Shop
30 NORTH FIRST STREET

Campus Representatives - Ted Lorber
Bruce Rys - Brian Padberg



Notice To PARENTS and STUDENTS of

Arizona State, Tempe High
McKemy, Mount Carmel and
Payne Training School

To be eligible to purchase our 50c JUNIOR ADMISSION TICKETS students over 12 years of age MUST bring activity or identification cards with them for presentation each time they attend the COLLEGE THEATRE. Bring them along and avoid confusion and the requirement to purchase 75c REGULAR ADMISSION TICKET.

The Management
College Theatre



MERRY XMAS

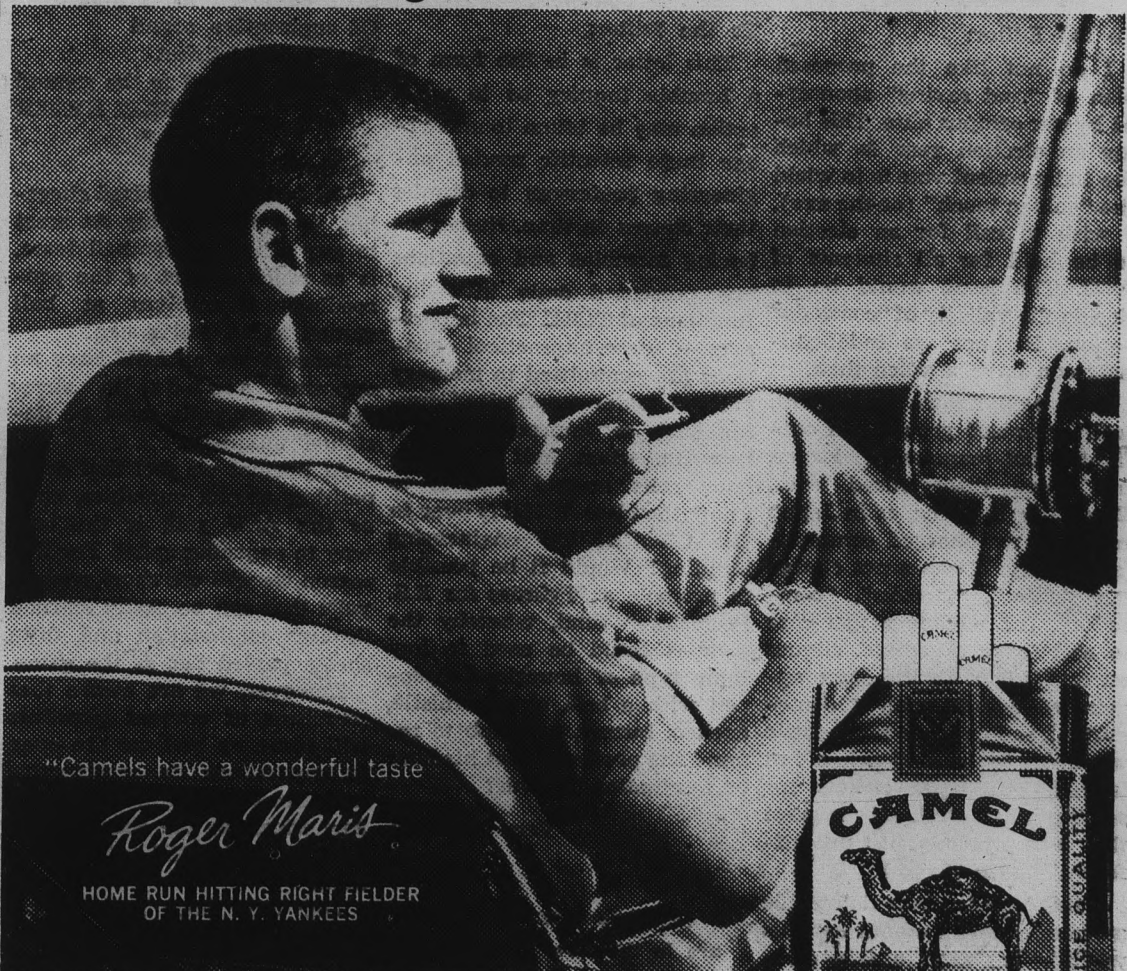
Don't be disappointed
call . . . WO 7-1673

For Holiday Air
Reservations Home
NO EXTRA CHARGE
FOR OUR SERVICES

Universal Travel

18 E. 5th St. — TEMPE

Have a real cigarette—have a CAMEL



"Camels have a wonderful taste"

Roger Maris

HOME RUN HITTING RIGHT FIELDER
OF THE N. Y. YANKEES

The best tobacco makes the best smoke!

R. J. Reynolds Tobacco Company, Winston-Salem, N. C.

Janet Leigh Talks to YDs —

Actress Feels Change Needed

By CAROL OSMAN

"My participation in the campaign seems to have surprised everyone but me," said Actress Janet Leigh to some 250 Young Democrats and other spectators in the MU ballroom yesterday afternoon.

Miss Leigh felt she should do more than "just vote," as crucial issues are involved. She said she believes a governmental change is important and commented, "I will do everything in my power to get that change."

Despite the fact that she recently broke her foot at a party and requires the use of her husband's cane to hobble about, Miss Leigh has been very active in her local "Citizens for Kennedy" committee and plans to drive people to the polls, baby sit and in general do her best "to see that people go to the polls and vote — preferably for Jack Kennedy."

The charming actress was pleasantly surprised at the amount of political interest displayed by ASU students. She commented, "I had no idea that a Young Democrats' organization even existed on this campus."

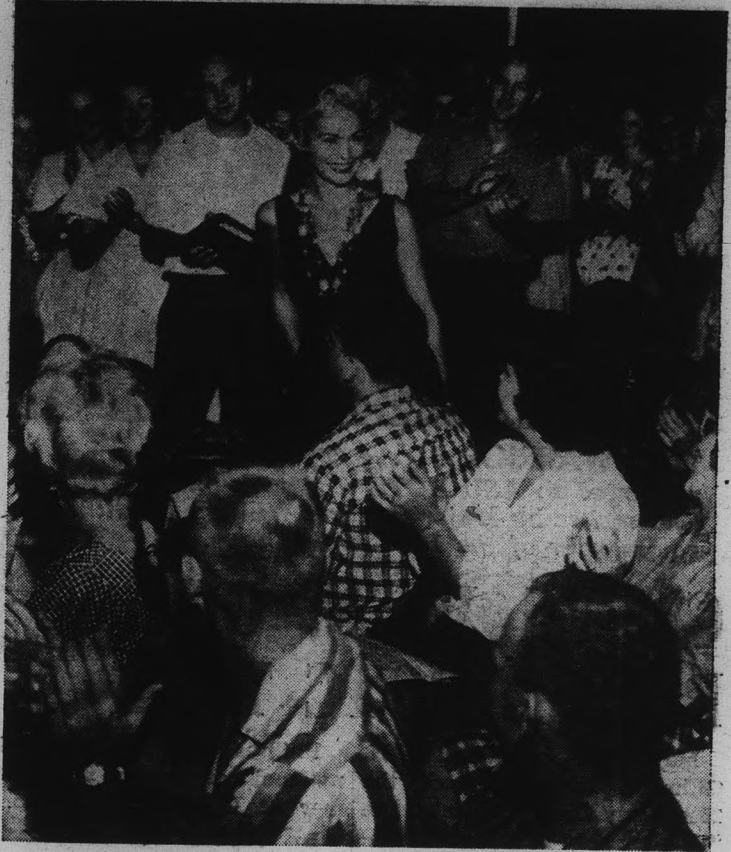
Concluding her speech, Miss Leigh strongly urged the audience to work and vote for Kennedy for president.

When asked for her opinion on whether the cluster of Hollywood stars supporting Kennedy is aiding or hindering his campaign, she commented, "They get a tremendous reaction from the public and in my mind can only be considered as a definite asset."

Presently donating full time to the campaign, Miss Leigh has refused two movie contracts and is currently doing some TV work for campaign purposes only. Her husband, actor Tony Curtis, is on location at Cudia City in Phoenix, for filming "The Sixth Man."

The active wife, and mother of two, stated that she and her husband try not to let their careers interfere with family life. "I never accept a contract that will take me and the children away from Tony; if he is working on a picture, we pack

(Continued on Page 8)



STAUNCH DEMO . . . Movie Actress Janet Leigh, whose husband, Actor Tony Curtis, is on location in the Valley for "The Sixth Man," lauded the Kennedy-Johnson presidential campaign in a talk to the ASU Young Democrats club yesterday.

You're In For
SONGS . . .
COMEDY and
JUST PLAIN FUN
when

BING
goes back
to college and
has himself
the high time
of a lifetime!



BING CROSBY

FABIAN

TUESDAY WELD

NICOLE MAUREY

HIGH TIME

NOW PLAYING
IN 2 THEATERS!

PARAMOUNT
2nd Ave. & Adams.
OPENS 12:30 P.M.

INDIAN Drive-In
7th Ave. & Indian Schol
OPENS 6:45 P.M.

BE THERE!

Fred Elquest & Son

Everything for the
Art Student

- Art Supplies
 - Picture Framing
- 703 N. 2nd St.
Phoenix
PHONE AL 8-2628

FRENCH 1-2 Objectives of Adjectives Prof. Amour

A broad study of the adjective *bon* in syntax with *bon soir*, *bon ami* and *bon grooming*. Lecture on *bon grooming* with 'Vaseline' Hair Tonic illustrating the fact that 'Vaseline' Hair Tonic replaces oil that water removes. Examination of adverse effects on hair resulting from drying action of water compounded by hair creams and alcohol tonics. Exhibition of how bad grooming puts you out of context with the opposite sex. Special emphasis on how 'Vaseline' Hair Tonic keeps hair neater longer and attracts women as Paris does tourists. Homework drills on Saturday evenings stressing plurals rather than singulars. Course aims at getting along in any language . . . especially the language of love.

*Jeune filles prefer hommes who use
'Vaseline' Hair Tonic for bon grooming!*

Vaseline HAIR TONIC

In the bottle and on your hair
the difference is clearly there!



'VASELINE' IS A REGISTERED TRADEMARK OF CHESBROUGH-POND'S INC.

TEMPE DRUG

6th & Mill

★ ★ FOUNTAIN ★ ★

SIDE ENTRANCE & ANGLE PARKING ON SIXTH STREET

Off-Campus Men To Meet in MU

The kick-off meeting for Off Campus Men will be Monday, Oct. 3, 3:45 p.m., in the north half of the MU upper lounge. Future plans and projects will be discussed, and the 1960-61 intramural manager will be elected, according to president Frank Hennig.

All off-campus men are invited.

Bud's PIZZA HOUSE

Eat Here . . . Or Carry

Open Daily 4 P.M.-2 A.M.
WO 7-0551 — 28 E. 5th St.

Tempe

THEATRE TEMPE

STARTS TONITE
MATINEE 12:30 SAT.

AT OUR
REGULAR PRICES

— NOTE —
ONE COMPLETE
SHOWING ONLY

STARTING AT 7:15

"VALLEY OF THE
Redwoods" on at 7:27

"Around the World in
80 Days" on at 8:30

MICHAEL TODD'S
"Around the World
In 80 Days"

— CO - FEATURE —

JOHN HUDSON
IN
"VALLEY OF THE
REDWOODS"



"THE WARRIOR . . . of The Pacific Award" is presented to ASU ROTC Cadet Colonel George G. Shoemaker by Major General William N. Gillmore, commander of the 15th Army Corps.

General W. N. Gillmore Presents ROTC Trophy

Major General William N. Gillmore, commander of the 15th Army Corps, presented the "Warrior of The Pacific Award," to the ASU Army ROTC unit Tuesday.

Cadet Colonel George G. Shoemaker, ROTC Battle Group commander, received the trophy during a ceremony in the Memorial Union.

The trophy is awarded each year to the school with more than 20 cadets at summer camp achieving the highest aggregate score in record firing of the M-1 rifle.

ASU cadets scored highest of all schools represented at any ROTC camp in the nation.

"I think the evidence shows that the ROTC at ASU has done very well. It requires men of good calibre to compete against schools all across the nation and to come out first," the two-star general stated.

The former West Pointer also presented the "National Junior 30 cal. Championship" trophy to cadet Otis Phillips, ASU junior.

Phillips won this award in national competition this summer at Camp Perry, Ohio.

In regard to compulsory ROTC, Gillmore said, "The two-year compulsory program helps pick the best men for officers. There is less chance to select the wrong type for officers because there is more opportunity to size up the candidates."

General Gillmore conferred with ASU Acting President H. D. Richardson about ROTC affairs.

Foreign Service Interviews Oct. 4

A State Department representative will interview students planning careers in the foreign service here Tuesday.

The representative has scheduled group meetings for 9:40 and 1:40 in BA 208.

Dr. Robert Menke, director of Placement, said Oct. 24 will be the deadline to file for the foreign service officer's exam, Dec. 10, a requirement for State Department positions.

More About —

Janet Leigh

(Continued from Page 5)

up and go with him," she added.

The vibrant actress, having campaigned in Los Angeles, San Francisco and Phoenix, plans to leave Oct. 15 for New York and Washington D.C. to fulfill other campaign engagements. She is enthusiastically supporting the "Key Women for Kennedy" movement and recently gave a fund-raising tea, which was attended by 2,000 women at her Los Angeles home.

Miss Leigh urges all undecided voters to watch the Kennedy-Nixon TV debates. "Never before have the American people had the opportunity to compare presidential candidates side by side."

The Hollywood couple will attend the ASU-WSU football game tomorrow night. They were presented tickets by ASU President Karl Dennison.



WO. 7-4482

Art and Craft SUPPLIES

Supplies For

• ARTISTS • DRAFTSMEN • HOBBYISTS

★ Block Printing Material ★ Artists

Supplies ★ Designer's Colors ★ Foster

Art Books ★ Pocket Library of Great Art

★ Marshal Photo Oil Colors ★ Colored

Corrugated Paper ★ Colored Foil and

Cellophane Paper, both by foot or yard.

★ Come & See Us . . .

IN THE TEMPE CENTER

The Americana Shop

young man with a goal

CAMPUS, 1960

and how to dress in style . . .

In traditional styling . . . Whatever your needs we have the clothing. Sportswear, furnishings and accessories that are in demand on campus.

Sports Coats in Solids, Stripes and Plaids, from \$30
Trousers in Solids and Stripes plain front from \$5

Button-down Sport Shirts with tapered body from \$5
Pull-over & Cardigan-style Sweaters from \$8.95

THE Americana SHOP

TEMPE SHOPPING CENTER
QUALITY MEN'S APPAREL

Open daily at 8:30 (for your early morning shopping) 'til 6:00 P.M.

Thursday night 'til 9:00 P.M.

WO 7-5457

Happy House

TEMPE CENTER
WO 7-5353

IT'S CANDY TIME

MRS. STEVENS FINE CANDIES
LOLIPOPS ALL SIZES
IMPORTED CANDIES

Jams

IN THE TEMPE CENTER

featuring

HOT KOSHER 50c
Corned Beef or Pastrami

SERVED ON RYE BREAD WITH
KOSHER PICKLE & POTATO CHIP

• Breakfast • Lunch • Dinner

Open 7 a.m. to 7 p.m.

Closed Sundays

TEMPE

Center

SHOPPING

In The Heart of Tempe On Mill Avenue . . . 8th Street to 10th Street

ONLY ONE BLOCK FROM CAMPUS

for your

One - Stop Shopping Center for All Your Shopping Needs

**NO EXTRA CITY SALES TAX
PLENTY OF FREE PARKING
COURTEOUS AND EFFICIENT SERVICE
COMPLETE MERCHANDISE STOCKS**

Americana Shop
Men's Apparel

Bonnie Sue Fashions
Women's & Children's Apparel

Celia's Fashions
Women's Apparel

Center Hardware
Hardware Supplies

El Rancho Market
Groceries — Produce

Erickson's Handcrafts
Art & Craft Supplies

First Federal Savings
Savings & Loan Service

GallenKamps
Family Shoe Store

W. T. Grant Co.
Department Store

First National Bank
Drive - In Facilities

Happy House Shop
Gifts — Candy — Cards

Hill's Record Shop
Records - TV - Radios - Stereos

House of Pancakes
Breakfast — Lunch — Dinner

Jam's Restaurant
Table Service

King's Fashions
Women's Apparel

Little Travelers
Infants' and Children's Wear

Pioneer Camera Shop
Cameras — Photo Finishing

Porters
Women's and Men's Wear

Ray's ASU Barber Shop
Men's Barber Shop

Rosamond's
Beauty Shop

Ryan Evans Drug
Prescriptions — Cosmetics

Sherwin Williams Co.
Paints — Wallpaper

Sewing Basket
Fabrics

S&H Redemption Center
Green Stamp Store

Sun Devil Hop-In
Drive - In Service

Top's
Beverages — Snacks

Union Furniture
Furniture and TV

Ohio State University Fights Discrimination In Housing

COLUMBUS, O. (I.P.) — Ohio State University has not been adding any new city-licensed houses to its "registered" list unless the landlords pledge acceptance of the university's "open house" anti-discriminatory policy.

In listing a series of other steps taken toward solution of the discrimination problem, William S. Guthrie, executive dean of student relations, pointed out that:

Several professionally trained community workers are devoting part time efforts in visiting landlords to "interpret the problem to them and secure additional open-house acceptance."

Operating under the director of the Religious Affairs Center on campus and university-area ministers, the project also includes experimental luncheon sessions and small neighborhood "coffees" for landlords.

Ministers of two university

district churches are working with landlords in their membership. A student visitation program has been operating under Student Senate auspices to call on landlords.

Organized study sessions to analyze and seek solutions to the problem have been held with many campus and off-campus groups. Extensive data on the issue have been presented to the Faculty Advisory committee to the president and Board of Trustees. The first comprehensive housing census

of Ohio State students has been completed with the help of IBM cards.

With the assistance of the Dean of Men's office, a negro fraternity now operates in the university's fraternity — sorority district. Among fraternities and sororities, action by leaders within the systems have left only one sorority with a "Christian" clause and none has a racial restrictive clause in its membership requirements. Only four fraternities retain discriminatory clauses.

Dr. Robert A. Patterson Writes About Scorpions

"Physiological Action of Scorpion Venom," an article by Dr. Robert A. Patterson, assistant professor of Zoology, appears in the current issue of the American Journal of Tropical Medicine and Hygiene. Dr. Patterson currently serves as a principal investigator

on a research project, "Site and Mode of Action of Selected Animal Venom," sponsored by the U.S. Public Health Service.

"A classic is something that everyone wants to have read and nobody wants to read." Mark Twain (1835-1910).

the QUIET VILLAGE

JAZZ DANCE NIGHTLY
STEAKS, SANDWICHES, EXOTIC HEALTH DRINKS —
Under New Management
5140 E. Van Buren BR 3-0600

**For The BEST
Auto Repair Service
In Tempe . . .**

call
WO 7-3345

FREE PICKUP AND DELIVERY
Specializing In All Chrysler Products

DANA Bros. MOTOR CO.

211 MILL AVE. — TEMPE



Take my shirt, my lit. notes and my cuff links...but get your own



LOOK FOR THE BLUE LABEL*



YOU TELL HER, MAN. The Court King is your shoe...professional traction-tread soles, flexible instep, full cushioning. A pro on the tennis court, but just as right with slacks.



A GIRL HAS RIGHTS. Like having a Champion Oxford made just for women. Comes with fashionable new taper toe—or round toe, if preferred. Light in weight, cool and colorful. Get U.S. KEDS—male or female—at any good shoe or department store.

US RUBBER United States Rubber
*Both U.S. Keds and the blue label are registered trademarks of
Rockefeller Center, New York 20, New York



Tried Regular Filter Cigarettes?



Tried Other Menthol Cigarettes?



NOW! Come Up...All The Way Up to the MENTHOL MAGIC of KOOL!

When your taste tells you it's time for a change, remember: Only Kool—no regular filter cigarette, no other menthol cigarette—gives you real Menthol Magic!

YOU FEEL A NEW SMOOTHNESS DEEP IN YOUR THROAT!



ALSO AVAILABLE WITHOUT FILTER

Your KEDS Dealer . . .

Open Thursday Night Until 9 P. M.

Fashion Bootery

605 Mill Ave. Tempe

Foreign Language Classes Have Enrollment Increase

A 125 per cent enrollment increase over last semester in second-year Russian has been reported by Dr. Russell K. Bowman, chairman of the department of Foreign Languages. Fourteen hundred students are now enrolled in foreign language courses at ASU, a 14.3 per cent increase over last year.

Also significant, said Dr. Bowman, is an 85½ per cent increase in enrollment in upper division French as compared to 45 and 32 per cent in upper division German and Spanish. He said he will file nominations to file nominations.

Applicants Sought for Award

Applications for Danforth Foundation fellowships are open to senior men and recent graduates preparing for college teaching careers, according to Dr. Karl H. Dannenfeldt, chairman of the division of Behavioral and Social Sciences.

Each year 100 fellowships are granted and may be carried concurrently with other Fellowship appointments. All applicants are required to take the Graduate Record Examination November 19 or January 21.

Name Heads For Formal

Chairmen for the annual AWS Star Formal are organizing their committees for the Nov. 19th dance.

The chairmen are: Invitations, Mary Ann Black; Publicity, Vela Richey; Programs, Carol Brittenham; Decorations, Judy Chisum; Refreshments, Jodee Baird and Diane Smith; "Mr. Preferred," Linda Lowery; Entertainment, Nancy Suess; Advisor, Carol Coon.

General theme for the formal is "Desert Starlight" highlighted by a color theme of blue and silver.

Anyone interested in working on the Star Formal may contact any of the chairmen or the AWS office in the MU.

PERIGRATION

By KEN HARRISON

"Application Denomination Designation Segregation Altercation Demonstration Situation — normal"

STADIUM COFFEE SHOP & Delicatessen

Good Things to Eat and Drink

1133 Normal Avenue

"Across the Street From East Stadium TV & RADIO Open 7 Days Week

ART, etc.

By MIKE BENSON

Wednesday's State Press announced that the Executive Council had approved a plan of seating at the football games. It was to have been called "Spirit Incorporated."

Yesterday, Karl Dennison, ASASU president, announced that he had cancelled the plan. He undoubtedly had pressure brought to bear upon him, students who told him they wouldn't abide by the decision, that they would riot, and other similar remarks.

We were only partially glad to hear of the announcement. Of course, we don't like the idea of being forced to do anything, but, in the interests of the school, we were willing to follow the system through the trial period to see if it would improve the lagging school spirit.

"Der Deutsche Verein," the German club, holds their first get-acquainted meeting 7:30 p.m. Monday, in the MU upper lounge.

Refreshments will be served and entertainment is planned.

"Spirit" is a word of many meanings; here we imply the idea of "enthusiastic loyalty" as it is defined in Webster's Dictionary (unabridged).

"Spirit" manifests itself in many ways on a university campus; at least, it should! We have noticed a singular lack of that commodity on ours.

"Enthusiastic loyalty" is not just for football games; it is the attendance of school functions: Student art exhibits, recitals, and other functions. It is the participation in student activities: Choral Union, Men's Glee Club, band, orchestra, student government. Most schools the size of ASU have active groups and interested students.

We did not agree with the Rally and Traditions committee on the methods they attempted to employ, but we do agree with the reason for the decision to act.

This is the time to re-evaluate our thoughts about our school. Surely, if we are a part of the school community, we should be proud enough of it to give it the support it deserves.

Jimmy Robinson's

University

Drive

Phone

WO 7-3141

for the

FASTEST CARRYOUT

Service in Tempe

Corner Apache & Rural • TEMPE

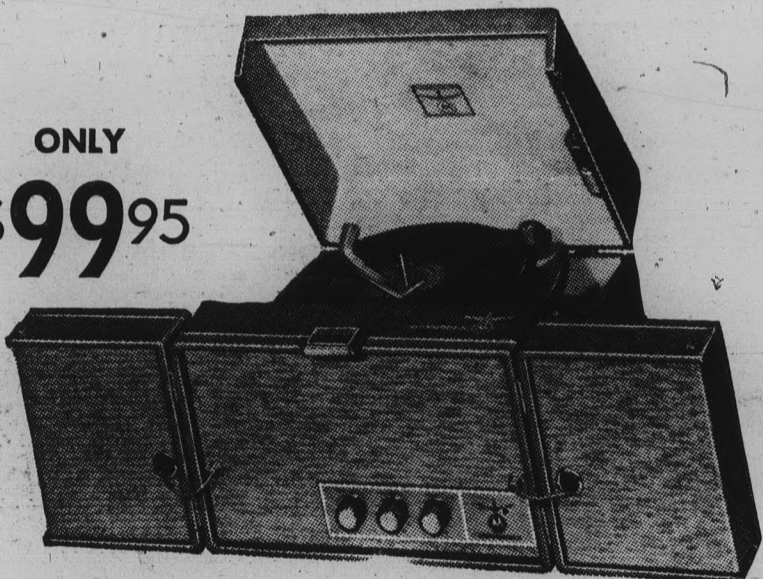
5 Minutes after your call your order will be ready at one of our curb stands

The Portable Chosen By More People Than Any Other

MOTOROLA 1961 STEREO

You Won't Believe Your Ears

ONLY \$99⁹⁵



- Separate Balance Control
- Automatic Shut-Off
- 4 Speeds
- 3 Separate Speaker Systems
- 3 Separate Amplifiers
- Golden Audio Separator

HILLS RECORDS

TEMPE CENTER

Open Thursday Nights Till 9



Make It "3-In-A-Row" And Then Celebrate At The

Brand New

MUGS-UP

Drive - In

Corner Van Ness and 8th Street "Where The Nickle Is Mighty"

Emerald Pool

HEATED POOL
OPEN DAILY
YEAR-ROUND

Adults

65c

Children

50c

PATIO AND DANCE AREA

AVAILABLE

FOR PRIVATE PARTIES

1502 N. 46th St. — Phoenix

1 Block South of McDowell

Phone BR 5-6246

GREEK TO ME —

Greeks Hold Initiations, Raids

Phi Alpha of Sigma Alpha Epsilon recently initiated Steve Bassett, Bill Blair, Bill Gorman, Jim Gafke and Ron Jackson.

Dave Barker, Ken Turley and Fred Roybal were accepted into active membership of Beta Xi chapter of Tau Kappa Epsilon.

Tomorrow morning Shelia Foster, Candy Harris, Lynn Shahan and Marge Zern will be initiated into Kappa Delta sorority. The four will be guests of honor at a luncheon later at Durant's.

Kappa Delta ribboned Mary Jo Adair, Suzanne Bailey, Maggie Palmer and Ginny Thiesen Wednesday.

Alpha Phi held its first annual retreat last weekend at Ride-N-Rock Guest Ranch in Scottsdale. Special guest was Mrs. Margot Appleman, Alpha Phi district governor, who visited the chapter last week.

Several fraternities and sororities have been involved in small raids lately resulting in thefts from each other.

Alpha Phis visited seven fraternity houses Sunday and car-

ried off 15 paddles, trophies, a charter, plaque and a mailbox.

Kappa Kappa Gammas serenaded the Phi Delt Monday night and after drawing the members from the house, a few Kappas sneaked around front to steal their trophies. Upon entering the front of the house, the girls found themselves face to face with ten pledges left standing at attention.

Sigma Nus showered down ATOs in a surprise water fight Monday night that began after the ATOs turned off the Sigma Nu's house lights.

Grade school classes were featured at the Kappa Delta-Sigma Phi Epsilon "school days" exchange Wednesday.

Phi Delt was hosts to the Thetas at a "turn-about" party the same night.

A cast of 60 pledges previewed the latest creations in pajama and night wear at the ADPi-Sigma Nu exchange.

Delta Sigs entertained the Delta Gammas Wednesday at the Ramada Inn with swimming, dining and dancing.

Chi Os and Sigma Chis exchanged at a "speakeasy" party in Clancy's Sept. 27.

Members of Alpha Sigma Alpha and their dates will attend

a buffet supper Friday, prior to viewing "Who Was That Lady I Saw You With?" at the Phoenix Little Theatre. The buffet will be at the home of Mrs. W. A. Nielander, faculty advisor to the Beta Chi chapter.

Delta Sigma Phi staged a "surprise branding party" Saturday, telling their dates to wear levis. The women were escorted in big trucks and hauled like cattle to the party site. Upon arrival, the gals were branded appropriately, on their rear flanks.

Members, alumnus and guests will party at the Sigma Pi fraternity house following the football contest.

Sigma Chi has scheduled an after-game party at the Desert Rose hotel.

Bulletin Board

FRIDAY

Men's Press Club
1:30 p.m. MU 210
Bridge Lessons
6:30 p.m., Senate Chamber
Bridge Party
7:30 p.m., MU lower lounge
Four Freshmen concert
7 p.m., 9:15, ballroom

SATURDAY

After-game Dance
10 p.m., MU ballroom

MONDAY

Financial Board of Control
3 p.m., MU 208
Off-Campus Men
3:45 p.m., MU upper lounge
Freshman Hostess committee
3:45 p.m., MU ballroom
Spurs
4 p.m., MU 209
Executive Council
4 p.m., MU 208
Natani
4 p.m., MU 210
Alpha Mu Sigma
6 p.m., MU 210
Theta Delta Chi
8 p.m., MU 210

Newman Club Sets Meeting

The ASU Newman Club will sponsor its annual Communion breakfast in the MU faculty dining room, Sunday, Oct. 2, 11:00 a.m. Speaking on "Religion and Literature" will be Dr. Richard Landini of the ASU English Department.

Be Smart
on
Campus

With a
Fine
Imported
Pipe



And
Our
Own
Blends
of
Tobaccos

PHOENIX PIPE SHOP
326 N. CENTRAL
Arizona's Newest and Most
Complete Pipe Shop

Organizations Elect Leaders

Mike Stanton is serving as new president for Pi Kappa Alpha. Other new officers include Bill McBroom, treas., John Ehrke, sec., and Nolan Parmer, vice-pres.

Alpha Sigma Alpha pledges elected Jean Nicolay, pres., Nancy Gibbert, vice-pres., Dell Kimbrough, sec-treas., and Diane Coe, chaplain.

Karen Smith is Alpha Phi pledge president. Other pledge officers include Carolyn Bennett, vice-pres., D. D. Deitrick, sec., Suzanne Runden, treas., Verna Lynn Gregory and Danna Leitnerman, junior Panhellenic representatives.

Di Bowman and Bonnie Evans are Gamma Phi Beta's representatives to junior Panhellenic council.

Chapter officers for Phi Delta Theta include Darrell Franklin, pres., John Rustin, sec., Larry Miller, treas., and Jim Hancock, reporter. Phi Delt pledge officers are Stewart Wright, pres., Bruce Hovde, sec., Chris Kossac, treas., and Bob Rush, warden.

Alpha Delta Pi pledges elected Nora McGrew, pres., Mary Leigh Burns, vice-pres., Lynn Anderson, sec., Bonnie Temple, treas., Joan Peterson and Barrie Kiesel, junior Panhellenic representatives.

Mary Ellen Ross is Chi Omega's pledge president. She will be assisted by Diane Smith, vice-pres., Jo Dee Baird, sec., Bonnie Olsen, treas., Mary Ann Shimm and Bennie Smith, junior Panhellenic representatives.

Kappa Alpha Theta's pledges will be led by Linda Henderson, pres., Nancy Caldwell, sec-treas., Susan Sloan and Marilyn Luckey, junior Panhellenic representatives.

Marty Pavell is pledge president of Alpha Epsilon Pi fraternity. Other pledge officers include Al Steinberg, vice-pres., Harry Green, sec., Alan Blau, treas., and Dick Raphael, sgt-of arms.



MINERAL SPECIMENS • MICROSCOPES
ULTRA VIOLET EQUIPMENT
COLLECTING SUPPLIES
GEMS

BOOKS
GEOLOGY • MINERALOGY
JUNIOR SCIENCE

SCOTT WILLIAMS
Mineral Company, INC.
440 N. SCOTTSDALE ROAD • SCOTTSDALE, ARIZONA • WH 5-0803

OVERWHELMING RESPONSE TO THE ASSOCIATED STUDENTS INSURANCE PLAN

has forced us to keep enrollment open TWO WEEKS LONGER!

REMEMBER, students insured last year should also re-apply for this year's coverage.

There are plans for single students, married couples, and families.

DON'T PUT IT OFF ANOTHER DAY

Applications at Room 213 Memorial Union

or

Charles Lock, 822B Mill Ave., Tempe, WO 7-0911

SIGN UP NOW

Before Saturday, October 15

PART TIME GIRL For Doctor's Office

Must be able to type and do light bookkeeping \$1.00 per-hour

Write Suite 105, Park Central No., Medical Building 461 W. Catalina Dr., Phoenix

Rugged Game Expected

Devils, Cougars Clash Here Tomorrow Night

Washington State's Cougars, the nation's leader in total pass offense and possessing one of the finest football teams to ever play in the Valley of the Sun, invade Sun Devil Stadium Saturday night in an effort to knock off Arizona State's unbeaten Sun Devils.

WSU, featuring All-American halfback candidate Keith Lincoln, has nipped Stanford 15-14, and lost to Denver University 28-26, although they picked up over 500 yards total offense against DU. Several mistakes led to the Cougars' downfall.

"We will have to be at our best to even consider winning," stated Head Coach Frank Kush. "We can't make any mistakes. Washington State should be stimulated mentally as well as physically after their loss to Denver. They had four first string men out because of injuries, including Lincoln."

Washington State Head Coach Jim Sutherland calls the big fellow, 6-2 and 205 pounds, "the finest all-around football player I have ever coached." Some of his past pupils include Ronnie Knox, R. C. Owens, and Leon McLaughlin at Santa Monica High in Santa Monica, California.

The WSU offense is the same Flanker-T the Devils faced last week at Canyon. Quarterback Mel Melin leads the nation in passing after two games, including 18 of 30 against Denver.

Kush is still worried over the right halfback post which has only one proven performer there, Joe Drake. John McFalls, Cecil Manning, and speedster Ray Young, are all out with sickness or injury.

ASU's own All-American candidate, Nolan Jones, is sixth in the nation in both scoring and rushing. Arizona State, as a team is fourth in rushing and sixth in total offense.

How ASU's Opponents Fared

Air Force	32	NEW MEXICO ST.	45 (3-0)
CSU	8 (0-2)	Trinity	0
ASU	14 (2-0)	TEXAS WESTERN	16 (0-1-1)
W. TEXAS ST.	3 (0-2)	N. Texas State	16
Denver	28	N. CAROLINA ST.	3 (2-0)
WASHINGTON ST.	26 (1-1)	N. Carolina	0
Miss. Southern	27	Utah	13
HARDIN-SIMMONS	0 (0-2)	U OF ARIZONA	3 (0-1)
SAN JOSE ST.	21 (0-1)		
BYU	8 (1-1)		



THREE-PIECE CORDUROY SUIT WITH YOUTH-APPEAL!

The suit that is setting the fashion pace. Like three outfits in one, this ensemble featuring new continental natural-shouldered, slim lapel sportcoat; trim, tapered trousers; and, gay Tica-lined reversible vest with antique metal buttons is the toast of young men everywhere.

In Antelope Tan, Burnt Green, Italian Olive, and Black. Sizes 35 to 46—Regulars, Longs, and Shorts.

29⁹⁵



603 MILL AVENUE

BOB VIEWS SPORTS NEWS

Patsy's Got Determination

By BOB EGER
Sports Editor



Patsy Willard is a young lady with an unusual amount of determination. Only two weeks ago she returned from the Rome Olympics after placing fourth in women's three-meter springboard diving. She announced then that she would take about a two month rest and then begin training for the 1964 Olympics.

Patsy's vacation only lasted about a week. "I got restless," she said, "I just couldn't keep away from it." She's now working out three to four hours a day—every day of the week.

"It's not the least bit boring," said the talented ASU sophomore, "I'm constantly learning new things and trying them out."

Although she specializes in springboard diving—she is 1960 national woman's outdoor three-meter springboard champ—Patsy plans to add platform diving to her repertory for the '64 Olympics.

A platform is currently being constructed at the Swim Gym in Phoenix and when it is completed Patsy will begin her tower training.

She's polishing up her work on the springboard now. "You can never get too much practice. The more you do a dive the less chance you have of missing it in competition," she said.

Patsy roomed with swimmer Chris von Saltza, a gold medal winner, while in Rome. "Chris, Lynn Burke (another US gold medal swimmer) and several of the other girls are going to retire from active competition," she said. "When they enter college they're going to call it quits. They figure the combination of college life and training is just too much."

Not so with Patsy. She manages to mix the two quite well. She's shooting for two gold medals in the '64 Games—one in springboard and one in platform. She's already proved her ability and her long hours of training are proof of her desire.

For a look at Patsy's trip to Rome see Jack Ong's "I Cover College Avenue" in this issue.

ASU's varsity baseball record in 1959 (32-13) was the best in the school's history.

This Is The
"BIG ONE"
Go Get 'Em Devils!
SOLANO'S CAFE
Drop In For A Real Treat After The Game
By Popular Demand, We'll Be Open Till 1 A.M.
Serving Delicious Mexican Food
— Food To Take Out —
Closed Mondays
Corner 4th & Mill WO 7-9035 TEMPE

DAIRY QUEEN
Tastes Better!
Stop In . . .
Find Out
For
Yourself!!
TEMPE DAIRY QUEEN
950 MILL AVE. — TEMPE

the
Capri's Pick Of The Week

CITATION MOTORS — 1122 E. Van Buren, Phoenix — AL 2-8797

We have a good selection of really top notch used cars available at all times, at any price you have in mind to spend. All of them thoroughly reconditioned and dependable as cars costing much more.

1955 RAMBLER HARDTOP Standard shift with overdrive, radio, heater. Continental kit. Sporty and economical. One owner, 46,000 miles. \$795	'55 MERCURY MONTCLAIR 2 door HARDTOP. Power steering, brakes, seats, windows. Radio, heater, automatic, near new premium tires. Like new throughout. \$895
---------------------------------------------------------------------------------------------------------------------------------------------------------------	--------------------------------------------------------------------------------------------------------------------------------------------------------------------------------

We also carry a selection of transportation cars which we can carry the contracts on.
1951 Buick Hardtop, like new \$295
1950 Ford Sedan \$150 1952 Mercury Sedan \$200
Mention this ad and receive 25 gallons of gas free with any purchase

CITATION MOTORS
1122 East Van Buren, Phoenix AL 2-8797

ASU - 21
Cougars - 13

Right or Wrong You Can't Miss With Our PIZZA'S
16 E. 4th St. — Tempe

JERRY SINGS FOLK SONGS
6 p.m. - 9 p.m.
Monday and Thursday

Check Our Complete Line of SMITH-CORONA TYPEWRITERS



Something NEW - now a 5-Year Guarantee

at your COLLEGE BOOKSTORE

Frosh, Varsity Baseball Series Starts Monday

Baseball games pitting the ASU varsity against the freshman team are scheduled daily beginning Monday.

Coach Bobby Winkles announced that the games will be held for several weeks as part of the fall training program.

Students are invited to attend the regulation nine-inning games to be played on the diamond east of Goodwin Stadium. Starting time is 3 p.m.

The games will afford students a chance to see the team ranked seventh nationally last spring and at the same time get a preview of things to come in the '61 season.

Carroll Wins Singles Title

Jim Carroll, Delta Sigma Phi, defeated Chuck Murdough, Sigma Chi, 6-3, 6-0, for the intramural tennis singles crown. Carroll eliminated Richard Reakes, the defending champion, in the semi-finals.

Tennis doubles is still underway with the finals today.

Next event on the schedule will be swimming which will take place at the ASU pool next week.

Mack Back

John McFalls, junior Sun Devil halfback, was pronounced fit by ASU team physician, Dr. L. C. Sutherland and will be available for spot defensive duty against Washington State tomorrow night.

McFalls, an offensive and defensive standout last season, has been suffering with diabetes but the condition is now under control, according to Dr. Sutherland.

Arizona State head football coach Frank Kush was an All-American gridder at Michigan State.

Meeting Today

An intramural manager's meeting is scheduled this afternoon at 3:30 in room 209 of the Memorial Union.

Swimming and volleyball will be discussed and entry blanks for those sports will be given out. Eligibility lists will also be available for those organizations who have not yet turned one in.

Roll will be taken at the meeting.

We Don't Serve "CREAMED COUGAR"

But Do Come In For Some Excellent Mexican Dishes

Call WO 7-3049 for

CHICO'S RESTAURANT*

FINE MEXICAN FOOD

1120 East Apache Blvd. — Tempe

Air conditioned of course



*"COKE" IS A REGISTERED TRADE-MARK. COPYRIGHT 1958 THE COCA-COLA COMPANY.

B.M.O.C.*

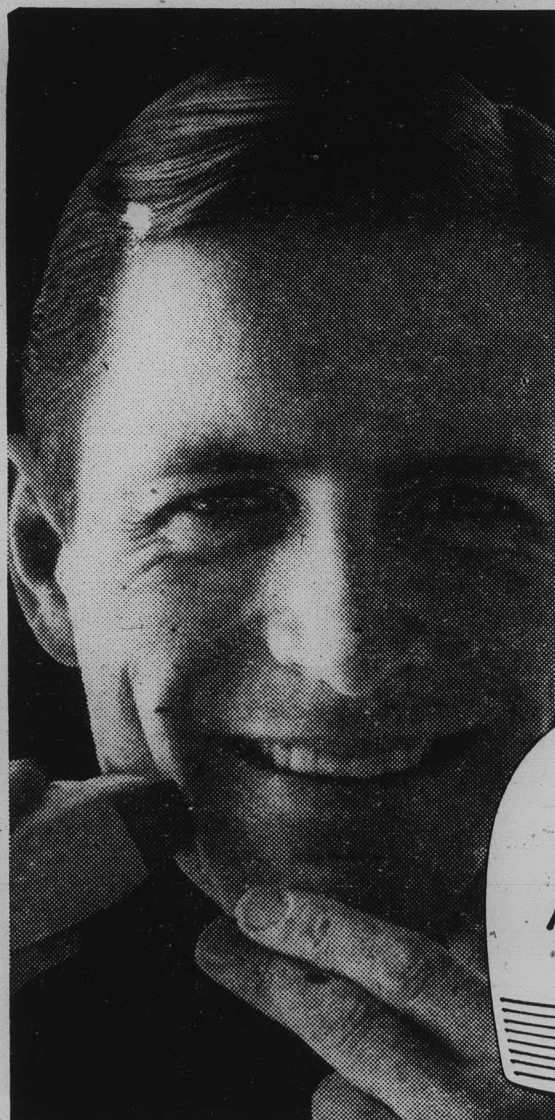
•Big Man On Campus—yea man! He treats the gals to Coke. Who can compete with charm like that. So if you're 5'0" and a little underweight, remember—you don't have to be a football hero to be popular. Just rely on the good taste of Coke. Put in a big supply today!



BE REALLY REFRESHED

Bottled under authority of The Coca-Cola Company by

Phoenix Coca-Cola Bottling Co. 1301 South Central, Phoenix



Mister... you're going to wear that shave all day!

START WITH THIS NEW FORMULA BEFORE-SHAVE LOTION, stop 4 o'clock stubble trouble! You can shave blade-close, all-day clean, without "tenderizing" your face, when you use Pro-Electric Before-Shave Lotion. It contains ISOPHYL® to give your shaver extra glide-power —refreshes you with that brisk, bracing Old Spice scent. 1.00 no federal tax.



SHULTON

Ryan-Evans DRUG STORES

Open to 10 P.M. Every Nite

TEMPE CENTER WO 7-2076

We Give S & H Green Stamps