

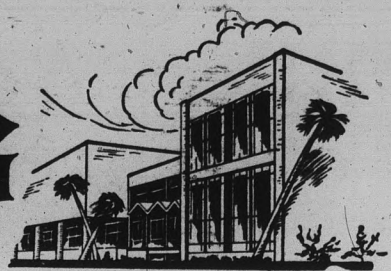


State Press

ARIZONA STATE UNIVERSITY



TEMPE, ARIZONA



Vol. 39

Friday, September 16, 1960

No. 1

Students Regain '50 Line'

Center seats will be available to both students and faculty football fans this fall in the Sun Devil stadium.

Student seats will range from the north 40-yard line south to the end of the east stands, sections T through Z.

ASU faculty members will be seated in the top ten rows of sections T, U, and V. This block of seats in the east stands also starts at the north 40 yard line and extends southward.

Section U from the top ten rows downward, has been reserved for the card section.

The band and Blue Key members will sit in Section T.

There will be no card section at tomorrow night's game. The cards used last season were spoiled by rain during summer vacation.

Bulletin!

Season football tickets and press passes valued at \$2,300 were stolen from the car of an ASU athletic department official in Phoenix yesterday.

Sports fans are warned not to purchase season tickets from individuals because the seat numbers of the stolen tickets have been traced and those tickets will not be honored.

The 104 stolen season tickets are for seats in section E, rows five through 18, in the west stands.

MU Open House Greets Frosh Tonight at Eight

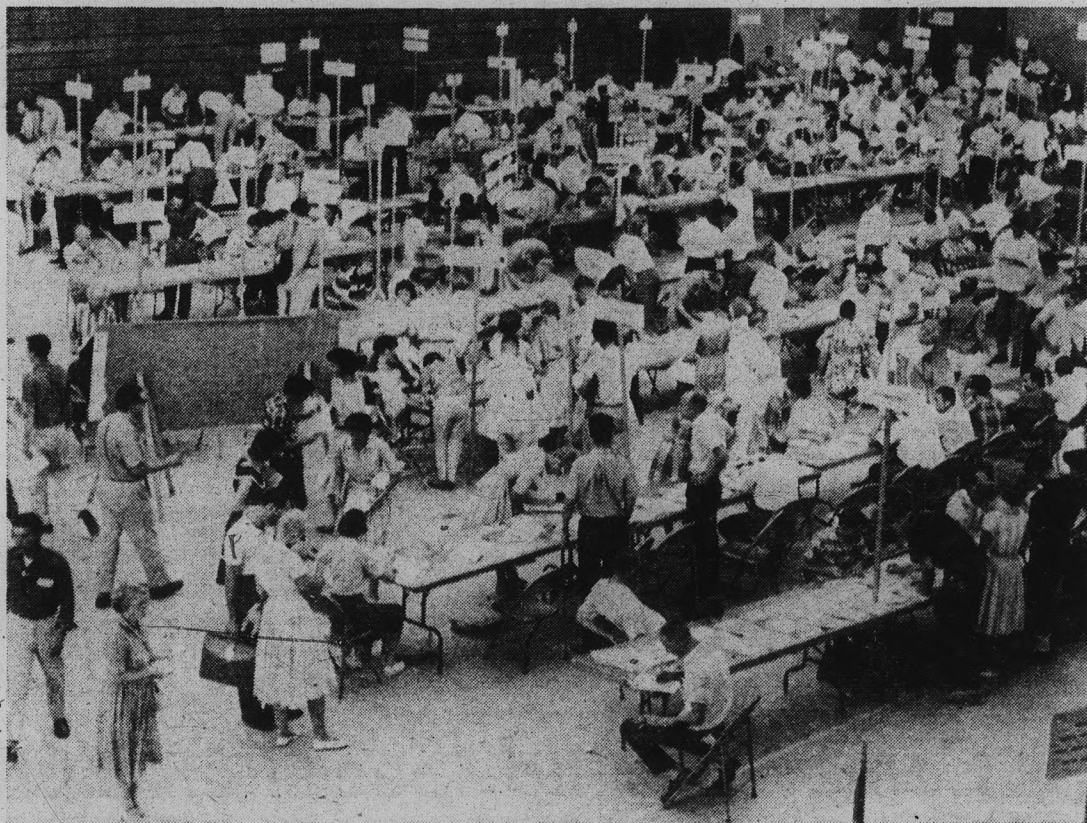
Freshmen and new students will be guests of honor at an open house in the Memorial Union tonight from 8 to midnight.

Continuous dancing will be to the Bob Roth Quartet in the ballroom; and M-G-M's "Teahouse of the August Moon," starring Glenn Ford, will be shown once in the banquet rooms upstairs at 8:30 p.m.

Downstairs, there will be a recorded concert in the lower lounge for a slower pace. Also in the lounge, paintings will be displayed. The prints are available this year for rental, under a program sponsored by the Cultural Affairs committee.

Variety floor shows will run throughout the evening in Clancy's, basement; there will be free games in the games room; and students will be guests to refreshments in the Devil's Den, Corral and Clancy's.

The open house is under the direction of Mrs. Cecelia Scoular, MU director.



THOUSANDS . . . of students registered last week as one of the largest total enrollments in ASU's history began the Fall Semester.

Deans Announce —

New Faculty Members Named

New faculty members have been announced by the Deans of the individual colleges.

Twenty-four new faculty members, 15 of whom are replacements, have been added to the staff of the College of Liberal Arts.

Dr. Israel Goldiamond, former head of the perception and conditioning laboratory, Southern Illinois University, has been named professor of Psychology.

Dr. Goldiamond received a B.A. from Brooklyn College and a Ph.D. from the University of Chicago.

New professor of Mathematics is Dr. Simon Green, who received a B.S. from Federal College, Vienna, Austria, a M.S. from the University of Vienna, and a Ph.D. from the University of Pittsburgh.

Dr. Green is the author of "Vector Analysis," and co-author of "An Introduction to Algebra for College Students," scheduled for publication next year.

New chairman of the department of Sociology and Anthropology is Dr. Raymond J. Ruppe, with a B.A. from the University of New Mexico and

a Ph.D. from Harvard University.

Dr. Bruce R. Mason is an associate professor and director of the Bureau of Government Research. He received a B.S. from North Texas State College, a M.A. from Texas Christian University, and a Ph.D. from the University of Texas.

Seven associate professors are on the new Liberal Arts faculty. They are:

Miss Bertha M. Bresina, Home Economics; Dr. Benham M. Ingersoll, Mathematics, who received his doctorate at Syracuse University; Dr. Jacob P. Lamberts, English, with a doctorate from the University of Michigan.

Others are Dr. Earl J. Landers, Jr., Zoology; Dr. John L. Michael, psychology, who received his doctorate from UCLA; Miss Janet Walker, nursing and Mrs. Mary L. Wright, Home Economics.

The five new assistant professors are:

Dr. Clarence L. Carpenter Jr., Chemistry, with a Ph.D. from the State University of Iowa; Mrs. Charlotte M. Harris, Nursing, assistant clinical instructor at the Philadelphia State Hospital; Miss Judith J. Radke, French, who received a M.A. from the University of Wisconsin.

Also Robert W. Sanders, Mathematics, with a M.A. from Stanford University; and Jack J. Taylor, Art.

The eight new instructors on the Liberal Arts faculty are:

Miss Arlene N. Hanssen, Health, Physical Education and Recreation; Edmund G. Howells, Humanities; Robert E. Lance, Mass Communications; and Mrs. Doris C. Powers, English.

Others are Mrs. Edythe G. Stelhorn and Miss Jane L. Ward, both Nursing; Wells F. Impson, Physics; and Miss Joan Richardson, Mathematics.

Among those added to the college of Business Administration is Dr. William H. Harris, professor of Marketing. He holds doctor's and master's degrees from Ohio State University and a B.S. from Denver University.

Dr. William T. Greenwood has been named associate professor of Management. He received his bachelor's and doctor's degrees from St. Louis University and his master's from the University of California at Berkeley.

Dr. Don V. Plantz, associate professor of Economics, studied at the University of Kansas and Indiana University.

Dr. Alfred H. Schmidt, named assistant professor of Marketing, holds doctor of Business Administration and master's degree from Indiana University and a B.S. from the University of Oklahoma.

Charles R. Klasson, graduate of Ohio State University, is assistant professor of Management. William W. Pyle, who will serve as visiting lecturer in Accounting, is author of the textbook, "Fundamental Accounting Principles," in use at 168 colleges and universities.

Returning to the ASU Business Administration faculty this fall is George Sheppard, lecturer in Accounting, who was an instructor from 1946 to '51.

Robert L. Blomstrom has joined the faculty as assistant professor of Management, and Richard R. McCready has been named assistant professor of Office Administration and Business Education.

Miss Charlotte Backus, who received her master's from ASU last year, will be an instructor in Office Administration.

(Continued on Page 6)

Durham To Take Office

Dr. G. Homer Durham, ASU presidential appointee, plans to take office Oct. 1.

Currently the vice-president of the University of Utah, Dr. Durham received a B.A. in history and political science from the University of Utah in 1932, and a Ph. D. in political science at the University of California at Los Angeles in 1939.

Prior to his appointment as UofU vice president in 1953, he served as the director of the university's institute of government and as professor and head of the department of political science.

Dr. Durham was principal founder and first president of the Western Political Science Association, and from 1946 to 1953, the publisher of the Western Political Quarterly.

As guest of honor at a recent Phoenix Press Club Forum he stated that he is concerned with teaching ASU students an "intellectual approach and appreciation of what has been accomplished in the last 100 years (in America)," and how we "relate ourselves to the comparative culture of the world."

He indicated we should know more about the Red Chinese, saying, "You can control only what you know," and noted he is more worried about the Red Chinese, as a challenge to our way of life, than the Russians.

The educator stated that he wouldn't be surprised to see the compulsory requirement for ROTC "move off the scene." Atomic weapons have changed the nation's need for student training in ROTC. In the future, the need will be for psychologists, language experts, and so on — not "the cadet colonel in ROTC."

Concerning college curriculum, he observed: "I am biased." (Continued on Page 5)

New Liberal Arts Building Houses Many Departments

The newest addition to ASU is the Liberal Arts building on College Avenue across from Matthews Library.

The four-story building, occupying 78,000 square feet, cost \$925,000.

There are 40 classrooms: 9 on the ground floor, 19 on the second floor, 12 on the third floor, 2 museums, 3 seminary rooms, an anthropology work room and a psychology clinic. There will be 67 faculty offices, which include offices for English, Mass Communications, Foreign Languages, Humanities, and Behavioral Sciences.

The concrete figures along the inner wall were chosen after a contest among ASU art and architecture students. "Winners Jim Badon and Roy McGowan, both art students, were awarded \$250 each," Mr. Ralph Haver, the building's designer said.

In the center of the courtyard will be a lily pond to add to the beauty of the building," John R. Ellingson, superintendent of buildings said. "The lobby will be semi-closed with a plastic screen which will keep the bright sun out and allow for some tropical plants," said Mr. Haver.

Adequate Parking Now Available ASU Campus Security Claims

"Adequate parking space is available for everyone at ASU," according to Gayle Shuman, Campus Security director. He states that parking space primarily for off-campus students is north of 8th St. near Palo Verde Hall. Although this area is not in the center of campus, there is room for all, Shuman says.

Anyone wishing to discuss traffic or parking problems may visit the Campus Security office, located behind the maintenance building, and speak to either Sgt. Peck or McCabe, Shuman added. Sgt. Peck's hours are 10 to 12 a.m., and 1 to 2 p.m., Monday through Friday. Sgt. McCabe's hours are 6 to 7 p.m. Weekdays.

Miller Advises Senators To Represent All Students

New Digital Computer To Be Ready Soon

Orientation of new senators highlighted the first session of the ASU student senate Wednesday.

Speaker of the senate Les Miller told members of the eighth ASASU legislature that they represent the students, not themselves. He advised senators to be aware of student opinion through the State Press, councils, and regular attendance at senate sessions and committee hearings.

Miller said that a definite senate schedule will be used this year. The senate will hold sessions the second and fourth weeks of each month, usually on Wednesdays at 3:45 p.m. All

sessions are public.

During the first and third weeks of each month, committee sessions will be scheduled. The Legislative Council, composed of senate leaders and chairmen, will meet on the first Wednesday of each month. Committees will set a definite time and place for meetings.

Miller announced the appointment of Don Reilly as sergeant-at-arms of the Senate. Sharlyn Nelson, organizational secretary, will serve as assistant senate secretary.

The speaker stated that last year's rules will be adopted at the next session, Sept. 28. New rules will be debated and adopted at the following session. Miller hinted that some controversies are in prospect over the new rules.

Governor Paul Fannin will speak at the formal session Sept. 28. At the session, ASASU President Karl Dennison will give his State of the University address and Fred Koory, new Supreme Court Chief Justice, will swear in the senators. A reception for senators will follow the session.

Miller also reminded senators that: 1) No smoking or food and drink is permitted in the chamber "except during unusually long sessions, as determined by the speaker;" 2) All bills must be submitted to the secretary by Monday of the week they are to be introduced; 3) His office hours for both students and senators will be Tuesday and Thursday 1:30 to 4:30 p.m. and Fridays 3:30 to 4:30 p.m.

A million dollar computer will go into operation at the ASU computer center next month.

The General Electric 304 computer was installed last July to replace the IBM 704 which the school has used since 1957.

Some advantages of the new unit are higher input-output speed and greater utility in non-scientific areas.

Problems from salary accounting for Business Administration to the value of "pi" for the Mathematics department are solved in moments by the machine.

ASU had use of the computer in exchange for housing the G. E. owned equipment.

The recording and program-

ming equipment of the transistorized machine are already in use.

Jazz At ASU Set Next Friday

Two leading Phoenix jazz groups, Tony Morell's Quartet and the Blue Notes, will present a concert in the MU ballroom from 7:30 to 10 p.m., Sept. 23.

Admission to the jazz festival, sponsored by the ASU Men's Press Club, will be \$1.

Tickets may be obtained from Press Club members, the MU information desk and Wing's Restaurant or Chez Jazz in Phoenix.

Place To Go For Brands You Know

FOR WOMEN

- ★ Lady Manhattan
- ★ Jantzen
- ★ Pendleton
- ★ Ship'N Shore
- ★ Rolf's Leather
- ★ Broderick Gym Wear

FOR MEN

- ★ Pendleton
- ★ Haggard
- ★ Jockey
- ★ Hickok
- ★ Levis
- ★ Jantzen
- ★ Freeman Shoes
- ★ Allen "A" Louart's
- ★ Wembley Ties
- ★ Rolf's Leathers
- ★ Weldon P. J.'s
- ★ Wilson Sporting Goods
- ★ First Nighter Formal Wear
- ★ Official Gym Clothes



Joe Selleh
Varsity Shop

7th & Mill Ph. WO 7-4163

ARIZONA'S FINEST RECORD SELECTION

Come In And See For YOURSELF

We Can Please the Jazz Collector and the Classical Connoisseur

RCA VICTOR

A MOST COMPLETE SELECTION OF CLASSICS AND OPERA

- Aida
- Lucia Di Lammermoor
- Force Of Destiny
- La Boheme
- Carmen
- Marriage Of Figaro
- Madame Butterfly
- Barber Of Seville
- Macbeth
- Il Trovatore
- La Traviata
- Cavalleria Rusticana
- Rigoletto
- Tosca

IN STEREO AND HI-FI

CAPITOL

- Four Freshmen
 - Kingston Trio
 - Frank Sinatra
 - Jonah Jones
 - George Shearing
 - Les Baxter
- BIG MUSIC ON CAMPUS

COLUMBIA

The Best In Jazz

- ★ Errol Garner
- ★ Miles Davis
- ★ Dave Brubeck
- ★ Jay & Kai
- ★ Gerry Mulligan
- ★ Max Roach
- ★ Lionel Hampton
- ★ Louis Armstrong
- ★ Chet Baker
- ★ Count Basie
- ★ Duke Ellington
- ★ Hi-Lo's
- ★ Billy Holiday
- ★ Mahalia Jackson

- YOU NAME IT...
- WE HAVE IT...
- SWEET TO DIXIE

LARGE SELECTION OF STEREOPHONIC RECORDS

HILL'S RECORDS

Tempe Center

— Open Thursday Till 9 —

Phone WO 7-5243

Dennison Appoints

Appointment of chairmen for nine student government boards have been announced by Karl Dennison, ASASU president. He also appointed the student legal adviser and three Supreme Court justices.

All of the appointments must be confirmed by the student senate. Dennison is also required to appoint two more Supreme Court Justices. The Chairman of the Board of Traffic Appeals will be appointed by Dean Shofstall.

Chairman appointments include:

* Memorial Union Board, Laird Simpson; Organization and Leadership board, Gary Walker; Election board, Mark Cockrill; Education board, Larry Ellis; Cultural Affairs committee, Mike Craig; Social Activities committee, Jim Howard; Student-Faculty Relations committee, Dale Cheeley; Calendar committee, Barbara Defer; Rallies and Traditions committee, Walt Gibford; and Board of Athletic Control, Gary Walker and Sam Stocks, student members.

Fred Koory was appointed Chief Justice of the Supreme Court, with Pete Koelsch and Margaret Williams as Associate Justices. Bud Bartlett was named Legal Adviser, with Gary Peter Klahr his chief assistant.

The chairmen may be contacted at the ASASU Secretary's office.

New Meteorites To Be Studied

The largest known meteorite collection is available for study and research at ASU.

The collection, valued at \$275,000, was purchased by the National Science Foundation and the state of Arizona.

Interested persons may contact Dr. Clyde A. Crowley, chairman of the Chemistry department, who is in charge of the collection.



HANNY'S VARSITY SHOP PUTS YOU ON THE RIGHT TRACK FOR BACK-TO-SCHOOL!

Hanny's gives you the inside track on Arizona's finest collection of correct college apparel. Here, in the friendly, traditional atmosphere of the Varsity Shop, you'll receive expert advice on what's being worn on every major campus in the country. And you'll enjoy knowing that the items you select are absolutely authentic in every detail. Happily, too, good taste is not expensive . . . come in and see for yourself.

authentic suits from **\$58.00**

authentic sportcoats from **\$33.00**

AUTHENTIC IVY ACCESSORIES

- Plain front worsted flannel pants, 15.95 to 25.00
 - Worsted & flannel plaid ivy pants, 16.95 to 19.95
 - Traditional or tab side polished cotton pants, 6.95
 - Gant white button-down oxford shirts, 5.95 & 6.95
 - Gant colored button-down oxford shirts, 5.95 & 6.95
 - Silk repp, foulard & wool challis ties, 2.50 & 3.50
 - Long & short sleeve Ivy sport shirts, 5.95 to 10.95
 - Pure shetland crew neck sweaters, 13.95
 - Cotton-knit polo shirts, 5.95
- Also: jackets, vests, cardigans, blazers, socks & shoes

HANNY'S CAMPUS CHARGE ACCOUNT for students and young executives

It's easy to complete your college wardrobe at one time, when you have a Hanny's Campus Charge Account. Just fill in the no-red-tape application form available in the Varsity Shop or on the Mezzanine.

- Charge up to \$60.00 and pay only \$10.00 per month
- Shop with charge account convenience
- Buy what you want . . . when you want it
- Buy without any down payment (slight monthly service charge)

Hanny's Varsity Shop
30 NORTH FIRST STREET



YOU'RE NEXT AT

JD's

Campus Barber Shop
816 COLLEGE AVE.

EDITOR'S Scratchpad



LETTERS to the Editor

EDITOR-IN-CHIEF: GORDON PETERSON
 MANAGING EDITORS: MICHAEL BARRETT and JACK ONG
 SPORTS EDITOR: BOB EGER
 ORGANIZATIONS EDITOR: DEANA DORMAN
 COPY EDITOR: TOM HILTON
 ASSIGNMENT EDITORS: CAROL OSMAN and LINDA WARREN
 SPECIAL EDITORS: VELVA RICHEY, MIKE BENSON and LINDA RANKIN

The STATE PRESS, distributed by Dave Pilcher, is the official campus newspaper of Arizona State University. Published each Wednesday and Friday throughout the school year, excepting holidays and entered as second class matter in the Post Office at Tempe, Arizona, under the Acts of March 3, 1879, and August 24, 1912. Subscription price, \$3.00 per school year.
 Member: Arizona Newspapers Association, Associated Collegiate Press, and National Advertising Service, Inc.

It's been a good year, and we had great fun working on the State Press. We only hope you enjoyed it as much as we did.

(Every editor writes a welcome column for his first edition. In hopes of making the State Press a little different this year, we thought we'd start out with a farewell column.)

Seriously, though, a hearty welcome back to thousands of you, and just as sincere a "just plain welcome" to the rest of you.

A little information for those of you who are new: You are reading the first genuine copy of the State Press since last May. During the summer, the summer State Press fills the gap, but it's a different staff under a different setup. Also, those of you who are now freshmen probably received a "paper" labeled "State Press." This was a special edition for freshmen, and really had nothing to do with our paper. It was not under Associated Students, as the State Press is; it was not written and edited by students as is the State Press. You may then ask how it can carry the State Press' "flag" and masthead. We've been asking that, too.

Anyway, welcome aboard. We're real happy you're reading this issue, and we hope you'll read 'em all. We'll be doing our best, but when it doesn't suit you (or when it does) just stick your ideas, comments or what-have-you in an envelope, address it to "Editor, State Press" and drop it in campus mail. If it's printable, we'll print it (they have to be signed, but name will be withheld on request). If it's not for print, that's fine too. It's your paper — we'll print what you want, if we can.

New student activity cards are to be picked up today. Picture I.D. cards are a boon to many students (especially those trying to cash checks). But, we question the purpose for which these cards were allegedly intended. In registration, we were told these cards would eliminate the perennial "problem" of students loaning their cards to others.

Question: What's the problem? Our answer: No problem! We paid for a seat at the football game, etc., and we can sit in it if we want. But, if we would rather let someone else use it, why not? We paid for one seat; we use one seat. Repeat, no problem!

Ditto the above regarding parking stickers. One sticker; one parking space, for one car. What difference whose?

Need we mention cards for a meal in the cafeteria?

Seems the State Press is too popular this year. In case you haven't noticed, it's 16 pages this time — due to an excess of advertising. Even so, many ads had to be omitted — likewise some news. To those whose material was dropped, we apologize — sincerely. We hope that in the future it will be possible to increase the number of pages as much as necessary, whenever necessary.

Don't forget — all cars which will be on campus at any time are to be registered with the campus police. Can't you just see 7,000 students in that little office? Incidentally, got a kick out of the wording on the blank we filled out in the registration hall. Nearly as we can remember, it said "will you ever have a car on campus?" So now we're prophets. Come to think of it, why do we have to sign up at registration AND at campus police. Oh well, anything to make life more complicated.

Have a few classes in the new Liberal Arts building, and we're left with mixed emotions. About the only way we can describe it is "the most beautiful monstrosity on campus." It is a beautiful building in many ways. The color scheme is both lovely and sickening. We occasionally got the feeling the brick slabs between windows may suddenly slide off. While we love windows (wouldn't want a building without them), sunshine in the eyes is a little rough when the windows are behind (or directly beside) the teachers' lectern. Maybe rearranging the furniture would help. And, if you've ever felt like you were going around in circles, don't bother trying to go from one class to another within the same building — you already know what it's like.

The patio, fish pond, arena, or whatever it is in the middle of the building is rather pretty and certainly facilitates lighting, but the next time we hear someone say there is a lack of space to construct classrooms near the center of campus...



LITTLE MAN ON CAMPUS



I Cover College Avenue

By JACK ONG

"All the world's a stage," (William Shakespeare, "As You Like It") and so's Arizona State.

Our stage is set for another season, with all the people waiting... "Waiting for the end to come." (Nevil Shute, "On the Beach")

But since the end's too far off, we're taking a step at a time, to the footlights... with anticipation and stage fright, all the ingredients of opening night. Curtain's up, so "let's go on with the show!" (Irving Berlin, "There's No Business Like Show Business")

Yep, curtain's risen, revealing construction, naturally, on "The Avenue." We watch ASU progress, not without lumpy throats, dusty eyes and muddy shoes.

When not watching progress, we look to find where last year's classrooms have been moved, an uncrowded eating place, or a spot to park cars... each a delicious treat in itself.

ACROSS STAGE — Down College, we see a new building, for Liberal Arts, getting final grease paint touches. Veterans of this pad realize the great job the LA building will do in easing all sorts of congestion. LA decorators deserve compliments for the excellent color scheme and building design. Tres chic! (??)

Hardly even noticed, final construction in those neat new classrooms, you know. We were too interested in counting the caves in the ceiling or waiting for the new prof to slip somewhere. Any drastic interruption in first classes Tuesday and Wednesday probably would've gotten results similar to popping a paper sack in the middle of "Psycho."

"Teach" (Evan Hunter, "Blackboard Jungle") knows better than to expect such silence for long, though. Instead of "Mr. This" or "Miss That," he'll soon be haunting houses to find such gems as "That noisy, dumb, inconsiderate cluck." (Jack Ong, "Names My Mother Calls Me")

RETREAT — Let's cross the Avenue, stop off at the V.I. for coffee, head back to the Memorial Union. Frosh and new students will be introduced to our MU this evening, starting at 8 p.m. It'll be an open house, with dancing, a movie, lots of refreshments and entertainment.

"Buried in the basement of the Union, we eager State Pressers work all week to get you a finer newspaper. Mike Barrett and I will take turns on the College Avenue beat: he on Wednesdays; I take what's left."

We welcome your suggestions and/or gripes... as a friend, "not as a stranger." (Who the heck wrote that novel, anyway! Olivia DeHavilland starred in the movie, I think.)

CURTAIN CALL — Rest up from strains of the first week, rise and shine Monday, rub the vacation haze from your eyes, and let's go! The administration's ready, ASASU's set, Senate, committees rarin' to take off.

Let's strive for that well-rounded round of learning; knowledge, experience, lots of fun. Four years go faster than we can imagine, so I hear. Best of luck, everyone. "See you next week?" (Loretta Young, "Loretta Young Show")

AFTER-THOUGHT — Dropping-adding is worse than getting up for a 7:40 class...

To the Editor:

We feel a true university is represented by its academic achievements rather than those of its football team. Although football seems paramount to formal education in this institution, we suggest a slight change in our athletic recruiting program. (One which the NCAA should undoubtedly approve!)

We would like to request our Board of Regents to appeal to the State of Pennsylvania to furnish each of its "Beef Trusts" with several volumes of classic knowledge (not comics) which may be deposited in Matthews Library. Increased transportation costs (It is 2,000 miles from Pennsylvania to Tempe) have evidently been defrayed through increased student guest fares. Therefore if we are unable to recruit our "Beef" from the local ranges, the increased ticket price would be justified if it resulted in an increase in our library volumes.

Daniel Sprague
 Richard Hume
 John L. Creese
 * * *

To the Editor:

It seems to me most strange that the students on this campus are always complaining about something or other. If its not the student seating at the football games, it's the parking situation.

What is wrong with the students on this campus? Are they afraid to consider the lucky break they are getting by even being in college at all? After all, here the students are getting the experience they will desperately need when they sally forth into the cruel, hard, cold world.

They learn about outrageous rent, they learn about people who are narrow minded, and by no means should we forget the advisor who didn't mention a required course to his young innocent ex-graduating senior.

But we must not complain, because now we will learn to cope with happenings of this nature in later life. In fact, the only thing anyone should complain about is the State Press.

With love,
 Name Withheld, Jr.
 * * *

To the Editor:

At last — at last. The Den has done something for the BENEFIT OF THE STUDENTS. They have stopped trying to serve coffee to 11,000 students out of one spigot.

Yes, the numerous coffee pots are a symbol of progress. (The fact that most cafeterias have been serving coffee this way for years does not concern us. We do not do merely because others do.)

It is possible (though some disagree) that we will see the day when the Den tables will be cleared to the extent that the table tops will be VISIBLE.

Signed,
 WJF

"Operation Abolition," a film on communist-organized student demonstrations against the House Un-American Activities Committee (HUAC) in San Francisco this summer will be shown Sunday, 7:30 p.m. on KPHO - TV's "World at Large."

Spanish Speaking Students Teach Language In Valley

Approximatey 80 Spanish speaking students will have a chance to earn money as Spanish teachers in the Scottsdale School district this semester.

The classes will be from 8-8:30 a.m. or after school. There will also be two pilot classes in curriculum at the Kaibab and Kachina elementary schools. In Pima and Navajo elementary schools Spanish will be taught as an elective in afternoon classes.

"Last year many ASU students who would have had to drop out of school due to financial reasons were aided by earning money as Spanish teachers in elementary school," commented Mrs. Mary Escudero, assistant professor of Spanish.

Students who speak and are interested in teaching Spanish, may come to the meeting of La Liga Panamericana at 5 p.m., Sept. 21, Main 112.

State Universities Topic Of Feature

The October issue of Arizona Highways features an article on Arizona's two universities — ASU and UofA — in recognition of their 75 years of service to the state.

The fourteen-page feature begins with the founding of the University of Arizona and what was then the Territorial Normal School in 1885 and tells of their growth and development to their present status.

More About —

New ASU President

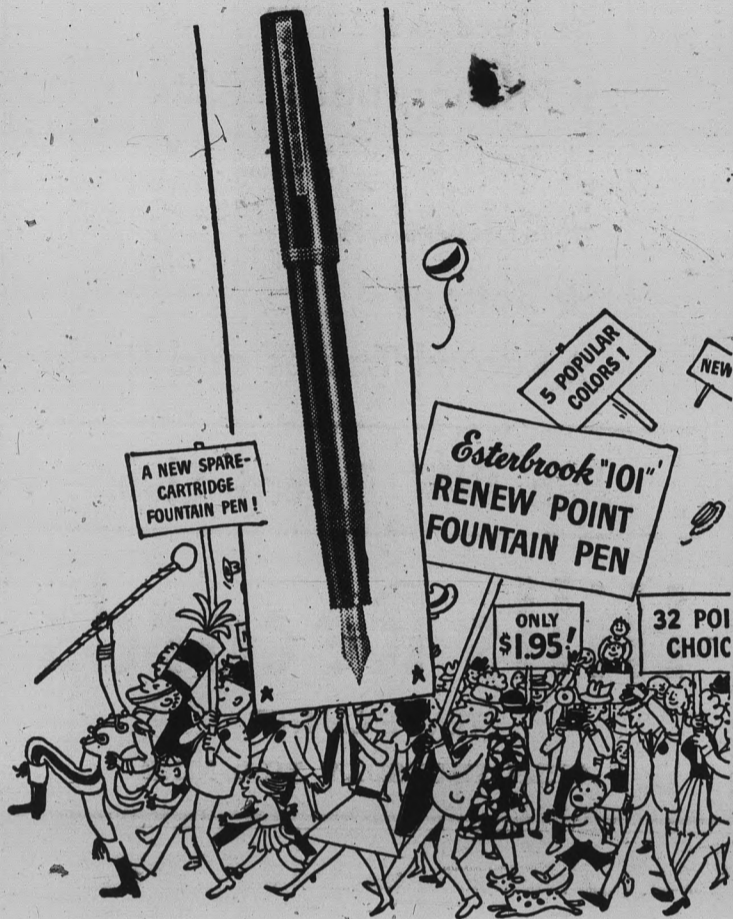
(Continued from Page 1)
ed toward the consolidation of courses, instead of splintering curriculum with vast numbers of courses, a new one every time McGraw-Hill puts out a new textbook."

Dr. Durham opposes "direct bloc grants" from the federal government to the schools, asserting "this should be the last step to finance public education." However, he favors such federal aid as the National Sci-

ence Foundation (scholarships, research and workshop grants, etc.) provides.

The new president and his family will live in Scottsdale, where the Board of Regents has leased a home, "until other arrangements are made."

The president's home on campus will be converted into an administrative building to relieve the pressure for office space.



ELECTED!

By a landslide...the new Esterbrook "101"! Now—a different type of cartridge pen! It carries 2 cartridges in the barrel—one is a spare—so there's no need to run out of ink.

32 points in its favor! Every point custom-fitted to a different handwriting personality. Choose your personality...choose your pen point...32 in all!

\$1.95 is the low, low price of the Esterbrook, "101" Renew Point Fountain Pen...so there's no opposition to the fountain pen budget this year! Get on the Esterbrook bandwagon...pick your pen and pen point now! 5 colors. Squeeze-fill available, too!

Esterbrook Pens

The Esterbrook "101" **\$1.95**
Other Esterbrook pens slightly higher

THERE'S A POINT CHOICE OF 32—ONE IS CUSTOM-FITTED FOR YOU!

student italic broad medium

Available At Your
COLLEGE BOOKSTORE

Beverli Invites You Back . . .

Same Old Place — Same Old Prices

THE CAPRI

16 East FOURTH St., Tempe

PIZZA

From 1.30 to 2.50

Complete
ITALIAN

Meals
From 1.00 to 1.50

Swingin' Hi-Fi
The Best Selection Of
Jazz Music In The Valley

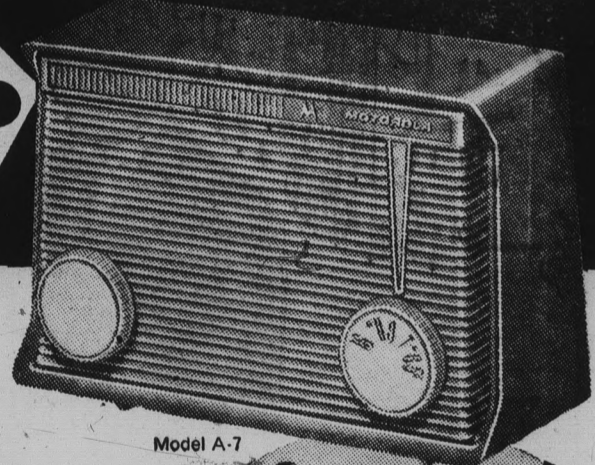
OPEN DAILY 4 P.M. — 2 A.M.

Call WO 7-9096 For Take Home Orders

MOTOROLA TABLE RADIO

ONLY **\$17.95***

Available in Moca Color



Model A-7

Clock Radios \$25.95 & up

FM Radios \$49.49 & up

Complete Line
Of 1961 Stereo!

WHAT A VALUE!

Here's a radio that has all the built-in features a radio should have to deliver solid performance . . . yet is priced far below anything in its class. Just compare the tone quality . . . design . . . chassis power this radio offers— if you can find a better value . . . buy it.

HILLS RECORDS

Tempe Center

Open Thursday Nights Till 9 P.M.

More About —

New Teachers Named

(Continued from Page 1)
Administration.

Just returned to the ASU faculty, after leave of absence, are Dr. R. C. Headington, professor of Real Estate, and Mrs. Mary L. Jacks, assistant professor of Office Administration.

Four new faculty members, all of them replacements, have been added to the College of Education.

Mrs. Leona L. Dudek is a new assistant professor of Education. She received a bachelor of Education degree from the National College of Education, Evanston, Ill., and a M.A. from ASU.

The other three instructors will join the I. D. Payne Training School faculty. They are:

Mrs. Evelyn A. Martin, second grade, who holds B.A. and M.A. degrees in elementary and secondary Education from ASU; Mrs. Mary H. Schall, first grade, who has a B.A. from Albion, Mich. College; and Mrs. Caryl J. Steere kindergarten, with a B.A. from Albion.

Four members have been added to ASU's School of Engineering.

New professor of Engineering is Dr. Bernard Ostle, who holds a Ph.D. from Iowa State University; bachelor's and master's degrees from the University of British Columbia, Canada.

Dr. James F. Avery, new ASU associate professor of Engineering Science, received his Ph.D. from Purdue University; B.S. and M.S. degrees from the University of Michigan.

Dr. Samuel E. Craig Jr., assistant professor of Chemical Engineering, holds his doctor's degree from the University of Utah and his bachelor's from Oregon State College.

John Tartar new instructor of Electrical Engineering, has a master's degree and B.S. from Oklahoma State University.

ASU's School of Architecture has four new faculty members. Anthony Ellner, associate professor, is a registered architect with a B.A. degree from Brooklyn College; M.A. from Columbia University; and bachelor of architecture from Yale.

A native of England, Marcus Whiffen has been named associate professor of Architecture and holds bachelor's and master's degrees from the University of Cambridge.

John H. Jakob will serve as assistant professor of Architecture. Laurence G. Gerkens is also a new instructor in the School of Architecture.

Miss Bertha M. Bresina and Mrs. Mary L. Wright have joined the Home Economics division as associate professors.

Miss Bresina received her M.S. in home economics education from Stout State College, Menomonie, Wis. Mrs. Wright received her B.S. from Iowa State University, her M.S. from State University of Iowa, Iowa City. She is listed in "Who's Who in the Midwest," and "Who's Who Among Women."

Dr. Stanford F. Farnsworth, director of the Maricopa County Health Department, will teach part time at ASU's School of Nursing. He was medical director of the World Health Organization from 1951 to 1959. As director of this organization, under the United Nations, he served in Guatemala, Switzerland and Egypt.

New full-time staff members in the School of Nursing are Miss Janet Fenn Walker associate professor; Mrs. Charlotte Harris, assistant professor; Mrs. Edythe Gross Stellhorn, instructor; and Miss Jane Larue Weed, instructor.

Miss Walker earned her bachelor's at Western Reserve University, Cleveland, and her master's at Catholic University, Washington, D. C.

Mrs. Harris received her bachelor's at Villanova University, Philadelphia, and her master's at Columbia University.

Mrs. Stellhorn received her bachelor's at Northwestern University, Evanston, Ill., and her master's at Washington University, St. Louis.

Miss Weed earned her bachelor's at the University of Utah, Salt Lake City and her master's at the University of Colorado.

ROTC Cadets Win Trophy

By WARREN J. FIELD

Senior Army cadets of ASU returned from Ft. Lewis, Wash. with the Warrior of the Pacific trophy, the most coveted award of the annual ROTC summer camp.

This trophy is awarded each year to the school, with over 20 cadets at camp, achieving the highest aggregate score in record firing of the M1 rifle.

The score of the ASU cadets was the highest of all schools represented at any ROTC camp in the United States.

In the overall camp competition among schools, ASU moved from a lower third position to a rank in the upper fourth.

The improvement is the result of a program initiated at ASU last year for the junior Army cadets. Previously, ROTC juniors were an integral part of the cadet battle group. Last year they were formed into a separate unit which underwent a more intensive course in leadership and physical training.

Of the 36 ASU students at the 6-week camp, 9 went as tentative Distinguished Military

Students. In addition, 10 more ASU cadets were appointed tentative DMS's by their camp unit commanders.

Jerry B. Hall, 1960 ASU graduate, received his commission as 2nd lieutenant in the Signal Corps at the end of the

ROTC camp. Lt. Hall graduated as a DMG and accepted his commission in the regular army.

He is now attending the Signal Corps basic school at Ft. Monmouth, N.J. Upon completion of branch school he will be stationed in Germany.

WELCOME!

Come In And Browse

- ★ Records —Stereo —Hi-Fi
- ★ Phonographs —Table —Console
- ★ Radios —Table —FM —Transistor
- ★ Television
- ★ Bongos
- ★ Record Tables and Racks

Join OUR Record Club

Hills Records

TEMPE CENTER
OPEN THURSDAY TILL NINE



Happy House
CANDIES
CARDS
GIFTS

Tempe Center
WO 7-5353

Make Your Party a Bright Success
Party Favors — Invitations — Candy
Paper Ware — Cocktail Sets — Nuts



The Americana Shop

young man with a goal

CAMPUS, 1960

and how to dress in style . . .

Apparel for men at moderate prices in traditional stylings to suit your taste.

Selections of sportswear, furnishings and clothing, expertly fitted to your satisfaction.

University fashions are our feature



THE Americana SHOP

Quality Men's Apparel
TEMPE SHOPPING CENTER

Open daily at 8:30 (for your early morning shopping) 'til 6:00 P.M.
Thursday night 'til 9:00 P.M.

WO 7-5457

TEMPE

Center

SHOPPING

In The Heart of Tempe On Mill Avenue . . . 8th Street to 10th Street

ONLY ONE BLOCK FROM CAMPUS

for your

One - Stop Shopping Center for All Your Shopping Needs

**NO EXTRA CITY SALES TAX
PLENTY OF FREE PARKING
COURTEOUS AND EFFICIENT SERVICE
COMPLETE MERCHANDISE STOCKS**

Americana Shop
Men's Apparel

First National Bank
Drive-In Facilities

Ray's ASU Barber Shop
Men's Barber Shop

Bonnie Sue Fashions
Women's & Children's Apparel

Happy House Shop
Gifts — Candy — Cards

Rosamond's
Beauty Shop

Celia's Fashions
Women's Apparel

Hill's Record Shop
Records - TV - Radios - Stereos

Ryan Evans Drug
Prescriptions — Cosmetics

Center Hardware
Hardware Supplies

House of Pancakes
Breakfast — Lunch — Dinner

Sherwin Williams Co.
Paints — Wallpaper

El Rancho Market
Groceries — Produce

Jam's Restaurant
Table Service

Sewing Basket
Fabrics

Erickson's Handcrafts
Art & Craft Supplies

King's Fashions
Women's Apparel

S&H Redemption Center
Green Stamp Store

First Federal Savings
Savings & Loan Service

Little Travelers
Infants' and Children's Wear

Sun Devil Hop-In
Drive-In Service

GallenKamps
Family Shoe Store

Pioneer Camera Shop
Cameras — Photo Finishing

Top's
Beverages — Snacks

W. T. Grant Co.
Department Store

Porters
Women's and Men's Wear

Union Furniture
Furniture and TV

Ferrell Says Military Ball Will Likely Be Voluntary

"I don't think the Military Ball will be compulsory this year. I certainly hope it won't," commented Col. P. A. Ferrell, professor of Military Science.

Ferrell's comment referred to the controversy that erupted at ASU last year after the Military ball was made compulsory for all ROTC cadets. Demonstrations and picketing resulted, and a senate subcommittee recommended that the ball be voluntary in future years.

The ROTC professor also said he expected the Army and Air Force to come up with compatible new curriculums "in a few weeks." Under terms of an ROTC Study Committee recommendation, ROTC would become voluntary next year unless compatible programs for Army and Air Force ROTC are improved by Nov. 1.

The current Army and Air Force curriculums call for 180-contact hours over a two-year basic course. The 180-hours are composed of 2 hours of class and an hour of drill each week for 60 weeks (4 semesters). Under a plan favored by the Air Force, contact hours would be reduced to 120 over two years, by permitting cadets to substitute academic classes for military classes in two out of four semesters.

Ferrell said that a compromise will probably be worked out

calling for 150-contact hours. This would mean that both Army and Air Force cadets could substitute an academic course for military classes for one semester. Drills would continue for four semesters. The ROTC head said he did not know exactly what courses students could substitute for ROTC work.

"The Army and Air Force ROTC units at ASU have permission to adopt this modified program," explained Ferrell.

Compulsion Is Retained

Early in the summer, the Board of Regents voted unanimously to continue compulsory ROTC for the current school year. The Regents also decided to reduce ASU drill hours from twice weekly to once weekly, the same policy at the UofA for many years. Because of an error, ASU students will get one and a half academic credits for each semester of ROTC while UofA cadets will get only one credit.

ASU Agriculture Publication Predicts Bright Education Future

"By January, 1962, Arizona State University will have the finest facilities for agriculture education in the Southwest."

This statement appeared in the "Ag News," quarterly publication issued by the ASU Division of Agriculture. "Ag News" makes this statement in a feature article about the university's new 320-acre farm. The September issue is currently being mailed out to about 1,500 farm youth and agriculture leaders in Arizona and the Southwest.

The Division of Agriculture,

under the direction of Dr. Daniel Robinson, is currently completing the master plan for the development of the new farm, 6.5 miles southeast of the campus, the publication announced.

The first phase of the development program consisted of grading 200 acres of land according to Soil Conservation specifications. This work was completed last fall, prior to the moving of all crop production projects to the new sites, from the old farm on south Mill Avenue.

THE FIRST SOUTHERN BAPTIST CHURCH

SUNDAY SCHOOL	9:30 a.m.
WORSHIP SERVICE	10:55 a.m.
TRAINING UNION	6:15 p.m.
WORSHIP SERVICE WEDNESDAY	7:30 p.m. 7:40 p.m.

711 West 8th Street
Tempe

Dr. James H. Wright, Jr., Pastor

Bud's PIZZA HOUSE

3 Doors West of Postoffice

OPENING TODAY!

Special Introductory Offer For Friday, Saturday and Sunday Spaghetti Dinner 75c

OPEN DAILY FROM 7 A.M.

Serving

- Breakfast
- Lunches
- Dinners

Watch For Our
PIZZA
Opening In A Few Days
(When our ovens arrive)

28 East 5th — Tempe



For short cuts... for any style...

Makes your haircut fit your head!



No matter how you like your hair cut—you'll look better when you use Short Cut. This new, non-greasy hair groom adds body to the hair fibers, makes your haircut fit your head. Keeps hair neat, and helps condition your scalp into the bargain. Takes 2 seconds, costs a fast .50 plus tax

Old Spice **SHORT CUT** HAIR GROOM

Ryan-Evans

Open to 10 P.M. Every Nite

DRUG STORES
TEMPE CENTER WO 7-2076

We Give S & H Green Stamps

Senate Speaker Les Miller Names Committee Members

Membership of student senate committees and chairman appointments have been announced by Les Miller, senate speaker. Miller also made available a list of senators and their constituencies.

Four vacancies exist in the 36-member senate. Two are freshman senators, and will not be selected for several weeks. Two Engineers' senators will be appointed by the Joint Council of Engineers.

Senators and their constituencies include:

Senior Class — Don Kunkel and John McGrath; Junior Class — Mike Peplow and Linda Peterson; Sophomore Class — Don Hollenbeck and Ted Johnson; Inter-Hall Council — Ed Manley and Steve Sargent; Foreign Language Council — Carmen Ruthling and Ed LeFevre; Inter-Fraternity Council — Bill Bromiley and Ron Paquin; Associated Women Students — Carlene Strand and Marianne Prevratil; Associated Men Students — Frank Hennig and Pete Wylie; Applied Arts College — Ronald McGrath and Harry Sykes; Business Administration College — Bob Hopkins and Bill Simon; Education College — Sharon Brazil and Helen Plummer; Liberal Arts College — Robert Carter and Chris Kilgard; Student Religious Council — Jim Chilton and Mary Alice Rhodes; Panhellenic Council — Beth Beierlein and Sandy Smith; Off-Campus Men — Jim Crosby and Tod Walker; Off-Campus Women — Leslie Farnsworth and Bobbie Taylor.

Committee membership and chairmen include:

Activities Control — Hopkins, chairman, Peterson, Strand, Peplow and Bromiley; Constitutional Revision — Crosby, chairman, McGrath and Ruthling; Education — Chilton, chairman, Carter, McGrath; Finance — Walker, chairman, Taylor, Paquin, Chilton, Kilgard; Judiciary — McGrath, chairman, Beierlein, Hennig; Membership and Elections — Kunkel, chairman, Hollenbeck, Sykes, Prevratil; Publications and Public Relations — Taylor, chairman, Brazil, Plummer, Johnson; Rules — Manley, chairman, Peplow, LeFevre; Student Conduct — LeFevre, chairman, Simon, Wylie, Farnsworth; Student Services — Rhodes, chairman, Sargent, Smith.

The ASASU senate faces the old problem — Which comes first, the chicken or the egg? September 28, the student senators are to be sworn in by Fred Koory, Chief Justice of the Supreme Court. But Koory will not be Chief Justice until an official senate confirms his appointment.

Sidelights

Committee membership and chairmen include:

It's That Time Again!
FOOTBALL

It's Also Time For Some
Delicious Mexican Food At

CHICO'S
RESTAURANT*
FINE MEXICAN FOOD

1120 East Apache Blvd. — Tempe

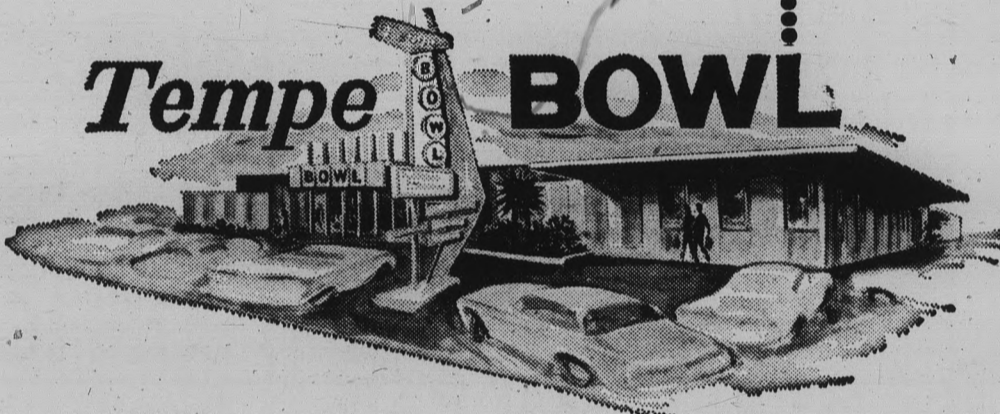
*Air conditioned of course



1100 Apache Blvd.
Temp e

LOOK!

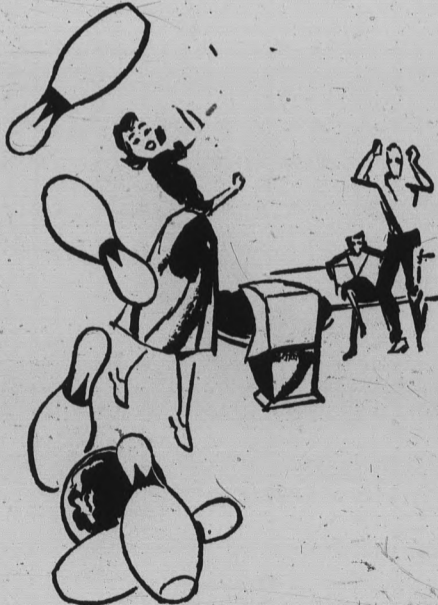
Here It Is.....



Phone
WO 7-1656

COMING YOUR WAY ON SEPTEMBER 25TH
24 Brunswick "Gold Crown" Automatic Lanes

- Restaurant
 - Billiards
 - Free Nursery
 - Pro Shop
 - Amusement Machines
- FREE INSTRUCTION**
by
Professional and Bomar
Certified Instructors



NOW ORGANIZING LEAGUES

- Specifically for
- ★ Fraternities
 - ★ Sororities
 - ★ Faculty and Staff

OTHER LEAGUES BEING PLANNED FOR ASU . . . OR BOWL IN ONE OF OUR REGULAR LEAGUES.

TEMPE BOWL is the only bowling lanes in Tempe that will be American Bowling Congress and Women's International Bowling Congress Sanctioned and approved with all of the bowler protection and advantages thereto.

★ ★ ★ Special Prices For ASU Bowlers... Call Us And Find Out ★ ★ ★

THE GENERAL MANAGER OF TEMPE BOWL IS ED HELER, A.S.U. ALUMNUS

For Information — Your Campus Representative Is Dave Rickard, WO 7-1656 or WO 7-0224



KAYDETTES . . . Jessica Thomas, Vel Richey, Linda Edgar and Linda Rankin step off toward a new year by gathering to plan for the annual membership tea scheduled for Tuesday, 7:30 a.m.

Kaydettes Fete Neophyte Debs

The annual Kaydette membership tea will be Tuesday morning, 7:30, in the MU lower lounge. A sheath and heels are required dress. Kaydettes, Army ROTC honorary for ASU women, is sponsored by Pershing Rifles, national professional honorary for ROTC cadets. Kaydettes act as honorary hostesses for the Army ROTC and its functions.

Dress Is Casual For ASU Games

"Let's get away from a fashion show. Big time football is here so let's dress big time — casual." With "casual" the keyword, the ASU Rallies and Traditions Board, after a pre-game meeting Wednesday, has suggested the attire for this season's football games.

Students, men and women alike, are asked to wear white blouses or shirts, bermuda shorts and tennis shoes to the first game tomorrow night.

Dean McGrath Plans Welcome For Ed Faculty

Faculty and staff members of ASU's College of Education will be welcomed by Dr. and Mrs. G. D. McGrath at a reception, Sunday, 3 to 5 p.m. in the MU upper lounge.

Top Students Get Scholarships

Seven Agriculture Division students have been awarded a total of \$3,300 in scholarships. Six were winners of the \$500 Vegetable Growers Association Memorial Scholarship. Recipients are Jay Lamoreaux, freshman; Charles Earl Roberts, freshman; Sherburn Delbert Beyer, senior; Billy Ensign, senior; Hal Clubb, senior; and Dan Morris, senior. Barry Bumgarner, freshman, was recently named winner of the \$300 Valley of the Sun Kiwanis Scholarship.

THEATRE TEMPE
707-4444

STARTS TONITE

Jeffrey Hunter
in
"Sergeant Ruthledge"

—CO-FEATURE—

Jim Davis
in
"Noose For A Gun Man"

BABOQUIVARI
SWINGS AGAIN!
TONIGHT

Open Tonite and Every Nite but Sundays & Mondays

131 East 1st St. — Scottsdale

MARRIED STUDENTS

Save Money On Your
Hospital Insurance Premiums

Enroll In The Associated Students Program.

The Group Plan Closes September 30th

Budget Plans Available

Applications and Information At
Room 213 Memorial Union Building
Or
Charles Lock — 822B Mill Avenue, Tempe
WO 7-0911

Phoenix C.&C.C. Assn. with W. Kiwanis Club presents

IN PERSON

with the **QUIET MEN**

MR. PIANO ROGER WILLIAMS

THURS. SEPT. 29
at 8:30 p.m.
PHOENIX U.H.S. AUDITORIUM

Tickets 3.50, 2.75, 2.10, 1.50 on sale
Linde Box Office
Hanny's 1st St. & Adams. Phone AL 4-2979
Net proceeds Sun Valley Children's Home

BOWLING

OFFICIAL LEAGUE BOWLING STARTS MONDAY, SEPT. 26

Several leagues are forming for women and off-Campus Students

★ Open Bowling — 40c Line ★

MEMORIAL UNION BOWLING LANES

Basement of Union Building

Education Building Planned

A new College of Education classroom building to be located near the corner of Forrest and 11th St. will be under construction soon.

Edward L. Varney Associates, Phoenix architectural firm designed the building which will include approximately 88,000 square feet.

Jams

IN THE TEMPE CENTER

• Breakfast • Lunch • Dinner

Open 7 a.m. to 7 p.m.

Closed Sundays

BREAKFAST SPECIALS

Till 11:00 A.M.

2 Eggs, any style, Hash Browns, Toast and Coffee45
With Ham, Bacon or Sausage65
Hot Cakes and Coffee35
With Ham, Bacon or Sausage55

ART, etc.

By MIKE BENSON

With a new school year under way, we'd like to welcome both old and new students to the campus. This is a weekly column, and will appear every Friday, as space permits. Our main purpose is to set our details of coming campus events dealing with what is commonly termed "culture." However, we prefer to take the wide latitude that our title offers. You find anything here.

Glancing through the Activities Calendar in the new Student Handbook, we noticed many interesting names: Andre Maurois, Societe Corelli, Anna Russell, Isaac Stern. These are a few of the people who will appear on the Lyceum Series this year.

One Thursday each month, with the exception of January, foreign films will be shown. This made some of the members of the State Press staff unhappy, because the movies will be shown just as the Friday edition of the paper is being put together.

We have heard, also, that the Four Freshmen are making a concert appearance here Sept. 30.

Last Tuesday we attended our first four classes, all of which were in the new Liberal Arts building. We left with the screaming meemies. The interior color scheme vibrates! Such dissonance we have never seen before.

The windows in many of the rooms are poorly placed. We found it necessary to squint at the instructors as they lectured because the sun beat through the window just to the side of the lectern.

From the street the building has the appearance of so many slabs of brick floating in space.

There are some saving graces, though. We were impressed with

the central patio. It is the coolest outdoor spot on campus. It's air conditioned! We won't bother you with technical details of the process; it works and we like it. 'Nuf sed.

Mental Health Institute Gives \$13,341 Contract

A \$13,341 research contract has been awarded to ASU by the National Institute of Mental Health, Bethesda, Md., to determine the influence of conditioning on personality traits.

The project is designed to determine the extent of the relation between learning and personality, which would have practical significance for mental health.

The investigators for the project, "Operant Conditioning Principles and Personality Traits," are Dr. Arthur W. Staats, associate professor of Psychology; Dr. Carolyn K. Staats, assistant professor of Psychology and Sociology; and Richard E. Schutz, director of the ASU testing service.

The current grant, which extends to Aug. 31, 1961, is the third year renewal of the project, which has received a total support of \$26,595.

Educators Attend Clinic

Dr. G. D. McGrath, Dean of the college of Education, and Dr. Raymond Wochner, professor of Education, will represent ASU at the Arizona Association of School Administrators' professional standards workshop.

Dr. McGrath will participate as a panel member in a discussion of "Certification of Administrators," and Dr. Wochner will be a panel member in the discussion, "Preparation of the Administrator."

The workshop will be held Sept. 28 and 29 at Arizona State College, Flagstaff.

PR May Accept 8 New Chapters

The ASU Headquarters Company of Pershing Rifles may accept eight new chapters into the 10th Regiment.

The University of Hawaii, UCLA, University of California at Berkeley, University of California at Santa Barbara, University of California at Davis, Pomona-C Claremont College and California Polytechnical School seek admission to the ROTC honorary.

Company officers are George G. Shoemaker, commander; Steve Anderson, executive officer; Phillip Geeck, supply officer; Paul Oxman, adjutant; Bill Beshears, expansion; and Thomas Wadham, operations officer.

"If you pick up a starving dog and make him prosperous, he will not bite you. This is the principal difference between a dog and a man." Mark Twain (1835-1910)

RAY'S ASU BARBER SHOP



RAY BOLES

Chair No. 1

LARRY LITTLE

Chair No. 2

CLOYCE CLARK

Chair No. 3

JIM CUMMINGS

Chair No. 4

JACK NELSON

Chair No. 5

SHOE SHINES AVAILABLE

The Largest, Most Modern Barber Shop In Tempe

OPEN 9 A.M.-6 P.M. Tuesday Thru Saturday

IN The Tempe Center

GREEK TO ME —

Pledges Honored By Sororities; Men Plan After-Game Parties

By DEANA DORMAN

Alpha Phi sorority entertained their new pledges at a buffet luncheon and swimming party Saturday at the home of Mrs. D. F. Cayce, Alpha Phi alumnus. Formal pledging for 23 was Monday night.

Barbara Farone was hostess at a slumber party Friday night held in honor of the 26 new Delta Gamma pledges. The party at Miss Farone's home followed formal ribboning ceremonies in the DG chapter room.

Gamma Phi Betas and their 24 new pledges celebrated at a dinner at Monti's in Tempe after ribboning Friday. Formal pledging was Saturday at 6:00 a.m.

Eleven Kappa Alpha Theta pledges will receive their pins in a formal pledging ceremony Sunday, Sept. 18 in Scottsdale.

Sigma Sigma Sigma and their 16 pledges dined at the Scottsdale House of Pancakes and attended a slumber party in their chapter room Sunday.

Freda Sarten, Mary Healy and Mecha Whitefield were in-

itiated into Tri Sigma Sept. 7 at Marilyn Bergen's home.

Delta Sigma Phi fraternity will hold an after-game dance at the Safari Hotel in Scottsdale in honor of new pledges and junior actives.

Phi Delta Thetas and their dates will celebrate at an after-game party at the Hiway House.

Sigma Pi members, alums and guests will attend the traditional fireside party after the game Saturday.

Ardella Fromchuk, Alpha Epsilon Pi Sweetheart, placed second in a national contest at their convention in Miami, Fla. AEPis and dates will attend a buffet dinner before the game.

Chi O Pat Dotson recently announced her pinning to Dick Parnell, Phi Sigma Kappa. His fraternity brother, Steve Anthony is pinned to Kathy Titsworth, Gamma Phi Beta. Gamma Phi Cynthia Zerden passed the candle Sept. 3, revealing her engagement to Allen Benedict.

Barbara Satterfield, Alpha Phi, is pinned to Bill Kauffman, Lambda Chi Alpha at Iowa Wesleyan College and Alpha Phi Marsha Smith is wearing the Phi Alpha pin of Henry Henkel.

ADPis had three candle passings last week. Grace Silva is engaged to Paul Hicks, Kappa Sigma at USC; Peggy Loper and ATO Mike Kreutz are engaged; and Betty Ann Sine is pinned to Sigma Chi Bob Glover.

Student NEA Sets Meeting

Students preparing for teaching may attend the first meeting of the ASU chapter of the Student National Education Association Tuesday at 7:30 p.m. in MU 218A.

Featured speakers include Dr. Donald O'Beirne, chairman of the Elementary Education department, and Dr. B. J. Fullerton, head of the Secondary Education department. The topic will be "Your Career in Education — Will It Be Elementary or Secondary?"

Sixteen Houses Finish Formal Fraternity Rush

Approximately 300 men signed for the Fall Semester rush at ASU with 16 fraternities participating. Rush ends today and rushees are asked to sign their bid cards between 8 a.m. and 6 p.m.

Rush officially began with the rush assembly last Sunday at 2:00 and open houses were held afterwards. Monday, parties were held from 4:00 until 10:00. Smokers lasting 45 minutes continued Tuesday eve-

ning. Wednesday, rushees selected their two favorite fraternities and Thursday preference parties were held.

Girls interested in Angel Flight may attend an Angel Flight tea Sept. 23 at 3:30 in the MU upper lounge. Angel Flight is the Arnold Air Society auxiliary unit. Cocktail dresses have been designated appropriate attire.

WANTED: RIDE
Transportation for 5th grader from Cosner Auditorium to 53rd St. and Osborn. School hours 8:40 to 3:30. Afternoon ride especially needed. Phone WH 5-2268.

Tonight At 7 O'Clock
Arizona Baptist Student Union Invites You To The
All Arizona BSU Western Round-Up
FOOD, FUN, FELLOWSHIP, FREE CHUCKWAGON SERVING AT 7 P.M. AT
First Southern Baptist Church of Tempe
711 West Eighth Street

WELCOME TO ASU
from the Brand New
MUGS-UP Drive-In
Corner Van Ness and 8th Street
"Where The Nickle Is Mighty"

attention freshman engineers
DECITRIG® and JET-LOG® Slide Rules
ARROW MARK II ANVIL JUPITER Drawing Instruments
YOUR 1960-61 K+Σ LEROY and DORIC Lettering Sets
Scales Triangles Protractors Curves T-Squares Graph Sheets Drafting Papers
COLLEGE BUYING GUIDE
helps you buy your Engineering Supplies ...get it at your college store
KEUFFEL & ESSER CO.
KEUFFEL & ESSER Slide Rules available at your COLLEGE BOOKSTORE

Sororities Pledge 203 During Rush

Eleven national social sororities represented on campus pledged a total of 203 coeds during formal rush.

Miss Barbara Defer, Panhellenic president, made the announcement following the Sept. 3-9 week of open houses, coke parties, theme parties and preference desserts.

The sororities and their new pledges include:

Alpha Delta Pi — Lynn Anderson, Cynthia Dee Buchanan, Sharon Lee Fuller, Nora McGrew, Karen Alice Nelson, Nancy Day, Gayle Fuller, Jo-Dee Guinn, Bonnie Gunn, Karen A. Naumann, Beverly Ann Richardson, Elsa Spencer, Marilyn Ann Vihel, Susan Mary Poe, Maris-Ann Thomas, Marilyn Whitney, Mary Leigh Burns, Karen Jean Flynn, Pamela Louise Holder, Patricia Evelyn Pansini, Joan Alene Peterson, Bonnie Temple, Nancy Alene Vening, Judith Folckemer, Barrie Keisel, Patty McDaniels and Jessica Willhoit.

Alpha Epsilon Phi — Cammie Blate, Sylberta Marshak and Carol Richman.

Alpha Phi — Diana Kay Deitrich, Adrienne La Force, Sheryl Payne, Susan Runden, Kathy Sheehan, Kathy Young, Marilyn Faast, Carol Fuller, Judy Mumford, Kathleen Nelson, Jackee A. Taylor, Sharon Lynn Howard, Karen Smith, Mary Jo Willis, Kathy Kolberg, Vernalynn Gregory, Dianne Miller, Karen Anderson, Carolyn Ben-

nett, Lynn Chewning, Sandra Garmire, Nancy Hiatt and Deanna Leiterman.

Alpha Sigma Alpha — Jean Nicolay, Diane Coe, Jeanne Gilbert, Georgia Dell Kimbrough, Brenda Sue Paschall, Linda Carnowski, Rebecca Reeder, Barbara Crabbs and Florentine DeFabie.

Chi Omega — Wilma Baca, Joanna Dee Baird, Jacqueline Bean, Nancy Clayton, Frances Fish, Mariamne Moore, Mari- anne Prevatil, Carolyn Ray, Mary Ellen Ross, Marilyn Ros- sini, Mary Ann Schimm, Cyn- thia A. Smith, Diane Smith, Sherrie Ulmer, Shelia Brennan, Vicki Lyn Ray, Bennie Smith, Georgette Tibshraney, Jane Dahl, Mary Susan Marionneau, Marilyn Fish, Susan Johnson, Pam Loeb, Mary Ann Mitchell, Bonnie Olsen and Margaret K. Ruth.

Delta Gamma — Kathi Bunch, Jackie Carter, Peggy Farone, Luella Griffen, Carol Ann Hahn, Linda Light, Di Ann Passmore, Carol Lee Roosevelt, Jane Tiffany, Margaret Mary Tiffany, Karen Wahl, Marilyn Kay Wood, Nancy Digges, Barbara Fuller, Gail Sue Chiha, Mary Ann Black, Dorothy Elzea, Rosamond Fitch, Pam Frazier, Nancy Garwood, Sidne Kaye Hall, Carolyn Mc- Cusker, Evelyn Miller, Judy Smith, Kaye Smith and Julie VanDellen.

Gamma Phi Beta — Charleen Bartlett, Mary Bienfang, Jac-



PROUD DISPLAY . . . Pledges Kay Lecky, Tri Sigma; Wilma Baca, Chi O; Sue Peterson, Theta; Kathy Sheehan, Alpha Phi; and Martha Creasman, Gamma Phi show off their new pins and corsages.

queline Knuffke, Pamela Cole, Diana Henson, Barbara Kirk- ham, Nancy E. Lay, Judith Lyn- ne Mahan, Patricia Phelps, Dianne Bowman, Joan Charl- son, Martha Creasman, Diane Weary, Linda Lee Cook, Bon- nie Evans, Jacqueline Blake, Marianna Murray, Beverly Searcy, Judith Anderson, Su- san Cantwell, Carolyn Hart, Susan Geffries, Marsha Salter and Jodi O'Hern.

Kappa Alpha Theta — Linda Henderson, Susan Kordylas, Susan Sloan, La Donna Curry, Janet Lynne Henry, Susan Pet- erson, Nancy Jean Caldwell, Linda Irene Jones, Sarah Eliza- beth Dickinson, Marilyn Luckey,

and Caroline Williams.

Kappa Delta — Rene Bethan- court, Nancy Brewer, Carol Ann Card, Judy Cowley, Jan Enright, Jacque Martys, Ann M. Reid, Karen Simmons, Marjorie Ann Watts, Pat Williamson, Lee Anna Brimhall, Marilyn Deeg- an, Barbara Dixon, Marie Mc- Elroy, Luana Marie Moore, Mary D'Alva White, Naomi Ruth McCarty, Glenna Walls, Beverly Dexter and Sharon Vidal.

Kappa Kappa Gamma — Di- anne Alford, Sharon Austin, Betty Bunn, Nan Lufty, Sharon Parks, Rita Utz, Rosina Yanez, Meda Edwards, Marcia Frost, Sarah Frost, Carmen Rames, Kay Reid, Lynnette Thomas, Martha Dillner, Susan Wey- rough, Mary Ann Harismendy, Jean Ison and Patsy Zahn.

Sigma Sigma Sigma — Diana Aldous, Nellie Ann Arronte, Kay Ellen Lecky, Pat Milani, Kato Yvette Bunch, Dianne Lehnis, Karen Parks, Rose- mary McDowell, Nancy Jo Smyth, Diane Searfoss, Sharon Davis, Paulette Durrett, Jan McKenzie, Mary Louise Ross, Coleen Ross Murphy and Shar- on Parsons.



Two campus religious groups will initiate weekly vesper services Wednesday.

The services, sponsored by campus pastors of the United Campus Christian Fellowship, which include Rev. John Dod- son of Wesminster Fellowship (Presbyterian), and Rev. Dick Dulin of Campus Christian Fel- lowship (Disciples of Christ), will be held in Danforth Chapel Wednesdays from 9:30 - 9:40 p.m.

All university students and personnel are invited to attend the non-denominational ser- vices.

* * *

"What is a Liberal Religion?" is the topic to be discussed by three speakers at the first meet- ing of the Liberal Religious Students Sunday at 7:30 p.m. in MU 218A.

attention -

FRESHMAN ENGINEERS

for your



COLLEGE BUYING GUIDE and ENGINEERING SUPPLIES

Come To BOOKSTORE COLLEGE

Smiley - Berge

Welcomes You To Tempe!

WE WOULD LIKE TO SAY "HELLO" TO THE NEW STUDENTS OF ARIZONA STATE UNIVERSITY AND "WELCOME BACK" TO OUR OLD FRIENDS AND CUSTOMERS

- ★ Complete Service Facilities
- ★ 7 Mechanics On Duty
- ★ Servicing All Makes & Models
- ★ Good Transportation Or

Late Model Cars Available

Smiley-Berge Motors

Your Nearest Auto Dealer

★ ★ JUST 2 BLOCKS FROM CAMPUS ★ ★

16 East 8th Street - TEMPE - Phone WO 7-2064

ONLY 15 DAYS LEFT

To The Closing Of The Associated Students Hospital Insurance Plan.

DON'T MISS THIS LOW-COST PROGRAM

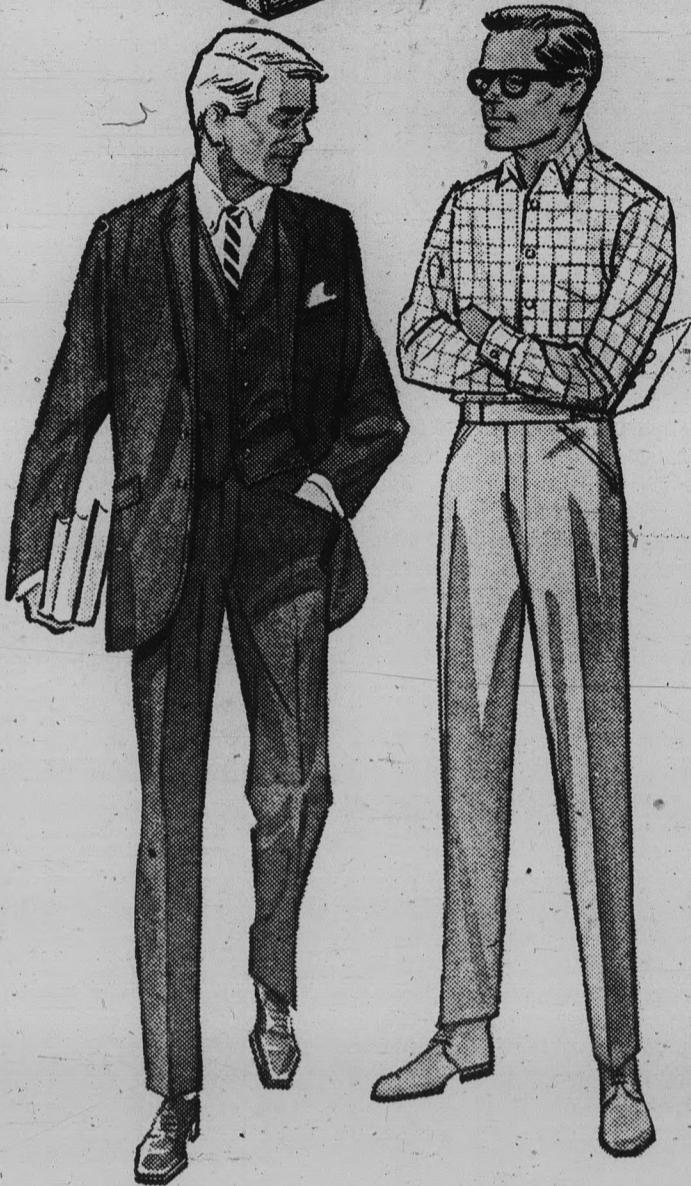
Applications and Information At Room 213 Memorial Union Building

Or

Charles Lock — 822B Mill Avenue, Tempe

WO 7-0911

campus classics FOR COLLEGE 1960!



Hockmeyer Corduroy VESTED SUITS

New for fall, the suit complete with vest. See them here.

29.95

SLACKS

Continental and Ivy styles in the group. All new fall shades. By A-1.

4.95 to 6.95



Sport Shirts

BY ARROW
Short and Long Sleeves

3.95 to 5.95



Reggie

"WHAT A SUMMER!"

"If you wore A-1 Rapiers, you know what I mean. But it's good to be back. New faces, new classes, new girls just waiting for me and my A-1 Rapiers."

4.95 to 6.95

Rapiers
CONTINENTAL SLACKS

At your favorite campus shop

Corduroy
SLACKS

6.95

Reversible
VEST

4.95

Campus
men's shop

FOR MEN AND YOUNG MEN

Open Every Thursday Until 9 P. M.

603 Mill Ave Charge Accounts Invited



BOB VIEWS SPORTS NEWS

Banner Sports Year Predicted

By BOB EGER
Sports Editor



This year could be the best ever in athletics for ASU with national powerhouses scheduled in all major sports and Sun Devil athletes out to top numerous outstanding performances of last year.

Football season opens tomorrow night in Sun Devil Stadium as the ASU eleven clashes with Colorado State University. A rugged schedule faces the Devils as they attempt to improve on the near-perfect 10-1 mark they posted last year.

The appearance of such notables as Washington State, San Jose State, New Mexico State and North Carolina State on the Devil's beefed-up '60 slate should provide fans with plenty of thrills. Those battles will all be between the buttes in Sun Devil Stadium.

At least one national magazine (Playboy) gives the Demons a good chance to crack the top 20 major colleges in gridiron polls this season.

BASKETBALL winning and attendance marks could be broken again this year as Coach Ned Wulk fields a team composed of a sprinkling of outstanding veterans and several talented newcomers.

Under Wulk's guidance the ASU cagers reached national prominence last year as one of the highest-scoring teams in the nation.

Note: Watch the freshmen this year. Some of the top prep talent in the southwest has been assembled into one of the best freshman basketball teams ever seen — anywhere. These boys could more than hold their own against a lot of college varsities.

COACH Bobby Winkles has almost all of his "Cinderella" baseball team returning, ready to achieve even higher goals than in '60.

Rated 23rd nationally in pre-season polls, the ASU diamonds threaded their way through the rankings to the 7th spot — the best ever by any ASU athletic team.

Several newcomers should fill weak spots more than adequately and restore ASU track and field to a powerful position. Most of the past season's top performers will be back, and coupled with the new additions to the squad, should present an exciting team.

DURING THE SUMMER Arizona State athletes were busy winning fame for themselves and ASU as they competed on the national and world-wide levels.

Patsy Willard performed beautifully to win fourth place in three-meter women's diving in the Summer Olympics in Rome.

Mal Spence went as far as the semi-finals before being eliminated from the 400-meter dash in the Rome Games.

Golf whiz JoAnne Gunderson added another National Women's Amateur title to her already long list of championships.

Everything considered, 1959-60 was probably the greatest year, athletic-wise, in ASU's history.

This year, however, we can expect even bigger and better things from ASU athletes.

Let's start by filling Sun Devil Stadium to the brim tomorrow night and cheering the Devils to a victory over Colorado State. What better way to start what should be the greatest year in this school's athletic history?

Freshmen interested in trying out for the freshman football team should contact Coach Gene Felker in room 123 of the men's gymnasium.

The Aggies . . .
Are Rough . . .
And Tough . . .

GO GET 'EM DEVILS!

**SOLANO'S
CAFE**

Drop In For A Real Treat After The Game
By Popular Demand, We'll Be Open Till 1 A.M.

Serving Delicious Mexican Food

— Food To Take Out —

Closed Mondays

Corner 4th & Mill

WO 7-9035

TEMPE

Devils Open Season Here Tomorrow

Start Rugged Schedule Against Colorado State

By BOB JACOBSEN

Arizona State's vaunted Sun Devils, embarking on ASU's roughest football schedule in years, tackle the Colorado State University Rams tomorrow night at Sun Devil Stadium. It's the initial encounter of the season for both squads.

The Sun Devils, after a brilliant 10-1 mark last campaign, (losing only by one touchdown to San Jose State) are long on experience with a proven offense, while CSU looks to its youth and a new attack alignment to bring it through.

Leading the Ram attack will be speed merchant Brady Keys, who was injured early last season and didn't see action until the final two games. He scored three touchdowns on long runs in those two games, serving notice that he will be a man to watch.

Myron Pearson, another break away artist, will open at right half for the Rams. Pearson is a two-year letterman.

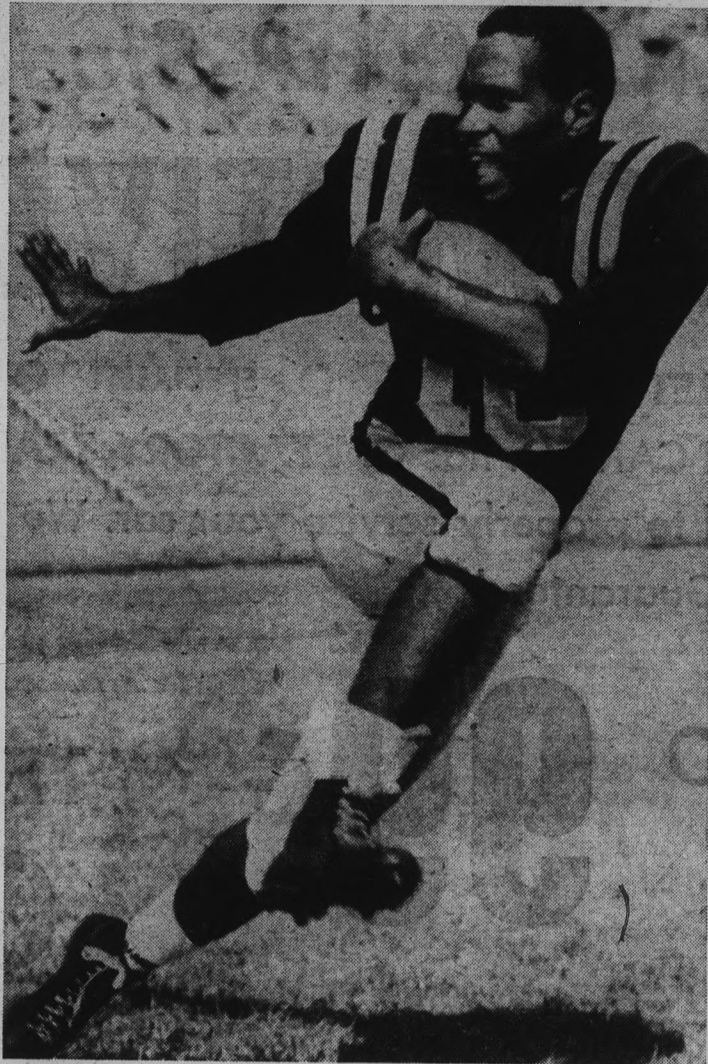
CSU, coached by Don "Tuffy" Mullison, has only six performers left from the first two units and only nine lettermen.

ASU team physician, Dr. L.

C. Sutherland, stated that star right halfback John McFalls could be ready to go at full steam in two weeks. McFalls, who only a short while ago discovered he had diabetes, lost 20 pounds before he learned he had it. He has been gaining about one pound a day for the last few days.

Clay Freney, Globe fullback, was praised by Kush. "He's the most improved player on the squad. He's gained a great deal of confidence and poise and helps our offense immensely."

Other Sun Devil stalwarts for the coming campaign include Nolan Jones, the nation's second leading scorer last season with an even 100 points; John Vucichevich, senior center from Miami and a co-captain along with Jones; Fred Rhodes, a junior mentioned in many pre-season polls as one of the Southwest's outstanding centers; Jesse Bradford, a 9.7 tackle who is blocking and tackling better than ever and quarterback Joe Zuger, who with his added weight and experience, should direct many Sun Devil scoring drives this season.



ROLLIN' . . . Nolan Jones shows the form that made him the second highest scorer in the nation among major college backs last year. Jones, a junior, will be in the starting left halfback slot when the Sun Devil gridders open their 1960 campaign against the Colorado State Rams in Sun Devil Stadium tomorrow night at eight.

The Lineups

CSU		ASU	
Don Wilson	208	LE	Tim Lee 180
Joe Keegan	229	LT	Jessie Bradford 190
Dick Harris	210	LG	Dick Locke 200
Tom Hartley	219	C	Fred Rhoades 200
Don Mason	192	RG	Larry Reaves 220
Leo Reed	252	RT	George Flint 210
Duane Knox	192	RE	Bob Rembert 185
Bill Wade	167	QB	Joe Zuger 182
Brady Keys	169	LH	Nolan Jones 165
Myron Pearson	173	RH	Joe Drake 175
Ward Gates	184	FB	Clay Freney 180
Average Weight:		CSU 199	ASU 190
Line:		CSU 275	ASU 198
Backfield:		CSU 173	ASU 175

Rifle Team Eyes Standout Season

ASU's rifle team expects another outstanding year, according to Captain John J. Luxemburger, head coach of the varsity riflemen.

"With the help of promising freshmen and the return of some of the best shooters in the country, ASU should be one of the best schools in marksmanship in the nation," Luxemburger said.

ASU's sharpshooters will see more competitive action this year than last with nearly 80 postal and 15 shoulder-to-shoulder matches planned.

RIFLEMEN WANTED

Persons interested in trying out for the ASU varsity rifle team may contact Capt. Luxemburger at MPE 210 or at the Arizona State rifle range. Experience is not necessary, according to the instructor.

"We have the rifles and the ammunition, but we need people to add more depth to our team," he added.

THINK AHEAD

and call . . .

WO 7-1673

Now For Your
Holiday Air
Reservations Home

**NO EXTRA CHARGE
FOR OUR SERVICES**

**UNIVERSAL
TRAVEL**

18 E. 5th St. — Tempe

the
**Capri's
Pick
Of
The
Week**

**ASU - 27
Colorado-10**

Right or Wrong
You Can't
Miss
With Our
PIZZA'S

**ASU FACULTY
AND STUDENTS
WELCOME
TO TEMPE &
DANA BROS. MOTOR
CO.**

Authorized Factory Dealer
**CHRYSLER — IMPERIAL — DODGE
DART — LANCER**

★ We Service All
Makes of Cars

★ Home Town Service
Away From Home

P.S. We have a few 1960 models left at
greatly reduced prices

**Dana Bros. MOTOR
CO.**

211 Mill Ave. — Phone WO 7-3345

GO-GO-GO-SUN DEVILS

**VAL'S
RESTAURANT**

**ENTERTAINMENT
FRIDAY & SATURDAY NIGHTS
9 TO 1 A.M.**

Specializing In
**PIZZAS &
SUBMARINE SANDWICHES**

★ ★ Finest In The West ★ ★

**CATERING SERVICE FOR
FRATERNITY & SORORITY PARTIES**

3 Miles E. On Mesa-Tempe Hiway
2752 W. Main, Mesa — Phone WO 7-9080

802 Mill Ave.

BRIT SMITH Car Co.

Tempe

INTRODUCTORY OFFER-Students-Faculty Only

All of Your

AUTOMOTIVE NEEDS

SALES SERVICE

CHEVROLET

● SPECIALIST ●

OLDSMOBILE

The BRIT SMITH CAR CO. has GM FACTORY TRAINED Mechanics that are qualified and experienced to properly service your car. We use Genuine Replacement Parts and our work is Guaranteed

TEXACO
LUBE
JOB

99^c

(With Oil Change)

TEXACO
GAS

3^c
GAL
DISCOUNT

(Skychief or Firechief)

Brake
Adjustment \$2²⁵

Also Front End Alignment only \$6.95

Engine
Tune-Up \$6⁹⁵

V8 Slightly More

● NEW CHEVROLETS AT DISCOUNT

● NEW CHEV. TRUCKS AT WHOLESALE

USED CARS

BOUGHT
SOLD

TIRES · SERVICE · DEPT.

802
MILL

BRIT SMITH CAR CO.

TEMPE
WO 7-3381

COUPON Introductory Offer*

TEXACO LUBE JOB 99^c
(With Oil Change)

Name _____
Address _____
Car _____ ASU No. _____

BRIT SMITH CAR CO.
802 Mill Ave. WO 7-3381
*TIL 10-31-60

COUPON Introductory Offer*

ENGINE TUNE-UP 6⁹⁵
V8 Slightly Higher

Name _____
Address _____
Car _____ ASU No. _____

BRIT SMITH CAR CO.
802 Mill Ave. WO 7-3381
*TIL 10-31-60

COUPON Introductory Offer*

TEXACO GAS 3^c
Gal. Discount
Firechief or Skychief

Name _____
Address _____
Car _____ ASU No. _____

BRIT SMITH CAR CO.
802 Mill Ave. WO 7-3381
*TIL 10-31-60

COUPON Introductory Offer*

Brake Adjustment 2²⁵

Name _____
Address _____
Car _____ ASU No. _____

BRIT SMITH CAR CO.
802 Mill Ave. WO 7-3381
*TIL 10-31-60