



State Press

ARIZONA STATE UNIVERSITY



TEMPE, ARIZONA



ARIZONA'S OLDEST COLLEGIATE NEWSPAPER, ESTABLISHED 1903

Vol. 38 No. 32

TEMPE, ARIZONA

Friday, February 12, 1960

Honors Students Chosen

Ten ASU students have been admitted to the newly-instituted Honors Program this semester.

"Permission to enter the program is granted only after careful review of the student's record by the Honors Council," said Dr. Arnold Tilden, dean of the college of Liberal Arts.

"Once admitted, the student works closely on an individual basis with the member of the council in his particular area of interest," he explained.

Selected to the program are Frank Beck, freshman Anthropology major, Ralph Flores, freshman English major, Patricia Fulks, freshman English major, Marjorie Avery, freshman History major, and Richard Smith, freshman English major.

Also, Gary Peter Klahr, sophomore Political Science major, Michael W. Peplow, sophomore English major, Drayton Swartz, sophomore Sociology major, Bert Myers, junior Philosophy major, and Karl Minke, junior Psychology major.

Thirteen students are now in the program, including three admitted first semester. They are Ina Abraham, Roberta Taylor, and Mary Pasztor.

Allowed greater flexibility in their curricula, honors students may elect advanced courses, special ability section, and Honors seminars and colloquia.

"We believe a vigorous program, designed to provide a greater opportunity and incentive for students who have ability and desire to learn, is essential," Dean Tilden said.

"We are gratified with the expansion of the program. It seems to indicate there are an increasing number of qualified students who share this belief and can profit by participation in the program."

The spring semester Honors Colloquium, in which the 13 students are participating, is "Ethical Concepts in English and American Literature, 1830 to 1950." It is presented by Dr. G. B. Montague, assistant professor of English.

Have you sent your valentine a Spur-O-Gram yet?

Today is the last day to buy a telegram from Spurs, sophomore women's honorary. An annual fund-raising project, the telegrams are selling for 25c written and 50c singing.

The telegrams may be sent from 8-4 on the corner of College and Orange, according to Barbara Farone, chairman of the event.



CROWN OF HEARTS . . . Seven finalists are vying for the title of "Queen of Hearts" to reign over the Heart Fund ball tomorrow evening from 9-12 p.m. in the MU Ballroom. Left to right are Elinor Simmons, Kappa Delta; Laurie Elliot, Alpha Delta Pi; Ardella Fromchuck, Alpha Epsilon Phi; Judy Brown, Gamma Phi Beta; Barbara Droke, North Hall; Pat Sullivan, Chi Omega; and Noel Owens, Delta Gamma, not pictured. Contributions to candidates' individual pennies which have been placed in front of the Union, will decide the queen.

To The Editor —

Professor Answers Gazette Editorial

By ELIZABETH J. FIELD

"American education has discovered that there are a few extremely gifted children in the nation's classrooms," stated a editorial in the Phoenix Gazette (Feb. 1).

Dr. Willard Abraham, ASU professor of Education in the field of exceptional children, was composing a letter to the editor when this reporter visited him concerning the editorial.

Student Offices Election Date Set; Petitions Ready

Election of ASASU officers for 1960-61 will take place March 30 and April 6, according to Tony West, Elections board chairman.

Petitions for ASASU offices may be obtained in MU 202 beginning Monday. Deadline for petitions is March 16.

Candidates must meet specific qualifications for each office and must also have the following general qualifications:

1. They must have been in attendance at ASU for at least one year immediately preceding the taking of office, except for freshmen.
2. They must have attained a 2.0 cumulative index preceding the time of candidacy.
3. They shall be registered for a minimum of 12 semester hours.
4. All candidates are required to read Senate Bill 113 and conform with its laws.

"Educators have been aware for some time that the gifted child exists," Dr. Abraham said. He pointed to a five-volume set of books on a continuing research project of 1500 gifted children conducted since 1921 by Lewis M. Terman and Melita H. Oden.

Dr. Abraham called attention to another statement in the editorial, ". . . assuming we can ritualistically determine what child has exceptional mental gifts and what one does not. If we do make such an assumption, and close the files on further study in that direction, we could saddle ourselves with a costly and possibly worthless system of selecting a fraudulent academic elite . . ."

"While we do the best we can now — which means going ahead with selections of the gifted by the best methods we can think of — we should resolve to follow through in search of final answers."

To this Dr. Abraham indicated the fifth volume of the set entitled "The Gifted Group in Mid-Life."

"Terman had used a so-called comparable normal group to make his comparison," Dr. Abraham said, "and results so far indicate the 1,500 gifted children, on the average, are higher on the professional scale; have better earnings, better health-mental and physical, more distinguished war records, and better marital adjustments on the basis of divorce statistics."

"Recognizing the gifted child is not difficult. The difficulty lies in what to do about it. I feel the child should continue to live and attend schools in his own community as long as he can realize a challenge. Many of these schools in this area are attempting to adapt their programs to all individuals — the normal, retarded and the gifted."

"In the teacher training program at ASU there are several students who were considered gifted children," Dr. Abraham said. "This is a great help as they are able to draw on personal experience in their approach to the children. Also, parents are usually interested and cooperative and help the child a great deal in making the necessary adjustments once the 'gift' is recognized."

Hulen Recommends Senate Action Concerning ASASU Seating Funds

ASASU President Tom Hulen set a precedent Wednesday by appearing before the ASASU Senate with a recommended program of action for the second time this year.

President Hulen asked the Senate to establish a contractual basis for allocation of ASASU funds as a "possible solution to the seating arrangement problem." Hulen referred to the loss of student seating on the 50-yard line during the past football season.

ROTC Opinions Polled

Male dormitory residents are 74 percent opposed to the present compulsory two years of basic ROTC, according to a poll conducted by the Inter-Hall Council.

Of 480 men answering the poll, 21 percent said they favored the present requirement, while 5 percent indicated no opinion.

However, 31 percent said they would favor requiring one year of ROTC, while 63 percent would not, and six percent were unsure.

Seventy percent said they would not enroll in ROTC if it were not compulsory. Nineteen percent said they would, and six percent were undecided.

The pollees, 92 percent of them non-veterans, were asked to fill out a printed form indicating their opinions of the program.

Of those answering the poll, 51 percent are not in ROTC, 46 percent are in basic ROTC, and 3 percent are in the advanced corps. Of those in advanced, 69 percent said they would not have applied for admission to the advanced course if the basic course had not been required, while 31 percent would have entered, regardless.

Meanwhile, ASASU President Tom Hulen has announced appointment of Dick Tarrant and Dave Matthews to join Bill Duke, Jerry Hassett and Frank Schaumburg to form the new student portion of the joint student-faculty committee to study the compulsory ROTC issue.

And, in Tucson, three leading advocates of compulsory ROTC at the UofA have challenged leaders of the U-A Students Against Compulsory ROTC to a showdown panel discussion next Tuesday night in the auditorium.

In reply, the president of the opposition group demanded a formal debate.

Hulen commended the senate for its prompt action on 8 of the 10 proposals submitted in October and re-requested the two not acted upon. These bills were the seating arrangement and the minimum wage bill. Four new points were presented for consideration, plus a recommendation to expand the minimum wage bill to include all ASASU students working on campus.

Sculptured Materials On Display

Tribal Masks, Statues, Cups, Pipes Included In MU African Exhibition

African sculpture from the Segy Gallery in New York City is currently on display in the MU lounge through Feb. 21.

The small but well-labeled exhibition includes objects d'art from the Belgian Congo, Rhodesia, Ghana, Nigeria and the Ivory Coast. Tribal masks, statues, armlets, cups, pipes and jewelry comprise the show sponsored by the Cultural Affairs board as one of its monthly art series being presented

through the 1959-60 year.

Tribal masks from the Belgian Congo will be of special interest to those who favor them as wall decorations. Traditionally they are used in ceremonies to celebrate various events such as emergence from puberty, entrance into manhood or perhaps an agricultural festival. Several masks of mythology and legends, with features of part-man part-animal, are shown as typical

art from the Ivory Coast.

Also displayed are gold weights used to measure gold dust before English currency came into common usage. These weights are carved in the shape of a Markala board (a game), a warrior's shield, a fly whisk, and a warrior's belt.

The usual number of statues are included in the show. Statues are considered by the native African as protective figures. Several outstanding examples are those which also serve a utilitarian purpose; one

as the handle of a spoon and another as a handle of a cup.

African artists utilize indigenous materials in creating their simple but intriguing art. Wood, leather, cloth, raffia, beads and shells predominate, and bits of mirror are often used to reflect sunshine believed to blind malevolent spirits.

—E.J.F.

Coffee Hours Begin Tuesday

The first of a monthly series of Student-Faculty Coffee Hours is planned for Tuesday from 2:30-4 p. m.

Faculty and students are invited to the MU upper lounge for coffee and other refreshments.

"Bowling is Fun," a 45-minute movie on bowling tips and intercollegiate leagues, will be shown in the MU bowling lanes tomorrow at 2 p.m. and 7 p.m.



MAGIC-WORKERS . . . Nancy Baldwin, freshman, takes a close look at wooden statue used to drive away malevolent spirits by Bakongo tribe in the Belgian Congo. The ceremonial cup (center) and statue on right, all part of the African exhibit in MU lower lounge, were used by tribes for magical rituals.



HAIR-DO SAVER . . . African women living in Mashonaland, N. Rhodesia, sleep on headrests like the one shown, to keep their fancy hairdos in place overnight.




THE PROPORTIONED COAT

Important part of the new look for the young man. Cricketeer tailors the look for us. Sport coats in hopsacking at only . . .

\$35

others from **\$32.50**

THE Americana SHOP

Quality Men's Apparel
TEMPE SHOPPING CENTER

**1
2
3
4
5**

Chairs To Serve You At

RAY'S ASU


BARBER SHOP
TEMPE CENTER
Closed Mondays

Hanny's Authentic IVY BLAZERS

\$35

with your fraternity crest free!

Hanny's goes to blazers in a big way this Spring. Rich flannels cut in traditional lines with metal buttons. Available with or without crests in red, navy, grey or white.



Hanny's Varsity Shop
30 NORTH FIRST STREET

Art, etc.

By MIKE BENSON

One of the more interesting sights as we cruised the campus this past week was the exhibit in the lobby of the Arts building. Most of the work was done by students in Basic Design. We won't go so far as to say that all of the work shown was art, but inventiveness in the use of materials was outstanding.

Music-wise we scarcely know where to begin. There are two concerts on Sunday as far as we were able to discover, one in the afternoon and another in the evening.

Sunday afternoon at 4 the Opera Workshop will present "Gallantry," a one-act opera by Douglas Moore. We heard a rehearsal or two and were impressed. On the same program will be the Collegium Musicum under the direction of Dr. Philip Nelson. The concert will be held in the Phoenix Public Library auditorium.

Larry Vanlandingham and Donald Glabe will present a joint senior recital Wednesday at 8:15 p.m. in the MU ballroom.

Tickets, at student rates, are available at the MU information desk for a number of valley performances including "L'll Abner," "The Glass Menagerie," and "Window Talk."

If you utter insults, you will probably hear them.

Final Presentation ...

Henrik Ibsen Play On Stage Tonight

The closing curtain falls tonight on the ASU Drama Workshop production of "Little Eyolf."

The last of four performances of this little known Henrik Ibsen play begins tonight at 8:30 in the little theatre behind Cosner Auditorium.

Tom Miller, who portrayed Christy in "Playboy of the Western World" and Pat Hughes, a player in another Ibsen work, "The Master Builder," are cast in the leading parts. Other characters are played by Carol Richardson, Linda Herst, Graeme A. Bond, and Deone Giacconi.

Produced in the form of a concert reading, "Little Eyolf" is one of Ibsen's last plays. He makes use of direct symbolism and leans toward a more introspective tone than in most of his earlier works for which he has become renowned.

The strongest feelings produced by the play, as directed by F. R. Byers, are the deep characterizations of love and the great power of death.

Throughout the reading, love runs the gamut from intense to esthetic to selfish, and produces the problems that cause a man to be erratically linked to two women.

The author makes it clear that the dead work in a psy-

chological way to give our thoughts new directions. This is the message of "Little Eyolf."

Elections Code To Be Revised At Open Hearing

An open hearing to revise the present ASASU Elections Code will be today at 3:30 p.m. in MU 210, according to Velva Richey, chairman, Senate Membership & Elections Committee.

Students wishing to express their opinions and give suggestions for the revision may attend. Those unable to be present may submit suggestions to the ASASU secretary's office.

Deadline for these written suggestions is noon today.



Tri-City Drug
Bayless Shopping Center
WO 7-3281



the smartest way
to make him say
I love you
Manhattan

Pin a Medal on Your Valentine! Present him with the order of "World's Greatest Lover." His decoration is gift-boxed in a plastic presentation case with three fine Manhattan Man-smooth® no-iron 100% cotton handkerchiefs. Fun, and practical, too!



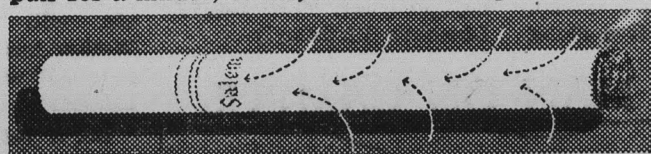
Joe Selleh

7TH & MILL

"The Place to go for Brands You Know" Ph. WO 7-4163

Salem's special High Porosity paper "Air-Softens" every puff

Invisible porous openings blend fresh air with each puff for a milder, cooler, more refreshing smoke.



Salem research creates a revolutionary new cigarette paper that makes Salem taste more Springtime-fresh than ever! Richer, too. Smoke refreshed...smoke Salem.

Created by R. J. Reynolds Tobacco Company



• menthol fresh • rich tobacco taste • modern filter, too

NOW MORE THAN EVER

Salem refreshes your taste



EDITOR-IN-CHIEF PETEY OLMSTED
 MANAGING EDITORS GORDON PETERSON and KATHY BURKE
 SPORTS EDITOR DAVE BARNES
 ORGANIZATIONS EDITOR JACK ONG
 COPY EDITOR LEE LITIN
 ASSIGNMENTS EDITOR VELVA RICHEY



The STATE PRESS, distributed by Dave Pilcher, is the official campus newspaper of Arizona State University. Published each Wednesday and Friday throughout the school year, excepting holidays, and entered as second class matter in the Post Office at Tempe, Arizona, under the Acts of March 3, 1879, and August 24, 1912. Subscription price, \$3.00 per school year.
 Member: Arizona Newspapers Association, Associated Collegiate Press, and National Advertising Service, Inc.

Editorially Speaking

Money - Saver?

A headline on page 14 of last evening's downtown newspaper read "Minor Bills Introduced In Senate."

A good many patriotic citizens glanced briefly at that headline before their eyes skipped to the one next to it that read "Bill Toughens Penalties." Chances are they read with gusto the ensuing story. Two items it reported were proposed action in the state House of Representatives to: 1. stiffen penalties against improperly licensed motor vehicle drivers, and 2. build a separate state prison for women.

Interesting stuff, by George . . . designed to take good care of Arizona citizens . . . to keep our young state reputable and healthy.

Chances are slimmer that they read the story under "Minor Bills Introduced In Senate." But if they did, they were probably glad to see that lawmakers have figured out some ways to boost the state income without (yet) raising taxes.

One of the ingenious ways we may be increasing our state monies is this: "A bill introduced by the majority of the finance and revenue committee would prohibit sabbatical leaves for employees of the state, counties, or cities, with or without pay.

" . . . This proposal would affect university and college personnel in particular."

Most of us are acquainted with the term "sabbatical leave." In Arizona, teachers are entitled to a year "off" from school, after they have taught seven years consecutively. Their leaves are granted conditionally, to be used to further their education—by formal study, research, or travel.

Often, teachers need this "year off" to complete doctoral studies. Most colleges and universities require that doctoral candidates spend the final term of this study in residence.

In general, sabbatical leaves serve to improve the quality of teachers and, thus, are a step toward educational excellence.

True, we can save money by cutting corners on education—but sooner or later that money will be needed for bigger and better state penal institutions—men's and women's!

Wouldn't it be wiser to spend money on education to fit people for life, rather than to punish them for not fitting?

If any campus citizens were among those who skipped over the "Minor Bills . . ." story, we hope they will go back and read it . . . and write their legislators.

*Meanwhile, happy 48th birthday, Arizona.

On Other Campi

By MIKE BARRETT

The harmful effects which result when righteous, self-appointed censors arbitrarily evaluate creative works — literature in this case — as pornographic were recently demonstrated at San Jose State College.

Several hundred books are not on the open shelves in the library, but in a locked cage, and "are available only by request at the circulation desk," reported the "Daily Spartan" Dec. 3.

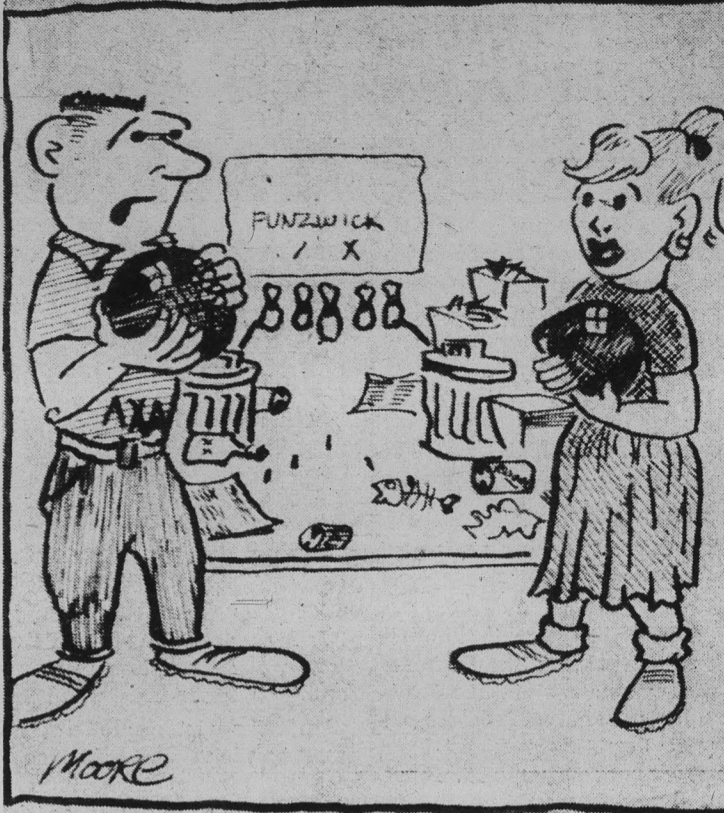
What are some of the works so closely guarded?

"Babbitt," 1922, authored by one of the 20th-century America's finest satirists, Sinclair Lewis, depicts the modern American man of that time who "exchanged his conscience for a cash register;" "The Naked And The Dead," 1948, written by one of the better young writers today, Norman

Mailer, is considered as one of the finest psychological war novels about W.W. II; "Tobacco Road," 1932, and "God's Little Acre," 1933, penned by Erskine Caldwell, explore some interesting segments of life in America's deep south.

"This is not meant to be censorship . . . but evil minds might get hold of some of the books and make bad use of them," Miss Joyce Backus, the college librarian, was quoted by the Daily.

Certainly, some of Miss Backus' fears may be realized, but that which she so nebulously speaks about is dwarfed by the much greater danger of thought control and eventual loss of freedom. How can a free society progress without cognizance and understanding of life and selection of that which is best through free communication?



"I DON'T CARE WHAT THEY SAY, TO ME IT LOOKS LIKE AN ALLEY..."

LETTERS to the Editor

Oops!

To the Editor:

What is happening to the State Press? Nothing seems to be accurate any longer. Wrong day of the week with the current date (Friday, February 10), incorrect and incomplete information on future events, etc. I do not know what surprises await me if I go ahead and read the paper thoroughly.

There are copyreaders as well as some organizations on this campus that do not know the most obvious facts of their own activities.

Under the headline of "Heart Fund Ball Saturday," page five of the State Press, Wednesday, February 10 issue, the names of the finalists were neither complete nor did they match the organizations they represent. The article starts: "Seven semi-finalists chose for queen. . . ." and only lists five along

with the wrong information.

I do not know who wrote this article. But he or she has no excuse. The finalists were chosen a week ago, and their names appeared in the Arizona Republic (correctly) several times. What good is an article which contains incorrect information?

I do not think that Laura Elliot, Alpha Delta Pi, Judy Brown Gamma Phi Beta and Ardella Fromchuck, Alpha Epsilon Phi are very happy with the careless mistakes made in the last issue of the State Press. We all owe an apology to them.

Sel Erder

(Editor's note: Yup — we're human. See page one for picture and names of Heart Fund Ball candidates. If our dateline left you confused, today is Friday, February 12. Happy Lincoln's Birthday!)

LITTLE MAN ON CAMPUS



"AT LEAST WE HAVE A LOT MORE OF THE FRESHMEN COMING IN TO USE THE LIBRARY."



By GORDON PETERSON

"The wheel that squeaks the loudest gets the grease," they say.

Well, we've got wheels around here squeaking about everything from compulsory ROTC to censorship of pictures in dorms. (Come to think about it, those two subjects aren't so far separated — they both hinge on a decision as to whether university students should be allowed to make up their own minds. Besides, who needs "arty" pictures more than the cadets when they return from drill on a cold morning?)

Anyway, for two or three semesters, there has been an extra squeak in the wheels that keep this institution rolling — this time from people who said the Off Campus Men's organization was falling apart. In fact, we heard one student refer to it as "the most disorganized organization I've ever seen."

Well, Praise the Lord and Pass the Grease Guns, action is being taken. O.C.M. Senator Tod Walker informs us that the organization is being reorganized.

In an O.C.M. "Newsletter" being distributed hither and yon, Walker invited off-campus men to a meeting at 3:30 p.m. next Wednesday in MU 208-209 to elect officers, kick around ideas for the group, and sip some Joe to be served by Phrateres.

We're real glad to hear this outfit's going to get rolling again. Not too surprising, though, with Tod in action. He seems to cotton to giving the commuters a chance to get their say in student government.

Not too long ago he spearheaded putting out suggestion boxes in the V. I., more or less as an experiment. People got interested, left notes and letters, and the whole thing seemed like a good idea. Trouble was, cardboard boxes didn't last too long. So, within a week or so, there will be metal boxes around campus.

Thoughts, suggestions, gripes, etc. will be welcomed and Walker has promised that each note left will receive due consideration.

So, if you don't like the way this school is being run, why not drop in at the meeting; help get the thing organized, and then keep with it?

Or, if you can't make the meeting, you might drop in to the AMS office and see Tod. He's generally there 12:45-2:30, Monday, and 9-11:30, Thursday.

And, when they get the suggestions boxes put up, remember — they're for you. Might as well use 'em.

Meanwhile, don't forget the State Press. Your ever-lovin' newspaper always welcomes your letters. They have to be signed, but we'll keep your name secret if you say so. We print as many as there's room for (and sometimes more), and try our darndest to get them all in.

R.S.V.P.

Man to stranger: "No, I'm not a college student. I just lost my belt, ran out of razor blades, forgot to shine my shoes, fell in a mud puddle, and a car ran over my hat."

Overpopulation Is Topic Of Priest-Scientist's Talk

Prominent Maricopa county attorney, Charles Ronan and his wife were featured speakers at the inaugural meeting of the "Cardinal Lecture Series," a new student and public

Peter O'Meara, Award Winner

Peter James O'Meara, Applied Arts and Sciences senior, is the first recipient of a new State Federation of Garden Clubs scholarship.

The annual \$200 stipend will be presented to an ASU junior or senior majoring in horticulture.

interest series sponsored by the Newman Club.

Scheduled soon on the weekly talks will be Rev. Anthony Zimmerman, priest-scientist and authority on the subject of overpopulation. Father Zimmerman will speak on "Population Explosion." Experts on marriage, narcotics, and other topics will follow.

The lectures will be at 8 p.m., Tuesday, in the ASU Newman Center at Eighth and College. Students may attend.

Irate father: "What do you mean, bringing my daughter in at this hour?"

College man: "Well, Sir, I have to be to class by 7:40."

A European 38th Parallel?

AS Professors To Discuss Berlin On TV Program

A crucial world topic will be discussed at 7:30 this Saturday evening on the KPHO radio program, "Viewpoint."

Dr. Karl Dannenfeldt, chairman of the Division of Behavioral and Social Sciences, will moderate the discussion, "Berlin: Insolvable Problems?"

Guest panelists are Dr. Heinz R. Hink, assistant professor of Political Science and authority on post-war Germany, Dr. Wallace E. Adams, assistant professor of European History, and Dr. George E. Paulsen, instructor in History.

They will answer the questions: Where do we stand in

advance of the May summit meeting? Are Russians likely to use Berlin in future demands? Is Berlin going to become a European 38 parallel? What can the Western World do about the Berlin Problem?

The weekly program, produced by the ASU Radio-Tele-

vision Bureau began last October.

Dr. Dannenfeldt said, "The program is aimed at the behavioral and social sciences, not at student problems."

The last program will be on June 4, 1960.

Exhibit Is Lecture Subject

A discussion of the African sculpture exhibit will be presented Wednesday, Feb. 17, by Lew Devis, lecturer in Art at ASU.

The exhibit is currently on display in the MU. The exhibit will be discussed in conjunction with the second lecture in the new "Views and Previews" series. The discussion will begin at 7:30 in the MU lower lounge.

The series, co-sponsored by the cultural affairs and student-faculty relations committees, is designed to acquaint students with the arts and humanities. Forthcoming programs will include music, drama, architecture, philosophy, psychology and art.

Students wishing to join the ASU gymnastic team may contact Coach Norris Steverson, Monday at 4 p.m. in the Men's PE building annex. The team can use all those who wish to apply," according to Coach Steverson.

IBM WILL INTERVIEW FEB. 19

IBM invites candidates for Bachelor's or Master's Degrees to discuss opportunities in Applied Science, Business Administration, Marketing and Product Development. . . . positions throughout the United States.

Laboratories and manufacturing facilities are located in Endicott, Kingston, Owego, Poughkeepsie, Yorktown, N. Y.; Burlington, Vt.; San Jose, Calif.; Lexington, Ky.; and Rochester, Minn. Corporate headquarters is located in New York, with 192 branch offices in cities throughout the United States. The IBM representative will be glad to discuss with you the type of career of particular interest to you. IBM offers:

- Leadership in the development of information-handling systems.
- New applications for data processing and advances in computer technology.
- Favorable climate for continued career growth.
- Opportunities for a wide range of academic backgrounds and talents.

Contact your College Placement Officer to arrange an appointment for a personal interview with the IBM representative.

If you cannot attend the interview, call or write:

Mr. C. H. Woolf, Branch Manager
IBM Corporation, Dept. 868
8424 North Central Avenue
Phoenix, Ariz.
Crestwood 7-2661



...the tobacco that outsells all other imported tobaccos combined! Try it and your very first puff will tell you why. There's more pleasure in smooth-smoking, even-burning, long-lasting, mild AMPHORA.

Popular priced, and more for your money, too—full 2 ounces in every pack! Blended in Holland. In handy pouches and tins. Come in and try it today!

40c

2-OZ. POUCH



TRY A PIPEFUL AT THE DEALER NEAREST YOU

GREEK TO ME

Delta Gammas Permit Lengthy Pledge Walk-Out

By JACK ONG

Showlow, Arizona, played host to Delta Gamma sorority pledges during their walk-out last weekend. Walk-out? Actually, the actives did some checking; found out that the "rummage sale" planned by the pledges was a hoax, but realized how much trouble and money was invested in the walk-out.

So the pledges skidaddled and were feted by Rotary Club members of Showlow, who rented a school bus to take the girls skiing and tobogganing, followed by an outdoor steak fry.

Delta Gamma candle passings revealed engagements: Betty Cosgrove to Chuck Foster, Judy Jensen to Ken Rivers, Helen Haldiman to Joe Harper; and pinnings: Sharon Cross to Wally Zwingli, Sigma Chi at Oregon State; Dianne Parker to Jim Hancock, Phi Delta Theta.

Men of Theta Chi recently learned of their president's, Dave Paul, pinning to Diane Wesson.

Sandi Watts, Gamma Phi

Rodeo Club Sets Thursday Meet

The ASU Rodeo Club has been expanded to include all phases of horsemanship, according to Dean Hill, club president.

The club has secured over forty acres of land near South Mountain Park to be used as headquarters for trail rides, horse shows, ropings, and other events scheduled for this semester.

"We hope to have supervised riding classes to be taught for actual credit," stated Hill.

The next meeting will be held Thursday at 7:30 p.m. in room 202 of the old Science Building. Movies on the 1959 Intercollegiate Rodeo will be shown. Public is invited.

BROADWAY PAVILION

2000 W. Broadway

WESTERN DANCES

Saturday — 9 to 1

featuring GENE DIFFIE

STADIUM COFFEE SHOP & Delicatessen

Good Things to Eat and Drink

"Across the Street From East Stadium"

Open 7 Days Week

Beta, passed the candle last Sunday to announce her pinning to Art Wiles, Phi Sigma Kappa.

Kappa Kappa Gamma Sandy Wilgus told of her engagement to Bill Titus, Las Vegas, at Monday night's candle passing.

Second degree ceremonies were held for Kappa Delta pledges Monday at 4 p.m. in the chapter room. Pledges awaiting active membership are Susan Fear, Susan Foster, Sandra Cooper, Sandra Corken, Mary Wooldridge, Karen Fulks and Sharlyn Nelson.

Actives won at the annual Delta Sigma Phi pledges vs. actives basketball vie. Pat Cummins led the actives with 38 points toward their 108-43 win.

Jim Kunkel, Delta Sig, was recently engaged to Fran Breslin.

Jane Wagner, Chi Omega, announced her engagement to Bob Hunt, Alpha Gamma Rho, at candle passing time.

Pledge and Active of the Week for Kappa Kappa Gamma are Jean Visel and Lynneah Maloy.

Sigma Pi George Neblett has pinned Nancy Tate, College of Pacific, California.

Jim Peachey, Phi Alpha colony of Sigma Alpha Epsilon, is engaged to Pat Kurz, Phoenix College.

Phi Alphas had Little Sisters of Minerva over to dinner Monday evening.

Alpha Epsilon Pi's pledges made one of the highest scholastic grade averages in the history of this chapter. The seven pledges going through Help Week have made a grade average of 3.0.

Beta Kappa chapter of Gamma Phi Beta held a formal affiliation service Tuesday night for Jean Gabbard, a transfer from San Jose State; and Alice Hopman, a University of Indiana transfer.

In a candle passing ceremony Monday, Nancy Bain, Alpha Sigma Alpha, announced her engagement to Carroll Thrash.

New social chairman of Delta Sigma Phi is Warren Cereghino. Delta Sigs will have a pajama party tonight from 8:30 to 1 a.m.

Members of Alpha Tau Omega recently serenaded Bonnie Temple, pinned to ATO Bob Buzard; and Miss Connie Szink, engaged to John Wayland.

Formal pledging of Mary Satterfield, Gloria Leiterman and Sherrie Byars to Alpha Phi was held recently.

Chi Omega pledges have challenged the actives to a volleyball game tonight at 4 p.m.

Bring Your Favorite "MUCHACHA"

To Chico's For Valentine's Day

CHICO'S

DRIVE-IN

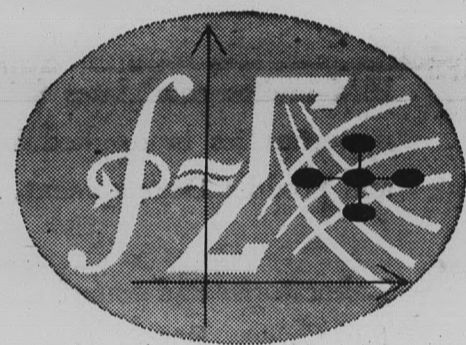
FINE MEXICAN FOOD

1120 East Apache Blvd. — Tempe

We require a B.S. or an advanced degree in mathematics or the physical sciences. Experience in your university's computing facility is highly desirable.

SPACE TECHNOLOGY

Offers work of the future ...today!



Computer programmers & applied mathematicians

High speed digital computers and expanding computing systems require individuals with more than the usual amount of interest and ability in the fields of Applied Mathematics and related computer programming.

Our Computation and Data Reduction Center in Southern California is one of the largest and most advanced facilities in the nation. Three of the largest and most modern high-speed digital computers (Two IBM 709's and an IBM 704) are utilized in the support of Systems Engineering for the Air Force Ballistic Missile Program and space flight studies.

Contact your placement office for an application, or send any inquiries to Space Technology Laboratories, Inc. to the attention of Mr. Gerald Backer.

On Campus Interviews . . . February 23

Space Technology Laboratories, Inc.

P.O. Box 95004, Los Angeles 45, California

Say It . . . and Mean It — with Flowers

Bobbies Flowers

20 E. 5th St.

WO 7-2972 WO 7-4274

Martha's WEDDING SHOP

HEADQUARTERS FOR PARTY DRESSES

Semi-formal or Formal
Ballerina or floor length.
Fabrics, tulles or laces.

BRIDAL GOWNS

Formal or in-formal
Short, floor or train.
Laces, tulles or laces.

MAIDS GOWNS

Sheath or bouffant.
Short of floor-length.
Accessories to match.

PRICED TO SUIT EVERY BUDGET
OPEN MONDAY AND THURSDAY EVENINGS
BRIDAL CONSULTANTS

307 EAST CAMELBACK, PHOENIX AM 6-8415

Valentine's Day Sets Pace For Weekend Celebrations

Two big parties will highlight campus Valentine's Day celebrations this weekend.

Students and faculty are invited to refreshments and entertainment at a Social Board At-Home get-together Sunday evening from 8 to 10:30 p. m. Party place is the MU lower lounge. Songs will be provided by Dean Gary R. Anderson.

Tonight, members and friends of the Baptist Young People's Union will gather at 7:30 for a Valentine's banquet. Theme is "South Sea Islands" and the affair will be held at the First Baptist Church. Crowning of a king and queen will be featured at this annual event.

Chairmen of the banquet are Edward Perry and Larry Payne.

Greek holiday celebrations include Sigma Pi fraternity's Hawaiian party tonight. Palm leaves, fish netting and cocoa-

nuts for decorations and Hawaiian punch will set atmosphere. Dress motif will be that of the Islands, as will dance music.

Also this weekend will be Alpha Phi sorority's second annual Heart Fund Ball, to be held tomorrow evening; a Queen of Hearts will be crowned at the semi-formal event.

SAM Seeking New Members

A membership drive by the Society for the Advancement of Management will last through Saturday.

Students of Economics, Business Administration, Engineering and others interested in the management field may join.

Application for membership into SAM are available at B.A. 107.



SHINE, MISTER? . . . Kappa Kappa Gamma pledges shined shoes on campus yesterday for their pledge project. Shown here at the Palo Verde Hall "stand" are, front row (l to r) Willa Thomas, Carole Angius, Sandee Hodgson, and Lesley Luhman. Second row: Clyde Douglas, Norma Clements and Karl Dennison.

SALE LAST CALL



**Cardigan and Shawl
Collar Bulky
Sweaters
795**



**All Wool
Now 12.95**



**CAR COATS
& JACKETS**

The answer to casual and campus wear! Select from slim suburban styles or men's jackets. Full cut for freedom of action!

Now 10.95

Campus men's shop
FOR MEN AND YOUNG MEN

603 Mill Ave

Tempe, Arizona

Open Rush For ASU Sororities To Continue Throughout Semester

Open rush for ASU's 11 national social sororities began Feb. 1, and will continue throughout most of second semester.

Coeds wishing to register for the informal rush program may do so in the Associate Dean of Students office, MU mezzanine, 8:30 a.m. until 4:30 p.m., Monday through Friday; 8:30 a.m. until noon, Saturdays.

According to the Panhellenic Handbook, in order to be eligible for rushing at ASU, a girl must:

1. Be registered at ASU with a minimum of 12 units.
2. Pay \$2.50 registration.
3. Have an over-all 2.00 grade average if she was a student at Arizona State the

previous semester.

4. Have a high "C" grade average or be in the upper two-thirds of her high school graduating class if she is entering as a freshman.

Girls registering for rushing are advised to register only if they are able to meet the financial obligations of a sorority, as listed in the Panhellenic Handbook.

Press representatives of campus organizations will meet tonight at 7:30 in MU 8, downstairs, for a brief workshop. All fraternities, sororities and other ASU groups are encouraged to send representatives.

AS Women Attend Meet

"Looking Forward From Past To Future" was the theme of the AWS State Convention this past weekend in Flagstaff.

Seventeen delegates from ASU attended the convention to discuss various topics, including The Role of AWS on Campus, Money Making Projects, and Aims and Ideals.

Attending from ASU were Georgia Kasnetsis, Kathy Campbell, Mary Hing, Karen Davis, Barbara Thurman, Linda Cheatham, Margaret Truman, Caryl Rambo, Lee Harmon, Nancy Wiegler, Barbara Termain, Lora Hilton, Sue Garrett, Katrina Sabey, Velda Richey, and Dean Ruth Kilbourne, adviser.



FLIGHT INSTRUCTION

Special Rates For
College People

MODERNIZED GROUND SCHOOL
FOR PILOTS & NON-PILOTS

Amos Flight Operations

A Private License is a Must In Modern Business

Don Amos — Class of '56

Phone BR 5-7291

SKY HARBOR

WE ARE YOUR PRESCRIPTION PHARMACY

Your prescription will be promptly filled here in our sparkling clean, modern pharmacy. Each prescription is double checked for accuracy. In case of any question we call your doctor.

- Cold Remedies
- Drugs • Baby Needs



We Give
S&H Green
Stamps

LAIRD PHARMACY
Rexall DRUGS

601 Mill
WO 7-2922

it's great for a date



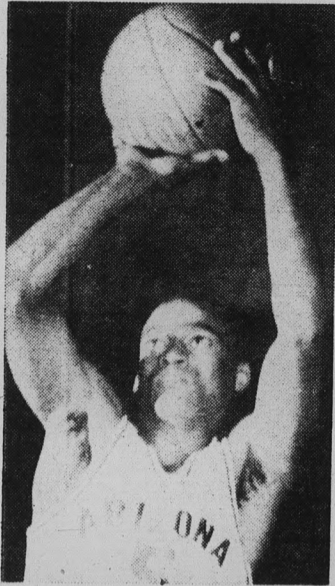
Friday Nite
Date Nite!

Brunswick
automatic pinsetters

Visit the All New
MEMORIAL UNION BOWLING LANES

Devils-Fresno Battle Tonight

Coach Ned Wulk's Sun Devils cagers will have their hands full as they play host to a tough Fresno State quint in a non-conference game tonight.



LITTLE LARRY . . .
will keep Fresno in fits.

The Devils will be attempting to bounce back after a 114-109 defeat at the hands of Los Angeles State Monday night and the Bulldogs will be shooting for win number eight in a row in tonight's encounter. They polished off College of the Pacific, 83-62, and Cal Poly, 77-67, last weekend to run their victory streak to seven games.

Los Angeles State, Monday night's victor over the Sun Devils, was beaten by the Bulldogs in an 88-83 contest earlier in the season. Comparative scores should therefore rate the

TOM'S RADIATOR & GARAGE

Tune - Ups
Complete Overhaul
TEXACO GAS & OILS
We're Equipped To Do
Repair Work On
All Foreign Cars and
Sport Cars

WE SPECIALIZE IN
RADIATOR SERVICE

922 Apache — WO 7-1694

Fresno five in the role of favorites for tonight's game.

Guard Babe Williams and forward Al Brown, Fresno's top scorers, will bring 14.1 and 13.2 averages into tonight's game. Other starters for the Bulldogs will be Mike McFerson, Tom Gilcrest and Vern Grissman.

Probable starters for the Devils are Ollie Payne and Gary Norton at forwards, Al Nealey at center and Larry Armstrong and Paul Howard at guards.

Nealey, who hit 29 points in Monday's loss needs 25 tonight to tie Ernie McCray of the University of Arizona as the top three-year career scorer in the history of the state. McCray scored 28 Wednesday night against New Mexico to give him a career total of 1250 points. Nealey currently has 1225 and six games left to play compared to McCray's five.

Sun Devils Rank High Nationally

The ASU Sun Devil basketball squad, led by Al Nealey's 29 points, Monday night unofficially upped its national offense record from 7th place to 6th among major colleges and universities.

Nealey's effort aided him in surpassing Royce Youree's old 3-year scoring record by 181 points. With six games remaining, Nealey leads all collegiate scorers in the state with 1,225 points in three consecutive seasons, for a 17.9 cumulative average.

Below are the individual scoring statistics for 17 games:

| | | |
|-----------------|------|------|
| Al Nealey | 343 | 20.2 |
| Larry Armstrong | 255 | 15.0 |
| Paul Howard | 240 | 14.1 |
| Gary Norton | 201 | 11.8 |
| Ollie Payne | 134 | 7.9 |
| Bill Pryor | 98 | 5.8 |
| Tom Hughes | 97 | 6.1 |
| Troy Neal | 36 | 2.4 |
| Mike McConnell | 22 | 2.4 |
| Others | 7 | .4 |
| ASU TOTALS | 1433 | 84.3 |
| OPP. TOTALS | 1284 | 75.5 |

Tracksters Travel To LA

Arizona State's mile relay team and individual performers left today for the first Los Angeles Times Indoor Games meet to be held tomorrow in the sports arena.

A total of 241 athletes composed of Olympic champions, world record holders and foreign track stars will compete in the classic meet.

Representing ASU will be distance runners Mel and Mal Spence, national record holder Alex Henderson in the 2 mile plus Mike Barrick and Karl Shriner in the mile relay. Barrick and Shriner ran time trials Tuesday in which they had clockings of 49.9 and 48.5 respectively.

Both Spences will compose the rest of the mile relay team.

Henderson will enter the two mile run, Mal the 600 yard run and Mel in the 1000 yard race.

Mal will receive stiff competition in the 600 yard from a fellow Jamaican. George Kerr, from the University of Illinois, who ran the Pan American 400 meters last year in the time of 46.1 Kerr also won the NCAA 880 yard race in a phenomenal 1:47.8 clocking.

Both Spence and Kerr will be after Mal Whitfield's indoor 600 yard record of 1:09.5. Although Kerr hasn't run the 600 yard dash this season he will be a favorite. Spence, on the other hand, has run the event twice this year with a best time of 1:11.4 ran on the same track.

Coach Senon "Baldy" Castillo firmly believes the relay team can win their featured event if they manage at least a 3:18 minute clocking, ASU's relay team will be running against such powerhouse teams as Occidental, Southern California, UCLA, Michigan and Oklahoma University.

DEVIL DOINGS —

Intramural Football 'All Stars' Named

By GARY WALKER

Norm Freestone, elusive Phi-Sig halfback, and Don Griffin, pass-run threat of the off-campus men, co-captain a glittering array of intramural all-stars for the 59-60 season.

Also cracking the first-unit backfield were Bob Reid, SAE, Fred Bonderud, Delta Sig, and Rog Barnson, Sigma Chi. Taking line play laurels were Dick Thomas, Delta Sig, and Ed Littleton, off campus men, at the end slots, with Desi Sanchez, Phi Sig, and Charley Antone, ATO, beefing up the interior.

The Rally and Traditions board is vitally interested in knowing student body opinion regarding election of the three cheerleaders for next year's football season by popular vote of the student body. The board

feels that popularity plays the greatest part in the cheerleaders ability to arouse response.

Quips And Quotes

During a recent Devil road-trip to Canyon, Texas, cagers found the motel they were staying in possessed only 3 TV's for their five rooms.

A free-throw contest decided fate with high scorers Nealey and Armstrong coming out on the short end.

The night before the West Texas encounter, the Wulkmen took in a little heavy drama at the local Canyon Theatre with "Money, Women, and Guns," starring Jock Mahoney, providing the entertainment.

* * *

At bowling lane opening the other night, some gal bowled two lines with two left shoes on.

* * *

Something to ponder: Have you ever seen a lady wrestler on a valentine?

Students wishing to join the ASU gymnastic team may contact Coach Norris Stevenson, Monday at 4 p.m., in the Men's PE building annex. "The team can use all those who wish to apply," according to Coach Stevenson.

KENNETH CLARK Insurance

Our Rates Compete with all other low cost plans
611 Mill, Tempe, WO 7-3388



NOW SHOWING
MATINEE SAT., 12:30

WALT DISNEY'S
"3rd MAN ON THE MOUNTAIN"

— CO-FEATURE —

SAL MINEO
IN
"PRIVATE AFFAIR"

SALE

-RCA-SAVE-ON-STEREO

\$1

With Purchase of ONE \$4.98 or \$5.98 Stereo LP
Choose Another Stereo LP from the entire RCA Catalog for an additional \$1.00

- STEREO PHONOS • TRANSISTOR & TABLE RADIOS
- NEEDLES • BATTERIES • PHONO STANDS

HILLS RECORDS

Open Thursday Till 9 P.M.

TEMPE CENTER



WO 7-4482

FORMERLY Groves

ART & CRAFT SUPPLIES

★ Valentine Decorations ★

Distinctive

GIFTS — TOYS — PICTURE FRAMES

Supplies For

ARTISTS — DRAFTSMEN — HOBBYISTS

Featuring

SCANDINAVIAN IMPORTS

7 E. 9th Street

Tempe Center