



State Press

ARIZONA STATE UNIVERSITY



TEMPE, ARIZONA



ARIZONA'S OLDEST COLLEGIATE NEWSPAPER, ESTABLISHED 1903

Vol. 33 — No. 1

STATE PRESS

Friday, September 18, 1959

Post-Ruling Action Fast

Arizona State University must obtain building permits from the City of Tempe and submit to inspections by city building inspectors, Superior Court Judge Lorna Lockwood said in a decision handed down last Friday morning.

The opinion denied the Board of Regents a permanent injunction against the City of Tempe.

The hassle began in June when Attorney General Wade Church overruled his predecessor, Robert Morrison, and decided the university was not subject to jurisdiction of the Tempe Building department. Therefore, ASU would obtain no more building permits from the City.

Tempe's counteraction was almost instantaneous. Condemned signs were placed on many buildings. The Regents retaliated, however, and received relief through a temporary injunction against the City.

William G. Barnes, an ASU graduate and presently Tempe city attorney, said that substandard work was being done on university remodeling projects, which created a threat to the health and welfare of Tempe citizens. Pictures of substandard remodeling were presented to the Court as evidence.

John R. Ellingson, director of maintenance, told the State Press no substandard work has ever been done by his men on remodeling projects. "Those buildings in question were constructed during World War II," he explained.

"Many of our nation's universities and colleges still use similar type buildings," he said. "We are replacing them as rapidly as we can." Ellingson also pointed out that extra staff personnel would have to be hired to handle the processing of building permits.

Also included in the dispute were claims that the university was asked to supply a ladder truck and \$10,000 to assist the City Fire Department. The University of Arizona and Arizona State College are provided

Foreign Teachers Expected Here Next Week

Twenty-four teachers from the Near East, Europe, Scandinavia and South America will be at ASU Monday as the International Teacher Training Program begins its seventh year here.

The program, sponsored by the U. S. State Department and the U. S. Office of Education, enables educators from other countries to study education methods used in the United States.

free fire protection by Tucson and Flagstaff.

Phoenix attorney, Regent Lynn Laney, said the matter may be discussed at the next board meeting whether the decision will be appealed to the Supreme Court. The Regents meet next Tuesday on the ASU campus.

In similar controversies elsewhere, Missouri courts favored the state, while Wisconsin favored the city to be responsible. However, the Badger state stipulated the Board of Regents was responsible for safety of campus buildings.

This week, Leslie Hardy of the State Attorney General's staff still held that the university was not subject to jurisdiction of the Tempe Building Department. Meanwhile, however, Arizona State officials said they will comply with Judge Lockwood's ruling.



COEDUCATIONAL . . . recreational activities are an innovation at ASU this year. Co-chairmen for the events are Donna Riggs, and Jere Clark, here admiring a trophy that will go to some lucky champions later this semester. Watch for more information in the State Press.

University Farm Shifts Six Miles Away, Tempe Realtor Plans More Lucrative Crop

The ASU farm is feeling Tempe's growing pains.

This summer the farm, on South Mill Avenue, began moving six miles farther away from the campus. The new 320-acre farm has a one mile frontage on

the west side of Price Road, between Warner and Elliot Roads in the Kyrene district, southeast of Tempe. The farm is one-half mile wide.

Already at the new location are acreages in alfalfa and cotton, which will be used for crop production studies this year. The old crop production area on Mill Avenue is still in cotton but by the end of this school year a Tempe real estate developer plans to be growing a crop of houses on it, according to Dr. Dan Robinson, head of ASU's Agriculture division.

The swine and dairy enterprises, now located on a forty-acre site on the west side of Mill Avenue, are next on the moving schedule. At present Dr. Grant Moody, associate professor of Animal Husbandry, and others in the Dairy Husbandry department are making plans for the new dairy center.

Last move will be the beef, poultry and sheep operations and the farm shop now on a forty-acre location across Mill from the dairy and swine areas. Plans call for completion of the exodus before the fall semester of 1961.

Student Pay Raise Hoped By President

ASASU President Tom Hulen is expected to set three goals for ASU student government when he makes his "State of the University" speech to the Student Senate Sept. 30.

They are: a minimum wage rate for student employes, contracts for student activities, and a separate budget for the senate.

Student employes should receive at least \$1 per hour, according to Hulen. He says that while many students employed by the university may already receive this rate (most are paid 75 cents an hour) he feels it should be established as a minimum for all student workers.

The president also plans to discuss establishment of a separate budget for the senate. Hulen added, however, that even more important may be increasing student interest in student government.

Late Registration Closing Date Set

Late registration for prospective ASU students will end at 4 p.m. Monday. Night students will register during the regular daytime office hours.

A fee of \$91 will be charged of students registering for more than six semester hours. Fees amounting to \$7.50 per semester hour will be charged for anything less than six hours.

Drama Department Plans Tryouts Starting Monday

Try-outs for fall semester plays, open to all ASU students, will be held in Payne Auditorium Monday, Tuesday, and Wednesday, 3 p.m. to 5 p.m. and 7 p.m. to 9:30 p.m. each day.

The first play, "The Playboy of the Western World," scheduled to run Nov. 3, 4, 5, 6, and 7, is a combination of comedy and the poetic lilt of Irish speech written by John Millington Synge. Dr. James Yeater, professor of Drama and Speech, will direct.

Henrik Ibsen's "Little Eyolf," the second production, is a powerful study of freedom and responsibility. Mr. Frank Byers, professor of Drama and director of the Drama Workshop, will direct the play which will be presented as a Concert Reading Nov. 17, 18, 19, and 20. "The Truth About Blayds," by A. A. Milne, is the last of this semester's productions and will be presented Dec. 8, 9, 10,

Bureau Premiers TV Show

The first TV program to originate from the ASU campus premiers Monday, Sept. 21 with an elementary engineering problem analysis telecourse.

Dr. George Beakley, ASU professor of engineering, will conduct the course Monday through Friday from 1 to 1:30 p.m. over KPHO-TV, channel 5.

Sheldon P. Siegel, ASU production manager, said the course is offered at a time, immediately following the lunch hour, when industrial employees can view the program. The course will enable high school students to determine if they have the desire or aptitude for an engineering career.

ASU undergraduates may take the two-credit course as part of a regular curriculum and high school graduates who have completed high school algebra and trigonometry may register for the class through the University's extension division.

ASU students enrolled for seven hours or more have no additional fee. Extension students will be charged \$20 which covers all costs except texts.

All students desiring college credit must attend five on-campus meetings for examinations on Oct. 12, Nov 9, Dec. 14, Jan. 11 and Jan. 18.

Bob Ellis is new Radio-TV Bureau production manager.

Students Report Money Gone

Irish Hall head resident Dave Fonner reported to Campus Police that \$168 was stolen from residents of Irish Hall "A" Sept. 8. The money was taken from their wallets while they were sleeping.

Three other ASU students were robbed of \$310 while sleeping in a fraternity house on E. 7th Street the same night.

Gayle Shuman, director of campus security, suggests students with large sums of money hide their money while sleeping, if they are unable to lock their doors.

Vocal, Organ Recitals Set For AS Music Workshop

A workshop, featuring new music for school orchestra directors, school and church choir directors, and church organists, is scheduled tomorrow at ASU.

The workshop, presented by the Music department in cooperation with Keynote Music Service, Los Angeles, is open to the public.

The choral music session, under the direction of David B. Scoular, professor of Music and ASU Choral Union director, will be in MU ballroom. Members of ASU choral organizations will perform. From 9 a. m. to noon, the workshop will be devoted to music for school groups and from 1:15 to 3 p. m., to music for church choirs.

The organ session, directed by Mrs. Nadine Dresskell, associate professor of Music, will be in Arts Building 131, from 9 a. m. to noon. New organ music, suitable for Catholic and Protestant church services, will be performed by Mrs. Dresskell and advanced organ students.

Orchestra sessions, scheduled from 9 a. m. to noon, and 1:15 to 3 p. m., will be in the Engineering Center 118.

Performing will be a professional orchestra whose services have been made possible through the Music Performance Trust Fund of the Phoenix Musicians' Local 586. Junior and senior high school full orchestra music will be heard during the morning session and string orchestra music in the afternoon.



RAISING DUST . . . but smoothing out campus parking lots and roads, this machine is one of several seen on campus.

Van Ness Lot Under Repair

The off-campus student parking lot east of the swimming pool on Van Ness will be closed until Thursday, according to Gayle Shuman, director of campus security.

During that period the lot will be black-topped. When open, it will hold about 200 cars, says Mr. Shuman.

Another off-campus student lot at Van Ness and Eighth Street provides 150 parking spaces, he adds. Availing 150 more off-campus student parking spaces is the lot on the south side of Apache Boulevard, according to Mr. Shuman.

Pleading for patience, he explains that construction workers' strikes during the summer prevented earlier completion of parking lot work. "We've increased convenient off-campus student parking by 500 spaces," Mr. Shuman said.

Place To Go For Brands You Know

FOR WOMEN

- ★ Lady Manhattan
- ★ Jantzen
- ★ Pendleton
- ★ Ship 'N Shore
- ★ Weldon P. J.'s
- ★ Rolf's Leather
- ★ Broderick Gym Wear

FOR MEN

- ★ Pendleton
- ★ Haggard
- ★ Jockey
- ★ Hickok
- ★ Levis
- ★ Jantzen
- ★ Freeman Shoes
- ★ Allen "A" Louart's
- ★ Wembley Ties
- ★ Rolf's Leathers
- ★ Weldon P. J.'s
- ★ Wilson Sporting Goods
- ★ First Nighter Formal Wear



Joe Selleh

Varsity Shop

7th & Mill Ph. WO 7-4163

ARIZONA'S FINEST RECORD SELECTION

Come In And See For YOURSELF

We Can Please the Jazz Collector and the Classical Connoisseur

RCA VICTOR

presents

New "Glenn Miller"

Never Before Released

Stephen Foster Song Book
Robert Shaw Chorale

The Ames Brothers

Hummm'n Strum Along—Chet Atkins

- Barber of Seville ● Marriage of Figaro
 - Force of Destiny ● Rubenstein Story
- All Complete—

COLUMBIA

The Best In Jazz

- ★ Errol Garner
- ★ Miles Davis
- ★ Dave Brubeck
- ★ Jay & Kai
- ★ Gerry Mulligan
- ★ Max Roach
- ★ Lionel Hampton
- ★ Louis Armstrong
- ★ Chet Baker
- ★ Count Basie
- ★ Duke Ellington
- ★ Hi-Lo's
- ★ Billy Holiday
- ★ Mahalia Jackson

- YOU NAME IT . . .
- WE HAVE IT . . .
- SWEET TO DIXIE

CAPITOL

Pops - - - Classics - - - Jazz

- Shearing & Peggy Lee . . . "Beauty & The Beat"
 - Sinatra . . . "No One Cares"
 - King Cole . . . "Everytime I Feel the Spirit"
 - Tennessee Ernie . . . "Gather Round"
 - Les Baxter . . . "Wild Guitars"
 - Stan Freberg . . . "With The Original Cast"
 - Wesley Edwards . . . "Island Paradise"
- Hawaii, the 50th State

LARGE SELECTION OF STEROPHONIC RECORDS

HILL'S RECORDS

Tempe Center

Phone WO 7-5243

Liberal Religious Students' Group To Hear Dr. Harry Wood Speak

The newly formed Liberal Religious Students group will hear Dr. Harry Wood, chairman of the Art department, speak on "Religion: Fossil, Fantasy, or Fact?" Sunday at 7 p.m. in MU 218 A.

This is the first meeting of the 10 charter members of the liberal group, according to Ed Bostrom, senior history major, chairman of the club.

"It's a unique organization

at ASU," says Bostrom. "We deal with religious, political, and social issues from a liberal point of view."

Although the group is Unitarian Church-sponsored, "it is open to anyone, Bostrom adds. "We'd like to have members from all kinds of backgrounds."

Regular meetings are scheduled throughout the year.

Traffic signs are signs of life.

Vincent Price To Appear In ASU Series, Present "Three American Voices" Sept. 30

Actor Vincent Price will open the 1959-60 concert and lecture series at Arizona State University with a one-man dramatic presentation Sept. 30, in Memorial Union.

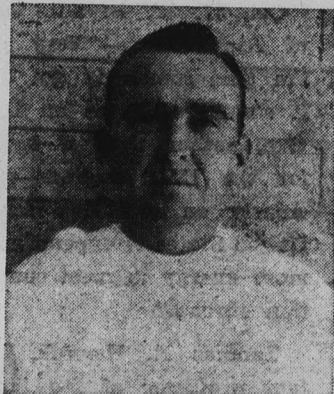
Price, who has appeared in motion pictures, on the stage, and in television, is also known as a critic, connoisseur, and collector of fine art.

He will draw from the works of poet Walt Whitman, painter James A. McNeill Whistler, and playwright Tennessee Williams in his presentation, "Three American Voices."

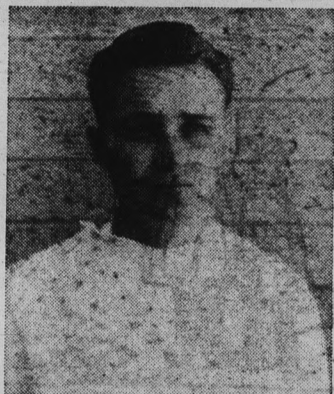
The Agrupacion Coral de Pamplona, known as the Pamplona Choir from Spain, will appear Oct. 22. Two years ago, the 16-voice choir made its de-

but in New York's Town Hall and toured Canada.

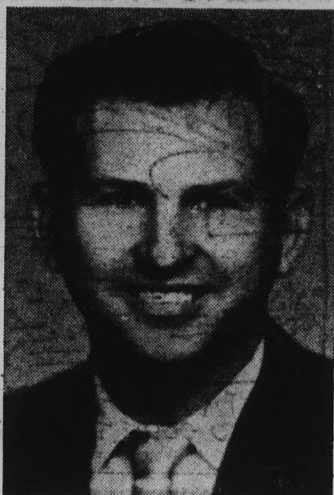
Nov. 11, "Break the News Panel" will feature news correspondents, who interview a national or international figure and invite questions from the audience. Senator A. S. (Mike) Monroney (D. Okla.) will be interviewed by Ken Crawford, Newsweek Magazine.



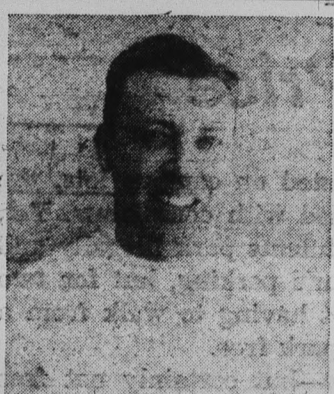
PAUL CARRIER
Chair No. 1



JIM CUMMINGS
Chair No. 4



RAY BOLES
Chair No. 5



LARRY LITTLE
Chair No. 2



CLOYCE CLARK
Chair No. 3

RAY'S ASU BARBER SHOP

The Largest, Most Modern Barber Shop In Tempe

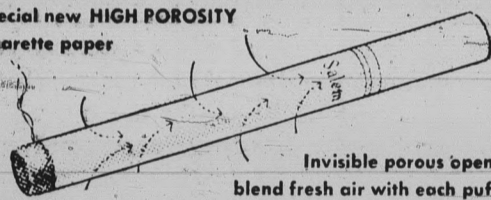
OPEN 9 A.M. - 6 P.M. Tuesday Thru Saturday

In The Tempe Center

Salem's new cigarette paper discovery "air-softens" every puff!



Special new HIGH POROSITY cigarette paper



Invisible porous openings blend fresh air with each puff for a softer, fresher, more flavorful smoke

Salem research creates a revolutionary new cigarette paper that breathes new refreshing softness and finer flavor into the smoke. Now, more than ever, there's Springtime freshness in every puff of a Salem. Smoke refreshed... smoke Salem.

Created by R. J. Reynolds Tobacco Company



• menthol fresh • rich tobacco taste • modern filter, too

NOW MORE THAN EVER

Salem refreshes your taste



EDITOR-IN-CHIEF PETEY OLMSTED
 MANAGING EDITORS GORDEN PETERSON and MIKE BARRETT
 SPORTS EDITOR BOB LAIRSON
 ORGANIZATIONS KATHY BURKE
 COPY EDITOR KAY KELM
 NEWS EDITORS JACK ONG and MIKE PEPLow



The STATE PRESS is distributed by Dave Pilcher Official campus newspaper of Arizona State University. Published each Wednesday and Friday throughout the school year, excepting holidays, and entered as second class matter in the Post Office at Tempe, Arizona, under the Acts of March 3, 1879, and August 24, 1912. Subscription price, \$3.00 per school year.
 Member: Arizona Newspapers Association, Associated Collegiate Press, and National Advertising Service, Inc.

EDITORIALLY SPEAKING —

High Price

Parking—\$3 per hour.

If a sign like that were posted on campus lots, the campus police would be flooded with complaints. Yet, every semester, hundreds of students park illegally and pay the price—not for an hour's parking, but for two or three minutes saved by not having to walk from a parking lot where they could park free.

Free to the student, that is—but certainly not free to the university. Every year, the university pays out thousands of dollars for parking lots. In a recent project, the white lines alone cost over \$500. With lines that expensive, the least we could do is to park between them!

But, nearly every month, students pay more than \$1,000 in fines for improper parking and other campus traffic violations. Pretty expensive for free parking, isn't it? ASU is the only university of its size in the nation to have free parking, according to Gayle Shuman, director of campus security.

At present, some 9,000 cars are registered at ASU. Mr. Shuman says campus lots, at any given time, could hold an additional 1,000 cars. Not everyone is here at the same time, so there should be enough space for everyone, if all park correctly. Yet, we continue to complain, park incorrectly, and pay \$1,000 per month for the privilege. Sure, completion of some of the lots was delayed by the recent construction strikes. But all those lots will be finished soon.

In the meantime, the short walk from a parking lot is good exercise, it saves \$3, and who knows, it may even help some of us to wake up before we get to class.

Welcome, Freshmen

Be you 18 or 78, if you had to wear a green beanie during freshman week, you are probably still a little confused about the location of campus buildings, rather shy about speaking up in classes and still scratching your head while thinking about the day when you registered.

But now your two first hectic weeks are over. Welcome to the fun, learning and life-time benefits of campus life.

Don't expect all these to be handed to you as easily as were your green beanies when you forked over 50 cents. The doors of opportunity are here. You have to open them — some with more effort than others. A university full of fellow students and professors are here to help you.

Welcome to four of the best years of your life.

ASU CALENDAR

- Saturday:**
 - All Day — Choral and Orchestra Workshop, MU Ballroom
 - 12-1:15 p.m. — New Music Reading Session Directors and Organists Luncheon, Faculty Dining Room
 - 8 p.m. — Football Game, (West Texas State), Sun Devil Stadium
 - 10 p.m. — After Game Dance, MU Ballroom
- Sunday:**
 - 3-5 p.m. — College of Education Tea, MU upper lounge
- Tuesday:**
 - 7-9:30 p.m. — East Hall Exchange with North and South Halls, Clancy's
 - 7:30-9 p.m. — NEA Meeting, MU 218
 - 8:15 p.m. — Symphony Brass Quartet Concert, MU Ballroom
- Wednesday:**
 - 9-10:30 a.m. — Student Faculty Coffee Hour, Faculty Dining Room
 - 8-10 p.m. — Psi Chi Lecture (open to public), MU upper lounge
- Thursday:**
 - 7 p.m. — Gammage-Pleiades Reception, West Hall
 - 3-5 p.m. — Kappa Delta Pi Honor Tea, MU upper lounge
- Friday:**
 - 7:30 p.m. — Dance at Clancy's

LITTLE MAN ON CAMPUS



"WELL, I'M GLAD TO SEE THEY'VE FINALLY DONE SOMETHING TO SOLVE THE STUDENT PARKING PROBLEM."

EDITOR'S Scratch pad

By PETEY OLMSTED

Dusty clouds billowing from the machines of progress are a familiar experience for returning ASU students.

So are seemingly invisible parking places, whimsical pedestrians testing motorists' nerves and brakes, the teeming Devil's Den and V. I., and, almost obscured in the melee, classes.

Shortly, most of the dust raised by road and parking lot construction will clear, hopes Gayle Shuman, director of campus security. So does everyone else.

But then, parking around here has been a problem ever since the State Press's first edition endeared itself to students, faculty, and administration.

The campus security department would probably give its eye-teeth for the little wooden hitching posts of the "olden days." Nowadays, it costs thousands of dollars to clear space for even 100 cars.

Things are being improved as rapidly as time and money permit, Mr. Shuman assures us. So eat a hearty breakfast, motorists, and rationalize yourself into enjoying a 10-minute walk from your car to class.

Newcomers on campus — freshmen and transfer students — probably notice the dust and little inconveniences more than those of us who've been here a while.

Soon, however, thoughts of all these intricacies and peculiarities of life at ASU new to freshmen will give way to pride in our ever-growing university.

With growing, of course, comes growing pains. And we feel 'em. That is, increased student enrollment means increased paper work and the like, which usually entails hiring more office help and using more space. So, the regis-

trar's operations now take up that part of the Business Administration Building formerly housing Dean Shofstall's and Dean Nichol's offices.

The deans' offices are now in the Memorial Union: Dean Nichol's staff in the mezzanine, Dean Shofstall's in the former State Press office (MU 212).

All of which means that when you get all-fired mad and want to storm to the State Press office, you'll find it in the MU basement now, MU-8.

Don't wait until you have a complaint to visit us. We welcome news tips, ideas, jokes, and even an occasional free cup of coffee.



By GORDON PETERSON

Last week, the Russians landed a rocket on the moon.

Both the moon and the Russians may seem far from the ASU campus, but the achievement has a definite significance for all of us. Some campus views were expressed by the following people.

Col. W. W. Bryant, USAF, of Air Science—"Very good! I'm glad somebody got there. It should serve as an incentive, rather than a setback, for the U.S. program—particularly an incentive for the United States to expend a little more energy to meet competition abroad."

Thomas R. Herrick, assistant professor of Political Science—"I don't think it is important at all. It was just a propaganda stunt, and should have no effect on our relations with the U.S.S.R."

Erwin Speakman, sophomore, Advertising major—"Very good. It should give our scientists an incentive, although I think we have the potential to duplicate the feat. It probably was basically a publicity stunt, timed to coincide with Khrushchev's arrival. We probably will do something similar when Eisenhower goes to Russia. Perhaps even more important, it helped Ike recognize the position Khrushchev has as leader of the second most powerful nation."

Mary Beth Sweeny, junior, Foods and Nutrition major—"It wasn't as spectacular as Sputnik, because people sort of expected it. Also, most people feel the U.S. is pretty close behind Russia in the space race."

Anne LaRocca, senior, Advertising major—"The Russians have turned a scientific advancement into an old-style press agents stunt. If more time and energy were spent on science instead of promotion, they might have made it farther than the moon by now."



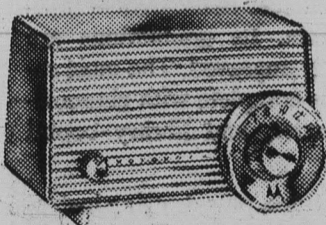
**MO-
TO-
RO-
LA**

**Biggest
Buys
in radio!**

**LOW
PRICES**



**MOTOROLA
RADIOS**



As Low As
\$16⁹⁵

Clock Radios
\$23⁹⁵ & Up

**HILL'S
RECORDS**
Tempe Center

Annex Locations Announced

Locations of 17 annexes were recently announced by Gayle Shuman, director of campus security.

Annex I is the old Payne Auditorium at Tenth Street School. Annex II is the educational annex south of Old Main. Annex III is north of the Campus Police office. Annex IV is on the corner of 10th Street and Forest Avenue. The Maintenance Office, behind East Hall, is Annex V; and the Campus Police office is housed in Annex VI. The old Dining

Hall is Annex VII. The Campus Cottage, north of the Home Economics Building, is Annex VIII. The Drew Apts, east of Campus Drugs, is annex IX and holds the offices of the Speech and Drama Department. Dr. Stahnke's former office south of the Old Science Building is Annex X. The Steel House, 904 Forest Ave. is Annex XI.

Annex XII is the Arts building of the Training School, east of the Shop Building. Annex XIII is Ramada Hall. Annex XIV is the first building north of the old West Stadium and is the band building. Annex XV, south of the Memorial Union, is now used by the American Men of Science.

Joyce House, 830 Forest Ave., is Annex XVI and now houses the school of Nursing. Risser House, 914 Forest Ave., is Annex XVII.

LIKE TO SING?

Men interested in singing with the ASU men's glee club are invited to contact Mr. Marion Smith, assistant professor of Voice, at extension 225.

Practice hours, with class credits available, are 3:30 to 4:30 p.m. Mondays and Wednesdays.

The group is not limited in number, though high and medium tenors and low basses are in demand, according to Mr. Smith. The glee club performs locally on television and at civic club events.

The State Press will have a classified ad section for readers' convenience. Rates are 50 cents for five lines, 10 cents for each additional line paid in advance. Contact Hal Hubele, ext. 473.



Gentlemen, we give you CONTEMPORARY CLASSICS. Newest look of leisure since white bucks! Traditional as the Dickens (*masterpieces*), modern as jazz. Matter of fact, the perfect combination of what's always been and what's bound to happen. A complete line of men's furnishings and leisurewear—all designed to give you the kind of individuality you want.

VAN HEUSEN "417" COLLECTION

Your Van Heusen Dealer In Tempe
Campus
men's shop
FOR MEN AND YOUNG MEN
603 Mill Avenue Phone WO 7-2690
OPEN THURSDAY NIGHT TILL 9 P.M.



FRESHMAN FUN... is part of ASU tradition. Here, freshmen get their first taste of college life, as they paint the "A" during freshman week.

Senate Leader Sets Plans For Year's Senate Slate

"Investigation and revision" are the words for the ASASU student senate this year, according to first vice president and speaker of the senate, Max Richards.

A new senate library has been set up which will contain all student government records and will be available to all students.

When asked about plans for legislation, Richards stated that the senate is "going to be active and alert." On the agenda are plans for investigation

of the new student seating in the stadium and revision of the publicity service.

The 1959-60 student senate will be striving for better communication with the student body.

The first senate meeting will be Sept. 30. plans are being made for Governor Fannin to attend.

Arts Building Underway

Construction will begin Monday on the new ASU Liberal Arts College building to be situated across from Matthews Library on Orange Ave., according to Gilbert L. Cady, Vice-President of Business Affairs.

Expected to be completed by 1960, the 4-story Liberal Arts Building will house the departments of political science, history, foreign languages, behavioral and social sciences, plus a psychology clinic on the top floor.

Gilbert and Dolan, Phoenix contractors, have approximated the cost of the 85,000 sq. ft. building at \$939,000. It is expected to hold a capacity of 1500 students.

'59 Sun Devil Football Game Seats Assigned

The seating arrangements for the 1959 football games in Sun Devil Stadium will reserve section "U" in the east stands for the card section, with additional student seating to the south, in sections "V" through "Z".

Faculty will be seated in the top half of section "T" in the east stands; the band and guests of the football players will be in the bottom half of the section. There also will be student seating near the band.

Reserve ticket holders will be placed in sections "S" through "N" of the east stands and in all sections of the west stands.

Students must have activity cards and athletic admission cards to be admitted to the stadium.

J.D.'s



**BARBER
SHOP**

★ 3 Barbers To Serve You ★

OPEN MONDAY THRU FRIDAY

8:00 a.m. Till 6:00 p.m.

816 College Avenue, Tempe

Organizations Page Policy Is Presented For Groups

By KATHY BURKE

Now that ASU activities are once again underway, the State Press welcomes news reports and notices of special events from campus organizations.

New policies will be in effect this semester, and the State Press staff will appreciate the cooperation of all organizations' publicity chairmen.

Announcement of a publicity workshop will be made in a few weeks, and all campus organizations should be represented by their publicity chairmen at this meeting.

Only future events or those of special interest will be printed in the Campus Currents, Chapel Corner and Greek columns. A calendar of events will appear weekly on the editorial page of the State Press for readers' convenience.

It shall be left to the discretion of the organizations editor to which articles will be newsworthy. The State Press organizations pages are not announcement sheets; nor are they to be used as a free advertising device for particular groups.

News releases intended for

Friday issues are to be put in the information sheet slot in the State Press office before noon Wednesday. Deadline for the Wednesday issue is Monday noon. Information sheets must be filled out completely, giving the name and phone number of the publicity chairman.

Any further questions that group publicity chairmen may have concerning releases will be answered at the ASU publicity workshop.

MU Hostesses Change Meeting

The Freshman Hostess Committee tea has been rescheduled for Monday, Sept. 28, in the MU upper lounge from 4 to 5 p.m.

Freshman girls may sign the hostess list at the MU information desk before tea time.

Heels and cottons are appropriate attire. Further information is posted at all freshman girls' dorms.

There is no limitation on membership.

CAMPUS LAUNDERETTE

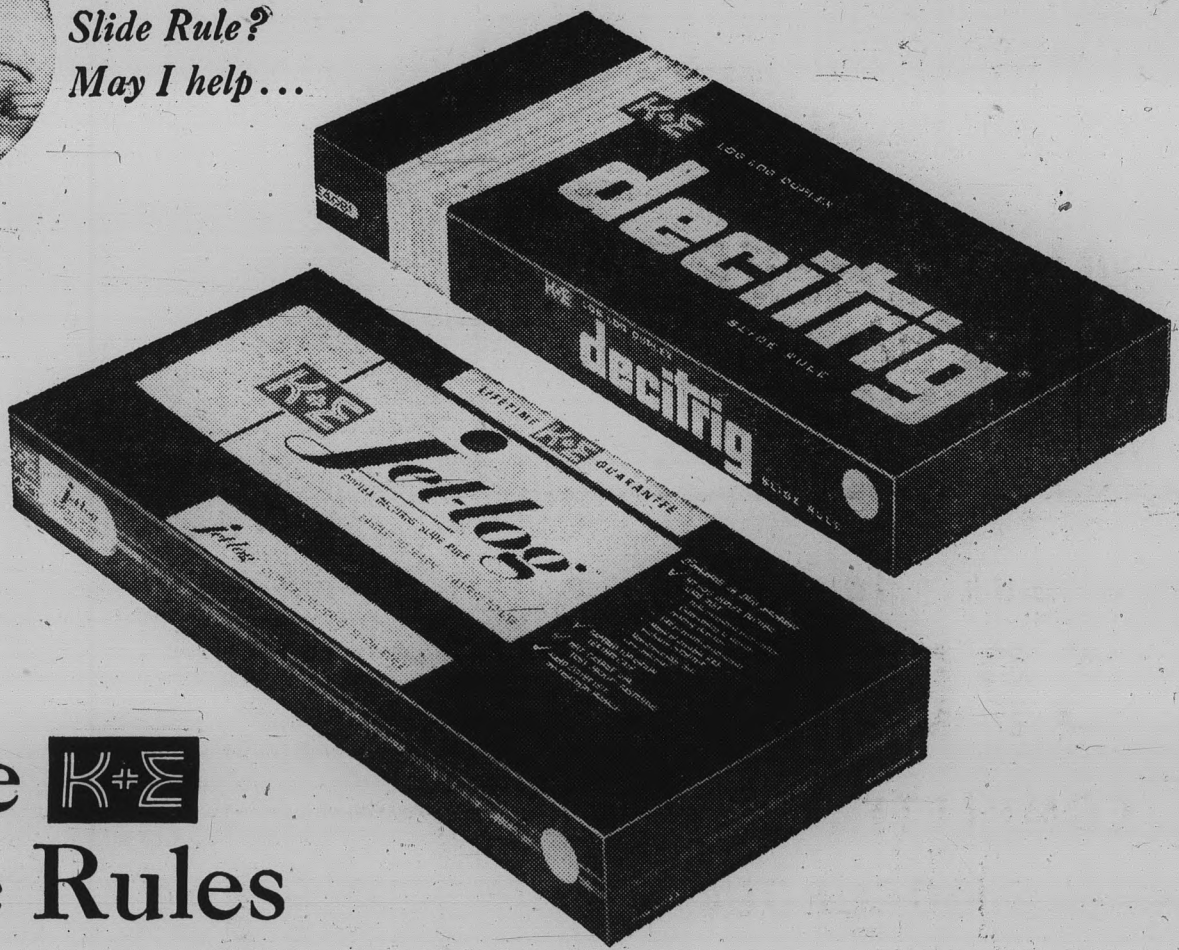
Fast, Efficient Laundry and Dry Cleaning Service

1 HOUR SERVICE ON FLUFF-DRY
24 HOUR SERVICE ON DRY CLEANING

818 College — Next Door to "V. I."
Save With Our Shamrock Stamps



Slide Rule?
May I help...



these **K+E**
Slide Rules
are your best buy

see them at your college store!

Fastest to Learn, Fastest to Use! That's the famous K&E Decitrig® scale system — preferred by engineers and featured by both these K&E Slide Rules. This system gives you all the scales you'll need . . . arranged without troublesome complications. It never contradicts itself . . . every scale relates — consistently — to the basic C and D scales. Numbers are color-coded for easy reading in both directions: black reads left to right, red reads right to left.

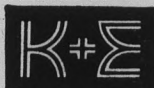
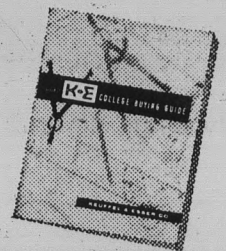
Efficient . . . Versatile — With the K&E Decitrig scale system you can find square-root values quickly, without stopping to reset. There's no confusion — direct functions always appear on like colors, co-functions on opposite colors. Get the benefits of these clear, simple, efficient scales on either of the two K&E Decitrig Slide Rules — the K&E Jet-Log™ Duplex Decitrig® or the K&E Log Log Duplex Decitrig®. Both come with a lifetime guarantee.

The Jet-Log is made of handsome, durable Ivorite®, and

comes complete with a smart top-grain cowhide case and a detachable belt-loop carrier. And you'll get a manual for easy self-instruction or between-classes reference . . . a handsome library-bound book you can keep for years.

The Log Log Duplex Decitrig . . . an instrument of unquestionable quality. It's made of choicest mahogany — ruthlessly selected, seasoned for years. Its graduations are engine-divided — deeply, accurately engraved. The most respected slide rule made, and yours complete with chamois-lined leather case, belt-loop carrier, and library-bound instruction manual.

Get the Facts — about K&E Slide Rules, plus drawing instruments and other supplies you'll need — in these two handy K&E booklets — "Slide Rule? May I help..." and the 1959-60 K&E College Buying Guide. Both are yours, free at your college store. Pick them up today!



KEUFFEL & ESSER CO.

NEW YORK • HOBOKEN, N. J. • DETROIT • CHICAGO • MILWAUKEE • ST. LOUIS • DALLAS • DENVER • SAN FRANCISCO • LOS ANGELES • SEATTLE • MONTREAL

KEUFFEL & ESSER Slide Rules

available at your

COLLEGE BOOKSTORE

"See K & E Equip. on Continental Classroom NBC-TV weekdays 6:00 to 7:00 a.m."

CAMPUS CURRENTS

Dr. Skinner Gives Talk

Psi Chi, ASU psychology honorary, will honor Dr. and Mrs. H. Clay Skinner, at a reception Wednesday at 8 p.m. in the upper lounge of the Memorial Union.

Dr. Skinner, professor of psychology at ASU, will discuss his recent trip to Europe. Dr. Hudson Jost, chairman of the department of Psychology and Philosophy, will comment on his plans for the psychology department.

Psi Chi members, faculty, psychology students and friends are invited.

An ASU De Molay Club is being organized, according to Mr. L. F. Riggins, assistant professor of Agricultural Mechanics.

The organization is open to De Molay members, Senior De Molays and members at large. Those wishing to register should contact Dave Knight at Sahara Hall, room A-330, or Mr. Riggins, WH 5-8710 or WO 7-5531.

First meeting is Sept. 28 at 7:30 p.m. in Memorial Union 218-A.


Temporary officers are: president, Ronnie Sheridan; vice president, Doug Whitneybell; chaplain, David Knight; scribe James (Bucky) Riggins.

Beta Phi Chapter of Kappa Delta Pi, national honor society in education, will give a tea for high school honor graduates entering the College of Education, Thursday from 3 to 5 p.m. in the upper lounge of the Memorial Union.

Members of Hillel, Jewish student group, will attend a barbecue dinner Sunday at 6 p.m. at the home of Ardella Fromchuck.

ASU students interested in joining Hillel also are invited.

New, Enlarged Patio To Serve ASU



8th Street & College Harold Barclay, Mgr.

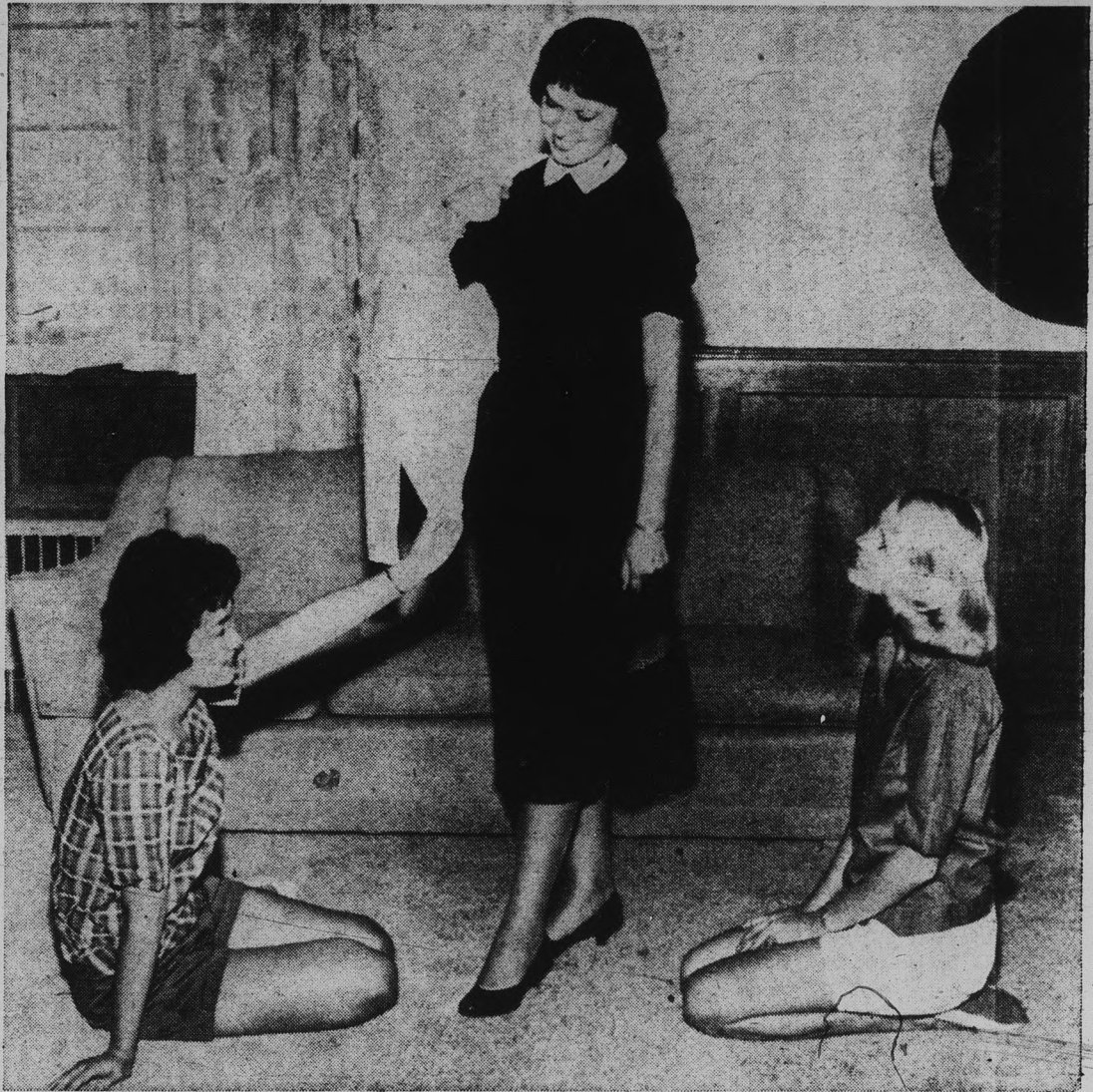
Get Acquainted OFFER

Lubrication \$1.00
With Oil Change

Free Pickup & Delivery
We Give Gold Bond Stamps

AL'S CHEVRON SERVICE

201 Mill Ave. — TEMPE — WO 7-9816



GAME ATTIRE . . . Suzanne Horne, (center) Gammage Hall sophomore proctor, shows two freshmen residents of the dorm manner of dress most popular with ASU coeds at football games. Freshmen are Mildred Akamatsu (left) and Pam Redburn.

Back - To - School!

SPECIAL!

COMPLETE MOTOROLA STEREO...



Only **79⁹⁵**

Limited Time Only

- Dual Sapphire Stylis
- Detachable Lid
- 15 Ft. Cord for Better Separation.

No matter what price you want to pay we have a Motorola STEREO to fit your needs.

COME IN AND SEE OUR COMPLETE LINE TODAY

HILL'S RECORDS

Ph. WO 7-5243 Tempe Center

Tryouts for Orchesis, modern dance honorary, are scheduled Tuesday, Thursday and Sept. 29 at 7 p.m. in the Moeur Activity Building.

The organization is limited to 40 members, but 10 alternates may be selected also. Both men and women may audition.

USED BOOKS

For Most Courses Still In Stock

VARSAITY BOOK EXCHANGE

Open 7 to 7 Daily

Next to Campus Drug WO 7-3253

AS Chapter Wins Honors

Several honors were won by the ASU chapter of Alpha Epsilon Pi, national social fraternity, at the organization's national convention this summer in Houston, Tex.

Dr. John Jacob Hausman, Phoenix optometrist, was named best AEPi alumni in the nation for his service to the ASU chapter.

Deanna LeBeau, the local chapter's 1959 fraternity sweetheart, placed second as national AEPi sweetheart. Deanna was an ASU freshman last year.

The chapter's publication, the Alpha Sig Monitor, also received second place awards in national competition.

Nick Einfeld, president of the ASU group, represented his chapter at the convention.

Naiads Invite New Members

Naiads, ASU girls' swimming club, will hold tryouts Tuesday, Thursday, and Friday 3:30-4:30 p.m. and Wednesday, 6:30-7:30 p.m. in the ASU swimming pool. Undergraduate women students interested in racing or synchronized swimming are invited.

Calhoun Cab Service

Why not take a Cab?
Call WO7-4674

24 Hours A Day

Weekend Dances Highlight Beginning Of AS Activities

Two free dances this weekend begin the year's social activities at ASU.

Tonight from 8 to 11, Bud Estes and his 5-piece orchestra will perform during an open house at Clancy's, in the MU basement.

Free refreshments and entertainment will be provided at the affair which will help to acquaint students with this new

service. Estes was formerly associated as arranger - saxophonist for such great band leaders as Charlie Barnett, Jimmy Dorsey and Benny Goodman. This dance is the first of the weekly dances to be sponsored by the Social Board.

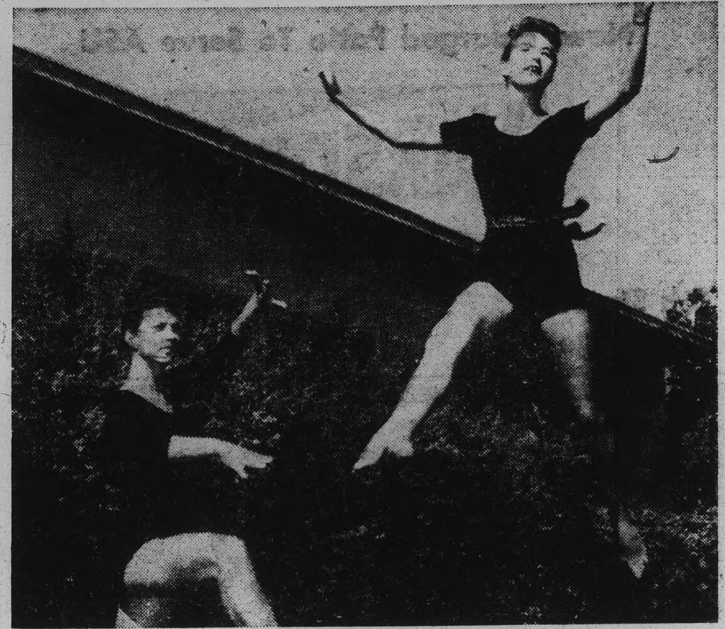
Tomorrow night's after-the-game dance in the MU ball-

room will have Carl Ritter's 21-piece band supplying the music from 10 p.m. to 12:30. The event is free to students and guests. The Corral will also be open.

Music for this occasion is provided by a grant from the Recording Industries Trust Fund obtained by the cooperation of Local 586 American Federation of Musicians' Union.



CLANCY'S CLEANERS . . . ASU social board members (l to r) Clark Barrett and Sue Nichols prepare Clancy's, in the MU basement, for tonight's opening dance of the 1959-60 school year. Waiting to place candles on the checkered-clothed table tops is Mrs. Ellen Bell, assistant director of the Memorial Union.



NANCY SUESS, left; Lorri Franco, practice for Orchestra See box, page 7

The Buffs...
Are Rough...
And Tough...

GO GET 'EM DEVILS!

Drop In For A Real Treat After The Game
We'll Be Open Till 1 A.M.

SOLANO'S
CAFE

Serving Delicious Mexican Food
— Food To Take Out —

Closed Mondays

Corner 4th & Mill

TEMPE

MU Concert Is Tuesday

A free concert will be presented by the Phoenix Symphony Brass Quartet Tuesday evening in the Memorial Union ballroom.

Sponsored by Kappa Kappa Psi, honorary band fraternity, the program will feature the following selections. Sharagan and Fugue, by Alan Hovhaness, Canzona per sonore 1 and 2, by Giovanni Gabrieli; and Farewell to the Forest, by J. S. Bach.

The newly-formed quartet, which gave a summer performance at the Phoenix Public Library, is composed of Carl Radusch, bass trombone; Harold Strand, tuba, Les Felten, Jr., trumpet; and Charles Plowman, trumpet.

The program begins at 8:15 p.m. and is open to the public, according to Carl Radusch, Kappa Kappa Psi president.

Pom Pon Girls To Be Chosen

Pom Pon tryouts for '59-'60 will be held Monday in Moer Activity Building at 3:30 p.m.

Five places are open, according to Diane Rose, head pom pon girl. Girls will be taught routines Monday and cuts will be Tuesday and Wednesday with the final selection being made Wednesday.

Judges include five faculty members, Margie Law, pom pon sponsor, and Miss Rose.

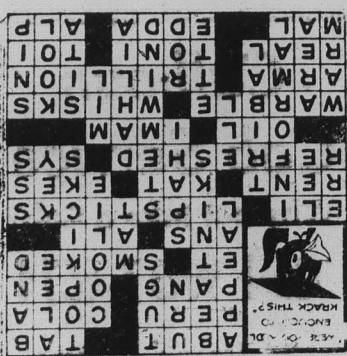
Any ASU coed having some dancing ability may participate in the try-outs.

a Swingline Stapler no bigger than a pack of gum!



SWINGLINE "TOT" Millions now in use. Unconditionally guaranteed. Makes book covers, fastens papers, arts and crafts, mends, tacks, etc. Available at your college bookstore.

SWINGLINE "Cub" Stapler \$1.29
Swingline INC
LONG ISLAND CITY, NEW YORK, N. Y.



KOOL KROSSWORD

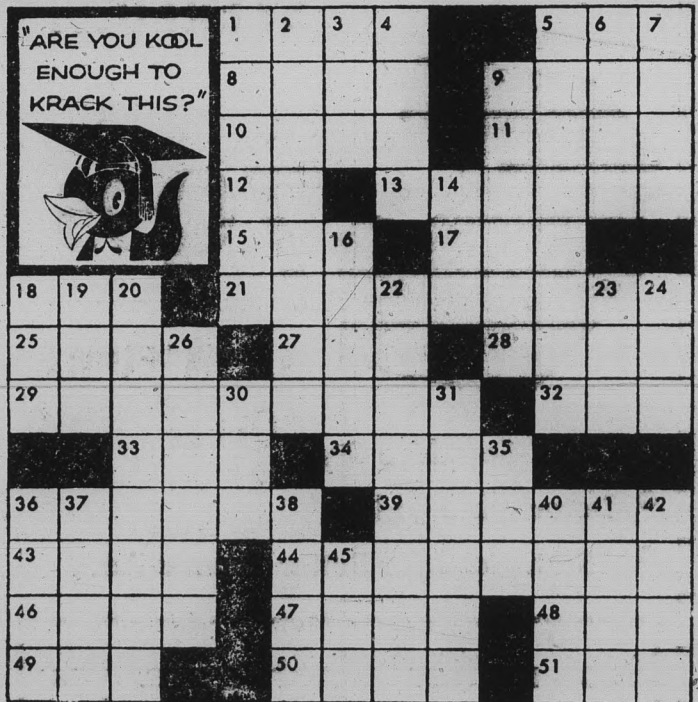
No. 1

ACROSS

1. To touch on
5. Hunter of note
8. Olmedo's home court
9. Drink with many first names
10. Piercing pain
11. Bet first
12. And (Latin)
13. It's time you — Kools
15. Short answer
17. Yessir, that's my baba
18. Yale man
21. Tasty parts of kisses
25. Torn
27. Crazy
28. Supplements
29. What the Menthol Magic of Kools makes you feel
32. Abbreviated system
33. Texas gold
34. Moslem priest found in Miami
36. Sing
39. Gives the brush-off
43. Latin-class weapons
44. Future U.S. budget figure
46. You need a change: Kools!
47. Is she a Wave?
48. You (French)
49. De mer or de tete
50. Kin of a saga
51. High point of European trip

DOWN

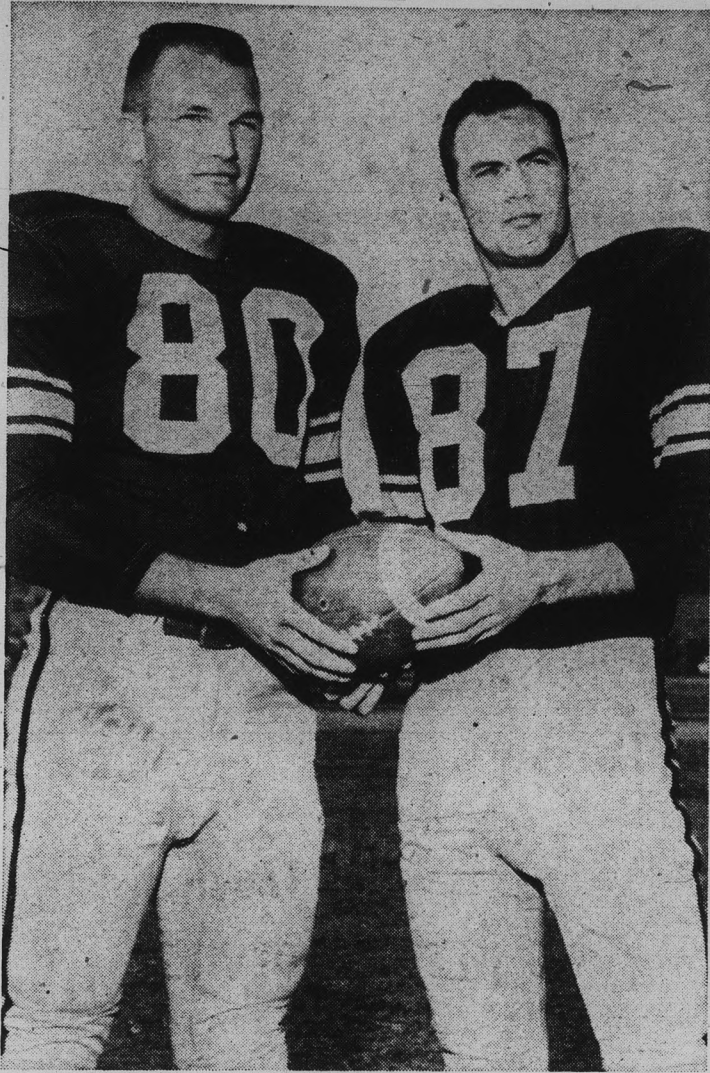
1. Frequent fellower of sex
2. The bearded gentry
3. Ode item
4. They've got pull
5. Sergeants or can-can girls
6. On the sheltered side
7. Playboys
9. Oriental hep-cat
14. Place for male clinches
16. Algerian soldier
18. Goof
19. Sheltered general
20. Not dressy, but not undressy
22. What nervous Manhattan drinkers do?
23. Part of the chain gang
24. Silience
26. Of the clan
30. Cockney hell
31. Flower named for actress
35. 3/4 of a mile
36. What Kools aren't
37. Space, 2-dimensionally
38. End of a cigarette
40. Heroine of Ramayana
41. The cigarette with Menthol Magic
42. Short cut
45. Hot type



When your throat tells you it's time for a change, you need a real change...

YOU NEED THE
Menthol Magic
OF KOOL





SENIOR WINGMAN . . . Sun Devil Co-Captains Karl Kiefer and Bill Spanko pose together before settling down to the serious business of winning the West Texas game. The two captains will be the mainstay of the young forward wall this season.

LONE SENIORS LEAD DEMONS

Senior co-captains Bill Spanko and Karl Kiefer have much in common in their ability to play football. Spanko works from the left end and Kiefer from the right, but both work together to lead the team.

Spanko won his third varsity letter last year. The glue-fingered receiver grabbed twenty-one aeriels for 463 yards and four touchdowns last fall.

On defense, the 6-foot, 185 pounder put his size and weight to good use. He ranked second best defensive lineman by rolling up 88 points on 17 tackles, 19 assists, three opponent fumble recoveries and one pass deflection.

As a result of his spectacular catches and rugged defensive play, Spanko was the only unanimous first team All-Border Conference selection in 1958.

A graduate of Johnstown Senior High in 1956, he came to ASU and was the only freshman to receive a varsity letter.

Karl Kiefer, the other half of this outstanding duo, has an equally impressive record. He earned his second varsity letter in 1958 as starting right end, and led all other Sun Devil receivers last season.

Working from his side of the line, Kiefer snared 22 passes for 324 yards and three touchdowns. He took fourth among linemen defensively with 69 points on 19 tackles and 12 assists.

Kiefer graduate from Tempe Union High School in 1956. In those days he was coached by Johnny Zucco, former ASU guard. Kiefer stands 6-1 and weighs 188 pounds.

Of the four seniors on the team, Spanko and Kiefer are the only starters. They are alike in many ways from brawn to ability, and are in perfect agreement in their desire to lead the team to a successful season.

CASA LOMA COFFEE SHOP
398 Mill Ave. — Tempe
featuring
Small Steaks — \$1.00
Now Open 6 am to 11 pm
Monday thru Saturday

The Demon's Lair

By BOB LAIRSON

Time to wipe the dust from the typewriter keys and welcome all sports enthusiasts back to campus. With everyone happy to see the end of summer toils, and plod back to the cold hard surfaces of classroom seats, we momentarily forget that the Sun Devil football team has been working out diligently in the hot sun for the past two weeks.

The Lair takes this opportunity to welcome newcomers to the pages of the State Press and also to renew acquaintances with old friends. As always, criticism of these pages is welcomed, and any reader who feels the need of improvement and can offer suggestions may come to the State Press office in the Memorial Union basement and direct frustrations, suggestions, etc., to the editor in the front desk (me).

Enough digressions for this issue, football is here and football is our first love, so here we go! Aside from the ASU-West Texas fray tomorrow, the big question mark is the New Mexico State-University of New Mexico contest which looms as a Border Conference eye catcher this week. The Aggies from Las Cruces have grown tired of being the dormat of the conference and are flexing newly-found football muscles. The University of New Mexico is a power in the Skyline Conference and is depending on all-conference halfback Don Perkins to confuse opponent defenses this year. There's high competition between the two schools, and this year the Aggies may taste revenge for past years' humiliation.

Continuing the tradition of my predecessors on the sports pages, I will stick my neck out, ramble through the football schedule for this weekend, and flip coins to decide losers and winners.

Let's begin by picking Arizona State University over West Texas State College by two touchdowns. The big buffalo linemen will have their hands full with the smaller but tougher Demon gridmen, and the Buffaloes have no passing attack to off-balance ASU defenses.

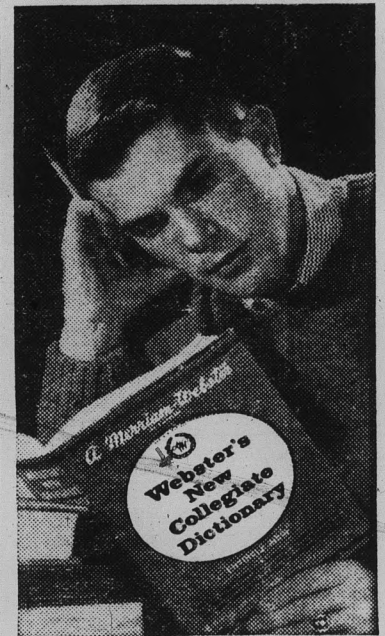
In other games in the Border Conference and around the nation, we have flipped the coin 17 times and here are the 17 winners we hope; Navy over Boston College, Missouri over Penn State, Pittsburgh over Marquette, Iowa State over Drake, Oklahoma over Cincinnati, Texas over Nebraska, UCLA over Purdue, Kansas State over Wichita, Tulsa over Arkansas, Clemson over No. Carolina, LSU over Rice, Texas A&M over Texas Tech, Brigham Young over Arizona, Colorado over Washington, San Jose State over Denver, New Mexico over New Mexico State, and Idaho over Utah State.

Girls' Volleyball Set For Monday

Volleyball intramurals, sponsored by the Women's Athletic Association, for undergraduate women students, will be 4:30 p.m. Monday through Oct. 1 at the women's athletic field.

Halls, sororities and organizations will compete in two leagues, with a playoff between the winners in each league.

A WAA newsletter, distributed to halls, sororities and organizations, contains a schedule for participants.



Now that you're on your own...

You'll need a complete and authoritative dictionary to help you in your college work. There are 10 reasons for insisting on Webster's New Collegiate Dictionary, the Merriam-Webster.

1. Only Merriam-Webster is based on the unabridged Webster's New International Dictionary, Second Edition.
2. Only Merriam-Webster meets the detailed requirements of college students.
3. Only Merriam-Webster gives the technical Latin names for plants, animals.
4. Only Merriam-Webster is based on complete records of the way English is spoken and written.
5. Only Merriam-Webster is kept up to date by a large staff of specialists.
6. Only Merriam-Webster presents definitions in the historical order, essential to understanding complete meaning.
7. Only Merriam-Webster gives you extensive cross-referencing.
8. Only Merriam-Webster, with separate biographical and geographical sections, keeps entries as accurate and complete as they should be.
9. Only Merriam-Webster meets the one-hand test; easy to use and carry.
10. Only Merriam-Webster is based on continuing word research.

Get Webster's New Collegiate Dictionary — the Merriam-Webster — today! \$5 plain, \$6 indexed. Adv. copyright by G. & C. Merriam Co., Springfield 2, Massachusetts.

INSIST ON
MERRIAM-WEBSTER
AND DISCOVER THE DIFFERENCE

In Stock at the
VARSITY BOOK EXCHANGE
Next Door to Campus Drug

WELCOME TO ASU
Selleh's Cleaning Co.
Phone WO 7-2422
12 W. 7th Street Tempe

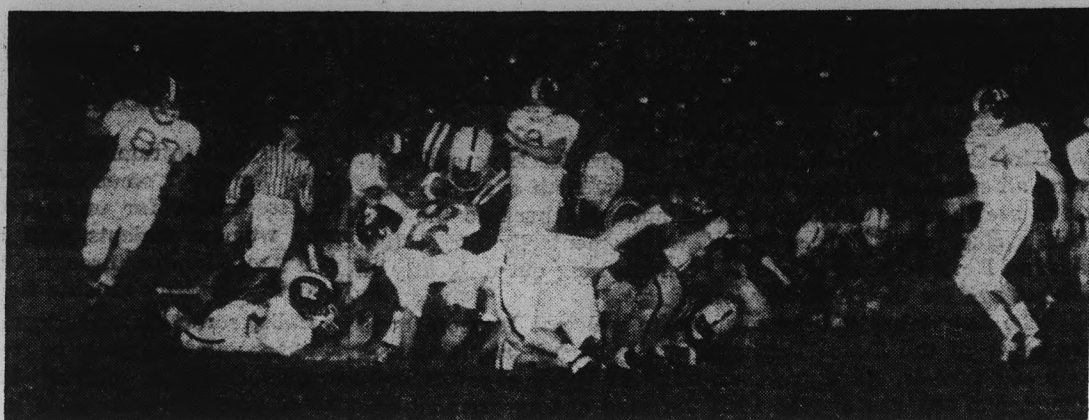
SAVE YOURSELF MONEY! ORDER YOUR MAGAZINES AT THE LOW STUDENT RATES!

PLAYBOY (Nov.-June) 43c a copy	\$3.50
PLAYBOY (1 yr.) 40c a copy	5.00
PLAYBOY (2 yr.) 36c a copy	9.00
TIME (27 wks.) 7½c a copy	1.97
TIME (1 yr.) 7c a copy	3.87
TIME (2 yr.) 7c a copy	7.00
NEWSWEEK (34 wks.) 7c a copy	2.50
NEWSWEEK (1 yr.) 6c a copy	3.50
US NEWS & WORLD REPORT (39 wks.) 9c a copy	3.67
FORTUNE (1 yr.) 62c a copy	7.50
LIFE (21 wks.) 9c a copy	1.91
LIFE (8 mos.) 9c a copy	3.00
LIFE (1 yr.) 7½c a copy	4.00
LIFE (2 yr.) 7c a copy	7.00
LOOK (1 yr.) 13c a copy	3.50
SATURDAY EVE POST (39 wks.) 10c a copy	3.90
READER'S DIGEST (1 yr.) 25c a copy	3.00
SPORTS ILLUSTRATED (17 wks.) 9c a copy	1.50
SPORTS ILLUSTRATED (6 mos.) 10c a copy	2.50
SPORTS ILLUSTRATED (1 yr.) 7c a copy	4.00
ESQUIRE (8 mos.) 37c a copy	3.00
ATLANTIC MONTHLY (8 mos.) 37c a copy	3.00
THE NEW YORKER (8 mos.) 9c a copy	3.00
HARPER'S (1 yr.) 37c a copy	4.50
SATURDAY REVIEW (1 yr.) 7c a copy	3.88
THE REPORTER (10 mos.) 33c a copy	3.27
HOLIDAY (9 mos.) 39c a copy	3.50
AMERICAN HOME (9 mos.) 25c a copy	2.25
LADIES' HOME JOURNAL (9 mos.) 28c a copy	2.50
VOGUE (1 yr.) 25c a copy	5.00
HOUSE & GARDEN (1 yr.) 29c a copy	3.50
GLAMOUR (1 yr.) 21c a copy	2.50
HARPER'S BAZAAR (1 yr.) 25c a copy	3.00
GOOD HOUSEKEEPING (2 yr.) 17c a copy	3.98
HOUSE BEAUTIFUL (2 yr.) 25c a copy	6.00
TV GUIDE (66 wks.) 9c a copy	5.85
GOLF DIGEST (5 mos.) 20c a copy	1.00
EBONY (1 yr.) 16c a copy	2.00
POPULAR MECHANICS (20 mos.) 15c a copy	2.98
SPORTS AFIELD (20 mos.) 15c a copy	2.98
SCIENCE DIGEST (20 mos.) 15c a copy	2.98

STUDENTS' SUBSCRIPTION SERVICE
2133 Norwood Street Los Angeles 7, California
Please Send the Above Underlined Magazines To:

NAME _____
ADDRESS _____
CITY _____ ZONE _____ STATE _____
UNIVERSITY OR COLLEGE _____ CLASS OF _____
 Payment enclosed, send me FREE pen Bill me Renewal

BOOKS
Offbeat Titles
NEW and USED
Big Discounts On All Issues
5012 East Van Buren
Phone BR 5-9833



LAST YEAR'S ACTION . . . ASU football fans will again witness this type of rugged gridiron play tomorrow night in Sun Devil Stadium. Here West Texas Buffaloes smother a Sun Devil ball carrier after a gain of a few yards. The Texans relinquished a 16-13 score after battling ASU through four hectic quarters in 1958 contest.

Interior Line Buff Asset

By BOB LAIRSON

West Texas State College will invade Sun Devil Stadium tomorrow night with hope-filled dreams of improving last year's 1-9 record. The Buffaloes gave opponents a fair share of bumps and bruises but found themselves on the short end of many close contests last year.

The prime concern of Frank Kush and company will be the West Texas interior line, led by tackle Eddie Meyer, an all-Border Conference choice last year in spite of the unimpressive record compiled by his team. He will be aided in blocking and tackling by guards Leon Manley and Carroll Stafford.

Coach Clark Jarnigan has switched his offense from the

split-T to the wing-T in hopes of utilizing the backfield speed of his pint-sized sophomores Jim Janes, Jerry Williams, and Ned Jolly. The three will control most of the halfback action this season, and weigh an average of 160 pounds, about 20 pounds shy of the college average for this position.

The Arizona State attack has been altered also, and the major changes are closely-guarded secrets. The Demon multiple-offense has been the headache of Border Conference opponents for the past four seasons, and as long as Coach Frank Kush can find the men to make the offense operate, opponents are slated for more of the same bitter medicine.

Coach Kush reports that lack

of experience will be the Sun Devils' big problem for the first two or three games, and this doesn't sound like the time honored coaches' tears after looking at the Demon starting lineup.

Three sophomores and one junior make up the starting backfield, and co-captains Bill Spanko and Karl Kiefer are the only seniors on the starting line. Juniors Mike Bartholomew, John Vucichevich, Fred Rhoades, George Flint, and Jim Lambeth will either start the game in first-string positions or obtain adequate reserve action tomorrow. Jess Bradford and Larry Reaves are the two sophomore linemen who appear certain of starting berths tomorrow.



Intramurals managers will meet Monday at 3 p.m. in MU 209. Purpose of the meeting is to discuss the year's intramural program.

Student Intramurals Director Jere Clark announced that competition will begin with tennis, singles and doubles, Wednesday. Tennis singles entries must be in the Intramurals office by 5 p.m. Tuesday. This will enable new pledges to participate. The Intramurals office is located in the Memorial Union and can be reached by phone at Ext. 253 and WO 7-

1411. Last year's winners were: Delta Sigs, first; Phi Sigs, second; ATOs, third; and Sigma Chi Sigmas, fourth. New competitors this years are Phi Alphas, who were not on campus until second semester last year.

INTRAMURALS CALENDAR

Sport	Entry Deadline	Competition Starts
Volleyball	Oct. 7	Oct. 13
Table Tennis	Nov. 4	Nov. 10
Cross Country	Nov. 18	Nov. 24
Football	Nov. 22	Dec. 1
Horseshoes	Jan. 6	Jan. 7

Instant Car Service Tempe Center

ZZZONA
LAUNDRY & CLEANERS
FIRST in Laundry and Cleaning - LAST in the Phone Book

Tempe Center WO 7-5773

Smiley-Berge
TEMPE
Your Nearest Auto Dealer

COMPLETE SERVICE FACILITIES
All Makes - All Models

50 Now in Stock **50**
FINE CARS TO CHOOSE FROM
Smiley-Berge Motors

Where Low Overhead Saves You Money

JUST 2 BLOCKS FROM CAMPUS
16 East 8th Street - TEMPE - Phone WO 7-2064

MERCURY RECORDS

The Finest In
STEREOPHONIC Sound

- ★ BUDDY MORROW
- ★ DAVID CARROLL
- ★ RICHARD HAYMAN
- ★ HERMAN CLEBANOFF
- ★ JAN AUGUST
- ★ PETE RUGOLO
- ★ TERRY GIBBS
- ★ DICK CONTINO
- ★ PATTI PAGE
- ★ SARAH VAUGHN
- ★ ANATOLE DORATI
- ★ DETROIT SYMPHONY

HILL'S RECORDS

Also Available in Hi-Fi
Ph. WO 7-5243 Tempe Center

FROSH FOOTBALLERS HELP VARSITY

By RON CONTRERAS

The potential power of the 1959 freshman football team will remain a mystery until Oct. 10, when ASU's Sun Imps meet the UofA Wildkittens in the first of a three-game schedule.

Thirty freshmen who turned out for the coming season will see action against New Mexico Western Oct. 17 and Eastern Arizona Junior College Nov. 14. All three games will be played on the opponents' fields.

Freshman coach Gene Felker says the freshmen will concentrate on helping the varsity by running the offensive and defensive plays of the Sun Devils' opponents. Coach Felker referred to his 30-man squad as "an average ball club so far." He said, "We won't know the strength and ability of the freshman squad until after the first game."

The new freshman coach hails from Drake University where he was varsity line coach for two years. He played end with the Green Bay Packers, served as a head football coach during a two-year hitch in the Army, and played one year with the Dallas Texans (now the Baltimore Colts). Felker, a 1951 graduate of the University of Wisconsin, also played in the Shrine East-West game and the Hula Bowl in Hawaii.

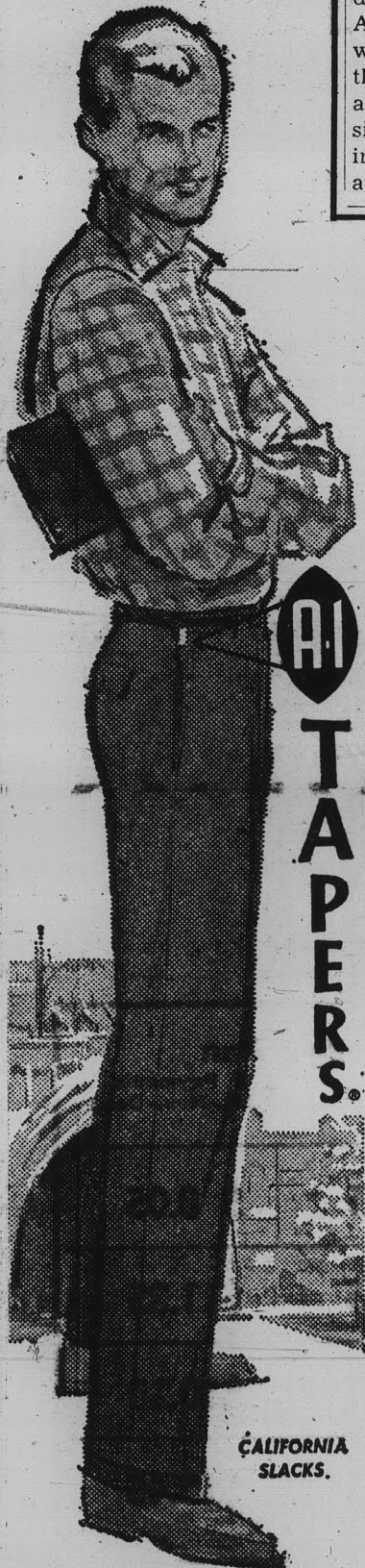
Besides his freshman coaching duties, Felker helps the varsity coaching staff. Assisting Felker this year are Dave "Buckets" Fonner and O'Jay Bourgeois, both members of last year's Sun Devil team. Fonner was first string center and Bourgeois was a backfield man.

The 1959 freshman football roster includes Steve Berzanski, Wilmore, Pa.; Bob Bishop, Bay City, Mich.; Phil Bizar, Chicago, Ill.; Jerry Bridgman, Buckeye; Cliff Bryan, La Mesa, Calif.; Richard Caul, Elgin, Ill.; Charles Denning, Long Beach Calif.; Raul Disarufino, Los Angeles, Calif.; Ron Dario, Hoboken, N. J.; Dalton Farester, Ford City, Pa.; Bob Huck, Sharon, Pa., and Ray Young, Sandusky, Ohio.



Basketball Coach Ned Wulk

Sign of the Leader



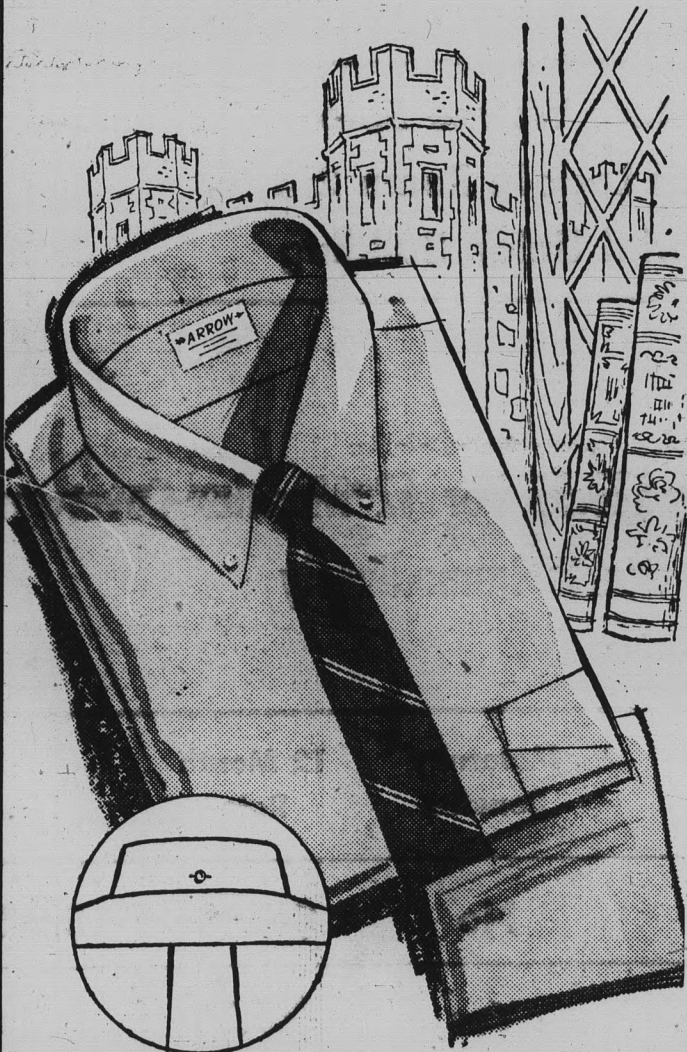
CALIFORNIA SLACKS.

Look for the A-1 Label above the right side pocket

Smooth front, tapered legs and flapped back pockets. In a wide selection of colors and fabrics. Sizes 26 to 38, \$4.95 and \$6.95. Junior Tapers, sizes 4 to 18, \$3.98 and \$4.50.

At your favorite campus shop

Fashion... a man's world, too



ARROW

"UNIVERSITY FASHION"

ensembles

A fresh new approach to college men's fashion—the soft subtle tone of natural linen in a shirt of yarn-dyed "Sanforized" oxford. University tailored with buttoned collar and back pleat. A study in smartness with color-coordinated tie and handkerchief.

Basketballers Eye Border Crown

The Sun Devil basketball agenda, still two months in the future, is already a popular subject among ASU sports enthusiasts.

Basketball mentor Ned Wulk is busy with final preparations for the 59-60 Devil slate. He said, "We'll field a more experienced club this season, although we still lack height."

Wulk, who gave ASU its first Border Conference championship in 1958 and a tie for the title last season, will begin pre-season workouts Oct. 15. The Wulkmen will open a twenty-four game schedule Dec. 1, with 14 of the contests slated for the Tempe court.

Wulk will have only five returning lettermen from last season's squad. Leading the returnees is sensational Paul Howard, 5-10 guard. Thousands of Devil followers have admired Howard's ability to deceive his opponents.

WELCOME ASU Students & Faculty

Start Now — Ask About Our Special Program Set-Up For Students & Faculty

CREDIT ACCOUNTS INVITED

Dana Bros. MOTOR CO.

CHRYSLER — IMPERIAL — PLYMOUTH
Authorized Factory Dealer

211 Mill Ave. Phone WO 7-3345

SOMETHING NEW! Dana Bros. NOW The Only

- CHRYSLER
 - IMPERIAL
 - PLYMOUTH
 - DODGE

Dealers For Tempe and Mesa

★ We Service All Makes of Cars ★

"Your Hometown Dealer & Service Station Away From Home"

GO-GO-GO-SUN DEVILS

Campus men's shop

FOR MEN AND YOUNG MEN . . .

603 Mill Avenue Phone WO 7-2960
OPEN THURSDAY NIGHT TILL 9 P. M.

Enrollment In The Associated Students HEALTH PLAN Open During September

Contact Either Wayne Sproule, or
Charles Lock In Room 213
Memorial Union Building

SINGLE STUDENTS

Bring \$23.55 For 12 Months Coverage
That Starts Immediately

MARRIED STUDENTS

Enroll Your Family
Through Budget
Payment Plan

Size of Family	Maternity Benefits	12 Month Rate	Budget Plan	
			Now	3 Payments (Oct.-Nov.-Dec.)
2	No	\$47.10	\$23.55	\$ 8.05
2	Yes	\$67.10	\$33.65	\$11.35
3 ^{or} More	No	\$59.50	\$29.80	\$10.10
3 ^{or} More	Yes	\$79.50	\$39.75	\$13.45

*If You Have Enrolled And Have Not Received
Your Policy And Identification Card . . .
Call At Room 213 Memorial Union Building.*

AMERICAN CASUALTY CO.

Reading, Pennsylvania