

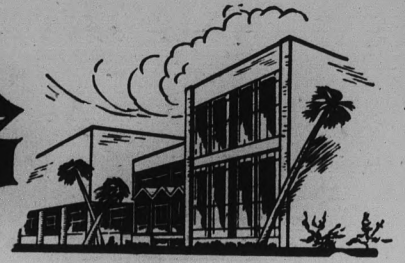


# State Press

ARIZONA STATE UNIVERSITY



TEMPE, ARIZONA



ARIZONA'S OLDEST COLLEGIATE NEWSPAPER, ESTABLISHED 1903

Vol. 37

Friday, May 8, 1959

No. 53



COMPLIMENTARY . . . whistles were in abundance during Women's Day yesterday as coeds donned their prettiest cottons, heels and hose. Giving treatment to Mary Ann Menard, Jane Chase and Sharon Mickle are Brent Merritt and Wesley Kleinworth.

## DESPITE NATIONAL STATISTICS

### ASU Recruits 'Outstanding' Faculty

ASU's successful recruiting of outstanding new faculty in the face of a national college teacher shortage is cited in the spring quarterly issue of the Arizona Statesman.

The ASU alumni magazine features "The Arizona State Faculty Story: 1959."

"During the past few years, ASU has been attracting brilliant new faculty at a highly accelerated rate," says the Statesman. To meet snowballing enrollment the university has increased its teaching faculty from 268 to 321 in the past year and will have 447 teachers next year.

"The climate, the dynamic growth of central Arizona and the opportunities of this area are major factors in bringing outstanding teachers from various parts of the nation."

The report, appearing this month in 248 similar publications of schools throughout the nation, calls the securing and retaining of well-trained, effective teachers "... the outstanding problem confronting all colleges today."

Industry, consulting firms and the government are all competing with colleges for men and women with advanced degrees.

Meantime, the report points

out, the college teacher "... has lost 50% in economic status as compared to the average American." The ASU salary rate lags behind national average, according to the Arizona Statesman.

### Free Concert On Campus Sunday Features Classical, Folk Songs

The ASU Collegium Musicum and the Choral Union appear in a free concert Sunday, 8:15 p.m. in the Memorial Union.

Six German folk songs, arranged by Brahms, sung by the 12 voices of the Collegium Musicum, open the program. The Collegium is directed by Dr. Philip Nelson, assistant professor of Music.

The 70-voice Choral Union, directed by Marion Smith, assistant professor of Voice, presents Haydn's "Mass in B Major," of "Heilig Messe."

The work often is cited as an example of a Mass from the Classical period and, as was customary at the time, it was dedicated to a servant of the church, Bernardus von Offidia, a monk, who had been canonized the previous year.

In addition, four contemporary songs, three by ASU faculty members, will be performed.

Accompanist for the mass is Lella Crandall, and soloists include Lynette Bullock, soprano; Roy King, tenor; Margaret Smith, alto; and Ed Durden, bass.

## Awards Dinner Highlights Day

The annual Women's Day awards banquet, eagerly anticipated each year by ASU coeds, was attended last night by a record number of students, faculty members and special guests.

Starting with pre-dawn tapping ceremonies, Women's Day festivities included a 10:40 a.m. assembly program, featuring Mrs. John Newcomer, of Phoenix, noted for her church, civic and music activities; and a noon luncheon, both sponsored by the Faculty Women's Club.

Theme of the day was "The University Woman: the world at her feet, the community in her hand, and the home in her heart."

The 5 p.m. awards banquet in the Memorial Union ballroom was sponsored by Associated Women Students.

Awards, those receiving them, and those presenting them include:

American Association of University Women membership awards to Misses Joycelynn Hatch, presented by Dr. Katharine Turner, ASU professor of English; AAUW scholarship award to Miss Cheryl Thraen, presented by Dr. Catherine G. Nichols, ASU associate dean of students.

Pleiades outstanding freshman woman award to Miss Linda Rankin, by Mary Lou Myers; Pleiades plaque to the residence hall (other than the honor hall) or off-campus women's group with the highest scholastic average to Phrateres International, presented by Miss Sheila Getz.

Pleiades recognition of the 12 outstanding senior women (other than Pleiad's) included Misses Sue Culley, Jean Kadish, Martha Haas, Mary Ann Menard, Rose Marie Matthews, Suzann O'Brien, Patricia Waggoner, Marjann Fletcher, Jacqueline Wisherd, Joyeline Wis-

herd, Dee Scholey, and Carma Smith, all introduced by Miss Hatch.

Associated Women Students freshman scholarship to Miss Linda Cheatham, South Mountain High School senior, presented by Miss Jo Ann Dickerson, Phoenix.

Alpha Lambda Delta outstanding member award to Miss Nancy Gracey by Miss Margaret Williams; Delta Kappa Gamma award to Miss Karen Davis by Mrs. Bertha Autenrieth, ASU assistant professor of Music; Altrusa award to Miss Rosalie Arnsen, Phoenix, by Dean Nichols.

Physical education major award to Miss Lois DuBois, by Miss Nina Murphy, professor of Physical Education; Chi Omega social science award to Miss Ina Joiner, by Mrs. C. N. McFarland, ASU director of student health service.

Newman Club service award to Miss Kathryn Doran, by Miss Margaret Walsh; outstanding home economics senior award to Miss Margaret Butler, by Dr. Jessie Rannels, head of the division of Home Economics;

(Continued on Page 2)

## ASU Student Gets Fulbright

William Lee Hendrickson of Phoenix, who will receive a bachelor of arts degree from ASU this month, will study in Europe next year under a Fulbright Fellowship.

The Fulbright Fellowship provides transportation, books and tuition expenses, plus approximately \$1,150 for living expenses.

This semester, Hendrickson is taking graduate courses in French and German literature. He will study existentialist literature, which is the outgrowth of a largely post-World War II philosophical movement in Europe.

Hendrickson completed the required studies for a bachelor's degree from the ASU College of Liberal Arts in January. Majoring in foreign language and minoring in English, he made an academic average of 3.79 out of a possible 4.00.

He is one of about 900 scholars from this country who will study abroad in the 1959-60 academic year under grants from the International Educational Exchange Program of the US State Department.



NEW PLEIADES . . . Sharon Neff tells Toni Johnson, Carole Curtis, Corinne Weyrens and Carolyn Buss that they have been chosen for membership in Pleiades at yesterday morning's tapping ceremony in the MU.

# U. S. State Department Again Selects ASU As A Foreign Teachers' Training Center

The U. S. State Department again has selected ASU as a training center for teachers from around the world.

Twenty-six teachers and administrators from about 14 different countries will spend 13 weeks next fall studying and

observing at ASU and meeting with community groups.

The grant from the State Department for the training program for international teachers is administered by the U.S. Office of Education.

Dr. John B. Barnes, director of ASU's Bureau of Educational Research and Field Services, said last year's international teachers addressed 97 different organizations in the state and were enrolled in 39 audit classes at graduate and undergraduate levels throughout the departments of the university.

A special seminar series of activities will be planned in the field of secondary education in the College of Education.

# Air Force Beats Army In Drill Competition

The Air Force ROTC drill team defeated the Army ROTC team in the annual drill com-

petition. Cadet Capt. Steven C. Stefanos, Air Force ROTC squadron commander, received the traveling trophy awarded annually to the squadron with the winning team.

Judges of the competition were officers from local military installations. They were: Lt. Col. Richard B. Engel, Williams Air Force Base; Lt. Cmdr. Daniel W. Stebbins, commanding officer, US Naval Training Center, Phoenix; Major David H. Poss, US Army Sector, Phoenix; Captain Charles D. Fay, USMC, and Lieutenant Stanley M. Lister, USN, both of the naval training center in Phoenix.

## More About

### Women's Day Activities

(Continued From Page 1)

South Hall woman of the year recognition to Miss Betty Davendorf, by Miss Barbara Termain.

Phrateres scholarship award to Miss Marjann Fletcher, by Miss Carol Westfall; AWS blood drive award to Phi Sigma Kappa fraternity, by Dr. Seymour Fisher, of Phoenix and Fletcher Newell, of Arizona Disabled American Veterans.

Phoenix Panhellenic scholarship cup to Kappa Delta sorority, by Mrs. Michael McNulty, Tempe, representing Phoenix Panhellenic; ASU Panhellenic scholarship plaque to Alpha Epsilon Phi sorority and ASU Junior Panhellenic scholarship plaque to Delta Gamma sorority, both presented by Miss Darleen Arthurs.

The new Big Sister chairman, Miss Barbara Thurman, was introduced by Miss Georgia Kasnetsis.

The Ralph A. Morris instrumental award to Miss Carol Hamilton, Phoenix, by Miss Rose Bourne; the outstanding freshman council member, Miss Judy Hamer, was introduced by Brenda Peterson.

Miss Mary Bunte, sponsor of Pleiades, junior and senior women's honorary group, introduced the newly tapped members. They are Misses Carole Curtis, Jo Ann Dickerson, Toni Johnson, Pat Dixon, Corinne Weyrens, Mary Ann Wilson, Karen Davis, Carolyn Buss, Jane McCullough, and Sue Philpott.

Newly-tapped Spurs, members of the sophomore women's

honorary group were introduced by Mrs. Grady Gammage, sponsor of Spurs

New members of Alpha Lambda Delta, freshmen women's national scholastic honorary group, were introduced by their sponsor, Mrs. Jack Herring, who also acted as general adviser for the entire Women's Day program.

## GET SATISFYING FLAVOR... So friendly to your taste!

### No flat "filtered-out" flavor! No dry "smoked-out" taste!



You can light either end!

## LAIRD Pharmacy

Prescription Druggists

501 Mill Ave. WO 7-2922  
26 E. 8th St. WO 7-4063

Get WILDROOT CREAM-OIL Charlie!

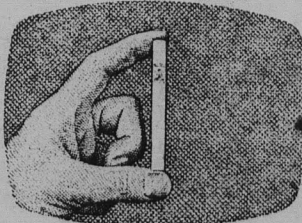


CARRIE Z. NATION, barmaid, says: "Smart men choose Wildroot, the non-alcoholic hair tonic!"

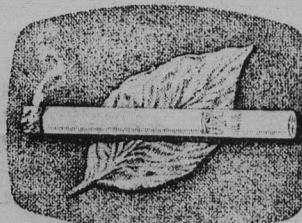


See how Pall Mall's famous length of fine tobacco travels and gentles the smoke — makes it mild — but does not filter out that satisfying flavor!

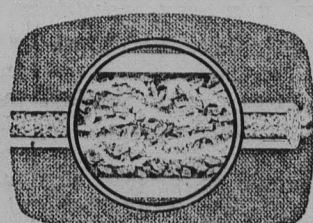
HERE'S WHY SMOKE 'TRAVELED' THROUGH FINE TOBACCO TASTES BEST



1 You get Pall Mall's famous length of the finest tobaccos money can buy.



2 Pall Mall's famous length travels and gentles the smoke naturally.



3 Travels it over, under, around and through Pall Mall's fine tobaccos!

### Outstanding...and they are Mild!

Product of The American Tobacco Company — "Tobacco is our middle name"

# Nearly Half Of Student Activity Fees Goes For Athletics, Senate Reports

By GORDON PETERSON  
 Nearly one-half of all student activity fees goes for athletic activities.

Ten dollars of the \$23 activity fee each student pays per year at registration is allotted to inter-collegiate athletics, intramurals and women's athletics. This allotment totals about \$76,650 for next year, an increase of approximately \$10,000 over this year. The reason for this increase is to provide "a well-rounded sports program and additional scholarships," according to the Student Senate.

Each year the \$23 activity fee is divided, by an act of the Student Senate, among the groups that sponsor student activities. The breakdown for next year is based on 7,500 students.

An increase of more than 100% has been granted to service activities, which includes

freshman week, homecoming, parents day and senior day. These activities will receive \$5,262 for the academic year of 1959-60, compared to \$2,595 this year.

Two new groups have been included in the budget this year. They are the Collegium Musicum, which will receive \$375, or .18% of the fees, and the Men's Glee Club, \$275, or .12%.

While 20 of the groups on the budget received increases in appropriations, 10 took decreases, and two will receive the same amount as this year.

The Symphony Orchestra will again get \$1,350, and the Memorial Union board remains at \$75.

Those granted increases, the amount of increase and the percent of the budget each receives are:

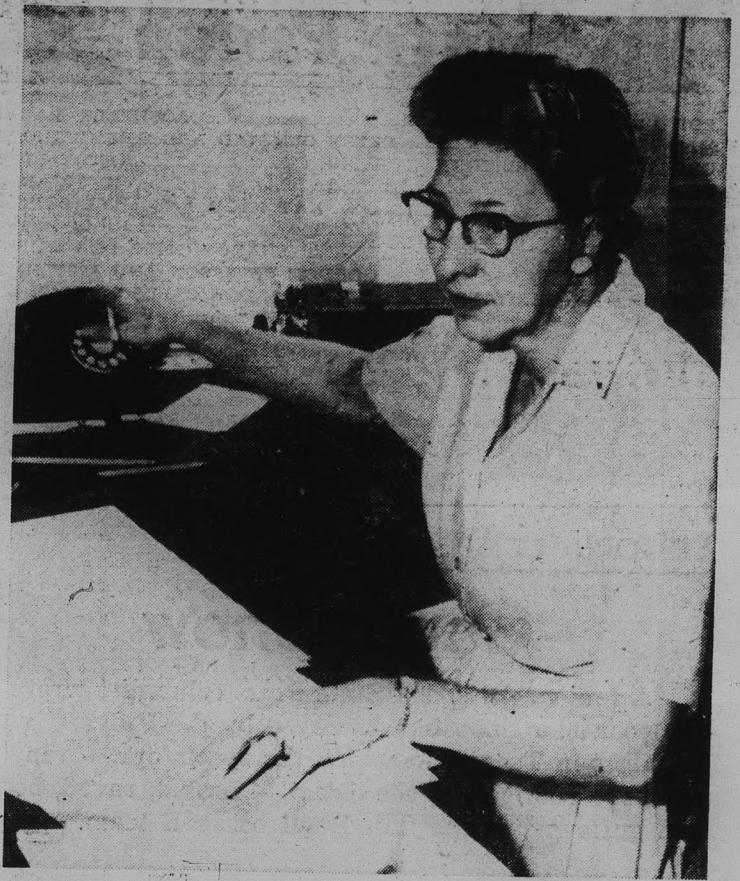
Intercollegiate athletics, \$22,000, 37.28; State Press, \$700, 8.45; band, \$390, 6.22; women's

athletics, \$1,100, 6.2; Choral Union, \$500, 2.17; religious, \$1,600, 1.74; AWS, \$300, 1.74; activities coordination, \$90, 1.64; debate, \$350, 1.5; intramurals, \$100, 1.37; senior day, \$1,200, 1.24.

Also, organizations and leadership, \$100, 1.18; drama \$430, .77; homecoming, \$140, .55; livestock judging, \$97, .55; student-faculty relations, \$270, .53; art festival, \$100, .32; parents day, \$175, .25; and modern dance, \$25, .17.

Decreases were: general administration, \$1,200, 10.22; general contingent, \$700, 4.6; student administration, \$60, 2.01; social board, \$1,300, 2.35; cultural affairs, \$300, 1.67; rally and traditions, \$100, 1.24; AMS, \$400, .99; publicity, \$100, .25; dairystock judging, \$50, .21; and elections board, \$30, .13. Several of these groups requested the decrease.

The preceding figures are approximate and may be changed slightly.



EXPERT BOOKKEEPER... top-notch file clerk, typing whiz — all these titles fit Lois Earle in her job as head of the ASU Payroll department.

## Lois Earle, Payroll Dept., Keep ASU Payroll Rolling

If you work for the University, chances are you get paid every once in a while.

Though you don't worry about it at the time, there is a department that's in charge of the money. It's a big job.

Whether it's the paycheck of President Gammage or the paycheck of a janitor — they all come from the same place — the Payroll Department.

Lois Earle is the department's section head. Her job requires that she be an expert bookkeeper, a top notch file clerk and a typing whiz. She certainly knows how to use an adding machine, she can do

detailed work (without going nuts), and she has a sense of humor to make the job easier.

There are 1700 persons working for ASU. This includes 468 regular faculty members, 685 students and numerous other help. About \$432,000 in checks leaves the payroll office every month.

Checks go out four times monthly.

Paying the employees has developed into a big business, according to Lois. "We used to be able to send the professors' checks directly to their banks on pay day," she says, "but now we have to let the various departments handle the distributing. We just send the checks to the various department heads."

Helping Lois Earle do her jobs are four girls. The team of five has a big task. For example, eight sets of cards have to be kept on employees. Some of the cards are for all of them and some are just for special groups, such as benefit deduction cards for the faculty and

staff. Says Mrs. Earle, "Students complain about the red tape they have to go through. Of course there is some, but we think that we've got the job cut down to a minimum. And if there's red tape to be gone through, I guess it's worth it when there is a check at the other end."

The payroll department has its fair share of humorous experiences though. No matter how meticulously the records are checked, there are always checks that get sent to the wrong place. "Once," Mrs. Earle recalls, laughing, "We really had a mess on our hands."

"We had sent a check over to the Business Education department for a man who was doing some work there for General Electric. At the top of the envelope we merely put GE, thinking he would be sure to get it."

"Days went by and still the man didn't get his check. We were getting worried when one day he came in with the check, grinning rather sheepishly. It seems the check had somehow found its way to his brother who also worked for GE."

"He lived in San Francisco... How it got there we'll never know..."



Featuring Exotic Chinese Dinners  
 Chicken, Sizzling Steaks and Seafoods  
**COMPLETE DINNERS FROM \$1.50**  
 Dragon Room for Club Meetings & Private Parties  
 OPEN 7 DAYS A WEEK  
 Phone AM 5-9484 — 1575 E. Camelback Road



## Prom trotter

She's the queen of the campus, and of course she favors you know what... the cold crisp taste of Coca-Cola. She knows that anytime, everywhere, Coke is the real refreshment. We don't say that the secret of her success is Coca-Cola... but it helps!



BE REALLY REFRESHED...HAVE A COKE!

Bottled under authority of The Coca-Cola Company by

Phoenix Coca-Cola Bottling Co.  
 1301 South Central, Phoenix

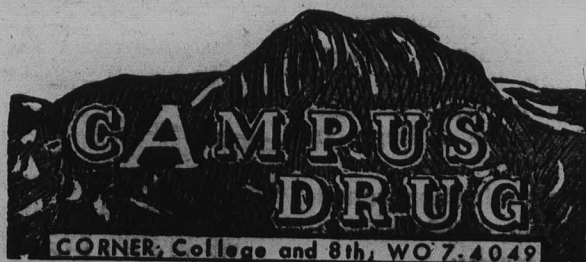
### FLIGHT INSTRUCTION

At Special Rates  
 For College People  
 A Private License is a  
 Must in Modern Business  
**AMOS**

FLIGHT OPERATORS  
 Don Amos - Class of '56  
 Ph. BR 5-7291 - Sky Harbor

GOOD GROOMING

## TOILETRIES



CORNER, College and 8th, WO 7-4049



Enjoy

perfect  
 fit and  
 up-to-date  
 styling  
 in a  
**RENTED**  
 formal  
 from

**SMITH'S  
 TUX SHOP**

Sales and Rentals  
 142 W. Adams AL 4-9523



EDITOR-IN-CHIEF \_\_\_\_\_ ROCHELLE MACKEY  
 MANAGING EDITORS \_\_\_\_\_ PETEY OLMSTED AND ABE GUTIERREZ  
 ORGANIZATIONS EDITOR \_\_\_\_\_ KATHY BURKE  
 SPORTS EDITOR \_\_\_\_\_ VIC FIGARELLI  
 COPY EDITORS \_\_\_\_\_ KAY KELM AND MIKE BARRETT  
 ASSIGNMENT EDITOR \_\_\_\_\_ JULIE PATTON  
 ASSOCIATE EDITORS \_\_\_\_\_ SHARON CORN, BOB LAIRSON  
 \_\_\_\_\_ GORDON PETERSON AND JEFF KIEHL  
 \_\_\_\_\_ DON CARLSON, JACK ONG

CONTRIBUTING EDITORS \_\_\_\_\_  
 The STATE PRESS is distributed by Rick Bedolla Official campus newspaper of Arizona State University. Published each Wednesday and Friday throughout the school year, excepting holidays, and entered as second class matter in the Post Office at Tempe, Arizona, under the Acts of March 3, 1879, and August 24, 1912. Subscription price, \$3.00 per school year.  
 Member: Arizona Newspapers Association, Associated Collegiate Press, and National Advertising Service, Inc.



EDITORIALLY SPEAKING —

# Good Show

A few weeks ago, a State Press columnist wrote on the poor sportsmanship displayed by the University enthusiasts in Tucson, in which the spectators — ranging from the youngest to the eldest — ranted, raved, booed and guffawed at the Sun Devil baseball team.

Saturday, when Arizona came to Tempe for a day-night doubleheader, ASU fans conducted themselves in an extremely admirable fashion. There were no derogatory remarks directed at the opposing team. Only spirited enthusiasm for the Sun Devil team prevailed. It doesn't take much to be a good, clean sport. A rabid sports fan need not make a scene in front of the rest of the crowd to display his enthusiasm.

Sportsmanship is mandatory if a school is to conduct any kind of athletic program whatsoever. Exhibitions of GOOD sportsmanship reflect top-flight teams.

Though the Sun Devils lost the second game of the doubleheader, ASU can be proud of the way the team and its fans conducted themselves, both in victory and in defeat, and the University of Arizona and its boosters can well take note of the desired conduct of spectators at an athletic event from the splendid way Saturday's games were handled.

# Finals Schedule

On Monday, May 25, 1959

From	7:40-9:30	7:40-8:30 MWF or Daily*
	9:40-11:30	9:40-10:30 TTh or TThS
	12:40-2:30	11:40-12:30 MWF or Daily*
	2:40-4:30	1:40-2:30 TTh or TThS

On Tuesday, May 26, 1959

From	7:40-9:30	8:40-9:30 MWF or Daily*
	9:40-11:30	10:40-11:30 TTh or TThS
	12:40-2:30	12:40-1:30 MWF or Daily*
	2:40-4:30	3:40-4:30 TTh or TThS

On Wednesday, May 27, 1959

From	7:40-9:30	7:40-8:30 TTh or TThS
	9:40-11:30	9:40-10:30 MWF or Daily*
	12:40-2:30	1:40-2:30 MWF or Daily*
	2:40-4:30	2:40-3:30 TTh or TThS

On Thursday, May 28, 1959

From	7:40-9:30	8:40-9:30 TTh or TThS
	9:40-11:30	10:40-11:30 MWF or Daily*
	12:40-2:30	11:40-12:30 TTh or TThS
	2:40-4:30	2:40-3:30 MWF or Daily*

On Friday, May 29, 1959

From	7:40-9:30	3:40-4:30 MWF or Daily*
	9:40-11:30	12:40-1:30 TTh or TThS

\* And classes that meet on M, MW, MF, MTWF, MWThF, MTWTh or F

Examinations for classes that are scheduled with "Time Arranged" and for classes that meet at, or after 4:40 p.m., in the evening, or on Saturday morning, will be held at the time scheduled for the last regular meeting of the class during the week of May 25-29, including those evening and extension classes that meet on Tuesday evening, unless otherwise scheduled by the instructor at a time during this final week of the semester.

If conflicts occur, or if under this schedule, a student has more than three exams in one day, he should consult instructor(s) regarding possible schedule adjustment, or if necessary the Dean(s) of the College in which the courses are offered.

No changes should be made in the examination schedule, except those required in individual cases, without the approval of the academic Vice President.

## LITTLE MAN ON CAMPUS



"YOU SHOULDA BEEN HERE YESTERDAY WHEN THIS GUY PINCHED TH' DOLL NEXT TO HIM."



By PETEY OLMSTED

Voices and cigarette smoke filled the Student-Faculty Assembly Hall. Through the clatter of chairs and shuffle of feet, members of the assembly heard the rap-rap-rap of the president's gavel.

"Meeting will come to order," he announced. Roll was called, and minutes of the last meeting were read. "The main order of business today is final decision on the school budget." Soon the meeting was in full swing.

The school budget traditionally has been the most important item of business on the Peachville Junior College agenda. No wonder the air was electrified with controversy on days it came up for consideration. The battle between the department of Education and the department of Athletics (noted for phenomenal development in the ping-pong division) was nearly as old as the school itself.

"I move that we increase the department of Education's funds by \$10,000 for construction of new classrooms," a brave young instructor called out. (This sum, of course, was entirely too presumptuous, and the cheers of his colleagues were drowned out by jeers from the opposition.)

"Ridiculous! If we are to have any kind of ping-pong team next season, the department of Athletics needs that money and more," retorted a chap from that department. "We've scouted all year. Some of the best young ping-pong players in the country are ready to come here — all we need are a couple hundred scholarships to swing the deal."

"But there's not room for that many students in our classrooms," pleaded an old professor.

"Irrelevant," glowered the athletic chap. "You know good and well they'll be too busy to attend classes."

"But we need new classrooms to accommodate students who will be in class," begged another department of Education member.

"Selfishness! Pure selfishness," chided the athletic chap. "Look at the glory, honor, fame and vigorous men we'll be bringing to P.J.C. with the ping pong scholarships. Why, every mother in the country will want to send her daughter here. And you want material things like buildings and chairs and blackboards. Aren't you ashamed?"

This touching story swung the votes, and the Athletic department won the needed scholarship money. The defeated department of Education members quietly consoled each other, for they knew from past experience that if they didn't make too much fuss, their department would get a little consideration from time to time.

Congratulations: to John Riggs, voted outstanding ASU student senator by his fellow senators.

Anyone who noticed Ted Miller's cartoon last issue about the scorpion, etc., might like to know that Dr. Herbert Stahnke appreciated it. But, he pointed out, that was an Egyptian scorpion — not the kind he specializes in.



By ROCHELLE MACKEY

Graduating seniors . . . do you have a cold chill, a fever or a nervous rash?

No wonder, after the announcement in last Wednesday's State Press . . . "Seniors . . . must take final examinations during the week of May 11-16 . . ."

To everyone taking finals next week . . . good luck and happy landing.

A national survey indicates there is an accident somewhere in the world every minute . . . At the same time I think there must be an activity starting on this campus every minute.

Yesterday afternoon I received a phone call from Mr. Marion Smith, assistant professor of Voice. He gave me a complete run-down of Sunday's concert of the Collegium Musicum and the Choral Union. The

concert, which will be held in the MU at 8:15 p.m., is free.

From sounds that drift out of the Arts building every afternoon, I'd say this will be one of the finer events of the university year. Hope a large number of the campus community will be able to attend.

Still in the concert line, the ASU ROTC band will present a concert Tuesday at 7 p.m. in the campus bandshell. This is the third and last of the Twilight Concert Series.

## LITTLE MAN ON CAMPUS By DICK BIBLER



"NICE OF YOU BOYS NEXT DOOR TO WASH OUR WINDOWS—WE HADN'T EVEN NOTICED THEY WERE GETTING DIRTY."

# This small world gets bigger every year

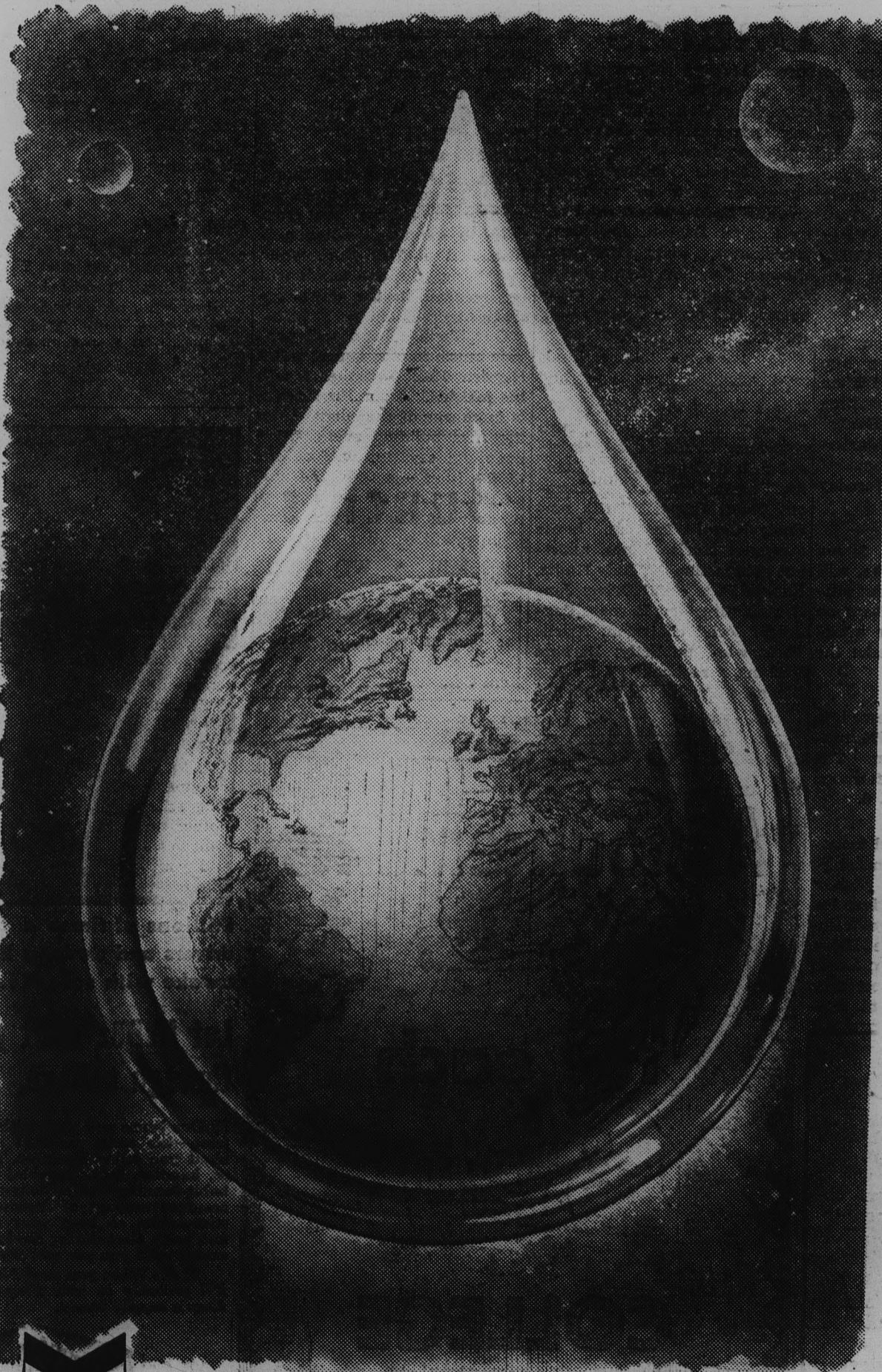
The exciting world within a drop of oil keeps growing as we make discoveries that bring new and better products into your world.

Even now, these products enter every hour of your day — from automotive fuels and lubricants to synthetic fibers for blankets you sleep under at night and clothes you wear during the day.

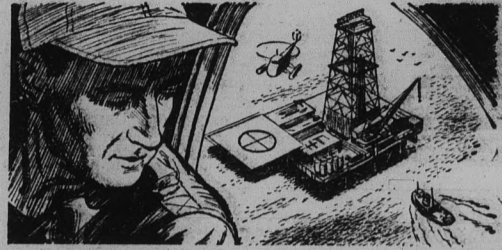
Wax containers that preserve food; plastics, paints, photographic film, detergents, medicines, synthetic rubber and thousands of other items for farms, homes, industry and the Armed Forces now are made better because of oil ingredients which Standard supplies to manufacturers.

But there's more in oil's future — much more. And so last year, as every year, one of our biggest jobs was finding ways to make oil serve you better — using research to create new and improved products, and building facilities to put these products to work.

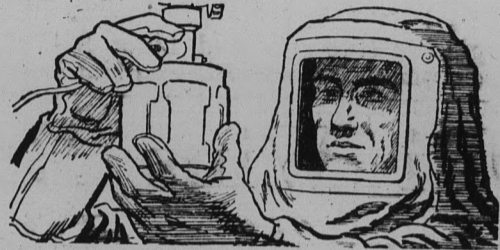
Here are some of the things we did during 1958 to expand the world within a drop of oil:



**STANDARD OIL COMPANY OF CALIFORNIA**  
*plans ahead to serve you better*



To help meet your growing demand for petroleum products, we invested \$235 million for exploration and development in 21 states of the U.S. and 12 other Western Hemisphere countries.



Our research and technical service staff has grown to 1400 people. Today we make more than 1000 products not sold 15 years ago. During that time our research budget more than tripled.



Producing and distributing products takes continuing investments in new refinery equipment, pipelines, tankers, trucks and trailers. Last year, \$108 million went into these new facilities.



Our 38,395 employees were paid \$281 million in wages and benefits. Standard's 152,754 stockholders received nearly 4¢ for each dollar of the market value of stockholdings.



Standard was one of the largest customers in the West. Our purchases included 50,000 items . . . helped provide jobs and payrolls for more than 10,000 firms in hundreds of Western communities.



Through affiliates, we helped advance progress in more than 70 free Eastern Hemisphere countries. Oil development helps provide jobs; supplies funds for education, health and housing.



PICNIC . . . ASU students enjoying one last afternoon outing together before finals begin are (l to r) seated. Linda Hill, Jim Shepard, Sandy Rowe and Bob Binder; (in back) Barbara Perkins and Wayne Zimmerman.

# ADPi Wins Back Trophy; Fraternities Plan Dances

By KATHY BURKE

Alpha Delta Pi won back a traveling trophy from Gamma Phi Beta Tuesday by winning their annual baseball game 19 to 2. Gamma Phi earned the trophy last spring. Both groups picnicked at Tempe Beach following the game.

Lambda Chi Alphas will choose their Crescent Girl for 1959 at their annual Crescent Formal tomorrow night at Ramada Inn. Dancing starts at 9.

Lorilee Kier, Chi Omega, pinned to Dave Pilcher, was serenaded Monday night by Lambda Chi.

The annual Sigma Nu White Rose Formal takes place tonight at Jokake Inn, beginning at 9.

Kappa Delta seniors Margaret O'Leary, Charmian Smith, Sue Culley, Mary Hufford, Nancy Sloan, Sue Smith, Barbara Lutz and Joanne Cooper were honored at a dinner Wednesday evening at the home of their faculty sponsor Mrs. Marvin Karp.

The same KD seniors staged a walk-out meeting the previous night and were surprised on their return to the dorm to find the mysterious persons had put their clothes in various rooms.

Thirteen "Little Sisters of Minerva" have been initiated by Phi Alpha of Sigma Alpha Ep-

silon, chosen on the basis of their interest in the fraternity. "Little Sisters," who were presented with SAE garters as badges of membership, are Judy Gnat, Marie Burnham, Jacque O'Hern, Deena Crim, Carole Futrelle, Jeannine Neal, Toni Diorio, Barbara Farone, Patty Foster, Linda Rankin, Jan Bolin, Brenda Tibshraeny and Jan Matthews.

Don Kenniger's Sigma Nu fraternity brothers gave him swimming lessons at Old Main fish pond Tuesday — resulting from his pinning to Marilee Spratler, Gamma Phi. Marilee and her sorority were serenaded by the Sigma Nus Wednesday night.

Two colonies at ASU, Sigma Chi Sigma and Phi Alpha, will compete in softball on the athletic field tomorrow afternoon and will party together afterward. They plan to make the game a yearly event.

Chi Omegas bid farewell to their seniors at a party Wednesday at the Desert Sun. The group swam in the afternoon and attended dinner at 6.

Chi Omegas appointed to sorority offices and chairmanships are: Carolyn Stabler, Junior Panhellenic representative; Pat Dotson, assistant pledge trainer; Pat Tracey, Carole Beley, assistant rush chairman; Sandy Seyfried, assistant secretary; Norma Walker, assistant trea-

surer; Marilyn Meyer, Petey Olmsted, publicity; Lenda Metcalf, Carol Wiehl, Jan Severns, scholarship; JoAnn Dickerson, activities; Jane Wagner, vocations; Maggie O'Malley, social; Sue Penrod, house manager; Cynthia Datus, historian; Peggy Coulter Barrett, Big Sister coordinator; Judy Robinson, Darlene Swadley, Lynn Steinko, float; Pat Tracey, campaigns; and Linda Cooper, song leader.

Chairmen named to serve Sigma Sigma Sigma for 1959-60 are: Linda Scofield, rush chairman; Lynda Lecky, assistant rush chairman; Pat McDaniel, Charm School and Harmony Hour; Juleen Merrill, sentinel; Carol Truman, house manager; Karlas Pipes, assistant house manager; Judy Kuntz, Robbie Page, Fund Drive; Jane Burtch, directory; Barbara Caganich, social chairman; Arlene Paskiewicz, publicity; Barbara Perkins, scrapbook; Vicki Sfrong, magazine chairman; Sue Nichols, music.

## Campus Currents

### Frosh Honorary Holds Meeting

Alpha Lambda Delta, freshman women's honorary, will hold its first meeting for new members Wednesday at 6:30 p.m. in the MU. Dr. Jack W. Herring, assistant professor of English, guest speaker, will talk on "The Touchstone Theory". Get-acquainted games will be played by old and new members both.

### Pershing Rifles Plans Party

Pershing Rifles will have an early morning inspection Sunday by the Tucson regimental staff. Following the inspection, members and dates will hold a picnic, swim, and dance at the Arizona Water User's recreation area.

### Spurs Elect Officers

New officers of Spurs, sophomore women's honorary, include Judy Hamei, president; Carmen Ruthling, vice-president, Sue Frost, secretary; Alice Housman, treasurer; Dee Jiminez, historian; Fran Breslin, editor; and Nancy Weigle, junior advisor.

### Hayden Hall Has Formal

Hayden Hall's spring sports day and formal takes place tomorrow at Jokake Inn from noon to midnight. Dinner is scheduled at 7:00 p.m., while swimming, golf, and tennis will be included in the day's activities.

Gus Sheild's band will provide music for the dance, and a Hayden Hall Sweetheart will be selected. Dick Kosidowski is in charge of the event.

Officers recently elected by the dormitory are: Jerry Hall, president; Lyle Cunningham, vice-president; and Mike Bartholemew, social vice-president.

### Club Schedules Lake Party

A Canyon Lake party is scheduled for Sunday by Gamma Theta Upsilon, national geography fraternity. Members and guests will leave from Goodwin Stadium at 10:00 a.m.

New officers of the group are Gary Clark, president; Bob Morris, vice-president; and Harry Walker, secretary.

### Group Takes Hospital Tour

Alpha Beta Alpha's Theta chapter toured the Veteran's Administration Hospital at their last meeting. Mrs. Wittenburg, librarian at the hospital, spoke on the career possibilities in Library Science.

Plans were also made for the Founder's Day dinner, and the annual spring banquet.

### Rodeo Club To Meet

ASU's Rodeo Club meets Wednesday at 7:30 p.m. in BA 209 to elect next year's officers. Also planned is a party at Dean Hill's Arena in Phoenix Sunday from 2:00 p.m. until 12.

### Club Holds Final Meeting

The Association for Childhood Education will hold its final meeting of the year Monday at 3:30 p.m. Mrs. Nell Byers will speak on "Trip to Europe." Refreshments will be served.

## Bunch's

609 Mill • WO 7-3221

"We Teach Watches to Tell the Truth"

REASONABLE PRICES

## Announcements

Still Available

16¢ each

Hurry, Hurry, Hurry  
At Your

# COLLEGE BOOKSTORE

# GLAMOUR HOUSE

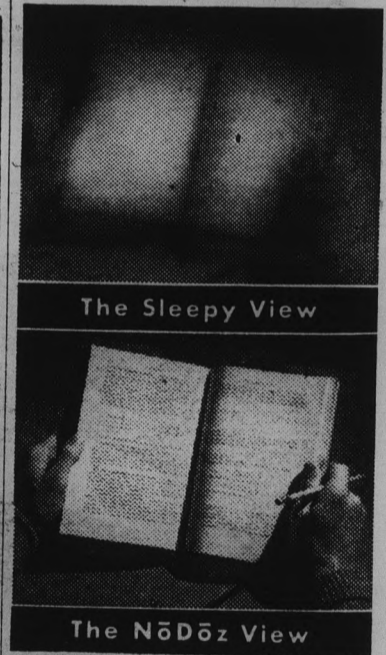
agnes and dorothy

Scottsdale's Only Complete Lingerie & Intimate Apparel Shop

- Trousseau's Our Specialty
- Moderate Prices

46 W. 5th Ave.

Scottsdale

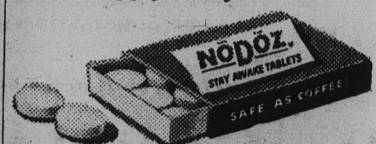


Millions of times a year drivers and students keep awake with safe NoDoz

Let NoDoz alert you through college, too

NoDoz keeps you alert with caffeine—the same pleasant stimulant you enjoy in coffee. Faster, handier, more reliable: non-habit-forming NoDoz delivers an accurate amount of dependable stimulation to keep your mind and body alert during study and exams until you can rest or sleep.

P. S.: When you need NoDoz, it'll probably be late. Play safe. Keep a supply handy.



The safe stay awake tablet—available everywhere

## Engineers Give Views

Four engineers will be guest speakers at the student Civil Engineering Club's final meeting of the semester at 8 p.m. Tuesday in the Memorial Union.

Dwight L. Busby, consulting engineer, will discuss "Structures."

"Highways" will be the subject of William E. Willey, state highway engineer.

Art F. Vondrick, utilities engineer of the Phoenix Water Department, will speak on "Water Supply and Sewage."

An address on "Soil Foundations" will be given by Gene Wheeler, manager, Phoenix Laboratory.

## Faculty Women Choose Officers

The Faculty Women's Club at ASU elected new officers at a luncheon yesterday.

They are: Miss Frances Failing, assistant professor of Art, president; Mrs. Jean Hopkins, lecturer in Art, vice president; Miss Mildred Schmidt, assistant professor of Home Economics, secretary; and Dr. Mary Escudero, associate professor of Spanish, treasurer.

## AS Majors In Education Are Honored

Forty-one ASU students were initiated into Kappa Delta Pi, national honorary education society, Wednesday night.

New initiates are Rosalie Arnson, Janice Cox, Leonore Gastelum, Barbara Holligan, Jeannie Holsinger, Evelyn Morrow, Jane Potter, Clarice Radich and Elizabeth Williamson.

Also, Phyllis Ransom, Gertrude Shafer, Penny Tropp, Sarah Zinn, Mrs. Margaret Butler, Mrs. Ruth Overman, Don Harris, Leonard Hinds, Edgar Hornik, Dale Keans, David Mayne, Albert Roark, Marjorie Bonham, Margaret Estes, Kathleen Goodwin, Theresa Howard, Carolyn Walls, Virginia Yaeger and Faye Clark.

Also, Jennie Cooper, Alvern Lisonbee, Mary Beth Alltizer, Ariel Lauver, Mrs. Delores A. Ashburn, Diane Read, Barbara Lawrence, Lewis Estes Jr., Mildred Maine, Ruth Barney, Russell Durham, Loy Palmer and Carol Mackintosh.

Junior, senior and graduate students were honored at a banquet in the MU after the initiation.

Alfred Thomas Jr., ASU registrar and director of admissions, addressed the members on "The Great American Dream."



**SAMPLE SHINE . . .** Sigma Sigma Sigma member Janie Groth gives Alpha Tau Omega Bob Plenty a free polish job as she practices for the annual Tri Sigma Shoeshine to be held tomorrow in Phoenix. Proceeds go to the Robbie Page Memorial Fund, the sorority's national philanthropic project.

## Society Initiates Tonight

Phi Kappa Phi, national honorary scholastic society, will initiate a record 78 new members tonight.

Alfred Thomas Jr., registrar and director of admissions, and Dr. Lee P. Thompson, dean of the College of Applied Arts and Sciences, will be among the initiates.

The ceremonies in the Memorial Union will be followed by a dinner. Maggie Savoy, woman's page editor of the Arizona Republic, is scheduled as the featured speaker.

To become a member of Phi Kappa Phi, a student must be a senior or second-semester junior and be in the upper 10 per cent of his class. Applicants are also screened by faculty and staff members of the ASU chapter.

Alumni who wish to attend tonight's program may make reservations with Dr. Paul Hubbard or Mrs. Loretta Wilson, arrangements chairman.

A free movie, "Ten North Frederick Street," will be shown tonight at 7:30 in Cosner Auditorium. Gary Cooper and Diane Varsi star.

See Our New Hol'N-One Donut Machine



Now Under New Management

8th Street & College

Harold Barclay, Mgr.

## Fred Elquest & Son

Everything for the Art Student  
 • Art Supplies  
 • Picture Framing  
 703 N. 2nd St.  
 Phoenix  
 PHONE AL 8-2628

## Tickets For Royal Ball To Be Available At MU

Tickets go on sale Monday at the Memorial Union information desk for the second annual Royal Ball, Friday, May 15, sponsored by the Social Board.

The Ball will begin with a steak or fish dinner for \$1.65 in the cafeteria at 7:30 p.m. Dancing to Les Brown's Band of Renown will start at 8 in the ballroom. Activity tickets must be presented at the door.

Newly elected ASASU officers will be inaugurated at the banquet. Highlight of the dance will be the coronation of this year's Campus King and Queen.

Les Brown's band, making history as the first band to use jet transportation between professional engagements, has been voted America's number-one band by all major polls since

1953; he collected four awards last year from Down Beat, Metronome, Billboard and Playboy magazines.

The Royal Ball is slated from 7:30 till midnight.

Social board chairman Toni Johnson is co-ordinator of the affair. Mrs. Ellen Bell is advisor.

The University Bridge Club, which meets every Friday evening, will hold free bridge lessons tonight at 6:30 in the Senate Chamber of the Memorial Union. Duplicate bridge play, under the direction of Mrs. Louise Maltby, will begin at 7:45 in the lower lounge of the MU.



"...and two cartons of Camels for our leader!"

More people drop in for Camels than any other cigarette on earth. It stands for reason: the best tobacco makes the best smoke. The Camel blend of costly tobaccos has never been equalled for rich flavor and easygoing mildness.

Put fads and fancy stuff in the past . . .

R. J. Reynolds Tobacco Co., Winston-Salem, N. C.

Have a real cigarette - have a CAMEL

## Get Your Car Ready . . . For The Trip Home

Complete Front End Service  
 Complete Lubrication Service  
 ALL MAKES & MODELS

• FINE USED CARS •

## Smiley - Berge

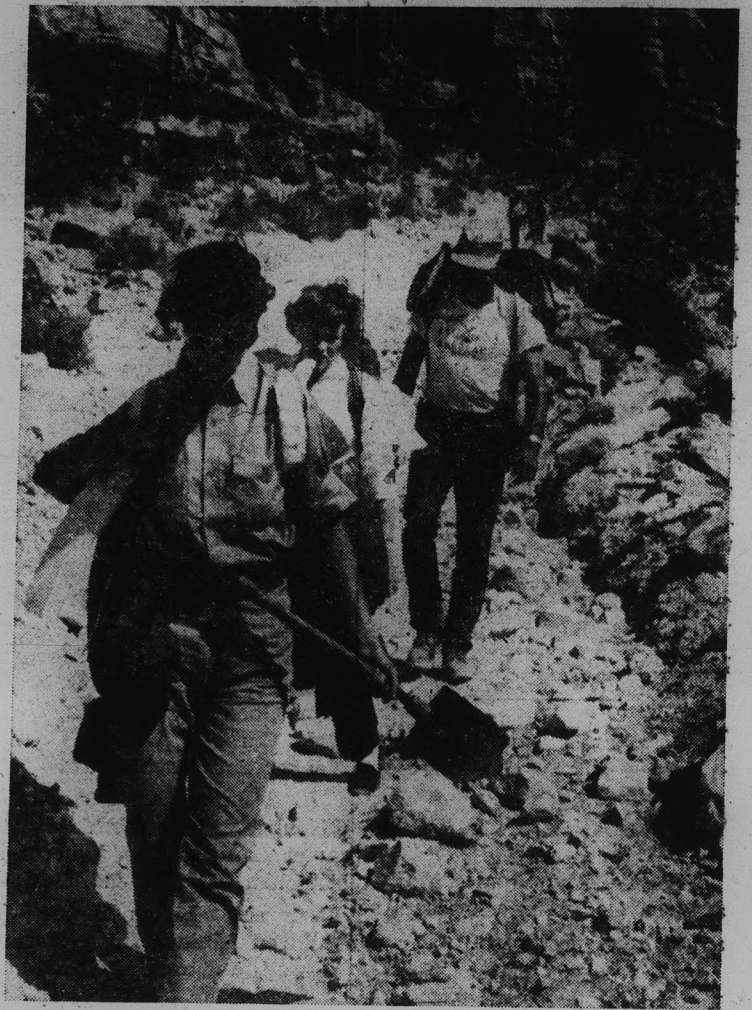
16 E. 8th St. Tempe

WO 7-2064

YOUR NEAREST COMPLETE SHOP  
 JUST TWO BLOCKS FROM CAMPUS



Embarkation From Hilltop



On The Trail



Rest At Campsite



Time Out



Indian Gods

# Class Has Cake - - - And Eats It Too!

To have one's cake and eat it too is the desire of many of us many times. And it isn't every day a group of students can have a whale of a good time and get class credit for it.

But, that's just what Miss Ann Pittman's camping class has done!

Last weekend the class hiked into Havasupai Canyon, a side canyon of the Grand Canyon.

The group entered the canyon trail from Hilltop, one of its three entrances. From Hilltop a narrow, ribbon-like trail winds some eight miles over slick, sharp rocks and swaying sheep bridges, always managing, somehow, to cling to the steep walls of the canyon.

To anyone unaccustomed to Arizona's fast scenery changes, the sights after several hours on the trail are amazing and often awesome. Dry, dusty rock canyon walls are exchanged for a fertile, green and productive valley, Supai Village, home of the Havasupai Indians — a tribe of 200 that has lived in the beautiful, peaceful canyon for over 200 years.

The Havasupais have derived their name

from the source of their valley's productivity — the blue-green river, Havasu Creek, which flows through the valley and over three falls, whose total drop is more than 700 feet, and then into the Colorado River in the Grand Canyon.

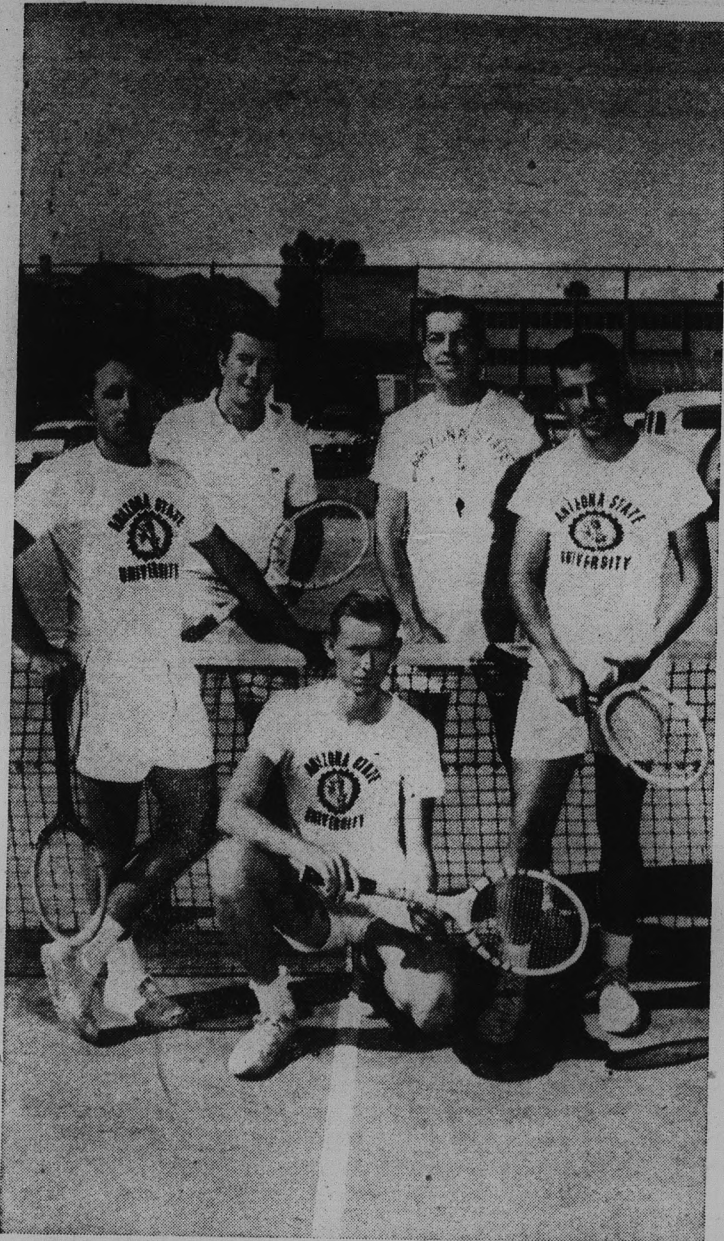
Life of the Havasupai is usually calm and tranquil. Of their two favorite pastimes, sweat baths are more common; but on occasion someone will arouse interest in the second — moving fences during the night further into a neighbors property to get more land.

As a new group of campers enter their village, the Havasupais watch from their doorways as the party moves along toward the camping ground at the foot of Havasu Falls, then continue their work, uninterested and unimpressed.

Miss Pittman's camping class is made up principally of students interested in getting summer jobs as camp counselors. The group was accompanied by Chuck Conley, ASU photographer, who took the pictures on this page.



Havasupai Falls



**RACQUETEERS . . .** Also in Tucson for the Border Conference spring sports festival is the ASU tennis team. Left to right standing are Bob McDannold, Doug Harrington, Coach Marlowe Kieth and Don Daniels. Kneeling is Frank Paddock.

# Ruiz, Regoli, Sims Statistics Leaders

Final team-statistic tabulation found three Arizona State baseballers leading in a majority of departments. Clutch hitters third baseman John Regoli and shortstop Benny Ruiz led in the batting department, while senior southpaw Jim Sims dominated the pitching departments.

Regoli, a junior from New Kensington, Pa., led the Sun Devils in hitting with a .356 mark, with Ruiz in second place at .346. Ruiz proved to be the "iron man" of the team, playing in all but two innings all season long. The Devils' 46 game schedule was the longest of any in the nation's collegiate circles.

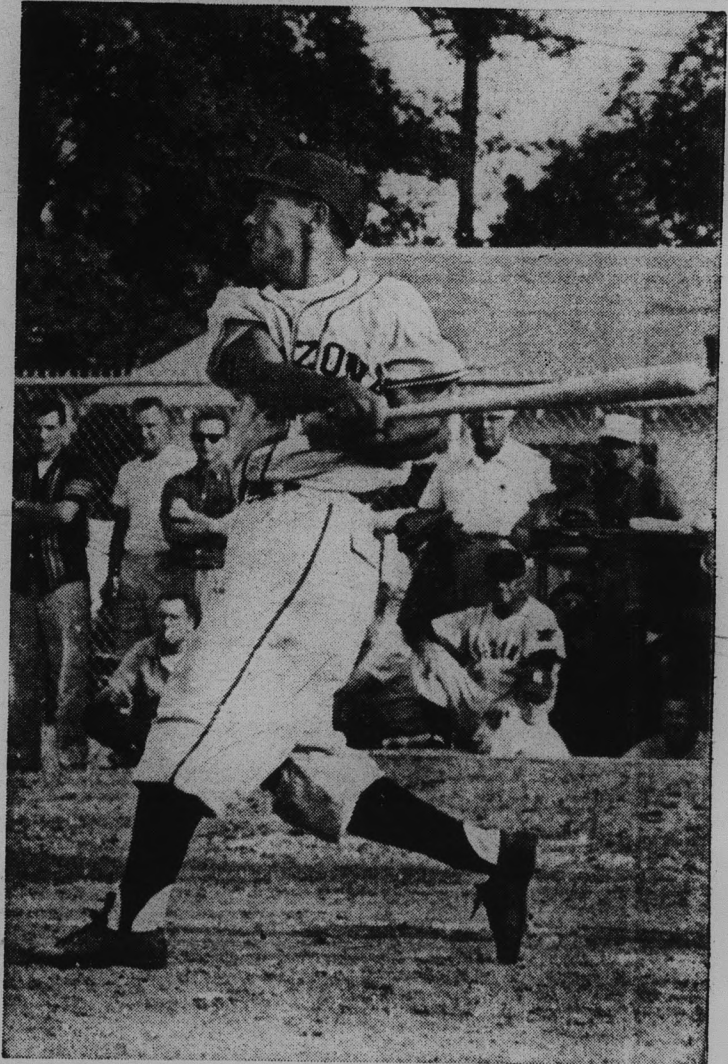
Sims, one of four graduating seniors on the team, (along with Ruiz, Joe Kostyk, and Bob Reid), had the lowest earned-run average of the club with a fine 1.63 for 17 games. Sims is the only pitcher in ASU baseball history to beat the University of Arizona twice, once last year and Saturday's 3-2 first game thriller. He also established a new school record this season by pitching 23 consecutive innings without allowing a run.

Regoli led the Sun Devil nine in runs scored with 40, in triples with 4, stolen bases with 16, and in total hits, with 62. He was second in doubles with 8, and second in walks with 34.

Ruiz, who led the team in hitting last season, finished second to Regoli in total hits,

and converted outfielder Dick Saunders led the home run derby with 4 apiece. Saunders was switched to the outfield the final 12 games of the year and hit four round-trippers in four consecutive days.

Jacobs and converted out-



**HIT LEADER . . .** John Regoli raps out one of 62 hits he made all year enroute to his club leading .356 batting mark. Regoli, a third baseman, led the team in batting, hits, runs, triples, stolen bases, and was second in doubles with 8 and second in walks with 34.

## FIG'S FILE

By VIC FIGARELLI

The time has come to bid "adieu" (that's French for goodbye) to this column and pass it on to one Bob Lairson, one-time scourge of the Phoenix Union sport pages and presently (or pastly) a member of the State Press sportswriting crew. There's no use being wishy-washy about all this, mainly because I cry at weddings, funerals and outgoing sports-editorships. And because tears make typewriter keys soggy and in my case, blurred vision cuts my words per minute down to four (from 11 w/m), there will be no platitudes, no past-year musings and no sentiments.

I can say that I enjoyed the past year (sniff) and must thank my writing squad (for what I don't know . . . They had to do it or flunk). They were a hardworking, hardy- ever reluctant group (although Jeff Kiehl was taken aback when I assigned him women's P. E. once).

I was asked not to make public the name of all my sportswriters. They came to me in a group and pleaded that they would have to go to school here next semester and the embarrassment would be too much to bear. (Ingrates).

Here they are, anyway: Dick Stehr, Lairson, Kiehl, Ron Contreras, Les Leiter, Paul Jackson, Deana Dorman, Ollis Brown, Gene Luptak and Bob Harness.

Fig Leaves . . . (they don't cover much): Been wanting to do that all year, but Frank Giannelli beat me to it years ago.

Casey Stengel must be spending too much time at the bank and not enough with his Yankees.

At the rate he's going, Lew Burdette will win 40 games this year.

At the rate he's going, Bob Friend will lost 40 games this year.

It's not that I like to write long, lengthy columns. It's just that we had so much space this issue 'cuz Hal Hubele, who handles SP advertising, said that more space would go to sports next year and he decided to experiment with today's issue. Sports lovers, rejoice! Other-department lovers, curse!

Well, with more space on the sports page, with an eight-team Border Conference and winning ASU teams in all major sports, it's about time I wrote etonshrdlu for now (Everybody else uses -30- . . . I gotta be different).



**BENNY RUIZ**

## 1959 ASU FOOTBALL SCHEDULE

OPPONENT	DATE	PLACE
West Texas State College	Sept. 19	Tempe
Utah State	Sept. 26	Tempe
Montana State	Oct. 3	Tempe
Hardin-Simmons	Oct. 10	Tempe
Colorado State	Oct. 17	Fort Collins
San Jose State	Oct. 24	San Jose
New Mexico State	Oct. 31	Tempe
Texas Western	Nov. 7	El Paso
Brigham Young	Nov. 14	Tempe
University of Arizona	Nov. 28	Tempe
University of Hawaii	Dec. 4	Honolulu

## FINAL ASU BASEBALL STATS

PLAYER-POS.	G	AB	R	H	2B	3B	HR	RBI	SB	AVG.
Slanoc, c	29	90	14	21	5	1	0	10	4	.233
Gorman, c	16	44	12	11	2	0	0	7	3	.250
Jacobs, 1b	46	174	33	54	10	2	4	36	4	.310
Neal, 2b	29	89	23	24	0	1	3	13	2	.269
Regoli, 3b	45	174	40	62	8	4	4	28	16	.356
Ruiz, ss	46	173	31	61	12	2	1	34	8	.352
Urban, of	39	143	31	40	4	1	3	22	9	.279
Saunders, of	18	45	14	17	2	1	4	13	0	.377
Littleton, of	22	77	19	27	3	2	1	9	3	.350
Cope, of	33	79	20	15	5	1	0	11	2	.189
Bryant, of	27	61	21	15	6	0	2	8	5	.245
Hanna, of	25	52	10	12	1	1	1	9	0	.230
Jones, of	19	39	11	6	2	0	0	5	1	.155
Carr, of	10	23	5	6	1	0	0	1	3	.252
Wilson, inf	22	54	7	13	0	1	0	9	1	.240
Reid, inf	13	27	5	2	0	1	0	8	0	.074
Mabry, of	7	25	4	8	1	1	0	3	2	.320
<b>PITCHERS</b>	<b>46</b>	<b>127</b>	<b>18</b>	<b>20</b>	<b>1</b>	<b>0</b>	<b>1</b>	<b>21</b>	<b>1</b>	<b>.156</b>
<b>TOTALS</b>	<b>46</b>	<b>1496</b>	<b>318</b>	<b>414</b>	<b>63</b>	<b>19</b>	<b>24</b>	<b>247</b>	<b>64</b>	<b>.276</b>

PITCHERS	G	IP	H	R	ER	ERA	SO	BB	W	L	PCT.
Sims	17	77 1/3	59	29	14	1.63	53	19	4	4	.500
Kostyk	18	76	74	52	38	4.50	38	41	6	4	.600
Kudron	15	70 1/3	66	39	27	3.45	61	44	4	3	.571
Barnson	15	51 1/3	58	44	23	4.03	47	24	6	4	.600
Hochevar	17	41	40	15	12	2.63	28	17	1	0	1.000
Martinez	9	30 1/3	31	22	17	5.37	27	19	1	2	.333
Lyddon	3	3	4	2	1	3.00	1	0	0	0	.000
Saunders	5	13	8	6	6	4.15	7	7	2	0	1.000
Tipton	4	8 1/3	7	3	2	2.16	7	10	0	1	.000
Denham	2	14 2/3	10	6	4	2.45	11	11	2	0	1.000
Bartholomew-1	7	7	7	4	3	3.85	5	3	1	0	1.000
<b>TOTALS</b>	<b>46</b>	<b>393</b>	<b>364</b>	<b>222</b>	<b>147</b>	<b>3.36</b>	<b>285</b>	<b>195</b>	<b>27</b>	<b>18</b>	<b>.600</b>

# Frosh Riflemen National Champs Over 35 Entries

ASU's Sun Devil Freshman Rifle Team outshot West Point, the U. S. Naval Academy and 33 other colleges and universities to win the National Intercollegiate Freshman Match, sponsored by the National Rifle Association.

ASU scored 1425 points. West Point placed second with 1417 and the U. S. Naval Academy was third with 1408 points. Each team competed under strict supervision at its school and sent the scores to a national committee for judging.

ASU's score tied the national record set by The Citadel in 1952.

## AT TUCSON

# Spikers Defend BC Crown

Arizona State University's hopes for a repeat of last year's Border Conference track and field championship dimmed Wednesday when coach Baldy Castillo announced that distance star Alex Henderson and high jumper Tom Whetstine were confined to bed with the flu.

The Sun Devils were favorites to retain their crown as BC track and field champs all season, but the upset by the UofA last week and the questions posed by the condition of Henderson and Whetstine will establish the Wildcats as co-favorites with the Demons.

Henderson is defending champ in the mile and two-

mile, while Whetstine is defending high-jump champion. Coach Baldy Castillo said yesterday, "Henderson and Whetstine must win three first places in the BC meet if the team is to repeat as conference champions."

The largest field of entries in BC history begin competition this morning at 10 in Tucson's Varsity Stadium. Finals begin at 7:30 tonight.

Ninety-seven athletes are entered from the league's six members, with more than half the entrants representing ASU and the UofA.

In the 1958 championships, Arizona State won 12 of the 15 events and tallied 33 points more than second place Arizona. The Sun Devils are minus only Leon Burton and Bobby Charles from last year's team. Burton won the 100-yd. dash, and Charles tied with Joe Rose for first place in the pole vault.

Sun Devil stars favored in their respective events are: Joe Rose, pole vault; Herb Montoya, javelin; Jesse Bradford, 100-yd. dash and the 220-yd., low hurdles; Mal Spence, 440; Dick Fischl high hurdles; Carol Lindroos, discus; Henderson, mile and two-mile if he can compete; Whetstine, high jump if he's able to, and the mile relay team of Mal and Mel Spence, Jim McGowan, and either Jim Addington, Tom Pettit or George Hershey.

If Whetstine is unable to perform, Castillo will pin his hopes on Jerry Robertson, a senior who has cleared 6-5.



MAPPING STRATEGY . . . Track mentor Baldy Castillo (second from right) tells three of his top pointmakers what to expect today at the Border Conference championships in Tucson. Left to right, Carol Lindroos, Jerry Robertson and Herb Montoya take in the details. The Devils, with Alex Henderson and Tom Whetstine on the doubtful list, will have to come up with peak performances if they are to retain their BC track crown.



MORE TRACK STRENGTH . . . Adding to the Sun Devil power array is 220 and mile relay man George Hershey. Hershey, who may be slowed somewhat with a pulled muscle, has been a steady performer on the ASU track squad all year

We still have A few Mother's Day Cards left . . .

# COLLEGE BOOKSTORE

## KOOL CROSSWORD

### No. 25

#### ACROSS

- Audio approval
- Sept. follower
- Performs
- Je t'
- Much-used article
- It's in the middle of everything
- With Kools, your throat feels
- Watery surroundings
- Squarer
- Assists
- Long, long
- Kind of ribs or minister
- God (Latin)
- Burn
- 2nd-century ascetic, in essence
- Split Yo-yo
- He looked homeward, angel
- Pat is confused
- A hot time
- Kools are
- Snow
- Kools give you a fresher taste
- Transportation luxury
- Go under, dressed in goggles
- Cheese that's made backwards
- River literally in England
- Related
- What la vie is en
- Mumbly gal
- Dissolve

#### DOWN

- Waterfall
- China in France
- Not quite glamorous, but oh, boy!
- He'd be flowery with a Y
- Alter ego (2 words)
- A word for Brigitte
- Wallpaper Williams
- If I see you, will you?
- Man, those Kools are!
- Part from the back
- They may be love for Olmedo
- Filter part of a Kool
- The good guy
- Old Boyer movie classic
- What a Singer does
- He chaperoned some wild couples
- She loves me, she loves me not
- Kind of math
- Madrid's great museum, cha-cha
- State of exaggeration
- Hallow
- Sprint star Dave
- Number-one boy
- Defense missile
- It's unnoted by 3 monkeys
- Flat rate
- Juicy dope

1	2	3	4	5	6	7	8	9	10	11	
12				13			14				
15			16				17				
18							19				
20			21			22					
23		24		25							
26			27			28					
			29			30					
31	32	33		34				35			
36			37			38		39	40	41	42
43						44					
45						46				47	
48						49				50	

"ARE YOU KOOL ENOUGH TO KRACK THIS?"

Switch from Hots to Snow Fresh Filter KOOL

R	O	S	E	P	E	G	M	E	L	T	
E	D	A	M	A	L	N	A	K	I	N	
T	A	X	I	S	K	I	N	D	I	V	E
F	R	E	S	H	C	L	E	A	N	E	R
A	P	T	A	F	I	R	E				
W	O	L	F	E							
E	S	S	E	N	C	E					
D	E	S	S	E	A	R					
A	G	O	P	R	I	M	E				
C	O	R	N	I	E	R	H	E	L	P	S
S	M	O	O	T	H	E	D				
A	I	M	E	T	H	E	C	O	R	E	
C	L	A	P	O	C	T	A	C	T	S	

KOOL ANSWER

### STADIUM COFFEE SHOP & Delicatessen

Good Things to Eat and Drink Television

"Across the Street From East Stadium" Open 7 days week

# TIRES

STUDENT DISCOUNTS — BUDGET TERMS

## COHILL & LOW TIRE CO.

4333 EAST WASHINGTON ST. PHOENIX, ARIZONA BR. 5-6288



- As cool and clean as a breath of fresh air.
- Finest leaf tobacco... mild refreshing menthol — and the world's most thoroughly tested filter!
- With every puff your mouth feels clean, your throat refreshed!

### America's Most Refreshing Cigarette

... ALSO REGULAR SIZE KOOL WITHOUT FILTER!  
©1959, Brown & Williamson Tobacco Corp.

SWITCH FROM HOTS TO Snow Fresh FILTER KOOL

MILD MENTHOL KING-SIZE Cigarettes

# McMahon High Scorer

Sun Devil gymnasts Chuck McMahon and Harvey Plant finished first and second, respectively, in the final tabulations of individual point standings for this year's gymnastics squad.

McMahon, who broke a bone in his foot competing in the AAU meet two weeks ago, finished with 138½ points, while Plant was a distant second with 79 points.

Ivan Jennings edged Dave Bonham by half a point for the third spot, 35½ to 35.

Dick LeBeau, out with a

shoulder injury for most of the season, scored 25 total points. LeBeau was second to McMahon last year for individual honors.

Charlie McCarty with three points, Don Manville and Sid Munger, with two points each, round out the scoring. These three men saw only limited action this year.

The ASU gymnasts whipped the University of Arizona three times during the season, and suffered their only loss to the Air Force Academy gym team, 81-63.



**DEFENDING CHAMPS . . .** Arizona State's Border Conference golf champions for the past two years are represented in Tucson today by this group of ASU divot diggers. Left to right, Joe Kallof, Phil Brignall, Joe Stowicki, Jim McClelland, Rex Wilson, Don Boaz, Duff Lawrence and Dave Klein. The Devil linksters expected their toughest opposition to come from Arizona and Hardin-Simmons, the runnerup teams last year.

# Golfers Go For Third Title

The ASU golf team, led by Duff Lawrence and Rex Wilson, faces stiff opposition from the Hardin-Simmons Cowboys and Arizona's Wildcats' in the BC championship meet at Tucson.

The H-S Cowboys won the Abilene Intercollegiate golf meet last Saturday. The H-SU linksmen shattered the tournament record with a two-under-par performance in the 72-hole meet.

The University of Arizona will be counting heavily on three freshmen, Mike Rombold, Tim Sexson and Dave Leon, to upset the Devils on the UA

home links. The Devils dropped one meet to the UofA there and won two meets here. In the last win, the Devils finished three strokes ahead of the

Wildcats.

Other teams competing in the BC golf championships are Texas Western, New Mexico State and West Texas.



With track remaining as the only intramural sport on the current year's program, Alpha Tau Omega, Phi Sigma Kappa,

Delta Sigma Phi, Sigma Chi Sigma and Sigma Nu are hastily preparing for competition on the Goodwin Stadium field Monday. These five teams are vying for top intramurals honors.

ATO won intramural wrestling last week, and Delta Sigma Phi placed first in swimming Wednesday to enhance their point totals.

Wrestling champs were: 127 lbs. — Iverson, ATO; 137 — Thompson, Phi Epsilon Kappa; 147 — Art Hussey, Sigma Chi Sigma; 157 — Carlson, Delta Sigma Phi; 167 — Davis, ATO; 177 — Digley, ATO; 187 — Faust, Best A; heavy-weight — Clancy Osborne, Phi Theta.

First-place finishers in swimming were: diving-Drake, Delta Sigma Phi; 200 yd., medley relay-Delta Sigma Phi; 200-yd. freestyle relay-Delta Sigma Phi; 50 yd. freestyle-three-way tie between Don Bigler, Hayden Hall; Spike Condit, Sigma Chi Sigma; and Mike Tiffany, Delta Sigma Phi; 50 yd. breast-stroke-Beardslee, Irish Hall; 50 yd. backstroke — Collins, Delta Sigma Phi; 50 yd. butterfly — Southern, ATO.

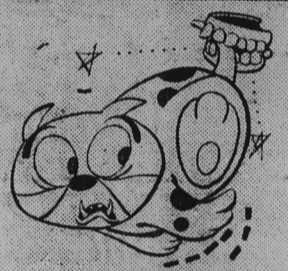
# WHO SAID IT FIRST?

A column of incidental intelligence  
by Jockey brand



**"GENTLEMAN AND SCHOLAR"**  
High praise, indeed, for any man! But did you know that the description comes from Robert Burns—who said it first about a dog? Here's the quote:  
"His locked, lettered, brow  
brass collar  
Showed him the gentleman  
and scholar."  
You'll find the couplet in Burns' "The Twa Dogs."

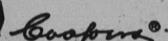
**"THE MORNING AFTER"**  
This horrible time was first immortalized by George Ade in "The Sultan of Sulu." Here's the way he put it:  
"But, R-E-M-O-R-S-E!  
The water-wagon is the place for me;  
It is no time for mirth and laughter,  
The cold, gray dawn of the morning after!"



**"MAN BITES DOG"**  
That's everybody's definition of news, and we're all indebted to John B. Bogart, city editor of the old New York Sun (1873-90) who first said:  
"When a dog bites a man, that is not news, because it happens so often. But if a man bites a dog, that is news!"

## Jockey Underwear

What's true about expressions is also true about styles. Somebody always got there first. Take Jockey brand underwear. Jockey brand is made only by Coopers. Coopers invented Jockey underwear—and no copy can compare with Jockey brand for quality, comfort and fit. For underwear that feels better because it fits better, insist on Jockey brand—the original comfort-tailored underwear. You'll find it at better stores everywhere. Recognize it by the Jockey trade mark.

fashioned by the house of 



Your JOCKEY Dealer  
In Tempe . . .

# Joe Sellek

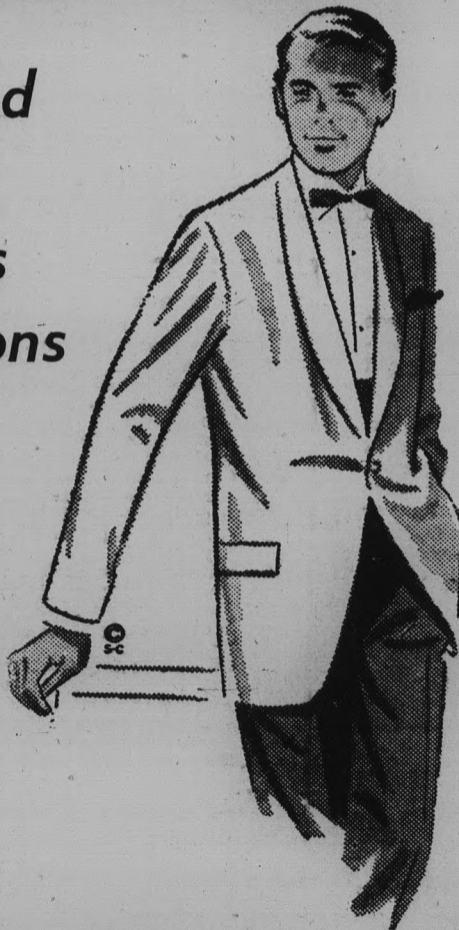
"The Place to go for Brands You Know"  
7th and Mill Pho. WO 7-4163

the trim, masculine look for  
**S**pring . . .

... And  
For  
Dress  
Occasions

After Six  
Jacket  
and  
Dress  
Trousers

\$39.50



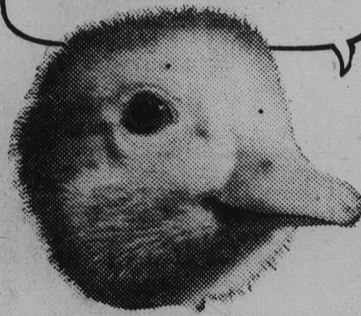
We Give S&H Green Stamps

# Lou's Campus Shop

FINE CLOTHES FOR MEN

603 Mill Avenue Phone WO 7-2960  
OPEN THURSDAY NIGHT TILL 9 P. M.

Get WILDROOT  
CREAM-OIL Charlie!



J. PAUL SHEEDY,\* hair expert, says  
"Quack down on that messy hair with Wildroot Cream-Oil."

\*of 151 So. Harris Hill Rd., Williamsville, N. Y.

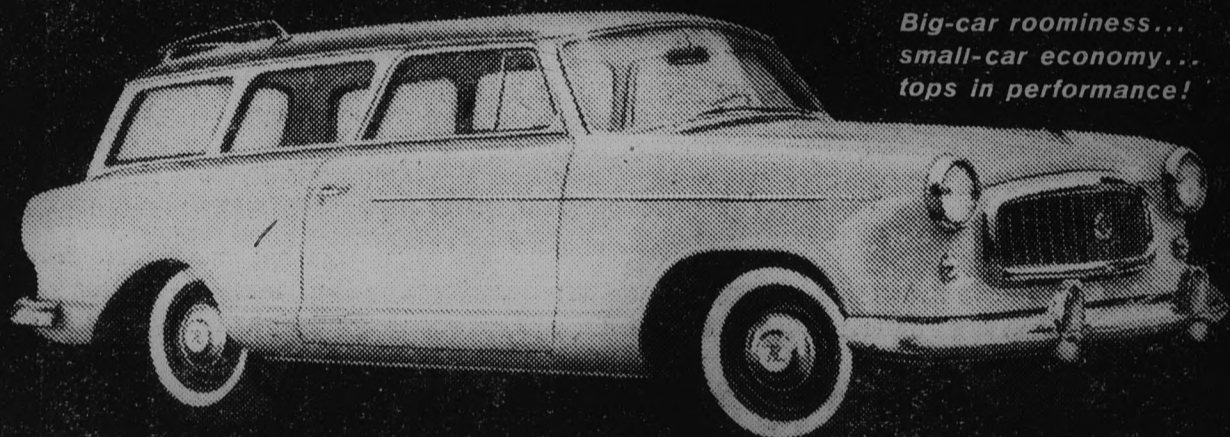
Just a little bit  
of Wildroot  
and...WOW!



# COLLEGE PUZZLE CONTEST

## FOR STUDENTS AND FACULTY MEMBERS

### 2 GRAND PRIZES



Rambler "American"!  
Big-car roominess...  
small-car economy...  
tops in performance!

### WIN A RAMBLER STATION WAGON!

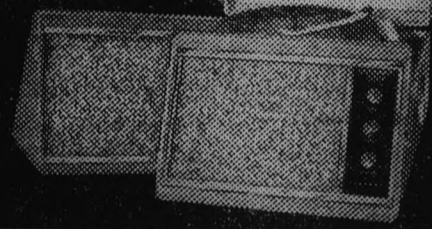
**LIGHT UP AND LIVE IT UP!** 3 great cigarettes offer you 627 chances to win! So pick your pack—save the six wrappers—and get going! It's crossword puzzle fun and real smoking pleasure all the way!

**ENTER OFTEN—HAVE FUN—AND WIN!** But think carefully! This puzzle is not as easy as it looks. At first the DOWN and ACROSS clues may appear simple. There may appear to be more than one "right" answer. For example, the clue might read: "Many a coed will be given her best date's P-N." Either "I" (PIN) or "E" (PEN) would seem to fit. But only one answer is apt and logical as decided by the judging staff, and therefore correct. Read the rules carefully. ENTER AS OFTEN AS YOU WISH. Good luck!

### 25 SECOND PRIZES:

COLUMBIA STEREOGRAPHIC HI-FI SETS

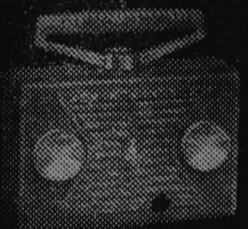
"Big Stereo" styled...  
engineered for the most exacting taste.



### 100 THIRD PRIZES:

EMERSON TRANSISTOR RADIOS

Packed with power...  
plays 1500 hrs. on 1 set of batteries



### 500 FOURTH PRIZES:

Cartons of America's finest cigarettes

#### RULES—PLEASE READ CAREFULLY

- The College Puzzle Contest is open to college students and college faculty members except employees and their immediate families of Liggett & Myers and its advertising agencies.
- Fill in all missing letters . . . print clearly. Use of obsolete, archaic, variant or foreign words prohibited. After you have completed the puzzle, send it along with six empty package wrappers of the same brand from L&M, Chesterfield or Oasis cigarettes (or one reasonable hand-drawn facsimile of a complete package wrapper of any one of the three brands) to: Liggett & Myers, P. O. Box 271, New York 46, N. Y. Enter as often as you wish, but be sure to enclose six package wrappers (or a facsimile) with each entry. Illegible entries will not be considered.
- Entries must be postmarked by midnight, Friday, May 29, 1959 and received by midnight, Friday, June 5, 1959.
- Entries will be judged by the Bruce-Richards Corporation, an independent judging organization, on the basis of logic and aptness of thought of solutions. In the event of ties, contestants will be required to complete in 25 words or less the following statement: "My favorite cigarette is (Chesterfield) (L&M) or (Oasis) because . . .". Entries will be judged on originality, aptness of thought and interest by the Bruce-Richards Corporation. Duplicate prizes will be awarded in event of final ties. Illegible entries will not be considered. By entering all entrants agree that the decision of the judges shall be final and binding.
- Solutions must be the original work of the contestants submitting them. All entries become the property of Liggett & Myers and none will be returned.
- Winners will be notified by mail as soon as possible after completion of the contest.
- This contest is subject to all Federal, State and local laws and regulations.

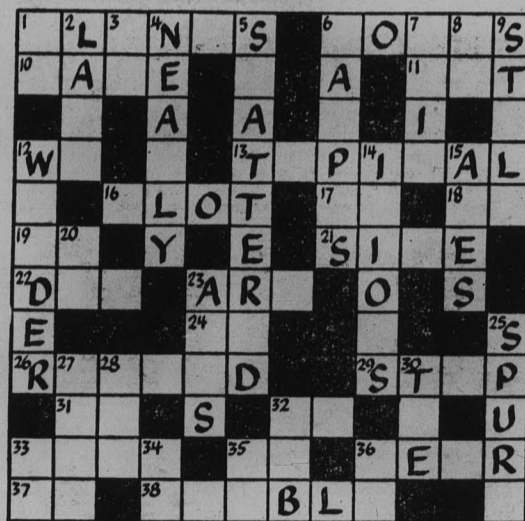
#### HURRY! ENTER NOW! CONTEST CLOSSES MAY 29, 1959

##### CLUES ACROSS:

- These may indicate that a nation is prepared to wage war in the air.
- Some college students.
- When at . . . . . Light up an Oasis.
- Sinking ship deserter.
- Plural pronoun.
- One expects . . . . . discussions in a sociology class.
- A student's careless . . . . . might annoy a short-story instructor.
- Initials of Uruguay and Denmark.
- Germanium (Chem.)
- Nova Scotia (Abbr.)
- It probably would count when you pick a horse to bet on.
- Sometimes a girl on a date must . . . . . into her pocketbook to help pay the tab.
- The muscle-builder's . . . . . may fascinate a poorly developed man.
- Chemical Engineer (Abbr.)
- Campers will probably be . . . . . by a forest fire.
- When starting a trip, tourists usually look forward to the first . . . . .
- At home.
- Literate in Arts (Abbr.)
- Familiar for faculty member.
- Associate in Arts (Abbr.)
- One could appear quite harmless at times.
- Reverse the first part of "L&M".
- What will soon appear in a bombed-out city.

##### CLUES DOWN:

- The beginning and end of pleasure.
- A rural . . . . . can be inviting to a vacationist.
- Second and third letters of OASIS.
- When one is . . . . . packed, it could be exasperating to remember a few articles that should be included.
- It would pay to be careful when glass is . . . . .
- Grounds to relax on with a mild CHESTERFIELD.
- Author . . . . . Ambler.
- District Attorney (Abbr.)
- A . . . . . from Paris should please the average woman.
- An inveterate traveler will . . . . . about distant lands.
- . . . . . are hard to study.
- Stone, Bronze and Iron . . . . .
- How Mexicans say, "Yes".
- All L&M cigarettes are " . . . . . high" in smoking pleasure.
- May be a decisive factor in winning a horse race.
- Initials of Oglethorpe, Iona, Rutgers and Emerson.
- United Nations Organization (Abbr.)
- Golf mound.
- Colloquial for place where the finest tobaccos are tested for L&M.
- Poet Laureate (Abbr.)
- Filter ends.
- What Abner might be called.
- Bachelor of Education degree.



#### PRINT CLEARLY! ENTER AS OFTEN AS YOU WISH

Mail to Liggett & Myers, P. O. Box 271, New York 46, New York. Be sure to attach six empty package wrappers of the same brand (or facsimile) from Chesterfield, L&M, or Oasis cigarettes.

Name \_\_\_\_\_

Address \_\_\_\_\_

College \_\_\_\_\_

This entry must be postmarked before midnight, May 29, 1959, and received at P. O. Box 271, New York 46, New York, by midnight, June 5, 1959.