

Assembly To Open SEW Monday

Spiritual Exploration Week held in Danforth Chapel at ASU, March 1-6, includes vesper services, workshops and five assembly programs.

Moderators of the workshops and chairmen of the assemblies are ASU faculty members and student body officers. The activities are sponsored by the Student Religious Council.

Dr. George Burroughs, pastor of the First Presbyterian church, El Paso, will speak at the opening assembly Monday at 10:40 a.m. Presiding will be Marjann Fletcher, chairman of SEW.

"Faith — God's Gift or Man's Innovation," will be the subject of Monday afternoon's 2:40 workshop, led by Dr. Robert N. Schaper, pastor of Bethany Church of Sierra Madre, Calif., and moderated by Vernon Dolphin, assistant professor of Psychology and Philosophy. Daily afternoon non-denominational vesper services will be

held in Danforth Chapel at 4:30 p.m.

Activities continue Tuesday afternoon at 12:40 when Rabbi Alfred Wolf, associate rabbi at Wilshire Boulevard Temple, L.

A., will lead an assembly entitled "Jewish Contributions to Modern Education."

"Science, God and a Living Creed" will be discussed at the 2:40 p.m. workshop by Dr.

Daniel H. Ludlow, associate professor of Religion at Brigham Young University.

The Rev. Richard Butler, O. P., pastor of St. Thomas Aquinas University Church, Albu-

querque, will be featured at a 6:00 p.m. Tuesday workshop entitled "Crossing Religious Barriers in Marriage." E. L. V. Richardson will moderate.

Wednesday's program includes a 9:40 a.m. assembly, presided over by Rose Bourne, AWS president, and featuring Dr. Ludlow speaking on "Decisions Determine Destinies." That afternoon a 2:40 workshop, led by Dr. Burroughs and moderated by the Rev. Charles Crouch, religious co-ordinator, will be on "Return to Religion: Real or Illusionary?" "How the Jews View Marriage" will be discussed at 6:00 p.m. by Rabbi Wolf and moderated by Dr. Herbert M. Jelley, assistant professor of Office Administration.

Thursday's 9:40 a.m. assembly will be entitled "Intellectual Growth and Its Effect Upon Faith." Dr. Schaper will speak, and Jay Dee Conrad, SRC president, will preside. Afternoon programs start with a 2:40 workshop featuring Father Butler speaking on "Reason and Revelation," conclude with Dr. Schaper's 6:00 p.m. workshop talk on "Marital Conflict — Romantic Versus Practical Views."

Friday's program begins with an 11:40 a.m. assembly on "Current Re-Emphasis of Religious Values" by Father Butler, with Bill Sullivan, AMS president, presiding.

The week's activities will conclude with the afternoon workshop, "The Intellectual Skeptic," led by Rabbi Wolf.



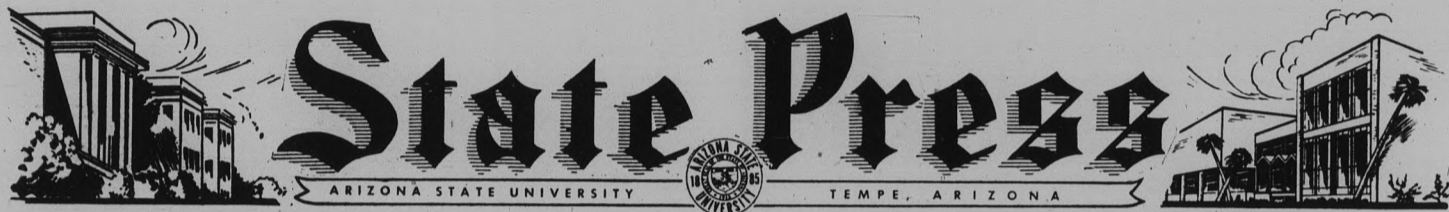
FATHER BUTLER



REV. BURROUGHS



RABBI WOLF



ARIZONA'S OLDEST COLLEGIATE NEWSPAPER, ESTABLISHED 1903

Vol. 37

Friday, February 27, 1959

No. 36

Education Board Meet Arranged

Nominees for the new Student Education board are preparing for the first meeting, arranged by Wayne Zimmerman and Dr. Catherine Nichols, associate dean of students.

Zimmerman is the temporary student chairman of the Student Personnel committee, and Dean Nichols is the group's advisor.

Two major items to be presented before the temporary committee at the first meeting are election of a chairman and two representatives to serve on the General Student Education board and selection of nominees to fill vacancies left by persons unable to serve.

Other members of the Student Education board are: Steve

Anthony, temporary chairman of the Business Affairs committee; Mr. Gilbert Cady, advisor; Lolly Vucichevich, temporary chairman of the Academic committee, and Dr. H. D. Richardson, advisor.

Nominees for the Student Personnel sub-committee are: freshmen Pete Tyson and Jane Wolcott; sophomores, Dick Tarrañ and Mike Purtill; juniors, JoAnne Smoot and Kay Palmer; seniors, Sharon Neff and Sharon Mickle; liberal arts, Mary Trail; applied arts, Charlie Ditsch; business, Wayne Zimmerman, and education, Kathleen Goodwin.

Members of the Business Affairs sub-committee are: freshmen, Ross Fish, Steve Anthony; sophomores, Jim Cordes, Bill Simon; juniors, John Singleton, Ernest Zumer; seniors, Bob Smithers, Paul Carlson; liberal arts, Phil Shafer; applied arts, Dolores Jimenez; business, Bob Garcia; education, Jaque Adler.

The Academic sub-committee nominees are: freshmen, Judy Lanman, John Campbell; sophomores, Nancy Suess, J. Mike Price; juniors, Rene Lariva, Robert Bates; seniors, Bob J. Fisher, Carol Cotton; liberal arts, Margaret Jo Williams; applied arts, Bryce Lamb; education, Sandra Mark; business, Lolly Vucichevich.

Board Plans Talent Auditions

An ASU student may participate in the Intercollegiate Talent Show at Utah State University March 27.

Auditions, sponsored by the Cultural Affairs board, will be March 9 and 10 in the MU ballroom from 2:30 to 4:30 p.m.

The student selected to represent ASU will receive an all-expenses-paid trip to Logan, Utah, to compete with representatives from other colleges and universities.

Students wishing to audition should sign up at the MU information desk by March 6.



CHECK OUT . . . James Way, new manager of the ASU Games Room in the basement of the Memorial Union, checks out ping-pong set to (1) Judy Smith and Morraine Hodgson.

'Limerick Laughter' Contest Is Open To Students, Faculty

Five-dollar bills will reward the efforts of winners in a limerick contest sponsored by a State Press advertiser, Liggett & Myers Tobacco Co. this issue.

Called the "Limerick Laughter" contest, the competition will be judged locally, and a five-dollar bill will be awarded to each of the top three en-

trants. ASU students and faculty are eligible. They may write limericks on any subject. Limit is three entries per person.

Rules for the contest appear in a Liggett & Myers ad in this issue only. Competition will close March 10.

The limerick contest is being sponsored by the ASU alumni magazine, "The Arizona Statesman," in which the tobacco company advertises.

"Entrants have a good chance of winning," said Statesman Editor Don Dotts, "since the contest appears in only one ad and is localized to three winners at ASU."

Consolation prizes will be awarded to runners-up.

Exemption Program Successful

Top freshman English students are benefiting from a new exemption program that is part of ASU's policy of tightening standards and rewarding competence.

The program, initiated in September of 1957, is headed by Dr. Leslie Bigelow, associate professor of English. It provides for exemptions from EN 101 or 102 for deserving students.

Students with four years of high school English were eligible. The students wrote a 300-word essay in class, discussing and analyzing a famous quotation or epigram. Final decision on the papers was given by a five-member freshman English teacher committee.

Approximately 42 students were selected for exemption. They had the option of transferring to EN 102, staying in 101, or dropping 101 for another course. "The results were very satisfactory," stated Dr. Bigelow. Most chose to transfer to EN 102, and their average grade was A.

The department expects to give an accelerated 102 course for superior students next year.

While no quota was established for the program, Dr. Bigelow said it was made highly restrictive to insure the success of the plan. He also noted that only an exemption, not academic credit, is offered.

The new EN 102 exemption (Continued on Page 2)

Delta Sigma Pi Grades Average 3.1 1st Semester

An average grade index of 3.17 was earned first semester by members of Delta Sigma Pi, international business and professional fraternity at ASU.

Dr. Glenn D. Overman, dean of the College of Business Administration, said, "Considering the many professional activities in which the men are engaged and the size of the group, this record of scholastic achievement is remarkable."

The ASU chapter, Gamma Omega, has 35 members.

Group activities included managing the College of Business Administration reading room, monthly meetings featuring guest speakers, periodic tours of local business concerns, and weekly breakfast meetings.

ASU Division Of Agriculture Will Host Eleventh Annual FFA Field Day March 7

The ASU Division of Agriculture will host the 11th annual FFA Field Day at the ASU training farm March 7. Over 600 agriculture students are expected to register at 8 a.m. Saturday for the day-long activities. Competition in various areas will begin about 9 a.m. In ad-

dition to judging events, contestants will demonstrate their knowledge and proficiency in agricultural mechanics and other phases of farm life.

A feature of the competition is the 'agathon,' a contest in which one entry from each FFA chapter participates in all events.

At noon, the ASU agriculture department, with the assistance of Alpha Gamma Rho, agriculture fraternity, will host the annual FFA barbecue.

Awards, donated by the livestock loan division of the First National Bank of Arizona, will be presented at 3:30 p.m.

Dr. Jelinek Attends Meet

Dr. James J. Jelinek, professor of education at ASU, will be in Cincinnati next week to participate in the 14th annual conference of the Association for Supervision and Curriculum Development.

At an open meeting of the National Commission on the Education of Adolescents, scheduled during the conference, Dr. Jelinek will discuss "The Professional Education of High

School Teachers in American Democracy."

As a member of the ASCD board of directors, Dr. Jelinek will take an active part in the development of the association's Cooperative Action Program for Curriculum Improvement, a nation-wide program of research studies in provision for individual differences, organization of balanced curricula, and evaluation of diverse learnings.



MODERN DANCE WINNERS . . . Sue Philpot and Sonya Campbell Sowers, both of Chi Omega, are all smiles after hearing that their sorority won first place in the modern dance division of WAA's dance intramurals Wednesday night.

IFT Scholarship Available Here

Graduating seniors interested in applying for an American Institute of Foreign Trade scholarship should go to the scholarship office in the Administration building.

Application forms and further information are available there.

Applicants must be graduates of ASU and must be interested in living and serving abroad.

Free bridge lessons and supervised play are offered tonight, beginning at 6:30, in the MU lower lounge.

Duplicate play, costing 50 cents per person, starts at 7:45.

Mrs. Louise Maltby is instructor for the free lessons.

Where Your Flower Needs Become A Creation . . .

Bill & Bob WH 6-1333

the Flower Shop

48½ W. 5th Ave. — Scottsdale

- ★ Corsages
- ★ Arrangements
- ★ Complete Weddings

3 WAYS TO WIN \$5

from

LIMERICK LAUGHTER

A New Contest Sponsored and Judged by The Statesman, ASU Alumni Magazine, on Behalf of its Back Cover Advertiser

Put a little sunshine in your life. Put some cash in your pocket. Enter the "Limerick Laughter" contest. It's easy. It's fun! You have three chances to win. Here's how the contest works:

The Statesman will award \$5 for the best limerick submitted with an empty L&M cigarette pack. Another \$5 will be paid for the best limerick submitted with an empty Chesterfield pack, and a third \$5 for the best limerick submitted with an empty Oasis pack. Ten honorary mention limerick winners each month will receive Happy Talk game, the new hilarious word game for adults.

Write your limerick on any subject you choose. Enter as often as you wish, but be sure to accompany each limerick with an empty pack of L&M, Chesterfield or Oasis cigarettes.

This contest is open to all ASU students and faculty members. Entries must be mailed or delivered to the Alumni Office, ASU, and limericks for the contest must be received by March 10.

Enter now. The samples below show you how easy it is to write a winning limerick.

*In Tempe the coming of spring
Is not marked by the bird on the wing
But by each Lochinvar
Setting forth in his car
Intent on a gay, sunny fling.*

*An astronomy student named Lars
Discovered while studying Mars
With an L&M smoke
He could always evoke
A great deal more taste and low tars.*



English Tests

(Continued on Page 1)

plan introduced this semester is designed to discover superior students after the first semester's work.

Instructors chose their students for this exemption solely on the basis of a A grade for the first semester. After being advised of their choice during the first week of the semester, the 26 selected students chose between remaining in 102 or taking an advanced English course. This semester most enrolled in EN 103.

Future plans include choosing qualified English students six weeks before the end of the first semester. They would complete their English requirements by transferring to a special six-week EN 102, course.

Candidates desiring to use pictures taken at the ASU Photo Lab for campaigning in the forthcoming Spring elections must have pictures taken by March 6.

Appointments for photographs may be made by phoning campus extension 391 between 8 a.m. and 4:30 p.m.

LAIRD
Pharmacy
Prescription
Druggists

501 Mill Ave. WO 7-2922
26 E. 8th St. WO 7-4063

Chi Omega, Alpha Delta Pi Top Winners In Dance Meet

Wednesday night, for the third consecutive year, Chi Omega sorority took two first places in WAA dance intramurals. Alpha Delta Pi sorority won in the third category.

Performing "Tropical Illusion" as their modern dance and "Top Hats in Review" as their tap dance, Chi Omega topped Alpha Delta Pi in both

divisions. McClintock "B" hall placed third in tap dance, while Sigma Sigma Sigma sorority won third in modern.

Following, ADPi's Swiss folk dance, "A Little Country Road," Chi Omega, and Phrateres placed second and third, respectively.

Choreographers of the winning modern and tap dances were Sonya Campbell Sowers

and Carolyn Stabler, Chi O. Connie Cabbage and Martha Peck of ADPi choreographed their winning folk dance.

Pat Dotson, WAA member, was chairman of Dance Night. Sue Ward, West Hall councilor, introduced the acts. Other organizations entered in the contest were McClintock "A" Hall, North Hall, Alpha Sigma Alpha sorority and Wilson Hall.

AS Senators Relate Views Of Past Year

With the coming student government elections, several student senators made observations on the past year.

Velva Richey, Associated Women Students, said that many senators entered student government for popularity reasons and that this "deadwood" contributed little to the work and legislation of the Senate. Miss Richey added that the orientation of parliamentary procedure should be intensified to acquaint new senators with the formalities and workings of the Senate so they can make positive contributions to their school and student body.

Larry Carrigan, Freshman Class, feels that there should be more communication between the senators and the student body.

"Most students aren't aware that if they want something changed on campus, they can tell their student senators, who will try to initiate the necessary legislation," he said.

George Beasley, Senior Class, now ending this second year in the Senate, offered advice to new senators.

"Familiarize yourself with the statutes of parliamentary procedure, and then stand up and voice your convictions if you want to accomplish anything."

Student government office petitions are available in MU 202.

Candidates for office must return petitions by 4 p.m., March 11.

March 12, all candidates will meet in MU ballroom for information on campaign rules and other election topics.

ASASU office petitions require 160 names. AMS, AWS and senatorial positions require 100 names.

Jam's
FOOT LONG HOT DOG
Fr. Fries - Pickle ... 45c

Bunch's
609 Mill • WO 7-3221
"We Teach Watches to Tell the Truth"
REASONABLE PRICES



WE WON!!!... shout Alpha Delta Pi sorority members and dance participants Martha Peck, Lois DuBois and Connie Cabbage. Alpha Delta Pi won top honors in folk dance in the WAA dance intramurals Wednesday night.

This Ad Worth \$150
Towards Purchase of
"MARVELOUS MILLER MOODS"
Glenn Miller Orchestra
"BING WITH A BEAT"
Crosby & Scobey
"DOOR OF DREAMS"
Joe Reisman
"29 STRINGS"
Armengol & Orchestra
AND MANY OTHERS
Reg. 3.98 Albums
Only **\$2.49** with this Coupon
HILL'S RECORDS
Tempe Shopping Center

Chemistry Students Can Win Cash In Oil Firm's Contest

Prizes totaling \$1500 will be awarded to students in chemistry, biochemistry and chemical

engineering in the 1959 contest in colloid and surface chemistry for college undergraduates.

Contestants may enter either a report on a research project conducted by themselves or an essay on "The contribution of Irving Langmuir to colloid and surface chemistry." Langmuir, American Nobel Prize winner in chemistry, died about two years ago.

Writers of the first-place essay and report will receive \$500 each, second-place winners \$200 each, and honorable mention will be worth \$50.

Entry blanks may be obtained from Professor K. J. Mysels, Chemistry Department, University of Southern California, Los Angeles 7, Calif. Contest deadline is July 1.

The contest is sponsored by the Continental Oil Company of Houston, Texas and Ponca City, Okla.

Jazz, Date Nite Set At Clancy's Tonight, 7:30-10

There'll be "Jazz at Clancy's" tonight from 7:30 to 10 in the Memorial Union basement. The ASU Social board is sponsoring the jam session, along with free refreshments.

Also, tonight is Date Nite in the games room. Couples may use the ping-pong or pool tables free.

Sunday from 8:30 to 10:30 p.m. the Social board presents another "At Home with Maverick" in the MU upper lounge. Free refreshments will be served.

Drinks On House At Coffee Hour

The drinks are on the house at the student-faculty coffee hour every Tuesday morning from 9 to 10:30.

Coffee and fruit juice are served free to both students and faculty for the purpose of furthering relations between the two groups, said Mary Boots Watts, chairman of the sponsoring Student-Faculty committee.

Committee members are Juanita Dees, Jo Marshall, Frank Schaumburg, Sandy

Smith, Jessica Thomas, Carol Nelson, Fran Breslin, Mrs. Marjorie Henshaw, Dr. Duane Manning and Mr. Elvin Taysom. Mrs. Ellen Bell is faculty advisor.

ASU girls interested in open rush, now being conducted by the 11 campus sororities, are urged to sign up in Mrs. Ruth Kilbourne's office, first floor, Administration Building.



Ice age

Lucky us... today is the modern ice age. Lots and lots of it in refrigerators ready to ice up the Coke. And what could be more delicious than frosty Coca-Cola... the real refreshment. With its cold crisp taste and lively lift it's always Coke for The Pause That Refreshes!



BE REALLY REFRESHED...HAVE A COKE!

Bottled under authority of The Coca-Cola Company by

Phoenix Coca Cola Bottling Co.
1301 South Central, Phoenix

State Press

EDITOR-IN-CHIEF _____ ROCHELLE MACKEY
 MANAGING EDITORS _____ PETEY OLMSTED AND ABE GUTIERREZ
 ORGANIZATIONS EDITOR _____ KATHY BURKE
 SPORTS EDITOR _____ VIC FIGARELLI
 COPY EDITOR _____ KAY KELM
 ASSIGNMENT EDITOR _____ JULIE PATTON
 FEATURE EDITOR _____ JOANNE SMOOT
 ASSOCIATE EDITORS _____ SHARON CORN, BOB LAIRSON AND JEFF KIEHL
 CONTRIBUTING EDITORS _____ GORDON PETERSON, DON CARLSON, JACK ONG, LEE BRUNO, MOHAMMED KHAN AND RITA PLOTKIN

The STATE PRESS is distributed by Rick Bedolla. Official campus newspaper of Arizona State University. Published each Wednesday and Friday throughout the school year, excepting holidays, and entered as second class matter in the Post Office at Tempe, Arizona, under the Acts of March 3, 1879, and August 24, 1912. Subscription price, \$3.00 per school year.
 Member: Arizona Newspapers Association, Associated Collegiate Press, and National Advertising Service, Inc.



EDITORIALLY SPEAKING —

Faith And Intellect

Close at hand is Spiritual Exploration Week, held annually on the ASU campus and sponsored by the Student Religious Council.

Using the theme "Faith and Intellect," the week's agenda centers around a number of vesper services, workshops and assemblies open to all ASU students and faculty.

Rather than a drive to bring sinners into the fold, it has been planned to provide an opportunity for the individual to explore the facets of and reaffirm his faith.

In outlining the SEW program, careful consideration has been taken of individual preference. For those who gain spiritual strength by hearing a speaker's philosophy of religion, assemblies are scheduled throughout the week. Vesper services and workshops have been programmed for those who prefer quiet meditations or provocative discussions.

Whether or not one participates in Spiritual Exploration Week activities is his own business. But, sometime during SEW, stop and consider the faith and intellect which is the basis of our American heritage; and consider the need of strengthening faith and intellect in order to preserve our freedom.

Scramble?

Who has the right-of-way during busy hours at the intersection of College Ave. and Orange — the pedestrian or the driver?

The pedestrian does. Whether this is always justified is irrelevant.

The fact remains that students, in an effort to get to their classes on time, bolt across the busy intersection with little regard for the waiting line of autos. We cannot suggest that students have more consideration in allowing drivers to slip through the crowd at intervals; that wouldn't work.

There is always the so-called "10 per cent" — the few who look out only for themselves.

But why not try the "scramble" system during the noon hour on College and Orange? With the help of the campus Security Department, this might aid in solving the problem.

At least it's worth a try. Everything else has failed.



"And... Miss Wearwell... would you make a carbon for my personal figure...er...file."



By ROCHELLE MACKEY

Getting tired of the monotony of college life? Want something new in relaxation?

In the games line, the Memorial Union Games Room will most likely be able to fulfill your wishes.

Ping pong, snooker (something like pool but more complicated), billiards, chess, bridge, dominoes, checkers and a variety of other games are available for student use, says Games Room manager Jim Way.

Snacks and soft drinks are sold there, too.

For music and dance enthusiasts, dancing and jazz sessions are held in Clancy's, adjacent to the Games Room.

A new program for the games room includes free instruction in pool and snooker Tuesday and Thursdays from 4 to 6 p.m., various tournaments, and the possibility of free table tennis lessons.

Couples are invited to use game facilities free Friday nights from 6:30 to 9:30.

For the gals there's a special night too. Thursdays from 7 to 9:30 p.m. ASU coeds may

use Games Room facilities at no cost.

Special events in the Games Room and Clancy's are sponsored by the Social Board.

So, when you find a spare moment, visit the games room. Jim Way and his assistants — Robert De Mastro, Jim Dawson, Angel Castro and Rudy Gasser — will be more than willing to help you select a game.

Student-faculty coffee hours are planned each Tuesday from 9 to 10:30 a.m. for the remainder of the semester in the Faculty Dining Room of the MU. Perhaps this might be an excellent opportunity for students interested in intellectual discussions to corner some of the faculty for good old-fashioned bull sessions. With the wealth of knowledge possessed by each member of our faculty, I'd be willing to bet that classroom time allows them to present very little of it.

Bull sessions or not, free coffee is free coffee, and you can't get much better than that! It's there for the taking, so why not attend?



By PETEY OLMSTED

It's a cold, hard world we'll be up against when we leave our college life, say those who know.

Six ASU political science majors were glad to get back to the simon-pure environment of student government here yesterday, after being exposed to and instructed by professionals in the political field.

In the first annual Legislative Conference, sponsored by the Citizenship Clearing Committee with funds from the Ford Foundation, the ASU students learned first-hand about lobbying and newspaper influence on legislation.

"It was quite an experience," agreed Max Richards and Diane Blommel, who dined on filet mignon at Ramada Inn, along with ASU students John Tate, Dick Guarjulo, Al Roark and John Demson, as part of the conference. Six UofA and three ASC political science majors also attended the meet.

"We had informal interviews with Governor Fannin as part of the instruction," they related. Professional lobbyists for Mountain States Telephone and Telegraph and Arizona Railroad Association were among those instructing the fledgling politicians. The students also attended legislature sessions.

In observing Arizona House of Representatives and Senate committees, the six noted big differences between the ASU political setup and that of the state.

"State legislators must contend with pressures from strong special interest groups as well as the struggle for power among financial groups," stated Richards.

"We (ASU government) could stand some innovations such as pressure groups (interested citizens), and a better general knowledge of government procedures," he continued.

Another point he noticed was the lack of important or vital debate on the floor of the state legislature, whereas "we depend greatly on good debate in the student senate."

One thing the group found that ASU has in common with state government: "Apathy on the part of the voters is as pronounced 'outside' as it is here!" Hmm... pity.

Dial 660

K A S N

Dial 660

MONDAY through FRIDAY PROGRAM LOG

Time	PROGRAM	Time	PROGRAM
12:00	NBC News on Hour	6:00	This is Your University
12:05	Music at Noon	6:30	Cafe Internationale
12:30	Music at Noon	7:00	Cafe Internationale
1:00	NBC News on Hour	7:30	Cafe Internationale
1:05	Kasey Express	8:00	Cafe Internationale
1:30	Kasey Express	8:30	Cafe Internationale
2:00	NBC News on Hour	9:00	Cafe Internationale
2:05	Kasey Express	9:15	Life and the World
2:30	Kasey Express	9:30	News
3:00	Devil's Delight	9:35	Campus News
3:30	Devil's Delight	9:40	Andy Williams
4:00	Platter Party	9:45	Music
4:25	News	10:00	Night Scene
4:30	Platter Party	10:30	News, Night Scene
5:00	Platter Party	11:00	Night Scene
5:30	NBS News of World	11:30	News, Night Scene
5:45	Sports Today	12:00	SIGN OFF

Letters To The Editor

To the Editor:

In Thursday's Republic there was an article entitled "Regents Raise Academic Standards For ASU."

Now, I am all in favor of high academic standards, but there seems to be a fallacy in the method used. At ASU a grade of D has long been considered the lowest passing grade on semester grade reports. A grade of D is equal to an index of 1.00. Yet the Regents voted that "ASU students will be dropped from school when their grade index falls below 1.25 at the end of their freshman year; below 1.50 at the close of the sophomore year; and below 1.75 the junior year."

Is it not paradoxical to drop a student from school when he or she has a grade average .75 above the lowest PASSING grade index for graduation? If the academic average is to be raised, why not do it in the classroom and keep our grading systems consistent and correlated?

An Interested Student

Dear Editor:

It seems to me that some time in his existence, the pseudo-intellectual becomes worked-up enough over his plight to make some outcry about it. The person who calls himself "the Revolutionist" is

a good example of this. He pictures himself wasting away in an intellectually desiccated badland and stands bawling his resistance to an unsympathetic fate.

I wonder if he has made any positive effort to help this situation (both for himself and his fellow intellegentsia). I am sure that there would be a response to an appeal for discussion groups, chamber music recitals and the like. If there is not, then he may be justified in what he says. However, I think it significant that he chooses a title rather than submitting his name. Perhaps he is afraid he might be taken at his word?

ROBERT NORTON

AS Inter-Fraternity Council Installs Kenniger President

New Inter-Fraternity Council officers were recently installed at a banquet at the Hi-way House in Phoenix.

Don Kenniger, Sigma Nu; Ron Paquin, Sigma Phi Epsilon; Bill Druke, Delta Sigma Phi; and Les Miller, Alpha Epsilon Pi, are the new president, vice president, secretary and treasurer, respectively. Kenniger was installed by outgoing president Bob Harris, Al-

pha Tau Omega, according to Kim Rose, IFC advisor.

Honored for one year of service on the council were: Bob Gomez and Joe Rossi, Delta Chi; Ron Paquin and Lynn Reed, Sigma Phi Epsilon; Bob McFadden, Kappa Alpha Psi; Greg McCleary, Alpha Gamma Rho; Kenniger and Harris and Bob Shcolnik, Alpha Epsilon Pi.

Dances, Banquets, Parties Top Greeks' Activity List

By KATHY BURKE

Delta Sigma Phi's take to the sea tomorrow night for their annual Sailor's Ball at the Terrace Club in Phoenix, beginning at 8:30. Jack Wright's band will play.

Second semester pledge class officers for Alpha Delta Pi are: Martha Peck, president; Jane Barrett, vice-president; Carol

King, social chairman; Jane Wolcott, reporter - historian; Jan Bolin, secretary; Carol McDonald, guard, and Nancy Blair, Panhellenic representative.

ADPi pledges recently gave the actives an after-hours party and presented them with a new vacuum cleaner. Lois Dubois and Velva Richey were voted actives-of-the-month for January and February, respectively.

Kappa Alpha Theta pledges met their "big sisters" Tuesday evening at a coke party. Because Theta is a new ASU chapter with only four actives, alumnae are serving as "big sisters" this semester.

The initiation of Ron Knott, Barry Smith, Elliot Morris and Phil Shaffer was announced by Alpha Epsilon Pi.

Members of Sigma Phi Epsilon and dates will get together for a record party tomorrow night at the Sig Ep house.

"The Value of Sororities" was the title of a talk by Dr. W. P. Shofstall, dean of students, at Alpha Sigma Alpha's recent initiation banquet at Ramada Inn. Donna Poston was named outstanding pledge, Kathy Lund had the outstand-

ing paddle, and Marylyn Niclander had the outstanding notebook.

Pledging ceremonies were held Monday for Nanci Mikuleky and Nancy Plotner by Kappa Delta sorority.

David Peterson, James Bacon and Roger Ulseth became active Phi Tau's at-large during initiation ceremonies Jan. at the U of Southern California. There are now four actives in the ASU Phi Tau colony.

New Gamma Phi Beta actives are Sue Frost, Sue Charlson, Sue Eldridge, Patty Foster, Pat Foster, Esther Mariašsey, Carol Sivesind, Janet Steward, Judy Brown, Judy Ebeling, Lynda McKnight, Linda Peterson, Alice Howsman and Vicki Hackworth. Sue Charlson was named outstanding pledge; Linda Peterson, Miss Congeniality, and Judy Ebeling, scholarship awardee.

Kerry Kuykendall, Margaret Rose Greener and Sandra Harsha have joined Gamma Phi's pledge class.

An 85-pound pedigreed German Shepard named "Moose" has been added to the Sigma Chi Sigma household as the fraternity's mascot.

Phi Kappa recently elected three officers to complete their 1959-60 ASU executive council. They are: Hank Kolb, sergeant-at-arms; Frank Hernandez, historian, and Fred Cordova, keeper of the temple.



THE TAREYTON RING MARKS THE REAL THING!

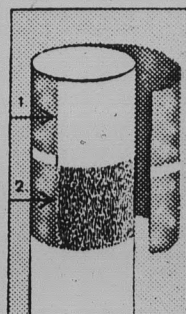
A FAR REACHING ADVANCE IN FILTER SMOKING!

From Me. to Mo. and clear out to Calif., New Dual Filter Tareytons have quickly become the big smoke on American campuses.

Why so? It's because the unique *Dual Filter* does more than just give you high filtration. It actually selects and balances the flavor elements in the smoke to bring out the best in fine tobacco taste. Try Tareytons today—in the bright, new pack!

Here's why Tareyton's Dual Filter filters as no single filter can:

1. It combines the efficient filtering action of a pure white outer filter . . .
2. with the additional filtering action of ACTIVATED CHARCOAL in a unique inner filter. The extraordinary purifying ability of Activated Charcoal is widely known to science. It has been definitely proved that it makes the smoke of a cigarette milder and smoother.



THE REAL THING IN MILDNESS . . . IN FINE TOBACCO TASTE!

NEW DUAL FILTER Tareyton
Product of The American Tobacco Company "Relax is our middle name" (© A. T. Co.)

Jam's
 FOOT LONG HOT DOG
 Fr. Fries - Pickle — 45c

Seniors!

It's Time to Order Your

CAP & GOWN:

Bachelor Cap & Gown	\$3.00
Masters Cap & Gown	\$3.50
Masters Hood	\$3.50
Doctors Cap & Gown	\$3.75
Doctors Hood	\$3.75

RINGS:

Priced from \$23.00 and Up

Announcements will be Available April 6th and will be sold on a First Come, First Served Basis. Cost: 16c Each.

at the

COLLEGE BOOKSTORE

Golfing Begins Monday

WAA golf and table tennis intramurals are scheduled March 2 through 12. They will be held at the Moer Activity building from 4 to 6 p.m.

Beginning golfers will meet at the girls' athletic field at 4 p.m. March 2. Intermediate and advanced groups will play at the Mesa Country Club. Scores for nine and eighteen holes, respectively, will be turned in.

There will be no charge for intramural golfers.

The ping pong tournament has single elimination with consolation brackets.

The Junior Class Council meets March 3, at 7 p.m., in the Memorial Union.

Two Juniors from each campus organization are invited. Plans for a "Western Stomp" will be discussed.



NEW BLAZERS... Alpha Delta Pis (l to r) Bea Becker, Marilyn Nelson, Bev Dryer and Barbara Bunch stop for a picture near Palo Verde Hall before walking to classes in their new white ADPi blazer jackets.

AS Dancers To Take Trip

Charles Weidman, one of the outstanding leaders in modern dance, will conduct a master lesson in the morning session at the Tucson Dance Symposium tomorrow. ASU's Orchestris members will attend.

The afternoon session will feature different schools and groups presenting dances to be criticized by Mr. Weidman.

ASU's participating members will be Nancy Suess, Charlotte Adair, Doris Parisek, Carol Sivesind, Bobbi Skok, Carol Mackintosh, Betty Oda, Sue Miller, Carolyn King, Stanley Portal-ski, Jean Campbell, Norma Borer, Carol Ashburn, Jane Wood, Forrest Baugh, Mrs. Peggy Des Jardin, piano accompanist; Mrs. Hope Heiman, dance instructor; and Miss Margaret Gisolo, sponsor of Orchestris.

Recently Orchestris members presented a program to the Tempe Women's Club.

Gamma Phi Beta presents the annual Gamma Phi Follies tonight and tomorrow night at 8:00 in Cosner Auditorium, 10th St. and Mill. Tickets will be sold at the door, 75 cents for adults; 40 cents, children.

Organizations Fill Their Calendars With Speakers, Teas And Elections

Javier Corona, director of Graphic Arts at the U. S. Information Service in Mexico City, will speak to members of La Liga Panamericana Tuesday at 3:40 p.m. in Main 105.

Mr. Corona plans and presents photographic displays depicting life in the U. S.

Alpha Lambda Delta will hold a membership tea Sunday, March 8, at 3:30 for all freshman women with a 3.5 index or better. New members will pledge the following Wednesday evening.

Leslie J. Mahoney, A.I.A. Phoenix architect, spoke at yesterday's meeting of the student chapter of American Institute of Architects in the MU.

Delta Sigma Pi, international professional business fraternity, will have its semester smoo-

ker for prospective members today at 7 p.m. in MU 218.

Coffee and cake will be served.

George Gill was recently elected president of the Amerind Club. Other officers are Gabriel Sharp, vice president; Donna Lomatska, recording secretary; Angelita Polacca, corresponding secretary; and Urban Giff, publicity officer.

In April, the club will send representatives to the Indian Youth Conference at Brigham Young University.

Rabbi Alfred Wolf will tell how Zionism affects world affairs to the Baptist Student Movement Sunday at 5:30 p.m. at the Student Center, 1400 Mill Ave.

A picnic will be held in room 350 of the Science building from 5-7 p.m. Tuesday by the Student Affiliate of the American Chemical Society.

Newly-elected officers of the American Society of Civil Engineers are Ronald E. Hill, Charles Metcalf, Hristaki Sofokidis and Kendall W. Bennett. They are not officers of the American Society of Childhood

Education, as reported in Wednesday's State Press.

Sylvia N. Poling, Christian Science lecturer of Phoenix, will be interviewed over KASN Monday evening from 7:15 to 7:30.

Jam's
FOOT LONG HOT DOG
Fr. Fries - Pickle ... 45c

KOOL CROSSWORD

No. 16

ACROSS

- Hot compress for cool student
- Deanly talks
- It's Instituted in Texas
- He didn't buy a balcony ticket
- Coin changes religiously
- Land of amore
- Sluggest
- He ran with Adlai
- Quiet, cat!
- 3/4 step
- Dulcet-toned damsel
- Role too small to get your teeth in
- Pinch punch line
- Water boy's burden
- She starts evasive action
- Revised risk
- Work free
- Skeleton's abode
- King-size Kools have a filter
- Also — divine
- Weirdy
- Hand percussion
- Kwai baby
- Proverbial holidayer
- Kind of gone
- They could be sober
- Me, myself and I
- Podder
- Kind of gal moms like

DOWN

- Cheat, a little childishly
- Puerto's last name
- Helping hearing
- Kools are
- Help! Wow! Boo-hoo!
- Switch from
- They're really lovers
- Kind of gram or phone
- Beans
- Date who's all arms
- Kind of Vegas
- Radar talk
- Start of Ivy League
- Asking a gal real nice like
- Co. in France
- DDE's predecessor
- You pay 'em when you err
- Hopper with a hunger
- Feels rough, this smoothie
- Performance, while rocking?
- Miss Fitz
- You said it, Preach!
- Kind of boy bob
- Kools are
- hear this!
- Buzzin' cousin
- Half a beer

1	2	3	4	"ARE YOU KOOL ENOUGH TO KRACK THIS?"					5	6	7	8	9	
10														
12														
14														
					16									
18	19					20	21	22			23		24	25
26						27					28			
29						30				31	32			
35	36	37								38		39	40	41
42						43				44				
45						46		47				48		
49						50							51	

Switch from Hots to Snow Fresh Filter KOOL

COOL ANSWER

GRAM
RICE
NOON
ITALY
ESTES
SHOES
ALTO
BIT
OUCH
KIRS
EVA
KIP
TOO
CLAPS
HOLDEN
BUS
SMAN
ROBES
EGG
NEW

AVAILABLE NOW
NEW ONE BEDROOM
Apartments. Stove & Refrigerator Optional. Individual Heating and Refrigeration. Ap'ts open Saturday 2-6 PM. Sunday 10 AM. to 6 PM. 1600 College Ave., Tempe. For App't call CR 7-7221 8 to 5 or after 6 P. M WI 3-0188 or CR 7-9233

TIRES
 STUDENT DISCOUNTS — BUDGET TERMS
COHILL & LOW TIRE CO.
 4333 EAST WASHINGTON ST.
 PHOENIX, ARIZONA
 BR. 5-6288

SWITCH FROM HOTS TO Snow Fresh FILTER KOOL

- As cool and clean as a breath of fresh air.
- Finest leaf tobacco...mild refreshing menthol — and the world's most thoroughly tested filter!
- With every puff your mouth feels clean, your throat refreshed!

America's Most Refreshing Cigarette

ALSO REGULAR SIZE KOOL WITHOUT FILTER!
 ©1959 Brown & Williamson Tobacco Corp.

AS Gymnasts Vie Against Wildcat Crew

The Arizona State gymnastics team, led by all-around performer Chuck McMahon, takes on the Arizona Wildcat gymnastic team in a match tomorrow night at 7 p.m. at Bear Down Gym in Tucson.

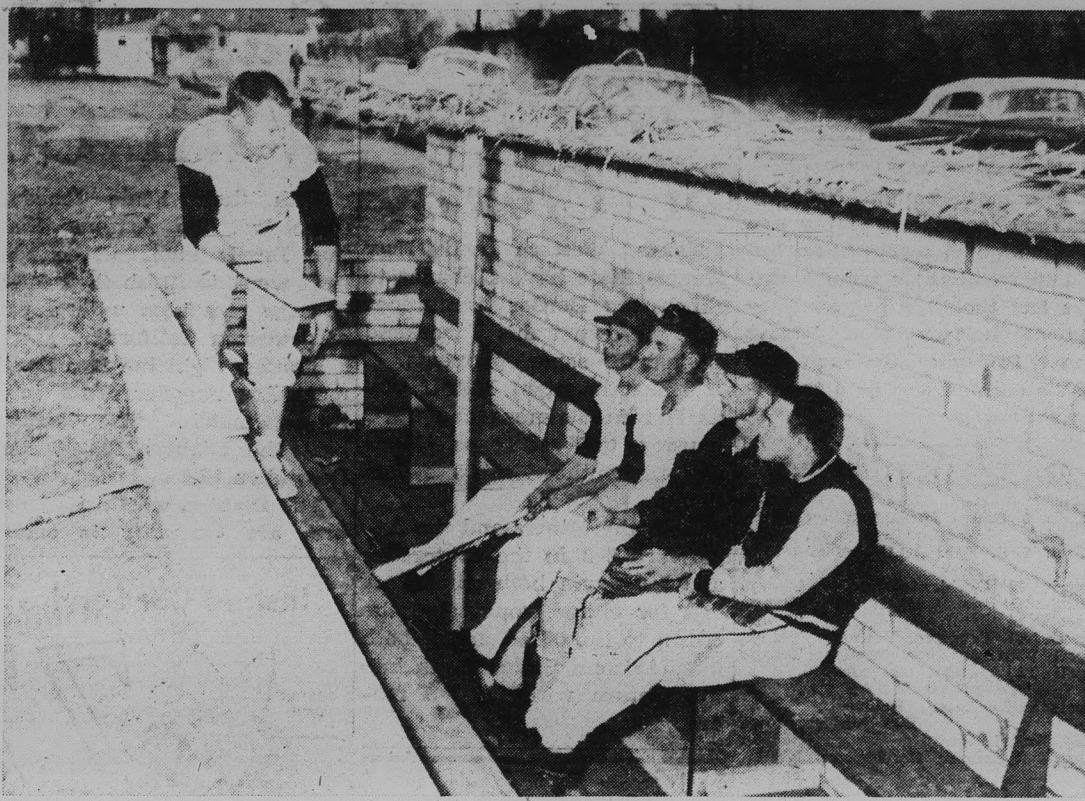
AS Coach Norris Steverson will take a five man squad to Tucson. Besides McMahon, who will participate in all events, also slated to make the trip are Dick LeBeau, Harvey Plant, Ivan Jennings and Dave Bonham.

The teams have met a common opponent in the Air Force Academy, and both were beaten, the Devil gymnasts losing 81-63, the Cats, 80-30.

High scorers for AS in the Air Force match were McMahon with 31 points and Plant with 19.

In two meetings with the University of Arizona in 1958, the AS crew won both, 98½-77½ and 110½-65½.

Le Beau will be entered in five events, Plant in three, Bonham in three, and Jennings will enter four events.



YOU LIKE, FELLAS?? . . . ASU Baseball Coach Bob Winkles gets the word on the Devils' dugout at the new ball field from four of his returnees from last year's squad. The four are (l to r) infielders Benny Ruiz and John Jacobs, and pitchers Jim Sims and Joe Kostyk. The dugout, a split-level affair, is a far cry from the broken-down, sliver-infested "benches" the team used last year for its home games at "Rock Park."

Imps Lose, Armstrong Scores 35

Larry Armstrong, 5-10 Phoenix College guard, proved that height isn't everything Wednesday night, basketing 35 points to lead his teammates to an 84-57 triumph over the taller ASU Sun Imps.

Besides sinking 16 field goals and three free throws, Armstrong set up scoring opportunities for his teammates with his fancy dribbling and play-making tactics.

It was the third time this season the PC Bears have vanquished the Sun Imp cagers. The only other defeat for the freshmen was by the UofA frosh. Wednesday night's victory gave the Bears their 26th win against three losses.

Harvey Darche, Sun Imp forward, led the losers with 22 points. Mike McConnell added 11 points, and Chico Morrison and Ollie Payne each contributed 10.

NEALEY, BOWEN STAR

Devils Hit 112, Rout Waves

If losing a pair of Border Conference basketball games over the weekend had any effect on the Arizona State basketball team, it wasn't evident Wednesday.

The ASU quintet scored points at almost a three-a-minute pace in running Pepperdine down, 112-78.

The victory was the Devil's seventeenth, compared with

six losses, and it ended ASU's home slate with a 14-0 record.

Everyone on the AS roster tallied, except guard Rich Jarvis, and the 112-point total bettered by four points the old scoring record of 108 set against Loyola of Los Angeles Dec. 21, 1957.

Another record fell when the Demons scorched the cords for 61 points in the first half. Also, it was the first time in the school's cage history that a Devil team won all its home games.

Al Nealey, who earlier this week broke former AS star Jim Newman's two-year scoring record, led with 29 points. Senior John Bowen, starting his first game, celebrated with

his first 20-plus effort, scoring 22.

For Pepperdine's Waves, who had been holding the opposition to an average of 67.7 points per game until Wednesday, high men were Bob Blue with 25 and John Rettberg with 20 points.

Other Devils who hit in double figures were Paul Denham, 17, and Paul Howard, 13.

Sterling Forbes, Pepperdine's big gun, finished with 13 points.

Coach Ned Wulk got a chance to see his reserves in some lengthy action, and they showed well.

Reserve guard Jack Heath, a sophomore, scored the record-breaking 109th point with a

free throw and added five more to finish with 6.

Troy Neal hit three baskets, one from outside, one on a tip underneath and one on a solo drive through the shattered Wave forces.

The crowd, though not near capacity, got more enthusiastic as the score rose.

When Nealey was taken out with eighth minutes left to play, the fans screamed for his return. He came back for the final four minutes but failed to score, though he assisted on three baskets.

The fast-breaking Devils were 49 per cent effective from the floor, converting 45 of their 91 shooting attempts.

UNIVERSITY BARBER SHOP

Bayless Center

3 Barbers to Serve "U"

Dana Bros.

211 Mill Avenue

Tempe

Plymouth - Chrysler - Imperial - Simca

Service SPECIAL

- Front Wheels Aligned • Balance Front Wheels, Including Weights.
- Pack Front Wheel Bearings
- Adjust & Inspect Brakes

REGULAR \$15.25

THIS WEEK

\$11⁹⁵

Credit Terms Available

COME IN FOR A FREE DEMONSTRATION RIDE IN A NEW

Plymouth - Chrysler

Take A Ride & Get A Free Wash or Lube Job Today & Saturday

WE NEED CLEAN USED CARS

Highest Trade - In Values NOW For

1959 Plymouths & Chryslers

Buy At DANA BROS.

Where You Get the Most For Your \$ \$ \$ \$ \$

Demons Meet 'Cat Spikers

A dual relay meet with the U. of Arizona tomorrow afternoon at 2:30 opens the 1959 track season for the Sun Devil spikers and Head Mentor Senon "Baldy" Castillo.

The Sun Devils won the annual meet last year and are banking their hopes on a quartet of international stars for this year's effort. The four are: Alex Henderson, from Australia, in the distance relays; Carol Lindroos, from Finland, in the shot put and discus; and the Spence twins Mal and Mel, from Jamaica, in the middle distances.

Lindroos is considered a sure

bet to break the meet record in the discus as well as threaten the world mark of 203 feet.

Henderson, the American three-mile champ, is entered in all the distance relays with his sophomore understudy Jim McGowan.

The Spences will run in the sprint and middle distance medley relays, though Castillo is counting on Mel in the AS 2-mile relay event. Mal will run with the 880 relay team along with Tom Pettit, Keith Cole and George Hershey.

The top Arizona State entry is expected to be the 2-mile quartet of Mel Spence, Dave Clough, McGowan, and Henderson.

Jam's

FOOT LONG HOT DOG
Fr. Fries - Pickle — 45c



WO. 7-4482

FORMERLY Groves

Supplies For

ARTISTS • DRAFTSMEN • HOBBYISTS

Picture Frames & Mats — Illustration & Poster Boards
Oil & Water Colors — Brushes — Canvas — Dummy Papers
Sketch Pads — Easels — Plaster Models — Leather Craft
Balsa Wood—

FEATURING SCANDINAVIAN IMPORTS
In the Tempe Center

FLIGHT INSTRUCTION

At Special Rates For College People

A Private License is a Must in Modern Business

A M O S

FLIGHT OPERATORS

Don Amos - Class of '56
Ph. BR 5-7291 - Sky Harbor

FIG'S FILE

By VIC FIGARELLI

Wednesday night's romp over Pepperdine turned out to be something of an anniversary for Ned Wulk and his ASU quintet.

The last time the Sun Devils lost on their home court was Feb. 24 of last year, a 67-62 decision to Los Angeles State.

Since then, 16 consecutive opponents have fallen on the Sun Devil floor.

Al Nealey upped his two-season total to 812 points to break ASU's two-year scoring record last Monday with 16 points against New Mexico State.

He is two points ahead of previous record-holder Jim Newman, who set the mark last year.

Ironically, Newman edged Nealey by two points last year for leading scorer honors on the Devil squad.

(With 29 points Wednesday, Nealey's two-year total is now 841, with two games yet to play.)

The AS three-year scoring mark is also within reach of the Devil star. That record is 1036 points, set by Royce Youree in the 1955-58 seasons.

It was an embarrassing night

1959 ASU GOLF SCHEDULE

DATE	OPPONENT
Mar. 6—U. of Arizona at Tempe.	
Mar. 13—U. of New Mexico at Tempe.	
Mar. 14—U. of Arizona at Tempe.	
Mar. 18—Colorado State U. at Tempe.	
Mar. 19—Colorado State U. at Tempe.	
Mar. 21—Phoenix College at Tempe.	
Mar. 26-28—Houston Invitational Tournament at Houston.	
Apr. 2—U. of Wyoming at Tempe.	
Apr. 3—U. of Wyoming at Tempe.	
Apr. 4—U. of Wyoming at Tempe.	
Apr. 11—Phoenix College at Phoenix.	
Apr. 13—U. of Arizona at Tucson.	
Apr. 16—Fresno State at Fresno.	
Apr. 17—UCLA at Los Angeles.	
Apr. 18—Southern California at Los Angeles.	
Apr. 25—U. of Arizona at Tucson.	
May 2—ASU, Phoenix College, Arizona at Tempe.	
May 7-9—Border Conference Championships at Tucson.	

STADIUM COFFEE SHOP & Delicatessen

Good Things to Eat and Drink

Television

"Across the Street From East Stadium"

Open 7 days week

TW, NMSU Going For BC Crown

Texas Western and New Mexico State have a chance to clinch the Border Conference cage crown this weekend against the same opponents.

Tomorrow night NMSU visits Hardin-Simmons and TWC journeys to West Texas. Monday night the visitors switch floors.

Both the Miners and the Aggies are 6-2 in the conference and must win both games. A loss for either would give the crown to the other, and if both lose, Arizona State moves into the picture with its 7-3 record.

all the way around for Pepperdine Wednesday night. Not only did they lose by probably one of the highest scores ever, but also three of their team members lost their uniforms. They had to borrow blue jerseys from Phoenix College and ASU's maroon and gold traveling shorts.

1959 TRACK SCHEDULE

Feb. 28 Arizona (dual relay)	Tempe
March 5 Camp Pendleton (relay)	Camp Pendleton, Calif.
March 7 S. Pac. AAU Relays	Los Angeles
March 14 Occidental	Tempe
March 20 San Jose State	Tempe
March 24 Whittier	Tempe
March 26 Brigham Young	Tempe
April 16 Camp Pendleton	Tempe
April 18 Abilene Christian	Abilene, Tex.
April 24-25 Drake Relays	Des Moines, Iowa
May 2 Arizona	Tucson
May 8-9 Border Conference Meet	Tucson
May 23 Coliseum Relays	Los Angeles
May 29 California Relays	Modesto, Calif.
June 6 Compton Invitational	Compton, Calif.
June 12-13 NCAA Championships	Lincoln, Neb.
June 19-20 National AAU Meet	Boulder, Colo.

Cage Play Ends With Coast Tour

With their home schedule completed, the Arizona State Sun Devils take to the road next week to finish their 1958-59 cage campaign with a pair of games in California.

Monday night the Sun Devils meet Los Angeles State in a return match. The Demons beat the Diablos 105-98 here December 13.

The Diablos, with a 15-7 record, are currently in second

place in the California Collegiate Athletic Association loop. Leading them will be 6-foot guard Ron Brazadier, who collected 31 points against the Sun Devils in the December encounter.

Tuesday night the Devils meet the Fresno State College Bulldogs for the season finale. So far, the Bulldogs have a 17-5 record and are third in the same league with L. A. State.

Instant Car Service

Tempe Center



FIRST in Laundry and Cleaning • LAST in the Phone Book

Tempe Center

WO 7-5773

Jam's

FOOT LONG HOT DOG

Fr. Fries - Pickle — 45c

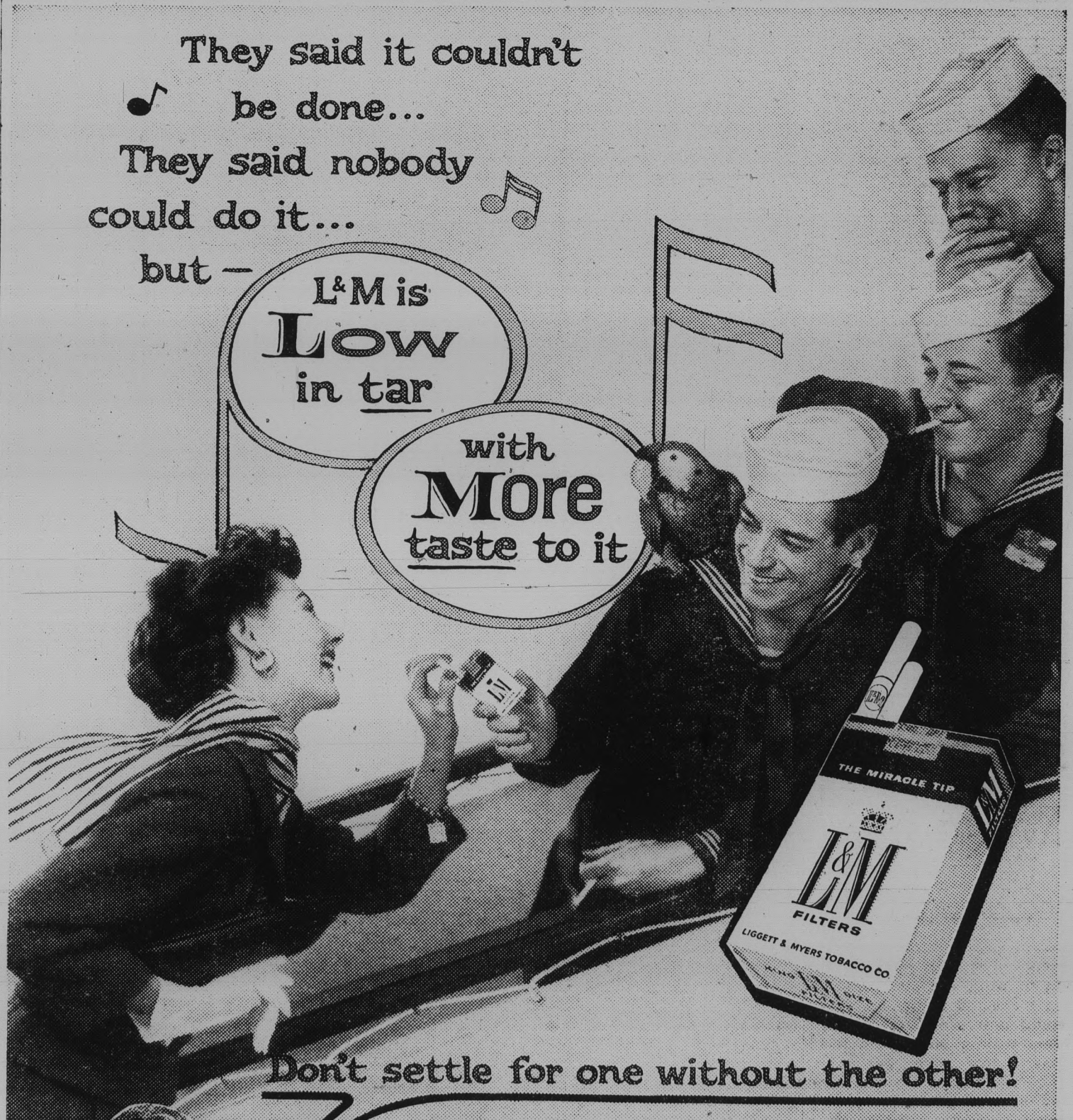
They said it couldn't be done...

They said nobody could do it...

but —

L&M is **Low** in tar

with **More** taste to it



Don't settle for one without the other!

©1959 Liggett & Myers Tobacco Company

"L&M is kindest to your taste," says James Arness. "There are two good reasons why I know you'll like 'em. They're truly low in tar, with more exciting taste than you'll find in any other cigarette."

LOW TAR: L&M's patented filtering process adds extra filter fibers electrostatically, crosswise to the stream of smoke... makes L&M truly low in tar.

MORE TASTE: L&M's rich mixture of slow burning tobaccos brings you more exciting taste than any other cigarette.

LIVE MODERN... CHANGE TO MODERN L&M

