



# State Press

ARIZONA STATE

TEMPE, ARIZONA



ARIZONA'S OLDEST COLLEGIATE NEWSPAPER, ESTABLISHED 1903

Vol. 37

Friday, January 9, 1959

No. 27

## Applications Available For Loans

Application forms for the National Defense Student Loan program are now available in the Administration building, room 103. Deadline for application has been set at Jan. 21.

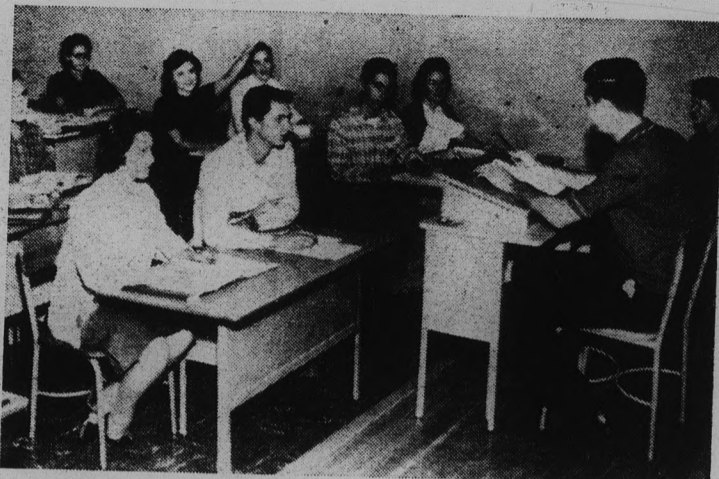
Herman Schmidt, acting dean of men, said that students who indicated interest in the program before the Christmas vacation will be given preference.

Dean Schmidt also noted that although superior scholarship was specified as a requisite for loan program aid, a number of students with below 2.0 grade indexes have shown interest in the loans. He said a minimum index of 2.0 is necessary for consideration.

At this time, the federal government has not authorized the requested ASU allotment, but Dean Schmidt said confirmation is expected any day.

The Jan. 21 deadline has been set so that applications may be screened prior to second semester registration. However, if government authorization does not arrive before registration, fees can not be deferred in anticipation of the federal funds.

Under terms of the loan agreement, funds do not go directly to the student. Institutional expenses are paid directly to the school. Remaining funds will be allotted on a predetermined schedule, and only after personal money has been exhausted.



**SENATE ACTION . . .** The Student Senate considers action on Senate Bill 119, to create a Student Education board. The bill passed later in the day. Wednesday's was the last session of the semester.

## ERNIE PYLE AWARD

### Dedera, AS Grad, Honored

Former State Press Editor Don Dedera has won the \$1,000 Ernie Pyle Memorial Award for 1958.

With the money is a bronze plaque, awarded for the style and craftsmanship which most nearly exemplify the work of the famed newsman killed in the Pacific during World War II.

The 29-year-old Arizona Republic columnist received his degree from Arizona State in 1951. He went to work as a police reporter for the Republic the same year. He has been writing the prize-winning column, "Good Morning," since 1954.

Dedera studied journalism at AS under Professor Ernest J. Hopkins.

When he learned of the award, Hopkins, now retired, said he was "proud to death" of Dedera, and added, "You know, he earned the prize. Don has great appreciation of human values in ordinary situations. You can't fake sincerity."

"This is the first real national recognition for our Arizona State journalism people. It's a top award."

The honor is presented each year by Scripps-Howard Newspapers, for whom Pyle worked. Judges commented that Dedera's style was "simple, concise and vivid," saying the daily column is a "constant reminder of the warm and human way Ernie Pyle wrote."

Dedera explained his belief in using names. "The name should be near the top, and before the story is done, the name should become a human being."

## Jazz Concert Set For Tonight

A "Showcase in Jazz" will be presented at Cosner Auditorium tonight at 8 p.m., sponsored by Arizona State's chapter of Kappa Kappa Psi, national band fraternity.

The program will include a 16-piece jazz band and a smaller combo playing such jazz classics as "September in the Rain," "How High the Moon" and "Stompin' at the Savoy," as well as several original compositions.

Featured in the band on saxophones will be Gary Rexroth, Kent Ryan, Jim Butler, John Osborne and Bob Mills. On trumpets will be Ernie Carbajal, Sam Mathews, Gray Osborne, and Wes Ridley. On the trombones will be Carl Radusch, Larry Conrad, Richard Franks and Jim Doubek. On the piano will be John Putnam, drums, Larry Vanlandingham and Art Zubieni on bass.



**REHEARSAL . . .** The jazz combo slated to play tonight at the Cosner Auditorium jazz program gets in a few hot licks in preparation for the show. The first number is scheduled for 8. Kappa Kappa Psi is staging the show.

## New Board Gives Students A Voice

By RITA PLOTKIN

If ASU President Dr. Gray Gammage and ASASU President Warren Sumners sign Senate Bill 119, students will have a voice in their educational program.

This semester's final Senate session passed the bill, which will create a Student Education Board.

The board was created "to establish the general well-being of all students by promoting a better total education program." It is composed of three subcommittees. Dr. Weldon P. Shofstall, dean of students, will be advisor.

The student personnel subcommittee will make suggestions in discipline, personal counseling, student employment and financial aid and faculty advising of student groups. Dr. Catherine G. Nichols, associate dean of students, will advise this subcommittee.

The academic subcommittee will express student thinking in such areas as grading, course changing and dropping, course offerings and schedulings. The advisor to this group will be Academic Vice President H. D. Richardson.

The business affairs subcommittee will make suggestions as to the use of fees collected from students, services for which students must pay, physical plant and parking. Gilbert L. Cady, vice president of Business affairs, will serve as advisor.

## Finance Board Grants Approval For Alley Funds

The Board of Financial Control Wednesday formally approved the transfer of 60 thousand dollars from the ASASU contingency fund to the plant budget for acquisition of Memorial Union bowling alleys.

The alleys were approved under the following conditions:

The Memorial Union board shall control policies. The alleys will be the direct responsibility of the Union director and/or the vice president in charge of business affairs. They shall be responsible for hiring an alley manager.

The manager shall carry out the policies of the student board in accordance with MU and university policies.

After advancement of the funds, they shall be under the direction of the financial manager.

(Continued on Page 3)

## Mackey New Editor For Next Semester

Rochelle Mackey, a senior, has been appointed Editor-in-chief of the State Press for the second semester of the 1958-59 school year. Her appointment was confirmed Wednesday by the Board of Student Publications.

She will take over the paper at the semester break from Phil Fry, who expects to complete his degree requirements this month.

Miss Mackey has named nine staff members.

Managing editors will be Peete Olmsted and Abe Gutierrez. Kathy Burke is to take over the Organizations editorship, while

Vic Figarelli will continue as Sports editor.

News editors will be Kay Kelm and Pat Mulligan. Joanne Smoot will leave her News editor post to fill a new position, Feature editor. Julie Patton has been named Assignment editor.

Miss Mackey said several additional assistants are to be appointed when the next semester begins.



ROCHELLE MACKEY

## Artists' Display Now In Union

Seventeen paintings and five sculptures, comprising the "West Coast Artists' Show," will be on display in the Memorial Union through Jan. 21.

The art pieces were selected from over 1,200 works entered in competition by contemporary artists in California, Washington and Oregon.

The show, now on a national tour of museums and art institutions, is presented at ASU by the Cultural Affairs Board.

This afternoon at 4 is the deadline for turning in lists of organizational activities for inclusion in the ASU calendar for second semester, according to Activities Vice President LeRoy Whitson.

# 'ASU' Tops Semester's Activities



**VICTORY . . .** Dr. Gammage announced as the final vote count for proposition 200 was received. Arizona voters endorsed the measure nearly 2 to 1.



**STADIUM OPENED . . .** Arizona State football fans enjoyed all but the first homegame in the comfort of new Sun Devil Stadium, a structure built to seat more than 30,000. It was dedicated Nov. 8, the first game after voters endorsed Proposition 200 in the General Election. Water used to cristen the stadium came from seven Arizona rivers.



**AN ASU BUTTON . . .** is placed on Walter Craig, chairman of Citizens for ASU, by Alice Housman. Sidney Cummar holds an oversize model of the badge.



**ITALIAN VINO . . .** loosens the vocal chords of three male members of "The Cloak" during a break in Puccini's short opera in the MU ballroom.

## REGISTRATION NEAR

# Registrar Tells Procedure

Students are to pick up registration materials for next semester Jan. 19-21.

The following will pick up registration material at B. B. Moeur Activity Building: students who were registered at Arizona State in on-campus courses this semester, new freshmen who have been admitted to Arizona State and former graduate students who were registered as graduate students here in on-campus courses this semester.

New freshman and transfer students who have not cleared their admission must report to the admission section of the

office of the Registrar and Director of Admissions in the Administration Building.

Former students who were not registered in on-campus courses this semester are to apply for re-admission in the Records section of the Registrar's office by Jan. 16. Students who do not clear re-admission will obtain materials

at the Records section.

Registration for evening classes will be Jan. 27-28 during regular registration days. Registration for night students will be Jan. 27-28 at the Registrar's office from 6-9 p.m.

Class schedules may be picked up at the Records section now and during registration.

Class card distribution will be in the men's gymnasium Jan. 27. First to receive class cards will be registration employees from 8 - 9 a.m., then seniors and graduate students from 9-11, juniors from 11:30 and 1-2:30, sophomores from 2:30-4:30. Jan. 28, freshmen will register from 8-1:30.

Transfers and students who missed their scheduled times register from 1:30-4.

The Math 118 final exam, originally scheduled for the B. A. building at 1:30 p.m., Jan. 17, has been moved up to 10:30 a.m. the same day in the same building, Dr. H. D. Richardson, academic vice president, announced. The time was changed so students would not have to attend Saturday afternoon.

## AS Singers To Appear In Phoenix

The 95-voice ASU Choral Union, directed by David B. Scouler, professor of Music, will appear with the Phoenix Symphony Tuesday.

The Choral Union, which has performed with the Symphony in the past, will sing the Coronation and Death music from Moussorgsky's "Boris Goudonov."

Carl Palangi, San Francisco Opera baritone, will be the soloist.

In its other Symphony appearances, the Choral Union has earned plaudits for its performances of Verdi's Requiem and Kodaly's Psalmus Hungaricus.

The Cultural Affairs Board is sponsoring a student-faculty travelcade to the performance, with tickets at 60 cents for students and 80 cents for faculty and staff available at the MU information desk. Transportation will be provided for 40 cents.

## Important Notice

Be Sure your Name and Address is written in all your books **IN INK** as we approach the end of the semester to prevent someone else from **SELLING YOUR** book.

# College Bookstore

## Veteran Enrollment Drops On National, Local Scale

Enrollment of Korean veterans in institutions of higher education has dropped slightly this semester, on both a national and local scale.

Throughout the nation, a drop of 46,000 from the 1957 fall enrollment figure of 446,000 has been reported by the Veterans Administration.

At ASU there has been a decrease of approximately 100 vets to bring this semester's total to about 1450, a drop of about 6% compared to the national drop of about 10%.

Business, engineering and education seem to be the favorite field for veterans on both scenes.

## ASU Requests Appropriations

The Board of Regents will request the state legislature for a \$100,000 deficiency appropriation for Arizona State this year on the basis that ASU's fall enrollment exceeded expectations.

President Grady Gammage said a total of 8,900 students were expected to register at ASU this fall, but the actual enrollment reached 9,708 on-campus students.

The average annual enrollment budget was fixed at 8,700 on-campus students, but that figure is now expected to reach 9,538. (Enrollment during second semester usually decreases 3½% from first semester).

The six-year-old Korean GI Bill training program, which so far has provided education and training to more than 2,000,000 veterans, comes to an end in 1965 under present law.

## TV Equipment Received By ASU Bureau

Television production equipment valued at \$1,600 was received recently by the ASU Radio-TV Bureau from KTAR Broadcasting Company, Phoenix.

The gift includes a rear-screen projector, screen, bulbs and a set of slides to be used, through the projector, to create a background for live action production.

KASC program director, Bob Stedlin, has announced openings on the staff of the campus radio station.

He said "opportunities for practical radio experience are available in the news, sports and special events departments." Other positions are also open.

Charles Allen, a junior at ASU, has been named operations manager of the Arizona State Radio Network.

Allen will supervise the distribution of the more than 100 program units produced per week by the ASU radio-TV bureau, according to James Loper, acting director of the bureau.



**MONEY, MONEY, MONEY . . .** Sitting in on the regular meeting of the Board of Financial Control are, left to right; Kim Rose, Advisor to the Board; Barbara Bunch, ASASU Secretary; Dean Weldon P. Shofstall, Dean of Students; Carolyn Reed, Organizations Secretary; Warren Summers, ASASU President; Bill Sullivan, AMS President; Rose Bourne, AWS President; Norman Garnatz, Financial Manager; Mrs. Autenrieth and Mr. Calvin Krueger.

## Distribution Set For Directory

The official "Organizations Directory" for 1958-59 will be distributed to approved organizations on the campus at the first of next semester, Carolyn Reed, secretary of the Student Organizations and Leadership board, announced.

Board chairman Roland Eidam stated that current plans are centered on scheduling the annual Payson student leadership conference to be held later in the year.

## MORE ABOUT . . .

### MU Bowling Alley Funds

(Continued from Page 1)

Provision shall be made for repayment of the advance and any additional profits to AS-ASU after the alleys are paid for.

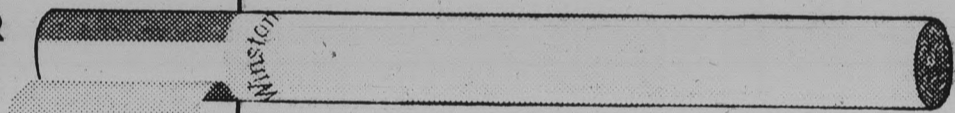
An operating budget would be prepared by the alley manager and submitted to the Board of Financial Control for approval.

Original plans for the MU structure called for bowling alleys and the space was pro-

vided. At that time, money wasn't available for construction of the alleys, but a special fund was established. The money from this special fund is to be added to money from the contingency fund to total 60 thousand dollars.

The money will now be transferred at the request of Mr. Gilbert Cady, vice president for business affairs, when construction plans are finalized.

A PURE WHITE MODERN FILTER  
IS ONLY THE BEGINNING OF A WINSTON



# It's what's up front that counts



Winston puts its

## FILTER-BLEND

up front... fine, flavorful tobaccos, specially processed for filter smoking



R. J. REYNOLDS  
TOBACCO CO.  
WINSTON-SALEM, N. C.

**WINSTON TASTES GOOD** LIKE A CIGARETTE SHOULD!

# State Press

EDITOR-IN-CHIEF PHIL FRY  
 MANAGING EDITORS ABE GUTIERREZ AND ROCHELLE MACKEY  
 ORGANIZATIONS EDITOR PETEY OLMSTED  
 SPORTS EDITOR VIC FIGARELLI  
 NEWS EDITORS JOANNE SMOOT AND KATHY BURKE



The STATE PRESS is distributed by Rick Bedolla. Official campus newspaper of Arizona State University. Published each Wednesday and Friday throughout the school year, excepting holidays, and entered as second class matter in the Post Office at Tempe, Arizona, under the Acts of March 3, 1879, and August 24, 1912. Subscription price, \$3.00 per school year.  
 Member: Arizona Newspapers Association, Associated Collegiate Press, and National Advertising Service, Inc.

## EDITORIALLY SPEAKING —

### Good Investment

There was plenty of beefing when the news first broke concerning the construction of bowling alleys in the MU. As it turned out, first reports on the procedure were inaccurate and for some time it was difficult to know what would happen.

Then the plan that has now been approved began to take shape. Business Vice President Gilbert Cady clarified the procedures. There would be no gifts or loans at interest. The money would simply be transferred from one account to another, to be paid back when the alleys were paid for.

— Would Associated Students benefit? It looked as if they would. It still looks that way. Associated Students has made an investment that should pay a moderate return as long as the alleys are in existence.

### Handle With Care

How much inherent right do students have to determine their educational destiny? Do student rights end when registration day comes to a close, or do they continue through the period of instruction?

Basically, students have the never-ending right to protest against and work for the correction of abuses. Students have the right to decide whether they wish to be good or poor students, and to follow through after the decision.

However, student rights end there. From that point it becomes the duty of the school to provide the best education possible with the funds available. If students feel they aren't getting what they pay for, there are other schools to try.

Administrators and educators are trained and experienced. They are hired because they are qualified. Students come seeking education, not to undertake the job of running the school and telling teachers how and what to teach.

Wednesday, the Student Senate passed a bill creating a student board on education. One of the purposes of the legislation is to enable students to bring about changes in areas they feel are mishandled.

The idea of consulting student opinion in the operation of an educational system is fine, for the students have much at stake. There is danger involved as well.

Let both sides handle thorny questions with tact, fairness and understanding, and all will proceed smoothly. Let one side get carried away and someone will be stuck. It won't be the side whose job it is to run the university and provide knowledge for our ingestion and digestion.

The Student Education board has it in its power to render service. Those who apply for membership on the board must keep in mind at all times the responsibility they will bear.

### The Line Forms

At times, our campus looks like the gutter of a large city thoroughfare just before the street cleaners go to work. It's the fault of no one in particular.

The grounds crew does the best it can to keep the campus orderly and neat. And students probably wouldn't throw trash hither and yon if they had anywhere else to throw it.

Discreetly placed, tastefully formed trash receptacles could go far in helping keep the campus clean and beautiful all the time instead of only after clean-up days.

Who wants to step up and volunteer to do a good deed. Line forms over there, boys.



What sort of robbery?



BY PHIL FRY

Startling news! This is my benefit of good training and last issue of the State Press. Rochelle Mackey takes over next week to put her new staff through its paces in preparation for next semester.

I imagine some folks will be happy to see me leave, and I hope a few will be sorry. To the vast majority, it won't make any difference.

But it makes a difference to me. I'll have to get out and look for some means of gainful employment after all these years. Aside from that, I'll be genuinely sorry to leave school and paper. Both have been wonderful experiences.

The paper goes into good hands. Rochelle has had the

has been on the staff for several semesters both Organizational and Managing editor. She'll have able help from the rest of the staff, most of whom have also had sound experience.

I'm especially happy to have had the blind good luck to have been editor when the thrilling news came in that ASC was now ASU. I'll never forget it.

There have been other big moments, too, such as the opening of the new stadium, the Brubeck jazz concert, Homecoming and the wonderful recovery of a fine football team.

Just the other day another big step was taken when the Board of Regents beefed up entrance requirements. That's not all, but you get the idea. It's been fun. So long.



To the Editor:

Either the student body agreed when I referred to the title of the forthcoming literary publication, IDYLS, as foreboding, or they don't give a hang about it. If the latter is the case, this is truly a sad state of affairs.

Students, don't you really think ASU should publish a magazine?

Two men, editors Decker and Ernst, feel strongly about it, but they can't succeed without your support. How about some "Proposition 200" enthusiasm for a campus magazine?

Also, the word, idyl, according to Webster is "any description, either in poetry or prose, of rustic life, pastoral scenes or the like." IDYLS is an appropriate title. I agree that it picturesquely describes the intended nature of the magazine.

John Mazur



By ROCHELLE MACKEY

For some time, I have been an ardent fan of an Arizona State graduate who writes for the Arizona Republic.

His column, "Good Morning," runs six days a week in the Republic and has attracted a wide readership throughout the state of Arizona as well as winning for him the respect of his colleagues in the newspaper business.

Wednesday it was announced that his efforts had been recognized by the Scripps-Howard Newspaper chain, which presented him the annual Ernie Pyle award for the columnist whose work best exemplifies and follows the style and high standards of journalism set by the late Ernie Pyle.

We of the State Press are proud indeed of Don Dedera, a past editor of this paper, and give him our heartiest congratulations.

January is the season for snow in most parts of the country . . . And the desert country of Arizona is no exception . . . The blizzards occurring on campus now that semester end is approaching rival those of Alaska . . . The word is that the offices of some of the teachers of tougher courses are so drifted-in already the poor professors might not be able to mush out till the spring thaw.

It might come as a shockingly radical idea to some . . . But it is endorsed by a majority of faculty members: the energy devoted to some of the more elaborate snow jobs applied to study could raise an E minus to a bona fide A plus.

Please don't let the above suggestion delude you into thinking the new staff of the State Press is going to be similarly radical in all of its policies . . . Perish forbid!

I approach the editorship of this newspaper with a full awareness of the many responsibilities it entails . . . We will continue to try to give the entire campus community the constantly improved coverage this university deserves.

I am very grateful for the readiness of my fine new staff to share these responsibilities with me . . . I am confident that their efforts will produce a newspaper ASU can be proud of.



# Limit Students' Club Activities?

By RITA PLOTKIN

Do you think students should be limited in the number of clubs and activities to which they belong to prevent the same students from monopolizing so much campus activity?

Linda Rankin, freshman, Alpha Delta Pi sorority, Student Senator, Freshman Council; "No, I don't think they should be limited. There is a problem that the same people are in most of the organizations, but it is those people who are the most interested in it.

"The people who are not in the clubs are not really interested enough to go out and find how to get into these organizations."

Ronald Paquin, sophomore, secretary of Inter-Fraternity Council, secretary of Sigma Phi Epsilon, Memorial Union Board; "No, the people in the organizations should not be limited, but the interest needs to be created for the people who are not in the organizations.

"Those few people who are in most of the organizations are doing a good job."

Mrs. David Scouler, director of the Memorial Union; "I believe that the students should be encouraged to limit themselves.

"This should be done through student government and head residents in dormitories. It could also be done through the State Press and by the students who hold chairmanships in the various organizations.

"There should be a mass meeting held, letting students apply for the positions. It is a student group responsibility with the emphasis on the individual."

Bob Scholnik, junior, president of Alpha Epsilon Pi, treasurer of Inter-Fraternity Council, treasurer of Greek Week steering committee; "No, I don't believe there is a problem because the reason some of the organizations are monopolized is that the people who are doing these things do have the responsibility to carry them out.

"There are so many organizations on campus that everyone has an opportunity to show their leadership and willingness to work if they have the desire."

Jack Stines, freshman; Mechanical Engineers, Math Club; "If the students are in too many clubs, they won't be able to take part in their regular studies." He did not know how to limit them.

Kim Rose, Assistant to the Dean of Students; "I think that they should be limited only insofar as their ability and scholarship would limit them to do so. It is an individual responsibility.

"If a person can maintain his scholastic average and still be in a lot of activities, he should be allowed to do this. Student government is now so set up that if a person does not maintain his 2.0 index, he cannot participate."



BRIGITTE . . . (Not Bardot) is the new Phi Sigma Kappa mascot. She is shown here with fraternity members Patrick Wilkes (l) and Steve Anthony.

# Menu Offers Cantonese Cookery

An "international dinner," featuring chicken cooked Cantonese style, will be served in the Memorial Union cafeteria Sunday, Feb. 22, from 5 to 7 p.m.

The dinner will be sponsored by the Foreign Students Club, with Ahmaddin of Afghanistan program chairman.

Committee members are Adil Kadri of Iraq; Shiu Chi Lo of Hong Kong; and Won Kil Choe of Korea.

Tickets may be purchased from committee members or from members of the club for \$1.25. Dinner will be prepared under the supervision of Lo.

## Chapel Corner

# Snow Bowl Trip Ahead For Martin Luther Society, LDS Girls Offer Second Chapter To New Members

### Hillel Group Meets Sunday

Nominations and election of officers are the scheduled activities for a Hillel Foundation meeting Sunday.

The group will meet at 7:30 p.m. in the Memorial Union.

The Foundation's Sahuaro picture will also be taken at the elections meeting.

### LDS Girls Form New Chapter

Phi Omega chapter of Lambda Delta Sigma has split to form two LDS chapters for girls on campus, Phi Omega and Phi Psi. The old Phi Omega officers — Rosalie Arnson, president; Jacque Daley, vice-president; Nancy Westover, secretary; and Mary Jane Reading, treasurer, became the new inter-chapter officers and

new officers were elected for regular meeting of the Martin Luther Society Sunday will be both chapters.

New officers for the Phi Omega chapter are: president, Mona Beecroft; vice president, Cleone Flake; secretary, Barbara Tucker; treasurer, Carolyn Buss; and Student Religious Council Representative, Margaret Wardlow.

Also social chairman, Carole Hendrickson; Big and Little Sister chairman, Yvonne Tarwater; publicity, Dale Henderson, and historian, Janet Dahl. New Phi Psi officers are president, Jae Dee Merrill, vice-president, Quola Hatch; secretary, Mary Ellsworth; treasurer, Jean Lines; social chairman, Becky Hall; Big and Little Sister chairman, Gay Blanchard, and SRC representative, Lella Crandall.

Also, publicity, Joan Lines; intramurals, Loretta Riggs; and historian, Lynette Stratton.

### Martin Luther Society Schedules Discussion

Topic for discussion at the

### Western "Stomp" Set Saturday

Hey, "stomp" fans . . . Calvin Nichols and his Wranglers will be "playing up a storm" next Saturday night, 8 p.m. to midnight, in the MU ballroom.

Sponsored by the ASU Rodeo Club to raise funds for the campus rodeo in April, this western "stomp" will be open to students and faculty.

Cost is 75 cents stag, and \$1.25 per couple, according to Rose Krznarich, dance chairman.

# Rules, Schedule Revealed For Fraternity Rushing

Rules and a schedule for second semester rush were announced yesterday by Dave Barnes, IFC rush chairman.

Registration for second semester rush will be taken in class registration lines, before and immediately following the rush assembly, and the following day until 2:40 p.m.

A mass rush assembly will take place on Monday, Feb. 2 at 8 p.m. in the MU cafeteria.

A compiled list of rushees and their preferences will be available for every fraternity house by 6:30 p.m., Tuesday.

Tuesday, Feb. 3, each fratern-

ity will hold Open House from 7 to 10 p.m.

Wednesday, Feb. 4, each fraternity may hold Open House from 3:30 to 5 p.m. and from 7 to 10 p.m.

Each rushee must visit eight houses. He may attend at any time within the designated hours. He must sign in and stay a minimum of fifteen minutes. No bids will be available at this time.

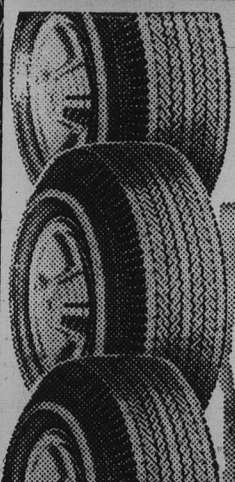
Thursday, Feb. 5, there will be no rush events.

Friday, Feb. 6 and Saturday, Feb. 7, bid parties will begin at 7 p.m. and are restricted to campus or fraternity houses. This is to afford the opportunity of visiting more than one house each night.

Sunday, Feb. 8, there will be no rush events.

Monday, Feb. 9, rushees are to bring all bids to the IFC office. Signing only one bid. Pledging ceremonies for all houses will be at 7 p.m.

Save your cash... Buy on Firestone Budget Plan



DeLuxe Champlon NEW TREADS

Applied on sound tire bodies or on your own tires

Ford - Chevrolet & Plymouth OWNERS

2 for 22.22\*

Whitewalls \$1.00 extra each \*Plus tax & Recappable exch.

COHILL & LOW TIRE CO.

4333 EAST WASHINGTON ST. PHOENIX, ARIZONA BR. 5-6288

M & H DEPARTMENT & HARDWARE

OPEN DAILY 9 to 9 Sundays 9 to 6

Bayless Center 1332 E. Apache Blvd.

your Mutual Benefit Life Man says:



WANT TO SAVE MONEY?

Few people realize that certain life insurance policies are one of the surest, easiest, ways in the world to save money. Let me design a savings plan to fit your needs.

Name \_\_\_\_\_ Address \_\_\_\_\_ City \_\_\_\_\_

Leonard A. Krell Mutual Benefit Life Insurance Co. 342 West McDowell Road Phoenix, Arizona

# New Members Initiated By Honorary

Kappa Delta Pi, national honor society in Education, initiated eleven new members Tuesday evening. The ceremonies followed the society's dinner.

Barbara Driskell, a senior, is president of Kappa Delta Pi.

Advisor to the group is Dr. Maurice Lewis, principal of the ASU laboratory school.

New members are Joanne Cooper, Marjorie L. Forrest, JoAnn Gulatto, Charmian Smith, Mrs. Margaret V. Woodside, Robert C. Moser, and Robert F. Pierce, all seniors.

Also Elaine Hash, junior, and Mmes. Erva J. Verner, Mildred Dixie Thompson, and Leona Solomon, graduate students.

Membership into Kappa Delta Pi is by having a junior class standing, being in the upper one-fifth of the class, and having completed work in the education field. Junior students must have six semester hours in education, while seniors must have 12 hours.



**HONORED . . .** Education majors were initiated into education honorary Kappa Delta Pi Tuesday. New members are (l to r seated) Elaine Hash, JoAnn Gulatto, Charmian Smith, Joanne Cooper, and Marjorie Forrest. Standing (l to r) are Robert F. Pierce, Erva Verner, Margaret Woodside, Leona Solomon, Dixie Thompson, and Robert C. Moser.

# Greek Pace Slows Down

By PETEY OLMSTED

Before the welcome lull of non-activity week overtakes them, ASU fraternities and sororities are recording a few final events

Alpha Sigma Alpha pledges will be busy at their rummage sale in Phoenix starting early tomorrow morning.

Later on tomorrow morning, Alpha Phis will be honoring their mothers and alumnae at an annual coffee.

Rae Hawks and Deena Crim, respectively, hold outstanding active and pledge honors this week. Officers pro tem are Joanne Smoot, president, and Carolyn Burns, treasurer.

New Alpha Epsilon Pi officers are Bob Shcolnik, Master; Les Miller, Lt. Master; Nick Einfeld, secretary, and Barry Starr, pledge master.

Others are Murray Goodman, historian; Jerry Kramer, treasurer; and Norman Zaslow, sentinel.

Irene Escobedo, Tri Sigma, is wearing the sorority's gold crested bracelet honoring her as pledge of the week.

Outstanding Gamma Phi Beta members for the last three months have been Mary Boots Watts, October; Janet Lewis, November; and Marilee Spratler, December. They were elected to the honor for service to the sorority during these months.

## Faculty Facts

### ASU Faculty Members Receive National Honors

Dr. Arnold Meister, ASU professor of Physics, received encouragement in the form of a \$5,000 grant for his research in molecular spectroscopy recently.

The grant, from the non-profit Research Corp., will provide funds for two more graduate assistantships next fall for students working on advanced degrees in molecular spectroscopy. This, plus a \$28,600 grant recently awarded ASU by the National Science Foundation, makes possible four assistantships for advanced students.

Dr. Meister's research program is the only one of its kind in the West. Strictly pure research, it involves the use of infrared radiation to determine the structure of molecules.

Two Social Science faculty members attended conventions of historical societies during the Christmas holidays and came back holding official positions in their respective groups.

Dr. Karl Dannenfeldt, chairman of the Division of Behavioral and Social Sciences, was elected secretary-treasurer of the American Society for Reforming Research, which met in Washington D. C.

One of five ASU faculty members to attend the Pacific Coast branch of the American Historical Association convention at Whittier College, Dr. Guilford A. Dudley, assistant professor of History, was chosen secretary-treasurer of the Pacific Coast Conference for British Studies.

The other faculty members attending were: Dr. Robert Coonrod, chairman of the Department of History and Political Science; Wallace E. Adams, assistant professor of European History; Dr. Paul Hubbard, associate professor of History; and Dr. Donald Van Petten, professor of Political Science.

Live rattlesnakes are on the program for the women of the ASU Newcomers Club Tuesday night.

Dr. Herbert L. Stahnke, chairman of the ASU Division of Life Sciences, and director of the poisonous animals research laboratory, will present the snakes along with other live examples of desert denizens in a lecture Tuesday at 8 p.m. in room 250 of the Science Building.

## More Devil's Diamonds Sparkle

Cupid's been a busy boy recently at ASU.

Gretchen Alexander, Alpha Phi, is engaged to Don Taylor, now serving in the U. S. Navy. Another Phi, Ellen Lucas, told of her pinning to Larry Gutz, Sigma Nu at Iowa State University.

Both were announced at the sorority meeting Monday evening in a candle-passing ceremony.

During the holidays, Sherrill

McRuer, Gamma Phi Beta, became engaged to Fred Holmes of Alpha Tau Omega. Georgia Shearer, Gamma Phi, and Keith Adams, Phi Delta Theta at the U of A, did likewise.

Gamma Phi Dianne Eldridge is wearing Benny Anderson's Delta Sigma Phi pin.

Also engaged are Patsy Beck and Chip Campbell, Gamma Phi and ATO, respectively. Other "older" engagements are those of Gamma Phi Rani Louthan and Warren Summers, Phi Sigma Kappa, and Shirley Hall and Dan Greener, Delta Sig.

Alpha Sigma Alpha Marsha Hill was married to Jim Pipla Dec. 27. He is also an ASU student.

Dione Ticoulat, DG, is wearing Don Head's Phi Delt pin. Another twosome, Eddie Culom, Phi Delt, and Beth Staley, are telling of their marriage last Friday.

## Sailing Group Gets Organized

Students and faculty interested in sailing are invited to a general meeting of a group of Phoenix sailing enthusiasts Sunday at 7:30 p.m. The meeting will be held at the ABC Club, 1425 E. Ocotillo Rd. in Phoenix. Members will not be required to own a sailboat.

See Our New Hol'N-One Donut Machine



Now Under New Management

8th Street & College

Harold Barclay, Mgr.

AFRO-CUBAN JAZZ at

## Guys & Dolls

32nd St. & Washington — Phoenix  
EVERY SUNDAY — 4:00 to 8:00 p.m.  
Cha - Cha — Merenge — Mambo

With The  
**CHARLIE LEWIS**  
Afro-Cuban Jazz Quintet  
featuring Top Flight Latin Drummers

Get WILDROOT CREAM-OIL Charlie!



HELEN OF TROY, N.Y. says: "There's no greece, just natural good grooming!"



## Fred Elquest & Son

Everything for the Art Student  
● Art Supplies  
● Picture Framing  
703 N. 2nd St.  
Phoenix  
PHONE AL 8-2628

## LAIRD Pharmacy

Prescription Druggists

501 Mill Ave. WO 7-2922  
26 E. 8th St. WO 7-4063



Subscribe Now at Half Price\*

You can read this world-famous daily newspaper for the next six months for \$4.50, just half the regular subscription rate.

Get top news coverage. Enjoy special features. Clip for reference work.

Send your order today. Enclose check or money order. Use coupon below.

The Christian Science Monitor P-CN One Norway St., Boston 15, Mass.

Send your newspaper for the time checked.

6 months \$4.50  1 year \$9

College Student  Faculty Member

Name \_\_\_\_\_

Address \_\_\_\_\_

City \_\_\_\_\_ Zone \_\_\_\_\_ State \_\_\_\_\_

\*This special offer available ONLY to college students, faculty members, and college libraries.

**INTRAMURAL Scene**

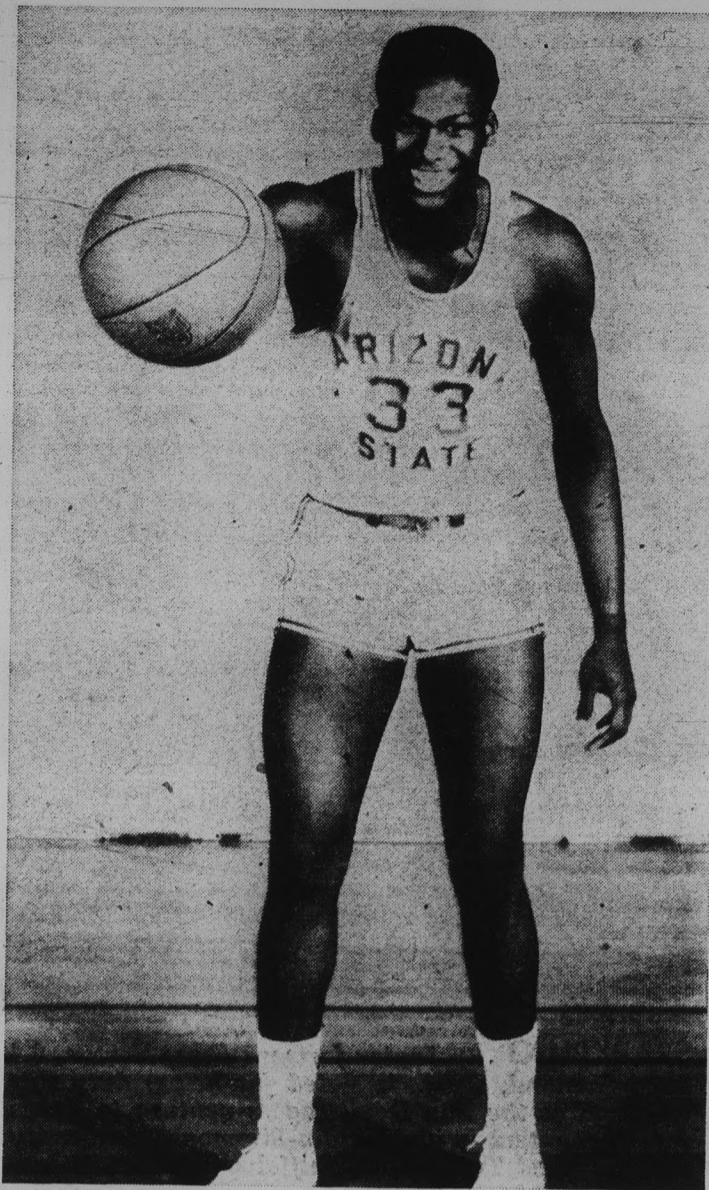
Intramural point standings compiled after the completion of football competition show Phi Sigma Kappa leading the pack by 19 points over runner-up Alpha Tau Omega, 76 to 57.

Delta Sigma Phi ranks third, a single point behind ATO, and Sigma Nu is fourth with 52 points.

Hayden and Haigler Halls follow with 48 and 45 points, respectively, with Sahuaro Hall and Sigma Chi Sigma tied for seventh place with 44 points each.

Running ninth is Phi Delta Theta with 36 points and rounding out the top ten is Phi Epsilon Kappa, with an accumulation of 31 points.

The Off Campus Men's team took the football title. Haigler Hall finished second.



**FROSH STAR . . .** Ollie Payne, a 6-4, 205-pounder from Charleroi, Pa., has been a motivating force behind the success of the ASU Sun Imps' 5-1 record to date. Averaging 12.8 points and 12 rebounds per game, Payne will be in the starting lineup tonight when Fanny Markham takes his frosh crew to Williams Air Force Base for a rematch with the Flyers.

**FIG'S FILE**

By VIC FIGARELLI

The Football 1958 Scorebook, an informative little magazine which rehashes the past season complete with all-star teams from all parts of the country, lists Lee Coleman's 1958 Sun Devil grid brochure as one of the twelve best in the nation.

Bouquets are in order for Lee and the ASU Sports Publicity Department.

Hardin-Simmons also made it into the elite dozen, which included USC, Navy, Michigan State, Oklahoma, Stanford, California, Utah, Arkansas, Miami of Florida and Brown.

Rock Park, we're glad to report, will no longer be the home grounds for the AS baseball team.

In case you haven't had occasion to run the track at Goodwin Stadium or take a short trip down Normal Ave., south of Apache Blvd., recently, there is a new baseball field across the street from Stadium Hall.

The new field will enable the Demon team to stay in one

place, instead of scheduling games for Tempe High and Mesa's Rendezvous Park.

USC has a bitter pill to masticate. The NCAA laid a two-year suspension on the school for being guilty of offering "improper inducements" to two student athletes.

The ban puts quite a crimp in Southern Cal's track ambitions. They only have two of the greatest former high school track athletes in the nation . . . Jim Brewer and Dallas Long . . . a couple of ex-North Phoenix High stars who set prep records in the pole vault and shot put, respectively.

Don't get all shook when you check the story on Border Conference statistics. Hardin-Simmons' won-lost record reads 5-3 there, but on page eight they're listed as having a 7-3 slate. The Cowboys played two games earlier this week which evidently didn't make it into loop headquarters, which accounts for the contradiction.

**AS Wrestling Program Dropped**

Arizona State's varsity wrestling program has been dropped for the current season.

ASU director of Intercollegiate Athletics Clyde Smith made the decision, saying that "our sports program has grown so rapidly that we have been unable to provide adequate

supervision, facilities, and budget for all eleven of our sports. This will be remedied in time."

The ASU wrestling program has been operating on a limited budget and schedule since wrestling became a varsity intercollegiate sport here three years ago.

they're here

flap-pocket **TAPERS**<sup>®</sup> california slacks



See the trim fit, new flapped back pockets, wide selection of colors and fabrics, attention to details and sturdy construction. Wherever you go, you're right in the latest style.

26 to 38, 4.95 to 6.95

Junior TAPERS 4 to 18 3.98 to 4.50

**Devils Prominent In BC Statistics**

ASU's basketball squad leads the six Border Conference teams so far this season in three out of five major statistical categories, with Al Nealey high among the individual leaders.

In the scoring department, the Devils, in 11 games, have accumulated 866 points for a 78.7 points-per-game average. Hardin-Simmons, in three less games, has garnered 528 points and a 66.0 average.

The Demons also have proved most accurate in the shooting department, both field goal and free throw. In 781 attempts from the field, State cagers have bucketed 328 for a 41.9 percentage. Texas Western is close behind with 41.6 percentage, sinking 269 out of 646.

From the free throw line, fouled Devils have attempted 297 shots, converting 210 for a 70.7 percentage. New Mexico State is runner up with 223 for 344 and a 64.8.

Defensively, the Sun Devils rank third, allowing the opposition 766 points, an average of 69.6 per game. Texas Western, in eleven contests, has yielded only 639 points for a 58.0 aver-

age and lead the BC in this department.

ASU holds down the second spot in rebounding with 476 and a 43.2 average. Hardin-Simmons leads with 49.5, having captured the ball 396 times off the backboard.

Individually, A-State forward Al Nealey leads the league in

scoring, rolling up 224 points for a 20.3 average. Paul Denham is fourth in the BC a 14.7 average, having scored 147 points.

Denham also has been number one man at the free throw line, plunking in 39 out of 47 for an accuracy percentage of 82.9. Nealey, with 54 for 75 is third with a percentage of 72.0.

Field goal accuracy honors go to Texas Western's Jon Sanders who has made 48.3 percent of his shots, or 69 out of

143. Nealey is fifth in the Conference with 85 for 202 and a percentage of 42.0.

Doyle Edmiston of Hardin-Simmons has proved to be the best rebounder in the BC loop so far. He has captured 119 for an average of 14.9 rebounds per game. Nealey is third with an 11.2 average and 124 rebounds.

**STANDINGS**

	W	L	Pct.
Arizona State	8	3	.727
Texas Western	7	4	.636
Hardin-Simmons	5	3	.625
New Mexico State	5	7	.417
Arizona	2	10	.167
West Texas	0	7	.000

**Imps Travel, Meet Flyers At Air Base**

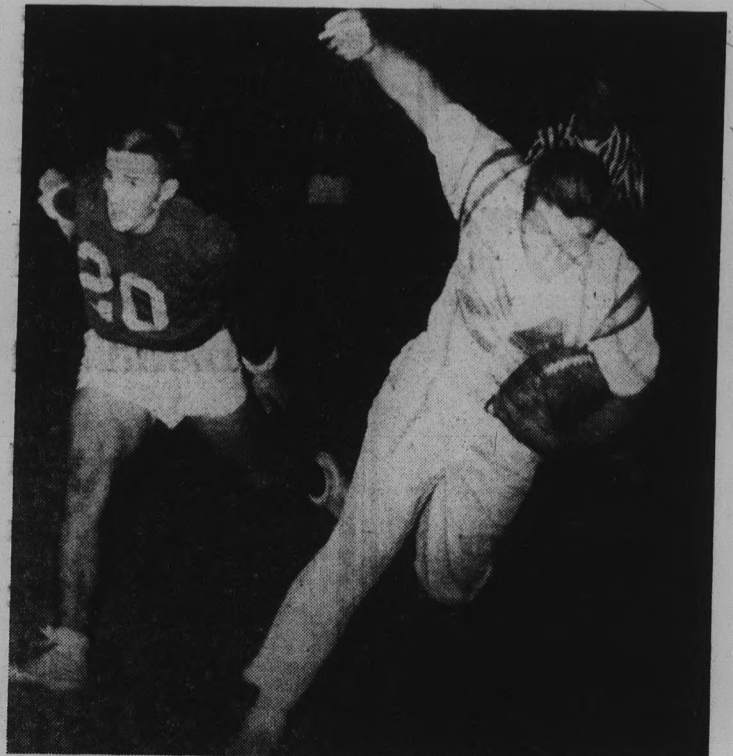
The ASU Sun Imps will try for their second win over the Williams Air Force Base quintet Friday night in the Flyers' gymnasium.

Having dropped only one basketball tussle so far this season, the Imps expect a real contest from the Air Force squad. The Flyers' home court advantage could make the difference as the Imps won by only 74-73 when they faced Williams in Sun Devil Gym Dec. 1.

Coach Fanny Markham's probable starting line-up will feature the Imps' high scoring forward Harvey Darche who has a 15.3 points per game scoring average and a rebound average of 16.0.

Also expected to start are Ollie Payne 6'4" with a 12.8 point average and 12.0 on rebounds. At center will be 6'6" Mike McConnell who is the Imps' second high scorer with 13.8.

Probable guards are Chico Morrison 6'2" with a 10.0 average and either Bill Flake 5'10" with an 8.8 average or Les Kuhn 5'11" and averaging 5.5.



**CACTUS BOWL . . .** action unfolds here in the ATO's 24-13 triumph over Phi Sigs. The final intramural grid standings found Off-Campus Men taking the title, Haigler Hall finishing second, and ATO, by virtue of their Cactus Bowl victory, finishing third.

**Bunch's**

609 Mill • WO 7-3221

"We Teach Watches to Tell the Truth"

REASONABLE PRICES

Lou's Campus Shop

Fine Clothes For Men  
403 Mill Avenue, Tempe  
Phone WO 7-2960

# Devils On Road, Meet H-SU, WT

By BOB LAIRSON

The ASU basketball team will make its first title defense of the season when it engages the Hardin - Simmons University Cowboys tomorrow night at Abilene, Texas. The Devils will remain in Texas for a Monday night loop fray with the West Texas State Buffaloes.

Led by high-scoring Al Nealey, the Demons have surprised pre-season prognosticators by attaining an 8-3 record in non-league play so far this season.

Coach Ned Wulk announced that he will take an eleven-man traveling squad on the weekend trek. The roster includes forwards Nealey, Paul Denham,

Gary Norton, Vern Russell and John Bowen; centers Billy Pryor and Tom Hughes; and guards Paul Howard, Ed Olson, Jack Heath and Rich Jarvis.

Hardin - Simmons has compiled a 7-3 record in games played before this week. The pre-season favorite to nab the Border Conference crown, the Cowboys' strongest weapon is their rebounding. H-SU has an average of 49.5 rebounds per game, good enough to dominate the conference in this department. Their two chief backboard men are 6'-8" Doyle Edmiston and 6'-7" Carl Knight.

The H-SU contest remains a question mark for ASU, as the teams have met no common opponents so far this season. The Sun Devils will work out in the Cowboy gym tonight in preparation for the Abilene game tomorrow.

West Texas State, the Devils' Monday night foe, is in the midst of a rebuilding season and have a 0-8 record, as of Wednesday night. The Buffalo game at Canyon will be the 25th meeting between the two teams. West Texas leads the series, 13-11.



**SPARKPLUG . . .** Junior forward Gary Norton, 6-4 from Sunland, Calif., is slated for heavy duty this weekend as the Sun Devil cagers venture to Texas for encounters with Hardin-Simmons University and the West Texas State Buffaloes. Norton is currently carrying an 8.8 average and is one of the leading rebounders on the AS squad.

## KOACH IEHL'S ORNER

By JEFF KIEHL

The 1959 edition of the Sun Devil football schedule has finally been released, with 11 games on tap, including 7 to be played at Sun Devil Stadium.

The list includes such new names as Utah State, Colorado State and Brigham Young of the Skyline Conference, plus Montana State of the Rocky Mountain loop.

Brigham Young, in the throes of a new athletic improvement plan, came on strong to finish in third place in the Skyline this year. Head Coach Hal Kopp, who engineered the Cougars' climb, has resigned, and there has been some speculation that Max Spilsbury, current head mentor at ASC, Flagstaff, has a chance at the job. Might prove interesting if he does take the grid reins at the Provo, Utah, school.

A young club this year, Utah State finished sixth in the conference, has its whole team returning next year and should give the Demons a real tussle. Colorado State finished fourth, new coach "Tuffy" Mullison proving he is a real strategist and previewing great things for the Aggies in the near future.

Montana State, a perennial power in the Rocky Mountain Conference, has decided to rough it alone as an independent and will come to Tempe with blood in their eyes, due to the 53-13 drubbing handed them by AS in '57.

Meanwhile, the Devils travel to San Jose next season with the same thought in mind — to amend their 21-20 loss to the Spartans in 1958.

From The Wigwam's Collection of Casuals



Footwear To Match



43-59 W. Main SCOTTSDALE

### Swimming Team Meets Tuesday

Preparations for competitive varsity swimming have started at ASU. An organizational meeting is to be held at the campus pool at 3:30 Tuesday for men interested in the sport.

Swimming coach Marvin Grier said, "Practices have officially started, but there is still time for men to try out and get in shape for our first meet."

## WAA News

ASU will have three representatives participating in the Thunderbird Tennis Tournament in Phoenix, beginning today and running through Sunday.

The three are Nancy Pennies, Lois Dubois and Doris Hirose.

Among the star players in the tourney are national junior champion Sally Moore and 16-year-old Karen Hantze, who last year became the youngest player to win the national junior crown.

Others top seeded in the women's class include Doris Hart, Pat Todd, Vicki Palmer, Dorothy Cheney and Jacque Tegland.

### 1959 ASU Grid Schedule

OPPONENT	DATE	PLACE
West Texas State*	Sept. 19	Tempe
Utah State	Sept. 26	Tempe
Montana State	Oct. 3	Tempe
Colorado State	Oct. 17	Fort Collins
San Jose State	Oct. 24	San Jose
New Mexico State*	Oct. 31	Tempe
Texas Western*	Nov. 7	El Paso
Brigham Young	Nov. 14	Tempe
Hardin-Simmons*	Nov. 21	Tempe
Arizona*	Nov. 28	Tempe
Hawaii	Dec. 4	Honolulu

\*Denotes Border Conference games.

### AS Opponent Cage Records

Team records to Jan. 5:

Team	W L
Hardin-Simmons	7-3
New Mexico St.	6-7
Texas Western	7-4
West Texas	0-7
Santa Clara	6-5
Fresno State	9-2
ASC-Flagstaff	4-4
Arizona	2-10
San Diego St.	6-3
Loyola	4-5
San Jose St.	2-8
Pepperdine	6-3
Tulsa	6-4
Whittier*	3-3
Wichita*	6-4
Houston*	4-4
Santa Barbara	0-8
Los Angeles St.	4-2

\*Denotes record incomplete

### FLIGHT INSTRUCTION

At Special Rates For College People  
A Private License is a Must in Modern Business  
**A M O S**

**FLIGHT OPERATORS**  
Don Amos - - Class of '56  
Ph. BR 5-7291 - Sky Harbor

### STADIUM COFFEE SHOP & Delicatessen

Good Things to Eat and Drink

Television

"Across the Street From East Stadium"  
Open 7 days week

Just Arrived  
Arizona State University

- ★ Mugs ★
- ★ Decals ★
- ★ Jackets ★
- ★ Animals ★
- ★ Stationery ★

College Bookstore

Instant Car Service Tempe Center

**DRIVE-IN LAUNDRY & CLEANERS**  
FIRST in Laundry and Cleaning • LAST in the Phone Book  
Tempe Center WO 7-5773