



State Press

ARIZONA STATE



TEMPE, ARIZONA



ARIZONA'S OLDEST COLLEGIATE NEWSPAPER, ESTABLISHED 1903

Vol. 37

Wednesday, December 17, 1958

No. 24

Light Action Is Reported For Loans

The Scholarship office through Herman Schmidt, Acting Dean of Men, has indicated a light response to the inquiry about the federal loan program announced Friday in the State Press.

Dean Schmidt said, "The response was about as expected, but we feel that many students neglected to use the inquiry form who really need the assistance."

"The funds allotted to Arizona State University may run out before we can help all those who qualify and are interested. Therefore, we will only be able to make loans to those who have filled in the inquiry blank. We must request funds on the basis of the interest indicated through these blanks."

A student may borrow up to \$1,000 in any academic year, with a maximum loan of \$5,000 for five years. Repayment begins one year from the time the borrower leaves school and may be made over a period of 10 years.

The inquiry blank is printed at the lower right on page three.

Opera Cast Lauded For Puccini's 'Cloak'

The ASU Opera Workshop presentation of Puccini's short opera, "The Cloak," was well received by an overflow audience Sunday night in the MU ballroom.

The performance, played in conjunction with the Concert Choir's Christmas program, also drew excellent reviews in the Phoenix newspapers.

"The Cloak" was sung in English. In the original Italian, the work is titled "Il Tabbarro." It tells a tale of jealousy and murder. Mr. David Scoular directed both the opera and the choir.

Tenor Marion Smith, baritone James Ellington, mezzo soprano Lillie King Shaw and Marina Pressendo as Georgette, the supposedly unfaithful wife, sang with appropriate passion and verve.

The high caliber of both the singing and the acting was maintained by others in the cast, including Lewis Litchfield, Jack Cathey and Theodore Bradshaw.

Sets for "The Cloak" were designed by Dick Drinen.

The performance in the ballroom came almost 40 years to the day after the opera's world premier at the Metropolitan Opera House in New York, and missed the 100th anniversary of the composer's death by only a week.

Another performance is sche-



DECK THE HALLS . . . Pat Patterson and Jaunita Dees are busy putting together the gifts and decorations for tomorrow afternoon's campus children's Christmas party.

FOR 220 KIDS

Santa To Arrive At Memorial Union

Santa Claus will appear at the Student - Faculty Relations Board's Christmas Party tomorrow from 4 to 5 p.m. in the

Memorial Union Ballroom.

An estimated, 220 children and 150 adults will attend.

Santa's helper, Margie Law, will lead the group in choral singing, and Mary Boots Watts will act as mistress of ceremonies.

Candy and gifts are planned for the youngsters.

Carey Gregory entertains at the piano, and Joan Martin will present a dramatic skit, "The Night Before Christmas." She will be accompanied by a choral background.

Other members of the Stu-

dent-Faculty Relations Board helping with the party are Pat Patterson, Jaunita Dees, Frank Schaumberg, Dick Huline, Sandy Smith, and Jessica Thomas.

Also helping are Dr. Harold Shapiro, Dr. Duane Manning, Mr. Elvin Taysom, and Mrs. Marjorie Henshaw.

Korean Vets may sign for December checks at the Veterans' Affairs office tomorrow and Friday before leaving for the Christmas vacation.

Directories Move To ASU Campus

The American Naturalist, oldest biological journal and second oldest scientific journal published in the United States, has established publishing headquarters at Arizona State, President Grady Gammage has announced.

Established in 1867, The American Naturalist is a bi-monthly journal published for the American Society of Naturalists.

Also establishing headquarters at Arizona State are the Directory of American Scholars and the American Men of Science. Both are internationally-recognized directories of American scientists and scholars.

Jaques Cattell, editor and publisher of the three publications, formerly published these works in New York City. He moved his headquarters to AS because of "the fine facilities and wonderful climate."

A staff of approximately 20 editorial and clerical assistants will be employed by Mr. Cattell. Headquarters is the building at 820 College Ave., which was formerly used as a home by faculty and staff members.

Mr. Cattell was also appointed as lecturer of technical publishing by Dr. Gammage. The position is effective second semester.

Dr. McKen Cattell, the present editor's father, established American Men of Science in 1906. The biographies of more than 90,000 scientists appear in the ninth and latest edition of the publication. Over 4,200 pages in three volumes make up this edition.

For the 10th edition of the publication, approximately 130,000 biographies of distinguished scientists will be published, according to Mr. Cattell. Four volumes of more than 5,500 pages will be published.

The Directory of American Scholars was established by Mr. Cattell in 1942 under the sponsorship of the Council of Learned Societies.

The third edition of the directory was published in 1957 by R. R. Bowker Company of New York City and contains 836 pages. This company also helped publish the latest edition of American Men of Science.

Both biographical directories are considered standard reference works in academic, scientific, industrial and business circles.

Mr. Cattell is listed in Who's Who in America, Who's Who in the East. He attended Harvard, Arizona and Columbia Universities.

He has worked as a laboratory assistant to noted botanists, zoologists and entomologists.

Mr. Cattell has already purchased a home in Phoenix and has recruited six workers for his office staff.

Alpha Phi Wins Top Show Award

Alpha Phi sorority waltzed away from the rest of the acts to take the Blue Key Musicale sweepstakes trophy last night.

Other winners were Kappa Delta, first; Alpha Delta Pi, second; and Gamma Phi Beta, third in the sorority division. Sigma Nu took first by a wide margin over Alpha Epsilon Pi in the fraternity division and Lambda Delta Sigma took top honors for special interest groups.

The Alpha Phi act was a dream sequence, with the girls beautifully costumed as children's toys. In her dream, a little girl's toys came to life and turned on her. She was forced to wake up to escape.



DOWN THE HATCH . . . Three male members of the cast of "The Cloak," loosen up their vocal chords with some Italian vino before resuming the action. Puccini's short opera was presented in conjunction with the ASU Concert Choir's appearance in the ballroom Sunday night. Pictured are Marina Pressendo, Marion Smith, Lou Litchfield and Jack Cathey.

Faculty Members Books Recognized

Three books* authored by ASU faculty members have received foreign adoption.

"Human Relations in Business," by Dr. Keith Davis, chairman of the Management department in the College of Business Administration, has been adopted as a text by the University of Montreal, Canada, and the Imede Management

Development Institute in Lausanne, Switzerland.

The 1958 revised edition of "Cases in Management," co-authored by Dr. Davis and Henry Cruickshank of Stonehill College, Mass., has been adopted by Ikkyo University in Japan and the Inter-American University in Puerto Rico.

Dr. William A. Nielander, chairman of the College of Business Administration's Marketing department, is co-author, with Dr. Raymond W. Miller of the Harvard University Graduate School of Business, of a book, "Public Relations."

This book, already translated into Italian, has received wide adoption in England, Italy, Belgium and Germany. It has just been translated into Spanish, to be published in Madrid.

Drs. Davis and Nielander joined the ASU faculty this fall. Dr. Davis came from the University of Indiana and Dr. Nielander from Cast Institute of Technology in Cleveland.

Civic Leaders Join Group

New members have been elected to the ASU Foundation.

Eighteen local civic leaders will join the non-profit corporation designed to promote and assist the development of the university. Dr. Daniel Noble, Motorola vice-president, was named to the board of directors from the new group.

Other new members are Karl Fickes, Ben Projan, Sherman Hazeltine, Frank Snell, Riney Salmon, Lewis J. Ruskin, Harold Alpert, Robert Garrett and Royal Alderman.

Also named were Harry Montgomery, W. R. Montgomery, Victor I. Corbell, and Drs. W. A. Brewer, John R. Green, Paul L. Singer, Don Matthiesen and Joseph Madison Greer.

J. C. Wetzler is president of the ASU Foundation.

Utility Tunnel Planned At AS

A utility tunnel soon will be constructed along the former Normal Avenue to service the new science buildings.

A building permit was issued by the city of Tempe for \$83,000 to cover costs. The tunnel will measure 7 x 8 feet by 580 feet in length.



ACHIEVEMENT AWARD... Governor elect Paul Fannin presents the Governor's Achievement Award as the outstanding football player of the 1958 season to quarterback John Hangartner.

Placement Sets Plans

The Placement Center is planning to expand summer employment opportunities, according to Dr. Robert Menke, director of Placement.

Jobs in nearly every vocation for which training is available at Arizona State University, along with other jobs open to university students, are being sought on the basis of geographical location, rate of pay and availability for both men and women students.

A number of commercial interviewers have announced they will interview students for summer employment as a part of their regular spring interviewing schedule.

Indications are that the greatest demand will be for seniors in engineering, chemistry, physics and mathematics, according to Dr. Menke.

More information concerning summer employment can be obtained at the Placement Center.

Three Foreign Tours Set This Summer

Travel and academic credit will be offered ASU students in three six-week tours of foreign countries next summer, according to Dr. Roy Rice, summer session director.

Dr. Rice said students may sign up now for the guided tours.

The sixth annual European study tour will include the 10 countries of Britain, Holland, Belgium, Germany, Austria,

Switzerland, Italy, Spain, France and Portugal.

Dr. John Martinez will conduct this tour, running from June 15 to July 29. New York City is the embarkation point for the airline round trip. Six hours of academic credit may be earned. The cost is \$1330, with a \$200 deposit required.

The Spanish study tour will feature four weeks of travel in Spain. Cost is \$935, with \$200 deposit for the June 30 through August 12 excursion.

Third tour will be the Mexico study-travel summer ses-

sion. Running June 8 through July 11, the cost is \$475, with \$75 deposit.

ASU Students In Auto Accident

Bernadette Konkler, ASU co-ed, was struck by an automobile yesterday morning at 8:30 at the corner of College and Orange.

A scratched elbow and ankle were the extent of her injuries, according to the Infirmary.

Bruce Colegrove, driver of the car, had stopped at the corner of Orange avenue and had started to make a left turn onto Orange as Miss Konkler started to cross the street. He said the sun was in his eyes and he did not see her in time. He stopped, helped Miss Konkler into the car and took her to the Infirmary.

Colegrove was cited by the Tempe police for failure to yield the right of way to a pedestrian.

Many Problems Confront AS Social Board Members

By DALE KUSCH

"Problems," the latest hit song of the Everly Brothers, might well be the theme song of the ASU Social Board.

If you see a student walking on a cloud or with his head hanging low, you might be looking at one of the fifteen members of the Social Board.

Yet, Toni Johnson, chairman of the board, says "I feel I can leave anytime, and they (members of the board) can operate without me." The members have proven her statement 100% correct.

Proof of this was the annual Halloween Party. Toni let the board plan this party without her assistance or direction.

The party was directed by Teri Moss, secretary and choir director of the board, and it was acclaimed a great success by the students who attended.

Other members of the board are John Southern, co-chairman; Linda Lee Tousa, business manager; Sami Bunt, decorations; Dale Kusch, public relations director; John Sumners, entertainment; Sue Nichols, financial director; Carole Curtis, At Home Series; J. R. Stephens, arrangements and set up.

Also Elaine Chiate, corresponding secretary; Harry Mitchell, special effects; Francis Flajnik, choreography; Norman Freestone, transportation; and Evangeline Mendoza, musical director.

Mrs. David Scoular and Joy Lynne Tanner are advisors to

the group.

Members are appointed to represent fraternities, sororities, and independent organizations.

The Social Board supplies the campus with social affairs ranging from jazz concerts to dances.

This year it has bought Dave Brubeck's Quartet for a jazz

concert; sponsored after game dances; opened Clancy's in the basement of the Memorial Union; sponsored the Western Dance and coronation; helped with the Memorial Union convention; and sponsored the Halloween Party and At Home Series.

Now All You Have To Do Is Graduate...

Keep On Your Toes With NODÖZ

Now that you've got yourself into college, let safe, handy NoDoz tablets help you get out. Harmless NoDoz helps you keep alert through long, late cramming sessions... keeps you on your toes during exams. NoDoz tablets are safe as coffee and much more convenient.

Give The Perfect Gift!

A GIFT CERTIFICATE

From Your Musical Needs Headquarters

★ ALBUMS

★ PHONOGRAPHS

★ RADIOS

★ DIAMOND NEEDLES

COMPLETE STEREO NEEDS

Phono's From \$79.95 to Consoles \$359.95

STEREO RECORDS

USE OUR XMAS LAYAWAY PLAN

HILL'S RECORDS

Gift Wrapping A Specialty

TEMPE CENTER — Phone WO 7-5243

Judging Team Takes Second In Utah Meet

The livestock judging team added another laurel to its list recently.

The squad placed second at the Golden Spike National Livestock Show held at Ogden, Utah. They were surpassed only by California Polytechnical. Eleven teams competed.

ASU representatives, coached by Robert Rasmussen, assistant professor of animal husbandry, included Roy Crosby, Greer; John Hadlock, Mesa; Logan Hansen, Lakeside; Franklin Flakke, Snowflake; Glenn Grubbs, Tempe; and alternate, Gordon Gilpin, Yuma.

Crosby was fifth high individual in the entire contest and Hadlock finished ninth among the 55 contestants.

Farm Develops Hereford Herd

A new foundation herd of registered Hereford stock is being developed at the ASU training farm after analysis of pedigrees of existing stock revealed possible dwarf carriers.

Robert D. Rasmussen, assistant professor of animal husbandry, said ASU has purchased nine registered Hereford heifers, seven of them bred at the Long Meadow Ranch at Prescott, with which to start the new foundation herd.

The purchases followed research by the American Hereford Association on bloodlines that have produced possible dwarf carriers in the older cows at ASU.

Sale of the older cows produced most of the funds used to purchase the new stock, Rasmussen said.



FLANKERS ELECTED . . . ASU will have a co-captain at each end of the line for next season's football games. Left end Bill Spanko and right end Karl Kiefer were named '59 co-captains at the fall awards banquet last week by coach Frank Kush, center.

Michigan Prof Speaks Here

"Australian Trees and High Blood Pressure" will be the subject of a discussion at 8:15 p.m. Friday in room 350 of the Science building.

Dr. R. C. Elderfield, professor

of Chemistry at the University of Michigan, will discuss the possibility of deriving from the barks of Australian Alstonia trees a relief for high blood pressure.

The address, free to the public, is sponsored by the ASU chapter of Sigma Xi, national fraternity for the advancement of scientific research.

Dr. Elderfield is a member of the National Academy of Sciences, American Chemical Society, American Society of Biological Chemistry and the National Malaria Society. He received the Presidential Certificate of Merit in 1946 and was editor of the "Treatise on Heterocyclis" and the Journal of Organic Chemistry.

Cultural Board Schedules Film

"Face In The Crowd," starring Andy Griffith and Patricia O'Neal, will be presented tomorrow and Friday evenings at 7:30. The movie, sponsored by the Cultural Affairs board, is free to faculty and students.

The movie will be shown at Cosner Auditorium tomorrow and at the MU banquet room Friday.

Graduate Program Is First In The West

The first graduate program in molecular and atomic spectroscopy west of the Mississippi was made possible by a National Science Foundation grant of \$28,600 to ASU.

Dr. Arnold G. Meister, pro-

fessor of physics, said the most important aspect of the project is that it allows five graduate assistants to work on master of science degrees in physics while doing research for the National Science Foundation.

Meister said a detailed study of the spacing between the nuclei of molecules, using a grating infra-red spectograph, is one of the aims of the research.

Directory Sales Begin This Week

The 1958-59 ASU Student Directory will go on sale this week, Jim Westover, Delta Phi president, has announced.

Sponsored by Delta Phi, national honorary fraternity, the publication will contain names, addresses and phone numbers of all students, teachers, departments and organizations at Arizona State.

Each directory will cost 50 cents. Delta Phi guarantees a free copy to any student not listed.

Library Has Yule Hours

The vacation schedule for Matthews Library has been posted on the front door of the building.

The library will be open Sunday, Dec. 21 from 2-5 p.m.; Monday and Tuesday, Dec. 22 and 23 from 8 a.m.-5 p.m.; Wednesday, Dec. 29-31 from 8 a.m.-5 p.m.; Friday and Saturday, Jan. 2 and 3 from 8 a.m.-5 p.m.; and Sunday, Jan. 4 from 2-5 p.m.

The library will be closed after 11 a.m. Wednesday, Dec. 24 until 8 a.m. Monday, Jan. 29. It will also be closed New Year's day. Regular hours resume Jan. 5.

Student's Poetry Work Recognized

Ed Weiner, ASU senior recently received recognition from the National Poetry Association for his poem, "Moon Rocket in Orbit."

The poem, Weiner's first, is one of 200 selected from about 8,000 submitted to the NPA for

publication in its annual Anthology of College Poetry.

Weiner, a 43-year-old accountant enrolled in the College of Business Administration, wrote the poem for an English class assignment.



"I see your husband's after her Camels again!"

More red-blooded skiers chase after Camels than any other cigarette today. The Camel blend of costly tobaccos has never been equalled for rich flavor and easygoing mildness. The best tobacco makes the best smoke.

Leave fads and fancy stuff to beginners . . .

Have a real cigarette - have a CAMEL



R. J. Reynolds Tobacco Co., Winston-Salem, N. C.

INQUIRY FORM

Name

I AM INTERESTED IN THE FEDERAL LOAN PROGRAM FOR:

SECOND SEMESTER

THIS SUMMER

NEXT YEAR

(Check all that are applicable)

AMOUNT I WOULD BE INTERESTED IN BORROWING FOR:

SECOND SEMESTER

THIS SUMMER

NEXT YEAR

(Fill in . . . all that are applicable)

Note: Return this form, prior to Christmas Vacation, to Division of Student Affairs Administration Building, 103. THIS IS NOT AN APPLICATION but students who return this inquiry form will be given priority for a loan IF they make formal application and qualify for a loan. You will be notified through the STATE PRESS when application blanks are available.

Instant Car Service

Tempe Center

ZZZONA
DRIVE-IN LAUNDRY & CLEANERS
 FIRST in Laundry and Cleaning • LAST in the Phone Book

Tempe Center

WO 7-5773



EDITOR-IN-CHIEF PHIL FRY
 MANAGING EDITORS ABE GUTIERREZ AND ROCHELLE MACKEY
 ORGANIZATIONS EDITOR PETEY OLMSTED
 SPORTS EDITOR VIC FIGARELLI
 NEWS EDITORS JOANNE SMOOT AND KATHY BURKE



The STATE PRESS is distributed by Rick Bedolla. Official campus newspaper of Arizona State University. Published each Wednesday and Friday throughout the school year, excepting holidays, and entered as second class matter in the Post Office at Tempe, Arizona, under the Acts of March 3, 1879, and August 24, 1912. Subscription price, \$3.00 per school year.
 Member: Arizona Newspapers Association, Associated Collegiate Press, and National Advertising Service, Inc.

EDITORIALLY SPEAKING —

Guest Editorial

A time of crisis has arrived in the young life of IDYLS, the proposed campus literary magazine.

Weeks have passed. We, the editors, have howled and pleaded, have run and hoped, have worked. The State Press cooperated enthusiastically. The faculty spurred us with daily encouragement. We hoped. Now that hope is fading.

Surely, we thought, on a campus of over 9,000 enrollment, where 29,000 attend the football games, surely here thrive enough creative writers to supply a magazine. Surely, we're not wrong.

But less than 20 of the 9,000 have written. Only four of those 20 have written prose. We thank the four, and the 20, for much of their writing is good. But only four from 9,000?

We tried, and hoped. Now it's up to you, you in the 9,000, you who have never written before, you who write professionally and you in between. Now we ask you to fill a vital part of the University, of any university, its literary expression.

A long holiday vacation begins Saturday. There will be time to write. We need articles, essays, poetry, and especially short stories up to 2,500 words.

We want new ideas or new twists on old ideas. We want ideas on God and reality, college and people, business and democracy. We want you to write, and to submit what you write. Boxes have been placed in the Bookstore and the English building. Write, and fill the boxes.

We ask ourselves and each of you for proof that Arizona State is more than a factory producing impassive robots with degrees stamped on their foreheads. We ask for the creativity which is the proof of a living, thinking, vigorous university.

We extend our plea for material to undergraduate, graduate students and faculty. It is our hope that the magazine will eventually be sustained exclusively on undergraduate contributions. However, while we struggle to publish the first few issues, we eagerly solicit every offering.

And now, a word in defense of the title, IDYLS.

We searched for hours for a name which would be modern (to allow for the off-beat writing of our young generation) and dignified (to suggest the quality and subtlety which were to be the standards of the magazine).

We ran through names such as Moods, Musings, Modes, even Heritage. We searched through dictionaries, the Thesaurus and periodical guides. Suddenly we came upon IDYLS and knew that was IT.

The literal translation, "little pictures," scarcely mattered, although it seemed appropriate. So IDYLS is the name. It can have any meaning you wish to give it. What ever it means to you is what matters. To us it is a dream to be hoped for and realized.

By BILL DECKER and DON ERNST

Easy Does It

Almost two years have passed since a girl from the Tenth Street Grammar School ran into an automobile on campus and had a partial leg amputation as a result of it. Yesterday, a coed was hit, but not seriously hurt, as she crossed the street at College and Orange.

Both were unavoidable accidents. The drivers were as much the victims of circumstances as the girls were the victims of the accidents.

However, there are thousands of cars on campus each day. There are many more thousands of pedestrians. Neither pedestrians nor drivers are as careful as they should be when operating under congested campus conditions. Why there hasn't been a tragic traffic fatality is a mystery.

Please, let's take it easy. At times, College Avenue look like a drag strip, the way some cars rip along, but it isn't. And pedestrians often give the impression that they are strolling through the park instead of crossing streets.

Why not trust to good sense instead of luck?



"SOMEBODY had better check the schedule."



BY PHIL FRY

I have a suggestion for organizations and whatnot; for anyone who might be interested in promoting activities on campus — forget it.

The TKE's thought it would be nice to sponsor a caroling party for the Christmas season. Maybe they made a mistake when they set it up as a Greeks only affair, but I don't think it would have mattered. Came time for the songs to begin and there were darn few singers on hand. Only a handful more showed up. It probably would have been the same if the whole state had been invited.

A couple of months ago, Blue Key announced an all-campus musical show. At one time, 17 groups had entered. Two of the groups notified Blue Key in advance they would have to drop out. Of the remaining 15, only nine eventually performed.

The other seven just didn't show up at show time. Add to that the fact that only a hundred people were in the audience the first night and only a somewhat larger group appeared last night.

Students on this campus never stop wailing that there is nothing to do on campus. But things don't just happen. There were some mighty fine acts in the Musicales, and plenty of work went into them. But no audience came. It only takes a few examples of this sort of

lethargy to permanently discourage initiative. If that's the way the students want it, fine.

But let's not hear any more crying about never having anything to do in this ghost town.



By ROCHELLE MACKEY

Traditionally, Christmas is a time of year especially enjoyed by children. And, this year is no exception. But one committee on campus has added to the merriment of their own Christmas by providing a special Yule party for children of ASU students and faculty.

The party, planned for tomorrow, has already demonstrated the need for such an affair. Some 220 children and 150 adults have indicated that they will attend. Scores of others have indicated their desire to attend but called for reservations too late.

This is the first party of its kind on campus and is sponsored by the Student-Faculty Relations Board. To those in charge, best of luck and congratulations for a fine idea.

Just in case you're wondering, Mathews Library isn't giving Shamrock stamps. Wish they would though. I might be encouraged to return my overdue books!

Children with a relationship to the university aren't the only ones being feted by ASU students. Each year nearly every Greek social group holds a Christmas party or some other activity for under-privileged children or families.

This year the plans include everything from Kiddies Parties, scheduled by several chapters, to adoption of families by others.

Final Exam Schedule

On Friday, January 16, 1959

From	To	Classes
7:40- 9:30	7:40- 8:30	MWF or Daily
9:40-11:30	9:40-10:30	TTh or TThS
12:40- 2:30	11:40-12:30	MWF or Daily
2:40- 4:30	1:40- 2:30	TTh or TThS

All Classes Regularly Scheduled At:

On Monday, January 19, 1959

From	To	Classes
7:40- 9:30	8:40- 9:30	MWF or Daily
9:40-11:30	10:40-11:30	TTh or TThS
12:40- 2:30	12:40- 1:30	MWF or Daily
2:40- 4:30	3:40- 4:30	TTh or TThS

On Tuesday, January 20, 1958

From	To	Classes
7:40- 9:30	7:40- 8:30	TTh or TThS
9:40-11:30	9:40-10:30	MWF or Daily
12:40- 2:30	1:40- 2:30	MWF or Daily
2:40- 4:30	2:40- 3:30	TTh or TThS

On Wednesday, January 21, 1959

From	To	Classes
7:40- 9:30	8:40- 9:30	TTh or TThS
9:40-11:30	10:40-11:30	MWF or Daily
12:40- 2:30	11:40-12:30	TTh or TThS
2:40- 4:30	2:40- 3:30	MWF or Daily

On Thursday, January 22, 1959

From	To	Classes
7:40- 9:30	3:40- 4:30	MWF or Daily
9:40-11:30	12:40- 1:30	TTh or TThS

MATHEMATICS EXAMS: Classes in Math. 116, 117, 119, 120 and 121 will be scheduled for the final examination at 8:30 a.m. on Saturday, Jan. 17 in the Business Administration building. The instructor for each class will announce the rooms in which the exam will be held.

Classes in Math. 118 will be scheduled for the final exam at 1:30 p.m. on Saturday, Jan. 17 in the Business Administration building. The instructor in each class will announce the room in which the exam will be held.

Examinations for classes that are scheduled with "Time Arranged" and for classes that meet at, or after 4:30 p.m., in the evening, or on Saturday morning, will be held at the time scheduled for the last regular meeting of the class during the week of January 16-21, unless otherwise scheduled by the instructor at a time during this final week of the semester.

If conflicts occur, or if under this schedule, a student has more than three exams in one day, he should consult instructor (s) regarding possible schedule adjustment, or if necessary the dean(s) of the College in which the courses are offered. No changes should be made in this schedule, except those required in individual cases, with the approval of the Academic Vice President.



Awll-right, now, how 'bout unsticking the rest of those "Vote Yes Proposition 200" stickers? Nobody's any prouder of the outcome than I am, but the hanging's over.

What more do the "still-stucks" want? A drawing and quartering of the carcass so they can continue to worry and bay at it like haoun'-dawgs? Fie, f'gosh sake.

A. J. N.



BARE FEET . . . signal intermission at the Delta Gamma formal Saturday evening at the Royal Palms resort, as Sue Condon (right) demonstrates. With her is Bob Clements, as Bob Adams (left) and Judy Straub pose with them.

Greeks Walk Out With Real Spirit!

By PETEY OLMSTED

The longest walkout of the season is currently in progress, according to some sneaky Sigma Phi Epsilon pledges. The Sig Ep pledges left the fraternity house Sunday, after "mild damage" to the premises, and don't plan to return til after Christmas holidays.

Seems this is the way walkouts work "back East." Clever, no?

But with other Greeks, the spirit of the season is evident in traditional parties and dinners.

Members of Gamma Phi Beta and Alpha Tau Omega are feting under-privileged children this afternoon at the Carnation Hostess Room in Phoenix. Presents, games, movies, and gifts will be featured at the party. About 43 tots will be attending, as well as fraternity and sorority members.

Food and gifts from the Chi Omega Christmas party Monday were delivered to an under-

privileged family yesterday afternoon.

This evening, Chi Os will honor their Mothers' Club at their annual Christmas dinner in Palo Verde cafeteria.

Members of Tau Kappa Epsilon enjoyed a turkey dinner Monday night at the home of Mr. Charles Merritt, past TKE advisor, and as tradition would have it, pledges washed the dishes!

Last evening Phi Sigma Kappa had as special Christmas dinner guest Dr. Grady Gammage. Tonight is the annual active-pledge gift exchange party at the fraternity house.

Congratulations to Sigma Nu members Kent Ryan and Gary Rexroth, who placed second and third as Sun Devil bandmen.

New officers in Tau Kappa are Dave Barnes, president; Don Glabe, vice president; Ed Woodmansee, secretary; Pete Koelsch, treasurer; and Jim Larson, scholarship chairman.

Also, Gene Craig, pledge trainer; and Pat Fay, rush and social chairman. Tekes hosted Alpha Sigs last week at an "international" themed exchange. Refreshments and hi-fi music highlighted the party.

Outstanding pledge of the week in Alpha Phi was Madge Munroe, and Carole Futrelle was named the week's outstanding active.

Phoenix Towers' roof was the destination of cagey Delta Sig Pledges one evening recently as they walked out, leaving the actives an empty kitchen stove. The location was provided by parents of one of the pledges.

New pledge officers are Bill Beasley, president; Bob Peck, secretary; and Bill Simon, sergeant-at-arms.

HELP! That's what Phi Delta Theta pledges needed last week, as they're sitting study tables and having "help week" ceremonies from 6 p.m. to midnight all this week.

And it all happened because they took actives Don Head and Charlie Snow for "a ride."

Annual Banquet Held By Hayden

Saturday night was Hayden Hall's annual "Christmas Dinner." The dinner, 7 to midnight, was attended by the men of Hayden Hall and their dates.

Other guests at the dinner were Dr. and Mrs. Gammage, Dean Weldon, P. Shofstall, Dean Catherine G. Nichols, and Dr. and Mrs. H. D. Richardson.



PARADISE INN . . . Saturday night was the scene of Alpha Tau Omega's formal. Pictured at the dance are (l to r) Reid Southern, Doris Friezak, Betty Segersten, and Dick Dodson, ATO alumns.

Honoraries Initiate, Entertain

Initiated by Alpha Pi Epsilon, secretarial honorary, recently were Yvonne Derrick, Jae Dee Merrill, Arlene Paskiewicz, and Anna Mae Willis.

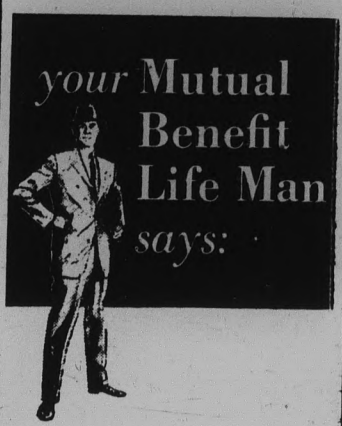
Also, Rita Finn, Dolores Escarsega, Gretchen Alexander, Orva Brewer, Cheryl Thraen, Amelia Callaway, Merlude Frasier, and Linda Tousa.

Officers elected by the group include Mary Ann Wilson, president; Jo Ann Dickerson, vice president; Claudette Hill, secretary; June Morris, treasurer; and Marilyn Leafdale, historian.

The initiation of members and election of officers was held by Phi Eta Sigma last Sunday at 3:30 p.m.

The new initiates include Kie Kiedaisch, James Foran, and Don Kunkel, president; Richard Leo, vice president; Ramon Mount, secretary; David Trujillo, treasurer; Steve Wise, historian, and Monty Moncavage, senior advisor.

Spurs, sophomore women's service honorary, entertained old members at a Christmas party last evening in the lower lounge of the Memorial Union.



"Good Insurance Is One Part Policy - - Two Parts Agent."

You might have the finest life insurance policy or contract possible, But unless it's the finest for you — and unless it does what you want it to do — it isn't good insurance. It takes training to put life insurance to work effectively—the kind of training you find with Mutual Benefit Life men through out the country.

The Mutual Benefit Life Insurance Company, Newark, New Jersey.



LEONARD A. KRELL . . . whose training is available to you, without obligation.

Mutual Benefit Life Insurance Co.

342 W. McDowell Rd.
Phone AL 8-6193
Phoenix, Arizona

CAMPUS LAUNDERETTE

Fast, Efficient Laundry and Dry Cleaning Service

**1 HOUR SERVICE ON FLUFF-DRY
24 HR. SERVICE ON DRY CLEANING**

818 College — Next Door to "V. I."
Save with Our Shamrock Stamps

The Faculty Women's Club will hold its annual Christmas luncheon Saturday at 1 p.m. at Camelback Inn.

See Our New Hol'N-One Donut Machine



Now Under New Management

8th Street & College

Harold Barclay, Mgr.



PAUSING . . . between dances at the Delta Sigma Phi formal last Friday at the Phoenix Woman's Club are (l to r) Barbara Huffine, Joe Raineri, Sharon Sole, Warren Cereghino, Ray Wilkinson, and Pat McDaniel.

New Phi Omega Members Receive Pins As LDS Group Fulfills Holiday Agenda

New members of the Phi Omega chapter of Lambda Delta Sigma received membership pins last Monday.

They are Jeanette Barrow, Mona Beecroft, Gay Blanchard, Sheryl Brooks, Jane Christenson, Annette Cunningham, Sheryl Dugger, Mary Ellsworth, Janath Flake, Becky Hall, Fayrene Hamberlin, Carole Hendrickson, Margaret Hicks, Linda Johnson, La Prael McBride.

Jo Nell McEuen, Lynneal Malay, Loene Marler, Lena Lee Marriott, Marcia Meeks, Nulyne Palmer, Lynda Payne, Darlene Ramsey, Loretta Riggs, Mary

Louise Skousen, Lynette Stratton, Yvonne Tarwater, Barbara Tucker and Ronola Wilson.

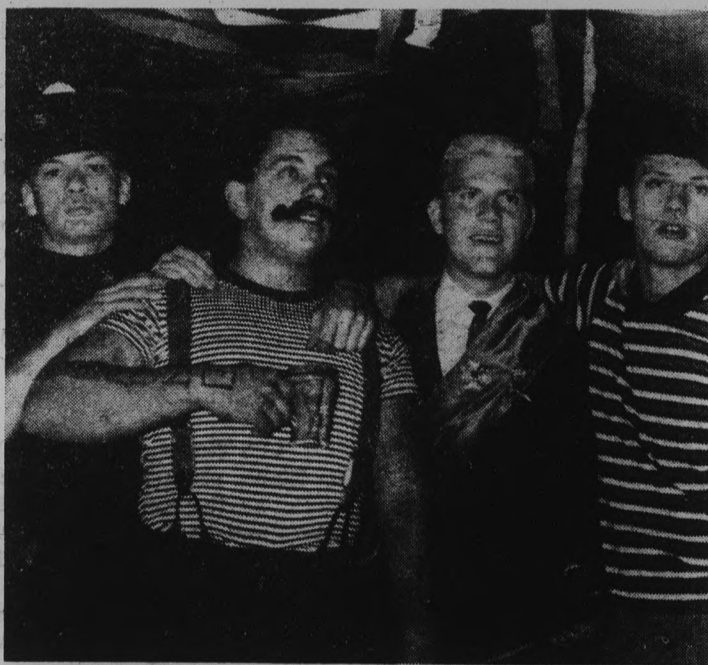
Marjorie Bonham was named outstanding active for the semester and presented a gift.

Friday was the date of the Christmas Formal held at the Tempe LDS Ward, 9-12 p.m.

A luncheon was given Satur-

day for the high school teachers attending the State LDS Seminary Convention.

The LDS Christmas Program, held Monday, featured the combined voices of the men's and women's chapters, as they sang of Christmas in Disneyland. The project was dedicated to a crippled children's home.



MAIS OUI . . . The "Frenchiest" Sigma Chi at the fraternity's French party Friday night at the Scottsdale Community Center was Allen Brunocini (second from left), flanked by the runners-up, Charles England (l to r), Bob Lairson, and Mike Hogan.

Newman Club Retreat Over

The annual Newman Club retreat for students at ASU and ASC-Flagstaff was held at the Casa de Paz y Bien retreat near Scottsdale, Dec. 7.

Retreat services began with a dinner at 7 p.m. Friday under the direction of Father Ivo O'Sullivan, retreat master for the 80 students attending.

Kay Doran of Phoenix, president of the ASU Newman Club, was in charge of arrangements for the students.

According to Leroy Whitson, activities vice president, organization activity information sheets must be turned in by this Friday to be properly scheduled on the activity calendar for the coming semester.

FLIGHT INSTRUCTION

At Special Rates For College People
A Private License is a Must in Modern Business
A M O S

FLIGHT OPERATORS
Don Amos - - Class of '56
Ph. BR 5-7291 - Sky Harbor

Merry Christmas
And A
Happy New Year
From Your
College Bookstore
Support the Copper Bowl

Campus Currents

Psychology Club Initiates Tonight

Psi Chi, psychology honorary, will meet tonight at 8 instead of tomorrow in the upper lounge of the MU to initiate new members.

New Officers Conduct Meeting

The officers of a new organization on campus, the Industrial Arts Club, conducted their first meeting last Thursday. A film, explaining the plastic saw guard, highlighted the evening's activities. The next meeting is scheduled for Jan. 7.

East Hall Dinner Held

East Hall's annual Christmas dinner was held last Wednesday at 10 p.m. Hall residents exchanged gifts and participated in group singing. Guests were Dean and Mrs. W. P.

Shofstall and director of housing Edward Hickox.

Spring Rodeo Plans Discussed

The Rodeo Club will meet tonight in BA 209 at 8 to discuss plans for a rodeo in the spring. The public may attend.

Russian Circle

Pictures Taken Tonight

Pictures for the Sahuaros of the Russian Club will be taken tonight in the MU lobby. Members will then go to 105 E. 1st street in Mesa for their regular meeting. Tonight's program includes Christmas caroling in Russian and the serving of Russian tea and pastry.

Ski Club

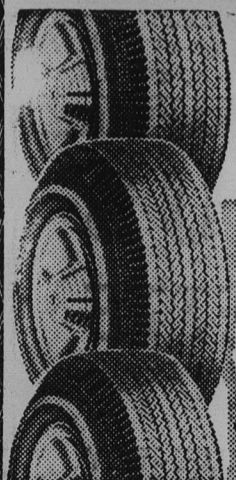
Movie Tonight

Highlighting the Ski Club's business meeting tonight at 8, MU 218A, will be a movie on the Santa Fe ski area presented by Buss Bainbridge.



OLD-FASHIONED . . . good time was had by Chi Omegas at their annual Christmas party Monday evening as they sang and exchanged gifts by the Christmas tree. In front are (l to r) Linda Metcalf, Lynn Steinko, and Sue Philpott, while in the back (l to r) are Jane Wagner, Sonya Campbell, and Sue Penrod.

Save your cash . . . Buy on Firestone Budget Plan



DeLuxe Champion NEW TREADS

Applied on sound tire bodies or on your own tires

Ford - Chevrolet & Plymouth OWNERS

2 for 22.22*

Whitewalls \$1.00 extra each
*Plus tax & Recappable exch.

COHILL & LOW TIRE CO.

4333 EAST WASHINGTON ST.
PHOENIX, ARIZONA
BR. 5-6288



Devil Cagers Even Slate, Tumble LA State, UCSB

Arizona State's resurging basketball team got back on the winning trail with consecutive routs of Pacific Coast schools last weekend.

The Sun Devils, behind an evenly balanced scoring attack led by Paul Denham's 15, beat the University of California at Santa Barbara Friday night 85-63.

Varsity swimming team try-outs will be held tomorrow at 3:30 p.m. at the swimming pool.

Coach Ned Wulk cleared his bench and played his second and third units during most of the second half after the Devils held a 30-point lead at half-time.

Santa Barbara played a slow and deliberate type of game at the start and trailed ASU only 7-6 in the opening minutes of play. Their glory was short-lived, however, as the sharp-shooting Demons pulled away to leave Santa Barbara on the short end of a 29-8 score by the time the Gauchos tallied next.

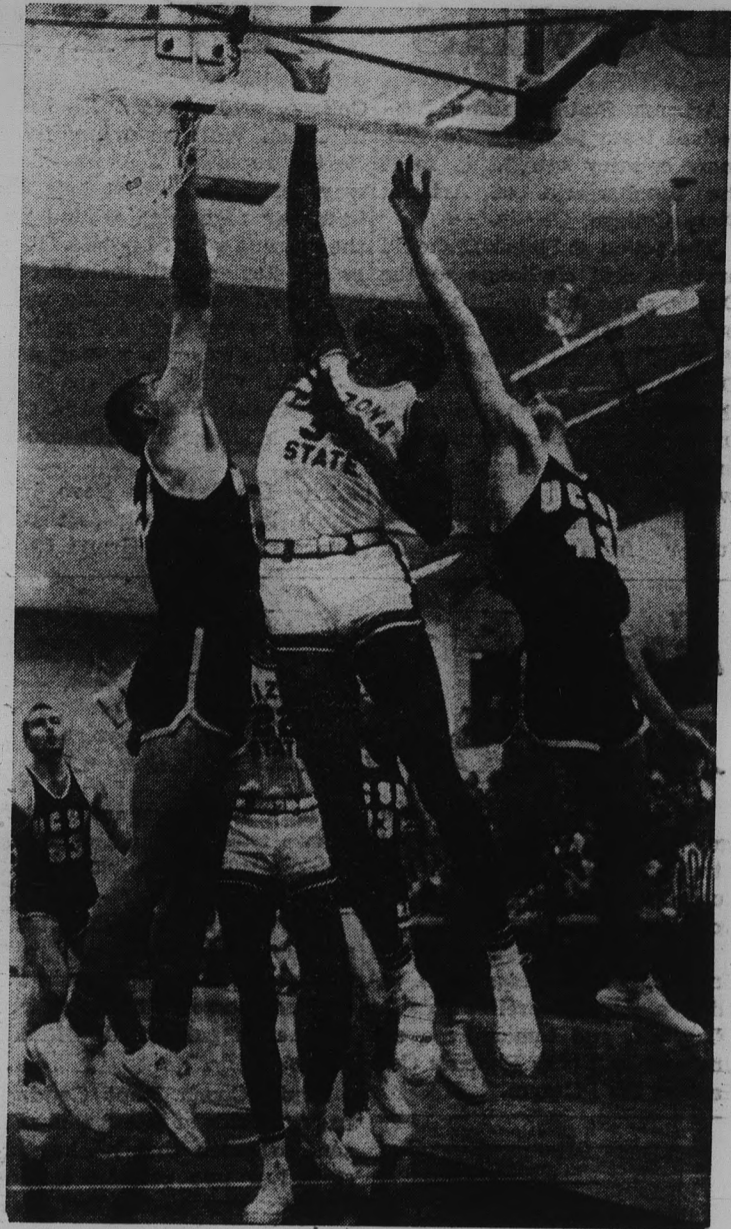
The Devils were never threatened again.

Stubby, 5-9 Santa Barbara guard Frank Bennett, however, put on a fine shooting and ball-handling demonstration and led all scorers with 32 points, more than half of his whole team's total output for the evening.

Saturday night, the Devils met Los Angeles State College and came within three points of establishing an all-time scoring record by trouncing the previously unbeaten Diablos, 105-83.

Arizona State's Al Nealey and LA State's Ron Bazadier, both forwards, led their teams in scoring, Nealey hitting 28 and Bazadier 30. ASU's Gary Norton contributed 21 and guards Paul Howard of ASU and Leon Hill of Los Angeles both garnered 18 for fourth place scoring honors.

The L. A. team stayed neck-and-neck with the Devils until 10 minutes remained in the game. Then ASU, with Rich Jarvis and Ed Olson putting the bind on Bazadier, pulled away with a 42-point show in the final quarter.



BALLET ACT . . . Everybody is up in the air as Santa Barbara's Carl Bosque (left) and Gene Freeman attempt to stop ASU's Al Nealey while the Sun Devil junior cans two points toward his eventual total of 10. Paul Denham took high scoring honors that evening with 15 points.

Cactus Bowl Tomorrow Decides I-M Grid Champ

The ASU flag-football team championship will be decided in tomorrow night's intramural Cactus Bowl in Goodwin Stadium at 7:30.

An added feature will be the pre-game battle between two teams composed of women dormitory students and sorority women. The Pep Band and Pom Pon girls will supply half-time entertainment.

The winner of the Off Campus Men-Phi Sigma Kappa game will meet the winner of the Alpha Tau Omega-Haigler Hall game. These games were played yesterday afternoon after the State Press went to press. Off-Campus Men has advanced to the semi-finals by beating Sigma Nu and Hayden Hall. Phi Sigma Kappa has beaten Phi Delta Theta and Sahuaro Hall.

Haigler Hall has advanced with wins over Tau Kappa Epsilon and Centaurs, while Alpha Tau Omega has beaten Phi Epsilon Kappa and Delta

Sigma Phi to gain a playoff berth against Haigler.

Flag football rules are similar to intercollegiate football rules, except that no padding is worn, twenty yards instead of ten are required for a first down, and the teams are composed of seven men instead of eleven. The emphasis is on speed and passing.

Demons Boost Scoring Average; Nealey, Denham Leading Scorers

A 105-83 victory over Los Angeles State gave a decided boost to the Sun Devils' statistical status in basketball.

The Devils have evened their record at three wins, three losses and have taken the lead in scoring, 498 points to the opposition's 475, or an average of 83 to 78.1 points per game.

Individually, forward Al Nealey has taken the scoring lead after racking up 28 points against LA State in Saturday's contest. Nealey's total so far this season is 118 points, an average of 19.6 per game. Close behind Nealey is forward-guard Paul Denham with 107 points and a 17.8 average. However, the rangy senior sat out most of the LA game with an injured ankle incurred during the first half. He has played almost 50 minutes less than Nealey.

Center Bill Pryor is the most accurate Sun Devil so far as field goals are concerned. He has attempted 34 shots, sinking 20 for a .588 percentage. Free-shot accuracy honors go to guard Ed Olson, who has canned 11 out of 13, and Denham, with 23 out of 28.

Defensively, Al Nealey has been the Sun Devils' dominating factor, having captured 68 rebounds. Pryor has seized 51 to place-second.

COPPER BOWL

Accent On Offenses

By PAUL JACKSON

The line-ups of the Southwest All-Stars and the National All-Stars will be composed of top players at each position in the Copper Bowl game Saturday night in Sun Devil Stadium.

Southwest coaches Frank Kush of ASU and Frank Broyles of Arkansas are spending all week drilling their all-stars on a way to take them over and around the husky National line.

The coaches have decided to abandon Kush's multiple offense because of the difficulty in perfecting it in only one week's practice. Their strategy will include Broyles' double-winged T, featuring passing and lateral attacks.

Kush will take charge of the line both defensively and offensively while Broyles is in

charge of the backfield.

In the National All-Stars camp, coaches Don Clark of USC and Phil Dickens of Indiana have patterned their defense with a plan to, "move into their play and just raise hell with it."

The Nationals are emphasizing a series of pass plays that

promise to make the game an aerial contest. Working out of a spread formation balanced T, the Nationals are ignoring contact practice and concentrating on offense.

Both teams are expected to make frequent use of replacements.

Imp Cagers Stay Unbeaten, Edge Huachuca, Smash PV

The Arizona State freshman Sun Imps basketball team remained undefeated by downing Fort Huachuca, 74-72, and smashing Palo Verde J. C. of California, 86-60, in preliminaries of the varsity games last weekend.

The victories were the third and fourth in a row for Coach Fanny Markham's five.

Les Kuhn was top scorer

Friday night with 12 points. Harvey Darche chipped in 11. Saturday night the frosh jumped off to a 41-31 halftime lead and were never threatened as they romped to the win over Palo Verde.

Lanky Mike McConnell led the Imps in scoring with 20 points and was followed by Darche with 12. Ollie Payne and Dick Catlett scored 11 apiece.

Enjoy
perfect fit and up-to-date styling in a RENTED formal from
SMITH'S TUX SHOP
Sales and Rentals
142 W. Adams AL 4-9523

Season's Greetings



WO. 7-4482

Groves HANDCRAFTS

Distinctive GIFTS - TOYS SOUVENIRS

Supplies For ARTISTS DRAFTSMAN HOBBYISTS

Featuring SCANDINAVIAN IMPORTS

— TEMPE CENTER —

STADIUM COFFEE SHOP & Delicatessen
Good Things to Eat and Drink
Television

"Across the Street From East Stadium"

Open 7 days week

LAIRD Pharmacy
Prescription Druggists

501 Mill Ave. WO 7-2922
26 E. 8th St. WO 7-4063

Fred Elquest & Son

Everything for the Art Student
● Art Supplies
● Picture Framing
703 N. 2nd St.
Phoenix
PHONE AL 8-2628

Devils Try Flagstaff

Arizona State's jelling basketball team journeys to the snow-country tonight to meet the Lumberjacks of Arizona State College.

The action at Flagstaff should prove a real challenge to the Devils, since they will be without the services of forward Paul Denham. Denham, the Devil's second high scorer for the season, injured his ankle in the Los Angeles State fracas and will be out for at least a week.

Transfer Gary Norton, a 6-4 junior from Valley Junior

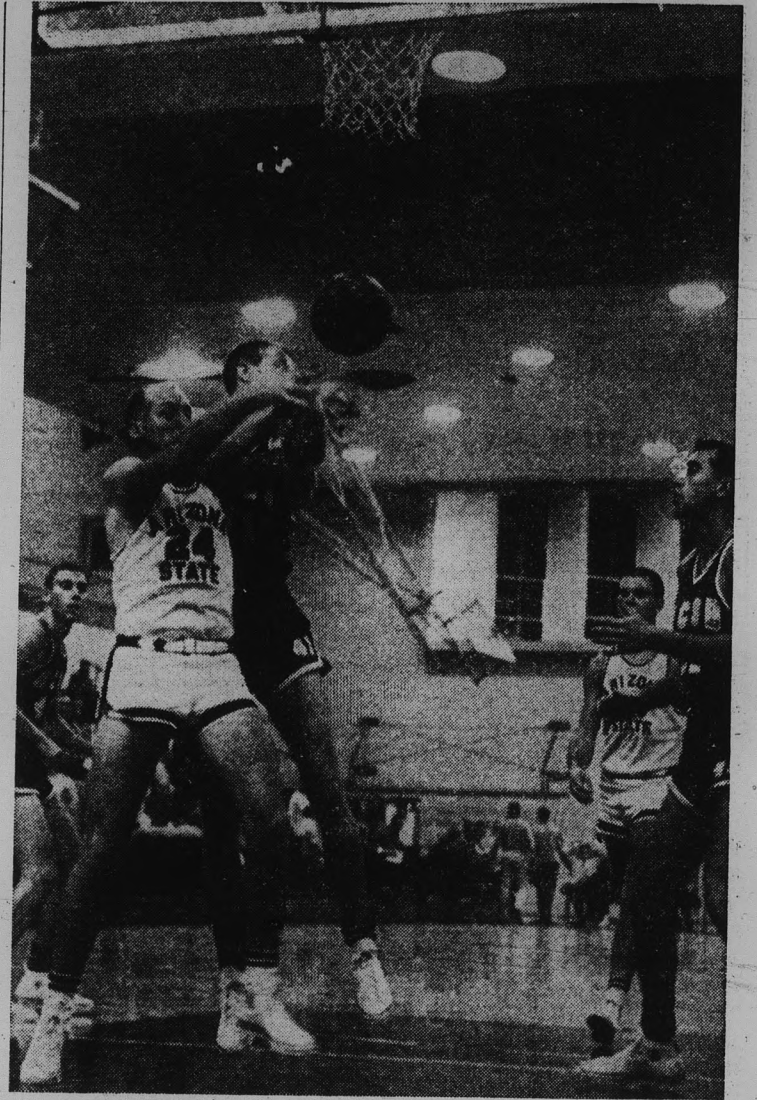
College, will replace Denham in Coach Wulk's starting five. Norton replaced Denham midway through the first half on Saturday night and wound up the evening with 21 points. Other AS starters will include 6-4 junior Al Nealey, pairing with Norton at forward; 6-6 sophomore Billy Pryor at center; and 5-10 Ed "Whitey" Olson and Paul Howard at the guards. Olson is a senior and Howard a junior.

The Lumberjacks have had tough luck in their last two contests, losing to Grand Can-

yon College of Phoenix and Wayland College of Abilene, Texas. In their second game, they beat the University of Arizona and gave reason to believe that this could be their year. In their opener they lost to New Mexico, 76-61.

The Jacks have a tall and talented team led by all-conference performers Bill Aaron, a 6-6 forward, and Wily Horton, 6-4 forward-guard. Six-six-and-a-half center Don Buttram, from the Army, has been chief rebounder. Bobby Olivas, 5-8, and Ira Andrews, 5-10, are guards.

Coach Ned Wulk said that Arizona State University's entire 14-man varsity will make the trip to Flagstaff. The ASU basketballers left Tempe today at 8:45 a.m. by charter bus. Coach Wulk said he would put his squad through a brief workout in Lumberjack gym upon arrival in Flagstaff. The Sun Devils will be quartered at the Flamingo Motor Hotel and will return to Tempe Thursday morning.



REBOUND FEVER . . . The maze of hands belongs to ASU's John Bowen and Santa Barbara's Ed Haertel, battling for a rebound enroute to the Sun Devil 85-63 whipping of the Gauchos. Devils scored 22 straight points in the first half to make the game a runaway.

Sun Imps Meet Axbabes, Bears

Arizona State's freshmen gun for their fifth and sixth straight victories tonight and tomorrow in a pair of road encounters.

Fanny Markham's unbeaten Imps play ASC-Flagstaff in tonight's varsity preliminary at Flagstaff, and tomorrow evening at 8 will play Phoenix College at the PC gym.

Flag's Axbabes are winless in two tries, having lost to the Arizona Wildkittens, 80-64, and PC Monday night, 71-46.

PC's Bruins, meanwhile, have run up six straight cage victories, and if the Imps win tonight, tomorrow's battle will be between a pair of all-winning teams.

Bruin Coach Runt Goddard has a wealth of talent this season, so much that he has installed a two platoon system. The big gun on his first crew has been Larry Armstrong, the former all-city, all-state star from South Mountain High.

Joining Armstrong on the number one platoon are former Phoenix high school stars Frank Mass, John Nickum, Bob Kerr and Mike Martin.

Goddard's second unit consists of forwards Dan Anstett and Vern Calvin, center Jerry Hahn and guards Jerry Daugherty and Steve Kennedy.

The Sun Imps will have a decided height advantage, since PC's tallest players are Hahn and Nickum at 6-4.

Markham will go with his regular starters, Ollie Payne and Harvey Darche, forwards; Mike McConnell, center, and Ken Kuhn and Chico Morrison, guards.



LARRY ARMSTRONG

AS Opponents Cage Scores

Dec. 11 through Dec. 16

L. A. State 81, Arizona 77

Arizona 74, Santa Barbara 69

San Diego St. 63, San Jose 50

Loyola (L. A.) 79, San Diego U. 31

H-SU 73, East Texas Baptist 60

NM A&M 67, New Mexico 53

Texas Western 62, McMurry 43

Texas Western 68, New Mexico 53

Idaho State 69, West Texas 42

Whittier 85, Claremont-Mudd 66

Oregon 73, Wichita 57

Oregon St. 72, Wichita 55

Washington 68, Houston 62

Washington 59, Houston 55

Vanderbilt 80, H-SU 52

Wayland (Tex.) 82, ASC-Flagstaff 73

Wheaton (Ill.) 52, San Jose St. 44

Judo Team Exhibition Tomorrow

Jerry Hays, ASU Judo team member, took second place honors in the annual judo tournament in Tucson Saturday.

The ASU team competed against 14 judo organizations from all over Arizona. It was the first time the Sun Devils had participated in the YMCA sponsored event.

Students and faculty will have an opportunity to see the judo boys at work in an exhibition tournament at 3:45 p.m. tomorrow in the men's gymnasium annex. The public is invited free of charge.

ASU Athletics Director Clyde Smith will award trophies to the winners of tomorrow's competition.

In charge of the tournament are Martin Gottlieb and Edmon Jaques, program chairmen. Committee members are James Stephson, Lynn Steele and Bill Meck. Faculty advisor is Raymond G. Studer.

FIG'S FILE

By VIC FIGARELLI

Changing of the starting time for Saturday's Copper Bowl game from 1:30 in the afternoon to 8 that evening will give Arizona grid fans a chance to see Arizona State at Flagstaff participate in the Holiday Bowl.

With a choice of two games, both involving homestate players, those fans planning to see the Copper Bowl game would have been disappointed at missing the national TV hookup for the ASC-Northeastern Oklahoma game.

As a result of the conflicting times, the Copper Bowl Committee graciously alleviated the difficulty.

Tomorrow night's Sun Imp basketball game at Phoenix College ought to bear close watching. PC is loaded with all-city, all-conference and all-state talent from Phoenix high schools, and has won all six of its games.

All PC lacks is height, which

the Imps have in Mike McConnell and Dick Catlett, 6-6 and 6-7, respectively.

The ASU height advantage should balance the ball game if the Bruins are to be given an edge on all-around performance.

If you're in the neighborhood of 15th Ave. and Thomas Rd. tomorrow night around 8, drop in and give the Imps some sort of representation in the stands.

They play at a disadvantage in that their ball games start so early. At the Palo Verde game in Tempe last Saturday, the California team had more rooters in the audience than the Sun Imps did.

Of the six Border Conference cage teams, West Texas is having the roughest time of it. They have yet to win in six tries. Best record belongs to Hardin-Simmons, which was finally beaten, after four straight victories, by Vanderbilt Monday night.

Bunch's
609 Mill • WO 7-3221
"We Teach Watches to Tell the Truth"
REASONABLE PRICES

TOY'S SHANGHAI
Featuring Exotic Chinese Dinners
Chicken, Sizzling Steaks and Seafoods
COMPLETE DINNERS FROM \$1.50
Dragon Room for Club Meetings & Private Parties
OPEN 7 DAYS A WEEK
Phone AM 5-9484 — 1575 E. Camelback Road

From Bullwhips to Bowie Knives . . .
From fine silverwork to hundreds of unusual, inexpensive gifts, and moccasins.
You will enjoy the friendly casual shopping at . . .
MILLER'S INDIAN STORE
516 Mill Avenue
★ Open Evenings ★