



State Press

ARIZONA STATE



TEMPE, ARIZONA



ARIZONA'S OLDEST COLLEGIATE NEWSPAPER, ESTABLISHED 1903

Vol. 37

Friday, December 12, 1958

No. 23

AS Students Offered Federal Loans

Choir Makes Winter Tour After Concert

The ASU Concert Choir will go on tour two days after the performance of their Annual Christmas program Sunday at 8:15 p.m. in the MU Ballroom.

The 50-voice Choir, directed by David B. Scouler, professor of Music, will appear in seven concerts during the four-day, three-state tour. They leave early Tuesday morning, Dec. 16.

First stop on the musical itinerary will be Globe High School, Tuesday morning, followed by an appearance at St. Johns High School. The Choir will then journey to Gallup, N. M., to spend the night.

Wednesday's performances include a morning concert at the Durango, Colo., High School, and the United Church in Los Alamos, N. M., that evening.

A tour of the Los Alamos Atomic Laboratories has been arranged for the singers Thursday morning before a concert at Santa Fe High School.

Concluding the tour, the Choir will perform at Socorro, N. M., High School, Friday morning and Round Valley High School, Springerville, that afternoon.

For their concerts, the singers will present a program of varied modern and classical choral works, plus Christmas music. Madrigal Singers will perform during the third part of the program and the Choir will close with four folk songs. Lella Crandall is the group's accompanist.



PRACTICE SESSION . . . for Sunday's Greek Christmas party at the Tau Kappa Epsilon house finds TKE members Jim Larson, left, Chip Rodarmor, center, and Jerry Baber, "snowed" with sheet music. (Story on page 5.)

FOR ASASU . . .

Senators Kept Active

Headed by Speaker of the Senate Ralph Segal, 38 ASU student senators, representing four colleges, AWS, AMS and the class councils, meet three Wednesdays a month to discuss bills currently on the senate

floor. They either defeat or ratify the bills that are presented to become laws governing the student body.

The first major bill to become law this year gave ASASU president Warren Summers the power to sign or veto bills before they were referred to President Gammage.

At present, the Student Senate is in the process of revising the Executive Council creating a public relations board and revising the traffic appeals board. Careful consideration is given to every segment of a bill since every student is affected after it is passed.

Appropriation of the 25 dollar activity fee is one of the most important responsibilities of the senate. Paid by each student at registration, the money is distributed to the different groups that represent all on-campus activities. These include the concert and lecture series, the State Press and all athletic events.

Work for student senators does not end when the meetings close. During the week, senators study and prepare bills that may someday become law

Endowment Fund Bequeathed AS By Phoenix Man

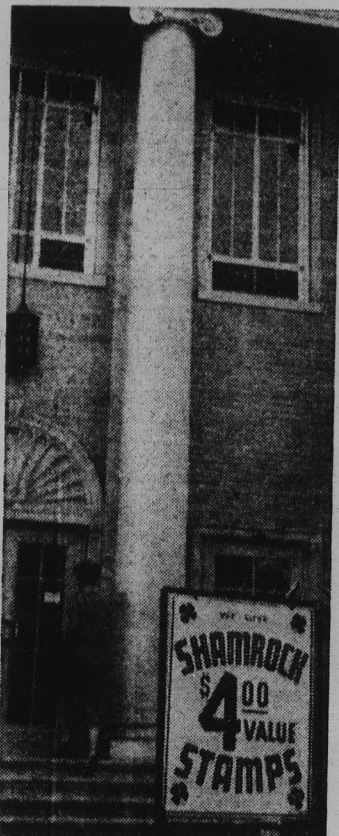
A \$20,000 "Alfred Knight Scholarship Endowment Fund" has been bequeathed to ASU by the late Phoenix businessman, scientist, philanthropist and civic leader.

To be invested, the fund will provide earnings to furnish scholarships for outstanding graduates of secondary schools having indicated a desire to continue their education in pure or applied mathematics and the sciences.

If such students are not available, the will stipulated, the scholarships are to go to outstanding high school graduates regardless of field of interest.

The number of scholarships, the amount of each, and the recipients are to be determined annually by ASU officials. The winners will be selected primarily on the basis of scholarship, character and "promise of enlarged usefulness."

Knight was commended for his scholarship when he received an honorary doctor of laws degree from AS in 1956.



PREMIUM ON EDUCATION??

Each May Get Up To \$5,000

Arizona State has an opportunity to participate in the extensive student loan program instituted by the National Defense Education Act of 1958.

In order to determine the extent to which students at ASU are interested in such a program, the scholarship office has

asked that students fill out the inquiry form printed in conjunction with this story.

Under the new program a student may borrow up to \$1,000 in any academic year, with a maximum total of \$5,000. Repayment begins one year after a borrower leaves the institution and ends 11 years thereafter. This time element may vary if good cause is shown.

Interest charge will be three-per-cent annually on the unpaid balance, beginning on the date of the first payment.

To be eligible for such a loan a student must show need of the money, be able to maintain a good grade average, and be enrolled as a full time student with a minimum of 12 semester hours per semester.

Special consideration will be given to students with a superior academic background who express a desire to teach in elementary or secondary schools and to those whose backgrounds show a superior capacity or preparation in Science, Mathematics, Engineering or a modern foreign language.

Up to one-half of any loan and interest will be cancelled if the borrower serves as a full time teacher in a public elementary or secondary school. For each academic year of such service, 10% of the loan will be cancelled until the loan is repaid or the maximum of 50% is reached.

Blue Key Show To Open Monday

Acts representing 15 sororities, fraternities and special interest groups will compete at the Blue Key Musicale, Monday and Tuesday evenings, Dec. 15 and 16, at 7:30 p.m.

Advance tickets to the musicale, to be held in Cosner Auditorium, are being sold in the Memorial Union today and Monday for 75c.

Among the 15 acts will be dancing: "Anytown, U. S. A." depicting the East, Midwest and West in dance; a girl chorus line; a satire on dancing; and a take-off on "Red Garters."

Also, pantomimists will give their impressions of Andy Griffith, The Wizard of Oz and a Jamaica Holiday. There will be vocal and musical ensembles, comedy acts and an "Interpretation of Music."

Money earned by the sale of tickets to the musicale will be used for Blue Key Scholarships.

INQUIRY FORM

Name

I AM INTERESTED IN THE FEDERAL LOAN PROGRAM FOR:

SECOND SEMESTER

THIS SUMMER

NEXT YEAR

(Check all that are applicable)

AMOUNT I WOULD BE INTERESTED IN BORROWING FOR:

SECOND SEMESTER

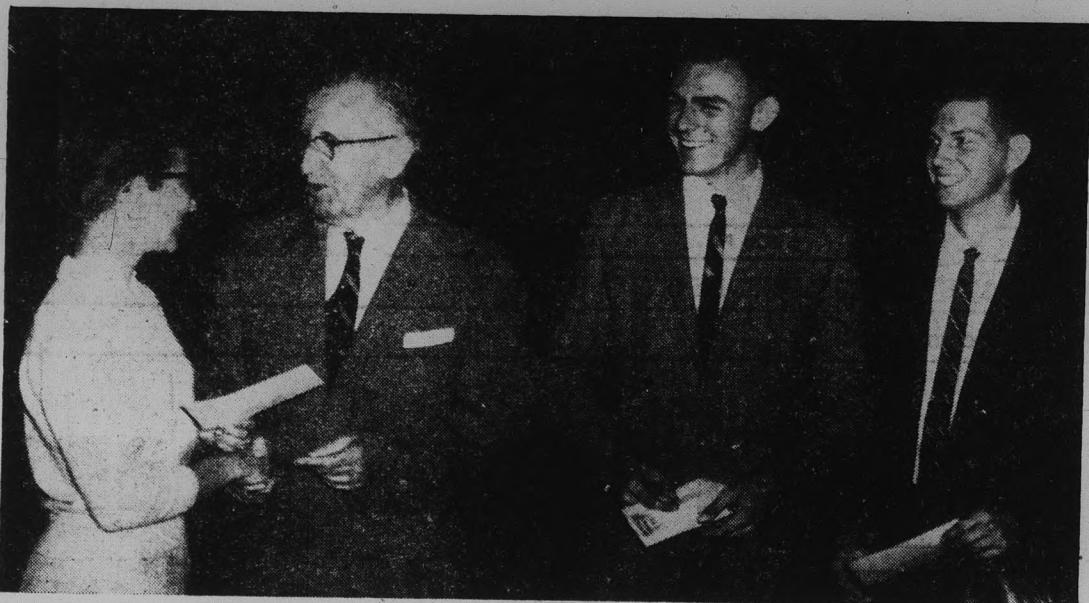
THIS SUMMER

NEXT YEAR

(Fill in . . . all that are applicable)

Note: Return this form, prior to Christmas Vacation, to Division of Student Affairs, Administration Building, 103. THIS IS NOT AN APPLICATION but students who return this inquiry form will be given priority for a loan IF they make formal application and qualify for a loan. You will be notified through the STATE PRESS when application blanks are available.

Entries for the second semester ASU Calendar cover contest must be submitted by Dec. 19. All entries should be turned in to Leroy Whitson in the activities vice-president's office. A \$25 check will be given to the student with the winning entry. Registered students are eligible to enter the contest.



WINNERS . . . Nancy Suess, left, accepts her \$25 first prize from Dr. Grady Gammage, who presented the awards at the annual Marching Band banquet. Runners-up for the outstanding band members award were Kent Ryan, third from left; and Gary Rexroth, right.

Suess Named Outstanding Band Member At Banquet

Nancy Suess was named this year's outstanding band member at the annual Marching Band banquet held in the ballroom of the Memorial Union last week. She was awarded a \$25 prize.

Runners-up were Kent Ryan,

who was given \$15; and Gary Rexroth, \$10.

Jackets were presented Don Crandall, Joann Gullato, Neil Sluegal for serving six semesters in the Sun Devil band. Honorable mentions were Bill Beal, Wendy Hughes and Keith Reidhead.

Twelve Students Pledge Honorary

Beta Phi Chapter of Kappa Delta Pi, honorary education fraternity, pledged a dozen members last week.

The twelve are JoAnne Cooper, Marjorie Forrest, JoAnn Gulatto, Elaine Hash, Mrs. Ruth Overman, Charmian Smith, Mildred Thompson, Erva Verner and Mrs. Margaret Woodside, all of Phoenix.

Also, Robert Moser and Leona Solomon, Mesa, and Robert Pierce, Tempe.

The outstanding bandsman award was initiated in 1955 by George Reyes, Globe, a band alumnus. This is the first year in which a girl has won the award. It is based on several qualifications, including spirit, attitude and ability.

Honorees were selected by Band Director Harold C. Hines and his assistant, Ronald A. Holloway after lists of suggested students were submitted by the Band Council, consisting of the band officers.

Dr. Grady Gammage presented the awards.

AS Engineers To Visit Plant

ASU electrical and radio engineering students today will tour the General Electric computer plant in Phoenix to observe the construction and testing of ERMA and AGT computers.

ERMA is a new computer intended for use by banks for clearing and sorting checks. It also writes bank statements.

AGT is an analog gas turbine computer used in testing and evaluating jet engines.

Members of both the Institute of Electrical Engineering and the Institute of Radio Engineers and their guests will make the tour, leaving the campus at 3:30. Reservations are limited, and the first one on hand will go.

AIEE Vice President Bill Broderick said the ASU chapter is the largest in the Southwest.

Smiley-Berge Motors

16 E. 8th St. — TEMPE — WO 7-2064

**FINAL CLEARANCE
OF 1958 MODELS
6 MUST GO!**

No Reasonable Offer Refused On These
Fine, Near New Cars

- ★ '58 Chevrolet Impala Hardtop
- ★ '58 Ford 500 Town Victorias
- ★ '58 Ford 500 Club Victorias
- ★ '58 Ford 500 4-Door Sedan

COMPLETE SERVICE ALL MAKES
Just 2 Blocks From ASU Campus

The swimming pool will be closed during the Christmas holidays, from Saturday, Dec. 20, to Monday, Jan. 5, Marvin Grier, pool director, announced.

DON'T WAIT! Pick yours out now for Christmas

Come in soon and see the portable that gives you big machine performance! Full-size keyboard. Wonderful to get . . . or to give!

Smith-Corona

WORLD'S FASTEST PORTABLE



Your Campus Smith-Corona Dealer

COLLEGE BOOKSTORE

Buy THUNDER!!

Get
Our
Famous



THUNDERBOOT \$7.95

One Of More Than
Fifty Styles Of Boots

Originals In Footwear
and Sportswear



43-59 West Main Street
Scottsdale



after every shave

Splash on Old Spice After Shave Lotion. Feel your face wake up and live! So good for your skin . . . so good for your ego. Brisk as an ocean breeze, Old Spice makes you feel like a new man. Confident. Assured. Relaxed. You know you're at your best when you top off your shave with Old Spice! 1.00 plus tax

Old Spice

AFTER SHAVE LOTION
by SHULTON



REHEARSING . . . a scene from "Il Tabarro" are, from left: Marina Pressendo as Georgette; Jack Cathey as the song vendor; and James Ellington as Michele. The hour-long opera will be presented as part of the Opera Workshop Sunday at 8:15 p.m. in the Memorial ballroom. Others in the opera cast are Marion Smith, Lillie King Shaw, Lewis Litchfield and Ted Bradshaw. The Workshop is under the direction of David B. Scoular, professor of Music.

Foreign Movies On Tap Next Week

The ASU concert and lecture series will present five award-winning art films and a British movie Friday, Dec. 19. The films, which are open to the public, will start at 3 p.m. in Cosner auditorium, Myrtle and Tenth St.

The art films, all narrated in English, include:

"Creative Art of Japan," a color film showing the aspects of Japanese art from a prehistoric terracotta burial figure to the 18 century;

"Japanese Calligraphy," made in France, an informative study of the art of Japanese calligraphy;

"From Renoir to Picasso" also a French movie. A winner of the first prize at the Venice and Rio de Janeiro film festivals, this film is based on the comparisons among and characteristics of Renoir, Suerat, and Picasso;

"Three Paintings of Hieronymus Bosch," a United States film study of the Flemish artist's three best-known paintings;

And "Il Semoniaco Nell'Arte," the Demon in Art, an Italian film using the works of 10 painters of the early 16th century which shows, through the paintings, the changes of the time.

The British Christmas film, a dramatization of the traditional English carol, is the most honored of the six, having won the Silver Reel award for literary, musical, and theatrical arts last year, a nomination for an Oscar, and a Royal Command performance in London.

Glee Club To Appear On TV Show

The ASU Men's Glee Club will appear on KPHO-TV at 5 p.m. this Saturday.

Marion Smith, assistant professor of voice, will direct the 20-voice Glee Club in the half-hour performance.

Evangeline Mendoza, chorus accompanist, also will be featured in a selection by Chopin.

Hosting the "University Concert" will be Dr. Wendell Rider, chairman of the Department of Music at ASU.

The Saturday programs of the Arizona State TV Hour are produced and directed for the ASU Radio-TV Bureau by Sheldon Siegel of KPHO-TV.

Phoenix Companies Offer Scholarships

Three Arizona State Construction students will receive \$500 Christmas presents this year in the form of scholarships.

The money will come from funds originally earmarked for Christmas presents for customers of the Fisher Contracting

Co. and the Min-A-Con Equipment Co. in Phoenix.

L. W. Beck, president of Min-A-Con Equipment Co., who made an initial contribution of \$1,500, expressed the belief the Christmas gift money would be put to better use in the furtherance of education.

The students will be selected Dec. 19, according to Del Fisher, chairman of the ASU advisory committee on construction programs and president of Fisher Contracting Co.

He announced his company will provide \$50 each year for the program, which will be added to \$3,300 previously donated as a supplement to the state appropriations.

Season's Greetings



WO. 7-4482

Distinctive Supplies For Featuring
 GIFTS - TOYS ARTISTS SCANDINAVIAN
 SOUVENIRS DRAFTSMAN IMPORTS
 HOBBYISTS

— TEMPE CENTER —



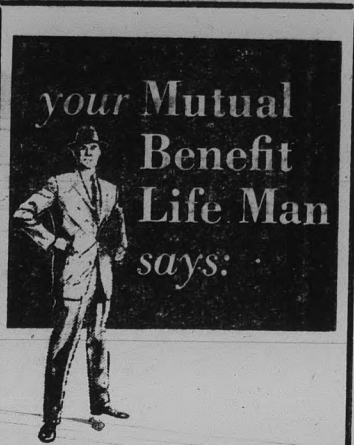
"...and two cartons of Camels for our leader!"

More people drop in for Camels than any other cigarette on earth. It stands to reason: the best tobacco makes the best smoke. The Camel blend of costly tobaccos has never been equalled for rich flavor and easygoing mildness.

Put fads and fancy stuff in the past . . .

R. J. Reynolds Tobacco Co., Winston-Salem, N. C.

Have a real cigarette - have a CAMEL



"Nine Out Of 10 Successful Men Want Custombuilt Life Insurance."

Some men, of course, can get by nicely with "ready-to-wear" life insurance designed for average instead of individual needs. But for most successful men — at least 9 out of 10 — life insurance is something personal that must be custom-made to meet personal needs. To serve such men Mutual Benefit Life men have made life-time, full-time careers of planning life insurance instead of merely selling it. The Mutual Benefit Life Insurance Company, Newark, N. J.



LEONARD A. KRELL
 . . . Thoroughly trained in all phases of modern life insurance.

Bunch's

609 Mill • WO 7-3221

"We Teach Watches to Tell the Truth"

REASONABLE PRICES

LAIRD Pharmacy

Prescription Druggists

501 Mill Ave. WO 7-2922
 26 E. 8th St. WO 7-4063

Mutual Benefit Life Insurance Co.

342 W. McDowell Rd.
 Phone AL 8-6193
 Phoenix, Arizona



EDITOR-IN-CHIEF PHIL FRY
 MANAGING EDITORS ABE GUTIERREZ AND ROCHELLE MACKEY
 ORGANIZATIONS EDITOR PETEY OLMSTED
 SPORTS EDITOR VIC FIGARELLI
 NEWS EDITORS JOANNE SMOOT AND KATHY BURKE



The STATE PRESS is distributed by Rick Bedolla. Official campus newspaper of Arizona State University. Published each Wednesday and Friday throughout the school year, excepting holidays, and entered as second class matter in the Post Office at Tempe, Arizona, under the Acts of March 3, 1879, and August 24, 1912. Subscription price, \$3.00 per school year.
 Member: Arizona Newspapers Association, Associated Collegiate Press, and National Advertising Service, Inc.

EDITORIALLY SPEAKING —

Working Together

Presidents of Arizona's three state-supported four-year institutions of higher learning are planning a meeting to organize the Arizona Presidents Association, modeled after Pacific Student Presidents Association. The three schools are members of PSPA.

Purposes of APA as envisioned by Warren Summers, ASASU president, follow those established by PSPA. They are to foster and promote friendly and cordial relations between the institutions and their various student body officers and to provide an organization through which the members may exchange ideas and work together for better development of collegiate student government.

PSPA, in its 34th year, has been able to follow its purposes. In conventions held every spring, delegates — representing more than 70 colleges and universities in the Rocky Mountain west — discuss such problems as integration of student activities, responsibilities of student government, finances, and many others. The conventions provide a meeting-ground for newly-elected and out-going officers of the schools. Thus, new ideas are discussed with persons who have met the trials and tribulations of student government offices.

This is fine. PSPA has met the needs of colleges and universities on a regional basis. But, it is time for an organization such as APA, on a state-wide basis.

Discussion topics can be pin-pointed rather than be of a broad general nature to include some 70 schools. Also, discussion of more common problems will lead to easier and faster solutions.

Formation of the Arizona Presidents Association undoubtedly will do a great deal to create a better relationship between the three schools. In addition, it should establish a means by which the students of University of Arizona, Arizona State College at Flagstaff, and Arizona State University can work together to further higher education in the state.

Encouraging Sign

It is always encouraging to see local businessmen making an effort to work with the University.

The College theater (Quick, someone, change the name!) recently initiated what manager Ron Stakebake calls an "Art House" policy, cooperating with the Humanities classes in showing cultural and foreign movies at really reasonable rates on Tuesday and Wednesday nights.

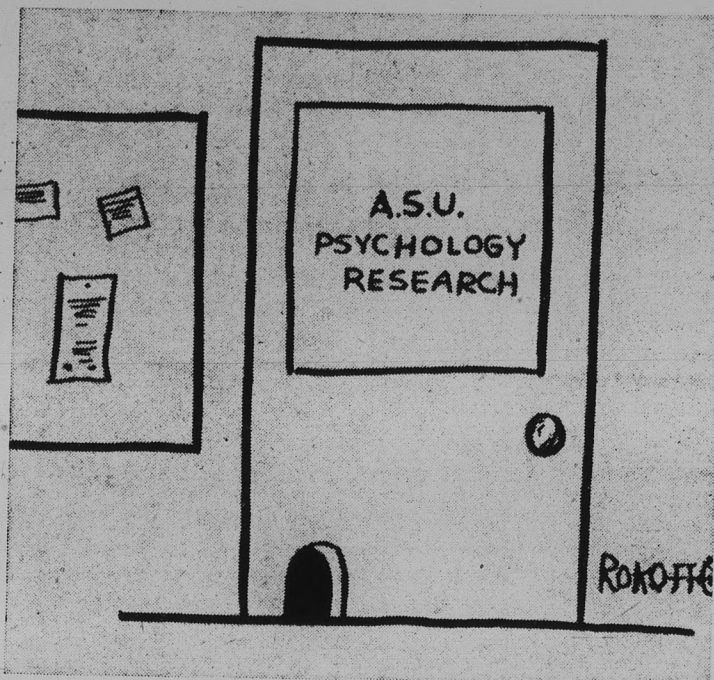
Certainly the theater is in business to make money, and this slanting of its program toward the University has commercial aspects. However, the same movies shown for 65 cents at the College theater usually cost nearly twice as much at most "art theaters."

Student requests are invited, primarily in the form of lists drawn up by the Humanities classes. Any student, though, is welcome to request the foreign, opera and classical drama films he would most like to see.

Films with the largest number of requests are naturally most likely to be shown first if they are available.

"La Parisienne," "Aida," "The Little World of Don Camillo" and "Madame Butterfly" are examples of the movies presented to date. Next in line is "Riviera," with Martine Carol. Requests have been made for "Hamlet" too.

We applaud the spirit of the venture, and wish it success.



BY PHIL FRY

An interesting picture popped up in the Arizona Republic yesterday morning. A University of Michigan senior set up a tent on campus and moved in. He had moved out of his dormitory room as a protest against what he called the "overprotective and mothering attitude" of the university.

The same complaint is voiced in the most recent of a series of articles on Eastern colleges by David Boroff in Harpers magazine.

The first two, on Harvard and Sarah Lawrence, were enjoyable reading, and the third, about Brooklyn College, really made me sit up and take notice. In places it could have been a story about ASU.

BC is a subway school. We don't have subways, but to a great extent, this is a subway school, or commuter school, if you prefer.

BC has experienced tremendous growth since it was founded in 1930. It now enrolls 15,000 students. We have grown phenomenally too, in even less time, although our founding date precedes theirs by some 45 years.

BC fields a large summer program, and its classes are full after as well as before the evening meal.

A quote from a BC student points up the impersonality of a large campus, mentioning the fact he thought the school was extremely "IBM-oriented." "I was number 14 in my Chem class."

BC has some 300 student organizations, possibly an attempt to compensate for official impersonality. Shades of this exist on our campus, but success of the new ASU curriculum advisement program could go far in eliminating it.

Boroff cited the tendency toward producing conformism among students.

He found that BC girls are in the harness of middle class re-

spectability and that BC is "distinctive" for its lack of an "official" drinking place.

The campus newspaper, Kingsman, is monopolistic, and a subscription is required of students. The editorial staff recently resigned, claiming press freedom is taught in class but is found objectionable otherwise. However, Boroff not only found no evidence of serious student opposition to the administration but even some resentment against student quarrels with the administration.

Students do, however, feel the administration's "nervous vigilance" over behavior is a back-hand slap. They don't like being "fussed over."

Boroff felt that at this time, "there is little in the College to generate a creative and responsible criticism of society . . ." and possibly "too much is predicated on 'getting into graduate school' or being acceptable to employers."

And, adding an insight to possible reasons for some of the less desirable aspects of BC, Boroff said this:

"Brooklyn College is a tax-supported institution, and in effect, every taxpayer is a trustee, some of them highly vocal ones.

"My own experience as faculty adviser of a student magazine is instructive. A relatively mild story about a love affair — far milder than a story in Harvard's Advocate which someone there gave me to read — elicited a semi-literate and hysterical letter from a lady in the community. In a rapture of illogic, she suggested that Brooklyn College students 'must be Communists since they are obscene.' It was suggested to me by a college official that I ought to encourage 'more cheerful stories.'"

All told, it was an interesting series, and there is more to come, including a treatise on a typical big state university.

Just Askin'



By CHARLES R. CONLEY

In full Christmas spirit, the question asked by the Inquiring Reporter this week was: What does Christmas mean to you this year?

Nancy Sues, Soph. — It means a time for me to be with my family in California — to relax and relieve the tension that has been built up this first semester, also, to enjoy the happiness that comes with the real Christmas spirit.



Sues Cunningham

Emily Cunningham, Soph. — It will be a chance for me to be with the family for Christmas and see a lot of friends that I haven't seen for a long time. I will be able to get some studying done. I will be able to sleep late and know I'm not missing classes.

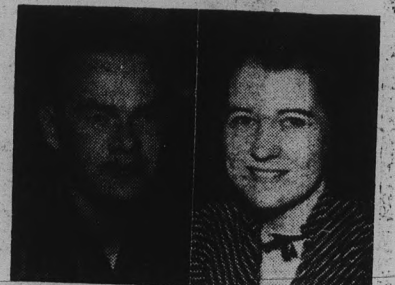
Charles Parker, - Jr. — I am touring with the choir this next week, and the first part of the vacation I'll be resting from the trip. My family plans to have guests from New England, and I have 2 or 3 book reports to prepare; so I guess my vacation time is pretty well taken-up.



Parker Long

Pete Long, Freshman — Usually, Christmas to me means the 25th of Dec. But this year will be the first Christmas I will spend with my family in 4 years, having been in the service in Germany 3 years. We'll have relatives at home. Some of these I haven't seen for a long time.

Joe Dolan, Sr. — Every year I have been home for Christmas, which means another time for my whole family to get together — big turkey dinner and all the trimmings. I enjoy this time of the year because of lots of parties and lots of food.



Dolan Frazier

Bobbie Frazier, - Jr. — The thing that makes it different this year is the fact that I have a new niece. We're going overboard for her. The family is all together this year, as my grandparents are here from the East. We are looking forward to a big family get-together.

Cactus Bowl, Dec. 18

Gals Play Preliminary Tilt

Campus Currents

Air Society Has Car Wash

Mobil Service Station, Eighth Street and Mill, is the site of the Arnold Air Society Car Wash this Saturday from 9 to 12 a.m. Price will be a dollar a car.

Psi Chi Honorary Initiates

Psi Chi, psychology honorary, will initiate new members Thursday in the MU upper lounge at 8 p.m.

Tennis Tourney Results Given

Lois Du Bois and Nancy Pennies won flight I in the W-A tennis tournament. Winners of flight II are Virginia Bober-sky and Judy Olson. Flight III has not finished its matches.

Snow Devil Club Meets

The Snow Devil Ski Club will meet in MU 218 a Wednesday. The business meeting will start at 7:30 p.m. and the regular meeting at 8.

A movie of the Santa Fe ski area will be shown.

Alpha Beta Alpha Plans Party

The December meeting of Alpha Beta Alpha, national library honorary fraternity will be at 8 p.m., Saturday. Speaker will be Mrs. Edgar Beston, "Story-Book Lady," talking on techniques of story telling.

The meeting will be combined with the organization's Christmas Party.

SAM Plans Elections

Elections are on the agenda for the Society for the Advancement of Management at a breakfast meeting December 18. The meeting will be at 6:30 a.m. in the Faculty Dining Room.

Student Nurses Hold Raffle

Selling 3000 raffle tickets — this is the goal of the ASU Student Nurses' Association. Tickets for the raffle of a stuffed dog went on sale yesterday for 25c each and will be sold until December 19.



YULETIDE DANCE . . . Los Conquistadores members Astrid Durazo and Jim Aguilera put up poster denoting club's annual Christmas dance tonight in Phoenix Calderon's Ballroom. Dance is from 8 to 12 p.m. and the public is invited.

Holiday 'Sing' Plans Ready For Sunday

Imported snow, a gleaming tree, roaring bonfire, hot chocolate and a festive atmosphere will be featured at the first annual all-Greek Christmas Sing, Sunday, at 8 p.m., according to Dave Barnes, general chairman.

To be held at the Tau Kappa Epsilon fraternity house, 231 E. 13th, Tempe, the sing will last "til it's over" and will be open to all sorority and fraternity members. An expected 800 guests will gather to sing carols and share the Christmas spirit.

Song leaders will be Shirley Hall, Gamma Phi Beta, and Richard Bowers, Sigma Nu. The two were picked from the fraternity and sorority which took first place in the Interfraternity Sing last spring.

Also featured on the program will be a narration of the Christmas story by Chip Rodarmor, TKE, and voice soloist Sue Culley, Kappa Delta.

The committee will provide two truckloads of snow from the mountains, enough wood to keep a blazing fire burning several hours, and enough hot chocolate for everyone.

Committee chairmen in addition to Barnes include Bob Wood, Gordon Armstrong, Tony Mitten, Gene Hastings, Don Glabe, Pete Koelsch and Mike Peplow.

The sing is sponsored by Tau Kappa Epsilon this year, and it is hoped it will become a traditional event, according to Barnes.

Careless smoking and matches caused 127,000 fires in the United States last year.

All members and prospective members of the Sociology Club are urged to "look sharp" on Wednesday. Pictures will be taken for the annual at 3:30 p.m. in M. U. 218.

Beta Chi Takes New Members

Beta Chi Epsilon pledging ceremonies were Tuesday at 3:30 p.m. in the upper lounge of the Home Economics building. Special guest at the meeting was Mrs. Raj Sachdeva from India, and refreshments served were Indian dishes.

New members are: Jane McPherson, Sharon Farris, Jane Mueller, Iris Donato, Terri Baldočk, Esther Mariassy, Kathleen Kirsch, Barbara Bartlett, Rella Croy, Wanda Mechling, Joanne Kamrar, Marilyn Black, Karen Billings, Edith Rowe, Margaret Bedell, and Barbara Vaughan.

Also Judy Spengler, Jeanne Lotspeich, Suzanne Hall, Joyce Farley, Beverly Clay, Gwen Hayes, Jacqueline Simmons, Barbara Jolley, Karen Willis, Kay Richardson, Frankie Yeben, Sandra Smith, Karen George, Carol Compton, Jean Dorsey, Carole Hendrickson, Laura Ashley, Joyce Yost, Martha Winslow and Judy Skinner.



great ideas for Christmas!

AUTHENTIC IVY shirts and trousers

Right now Hanny's features fresh Ivy gift selections. Tiny regimental or tartan stripes shown here are tasteful and new for button-down shirts. The plain front flap-back bedford cords reflect the latest Ivy trend. Come in now!

IVY SHIRTS

5.95 up

BEDFORD CORD TROUSERS

6.95 up



For a Merrier Christmas . . . Deck the Halls with boughs of IVY!

Hanny's Harsity Shop

30 NORTH FIRST STREET



A Career For COLLEGE WOMEN

UNITED AIR LINES WILL INTERVIEW CANDIDATES FOR STEWARDESS ON CAMPUS

December 15th, 1:00 PM — 4:30 PM

Here is your opportunity for an exciting career as a stewardess on United Air Lines.

Candidates must be attractive, single, at least 19 and a half but not yet 27 years of age, 5'2" in height but not over 5'8". Weight related to height with 138 pound maximum. Must be a good conversationalist and possess a cheerful disposition.

If you meet these qualifications contact the Placement Center for an appointment.

Greeks Don Yule Spirit

By PETEY OLMSTED

Mistletoe, Christmas tree decorations, singing — all mark the colorful season as fraternity and sorority members gather to celebrate this week and next.

Adding impetus to Christmas fun, Kappa Delta pledges are selling mistletoe in the West Hall quad today and next week.

While groups gather for their own enjoyment, they're also making Christmas happier for others.

For instance, Tri Sigma members are collecting food, clothing, and toys for families on the Sacaton Indian Reservation near Casa Grande. Monday night in the Palo Verde chapter room, Tri Sigma "big and little sisters" will exchange gifts at their Christmas party.

Chi Omegas will replace their regular meeting Monday with a party, where punch and cookies will be served while members trade gifts and sing around the decorated Christmas tree.

The tree, along with food, clothing, and toys, will later be given to a needy family chosen by the group for their "Christmas kindness" project.

The Alpha Sigma Alpha with the best-decorated door on the floor will win a prize Monday night at the Alpha Sig Christmas party. Refreshments are planned.

Delta Gammas will trim their Christmas tree Sunday evening, exchange presents, carol, and have refreshments while they're doing it.

Nancy Weigle was elected president of the chapter recently.

And loads of lauds to Nancy Seuss, DG, recently named "best bandsman" in the Sun Devil Band.

Sigma Phi Epsilons and dates will be entertained as the Sig Ep pledge class presents an interpretation of "The Night Before Christmas" at the fraternity party tonight. Popping corn in the fireplace and singing carols round out the evening.



GOOD GRIEF . . . All this for a formal, wonders Phi Kappa Hank Kolb, as he gets spruced up by fraternity brothers Manual Martinez, left, and Bob Green, right. Their Christmas formal is tomorrow night at Toy's Shangri-La, Phoenix.

Women's Dorms Ready For Parties; Open Houses, Caroling On Schedule

By SHARON CORN

The holiday season is well underway for women's dormitories on campus as Christmas activities fill all agendas.

Palo Verde set the pace for after-hour parties last night as girls from the "combined wings" celebrated with tree decorating, caroling, and refreshments served in the dining room.

Gammage Hall had an original idea this year — a Christmas auction, to provide money for their dorm party the 18th. The auction, held yesterday, will be followed by another popular project, "pixie-pal" week, in which secret sisters do helpful chores for their pals (on the sly). Santa will be the guest at their party next week.

North, West, and South Halls will hold open house Sunday, as the public and special guests view door and room decorations. The Quad will be the scene of caroling Wednesday, as girls from the three halls get together from 9:30 to 10 p.m. for the traditional sing.

West's traditional Christmas party is scheduled for Monday, 10 p.m. A Las Posadas procession through the halls, headed by Susan Wright and Linda Ross, will be followed by a

Christmas drama in the lobby. Coeds will then exchange gifts (toys) which later will be sent to children's homes.

Prizes will be given for best decorated doors and room, and scholarship plaques awarded deserving girls.

South Hall festivities began Wednesday evening in a Yule Log ceremony on the Quad lawn, with Dean Nichols reading the "story of old." Six outstanding freshmen girls of the hall were chosen at the yearly event. They are:

Cheryl Allen, Ruth Bradley, Pat Quinn, Margaret Takemoto, Carroll Anthony and Jo Nell McEuen. Continuing in fine spirit, the girls plan to get together Wednesday for their after-hours party.

North Hall gals are planning an informal dance Tuesday, 7:30-9:30 p.m. Their party will be Wednesday night also featuring a Christmas tree exchange. Competitive as well as Christmas spirit seems to be the trend — more prizes for door decorations!

An annual event at Wilson Hall is their party Wednesday at 10 p.m. Along the entertainment line will be a skit, reading and solo. Girls with the most

original door-decor will receive prizes. Special guest will be Dean Nichols. Wilson's Christmas Dance is scheduled for Thursday, 8-11 p.m.

On the roster for McClintock "A" is a dorm party Wednesday p.m. Gift exchanges, consisting of toys, will be sent to the children of Sunshine Acres, Jane Wayland Home, and to two needy families. Judging of window and door decorations will be Monday afternoon.

Tuesday is the date set for McClintock "B's" Christmas party. The night's activities include caroling, a dance by Linda DeWitt, and accordion playing by Carol Sue Kellum.

Toys exchanged by the girls will go to the Valley of the Sun School for handicapped children. Prizes will be awarded for window scenes in religious, secular, and sweepstake categories.

Chapel Corner

Groups Plan Weekend Fun

Religious clubs have planned dances and parties for the weekend, most of them in the Christmas spirit.

Newman Club's annual Christmas dance will be tonight at the Valley Ho in Scottsdale. Newmanites and their guests are invited.

Westminster Foundation will have a dinner at 4:30 p.m., followed by a round of caroling at various hospitals, and a party at the home of Rev. J. Calvin Hill Sunday night.

The annual Chanukah Latka Party, Sunday evening, at 7, is on Hillel Foundation's agenda.

The Baptist Student Movement collaborates with the Mesa college-age group for a barbecue at the Baptist Student Center tomorrow. Also, the club is taking applications for the student staff of the National Church Camp in Wisconsin this summer.

Lambda Delta Sigma's Christmas Formal is tonight from 9 to 12 in the Tempe LDS Ward.

Ken Krueger will show color slides of Europe, Sunday evening at 5, when the Martin Luther Society holds its regular meeting and dinner.

FLIGHT INSTRUCTION

At Special Rates For College People
A Private License is a Must in Modern Business
AMOS

FLIGHT OPERATORS
Don Amos - - Class of '56
Ph. BR 5-7291 - Sky Harbor

M & H DEPARTMENT & HARDWARE

OPEN DAILY 9 to 9
Sundays 9 to 6

Bayless Center 1332 E. Apache Blvd.

Val's Restaurant

FINEST ITALIAN FOOD IN VALLEY

Imported Wine & Beer
Accommodations For 100 People

FOR RESERVATIONS PHONE WO 7-5952

Open Daily Noon to 1 a.m.
Friday and Saturday, Noon to 3 a.m.
Entertainment 9-1 Wed., Fri., & Sat.

"THE ENCHANTERS"
featured
Sundays — 7 p.m. to 1 a.m.

On the Tempe - Mesa Highway
Watch For Flaming Torch 3 Mi. East of Tempe

Give The Perfect Gift!

From Your Musical Needs Headquarters

★ ALBUMS

★ PHONOGRAPHS

★ RADIOS

★ DIAMOND NEEDLES

COMPLETE STEREO NEEDS

Phono's From \$79.95 to Consoles \$359.95

STEREO RECORDS

• Gift Wrapping

• Gift Certificates

USE OUR XMAS LAYAWAY PLAN

HILL'S RECORDS

TEMPE CENTER — Phone WO 7-5243

Devils Meet Coast Quints In Weekend Home Stand

By VIC FIGARELLI

Back in the friendly confines of the Sun Devil gym, Ned Wulk and his Arizona State cagers face an invasion from the West Coast over the weekend.

Tonight, the Devils take on the University of Calif., at Santa Barbara, and tomorrow night Los Angeles State College moves in.

Tonight's game with Santa Barbara's Gauchos will be the first meeting of the two schools in basketball.

The Gauchos opened their season with an 88-72 loss to their Alumni last Friday and Whittier took them the following evening, 63-47, AS swamped Whittier, 89-60.

Los Angeles State and the Demons have met seven times. AS has won five. Last year the teams split a pair, with L. A. State winning here, 67-62, and the Devils winning on the coast, 83-65.

UCSB's starting lineup will average 6-1 somewhat stubbier

than the altitudinous chaps the Devils had trouble with last week.

At the forwards are 6-5 Ed Haertel, the team's leading scorer, and Jim Whalen; 6-5 John McMillan is the center; and 5-9 Frank Bennett and 5-11 Dennis Nielson are the guards.

L. A. State is even shorter than Santa Barbara. They divide out to slightly under six feet.

The Diablos will have 6-0 Bob Oldham and 6-0 Ron Bazadier at the forwards; 6-3 Bill Heynen, center; and 5-9 Elisio Nino and 5-11 Leo Hill at the guard posts.

Aggies Place Three On All-Opponents

New Mexico A&M landed three players on Arizona State's all-opponent team, named Wednesday.

College of Pacific, Hardin-Simmons and Texas Western each placed two men on the

team, and Detroit and West Texas one each.

The Aggies placed halfback Joe Kelly, tackle Bill Locklin and quarterback Charley Johnson on the eleven. The Devils beat the New Mexicans, 23-19.

The ASU players voted halfback Dick Bass and guard Carl Kammerer from COP to the group. The Tigers, who handed the Devils their only decisive beating of the year, won by 34-16.

From H-SU, 14-6 winner over AS, came fullback Pete Hart and end Sammy Ooates. Tackle Bob Bobo and end Lee Allan Jones represented Texas Western. TW lost to AS, 27-0.

Detroit, also a 27-0 loser, supplied the center, Joe Ivkovich, and Jerry Epps of West Texas State filled the other guard post.

AS Opponents Cage Scores

Seattle 83, Pepperdine 75
Grand Canyon 71, ASC-Flag-staff 65
H-SU 83, North Texas St. 72
NM A&M 80, McMurry 58
Utah State 91, West Texas 61
Santa Clara 72, Chico St. 39
Fresno St. 62, San Diego Marines 55
San Diego St. 55, Loyola 48
Whittier 83, Pasadena 68
San Francisco St. 44, San Jose 40



SMOOTH OPERATOR . . . Arizona State's Al Nealey is the team's leading rebounder and second most productive scorer. In four games, the 6-3½ forward has scored 80 points and picked off 46 rebounds.

NEALEY SAYS:

NCAA Finals Key To Bigtime

By RICHARD STEHR

I was talking to Al Nealey yesterday and asked him if he thought ASU would ever be as well known in basketball as it is in football.

"If we ever have a real big winning season and get in the NCAA finals," he said, "we'll get MORE national recognition than our football team."

If this is not the year for that "real big winning season," it will not be the fault of this star Sun Devil forward. Al has already scored a total of 80 points in four games this year.

Last season he led the team with 16.2 points-per-game average as the Devils won the Border Conference crown.

Al, a Phoenix boy, played his high school basketball at Carver and Phoenix Union and was on the All-City and All-State high school teams for three consecutive years. Now, as an ASU junior, he is touted by Coach Ned Wulk as having "as much potential in basketball as any kid I've ever worked with."

And what does Nealey think of Wulk? "He drives you hard but keeps you on your toes." Al plans to go into coaching himself, either in Arizona or California, preferably the former.

Presently, Al lives in Phoenix with his wife, Gloria, and their baby girl. Twenty years old, Al weighs 180 pounds and stands 6-3½. Shows there's still a place for a "little" guy in basketball.

they're here

flap-pocket
TAPERS
california slacks
by **ARROW**
INSIST ON THIS LABEL

See the trim fit, now flapped back pockets, wide selection of colors and fabrics, attention to details and sturdy construction. Wherever you go, you're right in the latest style.

26 to 38, 4.95 to 6.95

Junior TAPERS 4 to 18
3.98 to 4.50

Lou's Campus Shop
FINE CLOTHES FOR MEN
603 Mill Ave. WO 7-2960
S&H Green Stamps



Prom-perfect . . .
or for
any date

It's easy to see why Arrow White Shirts are the most popular on campus. Authentic in every style detail, they're the best-fitting shirts in circulation today.

Our exclusive Mitoga®-tailoring makes them that way from collar to cuff to waist. "Sanforized" fabrics keep their fit and the wildest bop won't pop their anchored buttons. \$4.00 up.

Cluett, Peabody & Co., Inc.



at your Favorite Campus Store

Lou's Campus Shop

FINE CLOTHES FOR MEN

603 MILL AVENUE, TEMPE PHONE WO 7-2960

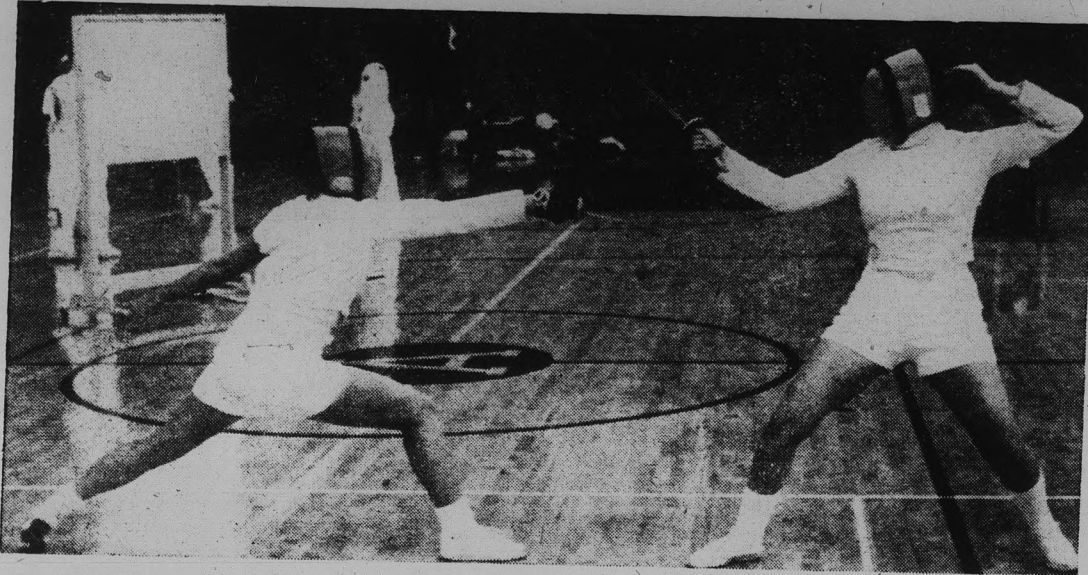
Opportunity In Selling For Local Students

A Utah publishing firm expanding distribution in this area, is seeking several local college students, qualified in sales and promotion, to sell and distribute a new line of accounting forms to local wholesale and retail businesses, stationery stores, banks, etc.

This is an opportunity to work with a progressive company that has a unique and necessary product to provide the American small business man.

This offer should appeal to busy college students that cannot work regular hours, since you may arrange your own sales schedule. Students in Utah and Idaho have averaged \$3.00 per hour for their efforts. Moreover, once your original contacts are made, you receive the same commission on reorder business.

Apply to:
T. Leland Shreeve Co.
2538 Van Buren Avenue
Ogden, Utah



TOUCHE . . . Arizona State's Pat Robinson lunges at Arizona's Lynn Walcha in a match during the AS-sponsored fencing tournament here last Saturday. Other teams competing in the parry-thrustfest were Davis-Monthan AFB and the Phoenix YMCA.

Belland Oil Can Recipient; Hangartner Feted As MVP

John Hangartner, senior quarterback, was named the season's most valuable player and received the annual "Governor's Achievement Award" at last night's ASU Football Banquet in the MU.

Governor-elect Paul Fannin presented the award — an engraved wrist watch — to Hangartner, who served along with right tackle Tom Ford as co-captain of this year's varsity team. Recipient of the University's highest football honor is

selected by a vote of teammates. The 1957 award went to Halfback Bob Mulgado.

Other players honored at the banquet were: fullback Joe Belland, winner of 1958 Oil Can Award, given to the Sun Devil player who has contributed most to team spirit and morale; left guard Al Carr, who received the first annual Glenn Hawkins Football Sportsmanship Trophy from Gov. Ernest McFarland. Carr, a former PUHS grid star, appeared a

shoo-in for All-American honors this season until a rash of injuries kept him on the sidelines.

Right halfback Leon Burton received a special presentation from William Burton, high potentate of El Zahir Temple of Phoenix. The award is a set of luggage for Leon's trip to San Francisco, where he will play in the Shrine East-West charity football game later this month.

Co-captains for ASU's 1959 team were also disclosed at the banquet. Selected were ends Karl Kiefer and Bill Spanko, juniors who played first-string football for the Devils this fall. Kiefer led the team in pass receiving while Spanko was an All-Border Conference selection.

In addition to special trophies and awards 30 members of the 1958 varsity were presented varsity letters at the banquet.

Intramural Grid Teams In Cactus Bowl Playoffs

The Cactus Bowl next Thursday will decide the intramural flag football championship.

The 8:00 contest will match the two teams remaining from an elimination tournament next week.

The ASU Pom Pon girls and Pep Band will be on hand to supply halftime entertainment. A pre-game battle is scheduled between teams composed of sorority women and women dormitory dwellers.

First and second place teams from each of the five leagues will compete in a single elimination tourney along with three teams chosen at large. Haigler, Lambda Delta Sigma and Phi Epsilon Kappa will stage a playoff today to decide which will represent the thirteenth team in the tourney.

Finalists in the five leagues are: Arizona — Delta Sigma Phi and Stragglers. State — Phi Sigma Kappa and the winner of the Haigler-LDS game. University — Off Campus Men, Hayden Hall and Sigma Nu. Sun League — Centaurs and Sahuaro Hall. Devil — Alpha Tau Omega, Phi Delta Theta

and Tau Kappa Epsilon. Pairings for the playoffs were picked in a drawing last night. Three teams will draw byes and 10 others will compete for the quarter finals.

See Our New Hol'N-One Donut Machine



Now Under New Management

8th Street & College

Harold Barclay, Mgr.

DON'T WAIT! Pick yours out now for Christmas

Come in soon and see the portable that gives you big machine performance! Full-size keyboard. Wonderful to get... or to give!



Smith-Corona

WORLD'S FASTEST PORTABLE

Your Campus Smith-Corona Dealer

COLLEGE BOOKSTORE

Fred Elquest & Son

Everything for the Art Student
• Art Supplies
• Picture Framing
703 N. 2nd St.
Phoenix
PHONE AL 8-2628

Imps Play Tonight, Tomorrow; Face Fort Huachuca, Palo Verde

Arizona State's freshman cagers go after their third and fourth victories this weekend against Fort Huachuca and Palo Verde Junior College.

The Soldiers will face the Imps in tonight's preliminary to the varsity's clash with Santa Barbara, and the Blyth, Calif. quintet plays in tomorrow's prelim to the Los Angeles State game. Both start at 6:15 p.m.

The Imps are undefeated in two games, having beaten Wil-

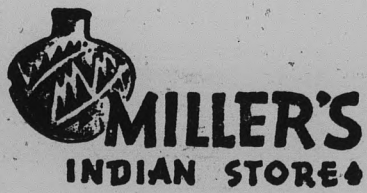
liams Air Force Base, 74-73, and Luke AFB, 90-63.

Coach Fanny Markham figures to start the same five he worked last week: Harvey Harche (6-3) and Ollie Payne (6-4) at the forwards, Mike McConnell (6-6), center, and Les Kühnz (5-11) and Chico Morrison (6-3) at the guards. He may switch Dick Catlett (6-6½) with McConnell, and move McConnell to Payne's spot.

From Bullwhips to Bowie Knives . .

From fine silverwork to hundreds of unusual, inexpensive gifts, and moccasins.

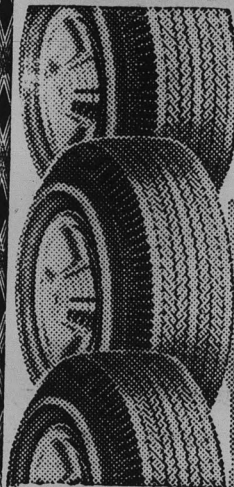
You will enjoy the friendly casual shopping at . . .



516 Mill Avenue

Open Evenings

Save your cash . . . Buy on Firestone Budget Plan



DeLuxe Champion NEW TREADS

Applied on sound tire bodies or on your own tires

Ford - Chevrolet & Plymouth OWNERS

2 for 22.22*

Whitewalls \$1.00 extra each
*Plus tax & Recappable exch.

COHILL & LOW TIRE CO.

4333 EAST WASHINGTON ST.
PHOENIX, ARIZONA
BR. 5-6288

Dana Bros.

211 Mill Avenue — Tempe

Your Chrysler - Plymouth - Imperial - Simca Dealer

FOR THE BEST DEAL ON A NEW or USED CAR . . . ANYTIME

Pre - Christmas Special On ALL 1959 CARS

COST PLUS 10%

On Factory Invoice

We Especially Invite ASU Personnel

SAVE MONEY ON YOUR SERVICE NEEDS & GAS AT OUR STATION

"Buy With Confidence"