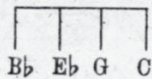


SM 6867

Chérie, I Love You

Tune Ukulele



Words and Music by
LILLIAN ROSEDALE GOODMAN

Valse moderato

Piano

The lan-guage of love is the same, In ev - 'ry
Each lov - er has tried to con - vey, Thoughts that ex -

clime, at an - y time. A whis - per, a
-press love's hap - pi - ness, So my heart is

smile or a glance. Pier - ces the heart with cu - pid's
yearn - ing to say, Just en - tre - nous, my love is

* Open Strings

dart. ————— But dear - est, I want you to know —————
 true, ————— But on - ly these words can I sing, —————

— This mes - sage, for I love you so. —————
 — To tell you the mes - sage they bring. —————

Refrain

mf slowly
 Orig. Chér - ie, chér - ie my own,
 Version. Chér - ie, chér - ie je t'aime,
con tenerezza
mf slowly

Chér - ie be mine a - lone.
 Chér - ie, lis - ten a - gain.

L.H. R.H.

Though I could praise you a thous - and ways
 I want to tell you I love you so

I say it all in that old, sweet phrase.
 I can't pre - tend that I don't, you know.

Chér - ie, chér - ie, so fair ———— Tell me,
 Chér - ie, chér - ie, je t'aime ———— Do not

tell me you care. ———— I love you, love you,
 say it's in vain. ———— I love you, love you,

That's what I mean. When I whisper Chér - ie, my own
 That's what I mean When I say - Chér - ie je t'aime

I love you, love you, that's what I mean, When I
 I love you, love you, that's what I mean, When I

whisper Chér - ie, my own.
 say - Chér - ie je t'aime.

own, t'aime,
 my je
 own, t'aime.