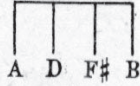


SM7257

2

# BELLS OF HAWAII

Tune Ukulele  
or Banjulele Banjo



Ukulele Arr. by  
MAY SINGHI BREEN  
"The Ukulele Lady"

By BILLY HEAGNEY

Piano

Valse moderato

The first system of piano accompaniment is in 3/4 time with a key signature of one sharp (F#). It features a melody in the right hand and a bass line in the left hand. The melody includes three instances of a bell sound effect, indicated by an upward-pointing arrow and the word "Bell". The left hand has markings for "L.H." and "Ped." (pedal). The tempo is marked "Valse moderato".

The second system of piano accompaniment continues the melody and bass line. It includes more bell sound effects and dynamic markings like "p" (piano) and "Ped." (pedal).

Voice

The third system includes the vocal line with lyrics and piano accompaniment. The lyrics are: "Mem - o - ry car - ries me o - ver the foam, / Hear me sigh why did I wan - der a - way,". The piano accompaniment includes a piano marking "p" and a triplet of eighth notes in the right hand.

4

Copyright 1927 by Fred. K. Steele, Inc. 745 Seventh Ave. N.Y.C.

International Copyright Secured

Made in U. S. A.

All Rights Reserved

And it seems, in my dreams I'm  
Now I'm blue, lone - some too A -

wan - der - ing home, Sil - vry stars  
wait - ing the day, When I'll say,

shin - ing a - bove, Steel gui - tars croon - ing of love,  
I missed you dear, Kiss a - way each lit - tle tear,

Tales they tell weave a spell o'er me:  
Heart of mine, for you I'm yearn - ing,

Chorus

When I hear those bells of Ha - wa - ii Call - ing

soft - ly ov - er the sea, Then they seem to

tell me Ha - wa - ii, Of the one who's wait - ing for

me, A - gain I see two

dream - y eyes, While some-one sighs 'neath

This system contains the first two staves of music. The vocal line is on a treble clef staff with a key signature of one sharp (F#). The piano accompaniment is on a grand staff (treble and bass clefs). Above the vocal staff, there are two guitar chord diagrams. The lyrics are: "dream - y eyes, While some-one sighs 'neath".

moon - lit skies, When I hear those bells of Ha -

This system contains the next two staves of music. The vocal line continues with the lyrics: "moon - lit skies, When I hear those bells of Ha -". Above the vocal staff, there are four guitar chord diagrams. The piano accompaniment includes markings for "Bell" and "L.H." (Left Hand) on the bass staff.

wa - ii Call - ing soft - ly ov - er the

This system contains the next two staves of music. The vocal line continues with the lyrics: "wa - ii Call - ing soft - ly ov - er the". Above the vocal staff, there are three guitar chord diagrams. The piano accompaniment includes markings for "gva. Bell" and "L.H." on the bass staff.

sea. When I sea.

This system contains the final two staves of music. The vocal line concludes with the lyrics: "sea. When I sea.". Above the vocal staff, there are four guitar chord diagrams, with the first two numbered "1" and "2". The piano accompaniment includes markings for "Bell", "L.H.", and "Ped.\*" (Pedal) on the bass staff.