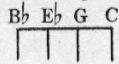


SM 7205

# When You Waltz With The One You Love

Tune Uke as follows:



Lyric by  
CHAS. O' FLYNN

Music by  
AL. SHERMAN  
Writer of "Save Your Sorrow," etc.

**Valse lente**

The piano introduction is in 3/4 time, marked *Valse lente*. It features a melody in the right hand and accompaniment in the left hand. The tempo is *mf espress.* and the piece concludes with a *ten.* (ritardando) and *poco rit.* marking.

Ukulele part: Eb (2nd fret), B $\flat$ 7 (3rd fret)

Dream-y lights a - glow,      Mu - sic soft and low,  
Mid-night pass - es by,      Break of morn is night,

Piano accompaniment continues with the melody and accompaniment from the introduction.

Ukulele part: B $\flat$ 7 (3rd fret), 3 dim. (3rd fret), B $\flat$ 7 (3rd fret), Eb (2nd fret)

In your arms your one and your on - ly;      Now a waltz di - vine,  
To the last sweet waltz you are danc - ing;      When the night has gone,

Piano accompaniment continues with the melody and accompaniment from the introduction.

Copyright MCMXXVI by VILLA MORÉT, Inc. San Francisco

International Copyright Secured

Made in U.S.A.

All Rights Reserved

Gm 3 dim. Gm Cm F7 ten. Bb Bb(Aug.)

Makes it sweet - heart time on How could you ev - er be lone - ly?  
 Still there lin - gers on Mem - 'ries, sweet mem - 'ries en - tranc - ing.

*poco rit.* *rall.*

REFRAIN Eb

When you waltz with the one that you love Then you

*espress.* *p-mf*

Melody (bring out)

Eb C7 Fm

hold par - a - dise in your arms When you waltz with the

Fm Ab Bb7 Bb(Aug.)

one you love This old world has a mil - lion

*E<sub>b</sub>*

charms As you dance, in each glance, there's ro - mance

*E<sub>b</sub>* *G7* *Cm* *E<sub>b</sub>7*

True as stars a - bove There's a

*A<sub>b</sub>* *A<sub>b</sub>m* *E<sub>b</sub>* *C<sub>9</sub>* *C7* *Fm*

thrill, there's a bliss as you steal one sweet kiss, When you waltz with the

*B<sub>b</sub>7* *1 E<sub>b</sub>* *3 dim.* *B<sub>b</sub>7* *2 E<sub>b</sub>* *D.C.*

one you love. When you love. *mf* *D.C.*