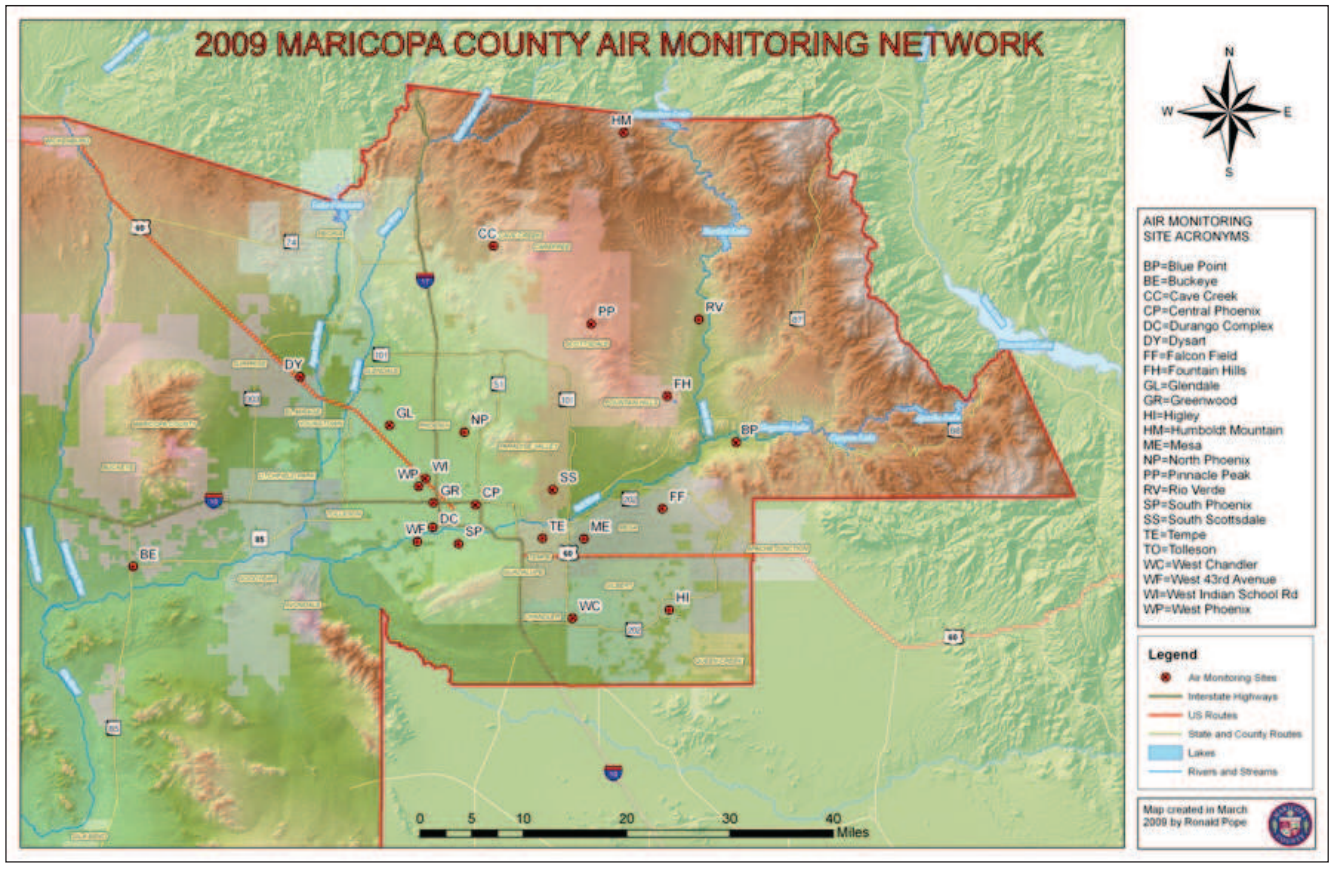




Maricopa County
Air Quality Department

2009 Air Monitoring Network Review

Prepared by the
Air Monitoring Division
2145 S. 11th Ave
Phoenix, AZ 85007



Acknowledgements

In 2009, the Maricopa County Air Quality Department's Air Monitoring Division maintained 25 ambient air monitoring sites throughout Maricopa County. New events happening during the year included the roll-out of our Mobile Air Monitoring Program. The department took possession of its mobile monitoring vehicle and equipment in February 2009 and started to ramp-up the program by conducting training, fine-tuning the equipment, and finally by conducting several monitoring special projects. The Air Monitoring Division now operates with a full staff with some technicians pulling double duty in both ambient monitoring and mobile monitoring.

The department would especially like to thank all of its air monitoring staff for the excellent job they do in maintaining Maricopa County's air monitoring network. They are Ben Davis, Larry Seals, Del Hawkins, Gary Ensminger, Robert Dyer, Ronald Pope, John Neff, Tom Shorb, Dale Foster, Chris Hernandez, Hugh Tom, Charles Miller, Alex Herrera, Dan Speigelberg, Tom Dubishar, Michael Gardner and Reynaldo Santillano.

In addition, the assistance of other agencies which provided data and helpful comments to this review is gratefully acknowledged. These include Arizona Department of Environmental Quality (ADEQ), Pinal County Air Quality Control District (PCAQCD) and the Maricopa Association of Governments (MAG).



2009 Maricopa County Air Quality Department Air Monitoring Division staff

Table of Contents

ACKNOWLEDGEMENTS	1
ABSTRACT	5
DEFINITION OF TERMS	6
CRITERIA POLLUTANT INFORMATION	8
<u>ABSTRACT OF POLLUTANTS</u>	8
<u>CAUSES AND CHARACTERISTICS OF POLLUTANTS</u>	8
Carbon Monoxide:.....	8
Lead:.....	8
Nitrogen Dioxide:.....	9
Ozone:.....	9
Particulate Matter:.....	9
Sulfur Dioxide:.....	10
<u>NATIONAL AMBIENT AIR QUALITY STANDARDS</u>	10
<u>ABSTRACT OF MARICOPA COUNTY AIR QUALITY DEPARTMENT POLLUTION MONITORING STRATEGIES</u>	11
NETWORK DESIGN	12
<u>PURPOSE AND OBJECTIVE OF THE NETWORK</u>	12
<u>OVERVIEW OF THE MARICOPA COUNTY AIR QUALITY DEPARTMENT’S AIR MONITORING NETWORK</u>	13
2009 SUMMARY OF NETWORK RESULTS AND REQUIRED INFORMATION	17
<u>DATA COMPLETENESS</u>	17
<u>CRITERIA POLLUTANT SUMMARY</u>	18
Carbon Monoxide (CO).....	18
Ozone (O ₃).....	20
Particulate Matter <=10 Microns (PM ₁₀).....	23
Particulate Matter <=2.5 Microns (PM _{2.5}).....	25
Nitrogen Dioxide (NO ₂).....	27
Sulfur Dioxide (SO ₂).....	28
<u>2009 NAAQS EXCEEDANCE AND VIOLATION SUMMARY</u>	29
<u>2009 OZONE EXCEEDANCE AND VIOLATION DETAILS</u>	29
<u>2009 EXCEEDANCES OF THE 24-HOUR PM₁₀ STANDARD</u>	30
<u>2009 VIOLATIONS OF THE 24-HOUR PM₁₀ STANDARD</u>	31
<u>EXCEPTIONAL EVENTS</u>	31
<u>2009 EXCEEDANCES OF THE 24-HOUR PM_{2.5} STANDARD</u>	32
<u>POLLUTION TRENDS</u>	33
Carbon Monoxide.....	33
Nitrogen Dioxide.....	33
Ozone.....	34
Particulates.....	34
Sulfur Dioxide.....	36
SPECIAL PROJECTS AND NETWORK CHANGES	37
<u>SEASONAL MONITORS</u>	37
<u>THE CONSIDERATION OF ADDITIONAL SITES/MONITORS</u>	37
<u>NEW SITES</u>	37
<u>CLOSED SITES/MONITORS</u>	38
<u>LEAD MONITORING</u>	38
<u>OTHER NETWORK CHANGES/SPECIAL PROJECTS/COMMENTS</u>	38
<u>MOBILE MONITORING PROGRAM</u>	38
ADDITIONAL COMMENTS	40
<u>ARIZONA DEPARTMENT OF ENVIRONMENTAL QUALITY NETWORK</u>	40
<u>EPA OZONE MAPPING</u>	40

<u>MARICOPA COUNTY'S INTERACTIVE POLLUTION MAP</u>	41
REFERENCES	43
APPENDIX I - MONITORING SITE DETAILS (PHOTOS AND SPECIFIC INFORMATION)	44
APPENDIX II - EPA REQUIRED DATA	70
<u>REQUIRED GENERAL INFORMATION ON MONITORING NETWORK</u>	71
<u>REQUIRED GENERAL STATEMENT REGARDING CHANGES TO THE PM_{2.5} NETWORK</u>	71
<u>NOTES REGARDING APPENDIX DATA</u>	71
APPENDIX III - PUBLIC NOTICE AND COMMENT INFORMATION	98
<u>PUBLIC NOTICE PERIOD</u>	99
<u>NEWS RELEASE</u>	99
<u>PUBLIC COMMENTS</u>	100

List of Tables

Table 1 National Ambient Air Quality Standards	10
Table 2 Site Monitoring Objectives	12
Table 3 Spatial Measurement Scales.....	12
Table 4 Maricopa County Ambient Air Monitoring Sites for 2009	14
Table 5 Criteria Pollutants Monitored, by Site and Network	14
Table 6 Site Location	15
Table 7 Site Instrument Setup	16
Table 8 2009 Criteria Pollutant Data Completeness.....	17
Table 9 2009 AQS Data Completeness	17
Table 10 2009 1-hour and 8-hour Average Carbon Monoxide Summary	19
Table 11 2009 8-hour Average Ozone Summary	21
Table 12 3 Year Average of 8-Hour Ozone	22
Table 13 2009 PM ₁₀ Summary	24
Table 14 2009 PM _{2.5} Summary (FRM Monitors).....	26
Table 15 2009 PM _{2.5} Data Summary (Continuous Monitors)	26
Table 16 2009 PM _{2.5} 3-Year Averages of 98 th Percentile (FRM Monitors)	26
Table 17 2009 PM _{2.5} 3-Year Averages of Annual Means (FRM Monitors).....	26
Table 18 2009 Nitrogen Dioxide Summary	27
Table 19 2009 Sulfur Dioxide Summary.....	28
Table 20 2009 NAAQS Exceedances and Violations Summary.....	29
Table 21 2009 Ozone 8-hour Average Exceedance Details	29
Table 22 2009 Ozone Violations.....	29
Table 23 2009 PM ₁₀ 24-hour Average Exceedance Details	30
Table 24 Violations of the 24-hr PM ₁₀ Standard	31
Table 25 2009 PM _{2.5} Exceedances.....	32
Table 26 Seasonal Monitors	37
Table 27 Air Quality Index	41

List of Figures

Figure 1 Maricopa County Air Monitoring Sites for 2009	13
Figure 2 2009 Carbon Monoxide Monitoring Sites.....	18
Figure 3 2009 Ozone Monitoring Sites	20
Figure 4 2009 PM ₁₀ Monitoring Sites (includes continuous and non-continuous sites).....	23
Figure 5 2009 PM _{2.5} Monitoring Sites (continuous and non-continuous)	25
Figure 6 2009 Nitrogen Dioxide Monitoring Sites.....	27
Figure 7 2009 Sulfur Dioxide Monitoring Sites	28
Figure 8 EPA AIRNow Website	40
Figure 9 Interactive Website Data Trends Page	42

List of Charts

Chart 1 2007-2009 8-hr Avg. Carbon Monoxide Maximum Values.....	33
---	----

Chart 2 2007-2009 Nitrogen Dioxide Annual Average Readings 33
Chart 3 2007-2009 Ozone 4th High 8-hr Average 34
Chart 4 2007-2009 PM₁₀ 24-hr Average Maximum Values 34
Chart 5 2007-2009 PM₁₀ Annual Average 35
Chart 6 2007-2009 PM_{2.5} Annual Average 35
Chart 7 2007-2009 PM_{2.5} 98th Percentile 36
Chart 8 2007-2009 Sulfur Dioxide Annual Average 36

ABSTRACT

This 2009 Annual Air Monitoring Network Review is respectfully submitted by the Maricopa County Air Quality Department¹ (MCAQD) to the United States Environmental Protection Agency (US EPA) Region 9. The Air Monitoring Network Review evaluates the adequacy of the ambient air monitoring network with respect to the monitoring objectives and spatial scales. This annual assessment is required by 40 CFR Part 58, Subpart B. Network changes, special projects, and 3-year data summaries are included in the review. This network review is also preliminary to our annual data certification with the US EPA and helps us assess the quality of our data before submitting for data certification. This network review has the secondary purpose of informing the public of the criteria air pollutants that can affect their health, how MCAQD monitors these criteria pollutants, and what the actual readings are so that our citizens can make informed decisions regarding their lifestyles.

¹ The functions of the former Air Quality Division of the Maricopa County Environmental Services Department (MCESD) were transferred to the newly-created Air Quality Department in November 2004.

DEFINITION OF TERMS

ADEQ:	Arizona Department of Environmental Quality.
AQS:	Environmental Protection Agency's Air Quality System
Attainment:	This refers to the NAAQS used to comply with the federal Clean Air Act. After several years of no violations of the NAAQS, the EPA can classify the area as in attainment for that pollutant.
CFR:	Code of Federal Regulations.
Class I:	Federally designated park or wilderness area with mandated visibility protection.
CO:	Carbon monoxide.
Criteria	
Pollutants:	Six pollutants (CO, Lead, NO ₂ , O ₃ , Particulates, and SO ₂) that have NAAQS established by the US EPA.
Delta T:	Difference between two levels of temperature measurements. Delta T is measured in the MCAQD network at heights of 2 and 10 meters. A higher temperature at the upper level indicates a temperature inversion.
Design	
Value:	A design value is a statistic that describes the air quality status of a given area relative to the level of the NAAQS. For a concentration-based standard, the air quality design value is simply the standard-related test statistic. The design value of a pollutant monitoring network is the highest sample value in the network used to compare to the NAAQS; e.g. the 24-hour PM _{2.5} design value for the network is the monitor with the highest 3-year average of the 98 th percentile.
EPA:	U. S. Environmental Protection Agency.
Exceptional	
Events:	An uncontrollable event caused by natural sources of pollution or an event that is not expected to recur at a given location. The ADEQ makes the determination of which events to classify as exceptional; they then petition the EPA for acceptance of the classification. If the EPA accepts the petition, the measured pollution event will not be used in determination of compliance with the NAAQS.
FDMS-	
TEOM:	Filter Dynamics Measurement System-Tapered Element Oscillating Microbalance. A continuous particulate measuring instrument used by MCAQD to measure PM _{2.5} .
HAPs:	Hazardous air pollutants. An air-borne chemical that has been listed in the federal Clean Air Act and has an associated standard or process requirement determined for it.
MCAQD:	Maricopa County Air Quality Department.
µg/m³:	Microgram per cubic meter.
MSA:	Metropolitan Statistical Area. A geographical area designated by the federal government based on the concept of a core area with a large population nucleus, plus adjacent communities having a high degree of economic and social integration with that core. The MCAQD operates within the Phoenix-Mesa MSA which includes portions of Maricopa and Pinal County.
NAAQS:	National Ambient Air Quality Standards. A health and welfare-based standard that is set by the US EPA to qualify allowable levels of criteria pollutants.
NCORE	National Core Multi-Pollutant Site. A national network of multi-pollutant monitoring sites used to represent the nation as a whole. There are currently ~75 NCORE sites (1-3 per state plus Washington DC, Virgin Islands, and Puerto Rico) located in both urban and rural areas.
NO₂:	Nitrogen dioxide.
NO_x:	Nitrogen oxides. Sum of nitric oxide (NO), NO ₂ , and other nitrogen-containing compounds.
O₃:	Ozone.
Pb:	Lead.
PM:	Particulate matter. Material suspended in the air in the form of minute solid particles or liquid droplets.
PM_{2.5}:	Particulate matter of 2.5 Microns in diameter or smaller
PM₁₀:	Particulate matter of 10 Microns in diameter or smaller.

PPM:	Parts per million.
Primary Standard:	One portion of the NAAQS. These standards are designed to protect the public health.
Secondary Standard:	The less stringent portion of the NAAQS designed to protect property and the environment.
SIP:	State Implementation Plan. SIPs are a collection of state and local regulations and plans to achieve healthy air quality under the Clean Air Act.
SLAMS:	State and Local Air Monitoring Station. The SLAMS consist of a network of approximately 5,000 monitoring stations nationwide whose size and distribution is largely determined by the needs of State and local air pollution control agencies to meet their respective State implementation plan (SIP) requirements. Other types of monitoring stations include NCORE (national core) and SPM (special purpose) monitors. Maricopa County does not currently operate any NCORE sites and only operates one SPM site.
SO₂:	Sulfur dioxide.
SPM:	Special purpose monitor. Special Purpose Monitoring Stations provide for special studies needed by the State and local agencies to support State implementation plans and other air program activities. The SPMs are not permanently established and can be adjusted easily to accommodate changing needs and priorities.
SSI:	Size Selective Inlet. SSI High Volume Samplers are filter-based instruments used by MCAQD to measure PM ₁₀ .
TEOM:	Tapered Element Oscillating Microbalance. A continuous particulate measuring instrument used by MCAQD to measure PM ₁₀ .
VOC:	Volatile organic compounds. VOCs are chemical compounds that can easily vaporize and enter the atmosphere. There are many natural and artificial sources of VOCs; solvents and gasoline make up some of the largest artificial sources. VOCs will react with NO _x in the presence of sunlight to create ground-level ozone pollution.

CRITERIA POLLUTANT INFORMATION

Abstract of Pollutants

Certain air pollutants, called “criteria air pollutants,” are common throughout the United States. These pollutants can cause health problems, harm the environment, and cause property damage. These criteria pollutants are so named since the US EPA has regulations, called the National Ambient Air Quality Standards (NAAQS), on allowable levels of these substances using health-based criteria. One set of limits, called “primary standards,” protect health, while another set of “secondary” standards, are designed to protect property and the environment. The US EPA names the following pollutants as criteria pollutants: carbon monoxide (CO), lead (Pb), nitrogen dioxide (NO₂), ozone (O₃), particulates (PM₁₀ & PM_{2.5}), and sulfur dioxide (SO₂). MCAQD operates monitors for the following criteria pollutants: carbon monoxide, ozone, particulates, nitrogen dioxide, and sulfur dioxide. Since levels of lead have been consistently below national levels, the department had been allowed to stop monitoring for lead, though this might change in the near future (see lead section below).

Causes and Characteristics of Pollutants

Carbon Monoxide:

CO is the most widely distributed and most commonly occurring air pollutant. Total emissions of CO to the atmosphere exceed all other pollutants combined, on a weight basis. Fortunately, CO does not persist in the atmosphere, but is quickly converted to carbon dioxide (CO₂). CO can reach dangerous levels in localized areas or hotspots such as heavily traveled intersections or city streets. In addition, CO has been implicated in ozone formation. Most people are familiar with CO and are aware that automobiles produce this deadly odorless and colorless gas. In Maricopa County, more than 70% of all anthropogenic CO comes from motor vehicle emissions. In fact, this gas is produced almost anytime something is burned. All substances that are living (plants, animals) or that were once living (wood, coal, oil, gasoline) are composed of carbon compounds. If these substances are burned in the presence of sufficient oxygen, the carbon is converted to CO₂ gas. If, as is often the case, not enough oxygen is present, carbon monoxide gas is produced.

Carbon monoxide’s danger lies in the extremely strong affinity that hemoglobin has for it. Hemoglobin, the special oxygen-transporting material in the red blood cell, has approximately 200 times stronger affinity for CO than for oxygen. Therefore, if both CO and O₂ are present the bonding between the CO and hemoglobin will prevent the O₂ from exchanging within a person’s body. This puts a heavy burden on people with heart disease and can aggravate angina, but even healthy people can suffer from harmful side effects from CO.

In 2009 Maricopa County achieved its 13th consecutive year of compliance with the eight-hour CO standard.

Lead:

Lead is a metal found naturally in the environment as well as in manufactured products. The major sources of lead emissions have historically been motor vehicles (such as cars and trucks) and industrial sources. Due to the phase out of leaded gasoline, metals processing is the major source of lead emissions to the air today. The highest levels of lead in air are generally found near lead smelters. Other stationary sources are waste incinerators, utilities, and lead-acid battery manufacturers. In the early 1970s, EPA set national regulations to gradually reduce the lead content in gasoline. In 1975, unleaded gasoline was introduced for motor vehicles equipped with catalytic converters. EPA banned the use of leaded gasoline in highway vehicles in December 1995. Primarily as a result of EPA's regulatory efforts to remove lead from gasoline, levels of lead in the air have decreased by 94 percent between 1980 and 1999.

Since levels of lead have been consistently below national levels, Maricopa County was allowed to discontinue ambient air monitoring for lead in 1997. However, recent changes in the lead monitoring regulations have

brought interest in resuming monitoring activities in Maricopa County. We are currently exploring new locations to install lead monitors.

Nitrogen Dioxide:

NO₂ belongs to a family of highly reactive gases called nitrogen oxides. These gases are formed when fuel is burned at high temperatures, and are emitted primarily from automobile exhaust and power plants. Exposure to nitrogen dioxide can irritate the lungs and lower resistance to respiratory infections, particularly in people with existing respiratory illness such as asthma. Maricopa County is currently in attainment status for NO₂.

Ozone:

O₃ is a naturally occurring compound in which three oxygen atoms combine together. This is an unstable combination, and ozone is continually going through a natural cycle of being formed and then converting back to the more stable "normal" double oxygen compound (O₂). The cycle occurs fairly rapidly. In the stratosphere (six miles and more above the earth), naturally occurring ozone has a beneficial effect of screening out harmful ultraviolet light from the sun. However, ground-level ozone is a pollutant and is a component of the regional smog that affects the valley. Ozone is not directly emitted into the air, but rather forms in a complex reaction that involves heat, sunlight, and a "soup" of toxic pollutants, especially volatile organic compounds (VOCs). Some of the most common sources of VOCs are gasoline vapors, chemical solvents, and combustion products of fuels and consumer products. Ozone is created by sunlight acting on nitrates (NO_x) and VOCs from motor vehicles and stationary sources, and can be carried hundreds of miles from their origins. Ozone affects the respiratory system in people and animals, and also affects the growth of plants.

Maricopa County is currently in non-attainment for Ozone pollution, although the number of violations of the standard has been decreasing in recent years. However, in February 2008, the EPA lowered the NAAQS for ozone from 0.08 ppm to 0.075 ppm. Many of the ozone monitoring sites were in borderline compliance with the older standard and now are exceeding the new standard. Strategies will have to be developed to lower ambient ozone levels into compliance with the new standard, improving air quality for all.

Particulate Matter:

Particulate matter is the term for solid or liquid particles found in the air. Particle pollution is made up of a number of components, including acids (such as nitrates and sulfates), organic chemicals, metals, and soil or dust particles. While some particles are large or dark enough to be seen as soot or smoke, others can only be seen through an electron microscope. In 1987 the EPA replaced the Total Suspended Particulates (TSP) air quality standard with a standard for PM₁₀ (particles measuring ten microns or less). Health research studies have found that PM₁₀ has the ability to reach the lower regions of the respiratory tract, and thus can affect the respiratory system in both humans and animals. Particulates with high acid levels can cause damage to man-made materials and reduce visibility.

The size of particles is directly linked to their potential for causing health problems. EPA is concerned about particles that are 10 micrometers in diameter or smaller because those are the particles that generally pass through the throat and nose and enter the lungs. Once inhaled, these particles can affect the heart and lungs and cause serious health effects. EPA groups particle pollution into two categories:

- "Coarse particles," such as those found near roadways and dusty industries, range in size from 2.5 to 10 microns in diameter.
- "Fine particles," such as those found in smoke and haze, have diameters smaller than 2.5 microns. These particles can be directly emitted from sources such as forest fires, or they can form when gases emitted from power plants, industries and automobiles react in the air.

Maricopa County is currently in non-attainment for PM₁₀ (although we are in attainment for PM_{2.5}), nor have we met the requirements set forth in our State Implementation Plan (SIP). As a result of this, the EPA is implementing a 5% reduction of emissions plan, including the possibility of sanctions. This plan, which is

required by the Clean Air Act, will continue until Maricopa County can bring the particulate matter pollution into compliance.

Sulfur Dioxide:

SO₂ is emitted (in gaseous form) largely from burning high-sulfur coal, oil, and diesel fuel. Because this gas is usually found in association with particulate pollution, as SO₂ is the precursor for fine sulfate particles, separating the health effects of these two pollutants is difficult. Together SO₂ and PM_{2.5} make up a major portion of the pollutant load in many cities, acting separately and in concert to threaten public health. SO₂ contributes to respiratory illness, particularly in children and the elderly, and aggravates existing heart and lung diseases. SO₂ contributes to the formation of acid rain, and it contributes to the formation of atmospheric particles that cause visibility impairment, most noticeably in national parks. SO₂ and the pollutants formed from SO₂, such as sulfate particles, can be transported over long distances and deposited far from the point of origin. This means that problems with SO₂ are not confined to areas where it is emitted.

Maricopa County is in attainment for Sulfur Dioxide.

National Ambient Air Quality Standards

The EPA Office of Air Quality Planning and Standards (OAQPS) manages programs to improve air quality in areas where the current quality is unacceptable and to prevent deterioration in areas where the air is relatively free of contamination. To accomplish this task, OAQPS establishes the National Ambient Air Quality Standard (NAAQS) for each of the criteria pollutants (see Table 1).

There are two types of standards. Primary standards protect against adverse health effects; secondary standards protect against welfare effects, such as damage to farm crops and vegetation and/or damage to buildings. Because different pollutants have different effects, the NAAQS are also different. Some pollutants have standards for both long-term and short-term averaging times. The short-term standards are designed to protect against acute, or short-term, health effects, while the long-term standards are established to protect against chronic health effects. Table 1 lists the NAAQS for the six criteria pollutants.

Table 1 National Ambient Air Quality Standards

Pollutant	Primary Standards	Averaging Times	Secondary Standard
Carbon Monoxide	9 ppm	8-hour ^a	None
	35 ppm	1-hour ^a	None
Lead	0.15 µg/m ³	Rolling 3-Month Average	Same as Primary
	1.5 µg/m ³	Quarterly Average	Same as Primary
Nitrogen Dioxide	0.053 ppm	Annual (Arithmetic Mean)	Same as Primary
PM ₁₀	150 µg /m ³	24-hour ^a	Same as Primary
PM _{2.5}	15 µg/m ³	Annual ^b (Arithmetic Mean)	Same as Primary
	35 µg/m ³	24-hour ^c	Same as Primary
Ozone	0.075 ppm	8-hour ^d	Same as Primary
Sulfur Oxides	0.03 ppm	Annual (Arithmetic Mean)	-----
	0.14 ppm	24-hour ^a	-----
	-----	3-hour ^a	0.5 ppm

^a Not to be exceeded more than once per year.

^b To attain this standard, the 3-year average of the annual arithmetic mean PM_{2.5} concentrations from single or multiple community-oriented monitors must not exceed 15 µg/m³.

^c To attain this standard, the 3-year average of the 98th percentile of 24-hour concentrations at each population-oriented monitor within an area must not exceed 35 µg/m³.

^d To attain this standard, the 3-year average of the fourth-highest daily maximum 8-hour average ozone concentrations measured at each monitor within an area over each year must not exceed 0.075 ppm.

Abstract of MARICOPA COUNTY AIR QUALITY DEPARTMENT Pollution Monitoring Strategies

MCAQD monitors for these criteria pollutants by maintaining twenty-four ambient air-monitoring sites throughout Maricopa County. The dates that the sites were established range from 1961 (Central Phoenix) to 2009 (Zuni Hills). Land use patterns around these sites vary from heavy populated urban areas to sparsely populated rural settings. Site elevations range from 845 feet above sea level (Buckeye) to 5190 feet above sea level at the top of Humboldt Mountain. Not all pollutants are measured at all sites; some sites measure most of the pollutants, while others only measure one or two pollutants.

The following section will detail how the department designs its air monitoring network to obtain representative samples of these air pollutants. Following this will be details of the results obtained from our 2009 sampling season.

NETWORK DESIGN

Purpose and Objective of the Network

The purpose of the ambient air monitoring network is to assess the extent of air pollution, ensure compliance with national legislation, evaluate control options, and provide data for air quality modeling. In general, six basic monitoring objectives and five measuring scales are used to determine the network design (see Table 2 and Table 3). Additional considerations such as availability of power, accessibility to site, security, geographic location, and fiscal and personnel resources are also addressed in determining the feasibility of the network design.

Table 2 Site Monitoring Objectives

1. Determine highest concentrations expected to occur in the area covered by the network.
2. Determine representative concentrations in areas of high population density.
3. Determine the impact on ambient pollution levels of significant sources or source categories.
4. Determine general background concentration levels.
5. Determine the extent of regional pollutant transport from populated areas, with regards to the secondary standards (such as visibility impairment and effects on vegetation).
6. Determine the welfare-related impacts in more rural and remote areas.

To establish or evaluate a site, one must link its monitoring objectives to the physical location of the site. This can be done by matching the spatial scale, which represents the sample of air around the monitor where pollutant concentrations are reasonably uniform, with the most appropriate monitoring objective. Thus, spatial scale represents the physical dimensions of the air parcel around the monitor, and monitoring objective represents the overall purpose of the monitor. Combining the proper spatial scale with the monitoring objective explains why air monitoring sites are located in particular areas.

Table 3 Spatial Measurement Scales

Scale	Defined parameter (radius)
Micro Scale	0 to 100 meters
Middle Scale	100 to 500 meters
Neighborhood Scale	0.5 to 4 kilometers
Urban Scale	4 to 50 kilometers
Regional Scale	10 to 100s of kilometers

Since it is physically and fiscally impossible to monitor air quality in every location, representative samples must be obtained. The optimal locations for obtaining these samples are determined by using the monitoring objectives and the spatial measurement scales described above. For example, there might be numerous locations where the highest concentration of carbon monoxide may occur. Using these principles, only one or two sites will be established to represent all of the high-concentration areas. The same reasoning can be used for different types of pollutants. This does not mean that the number of monitoring sites is fixed. To the contrary, the network must be dynamic enough to maintain a current representative sample of the air quality.

Overview of the Maricopa County Air Quality Department's Air Monitoring Network

The Phoenix Metropolitan Area has a population of over 3.9 million people (2008 US Census estimate). The EPA has mandated a minimum number of monitors required to properly represent this population. MCAQD has designed its network, using the concepts of scale and objective mentioned previously, to meet and in most cases exceed these EPA requirements (see "Required General Information on Monitoring Network" in Appendix II).

Altogether, the department operated a network of 25 monitoring sites in 2009. The following image details the location of these sites and gives the abbreviation symbols used by Maricopa County. Table 4 and Table 5, which follows, gives the AQS code assigned to each site and details which criteria pollutant is monitored at which site along with the monitor designation, respectively. Table 6 and Table 7 give more specific information about the location of the sites and the types and numbers of monitors at each site, respectively.

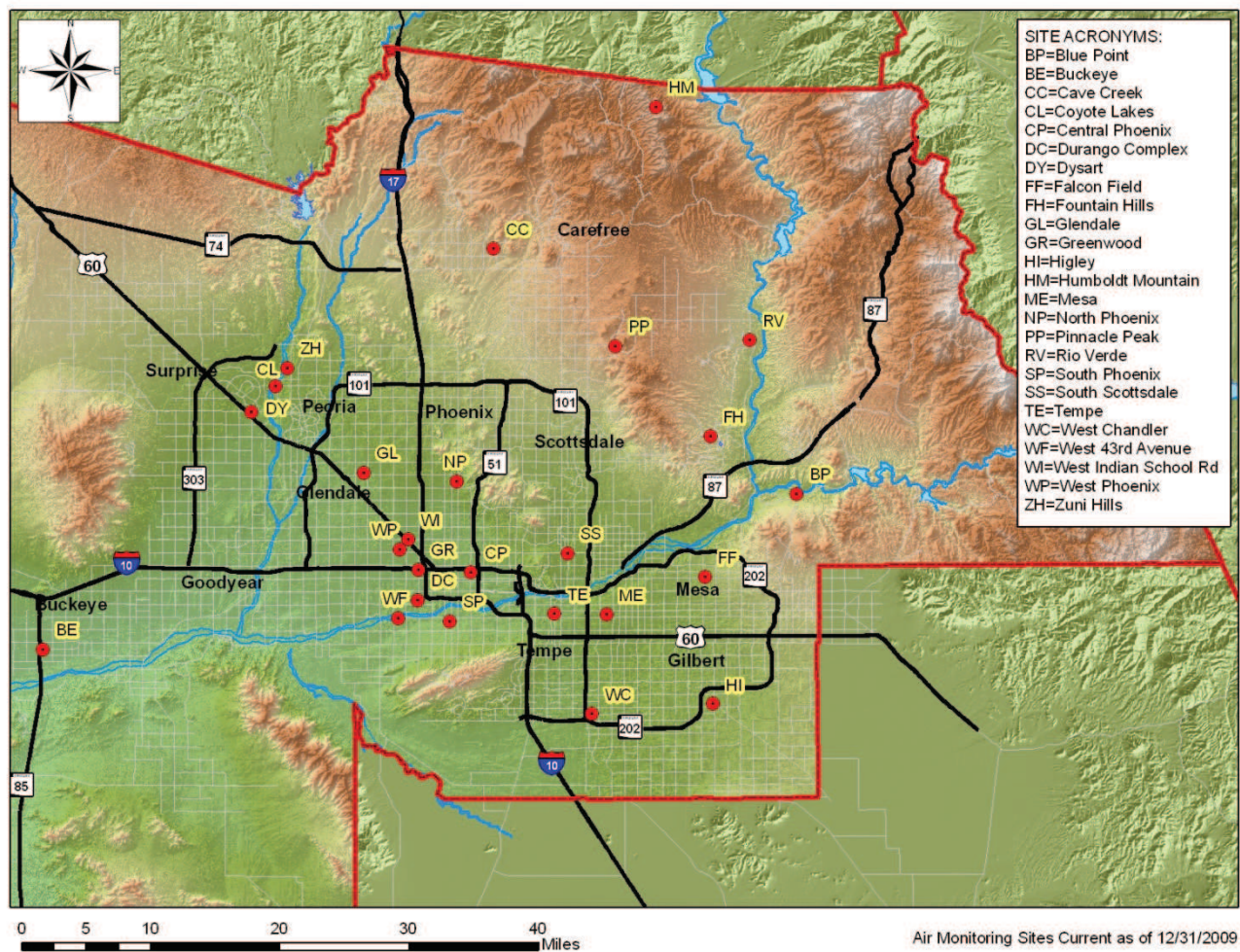


Figure 1 Maricopa County Air Monitoring Sites for 2009

Table 4 Maricopa County Ambient Air Monitoring Sites for 2009

Site Name	Site Abbr.	AQS Code
Blue Point	BP	04-013-9702
Buckeye	BE	04-013-4011
Cave Creek	CC	04-013-4008
Central Phoenix	CP	04-013-3002
Coyote Lakes	CL	04-013-4014
Durango Complex	DC	04-013-9812
Dysart	DY	04-013-4010
Falcon Field	FF	04-013-1010
Fountain Hills	FH	04-013-9704
Glendale	GL	04-013-2001
Greenwood	GR	04-013-3010
Higley	HI	04-013-4006
Humboldt Mountain	HM	04-013-9508

Site Name	Site Abbr.	AQS Code
Mesa	ME	04-013-1003
North Phoenix	NP	04-013-1004
Pinnacle Peak	PP	04-013-2005
Rio Verde	RV	04-013-9706
South Phoenix	SP	04-013-4003
South Scottsdale	SS	04-013-3003
Tempe	TE	04-013-4005
West Chandler	WC	04-013-4004
West 43 rd Ave.	WF	04-013-4009
W. Indian School Rd.	WI	04-013-0016
West Phoenix	WP	04-013-0019
Mesa	ME	04-013-1003
Zuni Hills	ZH	04-013-4016

Table 5 Criteria Pollutants Monitored, by Site and Network

Site	O ₃	CO	PM _{2.5}	PM ₁₀	NO ₂	SO ₂
Blue Point	SLAMS					
Buckeye	SLAMS	SLAMS		SLAMS	SLAMS	
Cave Creek	SLAMS					
Central Phoenix	SLAMS	SLAMS		SLAMS	SLAMS	SLAMS
Coyote Lakes				SP		
Durango Complex			SLAMS	SLAMS		
Dysart	SLAMS	SLAMS		SLAMS		
Falcon Field	SLAMS					
Fountain Hills	SLAMS					
Glendale	SLAMS	SLAMS		SLAMS		
Greenwood		SLAMS		SLAMS	SLAMS	
Higley				SLAMS		
Humboldt Mountain	SLAMS					
Mesa		SLAMS	SLAMS	SLAMS		
North Phoenix	SLAMS	SLAMS		SLAMS		
Pinnacle Peak	SLAMS					
Rio Verde	SLAMS					
South Phoenix	SLAMS	SLAMS	SLAMS	SLAMS		
South Scottsdale	SLAMS	SLAMS		SLAMS	SLAMS	SLAMS
Tempe	SLAMS	SLAMS				
West Chandler	SLAMS	SLAMS		SLAMS		
West 43 rd Ave.				SLAMS		
W. Indian School Rd.		SLAMS				
West Phoenix	SLAMS	SLAMS	SLAMS	SLAMS	SLAMS	
Zuni Hills				SP		

Table 6 Site Location

Site	Latitude	Longitude	Site Location	AQS Code
BP	33.54549	-111.60925	Usery Pass & Bush Highway	04-013-9702
BE	33.37005	-112.62070	MC85 & HWY 85	04-013-4001
CC	33.82169	-112.01739	32nd St. & Carefree Highway	04-013-4008
CP	33.45793	-112.04601	19th St & Roosevelt	04-013-3002
CL	33.66628	-112.31042	Beardsley Road and 115 th Ave.	04-013-4014
DC	33.42650	-112.11814	27th Ave. & Durango St.	04-013-9812
DY	33.63713	-112.34184	Bell Rd. & Dysart Rd.	04-013-4010
FF	33.45223	-111.73331	McKellips & Greenfield	04-013-1010
FH	33.61103	-111.72529	Palisades & Fountain Hills Blvd.	04-013-9704
GL	33.56936	-112.19153	59th Ave & W. Olive	04-013-2001
GR	33.46093	-112.11748	27th Ave. & Interstate 10	04-013-3010
HI	33.31074	-111.72255	Higley Rd. & Chandler Blvd	04-013-4006
HM	33.98280	-111.79870	Top of Humboldt Mountain	04-013-9508
ME	33.41045	-111.86507	Broadway Rd. & Alma School Rd.	04-013-1003
NP	33.56033	-112.06626	7th Street & Dunlap Avenue	04-013-1004
PP	33.71231	-111.85272	Pima Rd & Pinnacle Peak	04-013-2005
RV	33.71881	-111.67183	Forest Rd & Del Ray Ave.	04-013-9706
SP	33.40316	-112.07533	Central Ave. & Broadway	04-013-4003
SS	33.47968	-111.91721	Scottsdale Rd. & Thomas Rd.	04-013-3003
TE	33.4124	-111.93473	College Ave. & Apache Blvd.	04-013-4005
WC	33.29898	-111.88431	Ellis St. & Frye Rd.	04-013-4004
WF	33.40642	-112.14434	43 rd Ave. & Broadway Rd.	04-013-4009
WI	33.49462	-112.13098	33rd Ave. & Indian School Rd.	04-013-0016
WP	33.48385	-112.14257	39th Ave. & Earll Dr.	04-013-0019
ZH	33.686738	-112.294171	109 th Ave & Deer Valley Rd.	04-013-4016

2009 SUMMARY OF NETWORK RESULTS AND REQUIRED INFORMATION

Data Completeness

Before any data set can be considered valid it must first pass a data recovery test that consists of determining the ratio of actual samples to scheduled samples by quarter. This ratio must be greater than 75% for a data set to pass the first validity test. After all validation tests have been passed, the data can be used to determine compliance with the NAAQS.

The following is a summary of the annual data completeness for all criteria pollutants (Table 8). Note that CO, O₃, NO₂, and SO₂ samples are all from continuous monitors and are therefore hourly-averaged samples. PM monitors are either continuous, and therefore hourly-averaged, or filter-based and daily-averaged. Filters are sampled for 24 hours every 3rd day (PM_{2.5}) or every 6th day (PM₁₀).

Table 8 2009 Criteria Pollutant Data Completeness

	Number of Actual Samples	Number of Scheduled Samples	Data Completeness (Actual/Schedule)
Carbon Monoxide	79215	80832	98.0%
Ozone	114683	116304	98.6%
PM _{2.5} (1 in 3 day)	387	397	97.5%
PM _{2.5} (continuous)	20438	21864	93.5%
PM ₁₀ (1 in 6 day)	607	613	99.0%
PM ₁₀ (continuous)	70969	72120	98.4%
Nitrogen Dioxide	42504	43800	97.0%
Sulfur Dioxide	17161	17520	98.0%
Total	352874	360506	97.9%

Table 9 displays the official data completeness score as reported from the EPA's AQS database. This score only includes criteria pollutants that are entered into AQS and is reflective of appropriate sampling schedules. Maricopa County Air Quality considers this score the 'official' data completeness number.

Table 9 2009 AQS Data Completeness

AQS Data Completeness for Maricopa County Air Quality	98.4%
--	--------------

Criteria Pollutant Summary

Carbon Monoxide (CO)

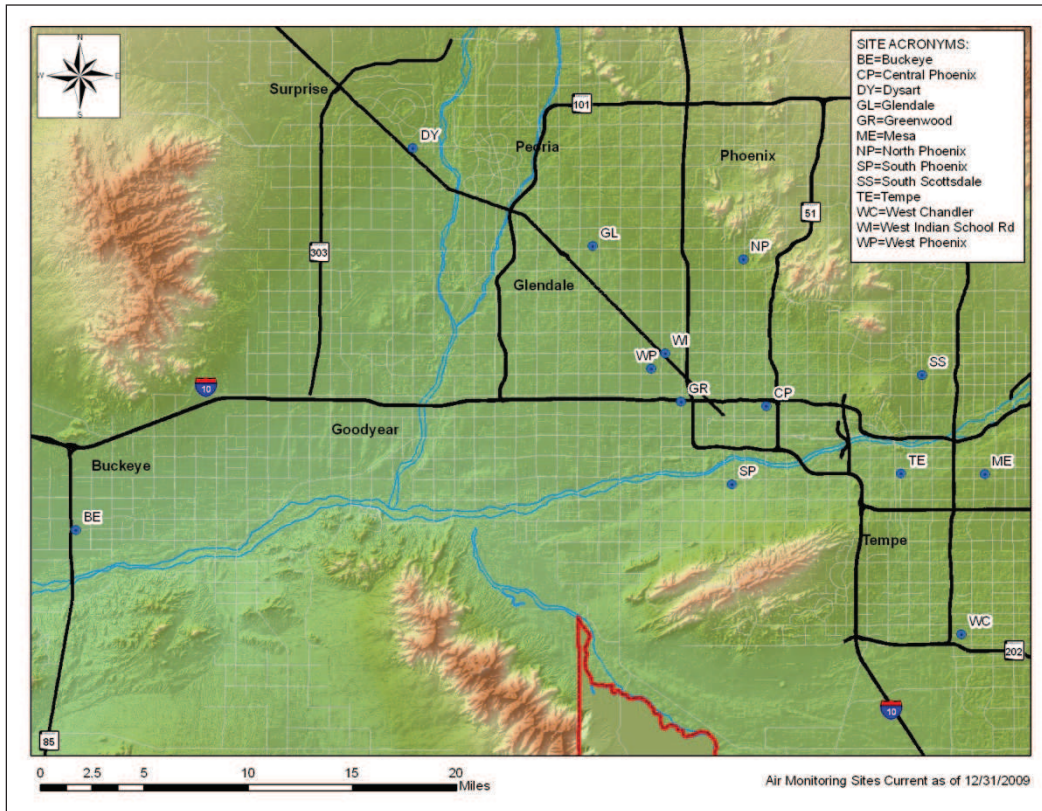


Figure 2 2009 Carbon Monoxide Monitoring Sites

During 2009, thirteen CO monitors were reported as operational to the US EPA Air Quality System (AQS) (Figure 2). All CO monitors are classified as SLAMS (Table 5).

There are two primary standards for CO, the 8-hour average and the 1-hour average. The 8-hour primary standard is 9 ppm and the 1-hour primary standard is 35 ppm. A violation of the standard is any two exceedances in a calendar year. For calendar year 2009, no exceedances of the CO 1-hour or 8-hour standards were recorded at any MCAQD monitoring sites (see Table 10).

Table 10 2009 1-hour and 8-hour Average Carbon Monoxide Summary

Site	CO 1-hour Average Max. (PPM); Date: Hour	CO 1-hour Average 2nd High (PPM); Date: Hour	Number of Samples	CO 8-hour Average Max. (PPM); Date: Hour	CO 8-hour Average 2nd High (PPM); Date: Hour	Number of Exceedances of 1/8-Hour average
Buckeye	1.2; 11/20:07	1.1; 10/23:09	5040	0.6; 12/21:21	0.5; 11/07:00	0
C. Phoenix	3.6; 01/01:00	3.0; 01/16:07	8644	2.2; 01/01:05	2.1; 12/25:04	0
Dysart	1.0; 03/07:20	0.9; 03/07:19	4913	0.9; 03/07:22	0.8; 03/08:03	0
Glendale	2.0; 02/06:01	1.9; 02/03:07	5035	1.3; 12/06:02	1.2; 01/01:05	0
Greenwood	3.5; 12/25:00	3.2; 01/13:08	8562	2.6; 12/25:05	2.4; 11/04:02	0
Mesa	2.0; 11/27:21	1.9; 11/20:20	5022	1.5; 11/07:00	1.3; 11/21:01	0
N. Phoenix	5.9; 01/23:18	2.1; 11/19:07	5036	1.3; 12/06:01	1.3; 12/12:01	0
S. Phoenix	4.1; 12/31:23	3.4; 01/01:03	5028	2.6; 01/01:07	2.2; 12/25:03	0
South Scottsdale	2.9;01/16:08	1.9; 02/02:07	4852	1.4; 11/07:00	1.4; 11/21:00	0
Tempe	4.0; 09/24:21	3.6; 09/24:23	4837	2.9; 09/25:01	2.1; 09/25:07	0
West Chandler	11/20:21	2.1; 11/20:22	5029	1.7; 11/21:00	1.5; 11/07:00	0
W. Indian School	5.6; 09/28:02	5.0; 09/28:00	8607	4.2; 01/01:05	3.3; 09/28:03	0
W. Phoenix	4.9; 01/01:01	4.8; 02/04:06	8610	4.6; 01/01:05	3.3; 12/25:04	0

Note: this table is read as the bold number representing the data followed by the date and time, e.g. **0.7; 01/10:18** is read as: 0.7 PPM on January 10 in the 6 o'clock PM (18:00) hour.

Ozone (O₃)

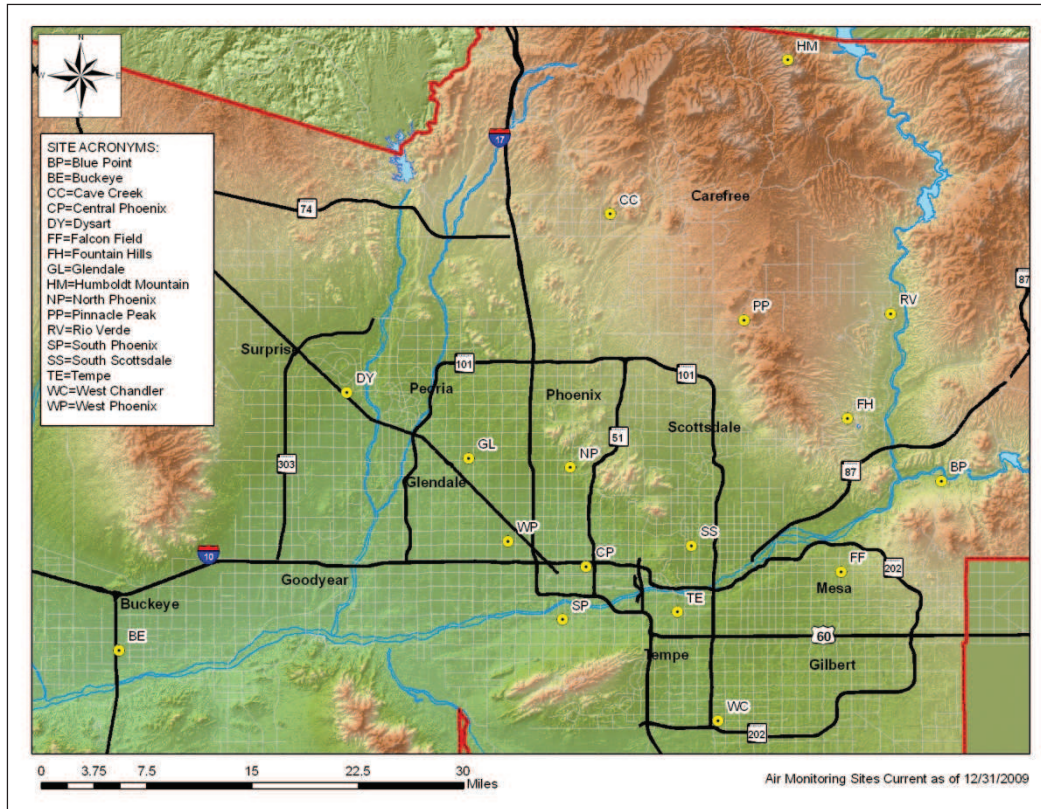


Figure 3 2009 Ozone Monitoring Sites

During 2009, seventeen ozone monitors were reported as operational in AQS (Figure 3). All of the ozone monitors are classified as SLAMS (Table 5). The 1-hour average ozone standard was revoked by the EPA on June 15, 2005, and has been replaced by the 8-hour average standard for compliance purposes.

On March 12, 2008, the EPA lowered the eight-hour ozone NAAQS from 0.080 to 0.075 ppm. Compliance with the standard is determined by averaging the 4th highest eight-hour average over a three-year period. This three-year average must be less than or equal to 0.075 ppm.

There were 6 exceedances of the eight hour primary standard for ozone in 2009. This is a significant drop from the 72 ozone exceedances in 2008. Table 11 presents the 2009 data summary for eight-hour ozone at department monitoring sites. Also in 2009, there was one violation of the eight-hour primary standard (the 8-hour average NAAQS for ozone is violated when the three-year average of the fourth high is greater than 0.075 ppm (Table 12).

Table 11 2009 8-hour Average Ozone Summary

Site	8-hour max. (PPM); Date: Hour	2nd High (PPM); Date: Hour	3rd High (PPM); Date: Hour	4th High (PPM); Date: Hour	Number of Days ≥ 0.075
Blue Point	0.073; 4/30:12	0.073; 9/01:12	0.069; 5/19:12	0.069; 9/02:11	0
Buckeye	0.069; 7/02:10	0.065; 8/28:10	0.063; 4/20:11	0.062; 4/30:10	0
Cave Creek	0.073; 4/30:11	0.071; 4/29:11	0.070; 5/18:11	0.070; 7/17:11	0
Central Phoenix	0.074; 5/17:11	0.071; 7/02:12	0.070; 5/18:11	0.069; 5/19:10	0
Dysart	0.077; 5/17:11	0.069; 7/02:11	0.069; 7/18:09	0.069; 8/28:11	1
Falcon Field	0.069; 9/01:11	0.068; 7/24:14	0.066; 5/29:11	0.065; 6/24:10	0
Fountain Hills	0.075; 4/30:11	0.071; 5/19:11	0.070; 5/18:11	0.069; 5/08:10	0
Glendale	0.076; 5/17:12	0.072; 7/18:10	0.068; 4/20:11	0.068; 7/24:11	1
Humboldt Mt.	0.076; 6/22:17	0.074; 4/30:13	0.071; 6/23:00	0.067; 8/17:15	1
North Phoenix	.076; 5/17:11	0.075; 5/18:11	0.074; 5/19:10	0.072; 7/24:11	1
Pinnacle Peak	0.079; 6/22:14	0.073; 5/18:12	0.071; 7/24:15	0.070; 7/17:12	1
Rio Verde	0.071; 4/30:12	0.069; 5/19:11	0.069; 6/22:14	0.068; 5/07:11	0
South Phoenix	0.075; 7/02:11	0.070; 9/01:11	0.069; 5/18:11	0.067; 4/20:10	0
South Scottsdale	0.074; 7/24:12	0.072; 5/18:11	0.072; 5/19:10	0.072; 7/22:11	0
Tempe	0.070; 5/19:10	0.068; 5/18:11	0.067; 5/28:10	0.067; 7/24:12	0
West Chandler	0.072; 5/19:10	0.071; 7/24:12	0.070; 4/20:11	0.070; 4/30:11	0
West Phoenix	0.082; 7/02:12	0.075; 5/17:11	0.070; 7/18:10	0.068; 4/20:10	1

Note: this table is read as the bold number representing the data followed by the date and time, e.g. **0.073; 4/30:12** is read as: 0.073 PPM on April 30 in the 12 o'clock PM (12:00) hour.

Table 12 3 Year Average of 8-Hour Ozone

Site	2007 4th High (PPM)	2008 4th High (PPM)	2009 4th High (PPM)	3 Yr. Avg. of 4th High (PPM)*
Blue Point	0.058	0.074	0.069	0.067
Buckeye	0.064	0.068	0.062	0.064
Cave Creek	0.077	0.078	0.070	0.075
Central Phoenix	0.07	0.072	0.069	0.070
Dysart	0.065	0.066	0.069	0.066
Falcon Field	0.073	0.075	0.065	0.071
Fountain Hills	0.074	0.079	0.069	0.074
Glendale	0.071	0.074	0.068	0.071
Humboldt Mt.	0.078	0.077	0.067	0.074
North Phoenix	0.078	0.080	0.072	0.076
Pinnacle Peak	0.075	0.073	0.070	0.072
Rio Verde	0.079	0.079	0.068	0.075
South Phoenix	0.072	0.076	0.067	0.071
South Scottsdale	0.077	0.076	0.072	0.075
Tempe	0.076	0.078	0.067	0.073
West Chandler	0.072	0.077	0.070	0.073
West Phoenix	0.074	0.078	0.068	0.073

*Note that this average value has been truncated (not rounded) to the third significant digit.

Table 13 2009 PM₁₀ Summary

Site Name	24-hr Average Max (µg/m ³)	24-hr Average 2 nd High (µg/m ³)	Number of 24-hour NAAQS Exceedances	Expected Exceedances	Annual Average (µg/m ³)	#Exceptional Events	Number of Samples
Buckeye (continuous)	439*	400*	3	3	38.9	0	8667
Central Phoenix (continuous)	153	130	0	0	34.5	0	8674
Coyote Lakes (continuous)	57	39	0	0	16.6#	0	1286
Durango Complex (continuous)	277*	161*	3	3	44.5	0	8637
Dysart	227*	62	1	6.6	24.2	0	142
Glendale	196*	83	1	6.6	28.5	0	142
Greenwood (continuous)	229*	123	1	1	41.2	0	8512
Higley (continuous)	275*	177*	2	2.1	38.4	0	8463
Mesa	87	65	0	0	22.8	0	61
North Phoenix	69	66	0	0	23.8	0	61
South Phoenix (continuous)	250*	169*	3	3	44.1	0	8657
South Scottsdale	135	75	0	0	25.5	0	61
West Chandler	220*	185*	2	7.7	27.9	0	140
West 43 rd Ave (continuous)	317*	213*	7	7	50.7	0	8676
West Phoenix (continuous)	210*	118	1	1	35.9	0	8658
Zuni Hills (continuous)	27	26	0	0	16.1#	0	739

*Indicates an exceedance of the standard.

Indicates <75% data recovery. Coyote Lakes site was closed in February 2009; Zuni Hills was opened in December 2009.

Note that some data have the potential for being classified as exceptional events (see Definition of Terms for explanation of exceptional events). In accordance with the EPA's exceptional events policy, once approved these data are not used in determining compliance with the NAAQS. Values in Table 13 are from official AQS reports as of the date of publishing this review; exceptional events that have not yet been approved by the EPA will not affect these values until they are approved. The process of approving exceptional events can take over a year after the exceedance day, so some values in Table 13 could change upon EPA approval of an exceptional event petition. At the time of publishing this review, no exceedances have been petitioned for exceptional event status. Note that the ADEQ takes the lead in the determination and petitioning of exceptional events.

On July 2, 2002 (67 FR 44369), EPA found the state implementation plan (SIP) for the Metropolitan Phoenix (Maricopa County), Arizona serious PM₁₀ non-attainment area to be inadequate to attain the 24-hour particulate (PM₁₀) air quality standard at the Salt River monitoring site. Under authority from the Clean Air Act, EPA has required a SIP revision to be submitted by the State of Arizona to correct the inadequacy. In 2004 the Arizona Department of Environmental Quality submitted a SIP addressing the inadequacies in the Salt River Area to the EPA. As of December 31, 2009, Maricopa County has not come into compliance with the NAAQS for PM₁₀. As a result of this, the EPA is requiring a 5% plan which began in 2008. This required Maricopa County to submit an approved plan to reduce the annual PM₁₀ emissions of Maricopa County by 5% until the standard is met. Failure to comply with this plan or to meet the NAAQS for PM₁₀ will result in further 5% reductions annually, and could result in sanctions from the EPA.

Particulate Matter ≤ 2.5 Microns ($PM_{2.5}$)

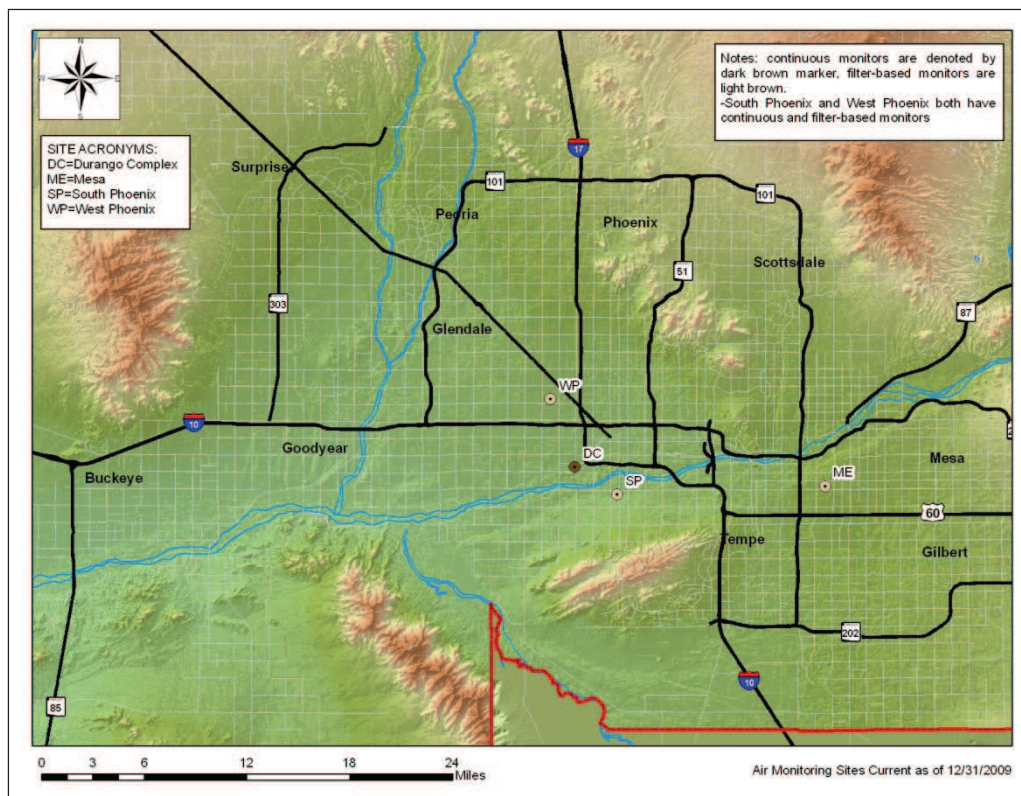


Figure 5 2009 $PM_{2.5}$ Monitoring Sites (continuous and non-continuous)

Currently MCAQD operates collocated compliance $PM_{2.5}$ monitors at the West Phoenix site (04-013-0019) and single monitors at the Mesa site (04-013-1003) and the South Phoenix site (04-013-4003) (Figure 5). These compliance $PM_{2.5}$ monitors all use sample filters and are non-continuous in nature. On July 1, 2007, the department took over weighing the sample filters, a process that was previously done by the ADEQ. All filters are processed and weighed in our internal laboratory. In addition to the filter-based monitors, the department operates three continuous $PM_{2.5}$ monitors at the Durango (04-013-9812), South Phoenix (04-013-4003) and West Phoenix (04-013-0019) sites. The South Phoenix continuous monitor is new and only began operation in December 2008; however problems with the equipment developed and the monitor was taken offline in May 2009 and put back into a testing configuration. The continuous monitors, other than the new South Phoenix monitor, are not federal reference or equivalent methods; therefore the data collected from them is not used for compliance purposes. All monitors are identified as SLAMS (Table 5).

Note that the $PM_{2.5}$ network is much smaller than the PM_{10} network. The reason for this is that historically more concern and resources have been given to PM_{10} since Maricopa County is not in attainment for this pollutant (Maricopa County is currently in attainment for $PM_{2.5}$). According to federal regulations, Maricopa County operates the required minimum number of $PM_{2.5}$ monitors for the MSA (see Appendix II). The Air Monitoring Division continually assesses if the existing network adequately represents the air quality ($PM_{2.5}$) in Maricopa County. One result from these ongoing assessments has been the addition of the continuous $PM_{2.5}$ monitor at South Phoenix. We've also purchased several other continuous $PM_{2.5}$ monitors which are now in the testing phase.

On December 18, 2006, the EPA implemented new primary standards for $PM_{2.5}$. These new rules changed the 24-hour average standard from $65 \mu\text{g}/\text{m}^3$ to $35 \mu\text{g}/\text{m}^3$. The annual average standard of $15 \mu\text{g}/\text{m}^3$ remains unchanged.

Compliance with the 24-hour standard is determined by taking the 3-year average of the 98th percentile at each monitoring site. Compliance with the Annual standard is determined by taking the 3-year average of the spatially averaged annual means. In 2009, there were five exceedances of the 24-hour standard at FRM or FEM monitors, though there were no violations of the 24-hour standard or the annual standard. Data is summarized in Table 14 and Table 15 (note that continuous data in Table 15 is not used for compliance purposes, it is only shown here for comparison purposes). Averages used for determining compliance with the NAAQS are shown in Table 16 and Table 17.

Table 14 2009 PM_{2.5} Summary (FRM Monitors)

Site Name	24-hr Avg. Max (µg/m ³)	24-hr Avg. 2 nd High (µg/m ³)	98 th Percentile Value	Annual Avg. (µg/m ³)	Number of Samples
Mesa	19.2	18.0	17.2	7.30	119
South Phoenix	71.3*	42.9*	34.5	11.00	118
West Phoenix	81.2*	41.7*	29.4	10.36	119

*Indicates an exceedance of the standard.

Table 15 2009 PM_{2.5} Data Summary (Continuous Monitors)

Site Name	1-hr Avg. Max (µg/m ³)	1-hr Avg. 2 nd High (µg/m ³)	Annual Avg. (µg/m ³)	Number of Samples
Durango Complex (continuous)	213.0	162.0	11.81	8639
South Phoenix (continuous)	222.2	216.3	10.08*	3465
West Phoenix (continuous)	249.1	241.8	10.98	8334

Note that data from our continuous monitors, except for South Phoenix which is an FEM monitor, are not accepted for compliance purposes. This data is displayed here for comparison purposes only.

*The South Phoenix continuous monitor was taken offline in May 2009 and does not constitute a 75% data completeness rate for 2009.

Table 16 2009 PM_{2.5} 3-Year Averages of 98th Percentile (FRM Monitors)

Site Name	2007 98 th Percentile Value	2008 98 th Percentile Value	2009 98 th Percentile Value	98 th Percentile 3-Year Average
Mesa	18.3	14.5	17.2	16.7
South Phoenix	29.2	10.9	34.5	24.9
West Phoenix	27.2	10.6	29.4	22.4

Table 17 2009 PM_{2.5} 3-Year Averages of Annual Means (FRM Monitors)

Site Name	2007 Annual Mean	2008 Annual Mean	2009 Annual Mean	3-Year Average of the Annual Mean
Mesa	9.70	8.50	7.30	8.5
South Phoenix	12.30	10.90	11.00	11.4
West Phoenix	10.90	10.60	10.36	10.62

Nitrogen Dioxide (NO₂)

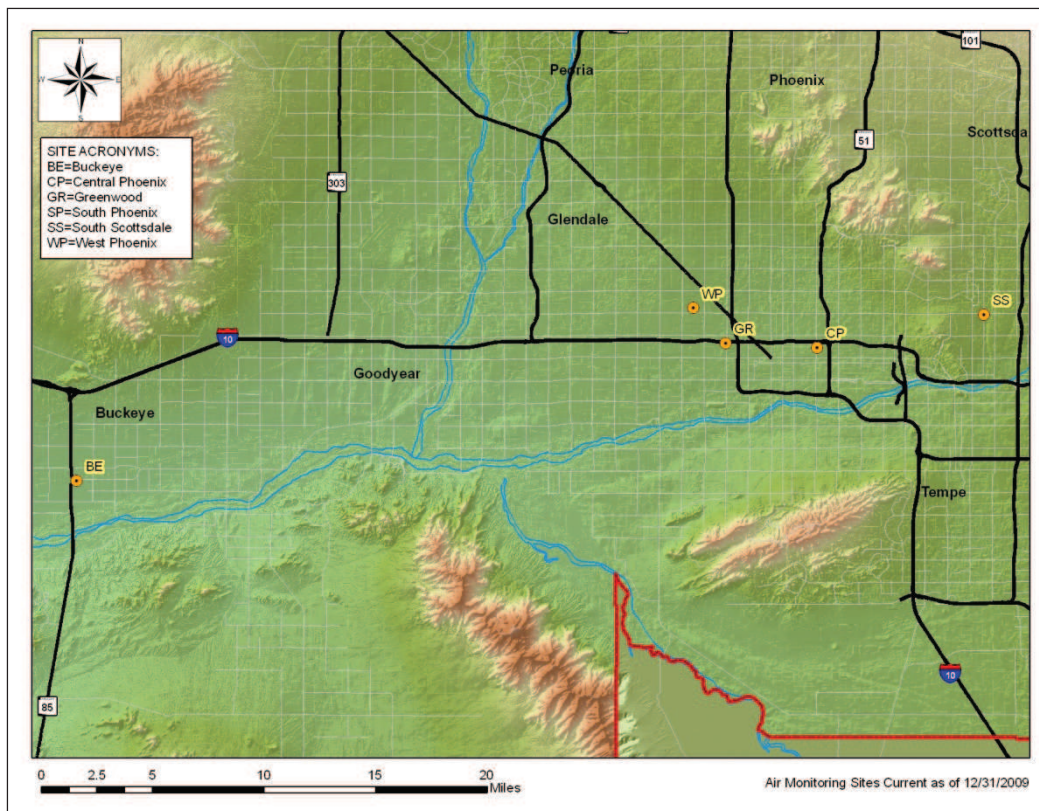


Figure 6 2009 Nitrogen Dioxide Monitoring Sites

All parts of Maricopa County are in attainment for nitrogen dioxide. During 2009, five NO₂ monitors were operational and were reported in AQS (Figure 6). All NO₂ monitors are designated as SLAMS (see Table 5).

Compliance with the NO₂ standard is achieved when the annual arithmetic mean concentration in a calendar year is less than or equal to 0.053 ppm, rounded to three decimal places. For calendar year 2009, no exceedances of the NO₂ annual standard were recorded at Maricopa County monitoring sites (Table 18).

Table 18 2009 Nitrogen Dioxide Summary

Site	NO ₂ Avg. 1-hour Max. (PPM); Date: Hour	NO ₂ Avg. 1-hour 2nd High (PPM); Date: Hour	Number of 1-hour Samples	Annual Average (PPM)
Buckeye	0.041 ; 11/10:17	0.038 ; 01/02:19	8530	0.0088
Central Phoenix	0.069 ; 02/20:09	0.069 ; 11/02:19	8609	0.0208
Greenwood	0.086 ; 01/13:08	0.084 ; 01/13:07	8497	0.0253
South Scottsdale	0.060 ; 03/02:19	0.058 ; 11/02:18	8499	0.0139
West Phoenix	0.059 ; 01/21:09	0.058 ; 08/28:20	8369	0.0171

Note: this table is read as the bold number representing the data followed by the date and time, e.g. **0.041**; 11/10:17 is read as: 0.041 PPM on November 10 in the 5 o'clock PM (17:00) hour.

Sulfur Dioxide (SO₂)

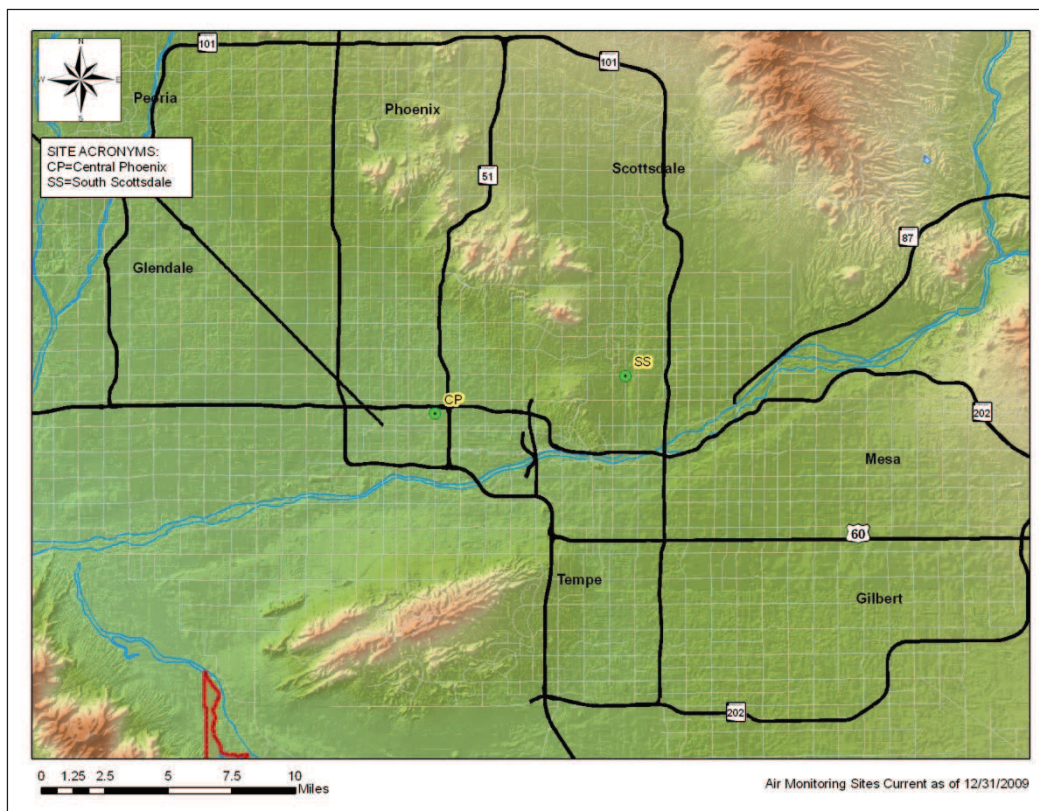


Figure 7 2009 Sulfur Dioxide Monitoring Sites

Maricopa County is in attainment for SO₂. During 2009, two SO₂ monitors were operational and were reported in AQS (Figure 7). Both of these monitors were designated SLAMS (see Table 5).

Sulfur Dioxide has an Annual and 24-hour average primary standard and a 3-hour average secondary standard. A violation of the primary standard occurs when the annual mean exceeds 0.030 ppm or when a 24-hour average of 0.14 ppm is exceeded more than once per calendar year. A violation of the 3-hour average secondary standard occurs when a 3-hour average of 0.5 ppm is exceeded more than once per year. For calendar year 2008, no exceedances of the SO₂ Annual, 24-hour, or 3-hour standard were recorded at Maricopa County monitoring sites (see Table 19).

Table 19 2009 Sulfur Dioxide Summary

Site	1-hour Max. (PPM); Date: Hour	1-hour 2nd High (PPM); Date: Hour	3-hour Max. (PPM); Date: Hour	3-hour 2nd High (PPM); Date: Hour	24-hour Max. (PPM); Date: Hour	24-hour 2nd High (PPM); Date: Hour	Annual Avg. (PPM)	Number of Samples
Central Phoenix	0.024 ; 06/30:05	0.017 ; 06/18:23	0.010 ; 06/30:05	0.009 ; 11/25:08	0.005 ; 12/21:23	0.004 ; 06/30:05	0.001 67	8668
South Scottsdale	0.043 ; 06/30:06	0.035 ; 06/30:05	0.022 ; 06/30:08	0.020 ; 06/30:05	0.006 ; 06/30:23	0.004 ; 07/29:23	0.001 2	8493

Note: this table is read as the bold number representing the data followed by the date and time, e.g. **0.024**; 06/30:05 is read as: 0.024 PPM on June 30 in the 5 o'clock AM (05:00) hour.

2009 NAAQS Exceedance and Violation Summary

The following is a summary of the number, types and dates of exceedances and violations of the NAAQS for 2009 (Table 20).

Table 20 2009 NAAQS Exceedances and Violations Summary

Carbon Monoxide	No exceedances or violations of the 1-hr or 8-hr NAAQS standard were logged.
Nitrogen Dioxide	No exceedances or violations of NAAQS were logged.
Ozone	There were 3 unique days when at least one monitor exceeded the standard. There were 6 individual exceedances of the 8-hour standard which occurred at 6 different sites. There was 1 violation of the 8-hour standard.
PM₁₀	There were 7 unique days when at least one monitor exceeded the standard. There were 24 individual exceedances of the 24-hour standard which occurred at 10 different sites. There were 8 violations of the 24-hour standard.
PM_{2.5}	There were 2 unique days when at least 1 FRM or FEM monitor exceeded the standard. There were 5 individual exceedances of the 24-hour standard which took place at two different sites. There were no violations of the 24-hour or annual standards.
Sulfur Dioxide	No exceedances or violations of NAAQS were logged.

2009 Ozone Exceedance and Violation Details

Table 21 details the dates and values for exceedances of the 8-hour ozone standard. The standard is 0.075 ppm for an eight hour average. Table 22 details violations of the 8-hour ozone standard. Violations are calculated with a three-year average of the fourth-highest annual 8-hour value. If this three-year average is greater than 0.075 ppm than the site violates the standard.

Table 21 2009 Ozone 8-hour Average Exceedance Details

Site	Date	Value (ppm)
Dysart	05/17	0.077
Glendale	05/17	0.076
Humboldt Mountain	06/22	0.076
North Phoenix	05/17	0.076
Pinnacle Peak	06/22	0.079
West Phoenix	07/02	0.082

Table 22 2009 Ozone Violations

Site	Value (ppm)
North Phoenix	0.076

2009 Exceedances of the 24-Hour PM₁₀ Standard

Table 23 details all of the site and dates of the 24-hour PM₁₀ standard. Note that this table includes all exceedances, even those that will be or are in the process of being classified as exceptional events (at the time of publishing this report no exceedances have been petitioned to be classified as exceptional, though this could change in the future). Exceptional events are not used in calculating compliance with the NAAQS.

Table 23 2009 PM₁₀ 24-hour Average Exceedance Details

Site	Date	Value (µg/m ³)
Buckeye	7/17/09	400.7
	7/18/09	439.7
	10/27/09	166.7
Durango Complex	7/17/09	161.7
	7/18/09	278.4
	10/27/09	157.7
Dysart	7/18/09	227.6
Glendale	7/18/09	196.5
Greenwood	7/18/09	229.9
Higley	7/17/09	276.0
	10/27/09	177.5
South Phoenix	7/17/09	169.4
	7/18/09	250.4
	9/3/09	160.5
West Chandler	7/18/09	185.8
	10/27/09	220.7
West 43 rd Avenue	3/22/09	198.8
	3/26/09	209.7
	4/3/09	213.4
	7/17/09	185.5
	7/18/09	317.9
	9/3/09	175.1
	10/27/09	188.6
West Phoenix	7/18/09	211.2

2009 Violations of the 24-Hour PM₁₀ Standard

The 24hr NAAQS for particulates is violated when the rate of expected occurrence of exceedances (samples greater than or equal to 155 µg/m³) is greater than one over three consecutive years (Table 24) (40 CFR Part 50.6 (a)).

Table 24 Violations of the 24-hr PM₁₀ Standard

Site	2007		2008		2009		Rate of Expected Exceedances
	24-hr Max. (µg/m ³)	Expected Exceedances	24-hr Max. (µg/m ³)	Expected Exceedances	24-hr Max. (µg/m ³)	Expected Exceedances	
Buckeye	195*	2	223*	4	439	3	3.3
Central Phoenix	267*	1	133	0	153	0	0.3
Coyote Lakes	313#*	2#	187	2	57#	0	N/A#
Durango Complex	155*	1	248	2	277	3	2.0
Dysart	111	0	75	0	227	6.6	2.2
Glendale	92	0	80	0	196	6.6	2.2
Greenwood	124	0	133	0	229	1	0.3
Higley	230*	5.1	133	0	275	2.1	2.4
Mesa	110	0	71	0	87	0	0.0
North Phoenix	78	0	88	0	69	0	0.0
South Phoenix	171*	7.5	230	2	250	3	4.2
South Scottsdale	73	0	92	0	135	0	0.0
West Chandler	104	0	67	0	220	7.7	2.6
West 43rd Avenue	227*	6	279*	6	317	7	6.3
West Phoenix	124	0	119	0	210	1	0.3
Zuni Hills	N/A	N/A	N/A	N/A	27#	0#	N/A#

■ Indicates violation of the standard.

Indicates <75% data available.

* Indicates Exceptional Events occurred at this site. The listed value is the highest official AQS reading at time of publication.

Exceptional Events

Table 24 lists the official records in AQS (at time of publication) for exceedances and violations. However, as was previously noted on page 24, some of these 2009 exceedance days could be petitioned to be classified as exceptional events and a request made to the EPA to remove them from official consideration as compliance data. EPA approval of these requests can take over a year. At the time of this publication there have not been any petitions for the classification of 2009 PM₁₀ exceedances as exceptional.

2009 Exceedances of the 24-Hour PM_{2.5} Standard

Table 25 2009 PM_{2.5} Exceedances

Site	Date	Value (ppm)	Method
South Phoenix	1/1/09	71.3	Non-continuous FRM
	1/1/09	69.3	Continuous FEM
	12/24/09	42.9	Non-continuous FRM
West Phoenix	1/1/09	81.2	Non-continuous FRM
	12/24/09	41.7	Non-continuous FRM

Pollution Trends

The following charts depict the most recent three-year trends (2007-2009) for each criteria pollutant. See Table 4 for explanations of site abbreviations.

Carbon Monoxide

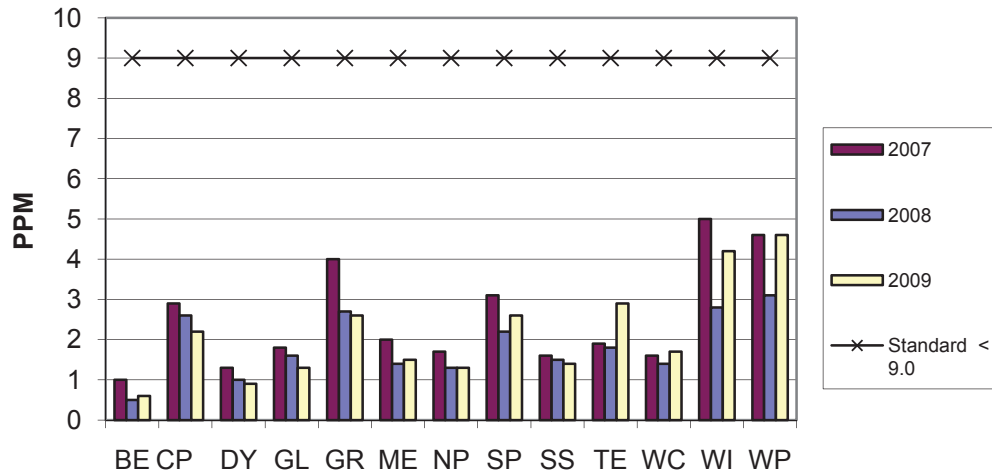


Chart 1 2007-2009 8-hr Avg. Carbon Monoxide Maximum Values

Nitrogen Dioxide

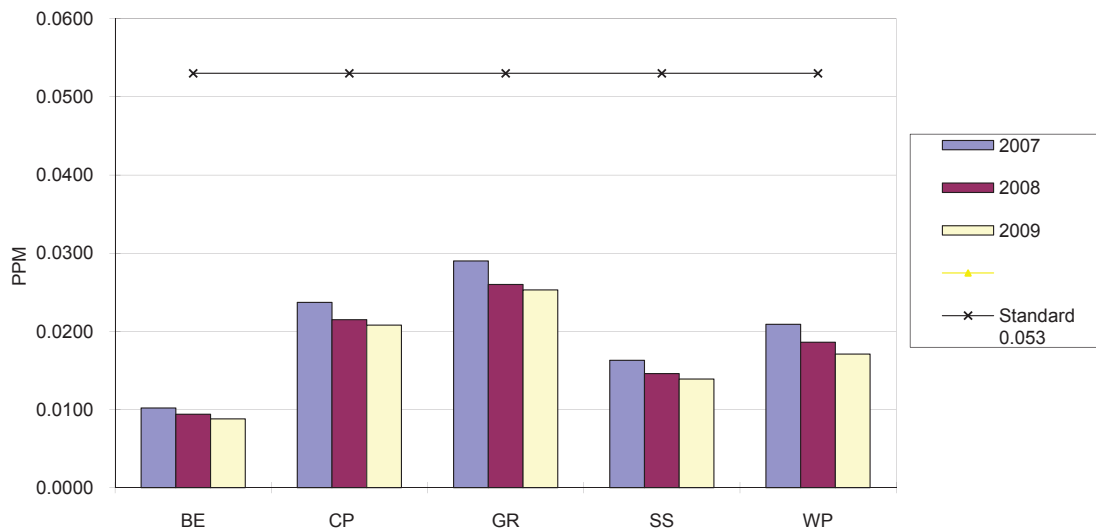


Chart 2 2007-2009 Nitrogen Dioxide Annual Average Readings

Ozone

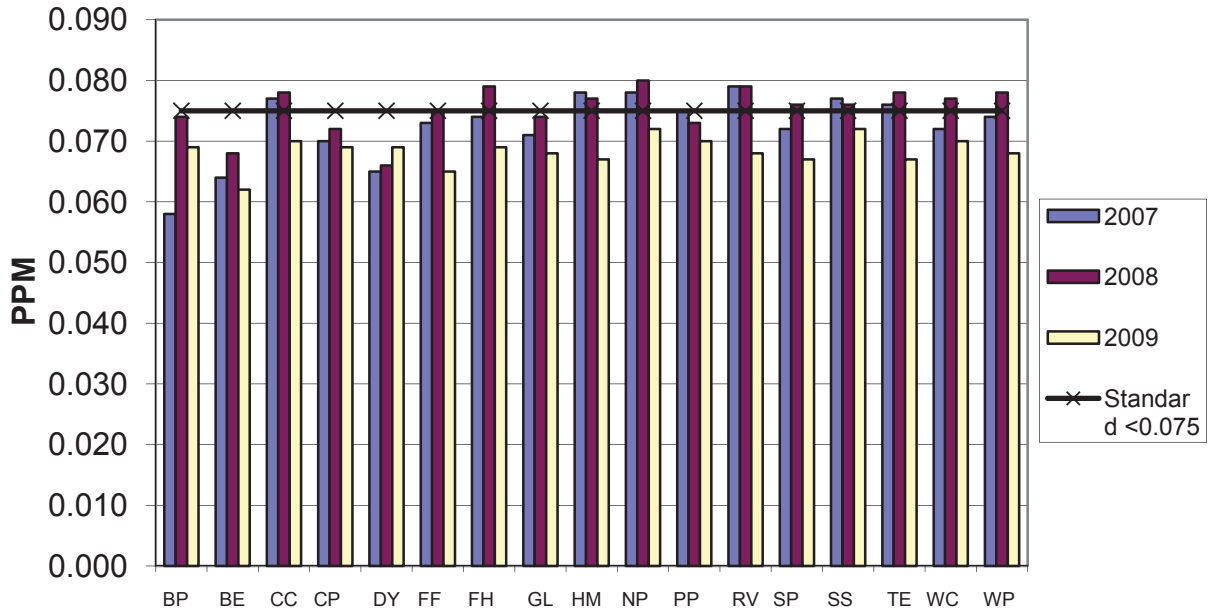


Chart 3 2007-2009 Ozone 4th High 8-hr Average

Particulates

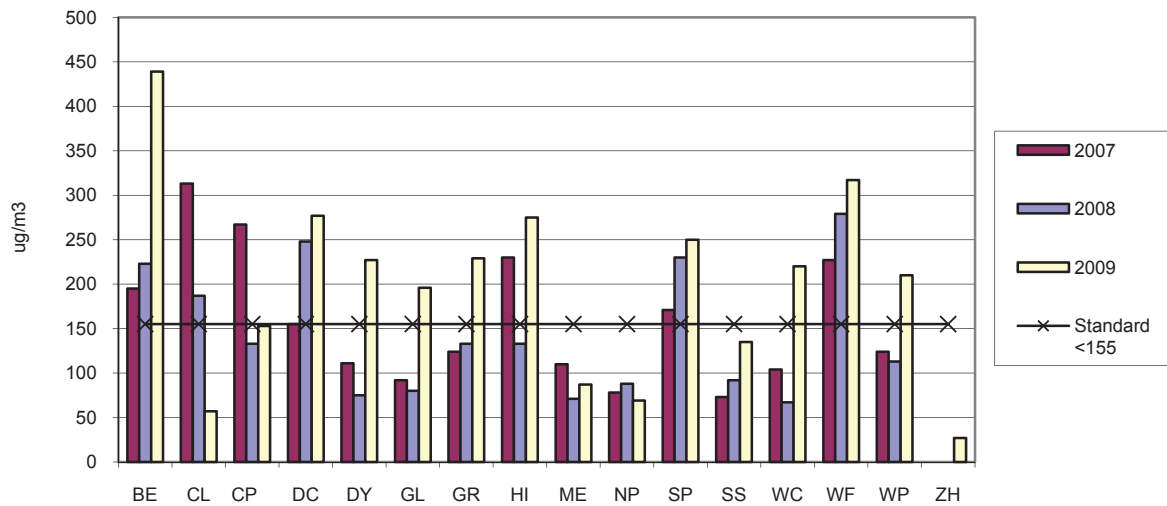


Chart 4 2007-2009 PM₁₀ 24-hr Average Maximum Values

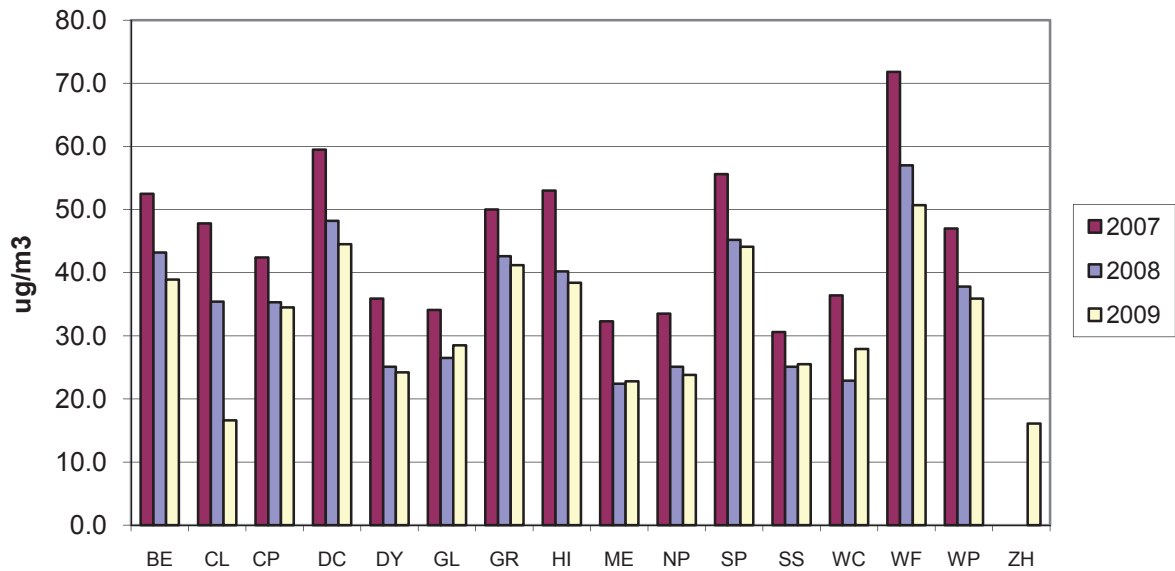


Chart 5 2007-2009 PM₁₀ Annual Average

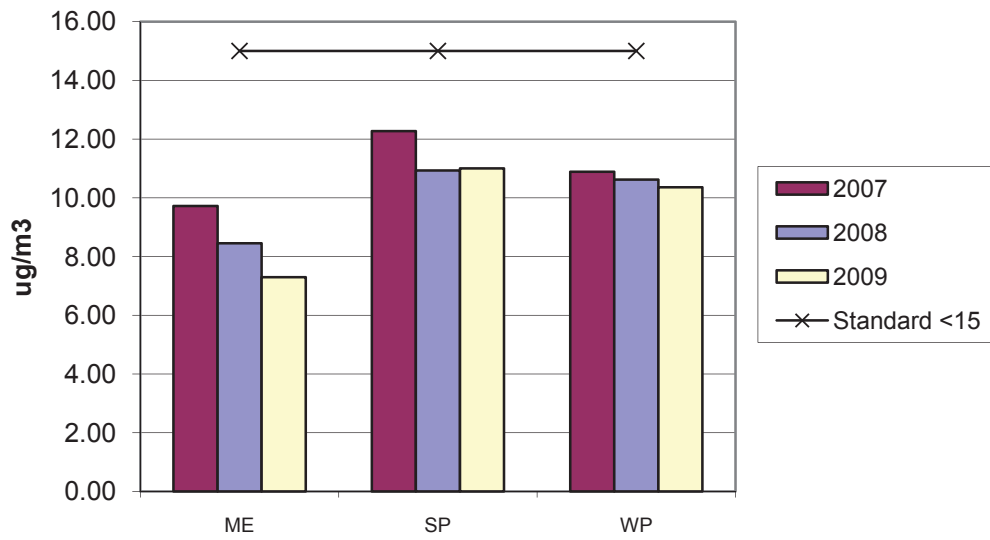


Chart 6 2007-2009 PM_{2.5} Annual Average

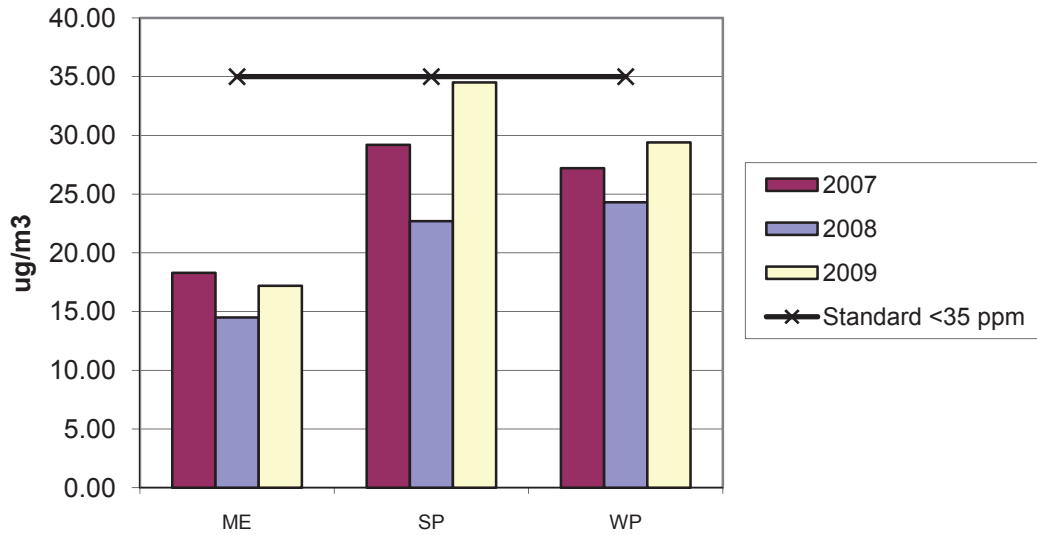


Chart 7 2007-2009 PM_{2.5} 98th Percentile

Sulfur Dioxide

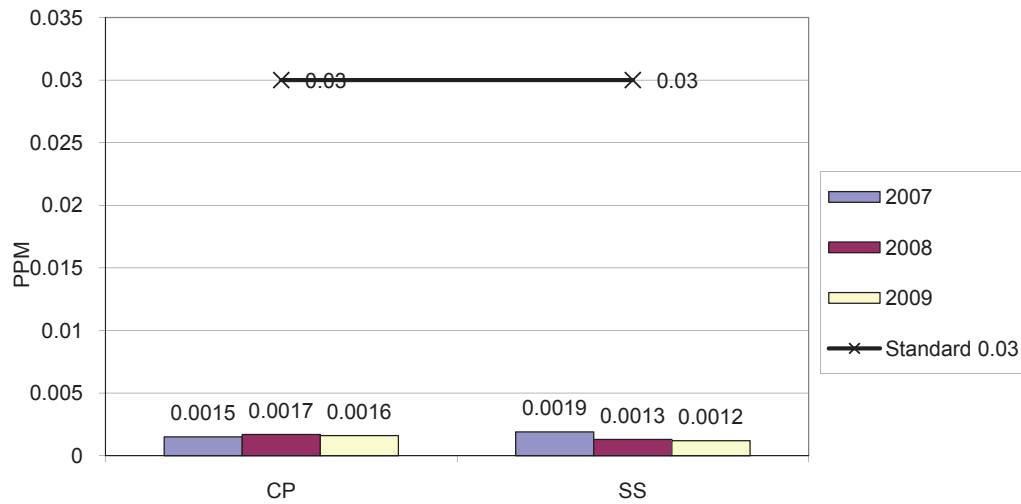


Chart 8 2007-2009 Sulfur Dioxide Annual Average

Special Projects and Network Changes

Air quality issues such as the SIP, natural events policy, and permits for new sources are diverse and controversial subjects for the citizens of Maricopa County. Since no policies can be made without high-quality monitoring data, MCAQD's Air Monitoring Division strives to provide the most reliable and relevant air monitoring data to the public. The following is a list of projects and changes that have occurred during the year 2009.

Seasonal Monitors

The department continues to run some of its carbon monoxide (CO) monitors and ozone (O₃) monitors on a seasonal basis (Table 26). Having part of the network operating seasonally allows the county to upgrade instruments, perform preventive maintenance, extend the life expectancy of the instruments, reduce replacement costs, and better utilize its QA and QC resources on the remaining instruments. During the off-season the number of CO and Ozone monitors operating still exceeds the minimum EPA requirements.

Table 26 Seasonal Monitors

Seasonal Carbon Monoxide Monitors (Operational Sept. 1 – Apr. 1)	Seasonal Ozone Monitors (Operational Apr. 1 – Nov. 1)
Buckeye	Buckeye
Dysart	Cave Creek
Glendale	Dysart
Mesa	Falcon Field
North Phoenix	Glendale
South Phoenix	Humboldt Mountain
South Scottsdale	Rio Verde
Tempe	Tempe
West Chandler	West Chandler

The Consideration of Additional Sites/Monitors

The department continues to evaluate the PM₁₀ network for possible additional sites for determining the impact on ambient pollution levels of significant sources or source categories. The significant sources would include industry and agriculture. The allocation of both financial and personnel resources continue to remain significant obstacles to the establishment of new monitoring sites.

New Sites

MCAQD opened a new special purpose site in the Sun City area named Zuni Hills. This site was opened in December 2009 and is located on the campus of the Zuni Hills elementary school, which is approximately 1.7 miles to the northeast from the now closed Coyote Lakes monitor. The PM₁₀ monitor at Zuni Hills is a change in scale and objective from Coyote Lakes; whereas Coyote Lakes was a middle-scale source-oriented monitor, Zuni Hills is a neighborhood-scale population-exposure monitor. These changes in scale and objective have the purpose of quantifying the air quality for a higher density of the population instead of focusing only on the air quality downwind of a major source.

New lead monitoring sites are also in the planning and design phase, these monitoring sites are described in the lead monitoring section below.

Closed Sites/Monitors

As mentioned in the previous section, the Coyote Lakes site was closed down and replaced with the Zuni Hills site. This site was opened in April of 2007 and the closure took place in February 2009 as the PM₁₀ monitor neared the end of its two-year special purpose monitoring life. For more information see page 49.

Lead Monitoring

In conjunction with the recent strengthening of the lead NAAQS, EPA is improving the existing national lead monitoring network by requiring monitors to be placed in areas with sources such as industrial facilities that emit one ton or more per year (tpy) of lead and in urban areas with more than 500,000 people. In 1997, the EPA allowed MCAQD to stop monitoring for airborne lead because the data showed values were far below the standard. With the new more stringent standard, the department will once again monitor for airborne lead. The department will operate a minimum of two lead monitors within the county. The first monitor is needed because federal emissions inventories have indicated that the Deer Valley Airport emits more than one tpy of lead. This is due to the lead contained in the general aviation fuel. We are currently in the process of designing a site near this airport. By federal regulation this source oriented monitor needs to be operating by Jan. 1, 2010. The second monitor will be located at our West Phoenix site. This site will be for the population coverage requirement.

Other Network Changes/Special Projects/Comments

MCAQD is participating in a joint PM₁₀ assessment project with the Maricopa Association of Governments (MAG) and the Arizona Department of Environmental Quality (ADEQ). This project will seek to identify the source of PM₁₀ emissions within the Salt River area of the southwest valley.

ADEQ, in conjunction with the MCAQD, has developed a year-round air quality forecasting capability for the Phoenix metropolitan area. ADEQ takes the lead on air quality forecasting and issuing of High Pollution Advisories, while the MCAQD provides monitoring data and designates No-Burn Days.

The department is continuing its distribution of air monitoring data to the public by posting one-hour continuous data on the Internet (see “Maricopa County Interactive Pollution Map” section below). Additionally, the department participates in the EPA Ozone Mapping AIRNow website (see ADDITIONAL COMMENTS). The corresponding websites are as follows:

Maricopa County Air Quality Dept:

<http://aqwww.maricopa.gov/AirMonitoring/SitePollutionMap.aspx>

AIRNow: <http://www.epa.gov/airnow>

Mobile Monitoring Program

The department received approval in late 2006 from the Maricopa County Board of Supervisors to start a Mobile Monitoring program. This program will enable the department to do more source-specific air monitoring (as opposed to the ambient monitoring that we have historically performed); the ability to track down sources of air pollutants; the ability to collect and analyze hazardous air-pollutant (HAP) samples; and the ability to perform stack testing of permitted sources. The program will be useful for collecting and analyzing scientific data for various projects, including assisting our compliance division in the enforcement of air pollution control regulations.

The equipment for this program includes a vehicle outfitted with air monitoring and analytical equipment. Monitoring and sampling equipment consists of various meteorological, criteria pollutant, and HAP monitors, as well as stack testing equipment. Analytical equipment includes a portable Gas-Chromatograph/Mass

Spectrometer (GCMS) and geographical positioning systems. Air monitoring equipment has also been placed in a mobile trailer that can be quickly moved to areas to operate independently. We also have the ability to use geographical information systems to build geo-referenced models of sampled pollutants.

In late 2008, the department hired an engineer to operate the vehicle and GCMS. The vehicle was delivered to MCAQD in February 2009. MCAQD has now developed quality control procedures for the Mobile Monitoring program and we spent much of 2009 in training, tuning, and ramp-up procedures on the new equipment. In the latter half of 2009 we began to respond to specific high-profile cases, providing data to assist our compliance division.

ADDITIONAL COMMENTS

Arizona Department of Environmental Quality Network

The ADEQ operates its own monitoring network within the State of Arizona, including some sites within Maricopa County. In addition to these state-run sites, ADEQ also utilizes several MCAQD sites to operate their own monitoring equipment. The ADEQ does a variety of ambient pollution, air toxics, visibility, and meteorological monitoring. One of the main sites in Maricopa County that is operated by ADEQ is the JLG Supersite in central Phoenix. The Supersite is a National Core multi-pollutant monitoring station (NCore) and is part of the national monitoring network (MCAQD's monitors, on the other hand, are part of the State and Local Air Monitoring network (SLAMS)).

For more information about the state's network or the NCore JLG Supersite consult the ADEQ's Annual Network Plan on their website at:

<http://www.azdeq.gov/function/forms/reports.html>.

EPA Ozone Mapping

The AIRNow website (<http://www.epa.gov/airnow>) provides real-time air pollution (ozone and PM_{2.5}) maps for major metropolitan areas around the United States, including the Phoenix Metropolitan Area. MCAQD has participated in the program since 2001.

The MCAQD, in cooperation with ADEQ and the Pinal County Air Pollution Control District, has expanded the area that the maps cover. This area now includes sites as far east as Queen Creek, as far south as Casa Grande, and as far west as Palo Verde.

This website can be used as a tool for which the public can plan their daily activities and limit their exposure to air pollution. Eight-hour average peak ozone concentration maps and real-time eight-hour ozone animation maps are provided. Colors on the map indicate different concentrations of ozone pollution. The one-hour average values are given in parts per billion. The eight-hour averages are converted into Air Quality Index (AQI) numbers. The AQI is based on the NAAQS. The index was developed to convert pollution measurements into a common index that the general public can more easily understand.

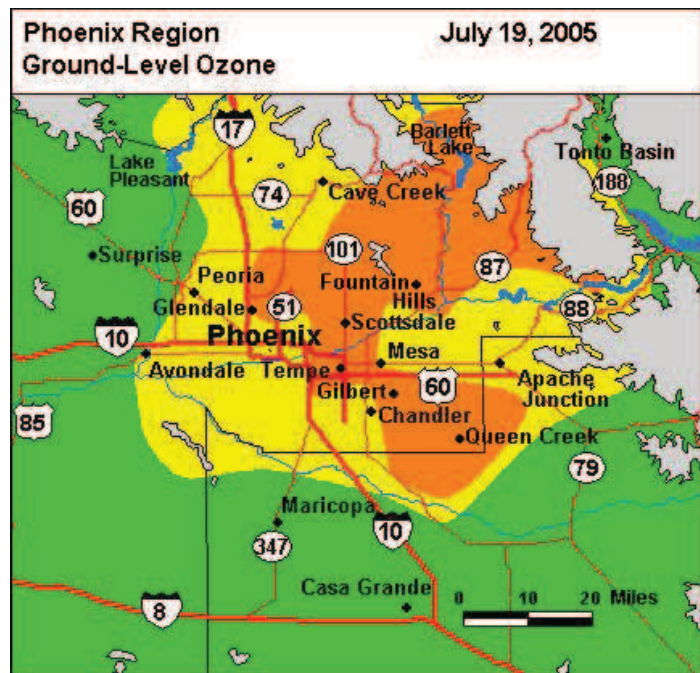


Figure 8 EPA AIRNow Website

Different colors on the map correspond to different categories of air quality and health impacts (Table 27).

Table 27 Air Quality Index

Index	Color Designation	Air Quality	Health Impact
0 – 50	Green	Good	No harmful effects expected.
51 – 100	Yellow	Moderate	Unusually sensitive people should consider limiting prolonged outdoor exertion.
101 – 150	Orange	Unhealthy for Sensitive Groups	Active children & adults, people with respiratory disease (i.e., asthma) should limit prolonged outdoor exertion.
151 – 200	Red	Unhealthy	Everyone should observe caution. Avoid prolonged outdoor exertion.
201 – 300	Purple	Very Unhealthy	Avoid all outdoor exertion. Use extreme caution outdoors
301 – 500	Maroon	Hazardous	Everyone should avoid all outdoor exertion.

The animated map is updated every hour from 8am to 8pm seven days a week. Updates to the site will be made during the ozone season (April through October).

Maricopa County’s Interactive Pollution Map

In the spirit of our mission statement of “Protecting our most vital natural resource”, MCAQD brought real-time pollution data to the Internet in late 2006. All of the department’s continuous data are available to the public through an interactive map (Figure 9). The air pollutants that are available include CO, Ozone, NO₂, SO₂, and Particulates. Wind Speed and Direction information is also available. Seasonal monitors are noted on the website and the data display will inform the user which monitors are currently active. Data can be accessed at the web address:

<http://aqwww.maricopa.gov/AirMonitoring/SitePollutionMap.aspx>.

Data are displayed using actual readings, as well as AQI numbers. Relevant rolling averages are also displayed. In addition, a trend chart is provided so that the previous 24-hours can be detailed. On a separate page, a 30-day pollution history is displayed for each site.

One of the major problems in providing “real-time” pollution data to a public medium is providing quality data. The data available on the Internet goes through an automated quality assurance check program before it is released; however, some invalid data can slip through. Normal quality assurance checks take between one and three months. Consequently, information provided at this site should be used for informational purposes only and should not be relied on for comparison with NAAQS.

Site Name: West 43rd Ave
 Site Location: 43rd Ave. and Broadway Rd.
 AQS Code: 04-013-4009



Warning: These data have been obtained from automated instruments and have not been subjected to a quality assurance review to determine their accuracy. They are presented for public awareness and should not be considered final. Conditions such as power outages and equipment malfunctions can produce invalid data. **Please note that not every pollutant is measured at every site.**

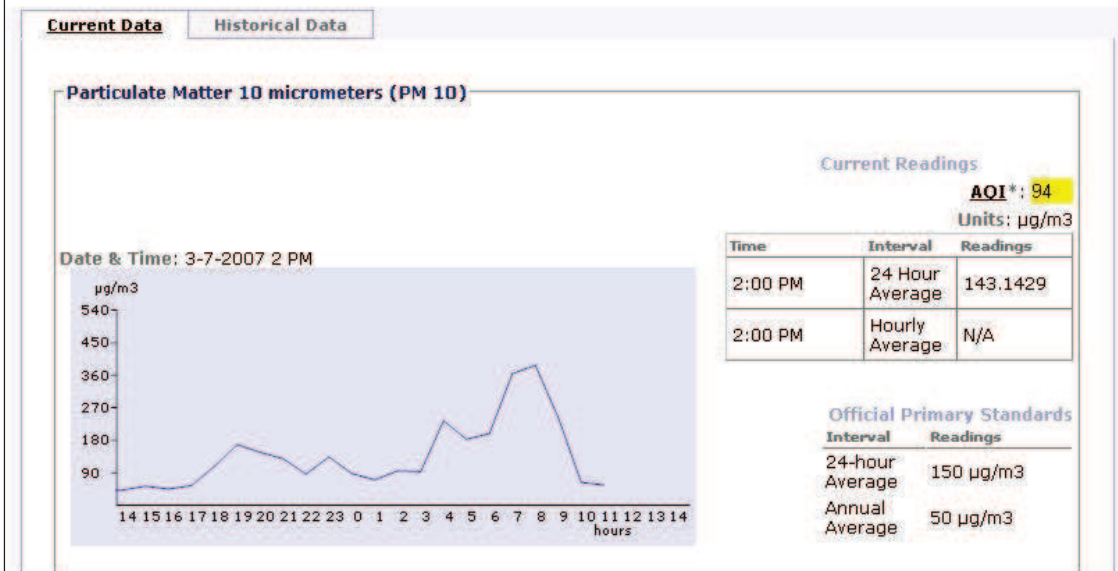


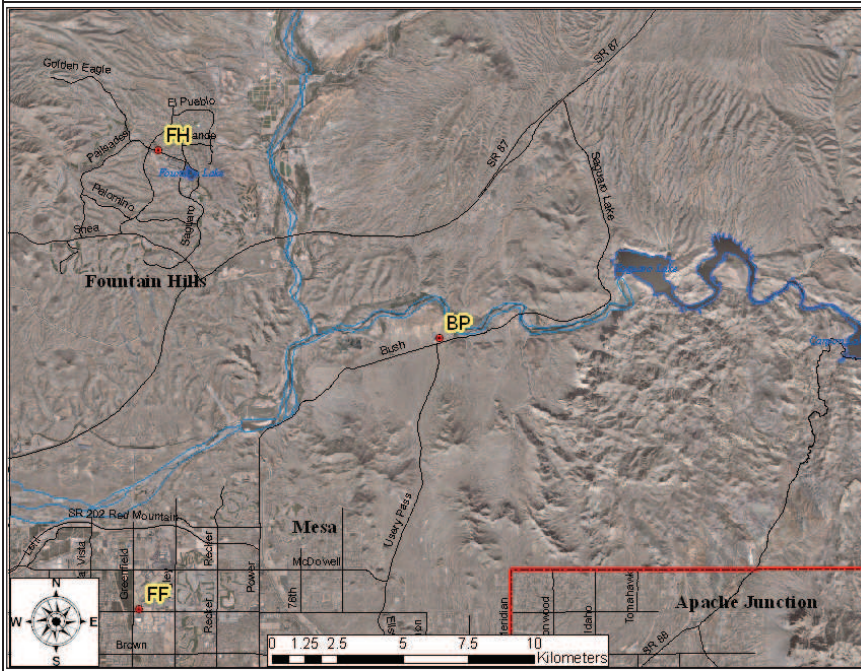
Figure 9 Interactive Website Data Trends Page

REFERENCES

1. Code of Federal Regulations, Chapter 40, Part 50 and 58, 1997
2. EPA's AirData (AQS) information: <http://www.epa.gov/air/data/index.html>
3. EPA's NAAQS Info: <http://www.epa.gov/air/criteria.html>
4. SIP Information: <http://www.adeq.state.az.us/environ/air/plan/index.html>
5. EPA's Air Program Information: <http://www.epa.gov/rgytgrnj/programs/artd/air/quality/quality.htm>
6. Maricopa County Air Quality Department Air Monitoring Map:
<http://aqwww.maricopa.gov/AirMonitoring/SitePollutionMap.aspx>.
7. AIRNow: <http://airnow.gov/>
8. Criteria Pollutant Information: <http://www.epa.gov/air/urbanair/6poll.html>
9. Maricopa County Air Quality Department Prior Network Reviews:
<http://www.maricopa.gov/aq/divisions/monitoring/network.aspx>.

APPENDIX I - Monitoring Site Details (Photos and Specific Information)

Blue Point (BP) (04-013-9702)



Location: Bush Highway and Utery Pass Rd., Maricopa County
Spatial Scale: Urban
Monitoring Objective: Maximum Ozone Concentration



Site Description: The Blue Point site became operational in July 1995 and is located in a Maricopa County Sheriff's Sub-Station in Tonto National Forest. This site represents the maximum ozone concentration, and urban-scale downwind transport conditions. This site is located approximately 40 miles east of the Phoenix metropolitan area. Ozone is the only criteria pollutant monitored at this SLAMS station. Wind speed and direction are also monitored at the site.

		2007	2008	2009
Ozone	Max. 8-hr O ₃ Avg. (PPM)	0.066	0.076*	0.073
	O ₃ #Daily Exceedances >0.075 ppm (as of 2008)	0	1	0
	O ₃ Three year average of 4 th High	0.072	0.070	0.067

*Indicates an exceedance of the standard.

Buckeye (BE) (04-013-4011)



Location: US 85 & MC 85,
Buckeye
Spatial Scale: Neighborhood and
Urban (NO₂)
Monitoring Objective: Population
Exposure and Source Oriented
(NO₂)



Site Description: The Buckeye site was established on August 1, 2004. This site is a SLAMS location for carbon monoxide, ozone, PM₁₀, and NO₂ criteria pollutants. The site is located in the Maricopa County Department of Transportation Southwest Facility. The immediate area is agriculture and encroaching residential development. The NO₂ monitors at this site are classified with the Source Oriented objective; the sources are complexes of power plants that are located approximately 15 miles to the west. The PM₁₀ monitor at this site was changed from a 1-in-6 day to hourly schedule as of October 1, 2004.

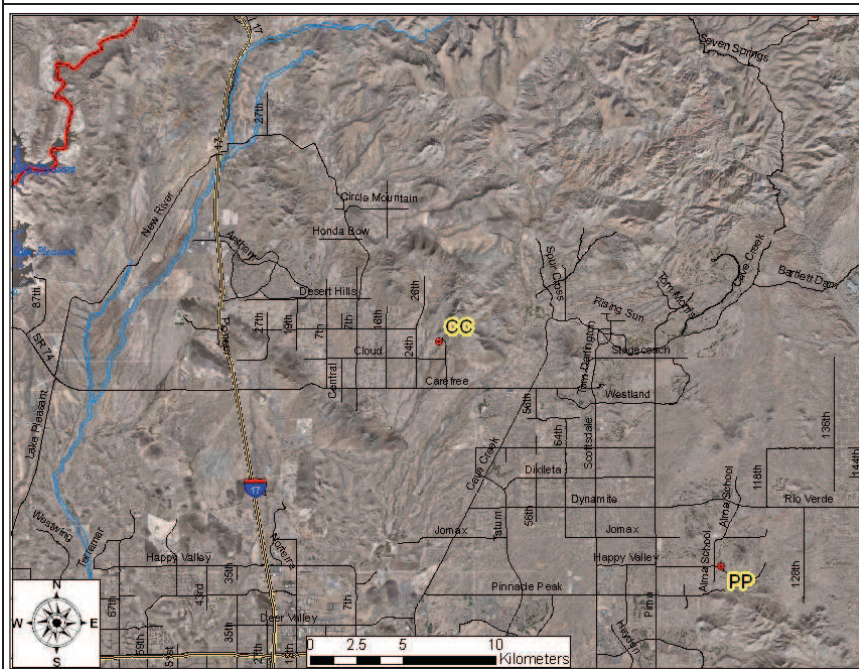
		2007	2008	2009
Carbon Monoxide	Max. 8-hr CO Avg. (PPM)	1.0	0.5	0.6
	Number exceedances 8-hr CO	0	0	0
Ozone	Max. 8-hr O ₃ Avg. (PPM)	0.066	0.071	0.069
	O ₃ #Daily Exceedances >0.075 ppm (as of 2008)	0	0	0
	O ₃ Three year avg. of 4 th High	0.065	0.066	0.064
PM ₁₀	Max. 24-hr PM ₁₀ Avg. (µg/m ³)	195*‡	223*‡	449*
	Number exceedances 24-hr PM ₁₀	2‡	4‡	3
	Annual PM ₁₀ Avg. (µg/m ³)	52.5	43.2	38.9
Nitrogen Dioxide	Annual NO ₂ Avg. (PPM)	0.0102	0.0094	0.0088

*Indicates an exceedance of the standard.

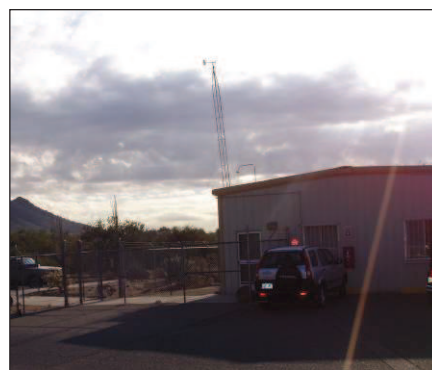
Indicates <75% data recovery.

‡ Indicates Exceptional Events at this site. Listed value is the highest official current AQS reading.

Cave Creek (CC) (04-013-4008)



Location: 32nd St. & Carefree Highway, Cave Creek
Spatial Scale: Urban
Monitoring Objective: Maximum Ozone Concentration



Site Description: The Cave Creek site became operational in August 2001 and is located in the Maricopa County Cave Creek Recreation Area (Park Office). This site was chosen through discussions on modifying the ozone network for the new 8-hr ozone standard. Ozone is the only criteria pollutant monitored at this SLAMS station. Wind speed and direction are also monitored at the site.

		2007	2008	2009
Ozone	Max. 8-hr O ₃ Avg. (PPM)	0.083	0.080*	0.073
	O ₃ #Daily Exceedances >0.075 ppm (as of 2008)	0	8	0
	O ₃ Three year average of 4 th High	0.079	0.078	0.075

*Indicates an exceedance of the standard.

Central Phoenix (CP) (04-013-3002)



Location: 19th St. and Roosevelt
Spatial Scale: Neighborhood
Monitoring Objective: High Population Exposure and Highest Concentration (NO₂ and SO₂)



Site Description: The Central Phoenix site has been in existence for over four decades and has provided a long-term historical database with a high rate of data recovery. The site is representative of high population exposure (greater than 5000 people per square mile) in the central Phoenix area. This site is a SLAMS location for carbon monoxide, ozone, PM₁₀, SO₂ and NO₂ criteria pollutants.

		2007	2008	2009
Carbon Monoxide	Max. 8-hr CO Avg. (PPM)	4.1	2.6	2.2
	Number exceedances 8-hr CO	0	0	0
Ozone	Max. 8-hr O ₃ Avg. (PPM)	0.073	0.078*	0.074
	O ₃ #Daily Exceedances >0.075 ppm (as of 2008)	0	1	0
	O ₃ Three year avg. of 4 th High	0.076	0.074	0.070
PM ₁₀	Max. 24-hr PM ₁₀ Avg. Continuous (µg/m ³)	267*‡	133	153
	Number exceedances Continuous 24-hr PM ₁₀	1‡	0	0
	Annual PM ₁₀ Avg. Continuous (µg/m ³)	42.4	35.3	34.5
Nitrogen Dioxide	Annual NO ₂ Avg. (PPM)	0.0237	0.0215	0.0208
Sulfur Dioxide	Max. 24-hr SO ₂ Avg. (PPM)	0.007	0.004	0.005
	Number of Exceedances SO ₂	0	0	0
	Annual SO ₂ Avg. (PPM)	0.0015	0.0017	0.0016

*Indicates an exceedance of the standard.

‡ Indicates Exceptional Events at this site. Listed value is the highest official current AQS reading.

Coyote Lakes (CL) (04-013-4014)



Location: Beardsley Rd & 115th Ave, Surprise
Spatial Scale: Middle
Monitoring Objective: Source Oriented



Site Description: The Coyote Lakes site became operational in April 2007. PM₁₀ is the only pollutant measured at this Special Purpose Monitoring (SPM) site. The monitoring objective of this site is to determine the impact of local sources in the area; the site is located within the Agua Fria river channel which has several sand & gravel mining operations, among other sources such as unpaved roads. Wind speed and direction, temperature, and atmospheric pressure are also monitored at this site; however, the wind data does not meet federal regulations and is therefore not official and is not entered into AQS. Due to neighborhood restrictions, the wind tower cannot be raised to the required height; the wind data from this site is therefore used for reference purposes only. SPM sites are only allowed to operate for two years before being required to convert to a permanent SLAMS site. As this site was nearing the end of this two year period, it was shut down in February 2009 to make way for a more permanent site, Zuni Hills. Zuni Hills was opened in December 2009 approximately 1.7 miles away to the northeast. This site has a wider spatial scale and the monitoring objective has changed to population exposure, thus it can characterize the air quality for a greater area and population density than Coyote Lakes did.

		2007	2008	2009
PM ₁₀	Max. 24-hr PM ₁₀ Avg. (µg/m ³)	313*‡	187*	57
	Number exceedances 24-hr PM ₁₀	2‡	2	0
	Annual PM ₁₀ Avg. (µg/m ³)	47.8#	35.4	16.6#

*Indicates an exceedance of the standard.

‡ Indicates Exceptional Events at this site. Listed value is the highest official current AQS reading.

Indicates <75% data recovery.

Durango Complex (DC) (04-013-9812)



Location: 27th Ave and Durango St.
Spatial Scale: Middle
Monitoring Objective: Highest Concentration



Site Description: This site is located in the Maricopa County Flood Control District storage yard which is one mile northwest from the former Salt River site. Sampling began on January 6, 1999 with the intent to replace the Salt River site. However, in 2000 the USEPA determined that the site is not equivalent to the Salt River site. Continuous particulate monitors (SLAMS PM₁₀ and PM_{2.5}) are located at this site. Note that the PM_{2.5} monitor located at this site is a continuous FDMS-TEOM monitor, which is not a federal reference method monitor. PM_{2.5} data from this site is not used to determine compliance with the NAAQS. There are also meteorological monitors (wind speed/direction and atmospheric pressure) located at the site.

		2007	2008	2009
PM ₁₀	Max. 24-hr PM ₁₀ Avg. Continuous (µg/m ³)	155*‡	248*	277*
	Number exceedances Continuous 24-hr PM ₁₀	1‡	2	3
	Annual PM ₁₀ Avg. Continuous (µg/m ³)	59.5	48.2	44.5
PM _{2.5}	Max. 24-hr PM _{2.5} Avg. (µg/m ³)	59.7	121.5*	213.0*
	Annual PM _{2.5} Avg. (µg/m ³)	14.2	13.4	11.81

*Indicates an exceedance of the standard.

‡ Indicates Exceptional Events at this site. Listed value is the highest official current AQS reading.

Dysart (DY) (04-013-4010)



Location: Bell Rd. & Dysart Rd.,
Surprise
Spatial Scale: Neighborhood
Monitoring Objective: Population
Exposure

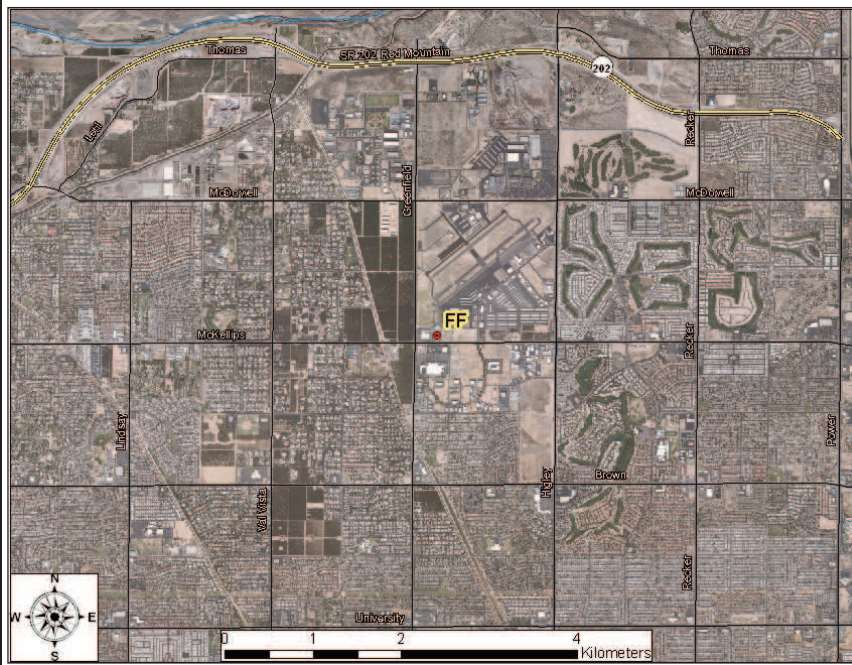


Site Description: The Dysart site was established in July 2003. It is located at the Maricopa County Facility Maintenance Yard at the corner of Bell Rd. and Dysart Rd. The site is in a growing population area in the north-west valley. The land use around the site consists of subdivisions of single family homes, commercial, and industrial. The site is approx. one mile west of the Agua Fria riverbed. Seasonal carbon monoxide, seasonal ozone, and PM₁₀ (all SLAMS) are the criteria pollutants monitored at this station. In September 2009 the PM₁₀ monitor was upgraded from a 1-in-6 day scheduled monitor to a continuous-monitoring TEOM. This upgrade took place in accordance with regulations due to a PM₁₀ exceedance which occurred at the site.

		2007	2008	2009
Carbon Monoxide	Max. 8-hr CO Avg. (PPM)	2.2	1.0	1.0
	Number exceedances 8-hr CO	0	0	0
Ozone	Max. 8-hr O ₃ Avg. (PPM)	0.069	0.074	0.077
	O ₃ #Daily Exceedances >0.075 ppm (as of 2008)	0	0	0
	Three year avg. of 4 th High	0.067	0.067	0.066
PM ₁₀	Max. 24-hr PM ₁₀ Avg. (µg/m ³)	111	75	227
	Number exceedances 24-hr PM ₁₀	0	0	1
	Annual PM ₁₀ Avg. (µg/m ³)	35.9	25.1	24.2

#Indicates <75% data recovery.

Falcon Field (FF) (04-013-1010)



Location: Greenfield and McKellips
Spatial Scale: Neighborhood
Monitoring Objective: Population Exposure

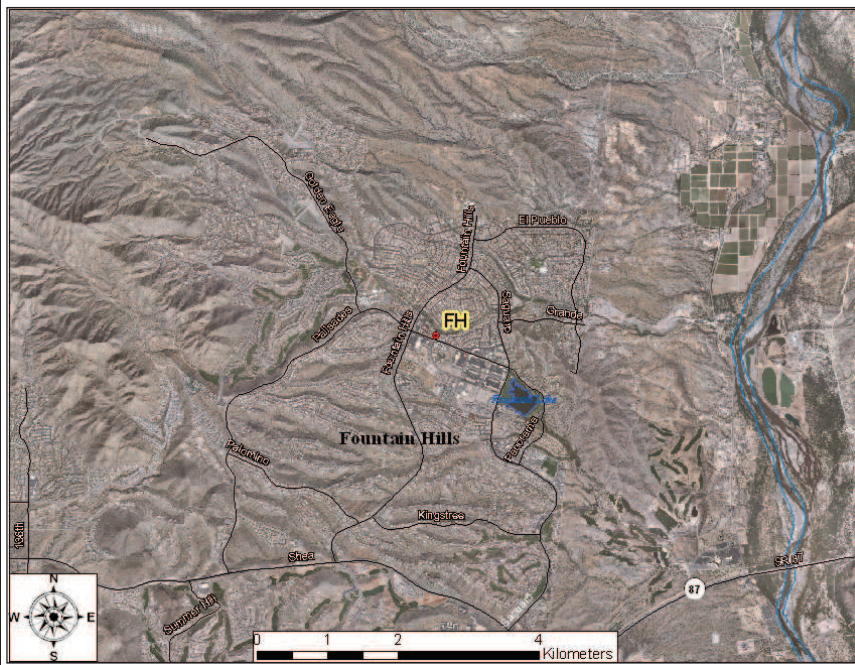


Site Description: Ozone is the seasonal SLAMS criteria pollutant monitored at this station. Monitoring began in June of 1989. The site is located near an airfield in a fire station within a growing residential area.

		2007	2008	2009
Ozone	Max. 8-hr O ₃ Avg. (PPM)	0.080	0.079*	0.069
	O ₃ #Daily Exceedances >0.075 ppm (as of 2008)	0	3	0
	Three year avg. of 4 th High	0.076	0.075	0.071

*Indicates an exceedance of the standard.

Fountain Hills (FH) (04-013-9704)



Location: Fountain Hills Blvd. and Palisades Blvd.
Spatial Scale: Neighborhood
Monitoring Objective: Maximum Ozone Concentrations



Site Description: The site, located at a Fountain Hills fire station, became operational in April of 1996 and monitors ozone (SLAMS) and wind speed and direction. The site is located approximately 15 miles downwind from the Phoenix metropolitan area and represents the high downwind concentrations on the fringes of the central basin district along the predominant summer/fall daytime wind direction.

		2007	2008	2009
Ozone	Max. 8-hr O ₃ Avg. (PPM)	0.083	0.080*	0.075
	O ₃ #Daily Exceedances >0.075 ppm (as of 2008)	0	7	0
	Three year avg. of 4 th High	0.082	0.079	0.074

* Indicates an exceedance of the standard.

Glendale (GL) (04-013-2001)



Location: 59th Ave. and Olive Ave.
Spatial Scale: Neighborhood
Monitoring Objective: Population Exposure



Site Description: The Glendale site was established over three decades ago and is located on the grounds of Glendale Community College in a populous residential area. Homes, various strip malls, food establishments, and parks surround the site. Seasonal carbon monoxide, seasonal Ozone, and PM₁₀ (all SLAMS) are the criteria pollutants monitored at this station. In September 2009 the PM₁₀ monitor was upgraded from a 1-in-6 day filter-based monitor to a continuous-monitoring TEOM. This upgrade took place in accordance with regulations due to a PM₁₀ exceedance which occurred at the site.

		2007	2008	2009
Carbon Monoxide	Max. 8-hr CO Avg. (PPM)	1.8	1.6	1.3
	Number exceedances 8-hr CO	0	0	0
Ozone	Max. 8-hr O ₃ Avg. (PPM)	0.075	0.079*	0.076*
	O ₃ #Daily Exceedances >0.075 ppm (as of 2008)	0	3	1
	Three year avg. of 4 th High	0.075	0.074	0.071
PM ₁₀	Max. 24-hr PM ₁₀ Avg. (µg/m ³)	92	80	196*
	Number exceedances 24-hr PM ₁₀	0	0	1
	Annual PM ₁₀ Avg. (µg/m ³)	34.1	26.5	28.5

* Indicates an exceedance of the standard.

Greenwood (GR) (04-013-3010)



Location: 27th Ave. and I-10,
Phoenix
Spatial Scale: Middle
Monitoring Objective: Population
Exposure



Site Description: Monitoring began at this site in December 1993. The station is bordered on the north by Interstate 10, on the west and south by neighborhood homes, and to the east by Greenwood Cemetery. Interstate 17 is approximately one mile to the east of the site. Carbon monoxide, NO₂, and PM₁₀ are the criteria pollutants monitored at this SLAMS facility. This site was converted to continuous PM₁₀ monitoring in the beginning of 2006.

		2007	2008	2009
Carbon Monoxide	Max. 8-hr CO Avg. (PPM)	4.0	2.7	2.6
	Number exceedances 8-hr CO	0	0	0
PM ₁₀	Max. 24-hr PM ₁₀ Avg. (µg/m ³)	124	133	229*
	Number exceedances 24-hr PM ₁₀	0	0	1
	Annual PM ₁₀ Avg. (µg/m ³)	50.0	42.6	41.2
Nitrogen Dioxide	Annual NO ₂ Avg. (PPM)	0.0290	0.0260	0.0253

* Indicates an exceedance of the standard.

Higley (HI) (04-013-4006)



Location: Higley Rd. and Williams Field Rd., Gilbert
Spatial Scale: Neighborhood
Monitoring Objective: Population Exposure



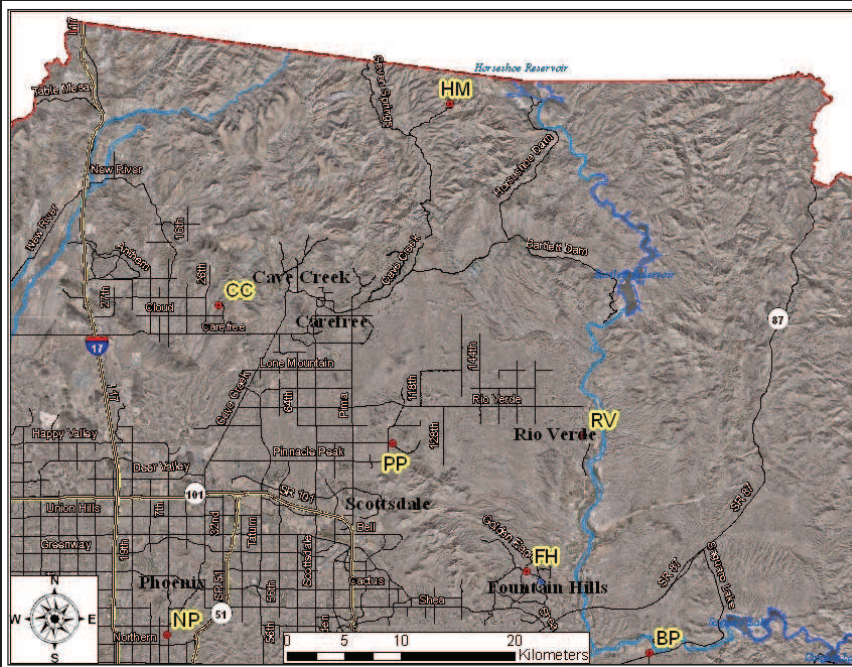
Site Description: Originally, in 1994, ADEQ set up this site to monitor for background particulate concentrations near the urban limits of Maricopa County. Since then, urban expansion has enveloped the site, so it no longer serves its original intended purpose. MCAQD installed a (1-in-6 day) PM₁₀ (SLAMS) in the second quarter of 2000. The data from this site was compared to the Chandler site and was found to be comparable. Since the City of Chandler requested that the department remove the Chandler site on 12/31/05, this site has taken over the role of that site. As of October 2004 the 1-in-6 day PM₁₀ monitor was replaced with an hourly continuous PM₁₀ monitor in accordance with 40 CFR 50, Appendix K. This continuous monitor samples on the neighborhood scale with a monitoring objective of high population exposure.

		2007	2008	2009
PM ₁₀	Max. 24-hr PM ₁₀ Avg. (µg/m ³)	230*‡	133	275*
	Number exceedances 24-hr PM ₁₀	5‡	0	2
	Annual PM ₁₀ Avg. (µg/m ³)	53.0	40.2	38.4

* Indicates an exceedance of the standard.

‡ Indicates Exceptional Events at this site. Listed value is the highest official current AQS reading.

Humboldt Mountain (HM) (04-013-9508)



Location: Humboldt Mountain Summit
Spatial Scale: Regional
Monitoring Objective: Maximum Ozone Concentrations

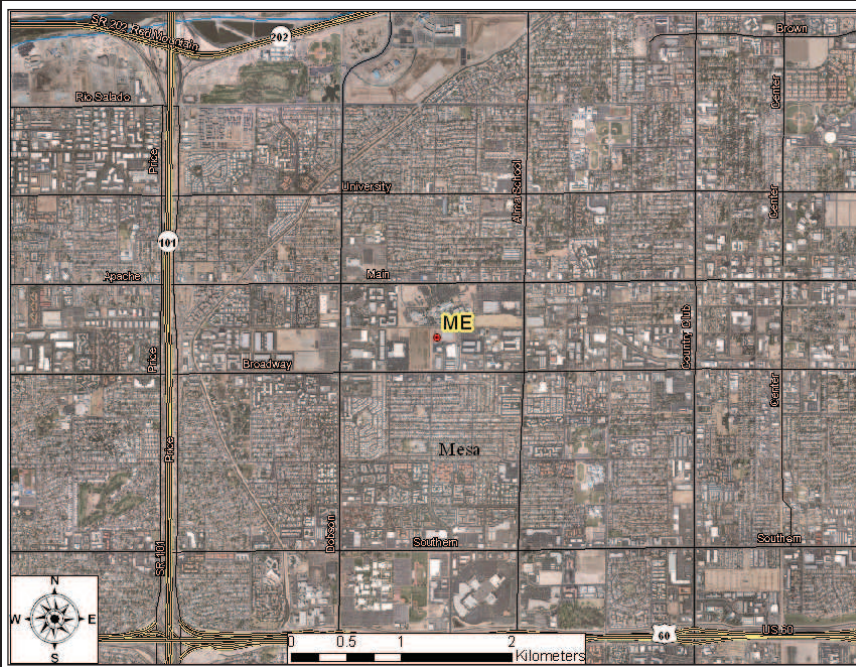


Site Description: This site became operational in August 1995. The Humboldt Mountain site is located on Federal Aviation Agency property, in a National Forest Service building in the Tonto National Forest. This site is located approximately 40 miles north-northeast of the Phoenix metropolitan area at an elevation of 5190 feet. Ozone is the only criteria pollutant that is monitored at this seasonal SLAMS site.

		2007	2008	2009
Ozone	Max. 8-hr O ₃ Avg. (PPM)	0.080	0.080*	0.076*
	O ₃ #Daily Exceedances >0.075 ppm (as of 2008)	0	6	1
	Three year avg. of 4 th High	0.081	0.078	0.074

* Indicates an exceedance of the standard.

Mesa (ME) (04-013-1003)



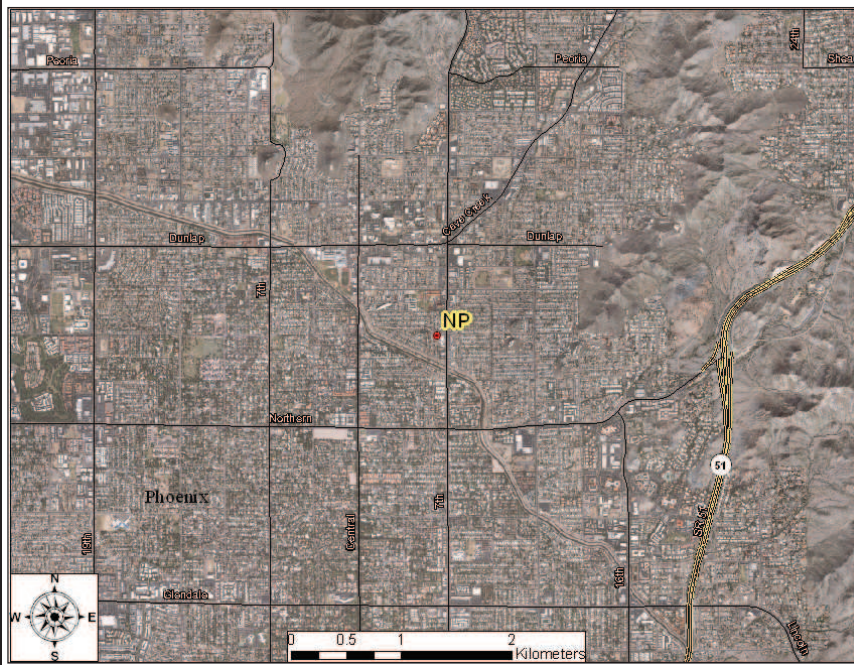
Location: Broadway Rd. and Brooks Ave.
Spatial Scale: Neighborhood
Monitoring Objective: Population Exposure



Site Description: This site is located at Brooks Reservoir at the western edge of the city near the Tempe border. It is centered in an area that contains residential, industrial, and a small amount of agricultural activity. An open field borders the site on the west with commercial development to the north, and light industry east and south of the site. Carbon monoxide, PM_{2.5}, and PM₁₀ are the criteria pollutants monitored at this SLAMS site. The department started operation of the PM_{2.5} Federal Reference Method monitor in May 2005.

		2007	2008	2009
Carbon Monoxide	Max. 8-hr CO Avg. (PPM)	2.0	1.4	1.5
	Number exceedances 8-hr CO	0	0	0
PM ₁₀	Max. 24-hr PM ₁₀ Avg. (µg/m ³)	110	71	87
	Number exceedances 24-hr PM ₁₀	0	0	0
	Annual PM ₁₀ Avg. (µg/m ³)	32.3	22.4	22.8
PM _{2.5}	Max. 24-hr PM _{2.5} Avg. (µg/m ³)	24.3	24.0	19.2
	Number of Daily Exceedances	0	0	0
	Annual PM _{2.5} Avg. (µg/m ³)	9.72	8.50	7.30

North Phoenix (NP) (04-013-1004)



Location: 7th St. and Butler Ave.
Spatial Scale: Neighborhood
Monitoring Objective: Population Exposure

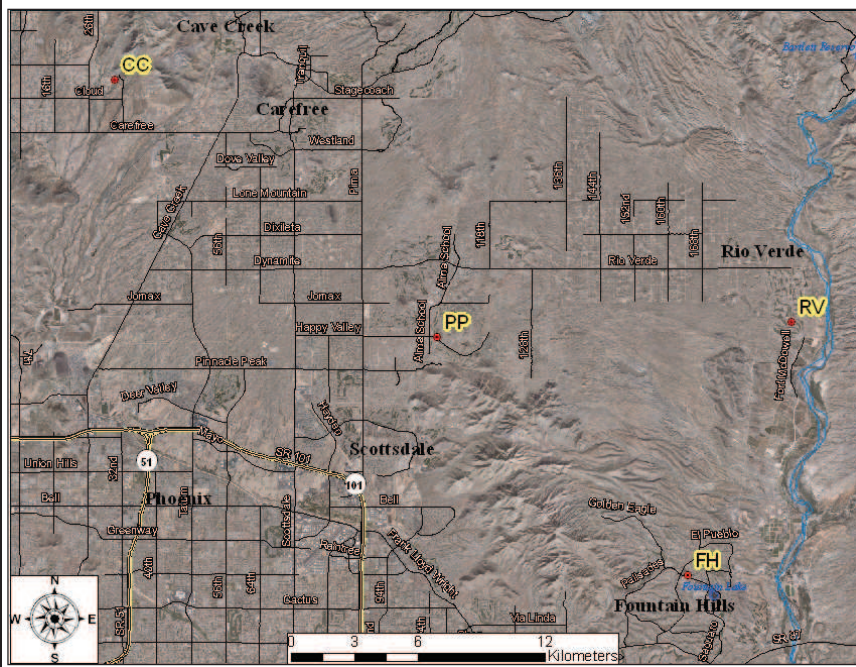


Site Description: This site is located in the Sunnyslope area of North Phoenix. Sunnyslope is an old established neighborhood, primarily residential. High-density population surrounds the site. CO, ozone, and PM₁₀ (all SLAMS) are monitored at this site, along with delta temperature (temperature inversion).

		2007	2008	2009
Carbon Monoxide	Max. 8-hr CO Avg. (PPM)	1.7	1.3	1.3
	Number exceedances 8-hr CO	0	0	0
Ozone	Max. 8-hr O ₃ Avg. (PPM)	0.081	0.083*	0.076*
	O ₃ #Daily Exceedances >0.075 ppm (as of 2008)	0	9	1
	Three year Avg. of 4 th High	0.082	0.081*	0.076*
PM ₁₀	Max. 24-hr PM ₁₀ Avg. (µg/m ³)	78	88	69
	Number exceedances 24-hr PM ₁₀	0	0	0
	Annual PM ₁₀ Avg. (µg/m ³)	33.5	25.1	23.8

* Indicates an exceedance of the standard.

Pinnacle Peak (PP) (04-013-2005)



Location: Pima Rd & Pinnacle Peak
Spatial Scale: Urban
Monitoring Objective: Maximum Ozone Concentrations

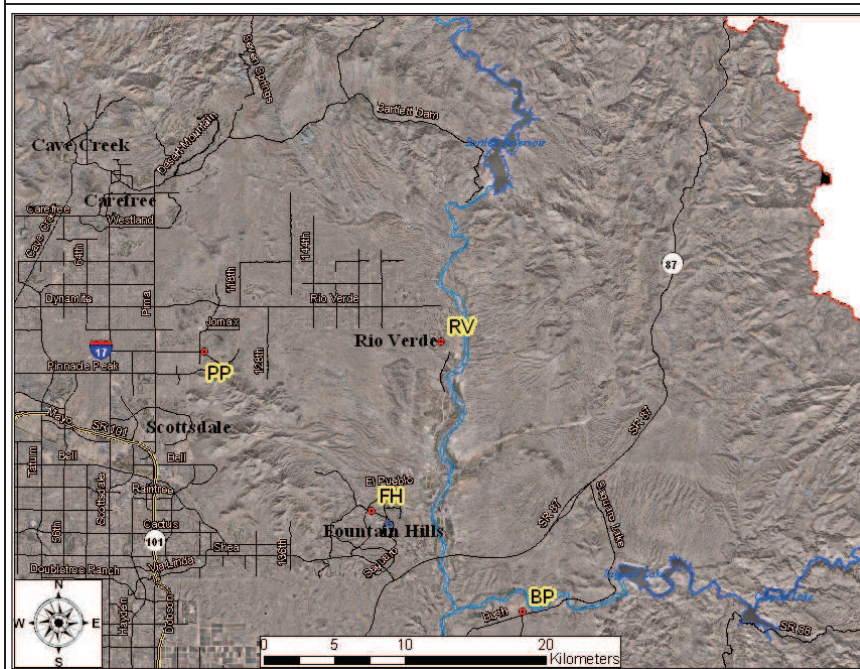


Site Description: This SLAMS site for ozone is located on the roof of a golf course country club and is surrounded by residential homes. It is located in a geographic area of low-density population (less than 2500 people per square mile). In previous years, ozone exceedances have been recorded due to transport of ozone and precursors from more urbanized areas of metropolitan Phoenix.

		2007	2008	2009
Ozone	Max. 8-hr O ₃ Avg. (PPM)	0.076	0.080*	0.079*
	O ₃ #Daily Exceedances >0.075 ppm (as of 2008)	0	2	1
	Three year Avg. of 4 th High	0.078	0.074	0.072

* Indicates an exceedance of the standard

Rio Verde (RV) (04-013-9706)



Location: Forest Rd. and Del Ray Ave.
Spatial Scale: Urban
Monitoring Objective: Maximum Ozone Concentrations



Site description: This seasonal ozone site became operational in spring of 1997. The monitor is located at the fire station / County Sheriff's office sub-station located in a residential area surrounded by the desert of Tonto National Forest. The site is eight miles north of the Fountain Hills SLAMS station, on the edge of a Class I Wilderness Area.

		2007	2008	2009
Ozone	Max. 8-hr O ₃ Avg. (PPM)	0.082	0.081*	0.071
	O ₃ #Daily Exceedances >0.075 ppm (as of 2008)	0	7	0
	Three year Avg. of 4 th High	0.083	0.080*	0.075

* Indicates an exceedance of the standard

South Phoenix (SP) (04-013-4003)



Location: Central Ave. and Broadway Rd.
Spatial Scale: Neighborhood
Monitoring Objective: Population Exposure



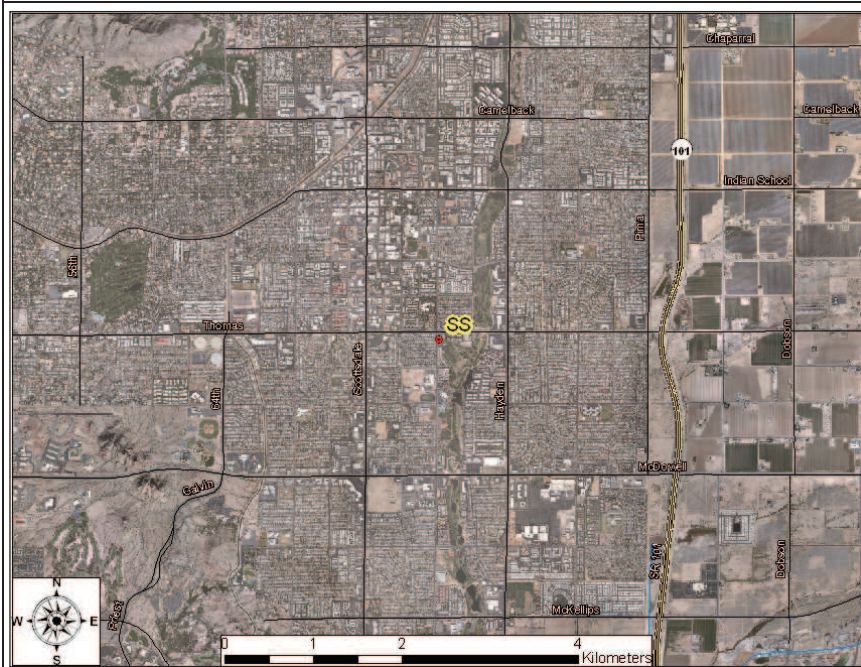
Site Description: The site was opened at its current location in October 1999. The site is at the edge of a high population area, but also borders on a mixture of residential and commercial (retail stores, food establishments, and office parks) land use. The station has two high population areas (>5000 people per square miles) north and west of the site. Carbon monoxide, ozone, and PM₁₀ (all SLAMS) are the criteria pollutants monitored at this station. The department started operation of a PM_{2.5} Federal Reference Monitor in May 2005. A continuous Thermo Scientific 1405 PM_{2.5} monitor started operation at this site in December 2008. This monitor is classified as a Federal Equivalent Method (FEM), and therefore the data can be used for compliance purposes within AQS. Unfortunately, problems with the monitoring equipment caused MCAQD to take the monitor offline in May 2009 for further testing.

		2007	2008	2009
Carbon Monoxide	Max. 8-hr CO Avg. (PPM)	3.1	2.2	2.6
	Number exceedances 8-hr CO	0	0	0
Ozone	Max. 8-hr O ₃ Avg. (PPM)	0.079	0.079*	0.075
	O ₃ #Daily Exceedances >0.075 ppm (as of 2008)	0	4	0
	Three year Avg. of 4 th High	0.072	0.072	0.071
PM ₁₀	Max. 24-hr PM ₁₀ Avg. (µg/m ³)	171*‡	230*	250*
	Number exceedances 24-hr PM ₁₀	2‡	2	3
	Annual PM ₁₀ Avg. (µg/m ³)	55.6	45.2	44.1
PM _{2.5}	Max. 24-hr PM _{2.5} Avg. (µg/m ³)	32.2	24.4	71.3*
	Number of Daily Exceedances	0	0	2
	Annual PM _{2.5} Avg. (µg/m ³)	12.27	10.9	11.0

* Indicates an exceedance of the standard.

‡ Indicates Exceptional Events at this site. Listed value is the highest official current AQS reading.

South Scottsdale (SS) (04-013-3003)



Location: Thomas Rd. and Miller Rd.
Spatial Scale: Neighborhood, Urban (NO₂)
Monitoring Objective: Population Exposure



Site Description: The South Scottsdale site is located at a City of Scottsdale Fire Station. The area surrounding the site is residential with a density of 2500 to 5000 persons per square mile. This site is located 12 miles east of metropolitan Central Phoenix. Carbon monoxide, ozone, NO₂, SO₂, and PM₁₀ (all SLAMS) are the criteria pollutants monitored at this station.

		2007	2008	2009
Carbon Monoxide	Max. 8-hr CO Avg. (PPM)	1.6	1.5	1.4
	Number exceedances 8-hr CO	0	0	0
Ozone	Max. 8-hr O ₃ Avg. (PPM)	0.082	0.079*	0.074
	O ₃ #Daily Exceedances >0.075 ppm (as of 2008)	0	6	0
	Three year Avg. of 4 th High	0.078	0.077	0.075
PM ₁₀	Max. 24-hr PM ₁₀ Avg. (µg/m ³)	73	92	135
	Number exceedances 24-hr PM ₁₀	0	0	0
	Annual PM ₁₀ Avg. (µg/m ³)	30.6	25.1	25.5
Nitrogen Dioxide	Annual NO ₂ Avg. (PPM)	0.0163	0.0146	0.0139
Sulfur Dioxide	Max. 24-hr SO ₂ Avg. (PPM)	0.005	0.005	0.006
	Number of Exceedances SO ₂	0	0	0
	Annual SO ₂ Avg. (PPM)	0.0019	0.0013	0.0012

* Indicates an exceedance of the standard.

Tempe (TE) (04-013-4005)



Location: Apache Blvd. & College Ave.
Spatial Scale: Neighborhood
Monitoring Objective: Population Exposure



Site Description: The site was established in 2000 to fill in a spatial gap between the metropolitan Phoenix area and the city of Mesa. Ozone and carbon monoxide (both SLAMS) are monitored at the site. Wind speed and direction and delta temperature (temperature inversion) meteorological parameters are also monitored at this site.

		2007	2008	2005
Carbon Monoxide	Max. 8-hr CO Avg. (PPM)	2.0	1.8	2.9
	Number exceedances 8-hr CO	0	0	0
Ozone	Max. 8-hr O ₃ Avg. (PPM)	0.084	0.082*	0.070
	O ₃ #Daily Exceedances >0.075 ppm (as of 2008)	0	6	0
	Three year Avg. of 4 th High	0.077	0.077*	0.073

* Indicates an exceedance of standard.

West Chandler (WC) (04-013-4004)



Location: Frye Rd. and Ellis St.
Spatial Scale: Neighborhood,
 Middle (PM₁₀)
Monitoring Objective: Population
 Exposure



Site Description: This site was first established in January 1995. The site was moved one half mile to the southeast in May 2000. A wide range of land uses surround the site including residential, agriculture, and heavy industry (semiconductor manufacturing plants and liquid air storage). Carbon monoxide, ozone, and PM₁₀ are the criteria pollutants monitored at this SLAMS site. In September 2009 the PM₁₀ monitor was upgraded from a 1-in-6 day scheduled monitor to a continuous-monitoring TEOM. This upgrade took place in accordance with regulations due to a PM₁₀ exceedance which occurred at the site.

		2007	2008	2009
Carbon Monoxide	Max. 8-hr CO Avg. (PPM)	2.0	1.4	1.7
	Number exceedances 8-hr CO	0	0	0
Ozone	Max. 8-hr O ₃ Avg. (PPM)	0.084	0.079*	0.072
	O ₃ #Daily Exceedances >0.075 ppm (as of 2008)	0	5	0
	Three year Avg. of 4 th High	0.076	0.076	0.073
PM ₁₀	Max. 24-hr PM ₁₀ Avg. (µg/m ³)	104	67	220*
	Number exceedances 24-hr PM ₁₀	0	0	2
	Annual PM ₁₀ Avg. (µg/m ³)	36.4	22.9	27.9

* Indicates an exceedance of the standard.

West 43rd Avenue (WF) (04-013-4009)



Location: 43rd Ave. & Broadway Rd.
Spatial Scale: Middle
Monitoring Objective: Highest Concentrations



Site Description: Monitoring began at the site in the 2nd quarter of 2002. This site is located at a Maricopa County Department of Transportation storage lot and is surrounded by a combination of heavy industry and residential homes. The site has one continuous TEOM PM₁₀ monitor and a temperature inversion monitor, as well as other meteorological instruments. The main purpose of the site is to measure maximum concentration PM₁₀ and to determine the impact on ambient pollution levels of significant sources or source categories. The sources around the site include sand and gravel operations, auto and metal recycling facilities, landfills, paved and unpaved haul roads, and cement casting.

		2007	2008	2009
PM ₁₀	Max. 24-hr PM ₁₀ Avg. (µg/m ³)	227*‡	279*‡	317*
	Number exceedances 24-hr PM ₁₀	6‡	6‡	7
	Annual PM ₁₀ Avg. (µg/m ³)	71.8	57.0	50.7

* Indicates an exceedance of the standard.

‡ Indicates Exceptional Events at this site. Listed value is the highest official current AQS reading.

West Indian School Road (WI) (04-013-0016)



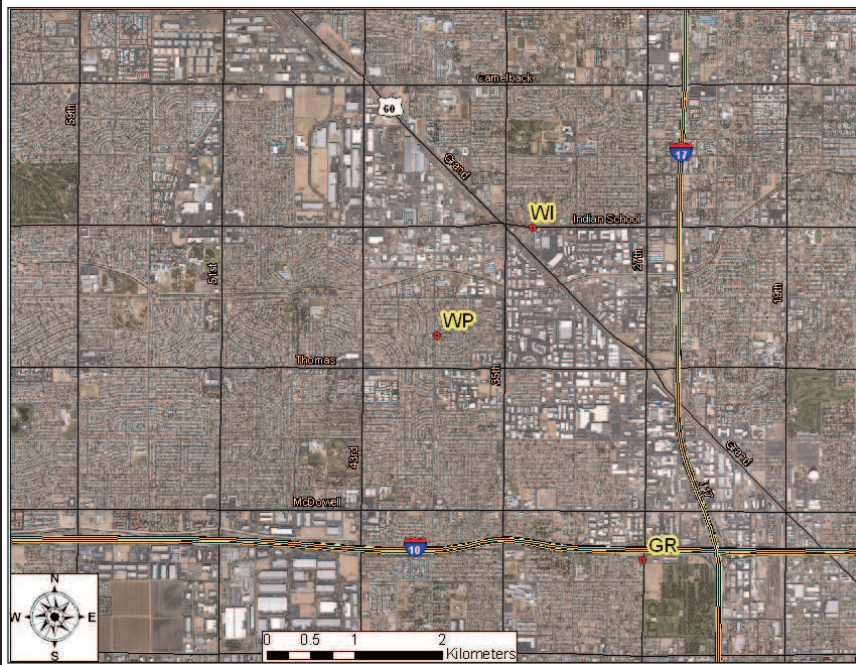
Location: 35th Avenue and Indian School Road
Spatial Scale: Micro
Monitoring Objective: Population Exposure



Site Description: This site is located at the City of Phoenix Firefighter Training Center. This site was opened in December 1980 and is used to monitor micro-scale maximum concentrations and is based on high vehicular traffic. The Average Weekday Traffic (AWT) volume past this location on Indian School Road is estimated to be approximately 55,000 vehicles/day. The site is also in close proximity to Grand Ave. and 35th Ave., which have AWT volumes of about 35,000 vehicles/day. Carbon monoxide is monitored at this SLAMS site. There is ongoing discussion regarding closing this site. The data collected at this site is very similar to that collected at the nearby West Phoenix site, which is neighborhood scale and just under two kilometers away. This implies that this micro-scale site is no longer necessary as this area is representative of the other neighborhood scale site.

		2007	2008	2009
Carbon Monoxide	Max. 8-hr CO Avg. (PPM)	5.0	2.8	4.2
	Number exceedances 8-hr CO	0	0	0

West Phoenix (WP) (04-013-0019)



Location: 39th Ave. and Earll Dr.
Spatial Scale: Neighborhood
Monitoring Objective: Population Exposure,
 Highest Concentration (PM_{2.5})



Site Description: This site became operational in 1984. It is located about one-mile southwest of the West Indian School Road micro-scale CO monitor. The spatial scale for the West Phoenix site is neighborhood. It is located in an area of stable, high-density residential population. Carbon monoxide, PM₁₀, ozone, and NO₂ (All SLAMS) are the criteria pollutants monitored at this site. The department also operates collocated PM_{2.5} FRM monitors and a continuous PM_{2.5} monitor (SLAMS) at this site.

		2007	2008	2009
Carbon Monoxide	Max. 8-hr CO Avg. (PPM)	4.6	3.1	4.6
	Number exceedances 8-hr CO	0	0	0
Ozone	Max. 8-hr O ₃ Avg. (PPM)	0.079	0.081*	0.082
	O ₃ #of Daily Exceedances >0.075 ppm (as of 2008)	0	4	1
	Three year Avg. of 4 th High	0.074	0.078*	0.073
PM ₁₀	Max. 24-hr PM ₁₀ Avg. (µg/m ³)	124	113	210*
	Number exceedances 24-hr PM ₁₀	0	0	1
	Annual PM ₁₀ Avg. (µg/m ³)	47.0	37.8	35.9
PM _{2.5}	Max. 24-hr PM _{2.5} Avg. (µg/m ³)	33.0	29.1	81.2*
	Number of Daily Exceedances	0	0	2
	Annual PM _{2.5} Avg. (µg/m ³)	10.89	10.60	10.36
Nitrogen Dioxide	Annual NO ₂ Avg. (PPM)	0.0209	0.0186	0.0171

* Indicates an exceedance of the standard.

Zuni Hills (ZH) (04-013-4016)



Location: 1099th Ave. and Deer Valley Road.
Spatial Scale: Neighborhood
Monitoring Objective: Population Exposure



Site Description: This site was opened in December 2009 and is located on the campus of the Zuni Hills elementary school, which is approximately 1.7 miles to the northeast from the now closed Coyote Lakes monitor. This site will have an objective of measuring air quality in an area of high population density and at a scale of neighborhood dimensions.

		2007	2008	2009
PM ₁₀	Max. 24-hr PM ₁₀ Avg. (µg/m ³)	N/A	N/A	27
	Number exceedances 24-hr PM ₁₀	N/A	N/A	0
	Annual PM ₁₀ Avg. (µg/m ³)	N/A	N/A	16.1#

Indicates <75% data completeness.

APPENDIX II - EPA REQUIRED DATA

Details compliance with requirements of 40CFR58 §58.10 and Appendices A, C, D, and E

Required General Information on Monitoring Network

Pollutant	MSA	MSA Population*	Design Value	#Monitors Required	#Monitors Operating**
Carbon Monoxide	6200 Phoenix-Mesa	3,954,598	1-Hour: 4.7 ppm 8-Hour: 3.1 ppm	0	13
Ozone	6200 Phoenix-Mesa	3,954,598	0.081 ppm	2	17
Nitrogen Dioxide	6200 Phoenix-Mesa	3,954,598	0.0260 ppm	0	5
PM _{2.5}	6200 Phoenix-Mesa	3,954,598	24-hour: 24.3 µg/m ³ Annual: 10.9 µg/m ³	3	3
PM _{2.5} Continuous Monitors	6200 Phoenix-Mesa	3,954,598	N/A	2	3
PM ₁₀	6200 Phoenix-Mesa	3,954,598	279 µg/m ³	6-10	16
Sulfur Dioxide	6200 Phoenix-Mesa	3,954,598	3-hour: 0.007 ppm 24-hour: 0.005 ppm Annual: 0.0017 ppm	0	2

*Based on the 2008 United States Census population estimate.

**Only includes monitors operated by the Maricopa County Air Quality Department; does not include monitors operated by other agencies within the MSA.

Required General Statement Regarding Changes to the PM_{2.5} Network

In the event the department needed to move or change a violating PM_{2.5} monitor the following procedure would be followed: The department would hold a public hearing regarding the requested change. Details and documentation of the requested change, as well as all public comments, would then be forwarded to the EPA for approval. Any action on the department's part will be dependent on EPA approval.

Please note that the previous statement is general in nature and is required to be placed in the annual network review by 40CFR58. The department does not currently have any violating PM_{2.5} monitors, nor does it have any proposals to move any PM_{2.5} monitors.

Notes regarding appendix data

Analysis Method (filters only) refers to the method used to process filter-based particulate samples.

Distance from Supporting Structure refers to those sample probes that are attached to a supporting structure, such as the side of a building. In most cases the sample probe is located above the supporting structure, in which case the entry will say N/A.

Distance from Obstructions refers to those obstructions, both on the roof and off the roof, which are located higher than the probe. In the case of a nearby obstruction being higher than the probe, details of its location will be listed in the entry. If there are no obstructions higher than the probe, then the entry will be N/A.

Last Annual Performance Evaluation Date refers to the performance evaluations detailed in 40CFR58, Appendix A, §3.2.2. These performance evaluations are performed by an agency outside of MCAQD. At least 25% of the network should be evaluated once per calendar quarter.

Last Two Semi-Annual Flow Rate Audit Dates refers to the performance evaluations detailed in 40CFR58, Appendix A, §3.2.4. These performance evaluations are performed by an agency outside of MCAQD at least once every six months.

Probe Sample Line Material refers to the material makeup of the intake sample lines.

Pollutant Sample Residence Time refers to the amount of time that it takes a sample of air to travel between the probe inlet and the monitor. This residence time is calculated by a formula that is based on the sample line diameter and length and the flow rate of the air intake. It is important to keep this residence time low so as to prevent gases in the air sample from reacting with the sample line material or with other gases in the sample; e.g. ozone could react with nitrogen oxide in the air sample if the residence time exceeds 20 seconds. This measurement only applies to NO₂, SO₂, and O₃ monitors.

BLUE POINT

County ID: BP

AQS ID: 04-013-9702

Address: Bush Highway & Usery Pass Road, Maricopa County

Coordinates: 33.54549N – 111.60925W

Metropolitan Sampling Area (MSA): 6200 Phoenix-Mesa

-General Information	
Pollutant/Monitor Type	Ozone
Sampling Schedule	Continuous
Analysis Method (filters only)	N/A
Any Proposal to Remove or Move Monitor?	No
Is site suitable for comparison to PM _{2.5} NAAQS per Part 58.30?	N/A
-Appendix A Requirements	
# Precision Checks Performed Annually	20
# Accuracy Checks Performed Annually	5
All Precision/Accuracy Reports Submitted to AQS?	Yes
Annual Data Certification Submitted?	Pending for July 2010
Frequency of One-Point QC Check	Bi-Weekly
Frequency of Flow Rate Verification	N/A
Last Annual Performance Evaluation Date	*
Last Two Semi-Annual Flow Rate Audit Dates	N/A
-Appendix C Requirements	
Sampler Make & Model	API M400
Date Established	01/01/1993
Classification	SLAMS
Method (FRM, FEM, ARM)	FEM
-Appendix D Requirements	
Monitoring Objective	Max Ozone Concentration
Monitoring Scale	Urban
Sampling Season	Jan-Dec
Network Meets Minimum Number of Monitors Required?	Yes
-Appendix E Requirements	
Distance between collocated samplers	N/A
Probe Inlet Height	5.3 meters
Airflow Arc	360°
Probe Sample Line Material	Teflon
Pollutant Sample Residence Time	7.6 sec
Distance from Supporting Structure	N/A
Distance from Obstructions	N/A
Distance to Furnace Flue	N/A
Spacing from Trees	N/A
Nearest Major Roadway	Bush Highway
Distance and Direction to Road	160 meters, South
Traffic Count (ADT)	1000
Groundcover	Paved

*Unavailable at time of publication

BUCKEYE
 County ID: BE
 AQS ID: 04-013-4011
 Address: 26449 W 100th DR, Buckeye
 Coordinates: 33.37005N – 111.62070W
 Metropolitan Sampling Area (MSA): 6200 Phoenix-Mesa

-General Information				
Pollutant/Monitor Type	Ozone	CO	NO ₂	PM ₁₀
Sampling Schedule	Continuous	Continuous	Continuous	Continuous
Analysis Method (filters only)	N/A	N/A	N/A	N/A
Any Proposal to Remove or Move Monitor?	No	No	No	No
Is site suitable for comparison to PM _{2.5} NAAQS per Part 58.30?	N/A	N/A	N/A	N/A
-Appendix A Requirements				
# Precision Checks Performed Annually	14	12	21	19
# Accuracy Checks Performed Annually	3	2	6	2
All Precision/Accuracy Reports Submitted to AQS?	Yes	Yes	Yes	Yes
Annual Data Certification Submitted?	Pending for July 2010	Pending for July 2010	Pending for July 2010	Pending for July 2010
Frequency of One-Point QC Check	Bi-Weekly	Bi-Weekly	Bi-Weekly	N/A
Frequency of Flow Rate Verification	N/A	N/A	N/A	Bi-Weekly
Last Annual Performance Evaluation Date	*	*	*	N/A
Last Two Semi-Annual Flow Rate Audit Dates	N/A	N/A	N/A	*
-Appendix C Requirements				
Sampler Make & Model	API M400	API M300	API M200	R&P TEOM
Date Established	08/01/2004	08/01/2004	08/01/2004	08/01/2004
Classification	SLAMS	SLAMS	SLAMS	SLAMS
Method (FRM, FEM, ARM)	FEM	FRM	FRM	FEM
-Appendix D Requirements				
Monitoring Objective	Population Exposure	Population Exposure	Source Oriented	Population Exposure
Monitoring Scale	Neighborhood	Neighborhood	Urban	Neighborhood
Sampling Season	Apr-Oct	Sep-Mar	Jan-Dec	Jan-Dec
Network Meets Minimum Number of Monitors Required?	Yes	Yes	Yes	Yes
-Appendix E Requirements				
Distance between collocated samplers	N/A	N/A	N/A	N/A
Probe Inlet Height	4 meters	4 meters	4 meters	4.5 meters
Airflow Arc	360°	360°	360°	360°
Distance from Supporting Structure	N/A	N/A	N/A	N/A
Probe Sample Line Material	Teflon	Teflon	Teflon	N/A
Pollutant Sample Residence Time	4.0 sec	N/A	4.0 sec	N/A
Distance from Obstructions	N/A	N/A	N/A	N/A
Distance to Furnace Flue	N/A	N/A	N/A	N/A
Spacing from Trees	14 meters, N	14 meters, N	14 meters, N	14 meters, N
Nearest Major Roadway	US Hwy 85	US Hwy 85	US Hwy 85	US Hwy 85
Distance and Direction to Road	31 meters, N	31 meters, N	31 meters, N	31 meters, N
Traffic Count (ADT)	3000	3000	3000	3000
Groundcover	Paved	Paved	Paved	Paved

*Unavailable at time of publication

CAVE CREEK

County ID: CC

AQS ID: 04-013-4008

Address: 37019 N Lava Lane, Phoenix

Coordinates: 33.82169N – 112.01739W

Metropolitan Sampling Area (MSA): 6200 Phoenix-Mesa

-General Information	
Pollutant/Monitor Type	Ozone
Sampling Schedule	Continuous
Analysis Method (filters only)	N/A
Any Proposal to Remove or Move Monitor?	No
Is site suitable for comparison to PM _{2.5} NAAQS per Part 58.30?	N/A
-Appendix A Requirements	
# Precision Checks Performed Annually	14
# Accuracy Checks Performed Annually	3
All Precision/Accuracy Reports Submitted to AQS?	Yes
Annual Data Certification Submitted?	Pending for July 2010
Frequency of One-Point QC Check	Bi-Weekly
Frequency of Flow Rate Verification	N/A
Last Annual Performance Evaluation Date	*
Last Two Semi-Annual Flow Rate Audit Dates	N/A
-Appendix C Requirements	
Sampler Make & Model	API M400
Date Established	07/20/2001
Classification	SLAMS
Method (FRM, FEM, ARM)	FEM
-Appendix D Requirements	
Monitoring Objective	Max Ozone Concentration
Monitoring Scale	Urban
Sampling Season	Apr-Oct
Network Meets Minimum Number of Monitors Required?	Yes
-Appendix E Requirements	
Distance between collocated samplers	N/A
Probe Inlet Height	4.8 meters
Airflow Arc	360°
Probe Sample Line Material	Teflon
Pollutant Sample Residence Time	10.2 sec
Distance from Supporting Structure	N/A
Distance from Obstructions	N/A
Distance to Furnace Flue	N/A
Spacing from Trees	20 meters, E
Nearest Major Roadway	32 nd Street
Distance and Direction to Road	240 meters, NE
Traffic Count (ADT)	1000
Groundcover	Paved

*Unavailable at time of publication

CENTRAL PHOENIX

County ID: CP

AQS ID: 04-013-3002

Address: 1645 E Roosevelt, Phoenix

Coordinates: 33.45793N - 112.04601W

Metropolitan Sampling Area (MSA): 6200 Phoenix-Mesa

-General Information					
Pollutant/Monitor Type	Ozone	CO	NO₂	SO₂	PM₁₀
Sampling Schedule	Continuous	Continuous	Continuous	Continuous	Continuous
Analysis Method (filters only)	N/A	N/A	N/A	N/A	N/A
Any Proposal to Remove or Move Monitor?	No	No	No	No	No
Is site suitable for comparison to PM _{2.5} NAAQS per Part 58.30?	N/A	N/A	N/A	N/A	N/A
-Appendix A Requirements					
# Precision Checks Performed Annually	23	23	23	23	22
# Accuracy Checks Performed Annually	4	4	4	4	3
All Precision/Accuracy Reports Submitted to AQS?	Yes	Yes	Yes	Yes	Yes
Annual Data Certification Submitted?	Pending for July 2010	Pending for July 2010	Pending for July 2010	Pending for July 2010	Pending for July 2010
Frequency of One-Point QC Check	Bi-Weekly	Bi-Weekly	Bi-Weekly	Bi-Weekly	N/A
Frequency of Flow Rate Verification	N/A	N/A	N/A	N/A	Bi-Weekly
Last Annual Performance Evaluation Date	*	*	*	*	N/A
Last Two Semi-Annual Flow Rate Audit Dates	N/A	N/A	N/A	N/A	*
-Appendix C Requirements					
Sampler Make & Model	API M400	API M300	API M200	API M100	R&P TEOM
Date Established	06/01/1967	10/01/1966	01/01/1967	01/01/1965	04/01/1985
Classification	SLAMS	SLAMS	SLAMS	SLAMS	SLAMS
Method (FRM, FEM, ARM)	FEM	FRM	FRM	FEM	FEM
-Appendix D Requirements					
Monitoring Objective	Population Exposure	Population Exposure	Highest Concentration	Highest Concentration	Population Exposure
Monitoring Scale	Neighborhood	Neighborhood	Neighborhood	Neighborhood	Neighborhood
Sampling Season	Jan-Dec	Jan-Dec	Jan-Dec	Jan-Dec	Jan-Dec
Network Meets Minimum Number of Monitors Required?	Yes	Yes	Yes	Yes	Yes
-Appendix E Requirements					
Distance between collocated samplers	N/A	N/A	N/A	N/A	N/A
Probe Inlet Height	11.3 meters	11.3 meters	11.3 meters	11.3 meters	11.3 meters
Airflow Arc	360°	360°	360°	360°	360°
Probe Sample Line Material	Teflon	Teflon	Teflon	Teflon	N/A
Pollutant Sample Residence Time	9.0 sec	N/A	9.0 sec	10.0 sec	N/A
Distance from Supporting Structure	N/A	N/A	N/A	N/A	N/A
Distance from Obstructions	N/A	N/A	N/A	N/A	N/A
Distance to Furnace Flue	N/A	N/A	N/A	N/A	N/A
Spacing from Trees	N/A	N/A	N/A	N/A	N/A
Nearest Major Roadway A	16 th Street	16 th Street	16 th Street	16 th Street	16 th Street
Distance and Direction to Road	88 meters, W	88 meters, W	88 meters, W	88 meters, W	91 meters, W
Traffic Count (ADT)	24000	24000	24000	24000	24000
Nearest Major Roadway B	Roosevelt St.	Roosevelt St.	Roosevelt St.	Roosevelt St.	Roosevelt St.
Distance and Direction to Road	75 meters, N	75 meters, N	75 meters, N	75 meters, N	75 meters, N
Traffic Count (ADT)	Unknown	Unknown	Unknown	Unknown	Unknown
Groundcover	Paved	Paved	Paved	Paved	Paved

*Unavailable at time of publication

COYOTE LAKES

County ID: CL

AQS ID: 04-013-4014

Address: 20010 N Coyote Lakes Pkwy, Surprise

Coordinates: 33.666284N – 112.31042W

Metropolitan Sampling Area (MSA): 6200 Phoenix-Mesa

-General Information	
Pollutant/Monitor Type	PM₁₀
Sampling Schedule	Continuous
Analysis Method (filters only)	N/A
Any Proposal to Remove or Move Monitor?	No
Is site suitable for comparison to PM _{2.5} NAAQS per Part 58.30?	N/A
-Appendix A Requirements	
# Precision Checks Performed Annually	3*
# Accuracy Checks Performed Annually	0*
All Precision/Accuracy Reports Submitted to AQS?	Yes
Annual Data Certification Submitted?	Pending for July 2010
Frequency of One-Point QC Check	N/A
Frequency of Flow Rate Verification	Bi-Weekly
Last Annual Performance Evaluation Date	N/A
Last Two Semi-Annual Flow Rate Audit Dates	9/5/08, 12/10/08
-Appendix C Requirements	
Sampler Make & Model	R&P TEOM
Date Established	04/02/2007
Classification	SLAMS
Method (FRM, FEM, ARM)	FEM
-Appendix D Requirements	
Monitoring Objective	Source Oriented
Monitoring Scale	Middle Scale
Sampling Season	Jan-Dec
Network Meets Minimum Number of Monitors Required?	Yes
-Appendix E Requirements	
Distance between collocated samplers	N/A
Probe Inlet Height	2.6 meters
Airflow Arc	360°
Distance from Supporting Structure	N/A
Distance from Obstructions	N/A
Distance to Furnace Flue	N/A
Spacing from Trees	N/A
Nearest Major Roadway	Coyote Lakes Pkwy
Distance and Direction to Road	54 meters, E
Traffic Count (ADT)	Unknown (residential street)
Groundcover	Gravel/Dirt

* Site Closed in February 2009.

DURANGO COMPLEX
County ID: DC
AQS ID: 04-013-9812
Address: 2702 RC Esterbrooks Blvd, Phoenix
Coordinates: 33.42650N -112.11814W
Metropolitan Sampling Area (MSA): 6200 Phoenix-Mesa

-General Information		
Pollutant/Monitor Type	PM₁₀	PM_{2.5}
Sampling Schedule	Continuous	Continuous
Analysis Method (filters only)	N/A	N/A
Any Proposal to Remove or Move Monitor?	No	No
Is site suitable for comparison to PM _{2.5} NAAQS per Part 58.30?	N/A	Yes
-Appendix A Requirements		
# Precision Checks Performed Annually	20	
# Accuracy Checks Performed Annually	3	
All Precision/Accuracy Reports Submitted to AQS?	Yes	Yes
Annual Data Certification Submitted?	Pending for July 2010	Pending for July 2010
Frequency of One-Point QC Check	N/A	N/A
Frequency of Flow Rate Verification	Bi-Weekly	Bi-Weekly
Last Annual Performance Evaluation Date	N/A	N/A
Last Two Semi-Annual Flow Rate Audit Dates	*	N/A
-Appendix C Requirements		
Sampler Make & Model	R&P TEOM	R&P FDMS-TEOM
Date Established	07/01/1999	07/01/2005
Classification	SLAMS	SLAMS
Method (FRM, FEM, ARM)	FEM	None
-Appendix D Requirements		
Monitoring Objective	Highest Concentration	Highest Concentration
Monitoring Scale	Middle	Middle
Sampling Season	Jan-Dec	Jan-Dec
Network Meets Minimum Number of Monitors Required?	Yes	Yes
-Appendix E Requirements		
Distance between collocated samplers	N/A	N/A
Probe Inlet Height	3.9 meters	4.8 meters
Airflow Arc	360°	360°
Probe Sample Line Material	N/A	N/A
Pollutant Sample Residence Time	N/A	N/A
Distance from Supporting Structure	N/A	N/A
Distance from Obstructions	N/A	N/A
Distance to Furnace Flue	N/A	N/A
Spacing from Trees	14 meters, S	14 meters, S
Nearest Major Roadway	27 th Ave	27 th Ave
Distance and Direction to Road	78 meters, E	76 meters, E
Traffic Count (ADT)	16000	16000
Groundcover	Paved	Paved

*Unavailable at time of publication

DYSART

County ID: DY

AQS ID: 04-013-4010

Address: 16825 N Dysart Rd, Surprise

Coordinates: 33.63713N – 112.34184W

Metropolitan Sampling Area (MSA): 6200 Phoenix-Mesa

-General Information			
Pollutant/Monitor Type	Ozone	CO	PM₁₀
Sampling Schedule	Continuous	Continuous	1 in 6 days/Continuous#
Analysis Method (filters only)	N/A	N/A	Filters weighed in-house
Any Proposal to Remove or Move Monitor?	No	No	No
Is site suitable for comparison to PM _{2.5} NAAQS per Part 58.30?	N/A	N/A	N/A
-Appendix A Requirements			
# Precision Checks Performed Annually	11	10	5#
# Accuracy Checks Performed Annually	3	3	4
All Precision/Accuracy Reports Submitted to AQS?	Yes	Yes	Yes
Annual Data Certification Submitted?	Pending for July 2010	Pending for July 2010	Pending for July 2010
Frequency of One-Point QC Check	Bi-Weekly	Bi-Weekly	N/A
Frequency of Flow Rate Verification	N/A	N/A	Monthly
Last Annual Performance Evaluation Date	*	*	N/A
Last Two Semi-Annual Flow Rate Audit Dates	N/A	N/A	*
-Appendix C Requirements			
Sampler Make & Model	API M400	API M300	Anderson SSI
Date Established	7/21/2003	09/01/2003	07/14/2003
Classification	SLAMS	SLAMS	SLAMS
Method (FRM, FEM, ARM)	FEM	FRM	FRM
-Appendix D Requirements			
Monitoring Objective	Population Exposure	Population Exposure	Population Exposure
Monitoring Scale	Neighborhood	Neighborhood	Neighborhood
Sampling Season	Apr-Oct	Sep-Mar	Jan-Dec
Network Meets Minimum Number of Monitors Required?	Yes	Yes	Yes
-Appendix E Requirements			
Distance between collocated samplers	N/A	N/A	N/A
Probe Inlet Height	3.3 meters	3.3 meters	2.6 meters
Airflow Arc	360°	360°	360°
Probe Sample Line Material	Teflon	Teflon	N/A
Pollutant Sample Residence Time	4.8 sec	N/A	N/A
Distance from Supporting Structure	N/A	N/A	N/A
Distance from Obstructions	N/A	N/A	N/A
Distance to Furnace Flue	N/A	N/A	N/A
Spacing from Trees	N/A	N/A	N/A
Nearest Major Roadway A	Dysart	Dysart	Dysart
Distance and Direction to Road	17 meters, W	17 meters, W	12 meters, W
Traffic Count (ADT)	12000	12000	12000
Nearest Major Roadway B	Bell Rd	Bell Rd	Bell Rd
Distance and Direction to Road	495 meters, N	495 meters, N	460 meters, N
Traffic Count (ADT)	43000	43000	43000
Groundcover	Paved/Gravel	Paved/Gravel	Paved/Gravel

Monitor changed from filter-based to continuous in September 2009. Precision checks are for continuous monitor.

*Unavailable at time of publication

FALCON FIELD

County ID: FF

AQS ID: 04-013-1010

Address: 4530 E McKellips Rd, Mesa

Coordinates: 33.45223N – 111.73331W

Metropolitan Sampling Area (MSA): 6200 Phoenix-Mesa

-General Information	
Pollutant/Monitor Type	Ozone
Sampling Schedule	Continuous
Analysis Method (filters only)	N/A
Any Proposal to Remove or Move Monitor?	No
Is site suitable for comparison to PM _{2.5} NAAQS per Part 58.30?	N/A
-Appendix A Requirements	
# Precision Checks Performed Annually	12
# Accuracy Checks Performed Annually	3
All Precision/Accuracy Reports Submitted to AQS?	Yes
Annual Data Certification Submitted?	Pending for July 2010
Frequency of One-Point QC Check	Bi-Weekly
Frequency of Flow Rate Verification	N/A
Last Annual Performance Evaluation Date	*
Last Two Semi-Annual Flow Rate Audit Dates	N/A
-Appendix C Requirements	
Sampler Make & Model	API M400
Date Established	06/01/1989
Classification	SLAMS
Method (FRM, FEM, ARM)	FEM
-Appendix D Requirements	
Monitoring Objective	Population Exposure
Monitoring Scale	Neighborhood
Sampling Season	Apr-Oct
Network Meets Minimum Number of Monitors Required?	Yes
-Appendix E Requirements	
Distance between collocated samplers	N/A
Probe Inlet Height	9.3 meters
Airflow Arc	360°
Probe Sample Line Material	Teflon
Pollutant Sample Residence Time	16.4 sec
Distance from Supporting Structure	N/A
Distance from Obstructions	N/A
Distance to Furnace Flue	N/A
Spacing from Trees	N/A
Nearest Major Roadway	McKellips
Distance and Direction to Road	58 meters, S
Traffic Count (ADT)	29000
Groundcover	Paved

*Unavailable at time of publication

FOUNTAIN HILLS

County ID: FH

AQS ID: 04-013-9704

Address: 16426 E Palisades Blvd, Fountain Hills

Coordinates: 33.61103N – 111.72529W

Metropolitan Sampling Area (MSA): 6200 Phoenix-Mesa

-General Information	
Pollutant/Monitor Type	Ozone
Sampling Schedule	Continuous
Analysis Method (filters only)	N/A
Any Proposal to Remove or Move Monitor?	No
Is site suitable for comparison to PM _{2.5} NAAQS per Part 58.30?	N/A
-Appendix A Requirements	
# Precision Checks Performed Annually	20
# Accuracy Checks Performed Annually	6
All Precision/Accuracy Reports Submitted to AQS?	Yes
Annual Data Certification Submitted?	Pending for July 2010
Frequency of One-Point QC Check	Bi-Weekly
Frequency of Flow Rate Verification	N/A
Last Annual Performance Evaluation Date	*
Last Two Semi-Annual Flow Rate Audit Dates	N/A
-Appendix C Requirements	
Sampler Make & Model	API M400
Date Established	04/01/1996
Classification	SLAMS
Method (FRM, FEM, ARM)	FEM
-Appendix D Requirements	
Monitoring Objective	Max Ozone Concentration
Monitoring Scale	Neighborhood
Sampling Season	Jan-Dec
Network Meets Minimum Number of Monitors Required?	Yes
-Appendix E Requirements	
Distance between collocated samplers	N/A
Probe Inlet Height	4.3 meters
Airflow Arc	360°
Probe Sample Line Material	Teflon
Pollutant Sample Residence Time	4.8 sec
Distance from Supporting Structure	N/A
Distance from Obstructions	Canopy 1 meter higher than probe, located 9 meters to the south
Distance to Furnace Flue	N/A
Spacing from Trees	15 meters, W
Nearest Major Roadway	Palisades Blvd
Distance and Direction to Road	70 meters, SW
Traffic Count (ADT)	8000
Groundcover	Paved

*Unavailable at time of publication

GLENDALE
County ID: GL
AQS ID: 04-013-2001
Address: 6001 W Olive, Glendale
Coordinates: 33.56936N – 112.19153W
Metropolitan Sampling Area (MSA): 6200 Phoenix-Mesa

-General Information			
Pollutant/Monitor Type	Ozone	CO	PM₁₀
Sampling Schedule	Continuous	Continuous	1 in 6 day/Continuous#
Analysis Method (filters only)	N/A	N/A	Filters Weighed In-House
Any Proposal to Remove or Move Monitor?	No	No	No
Is site suitable for comparison to PM _{2.5} NAAQS per Part 58.30?	N/A	N/A	N/A
-Appendix A Requirements			
# Precision Checks Performed Annually	11	10	4#
# Accuracy Checks Performed Annually	3	3	3
All Precision/Accuracy Reports Submitted to AQS?	Yes	Yes	Yes
Annual Data Certification Submitted?	Pending for July 2010	Pending for July 2010	Pending for July 2010
Frequency of One-Point QC Check	Bi-Weekly	Bi-Weekly	N/A
Frequency of Flow Rate Verification	N/A	N/A	Monthly
Last Annual Performance Evaluation Date	*	*	N/A
Last Two Semi-Annual Flow Rate Audit Dates	N/A	N/A	*
-Appendix C Requirements			
Sampler Make & Model	API M400	API M300	Anderson SSI
Date Established	01/01/1974	01/01/1974	07/01/1987
Classification	SLAMS	SLAMS	SLAMS
Method (FRM, FEM, ARM)	FEM	FRM	FRM
-Appendix D Requirements			
Monitoring Objective	Population Exposure	Population Exposure	Population Exposure
Monitoring Scale	Neighborhood	Neighborhood	Neighborhood
Sampling Season	Apr-Oct	Sep-Mar	Jan-Dec
Network Meets Minimum Number of Monitors Required?	Yes	Yes	Yes
-Appendix E Requirements			
Distance between collocated samplers	N/A	N/A	N/A
Probe Inlet Height	6.0 meters	6.0 meters	7.4 meters
Airflow Arc	360°	360°	360°
Probe Sample Line Material	Teflon	Teflon	N/A
Pollutant Sample Residence Time	15.5 sec	N/A	N/A
Distance from Supporting Structure	N/A	N/A	N/A
Distance from Obstructions	N/A	N/A	N/A
Distance to Furnace Flue	N/A	N/A	N/A
Spacing from Trees	N/A	N/A	N/A
Nearest Major Roadway A	Olive Ave	Olive Ave	Olive Ave
Distance and Direction to Road	225 meters, S	225 meters, S	227 meters, S
Traffic Count (ADT)	25000	25000	25000
Nearest Major Roadway B	59 th Ave	59 th Ave	59 th Ave
Distance and Direction to Road	475 meters, E	475 meters, E	430 meters, E
Traffic Count (ADT)	30500	30500	30500
Groundcover	Paved	Paved	Paved

Monitor changed from filter-based to continuous in September 2009. Precision checks are for continuous monitor.

*Unavailable at time of publication

GREENWOOD

County ID: GR

AQS ID: 04-013-3010

Address: 1128 N 27th Ave., Phoenix

Coordinates: 33.46093N – 112.11748W

Metropolitan Sampling Area (MSA): 6200 Phoenix-Mesa

-General Information			
Pollutant/Monitor Type	CO	NO₂	PM₁₀
Sampling Schedule	Continuous	Continuous	Continuous
Analysis Method (filters only)	N/A	N/A	N/A
Any Proposal to Remove or Move Monitor?	No	No	No
Is site suitable for comparison to PM _{2.5} NAAQS per Part 58.30?	N/A	N/A	N/A
-Appendix A Requirements			
# Precision Checks Performed Annually	22	21	21
# Accuracy Checks Performed Annually	7	5	2
All Precision/Accuracy Reports Submitted to AQS?	Yes	Yes	Yes
Annual Data Certification Submitted?	Pending for July 2010	Pending for July 2010	Pending for July 2010
Frequency of One-Point QC Check	Bi-Weekly	Bi-Weekly	N/A
Frequency of Flow Rate Verification	N/A	N/A	Bi-Weekly
Last Annual Performance Evaluation Date	*	*	N/A
Last Two Semi-Annual Flow Rate Audit Dates	N/A	N/A	*
-Appendix C Requirements			
Sampler Make & Model	API M300	API M200	R&P TEOM
Date Established	11/01/1993	11/01/1993	11/01/1993
Classification	SLAMS	SLAMS	SLAMS
Method (FRM, FEM, ARM)	FRM	FRM	FEM
-Appendix D Requirements			
Monitoring Objective	Population Exposure	Population Exposure	Population Exposure
Monitoring Scale	Middle	Middle	Middle
Sampling Season	Jan-Dec	Jan-Dec	Jan-Dec
Network Meets Minimum Number of Monitors Required?	Yes	Yes	Yes
-Appendix E Requirements			
Distance between collocated samplers	N/A	N/A	N/A
Probe Inlet Height	4.2 meters	4.2 meters	4.4 meters
Airflow Arc	360°	360°	360°
Probe Sample Line Material	Teflon	Teflon	N/A
Pollutant Sample Residence Time	N/A	4.3 sec	N/A
Distance from Supporting Structure	N/A	N/A	N/A
Distance from Obstructions	N/A	N/A	N/A
Distance to Furnace Flue	N/A	N/A	N/A
Spacing from Trees	20 meters, NW	20 meters, NW	20 meters, NW
Nearest Major Roadway A	27 th Ave	27 th Ave	27 th Ave
Distance and Direction to Road	10 meters, E	10 meters, E	10 meters, E
Traffic Count (ADT)	18500	18500	18500
Nearest Major Roadway B	I-10	I-10	I-10
Distance and Direction to Road	85 meters, N	85 meters, N	85 meters, N
Traffic Count (ADT)	229000	229000	229000
Groundcover	Paved	Paved	Paved

*Unavailable at time of publication

HIGLEY

County ID: HI

AQS ID: 04-013-4006

Address: 15400 South Higley Road, Gilbert

Coordinates: 33.31074N – 111.72255W

Metropolitan Sampling Area (MSA): 6200 Phoenix-Mesa

-General Information	
Pollutant/Monitor Type	PM₁₀
Sampling Schedule	Continuous
Analysis Method (filters only)	N/A
Any Proposal to Remove or Move Monitor?	No
Is site suitable for comparison to PM _{2.5} NAAQS per Part 58.30?	N/A
-Appendix A Requirements	
# Precision Checks Performed Annually	20
# Accuracy Checks Performed Annually	3
All Precision/Accuracy Reports Submitted to AQS?	Yes
Annual Data Certification Submitted?	Pending for July 2010
Frequency of One-Point QC Check	N/A
Frequency of Flow Rate Verification	Bi-Weekly
Last Annual Performance Evaluation Date	N/A
Last Two Semi-Annual Flow Rate Audit Dates	*
-Appendix C Requirements	
Sampler Make & Model	R&P TEOM
Date Established	07/01/2000
Classification	SLAMS
Method (FRM, FEM, ARM)	FEM
-Appendix D Requirements	
Monitoring Objective	Population Exposure
Monitoring Scale	Neighborhood
Sampling Season	Jan-Dec
Network Meets Minimum Number of Monitors Required?	Yes
-Appendix E Requirements	
Distance between collocated samplers	N/A
Probe Inlet Height	2.9 meters
Airflow Arc	360°
Probe Sample Line Material	N/A
Pollutant Sample Residence Time	N/A
Distance from Supporting Structure	N/A
Distance from Obstructions	N/A
Distance to Furnace Flue	N/A
Spacing from Trees	N/A
Nearest Major Roadway A	Higley Rd
Distance and Direction to Road	117 meters, E
Traffic Count (ADT)	11500
Nearest Major Roadway B	Williams Field Rd
Distance and Direction to Road	410 meters, S
Traffic Count (ADT)	11500
Groundcover	Paved

*Unavailable at time of publication

HUMBOLDT MOUNTAIN

County ID: HM

AQS ID: 04-013-9508

Address: Seven Springs Rd-FAA Radar Station, Tonto National Forest

Coordinates: 33.98280N – 111.79870W

Metropolitan Sampling Area (MSA): 6200 Phoenix-Mesa

-General Information	
Pollutant/Monitor Type	Ozone
Sampling Schedule	Continuous
Analysis Method (filters only)	N/A
Any Proposal to Remove or Move Monitor?	No
Is site suitable for comparison to PM _{2.5} NAAQS per Part 58.30?	N/A
-Appendix A Requirements	
# Precision Checks Performed Annually	12
# Accuracy Checks Performed Annually	3
All Precision/Accuracy Reports Submitted to AQS?	Yes
Annual Data Certification Submitted?	Pending for July 2010
Frequency of One-Point QC Check	Bi-Weekly
Frequency of Flow Rate Verification	N/A
Last Annual Performance Evaluation Date	*
Last Two Semi-Annual Flow Rate Audit Dates	N/A
-Appendix C Requirements	
Sampler Make & Model	API M400
Date Established	01/01/1993
Classification	SLAMS
Method (FRM, FEM, ARM)	FEM
-Appendix D Requirements	
Monitoring Objective	Max Ozone Concentration
Monitoring Scale	Regional
Sampling Season	Apr-Oct
Network Meets Minimum Number of Monitors Required?	Yes
-Appendix E Requirements	
Distance between collocated samplers	N/A
Probe Inlet Height	4.5 meters
Airflow Arc	360°
Probe Sample Line Material	Teflon
Pollutant Sample Residence Time	6.2 sec
Distance from Supporting Structure	N/A
Distance from Obstructions	N/A
Distance to Furnace Flue	N/A
Spacing from Trees	N/A
Nearest Major Roadway	N/A (Remote mountaintop site, only reachable by small access road)
Distance and Direction to Road	N/A
Traffic Count (ADT)	N/A
Groundcover	Dirt/Vegetated

*Unavailable at time of publication

MESA
 County ID: ME
 AQS ID: 04-013-1003
 Address: 310 S Brooks, Mesa
 Coordinates: 33.41045N – 111.86507W
 Metropolitan Sampling Area (MSA): 6200 Phoenix-Mesa

-General Information			
Pollutant/Monitor Type	CO	PM_{2.5}	PM₁₀
Sampling Schedule	Continuous	1 in 3 day	1 in 6 day
Analysis Method (filters only)	N/A	Filters Weighed In-House	Filters Weighed In-house
Any Proposal to Remove or Move Monitor?	No	No	No
Is site suitable for comparison to PM _{2.5} NAAQS per Part 58.30?	N/A	Yes	N/A
-Appendix A Requirements			
# Precision Checks Performed Annually	11	N/A	45 (Collocated)
# Accuracy Checks Performed Annually	3	3	4
All Precision/Accuracy Reports Submitted to AQS?	Yes	Yes	Yes
Annual Data Certification Submitted?	Pending for July 2010	Pending for July 2010	Pending for July 2010
Frequency of One-Point QC Check	Bi-Weekly	N/A	N/A
Frequency of Flow Rate Verification	N/A	Every 6 Weeks	Monthly
Last Annual Performance Evaluation Date	*	N/A	N/A
Last Two Semi-Annual Flow Rate Audit Dates	N/A	*	*
-Appendix C Requirements			
Sampler Make & Model	API M400	R&P 2025	Anderson SSI
Date Established	01/01/1978	04/28/2005	01/23/1990
Classification	SLAMS	SLAMS	SLAMS
Method (FRM, FEM, ARM)	FEM	FRM	FRM
-Appendix D Requirements			
Monitoring Objective	Population Exposure	Population Exposure	Population Exposure
Monitoring Scale	Neighborhood	Neighborhood	Neighborhood
Sampling Season	Sep-Mar	Jan-Dec	Jan-Dec
Network Meets Minimum Number of Monitors Required?	Yes	Yes	Yes
-Appendix E Requirements			
Distance between collocated samplers	N/A	N/A	3.3 meters
Probe Inlet Height	7 meters	6.9 meters	6.2 meters
Airflow Arc	360°	360°	360°
Probe Sample Line Material	Teflon	N/A	N/A
Pollutant Sample Residence Time	N/A	N/A	N/A
Distance from Supporting Structure	N/A	N/A	N/A
Distance from Obstructions	N/A	N/A	N/A
Distance to Furnace Flue	N/A	N/A	N/A
Spacing from Trees	N/A	N/A	N/A
Nearest Major Roadway	Broadway Rd.	Broadway Rd.	Broadway Rd.
Distance and Direction to Road	305 meters, S	305 meters, S	305 meters, S
Traffic Count (ADT)	33000	33000	33000
Groundcover	Paved/Gravel	Paved/Gravel	Paved/Gravel

*Unavailable at time of publication

NORTH PHOENIX

County ID: NP

AQS ID: 04-013-1004

Address: 601 E Butler Dr., Phoenix

Coordinates: 33.56033N – 112.06626W

Metropolitan Sampling Area (MSA): 6200 Phoenix-Mesa

-General Information			
Pollutant/Monitor Type	Ozone	CO	PM₁₀
Sampling Schedule	Continuous	Continuous	1 in 6 day
Analysis Method (filters only)	N/A	N/A	Filters Weighed In-House
Any Proposal to Remove or Move Monitor?	No	No	No
Is site suitable for comparison to PM _{2.5} NAAQS per Part 58.30?	N/A	N/A	N/A
-Appendix A Requirements			
# Precision Checks Performed Annually	23	12	N/A
# Accuracy Checks Performed Annually	3	2	3
All Precision/Accuracy Reports Submitted to AQS?	Yes	Yes	Yes
Annual Data Certification Submitted?	Pending for July 2010	Pending for July 2010	Pending for July 2010
Frequency of One-Point QC Check	Bi-Weekly	Bi-Weekly	N/A
Frequency of Flow Rate Verification	N/A	N/A	Monthly
Last Annual Performance Evaluation Date	*	*	N/A
Last Two Semi-Annual Flow Rate Audit Dates	N/A	N/A	*
-Appendix C Requirements			
Sampler Make & Model	API M400	API M300	Anderson SSI
Date Established	01/01/1975	01/01/1974	01/05/1990
Classification	SLAMS	SLAMS	SLAMS
Method (FRM, FEM, ARM)	FEM	FRM	FRM
-Appendix D Requirements			
Monitoring Objective	Population Exposure	Population Exposure	Population Exposure
Monitoring Scale	Neighborhood	Neighborhood	Neighborhood
Sampling Season	Jan-Dec	Sep-Mar	Jan-Dec
Network Meets Minimum Number of Monitors Required?	Yes	Yes	Yes
-Appendix E Requirements			
Distance between collocated samplers	N/A	N/A	N/A
Probe Inlet Height	4.6 meters	4.6 meters	4.4 meters
Airflow Arc	360°	360°	360°
Probe Sample Line Material	Teflon	Teflon	N/A
Pollutant Sample Residence Time	5.0 sec	N/A	N/A
Distance from Supporting Structure	N/A	N/A	N/A
Distance from Obstructions	N/A	N/A	N/A
Distance to Furnace Flue	N/A	N/A	N/A
Spacing from Trees	N/A	N/A	N/A
Nearest Major Roadway	7 th Street	7 th Street	7 th Street
Distance and Direction to Road	75 meters, E	75 meters, E	75 meters, E
Traffic Count (ADT)	32000	32000	32000
Groundcover	Gravel	Gravel	Gravel

*Unavailable at time of publication

PINNACLE PEAK

County ID: PP

AQS ID: 04-013-2005

Address: 25000 N Windy Walk, Scottsdale

Coordinates: 33.71231N – 111.85272W

Metropolitan Sampling Area (MSA): 6200 Phoenix-Mesa

-General Information	
Pollutant/Monitor Type	Ozone
Sampling Schedule	Continuous
Analysis Method (filters only)	N/A
Any Proposal to Remove or Move Monitor?	No
Is site suitable for comparison to PM _{2.5} NAAQS per Part 58.30?	N/A
-Appendix A Requirements	
# Precision Checks Performed Annually	23
# Accuracy Checks Performed Annually	4
All Precision/Accuracy Reports Submitted to AQS?	Yes
Annual Data Certification Submitted?	Pending for July 2010
Frequency of One-Point QC Check	Bi-Weekly
Frequency of Flow Rate Verification	N/A
Last Annual Performance Evaluation Date	*
Last Two Semi-Annual Flow Rate Audit Dates	N/A
-Appendix C Requirements	
Sampler Make & Model	API M400
Date Established	02/01/1988
Classification	SLAMS
Method (FRM, FEM, ARM)	FEM
-Appendix D Requirements	
Monitoring Objective	Max Ozone Concentration
Monitoring Scale	Urban
Sampling Season	Jan-Dec
Network Meets Minimum Number of Monitors Required?	Yes
-Appendix E Requirements	
Distance between collocated samplers	N/A
Probe Inlet Height	11.9 meters
Airflow Arc	360°
Probe Sample Line Material	Teflon
Pollutant Sample Residence Time	20.0 sec
Distance from Supporting Structure	N/A
Distance from Obstructions	N/A
Distance to Furnace Flue	N/A
Spacing from Trees	N/A
Nearest Major Roadway	Happy Valley Rd.
Distance and Direction to Road	61 meters, S
Traffic Count (ADT)	16000
Groundcover	Paved/Grass

*Unavailable at time of publication

RIO VERDE
 County ID: RV
 AQS ID: 04-013-9706
 Address: 25608 N Forest Rd., Rio Verde
 Coordinates: 33.71881N – 111.67183W
 Metropolitan Sampling Area (MSA): 6200 Phoenix-Mesa

-General Information	
Pollutant/Monitor Type	Ozone
Sampling Schedule	Continuous
Analysis Method (filters only)	N/A
Any Proposal to Remove or Move Monitor?	No
Is site suitable for comparison to PM _{2.5} NAAQS per Part 58.30?	N/A
-Appendix A Requirements	
# Precision Checks Performed Annually	12
# Accuracy Checks Performed Annually	4
All Precision/Accuracy Reports Submitted to AQS?	Yes
Annual Data Certification Submitted?	Pending for July 2010
Frequency of One-Point QC Check	Bi-Weekly
Frequency of Flow Rate Verification	N/A
Last Annual Performance Evaluation Date	*
Last Two Semi-Annual Flow Rate Audit Dates	N/A
-Appendix C Requirements	
Sampler Make & Model	API M400
Date Established	01/01/1997
Classification	SLAMS
Method (FRM, FEM, ARM)	FEM
-Appendix D Requirements	
Monitoring Objective	Max Ozone Concentration
Monitoring Scale	Urban
Sampling Season	Apr-Oct
Network Meets Minimum Number of Monitors Required?	Yes
-Appendix E Requirements	
Distance between collocated samplers	N/A
Probe Inlet Height	6.2 meters
Airflow Arc	360°
Probe Sample Line Material	Teflon
Pollutant Sample Residence Time	9.7 sec
Distance from Supporting Structure	N/A
Distance from Obstructions	N/A
Distance to Furnace Flue	N/A
Spacing from Trees	16 meters, S
Nearest Major Roadway	Forest Rd
Distance and Direction to Road	43 meters, E
Traffic Count (ADT)	Unknown
Groundcover	Paved

*Unavailable at time of publication

SOUTH PHOENIX

County ID: SP

AQS ID: 04-013-4003

Address: 33 W Tamarisk, Phoenix

Coordinates: 33.40316N – 112.07533W

Metropolitan Sampling Area (MSA): 6200 Phoenix-Mesa

-General Information				
Pollutant/Monitor Type	Ozone	CO	PM_{2.5}	PM₁₀
Sampling Schedule	Continuous	Continuous	1 in 3 day	Continuous
Analysis Method (filters only)	N/A	N/A	Filters Weighed In-House	N/A
Any Proposal to Remove or Move Monitor?	No	No	No	No
Is site suitable for comparison to PM _{2.5} NAAQS per Part 58.30?	N/A	N/A	N/A	N/A
-Appendix A Requirements				
# Precision Checks Performed Annually	23	11	N/A	21
# Accuracy Checks Performed Annually	6	2	2	2
All Precision/Accuracy Reports Submitted to AQS?	Yes	Yes	Yes	Yes
Annual Data Certification Submitted?	Pending for July 2010	Pending for July 2010	Pending for July 2010	Pending for July 2010
Frequency of One-Point QC Check	Bi-Weekly	Bi-Weekly	N/A	N/A
Frequency of Flow Rate Verification	N/A	N/A	Every 6 Weeks	Bi-Monthly
Last Annual Performance Evaluation Date	*	*	N/A	N/A
Last Two Semi-Annual Flow Rate Audit Dates	N/A	N/A	*	*
-Appendix C Requirements				
Sampler Make & Model	API M400	API M300	R&P 2025	R&P TEOM
Date Established	10/01/1999	10/01/1999	01/01/2005	7/1/2007
Classification	SLAMS	SLAMS	SLAMS	SLAMS
Method (FRM, FEM, ARM)	FEM	FRM	FRM	FEM
-Appendix D Requirements				
Monitoring Objective	Population Exposure	Population Exposure	Population Exposure	Population Exposure
Monitoring Scale	Neighborhood	Neighborhood	Neighborhood	Neighborhood
Sampling Season	Jan-Dec	Sep-Mar	Jan-Dec	Jan-Dec
Network Meets Minimum Number of Monitors Required?	Yes	Yes	Yes	Yes
-Appendix E Requirements				
Distance between collocated samplers	N/A	N/A	N/A	N/A
Probe Inlet Height	4.9 meters	4.9 meters	5.5 meters	5.4 meters
Airflow Arc	360°	360°	360°	360°
Probe Sample Line Material	Teflon	Teflon	N/A	N/A
Pollutant Sample Residence Time	6.9 sec	N/A	N/A	N/A
Distance from Supporting Structure	N/A	N/A	N/A	N/A
Distance from Obstructions	N/A	N/A	N/A	N/A
Distance to Furnace Flue	N/A	N/A	N/A	N/A
Spacing from Trees	N/A	N/A	N/A	N/A
Nearest Major Roadway A	Central Ave	Central Ave	Central Ave	Central Ave
Distance and Direction to Road	168 meters, E	168 meters, E	168 meters, E	165 meters, E
Traffic Count (ADT)	24000	24000	24000	24000
Nearest Major Roadway B	Broadway Rd	Broadway Rd	Broadway Rd	Broadway Rd
Distance and Direction to Road	385 meters, N	385 meters, N	385 meters, N	385 meters, N
Traffic Count (ADT)	18000	18000	18000	13000
Groundcover	Paved	Paved	Paved	Paved

*Unavailable at time of publication

SOUTH SCOTTSDALE

County ID: SS

AQS ID: 04-013-3003

Address: 2857 N Miller Rd., Scottsdale

Coordinates: 33.47968N – 111.91721W

Metropolitan Sampling Area (MSA): 6200 Phoenix-Mesa

-General Information					
Pollutant/Monitor Type	Ozone	CO	NO₂	SO₂	PM₁₀
Sampling Schedule	Continuous	Continuous	Continuous	Continuous	1 in 6 day
Analysis Method (filters only)	N/A	N/A	N/A	N/A	Filters Weighed In-House
Any Proposal to Remove or Move Monitor?	No	No	No	No	No
Is site suitable for comparison to PM _{2.5} NAAQS per Part 58.30?	N/A	N/A	N/A	N/A	N/A
-Appendix A Requirements					
# Precision Checks Performed Annually	22	11	21	23	61 (collocated)
# Accuracy Checks Performed Annually	6	3	5	7	2
All Precision/Accuracy Reports Submitted to AQS?	Yes	Yes	Yes	Yes	Yes
Annual Data Certification Submitted?	Pending for July 2010	Pending for July 2010	Pending for July 2010	Pending for July 2010	Pending for July 2010
Frequency of One-Point QC Check	Bi-Weekly	Bi-Weekly	Bi-Weekly	Bi-Weekly	N/A
Frequency of Flow Rate Verification	N/A	N/A	N/A	N/A	Monthly
Last Annual Performance Evaluation Date	*	*	*	*	N/A
Last Two Semi-Annual Flow Rate Audit Dates	N/A	N/A	N/A	N/A	*
-Appendix C Requirements					
Sampler Make & Model	API M400	API M300	API M200	API M100	Anderson SSI
Date Established	01/01/1974	01/01/1974	10/01/1975	01/01/1984	07/01/1987
Classification	SLAMS	SLAMS	SLAMS	SLAMS	SLAMS
Method (FRM, FEM, ARM)	FEM	FRM	FRM	FEM	FRM
-Appendix D Requirements					
Monitoring Objective	Population Exposure	Population Exposure	Population Exposure	Population Exposure	Population Exposure
Monitoring Scale	Neighborhood	Neighborhood	Urban	Neighborhood	Neighborhood
Sampling Season	Jan-Dec	Sep-Mar	Jan-Dec	Jan-Dec	Jan-Dec
Network Meets Minimum Number of Monitors Required?	Yes	Yes	Yes	Yes	Yes
-Appendix E Requirements					
Distance between collocated samplers	N/A	N/A	N/A	N/A	6.5 meters
Probe Inlet Height	5.8 meters	5.8 meters	5.8 meters	5.8 meters	5.1 meters
Airflow Arc	360°	360°	360°	360°	360°
Probe Sample Line Material	Teflon	Teflon	Teflon	Teflon	N/A
Pollutant Sample Residence Time	11.1 sec	N/A	11.1 sec	12.1 sec	N/A
Distance from Supporting Structure	N/A	N/A	N/A	N/A	N/A
Distance from Obstructions	N/A	N/A	N/A	N/A	N/A
Distance to Furnace Flue	N/A	N/A	N/A	N/A	N/A
Spacing from Trees	14 meters, S	14 meters, S	14 meters, S	14 meters, S	14 meters, S
Nearest Major Roadway A	Thomas	Thomas	Thomas	Thomas	Thomas
Distance and Direction to Road	66 meters, N	66 meters, N	66 meters, N	66 meters, N	62 meters, N
Traffic Count (ADT)	33000	33000	33000	33000	33000
Nearest Major Roadway B	Miller	Miller	Miller	Miller	Miller
Distance and Direction to Road	32 meters, W	32 meters, W	32 meters, W	32 meters, W	35 meters, W
Traffic Count (ADT)	13000	13000	13000	13000	13000
Groundcover	Paved	Paved	Paved	Paved	Paved

*Unavailable at time of publication

TEMPE
County ID: TE
AQS ID: 04-013-4005
Address: 1525 S College, Tempe
Coordinates: 33.4124N – 111.93473W
Metropolitan Sampling Area (MSA): 6200 Phoenix-Mesa

-General Information		
Pollutant/Monitor Type	Ozone	CO
Sampling Schedule	Continuous	Continuous
Analysis Method (filters only)	N/A	N/A
Any Proposal to Remove or Move Monitor?	No	No
Is site suitable for comparison to PM _{2.5} NAAQS per Part 58.30?	N/A	N/A
-Appendix A Requirements		
# Precision Checks Performed Annually	14	13
# Accuracy Checks Performed Annually	3	2
All Precision/Accuracy Reports Submitted to AQS?	Yes	Yes
Annual Data Certification Submitted?	Pending for July 2010	Pending for July 2010
Frequency of One-Point QC Check	Bi-Weekly	Bi-Weekly
Frequency of Flow Rate Verification	N/A	N/A
Last Annual Performance Evaluation Date	*	*
Last Two Semi-Annual Flow Rate Audit Dates	N/A	N/A
-Appendix C Requirements		
Sampler Make & Model	API M400	API M300
Date Established	07/01/2000	07/01/2000
Classification	SLAMS	SLAMS
Method (FRM, FEM, ARM)	FEM	FRM
-Appendix D Requirements		
Monitoring Objective	Population Exposure	Population Exposure
Monitoring Scale	Neighborhood	Neighborhood
Sampling Season	Jan-Dec	Sep-Mar
Network Meets Minimum Number of Monitors Required?	Yes	Yes
-Appendix E Requirements		
Distance between collocated samplers	N/A	N/A
Probe Inlet Height	4.4 meters	4.4 meters
Airflow Arc	360°	360°
Probe Sample Line Material	Teflon	Teflon
Pollutant Sample Residence Time	5.4 sec	N/A
Distance from Supporting Structure	N/A	N/A
Distance from Obstructions	N/A	N/A
Distance to Furnace Flue	N/A	N/A
Spacing from Trees	N/A	N/A
Nearest Major Roadway A	College Ave	College Ave
Distance and Direction to Road	11 meters, W	11 meters, W
Traffic Count (ADT)	Unknown (secondary street)	Unknown (secondary street)
Nearest Major Roadway B	Apache	Apache
Distance and Direction to Road	370 meters, N	370 meters, N
Traffic Count (ADT)	25000	25000
Groundcover	Gravel	Gravel

*Unavailable at time of publication

WEST CHANDLER

County ID: WC

AQS ID: 04-013-4004

Address: 275 S Ellis, Chandler

Coordinates: 33.29898N – 111.88431W

Metropolitan Sampling Area (MSA): 6200 Phoenix-Mesa

-General Information			
Pollutant/Monitor Type	Ozone	CO	PM₁₀
Sampling Schedule	Continuous	Continuous	1-in-6 day/Continuous*
Analysis Method (filters only)	N/A	N/A	Filters weighed in-house
Any Proposal to Remove or Move Monitor?	No	No	No
Is site suitable for comparison to PM _{2.5} NAAQS per Part 58.30?	N/A	N/A	N/A
-Appendix A Requirements			
# Precision Checks Performed Annually	14	13	5#
# Accuracy Checks Performed Annually	3	2	4
All Precision/Accuracy Reports Submitted to AQS?	Yes	Yes	Yes
Annual Data Certification Submitted?	Pending for July 2010	Pending for July 2010	Pending for July 2010
Frequency of One-Point QC Check	Bi-Weekly	Bi-Weekly	N/A
Frequency of Flow Rate Verification	N/A	N/A	Monthly
Last Annual Performance Evaluation Date	*	*	N/A
Last Two Semi-Annual Flow Rate Audit Dates	N/A	N/A	*
-Appendix C Requirements			
Sampler Make & Model	API M400	API M300	Anderson SSI
Date Established	07/01/2000	07/01/2000	07/01/2000
Classification	SLAMS	SLAMS	SLAMS
Method (FRM, FEM, ARM)	FEM	FRM	FRM
-Appendix D Requirements			
Monitoring Objective	Population Exposure	Population Exposure	Population Exposure
Monitoring Scale	Neighborhood	Neighborhood	Middle
Sampling Season	Apr-Oct	Sep-Mar	Jan-Dec
Network Meets Minimum Number of Monitors Required?	Yes	Yes	Yes
-Appendix E Requirements			
Distance between collocated samplers	N/A	N/A	N/A
Probe Inlet Height	4.4 meters	4.4 meters	4.4 meters
Airflow Arc	360°	360°	360°
Probe Sample Line Material	Teflon	Teflon	N/A
Pollutant Sample Residence Time	4.6 sec	N/A	N/A
Distance from Supporting Structure	N/A	N/A	N/A
Distance from Obstructions	N/A	N/A	N/A
Distance to Furnace Flue	N/A	N/A	N/A
Spacing from Trees	14 meters, E	14 meters, E	14 meters, E
Nearest Major Roadway A	Frye Rd	Frye Rd	Frye Rd
Distance and Direction to Road	23 meters, S	23 meters, S	25 meters, S
Traffic Count (ADT)	Unknown (secondary street)	Unknown (secondary street)	Unknown (secondary street)
Nearest Major Roadway B	Ellis St	Ellis St	Ellis St
Distance and Direction to Road	73 meters, W	73 meters, W	71 meters, W
Traffic Count (ADT)	Unknown (secondary street)	Unknown (secondary street)	Unknown (secondary street)
Groundcover	Paved/Gravel	Paved/Gravel	Paved/Gravel

Monitor changed from filter-based to continuous in September 2009. Precision checks are for continuous monitor.

*Unavailable at time of publication

WEST 43RD AVENUE

County ID: WF

AQS ID: 04-013-4009

Address: 3940 W Broadway, Phoenix

Coordinates: 33.40642N – 112.14434W

Metropolitan Sampling Area (MSA): 6200 Phoenix-Mesa

-General Information	
Pollutant/Monitor Type	PM₁₀
Sampling Schedule	Continuous
Analysis Method (filters only)	N/A
Any Proposal to Remove or Move Monitor?	No
Is site suitable for comparison to PM _{2.5} NAAQS per Part 58.30?	N/A
-Appendix A Requirements	
# Precision Checks Performed Annually	19
# Accuracy Checks Performed Annually	2
All Precision/Accuracy Reports Submitted to AQS?	Yes
Annual Data Certification Submitted?	Pending for July 2010
Frequency of One-Point QC Check	N/A
Frequency of Flow Rate Verification	Bi-Weekly
Last Annual Performance Evaluation Date	N/A
Last Two Semi-Annual Flow Rate Audit Dates	*
-Appendix C Requirements	
Sampler Make & Model	R&P TEOM
Date Established	04/01/2002
Classification	SLAMS
Method (FRM, FEM, ARM)	FEM
-Appendix D Requirements	
Monitoring Objective	Highest Concentrations
Monitoring Scale	Middle
Sampling Season	Jan-Dec
Network Meets Minimum Number of Monitors Required?	Yes
-Appendix E Requirements	
Distance between collocated samplers	N/A
Probe Inlet Height	5 meters
Airflow Arc	360°
Probe Sample Line Material	N/A
Pollutant Sample Residence Time	N/A
Distance from Supporting Structure	N/A
Distance from Obstructions	N/A
Distance to Furnace Flue	N/A
Spacing from Trees	N/A
Nearest Major Roadway	Broadway Road
Distance and Direction to Road	37 meters, SE
Traffic Count (ADT)	Unknown
Groundcover	Gravel

*Unavailable at time of publication

WEST INDIAN SCHOOL ROAD

County ID: WI

AQS ID: 04-013-0016

Address: 3315 W Indian School Rd, Phoenix

Coordinates: 33.49462N – 112.13095W

Metropolitan Sampling Area (MSA): 6200 Phoenix-Mesa

-General Information	
Pollutant/Monitor Type	CO
Sampling Schedule	Continuous
Analysis Method (filters only)	N/A
Any Proposal to Remove or Move Monitor?	Yes, consideration of removing monitor
Is site suitable for comparison to PM _{2.5} NAAQS per Part 58.30?	N/A
-Appendix A Requirements	
# Precision Checks Performed Annually	23
# Accuracy Checks Performed Annually	4
All Precision/Accuracy Reports Submitted to AQS?	Yes
Annual Data Certification Submitted?	Pending for July 2010
Frequency of One-Point QC Check	Bi-Weekly
Frequency of Flow Rate Verification	N/A
Last Annual Performance Evaluation Date	*
Last Two Semi-Annual Flow Rate Audit Dates	N/A
-Appendix C Requirements	
Sampler Make & Model	API M300
Date Established	12/01/1980
Classification	SLAMS
Method (FRM, FEM, ARM)	FRM
-Appendix D Requirements	
Monitoring Objective	Highest Concentration
Monitoring Scale	Micro-scale
Sampling Season	Jan-Dec
Network Meets Minimum Number of Monitors Required?	Yes
-Appendix E Requirements	
Distance between collocated samplers	N/A
Probe Inlet Height	2.6 meters
Airflow Arc	360°
Probe Sample Line Material	Teflon
Pollutant Sample Residence Time	N/A
Distance from Supporting Structure	2 meters from side of building
Distance from Obstructions	Roofline 2 meters to South, .5 meters above probe
Distance to Furnace Flue	N/A
Spacing from Trees	N/A
Nearest Major Roadway	Indian School Road
Distance and Direction to Road	3 meters, N
Traffic Count (ADT)	50,000
Groundcover	Paved

*Unavailable at time of publication

WEST PHOENIX

County ID: WP

AQS ID: 04-013-0019

Address: 3847 W Earll, Phoenix

Coordinates: 33.48385N – 112.14257W

Metropolitan Sampling Area (MSA): 6200 Phoenix-Mesa

-General Information						
Pollutant/Monitor Type	Ozone	CO	NO ₂	PM _{2.5}	PM _{2.5}	PM ₁₀
Sampling Schedule	Continuous	Continuous	Continuous	1 in 3 days	Continuous	Continuous
Analysis Method (filters only)	N/A	N/A	N/A	Filters Weighed In-House	N/A	N/A
Any Proposal to Remove or Move Monitor?	No	No	No	No	No	No
Is site suitable for comparison to PM _{2.5} NAAQS per Part 58.30?	N/A	N/A	N/A	Yes	Yes	N/A
-Appendix A Requirements						
# Precision Checks Performed Annually	23	23	25	30 (Collocated)		22
# Accuracy Checks Performed Annually	4	4	5	1	1	3
All Precision/Accuracy Reports Submitted to AQS?	Yes	Yes	Yes	Yes	Yes	Yes
Annual Data Certification Submitted?	Pending for July 2010	Pending for July 2010	Pending for July 2010	Pending for July 2010	Pending for July 2010	Pending for July 2010
Frequency of One-Point QC Check	Bi-Weekly	Bi-Weekly	Bi-Weekly	N/A	N/A	N/A
Frequency of Flow Rate Verification	N/A	N/A	N/A	Every 6 weeks	Bi-Weekly	Bi-Weekly
Last Annual Performance Evaluation Date	*	*	*	N/A	N/A	N/A
Last Two Semi-Annual Flow Rate Audit Dates	N/A	N/A	N/A	*	*	*
-Appendix C Requirements						
Sampler Make & Model	API M400	API M300	API M200	R&P 2025	R&P FDMS-TEOM	R&P TEOM
Date Established	01/01/84	01/01/84	05/24/90	06/13/00	09/01/05	02/01/88
Classification	SLAMS	SLAMS	SLAMS	SLAMS	SLAMS	SLAMS
Method (FRM, FEM, ARM)	FEM	FRM	FRM	FRM	None	FEM
-Appendix D Requirements						
Monitoring Objective	Population Exposure	Population Exposure	Population Exposure	Highest Concentration	Highest Concentration	Population Exposure
Monitoring Scale	Neighborhood	Neighborhood	Neighborhood	Neighborhood	Neighborhood	Neighborhood
Sampling Season	Jan-Dec	Jan-Dec	Jan-Dec	Jan-Dec	Jan-Dec	Jan-Dec
Network Meets Minimum Number of Monitors Required?	Yes	Yes	Yes	Yes	Yes	Yes
-Appendix E Requirements						
Distance between collocated samplers	N/A	N/A	N/A	2.3 meters	N/A	N/A
Probe Inlet Height	4.3 meters	4.3 meters	4.3 meters	2.8 meter	3.6 meter	2.7 meters
Airflow Arc	360°	360°	360°	360°	360°	360°
Probe Sample Line Material	Teflon	Teflon	Teflon	N/A	N/A	N/A
Pollutant Sample Residence Time	4.4 sec	N/A	4.4 sec	N/A	N/A	N/A
Distance from Supporting Structure	N/A	N/A	N/A	N/A	N/A	N/A
Distance from Obstructions	N/A	N/A	N/A	N/A	N/A	N/A
Distance to Furnace Flue	N/A	N/A	N/A	N/A	N/A	N/A
Spacing from Trees	N/A	N/A	N/A	N/A	N/A	N/A
Nearest Major Roadway	Thomas	Thomas	Thomas	Thomas	Thomas	Thomas
Distance and Direction to Road	360 meters, S	360 meters, S	360 meters, S	360 meters, S	360 meters, S	360 meters, S
Traffic Count (ADT)	29,000	29,000	29,000	29,000	29,000	29,000
Groundcover	Gravel	Gravel	Gravel	Gravel	Gravel	Gravel

*Unavailable at time of publication

ZUNI HILLS

County ID: ZH

AQS ID: 04-013-4016

Address: 10851 West Williams Rd., Sun City, AZ

Coordinates: 33.68674N, -112.29417W

Metropolitan Sampling Area (MSA): 6200 Phoenix-Mesa

-General Information	
Pollutant/Monitor Type	PM₁₀
Sampling Schedule	Continuous
Analysis Method (filters only)	N/A
Any Proposal to Remove or Move Monitor?	No
Is site suitable for comparison to PM _{2.5} NAAQS per Part 58.30?	N/A
-Appendix A Requirements	
# Precision Checks Performed Annually	2*
# Accuracy Checks Performed Annually	0*
All Precision/Accuracy Reports Submitted to AQS?	Yes
Annual Data Certification Submitted?	Pending for July 2010
Frequency of One-Point QC Check	N/A
Frequency of Flow Rate Verification	Bi-Weekly
Last Annual Performance Evaluation Date	N/A
Last Two Semi-Annual Flow Rate Audit Dates	None*
-Appendix C Requirements	
Sampler Make & Model	R&P TEOM
Date Established	12/01/09
Classification	SLAMS
Method (FRM, FEM, ARM)	FEM
-Appendix D Requirements	
Monitoring Objective	Population Exposure
Monitoring Scale	Neighborhood Scale
Sampling Season	Jan-Dec
Network Meets Minimum Number of Monitors Required?	Yes
-Appendix E Requirements	
Distance between collocated samplers	N/A
Probe Inlet Height	2.3 meters
Airflow Arc	360°
Probe Sample Line Material	N/A
Pollutant Sample Residence Time	N/A
Distance from Supporting Structure	N/A
Distance from Obstructions	N/A
Distance to Furnace Flue	N/A
Spacing from Trees	N/A
Nearest Major Roadway	Williams Rd
Distance and Direction to Road	200 meters, N
Traffic Count (ADT)	Unknown (residential street)
Groundcover	Lawn/Dirt

* Site opened in December 2009

APPENDIX III - PUBLIC NOTICE AND COMMENT INFORMATION

Public Notice Period

To fulfill the requirements of 40CFR58 §58.10, the Maricopa County Air Quality Department posted a draft copy of this Network Review on its website on 3/26/10. In an effort to notify the public of its network review, the department published information on a Network Review Public Workshop through the following outlets:

- News item on department website
- Electronic feed to subscribers
- Public Notice posted in the Arizona Republic, a newspaper of general circulation in Maricopa County.

News Release

The following is a copy of the news release that was advertised in the Arizona Republic:

Public Notice

The Maricopa County Air Quality Department will hold a public meeting to discuss its 2009 Air Monitoring Network Review on Wednesday, April 28, 2010 at 1:00 p.m. The meeting will be held at the Air Monitoring Division's offices at 2145 S. 11th Ave. suite 170, Phoenix, AZ 85007. A copy of the draft network review is currently available on the department's website at the following website address:

<http://www.maricopa.gov/aq/divisions/monitoring/network.aspx>

Hard copies of the document may be requested from the department's Records Management Coordinator at (602) 506-6201 or at the department's address: 1001 North Central Avenue, Phoenix, Arizona 85004. Arrangements may be made to view the information every Monday through Friday (excluding major holidays) between 8:00 a.m. and 4:30 p.m. There is a small fee for copying available documents.

The 2009 Air Monitoring Network Review covers ambient air monitoring activity captured by the department's 25 air monitoring sites throughout 2009. The Air Monitoring Network Review also provides a summary of the pollutants measured by Maricopa County, a look at the air monitoring network design and monitoring site details and statistics from the past year among other information. Additional information on the draft Air Monitoring Network Review may be obtained by contacting Ben Davis at 2145 S 11th Avenue #170, Phoenix, AZ 85007 or (602) 258-5155 x221.

The purpose of this April 28, 2010 public meeting is to receive comments from the public on the draft Network Review. Members of the public may comment in person or through written statements to the department.

Written comments shall state the name and mailing address of the person making comment and be signed by that person or authorized agent or attorney. Written comments on the draft document are due to the department by April 28, 2009 at 5:00 p.m.

A sign language and/or Spanish interpreter will be made available upon request with 72 hours notice. Additional reasonable accommodations will be made available to the extent possible within the time frame of the request.

Dates of Publication:

Arizona Republic: 3/26/2010 and 4/2/2010

Public Comments

There were no comments received from the public.