

TEENAGE PREGNANCY

Arizona, 2000-2010



**Arizona
Department of
Health Services**

**Public Health Services
Bureau of Public Health Statistics
Health Status and Vital Statistics Section**

~ Leadership for a Healthy Arizona ~



Janice K. Brewer, Governor
State of Arizona

Will Humble, Director
Arizona Department of Health Services

**HEALTH STATUS AND VITAL STATISTICS SECTION
BUREAU OF PUBLIC HEALTH STATISTICS
ARIZONA DEPARTMENT OF HEALTH SERVICES**

150 North 18th Avenue, Suite 550
Phoenix, Arizona 85007
Phone: 602/542-7333; FAX: 602/542-2940
www.azdhs.gov/plan

**This publication can be made available in alternative format.
Please contact the Bureau of Public Health Statistics
at 602/542-7333 (voice) or call 1-800-367-8939 (TDD).**

*The Arizona Department of Health Services is
an Equal Employment Opportunity Agency.*

*Permission to quote from or reproduce materials from this
publication is granted when due acknowledgment is made.*

TEENAGE PREGNANCY, ARIZONA, 2000-2010

by

Christopher K. Mrela, Ph.D., *Assistant Registrar of Vital Statistics*
Clare Torres, *Senior Health Data Analyst*

March 2012

Acknowledgment

Grateful acknowledgement is made to Richard S. Porter for reviewing the typescript.

TEENAGE PREGNANCY, ARIZONA, 2000-2010

Table of Contents

PURPOSE	1
METHODS AND SOURCES	1
DATA ORGANIZATION	1
COMPARATIVE NATIONAL AND STATE DATA	2
KEY FINDINGS	2
DATA TABLES	13

List of Figures

Figure 1	3
PREGNANCY RATES BY AGE GROUP AND YEAR AMONG FEMALES 19 OR YOUNGER, ARIZONA, 2000-2010	
Figure 2	3
TRENDS IN THE NUMBER OF PREGNANCIES AND PREGNANCY RATES AMONG FEMALES 19 OR YOUNGER, ARIZONA, 2000-2010	
Figure 3	4
TRENDS IN THE NUMBER OF PREGNANCIES BY RACE/ETHNICITY AMONG FEMALES 19 OR YOUNGER, ARIZONA, 2000-2010	
Figure 4	4
COMPARISON OF PREGNANCY RATES BY YEAR AMONG HISPANIC OR LATINOS AND ALL FEMALES 19 OR YOUNGER, ARIZONA, 2000-2010	
Figure 5	5
COMPARISON OF PREGNANCY RATES BY YEAR AMONG WHITE NON-HISPANICS AND ALL FEMALES 19 OR YOUNGER, ARIZONA, 2000-2010	
Figure 6	5
COMPARISON OF PREGNANCY RATES BY YEAR AMONG AMERICAN INDIAN OR ALASKA NATIVES AND ALL FEMALES 19 OR YOUNGER, ARIZONA, 2000-2010	
Figure 7	6
COMPARISON OF PREGNANCY RATES BY YEAR AMONG BLACK OR AFRICAN AMERICANS AND ALL FEMALES 19 OR YOUNGER, ARIZONA, 2000-2010	
Figure 8	6
COMPARISON OF PREGNANCY RATES BY YEAR AMONG ASIAN OR PACIFIC ISLANDERS AND ALL FEMALES 19 OR YOUNGER, ARIZONA, 2000-2010	
Figure 9	7
PROPORTIONAL CONTRIBUTION OF SURGICAL AND NON-SURGICAL ABORTIONS BY YEAR AMONG FEMALES 19 OR YOUNGER, ARIZONA, 2001-2010	
Figure 10	7
PROPORTIONAL CONTRIBUTION OF NON-SURGICAL AND SURGICAL ABORTIONS BY RACE/ETHNICITY AMONG FEMALES 19 OR YOUNGER, ARIZONA, 2010	
Figure 11	8
CUMULATIVE NUMBER OF MOTHERS WHO WERE 19 OR YOUNGER IN ARIZONA BY YEAR, 2000-2010	
Figure 12	8
RATES OF FIRST AND REPEAT BIRTHS TO FEMALES 15-19 YEARS, ARIZONA, 2000 AND 2010	
Figure 13	9
BIRTHS TO MOTHERS 19 OR YOUNGER BY MARITAL STATUS, ARIZONA, 1990, 2000 AND 2010	
Figure 14	9
NUMBER OF BIRTHS TO MOTHERS 19 OR YOUNGER BY PAYEE, ARIZONA, 2000 AND 2010	
Figure 15	10
TRENDS IN THE INCIDENCE OF SEXUALLY TRANSMITTED INFECTIONS AMONG FEMALES 15-19 YEARS, ARIZONA, 2000-2010	
Figure 16	10
CUMULATIVE NUMBER OF CASES OF GENITAL HERPES AMONG FEMALES 15-19 YEARS, ARIZONA, 2000-2010	

List of Figures (continued)

Figure 17	11
BIRTH RATES FOR TEENAGERS 15-19 YEARS NATIONALLY AND IN ARIZONA, 2000-2010	
Figure 18	11
BIRTH RATES FOR HISPANIC OR LATINO TEENAGERS 15-19 YEARS NATIONALLY AND IN ARIZONA, 2000-2010	

List of Tables

Table 1	14
PREGNANCIES AND PREGNANCY OUTCOME BY AGE GROUP AND YEAR, FEMALES 19 OR YOUNGER, ARIZONA, 2000-2010	
Table 2	15
PREGNANCY RATES BY PREGNANCY OUTCOME, AGE GROUP AND YEAR, FEMALES 19 OR YOUNGER, ARIZONA, 2000-2010	
Table 3	16
LIVE BIRTHS TO FEMALES 19 OR YOUNGER BY AGE GROUP, RACE/ETHNICITY AND YEAR, ARIZONA, 2000-2010	
Table 4	17
ABORTIONS TO FEMALES 19 OR YOUNGER BY AGE GROUP, RACE/ETHNICITY AND YEAR, ARIZONA, 2000-2010	
Table 5	18
NUMBER OF PREGNANCIES BY PREGNANCY OUTCOME, RACE/ETHNIC GROUP AND YEAR AMONG FEMALES AGE 17 OR YOUNGER WITH RATES, ARIZONA, 2000-2010	
Table 6	19
NUMBER OF PREGNANCIES BY PREGNANCY OUTCOME, RACE/ETHNIC GROUP AND YEAR AMONG FEMALES 15-17 YEARS OLD WITH RATES, ARIZONA, 2000-2010	
Table 7	20
NUMBER OF PREGNANCIES BY PREGNANCY OUTCOME, RACE/ETHNIC GROUP AND YEAR AMONG FEMALES 18-19 YEARS OLD WITH RATES, ARIZONA, 2000-2010	
Table 8	21
NUMBER OF PREGNANCIES BY PREGNANCY OUTCOME, RACE/ETHNIC GROUP AND YEAR AMONG FEMALES 19 OR YOUNGER WITH RATES, ARIZONA, 2000-2010	
Table 9	22
TRENDS IN PREGNANCY RATES BY COUNTY OF RESIDENCE AMONG FEMALES 10-17 AND 18-19 YEARS OLD, ARIZONA, 2000-2010	
Table 10	23
LIVE BIRTHS TO FEMALES 19 OR YOUNGER AS A PERCENTAGE OF TOTAL LIVE BIRTHS BY AREA, RACE/ETHNICITY AND YEAR, ARIZONA. 2000-2010	
Table 11	24
BIRTH RATES BY AGE GROUP FOR FEMALES 19 OR YOUNGER, ARIZONA AND UNITED STATES, 2000-2010	
Table 12	25
REPEAT PREGNANCIES AMONG TEENAGE MOTHERS GIVING BIRTH BY AGE AND YEAR, ARIZONA, 2000-2010	
Table 13	26
CUMULATIVE NUMBER OF MOTHERS WHO WERE 19 OR YOUNGER IN ARIZONA IN 2010	
Table 14	27
TRENDS IN TEEN PREGNANCY RATES BY RACE/ETHNICITY AND AGE GROUP, ARIZONA, 2000-2010	

List of Tables (continued)

Table 15	28
TRENDS IN SEXUALLY TRANSMITTED INFECTIONS BY AGE GROUP AND YEAR AMONG FEMALES 10-19 YEARS, ARIZONA, 2000-2010	
Table 16	29
TRENDS IN THE INCIDENCE RATES OF SEXUALLY TRANSMITTED INFECTIONS BY AGE GROUP AND YEAR AMONG FEMALES 10-19 YEARS, ARIZONA, 2000-2010	
Table 17	30
PREGNANCIES AND PREGNANCY RATES, FEMALES 19 OR YOUNGER BY COUNTY OF RESIDENCE, ARIZONA, 2010	
Table 18	31
BIRTHS AND BIRTH RATES, FEMALES 19 OR YOUNGER BY COUNTY OF RESIDENCE, ARIZONA, 2010	
Table 19	32
PREGNANCY RATES AND NUMBER OF LIVE BIRTHS, FETAL DEATHS AND ABORTIONS TO TEENS BY INDIVIDUAL AGE, ARIZONA, 2010	
Table 20	33
BIRTHS TO FEMALES 19 OR YOUNGER BY AGE AND COUNTY OF RESIDENCE, ARIZONA, 2010	
Table 21	34
ABORTIONS TO FEMALES 19 OR YOUNGER BY AGE AND COUNTY OF RESIDENCE, ARIZONA, 2010	
Table 22	35
SOURCES OF PAYMENT FOR LABOR AND DELIVERY, FEMALES 19 OR YOUNGER BY AGE AND COUNTY OF RESIDENCE, ARIZONA, 2010	
Table 23	36
SOURCES OF PAYMENT FOR LABOR AND DELIVERY, FEMALES 19 OR YOUNGER BY AGE GROUP, ARIZONA, 2010	
Table 24	37
TEENAGE BIRTHS BY NUMBER OF PREVIOUS PREGNANCIES BY AGE GROUP, ARIZONA, 2010	
Table 25	37
TEENAGE BIRTHS BY MARITAL STATUS AND AGE GROUP, ARIZONA, 2010	
Table 26	37
TEENAGE BIRTHS BY MOTHER'S EDUCATION AND AGE GROUP, ARIZONA, 2010	
Table 27	38
TEENAGE BIRTHS BY TRIMESTER OF ENTRY INTO PRENATAL CARE AND AGE GROUP, ARIZONA, 2010	
Table 28	38
TEENAGE BIRTHS BY NUMBER OF PRENATAL VISITS AND AGE GROUP, ARIZONA, 2010	
Table 29	39
TOBACCO AND/OR ALCOHOL USE DURING PREGNANCY AMONG FEMALES 19 OR YOUNGER BY AGE GROUP, ARIZONA, 2010	
Table 30	40
RISK FOR LOW-BIRTHWEIGHT (LBW) BIRTHS BY SELECTED CHARACTERISTICS OF FEMALES 19 OR YOUNGER, ARIZONA, 2010	
Table 31	41
POPULATION OF FEMALES 19 OR YOUNGER, NUMBER OF PREGNANCIES AND PREGNANCY RATES BY AGE GROUP AND RACE/ETHNICITY, ARIZONA, 2010	
Table 32	42
POPULATION OF FEMALES 19 OR YOUNGER BY COUNTY OF RESIDENCE, ARIZONA 2010	
Appendix	43
HOW TO COMPUTE THE RATES OF FIRST AND REPEAT CHILDBEARING	

PURPOSE

This report is the annual update of information about pregnancies among females under age 20. The data for 2010 is placed in a temporal context by comparing it with the data from the preceding years. Earlier reports are available online at <http://www.azdhs.gov/plan/report/tp/index.htm> .

METHODS AND SOURCES

In this report, pregnancies are measured as the sum of three components: live births, fetal deaths (or stillbirths) and reported abortions to Arizona resident women, unless otherwise specified. Not included are spontaneous fetal losses that occur at less than 20 weeks of gestation. Induced terminations of pregnancy do not include those performed out-of-state to Arizona residents, since they are not reported in Arizona. Pregnancy statistics for Arizona are not available on a sub-county level.

Teens are defined as 10-14 year old preadolescents and adolescents 15-19 years of age. Where possible, the data presented distinguishes 18-19 year old teenagers from those aged 15-17 and girls less than 15 years of age.

The primary source documents for the data are the certificates of live births, certificates of fetal deaths and reports of induced terminations of pregnancy filed with the Arizona Department of Health Services.

The population denominators for Arizona's resident females, used to calculate rates for 2000 and 2010 are the actual census enumerations from the U.S. Census Bureau. The denominators for 2001-2009 are population estimates of Arizona resident females aged 10-19 years. Detailed information about the assumptions and specific data sources is available online at <http://www.azdhs.gov/plan/menu/info/pd.htm> .

The population denominators used to compute the rates for 2007 – 2009 will most likely be revised in the future. It is not only because they are based on the quite outdated 2000 Census, but they have not been adjusted for the effects of the economic downturn or changes in the law penalizing the illegal immigration. According to the 2010 Census enumerations there were 6,392,017 residents of the State in 2010, 203,761 fewer than the Census Bureau estimate of 6,595,778 for 2009, and fewer than the estimated number of Arizonans in 2007.

DATA ORGANIZATION

Tables 1-16 present annual numbers and rates of pregnancy, fertility, and abortion by year from 2000 to 2010, age group, and race/ethnicity for Arizona teens. Temporal trends and changes may be assessed from this data. Proportional contribution of teen births to all births is shown in Table 10 by area of residence and race/ethnic group in Arizona from 2000 to 2010. Table 11 compares birth rates in Arizona to those in the United States. The annual numbers of repeat pregnancies among teenage mothers are shown by age and year from 2000 to 2010 in Table 12.

Table 14 presents teen pregnancy rates by race/ethnicity and age group by year from 2000 to 2010. Table 15 provides information about the incidence of sexually transmitted infections among females 10-14 and 15-19 years old in Arizona in 2000-2010. Table 16 shows the incidence rates by year from 2000 to 2010.

Frequency counts, proportions and rates in Tables 17-32 all apply to the 2010 data. Tables 17-18 and 20-22 provide data by county of residence. Table 19 presents pregnancy rates by single year of age among females 19 and younger. Live births to teenage mothers are also reported in Tables 23-30 by marital status, education, previous pregnancies, trimester of entry into prenatal care, source of payment for labor and delivery and tobacco and alcohol use during pregnancy. The 2010 population denominators for Arizona resident females by age group and race/ethnicity, as well as by age group and county of residence are presented in Table 31 and Table 32. The *Appendix* demonstrates "How to compute the rates of first and repeat childbearing" using the annual data for 2000-2010.

COMPARATIVE NATIONAL AND STATE DATA

Timely, comparable, and reliable teen pregnancy statistics for other States and the Nation are not easily available. **"Health, United States, 2010"**, the premier annual publication of The Department of Health and Human Services, contains no information about pregnancies. The latest available (preliminary) national teenage birth rates for 2008 were published in May, 2010. No national abortion or fetal death data have been available since the 2006 calendar data year. The report, **"U.S. Teenage Pregnancies, Births and Abortions: National and State Trends and Trends by Race and Ethnicity"*** was published by the Alan Guttmacher Institute in January 2010. The authors combine the complete count of births provided by every state to the NCHS with the estimated numbers of abortions, early miscarriages, and fetal deaths. The number of abortions is estimated from surveys the Alan Guttmacher Institute conducts of known abortion providers (i.e. these data are by the place of occurrence and not by the woman's place of residence). The fetal loss estimates – including early miscarriages before 20 weeks of gestation (and estimated as 20% of live births plus 10% of abortions) – are from pregnancy history information collected by the National Survey of Family Growth (NSFG). Unlike vital statistics reports of fetal losses occurring at gestations of 20 weeks or more, NSFG include all gestations. Since the majority of fetal losses occur early in pregnancy before the reporting requirements for fetal deaths are in effect, their inclusion dramatically raises both the fetal loss rate and the pregnancy rate. The National Survey of Family Growth data are not state-specific. The pregnancy rates for Arizona teens cannot be compared with the rates for their peers nationally.

No comparable state-by-state teen pregnancy data for 2000 – 2010 are available at this time.

KEY FINDINGS

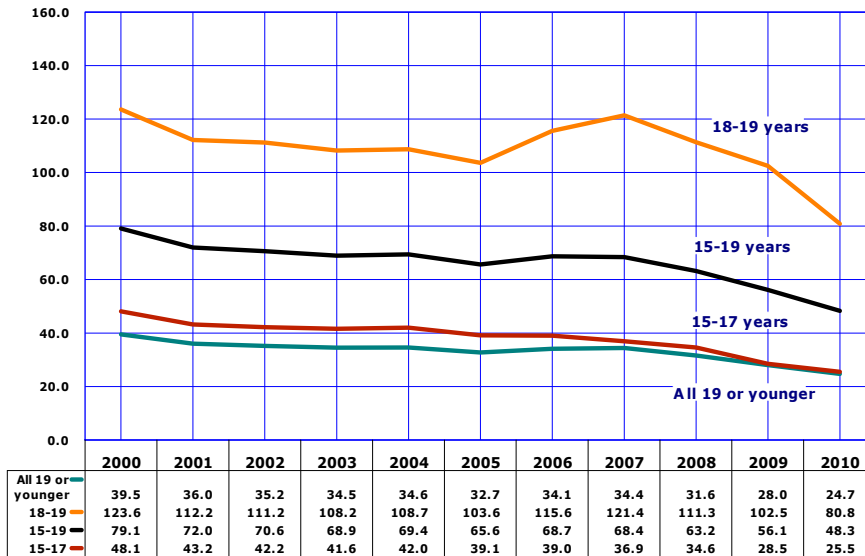
The following section presents some illustrative findings contained in the figures and tables of the report. It is not intended to be an exhaustive analysis of the tabulated data.

- **In 2010, the pregnancy rate of 24.7 pregnancies per 1,000 females 19 years or younger was 37.5 percent lower than the rate of 39.5/1,000 in 2000.**
- **It is only since 2007 that the reduction in the number of teen pregnancies was accompanied by an equally impressive decline in pregnancy rates.**
- **The declines in teenage pregnancy have been much steeper for younger than for older teenagers. The rate for teenagers 15-17 years dropped steeply by 47.0 percent from 48.1 per 1,000 in 2000 to 25.5 in 2010. The rate for older teenagers (aged 18-19 years) fell as well, by 34.6 percent beginning in 2000, from 123.6 to 80.8.**
- **The 2010 teen pregnancy rate of 24.7/1,000 was based on 10,980 pregnancies occurring among 443,971 females aged 10-19 years. The number of 10,980 teen pregnancies in 2010 was the lowest since 1984.**
- **From 2007 to 2009, the number of teen pregnancies declined particularly steeply for Asian (-29.9 percent), and Hispanic or Latino females (-30.8 percent).**
- **In 2010, Hispanic or Latino females accounted for 53.9 percent of all pregnancies in this age group, followed by White non-Hispanics (28.1 percent).**
- **In each year from 2000 to 2010, the pregnancy rates of Hispanic or Latino females were consistently greater than the average rates for all females 19 years or younger in Arizona. In 2010, the Hispanic rate exceeded the average rate for all groups by 33.8 percent.**
- **If the 2010 "risk for pregnancy" of Asian teens (i.e., their pregnancy rate) applied to all Arizona females 19 years or younger, the number of teen pregnancies in the State would have been reduced from 10,980 to approximately 4,395.**
- **The first birth rate for childless teenagers has dropped 37.5 percent from 57.1 first-time births per 1,000 females 15-19 years old in 2000, to 35.7/1,000 in 2010.**
- **The repeat birth rates for teenagers who had already had a child decreased by 36.9 percent from 181.3 in 2000 to 114.4 per 1,000 females 15-19 years old in 2010 who had a previous birth.**
- **The total number of births to mothers 19 years or younger decreased by 22.7 percent from 12,189 in 2000 to 9,416 in 2010 (Table 1). In contrast, the proportional share of births paid for by the Arizona Health Care Cost Containment System (AHCCCS, the State's Medicaid program) increased by 21.1 from 69.1 percent in 2000 to 83.7 percent in 2010.**
- **Unwed mothers have accounted for an increasing annual proportion of births throughout the 1980s and 1990s. In 2010, nonmarital births accounted for 88.1 percent of births to mothers 19 years or younger.**
- **The proportion of non-surgical abortions to females 19 years or younger decreased from 44.3 percent in 2009 to 40.6 percent in 2010.**

* Available at www.guttmacher.org/pubs/USTrends.pdf

KEY FINDINGS

Figure 1
Pregnancy Rates by Age Group and Year among
Females 19 or Younger, Arizona, 2000-2010

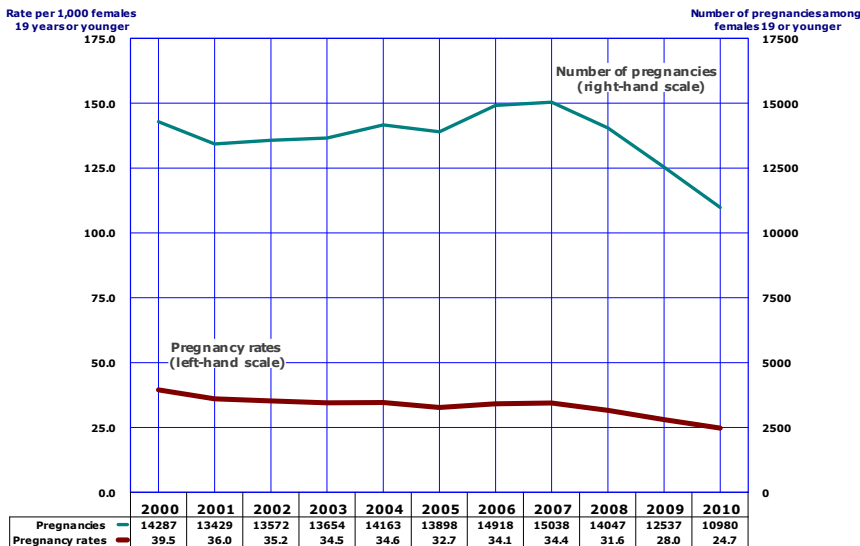


Note: All rates are per 1,000 females in specified group.

Teenage pregnancy rates dropped 37.5 percent overall from 2000 to 2010. **Figure 1, Table 2**). The declines in teenage pregnancy have been much steeper for younger than for older teenagers. The rate for teenagers 15-17 years dropped steeply by 47.0 percent from 48.1 per 1,000 in 2000 to 25.5 in 2010 (**Figure 1, Table 2**). The rate for older teenagers (aged 18-19 years) fell as well, by 34.6 percent beginning in 2000, from 123.6 to 80.8.

All components of the pregnancy rates for teenagers 19 years old or younger (births, abortions, and fetal losses) declined from 2007 to 2010 (**Table 1**).

Figure 2
Trends in the Number of Pregnancies and Pregnancy Rates
among Females 19 or Younger, Arizona, 2000-2010



Pregnancy rate = the number of pregnancies per 1,000 females in specified group.

Trends in the number of pregnancies to teenage women do not always parallel the pregnancy rate. The teen pregnancy rate measures the proportion of teenagers becoming pregnant in a given year; in other words, the relative "risk for pregnancy" in a population "at risk". The number of pregnancies is, however, also determined by the size of the population "at risk": or in this case by the number of teenage females in the population.

The annual pregnancy rates in 2001 - 2005 were lower than the 2000 rate of 39.5 /1,000. In contrast, the number of pregnancies increased from 13,429 in 2001 to 14,918 in 2006 and 15,038 in 2007. It is only since 2008 that the reduction in the number of teen pregnancies was accompanied by an equally impressive decline in pregnancy rates (**Figure 2, Table 1**).

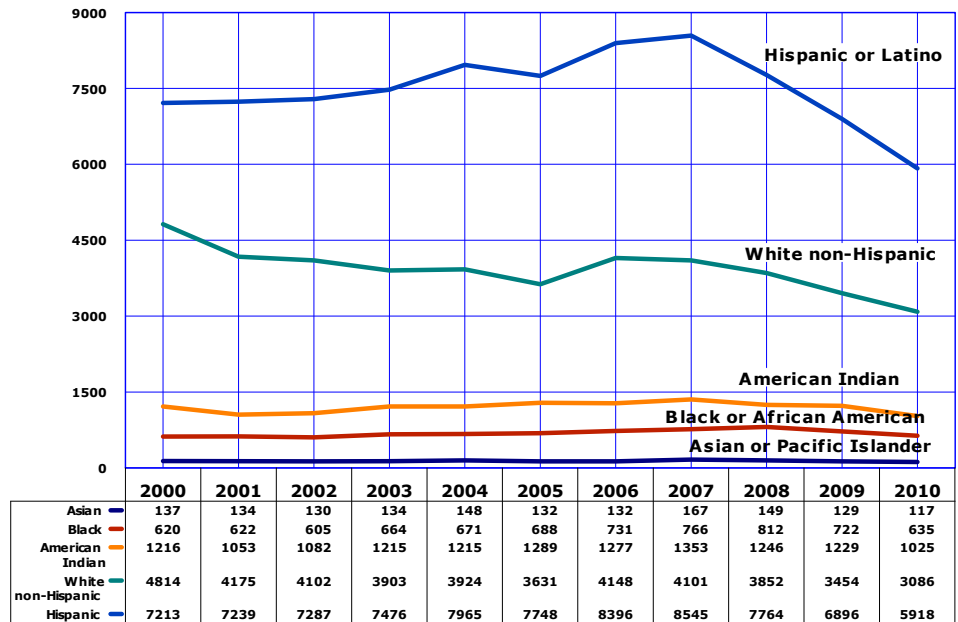
The 2010 teen pregnancy rate of 24.7/1,000 was based on 10,980 pregnancies occurring among 443,971 females aged 10-19 years. The number of 10,980 teen pregnancies in 2010 was the lowest since 1984.

KEY FINDINGS

Figure 3
Trends in the Number of Pregnancies* by Race/Ethnicity among Females 19 or Younger, Arizona, 2000-2010

The number of pregnancies to Hispanic females aged 19 years or younger exceeded the number of pregnancies among white non-Hispanic peers in every year since 1994 (**Figure 3** and **Table 8** in this report show only the data for 2000-2010). In 2010, Hispanic or Latino females accounted for 53.9 percent of all pregnancies in this age group, followed by White non-Hispanics (28.1 percent). Black or African American, Asian or Pacific Islander, American Indian, and females of other race aged 19 years or younger accounted for a larger share of pregnancies in 2010 (16.2 percent) than they did in 2000 (13.8 percent).

From 2007 to 2010, the number of teen pregnancies declined particularly steeply for Asian (-29.9 percent), and Hispanic or Latino females (-30.8 percent).



The sum of live births + induced abortions + spontaneous fetal deaths.

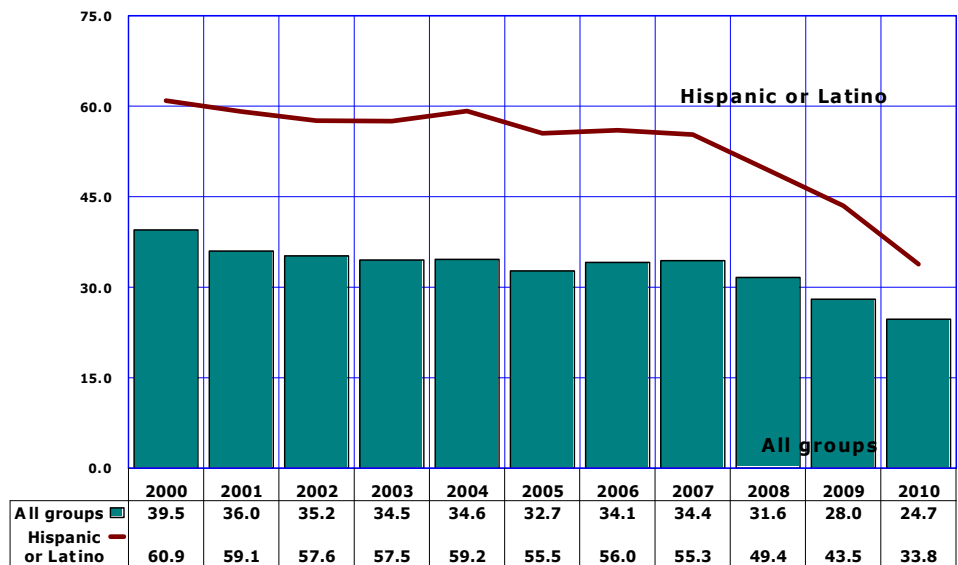
Figure 4
Comparison of Pregnancy Rates by Year among Hispanic or Latinos and all Females 19 or Younger, Arizona, 2000-2010

The teen pregnancy rates for all race and ethnic groups were lower in 2010 than in 2000 (**Figure 1**). However, the temporal trends in annual teen pregnancy rates differed considerably by race/ethnicity.

Figures 4, 5, 6, 7 and **8** reveal race/ethnicity-specific trends in teen pregnancy rates in Arizona in 2000-2010.

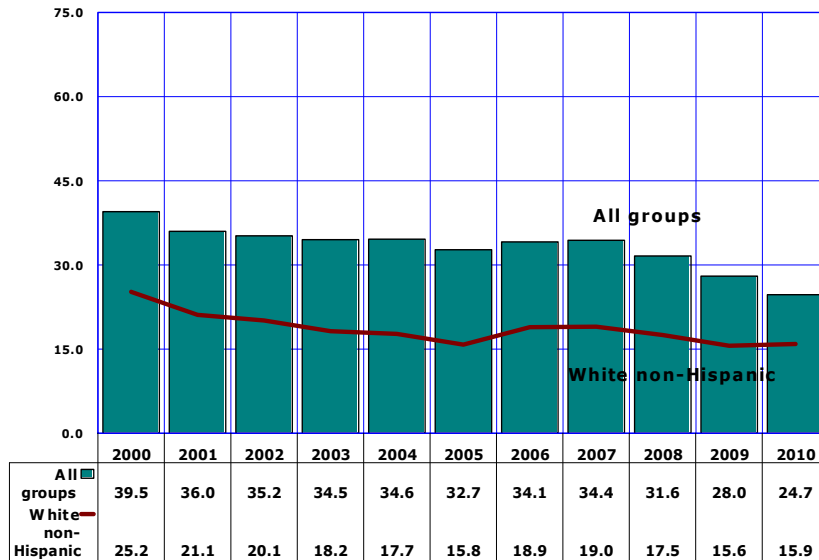
The pregnancy rate fell 5.6 percent for Hispanic or Latino females 19 years or younger in 2000-2003 and then increased in 2004. From 2006 to 2010 the pregnancy rate of Hispanic or Latino females fell by 42.9 percent (**Figure 4**).

In each year from 2000 to 2010, the pregnancy rates of Hispanic or Latino females were consistently greater than the average rates for all females 19 years or younger in Arizona. In 2010, the Hispanic rate exceeded the average rate for all groups by 33.8 percent.



Note: All rates are per 1,000 females in specified group.

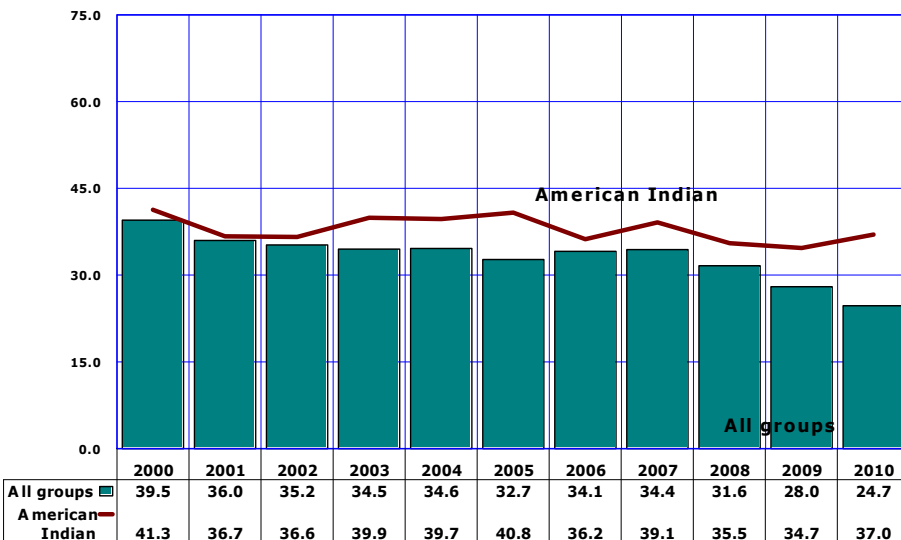
Figure 5
Comparison of Pregnancy Rates by Year among White non-Hispanics
and all Females 19 or Younger, Arizona, 2000-2010



The pregnancy rate for White non-Hispanics sharply increased by 19.6 percent in 2006 (Figure 5). The rate remained essentially unchanged at 19.0 in 2007 and then fell by 17.9 percent to 15.6/1,000 in 2009. In each year from 2000 to 2010, the pregnancy rates for White non-Hispanic females were lower than the average rates for all females 19 years or younger in Arizona.

Note: All rates are per 1,000 females in specified group.

Figure 6
Comparison of Pregnancy Rates by Year among American Indian or Alaska
Natives and all Females 19 or Younger, Arizona, 2000-2010



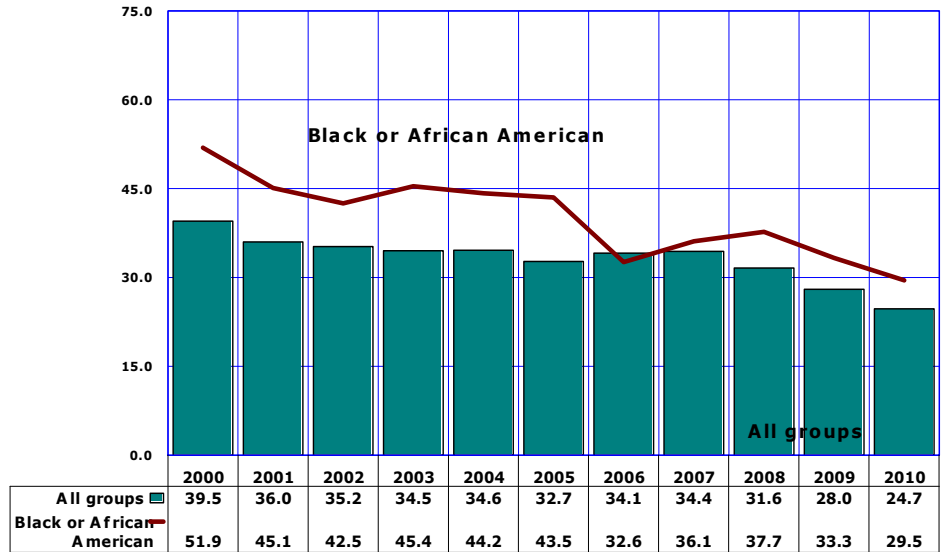
Despite some of the decreases noted between 2001 and 2002, the annual pregnancy rates among American Indian females 19 years or younger erratically varied from year to year (Figure 6). The American Indian rates were higher than the average for all groups in 2000-2010.

Note: All rates are per 1,000 females in specified group.

KEY FINDINGS

Figure 7
Comparison of Pregnancy Rates by Year among Black or African Americans and all Females 19 or Younger, Arizona, 2000-2010

The pregnancy rates for Black or African American females 19 years or younger decreased from 51.9/1,000 in 2000 to 29.5/1,000 in 2010. Except 2006, the pregnancy rates for Black or African American teenagers exceeded in 2000-2005 and 2007-2010 the pregnancy rate for all groups.

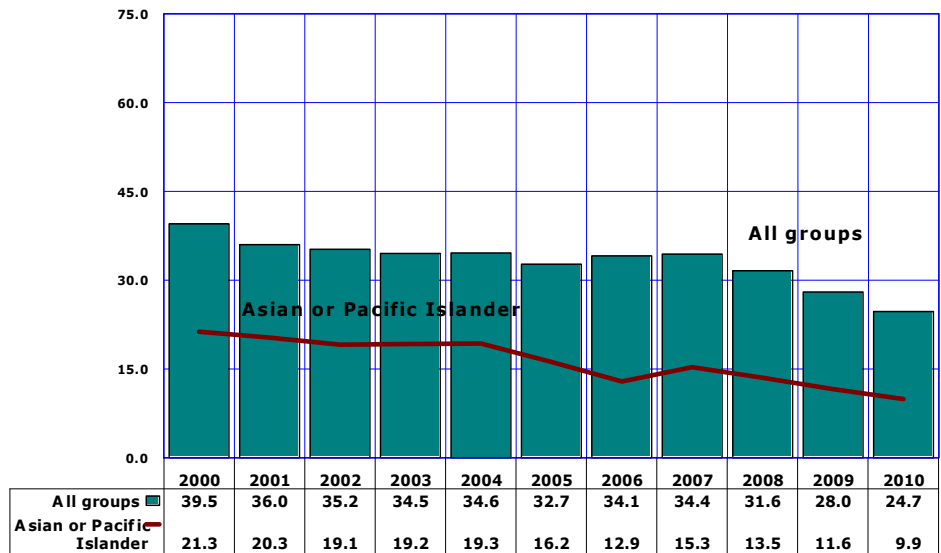


Note: All rates are per 1,000 females in specified group.

Figure 8
Comparison of Pregnancy Rates by Year among Asian or Pacific Islanders and all Females 19 or Younger, Arizona, 2000-2010

In each year from 2000 to 2010, the pregnancy rates for Asian or Pacific Islander females 19 years or younger were substantially lower than the average rates among all females 19 years or younger in Arizona (Figure 8). In 2010, the Asian rate (9.9/1,000) was 59.9 percent lower than the rate for all groups (24.7/1,000).

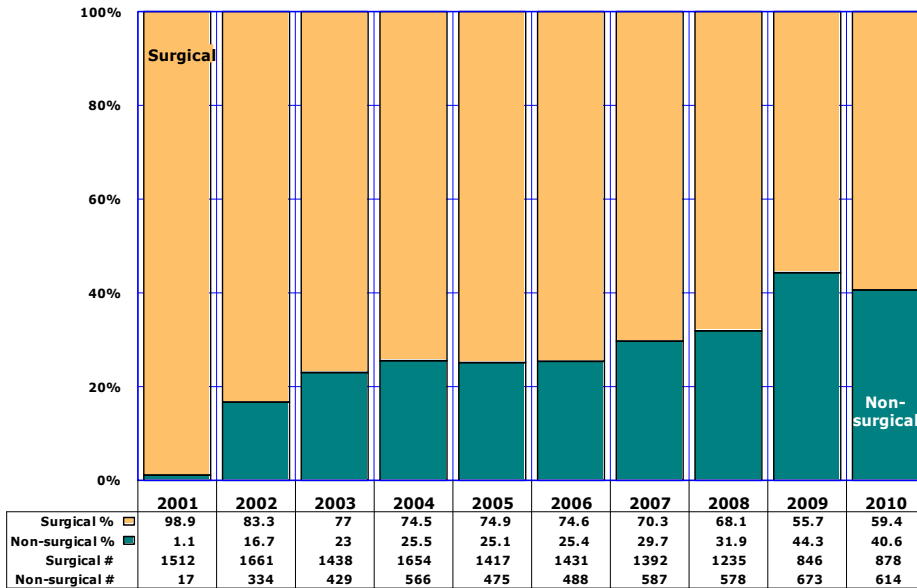
If the 2010 "risk for pregnancy" of Asian teens (i.e., their pregnancy rate) applied to all Arizona females 19 years or younger, the number of teen pregnancies in the State would have been reduced from 10,980 to approximately 4,395.



Note: All rates are per 1,000 females in specified group.

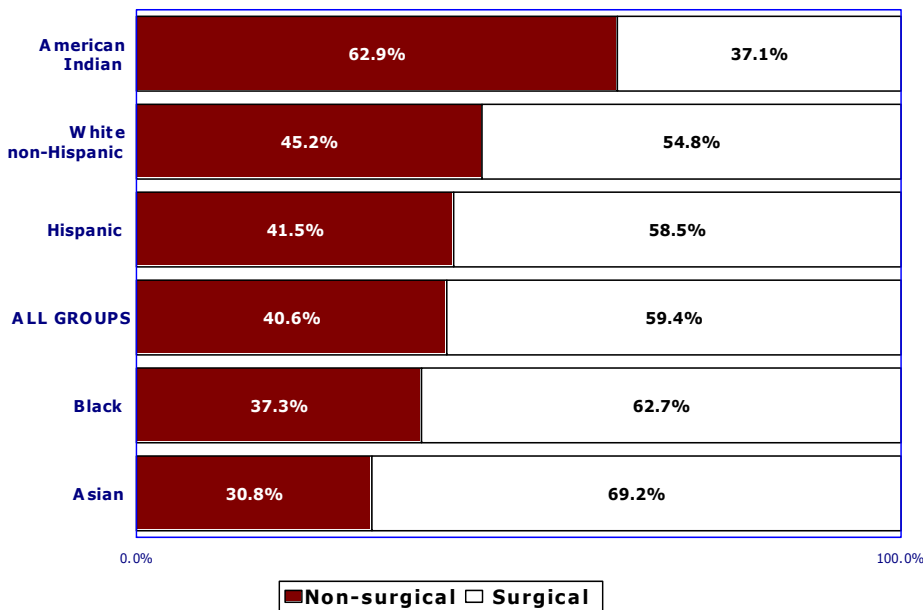
KEY FINDINGS

Figure 9
Proportional Contribution of Surgical and Non-Surgical Abortions
by Year among Females 19 or Younger, Arizona, 2001-2010



The proportion of non-surgical abortions to females 19 years or younger decreased from 44.3 percent in 2009 to 40.6 percent in 2010 (Figure 9).

Figure 10
Proportional Contribution of Non-Surgical and Surgical Abortions by
Race/Ethnicity among Females 19 or Younger, Arizona, 2010



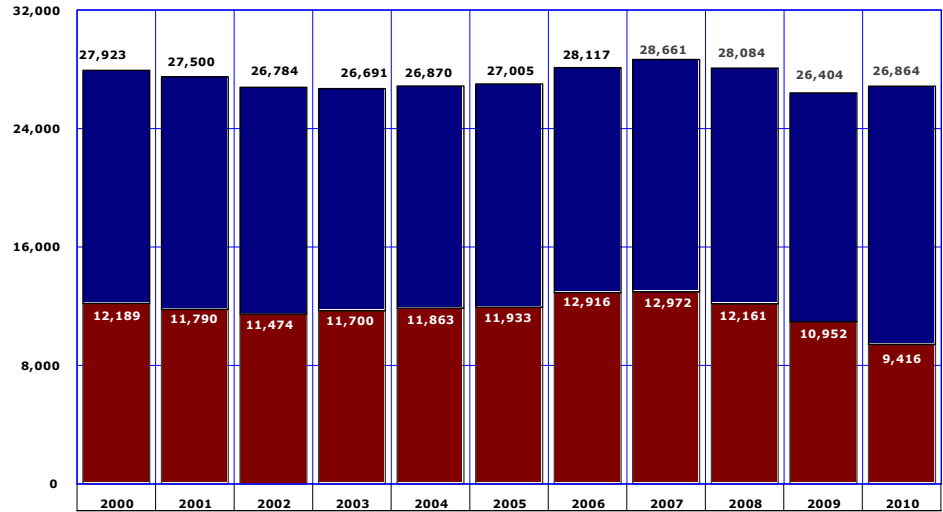
Among American Indian, White non-Hispanic or Latino teens the proportion of non-surgical abortions exceeded the average for all groups (Figure 10). The ratios of reported non-surgical abortions among Asian and Black females were the lowest among ethnic groups.

Non-surgical: Mifepristone, Methotrexate, RU486, etc.

KEY FINDINGS

Figure 11
Cumulative Number of Mothers who were 19 or Younger in Arizona by Year, 2000-2010

■ Gave birth that year ■ Gave birth before and was still 19 years old or younger

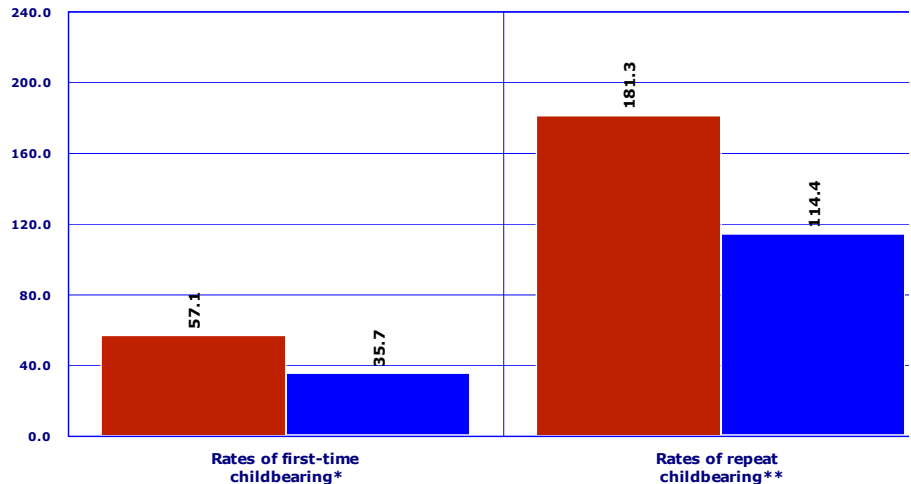


There were approximately 26,864 mothers under age 20 in Arizona in 2010, the second lowest number since 2000. Among them there were the 9,416 who gave birth that year and the 17,448 who gave birth prior to 2010 and were still 19 years old or younger (Figure 11, Table 13). The cumulative number of mothers who were 19 years or younger in Arizona increased by 1.7 percent from 26,404 in 2009.

*See Table 13 for more details.

Figure 12
Rates of First and Repeat Births to Females 15-19 Years, Arizona, 2000 and 2010

■ 2000 ■ 2010

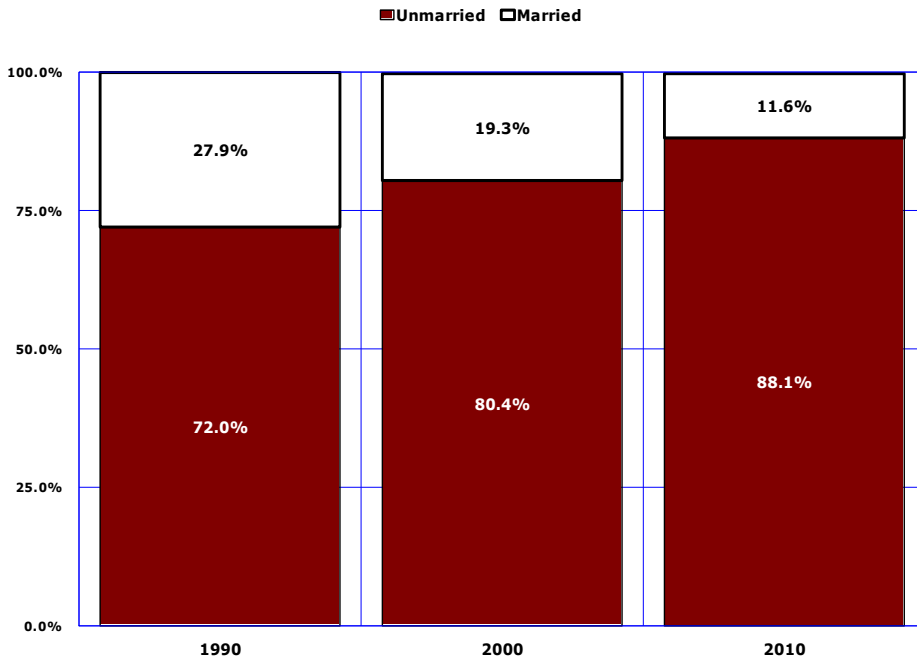


The first birth rate for childless teenagers has dropped 37.5 percent from 57.1 first-time births per 1,000 females 15-19 years old in 2000, to 35.7/1,000 in 2010 (Figure 12).

The repeat birth rates for teenagers who had already had a child decreased by 36.9 percent from 181.3 in 2000 to 114.4 per 1,000 females 15-19 years old in 2010 who had a previous birth (Figure 12).

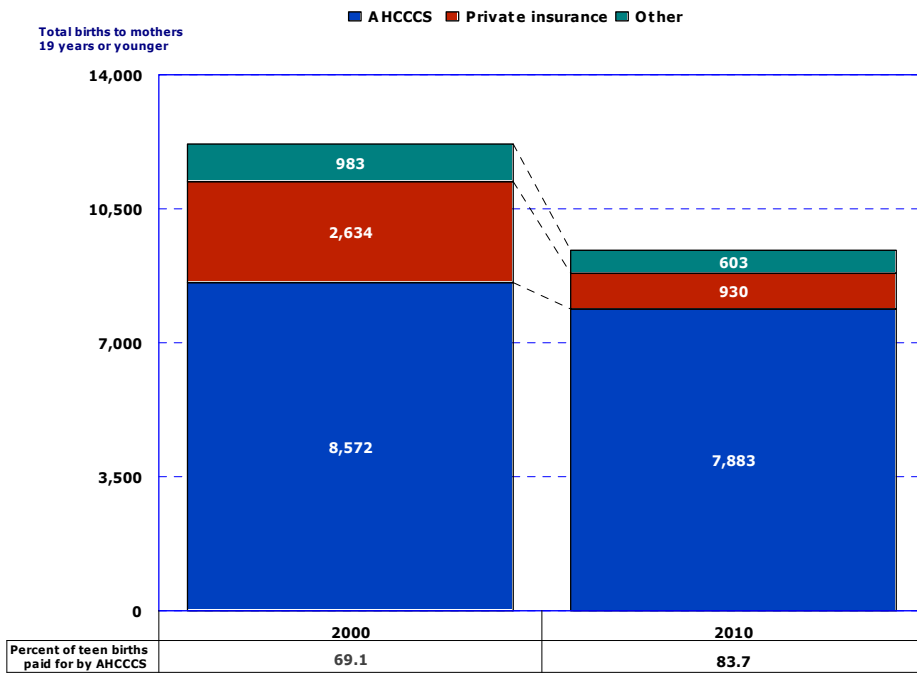
* Number of first births per 1,000 females 15-19 years old who have not had a birth.
 **Number of repeat births per 1,000 females 15-19 years old who have had a previous birth.
 See Appendix "How to compute rates of first and repeat childbearing."

Figure 13
Births to Mothers 19 or Younger by Marital Status,
Arizona, 1990, 2000 and 2010



Unwed mothers have accounted for an increasing annual proportion of births throughout the 1980s and 1990s. Two decades ago, approximately 7 out of 10 teenage mothers were unmarried (**Figure 13**). In 2010, nonmarital births accounted for 88.1 percent of births to mothers 19 years or younger.

Figure 14
Number of Births to Mothers 19 or Younger by Payee,
Arizona, 2000 and 2010



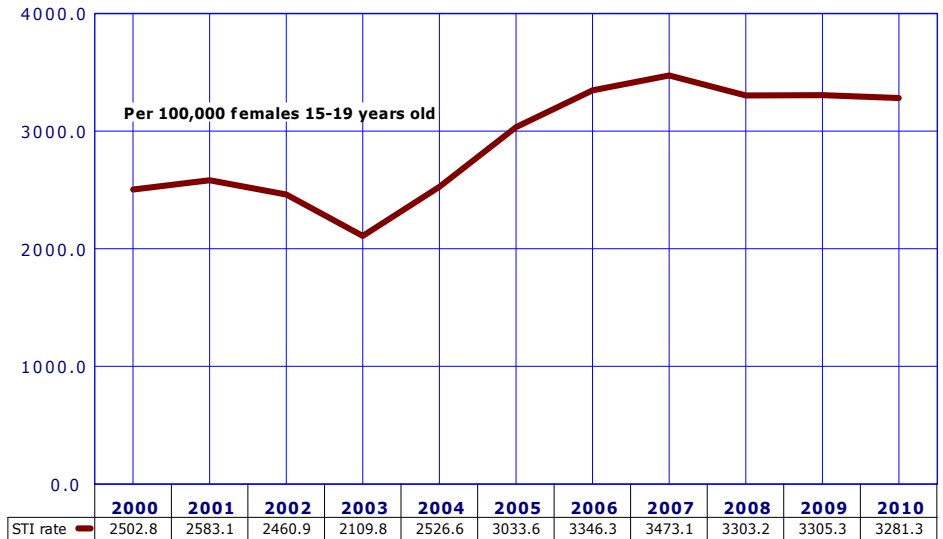
The total number of births to mothers 19 years or younger decreased by 22.7 percent from 12,189 in 2000 to 9,416 in 2010 (**Table 1**). In contrast, the proportional share of births paid for by the Arizona Health Care Cost Containment System (AHCCCS, the State's Medicaid program) increased by 21.1 percent from 69.1 percent in 2000 to 83.7 percent in 2010 (**Figure 14**).

KEY FINDINGS

Figure 15
Trends in the Incidence of Sexually Transmitted Infections* among Females 15-19 Years, Arizona, 2000-2010

In each year from 2006 to 2010, the total number of sexually transmitted infections (STI) among females aged 19 or younger exceeded 7,400 (Table 15) compared to approximately 4,300 reported in 2003. Females aged 15-19 years accounted for 96.7 percent of all sexually transmitted infections in 2010. The rate of STI among females 15-19 years old increased by 64.6 percent from 2109.8 cases per 100,000 in 2003 to 3473.1/100,000 in 2007 and then declined to a rate of 3281.3/100,000 in 2010.

These STIs include *chlamydia* and *syphilis*. *Chlamydia* can cause sterility in the affected mother and eye infections and pneumonia in the newborn. *Syphilis* can cause blindness, maternal and/or infant death.



* The sum of annually reported cases of gonorrhea, chlamydia, genital herpes, and early syphilis.
Source: Bureau of Epidemiology and Disease Control Services, Office of Infectious Disease Services.

Figure 16
Cumulative Number of Cases of Genital Herpes among Females 15-19 Years, Arizona, 2000-2010

Unlike gonorrhea or chlamydia, genital herpes cannot be cured. Since genital herpes is not a fatal disease, new cases arising each year may add to the pool of people infected with the disease who can then transmit the disease to others.

Assuming that females 15-19 years old reported with genital herpes since 2000 have not died or left the State, the 2010 prevalence of this disease based on 1,355 accumulated cases (Figure 16), one in every 63 females aged 15-19 years may be infected.

Genital herpes also is a threat to newborns. Out of 155 females aged 15-19 years who were diagnosed with genital herpes in 2010, 52 (or 33.5 percent) also gave birth that year (Figure 16, Table 15).

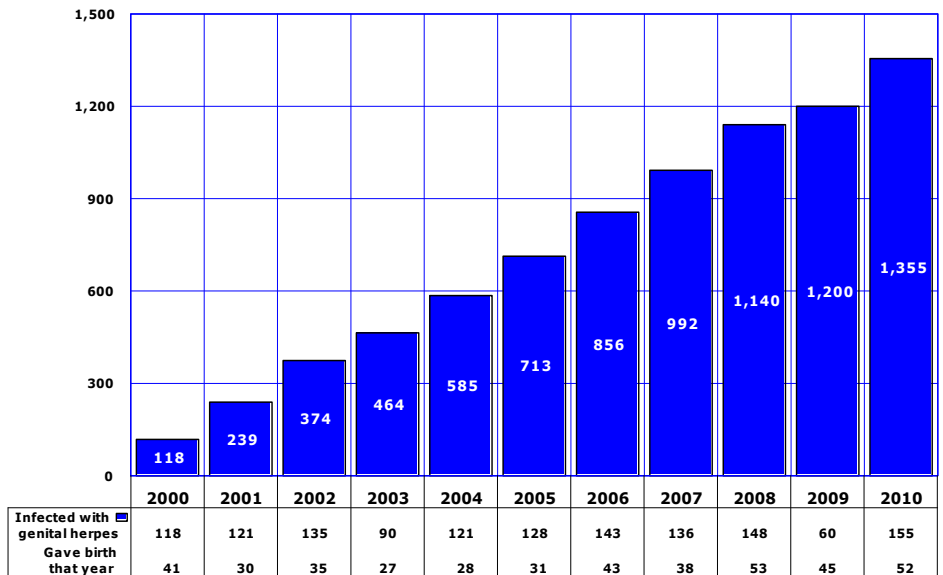
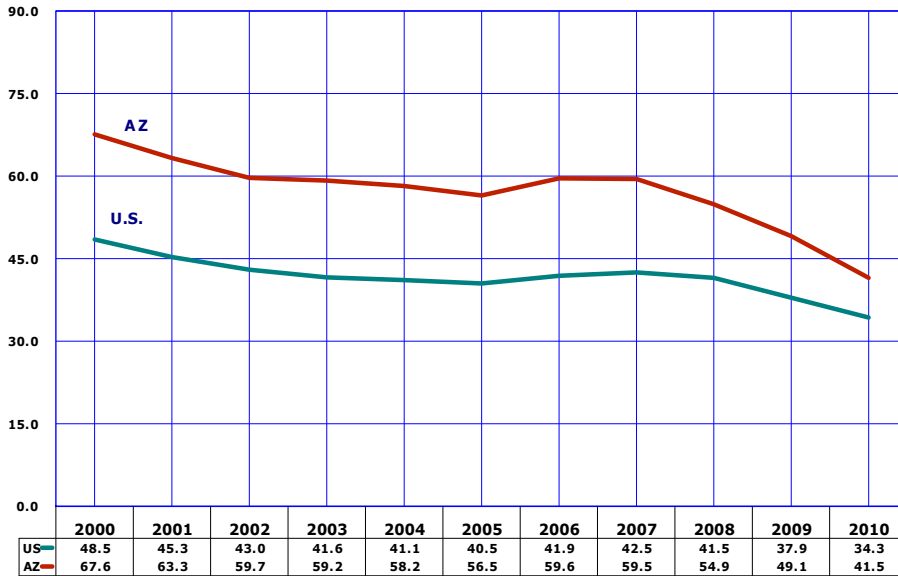


Figure 17
Birth Rates for Teenagers 15-19 Years, Nationally and in Arizona, 2000-2010

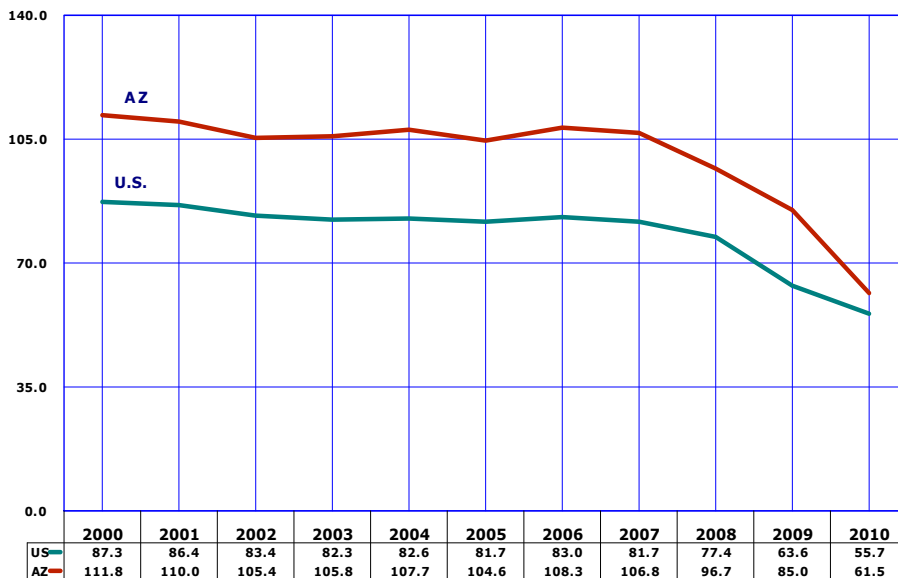


In each year from 2000 to 2010 birth rates for Arizona teenagers 15-19 years old exceeded the rates of their national peers (**Figure 17, Table 11**).

In Arizona, Hispanic or Latino females 15-19 years old, a high-fertility group, accounted for 39.4 percent of females aged 15-19 years in 2010. A high proportional representation of Hispanic or Latino females in Arizona puts upward pressure on the overall teen birth rate.

The number of births per 1,000 females 15-19 years old.

Figure 18
Birth Rates for Hispanic or Latino Teenagers 15-19 Years, Nationally, and in Arizona, 2000-2010



In 2010, Hispanics or Latinos aged 15-19 years disproportionately accounted for 56.7 percent of births to mothers in this age group in Arizona (5,280 out of 9,311; see **Table 6** and **Table 7**).

The 2010 birth rate among teen 15-19 years old exceeded the national rate for this age/ethnic group by 10.4 percent.

The number of births per 1,000 females 15-19 years old.

TEENAGE PREGNANCY, ARIZONA, 2000-2010

DATA TABLES

**TABLE 1
PREGNANCIES AND PREGNANCY OUTCOME BY AGE GROUP AND YEAR,
FEMALES 19 OR YOUNGER, ARIZONA, 2000-2010**

Pregnancy outcome by year	Total females 19 years or younger	Under 15 years	15-19 years old		
			Total	15-17 years	18-19 years
ALL PREGNANCIES					
2000	14,287	278	14,009	5,016	8,993
2001	13,429	253	13,170	4,661	8,515
2002	13,572	255	13,317	4,696	8,621
2003	13,654	272	13,382	4,755	8,627
2004	14,163	233	13,930	4,955	8,975
2005	13,898	239	13,659	4,790	8,869
2006	14,918	242	14,676	5,105	9,571
2007	15,038	325	14,713	4,975	9,738
2008	14,047	230	13,817	4,740	9,077
2009	12,537	156	12,381	3,945	8,436
2010	10,980	150	10,830	3,363	7,467
LIVE BIRTHS					
2000	12,189	216	11,973	4,284	7,689
2001	11,790	198	11,592	4,080	7,512
2002	11,474	206	11,268	3,952	7,316
2003	11,700	211	11,489	4,110	7,379
2004	11,863	188	11,675	4,227	7,448
2005	11,933	185	11,748	4,179	7,569
2006	12,916	170	12,746	4,450	8,296
2007	12,972	180	12,792	4,361	8,431
2008	12,161	161	12,000	4,151	7,849
2009	10,952	132	10,820	3,501	7,319
2010	9,416	105	9,311	2,910	6,401
ABORTIONS					
2000	1,988	57	1,931	684	1,247
2001	1,528	46	1,482	540	942
2002	1,995	44	1,951	705	1,246
2003	1,867	60	1,807	614	1,193
2004	2,220	44	2,176	703	1,473
2005	1,892	54	1,838	582	1,256
2006	1,919	69	1,850	624	1,226
2007	1,979	142	1,837	576	1,261
2008	1,813	67	1,746	567	1,179
2009	1,519	24	1,495	418	1,077
2010	1,512	44	1,468	435	1,033
FETAL LOSSES					
2000	110	5	105	48	57
2001	111	9	102	41	61
2002	103	5	98	39	59
2003	87	1	86	31	55
2004	80	1	79	25	54
2005	73	0	73	29	44
2006	83	3	80	31	49
2007	87	3	84	38	46
2008	73	2	71	22	49
2009	66	0	66	26	40
2010	52	1	51	18	33

TABLE 2
PREGNANCY RATES¹ BY PREGNANCY OUTCOME, AGE GROUP AND YEAR,
FEMALES 19 OR YOUNGER, ARIZONA, 2000-2010

Pregnancy outcome by year	Total females 19 years or younger	Under 15 years	15-19 years old		
			Total	15-17 years	18-19 years
ALL PREGNANCIES					
2000	39.5	1.5	79.1	48.1	123.6
2001	36.0	1.3	72.0	43.2	112.2
2002	35.2	1.3	70.6	42.2	111.2
2003	34.5	1.4	68.9	41.6	108.2
2004	34.6	1.1	69.4	42.0	108.7
2005	32.7	1.1	65.6	39.1	103.6
2006	34.1	1.1	68.7	39.0	115.6
2007	34.4	1.5	68.4	36.9	121.4
2008	31.6	1.0	63.2	34.6	111.3
2009	28.0	0.7	56.1	28.5	102.5
2010	24.7	0.7	48.3	25.5	80.8
LIVE BIRTHS					
2000	33.7	1.2	67.6	41.1	105.7
2001	31.6	1.0	63.3	37.8	99.9
2002	29.8	1.0	59.7	35.5	94.3
2003	29.5	1.0	59.2	35.9	92.5
2004	29.0	0.9	58.2	35.8	90.2
2005	28.1	0.9	56.5	34.1	88.4
2006	29.6	0.8	59.6	34.0	100.2
2007	29.7	0.8	59.5	32.3	105.1
2008	27.4	0.7	54.9	30.3	96.3
2009	24.4	0.6	49.1	25.3	89.0
2010	21.2	0.5	41.5	22.1	69.2
ABORTIONS					
2000	5.5	0.3	10.9	6.6	17.1
2001	4.1	0.2	8.1	5.0	12.5
2002	5.2	0.2	10.3	6.3	16.1
2003	4.7	0.3	9.3	5.4	15.0
2004	5.4	0.2	10.8	6.0	17.8
2005	4.5	0.2	8.8	4.8	14.7
2006	4.4	0.3	8.7	4.8	14.8
2007	4.5	0.6	8.5	4.3	15.7
2008	4.1	0.3	8.0	4.1	14.5
2009	3.4	0.1	6.8	3.0	13.1
2010	3.4	0.2	6.5	3.3	11.2
FETAL LOSSES					
2000	0.3	0.0	0.6	0.5	0.8
2001	0.3	0.0	0.6	0.4	0.8
2002	0.3	0.0	0.5	0.4	0.8
2003	0.2	0.0	0.4	0.3	0.7
2004	0.2	0.0	0.4	0.2	0.7
2005	0.2	0.0	0.4	0.2	0.5
2006	0.2	0.0	0.4	0.2	0.6
2007	0.2	0.0	0.4	0.3	0.6
2008	0.2	0.0	0.3	0.2	0.6
2009	0.2	0.0	0.3	0.2	0.5
2010	0.1	0.0	0.2	0.1	0.4

¹ The number of pregnancies (live births + abortions + fetal deaths) per 1,000 females in specified age group.
0.0: Quantity more than zero but less than 0.05.

**TABLE 3
LIVE BIRTHS TO FEMALES 19 OR YOUNGER BY AGE GROUP, RACE/ETHNICITY
AND YEAR, ARIZONA, 2000-2010**

Race/ethnic group and year	Total, females 19 years or younger	Under 15 years	15-19 years		
			Total	15-17 years	18-19 years
WHITE NON-HISPANIC					
2000	3,759	38	3,721	1,040	2,681
2001	3,396	34	3,362	926	2,436
2002	3,064	23	3,041	824	2,217
2003	2,970	23	2,947	782	2,165
2004	2,806	17	2,789	747	2,042
2005	2,744	17	2,727	711	2,016
2006	3,209	19	3,190	852	2,338
2007	3,100	26	3,074	779	2,295
2008	2,993	15	2,978	769	2,209
2009	2,715	20	2,695	649	2,046
2010	2,386	12	2,374	541	1,833
HISPANIC OR LATINO					
2000	6,548	144	6,404	2,567	3,837
2001	6,648	132	6,516	2,552	3,964
2002	6,585	147	6,438	2,507	3,931
2003	6,792	146	6,646	2,600	4,046
2004	7,138	137	7,001	2,779	4,222
2005	7,188	137	7,051	2,721	4,330
2006	7,738	123	7,615	2,923	4,692
2007	7,782	115	7,667	2,892	4,775
2008	7,168	111	7,057	2,724	4,333
2009	6,341	87	6,254	2,253	4,001
2010	5,348	68	5,280	1,859	3,421
BLACK OR AFRICAN AMERICAN					
2000	572	12	560	198	362
2001	545	13	532	193	339
2002	468	12	456	152	304
2003	549	3	546	204	342
2004	540	12	528	180	348
2005	569	8	561	199	362
2006	601	7	594	187	407
2007	621	12	609	195	414
2008	656	12	644	203	441
2009	603	6	597	181	416
2010	562	10	552	151	401
AMERICAN INDIAN OR ALASKA NATIVE					
2000	1,089	20	1,069	405	664
2001	1,013	17	996	348	648
2002	1,039	18	1,021	374	647
2003	1,141	37	1,104	434	670
2004	1,142	21	1,121	452	669
2005	1,204	21	1,183	478	705
2006	1,216	19	1,197	430	767
2007	1,285	26	1,259	445	814
2008	1,185	22	1,163	408	755
2009	1,170	17	1,153	394	759
2010	988	14	974	331	643
ASIAN OR PACIFIC ISLANDER					
2000	100	1	99	29	70
2001	104	0	104	29	75
2002	96	1	95	19	76
2003	107	1	106	38	68
2004	92	1	91	25	66
2005	96	1	95	28	67
2006	92	1	91	28	63
2007	103	0	103	31	72
2008	113	1	112	26	86
2009	88	2	86	18	68
2010	103	1	102	23	79

**TABLE 4
ABORTIONS TO FEMALES 19 OR YOUNGER BY AGE GROUP, RACE/ETHNICITY
AND YEAR, ARIZONA, 2000-2010**

Race/ethnic group and year	Total, females 19 years or younger	Under 15 years	15-19 years		
			Total	15-17 years	18-19 years
WHITE NON-HISPANIC					
2000	1,020	25	995	342	653
2001	746	16	730	262	458
2002	1,010	20	990	367	623
2003	914	18	896	304	592
2004	1,095	19	1,076	341	735
2005	867	15	852	278	574
2006	917	28	889	296	593
2007	982	71	911	282	629
2008	841	21	820	266	554
2009	720	11	709	207	502
2010	694	16	678	198	480
HISPANIC OR LATINO					
2000	610	22	588	228	360
2001	534	22	512	199	313
2002	650	15	635	235	400
2003	630	27	603	197	406
2004	784	20	764	247	517
2005	522	21	501	151	350
2006	609	24	585	193	392
2007	710	44	666	210	456
2008	561	34	527	173	354
2009	525	8	517	136	381
2010	532	16	516	151	365
BLACK OR AFRICAN AMERICAN					
2000	115	5	110	42	68
2001	71	3	68	28	40
2002	118	4	114	30	84
2003	107	6	101	40	61
2004	125	1	124	46	78
2005	114	5	109	32	77
2006	124	9	115	48	67
2007	136	13	123	42	81
2008	143	5	138	43	95
2009	110	3	107	28	79
2010	67	1	66	24	42
AMERICAN INDIAN OR ALASKA NATIVE					
2000	43	2	41	13	28
2001	29	3	26	7	19
2002	40	3	37	12	25
2003	68	3	65	25	40
2004	65	1	64	17	47
2005	76	4	72	21	51
2006	55	1	54	24	30
2007	63	8	55	22	33
2008	54	2	52	17	35
2009	52	0	52	22	30
2010	36	2	34	13	21
ASIAN OR PACIFIC ISLANDER					
2000	37	0	37	11	26
2001	30	0	30	15	15
2002	34	0	34	10	24
2003	27	1	26	7	19
2004	56	1	55	19	36
2005	35	0	35	10	25
2006	40	3	37	11	26
2007	63	4	59	8	51
2008	36	2	34	12	22
2009	40	1	39	8	31
2010	14	0	14	5	9

**TABLE 5
NUMBER OF PREGNANCIES¹ BY PREGNANCY OUTCOME, RACE/ETHNICITY AND YEAR AMONG FEMALES AGED 17 AND YOUNGER
WITH RATES², ARIZONA, 2000-2010**

Race/ethnicity Pregnancy outcome	2000	2001	2002	2003	2004	2005	2006	2007	2008	2009	2010	2010 Rates
WHITE³ NON-HISPANIC, total:	1,462	1,250	1,245	1,131	1,129	1,028	1,204	1,165	1,074	894	770	5.1
Births	1,078	960	847	805	764	728	871	805	784	669	553	3.7
Abortions	367	278	387	322	360	293	324	353	287	218	214	1.4
HISPANIC OR LATINO, total:	2,991	2,930	2,926	2,993	3,198	3,043	3,281	3,286	3,057	2,496	2,106	14.9
Births	2,711	2,684	2,654	2,746	2,916	2,858	3,046	3,007	2,835	2,340	1,927	13.7
Abortions	250	221	250	224	267	172	217	254	207	144	167	1.2
BLACK OR AFRICAN AMERICAN, total:	227	240	207	256	241	247	255	268	266	221	189	11.2
Births	210	206	164	207	192	207	194	207	215	187	161	9.5
Abortions	47	31	34	46	47	37	57	55	48	31	25	1.5
AMERICAN INDIAN OR ALASKA NATIVE, total:	476	384	409	501	495	530	477	504	452	436	361	16.6
Births	425	365	392	471	473	499	449	471	430	411	345	15.9
Abortions	15	10	15	28	18	25	25	30	19	22	15	0.7
ASIAN OR PACIFIC ISLANDER, total:	41	44	30	47	46	39	43	43	41	30	29	3.1
Births	30	29	20	39	26	29	29	31	27	20	24	2.6
Abortions	11	15	10	8	20	10	14	12	14	9	5	0.5
ALL RACE/ETHNIC GROUPS⁴, total:	5,294	4,914	4,951	5,027	5,188	5,029	5,347	5,300	4,970	4,101	3,513	10.0
Births	4,500	4,278	4,158	4,321	4,415	4,364	4,620	4,541	4,312	3,633	3,015	8.6
Abortions	741	586	749	674	747	636	693	718	634	442	479	1.4
Pregnancy rate, total:	18.4	16.5	16.1	15.9	15.9	14.8	15.1	14.8	13.7	11.2	10.0	
Fertility rate⁵	15.6	14.3	13.5	13.7	13.5	12.9	13.0	12.7	11.9	9.9	8.6	
Abortion rate	2.6	2.0	2.4	2.1	2.3	1.9	2.0	2.0	1.7	1.2	1.4	

¹Fetal deaths are included in the total counts of pregnancies.

²All rates per 1,000 females 10-17 years old.

³Not of Hispanic origin.

⁴Includes other and unspecified ethnicity.

⁵Number of births per 1,000 females 10-17 years old.

**TABLE 6
NUMBER OF PREGNANCIES¹ BY PREGNANCY OUTCOME, RACE/ETHNICITY AND YEAR AMONG FEMALES 15-17 YEARS OLD
WITH RATES², ARIZONA, 2000-2010**

Race/ethnicity Pregnancy outcome	2000	2001	2002	2003	2004	2005	2006	2007	2008	2009	2010	2010 Rates
WHITE³ NON-HISPANIC, total:	1,397	1,197	1,202	1,090	1,093	996	1,157	1,067	1,038	863	742	12.9
Births	1,040	926	824	782	747	711	852	779	769	649	541	9.4
Abortions	342	262	367	304	341	278	296	282	266	207	198	3.4
HISPANIC OR LATINO, total:	2,823	2,771	2,761	2,819	3,040	2,885	3,131	3,126	2,911	2,401	2,021	38.9
Births	2,567	2,552	2,507	2,600	2,779	2,721	2,923	2,892	2,724	2,253	1,859	35.7
Abortions	228	199	235	197	247	151	193	210	173	136	151	2.9
BLACK OR AFRICAN AMERICAN, total:	242	224	189	247	228	234	239	242	248	212	178	27.3
Births	198	193	152	204	180	199	187	195	203	181	151	23.1
Abortions	42	28	30	40	46	32	48	42	43	28	24	3.7
AMERICAN INDIAN OR ALASKA NATIVE, total:	421	363	388	461	473	505	457	470	428	419	345	40.5
Births	405	348	374	434	452	478	430	445	408	394	331	38.8
Abortions	13	7	12	25	17	21	24	22	17	22	13	1.5
ASIAN OR PACIFIC ISLANDER, total:	40	44	29	45	44	38	39	39	38	27	28	8.3
Births	29	29	19	38	25	28	28	31	26	18	23	6.8
Abortions	11	15	10	7	19	10	11	8	12	1	5	1.5
ALL RACE/ETHNIC GROUPS⁴, total:	5,016	4,661	4,696	4,755	4,955	4,790	5,105	4,975	4,740	3,945	3,363	25.5
Births	4,284	4,080	3,952	4,110	4,227	4,179	4,450	4,361	4,151	3,501	2,910	22.1
Abortions	684	540	705	614	703	582	624	576	567	418	435	3.3
Pregnancy rate, total:	48.1	43.2	42.2	41.6	42.0	39.1	39.0	36.9	34.6	28.5	25.5	
Fertility rate⁵	41.1	37.8	35.5	35.9	35.8	34.1	34.0	32.3	30.3	25.3	22.1	
Abortion rate	6.6	5.0	6.3	5.4	6.0	4.8	4.8	4.3	4.1	3.0	3.3	

¹Fetal deaths are included in the total counts of pregnancies.

²All rates per 1,000 females 15-17 years old.

³Not of Hispanic origin.

⁴Includes other and unspecified ethnicity.

⁵Number of births per 1,000 females 15-17 years old.

**TABLE 7
NUMBER OF PREGNANCIES¹ BY PREGNANCY OUTCOME, RACE/ETHNICITY AND YEAR AMONG FEMALES 18-19 YEARS OLD
WITH RATES², ARIZONA, 2000-2010**

Race/ethnicity Pregnancy outcome	2000	2001	2002	2003	2004	2005	2006	2007	2008	2009	2010	2010 Rates
WHITE³ NON-HISPANIC, total:	3,352	2,925	2,857	2,772	2,795	2,603	2,944	2,936	2,778	2,560	2,316	53.9
Births	2,681	2,436	2,217	2,165	2,042	2,016	2,338	2,295	2,209	2,046	1,833	42.7
Abortions	653	468	623	592	735	574	593	629	554	502	480	11.2
HISPANIC OR LATINO, total:	4,222	4,309	4,361	4,483	4,767	4,705	5,115	5,259	4,707	4,400	3,812	112.6
Births	3,837	3,964	3,931	4,046	4,222	4,330	4,692	4,775	4,333	4,001	3,421	101.1
Abortions	360	313	400	406	517	350	392	456	354	381	365	10.8
BLACK OR AFRICAN AMERICAN, total:	433	382	398	408	430	441	476	498	546	501	446	97.0
Births	362	339	304	342	348	362	407	414	441	416	401	87.2
Abortions	68	40	84	61	78	77	67	81	95	79	42	9.1
AMERICAN INDIAN OR ALASKA NATIVE, total:	700	669	673	714	720	759	800	849	794	793	664	111.0
Births	664	648	647	670	669	705	767	814	755	759	643	107.5
Abortions	28	19	25	40	47	51	30	33	35	30	21	3.5
ASIAN OR PACIFIC ISLANDER, total:	96	90	100	87	102	93	89	124	108	99	88	35.5
Births	70	75	76	68	66	67	63	72	86	68	79	31.9
Abortions	26	15	24	19	36	25	26	51	22	31	9	3.6
ALL RACE/ETHNIC GROUPS⁴, total:	8,993	8,515	8,621	8,627	8,975	8,869	9,571	9,738	9,077	8,436	7,467	80.8
Births	7,689	7,512	7,316	7,379	7,448	7,569	8,296	8,431	7,849	7,319	6,401	69.2
Abortions	1,247	942	1,246	1,193	1,473	1,256	1,226	1,261	1,179	1,077	1,033	11.2
Pregnancy rate, total:	123.6	113.2	111.2	108.2	108.7	103.6	115.6	121.4	111.3	102.5	80.8	
Fertility rate⁵	105.7	99.9	94.3	92.5	90.2	88.4	100.2	105.1	96.3	89.0	69.2	
Abortion rate	17.1	12.5	16.1	15.0	17.8	14.7	14.8	15.7	14.5	13.1	11.2	

¹Fetal deaths are included in the total count of pregnancies.

²All rates per 1,000 females 18-19 years old.

³Not of Hispanic origin.

⁴Includes other and unspecified ethnicity.

⁵Number of births per 1,000 females 18-19 years old.

**TABLE 8
NUMBER OF PREGNANCIES¹ BY PREGNANCY OUTCOME, RACE/ETHNICITY AND YEAR AMONG FEMALES 19 AND YOUNGER,
WITH RATES², ARIZONA, 2000-2010**

Race/ethnicity Pregnancy outcome	2000	2001	2002	2003	2004	2005	2006	2007	2008	2009	2010	2010 Rates
WHITE³ NON-HISPANIC, total:	4,814	4,175	4,102	3,903	3,924	3,631	4,148	4,101	3,852	3,454	3,086	15.9
Births	3,759	3,396	3,064	2,970	2,806	2,744	3,209	3,100	2,993	2,715	2,386	12.3
Abortions	1,020	746	1,010	914	1,095	867	917	982	841	720	694	3.6
HISPANIC OR LATINO, total:	7,213	7,239	7,287	7,476	7,965	7,748	8,396	8,545	7,764	6,896	5,918	33.8
Births	6,548	6,648	6,585	6,792	7,138	7,188	7,738	7,782	7,168	6,341	5,348	30.6
Abortions	610	534	650	630	784	522	609	710	561	525	532	3.0
BLACK OR AFRICAN AMERICAN, total:	620	622	605	664	671	688	731	766	812	722	635	29.5
Births	572	545	468	549	540	569	601	621	656	603	562	26.1
Abortions	115	71	118	107	125	114	124	136	143	110	67	3.1
AMERICAN INDIAN OR ALASKA NATIVE, total:	1,216	1,053	1,082	1,215	1,215	1,289	1,277	1,353	1,246	1,229	1,025	37.0
Births	1,089	1,013	1,039	1,141	1,142	1,204	1,216	1,285	1,185	1,170	988	35.7
Abortions	43	29	40	68	65	76	55	63	54	52	36	1.3
ASIAN OR PACIFIC ISLANDER, total:	137	134	130	134	148	132	132	167	149	129	117	9.9
Births	100	104	96	107	92	96	92	103	113	88	103	8.7
Abortions	37	30	34	27	56	35	40	63	36	40	14	1.2
ALL RACE/ETHNIC GROUPS⁴, total:	14,287	13,429	13,572	13,654	14,163	13,898	14,918	15,038	14,047	12,537	10,980	24.7
Births	12,189	11,790	11,474	11,700	11,863	11,933	12,916	12,972	12,161	10,952	9,416	21.2
Abortions	1,988	1,528	1,995	1,867	2,220	1,892	1,919	1,979	1,813	1,519	1,512	3.4
Pregnancy rate, total:	39.5	36.0	35.2	34.5	34.6	32.7	34.1	34.4	31.6	28.0	24.7	
Fertility rate⁵	33.7	31.6	29.8	29.5	29.0	28.1	29.6	29.7	27.4	24.4	21.2	
Abortion rate	5.5	4.1	5.2	4.7	5.4	4.5	4.4	4.5	4.1	3.4	3.4	

¹Fetal deaths are included in the total counts of pregnancies.

²All rates per 1,000 females 19 or younger.

³Not of Hispanic origin.

⁴Includes other and unspecified ethnicity.

⁵Number of births per 1,000 females 19 or younger.

**TABLE 9
TRENDS IN PREGNANCY RATES* BY COUNTY OF RESIDENCE AMONG FEMALES 10-17 AND 18-19 YEARS OLD,
ARIZONA, 2000-2010**

	ARIZONA	APACHE	COCHISE	COCONINO	GILA	GRAHAM	GREENLEE	MARICOPA	MOHAVE	NAVAJO	PIMA	PINAL	SANTA CRUZ	YAVAPAI	YUMA	LA PAZ
2000	39.5	29.2	38.7	28.6	41.1	28.8	26.7	40.7	33.5	34.8	39.6	47.7	39.3	33.0	42.0	32.6
2001	36.0	21.6	34.3	30.3	43.2	33.8	18.3	37.2	31.4	26.7	36.0	43.7	33.0	26.3	36.7	36.8
2002	35.2	23.2	30.6	26.0	42.4	29.9	40.0	36.0	32.5	28.5	36.3	38.5	36.4	29.6	38.8	35.6
2003	34.5	30.8	31.5	26.9	42.8	27.5	26.0	36.0	30.9	29.6	32.0	38.1	30.0	25.3	40.6	32.2
2004	34.6	32.8	30.0	27.7	38.4	22.5	36.6	35.5	28.7	33.7	33.8	36.4	38.6	27.9	42.1	39.8
2005	32.7	25.9	30.0	27.7	38.8	20.9	31.0	33.9	32.1	33.1	30.6	33.5	30.7	25.7	37.0	49.8
2006	34.1	25.6	24.2	31.0	37.7	35.5	24.7	35.4	33.0	30.0	32.9	34.1	32.9	29.6	38.0	30.0
2007	34.4	27.5	29.1	33.2	41.7	40.1	25.4	35.4	31.9	33.7	30.5	37.4	32.2	33.0	37.8	50.9
2008	31.6	25.3	27.2	28.6	45.9	33.2	33.2	32.5	28.1	36.3	29.0	31.3	31.5	26.9	35.1	38.6
2009	28.0	27.7	28.7	27.6	40.8	33.7	41.2	27.4	25.9	33.2	27.0	27.6	29.1	25.0	36.1	27.8
2010	24.7	26.7	27.5	22.5	39.7	33.3	35.7	23.7	24.6	32.8	24.7	22.8	30.5	21.4	34.1	38.1
19 YEARS OR YOUNGER	135.8	109.9	124.5	74.7	167.3	74.1	123.8	127.8	139.7	154.1	104.7	161.0	132.1	124.9	149.8	127.1
2000	113.2	91.9	116.8	84.3	154.3	84.9	78.4	117.3	132.5	111.7	96.6	156.9	113.7	91.8	130.8	153.0
2001	111.1	100.7	104.4	68.9	151.5	78.4	161.9	114.2	131.5	121.5	96.7	130.2	137.7	115.9	133.4	127.0
2002	108.2	130.1	107.3	70.6	145.5	78.8	64.8	112.4	129.0	123.4	86.0	139.3	130.7	98.7	134.2	113.4
2003	108.7	141.6	106.7	76.9	164.3	57.7	173.1	110.9	112.8	141.3	93.7	121.0	147.2	99.3	135.6	153.8
2004	103.6	105.4	110.0	79.5	150.5	56.7	174.8	106.5	134.0	138.2	83.7	119.8	111.8	104.1	122.2	148.7
2005	115.6	87.9	71.1	84.0	139.8	95.6	69.0	125.0	142.1	99.4	95.8	129.3	108.5	109.2	122.8	63.0
2006	121.4	89.4	99.8	81.2	164.0	103.4	122.4	131.9	157.6	125.8	89.6	144.9	102.8	129.9	129.8	242.8
2007	111.3	89.5	92.4	72.2	165.9	94.7	133.3	120.0	135.7	135.7	86.5	121.8	111.6	100.1	121.7	156.1
2008	102.5	100.2	102.7	68.9	160.2	93.2	203.9	106.0	129.2	132.3	82.3	108.4	115.7	101.3	119.9	127.2
2009	80.8	96.6	90.6	40.2	137.9	96.0	122.4	80.3	96.5	122.7	68.7	96.8	94.2	84.5	114.7	177.8
2010	18.4	15.0	19.1	14.6	17.6	13.9	8.8	18.9	12.0	13.7	19.1	23.8	21.8	13.3	17.5	15.2
10-17 YEARS	16.5	9.2	15.5	13.9	22.5	17.0	7.2	17.2	10.9	11.7	16.9	19.8	17.8	12.3	15.3	15.2
2001	16.1	9.6	13.7	13.0	22.1	14.0	17.5	16.5	12.5	12.0	17.2	19.1	17.2	11.1	17.3	18.7
2002	15.9	13.4	14.3	13.6	23.7	10.7	18.8	16.9	11.1	13.0	14.6	16.8	11.1	9.5	19.3	17.2
2003	15.9	13.5	12.7	12.9	15.4	10.9	10.9	16.5	11.8	14.6	15.1	18.3	17.9	12.3	20.4	17.8
2004	14.8	11.9	11.7	12.1	18.2	9.0	6.6	15.7	11.5	14.4	14.0	14.9	15.2	8.6	17.1	30.7
2005	15.1	10.8	12.0	14.1	16.6	17.6	5.1	15.7	12.4	14.9	14.7	13.4	16.5	11.8	16.6	13.1
2006	14.8	12.5	12.0	16.3	16.2	19.3	8.8	15.3	10.7	14.4	13.6	16.4	17.7	12.8	16.0	15.8
2007	13.7	9.7	11.3	13.2	21.0	12.9	16.2	14.3	9.5	15.5	12.5	13.6	15.0	10.9	14.6	17.0
2008	11.2	10.1	10.8	13.0	15.9	14.2	13.3	11.0	8.1	12.5	11.2	11.8	11.4	8.4	16.1	9.5
2009	10.0	11.0	10.8	11.5	18.1	11.9	19.3	9.5	8.1	12.5	10.3	8.6	17.1	6.6	14.9	6.3

* Number of pregnancies per 1,000 females in specified group.

**TABLE 10
LIVE BIRTHS TO FEMALES 19 OR YOUNGER AS A PERCENTAGE OF TOTAL LIVE BIRTHS BY AREA, RACE/ETHNICITY
AND YEAR, ARIZONA, 2000-2010**

Group	2000	2001	2002	2003	2004	2005	2006	2007	2008	2009	2010
ARIZONA, TOTAL¹											
# Births (all ages)	84,985	85,213	87,379	90,783	93,396	95,798	102,042	102,687	99,215	92,616	87,053
# Births to teenagers	12,189	11,790	11,474	11,700	11,863	11,933	12,916	12,972	12,161	10,952	9,416
% Births to teenagers	14.3	13.8	13.1	12.9	12.7	12.5	12.7	12.6	12.2	11.8	10.8
URBAN COUNTIES²											
# Births (all ages)	72,596	73,319	74,851	77,905	79,951	82,141	87,910	88,266	85,263	79,046	74,624
# Births to teenagers	10,102	9,906	9,512	9,686	9,786	9,827	10,809	10,693	10,013	8,867	7,690
% Births to teenagers	13.9	13.5	12.7	12.4	12.2	12.0	12.3	12.1	11.7	11.2	10.3
RURAL COUNTIES											
# Births (all ages)	12,333	11,851	12,498	12,848	13,409	13,603	14,083	14,413	13,952	13,570	12,429
# Births to teenagers	2,083	1,882	1,959	2,014	2,074	2,103	2,100	2,279	2,148	2,085	1,726
% Births to teenagers	16.9	15.9	15.7	15.7	15.5	15.5	14.9	15.8	15.3	15.4	13.9
WHITE NON-HISPANIC											
# Births (all ages)	39,850	38,934	38,819	38,842	39,271	39,657	43,013	42,216	41,925	39,781	38,777
# Births to teenagers	3,759	3,396	3,064	2,970	2,806	2,744	3,209	3,100	2,993	2,715	2,386
% Births to teenagers	9.4	8.7	7.9	7.6	7.2	6.9	7.5	7.3	7.1	6.8	6.2
HISPANIC OR LATINO											
# Births (all ages)	33,893	35,103	36,089	39,101	40,822	42,156	44,862	45,731	42,639	38,362	34,333
# Births to teenagers	6,548	6,648	6,585	6,792	7,138	7,188	7,738	7,782	7,168	6,341	5,348
% Births to teenagers	19.3	18.9	18.2	17.4	17.5	17.0	17.2	17.0	16.8	16.5	15.6
BLACK OR AFRICAN AMERICAN											
# Births (all ages)	2,760	2,736	2,753	3,022	3,216	3,450	3,864	4,165	4,301	4,378	4,328
# Births to teenagers	572	545	468	549	540	569	601	621	656	603	562
% Births to teenagers	20.7	19.9	17.0	18.2	16.8	16.5	15.6	14.9	15.2	13.8	13.0
AMERICAN INDIAN OR ALASKA NATIVE											
# Births (all ages)	5,602	5,340	5,545	5,881	6,120	6,293	6,364	6,408	6,362	6,170	5,815
# Births to teenagers	1,089	1,013	1,039	1,141	1,142	1,204	1,216	1,285	1,185	1,170	988
% Births to teenagers	19.4	19.0	18.7	19.4	18.9	19.1	19.1	20.0	18.6	19.0	17.0
ASIAN OR PACIFIC ISLANDER											
# Births (all ages)	2,041	2,104	2,281	2,524	2,614	2,805	3,136	3,412	3,425	3,396	3,293
# Births to teenagers	100	104	96	107	92	96	92	103	113	88	103
% Births to teenagers	4.9	4.9	4.2	4.2	3.5	3.4	2.9	3.0	3.2	2.6	3.1

¹ Includes records for ethnic groups other than White Non-Hispanic, Hispanic or Latino, Black or African American, American Indian or Alaska Native or Asian or Pacific Islander

² Urban = Maricopa, Pima, Pinal, and Yuma. The remaining counties comprise Arizona's rural areas.

**TABLE 11
BIRTH RATES BY AGE GROUP FOR FEMALES 19 OR YOUNGER,
ARIZONA AND UNITED STATES, 2000-2010**

Year	Under 15 Years		15 - 19 Years Old					
			Total		15-17 Years		18-19 Years	
	AZ	U.S.	AZ	U.S.	AZ	U.S.	AZ	U.S.
2000	1.2	0.9	67.6	48.5	41.1	27.4	105.7	78.1
2001	1.0	0.8	63.3	45.3	37.8	24.7	99.9	76.1
2002	1.0	0.7	59.7	43.0	35.5	23.2	94.3	72.7
2003	1.0	0.6	59.2	41.6	35.9	22.4	92.5	70.7
2004	0.9	0.7	58.2	41.1	35.8	22.1	90.2	70.0
2005	0.9	0.7	56.5	40.5	34.1	21.4	88.4	69.9
2006	0.8	0.6	59.6	41.9	34.0	22.0	100.2	73.0
2007	0.8	0.6	59.5	42.5	32.3	22.2	105.1	73.9
2008	0.7	0.6	54.9	41.5	30.3	21.7	96.3	70.7
2009	0.6	0.5	49.1	37.9	25.3	19.6	89.0	64.0
2010	0.5	0.4	41.5	34.3	22.1	17.3	69.2	58.3

Note: The U.S. data is from the National Vital Statistics reports published by the National Center for Health Statistics.

**TABLE 12
REPEAT PREGNANCIES AMONG TEENAGE MOTHERS GIVING BIRTH BY AGE AND YEAR, ARIZONA, 2000-2010**

Mother's age	Pregnancies	Year											
		2000	2001	2002	2003	2004	2005	2006	2007	2008	2009	2010	
11	Total	0	0	1	1	0	0	0	0	1	0	0	1
	Previous pregnancies	0	0	1	1	0	0	0	0	1	0	0	1
	One or more	0	0	0	0	0	0	0	0	0	0	0	0
12	Total	4	3	5	3	3	3	2	4	3	1	1	1
	Previous pregnancies	4	3	5	3	3	2	2	4	3	1	1	1
	One or more	0	0	0	0	0	1	0	0	0	0	0	0
13	Total	37	28	22	26	31	22	25	20	16	15	11	11
	Previous pregnancies	35	28	21	25	30	22	25	20	16	15	11	11
	One or more	2	0	0	1	1	0	0	0	0	0	0	0
14	Total	175	167	178	181	154	160	143	156	141	116	2	2
	Previous pregnancies	172	157	167	176	151	155	140	154	138	113	88	88
	One or more	3	10	11	5	3	5	3	2	3	3	4	4
15	Total	647	620	512	587	566	603	593	604	570	446	339	339
	Previous pregnancies	604	569	470	551	538	559	558	553	553	428	317	317
	One or more	36	49	41	36	25	44	35	51	17	18	22	22
16	Total	1,376	1,353	1,336	1,314	1,389	1,317	1,448	1,360	1,250	1,107	937	937
	Previous pregnancies	1,205	1,171	1,169	1,144	1,228	1,167	1,290	1,199	1,146	988	848	848
	One or more	163	176	166	168	159	150	158	161	104	119	89	89
17	Total	2,261	2,107	2,104	2,209	2,272	2,259	2,409	2,397	2,331	1,948	1,634	1,634
	Previous pregnancies	1,806	1,634	1,658	1,729	1,838	1,791	1,905	1,895	1,983	1,598	1,343	1,343
	One or more	447	464	437	475	427	468	502	502	348	350	291	291
18	Total	3,338	3,168	3,208	3,211	3,208	3,351	3,523	3,661	3,376	3,078	2,647	2,647
	Previous pregnancies	2,313	2,161	2,231	2,209	2,250	2,411	2,519	2,645	2,576	2,226	1,967	1,967
	One or more	1,014	988	967	996	954	940	1,004	1,016	799	851	680	680
19	Total	4,351	4,344	4,108	4,168	4,240	4,218	4,773	4,770	4,473	4,241	3,754	3,754
	Previous pregnancies	2,627	2,597	2,496	2,592	2,556	2,631	2,961	2,980	3,065	2,667	2,459	2,459
	One or more	1,706	1,735	1,595	1,567	1,681	1,586	1,812	1,790	1,407	1,570	1,295	1,295
	Unknown	18	12	17	9	3	1	0	0	1	4	0	0

**TABLE 13
CUMULATIVE NUMBER OF MOTHERS WHO WERE 19 OR YOUNGER IN ARIZONA IN 2010**

Year Baby Was Born	MOTHER'S AGE WHEN BABY WAS BORN										Mother was 19 or younger in 2009	
	10	11	12	13	14	15	16	17	18	19		
2001	0											0
2002	0	1										1
2003	0	1	3									4
2004	0	0	3	31								34
2005	0	0	3	22	160							185
2006	0	0	2	25	143	593						763
2007	0	0	4	20	156	604	4,654					5,438
2008	0	1	3	16	141	570	1,250	2,331				4,312
2009	0	0	1	15	116	446	1,107	1,948	3,078			6,711
2010	0	1	1	11	92	339	937	1,634	2,647	3,754		9,416
Cumulative number of mothers 19 or younger	0	4	20	140	808	2,552	7,948	5,913	5,725	3,754		26,864

NOTE: The above table focuses on the 2010 cohort of Arizona mothers who were 19 or younger that year.

Among them are those who:

gave birth to the babies in 2010.

gave birth to a baby prior to 2010 and were still 19 or less years old in 2010.

The numbers below the main diagonal (and below the stair-like line) represent the number of mothers meeting either one of the above criteria. The last column to the right gives the cumulative total for 2010 by the year the baby was born. For example, from among those girls and adolescents who had their baby in 2003, 4 remained in their teens in 2010. The bottom row gives the cumulative total by mother's age when the baby was born. For example, among the 26,864 mothers under 20 in Arizona in 2010, 140 had given birth when 13 years old.

Excluded from the cumulative totals and not shown above the main diagonal (and above stair-like line) are the number of mothers who were 19 years old or younger when the baby was born, but who were no longer under the age 20 by 2010. For example, mothers who were 11 years old in 2001 were 20 years old in 2010.

The figures in Table 13 are unadjusted for in-and-out migration, as well as mortality of mothers, in the period of 2000-2010. For simplicity, the number of mothers = the number of babies (i.e., no adjustment was made for multiple birth events).

TABLE 14
TRENDS IN TEEN PREGNANCY RATES BY RACE/ETHNICITY AND AGE GROUP,
ARIZONA, 2000-2010

		All 19 years or younger	10-14 years	15-19 years	15-17 years	18-19 years
White non-Hispanic	2000	25.2	0.7	49.9	25.1	85.0
	2001	21.1	0.5	41.9	20.8	71.0
	2002	20.1	0.4	40.0	20.2	67.9
	2003	18.2	0.4	36.3	17.5	62.9
	2004	17.7	0.3	35.3	16.9	61.2
	2005	15.8	0.3	31.6	14.9	55.1
	2006	18.9	0.4	37.2	17.2	68.6
	2007	19.0	0.9	36.3	15.6	70.3
	2008	17.5	0.3	34.1	14.9	65.3
	2009	15.6	0.3	30.3	12.3	59.6
2010	15.9	0.3	30.5	12.9	53.9	
Hispanic or Latino	2000	60.9	2.7	123.0	84.0	178.4
	2001	59.1	2.5	119.5	79.7	176.0
	2002	57.6	2.5	116.6	77.0	172.8
	2003	57.5	2.6	116.2	76.5	172.7
	2004	59.2	2.3	120.1	79.7	177.4
	2005	55.5	2.2	112.5	72.9	168.9
	2006	56.0	1.9	117.3	72.7	188.1
	2007	55.3	1.9	116.8	68.5	201.2
	2008	49.4	1.7	104.4	62.7	177.2
	2009	43.5	1.1	92.4	51.3	164.2
2010	33.8	0.9	67.9	38.9	112.6	
Black or African American	2000	51.9	2.4	107.3	64.2	171.7
	2001	45.1	2.2	93.1	57.5	146.0
	2002	42.5	2.4	87.5	47.0	148.0
	2003	45.4	1.2	94.9	59.8	147.5
	2004	44.2	1.6	91.8	53.0	149.8
	2005	43.5	1.6	89.0	51.6	144.8
	2006	32.6	1.4	67.2	36.1	118.1
	2007	36.1	2.3	73.9	36.9	144.1
	2008	37.7	1.6	78.1	37.2	155.7
	2009	33.3	0.8	69.5	31.6	141.7
2010	29.5	1.1	56.1	27.3	97.0	
American Indian or Alaska Native	2000	41.3	1.6	86.7	52.1	144.4
	2001	36.7	1.4	77.2	43.5	133.0
	2002	36.6	1.3	77.0	45.1	130.1
	2003	39.9	2.5	82.9	52.0	134.2
	2004	39.7	1.4	83.6	53.2	134.2
	2005	40.8	1.5	85.8	55.0	137.0
	2006	36.2	1.1	71.1	41.5	119.8
	2007	39.1	2.0	73.8	42.4	124.9
	2008	35.5	1.4	67.4	38.1	115.2
	2009	34.7	1.0	66.2	36.9	114.0
2010	37.0	1.2	69.5	40.5	111.0	
Asian or Pacific Islander	2000	21.3	0.3	39.8	21.4	62.4
	2001	20.3	0.0	38.2	22.8	57.0
	2002	19.1	0.3	35.7	14.6	61.6
	2003	19.2	0.2	35.5	22.0	52.1
	2004	19.3	0.6	36.2	20.2	55.0
	2005	16.2	0.3	30.4	16.2	47.6
	2006	12.9	0.8	25.7	13.0	45.0
	2007	15.3	0.7	31.1	12.0	62.2
	2008	13.5	0.5	27.6	11.6	53.5
	2009	11.6	0.5	23.6	8.2	48.7
2010	9.9	0.2	19.9	8.3	35.5	

**TABLE 15
TRENDS IN SEXUALLY TRANSMITTED INFECTIONS BY AGE GROUP AND YEAR AMONG FEMALES 10-19 YEARS,
ARIZONA, 2000-2010**

	2000	2001	2002	2003	2004	2005	2006	2007	2008	2009	2010
10-14 years old											
Diagnosed with:											
Gonorrhea	32	37	22	31	36	40	40	32	19	26	22
Chlamydia	207	223	191	169	188	210	224	278	249	224	223
Early syphilis	2	2	0	0	0	0	0	1	1	0	0
Genital herpes	6	7	2	2	5	5	7	10	11	1	7
Gave birth that year	0	0	0	0	0	0	0	0	0	0	0
Total reported infections	247	269	215	202	229	255	271	321	280	251	252
15-19 years old											
Diagnosed with:											
Gonorrhea	565	535	469	503	538	721	804	709	468	453	529
Chlamydia	3,726	4,046	4,024	3,475	4,400	5,451	6,188	6,600	6,595	6,771	6,666
Early syphilis	22	24	23	25	19	13	16	25	8	6	10
Genital herpes	118	121	135	90	121	128	143	136	148	60	155
Gave birth that year	41	30	35	27	28	31	43	38	53	45	52
Total reported infections	4,431	4,726	4,651	4,093	5,078	6,313	7,151	7,470	7,219	7,290	7,360

Note: Information about the number of reported cases of gonorrhea, chlamydia, early syphilis and genital herpes was provided by STD Program in the Office of Infectious Diseases (see Table 3B-3 in the Arizona Health Status and Vital Statistics annual reports). Information about females who gave birth while infected with genital herpes is collected on birth certificates.

TABLE 16
TRENDS IN THE INCIDENCE RATES* OF SEXUALLY TRANSMITTED INFECTIONS BY AGE GROUP AND YEAR AMONG
FEMALES 10-19 YEARS, ARIZONA, 2000-2010

	2000	2001	2002	2003	2004	2005	2006	2007	2008	2009	2010
10 - 14 years old											
Diagnosed with:											
Gonorrhea	17.4	19.5	11.2	15.4	17.2	18.5	17.9	14.4	8.4	11.4	10.0
Chlamydia	112.5	122.6	97.5	83.7	90.1	97.1	100.3	125.1	110.3	98.3	101.5
Early syphilis	1.0	1.1	0.0	0.0	0.0	9.0	0.0	0.5	0.4	0.0	0.0
Genital herpes	3.3	3.7	1.0	1.0	2.4	2.3	3.1	4.5	4.9	0.4	3.2
Total reported infections	134.2	146.9	109.7	100.1	109.7	126.9	121.3	144.5	124.0	110.2	110.7
15 -19 years old											
Diagnosed with:											
Gonorrhea	319.2	292.4	248.2	259.3	267.7	346.5	376.2	329.6	214.1	205.4	253.8
Chlamydia	2104.5	2211.5	2129.1	1791.2	2189.1	2619.4	2895.7	3068.6	3017.7	3070.0	2971.9
Early syphilis	12.4	13.1	12.2	12.9	9.5	6.2	7.5	11.6	3.7	2.7	4.5
Genital herpes	66.7	66.1	71.4	46.4	60.3	61.5	66.9	63.2	67.7	27.2	69.1
Gave birth that year (%)	34.7	24.8	25.9	30.0	23.1	24.2	30.1	27.9	35.8	75.0	33.5
Total reported infections	2502.8	2583.1	2460.9	2109.8	2526.6	3033.6	3346.3	3473.1	3303.2	3305.3	3337.0

* Number of cases per 100,000 females in specified age group. The incidence rates of genital herpes among females who gave birth that year are per

**TABLE 17
PREGNANCIES AND PREGNANCY RATES, FEMALES 19 OR YOUNGER
BY COUNTY OF RESIDENCE, ARIZONA, 2010**

County of residence	NUMBER OF PREGNANCIES:*				
	All 19 years or younger	10-14 years	15-19 years		
			Total 15-19 years	15-17 years	18-19 years
Apache	171	1	170	57	113
Cochise	228	2	226	69	157
Coconino	253	4	249	76	173
Gila	126	3	123	44	79
Graham	98	0	98	26	72
Greenlee	22	1	21	9	12
Maricopa	6,407	98	6,309	1,962	4,347
Mohave	282	2	280	73	207
Navajo	289	5	284	85	199
Pima	1,613	19	1,594	488	1,106
Pinal	540	7	533	165	368
Santa Cruz	125	0	125	58	67
Yavapai	241	0	241	60	181
Yuma	526	5	521	180	341
La Paz	37	0	37	5	32
Unknown	22	3	19	6	13
TOTAL STATE	10,980	150	10,830	3,363	7,467
County of residence	PREGNANCY RATES:**				
	All 19 years or younger	10-14 years	15-19 years		
			Total 15-19 years	15-17 years	18-19 years
Apache	26.7	0.3	51.9	27.1	96.6
Cochise	27.5	0.5	52.9	27.2	90.6
Coconino	22.5	0.9	35.6	28.2	40.2
Gila	39.7	1.9	76.6	42.6	137.9
Graham	33.3	0.0	63.2	32.5	96.0
Greenlee	35.7	3.0	75.0	49.5	122.4
Maricopa	23.7	0.7	47.0	24.5	80.3
Mohave	24.6	0.3	48.9	20.4	96.5
Navajo	32.8	1.1	64.1	30.2	122.7
Pima	24.7	0.6	45.4	25.6	68.7
Pinal	22.8	0.5	49.7	23.9	96.8
Santa Cruz	30.5	0.0	61.5	43.9	94.2
Yavapai	21.4	0.0	43.1	17.4	84.5
Yuma	34.1	0.7	66.6	37.1	114.7
La Paz	38.1	0.0	73.1	15.3	177.8
TOTAL STATE	24.7	0.7	48.3	25.5	80.8

* The sum of live births, fetal deaths and abortions.

** The number of pregnancies per 1,000 females in specified group.

**TABLE 18
BIRTHS AND BIRTH RATES, FEMALES 19 OR YOUNGER BY COUNTY OF RESIDENCE,
ARIZONA, 2010**

County of residence	NUMBER OF BIRTHS:				
	All 19 years or younger	10-14 years	15-19 years		
			Total 15-19 years	15-17 years	18-19 years
Apache	166	0	166	55	111
Cochise	207	0	207	62	145
Coconino	205	2	203	63	140
Gila	123	3	120	42	78
Graham	94	0	94	26	68
Greenlee	17	1	16	8	8
Maricopa	5,342	69	5,273	1,654	3,619
Mohave	275	1	274	72	202
Navajo	274	4	270	84	186
Pima	1,346	14	1,332	409	923
Pinal	511	6	505	156	349
Santa Cruz	117	0	117	55	62
Yavapai	211	0	211	53	158
Yuma	491	5	486	166	320
La Paz	37	0	37	5	32
TOTAL STATE	9,416	105	9,311	2,910	6,401

County of residence	BIRTH RATES:**				
	All 19 years or younger	10-14 years	15-19 years		
			Total 15-19 years	15-17 years	18-19 years
Apache	25.9	0.0	50.7	26.1	94.9
Cochise	24.9	0.0	48.5	24.4	83.7
Coconino	18.2	0.5	29.0	23.4	32.5
Gila	38.8	1.9	74.7	40.7	136.1
Graham	31.9	0.0	60.6	32.5	90.7
Greenlee	27.6	3.0	57.1	44.0	81.6
Maricopa	19.8	0.5	39.2	20.6	66.8
Mohave	23.9	0.2	47.9	20.1	94.1
Navajo	31.1	0.9	60.9	29.9	114.7
Pima	20.6	0.5	37.9	21.5	57.4
Pinal	21.6	0.5	47.1	22.6	91.8
Santa Cruz	28.5	0.0	57.6	41.6	87.2
Yavapai	18.8	0.0	37.8	15.4	73.7
Yuma	31.8	0.7	62.1	34.2	107.6
La Paz	38.1	0.0	73.1	15.3	177.8
TOTAL STATE	21.2	0.5	41.5	22.1	69.2

** The number of births per 1,000 females in specified group.

**TABLE 19
PREGNANCY RATES¹ AND NUMBER OF LIVE BIRTHS, FETAL DEATHS AND
ABORTIONS TO TEENS BY INDIVIDUAL AGE, ARIZONA, 2010**

Age	Population	PREGNANCIES BY OUTCOME			TOTAL PREGNANCIES	
		Live births	Induced terminations of pregnancy (or abortions)	Spontaneous fetal losses	Number	Rate
10	45,080	0	0	0	0	0.0
11	44,176	1	0	0	1	0.0
12	43,381	1	2	0	3	0.1
13	43,657	11	7	1	19	0.4
14	43,375	92	35	0	127	2.9
10-14	219,669	105	44	1	150	0.7
15	43,491	339	70	2	411	9.5
16	44,218	937	137	10	1,084	24.5
17	44,145	1,634	228	6	1,868	42.3
15-17	131,854	2,910	435	18	3,363	25.5
18	46,009	2,647	455	12	3,114	67.7
19	46,439	3,754	578	21	4,353	93.7
18-19	92,448	6,401	1,033	33	7,467	80.8
Total 10-19	443,971	9,416	1,512	52	10,980	24.7

¹Rates per 1,000 female population in specific group.

**TABLE 20
BIRTHS TO FEMALES 19 OR YOUNGER BY AGE AND COUNTY OF RESIDENCE,
ARIZONA, 2010**

	Total	Mother's age								
		11	12	13	14	15	16	17	18	19
TOTAL	9,416	1	1	11	92	339	937	1,634	2,647	3,754
Apache	166	0	0	0	0	6	17	32	47	64
Cochise	207	0	0	0	0	7	15	40	56	89
Coconino	205	0	0	0	2	8	22	33	59	81
Gila	123	0	0	0	3	5	16	21	38	40
Graham	94	0	0	0	0	3	8	15	27	41
Geenlee	17	0	0	0	1	2	2	4	5	3
Maricopa	5,342	0	1	9	59	202	512	940	1,491	2,128
Mohave	275	0	0	0	1	9	14	49	72	130
Navajo	274	0	0	0	4	10	29	45	83	103
Pima	1,346	1	0	0	13	44	134	231	373	550
Pinal	511	0	0	2	4	14	63	79	136	213
Santa Cruz	117	0	0	0	0	5	21	29	25	37
Yavapai	211	0	0	0	0	7	19	27	77	81
Yuma	491	0	0	0	5	15	64	87	143	177
La Paz	37	0	0	0	0	2	1	2	15	17

**TABLE 21
ABORTIONS TO FEMALES 19 OR YOUNGER BY AGE AND COUNTY OF RESIDENCE,
ARIZONA, 2010**

	Total	11	12	13	14	15	16	17	18	19
TOTAL	1,512	0	2	7	35	70	137	228	455	578
Apache	5	0	0	0	1	0	1	1	1	1
Cochise	20	0	0	0	1	0	1	6	7	5
Coconino	48	0	0	0	2	3	3	7	13	20
Gila	2	0	0	0	0	0	1	1	0	0
Graham	4	0	0	0	0	0	0	0	3	1
Greenlee	5	0	0	0	0	0	0	1	2	2
Maricopa	1,031	0	2	5	22	47	101	150	308	396
Mohave	7	0	0	0	1	1	0	0	0	5
Navajo	14	0	0	0	1	0	0	0	9	4
Pima	258	0	0	1	4	10	19	46	80	98
Pinal	28	0	0	1	0	4	2	2	7	12
Santa Cruz	8	0	0	0	0	0	1	2	3	2
Yavapai	29	0	0	0	0	0	1	6	6	16
Yuma	31	0	0	0	0	3	5	4	8	11
La Paz	0	0	0	0	0	0	0	0	0	0
Unknown	22	0	0	0	3	2	2	2	8	5

TABLE 22
SOURCES OF PAYMENT FOR LABOR AND DELIVERY, FEMALES 19 OR YOUNGER
BY AGE AND COUNTY OF RESIDENCE, ARIZONA, 2010

	Total	AHCCCS	IHS	Private insurance	Self	Unknown
TOTAL	9,416	7,883	313	930	234	56
Apache	166	101	54	1	1	9
Cochise	207	158	0	43	4	2
Coconino	205	134	52	16	2	1
Gila	123	72	44	7	0	0
Graham	94	57	19	17	1	0
Greenlee	17	10	0	7	0	0
Maricopa	5,342	4,653	27	523	119	20
Mohave	275	226	1	35	7	6
Navajo	274	192	72	5	0	5
Pima	1,346	1,121	21	155	43	6
Pinal	511	427	10	61	10	3
Santa Cruz	117	96	0	6	15	0
Yavapai	211	193	1	15	2	0
Yuma	491	424	1	36	28	2
La Paz	37	19	11	3	2	2

**TABLE 23
SOURCES OF PAYMENT FOR LABOR AND DELIVERY, FEMALES 19 OR YOUNGER
BY AGE GROUP, ARIZONA, 2010**

		Total	Mother's age group			
			<15	15-17	18-19	
Total	Count	9,416	105	2,910	6,401	
Payee for births	AHCCCS	Count	7,883	89	2,392	5,402
		Percent	83.7	84.8	82.2	84.4
	IHS	Count	313	6	115	192
		Percent	3.3	5.7	4.0	3.0
	Private insurance	Count	930	6	291	633
		Percent	9.9	5.7	10.0	9.9
	Self	Count	234	4	95	135
		Percent	2.5	3.8	3.3	2.1
	Unknown	Count	56	0	17	39
		Percent	0.6	0.0	0.6	0.6

**TABLE 24
TEENAGE BIRTHS BY NUMBER OF PREVIOUS PREGNANCIES BY AGE GROUP,
ARIZONA, 2010**

		Total	Mother's age group			
			<15	15-17	18-19	
Total	Count	9,416	105	2,910	6,401	
Total prior pregnancies	None	Count	6,973	101	2,499	4,373
		Percent	74.1	96.2	85.9	68.3
	1	Count	1,875	3	363	1,509
		Percent	19.9	2.9	12.5	23.6
	2	Count	469	1	35	433
		Percent	5.0	1.0	1.2	6.8
	3	Count	73	0	8	65
		Percent	0.8	0.0	0.3	1.0
	4 or more	Count	21	0	3	18
		Percent	0.2	0.0	0.1	0.3
	Unknown	Count	5	0	2	3
		Percent	0.1	0.0	0.1	0.0

**TABLE 25
TEENAGE BIRTHS BY MARITAL STATUS AND AGE GROUP,
ARIZONA, 2010**

		Total	Mother's age group			
			<15	15-17	18-19	
Total	Count	9,416	105	2,910	6,401	
Marital status	Married	Count	1,093	0	153	940
		Percent	11.6	0.0	5.3	14.7
	Unmarried	Count	8,298	104	2,752	5,442
		Percent	88.1	99.0	94.6	85.0
	Other	Count	25	1	5	19
		Percent	0.3	1.0	0.2	0.3

**TABLE 26
TEENAGE BIRTHS BY MOTHER'S EDUCATION AND AGE GROUP
ARIZONA, 2010**

		Total	Mother's age group			
			<15	15-17	18-19	
Total	Count	9,416	105	2,910	6,401	
Mother's education	< 8	Count	170	23	54	93
		Percent	1.8	21.9	1.9	1.5
	8	Count	384	53	197	134
		Percent	4.1	50.5	6.8	2.1
	9-11	Count	4,426	28	2,194	2,204
		Percent	47.0	26.7	75.4	34.4
	12	Count	3,669	0	431	3,238
		Percent	39.0	0.0	14.8	50.6
	13-16	Count	719	0	24	695
		Percent	7.6	0.0	0.8	10.9
	17+	Count	4	0	0	4
		Percent	0.0	0.0	0.0	0.1
	Unknown	Count	44	1	10	33
		Percent	0.5	1.0	0.3	0.5

**TABLE 27
TEENAGE BIRTHS BY TRIMESTER OF ENTRY INTO PRENATAL CARE
AND AGE GROUP, ARIZONA, 2010**

		Total	Mother's age group			
			<15	15-17	18-19	
Total	Count	9,416	105	2,910	6,401	
Prenatal care	No care	Count	245	5	94	146
		Percent	2.6	4.8	3.2	2.3
	1st trimester	Count	6,654	52	1,953	4,649
		Percent	70.7	49.5	67.1	72.6
	2nd trimester	Count	2,009	37	671	1,301
		Percent	21.3	35.2	23.1	20.3
	3rd trimester	Count	483	11	183	289
		Percent	5.1	10.5	6.3	4.5
	Unknown	Count	25	0	9	16
		Percent	0.3	0.0	0.3	0.2

**TABLE 28
TEENAGE BIRTHS BY NUMBER OF PRENATAL VISITS AND AGE GROUP,
ARIZONA, 2010**

		Total	Mother's age group			
			<15	15-17	18-19	
Total	Count	9,416	105	2,910	6,401	
Prenatal visits	No visits	Count	245	5	94	146
		Percent	2.6	4.8	3.2	2.3
	1-4 visits	Count	494	7	178	309
		Percent	5.2	6.7	6.1	4.8
	5-8 visits	Count	1,987	28	675	1,284
		Percent	21.1	26.7	23.2	20.1
	9-12 visits	Count	4,511	44	1,340	3,127
		Percent	47.9	41.9	46.0	48.9
	13+ visits	Count	2,149	21	614	1,514
		Percent	22.8	20.0	21.1	23.7
	Unknown	Count	30	0	9	21
		Percent	0.3	0.0	0.3	0.3

TABLE 29
TOBACCO AND/OR ALCOHOL USE DURING PREGNANCY AMONG FEMALES
19 OR YOUNGER BY AGE GROUP, ARIZONA, 2010

		Total	Mother's age group			
			<15	15-17	18-19	
Total	Count	9,416	105	2,910	6,401	
Substance use	Drinker, nonsmoker	Count	17	0	4	13
		Percent	0.2	0.0	0.1	0.2
	Smoker, nondrinker	Count	406	0	79	327
		Percent	4.3	0.0	2.7	5.1
	Smoker and drinker	Count	18	0	4	14
		Percent	0.2	0.0	0.1	0.2
	Nonsmoker and nondrinker	Count	8,975	105	2,823	6,047
		Percent	95.3	100.0	97.0	94.5

**TABLE 30
RISK FOR LOW-BIRTHWEIGHT (LBW) BIRTHS BY SELECTED CHARACTERISTICS OF FEMALES 19 OR YOUNGER,
ARIZONA, 2010**

	Mother's age group										
	<15			15-17			18-19				
	Total births	LBW births Count	Percent	Total births	LBW births Count	Percent	Total births	LBW births Count	Percent		
Race/ethnicity	White non-Hispanic	12	2	16.7	541	50	9.2	1,833	131	7.1	
	Hispanic or Latino	68	6	8.8	1,859	143	7.7	3,421	251	7.3	
	Black or African American	10	4	40.0	151	19	12.6	401	63	15.7	
	American Indian or Alaska Native	14	3	21.4	331	25	7.6	643	34	5.3	
	Asian or Pacific Islander	1	0	0.0	23	6	26.1	79	9	11.4	
	Other	0	0	0.0	1	0	0.0	9	2	22.2	
	Unknown	0	0	0.0	4	1	25.0	15	5	33.3	
	Substance use	Drinker, nonsmoker	0	0	0.0	4	0	0.0	13	3	23.1
	Smoker, nondrinker	0	0	0.0	79	11	13.9	327	44	13.5	
	Smoker and drinker	0	0	0.0	4	1	25.0	14	0	0.0	
Payee for births	Nonsmoker and nondrinker	105	15	14.3	2,823	232	8.2	6,047	448	7.4	
AHCCCS	89	13	14.6	2,392	200	8.4	5,402	423	7.8		
IHS	6	0	0.0	115	9	7.8	192	11	5.7		
Private insurance	6	2	33.3	291	22	7.6	633	43	6.8		
Self	4	0	0.0	95	11	11.6	135	13	9.6		
Unknown	0	0	0.0	17	2	11.8	39	5	12.8		
Length of gestation	36 weeks or less	0	0	0.0	10	6	60.0	21	16	76.2	
37 weeks or more	4	4	100.0	48	41	85.4	68	64	94.1		
Unknown	101	11	10.9	2,852	197	6.9	6,312	415	6.6		
Prenatal visits	Less than 5	12	2	16.7	272	46	16.9	455	64	14.1	
5 or more	93	13	14.0	2,629	197	7.5	5,925	428	7.2		
Unknown	0	0	0.0	9	1	11.1	21	3	14.3		

**TABLE 31
POPULATION OF FEMALES 19 OR YOUNGER, NUMBER OF PREGNANCIES AND PREGNANCY
RATES BY AGE GROUP AND RACE/ETHNICITY, ARIZONA, 2010**

	POPULATION				
	All 19 years or younger	10-14 years	15-19 years	15-17 years	18-19 years
All groups	443,971	219,669	224,302	131,854	92,448
White non-Hispanic	194,069	93,642	100,427	57,485	42,942
Hispanic or Latino	175,017	89,150	85,867	52,013	33,854
Black or African American	21,535	10,413	11,122	6,524	4,598
American Indian or Alaska Native	27,707	13,194	14,513	8,529	5,984
Asian or Pacific Islander	11,832	5,996	5,836	3,358	2,478

Note: The 2010 population denominators are the census enumerations. For more information visit:
<http://www.azdhs.gov/plan//menu/info/pd.htm>

	NUMBER OF PREGNANCIES				
	All 19 years or younger	10-14 years	15-19 years	15-17 years	18-19 years
All groups	10,980	150	10,830	3,363	7,467
White non-Hispanic	3,086	28	3,058	742	2,316
Hispanic or Latino	5,918	85	5,833	2,021	3,812
Black or African American	635	11	624	178	446
American Indian or Alaska Native	1,025	16	1,009	345	664
Asian or Pacific Islander	117	1	116	28	88

	PREGNANCY RATES PER 1,000 FEMALES				
	All 19 years or younger	10-14 years	15-19 years	15-17 years	18-19 years
All groups	24.7	0.7	48.3	25.5	80.8
White non-Hispanic	15.9	0.3	30.5	12.9	53.9
Hispanic or Latino	33.8	0.9	67.9	38.9	112.6
Black or African American	29.5	1.1	56.1	27.3	97.0
American Indian or Alaska Native	37.0	1.2	69.5	40.5	111.0
Asian or Pacific Islander	9.9	0.2	19.9	8.3	35.5

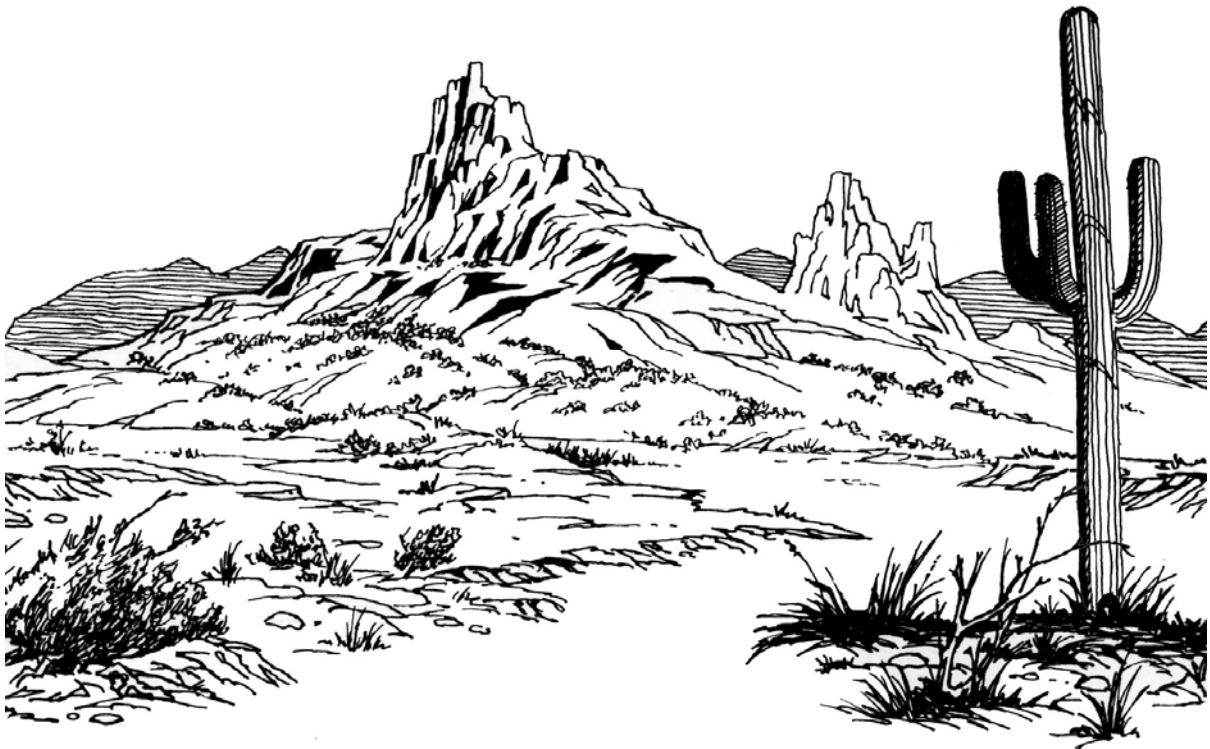
**TABLE 32
POPULATION OF FEMALES 19 OR YOUNGER BY COUNTY OF RESIDENCE, ARIZONA, 2010**

	All 19 years or younger	10-14 years	15-19 years		
			15-19 years	15-17 years	18-19 years
ARIZONA	443,971	219,669	224,302	131,854	92,448
Apache	6,397	3,120	3,277	2,107	1,170
Cochise	8,300	4,031	4,269	2,537	1,732
Coconino	11,240	4,237	7,003	2,697	4,306
Gila	3,174	1,568	1,606	1,033	573
Graham	2,944	1,394	1,550	800	750
Greenlee	616	336	280	182	98
La Paz	971	465	506	326	180
Maricopa	270,221	135,874	134,347	80,196	54,151
Mohave	11,459	5,734	5,725	3,579	2,146
Navajo	8,818	4,384	4,434	2,812	1,622
Pima	65,374	30,229	35,145	19,054	16,091
Pinal	23,689	12,975	10,714	6,912	3,802
Santa Cruz	4,104	2,072	2,032	1,321	711
Yavapai	11,240	5,653	5,587	3,444	2,143
Yuma	15,424	7,597	7,827	4,854	2,973

**APPENDIX
HOW TO COMPUTE THE RATES OF FIRST AND REPEAT CHILDBEARING**

	2000	2001	2002	2003	2004	2005	2006	2007	2008	2009	2010	Comments
A. The number of females 15-19 years old	177,114	183,057	188,780	194,127	200,676	208,105	213,698	215,079	218,545	220,555	224,302	Census enumeration for 2000. Population estimates for 2001-2009.
B. The number of births to females 15-19 years old	11,973	11,591	11,268	11,489	11,676	11,748	12,746	12,792	12,000	10,820	9,311	Based on the birth database.
C. The rate of births (B/A)*1,000	67.6	63.3	59.7	59.2	58.2	56.5	59.6	59.4	54.9	49.1	41.5	The number of births per 1,000 females 15-19 years old.
D. Cumulative number of mothers who gave birth when 15-19 years old	26,525	26,231	25,433	25,346	25,568	25,761	26,916	27,486	26,958	25,352	25,892	Mothers who gave birth when 15-19 years old. As an example, the 2010 cohort of mothers who were 15-19 years old includes 9,311 who gave birth that year and 16,581 who gave birth prior to 2010 and were still 15-19 years old in 2010 (Table 13).
E. The number of females 15-19 years old who had a birth previously (D-B)	14,552	14,640	14,165	13,857	13,892	14,013	14,170	14,694	14,958	14,532	16,581	The cumulative number of mothers 15-19 years old (Table 13) minus those who gave birth that year.
F. The number of repeat births to females 15-19 years old who had a birth previously	2,639	2,680	2,533	2,567	2,590	2,488	2,864	2,800	2,658	2,252	1,898	Table 1B-24 in "Arizona Health Status and Vital Statistics" annual report.
G. The rate of repeat childbearing (F/E)*1,000	181.3	183.1	178.8	185.2	186.4	177.5	202.1	190.6	177.7	155.0	114.4	The number of repeat births per 1,000 females 15-19 years old who had a birth previously.
H. The number of females 15-19 years old who did not have a birth previously (A-E)	162,562	168,417	174,615	180,270	186,784	194,092	199,528	200,385	203,587	206,023	207,721	All 15-19 years old - those who gave birth previously.
I. The number of first-time births to females 15-19 years old who did not have a birth previously	9,285	8,870	8,699	8,922	9,071	9,259	9,880	9,992	9,342	8,568	7,409	Table 1B-24 in "Arizona Health Status and Vital Statistics" annual report.
J. The rate of first-time births (I/H)*1,000	57.1	52.7	49.8	49.5	48.6	47.7	49.5	49.9	45.9	41.6	35.7	The number of first-time births per 1,000 females 15-19 years old who did not have a birth previously.

Our Web site at <http://www.azdhs.gov/plan> provides instantaneous access to a wide range of statistical information about health status of Arizonans. The *Arizona Health Status and Vital Statistics* annual report examines trends in natality, mortality, and morbidity towards established health objectives. Additional reports and studies include *Differences in the Health Status Among Race/Ethnic Groups*, *Advance Vital Statistics by County of Residence*, *Mortality from Alzheimer's Disease*, *Injury Mortality among Arizona Residents* (accidents, suicides, homicides, legal intervention, firearm-related fatalities, drug-related deaths, drowning deaths, falls among Arizonans 65 years or older), hospital inpatient and emergency room statistics for *mental disorders, asthma, diabetes, influenza and pneumonia and substance abuse*, *Community Vital Statistics*, *Teenage Pregnancy*, *Selected Characteristics of Newborns and Mothers Giving Birth by Census Tract in Maricopa County, Pima County and South Phoenix Area*, *Health Status Profile of American Indians in Arizona*, *Deaths from Exposure to Excessive Natural Heat Occurring in Arizona*, *Obesity in Arizona: Prevalence, Hospital Care Utilization, Mortality, and Marital Status and Health*.



**Health Status and Vital Statistics Section
Bureau of Public Health Statistics
ARIZONA DEPARTMENT OF HEALTH SERVICES**